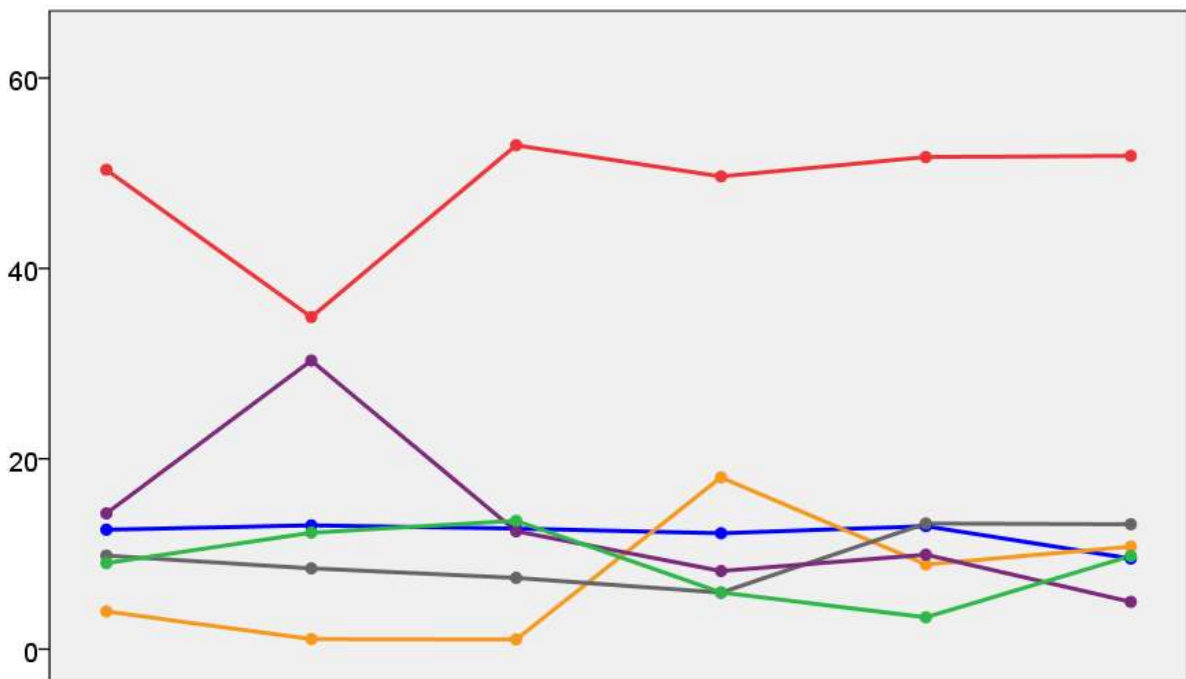


West Glamorgan County Council Election Results 1973-1993



Colin Rallings and Michael Thrasher
The Elections Centre
Plymouth University

The information contained in this report has been obtained from a number of sources. Election results from the immediate post-reorganisation period were painstakingly collected by Alan Willis largely, although not exclusively, from local newspaper reports. From the mid-1980s onwards the results have been obtained from each local authority by the Elections Centre. The data are stored in a database designed by Lawrence Ware and maintained by Brian Cheal and others at Plymouth University. Despite our best efforts some information remains elusive whilst we accept that some errors are likely to remain. Notice of any mistakes should be sent to elections@plymouth.ac.uk. The results sequence can be kept up to date by purchasing copies of the annual Local Elections Handbook, details of which can be obtained by contacting the email address above.

Front cover: the graph shows the distribution of percentage vote shares over the period covered by the results. The lines reflect the colours traditionally used by the three main parties. The grey line is the share obtained by Independent candidates while the purple line groups together the vote shares for all other parties.

Rear cover: the top graph shows the percentage share of council seats for the main parties as well as those won by Independents and other parties. The lines take account of any by-election changes (but not those resulting from elected councillors switching party allegiance) as well as the transfers of seats during the main round of local election.

The lower graph shows for each main round of local elections the overall percentage turnout (solid line), the percentage of women candidates standing at (dotted line) and the percentage of women among those elected (hashed line).

West Glamorgan 1973

Aberavon East & West (11896)³

		vote	share
Warren J.	Lab	3,374	58.7
Crowley C.	Lab	2,906	-
Lewis C.	Lab	2,889	-
Stanton L.	Res	2,371	41.3
Roberts J.	Res	2,280	-
Turnout		48.3	17.5

Aberavon North (6377)

		vote	share
Heatley D.	Lab	1,829	53.6
Raikes T.	Rate	1,584	46.4
Turnout		53.5	7.2

Aberavon South (3888)

		vote	share
Hopkin W.	Lab	1,319	64.3
Cuss H.	Rate	733	35.7
Turnout		52.8	28.6

Brynmelyn (5105)²

		vote	share
Dowdle R.	Lab	0	0.0
Adams J.	Lab	0	-
Turnout		0.0	0.0

Castle (4329)²

		vote	share
Ludham B.	Lab	0	0.0
Knill E.	Lab	0	-
Turnout		0.0	0.0

Cwmafan (3793)

		vote	share
John T.	PROG L	1,548	60.1
Richards L.	Lab	1,026	39.9
Turnout		67.9	20.3

Fforest Fach (9570)²

		vote	share
Alexander V.	Lab	2,471	66.4
Bevan D.	Lab	2,297	-
Mercer D.	Con	1,249	33.6
Hinds R.	Con	1,185	-
Turnout		38.9	32.8

Ffynone (6862)²

		vote	share
Valerio P.	Con	1,732	66.1
Thomas T.	Con	1,715	-
McCallum P.	Lab	889	33.9
Turnout		38.2	32.2

Glyncorwg (5836)²

		vote	share
Daniels D.	Lab	0	-
Davies G.	Lab	0	0.0
Turnout		0.0	0.0

Gower No.1 (3358)

		vote	share
Keal B.	Lib	0	0.0
Turnout		0.0	0.0

Gower No.2 (4572)

		vote	share
Lord F.	Lab	1,644	59.5
Thomas D.	Rate	1,121	40.5
Turnout		60.5	18.9

Gower No.3 (4901)

		vote	share
Beynon G.	Lib	1,682	72.4
Watters V.	Lab	642	27.6
Turnout		47.4	44.8

Landore (5419)²

		vote	share
Cox D.	Lab	0	-
John S.	Lab	0	0.0
Turnout		0.0	0.0

Llansamlet (11176)²

		vote	share
Lloyd-Jones T.	Lab	3,009	65.3
Penhaligan L.	Lab	2,623	-
Bell J.	PC	1,232	26.7
Bevan E.	Comm	366	7.9
Turnout		41.2	38.6

Llchwyr No.1 (4466)

		vote	share
Jones W.	Lab	1,597	57.4
Morgan C.	Ind	1,184	42.6
Turnout		62.3	14.9

Llchwyr No.2 (8673)²

		vote	share
Davies D.	Lab	2,782	45.9
Jones J.	Lab	2,270	-
Thomas C.	Lib	1,702	28.1
Thomas M.	Ind Lab	1,574	26.0
Turnout		69.8	17.8

Llchwyr No.3 (7490)²

		vote	share
Thomas J.	Lab	2,495	45.6
Turner D.	Lab	2,222	-
Griffiths H.	Lib	1,514	27.7
Williams N.	Con	1,457	26.7
Turnout		73.0	17.9

Margam Central (3908)

		vote	share
Heycock L.	Lab	0	0.0
Turnout		0.0	0.0

Margam North (2439)

		vote	share
Mitchell T.	Lab	781	53.4
Penhale G.	Rate	682	46.6
Turnout		60.0	6.8

Margam West (4213)

		vote	share
Miles E.	Rate	1,482	59.4
Phillips D.	Lab	1,011	40.6
Turnout		59.2	18.9

Morrison (10628)²

		vote	share
Evans P.	Lab	1,996	52.4
Havard S.	Lab	1,977	-
Hadley C.	Rate	1,810	47.6
Howes J.	Rate	1,295	-
Turnout		35.8	4.9

Mumbles (10852)²

		vote	share
Chilcott A.	Con	3,180	64.4
Jones M.	Con	3,072	-
Neale L.	Lab	1,757	35.6
Turnout		45.5	28.8

Neath No.1 (14441) @ 4

		vote	share
Phillips W.	Lab	4,159	71.2
Kingdom F.	Lab	4,137	-
David D.	Lab	4,013	-
Burton S.	Lab	3,891	-
Jenkins G.	Comm	1,683	28.8
Ferriss W.	Comm	1,378	-
Pritchard W.	Comm	1,019	-
Strangeward E.	Comm	689	-
Turnout		40.5	42.4

Neath No.2 (7836)²

		vote	share
Evans F.	Lab	2,669	63.4
Jones J.	Lab	2,261	-
Leitz J.	Ind	1,541	36.6
Hemming E.	Ind	1,533	-
Turnout		53.7	26.8

Neath Rural No. (8743)²

		vote	share
Jones R.	Lab	2,905	49.4
Thomas M.	Ind	2,534	-
Thomas N.	Lab	2,385	-
Thomas T.	Lab	2,131	-
Evans H.	PC	1,919	-
Roberts O.	PC	1,629	27.7
Jones W.	Lab	1,575	-
Jones C.	Lab	1,499	-
Rees T.	Ind	1,346	22.9
Davies R.	Lab	1,300	-
Adams L.	Ind	1,191	-
Morgan G.	Comm	734	-
Evans T.	PC	346	-
Turnout		67.3	21.7

Neath Rural No. 5 (4777)

		vote	share
Hull D.	Lab	1,470	48.7
Rees R.	Ind	1,277	42.3
Dawe G.	PC	273	9.0
Turnout		63.2	6.4

Pendery (15991)³

		vote	share
Allison J.	Lab	3,152	66.9
Jones T.	Lab	3,090	-
Thomas G.	Lab	3,032	-
Reynon D.	PC	972	20.6
Jones W.	Comm	584	12.4
Lewis B.	Comm	424	-
Barrow H.	Comm	280	-
Turnout		29.4	46.3

Pontardawe No.1 (3304)

		vote	share
Williams J.	Ind	1,151	62.1
Williams G.	Lab	703	37.9
Turnout		56.1	24.2

Pontardawe No.2 (7790)²

		vote	share
Maunder J.	Lab	2,694	43.8
Rees M.	Ind	1,948	31.7
Jones C.	Lab	1,836	-
Mulcahy M.	PC	1,507	24.5
Jones R.	Ind	1,037	-
Turnout		78.9	12.1

Pontardawe No.3 (12241)³

		vote	share
Lake G.	Lab	4,702	58.7
Rees W.	Lab	4,615	-
Richards B.	Lab	4,464	-
Davies R.	PC	3,305	41.3
Turnout		65.4	17.4

Sketty (16182)³

		vote	share
Vaughan M.	Con	5,270	69.0
Perry S.	Con	4,819	-
Massey-Shaw R.	Con	4,477	-
Dalton J.	Lab	2,372	31.0
Turnout		47.2	37.9

St.Helens (5719)²

		vote	share
Dilley C.	Con	1,742	62.0
Hinds M.	Con	1,545	-
Davies D.	Lab	1,067	38.0
Turnout		49.1	24.0

St.Johns (5654) ²			
		vote	share
Morris A.	Lab	0	-
Tabram H.	Lab	0	0.0
Turnout		0.0	0.0

St.Thomas (5895) ²			
		vote	share
Hare A.	Lab	0	-
Morgan I.	Lab	0	0.0
Turnout		0.0	0.0

Townhill (6627) ²			
		vote	share
Wignall T.	Lab	1,848	81.2
Evans T.	Lab	1,748	-
McPherson C.	Con	429	18.8
Turnout		34.4	62.3

Victoria (5079) ²			
		vote	share
Jenkins D.	Ind RA	1,390	47.6
Jenkins S.	Ind RA	1,132	-
Taylor A.	Lab	1,051	36.0
Lloyd R.	Lab	852	-
Morgan T.	Con	477	16.3
Burrington E.	Con	329	-
Turnout		57.5	11.6

West Glamorgan 1977

Aberavon East & West (11921) ³			
		vote	share
Crowley C.	Lab	2,769	53.9
Lewis C.	Lab	2,600	-
Jones P.	Lab	2,397	-
Stanton A.	Rate	2,365	46.1
Thomas R.	Rate	2,209	-
Jones V.	Rate	2,126	-
Turnout		43.1	7.9

Aberavon North (6546)			
		vote	share
Hubbard R.	Rate	1,981	50.2
Heatley L.	?	1,571	39.8
Walford P.	?	398	10.1
Turnout		60.3	10.4

Aberavon South (4321)			
		vote	share
Carey L.	Rate	1,001	45.8
Hopkins W.	Lab	951	43.5
Bowen S.	PC	232	10.6
Turnout		50.5	2.3

Brynmelyn (4874) ²			
		vote	share
Dowdle J.	Lab	1,407	65.8
Adams J.	Lab	1,334	-
Morgan P.	Con	382	17.9
John M.	Rate	348	16.3
Turnout		43.8	48.0

Castle (4049) ²			
		vote	share
Jones D.	Lab	945	50.8
Ludlam B.	Lab	893	-
Williams I.	Rate	558	30.0
Mathews B.	Rate	508	-
Patriarcia S.	Con	358	19.2
Turnout		46.0	20.8

Cwmafan (3679)			
		vote	share
John T.	Lab	1,522	68.0
John B.	Rate	716	32.0
Turnout		60.8	36.0

Fforest Fach (9587) ²			
		vote	share
Bevan D.	Lab	1,292	36.0
Alexander V.	Lab	1,193	-
Jones D.	Rate	1,115	31.1
Evans L.	Rate	1,091	-
Andrews C.	Con	767	21.4
Charles E.	Con	750	-
Williams A.	PC	319	8.9
Morton D.	PC	305	-
Lewis B.	Comm	92	2.6
Turnout		37.4	4.9

Ffynone (6479) ²			
		vote	share
Valerio P.	Con	1,840	44.7
Thomas J.	Rate	1,383	33.6
Ashmole G.	Con	1,296	-
Thomas J.	PC	456	33.6
Evans S.	Lib	441	10.7
Turnout		63.6	11.1

Glyncorrwg (5656) ²			
		vote	share
Davies G.	Lab	1,916	57.6
Daniel D.	Lab	1,733	-
James G.	Rate	1,411	42.4
Turnout		58.8	15.2

Gower No.1 (3584)			
		vote	share
Bartlett J.	Con	0	0.0
Turnout		0.0	0.0

Gower No.2 (4757)			
		vote	share
Sanders C.	Rate	1,660	54.1
Lord F.	Lab	1,407	45.9
Turnout		64.5	8.2

Gower No.3 (4850)			
		vote	share
Bevan P.	Con	1,565	52.1
Beynon G.	Rate	1,166	38.8
Thomas M.	Lab	273	9.1
Turnout		61.9	13.3

Landore (5309) ²			
		vote	share
Cox D.	Lab	1,286	55.8
John S.	Lab	1,237	-
Lewis J.	Rate	921	40.0
Phillips C.	Rate	917	-
Thomas R.	Comm	97	4.2
Turnout		43.4	15.8

Llansamlet (12113) ²			
		vote	share
Penhaligan L.	Lab	2,471	47.9
Davies W.	Lab	1,931	-
Phillips C.	PC	1,181	22.9
James E.	Rate	845	16.4
Smith W.	PC	779	-
Stevens C.	Rate	773	-
Edgecombe J.	Con	661	12.8
Holmes J.	Con	560	-
Turnout		42.6	25.0

Llwchwr No.1 (4474)			
		vote	share
Williams G.	Lab	1,410	50.1
Thomas D.	Ind	829	29.4
Day R.	Con	576	20.5
Turnout		62.9	20.6

Llwchwr No.2 (8843) ²			
		vote	share
Davies D.	Lab	2,518	58.6
Jones J.	Lab	1,962	-
Thomas E.	PC	1,780	41.4
Turnout		48.6	17.2

Llwchwr No.3 (8006) ²			
		vote	share
Thomas J.	Lab	1,835	35.5
Turner D.	Lab	1,697	-
Davies W.	Con	1,301	25.1
Morgan C.	Ind	1,176	22.7
Bevan M.	Con	1,167	-
Price H.	PC	862	16.7
Turnout		64.6	10.3

Margam Central (3897)			
		vote	share
James R.	Lab	1,146	48.4
Jones W.	Rate	1,006	42.4
Thomas D.	PC	218	9.2
Turnout		60.8	5.9

Margam North (2444)			
		vote	share
Williams S.	Rate	842	45.9
Morgans T.	Ind	789	43.0
Johnston K.	Lab	204	11.1
Turnout		75.1	2.9

Margam West (4034)			
		vote	share
Miles E.*	Rate	1,659	71.4
Johnson L.	?	462	19.9
Greaves P.	?	204	8.8
Turnout		57.6	51.5

Morrison (11267) ²			
		vote	share
Davino E.	Rate	2,164	44.7
Davies G.	Rate	1,511	-
Harvard D.	Lab	1,339	27.7
Moriarty C.	Lab	1,055	-
Reid C.	PC	935	19.3
Harris D.	PC	629	-
Tingey J.	Con	404	8.3
Turnout		43.0	17.0

Mumbles (11781) ²			
		vote	share
Chilcott G.	Con	3,348	50.1
Hughes W.	Con	2,555	-
Penhale W.	Rate	2,185	32.7
Teasue M.	Rate	1,721	-
Coghlin M.	Lab	1,151	17.2
Turnout		56.7	17.4

Neath No.1 (13751) ⁴			
		vote	share
Kingdom F.	Lab	3,003	41.3
Phillips W.	Lab	2,996	-
David D.	Lab	2,604	-
Roberts D.	Lab	2,546	-
Evans S.	Rate	2,143	29.5
Williams W.	Rate	1,954	-
Rees D.	Rate	1,905	-
Chapman C.	Lib	1,184	16.3
Jenkins G.	Comm	942	13.0
Pritchard W.	Comm	561	-
Turnout		52.9	11.8

Neath No.2 (7965) ²			
		vote	share
Evans F.	Lab	2,285	40.9
Jones R.	Rate	1,920	34.4
Jones L.	Lab	1,700	-
Curtis I.	PC	1,375	24.6
Turnout		70.1	6.5

Neath Rural No. (6434) ²			
		vote	share
Thomas M.	Ind	2,440	40.4
Jones R.	Lab	2,391	-
Gwyn D.	PC	2,229	-
Thomas N.	Lab	2,089	-
Evans H.	PC	1,749	-
Jones C.	Lab	1,740	-
Davies D.	Lab	1,713	-
Davies R.	PC	1,661	-
Thomas T.	Lab	1,621	26.8
Thresher E.	Ind	1,120	-
Florance D.	Lab	967	-
Payne E.	Ind	922	-
Lewis M.	PC	752	12.4
Morgan G.	Comm	632	10.5
Davies F.	Rate	601	9.9
Phillips T.	PC	589	-
Turnout		94.0	13.5

Neath Rural No. 5 (4787)			
		vote	share
Rees R.	Ind	1,783	58.8
Hull D.	Lab	1,248	41.2
Turnout		63.3	17.7

Penderry (16070) ³			
		vote	share
Allison J.	Lab	2,884	-
Jones T.	Lab	2,884	47.7
Thomas G.	Lab	2,759	-
John J.	Rate	2,506	41.4
Griffin G.	Rate	2,411	-
Davies C.	Rate	2,336	-
Phillips W.	PC	661	10.9
Freemen P.	PC	594	-
John S.	PC	571	-
Turnout		37.7	6.2

Pontardawe No.1 (3750)			
		vote	share
Williams J.	Ind	1,159	62.6
James S.	Lab	692	37.4
Turnout		49.4	25.2

Pontardawe No.2 (7740) ²			
		vote	share
Rees M.	Ind Lab	2,576	43.6
Mulcahy M.	PC	2,159	36.5
Bevan W.	Lab	1,172	19.8
Hopkins H.	Lab	1,121	-
Turnout		76.3	7.1

Pontardawe No.3 (11659) ³			
		vote	share
Morgan J.	Ind	2,828	29.2
Morgan M.	Lab	2,692	27.8
Rees W.	Lab	2,474	-
Morgan B.	Ind Lab	2,202	22.8
Cape J.	Ind	2,047	-
James D.	PC	1,950	20.2
Turnout		83.0	1.4

Sketty (16739) ³			
		vote	share
Vaughan S.	Con	5,426	51.6
Perry S.	Con	5,038	-
Shew R.	Con	4,689	-
Hamond J.	Rate	2,432	23.1
Jones C.	Rate	2,236	-
Rees J.	Lab	1,583	15.0
Cainen J.	Lab	1,318	-
Gwent G.	PC	1,079	10.3
Turnout		62.8	28.5

St.Helens (5205) ²			
		vote	share
Dilley C.	Con	1,529	51.4
Whitiah M.	Con	1,244	-
Meager D.	Rate	1,023	34.4
Smith M.	Rate	826	-
Duffan P.	PC	425	14.3
Turnout		57.2	17.0

St.Johns (5573) ²			
		vote	share
Tabram N.	Lab	1,237	45.5
Morris A.	Lab	1,158	-
Williams R.	Rate	740	27.2
John W.	Rate	720	-
Tovey B.	Con	425	15.6
Williams G.	Con	403	-
Williams R.	PC	316	27.2
Jones R.	PC	293	-
Turnout		48.8	18.3

St.Thomas (5673) ²			
		vote	share
Morgan I.	Lab	1,467	51.0
Hare K.	Lab	1,389	-
Trick A.	Rate	1,132	39.3
Hale D.	Rate	1,080	-
Lewis R.	Con	279	9.7
Turnout		50.7	11.6

Townhill (6444) ²			
		vote	share
Wignall T.	Lab	1,464	62.0
Evans T.	Lab	1,460	-
Lloyd A.	Con	496	21.0
Tyler L.	Con	436	-
Westwood A.	Rate	400	16.9
Mills D.	Rate	375	-
Turnout		36.6	41.0

Victoria (4537) ²			
		vote	share
Jenkins D.	Rate	1,193	47.1
Jenkins S.	Rate	1,009	-
Jenkins A.	Con	630	24.9
Hammacott C.	Lab	580	22.9
Martin L.	Lab	528	-
Olsen K.	Con	499	-
Farmer G.	PC	128	5.1
Turnout		55.8	22.2

West Glamorgan 1981

Aberavon East & West (11573) ³			
		vote	share
Crowley C.	Lab	3,656	71.0
Lewis C.	Lab	3,434	-
Jones P.	Lab	3,287	-
Thomas B.	NT	1,495	29.0
Johnson W.	NT	1,423	-
Roberts J.	NT	1,241	-
Turnout		44.5	42.0

Aberavon North (6543)			
		vote	share
Harris M.	Lab	1,653	51.0
Hubbard R.	Rate	1,590	49.0
Turnout		49.6	1.9

Aberavon South (4505)			
		vote	share
Llewellyn W.	Lab	1,310	64.9
Carey L.	Rate	709	35.1
Turnout		44.8	29.8

Brynmelyn (4570) ²			
		vote	share
Dowdle J.	Lab	1,432	92.8
Thomas D.	Lab	1,312	-
Harris J.	PC	111	7.2
Harris J.	PC	96	7.2
Turnout		33.8	85.6

Castle (3703) ²			
		vote	share
Jones P.	Lab	958	55.3
Ludlam B.	Lab	927	-
Lewis R.	Con	394	22.8
Percival S.	Rate	290	16.8
Davies L.	PC	89	5.1
Turnout		46.7	32.6

Cwmafán (3828)			
		vote	share
John T.	Lab	1,632	93.0
Bevan A.	Ind	122	7.0
Turnout		45.8	86.1

Fforest Fach (10679) ²			
		vote	share
Alexander V.	Lab	2,180	59.4
Bevan D.	Lab	2,149	11.9
Evans L.	Rate	1,054	28.7
Bevan D.	PC	436	11.9
Williams A.	PC	393	-
Turnout		34.4	47.5

Ffynone (6395) ²			
		vote	share
Price W.	Con	1,357	45.4
Hoskins M.	Con	1,347	-
Martin L.	Lab	869	29.1
Carruthers G.	Lab	821	-
Shrewsbury M.	Lib Dem	641	21.5
Mann J.	Lib Dem	564	-
Thomas J.	PC	121	4.0
McKevit I.	PC	105	-
Turnout		46.7	16.3

Glyncorrwg (5523) ²			
		vote	share
Davies G.	Lab	1,839	49.8
Daniel D.	Lab	1,601	-
James G.	Rate	934	25.3
Goodridge M.	Ind	922	25.0
Turnout		66.9	24.5

Gower No.1 (3786)			
		vote	share
Bartlett J.	Con	1,082	58.6
Richards D.	Ind	765	41.4
Turnout		48.8	17.2

Gower No.2 (5068)			
		vote	share
Stock J.	Lab	1,303	51.3
Sander C.	Rate	879	34.6
Davies F.	Con	359	14.1
Turnout		50.1	16.7

Gower No.3 (5021)			
		vote	share
Smith M.	Ind	1,202	44.9
Richards F.	Con	782	29.2
Beynon L.	Ind	695	25.9
Turnout		53.4	15.7

Landore (5192) ²			
		vote	share
Cox D.	Lab	1,312	58.6
Porter N.	Lab	1,171	-
Rees N.	Rate	423	18.9
Williams A.	Con	329	14.7
Reid A.	PC	173	7.7
Turnout		43.1	39.7

Llansamlet (13224) ²			
		vote	share
Penhaligan L.	Lab	2,895	79.0
Davies W.	Lab	2,672	-
Phillips C.	PC	770	21.0
Watkins G.	PC	644	-
Turnout		27.7	58.0

Llchwyr No.1 (4424)			
		vote	share
Williams G.	Lab	1,922	65.9
Morgan C.	Ind	995	34.1
Turnout		65.9	31.8
Llchwyr No.2 (9388) ²			
		vote	share
Davies D.	Lab	2,768	61.6
Pullen J.	Lab	2,240	-
Jones D.	PC	1,135	25.3
Demery D.	PC	988	-
Johns A.	Con	592	13.2
Turnout		47.9	36.3
Llchwyr No.3 (8605) ²			
		vote	share
Thomas J.	Lab	2,162	49.9
Turner D.	Lab	2,105	-
Evans W.	PC	1,210	27.9
Griffiths A.	Con	964	22.2
Turnout		50.4	22.0
Margam Central (3897)			
		vote	share
Rogers J.	Lab	1,252	67.4
Jones W.	Ind	606	32.6
Turnout		47.7	34.8
Margam North (2401)			
		vote	share
Southall D.	Lab	843	57.7
Williams S.	Ind	618	42.3
Turnout		60.8	15.4
Margam West (3855)			
		vote	share
Miles E.*	Rate	1,254	69.9
Hayward E.	Lab	541	30.1
Turnout		46.6	39.7
Morrison (12249) ²			
		vote	share
Moriarty C.	Lab	1,975	36.2
Adams E.	Lab	1,929	-
Davies G.	Rate	1,368	25.1
Greep C.	Ind	1,356	24.9
Reid C.	PC	752	13.8
Harris D.	PC	546	-
Turnout		44.5	11.1
Mumbles (11829) ²			
		vote	share
Chilcott A.	Con	3,075	61.8
Hughes W.	Con	2,883	-
Miles E.	Lab	1,438	28.9
Jones O.	PC	465	9.3
James D.	PC	231	-
Turnout		42.1	32.9
Neath No.1 (13701) @ 4			
		vote	share
Kingdom F.	Lab	3,620	50.9
Dvid D.	Lab	3,549	-
Jeffs D.	Lab	3,399	-
Roberts D.	Lab	3,371	-
Evans S.	Rate	1,879	26.4
Griffiths M.	PC	882	12.4
Leaker J.	Con	734	10.3
Turnout		51.9	24.5
Neath No.2 (8110) ²			
		vote	share
Evans F.	Lab	2,086	52.2
Jones M.	Lab	1,834	-
Jones R.	Rate	1,318	33.0
Phillips O.	Rate	1,289	-
Curtis I.	PC	593	14.8
Turnout		49.3	19.2

Neath Rural No. (9416) ²			
		vote	share
Jones R.	Lab	2,881	53.1
Thomas N.	Lab	2,586	-
Gwyn A.	PC	2,548	46.9
Thomas M.	Ind	2,338	-
Morgan J.	PC	2,079	-
Davies D.	Lab	1,810	-
Thomas T.	Lab	1,771	-
Thomas D.	Lab	1,479	-
Davies M.	PC	1,211	-
Florance D.	Lab	1,171	-
Morgan G.	Comm	925	-
Davies D.	Ind	680	-
Evans T.	PC	588	-
Brown R.	Con	347	-
Phillips T.	PC	295	-
Evans E.	PC	174	-
Turnout		57.7	6.1
Neath Rural No. 5 (4823)			
		vote	share
Williams D.	Lab	1,892	77.7
Lewis W.	PC	542	22.3
Turnout		50.5	55.5
Penderry (15849) ³			
		vote	share
Jones T.	Lab	3,583	76.0
Allison J.	Lab	3,425	-
Thomas G.	Lab	3,396	-
Freeman P.	PC	664	14.1
Jones W.	Comm	469	9.9
Turnout		29.8	61.9
Pontardawe No.1 (3935)			
		vote	share
Williams G.	Ind Lab	763	52.0
Myrley E.	Lab	703	48.0
Turnout		37.3	4.1
Pontardawe No.2 (7900) ²			
		vote	share
Mauder T.	Lab	2,378	69.9
Ford B.	Lab	2,284	-
Richards I.	PC	1,023	30.1
Rees G.	PC	834	-
Turnout		43.1	39.8
Pontardawe No.3 (11573) ³			
		vote	share
Morgan M.	Lab	3,766	62.9
Rees W.	Lab	3,192	-
Thomas S.	Lab	2,913	-
Evans W.	PC	2,222	37.1
Davies R.	PC	2,139	-
Turnout		51.7	25.8
Sketty (17728) ³			
		vote	share
Vaughan M.	Con	4,412	63.0
Massey-Shaw R.	Con	4,224	-
Perry S.	Con	4,221	-
Hedges M.	Lab	2,075	29.6
Samuel R.	Lab	1,956	-
Collins D.	Lab	1,810	-
Parry K.	PC	518	7.4
Robbins G.	PC	398	-
Morton D.	PC	365	-
Turnout		39.5	33.4
St.Helens (4916) ²			
		vote	share
Dilley C.	Con	1,212	49.9
Whitlock N.	Con	1,112	-
Williams W.	Lab	632	26.0
Rumbles D.	Lab	546	-
Hinton A.	Lib	467	19.2
Breese J.	PC	118	4.9
Joynson D.	PC	107	-
Turnout		49.4	23.9

St.Johns (5679) ²			
		vote	share
Tabram H.	Lab	1,505	83.7
Morris A.	Lab	1,470	-
Bevan R.	PC	294	16.3
Williams R.	PC	32	-
Turnout		31.7	67.3
St.Thomas (5614) ²			
		vote	share
Morgan E.	Lab	1,630	85.4
Copp V.	Lab	1,437	-
Parry M.	PC	279	14.6
Turnout		34.0	70.8
Townhill (6323) ²			
		vote	share
Evans T.	Lab	1,437	87.1
Wignall T.	Lab	1,398	-
Williams B.	PC	213	12.9
Jones G.	PC	207	-
Turnout		26.1	74.2
Victoria (4386) ²			
		vote	share
Lewis M.	Lab	834	35.9
Thomas D.	Lab	794	-
Olson C.	Con	633	27.3
Jenkins D.	Rate	571	24.6
Hughes K.	Con	424	-
Jenkins J.	Lib Dem	207	8.9
Thomas J.	PC	77	3.3
Thomas A.	PC	70	-
Turnout		52.9	8.7
West Glamorgan 1985			
Aberavon East & West (11226) ³			
		vote	share
Crowley C.	Lab	3,703	77.3
Lewis C.	Lab	3,389	-
Jones P.	Lab	3,310	-
Johnston T.	SDP/All	1,090	22.7
Prescott E.	SDP/All	1,050	-
Makinson B.	SDP/All	783	-
Turnout		42.7	54.5
Aberavon North (6688)			
		vote	share
Harris M.	Lab	2,063	60.3
Griffiths L.	Rate	937	27.4
Larsen J.	SDP/All	419	12.3
Turnout		51.1	32.9
Aberavon South (4412)			
		vote	share
Llewellyn W.	Lab	1,183	64.9
Taylor A.	SDP/All	641	35.1
Turnout		41.3	29.7
Brynmelyn (4347) ²			
		vote	share
Macdonald-Murray D.	Lab	0	0.0
Dowdle J.	Lab	0	-
Turnout		0.0	0.0
Castle (3677) ²			
		vote	share
Jones D.	Lab	911	80.5
Ludlam B.	Lab	792	-
Scordellis M.	Con	221	19.5
Turnout		30.8	61.0
Cwmafan (3856)			
		vote	share
John T.	Lab	1,586	78.5
Harris M.	Lib/All	434	21.5
Turnout		52.4	57.0

Forest Fach (10906)²			
		vote	share
Alexander V.	Lab	2,110	59.0
Bevan D.	Lab	2,061	-
Latham D.	Res	1,221	34.1
Williams G.	Res	1,196	-
Williams A.	PC	245	6.9
Roberts J.	PC	192	-
Turnout		32.8	24.9

Ffynone (6467)²			
		vote	share
Ford M.	Lib/SDP	1,012	37.8
Wakefield S.	Lib/SDP	1,000	-
James M.	Con	897	33.5
Hoskins M.	Con	892	-
Carruthers G.	Lab	771	28.8
Hedges M.	Lab	769	-
Turnout		41.4	4.3

Glyncorrwg (5184)²			
		vote	share
Jones T.	Lab	1,699	46.7
Eckett R.	Lab	1,180	-
Daniel D.	Ind Lab	1,068	29.3
Goodridge M.	Ind	872	24.0
Turnout		70.2	17.3

Gower No.1 (3887)			
		vote	share
Kelleher J.	SDP/All	1,028	54.2
Vaughan J.	Con	870	45.8
Turnout		48.8	8.3

Gower No.2 (5464)			
		vote	share
Stock J.	Lab	1,450	59.3
Elliot D.	SDP/All	996	40.7
Turnout		44.8	18.6

Gower No.3 (5240)			
		vote	share
Smith M.	Ind	0	0.0
Turnout		0.0	0.0

Landore (5133)²			
		vote	share
Cox D.	Lab	1,179	79.4
Porter N.	Lab	988	-
Evans J.	Lib/All	305	20.6
Shrewsbury M.	Lib/All	282	-
Turnout		28.9	58.9

Llansamlet (13394)²			
		vote	share
Penhaligan L.	Lab	2,548	84.5
Davies W.	Lab	2,407	-
Boothroyd A.	Con	467	15.5
Thomas A.	Con	375	-
Turnout		22.5	69.0

Llchwyr No.1 (4661)			
		vote	share
Williams G.	Lab	1,948	84.5
Austin B.	Con	358	15.5
Turnout		49.5	69.0

Llchwyr No.2 (9874)²			
		vote	share
Davies D.	Lab	2,369	58.7
James D.	Lab	2,122	-
Thomas K.	PC	1,668	41.3
Turnout		40.9	17.4

Llchwyr No.3 (9002)²			
		vote	share
Turner J.	Lab	1,714	30.9
Thomas M.	Lab	1,555	-
Morgan W.	Ind	1,402	25.3
Davies P.	Con	1,011	18.2
Smith B.	SDP/All	810	14.6
Morgan-Griffiths A.	PC	610	11.0
Turnout		61.6	5.6

Margam Central (3946)			
		vote	share
Rogers J.	Lab	1,642	83.1
Rees W.	Lib/All	334	16.9
Turnout		50.1	66.2

Margam North (2536)			
		vote	share
Southall D.	Lab	735	56.7
Charles W.	Ind	561	43.3
Turnout		51.1	13.4

Margam West (3818)			
		vote	share
Miles E.*	Rate	1,079	59.2
Davis B.	Lab	743	40.8
Turnout		47.7	18.4

Morrison (12868)²			
		vote	share
Adams E.	Lab	2,474	53.1
Moriarty C.	Lab	2,386	-
Bromham C.	SDP/All	1,382	29.7
Bray P.	Con	805	17.3
Turnout		36.2	23.4

Mumbles (12217)²			
		vote	share
Chilcott A.	Con	2,433	49.0
Hughes W.	Con	2,200	-
Butler R.	Lab	1,412	28.4
Exton T.	Lab	1,351	-
Evans S.	SDP/All	1,120	22.6
Turnout		40.6	20.6

Neath No.1 (13392)⁴			
		vote	share
David D.	Lab	0	-
Pearson M.	Lab	0	0.0
Kingdom F.	Lab	0	-
Jeffer D.	Lab	0	-
Turnout		0.0	0.0

Neath No.2 (8283)²			
		vote	share
Evans F.	Lab	2,174	71.2
Jones M.	Lab	2,062	-
Lloyd J.	Con	878	28.8
Turnout		36.8	42.5

Neath Rural No. (9556)²			
		vote	share
Jones R.	Lab	2,681	57.3
Thomas N.	Lab	2,482	-
Thomas M.	Ind	2,125	-
Florance D.	Lab	1,345	-
Bevan H.	Lab	1,165	-
Walters E.	PC	1,033	22.1
Wilkins T.	SDP/All	961	20.6
Morgan G.	Comm	889	-
King R.	PC	867	-
Davies D.	SDP/All	844	-
James P.	PC	407	-
Thomas D.	Lab	0	-
Davies D.	Lab	0	-
Turnout		48.9	35.3

Neath Rural No. 5 (4722)			
		vote	share
Davies D.	Lab	0	0.0
Turnout		0.0	0.0

Penderry (15645)³			
		vote	share
Jones T.	Lab	2,941	43.4
Allison J.	Lab	2,733	-
Thomas G.	Lab	2,724	-
Clement A.	Res	1,982	29.3
Wright K.	SDP/All	1,849	27.3
Watkins S.	Res	1,741	-
Turnout		43.3	14.2

Pontardawe No.1 (3955)			
		vote	share
Mumford A.	Lab	1,216	75.2
Powell L.	SDP/All	400	24.8
Turnout		40.9	50.5

Pontardawe No.2 (8219)²			
		vote	share
Ford B.	Lab	1,929	38.3
Davies J.	Rate	1,478	29.4
Maunder T.	Lab	1,218	-
Richard I.	Ind	853	16.9
Mullins S.	SDP/All	775	15.4
Turnout		61.3	9.0

Pontardawe No.3 (11529)³			
		vote	share
Morgan M.	Lab	3,212	58.0
Griffiths S.	Lab	2,903	-
Thomas S.	Lab	2,551	-
Evans W.	PC	2,324	42.0
Llewellyn A.	PC	1,831	-
Turnout		48.0	16.0

Sketty (18438)³			
		vote	share
Perry S.	Con	3,368	45.7
Massey-Shaw R.	Con	3,271	-
Evans N.	Con	3,098	-
Davies V.	SDP/All	2,174	29.5
Paul D.	SDP/All	1,960	-
Newbury J.	SDP/All	1,954	-
Parker C.	Lab	1,830	24.8
Coghlin S.	Lab	1,692	-
Thomas V.	Lab	1,666	-
Turnout		40.0	16.2

St.Helens (4840)²			
		vote	share
Dilley C.	Con	1,057	48.4
Whitlock N.	Con	1,050	-
Frost D.	Lab	766	35.0
Lewis-Sannerstedt M.	Lab	681	-
Lines C.	SDP/All	363	16.6
Turnout		45.2	13.3

St.Johns (5587)²			
		vote	share
Bozman A.	SDP/All	1,780	62.8
Holley C.	SDP/All	1,709	-
Morris A.	Lab	1,053	37.2
Tabram H.	Lab	1,046	-
Turnout		50.7	25.7

St.Thomas (5499)²			
		vote	share
Copp V.	Lab	0	-
Morgan E.	Lab	0	0.0
Turnout		0.0	0.0

Townhill (6025)²			
		vote	share
Miles E.	Lab	0	-
Sullivan H.	Lab	0	0.0
Turnout		0.0	0.0

Victoria (4352)²			
Lewis M.	Lab	995	44.3
Thomas D.	Lab	827	-
Morris P.	Con	482	21.5
Lewis R.	Ind	451	20.1
Bowen J.	SDP/All	319	14.2
Turnout		51.6	22.8

West Glamorgan 1989

Aberavon (4568)			
Llywellyn W.*	Lab	981	53.9
Jeffries J. Ms.	SDP	839	46.1
Turnout		39.8	7.8

Aberdulais (2681)			
Jones D. Ms.	Lab	0	0.0
Turnout		0.0	0.0

Baglan (5675)			
Harris M.*	Lab	1,591	57.3
Sullivan S.	Rate	1,186	42.7
Turnout		48.9	14.6

Birchgrove (3753)			
Lloyd P.	Lab	0	0.0
Turnout		0.0	0.0

Bishopston (4012)			
Roberts K.	Con	939	43.3
Kelleher J.*	SLD	875	40.4
Cribbs J.	Lab	354	16.3
Turnout		54.0	3.0

Bonymaen (5496)			
Penhaligan L.*	Lab	1,399	89.8
Rufus E.	Ind	159	10.2
Turnout		28.3	79.6

Briton Ferry (5027)			
Kingdom F.*	Lab	0	0.0
Turnout		0.0	0.0

Bryncoch (4888)			
Jones R.*	Lab	1,404	66.7
Richards G.	PC	511	24.3
Reed K. Ms.	SLD	190	9.0
Turnout		43.1	42.4

Castle North (3813)			
Ludlam B.*	Lab	930	83.2
Morris P.	Con	104	9.3
Goatley T.	SLD	84	7.5
Turnout		29.3	73.9

Castle South (5543)			
Lewis M.*	Lab	1,309	64.6
Jones W.	Ind	718	35.4
Turnout		36.6	29.2

Cilybebyll (3691)			
Evans D.	PC	877	43.5
Milburn M.	Lab	642	31.8
Mumford A.*	Ind	499	24.7
Turnout		54.7	11.6

Cimla (4202)			
Jones M.*	Lab	0	0.0
Turnout		0.0	0.0

Clase (3251)			
Jones D. Ms.	Lab	671	50.9
Clement A. Ms.	Res	648	49.1
Turnout		40.6	1.7

Clydach (7051)			
Ford B.*	Lab	2,031	65.6
Saunders D.	Ind	1,066	34.4
Turnout		43.9	31.2

Cockett (4456)			
Bevan D.*	Lab	970	72.2
Phillips D.	Con	373	27.8
Turnout		30.1	44.5

Coedffranc (4912)			
Thomas M.*	Ind	1,675	61.0
Florence D.*	Lab	1,073	39.0
Turnout		55.9	21.9

Cwmafán (4972)			
John T.*	Lab	1,699	61.3
Harris M. Ms.	SDP	1,074	38.7
Turnout		55.8	22.5

Cwmbwrla (6461)			
Holley C.*	SLD	2,079	62.6
Tabram H.	Lab	1,242	37.4
Turnout		51.4	25.2

Cwmrhydyceirw (4309)			
Adams E.*	Lab	1,132	82.9
Bronham C.	SLD	234	17.1
Turnout		31.7	65.7

Dunvant (3845)			
Wood V. Ms.	Lab	847	45.6
Gunn G.	Con	628	33.8
Hurst L.	SLD	382	20.6
Turnout		48.3	11.8

Dyffryn (4251)			
Thomas N.	Lab	1,001	52.2
Absalom S.	PC	741	38.7
Wilkins T.	SDP	174	9.1
Turnout		45.1	13.6

Fforestfach (5567)			
Alexander V.*	Lab	1,284	82.6
Ramos F. Ms.	SLD	270	17.4
Turnout		27.9	65.3

Glyncorrwg (4839)			
Eckert R.*	Lab	1,438	67.3
Stead J.	Ind	699	32.7
Turnout		44.2	34.6

Glynneath (4802)			
Thomas N. Ms.*	Lab	2,064	83.7
Morgan J.	PC	401	16.3
Turnout		51.3	67.5

Goreseinon (6186)			
Davies D.*	Lab	0	0.0
Turnout		0.0	0.0

Gowerton (4028)			
Turner J.*	Lab	1,026	51.6
Davies P.*	Con	659	33.1
Howells D.	Green	303	15.2
Turnout		49.4	18.5

Gwaun Cae Gurwen (3327)			
Thomas G. Ms.	Lab	1,384	76.5
Owen C.	PC	425	23.5
Turnout		54.4	53.0

Killay (4303)			
Perry S.*	Con	1,146	64.0
Holloway P.	Lab	478	26.7
Cole R.	SLD	167	9.3
Turnout		41.6	37.3

Landore (4989)			
Cox D.*	Lab	1,221	81.6
Bridgeman R.	SLD	276	18.4
Turnout		30.0	63.1

Llansamlet (3955)			
Davies W.*	Lab	0	0.0
Turnout		0.0	0.0

Llwchwr (5937)			
James D.	Lab	0	0.0
Turnout		0.0	0.0

Mayals (4333)			
Massey-Shaw R.*	Con	1,350	74.3
Locke H.	Lab	247	13.6
Ali P.	SLD	219	12.1
Turnout		41.9	60.7

Mayhill (3385)			
Sullivan H. Ms.*	Lab	635	48.4
Norman P.	SLD	484	36.9
Phillips B. Ms.	Lab	193	14.7
Turnout		38.8	11.5

Morrleston North (3601)			
Hedges M.	Lab	649	46.3
Hughes W.	Con	377	26.9
Davies G.	Res	375	26.8
Turnout		38.9	19.4

Morrleston South (4679)			
Moriarty C.*	Lab	1,003	75.6
Clement A.	Res	324	24.4
Turnout		28.4	51.2

Mumbles (6713)			
Chilcott A.*	Con	1,384	53.0
Evans S.	SLD	1,226	47.0
Turnout		38.9	6.1

Neath East (4972)			
Pearson M.*	Lab	0	0.0
Turnout		0.0	0.0

Neath North (3213)			
		vote	share
Evans F.*	Lab	0	0.0
	Turnout	0.0	0.0
Neath South (3834)			
		vote	share
David D.*	Lab	0	0.0
	Turnout	0.0	0.0
North Gower (5070)			
		vote	share
Morgan H.	Ind	1,645	57.4
Stock J.*	Lab	1,116	38.9
Wigley S.	Green	105	3.7
	Turnout	56.5	18.5
Penlan (4633)			
		vote	share
Jones T.*	Lab	1,477	90.2
Norman F.	SLD	161	9.8
	Turnout	35.4	80.3
Penllergaer (4011)			
		vote	share
Harris R. Ms.	Ind	856	39.6
Morgan D.	Ind	765	35.4
Thomas M.	Lab	543	25.1
	Turnout	54.0	4.2
Pontardawe (5027)			
		vote	share
Thomas S. Ms.	Lab	1,173	66.3
Davies K. Ms.	Ind	597	33.7
	Turnout	35.2	32.5
Pontarddulais (4182)			
		vote	share
Williams G.*	Lab	0	0.0
	Turnout	0.0	0.0
Port Talbot (4503)			
		vote	share
Miles E.	Rate	1,224	57.9
Hulse B.	Lab	890	42.1
	Turnout	46.9	15.8
Portmead (4522)			
		vote	share
Porter N.*	Lab	0	0.0
	Turnout	0.0	0.0
Resolven (4375)			
		vote	share
Davies D.*	Lab	0	0.0
	Turnout	0.0	0.0
Sandfields East (4982)			
		vote	share
Crowley C.*	Lab	0	0.0
	Turnout	0.0	0.0
Sandfields West (5627)			
		vote	share
Lewis C.*	Lab	0	0.0
	Turnout	0.0	0.0
Seven Sisters (4553)			
		vote	share
Lewis D.*	Lab	0	0.0
	Turnout	0.0	0.0
Sketty Central (4834)			
		vote	share
Verma Mehar Chand L.	Lab	1,026	47.2
Ford M.*	Con	666	30.6
Dalrymple J.	Ind	481	22.1
	Turnout	45.0	16.6

Sketty North (4599)			
		vote	share
Evans N.*	Con	971	46.2
Aubrey I. Ms.	Ind	600	28.5
Miles E. Ms.	Lab	410	19.5
Peters D.	Green	121	5.8
	Turnout	45.7	17.6
South Gower (4337)			
		vote	share
Smith M. Ms.*	Ind	1,590	79.7
Bryant R.	Green	230	11.5
Fender B.	Lab	174	8.7
	Turnout	46.0	68.2
St. (4866)			
		vote	share
Richards W.	Lab	849	44.7
Whitlock N.*	Con	823	43.3
Ekevall T.	Green	116	6.1
Hopkin A.	SLD	111	5.8
	Turnout	39.0	1.4
St. Thomas (5337)			
		vote	share
Morgan E. Ms.*	Lab	1,580	85.7
Westwood A.	SLD	264	14.3
	Turnout	34.6	71.4
Taibach (5362)			
		vote	share
Rogers J.*	Lab	1,858	74.1
Hockin E. Ms.	SDP	650	25.9
	Turnout	46.8	48.2
Town Hill (3851)			
		vote	share
Edwards B. Ms.	SLD	705	41.4
Carruthers G.	Lab	688	40.4
Phillips D.	Ind	310	18.2
	Turnout	44.2	1.0
Treboeth (4790)			
		vote	share
Watkins W.	Res	1,062	55.1
Thomas G.*	Lab	864	44.9
	Turnout	40.2	10.3
Uplands (5724)			
		vote	share
Lewis R.*	Con	824	46.3
Williams C.	Lab	664	37.3
McPake B. Ms.	Green	159	8.9
Spooner E.	SLD	132	7.4
	Turnout	31.1	9.0
West Cross (5882)			
		vote	share
Thomas D.*	Lab	1,457	51.9
Peters J. Ms.	Con	1,168	41.6
Scargill E.	Green	180	6.4
	Turnout	47.7	10.3
Ystalyfera (4675)			
		vote	share
Morris W.	Lab	0	0.0
	Turnout	0.0	0.0

West Glamorgan 1993

Aberavon (4496)			
		vote	share
Sullivan T.	SDP	831	50.7
Llewellyn W.*	Lab	808	49.3
	Turnout	36.5	1.4
Aberdulais (2651)			
		vote	share
Jones D. Ms.*	Lab	1,036	88.1
Levell G.	Con	140	11.9
	Turnout	44.4	76.2
Baglan (5666)			
		vote	share
Harris M.*	Lab	1,339	53.7
Awbery J.	Rate	1,154	46.3
	Turnout	44.0	7.4
Birchgrove (3665)			
		vote	share
Lloyd P.*	Lab	0	0.0
	Turnout	0.0	0.0
Bishopston (3878)			
		vote	share
Hughes F.	LD	1,595	82.8
Trezise D.	Con	332	17.2
	Turnout	49.7	65.5
Bonymaen (5407)			
		vote	share
Penhaligan L.*	Lab	740	75.1
Warden T.	LD	245	24.9
	Turnout	18.2	50.3
Briton Ferry (5019)			
		vote	share
Kingdom F.*	Lab	1,278	71.6
Thompson G.	Ind	506	28.4
	Turnout	35.5	43.3
Bryncoch (4866)			
		vote	share
Jones R.*	Lab	1,178	57.3
Peters D.	PC	706	34.3
Thomas D.	Con	172	8.4
	Turnout	42.3	23.0
Castle North (3789)			
		vote	share
Ludlam B.*	Lab	0	0.0
	Turnout	0.0	0.0
Castle South (6065)			
		vote	share
Lewis M.*	Lab	968	62.9
Bray-Malcolm P.	Con	414	26.9
Rees-Hugh A.	PC	157	10.2
	Turnout	25.4	36.0
Cilybebyll (3668)			
		vote	share
Bubb M.	Lab	1,018	51.5
Evans D.*	PC	877	44.4
Howells G.	Con	80	4.1
	Turnout	53.8	7.1
Cimla (4414)			
		vote	share
Jones M.*	Lab	849	50.1
Warman J.	LD	844	49.9
	Turnout	38.4	0.3

Clase (3028)			
		vote	share
Jones D. Ms.*	Lab	533	50.2
Thorpe A.	Res	529	49.8
Turnout		35.1	0.4
Clydach (7110)			
		vote	share
Harris D.	PC	1,578	60.2
Hopkin I.	Lab	926	35.3
Bennett J.	Con	119	4.5
Turnout		36.9	24.9
Cockett (4498)			
		vote	share
Bevan D.*	Lab	810	75.2
Davies O. Ms.	Con	267	24.8
Turnout		23.9	50.4
Coedffranc (4888)			
		vote	share
Thomas M.*	Ind	1,542	67.4
Belcher S.	Lab	610	26.7
Tregonning L.	PC	136	5.9
Turnout		46.8	40.7
Cwmafan (5073)			
		vote	share
John T.*	Lab	1,539	62.9
Pursey R.	LD	906	37.1
Turnout		48.2	25.9
Cwmbwrla (6469)			
		vote	share
Holley C.*	LD	2,173	76.2
White T.	Lab	678	23.8
Turnout		44.1	52.4
Cwmrhydyceirw (4472)			
		vote	share
Adams E.*	Lab	888	78.4
Cunningham D.	LD	244	21.6
Turnout		25.3	56.9
Dunvant (3755)			
		vote	share
Wood V. Ms.*	Lab	848	57.9
Guy P.	Con	373	25.5
Bleay J.	LD	244	16.7
Turnout		39.0	32.4
Dyffryn (4391)			
		vote	share
Thomas N.*	Lab	697	35.8
Davies D.	LD	595	30.5
King R.	PC	571	29.3
Rees J.	Con	85	4.4
Turnout		44.4	5.2
Fforestfach (5601)			
		vote	share
Alexander V.*	Lab	784	53.9
Lloyd D.	PC	671	46.1
Turnout		26.0	7.8
Glyncorrwg (4835)			
		vote	share
Reeves M.	Lab	0	0.0
Turnout		0.0	0.0
Glynneath (4672)			
		vote	share
Thomas N. Ms.*	Lab	1,786	73.5
Lewis H.	PC	643	26.5
Turnout		52.0	47.1

Goreseinon (6587)			
		vote	share
Davies D.*	Lab	1,751	74.6
Williams G.	PC	369	15.7
Smith A.	Con	226	9.6
Turnout		35.6	58.9
Gowerton (4464)			
		vote	share
Evans W.	Lab	864	43.4
Jones L.	Con	701	35.2
Griffiths A.	PC	263	13.2
Davies C.	LD	164	8.2
Turnout		44.6	8.2
Gwaun Cae Gurwen (3298)			
		vote	share
Thomas G. Ms.*	Lab	1,500	82.9
Williams E.	PC	309	17.1
Turnout		54.9	65.8
Killay (4701)			
		vote	share
Gunn G.	Con	839	56.6
Cocks L. Ms.	Lab	347	23.4
Stanford P.	LD	297	20.0
Turnout		31.6	33.2
Landore (4961)			
		vote	share
Cox D.*	Lab	875	69.5
Chapman E.	Ind	384	30.5
Turnout		25.4	39.0
Llansamlet (4151)			
		vote	share
Davies W.*	Lab	0	0.0
Turnout		0.0	0.0
Llwchwr (5971)			
		vote	share
James D.*	Lab	1,298	64.4
Rees A.	Ind	359	17.8
Marlow D.	LD	207	10.3
Timothy J.	Con	153	7.6
Turnout		33.8	46.6
Mayals (4188)			
		vote	share
Massey-Shaw R.*	Con	890	51.0
Evans D.	Ind	587	33.7
Collins M. Ms.	Lab	267	15.3
Turnout		41.6	17.4
Mayhill (3251)			
		vote	share
Sullivan H. Ms.*	Lab	618	72.8
Spooner E.	LD	231	27.2
Turnout		26.1	45.6
Morrison North (3878)			
		vote	share
Hedges M.*	Lab	924	65.7
Cunningham M.	LD	482	34.3
Turnout		36.3	31.4
Morrison South (4668)			
		vote	share
Moriarty C.*	Lab	657	69.6
Hughes M. Ms.	Ind	287	30.4
Turnout		20.2	39.2
Mumbles (6656)			
		vote	share
King F.	Con	1,216	55.8
Evans S.	LD	963	44.2
Turnout		32.7	11.6

Neath East (4978)			
		vote	share
Pearson M.*	Lab	0	0.0
Turnout		0.0	0.0
Neath North (3446)			
		vote	share
Evans F.*	Lab	807	80.5
Buckley A.	Con	196	19.5
Turnout		29.1	60.9
Neath South (3674)			
		vote	share
Jenkins J.	Lab	688	67.9
Havard W.	PC	205	20.2
Rees C.	Ind	121	11.9
Turnout		27.6	47.6
North Gower (5179)			
		vote	share
Morgan H.*	Ind	1,809	78.1
James J.	Lab	508	21.9
Turnout		44.7	56.2
Penlan (4459)			
		vote	share
Jones T.*	Lab	807	62.5
Vaughan A.	Ind	485	37.5
Turnout		29.0	24.9
Penllergaer (4413)			
		vote	share
Lawlor D.	Lab	667	37.5
Harris R. Ms.*	Ind	651	36.6
Morgan W.	Ind	460	25.9
Turnout		40.3	0.9
Pontardawe (5187)			
		vote	share
Thomas S. Ms.*	Lab	1,054	60.0
Morgan J.	PC	702	40.0
Turnout		33.9	20.0
Pontarddulais (4219)			
		vote	share
Williams G.*	Lab	1,378	58.3
Howells D.	Ind	743	31.5
Alun C. Ms.	PC	241	10.2
Turnout		56.0	26.9
Port Talbot (4460)			
		vote	share
Miles E.*	Rate	1,139	69.9
Davies H.	Lab	491	30.1
Turnout		36.6	39.8
Portmead (4221)			
		vote	share
Porter N.*	Lab	0	0.0
Turnout		0.0	0.0
Resolven (4323)			
		vote	share
Davies D.*	Lab	1,406	79.2
Gillard C.	PC	370	20.8
Turnout		41.1	58.3
Sandfields East (5020)			
		vote	share
Crowley C.*	Lab	1,483	74.6
Saunders D.	PC	358	18.0
Beany Capt.	Ind	148	7.4
Turnout		39.6	56.6
Sandfields West (5389)			
		vote	share
Lewis C.*	Lab	1,152	67.6
Edwards K.	PC	553	32.4
Turnout		31.6	35.1

Seven Sisters (4579)			
		vote	share
Thomas H.	Lab	1,544	63.2
Milsom R.	Ind	721	29.5
Holloway D.	PC	177	7.2
<hr/>			
	Turnout	53.3	33.7
Sketty Central (4787)			
		vote	share
Verma M.*	Lab	1,118	63.7
Birss C.	Con	636	36.3
<hr/>			
	Turnout	36.6	27.5
Sketty North (4733)			
		vote	share
Stanton R. Ms.	Ind	1,043	55.7
Wixey K. Ms.	Con	475	25.3
Cromie L. Ms.	Lab	356	19.0
<hr/>			
	Turnout	39.6	30.3
South Gower (4258)			
		vote	share
Smith M. Ms.*	Ind	1,428	79.1
James M. Ms.	LD	378	20.9
<hr/>			
	Turnout	42.4	58.1
St. (5162)			
		vote	share
Richards W.*	Lab	948	49.4
Phillips D.	Con	805	41.9
Cadwalldr D.	Ind	167	8.7
<hr/>			
	Turnout	37.2	7.4
St. Thomas (5250)			
		vote	share
Morgan E. Ms.*	Lab	988	67.5
Burrows P.	Ind	476	32.5
<hr/>			
	Turnout	27.9	35.0
Taibach (5321)			
		vote	share
Rogers J.*	Lab	1,656	82.3
Phillips M.	LD	356	17.7
<hr/>			
	Turnout	37.8	64.6
Town Hill (3727)			
		vote	share
Edwards B. Ms.*	LD	635	43.2
Stuckey M. Ms.	Lab	626	42.6
Phillips D.	Ind	209	14.2
<hr/>			
	Turnout	39.4	0.6
Treboeth (4792)			
		vote	share
Clement A. Ms.	Res	1,037	57.7
James J.	Lab	760	42.3
<hr/>			
	Turnout	37.5	15.4
Uplands (5841)			
		vote	share
Phillips D.	Lab	800	38.0
Lewis R.*	Ind	739	35.1
Taverner J. Ms.	Con	454	21.6
Phillips B. Ms.	Ind Lab	113	5.4
<hr/>			
	Turnout	36.1	2.9
West Cross (5634)			
		vote	share
Thomas D.*	Lab	1,427	63.3
Cainen M.	Con	758	33.6
Redburn C.	Ind Lab	71	3.1
<hr/>			
	Turnout	40.0	29.7
Ystalyfera (4701)			
		vote	share
Myers J.	Lab	1,710	70.7
Randall A.	PC	708	29.3
<hr/>			
	Turnout	51.4	41.4

