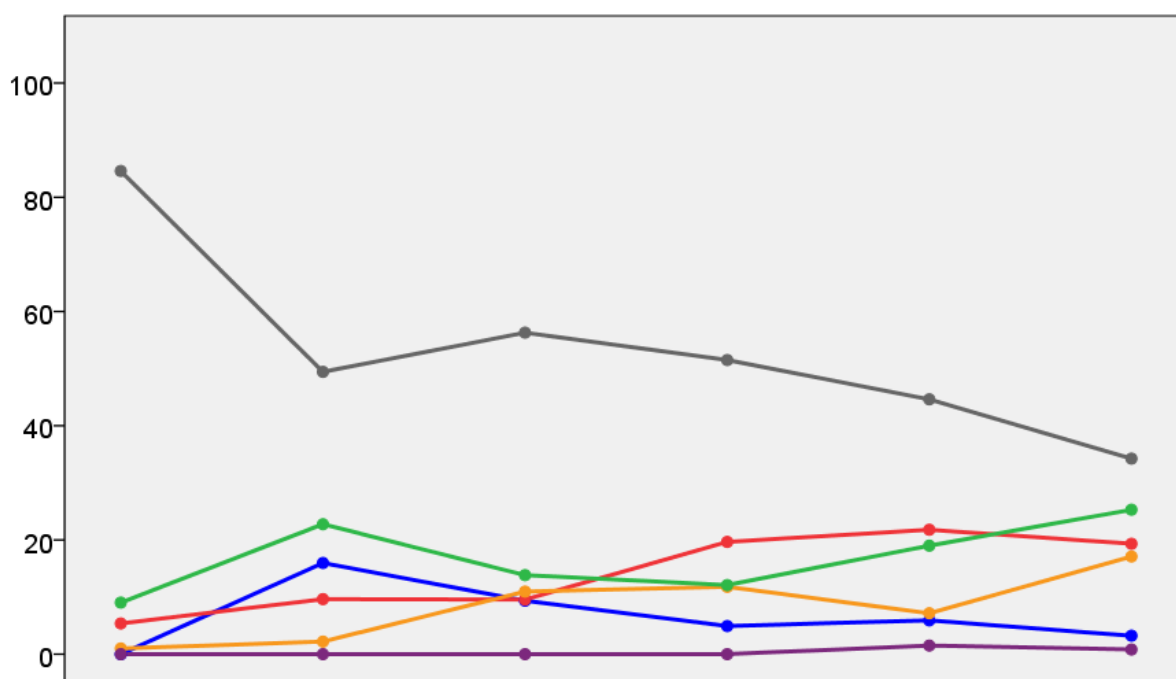


# Gwynedd County Council Election Results 1973-1993



Colin Rallings and Michael Thrasher  
The Elections Centre  
Plymouth University

The information contained in this report has been obtained from a number of sources. Election results from the immediate post-reorganisation period were painstakingly collected by Alan Willis largely, although not exclusively, from local newspaper reports. From the mid-1980s onwards the results have been obtained from each local authority by the Elections Centre. The data are stored in a database designed by Lawrence Ware and maintained by Brian Cheal and others at Plymouth University. Despite our best efforts some information remains elusive whilst we accept that some errors are likely to remain. Notice of any mistakes should be sent to [elections@plymouth.ac.uk](mailto:elections@plymouth.ac.uk). The results sequence can be kept up to date by purchasing copies of the annual Local Elections Handbook, details of which can be obtained by contacting the email address above.

Front cover: the graph shows the distribution of percentage vote shares over the period covered by the results. The lines reflect the colours traditionally used by the three main parties. The grey line is the share obtained by Independent candidates while the purple line groups together the vote shares for all other parties.

Rear cover: the top graph shows the percentage share of council seats for the main parties as well as those won by Independents and other parties. The lines take account of any by-election changes (but not those resulting from elected councillors switching party allegiance) as well as the transfers of seats during the main round of local election.

The lower graph shows for each main round of local elections the overall percentage turnout (solid line), the percentage of women candidates standing at (dotted line) and the percentage of women among those elected (hashed line).

## Gwynedd 1973

### Aethwy No.1 (3625)

		vote	share
<b>Williams D.</b>	Ind	1,021	51.3
Pritchard J.	Ind	968	48.7
<b>Turnout</b>		54.9	2.7

### Aethwy No.2 (3307)

		vote	share
<b>Williams J.</b>	Ind	961	49.7
Roberts J.	Ind	623	32.2
Gruffydd J.	Ind	348	18.0
<b>Turnout</b>		58.4	17.5

### Aethwy No.3 (3273)

		vote	share
<b>Roberts E.</b>	PC	1,087	55.7
Parry T.	Ind	865	44.3
<b>Turnout</b>		59.6	11.4

### Aled (2473)

		vote	share
<b>Jenkins E.</b>	Ind	0	0.0
<b>Turnout</b>		0.0	0.0

### Amlwch (2827)

		vote	share
<b>Wainwright O.</b>	Ind	822	42.6
Arthur-Jones A.	Ind	753	39.0
Evans R.	Ind	355	18.4
<b>Turnout</b>		68.3	3.6

### Bala & Penllyn (3160)

		vote	share
<b>Jones T.</b>	Ind	1,108	51.1
Puw D.	Ind	1,059	48.9
<b>Turnout</b>		68.6	2.3

### Bangor No.1 (5207)<sup>2</sup>

		vote	share
<b>Jones G.</b>	Lab	971	41.7
<b>Roberts A.</b>	Ind	819	35.2
Pritchard O.	Ind	735	-
Jones H.	Ind	652	-
Deans C.	Lib	539	23.1
Parry-Jones D.	Ind	407	-
<b>Turnout</b>		44.7	6.5

### Bangor No.2 (2076)

		vote	share
<b>Roberts R.</b>	Lab	529	67.7
Lavender J.	Lib	252	32.3
<b>Turnout</b>		37.6	35.5

### Bangor No.3 (2737)

		vote	share
<b>Hainge C.</b>	Lab	763	69.7
Cozens H.	Ind	332	30.3
<b>Turnout</b>		40.0	39.4

### Barmouth (1581)

		vote	share
<b>Jones J.</b>	Ind	677	69.2
O'Marah T.	Ind	301	30.8
<b>Turnout</b>		61.9	38.4

### Beaumaris (1731)

		vote	share
<b>Thomas J.</b>	Ind	677	73.8
Roberts F.	Ind	240	26.2
<b>Turnout</b>		53.0	47.7

### Bethesda (3081)

		vote	share
<b>Orwig D.</b>	PC	1,209	50.3
Morris T.	Lab	1,195	49.7
<b>Turnout</b>		78.0	0.6

### Caernarfon No.1 (1554)

		vote	share
<b>Williams J.</b>	Ind	505	57.6
Hitchinson F.	Ind	371	42.4
<b>Turnout</b>		56.4	15.3

### Caernarfon No.2 (3413)

		vote	share
<b>Pritchard B.</b>	Ind	692	39.5
Roberts W.	Ind	396	22.6
Higgins E.	PC	385	22.0
Hughes J.	Ind	277	15.8
<b>Turnout</b>		51.3	16.9

### Caernarfon No.3 ()

		vote	share
<b>Griffith I.</b>	Ind	0	0.0
<b>Turnout</b>		0.0	0.0

### Conwy (2948)

		vote	share
<b>Davies L.</b>	Ind	879	67.7
Leathwhite R.	Ind	420	32.3
<b>Turnout</b>		44.1	35.3

### Conwy No.2 (2240)

		vote	share
<b>Jones E.</b>	Ind	0	0.0
<b>Turnout</b>		0.0	0.0

### Conwy No.3 (2733)

		vote	share
<b>Roberts S.</b>	Ind	0	0.0
<b>Turnout</b>		0.0	0.0

### Conwy No.4 (2188)

		vote	share
<b>Williams D.</b>	Ind	0	0.0
<b>Turnout</b>		0.0	0.0

### Criccieth (1331)

		vote	share
<b>George W.</b>	Ind	500	51.3
Roberts T.	Ind	228	23.4
Williams E.	Ind	177	18.2
Jones W.	Ind	70	7.2
<b>Turnout</b>		73.3	27.9

### Deudraeth No.1 (2281)

		vote	share
<b>Williams E.</b>	PC	0	0.0
<b>Turnout</b>		0.0	0.0

### Deudraeth No.2 (2871)

		vote	share
<b>Davies E.</b>	Ind	1,130	56.2
Jones I.	Ind	599	29.8
Parfitt A.	Lab	280	13.9
<b>Turnout</b>		70.0	26.4

### Dolgellau (2546)

		vote	share
<b>Tudor J.</b>	Ind	1,016	53.0
Jones B.	Ind	901	47.0
<b>Turnout</b>		75.3	6.0

### Dolgellau Rural No.1 (2569)

		vote	share
<b>Williams E.</b>	Ind	606	36.6
Jones J.	Ind	532	32.1
Williams D.	Ind	519	31.3
<b>Turnout</b>		64.5	4.5

### Dolgellau Rural No.2 (2428)

		vote	share
<b>Thomas J.</b>	Ind	680	51.7
Davies E.	Ind	486	37.0
Williams T.	Ind	149	11.3
<b>Turnout</b>		54.2	14.8

### Ffestiniog No.1 (2053)

		vote	share
<b>Evans G.</b>	Ind	693	40.0
Jones E.	Ind	583	33.6
Davies R.	Ind	457	26.4
<b>Turnout</b>		84.4	6.3

### Ffestiniog No.2 (1924)

		vote	share
<b>Roberts R.</b>	Ind	0	0.0
<b>Turnout</b>		0.0	0.0

### Gwyrfai No.1 (3026)

		vote	share
<b>Roberts H.</b>	PC	1,134	51.9
Morris A.	Ind	1,052	48.1
<b>Turnout</b>		72.2	3.8

### Gwyrfai No.2 (2340)

		vote	share
<b>Hughes-Jones A.</b>	Ind	984	55.8
Hudson E.	Ind	778	44.2
<b>Turnout</b>		75.3	11.7

### Gwyrfai No.3 (2386)

		vote	share
<b>Roberts O.</b>	Ind	635	42.0
Vaughan-Jones M.	Ind	579	38.3
Evans R.	Ind	297	19.7
<b>Turnout</b>		63.3	3.7

### Gwyrfai No.4 (3020)

		vote	share
<b>Prytherch W.</b>	Ind	987	53.2
Thomas A.	PC	869	46.8
<b>Turnout</b>		61.5	6.4

### Gwyrfai No.5 (3078)

		vote	share
<b>Jones G.</b>	PC	793	42.6
Roberts L.	Lab	535	28.7
Williams J.	Ind	307	16.5
Rowlands E.	Ind	228	12.2
<b>Turnout</b>		60.5	13.8

### Gwyrfai No.6 (1913)

		vote	share
<b>Owen R.</b>	Ind	1,008	65.6
Williams T.	Ind	529	34.4
<b>Turnout</b>		80.3	31.2

### Gwyrfai No.7 (2214)

		vote	share
<b>Roberts O.</b>	Ind	635	42.0
Vaughan-Jones M.	Ind	579	38.3
Evans R.	Ind	297	19.7
<b>Turnout</b>		68.2	3.7

### Holyhead No.1 (2827)

		vote	share
<b>Robertson A.</b>	Ind	864	62.7
Jones R.	Ind	310	22.5
Jones E.	Ind	205	14.9
<b>Turnout</b>		48.8	40.2

### Holyhead No.2 (2119)

		vote	share
<b>Manley-Williams D.</b>	Ind	0	0.0
<b>Turnout</b>		0.0	0.0

Holyhead No.3 (2845)			
		vote	share
Lowett T.	Ind	929	71.7
Jones H.	Ind	366	28.3
<b>Turnout</b>		45.5	43.5

Llandudno ()			
		vote	share
White T.	Ind	0	0.0
<b>Turnout</b>		0.0	0.0

Llandudno East (1478)			
		vote	share
Williams T.	Ind	447	63.7
Ash F.	Ind	255	36.3
<b>Turnout</b>		47.5	27.4

Llandudno North (1915)			
		vote	share
Humphreys M.	Ind	443	63.2
Davies D.	Ind	258	36.8
<b>Turnout</b>		36.6	26.4

Llandudno South (4669)			
		vote	share
Williams F.	Ind	1,012	62.5
Parry I.	Ind	608	37.5
<b>Turnout</b>		34.7	24.9

Llandudno West (3378)			
		vote	share
Hughes E.	Ind	732	57.1
Owen R.	Ind	551	42.9
<b>Turnout</b>		38.0	14.1

Llanfarifechan (2671)			
		vote	share
Davies A.	Ind	0	0.0
<b>Turnout</b>		0.0	0.0

Llangefni (2949)			
		vote	share
Roberts T.	Ind	840	47.4
Hughes J.	PC	513	28.9
Evans A.	Ind	420	23.7
<b>Turnout</b>		60.1	18.4

Llanrwst (2801)			
		vote	share
Phillips L.	Ind	1,228	86.4
Thomas E.	Ind	194	13.6
<b>Turnout</b>		50.8	72.7

Lleyn No.1 (2209)			
		vote	share
Williams R.	Ind	634	51.5
Owen D.	Ind	598	48.5
Griffith E.	PC	0	0.0
<b>Turnout</b>		55.8	2.9

Lleyn No.2 (2792)			
		vote	share
Humphreys T.	Ind	810	52.5
Hookes L.	Ind	444	28.8
Williams W.	Ind	288	18.7
<b>Turnout</b>		55.2	23.7

Lleyn No.3 (3063)			
		vote	share
Williams R.	Ind	1,256	54.6
Parry R.	Ind	1,043	45.4
<b>Turnout</b>		75.1	9.3

Lleyn No.4 (3073)			
		vote	share
Roberts J.	Ind	794	38.1
Jones D.	Ind	657	31.5
Thomas H.	Ind	632	30.3
<b>Turnout</b>		67.8	6.6

Menaibridge (2113)			
		vote	share
Parry C.	Ind	918	69.0
Morgan T.	Ind	413	31.0
<b>Turnout</b>		63.0	37.9

Nantconwy No.1 (2415)			
		vote	share
Roberts O.	Ind	0	0.0
<b>Turnout</b>		0.0	0.0

Nantconwy No.2 (1668)			
		vote	share
Jones T.	Ind	658	59.8
Williams H.	Ind	443	40.2
<b>Turnout</b>		66.0	19.5

Ogwen (4151) <sup>2</sup>			
		vote	share
Rochell R.	Lab	0	0.0
Williams W.	Ind	0	0.0
<b>Turnout</b>		0.0	0.0

Penmaenmawr (3069)			
		vote	share
Williams E.	Ind	993	65.8
Haggas E.	Ind	515	34.2
<b>Turnout</b>		49.1	31.7

Porthmadog (3057)			
		vote	share
Lewis H.	PC	1,172	58.9
Roberts R.	Ind	817	41.1
<b>Turnout</b>		65.1	17.8

Pwllheli (3135)			
		vote	share
Roberts J.	Ind	1,018	55.6
Roberts H.	Ind	813	44.4
<b>Turnout</b>		58.4	11.2

Twrcelyn No.1 (2643)			
		vote	share
Jones T.	Ind	724	38.5
Roberts G.	Ind	724	38.5
Jones J.	Ind	434	23.1
<b>Turnout</b>		71.2	0.0

Twrcelyn No.2 (3158)			
		vote	share
Hughes O.	Ind	974	54.1
Huws O.	Ind	434	24.1
Humphreys D.	Ind	393	21.8
<b>Turnout</b>		57.0	30.0

Twrcelyn No.3 (2404)			
		vote	share
Owen A.	Ind	990	54.8
Jones J.	Ind	818	45.2
<b>Turnout</b>		75.2	9.5

Tywyn (3427)			
		vote	share
Lloyd J.	Ind	1,042	46.5
Jenkins T.	Ind	1,024	45.7
Lewis M.	Ind	135	6.0
Middleton R.	Ind	38	1.7
<b>Turnout</b>		65.3	0.8

Valley No.1 (2342)			
		vote	share
Williams G.	Ind	0	0.0
<b>Turnout</b>		0.0	0.0

Valley No.2 (3230)			
		vote	share
Pierce W.	Ind	1,163	70.0
Jones M.	Ind	499	30.0
<b>Turnout</b>		51.5	40.0

Valley No.3 (2908)			
		vote	share
Taylor W.	Ind	0	0.0
<b>Turnout</b>		0.0	0.0

Valley No.4 (2855)			
		vote	share
Jones R.	Ind	0	0.0
<b>Turnout</b>		0.0	0.0

## Gwynedd 1977

Aethwy No.1 (3633)			
		vote	share
Williams D.	Ind	1,158	50.9
Pritchard J.	Ind	1,119	49.1
<b>Turnout</b>		62.7	1.7

Aethwy No.2 (3314)			
		vote	share
Williams J.	PC	1,304	67.1
Connor A.	Con	639	32.9
<b>Turnout</b>		58.6	34.2

Aethwy No.3 (3280)			
		vote	share
Roberts E.	PC	1,243	68.1
Billing J.	Con	582	31.9
<b>Turnout</b>		55.6	36.2

Aled (2478)			
		vote	share
Williams V.	Con	554	39.8
Jones E.	Ind	524	37.6
Jenkins E.	Ind	314	22.6
<b>Turnout</b>		56.2	2.2

Amlwch (2833)			
		vote	share
Hughes E.	Ind	790	46.1
Evans J.	Ind	497	29.0
Morris R.	Con	428	25.0
<b>Turnout</b>		60.5	17.1

Bala & Penllyn (3166)			
		vote	share
Jones T.	Ind	0	0.0
<b>Turnout</b>		0.0	0.0

Bangor No.1 (5218) <sup>2</sup>			
		vote	share
Jones G.	Ind	1,237	46.9
Roberts A.	Ind	998	-
Jones G.	Lab	884	46.9
Nicholson J.	Lab	737	-
Albin I.	Lib	519	19.7
<b>Turnout</b>		50.6	0.0

Bangor No.2 (2080)			
		vote	share
Roberts R.	Lab	0	0.0
<b>Turnout</b>		0.0	0.0

Bangor No.3 (2743)			
		vote	share
Hainge C.	Lab	417	58.9
Jones D.	Ind	291	41.1
<b>Turnout</b>		25.8	17.8

Barmouth (1584)			
		vote	share
Edwards L.	Ind	0	0.0
<b>Turnout</b>		0.0	0.0

<b>Beumaris (1735)</b>			
		vote	share
<b>Roberts M.</b>	Lab	0	0.0
	<b>Turnout</b>	0.0	0.0
<b>Bethesda (3087)</b>			
		vote	share
<b>Orwig D.</b>	PC	1,397	65.0
<b>Williams T.</b>	Lab	753	35.0
	<b>Turnout</b>	69.6	30.0
<b>Caernarfon (2110)</b>			
		vote	share
<b>Griffith I.</b>	Ind	0	0.0
	<b>Turnout</b>	0.0	0.0
<b>Caernarfon No.1 (1557)</b>			
		vote	share
<b>Jones I.</b>	Ind	474	61.0
<b>Williams J.</b>	Ind	303	39.0
	<b>Turnout</b>	49.9	22.0
<b>Caernarfon No.2 (3420)</b>			
		vote	share
<b>Hughes J.</b>	PC	885	46.8
<b>Bonner-Pritchard M.</b>	Ind	620	32.8
<b>Jones T.</b>	Ind	360	19.0
<b>Wilkinson W.</b>	Ind	26	1.4
	<b>Turnout</b>	55.3	14.0
<b>Conwy (2954)</b>			
		vote	share
<b>Pattinson B.</b>	Ind	0	0.0
	<b>Turnout</b>	0.0	0.0
<b>Conwy Marl (2774)</b>			
		vote	share
<b>Trevor R.</b>	Con	825	61.0
<b>Roberts S.</b>	Ind	528	39.0
	<b>Turnout</b>	48.8	22.0
<b>Criccieth (1334)</b>			
		vote	share
<b>George W.</b>	Ind	552	64.1
<b>Maclean A.</b>	Con	309	35.9
	<b>Turnout</b>	64.5	28.2
<b>Deganwy ()</b>			
		vote	share
<b>Jones E.</b>	Con	0	0.0
	<b>Turnout</b>	0.0	0.0
<b>Deudraeth No.1 (2286)</b>			
		vote	share
<b>Williams E.</b>	PC	0	0.0
	<b>Turnout</b>	0.0	0.0
<b>Deudraeth No.2 (2877)</b>			
		vote	share
<b>Davies E.</b>	Ind	0	0.0
	<b>Turnout</b>	0.0	0.0
<b>Dolgellau (1818)</b>			
		vote	share
<b>Tudor J.</b>	Ind	0	0.0
	<b>Turnout</b>	0.0	0.0
<b>Dolgellau Rural No.1 (2574)</b>			
		vote	share
<b>Price I.</b>	Ind	841	53.5
<b>Williams E.</b>	PC	732	46.5
	<b>Turnout</b>	61.1	6.9

<b>Dolgellau Rural No.2 (2433)</b>			
		vote	share
<b>Davies E.</b>	Ind	853	61.6
<b>Jenkins P.</b>	PC	386	27.9
<b>Jones B.</b>	Ind	146	10.5
	<b>Turnout</b>	56.9	33.7
<b>Ffestiniog No.1 (2057)</b>			
		vote	share
<b>Evans G.</b>	Lab	965	66.4
<b>Roberts W.</b>	PC	489	33.6
	<b>Turnout</b>	70.7	32.7
<b>Ffestiniog No.2 (1928)</b>			
		vote	share
<b>Roberts R.</b>	Ind	0	0.0
	<b>Turnout</b>	0.0	0.0
<b>Gwyrfai No.1 (3032)</b>			
		vote	share
<b>Williams B.</b>	Lab	1,251	52.7
<b>Roberts D.</b>	PC	1,121	47.3
	<b>Turnout</b>	78.2	5.5
<b>Gwyrfai No.2 (2345)</b>			
		vote	share
<b>Hughes-Jones A.</b>	Ind	0	0.0
	<b>Turnout</b>	0.0	0.0
<b>Gwyrfai No.3 (2391)</b>			
		vote	share
<b>Jones R.</b>	Ind	808	48.5
<b>Price R.</b>	PC	602	36.2
<b>Clowes A.</b>	Con	255	15.3
	<b>Turnout</b>	69.6	12.4
<b>Gwyrfai No.4 (3026)</b>			
		vote	share
<b>Owen H.</b>	Ind	1,148	53.0
<b>Wyn E.</b>	PC	1,020	47.0
	<b>Turnout</b>	71.6	5.9
<b>Gwyrfai No.5 (3084)</b>			
		vote	share
<b>Larson P.</b>	PC	931	45.6
<b>Evans A.</b>	Lab	813	39.8
<b>Jones G.</b>	Ind	298	14.6
	<b>Turnout</b>	66.2	5.8
<b>Gwyrfai No.7 (2218)</b>			
		vote	share
<b>Humphreys R.</b>	Ind	642	51.0
<b>Pritchard R.</b>	PC	618	49.0
	<b>Turnout</b>	56.8	1.9
<b>Holyhead No.1 (2833)</b>			
		vote	share
<b>Robertson A.</b>	Ind	976	78.8
<b>Owen R.</b>	PC	262	21.2
	<b>Turnout</b>	43.7	57.7
<b>Holyhead No.2 (2124)</b>			
		vote	share
<b>Manley-Williams D.</b>	Ind	0	0.0
	<b>Turnout</b>	0.0	0.0
<b>Holyhead No.3 (2851)</b>			
		vote	share
<b>Thomas G.</b>	Ind	506	40.1
<b>Covett T.</b>	Ind	411	32.6
<b>Parry R.</b>	Ind	181	14.3
<b>Jones M.</b>	PC	164	13.0
	<b>Turnout</b>	44.3	7.5
<b>Llandudno East (1481)</b>			
		vote	share
<b>Evans J.</b>	Con	448	68.7
<b>Williams T.</b>	Ind	204	31.3
	<b>Turnout</b>	44.0	37.4

<b>Llandudno North (1919)</b>			
		vote	share
<b>Dennis D.</b>	Con	416	44.8
<b>Tinkham F.</b>	Con	259	27.9
<b>Humphreys M.</b>	Ind	253	27.3
	<b>Turnout</b>	48.4	16.9
<b>Llandudno Penrhyn (3270)</b>			
		vote	share
<b>White T.</b>	Ind	928	53.0
<b>Davey A.</b>	Lib	822	47.0
	<b>Turnout</b>	53.5	6.1
<b>Llandudno South (4678)</b>			
		vote	share
<b>Barma A.</b>	Con	1,357	71.2
<b>Williams F.</b>	Ind	548	28.8
	<b>Turnout</b>	40.7	42.5
<b>Llandudno West (3385)</b>			
		vote	share
<b>Hughes E.</b>	Ind	874	63.9
<b>Gott H.</b>	Con	494	36.1
	<b>Turnout</b>	40.4	27.8
<b>Llanfarifechan (2676)</b>			
		vote	share
<b>Jones F.</b>	Ind	768	50.4
<b>Hughes T.</b>	Ind	757	49.6
	<b>Turnout</b>	57.0	0.7
<b>Llangefni (2955)</b>			
		vote	share
<b>Roberts T.</b>	Ind	0	0.0
	<b>Turnout</b>	0.0	0.0
<b>Llanrwst (2807)</b>			
		vote	share
<b>Phillips L.</b>	Ind	0	0.0
	<b>Turnout</b>	0.0	0.0
<b>Lleyn No.1 (2213)</b>			
		vote	share
<b>Williams R.</b>	Ind	0	0.0
	<b>Turnout</b>	0.0	0.0
<b>Lleyn No.2 (2798)</b>			
		vote	share
<b>Humphreys T.</b>	Ind	0	0.0
	<b>Turnout</b>	0.0	0.0
<b>Lleyn No.3 (3069)</b>			
		vote	share
<b>Williams R.</b>	Ind	1,440	78.5
<b>Wales D.</b>	Con	394	21.5
	<b>Turnout</b>	59.8	57.0
<b>Lleyn No.4 (3079)</b>			
		vote	share
<b>Roberts J.</b>	Ind	0	0.0
	<b>Turnout</b>	0.0	0.0
<b>Menaibridge (2118)</b>			
		vote	share
<b>Parry C.</b>	Ind	720	62.5
<b>Roffey M.</b>	Con	257	22.3
<b>Jones H.</b>	Ind	175	15.2
	<b>Turnout</b>	54.4	40.2
<b>Nantconwy No.1 (2420)</b>			
		vote	share
<b>Roberts O.</b>	Ind	0	0.0
	<b>Turnout</b>	0.0	0.0
<b>Nantconwy No.2 (1671)</b>			
		vote	share
<b>Jones T.</b>	Ind	0	0.0
	<b>Turnout</b>	0.0	0.0

Ogwen (4159) <sup>2</sup>			
		vote	share
Jones D.	PC	1,069	42.6
Jones D.	Ind	883	42.6
Jones J.	Ind	647	-
Rochell H.	Lab	557	22.2
<b>Turnout</b>		60.3	0.0

Penmaenmawr (3075)			
		vote	share
Dyson A.	Con	862	53.4
Williams R.	Ind	751	46.6
<b>Turnout</b>		52.5	6.9

Pensarn ()			
		vote	share
Williams D.	Ind	0	0.0
<b>Turnout</b>		0.0	0.0

Porthmadog (3063)			
		vote	share
Lewis H.	PC	0	0.0
<b>Turnout</b>		0.0	0.0

Pwllheli (3141)			
		vote	share
Roberts J.	Ind	0	0.0
<b>Turnout</b>		0.0	0.0

Twrceilyn (2413)			
		vote	share
Owen A.	Ind	0	0.0
<b>Turnout</b>		0.0	0.0

Twrceilyn No.1 ()			
		vote	share
Jones T.	Ind	883	72.9
Clegg R.	Con	329	27.1
<b>Turnout</b>		0.0	45.7

Twrceilyn No.2 (3165)			
		vote	share
Owens B.	Con	648	34.9
Hughes J.	PC	640	34.5
Griffiths O.	Ind	568	30.6
<b>Turnout</b>		58.6	0.4

Twrceilyn No.3 (2409)			
		vote	share
Albert O.	Ind	0	0.0
<b>Turnout</b>		0.0	0.0

Tywyn (3434)			
		vote	share
Vaughan M.	Ind	1,137	51.6
Lloyd J.	Ind	851	38.6
Blowers J.	Lab	216	9.8
<b>Turnout</b>		64.2	13.0

Valley No.1 (2347)			
		vote	share
Williams G.	Ind	575	49.4
Hodgetts E.	Con	338	29.0
Jones G.	PC	252	21.6
<b>Turnout</b>		49.6	20.3

Valley No.2 (3237)			
		vote	share
Pierce R.	Ind	1,388	84.6
Williams J.	PC	252	15.4
<b>Turnout</b>		50.7	69.3

Valley No.3 (2914)			
		vote	share
Davies R.	PC	0	0.0
<b>Turnout</b>		0.0	0.0

Valley No.4 (2861)			
		vote	share
Owens J.	Ind	493	32.2
Williams W.	PC	472	30.8
Wallace T.	Con	314	20.5
Williams A.	Ind	253	16.5
<b>Turnout</b>		53.5	1.4

## Gwynedd 1981

Aethwy No.1 (3919)			
		vote	share
Williams B.	Ind	0	0.0
<b>Turnout</b>		0.0	0.0

Aethwy No.2 (3836)			
		vote	share
Williams J.	Ind	0	0.0
<b>Turnout</b>		0.0	0.0

Aethwy No.3 (3486)			
		vote	share
Roberts E.	PC	958	46.2
Brownson M.	Ind	874	42.2
Roberts H.	Con	241	11.6
<b>Turnout</b>		59.5	4.1

Aled (2484)			
		vote	share
Williams V.	Con	599	74.0
Kay C.	Ind	211	26.0
<b>Turnout</b>		32.6	47.9

Amlwch (2784)			
		vote	share
Hughes E.	Ind	0	0.0
<b>Turnout</b>		0.0	0.0

Bala & Penllyn (3173)			
		vote	share
Jones T.	Ind	1,317	65.7
Edwards W.	Ind	689	34.3
<b>Turnout</b>		63.2	31.3

Bangor No.1 (5229) <sup>2</sup>			
		vote	share
Jones D.	Ind	938	40.5
Jones G.	Lab	716	30.9
Elliott A.	Lib	661	28.6
Hughes R.	Lib	547	-
Jones K.	Ind	539	-
Roberts E.	Ind	474	-
<b>Turnout</b>		44.3	9.6

Bangor No.2 (2085)			
		vote	share
Roberts R.	Ind	622	77.4
Albin I.	Lib	182	22.6
<b>Turnout</b>		38.6	54.7

Bangor No.3 (2749)			
		vote	share
Jones H.	Lib	617	57.6
Knight D.	Lab	454	42.4
<b>Turnout</b>		39.0	15.2

Barmouth (1588)			
		vote	share
Edwards L.	Ind	385	39.1
Davies J.	Ind	362	36.8
O'Mara T.	Ind	237	24.1
<b>Turnout</b>		62.0	2.3

Beumaris (1667)			
		vote	share
Grant A.	Ind	471	50.4
Roberts M.	Ind	464	49.6
<b>Turnout</b>		56.1	0.7

Bethesda (3094)			
		vote	share
Orwig D.	PC	1,254	61.9
Jones O.	Lab	772	38.1
<b>Turnout</b>		65.5	23.8

Caernarfon (2115)			
		vote	share
Miserotti J.	Ind	593	59.1
Griffith I.	Ind	410	40.9
<b>Turnout</b>		47.4	18.2

Caernarfon No.1 (1561)			
		vote	share
Ellis M.	Ind	847	76.5
Bebb H.	PC	260	23.5
<b>Turnout</b>		70.9	53.0

Caernarfon No.2 (3427)			
		vote	share
Hughes J.	PC	1,134	63.6
Jones I.	Ind	648	36.4
<b>Turnout</b>		52.0	27.3

Conwy (2960)			
		vote	share
Pattinson E.	Ind	618	53.1
Johnston P.	Lib	315	27.1
Davies P.	Lab	230	19.8
<b>Turnout</b>		39.3	26.1

Conwy Marl (2780)			
		vote	share
Roberts P.	Lib	556	51.2
Trevor R.	Con	530	48.8
<b>Turnout</b>		39.1	2.4

Conwy No.2 (2250)			
		vote	share
Jones E.	Con	582	55.4
Williams R.	Ind	469	44.6
<b>Turnout</b>		46.7	10.8

Conwy No.4 (2197)			
		vote	share
Davies M.	Lib	624	64.0
Prydderch D.	Lab	351	36.0
<b>Turnout</b>		44.4	28.0

Criccieth (1337)			
		vote	share
George W.	Ind	0	0.0
<b>Turnout</b>		0.0	0.0

Deudraeth No.1 (2291)			
		vote	share
Williams E.	PC	0	0.0
<b>Turnout</b>		0.0	0.0

Deudraeth No.2 (2883)			
		vote	share
Davies E.	Ind	0	0.0
<b>Turnout</b>		0.0	0.0

Dolgellau (1822)			
		vote	share
Davies E.	Ind	0	0.0
<b>Turnout</b>		0.0	0.0

Dolgellau Rural No.1 (2580)			
		vote	share
Tudor J.	Ind	0	0.0
<b>Turnout</b>		0.0	0.0

<b>Dolgellau Rural No.2 (2438)</b>			
		<b>vote</b>	<b>share</b>
<b>Price I.</b>	Ind	1,141	66.5
<b>Williams E.</b>	Ind	575	33.5
<b>Turnout</b>		70.4	33.0
<b>Ffestiniog No.1 (2062)</b>			
		<b>vote</b>	<b>share</b>
<b>Jones R.</b>	Lab	0	0.0
<b>Turnout</b>		0.0	0.0
<b>Ffestiniog No.2 (1932)</b>			
		<b>vote</b>	<b>share</b>
<b>Roberts R.</b>	Lab	0	0.0
<b>Turnout</b>		0.0	0.0
<b>Gwyrfai No.1 (3039)</b>			
		<b>vote</b>	<b>share</b>
<b>Williams B.</b>	Lab	1,308	60.3
<b>Jones M.</b>	PC	862	39.7
<b>Turnout</b>		71.4	20.6
<b>Gwyrfai No.2 (2350)</b>			
		<b>vote</b>	<b>share</b>
<b>Llewelyn G.</b>	PC	0	0.0
<b>Turnout</b>		0.0	0.0
<b>Gwyrfai No.3 (2396)</b>			
		<b>vote</b>	<b>share</b>
<b>Jones R.</b>	Ind	679	100.0
<b>Jones W.</b>	Ind	0	0.0
<b>Turnout</b>		28.3	100.0
<b>Gwyrfai No.4 (3033)</b>			
		<b>vote</b>	<b>share</b>
<b>Owen H.</b>	Ind	1,172	53.0
<b>Eurig W.</b>	PC	1,038	47.0
<b>Turnout</b>		72.9	6.1
<b>Gwyrfai No.5 (3091)</b>			
		<b>vote</b>	<b>share</b>
<b>Larsen P.</b>	PC	1,201	65.3
<b>Pritchard N.</b>	Lab	637	34.7
<b>Turnout</b>		59.5	30.7
<b>Gwyrfai No.6 (1921)</b>			
		<b>vote</b>	<b>share</b>
<b>Jones F.</b>	Lab	0	0.0
<b>Turnout</b>		0.0	0.0
<b>Gwyrfai No.7 (2223)</b>			
		<b>vote</b>	<b>share</b>
<b>Humphreys R.</b>	Ind	0	0.0
<b>Turnout</b>		0.0	0.0
<b>Holyhead No.1 (2783)</b>			
		<b>vote</b>	<b>share</b>
<b>Robertson A.</b>	Ind	955	87.5
<b>Jones J.</b>	Con	136	12.5
<b>Turnout</b>		39.2	75.1
<b>Holyhead No.2 (2110)</b>			
		<b>vote</b>	<b>share</b>
<b>Owen L.</b>	Ind	365	44.5
<b>Williams J.</b>	Con	329	40.1
<b>McManus D.</b>	Ind	126	15.4
<b>Turnout</b>		38.9	4.4
<b>Holyhead No.3 (2703)</b>			
		<b>vote</b>	<b>share</b>
<b>Thomas G.</b>	Ind	852	83.0
<b>Divall E.</b>	Con	174	17.0
<b>Turnout</b>		38.0	66.1

<b>Llandudno East (1484)</b>			
		<b>vote</b>	<b>share</b>
<b>Ferris M.</b>	Lib	279	44.8
<b>Evans L.</b>	Con	240	38.5
<b>Owen R.</b>	Ind	104	16.7
<b>Turnout</b>		42.0	6.3
<b>Llandudno North (1923)</b>			
		<b>vote</b>	<b>share</b>
<b>Hannan T.</b>	Ind	363	37.0
<b>Davies D.</b>	Con	318	32.4
<b>Humphreys M.</b>	Ind	229	23.3
<b>Frazer-McDonald J.</b>	Ind	72	7.3
<b>Turnout</b>		51.1	4.6
<b>Llandudno Penrhyn (3277)</b>			
		<b>vote</b>	<b>share</b>
<b>Jones J.</b>	Lib	784	51.0
<b>White T.</b>	Ind	754	49.0
<b>Turnout</b>		46.9	2.0
<b>Llandudno South (4688)</b>			
		<b>vote</b>	<b>share</b>
<b>Knowles J.</b>	Lib	976	52.4
<b>Barma A.</b>	Con	888	47.6
<b>Turnout</b>		39.8	4.7
<b>Llandudno West (3392)</b>			
		<b>vote</b>	<b>share</b>
<b>Jones G.</b>	Ind	713	59.3
<b>Bertola C.</b>	Lib	489	40.7
<b>Turnout</b>		35.4	18.6
<b>Llanfarifechan (2682)</b>			
		<b>vote</b>	<b>share</b>
<b>Thomas H.</b>	Ind	584	39.3
<b>Jones F.</b>	Ind	546	36.7
<b>Bordoni C.</b>	Ind	357	24.0
<b>Turnout</b>		55.4	2.6
<b>Llangefni (3117)</b>			
		<b>vote</b>	<b>share</b>
<b>Roberts T.</b>	Ind	933	54.7
<b>Williams E.</b>	Ind	773	45.3
<b>Turnout</b>		54.7	9.4
<b>Llanrwst (2813)</b>			
		<b>vote</b>	<b>share</b>
<b>Phillips L.</b>	Ind	0	0.0
<b>Turnout</b>		0.0	0.0
<b>Lleyn No.1 (2218)</b>			
		<b>vote</b>	<b>share</b>
<b>Williams R.</b>	Ind	0	0.0
<b>Turnout</b>		0.0	0.0
<b>Lleyn No.2 (2804)</b>			
		<b>vote</b>	<b>share</b>
<b>Humphreys T.</b>	Ind	0	0.0
<b>Turnout</b>		0.0	0.0
<b>Lleyn No.3 (3076)</b>			
		<b>vote</b>	<b>share</b>
<b>Williams R.</b>	Ind	0	0.0
<b>Turnout</b>		0.0	0.0
<b>Lleyn No.4 (3086)</b>			
		<b>vote</b>	<b>share</b>
<b>Roberts J.</b>	Ind	0	0.0
<b>Turnout</b>		0.0	0.0
<b>Menaibridge (2405)</b>			
		<b>vote</b>	<b>share</b>
<b>Hughes E.</b>	Ind	700	56.8
<b>Davies J.</b>	Ind	532	43.2
<b>Turnout</b>		51.2	13.6

<b>Nantconwy No.1 (2425)</b>			
		<b>vote</b>	<b>share</b>
<b>Roberts O.</b>	Ind	0	0.0
<b>Turnout</b>		0.0	0.0
<b>Nantconwy No.2 (1675)</b>			
		<b>vote</b>	<b>share</b>
<b>Jones T.</b>	Ind	0	0.0
<b>Turnout</b>		0.0	0.0
<b>Ogwen (4168)<sup>2</sup></b>			
		<b>vote</b>	<b>share</b>
<b>Jones D.</b>	PC	955	35.6
<b>Jones D.</b>	Ind	898	35.6
<b>Rochelle R.</b>	Lab	826	30.8
<b>Turnout</b>		64.3	0.0
<b>Penmaenmawr (3082)</b>			
		<b>vote</b>	<b>share</b>
<b>Roberts G.</b>	Lib	585	39.4
<b>Guthrie J.</b>	Ind	538	36.3
<b>Williams R.</b>	Ind	360	24.3
<b>Turnout</b>		48.1	3.2
<b>Porthmadog (3070)</b>			
		<b>vote</b>	<b>share</b>
<b>Lewis I.</b>	Ind	951	60.0
<b>Jones J.</b>	Ind	634	40.0
<b>Turnout</b>		51.6	20.0
<b>Pwllheli (3148)</b>			
		<b>vote</b>	<b>share</b>
<b>Roberts J.</b>	Ind	0	0.0
<b>Turnout</b>		0.0	0.0
<b>Twrcelyn No.1 (2654)</b>			
		<b>vote</b>	<b>share</b>
<b>Jones T.</b>	Ind	742	50.6
<b>Roberts D.</b>	Ind	506	34.5
<b>Dewar C.</b>	Ind	219	14.9
<b>Turnout</b>		55.3	16.1
<b>Twrcelyn No.2 (3506)</b>			
		<b>vote</b>	<b>share</b>
<b>Hughes J.</b>	Ind	988	58.0
<b>Owens B.</b>	Con	715	42.0
<b>Turnout</b>		48.6	16.0
<b>Twrcelyn No.3 (2612)</b>			
		<b>vote</b>	<b>share</b>
<b>Owen A.</b>	Ind	0	0.0
<b>Turnout</b>		0.0	0.0
<b>Tywyn (3441)</b>			
		<b>vote</b>	<b>share</b>
<b>Vaughan M.</b>	Ind	0	0.0
<b>Turnout</b>		0.0	0.0
<b>Valley No.1 (2780)</b>			
		<b>vote</b>	<b>share</b>
<b>Williams G.</b>	Ind	832	65.8
<b>Carmichael P.</b>	Con	433	34.2
<b>Turnout</b>		45.5	31.5
<b>Valley No.2 (3405)</b>			
		<b>vote</b>	<b>share</b>
<b>Pierce W.</b>	Ind	0	0.0
<b>Turnout</b>		0.0	0.0
<b>Valley No.3 (2911)</b>			
		<b>vote</b>	<b>share</b>
<b>Davies R.</b>	Ind	0	0.0
<b>Turnout</b>		0.0	0.0

Valley No.4 (3118)			
		vote	share
Owens J.	Ind	925	68.4
Williams A.	Ind	428	31.6
<b>Turnout</b>		43.4	36.7

## Gwynedd 1985

Aethwy No.1 (4057)			
		vote	share
Rowlands J.	Ind	1,114	69.1
Gliddon A.	Lab	499	30.9
<b>Turnout</b>		39.8	38.1

Aethwy No.2 (4147)			
		vote	share
Williams J.	Ind	0	0.0
<b>Turnout</b>		0.0	0.0

Aethwy No.3 (3588)			
		vote	share
Brownson M.	Ind	859	43.6
Mummery E.	PC	781	39.6
Evans G.	Ind	330	16.8
<b>Turnout</b>		54.9	4.0

Aled (2484)			
		vote	share
Williams V.	Con	580	48.1
Richardson K.	Lib	387	32.1
Harrod R.	Lab	240	19.9
<b>Turnout</b>		48.6	16.0

Amlwch (2917)			
		vote	share
Hughes E.	Ind	938	62.2
Salisbury R.	Lab	571	37.8
<b>Turnout</b>		51.7	24.3

Bala & Penllyn (3277)			
		vote	share
Jones T.	Ind	0	0.0
<b>Turnout</b>		0.0	0.0

Bangor No.1 (5257) <sup>2</sup>			
		vote	share
Marshall R.	Lib	968	36.9
Jones G.	Ind	914	34.9
Williams M.	Ind	883	-
Knight D.	Lab	738	28.2
<b>Turnout</b>		49.8	2.1

Bangor No.2 (2046)			
		vote	share
Roberts R.	Ind	532	76.1
Davies L.	Lab	167	23.9
<b>Turnout</b>		34.2	52.2

Bangor No.3 (2704)			
		vote	share
Jones H.	SDP	473	51.1
Jones A.	Lab	414	44.8
Humphreys O.	Ind	38	4.1
<b>Turnout</b>		34.2	6.4

Barmouth (1673)			
		vote	share
Edwards L.	Ind	0	0.0
<b>Turnout</b>		0.0	0.0

Beaumaris (1759)			
		vote	share
Grant A.	Ind	825	90.0
Wells C.	Lab	92	10.0
<b>Turnout</b>		52.1	79.9

Bethesda (3180)			
		vote	share
Orwin D.	PC	0	0.0
<b>Turnout</b>		0.0	0.0

Caernarfon (2124)			
		vote	share
Miserotti J.	Ind	0	0.0
<b>Turnout</b>		0.0	0.0

Caernarfon No.1 (1621)			
		vote	share
Ellis M.	Ind	0	0.0
<b>Turnout</b>		0.0	0.0

Caernarfon No.2 (3503)			
		vote	share
Thomas J.	Ind	0	0.0
<b>Turnout</b>		0.0	0.0

Conwy (2992)			
		vote	share
Pattinson E.	Ind	0	0.0
<b>Turnout</b>		0.0	0.0

Conwy No.2 (2352)			
		vote	share
Jones E.	Con	552	52.9
Stagg T.	Lib	491	47.1
<b>Turnout</b>		44.3	5.8

Conwy No.3 (2750)			
		vote	share
Williams R.	All	917	77.4
Delvin B.	Lab	267	22.6
<b>Turnout</b>		43.1	54.9

Conwy No.4 (2224)			
		vote	share
Davies M.	Lib	536	53.3
Callen A.	Lab	470	46.7
<b>Turnout</b>		45.2	6.6

Criccieth (1357)			
		vote	share
George W.	Ind	0	0.0
<b>Turnout</b>		0.0	0.0

Deudraeth No.1 (2335)			
		vote	share
Morris T.	Ind	847	59.1
Williams E.	PC	414	28.9
Williams E.	Ind	171	28.9
<b>Turnout</b>		61.3	30.2

Deudraeth No.2 (2914)			
		vote	share
Davies E.	Ind	0	0.0
<b>Turnout</b>		0.0	0.0

Dolgellau (1895)			
		vote	share
Davies E.	Ind	0	0.0
<b>Turnout</b>		0.0	0.0

Dolgellau Rural No.1 (2684)			
		vote	share
Tudor J.	Ind	0	0.0
<b>Turnout</b>		0.0	0.0

Dolgellau Rural No.2 (2631)			
		vote	share
Price I.	Ind	0	0.0
<b>Turnout</b>		0.0	0.0

Ffestiniog No.1 (2113)			
		vote	share
Jones R.	Lab	819	61.6
Jones D.	PC	511	38.4
<b>Turnout</b>		62.9	23.2

Ffestiniog No.2 (1974)			
		vote	share
Roberts R.	Lab	0	0.0
<b>Turnout</b>		0.0	0.0

Gwyrfai No.1 (3123)			
		vote	share
Williams B.	Lab	1,424	67.2
Jones A.	PC	694	32.8
<b>Turnout</b>		67.8	34.5

Gwyrfai No.2 (2414)			
		vote	share
Llywelyn E.	PC	0	0.0
<b>Turnout</b>		0.0	0.0

Gwyrfai No.3 (2492)			
		vote	share
Jones W.	Ind	763	67.1
Roberts R.	Ind	374	32.9
<b>Turnout</b>		45.6	34.2

Gwyrfai No.4 (3054)			
		vote	share
Owen M.	Ind	1,108	54.2
Iwan D.	PC	935	45.8
<b>Turnout</b>		66.9	8.5

Gwyrfai No.5 (3150)			
		vote	share
Larsen P.	PC	1,079	64.6
Rochell R.	Lab	590	35.4
<b>Turnout</b>		53.0	29.3

Gwyrfai No.6 (1933)			
		vote	share
Jones F.	Lab	0	0.0
<b>Turnout</b>		0.0	0.0

Gwyrfai No.7 (2310)			
		vote	share
Pritchard R.	PC	698	61.1
Humphreys R.	Ind	445	38.9
<b>Turnout</b>		49.5	22.1

Holyhead No.1 (2623)			
		vote	share
Robertson A.	Ind	0	0.0
<b>Turnout</b>		0.0	0.0

Holyhead No.2 (1985)			
		vote	share
Roberts T.	Ind	560	60.2
Owen L.	Lab	261	28.0
Hughes D.	Ind	110	11.8
<b>Turnout</b>		46.9	32.1

Holyhead No.3 (2843)			
		vote	share
Pritchard A.	Lab	872	51.9
Williams E.	Ind	431	25.6
Thomas G.	Ind	240	14.3
Phillips J.	Ind	138	8.2
<b>Turnout</b>		59.1	26.2

Llandudno East (1502)			
		vote	share
White T.	Con	252	45.2
Oliver W.	Lib	173	31.0
Haslock F.	Lab	133	23.8
<b>Turnout</b>		37.2	14.2



Llandudno North (1907)			
		vote	share
Hannon T.	Ind	509	51.9
Owen E.	Lib	244	24.9
Quiney E.	Lab	227	23.2
<b>Turnout</b>		51.4	27.0
Llandudno Penrhyn (3352)			
		vote	share
Jones B.	Lib	919	58.1
White T.	Con	662	41.9
<b>Turnout</b>		47.2	16.3
Llandudno South (4872)			
		vote	share
Knowles J.	Lib	916	47.8
Crosby C.	Con	620	32.3
Bates J.	Lab	381	19.9
<b>Turnout</b>		39.3	15.4
Llandudno West (3578)			
		vote	share
Jones G.	Ind	873	60.4
Todd A.	Lab	572	39.6
<b>Turnout</b>		40.4	20.8
Llanfarifechan (2722)			
		vote	share
Thomas H.	Ind	806	65.9
Winstanley T.	Lab	417	34.1
<b>Turnout</b>		44.9	31.8
Llangefni (3266)			
		vote	share
Morgan H.	Ind	675	31.8
Williams T.	Ind	655	30.9
Hughes M.	Ind	549	25.9
Evans R.	PC	244	11.5
<b>Turnout</b>		65.0	0.9
Llanrwst (2895)			
		vote	share
Phillips H.	Ind	0	0.0
<b>Turnout</b>		0.0	0.0
Lleyn No.1 (2252)			
		vote	share
Williams R.	Ind	0	0.0
<b>Turnout</b>		0.0	0.0
Lleyn No.2 (2875)			
		vote	share
Humphreys T.	Ind	0	0.0
<b>Turnout</b>		0.0	0.0
Lleyn No.3 (3356)			
		vote	share
Williams R.	Ind	0	0.0
<b>Turnout</b>		0.0	0.0
Lleyn No.4 (3063)			
		vote	share
Roberts J.	Ind	0	0.0
<b>Turnout</b>		0.0	0.0
Menaibridge (2470)			
		vote	share
Hughes E.	Ind	0	0.0
<b>Turnout</b>		0.0	0.0
Nantconwy No.1 (2527)			
		vote	share
Roberts O.	Ind	592	58.3
Edwards G.	Ind	423	41.7
<b>Turnout</b>		40.2	16.7

Nantconwy No.2 (1694)			
		vote	share
Jones T.	PC	0	0.0
<b>Turnout</b>		0.0	0.0
Ogwen (4408) <sup>2</sup>			
		vote	share
Jones D.	Lab	674	36.5
Jones I.	PC	654	35.4
Roberts D.	PC	606	-
Jones D.	Ind	517	36.5
<b>Turnout</b>		41.9	1.1
Penmaenmawr (3084)			
		vote	share
Clarke T.	Lib	0	0.0
<b>Turnout</b>		0.0	0.0
Porthmadog (3438)			
		vote	share
Lewis H.	PC	0	0.0
<b>Turnout</b>		0.0	0.0
Pwllheli (3164)			
		vote	share
Roberts J.	Ind	896	58.1
Edgar I.	Ind	647	41.9
<b>Turnout</b>		48.8	16.1
Twrcelyn No.1 (2876)			
		vote	share
Roberts G.	Ind	827	47.2
Williams J.	Ind	658	37.6
Roberts D.	Ind	266	15.2
<b>Turnout</b>		60.9	9.7
Twrcelyn No.2 (3555)			
		vote	share
Hughes J.	Ind	1,050	63.7
Salisbury R.	Lib/SDP	356	21.6
Morton G.	Lab	242	14.7
<b>Turnout</b>		46.4	42.1
Twrcelyn No.3 (2771)			
		vote	share
Owen A.	Ind	646	40.0
Owen R.	PC	539	33.4
Roberts H.	Ind	431	26.7
<b>Turnout</b>		58.3	6.6
Tywyn (3678)			
		vote	share
Vaughan M.	Ind	1,512	71.7
Middleton R.	Ind	598	28.3
<b>Turnout</b>		57.4	43.3
Valley No.1 (3095)			
		vote	share
Williams G.	Ind	971	71.6
Parry B.	Lab	386	28.4
<b>Turnout</b>		43.8	43.1
Valley No.2 (3527)			
		vote	share
Pearce W.	Ind	1,140	86.4
Williams A.	Lab	179	13.6
<b>Turnout</b>		37.4	72.9
Valley No.3 (2941)			
		vote	share
Davies O.	Ind	0	0.0
Hughes L.	Ind	0	0.0
<b>Turnout</b>		0.0	0.0
Valley No.4 (3207)			
		vote	share
Jones R.	Ind	1,368	72.7
Owens J.	Ind	514	27.3
<b>Turnout</b>		58.7	45.4

## Gwynedd 1989

Aberffraw (3313)			
		vote	share
Robert J.	Ind	0	0.0
<b>Turnout</b>		0.0	0.0
Aethwy (3840)			
		vote	share
Williams J.*	Ind	0	0.0
<b>Turnout</b>		0.0	0.0
Amlwch (2910)			
		vote	share
Hughes E.*	Ind	730	52.0
Hughes E.	Ind	675	52.0
<b>Turnout</b>		48.3	0.0
Bala (3336)			
		vote	share
Bowen D.	PC	0	0.0
<b>Turnout</b>		0.0	0.0
Bangor (2971)			
		vote	share
Jones G.	Ind	424	42.5
Marshall J. Ms.	SLD	347	34.8
Saunders R.	Lab	227	22.7
<b>Turnout</b>		33.6	7.7
Barmouth/Abermaw (3001)			
		vote	share
Edwards L.*	Ind	0	0.0
<b>Turnout</b>		0.0	0.0
Beaumaris (2617)			
		vote	share
Grant A.*	Ind	0	0.0
<b>Turnout</b>		0.0	0.0
Bethesda (3260)			
		vote	share
Orwig D.*	PC	1,352	67.5
Wormald M.	Lab	511	25.5
Livingstone M.	Ind	83	4.1
Gower C. Ms.	SLD	57	2.8
<b>Turnout</b>		61.4	42.0
Bro Machno (2268)			
		vote	share
Jones T.*	PC	0	0.0
<b>Turnout</b>		0.0	0.0
Bro-Y-Llynoedd (3115)			
		vote	share
Jones G.	Ind	0	0.0
<b>Turnout</b>		0.0	0.0
Caergybi (3463)			
		vote	share
O'Toole J.	Lab	987	56.6
Robertson A.*	Ind	756	43.4
<b>Turnout</b>		50.3	13.3
Caerhun (2642)			
		vote	share
Jones W.	Lab	655	43.8
Lewis G.	Ind	344	23.0
Parry A. Ms.	Ind	288	19.2
Edwards G.	Ind	210	14.0
<b>Turnout</b>		56.7	20.8
Caernarfon (3803)			
		vote	share
Thomas J.*	Ind	0	0.0
<b>Turnout</b>		0.0	0.0

**Conglywal A Maenofferen (1853)**

		vote	share
<b>Williams A.</b>	Lab	676	59.4
Jones L. Ms.	PC	462	40.6

Turnout 61.4 18.8

**Conwy (2979)**

		vote	share
<b>Maitas V.</b>	Lab	590	51.6
Pattinson M. Ms.*	Ind	553	48.4

Turnout 38.4 3.2

**Corris (3080)**

		vote	share
<b>Tudor J.*</b>	Ind	0	0.0

Turnout 0.0 0.0

**Craigydun (2877)**

		vote	share
<b>Knowles J.*</b>	SLD	686	62.3
Lee J. Ms.	Con	415	37.7

Turnout 38.3 24.6

**Criccieth (2865)**

		vote	share
<b>George W.*</b>	Ind	926	63.8
Jones W.	Ind	525	36.2

Turnout 50.6 27.6

**Cwm Cadnant (3300)**

		vote	share
<b>Rowlands J.*</b>	Ind	0	0.0

Turnout 0.0 0.0

**Deganwy (3069)**

		vote	share
<b>Willdig M. Ms.</b>	Ind	0	0.0

Turnout 0.0 0.0

**Dewi (3172)**

		vote	share
<b>Knight D. Ms.</b>	Lab	520	47.5
Williams M. Ms.	Ind	374	34.2
Evans T.	SLD	201	18.4

Turnout 34.5 13.3

**Dolbenmaen (2280)**

		vote	share
<b>Pritchard R.*</b>	PC	0	0.0

Turnout 0.0 0.0

**Dolgellau (3068)**

		vote	share
<b>Hughes G. Ms.</b>	PC	941	49.7
Price I.*	Ind	801	42.3
Gunn A. Ms.	Ind	153	8.1

Turnout 61.8 7.4

**Dulas (2953)**

		vote	share
<b>Jones G.</b>	PC	915	58.7
Herbert D.	Ind	644	41.3

Turnout 52.8 17.4

**Dyffryn Nantlle (3176)**

		vote	share
<b>Williams B. Ms.*</b>	Lab	1,329	63.5
Jones A.	PC	764	36.5

Turnout 65.9 27.0

**Ffestiniog (2188)**

		vote	share
<b>Roberts R.*</b>	Lab	0	0.0

Turnout 0.0 0.0

**Gogarth (3087)**

		vote	share
<b>Parry M.</b>	SLD	794	57.2
Hannon T.*	Con	593	42.8

Turnout 44.9 14.5

**Gwyrfrai (2133)**

		vote	share
<b>Eurig W.</b>	PC	771	53.7
Owen H.*	Ind	665	46.3

Turnout 67.3 7.4

**Harlech (2342)**

		vote	share
<b>Williams J.</b>	PC	0	0.0

Turnout 0.0 0.0

**Llanbadrig (2403)**

		vote	share
<b>Roberts G.*</b>	Ind	978	76.9
Clews I.	Ind	294	23.1

Turnout 52.9 53.8

**Llanddeiniolen (3418)**

		vote	share
<b>Larsen P. Ms.*</b>	PC	0	0.0

Turnout 0.0 0.0

**Llandurog (3351)**

		vote	share
<b>Owen G.</b>	Ind	1,093	57.5
Llywelyn G.*	PC	808	42.5

Turnout 56.7 15.0

**Llandygai (2665)**

		vote	share
<b>Jones I.</b>	PC	666	52.3
Jones D.*	Lab	608	47.7

Turnout 47.8 4.6

**Llanengan (2964)**

		vote	share
<b>Jones-Humphreys T.</b>	Ind	0	0.0

Turnout 0.0 0.0

**Llanerch-Y-Medd (3232)**

		vote	share
<b>Owen A.*</b>	Ind	0	0.0

Turnout 0.0 0.0

**Llanfairfechan (2782)**

		vote	share
<b>Thomas H.*</b>	Ind	857	62.2
Kierney R.	Lab	521	37.8

Turnout 49.5 24.4

**Llanfair-Mathafarn-Eithaf (2879)**

		vote	share
<b>Hughes J.*</b>	Ind	783	75.7
Gliddon A. Ms.	Lab	251	24.3

Turnout 35.9 51.5

**Llangefni (2559)**

		vote	share
<b>Morgan H.*</b>	Ind	0	0.0

Turnout 0.0 0.0

**Liannor (2578)**

		vote	share
<b>Jones-Williams E.</b>	Ind	0	0.0

Turnout 0.0 0.0

**Llanrwst (3540)**

		vote	share
<b>Jones D.</b>	PC	884	54.0
Woodward E.	SDP	754	46.0

Turnout 46.3 7.9

**Llansanffraid (4014)**

		vote	share
<b>Hackworth G. Ms.</b>	Ind	865	46.2
Williams V.*	Con	530	28.3
Pickard M.	Lab	476	25.4

Turnout 46.6 17.9

**Maeshyfyrd (2873)**

		vote	share
<b>Roberts T.*</b>	Ind	0	0.0

Turnout 0.0 0.0

**Marchog (3968)**

		vote	share
<b>Roberts R.*</b>	Ind	0	0.0

Turnout 0.0 0.0

**Marl (2932)**

		vote	share
<b>Williams R.*</b>	Ind	0	0.0

Turnout 0.0 0.0

**Menai (3107)**

		vote	share
<b>Brownson M. Ms.*</b>	Ind	860	56.5
Roberts J.	Ind	661	43.5

Turnout 49.0 13.1

**Menai Bridge (2401)**

		vote	share
<b>Hughes E.*</b>	Ind	753	61.2
Parry C.	Ind	477	38.8

Turnout 51.2 22.4

**Mostyn (2963)**

		vote	share
<b>Todd A.</b>	Lab	473	40.3
Jones G.*	Ind	361	30.8
Turner I.	Ind	339	28.9

Turnout 39.6 9.5

**Nefyn (3492)**

		vote	share
<b>Jones-Parry R.</b>	PC	0	0.0

Turnout 0.0 0.0

**Padarn (3495)**

		vote	share
<b>Jones F.*</b>	Lab	1,271	68.2
Carrog E. Ms.	PC	593	31.8

Turnout 53.3 36.4

**Peblig (3677)**

		vote	share
<b>Ellis M. Ms.*</b>	Ind	1,278	60.3
Iwan D.	PC	549	25.9
Miserotti J.*	Ind	293	13.8

Turnout 57.7 34.4

**Penmaenmawr (3335)**

		vote	share
<b>Jones O. Ms.</b>	SLD	823	50.2
Stevens K.	Lab	442	27.0
Clarke T.*	Ind	374	22.8

Turnout 49.1 23.2

**Penrhyn (3081)**

		vote	share
<b>Finch J.</b>	Con	789	54.6
Harrison M. Ms.	SLD	657	45.4

Turnout 46.9 9.1

**Penrhyndeudraeth (3022)**

		vote	share
<b>Morris T.*</b>	Ind	0	0.0

Turnout 0.0 0.0

<b>Pentir (3105)</b>			
		vote	share
Jones W.*	Ind	656	47.1
Ogwen J.	Ind	570	40.9
Fleur J. Ms.	Lab	168	12.1
<b>Turnout</b>		44.9	6.2
<b>Porthmadog (2494)</b>			
		vote	share
Hughes G.	Ind	0	0.0
<b>Turnout</b>		0.0	0.0
<b>Porthyfelin (2791)</b>			
		vote	share
Pritchard A.*	Lab	0	0.0
<b>Turnout</b>		0.0	0.0
<b>Pwllheli (3197)</b>			
		vote	share
Edgar I.	Ind	0	0.0
<b>Turnout</b>		0.0	0.0
<b>Trearddur (2338)</b>			
		vote	share
Williams G.*	Ind	724	70.2
Jones J.	Con	307	29.8
<b>Turnout</b>		44.1	40.4
<b>Tudno (3181)</b>			
		vote	share
Hughes R.	Lab	797	71.5
Thomas S. Ms.	Con	317	28.5
<b>Turnout</b>		35.0	43.1
<b>Tudweiliog (2190)</b>			
		vote	share
Williams R.*	Ind	0	0.0
<b>Turnout</b>		0.0	0.0
<b>Tywyn (3835)</b>			
		vote	share
Vaughan M.*	Ind	1,332	79.3
Adams T.	Lab	348	20.7
<b>Turnout</b>		43.8	58.6
<b>Valley (2619)</b>			
		vote	share
Burns B. Ms.	PC	758	59.2
Holmes J.	Ind	522	40.8
<b>Turnout</b>		48.9	18.4

## Gwynedd 1993

<b>Aberffraw (3395)</b>			
		vote	share
Jones R.*	Ind	0	0.0
<b>Turnout</b>		0.0	0.0
<b>Aethwy (4056)</b>			
		vote	share
Williams J.*	Green	0	0.0
<b>Turnout</b>		0.0	0.0
<b>Amlwch (2905)</b>			
		vote	share
Hughes G.	PC	0	0.0
<b>Turnout</b>		0.0	0.0
<b>Bala (3364)</b>			
		vote	share
James J.	PC	0	0.0
<b>Turnout</b>		0.0	0.0

<b>Bangor (3252)</b>			
		vote	share
Evans T.	LD	693	67.3
Llewelyn D.	PC	336	32.7
<b>Turnout</b>		31.6	34.7
<b>Barmouth/Abermaw (2979)</b>			
		vote	share
Edwards L.*	Ind	660	62.1
Roberts T.	Lab	402	37.9
<b>Turnout</b>		35.7	24.3
<b>Beaumaris (2720)</b>			
		vote	share
Grant A.*	Ind	749	70.4
Andrew S.	Con	315	29.6
<b>Turnout</b>		39.1	40.8
<b>Bethesda (3265)</b>			
		vote	share
Orwig D.*	PC	0	0.0
<b>Turnout</b>		0.0	0.0
<b>Bro Machno (2349)</b>			
		vote	share
Jones T.*	PC	0	0.0
<b>Turnout</b>		0.0	0.0
<b>Bro-Y-Llynoedd (3261)</b>			
		vote	share
Jones G.*	Ind	1,143	92.8
Knox P. Ms.	Ind	89	7.2
<b>Turnout</b>		37.8	85.6
<b>Caergybi (3221)</b>			
		vote	share
O'Toole J.*	Lab	0	0.0
<b>Turnout</b>		0.0	0.0
<b>Caerhun (2665)</b>			
		vote	share
Jones W.*	Lab	583	43.6
Edwards G.	Ind	398	29.8
Metcalfe G.	Ind	355	26.6
<b>Turnout</b>		50.1	13.8
<b>Caernarfon (4184)</b>			
		vote	share
Thomas J.*	Ind	997	52.2
Jones R.	PC	912	47.8
<b>Turnout</b>		45.6	4.5
<b>Conglywal A Maenofferen (1866)</b>			
		vote	share
Williams A.*	Lab	615	57.8
Morgan A.	PC	449	42.2
<b>Turnout</b>		57.0	15.6
<b>Conwy (2989)</b>			
		vote	share
Maitas V.*	Lab	528	40.6
Thomas R.	Ind	487	37.4
Roberts A. Ms.	PC	286	22.0
<b>Turnout</b>		43.5	3.2
<b>Corris (3045)</b>			
		vote	share
Tudor J.*	Ind	0	0.0
<b>Turnout</b>		0.0	0.0
<b>Craigydun (2858)</b>			
		vote	share
Knowles J.*	LD	721	82.0
Marshall A.	Lab	158	18.0
<b>Turnout</b>		30.8	64.1

<b>Criccieth (2759)</b>			
		vote	share
George W.*	Ind	0	0.0
<b>Turnout</b>		0.0	0.0
<b>Cwm Cadnant (3349)</b>			
		vote	share
Rowlands J.*	Ind	0	0.0
<b>Turnout</b>		0.0	0.0
<b>Deganwy (3114)</b>			
		vote	share
Parry M. Ms.*	LD	936	82.2
Gaines G. Ms.	Lab	203	17.8
<b>Turnout</b>		36.6	64.4
<b>Dewi (3220)</b>			
		vote	share
Knight D. Ms.*	Lab	485	49.2
Owen J. Ms.	LD	258	26.2
Davies R.	PC	242	24.6
<b>Turnout</b>		30.6	23.0
<b>Dolbenmaen (2311)</b>			
		vote	share
Thomas D.	Ind	868	69.1
Roberts G.	Ind	388	30.9
<b>Turnout</b>		54.4	38.2
<b>Dolgellau (3098)</b>			
		vote	share
Hughes G. Ms.*	PC	1,066	73.9
Humphreys W.	Ind LI	250	17.3
Newman B. Ms.	Lab	126	8.7
<b>Turnout</b>		46.6	56.6
<b>Dulas (2984)</b>			
		vote	share
Jones G.*	PC	0	0.0
<b>Turnout</b>		0.0	0.0
<b>Dyffryn Nantlle (3105)</b>			
		vote	share
Huws O.	PC	1,276	76.5
Jones M. Ms.	Lab	392	23.5
<b>Turnout</b>		53.7	53.0
<b>Ffestiniog (2190)</b>			
		vote	share
Roberts G.	PC	0	0.0
<b>Turnout</b>		0.0	0.0
<b>Gogarth (3247)</b>			
		vote	share
Ridler J.	Ind	412	37.7
Hannon T.	Con	407	37.3
Bates J.	Lab	273	25.0
<b>Turnout</b>		33.6	0.5
<b>Gwyrfrai (2175)</b>			
		vote	share
Wyn E.*	PC	0	0.0
<b>Turnout</b>		0.0	0.0
<b>Harlech (2418)</b>			
		vote	share
Williams J.*	PC	0	0.0
<b>Turnout</b>		0.0	0.0
<b>Llanbadrig (2441)</b>			
		vote	share
Williams J.	Ind	782	55.5
Roberts G.*	Ind	627	44.5
<b>Turnout</b>		57.7	11.0

<b>Llanddeiniolen (3633)</b>			
		<b>vote</b>	<b>share</b>
<b>Larsen P. Ms.*</b>	PC	1,213	78.9
Lofthouse C. Ms.	Ind	325	21.1
<b>Turnout</b>		42.3	57.7
<b>Llandurog (3353)</b>			
		<b>vote</b>	<b>share</b>
<b>Owen G.*</b>	Ind	1,384	91.8
Nicholson J.	Green	124	8.2
<b>Turnout</b>		45.0	83.6
<b>Llandygai (2641)</b>			
		<b>vote</b>	<b>share</b>
<b>Jones I.*</b>	PC	700	50.9
Jones D.	Lab	500	36.4
Williams A.	LD	174	12.7
<b>Turnout</b>		52.0	14.6
<b>Llanengan (3074)</b>			
		<b>vote</b>	<b>share</b>
<b>Humphreys T.*</b>	Ind	647	43.0
Evans D.	Ind	466	31.0
Evans T.	Ind	391	26.0
<b>Turnout</b>		48.9	12.0
<b>Llanerch-Y-Medd (3419)</b>			
		<b>vote</b>	<b>share</b>
<b>Owen A.*</b>	Ind	0	0.0
<b>Turnout</b>		0.0	0.0
<b>Llanfairfechan (2789)</b>			
		<b>vote</b>	<b>share</b>
<b>Roberts W.</b>	LD	1,019	64.9
Thomas H.*	Ind	552	35.1
<b>Turnout</b>		56.3	29.7
<b>Llanfair-Mathafarn-Eithaf (2681)</b>			
		<b>vote</b>	<b>share</b>
<b>Hughes J.*</b>	Ind	0	0.0
<b>Turnout</b>		0.0	0.0
<b>Llangefni (3595)</b>			
		<b>vote</b>	<b>share</b>
<b>Morgan H.*</b>	Ind	0	0.0
<b>Turnout</b>		0.0	0.0
<b>Liannor (2642)</b>			
		<b>vote</b>	<b>share</b>
<b>Hughes R.</b>	PC	991	72.4
Evans W.	Ind	312	22.8
Hayes B.	Lab	65	4.8
<b>Turnout</b>		51.8	49.6
<b>Llanrwst (3641)</b>			
		<b>vote</b>	<b>share</b>
<b>Parry-Jones D.*</b>	PC	1,176	63.0
Woodward E.	Lab	692	37.0
<b>Turnout</b>		51.3	25.9
<b>Llansanffraid (4023)</b>			
		<b>vote</b>	<b>share</b>
<b>Hackworth G. Ms.*</b>	LD	909	51.3
Rees G.	Lab	862	48.7
<b>Turnout</b>		44.0	2.7
<b>Maeshyfyd (2783)</b>			
		<b>vote</b>	<b>share</b>
<b>Roberts T.*</b>	Lab	0	0.0
<b>Turnout</b>		0.0	0.0
<b>Marchog (4022)</b>			
		<b>vote</b>	<b>share</b>
<b>Eames F. Ms.</b>	PC	494	45.2
Roberts R.*	Ind	388	35.5
Wilson V. Ms.	LD	211	19.3
<b>Turnout</b>		27.2	9.7

<b>Marl (2821)</b>			
		<b>vote</b>	<b>share</b>
<b>Williams E.</b>	LD	629	67.6
Owen I.	Lab	302	32.4
<b>Turnout</b>		33.0	35.1
<b>Menai (3142)</b>			
		<b>vote</b>	<b>share</b>
<b>Brownson M. Ms.*</b>	Ind	0	0.0
<b>Turnout</b>		0.0	0.0
<b>Menai Bridge (2441)</b>			
		<b>vote</b>	<b>share</b>
<b>Hughes E.*</b>	Ind	0	0.0
<b>Turnout</b>		0.0	0.0
<b>Mostyn (2916)</b>			
		<b>vote</b>	<b>share</b>
<b>Todd A.*</b>	Lab	633	65.1
Guinn A.	LD	339	34.9
<b>Turnout</b>		33.3	30.2
<b>Nefyn (3333)</b>			
		<b>vote</b>	<b>share</b>
<b>Williams T.</b>	Ind	0	0.0
<b>Turnout</b>		0.0	0.0
<b>Padarn (3634)</b>			
		<b>vote</b>	<b>share</b>
<b>Davies R.</b>	PC	1,036	61.2
Parry K.	Lab	658	38.8
<b>Turnout</b>		46.6	22.3
<b>Peblig (3295)</b>			
		<b>vote</b>	<b>share</b>
<b>Ellis M. Ms.*</b>	Ind	1,303	79.4
Parry R.	Ind	339	20.6
<b>Turnout</b>		49.8	58.7
<b>Penmaenmawr (3276)</b>			
		<b>vote</b>	<b>share</b>
<b>Jones O. Ms.*</b>	LD	836	56.8
Vig S.	Lab	636	43.2
<b>Turnout</b>		44.9	13.6
<b>Penrhyn (3219)</b>			
		<b>vote</b>	<b>share</b>
<b>Finch J.*</b>	Con	758	51.4
Bradley R.	LD	716	48.6
<b>Turnout</b>		45.8	2.8
<b>Penrhyndeudraeth (3015)</b>			
		<b>vote</b>	<b>share</b>
<b>Morris T.*</b>	Ind	952	57.2
Gaffey P.	PC	712	42.8
<b>Turnout</b>		55.2	14.4
<b>Pentir (3293)</b>			
		<b>vote</b>	<b>share</b>
<b>Hughes M.</b>	PC	704	50.7
Jones W.*	Ind	684	49.3
<b>Turnout</b>		42.2	1.4
<b>Porthmadog (2533)</b>			
		<b>vote</b>	<b>share</b>
<b>Hughes R.*</b>	Ind	0	0.0
<b>Turnout</b>		0.0	0.0
<b>Porthyfelin (2869)</b>			
		<b>vote</b>	<b>share</b>
<b>Pritchard A.*</b>	Lab	0	0.0
<b>Turnout</b>		0.0	0.0
<b>Pwllheli (3235)</b>			
		<b>vote</b>	<b>share</b>
<b>Edgar I.*</b>	Ind	0	0.0
<b>Turnout</b>		0.0	0.0

<b>Trearddur (2283)</b>			
		<b>vote</b>	<b>share</b>
<b>Williams G.*</b>	Ind	0	0.0
<b>Turnout</b>		0.0	0.0
<b>Tudno (3339)</b>			
		<b>vote</b>	<b>share</b>
<b>Hughes R.*</b>	Lab	753	65.5
Priddle A.	LD	397	34.5
<b>Turnout</b>		34.4	31.0
<b>Tudweiliog (2269)</b>			
		<b>vote</b>	<b>share</b>
<b>Williams R.*</b>	Ind	0	0.0
<b>Turnout</b>		0.0	0.0
<b>Tywyn (3796)</b>			
		<b>vote</b>	<b>share</b>
<b>Vaughan M.*</b>	Ind	0	0.0
<b>Turnout</b>		0.0	0.0
<b>Valley (2583)</b>			
		<b>vote</b>	<b>share</b>
<b>Burns B. Ms.*</b>	PC	0	0.0
<b>Turnout</b>		0.0	0.0



