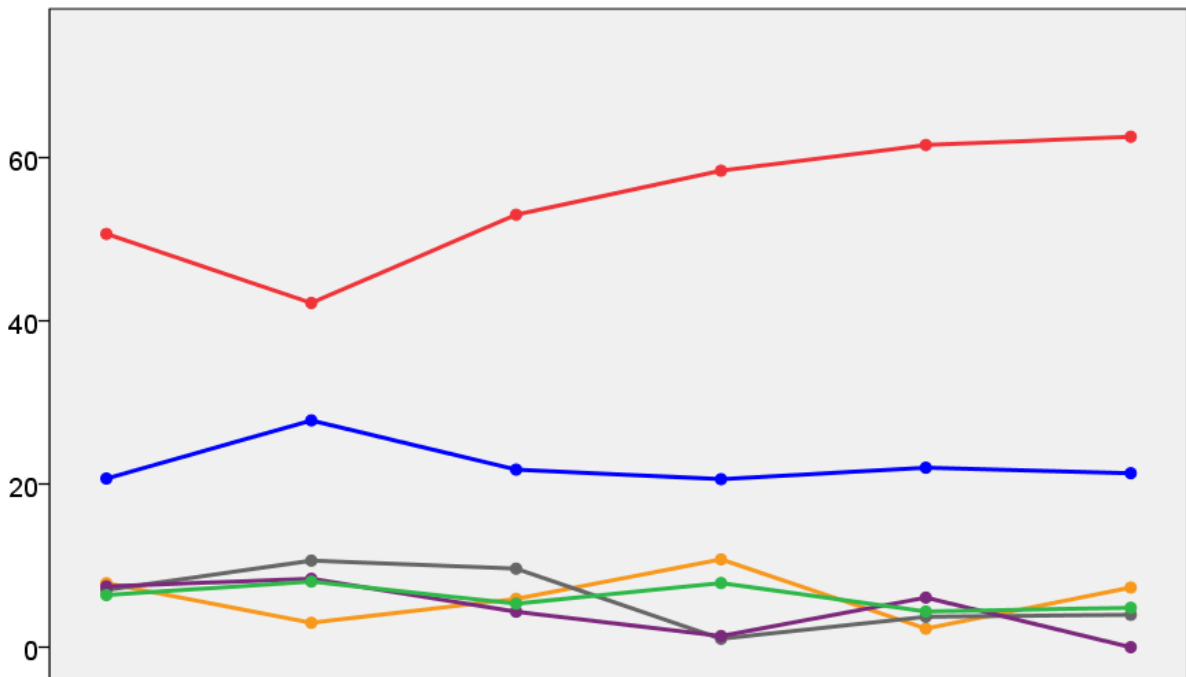


Gwent County Council Election Results 1973-1993



Colin Rallings and Michael Thrasher
The Elections Centre
Plymouth University

The information contained in this report has been obtained from a number of sources. Election results from the immediate post-reorganisation period were painstakingly collected by Alan Willis largely, although not exclusively, from local newspaper reports. From the mid-1980s onwards the results have been obtained from each local authority by the Elections Centre. The data are stored in a database designed by Lawrence Ware and maintained by Brian Cheal and others at Plymouth University. Despite our best efforts some information remains elusive whilst we accept that some errors are likely to remain. Notice of any mistakes should be sent to elections@plymouth.ac.uk. The results sequence can be kept up to date by purchasing copies of the annual Local Elections Handbook, details of which can be obtained by contacting the email address above.

Front cover: the graph shows the distribution of percentage vote shares over the period covered by the results. The lines reflect the colours traditionally used by the three main parties. The grey line is the share obtained by Independent candidates while the purple line groups together the vote shares for all other parties.

Rear cover: the top graph shows the percentage share of council seats for the main parties as well as those won by Independents and other parties. The lines take account of any by-election changes (but not those resulting from elected councillors switching party allegiance) as well as the transfers of seats during the main round of local election.

The lower graph shows for each main round of local elections the overall percentage turnout (solid line), the percentage of women candidates standing at (dotted line) and the percentage of women among those elected (hashed line).

Gwent 1973

Aberbeeg & Six Bells (4608)

		vote	share
Lewis I.	PC	1,415	52.2
Snellgrove H.	Lab	1,295	47.8
Turnout		58.8	4.4

Abercarn & Cwmcarn (3920)

		vote	share
Williams D.	Lab	0	0.0
Turnout		0.0	0.0

Abergavenny Cantref & Grofield (3745)

		vote	share
Smith R.	Con	947	64.5
Stockham P.	Lab	522	35.5
Turnout		39.2	28.9

Abergavenny Castle & Priory (3376)

		vote	share
Williams P.	Con	1,000	52.5
Pardoe J.	Lab	904	47.5
Turnout		56.4	5.0

Abersychan Central (2288)

		vote	share
Smith G.	Lab	891	80.1
Williams G.	Comm	222	19.9
Turnout		48.6	60.1

Abersychan North (2916)

		vote	share
Morgan G.	Lab	891	52.9
Mills G.	Comm	794	47.1
Turnout		57.8	5.8

Abertillery (3280)

		vote	share
Owen R.	Lab	0	0.0
Turnout		0.0	0.0

Alexander (2802)

		vote	share
Jones R.	Lab	1,067	77.6
Hughes D.	PC	308	22.4
Turnout		49.1	55.2

Allt Yr Yn (5360)

		vote	share
Miller S.	Con	1,464	56.6
Owen D.	Lib	778	30.1
Seaman S.	Lab	343	13.3
Turnout		48.2	26.5

Alway (6569)²

		vote	share
Turner J.	Lab	1,718	49.0
Murray R.	Lab	1,439	-
Tranter T.	Con	951	27.1
Griffiths D.	Con	856	-
Clarke H.	Lib	834	23.8
Turnout		53.3	21.9

Argoed & Cefn Fforest (3566)

		vote	share
Lloyd O.	Lab	0	0.0
Turnout		0.0	0.0

Bassaleg & Marshfield (4474)

		vote	share
Grimmer P.	Con	1,027	49.7
Lewis T.	Lab	638	30.9
Waskett I.	Lib	401	19.4
Turnout		46.2	18.8

Bedwellty No.2 Pengam ()

		vote	share
Jenkins G.	Lab	0	0.0
Turnout		0.0	0.0

Beechwood (5961)²

		vote	share
Marsh J.	Lab	1,322	35.3
Crowther W.	Lib	1,143	30.5
Purnell G.	Lab	1,081	-
Elliot T.	Con	975	26.0
Wright W.	Con	812	-
Lee G.	PC	308	8.2
Turnout		62.9	4.8

Bettws (6149)

		vote	share
Morgan J.	Lab	0	0.0
Turnout		0.0	0.0

Blackwood (5302)

		vote	share
Bosley D.	Lab	0	0.0
Turnout		0.0	0.0

Blaenavon (5137)

		vote	share
Puddle D.	Lab	1,568	48.1
Arnold W.	Rate	1,481	45.5
Edwards N.	Dem Lab	209	6.4
Turnout		63.4	2.7

Brynmawr (4399)

		vote	share
Fenton E.	Lab	1,756	58.0
Williams R.	PC	737	24.3
Jones V.	Con	535	17.7
Turnout		68.8	33.7

Caerleon (4901)

		vote	share
Kirkwood J.	Lab	1,274	46.8
Lewis L.	PC	952	34.9
Zeal R.	Lib	498	18.3
Turnout		55.6	11.8

Caerwent (4666)

		vote	share
Baldwin S.	Lab	1,203	50.7
Horton L.	Con	1,169	49.3
Turnout		50.8	1.4

Caldicot (7043)

		vote	share
Powell G.	Lab	1,917	71.3
Shirington M.	Con	772	28.7
Turnout		38.2	42.6

Central (3723)

		vote	share
Hames A.	Lab	1,276	66.1
Courtney C.	Con	653	33.9
Turnout		51.8	32.3

Chepstow (5302)

		vote	share
O'Neill A.	Lab	1,240	85.0
Spanswick E.	PC	219	15.0
Turnout		27.5	70.0

Crickhowell & Llanely Parish (2907)

		vote	share
Jones J.	Lab	622	41.8
Thomas T.	Ind	491	33.0
Morris W.	Ind	375	25.2
Turnout		51.2	8.8

Crucorney Fawr & Llantilio Pertho (4283)

		vote	share
Davies J.	Con	940	62.4
Blour E.	Lab	567	37.6
Turnout		35.2	24.8

Crumlin (4058)

		vote	share
England A.	Lab	0	0.0
Turnout		0.0	0.0

Cwmbran Central & Llantarnam (5112)

		vote	share
James O.	Lab	1,263	60.3
Miles D.	Ind	831	39.7
Turnout		41.0	20.6

Cwmtillery (4598)

		vote	share
Mytton T.	Lab	0	0.0
Turnout		0.0	0.0

Ebbw Vale Badminton Central & Cwm (6428)²

		vote	share
Watley F.	Lab	1,771	37.5
Jones W.	Rate	1,723	36.5
Pope A.	Rate	1,689	-
Barnes K.	Lab	1,665	-
Evans J.	PC	1,231	26.1
Turnout		73.5	1.0

Ebbw Vale Central & Cwm South (11697)³

		vote	share
Rogers J.	Lab	3,792	43.6
Morgan R.	Lab	3,667	-
Cross P.	Lab	3,070	-
O'Donovan A.	Rate	2,965	34.1
Jones M.	Rate	2,357	-
Kerwick D.	PC	1,937	22.3
Turnout		74.3	9.5

Fairwater & Henllys (8443)

		vote	share
Wellington R.	Lab	1,319	88.6
Clarke D.	Comm	169	11.4
Turnout		17.6	77.3

Langstone (4997)

		vote	share
Duthie D.	Con	1,227	58.9
Murphy J.	Lab	855	41.1
Turnout		41.7	17.9

Llanfoist & Llanover (3807)

		vote	share
Williams C.	Con	1,143	61.6
Gail H.	Lab	712	38.4
Turnout		48.7	23.2

Llanfrechfa Lower (8637)²

		vote	share
Thomas M.	Lab	2,114	52.1
Hill R.	Lab	1,968	-
Davies N.	Con	1,346	33.1
Chappell D.	Con	1,298	-
Hole F.	Ind	601	14.8
Turnout		47.0	18.9

Llanhilleth (2117)

		vote	share
Rice R.	Lab	0	0.0
Turnout		0.0	0.0

Lliswerry (7382)²

		vote	share
Lloyd R.	Lab	1,527	56.5
Herbert H.	Lab	1,422	-
Jewett D.	Con	1,177	43.5
Bellew M.	Con	1,128	-
Turnout		36.6	12.9

Malpas (6629) ²			
		vote	share
James K.	Lab	1,864	61.3
Lewis M.	Lab	1,754	-
Jewett D.	Con	1,177	38.7
Bellew M.	Con	1,128	-
Turnout		45.9	22.6
Monmouth (5750)			
		vote	share
Lewis J.	Con	1,363	64.3
Flynn T.	Lab	757	35.7
Turnout		36.9	28.6
Mynyddislwyn Penmaen ()			
		vote	share
Lloyd S.	Lab	0	0.0
Turnout		0.0	0.0
Nantyglo & Blaina Central & Sou (4794)			
		vote	share
Jayne K.	Lab	1,909	57.4
Chard W.	Ind	1,418	42.6
Turnout		69.4	14.8
Nantyglo & Blaina North (2485)			
		vote	share
Abraham P.	Lab	0	0.0
Turnout		0.0	0.0
Newbridge (4566)			
		vote	share
Matthews T.	Lab	0	0.0
Turnout		0.0	0.0
Old Cwmbran (4578)			
		vote	share
Rex D.	Ind	784	51.5
Smith B.	Lab	737	48.5
Turnout		33.2	3.1
Panteg East (6818)			
		vote	share
Toughig J.	Lab	1,683	64.4
Irving C.	Ind	932	35.6
Turnout		38.4	28.7
Panteg West (4408)			
		vote	share
Skuse A.	Lab	0	0.0
Turnout		0.0	0.0
Pontllanfraith (6675)			
		vote	share
Chicken B.	Lab	0	0.0
Turnout		0.0	0.0
Pontnewydd (3820)			
		vote	share
Pritchard P.	Rate	973	64.4
Maplestone P.	Lab	537	35.6
Turnout		39.5	28.9
Pontnewydd North (5450)			
		vote	share
Ball S.	Lab	0	0.0
Turnout		0.0	0.0
Pontnewydd South (3357)			
		vote	share
Gibson E.	Lab	448	58.9
Palmer E.	PC	312	41.1
Turnout		22.6	17.9
Pontypool (2404)			
		vote	share
Strickland P.	Lab	671	81.6
Palmer P.	PC	151	18.4
Turnout		34.2	63.3

Ringland (7046) ²			
		vote	share
Card I.	Lab	0	-
Edwards F.	Lab	0	0.0
Turnout		0.0	0.0
Risca Central (2035)			
		vote	share
Griffiths E.	Lab	918	85.2
Rees D.	Ind	160	14.8
Turnout		53.0	70.3
Risca North (3098)			
		vote	share
West A.	Lab	1,022	68.4
Bevan M.	Ind	473	31.6
Turnout		48.3	36.7
Risca South (7387)			
		vote	share
Bendall E.	Lab	1,579	64.3
Webster R.	Ind	877	35.7
Turnout		33.2	28.6
Rogerstone (6481)			
		vote	share
Scrivens G.	Lab	1,178	55.6
Howell G.	Ind	939	44.4
Turnout		32.7	11.3
Shaftesbury (5209)			
		vote	share
Bosley E.	Lab	1,574	65.2
Davies D.	Con	839	34.8
Turnout		46.3	30.5
Shirenewton & Tintern (4434)			
		vote	share
Heath I.	Con	1,192	63.4
Huntley A.	Lab	402	21.4
Millard D.	Rate	286	15.2
Turnout		42.4	42.0
St. Julians (6578) ²			
		vote	share
Ovens E.	Lab	1,595	52.1
Morris W.	Con	1,468	47.9
Thomas R.	Con	1,425	-
Soni R.	Lab	1,387	-
Turnout		46.6	4.1
St. Woolos (8549) ²			
		vote	share
Pembridge J.	Lab	1,884	58.0
Turnbull L.	Lab	1,729	-
Hando D.	Lib	1,364	42.0
Turnout		38.0	16.0
Tredegar Central & West (5488)			
		vote	share
Donaldson A.	Lib	2,172	53.9
Harry W.	Lab	1,856	46.1
Turnout		73.4	7.8
Tredegar Georgetown (2556)			
		vote	share
Price W.	Lab	925	53.4
Holley A.	Lib	663	38.3
Perriam L.	Ind	143	8.3
Turnout		67.7	15.1
Tredegar Sirhowy (4331)			
		vote	share
Thomas D.	Lib	1,426	50.8
Williams O.	Lab	1,383	49.2
Turnout		64.9	1.5

Upper Cwmbran (3663)			
		vote	share
Price D.	Lab	745	73.2
Price J.	Ind	273	26.8
Turnout		27.8	46.4
Usk & Pontypool Rural (5367)			
		vote	share
Etheridge V.	Con	2,033	76.4
Davies J.	Lab	627	23.6
Turnout		49.6	52.9
Victoria (4693)			
		vote	share
Geraghty R.	Lab	1,333	55.4
Jones P.	Con	1,075	44.6
Turnout		51.3	10.7
Ynysddu (2520)			
		vote	share
Evans R.	Lab	0	0.0
Turnout		0.0	0.0
Gwent 1977			
Aberbeeg & Six Bells (4617)			
		vote	share
Snelgrove H.	Lab	1,224	57.4
Wheeler L.	PC	910	42.6
Turnout		46.2	14.7
Abercarn (2703)			
		vote	share
Dunn C.	Lab	641	47.4
Criddle J.	PC	365	27.0
Pon K.	Rate	346	25.6
Turnout		50.0	20.4
Abercarn & Cwmcarn (3928)			
		vote	share
Pidgeon R.	Lab	1,311	55.6
Phillips M.	Ind	584	24.8
Gibbling P.	PC	463	19.6
Turnout		60.0	30.8
Abergavenny Cantref & Grofield (3753)			
		vote	share
Smith R.	Con	976	69.6
Bowditch R.	Lib	427	30.4
Turnout		37.4	39.1
Abergavenny Castle & Priory (3383)			
		vote	share
Williams P.	Con	0	0.0
Turnout		0.0	0.0
Abersychan Central (2293)			
		vote	share
Berry W.	Lab	647	59.2
Rees J.	PC	252	23.1
Lewis A.	Rate	194	17.7
Turnout		47.7	36.1
Abersychan North (2922)			
		vote	share
Miles G.	Comm	814	57.4
Little C.	Lab	604	42.6
Turnout		48.5	14.8
Abertillery (3114)			
		vote	share
Owen R.	Lab	906	55.2
Jones R.	Ind	735	44.8
Turnout		52.7	10.4

Alexander (2808)			
		vote	share
Jones R.	Lab	616	41.8
Griffiths C.	Con	424	28.8
Dray R.	Rate	246	16.7
Hughes D.	PC	188	12.8
Turnout		52.5	13.0
Allt Yr Yn (5371)			
		vote	share
Huckle W.	Con	2,351	78.5
Simms I.	Lab	446	14.9
Mole R.	PC	196	6.5
Turnout		55.7	63.6
Alway (6582)²			
		vote	share
Martin A.	Con	1,573	52.4
Turner J.	Lab	1,431	47.6
Weight W.	Con	1,417	-
Murray E.	Lab	1,228	-
Turnout		45.6	4.7
Argoed & Cefn Fforest (3573)			
		vote	share
Lloyd O.	Lab	1,138	66.8
Gurmin S.	Ind	565	33.2
Turnout		47.7	33.6
Bassaleg & Marshfield (4483)			
		vote	share
Brimmer P.	Con	1,348	64.9
Tyrer A.	Lab	372	17.9
Wasket I.	Lib	356	17.1
Turnout		46.3	47.0
Beechwood (5973)²			
		vote	share
Edwards P.	Con	1,309	44.8
Williams L.	Con	1,201	-
Kennedy L.	Lab	961	32.9
Purnell G.	Lab	924	-
Crowther W.	Lib	649	22.2
Tully D.	Lib	427	-
Turnout		48.9	11.9
Bettws (6161)			
		vote	share
Wilson A.	Lab	977	50.2
Smith E.	Con	516	26.5
Clarke R.	Rate	311	16.0
Phillips B.	PC	144	7.4
Turnout		31.6	23.7
Blackwood (5313)			
		vote	share
Bosley D.	Lab	977	44.3
Jenkins G.	Lab	803	-
Williams D.	Ind	769	-
Parry S.	Ind	768	34.8
Barker R.	PC	459	20.8
Turnout		41.5	9.5
Blaenavon (5147)			
		vote	share
Morgan D.	Rate	1,170	51.9
Harris D.	Lab	1,083	48.1
Turnout		43.8	3.9
Brynmawr (4408)			
		vote	share
Webb G.	Ind	1,196	39.5
Panton E.	Lab	962	31.8
Williams R.	PC	536	17.7
Atkins S.	Con	333	11.0
Turnout		68.7	7.7
Caerleon (4911)			
		vote	share
Veale S.	Con	1,759	58.9
Kirkwood J.	Lab	1,225	41.1
Turnout		60.8	17.9

Caerwent (4675)			
		vote	share
Morgan I.	Con	1,496	61.8
Baldwin S.	Lab	923	38.2
Turnout		51.7	23.7
Caldicot (7057)			
		vote	share
Powell G.	Lab	1,201	52.0
Richards H.	Con	1,108	48.0
Turnout		32.7	4.0
Central (3731)			
		vote	share
Marsh J.	Lab	845	48.4
Bevan M.	Con	807	46.2
Priest C.	PC	95	5.4
Turnout		46.8	2.2
Chepstow (5313)			
		vote	share
Hutley A.	Lab	1,217	50.4
Walker C.	Con	1,088	45.1
Spanwick E.	Ind Lab	108	4.5
Turnout		45.4	5.3
Crickhowell & Llanely Parish (2913)			
		vote	share
Hayward G.	Con	1,045	64.3
Jones J.	Lab	581	35.7
Turnout		55.8	28.5
Crucorney Fawr & Llantilio Pertho (4292)			
		vote	share
Davies J.	Con	0	0.0
Turnout		0.0	0.0
Crumlin (4066)			
		vote	share
England A.	Lab	1,324	60.2
Lloyd M.	PC	548	24.9
Erasmus O.	Rate	328	14.9
Turnout		54.1	35.3
Cwmbran Central & Llantarnam (5122)			
		vote	share
Jones J.	Lab	946	40.4
Scott Z.	Ind	779	33.3
Miles D.	Ind	426	18.2
Cox R.	PC	142	6.1
Kinsella P.	Lib	49	2.1
Turnout		45.7	7.1
Cwmtillery (4607)			
		vote	share
Mytton T.	Lab	1,298	63.8
Owen M.	PC	735	36.2
Turnout		44.1	27.7
Ebbw Vale Badminton Central & Cwm (6441)²			
		vote	share
Jones W.	Rate	1,962	57.3
Greenland B.	Rate	1,647	-
Barnes K.	Lab	1,465	42.7
Morgan N.	Lab	1,386	-
Turnout		53.2	14.5
Ebbw Vale Central & Cwm South (11721)³			
		vote	share
Rogers J.	Lab	3,120	42.2
Morgan R.	Lab	2,877	-
McKelvey H.	Rate	2,633	35.7
Cross P.	Lab	2,320	-
Phillips C.	Rate	2,209	-
Newman T.	Rate	2,121	-
Kerwick D.	PC	1,632	22.1
Turnout		63.0	6.6

Fairwater & Henllys (8460)			
		vote	share
Wellington R.	Lab	1,021	43.7
Orton D.	Con	932	39.9
Cox P.	PC	238	10.2
Morgan M.	Lib	146	6.2
Turnout		27.6	3.8
Langstone (5007)			
		vote	share
Duthie G.	Con	1,370	53.9
Weeks S.	Ind	671	26.4
Carey J.	Lab	503	19.8
Turnout		50.8	27.5
Llanfoist & Llanover (3815)			
		vote	share
Williams C.	Con	1,313	63.9
John G.	Lab	742	36.1
Turnout		53.9	27.8
Llanfrechfa Lower (8655)²			
		vote	share
Knox S.	Con	1,913	32.6
Walker J.	Ind	1,902	32.4
Thomas M.	Lab	1,684	28.7
Hill R.	Lab	1,362	-
Perring M.	PC	367	6.3
Turnout		67.8	0.2
Llanhilleth (2121)			
		vote	share
Rice R.	Lab	0	0.0
Turnout		0.0	0.0
Lliswerry (7397)²			
		vote	share
Lussman C.	Con	1,321	53.6
Postle B.	Con	1,291	-
Lloyd R.	Lab	1,145	46.4
Herbert H.	Lab	1,041	-
Turnout		33.3	7.1
Malpas (6642)²			
		vote	share
Davies J.	Con	1,675	51.4
Trigg N.	Con	1,666	-
James K.	Lab	1,585	48.6
Lewis M.	Lab	1,441	-
Turnout		49.1	2.8
Monmouth (5762)			
		vote	share
Lewis J.	Con	1,629	88.5
Smith G.	Lab	211	11.5
Turnout		31.9	77.1
Monmouth Rural (5315)			
		vote	share
Inkin G.	Con	1,999	74.4
Appelton S.	Ind	467	17.4
Moore L.	Lab	222	8.3
Turnout		50.6	57.0
Nantyglo & Blaina Central & Sou (4804)			
		vote	share
Jayne K.	Lab	1,678	54.5
Davies R.	Ind	1,402	45.5
Turnout		64.1	9.0
Nantyglo & Blaina North (2490)			
		vote	share
Gore W.	Lab	890	56.8
Hughes K.	Ind	411	26.2
Finney K.	PC	266	17.0
Turnout		62.9	30.6

Newbridge (4575)			
		vote	share
Richards A.	PC	1,536	52.2
Matthews F.	Lab	1,408	47.8

Turnout 64.3 4.3

Old Cwmbra (4587)			
		vote	share
Rex D.	Ind	777	55.1
Ford H.	Lab	455	32.3
Morris J.	PC	177	12.6

Turnout 30.7 22.9

Panteg East (6832)			
		vote	share
Jones E.	Ind	2,058	59.1
Tohig J.	Lab	1,423	40.9

Turnout 51.0 18.2

Panteg West (4417)			
		vote	share
Skuse A.	Lab	913	50.1
Morris W.	Con	760	41.7
Jackson L.	Comm	148	8.1

Turnout 41.2 8.4

Pontllanfraith (6689)			
		vote	share
Parker M.	PC	983	36.5
Chicken B.	Lab	717	26.7
Webb A.	Ind	568	21.1
Gardener E.	Rate	422	15.7

Turnout 40.2 9.9

Pontnewydd (3828)			
		vote	share
White R.	Lab	843	50.1
Pritchard P.	Rate	715	42.5
Brisbane I.	PC	126	7.5

Turnout 44.0 7.6

Pontnewydd North (5461)			
		vote	share
Ball S.	Lab	809	48.4
Dawson K.	Ind	435	26.0
Irwin L.	Comm	219	13.1
Jeffreys G.	Ind	209	12.5

Turnout 30.6 22.4

Pontnewydd South (3364)			
		vote	share
Cottrell T.	Lab	608	43.7
Palmer E.	PC	436	31.3
Coles E.	Rate	348	25.0

Turnout 41.4 12.4

Pontypool (2409)			
		vote	share
Wells P.	Ind	453	43.0
Young P.	Lab	420	39.9
Norris D.	Ind	117	11.1
Palmer P.	PC	63	6.0

Turnout 43.7 3.1

Ringland (7060) ²			
		vote	share
Flynn P.	Lab	1,731	63.5
Edwards A.	Lab	1,709	-
Roberts D.	Con	994	36.5
Tranter T.	Con	992	-

Turnout 38.6 27.0

Risca Central (2039)			
		vote	share
Griffiths E.	Lab	799	61.9
Farmer-Little J.	Con	492	38.1

Turnout 63.3 23.8

Risca North (3104)			
		vote	share
Parfitt M.	Ind SO	962	56.2
West A.	Lab	749	43.8

Turnout 55.1 12.4

Risca South (7402)			
		vote	share
Beecham R.	Lab	1,410	56.6
Howell T.	Rate	1,080	43.4

Turnout 33.6 13.3

Rogerstone (6494)			
		vote	share
Powell G.	Con	1,323	42.5
Scrivens G.	Lab	1,174	37.7
Webster R.	Rate	431	13.8
Pierce R.	PC	184	5.9

Turnout 47.9 4.8

Shaftesbury (5220)			
		vote	share
Jewitt D.	Con	1,399	58.4
Bosley E.	Lab	995	41.6

Turnout 45.9 16.9

Shirenewton & Tintern (4443)			
		vote	share
Heath I.	Con	1,706	83.6
Dickinson A.	Lab	334	16.4

Turnout 45.9 67.3

St. Julians (6591) ²			
		vote	share
Morris W.	Con	1,901	59.0
Copus A.	Con	1,817	-
Evans E.	Lab	1,320	41.0
Delahay M.	Lab	1,166	-

Turnout 48.9 18.0

St. Woolos (8566) ²			
		vote	share
Turnbull L.	Lab	2,048	61.8
Pembridge J.	Lab	1,966	-
Powell I.	Con	1,265	38.2
Hustler B.	Con	1,224	-

Turnout 38.7 23.6

Tredegar Central & West (5499)			
		vote	share
Jones C.	Lab	1,155	45.1
O'Leary J.	Lib	901	35.2
Bowen-Knight G.	PC	347	13.5
Williams R.	Ind Lab	158	6.2

Turnout 46.6 9.9

Tredegar Georgetown (2561)			
		vote	share
Edwards M.	Lab	678	52.2
Holley A.	Lib	407	31.3
Roberts G.	PC	214	16.5

Turnout 50.7 20.9

Tredegar Sirhowy (4340)			
		vote	share
Thomas D.	Lib	1,551	61.6
Harris L.	Lab	968	38.4

Turnout 58.0 23.1

Upper Cwmbra (3670)			
		vote	share
Price E.	Lab	634	56.8
Morgan A.	Ind	483	43.2

Turnout 30.4 13.5

Usk & Pontypool Rural (5378)			
		vote	share
Etheridge V.	Con	2,415	82.3
Hodkin N.	Lab	518	17.7

Turnout 54.5 64.7

Victoria (4703)			
		vote	share
Jordan K.	Con	1,183	50.4
Geraghty P.	Lab	1,163	49.6

Turnout 49.9 0.9

Ynysddu (2525)			
		vote	share
Evans R.	Lab	1,142	64.8
Pope J.	PC	472	26.8
Russ L.	Ind	147	8.3

Turnout 69.7 38.0

Gwent 1981

Aberbeeg & Six Bells (4627)			
		vote	share
Bartlett R.	Lab	1,300	61.2
Jones R.	Ind	823	38.8

Turnout 45.9 22.5

Abercarn (2709)			
		vote	share
Dunn C.	Lab	719	53.9
Waters E.	Ind	616	46.1

Turnout 49.3 7.7

Abercarn & Cwmcarn (3936)			
		vote	share
Pidgeon R.	Lab	0	0.0

Turnout 0.0 0.0

Abergavenny Cantref & Grofield (3761)			
		vote	share
Smith R.	Con	758	39.3
Gase K.	Lab	742	38.5
Tetter J.	Lib	427	22.2

Turnout 51.2 0.8

Abergavenny Castle & Priory (3390)			
		vote	share
Williams P.	Con	981	61.6
Hill R.	Lab	611	38.4

Turnout 47.0 23.2

Abersychan Central (2298)			
		vote	share
Berry W.	Lab	0	0.0

Turnout 0.0 0.0

Abersychan North (2928)			
		vote	share
Gratton M.	Lab	578	50.8
Miles G.	Comm	560	49.2

Turnout 38.9 1.6

Abertillery (3294)			
		vote	share
Owen R.	Lab	0	0.0

Turnout 0.0 0.0

Alexander (2814)			
		vote	share
Jones R.	Lab	611	37.0
Picton G.	Ind	553	33.5
Davies P.	Con	488	29.5

Turnout 58.7 3.5

Allt Yr Yn (5382)			
		vote	share
Huckle W.	Con	1,592	57.7
Dearth R.	Lib	650	23.6
Osborn R.	Lab	518	18.8

Turnout 51.3 34.1

Alway (6596) ²			
		vote	share
Turner J.	Lab	1,909	69.7
Powell K.	Lab	1,796	-
Williams T.	Con	831	30.3
Witton D.	Con	749	-
Turnout		41.5	39.3

Argoed & Cefn Fforest (3581)			
		vote	share
Lloyd O.	Lab	0	0.0
Turnout		0.0	0.0

Bassaleg & Marshfield (4493)			
		vote	share
Gidden G.	Con	1,133	46.9
Jones T.	Lab	749	31.0
Waskett I.	Lib	535	22.1
Turnout		53.8	15.9

Beechwood (5986) ²			
		vote	share
Cleaves W.	Lab	1,330	42.6
Morris R.	Lab	1,273	-
Poor D.	Lib	1,053	33.7
Riley D.	Lib	884	-
Martin A.	Con	741	23.7
Crabb L.	Con	684	-
Turnout		52.2	8.9

Bettws (6174)			
		vote	share
Murray R.	Lab	1,998	83.4
Williams G.	Con	399	16.6
Turnout		38.8	66.7

Blackwood (5324)			
		vote	share
Bosley D.	Lab	1,687	76.7
Jenkins G.	Lab	1,087	-
Sarsmus O.	PC	513	23.3
Sainsbury L.	SDP	275	-
Turner N.	PC	207	-
Turnout		41.3	53.4

Blaenavon (5158)			
		vote	share
Jones R.	Lab	1,499	60.9
Morgan W.	Rate	866	35.2
Snow C.	Green	97	3.9
Turnout		47.7	25.7

Brynmawr (4417)			
		vote	share
Jones M.	Lab	1,504	53.4
Jones M.	Con	1,032	53.4
Williams R.	PC	281	10.0
Turnout		63.8	0.0

Caerleon (4921)			
		vote	share
Kirkwood J.	Lab	1,514	52.7
Veale S.	Con	1,360	47.3
Turnout		58.4	5.4

Caerwent (4685)			
		vote	share
Harris M.	Lab	1,112	50.2
Morgan I.	Con	1,103	49.8
Turnout		47.3	0.4

Caldicot (7072)			
		vote	share
Powell G.	Lab	1,956	59.8
Nancekivill R.	Ind	1,313	40.2
Turnout		46.2	19.7

Central (3739)			
		vote	share
Marsh J.	Lab	1,019	65.2
Davies G.	Con	544	34.8
Turnout		41.8	30.4

Chepstow (5324)			
		vote	share
Huntley J.	Lab	1,662	65.0
Morgan K.	Con	894	35.0
Turnout		48.0	30.0

Crickhowell & Llanely Parish (2919)			
		vote	share
Hayward G.	Con	1,062	61.7
Powell E.	Lab	658	38.3
Turnout		58.9	23.5

Crucorney Fawr & Llantilio Pertho (4301)			
		vote	share
Davies J.	Con	1,115	63.3
Welsh M.	Lab	646	36.7
Turnout		40.9	26.6

Crumlin (4075)			
		vote	share
England A.	Lab	1,307	70.6
Waters J.	PC	545	29.4
Turnout		45.4	41.1

Cwmbran Central & Llantarnam (5133)			
		vote	share
Jones J.	Lab	1,582	89.9
Trimble P.	PC	178	10.1
Turnout		34.3	79.8

Cwmtillery (4617)			
		vote	share
Mytton T.	Lab	0	0.0
Turnout		0.0	0.0

Ebbw Vale Badminton Central & Cwm (6455) ²			
		vote	share
Morgan N.	Ind	1,803	38.2
Evans P.	Lab	1,802	38.2
Williams G.	Rate	1,110	23.5
Greenland B.	Rate	892	-
Turnout		73.0	0.0

Ebbw Vale Central & Cwm South (11745) ³			
		vote	share
Morgan R.	Lab	3,288	46.6
Foster H.	Lab	2,902	-
Parton I.	Lab	2,607	-
McKelvie G.	Rate	2,215	31.4
Foxwell G.	Rate	2,160	-
Newman E.	Rate	1,891	-
Evans J.	PC	1,554	22.0
Turnout		60.1	15.2

Fairwater & Henllys (8478)			
		vote	share
Mullin J.	Lab	1,754	85.9
Morris R.	PC	288	14.1
Turnout		24.1	71.8

Langstone (5018)			
		vote	share
Stephens W.	Con	1,187	47.1
Ford G.	Lab	974	38.6
Williams L.	Ind	360	14.3
Turnout		50.2	8.4

Llanfoist & Llanover (3823)			
		vote	share
Handford J.	Con	876	42.9
Bourton M.	Lab	628	30.8
Allsopp J.	Lib	536	26.3
Turnout		53.4	12.2

Llanfrechfa Lower (8673) ²			
		vote	share
Thomas M.	Lab	2,215	44.0
Marchant D.	Lab	1,871	-
Walker J.	Ind	1,488	29.6
Wyman M.	Con	1,326	26.4
Turnout		58.0	14.5

Llanhilleth (2126)			
		vote	share
Allford C.	Lab	0	0.0
Turnout		0.0	0.0

Lliswerry (7412) ²			
		vote	share
Herbert H.	Lab	1,914	53.7
Kenwyn M.	Lab	1,879	-
Hughes M.	Ind	952	26.7
Davenport P.	Con	699	19.6
Turnout		48.1	27.0

Malpas (6656) ²			
		vote	share
Dally J.	Lab	1,639	53.6
Poole R.	Lab	1,510	-
Davies P.	Con	1,169	38.2
Thomas T.	Con	1,130	-
Trigg N.	Ind	252	8.2
Turnout		46.0	15.4

Monmouth (5774)			
		vote	share
Lewis J.	Con	1,582	59.8
Hewson T.	Lab	1,064	40.2
Turnout		45.8	19.6

Monmouth Rural (5326)			
		vote	share
Inkin G.	Con	1,783	65.3
Parckar R.	Lib	535	19.6
Pursell A.	Lab	413	15.1
Turnout		51.3	45.7

Nantyglo & Blaina Central & Sou (4814)			
		vote	share
Jayne K.	Lab	0	0.0
Turnout		0.0	0.0

Nantyglo & Blaina North (2496)			
		vote	share
Gore W.	Lab	1,325	86.7
Finney K.	PC	204	13.3
Turnout		61.3	73.3

Newbridge (4585)			
		vote	share
Ellis M.	Lab	1,569	57.2
Richards A.	PC	1,175	42.8
Turnout		59.8	14.4

Old Cwmbran (4597)			
		vote	share
Lloyd A.	Lab	894	48.6
Rex D.	Ind	808	44.0
John P.	PC	136	7.4
Turnout		40.0	4.7

Panteg East (6846)			
		vote	share
Maurice B.	Lab	1,581	52.3
Jones E.	Ind	1,443	47.7
Turnout		44.2	4.6

Panteg West (4426)			
		vote	share
Tonig D.	Lab	0	0.0
Turnout		0.0	0.0

Pontllanfraith (6703)			
		vote	share
Winfield J.	Lab	1,489	52.7
Parer M.	PC	1,336	47.3
Turnout		42.1	5.4
Pontnewydd (3836)			
		vote	share
White R.	Lab	0	0.0
Turnout		0.0	0.0
Pontnewydd North (5473)			
		vote	share
Ball S.	Lab	832	42.3
Burgess T.	Ind	460	23.4
Dawson K.	Rate	354	18.0
Irwin L.	Comm	322	16.4
Turnout		36.0	18.9
Pontnewydd South (3371)			
		vote	share
Cottrell D.	Lab	732	52.8
Morris B.	Rate	351	25.3
Palmer E.	PC	304	21.9
Turnout		41.1	27.5
Pontypool (2414)			
		vote	share
Hearth B.	Lab	735	68.5
Wells-Rice M.	Ind	275	25.6
Palmer D.	PC	63	5.9
Turnout		44.4	42.9
Ringland (7075)²			
		vote	share
Edwards F.	Lab	2,349	86.1
Flynn P.	Lab	2,223	-
Davies R.	Con	378	13.9
Ahmed F.	Con	241	-
Turnout		38.5	72.3
Risca Central (2044)			
		vote	share
Griffiths E.	Lab	0	0.0
Turnout		0.0	0.0
Risca North (3111)			
		vote	share
Parfitt M.	Lab	0	0.0
Turnout		0.0	0.0
Risca South (7417)			
		vote	share
Beacham R.	Lab	2,066	82.2
Webster R.	Ind	448	17.8
Turnout		33.9	64.4
Rogerstone (6508)			
		vote	share
Tutton I.	Lab	1,901	61.0
Toleman J.	Ind	1,215	39.0
Turnout		47.9	22.0
Shaftesbury (5231)			
		vote	share
Delahey M.	Lab	1,325	58.9
Jewitt D.	Con	926	41.1
Turnout		43.0	17.7
Shirenewton & Tintern (4452)			
		vote	share
Hearth I.	Con	1,448	67.9
Bamford V.	Lab	475	22.3
Wood H.	Ind	211	9.9
Turnout		47.9	45.6

St. Julians (6605)²			
		vote	share
Ovens E.	Lab	1,841	59.0
Thomas R.	Lab	1,711	-
Morris W.	Con	1,277	41.0
Copus A.	Con	1,173	-
Turnout		47.2	18.1
St. Woolos (8584)²			
		vote	share
Turnbull L.	Lab	2,876	67.3
Pembridge J.	Lab	2,668	-
Selwood L.	Lib	749	17.5
May R.	Lib	737	-
Jones G.	Con	648	15.2
Neale J.	Con	635	-
Turnout		49.8	49.8
Tredegar Central & West (5511)			
		vote	share
Jones C.	Lab	1,450	57.5
O'Leary J.	Lib	933	37.0
Bowen K.	PC	139	5.5
Turnout		45.8	20.5
Tredegar Georgetown (2567)			
		vote	share
Edwards M.	Lab	809	67.5
Hulley A.	Lib	390	32.5
Turnout		46.7	34.9
Tredegar Sirhowy (4349)			
		vote	share
Thomas D.	Lib	1,453	56.3
Harris J.	Lab	1,023	39.6
Kelly B.	Ind	105	4.1
Turnout		59.3	16.7
Upper Cwmbran (3678)			
		vote	share
Price D.	Lab	0	0.0
Turnout		0.0	0.0
Usk & Pontypool Rural (5389)			
		vote	share
Etheridge V.	Con	1,871	71.4
Hedkin N.	Lab	749	28.6
Turnout		48.6	42.8
Victoria (4713)			
		vote	share
Geraghty P.	Lab	1,272	53.9
Miles A.	Lib	542	23.0
Jordan K.	Con	492	20.9
Hickman G.	Green	52	2.2
Turnout		50.0	31.0
Ynysddu (2531)			
		vote	share
Evans R.	Lab	1,034	74.4
Cullen D.	PC	356	25.6
Turnout		54.9	48.8

Gwent 1985

Aberbeeg & Six Bells (4473)			
		vote	share
Bartlett R.	Lab	0	0.0
Turnout		0.0	0.0
Abercarn (2700)			
		vote	share
Jones T.	PC	629	50.8
Dunn C.	Lab	608	49.2
Turnout		45.8	1.7

Abercarn & Cwmcarn (3806)			
		vote	share
Pidgeon R.	Lab	1,297	70.7
Williams P.	Lib/All	537	29.3
Turnout		48.2	41.4
Abergavenny Cantref & Grofield (3763)			
		vote	share
Gass K.	Lab	798	39.4
Hill R.	Rate	615	30.4
Norris M.	Con	613	30.3
Turnout		53.8	9.0
Abergavenny Castle & Priory (3472)			
		vote	share
Evans K.	Lab	745	39.5
Williams P.	Con	727	38.5
Fury G.	SDP/All	415	22.0
Turnout		54.3	1.0
Abersychan Central (2403)			
		vote	share
Berry W.	Lab	764	82.0
Burgess J.	Ind	168	18.0
Turnout		38.8	63.9
Abersychan North (2924)			
		vote	share
Gratton M.	Lab	0	0.0
Turnout		0.0	0.0
Abertillery (3127)			
		vote	share
Owen R.	Lab	0	0.0
Turnout		0.0	0.0
Alexander (2885)			
		vote	share
Jones R.	Lab	965	69.7
Davies P.	Con	419	30.3
Turnout		48.0	39.5
Allt Yr Yn (5254)			
		vote	share
Graham W.	Con	1,542	67.1
Penn V.	Lab	664	28.9
Simmons R.	PC	92	4.0
Turnout		43.7	38.2
Alway (6298)²			
		vote	share
Turner J.	Lab	1,634	59.8
Powell K.	Lab	1,476	-
Dixon K.	Con	789	28.9
Pumford J.	Ind Lab	310	11.3
Turnout		43.4	30.9
Argoed & Cefn Fforest (3582)			
		vote	share
Lloyd O.	Lab	1,163	71.5
Franklin G.	PC	464	28.5
Turnout		45.4	43.0
Bassaleg & Marshfield (4925)			
		vote	share
Gitten R.	Con	1,304	57.6
Jones T.	Lab	958	42.4
Turnout		45.9	15.3
Beechwood (6218)²			
		vote	share
Rees R.	Lab	1,647	47.3
Morris R.	Lab	1,613	-
Gibbon J.	All	1,354	38.9
Coughlin J.	All	1,314	-
Cox D.	Con	484	13.9
Williams G.	Con	408	-
Turnout		56.0	8.4

Bettws (6384)			
		vote	share
Murray R.	Lab	1,788	87.3
Williams L.	Con	260	12.7
	Turnout	32.1	74.6
Blackwood (5399)			
		vote	share
Bosley D.	Lab	1,785	79.9
Jenkins G.	Lab	1,050	-
Smith J.	PC	448	20.1
Turner N.	PC	264	-
	Turnout	41.4	59.9
Blaenavon (5070)			
		vote	share
Hardwicke P.	Lab	1,350	56.7
Williamson N.	SDP/All	1,031	43.3
	Turnout	47.0	13.4
Brynmawr (4330)			
		vote	share
Jones M.	Lab	1,557	71.9
Williams R.	PC	368	17.0
Smith M.	Con	242	11.2
	Turnout	50.0	54.9
Caerleon (5194)			
		vote	share
Kirkwood J.	Lab	1,909	66.6
Morris W.	Con	957	33.4
	Turnout	55.2	33.2
Caerwent (5902)			
		vote	share
Harris M.	Lab	1,800	61.9
Jones-Richards H.	Con	1,110	38.1
	Turnout	49.3	23.7
Caldicot (7418)			
		vote	share
Powell G.	Lab	1,907	60.8
Johnston M.	SDP/All	663	21.1
Cawley F.	Con	566	18.0
	Turnout	42.3	39.7
Central (3695)			
		vote	share
Marsh J.	Lab	1,158	69.3
Stokes C.	Con	512	30.7
	Turnout	45.2	38.7
Chepstow (5550)			
		vote	share
Huntley A.	Lab	1,522	60.1
Marsh M.	Con	595	23.5
Hodges H.	Lib/All	417	16.5
	Turnout	45.7	36.6
Crickhowell & Llanelly Parish (3036)			
		vote	share
Hayward G.	Con	793	45.5
Jones J.	Ind Lab	497	28.5
Rogers J.	Lab	454	26.0
	Turnout	57.4	17.0
Crucorney Fawr & Llantilio Pertho (4568)			
		vote	share
Nelmes J.	Lab	926	45.7
Davies J.	Con	837	41.3
Conan G.	Rate	262	12.9
	Turnout	44.3	4.4
Crumlin (4461)			
		vote	share
England A.	Lab	1,233	60.2
Roberts R.	PC	815	39.8
	Turnout	45.9	20.4

Cwmbran Central & Llantarnam (4998)			
		vote	share
Jones J.	Lab	1,465	92.8
Cox P.	PC	114	7.2
	Turnout	31.6	85.6
Cwmtillery (4508)			
		vote	share
Vowles W.	Lab	0	0.0
	Turnout	0.0	0.0
Ebbw Vale Badminton Central & Cwm (11896)³			
		vote	share
Morgan R.	Lab	3,630	62.6
Foster H.	Lab	3,325	-
Parton I.	Lab	3,168	-
Evans J.	PC	1,535	26.5
Tuck R.	Con	630	10.9
	Turnout	48.7	36.2
Ebbw Vale Central & Cwm South (6326)			
		vote	share
Wells P.	Lab	1,902	45.1
Ritter K.	Lab	1,789	42.5
Markey M.	PC	523	12.4
	Turnout	66.6	2.7
Fairwater & Henllys (9122)			
		vote	share
Mullin J.	Lab	0	0.0
	Turnout	0.0	0.0
Langstone (4523)			
		vote	share
Stephens W.	Con	981	51.1
Murphy R.	Lab	937	48.9
	Turnout	42.4	2.3
Llanfoist & Llanover (4056)			
		vote	share
Hanford J.	Con	847	47.1
Harris H.	Lab	741	41.2
Williams C.	PC	212	11.8
	Turnout	44.4	5.9
Llanfrechfa Lower (8699)²			
		vote	share
Marchant D.	Lab	0	-
Thomas M.	Lab	0	0.0
	Turnout	0.0	0.0
Llanhilleth (2032)			
		vote	share
Allford C.	Lab	0	0.0
	Turnout	0.0	0.0
Lliswerry (7243)²			
		vote	share
Herbert H.	Lab	1,758	73.7
Kenvyn M.	Lab	1,681	-
Farr P.	Con	626	26.3
	Turnout	32.9	47.5
Malpas (6805)²			
		vote	share
Dally J.	Lab	1,858	62.8
Poole R.	Lab	1,816	-
Goulandris J.	Con	1,102	37.2
Sawyer A.	Con	1,099	-
	Turnout	43.5	25.5
Monmouth (6155)			
		vote	share
Lewis J.	Con	1,178	40.7
David F.	SDP/All	1,065	36.8
Huwson T.	Lab	651	22.5
	Turnout	47.0	3.9

Monmouth Rural (4531)			
		vote	share
Goodwin W.	Con	1,324	55.5
Haydn P.	All	730	30.6
Purcel A.	Lab	333	14.0
	Turnout	52.7	24.9
Nantyglo & Blaina Central & Sou (4864)			
		vote	share
Silk J.	Lab	1,779	73.6
Morgan S.	PC	638	26.4
	Turnout	49.7	47.2
Nantyglo & Blaina North (2409)			
		vote	share
Gore W.	Lab	999	78.2
Finney K.	PC	279	21.8
	Turnout	53.1	56.3
Newbridge (5453)			
		vote	share
Ellis M.	Lab	1,516	55.0
Richards A.	PC	1,240	45.0
	Turnout	50.5	10.0
Old Cwmbran (4636)			
		vote	share
Lloyd A.	Lab	1,094	55.9
Hewson M.	Lib/All	864	44.1
	Turnout	42.2	11.7
Panteg East (7160)			
		vote	share
Maurice B.	Lab	0	0.0
	Turnout	0.0	0.0
Panteg West (4431)			
		vote	share
Touhig D.	Lab	0	0.0
	Turnout	0.0	0.0
Pontllanfraith (6745)			
		vote	share
Winfield J.	Lab	1,492	50.2
Cridle J.	PC	1,222	41.1
Ruff M.	Con	258	8.7
	Turnout	44.1	9.1
Pontnewydd (3837)			
		vote	share
O'Kelly F.	Lab	0	0.0
	Turnout	0.0	0.0
Pontnewydd North (5548)			
		vote	share
Griffiths C.	Lab	1,118	67.9
Burgess T.	Ind	529	32.1
	Turnout	29.7	35.8
Pontnewydd South (3412)			
		vote	share
Williams G.	Lab	726	66.8
Palmer E.	PC	361	33.2
	Turnout	31.9	33.6
Pontypool (2435)			
		vote	share
Hearth B.	Lab	0	0.0
	Turnout	0.0	0.0
Ringland (6808)²			
		vote	share
Edwards F.	Lab	1,962	84.7
Bright R.	Lab	1,794	-
Brussalis N.	Con	354	15.3
	Turnout	34.0	69.4

Risca Central (2044)			
		vote	share
Griffiths E.	Lab	0	0.0
Turnout		0.0	0.0
Risca North (3022)			
		vote	share
Parfitt M.	Lab	990	61.8
Maddocks A.	All	611	38.2
Turnout		53.0	23.7
Risca South (7432)			
		vote	share
Paginton E.	Lab	1,686	71.1
Matthews C.	All	685	28.9
Turnout		31.9	42.2
Rogerstone (5725)			
		vote	share
Tutton I.	Lab	1,543	51.0
Toleman J.	Con	745	24.6
Etheridge K.	SDP/All	737	24.4
Turnout		52.8	26.4
Shaftesbury (5371)			
		vote	share
Delahay M.	Lab	1,403	58.7
Jewitt D.	Con	517	21.6
Dearth R.	Lib/All	471	19.7
Turnout		44.5	37.1
Shirenewton & Tintern (4690)			
		vote	share
Heath I.	Con	1,150	55.4
Parckar R.	Lib/All	529	25.5
Gay B.	Ind	395	19.0
Turnout		44.2	29.9
St. Julians (6543) ²			
		vote	share
Ovens E.	Lab	1,988	66.5
Waters W.	Lab	1,866	-
McDonnell L.	Con	1,000	33.5
Shaw M.	Con	984	-
Turnout		45.7	33.1
St. Woolos (8483) ²			
		vote	share
Turnbull L.	Lab	2,841	63.2
Pembridge J.	Lab	2,737	-
Ford A.	Con	911	20.3
Shirley D.	Con	750	-
Cox N.	SDP	568	12.6
Cann P.	Ind	176	3.9
Turnout		53.0	42.9
Tredegar Central & West (5245)			
		vote	share
Jones C.	Lab	1,404	63.5
Thomas J.	Lib	807	36.5
Turnout		42.2	27.0
Tredegar Georgetown (2746)			
		vote	share
Lloyd T.	Lab	704	58.4
Jones A.	Lib	297	24.6
Roberts G.	PC	205	17.0
Turnout		43.9	33.7
Tredegar Sirhowy (4397)			
		vote	share
Thomas D.	Lib	1,509	59.8
Waters J.	Lab	1,013	40.2
Turnout		57.4	19.7
Upper Cwmbran (4244)			
		vote	share
Price D.	Lab	0	0.0
Turnout		0.0	0.0

Usk & Pontypool Rural (5587)			
		vote	share
Etheridge V.	Con	1,619	68.0
Evans I.	Lab	761	32.0
Turnout		42.6	36.1
Victoria (4538)			
		vote	share
Geraghty P.	Lab	1,487	77.0
Dixton E.	Con	444	23.0
Turnout		42.6	54.0
Ynysyddu (2521)			
		vote	share
Williams E.	Lab	886	75.0
Cullen B.	PC	296	25.0
Turnout		46.9	49.9

Gwent 1989

Abercarn (3808)			
		vote	share
Pidgeon R.*	Lab	1,171	76.0
Williams P.	Dem	370	24.0
Turnout		40.5	52.0
Abergavenny (5910)			
		vote	share
Evans K.*	Lab	1,653	51.5
Williams P.	Con	1,556	48.5
Turnout		54.3	3.0
Abersychan (5355)			
		vote	share
Jones D.*	Lab	1,370	62.6
Cox J.	Comm	485	22.2
Burgess T.	Dem	184	8.4
Rees J.	PC	148	6.8
Turnout		40.8	40.5
Abertillery (5749)			
		vote	share
Owen R.*	Lab	0	0.0
Turnout		0.0	0.0
Allt-Yr-Yn (6225)			
		vote	share
Reeves C.*	Con	1,461	53.6
Clist J. Ms.	Lab	1,024	37.6
James P.	Green	240	8.8
Turnout		43.8	16.0
Alway (5730)			
		vote	share
Powell K.*	Lab	1,586	73.4
Gwilliam V. Ms.	Con	575	26.6
Turnout		37.7	46.8
Beaufort (5829)			
		vote	share
Daniels G.*	Lab	0	0.0
Turnout		0.0	0.0
Beechwood (6315)			
		vote	share
Morris R.*	Lab	1,856	65.7
Jones G.	Con	497	17.6
Hillman J.	SLD	470	16.6
Turnout		44.7	48.1
Bettws (6208)			
		vote	share
Murray R.*	Lab	1,864	87.0
Royle A. Ms.	Con	279	13.0
Turnout		34.5	74.0

Blackwood (5643)			
		vote	share
Bosley D.*	Lab	1,575	75.6
Jones H. Ms.	PC	509	24.4
Turnout		36.9	51.2
Blaenavon (4954)			
		vote	share
Hardwicke P.*	Lab	1,254	82.9
Layton G. Ms.	Dem	259	17.1
Turnout		30.5	65.8
Brynawr (4371)			
		vote	share
Jones M.*	Lab	1,287	49.6
Jones M. Ms.	Ind	1,116	49.6
Faulkner H.	PC	190	7.3
Turnout		59.3	0.0
Caerleon (6128)			
		vote	share
Kirkwood K.*	Lab	2,138	66.6
Alger C.	Con	714	22.2
Davis T.	Green	359	11.2
Turnout		52.4	44.3
Caerwent (3384)			
		vote	share
Richards S.*	Lab	842	50.5
Spence D. Ms.	Con	824	49.5
Turnout		49.2	1.1
Caldicot Town (6427)			
		vote	share
Powell G.*	Lab	1,644	65.8
Thomas M. Ms.	Con	521	20.9
Ratledge H.	SLD	333	13.3
Turnout		38.9	45.0
Chepstow North (6339)			
		vote	share
White C.*	Con	1,608	63.0
Newman A.	Lab	943	37.0
Turnout		40.2	26.1
Chepstow South (4367)			
		vote	share
Huntley A.*	Lab	1,418	69.1
Hyland C.	Con	397	19.4
Hodges H.	SLD	236	11.5
Turnout		47.0	49.8
Croesyceiliog (4761)			
		vote	share
Thomas M. Ms.*	Lab	1,616	71.5
Friend D.	Con	427	18.9
Davenport S. Ms.	Green	217	9.6
Turnout		47.5	52.6
Crumlin (4514)			
		vote	share
Sutton B.*	Lab	1,208	66.6
Grist J.	PC	607	33.4
Turnout		40.2	33.1
Cwmtillery (3863)			
		vote	share
Vowles W.*	Lab	1,099	66.6
Angel T.	Ind Lab	551	33.4
Turnout		42.7	33.2
Ebbw Vale North (6460)			
		vote	share
Morgan R.*	Lab	0	0.0
Turnout		0.0	0.0

Ebbw Vale South (6145)			
		vote	share
Evans P.*	Lab	1,468	61.9
O'Callaghan S.	Rate	518	21.8
Davies J.	Green	386	16.3
Turnout		38.6	40.1
Fairwater (6519)			
		vote	share
Mullin J.*	Lab	1,259	75.9
Witherden M.	Green	235	14.2
Phillips S.	Dem	164	9.9
Turnout		25.4	61.8
Gaer (6850)			
		vote	share
Pembridge J.*	Lab	2,592	82.2
Ferris J.	Con	560	17.8
Turnout		46.0	64.5
Graig (3301)			
		vote	share
Gidden R.*	Con	860	59.0
McKim P.	Lab	597	41.0
Turnout		44.1	18.1
Liswerry (7174)			
		vote	share
Turner J.*	Lab	0	0.0
Turnout		0.0	0.0
Llanelly (3131)			
		vote	share
Rees R. Ms.*	Lab	922	50.4
Hayward G.	Con	908	49.6
Turnout		58.4	0.8
Llanhilleth (4196)			
		vote	share
Bartlett R.*	Lab	0	0.0
Turnout		0.0	0.0
Llanover (5812)			
		vote	share
Gass K. Ms.*	Lab	1,597	54.7
Hanford J.	Con	1,322	45.3
Turnout		50.2	9.4
Llantarnam (6929)			
		vote	share
Ryan B. Ms.*	Lab	1,632	64.4
Giles D.	Dem	903	35.6
Turnout		36.6	28.8
Llanwern (4660)			
		vote	share
Major J.*	Con	1,188	60.3
Watkins E.	Lab	783	39.7
Turnout		42.3	20.5
Llanyravon (3615)			
		vote	share
Caron G.*	Lab	992	48.2
Kerby E. Ms.	Con	551	26.7
Watkins V. Ms.	SLD	517	25.1
Turnout		57.0	21.4
Malpas (6592)			
		vote	share
Dally J.*	Lab	1,705	62.0
Hill R.	Con	789	28.7
Davies A.	Dem	255	9.3
Turnout		41.7	33.3
Mardy (4619)			
		vote	share
Nelmes J.*	Lab	1,120	51.4
Davies J.	Ind	1,059	48.6
Turnout		47.2	2.8

Monmouth (6816)			
		vote	share
Lewis J.*	Con	1,285	46.4
Smith R.	Dem	880	31.8
Cuming H. Ms.	Lab	358	12.9
Fletcher J.	Ind	244	8.8
Turnout		40.6	14.6
Monmouth Rural (5664)			
		vote	share
Goodwin W.*	Con	1,313	54.8
David F. Ms.	SLD	758	31.7
Pursell A.	Lab	323	13.5
Turnout		42.3	23.2
Mynyddislwyn (5494)			
		vote	share
Williams E.*	Lab	0	0.0
Turnout		0.0	0.0
Nantyglo & Blaina (7382)			
		vote	share
Gore W.*	Lab	0	0.0
Turnout		0.0	0.0
Newbridge (5254)			
		vote	share
Ellis M. Ms.*	Lab	1,663	73.3
Davies M.	PC	607	26.7
Turnout		43.2	46.5
Panteg North (4960)			
		vote	share
Maurice B.*	Lab	1,459	74.7
Noller D. Ms.	Con	493	25.3
Turnout		39.4	49.5
Panteg South (5115)			
		vote	share
Touhig D.*	Lab	1,803	83.5
Logan-Salton M.	Con	355	16.5
Turnout		42.2	67.1
Pengam (5695)			
		vote	share
Jenkins G.*	Lab	1,654	82.2
Turner N.	PC	358	17.8
Turnout		35.3	64.4
Penmaen (5144)			
		vote	share
Lloyd O. Ms.*	Lab	1,461	60.4
Jones D.	PC	957	39.6
Turnout		47.0	20.8
Pillgwenlly (3461)			
		vote	share
Jones R.*	Lab	1,292	80.9
Lewis D.	Con	228	14.3
Small C.	Green	78	4.9
Turnout		46.2	66.6
Pontllanfraith (6094)			
		vote	share
Winfield J.*	Lab	1,768	55.2
Parker M.	PC	1,210	37.8
Ruff L. Ms.	Con	227	7.1
Turnout		52.6	17.4
Pontnewydd (4778)			
		vote	share
O'Kelly F. Ms.*	Lab	1,599	85.3
Levy D.	Dem	276	14.7
Turnout		39.2	70.6
Ringland (6655)			
		vote	share
Bright R.*	Lab	1,900	86.3
Hillman A.	SLD	301	13.7
Turnout		33.1	72.

Risca East (5341)			
		vote	share
Paginton E. Ms.*	Lab	0	0.0
Turnout		0.0	0.0
Risca West (4197)			
		vote	share
Griffiths E.*	Lab	0	0.0
Turnout		0.0	0.0
Rogerstone (5749)			
		vote	share
Kelly R.*	Lab	1,777	64.6
Toleman J.	Con	975	35.4
Turnout		47.9	29.1
Sevenside (4886)			
		vote	share
Harris M.*	Lab	1,296	60.8
Bashford V.	Con	834	39.2
Turnout		43.6	21.7
Shaftesbury (4052)			
		vote	share
Delahay M.*	Lab	1,350	78.2
Davies P.	Con	377	21.8
Turnout		42.6	56.3
Sirhowy (7148)			
		vote	share
Thomas B.*	Ind	1,525	43.7
Lloyd T.	Lab	1,518	43.5
Davies T.	PC	443	12.7
Turnout		48.8	0.2
St.Julians (6201)			
		vote	share
Waters W.*	Lab	2,005	68.4
Davies P.	Con	926	31.6
Turnout		47.3	36.8
Stowhill (3217)			
		vote	share
Marsh J.*	Lab	884	63.4
Stokes A. Ms.	Con	391	28.0
Gribble R.	Green	119	8.5
Turnout		43.3	35.4
Tredegar Central & West (5005)			
		vote	share
Jones C.*	Lab	1,554	81.9
Harriman J.	Ind	344	18.1
Turnout		37.9	63.8
Tredegar Park (3730)			
		vote	share
Herbert H.*	Lab	960	58.8
Doody M.	Con	673	41.2
Turnout		43.8	17.6
Trevethin (5808)			
		vote	share
Griffiths C. Ms.*	Lab	0	0.0
Turnout		0.0	0.0
Two Locks (5129)			
		vote	share
Lloyd A. Ms.*	Lab	1,322	80.3
Hewson M.	Dem	324	19.7
Turnout		32.1	60.6
Upper Cwmbran (4365)			
		vote	share
Price D.*	Lab	0	0.0
Turnout		0.0	0.0

Usk Rurale (5679)			
		vote	share
Clarke P.*	Con	1,844	67.2
Leathwood A.	Lab	899	32.8
Turnout		48.3	34.5

Victoria (4277)			
		vote	share
Geraghty P.*	Lab	0	0.0
Turnout		0.0	0.0

Wainfelin (7275)			
		vote	share
Davies G.*	Lab	1,719	76.5
Witheridge H.	Con	339	15.1
Layton D.	Dem	189	8.4
Turnout		30.9	61.4

Gwent 1993

Abercarn (3833)			
		vote	share
Rees J.*	Lab	720	51.5
Ackerman I.	PC	601	43.0
Jones R.	Con	78	5.6
Turnout		36.5	8.5

Abergavenny (5849)			
		vote	share
Lambert J.	Lab	1,499	47.5
Powdrill B.*	Con	1,426	45.2
Lines C.	LD	228	7.2
Turnout		53.9	2.3

Abersychan (5344)			
		vote	share
Jones D.*	Lab	0	0.0
Turnout		0.0	0.0

Abertillery (5779)			
		vote	share
Owen R.*	Lab	1,447	76.4
Bard W.	LD	264	13.9
Francombe G. Ms.	PC	183	9.7
Turnout		32.8	62.5

Allt-Yr-Yn (6218)			
		vote	share
Knight L.*	Con	1,305	55.9
Clist D.	Lab	1,030	44.1
Turnout		37.6	11.8

Alway (5678)			
		vote	share
Powell K.*	Lab	1,131	76.0
Williams G.	Con	358	24.0
Turnout		26.2	51.9

Beaufort (5762)			
		vote	share
England R.	Lab	0	0.0
Turnout		0.0	0.0

Beechwood (5976)			
		vote	share
Morris R.*	Lab	1,655	76.7
Thomas R.	Con	504	23.3
Turnout		36.1	53.3

Bettws (5914)			
		vote	share
Jarvis G.*	Lab	1,339	85.7
Ryan M.	Con	223	14.3
Turnout		26.4	71.4

Blackwood (5683)			
		vote	share
Bosley D.*	Lab	1,200	69.0
Etheridge K.	LD	402	23.1
Jones M. Ms.	Con	137	7.9
Turnout		30.6	45.9

Blaenavon (4888)			
		vote	share
Roberts P. Ms.*	Lab	1,173	75.7
Layton D.	LD	376	24.3
Turnout		31.7	51.5

Brynawr (4382)			
		vote	share
Jones M. Ms.*	Lab	0	0.0
Turnout		0.0	0.0

Caerleon (6229)			
		vote	share
Kirkwood J.*	Lab	1,784	78.5
Frazer-Overton R.	Con	489	21.5
Turnout		36.5	57.0

Caerwent (3389)			
		vote	share
Richards S.*	Lab	1,020	58.4
Rees G.	Con	546	31.3
Hodgson J.	LD	180	10.3
Turnout		51.5	27.1

Caldicot Town (6364)			
		vote	share
Powell G.*	Lab	1,691	78.3
Cawley N. Ms.	Con	469	21.7
Turnout		33.9	56.6

Chepstow North (6432)			
		vote	share
White C.*	Con	1,120	44.7
Newman A.	Lab	764	30.5
Hobson P.	LD	619	24.7
Turnout		38.9	14.2

Chepstow South (4260)			
		vote	share
Huntley A.*	Lab	1,068	72.2
Hodges H.	LD	411	27.8
Turnout		34.7	44.4

Croesyceiliog (4641)			
		vote	share
Thomas M. Ms.*	Lab	1,535	79.0
Davies J. Ms.	Con	408	21.0
Turnout		41.9	58.0

Crumlin (4637)			
		vote	share
Sutton B.*	Lab	930	49.2
Jones M.	PC	895	47.3
Pritchard G.	Con	67	3.5
Turnout		40.8	1.8

Cwmtilery (3847)			
		vote	share
Vowles W.*	Lab	0	0.0
Turnout		0.0	0.0

Ebbw Vale North (6397)			
		vote	share
Biston G.	Lab	0	0.0
Turnout		0.0	0.0

Ebbw Vale South (6141)			
		vote	share
Davies G.	Lab	0	0.0
Turnout		0.0	0.0

Fairwater (7118)			
		vote	share
Hardwick C.*	Lab	1,021	79.7
Cox A.	PC	260	20.3
Turnout		18.0	59.4

Gaer (6518)			
		vote	share
Pembridge J.*	Lab	1,895	79.9
Hopkins C. Ms.	Con	476	20.1
Turnout		36.4	59.8

Graig (3524)			
		vote	share
Gidden R.*	Con	678	43.8
McKim P.	Lab	665	42.9
Roberts C.	Ind	206	13.3
Turnout		44.0	0.8

Liswerry (7235)			
		vote	share
Turner J.*	Lab	1,434	83.9
Jenkins D.	Con	276	16.1
Turnout		23.6	67.7

Llanelly (3119)			
		vote	share
Rees R. Ms.*	Lab	820	54.5
Edwards A.	Ind	685	45.5
Turnout		48.3	9.0

Llanhilleth (4141)			
		vote	share
Bartlett R.*	Lab	1,060	78.2
Francombe C.	PC	296	21.8
Turnout		32.8	56.3

Llanover (5950)			
		vote	share
Gass K. Ms.*	Lab	1,788	61.3
Barrett V.	Con	916	31.4
Tatam N.	LD	211	7.2
Turnout		49.0	29.9

Llantarnam (6783)			
		vote	share
Ryan B. Ms.*	Lab	1,300	58.1
Webb C. Ms.	LD	816	36.5
Cox P. Ms.	PC	122	5.5
Turnout		33.0	21.6

Llanwern (4684)			
		vote	share
Major J.*	Con	962	53.2
Down S.	Lab	847	46.8
Turnout		38.6	6.4

Llanyravon (3508)			
		vote	share
Caron G.*	Lab	1,174	66.2
Grossi P.	Con	600	33.8
Turnout		50.6	32.4

Malpas (6410)			
		vote	share
Dally J.*	Lab	1,341	51.9
Brydon V. Ms.	LD	865	33.5
Lee T.	Con	376	14.6
Turnout		40.3	18.4

Mardy (4580)			
		vote	share
Nelmes J.*	Lab	991	54.3
Cowan G.	Con	835	45.7
Turnout		39.9	8.5

Monmouth (6680)			
		vote	share
Lewis J.*	Con	1,024	34.6
Goodrich E. Ms.	LD	969	32.7
Hughes S.	Lab	969	32.7
Turnout		44.3	1.9
Monmouth Rural (5580)			
		vote	share
Anstey D.	LD	1,227	51.1
Webb A. Ms.	Con	1,175	48.9
Turnout		43.1	2.2
Mynyddislwyn (5613)			
		vote	share
Williams E.*	Lab	1,544	86.2
Phillips W. Ms.	Con	247	13.8
Turnout		31.9	72.4
Nantyglo & Blaina (7205)			
		vote	share
Gore W.*	Lab	0	0.0
Turnout		0.0	0.0
Newbridge (5292)			
		vote	share
Ellis M. Ms.*	Lab	1,417	64.1
Harries D.	PC	718	32.5
Jones W.	Con	77	3.5
Turnout		41.8	31.6
Panteg North (5004)			
		vote	share
Maurice B.*	Lab	0	0.0
Turnout		0.0	0.0
Panteg South (5047)			
		vote	share
Touhig D.*	Lab	0	0.0
Turnout		0.0	0.0
Pengam (5900)			
		vote	share
Jenkins G.*	Lab	1,502	89.7
Stevens S. Ms.	Con	173	10.3
Turnout		28.4	79.3
Penmaen (5363)			
		vote	share
Gore E. Ms.*	Lab	1,364	87.2
Organ S. Ms.	Con	201	12.8
Turnout		29.2	74.3
Pillgwenlly (3309)			
		vote	share
Jones R.*	Lab	1,081	83.5
Jones G.	Con	214	16.5
Turnout		39.1	66.9
Pontllanfraith (6180)			
		vote	share
Richards J. Ms.	PC	1,231	47.4
Winfield J.*	Lab	1,219	47.0
Thomas D.	Con	146	5.6
Turnout		42.0	0.5
Pontnewydd (4771)			
		vote	share
Kenworthy M.	Lab	0	0.0
Turnout		0.0	0.0
Ringland (6393)			
		vote	share
Bright R.*	Lab	1,549	88.5
Fairbairn B.	Con	202	11.5
Turnout		27.4	76.9

Risca East (5201)			
		vote	share
Paginton E. Ms.*	Lab	1,141	87.2
Jones G. Ms.	Con	168	12.8
Turnout		25.2	74.3
Risca West (4219)			
		vote	share
Griffiths E.*	Lab	1,122	87.5
Bone J. Ms.	Con	161	12.5
Turnout		30.4	74.9
Rogerstone (6009)			
		vote	share
Kelly R.*	Lab	1,357	63.9
Williams D.	Con	589	27.7
Cooper D.	Ind	179	8.4
Turnout		35.4	36.1
Severnside (5144)			
		vote	share
Harris M.*	Lab	1,038	56.5
Martin A. Ms.	LD	411	22.4
Franklin R.	Con	389	21.2
Turnout		35.7	34.1
Shaftesbury (3902)			
		vote	share
Delahay M.*	Lab	977	75.9
Davies P.	Con	311	24.1
Turnout		33.0	51.7
Sirhowy (7224)			
		vote	share
Davies W.	Lab	1,766	52.7
Thomas B.*	Ind	1,582	47.3
Turnout		46.4	5.5
St.Julians (6082)			
		vote	share
Waters W.*	Lab	1,237	70.5
Davies D.	Con	517	29.5
Turnout		28.8	41.0
Stowhill (3113)			
		vote	share
Marsh J.*	Lab	714	58.1
Davies P.	Con	515	41.9
Turnout		39.5	16.2
Tredeggar Central & West (5066)			
		vote	share
Fox A.	Lab	1,107	57.5
Reardon K.	Ind	818	42.5
Turnout		38.0	15.0
Tredeggar Park (4111)			
		vote	share
Herbert H.*	Lab	609	46.8
Phillips M.	Con	370	28.5
Wagstaff P. Ms.	Ind	321	24.7
Turnout		31.6	18.4
Trevethin (5718)			
		vote	share
Irwin L.*	Lab	0	0.0
Turnout		0.0	0.0
Two Locks (5581)			
		vote	share
Lloyd A. Ms.*	Lab	0	0.0
Turnout		0.0	0.0
Upper Cwmbran (4294)			
		vote	share
Price D.*	Lab	0	0.0
Turnout		0.0	0.0

Usk Rurale (5884)			
		vote	share
Clarke P.*	Con	1,377	55.5
Leathwood A.	Lab	1,102	44.5
Turnout		42.1	11.1
Victoria (4022)			
		vote	share
Geraghty P.*	Lab	977	80.4
Young A.	Con	238	19.6
Turnout		30.2	60.8
Wainfelin (7098)			
		vote	share
Jackson M.	Lab	1,586	83.8
Palmer P. Ms.	PC	307	16.2
Turnout		26.7	67.6

