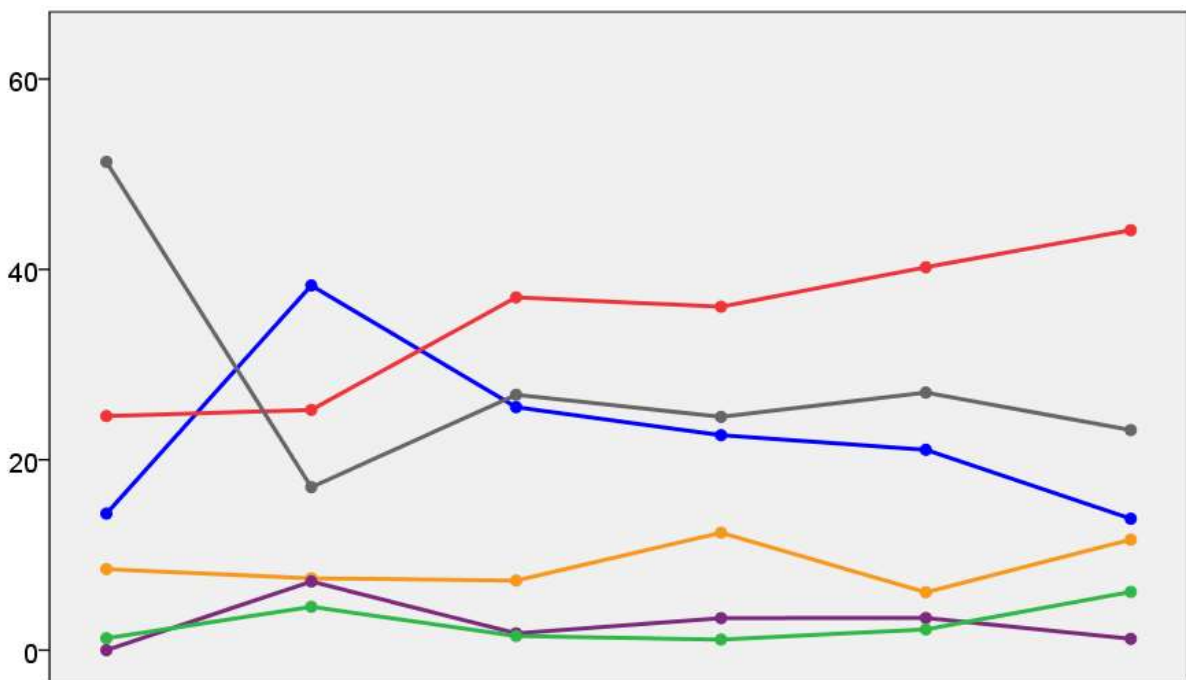


Clwyd County Council Election Results 1973-1993



Colin Rallings and Michael Thrasher
The Elections Centre
Plymouth University

The information contained in this report has been obtained from a number of sources. Election results from the immediate post-reorganisation period were painstakingly collected by Alan Willis largely, although not exclusively, from local newspaper reports. From the mid-1980s onwards the results have been obtained from each local authority by the Elections Centre. The data are stored in a database designed by Lawrence Ware and maintained by Brian Cheal and others at Plymouth University. Despite our best efforts some information remains elusive whilst we accept that some errors are likely to remain. Notice of any mistakes should be sent to elections@plymouth.ac.uk. The results sequence can be kept up to date by purchasing copies of the annual Local Elections Handbook, details of which can be obtained by contacting the email address above.

Front cover: the graph shows the distribution of percentage vote shares over the period covered by the results. The lines reflect the colours traditionally used by the three main parties. The grey line is the share obtained by Independent candidates while the purple line groups together the vote shares for all other parties.

Rear cover: the top graph shows the percentage share of council seats for the main parties as well as those won by Independents and other parties. The lines take account of any by-election changes (but not those resulting from elected councillors switching party allegiance) as well as the transfers of seats during the main round of local election.

The lower graph shows for each main round of local elections the overall percentage turnout (solid line), the percentage of women candidates standing at (dotted line) and the percentage of women among those elected (hashed line).

Clwyd 1973

Abergele No.1 (6217)			
		vote	share
Lyons M.	Ind	0	0.0
Turnout		0.0	0.0
Abergele No.2 (6591)			
		vote	share
Hughes R.	Ind	0	0.0
Turnout		0.0	0.0
Aled (4272)			
		vote	share
Edwards J.	Ind	1,306	59.3
Davies W.	Ind	895	40.7
Turnout		51.5	18.7
Buckley No.1 (4738)			
		vote	share
Bellis J.	Lab	0	0.0
Turnout		0.0	0.0
Buckley No.2 (4897)			
		vote	share
Jones A.	Lab	1,310	56.1
Newton L.	Ind	1,024	43.9
Turnout		47.7	12.3
Ceiriog (5836)			
		vote	share
Edwards R.	Ind	1,041	32.2
Davies E.	Ind	800	24.8
Williams-Jones J.	Ind	568	17.6
Roberts G.	Ind	534	16.5
Morgan C.	Ind	285	8.8
Turnout		55.3	7.5
Colwyn Bay No.1 (3451)			
		vote	share
Lee G.	Ind	1,015	52.9
Dodd E.	Ind	905	47.1
Turnout		55.6	5.7
Colwyn Bay No.2 (4381)			
		vote	share
Smith W.	Ind	1,680	64.7
Owen W.	Ind	915	35.3
Turnout		59.2	29.5
Colwyn Bay No.3 (5024)			
		vote	share
Cawley F.	Ind	1,029	53.8
French J.	Ind	883	46.2
Turnout		38.1	7.6
Colwyn Bay No.4 (3660)			
		vote	share
Taylor V.	Ind	863	53.7
Nicklin G.	Ind	745	46.3
Turnout		43.9	7.3
Colwyn Bay No.5 (4822)			
		vote	share
Griffiths D. Ms.	Ind	1,217	61.5
Walford W.	Ind	763	38.5
Turnout		41.1	22.9
Connahs Quay No.1 (5621)			
		vote	share
Caddick D.	Lab	1,200	45.9
Scott J.	Con	762	29.2
Jones E.	Lib	651	24.9
Turnout		46.5	16.8

Connahs Quay No.2 (4988)			
		vote	share
Hett E.	Lab	1,669	62.6
Fish T.	Ind	997	37.4
Turnout		53.4	25.2
Denbigh (6482)			
		vote	share
Rowlands R.	Ind	1,844	60.3
Jones D.	Lab	1,212	39.7
Turnout		47.1	20.7
Edgyrnion (3111)			
		vote	share
Webb W.	Ind	1,058	44.6
Jones-White M.	Ind	730	30.7
Lynch E.	Ind	586	24.7
Turnout		76.3	13.8
Flint No.1 (3593)			
		vote	share
Jones W.	Lab	1,092	56.4
Carroll F.	Con	845	43.6
Turnout		53.9	12.8
Flint No.2 (5308)			
		vote	share
Bithell T.	Con	1,269	50.1
Mersham H.	Lab	1,265	49.9
Turnout		47.7	0.2
Flint No.3 (2783)			
		vote	share
Round W.	Lab	801	52.9
Godlove J.	Ind	714	47.1
Turnout		54.4	5.7
Hawarden No.1 (5317)			
		vote	share
Williams D.	Lab	1,302	58.0
Margarson K.	Con	941	42.0
Turnout		42.2	16.1
Hawarden No.2 (4022)			
		vote	share
Dood J.	Lab	1,352	59.6
Ferguson J.	Con	916	40.4
Turnout		56.4	19.2
Hawarden No.3 (3895)			
		vote	share
Iball K.	Lab	1,322	57.5
Humphries B.	Ind	979	42.5
Turnout		59.1	14.9
Hawarden No.4 (4748)			
		vote	share
Jones E. Ms.	Ind	1,005	42.5
Bithell C.	Lib	921	38.9
Wilson D.	Ind	440	18.6
Turnout		49.8	3.6
Hawarden No.5 (4629)			
		vote	share
Williams G.	Lab	1,419	59.1
Jackson I.	Con	984	40.9
Turnout		51.9	18.1
Hawarden No.6 (4895)			
		vote	share
Jones T.	Con	1,503	55.8
Wrench H.	Ind	704	26.1
Myers M.	Lib	486	18.0
Turnout		55.0	29.7

Hawarden No.7 (3376)			
		vote	share
Flett T.	Lib	838	43.2
Lloyd J.	Lab	782	40.3
Roberts I.	PC	322	16.6
Turnout		57.5	2.9
Hiraethog (1864)			
		vote	share
Hughes G.	Ind	521	42.9
Roberts E.	Ind	513	42.2
Jones D.	Ind	181	14.9
Turnout		65.2	0.7
Holywell No.1 (4071)			
		vote	share
Hughes W.	Lab	0	0.0
Turnout		0.0	0.0
Holywell No.2 (2409)			
		vote	share
Schwarz D.	Ind	845	57.5
Williams R.	Lab	624	42.5
Turnout		61.0	15.0
Holywell Rural No. (7875)			
		vote	share
Dodd Q.	Lib	1,841	58.4
Sharps L.	Ind	1,309	41.6
Ellis W.	Lib	1,142	-
Davies G.	Ind	1,060	-
Davies J.	Lab	992	-
Baker E.	Ind	926	-
Jones J.	Lib	768	-
Quant C.	Ind	673	-
James E.	Lab	454	-
Jones E.	PC	408	-
Jones L.	Ind	393	-
Turnout		40.0	16.9
Holywell Ward 1 ()			
		vote	share
Risley M.	Ind	872	38.8
Roberts H.	PC	689	30.7
Williams W.	Lab	685	30.5
Turnout		0.0	8.1
Llangollen (4210)			
		vote	share
Richards G.	Ind	611	25.7
Evans S.	Ind	606	25.5
Davies P.	Lab	584	24.5
Pierce-Jenkins N.	Ind	580	24.4
Turnout		56.6	0.2
Maelor (3859)			
		vote	share
Misa S.	Con	1,196	56.4
Robinson F.	Ind	464	21.9
McNally O.	Lab	460	21.7
Turnout		54.9	34.5
Mold (6276)			
		vote	share
Glazier M.	Ind	2,112	67.7
Jones T.	Lib	1,006	32.3
Turnout		49.7	35.5
Prestatyn No.1 (6748)			
		vote	share
Macdonald E.	Con	1,817	60.5
Taylor P.	Con	1,186	39.5
Turnout		44.5	21.0
Prestatyn No.2 (2853)			
		vote	share
Allitt F.	Con	867	63.3
Steward N.	Con	503	36.7
Turnout		48.0	26.6

Prestatyn No.3 (3811)			
		vote	share
Macleod A.	Ind	1,014	64.2
Storey W.	Ind	565	35.8

Turnout 41.4 28.4

Rhyl No.2 (4424)			
		vote	share
Espley J.	Con	1,406	57.7
Harrison A.	Con	1,029	42.3

Turnout 55.0 15.5

Rhyl South West & South Central ()			
		vote	share
Conway W.	Lab	0	0.0

Turnout 0.0 0.0

Ruthin (3584)			
		vote	share
Roberts M.	Ind	797	37.2
Higgins F.	Ind	620	29.0
Jones A.	Ind	337	15.7
Davies A.	Ind	224	10.5
Humphries H.	Ind	163	7.6

Turnout 59.7 8.3

Ruthin Rural No. 1 (3533)			
		vote	share
Jones M.	Ind	585	28.1
Williams R.	Ind	564	27.1
Moon J.	Ind	446	21.4
Rees-Jones W.	Ind	247	11.9
Senior S.	Ind	240	11.5

Turnout 58.9 1.0

Ruthin Rural No.2 (3427)			
		vote	share
Williams W.	Ind	1,032	49.2
Jones I.	Ind	647	30.9
Lloyd E.	Ind	418	19.9

Turnout 61.2 18.4

St. Asaph Rhuddlan & Bodelwyddan ()			
		vote	share
Kerfoot W.	Con	0	0.0

Turnout 0.0 0.0

Wrexham Borough No.3 ()			
		vote	share
Jenkins A.	Lab	0	0.0

Turnout 0.0 0.0

Wrexham No. 1 (7281)			
		vote	share
Craig R.	Ind	1,213	37.3
Rogers K.	Lib	1,093	33.6
Hewitt M.	Lab	950	29.2

Turnout 44.7 3.7

Wrexham No.2 (3151)			
		vote	share
McMahon E.	Ind	455	37.8
Griffiths H.	Ind	422	35.0
Clay J.	Lab	327	27.2

Turnout 38.2 2.7

Wrexham No.4 (5582)			
		vote	share
Davies E.	Lab	0	0.0

Turnout 0.0 0.0

Wrexham No.5 (2922)			
		vote	share
Parry G.	Ind	950	64.0
Hughes E.	Lab	535	36.0

Turnout 50.8 27.9

Wrexham No.6 (2759)			
		vote	share
Jones A.	Ind	950	60.2
Williams H.	Lab	627	39.8

Turnout 57.2 20.5

Wrexham No.7 (5060)			
		vote	share
Taylor H.	Ind	917	43.0
Brown J.	Ind	778	36.4
Thomas R.	Lab	440	20.6

Turnout 42.2 6.5

Wrexham Rural No. (4523)			
		vote	share
McCarthy J.	Lab	1,237	76.2
Arthur R.	Lab	1,152	-
Williams J.	Ind	997	-
Owen J.	Ind	874	-
Thomas W.	Lab	777	-
Hughes D.	Ind	752	-
Jones J.	Ind	517	-
Parry E.	Ind	515	-
Coe A.	Lab	502	-
Brown L.	Ind	463	-
Williams J.	Ind	454	-
Hughes J.	Lab	434	-
Parry J.	Ind	404	-
Salisbury V.	Lab	386	23.8
Shone D.	Ind	350	-
Davies J.	Ind	262	-
Davies M.	Lab	0	-
Roberts E.	Lab	0	-

Turnout 35.9 52.4

Wrexham Rural No. 11 (3366)			
		vote	share
Owen J.	Lab	832	67.8
Owen F.	Ind	396	32.2

Turnout 36.5 35.5

Wrexham Rural No.1 (5938)			
		vote	share
Heyes G.	Lib	874	42.0
McDonald T.	Ind	628	30.2
Thompson H.	Ind	580	27.9

Turnout 35.1 11.8

Wrexham Rural No.10 (4052)			
		vote	share
Clemence J.	Lab	1,063	51.9
Meadows P.	Con	986	48.1

Turnout 50.6 3.8

Clwyd 1977

Abergele No.1 (6229)			
		vote	share
Lawton R.	Con	0	0.0

Turnout 0.0 0.0

Abergele No.2 (6604)			
		vote	share
Smith W.	Con	0	0.0

Turnout 0.0 0.0

Aled (4281)			
		vote	share
Edwards J.	Ind	0	0.0

Turnout 0.0 0.0

Buckley No.1 (4747)			
		vote	share
Peers D.	Lab	1,028	50.1
Burley J.	Con	1,022	49.9

Turnout 43.2 0.3

Buckley No.2 (4907)			
		vote	share
Newton L.	Con	1,420	55.1
Jones A.	Lab	1,157	44.9

Turnout 52.5 10.2

Ceiriog (5848)			
		vote	share
Edwards R.	Ind	0	0.0

Turnout 0.0 0.0

Colwyn Bay No.1 (3458)			
		vote	share
Lee G.	Con	0	0.0

Turnout 0.0 0.0

Colwyn Bay No.2 (4390)			
		vote	share
Hague J.	Con	1,423	67.9
Badderley R.	Ind	673	32.1

Turnout 47.7 35.8

Colwyn Bay No.3 (5034)			
		vote	share
Roberts R.	Con	1,622	54.7
Robinson A.	Lib	1,343	45.3

Turnout 58.9 9.4

Colwyn Bay No.4 (3668)			
		vote	share
Naylor V.	Con	1,148	64.1
Nicklin G.	Lib	644	35.9

Turnout 48.9 28.1

Colwyn Bay No.5 (4832)			
		vote	share
Griffiths D. Ms.	Lab	0	0.0

Turnout 0.0 0.0

Connahs Quay No.1 (5632)			
		vote	share
Preston M.	Rate	1,321	53.5
Caddick D.	Lab	968	39.2
Gresty E.	PC	178	7.2

Turnout 43.8 14.3

Connahs Quay No.2 (4998)			
		vote	share
Hett G.	Lab	1,576	57.6
Metcalfe M.	Rate	1,159	42.4

Turnout 54.7 15.2

Denbigh (6495)			
		vote	share
Rowlands R.	Ind	0	0.0

Turnout 0.0 0.0

Edgrynion (3117)			
		vote	share
Webb W.	Ind	0	0.0

Turnout 0.0 0.0

Flint No.1 (3601)			
		vote	share
Jones W.	Lab	727	39.2
Carroll F.	Con	725	39.1
Moore M.	PC	212	11.4
Evans G.	Ind	191	10.3

Turnout 51.5 0.1

Flint No.2 (5319)			
		vote	share
Lovelock A.	Lab	1,212	46.8
Tierney E.	Con	1,087	41.9
Thomas N.	PC	293	11.3

Turnout 48.7 4.8

Flint No.3 (2788)			
		vote	share
Round W.	Lab	630	38.5
Davies W.	PC	546	33.4
Pritchard A.	Con	459	28.1
Turnout		58.6	5.1
Hawarden No.1 (5328)			
		vote	share
Jackson I.	Con	1,421	63.4
Jenkins F.	Ind	822	36.6
Turnout		42.1	26.7
Hawarden No.2 (4030)			
		vote	share
Roberts E.	Con	1,215	57.2
Dodd J.	Lab	910	42.8
Turnout		52.7	14.4
Hawarden No.3 (3903)			
		vote	share
Iball K.	Lab	986	51.6
Lewis I.	Ind	801	41.9
Ferguson J.	PC	123	6.4
Turnout		48.9	9.7
Hawarden No.4 (4758)			
		vote	share
Jones E. Ms.	Con	1,416	66.9
Bithell C.	Lib	619	29.2
Lucas D.	PC	82	3.9
Turnout		44.5	37.6
Hawarden No.5 (4639)			
		vote	share
Davies W.	Con	1,093	47.6
Williams	?	959	41.8
Evans R.	PC	242	10.5
Turnout		49.5	5.8
Hawarden No.6 (4905)			
		vote	share
Jones T.	Con	1,701	68.0
Murray R.	Lab	800	32.0
Turnout		51.0	36.0
Hawarden No.7 (3383)			
		vote	share
Williams G.	Lab	904	51.0
Sankey W.	Con	868	49.0
Turnout		52.4	2.0
Hiraethog (1868)			
		vote	share
Hughes G.	Ind	0	0.0
Turnout		0.0	0.0
Holywell No.1 (4080)			
		vote	share
Williams W.	Lab	1,116	50.7
Rutt M.	Con	1,086	49.3
Turnout		54.0	1.4
Holywell No.2 (2414)			
		vote	share
Schwarz D.	Ind	739	51.3
Hughes A.	Lab	552	38.3
Robinson E.	Con	150	10.4
Turnout		59.7	13.0

Holywell Rural No. (7891)			
		vote	share
Dodd Q.	Lib	2,337	67.8
Vernon S.	Rate	1,109	32.2
Van Dyke D.	Con	474	-
White D.	Rate	388	-
Jones R.	PC	375	-
Jarvis J.	Ind	272	-
Whitley E.	Ind	241	-
Baker E.	Ind	0	-
Watkins J.	Ind	0	-
Turnout		43.7	35.6
Holywell Rural No. 1 (3800)			
		vote	share
Hughes W.	Lab	0	0.0
Turnout		0.0	0.0
Llangollen (4218)			
		vote	share
Davies P.	Ind	988	40.4
Richards G.	Ind	840	34.3
Evans S.	Con	619	25.3
Turnout		58.0	6.0
Maelor (3867)			
		vote	share
Reid D.	Con	0	0.0
Turnout		0.0	0.0
Mold (6286)			
		vote	share
Glazier M.	Ind	2,007	61.4
Williams E.	Lab	1,264	38.6
Turnout		52.0	22.7
Prestatyn No.1 (6762)			
		vote	share
Macdonald E.	Con	0	0.0
Turnout		0.0	0.0
Prestatyn No.2 (2859)			
		vote	share
Allitt F.	Con	0	0.0
Turnout		0.0	0.0
Rhyl No.1 (3145)			
		vote	share
Irving J.	Lib	626	54.2
Roberts C.	Lab	528	45.8
Turnout		36.7	8.5
Rhyl No.2 (4433)			
		vote	share
Esplay J.	Con	1,310	78.8
Gaskell F.	PC	352	21.2
Turnout		37.5	57.6
Rhyl No.3 (3884)			
		vote	share
Conway W.	Lab	0	0.0
Turnout		0.0	0.0
Rhyl No.4 (6613)			
		vote	share
Jones E.	Con	0	0.0
Turnout		0.0	0.0
Ruthin (3591)			
		vote	share
Roberts M.	Lab	1,309	61.1
Mottramsmale S.	Con	835	38.9
Turnout		59.7	22.1

Ruthin Rural No. 1 (3540)			
		vote	share
Williams R.	Ind	686	35.6
Holland A.	Con	624	32.4
Jones M.	Ind	617	32.0
Turnout		54.4	3.2
Ruthin Rural No.2 (3434)			
		vote	share
Williams H.	Ind	1,030	58.8
Parry-Jones J.	Ind	722	41.2
Turnout		51.0	17.6
St. (4230)			
		vote	share
Kerfoot C.	Ind	0	0.0
Turnout		0.0	0.0
St. Asaph No.2 (5315)			
		vote	share
Corbishley V.	Con	1,481	65.4
Orford J.	Ind	782	34.6
Turnout		42.6	30.9
Wrexham No. 1 (7296)			
		vote	share
Brown J.	Con	1,944	74.4
Thomas H.	PC	669	25.6
Turnout		35.8	48.8
Wrexham No.2 (3157)			
		vote	share
McMahon A.	Con	750	57.2
Roberts L.	PC	562	42.8
Turnout		41.6	14.3
Wrexham No.3 (3347)			
		vote	share
Beresford E.	Lab	694	62.6
Roberts M.	Con	415	37.4
Turnout		33.1	25.2
Wrexham No.4 (5593)			
		vote	share
Davies E.	Lab	1,251	75.9
Walsh M.	Con	398	24.1
Turnout		29.5	51.7
Wrexham Rural No. (4989)			
		vote	share
Hughes D.	Ind	1,091	64.7
Arthur R.	Lab	861	-
Samuels A.	Rate	815	-
Owen B.	Ind	663	-
Bevin H.	Con	596	35.3
Williams A.	Ind	194	-
Davies M.	Lab	0	-
Williams J.	Ind	0	-
Thomas W.	Lab	0	-
McCarthy J.	Lab	0	-
????? L.	?	0	-
Turnout		33.8	29.3
Wrexham Rural No. 11 (3373)			
		vote	share
Owen J.	Lab	725	57.4
Skone D.	Con	537	42.6
Turnout		37.4	14.9
Wrexham Rural No.1 (5950)			
		vote	share
Nenerley D.	Con	1,170	49.0
Macdonald T.	Con	481	20.2
Heys G.	Lib	448	18.8
Griffiths J.	Ind	288	12.1
Turnout		40.1	28.9

Wrexham Rural No.10 (4060)			
		vote	share
Meadows P.	Con	1,062	53.4
Clemence J.	Lab	926	46.6
Turnout		49.0	6.8

Clwyd 1981

Abergele No.1 (6242)			
		vote	share
Pritchard M.	Ind	0	0.0
Turnout		0.0	0.0

Abergele No.2 (6618)			
		vote	share
Smith W.	Con	0	0.0
Turnout		0.0	0.0

Aled (4289)			
		vote	share
Williams E.	Ind	0	0.0
Turnout		0.0	0.0

Buckley No.1 (4757)			
		vote	share
Peers D.	Lab	1,388	69.3
Robinson G.	Con	451	22.5
Barry V.	PC	165	8.2
Turnout		42.1	46.8

Buckley No.2 (5008)			
		vote	share
Jones A.	Lab	1,213	49.2
Newton L.	Con	856	34.7
Maclean I.	Ind	312	12.7
Presford P.	PC	83	3.4
Turnout		49.2	14.5

Ceiriog (5860)			
		vote	share
Edwards R.	Ind	0	0.0
Turnout		0.0	0.0

Colwyn Bay No.1 (3465)			
		vote	share
Lee G.	Con	1,145	57.1
Geary H.	Lib	862	42.9
Turnout		57.9	14.1

Colwyn Bay No.2 (4399)			
		vote	share
Smith P.	Lib	945	40.7
Hague J.	Con	892	38.4
Speakman E.	Lab	486	20.9
Turnout		52.8	2.3

Colwyn Bay No.3 (5044)			
		vote	share
Roberts R.	Con	0	0.0
Turnout		0.0	0.0

Colwyn Bay No.4 (3675)			
		vote	share
Percival V.	Con	0	0.0
Turnout		0.0	0.0

Colwyn Bay No.5 (4842)			
		vote	share
Griffiths D. Ms.	Lab	0	0.0
Turnout		0.0	0.0

Connahs Quay No.1 (5644)			
		vote	share
Deevy R.	Lab	1,423	69.8
Freeman A.	Con	615	30.2
Turnout		36.1	39.6

Connahs Quay No.2 (5008)			
		vote	share
Davies N.	Lab	0	0.0
Turnout		0.0	0.0

Denbigh (6508)			
		vote	share
Williams J.	Ind	0	0.0
Jones D.	Lab	0	0.0
Turnout		0.0	0.0

Edgryrnion (3123)			
		vote	share
Webb W.	Ind	0	0.0
Turnout		0.0	0.0

Flint No.1 (3580)			
		vote	share
Jones W.	Lab	991	63.2
Carroll F.	Con	576	36.8
Turnout		43.8	26.5

Flint No.2 (5518)			
		vote	share
Lovelock A.	Lab	1,625	64.7
Cryer R.	Con	887	35.3
Turnout		45.5	29.4

Flint No.3 (2794)			
		vote	share
Round W.	Lab	0	0.0
Turnout		0.0	0.0

Hawarden No.1 (5518)			
		vote	share
Foulkes R.	Lib	988	52.1
Jackson I.	Con	910	47.9
Turnout		34.4	4.1

Hawarden No.2 (4038)			
		vote	share
Davies R.	Lab	1,211	62.5
Roberts E.	Con	727	37.5
Turnout		48.0	25.0

Hawarden No.3 (3938)			
		vote	share
Cottle H.	Lab	1,013	65.5
Macdonald H.	Con	533	34.5
Turnout		39.3	31.0

Hawarden No.4 (5019)			
		vote	share
Jones E. Ms.	Con	931	42.0
Bithell C.	Dem	771	34.8
Owen J.	Lab	516	23.3
Turnout		44.2	7.2

Hawarden No.5 (4854)			
		vote	share
Drennan R.	Lab	1,653	71.7
Warburton A.	Con	653	28.3
Turnout		47.5	43.4

Hawarden No.6 (5040)			
		vote	share
Jones T.	Con	1,469	56.5
Evans E.	Lab	1,131	43.5
Turnout		51.6	13.0

Hawarden No.7 (3431)			
		vote	share
Williams G.	Lab	1,073	68.9
Hughes A.	Ind	485	31.1
Turnout		45.4	37.7

Hiraethog (1872)			
		vote	share
Hughes G.	Ind	0	0.0
Turnout		0.0	0.0

Holywell No.1 (4127)			
		vote	share
Chowdhury S.	Lab	1,409	57.6
Roberts T.	Con	1,036	42.4
Turnout		59.2	15.3

Holywell No.2 (2437)			
		vote	share
Parry D.	Lab	818	57.6
Schwartz D.	Ind	625	43.3
Turnout		59.2	13.4

Holywell Rural No. (5109)			
		vote	share
Roberts G.	Ind	1,241	67.3
Mathews E.	Ind	1,101	-
Hughes-Parry V.	Lib	913	-
Smith A.	Ind	602	32.7
Petrie J.	Lab	530	-
Jones E.	PC	369	-
Owen-Jones L.	Lib	324	-
Alexander J.	Con	230	-
Blunt R.	Ind	221	-
Jelley M.	Ind	198	-
Dodd Q.	Lib	0	-
Turnout		36.1	34.7

Holywell Rural No. 1 (3808)			
		vote	share
Hughes W.	Lab	0	0.0
Turnout		0.0	0.0

Llangollen (4227)			
		vote	share
Walker P.	Ind	1,203	49.1
Iball K.	Lab	772	31.5
Harris H.	Con	473	19.3
Turnout		57.9	17.6

Mold (6302)			
		vote	share
Glazier M.	Ind	1,686	52.3
Davies M.	Lab	1,536	47.7
Turnout		51.1	4.7

Prestatyn No.1 (6776)			
		vote	share
Ellis C.	Ind	1,271	68.3
Handoll H.	Ind	589	31.7
Turnout		27.4	36.7

Prestatyn No.2 (2865)			
		vote	share
Allit F.	Con	647	56.6
Roberts C.	Ind	497	43.4
Turnout		39.9	13.1

Prestatyn No.3 (3827)			
		vote	share
Edwards R.	Ind	0	0.0
Turnout		0.0	0.0

Rhyl No.1 (3151)			
		vote	share
Griffiths J.	Ind	638	67.4
Walker R.	Lib	308	32.6
Turnout		30.0	34.9

Rhyl No.2 (4442)			
		vote	share
Espley J.	Con	0	0.0
Turnout		0.0	0.0

Rhyl No.3 (3892)			
		vote	share
Conway W.	Lab	0	0.0
Turnout		0.0	0.0
Rhyl No.4 (6626)			
		vote	share
Taylor N.	Lab	984	40.4
Lloyd-Jones E.	Con	904	37.2
Perry R.	Ind	545	22.4
Turnout		36.7	3.3
Ruthin (3598)			
		vote	share
Roberts M.	Ind	985	46.0
Jones M.	Con	945	44.2
Crompton M.	Ind	209	9.8
Turnout		59.4	1.9
Ruthin Rural No. 1 (3547)			
		vote	share
Williams R.	Ind	651	34.9
Hughes G.	Ind	642	34.4
Holland A.	Con	574	30.7
Turnout		52.6	0.5
Ruthin Rural No.2 (3441)			
		vote	share
Roberts R.	Ind	730	40.4
Biagi R.	Con	546	30.2
Parry R.	Ind	533	29.5
Turnout		52.6	10.2
St. (4239)			
		vote	share
Wynne F.	Ind	634	41.0
Ainsworth J.	Ind	537	34.7
Jones M.	Con	376	24.3
Turnout		36.5	6.3
St. Asaph No.2 (5326)			
		vote	share
Corbishley V.	Con	0	0.0
Turnout		0.0	0.0
Wrexham No. 1 (7311)			
		vote	share
Jones M.	Lab	1,217	38.2
Brown J.	Con	913	28.6
Richardson I.	Lib	597	18.7
Haddon-Jones R.	Ind	461	14.5
Turnout		43.6	9.5
Wrexham No.2 (3164)			
		vote	share
Francis D.	Lab	667	42.8
Moat W.	Con	653	41.9
McMahon E.	Ind	239	15.3
Turnout		49.3	0.9
Wrexham No.3 (3354)			
		vote	share
Beresford E.	Lab	0	0.0
Turnout		0.0	0.0
Wrexham No.4 (5604)			
		vote	share
Davies E.	Lab	0	0.0
Turnout		0.0	0.0
Wrexham No.5 (2934)			
		vote	share
Myers J.	Con	721	47.8
Marsh W.	Lab	406	26.9
Taylor L.	Ind	381	25.3
Turnout		51.4	20.9

Wrexham No.6 (2770)			
		vote	share
Jones A.	Ind	812	53.8
Beresford M.	Lab	417	27.6
Guest R.	Lib	281	18.6
Turnout		54.5	26.2
Wrexham No.7 (5080)			
		vote	share
Taylor H.	Ind	1,524	61.7
Bower A.	Lab	946	38.3
Turnout		48.6	23.4
Wrexham No.8 ()			
		vote	share
Reid D.	Con	0	0.0
Turnout		0.0	0.0
Wrexham Rural Johnstown & Rhostyl ()			
		vote	share
Thomas W.	Lab	1,193	81.0
Mason A.	Con	279	19.0
Turnout		0.0	62.1
Wrexham Rural No. (6364)			
		vote	share
Roberts E.	Lab	1,304	49.4
McCarthy J.	Lab	1,124	-
Heyward D.	Lab	973	36.9
Bevin H.	Con	931	-
Squire R.	Ind	844	-
Samuel A.	Ind	700	-
Barnes A.	Dem So	686	-
Jones C.	Lab	684	-
Hughes J.	Ind	405	-
Hoult D.	Con	363	13.8
Snelling D.	Con	338	-
Williams J.	Ind	0	-
Arthur R.	Lab	0	-
Turnout		41.5	12.5
Wrexham Rural No. 11 (3380)			
		vote	share
Broderick D.	Lab	0	0.0
Turnout		0.0	0.0
Wrexham Rural No.1 (5962)			
		vote	share
Edwards H.	Con	0	0.0
Turnout		0.0	0.0
Wrexham Rural No.10 (4068)			
		vote	share
Clemence J.	SDP	811	43.3
Fey H.	Ind	604	32.3
Lambert C.	Con	457	24.4
Turnout		46.0	11.1
Wrexham Rural Rhos ()			
		vote	share
Davies M.	Lab	1,833	75.1
Thomas A.	PC	608	24.9
Turnout		0.0	50.2

Clwyd 1985

Abergele No.1 (6255)			
		vote	share
Pritchard M.	Rate	1,240	56.3
Taylor B.	Lib	964	43.7
Turnout		35.2	12.5
Buckley No.1 (4767)			
		vote	share
Peers D.	Lab	994	54.8
Chard P.	All	819	45.2
Turnout		38.0	9.7
Buckley No.2 (5109)			
		vote	share
Newton L.	Con	0	0.0
Turnout		0.0	0.0
Ceiriog (5872)			
		vote	share
Edwards R.	Ind	0	0.0
Turnout		0.0	0.0
Colwyn Bay No.1 (3472)			
		vote	share
Lee G.	Con	779	42.2
Humphreys C.	Lib	595	32.2
Pearce-Geary H.	Ind	474	25.6
Turnout		53.2	10.0
Colwyn Bay No.2 (4408)			
		vote	share
Formstone R.	Con	1,011	43.4
Whittingham M.	Lib	766	32.8
Jones S.	Ind	555	23.8
Turnout		52.9	10.5
Colwyn Bay No.3 (5055)			
		vote	share
Roberts R.	Con	0	0.0
Turnout		0.0	0.0
Colwyn Bay No.4 (3683)			
		vote	share
Roberts W.	Lib	996	60.4
Percival V.	Con	653	39.6
Turnout		44.8	20.8
Colwyn Bay No.5 (4852)			
		vote	share
Griffiths D. Ms.	Lab	906	58.8
Jones M.	Lib	634	41.2
Turnout		31.7	17.7
Connahs Quay No.1 (5655)			
		vote	share
Poppleworth A.	Ind	1,068	52.3
Hughes G.	Lab	976	47.7
Turnout		36.1	4.5
Connahs Quay No.2 (5019)			
		vote	share
Davies N.	Lab	1,375	81.9
Freeman A.	Con	303	18.1
Turnout		33.4	63.9
Denbigh (6522)			
		vote	share
Williams J.	Ind	1,500	60.9
Stevens K.	Lab	625	25.4
Jones D.	PC	340	13.8
Turnout		37.8	35.5

Edgryrnion (3130)			
		vote	share
Webb W.	Ind	1,533	82.9
Appleby J.	Lab	317	17.1
Turnout		59.1	65.7

Flint No.1 (3559)			
		vote	share
Jones W.	Lab	949	59.8
Carroll F.	Con	638	40.2
Turnout		44.6	19.6

Flint No.2 (5718)			
		vote	share
Orbison D.	Lab	1,008	33.7
Lovelock A.	Ind Lab	803	26.8
Owens R.	Con	631	21.1
Smith J.	Lib/All	549	18.4
Turnout		52.3	6.9

Flint No.3 (2800)			
		vote	share
Clarke H.	Lab	996	75.3
Tozer K.	Con	326	24.7
Turnout		47.2	50.7

Hawarden No.1 (5709)			
		vote	share
McIver G.	Lab	904	36.4
Foulkes R.	Lib/All	903	36.4
Duckworth D.	Con	675	27.2
Turnout		43.5	0.0

Hawarden No.2 (4047)			
		vote	share
Davies R.	Lab	0	0.0
Turnout		0.0	0.0

Hawarden No.3 (3973)			
		vote	share
Davies J.	Lab	901	56.5
Margaron J.	Con	403	25.3
Griffiths J.	Ind	290	18.2
Turnout		40.1	31.2

Hawarden No.4 (5281)			
		vote	share
Jones E. Ms.	Con	936	41.1
Bithell C.	All	721	31.7
Jones G.	Lab	618	27.2
Turnout		43.1	9.5

Hawarden No.5 (5070)			
		vote	share
Drennan R.	Lab	0	0.0
Turnout		0.0	0.0

Hawarden No.6 (5175)			
		vote	share
Evans E.	Lab	1,427	54.1
Jones T.	Con	1,209	45.9
Turnout		50.9	8.3

Hawarden No.7 (3480)			
		vote	share
Roberts S.	Ind	510	31.9
Hughes W.	Ind	382	23.9
Holmes V.	All	357	22.4
Shone C.	Con	348	21.8
Turnout		45.9	8.0

Hiraethog (1876)			
		vote	share
Hughes G.	Ind	0	0.0
Turnout		0.0	0.0

Holywell No.1 (4174)			
		vote	share
Renshaw T.	Ind Lab	1,455	71.1
Sutcliffe J.	Con	592	28.9
Turnout		49.0	42.2

Holywell No.2 (2461)			
		vote	share
Parry D.	Lab	964	67.6
Davies M.	Con	461	32.4
Turnout		57.9	35.3

Holywell Rural No. (7923)			
		vote	share
Dodd Q.	Lib	2,952	76.3
Roberts G.	Ind	1,237	-
Jenkins M.	Con	915	23.7
Ellis E.	Ind	761	-
Salisbury I.	Lab	552	-
Bryce R.	Con	416	-
Petrie J.	Lab	371	-
Alexander J.	Con	276	-
Jones E.	PC	266	-
Matthews E.	Ind	0	-
Turnout		48.8	52.7

Holywell Rural No. 1 (3816)			
		vote	share
Jones J.	Lab	919	49.1
Howatson E.	Con	820	43.8
Price R.	Ind	133	7.1
Turnout		49.1	5.3

Llangollen (4236)			
		vote	share
Walker P.	Ind	1,120	60.8
Caldecott R.	Lab	722	39.2
Turnout		43.5	21.6

Maelor (3883)			
		vote	share
Robinson F.	Con	0	0.0
Turnout		0.0	0.0

Mold (6315)			
		vote	share
Davies M.	Lab	2,374	68.7
Challinor H.	Con	1,082	31.3
Turnout		54.7	37.4

Prestatyn No.1 (6790)			
		vote	share
Evans P.	Ind	1,143	41.2
Blunt J.	Con	884	31.8
Ellis C.	Ind	749	27.0
Turnout		40.9	9.3

Prestatyn No.2 (2871)			
		vote	share
Blunt T.	Con	519	36.0
Martin H.	Ind	484	33.6
Parry G.	Ind	438	30.4
Turnout		50.2	2.4

Prestatyn No.3 (3835)			
		vote	share
Edwards R.	Ind	990	54.4
Syber S.	Con	587	32.3
Ellis E.	Ind	243	13.4
Turnout		47.5	22.1

Rhyl No.1 (3158)			
		vote	share
Griffiths J.	Ind	459	58.0
Roberts C.	Lab	332	42.0
Turnout		25.0	16.1

Rhyl No.2 (4451)			
		vote	share
Espley J.	Con	1,047	55.9
Davies P.	Ind	430	23.0
Ball J.	Lab	396	21.1
Turnout		42.1	32.9

Rhyl No.3 (3900)			
		vote	share
Conway W.	Lab	1,262	85.6
Colclough S.	Con	213	14.4
Turnout		37.8	71.1

Rhyl No.4 (6640)			
		vote	share
Jemmett F.	Con	1,304	47.4
Simmons B.	Lab	905	32.9
Williams P.	Ind	541	19.7
Turnout		41.4	14.5

Ruthin (3606)			
		vote	share
Roberts M.	Ind	982	44.4
Jones R.	Ind	759	34.3
Harrison P.	Lab	471	21.3
Turnout		61.3	10.1

Ruthin Rural No. 1 (3555)			
		vote	share
Williams R.	Ind	0	0.0
Turnout		0.0	0.0

Ruthin Rural No.2 (3448)			
		vote	share
Roberts R.	Ind	1,156	78.9
Williams I.	Lab	310	21.1
Turnout		42.5	57.7

St. (4248)			
		vote	share
Drake C.	Con	650	36.2
Thomas L.	Ind	446	24.8
Wynne D.	Ind	388	21.6
Bunby J.	Lib/SDP	311	17.3
Turnout		42.3	11.4

St. Asaph No.2 (5337)			
		vote	share
Ainsworth J.	Ind	964	34.4
Jones R.	Ind	959	34.2
Cleaver J.	Con	881	31.4
Turnout		52.5	0.2

Wrexham No. 1 (7326)			
		vote	share
Jones M.	Lab	1,474	39.3
Crisp G.	All	1,371	36.6
Hoult D.	Con	905	24.1
Turnout		51.2	2.7

Wrexham No.2 (3170)			
		vote	share
Francis D.	Lab	781	56.8
Brierley E.	Con	595	43.2
Turnout		43.4	13.5

Wrexham No.3 (3361)			
		vote	share
Beresford E.	Lab	872	88.2
Jackson M.	Con	117	11.8
Turnout		29.4	76.3

Wrexham No.4 (5616)			
		vote	share
Davies E.	Lab	1,108	72.0
Griffiths D.	Lib/All	289	18.8
Stevens C.	Con	142	9.2
Turnout		27.4	53.2

Wrexham No.5 (2940)			
		vote	share
Myers J.	Con	617	38.2
Lloyd H.	Ind	552	34.2
Marsh W.	Lab	445	27.6
Turnout		54.9	4.0

Wrexham No.6 (2776)			
		vote	share
Jones A.	Ind	842	58.4
Lloyd-Edwards J.	Lab	599	41.6
Turnout		51.9	16.9

Wrexham No.7 (5091)			
		vote	share
Taylor H.	Ind	1,347	51.0
Cartlidge P.	Lab	1,294	49.0
Turnout		51.9	2.0

Wrexham Rural No. (6377)			
		vote	share
Williams B.	Lab	1,727	81.2
McCarthy J.	Lab	1,671	-
Davies M.	Lab	1,325	-
Squire R.	Ind	1,022	-
Williams J.	Ind	1,014	-
Williams C.	Lab	937	-
Harvey J.	Con	880	-
Morris T.	Lab	716	-
Jones W.	Lab	615	-
Thomas A.	PC	552	-
Snelling D.	Con	443	-
Crane S.	Con	399	18.8
Arthur R.	Lab	0	-
Thomas R.	Lab	0	-
Turnout		33.3	62.5

Wrexham Rural No. 11 (3387)			
		vote	share
Broderick D.	Lab	1,127	65.6
Prydderch K.	Lib/All	591	34.4
Turnout		50.7	31.2

Wrexham Rural No.1 (5975)			
		vote	share
Edwards H.	Con	0	0.0
Turnout		0.0	0.0

Wrexham Rural No.10 (4077)			
		vote	share
Wilkinson C.	Lab	1,221	60.0
Lloyd J.	Con	813	40.0
Turnout		49.9	20.1

Clwyd 1989

Abergele No.1 (7464)			
		vote	share
Pritchard M.*	Ind	1,244	52.9
Pitt J.	Con	1,108	47.1
Turnout		31.5	5.8

Abergele No.2 (6645)			
		vote	share
Ball J.	Lab	1,019	53.3
Smith W.*	Con	893	46.7
Turnout		28.8	6.6

Aled (4307)			
		vote	share
Williams E.*	Ind	0	0.0
Turnout		0.0	0.0

Buckley No.1 (4952)			
		vote	share
Messham D.*	Lab	1,379	73.2
Evison L.	Con	505	26.8
Turnout		38.0	46.4

Buckley No.2 (5699)			
		vote	share
Roberts W.	Lab	1,464	57.7
Newton L.*	Con	1,073	42.3
Turnout		44.5	15.4

Ceiriog (6082)			
		vote	share
Jones E.	Lab	1,343	45.7
Edwards R.*	Ind	1,236	42.0
Davies D.	Ind	361	12.3
Turnout		48.3	3.6

Colwyn Bay No.1 (3654)			
		vote	share
Bruhjn J.	Con	0	0.0
Turnout		0.0	0.0

Colwyn Bay No.2 (4556)			
		vote	share
Formstone R.*	Con	0	0.0
Turnout		0.0	0.0

Colwyn Bay No.3 (5599)			
		vote	share
Price P.	Con	1,080	65.1
Parry V. Ms.	Lab	578	34.9
Turnout		29.6	30.3

Colwyn Bay No.4 (4089)			
		vote	share
Jones T.	Lab	622	36.6
Horsley D.	Con	576	33.9
Roberts W.*	SLD	500	29.4
Turnout		41.5	2.7

Colwyn Bay No.5 (5109)			
		vote	share
Griffiths D. Ms.*	Lab	0	0.0
Turnout		0.0	0.0

Connahs Quay No.1 (5667)			
		vote	share
Popplewell A.*	Ind	1,118	57.2
Hughes G.	Ind	835	42.8
Turnout		34.5	14.5

Connahs Quay No.2 (5182)			
		vote	share
Hulley R.	Lab	1,205	76.6
Wiggins D.	SLD	368	23.4
Turnout		30.4	53.2

Denbigh (6862)			
		vote	share
Evans M.	Ind	1,418	47.2
Jones D.	Lab	875	29.1
Lake L. Ms.	SLD	423	14.1
Jones D.	PC	291	29.1
Turnout		43.8	18.1

Edgrynion (3287)			
		vote	share
Webb W.*	Ind	0	0.0
Turnout		0.0	0.0

Flint No.1 (3539)			
		vote	share
Jones W.*	Lab	1,010	70.4
Davies R. Ms.	Ind	424	29.6
Turnout		40.5	40.9

Flint No.2 (5771)			
		vote	share
Jones D.	Lab	1,202	49.7
Jones C.	Con	1,016	42.0
Noble A.	Ind	202	8.3
Turnout		41.9	7.7

Flint No.3 (2868)			
		vote	share
Clarke H.*	Lab	0	0.0
Turnout		0.0	0.0

Hawarden No.1 (6100)			
		vote	share
Angell J. Ms.*	Lab	1,239	50.4
Yale P. Ms.	Con	1,218	49.6
Turnout		40.3	0.9

Hawarden No.2 (4195)			
		vote	share
Davies R.*	Lab	0	0.0
Turnout		0.0	0.0

Hawarden No.3 (3965)			
		vote	share
Barker J.	Lab	743	66.3
Armstrong-Braun K.	Green	377	33.7
Turnout		28.2	32.7

Hawarden No.4 (6028)			
		vote	share
Jones E. Ms.*	Con	958	46.1
Bithell C.	SLD	645	31.0
Armstrong-Braun K.	Green	475	22.9
Turnout		34.5	15.1

Hawarden No.5 (5345)			
		vote	share
Drennan R.*	Lab	0	0.0
Turnout		0.0	0.0

Hawarden No.6 (5742)			
		vote	share
Jones T.*	Con	0	0.0
Turnout		0.0	0.0

Hawarden No.7 (3806)			
		vote	share
Roberts S.*	Ind	1,030	55.3
Sudworth L.	Lab	834	44.7
Turnout		49.0	10.5

Hiraethog (2035)			
		vote	share
Hughes G.*	Ind	0	0.0
Turnout		0.0	0.0

Holywell No.1 (4096)			
		vote	share
Rensahw T.*	Lab	1,210	76.6
Winter J. Ms.	SLD	370	23.4
Turnout		38.6	53.2

Holywell No.2 (2485)			
		vote	share
Parry D.*	Lab	875	77.3
Mortlock J.	Con	257	22.7
Turnout		45.6	54.6

Holywell Rural No. (8194)			
		vote	share
Dood Q.*	Lib	2,498	63.8
Roberts G.*	Ind	1,610	-
Matthews E.*	Ind	1,196	-
Ellis E.*	Ind	1,128	-
Hughes C.	Lab	805	20.6
Davies P. Ms.	Lab	783	-
Ames D.	Con	610	15.6
Lloyd G.	Lab	528	-
Smith-Lochlin M. Ms.	Ind	309	-
Jones G.	Ind	238	-
Turnout		47.8	43.3

Holywell Rural No. 1 (4101)			
		vote	share
Roberts B. Ms.	Lab	1,170	51.5
Goodrich M. Ms.	Con	863	38.0
Oram A.	Ind	238	10.5
Turnout		55.4	13.5

Llangollen (4572)			
		vote	share
Walker P.*	Ind	902	44.5
Dolan P.	Lab	794	39.2
Evans S.	Ind	332	16.4
Turnout		44.4	5.3

Maelor (4415)			
		vote	share
Huxley B.	Ind	1,120	74.8
Stapeley B.	Lab	378	25.2
Turnout		33.9	49.5

Mold (6703)			
		vote	share
Davies M.*	Lab	0	0.0
Turnout		0.0	0.0

Prestatyn No.1 (7025)			
		vote	share
Atack R. Ms.	Con	1,077	36.4
German M.	Lab	979	33.1
Roberts G.	Ind	463	15.6
Martin H.	Ind	442	14.9
Turnout		42.1	3.3

Prestatyn No.2 (3021)			
		vote	share
Parry T.	Ind	799	51.2
Smith D.*	Con	598	38.3
Cartwright A.	Lab	165	10.6
Turnout		51.7	12.9

Prestatyn No.3 (4121)			
		vote	share
Edwards R.*	Ind	1,073	47.8
Waltham R. Ms.	Con	684	30.5
Gill E.	Lab	486	21.7
Turnout		54.4	17.3

Rhyl No.1 (3660)			
		vote	share
Roberts C.	Lab	470	58.0
Tredrea R.	Ind	340	42.0
Turnout		22.1	16.0

Rhyl No.2 (4573)			
		vote	share
Griffiths J.*	Ind	921	63.7
Davies D.	Lab	525	36.3
Turnout		31.6	27.4

Rhyl No.3 (3944)			
		vote	share
Conway W.*	Lab	1,191	85.4
Taylor K.	Con	203	14.6
Turnout		35.3	70.9

Rhyl No.4 (7492)			
		vote	share
Nelson J.	Lab	1,369	45.8
Jemmett F.*	Con	1,232	41.2
Yeomans J. Ms.	Ind	386	12.9
Turnout		39.9	4.6

Ruthin (4048)			
		vote	share
Jones G.	Ind	537	30.8
Feeley R. Ms.	Ind	532	30.5
Hughes G.	Ind	411	23.5
Myddleton W.	SLD	266	15.2
Turnout		43.1	0.3

Ruthin Rural No. 1 (4137)			
		vote	share
Williams W.*	SLD	991	64.9
Astbury K.	Ind	535	35.1
Turnout		36.9	29.9

Ruthin Rural No.2 (3812)			
		vote	share
Roberts R.*	Ind	970	63.5
Shaw W.	SLD	558	36.5
Turnout		40.1	27.0

St. (4784)			
		vote	share
Drake C.*	Con	0	0.0
Turnout		0.0	0.0

St. Asaph No.2 (5818)			
		vote	share
Ainsworth J.*	Ind	862	34.7
Taylor A.	Con	557	22.5
Jones C.	PC	442	17.8
Winney J.	Lab	432	17.4
Goddard M. Ms.	Ind	188	7.6
Turnout		42.6	12.3

Wrexham No. 1 (7770)			
		vote	share
Lowe G.	Lab	1,434	41.6
Crisp G.	SLD	1,026	29.8
Jones C.	Con	986	28.6
Turnout		44.4	11.8

Wrexham No.2 (3177)			
		vote	share
Roberts W.	Lab	624	48.3
Rogers L. Ms.	Con	458	35.4
O'Toole C. Ms.	SLD	210	16.3
Turnout		40.7	12.8

Wrexham No.3 (3126)			
		vote	share
King M.	Lab	0	0.0
Turnout		0.0	0.0

Wrexham No.4 (5161)			
		vote	share
Dolan C.	Lab	1,472	89.3
Kane A.	Con	177	10.7
Turnout		32.0	78.5

Wrexham No.5 (2971)			
		vote	share
Stevens R.	Lab	804	58.4
Lumley K. Ms.	Con	573	41.6
Turnout		46.3	16.8

Wrexham No.6 (2877)			
		vote	share
Jone A.*	Ind	748	50.6
Armstrong A.	Lab	729	49.4
Turnout		51.3	1.3

Wrexham No.7 (5785)			
		vote	share
Williams C.	Lab	1,465	72.3
Andrews E.	Con	561	27.7
Turnout		35.0	44.6

Wrexham Rural No. (4805)			
		vote	share
Rogers N.*	Lab	1,538	87.9
Thomas J.*	PC	1,424	-
Morris P.*	Lab	1,093	-
Caldecott .	Lab	1,046	-
Squire R.*	Ind	980	-
Roberts A.	Lab	950	-
Stevens C. Ms.*	Con	758	-
Williams J.*	Ind	746	-
Trommelan A.	Lab	722	-
Anzana M. Ms.	SLD	652	-
Jones G.	Ind	451	-
Griffiths D.	Con	212	12.1
Thomas W.*	Lab	0	-
Williams B.*	Lab	0	-
Turnout		36.4	75.8

Wrexham Rural No. 11 (3629)			
		vote	share
Broderick D.*	Lab	0	0.0
Turnout		0.0	0.0

Wrexham Rural No.1 (7428)			
		vote	share
Edwards H.*	Con	1,710	58.1
Griffins F.	Lab	1,235	41.9
Turnout		39.6	16.1

Wrexham Rural No.10 (4321)			
		vote	share
Wilkinson C.*	Lab	977	43.2
Lloyd J.	Con	864	38.2
Thomas N.	Ind	418	18.5
Turnout		52.3	5.0

Clwyd 1993

Acton (4540)			
		vote	share
Lowe G.*	Lab	927	43.1
Davies R.	LD	855	39.7
Cantwell P.	Con	256	11.9
Jones I.	Ind Lab	113	5.3
Turnout		47.4	3.3

Aled (4402)			
		vote	share
Williams E.*	Ind	1,152	81.2
Winney J.	Lab	267	18.8
Turnout		32.2	62.4

Argoed (4687)			
		vote	share
Dodd Q.*	LD	1,288	55.5
Henry A. Ms.	Lab	416	17.9
Pedley P.	Con	316	13.6
Chatburn E.	Ind	299	12.9
Turnout		49.5	37.6

Aston (5464)			
		vote	share
Angell J. Ms.*	Lab	1,125	53.2
Edwards D.	Con	988	46.8
Turnout		38.7	6.5

Bagillt (5317)			
		vote	share
Clarke H.*	Lab	1,466	81.1
Roberts D.	Con	341	18.9
Turnout		34.0	62.3

Borras Park (6029)			
		vote	share
Lumley K Ms.	Con	930	40.5
George E.	Lab	878	38.3
Price F. Ms.	LD	487	21.2
Turnout		38.1	2.3
Buckley Bistre West (5320)			
		vote	share
Messham D.*	Lab	0	0.0
Turnout		0.0	0.0
Buckley Pentrobin (5616)			
		vote	share
Roberts W.*	Lab	0	0.0
Turnout		0.0	0.0
Caia Park (5498)			
		vote	share
King M.*	Lab	1,189	83.0
Wilson A.	LD	141	9.8
Jones J.	Con	102	7.1
Turnout		26.1	73.2
Cefn Mawr (5429)			
		vote	share
Walmsley N.	Lab	1,296	69.5
Truby L.	LD	570	30.5
Turnout		34.4	38.9
Chirk (5997)			
		vote	share
Edwards R.	Ind	1,319	50.8
Jones E.*	Lab	1,276	49.2
Turnout		43.3	1.7
Coedpoeth (5590)			
		vote	share
Squire R.*	Ind	847	36.7
Carter D. Ms.	Lab	844	36.5
Fey H.	Ind	429	18.6
Lloyd S.	PC	191	8.3
Turnout		41.3	0.1
Coleshill (5828)			
		vote	share
Aldridge L.	Lab	1,203	48.0
Howorth T.	Ind	1,000	39.9
Lloyd-Parry R. Ms.	Con	302	12.1
Turnout		43.0	8.1
Colwyn (5148)			
		vote	share
Howard M. Ms.	Ind	968	47.8
Davies D.	LD	507	25.0
Hughes E.	Lab	279	13.8
Hughes D.	Ind Lab	214	10.6
McGroarty D.	Ind So	58	2.9
Turnout		39.4	22.8
Connahs Quay Golftyn (6164)			
		vote	share
Hulley R.*	Lab	913	55.3
Hall S.	Ind	560	33.9
Williams G.	PC	177	10.7
Turnout		26.8	21.4
Connahs Quay South (5182)			
		vote	share
Popplewell A.*	Ind	856	53.7
Williams A.	Lab	739	46.3
Turnout		30.8	7.3
Corwen (3315)			
		vote	share
Webb W.*	Ind	1,248	75.8
Edwards M. Ms.	Lab	399	24.2
Turnout		49.7	51.5

Denbigh Lower (5192)			
		vote	share
Evans M.*	Ind	972	45.7
Hughes N.	PC	584	27.5
Stevens K.	Lab	327	15.4
Jones T.	LD	243	11.4
Turnout		41.0	18.3
Denbigh Upper (3975)			
		vote	share
Jones D.	Lab	1,028	75.5
Badger P. Ms.	LD	334	24.5
Turnout		34.3	51.0
Dyffryn Ial (4155)			
		vote	share
Williams W.*	LD	1,068	63.4
Roberts R.	Ind	424	25.2
Lewis E. Ms.	Lab	192	11.4
Turnout		40.5	38.2
Esclusham (4826)			
		vote	share
Thomas W.*	Lab	896	61.6
Bentley R.	Ind	383	26.3
Ireland P.	PC	175	12.0
Turnout		30.1	35.3
Gele (4877)			
		vote	share
Pitt J.	Con	894	52.9
Mortimer J.	Lab	529	31.3
Ap-Tegwyn H.	PC	266	15.7
Turnout		34.6	21.6
Glyn (6068)			
		vote	share
Jones T.*	Lab	1,207	57.7
Cossey B.	LD	763	36.5
Hill C.	PC	123	5.9
Turnout		34.5	21.2
Gresford (5547)			
		vote	share
Bailey A.	Lab	1,023	52.1
Edwards H.*	Con	939	47.9
Turnout		35.4	4.3
Gwersyllt (5292)			
		vote	share
Williams B.*	Lab	913	74.1
Ellis C. Ms.	LD	319	25.9
Turnout		23.3	48.2
Gwersyllt North (4672)			
		vote	share
Roberts W.*	Lab	758	47.8
Thomas N.	Ind	632	39.8
Pumford P.	PC	126	7.9
Peake G.	LD	71	4.5
Turnout		34.0	7.9
Halkyn (6219)			
		vote	share
Mathews E.*	Ind	1,027	42.2
Renshaw T.*	Lab	767	31.5
Pedley J. Ms.	Con	639	26.3
Turnout		39.1	10.7
Hawarden (4054)			
		vote	share
Jones E. Ms.*	Con	854	56.2
Evans R.	Lab	666	43.8
Turnout		37.5	12.4

Holt (3439)			
		vote	share
Stevens C. Ms.*	Con	543	50.8
Bostock C.	Lab	526	49.2
Turnout		31.1	1.6
Holywell (4889)			
		vote	share
Lloyd G.	Lab	1,271	60.8
Hargreaves J.	Con	435	20.8
Bailey C.	PC	386	18.5
Turnout		42.8	40.0
Hope (5823)			
		vote	share
Williams G.	Lab	1,210	53.5
Roberts S.	Ind	1,053	46.5
Turnout		38.9	6.9
Leeswood (6124)			
		vote	share
Roberts G.*	Ind	1,350	48.9
Stevens M.	Lab	892	32.3
Brackley R.	Con	386	14.0
Torr J. Ms.	Ind	130	4.7
Turnout		45.0	16.6
Llanasa (5955)			
		vote	share
Heesom P.	Lab	1,588	61.4
Jones A. Ms.	Con	622	24.0
Oram A.	Ind	378	14.6
Turnout		43.5	37.3
Llangollen (4579)			
		vote	share
Walker P.*	Ind	929	50.6
Hamilton-Morris R.	Lab	907	49.4
Turnout		40.1	1.2
Llay (4444)			
		vote	share
Broderick D.*	Lab	0	0.0
Turnout		0.0	0.0
Maelor (4465)			
		vote	share
Huxley B.*	Ind	751	48.4
Watkin B. Ms.	LD	563	36.3
Dolan A.	Lab	238	15.3
Turnout		34.8	12.1
Mold (7445)			
		vote	share
Guest R.	LD	1,458	42.3
Williams M. Ms.	Lab	1,358	39.4
Williams D. Ms.	Con	404	11.7
Davies P. Ms.	Ind Lab	227	6.6
Turnout		46.3	2.9
New Broughton (4346)			
		vote	share
Rogers N.*	Lab	1,181	88.5
Craddock G.	LD	153	11.5
Turnout		30.7	77.1
Northop (4005)			
		vote	share
Sharps L.	Ind	886	38.8
Lamb J.	LD	627	27.4
Roberts B.*	Lab	602	26.3
Morris F.	Con	171	7.5
Turnout		57.1	11.3

Oakenholt (4229)			
		vote	share
Jones W.*	Lab	1,323	83.9
Jones G.	Con	254	16.1

Turnout 37.3 67.8

Offa (5549)			
		vote	share
Bostock C.	Lab	1,109	54.0
Bateman G.	LD	433	21.1
Longworth A. Ms.	Ind	383	18.7
Williams D. Ms.	PC	127	6.2

Turnout 37.0 32.9

Pentre Mawr (4617)			
		vote	share
Wilkins A. Ms.	Lab	725	42.3
Jones R. Ms.	Ind	696	40.6
Byrne D.	Ind	293	17.1

Turnout 37.1 1.7

Prestatyn East (5684)			
		vote	share
Parry T.*	Ind	1,302	47.6
Steele-Mortimer N.	Con	767	28.0
Wells V. Ms.	Lab	667	24.4

Turnout 48.1 19.6

Prestatyn North (4050)			
		vote	share
Edwards R.*	Ind	925	53.8
German M.	Lab	547	31.8
Smith D.	Con	248	14.4

Turnout 42.5 22.0

Prestatyn South West (4214)			
		vote	share
Hughes R. Ms.	Lab	1,064	60.3
Atack R. Ms.*	Con	700	39.7

Turnout 41.9 20.6

Queensway (5555)			
		vote	share
Parry D.	Lab	1,041	75.7
Wilson T.	LD	334	24.3

Turnout 24.8 51.4

Rhiw (5735)			
		vote	share
Price P.*	Con	810	41.4
Humphreys C. Ms.	LD	666	34.1
Garner S. Ms.	Lab	479	24.5

Turnout 34.1 7.4

Rhos (6135)			
		vote	share
Formstone R.*	Con	1,342	51.4
Eames-Hughes M.	LD	865	33.1
Macnamara G.	Lab	403	15.4

Turnout 42.5 18.3

Rhosddu (5278)			
		vote	share
Morris E.	Ind	1,055	51.2
Stevens R.*	Lab	1,004	48.8

Turnout 39.0 2.5

Rhosllanerchrugog (4916)			
		vote	share
Thomas J.*	PC	1,399	60.8
Matthews S. Ms.	Lab	903	39.2

Turnout 46.8 21.5

Rhuddlan (4233)			
		vote	share
Drake C.*	Con	637	47.7
Williams P.	Lab	476	35.7
Williams J.	PC	222	16.6

Turnout 31.5 12.1

Rhyl East (3811)			
		vote	share
Griffiths J.*	Ind	643	46.4
Jones M. Ms.	Lab	591	42.7
Simons M.	LD	151	10.9

Turnout 36.3 3.8

Rhyl South (5516)			
		vote	share
Conway W.*	Lab	1,622	69.4
Gray W.	Con	618	26.4
Saleem T.	LD	98	4.2

Turnout 42.4 42.9

Rhyl South East (6251)			
		vote	share
Foulds D.	Lab	1,175	60.4
Plumer K.	LD	310	15.9
Murray D.	Ind	244	12.5
Roberts C.	PC	216	11.1

Turnout 31.1 44.5

Rhyl West (3954)			
		vote	share
Davies D.	Lab	698	79.5
Remphrey R.	Ind	180	20.5

Turnout 22.2 59.0

Ruabon (5275)			
		vote	share
Roberts A.*	Lab	863	63.4
Jones M.	Ind So	255	18.7
Pritchard G.	PC	244	17.9

Turnout 25.8 44.6

Ruthin (6029)			
		vote	share
Williams E.	PC	1,308	45.6
Edwards E.	Ind	913	31.9
Lloyd T.	LD	392	13.7
Hughes C. Ms.	Lab	253	8.8

Turnout 47.5 13.8

Saltney (5037)			
		vote	share
Jones G.	Lab	934	65.5
Armstrong-Braun K.	Green	492	34.5

Turnout 28.3 31.0

Sealand (3676)			
		vote	share
Middlehurst T.	Lab	0	0.0

Turnout 0.0 0.0

Shotton (4888)			
		vote	share
Davies R.*	Lab	1,265	85.1
Edwards J.	Con	222	14.9

Turnout 30.4 70.1

South Broughton (6581)			
		vote	share
Jones T.*	Con	970	43.2
Matthews K.	Lab	778	34.6
Bithel C.	LD	498	22.2

Turnout 34.1 8.5

St. Asaph (5769)			
		vote	share
Ainsworth J.*	Ind	926	52.0
Jones C.	PC	485	27.2
O'Rourke C. Ms.	Ind	371	20.8

Turnout 30.9 24.7

Towyn (5306)			
		vote	share
Ball J.*	Lab	803	51.9
Anderson S.	Ind	744	48.1

Turnout 29.2 3.8

Uwchaled (2248)			
		vote	share
Hughes G.	PC	931	90.4
Lewis S.	Lab	99	9.6

Turnout 45.8 80.8

