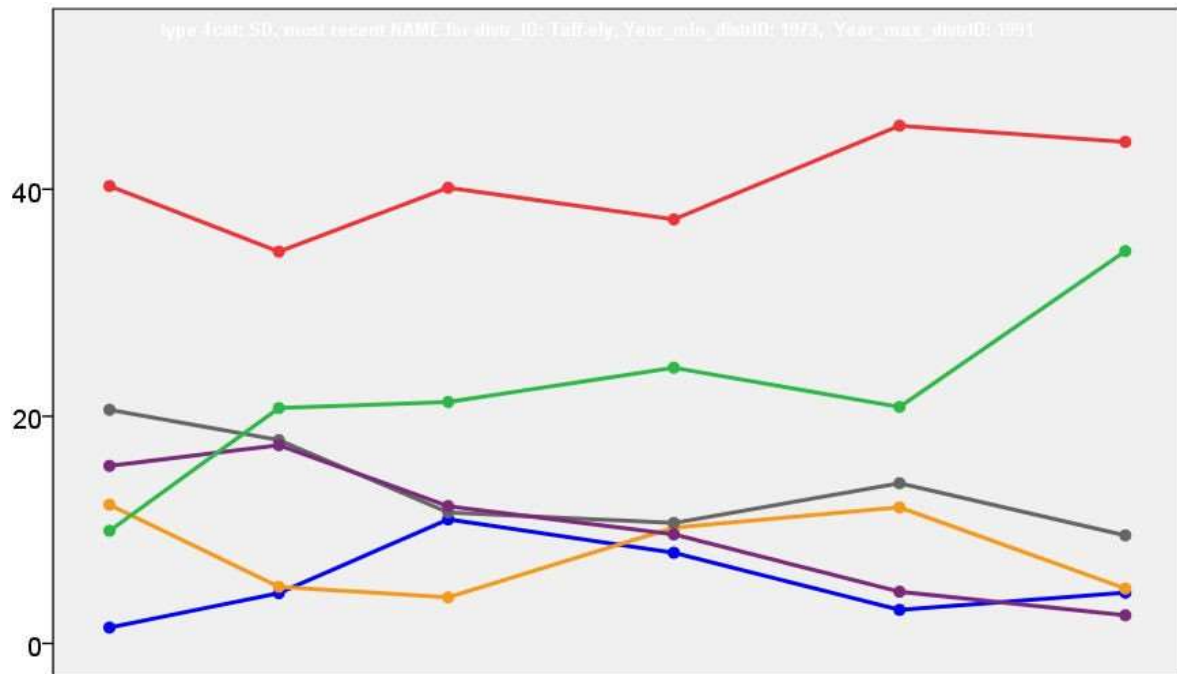


Taff-Ely Welsh District Council Elections Results 1973-1991



Colin Rallings and Michael Thrasher
The Elections Centre
Plymouth University

The information contained in this report has been obtained from a number of sources. Election results from the immediate post-reorganisation period were painstakingly collected by Alan Willis largely, although not exclusively, from local newspaper reports. From the mid-1980s onwards the results have been obtained from each local authority by the Elections Centre. The data are stored in a database designed by Lawrence Ware and maintained by Brian Cheal and others at Plymouth University. Despite our best efforts some information remains elusive whilst we accept that some errors are likely to remain. Notice of any mistakes should be sent to elections@plymouth.ac.uk. The results sequence can be kept up to date by purchasing copies of the annual Local Elections Handbook, details of which can be obtained by contacting the email address above.

Front cover: the graph shows the distribution of percentage vote shares over the period covered by the results. The lines reflect the colours traditionally used by the three main parties. The grey line is the share obtained by Independent candidates while the purple line groups together the vote shares for all other parties.

Rear cover: the top graph shows the percentage share of council seats for the main parties as well as those won by Independents and other parties. The lines take account of any by-election changes (but not those resulting from elected councillors switching party allegiance) as well as the transfers of seats during the main round of local election.

The lower graph shows for each main round of local elections the overall percentage turnout (solid line), the percentage of women candidates standing at (dotted line) and the percentage of women among those elected (hashed line).

Taff-Ely 1973

Gilfach Goch (2631)²

		vote	share
Jury G.	Res	754	35.2
Dearden H.	Res	637	-
Moody-Jones W.	Ind	544	25.4
Herbert A.	Lab	544	25.4
Harrison D.	Lab	389	-
Hearne W.	Comm	299	14.0
Turnout		81.4	9.8

Llanilterne & Pentyrch (2831)²

		vote	share
Rees E.	Lab	531	37.2
Lewis H.	Ind	465	32.6
Christopher I.	Ind	438	-
Everest J.	Con	432	30.3
Ashton W.	Lab	398	-
Turnout		50.4	4.6

Llantrisant Town (11654)⁷

		vote	share
Harrison D.	Lab	1,995	36.5
Jacob W.	Lab	1,988	-
John T.	Rate	1,808	33.0
Preston G.	Lab	1,763	-
Hurley C.	Lab	1,722	-
Roderick K.	Lab	1,713	-
Balby S.	Lab	1,706	-
Taylor W.	Rate	1,592	-
Bolt J.	Rate	1,567	-
Lake G.	Lab	1,526	-
Miles B.	Rate	1,496	-
John A.	Rate	1,468	-
Pearse D.	Rate	1,268	-
Gibbon C.	Rate	1,162	-
Norman R.	PC	863	15.8
Williams D.	PC	856	-
Williams A.	Rate	856	-
Jones M.	Res	805	14.7
Webster M.	PC	804	-
Morgan D.	PC	751	-
Day L.	Res	659	-
Turnout		46.9	3.4

Llantwit Fardre (7418)⁵

		vote	share
Hughes I.	Ind	1,041	34.8
Millward D.	Ind	1,039	-
Watts A.	Lab	1,033	34.6
Boldero L.	Ind	988	-
Arnold J.	Lab	968	-
Thomas G.	Lab	963	-
Williams A.	Ind	945	-
Butler R.	Lab	937	-
Kemp R.	PC	914	30.6
Stone E.	Lab	852	-
Williams I.	PC	808	-
Turnout		40.3	0.3

Peterston-Super-Montem ()

		vote	share
Young E.	Ind	453	52.9
David G.	Ind	403	47.1
Turnout		0.0	5.8

Pontypridd Town ()³

		vote	share
Faull D.	Lib	911	42.1
Burford J.	Lab	837	38.7
Watkins A.	Lab	784	-
Murphy B.	Lib	780	-
Jones D.	Lab	748	-
Clarke E.	Lib	732	-
O'Connell A.	Rate	414	19.1
O'Leary H.	Rate	404	-
Turnout		0.0	3.4

Rhondda ()³

		vote	share
Griffiths I.	Lab	1,571	56.6
Anzani J.	Lab	1,391	-
Williams V.	Lab	1,268	-
Henly E.	PC	633	22.8
James K.	Lib	571	20.6
Turnout		0.0	33.8

Rhydyfelin ()⁵

		vote	share
Cheesman W.	Lab	1,366	38.8
Cox H.	Lab	1,214	-
Griffiths W.	Lib	1,168	33.1
Mason W.	Lab	1,025	-
Williams K.	Ind	991	28.1
Baker A.	Lab	870	-
Youde R.	Lab	776	-
Smith E.	Lab	766	-
Hyde M.	Lab	640	-
Baldwin C.	Lab	565	-
Turnout		0.0	5.6

Taffs Well ()²

		vote	share
Bunn J.	PC	652	51.7
Jenkins I.	PC	627	-
Atkins I.	Lab	608	48.3
Toghill R.	Lab	587	-
Turnout		0.0	3.5

Tonyrefail ()⁶

		vote	share
Carter L.	Lab	1,850	31.2
Roderick T.	Lab	1,774	-
Brinson E.	Rate	1,734	29.3
Copeland J.	Lab	1,610	-
Brookes D.	Lab	1,489	-
Cox R.	Lab	1,463	-
Flower S.	Lab	1,447	-
Clee J.	Res	1,376	23.2
Staples W.	Res	1,308	-
Pritchard C.	Res	1,221	-
Stock W.	Comm	965	16.3
Evans P.	Comm	793	-
Turnout		0.0	2.0

Trallwn ()³

		vote	share
Murphy M.	Lib	1,121	61.4
Green R.	Lib	967	-
Highcock E.	Lib	871	-
Evans R.	Lab	705	38.6
Watkins D.	Lab	627	-
Cannon D.	Lab	617	-
Turnout		0.0	22.8

Treforest ()²

		vote	share
Daniel R.	Ind	1,132	66.7
Sullivan J.	Ind	931	-
Williams N.	Lab	565	33.3
Young D.	Lab	557	-
Turnout		0.0	33.4

Vaynor ()³

		vote	share
John M.	Ind	925	49.1
Smith T.	Lab	838	44.5
Chambers M.	Lab	805	-
Morgan N.	Ind	716	-
Robert D.	Ind	542	-
Pratt S.	Ind	400	-
Rogers N.	Lab	400	-
Thomas G.	Comm	119	6.3
Thomas S.	Comm	66	-
Turnout		0.0	4.6

Taff-Ely 1976

Clifynydd (2196)²

		vote	share
Edwards M.	PC	738	56.1
Paget G.	Lab	578	43.9
Harper M.	Lab	562	-
Turnout		59.9	12.2

Gilfach Goch (2636)²

		vote	share
Jury G.	Rate	921	56.4
Dearden H.	Rate	845	-
Thomas J.	Lab	389	23.8
Thomas J.	Lab	364	23.8
Hearne W.	Comm	322	19.7
Turnout		61.9	32.6

Graig (2521)²

		vote	share
Hurley D.	Lab	697	61.0
Lewis E.	Lab	620	-
Humphrey E.	Ind	445	39.0
Turnout		45.3	22.1

Llanharan (1431)

		vote	share
Lewis W.	Lab	0	0.0
Turnout		0.0	0.0

Llanharry & Llanilid (1801)²

		vote	share
Morgan M. Ms.	Ind	526	44.8
Milsom R.	Lab	349	29.8
Williams I.	Lab	311	-
Lewis T.	Ind	299	-
Davies J. Ms.	PC	298	25.4
Turnout		65.1	15.1

Llanilterne & Pentyrch (2836)²

		vote	share
Knox J.	Con	854	35.9
Follis N.	Lab	640	26.9
Jones D.	Con	624	-
Lewis H.	Ind	535	22.5
Kemp R.	PC	347	14.6
Graves L.	PC	279	-
Turnout		83.8	9.0

Llantrisant Town (11672)⁷

		vote	share
John T.*	Rate	2,098	39.8
Jacob W.*	Lab	1,849	35.1
Marrison D.	Lab	1,767	-
Taylor W.	Rate	1,707	-
Preson G.*	Lab	1,582	-
Hurley C.*	Lab	1,560	-
Hendy J.	Lab	1,520	-
Bolt J.	Rate	1,491	-
Roberts J.	Rate	1,456	-
Jell P.	Lab	1,410	-
Wren M.	Lab	1,403	-
Brown D.	Rate	1,364	-
Norman G.	PC	1,319	25.0
Pearce D.	Rate	1,269	-
Gibbon C.	Rate	1,264	-
Phillips A.	PC	1,253	-
Jones D.	PC	1,153	-
Williams L.	PC	1,120	-
Lewis V.	PC	1,118	-
Morris R.	PC	1,032	-
Turnout		45.1	4.7

Llantwit Fardre (7430)⁵			
		vote	share
Watts A.	Lab	1,384	31.7
Davies K.	PC	1,380	31.6
Rogers B.	PC	1,356	-
Roberts A.	PC	1,341	-
Jones T.	PC	1,252	-
Williams I.	PC	1,167	-
Butler R.	Lab	1,077	-
Thomas L.	Lab	1,056	-
Arnold J.	Lab	1,052	-
Evans R.	Lab	959	-
Hughes L.	Ind	828	19.0
Millward D.	Ind	780	-
Bowen H.	Con	775	17.7
Bunnage R.	Con	770	-
Boldero L.	Ind	768	-
Bunnage J.	Con	754	-
Jarman L.	Con	684	-
Priest F.	Con	602	-
Turnout		58.8	0.1
Peterston Etc (2087)			
Young E.	Lab	0	0.0
Turnout		0.0	0.0
Rhondda (3993)³			
Jones D.	Lab	946	53.1
Williams V. Ms.	Lab	943	-
Anzani J.	Lab	919	-
Keith J.	Ind	834	46.9
Turnout		44.6	6.3
Rhydfelin (6904)⁵			
Cox H.	Lab	1,470	33.6
Williams K.	Ind	1,460	33.4
Griffiths W.	Ind Lib	1,444	33.0
Cheesman W.	Lab	1,236	-
Mason W.	Lab	1,191	-
Morgan E. Ms.	Lab	948	-
Francies D.	Lab	911	-
Joseph D.	Ind	543	-
Turnout		63.4	0.2
Taffs Well (2252)²			
Bunn J.	PC	971	64.9
Jenkins I.	PC	963	-
Toghill R.	Lab	425	28.4
James C.	Lab	391	-
Jones R.	Comm	99	6.6
Turnout		66.4	36.5
Tonyrefail (7447)⁶			
Brinson E.	Rate	1,865	31.6
Carter L. Ms.	Lab	1,772	30.0
Roderick T.	Lab	1,539	-
Flower S.	Lab	1,491	-
Davies D.	PC	1,422	24.1
Cox R.	Lab	1,374	-
Williams R.	PC	1,352	-
Rees R.	PC	1,304	-
Jones J.	PC	1,253	-
Brookes D.	Lab	1,244	-
Evans E.	Lab	1,069	-
Stock W.	Comm	848	14.4
Turnout		79.3	1.6
Town (4381)³			
Burford J. Ms.	Lab	950	36.3
Faulf D.	Lib	950	36.3
Murphy B.	Lib	873	-
Watkins A.	Lab	735	-
Francis D.	PC	716	27.4
Goodwin S. Ms.	PC	695	-
Beynon G.	Lab	682	-
Highcock E.	Lib	655	-
Grinter A. Ms.	PC	608	-
Turnout		59.7	0.0

Trallwn (3219)³			
		vote	share
Murphy M. Ms.	Ind	1,194	38.0
Green R.	Lib	886	28.2
Thomas J.	Lib	849	-
Jones W.	Lab	626	19.9
Cody S.	PC	440	14.0
Lewis F.	PC	408	-
Turnout		97.7	9.8
Treforest (2764)²			
Hyde I.	Ind	772	55.2
Sullivan J.	Ind	769	-
Ashman B.	Lab	627	44.8
Morton T.	Lab	577	-
Turnout		50.6	10.4
Taff-Ely 1979			
Ward 1 (2794)²			
Jones E.	Lab	1,035	40.4
Sullivan J.	Ind	947	36.9
Hyde I.	Ind	878	-
Parry J.	Con	582	22.7
Turnout		91.8	3.4
Ward 10 (7929)⁵			
Watts A.	Lab	3,008	45.7
Jenkins T.	Lab	2,540	-
Arnold J.	Lab	2,521	-
Thomas T.	Lab	2,238	-
Stone D.	Lab	2,198	-
Davies R.	PC	1,879	28.5
Rogers B.	PC	1,856	-
Bunnage R.	Con	1,696	25.8
Jarman L.	Con	1,568	-
Calder D.	Con	1,537	-
Sidman B.	Con	1,514	-
Jones T.	PC	1,496	-
Hunt L.	Con	1,470	-
Williams I.	PC	1,392	-
Bennett C.	PC	1,370	-
Turnout		83.0	17.2
Ward 11 (2573)²			
Thomas J.	Lab	1,264	37.5
Jury G.	T & R	1,214	36.1
Roberts A.	Ind Lab	507	15.1
Fletcher C.	PC	382	11.3
Turnout		130.9	1.5
Ward 12 (7513)⁶			
Carter L.	Lab	3,451	39.7
Brinson E.	T & R	3,221	37.1
Roderick T.	Lab	3,096	-
Cox R.	Lab	2,935	-
Flower S.	Lab	2,905	-
Ridley A.	Lab	2,174	-
Long B.	Lab	2,160	-
Williams R.	PC	2,017	23.2
Davies D.	PC	1,905	-
Turnout		115.7	2.6

Ward 13 (12552)⁷			
		vote	share
Harrison D.	Lab	3,967	34.6
Hendy J.	Lab	3,762	-
Preston G.	Lab	3,724	-
Davies J.	Lab	3,650	-
Cann R.	Lab	3,627	-
James N.	Lab	3,597	-
Hughes C.	Lab	3,452	-
Brown D.	Con	2,880	25.1
Duggan M.	Con	2,865	-
Duggan T.	Con	2,704	-
Harding M.	Con	2,702	-
Elms T.	Con	2,541	-
Pearse D.	Con	2,443	-
Taylor W.	Ind	2,384	20.8
Bowen I.	PC	2,236	19.5
Watkins L.	Ind	1,780	-
Jenkin R.	PC	1,523	-
Llwyd-Evans E.	PC	1,334	-
Kennard R.	PC	1,325	-
Price G.	PC	1,325	-
Turnout		91.4	9.5
Ward 14 (1562)			
Williams T.	Lab	0	0.0
Turnout		0.0	0.0
Ward 15 (1841)²			
Morgan M.	Ind	691	41.0
Milsom R.	Lab	581	34.5
Lewis T.	Ind	501	-
Jordan V.	Lab	445	-
Davies J.	PC	412	24.5
Turnout		91.5	6.5
Ward 16 (2421)			
Young E.	Lab	1,020	56.2
Gylee I.	Ind	796	43.8
Turnout		75.0	12.3
Ward 2 (2504)²			
Lewis E.	Lab	0	-
Hurley D.	Lab	0	0.0
Turnout		0.0	0.0
Ward 3 (2171)²			
Hopkins T.	Lab	1,353	74.3
Harper M.	Lab	1,242	-
Walsh T.	PC	467	25.7
Turnout		83.8	48.7
Ward 4 (3155)³			
Murphy M.	Lib	1,392	46.9
Thomas H.	Lib	1,109	-
Green R.	Lib	1,058	-
Evans R.	Lab	889	30.0
Edwards D.	PC	684	23.1
Cody S.	PC	612	-
Gregory G.	PC	429	-
Turnout		94.0	17.0
Ward 5 (4379)³			
Burford J.	Lab	1,711	46.4
Carter S.	Lab	1,248	-
Jones J.	Lab	1,168	-
Murphy B.	Lib	1,069	29.0
Favil D.	Lib	1,035	-
Jones C.	PC	908	24.6
James B.	Lib	862	-
Evans S.	PC	842	-
Price H.	PC	746	-
Turnout		84.2	17.4

Ward 6 (3923)³

		vote	share
Anzani J.	Lab	1,921	61.9
Jones D.	Lab	1,866	-
Williams V.	Lab	1,669	-
Holcombe S.	PC	1,180	38.1
Griffiths G.	PC	1,012	-

Turnout 79.0 23.9

Ward 7 (6853)⁵

		vote	share
Cheesman W.	Lab	2,973	37.0
Cox H.	Lab	2,871	-
Williams K.	Ind	2,177	27.1
Mason W.	Lab	2,108	-
Bunt P.	Lab	1,994	-
Griffiths W.	Ind Lib	1,960	24.4
Morgan E.	Lab	1,902	-
Biddulph J.	PC	928	11.5

Turnout 117.3 9.9

Ward 8 (2289)²

		vote	share
Jenkins I.	PC	1,166	64.3
Edwards G.	PC	991	-
Toghill R.	Lab	647	35.7
Atkins J.	Lab	630	-

Turnout 79.2 28.6

Ward 9 (3493)²

		vote	share
Knox J.	Con	1,468	41.2
Henderson M.	Con	1,077	-
Lewis H.	Ind Rate	938	26.3
Willis E.	PC	637	17.9
Lamerton W.	Lab	520	14.6
Wright G.	Lab	453	-
Phillips E.	PC	445	-

Turnout 102.0 14.9

Taff-Ely 1983**Clifynydd (2203)²**

		vote	share
Belzak S.	Ind	449	41.7
Gould A.	Lab	442	41.1
Harper M.	Lab	422	-
Gronow C.	PC	185	17.2
Gronow D.	PC	180	-

Turnout 48.8 0.7

Gilfach Goch (2645)²

		vote	share
Jury G.	Rate	927	51.2
Jones D.	Lab	820	45.3
Hunt J.	Lab	653	-
Roberts A.	Rate	516	-
Smith J.	PC	64	3.5

Turnout 68.5 5.9

Graig (2529)²

		vote	share
Hurley D.	Lab	676	67.2
Lewis E.	Lab	615	-
Lynas-Gray A.	PC	330	32.8
Breian S.	PC	313	-

Turnout 39.8 34.4

Llanharan (1681)

		vote	share
Williams T.	Lab	506	66.8
Walters A.	PC	251	33.2

Turnout 45.0 33.7

Llanharry & Llaniltud (1802)²

		vote	share
Davies J.	PC	472	37.5
Morgan M.	Ind	403	32.0
Jordan V.	Lab	385	30.6
Butt G.	Lab	292	-

Turnout 69.9 5.5

Llanilterne & Pentyrch (2846)²

		vote	share
Henderson M.	Con	1,141	45.5
Willis E.	PC	724	28.9
Rees B.	Ind	640	25.5
Roberts S.	PC	513	-
Richards W.	Ind	176	-

Turnout 88.0 16.6

Llantrisant Town (11713)⁷

		vote	share
Preston G.	Lab	1,934	37.3
Harrison D.	Lab	1,882	-
Davies J.	Lab	1,755	-
Cann R.	Lab	1,711	-
James N.	Lab	1,652	-
Hughes C.	Lab	1,598	-
Nicholas D.	Lab	1,526	-
Bowen I.	PC	1,339	25.8
Taylor W.	Con	1,318	25.4
Duggan T.	Con	1,184	-
Harding M.	Con	1,184	-
Norman R.	PC	1,156	-
Kutner V.	Con	1,140	-
Landgrebe F.	Con	1,033	-
Stark G.	Con	1,014	-
Kennard R.	PC	955	-
Collings M.	PC	902	-
Canning J.	PC	886	-
Morris G.	PC	863	-
Bushell B.	SDP	592	11.4

Turnout 44.2 11.5

Llantwit Fardre (7456)⁵

		vote	share
Watts A.	Lab	1,449	37.0
Butler R.	Lab	1,297	-
Arnold J.	Lab	1,214	-
Thomas T.	Lab	1,155	-
Rees D.	Lab	1,114	-
Rogers B.	SDP	1,032	26.3
Davies R.	PC	945	24.1
Hewitt P.	SDP	822	-
Watkins D.	PC	749	-
Richards J.	SDP	696	-
Lewis A.	PC	665	-
Thomas E.	PC	593	-
Wright G.	SDP	582	-
Reilly D.	PC	544	-
Bunnage R.	Con	493	12.6
Bunnage J.	Con	486	-
Sidman B.	Con	456	-

Turnout 52.6 10.6

Peterston-Super-Montem (2726)

		vote	share
Hughes A.	Ind	370	40.4
Waters G.	Lab	355	38.8
Gylee I.	Ind	191	20.9

Turnout 33.6 1.6

Pontypridd Town (4389)³

		vote	share
Jones C.	PC	1,208	41.7
Burford J.	Lab	1,135	39.2
Jones J.	Lab	754	-
Beynon S.	Lab	727	-
Davies P.	PC	718	-
Grinter A.	PC	693	-
Murphy B.	Lib	552	19.1
Faul D.	Lib	532	-
Aird C.	Lib	418	-

Turnout 66.0 2.5

Rhondda (3931)³

		vote	share
Anzani J.	Lab	1,186	52.6
Jones D.	Lab	1,115	-
Richards A.	Lab	959	-
James K.	Lib	576	25.6
Griffiths G.	PC	491	21.8
Collins D.	PC	432	-
Green J.	PC	409	-

Turnout 57.3 27.1

Rhydyfelin (7024)⁵

		vote	share
Cox H.	Lab	1,725	34.2
Cheesman W.	Lab	1,535	-
Williams K.	Ind	1,366	27.1
Bunt R.	Lab	1,007	-
Wells A.	Ind	919	-
Mason W.	Lab	911	-
Williams A.	Rate	818	16.2
Burgwyn M.	Rate	737	-
Holland A.	Rate	682	-
Griffiths W.	Ind Lib	670	13.3
Moran R.	PC	458	9.1
Evans D.	PC	426	-
Holloway C.	PC	282	-
Biddulph J.	PC	278	-
Thomas R.	PC	208	-

Turnout 71.7 7.1

Taffs Well (2477)²

		vote	share
Edwards E.	PC	1,023	73.1
Jenkins I.	PC	1,016	-
Toghill A.	Lab/COOP	376	26.9
Toghill R.	Lab/COOP	330	-

Turnout 56.5 46.2

Tonyrefail (7680)⁶

		vote	share
Carter L.	Lab	1,847	39.4
Brinson E.	Ind TEN	1,806	38.5
Roderick T.	Lab	1,695	-
Flower S.	Lab	1,681	-
Cox R.	Lab	1,641	-
Ridley A.	Lab	1,447	-
Roberts R.	Lab	1,187	-
Williams R.	PC	1,036	22.1
Minty C.	PC	505	-
Evans E.	PC	489	-
Bradley G.	PC	432	-

Turnout 61.1 0.9

Trallwn (3143)³

		vote	share
Murphy M.	Lib	1,018	62.9
Thomas H.	Lib	916	-
Morris J.	Lib	788	-
Boyce D.	Lab	377	23.3
Fisher S.	Lab	343	-
Edwards D.	PC	224	13.8
Jones C.	PC	178	-
Gregory G.	PC	150	-

Turnout 51.5 39.6

Treforest (2714)²

		vote	share
Jones C.	Lab	595	44.9
Sullivan J.	Ind	503	38.0
Watkins D.	Lab	485	-
Parry J.	Ind	470	-
Watkins E.	PC	226	17.1
Humphreys E.	PC	143	-

Turnout 48.8 6.9

Taff-Ely 1987

Beddau (2311)²

		vote	share
Cann R.	Lab	508	68.3
Davies J.	Lab	450	-
Dobbin M. Ms.	PC	236	31.7
Evans W.	PC	205	-
Turnout		32.2	36.6

Bryнна (2517)

		vote	share
Waters G.	Lab	538	53.6
Hughes A.	Ind	465	46.4
Turnout		39.8	7.3

Church Village (2266)

		vote	share
Arnold J.	Lab	527	56.1
Withey G.	SDP	234	24.9
Caiach S.	PC	179	19.0
Turnout		41.5	31.2

Cilfnydd (2038)

		vote	share
Belzak S.	SDP	583	51.3
Bennett K.	Lab	433	38.1
Gould A.	Ind Lab	120	10.6
Turnout		55.7	13.2

Creigiau (1684)

		vote	share
Willis C. Ms.	PC	382	50.2
Rees B.	Con	379	49.8
Turnout		45.2	0.4

Gilfach Goch (2636)²

		vote	share
Jury G.	Res	1,152	65.2
Roberts A.	Res	770	-
Lewis C.	Lab	615	34.8
Hunt J.	Lab	566	-
Turnout		67.0	30.4

Glyncoch (2241)

		vote	share
Burford J. Ms.	Lab	997	93.2
Grinter A.	PC	73	6.8
Turnout		47.7	86.4

Graig (1976)²

		vote	share
Clarke D.	Ind	412	36.6
Hurley D.	Lab	388	34.4
Lewis E.	Lab	334	-
Fox R.	SDP	327	29.0
Fox M.	SDP	315	-
Turnout		57.0	2.1

Hawthorn (1717)

		vote	share
Wells A.	Ind	495	56.4
Lewis J.	Lab	382	43.6
Turnout		51.1	12.9

Ilan (1210)

		vote	share
Cox H.	Lab	387	79.3
Thomas R.	PC	101	20.7
Turnout		40.3	58.6

Llanharan (1871)

		vote	share
Williams T.	Lab	493	63.6
Harris L.	Ind	282	36.4
Turnout		41.4	27.2

Llanharry (1755)

		vote	share
Davies J. Ms.	PC	491	53.6
Jordan V.	Lab	289	31.6
Morgan M.	Ind	136	14.8
Turnout		52.2	22.1

Llantrisant Town (2954)²

		vote	share
Preston G.	Lab	630	41.5
James N.	Lab	620	-
Beattie D.	SDP	542	35.7
Barry L.	PC	347	22.8
Turnout		51.4	5.8

Llantwit Fardre (3155)²

		vote	share
Watkins D.	PC	515	36.0
Bunnage R.	Ind	469	32.8
Thomas T.	Lab	446	31.2
Thompson C.	PC	424	-
Stacey G.	Lab	400	-
Turnout		45.3	3.2

Pentyrch (2299)

		vote	share
Henderson M. Ms.	Con	600	46.4
Priday E.	Lab	456	35.3
Williams P.	PC	236	18.3
Turnout		56.2	11.1

Pont-Y-Clun (3384)²

		vote	share
James V.	PC	0	0.0
Norman R.	PC	0	-
Turnout		0.0	0.0

Pontypridd Town (2357)

		vote	share
Jones C.	PC	607	52.8
Carter S.	Lab	305	26.5
Gibbon C.	Rate	237	20.6
Turnout		48.7	26.3

Rhondda (3547)²

		vote	share
Jones D.	Lab	1,115	70.5
Richards A.	Lab	1,051	-
Green J.	PC	467	29.5
Griffiths G. Ms.	PC	438	-
Turnout		44.6	41.0

Rhydfelen Central (2204)

		vote	share
Gooch B.	Lab	631	59.5
Jones C.	Ind	430	40.5
Turnout		48.1	18.9

Rhydfelen Lower (1359)

		vote	share
Cheesman W.	Lab	543	82.3
Biddulph J.	Ind	59	8.9
Vaughan G.	SDP	58	8.8
Turnout		48.6	73.3

Taffs Well (2580)²

		vote	share
Edwards G.	PC	1,066	76.1
Jenkins I.	PC	967	-
Tomlinson C.	Ind	335	23.9
Turnout		54.3	52.2

Talbot Green (2017)

		vote	share
Bowen I.	PC	599	66.0
Harrison D.	Lab	309	34.0
Turnout		45.0	31.9

Ton-Teg (3757)²

		vote	share
Watts A.	Lab	887	42.4
Davies R.	PC	668	31.9
Butler R.	Lab	636	-
Withey C.	SDP	539	25.7
Reilley D.	PC	429	-
Turnout		55.7	10.5

Tonyrefail East (4287)³

		vote	share
Brinson E.	Ind	1,021	40.3
McDonald R.	Lab	884	34.9
Roberts R.	Lab	792	-
Roderick T.	Lab	748	-
Williams A.	PC	626	24.7
Patrick F.	PC	376	-
Turnout		59.0	5.4

Tonyrefail West (3381)²

		vote	share
Carter L. Ms.	Lab	985	70.2
Flower S.	Lab	933	-
Nelson H.	PC	308	22.0
Cook P.	PC	225	-
Roche B.	SDP	110	7.8
Turnout		41.5	48.3

Trallwng (3197)²

		vote	share
Thomas H.	Lib	832	57.7
Morris J.	Lib	736	-
Boyce D.	Lab	609	42.3
Hughes K.	Lab	559	-
Turnout		45.1	15.5

Treforest (3213)²

		vote	share
Williams A. Ms.	Lab	903	45.8
Jones E.	Lab	753	-
Sullivan J.	Ind	571	28.9
Parry J.	SDP	499	25.3
Turnout		61.4	16.8

Tyn-Y-Nant (2852)²

		vote	share
Nicholas D.	Lab	847	77.4
Hughes C.	Lab	822	-
Greedy R.	SDP	247	22.6
Thomas W.	SDP	227	-
Turnout		38.4	54.8

Taff-Ely 1991

Beddau (2374)²

		vote	share
Williams I. Ms.	Lab	403	50.8
Dobbin M. Ms.*	PC	390	49.2
Wrench M. Ms.	Lab	387	-
Lewis W.	PC	327	-
Turnout		35.3	1.6

Bryнна (2538)

		vote	share
Hughes A.	Ind	568	54.0
Waters G.*	Lab	483	46.0
Turnout		42.0	8.1

Church Village (2263)

		vote	share
Thomas F.	Lab	583	62.9
Watkins D. Ms.	PC	344	37.1
Turnout		41.3	25.8

Gilfnydd (2103)			
		vote	share
Belzak S.*	LD	688	67.5
Dumphry A.	Lab	332	32.5
Turnout		49.1	34.9
Creigiau (2006)			
		vote	share
Williams A.	Con	456	43.6
Willis C. Ms.*	PC	374	35.7
Stone D.	Lab	217	20.7
Turnout		52.4	7.8
Gilfach Goch (2345)²			
		vote	share
Lewis C.	Lab	0	0.0
Roberts A.*	Res	0	0.0
Turnout		0.0	0.0
Glyncoch (2215)			
		vote	share
Burford J. Ms.*	Lab	816	76.5
Williams G.	PC	250	23.5
Turnout		48.9	53.1
Graig (1944)²			
		vote	share
Fox R.	Ind SDP	651	40.7
Clarke D.*	Ind	494	30.9
Hurley D.*	Lab	455	28.4
Turnout		51.1	9.8
Hawthorn (1651)			
		vote	share
Wells A.*	Ind	366	48.2
Jones E. Ms.	Lab	294	38.7
Jones S.	Con	99	13.0
Turnout		46.9	9.5
Ilan (1200)			
		vote	share
Cox H.*	Lab	346	75.5
Humphries R.	PC	112	24.5
Turnout		38.9	51.1
Llanharan (2043)			
		vote	share
Edwards T.	Lab	446	60.3
Harris L.	Ind	294	39.7
Turnout		36.3	20.5
Llanharry (1770)			
		vote	share
Davies J. Ms.*	PC	700	78.3
Jordan V.	Lab	194	21.7
Turnout		50.5	56.6
Llantrisant Town (3021)²			
		vote	share
Wilkins I.	PC	700	42.6
James M. Ms.	Lab	603	36.7
Watts E.	Lab	468	-
Williams R.	PC	429	-
Marchant M. Ms.	LD	342	20.8
Turnout		47.6	5.9
Llantwit Fardre (3960)²			
		vote	share
Watkins D.*	PC	639	38.7
Watts A.*	Lab	547	33.2
Stacey G.	Lab	510	-
Bunnage R.	Ind	464	28.1
Watson D.	PC	447	-
Turnout		36.8	5.6

Pentyrch (2647)			
		vote	share
Henderson M. Ms.*	Con	666	46.9
Priddy E.	Lab	534	37.6
Bestic P. Ms.	PC	147	10.4
Hartog T. Ms.	PC	72	5.1
Turnout		53.7	9.3
Pont-Y-Clun (3467)²			
		vote	share
James V.*	PC	1,239	61.3
Norman R.*	PC	1,233	-
Kingham D.	Lab	489	24.2
Edwards R.	Lab	469	-
Parsons V.	Con	293	14.5
Turnout		56.7	37.1
Pontypridd Town (2375)			
		vote	share
Llywelyn G.	PC	728	57.4
Carter S.	Lab	375	29.6
Gibbon C.	Ind	166	13.1
Turnout		54.1	27.8
Rhondda (3557)²			
		vote	share
Jones C.*	PC	932	54.7
Griffiths G. Ms.	PC	912	-
Randall M. Ms.	Lab	771	45.3
Turnout		45.4	9.5
Rhydfelen Central (2246)			
		vote	share
Gooch B.*	Lab	598	67.4
Mathews R.	Ind	289	32.6
Turnout		39.9	34.8
Rhydfelen Lower (1321)			
		vote	share
Cheesman W.*	Lab	480	71.9
Hillard R. Ms.	Ind Lab	188	28.1
Turnout		51.6	43.7
Taffs Well (2741)²			
		vote	share
Jenkins I.*	PC	910	61.2
Bunn J.*	PC	817	-
Lintern J.	Lab	578	38.8
Toghill A.	Lab	501	-
Turnout		55.0	22.3
Talbot Green (1971)			
		vote	share
Dunstall A.	PC	706	68.3
Shaffers B. Ms.	Lab	327	31.7
Turnout		53.4	36.7
Ton-Teg (3732)²			
		vote	share
Davies R.	PC	953	56.9
Reilly D.	PC	821	-
David W.	Lab	722	43.1
Kear M.	Lab	565	-
Turnout		43.5	13.8
Tonyrefail East (4548)³			
		vote	share
Evans G.*	Lab	1,155	63.8
Roberts R.*	Lab	950	-
McDonald R.*	Lab	861	-
Davies D.	PC	655	36.2
Williams A.	PC	639	-
Turnout		38.8	27.6
Tonyrefail West (3434)²			
		vote	share
Carter L. Ms.*	Lab	919	61.0
Flower S.*	Lab	808	-
Williams R.	PC	588	39.0
Turnout		42.5	22.0

Trallwng (3143)²			
		vote	share
Bevan A.	Lab	642	38.3
Pritchard M. Ms.	LD	606	36.2
Chapman C. Ms.	Lab	560	-
Southgate A.	LD	447	-
Thomas A.	PC	428	25.5
Edwards B. Ms.	PC	391	-
Turnout		51.9	2.1
Treforest (3259)²			
		vote	share
Williams A. Ms.*	Lab	745	41.1
Otley A.	Ind	581	32.1
Jones E.*	Lab	546	-
Richards A.	PC	486	26.8
Turnout		55.6	9.1
Tyn-Y-Nant (2799)²			
		vote	share
Hughes C.*	Lab	897	72.5
Nicholas D.*	Lab	880	-
Mahoney T.	PC	340	27.5
Canning J.	PC	314	-
Turnout		45.1	45.0

