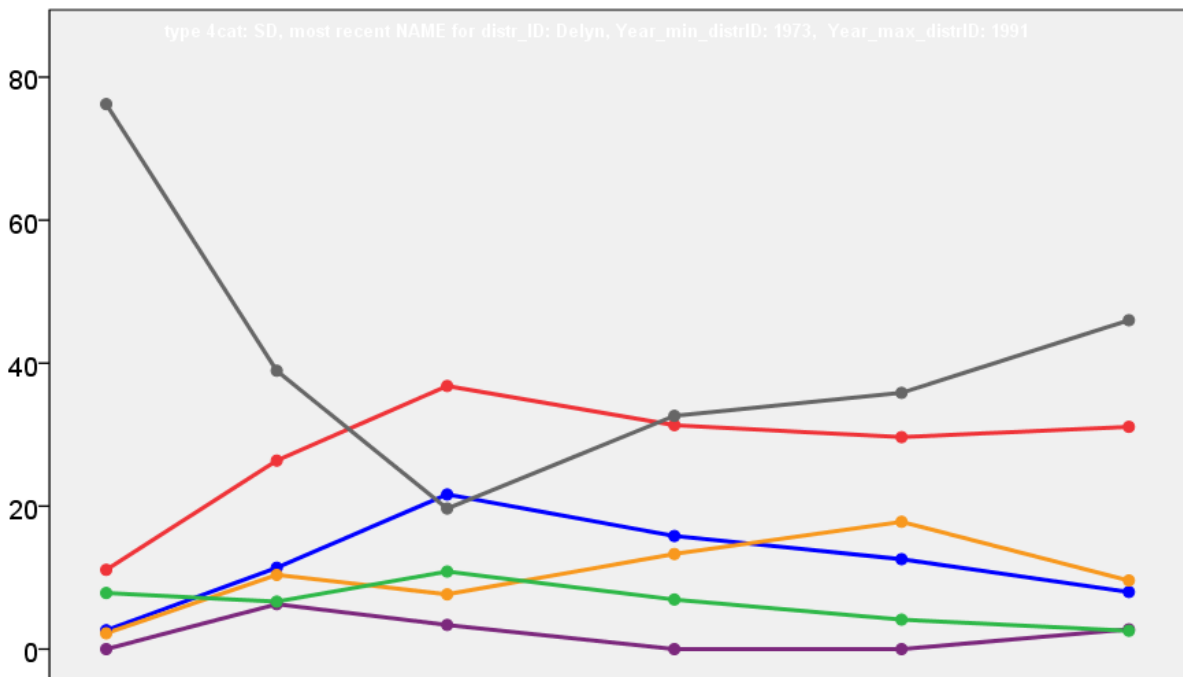


Delyn Welsh District Council Elections Results 1973-1991



Colin Rallings and Michael Thrasher
The Elections Centre
Plymouth University

The information contained in this report has been obtained from a number of sources. Election results from the immediate post-reorganisation period were painstakingly collected by Alan Willis largely, although not exclusively, from local newspaper reports. From the mid-1980s onwards the results have been obtained from each local authority by the Elections Centre. The data are stored in a database designed by Lawrence Ware and maintained by Brian Cheal and others at Plymouth University. Despite our best efforts some information remains elusive whilst we accept that some errors are likely to remain. Notice of any mistakes should be sent to elections@plymouth.ac.uk. The results sequence can be kept up to date by purchasing copies of the annual Local Elections Handbook, details of which can be obtained by contacting the email address above.

Front cover: the graph shows the distribution of percentage vote shares over the period covered by the results. The lines reflect the colours traditionally used by the three main parties. The grey line is the share obtained by Independent candidates while the purple line groups together the vote shares for all other parties.

Rear cover: the top graph shows the percentage share of council seats for the main parties as well as those won by Independents and other parties. The lines take account of any by-election changes (but not those resulting from elected councillors switching party allegiance) as well as the transfers of seats during the main round of local election.

The lower graph shows for each main round of local elections the overall percentage turnout (solid line), the percentage of women candidates standing at (dotted line) and the percentage of women among those elected (hashed line).

Delyn 1973

Caerwys (1600)

		vote	share
Matthews E.	Ind	529	61.1
Davies J.	Ind	337	38.9
Turnout		54.1	22.2

Holywell E ()²

		vote	share
Griffiths E.	Lab	929	100.0
Hughes A.	Lab	823	-
Turnout		0.0	63.7

Leeswood ()

		vote	share
Tatum R.	Ind	0	0.0
Tatum R.	Ind	0	0.0
Turnout		0.0	0.0

Ward 1 ()

		vote	share
Joyce E.	Ind	967	36.9
Jones W.	Ind	882	33.7
Williams R.	Ind	772	29.5
Lovatt J.	Ind	0	0.0
Jones R.	Ind	0	0.0
Pritchard A.	Ind	0	0.0
Turnout		0.0	3.2

Ward 10 ()

		vote	share
Hughes L.	Ind	161	54.9
Jones E.	PC	132	45.1
Turnout		0.0	9.9

Ward 11 ()

		vote	share
Bithel C.	Ind	270	41.9
Evans J.	Lib	249	38.6
McHugh L.	Ind	126	19.5
Turnout		0.0	3.3

Ward 12 ()²

		vote	share
Evans F.	PC	0	0.0
Glazier M.	Ind	0	0.0
Hughes F.	Ind	0	-
Turnout		0.0	0.0

Ward 13 ()

		vote	share
Roberts E.	Ind	493	100.0
Jenkins R.	PC	0	0.0
Turnout		0.0	100.0

Ward 14 ()

		vote	share
Davies E.	Ind	345	71.7
Evans F.	PC	136	28.3
Turnout		0.0	43.5

Ward 15 ()²

		vote	share
Jones E.	Ind	945	100.0
McGill H.	Ind	854	-
Manning M.	Lab	0	0.0
Peters P.	Ind	0	-
Morrison R.	Ind	0	-
Turnout		0.0	100.0

Ward 16 ()

		vote	share
Roberts G.	Ind	0	0.0
Bradley D.	Lab	0	0.0
Turnout		0.0	0.0

Ward 17 ()²

		vote	share
Bownas G.	Ind	566	100.0
Wilson L.	Ind	361	-
Jones G.	Ind	0	-
Price T.	Ind	0	-
Thompson E.	PC	0	0.0
Salisbury G.	Ind	0	-
Turnout		0.0	100.0

Ward 18 ()

		vote	share
Davies J.	Ind	0	0.0
Matthews E.	Ind	0	0.0
Turnout		0.0	0.0

Ward 2 ()

		vote	share
Evans G.	Ind	515	53.2
Johnson J.	Ind	453	46.8
Postle E.	Ind	0	0.0
Mees N.	Ind	0	0.0
Turnout		0.0	6.4

Ward 22 ()

		vote	share
Evans R.	Ind	0	0.0
Edwards D.	Lab	0	0.0
Carson G.	Ind	0	0.0
Turnout		0.0	0.0

Ward 23 ()³

		vote	share
Kendrick K.	Lab	0	0.0
Jones E.	PC	0	0.0
Whitby E.	Ind	0	-
Davies K.	Ind	0	0.0
Hughes D.	Ind	0	-
Turnout		0.0	0.0

Ward 3 ()

		vote	share
Carroll F.	Con	296	100.0
Clark R.	Ind	0	0.0
Turnout		0.0	100.0

Ward 4 ()²

		vote	share
Lovelock A.	Lab	843	100.0
Mesham H.	Lab	754	-
Watkins J.	Ind	0	-
Bithell T.	Ind	0	0.0
Harwood T.	Ind	0	-
Turnout		0.0	100.0

Ward 5 ()

		vote	share
Doleman B.	Ind	601	100.0
Davies H.	Ind	0	0.0
Clark H.	Ind	0	0.0
Bennett F.	Ind	0	0.0
Turnout		0.0	100.0

Ward 6 ()

		vote	share
Round W.	Lab	404	100.0
Renshaw R.	Ind	0	0.0
Turnout		0.0	100.0

Ward 7 ()²

		vote	share
Hughes A.	Lab	0	-
Edwards J.	Lab	0	0.0
McKay E.	PC	0	0.0
Turnout		0.0	0.0

Ward 8 ()²

		vote	share
Risley M.	Ind	611	100.0
Hughes R.	Ind	416	-
Jones T.	Ind	0	-
Lloyd T.	Lab	0	0.0
Turnout		0.0	100.0

Ward 9 ()²

		vote	share
Roberts H.	PC	614	100.0
Bellamie K.	Lab	0	0.0
Flaxman P.	Ind	0	0.0
Owen B.	Lab	0	-
Turnout		0.0	100.0

Delyn 1976

Bagillt East (1850)²

		vote	share
Clarke H.	Lab	0	0.0
Howarth T.	Lab	0	-
Turnout		0.0	0.0

Bagillt West (932)

		vote	share
Round W.	Lab	399	65.1
Davies W.	PC	214	34.9
Turnout		65.8	30.2

Brynford (2271)²

		vote	share
Bownass S.*	Ind	809	75.8
Wilson L.*	Ind	650	-
Allen L.	Lib	258	24.2
Wild J.	Lib	232	-
Turnout		47.0	51.6

Caerwys (1343)

		vote	share
Matthews E.	Ind	0	0.0
Turnout		0.0	0.0

Carmel (3011)³

		vote	share
Jones E.	PC	741	29.1
Whitley E.	Ind	569	22.3
Philip E.	Con	560	22.0
Griffiths J.	Ind	546	-
Jones W.	Ind	400	-
Braithwaite G.	Lib	367	14.4
Davies K.	Lab	313	12.3
Turnout		84.7	6.7

Cilcain (2215)²

		vote	share
Williams W.	Ind	729	100.0
Rich T.	Ind	577	-
Tattum G.	Ind	441	-
James E.	Ind	330	-
Turnout		32.9	21.9

Ffynnongroen (2493)²

		vote	share
Edwards D.	Ind	654	74.7
Owen M.	Ind	644	-
Baker J.	Rate	221	25.3
Brown B.	Ind	214	-
Groome M.	Ind	115	-
Turnout		35.1	49.5

Flint Castle (642)

		vote	share
Carroll F.	Con	239	58.2
Jones D.	Lab	172	41.8
Turnout		64.0	16.3

Flint Coleshill (2637) ²			
		vote	share
Lovelock A.	Lab	773	57.9
Messham H.	Lab	596	-
Wynne E.	Con	563	42.1
Turnout		50.7	15.7
Flint Oakenhold (2763) ³			
		vote	share
Williams R.	Lab	748	64.9
Joyce E.	Lab	728	-
Jones W.	Lab	669	-
Jones B.	Con	404	35.1
Turnout		41.7	29.9
Flint Trelawny (2521) ²			
		vote	share
Humphreys K.	Ind	634	43.0
Evans G.	Ind	580	-
Johnson J.	Lab	476	32.3
Dymont M.	Lab	434	-
Pritchard A.	Con	364	24.7
Turnout		58.5	10.7
Greenfield (1816) ²			
		vote	share
Risley M.	Ind	646	46.5
Petrie J.	Lab	454	32.7
Turley M.	PC	288	20.7
Jones G.	Lab	268	-
Turnout		76.4	13.8
Gwaenysgor (998)			
		vote	share
Carson G.	Ind	399	57.2
Griffiths R.	Ind	299	42.8
Turnout		69.9	14.3
Holywell East (2414) ²			
		vote	share
Griffiths P.	Lab	0	0.0
Hughes A.	Lab	0	-
Turnout		0.0	0.0
Holywell West (2302) ²			
		vote	share
Caithness K.	Lab	0	0.0
Roberts G.	PC	0	0.0
Turnout		0.0	0.0
Leeswood (1423)			
		vote	share
Roberts S.	Ind	475	54.6
Lyons A.	Lab	395	45.4
Turnout		61.1	9.2
Mold (850)			
		vote	share
Davies E.	Lab	299	65.3
Willman G.	Lib	159	34.7
Turnout		53.9	30.6
Mold East (1129)			
		vote	share
Bithell C.	Lab	0	0.0
Turnout		0.0	0.0
Mold North (866)			
		vote	share
Humphreys J.	Ind	316	59.1
Davies P.	Lab	219	40.9
Turnout		61.8	18.1
Mold South (1495)			
		vote	share
Barrell R.	Ind	388	45.6
Evans G.	Lib	329	38.7
Barwell W.	Lab	133	15.6
Turnout		56.9	6.9

Mold West (1584) ²			
		vote	share
Corbett K.	Ind	715	68.5
Glazier M.	Ind	564	-
Williams M.	Lab	329	31.5
Williams E.	Lab	268	-
Turnout		65.9	37.0
Mynydd Isa (4091) ²			
		vote	share
Baldwin K.	Rate	955	47.5
Dodd R.	Lib	830	41.3
Jones E.	Lib	804	-
Houlbrook R.	Rate	771	-
Munro D.	Lab	225	11.2
Armitage B.	Lab	221	-
Turnout		49.1	6.2
Nercwys (1240)			
		vote	share
Roberts G.	Ind	0	0.0
Turnout		0.0	0.0
Northop (2381) ²			
		vote	share
Fazackerly R.	Ind	0	0.0
Sharps T.	Ind	0	-
Turnout		0.0	0.0
Delyn 1979			
Ward 1 (3000) ³			
		vote	share
Joyce E.	Lab	1,598	67.4
Jones W.	Lab	1,355	-
Jones D.	Lab	1,222	-
Pritchard A.	Con	772	32.6
Turnout		79.0	34.9
Ward 10 ()			
		vote	share
Humphreys J.	Ind	395	51.3
Davies M.	Lab	375	48.7
Turnout		0.0	2.6
Ward 11 ()			
		vote	share
Bithell R.	Lab	0	0.0
Turnout		0.0	0.0
Ward 12 () ²			
		vote	share
Corbett K.	Ind	0	0.0
Burrows J.	Lab	0	0.0
Turnout		0.0	0.0
Ward 13 (1702)			
		vote	share
Glazier M.	Ind	878	61.4
Jones D.	PC	552	38.6
Turnout		84.0	22.8
Ward 14 ()			
		vote	share
Davies E.	Lab	0	0.0
Turnout		0.0	0.0
Ward 15 (4314) ²			
		vote	share
Dodd R.	Lib	2,349	54.5
Willman G.	Lib	1,465	-
Burley J.	Con	1,020	23.7
McNulty M.	Lab	938	21.8
Turnout		99.8	30.9

Ward 16 ()			
		vote	share
Roberts G.	Ind	0	0.0
Turnout		0.0	0.0
Ward 17 () ²			
		vote	share
Bownass G.	Ind	0	0.0
Williams G.	Lab	0	0.0
Turnout		0.0	0.0
Ward 18 ()			
		vote	share
Matthews E.	Ind	0	0.0
Turnout		0.0	0.0
Ward 19 () ²			
		vote	share
Smith J.	Ind	0	-
Williams E.	Ind	0	0.0
Turnout		0.0	0.0
Ward 2 (2848) ²			
		vote	share
Evans D.	Ind	1,092	38.1
Cryer R.	Con	982	34.3
Johnson J.	Lab	790	27.6
Parry S.	Lab	602	-
Turnout		100.6	3.8
Ward 20 (2533) ²			
		vote	share
Evans D.	Ind Lab	1,036	54.0
Owen M.	Lab	882	46.0
Edwards D.	Lab	840	-
Turnout		75.7	8.0
Ward 21 ()			
		vote	share
Roberts S.	Ind	0	0.0
Turnout		0.0	0.0
Ward 22 (1015)			
		vote	share
Carson G.	Ind	681	82.5
Oram A.	Lab	144	17.5
Turnout		81.3	65.1
Ward 23 (3073) ³			
		vote	share
Jones E.	PC	1,161	27.8
Lloyd K.	Lab	1,033	24.8
Whitley E.	Ind	1,018	24.4
Philip E.	Con	960	23.0
Turnout		135.8	3.1
Ward 24 () ²			
		vote	share
Sharps L.	Ind	0	0.0
Fazackerley R.	Ind	0	-
Turnout		0.0	0.0
Ward 3 (593)			
		vote	share
Carrol F.	Con	298	60.4
Baker L.	Lab	195	39.6
Turnout		83.1	20.9
Ward 4 (2696) ²			
		vote	share
Lovelock A.	Ind	1,265	39.0
Messham H.	Lab	1,084	33.4
Johnson J.	Con	892	27.5
Turnout		120.2	5.6

Ward 5 (1951) ²			
		vote	share
Howorth H.	Lab	978	70.2
Clarke H.	Lab	861	-
Davies W.	PC	415	29.8
Turnout		71.4	40.4

Ward 6 (909)			
		vote	share
Round W.	Lab	477	61.6
Roberts C.	PC	297	38.4
Turnout		85.1	23.3

Ward 7 (2422) ²			
		vote	share
Parry M.	Con	1,130	50.3
Griffiths P.	Lab	1,116	49.7
Hughes A.	Lab	928	-
Turnout		92.7	0.6

Ward 8 (1840) ²			
		vote	share
Scragg G.	Lab	1,080	65.2
Petrie J.	Lab	743	-
Kelly J.	Con	577	34.8
Turnout		90.1	30.4

Ward 9 (2278) ²			
		vote	share
Roberts H.	PC	900	41.2
Roberts T.	Ind	694	31.8
Caithness K.	Lab	589	27.0
Wilkes R.	Lab	581	-
Turnout		95.8	9.4

Delyn 1983

Argoed (4638) ²			
		vote	share
Brackenbury N.	Lib	979	40.5
Willman G.	Lib	979	-
Challinor H.	Con	895	37.0
Daley J.	Lab	543	22.5
Turnout		52.1	3.5

Bagillt East (1860) ²			
		vote	share
Howorth H.	Lab	0	-
Clarke H.	Lab	0	0.0
Turnout		0.0	0.0

Bagillt West (900)			
		vote	share
Roberts J.	Lab	0	0.0
Turnout		0.0	0.0

Brynford (2554) ²			
		vote	share
Bownass G.	Ind	1,006	100.0
Pearce I.	Ind	690	-
Blunt R.	Ind	167	-
Turnout		39.4	11.0

Caerwys (1609)			
		vote	share
Mathews E.	Ind	0	0.0
Turnout		0.0	0.0

Carmel (3131) ³			
		vote	share
Ellis E.	Ind	882	28.9
Lloyd K.	Lab	781	25.6
Jones E.	PC	768	25.2
Hughes A.	Lib/SDP	622	20.4
Whitley E.	Lab	572	-
Owen-Jones L.	Lib/SDP	455	-
Turnout		97.5	3.3

Cilcain (2522) ²			
		vote	share
Williams E.	Ind	711	100.0
Smith J.	Ind	613	-
Williams S.	Ind	486	-
Smith A.	Ind	363	-
Turnout		28.2	-9.8

Flint Castle (645)			
		vote	share
Carrroll F.	Con	261	61.3
Hopkins J.	Lab	165	38.7
Turnout		66.0	22.5

Flint Coleshill (2861) ²			
		vote	share
Johnson J.	Lab	748	72.8
Wedge J.	Lab	493	-
Davies W.	Ind	280	27.2
Turnout		35.9	45.5

Flint Oakenhold (3058) ³			
		vote	share
Jones D.	Lab	0	0.0
Jones W.	Lab	0	-
Joyce E.	Lab	0	-
Turnout		0.0	0.0

Flint Trelawny (2960) ²			
		vote	share
Evans D.	Lab	773	45.3
Parry S.	Lab	524	-
Cryer R.	Ind	492	28.8
Jones A.	Lib/SDP	441	25.8
Turnout		57.6	16.5

Greenfield (1893) ²			
		vote	share
Parry D.	Lab	0	0.0
Petrie J.	Lab	0	-
Turnout		0.0	0.0

Gronant (2597) ²			
		vote	share
Evans D.	Lab	749	59.9
Roberts T.	Ind	501	40.1
Owen M.	Lab	429	-
Parry V.	Ind	334	-
Turnout		48.1	19.8

Gwaenysgor (1077)			
		vote	share
Carson G.	Ind	290	38.0
Williams W.	Lab	254	33.3
Steele-Mortimer N.	Con	219	28.7
Turnout		70.8	4.7

Gwenynmydd (1359)			
		vote	share
Roberts G.	Ind	0	0.0
Turnout		0.0	0.0

Holywell East (2433) ²			
		vote	share
Parry E.	Con	972	51.1
Griffiths P.	Lab	932	48.9
Griffiths J.	Lab	594	-
Davies M.	Con	435	-
Turnout		78.3	2.1

Holywell West (2352) ²			
		vote	share
Roberts H.	PC	790	49.3
Roberts E.	Con	425	26.5
Jones J.	Lab	387	24.2
Davies R.	Con	293	-
Jones G.	Lab	286	-
Turnout		68.1	22.8

Leeswood (1583)			
		vote	share
Roberts S.	Ind	664	66.8
Lyons A.	Lab	330	33.2
Turnout		62.8	33.6

Mold (931)			
		vote	share
Dodd R.	Lib	256	45.0
Laing J.	Lab	187	32.9
Drake C.	Con	126	22.1
Turnout		61.1	12.1

Mold East (1160)			
		vote	share
Bithell R.	Lab	0	0.0
Turnout		0.0	0.0

Mold North (980)			
		vote	share
Davies M.	Lab	397	66.2
Rowley W.	Con	203	33.8
Turnout		61.2	32.3

Mold South (1779)			
		vote	share
Cattermoul A.	Lib	496	52.0
Holland M.	Con	458	48.0
Turnout		53.6	4.0

Mold West (1567) ²			
		vote	share
Corbett K.	Ind	618	46.4
Fellows L.	Lab	514	38.6
Evans J.	Lab	288	-
Huxley M.	SDP	199	15.0
Turnout		84.9	7.8

Northop (2685) ²			
		vote	share
Sharps L.	Ind	1,239	81.4
Salisbury D.	Ind	887	-
Orbison D.	Lab	284	18.6
Williams P.	Lab	280	-
Turnout		56.7	62.7

Delyn 1987

Bagillt East (2051) ²			
		vote	share
Roberts J.	Ind	534	56.0
Jones D. Ms.	Ind	499	-
Cartwright C.	Lab	419	44.0
Jones R.	Lab	372	-
Turnout		46.5	12.1

Bagillt West (940)			
		vote	share
Clarke H.	Lab	0	0.0
Turnout		0.0	0.0

Caerwys (1689)			
		vote	share
Mathews.	Ind	752	70.4
Mortlock J.	Ind	316	29.6
Turnout		63.2	40.8

Castle (1820) ²			
		vote	share
Jones G.	Ind	619	54.6
O'Neil T.	Lab	515	45.4
Roberts I.	Lab	439	-
Parry S.	Ind	411	-
Turnout		62.3	9.2

Cilcain (1421)			
		vote	share
Williams E.	Ind	0	0.0
Turnout		0.0	0.0
Coleshill (2555) ²			
		vote	share
Johnson J.	Ind	558	37.3
Moore S.	Con	474	31.7
Williams S.	Lab	462	30.9
Cox D.	Lab	400	-
Wedge J.	Ind	367	-
Turnout		58.5	5.6
Ffynngroyw (1599)			
		vote	share
Evans D.	Lab	606	67.9
Goodrick M.	Con	287	32.1
Turnout		55.8	35.7
Greenfield (1850) ²			
		vote	share
Parry D.	Lab	827	76.1
Petrie J.	Lab	575	-
Stephens G.	SDP	260	23.9
Turnout		58.8	52.2
Gronant (1140)			
		vote	share
Roberts T.	Ind	284	53.9
Oram A.	Lab	243	46.1
Turnout		46.2	7.8
Gwernaffield (1502)			
		vote	share
Smith E. Ms.	Ind	0	0.0
Turnout		0.0	0.0
Gwernymynydd (1342)			
		vote	share
Roberts G.	Ind	602	80.1
Hayes M.	Lab	150	19.9
Turnout		56.0	60.1
Halkyn (2677) ²			
		vote	share
Pearce I.	Ind	799	100.0
Bownass G.	Ind	799	-
Sherratt E.	Ind	578	-
Gregory.	Ind	473	-
Turnout		29.8	81.2
Holywell East (2493) ²			
		vote	share
Parry M.	Con	979	44.3
Davies K. Ms.	Lab	887	40.2
Jones T.	Lab	692	-
Winter J.	SDP	342	15.5
Turnout		88.6	4.2
Holywell West (2276) ²			
		vote	share
Roberts H.	PC	932	46.3
Jones J.	Lab	587	29.2
Thomas G.	Ind	492	24.5
Turnout		88.4	17.2
Leeswood (1588)			
		vote	share
Roberts S.	Ind	683	71.6
Thomas W.	Lab	271	28.4
Turnout		60.1	43.2
Mold Bron Coed (976)			
		vote	share
Dodd R.	SDP	327	51.3
McHugh L.	Lab	186	29.2
Rowley W.	Con	125	19.6
Turnout		65.4	22.1

Mold Central (1100)			
		vote	share
Corbett K.	Ind	403	53.1
Clark M.	Lab	211	27.8
Huxley M.	SDP	145	19.1
Turnout		69.0	25.3
Mold East (1157)			
		vote	share
Bithell R.	Lab	526	69.5
Guest R.	SDP	231	30.5
Turnout		65.4	39.0
Mold North (1355)			
		vote	share
Davies M.	Lab	466	55.2
Cattermoul J.	SDP	378	44.8
Turnout		62.3	10.4
Mold South (1263)			
		vote	share
Cattermoul A.	SDP	549	75.2
Venn P.	Lab	181	24.8
Turnout		57.8	50.4
Mold West (1125)			
		vote	share
Davies P. Ms.	Lab	507	73.7
Davies J.	Ind	181	26.3
Turnout		61.2	47.4
Mostyn (1469)			
		vote	share
Ellis E.	Ind	608	66.4
Partington D.	Lab	307	33.6
Turnout		62.3	32.9
Mynydd Isa East (2284) ²			
		vote	share
Brackenbury N.	SDP	829	60.5
Chatburn E.	SDP	695	-
Jolly I.	Con	542	39.5
Turnout		60.0	20.9
New Brighton (2261) ²			
		vote	share
Doran M.	SDP	930	42.4
Williams I.	Ind	650	29.6
Challinor H.	Con	615	28.0
Turnout		97.1	12.8
Northop (3081) ³			
		vote	share
Sharps L.	Ind	1,330	47.8
Mackey R.	SDP	877	31.5
Higham M.	Ind	853	-
Salisbury D.	Ind	726	-
Pierce G.	Lab	578	20.8
Turnout		90.4	16.3
Oakenholt (2328) ²			
		vote	share
Joyce E.	Ind	846	63.5
Jones D.	Ind	676	-
Jones W.	Lab	486	36.5
Aldridge L.	Lab	398	-
Turnout		57.2	27.0
Trelawny (2480) ²			
		vote	share
Evans G.	Ind	658	36.0
Howorth H.	Lab	594	32.5
Orlik J.	Con	574	31.4
Roberts K.	Ind	426	-
Turnout		73.6	3.5
Trelawnyd & Gwaenysgor (1338)			
		vote	share
Steele-Mortimer N.	Con	0	0.0
Turnout		0.0	0.0

Whitford (1843)			
		vote	share
Brighton P.	SDP	544	49.9
Jones E.	PC	320	29.4
Jones G.	Con	226	20.7
Turnout		59.1	20.6
Delyn 1991			
1991			
Bagillt East (2143) ²			
		vote	share
Jones D. Ms.*	Ind	499	53.7
Roberts J.*	Ind	484	-
Jones R.	Lab	431	46.3
Williams C.	Lab	353	-
Turnout		64.2	7.3
Bagillt West (942)			
		vote	share
Doleman B.	Lab	248	62.5
Jones W.	Ind Lab	149	37.5
Turnout		42.1	24.9
Caerwys (1813)			
		vote	share
Matthews E.*	Ind	808	81.0
Smith-Locklin M. Ms.	Ind	190	19.0
Turnout		55.0	61.9
Castle (1800) ²			
		vote	share
Roberts I.	Lab	491	47.4
Parry S.*	Ind	286	27.6
Jones G.	Ind	259	-
Williams E.	Ind Lab	258	24.9
Turnout		57.5	19.8
Cilcain (1424)			
		vote	share
Walters P.*	Ind	571	68.8
Isted G.	Lab	259	31.2
Turnout		58.3	37.6
Coleshill (2672) ²			
		vote	share
Johnson J.*	Ind	582	50.2
Cox D.	Lab	577	49.8
Harvey C.	Ind	279	-
Turnout		53.8	0.4
Ffynngroyw (1895)			
		vote	share
Evans D.*	Lab	0	0.0
Turnout		0.0	0.0
Greenfield (1963) ²			
		vote	share
Parry D.*	Lab	0	-
Wilkes D.	Lab	0	0.0
Turnout		0.0	0.0
Gronant (1215)			
		vote	share
Chilton A.	Lab	256	40.8
Seddon R.	Ind	187	29.8
Bell L. Ms.	Ind	85	13.6
Oram A.	Ind	54	8.6
Evans E.	Ind	45	7.2
Turnout		51.6	11.0
Gwernaffield (1506)			
		vote	share
Smith E. Ms.*	Ind	0	0.0
Turnout		0.0	0.0

Gwernymynydd (1356)			
		vote	share
Roberts G.*	Ind	0	0.0
Turnout		0.0	0.0
Halkyn (2988)²			
		vote	share
Bownass G.*	Ind	718	100.0
Pearce I.*	Ind	655	-
Storey J. Ms.	Ind	600	-
Turnout		66.0	74.0
Holywell East (2508)²			
		vote	share
Davies K. Ms.*	Lab	999	54.0
Parry M.*	Ind	852	46.0
Petrie J.	Ind	406	-
Jones D.	Lab	394	-
Turnout		56.0	7.9
Holywell West (2278)²			
		vote	share
Wilcock J. Ms.	Ind	0	0.0
Roberts H.*	PC	0	0.0
Turnout		0.0	0.0
Leeswood (1640)			
		vote	share
Hughes R.	Ind	531	50.0
Roberts S.	Ind	530	50.0
Turnout		64.7	0.1
Mold Bron Coed (1040)			
		vote	share
Dodd R.*	LD	302	52.5
McHugh L.	Lab	273	47.5
Turnout		55.3	5.0
Mold Central (1202)			
		vote	share
Corbett K.*	Ind	0	0.0
Turnout		0.0	0.0
Mold East (1138)			
		vote	share
Bithell R.*	Lab	583	81.9
Ames D.	Con	129	18.1
Turnout		62.6	63.8
Mold North (1368)			
		vote	share
Williams M. Ms.	Lab	294	38.9
Guest R.	LD	268	35.5
Rowley W.	Con	193	25.6
Turnout		55.2	3.4
Mold South (1361)			
		vote	share
Cattermoul A.*	LD	566	80.5
Morris F.	Con	137	19.5
Turnout		51.7	61.0
Mold West (1062)			
		vote	share
Clark M.	Lab	388	67.6
Davies P. Ms.*	Ind Lab	186	32.4
Turnout		54.0	35.2
Mostyn (1484)			
		vote	share
Ellis E.	Ind	645	67.5
Smillie G.	Lab	310	32.5
Turnout		64.4	35.1
Mynydd Isa East (2361)²			
		vote	share
Chatburn E.*	Ind	0	0.0
Brackenbury N.	Ind	0	-
Turnout		0.0	0.0

New Brighton (2288)²			
		vote	share
Doran M.*	Ind	0	-
Williams I.*	Ind	0	0.0
Turnout		0.0	0.0
Northop (3070)³			
		vote	share
Sharps L.*	Ind	1,007	52.2
Davies C. Ms.	Ind	931	-
Mackey R.*	LD	921	47.8
Lamb J.	LD	889	-
Higham M.*	Ind	843	-
Turnout		62.8	4.5
Oakenholt (2370)²			
		vote	share
Joyce E.*	Ind	839	52.2
Jones D.*	Lab	768	47.8
Evans T. Ms.	Lab	244	-
Turnout		56.8	4.4
Trelawny (2675)²			
		vote	share
Howorth H.*	Ind	779	48.4
Evans E.*	Lab	473	29.4
Evans D.	Ind	392	-
Jones C.	Con	359	22.3
Turnout		60.2	19.0
Trelawnyd & Gwaenysgor (1341)			
		vote	share
Steele-Mortimer N.*	Con	578	60.7
Glynn-Heeson P.	Lab	318	33.4
Broughton C. Ms.	Ind	56	5.9
Turnout		71.0	27.3
Whitford (1918)			
		vote	share
Jones E.	PC	550	63.4
Jones G.	Con	317	36.6
Turnout		45.2	26.9

