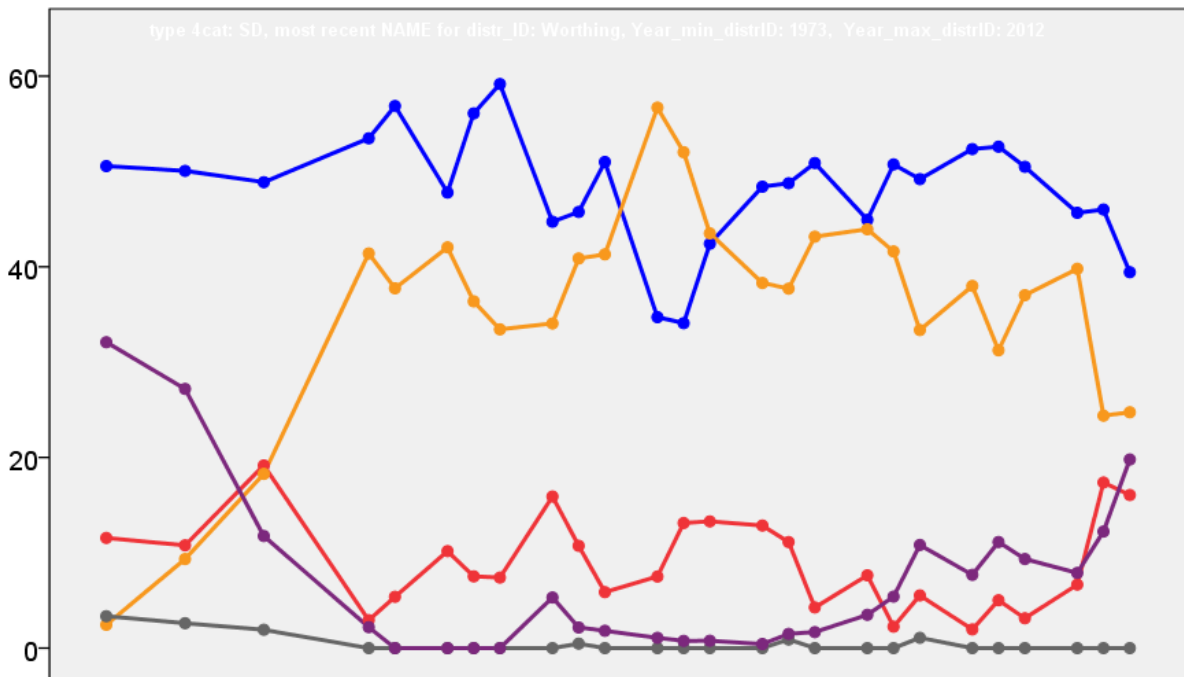


Worthing Borough Council Election Results 1973-2012



Colin Rallings and Michael Thrasher
The Elections Centre
Plymouth University

The information contained in this report has been obtained from a number of sources. Election results from the immediate post-reorganisation period were painstakingly collected by Alan Willis largely, although not exclusively, from local newspaper reports. From the mid-1980s onwards the results have been obtained from each local authority by the Elections Centre. The data are stored in a database designed by Lawrence Ware and maintained by Brian Cheal and others at Plymouth University. Despite our best efforts some information remains elusive whilst we accept that some errors are likely to remain. Notice of any mistakes should be sent to elections@plymouth.ac.uk. The results sequence can be kept up to date by purchasing copies of the annual Local Elections Handbook, details of which can be obtained by contacting the email address above.

Front cover: the graph shows the distribution of percentage vote shares over the period covered by the results. The lines reflect the colours traditionally used by the three main parties. The grey line is the share obtained by Independent candidates while the purple line groups together the vote shares for all other parties.

Rear cover: the top graph shows the percentage share of council seats for the main parties as well as those won by Independents and other parties. The lines take account of any by-election changes (but not those resulting from elected councillors switching party allegiance) as well as the transfers of seats during the main round of local election.

The lower graph shows for each main round of local elections the overall percentage turnout (solid line), the percentage of women candidates standing at (dotted line) and the percentage of women among those elected (hashed line).

Worthing - 1973

Broadwater (7736)³

		vote	share
Chapman F.	Con	1,619	51.6
Goulding K. Ms.	Lab	1,519	48.4
Searle P.	Con	1,477	-
Freelove G.	Con	1,425	-
Paton J.	Lab	1,381	-
Bignell A.	Lab	1,315	-
Turnout		40.6	3.2

Castle (8955)³

		vote	share
Frampton W. Ms.	Con	1,338	49.8
Godfrey G.	Con	1,311	-
Kenton F.	Con	1,280	-
Shears C.	Lab	1,168	43.5
Smith W.	Lab	1,133	-
Bristow A. Ms.	Lab	1,113	-
Miles J.	Comm	181	6.7
Turnout		30.0	6.3

Central (5744)³

		vote	share
Cuer E.	Con	843	42.6
Smith I. Ms.	Con	755	-
Rudd D. Ms.	Con	741	-
Dixon A.	Res	630	31.8
Adams G.	Res	581	-
O'Rourke V.	Res	576	-
Clinch S.	Ind	343	17.3
Newman P.	Lab	163	8.2
Harwood L.	Lab	157	-
Hellenburgh S. Ms.	Lab	144	-
Turnout		34.5	10.8

Durrington (8676)³

		vote	share
Hill D.	Res	1,791	56.7
Edwards D.	Res	1,474	-
Mitton P.	Res	1,385	-
Knight S.	Con	1,367	43.3
Waters A.	Con	1,238	-
Weston H.	Con	1,219	-
Turnout		36.4	13.4

Goring (6974)³

		vote	share
Miller V.	Res	1,797	66.3
Callender R.	Res	1,796	-
Ansell B.	Res	1,785	-
Cambridge V.	Con	914	33.7
Fitzgerald W.	Con	864	-
Walsh C.	Con	799	-
Turnout		38.9	32.6

Heene (6662)³

		vote	share
Lumley P.	Con	1,543	66.7
Ayscough T.	Con	1,517	-
Thomas A.	Con	1,495	-
Richardson J.	Res	770	33.3
Boniface J.	Res	746	-
Gotch C. Ms.	Res	727	-
Turnout		34.7	33.4

Marine (6545)³

		vote	share
Robinson I.	Res	1,499	53.1
Tilney R.	Res	1,410	-
Stafford M. Ms.	Res	1,405	-
Morey D.	Con	1,323	46.9
Fair H.	Con	1,319	-
Piggott H.	Con	1,315	-
Turnout		43.1	6.2

Offington (8109)³

		vote	share
Clapp R.	Con	2,297	80.8
Elliott S.	Con	2,233	-
Scott C. Ms.	Con	2,192	-
Johnstone J. Ms.	Ind	546	19.2
Turnout		35.1	61.6

Selden (6188)³

		vote	share
Strudwick A.	Res	1,076	50.4
Brackley H.	Res	1,056	-
Laverick P.	Res	1,028	-
Hammond F.	Con	838	39.3
Lephard N. Ms.	Con	731	-
Prestwich N. Ms.	Con	701	-
Syphas A.	Lab	221	10.4
Mills S.	Lab	213	-
Turnout		34.5	11.1

West Tarring (7798)³

		vote	share
Yates H.	Con	1,359	48.6
Davey J.	Con	1,333	-
Stutchbury R.	Con	1,264	-
Oxley J. Ms.	Res	787	28.1
Schoch-			
Claydon D. Ms.	Res	751	-
Ross B.	Res	725	-
Reed S.	Lib	650	23.2
Higson A.	Lib	595	-
Campbell D.	Lib	565	-
Turnout		35.9	20.5

Worthing - 1976

Broadwater (7516)³

		vote	share
Clare A.	Lib	1,308	34.2
Bettelley B. Ms.	Con	1,244	32.6
Carter N.	Con	1,236	-
Searle P.	Con	1,233	-
Campbell D.	Lib	1,086	-
Dockerty A.	Lib	1,062	-
Goulding K. Ms.	Lab	905	23.7
Featherstone J. Ms.	Lab	652	-
Pidgeon F.	Lab	635	-
Long F.	Ind	364	9.5
Turnout		50.8	1.7

Castle (8931)³

		vote	share
Frampton W. Ms.	Con	1,603	51.6
Cambridge V.	Con	1,578	-
Yorke J.	Con	1,548	-
Bignell A.	Lab	1,501	48.4
Drummond B. Ms.	Lab	1,490	-
Perry P. Ms.	Lab	1,439	-
Turnout		34.8	3.3

Central (5433)³

		vote	share
Cuer E.	Con	926	46.7
Rudd D. Ms.	Con	835	-
Smith I. Ms.	Con	816	-
Fludgate J.	Res	689	34.8
Goodall D.	Res	686	-
Ingram J. Ms.	Lib	366	18.5
Turnout		36.5	12.0

Durrington (9579)³

		vote	share
Glover L.	Con	2,206	58.4
Cotton J.	Con	2,174	-
Moore S.	Con	2,119	-
Mitton P.	Res	1,021	27.0
Peters E.	Res	1,018	-
Bell C.	Res	995	-
Johnstone J. Ms.	Lab	551	14.6
Clarke D.	Lab	524	-
Smith C.	Lab	505	-
Turnout		39.4	31.4

Goring (6899)³

		vote	share
Ansell B.	Res	1,823	54.6
Mansell J.	Res	1,739	-
Miller V.	Res	1,710	-
Herrtage H.	Con	1,516	45.4
Morton H.	Con	1,470	-
Sedgwick B. Ms.	Con	1,411	-
Turnout		48.4	9.2

Heene (6580)³

		vote	share
Piggott H.	Con	1,477	58.1
Ayscough T.	Con	1,475	-
Bowles A.	Con	1,470	-
Froude A.	Res	1,067	41.9
Silverthorne T.	Res	1,033	-
Cable-Robbie C.	Res	1,001	-
Turnout		38.7	16.1

Marine (6546)³

		vote	share
Phillips R.	Con	1,805	60.3
Tilney R.	Con	1,796	-
Hill D.	Con	1,780	-
Robinson I.	Res	1,187	39.7
Stafford M. Ms.	Res	1,094	-
Trigwell A.	Res	1,027	-
Turnout		45.7	20.7

Offington (8182)³

		vote	share
Clapp R.	Con	2,402	66.7
Elliott S.	Con	2,317	-
Scott C. Ms.	Con	2,230	-
Hill L.	Res	1,198	33.3
Laverick P.	Res	1,187	-
Ash H.	Res	1,085	-
Turnout		44.0	33.4

Selden (6002)³

		vote	share
Hammond F.	Con	1,094	35.6
Prestwich N. Ms.	Con	1,042	-
Chowen J.	Con	1,003	-
Strudwick A.	Res	826	26.8
Brackley H.	Res	640	-
Elvey D.	Res	568	-
Keen D. Ms.	Lib	519	16.9
Mitchell B. Ms.	Lib	484	-
Curphey E.	Ind	462	15.0
Bristow S.	Lab	176	5.7
Bristow A. Ms.	Lab	168	-
Lacey M.	Lab	153	-
Turnout		51.3	8.7

West Tarring (7774)³

		vote	share
Yates H.	Con	1,525	46.0
Southey L.	Con	1,404	-
Walley C.	Con	1,403	-
Bowen C.	Res	767	23.1
Neeve R.	Lib	756	22.8
Oxley J. Ms.	Res	755	-
Schoch-			
Claydon D. Ms.	Res	702	-
Ridley D.	Lib	520	-
Freeman A.	Lib	471	-
Dyball A.	Lab	269	8.1
Harwood L.	Lab	260	-
Mellish R.	Lab	250	-
Turnout		42.7	22.9

Worthing - 1979

Broadwater (7385) ³			
		vote	share
Clare A.	Lib	3,150	50.3
Campbell D.	Lib	2,656	-
Dockerty A.	Lib	2,601	-
Bettelley B. Ms.	Con	1,821	29.1
Carter N.	Con	1,517	-
Chambers G.	Con	1,385	-
Pidgeon F.	Lab	804	12.8
Long F.	Ind Con	489	7.8
Turnout		84.8	21.2
Castle (9071) ³			
		vote	share
Frampton W. Ms.	Con	3,121	54.2
Hemsworth R.	Con	3,024	-
Cambridge V.	Con	2,951	-
Bignell A.	Lab	2,635	45.8
Drummond B. Ms.	Lab	2,582	-
Perry P. Ms.	Lab	2,569	-
Turnout		63.5	8.4
Central (5533) ³			
		vote	share
Clinch M.	Con	1,797	48.7
Smith I. Ms.	Con	1,389	-
Rudd D. Ms.	Con	1,313	-
O'Brien T.	Ind	1,002	27.1
Harwood L.	Lab	894	24.2
Dyball A.	Lab	706	-
Turnout		66.7	21.5
Durrington (10714) ³			
		vote	share
Blackman E.	Lib	3,715	48.8
McLuskie B.	Lib	3,652	-
Marlow D.	Lib	3,377	-
Cotton J.	Con	3,137	41.2
Glover L.	Con	3,080	-
Moore S.	Con	2,925	-
Clarke D.	Lab	767	10.1
Smith C.	Lab	733	-
Sparrow P.	Lab	652	-
Turnout		71.1	7.6
Goring (6839) ³			
		vote	share
Ansell B.	Res	3,428	62.9
Mansell J.	Res	3,078	-
Bennett S.	Res	2,657	-
Cable-Robbie C.	Con	1,671	30.7
Morton H.	Con	1,627	-
Melser J.	Con	1,562	-
Fisher J.	Lab	351	6.4
Turnout		79.7	32.2
Heene (6785) ³			
		vote	share
Piggott H.	Con	2,894	77.2
Bowles A.	Con	2,860	-
Shaw T.	Con	2,629	-
Bristow S.	Lab	854	22.8
Bristow A. Ms.	Lab	816	-
Turnout		55.2	54.4
Marine (6679) ³			
		vote	share
Hill D.	Con	2,228	45.3
Roberts D.	Res	2,213	45.0
Hill L.	Res	2,163	-
Tilney R.	Con	2,062	-
Phillips R.	Con	2,058	-
Robinson I.	Res	2,021	-
Glyn-Jones T.	Lab	482	9.8
Turnout		73.7	0.3

Offington (8121)³

		vote	share
Clapp R.	Con	4,329	75.7
Elliott S.	Con	4,222	-
Scott C. Ms.	Con	4,077	-
Griffin H. Ms.	Lab	1,389	24.3
Turnout		70.4	51.4
Selden (6032) ³			
		vote	share
Hammond F.	Con	2,224	65.1
Chowen J.	Con	2,217	-
Prestwich N. Ms.	Con	2,037	-
Lacey M.	Lab	1,193	34.9
Cornes J.	Lab	1,083	-
Turnout		56.6	30.2

West Tarring (7827)³

		vote	share
Green P.	Lib	2,664	48.0
Bennett P.	Lib	2,634	-
Dundas-Collins I.	Lib	2,541	-
Yates H.	Con	2,264	40.8
Baird E. Ms.	Con	2,149	-
Southey L.	Con	2,092	-
Havenhand J.	Lab	625	11.3
Turnout		70.9	7.2

Worthing - 1983

Broadwater (6577) ³			
		vote	share
Clare A.	Lib/SDP	1,539	50.5
Dockerty A.	Lib/SDP	1,406	-
Otway P.	Lib/SDP	1,286	-
Kemp B.	Con	1,211	39.7
Lissenburg G.	Con	1,149	-
Golland L.	Con	1,081	-
Brook P. Ms.	Lab	297	9.7
Turnout		46.3	10.8
Castle (6458) ³			
		vote	share
Horgan J. Ms.	Lib/SDP	1,507	57.2
Chapman D.	Lib/SDP	1,485	-
Neal J.	Lib/SDP	1,434	-
Grady D.	Con	1,127	42.8
Popplestone E.	Con	1,086	-
Lee L.	Con	1,076	-
Turnout		40.8	14.4
Central (5536) ³			
		vote	share
Bennett J. Ms.	Lib/SDP	919	43.8
Macmillan A.	Con	890	42.5
Beaumont A.	Con	875	-
Price R.	Con	840	-
Ellis I.	Lib/SDP	718	-
Cave V.	Lib/SDP	701	-
Poole D.	Lab	287	13.7
Turnout		37.9	1.4
Durrington (6357) ³			
		vote	share
Cotton J.	Con	1,522	50.2
Moore K.	Lib/SDP	1,512	49.8
Knowles P. Ms.	Con	1,477	-
Elkins R.	Con	1,455	-
Marlow D.	Lib/SDP	1,454	-
Barfield D. Ms.	Lib/SDP	1,449	-
Turnout		47.7	0.3

Gaisford (6421)³

		vote	share
Bennett P.	Lib/SDP	1,376	52.1
Ketley R.	Lib/SDP	1,337	-
Wagon D.	Lib/SDP	1,332	-
Piggott B. Ms.	Con	1,266	47.9
Gambrill A.	Con	1,196	-
Cambridge S.	Con	1,191	-
Turnout		41.1	4.2
Goring (6835) ³			
		vote	share
Lynn B.	Con	2,144	53.6
Clinch M.	Con	2,140	-
Cable-Robbie C.	Con	2,120	-
Sweetko I. Ms.	Lib/SDP	1,859	46.4
Nash M. Ms.	Lib/SDP	1,516	-
Dawson B.	Lib/SDP	1,472	-
Turnout		58.6	7.1

Heene (6453)³

		vote	share
Piggott H.	Con	1,950	77.1
Collinson G.	Con	1,855	-
Moore S.	Con	1,790	-
Mitchell B. Ms.	Lib/SDP	580	22.9
Meredith M. Ms.	Lib/SDP	541	-
Hassall C. Ms.	Lib/SDP	529	-
Turnout		39.2	54.2

Marine (6301)³

		vote	share
Hill D.	Con	1,866	61.1
McDonald E.	Con	1,828	-
Parkin M.	Con	1,764	-
Chapman T.	Lib/SDP	630	20.6
Venamore A.	Lib/SDP	601	-
Oliver D. Ms.	Lib/SDP	586	-
Hill L.	Res	558	18.3
Fludgate J.	Res	445	-
Turnout		48.5	40.5

Offington (6043)³

		vote	share
Scott C. Ms.	Con	1,980	65.6
Sinnott I.	Con	1,973	-
Elliott S.	Con	1,940	-
Meredith G.	Lib/SDP	828	27.4
Thomas E. Ms.	Lib/SDP	809	-
Jones B.	Lib/SDP	803	-
Hecht D.	Res	209	6.9
Turnout		49.9	38.2

Salvington (6651)³

		vote	share
Braden H.	Con	1,871	55.8
Howlett B.	Con	1,781	-
Bennett S.	Con	1,729	-
Blackman E.	Lib/SDP	1,484	44.2
McLuskie B.	Lib/SDP	1,413	-
Crabtree J.	Lib/SDP	1,354	-
Turnout		50.4	11.5

Selden (6287)³

		vote	share
Chowen J.	Con	1,349	51.8
Wilton M. Ms.	Con	1,169	-
Baird E. Ms.	Con	1,142	-
De Pinna L.	Lib/SDP	816	31.3
Monk R.	Lib/SDP	785	-
Austin J.	Lab	439	16.9
Croft B.	Lab	425	-
Turnout		41.4	20.5

Tarring (6549) ³			
		vote	share
Yates H.	Con	1,506	51.6
Young K.	Con	1,438	-
Harvey V. Ms.	Lib/SDP	1,413	48.4
Todd S.	Con	1,406	-
Green P.	Lib/SDP	1,386	-
O'Callaghan V. Ms.	Lib/SDP	1,298	-
Turnout		44.6	3.2

Worthing - 1984

Broadwater (6598)			
		vote	share
McLuskie B.	Lib/SDP	1,266	50.0
Kemp B.	Con	1,096	43.3
Brook P. Ms.	Lab	169	6.7
Turnout		38.4	6.7

Castle (6392)			
		vote	share
Neal J.	Lib/SDP	1,144	50.5
Elkins R.	Con	962	42.5
Weeks R.	Lab	159	7.0
Turnout		35.4	8.0

Central (5611)			
		vote	share
Robinson G.	All	822	51.4
Beaumont A.	Con	777	48.6
Turnout		28.5	2.8

Durrington (6395)			
		vote	share
Knowles P. Ms.	Con	1,114	48.9
Clayden M. Ms.	Lib/SDP	1,021	44.8
Austin J.	Lab	143	6.3
Turnout		35.6	4.1

Gaisford (6387)			
		vote	share
Green P.	Lib/SDP	1,130	53.4
Price R.	Con	793	37.5
Taylor J. Ms.	Lab	192	9.1
Turnout		33.1	15.9

Goring (6878)			
		vote	share
Cable-Robbie C.	Con	2,201	79.9
Elton D. Ms.	Lib/SDP	555	20.1
Turnout		40.1	59.7

Heene (6535)			
		vote	share
Moore S.	Con	1,669	72.0
O'Callaghan M.	Lib/SDP	650	28.0
Turnout		35.5	43.9

Marine (6283)			
		vote	share
Parkin M.	Con	1,642	68.2
Chapman T.	Lib/SDP	626	26.0
Svennevig I.	Lab	141	5.9
Turnout		38.3	42.2

Offington (6075)			
		vote	share
Elliott S.	Con	1,610	71.9
Meredith M. Ms.	All	487	21.8
Hurcombe S. Ms.	Lab	141	6.3
Turnout		36.8	50.2

Salvington (6694)			
		vote	share
Bennett S.	Con	1,446	62.5
Crabtree J.	Lib/SDP	758	32.8
Eustice B.	Lab	110	4.8
Turnout		34.6	29.7

Selden (6276)			
		vote	share
Baird E. Ms.	Con	1,014	50.0
Burt R.	Lib/SDP	796	39.2
Croft B.	Lab	219	10.8
Turnout		32.3	10.7

Tarring (6582)			
		vote	share
Todd S.	Con	1,090	48.5
Harvey V. Ms.	Lib/SDP	975	43.4
Peaty S. Ms.	Lab	184	8.2
Turnout		34.2	5.1

Worthing - 1986

Broadwater (6564)			
		vote	share
Dockerty A.	Lib/SDP	1,441	58.2
Kemp S. Ms.	Con	819	33.1
Wright B. Ms.	Lab	214	8.6
Turnout		37.7	25.1

Castle (6456) ²			
		vote	share
Harvey V. Ms.	Lib/SDP	1,041	48.3
Turner L.	Lib/SDP	1,018	-
Popplestone E.	Con	787	36.5
Finlay J.	Con	766	-
Hammond J.	Lab	329	15.3
Jones T. Ms.	Lab	254	-
Turnout		33.4	11.8

Central (5668)			
		vote	share
Lipscombe R.	Lib/SDP	922	50.2
Macmillan A.	Con	713	38.9
King H. Ms.	Lab	200	10.9
Turnout		32.4	11.4

Durrington (6412)			
		vote	share
Moore C.	Lib/SDP	1,469	55.8
Smart R.	Con	935	35.5
Duggan J.	Lab	227	8.6
Turnout		41.0	20.3

Gaisford (6431)			
		vote	share
Golds C.	Lib/SDP	1,182	50.1
Wilton S.	Con	903	38.3
Hurcombe S. Ms.	Lab	274	11.6
Turnout		36.7	11.8

Goring (6873)			
		vote	share
Clinch M.	Con	1,655	57.8
Clayden M. Ms.	Lib/SDP	1,039	36.3
Taylor P.	Lab	171	6.0
Turnout		41.7	21.5

Heene (6557)			
		vote	share
Collinson G.	Con	1,521	62.6
Kift S. Ms.	Lib/SDP	709	29.2
Deen S. Ms.	Lab	200	8.2
Turnout		37.1	33.4

Marine (6347)			
		vote	share
McDonald E.	Con	1,545	59.0
Chapman T.	Lib/SDP	894	34.1
Deen J.	Lab	181	6.9
Turnout		41.3	24.8

Offington (6185)			
		vote	share
Peters D. Ms.	Con	1,404	61.2
Meredith G.	Lib/SDP	752	32.8
Broad D.	Lab	137	6.0
Turnout		37.1	28.4

Salvington (6713)			
		vote	share
Lissenburg G. Ms.	Con	1,591	58.3
Crabtree J.	Lib/SDP	923	33.8
Griffiths Y. Ms.	Lab	216	7.9
Turnout		40.7	24.5

Selden (6334)			
		vote	share
Wilton M. Ms.	Con	1,007	42.9
Elson M. Ms.	Lib/SDP	791	33.7
Frost B.	Lab	548	23.4
Turnout		37.0	9.2

Tarring (6571)			
		vote	share
Phillips W.	Lib/SDP	1,135	45.1
llett E.	Con	1,100	43.8
Peaty S. Ms.	Lab	279	11.1
Turnout		38.3	1.4

Worthing - 1987

Broadwater (6526)			
		vote	share
Clare A.	Lib/SDP	1,660	62.6
Wilton S.	Con	832	31.4
Croft B.	Lab	159	6.0
Turnout		40.6	31.2

Castle (6337)			
		vote	share
Orridge R.	Con	1,269	49.4
Horgan J. Ms.	Lib/SDP	1,084	42.2
Hammond J.	Lab	217	8.4
Turnout		40.6	7.2

Central (5699)			
		vote	share
Price R.	Con	949	45.3
Wharton W.	Lib/SDP	919	43.9
Deen J.	Lab	226	10.8
Turnout		36.8	1.4

Durrington (6466)			
		vote	share
Cotton J.	Con	1,495	48.6
Stephens M. Ms.	Lib/SDP	1,382	44.9
Anderson T.	Lab	199	6.5
Turnout		47.6	3.7

Gaisford (6388)			
		vote	share
Bennett P.	Lib/SDP	1,333	47.4
Goodhind R.	Con	1,287	42.8
Hurcombe J. Ms.	Lab	193	6.9
Turnout		44.1	1.6

Goring (6890)			
		vote	share
Lynn B.	Con	2,379	66.6
Clayden M. Ms.	Lib/SDP	1,053	29.5
Shannon E. Ms.	Lab	140	3.9
Turnout		51.9	37.1

Heene (6548)			
		vote	share
Piggott H.	Con	1,835	67.9
Kift S. Ms.	Lib/SDP	690	25.5
Deen S. Ms.	Lab	179	6.6
Turnout		41.3	42.3

Marine (6325)			
		vote	share
Hill D.	Con	2,054	71.1
Selley R. Ms.	Lib/SDP	654	22.6
King H. Ms.	Lab	181	6.3
Turnout		45.8	48.5

Offington (6280)			
		vote	share
Scott C. Ms.	Con	1,951	67.1
Mardell E.	Lib/SDP	822	28.3
Wright B. Ms.	Lab	133	4.6
Turnout		46.3	38.9

Salvington (6698)			
		vote	share
Braden H.	Con	1,997	66.6
Nash D.	Lib/SDP	817	27.2
Griffiths Y. Ms.	Lab	185	6.2
Turnout		43.8	39.3

Selden (6298)			
		vote	share
Kemp B.	Con	1,323	52.2
Hellstrom C. Ms.	Lib/SDP	715	28.2
Frost B.	Lab	498	19.6
Turnout		40.3	24.0

Tarring (6526)			
		vote	share
Yates H.	Con	1,553	53.1
Allen M. Ms.	Lib/SDP	1,142	39.1
Peaty S. Ms.	Lab	229	7.8
Turnout		44.9	14.1

Worthing - 1988

Broadwater (6593)			
		vote	share
McLuskie B.*	SLD	1,205	54.2
Hooker P.	Con	856	38.5
Wright B. Ms.	Lab	164	7.4
Turnout		33.7	15.7

Castle (6393)			
		vote	share
Brookman S.	Con	977	53.0
Hammond J.	Lab	472	25.6
Russell E.	SLD	393	21.3
Turnout		28.8	27.4

Central (5804)			
		vote	share
Robinson G.*	Con	782	44.4
Chick T.	SLD	764	43.4
Brunsdon M. Ms.	Lab	214	12.2
Turnout		30.3	1.0

Durrington (6893)			
		vote	share
Sutton V. Ms.	Con	1,309	54.8
Lovell J.	SLD	1,081	45.2
Turnout		34.7	9.5

Gaisford (6462)			
		vote	share
Miller G.	SLD	995	45.9
Goodhind R.	Con	989	45.6
Brunsdon V. Ms.	Lab	184	8.5
Turnout		33.5	0.3

Goring (6957)			
		vote	share
Cable-Robbie C.*	Con	2,018	79.1
Whyberd D.	SLD	532	20.9
Turnout		36.7	58.3

Heene (6767)			
		vote	share
Moore S.*	Con	1,517	71.2
Russell P.	SLD	613	28.8
Turnout		31.5	42.4

Marine (6437)			
		vote	share
Parkin M.*	Con	1,571	72.9
Selley R. Ms.	SLD	358	16.6
Fisher K. Ms.	Lab	226	10.5
Turnout		33.5	56.3

Offington (6352)			
		vote	share
Elliott S.*	Con	1,467	65.8
Mardell E.	SLD	763	34.2
Turnout		35.1	31.6

Salvington (6770)			
		vote	share
Lynn A. Ms.	Con	1,556	66.0
Clare A. Ms.	SLD	803	34.0
Turnout		34.8	31.9

Selden (6314)			
		vote	share
Baird E. Ms.*	Con	942	51.2
Richards I. Ms.	SLD	541	29.4
Croft B.	Lab	358	19.4
Turnout		29.2	21.8

Tarring (6666)			
		vote	share
Todd S.*	Con	1,222	59.6
Davie M. Ms.	SLD	546	26.6
Goatcher J.	Lab	282	13.8
Turnout		30.8	33.0

Worthing - 1990

Broadwater (6605)			
		vote	share
Dockerty A.*	SLD	1,704	62.8
Blake A.	Con	711	26.2
Ball A.	Green	300	11.0
Turnout		41.1	36.6

Castle (6306)			
		vote	share
John N.	SLD	1,367	42.2
Cohen A.	Con	1,026	31.7
Fisher K. Ms.	Lab	846	26.1
Turnout		51.4	10.5

Central (6038)			
		vote	share
Lipscombe P. Ms.*	SLD	1,053	42.4
Orridge J. Ms.	Con	821	33.1
King H. Ms.	Lab	344	13.9
Colkett L. Ms.	Green	202	8.1
Morley R.	SDP	63	2.5
Turnout		41.1	9.3

Durrington (7428)			
		vote	share
Frances P. Ms.	Con	1,335	41.4
Pye S. Ms.	SLD	1,100	34.1
Perigoe B.	Lab	498	15.4
Hughes J.	Green	292	9.1
Turnout		43.4	7.3

Gaisford (6465)			
		vote	share
Golds C.*	SLD	1,267	43.8
Carne J.	Con	1,051	36.4
Bethell D. Ms.	Lab	340	11.8
Baker J. Ms.	Green	232	8.0
Turnout		44.7	7.5

Goring (6884)			
		vote	share
Clinch M.*	Con	2,050	60.5
Rand O. Ms.	Lab	454	13.4
Whyberd D.	SLD	446	13.2
Meyrick M. Ms.	SDP	440	13.0
Turnout		49.2	47.1

Heene (6713)			
		vote	share
Collinson G.*	Con	1,631	60.0
Earl L.	SLD	651	24.0
Deen S. Ms.	Lab	436	16.0
Turnout		40.5	36.1

Marine (6341)			
		vote	share
McDonald E.*	Con	1,802	62.9
Selly R. Ms.	SLD	582	20.3
Fisher J.	Lab	479	16.7
Turnout		45.2	42.6

Offington (6294)			
		vote	share
Peters D. Ms.*	Con	1,516	52.1
Mardell E.	SLD	1,108	38.1
Mann A.	Lab	284	9.8
Turnout		46.2	14.0

Salvington (6665)			
		vote	share
Lissenburg G. Ms.*	Con	1,685	55.3
Clare A. Ms.	SLD	816	26.8
Dowson M.	Lab	547	17.9
Turnout		45.7	28.5

Selden (6274)			
		vote	share
Wilton M. Ms.*	Con	1,012	38.1
Deen J.	Lab	921	34.7
Moore M.	SLD	639	24.0
Elson M. Ms.	SDP	86	3.2
Turnout		42.4	3.4

Tarring (6739)			
		vote	share
Green P.	SLD	1,254	41.0
Wallis C.	Con	1,101	36.0
Hammond J.	Lab	447	14.6
Bruce V.	Green	180	5.9
Masters G.	SDP	75	2.5
Turnout		45.4	5.0

Worthing - 1991

Broadwater (6468)			
		vote	share
Clare A.*	LD	1,556	63.8
Wilson M.	Con	663	27.2
Mann A.	Lab	219	9.0
Turnout		37.7	36.6

Castle (6191)			
		vote	share
Pye S. Ms.	LD	1,397	47.6
Orridge J. Ms.*	Con	1,010	34.4
Fisher K. Ms.	Lab	527	18.0
Turnout		47.5	13.2

Central (5838)			
		vote	share
Stuart I.	LD	1,332	57.7
Price R.*	Con	801	34.7
Del Rio Fernandez J.	Lab	176	7.6
Turnout		39.6	23.0

Durrington (7431)

		vote	share
Cotton J.*	Con	1,422	43.9
Smytherman R.	LD	1,227	37.9
Perigoe B.	Lab	302	9.3
Hughes J.	Green	289	8.9
Turnout		43.6	6.0

Gaisford (6304)

		vote	share
Bennett P.*	LD	1,249	47.3
Thomson G. Ms.	Con	1,054	40.0
Henbrey D.	Lab	179	6.8
Kennard P.	Ind	156	5.9
Turnout		41.9	7.4

Goring (6759)

		vote	share
Lynn B.*	Con	1,990	61.7
Whyberd D.	LD	849	26.3
Rand O. Ms.	Lab	196	6.1
Colkett D.	Green	192	5.9
Turnout		47.9	35.4

Heene (6728)

		vote	share
Piggott H.*	Con	1,418	57.2
Lipscombe E.	LD	819	33.1
Hammond J.	Lab	241	9.7
Turnout		36.9	24.2

Marine (6234)

		vote	share
Carne J.	Con	1,580	59.8
Selley R. Ms.	LD	611	23.1
Colkett L. Ms.	Green	239	9.0
Haworth D.	Lab	211	8.0
Turnout		42.4	36.7

Offington (6251)

		vote	share
Scott C. Ms.*	Con	1,491	50.1
Mardell E.	LD	1,357	45.6
Tempest C. Ms.	Lab	126	4.2
Turnout		47.7	4.5

Salvington (6507)

		vote	share
Braden H.*	Con	1,676	58.8
McLuskie V. Ms.	LD	917	32.2
Dowson M.	Lab	258	9.0
Turnout		43.9	26.6

Selden (6245)

		vote	share
Craig A.	Con	992	38.2
Deen J.	Lab	910	35.1
Moore M.	LD	692	26.7
Turnout		41.5	3.2

Tarring (6553)

		vote	share
Lovell J.	LD	1,574	54.3
Giddins E. Ms.	Con	1,106	38.2
Dove C.	Lab	219	7.6
Turnout		44.3	16.1

Worthing - 1992**Broadwater (6459)**

		vote	share
McLuskie B.*	LD	1,232	60.7
Boustead C.	Con	629	31.0
Dyball A.	Lab	96	4.7
Croft D.	Green	73	3.6
Turnout		31.5	29.7

Castle (6130)

		vote	share
Cornell G.	LD	1,211	54.3
Wallis C.	Con	855	38.3
Fisher K. Ms.	Lab	166	7.4
Turnout		36.4	15.9

Central (5880)

		vote	share
Tucker M.	LD	1,080	54.7
Price R.	Con	773	39.1
Del Rio Fernandez J.	Lab	80	4.0
Colkett D.	Green	43	2.2
Turnout		33.6	15.5

Durrington (7500)

		vote	share
Sutton V. Ms.*	Con	1,536	54.6
Rose J.	LD	1,052	37.4
Haworth D.	Lab	148	5.3
Hughes J.	Green	78	2.8
Turnout		37.6	17.2

Gaisford (6332)

		vote	share
Bell S. Ms.	Con	1,199	49.1
Miller G.*	LD	1,151	47.1
Tempest C. Ms.	Lab	92	3.8
Turnout		38.6	2.0

Goring (6731)

		vote	share
Waight S.	Con	1,839	61.6
Hampson F. Ms.	LD	975	32.7
Rand O. Ms.	Lab	103	3.4
Allen R.	Green	69	2.3
Turnout		44.3	28.9

Heene (6815)

		vote	share
Moore S.*	Con	1,489	65.3
Lipscombe E.	LD	593	26.0
Deen S. Ms.	Lab	138	6.1
Morgan A.	Green	59	2.6
Turnout		33.5	39.3

Marine (6244)

		vote	share
Parkin M.*	Con	1,619	67.9
Elton P. Ms.	LD	584	24.5
Comb L. Ms.	Lab	102	4.3
Colkett L. Ms.	Green	80	3.4
Turnout		38.3	43.4

Offington (6248)

		vote	share
Elliott S.*	Con	1,469	52.2
Mardell E.	LD	1,346	47.8
Turnout		45.2	4.4

Salvington (6500)

		vote	share
Lynn A. Ms.*	Con	1,478	59.3
McLuskie V. Ms.	LD	846	33.9
Dowson M.	Lab	99	4.0
Baker J. Ms.	Green	71	2.8
Turnout		38.4	25.3

Selden (6200)

		vote	share
Baird E. Ms.*	Con	870	38.1
Hart I.	LD	802	35.1
Deen J.	Lab	614	26.9
Turnout		36.9	3.0

Tarring (6502)

		vote	share
Pitt E.	LD	1,244	48.0
Dice T.	Con	1,203	46.4
West J.	Lab	85	3.3
Nichols A.	Green	60	2.3
Turnout		39.9	1.6

Worthing - 1994**Broadwater (6438)**

		vote	share
Dockerty A.*	LD	1,792	73.7
Allen D.	Con	436	17.9
Dyball A.	Lab	205	8.4
Turnout		37.8	55.7

Castle (6039)

		vote	share
Rose J.	LD	1,551	59.3
High P.	Con	703	26.9
French S.	Lab	360	13.8
Turnout		43.3	32.4

Central (5550)

		vote	share
Stuart A. Ms.	LD	1,208	56.1
Macquarrie V.	Con	713	33.1
Hammond J.	Lab	163	7.6
Colkett D.	Green	68	3.2
Turnout		38.9	23.0

Durrington (7681)

		vote	share
Murno M.	LD	1,853	60.0
Owen C.	Con	972	31.5
Fisher K. Ms.	Lab	176	5.7
Colgate S.	Green	88	2.8
Turnout		40.2	28.5

Gaisford (6319)

		vote	share
Gold C.*	LD	1,637	60.5
Plummer C.	Con	812	30.0
Tempest C. Ms.	Lab	168	6.2
Baker J. Ms.	Green	91	3.4
Turnout		43.0	30.5

Goring (6697)

		vote	share
Harries D.	LD	1,686	48.7
Marchant D.	Con	1,617	46.7
McHale C.	Lab	160	4.6
Turnout		51.7	2.0

Heene (6490)

		vote	share
Collinson G.*	Con	1,160	48.7
Hyde A.	LD	1,013	42.5
Smith K. Ms.	Lab	211	8.9
Turnout		37.0	6.2

Marine (6271)

		vote	share
McDonald E.*	Con	1,212	44.5
Bull N. Ms.	LD	1,121	41.2
Withington D.	Lab	283	10.4
Colkett L. Ms.	Green	106	3.9
Turnout		43.4	3.3

Offington (6163)

		vote	share
Mardell E.	LD	1,704	55.0
Peters D. Ms.*	Con	1,242	40.1
Gardiner J.	Lab	152	4.9
Turnout		50.4	14.9

Salvington (6435)

		vote	share
Brown A.	LD	1,533	50.6
Lissenburg G. Ms.*	Con	1,343	44.4
Wallace M.	Lab	151	5.0
Turnout		47.0	6.3

Selden (6053)			
		vote	share
Chapman D.	LD	1,589	65.4
Price R.	Con	589	24.2
Banks K.	Lab	251	10.3
Turnout		40.2	41.2

Tarring (6503)			
		vote	share
Green P.*	LD	1,925	71.1
Hunter A.	Con	597	22.0
Johnson D.	Lab	186	6.9
Turnout		41.7	49.0

Worthing - 1995

Broadwater (6403)			
		vote	share
Clare A.*	LD	1,412	68.7
Woolger Z. Ms.	Con	362	17.6
White D.	Lab	282	13.7
Turnout		32.1	51.1

Castle (6002)			
		vote	share
Pye S. Ms.*	LD	1,242	52.4
Sartin D.	Lab	583	24.6
McCarthy M.	Con	546	23.0
Turnout		39.5	27.8

Central (5558)			
		vote	share
Stuart I.*	LD	1,105	58.6
Hunter A.	Con	492	26.1
Hammond J.	Lab	290	15.4
Turnout		34.1	32.5

Durrington (7624)			
		vote	share
Sargent C.	LD	1,646	58.5
Wells C.	Con	769	27.3
Fisher K. Ms.	Lab	397	14.1
Turnout		37.0	31.2

Gaisford (6381)			
		vote	share
Bennett P.*	LD	1,348	61.5
Green F. Ms.	Con	532	24.3
Tempest C. Ms.	Lab	254	11.6
Baker J. Ms.	Green	57	2.6
Turnout		34.4	37.2

Goring (6692)			
		vote	share
Lynn B.*	Con	1,663	49.4
Earl B.	LD	1,381	41.0
Rand O. Ms.	Lab	279	8.3
Baines R.	Green	44	1.3
Turnout		50.4	8.4

Heene (6298)			
		vote	share
Dice T.	Con	1,171	50.4
Richards I. Ms.	LD	767	33.0
Smith K. Ms.	Lab	329	14.2
Colgate S.	Green	56	2.4
Turnout		37.0	17.4

Marine (6233)			
		vote	share
Lissenburg G. Ms.	Con	1,316	46.6
Bull N. Ms.	LD	1,132	40.0
Michica N. Ms.	Lab	310	11.0
Colkett L. Ms.	Green	69	2.4
Turnout		45.4	6.5

Offington (6133)			
		vote	share
Doyle J.	LD	1,269	46.6
Green R.	Con	1,241	45.5
Gardiner J.	Lab	215	7.9
Turnout		44.5	1.0

Salvington (6439)			
		vote	share
Player S. Ms.	LD	1,263	46.9
Braden H.	Con	1,118	41.5
Wicks J. Ms.	Lab	313	11.6
Turnout		41.9	5.4

Selden (5996)			
		vote	share
Brown C. Ms.	LD	1,327	63.4
Craig A.	Con	450	21.5
White R. Ms.	Lab	315	15.1
Turnout		35.0	41.9

Tarring (6454)			
		vote	share
Lovell J.	LD	1,581	66.0
Smith J.	Con	480	20.0
Johnson D.	Lab	335	14.0
Turnout		37.2	46.0

Worthing - 1996

Broadwater (6403)			
		vote	share
McCluskie B.*	LD	1,186	66.4
Meneaud-Lissenburg D.	Con	343	19.2
White R.	Lab	256	14.3
Turnout		27.9	47.2

Castle (5982)			
		vote	share
Cornell G.*	LD	839	40.5
Garrett A.	Con	729	35.2
Hammond J.	Lab	503	24.3
Turnout		34.4	5.3

Central (5629)²			
		vote	share
Tucker M.*	LD	920	53.3
Millington-Pratt L. Ms.	LD	892	-
Livermore J. Ms.	Con	545	31.6
Shreeve S.	Con	532	-
Smith K.	Lab	261	15.1
Turnout		30.9	21.7

Durrington (7635)			
		vote	share
Bull N. Ms.	LD	1,064	44.0
Sutton V. Ms.*	Con	976	40.3
Hammond K. Ms.	Lab	314	13.0
Colkett L. Ms.	Green	66	2.7
Turnout		31.7	3.6

Gaisford (6382)			
		vote	share
Price A.	LD	967	46.5
Craghill S.	Con	822	39.6
Hurcombe J. Ms.	Lab	230	11.1
Baker J. Ms.	Green	59	2.8
Turnout		32.6	7.0

Goring (6754)			
		vote	share
Waight S.*	Con	1,778	64.0
McRum-Stewart J.	LD	757	27.3
Rand O. Ms.	Lab	241	8.7
Turnout		41.1	36.8

Heene (6355)			
		vote	share
Smith J.	Con	1,124	57.6
Bennett J. Ms.	LD	534	27.4
Newman S.	Lab	292	15.0
Turnout		30.8	30.3

Marine (6291)			
		vote	share
Aston-Dive R.	Con	1,263	55.8
Halpin E.	LD	630	27.8
Michica N. Ms.	Lab	291	12.9
Colgate S.	Green	79	3.5
Turnout		36.0	28.0

Offington (6193)			
		vote	share
Green R.	Con	1,372	51.1
Gibson D.	LD	1,089	40.5
Gardiner J.	Lab	226	8.4
Turnout		43.7	10.5

Salvington (6464)			
		vote	share
Lynn A. Ms.*	Con	1,214	47.6
Kasproicz J. Ms.	LD	1,070	41.9
Wicks J. Ms.	Lab	268	10.5
Turnout		39.6	5.6

Selden (6091)			
		vote	share
Gibbins R.	LD	1,046	53.9
Jackson T.	Con	533	27.5
Smith T.	Lab	361	18.6
Turnout		31.9	26.4

Tarring (6471)			
		vote	share
Pitt E.*	LD	1,333	65.5
Gleaves M.	Con	449	22.1
Parr J.	Lab	252	12.4
Turnout		31.3	43.5

Worthing - 1998

Broadwater (6409)			
		vote	share
Mardell E.*	LD	780	53.5
Bettelley B. Ms.	Con	462	31.7
Gardiner J.	Lab	215	14.8
Turnout		22.8	21.8

Castle (5942)			
		vote	share
Howcroft-Stemp J.	Con	827	41.7
Woolley M.	Lab	591	29.8
Rose J.*	LD	567	28.6
Turnout		33.4	11.9

Central (5752)			
		vote	share
Stuart A. Ms.*	LD	821	54.3
Smith P.	Con	482	31.9
Bignell A.	Lab	185	12.2
Maltby C.	Nat Dem	24	1.6
Turnout		26.3	22.4

Durrington (7722)			
		vote	share
Sargent M.	LD	1,131	48.3
Cartwright D.	Con	987	42.2
Hammond K. Ms.	Lab	223	9.5
Turnout		30.3	6.2

Gaisford (6416)			
		vote	share
Bell R.	Con	789	46.7
Winson J.	LD	659	39.0
Hurcombe J. Ms.	Lab	240	14.2
Turnout		26.4	7.7

Goring (6759)			
		vote	share
Farrell P. Ms.	Con	1,899	74.3
McGurn			
Stewart J. Ms.	LD	412	16.1
Roper M.	Lab	245	9.6
Turnout		37.9	58.2

Heene (6375)			
		vote	share
Livermore J.	Con	1,056	62.0
Selby C.	LD	434	25.5
Balderstone P.	Lab	213	12.5
Turnout		26.8	36.5

Marine (6298)			
		vote	share
Orridge R.*	Con	1,174	59.1
Parker D.	LD	521	26.2
Balderstone J. Ms.	Lab	216	10.9
Colkett L. Ms.	Green	76	3.8
Turnout		31.5	32.9

Offington (6242)			
		vote	share
Craghill S.	Con	1,405	63.1
Featherstone J. Ms.	LD	646	29.0
Saunders A. Ms.	Lab	177	7.9
Turnout		35.7	34.1

Salvington (6513)			
		vote	share
Sutton V. Ms.	Con	1,117	52.4
Harbinson G.	LD	827	38.8
Page S. Ms.	Lab	188	8.8
Turnout		32.8	13.6

Selden (6020)			
		vote	share
Chapman D.*	LD	955	54.8
Lock R.	Con	468	26.9
Turley J.	Lab	319	18.3
Turnout		29.0	28.0

Tarring (6506)			
		vote	share
Hart G.	LD	1,125	61.0
Jackson T.	Con	553	30.0
Parr J.	Lab	167	9.1
Turnout		28.4	31.0

Worthing - 1999

Broadwater (6427)			
		vote	share
Clare A.*	LD	903	56.4
Nicholas J.	Con	469	29.3
Saunders A. Ms.	Lab	230	14.4
Turnout		24.9	27.1

Castle (6011)			
		vote	share
Garrett A.*	Con	930	43.3
Woolley M.	Lab	698	32.5
Smytherman R.	LD	520	24.2
Turnout		35.7	10.8

Central (5728)			
		vote	share
Bennett P.*	LD	794	54.1
Cinch M.	Con	443	30.2
Bignell A.	Lab	156	10.6
Blackman T.	Green	75	5.1
Turnout		25.7	23.9

Durrington (7881)			
		vote	share
Sargent C.*	LD	1,137	47.1
Falk J.	Con	1,039	43.1
Hammond K. Ms.	Lab	236	9.8
Turnout		30.7	4.1

Gaisford (6406)			
		vote	share
Stephens G.	Con	793	41.2
Doyle J.*	LD	666	34.6
Barlow M. Ms.	Ind	218	11.3
Hurcombe J. Ms.	Lab	205	10.7
Colgate S.	Green	42	2.2
Turnout		30.0	6.6

Goring (6703)			
		vote	share
King D.	Con	1,741	71.5
Moseley I.	LD	476	19.5
Roper M.	Lab	218	9.0
Turnout		36.4	52.0

Heene (6336)			
		vote	share
Dice T.*	Con	1,117	62.1
Stephenson F. Ms.	LD	418	23.2
Sandell I.	Lab	198	11.0
Colkett D.	Green	66	3.7
Turnout		28.7	38.9

Marine (6358)²			
		vote	share
Lissenburg G. Ms.*	Con	1,357	59.3
Wingate F.	Con	1,267	-
Parker M.	LD	510	22.3
Winson J.	LD	444	-
Salter B.	Lab	245	10.7
Colkett L. Ms.	Green	176	7.7
Turnout		32.8	37.0

Offington (6290)			
		vote	share
McCarthy M.	Con	1,478	65.0
Featherstone J. Ms.	LD	598	26.3
Young J. Ms.	Lab	199	8.7
Turnout		36.3	38.7

Salvington (6480)			
		vote	share
Lynn B.*	Con	1,162	50.7
Player S. Ms.*	LD	1,131	49.3
Turnout		35.7	1.4

Selden (6052)			
		vote	share
Brown C. Ms.*	LD	710	45.3
Smith P.	Con	568	36.2
Turley J.	Lab	289	18.4
Turnout		26.0	9.1

Tarring (6485)			
		vote	share
Lovell J.*	LD	1,205	65.7
Jackson T.	Con	628	34.3
Turnout		28.4	31.5

Worthing - 2000

Broadwater (6406)			
		vote	share
McLuskie B.*	LD	943	59.9
Green C. Ms.	Con	471	29.9
Gardiner J.	Lab	160	10.2
Turnout		24.6	30.0

Castle (6042)²			
		vote	share
John N.	Con	816	45.3
O'Keefe M.	Con	793	-
Cornell G.*	LD	533	29.6
Smytherman R.	LD	500	-
Bignell A.	Lab	453	25.1
Deen J.	Lab	431	-
Turnout		30.0	15.7

Central (5580)			
		vote	share
Tucker M.*	LD	923	65.5
Wootton G. Ms.	Con	487	34.5
Turnout		25.4	30.9

Durrington (8107)			
		vote	share
Baker I. Ms.	LD	1,335	58.1
Jackson T.	Con	964	41.9
Turnout		28.5	16.1

Gaisford (6413)			
		vote	share
Green P.	LD	880	50.1
Knott P.	Con	783	44.6
McLean D.	Green	94	5.4
Turnout		27.5	5.5

Goring (6728)			
		vote	share
Waight S.*	Con	1,755	76.4
Rodgers N.	LD	542	23.6
Turnout		34.4	52.8

Heene (6426)			
		vote	share
Smith J.*	Con	931	59.9
Stephenson F. Ms.	LD	503	32.4
Colkett D.	Green	119	7.7
Turnout		24.3	27.6

Marine (6295)²			
		vote	share
Mercer K.	Con	1,207	62.3
Wingate K.*	Con	1,162	-
Doyle J.	LD	562	29.0
Parker D.	LD	544	-
Colkett L. Ms.	Green	169	8.7
Turnout		30.4	33.3

Offington (6298)			
		vote	share
Green R.*	Con	1,493	64.8
Lissenburg D.	LD	673	29.2
Young J. Ms.	Lab	138	6.0
Turnout		36.6	35.6

Salvington (6468)			
		vote	share
Lynn A. Ms.*	Con	1,339	64.2
Harbinson G.	LD	747	35.8
Turnout		32.4	28.4

Selden (6109)			
		vote	share
Player S. Ms.	LD	815	45.8
High P.	Con	748	42.0
Turley J.	Lab	216	12.1
Turnout		29.1	3.8

Tarring (6543)			
		vote	share
Thorpe H. Ms.	LD	1,341	70.8
Honiball P.	Con	554	29.2
Turnout		29.0	41.5

Worthing - 2002

Broadwater (6481)			
		vote	share
Mardell E.*	LD	1,148	68.8
Saheid M.	Con	372	22.3
Saunders A. Ms.	Lab	148	8.9
Turnout		25.8	46.5

Castle (5971)			
		vote	share
Moynan M. Ms.	LD	966	51.0
O'Keefe M.*	Con	633	33.4
Barnes P.	Lab	238	12.6
Colkett D.	Green	56	3.0
Turnout		31.7	17.6

Central (5816)			
		vote	share
Goldsbrough-Jones J. Ms.	LD	903	58.7
Coppard M.	Con	445	28.9
Gill B.	Lab	191	12.4
Turnout		26.5	29.8

Durrington (8206)			
		vote	share
Allen C. Ms.	LD	1,470	64.8
Whiteley A. Ms.	Con	659	29.0
Dwyer J. Ms.	Green	141	6.2
Turnout		27.7	35.7

Gaisford (6493)			
		vote	share
Lissenburg D. Ms.	LD	962	49.1
Turner B.	Con	740	37.8
Hurcombe J. Ms.	Lab	169	8.6
Hillcoat M. Ms.	Green	89	4.5
Turnout		30.3	11.3

Goring (6756)			
		vote	share
Marchant D.	Con	1,800	71.3
Rodgers N.	LD	724	28.7
Turnout		37.6	42.6

Heene (6291)			
		vote	share
Livermore J.*	Con	989	58.3
Bennett J. Ms.	LD	557	32.9
Rogers H. Ms.	Green	149	8.8
Turnout		27.3	25.5

Marine (6438)			
		vote	share
Wingate F.*	Con	1,235	60.7
Stephenson B.	LD	388	19.1
Slater B.	Lab	230	11.3
Colkett L. Ms.	Green	182	8.9
Turnout		31.7	41.6

Offington (6279)			
		vote	share
Fabes G.	Con	1,404	64.6
Daniels P.	LD	502	23.1
Gardiner J.	Lab	153	7.0
Hook R. Ms.	Green	115	5.3
Turnout		34.7	41.5

Salvington (6528)			
		vote	share
Sutton V. Ms.*	Con	1,176	60.6
Mardell E. Ms.*	LD	550	28.4
Rennie H. Ms.	Lab	214	11.0
Turnout		29.8	32.3

Selden (6153)			
		vote	share
Doyle J.	LD	920	44.8
High P.	Con	733	35.7
Turley J.	Lab	309	15.0
Yates D.	Green	93	4.5
Turnout		33.5	9.1

Tarring (6563)			
		vote	share
Smytherman R.	LD	1,297	68.8
Harding M. Ms.	Con	435	23.1
Sandell I.	Lab	152	8.1
Turnout		28.9	45.8

Worthing - 2003

Broadwater (6547)			
		vote	share
Lissenburg G. Ms.	LD	1,069	65.9
Mercer H. Ms.	Con	427	26.3
Colkett D.	Green	125	7.7
Turnout		25.0	39.6

Castle (5968)			
		vote	share
Potter C. Ms.	LD	923	54.5
Rogers J.	Con	771	45.5
Turnout		28.6	9.0

Central (5807)			
		vote	share
Hart G.	LD	667	47.4
Coppard M.	Con	472	33.5
Gill B.	Lab	158	11.2
Hinton A. Ms.	Green	111	7.9
Turnout		24.4	13.8

Durrington (8272)			
		vote	share
Rodgers N.	LD	1,168	56.3
Whiteley A.	Con	787	37.9
Dwyer J.	Green	121	5.8
Turnout		25.1	18.4

Gaisford (6465)			
		vote	share
Stephens G.*	Con	752	45.7
Price A.	LD	746	45.3
Hillcoat M. Ms.	Green	149	9.0
Turnout		25.5	0.4

Goring (6695)			
		vote	share
Welch P.	Con	1,732	73.4
Stephenson B.	LD	628	26.6
Turnout		35.4	46.8

Heene (6445)²			
		vote	share
Dice T.*	Con	996	58.6
High P.	Con	949	-
Jones A.	LD	513	30.2
Skepper K.	LD	418	-
Rogers H. Ms.	Green	191	11.2
Turnout		25.1	28.4

Marine (6457)			
		vote	share
Wye T.	Con	1,282	63.6
Medcalf P.	LD	373	18.5
Barnes P.	Lab	222	11.0
Colkett L. Ms.	Green	140	6.9
Turnout		31.4	45.1

Offington (6334)			
		vote	share
McCarthy M.*	Con	1,490	69.7
Moynan D.	LD	489	22.9
Hook R. Ms.	Green	160	7.5
Turnout		33.7	46.8

Salvington (6579)			
		vote	share
Marsh J. Ms.	Con	1,100	60.3
O'Keefe M.	LD	723	39.7
Turnout		27.9	20.7

Selden (6083)			
		vote	share
Saheid J.	Con	1,053	51.2
Brown C. Ms.*	LD	872	42.4
Yates D.	Green	130	6.3
Turnout		33.9	8.8

Tarring (6624)			
		vote	share
Lovell J.*	LD	1,135	62.1
Clark G.	Con	486	26.6
Sandell I.	Lab	123	6.7
Colkett B.	Green	83	4.5
Turnout		27.6	35.5

Worthing - 2004

Broadwater (6585)³			
		vote	share
Lissenburg G. Ms.*	LD	1,054	41.6
Skepper K.	LD	913	-
Allen D.	LD	902	-
Cuer-Greene J. Ms.	Con	824	32.5
Terry A. Ms.	Con	787	-
Lafferty D.	Con	769	-
Colkett B.	Green	384	15.2
Turley J.	Lab	272	10.7
Turnout		33.8	9.1

Castle (6170)³			
		vote	share
Potter C. Ms.*	LD	1,093	50.3
Rogers R.	LD	1,090	-
Rogers J.	Con	1,081	49.7
Bonetti B.	LD	1,078	-
Taylor G. Ms.	Con	1,042	-
White R. Ms.	Con	1,012	-
Turnout		37.6	0.6

Central (6090) ³			
		vote	share
Coppard M.	Con	797	36.4
Roberts C.	Con	762	-
Freeland M. Ms.	LD	753	34.4
Tucker M.*	LD	721	-
Lermitte M. Ms.	Con	701	-
Goldsbrough-Jones J. Ms.*	LD	700	-
Hinton A. Ms.	Green	377	17.2
Barnes P.	Lab	260	11.9
Turnout		33.3	2.0

Durrington (4481) ²			
		vote	share
Falk J.	Con	744	44.8
Sayers A. Ms.	Con	677	-
O'keeffe M.	LD	621	37.4
Sunderland K.	LD	580	-
Dwyer J.	Green	295	17.8
Turnout		37.6	7.4

Gaisford (6646) ³			
		vote	share
Barlow M. Ms.	Con	1,014	38.8
Turner B.	Con	1,000	-
Brady K.	Con	983	-
Medcalf P.	LD	914	35.0
Lissenburg D.*	LD	909	-
Rice A.	LD	870	-
Hillcoat M. Ms.	Green	409	15.7
Young J. Ms.	Lab	274	10.5
Turnout		37.1	3.8

Goring (6677) ³			
		vote	share
John N.*	Con	2,138	68.3
Green F. Ms.	Con	2,055	-
Waight S.*	Con	2,044	-
Paris S.	LD	677	21.6
Grace M.	LD	611	-
Withnell S. Ms.	LD	606	-
Clayton K. Ms.	Lab	317	10.1
Turnout		47.1	46.6

Heene (6040) ³			
		vote	share
High P.*	Con	1,121	44.0
Livermore J.*	Con	1,116	-
Stephens G.*	Con	1,080	-
Allen C. Ms.*	LD	560	22.0
Jones A.	LD	492	-
Taylor C.	Green	393	15.4
Ralls C.	LD	387	-
Duffy N.	Lab	302	11.8
Chalk S. Ms.	LCA	173	6.8
Turnout		35.6	22.0

Marine (6489) ³			
		vote	share
Bradley J. Ms.	Con	1,713	55.7
Mercer K.*	Con	1,640	-
Wye T.*	Con	1,637	-
Millard S. Ms.	LD	586	19.0
Izod P. Ms.	LD	499	-
Colkett L. Ms.	Green	488	15.9
Stephenson B.	LD	469	-
Slater B.	Lab	290	9.4
Turnout		42.6	36.6

Northbrook (3432) ²			
		vote	share
Harding M. Ms.	Con	410	38.0
Whiteley A.	Con	367	-
Capon V.	LD	288	26.7
Jones M.	LD	247	-
Smith D. Ms.	SDD	216	20.0
Brown T. Ms.	Green	165	15.3
Turnout		27.7	11.3

Offington (6155) ³			
		vote	share
McCarthy M.	Con	1,857	73.4
Fabes G.*	Con	1,837	-
Green R.*	Con	1,828	-
Daniels P.	LD	674	26.6
Moynan D.	LD	567	-
Moynan M. Ms.*	LD	559	-
Turnout		43.3	46.7

Salvington (6975) ³			
		vote	share
Marsh J. Ms.*	Con	1,656	58.4
Atkins N.	Con	1,617	-
Mercer H. Ms.	Con	1,517	-
Baker I. Ms.*	LD	725	25.6
O'Keeffe S. Ms.	LD	638	-
Bates S.	LD	630	-
Colkett D.	Green	456	16.1
Turnout		38.7	32.8

Selden (6066) ³			
		vote	share
Saheid J.*	Con	1,185	50.5
Doyle J.*	LD	1,161	49.5
Brown C. Ms.	LD	1,149	-
Player S. Ms.*	LD	1,108	-
Turner D.	Con	1,038	-
King S. Ms.	Con	1,025	-
Turnout		40.7	1.0

Tarring (6412) ³			
		vote	share
Lovell L.*	LD	1,247	54.0
Thorpe H. Ms.*	LD	1,169	-
Smytherman R.*	LD	1,077	-
Brady K. Ms.	Con	725	31.4
Ide D.	Con	709	-
Bird G.	Con	706	-
Sandell I.	Ind	338	14.6
Turnout		36.1	22.6

Worthing - 2006

Broadwater (6508)			
		vote	share
Player S. Ms.	LD	1,126	52.2
Studd S.	Con	766	35.5
Colkett D.	Green	267	12.4
Turnout		33.3	16.7

Castle (6114)			
		vote	share
Rogers J.*	Con	999	47.3
Potter D.	LD	884	41.9
Warrick J.	Green	228	10.8
Turnout		34.7	5.4

Central (6234)			
		vote	share
Yallop P.	Con	773	41.6
Goldsbrough-Jones J. Ms.	LD	702	37.8
Colkett L. Ms.	Green	218	11.7
Barnes P.	Lab	164	8.8
Turnout		30.3	3.8

Durrington (4416) ²			
		vote	share
Sunderland K.	LD	805	51.1
Donin M.	LD	794	-
Withers M.	Con	771	48.9
Sayers A. Ms.*	Con	768	-
Turnout		36.1	2.2

Gaisford (6585)			
		vote	share
Rice A.	LD	969	44.5
Brady K.*	Con	914	42.0
Hillcoat M. Ms.	Green	295	13.5
Turnout		33.3	2.5

Goring (6664)			
		vote	share
Waight S.*	Con	1,807	66.3
Allen C. Ms.	LD	546	20.0
Bater R.	UKIP	372	13.7
Turnout		41.2	46.3

Heene (5908)			
		vote	share
Molineaux C. Ms.	Con	1,098	62.0
Jones A.	LD	674	38.0
Turnout		30.6	23.9

Marine (6499)			
		vote	share
Wye T.*	Con	1,489	60.0
Baker C.	LD	383	15.4
Thompson T. Ms.	Green	271	10.9
Slater B.	Lab	173	7.0
Ruddock P.	UKIP	166	6.7
Turnout		38.3	44.6

Northbrook (3418)			
		vote	share
Jones D. Ms.	LD	404	54.5
O'Keeffe M.	Con	337	45.5
Turnout		22.1	9.0

Offington (6171)			
		vote	share
Green R.*	Con	1,476	74.7
Fisher N. Ms.	LD	501	25.3
Turnout		32.0	49.3

Salvington (7077)			
		vote	share
Mercer H. Ms.*	Con	1,643	70.8
Cranfield M.	LD	679	29.2
Turnout		33.2	41.5

Selden (5974)			
		vote	share
Brown C. Ms.*	LD	1,043	53.5
Oakley R.	Con	905	46.5
Turnout		33.1	7.1

Tarring (6338)			
		vote	share
Smytherman R.*	LD	1,149	54.2
Ide D.	Con	618	29.1
Woodward C.	UKIP	180	8.5
Wells S.	Lab	174	8.2
Turnout		33.5	25.0

Worthing - 2007

Broadwater (6523)			
		vote	share
Skepper K.*	Con	1,062	49.6
Riding G.	LD	941	44.0
Turley J.	Lab	136	6.4
Turnout		33.0	5.7

Castle (6280) ²			
		vote	share
Rogers R.*	LD	1,025	42.3
Potter D.	LD	952	-
Capper B.	Con	944	38.9
White R. Ms.	Con	924	-
Warrick J.	Green	251	10.4
Chatfield C.	UKIP	204	8.4
Turnout		35.5	3.3

Central (6517)			
		vote	share
Roberts C.*	Con	874	42.7
Goldsbrough-Jones J. Ms.	LD	630	30.8
Pearson J.	Green	263	12.9
Smith T.	Lab	180	8.8
Woodward C.	UKIP	99	4.8
Turnout		31.5	11.9

Gaisford (6586)			
		vote	share
Turner B.*	Con	1,085	47.4
Muggeridge A.	LD	844	36.9
Hillcoat M. Ms.	Green	193	8.4
Finney T. Ms.	Lab	168	7.3
Turnout		35.0	10.5

Goring (6702)			
		vote	share
Sayers A. Ms.	Con	1,817	62.9
Jones M.	LD	410	14.2
Bater R.	UKIP	323	11.2
Smith D. Ms.	SDD	174	6.0
Haden J. Ms.	Lab	165	5.7
Turnout		43.0	48.7

Heene (6070)			
		vote	share
Livermore J.*	Con	1,003	53.6
Jones A.	LD	446	23.9
Colkett D.	Green	248	13.3
Field S.	UKIP	173	9.3
Turnout		31.0	29.8

Marine (6484)			
		vote	share
Mercer K.*	Con	1,511	63.4
Withnell S. Ms.	LD	344	14.4
Colkett S.	Green	201	8.4
Ruddock P.	UKIP	171	7.2
Slater B.	Lab	155	6.5
Turnout		36.7	49.0

Offington (6207)			
		vote	share
Fabes G.*	Con	1,845	77.2
Fisher N. Ms.	LD	425	17.8
Rennie H. Ms.	Lab	121	5.1
Turnout		39.0	59.4

Salvington (7095)			
		vote	share
Atkins N.*	Con	1,530	61.3
Cranehead M.	LD	603	24.1
Brooks R.	UKIP	364	14.6
Turnout		35.0	37.1

Selden (5981)			
		vote	share
Oakley R.	Con	962	45.2
Doyle J.*	LD	950	44.6
Saunders A. Ms.	Lab	216	10.2
Turnout		36.0	0.6

Tarring (6404)			
		vote	share
Thorpe H. Ms.*	LD	1,259	58.3
Rose J.	Con	632	29.3
McGinlay M.	UKIP	144	6.7
Wells S.	Lab	125	5.8
Turnout		33.8	29.0

Worthing - 2008

Broadwater (6617)			
		vote	share
Allen D.	Con	977	47.4
John N.*	LD	952	46.2
Turley J.	Lab	132	6.4
Turnout		31.1	1.2

Castle (6324)			
		vote	share
Potter D.*	LD	1,167	55.8
White R. Ms.	Con	926	44.2
Turnout		33.0	11.5

Central (6403)			
		vote	share
Coppard M.*	Con	791	44.9
Condon N.	LD	698	39.6
Barnes P.	Lab	148	8.4
Woodward C.	UKIP	126	7.1
Turnout		28.0	5.3

Durrington (4456)			
		vote	share
Donin M.	LD	708	45.6
Withers M.	Con	631	40.6
Chatfield C.	UKIP	215	13.8
Turnout		35.0	5.0

Gaisford (6634)			
		vote	share
Barlow A. Ms.*	Con	1,026	48.5
Goldsbrough-Jones J. Ms.	LD	951	45.0
Rennie H. Ms.	Lab	137	6.5
Turnout		32.0	3.5

Goring (6752)			
		vote	share
Lermite M. Ms.	Con	1,921	68.3
Jones M.	LD	523	18.6
Bater R.	UKIP	368	13.1
Turnout		42.0	49.7

Heene (6047)			
		vote	share
High P.*	Con	1,018	61.7
Jones A.	LD	632	38.3
Turnout		28.0	23.4

Marine (6531)			
		vote	share
Bradley J. Ms.*	Con	1,351	63.2
Riding G.	LD	508	23.8
Ruddock P.	UKIP	278	13.0
Turnout		33.0	39.4

Northbrook (3489)			
		vote	share
Harding M. Ms.*	Con	372	40.5
Cranehead M.	LD	354	38.6
Smith D. Ms.	SDD	99	10.8
Baxter J.	BNP	93	10.1
Turnout		26.0	2.0

Offington (6244)			
		vote	share
Sparkes E. Ms.	Con	1,533	64.8
Glennon M.	UKIP	402	17.0
Izod P. Ms.	LD	289	12.2
Gardiner J.	Lab	142	6.0
Turnout		38.0	47.8

Salvington (7194)			
		vote	share
Marsh J. Ms.*	Con	1,311	57.5
Cranehead J. Ms.	LD	540	23.7
Brooks R.	UKIP	428	18.8
Turnout		32.0	33.8

Selden (6079)			
		vote	share
Doyle J.	LD	1,227	54.1
Hedley-Barnes S. Ms.	Con	673	29.7
Little D.	BNP	233	10.3
Saunders A. Ms.	Lab	133	5.9
Turnout		39.0	24.4

Tarring (6441)			
		vote	share
Fisher N. Ms.	LD	1,083	54.1
Ide D.	Con	607	30.3
Brown A. Ms.	UKIP	191	9.5
Wells S.	Lab	121	6.0
Turnout		31.0	23.8

Worthing - 2010

Broadwater (6809)			
		vote	share
Vaughan V. Ms.	Con	1,774	41.6
Nelson J.	LD	1,737	40.7
Turley J.	Lab	440	10.3
Avis C.	UKIP	318	7.4
Turnout		62.7	0.9

Castle (6308)			
		vote	share
England T.	LD	2,199	58.8
Turner D.	Con	1,542	41.2
Turnout		59.3	17.6

Central (6939)			
		vote	share
Chapman D.	LD	1,603	43.2
Murray S.	Con	1,358	36.6
Haden J. Ms.	Lab	505	13.6
Woodward C.	UKIP	242	6.5
Turnout		53.4	6.6

Durrington (4437)			
		vote	share
James C.	Con	1,303	46.2
Sunderland K.*	LD	1,209	42.8
King S. Ms.	UKIP	310	11.0
Turnout		63.6	3.3

Gaisford (6779)			
		vote	share
Rice A.*	LD	1,835	42.4
Rogers J.	Con	1,708	39.4
Smith M.	Lab	463	10.7
Harwood J.	UKIP	324	7.5
Turnout		62.9	2.9

Goring (6780)			
		vote	share
Waight S.*	Con	2,774	57.7
Condon N.	LD	1,016	21.1
Elwood J.	Lab	569	11.8
Bater R.	UKIP	445	9.3
Turnout		70.8	36.6

Heene (6270)			
		vote	share
Molineaux C. Ms.*	Con	1,642	46.7
Hoban W.	LD	1,337	38.1
Marsh S. Ms.	Lab	534	15.2
Turnout		56.0	8.7

Marine (6591)²			
		vote	share
Wye T.*	Con	2,339	54.2
Yallop P.	Con	1,981	-
Allen C. Ms.	LD	1,467	34.0
Leonard Y. Ms.	LD	1,339	-
Ruddock P.	UKIP	510	11.8
Turnout		65.5	20.2

Northbrook (3547)			
		vote	share
Jones D. Ms.*	LD	1,011	54.0
Whiteley A.	Con	861	46.0
Turnout		52.8	8.0

Offington (6308)			
		vote	share
Green R.*	Con	2,617	56.6
Cranefield M.	LD	1,124	24.3
Glennon M.	UKIP	496	10.7
Gardiner J.	Lab	384	8.3
Turnout		73.3	32.3

Salvington (7272)			
		vote	share
Waight N. Ms.	Con	2,343	51.0
Cranefield J. Ms.	LD	1,659	36.1
Hall P. Ms.	UKIP	589	12.8
Turnout		63.1	14.9

Selden (6241)			
		vote	share
Brown C. Ms.*	LD	1,702	46.0
Rogers J. Ms.	Con	1,273	34.4
Saunders A. Ms.	Lab	464	12.5
Offen R. Ms.	UKIP	264	7.1
Turnout		59.3	11.6

Tarring (6537)			
		vote	share
Smytherman R.*	LD	2,166	52.3
Chick T.	Con	1,496	36.1
Fallone A.	UKIP	479	11.6
Turnout		63.3	16.2

Worthing - 2011

Broadwater (6784)			
		vote	share
Taylor V. Ms.	LD	979	38.2
Pisko M.	Con	828	32.3
Turley J.	Lab	479	18.7
Strange J.	UKIP	276	10.8
Turnout		38.0	5.9

Castle (6218)			
		vote	share
Humphreys D.	Con	892	37.4
Rogers R.*	LD	807	33.8
Deen R.	Lab	436	18.3
Chatfield C.	UKIP	251	10.5
Turnout		38.9	3.6

Central (7017)			
		vote	share
Roberts C.*	Con	893	40.2
Allen C. Ms.	LD	600	27.0
Haden J. Ms.	Lab	528	23.8
Woodward C.	UKIP	202	9.1
Turnout		32.1	13.2

Gaisford (6787)			
		vote	share
Turner B.*	Con	1,133	42.5
Sunderland K.	LD	767	28.8
Steels J.	Lab	485	18.2
Harwood J.	UKIP	281	10.5
Turnout		40.0	13.7

Goring (6784)			
		vote	share
Barraclough R.	Con	1,956	57.8
Elwood J.	Lab	411	12.1
Bater R.	UKIP	385	11.4
Aherne D.	Green	382	11.3
Finch M.	LD	253	7.5
Turnout		50.7	45.6

Heene (6261)			
		vote	share
Howard P.	Con	1,144	52.6
Marsh S. Ms.	Lab	598	27.5
Hoban W.	LD	433	19.9
Turnout		35.4	25.1

Marine (6565)			
		vote	share
Yallop P.	Con	1,614	56.9
Wagstaff A. Ms.	Lab	465	16.4
Leonard Y. Ms.	LD	448	15.8
Ruddock P.	UKIP	312	11.0
Turnout		44.1	40.5

Offington (6321)			
		vote	share
Fabes G.*	Con	1,754	58.9
Glennon M.	UKIP	465	15.6
Condon N.	LD	431	14.5
Saunders A. Ms.	Lab	327	11.0
Turnout		47.9	43.3

Salvington (7209)			
		vote	share
Atkins N.*	Con	1,539	55.0
Hall T. Ms.	UKIP	443	15.8
Davies E. Ms.	LD	415	14.8
Salter L. Ms.	Lab	403	14.4
Turnout		39.3	39.1

Selden (6262)			
		vote	share
Oakley R.*	Con	802	34.3
Cranefield J. Ms.	LD	783	33.5
Barrett M.	Lab	504	21.6
Head B.	UKIP	246	10.5
Turnout		37.6	0.8

Tarring (6492)			
		vote	share
Thorpe H. Ms.*	LD	1,108	45.1
Khan N.	Con	701	28.5
Barnes P.	Lab	368	15.0
King S. Ms.	UKIP	282	11.5
Turnout		38.5	16.6

Worthing - 2012

Broadwater (6833)			
		vote	share
Walker V.	Con	585	33.1
Nelson J.	LD	513	29.1
Newbury L. Ms.	Lab	371	21.0
Avis C.	UKIP	296	16.8
Turnout		25.9	4.1

Castle (6236)			
		vote	share
Potter D.*	LD	701	40.3
Chapman A. Ms.	Con	505	29.1
Chatfield C.	UKIP	270	15.5
Walker I.	Lab	262	15.1
Turnout		27.9	11.3

Central (7340)			
		vote	share
Vinojan V.	Con	494	29.5
Deen R.	Lab	404	24.1
Scott L. Ms.	LD	327	19.5
Woodward C.	UKIP	254	15.2
Pearce M. Ms.	Green	196	11.7
Turnout		22.9	5.4

Durrington (4512)			
		vote	share
Donin M.*	LD	508	36.3
James M. Ms.	Con	492	35.1
Jelliss M.	UKIP	218	15.6
Chadwick G.	Lab	183	13.1
Turnout		31.1	1.1

Gaisford (6858)			
		vote	share
Turner V. Ms.	Con	671	36.6
Davies E. Ms.	LD	577	31.5
Turley J.	Lab	329	18.0
Harwood J.	UKIP	254	13.9
Turnout		26.8	5.1

Goring (6784)			
		vote	share
Lermitte M. Ms.*	Con	1,200	50.2
Bater R.	UKIP	482	20.2
Elwood J.	Lab	359	15.0
Aherne D.	Green	178	7.5
Finch M.	LD	170	7.1
Turnout		35.3	30.1

Heene (6424)			
		vote	share
High P.*	Con	685	47.5
Orr-Ewing S. Ms.	LD	425	29.5
Setford R.	UKIP	331	23.0
Turnout		23.3	18.0

Marine (6595)			
		vote	share
Bradley J. Ms.*	Con	959	49.8
Wagstaff A. Ms.	Lab	357	18.5
Ruddock P.	UKIP	349	18.1
Leonard Y. Ms.	LD	260	13.5
Turnout		29.3	31.3

Northbrook (3570)			
		vote	share
Sunderland K.	LD	298	40.2
Harding M. Ms.*	Con	294	39.7
Haden J. Ms.	Lab	86	11.6
Morris W.	Green	63	8.5
Turnout		20.9	0.5

Offington (6359)²			
		vote	share
Sparkes C. Ms.*	Con	1,107	48.1
Rogers J.	Con	959	-
Glennon M.	UKIP	599	26.0
Williams L. Ms.	LD	305	13.3
Steels J.	Lab	290	12.6
Starling T. Ms.	LD	256	-
Turnout		32.2	22.1

Salvington (7135)

		vote	share
Cloake M.	Con	884	46.7
Hall P. Ms.	UKIP	456	24.1
Martin J.	Lab	297	15.7
Campbell N.	LD	257	13.6
Turnout		26.7	22.6

Selden (6322)

		vote	share
Bickers K.	Con	605	33.6
Cranefield J. Ms.	LD	498	27.7
Barrett M.	Lab	429	23.8
Lloyd G.	UKIP	267	14.8
Turnout		28.6	5.9

Tarring (6506)

		vote	share
Fisher N. Ms.*	LD	763	43.7
Chick T.	Con	448	25.6
Barnes P.	Lab	269	15.4
King S.	UKIP	267	15.3
Turnout		27.0	18.0

