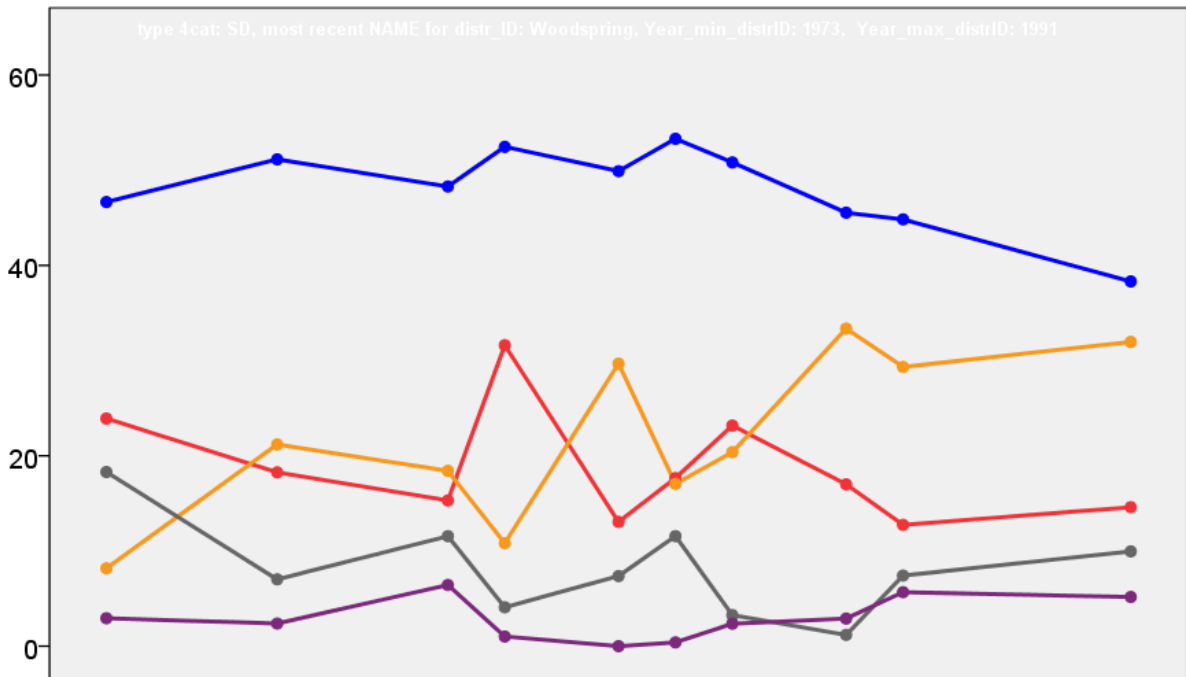


Woodspring District Council Election Results 1973-1991



Colin Rallings and Michael Thrasher
The Elections Centre
Plymouth University

The information contained in this report has been obtained from a number of sources. Election results from the immediate post-reorganisation period were painstakingly collected by Alan Willis largely, although not exclusively, from local newspaper reports. From the mid-1980s onwards the results have been obtained from each local authority by the Elections Centre. The data are stored in a database designed by Lawrence Ware and maintained by Brian Cheal and others at Plymouth University. Despite our best efforts some information remains elusive whilst we accept that some errors are likely to remain. Notice of any mistakes should be sent to elections@plymouth.ac.uk. The results sequence can be kept up to date by purchasing copies of the annual Local Elections Handbook, details of which can be obtained by contacting the email address above.

Front cover: the graph shows the distribution of percentage vote shares over the period covered by the results. The lines reflect the colours traditionally used by the three main parties. The grey line is the share obtained by Independent candidates while the purple line groups together the vote shares for all other parties.

Rear cover: the top graph shows the percentage share of council seats for the main parties as well as those won by Independents and other parties. The lines take account of any by-election changes (but not those resulting from elected councillors switching party allegiance) as well as the transfers of seats during the main round of local election.

The lower graph shows for each main round of local elections the overall percentage turnout (solid line), the percentage of women candidates standing at (dotted line) and the percentage of women among those elected (hashed line).

Woodspring 1973

Backwell (3898)²

		vote	share
Dening W.	Con	768	48.3
Harris R.	Con	638	-
Johnson M. Ms.	Ind	609	38.3
Udall E.	Ind	532	-
Lander A.	Ind	285	-
Rowe C.	Lab	213	13.4
Rowe H. Ms.	Lab	165	-
Turnout		40.8	10.0

Blagdon (1321)

		vote	share
Keel I.	Con	366	62.8
Bendall P. Ms.	Ind	217	37.2
Turnout		44.1	25.6

Churchill (1197)

		vote	share
Downey D.	Lib	372	59.8
Owens E.	Con	250	40.2
Turnout		52.0	19.6

Congresbury (2381)

		vote	share
Walter J.	Con	610	73.8
Holmes D.	Ind	217	26.2
Turnout		34.7	47.5

Easton In Gordano (3698)²

		vote	share
Keen M.	Ind	450	52.7
Short B.	Con	404	47.3
Gamlin D.	Con	326	-
Turnout		23.1	5.4

Locking (1794)

		vote	share
Miller D.	Ind	440	85.8
Mercer D.	Lab	73	14.2
Turnout		28.6	71.5

Long Ashton (3764)²

		vote	share
Clarke S. Ms.	Ind	872	56.4
Martin P. Ms.	Con	675	43.6
Stocker P.	Con	507	-
Turnout		41.1	12.7

No. 1 (Weston-Super-Mare: Ashcombe) (3553)²

		vote	share
Brewer D.	Lab	867	54.1
German W.	Con	735	45.9
Haine L.	Con	684	-
Turnout		45.1	8.2

No. 10 (Clevedon: East) (1429)

		vote	share
Baker H. Ms.	Con	323	52.1
Logan R.	Lib	173	27.9
Kingston P.	Ind	124	20.0
Turnout		43.4	24.2

No. 11 (Clevedon: North) (1409)

		vote	share
Topham J.	Con	361	66.4
Crewe I. Ms.	Lib	183	33.6
Turnout		38.6	32.7

No. 12 (Clevedon: South) (2431)

		vote	share
Hodge C.	Lab	562	63.6
Ball S. Ms.	Con	322	36.4
Turnout		36.4	27.1

No. 13 (Clevedon: Walton) (2301)

		vote	share
Sturgess T.	Con	0	0.0
Turnout		0.0	0.0

No. 14 (Clevedon: West) (1754)

		vote	share
Cook J. Ms.	Lab	399	54.9
Holden P. Ms.	Con	328	45.1
Turnout		41.4	9.8

No. 15 (Portishead) (6720) @ 4

		vote	share
Windibank S.	Con	1,439	51.2
Padfield R.	Lab	1,374	48.8
Westley M.	Con	1,220	-
Glasgow G.	Con	1,143	-
Marsden P. Ms.	Lab	1,056	-
Iles H.	Con	1,042	-
Haigh D.	Lab	963	-
Jenkins J.	Lab	861	-
Turnout		41.9	2.3

No. 16 (Banwell) (2495)

		vote	share
Gwyn J. Ms.	Ind	651	89.1
Davis S.	Lab	80	10.9
Turnout		29.3	78.1

No. 2 (Weston-Super-Mare: Central) (4359)³

		vote	share
Driver D.	Con	1,257	62.0
Dickson J.	Con	1,079	-
Price M.	Con	1,035	-
Burnett J.	Lab	396	19.5
Ridge E.	Lab	377	-
Bagnall J.	Lib	375	18.5
Turnout		46.5	42.5

No. 20 (Winscombe) (3124)²

		vote	share
Rider A.	Lib	878	43.5
Hutchings G.	Lib	827	-
King D.	Ind Con	687	34.0
Gale D.	Con	453	22.4
Bennett G. Ms.	Con	427	-
Turnout		64.6	9.5

No. 22 (Kewstoke) (1052)

		vote	share
Horry A.	Con	0	0.0
Turnout		0.0	0.0

No. 23 (Hutton) (2206)

		vote	share
Smith R.	Con	407	60.4
Cox R.	Ind	267	39.6
Turnout		30.6	20.8

No. 25 (Nailsea) (6760) @ 4

		vote	share
Vance R.	Con	1,237	60.4
Lewis M.	Con	1,158	-
Cordery K.	Con	1,124	-
Russell G.	Con	1,016	-
Fox R.	Lab	499	24.4
Challice J.	Lab	461	-
Warman A.	Lab	460	-
Farley G.	Lab	417	-
Crocker A.	Ind	311	15.2
Turnout		30.3	36.1

No. 29 (Yatton) (4877)³

		vote	share
Ashbee W. Ms.	Ind	946	56.0
Brown J. Ms.	Con	742	44.0
Farrant E.	Con	730	-
Cox R.	Ind	616	-
Fido L.	Ind	610	-
Stroud G.	Ind	409	-
Turnout		34.6	12.1

No. 3 (Weston-Super-Mare: East) (4313)³

		vote	share
Watts M.	Lab	1,536	74.3
Watts S.	Lab	1,438	-
Sheppard R.	Lab	1,332	-
Reed P.	Con	532	25.7
Turnout		47.9	48.5

No. 32 (Kenn) (1102)

		vote	share
Surrey W.	Ind	271	52.4
Dyer S.	Con	246	47.6
Turnout		46.9	4.8

No. 33 (Gordano & North Weston) (3124)²

		vote	share
Barker G.	Ind	694	38.8
Riddiford H.	Con	674	37.7
Wippell M. Ms.	Con	645	-
Braithwaite C. Ms.	Lab	419	23.4
Turnout		57.2	1.1

No. 4 (Weston-Super-Mare: Ellenborough) (4640)³

		vote	share
Edwards D. Ms.	Con	1,181	75.4
Ewart-Clarke K.	Con	1,150	-
Goold V.	Con	1,143	-
Gosnall A.	Lab	385	24.6
Turnout		33.8	50.8

No. 5 (Weston-Super-Mare: Milton & Worle) (6916)³

		vote	share
Horler B.	Con	1,347	44.8
White G.	Con	1,234	-
Brenner J.	Con	1,143	-
Rogers B.	Lib	1,031	34.3
Bird A.	Lab	628	20.9
Turnout		43.5	10.5

No. 6 (Weston-Super-Mare: South) (5903)³

		vote	share
Lloyd E.	Lab	1,185	63.5
Nicholls E. Ms.	Lab	1,131	-
Stanton L.	Lab	1,046	-
Crockford-Hawley J.	Con	681	36.5
Turnout		31.6	27.0

No. 7 (Weston-Super-Mare: Uphill) (5091)³

		vote	share
Tremaine H.	Con	1,268	67.1
Goodwin R.	Con	1,232	-
Boyd F.	Con	1,182	-
Tolley R.	Lab	621	32.9
Turnout		37.1	34.3

No. 8 (Weston-Super-Mare: West) (4412)³

		vote	share
Haskins N.	Con	0	-
Smith H.	Con	0	0.0
Prosser W.	Con	0	-
Turnout		0.0	0.0

No. 9 (Clevedon: Central) (1562)

		vote	share
Hart B.	Con	426	68.6
Egan T.	Lab	195	31.4
Turnout		39.8	37.2

Winford (1990)

		vote	share
Cox T.	Con	421	48.6
Lasson A.	Ind	241	27.8
Bull J.	Ind Con	204	23.6
Turnout		43.5	20.8

Wraxall (1757)			
		vote	share
West M. Ms.	Con	396	45.1
Lee H.	Ind Con	267	30.4
Bromhead E. Ms.	Lib	215	24.5
		Turnout	50.0 14.7

Wrighton (1734)			
		vote	share
Ashman H.	Con	553	72.2
Livingstone E.	Ind	213	27.8
		Turnout	44.2 44.4

Woodspring 1976

Backwell (3957)²			
		vote	share
Denning W.*	Con	0	-
Harris R.*	Con	0	0.0
		Turnout	0.0 0.0

Blagdon (1380)			
		vote	share
Keel I.*	Con	569	72.7
Bendall P. Ms.	Ind	214	27.3
		Turnout	56.7 45.3

Churchill (1286)			
		vote	share
McGill M. Ms.	Con	412	52.9
Downey B.*	Lib	367	47.1
		Turnout	60.6 5.8

Congresbury (2395)			
		vote	share
Walter J.*	Con	729	69.2
Downer A. Ms.	Lib	324	30.8
		Turnout	44.0 38.5

Easton In Gordano (3736)²			
		vote	share
Short B.*	Con	1,409	60.2
Young R.	Con	1,324	-
Shaw P. Ms.	Lib	504	21.5
Stone J.	Lab	426	18.2
Brinsmead-Williams H.Lib		253	-
		Turnout	58.5 38.7

Locking (1872)			
		vote	share
Miller D.*	Ind	479	66.7
Draper M. Ms.	Lab	239	33.3
		Turnout	38.4 33.4

Long Ashton (3699)²			
		vote	share
Edwards A.	Con	0	-
Martin P. Ms.	Con	0	0.0
		Turnout	0.0 0.0

No. 1 (Weston-Super-Mare: Ashcombe) (3969)²			
		vote	share
Brewer D.*	Lab	932	42.2
German R.*	Con	902	40.9
Haine L.	Con	800	-
Martin M.	Lib	374	16.9
		Turnout	46.4 1.4

No. 10 (Clevedon: East) (1409)			
		vote	share
Baker H. Ms.*	Con	464	63.8
Shopland D.	Ind	263	36.2
		Turnout	51.6 27.6

No. 11 (Clevedon: North) (1382)			
		vote	share
Topham J.*	Con	0	0.0
		Turnout	0.0 0.0

No. 12 (Clevedon: South) (2546)			
		vote	share
Briggs T.	Con	696	56.9
Hodge C.*	Lab	527	43.1
		Turnout	48.0 13.8

No. 13 (Clevedon: Walton) (2281)			
		vote	share
Sturgess T.*	Con	788	62.9
Kerry T.	Lib	465	37.1
		Turnout	54.9 25.8

No. 14 (Clevedon: West) (1845)			
		vote	share
Gilmore A. Ms.	Con	516	57.7
Cook J. Ms.*	Lab	379	42.3
		Turnout	48.5 15.3

No. 15 (Portishead) (7332) @ 4			
		vote	share
Windibank S.*	Con	2,006	40.7
Burden P.	Con	1,863	-
Iles H.	Con	1,704	-
Herbert J. Ms.	Con	1,618	-
Haysom S. Ms.	Lib	1,521	30.9
Padfield R.*	Lab	1,399	28.4
Marston P. Ms.	Lab	1,133	-
Braithwaite C. Ms.	Lab	858	-
Booth S.	Lib	848	-
Ballantyne H.	Lib	772	-
Trimnell M.	Lab	633	-
		Turnout	53.6 9.8

No. 16 (Banwell) (2513)			
		vote	share
Jones G.	Con	0	0.0
		Turnout	0.0 0.0

No. 2 (Weston-Super-Mare: Central) (4319)³			
		vote	share
Dickson J.*	Con	1,252	56.2
Horler D.	Con	1,095	-
Prescott J.	Con	1,059	-
Holford C.	Lib	530	23.8
Perriam M. Ms.	Lib	468	-
Puzey J.	Lab	445	20.0
		Turnout	45.3 32.4

No. 20 (Winscombe) (3094)²			
		vote	share
King D.	Con	1,074	55.7
Whicher G.	Con	921	-
Hutchings G.*	Lib	854	44.3
Anderton J.	Lib	696	-
		Turnout	59.7 11.4

No. 22 (Kewstoke) (1054)			
		vote	share
Parsons F.	Con	285	50.9
Horry A.*	Ind Con	275	49.1
		Turnout	53.1 1.8

No. 23 (Hutton) (2432)			
		vote	share
Smith R.*	Con	713	76.9
Refault K.	Lib	214	23.1
		Turnout	38.1 53.8

No. 25 (Nailsea) (8010) @ 4			
		vote	share
Cordery K.*	Con	2,190	55.5
Vance R.*	Con	2,096	-
Smoldon P.	Con	1,787	-
Exell D.	Con	1,768	-
Fox R.	Lab	697	17.7
Burbridge L.	Lab	626	-
Bowen A.	Lib	619	15.7
Challice J.	Lab	618	-
Evans F. Ms.	Lib	606	-
Adamson J.	Lib	551	-
Prior B.	Lab	514	-
Judge A.	Lib	472	-
Holmes D.	Ind	443	11.2
		Turnout	42.9 37.8

No. 29 (Yatton) (4981)³			
		vote	share
Brown J. Ms.*	Con	1,194	43.2
Farrant E.*	Con	942	-
Ashbee W. Ms.*	Ind	909	32.9
Organ E.	Con	898	-
Biermann M.	Lib	662	23.9
Hughes R.	Lib	608	-
Cox P.	Ind	394	-
Stacey A.	Ind	301	-
		Turnout	46.6 10.3

No. 3 (Weston-Super-Mare: East) (4442)³			
		vote	share
Watts M.*	Lab	1,360	59.2
Heath H.	Lab	1,225	-
Sheppard R.*	Lab	1,157	-
Edwards A.	Con	939	40.8
Ap E. Rees	Con	874	-
Henwood B.	Con	821	-
		Turnout	50.9 18.3

No. 32 (Kenn) (1091)			
		vote	share
Surrey W.*	Ind	0	0.0
		Turnout	0.0 0.0

No. 33 (Gordano & North Weston) (3385)²			
		vote	share
Daws J.	Ind Con	840	35.3
Riddiford H.*	Con	713	29.9
Tyler B.	Ind Con	540	-
Quas N. Ms.	Lib	512	21.5
Schaffer G.	Con	468	-
Green G.	Lab	317	13.3
		Turnout	55.6 5.3

No. 4 (Weston-Super-Mare: Ellenborough) (4707)³			
		vote	share
Edwards D. Ms.*	Con	1,351	52.9
Goold V.*	Con	1,288	-
Ewart-Clarke K.*	Con	1,279	-
Sinclair K.	Lib	805	31.5
Lloyd E.	Lab	400	15.6
		Turnout	47.0 21.4

No. 5 (Weston-Super-Mare: Milton & Worle) (8018)³			
		vote	share
Crockford-Hawley J.	Con	1,523	50.1
White G.*	Con	1,477	-
Harrison R.	Con	1,395	-
Blackwell J.	Lib	809	26.6
Adams E.	Lib	777	-
Rogers B.	Ind	706	23.2
Cornish M. Ms.	Lib	575	-
		Turnout	33.6 23.5

No. 6 (Weston-Super-Mare: South) (5920)³			
		vote	share
Watts A.	Lab	1,234	65.4
Nicholls E. Ms.*	Lab	1,204	-
Gosnall A.	Lab	1,070	-
West J.	Con	654	34.6
Jenkins S. Ms.	Con	644	-
Kneale H.	Con	571	-
		Turnout	33.8 30.7

No. 7 (Weston-Super-Mare: Uphill) (5118) ³			
		vote	share
Tremaine H.*	Con	1,620	73.5
Tait T.	Con	1,424	-
Boyd F.*	Con	1,370	-
Kerr A.	Lib	585	26.5
Kay L.	Lib	532	-
Turnout		43.0	46.9

No. 8 (Weston-Super-Mare: West) (4312) ³			
		vote	share
Haskins N.*	Con	1,029	67.3
Prosser W.*	Con	1,000	-
Smith H.*	Con	910	-
Prunier D.	Lib	500	32.7
Turnout		35.7	34.6

No. 9 (Clevedon: Central) (1672)			
		vote	share
Hart B.*	Con	312	40.4
Neill K. Ms.	Lib	270	35.0
Anthony J.	Lab	190	24.6
Turnout		46.2	5.4

Winford (2068)			
		vote	share
Cox T.*	Con	0	0.0
Turnout		0.0	0.0

Wraxall (1762)			
		vote	share
Cox W.	Con	591	68.7
Lee H.	Ind	269	31.3
Turnout		48.8	37.4

Wrighton (1673)			
		vote	share
Ashman H.*	Con	0	0.0
Turnout		0.0	0.0

Woodspring 1979

Backwell (4085) ²			
		vote	share
Denning W.	Con	0	-
Harris R.	Con	0	0.0
Turnout		0.0	0.0

Banwell (3691) ²			
		vote	share
Jones G.	Con	1,620	55.0
Parsons F.	Con	1,410	-
Rider W.	Lib	1,324	45.0
Turnout		79.8	10.1

Blagdon (1086)			
		vote	share
Keel I.	Con	0	0.0
Turnout		0.0	0.0

Churchill (1313)			
		vote	share
McGill M. Ms.	Con	0	0.0
Turnout		0.0	0.0

Clevedon Central (1782)			
		vote	share
Neill K. Ms.	Lib	703	54.0
Morris G.	Con	600	46.0
Turnout		73.1	7.9

Clevedon East (2457)			
		vote	share
Baker H. Ms.	Con	1,116	59.5
Beech C.	Lib	759	40.5
Turnout		76.3	19.0

Clevedon North (1505)			
		vote	share
Topham J.	Con	0	0.0
Turnout		0.0	0.0

Clevedon South (2240)			
		vote	share
Briggs P.	Con	1,189	66.4
Loughlin M.	Lab	603	33.6
Turnout		80.0	32.7

Clevedon Walton (2394)			
		vote	share
Sturgess T.	Con	1,016	51.4
Dagnall J.	Lib	962	48.6
Turnout		82.6	2.7

Clevedon West (1974)			
		vote	share
Gilmore A. Ms.	Con	892	57.2
Cook J. Ms.	Lab	668	42.8
Turnout		79.0	14.4

Congresbury (2432)			
		vote	share
Baldwin P.	Ind	796	40.8
Lennon V. Ms.	Con	736	37.7
Holmes D.	Ind	420	21.5
Turnout		80.3	3.1

Easton In Gordano (3837) ²			
		vote	share
Short B.	Con	0	-
Young R.	Con	0	0.0
Turnout		0.0	0.0

Gordano (1892)			
		vote	share
McEwen Smith M. Ms.	Con	0	0.0
Turnout		0.0	0.0

Hutton (2431)			
		vote	share
Smith R.	Con	0	0.0
Turnout		0.0	0.0

Locking (1826)			
		vote	share
Miller D.	Ind	0	0.0
Turnout		0.0	0.0

Long Ashton (3775) ²			
		vote	share
Martin P. Ms.	Con	0	0.0
Edwards A.	Con	0	-
Turnout		0.0	0.0

Nailsea East (2333)			
		vote	share
Daws J.	Con	0	0.0
Turnout		0.0	0.0

Nailsea North & West (3748) ²			
		vote	share
Cordery K.	Con	2,096	73.6
Vance R.	Con	1,955	-
Beal J.	Lab	750	26.4
Cross P.	Lab	747	-
Turnout		75.9	47.3

North Weston (5690) ³			
		vote	share
Paul D.	Con	2,655	60.6
Kent J. Ms.	Con	2,559	-
Lawrence W.	Con	2,331	-
Burbridge L.	Lab	1,727	39.4
Fox R.	Lab	1,411	-
Prior R.	Lab	1,335	-
Turnout		77.0	21.2

Portishead Central (1679)			
		vote	share
Haysom S. Ms.	Lib	835	63.5
Withers R.	Con	479	36.5
Turnout		78.3	27.1

Portishead Coast (1839)			
		vote	share
Iles H.	Con	890	59.8
Kingman A. Ms.	Lib	599	40.2
Turnout		81.0	19.5

Portishead South (1951)			
		vote	share
Burden P.	Con	827	53.1
George G. Ms.	Lib	731	46.9
Turnout		79.9	6.2

Portishead West (2700)			
		vote	share
Cruse M.	Con	1,122	52.0
Ballantyne R.	Lib	1,036	48.0
Turnout		79.9	4.0

Weston Super Mare Ashcombe (6664) ³			
		vote	share
Watts M.	Lab	2,505	44.7
Brewer D.	Lab	2,324	-
Prescott J.	Con	1,830	32.7
Horler D.	Con	1,785	-
Heath H.	Lab	1,727	-
West J.	Con	1,690	-
Perriam M. Ms.	Lib	1,263	22.6
Turnout		84.0	12.1

Weston Super Mare East (7187) ³			
		vote	share
Smith R.	Res	3,618	58.6
Taylor P.	Con	2,551	41.4
Ap Rees E.	Con	2,205	-
Kilmartin M.	Con	2,195	-
Turnout		85.8	17.3

Weston Super Mare Ellenborough (5755) ³			
		vote	share
Goold V.	Con	0	0.0
Edwards D. Ms.	Con	0	-
Ewart-Clarke K.	Con	0	-
Turnout		0.0	0.0

Weston Super Mare North (7352) ³			
		vote	share
Harrison R.	Con	0	-
White G.	Con	0	-
Crockford-Hawley J.	Con	0	0.0
Turnout		0.0	0.0

Weston Super Mare South (5452) ³			
		vote	share
Watts A.	Lab	2,360	67.3
Nicholls E. Ms.	Lab	2,278	-
Hawkes R.	Lab	2,153	-
Palmer W.	Con	1,146	32.7
Davies M.	Con	1,058	-
Hayman R.	Con	950	-
Turnout		64.3	34.6

Weston Super Mare Uphill (6175) ³			
		vote	share
Tremaine H.	Con	2,441	38.8
Wyatt J.	Lib	2,149	34.2
Tait T.	Con	2,072	-
Boyd F.	Con	1,796	-
Spillane F.	Ind	1,702	27.1
Turnout		101.9	4.6

Weston Super Mare West (5476) ³			
		vote	share
Prosser W.	Con	0	-
Dickson J.	Con	0	0.0
Haskins N.	Con	0	-
Turnout		0.0	0.0

Winford (2114)			
		vote	share
Cox T.	Con	0	0.0
Turnout		0.0	0.0

Winscombe (3325) ²			
		vote	share
King D.	Con	1,976	66.5
Whicher G.	Con	1,644	-
Lovell R.	Ind	994	33.5
Turnout		89.3	33.1

Wraxall (1879)			
		vote	share
Cox W.	Con	0	0.0
Turnout		0.0	0.0

Wrighton (1741)			
		vote	share
Ashman H.	Con	0	0.0
Turnout		0.0	0.0

Yatton (5787) ³			
		vote	share
Lewis G. Ms.	Ind	2,589	56.6
Dougherty D. Ms.	Ind	2,243	-
Farrant E.	Con	1,983	43.4
Hill A. Ms.	Con	1,962	-
Organ E.	Con	1,860	-
Turnout		79.0	13.3

Woodspring 1980

Backwell (4108)			
		vote	share
Denning W.*	Con	0	0.0
Turnout		0.0	0.0

Banwell (3834)			
		vote	share
Parsons F.*	Con	0	0.0
Turnout		0.0	0.0

Easton In Gordano (3854)			
		vote	share
Duck G.	Lab	698	39.2
Sexton C. Ms.	Ind	479	26.9
Greaves L. Ms.	Con	423	23.8
Shaw A. Ms.	Lib	179	10.1
Turnout		46.2	12.3

Locking (1869)			
		vote	share
Miller D.*	Ind	0	0.0
Turnout		0.0	0.0

Long Ashton (3857)			
		vote	share
Simcox R.	Con	0	0.0
Turnout		0.0	0.0

Nailsea East (2327)			
		vote	share
Daws J.*	Con	0	0.0
Turnout		0.0	0.0

North Weston (5708)			
		vote	share
Lawrence W.*	Con	948	64.6
Cross P.	Lab	520	35.4
Turnout		25.7	29.2

Portishead Central (1682)			
		vote	share
Haysom S. Ms.*	Lib	352	50.2
Withers R.	Con	214	30.5
Robertson P. Ms.	Lab	135	19.3
Turnout		41.7	19.7

Portishead Coast (1836)			
		vote	share
Iles H.*	Con	623	58.4
Langley M.	Lib	377	35.3
Manners J. Ms.	Lab	67	6.3
Turnout		58.1	23.1

Portishead South (1955)			
		vote	share
Burden P.*	Con	449	49.4
Johnston R.	Lib	265	29.2
Aitken C. Ms.	Lab	195	21.5
Turnout		46.5	20.2

Portishead West (2848)			
		vote	share
Cruse M.*	Con	612	46.2
Kingman A.	Lib	412	31.1
Gill W.	Lab	302	22.8
Turnout		46.6	15.1

Weston Super Mare Ashcombe (6522)			
		vote	share
Morris J.	Con	1,115	50.3
Heath H.	Lab	1,102	49.7
Turnout		34.0	0.6

Weston Super Mare East (7229)			
		vote	share
Ap Rees E.*	Con	1,232	59.0
Martin M.	Lab	855	41.0
Turnout		28.9	18.1

Weston Super Mare Ellenborough (5684)			
		vote	share
Goold V.*	Con	1,038	73.8
Groves D.	Lab	369	26.2
Turnout		24.8	47.5

Weston Super Mare North (8254)			
		vote	share
White G.*	Con	1,139	52.1
Hartland A.	Lab	820	37.5
Stenner D.	Ecol	226	10.3
Turnout		26.5	14.6

Weston Super Mare South (5453)			
		vote	share
Hawkes R.*	Lab	1,089	75.2
Palmer W.	Con	360	24.8
Turnout		26.6	50.3

Weston Super Mare Uphill (6160)			
		vote	share
Tait T.*	Con	1,217	49.4
Howell J.	Lib	819	33.2
Spillane B.	Ind	429	17.4
Turnout		40.0	16.1

Weston Super Mare West (5386)			
		vote	share
Dickson J.*	Con	1,205	83.8
Coonick C.	Lab	233	16.2
Turnout		26.7	67.6

Winscombe (3367)			
		vote	share
Wilkinson J.	Con	0	0.0
Turnout		0.0	0.0

Yatton (6010)			
		vote	share
Farrant E.*	Con	1,083	62.8
Giles R.	Lab	641	37.2
Turnout		28.7	25.6

Woodspring 1982

Backwell (4264)			
		vote	share
Wiltshire J.	Con	1,248	74.2
Eggington D.	All	433	25.8
Turnout		39.4	48.5

Banwell (2620)			
		vote	share
Jones G.*	Con	0	0.0
Turnout		0.0	0.0

Churchill (1289)			
		vote	share
Frost A.	Con	438	60.3
Sandford J.	All	288	39.7
Turnout		56.3	20.7

Congresbury (2502)			
		vote	share
Baldwin P.*	Ind	771	86.8
Giles R.	Lab	117	13.2
Turnout		35.5	73.6

Easton In Gordano (3924)			
		vote	share
Allcock P. Ms.	Con	932	47.2
Kirsan N. Ms.	All	596	30.2
Hughes C.	Lab	448	22.7
Turnout		50.4	17.0

Long Ashton (3954)			
		vote	share
Edwards A.*	Con	0	0.0
Turnout		0.0	0.0

Nailsea North & West (4667)			
		vote	share
Boulter L. Ms.	Con	1,093	59.8
Martin C.	All	735	40.2
Turnout		39.2	19.6

North Weston (5814) ²			
		vote	share
Kent J. Ms.*	Con	1,238	57.0
Small G. Ms.	Con	1,133	-
Hodgson J.	All	736	33.9
Hardingham S. Ms.	All	698	-
Nightingale D.	Lab	198	9.1
Antonovics A.	Lab	192	-
Turnout		37.4	23.1

Weston Super Mare Ashcombe (6540)			
		vote	share
Brewer D.*	All	1,414	49.1
German W.	Con	1,009	35.1
Westwood B.	Lab	455	15.8
Turnout		44.0	14.1

Weston Super Mare East (7312)			
		vote	share
Taylor P.*	Con	1,585	55.6
Miners D.	All	884	31.0
Jennings B.	Lab	382	13.4
Turnout		39.0	24.6

Weston Super Mare Ellenborough (5738)

		vote	share
Robertson P. Ms.	Con	1,275	58.0
Matthews J.	All	701	31.9
Evers J.	Lab	224	10.2
Turnout		38.3	26.1

Weston Super Mare North (9036)

		vote	share
Crockford-Hawley J.*	Con	1,982	58.2
Moon R.	All	954	28.0
Board R.	Lab	471	13.8
Turnout		37.7	30.2

Weston Super Mare South (5564)

		vote	share
Nicholls E. Ms.*	Lab	947	52.6
Burdge P.	All	474	26.3
Peddlesden I.	Con	381	21.1
Turnout		32.4	26.2

Weston Super Mare Uphill (6254)

		vote	share
Haine L.	Con	1,532	56.9
Howell J.	All	768	28.5
Groves D.	Lab	392	14.6
Turnout		43.0	28.4

Weston Super Mare West (5467)

		vote	share
Haskins N.	Con	1,287	64.7
Perriam M. Ms.	All	575	28.9
Semmens G.	Lab	128	6.4
Turnout		36.4	35.8

Winscombe (3541)²

		vote	share
King D.*	Con	1,191	58.6
Deane D.	Con	996	-
Hutchings G.	All	843	41.4
Lacy P.	All	771	-
Turnout		57.4	17.1

Wraxall (1814)

		vote	share
Cox W.*	Con	619	77.8
Elliott J.	Ind	177	22.2
Turnout		43.9	55.5

Wrighton (1796)

		vote	share
Ashman H.*	Con	0	0.0
Turnout		0.0	0.0

Yatton (6059)

		vote	share
Dougherty D. Ms.*	Ind	1,386	78.8
Byrne G.	Lab	372	21.2
Turnout		29.0	57.7

Woodspring 1983**Blagdon (1156)**

		vote	share
Keel I.*	Con	0	0.0
Turnout		0.0	0.0

Clevedon Central (2991)

		vote	share
Gannicliff P.	Lib/SDP	815	60.9
Puddy P. Ms.	Con	523	39.1
Turnout		44.7	21.8

Clevedon East (2684)

		vote	share
Baker H. Ms.*	Con	506	42.1
Shopland D.	Ind	505	42.0
Phillips A. Ms.	Lab	192	16.0
Turnout		44.8	0.1

Clevedon North (1586)

		vote	share
Birks A. Ms.	Con	438	64.2
Cusens J. Ms.	Lib/SDP	244	35.8
Turnout		43.0	28.4

Clevedon South (2797)

		vote	share
Lavelle W.	Con	720	59.7
Sterling P.	Lab	487	40.3
Turnout		43.2	19.3

Clevedon Walton (2504)

		vote	share
Hickling R.	Con	980	62.8
Dagnall J.	Lib/SDP	580	37.2
Turnout		62.3	25.6

Clevedon West (2603)

		vote	share
Gilmore D.*	Con	636	59.7
Cook J. Ms.	Lab	429	40.3
Turnout		40.9	19.4

Gordano (2030)

		vote	share
McEwen Smith M. Ms.*	Con	827	77.0
Williams W.	Lib/SDP	247	23.0
Turnout		52.9	54.0

Hutton (2718)

		vote	share
Bailey R.	Con	0	0.0
Turnout		0.0	0.0

Nailesea North & West (4934)

		vote	share
Price G. Ms.	Con	1,330	59.6
Martin J.	Lib/SDP	729	32.6
Antonovics A.	Lab	174	7.8
Turnout		45.3	26.9

North Weston (5881)

		vote	share
Small G. Ms.	Con	1,448	57.7
Steadman R.	Lib/SDP	695	27.7
Smart S.	Lab	366	14.6
Turnout		42.7	30.0

Weston Super Mare Ashcombe (6599)

		vote	share
Watts M.*	Ind	1,429	47.2
German W.	Con	902	29.8
Simmens G.	Lab	385	12.7
Burge P.	Lib/SDP	312	10.3
Turnout		45.9	17.4

Weston Super Mare East (7375)

		vote	share
Sweeting M. Ms.	Con	1,773	60.2
Kitt D.	Lib/SDP	656	22.3
Jennings B.	Lab	517	17.5
Turnout		39.9	37.9

Weston Super Mare Ellenborough (5877)

		vote	share
Thompson R.	Con	1,397	65.6
Robinson L. Ms.	Lib/SDP	422	19.8
Evers J.	Lab	309	14.5
Turnout		36.2	45.8

Weston Super Mare North (9367)

		vote	share
Harrison R.*	Con	2,118	73.7
Coonick C.	Lab	757	26.3
Turnout		30.7	47.3

Weston Super Mare South (5522)

		vote	share
Watts A.*	Lab	1,250	71.5
Peddlesden I.	Con	498	28.5
Turnout		31.7	43.0

Weston Super Mare Uphill (6194)

		vote	share
Lacey K.	Con	1,703	62.4
Hiley J.	Lib/SDP	530	19.4
Groves D.	Lab	498	18.2
Turnout		44.1	43.0

Weston Super Mare West (5631)

		vote	share
Prosser W.	Con	1,542	77.4
Stenner R.	Lib/SDP	320	16.1
Rickards K.	Soc Env	130	6.5
Turnout		35.4	61.3

Winford (2266)

		vote	share
Cox B.*	Con	0	0.0
Turnout		0.0	0.0

Yatton (6045)

		vote	share
Lewis G. Ms.*	Ind	1,829	82.6
Giles R.	Lab	385	17.4
Turnout		36.6	65.2

Woodspring 1984**Backwell (4317)**

		vote	share
Denning W.*	Con	1,172	68.0
Barrett A.	Lib/SDP	551	32.0
Turnout		39.9	36.0

Banwell (4157)

		vote	share
Parsons F.*	Con	0	0.0
Turnout		0.0	0.0

Easton In Gordano (3985)

		vote	share
Duck G.*	Lab	1,151	61.0
Walters J.	Con	736	39.0
Turnout		47.4	22.0

Locking (2009)

		vote	share
Ap Rees E.	KEEP L GRN	472	66.7
Miller D.*	Ind	236	33.3
Turnout		35.2	33.3

Long Ashton (3982)			
		vote	share
Symonds B.	Con	1,132	57.9
Binns W. Ms.	Lib/SDP	459	23.5
Hanson J.	Lab	363	18.6
Turnout		49.1	34.4
Nailsea East (2407)			
		vote	share
Daws J.*	Con	0	0.0
Turnout		0.0	0.0
North Weston (5787)			
		vote	share
Lawrence W.*	Con	888	39.7
Hodgson J.	Lib/SDP	634	28.4
Baker N.	Ind	319	14.3
Grigg A.	Lab	315	14.1
Wilson R.	Ecol	78	3.5
Turnout		38.6	11.4
Portishead Central (1688)			
		vote	share
Haysom S. Ms.*	Lib/SDP	484	62.2
Terry A.	Con	294	37.8
Turnout		46.1	24.4
Portishead Coast (1723)			
		vote	share
Westley M.	Con	548	54.7
Stevenson L.	Lib/SDP	453	45.3
Turnout		58.1	9.5
Portishead South (2200)			
		vote	share
Burden P.*	Con	568	52.4
Brailsford E.	Lib/SDP	516	47.6
Turnout		49.3	4.8
Portishead West (2977)			
		vote	share
Shield A.	Con	660	46.9
Williams W.	Lib/SDP	444	31.6
Gill W.	Lab	235	16.7
Summerley N.	Ecol	67	4.8
Turnout		47.2	15.4
Weston Super Mare Ashcombe (6572)			
		vote	share
Morris J.*	Con	1,202	48.4
Wood M.	Lib/SDP	655	26.4
Kraft D.	Lab	626	25.2
Turnout		37.8	22.0
Weston Super Mare East (7435)			
		vote	share
Crew P.	Con	1,594	68.1
Evers J.	Lab	745	31.9
Turnout		31.5	36.3
Weston Super Mare Ellenborough (6016)²			
		vote	share
German W.	Con	0	-
Wedlake M.	Con	0	0.0
Turnout		0.0	0.0
Weston Super Mare North (9898)			
		vote	share
Allen White G.*	Con	1,666	65.1
Jennings B.	Lab	894	34.9
Turnout		25.9	30.2
Weston Super Mare South (5549)			
		vote	share
Hawkes R.*	Lab	801	53.1
Elliott T.	Lib/SDP	369	24.5
Peddlesden I.	Con	338	22.4
Turnout		27.2	28.6

Weston Super Mare Uphill (6203)			
		vote	share
Tait T.*	Con	1,476	70.8
Groves D.	Lab	608	29.2
Turnout		33.6	41.7
Weston Super Mare West (5833)			
		vote	share
Dickson J.*	Con	0	0.0
Turnout		0.0	0.0
Winscombe (3517)			
		vote	share
Deane D.	Con	0	0.0
Turnout		0.0	0.0
Yatton (6175)			
		vote	share
Hill A. Ms.	Con	1,007	42.2
Jopp A.	Lib/SDP	760	31.9
Sterling P.	Lab	319	13.4
Bennett J.	Ind	298	12.5
Turnout		38.6	10.4
Woodspring 1986			
Backwell (4317)			
		vote	share
Wiltshire J.*	Con	1,146	61.2
Nelson P.	Lib/SDP	390	20.8
Allen G.	Lab	195	10.4
Timberlake C.	Green	142	7.6
Turnout		43.4	40.4
Banwell (4250)			
		vote	share
Jones G.*	Con	803	59.9
Heathcote K.	Lib/SDP	369	27.5
Scott P.	Lab	169	12.6
Turnout		31.6	32.4
Churchill (1360)			
		vote	share
Young J. Ms.	Con	382	65.9
Corney A.	Lib/SDP	150	25.9
Short M. Ms.	Lab	48	8.3
Turnout		42.6	40.0
Congresbury (2556)			
		vote	share
Lawson R.	Green	725	59.5
Baldwin P.*	Ind	380	31.2
Giles R.	Lab	113	9.3
Turnout		47.7	28.3
Easton In Gordano (3980)			
		vote	share
Kirsan N. Ms.	Lib/SDP	1,080	48.8
Neville G.	Lab	621	28.1
Allcock P. Ms.*	Con	510	23.1
Turnout		55.6	20.8
Long Ashton (4091)			
		vote	share
Leavett A.	Con	1,085	58.1
Bramhall P.	Lib/SDP	490	26.2
Francis D.	Lab	294	15.7
Turnout		45.7	31.8
Nailsea North & West (5636)			
		vote	share
Boulter L. Ms.*	Con	1,324	51.0
Martin J.	Lib/SDP	919	35.4
Groves D.	Lab	269	10.4
Timberlake M.	Green	83	3.2
Turnout		46.0	15.6

North Weston (6156)			
		vote	share
Harrison P.	Con	1,198	43.7
Steadman R.	Lib/SDP	1,048	38.2
Warrior M.	Lab	347	12.7
Wilson R.	Green	147	5.4
Turnout		44.5	5.5
Weston Super Mare Ashcombe (6603)			
		vote	share
Brewer D.*	Lib/SDP	1,185	44.0
Chun D.	Con	848	31.5
Heath H.	Lab	658	24.5
Turnout		40.8	12.5
Weston Super Mare East (7565)			
		vote	share
Taylor P.*	Con	1,294	48.1
Pritchard G.	Lib/SDP	833	30.9
Evers J.	Lab	565	21.0
Turnout		35.6	17.1
Weston Super Mare Ellenborough (6192)			
		vote	share
Bladon E.	Con	1,118	53.5
Moon R.	Lib/SDP	499	23.9
Nicholls E. Ms.	Lab	406	19.4
Hatton P.	Ind	67	3.2
Turnout		33.8	29.6
Weston Super Mare North (11152)			
		vote	share
Little A.	Con	1,537	42.3
Crockford-Hawley J.*	Lib/SDP	1,397	38.4
Taylor D.	Lab	703	19.3
Turnout		32.6	3.8
Weston Super Mare South (5591)			
		vote	share
Jennings B.	Lab	1,013	59.3
McGrath B.	Lib/SDP	403	23.6
Turle P. Ms.	Con	293	17.1
Turnout		30.6	35.7
Weston Super Mare Uphill (6286)			
		vote	share
Haine L.*	Con	1,246	52.6
Sheridan D.	Lib/SDP	696	29.4
Jennings R.	Lab	426	18.0
Turnout		37.7	23.2
Weston Super Mare West (5840)			
		vote	share
Richards I.	Con	1,259	60.0
Elliott T.	Lib/SDP	612	29.1
Nicholls P.	Lab	229	10.9
Turnout		36.0	30.8
Winscombe (3548)			
		vote	share
King D.*	Con	927	57.8
Marshall A.	Lib/SDP	676	42.2
Turnout		45.2	15.7
Wraxall (1845)			
		vote	share
Cox W.*	Con	551	70.6
Wheeler M.	Lib/SDP	229	29.4
Turnout		42.3	41.3
Wrighton (1809)			
		vote	share
Ashman H.*	Con	597	65.2
Revington L. Ms.	Lib/SDP	319	34.8
Turnout		50.6	30.3

Yatton (6203)			
		vote	share
Jopp A.	Lib/SDP	1,327	47.2
Carter A. Ms.	Con	1,107	39.4
Thomas L.	Lab	377	13.4
		Turnout	45.3 7.8

Woodspring 1987

Backwell (4426) ²			
		vote	share
Dening W.*	Con	1,473	57.8
Wiltshire J.*	Con	1,443	-
Hardingham S. Ms.	Lib/SDP	520	20.4
Timberlake C.	Green	308	12.1
Allen G.	Lab	249	9.8
		Turnout	57.6 37.4

Banwell (4352) ²			
		vote	share
Jones G.*	Con	1,096	45.7
Parsons F.*	Con	908	-
Mohide I.	Lib/SDP	625	26.0
Weston G.	Ind	430	17.9
Semmens H. Ms.	Lab	249	10.4
		Turnout	55.1 19.6

Blagdon (1515)			
		vote	share
Keel I.*	Con	512	68.4
Culverhouse B.	Lib/SDP	236	31.6
		Turnout	49.4 36.9

Churchill (1372)			
		vote	share
Young J. Ms.*	Con	487	68.6
Fowles A.	Lib/SDP	185	26.1
Short M. Ms.	Lab	38	5.4
		Turnout	51.7 42.5

Clevedon Central (3781)			
		vote	share
Morris R.	Ind Con	690	40.9
Gannicliff P.*	Lib/SDP	687	40.8
Gale A.	Con	236	14.0
Stephens-Wood P.	Green	72	4.3
		Turnout	44.6 0.2

Clevedon East (2666)			
		vote	share
Shopland D.	Ind	765	57.0
Baker H. Ms.*	Con	445	33.2
Martin I.	Lab	131	9.8
		Turnout	50.3 23.9

Clevedon North (1708)			
		vote	share
Bates L.	Con	453	55.0
Smith P. Ms.	Lib/SDP	310	37.7
Holden C. Ms.	Green	60	7.3
		Turnout	48.2 17.4

Clevedon South (3539)			
		vote	share
Lavelle W.*	Con	824	60.5
Sterling P.	Lab	367	26.9
Hayden J.	Green	171	12.6
		Turnout	38.5 33.6

Clevedon Walton (2634)			
		vote	share
Hickling R.*	Con	926	61.4
Dagnall J.	Lib/SDP	446	29.6
Glendell P.	Green	135	9.0
		Turnout	57.2 31.9

Clevedon West (2809)			
		vote	share
Lovering D.	Lib/SDP	638	47.9
Douglas F. Ms.	Con	607	45.6
Stephens-Wood L. Ms.	Green	87	6.5
		Turnout	47.4 2.3

Congresbury (2617)			
		vote	share
Lawson R.*	Green	919	61.5
Fear C. Ms.	Con	490	32.8
Giles R.	Lab	86	5.8
		Turnout	57.1 28.7

Easton In Gordano (4011) ²			
		vote	share
Kirsan N. Ms.*	Lib/SDP	1,137	40.8
Duck G.*	Lab	1,026	36.8
Townend K.	Lib/SDP	916	-
Alexander A.	Con	569	20.4
Sweeting C.	Con	560	-
Neville G.	Lab	429	-
Pettifer P. Ms.	Green	54	1.9
		Turnout	69.5 4.0

Gordano (2125)			
		vote	share
McEwen-Smith M. Ms.*	Con	794	75.6
Williams W.	Lib/SDP	256	24.4
		Turnout	49.4 51.2

Hutton (2926)			
		vote	share
Peddlesden I.	Con	762	56.7
Duverger X.	Lib/SDP	581	43.3
		Turnout	45.9 13.5

Locking (2162)			
		vote	share
Ap Rees E.*	Con	700	79.2
Semmens G.	Lab	184	20.8
		Turnout	40.9 58.4

Long Ashton (4141) ²			
		vote	share
Leavett A.*	Con	1,257	52.0
Symonds B.*	Con	1,185	-
Barritt D.	Lib/SDP	628	26.0
Bramhall P.	Lib/SDP	513	-
Keeble B.	Green	287	11.9
Randow P.	Lab	245	10.1
		Turnout	58.4 26.0

Nailsea East (2463)			
		vote	share
Daws J.*	Con	848	64.2
Webber S. Ms.	Lib/SDP	328	24.8
Green G.	Lab	144	10.9
		Turnout	53.6 39.4

Nailsea North & West (6083) ²			
		vote	share
Boulter L. Ms.*	Con	1,745	53.0
Price G. Ms.*	Con	1,569	-
Hawes G.	Lib/SDP	707	21.5
Howard J.	Lib/SDP	685	-
Baker N.	Ind	554	16.8
Goss D.	Lab	284	8.6
Groves D.	Lab	245	-
		Turnout	54.1 31.6

North Weston (6217) ³			
		vote	share
Small G. Ms.*	Con	1,564	38.8
Harrison P.*	Con	1,441	-
Lawrence W.*	Con	1,361	-
Steadman R.	Lib/SDP	1,290	32.0
Blyth G. Ms.	Lib/SDP	1,235	-
Wilson R.	Green	736	18.3
Deacon C. Ms.	Lab	436	10.8
Warrior M.	Lab	364	-
Francis D.	Lab	333	-
		Turnout	64.8 6.8

Portishead Central (1738)			
		vote	share
Brailsford E.	Lib/SDP	452	45.8
Hayes A.	Con	367	37.2
Webber D.	Lab	168	17.0
		Turnout	56.8 8.6

Portishead Coast (1851)			
		vote	share
Walters J.	Con	615	50.3
Haysom S. Ms.	Lib/SDP	561	45.9
Robertson P. Ms.	Lab	47	3.8
		Turnout	66.1 4.4

Portishead South (2299)			
		vote	share
Burden P.*	Con	669	51.7
Stevenson L.	Lib/SDP	468	36.1
Williams J. Ms.	Lab	158	12.2
		Turnout	56.3 15.5

Portishead West (3013)			
		vote	share
Terry A.	Con	893	50.4
Webber R.	Lib/SDP	653	36.9
Woodward L.	Lab	225	12.7
		Turnout	58.8 13.6

Weston Super Mare Ashcombe (6710) ³			
		vote	share
Watts M.*	Ind	1,930	34.3
Brewer D.*	Lib/SDP	1,669	29.7
Morris J.*	Con	1,221	21.7
Tucker J.	Con	891	-
Power D.	Con	829	-
Scott P.	Lab	803	14.3
		Turnout	83.8 4.6

Weston Super Mare East (7553) ³			
		vote	share
Baker J.	Con	1,732	41.7
Crew P.*	Con	1,711	-
Taylor P.*	Con	1,707	-
Baines P.	Lib/SDP	1,267	30.5
Wood M.	Lib/SDP	1,160	-
Jenks R.	Lab	758	18.3
Palmer F.	Green	392	9.4
		Turnout	54.9 11.2

Weston Super Mare Ellenborough (6378) ³			
		vote	share
Thompson J.*	Con	1,410	48.5
German W.*	Con	1,385	-
Bladon E.*	Con	1,335	-
Moon R.	Lib/SDP	952	32.7
Craig R.	Lab	546	18.8
		Turnout	45.6 15.7

Weston Super Mare North (11770) ³			
		vote	share
Harrison R.*	Con	2,187	51.2
Bryant A.	Con	2,166	-
Little A.*	Con	2,147	-
McGann V. Ms.	Lib/SDP	1,445	33.8
Mills G.	Lib/SDP	1,406	-
Pritchard G.	Lib/SDP	1,363	-
Peak A.	Lab	639	15.0
Ross D.	Lab	636	-
Flint C.	Lab	629	-
		Turnout	36.3 17.4

Weston Super Mare South (5716) ³			
		vote	share
Watts A.*	Lab	1,180	49.3
Jennings B.*	Lab	1,133	-
Heath H.	Lab	889	-
McGrath B.	Lib/SDP	692	28.9
Berry S.	Con	522	21.8
Fogg L.	Con	449	-
Brown R.	Con	442	-
Turnout		41.9	20.4

Weston Super Mare Uphill (6303) ³			
		vote	share
Lacey K.*	Con	1,747	46.6
Wedlake M.	Con	1,555	-
Tait T.*	Con	1,509	-
Howell J.	Lib/SDP	1,406	37.5
Jennings R.	Lab	598	15.9
Turnout		59.5	9.1

Weston Super Mare West (6058) ³			
		vote	share
Dickson J.*	Con	1,628	59.1
Prosser W.*	Con	1,574	-
Richards L.*	Con	1,473	-
Burge P.	Lib/SDP	780	28.3
Schrecker M. Ms.	Lab	346	12.6
Turnout		45.5	30.8

Winford (2320)			
		vote	share
Cox T.*	Con	848	79.0
Midgley M. Ms.	Lib/SDP	225	21.0
Turnout		46.3	58.1

Winscombe (3538) ²			
		vote	share
King D.*	Con	1,049	54.0
Boobyer D.	Con	1,000	-
Marshall A.	Lib/SDP	730	37.6
Laband J.	Lib/SDP	694	-
Daley R. Ms.	Green	162	8.3
Turnout		54.9	16.4

Wraxall (1839)			
		vote	share
Cox W.*	Con	701	78.5
Brown D.	Green	117	13.1
Worley R.	Lab	75	8.4
Turnout		48.6	65.4

Wroughton (1893)			
		vote	share
Ashman H.*	Con	755	66.5
Revington L. Ms.	Lib/SDP	291	25.6
Frampton R. Ms.	Lab	53	4.7
Major V. Ms.	Green	37	3.3
Turnout		60.0	40.8

Yatton (6275) ³			
		vote	share
Lewis G. Ms.*	Ind	1,852	34.9
Jopp A.*	Lib/SDP	1,703	32.1
Hill A.*	Con	1,284	24.2
Evans C.	Lib/SDP	1,246	-
Hadley J. Ms.	Con	1,219	-
Hill A. Ms.	Con	1,129	24.2
Kelly D.	Lab	462	8.7
Turnout		84.5	2.8

Woodspring 1991

Backwell (4418) ²			
		vote	share
Lawrence W.	Con	1,255	54.1
Wiltshire J.*	Con	1,249	-
Pritchard P.	Green	759	32.7
Reeves A.	Green	378	-
Allen G.	Lab	306	13.2
Turnout		52.5	21.4

Banwell (4799) ²			
		vote	share
Bibb M.	LD	1,270	50.6
Walker D.	LD	795	-
Jones G.*	Con	790	31.5
Parsons F.*	Con	695	-
Cheshire V.	Ind Con	449	17.9
Turnout		46.4	19.1

Blagdon (1846)			
		vote	share
Keel I.*	Con	460	65.8
Scott S. Ms.	Green	239	34.2
Turnout		37.9	31.6

Churchill (1645)			
		vote	share
Young J. Ms.*	Con	0	0.0
Turnout		0.0	0.0

Clevedon Central (3730)			
		vote	share
Flint D. Ms.	Con	507	31.5
Morris R.*	Ind	433	26.9
Hendra D.	LD	429	26.6
Bedford C.	Lab	243	15.1
Turnout		43.2	4.6

Clevedon East (2636)			
		vote	share
Shopland D.*	Ind	837	65.0
Usher C.	Con	296	23.0
Stephens-Woods P.	Green	155	12.0
Turnout		48.9	42.0

Clevedon North (1689)			
		vote	share
Bates L.*	Con	497	60.9
Chislett B.	Green	319	39.1
Turnout		48.3	21.8

Clevedon South (3698)			
		vote	share
Lavelle W.*	Con	570	36.9
Bellotti P.	LD	446	28.9
Cooper B.	Lab	424	27.5
Hayden J.	Green	103	6.7
Turnout		41.7	8.0

Clevedon Walton (2471)			
		vote	share
Hickling R.*	Con	761	55.4
Dagnall J.	LD	543	39.5
Stewart E. Ms.	Green	70	5.1
Turnout		55.6	15.9

Clevedon West (2795)			
		vote	share
Sweet P.	LD	745	56.7
Harvey S.	Con	568	43.3
Turnout		47.0	13.5

Congresbury (2604)			
		vote	share
Knifton R. Ms.	Green	739	55.2
Edwards A.	Con	600	44.8
Turnout		51.4	10.4

Easton In Gordano (3912) ²			
		vote	share
Kirsan N. Ms.*	LD	1,123	41.9
Duck G.*	Lab	897	33.5
Flint B.	Con	661	24.7
Marston P. Ms.	Lab	384	-
Turnout		68.5	8.4

Gordano (2083)			
		vote	share
Ashton N.	Con	635	57.2
Kelly J.	LD	475	42.8
Turnout		53.3	14.4

Hutton (2936)			
		vote	share
Kerr A.	LD	842	56.5
Peddlesden I.*	Con	647	43.5
Turnout		50.7	13.1

Locking (2087)			
		vote	share
Ap Rees E.*	Con	555	55.4
Bell J.	LD	447	44.6
Turnout		48.0	10.8

Long Ashton (4008) ²			
		vote	share
Leavett A.*	Con	1,144	44.4
Fisher A. Ms.	Con	1,029	-
Barritt D.	LD	903	35.0
Mossman D.	Lab	531	20.6
Turnout		64.3	9.3

Nailsea East (2556)			
		vote	share
Daws J.*	Con	684	50.9
Clark J.	LD	418	31.1
Green G.	Lab	241	17.9
Turnout		52.5	19.8

Nailsea North & West (6320) ³			
		vote	share
Harrison P.*	Con	1,348	43.6
Morten S.	Con	1,270	-
McCombe R.	Con	1,222	-
Steadman R.	LD	1,101	35.6
Blyth G. Ms.	LD	1,093	-
Fox R.	Lab	643	20.8
Cutler D.	Lab	595	-
Grigg A.	Lab	573	-
Turnout		47.9	8.0

North Weston (6725) ²			
		vote	share
Barber A. Ms.	Con	1,728	53.9
Hopper D.	Con	1,497	-
Brady A.	LD	867	27.1
Pinfield N.	Lab	610	19.0
Somerset R.	Lab	529	-
Turnout		47.7	26.9

Portishead Central (1771)			
		vote	share
Brailsfort E.	LD	556	65.1
Emery D.	Con	298	34.9
Turnout		48.2	30.2

Portishead Coast (1882)			
		vote	share
Walters J.*	Con	595	52.1
Bickley D. Ms.	LD	546	47.9
Turnout		60.6	4.3

Portishead South (2280)			
		vote	share
Haysom S. Ms.	LD	749	60.7
Burden P.*	Con	484	39.3
Turnout		54.1	21.5

Portishead West (3303)			
		vote	share
Terry A.*	Con	0	0.0
<hr/>			
	Turnout	0.0	0.0
Weston Super Mare Ashcombe (6634)³			
		vote	share
Watts M.*	Ind	1,835	42.3
Brewer D.*	Ind	1,232	-
Taylor G.	Con	934	21.5
Tucker R.	Lab	846	19.5
Jenks R.	Lab	820	-
Rich G.	Con	780	-
Ferren T.	Con	766	-
Shaw L. Ms.	Green	727	16.7
<hr/>			
	Turnout	51.4	20.8
Weston Super Mare East (7679)³			
		vote	share
Kiss G. Ms.	LD	1,615	38.6
Baker J.*	Con	1,463	35.0
Crew P.*	Con	1,346	-
Taylor P.*	Con	1,342	-
Willsher C.	Lab	1,106	26.4
<hr/>			
	Turnout	54.5	3.6
Weston Super Mare Ellenborough (6722)³			
		vote	share
Matthews J.	LD	1,512	60.1
Thompson J.*	Con	1,003	39.9
German W.*	Con	974	-
Morris J.	Con	968	-
<hr/>			
	Turnout	37.4	20.2
Weston Super Mare North (13001)³			
		vote	share
McGann V. Ms.	LD	2,309	34.6
Bryant A.*	Con	1,894	28.4
Little A.*	Con	1,864	-
Harrison R.*	Con	1,802	-
Flint C.	Lab	1,318	19.8
Peak A.	Lab	1,225	-
Hockridge A.	Ind	1,144	17.2
<hr/>			
	Turnout	51.3	6.2
Weston Super Mare South (5576)³			
		vote	share
Watts A.*	Lab	1,313	71.4
Jennings B.*	Lab	1,310	-
Heath H.*	Lab	1,077	-
Gardner E.	Con	527	28.6
<hr/>			
	Turnout	33.0	42.7
Weston Super Mare Uphill (6190)³			
		vote	share
Lacey K.*	Con	1,437	41.2
Wedlake M.*	Con	1,401	-
Duverger X.	LD	1,312	37.6
Roe M.	Con	1,218	-
Craig R.	Lab	736	21.1
<hr/>			
	Turnout	56.3	3.6
Weston Super Mare West (5950)³			
		vote	share
Prosser W.*	Con	0	-
Flavell J. Ms.	Con	0	-
Richards I.*	Con	0	0.0
<hr/>			
	Turnout	0.0	0.0
Winford (2280)			
		vote	share
Cox T.*	Con	772	72.9
Mainwaring M. Ms.	Lab	287	27.1
<hr/>			
	Turnout	46.4	45.8
Winscombe (3542)²			
		vote	share
Willie C.	LD	996	35.9
Jay P.	Con	926	33.4
Gething N.	Con	901	-
Laband J.	Ind	853	30.7
<hr/>			
	Turnout	54.3	2.5

Wraxall (1788)			
		vote	share
Wharton P.	Con	619	65.6
Kirslen P.	LD	324	34.4
<hr/>			
	Turnout	52.7	31.3
Wrighton (2056)			
		vote	share
Ashman H.*	Con	657	53.5
Yamanaka D. Ms.	LD	570	46.5
<hr/>			
	Turnout	59.7	7.1
Yatton (6354)³			
		vote	share
Jopp A.*	LD	1,917	36.2
Lewis G. Ms.*	Ind	1,754	33.1
Cummings I. Ms.	LD	1,741	-
Hill A. Ms.*	Con	1,075	20.3
Hadley S.	Con	1,026	-
Blunsdon C.	Con	948	-
Lawrence R.	Lab	554	10.5
<hr/>			
	Turnout	55.8	3.1

