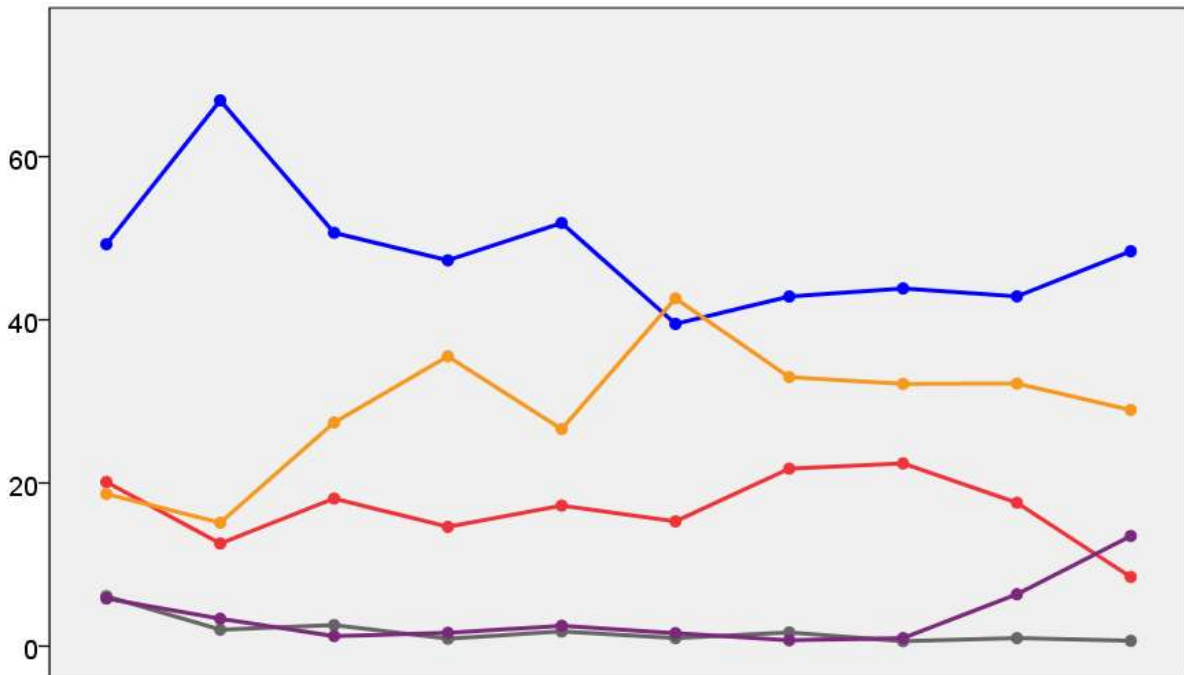


West Sussex County Council Election Results 1973-2009



Colin Rallings and Michael Thrasher
The Elections Centre
Plymouth University

The information contained in this report has been obtained from a number of sources. Election results from the immediate post-reorganisation period were painstakingly collected by Alan Willis largely, although not exclusively, from local newspaper reports. From the mid-1980s onwards the results have been obtained from each local authority by the Elections Centre. The data are stored in a database designed by Lawrence Ware and maintained by Brian Cheal and others at Plymouth University. Despite our best efforts some information remains elusive whilst we accept that some errors are likely to remain. Notice of any mistakes should be sent to elections@plymouth.ac.uk. The results sequence can be kept up to date by purchasing copies of the annual Local Elections Handbook, details of which can be obtained by contacting the email address above.

Front cover: the graph shows the distribution of percentage vote shares over the period covered by the results. The lines reflect the colours traditionally used by the three main parties. The grey line is the share obtained by Independent candidates while the purple line groups together the vote shares for all other parties.

Rear cover: the top graph shows the percentage share of council seats for the main parties as well as those won by Independents and other parties. The lines take account of any by-election changes (but not those resulting from elected councillors switching party allegiance) as well as the transfers of seats during the main round of local election.

The lower graph shows for each main round of local elections the overall percentage turnout (solid line), the percentage of women candidates standing at (dotted line) and the percentage of women among those elected (hashed line).

West Sussex 1973

Arundel (5209)

		vote	share
Green E.	Con	0	0.0
	Turnout	0.0	0.0

Bognor Regis No. 1 (Central) (6533)

		vote	share
Avard F.	Lib	1,613	58.7
Bootham T.	Con	1,136	41.3
	Turnout	42.3	17.4

Bognor Regis No. 2 (Felpham) (7717)

		vote	share
Walwin I.	Con	1,594	47.1
Stinchcombe P. Ms.	Lib	1,038	30.7
Downer R.	Ind	749	22.2
	Turnout	43.9	16.4

Bognor Regis No. 3 (South) (5867)

		vote	share
Keen F.	Con	1,296	63.6
Rhys-Parry W.	Res	741	36.4
	Turnout	34.9	27.2

Bognor Regis No. 4 (West & Pagham) (11393)²

		vote	share
Bunning H. Ms.	Con	2,727	78.9
Youngman C.	Con	2,541	-
Chambers A.	Lab	728	21.1
Fox B.	Lab	725	-
	Turnout	31.3	57.9

Burgess Hill No. 1 (5641)

		vote	share
Guest J.	Con	1,234	55.5
Smith J.	Lab	991	44.5
	Turnout	39.5	10.9

Burgess Hill No. 2 (Town) (3303)

		vote	share
Pepper R.	Con	809	75.4
Hensford A. Ms.	Lab	264	24.6
	Turnout	32.5	50.8

Burgess Hill No. 3 (5207)

		vote	share
Christie B.	Con	1,260	69.0
Rudd R.	Lab	567	31.0
	Turnout	35.1	37.9

Chanctonbury No. 1 (Henfield) (3755)

		vote	share
Digby-Dell H.	Ind	746	53.5
Bishop L. Ms.	Con	648	46.5
	Turnout	37.3	7.0

Chanctonbury No. 2 (Pulborough) (4977)

		vote	share
Atkins D.	Con	1,308	67.2
Cleaver M. Ms.	Lib	639	32.8
	Turnout	39.2	34.4

Chanctonbury No. 3 (Steyning) (6484)

		vote	share
Blackaby A. Ms.	Lib	1,257	50.2
Howard A.	Con	1,045	41.7
Avey E. Ms.	Lab	202	8.1
	Turnout	38.6	8.5

Chanctonbury No. 4 (7446)

		vote	share
Shepherd P.	Con	1,270	37.8
Foster P. Ms.	Ind Con	1,129	33.6
Johnson M. Ms.	Lib	957	28.5
	Turnout	41.1	4.2

Charlwood & Horley (15278)³

		vote	share
Austin W.	Con	2,082	42.5
Burgess C.	Con	1,843	-
Duncan R.	Con	1,783	-
Athol R.	Res	1,132	23.1
Stalford D.	Comm	929	19.0
Murgatroyd J. Ms.	Res	894	-
Bush-Nelson R.	Res	859	-
Edwards A.	Lab	759	15.5
Mortimer P. Ms.	Lab	724	-
Obbard A.	Lab	659	-
	Turnout	27.5	19.4

Chichester (East) (4380)

		vote	share
Blacker D.	Ind Con	649	34.4
Bennett J.	Lab	533	28.2
Tupper C.	Lib	412	21.8
Herniman C.	Ind	294	15.6
	Turnout	43.3	6.1

Chichester (South) (4407)

		vote	share
Smith L.	Lib	643	59.2
Pope W.	Ind Rp	443	40.8
	Turnout	24.9	18.4

Chichester (West) (6430)

		vote	share
Siggs T.	Lib	1,036	54.4
Evan-Jones C.	Con	868	45.6
	Turnout	29.8	8.8

Chichester Rural No. 1 (5510)

		vote	share
Langmead J. Ms.	Ind	1,332	57.9
Mould H.	Con	967	42.1
	Turnout	41.8	15.9

Chichester Rural No. 2 (5846)

		vote	share
Dunlop R.	Con	0	0.0
	Turnout	0.0	0.0

Chichester Rural No. 3 (6663)

		vote	share
Brinton H.	Ind	886	50.1
Carey W.	Con	884	49.9
	Turnout	26.6	0.1

Chichester Rural No. 4 (6805)

		vote	share
Clarke E. Ms.	Con	1,274	58.8
Sell M. Ms.	Lib	894	41.2
	Turnout	31.9	17.5

Chichester Rural No. 5 (5882)

		vote	share
Roth S.	Con	760	54.3
Heald F.	Lib	640	45.7
	Turnout	23.9	8.6

Chichester Rural No. 6 (E.P. 25.6.8) (6332)

		vote	share
Ward E. Ms.	Con	937	45.4
Rudkin D.	Lib	585	28.3
Feltham G.	Ind	543	26.3
	Turnout	32.7	17.0

Chichester Rural No. 7 (5633)

		vote	share
Chance D.	Con	1,214	67.7
Weston P.	Lib	430	24.0
Andrews E.	Ind	148	8.3
	Turnout	31.9	43.8

Crawley No. 1 (Pound Hill) (5865)

		vote	share
Clift M.	Lab	1,436	56.3
Banfield W.	Con	1,113	43.7
	Turnout	43.6	12.7

Crawley No. 2 (Gossops Green) (7271)

		vote	share
Anderson B. Ms.	Lab	1,774	64.2
Bronte-Hearne P.	Con	988	35.8
	Turnout	38.1	28.5

Crawley No. 3 (Ifield) (4679)

		vote	share
Ledger W.	Lab	1,514	69.7
Anderson A.	Con	657	30.3
	Turnout	46.5	39.5

Crawley No. 4 (Langley Green) (5607)

		vote	share
Reynolds D. Ms.	Lab	1,496	72.2
Young V. Ms.	Con	471	22.7
Lonsdale S.	Comm	104	5.0
	Turnout	37.0	49.5

Crawley No. 5 (Northgate & West Gre) (7621)

		vote	share
Pegler A.	Lab	2,117	72.8
Smith W. Ms.	Con	789	27.2
	Turnout	38.3	45.7

Crawley No. 6 (Southgate) (7526)

		vote	share
Snape T.	Lab	1,544	63.1
Tyson A. Ms.	Con	903	36.9
	Turnout	32.6	26.2

Crawley No. 7 (Three Bridges) (4463)

		vote	share
Gardner A.	Lab	1,004	43.1
Lawler E.	Con	667	28.7
Webber P. Ms.	Lib	656	28.2
	Turnout	52.3	14.5

Crawley No. 8 (Tilgate) (5326)

		vote	share
Healey P.	Lab	1,415	77.4
Carter K.	Con	413	22.6
	Turnout	34.3	54.8

Cuckfield & Haywards Heath West (6982)

		vote	share
Haworth-Booth A.	Con	1,201	50.1
Ferguson R.	Ind	1,195	49.9
	Turnout	34.4	0.3

Cuckfield Rural No. 1 (5571)

		vote	share
Kirby-Turner M. Ms.	Ind Con	1,160	60.3
Howell E. Ms.	Con	763	39.7
	Turnout	34.9	20.6

Cuckfield Rural No. 2 (5257)

		vote	share
Long M.	Con	1,041	76.2
Ledger B. Ms.	Lab	326	23.8
	Turnout	26.0	52.3

Cuckfield Rural No. 3 (5410)

		vote	share
Cutress C.	Ind	1,097	59.5
Green D.	Con	747	40.5
	Turnout	34.2	19.0

Cuckfield Rural No. 4 (5842)

		vote	share
Sharp G.	Con	0	0.0
	Turnout	0.0	0.0

Cuckfield Rural No. 5 (5528)			
		vote	share
Greenwood J.	Con	0	0.0
Turnout		0.0	0.0
East Grinstead (East) (6166)			
		vote	share
Ball K.	Con	1,340	38.8
Shaw I.	Lib	1,215	35.2
Ackerley R.	Lab	895	25.9
Turnout		56.3	3.6
East Grinstead (West) (7681)			
		vote	share
Andrews J.	Con	1,243	43.3
Paterson D.	Lib	1,188	41.4
Wells A.	Lab	438	15.3
Turnout		37.4	1.9
Haywards Heath South (5068)			
		vote	share
Bartlett P. Ms.	Con	0	0.0
Turnout		0.0	0.0
Horsham (North) (7395)			
		vote	share
Sheppard A.	Con	1,101	63.7
Ward G.	Lab	628	36.3
Turnout		23.5	27.4
Horsham (South) (5914)			
		vote	share
Brown C.	Con	910	52.9
Clarke E.	Lab	434	25.2
Armour-Milne J.	Ind	377	21.9
Turnout		29.2	27.7
Horsham (West) (5981)			
		vote	share
Buckle C.	Con	1,685	80.5
Thompson D.	Lab	408	19.5
Turnout		35.1	61.0
Horsham Rural No. 1 (5094)			
		vote	share
Dunkerton F.	Con	995	56.7
Michie I.	Lib	761	43.3
Turnout		34.6	13.3
Horsham Rural No. 2 (5496)			
		vote	share
Lucas C.	Con	0	0.0
Turnout		0.0	0.0
Horsham Rural No. 3 (6336)			
		vote	share
Harrison G.	Con	0	0.0
Turnout		0.0	0.0
Horsham Rural No. 4 (5805)			
		vote	share
Arnold D.	Con	0	0.0
Turnout		0.0	0.0
Lindfield & Haywards Heath East (7009)			
		vote	share
Coltart M. Ms.	Con	1,200	72.2
Willoughby W.	Lab	461	27.8
Turnout		23.7	44.5
Littlehampton No. 1 (Beach) (5059)			
		vote	share
Whittaker D.	Con	0	0.0
Turnout		0.0	0.0
Littlehampton No. 2 (Wick) (5867)			
		vote	share
Genoni M.	Con	0	0.0
Turnout		0.0	0.0

Littlehampton No. 3 (4049)			
		vote	share
Jones H.	Con	0	0.0
Turnout		0.0	0.0
Midhurst No. 1 (7082)			
		vote	share
Thistleton-Smith G.	Con	0	0.0
Turnout		0.0	0.0
Midhurst No. 2 (6469)			
		vote	share
Lochner M. Ms.	Con	1,185	59.8
Schilch S.	Lib	696	35.1
Cuthbert W.	Ind	100	5.0
Turnout		30.6	24.7
Petworth No. 1 (5316)			
		vote	share
Mursell P.	Con	0	0.0
Turnout		0.0	0.0
Petworth No. 2 (4447)			
		vote	share
Pennicott D. Ms.	Con	1,262	66.1
Foley M.	Lib	647	33.9
Turnout		42.9	32.2
Shoreham-By-Sea (East) (5329)			
		vote	share
Colquhoun M. Ms.	Lab	1,319	59.0
Stow A.	Con	918	41.0
Turnout		42.1	17.9
Shoreham-By-Sea (North) (4963)			
		vote	share
Elliott I.	Con	1,266	80.5
Naylor W.	Lab	307	19.5
Turnout		31.8	61.0
Shoreham-By-Sea (South) (4603)			
		vote	share
Still G.	Con	831	50.3
Blackman G.	Lib	606	36.7
Mitchell C.	Lab	214	13.0
Turnout		36.0	13.6
Southwick (North) (4949)			
		vote	share
Wey G.	Con	1,391	61.0
Berry P.	Lab	888	39.0
Turnout		46.1	22.1
Southwick (South) (4226)			
		vote	share
Marsh T.	Lab	1,145	56.8
Joyce V. Ms.	Con	871	43.2
Turnout		47.8	13.6
Worthing (Broadwater) (7679)			
		vote	share
Chapman F.	Con	1,591	46.9
Paton J.	Lab	1,297	38.2
Mitchell B. Ms.	Lib	506	14.9
Turnout		44.2	8.7
Worthing (Castle) (8956)²			
		vote	share
Frampton W. Ms.	Con	1,549	51.4
Kenton F.	Con	1,545	-
Newman P.	Lab	1,462	48.6
Harwood L.	Lab	1,449	-
Turnout		35.4	2.9
Worthing (Central) (5744)			
		vote	share
Sandberg J.	Con	1,024	70.3
Higson A.	Lib	433	29.7
Turnout		25.5	40.6

Worthing (Durrington) (8676)²			
		vote	share
Weston H.	Con	1,741	67.1
Walter E.	Con	1,739	-
Campbell D.	Lib	854	32.9
Denyer L.	Lib	823	-
Turnout		31.0	34.2
Worthing (Goring) (6974)			
		vote	share
Miller J.	Res	1,860	57.5
Scott C. Ms.	Con	1,374	42.5
Turnout		46.5	15.0
Worthing (Hearne) (6662)			
		vote	share
Atkinson E. Ms.	Con	0	0.0
Turnout		0.0	0.0
Worthing (Marine) (6545)			
		vote	share
Elliott S.	Con	1,973	77.0
Bishop P.	Lib	589	23.0
Turnout		39.3	54.0
Worthing (Offington) (8109)²			
		vote	share
Clarke A.	Con	2,949	90.0
Cobby M. Ms.	Con	2,928	-
Griffin H. Ms.	Lab	327	10.0
Knibb L. Ms.	Lab	302	-
Turnout		41.3	80.0
Worthing (Selden) (6188)			
		vote	share
Jackson P.	Ind	1,085	46.1
Thomas P.	Con	782	33.2
Denyer P.	Lib	269	11.4
Lichfield S.	Lab	219	9.3
Turnout		38.3	12.9
Worthing (West Tarring) (7798)			
		vote	share
McKee W.	Con	1,570	65.2
Reed S.	Lib	837	34.8
Turnout		30.9	30.5
Worthing Rural No. 1 (Rustington) (7836)			
		vote	share
Green P.	Con	2,236	67.6
Smith P.	Lib	1,072	32.4
Turnout		42.3	35.2
Worthing Rural No. 2 (Ferring) (3987)			
		vote	share
Treanor M.	Con	0	0.0
Turnout		0.0	0.0
Worthing Rural No. 3 (4363)			
		vote	share
Chapman J.	Con	0	0.0
Turnout		0.0	0.0
Worthing Rural No. 4 (5511)			
		vote	share
Foster W.	Con	0	0.0
Turnout		0.0	0.0
Worthing Rural No. 5 (Sompting) (6373)			
		vote	share
Savell-Ross L. Ms.	Lib	1,742	61.5
Richards F. Ms.	Con	745	26.3
White J.	Lab	347	12.2
Turnout		44.6	35.2

Worthing Rural No. 6 (13279)²			
		vote	share
Bartram P.	Lib	3,825	59.3
Robinson J.	Lib	3,552	-
East J.	Con	1,993	30.9
Potter E.	Con	1,735	-
Gatland L. Ms.	Lab	633	9.8
Clarke R.	Lab	590	-
	Turnout	48.8	28.4

West Sussex 1977

Arundel (5337)			
		vote	share
Green E.*	Con	1,658	87.5
Owen E. Ms.	Lib	236	12.5
	Turnout	35.5	75.1

Bognor Regis No. 1 (Central) (6684)			
		vote	share
Boothman T.	Con	1,565	58.7
Avard F.*	Lib	1,100	41.3
	Turnout	40.0	17.4

Bognor Regis No. 2 (Felpham) (8536)			
		vote	share
Walwin L.*	Con	2,276	79.1
Wedmore B.	Lib	603	20.9
	Turnout	33.8	58.1

Bognor Regis No. 3 (South) (5957)			
		vote	share
Keen F.*	Con	1,476	75.5
Dent R.	Lib	478	24.5
	Turnout	33.0	51.1

Bognor Regis No. 4 (West & Pagham) (12770)²			
		vote	share
Sayer J.	Con	3,540	75.3
Williams J.	Con	3,478	-
Reed A. Ms.	Res	843	17.9
Cave P.	Res	802	-
Powell J. Ms.	Lib	320	6.8
Fitzgerald M. Ms.	Lib	277	-
	Turnout	37.7	57.3

Burgess Hill No. 1 (5768)			
		vote	share
Hoddell E.	Con	1,607	68.9
Smith J.	Lab	369	15.8
Perkins M.	Lib	356	15.3
	Turnout	40.5	53.1

Burgess Hill No. 2 (Town) (3682)			
		vote	share
Pepper R.*	Con	1,023	57.8
Hibbs A.	Lib	611	34.5
Mathias D.	Lab	136	7.7
	Turnout	48.1	23.3

Burgess Hill No. 3 (5386)			
		vote	share
Whitticks A.	Con	1,453	67.8
Coombes D.	Lib	402	18.8
Husbands O.	Lab	287	13.4
	Turnout	39.9	49.1

Chanctonbury No. 1 (Henfield) (3916)			
		vote	share
Jones T.	Con	992	65.6
Bishop L. Ms.	Ind	353	23.3
Tysoe F.	Lib	91	6.0
Griffin H. Ms.	Lab	76	5.0
	Turnout	38.9	42.3

Chanctonbury No. 2 (Pulborough) (5299)			
		vote	share
Atkins D.*	Con	2,035	87.5
Cleaver M. Ms.	Lib	292	12.5
	Turnout	44.0	74.9

Chanctonbury No. 3 (Steyping) (6956)			
		vote	share
Newell G.	Con	2,076	68.7
Blackaby A. Ms.*	Lib	948	31.3
	Turnout	43.6	37.3

Chanctonbury No. 4 (8091)			
		vote	share
Shepherd P.*	Con	2,749	79.8
Marlow D.	Lib	694	20.2
	Turnout	42.6	59.7

Chichester (East) (4454)			
		vote	share
Blacker D.*	Con	1,029	57.9
Tupper C.	Lib	507	28.5
Morrison D.	Lab	242	13.6
	Turnout	40.0	29.4

Chichester (South) (4394)			
		vote	share
Hill K.	Con	915	50.1
Smith K. Ms.*	Lib	622	34.1
Bell M. Ms.	Ind	288	15.8
	Turnout	42.0	16.1

Chichester (West) (6976)			
		vote	share
Craig F.	Con	1,820	61.6
Siggs T.*	Lib	1,135	38.4
	Turnout	42.4	23.2

Chichester Rural No. 1 (5947)			
		vote	share
Langmead J. Ms.*	Con	2,001	79.1
Howard M.	Lab	286	11.3
Colquhoun I. Ms.	Lib	244	9.6
	Turnout	42.6	67.8

Chichester Rural No. 2 (6720)			
		vote	share
Dunlop R.*	Con	1,801	81.0
Stinchcombe P. Ms.	Lib	423	19.0
	Turnout	33.2	62.0

Chichester Rural No. 3 (6916)			
		vote	share
Ash C. Ms.	Con	1,391	50.0
Robertson F.	Ind Con	732	26.3
Brisland M. Ms.	Ind	658	23.7
	Turnout	40.3	23.7

Chichester Rural No. 4 (7321)			
		vote	share
Clarke E. Ms.*	Con	0	0.0
	Turnout	0.0	0.0

Chichester Rural No. 5 (6209)			
		vote	share
Elvin R.	Con	1,828	74.2
Heald F.	Lib	636	25.8
	Turnout	39.8	48.4

Chichester Rural No. 6 (E.P. 25.6.8) (6130)			
		vote	share
Mason G. Ms.	Con	1,346	51.9
Marrs M. Ms.	Res	1,247	48.1
	Turnout	42.5	3.8

Chichester Rural No. 7 (5893)			
		vote	share
Chance D.*	Con	0	0.0
	Turnout	0.0	0.0

Crawley No. 1 (Pound Hill) (6840)			
		vote	share
Cornes S.	Con	2,177	58.4
Clift M.*	Lab	1,332	35.7
Campbell-Barr R.	Lib	220	5.9
	Turnout	54.6	22.7

Crawley No. 2 (Gossops Green) (10292)			
		vote	share
Bridgeman K.	Con	2,478	54.1
Mayne D.	Lab	1,706	37.3
Simpkin R.	Lib	393	8.6
	Turnout	44.5	16.9

Crawley No. 3 (Ifield) (4692)			
		vote	share
Edwards A.	Lab	981	45.0
Watson B.	Con	967	44.4
Shaw M.	Lib	231	10.6
	Turnout	46.5	0.6

Crawley No. 4 (Langley Green) (5777)			
		vote	share
Reynolds D. Ms.*	Lab	1,212	53.4
Mackenzie G.	Con	829	36.5
Wainwright P.	Lib	121	5.3
Lonsdale S.	Comm	107	4.7
	Turnout	39.4	16.9

Crawley No. 5 (Northgate & West Gre) (7462)			
		vote	share
Pegler A.*	Lab	1,628	47.7
Vallance M.	Con	1,607	47.1
Campbell-Barr V. Ms.	Lib	175	5.1
	Turnout	45.8	0.6

Crawley No. 6 (Southgate) (7754)			
		vote	share
Norris C.	Con	1,875	56.6
Snape T.*	Lab	1,166	35.2
Graham A.	Lib	270	8.2
	Turnout	42.7	21.4

Crawley No. 7 (Three Bridges) (4505)			
		vote	share
Tyson A. Ms.	Con	1,195	49.4
Gardner A.*	Lab	949	39.2
Webster P. Ms.	Lib	274	11.3
	Turnout	53.7	10.2

Crawley No. 8 (Tilgate) (5509)			
		vote	share
Rudd R.	Lab	1,146	55.5
Fowler E. Ms.	Con	920	44.5
	Turnout	37.6	10.9

Cuckfield & Haywards Heath West (7560)			
		vote	share
Haworth-Booth A.*	Con	2,797	89.1
Owens P.	Lab	342	10.9
	Turnout	41.7	78.2

Cuckfield Rural No. 1 (6558)			
		vote	share
Howell E. Ms.	Con	1,844	75.8
Bond W.	Lib	371	15.2
Obbard A.	Lab	219	9.0
	Turnout	37.1	60.5

Cuckfield Rural No. 2 (5572)			
		vote	share
Long M.*	Con	1,800	84.9
Benbow A.	Lab	320	15.1
	Turnout	38.2	69.8

Cuckfield Rural No. 3 (5367)			
		vote	share
Carpendale Q.	Con	1,525	60.6
Gwynne G.	Ind	991	39.4
	Turnout	47.0	21.2

Cuckfield Rural No. 4 (5779)			
		vote	share
Sharp G.*	Con	2,222	76.3
Cattermole C. Ms.	Lib	495	17.0
Innes B. Ms.	Lab	197	6.8
Turnout		50.6	59.3
Cuckfield Rural No. 5 (5897)			
		vote	share
Greenwood J.*	Con	1,932	83.8
Miles S.	Lab	373	16.2
Turnout		39.2	67.6
East Grinstead (East) (7437)			
		vote	share
Ball K.*	Con	2,068	66.2
Stevens D.	Lab	621	19.9
Hamling G. Ms.	Lib	437	14.0
Turnout		42.2	46.3
East Grinstead (West) (7005)			
		vote	share
King D.	Con	1,718	68.1
Glynn J. Ms.	Lib	473	18.7
Bailey P.	Lab	332	13.2
Turnout		36.1	49.3
Haywards Heath South (5635)			
		vote	share
Fletcher R.	Con	0	0.0
Turnout		0.0	0.0
Horsham (North) (7535)			
		vote	share
Sheppard A.*	Con	2,132	78.9
McCoy J.	Lab	571	21.1
Turnout		36.0	57.8
Horsham (South) (5941)			
		vote	share
Brown C.*	Con	1,746	77.0
Clements R.	Lab	523	23.0
Turnout		38.4	53.9
Horsham (West) (5974)			
		vote	share
Buckle C.*	Con	2,067	82.6
Carver A. Ms.	Lab	435	17.4
Turnout		41.9	65.2
Horsham Rural No. 1 (5427)			
		vote	share
Dunkerton F.*	Con	2,007	84.7
Calcott R.	Lab	363	15.3
Turnout		43.8	69.4
Horsham Rural No. 2 (6421)			
		vote	share
Lucas C.*	Con	2,315	86.0
Wilson D.	Lab	377	14.0
Turnout		42.0	72.0
Horsham Rural No. 3 (7279)			
		vote	share
Cowley E. Ms.	Con	2,803	88.0
Hitchcock W.	Lab	382	12.0
Turnout		43.9	76.0
Horsham Rural No. 4 (6249)			
		vote	share
Arnold D.*	Con	2,075	87.0
Lilley A.	Lab	309	13.0
Turnout		38.2	74.1
Lindfield & Haywards Heath East (7242)			
		vote	share
Coltart M. Ms.*	Con	2,253	78.7
Dutton J.	Lab	608	21.3
Turnout		39.7	57.5

Littlehampton No. 1 (Beach) (6137)			
		vote	share
Forster J.	Con	1,452	52.7
Walsh J.	Lib	1,303	47.3
Turnout		45.0	5.4
Littlehampton No. 2 (Wick) (6319)			
		vote	share
Hunter E.	Con	962	50.9
Squires A.	Lab	664	35.1
Beach G.	Lib	264	14.0
Turnout		30.0	15.8
Littlehampton No. 3 (3938)			
		vote	share
Jones H.*	Con	846	63.1
Gray A.	Lab	304	22.7
Midgley A.	Lib	191	14.2
Turnout		34.1	40.4
Midhurst No. 1 (7637)			
		vote	share
Lubbock M.	Con	0	0.0
Turnout		0.0	0.0
Midhurst No. 2 (6448)			
		vote	share
Lochner M. Ms.*	Con	0	0.0
Turnout		0.0	0.0
Petworth No. 1 (5357)			
		vote	share
Hay B.	Con	1,313	54.1
White J.	Ind	1,116	45.9
Turnout		45.6	8.1
Petworth No. 2 (4775)			
		vote	share
Speed H.	Con	0	0.0
Turnout		0.0	0.0
Shoreham-By-Sea (East) (5542)			
		vote	share
Frost D.	Lib	1,696	59.3
Divers B.	Con	886	31.0
Spence F. Ms.	Lab	278	9.7
Turnout		51.8	28.3
Shoreham-By-Sea (North) (5970)			
		vote	share
Elliott I.*	Con	2,060	69.4
Wright G. Ms.	Lib	630	21.2
Phillips J.	Lab	278	9.4
Turnout		49.8	48.2
Shoreham-By-Sea (South) (4616)			
		vote	share
Still G.*	Con	1,303	70.6
Readman T.	Lib	326	17.7
Ruff M.	Lab	217	11.8
Turnout		40.1	52.9
Southwick (North) (4872)			
		vote	share
Wey G.*	Con	1,512	74.3
Munnery D.	Lab	299	14.7
Andrews M.	Lib	223	11.0
Turnout		41.8	59.6
Southwick (South) (4299)			
		vote	share
Coghlan J.	Con	1,139	54.0
Marsh T.*	Lab	816	38.7
Cooper M.	Lib	154	7.3
Turnout		49.1	15.3

Worthing (Broadwater) (7458)			
		vote	share
Westcott R.	Lib	1,632	50.2
Freelove G.	Con	1,516	46.7
Lill A.	Res	100	3.1
Turnout		43.7	3.6
Worthing (Castle) (9065)²			
		vote	share
Frampton W. Ms.*	Con	1,673	52.7
Popplestone E.	Con	1,600	-
Newman P.	Lab	1,502	47.3
Perry P. Ms.	Lab	1,415	-
Turnout		36.2	5.4
Worthing (Central) (5320)			
		vote	share
Moon J.	Con	1,026	82.7
Denyer P.	Lib	214	17.3
Turnout		23.5	65.5
Worthing (Durrington) (9942)²			
		vote	share
Hammond S.	Con	2,217	61.1
Weston H.*	Con	2,213	-
Mitton P.	Res	609	16.8
Peters E.	Res	579	-
McLuskie B.	Lib	406	11.2
Mitchell B. Ms.	Lib	398	-
Johnstone J. Ms.	Lab	394	10.9
Smith C.	Lab	337	-
Turnout		37.6	44.3
Worthing (Goring) (6837)			
		vote	share
Miller J.*	Con	1,836	61.0
Bowen C.	Res	1,172	39.0
Turnout		44.1	22.1
Worthing (Hearne) (6613)			
		vote	share
Piggott H.	Con	1,867	86.2
Holmes P.	Lib	299	13.8
Turnout		32.9	72.4
Worthing (Marine) (6571)			
		vote	share
Elliott S.*	Con	2,354	88.8
Campbell D.	Lib	297	11.2
Turnout		40.5	77.6
Worthing (Offington) (8235)²			
		vote	share
Sheridan J.	Con	2,812	85.1
Sedgwick B. Ms.	Con	2,725	-
Bennett P.	Lib	492	14.9
Turnout		40.4	70.2
Worthing (Selden) (5994)			
		vote	share
Lephard N. Ms.	Con	1,281	61.9
Curphey E.	Res	443	21.4
De Pinna L.	Lib	346	16.7
Turnout		34.6	40.5
Worthing (West Tarring) (7712)			
		vote	share
McKee W.*	Con	1,671	62.5
Whyberd D.	Lib	1,002	37.5
Turnout		34.7	25.0
Worthing Rural No. 1 (Rustington) (7989)			
		vote	share
Green P.*	Con	2,142	71.2
Fine H.	Res	866	28.8
Turnout		37.8	42.4

Worthing Rural No. 2 (Ferring) (3814)			
		vote	share
Treanor M.*	Con	1,548	87.7
McDonald P.	Lib	217	12.3
Turnout		46.4	75.4

Worthing Rural No. 3 (4432)			
		vote	share
Chapman J.*	Con	1,505	89.4
Leonard E.	Lib	178	10.6
Turnout		38.1	78.8

Worthing Rural No. 4 (5705)			
		vote	share
Foster L.*	Con	1,847	86.5
Bunday S. Ms.	Lib	289	13.5
Turnout		37.5	72.9

Worthing Rural No. 5 (Sompting) (6688)			
		vote	share
Lodge R.	Con	1,552	47.4
Kimmins A.	Lib	1,218	37.2
Savell-Boss L. Ms.	Ind	283	8.7
Message D.	Lab	218	6.7
Turnout		49.0	10.2

Worthing Rural No. 6 (13708)²			
		vote	share
Forshaw G.	Con	3,539	50.4
Dixon J. Ms.	Con	3,505	-
Bartram P.*	Lib	3,020	43.0
Robinson J.*	Lib	2,821	-
Harwood R.	Lab	463	6.6
Seymour P.	Lab	458	-
Turnout		52.4	7.4

West Sussex 1981

Arundel (5470)			
		vote	share
Green E.*	Con	1,535	70.3
Lewis B.	Lib	413	18.9
Natgrass E.	Lab	237	10.8
Turnout		40.5	51.4

Bognor Regis No. 1 (Central) (6895)			
		vote	share
Avard F.	Lib	1,268	41.7
Boothman T.*	Con	1,212	39.9
Rees G.	Lab	561	18.4
Turnout		44.7	1.8

Bognor Regis No. 2 (Felpham) (9080)			
		vote	share
Walwin L.*	Con	1,962	56.5
Cooper E.	Lib	1,168	33.6
Griffin D. Ms.	Lab	344	9.9
Turnout		38.8	22.9

Bognor Regis No. 3 (South) (6184)			
		vote	share
Keen F.*	Con	1,262	59.8
Stinchcombe P. Ms.	Lib	551	26.1
Martin J.	Lab	297	14.1
Turnout		34.4	33.7

Bognor Regis No. 4 (West & Pagham) (13480)²			
		vote	share
Sayer J.*	Con	3,060	64.1
Williams J.*	Con	3,018	-
Renard B.	Lib	1,054	22.1
Powell J. Ms.	Lib	1,035	-
Thresher E.	Lab	660	13.8
Turnout		35.8	42.0

Burgess Hill No. 1 (6052)			
		vote	share
Hoddell E.*	Con	1,210	46.2
Matthews G.	Lib	992	37.9
Copus J. Ms.	Lab	418	16.0
Turnout		43.4	8.3

Burgess Hill No. 2 (Town) (4537)			
		vote	share
Meek P. Ms.	Lib	1,065	50.2
Orpin G.	Con	852	40.2
Smith J.	Lab	204	9.6
Turnout		46.8	10.0

Burgess Hill No. 3 (6809)			
		vote	share
Whitticks A.*	Con	1,488	48.0
Jeffery A.	Lib	1,117	36.0
Warne H. Ms.	Lab	497	16.0
Turnout		45.7	12.0

Chanctonbury No. 1 (Henfield) (4201)			
		vote	share
Summarsell R.	Con	1,241	84.0
Ruff M.	Lab	237	16.0
Turnout		35.8	67.9

Chanctonbury No. 2 (Pulborough) (5640)			
		vote	share
McKee W.	Con	1,809	75.3
Cleaver M. Ms.	Lib	340	14.1
Wilkinson B. Ms.	Lab	254	10.6
Turnout		43.9	61.1

Chanctonbury No. 3 (Steyning) (7270)			
		vote	share
Campbell J.	Lib	1,845	60.2
Gilbert H.	Con	1,054	34.4
Greenland A. Ms.	Lab	165	5.4
Turnout		42.8	25.8

Chanctonbury No. 4 (9005)			
		vote	share
Shepherd P.*	Con	2,471	64.9
Dean P.	Lib	904	23.7
Allen J. Ms.	Lab	301	7.9
Battson R.	Ecol	134	3.5
Turnout		42.8	41.1

Chichester (East) (5882)			
		vote	share
Blacker D.*	Con	991	42.1
French M.	Lib	981	41.7
Morrison D.	Lab	382	16.2
Turnout		40.1	0.4

Chichester (South) (4939)			
		vote	share
Craig E. Ms.	Con	886	42.5
Smith K. Ms.	Lib	805	38.6
Marshall P.	Lab	392	18.8
Turnout		42.4	3.9

Chichester (West) (6964)			
		vote	share
Craig F.*	Con	1,510	46.9
Siggs T.	Lib	1,264	39.2
Atkinson P.	Lab	448	13.9
Turnout		46.4	7.6

Chichester Rural No. 1 (6649)			
		vote	share
Morrison P.	Con	1,468	59.1
Knight M.	Lib	580	23.3
De Freitas F.	Lab	336	13.5
Widdowson M. Ms.	Ind	102	4.1
Turnout		37.8	35.7

Chichester Rural No. 2 (8213)			
		vote	share
Macdonald N.	Lib	1,662	46.9
Dunlop R.*	Con	1,516	42.8
Tomlinson J.	Lab	367	10.4
Turnout		43.6	4.1

Chichester Rural No. 3 (7415)			
		vote	share
Ash A. Ms.*	Con	1,277	48.7
Ogden A.	Ind	587	22.4
Johnston G. Ms.	Lib	329	12.5
Norris P. Ms.	Lab	270	10.3
Cox M. Ms.	Ind	161	6.1
Turnout		35.5	26.3

Chichester Rural No. 4 (7673)			
		vote	share
Clarke E. Ms.*	Con	2,129	69.9
Gostling V. Ms.	Lib	620	20.4
Norris R.	Lab	295	9.7
Turnout		40.0	49.6

Chichester Rural No. 5 (6458)			
		vote	share
Hoult D.	Con	1,575	55.8
Heald F.	Lib	860	30.5
Morrison B. Ms.	Lab	387	13.7
Turnout		44.3	25.3

Chichester Rural No. 6 (E.P. 25.6.8) (6314)			
		vote	share
Mason G. Ms.*	Con	768	35.1
Bourne J. Ms.	Res	398	18.2
Bray S.	Ind	384	17.6
Ford R.	Lib	236	10.8
Hemblade R.	Lab	226	10.3
Yule L.	Ind	175	8.0
Turnout		34.6	16.9

Chichester Rural No. 7 (6012)			
		vote	share
Longmore F. Ms.	Con	1,552	57.0
Mitchell P.	Lib	784	28.8
Bell H.	Lab	387	14.2
Turnout		45.0	28.2

Crawley No. 1 (Pound Hill) (7168)			
		vote	share
Cornes S.*	Con	1,748	51.6
Sully J. Ms.	Lab	1,167	34.5
Reed S. Ms.	Lib	470	13.9
Turnout		48.1	17.2

Crawley No. 2 (Gossops Green) (13321)			
		vote	share
Martin C.	Lab	2,539	49.6
Bronte-Hearne P.	Con	1,748	34.1
Shaw M.	Lib	836	16.3
Turnout		39.0	15.4

Crawley No. 3 (Ifield) (4675)			
		vote	share
Edwards A.*	Lab	1,002	43.6
Matthewson N.	Con	658	28.6
Riordan J.	Lib	640	27.8
Turnout		50.2	15.0

Crawley No. 4 (Langley Green) (5593)			
		vote	share
Pegler A.*	Lab	1,728	74.3
Burnham J. Ms.	Con	599	25.7
Turnout		42.3	48.5

Crawley No. 5 (Northgate & West Gre) (7266)			
		vote	share
Buck W.	Lab	1,783	53.6
Rouse J. Ms.	Con	1,146	34.4
Bradford F.	Lib	400	12.0
Turnout		46.5	19.1

Crawley No. 6 (Southgate) (8096)			
		vote	share
Mayne D.	Lab	1,502	45.4
Edmond-Smith B.	Con	1,316	39.8
Gee C. Ms.	Lib	490	14.8
Turnout		41.7	5.6

Crawley No. 7 (Three Bridges) (4472)			
		vote	share
Briggs B. Ms.	Lab	911	38.5
Tyson A. Ms.*	Con	878	37.1
Webster P. Ms.	Lib	578	24.4
Turnout		53.8	1.4

Crawley No. 8 (Tilgate) (5532)			
		vote	share
Rudd R.*	Lab	1,583	71.1
Siddall E.	Con	643	28.9
Turnout		41.0	42.2

Cuckfield & Haywards Heath West (7939)			
		vote	share
Harris H.	Con	2,147	61.6
Moore C.	Lib	1,161	33.3
Osgerby G.	Lab	179	5.1
Turnout		44.0	28.3

Cuckfield Rural No. 1 (9313)			
		vote	share
Howell E. Ms.*	Con	2,325	75.4
McNamara I.	Lab	760	24.6
Turnout		33.4	50.7

Cuckfield Rural No. 2 (5847)			
		vote	share
Long M.*	Con	1,474	58.2
Mockridge S.	Lib	509	20.1
Smelt T.	Lab	295	11.7
Clarke R.	Ecol	254	10.0
Turnout		43.4	38.1

Cuckfield Rural No. 3 (5421)			
		vote	share
Carpendale Q.*	Con	1,227	46.7
Gwynne G.	Ind	1,200	45.6
Smith B. Ms.	Lab	203	7.7
Turnout		48.6	1.0

Cuckfield Rural No. 4 (5901)			
		vote	share
Sharp G.*	Con	1,639	52.8
Gee T.	Lib	1,201	38.7
Piercy A.	Lab	265	8.5
Turnout		52.7	14.1

Cuckfield Rural No. 5 (6907)			
		vote	share
Greenwood J.*	Con	1,459	59.4
Johnson J.	Lib	525	21.4
Todd G.	Lab	473	19.3
Turnout		35.7	38.0

East Grinstead (East) (9546)			
		vote	share
Ball K.*	Con	2,153	51.2
Blaine P.	Lib	1,192	28.3
Stevens D.	Lab	862	20.5
Turnout		44.2	22.8

East Grinstead (West) (7022)			
		vote	share
Wingrove A.	Con	1,150	38.5
Taylor L.	Lib	783	26.2
King D.*	Ind	652	21.8
Rogers C. Ms.	Lab	404	13.5
Turnout		44.7	12.3

Haywards Heath South (6590)			
		vote	share
Fletcher R.*	Con	1,280	50.1
Jones A. Ms.	Lib	778	30.5
Churnside L. Ms.	Lab	496	19.4
Turnout		38.8	19.7

Horsham (North) (7907)			
		vote	share
Sheppard A.*	Con	1,541	48.2
Bowles V.	Lib	867	27.1
Lamb P.	Lab	788	24.7
Turnout		41.1	21.1

Horsham (South) (6102)			
		vote	share
Brown C.*	Con	1,296	53.8
Shopland E.	Lab	1,113	46.2
Turnout		40.2	7.6

Horsham (West) (6050)			
		vote	share
Buckle C.*	Con	1,888	71.8
Simon T.	Lab	743	28.2
Turnout		43.5	43.5

Horsham Rural No. 1 (5663)			
		vote	share
Dyas H. Ms.	Con	1,258	54.5
Banks D.	Ind	398	17.2
Railton Harris V.	Lab	328	14.2
Forknell J.	Lib	325	14.1
Turnout		41.4	37.2

Horsham Rural No. 2 (10265)			
		vote	share
Lucas C.*	Con	2,458	66.6
McMillan A.	Lab	1,235	33.4
Turnout		36.6	33.1

Horsham Rural No. 3 (8546)			
		vote	share
Cowley E. Ms.*	Con	2,414	72.5
Lilley A.	Lab	915	27.5
Turnout		40.0	45.0

Horsham Rural No. 4 (6782)			
		vote	share
Arnold D.*	Con	1,488	51.1
Bolden A.	Lib	1,170	40.2
Calcott R.	Lab	253	8.7
Turnout		43.7	10.9

Lindfield & Haywards Heath East (7220)			
		vote	share
Johnson M. Ms.	Con	1,739	52.7
Davies P. Ms.	Lib	1,075	32.6
Dutton J.	Lab	483	14.6
Turnout		45.7	20.1

Littlehampton No. 1 (Beach) (7302)			
		vote	share
Forster J.*	Con	1,383	47.7
Walsh J.	Lib	1,370	47.3
Gray A.	Lab	146	5.0
Turnout		40.2	0.4

Littlehampton No. 2 (Wick) (6447)			
		vote	share
Lane P. Ms.	Lab	821	35.2
Chapman J.	Lib	768	32.9
Ingle A.	Con	743	31.9
Turnout		36.6	2.3

Littlehampton No. 3 (3883)			
		vote	share
Jones H.*	Con	630	46.3
Shewring J. Ms.	Lib	409	30.1
Lane M.	Lab	321	23.6
Turnout		35.4	16.3

Midhurst No. 1 (7864)			
		vote	share
Stevenson D.	Con	2,165	75.5
Groves A.	Lab	701	24.5
Turnout		37.0	51.1

Midhurst No. 2 (6573)			
		vote	share
Lochner M. Ms.*	Con	0	0.0
Turnout		0.0	0.0

Petworth No. 1 (5607)			
		vote	share
Hay B.*	Con	1,492	66.4
Sherlock P.	Ecol	755	33.6
Turnout		40.5	32.8

Petworth No. 2 (5004)			
		vote	share
Hancock R.	Con	0	0.0
Turnout		0.0	0.0

Shoreham-By-Sea (East) (5616)			
		vote	share
Biggs A.	Lib	759	34.0
Merrick A.	Con	698	31.3
Sprange D.	Lab	396	17.7
White J.	Ind	380	17.0
Turnout		39.8	2.7

Shoreham-By-Sea (North) (6198)			
		vote	share
Elliott I.*	Con	1,878	70.2
Attrill D. Ms.	Lib	437	16.3
Checksfield D.	Lab	293	10.9
Bonny J. Ms.	ANP	68	2.5
Turnout		43.3	53.8

Shoreham-By-Sea (South) (4687)			
		vote	share
Barton P.	Ind	1,151	69.8
Robinson J.	Lib	245	14.9
Tomlinson M. Ms.	Lab	175	10.6
Green M.	ANP	78	4.7
Turnout		35.6	54.9

Southwick (North) (5065)			
		vote	share
Wey G.*	Con	1,088	53.0
Backwell J. Ms.	Lab	604	29.4
Cooper M.	Lib	362	17.6
Turnout		40.7	23.6

Southwick (South) (4205)			
		vote	share
Dunn R.	Con	849	43.9
Harwood R.	Lab	774	40.0
Gasson J.	Lib	312	16.1
Turnout		46.1	3.9

Worthing (Broadwater) (7489)			
		vote	share
Clare A. Ms.	Lib	1,967	61.1
Bagwell G. Ms.	Con	1,013	31.4
Cornes J.	Lab	241	7.5
Turnout		43.6	29.6

Worthing (Castle) (9462) ²			
		vote	share
Chapman D.	Lib	2,331	63.9
Randall J.	Lib	2,307	-
Frampton W. Ms.*	Con	1,317	36.1
Popplestone E.*	Con	1,308	-
Turnout		40.1	27.8

Worthing (Central) (5207)			
		vote	share
Lipscombe R. Ms.	Lib	882	52.9
O'Brien T.	Con	785	47.1
Turnout		32.3	5.8

Worthing (Durrington) (11524) ²			
		vote	share
Sudbury B.	Lib	2,803	55.2
Stephens M. Ms.	Lib	2,554	-
Goodyer D.	Con	2,271	44.8
Weston H.*	Con	2,141	-
Turnout		46.4	10.5

Worthing (Goring) (6855)			
		vote	share
Scott C. Ms.	Con	1,455	42.8
Sweetko I.	Lib	1,163	34.2
Bennett S.	Res	778	22.9
Turnout		50.0	8.6

Worthing (Hearne) (6750)			
		vote	share
Piggott H.*	Con	0	0.0
Turnout		0.0	0.0

Worthing (Marine) (6736)			
		vote	share
Elliott S.*	Con	0	0.0
Turnout		0.0	0.0

Worthing (Offington) (8209) ²			
		vote	share
Sedgewick B. Ms.*	Con	0	-
Sheridan J.*	Con	0	0.0
Turnout		0.0	0.0

Worthing (Selden) (6001)			
		vote	share
Barnett A.	Con	1,119	44.3
Davies J.	Lib	1,059	41.9
Lacey M.	Lab	349	13.8
Turnout		42.6	2.4

Worthing (West Tarring) (7871)			
		vote	share
Whyberd D.	Lib	1,936	53.8
Yates H.	Con	1,665	46.2
Turnout		46.5	7.5

Worthing Rural No. 1 (Rustington) (8481)			
		vote	share
Seear H.	Con	2,097	64.5
Cook P. Ms.	Lib	906	27.9
Roberts J.	Lab	247	7.6
Turnout		38.8	36.6

Worthing Rural No. 2 (Ferring) (3822)			
		vote	share
Treanor M.*	Con	1,470	78.7
Samuels T. Ms.	Lib	307	16.4
Burtonshaw J.	Lab	91	4.9
Turnout		49.0	62.3

Worthing Rural No. 3 (4760)			
		vote	share
Tyler A.	Con	1,439	75.0
Allan G.	Lib	333	17.4
Hosgood G.	Lab	147	7.7
Turnout		40.4	57.6

Worthing Rural No. 4 (6134)			
		vote	share
Foster L.*	Con	1,729	69.1
Stepney K.	Lib	518	20.7
Le Tissier J.	Lab	255	10.2
Turnout		41.1	48.4

Worthing Rural No. 5 (Sompting) (6788)			
		vote	share
Kimmins A.	Lib	1,491	52.4
Luck A.	Con	958	33.7
Atkins B.	Lab	394	13.9
Turnout		42.0	18.7

Worthing Rural No. 6 (14085) ²			
		vote	share
Forshaw G.*	Con	2,727	45.3
Robinson C.	Lib	2,681	44.6
Jones M. Ms.	Con	2,600	-
Allen C. Ms.	Lib	2,491	-
Cosgrove L.	Lab	608	10.1
Jacques W.	Lab	594	-
Turnout		43.7	0.8

West Sussex 1985

Arun East (6327)			
		vote	share
Keymer W.	Con	2,098	72.9
Deedman D.	Lib/SDP	636	22.1
Liversidge P.	Lab	142	4.9
Turnout		45.5	50.8

Arundel & Angmering (7459)			
		vote	share
Mainwaring R.	Con	1,370	57.0
Leonard E.	Lib/SDP	734	30.5
Wells C.	Lab	299	12.4
Turnout		32.2	26.5

Bersted (9972)			
		vote	share
Whittington R.	Con	1,206	42.5
Beckerson P.	Lib/SDP	1,089	38.4
Mills R.	Lab	542	19.1
Turnout		28.4	4.1

Bewbush (6004)			
		vote	share
Murdoch C. Ms.	Lab	1,162	64.5
Vaughan V.	Con	328	18.2
Law A.	Lib/SDP	312	17.3
Turnout		30.0	46.3

Billingshurst (6321)			
		vote	share
Taylor J.	Con	1,104	42.6
Longhurst K.	Lib/SDP	809	31.2
Richards H. Ms.	Lab	474	18.3
Sherlock J.	Ecol	206	7.9
Turnout		41.0	11.4

Bognor Regis (7836)			
		vote	share
Keen F.*	Con	1,582	54.9
Box D.	Lib/SDP	1,047	36.4
Liddle K.	Lab	250	8.7
Turnout		36.7	18.6

Bourne (8228)			
		vote	share
Mason G. Ms.*	Con	1,297	39.2
Gowlett R.	Lib/SDP	897	27.1
Sutherland I. Ms.	Res	890	26.9
Cupido F. Ms.	Lab	224	6.8
Turnout		40.2	12.1

Broadfield (6701)			
		vote	share
Mayne D.*	Lab	938	45.7
Quirk A.	Con	765	37.2
Holmes J.	Lib/SDP	351	17.1
Turnout		30.7	8.4

Broadwater (7566)			
		vote	share
Clare A. Ms.*	Lib/SDP	1,623	64.8
Parkin C. Ms.	Con	882	35.2
Turnout		33.1	29.6

Burgess Hill Central (8126)			
		vote	share
Meek P. Ms.*	Lib/SDP	1,964	58.6
Batten R.	Con	1,088	32.5
Copus C.	Lab	297	8.9
Turnout		41.2	26.2

Burgess Hill East (7514)			
		vote	share
Galvin C.	Lib/SDP	1,864	53.1
Whitticks A.*	Con	1,426	40.6
Reuby M.	Lab	220	6.3
Turnout		46.7	12.5

Chichester East (6997)			
		vote	share
Tupper C.	Lib/SDP	998	43.9
Mays I.	Con	899	39.6
Morrison D.	Lab	374	16.5
Turnout		32.5	4.4

Chichester North (7121)			
		vote	share
Longmore F. Ms.*	Con	1,572	51.8
Eyles L.	Lib/SDP	1,164	38.4
Kennett J.	Lab	296	9.8
Turnout		42.6	13.5

Chichester South (7368)			
		vote	share
Kirkby-Bott E.	Con	1,223	46.4
Wilton F.	Lib/SDP	1,051	39.9
Kirwan P.	Lab	361	13.7
Turnout		35.8	6.5

Chichester West (7939)			
		vote	share
Wilson R.	Con	1,749	50.4
Cox Q.	Lib/SDP	1,281	36.9
Atkinson P.	Lab	440	12.7
Turnout		43.7	13.5

Cissbury (8283)			
		vote	share
Sedgewick B. Ms.*	Con	1,848	59.0
Green P.	Lib/SDP	1,109	35.4
Shears C.	Lab	173	5.5
Turnout		37.8	23.6

Cuckfield Rural (7826)			
		vote	share
Long M.*	Con	1,574	58.4
Mockridge S. Ms.	Lib/SDP	1,120	41.6
Turnout		34.4	16.9

Durrington (6465)			
		vote	share
Saville E. Ms.	Lib/SDP	1,394	52.9
Goodyer D.	Con	1,240	47.1
Turnout		40.7	5.8

East Grinstead East (7446)			
		vote	share
Collins M. Ms.	Lib/SDP	1,515	51.9
Ball K.*	Con	1,199	41.1
Wilkins E.	Lab	206	7.1
Turnout		39.2	10.8

East Grinstead South (7058)			
		vote	share
Rushman E.	Con	1,198	47.4
Tate L.	Lib/SDP	1,146	45.3
Hopwood D.	Lab	186	7.4
Turnout		35.8	2.1

East Worthing (7894)			
		vote	share
Barnett A.*	Con	1,297	50.5
Meredith G.	Lib/SDP	870	33.9
Croft B.	Lab	400	15.6
Turnout		32.5	16.6

Felpham (7580)			
Walwin L.*	Con	1,556	60.3
Saville D.	Lib/SDP	776	30.1
Perrin D. Ms.	Lab	247	9.6
Turnout		34.0	30.2

Fernhurst (8289)			
Boulton P. Ms.	Con	1,773	56.9
Schlich S.	Lib/SDP	1,138	36.5
Eastland M.	Lab	206	6.6
Turnout		37.6	20.4

Fontwell (7577)			
Green E.*	Con	1,391	50.5
Kingsbury J.	Lib/SDP	1,074	39.0
Adams J.	Lab	187	6.8
Carter M.	Ecol	100	3.6
Turnout		36.3	11.5

Furnace Green (7872)			
Todd G.	Lab	1,480	42.2
Barry D.	Con	1,255	35.8
Chaplin P.	Lib/SDP	772	22.0
Turnout		44.6	6.4

Goring-By-Sea (8045)			
Scott C. Ms.*	Con	2,012	67.1
Wagon D.	Lib/SDP	986	32.9
Turnout		37.3	34.2

Gossops Green (7437)			
Leo P.	Lab	1,438	43.8
Blake B.	Con	1,266	38.5
Stonely C.	Lib/SDP	582	17.7
Turnout		44.2	5.2

Hassocks & Burgess Hill W (8852)			
Hollingdale P. Ms.	Lib/SDP	2,000	45.4
Hoddell E.*	Con	1,585	36.0
Pryke M.	Ind	557	12.7
Copus J. Ms.	Lab	259	5.9
Turnout		49.7	9.4

Haywards Heath East (7064)			
Campbell Barnes A. Ms.	Lib/SDP	1,203	44.8
Fletcher R.*	Con	1,147	42.7
Lee G.	Lab	336	12.5
Turnout		38.0	2.1

Haywards Heath West (6669)			
Taylor R.	Con	1,406	46.2
Church D.	Lib/SDP	1,362	44.8
Hanford R.	Lab	273	9.0
Turnout		45.6	1.4

Henfield (7384)			
Cantello W.	Con	1,646	67.7
Redshaw S. Ms.	Ecol	455	18.7
Dolan A.	Lab	331	13.6
Turnout		32.9	49.0

Holbrook (7705)			
Cowley E. Ms.*	Con	1,567	60.8
Tompsett S. Ms.	Lab	565	21.9
Pollard J.	Ind Con	445	17.3
Turnout		33.4	38.9

Hotham (7023)			
Morrish C. Ms.	Lib/SDP	1,124	49.6
Moss K.	Con	839	37.0
Musselwhite J. Ms.	Lab	305	13.4
Turnout		32.3	12.6

Hurst (6192)			
Dyas H. Ms.*	Con	1,370	52.8
Pearce J. Ms.	Lib/SDP	882	34.0
Croal E.	Lab	342	13.2
Turnout		41.9	18.8

Ifield (6576)			
Edwards A.*	Lab	1,274	44.6
Elliott B. Ms.	Con	973	34.1
George J.	Lib/SDP	607	21.3
Turnout		43.4	10.5

Imberdown (9105)			
Field S.	Con	1,771	47.0
Johnson J.	Lib/SDP	1,742	46.2
Stevens D.	Lab	257	6.8
Turnout		41.4	0.8

Kingston Buci (6918)			
Biggs A.*	Lib/SDP	1,759	52.3
Merrick A.	Con	1,282	38.1
Morris C.	Lab	320	9.5
Turnout		48.6	14.2

Lancing (8620)			
Robinson C.*	Lib/SDP	2,317	61.8
Hillier L. Ms.	Con	1,148	30.6
Aldrich S. Ms.	Lab	284	7.6
Turnout		43.5	31.2

Langley Green (6889)			
Pegler A.*	Lab	1,833	66.2
Manning S. Ms.	Con	593	21.4
Sharp N. Ms.	Ind	342	12.4
Turnout		40.2	44.8

Lindfield (7139)			
Johnson M. Ms.*	Con	1,802	59.4
Sheppard M.	Lib/SDP	1,230	40.6
Turnout		42.5	18.9

Littlehampton North (7293)			
Gamble S.	Con	1,001	38.7
Lane P. Ms.*	Lab	839	32.5
Harris K.	Lib/SDP	745	28.8
Turnout		35.4	6.3

Littlehampton Town (8124)			
Forster J.*	Con	1,098	45.7
Dunlop A. Ms.	Lib/SDP	937	39.0
Shorten N. Ms.	Lab	367	15.3
Turnout		29.6	6.7

Maybridge (7514)			
Horgan D.	Lib/SDP	1,432	53.5
Wilton S.	Con	967	36.1
Hammond J.	Lab	278	10.4
Turnout		35.6	17.4

Mid Sussex North (7624)			
Howell E. Ms.*	Con	1,686	61.6
Hamling G. Ms.	Lib/SDP	752	27.5
Ward P. Ms.	Lab	297	10.9
Turnout		35.9	34.1

Mid Sussex South (6780)			
Carpendale Q.*	Con	1,753	60.4
Carey K.	Lib/SDP	1,151	39.6
Turnout		42.8	20.7

Middleton (6523)			
Morrison P.*	Con	1,297	60.9
Doyle M. Ms.	Lib/SDP	565	26.5
Found P.	Lab	267	12.5
Turnout		32.6	34.4

Midhurst (8636)			
Lochner M. Ms.*	Con	1,691	46.0
Veysey R.	Lib/SDP	1,254	34.1
Knight E.	Ind Con	510	13.9
Jarvis J. Ms.	Lab	225	6.1
Turnout		42.6	11.9

Northgate & Three Bridges (7824)			
Buck W.*	Lab	1,590	43.8
Fradgley J.	Con	1,147	31.6
Seekings G.	Lib/SDP	897	24.7
Turnout		46.4	12.2

Nyetimber (9407)			
Sayer J.*	Con	1,957	54.8
Kilcoyne P. Ms.	Lib/SDP	1,191	33.4
Chester J.	Lab	422	11.8
Turnout		38.0	21.5

Petworth (8713)			
Greenwell S. Ms.	Con	1,925	67.4
Bagnall I.	Ecol	489	17.1
Sales M. Ms.	Lab	441	15.4
Turnout		32.8	50.3

Pound Hill (7038)			
Dunn K.	Con	1,169	48.1
Dennis N.	Lib/SDP	709	29.2
Slattery P.	Lab	553	22.7
Turnout		34.5	18.9

Preston Manor (8269)			
Smart W.	Con	2,265	59.4
Williams G. Ms.	Lib/SDP	1,252	32.9
Truman H. Ms.	Lab	207	5.4
Grant J.	Ind	87	2.3
Turnout		46.1	26.6

Pulborough (7944)			
Sheridan J.	Con	2,019	67.8
De'Ath G. Ms.	Lib/SDP	580	19.5
Green M. Ms.	Ecol	200	6.7
East R.	Lab	178	6.0
Turnout		37.5	48.3

Richmond (7347)			
Hall V.	Con	1,175	47.1
Lipscombe R. Ms.*	Lib/SDP	1,106	44.3
King H. Ms.	Lab	215	8.6
Turnout		34.0	2.8

Riverside (8205)

		vote	share
Wingrove A.	Con	1,283	43.1
Bowles V.	Lib/SDP	1,100	36.9
Barrett D.	Lab	597	20.0
Turnout		36.3	6.1

Roffey (7731)

		vote	share
Ramsey V.	Con	1,018	41.3
Owen E.	Lib/SDP	973	39.5
McMillan A.	Lab	474	19.2
Turnout		31.9	1.8

Rustington West (8347)

		vote	share
Walsh J.	Lib/SDP	1,911	50.9
Hawkes A.	Con	1,653	44.0
McCarthy A. Ms.	Lab	189	5.0
Turnout		45.0	6.9

Saltings (8381)

		vote	share
Forshaw G.*	Con	1,566	39.8
Pressley N.	Lib/SDP	1,309	33.3
Donaldson D.	Ind	637	16.2
Jacques W.	Lab	310	7.9
Martin M. Ms.	Ecol	110	2.8
Turnout		46.9	6.5

Salvington (8087)

		vote	share
Wilson F.	Con	1,774	59.0
Reed O.	Lib/SDP	1,232	41.0
Turnout		37.2	18.0

Selsey & Sidlesham (7962)

		vote	share
Ager B.	Con	1,661	72.0
Sugden J.	Lab	647	28.0
Turnout		29.0	43.9

Shoreham (8452)

		vote	share
Elliott I.*	Con	2,055	61.2
Bienati C. Ms.	Lib/SDP	885	26.4
Snowden H.	Lab	417	12.4
Turnout		39.7	34.9

Sompting (6695)

		vote	share
Brookes M.	Lib/SDP	1,640	61.9
Kirk S. Ms.	Con	677	25.5
Burns F.	Lab	333	12.6
Turnout		39.6	36.3

Southwater (7303)

		vote	share
Green E. Ms.	Con	1,194	43.4
Parr-Voller R.	Lib/SDP	807	29.3
Pidgeon C. Ms.	Lab	456	16.6
Kenny C.	Ind	293	10.7
Turnout		37.7	14.1

Southwick (7363)

		vote	share
Wey G. Ms.*	Con	1,464	46.0
Vinter C.	Lab	975	30.6
King J. Ms.	Lib/SDP	743	23.4
Turnout		43.2	15.4

Stevington (7792)

		vote	share
Campbell J.*	Lib/SDP	1,770	58.1
Ward M. Ms.	Con	1,075	35.3
Greenland A. Ms.	Lab	203	6.7
Turnout		39.1	22.8

Storrington (7731)

		vote	share
Shepherd P.*	Con	1,808	54.4
Banks D.	Lib/SDP	1,313	39.5
Allen R.	Lab	201	6.1
Turnout		43.1	14.9

The Witterings (8125)

		vote	share
Clarke E. Ms.*	Con	1,766	55.7
Sander P. Ms.	Lib/SDP	1,160	36.6
Norris R.	Lab	245	7.7
Turnout		39.0	19.1

Tilgate (8355)

		vote	share
Rudd R.*	Lab	1,914	61.8
Walker A.	Con	677	21.9
Bowles K.	Lib/SDP	504	16.3
Turnout		37.0	40.0

Warnham (6336)

		vote	share
Dick B. Ms.*	Lib/SDP	1,235	46.2
Lucas C.	Con	1,213	45.4
Fiveash M.	Lab	224	8.4
Turnout		42.2	0.8

West Parade (8430)

		vote	share
Elliott S.*	Con	2,115	66.8
O'Callaghan M.	Lib/SDP	847	26.8
Deen J.	Lab	202	6.4
Turnout		37.5	40.1

West Tarring (7430)

		vote	share
Whyberd D.*	Lib/SDP	1,473	52.5
Meneaud-Lissenburg G. Ms.	Con	1,043	37.2
Henbrey D.	Lab	288	10.3
Turnout		37.7	15.3

West Sussex 1989**Arun East (6365)**

		vote	share
Smedley H.	Con	1,999	76.9
Harrison I.	LD	600	23.1
Turnout		40.8	53.8

Arundel & Angmering (8020)

		vote	share
Brown F.	Con	1,435	56.0
Stedman M.	Lab	1,129	44.0
Turnout		32.0	11.9

Bersted (10210)

		vote	share
Whittington R.*	Con	1,138	45.8
Beckerson P.	LD	737	29.7
Cope G.	Lab	610	24.5
Turnout		24.3	16.1

Bewbush (7591)

		vote	share
Murdoch C. Ms.*	Lab	1,434	69.4
Harrington R.	Con	464	22.4
Davis D.	LD	169	8.2
Turnout		27.2	46.9

Billingshurst (6338)

		vote	share
Keen D.	Con	1,103	62.2
Longhurst K.	Ind	359	20.3
Street M.	Lab	310	17.5
Turnout		28.0	42.0

Bognor Regis (8681)

		vote	share
Keen F.*	Con	1,780	64.8
Blyth A.	LD	553	20.1
Griffin D. Ms.	Lab	416	15.1
Turnout		31.7	44.6

Bourne (8382)

		vote	share
Jones D.	Con	1,869	60.4
Ford W. Ms.	LD	681	22.0
Turner R.	Lab	542	17.5
Turnout		36.9	38.4

Broadfield (7693)

		vote	share
Hilton N.	Lab	1,226	58.2
Quirk A.	Con	683	32.4
Holmes J.	SDP	115	5.5
Fontbin P.	LD	82	3.9
Turnout		27.4	25.8

Broadwater (7580)

		vote	share
Calre A. Ms.*	LD	1,562	60.5
Close R.	Con	1,019	39.5
Turnout		34.1	21.0

Burgess Hill Central (8621)

		vote	share
Meek P. Ms.*	LD	1,816	47.3
Hoddell E.	Con	1,742	45.3
Speight H.	Lab	285	7.4
Turnout		44.6	1.9

Burgess Hill East (7724)

		vote	share
Coveney M. Ms.	Con	1,460	46.9
Porterfield M.	LD	1,319	42.4
Chalkley D.	Lab	333	10.7
Turnout		40.3	4.5

Chichester East (7445)

		vote	share
Tupper C.*	LD	1,340	51.9
McGregor-Wood N.	Con	961	37.2
Morrison D.	Lab	283	11.0
Turnout		34.7	14.7

Chichester North (7079)

		vote	share
Longmore F. Ms.*	Con	1,805	67.1
Smith A.	LD	887	32.9
Turnout		38.0	34.1

Chichester South (7843)

		vote	share
Rankin J.	LD	1,402	45.4
Quinnell P.	Con	1,374	44.5
Moran J.	Lab	309	10.0
Turnout		39.3	0.9

Chichester West (8187)

		vote	share
Wilson R.*	Con	1,938	60.3
Bulpett C. Ms.	LD	746	23.2
Kennett J.	Lab	530	16.5
Turnout		39.3	37.1

Cissbury (8514)

		vote	share
Sedwick B. Ms.*	Con	1,659	59.0
Mardell E.	LD	1,153	41.0
Turnout		33.0	18.0

Cuckfield Rural (7547)

		vote	share
Long M.*	Con	1,548	62.9
Wood C.	LD	591	24.0
Glen-Stuart J.	Lab	322	13.1
Turnout		32.6	38.9

Durrington (7216)			
		vote	share
Owen C.	Con	1,243	50.8
Phillips W.	LD	976	39.9
Croft B.	Lab	229	9.4
Turnout		33.9	10.9

East Grinstead East (7751)			
		vote	share
Collins M. Ms.*	SDP	1,362	42.6
Ball K.	Con	1,329	41.6
Glynn J. Ms.	LD	300	9.4
Knott I.	Lab	204	6.4
Turnout		41.2	1.0

East Grinstead South (7502)			
		vote	share
Baldwin J.	LD	1,524	53.3
Rushman E.*	Con	1,121	39.2
Hopwood D.	Lab	216	7.5
Turnout		38.1	14.1

East Worthing (7949)			
		vote	share
Barnett A.*	Con	1,180	51.6
Wilding H.	LD	597	26.1
Deen J.	Lab	510	22.3
Turnout		28.8	25.5

Felpham (7905)			
		vote	share
Walwin L.*	Con	1,762	70.3
Perrin D. Ms.	Lab	745	29.7
Turnout		31.7	40.6

Fernhurst (8256)			
		vote	share
Boulton P. Ms.*	Con	1,930	68.5
Schlich S.	LD	886	31.5
Turnout		34.1	37.1

Fontwell (7989)			
		vote	share
Moody A.	Con	1,821	74.1
Grant A.	Lab	636	25.9
Turnout		30.8	48.2

Furnace Green (7542)			
		vote	share
Weller I.	Lab	1,634	51.6
Edmond-Smith P. Ms.	Con	1,324	41.8
Trim D.	LD	181	5.7
Bowles K.	SDP	30	0.9
Turnout		42.0	9.8

Goring-By-Sea (8179)			
		vote	share
Scott C. Ms.*	Con	1,854	65.0
Meyrick M. Ms.	SDP	524	18.4
Lipscombe R. Ms.	LD	475	16.6
Turnout		34.9	46.6

Gossops Green (7315)			
		vote	share
Leo P.*	Lab	1,607	55.9
Wilkinson S.	Con	958	33.3
Graham K.	SDP	191	6.6
Spriggs F.	LD	119	4.1
Turnout		39.3	22.6

Hassocks & Burgess Hill W (8842)			
		vote	share
Gee T.	LD	1,764	46.7
Crowe D.	Con	1,647	43.6
Moss A.	Lab	363	9.6
Turnout		42.7	3.1

Haywards Heath East (7512)			
		vote	share
Gayler J. Ms.	Con	915	37.3
Campbell Barnes A. Ms.*	Ind	908	37.0
Blaber I.	Lab	387	15.8
Smith D.	LD	243	9.9
Turnout		32.7	0.3

Haywards Heath West (7082)			
		vote	share
Taylor R.*	Con	1,513	58.3
Clayden R. Ms.	LD	654	25.2
Hanford R.	Lab	430	16.6
Turnout		36.7	33.1

Henfield (7848)			
		vote	share
Cantello W.*	Con	0	0.0
Turnout		0.0	0.0

Holbrook (8271)			
		vote	share
Wingrove A.	Con	1,758	75.3
Uwins S.	Lab	577	24.7
Turnout		28.2	50.6

Hotham (7670)			
		vote	share
Morrish C. Ms.*	LD	1,228	49.4
Miller C.	Con	883	35.5
Liddle K.	Lab	376	15.1
Turnout		32.4	13.9

Hurst (6127)			
		vote	share
Dyas H. Ms.*	Con	1,408	61.2
Eeles N. Ms.	LD	551	24.0
Lamb P.	Lab	341	14.8
Turnout		37.5	37.3

Ifield (6346)			
		vote	share
Todd A. Ms.	Lab	1,288	62.6
Tarran J. Ms.	Con	581	28.2
Hamilton L. Ms.	LD	123	6.0
Gonsalves P.	SDP	66	3.2
Turnout		32.4	34.4

Imberdown (9242)			
		vote	share
Briggs M. Ms.*	Con	1,930	57.3
Johnson J.	LD	1,159	34.4
Stevens D.	Lab	279	8.3
Turnout		36.4	22.9

Kingston Buci (7394)			
		vote	share
Biggs A.*	LD	1,526	53.1
Parish D. Ms.	Con	1,066	37.1
Gibbs J. Ms.	Lab	280	9.7
Turnout		38.8	16.0

Lancing (8598)			
		vote	share
Robinson C.*	LD	1,828	55.6
Donald M.	Con	1,179	35.9
Atkins B.	Lab	278	8.5
Turnout		38.2	19.8

Langley Green (6820)			
		vote	share
Pegler A.*	Lab	1,812	74.5
Bradnum A. Ms.	Con	430	17.7
Brown A.	LD	189	7.8
Turnout		35.6	56.8

Lindfield (7411)			
		vote	share
Johnson M. Ms.*	Con	1,991	68.3
Povey C.	LD	577	19.8
Gregory L. Ms.	Lab	348	11.9
Turnout		39.3	48.5

Littlehampton North (7566)			
		vote	share
O'Neill G.	Lab	1,122	43.9
Gamble S.*	Con	949	37.1
Weights B.	Green LIB	293	11.5
Saville D.	LD	191	7.5
Turnout		33.8	6.8

Littlehampton Town (8742)			
		vote	share
Newell E. Ms.	Con	1,043	45.5
Patterson H.	LD	756	33.0
Gill B.	Lab	491	21.4
Turnout		26.2	12.5

Maybridge (7365)			
		vote	share
Hare C.	LD	1,184	43.4
Cohen A.	Con	1,103	40.4
Hammond J.	Lab	441	16.2
Turnout		37.0	3.0

Mid Sussex North (7990)			
		vote	share
Howell E. Ms.*	Con	1,744	69.4
Skinnerton W.	LD	445	17.7
Henry A.	Lab	323	12.9
Turnout		31.4	51.7

Mid Sussex South (6889)			
		vote	share
Begbie D.	Con	1,352	48.3
Gwynne G.	Ind	1,177	42.1
Ashcroft P. Ms.	Lab	269	9.6
Turnout		40.6	6.3

Middleton (7262)			
		vote	share
Shingler A.	Con	1,279	63.0
Harris K.	LIB	398	19.6
Found P.	Lab	353	17.4
Turnout		28.0	43.4

Midhurst (9132)			
		vote	share
O'Kelly E.	Con	2,412	64.9
Campbell K.	Ind	1,003	27.0
Tomlinson J.	Lab	300	8.1
Turnout		40.7	37.9

Northgate & Three Bridges (7599)			
		vote	share
Buck W.*	Lab	1,625	46.1
Panter L. Ms.	Con	959	27.2
Bates P. Ms.	LD	940	26.7
Turnout		46.4	18.9

Nyetimber (9502)			
		vote	share
Sayer J.*	Con	2,044	64.9
Oppler F.	LD	586	18.6
Chester J.	Lab	521	16.5
Turnout		33.2	46.3

Petworth (8802)			
		vote	share
Greenwell S. Ms.*	Con	2,057	59.6
Gardiner P.	LD	1,396	40.4
Turnout		39.2	19.1

Pound Hill (7511)			
		vote	share
Dewdney D.	Con	1,422	60.3
Irvine I.	Lab	589	25.0
Hoadley A.	LD	248	10.5
Bryant K.	SDP	101	4.3
Turnout		31.4	35.3
Preston Manor (8477)			
		vote	share
Evans R.	Con	2,394	74.6
Eyre G.	LD	817	25.4
Turnout		37.9	49.1
Pulborough (8664)			
		vote	share
Sheridan J.*	Con	2,243	77.2
Martin R.	LD	664	22.8
Turnout		33.6	54.3
Richmond (7491)			
		vote	share
Collinson G.	Con	1,190	49.4
Stuart I.	LD	976	40.5
King H. Ms.	Lab	243	10.1
Turnout		32.2	8.9
Riverside (8327)			
		vote	share
Millson M. Ms.	LD	1,445	47.5
Mauchel E. Ms.	Con	1,138	37.4
Barrett D.	Lab	462	15.2
Turnout		36.6	10.1
Roffey (8292)			
		vote	share
Ramsey V.*	Con	1,017	44.3
Prodger T.	SDP	716	31.2
McMillan A.	Lab	565	24.6
Turnout		27.7	13.1
Rustington West (8423)			
		vote	share
Walsh J.*	LD	1,775	55.2
Seager P. Ms.	Con	1,243	38.7
Natgrass E.	Lab	195	6.1
Turnout		38.1	16.6
Saltings (8634)			
		vote	share
Forshaw G.*	Con	1,881	58.5
Pressley N.	LD	965	30.0
Atkins H. Ms.	Lab	372	11.6
Turnout		37.3	28.5
Salvington (8123)			
		vote	share
Wilson F.*	Con	1,738	60.3
Crabtree J.	LD	601	20.8
Pickett M. Ms.	Lab	545	18.9
Turnout		35.5	39.4
Selsey & Sidlesham (8395)			
		vote	share
Ogden A.	Con	1,812	70.3
Hoy S.	LD	767	29.7
Turnout		30.7	40.5
Shoreham (8602)			
		vote	share
Elliott I.*	Con	1,883	64.0
Hammond D.	LD	1,061	36.0
Turnout		34.2	27.9
Sompting (6891)			
		vote	share
Brookes M.*	LD	1,208	47.3
Catchpole W.	Con	1,036	40.6
Sweet N.	Lab	310	12.1
Turnout		37.1	6.7

Southwater (8458)			
		vote	share
Holding G.	Con	1,453	48.0
Farmer D.	LD	1,286	42.5
Pidgeon C. Ms.	Lab	288	9.5
Turnout		35.8	5.5
Southwick (7278)			
		vote	share
Wey G. Ms.*	Con	1,540	54.2
Whitmore L.	LD	744	26.2
Morris C.	Lab	556	19.6
Turnout		39.0	28.0
Stevington (8003)			
		vote	share
Dennis A.	Con	1,422	54.8
Neves V. Ms.	SDP	804	31.0
Drew D.	Lab	369	14.2
Turnout		32.4	23.8
Storrington (7473)			
		vote	share
Burningham J.	Con	1,615	52.9
Hughes A.	LD	1,284	42.0
Pope P. Ms.	Lab	155	5.1
Turnout		40.9	10.8
The Witterings (8519)			
		vote	share
Daws-Chew J.	Con	2,178	70.5
Pannell M.	LD	466	15.1
Norris R.	Lab	445	14.4
Turnout		36.3	55.4
Tilgate (8041)			
		vote	share
Rudd R.*	Lab	1,970	73.2
Belben A.	Con	536	19.9
McCormack M.	SDP	112	4.2
Reay E.	LD	72	2.7
Turnout		33.5	53.3
Warnham (6689)			
		vote	share
Dick B. Ms.*	LD	1,569	51.3
Trafford B.	Con	1,315	43.0
Brady E.	Lab	177	5.8
Turnout		45.8	8.3
West Parade (8632)			
		vote	share
Elliott S.*	Con	1,890	68.2
Marsh C. Ms.	LD	609	22.0
Fisher K. Ms.	Lab	273	9.8
Turnout		32.1	46.2
West Tarring (7740)			
		vote	share
Whyberd D.*	LD	1,101	42.1
Hyam R.	Con	1,077	41.2
Dove C.	Lab	245	9.4
Masters G.	SDP	130	5.0
Bruce V.	Ind	62	2.4
Turnout		33.8	0.9

West Sussex 1993

Arun East (6310)			
		vote	share
Joyce E.	Con	1,624	64.2
Franke M.	LD	790	31.2
Hammond J.	Lab	115	4.5
Turnout		40.1	33.0
Arundel & Angmering (7994)			
		vote	share
Brown F.*	Con	1,236	47.8
Stedman M.	Lab	720	27.8
Long M.	LD	631	24.4
Turnout		32.4	19.9
Bersted (10054)			
		vote	share
Olliver S. Ms.	LD	1,659	57.4
Huntingdon .E	Con	680	23.5
Armstrong L. Ms.	Lab	552	19.1
Turnout		28.8	33.9
Bewbush (8096)			
		vote	share
Minns A.	Lab	1,322	66.8
Burke L.	Con	319	16.1
Mealain E.	LD	251	12.7
Mitton P. Ms.	Green	86	4.3
Turnout		24.4	50.7
Billingshurst (6396)			
		vote	share
Lawes G.	LD	980	42.1
Cummings M.	Con	708	30.4
Lomas R.	Ind	306	13.1
Banks D.	Ind	213	9.2
Longhurst K.	Ind	120	5.2
Turnout		36.4	11.7
Bognor Regis (8624)			
		vote	share
Scutt K.	LD	1,736	55.8
Keen F.*	Con	1,209	38.9
Stallybrass C. Ms.	Lab	164	5.3
Turnout		36.1	17.0
Bourne (8537)			
		vote	share
Jones D.*	Con	1,412	46.6
Ford R.	LD	916	30.2
Smith C.	Lab	501	16.5
Hoar M.	Ind	203	6.7
Turnout		35.5	16.4
Broadfield (7891)			
		vote	share
Hilton N.*	Lab	1,222	65.9
Lanham M.	Con	418	22.5
Dennis N.	LD	215	11.6
Turnout		23.5	43.3
Broadwater (7391)			
		vote	share
Clare A. Ms.*	LD	1,623	67.5
Allen D.	Con	567	23.6
West G.	Lab	130	5.4
Colkett L. Ms.	Green	86	3.6
Turnout		32.6	43.9
Burgess Hill Central (9324)			
		vote	share
Chapman A. Ms.	LD	1,825	51.9
Hoddell E.	Con	1,298	36.9
Poulson E. Ms.	Lab	303	8.6
Stevens H.	Green	89	2.5
Turnout		37.7	15.0

Burgess Hill East (7606)			
		vote	share
Ross H. Ms.	LD	2,055	64.2
Snowling G.	Con	947	29.6
Taylor N.	Lab	199	6.2
Turnout		42.1	34.6

Chichester East (7362)			
		vote	share
Tupper C.*	LD	1,309	56.8
Burton C.	Con	697	30.3
Morrison D.	Lab	297	12.9
Turnout		31.3	26.6

Chichester North (7128)			
		vote	share
Herniman J.	Con	1,442	48.1
Eyles L.	LD	1,246	41.6
Tomlinson J.	Lab	185	6.2
Young A.	Green	125	4.2
Turnout		42.1	6.5

Chichester South (8038)			
		vote	share
Rankin J.*	LD	1,706	56.8
Wood-Roe D. Ms.	Con	906	30.2
Moran J.	Lab	254	8.5
Eckard J. Ms.	Green	136	4.5
Turnout		37.4	26.6

Chichester West (8255)			
		vote	share
Wright J. Ms.	LD	1,501	45.0
Jones P.	Con	1,463	43.9
Kennett J.	Lab	371	11.1
Turnout		40.4	1.1

Cissbury (8301)			
		vote	share
Miller G.	LD	1,854	50.5
Sedgwick B. Ms.*	Con	1,645	44.8
Sprange D.	Lab	98	2.7
Croft D.	Green	77	2.1
Turnout		44.3	5.7

Cuckfield Rural (7592)			
		vote	share
Dennis M.	Con	1,292	55.1
Davies A.	LD	645	27.5
Leppard S.	Lab	232	9.9
Came J. Ms.	Green	177	7.5
Turnout		30.9	27.6

Durrington (7586)			
		vote	share
Rodgers N.	LD	1,240	47.4
Owen C.*	Con	1,083	41.4
Haworth D.	Lab	229	8.8
Glass J. Ms.	Green	65	2.5
Turnout		34.5	6.0

East Grinstead East (7864)			
		vote	share
Collins M. Ms.*	LD	2,152	66.2
Clark S. Ms.	Con	862	26.5
Robson B.	Lab	142	4.4
Gibson S. Ms.	Green	93	2.9
Turnout		41.3	39.7

East Grinstead South (7542)			
		vote	share
Baldwin J.*	LD	1,540	55.6
Shepherd D.	Con	977	35.3
Sheppard J. Ms.	Lab	145	5.2
Gibson N.	Green	106	3.8
Turnout		36.7	20.3

East Worthing (7784)			
		vote	share
Hart G.	LD	1,526	58.5
Price R.	Con	716	27.5
Banks K.	Lab	366	14.0
Turnout		33.5	31.1

Felpham (7802)			
		vote	share
Smith D. Ms.	Ind	1,111	43.4
Black P.	Con	749	29.2
Stinchcombe P. Ms.	LD	525	20.5
Rees C. Ms.	Lab	177	6.9
Turnout		32.8	14.1

Fernhurst (7996)			
		vote	share
Findlay W.	Con	1,632	59.5
Elston C.	LD	1,111	40.5
Turnout		34.3	19.0

Fontwell (7911)			
		vote	share
Hall H.	Con	1,163	46.5
Fletcher G.	LD	1,118	44.7
Grant A.	Lab	218	8.7
Turnout		31.6	1.8

Furnace Green (8417)			
		vote	share
Todd A. Ms.	Lab	1,419	45.3
Russell D.	Con	1,200	38.3
Hart M.	LD	515	16.4
Turnout		37.2	7.0

Goring-By-Sea (7909)			
		vote	share
Scott C. Ms.*	Con	1,412	50.8
Adlem S.	LD	1,196	43.0
Rand O. Ms.	Lab	174	6.3
Turnout		35.2	7.8

Gossops Green (6980)			
		vote	share
Edwards A.	Lab	1,376	54.1
Bronte-Hearne P.	Con	790	31.1
Hart J. Ms.	LD	377	14.8
Turnout		36.4	23.0

Hassocks & Burgess Hill W (8759)			
		vote	share
Gee T.*	LD	2,135	60.1
Langhorne J.	Con	1,018	28.7
Ashcroft P. Ms.	Lab	400	11.3
Turnout		40.6	31.4

Haywards Heath East (7691)			
		vote	share
Hamilton M.	Lab	999	34.3
Gayler J. Ms.*	Con	966	33.1
Riddington J.	LD	862	29.6
Bean H. Ms.	Green	89	3.1
Turnout		37.9	1.1

Haywards Heath West (7451)			
		vote	share
Hall B.	LD	1,625	54.9
Taylor R.*	Con	1,034	34.9
Gray L.	Lab	210	7.1
Sesemann J.	Green	93	3.1
Turnout		39.8	20.0

Henfield (7907)			
		vote	share
Cantello W.*	Con	1,524	58.9
Clarke M. Ms.	LD	824	31.8
Uwins S.	Lab	241	9.3
Turnout		32.7	27.0

Holbrook (8818)			
		vote	share
Mathewson N.	Con	1,375	52.0
Millson A.	LD	940	35.6
Chapman R.	Lab	327	12.4
Turnout		30.0	16.5

Hotham (7785)			
		vote	share
Morrish C. Ms.*	LD	1,270	54.4
Wotherspoon P.	Con	750	32.1
Cosgrove J.	Lab	313	13.4
Turnout		30.0	22.3

Hurst (5952)			
		vote	share
Dennis N.	LD	1,120	47.9
Wingrove A.*	Con	1,025	43.9
Brady E.	Lab	191	8.2
Turnout		39.3	4.1

Ifield (6099)			
		vote	share
Pritchard A.	Lab	1,262	62.5
Tandy C. Ms.	Con	387	19.2
Hamilton L. Ms.	LD	257	12.7
Dickson I.	Green	112	5.6
Turnout		33.1	43.4

Imberdown (10204)			
		vote	share
Weaver J.	LD	2,228	56.0
Briggs M. Ms.*	Con	1,425	35.8
Stewart M. Ms.	Lab	230	5.8
Salmon A.	Green	98	2.5
Turnout		39.0	20.2

Kingston Buci (7042)			
		vote	share
Biggs A.*	LD	1,516	59.9
Easter N. Ms.	Con	712	28.1
Sweet N.	Lab	302	11.9
Turnout		35.9	31.8

Lancing (8099)			
		vote	share
Robinson C.*	LD	1,769	60.2
Chatfield F.	Con	892	30.4
Organ M.	Lab	278	9.5
Turnout		36.3	29.8

Langley Green (6657)			
		vote	share
Pegler A.*	Lab	1,687	72.8
Miller R.	LD	318	13.7
Devitt I. Ms.	Con	312	13.5
Turnout		34.8	59.1

Lindfield (7464)			
		vote	share
Johnson M. Ms.*	Con	1,531	55.1
Johnson R.	LD	1,003	36.1
Burns I. Ms.	Lab	138	5.0
Filby C. Ms.	Green	108	3.9
Turnout		37.3	19.0

Littlehampton North (7324)			
		vote	share
O'Neill G.*	Lab	1,438	56.7
Wicks T.	Con	619	24.4
Saville M. Ms.	LD	274	10.8
Elliott J. Ms.	LIB	203	8.0
Turnout		34.6	32.3

Littlehampton Town (9072)			
		vote	share
Newell E. Ms.*	Con	862	37.4
Dyball D.	Lab	630	27.3
Weights B.	LIB	452	19.6
Beckerson P.	LD	363	15.7
Turnout		25.4	10.1

Maybridge (7151)			
		vote	share
Hare C.*	LD	1,918	65.9
Hill D.	Con	717	24.6
Wallace M.	Lab	211	7.3
Ball A.	Green	64	2.2
Turnout		40.7	41.3

Mid Sussex North (8491)			
		vote	share
Howell E. Ms.*	Con	1,596	62.5
Garton J. Ms.	Lab	637	25.0
Weller M.	Green	319	12.5
Turnout		30.1	37.6

Mid Sussex South (6701)			
		vote	share
Mack B.	Con	1,377	55.5
Mills D.	LD	801	32.3
Moran M.	Lab	217	8.7
Seefried N. Ms.	Green	87	3.5
Turnout		37.0	23.2

Middleton (7481)			
		vote	share
Shingler A.*	Con	1,000	48.1
Matthews H.	LD	748	36.0
Found P.	Lab	330	15.9
Turnout		27.8	12.1

Midhurst (8983)			
		vote	share
O'Kelly E.*	Con	2,368	59.6
Devereux R.	LD	1,399	35.2
Waite M.	Lab	205	5.2
Turnout		44.2	24.4

Northgate & Three Bridges (7419)			
		vote	share
Buck W.*	Lab	1,438	53.4
Butt N.	LD	633	23.5
Coyston C.	Con	622	23.1
Turnout		36.3	29.9

Nyetimber (9228)			
		vote	share
Sayer J.*	Con	1,508	51.1
Griggs R.	LD	1,025	34.7
Griffin D. Ms.	Lab	419	14.2
Turnout		32.0	16.4

Petworth (8615)			
		vote	share
Hooton B.	LD	1,713	52.0
Greenwell S. Ms.*	Con	1,580	48.0
Turnout		38.2	4.0

Pound Hill (7667)			
		vote	share
Dewdney D.*	Con	1,174	49.3
Moffatt C.	Lab	659	27.7
Hoadley A.	LD	546	23.0
Turnout		31.0	21.6

Preston Manor (8769)			
		vote	share
Evans R.*	Con	2,092	64.5
Richards J.	LD	950	29.3
Somerville D.	Lab	199	6.1
Turnout		37.0	35.2

Pulborough (8624)			
		vote	share
Sheridan J.*	Con	1,912	61.9
Holbrook S.	LD	1,175	38.1
Turnout		35.8	23.9

Richmond (7315)			
		vote	share
Selby C.	LD	1,302	55.8
Brookman S.	Con	823	35.3
Comb L. Ms.	Lab	145	6.2
Colkett D.	Green	62	2.7
Turnout		31.9	20.5

Riverside (8106)			
		vote	share
Millson M. Ms.*	LD	2,156	64.3
Wilkinson F.	Con	970	28.9
Clewer D. Ms.	Lab	225	6.7
Turnout		41.3	35.4

Roffey (8126)			
		vote	share
Farmer D.	LD	1,914	66.3
Leat B.	Lab	745	25.8
Ramsey V.*	Con	227	7.9
Turnout		35.5	40.5

Rustington West (8127)			
		vote	share
Walsh J.*	LD	2,077	62.2
Bower R.	Con	1,092	32.7
Jennings M.	Lab	171	5.1
Turnout		41.1	29.5

Saltings (8485)			
		vote	share
Forshaw G.*	Con	1,399	51.3
Robinson J. Ms.	LD	1,015	37.2
Rose J.	Lab	315	11.5
Turnout		32.2	14.1

Salvington (7793)			
		vote	share
Howlett B.	Con	1,267	45.3
Brown A.	LD	1,250	44.7
Johnson D.	Lab	197	7.0
Nichols A.	Green	85	3.0
Turnout		35.9	0.6

Selsey & Sidlesham (8276)			
		vote	share
Ogden A.*	Con	1,239	43.8
Bradley D.	LD	1,068	37.8
Brisland M. Ms.	Lab	519	18.4
Turnout		34.2	6.1

Shoreham (8495)			
		vote	share
Elliott I.*	Con	1,516	53.6
Hammond D.	LD	1,002	35.4
Partridge F.	Lab	311	11.0
Turnout		33.3	18.2

Sompting (6651)			
		vote	share
Brookes M.*	LD	1,363	57.4
Jones G.	Con	655	27.6
Harris J.	Lab	355	15.0
Turnout		35.7	29.8

Southwater (9079)			
		vote	share
Beeson M. Ms.	LD	2,084	57.3
Hill P.	Con	1,341	36.9
Gillians E.	Lab	212	5.8
Turnout		40.1	20.4

Southwick (6946)			
		vote	share
Bucknall G.	LD	1,240	42.3
Wey G. Ms.*	Con	998	34.1
Munnery D.	Lab	691	23.6
Turnout		42.2	8.3

Steyning (8049)			
		vote	share
Campbell J.	LD	2,030	60.9
Dennis A.*	Con	1,178	35.3
McCusker P.	Lab	128	3.8
Turnout		41.5	25.5

Storrington (7238)			
		vote	share
Bates K.	LD	1,612	55.1
Burningham J.*	Con	1,312	44.9
Turnout		40.4	10.3

The Witterings (8720)			
		vote	share
Daws-Chew J.*	Con	1,752	51.4
Ashmore J.	LD	1,264	37.1
Norris R.	Lab	268	7.9
Paine E.	Green	123	3.6
Turnout		39.1	14.3

Tilgate (7590)			
		vote	share
Mayne D.	Lab	1,776	71.8
Bradnum A. Ms.	Con	501	20.3
Wilson M.	Green	195	7.9
Turnout		32.6	51.6

Warnham (6675)			
		vote	share
Pearce J. Ms.	LD	1,396	53.5
Burnham J. Ms.	Con	1,030	39.4
Harper J. Ms.	Lab	185	7.1
Turnout		39.1	14.0

West Parade (8478)			
		vote	share
Giddins E. Ms.	Con	1,808	61.2
Stuart I.	LD	925	31.3
Dowson D.	Lab	220	7.5
Turnout		34.8	29.9

West Tarring (7597)			
		vote	share
Rose J.	LD	1,726	59.5
Dice T.	Con	918	31.6
Tempest C. Ms.	Lab	199	6.9
Beever P. Ms.	Green	60	2.1
Turnout		38.2	27.8

West Sussex 1997

Arun East (6369)			
		vote	share
Sedgwick C.	Con	3,165	63.6
Hughes J.	LD	1,326	26.7
Levy F.	Lab	482	9.7
Turnout		78.1	37.0

Arundel & Angmering (8185)			
		vote	share
Winn M. Ms.	Con	3,149	51.8
Barstow J.	LD	1,707	28.1
Jones D.	Lab	1,221	20.1
Turnout		74.3	23.7

Bersted (9922)			
		vote	share
Olliver S. Ms.*	LD	2,577	38.5
Boucher G.	Con	2,171	32.4
Cosgrove J.	Lab	1,948	29.1
Turnout		67.5	6.1

Bewbush (7983)			
		vote	share
Sully J. Ms.	Lab	3,771	70.6
Burke L.	Con	1,569	29.4
Turnout		66.9	41.2

Billingshurst (6732)			
		vote	share
Podger T.	Con	2,116	43.7
Lawes G.*	LD	1,706	35.2
Gander P.	Lab	650	13.4
Lomas R.	Ind	372	7.7
Turnout		72.0	8.5

Bognor Regis (9150)			
		vote	share
Brown R.	Con	2,768	44.6
Scutt K.*	LD	2,444	39.4
Walker G. Ms.	Lab	995	16.0
Turnout		67.8	5.2

Bourne (8401)			
		vote	share
Dunn T.	Con	2,503	40.5
Ford R.	LD	1,894	30.6
Bray S.	Ind	986	15.9
Humphrey R.	Lab	801	13.0
Turnout		73.6	9.8

Broadfield (7963)			
		vote	share
Briggs M.	Lab	3,012	59.1
Bowen D.	Con	1,458	28.6
Hamilton L. Ms.	LD	627	12.3
Turnout		64.0	30.5

Broadwater (7300)			
		vote	share
Clare A. Ms.*	LD	2,362	46.3
Bettelley B. Ms.	Con	1,769	34.7
Woolley M.	Lab	974	19.1
Turnout		69.9	11.6

Burgess Hill Central (9020)			
		vote	share
Chapman A. Ms.*	LD	3,258	47.0
Burgess P.	Con	2,352	33.9
Mitchell P.	Lab	1,170	16.9
Stevens H.	Green	155	2.2
Turnout		76.9	13.1

Burgess Hill East (7332)			
		vote	share
Ross H. Ms.*	LD	2,903	51.3
Greenhow M.	Con	1,964	34.7
Whiting L. Ms.	Lab	664	11.7
Stevens R. Ms.	Green	128	2.3
Turnout		77.2	16.6

Chichester East (7072)			
		vote	share
Tupper C.*	LD	2,248	45.7
Chevis J. Ms.	Con	1,742	35.4
Weeks T.	Lab	925	18.8
Turnout		69.5	10.3

Chichester North (6945)			
		vote	share
Phillips A.	Con	2,386	45.1
Pingree E. Ms.	LD	2,232	42.2
Moran J.	Lab	675	12.8
Turnout		76.2	2.9

Chichester South (8046)			
		vote	share
Rankin J.*	LD	2,589	44.1
Bassett M. Ms.	Con	2,338	39.8
Jones G.	Lab	943	16.1
Turnout		73.0	4.3

Chichester West (8354)			
		vote	share
Ward K. Ms.	Con	2,947	46.2
Wright J. Ms.*	LD	2,500	39.2
Edwards I.	Lab	926	14.5
Turnout		76.3	7.0

Cissbury (8457)			
		vote	share
O'Neill C.	Con	3,241	51.8
Miller G.*	LD	2,441	39.0
Ashley T. Ms.	Lab	577	9.2
Turnout		74.0	12.8

Cuckfield Rural (7586)			
		vote	share
Dennis M.*	Con	3,066	51.8
Slaughter J.	LD	1,763	29.8
Harrison F.	Lab	774	13.1
Came J. Ms.	Green	317	5.4
Turnout		78.0	22.0

Durrington (7675)			
		vote	share
Rodgers N.*	LD	2,400	44.0
Farrell P. Ms.	Con	2,326	42.6
Hammond K. Ms.	Lab	734	13.4
Turnout		71.1	1.4

East Grinstead East (7550)			
		vote	share
Collins M. Ms.*	LD	2,645	45.6
Ball M. Ms.	Con	2,239	38.6
Scott M. Ms.	Lab	692	11.9
Salmon A.	Green	226	3.9
Turnout		76.9	7.0

East Grinstead South (7405)			
		vote	share
Brock A.	LD	2,470	44.1
Beal A.	Con	2,429	43.3
Dickson D.	Lab	705	12.6
Turnout		75.7	0.7

East Worthing (7826)			
		vote	share
Richards I. Ms.	LD	2,009	41.0
Jackson T.	Con	1,737	35.4
Marshall C.	Lab	996	20.3
Glass J. Ms.	Green	161	3.3
Turnout		62.7	5.5

Felpham (7905)			
		vote	share
Smith D. Ms.*	Ind	3,053	54.8
Vanner W.	LD	1,621	29.1
McIsaac A. Ms.	Lab	899	16.1
Turnout		70.5	25.7

Fernhurst (7980)			
		vote	share
Pemberton T.	Con	3,034	50.5
Lang H. Ms.	LD	2,395	39.9
Morrison D.	Lab	576	9.6
Turnout		75.3	10.6

Fontwell (8433)			
		vote	share
Hall H.*	Con	3,199	52.5
McDougall F.	LD	1,896	31.1
Oxtoby T.	Lab	1,001	16.4
Turnout		72.3	21.4

Furnace Green (11317)			
		vote	share
Smith H.	Con	3,839	44.8
Todd A. Ms.*	Lab	3,521	41.1
Wise D.	LD	1,209	14.1
Turnout		75.7	3.7

Goring-By-Sea (7911)			
		vote	share
Forshaw G.	Con	3,351	54.8
McGurn Stewart J. Ms.	LD	2,134	34.9
Rand O. Ms.	Lab	634	10.4
Turnout		77.4	19.9

Gossops Green (7057)			
		vote	share
Edwards A.*	Lab	2,628	51.8
Clarke G.	Con	1,749	34.5
Hart J. Ms.	LD	696	13.7
Turnout		71.9	17.3

Hassocks & Burgess Hill W (9058)			
		vote	share
Balsdon T.	LD	3,238	46.2
Terry D.	Con	2,494	35.6
Ashcroft P. Ms.	Lab	1,102	15.7
Filby C. Ms.	Green	169	2.4
Turnout		77.3	10.6

Haywards Heath East (7096)			
		vote	share
Gayler J. Ms.	Con	1,947	35.1
Hamilton M.*	Lab	1,743	31.4
Brown J. Ms.	LD	1,735	31.3
Hasley E.	Green	125	2.3
Turnout		78.2	3.7

Haywards Heath West (7079)			
		vote	share
Hall B.*	LD	2,557	46.6
Wilson J.	Con	1,937	35.3
Henry P.	Lab	835	15.2
Anderson S.	Green	158	2.9
Turnout		77.5	11.3

Henfield (8222)			
		vote	share
Cantello W.*	Con	3,587	58.3
Heawood M.	LD	1,607	26.1
Erlam S. Ms.	Lab	961	15.6
Turnout		74.9	32.2

Holbrook (10996)			
		vote	share
Matthewson N.*	Con	4,207	51.9
Brundish D.	LD	2,639	32.6
Chapman R.	Lab	1,254	15.5
Turnout		73.7	19.4

Hotham (7857)			
		vote	share
Morrish C. Ms.*	LD	1,975	39.7
Parker L.	Con	1,610	32.4
Fane D.	Lab	1,388	27.9
Turnout		63.3	7.3

Hurst (6200)			
		vote	share
Dennis N.*	LD	2,207	45.9
Tobutt P.	Con	2,043	42.5
Thurston J. Ms.	Lab	559	11.6
Turnout		77.6	3.4

Ifield (5995)			
		vote	share
Mortimer J.	Lab	2,532	59.4
Bowen C. Ms.	Con	1,181	27.7
Llewelyn H.	LD	548	12.9
Turnout		71.1	31.7

Imberdown (10081)			
		vote	share
Coote P.	Con	3,573	46.3
Hatswell D. Ms.	LD	2,747	35.6
Burgess R.	Lab	1,179	15.3
Gibson S. Ms.	Green	223	2.9
Turnout		76.6	10.7

Kingston Buci (6905)			
		vote	share
Little S.	LD	1,859	37.3
Sims P.	Con	1,639	32.9
Sweet N.	Lab	1,491	29.9
Turnout		72.3	4.4

Lancing (8368)			
		vote	share
Robinson C.*	LD	2,866	46.2
Craghill S.	Con	2,070	33.3
Largue J.	Lab	1,271	20.5
	Turnout	74.2	12.8
Langley Green (6713)			
		vote	share
Smith J.	Lab	3,292	68.2
Wilkinson S.	Con	1,140	23.6
Patel V.	LD	392	8.1
	Turnout	71.9	44.6
Lindfield (7355)			
		vote	share
Johnson M. Ms.*	Con	2,789	48.2
Lucraft A. Ms.	LD	2,019	34.9
Lightbody N.	Lab	761	13.2
Wemyss-Gorman P.	Green	215	3.7
	Turnout	78.6	13.3
Littlehampton North (7397)			
		vote	share
O'Neill G.*	Lab	2,113	44.9
Forster J.	Con	1,508	32.0
Jones D.	LD	1,087	23.1
	Turnout	63.7	12.9
Littlehampton Town (9354)			
		vote	share
Newell E. Ms.*	Con	2,022	34.0
Roberts B. Ms.	LD	1,730	29.1
Dyball D.	Lab	1,711	28.7
Hawkes A.	Ind	492	8.3
	Turnout	63.7	4.9
Maybridge (6984)			
		vote	share
Green P.	LD	2,300	45.7
Bleasdale P.	Con	1,769	35.2
Balderstone P.	Lab	961	19.1
	Turnout	72.0	10.6
Mid Sussex North (8330)			
		vote	share
Acraman W.	Con	3,288	53.2
Dennis N.	LD	1,379	22.3
Mitchell J.	Lab	1,291	20.9
Weller M.	Green	223	3.6
	Turnout	74.2	30.9
Mid Sussex South (7118)			
		vote	share
Mack B.*	Con	3,112	56.0
Davies A.	LD	1,477	26.6
Ryan M. Ms.	Lab	795	14.3
Seefried N. Ms.	Green	176	3.2
	Turnout	78.1	29.4
Middleton (7842)			
		vote	share
Betteridge J.	Con	2,566	45.5
Matthews J.	LD	1,989	35.3
Found P.	Lab	884	15.7
Widdowson M. Ms.	Ind	202	3.6
	Turnout	71.9	10.2
Midhurst (9041)			
		vote	share
Waller C.	Con	3,753	55.9
Devereux R.	LD	2,090	31.1
Hollowood B.	Lab	874	13.0
	Turnout	74.3	24.8
Northgate & Three Bridges (7533)			
		vote	share
Buck W.*	Lab	2,854	50.9
Coyston C.	Con	1,585	28.2
Hamilton B.	LD	1,172	20.9
	Turnout	74.5	22.6

Nyetimber (9417)			
		vote	share
Gillings C.	Con	3,490	50.3
Oppler F.	LD	1,914	27.6
Jones M.	Lab	1,531	22.1
	Turnout	73.6	22.7
Petworth (8793)			
		vote	share
Greenwell S. Ms.	Con	3,755	56.4
Hooton B.*	Ind	1,779	26.7
Young A.	Lab	1,128	16.9
	Turnout	75.8	29.7
Pound Hill (7645)			
		vote	share
Dewdney D.*	Con	2,804	48.9
Calcott R.	Lab	1,954	34.1
Hart M.	LD	866	15.1
Temple-Smithson P.	Ind	110	1.9
	Turnout	75.0	14.8
Preston Manor (8963)			
		vote	share
Moor P.	Con	3,610	54.7
Richards J.	LD	2,070	31.4
Nightingale P.	Lab	914	13.9
	Turnout	73.6	23.4
Pulborough (9385)			
		vote	share
Cain C. Ms.	Con	5,093	74.0
Rees C. Ms.	Lab	1,788	26.0
	Turnout	73.3	48.0
Richmond (6959)			
		vote	share
Livermore J.	Con	1,654	41.2
Selby C.*	LD	1,519	37.8
Hammond J.	Lab	665	16.6
Colkett D.	Green	179	4.5
	Turnout	57.7	3.4
Riverside (8238)			
		vote	share
Millson M. Ms.*	LD	2,790	46.6
Palmer B. Ms.	Con	2,405	40.2
Burton G.	Lab	788	13.2
	Turnout	72.6	6.4
Roffey (8638)			
		vote	share
Clausen J.	LD	2,606	40.8
Watson B.	Con	2,603	40.7
Brown R.	Lab	1,179	18.5
	Turnout	74.0	0.0
Rustington West (8454)			
		vote	share
Walsh J.*	LD	2,820	45.4
Bower P. Ms.	Con	2,563	41.2
Singleton J.	Lab	835	13.4
	Turnout	73.6	4.1
Saltings (8669)			
		vote	share
Jones G.	Con	2,562	43.7
Robinson J. Ms.	LD	1,883	32.1
Knight R.	Lab	1,422	24.2
	Turnout	67.7	11.6
Salvington (7891)			
		vote	share
Stevens C.	Con	2,601	45.6
Rowley D.	LD	2,372	41.6
Wicks J. Ms.	Lab	733	12.8
	Turnout	72.3	4.0

Selsey & Sidlesham (8168)			
		vote	share
Jones P.	Con	2,796	48.9
Prince T.	Lab	1,394	24.4
Shone M.	LD	1,331	23.3
Paine E.	Green	191	3.3
	Turnout	70.0	24.5
Shoreham (8706)			
		vote	share
Elliott I.*	Con	3,109	46.6
Burtenshaw A.	LD	2,094	31.4
Howitt G.	Lab	1,463	21.9
	Turnout	76.6	15.2
Sompting (6723)			
		vote	share
Brookes M.*	LD	1,992	41.4
McCarthy M.	Con	1,492	31.0
Luxford E.	Lab	1,331	27.6
	Turnout	71.6	10.4
Southwater (10041)			
		vote	share
Beeson M. Ms.*	LD	3,303	44.6
Boud T.	Con	3,135	42.3
Dumbrill D. Ms.	Lab	968	13.1
	Turnout	73.8	2.3
Southwick (6952)			
		vote	share
Whipp B.	Lab	1,856	35.8
Dunn R.	Con	1,827	35.3
Deedman D.	LD	1,497	28.9
	Turnout	74.5	0.6
Steyning (8419)			
		vote	share
Campbell J.*	LD	2,956	47.3
Dennis A.	Con	2,649	42.4
Bridgewater J. Ms.	Lab	639	10.2
	Turnout	74.2	4.9
Storrington (7417)			
		vote	share
Wilkinson F.	Con	2,781	51.5
Bates K.*	LD	2,024	37.5
Wickham D.	Lab	594	11.0
	Turnout	72.8	14.0
The Witterings (9011)			
		vote	share
Daws-Chew J.*	Con	3,521	54.2
Green S.	LD	2,150	33.1
Fenney J.	Lab	830	12.8
	Turnout	72.2	21.1
Tilgate (7333)			
		vote	share
Mayne D.*	Lab	3,342	61.9
Withall D.	Con	1,372	25.4
Miller R.	LD	686	12.7
	Turnout	73.6	36.5
Warnham (7025)			
		vote	share
Horton N.	Con	2,666	50.9
Wright D.	LD	1,990	38.0
Brady E.	Lab	583	11.1
	Turnout	74.6	12.9
West Parade (8538)			
		vote	share
Giddins E. Ms.*	Con	3,177	53.6
Brown H. Ms.	LD	1,789	30.2
Balderstone J. Ms.	Lab	780	13.2
Colkett L. Ms.	Green	185	3.1
	Turnout	69.5	23.4

West Tarring (7515)			
		vote	share
Rose J.*	LD	2,432	48.5
Kemp H.	Con	1,657	33.0
Parr J.	Lab	759	15.1
Colgate S.	Green	170	3.4
Turnout		66.8	15.4

West Sussex 2001

Arun East (6366)			
		vote	share
Sedgwick C.*	Con	2,880	66.6
Munro M. Ms.	LD	1,442	33.4
Turnout		67.9	33.3

Arundel & Angmering (8199)			
		vote	share
Wingrove O.	Con	2,598	51.8
Olney I.	LD	2,418	48.2
Turnout		61.2	3.6

Bersted (9723)			
		vote	share
Holland S.	Lab	1,928	36.8
Widger B.	Con	1,840	35.1
McDougall S.	LD	1,470	28.1
Turnout		53.9	1.7

Bewbush (8266)			
		vote	share
Sully J. Ms.*	Lab	2,282	60.2
Cowdrey M.	Con	950	25.1
Hamilton B.	LD	557	14.7
Turnout		45.8	35.2

Billingshurst (7176)			
		vote	share
Davies O.	Con	1,985	44.0
Lawes G.	LD	1,617	35.8
Scott P.	Lab	909	20.2
Turnout		62.9	8.2

Bognor Regis (8855)			
		vote	share
Brown R.*	Con	2,416	46.7
Scutt K.	LD	1,723	33.3
Walker G. Ms.	Lab	1,029	19.9
Turnout		58.4	13.4

Bourne (8715)			
		vote	share
Dunn T.*	Con	2,501	46.1
Juniper K. Ms.	LD	1,248	23.0
Hickson O. Ma.	Lab	1,064	19.6
Barr J. Ms.	Green	250	4.6
Denny A. Ms.	UK Ind	203	3.7
Hoar M.	Ind	163	3.0
Turnout		62.3	23.1

Broadfield (8526)			
		vote	share
Briggs M.*	Lab	2,010	55.2
Bowen D.	Con	1,016	27.9
Llewelyn H.	LD	477	13.1
Badger M.	SOC Lab	136	3.7
Turnout		42.7	27.3

Broadwater (7365)			
		vote	share
Lissenburg D.	LD	1,927	48.2
Paskin S.	Con	1,296	32.4
Thompson G. Ms.	Lab	775	19.4
Turnout		54.3	15.8

Burgess Hill Central (9845)			
		vote	share
Chapman A. Ms.*	LD	2,998	50.0
Holland E.	Con	1,965	32.8
Bridges A. Ms.	Lab	1,029	17.2
Turnout		60.9	17.2

Burgess Hill East (7408)			
		vote	share
Balsdon T.	LD	2,355	50.1
Hersey C.	Con	1,768	37.6
Sweet N.	Lab	575	12.2
Turnout		63.4	12.5

Chichester East (7072)			
		vote	share
Hall M.	LD	1,661	40.9
Roffey J.	Con	1,145	28.2
Earnshaw-Mansell B.	Lab	900	22.2
Finbow C. Ms.	Green	179	4.4
Bygrave E. Ms.	UK Ind	177	4.4
Turnout		57.4	12.7

Chichester North (7196)			
		vote	share
Phillips A.*	Con	2,203	46.1
Fletcher B.	LD	1,800	37.6
Barkham S. Ms.	Lab	580	12.1
Briginsshaw V. Ms.	Green	199	4.2
Turnout		66.5	8.4

Chichester South (8175)			
		vote	share
Dignum A.	Con	1,803	36.8
Chaplin A.	LD	1,798	36.7
Bennett J.	Lab	1,073	21.9
Eckhard J. Ms.	Green	223	4.6
Turnout		62.6	0.1

Chichester West (8354)			
		vote	share
Goldsmith M. Ms.	Con	2,158	39.7
Siggs D.	LD	1,904	35.0
Edwards I.	Lab	861	15.8
Denny D.	UK Ind	273	5.0
Graham G.	Green	246	4.5
Turnout		65.1	4.7

Cissbury (8469)			
		vote	share
O'Neil C.*	Con	2,906	54.4
Daniels P.	LD	1,679	31.4
Saunders A. Ms.	Lab	756	14.2
Turnout		63.1	23.0

Cuckfield Rural (7776)			
		vote	share
Dennis M.*	Con	2,758	52.2
Shevels D. Ms.	LD	1,543	29.2
Harrison F.	Lab	982	18.6
Turnout		67.9	23.0

Durrington (8238)			
		vote	share
Rodgers N.*	LD	2,639	59.1
Goodyer D.	Con	1,549	34.7
Taylor L. Ms.	Green	278	6.2
Turnout		54.2	24.4

East Grinstead East (7557)			
		vote	share
Collins M. Ms.*	LD	2,290	50.0
Horman R.	Con	1,813	39.6
Irvine D.	Lab	478	10.4
Turnout		60.6	10.4

East Grinstead South (7793)			
		vote	share
Brock A.*	LD	2,321	46.6
Beal A.	Con	2,158	43.4
Tomlinson J.	Lab	499	10.0
Turnout		63.9	3.3

East Worthing (7891)			
		vote	share
Richards I. Ms.*	LD	1,563	37.6
Fabes G.	Con	1,395	33.5
Turley J.	Lab	965	23.2
Pfluger C. Ms.	Green	236	5.7
Turnout		52.7	4.0

Felpham (7886)			
		vote	share
Stainton A.	Con	2,035	40.2
Stride G.	Ind	1,383	27.3
Webb M. Ms.	Lab	843	16.7
Barstow J.	LD	799	15.8
Turnout		64.2	12.9

Fernhurst (8011)			
		vote	share
Pemberton T.*	Con	2,960	56.0
Quinn W.	LD	1,576	29.8
Hollowood B.	Lab	750	14.2
Turnout		66.0	26.2

Fontwell (8472)			
		vote	share
Hall H.*	Con	2,792	53.0
White S.	LD	1,346	25.5
Holliday A.	Lab	1,133	21.5
Turnout		62.2	27.4

Furnace Green (13225)			
		vote	share
Smith H.*	Con	3,484	44.8
Irvine I.	Lab	2,951	38.0
Jones V. Ms.	LD	1,337	17.2
Turnout		58.8	6.9

Goring-By-Sea (7934)			
		vote	share
Waight S.	Con	2,917	56.2
Smytherman R.	LD	1,449	27.9
Gill B.	Lab	823	15.9
Turnout		65.4	28.3

Gossops Green (7172)			
		vote	share
Mullins C.	Lab	2,040	51.3
Clarke G.	Con	1,347	33.9
Wise D.	LD	592	14.9
Turnout		55.5	17.4

Hassocks & Burgess Hill W (10310)			
		vote	share
Wilsdon C.	LD	2,827	43.7
Barrett-Miles A.	Con	2,621	40.6
Piercy A. Ms.	Lab	1,014	15.7
Turnout		62.7	3.2

Haywards Heath East (7317)			
		vote	share
Gaylor J. Ms.*	Con	1,744	36.9
Henry P.	Lab	1,675	35.5
Harman T.	LD	1,302	27.6
Turnout		64.5	1.5

Haywards Heath West (7319)			
		vote	share
Hall B.*	LD	2,075	42.6
Chapman C.	Con	1,896	38.9
Irvine R. Ms.	Lab	788	16.2
Berry P.	MRLP	113	2.3
Turnout		66.6	3.7

Henfield (8628)			
		vote	share
Barnard L.	Con	3,278	59.7
Hanford R.	Lab	1,193	21.7
Price L.	LD	1,018	18.5
Turnout		63.6	38.0

Holbrook (10489)			
		vote	share
Wilson G.	Con	3,768	51.9
Sheldon D.	LD	2,217	30.6
Chapman R.	Lab	1,270	17.5
Turnout		69.2	21.4

Hotham (7550)			
		vote	share
Jones M.	Lab	1,393	36.6
Flynn H. Ms.	Con	1,246	32.7
Morrish C. Ms.*	LD	1,166	30.6
Turnout		50.4	3.9

Hurst (6290)			
		vote	share
Dennis N.*	LD	2,279	53.4
Mitchell C.	Con	1,518	35.6
Gander P.	Lab	470	11.0
Turnout		67.8	17.8

Ifield (6141)			
		vote	share
Mortimer J.*	Lab	1,888	55.9
Belben C. Ms.	Con	940	27.8
Reay E.	LD	549	16.3
Turnout		55.0	28.1

Imberdown (10398)			
		vote	share
Coote P.*	Con	3,157	48.9
Wilson J. Ms.	LD	2,269	35.1
Crawford J.	Lab	1,035	16.0
Turnout		62.1	13.7

Kingston Bucu (7135)			
		vote	share
Ashley D.	Con	1,554	36.5
Munnery D.	Lab	1,379	32.4
Little S.*	LD	1,328	31.2
Turnout		59.7	4.1

Lancing (8434)			
		vote	share
Nicklen A.	Con	1,834	37.5
Dollemore K.	LD	1,774	36.3
Rubin D.	Lab	1,284	26.2
Turnout		58.0	1.2

Langley Green (5190)			
		vote	share
Smith J.*	Lab	2,483	65.0
Burke L.	Con	812	21.2
Osborne K.	LD	527	13.8
Turnout		73.6	43.7

Lindfield (7461)			
		vote	share
Johnson M. Ms.*	Con	2,515	48.9
Lucraft A. Ms.	LD	1,943	37.8
Atkins P.	Lab	684	13.3
Turnout		68.9	11.1

Littlehampton North (7023)			
		vote	share
O'Neill G.*	Lab	1,838	48.3
Ayres M. Ms.	Con	1,286	33.8
Jones D.	LD	678	17.8
Turnout		54.1	14.5

Littlehampton Town (9717)			
		vote	share
Tyler G.	Con	1,838	35.6
Butcher A.	Lab	1,717	33.3
Wiltshire N.	LD	1,359	26.3
Horwood S.	Ind	244	4.7
Turnout		53.1	2.3

Maybridge (7094)			
		vote	share
Rogers R.	LD	1,543	38.6
Garrett A.	Con	1,513	37.8
Bignell A.	Lab	946	23.6
Turnout		56.4	0.7

Mid Sussex North (8414)			
		vote	share
Acraman W.*	Con	2,813	53.9
Brown P.	LD	1,437	27.5
Dell T.	Lab	971	18.6
Turnout		62.1	26.4

Mid Sussex South (7088)			
		vote	share
Oliver J.	Con	2,525	54.5
Davies A.	LD	1,359	29.3
Houghton D. Ms.	Lab	747	16.1
Turnout		65.3	25.2

Middleton (8119)			
		vote	share
Freeman C. Ms.	Con	2,494	51.2
Kissell R. Ms.	LD	1,266	26.0
Ayoub T.	Lab	1,107	22.7
Turnout		60.0	25.2

Midhurst (8622)			
		vote	share
Waller C.*	Con	2,957	49.3
Shaxson A.	LD	2,358	39.3
Young A.	Lab	683	11.4
Turnout		70.0	10.0

Northgate & Three Bridges (7684)			
		vote	share
Buck W.*	Lab	2,200	49.4
Flatt M. Ms.	Con	1,290	29.0
Robson G.	LD	964	21.6
Turnout		58.0	20.4

Nyetimber (9818)			
		vote	share
Coleman M.	Con	2,980	47.9
Oppier F.	LD	1,557	25.0
Nash P. Ms.	Lab	1,397	22.5
Cain P.	Ind	285	4.6
Turnout		63.3	22.9

Petworth (8958)			
		vote	share
Greenwell S. Ms.*	Con	3,447	58.6
Ireland J.	LD	1,716	29.2
Morrison D.	Lab	723	12.3
Turnout		65.7	29.4

Pound Hill (8777)			
		vote	share
Dewdney D.*	Con	2,273	48.5
Shreeves D.	Lab	1,517	32.4
Aldridge N.	LD	813	17.4
Symonds R.	Ind	80	1.7
Turnout		53.4	16.1

Preston Manor (8972)			
		vote	share
Moore P.*	Con	3,321	58.9
Richards J.	LD	2,315	41.1
Turnout		62.8	17.8

Pulborough (9559)			
		vote	share
Arculus P. Ms.	Con	4,028	62.5
Barstow S. Ms.	LD	1,467	22.8
Pitt E.	Lab	949	14.7
Turnout		67.4	39.7

Richmond (7055)			
		vote	share
Golds C.	LD	1,278	39.1
Atkins N.	Con	1,236	37.8
Battson R.	Lab	581	17.8
Colkett D.	Green	174	5.3
Turnout		46.3	1.3

Riverside (8420)			
		vote	share
Millson M. Ms.*	LD	2,611	50.6
Palmer B. Ms.	Con	1,804	35.0
Battersby J. Ms.	Lab	744	14.4
Turnout		61.3	15.6

Roffey (8804)			
		vote	share
Clausen J.*	LD	2,495	46.8
Imam H.	Con	2,041	38.3
Hamilton M.	Lab	796	14.9
Turnout		60.6	8.5

Rustington West (8778)			
		vote	share
Walsh J.*	LD	2,332	41.1
Marchant D.	Con	2,280	40.2
Walsh E.	Lab	1,056	18.6
Turnout		64.6	0.9

Saltings (9032)			
		vote	share
Mockridge P.	Con	2,533	46.7
White J. Ms.	Lab	1,585	29.2
Beresford P.	LD	1,302	24.0
Turnout		60.0	17.5

Salvington (7841)			
		vote	share
Stevens C.*	Con	2,147	46.1
Player S. Ms.	LD	1,561	33.5
Barnes P.	Lab	713	15.3
Glass J. Ms.	Green	233	5.0
Turnout		59.4	12.6

Selsey & Sidlesham (8933)			
		vote	share
Jones P.*	Con	2,639	47.4
Bell I.	Lab	1,858	33.4
Eyles L.	LD	1,070	19.2
Turnout		62.3	14.0

Shoreham (8658)			
		vote	share
Williams C.	Con	2,526	44.9
Howitt G.	Lab	1,916	34.0
Vaughan E. Ms.	LD	1,186	21.1
Turnout		65.0	10.8

Sompting (6701)			
		vote	share
Woolhead V. Ms.	Con	1,430	36.1
Berry P.	Lab	1,298	32.8
Brookes M.*	LD	1,235	31.2
Turnout		59.1	3.3

Southwater (10926)			
		vote	share
Watson B.	Con	2,983	43.5
Stainton P.	LD	2,926	42.6
Dumbrill D Ms.	Lab	952	13.9
Turnout		62.8	0.8

Southwick (6882)			
		vote	share
Whipp B.*	Lab	1,738	41.4
Dunn R.	Con	1,580	37.7
Hilditch J.	LD	876	20.9
Turnout		60.9	3.8

Steyning (8516)			
		vote	share
Deedman D.	LD	2,290	41.9
Willett M.	Con	2,284	41.8
Ridley J.	Lab	886	16.2
Turnout		64.1	0.1

Storrington (8058)			
		vote	share
Wilkinson F.*	Con	2,919	55.8
Hewitt J.	LD	1,374	26.3
Banks P. Ms.	Lab	934	17.9
Turnout		64.9	29.6

The Witterings (9482)			
		vote	share
Daws-Chew J.*	Con	3,283	54.8
Tilbury R.	LD	1,477	24.7
O'Sullivan P.	Lab	1,229	20.5
Turnout		63.2	30.2

Tilgate (7398)			
		vote	share
Lloyd C.	Lab	2,266	56.1
Bowen C. Ms.	Con	1,086	26.9
McMurray R.	LD	591	14.6
Isaacs D.	SOC Lab	96	2.4
Turnout		54.6	29.2

Warnham (7238)			
		vote	share
Hodgson M.	Con	2,488	53.3
Aris R.	LD	1,424	30.5
Corthine R.	Lab	753	16.1
Turnout		64.5	22.8

West Parade (8563)			
		vote	share
Livermore J.	Con	2,530	50.4
Doyle J.	LD	1,343	26.7
Slater B.	Lab	808	16.1
Colkett L. Ms.	Green	340	6.8
Turnout		58.6	23.6

West Tarring (7671)			
		vote	share
Green P.	LD	1,896	47.4
Andrews A.	Con	1,263	31.6
Sandell I.	Lab	671	16.8
Hillcoat M. Ms.	Green	169	4.2
Turnout		52.1	15.8

West Sussex 2005

Angmering & Findon (7525)			
		vote	share
Wingrove O.*	Con	2,454	50.2
Richards T.	LD	1,847	37.8
Russo P.	UKIP	588	12.0
Turnout		65.0	12.4

Arundel & Wick (7193)			
		vote	share
Britton D.	Con	1,723	37.5
Leggatt D.	LD	1,254	27.3
Dyball D.	Lab	1,206	26.3
Whitaker H.	UKIP	411	8.9
Turnout		63.9	10.2

Bersted (9527)			
		vote	share
McDougall S.	LD	1,684	30.4
Holland S.*	Lab	1,661	30.0
Widger B.	Con	1,600	28.9
Spencer J.	UKIP	598	10.8
Turnout		58.2	0.4

Bewbush Gossops Green & Southgate (16158)²			
		vote	share
Mullins C.*	Lab	3,674	42.2
Sully J. Ms.*	Lab	2,856	-
Blake B.	Con	2,763	31.7
Bloom H.	Con	2,707	-
Bonner J.	LD	1,526	17.5
Wise D.	LD	1,142	-
Liles M.	Green	747	8.6
Turnout		54.8	10.5

Billingshurst (8743)			
		vote	share
Davies O.*	Con	2,950	50.6
Lawes G.	LD	2,078	35.7
Morton S. Ms.	Lab	797	13.7
Turnout		66.6	15.0

Bognor Regis East (7651)			
		vote	share
Oppler F.	LD	1,331	32.0
Jones M.*	Lab	1,228	29.5
Maconachie D.	Con	1,206	29.0
Otton A.	UKIP	398	9.6
Turnout		54.4	2.5

Bognor Regis West & Aldwick (7807)			
		vote	share
Brown R.*	Con	2,171	46.1
Dodd B.	LD	1,860	39.5
Fraser I.	UKIP	679	14.4
Turnout		60.3	6.6

Bourne (8973)			
		vote	share
Dunn T.*	Con	2,377	40.5
Gowlett R.	LD	1,922	32.8
Baker J.	Lab	841	14.3
Phillips C. Ms.	Ind	375	6.4
Denny A. Ms.	UKIP	347	5.9
Turnout		65.3	7.8

Bramber Castle (8948)			
		vote	share
Deedman D.*	LD	3,056	48.8
Whall A.	Con	2,473	39.5
Hilditch P.	Lab	737	11.8
Turnout		70.0	9.3

Broadfield (8328)			
		vote	share
McGough J.	Lab	1,861	45.5
Head M. Ms.	Con	1,291	31.6
Scott M.	LD	723	17.7
Hardman D.	Green	212	5.2
Turnout		49.1	13.9

Burgess Hill (17760)²			
		vote	share
Knight S. Ms.	LD	4,940	41.0
Barrett-Miles A.	Con	4,677	38.8
Henwood J. Ms.	LD	4,627	-
Landriani J. Ms.	Con	4,445	-
Renshaw I.	Lab	1,495	12.4
West A.	Lab	977	-
Macgregor M. Ms.	Green	930	7.7
Turnout		68.0	2.2

Chichester East (9130)			
		vote	share
Smith A.	LD	2,191	40.8
King S.	Con	1,765	32.9
Earnshaw-Mansell B.	Lab	1,047	19.5
Preater-Cole A.	UKIP	368	6.9
Turnout		58.8	7.9

Chichester North (7933)			
		vote	share
Hall M.*	LD	2,628	48.7
Flynn H. Ms.	Con	1,884	34.9
Morrison D.	Lab	593	11.0
Mason M.	UKIP	290	5.4
Turnout		68.0	13.8

Chichester South (8546)			
		vote	share
Chaplin A.	LD	2,244	40.5
Dignum A.*	Con	2,034	36.7
Few M.	Lab	891	16.1
Sitwell N.	UKIP	374	6.7
Turnout		64.9	3.8

Chichester West (9053)			
		vote	share
Goldsmith M. Ms.*	Con	2,446	39.4
Campling J.	LD	2,051	33.0
Hastings R.	Lab	875	14.1
McCulloch J.	UKIP	367	5.9
Phillips A.*	Ind	268	4.3
Apel R.	Ind	202	3.3
Turnout		68.6	6.4

Cuckfield & Lucastes (6866)			
		vote	share
Morris A. Ms.	Con	2,633	53.0
Balls I. Ms.	LD	1,556	31.3
Davies D.	Lab	423	8.5
Wemyss-Gorman P.	Green	354	7.1
Turnout		72.3	21.7

East Grinstead (16473)²			
		vote	share
Collins M. Ms.*	LD	4,802	44.7
Ball M. Ms.	Con	4,680	43.6
Bass A.	Con	4,449	-
Brock A.*	LD	4,138	-
Fallowell S.	Lab	1,257	11.7
Irvine D.	Lab	875	-
Turnout		66.6	1.1

East Preston & Ferring (9583)			
		vote	share
Evans P.	Con	3,781	57.2
Richards J.	LD	1,464	22.2
Miller H.	Lab	1,015	15.4
Skinner P.	UKIP	348	5.3
Turnout		69.0	35.1

Felpham (7759)			
		vote	share
Blampied G.	Con	2,371	45.2
Harvey M.	LD	1,663	31.7
Cosgrove J.	Lab	727	13.9
Richardson A.	UKIP	482	9.2
Turnout		67.6	13.5

Fernhurst (8229)			
		vote	share
Pemberton T.*	Con	3,022	52.3
Rowell K.	LD	1,848	32.0
Hollowood B.	Lab	616	10.7
Denny D.	UKIP	295	5.1
Turnout		70.3	20.3

Fontwell (8729)			
		vote	share
Whittington D.	Con	2,775	49.9
Menzies I.	LD	2,055	37.0
Dunning J.	UKIP	728	13.1
Turnout		63.7	13.0

Gaisford (19414)²			
		vote	share
Green P.*	LD	5,012	42.7
Lissenburg D.*	LD	4,238	-
Lermitte M. Ms.	Con	3,452	29.4
Rogers J.	Con	3,413	-
Gardiner J.	Lab	1,736	14.8
Turley J.	Lab	1,465	-
Hillcoat M. Ms.	Green	1,117	9.5
Sandell I.	Ind	426	3.6

Turnout 58.4 13.3

Goring & Northbrook (16206)²			
		vote	share
Mercer K.	Con	4,024	40.2
Waight S.*	Con	3,766	-
Rodgers N.*	LD	3,279	32.7
Rogers R.*	LD	3,078	-
Bignell A.	Lab	1,384	13.8
Duffy N.	Lab	1,302	-
Stace A.	Green	698	7.0
Bater R.	UKIP	628	6.3
Woodward C.	UKIP	515	-

Turnout 61.0 7.4

Hassocks & Victoria (9424)			
		vote	share
Wilsdon C.*	LD	2,818	42.9
Bell S.	Con	2,632	40.1
Piercy A. Ms.	Lab	697	10.6
Hammond D.	Green	423	6.4

Turnout 69.7 2.8

Haywards Heath East (7255)			
		vote	share
De-Mierre A.	Con	1,779	36.3
Brown J. Ms.	LD	1,615	33.0
Henry P.	Lab	1,504	30.7

Turnout 67.5 3.3

Haywards Heath Town (7642)			
		vote	share
Hall B.*	LD	2,096	39.4
Baker M. Ms.	Con	2,052	38.6
Goddard R.	Lab	846	15.9
Smith P.	Green	324	6.1

Turnout 69.6 0.8

Henfield (8263)			
		vote	share
Barnard L.*	Con	3,381	61.8
Taylor F.	LD	2,086	38.2

Turnout 66.2 23.7

Holbrook (8369)			
		vote	share
Catchpole P.	Con	2,546	44.4
Crosbie L.	LD	2,374	41.4
Chapman R.	Lab	814	14.2

Turnout 68.5 3.0

Horsham Carfax (8629)			
		vote	share
Dennis N.*	LD	3,018	51.6
Ostacchini E. Ms.	Con	2,013	34.4
Goddard K. Ms.	Lab	815	13.9

Turnout 67.7 17.2

Horsham Riverside (8710)			
		vote	share
Millson M. Ms.*	LD	3,015	52.0
Lowson N.	Con	1,915	33.0
Thomas J.	Lab	873	15.0

Turnout 66.6 19.0

Hurstpierpoint & Bolney (7448)			
		vote	share
Griffiths P.	Con	2,816	53.8
Cook N.	LD	1,479	28.3
Uhlhorn M.	Lab	745	14.2
Berry P.	MRLP	192	3.7

Turnout 70.2 25.6

Ifield Langley Green & West Green (15395)²			
		vote	share
Mortimer J.*	Lab	3,906	44.0
Smith J.*	Lab	3,173	-
Denman J.	Con	2,295	25.9
Skinner C.	Con	2,075	-
Hamilton B.	LD	1,411	15.9
Osborne K.	LD	1,175	-
Baldwin G.	BNP	673	7.6
Graham A.	Green	586	6.6

Turnout 55.7 18.2

Imberdown (7314)			
		vote	share
Coote P.*	Con	2,533	48.5
Matthews E.	LD	1,312	25.1
Edminson C. Ms.	Green	805	15.4
Briggs M.	Lab	578	11.1

Turnout 71.5 23.4

Kingston Buci (7327)			
		vote	share
Graysmark P.	Con	1,674	36.9
Bray A.	Lab	1,315	29.0
Goldsbrough-Jones J. Ms.	LD	1,065	23.5
Henn M.	UKIP	256	5.6
Tilsley V.	Green	227	5.0

Turnout 61.9 7.9

Lancing (9895)			
		vote	share
Albury C.	Con	2,201	37.4
Burt R.	LD	1,799	30.6
Bashford K.	Lab	1,470	25.0
Parsons L.	UKIP	413	7.0

Turnout 59.5 6.8

Lindfield & High Weald (9274)			
		vote	share
Johnson M. Ms.*	Con	3,586	52.0
Lucraft A-M. Ms.	LD	2,045	29.7
Brown P.	Green	646	9.4
Crawford J.	Lab	613	8.9

Turnout 74.3 22.4

Littlehampton East (9322)			
		vote	share
Walsh J.*	LD	2,132	37.1
Tyler G.*	Con	1,837	32.0
Thomson M.	Lab	1,246	21.7
East R.	UKIP	524	9.1

Turnout 61.6 5.1

Littlehampton Town (7163)			
		vote	share
O'Neill G.*	Lab	1,399	37.1
Gammon A.	Con	1,016	26.9
Jones D.	LD	903	24.0
Lees M. Ms.	UKIP	452	12.0

Turnout 52.6 10.2

Middleton (8219)			
		vote	share
Freeman C. Ms.*	Con	2,528	49.0
Kissell R. Ms.	LD	1,181	22.9
McConnell S.	Lab	989	19.2
Sutcliffe A.	UKIP	459	8.9

Turnout 62.7 26.1

Midhurst (8533)			
		vote	share
Hendon N. Ms.	Con	2,222	38.5
Shaxson A.	Ind	1,653	28.7
Fowler J. Ms.	LD	1,612	28.0
Cole P.	UKIP	280	4.9

Turnout 67.6 9.9

Northgate & Three Bridges (7809)			
		vote	share
Joyce G. Ms.	Lab	1,719	36.8
Burgess B. Ms.	Con	1,546	33.1
Barry D.	LD	1,049	22.5
Grice R.	BNP	215	4.6
Liles M. Ms.	Green	143	3.1

Turnout 59.8 3.7

Nyetimber (10184)			
		vote	share
Coleman M.*	Con	3,263	47.8
Nash P. Ms.	Lab	1,468	21.5
Burt G.	LD	1,450	21.2
Porter S.	UKIP	649	9.5

Turnout 67.1 26.3

Petworth (9358)			
		vote	share
Moffatt P.	Con	3,524	54.2
Cooper R.	LD	1,968	30.3
Miller J. Ms.	Lab	651	10.0
Moran V. Ms.	UKIP	354	5.4

Turnout 69.4 23.9

Pound Hill Worth & Maidenbower (16609)²			
		vote	share
Smith H.*	Con	5,532	52.8
Dewdney D.*	Con	4,804	-
Skudder J. Ms.	Lab	2,307	22.0
Sully E.	Lab	2,218	-
Reay E.	LD	1,853	17.7
Bannister P.	LD	1,528	-
Liles B.	Green	782	7.5

Turnout 63.4 30.8

Pulborough (8917)			
		vote	share
Arculus P. Ms.*	Con	3,826	63.7
Wright D.	LD	2,177	36.3

Turnout 67.3 27.5

Roffey (9507)			
		vote	share
Hellawell W.	LD	2,751	45.5
Charles J.	Con	2,347	38.8
Wilson R.	Lab	946	15.7

Turnout 63.6 6.7

Rustington (9094)			
		vote	share
Moor P.*	Con	2,817	46.1
Lauretani A.	LD	1,971	32.3
Dines A.	Lab	904	14.8
Penn J. Ms.	UKIP	413	6.8

Turnout 67.1 13.9

Saltings (7680)			
		vote	share
Dunn R.	Con	2,106	43.3
Martin D. Ms.	LD	1,377	28.3
Yates D.	Lab	1,155	23.7
Pledge D.	UKIP	227	4.7

Turnout 63.3 15.0

Salvington (17532)²			
		vote	share
O'Neill C.*	Con	5,265	50.3
Stevens C.*	Con	5,061	-
Donin M.	LD	3,404	32.5
Sunderland K.	LD	3,191	-
Rennie H. Ms.	Lab	1,797	17.2

Turnout 62.7 17.8

Selsey (8343)			
		vote	share
Jones P.*	Con	2,155	40.2
Shade J.	LD	1,386	25.9
Lawson M. Ms.	Lab	1,214	22.6
Smith B.	UKIP	605	11.3

Turnout 64.2 14.3

Shoreham (7152)

		vote	share
Williams C.*	Con	2,359	47.1
Stuart A.	LD	1,055	21.1
Sweet N.	Lab	965	19.3
Martin M. Ms.	Green	430	8.6
Drayton-Morris P.	UKIP	202	4.0
Turnout		70.1	26.0

Sompting (6766)

		vote	share
Woolhead V. Ms.*	Con	1,635	40.0
Martin S.	LD	1,230	30.1
Berry P.	Lab	1,226	30.0
Turnout		60.5	9.9

Southwater & Nuthurst (9224)

		vote	share
Watson B.*	Con	3,057	48.4
Stainton P.	LD	2,608	41.3
Parker T.	Lab	646	10.2
Turnout		68.4	7.1

Southwick (7673)

		vote	share
Eade K.	Con	1,966	40.1
Lowe A. Ms.	Lab	1,423	29.0
Mortimer A.	LD	959	19.5
Greig J. Ms.	UKIP	317	6.5
Board S. Ms.	Green	243	5.0
Turnout		64.0	11.1

Storrington (9348)

		vote	share
Wilkinson F.*	Con	3,767	58.8
Hughes A.	LD	1,619	25.3
Banks P. Ms.	Lab	1,020	15.9
Turnout		68.5	33.5

The Witterings (7840)

		vote	share
Daws-Chew J.*	Con	2,339	45.3
Wells A.	LD	993	19.2
Norris R.	Ind	755	14.6
O'Sullivan P.	Lab	632	12.2
Wilson R.	UKIP	450	8.7
Turnout		65.9	26.0

Tilgate & Furnace Green (9002)

		vote	share
Crow D.	Con	2,302	40.6
Ward W.	Lab	2,127	37.5
McMurray R.	LD	963	17.0
Dore V. Ms.	Green	283	5.0
Turnout		63.0	3.1

Warnham & Rusper (8492)

		vote	share
Hodgson M.*	Con	3,217	56.5
Pearce T.	LD	1,645	28.9
Battersby J. Ms.	Lab	832	14.6
Turnout		67.1	27.6

Worth Forest (8830)

		vote	share
Acraman W.*	Con	3,208	53.4
Knight G.	LD	1,327	22.1
Burgess R.	Lab	1,025	17.0
Weller M.	Green	452	7.5
Turnout		68.1	31.3

Worthing East (7803)

		vote	share
Richards I. Ms.*	LD	1,866	41.9
Saheid M.	Con	1,764	39.6
Saunders A. Ms.	Lab	828	18.6
Turnout		57.1	2.3

Worthing Pier (8024)

		vote	share
Roberts C.	Con	1,678	40.4
Brown C. Ms.	LD	1,434	34.5
Barnes P.	Lab	694	16.7
Colkett D.	Green	351	8.4
Turnout		51.8	5.9

Worthing West (8647)

		vote	share
Livermore J.*	Con	2,357	45.2
Rice A.	LD	1,295	24.8
Slater B.	Lab	820	15.7
Colkett L. Ms.	Green	392	7.5
Ruddock P.	UKIP	266	5.1
Roberts J.	Ind	82	1.6
Turnout		60.3	20.4

West Sussex 2009**Angmering & Findon (7873)**

		vote	share
Urquhart D. Ms.	Con	2,083	66.6
Richards T.	LD	1,043	33.4
Turnout		40.7	33.3

Arundel & Wick (7664)

		vote	share
Peters N.	Con	1,648	56.2
Wiltshire N.	LD	1,009	34.4
Butcher A.	Lab	274	9.3
Turnout		38.8	21.8

Bersted (8751)

		vote	share
McDougall S.*	LD	992	33.2
Smee A. Ms.	Con	873	29.2
Rapnik A. Ms.	UKIP	511	17.1
Holland S.	Lab	326	10.9
Witchell M.	BNP	285	9.5
Turnout		34.3	4.0

Bewbush & Ifield West (8425)

		vote	share
Oxlade C.	Lab	865	36.0
Brown A.	Con	758	31.5
Arnold E.	LD	344	14.3
Baldwin G.	BNP	315	13.1
Khan A.	JP	121	5.0
Turnout		28.7	4.5

Billingshurst (8195)

		vote	share
Jupp A. Ms.	Con	1,701	54.1
Duke D.	UKIP	694	22.1
Rowe L. Ms.	LD	588	18.7
Conibear C. Ms.	Lab	160	5.1
Turnout		38.4	32.0

Bognor Regis East (9305)

		vote	share
Oppler F.*	LD	1,279	45.9
Hitchins P.	Con	711	25.5
Lee P.	UKIP	517	18.6
Bodle A.	BNP	278	10.0
Turnout		30.2	20.4

Bognor Regis West & Aldwick (9061)

		vote	share
Wells P.	LD	1,606	44.3
Brown R.*	Con	1,545	42.6
Little D.	BNP	264	7.3
Cosgrove J.	Lab	214	5.9
Turnout		40.4	1.7

Bourne (9327)

		vote	share
Dunn M.*	Con	1,948	56.3
Maddougal P.	LD	1,382	40.0
Miller J. Ms.	Lab	127	3.7
Turnout		38.1	16.4

Bramber Castle (9089)

		vote	share
Deedman D.*	LD	2,252	48.8
Barling D.	Con	1,669	36.2
Bower S.	UKIP	351	7.6
Bailey D. Ms.	BNP	226	4.9
Piercy A. Ms.	Lab	117	2.5
Turnout		51.0	12.6

Broadfield (8698)

		vote	share
Quirk A.	Con	1,367	58.2
Joyce G. Ms.*	Lab	983	41.8
Turnout		27.7	16.3

Broadwater (9738)

		vote	share
Rice A.	LD	1,245	38.8
Wye T.	Con	1,230	38.3
Parsons L.	UKIP	559	17.4
Turley J.	Lab	177	5.5
Turnout		33.2	0.5

Burgess Hill East (9371)

		vote	share
Knight S. Ms.*	LD	1,944	50.0
Landriani J. Ms.	Con	1,769	45.5
Allott P.	Lab	174	4.5
Turnout		41.8	4.5

Burgess Hill Town (8989)

		vote	share
Ross H. Ms.	LD	1,421	41.5
Barrett-Miles A.*	Con	1,371	40.1
French C.	UKIP	476	13.9
Foulkes N.	Lab	152	4.4
Turnout		38.2	1.5

Chichester East (9528)

		vote	share
Smith A.*	LD	1,717	52.3
Dingemans N.	Con	1,168	35.6
Fallick R.	BNP	203	6.2
Leonard J. Ms.	Lab	196	6.0
Turnout		34.9	16.7

Chichester North (8248)

		vote	share
Hall M.*	Con	1,901	52.4
Plowman R.	LD	1,118	30.8
Mason M.	UKIP	439	12.1
Dyer M. Ms.	Lab	168	4.6
Turnout		44.2	21.6

Chichester South (9007)

		vote	share
Whitehead M. Ms.	Con	1,419	42.9
Chaplin A.*	LD	1,068	32.3
Sitwell N.	UKIP	581	17.6
Pengelly W. Ms.	Lab	241	7.3
Turnout		37.0	10.6

Chichester West (9255)

		vote	share
Goldsmith L. Ms.*	Con	2,190	55.0
Henry B. Ms.	LD	692	17.4
McCulloch J.	UKIP	380	9.5
Lanchester R.	Green	378	9.5
Bennett J.	Lab	199	5.0
Emerson A.	BNP	142	3.6
Turnout		43.1	37.6

Cissbury (8565)			
		vote	share
Stevens C.*	Con	1,925	52.8
Glennon M.	UKIP	888	24.4
Hoban W.	LD	641	17.6
Gardiner J.	Lab	191	5.2
	Turnout	42.9	28.4
Cuckfield & Lucastes (8018)			
		vote	share
Bradbury P.*	Con	1,703	46.8
Blanch S.	LD	770	21.2
Bright M.	Ind	644	17.7
Montgomery M.	UKIP	218	6.0
Edminson C. Ms.	Green	208	5.7
Davies D.	Lab	95	2.6
	Turnout	45.6	25.6
Durrington & Salvington (9614)			
		vote	share
Waight N. Ms.	Con	1,308	39.5
Donin M.	LD	1,235	37.3
Wallace J.	UKIP	768	23.2
	Turnout	34.8	2.2
East Grinstead Meridian (8323)			
		vote	share
Bennett E. Ms.	Con	1,408	47.5
Johnson P.	LD	1,153	38.9
Blair J.	Green	300	10.1
Moffatt C.	Lab	103	3.5
	Turnout	35.8	8.6
East Grinstead South & Ashurst Wood (8711)			
		vote	share
Quinn L.	Con	1,599	44.5
Collins M. Ms.*	LD	1,469	40.9
Brown P.	Green	429	11.9
Lamb P.	Lab	94	2.6
	Turnout	41.3	3.6
East Preston & Ferring (9762)			
		vote	share
Evans P.*	Con	2,956	66.0
Brown C. Ms.	LD	649	14.5
Maltby C.	Edem	482	10.8
Miller H.	Lab	390	8.7
	Turnout	45.9	51.5
Felpham (7828)			
		vote	share
Blampied G.*	Con	1,676	54.5
Denny A. Ms.	UKIP	734	23.9
Passingham J.	LD	474	15.4
White M. Ms.	Lab	191	6.2
	Turnout	39.5	30.6
Fernhurst (8470)			
		vote	share
Brown M.	Con	1,995	54.9
Bonfante Horrox M.	LD	825	22.7
Moncreiff A.	UKIP	644	17.7
Smith J.	Lab	169	4.7
	Turnout	43.1	32.2
Fontwell (9012)			
		vote	share
Whittington D.*	Con	2,310	64.3
Fletcher G.	LD	1,281	35.7
	Turnout	40.5	28.7
Goring (8115)			
		vote	share
Waight S.*	Con	1,727	54.0
Bater R.	UKIP	646	20.2
John N.	LD	576	18.0
Elwood J.	Lab	248	7.8
	Turnout	39.8	33.8
Gossops Green & Ifield East (8110)			
		vote	share
Blake K.	Con	1,191	38.6
Mortimer J.*	Lab	893	28.9
Kenealy D.	BNP	387	12.5
Hamilton B.	LD	324	10.5
Symonds R.	Ind	291	9.4
	Turnout	38.2	9.7
Hassocks & Victoria (9703)			
		vote	share
Wilsdon C.*	LD	2,159	50.7
Thomas-Atkin M. Ms.	Con	1,895	44.5
Epstein J. Ms.	Lab	204	4.8
	Turnout	44.6	6.2
Haywards Heath East (7685)			
		vote	share
Hall A. Ms.	LD	1,237	41.2
De Mierre J.*	Con	1,194	39.7
Onah O.	Lab	406	13.5
Trower R.	BNP	168	5.6
	Turnout	39.3	1.4
Haywards Heath Town (8191)			
		vote	share
Hall B.*	LD	1,477	44.0
Bourne K. Ms.	Con	1,416	42.2
Smith P.	Green	289	8.6
Atkins P.	Lab	175	5.2
	Turnout	41.2	1.8
Henfield (8277)			
		vote	share
Barnard L.*	Con	2,221	63.5
Purches A.	LD	830	23.7
Aldous T.	BNP	257	7.3
Uhlhorn M.	Lab	191	5.5
	Turnout	42.7	39.8
Holbrook (8534)			
		vote	share
Catchpole P.*	Con	1,729	47.1
Walters B. Ms.	LD	1,590	43.3
Carlin F.	BNP	192	5.2
Chapman R.	Lab	161	4.4
	Turnout	43.2	3.8
Horsham Hurst (7906)			
		vote	share
Dennis N.*	LD	1,697	50.8
Kent M.	Con	879	26.3
Bridewell C. Ms.	UKIP	279	8.3
Frier S. Ms.	Green	187	5.6
Hayton C. Ms.	Lab	183	5.5
Audric J. Ms.	BNP	118	3.5
	Turnout	42.4	24.5
Horsham Riverside (7996)			
		vote	share
Millson M. Ms.*	LD	1,985	55.7
Baldwin A.	Con	1,283	36.0
Duggan J.	Peace P	159	4.5
Austin J.	Lab	137	3.8
	Turnout	44.8	19.7
Horsham Tanbridge & Broadbridge Heath (6800)			
		vote	share
Sheldon D.	LD	1,496	56.1
Deakins L.	Con	1,030	38.6
Hide D.	Lab	141	5.3
	Turnout	39.8	17.5
Hurstpierpoint & Bolney (7833)			
		vote	share
Griffiths P.*	Con	2,038	58.4
Jackson R.	LD	727	20.8
Airey M.	Green	529	15.1
Morgan A. Ms.	Lab	198	5.7
	Turnout	44.7	37.5
Imberdown (8093)			
		vote	share
Brunsdon H. Ms.	LD	1,522	44.1
Coote P.*	Con	1,370	39.7
Saunders E.	UKIP	412	11.9
Cornell A. Ms.	Lab	144	4.2
	Turnout	42.8	4.4
Kingston Buci (7436)			
		vote	share
Graysmark P.*	Con	1,198	45.8
Henn M.	UKIP	554	21.2
Bray A.	Lab	452	17.3
Izod P. Ms.	LD	409	15.7
	Turnout	36.9	24.6
Lancing (8096)			
		vote	share
Mills A. Ms.	Con	880	34.4
Martin S.	LD	753	29.4
Bushell D.	UKIP	710	27.8
Devoy D.	Lab	215	8.4
	Turnout	32.0	5.0
Langley Green & West Green (9193)			
		vote	share
Smith B. Ms.	Lab	1,396	45.5
Gilroy L.	Con	1,140	37.2
Osborne K.	LD	532	17.3
	Turnout	33.9	8.3
Lindfield & High Weald (9455)			
		vote	share
Field C. Ms.	Con	2,573	57.9
Lucraft A-M. Ms.	LD	983	22.1
Wemyss-Gorman P.	Green	728	16.4
Yates A.	Lab	158	3.6
	Turnout	47.2	35.8
Littlehampton East (8899)			
		vote	share
Walsh J.*	LD	1,525	45.1
Bowyer J. Ms.	Con	1,007	29.8
East R.	UKIP	553	16.3
McConnell S.	Lab	179	5.3
Baxter J.	BNP	120	3.5
	Turnout	38.1	15.3
Littlehampton Town (8163)			
		vote	share
Britton D.	Con	757	28.7
Buckland I.	LD	689	26.1
O'Neill G.*	Lab	568	21.5
Pescud D.	UKIP	476	18.0
Manchee V. Ms.	BNP	149	5.6
	Turnout	32.5	2.6
Maidenbower (8720)			
		vote	share
Smith H.	Con	2,192	72.3
Byrne K.	Lab	425	14.0
Pandya S.	LD	415	13.7
	Turnout	35.2	58.3
Middleton (8397)			
		vote	share
Freeman C. Ms.*	Con	1,640	49.9
Phillips J. Ms.	UKIP	906	27.5
Biss D.	LD	531	16.1
Natgrass E.	Lab	212	6.4
	Turnout	39.3	22.3
Midhurst (8784)			
		vote	share
Hendon N. Ms.*	Con	2,479	68.4
Fowler J. Ms.	LD	952	26.3
Young A.	Lab	195	5.4
	Turnout	41.6	42.1

Northbrook (8333)			
		vote	share
Rogers R.	LD	1,524	57.9
Rogers J.	Con	974	37.0
Albiston B.	Lab	135	5.1
Turnout		32.3	20.9

Northgate & Three Bridges (7933)			
		vote	share
Burgess R.	Con	1,172	40.2
Thomas G.	Lab	891	30.6
Wickins M.	LD	504	17.3
Taylor M.	Edem	348	11.9
Turnout		37.0	9.6

Nyetimber (9113)			
		vote	share
Coleman M.*	Con	1,791	47.7
Denny D.	UKIP	924	24.6
Burt G.	LD	544	14.5
Nash P. Ms.	Lab	247	6.6
Cole P.	BNP	245	6.5
Turnout		41.5	23.1

Petworth (9585)			
		vote	share
Dunton C.*	Con	2,769	70.4
Cooper R.	LD	810	20.6
Trower R.	BNP	209	5.3
Wise B. Ms.	Lab	148	3.8
Turnout		41.5	49.8

Pound Hill & Worth (8474)			
		vote	share
Burrett R.	Con	2,308	69.7
Reay E.	LD	640	19.3
Shreeves D.	Lab	361	10.9
Turnout		39.6	50.4

Pulborough (9221)			
		vote	share
Arculus P. Ms.*	Con	2,871	73.2
Deedman R. Ms.	LD	829	21.1
Bignell A.	Lab	222	5.7
Turnout		43.1	52.1

Roffey (7621)			
		vote	share
Hellawell W.*	LD	1,468	48.4
Charles J.	Con	1,164	38.4
Poulter C.	BNP	279	9.2
Skudder A.	Lab	123	4.1
Turnout		40.2	10.0

Rustington (9448)			
		vote	share
Tyler G.	Con	2,962	69.6
Lovell L.	LD	986	23.2
Dines A.	Lab	310	7.3
Turnout		45.6	46.4

Saltings (8132)			
		vote	share
Dunn R.*	Con	1,154	38.1
Mendoza M.	UKIP	781	25.8
Martin D. Ms.	LD	458	15.1
Barnes S.	Green	365	12.1
Daniel A. Ms.	Lab	269	8.9
Turnout		37.2	12.3

Selsey (8849)			
		vote	share
Jones P.*	Con	1,525	47.1
Smith B.	UKIP	1,295	40.0
Bell I.	Lab	415	12.8
Turnout		37.1	7.1

Shoreham (7439)			
		vote	share
Coomber B.	Con	1,453	49.1
Martin M. Ms.	Green	483	16.3
Elliott B.	UKIP	396	13.4
Cannings C.	LD	370	12.5
Daniel R.	Lab	256	8.7
Turnout		40.0	32.8

Sompting & North Lancing (8609)			
		vote	share
Simmons D.	Con	1,376	45.3
Whiting R.	UKIP	747	24.6
Burt R.	LD	546	18.0
Mear B.	Lab	370	12.2
Turnout		35.4	20.7

Southgate & Crawley Central (6511)			
		vote	share
Bloom H.	Con	1,079	47.7
Jones M.	Lab	897	39.7
Atkinson L. Ms.	BNP	284	12.6
Turnout		35.3	8.1

Southwater & Nuthurst (9644)			
		vote	share
Watson B.*	Con	1,934	49.6
Stainton P.	LD	1,075	27.5
Aldridge H.	UKIP	519	13.3
Lorraine T.	Green	261	6.7
Field J. Ms.	Lab	113	2.9
Turnout		40.7	22.0

Southwick (7727)			
		vote	share
Mockridge J. Ms.	Con	1,089	42.6
Greig J. Ms.	UKIP	593	23.2
Hilditch J.	LD	359	14.0
Thompson B.	Lab	273	10.7
Board S. Ms.	Green	245	9.6
Turnout		33.4	19.4

Storrington (9713)			
		vote	share
Wilkinson F.*	Con	2,677	64.0
Stokes S. Ms.	LD	771	18.4
Powell H.	Edem	523	12.5
Cornwell M. Ms.	Lab	215	5.1
Turnout		43.4	45.5

Tarring (9838)			
		vote	share
Smytherman B.	LD	1,646	47.4
High P.	Con	1,007	29.0
Harwood J.	UKIP	628	18.1
Wells S.	Lab	191	5.5
Turnout		35.6	18.4

The Witterings (8171)			
		vote	share
Montyn P.	Con	1,627	49.6
Daws-Chew M.*	Ind	618	18.8
Tilbury R.	LD	346	10.6
Mills A.	Green	292	8.9
Trower S. Ms.	BNP	220	6.7
O'Sullivan J.	Lab	176	5.4
Turnout		40.3	30.8

Tilgate & Furnace Green (8759)			
		vote	share
Crow D.	Con	1,600	46.0
Irvine I.	Lab	871	25.0
Wise D.	LD	607	17.4
Atkinson V.	BNP	401	11.5
Turnout		40.0	21.0

Warnham & Rusper (7255)			
		vote	share
Hodgson M.*	Con	1,783	58.9
Aldridge S.	UKIP	583	19.3
Belmore A.	LD	535	17.7
Chapman S. Ms.	Lab	125	4.1
Turnout		42.1	39.7

Worth Forest (9356)			
		vote	share
Acraman W.*	Con	2,147	61.2
Dennis N.	LD	617	17.6
Weller B.	Green	518	14.8
Thomson F.	Lab	225	6.4
Turnout		37.8	43.6

Worthing East (8029)			
		vote	share
Richards I. Ms.*	LD	1,157	40.9
Oakley R.	Con	1,012	35.8
Clark M.	UKIP	424	15.0
Saunders A. Ms.	Lab	233	8.2
Turnout		35.2	5.1

Worthing Pier (8547)			
		vote	share
Doyle J.	LD	1,097	40.1
Yallop P.	Con	1,015	37.1
Woodward C.	UKIP	350	12.8
Marsh S. Ms.	Lab	181	6.6
Black-Feather M.	Edem	93	3.4
Turnout		32.0	3.0

Worthing West (8605)			
		vote	share
Livermore J.*	Con	1,529	48.9
Leonard Y. Ms.	LD	731	23.4
Ruddock P.	UKIP	616	19.7
Powell E. Ms.	Lab	248	7.9
Turnout		36.5	25.5

