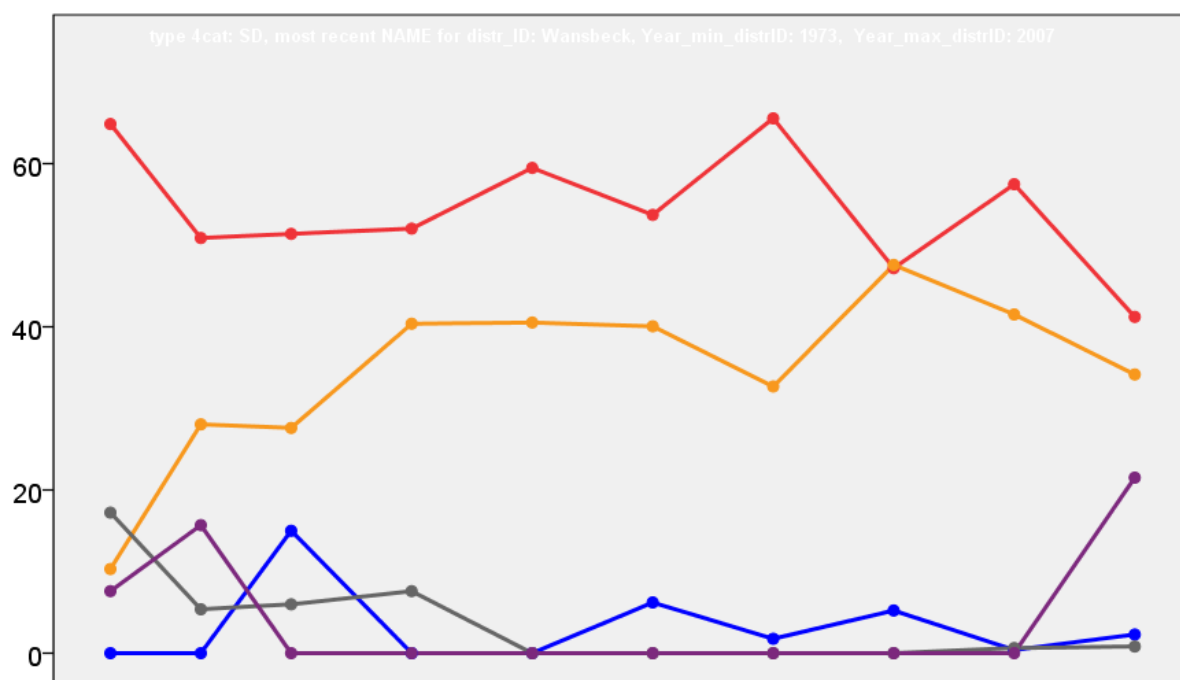


# Wansbeck District Council Election Results 1973-2007



Colin Rallings and Michael Thrasher  
The Elections Centre  
Plymouth University

The information contained in this report has been obtained from a number of sources. Election results from the immediate post-reorganisation period were painstakingly collected by Alan Willis largely, although not exclusively, from local newspaper reports. From the mid-1980s onwards the results have been obtained from each local authority by the Elections Centre. The data are stored in a database designed by Lawrence Ware and maintained by Brian Cheal and others at Plymouth University. Despite our best efforts some information remains elusive whilst we accept that some errors are likely to remain. Notice of any mistakes should be sent to [elections@plymouth.ac.uk](mailto:elections@plymouth.ac.uk). The results sequence can be kept up to date by purchasing copies of the annual Local Elections Handbook, details of which can be obtained by contacting the email address above.

Front cover: the graph shows the distribution of percentage vote shares over the period covered by the results. The lines reflect the colours traditionally used by the three main parties. The grey line is the share obtained by Independent candidates while the purple line groups together the vote shares for all other parties.

Rear cover: the top graph shows the percentage share of council seats for the main parties as well as those won by Independents and other parties. The lines take account of any by-election changes (but not those resulting from elected councillors switching party allegiance) as well as the transfers of seats during the main round of local election.

The lower graph shows for each main round of local elections the overall percentage turnout (solid line), the percentage of women candidates standing at (dotted line) and the percentage of women among those elected (hashed line).

## Wansbeck 1973

### No. 1 (Ashington: Central) (3348) @ 4

		vote	share
Scott D.	Lab	0	-
Scott J.	Lab	0	-
Wright W.	Lab	0	0.0
Cleogh A.	Lab	0	-
Turnout		0.0	0.0

### No. 10 (Stakeford) (2647)<sup>2</sup>

		vote	share
Wilson G.	Lab	0	0.0
Haig J.	Lab	0	-
Turnout		0.0	0.0

### No. 11 (Newbiggin: East) (1829)<sup>2</sup>

		vote	share
Loggie G.	Lab	0	0.0
Kemmitt L.	Lab	0	-
Turnout		0.0	0.0

### No. 12 (Newbiggin: North Seaton) (2198)<sup>2</sup>

		vote	share
Queen R.	Lab	426	70.3
Birch J.	Lab	421	-
Wilkinson J.	Lib	180	29.7
Turnout		27.6	40.6

### No. 13 (Newbiggin: West) (1900)<sup>2</sup>

		vote	share
Eastlake E. Ms.	Lab	0	-
Storey R.	Lab	0	0.0
Turnout		0.0	0.0

### No. 14 (Newbiggin: Woodhorn Demesne) (2205)<sup>2</sup>

		vote	share
Thompson J.	Lab	0	0.0
Spain G.	Lab	0	-
Turnout		0.0	0.0

### No. 2 (Ashington: East) (5166) @ 4

		vote	share
Scott D.	Lab	0	0.0
Gallagher A.	Lab	0	-
Dodd E. Ms.	Lab	0	-
Devon S.	Lab	0	-
Turnout		0.0	0.0

### No. 3 (Ashington: West) (4182) @ 4

		vote	share
Bramley A.	Lab	989	71.1
Oliver J.	Lab	977	-
Haggerty J.	Lab	946	-
McGuckin F.	Lab	910	-
Dawson W.	Ind Con	402	28.9
Turnout		33.3	42.2

### No. 4 (Ashington South) (6031) @ 6

		vote	share
McGuigan C.	Lab	0	-
Murphy D.	Lab	0	-
Freathy J.	Lab	0	-
Dodds E. Ms.	Lab	0	-
Brown W.	Lab	0	-
Sanderson R.	Lab	0	0.0
Turnout		0.0	0.0

### No. 5 (Bedlington) (5548) @ 5

		vote	share
Caine J.	Lab	1,026	52.9
Morris C.	Lab	953	-
Watson R.	Ind	912	47.1
Mounsey J.	Lab	788	-
Joyce V.	Lab	763	-
Hay K.	Lab	735	-
Turnout		34.9	5.9

### No. 6 (Cambois) (1256)<sup>2</sup>

		vote	share
Roach K.	Lab	0	0.0
Gair A.	Lab	0	-
Turnout		0.0	0.0

### No. 7 (Choppington) (5391) @ 5

		vote	share
Hindhaugh R.	Lab	992	73.0
Teasdale J.	Lab	957	-
Drew W.	Lab	885	-
Coxon S.	Lab	842	-
Fitzsimmons W.	Lab	837	-
McInnes J.	Lib	366	27.0
Turnout		25.2	46.1

### No. 8 (Netherton) (1030)

		vote	share
Black J.	Lab	0	0.0
Turnout		0.0	0.0

### No. 9 (Sleekburn) (4673) @ 4

		vote	share
Christmas W.	Lab	0	-
Worn S.	Lab	0	0.0
Scott M. Ms.	Lab	0	-
O'Neil T.	Lab	0	-
Turnout		0.0	0.0

## Wansbeck 1976

### Bedlington Central (3589)<sup>3</sup>

		vote	share
Caine J.	Lab	616	50.2
Mitchell E. Ms.	Lab	555	-
Mounsey J.	Lab	438	-
Butters A.	ILP	411	33.5
Temple J.	Comm	200	16.3
Turnout		34.2	16.7

### Bedlington East (3071)<sup>3</sup>

		vote	share
McKenzie F.	Lab	0	-
Richmond B.	Lab	0	-
Mullen J.	Lab	0	0.0
Turnout		0.0	0.0

### Bedlington West (2591)<sup>3</sup>

		vote	share
Black J.	ILP	510	53.2
Morris C.	Lab	448	46.8
Gray H. Ms.	Lab	413	-
Newton S.	Lab	401	-
Green R.	ILP	392	-
Smith G.	ILP	330	-
Turnout		37.0	6.5

### Bothal (3570)<sup>3</sup>

		vote	share
Bramley A.	Lab	0	0.0
Haggerty J.	Lab	0	-
Heap K.	Lab	0	-
Turnout		0.0	0.0

### Central (3337)<sup>3</sup>

		vote	share
Sanderson R.	Lab	0	-
Oliver J.	Lab	0	0.0
Scott J.	Lab	0	-
Turnout		0.0	0.0

### Choppington (2161)<sup>2</sup>

		vote	share
Robinson M.	Lab	0	0.0
Brew W.	Lab	0	-
Turnout		0.0	0.0

### College (2890)<sup>3</sup>

		vote	share
McCormack J.	Lab	0	0.0
McGuigan C.	Lab	0	-
Cleough A.	Lab	0	-
Turnout		0.0	0.0

### Guide Post (3269)<sup>3</sup>

		vote	share
Hepple C.	Lib	588	50.2
Teasdale E.	Lab	583	49.8
Hindhaugh R.	Lab	576	-
Tiffin R.	Lib	559	-
Coxon S.	Lab	477	-
Turnout		35.8	0.4

### Haydon (1738)<sup>3</sup>

		vote	share
Gallagher T.	Lab	0	-
McGuckin F.	Lab	0	-
McCormack J.	Lab	0	0.0
Turnout		0.0	0.0

### Hirst (2956)<sup>3</sup>

		vote	share
Gallagher A.	Lab	0	-
Devon S.	Lab	0	-
Dodd E. Ms.	Lab	0	0.0
Turnout		0.0	0.0

### Newbiggin East (3206)<sup>3</sup>

		vote	share
Kemmitt L.	Lab	0	-
Loggie G.	Lab	0	-
Thompson J.	Lab	0	0.0
Turnout		0.0	0.0

### Newbiggin West (2699)<sup>3</sup>

		vote	share
Eastlake E. Ms.	Lab	777	58.2
Dixon J.	Lab	665	-
Parry K.	Lab	592	-
Thompson A. Ms.	Lib	559	41.8
Turnout		49.5	16.3

### Park (2940)<sup>3</sup>

		vote	share
Scott D.	Lab	0	-
Devon J.	Lab	0	-
Freathy J.	Lab	0	0.0
Turnout		0.0	0.0

### Seaton (3528)<sup>3</sup>

		vote	share
Storey R.	Lab	751	57.5
Queen R. Ms.	Lab	737	-
Birch J.	Lab	706	-
Forster I.	Lib	555	42.5
Wilkinson J. Ms.	Lib	475	-
Turnout		37.0	15.0

### Sleekburn (3182)<sup>3</sup>

		vote	share
Roach M.	Lab	647	42.6
O'Neill	Lab	586	-
Warn	Lab	499	-
Bryson	Ind	458	30.1
Chapple	ILP	415	27.3
Turnout		47.8	12.4

### Stakeford (2413)<sup>2</sup>

		vote	share
Gair M.	Lib	687	57.3
Haig J.	Lab	512	42.7
Wilson	Lab	370	-
Turnout		49.7	14.6

## Wansbeck 1979

Bedlington Central (3677) <sup>3</sup>			
		vote	share
Douglas A.	Ind	1,471	40.5
Caine J.	Lab	1,279	35.2
Buglass C.	Lab	1,152	-
Mounsey J.	Lab	1,043	-
Wade L. Ms.	Con	884	24.3
Tetley E. Ms.	Con	765	-
	Turnout	78.7	5.3
Bedlington East (3119) <sup>3</sup>			
		vote	share
McKenzie F.	Lab	1,461	71.8
Mullen J.	Lab	1,422	-
Richmond B.	Lab	1,256	-
Muter M.	Con	575	28.2
Scott E. Ms.	Con	545	-
Scott M.	Con	530	-
	Turnout	76.1	43.5
Bedlington West (2738) <sup>3</sup>			
		vote	share
Morris C.	Lab	1,288	64.0
Marshall T. Ms.	Lab	1,165	-
Gray H. Ms.	Lab	1,025	-
Tallantyre E.	Con	723	36.0
Storror A.	Con	599	-
Bathurst T.	Con	592	-
	Turnout	81.7	28.1
Bothal (3374) <sup>3</sup>			
		vote	share
Robson G.	Lib	1,341	53.4
Little J.	Lab	1,168	46.6
Dawson T.	Lib	1,162	-
Hesp K.	Lab	1,127	-
Parry K.	Lab	1,059	-
Douglas M.	Lib	1,047	-
	Turnout	77.3	6.9
Central (3086) <sup>3</sup>			
		vote	share
Scott J.	Lab	0	-
Sanderson R.	Lab	0	-
Tully E. Ms.	Lab	0	0.0
	Turnout	0.0	0.0
Choppington (2166) <sup>2</sup>			
		vote	share
Robinson M.	Lab	0	0.0
Drew W.	Lab	0	-
	Turnout	0.0	0.0
College (2826) <sup>3</sup>			
		vote	share
McGuigan C.	Lab	0	0.0
Brown D. Ms.	Lab	0	-
Murphy D.	Lab	0	-
	Turnout	0.0	0.0
Guide Post (3216) <sup>3</sup>			
		vote	share
Hindhaugh R.	Lab	1,256	42.3
Murphy M.	Lab	1,034	-
Dickson A.	Lab	954	-
Tweddle J.	Lib	948	32.0
Stone V. Ms.	Con	762	25.7
Nicholson W.	Con	697	-
Lowes D.	Con	459	-
	Turnout	80.1	10.4
Haydon (2013) <sup>3</sup>			
		vote	share
Gallagher T.	Lab	1,077	72.1
McGuckin F.	Lab	1,003	-
McCormack J.	Lab	1,001	-
Crooks B.	Lib	417	27.9
Sabin J. Ms.	Lib	415	-
	Turnout	75.1	44.2

Hirst (3500) <sup>3</sup>			
		vote	share
Devon S.	Lab	0	-
Dodd E. Ms.	Lab	0	-
Gallagher A.	Lab	0	0.0
	Turnout	0.0	0.0
Newbiggin East (3162) <sup>3</sup>			
		vote	share
Loggie G.	Lab	1,565	69.4
Kemmitt L.	Lab	1,387	-
Dodds J.	Lab	1,173	-
Askew E.	Lib	689	30.6
Friberg W.	Lib	583	-
Armstrong A.	Lib	531	-
	Turnout	76.0	38.9
Newbiggin West (2659) <sup>3</sup>			
		vote	share
Eastlake E. Ms.	Lab	1,244	52.5
Thompson J.	Lib	1,127	47.5
Birch J.	Lab	1,072	-
Storey R.	Lab	949	-
Noble M. Ms.	Lib	648	-
Harratt P.	Lib	527	-
	Turnout	80.9	4.9
Park (2682) <sup>3</sup>			
		vote	share
Scott R.	Lab	0	0.0
Scott D.	Lab	0	-
Devon J.	Lab	0	-
	Turnout	0.0	0.0
Seaton (3577) <sup>3</sup>			
		vote	share
Dixon J.	Lab	1,672	51.9
Tait T.	Lab	1,452	-
Queen R. Ms.	Lab	1,071	-
Thompson D.	Lib	1,012	31.4
Wilkinson J. Ms.	Lib	676	-
Newman S.	Lib	609	-
Robinson C.	Con	537	16.7
	Turnout	90.0	20.5
Sleekburn (3023) <sup>3</sup>			
		vote	share
O'Neil T.	Lab	0	-
Roach M.	Lab	0	-
Worn S.	Lab	0	0.0
	Turnout	0.0	0.0
Stakeford (2427) <sup>2</sup>			
		vote	share
Gair M.	Lib	1,240	60.6
Parkin D.	Lib	835	-
Maley P.	Lab	603	29.5
Haig J.	Lab	590	-
Dixon G.	Con	202	9.9
Hall J. Ms.	Con	144	-
	Turnout	82.9	31.1

## Wansbeck 1983

Bedlington Central (3591) <sup>3</sup>			
		vote	share
Douglass	Ind	1,084	45.0
Buglass C.	Lab	685	28.4
Watson	Lib/SDP	639	26.5
Doherty	Lab	579	-
Murphy	Lab	499	-
	Turnout	47.3	16.6
Bedlington East (3226) <sup>3</sup>			
		vote	share
McKenzie F.	Lab	632	53.5
Richmond B.	Lab	618	-
Mullen J.	Lab	607	-
Caulwelaert	Lib/SDP	549	46.5
	Turnout	36.6	7.0

Bedlington West (3277) <sup>3</sup>			
		vote	share
Morris C.	Lab	717	52.3
Lowerson	Lib/SDP	653	47.7
Marshall T. Ms.	Lab	642	-
Gair	Lab	636	-
Newson	Lib/SDP	631	-
Iredale	Lib/SDP	594	-
	Turnout	44.1	4.7
Bothal (3383) <sup>3</sup>			
		vote	share
Devon P. Ms.	Lab	746	51.7
McGuckin	Lab	703	-
Robson G.	Lib/SDP	697	48.3
Maughan	Lab	695	-
Dawson T.	Lib/SDP	664	-
Robson	Lib/SDP	597	-
	Turnout	44.4	3.4
Central (2961) <sup>3</sup>			
		vote	share
Scott J.	Lab	675	69.4
Sanderson R.	Lab	614	-
Tulley	Lab	612	-
Humble	Lib/SDP	298	30.6
	Turnout	32.2	38.7
Choppington (2133) <sup>2</sup>			
		vote	share
Rice	Lab	615	76.2
Robinson M.	Lab	599	-
Hesp	Lib/SDP	192	23.8
	Turnout	40.9	52.4
College (2742) <sup>3</sup>			
		vote	share
Brown D. Ms.	Lab	0	-
Tait	Lab	0	0.0
McGuckin	Lab	0	-
	Turnout	0.0	0.0
Guide Post (3145) <sup>3</sup>			
		vote	share
Tweddle J.	Lib/SDP	750	52.7
Robinson	Lib/SDP	681	-
Hindhaugh R.	Lab	672	47.3
Parker	Lib/SDP	656	-
Jordan	Lab	571	-
Dickson A.	Lab	544	-
	Turnout	45.0	5.5
Haydon (2665) <sup>3</sup>			
		vote	share
Gallagher T.	Lab	638	65.2
McCormack J.	Lab	593	-
McGuckin F.	Lab	583	-
Maitland	Lib/SDP	340	34.8
Sabin J. Ms.	Lib/SDP	323	-
Wren	Lib/SDP	298	-
	Turnout	38.3	30.5
Hirst (3378) <sup>3</sup>			
		vote	share
Gallagher A.	Lab	749	79.7
Parry	Lab	674	-
Dodd E. Ms.	Lab	661	-
Davis	Lib/SDP	191	20.3
Rochester	Lib/SDP	174	-
Harratt	Lib/SDP	171	-
	Turnout	30.0	59.4
Newbiggin East (3173) <sup>3</sup>			
		vote	share
Loggie G.	Lab	982	52.0
Kemmitt L.	Lab	867	-
Dodds J.	Lab	827	-
Morgan L.	Lib/SDP	562	29.8
Turnbull	Lib/SDP	485	-
Sewell	Ind	343	18.2
	Turnout	48.5	22.3

Newbiggin West (2684) <sup>3</sup>			
		vote	share
<b>Thompson Ms.</b>	Lib/SDP	908	52.8
<b>Birch J.</b>	Lab	812	47.2
<b>Waters</b>	Lib/SDP	760	-
Lennox	Lib/SDP	646	-
Baxter	Lab	598	-
Davies	Lab	596	-
<b>Turnout</b>		58.4	5.6

Park (2694) <sup>3</sup>			
		vote	share
<b>Devon J.</b>	Lab	0	-
<b>Scott D.</b>	Lab	0	-
<b>Scott</b>	Lab	0	0.0
<b>Turnout</b>		0.0	0.0

Seaton (3591) <sup>3</sup>			
		vote	share
<b>Dixon J.</b>	Lab	992	71.1
<b>Tully J.</b>	Lab	981	-
<b>Hedley D.</b>	Lab	976	-
Wilkinson J. Ms.	Lib/SDP	404	28.9
Thirtle	Lib/SDP	392	-
Silver	Lib/SDP	383	-
<b>Turnout</b>		41.7	42.1

Sleekburn (2943) <sup>3</sup>			
		vote	share
<b>Roach M.</b>	Lab	513	53.9
<b>O'Neill</b>	Lab	480	-
<b>Wilkinson J.</b>	Lib/SDP	438	46.1
Warn	Lab	426	-
<b>Turnout</b>		34.8	7.9

Stakeford (2600) <sup>2</sup>			
		vote	share
<b>Gair M.</b>	Lib/SDP	964	73.6
<b>Parkin D.</b>	Lib/SDP	848	-
Chadwick	Lab	346	26.4
Crosby	Lab	322	-
<b>Turnout</b>		50.4	47.2

## Wansbeck 1987

Bedlington Central (3832) <sup>3</sup>			
		vote	share
<b>Douglas A.</b>	Lab	1,158	61.5
<b>Buglass C.</b>	Lab	1,075	-
<b>Wilson G.</b>	Lab	990	-
Faulkner M. Ms.	Lib/SDP	724	38.5
<b>Turnout</b>		47.1	23.1

Bedlington East (3334) <sup>3</sup>			
		vote	share
<b>McKenzie F.</b>	Lab	847	62.2
<b>Mullen J.</b>	Lab	824	-
<b>Richmond B.</b>	Lab	797	-
Major R.	Lib/SDP	515	37.8
Newson R.	Lib/SDP	456	-
<b>Turnout</b>		45.7	24.4

Bedlington West (3268) <sup>3</sup>			
		vote	share
<b>Morris C.</b>	Lab	852	51.9
<b>Murphy C. Ms.</b>	Lab	828	-
<b>Todd G.</b>	Lib/SDP	791	48.1
Graham J.	Lab	693	-
<b>Turnout</b>		48.0	3.7

Bothal (3381) <sup>3</sup>			
		vote	share
<b>Robson G.</b>	Lib/SDP	1,058	50.1
<b>Devon P. Ms.</b>	Lab	1,053	49.9
<b>Tully E. Ms.</b>	Lab	961	-
Wilson J.	Lab	948	-
Maitland J.	Lib/SDP	944	-
McSparron P. Ms.	Lib/SDP	897	-
<b>Turnout</b>		62.1	0.2

Central (2809) <sup>3</sup>			
		vote	share
<b>McGuckin F.</b>	Lab	840	69.9
<b>Scott J.</b>	Lab	827	-
<b>Ferrigon M.</b>	Lab	790	-
Dawson T.	Lib/SDP	361	30.1
<b>Turnout</b>		42.8	39.9

Choppington (1927) <sup>2</sup>			
		vote	share
<b>Robinson M.</b>	Lab	0	0.0
<b>Hindhaugh R.</b>	Lab	0	-
<b>Turnout</b>		0.0	0.0

College (2714) <sup>3</sup>			
		vote	share
<b>Brown D. Ms.</b>	Lab	0	-
<b>Cole G.</b>	Lab	0	-
<b>Maughan K.</b>	Lab	0	0.0
<b>Turnout</b>		0.0	0.0

Guide Post (3113) <sup>3</sup>			
		vote	share
<b>Hindhaugh P.</b>	Lab	822	60.8
<b>Chadwick J.</b>	Lab	747	-
<b>Tweddie J.</b>	Lab	731	-
Reay J.	Lib/SDP	531	39.2
<b>Turnout</b>		42.9	21.5

Haydon (2714) <sup>3</sup>			
		vote	share
<b>Gallagher T.</b>	Lab	759	58.4
<b>McCormack J.</b>	Lab	708	-
<b>Richardson K.</b>	Lab	686	-
Thompson D.	Lib/SDP	541	41.6
Wilkinson J. Ms.	Lib/SDP	495	-
Ponton A. Ms.	Lib/SDP	491	-
<b>Turnout</b>		48.9	16.8

Hirst (3234) <sup>3</sup>			
		vote	share
<b>Gallagher A.</b>	Lab	1,001	78.2
<b>Parry K.</b>	Lab	960	-
<b>Parker C.</b>	Lab	916	-
Hedley B. Ms.	Lib/SDP	279	21.8
<b>Turnout</b>		37.5	56.4

Newbiggin East (3063) <sup>3</sup>			
		vote	share
<b>Dodds J.</b>	Lab	960	50.6
<b>Leonard A. Ms.</b>	Lib/SDP	939	49.4
<b>Loggie G.</b>	Lab	932	-
Morgan L.	Lib/SDP	903	-
Imrie V. Ms.	Lib/SDP	821	-
Kemmitt L.	Lab	801	-
<b>Turnout</b>		62.1	1.1

Newbiggin West (2575) <sup>3</sup>			
		vote	share
<b>Thompson J.</b>	Lib/SDP	953	51.5
<b>Birch J.</b>	Lab	896	48.5
<b>Thompson A. Ms.</b>	Lib/SDP	865	-
Wallace T.	Lab	831	-
Hipkin J.	Lib/SDP	752	-
Armstrong T. Ms.	Lab	718	-
<b>Turnout</b>		69.2	3.1

Park (2524) <sup>3</sup>			
		vote	share
<b>Devon J.</b>	Lab	1,006	84.0
<b>Smith J.</b>	Lab	940	-
<b>Scott D.</b>	Lab	918	-
Imrie N.	Lib/SDP	191	16.0
<b>Turnout</b>		47.5	68.1

Seaton (3599) <sup>3</sup>			
		vote	share
<b>Tully J.</b>	Lab	1,132	67.3
<b>Hedley D.</b>	Lab	1,098	-
<b>Jones B.</b>	Lab	1,048	-
Ryder C.	Lib/SDP	551	32.7
<b>Turnout</b>		46.1	34.5

Sleekburn (2854) <sup>3</sup>			
		vote	share
<b>Knox R.</b>	Lab	760	59.7
<b>Crosby W.</b>	Lab	730	-
<b>Austin E. Ms.</b>	Lab	646	-
Charlton F. Ms.	Lib/SDP	513	40.3
Wilkinson J.	Lib/SDP	472	-
Webster G.	Lib/SDP	460	-
<b>Turnout</b>		49.1	19.4

Stakeford (2571) <sup>2</sup>			
		vote	share
<b>Wilkinson S. Ms.</b>	Lib/SDP	702	53.5
<b>Smart R.</b>	Lib/SDP	700	-
Wright C.	Lab	611	46.5
Young G.	Lab	610	-
<b>Turnout</b>		51.9	6.9

## Wansbeck 1991

Bedlington Central (3797) <sup>3</sup>			
		vote	share
<b>Douglas A.*</b>	Lab	940	43.4
<b>Buglass C.*</b>	Lab	923	-
<b>Wilson G.*</b>	Lab	867	-
James S. Ms.	LD	783	36.1
Scott M.	Con	443	20.5
<b>Turnout</b>		47.4	7.2

Bedlington East (3308) <sup>3</sup>			
		vote	share
<b>Graham J.</b>	Lab	869	60.2
<b>Richmond B.*</b>	Lab	747	-
<b>Mullen J.*</b>	Lab	734	-
Major R.	LD	575	39.8
<b>Turnout</b>		40.5	20.4

Bedlington West (3208) <sup>3</sup>			
		vote	share
<b>Jackson L. Ms.</b>	Lab	731	50.2
<b>Todd G.*</b>	LD	726	49.8
<b>Armstrong D.</b>	Lab	721	-
Roe M.	Lab	642	-
<b>Turnout</b>		42.8	0.3

Bothal (4204) <sup>3</sup>			
		vote	share
<b>Davidson I. Ms.</b>	LD	1,096	53.1
<b>Devon P. Ms.*</b>	Lab	968	46.9
<b>Murdie J.</b>	Lab	833	-
Wilson T.	Lab	823	-
<b>Turnout</b>		45.8	6.2

Central (2754) <sup>3</sup>			
		vote	share
<b>Scott J.*</b>	Lab	0	0.0
<b>Ferrigon M.*</b>	Lab	0	-
<b>Cunningham J.</b>	Lab	0	-
<b>Turnout</b>		0.0	0.0

Choppington (1773) <sup>2</sup>			
		vote	share
<b>Robinson M.*</b>	Lab	0	0.0
<b>Hindhaugh R.*</b>	Lab	0	-
<b>Turnout</b>		0.0	0.0

College (2636) <sup>3</sup>			
		vote	share
<b>Brown D. Ms.*</b>	Lab	0	-
<b>Cole G.*</b>	Lab	0	-
<b>Maughan K.*</b>	Lab	0	0.0
<b>Turnout</b>		0.0	0.0

Guide Post (2989) <sup>3</sup>			
		vote	share
Moran P.	Lab	739	52.9
Tweddle J.*	Lab	708	-
Ledger D.	Lab	670	-
Newson R.	LD	345	24.7
Gray G.	Con	312	22.3
<b>Turnout</b>		40.1	28.2

Haydon (2848) <sup>3</sup>			
		vote	share
Gallagher T.*	Lab	0	-
McCormack J.*	Lab	0	-
Richardson K.*	Lab	0	0.0
<b>Turnout</b>		0.0	0.0

Hirst (3102) <sup>3</sup>			
		vote	share
Straughan G.	Lab	0	0.0
Parker C.*	Lab	0	-
Parry L.*	Lab	0	-
<b>Turnout</b>		0.0	0.0

Newbiggin East (2971) <sup>3</sup>			
		vote	share
Dodds J.*	Lab	962	56.8
Loggie G.*	Lab	927	-
Wallace M. Ms.	Lab	871	-
Morgan L.	LD	732	43.2
Imrie V. Ms.	LD	575	-
Hipkin J.	LD	561	-
<b>Turnout</b>		57.2	13.6

Newbiggin West (2557) <sup>3</sup>			
		vote	share
Birch J.*	Lab	863	56.9
Storey R.	Lab	785	-
Brown L.	Lab	715	-
Ferris P.	LD	653	43.1
Spowart L. Ms.	LD	633	-
Morgan A. Ms.	LD	599	-
<b>Turnout</b>		60.9	13.9

Park (2428) <sup>3</sup>			
		vote	share
Smith J.*	Lab	0	0.0
Devon J.*	Lab	0	-
Murphy D.	Lab	0	-
<b>Turnout</b>		0.0	0.0

Seaton (3770) <sup>3</sup>			
		vote	share
Tully J.*	Lab	793	54.2
Hedley D.*	Lab	763	-
Jones B.*	Lab	700	-
Jackson M.	LD	671	45.8
<b>Turnout</b>		36.8	8.3

Sleekburn (2730) <sup>3</sup>			
		vote	share
Crosby W.*	Lab	923	64.5
Young K.	Lab	770	-
Wallace A.	Lab	768	-
Linton A.	LD	276	19.3
Scott E. Ms.	Con	231	16.2
<b>Turnout</b>		46.8	45.2

Stakeford (2498) <sup>2</sup>			
		vote	share
Young J.	Lab	734	59.5
Williams D.	Lab	686	-
Brown R.	LD	500	40.5
Todd M. Ms.	LD	467	-
<b>Turnout</b>		51.6	19.0

## Wansbeck 1995

Bedlington Central (4030) <sup>3</sup>			
		vote	share
Douglas A.*	Lab	965	57.1
Wilson G.*	Lab	904	-
Roe M.	Lab	868	-
Pegg A.	LD	495	29.3
Scott M.	Con	229	13.6
<b>Turnout</b>		36.5	27.8

Bedlington East (3267) <sup>3</sup>			
		vote	share
Graham J.*	Lab	800	68.2
Richmond B.*	Lab	722	-
Mullen J.*	Lab	722	-
Major R.	LD	373	31.8
<b>Turnout</b>		35.8	36.4

Bedlington West (3282) <sup>3</sup>			
		vote	share
Armstrong D.*	Lab	710	53.7
Jackson L. Ms.*	Lab	693	-
Tyler J.	Lab	636	-
Todd G.	LD	613	46.3
<b>Turnout</b>		37.5	7.3

Bothal (4556) <sup>3</sup>			
		vote	share
Lavery I.	Lab	1,161	62.0
Devon P. Ms.*	Lab	1,139	-
Wilson T.	Lab	1,042	-
Davidson I. Ms.	LD	712	38.0
<b>Turnout</b>		38.4	24.0

Central (2571) <sup>3</sup>			
		vote	share
Scott J.*	Lab	618	70.2
Ferrigon M.*	Lab	593	-
Lashley R.	Lab	557	-
Farrar J.	LD	262	29.8
<b>Turnout</b>		35.3	40.5

Choppington (1838) <sup>2</sup>			
		vote	share
Vaughan P.	Lab	0	0.0
Rowe A.	Lab	0	-
<b>Turnout</b>		0.0	0.0

College (2522) <sup>3</sup>			
		vote	share
Brown D. Ms.*	Lab	0	-
Maugham K.*	Lab	0	0.0
Ferrigon M.	Lab	0	-
<b>Turnout</b>		0.0	0.0

Guide Post (3076) <sup>3</sup>			
		vote	share
Moran P.*	Lab	0	-
Tweddle J.*	Lab	0	0.0
Ledger D.*	Lab	0	-
<b>Turnout</b>		0.0	0.0

Haydon (2781) <sup>3</sup>			
		vote	share
Gallagher T.*	Lab	887	68.8
Tully J.*	Lab	780	-
McCormack J.*	Lab	780	-
Morgan A. Ms.	LD	403	31.2
<b>Turnout</b>		42.4	37.5

Hirst (2959) <sup>3</sup>			
		vote	share
Parry K.*	Lab	795	77.0
Parker C.*	Lab	747	-
Straughan G.*	Lab	734	-
Hawkhead P. Ms.	LD	237	23.0
<b>Turnout</b>		35.0	54.1

Newbiggin East (3005) <sup>3</sup>			
		vote	share
Dodds J.*	Lab	0	-
Wallace M. Ms.	Lab	0	0.0
Loggie G.*	Lab	0	-
<b>Turnout</b>		0.0	0.0

Newbiggin West (2460) <sup>3</sup>			
		vote	share
Birch J.*	Lab	0	-
Brown L.*	Lab	0	-
Storey R.*	Lab	0	0.0
<b>Turnout</b>		0.0	0.0

Park (2437) <sup>3</sup>			
		vote	share
Devon J.*	Lab	0	-
Murphy D.*	Lab	0	-
Smith J.*	Lab	0	0.0
<b>Turnout</b>		0.0	0.0

Seaton (4159) <sup>3</sup>			
		vote	share
Hedley D.*	Lab	1,040	64.3
Cole G.*	Lab	1,003	-
Murdie J.*	Lab	966	-
Morgan L.	LD	578	35.7
<b>Turnout</b>		37.6	28.6

Sleekburn (2812) <sup>3</sup>			
		vote	share
Stewart A.	Lab	742	70.9
Wallace A.*	Lab	618	-
Young K.*	Lab	608	-
Shephard S.	LD	305	29.1
<b>Turnout</b>		35.5	41.7

Stakeford (2518) <sup>2</sup>			
		vote	share
Young J.*	Lab	778	75.1
Williams D.*	Lab	694	-
Shephard M.	LD	258	24.9
<b>Turnout</b>		40.2	50.2

## Wansbeck 1999

Bedlington Central (3199) <sup>3</sup>			
		vote	share
Shephard S.	LD	644	61.5
Tyler V. Ms.	Lab	403	38.5
Douglas A.*	Lab	400	-
Roe M.*	Lab	357	-
<b>Turnout</b>		31.7	23.0

Bedlington East (3514) <sup>3</sup>			
		vote	share
Graham J.*	Lab	467	71.6
Richmond B.*	Lab	409	-
Mullen J.*	Lab	379	-
Scott E. Ms.	Con	185	28.4
<b>Turnout</b>		19.4	43.3

Bedlington West (3873) <sup>3</sup>			
		vote	share
Todd G.	LD	826	67.6
Tyler J.*	Lab	396	32.4
Armstrong D.*	Lab	376	-
Roe L. Ms.*	Lab	343	-
<b>Turnout</b>		29.8	35.2

Bothal (3368) <sup>3</sup>			
		vote	share
Davidson I. Ms.	LD	698	62.5
Reed S.	LD	674	-
Urwin K. Ms.	Lab	419	37.5
Devon P. Ms.*	LD	401	-
Wilson T.*	Lab	379	-
<b>Turnout</b>		33.5	25.0

Central (3000) <sup>3</sup>			
		vote	share
Davis A.	LD	588	52.5
Lashley R.*	Lab	354	31.6
Ferrigon M.*	Lab	354	-
Scott J.*	Lab	346	-
Scott M.	Con	177	15.8
Turnout		31.3	20.9

Choppington (2258) <sup>2</sup>			
		vote	share
Vaughan P.*	Lab	417	69.5
Rowe A.*	Lab	349	-
Coatesworth M. Ms.	LD	107	17.8
Fenwick M. Ms.	Con	76	12.7
Turnout		24.8	51.7

College (3011) <sup>3</sup>			
		vote	share
Conroy J.	LD	589	55.7
Patterson M. Ms.	LD	554	-
Lavery I.*	Lab	469	44.3
Ferrigon M.*	Lab	397	-
Maughan K.*	Lab	367	-
Turnout		35.5	11.3

Guide Post (2909) <sup>3</sup>			
		vote	share
Moran P.*	Lab	448	73.6
Ledger D.*	Lab	434	-
Tweddle J.*	Lab	409	-
Denton E.	Con	161	26.4
Turnout		23.0	47.1

Haydon (3472) <sup>3</sup>			
		vote	share
Little G.	LD	709	57.1
Smart R.	LD	670	-
Brown D. Ms.*	Lab	532	42.9
McCormack J.*	Lab	516	-
Tully J.*	LD	487	-
Turnout		35.1	14.3

Hirst (2749) <sup>3</sup>			
		vote	share
Bircham M. Ms.	LD	503	52.5
Parry K.*	Lab	455	47.5
Thompson P. Ms.	LD	444	-
Morris D.	LD	431	-
Parker C.*	Lab	413	-
Straughan G.*	Lab	407	-
Turnout		36.6	5.0

Newbiggin East (2960) <sup>3</sup>			
		vote	share
Thompson J.	LD	963	63.3
McAlpine R.	LD	795	-
Rutter M.	LD	791	-
Loggie G.*	Lab	558	36.7
Dodds J.*	Lab	521	-
Brown L.*	Lab	405	-
Turnout		49.5	26.6

Newbiggin West (2114) <sup>2</sup>			
		vote	share
Boon D.	LD	522	51.4
Peden M.	LD	510	-
Birch J.*	Lab	494	48.6
Storey R.*	Lab	470	-
Turnout		50.0	2.8

Park (3068) <sup>3</sup>			
		vote	share
Devon J.*	Lab	515	53.7
Dunn J.*	Lab	510	-
McGregor A.	LD	444	46.3
Smith J.*	Lab	443	-
Turnout		31.6	7.4

Seaton (3080) <sup>3</sup>			
		vote	share
Peel S.	LD	492	52.0
Thompson P. Ms.	LD	488	-
Durmaz J. Ms.	LD	477	-
Hedley D.*	Lab	391	41.3
Murdie J.*	Lab	364	-
Cole G.*	Lab	359	-
Grant S. Ms.	Con	64	6.8
Turnout		31.2	10.7

Sleekburn (3268) <sup>3</sup>			
		vote	share
Stewart A.*	Lab	546	56.8
Mason L. Ms.	Lab	498	-
Wallace A.*	Lab	459	-
Major R.	LD	415	43.2
Turnout		28.8	13.6

Stakeford (2310) <sup>2</sup>			
		vote	share
Young J.*	Lab	574	78.1
Williams D.*	Lab	484	-
Debbage Y. Ms.	Con	161	21.9
Turnout		32.9	56.2

## Wansbeck 2003

Bedlington Central (3305) <sup>3</sup>			
		vote	share
Coatesworth. M. Ms.	LD	798	50.1
Tyler V. Ms.*	Lab	795	49.9
Pegg A.	LD	770	-
Graham D.	Lab	726	-
Mason P.	Lab	624	-
Reed M. Ms.	LD	613	-
Turnout		50.1	0.2

Bedlington East (3561) <sup>3</sup>			
		vote	share
Harbottle I. Ms.	Lab	905	62.4
Douglas A.*	Lab	893	-
Richmond B.*	Lab	864	-
Clark M.	LD	545	37.6
Simm A.	LD	501	-
Watson E. Ms.	LD	415	-
Turnout		44.5	24.8

Bedlington West (4193) <sup>3</sup>			
		vote	share
Todd G.*	LD	1,068	56.3
Fitzsimmons A. Ms.	LD	915	-
Patterson M. Ms.*	LD	907	-
Armstrong D.*	Lab	830	43.7
Tyler J.*	Lab	821	-
Cazaly E.	Lab	784	-
Turnout		48.1	12.5

Bothal (3371) <sup>3</sup>			
		vote	share
Davidson I. Ms.*	Lab	866	51.5
Urwin K.*	Lab	841	-
Reed S.*	LD	814	48.5
Blackmore D.	LD	774	-
Bircham L.	LD	763	-
Dobie J.	Lab	697	-
Turnout		52.5	3.1

Central (2868) <sup>3</sup>			
		vote	share
Wilson T.	Lab	836	61.0
Straughan G.	Lab	834	-
Lashley R.*	Lab	820	-
Davis A. Ms.*	LD	534	39.0
Rochester L. Ms.	LD	492	-
Rogerson M.	LD	412	-
Turnout		50.9	22.0

Choppington (2175) <sup>2</sup>			
		vote	share
Nicholson D.	Lab	445	75.0
Vaughan P.*	Lab	422	-
McMillan S. Ms.	LD	148	25.0
Walker C.	LD	128	-
Turnout		48.2	50.1

College (2717) <sup>3</sup>			
		vote	share
Kirkup M.	LD	760	50.3
Briggs J.	Lab	750	49.7
Roe L. Ms.	Lab	625	-
Sawyer J.	Lab	563	-
Rutter J. Ms.	LD	477	-
Sweet C. Ms.	LD	414	-
Turnout		49.8	0.7

Guide Post (2865) <sup>3</sup>			
		vote	share
Ledger D.*	Lab	965	62.1
Young J. Ms.*	Lab	930	-
Wallace A. Ms.	Lab	831	-
Walton A. Ms.	LD	451	29.0
Shearer S.	LD	409	-
Laidlow P.	LD	295	-
Tweddle J.*	Ind	138	8.9
Turnout		54.0	33.1

Haydon (3772) <sup>3</sup>			
		vote	share
Bilcliff A. Ms.	Lab	881	51.0
Brown D. Ms.*	Lab	879	-
Liddle G.*	LD	845	49.0
Davidson J.	Lab	841	-
Liddle M. Ms.	LD	796	-
Patterson E.*	LD	709	-
Turnout		49.0	2.1

Hirst (2353) <sup>3</sup>			
		vote	share
Parry K.*	Lab	686	59.8
Wilson J.	Lab	645	-
Parker C.	Lab	604	-
Thompson P. Ms.*	LD	461	40.2
Bircham M. Ms.*	LD	440	-
Knox H.	LD	345	-
Turnout		51.8	19.6

Newbiggin East (2658) <sup>3</sup>			
		vote	share
Wallace M. Ms.	Lab	684	51.4
Dent I. Ms.	Lab	654	-
Thompson J.*	LD	647	48.6
Goodman C. Ms.	Lab	626	-
Rutter M.*	LD	590	-
McAlpine R.*	LD	553	-
Turnout		53.6	2.8

Newbiggin West (2032) <sup>2</sup>			
		vote	share
Birch J.	Lab	589	59.7
Roll T.	Lab	518	-
Boon D.*	LD	397	-
Peden M.*	LD	397	40.3
Turnout		54.4	19.5

Park (2757) <sup>3</sup>			
		vote	share
Dunn J.*	Lab	801	73.3
Devon J.*	Lab	763	-
Purvis M.	Lab	720	-
McGregor A.*	LD	292	26.7
Miley W. Ms.	LD	284	-
Bircham A.	LD	278	-
Turnout		45.0	46.6

Seaton (2900) <sup>3</sup>			
		vote	share
Lang K. Ms.	Lab	919	63.6
Brown L.	Lab	910	-
Lang M. Ms.	Lab	850	-
Thompson P. Ms.*	LD	526	36.4
Durmaz J. Ms.*	LD	497	-
Peel S.*	LD	495	-
<b>Turnout</b>		53.9	27.2

Sleekburn (3064) <sup>3</sup>			
		vote	share
Stewart A.*	Lab	905	66.6
Mason L. Ms.*	Lab	875	-
Wallace A.*	Lab	814	-
Major R.	LD	453	33.4
Goodwill J.	LD	452	-
Imrie V. Ms.	LD	355	-
<b>Turnout</b>		48.8	33.3

Stakeford (2343) <sup>2</sup>			
		vote	share
Young J.*	Lab	756	62.4
Rowe A.*	Lab	681	-
Hetherington V. Ms.	LD	372	30.7
Carr M. Ms.	LD	348	-
Elphinstone A. Ms.	Con	84	6.9
Scott M.	Con	72	-
<b>Turnout</b>		54.0	31.7

## Wansbeck 2007

Ashington Central (2697) <sup>3</sup>			
		vote	share
Carey B. Ms.	Lab	477	38.0
Wilson T.*	Lab	476	-
Vasey B.	FRESH	431	34.3
McCallum G. Ms.	Lab	383	-
Goswellen K. Ms.	LD	347	27.6
<b>Turnout</b>		36.0	3.7

Bedlington Central (3410) <sup>3</sup>			
		vote	share
Pegg A.*	LD	821	58.5
Allen M. Ms.	LD	762	-
Goodwill J. Ms.	LD	727	-
Tyler V. Ms.*	Lab	441	31.4
Armstrong D.	Lab	419	-
Dobie J.	Lab	395	-
Evans D.	Fresh	141	10.0
<b>Turnout</b>		40.9	27.1

Bedlington East (3245) <sup>3</sup>			
		vote	share
Harbottle I. Ms.*	Lab	556	48.2
Tyler J.	Lab	547	-
Richmond B.*	Lab	539	-
James D. Ms.	LD	364	31.5
Stuart J. Ms.	Fresh	234	20.3
<b>Turnout</b>		30.6	16.6

Bedlington North (2121) <sup>2</sup>			
		vote	share
Harratt P.	LD	441	58.4
Major R.	LD	381	-
Feary B.	Lab	185	-
Graham D.	Lab	185	24.5
Aynsley T. Ms.	Con	129	17.1
Fenwick M. Ms.	Con	93	-
<b>Turnout</b>		35.2	33.9

Bedlington South (2265) <sup>2</sup>			
		vote	share
Todd G.*	LD	448	45.9
Goodwill J.	LD	358	-
Fitzsimmons A. Ms.*	Lab	296	30.3
Jenkinson C.	Lab	285	-
Stephenson G.	Ind	159	16.3
Noble E. Ms.	Fresh	73	7.5
<b>Turnout</b>		39.2	15.6

Bothal North (1769) <sup>2</sup>			
		vote	share
Kirkup M.*	LD	319	40.9
Davidson I. Ms.*	Lab	277	35.6
Davidson J.	Lab	273	-
Sikander B.	LD	234	-
Gould P.	Fresh	183	23.5
<b>Turnout</b>		39.4	5.4

Bothal South (2303) <sup>2</sup>			
		vote	share
Reed S.*	LD	612	52.6
McGregor A.	LD	588	-
Walkinshaw R.	Lab	332	28.5
Clark M. Ms.	Lab	286	-
Dixon K.	Fresh	219	18.8
<b>Turnout</b>		47.1	24.1

Choppington (2285) <sup>2</sup>			
		vote	share
Armstrong S.	Lab	410	60.7
Vaughan P.*	Lab	403	-
Boden J. Ms.	Fresh	265	39.3
<b>Turnout</b>		33.0	21.5

College (3009) <sup>3</sup>			
		vote	share
Sawyer J.	Lab	585	42.3
Briggs J.*	Lab	545	-
Roe L. Ms.*	Lab	438	-
Brannigan M. Ms.	Fresh	415	30.0
Reed M. Ms.	LD	383	27.7
Foster S.	Fresh	356	-
<b>Turnout</b>		37.3	12.3

Guide Post (3371) <sup>3</sup>			
		vote	share
Butler R.	Lab	750	42.2
Ledger D.*	Lab	678	-
Wallace A. Ms.*	Lab	556	-
Carr M. Ms.	LD	414	23.3
Ferson S.	Fresh	359	20.2
Wharton T.	Fresh	299	-
Elphinstone A. Ms.	Con	255	14.3
<b>Turnout</b>		40.2	18.9

Haydon (3180) <sup>3</sup>			
		vote	share
Johnson A. Ms.	LD	601	38.5
Bircham M. Ms.	LD	556	-
Gallacher B.	Lab	503	32.2
Turnbull E.	Lab	479	-
Trebillcock K.	Lab	466	-
Boden M.	Fresh	456	29.2
<b>Turnout</b>		41.7	6.3

Hirst (2076) <sup>2</sup>			
		vote	share
Parry K.*	Lab	347	56.5
Parker C.*	Lab	332	-
Thompson P. Ms.	LD	267	43.5
<b>Turnout</b>		29.4	13.0

Newbiggin East (2280) <sup>2</sup>			
		vote	share
Thompson A.*	LD	518	50.0
Rutter M.	LD	435	-
Wallace M. Ms.*	Lab	333	32.2
Dent I. Ms.*	Lab	323	-
Twizell S. Ms.	Fresh	121	11.7
Grant S. Ms.	Con	63	6.1
<b>Turnout</b>		41.4	17.9

Newbiggin West (2391) <sup>2</sup>			
		vote	share
Boon M.	LD	511	56.3
Peden M.	LD	508	-
Roll T.*	Lab	397	43.7
Bell M.	Lab	370	-
<b>Turnout</b>		36.0	12.6

Park (3342) <sup>3</sup>			
		vote	share
Devon J.*	Lab	693	59.6
Purvis M.*	Lab	602	-
Bridges V.	Fresh	469	40.4
Roe M.	Lab	442	-
<b>Turnout</b>		31.9	19.3

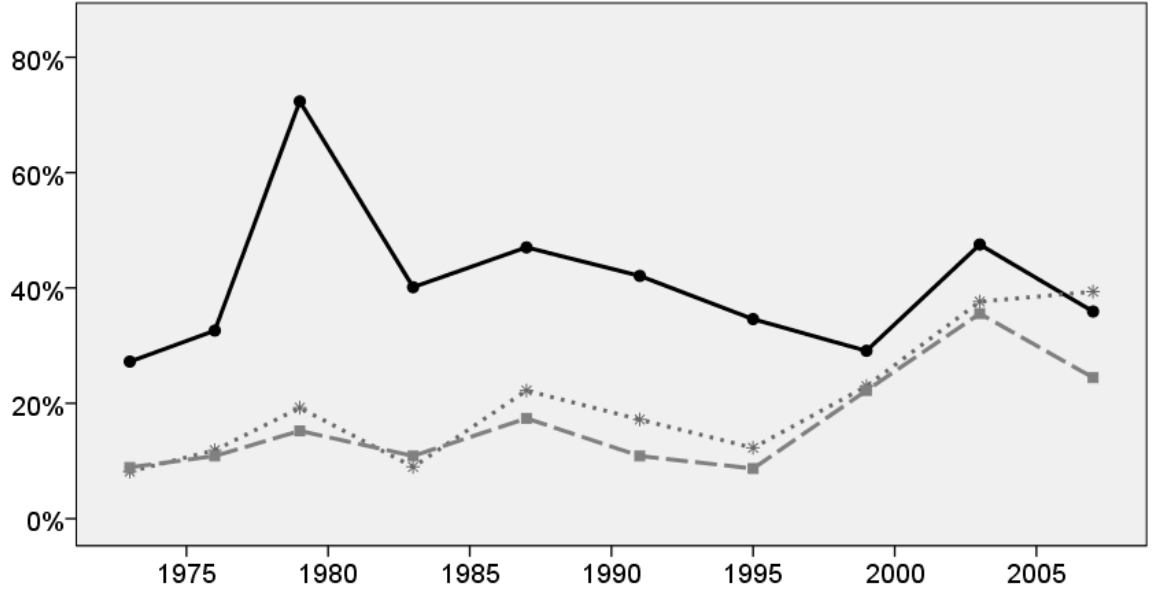
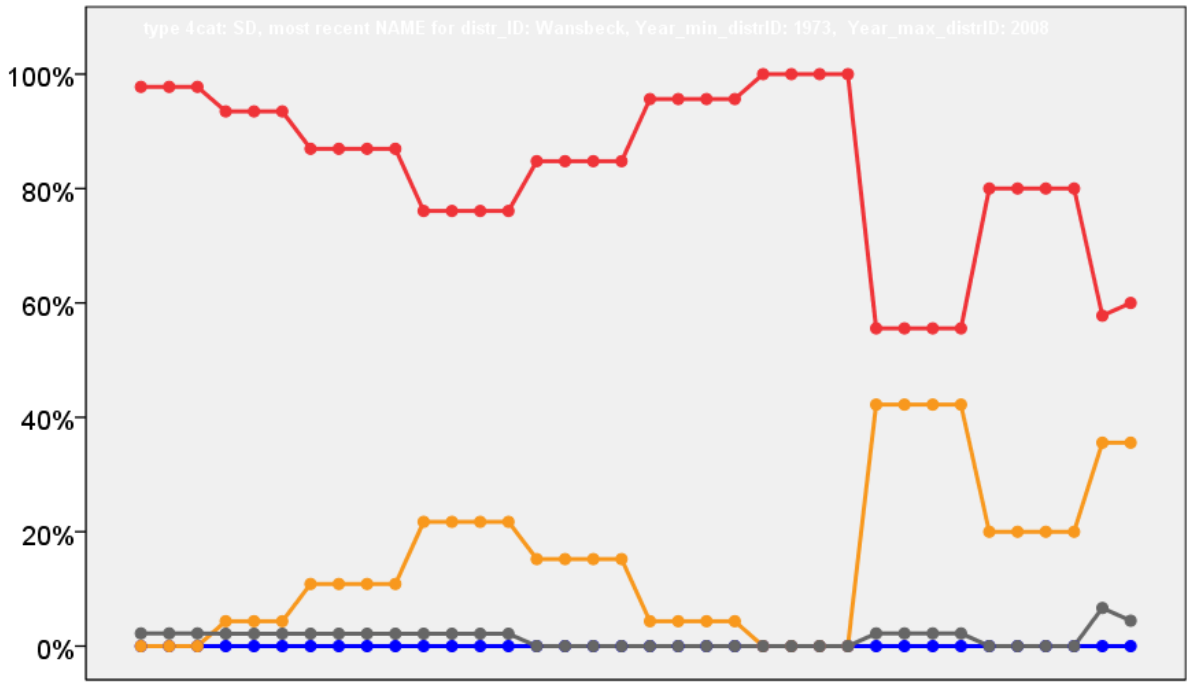
Seaton (2830) <sup>3</sup>			
		vote	share
Brannigan N.	Fresh	541	54.0
Lang M. Ms.*	Lab	460	46.0
Brown L.*	Lab	431	-
Brown V. Ms.	Lab	394	-
<b>Turnout</b>		33.1	8.1

Sleekburn (3292) <sup>3</sup>			
		vote	share
Stewart A.*	Lab	645	56.1
Wallace A.*	Lab	555	-
Dixon A. Ms.	Lab	530	-
Dobson J.	LD	369	32.1
Rutter J. Ms.	LD	245	-
Durmaz J. Ms.	LD	213	-
Stuart J.	Fresh	135	11.7
<b>Turnout</b>		31.9	24.0

Stakeford (2042) <sup>2</sup>			
		vote	share
Young J.*	Lab	342	46.9
Rowe A.*	Lab	260	-
Hetherington V. Ms.*	LD	239	32.8
Thompson P. Ms.	LD	156	-
Boden C. Ms.	Fresh	148	20.3
<b>Turnout</b>		37.4	14.1







Add graph 'Turnout & Women' here...