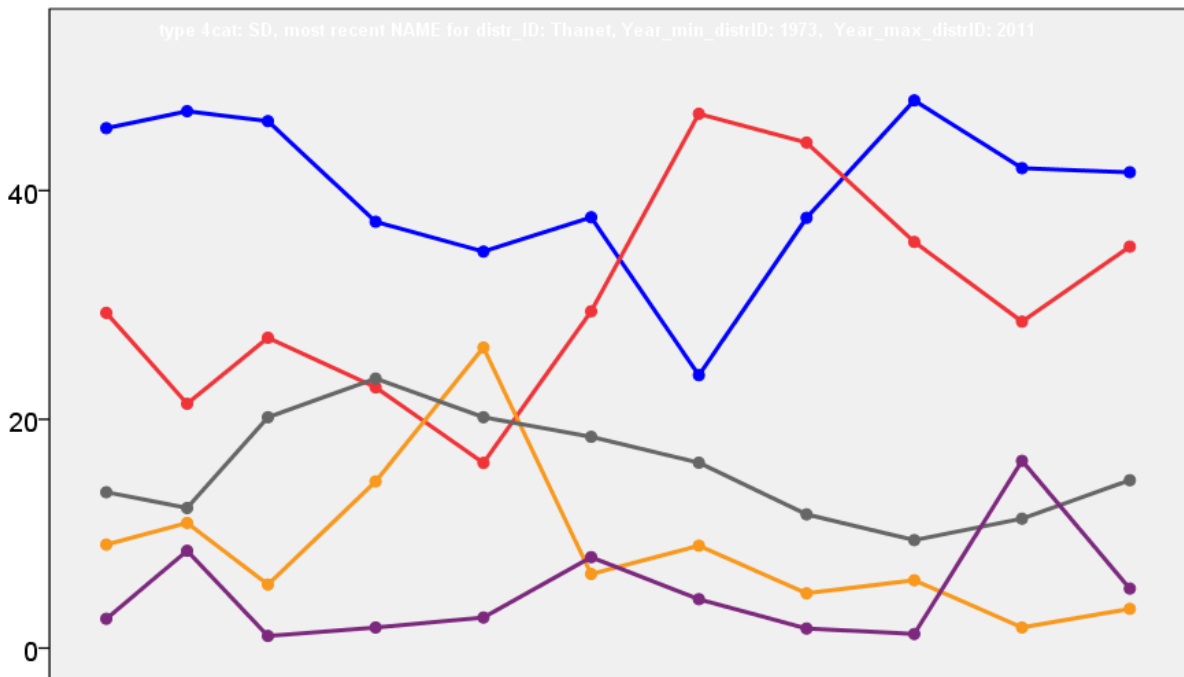


# Thanet District Council Election Results 1973-2011



Colin Rallings and Michael Thrasher  
The Elections Centre  
Plymouth University

The information contained in this report has been obtained from a number of sources. Election results from the immediate post-reorganisation period were painstakingly collected by Alan Willis largely, although not exclusively, from local newspaper reports. From the mid-1980s onwards the results have been obtained from each local authority by the Elections Centre. The data are stored in a database designed by Lawrence Ware and maintained by Brian Cheal and others at Plymouth University. Despite our best efforts some information remains elusive whilst we accept that some errors are likely to remain. Notice of any mistakes should be sent to [elections@plymouth.ac.uk](mailto:elections@plymouth.ac.uk). The results sequence can be kept up to date by purchasing copies of the annual Local Elections Handbook, details of which can be obtained by contacting the email address above.

Front cover: the graph shows the distribution of percentage vote shares over the period covered by the results. The lines reflect the colours traditionally used by the three main parties. The grey line is the share obtained by Independent candidates while the purple line groups together the vote shares for all other parties.

Rear cover: the top graph shows the percentage share of council seats for the main parties as well as those won by Independents and other parties. The lines take account of any by-election changes (but not those resulting from elected councillors switching party allegiance) as well as the transfers of seats during the main round of local election.

The lower graph shows for each main round of local elections the overall percentage turnout (solid line), the percentage of women candidates standing at (dotted line) and the percentage of women among those elected (hashed line).

## Thanet - 1973

### Minster (2542)<sup>2</sup>

		vote	share
<b>Morphew E.</b>	Ind	665	51.8
<b>Osbourne P.</b>	Ind	607	-
Lamb M.	Con	489	38.1
Kaye K. Ms.	Con	381	-
Greenfield J.	Lab	129	10.1
Hankin H.	Ind	120	-
Mills B.	Lab	114	-
<b>Turnout</b>		50.5	13.7

### No. 1 (Margate: Birchington) (7085)<sup>5</sup>

		vote	share
<b>Dawson B.</b>	Ind	1,947	42.3
<b>Kemp B.</b>	Ind	1,516	-
<b>Whewell A.</b>	Con	1,496	32.5
<b>Wanstall W.</b>	Ind	1,486	-
<b>Bentley D.</b>	Ind	1,236	-
Hibberd C.	Con	1,225	-
Thomas N.	Con	1,222	-
Farrington L.	Con	1,166	-
Tobutt J.	Con	1,113	-
Abrahams G.	Ind	918	-
Bloore P.	Lib	806	17.5
Macpherson F.	Lib	732	-
Hudson N.	Lib	709	-
Macpherson R.	Lib	538	-
Williams G.	Lib	404	-
Lowe M. Ms.	Lab	353	7.7
Amor J.	Lab	296	-
Watts R.	Lab	285	-
Stacey E. Ms.	Lab	260	-
Deas A.	Lab	241	-
<b>Turnout</b>		65.0	9.8

### No. 10 (Ramsgate: Northwood) (5668)<sup>4</sup>

		vote	share
<b>Molock D.</b>	Lab	1,415	67.4
<b>Dickinson R.</b>	Lab	1,337	-
<b>Gray L.</b>	Lab	1,324	-
<b>Murphy D.</b>	Lab	1,307	-
Johnson R.	Con	683	32.6
Rowland J. Ms.	Con	645	-
Adshead R. Ms.	Con	636	-
Long D.	Con	633	-
<b>Turnout</b>		37.0	34.9

### No. 11 (Ramsgate: St. Lawrence) (8665)<sup>6</sup>

		vote	share
<b>Bishop L.</b>	Lab	2,133	62.7
<b>Davies M. Ms.</b>	Lab	2,099	-
<b>McEvely B.</b>	Lab	2,074	-
<b>Jones K.</b>	Lab	2,070	-
<b>Rees A.</b>	Lab	2,067	-
<b>Godfrey R.</b>	Lab	1,959	-
Taylor R.	Con	1,267	37.3
Kemp E. Ms.	Con	1,264	-
Howes J.	Con	1,223	-
Barton C.	Con	1,219	-
Thomas D.	Con	1,213	-
Wagstaffe W.	Con	1,170	-
<b>Turnout</b>		39.2	25.5

### No. 13 (Ramsgate: Southwood) (3474)<sup>2</sup>

		vote	share
<b>Groombridge S.</b>	Con	797	44.4
<b>Thomas J.</b>	Con	671	-
Duddington W.	Ind	543	30.3
Rabson N.	Lab	454	25.3
<b>Turnout</b>		51.6	14.2

### No. 14 (Ramsgate: West Central & West Cliff) (5545)<sup>4</sup>

		vote	share
<b>McEvoy B.</b>	Con	950	41.8
<b>Hudson V.</b>	Con	916	-
<b>Corbitt L.</b>	Con	904	-
<b>Armstrong M.</b>	Con	787	-
Corder F.	Lab	681	30.0
Davies J.	Lab	681	-
Jones P. Ms.	Lab	664	-
Josephs I.	Ind Con	642	28.2
Harnett G.	Lab	642	-
<b>Turnout</b>		41.0	11.8

### No. 15 (Broadstairs: Central) (3870)<sup>3</sup>

		vote	share
<b>Cox J.</b>	Lib	1,218	52.0
<b>Shutler W.</b>	Lib	980	-
<b>Thorpe E.</b>	Lib	952	-
Robinson E.	Con	895	38.2
Simcock W.	Con	892	-
Ward R.	Con	841	-
Davies E.	Lab	230	9.8
<b>Turnout</b>		60.5	13.8

### No. 16 (Broadstairs: Kingsgate) (4222)<sup>3</sup>

		vote	share
<b>Tucker A.</b>	Con	854	61.9
<b>White B.</b>	Con	826	-
<b>Booth N. Ms.</b>	Con	759	-
Taylor R. Ms.	Lab	525	38.1
McNally A. Ms.	Lab	467	-
Farmer J.	Lab	310	-
<b>Turnout</b>		32.7	23.9

### No. 19 (Broadstairs: Upton) (2891)<sup>2</sup>

		vote	share
<b>Smith L.</b>	Con	832	58.9
<b>Longprice A.</b>	Con	751	-
Dell A. Ms.	Ind Lib	405	28.7
Nobbs-Nesbitt D.	Lab	175	12.4
<b>Turnout</b>		48.8	30.2

### No. 2 (Margate: Cecil & Ethelbert) (3271)<sup>2</sup>

		vote	share
<b>Hayward S.</b>	Lab	741	61.4
<b>Hayward S. Ms.</b>	Lab	726	61.4
Mesure J.	Con	465	38.6
Tolley H.	Con	450	-
<b>Turnout</b>		36.9	0.0

### No. 3 (Margate: Marine & Pier) (3810)<sup>3</sup>

		vote	share
<b>Anish H.</b>	Con	1,660	77.4
<b>Jones J.</b>	Con	1,518	-
<b>Knight S.</b>	Con	1,503	-
Finegold J.	Lab	484	22.6
Rowland J.	Lab	481	-
Kearney E. Ms.	Lab	467	-
<b>Turnout</b>		56.3	54.9

### No. 4 (Margate: Cliftonville) (5074)<sup>3</sup>

		vote	share
<b>Hoser C.</b>	Con	892	62.4
<b>Masters D.</b>	Con	861	-
<b>Rowland M.</b>	Con	817	-
Sankey P. Ms.	Lab	537	37.6
Rowland S. Ms.	Lab	528	-
Finegold M.	Lab	480	-
<b>Turnout</b>		28.2	24.8

### No. 5 (Margate: Park) (6384)<sup>4</sup>

		vote	share
<b>Matthews F.</b>	Ind	1,261	48.0
<b>Solly G.</b>	Ind	1,095	-
<b>Tree H.</b>	Ind	978	-
<b>Sammonds C.</b>	Ind	871	-
Sharkey D. Ms.	Con	813	31.0
Saward B.	Con	717	-
Trussell S. Ms.	Con	592	-
Eley J.	Lab	552	21.0
Hoare G.	Lab	533	-
Atherton V. Ms.	Con	511	-
Foord P.	Lab	476	-
Pitt M.	Lab	424	-
<b>Turnout</b>		41.1	17.1

### No. 6 (Margate: Salmestone) (4302)<sup>3</sup>

		vote	share
<b>Knott D.</b>	Lab	1,085	51.3
<b>Lane J.</b>	Lab	1,031	-
<b>Beerling B.</b>	Con	1,028	48.7
Knott M. Ms.	Lab	1,023	-
Stokes T.	Con	954	-
Waddington K.	Con	901	-
<b>Turnout</b>		49.1	2.7

### No. 7 (Margate: West) (4866)<sup>3</sup>

		vote	share
<b>Thompson E. Ms.</b>	Con	1,193	49.5
<b>Reilly D.</b>	Con	1,131	-
<b>Spurr A.</b>	Con	1,106	-
Tiltman I.	Lib	790	32.8
Regelous S.	Lib	759	-
Parsons L.	Lib	743	-
Stockford A.	Lab	429	17.8
Harris P.	Lab	397	-
Ennis L.	Lab	345	-
<b>Turnout</b>		49.6	16.7

### No. 9 (Ramsgate: East Central and East Cliff) (4204)<sup>3</sup>

		vote	share
<b>Thomas R.</b>	Con	848	52.4
<b>Peppiatt B.</b>	Con	791	-
<b>Easton E.</b>	Con	774	-
Wood P.	Lab	770	47.6
Woodbridge C. Ms.	Lab	757	-
Green B.	Lab	719	-
<b>Turnout</b>		38.5	4.8

### Pierremont (2747)<sup>2</sup>

		vote	share
<b>Amies F.</b>	Con	799	82.9
<b>Turtell G.</b>	Con	680	-
Coward R.	Lab	165	17.1
<b>Turnout</b>		35.1	65.8

### Sir Moses Montefiore (3098)<sup>2</sup>

		vote	share
<b>Cole T.</b>	Con	731	62.4
<b>Smith G.</b>	Con	691	-
Barber A. Ms.	Lab	441	37.6
Scoates J. Ms.	Lab	428	-
<b>Turnout</b>		37.8	24.7

### St. Peters (3275)<sup>2</sup>

		vote	share
<b>Dell P.</b>	Lib	886	55.3
<b>Haydon J. Ms.</b>	Lib	700	-
Hammond W.	Con	578	36.1
Velvick V.	Con	525	-
Taylor R. Ms.	Lab	138	8.6
<b>Turnout</b>		48.9	19.2

### Thanet Parishes (1283)

		vote	share
<b>Cole W.</b>	Con	0	0.0
<b>Turnout</b>		0.0	0.0

Westgate-On-Sea (5087) <sup>4</sup>			
		vote	share
Finlay P.	Con	1,317	45.3
Goodrich W.	Con	1,246	-
Peterkin M. Ms.	Ind	1,038	35.7
Paige C.	Con	1,031	-
Herbert D.	Ind	942	-
O'Toole K.	Ind	936	-
Ridler S.	Con	877	-
Francis P.	Ind	818	-
Watkins C.	Lab	550	18.9
Forster P.	Lab	521	-
Knott A.	Lab	482	-
<b>Turnout</b>		57.1	9.6

## Thanet - 1976

Minster (2482) <sup>2</sup>			
		vote	share
Young J.	Con	595	34.9
Osborne P.	Ind	570	33.4
Kaye K. Ms.	Con	443	-
Pickering H.	Lab	438	25.7
Greenfield J.	Lab	233	-
Phillips B.	Lib	103	6.0
Lathen J.	Lib	99	-
<b>Turnout</b>		57.7	1.5

No. 1 (Margate: Birchington) (6277) <sup>5</sup>			
		vote	share
Dawson W.	Ind	2,030	48.7
Wanstall A.	Ind	1,829	-
Hudson N.	Ind	1,709	-
Kemp W.	Ind	1,695	-
Bentley D.	Ind	1,634	-
Whewell A.	Con	1,457	34.9
Hibberd C.	Con	1,213	-
Betts H. Ms.	Con	1,177	-
Queen P. Ms.	Con	1,113	-
Buch F.	Con	1,091	-
Bloore P.	Lib	497	11.9
Macpherson F.	Lib	462	-
Bradbury H.	Lib	316	-
Smithers G.	Lab	187	4.5
<b>Turnout</b>		59.2	13.7

No. 10 (Ramsgate: Northwood) (5579) <sup>4</sup>			
		vote	share
Molock D.	Lab	1,129	44.4
Davies M. Ms.	Lab	1,039	-
Dickinson R.	Lab	1,005	-
Gray L.	Lab	993	-
Johnson R.	Con	885	34.8
Stirups J. Ms.	Con	769	-
Dewing E.	Lib	416	16.4
Ives D.	Lib	399	-
Munson K.	NF	113	4.4
<b>Turnout</b>		45.6	9.6

No. 11 (Ramsgate: St. Lawrence) (8618) <sup>6</sup>			
		vote	share
Bishop L.	Lab	1,934	55.1
Jones K.	Lab	1,844	-
Rees A.	Lab	1,819	-
McEvelly B.	Lab	1,810	-
Godfrey G.	Lab	1,786	-
Willett M.	Lab	1,772	-
Smith A.	Con	1,578	44.9
Preston P.	Con	1,538	-
<b>Turnout</b>		40.8	10.1

No. 13 (Ramsgate: Southwood) (3572) <sup>2</sup>			
		vote	share
Marshall G.	Con	1,122	60.1
Thomas J.	Con	966	-
Josephs I.	RA&Lib	402	21.5
Franklin G.	Lab	342	18.3
Foord P.	Lab	276	-
<b>Turnout</b>		52.2	38.6

No. 14 (Ramsgate: West Central & West Cliff) (5440) <sup>4</sup>			
		vote	share
Hudson V.	Con	1,247	68.7
Taylor L.	Con	1,231	-
Miles P. Ms.	Con	1,194	-
Corbitt L.	Con	1,121	-
Taylor J.	Lab	567	31.3
Corder F.	Lab	556	-
Corder B. Ms.	Lab	546	-
George R.	Lab	545	-
<b>Turnout</b>		33.3	37.5

No. 15 (Broadstairs: Central) (3871) <sup>3</sup>			
		vote	share
Shutler W.	Con	1,223	53.3
Attkins M. Ms.	Con	1,209	-
Abbott M.	Con	1,134	-
Cox J.	Lib	837	36.5
Bracewell J.	Lib	631	-
Thorpe E.	Lib	488	-
Mileham H. Ms.	Lab	235	10.2
Langsmead W.	Lab	214	-
<b>Turnout</b>		55.1	16.8

No. 16 (Broadstairs: Kingsgate) (4242) <sup>3</sup>			
		vote	share
White B.	Con	993	54.4
Rossiter C.	Con	889	-
Booth N. Ms.	Con	852	-
Taylor R.	Lab	421	23.1
Flaig C. Ms.	Lib	411	22.5
Green M. Ms.	Lib	406	-
Taylor R. Ms.	Lab	371	23.1
Jennings G.	Lib	370	-
Rake B.	Lab	348	-
<b>Turnout</b>		43.5	31.3

No. 19 (Broadstairs: Upton) (2826) <sup>2</sup>			
		vote	share
Smith L.	Con	1,007	64.0
Thomson T.	Con	823	-
Hooker T.	Lib	412	26.2
Hopker D.	Lib	365	-
Taylor R.	Lab	154	9.8
<b>Turnout</b>		54.7	37.8

No. 2 (Margate: Cecil & Ethelbert) (3353) <sup>2</sup>			
		vote	share
Ennis L.	Lab	442	35.2
Burley G.	Con	417	33.2
Bullen R. Ms.	Res	398	31.7
McKenna T.	Lab	398	-
Purser T.	Con	374	-
Raven D.	Res	369	-
<b>Turnout</b>		43.1	2.0

No. 3 (Margate: Marine & Pier) (3917) <sup>3</sup>			
		vote	share
Hoser C.	Con	863	45.4
Masters D.	Con	816	-
Rowland M.	Con	773	-
Mortlock P.	Res	552	29.0
Greig D.	Res	539	-
Harvey C.	Lab	487	25.6
Leadbeater B. Ms.	Res	471	-
<b>Turnout</b>		51.0	16.4

No. 4 (Margate: Cliftonville) (5768) <sup>3</sup>			
		vote	share
Anish H.	Con	1,563	52.6
Dolding D.	Con	1,337	-
Jones J.	Con	1,273	-
Mendham P.	Res	1,097	36.9
Grove H.	Res	1,063	-
Vaughan J.	Res	1,010	-
Harvey M. Ms.	Lab	313	10.5
<b>Turnout</b>		50.8	15.7

No. 5 (Margate: Park) (6502) <sup>4</sup>			
		vote	share
Mathews F.	Ind	1,393	51.7
Solly G.	Ind	1,141	-
Tree H.	Ind	1,040	-
Sammonds C.	Ind	1,021	-
Toller P.	Con	718	26.7
Kearney A.	Con	683	-
Atherton V. Ms.	Con	656	-
Digby S.	Lab	439	16.3
Tilley E. Ms.	Lab	431	-
Eley J.	Lab	429	-
Hoare G.	Lab	390	-
O'Reilly E. Ms.	Lib	143	5.3
Pankhurst S.	Lib	136	-
Moore V. Ms.	Lib	122	-
<b>Turnout</b>		46.7	25.1

No. 6 (Margate: Salmestone) (4181) <sup>3</sup>			
		vote	share
Leadbeater W.	Res	788	41.9
Layton M.	Res	771	-
Twyman F.	Con	718	38.2
Ward R.	Con	686	-
Gibson J.	Res	675	-
Turner J.	Con	656	-
Young C.	Lab	376	20.0
Lowe M. Ms.	Lab	334	-
Stark P.	Lab	322	-
<b>Turnout</b>		50.8	3.7

No. 7 (Margate: West) (4653) <sup>3</sup>			
		vote	share
Thompson D. Ms.	Con	1,336	55.6
Reilly D.	Con	1,223	-
Barnes F.	Con	1,156	-
Tiltman I.	Lib	781	32.5
Fuller A.	Lib	662	-
Hardy R.	Lib	506	-
Forster P.	Lab	287	11.9
<b>Turnout</b>		52.6	23.1

No. 9 (Ramsgate: East Central and East Cliff) (4170) <sup>3</sup>			
		vote	share
Easton E.	Con	1,000	50.9
Peppiatt W.	Con	958	-
Thomas R.	Con	935	-
Lakey D.	Lab	607	30.9
Harnett G.	Lab	590	-
Barber A. Ms.	Lab	561	-
Glassborow A.	Lib	266	13.5
McDonald P. Ms.	Lib	251	-
Taylor J.	Lib	242	-
Murphy D.	Ind Lab	93	4.7
<b>Turnout</b>		47.1	20.0

Pierremont (2911) <sup>2</sup>			
		vote	share
Velvick C.	Con	868	68.8
Turtell G.	Con	867	-
Chapman K.	Lib	189	15.0
Nisse S. Ms.	Lib	146	-
Griffiths S.	Lab	132	10.5
Moreland J.	NF	73	5.8
<b>Turnout</b>		42.8	53.8

Sir Moses Montefiore (3040) <sup>2</sup>			
		vote	share
Cole T.	Con	847	74.2
Smith G.	Con	802	-
Mason R.	Lab	295	25.8
Blakemore E.	Lab	271	-
<b>Turnout</b>		37.6	48.3

St. Peters (4077) <sup>2</sup>			
		vote	share
Rogers D.	Con	775	41.2
Hammond W.	Con	764	-
Hogarth A.	Lib	701	37.3
Tracey J.	Lib	605	-
McKay R.	Lab	225	12.0
Taylor D.	NF	180	9.6
<b>Turnout</b>		44.3	3.9

Thanet Parishes (1281)			
		vote	share
<b>Cole W.</b>	Con	0	0.0
<b>Turnout</b>		0.0	0.0
Westgate-On-Sea (5219) <sup>4</sup>			
		vote	share
<b>Peterkin M. Ms.</b>	Ind	1,331	47.8
<b>Duffy S.</b>	Con	1,183	42.5
<b>Scarlett J.</b>	Con	1,128	-
<b>Brookes A.</b>	Con	1,126	-
Quy-Verlander D.	Con	1,086	-
Foster J.	Ind	1,015	-
Allen J. Ms.	Ind	1,000	-
Peters R.	Ind	969	-
Gyseman L.	Lab	272	9.8
<b>Turnout</b>		60.0	5.3

## Thanet - 1979

Beacon Road (3416) <sup>2</sup>			
		vote	share
<b>White B.</b>	Con	1,024	41.8
<b>Coates E.</b>	Con	999	-
Miller M. Ms.	Lab	961	39.2
Dalton J.	Lab	924	-
Hooker T.	Lib	464	18.9
Flaig C. Ms.	Lib	446	-
<b>Turnout</b>		71.7	2.6

Birchington East (4421) <sup>2</sup>			
		vote	share
<b>Dawson W.</b>	Ind	1,561	49.8
<b>Wanstall A.</b>	Ind	1,471	-
Buch F.	Con	835	26.6
Porter M.	Con	802	-
Lowe M.	Lab	387	12.3
McPherson F.	Lib	353	11.3
Bloore P.	Lib	349	-
<b>Turnout</b>		70.9	23.2

Birchington West (3130) <sup>2</sup>			
		vote	share
<b>Hudson N.</b>	Ind	1,301	53.7
<b>Bentley D.</b>	Ind	1,208	-
Sutton W.	Con	804	33.2
Evans R.	Con	792	-
Casey F.	Lib	158	6.5
Harrington P.	Lab	158	6.5
<b>Turnout</b>		77.3	20.5

Bradstowe (3385) <sup>2</sup>			
		vote	share
<b>Abbott M.</b>	Con	1,176	42.2
<b>Clahane R.</b>	Con	1,089	-
Cox J.	Lib	740	26.5
Pinder-White C.	Ind	582	20.9
Thorpe E.	Lib	374	-
Mileham H. Ms.	Lab	292	10.5
Miller E.	Lab	283	-
Darby J. Ms.	Ind	249	-
<b>Turnout</b>		82.4	15.6

Cecil (1413)			
		vote	share
<b>Payne D.</b>	Lib	365	30.5
Ennis L.	Lab	364	30.4
Joseph D. Ms.	Con	346	28.9
Reid W.	Ind	122	10.2
<b>Turnout</b>		84.7	0.1

Central Eastcliffe (4837) <sup>3</sup>			
		vote	share
<b>Peppiatt W.</b>	Con	1,497	52.2
<b>Sharp C.</b>	Con	1,489	-
<b>Murphy D.</b>	Con	1,488	-
Barder A. Ms.	Lab	1,373	47.8
Emms P.	Lab	1,352	-
Dickinson R.	Lab	1,340	-
<b>Turnout</b>		59.3	4.3

Central Westcliffe (5571) <sup>3</sup>			
		vote	share
<b>Taylor L.</b>	Con	2,044	64.0
<b>Corbitt L.</b>	Con	1,917	-
<b>Hudson V.</b>	Con	1,906	-
Harris P.	Lab	1,152	36.0
Harnett G.	Lab	1,136	-
Harris R. Ms.	Lab	1,102	-
<b>Turnout</b>		57.4	27.9

Cliftonville (5063) <sup>3</sup>			
		vote	share
<b>Anish H.</b>	Con	2,297	62.0
<b>Dolding D.</b>	Con	1,877	-
<b>Jones J.</b>	Con	1,851	-
St. John H.	Ind	819	22.1
Cammack J.	Ind	772	-
Papa-Adams S.	Ind	727	-
Nicholson J.	Lab	591	15.9
<b>Turnout</b>		73.2	39.9

Dane Park (3663) <sup>2</sup>			
		vote	share
<b>Tree H.</b>	Ind	1,295	54.3
<b>Sammonds C.</b>	Ind	1,266	-
Law W.	Con	1,090	45.7
Wood D.	Con	970	-
<b>Turnout</b>		65.1	8.6

Ethelbert (1657)			
		vote	share
<b>Gosden C.</b>	Con	393	38.5
Harvey C.	Lab	332	32.5
Burley G.	Ind	297	29.1
<b>Turnout</b>		61.7	6.0

Kingsgate (1765)			
		vote	share
<b>Booth N. Ms.</b>	Con	756	60.5
Brightling R.	Ind	201	16.1
Marriott J. Ms.	Lib	195	15.6
Hill A. Ms.	Lab	98	7.8
<b>Turnout</b>		70.8	44.4

Margate West (5121) <sup>3</sup>			
		vote	share
<b>Morton S. Ms.</b>	Ind	2,049	58.0
<b>Winston H.</b>	Ind	2,019	-
<b>Raven D.</b>	Ind	1,893	-
Barnes F.	Con	1,483	42.0
Smythe D.	Con	1,363	-
Masters D.	Con	1,324	-
<b>Turnout</b>		69.0	16.0

Marine (1680)			
		vote	share
<b>Rowland M.</b>	Con	481	44.8
Penfold H.	Ind	408	38.0
Lewis B.	Lab	185	17.2
<b>Turnout</b>		63.9	6.8

Minster (2486) <sup>2</sup>			
		vote	share
<b>Kaye K. Ms.</b>	Con	917	52.9
<b>Lowden A.</b>	Con	865	-
Pickering H.	Lab	818	47.1
Pickering A. Ms.	Lab	748	-
<b>Turnout</b>		69.8	5.7

Newington (3935) <sup>2</sup>			
		vote	share
<b>Harrison M.</b>	Lab	1,707	70.8
<b>Willett M.</b>	Lab	1,646	-
Thomas J.	Con	705	29.2
Preston P.	Con	696	-
<b>Turnout</b>		61.3	41.5

Northdown Park (4404) <sup>2</sup>			
		vote	share
<b>Mathews F.</b>	Ind	1,584	51.7
<b>Solly G.</b>	Ind	1,167	-
Kneeshaw K.	Con	854	27.9
Selmes G.	Con	824	-
Jones K.	Lab	624	20.4
<b>Turnout</b>		69.5	23.8

Northwood (5102) <sup>3</sup>			
		vote	share
<b>Molock D.</b>	Lab	1,978	56.9
<b>Davies M. Ms.</b>	Lab	1,769	-
<b>Gray L.</b>	Lab	1,768	-
Noon P.	Con	1,496	43.1
Maple A.	Con	1,489	-
Maw R.	Con	1,426	-
<b>Turnout</b>		68.1	13.9

Pier (1891)			
		vote	share
<b>Hoser C.</b>	Free Con	700	57.8
Fry K.	Lab	511	42.2
<b>Turnout</b>		64.0	15.6

Pierremont (2859) <sup>2</sup>			
		vote	share
<b>Turtell G.</b>	Con	1,449	76.7
<b>Velvick C.</b>	Con	1,429	-
Ewens D.	Lab	441	23.3
Sweeting L.	Lab	416	-
<b>Turnout</b>		66.1	53.3

Salmestone (4034) <sup>2</sup>			
		vote	share
<b>Coleman P.</b>	Ind	935	33.2
<b>Leadbeater W.</b>	Ind	932	-
Ward R.	Lab	881	31.3
Twyman F.	Con	848	30.1
Chart J.	Con	774	-
Young C.	Lab	732	-
Pankhurst S.	Lib	153	5.4
Taylor A.	Lib	139	-
<b>Turnout</b>		69.8	1.9

Sir Moses Montefiore (2875) <sup>2</sup>			
		vote	share
<b>Cole T.</b>	Con	1,248	60.8
<b>Smith G.</b>	Con	1,170	-
Maplesden M.	Lab	805	39.2
Northrop S.	Lab	718	-
<b>Turnout</b>		71.4	21.6

Southwood (3951) <sup>2</sup>			
		vote	share
<b>Marshall G.</b>	Con	1,755	63.8
<b>Stirups J. Ms.</b>	Con	1,593	-
Bishop L.	Lab	994	36.2
Digby S.	Lab	807	-
<b>Turnout</b>		69.6	27.7

St. Lawrence (3462) <sup>2</sup>			
		vote	share
<b>Easton E.</b>	Con	1,505	63.0
<b>Howes J.</b>	Con	1,438	-
Harrison P. Ms.	Lab	883	37.0
Foord P.	Lab	871	-
<b>Turnout</b>		69.0	26.0

St. Peters (4526) <sup>2</sup>			
		vote	share
<b>Enticott P.</b>	Con	1,476	42.6
<b>Langley K.</b>	Con	1,444	-
Hopker P.	Lib	1,246	36.0
Williamson H. Ms.	Lib	1,176	-
Davis P. Ms.	Lab	743	21.4
Taylor R. Ms.	Lab	661	-
<b>Turnout</b>		76.6	6.6

Thanet Parishes (1286)			
		vote	share
Cole W.	Con	527	53.8
Pocknall D.	Ind	298	30.4
Philpot J.	Lab	155	15.8
<b>Turnout</b>		76.2	23.4

Upton (4109) <sup>2</sup>			
		vote	share
Smith L.	Con	2,060	72.0
Thomson T.	Con	1,816	-
McNally A. Ms.	Lab	803	28.0
Hill G.	Lab	795	-
<b>Turnout</b>		69.7	43.9

Westgate-On-Sea (5490) <sup>3</sup>			
		vote	share
Peterkin M. Ms.	Ind	1,888	47.5
Hooper N. Ms.	Ind	1,519	-
Newman W.	Ind	1,493	-
Blundell G.	Con	1,387	34.9
Brookes A.	Con	1,323	-
Carter W.	Con	1,259	-
Green A.	Lab	702	17.7
<b>Turnout</b>		72.4	12.6

## Thanet - 1983

Beacon Road (3474) <sup>2</sup>			
		vote	share
White B.	Con	582	34.8
Preston E.	Con	557	-
Coates N.	Ind	484	28.9
Powers M. Ms.	Lab	335	20.0
Attwood E.	Lab	324	-
Hooker T.	Lib/SDP	271	16.2
Tiburtius S.	Lib/SDP	236	-
<b>Turnout</b>		48.1	5.9

Birchington East (4503) <sup>2</sup>			
		vote	share
Wanstall W.	Ind	1,015	45.1
Dawson W.	Ind	1,003	-
Callaway J.	Con	816	36.3
Lowe M.	Lab	259	11.5
Harrington P.	Lab	220	-
Stein N.	Lib/SDP	159	7.1
Hill J. Ms.	Lib/SDP	159	-
<b>Turnout</b>		49.9	8.8

Birchington West (3024) <sup>2</sup>			
		vote	share
Hudson N.	Ind	918	49.8
Bentley D.	Ind	836	-
Barry S.	Con	763	41.4
Hayward P.	Lab	161	8.7
Sandford L.	Lab	129	-
<b>Turnout</b>		60.9	8.4

Bradstowe (3299) <sup>2</sup>			
		vote	share
Clahane R.	Con	778	44.4
Peters W.	Ind	648	37.0
Abbott M.	Con	544	-
Davies E.	Lab	327	18.7
<b>Turnout</b>		53.1	7.4

Cecil (1734)			
		vote	share
Joseph D. Ms.	Con	299	35.3
Green F.	Lab	275	32.5
Tipple A.	Lib/SDP	160	18.9
Galbraith E.	Ind	112	13.2
<b>Turnout</b>		48.8	2.8

Central Eastcliffe (5020) <sup>3</sup>			
		vote	share
Sharp C.	Con	716	35.7
James A.	Lab	712	35.5
Sutton C.	Lab	687	-
Woodcock H.	Lab	684	-
Mackenzie M.	Con	675	-
Murphy D.	Con	642	-
Langley M. Ms.	Lib/SDP	576	28.7
Cox J.	Lib/SDP	533	-
Berrington A.	Lib/SDP	389	-
<b>Turnout</b>		39.9	0.2

Central Westcliffe (5748) <sup>3</sup>			
		vote	share
Taylor R.	Con	874	36.9
Pettitt D.	Con	844	-
Corbitt L.	Con	825	-
Cousens R. Ms.	Ind	639	27.0
Monaghan R.	Lab	549	23.2
McEvelly B.	Lab	514	-
Lineham M.	Lab	503	-
Butterfield J.	Ind	358	-
Dumps T.	Lib/SDP	308	13.0
<b>Turnout</b>		41.2	9.9

Cliftonville (5395) <sup>3</sup>			
		vote	share
Cheshire F.	Con	1,110	41.3
Tappenden J.	Ind	1,056	39.3
Selmes G.	Con	1,034	-
Jones J.	Con	978	-
Jones K.	Ind	906	-
Cella A.	Ind	854	-
Rowland S.	Lab	329	12.3
Green M.	Lab	316	-
Chance B.	Lib/SDP	190	7.1
Brown D. Ms.	Lib/SDP	189	-
Stockien J.	Lib/SDP	185	-
<b>Turnout</b>		49.8	2.0

Dane Park (3613) <sup>2</sup>			
		vote	share
Fewkes E.	Con	621	36.4
Tree H.	Ind	569	33.4
Goulet M.	Con	568	-
Dyke E.	Ind	430	-
Porter J.	Lab	369	21.6
James S.	Lib/SDP	147	8.6
<b>Turnout</b>		47.2	3.0

Ethelbert (1603)			
		vote	share
Burley G.	Ind	178	28.7
Sadler J.	Con	168	27.1
Edwards S.	Lib/SDP	155	25.0
Lewis B.	Lab	119	19.2
<b>Turnout</b>		38.7	1.6

Kingsgate (1733)			
		vote	share
Denne K.	Con	581	67.8
Flaig C.	Lib/SDP	215	25.1
Jackson F.	Lab	61	7.1
<b>Turnout</b>		49.5	42.7

Margate West (5229) <sup>3</sup>			
		vote	share
Barnes F.	Con	946	38.3
Latter E.	Con	872	-
Pearson C.	Con	786	-
Winston H.	Ind	585	23.7
Blundell G.	Ind	570	-
Berry P. Ms.	Lib/SDP	563	22.8
Newman T.	Ind	533	-
Avory N.	Lib/SDP	440	-
Hynes V.	Lib/SDP	405	-
Bolton C.	Lab	376	15.2
Tinkler L.	Lab	348	-
Carney P.	Lab	339	-
<b>Turnout</b>		47.2	14.6

Marine (1638)			
		vote	share
Carter J. Ms.	Con	278	39.2
Gilbert P.	Lib/SDP	209	29.4
Selman B.	Ind Con	119	16.8
St. John H.	Ind	92	13.0
Birkett P.	Ind	12	1.7
<b>Turnout</b>		43.3	9.7

Minster (2445) <sup>2</sup>			
		vote	share
Lowden A.	Con	561	52.5
Kaye K. Ms.	Con	553	-
Pickering H.	Lab	507	47.5
Pickering A. Ms.	Lab	417	-
<b>Turnout</b>		43.7	5.1

Newington (3903) <sup>2</sup>			
		vote	share
Harrison M.	Lab	962	69.7
Stephens E.	Lab	845	-
Drake A.	Con	261	18.9
Cary R.	Con	259	-
Delamotta A.	Lib/SDP	157	11.4
<b>Turnout</b>		35.4	50.8

Northdown Park (4481) <sup>2</sup>			
		vote	share
Mathews F.	Ind	940	50.3
Payne D.	Ind	677	-
Bailey E.	Con	450	24.1
Hunter H.	Con	379	-
Burns P.	Lab	276	14.8
Houghton H.	Lib/SDP	203	10.9
Lerner J.	Lib/SDP	120	-
<b>Turnout</b>		41.7	26.2

Northwood (5228) <sup>3</sup>			
		vote	share
Gray L.	Lab	1,115	51.8
Davies M. Ms.	Lab	1,105	-
Barber A. Ms.	Lab	1,067	-
Lawrence J.	Con	754	35.0
Barker M.	Con	746	-
Bowman R.	Con	719	-
Chance C.	Lib/SDP	285	13.2
<b>Turnout</b>		41.2	16.8

Pier (1870)			
		vote	share
Ovenden R.	Lib/SDP	306	40.0
Chart J.	Con	235	30.7
Harvey C.	Lab	166	21.7
Grossman J.	Ind	58	7.6
<b>Turnout</b>		40.9	9.3

Pierremont (2852) <sup>2</sup>			
		vote	share
Brightling R.	Ind	798	49.8
Velvick V.	Con	469	29.3
Turtell G.	Con	466	-
Taylor R.	Lab	335	20.9
<b>Turnout</b>		56.2	20.5

Salmestone (3867) <sup>2</sup>			
		vote	share
Twyman F.	Con	630	36.7
Young C.	Lab	620	36.1
Purser T.	Con	547	-
Fry K.	Lab	518	-
Sherwell J.	Lib/SDP	468	27.2
Sherwell N. Ms.	Lib/SDP	441	-
<b>Turnout</b>		44.4	0.6

<b>Sir Moses Montefiore (2988)<sup>2</sup></b>			
		<b>vote</b>	<b>share</b>
<b>Cole T.</b>	Con	559	44.5
<b>Smith G.</b>	Con	538	-
Dickinson R.	Lib/SDP	403	32.1
Simpson W.	Lib/SDP	392	-
Herring W.	Lab	293	23.3
Fets M.	Lab	281	-
<b>Turnout</b>		42.0	12.4

<b>Southwood (3948)<sup>2</sup></b>			
		<b>vote</b>	<b>share</b>
<b>Maw R.</b>	Con	681	30.3
<b>Marshall G.</b>	Ind Con	677	30.2
Peppiatt W.	Con	607	-
Todd L.	Lab	549	24.5
Lineham J.	Lab	522	-
Wright P.	Lib/SDP	338	15.1
<b>Turnout</b>		56.9	0.2

<b>St. Lawrence (3331)<sup>2</sup></b>			
		<b>vote</b>	<b>share</b>
<b>Easton E.</b>	Con	659	45.1
<b>Boutwood M.</b>	Con	524	-
Rees A.	Lab	296	20.2
Foord P.	Lab	291	-
Freeman R.	Ind	285	19.5
Acaster K.	Ind	270	-
Cox A.	Lib/SDP	222	15.2
O'Reilly E.	Lib/SDP	199	-
<b>Turnout</b>		43.9	24.8

<b>St. Peters (4693)<sup>2</sup></b>			
		<b>vote</b>	<b>share</b>
<b>Edwards M.</b>	Con	895	42.3
<b>Williamson H. Ms.</b>	Lib/SDP	849	40.1
Whitehead B. Ms.	Lib/SDP	837	-
Rose G.	Con	681	-
Jones K.	Lab	373	17.6
<b>Turnout</b>		45.1	2.2

<b>Thanet Parishes (1329)</b>			
		<b>vote</b>	<b>share</b>
<b>Lambert K.</b>	Ind	336	53.8
Smith G.	Con	288	46.2
<b>Turnout</b>		47.0	7.7

<b>Upton (4186)<sup>2</sup></b>			
		<b>vote</b>	<b>share</b>
<b>Smith L.</b>	Con	671	41.0
<b>Booth N. Ms.</b>	Con	646	-
Taylor K.	Ind	614	37.5
Brookfield R.	Ind	536	-
Startup D.	Lab	351	21.5
<b>Turnout</b>		39.1	3.5

<b>Westgate-On-Sea (5546)<sup>3</sup></b>			
		<b>vote</b>	<b>share</b>
<b>Hooper N. Ms.</b>	Ind	1,074	42.8
<b>Peterkin M. Ms.</b>	Ind	1,071	-
<b>Knowles A.</b>	Ind	1,001	-
Wright N.	Con	823	32.8
Brookes A.	Con	743	-
Vickers M.	Con	743	-
Harvey M.	Lab	359	14.3
Swaddle K.	Lib/SDP	251	10.0
<b>Turnout</b>		45.2	10.0

## Thanet - 1987

<b>Beacon Road (3559)<sup>2</sup></b>			
		<b>vote</b>	<b>share</b>
<b>Davies B.</b>	Con	741	44.8
<b>Walsh T.</b>	Con	642	-
Whitehead B. Ms.	Lib/SDP	602	36.4
Hooker B. Ms.	Lib/SDP	529	-
Powers M. Ms.	Lab	312	18.9
<b>Turnout</b>		46.5	8.4

<b>Birchington East (5535)<sup>2</sup></b>			
		<b>vote</b>	<b>share</b>
<b>Dawson B.</b>	Ind	1,120	44.8
<b>Johnson C.</b>	Ind	1,000	-
Clark G.	Con	789	31.5
Hill J. Ms.	Lib/SDP	444	17.7
Conway D. Ms.	Lab	149	6.0
Hynes V. Ms.	Lib/SDP	143	-
Simmons J. Ms.	Lab	139	-
<b>Turnout</b>		45.2	13.2

<b>Birchington West (3210)<sup>2</sup></b>			
		<b>vote</b>	<b>share</b>
<b>Hudson N.</b>	Ind	1,176	64.5
<b>Barry S.</b>	Ind	1,164	-
Bedwell I. Ms.	Con	530	29.1
Hunter E. Ms.	Con	399	-
Harington P. Ms.	Lab	117	6.4
Denman S.	Lab	109	-
<b>Turnout</b>		56.8	35.4

<b>Bradstowe (3502)<sup>2</sup></b>			
		<b>vote</b>	<b>share</b>
<b>Coates N.</b>	Con	888	47.7
<b>Turner F.</b>	Con	863	-
Peters W.	Lib/SDP	521	28.0
Nathan R.	Lib/SDP	446	-
Clahane R.	Ind	259	13.9
Attwood W.	Lab	195	10.5
Sutton G.	Ind	134	-
<b>Turnout</b>		53.2	19.7

<b>Cecil (1677)</b>			
		<b>vote</b>	<b>share</b>
<b>Joseph D. Ms.</b>	Con	374	45.3
Ward R.	Lab	255	30.9
Brewer D.	Lib/SDP	124	15.0
Igoe I. Ms.	Ind	72	8.7
<b>Turnout</b>		49.2	14.4

<b>Central Eastcliffe (4893)<sup>3</sup></b>			
		<b>vote</b>	<b>share</b>
<b>Goldsmith C.</b>	Lib/SDP	914	42.5
<b>Langley M. Ms.</b>	Lib/SDP	889	-
<b>Freeman R.</b>	Lib/SDP	770	-
Sharp C.	Con	575	26.7
Elson S.	Con	541	-
Jackson S. Ms.	Con	532	-
Roost G.	Lab	508	23.6
Sutton C.	Lab	502	-
Pettit P. Ms.	Ind	156	7.2
Hunter F.	Ind	111	-
Mackenzie M.	Ind	100	-
<b>Turnout</b>		44.0	15.7

<b>Central Westcliffe (6755)<sup>3</sup></b>			
		<b>vote</b>	<b>share</b>
<b>Pettit D.</b>	Ind	952	37.1
<b>Williams J. Ms.</b>	Ind	715	-
<b>Collins S.</b>	Ind	714	-
Cook A.	Con	606	23.6
Cramp T.	Lib/SDP	547	21.3
Corbitt L.	Con	540	-
Russell E.	Con	505	-
Shingles P.	Lib/SDP	499	-
Mursell P.	Lib/SDP	482	-
Taylor R.	Ind Con	462	18.0
<b>Turnout</b>		38.0	13.5

<b>Cliftonville (7039)<sup>3</sup></b>			
		<b>vote</b>	<b>share</b>
<b>Brench J.</b>	Con	997	32.8
<b>Cuthbert C.</b>	Ind	983	32.3
<b>Duncan R. Ms.</b>	Con	942	-
Regan T.	Lib/SDP	762	25.1
Sparkes J.	Lib/SDP	480	-
Rootes J.	Ind	466	-
Brown D. Ms.	Lib/SDP	460	-
Hysted B.	Ind	360	-
Baker S. Ms.	Lab	299	9.8
Ravenscroft J.	Lab	254	-
<b>Turnout</b>		43.2	0.5

<b>Dane Park (3488)<sup>2</sup></b>			
		<b>vote</b>	<b>share</b>
<b>Brown R.</b>	Lib/SDP	562	34.8
<b>Edwards S.</b>	Lib/SDP	547	-
Cairns J.	Con	538	33.3
Frensham P.	Con	512	-
Ovenden A.	Lab	261	16.2
Hodges N.	Lab	258	-
Young M. Ms.	Ind	254	15.7
Cooke C.	Ind	220	-
<b>Turnout</b>		46.3	1.5

<b>Ethelbert (1688)</b>			
		<b>vote</b>	<b>share</b>
<b>Lewis B.</b>	Lab	236	37.0
Burley G.	Ind	209	32.8
Horey K.	Con	124	19.4
Woodland D.	Lib/SDP	69	10.8
<b>Turnout</b>		37.8	4.2

<b>Kingsgate (1813)</b>			
		<b>vote</b>	<b>share</b>
<b>Miles P.</b>	Con	711	72.6
Hopkin H. Ms.	Lib/SDP	268	27.4
<b>Turnout</b>		54.0	45.3

<b>Margate West (6895)<sup>3</sup></b>			
		<b>vote</b>	<b>share</b>
<b>Berry P. Ms.</b>	Lib/SDP	1,226	39.8
<b>Trussell S. Ms.</b>	Con	933	30.3
<b>Georgiou N.</b>	Con	923	-
Avory N.	Lib/SDP	697	-
Barnes F.	Ind	657	21.3
Bloore P.	Lib/SDP	638	-
Tinkler M. Ms.	Lab	266	8.6
Sweeney A. Ms.	Lab	242	-
Toomey V. Ms.	Lab	231	-
<b>Turnout</b>		44.7	9.5

<b>Marine (1643)</b>			
		<b>vote</b>	<b>share</b>
<b>Carter J. Ms.</b>	Con	379	58.4
Brewer G.	Lib/SDP	158	24.3
Wales P.	Lab	112	17.3
<b>Turnout</b>		39.5	34.1

<b>Minster (2521)<sup>2</sup></b>			
		<b>vote</b>	<b>share</b>
<b>Kaye K. Ms.</b>	Ind	574	52.5
<b>Pickering H.</b>	Lab	520	47.5
Pickering A. Ms.	Lab	463	-
Lowden A.	Ind	446	-
<b>Turnout</b>		43.4	4.9

<b>Newington (3245)<sup>2</sup></b>			
		<b>vote</b>	<b>share</b>
<b>Herring W. Ms.</b>	Lab	753	54.6
<b>Ford R.</b>	Lab	739	-
James A.	Lib/SDP	394	28.6
Downs C. Ms.	Lib/SDP	373	-
Mead S.	Con	232	16.8
Willmore L. Ms.	Con	223	-
<b>Turnout</b>		42.5	26.0

<b>Northdown Park (4198)<sup>2</sup></b>			
		<b>vote</b>	<b>share</b>
<b>Payne D.</b>	Ind	467	29.4
<b>Brownlee P.</b>	Lib/SDP	434	27.3
Swain T.	Lib/SDP	418	-
Tiltman I.	Con	411	25.8
Shaddick S. Ms.	Con	405	-
Whelan W.	Ind	352	-
Ford R. Ms.	Lab	279	17.5
Johnston I. Ms.	Lab	244	-
<b>Turnout</b>		37.9	2.1

Northwood (4975) <sup>3</sup>			
		vote	share
Barber B. Ms.	Lab	899	45.5
Davies M. Ms.	Lab	896	-
Farmer S.	Lab	855	-
Burgess H.	Con	640	32.4
Smith C.	Con	585	-
Smith E. Ms.	Con	565	-
Chance B. Ms.	Lib/SDP	436	22.1
Essex M.	Lib/SDP	435	-
Brewer M. Ms.	Lib/SDP	431	-
		<b>Turnout</b>	39.7 13.1

Pier (2104)			
		vote	share
Ovenden R.	Lib/SDP	290	36.7
Purser T.	Con	262	33.1
Brooker H. Ms.	Lab	167	21.1
Grossman J.	Ind	72	9.1
		<b>Turnout</b>	37.6 3.5

Pierremont (2976) <sup>2</sup>			
		vote	share
Peppiatt W.	Con	703	51.4
Parrett M. Ms.	Con	687	-
Robinson P. Ms.	Lib/SDP	291	21.3
Dowden D. Ms.	Lib/SDP	274	-
Velvick V.	Ind	219	16.0
Munro A.	Lab	156	11.4
		<b>Turnout</b>	46.0 30.1

Salmestone (3904) <sup>2</sup>			
		vote	share
Twyman A.	Con	747	46.0
Mynard G.	Con	613	-
Young C.	Lab	526	32.4
Fry K.	Lab	435	-
Sherwell J.	Lib/SDP	351	21.6
Sherwell N. Ms.	Lib/SDP	314	-
		<b>Turnout</b>	41.6 13.6

Sir Moses Montefiore (3253) <sup>2</sup>			
		vote	share
Cole T.	Ind Con	386	25.2
Gore J. Ms.	Lib/SDP	376	24.6
Smith G.	Ind Con	322	-
Simpson W.	Lib/SDP	314	-
Seale L.	Con	298	19.5
Hayton B.	Ind	258	16.9
Fets M.	Lab	211	13.8
Dickenson D.	Ind	161	-
Summerfield R.	Con	153	-
		<b>Turnout</b>	47.0 0.7

Southwood (4180) <sup>2</sup>			
		vote	share
Piper K.	Con	569	27.2
Piper D. Ms.	Con	533	-
Rochford K.	Ind	517	24.7
Kirby J. Ms.	Lib/SDP	481	23.0
Simpson G.	Ind	445	-
Stokes C.	Lab	352	16.8
Pullen S.	Lab	344	-
Goffin-Lecar R.	Lib/SDP	318	-
Veasey G.	Ind Con	171	8.2
		<b>Turnout</b>	50.0 2.5

St. Lawrence (3962) <sup>2</sup>			
		vote	share
Lawrence N. Ms.	Con	753	38.5
Taylor D.	Con	587	-
Chance C.	Lib/SDP	509	26.0
Jones R.	Lib/SDP	440	-
Foord P.	Lab	240	12.3
Rees A.	Lab	235	-
Castle P. Ms.	Ind	235	12.0
Easton E.	Ind Con	220	11.2
		<b>Turnout</b>	49.4 12.5

St. Peters (4946) <sup>2</sup>			
		vote	share
Williamson H. Ms.	Lib/SDP	1,211	45.8
Green H.	Con	1,144	43.2
Cox J.	Lib/SDP	1,129	-
Farmer R. Ms.	Lab	291	11.0
		<b>Turnout</b>	53.5 2.5

Thanet Parishes (1428)			
		vote	share
Lambert K.	Ind	342	44.9
Scott I. Ms.	Con	296	38.9
Harris M.	Lib/SDP	123	16.2
		<b>Turnout</b>	53.3 6.0

Upton (4256) <sup>2</sup>			
		vote	share
Kilvington B.	Con	865	49.9
Hooper P. Ms.	Con	780	-
McGregor A.	Lib/SDP	632	36.5
Browning R. Ms.	Lib/SDP	617	-
Booth N. Ms.	Ind	235	13.6
Smith L.	Ind	222	-
		<b>Turnout</b>	40.7 13.5

Westgate-On-Sea (5723) <sup>3</sup>			
		vote	share
Swan D.	Con	962	39.8
Findlay B.	Con	950	-
Leadbeater B.	Con	848	-
Tree B.	Ind	599	24.8
Hooper N. Ms.	Ind	492	-
Eggelston M. Ms.	Lib/SDP	455	18.8
Avory V. Ms.	Lib/SDP	432	-
Langton J. Ms.	Ind	428	-
Jennings D.	Lab	399	16.5
Dean H.	Lab	384	-
Hilbery J. Ms.	Lib/SDP	383	-
Wales J. Ms.	Lab	332	-
		<b>Turnout</b>	42.2 15.0

## Thanet - 1991

Beacon Road (3375) <sup>2</sup>			
		vote	share
Conyers-Silverthorn P.	Con	549	35.2
Hutton R.	Con	534	-
Archard P.	Lab	530	34.0
Peters W.	Lab	446	-
Hooker B. Ms.	LD	343	22.0
Nathan R.	LD	292	-
Hawke J.	Green	138	8.8
		<b>Turnout</b>	46.0 1.2

Birchington East (5028) <sup>2</sup>			
		vote	share
Warren J.	Con	1,092	43.5
Chapman C. Ms.	Con	1,024	-
Francis P.	Ind	693	27.6
East W.	Lab	404	16.1
Quested R. Ms.	Green	319	12.7
Wright W.	Lab	300	-
		<b>Turnout</b>	44.3 15.9

Birchington West (3346) <sup>2</sup>			
		vote	share
Barry S.*	Ind	813	48.1
Hudson N.*	Ind	802	-
Jones V.	Con	636	37.6
Eady G. Ms.	Con	635	-
Rowe E. Ms.	Lab	126	7.5
Williams L. Ms.	Green	116	6.9
Bridgeland C.	Lab	105	-
		<b>Turnout</b>	50.7 10.5

Bradstowe (3176) <sup>2</sup>			
		vote	share
Sharp C.	Con	639	40.8
Sparham H.	Con	621	-
Simpson R. Ms.	LD	595	38.0
Phipps P. Ms.	LD	497	-
James R.	Lab	212	13.5
Pike V.	Lab	212	-
Blenkin S. Ms.	Green	119	7.6
		<b>Turnout</b>	48.1 2.8

Cecil (1782)			
		vote	share
Ford R.	Lab	283	43.3
Purser T.	Con	205	31.3
Knight D.	Ind	166	25.4
		<b>Turnout</b>	36.7 11.9

Central Eastcliffe (5144) <sup>3</sup>			
		vote	share
Goldsmith C.*	Lab	1,015	47.2
Langley M. Ms.	Lab	928	-
Cook T.	Lab	826	-
Long E.	Con	614	28.5
Parker N.	Con	571	-
Willis L. Ms.	Con	530	-
Dawson W.	Ind	522	24.3
		<b>Turnout</b>	40.1 18.6

Central Westcliffe (5891) <sup>3</sup>			
		vote	share
Pettit D.*	Ind	1,000	37.7
Simpson G.	Ind	837	-
Williams J. Ms.*	Ind	750	-
McEvelly B.	Lab	610	23.0
Sutton C.	Lab	547	-
Butterfield J.	Con	537	20.2
Tigg G.	Lab	511	-
Kearney A.	Con	485	-
Long D.	Con	453	-
Shingles P.	LD	307	11.6
Illingworth L. Ms.	Green	200	7.5
		<b>Turnout</b>	39.0 14.7

Cliftonville (6145) <sup>3</sup>			
		vote	share
Callaghan H.	Con	1,337	47.2
Garretty R.	Con	1,295	-
Duncan R. Ms.*	Con	1,281	-
Ezekiel M.	Ind	858	30.3
Coe K. Ms.	Lab	639	22.5
Ford R. Ms.	Lab	585	-
		<b>Turnout</b>	40.0 16.9

Dane Park (3581) <sup>2</sup>			
		vote	share
Regan A.	Con	653	46.7
Maison G.	Con	585	-
Ovendon A.	Lab	488	34.9
Gregory A.	Lab	463	-
Peyerl-Dawe H. Ms.	Green	258	18.4
		<b>Turnout</b>	39.6 11.8

Ethelbert (1736)			
		vote	share
Burley G.*	Con	213	48.3
Armstrong M. Ms.	Lab	176	39.9
Dawe S.	Green	52	11.8
		<b>Turnout</b>	25.4 8.4

Kingsgate (1782)			
		vote	share
Bayford R.	Con	492	60.3
Hopkin P.	LD	245	30.0
Herring W.	Lab	79	9.7
		<b>Turnout</b>	45.8 30.3



<b>Margate West (5235)<sup>3</sup></b>			
		<b>vote</b>	<b>share</b>
<b>Mortlock M. Ms.</b>	Con	1,304	52.6
<b>Georgiou N.*</b>	Con	1,228	-
<b>Ovenden R.</b>	Con	1,199	-
Davis B. Ms.	Lab	616	24.8
Dean H.	Lab	609	-
Jarman W.	Green	561	22.6
Gilbert J.	Lab	543	-
<b>Turnout</b>		43.7	27.7
<b>Marine (1710)</b>			
		<b>vote</b>	<b>share</b>
<b>Leadbeater W.</b>	Con	322	43.4
Johnston I. Ms.	Lab	216	29.1
Carter J. Ms.*	Ind	204	27.5
<b>Turnout</b>		43.4	14.3
<b>Minster (2448)<sup>2</sup></b>			
		<b>vote</b>	<b>share</b>
<b>Pickering H.*</b>	Lab	625	39.9
<b>Pickering A. Ms.*</b>	Lab	525	-
Clark G.	Con	517	33.0
Kaye K. Ms.	Ind	425	27.1
<b>Turnout</b>		49.5	6.9
<b>Newington (3597)<sup>2</sup></b>			
		<b>vote</b>	<b>share</b>
<b>Coppock B.</b>	Lab	852	76.3
<b>Dunn J. Ms.</b>	Lab	851	-
May M. Ms.	Con	264	23.7
<b>Turnout</b>		35.0	52.7
<b>Northdown Park (4345)<sup>2</sup></b>			
		<b>vote</b>	<b>share</b>
<b>Payne D.*</b>	Ind	505	33.3
<b>Brownlee P.*</b>	Ind	484	-
King L.	Con	418	27.6
Guy J.	Lab	409	27.0
Whelan W.	Con	396	-
Hogben J. Ms.	Green	185	12.2
<b>Turnout</b>		32.7	5.7
<b>Northwood (5207)<sup>3</sup></b>			
		<b>vote</b>	<b>share</b>
<b>Farmer S.*</b>	Lab	1,188	60.1
<b>Barber A. Ms.*</b>	Lab	1,183	-
<b>Davies M. Ms.</b>	Lab	1,182	-
Jackson R.	Con	789	39.9
Jackson S. Ms.	Con	732	-
<b>Turnout</b>		41.0	20.2
<b>Pier (2179)</b>			
		<b>vote</b>	<b>share</b>
<b>Brooker H. Ms.</b>	Lab	276	43.7
Charou Z.	Con	219	34.7
Grossman J.	Ind	69	10.9
Green H.	Ind Con	68	10.8
<b>Turnout</b>		29.0	9.0
<b>Pierremont (2794)<sup>2</sup></b>			
		<b>vote</b>	<b>share</b>
<b>Peppiatt W.*</b>	Con	586	45.3
<b>Trivess-Smith V. Ms.</b>	Con	441	-
Doyle V. Ms.	Lab	265	20.5
Doyle P.	Lab	259	-
Godfrey P.	Ind Con	237	18.3
Hawke L. Ms.	Green	205	15.9
<b>Turnout</b>		39.4	24.8
<b>Salmestone (3736)<sup>2</sup></b>			
		<b>vote</b>	<b>share</b>
<b>Young C.</b>	Lab	656	40.8
<b>Derrane R. Ms.</b>	Lab	554	-
Twyman F.*	Ind	500	31.1
Cook C.	Con	334	20.8
Mynard G.	Con	311	-
Reed R.	Green	118	7.3
<b>Turnout</b>		38.5	9.7

<b>Sir Moses Montefiore (2899)<sup>2</sup></b>			
		<b>vote</b>	<b>share</b>
<b>Cole T.*</b>	Con	605	54.8
<b>Hayton W.</b>	Con	577	-
Gore J. Ms.	Lab	500	45.2
Lubin S.	Lab	422	-
<b>Turnout</b>		40.0	9.5
<b>Southwood (3887)<sup>2</sup></b>			
		<b>vote</b>	<b>share</b>
<b>Kirby J. Ms.</b>	Ind	753	40.8
<b>Rochford K.</b>	Ind	660	-
Hart D.	Lab	506	27.4
Pike J. Ms.	Lab	474	-
Thomas J.	Con	434	23.5
Robson J.	Con	410	-
Piper K.*	Ind Con	154	8.3
Piper D. Ms.*	Ind Con	140	-
<b>Turnout</b>		48.3	13.4
<b>St. Lawrence (3496)<sup>2</sup></b>			
		<b>vote</b>	<b>share</b>
<b>Smith G.</b>	Con	504	26.0
<b>Cramp T.</b>	LD	472	24.4
Lawrence N. Ms.*	Ind	420	21.7
Foord P.	Lab	420	21.7
Rees A.	Lab	414	-
Taylor W.	Ind	414	-
Carthew E.	Green	120	6.2
<b>Turnout</b>		45.8	1.7
<b>St. Peters (4662)<sup>2</sup></b>			
		<b>vote</b>	<b>share</b>
<b>Kirkpatrick J.</b>	Con	927	42.8
<b>Whitehead B. Ms.</b>	LD	839	38.7
Pinaffo B. Ms.	Con	774	-
Willey D.	LD	772	-
Coppock J. Ms.	Lab	402	18.5
Silk B. Ms.	Lab	388	-
<b>Turnout</b>		47.4	4.1
<b>Thanet Parishes (1466)</b>			
		<b>vote</b>	<b>share</b>
<b>Freeman R.</b>	Con	335	44.7
Lambert K.*	Ind	263	35.1
Scott M.	Lab	151	20.2
<b>Turnout</b>		51.1	9.6
<b>Upton (4372)<sup>2</sup></b>			
		<b>vote</b>	<b>share</b>
<b>Kilvington B.*</b>	Con	807	44.9
<b>Hooper P. Ms.*</b>	Con	761	-
Gray T.	Lab	493	27.4
Shepherd P. Ms.	Lab	459	-
Challans P.	Green	324	18.0
Clahane R.	Ind	174	9.7
Carter N.	Ind	124	-
<b>Turnout</b>		40.9	17.5
<b>Westgate-On-Sea (5546)<sup>3</sup></b>			
		<b>vote</b>	<b>share</b>
<b>Swan D.*</b>	Con	960	39.2
<b>Dolding D.</b>	Con	885	-
<b>Murphy D.</b>	Con	740	-
Tree H.	Ind	625	25.5
Jennings D.	Lab	599	24.5
Sebastian V. Ms.	Lab	584	-
Gadsden P.	Lab	574	-
Hooper N. Ms.	Ind	422	-
Disleris-Beck E. Ms.	Green	264	10.8
<b>Turnout</b>		38.8	13.7
<b>Thanet - 1995</b>			
<b>Beacon Road (3253)<sup>2</sup></b>			
		<b>vote</b>	<b>share</b>
<b>Archard P.</b>	Lab	861	63.9
<b>Silk B. Ms.</b>	Lab	795	-
Coates E.	Con	487	36.1
Spurrier T.	Con	423	-
<b>Turnout</b>		43.1	27.7

<b>Birchington East (4926)<sup>2</sup></b>			
		<b>vote</b>	<b>share</b>
<b>Harris V.</b>	Lab	819	45.8
<b>Signorell A.</b>	Lab	782	-
Dawson W.	Ind	506	28.3
Binks R.	Con	465	26.0
Chapman C. Ms.*	Ind	423	-
Rowlett M.	Con	409	-
Francis P.	Ind	304	-
<b>Turnout</b>		39.9	17.5
<b>Birchington West (3352)<sup>2</sup></b>			
		<b>vote</b>	<b>share</b>
<b>Hudson N.*</b>	Ind	657	41.3
<b>Thomas N.</b>	Ind	587	-
Barton C.	Con	482	30.3
Simmons J. Ms.	Lab	453	28.5
Brewer D.	Lab	446	-
Wainwright J.	Con	429	-
<b>Turnout</b>		47.0	11.0
<b>Bradstowe (3155)<sup>2</sup></b>			
		<b>vote</b>	<b>share</b>
<b>Emes T.</b>	LD	527	35.3
<b>Nathan R.</b>	LD	462	-
Pinder-White H. Ms.	Con	456	30.5
Archard C. Ms.	Lab	435	29.1
Sparham H.*	Con	374	-
Hart D.	Lab	333	-
Barrow-			
Retallack S. Ms.	Green	77	5.2
<b>Turnout</b>		45.0	4.7
<b>Cecil (1652)</b>			
		<b>vote</b>	<b>share</b>
<b>Ford R.*</b>	Lab	362	66.2
Cousins R. Ms.	Ind	102	18.6
Singleton M.	Con	83	15.2
<b>Turnout</b>		33.2	47.5
<b>Central Eastcliffe (5028)<sup>3</sup></b>			
		<b>vote</b>	<b>share</b>
<b>Goldsmith C.*</b>	Lab	1,254	67.2
<b>Langley M. Ms.*</b>	Lab	1,111	-
<b>Ladyman S.</b>	Lab	1,081	-
Doyle P.	Con	431	23.1
Grey C. Ms.	Con	398	-
Lawrence S. Ms.	Green	181	9.7
<b>Turnout</b>		35.7	44.1
<b>Central Westcliffe (5546)<sup>3</sup></b>			
		<b>vote</b>	<b>share</b>
<b>Nicholson R.</b>	Lab	987	43.8
<b>Harrison M.</b>	Lab	964	-
<b>Masters R.</b>	Lab	894	-
Pettit D.*	Ind	580	25.8
Simpson G.*	Ind	542	-
Fullarton J.	Con	455	20.2
Sharp C.	Con	417	-
Wood R.	Ind	414	-
Wheatley D.	Green	230	10.2
Barsley R.	Green	160	-
<b>Turnout</b>		37.0	18.1
<b>Cliftonville (6475)<sup>3</sup></b>			
		<b>vote</b>	<b>share</b>
<b>Coe K. Ms.</b>	Lab	1,036	40.5
<b>Cambridge P.</b>	Lab	1,034	-
<b>Gregory I.</b>	Con	998	39.0
Garretty R.*	Con	973	-
Ali T.	Lab	966	-
Ezekiel M.	Con	959	-
Hone J.	Ind	524	20.5
Callaghan H.*	Ind	491	-
Waddilove A.	Ind	445	-
<b>Turnout</b>		41.2	1.5

Dane Park (3429) <sup>2</sup>			
		vote	share
<b>Ovenden A.</b>	Lab	644	48.0
<b>Gregory A.</b>	Lab	612	-
Regan A.*	Con	312	23.2
Benson D.	Con	265	-
Jennings C.	LD	225	16.8
Lawson J.	LD	202	-
Graham K.	Ind	162	12.1
Strong H.	Ind	103	-
<b>Turnout</b>		38.2	24.7

Ethelbert (1625)			
		vote	share
<b>Rollins P.</b>	Lab	326	69.7
Richardson J. Ms.	Con	112	23.9
Beckley C.	NLP	30	6.4
<b>Turnout</b>		28.9	45.7

Kingsgate (1884)			
		vote	share
<b>Bayford R.*</b>	Con	407	57.4
Oldroyd J. Ms.	Lab	262	37.0
Evaristo-Boyce C. Ms.	Green	40	5.6
<b>Turnout</b>		37.7	20.5

Margate West (5005) <sup>3</sup>			
		vote	share
<b>Eccott T.</b>	Lab	852	36.1
<b>Eccott A. Ms.</b>	Lab	827	-
<b>Jackson M.</b>	Lab	824	-
Mortlock M. Ms.*	Ind	679	28.8
Ovenden R.*	Con	599	25.4
Spencer E.	Con	516	-
Betts H. Ms.	Ind	512	-
Beard M. Ms.	Con	486	-
Howard E. Ms.	Ind	473	-
Kendrick J. Ms.	LD	229	9.7
<b>Turnout</b>		43.4	7.3

Marine (1896)			
		vote	share
<b>Johnston I. Ms.</b>	Lab	359	54.2
Maison G.	Con	159	24.0
Kendrick I. Ms.	LD	92	13.9
Purser T.	Ind	52	7.9
<b>Turnout</b>		34.9	30.2

Minster (2570) <sup>2</sup>			
		vote	share
<b>Pickering H.*</b>	Lab	733	60.7
<b>Pickering A. Ms.*</b>	Lab	689	-
Brench F.	Ind Con	289	23.9
Knight D.	Ind	185	15.3
Lehman B. Ms.	Ind	171	-
<b>Turnout</b>		43.3	36.8

Newington (3450) <sup>2</sup>			
		vote	share
<b>Coppock B.*</b>	Lab	1,185	91.6
<b>Coppock J. Ms.</b>	Lab	1,076	-
Dilliway J. Ms.	Con	109	8.4
May M. Ms.	Con	98	-
<b>Turnout</b>		38.8	83.2

Northdown Park (4226) <sup>2</sup>			
		vote	share
<b>Ford R. Ms.</b>	Lab	673	39.1
<b>Wright C.</b>	Lab	590	-
Payne D.*	Ind	370	21.5
Brownlee P.*	Ind	349	-
Clay J.	Con	331	19.2
Godden L. Ms.	Con	309	-
Ursell P.	MILT Lab	262	15.2
O'Brien S. Ms.	Green	87	5.0
<b>Turnout</b>		38.5	17.6

Northwood (5012) <sup>3</sup>			
		vote	share
<b>Farmer S.*</b>	Lab	1,381	69.9
<b>Davies M. Ms.*</b>	Lab	1,365	-
<b>Barber A. Ms.*</b>	Lab	1,253	-
Burgess H.	Con	328	16.6
Dale I.	Con	323	-
Hunter F.	Ind	168	8.5
Thorpe K. Ms.	Ind	163	-
Jenkin A. Ms.	Ind	154	-
Edley S.	Green	100	5.1
<b>Turnout</b>		40.2	53.3

Pier (2136)			
		vote	share
<b>Brooker H. Ms.*</b>	Lab	431	65.9
Whelan W.	Con	102	15.6
Tomlinson M.	Ind	88	13.5
Frost R.	LD	33	5.0
<b>Turnout</b>		30.8	50.3

Pierremont (2666) <sup>2</sup>			
		vote	share
<b>Cradduck P. Ms.</b>	LD	414	37.0
<b>Peppiatt W.*</b>	Con	370	33.1
Pitt W.	LD	346	-
Trivess-Smith V. Ms.*	Con	343	-
Doyle V. Ms.	Lab	273	24.4
Powers M. Ms.	Lab	263	-
Boyce P.	Green	61	5.5
<b>Turnout</b>		41.3	3.9

Salmestone (3596) <sup>2</sup>			
		vote	share
<b>Derrane R. Ms.*</b>	Lab	798	54.0
<b>Young C.*</b>	Lab	787	-
Twyman F.	Ind	377	25.5
Brown A.	Ind	234	-
Brooman M.	Con	180	12.2
Cordell A. Ms.	LD	91	6.2
Pettitt K.	NLP	32	2.2
<b>Turnout</b>		38.1	28.5

Sir Moses Montefiore (2807) <sup>2</sup>			
		vote	share
<b>Ashby A.</b>	Lab	575	48.6
<b>Dickinson R.</b>	Lab	554	-
Cole T.*	Con	301	25.5
Hayton W.*	Con	295	-
Twyman I. Ms.	Ind	147	12.4
Dark K. Ms.	Ind	147	-
Bell-Guy J.	LD	122	10.3
Knight V.	LD	118	-
Illingworth L. Ms.	Green	37	3.1
<b>Turnout</b>		41.9	23.2

Southwood (3755) <sup>2</sup>			
		vote	share
<b>Mannering J.</b>	Lab	693	40.8
<b>Glover G.</b>	Lab	690	-
Kirby J.*	Ind	619	36.4
Kirby J. Ms.	Ind	529	36.4
Long E.	Con	317	18.7
Parker N.	Con	297	-
Gibbons I. Ms.	Green	70	4.1
<b>Turnout</b>		44.7	4.4

St. Lawrence (3451) <sup>2</sup>			
		vote	share
<b>Hallier L. Ms.</b>	Lab	724	46.3
<b>Craig A.</b>	Lab	719	-
Hoult R.	Ind	317	20.3
Kearney A.	Con	267	17.1
Taylor W.	Con	261	-
Cramp T.*	LD	204	13.0
Lehman J.	Ind	197	-
Parker R. Ms.	Green	53	3.4
<b>Turnout</b>		42.3	26.0

St. Peters (4721) <sup>2</sup>			
		vote	share
<b>Simpson R. Ms.</b>	LD	781	36.8
<b>Roberts D. Ms.</b>	Lab	677	31.9
Stocks C. Ms.	Lab	675	-
Buckley J.	LD	662	-
Kirkpatrick J.*	Con	600	28.3
Robinson D.	Con	463	-
Jarman W.	Green	63	3.0
<b>Turnout</b>		44.0	4.9

Thanet Parishes (1466)			
		vote	share
<b>Forbes L.</b>	Lab	231	35.7
Lambert K.	Ind	220	34.0
Freeman R.*	Con	196	30.3
<b>Turnout</b>		44.3	1.7

Upton (4506) <sup>2</sup>			
		vote	share
<b>Farmer R. Ms.</b>	Lab	659	37.7
<b>Herring W. Ms.</b>	Lab	588	-
Hooker B. Ms.	LD	442	25.3
Hillyard E. Ms.	LD	426	-
Kilvington B.*	Con	397	22.7
Hooper P. Ms.*	Con	369	-
Pearce M.	Ind	161	9.2
Proudfoot B. Ms.	Ind	129	-
Challans P.	Green	89	5.1
Holian C. Ms.	Green	74	-
<b>Turnout</b>		39.3	12.4

Westgate-On-Sea (5272) <sup>3</sup>			
		vote	share
<b>Sebastian P.</b>	Lab	905	43.3
<b>Baker M.</b>	Lab	883	-
<b>Jeary M.</b>	Lab	860	-
Twyman P.	Con	550	26.3
Swan T. Ms.*	Con	548	-
Dolding D.*	Con	513	-
Bloore P.	LD	403	19.3
Lord N.	LD	390	-
Kendrick P.	LD	377	-
Jones M. Ms.	Ind	233	11.1
Gilpin D.	Ind	168	-
Clahane R.	Ind	167	-
<b>Turnout</b>		40.4	17.0

## Thanet - 1999

Beacon Road (3191) <sup>2</sup>			
		vote	share
<b>Archard P.*</b>	Lab	509	52.5
<b>Poole E. Ms.</b>	Lab	476	-
Coates E.	Con	342	35.3
Coates Y. Ms.	Con	323	-
Winkworth A.	LD	118	12.2
Wnorowski C.	LD	97	-
<b>Turnout</b>		31.1	17.2

Birchington East (4943) <sup>2</sup>			
		vote	share
<b>Cohen J.</b>	Con	730	40.3
<b>Cossey R. Ms.</b>	Con	729	-
Dawson W.	Ind	543	30.0
Simmons J. Ms.	Lab	537	29.7
Harris V.*	Lab	506	-
<b>Turnout</b>		34.0	10.3

Birchington West (3310) <sup>2</sup>			
		vote	share
<b>Hudson N.*</b>	Ind	856	52.8
<b>Thomas N.*</b>	Ind	616	-
Cooper D.	Con	480	29.6
Rose C.	Lab	284	17.5
Waddingham R. Ms.	Lab	243	-
<b>Turnout</b>		40.8	23.2

<b>Bradstowe (3147)<sup>2</sup></b>			
		<b>vote</b>	<b>share</b>
<b>Hayton W.</b>	Con	516	41.7
<b>White H. Ms.</b>	Con	498	-
Emes T.*	LD	371	30.0
Simpson R. Ms.	LD	368	-
Yeoman B.	Lab	269	21.8
Jones E.	Lab	267	-
Pearson R.	Ind	80	6.5
<b>Turnout</b>		38.5	11.7
<b>Cecil (1553)</b>			
		<b>vote</b>	<b>share</b>
<b>Ford R.*</b>	Lab	226	67.7
Bartingale P.	Con	108	32.3
<b>Turnout</b>		21.7	35.3
<b>Central Eastcliffe (4886)<sup>3</sup></b>			
		<b>vote</b>	<b>share</b>
<b>Goldsmith C.*</b>	Lab	748	71.6
<b>Green D.</b>	Lab	635	-
<b>Langley M. Ms.*</b>	Lab	627	-
Roberts M.	Con	297	28.4
<b>Turnout</b>		20.6	43.2
<b>Central Westcliffe (5522)<sup>3</sup></b>			
		<b>vote</b>	<b>share</b>
<b>Harrison M.*</b>	Lab	648	51.5
<b>Masters R.*</b>	Lab	630	-
<b>Nicholson R.*</b>	Lab	615	-
Pettit D.	Ind	611	48.5
Simpson H.	Ind	607	-
Cousens R. Ms.	Ind	577	-
<b>Turnout</b>		24.3	2.9
<b>Cliftonville (6375)<sup>3</sup></b>			
		<b>vote</b>	<b>share</b>
<b>Ezekiel S. Ms.</b>	Con	1,223	60.9
<b>Waddilove A.</b>	Con	1,142	-
<b>Sullivan B.</b>	Con	1,138	-
Hampton N.	Lab	784	39.1
Stapley B. Ms.	Lab	747	-
<b>Turnout</b>		32.5	21.9
<b>Dane Park (3449)<sup>2</sup></b>			
		<b>vote</b>	<b>share</b>
<b>Palmer E.</b>	Lab	425	57.7
<b>Gregory A.*</b>	Lab	406	-
Regan A.	Con	312	42.3
Hensby C. Ms.	Con	277	-
<b>Turnout</b>		21.9	15.3
<b>Ethelbert (1639)</b>			
		<b>vote</b>	<b>share</b>
<b>Rollins P.*</b>	Lab	0	0.0
<b>Turnout</b>		0.0	0.0
<b>Kingsgate (1908)</b>			
		<b>vote</b>	<b>share</b>
<b>Bayford R.*</b>	Con	475	72.9
Green S.	Lab	177	27.1
<b>Turnout</b>		34.7	45.7
<b>Margate West (4967)<sup>3</sup></b>			
		<b>vote</b>	<b>share</b>
<b>Spencer I. Ms.</b>	Con	596	38.8
<b>Wise M.</b>	Con	572	-
<b>Mayo S. Ms.</b>	Lab	571	37.1
Duncan R. Ms.	Con	570	-
Lord N.	Lab	568	-
Nemzer S. Ms.	Lab	541	-
Ovenden R.*	Ind	371	24.1
Mortlock M. Ms.	Ind	307	-
Mynard G.	Ind	244	-
<b>Turnout</b>		31.2	1.6
<b>Marine (1902)</b>			
		<b>vote</b>	<b>share</b>
<b>Johnston I. Ms.</b>	Lab	324	63.2
Whelan W.	Con	189	36.8
<b>Turnout</b>		27.0	26.3

<b>Minster (2521)<sup>2</sup></b>			
		<b>vote</b>	<b>share</b>
<b>Pickering A. Ms.*</b>	Ind	595	47.2
<b>Glover G.*</b>	Lab	384	30.5
Northrop T.	Lab	294	-
Garretty R.	Con	281	22.3
<b>Turnout</b>		34.5	16.7
<b>Newington (3310)<sup>2</sup></b>			
		<b>vote</b>	<b>share</b>
<b>Coppock B.*</b>	Lab	687	87.2
<b>Coppock J. Ms.*</b>	Lab	655	-
Dillway J. Ms.	Con	101	12.8
Lind H. Ms.	Con	93	-
<b>Turnout</b>		24.2	74.4
<b>Northdown Park (4164)<sup>2</sup></b>			
		<b>vote</b>	<b>share</b>
<b>Connel S.*</b>	Lab	550	39.9
<b>Ovenden A.*</b>	Lab	504	-
Gregory I.	Con	451	32.7
Payne D.	Ind Con	377	27.4
<b>Turnout</b>		25.6	7.2
<b>Northwood (4955)<sup>3</sup></b>			
		<b>vote</b>	<b>share</b>
<b>Farmer S.*</b>	Lab	868	67.8
<b>Gore W. Ms.</b>	Lab	849	-
<b>Green E. Ms.</b>	Lab	831	-
Heale M.	Con	412	32.2
Jackson R.	Con	368	-
Jackson S. Ms.	Con	357	-
<b>Turnout</b>		27.3	35.6
<b>Pier (2067)</b>			
		<b>vote</b>	<b>share</b>
<b>West D. Ms.*</b>	Lab	199	52.5
Eales M. Ms.	Con	180	47.5
<b>Turnout</b>		18.5	5.0
<b>Pierremont (2855)<sup>2</sup></b>			
		<b>vote</b>	<b>share</b>
<b>Peppiatt W.*</b>	Con	396	45.0
<b>Kirkpatrick J.</b>	Con	383	-
Rose V.	Lab	253	28.8
Davies R.	Lab	247	-
Cradduck P. Ms.*	LD	231	26.3
Myhill J.	LD	187	-
<b>Turnout</b>		30.8	16.3
<b>Salmestone (3657)<sup>2</sup></b>			
		<b>vote</b>	<b>share</b>
<b>Young C.*</b>	Lab	533	65.4
<b>Derrane R. Ms.*</b>	Lab	504	-
Partridge A.	Con	282	34.6
<b>Turnout</b>		23.3	30.8
<b>Sir Moses Montefiore (2819)<sup>2</sup></b>			
		<b>vote</b>	<b>share</b>
<b>Ashby A.*</b>	Lab	437	57.3
<b>Dickinson R.*</b>	Lab	435	-
Burgess R.	Con	325	42.7
Long E.	Con	321	-
<b>Turnout</b>		28.5	14.7
<b>Southwood (3896)<sup>2</sup></b>			
		<b>vote</b>	<b>share</b>
<b>Jillings D.</b>	Lab	532	50.0
<b>Kirby J. Ms.</b>	Con	532	50.0
Mannering J.*	Lab	529	-
Batt F.	Con	474	-
<b>Turnout</b>		27.9	0.0
<b>St. Lawrence (3495)<sup>2</sup></b>			
		<b>vote</b>	<b>share</b>
<b>Hart D.*</b>	Lab	587	49.3
<b>Poole A.</b>	Lab	472	-
Bicknell J.	Con	342	28.7
Mairs D.	Ind	262	22.0
Sharp C.	Con	242	-
<b>Turnout</b>		30.6	20.6

<b>St. Peters (4799)<sup>2</sup></b>			
		<b>vote</b>	<b>share</b>
<b>Fullarton J.</b>	Con	600	38.0
<b>Buckley J.</b>	Lab	587	37.2
Wiltshire Z. Ms.	Con	574	-
Rose J.	Lab	524	-
Pearce M.	LD	328	20.8
Proctor S.	LD	295	-
Challans P.	Green	64	4.1
<b>Turnout</b>		32.6	0.8
<b>Thanet Parishes (1466)</b>			
		<b>vote</b>	<b>share</b>
<b>Hibberd C.</b>	Con	333	55.5
Forbes L.*	Lab	267	44.5
<b>Turnout</b>		41.8	11.0
<b>Upton (4513)<sup>2</sup></b>			
		<b>vote</b>	<b>share</b>
<b>Cook B. Ms.</b>	Lab	495	38.0
<b>Fenner M. Ms.</b>	Lab	494	-
Kilvington B.	Con	451	34.6
Sparham H.	Con	422	-
Hooker B. Ms.	LD	312	23.9
Beale D. Ms.	LD	264	-
Holian C. Ms.	Green	45	3.5
<b>Turnout</b>		29.0	3.4
<b>Westgate-On-Sea (5350)<sup>3</sup></b>			
		<b>vote</b>	<b>share</b>
<b>Chater A. Ms.</b>	Con	720	52.3
<b>Daly J.</b>	Lab	657	47.7
<b>Ruffell E.</b>	Lab	647	-
Chipperfield M. Ms.	Lab	608	-
<b>Turnout</b>		25.3	4.6
<b>Thanet - 2003</b>			
<b>Beacon Road (3261)<sup>2</sup></b>			
		<b>vote</b>	<b>share</b>
<b>Archard P.*</b>	Lab	536	48.4
<b>Poole E. Ms.*</b>	Lab	502	-
Dickie J.	Con	403	36.4
Swan T. Ms.	Con	399	-
Hooker B. Ms.	LD	169	15.3
<b>Turnout</b>		34.1	12.0
<b>Birchington North (3191)<sup>2</sup></b>			
		<b>vote</b>	<b>share</b>
<b>Latchford R.</b>	Con	868	59.4
<b>Day S.</b>	Con	846	-
Hudson N.*	Ind	397	27.2
Thomas N.*	Ind	286	-
Rose C.	Lab	197	13.5
Signorell M.	Lab	177	-
Hardy B.	Ind	175	-
<b>Turnout</b>		48.3	32.2
<b>Birchington South (5159)<sup>3</sup></b>			
		<b>vote</b>	<b>share</b>
<b>Cohen J.*</b>	Con	1,133	55.7
<b>Sheldrick M. Ms.</b>	Con	996	-
<b>Duncan R. Ms.</b>	Con	924	-
Ovenden A.*	Lab	452	22.2
Cossey R. Ms.	Ind	448	22.0
Williams G.	Lab	409	-
Kinsella M. Ms.	Ind	370	-
<b>Turnout</b>		35.0	33.5
<b>Bradstowe (3348)<sup>2</sup></b>			
		<b>vote</b>	<b>share</b>
<b>Emes T.</b>	LD	587	39.5
<b>Hayton W.*</b>	Con	566	38.1
Pinder-White H. Ms.*	Con	552	-
Voizey G.	LD	517	-
Beck P. Ms.	Lab	223	15.0
Ellner L. Ms.	Lab	211	-
Marsh R.	UK Ind	109	7.3
<b>Turnout</b>		43.6	1.4

Central Harbour (5605) <sup>3</sup>			
		vote	share
Higgs L. Ms.	Lab	652	39.3
Nicholson B. Ms.	Lab	640	-
Gregory A.*	Lab	633	-
Batt F.	Con	511	30.8
Baldwin B.	Ind	494	29.8
Kelly B.	Con	470	-
Burgess R.	Con	465	-
Heale M.	Ind	446	-
Strong H.	Ind	438	-
<b>Turnout</b>		29.8	8.5

Cliffsend & Pegwell (3635) <sup>2</sup>			
		vote	share
Kirby J.*	Con	899	66.9
Booth J. Ms.	Con	834	-
King S. Ms.	Lab	444	33.1
Nottingham M.	Lab	398	-
<b>Turnout</b>		38.6	33.9

Cliftonville East (5077) <sup>3</sup>			
		vote	share
Ezekiel S.*	Con	1,531	74.5
Wise M.*	Con	1,400	-
Sullivan B.*	Con	1,369	-
Harvey C.	Lab	524	25.5
Harvey M. Ms.	Lab	516	-
Stapley B. Ms.	Lab	471	-
<b>Turnout</b>		42.1	49.0

Cliftonville West (5167) <sup>3</sup>			
		vote	share
Hart C.	Lab	584	49.0
Clark D.	Lab	536	-
Aldred L. Ms.	Lab	527	-
Grant M.	Con	511	42.9
Pankhurst W.	Con	508	-
Papa-Adams A.	Con	448	-
Wheatley D.	Ind	97	8.1
<b>Turnout</b>		23.9	6.1

Dane Valley (5401) <sup>3</sup>			
		vote	share
Connell S.	Lab	575	50.3
Gregory I.	Con	568	49.7
Ford R.*	Lab	508	-
Chhabra R.	Con	497	-
Watkins J.	Lab	493	-
<b>Turnout</b>		22.0	0.6

Eastcliff (5293) <sup>3</sup>			
		vote	share
Cook B. Ms.*	Lab	685	46.6
Green D.*	Lab	633	-
Ward S.	Lab	600	-
Easton E.	Con	394	26.8
Kirkaldie M.	Ind	390	26.5
Cordery D.	Con	386	-
Sharp C.	Con	380	-
<b>Turnout</b>		25.7	19.8

Garlinge (3587) <sup>2</sup>			
		vote	share
Tomlinson S. Ms.	Con	663	56.7
Brown S.	Con	622	-
Palmer W.	Lab	506	43.3
Scobie H.	Lab	443	-
<b>Turnout</b>		33.8	13.4

Kingsgate (1642)			
		vote	share
Bayford R.*	Con	449	77.3
Matterface J.	Lab	132	22.7
<b>Turnout</b>		35.4	54.6

Margate Central (3507) <sup>2</sup>			
		vote	share
Johnston I. Ms.*	Lab	390	45.8
Kiddell C.	Con	354	41.5
West D. Ms.*	Lab	353	-
Spencer E.	Con	299	-
Foy F.	Ind	108	12.7
<b>Turnout</b>		24.0	4.2

Nethercourt (3325) <sup>2</sup>			
		vote	share
Kirby J. Ms.*	Con	546	50.2
Hart D.*	Lab	542	49.8
Poole A.*	Lab	512	-
Rogers B. Ms.	Con	500	-
<b>Turnout</b>		34.0	0.4

Newington (3373) <sup>2</sup>			
		vote	share
Harrison M.*	Lab	532	58.4
Nicholson R.*	Lab	498	-
Williams K.	Ind	235	25.8
Booth P.	Con	144	15.8
Dillway J. Ms.	Con	140	-
<b>Turnout</b>		25.6	32.6

Northwood (4914) <sup>3</sup>			
		vote	share
Gore W. Ms.*	Lab	801	61.6
Green E. Ms.*	Lab	789	-
Dark K. Ms.	Lab	780	-
Jackson R.	Con	499	38.4
Jackson S. Ms.	Con	459	-
<b>Turnout</b>		28.8	23.2

Salmestone (3743) <sup>2</sup>			
		vote	share
Young C.*	Lab	411	50.2
Fuller B.	Con	407	49.8
Derrane R. Ms.*	Lab	396	-
Wright L. Ms.	Con	364	-
<b>Turnout</b>		22.9	0.5

Sir Moses Montefiore (3628) <sup>2</sup>			
		vote	share
Dickinson R.*	Lab	545	46.5
Fenner M. Ms.*	Lab	542	-
Long E.	Con	424	36.2
Kearney A.	Con	405	-
Knight V.	LD	202	17.3
Monaghan R. Ms.	LD	185	-
<b>Turnout</b>		33.8	10.3

St. Peters (5346) <sup>3</sup>			
		vote	share
Fullarton J.*	Con	916	45.4
Savage J.	Con	878	-
Wiltshire Z. Ms.	Con	822	-
Buckley J.*	Lab	692	34.3
De Rose J.	Lab	605	-
Lee R.	Lab	495	-
Drew S. Ms.	LD	410	20.3
<b>Turnout</b>		35.1	11.1

Thanet Villages (4734) <sup>3</sup>			
		vote	share
Hibberd C.*	Con	687	37.9
Pickering A. Ms.*	Ind	627	34.6
Roberts M.	Con	574	-
Miles D.	Con	572	-
Glover G.*	Lab	499	27.5
Andrews D.	Ind	424	-
Clayson B.	Ind	419	-
Glover J. Ms.	Lab	380	-
Mannering J.	Lab	284	-
<b>Turnout</b>		35.6	3.3

Viking (5577) <sup>3</sup>			
		vote	share
Kirkpatrick J.*	Con	1,050	53.4
Peppiatt W.*	Con	1,012	-
Wells C.	Con	938	-
Craddock P. Ms.	LD	499	25.4
James L. Ms.	LD	422	-
Matterface J. Ms.	Lab	419	21.3
Poole M.	Lab	415	-
Wills Y. Ms.	LD	413	-
Yeoman B.	Lab	388	-
<b>Turnout</b>		36.2	28.0

Westbrook (3207) <sup>2</sup>			
		vote	share
Tomlinson M.	Con	636	66.7
Payne D.	Con	570	-
Judge L. Ms.	Lab	317	33.3
Nemzer S. Ms.	Lab	303	-
<b>Turnout</b>		30.8	33.5

Westgate-On-Sea (5164) <sup>3</sup>			
		vote	share
Chater A. Ms.*	Con	904	53.2
Goodwin B.	Con	855	-
Spencer I. Ms.*	Con	783	-
Sebastian P.	Lab	514	30.3
May E. Ms.	Lab	481	-
Lord N.	Lab	457	-
Parker R.	BNP	280	16.5
<b>Turnout</b>		31.7	23.0

## Thanet - 2007

Beacon Road (3282) <sup>2</sup>			
		vote	share
Crotty C.	Con	613	52.0
Lawson D.	Con	607	-
Archard P.*	Lab	566	48.0
Poole E. Ms.*	Lab	547	-
<b>Turnout</b>		37.6	4.0

Birchington North (3170) <sup>2</sup>			
		vote	share
Latchford R.*	Con	797	41.4
Day S.*	Con	648	-
Worrow J.	Ind	555	28.8
Furness B.	LD	270	14.0
Bloore P.	LD	213	-
Bridge C.	Green	203	10.6
Scobie R. Ms.	Lab	99	5.1
Scobie S. Ms.	Lab	88	-
<b>Turnout</b>		49.9	12.6

Birchington South (5115) <sup>3</sup>			
		vote	share
Sheldrick M. Ms.*	Con	1,106	49.3
Bruce A.	Con	968	-
Roberts J. Ms.	Con	890	-
Cohen J.*	Ind	819	36.5
Harvey C.	Lab	317	14.1
Harvey M. Ms.	Lab	310	-
Stapley B. Ms.	Lab	286	-
<b>Turnout</b>		37.9	12.8

Bradstowe (3349) <sup>2</sup>			
		vote	share
Hayton B.*	Con	811	47.7
Cameron E.	Con	770	-
Emes T.*	LD	402	23.6
De Rose J.	Lab	264	15.5
Burges J. Ms.	Ind	224	13.2
Phillips P. Ms.	Lab	195	-
<b>Turnout</b>		44.3	24.0

Central Harbour (5677) <sup>3</sup>			
		vote	share
<b>Nicholson B. Ms.*</b>	Lab	586	22.7
<b>Taylor M.</b>	Rams	566	22.0
<b>Campbell P.</b>	Lab	557	-
Harrison B. Ms.	Con	521	20.2
Thomas J.	Con	520	-
Simpson P.	Con	513	-
Wilton E. Ms.	Lab	502	-
Shonk T.	UKIP	499	19.4
Guy J.	Green	404	15.7
<b>Turnout</b>		31.8	0.8
Cliffsend & Pegwell (3672) <sup>2</sup>			
		vote	share
<b>Kirby J.*</b>	Con	871	57.5
<b>Gideon J. Ms.*</b>	Con	822	-
Mannering J.	Lab	392	25.9
Higgs L. Ms.	Lab	315	-
Schacht B. Ms.	Green	252	16.6
<b>Turnout</b>		39.7	31.6
Cliftonville East (5060) <sup>3</sup>			
		vote	share
<b>Wise M.*</b>	Con	1,381	59.9
<b>Sullivan B.*</b>	Con	1,240	-
<b>Ezekiel S.*</b>	Con	1,225	-
Hart S.	Lab	574	24.9
Main M. Ms.	Lab	522	-
Moore P. Ms.	Lab	452	-
Franklin D.	Green	352	15.3
<b>Turnout</b>		42.0	35.0
Cliftonville West (5288) <sup>3</sup>			
		vote	share
<b>Hart C.*</b>	Lab	657	43.1
<b>Clark D.*</b>	Lab	599	-
<b>Aldred L. Ms.*</b>	Lab	581	-
Bishop J.	Con	570	37.4
Wood G.	Con	551	-
Miles P.	Con	518	-
Cooper T.	UKIP	296	19.4
<b>Turnout</b>		27.6	5.7
Dane Valley (5490) <sup>3</sup>			
		vote	share
<b>Jarvis M.</b>	Con	639	43.6
<b>Broadhurst S.</b>	Con	629	-
<b>Watt-Ruffell T.</b>	Con	615	-
Holden V. Ms.	Lab	558	38.1
Guilder K.	Lab	554	-
Pike J. Ms.	Lab	482	-
Allan W. Ms.	Ind	269	18.3
<b>Turnout</b>		26.3	5.5
Eastcliff (5219) <sup>3</sup>			
		vote	share
<b>Green D.*</b>	Lab	671	40.1
<b>Ward S.*</b>	Lab	637	-
<b>Harker K. Ms.</b>	Lab	594	-
O'Donnell G.	Rams	504	30.1
Easton E.	Con	497	29.7
Tigg J. Ms.	Con	457	-
Kearney T.	Con	440	-
<b>Turnout</b>		22.2	10.0
Garlinge (3647) <sup>2</sup>			
		vote	share
<b>Tomlinson S. Ms.*</b>	Con	638	52.6
<b>Brown S.*</b>	Con	597	-
Ovenden T.	Lab	305	25.1
Goddard C.	Ind	271	22.3
Ellender R.	Lab	263	-
<b>Turnout</b>		31.8	27.4
Kingsgate (1738)			
		vote	share
<b>Bayford B.*</b>	Con	501	80.2
Poole M.	Lab	124	19.8
<b>Turnout</b>		36.5	60.3

Margate Central (3516) <sup>2</sup>			
		vote	share
<b>Johnston I. Ms.*</b>	Lab	605	56.8
<b>Watkins J.*</b>	Lab	551	-
Duncan R. Ms.*	Con	192	18.0
Goldman D.	Con	185	-
Rollins P.	Ind	153	14.4
Porter J.	BNP	116	10.9
<b>Turnout</b>		28.0	38.7
Nethercourt (3337) <sup>2</sup>			
		vote	share
<b>Kirby J. Ms.*</b>	Con	580	40.2
<b>Rogers B. Ms.</b>	Con	511	-
Hart D.*	Lab	443	30.7
Landi P.	Rams	418	29.0
Wilkinson M.	Lab	407	-
<b>Turnout</b>		39.2	9.5
Newington (3410) <sup>2</sup>			
		vote	share
<b>Harrison M.*</b>	Lab	471	44.3
<b>Nicholson R.*</b>	Lab	438	-
Beer J. Ms.	Rams	268	25.2
Dillway D.	Con	208	19.6
Ezekiel M.	Con	197	-
Shayler V. Ms.	Rams	196	-
Condie P.	UKIP	116	10.9
<b>Turnout</b>		29.0	19.1
Northwood (4959) <sup>3</sup>			
		vote	share
<b>Green E. Ms.*</b>	Lab	812	43.6
<b>Dark K. Ms.*</b>	Lab	781	-
<b>Nottingham M.</b>	Lab	675	-
Heale M.	UKIP	525	28.2
Long E.	Con	525	28.2
Kingham D.	Con	488	-
Wallin D.	Con	393	-
<b>Turnout</b>		33.9	15.4
Salmestone (3772) <sup>2</sup>			
		vote	share
<b>Lodge-Pritchard E. Ms.</b>	Lab	562	55.3
<b>Scobie H.</b>	Lab	562	-
Maskell J.	Con	455	44.7
Pankhurst B.	Con	422	-
<b>Turnout</b>		28.6	10.5
Sir Moses Montefiore (3664) <sup>2</sup>			
		vote	share
<b>Fenner M. Ms.*</b>	Lab	668	41.8
<b>Poole A.*</b>	Lab	600	-
Burgess R.	Con	427	26.7
Dennis L.	Con	382	-
Cousins A. Ms.	Rams	291	18.2
Parker R. Ms.	UKIP	211	13.2
<b>Turnout</b>		37.8	15.1
St. Peters (5581) <sup>3</sup>			
		vote	share
<b>Savage J.*</b>	Con	1,062	52.6
<b>Wiltshire Z. Ms.*</b>	Con	1,015	-
<b>Gregory K.*</b>	Con	892	-
Carter C.	Lab	503	24.9
Howard M. Ms.	Lab	493	-
Lee R.	Lab	466	-
Jones G.	UKIP	453	22.4
<b>Turnout</b>		34.5	27.7
Thanet Villages (4777) <sup>3</sup>			
		vote	share
<b>Pickering A. Ms.*</b>	Ind	793	43.3
<b>Sullivan K. Ms.</b>	Con	670	36.6
<b>Roberts M.*</b>	Con	625	-
Roochove A.	Con	434	-
Davenport A. Ms.	Lab	368	20.1
Chantler J.	Lab	359	-
<b>Turnout</b>		36.8	6.7

Viking (5569) <sup>3</sup>			
		vote	share
<b>Peppiatt B.*</b>	Con	1,231	57.0
<b>Russell J. Ms.</b>	Con	1,194	-
<b>Wells C.*</b>	Con	1,140	-
Edwards G.	Lab	537	24.9
Ellner L. Ms.	Lab	525	-
Digby S.	Lab	484	-
Kirtley R.	UKIP	391	18.1
<b>Turnout</b>		37.3	32.1
Westbrook (3207) <sup>2</sup>			
		vote	share
<b>Tomlinson M.*</b>	Con	567	46.2
<b>McCastree D.</b>	Ind	433	35.3
Payne D.*	Con	432	-
Curtis A. Ms.	Lab	227	18.5
Watkins J. Ms.	Lab	209	-
<b>Turnout</b>		32.6	10.9
Westgate-On-Sea (5224) <sup>3</sup>			
		vote	share
<b>Moore S.</b>	Con	754	37.8
<b>King T.</b>	Ind	696	34.9
<b>Goodwin B.*</b>	Con	687	-
Spencer I. Ms.*	Con	673	-
Chater A. Ms.*	Ind	552	-
Jeary M.	Lab	315	15.8
Cook B. Ms.*	Lab	269	-
Green H.	Green	231	11.6
Araffa S.	Lab	227	-
Fleming J. Ms.	Ind	213	-
<b>Turnout</b>		34.5	2.9
Thanet - 2011			
Beacon Road (3245) <sup>2</sup>			
		vote	share
<b>Matterface J. Ms.</b>	Lab	703	51.1
<b>Binks R. Ms.</b>	Con	672	48.9
Edwards G.	Lab	670	-
Lawson D.*	Con	591	-
<b>Turnout</b>		44.0	2.3
Birchington North (3190) <sup>2</sup>			
		vote	share
<b>Day S.*</b>	Con	835	45.8
<b>Coleman-Cooke K.</b>	Con	787	-
Ashbee A.	Ind	552	30.2
Hibbert J. Ms.	Lab	228	12.5
Granata S. Ms.	LD	210	11.5
La Roche B.	Ind	201	-
Proctor S.	LD	87	-
<b>Turnout</b>		52.7	15.5
Birchington South (4962) <sup>3</sup>			
		vote	share
<b>Worrow J.</b>	Con	1,171	43.5
<b>Bruce A.*</b>	Con	1,079	-
<b>Cohen J.</b>	Ind	1,023	38.0
Roberts J. Ms.*	Con	900	-
Scobie H. Ms.	Lab	499	18.5
Scobie R. Ms.	Lab	433	-
<b>Turnout</b>		45.9	5.5
Bradstowe (3229) <sup>2</sup>			
		vote	share
<b>Saunders D.</b>	Con	832	45.5
<b>Hayton B.*</b>	Con	781	-
Latham L. Ms.	LD	412	22.6
Yeoman B.	Lab	372	20.4
Hunt C. Ms.	LD	279	-
Vaughan-Lyons R.	Ind	211	11.5
<b>Turnout</b>		50.3	23.0

Central Harbour (5426) <sup>3</sup>			
		vote	share
<b>Campbell P.*</b>	Lab	859	36.1
<b>Dwyer M. Ms.</b>	Lab	743	-
<b>Huxley C. Ms.</b>	Lab	729	-
Hoult R.	Ind	630	26.5
Spicer S.	Con	554	23.3
Taylor M.*	Con	517	-
Batt F.	Ind	485	-
Huggins S.	Con	440	-
Cousins A. Ms.	Ind	435	-
Shonk T.	UKIP	335	14.1
<b>Turnout</b>		39.0	9.6

Cliffsend & Pegwell (3723) <sup>2</sup>			
		vote	share
<b>Kirby J.*</b>	Con	966	50.7
<b>Gideon J. Ms.*</b>	Con	859	-
Ward S.*	Lab	502	26.3
Urwin B.	Ind	439	23.0
Wharmby P.	Lab	384	-
<b>Turnout</b>		47.6	24.3

Cliftonville East (5018) <sup>3</sup>			
		vote	share
<b>Ezekiel S.*</b>	Con	1,187	45.9
<b>Wise M.*</b>	Con	1,165	-
<b>Sullivan B.*</b>	Con	1,155	-
Friend W.	Ind	601	23.2
Friend L. Ms.	Ind	598	-
Poole E. Ms.	Lab	515	19.9
Symonds M. Ms.	Lab	490	-
Poole M.	Lab	456	-
Spencer T.	Green	283	10.9
<b>Turnout</b>		49.1	22.7

Cliftonville West (4431) <sup>3</sup>			
		vote	share
<b>Hart C.*</b>	Lab	875	59.8
<b>Clark D.*</b>	Lab	822	-
<b>Aldred L. Ms.*</b>	Lab	800	-
McCastree B.	Con	588	40.2
Martell H.	Con	567	-
Rothman J.	Con	525	-
<b>Turnout</b>		35.1	19.6

Dane Valley (5188) <sup>3</sup>			
		vote	share
<b>Hart S. Ms.</b>	Lab	921	51.4
<b>Edwards J.</b>	Lab	863	-
<b>Scobie W.</b>	Lab	818	-
Allan W. Ms.	Con	582	32.5
Jarvis M.*	Con	479	-
Wallin D.	Con	431	-
Brown M.	LD	289	16.1
Flaig T.	LD	278	-
Furness B.	LD	243	-
<b>Turnout</b>		35.0	18.9

Eastcliff (4819) <sup>3</sup>			
		vote	share
<b>Green D.*</b>	Lab	767	39.0
<b>Everitt R.</b>	Lab	651	-
<b>Moore P. Ms.</b>	Lab	622	-
O'Donnell G.	Rams	519	26.4
Easton E.	Con	457	23.2
Holmes J.	Con	404	-
Spicer D.	Con	372	-
Roscow J. Ms.	Ind	226	11.5
Shonk L.	Ind	224	-
<b>Turnout</b>		34.6	12.6

Garlinge (3453) <sup>2</sup>			
		vote	share
<b>Tomlinson S. Ms.*</b>	Con	482	32.7
<b>Gregory K.*</b>	Con	440	-
Denning B. Ms.	Lab	415	28.1
Harvey C.	Lab	403	-
Ovenden R.	Ind	312	21.2
Greely D.	UKIP	266	18.0
<b>Turnout</b>		40.0	4.5

Kingsgate (1759)			
		vote	share
<b>Bayford B.*</b>	Con	518	65.1
Utton N.	Lab	171	21.5
Terry A.	UKIP	107	13.4
<b>Turnout</b>		45.6	43.6

Margate Central (2942) <sup>2</sup>			
		vote	share
<b>Johnston I. Ms.*</b>	Lab	682	70.7
<b>Watkins J.*</b>	Lab	570	-
Clements M.	Con	283	29.3
Coleman-Cooke G.	Con	235	-
<b>Turnout</b>		33.5	41.3

Nethercourt (3390) <sup>2</sup>			
		vote	share
<b>Alexandrou S.</b>	Lab	669	45.9
<b>Gibson K. Ms.</b>	Lab	628	-
Kirby J. Ms.*	Con	600	41.2
Rogers B. Ms.*	Con	562	-
Larkins S. Ms.	UKIP	188	12.9
Carter M. Ms.	UKIP	166	-
<b>Turnout</b>		44.3	4.7

Newington (3186) <sup>2</sup>			
		vote	share
<b>Harrison M.*</b>	Lab	705	65.6
<b>Nicholson R.*</b>	Lab	702	-
Marsh W. Ms.	Con	370	34.4
Simpson P.	Con	351	-
<b>Turnout</b>		35.7	31.2

Northwood (4809) <sup>3</sup>			
		vote	share
<b>Dark K. Ms.*</b>	Lab	971	57.2
<b>Green E. Ms.*</b>	Lab	951	-
<b>Driver I.</b>	Lab	877	-
Byne B. Ms.	Con	726	42.8
Hudson J. Ms.	Con	658	-
Mulvihill M.	Con	616	-
<b>Turnout</b>		37.6	14.4

Salmestone (3555) <sup>2</sup>			
		vote	share
<b>Scobie H.*</b>	Lab	579	49.9
<b>Lodge-Pritchard E. Ms.*</b>	Lab	557	-
Spencer I. Ms.	Con	417	35.9
Tamiz P.	Con	312	-
Elenor J.	UKIP	165	14.2
Jardine A.	UKIP	163	-
<b>Turnout</b>		33.9	14.0

Sir Moses Montefiore (3462) <sup>2</sup>			
		vote	share
<b>Fenner M. Ms.*</b>	Lab	872	61.7
<b>Poole A.*</b>	Lab	858	-
Todd G. Ms.	Con	541	38.3
Todd V.	Con	514	-
<b>Turnout</b>		41.9	23.4

St. Peters (5515) <sup>3</sup>			
		vote	share
<b>Gregory I.</b>	Con	1,385	61.4
<b>Wiltshire Z. Ms.*</b>	Con	1,330	-
<b>Savage J.*</b>	Con	1,329	-
Perfect W. Ms.	Lab	869	38.6
Symonds D.	Lab	861	-
Poole E. Ms.	Lab	853	-
<b>Turnout</b>		44.1	22.9

Thanet Villages (4755) <sup>3</sup>			
		vote	share
<b>Grove B.</b>	Ind	1,209	44.2
<b>Roberts M.*</b>	Con	1,011	37.0
<b>Wright L. Ms.</b>	Con	837	-
Sullivan K. Ms.*	Con	720	-
Read K.	Ind	523	-
Bean A.	Lab	516	18.9
Bean S. Ms.	Lab	472	-
<b>Turnout</b>		47.4	7.2

Viking (5397) <sup>3</sup>			
		vote	share
<b>Saunders M. Ms.</b>	Con	1,487	53.7
<b>Wells C.*</b>	Con	1,352	-
<b>Marson J. Ms.</b>	Con	1,321	-
Kemp C.	Lab	777	28.1
Pitt B.	Lab	733	-
Perfect S.	Lab	649	-
Branscombe-Kent M. Ms.	LD	504	18.2
<b>Turnout</b>		47.7	25.7

Westbrook (3059) <sup>2</sup>			
		vote	share
<b>Hornus N.</b>	Con	704	60.5
<b>Tomlinson M.*</b>	Con	697	-
Harker K. Ms.*	Lab	459	39.5
Drelaud L. Ms.	Lab	450	-
<b>Turnout</b>		42.1	21.1

Westgate-On-Sea (5079) <sup>3</sup>			
		vote	share
<b>King T.*</b>	Ind	853	34.3
<b>Moore S.*</b>	Con	793	31.9
<b>Goodwin B.*</b>	Con	751	-
Chapman R.	Con	675	-
Bull D.	Lab	555	22.3
Robinson L. Ms.	Lab	528	-
Harvey M. Ms.	Lab	444	-
Parker R. Ms.	UKIP	283	11.4
<b>Turnout</b>		41.5	2.4



