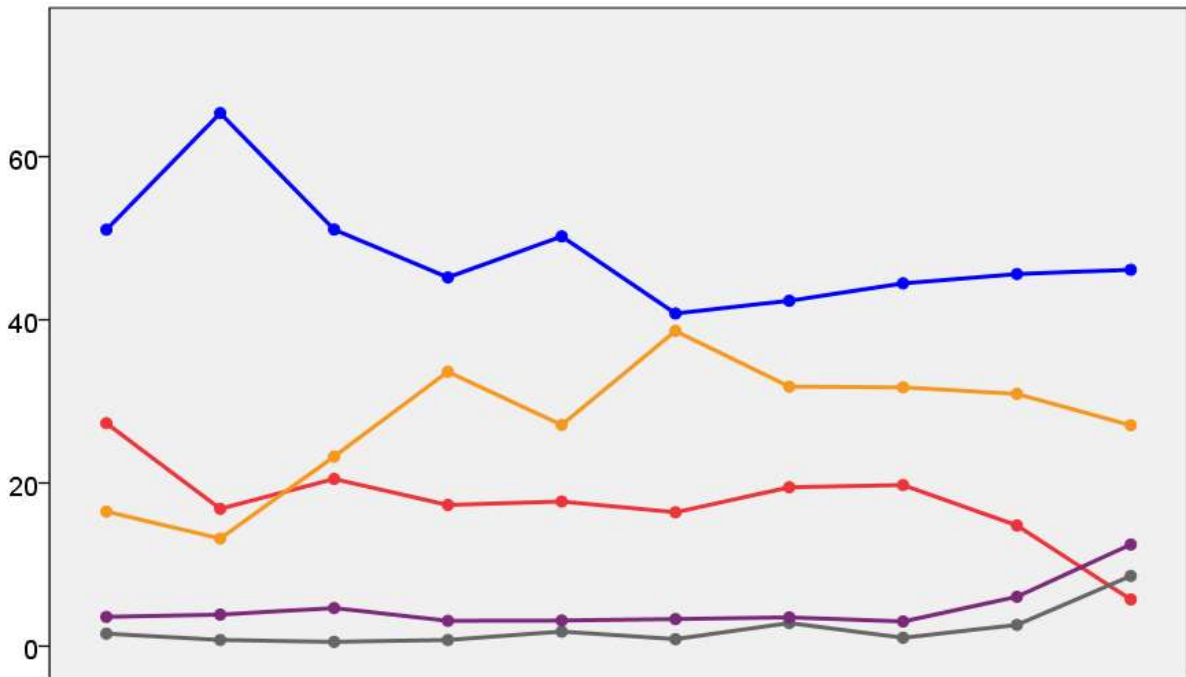


# Surrey County Council Election Results 1973-2009



Colin Rallings and Michael Thrasher  
The Elections Centre  
Plymouth University

The information contained in this report has been obtained from a number of sources. Election results from the immediate post-reorganisation period were painstakingly collected by Alan Willis largely, although not exclusively, from local newspaper reports. From the mid-1980s onwards the results have been obtained from each local authority by the Elections Centre. The data are stored in a database designed by Lawrence Ware and maintained by Brian Cheal and others at Plymouth University. Despite our best efforts some information remains elusive whilst we accept that some errors are likely to remain. Notice of any mistakes should be sent to [elections@plymouth.ac.uk](mailto:elections@plymouth.ac.uk). The results sequence can be kept up to date by purchasing copies of the annual Local Elections Handbook, details of which can be obtained by contacting the email address above.

Front cover: the graph shows the distribution of percentage vote shares over the period covered by the results. The lines reflect the colours traditionally used by the three main parties. The grey line is the share obtained by Independent candidates while the purple line groups together the vote shares for all other parties.

Rear cover: the top graph shows the percentage share of council seats for the main parties as well as those won by Independents and other parties. The lines take account of any by-election changes (but not those resulting from elected councillors switching party allegiance) as well as the transfers of seats during the main round of local election.

The lower graph shows for each main round of local elections the overall percentage turnout (solid line), the percentage of women candidates standing at (dotted line) and the percentage of women among those elected (hashed line).



<b>Guildford (East) (9070)</b>			
		vote	share
<b>Williams A.</b>	Con	2,036	53.5
Walton M. Ms.	Lib	1,236	32.4
Haimes J. Ms.	Lab	537	14.1
<b>Turnout</b>		42.0	21.0
<b>Guildford (North) (12133)</b>			
		vote	share
<b>Fahy J.</b>	Lab	2,520	51.1
Nicholson F.	Con	2,409	48.9
<b>Turnout</b>		40.6	2.3
<b>Guildford (South) (10567)</b>			
		vote	share
<b>Floyd G.</b>	Lib	1,900	44.6
Crabtree S. Ms.	Con	1,869	43.9
Harper L. Ms.	Lab	487	11.4
<b>Turnout</b>		40.3	0.7
<b>Guildford (West) (11517)</b>			
		vote	share
<b>Bellerby D. Ms.</b>	Lab	2,741	56.9
Gibbs B.	Con	2,074	43.1
<b>Turnout</b>		41.8	13.9
<b>Hambleton (Central) (7524)</b>			
		vote	share
<b>Kennett J.</b>	Lib	1,945	54.9
Stedall M.	Con	1,596	45.1
<b>Turnout</b>		47.1	9.9
<b>Hambleton (East) (12167)</b>			
		vote	share
<b>Gardiner R.</b>	Con	2,395	52.1
Eldon M.	Lib	2,204	47.9
<b>Turnout</b>		37.8	4.2
<b>Hambleton (West) (8796)</b>			
		vote	share
<b>Davies P.</b>	Lib	2,196	51.9
Readhead R.	Con	2,033	48.1
<b>Turnout</b>		48.1	3.9
<b>Haslemere (10138)</b>			
		vote	share
<b>Jeffs G.</b>	Lib	2,352	54.4
Manners-Clark R.	Con	1,970	45.6
<b>Turnout</b>		42.6	8.8
<b>Horsleys (9281)</b>			
		vote	share
<b>Eve J.</b>	Con	0	0.0
<b>Turnout</b>		0.0	0.0
<b>Leatherhead (Central) (7102)</b>			
		vote	share
<b>Matthews H.</b>	Con	1,281	68.4
McDevitt D.	Lab	591	31.6
<b>Turnout</b>		26.4	36.9
<b>Leatherhead (East) (9939)</b>			
		vote	share
<b>Argyropulo D.</b>	Con	2,689	76.3
Hopper E.	Lab	833	23.7
<b>Turnout</b>		35.4	52.7
<b>Leatherhead (West) (13215)</b>			
		vote	share
<b>Howe R.</b>	Con	0	0.0
<b>Turnout</b>		0.0	0.0
<b>New Haw (10799)</b>			
		vote	share
<b>Blowers A.</b>	Con	2,238	59.8
Boyd C.	Lib	1,503	40.2
<b>Turnout</b>		34.6	19.6

<b>Reigate (East) (10317)</b>			
		vote	share
<b>Smith S.</b>	Lab	2,646	62.4
Frost D. Ms.	Con	1,592	37.6
<b>Turnout</b>		41.1	24.9
<b>Reigate (North West) (13585)</b>			
		vote	share
<b>Robinson P. Ms.</b>	Con	3,305	70.8
Evans T.	Lab	1,360	29.2
<b>Turnout</b>		34.3	41.7
<b>Reigate (South Central) (10107)</b>			
		vote	share
<b>Barnes B. Ms.</b>	Con	2,266	55.4
Pritchard D.	Lab	1,822	44.6
<b>Turnout</b>		40.5	10.9
<b>Reigate (South West) (6839)</b>			
		vote	share
<b>Heath W.</b>	Lab	1,806	61.9
Nye M. Ms.	Con	1,111	38.1
<b>Turnout</b>		42.7	23.8
<b>Shalford (7176)</b>			
		vote	share
<b>Brigstocke A.</b>	Con	0	0.0
<b>Turnout</b>		0.0	0.0
<b>Shepperton (10385)</b>			
		vote	share
<b>Deed W.</b>	Con	2,215	62.4
Gates F.	Lab	1,332	37.6
<b>Turnout</b>		34.2	24.9
<b>Shere (8588)</b>			
		vote	share
<b>Whiting W.</b>	Con	1,927	55.7
Blundell G. Ms.	Lib	1,533	44.3
<b>Turnout</b>		40.3	11.4
<b>Staines (9527)</b>			
		vote	share
<b>Burges M. Ms.</b>	Con	1,878	53.3
Collins G. Ms.	Lab	1,401	39.7
Butterfield E.	NF	246	7.0
<b>Turnout</b>		37.0	13.5
<b>Stanwell (9716)</b>			
		vote	share
<b>Benen-Stock L.</b>	Lab	2,212	68.3
Arnold V. Ms.	Con	1,027	31.7
<b>Turnout</b>		33.3	36.6
<b>Sunbury (8237)</b>			
		vote	share
<b>Robertson J.</b>	Con	2,019	49.3
King G.	Lib	1,352	33.0
Middleton J.	Lab	727	17.7
<b>Turnout</b>		49.8	16.3
<b>Sunbury Common &amp; Ashford Common (10102)</b>			
		vote	share
<b>Robinson W.</b>	Lab	2,461	58.9
Wright E.	Con	1,719	41.1
<b>Turnout</b>		41.4	17.8
<b>Walton &amp; Weybridge No. 1 (Hersham) (8801)</b>			
		vote	share
<b>Fellowes A.</b>	Con	1,970	52.5
Awcock F.	Lab	1,779	47.5
<b>Turnout</b>		42.6	5.1
<b>Walton &amp; Weybridge No. 2 (Walton So) (9257)</b>			
		vote	share
<b>Guymer R.</b>	Con	2,242	60.2
Cook P.	Lib	1,086	29.2
Brown I.	Lab	396	10.6
<b>Turnout</b>		40.2	31.0

<b>Walton &amp; Weybridge No. 3 (Walton On) (8844)</b>			
		vote	share
<b>Fudge H. Ms.</b>	Lab	1,994	54.4
Bird B.	Con	1,673	45.6
<b>Turnout</b>		41.5	8.8
<b>Walton &amp; Weybridge No. 4 (Weybridge) (10202)</b>			
		vote	share
<b>Sturgis A.</b>	Lib	2,132	50.5
Garrett K. Ms.	Con	2,090	49.5
<b>Turnout</b>		41.4	1.0
<b>Warlingham (8577)</b>			
		vote	share
<b>Owlett G. Ms.</b>	Con	1,783	54.4
Shaw K.	Lib	1,128	34.4
Bish G.	Lab	368	11.2
<b>Turnout</b>		38.2	20.0
<b>Windlesham (7859)</b>			
		vote	share
<b>Whitfield J.</b>	Con	0	0.0
<b>Turnout</b>		0.0	0.0
<b>Woking (Central) (11097)</b>			
		vote	share
<b>Powell D.</b>	Con	2,117	47.7
Patel R.	Lib	1,172	26.4
Molloy T.	Lab	1,146	25.8
<b>Turnout</b>		40.0	21.3
<b>Woking (East) (12383)</b>			
		vote	share
<b>Marshall M. Ms.</b>	Con	2,654	67.5
Blagbrough P.	Lab	1,280	32.5
<b>Turnout</b>		31.8	34.9
<b>Woking (North) (11247)</b>			
		vote	share
<b>Gammon K.</b>	Con	2,296	60.6
Newell R.	Lab	1,490	39.4
<b>Turnout</b>		33.7	21.3
<b>Woking (South) (6835)</b>			
		vote	share
<b>Smith H. Ms.</b>	Lab	1,668	52.8
Brett J.	Con	1,494	47.2
<b>Turnout</b>		46.3	5.5
<b>Woking (West) (12805)</b>			
		vote	share
<b>Cruickshank E. Ms.</b>	Con	2,190	65.9
Whiteley S. Ms.	Lab	1,134	34.1
<b>Turnout</b>		26.0	31.8
<b>Worplesdon (9548)</b>			
		vote	share
<b>Bastin D.</b>	Con	1,720	72.3
Foster J.	Lab	658	27.7
<b>Turnout</b>		24.9	44.7

## Surrey 1977

Aldershot (10957)			
		vote	share
Jarvis B.	Con	2,695	57.2
Sharpe R.	Lab	1,217	25.8
Hopwood D.	Lib	798	16.9
<b>Turnout</b>		43.1	31.4
Ash (10393)			
		vote	share
Holden A.	Con	2,775	77.8
Robinson S.	Lab	792	22.2
<b>Turnout</b>		34.3	55.6
Ashford East & Laleham (11978)			
		vote	share
Van Der Meulen C.	Con	3,135	70.4
Hemsley G.	Lab	1,315	29.6
<b>Turnout</b>		37.2	40.9
Ashford West (9125)			
		vote	share
Wickes S. Ms.*	Con	2,490	69.5
Neal E.	Lab	1,095	30.5
<b>Turnout</b>		39.3	38.9
Banstead (North East) (9379)			
		vote	share
Worthington J.	Con	0	0.0
<b>Turnout</b>		0.0	0.0
Banstead (North West) (11979)			
		vote	share
Cooper A. Ms.*	Con	3,866	76.4
Manson H.	Lab	1,197	23.6
<b>Turnout</b>		42.3	52.7
Banstead (South) (10760)			
		vote	share
Childs G.*	Con	0	0.0
<b>Turnout</b>		0.0	0.0
Camberley (East) (10797)			
		vote	share
Warden J. Ms.	Con	2,742	72.2
Stewart D.	Ind	628	16.5
McCarthy J. Ms.	Lab	426	11.2
<b>Turnout</b>		35.2	55.7
Camberley (West) (6833)			
		vote	share
Robertson K.*	Con	0	0.0
<b>Turnout</b>		0.0	0.0
Caterham Hill (8888)			
		vote	share
Bailey D.	Con	2,592	55.1
Shaw M.*	Lib	1,486	31.6
Burkitt D.	Lab	622	13.2
<b>Turnout</b>		52.9	23.5
Caterham Valley (7282)			
		vote	share
Mortimer G.*	Con	2,504	75.6
Mycroft J. Ms.	Lib	810	24.4
<b>Turnout</b>		45.5	51.1
Chertsey (9049)			
		vote	share
Payne N.	Con	2,110	52.4
Reddy T.*	Lab	1,196	29.7
Elfer G.	Lib	511	12.7
Vaughan-Smith R.	NF	208	5.2
<b>Turnout</b>		44.7	22.7

Chobham & Bisley (7538)			
		vote	share
Reed M. Ms.	Con	2,676	86.9
Mitchell D.	Lab	405	13.1
<b>Turnout</b>		40.9	73.7
Dorking (North) (6997)			
		vote	share
Evelyn J.	Con	1,983	60.8
Shaw A.	Lib	1,278	39.2
<b>Turnout</b>		46.7	21.6
Dorking (South) (9765)			
		vote	share
Bryan M. Ms.*	Con	2,620	61.9
Wendon S. Ms.	Lab	929	21.9
Hope R. Ms.	Lib	684	16.2
<b>Turnout</b>		43.4	39.9
Dorking Rural (10871)			
		vote	share
Reynolds E.	Con	3,648	82.0
Goodall D.	Lab	800	18.0
<b>Turnout</b>		41.0	64.0
Egham (North) (11031)			
		vote	share
Birchall E. Ms.*	Con	2,799	71.1
Capper K.	Lab	797	20.2
Stuart I.	Lib	343	8.7
<b>Turnout</b>		35.9	50.8
Egham (South) (12036)			
		vote	share
Toynbee W.	Con	2,875	73.4
Austin E. Ms.	Lab	1,042	26.6
<b>Turnout</b>		32.7	46.8
Epsom & Ewell (North East) (7850)			
		vote	share
Davison H.*	Ind	0	0.0
<b>Turnout</b>		0.0	0.0
Epsom & Ewell (North) (11155)			
		vote	share
Heather P. Ms.*	Res	3,363	74.6
Buckingham H.	Lib	1,146	25.4
<b>Turnout</b>		40.4	49.2
Epsom & Ewell (South East) (11397)			
		vote	share
Gerrard C. Ms.	Con	2,930	59.2
Scott-Malden G. Ms.	Ind Re	2,021	40.8
<b>Turnout</b>		43.4	18.4
Epsom & Ewell (South West) (7190)			
		vote	share
Biggart M. Ms.*	Con	1,769	68.9
Rawle M.	Lib	800	31.1
<b>Turnout</b>		35.7	37.7
Epsom & Ewell (West) (11798)			
		vote	share
Mackenzie B. Ms.	Con	2,642	56.6
King M. Ms.*	Lab	2,022	43.4
<b>Turnout</b>		39.5	13.3
Esher No. 1 (Claygate & Esher) (8840)			
		vote	share
Charlton A.*	Con	2,904	69.5
Woods C.	Lib	1,273	30.5
<b>Turnout</b>		47.3	39.0
Esher No. 2 (Long Ditton & Hinchley) (7159)			
		vote	share
Sibthorp D. Ms.*	Con	0	0.0
<b>Turnout</b>		0.0	0.0

Esher No. 3 (Cobham) (10855)			
		vote	share
Jenkins W.	Con	3,406	73.5
Beeson D.	Lib	678	14.6
Arksey F.	Lab	551	11.9
<b>Turnout</b>		42.7	58.9
Esher No. 4 (Molesey) (12965)			
		vote	share
Green J. Ms.*	Res	2,652	52.1
Leeson B.	Con	2,440	47.9
<b>Turnout</b>		39.3	4.2
Esher No. 5 (Thames Ditton) (8964)			
		vote	share
Metcalfe M.*	Con	0	0.0
<b>Turnout</b>		0.0	0.0
Farnham (North) (12609)			
		vote	share
Cordier R.	Con	2,743	53.7
Bransby-Williams M.*	Lib	1,900	37.2
Rowlands D.	Lab	461	9.0
<b>Turnout</b>		40.5	16.5
Farnham (South) (13247)			
		vote	share
Lawson R.*	Con	3,609	62.0
King-Hele M. Ms.	Lib	1,748	30.0
Dane N.	Ind	465	8.0
<b>Turnout</b>		43.9	32.0
Frimley (15678)			
		vote	share
Coffin B.*	Con	4,000	64.7
Lyons T.	Ind Rp	1,644	26.6
Walkley L.	Lab	535	8.7
<b>Turnout</b>		39.4	38.1
Godalming (13539)			
		vote	share
Lovell-Knight A.	Con	3,021	54.7
Denningberg E. Ms.	Lab	1,479	26.8
Davies P.	Lib	963	17.4
Hun A.	ANP	61	1.1
<b>Turnout</b>		40.8	27.9
Godstone (North East) (11760)			
		vote	share
Macfarlane J.*	Con	3,550	69.6
Liddell S. Ms.	Lib	956	18.7
Johnstone B. Ms.	Lab	594	11.6
<b>Turnout</b>		43.4	50.9
Godstone (North West) (8798)			
		vote	share
Butcher S. Ms.*	Con	2,400	66.2
Dickson M.	Lab	676	18.6
Hayter N.	Lib	550	15.2
<b>Turnout</b>		41.2	47.5
Godstone (South East) (5970)			
		vote	share
Anderson J.	Con	1,868	60.1
Leach D.*	Lib	769	24.8
Allonby D.	Lab	470	15.1
<b>Turnout</b>		52.0	35.4
Godstone (South West) (5292)			
		vote	share
Acraman W.	Con	1,856	84.7
Fogarty B.	Lib	336	15.3
<b>Turnout</b>		41.4	69.3
Guildford (East) (9209)			
		vote	share
Beatrice R.	Con	2,782	74.2
Mathews E. Ms.	Lab	499	13.3
Goldstone M. Ms.	Lib	468	12.5
<b>Turnout</b>		40.7	60.9

<b>Guildford (North) (12507)</b>			
		vote	share
Jordan W.	Con	3,154	55.5
Fahy W.*	Lab	1,804	31.8
Goldstone P.	Lib	721	12.7
<b>Turnout</b>		45.4	23.8
<b>Guildford (South) (10506)</b>			
		vote	share
Tye S.	Con	2,620	56.2
Floyd G.*	Lib	1,442	30.9
Roost B.	Lab	604	12.9
<b>Turnout</b>		44.4	25.2
<b>Guildford (West) (11739)</b>			
		vote	share
Ross-Symons F.	Con	2,276	46.2
Bellerby D. Ms.*	Lab	2,238	45.4
Payne R.	Lib	414	8.4
<b>Turnout</b>		42.0	0.8
<b>Hambleton (Central) (7383)</b>			
		vote	share
Wood J.	Con	2,360	60.7
Kennett J.*	Lib	1,387	35.7
Robinson B.	Lab	143	3.7
<b>Turnout</b>		52.7	25.0
<b>Hambleton (East) (12346)</b>			
		vote	share
Creswell M.	Con	3,792	74.2
Young A.	Lib	1,316	25.8
<b>Turnout</b>		41.4	48.5
<b>Hambleton (West) (11022)</b>			
		vote	share
Roxburgh J.	Con	3,548	71.7
Raynes P.	Lib	1,062	21.5
Sanderson P.	Lab	335	6.8
<b>Turnout</b>		44.9	50.3
<b>Haslemere (10449)</b>			
		vote	share
James D. Ms.	Con	3,237	73.0
Rennison P. Ms.	Lib	932	21.0
Roberts M.	Lab	267	6.0
<b>Turnout</b>		42.5	52.0
<b>Horley (13642)</b>			
		vote	share
Duncan R.	Con	3,531	82.1
Spill R.	Lab	771	17.9
<b>Turnout</b>		31.6	64.2
<b>Horsleys (9871)</b>			
		vote	share
Eve J.*	Con	0	0.0
<b>Turnout</b>		0.0	0.0
<b>Leatherhead (Central) (7097)</b>			
		vote	share
Eaton E.	Con	1,881	72.3
McDevitt D.	Lab	721	27.7
<b>Turnout</b>		36.8	44.6
<b>Leatherhead (East) (9986)</b>			
		vote	share
Kerr D.	Con	0	0.0
<b>Turnout</b>		0.0	0.0
<b>Leatherhead (West) (13470)</b>			
		vote	share
Howe R.*	Con	3,637	65.9
Berry N.	Ind	950	17.2
Storey J.	Lib	929	16.8
<b>Turnout</b>		41.1	48.7

<b>New Haw (10935)</b>			
		vote	share
Blowers A.*	Con	3,197	72.5
Graham J.	Lib	776	17.6
O'Bryne S.	Lab	439	10.0
<b>Turnout</b>		40.4	54.9
<b>Reigate (East) (9643)</b>			
		vote	share
Smith S.*	Lab	2,329	51.8
Parkhouse R.	Con	2,168	48.2
<b>Turnout</b>		46.8	3.6
<b>Reigate (North West) (13500)</b>			
		vote	share
Robinson P. Ms.*	Con	4,016	77.5
Runciman R.	Lib	1,164	22.5
<b>Turnout</b>		38.6	55.1
<b>Reigate (South Central) (10246)</b>			
		vote	share
Smalley P.	Con	0	0.0
<b>Turnout</b>		0.0	0.0
<b>Reigate (South West) (6649)</b>			
		vote	share
Davies P.	Lab	1,630	54.7
Hardy P.	Con	1,350	45.3
<b>Turnout</b>		44.9	9.4
<b>Shalford (7120)</b>			
		vote	share
Brigstocke A.*	Con	2,212	82.5
Grugeon L.	Lib	468	17.5
<b>Turnout</b>		37.6	65.1
<b>Shepperton (10649)</b>			
		vote	share
Fidler F.	Con	3,231	78.3
Cowley M.	Lab	898	21.7
<b>Turnout</b>		38.8	56.5
<b>Shere (8266)</b>			
		vote	share
Whiting W.*	Con	0	0.0
<b>Turnout</b>		0.0	0.0
<b>Staines (10172)</b>			
		vote	share
Burgess M. Ms.*	Con	2,290	73.8
Collins G. Ms.	Lab	611	19.7
Longland R.	Lib	204	6.6
<b>Turnout</b>		30.5	54.1
<b>Stanwell (10083)</b>			
		vote	share
Cotton J.	Con	1,863	50.7
Robinson W.*	Lab	1,420	38.7
Butterfield E.	Ind Rp	390	10.6
<b>Turnout</b>		36.4	12.1
<b>Sunbury (8065)</b>			
		vote	share
Robertson J.*	Con	2,761	83.0
Gates F.	Lab	565	17.0
<b>Turnout</b>		41.2	66.0
<b>Sunbury Common &amp; Ashford Common (10137)</b>			
		vote	share
Wright E.	Con	2,537	62.5
Evans T.*	Lab	1,525	37.5
<b>Turnout</b>		40.1	24.9
<b>Walton &amp; Weybridge No. 1 (Hersham) (8980)</b>			
		vote	share
Greenwood G.	Con	2,694	66.3
Thorpe P.	Lab	1,367	33.7
<b>Turnout</b>		45.2	32.7

<b>Walton &amp; Weybridge No. 2 (Walton So) (9277)</b>			
		vote	share
Guymer R.*	Con	3,006	76.6
Wheeler G.	Lib	920	23.4
<b>Turnout</b>		42.3	53.1
<b>Walton &amp; Weybridge No. 3 (Walton On) (8956)</b>			
		vote	share
Naish C.	Con	2,526	61.3
Fudge H. Ms.*	Lab	1,592	38.7
<b>Turnout</b>		46.0	22.7
<b>Walton &amp; Weybridge No. 4 (Weybridge) (10344)</b>			
		vote	share
Brian-Smith W.	Con	3,281	66.0
Sturgis A.*	Lib	1,693	34.0
<b>Turnout</b>		48.1	31.9
<b>Warlingham (8793)</b>			
		vote	share
Phillips E. Ms.	Con	3,015	72.4
Smith G.	Lib	738	17.7
Tandridge A.	Lab	413	9.9
<b>Turnout</b>		47.4	54.7
<b>Windlesham (8704)</b>			
		vote	share
Whitfield J.*	Con	2,802	83.1
Chaffey B.	Lab	568	16.9
<b>Turnout</b>		38.7	66.3
<b>Woking (Central) (11300)</b>			
		vote	share
Powell D.*	Con	2,851	63.2
Robinson F.	Lab	1,100	24.4
Williams D.	Lib	562	12.5
<b>Turnout</b>		39.9	38.8
<b>Woking (East) (12644)</b>			
		vote	share
Marshall M. Ms.*	Con	3,983	67.1
Cheatle J. Ms.	Lib	1,013	17.1
Newell R.	Lab	940	15.8
<b>Turnout</b>		47.0	50.0
<b>Woking (North) (11642)</b>			
		vote	share
Gammon K.*	Con	3,077	58.5
Dunne J.	Lab	1,102	20.9
Wade M.	Lib	1,083	20.6
<b>Turnout</b>		45.2	37.5
<b>Woking (South) (6747)</b>			
		vote	share
Hunt D.	Con	2,014	58.3
Smith H. Ms.*	Lab	1,179	34.1
Gibson J.	Lib	262	7.6
<b>Turnout</b>		51.2	24.2
<b>Woking (West) (13787)</b>			
		vote	share
Jones A. Ms.	Con	3,804	72.3
Bone W.	Lab	778	14.8
Cheeseman G. Ms.	Lib	679	12.9
<b>Turnout</b>		38.2	57.5
<b>Worplesdon (9748)</b>			
		vote	share
Bastin D.*	Con	2,454	82.1
Green P.	Lab	536	17.9
<b>Turnout</b>		30.7	64.1

**Surrey 1981**

Aldershot (11861)			
		vote	share
Jarvis B.	Con	2,342	45.6
Trory R.	Lab	1,771	34.5
Beal M.	Lib	1,021	19.9
	<b>Turnout</b>	43.3	11.1
Ash (11607)			
Cook A. Ms.	Con	2,253	56.9
Green P.	Lab	1,710	43.1
	<b>Turnout</b>	34.1	13.7
Ashford East (9672)			
Wright E.	Con	1,954	47.5
Evans T.	Lab	1,272	30.9
O'Brien J.	Lib	891	21.6
	<b>Turnout</b>	42.6	16.6
Ashford West (11093)			
Wickes S. Ms.	Con	2,945	62.6
Tompkinson J. Ms.	Lab	1,152	24.5
Rankin D. Ms.	Lib	609	12.9
	<b>Turnout</b>	42.4	38.1
Ashted (10102)			
Lewis I.	Ind Re	2,914	57.3
Kerr D.	Con	2,173	42.7
	<b>Turnout</b>	50.4	14.6
Banstead East (11172)			
Day D.*	Con	3,043	63.0
Davies I.	Lib	1,288	26.7
Gray A. Ms.	Lab	502	10.4
	<b>Turnout</b>	43.3	36.3
Banstead South (11381)			
Fowler J. Ms.	Con	3,332	73.1
Wendon S. Ms.	Lab	1,225	26.9
	<b>Turnout</b>	40.0	46.2
Banstead West (10206)			
Cooper A. Ms.	Con	3,054	74.4
Fisher M. Ms.	Lab	1,051	25.6
	<b>Turnout</b>	40.2	48.8
Bookham & Fetcham West (10842)			
Turner G.	Con	2,834	58.6
Hughes F. Ms.	Lib	2,002	41.4
	<b>Turnout</b>	44.6	17.2
Camberley East (9945)			
Thorburn J.	Con	1,969	53.6
Stewart D.	Ind	935	25.4
Walkley L.	Lab	772	21.0
	<b>Turnout</b>	37.0	28.1
Camberley West (11038)			
Cooper D.	Con	2,827	63.3
Rowlands M.	Lab	1,639	36.7
	<b>Turnout</b>	40.5	26.6
Caterham Hill (8904)			
Bailey D.	Con	1,926	46.4
Clements J. Ms.	Lab	1,152	27.7
Tuck P.	Lib	1,074	25.9
	<b>Turnout</b>	46.6	18.6

Caterham Valley (9638)			
		vote	share
Mortimer G.	Con	2,588	61.7
Jones R.	Lib	1,049	25.0
Burkitt D.	Lab	560	13.3
	<b>Turnout</b>	43.5	36.7
Chertsey (8720)			
Payne N.	Con	1,594	41.1
Harris B.	Lab	1,576	40.7
Elfer G.	Lib	704	18.2
	<b>Turnout</b>	44.4	0.5
Chobham & Bisley (8064)			
Hunnisette E.	Con	1,891	65.2
Whitby R.	Soc Dem	617	21.3
Chapman J. Ms.	Lab	393	13.5
	<b>Turnout</b>	36.0	43.9
Claygate & Hinchley Wood (8869)			
Sibthorp D. Ms.	Con	2,569	56.2
Griffiths N.	Lib	1,783	39.0
Reed P.	Lab	218	4.8
	<b>Turnout</b>	51.5	17.2
Cobham & Oxshott (11220)			
Jenkins W.	Con	2,998	67.2
Anderson R.	Lib	810	18.2
Ross W.	Lab	651	14.6
	<b>Turnout</b>	39.7	49.1
Dorking North (8973)			
Evelyn J.	Con	2,157	52.1
Hope R. Ms.	Lib	1,489	35.9
O'Shea N.	Lab	498	12.0
	<b>Turnout</b>	46.2	16.1
Dorking Rural (9252)			
Reynolds E.	Con	2,349	61.1
McCarthy L. Ms.	Lib	862	22.4
Goodall D.	Lab	634	16.5
	<b>Turnout</b>	41.6	38.7
Dorking South (9942)			
Bryan M. Ms.	Con	1,925	40.1
Ward M.	Lib	1,703	35.5
O'Neill P.	Lab	1,171	24.4
	<b>Turnout</b>	48.3	4.6
Egham North (10819)			
Collins E. Ms.	Con	2,140	56.2
Smith M.	Lab	887	23.3
Wendon J.	Lib	783	20.6
	<b>Turnout</b>	35.2	32.9
Egham South (12084)			
Smith J.	Ind Re	1,903	39.1
Toynbee W.	Con	1,742	35.8
Austin E. Ms.	Lab	936	19.2
Key P.	Lib	289	5.9
	<b>Turnout</b>	40.3	3.3
Epsom & Ewell North East (10088)			
Fraser A. Ms.	Con	2,059	44.0
Oxford P.	Res	1,780	38.0
Cotterell A.	Lib	844	18.0
	<b>Turnout</b>	46.4	6.0

Epsom & Ewell Southeast (9056)			
		vote	share
Gerrard C. Ms.	Con	0	0.0
	<b>Turnout</b>	0.0	0.0
Epsom & Ewell Southwest (11053)			
Biggart M. Ms.	Con	2,351	59.9
Duffy J.	Lab	1,576	40.1
	<b>Turnout</b>	35.5	19.7
Epsom & Ewell West (9718)			
Dunn J. Ms.	Lib	1,742	41.9
Danny J.	Con	1,342	32.3
Hill R.	Lab	1,069	25.7
	<b>Turnout</b>	42.7	9.6
Esher & Molesey East (8447)			
Charlton A.	Con	2,167	67.9
Wilson R.	Lib	770	24.1
Merkel A. Ms.	Lab	254	8.0
	<b>Turnout</b>	37.8	43.8
Ewell Court Aurial & Cuddington (11214)			
Scott-Malden G. Ms.	Res	2,862	56.6
Bruinvels P.	Con	1,552	30.7
Booth W.	Lib	645	12.7
	<b>Turnout</b>	45.1	25.9
Farnham Central (8295)			
King-Hele M. Ms.	Lib	1,955	54.1
Clarke G.	Con	1,656	45.9
	<b>Turnout</b>	43.5	8.3
Farnham North (9191)			
Cordier R.	Con	1,885	48.4
Raynes P.	Lib	1,334	34.3
Earl R.	Lab	674	17.3
	<b>Turnout</b>	42.4	14.2
Farnham South (9582)			
Hoseason P. Ms.	Con	2,113	56.2
Hunter T.	Lib	1,361	36.2
Eaton G.	Lab	288	7.7
	<b>Turnout</b>	39.3	20.0
Frimley Green & Mytchett (6762)			
Lambert F.	Con	1,370	58.3
Thatcher S. Ms.	Lib	530	22.5
Holman M.	Lab	451	19.2
	<b>Turnout</b>	34.8	35.7
Godalming North (10916)			
Denningberg E. Ms.	Lab	1,642	39.1
Dyson D. Ms.	Con	1,480	35.2
Naylor A.	Lib	1,009	24.0
Webster A.	ANP	73	1.7
	<b>Turnout</b>	38.5	3.9
Godalming South & Rural (11594)			
Waring T.	Con	3,303	61.9
Bloomfield T.	Lib	1,463	27.4
Harvey P.	Lab	506	9.5
Michaelski A. Ms.	ANP	61	1.1
	<b>Turnout</b>	46.0	34.5
Godstone (8313)			
Butcher S. Ms.	Con	1,903	46.7
Paterson S.	Lib	1,115	27.4
Hayman J. Ms.	Lab	1,058	26.0
	<b>Turnout</b>	49.0	19.3

<b>Guildford East (9496)</b>			
		<b>vote</b>	<b>share</b>
<b>Beatrip R.</b>	Con	2,157	57.1
Oliver C.	Lib	882	23.4
Chesterton B.	Lab	705	18.7
Collier N.	ANP	32	0.8
<b>Turnout</b>		39.8	33.8
<b>Guildford North (12437)</b>			
		<b>vote</b>	<b>share</b>
<b>Bellerby B.</b>	Lab	3,082	45.1
Jordan W.	Con	1,923	28.1
Maynard G.	Lib	1,764	25.8
Clutterbuck G.	ANP	65	1.0
<b>Turnout</b>		54.9	17.0
<b>Guildford South (10633)</b>			
		<b>vote</b>	<b>share</b>
<b>Tye S.</b>	con	2,457	41.5
Marks R.	Lib	1,993	40.1
Burgess R.	Lab	846	17.0
Carroll D. Ms.	ANP	67	1.3
<b>Turnout</b>		46.7	1.3
<b>Guildford West (12056)</b>			
		<b>vote</b>	<b>share</b>
<b>Bellerby D. Ms.</b>	Lab	2,457	45.5
Fox C.	Lib	1,510	28.0
Hancock W.	Con	1,368	25.3
Norsworthy P.	ANP	67	1.2
<b>Turnout</b>		44.8	17.5
<b>Haslemere (10887)</b>			
		<b>vote</b>	<b>share</b>
<b>James D. Ms.</b>	Con	2,528	59.0
Rennison P. Ms.	Lib	1,698	39.6
Pumfrett S.	ANP	60	1.4
<b>Turnout</b>		39.4	19.4
<b>Heatherside &amp; Parkside (8181)</b>			
		<b>vote</b>	<b>share</b>
<b>Coffin B.</b>	Con	1,607	49.2
Lyons T.	Ind Rp	869	26.6
Bennie F. Ms.	Lib	562	17.2
Milne J. Ms.	Lab	226	6.9
<b>Turnout</b>		39.9	22.6
<b>Hersham (9268)</b>			
		<b>vote</b>	<b>share</b>
<b>Greenwood G.</b>	Cpn	1,633	39.9
Plaskow D. Ms.	Lab	1,129	27.6
Mott R.	Ind	738	18.0
Nicholls S.	Lib	592	14.5
<b>Turnout</b>		44.2	12.3
<b>Horley East &amp; Salfords (7435)</b>			
		<b>vote</b>	<b>share</b>
<b>Duncan R.</b>	Con	0	0.0
<b>Turnout</b>		0.0	0.0
<b>Horley West (8041)</b>			
		<b>vote</b>	<b>share</b>
<b>Athol R.</b>	Con	1,437	55.7
Smith D.	Lab	590	22.9
Bartlett J.	Lib	551	21.4
<b>Turnout</b>		32.1	32.9
<b>Horsleys (9358)</b>			
		<b>vote</b>	<b>share</b>
<b>Greenhead G.</b>	Con	2,619	59.7
Pearson W.	Lib	1,388	31.6
Lines F. Ms.	Lab	379	8.6
<b>Turnout</b>		46.9	28.1
<b>Laleham &amp; Shepperton Green (9846)</b>			
		<b>vote</b>	<b>share</b>
<b>Renfree N.</b>	Con	2,318	57.6
Smith F.	Lab	1,008	25.0
Hitchcock P. Ms.	Lib	701	17.4
<b>Turnout</b>		40.9	32.5

<b>Leatherhead &amp; Fetcham E. (10345)</b>			
		<b>vote</b>	<b>share</b>
<b>Eaton E.</b>	Con	2,101	43.0
Anderson M.	Lib	1,858	38.0
Macfarlane D.	Lab	932	19.1
<b>Turnout</b>		47.3	5.0
<b>Lingfield (11656)</b>			
		<b>vote</b>	<b>share</b>
<b>Balchin R.</b>	Con	2,994	56.7
Liddell S. Ms.	Lib	1,895	35.9
Lees R.	Lab	390	7.4
<b>Turnout</b>		45.3	20.8
<b>Molesey West (9172)</b>			
		<b>vote</b>	<b>share</b>
<b>Griffiths J. Ms.</b>	Con	1,612	57.3
Arksey F.	Lab	1,202	42.7
<b>Turnout</b>		30.7	14.6
<b>New Haw (11040)</b>			
		<b>vote</b>	<b>share</b>
<b>Blowers A.</b>	Con	2,583	56.8
Boyde C.	Lib	1,358	29.8
Long N.	Lab	609	13.4
<b>Turnout</b>		41.2	26.9
<b>Oxted (10848)</b>			
		<b>vote</b>	<b>share</b>
<b>Macfarlane J.</b>	Con	2,609	52.1
Ford B. Ms.	Lib	1,395	27.8
Halama M. Ms.	Lab	777	15.5
Ashfield S. Ms.	Ecol	228	4.6
<b>Turnout</b>		46.2	24.2
<b>Reigate Central (10328)</b>			
		<b>vote</b>	<b>share</b>
<b>Robinson P. Ms.</b>	Con	2,313	54.9
Stephens F.	Lib	1,508	35.8
Newell D.	Ecol	392	9.3
<b>Turnout</b>		40.8	19.1
<b>Reigate East (10005)</b>			
		<b>vote</b>	<b>share</b>
<b>Smith S.</b>	Lab	2,126	47.2
Jones G. Ms.	Con	1,375	30.5
Knight L. Ms.	Lib	882	19.6
Hughes C. Ms.	Ecol	123	2.7
<b>Turnout</b>		45.0	16.7
<b>Reigate North (9642)</b>			
		<b>vote</b>	<b>share</b>
<b>Smalley P.</b>	Con	2,237	58.1
Ross F.	Lib	804	20.9
Doherty J.	Lab	654	17.0
Jarrett R.	Ecol	154	4.0
<b>Turnout</b>		39.9	37.2
<b>Reigate South (10256)</b>			
		<b>vote</b>	<b>share</b>
<b>Smith S. Ms.</b>	Lab	2,247	55.0
Acraman W.	Con	1,568	38.4
Johnson P.	Ecol	269	6.6
<b>Turnout</b>		39.8	16.6
<b>Shalford (7637)</b>			
		<b>vote</b>	<b>share</b>
<b>Brigstocke A.</b>	Con	1,845	59.6
Grugeon L.	Lib	664	21.5
Dale J.	Lab	586	18.9
<b>Turnout</b>		40.5	38.2
<b>Shepperton (10349)</b>			
		<b>vote</b>	<b>share</b>
<b>Fidler F.</b>	Con	2,731	61.0
Brooks I. Ms.	Lib	880	19.7
Cowley M.	Lab	866	19.3
<b>Turnout</b>		43.3	41.3

<b>Shere (8723)</b>			
		<b>vote</b>	<b>share</b>
<b>Pattman B. Ms.</b>	Con	2,288	57.3
McCarthy P.	Lib	1,708	42.7
<b>Turnout</b>		45.8	14.5
<b>Staines (10323)</b>			
		<b>vote</b>	<b>share</b>
<b>Burges M. Ms.</b>	Con	2,400	56.2
Williamson T.	Lab	1,246	29.2
Griffin G.	Lib	626	14.7
<b>Turnout</b>		41.4	27.0
<b>Stanwell (9723)</b>			
		<b>vote</b>	<b>share</b>
<b>Robinson W.</b>	Lab	1,481	43.8
Baxter E.	Con	1,352	40.0
Gale I. Ms.	Lib	351	10.4
Butterfield E.	Anti Common Mkt	194	5.7
<b>Turnout</b>		34.7	3.8
<b>Sunbury (10452)</b>			
		<b>vote</b>	<b>share</b>
<b>Robertson J.</b>	Con	2,549	56.1
O'Mara K.	Lab	1,214	26.7
Honeyman C.	Lib	782	17.2
<b>Turnout</b>		43.5	29.4
<b>The Dittons (9934)</b>			
		<b>vote</b>	<b>share</b>
<b>Metcalfe M.</b>	Con	2,774	64.8
Humphreys M.	Lib	1,093	25.5
Jarlett J. Ms.	Lab	416	9.7
<b>Turnout</b>		43.1	39.2
<b>Walton South &amp; Oatlands (9508)</b>			
		<b>vote</b>	<b>share</b>
<b>Naish C.</b>	Con	2,718	70.1
Wilkinson J.	Lib	831	21.4
Schofield H. Ms.	Lab	330	8.5
<b>Turnout</b>		40.8	48.6
<b>Walton-On-Thames (9072)</b>			
		<b>vote</b>	<b>share</b>
<b>Gray C. Ms.</b>	Lab	1,890	45.4
Graves-Morris E. Ms.	Con	1,715	41.2
Ritchie G.	Lib	562	13.5
<b>Turnout</b>		45.9	4.2
<b>Warlingham (8575)</b>			
		<b>vote</b>	<b>share</b>
<b>Phillips E. Ms.</b>	Con	1,985	57.8
Smith G.	Lib	879	25.6
Crouch G.	Lab	571	16.6
<b>Turnout</b>		40.1	32.2
<b>Waverley East (12790)</b>			
		<b>vote</b>	<b>share</b>
<b>Creswell M.</b>	Con	2,838	48.3
Kennett J.	Lib	2,107	35.9
Henderson A.	Lab	834	14.2
Wakefield C.	ANP	97	1.7
<b>Turnout</b>		45.9	12.4
<b>Waverley West (11315)</b>			
		<b>vote</b>	<b>share</b>
<b>Porter P. Ms.</b>	Con	2,840	58.7
Moxon M. Ms.	Lib	1,819	37.6
Mintern R.	ANP	178	3.7
<b>Turnout</b>		42.7	21.1
<b>Weybridge (10265)</b>			
		<b>vote</b>	<b>share</b>
<b>Edwards M. Ms.</b>	Con	2,745	57.0
Sturgis A.	Lib	2,075	43.0
<b>Turnout</b>		47.0	13.9



<b>Windlesham (9812)</b>			
		<b>vote</b>	<b>share</b>
<b>Whitfield J.</b>	Con	2,684	74.8
Chaffey B.	Lab	904	25.2
<b>Turnout</b>		36.6	49.6
<b>Woking East (8916)</b>			
		<b>vote</b>	<b>share</b>
<b>Buckrell D. Ms.</b>	Lib	1,984	44.4
Martshall M. Ms.	Con	1,673	37.5
Ryan M.	Lab	809	18.1
<b>Turnout</b>		50.1	7.0
<b>Woking North (10614)</b>			
		<b>vote</b>	<b>share</b>
<b>Gammon M. Ms.</b>	Con	2,218	47.1
Mitchell D.	Lab	1,449	30.8
Hackney J. Ms.	Lib	1,043	22.1
<b>Turnout</b>		44.4	16.3
<b>Woking South (10602)</b>			
		<b>vote</b>	<b>share</b>
<b>Tinney V. Ms.</b>	Con	2,133	42.7
Thorn J.	Lab	1,598	32.0
West J.	Lib	1,263	25.3
<b>Turnout</b>		47.1	10.7
<b>Woking Southeast (10502)</b>			
		<b>vote</b>	<b>share</b>
<b>Powell D.</b>	Con	2,080	45.0
Molloy T.	Lab	1,364	29.5
Webber J.	Lib	1,180	25.5
<b>Turnout</b>		44.0	15.5
<b>Woking Southwest (9041)</b>			
		<b>vote</b>	<b>share</b>
<b>White A.</b>	Con	2,258	63.8
Ayres S. Ms.	Lib	769	21.7
Smith H. Ms.	Lab	512	14.5
<b>Turnout</b>		39.1	42.1
<b>Woking West (9853)</b>			
		<b>vote</b>	<b>share</b>
<b>Biddolph E. Ms.</b>	Con	1,587	43.5
Evans D.	Lab	1,119	30.7
Sharpley R. Ms.	Lib	939	25.8
<b>Turnout</b>		37.0	12.8
<b>Worplesdon (10446)</b>			
		<b>vote</b>	<b>share</b>
<b>Ross-Symons F.</b>	Con	1,897	53.6
Turner K.	Lib	1,004	28.4
Mountain B.	Lab	585	16.5
Whitman M.	ANP	54	1.5
<b>Turnout</b>		33.9	25.2

## Surrey 1985

<b>Addlestone (12237)</b>			
		<b>vote</b>	<b>share</b>
<b>Payne K.</b>	Con	1,921	42.0
Spelman C.	Lib/SDP	1,337	29.3
Davies R.	Lab	1,311	28.7
<b>Turnout</b>		37.3	12.8
<b>Ash (12262)</b>			
		<b>vote</b>	<b>share</b>
<b>Cook A. Ms.*</b>	Con	1,703	43.6
Fox C.	Lib/SDP	1,393	35.7
Green P.	Lab	811	20.8
<b>Turnout</b>		31.9	7.9
<b>Ashford East (9972)</b>			
		<b>vote</b>	<b>share</b>
<b>Wright E.*</b>	Con	1,797	51.9
Smith F.	Lab	1,664	48.1
<b>Turnout</b>		34.7	3.8

<b>Ashford West (11353)</b>			
		<b>vote</b>	<b>share</b>
<b>Palmer B. Ms.</b>	Con	2,053	50.4
Trace H.	Lab	1,036	25.4
Hale D.	Lib/SDP	987	24.2
<b>Turnout</b>		35.9	25.0
<b>Ashted (10365)</b>			
		<b>vote</b>	<b>share</b>
<b>Lewis I.</b>	Ind	2,328	46.0
Cooper J. Ms.	Con	1,840	36.3
Wignall G.	Lib/SDP	894	17.7
<b>Turnout</b>		48.8	9.6
<b>Banstead East (11419)</b>			
		<b>vote</b>	<b>share</b>
<b>Riley A.</b>	Con	2,223	52.9
Emery P.	Lib/SDP	1,977	47.1
<b>Turnout</b>		36.8	5.9
<b>Banstead South (11559)</b>			
		<b>vote</b>	<b>share</b>
<b>Fowler J. Ms.*</b>	Con	2,154	56.8
Salter A.	Lib/SDP	999	26.4
Goldfinch P.	Lab	637	16.8
<b>Turnout</b>		32.8	30.5
<b>Banstead West (10409)</b>			
		<b>vote</b>	<b>share</b>
<b>Cooper A. Ms.*</b>	Con	2,176	63.2
Gourley D.	Lib/SDP	853	24.8
Kent A.	Lab	414	12.0
<b>Turnout</b>		33.1	38.4
<b>Bookham &amp; Fetcham West (11337)</b>			
		<b>vote</b>	<b>share</b>
<b>Turner G.*</b>	Con	2,516	53.1
Stanley J. Ms.	Lib/SDP	2,223	46.9
<b>Turnout</b>		41.8	6.2
<b>Camberley East (10030)</b>			
		<b>vote</b>	<b>share</b>
<b>Thorburn J.</b>	Con	1,771	52.1
Hendries R.	Lib/SDP	1,126	33.1
Barker A.	Lab	505	14.8
<b>Turnout</b>		33.9	19.0
<b>Camberley West (11309)</b>			
		<b>vote</b>	<b>share</b>
<b>Cooper D.*</b>	Con	1,866	45.6
Sutton G.	Lib/SDP	1,436	35.1
Cairke B. Ms.	Lab	787	19.2
<b>Turnout</b>		36.2	10.5
<b>Caterham Hill (8800)</b>			
		<b>vote</b>	<b>share</b>
<b>Bailey D.*</b>	Con	1,598	43.4
Paterson S.	Lib/SDP	1,177	31.9
Beard R.	Lab	909	24.7
<b>Turnout</b>		41.9	11.4
<b>Caterham Valley (9804)</b>			
		<b>vote</b>	<b>share</b>
<b>Mortimer G.*</b>	Con	2,245	56.3
Hunt H.	Lib/SDP	983	24.6
Vince R.	Lab	763	19.1
<b>Turnout</b>		40.7	31.6
<b>Chertsey (8796)</b>			
		<b>vote</b>	<b>share</b>
<b>Lowther R.</b>	Lab	2,457	61.9
Paris G.	Con	1,123	28.3
Kirby R.	Lib/SDP	392	9.9
<b>Turnout</b>		45.2	33.6
<b>Chobham &amp; Bisley (8703)</b>			
		<b>vote</b>	<b>share</b>
<b>Reid W.</b>	Con	1,795	64.0
Herridge J. Ms.	Lib/SDP	729	26.0
Parrinder S.	Lab	279	10.0
<b>Turnout</b>		32.2	38.0

<b>Claygate &amp; Hinchley Wood (8813)</b>			
		<b>vote</b>	<b>share</b>
<b>Sibthorp D. Ms.</b>	Con	2,071	54.0
Griffiths J. Ms.	Lib/SDP	1,562	40.7
Peart L. Ms.	Lab	202	5.3
<b>Turnout</b>		43.5	13.3
<b>Cobham &amp; Oxshott (11555)</b>			
		<b>vote</b>	<b>share</b>
<b>Church P. Ms.</b>	Con	2,865	63.4
Fox S. Ms.	Lib/SDP	1,070	23.7
Arbury J.	Lab	586	13.0
<b>Turnout</b>		39.1	39.7
<b>Dorking North (9558)</b>			
		<b>vote</b>	<b>share</b>
<b>Evelyn J.*</b>	Con	1,918	46.1
Boyle P. Ms.	Lib/SDP	1,812	43.5
Wendon S. Ms.	Lab	431	10.4
<b>Turnout</b>		43.5	2.5
<b>Dorking Rural (9217)</b>			
		<b>vote</b>	<b>share</b>
<b>Huggins J. Ms.</b>	Con	2,137	62.6
Martin P. Ms.	Lib/SDP	1,278	37.4
<b>Turnout</b>		37.1	25.2
<b>Dorking South (10298)</b>			
		<b>vote</b>	<b>share</b>
<b>Thomas S. Ms.</b>	Lib/SDP	2,603	47.2
King-Smith P. Ms.	Con	2,082	37.8
Helowicz G.	Lab	828	15.0
<b>Turnout</b>		53.5	9.5
<b>Egham North (11236)</b>			
		<b>vote</b>	<b>share</b>
<b>Bushill C.</b>	Res	2,039	51.2
Collins E. Ms.*	Con	1,375	34.5
Baker T.	Lab	572	14.4
<b>Turnout</b>		35.5	16.7
<b>Egham South (11856)</b>			
		<b>vote</b>	<b>share</b>
<b>Smith J.*</b>	Res	1,700	41.9
Allen J. Ms.	Con	1,537	37.9
Pate R.	Lab	816	20.1
<b>Turnout</b>		34.2	4.0
<b>Epsom &amp; Ewell North East (9980)</b>			
		<b>vote</b>	<b>share</b>
<b>Jones P.</b>	Res	2,082	52.7
Fraser A. Ms.*	Con	1,252	31.7
Hedger S. Ms.	Lib/SDP	620	15.7
<b>Turnout</b>		39.6	21.0
<b>Epsom &amp; Ewell Southeast (8841)</b>			
		<b>vote</b>	<b>share</b>
<b>Gerrard C. Ms.*</b>	Con	1,903	56.8
Morrison J. Ms.	Lib/SDP	1,445	43.2
<b>Turnout</b>		37.9	13.7
<b>Epsom &amp; Ewell Southwest (10862)</b>			
		<b>vote</b>	<b>share</b>
<b>Parkin L.</b>	Con	1,609	40.7
Sharples S.	Lib/SDP	1,272	32.2
Bradley T.	Lab	1,073	27.1
<b>Turnout</b>		36.4	8.5
<b>Epsom &amp; Ewell West (9158)</b>			
		<b>vote</b>	<b>share</b>
<b>Dunn J. Ms.*</b>	Lib/SDP	1,660	43.1
Jardine J.	Con	1,113	28.9
Carpenter W.	Lab	1,082	28.1
<b>Turnout</b>		42.1	14.2



<b>Stanwell (9723)</b>			
		<b>vote</b>	<b>share</b>
<b>Rowlands M.</b>	Lab	2,144	65.2
Kennett P.	Con	1,143	34.8
<b>Turnout</b>		33.8	30.5
<b>Sunbury (10596)</b>			
		<b>vote</b>	<b>share</b>
<b>Robertson J.*</b>	Con	1,884	50.6
Cowley M.	Lab	1,158	31.1
Gale I. Ms.	Lib/SDP	679	18.2
<b>Turnout</b>		35.1	19.5
<b>The Dittons (9874)</b>			
		<b>vote</b>	<b>share</b>
<b>Metcalf M.*</b>	Con	2,191	54.7
Baker R.	Lib/SDP	1,537	38.4
Reid P. Ms.	Lab	279	7.0
<b>Turnout</b>		40.6	16.3
<b>Walton South &amp; Outlands (10044)</b>			
		<b>vote</b>	<b>share</b>
<b>Hawker H. Ms.</b>	Con	2,422	64.4
Baker J.	Lib/SDP	1,062	28.2
Dray M.	Lab	277	7.4
<b>Turnout</b>		37.4	36.2
<b>Walton-On-Thames (9260)</b>			
		<b>vote</b>	<b>share</b>
<b>Plaskow D. Ms.</b>	Lab	1,821	45.1
Hall A.	Con	1,464	36.2
McDonald H.	Lib/SDP	755	18.7
<b>Turnout</b>		43.6	8.8
<b>Warlingham (8635)</b>			
		<b>vote</b>	<b>share</b>
<b>Drake R.</b>	Con	1,610	53.3
Sage J. Ms.	Lib/SDP	982	32.5
Holman G.	Lab	426	14.1
<b>Turnout</b>		35.0	20.8
<b>Waverley East (13330)</b>			
		<b>vote</b>	<b>share</b>
<b>Bridge A.</b>	Con	2,627	48.9
Savage C. Ms.	Lib/SDP	2,235	41.6
Day M.	Lab	508	9.5
<b>Turnout</b>		40.3	7.3
<b>Waverley West (11456)</b>			
		<b>vote</b>	<b>share</b>
<b>Inglis C. Ms.</b>	Lib/SDP	2,819	47.9
Crawford W.	Con	2,816	47.9
Sumner P.	Lab	248	4.2
<b>Turnout</b>		51.4	0.1
<b>Weybridge (10542)</b>			
		<b>vote</b>	<b>share</b>
<b>Etherington J.</b>	Con	2,362	53.3
Brooke D.	Lib/SDP	1,578	35.6
Froud G.	Lab	493	11.1
<b>Turnout</b>		42.1	17.7
<b>Windlesham (10254)</b>			
		<b>vote</b>	<b>share</b>
<b>Whitfield J.*</b>	Con	1,924	54.8
Clark C. Ms.	Lib/SDP	1,179	33.6
Chaffey B.	Lab	406	11.6
<b>Turnout</b>		34.2	21.2
<b>Woking East (9092)</b>			
		<b>vote</b>	<b>share</b>
<b>Buckrell D. Ms.*</b>	Lib/SDP	2,372	55.4
Fidler E. Ms.	Con	1,487	34.7
Baldry K.	Lab	421	9.8
<b>Turnout</b>		47.1	20.7

<b>Woking North (10583)</b>			
		<b>vote</b>	<b>share</b>
<b>Chapman A.</b>	Lib/SDP	2,310	45.5
Gammon M. Ms.*	Con	1,769	34.9
Dunne J.	Lab	993	19.6
<b>Turnout</b>		47.9	10.7
<b>Woking South (10815)</b>			
		<b>vote</b>	<b>share</b>
<b>Gruselle S. Ms.</b>	Con	1,825	39.1
Williams R.	Lab	1,495	32.1
Johnston C. Ms.	Lib/SDP	1,344	28.8
<b>Turnout</b>		43.1	7.1
<b>Woking Southeast (10682)</b>			
		<b>vote</b>	<b>share</b>
<b>Rawet J.</b>	Con	1,891	45.5
Griffiths D.	Lib/SDP	1,210	29.1
Molloy T.	Lab	1,054	25.4
<b>Turnout</b>		38.9	16.4
<b>Woking Southwest (9501)</b>			
		<b>vote</b>	<b>share</b>
<b>White A.*</b>	Con	1,901	52.8
Funning M.	Lib/SDP	1,334	37.1
Smith H. Ms.	Lab	364	10.1
<b>Turnout</b>		37.9	15.8
<b>Woking West (13191)</b>			
		<b>vote</b>	<b>share</b>
<b>Goman Smith J.</b>	Lib/SDP	2,654	50.3
Biddolph E. Ms.*	Con	1,855	35.1
Whitaker J.	Lab	772	14.6
<b>Turnout</b>		40.0	15.1
<b>Worplesdon (10786)</b>			
		<b>vote</b>	<b>share</b>
<b>Hemingway P.</b>	Lib/SDP	2,650	51.3
May L.	Con	2,190	42.4
Bullock J.	Lab	258	5.0
Kollerstron N.	Ecol	64	1.2
<b>Turnout</b>		47.9	8.9

## Surrey 1989

<b>Addlestone (12725)</b>			
		<b>vote</b>	<b>share</b>
<b>Payne K.*</b>	Con	2,115	49.7
Gould N.	Lab	1,253	29.4
Bleach S. Ms.	SDP	890	20.9
<b>Turnout</b>		33.5	20.2
<b>Ash (12151)</b>			
		<b>vote</b>	<b>share</b>
<b>Cook A. Ms.*</b>	Con	1,728	45.1
Dallison J. Ms.	LD	1,639	42.8
Mountain B.	Lab	461	12.0
<b>Turnout</b>		31.5	2.3
<b>Ashford East (9942)</b>			
		<b>vote</b>	<b>share</b>
<b>Wright E.*</b>	Con	1,606	48.2
Smith F.	Lab	1,188	35.7
Powell E.	LD	538	16.1
<b>Turnout</b>		33.5	12.5
<b>Ashford West (11246)</b>			
		<b>vote</b>	<b>share</b>
<b>Palmer B. Ms.*</b>	Con	1,924	57.3
Hargrave G. Ms.	Lab	822	24.5
Hall A.	LD	612	18.2
<b>Turnout</b>		29.9	32.8

<b>Ashted (10523)</b>			
		<b>vote</b>	<b>share</b>
<b>Lewis I.*</b>	Ind	1,824	43.4
Brown P.	Con	1,157	27.5
Crighton I.	Green	699	16.6
Scott C.	Lab	292	6.9
Spencer R.	LD	230	5.5
<b>Turnout</b>		39.9	15.9
<b>Banstead East (11153)</b>			
		<b>vote</b>	<b>share</b>
<b>Fraser A. Ms.</b>	Con	1,948	62.3
Salter A.	LD	1,177	37.7
<b>Turnout</b>		28.0	24.7
<b>Banstead South (12029)</b>			
		<b>vote</b>	<b>share</b>
<b>Gladman S. Ms.</b>	Con	2,171	67.1
Shotton J. Ms.	Green	573	17.7
Phillips C.	LD	490	15.2
<b>Turnout</b>		26.9	49.4
<b>Banstead West (10467)</b>			
		<b>vote</b>	<b>share</b>
<b>Cooper A. Ms.*</b>	Con	0	0.0
<b>Turnout</b>		0.0	0.0
<b>Bookham &amp; Fetcham West (11617)</b>			
		<b>vote</b>	<b>share</b>
<b>Mackinnon I. Ms.*</b>	Con	2,590	54.9
Anderson M.	LD	1,881	39.9
McDevitt D.	Lab	246	5.2
<b>Turnout</b>		40.6	15.0
<b>Camberley East (9741)</b>			
		<b>vote</b>	<b>share</b>
<b>Peirce E.</b>	Con	1,573	60.1
Haynes A.	LD	631	24.1
Barker A.	Lab	412	15.7
<b>Turnout</b>		26.9	36.0
<b>Camberley West (10905)</b>			
		<b>vote</b>	<b>share</b>
<b>Jones D. Ms.</b>	Con	1,660	57.0
Rowlands W. Ms.	Lab	701	24.1
Holder D.	LD	549	18.9
<b>Turnout</b>		26.7	33.0
<b>Caterham Hill (8777)</b>			
		<b>vote</b>	<b>share</b>
<b>Butcher R.</b>	Con	1,695	46.8
Russell G.	LD	1,337	36.9
Clements R.	Lab	589	16.3
<b>Turnout</b>		41.3	9.9
<b>Caterham Valley (9898)</b>			
		<b>vote</b>	<b>share</b>
<b>Mortimer G.*</b>	Con	1,812	57.9
Tomlin R.	LD	862	27.5
Barry C. Ms.	Lab	457	14.6
<b>Turnout</b>		31.6	30.3
<b>Chertsey (8315)</b>			
		<b>vote</b>	<b>share</b>
<b>Lowther R.*</b>	Lab	2,424	72.0
Rigazzi-Tarling N.	Con	941	28.0
<b>Turnout</b>		40.5	44.1
<b>Chobham &amp; Bisley (8727)</b>			
		<b>vote</b>	<b>share</b>
<b>Reid W.*</b>	Con	1,770	76.3
Whitcroft D.	LD	301	13.0
Warrener M. Ms.	Lab	249	10.7
<b>Turnout</b>		26.6	63.3
<b>Claygate &amp; Hinchley Wood (8541)</b>			
		<b>vote</b>	<b>share</b>
<b>Sibthorp D. Ms.*</b>	Con	2,007	59.3
Howard R.	LD	1,193	35.3
Peart L. Ms.	Lab	183	5.4
<b>Turnout</b>		39.6	24.1



<b>Reigate Central (10354)</b>			
		<b>vote</b>	<b>share</b>
<b>Robinson P. Ms.*</b>	Con	1,560	47.8
Fowler A.	LD	690	21.1
Mills N.	Green	600	18.4
Wells P. Ms.	Lab	414	12.7
<b>Turnout</b>		31.5	26.7
<b>Reigate East (9828)</b>			
		<b>vote</b>	<b>share</b>
<b>Smith S.*</b>	Lab	1,756	42.5
Keeble C. Ms.	LD	1,514	36.6
Fry J.	Con	866	20.9
<b>Turnout</b>		42.1	5.9
<b>Reigate North (9804)</b>			
		<b>vote</b>	<b>share</b>
<b>Kee D.*</b>	Con	1,613	51.6
Neville R.	Lab	440	14.1
Hickman M. Ms.	LD	395	12.6
Golding F.	Green	381	12.2
Brown D.	SDP	294	9.4
<b>Turnout</b>		31.9	37.6
<b>Reigate South (10564)</b>			
		<b>vote</b>	<b>share</b>
<b>Lines F. Ms.*</b>	Lab	1,855	56.7
Newstead M. Ms.	Con	1,012	30.9
Smith R.	LD	403	12.3
<b>Turnout</b>		31.0	25.8
<b>Shalford (7630)</b>			
		<b>vote</b>	<b>share</b>
<b>Brigstocke A.</b>	Con	1,798	66.4
Mellor P.	LD	639	23.6
Hagan S.	Lab	272	10.0
<b>Turnout</b>		35.5	42.8
<b>Shepperton (10590)</b>			
		<b>vote</b>	<b>share</b>
<b>Maxwell J.</b>	Con	1,991	58.3
Donnelly L.	LD	536	15.7
Rowell E. Ms.	Green	445	13.0
Tomkinson J. Ms.	Lab	442	12.9
<b>Turnout</b>		32.2	42.6
<b>Shere (8737)</b>			
		<b>vote</b>	<b>share</b>
<b>Pattman B. Ms.*</b>	Con	2,115	71.0
Dowden P.	Lab	452	15.2
Bull A.	LD	413	13.9
<b>Turnout</b>		34.1	55.8
<b>Staines (10809)</b>			
		<b>vote</b>	<b>share</b>
<b>Hartley K.</b>	Con	1,708	54.4
Williamson T.	Lab	822	26.2
O'Brien J.	LD	374	11.9
Healy E.	SDP	235	7.5
<b>Turnout</b>		29.0	28.2
<b>Stanwell (10029)</b>			
		<b>vote</b>	<b>share</b>
<b>Rowlands M.*</b>	Lab	1,779	51.9
Hyams M. Ms.	Con	1,319	38.5
Bennett J. Ms.	LD	329	9.6
<b>Turnout</b>		34.2	13.4
<b>Sunbury (10464)</b>			
		<b>vote</b>	<b>share</b>
<b>Robertson J.*</b>	Con	1,752	59.6
Cowley M.	Lab	597	20.3
Fisher C. Ms.	LD	590	20.1
<b>Turnout</b>		28.1	39.3
<b>The Dittons (9523)</b>			
		<b>vote</b>	<b>share</b>
<b>Bayles E. Ms.</b>	Con	2,366	59.4
Stewart J. Ms.	LD	1,319	33.1
McCormac R. Ms.	Lab	300	7.5
<b>Turnout</b>		41.8	26.3

<b>Walton South &amp; Outlands (10025)</b>			
		<b>vote</b>	<b>share</b>
<b>Hawker H. Ms.*</b>	Con	2,222	72.1
Scott P.	LD	449	14.6
Dray M.	Lab	410	13.3
<b>Turnout</b>		30.7	57.5
<b>Walton-On-Thames (9627)</b>			
		<b>vote</b>	<b>share</b>
<b>Awcock F.</b>	Lab	1,843	50.1
Bland F.	Con	1,488	40.5
Cecil L. Ms.	LD	347	9.4
<b>Turnout</b>		38.2	9.7
<b>Waringham (8602)</b>			
		<b>vote</b>	<b>share</b>
<b>Drake R.*</b>	Con	1,615	47.7
Easton J.	LD	1,471	43.5
Jones J.	Lab	299	8.8
<b>Turnout</b>		39.4	4.3
<b>Waverley East (13487)</b>			
		<b>vote</b>	<b>share</b>
<b>Bridge A.*</b>	Con	2,556	57.3
Masterton-Smith A.	LD	1,397	31.3
Frere P. Ms.	Lab	506	11.3
<b>Turnout</b>		33.1	26.0
<b>Waverley West (11345)</b>			
		<b>vote</b>	<b>share</b>
<b>Inglis C. Ms.*</b>	LD	2,734	48.3
Edwards G.	Con	2,668	47.1
Toth J.	Lab	258	4.6
<b>Turnout</b>		49.9	1.2
<b>Weybridge (10353)</b>			
		<b>vote</b>	<b>share</b>
<b>Etherington J.*</b>	Con	2,001	54.4
Brooke D.	SLDFT	1,330	36.2
Evans R. Ms.	Lab	348	9.5
<b>Turnout</b>		35.5	18.2
<b>Windslesham (11824)</b>			
		<b>vote</b>	<b>share</b>
<b>Tisdall A.</b>	Con	2,215	70.6
Emuss J.	LD	531	16.9
Morrison R. Ms.	Lab	391	12.5
<b>Turnout</b>		26.5	53.7
<b>Woking East (9078)</b>			
		<b>vote</b>	<b>share</b>
<b>Buckrell D. Ms.*</b>	LD	1,831	46.5
Fabb T.	Con	1,687	42.8
Brownlow W. Ms.	Lab	421	10.7
<b>Turnout</b>		43.4	3.7
<b>Woking North (10896)</b>			
		<b>vote</b>	<b>share</b>
<b>Gammon K.</b>	Con	2,362	44.3
Jackson S.	LD	1,713	32.1
Morris R. Ms.	Lab	1,006	18.9
Nield C. Ms.	SDP	250	4.7
<b>Turnout</b>		48.9	12.2
<b>Woking South (10647)</b>			
		<b>vote</b>	<b>share</b>
<b>Gruselle S. Ms.*</b>	Con	2,007	45.6
Hill M. Ms.	LD	1,418	32.2
Matthews I. Ms.	Lab	974	22.1
<b>Turnout</b>		41.3	13.4
<b>Woking Southeast (10726)</b>			
		<b>vote</b>	<b>share</b>
<b>Rawet J.*</b>	Con	2,069	52.4
Donnelly P.	Lab	989	25.1
Goldenberg L. Ms.	LD	890	22.5
<b>Turnout</b>		36.8	27.4

<b>Woking Southwest (9639)</b>			
		<b>vote</b>	<b>share</b>
<b>Connelly J.</b>	Con	1,895	48.0
Fowler J. Ms.*	LD	1,568	39.7
Mackenzie L. Ms.	SDP	246	6.2
Adams M.	Lab	243	6.1
<b>Turnout</b>		41.0	8.3
<b>Woking West (13686)</b>			
		<b>vote</b>	<b>share</b>
<b>Goman-Smith J.*</b>	LD	2,253	46.7
Addison H. Ms.	Con	1,947	40.3
Whittingstall D.	Lab	626	13.0
<b>Turnout</b>		35.3	6.3
<b>Worplesdon (10740)</b>			
		<b>vote</b>	<b>share</b>
<b>Pickup H.</b>	Con	2,227	50.1
Laker M. Ms.	LD	1,947	43.8
Cridland N.	Lab	267	6.0
<b>Turnout</b>		41.4	6.3
<b>Surrey 1993</b>			
<b>Addlestone (12836)</b>			
		<b>vote</b>	<b>share</b>
<b>Payne K.*</b>	Con	2,166	57.5
Anderson P.	Lab	1,603	42.5
<b>Turnout</b>		29.4	14.9
<b>Ash (11824)</b>			
		<b>vote</b>	<b>share</b>
<b>Dallison J. Ms.</b>	LD	2,176	52.1
Grattan L. Ms.	Con	1,652	39.6
Jasinski K.	Lab	348	8.3
<b>Turnout</b>		35.3	12.5
<b>Ashford East (9354)</b>			
		<b>vote</b>	<b>share</b>
<b>Scott R. Ms.</b>	Con	1,359	42.9
Smith P. Ms.	Lab	1,326	41.9
Raabe G. Ms.	LD	480	15.2
<b>Turnout</b>		33.8	1.0
<b>Ashford West (10698)</b>			
		<b>vote</b>	<b>share</b>
<b>Palmer B. Ms.*</b>	Con	1,704	49.5
Trace H.	Lab	1,093	31.7
Johnson R.	LD	648	18.8
<b>Turnout</b>		32.2	17.7
<b>Ashtead (10508)</b>			
		<b>vote</b>	<b>share</b>
<b>Gollin D.</b>	Ind	2,301	52.6
Brown P.	Con	892	20.4
Webster E. Ms.	LD	784	17.9
Scott C.	Lab	253	5.8
Cooper A.	Green	145	3.3
<b>Turnout</b>		41.6	32.2
<b>Banstead East (11008)</b>			
		<b>vote</b>	<b>share</b>
<b>Fraser A. Ms.*</b>	Con	1,980	59.7
Fowler A.	LD	1,338	40.3
<b>Turnout</b>		30.1	19.3
<b>Banstead South (12194)</b>			
		<b>vote</b>	<b>share</b>
<b>Gladman S. Ms.*</b>	Con	2,037	59.0
Salter A.	LD	1,416	41.0
<b>Turnout</b>		28.3	18.0
<b>Banstead West (10313)</b>			
		<b>vote</b>	<b>share</b>
<b>Haward J. Ms.</b>	RES	1,686	50.9
Cooper A. Ms.*	Con	1,115	33.7
Viola J.	LD	510	15.4
<b>Turnout</b>		32.1	17.2











<b>Waverley East (13548)</b>			
		vote	share
<b>Povey A.*</b>	Con	4,876	47.5
Savage C. Ms.	LD	3,815	37.1
Henderson A.	Lab	1,584	15.4
<b>Turnout</b>		76.7	10.3
<b>Waverley West (11340)</b>			
		vote	share
<b>Inglis C. Ms.*</b>	LD	4,530	50.6
Webster K.	Con	3,865	43.2
Featherstone L. Ms.	Lab	559	6.2
<b>Turnout</b>		79.8	7.4
<b>Weybridge (10900)</b>			
		vote	share
<b>Lake I.</b>	Con	4,041	52.9
Solway L.	LD	2,133	27.9
Sheppard G.	Lab	1,137	14.9
Bilcliff M.	Ind	327	4.3
<b>Turnout</b>		70.7	25.0
<b>Windlesham (12575)</b>			
		vote	share
<b>Peirce E.</b>	Con	5,354	57.0
Williams D.	LD	2,431	25.9
Hutchinson P.	Lab	1,611	17.1
<b>Turnout</b>		75.3	31.1
<b>Woking East (9301)</b>			
		vote	share
<b>Smith A.</b>	LD	2,968	44.8
Gosling G. Ms.	Con	2,424	36.6
Holroyde R.	Lab	1,238	18.7
<b>Turnout</b>		71.3	8.2
<b>Woking North (10891)</b>			
		vote	share
<b>Gammon K.*</b>	Con	3,867	48.1
Goman-Smith Ld	LD	2,722	33.8
Bowden V. Ms.	Lab	1,454	18.1
<b>Turnout</b>		73.8	14.2
<b>Woking South (10982)</b>			
		vote	share
<b>Gruselle S. Ms.*</b>	Con	3,435	44.0
Kremer A.	LD	2,360	30.2
Martin C.	Lab	2,008	25.7
<b>Turnout</b>		71.1	13.8
<b>Woking Southeast (11488)</b>			
		vote	share
<b>Tinney V. Ms.</b>	Con	3,944	49.2
Jeffries C.	LD	2,394	29.8
Mills R.	Lab	1,686	21.0
<b>Turnout</b>		69.8	19.3
<b>Woking Southwest (10004)</b>			
		vote	share
<b>Compton E. Ms.</b>	Con	3,602	48.9
Sargent N.	LD	2,864	38.9
Kendal B.	Lab	904	12.3
<b>Turnout</b>		73.7	10.0
<b>Woking West (14802)</b>			
		vote	share
<b>Hill M. Ms.*</b>	LD	4,340	43.3
Swift-Hook D.	Con	3,688	36.8
Evans E. Ms.	Lab	2,006	20.0
<b>Turnout</b>		67.8	6.5
<b>Worplesdon (10526)</b>			
		vote	share
<b>Laker M. Ms.*</b>	LD	3,676	47.8
Westlake S.	Con	3,188	41.4
Ritchie A.	Lab	832	10.8
<b>Turnout</b>		73.4	6.3

## Surrey 2001

<b>Addlestone (13104)</b>			
		vote	share
<b>Dicks T.</b>	Con	3,799	50.1
Kingham P.	Lab	2,488	32.8
Weston S.	LD	1,295	17.1
<b>Turnout</b>		57.9	17.3
<b>Ash (12856)</b>			
		vote	share
<b>Ades J.</b>	Con	3,593	48.2
Smith D. Ms.	LD	2,689	36.1
Hall B.	Lab	1,176	15.8
<b>Turnout</b>		58.0	12.1
<b>Ashford East (9255)</b>			
		vote	share
<b>Scott R. Ms.*</b>	Con	2,650	48.2
Watson S. Ms.	Lab	2,022	36.8
Strong C.	LD	821	14.9
<b>Turnout</b>		59.3	11.4
<b>Ashford West (10932)</b>			
		vote	share
<b>Carruthers J.*</b>	Con	3,427	50.3
Leedham A. Ms.	Lab	2,248	33.0
Bird B.	LD	1,142	16.8
<b>Turnout</b>		62.4	17.3
<b>Ashtead (10631)</b>			
		vote	share
<b>Gollin D.*</b>	Ind	2,753	37.8
Sharland S. Ms.	Con	2,538	34.9
Jones J.	LD	1,124	15.4
Gough J.	Lab	867	11.9
<b>Turnout</b>		68.4	3.0
<b>Banstead East (11293)</b>			
		vote	share
<b>Fraser A. Ms.*</b>	Con	3,998	58.9
Merritt S. Ms.	LD	1,540	22.7
Norgrove R. Ms.	Lab	1,255	18.5
<b>Turnout</b>		60.2	36.2
<b>Banstead South (12579)</b>			
		vote	share
<b>Bowes D. Ms.*</b>	Con	4,528	61.5
Bakewell E. Ms.	Lab	1,537	20.9
Norman R. Ms.	LD	1,293	17.6
<b>Turnout</b>		58.5	40.6
<b>Banstead West (10677)</b>			
		vote	share
<b>Thick P. Ms.</b>	RES	3,795	57.0
Hack L. Dr.	Con	1,760	26.5
Rangasamy J.	Lab	569	8.6
Gourley D.	LD	529	8.0
<b>Turnout</b>		62.3	30.6
<b>Bookham &amp; Fetcham West (11393)</b>			
		vote	share
<b>Smith J.*</b>	Con	3,841	47.7
Howarth E. Ms.	LD	3,373	41.9
Ridley J. Ms.	Lab	844	10.5
<b>Turnout</b>		70.7	5.8
<b>Camberley East (10429)</b>			
		vote	share
<b>Neighbour M.*</b>	Con	3,122	52.3
Smith M.	LD	1,532	25.7
Bates R.	Lab	1,315	22.0
<b>Turnout</b>		57.2	26.6
<b>Camberley West (11128)</b>			
		vote	share
<b>Chipperfield F.*</b>	Con	2,841	45.2
Loyal P. Ms.	Lab	2,071	33.0
Morrison D.	LD	1,367	21.8
<b>Turnout</b>		56.4	12.3

<b>Caterham Hill (9731)</b>			
		vote	share
<b>Langham M.*</b>	Con	2,823	46.0
Pidgeon J. Ms.	LD	2,367	38.6
Clements R.	Lab	944	15.4
<b>Turnout</b>		63.0	7.4
<b>Caterham Valley (9943)</b>			
		vote	share
<b>Marks S. Ms.</b>	Con	3,101	49.4
Paterson S.	LD	2,424	38.6
Morgan C. Ms.	Lab	754	12.0
<b>Turnout</b>		63.2	10.8
<b>Chertsey (9200)</b>			
		vote	share
<b>Lowther R.*</b>	Lab	2,712	51.3
Tuley P.	Con	1,989	37.6
Gibbons T.	LD	589	11.1
<b>Turnout</b>		57.5	13.7
<b>Chobham &amp; Bisley (8938)</b>			
		vote	share
<b>Sealy L. Ms.*</b>	Con	2,974	55.5
Douch J. Ms.	LD	2,389	44.5
<b>Turnout</b>		60.0	10.9
<b>Claygate &amp; Hinchley Wood (8842)</b>			
		vote	share
<b>Pincham J.*</b>	LD	2,875	49.1
Forbes S. Ms.	Con	2,468	42.1
Rich D.	Lab	517	8.8
<b>Turnout</b>		66.3	6.9
<b>Cobham &amp; Oxshott (12155)</b>			
		vote	share
<b>Mitchell D. Ms.</b>	Con	4,340	61.2
Berry D.	LD	1,217	17.2
Dennett G.	Lab	1,096	15.5
Collins P.	Ind	437	6.2
<b>Turnout</b>		58.3	44.0
<b>Dorking North (9729)</b>			
		vote	share
<b>Watson H. Ms.*</b>	LD	3,247	47.8
Pulling-Smith P. Ms.	Con	2,783	41.0
Roger N.	Lab	765	11.3
<b>Turnout</b>		69.8	6.8
<b>Dorking Rural (9411)</b>			
		vote	share
<b>Clack H. Ms.</b>	Con	3,180	52.2
Forrester E.	LD	2,154	35.3
Corey G.	Lab	760	12.5
<b>Turnout</b>		64.8	16.8
<b>Dorking South (10451)</b>			
		vote	share
<b>Timms D.*</b>	LD	3,415	49.6
Edge D.	Con	2,530	36.7
Watts E.	Lab	940	13.7
<b>Turnout</b>		65.9	12.9
<b>Egham North (13900)</b>			
		vote	share
<b>Bruce S. Ms.</b>	Con	3,094	45.3
Swindlehurst J.	Lab	2,042	29.9
Key P.	LD	1,688	24.7
<b>Turnout</b>		49.1	15.4
<b>Egham South (12303)</b>			
		vote	share
<b>Whiteley E. Ms.*</b>	Con	3,596	52.8
Ray R.	Lab	1,868	27.4
Mead D.	LD	1,342	19.7
<b>Turnout</b>		55.3	25.4

















**Woking South West (St. Johns & Brookwood)**  
(9417)

		<b>vote</b>	<b>share</b>
<b>Compton E. Ms.*</b>	Con	1,688	43.0
Howard K.	LD	1,625	41.4
Clarke D.	UKIP	462	11.8
Bright C.	Lab	149	3.8
<b>Turnout</b>		41.8	1.6

**Woodham & New Haw (8497)**

		<b>vote</b>	<b>share</b>
<b>Angell F. Ms.*</b>	Con	1,829	57.0
Mullett L.	UKIP	580	18.1
Coulon J. Ms.	LD	561	17.5
Morrison G.	Lab	236	7.4
<b>Turnout</b>		37.9	39.0

**Worplesdon (10876)**

		<b>vote</b>	<b>share</b>
<b>Nevins M.*</b>	Con	2,277	48.5
Cragg P.	LD	1,649	35.1
Kingston M. Ms.	UKIP	573	12.2
Phillips M.	Lab	195	4.2
<b>Turnout</b>		43.4	13.4



