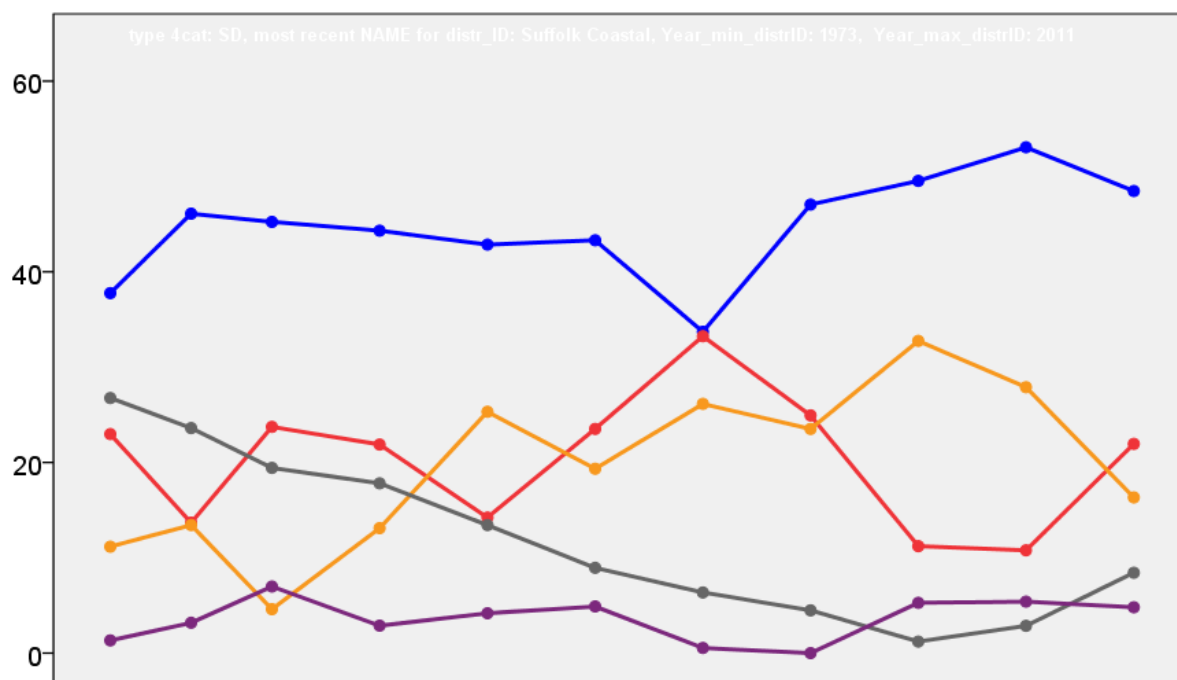


Suffolk Coastal District Council Election Results 1973-2011



Colin Rallings and Michael Thrasher
The Elections Centre
Plymouth University

The information contained in this report has been obtained from a number of sources. Election results from the immediate post-reorganisation period were painstakingly collected by Alan Willis largely, although not exclusively, from local newspaper reports. From the mid-1980s onwards the results have been obtained from each local authority by the Elections Centre. The data are stored in a database designed by Lawrence Ware and maintained by Brian Cheal and others at Plymouth University. Despite our best efforts some information remains elusive whilst we accept that some errors are likely to remain. Notice of any mistakes should be sent to elections@plymouth.ac.uk. The results sequence can be kept up to date by purchasing copies of the annual Local Elections Handbook, details of which can be obtained by contacting the email address above.

Front cover: the graph shows the distribution of percentage vote shares over the period covered by the results. The lines reflect the colours traditionally used by the three main parties. The grey line is the share obtained by Independent candidates while the purple line groups together the vote shares for all other parties.

Rear cover: the top graph shows the percentage share of council seats for the main parties as well as those won by Independents and other parties. The lines take account of any by-election changes (but not those resulting from elected councillors switching party allegiance) as well as the transfers of seats during the main round of local election.

The lower graph shows for each main round of local elections the overall percentage turnout (solid line), the percentage of women candidates standing at (dotted line) and the percentage of women among those elected (hashed line).

Suffolk Coastal - 1973

Aldeburgh (2598)²

		vote	share
Agate G. Ms.	Ind	549	60.5
Gifford M. Ms.	Ind	267	-
Hawes S.	Ind	262	-
Botterill F.	Ind	241	-
Milward B.	Lab	189	20.8
Wagner G. Ms.	Ind Con	170	18.7
Turnout		34.9	39.6

Alderton & Sutton (918)

		vote	share
Weaver C.	Ind	241	70.5
Broyd L.	Ind Lab	101	29.5
Turnout		37.3	40.9

Buxlow (1345)

		vote	share
Smith W.	Ind	0	0.0
Turnout		0.0	0.0

Dennington (1209)

		vote	share
Leather A.	Con	0	0.0
Turnout		0.0	0.0

Felixstowe North (3372)³

		vote	share
Grayston C.	Con	779	56.3
Warby M. Ms.	Con	761	-
Oxenbury T.	Con	726	-
Castle R.	Lab	604	43.7
Dench E.	Lab	576	-
Turnout		41.0	12.7

Framlingham (1588)

		vote	share
Brownsord E. Ms.	Ind	271	40.0
Henry D.	Con	260	38.3
Campbell P. Ms.	Lab	147	21.7
Turnout		42.7	1.6

Hasketon (862)

		vote	share
Hyde K. Ms.	Ind	0	0.0
Turnout		0.0	0.0

Kelsale (1024)

		vote	share
Keeble A.	Ind	203	76.3
Lindsey J.	Ind	63	23.7
Turnout		26.0	52.6

Kesgrave (3362)³

		vote	share
Fenton E.	Con	0	0.0
Young K.	Ind	0	0.0
Elmer M.	Con	0	-
Turnout		0.0	0.0

Kirton (1371)

		vote	share
Metcalfe J. Ms.	Ind	0	0.0
Turnout		0.0	0.0

Leiston (3584)³

		vote	share
Geater J.	Con	1,029	43.7
Farrow L.	Con	1,000	-
Telford A.	Lab	843	35.8
Bonham M.	Con	803	-
Watts J.	Lab	723	-
Hodgson T.	Lab	665	-
Huxley F.	Lib	482	20.5
Turnout		65.7	7.9

Martlesham (1290)

		vote	share
Shute N.	Ind	181	62.0
Banyard C.	Con	111	38.0
Turnout		22.6	24.0

Melton (1199)

		vote	share
Hutchison P.	Ind	275	62.2
Lewis J.	Ind	133	30.1
Boulton L.	Ind	34	7.7
Turnout		36.9	32.1

Nacton (1662)

		vote	share
Allerton E.	Ind	463	78.7
Cook J.	Lab	125	21.3
Turnout		35.4	57.5

No. 15 (Bramfield) (1334)

		vote	share
Holmes M.	Lab	298	43.4
Hall M. Ms.	Con	282	41.1
Symonds D. Ms.	Ind	106	15.5
Turnout		51.4	2.3

No. 18 (Earl Soham) (1093)

		vote	share
Garvey R.	Ind	0	0.0
Turnout		0.0	0.0

No. 19 (Hacheston) (877)

		vote	share
Finch J. Ms.	Ind	194	62.4
Arnsby M. Ms.	Con	117	37.6
Turnout		35.5	24.8

No. 2 (Felixstowe: East) (3020)³

		vote	share
Yetton Ward W.	Con	756	50.9
Shepperd M.	Lib	729	49.1
Price B.	Lib	710	-
Lee F.	Con	706	-
Knott J. Ms.	Lib	677	-
Wright J.	Con	675	-
Turnout		49.2	1.8

No. 20 (Snape) (966)

		vote	share
Heycock J. Ms.	Con	252	49.0
Stockbridge S. Ms.	Lib	162	31.5
Gibson J.	Ind	100	19.5
Turnout		53.2	17.5

No. 21 (Otley) (1157)

		vote	share
Kitson R.	Con	0	0.0
Turnout		0.0	0.0

No. 23 (Tunstall) (903)

		vote	share
Friend N.	Ind	293	67.7
Wallace L.	Con	140	32.3
Turnout		48.0	35.3

No. 24 (Orford) (843)

		vote	share
Fison W. Ms.	Con	274	64.2
Guy C.	Lab	153	35.8
Turnout		50.7	28.3

No. 25 (Hollesey) (1039)

		vote	share
Shannon M.	Ind	442	78.5
Archer J.	Ind	78	13.9
Pike T.	Ind	43	7.6
Turnout		54.2	64.7

No. 34 (Bealings) (1145)

		vote	share
Macray W.	Con	0	0.0
Turnout		0.0	0.0

No. 35 (Grundisburgh) (1418)

		vote	share
Fabb J.	Ind Con	0	0.0
Turnout		0.0	0.0

No. 37 (Ufford) (1153)

		vote	share
Lehmann H.	Con	181	52.3
Gordon V.	Ind	165	47.7
Turnout		30.0	4.6

No. 4 (Felixstowe: South) (2789)²

		vote	share
Sanders R.	Con	557	62.8
Eaton R.	Con	553	-
Daniel K. Ms.	Lib	330	37.2
Peat J.	Lib	314	-
Turnout		31.8	25.6

No. 5 (Felixstowe: South East) (2111)²

		vote	share
Mumford N.	Con	564	58.4
Rowland W.	Con	539	-
Wheeler E.	Lib	308	31.9
Hellen A.	Lib	302	-
Blackshaw A.	Lab	94	9.7
Turnout		45.8	26.5

No. 6 (Felixstowe: West) (2671)²

		vote	share
Loveday B.	Lab	686	65.2
Stansfield W. Ms.	Lab	686	-
Pedely W.	Con	366	34.8
Hanton J.	Con	346	-
Turnout		39.4	30.4

No. 9 (Woodbridge) (5287)⁵

		vote	share
Daly Briscoe A.	Con	1,216	44.0
Rowland M.	Con	995	-
Dunnett D.	Con	968	-
Hill E.	Lab	831	30.1
Rosher B.	Con	748	-
Dawnay M. Ms.	Ind	717	25.9
Hull D. Ms.	Ind	647	-
Jacobs R.	Ind	644	-
Davis D. Ms.	Lab	491	-
Little W.	Ind	481	-
Brown S. Ms.	Lab	425	-
Clark P.	Lab	422	-
Ellis D. Ms.	Lab	383	-
Turnout		52.3	13.9

Rushmere St. Andrew (2254)²

		vote	share
Barnard G.	Ind	0	-
Forton S.	Ind	0	0.0
Turnout		0.0	0.0

Saxmundham (1244)

		vote	share
Fisher B.	Ind	0	0.0
Turnout		0.0	0.0

Trimleys (2124)²

		vote	share
Punchard R.	Con	567	50.8
Reeve J.	Lab	550	49.2
Cotton R.	Lab	539	-
Carrick-Sproat B. Ms.	Con	441	-
Turnout		52.6	1.5

Walberswick (1447)			
		vote	share
Roberts J.	Ind	0	0.0
Turnout		0.0	0.0
Westleton (1067)			
		vote	share
Caines B. Ms.	Ind	346	69.2
Collacott K. Ms.	Ind	154	30.8
Turnout		46.9	38.4
Wickham Market (1105)			
		vote	share
Rule D.	Lab	151	53.7
Mason P.	Ind	130	46.3
Turnout		25.4	7.5
Yoxford (1016)			
		vote	share
Young K.	Lib	260	53.2
Kingsley B. Ms.	Con	229	46.8
Turnout		48.1	6.3

Suffolk Coastal - 1976

Aldeburgh (2610) ²			
		vote	share
Agate G. Ms.	Con	796	71.0
Layton C.	Con	488	-
Hawes S.	Ind	325	29.0
Gifford M. Ms.	Ind	316	-
Turnout		43.0	42.0
Alderton & Sutton (924)			
		vote	share
Carmichael P. Ms.	Con	0	0.0
Turnout		0.0	0.0
Buxlow (1376)			
		vote	share
Smith H.	Con	417	53.9
Wright R.	Ind	293	37.9
Barnes J.	Ind	64	8.3
Turnout		56.3	16.0
Dennington (1316)			
		vote	share
Leather A.	Ind	385	70.3
Carter A.	Lab	163	29.7
Turnout		41.6	40.5
Felixstowe North (3652) ³			
		vote	share
Grayston C.	Con	902	63.2
Warby M. Ms.	Con	894	-
Oxenbury T.	Con	794	-
Knott J. Ms.	Lib	526	36.8
Turnout		39.1	26.3
Framlingham (1634)			
		vote	share
Brownsord E. Ms.	Ind	0	0.0
Turnout		0.0	0.0
Hasketon (571)			
		vote	share
Hyde K. Ms.	Ind	0	0.0
Turnout		0.0	0.0
Kelsale (1048)			
		vote	share
Keeble A.	Con	0	0.0
Turnout		0.0	0.0

Kesgrave (3374) ³			
		vote	share
Hewitt C.	Con	0	-
Stark T.	Con	0	-
Elmer M.	Con	0	0.0
Turnout		0.0	0.0
Kirtton (1398)			
		vote	share
Metcalfe J. Ms.	Ind	539	71.9
Punchard J.	Con	211	28.1
Turnout		53.6	43.7
Leiston (3675) ³			
		vote	share
Geater J.	Con	1,007	40.7
Farrow L.	Con	921	-
Telford A.	Lab	724	29.2
Hawkins T.	Con	703	-
Knight R.	Lab	562	-
Hodgson T.	Lab	486	-
Huxley F.	Lib	428	17.3
Chadwick L. Ms.	Comm	269	10.9
Bridger O. Ms.	Ecol	49	2.0
Turnout		67.4	11.4
Martlesham (1445)			
		vote	share
Woods C.	Ind	0	0.0
Turnout		0.0	0.0
Melton (1563)			
		vote	share
Hutchison P.	Ind	0	0.0
Turnout		0.0	0.0
Nacton (1650)			
		vote	share
Cook J.	Lab	0	0.0
Turnout		0.0	0.0
No. 15 (Bramfield) (1391)			
		vote	share
Scoppie D.	Con	388	50.2
Holmes M.	Ind	385	49.8
Turnout		55.6	0.4
No. 18 (Earl Soham) (1106)			
		vote	share
Roberts S. Ms.	Lib	316	53.1
Akester W.	Con	279	46.9
Turnout		53.8	6.2
No. 19 (Hacheston) (881)			
		vote	share
Medway Lord	Con	259	60.4
Finch J. Ms.	Ind	170	39.6
Turnout		48.7	20.7
No. 2 (Felixstowe: East) (3338) ³			
		vote	share
Clark F.	Con	1,180	63.8
Pedely W.	Con	1,122	-
Cusworth P.	Con	1,099	-
Price B.	Lib	669	36.2
Morgan C.	Lib	574	-
Sheppard M.	Lib	554	-
Turnout		55.4	27.6
No. 20 (Snape) (986)			
		vote	share
Heycock J. Ms.	Con	0	0.0
Turnout		0.0	0.0
No. 21 (Otley) (1291)			
		vote	share
Kitson R.	Con	0	0.0
Turnout		0.0	0.0

No. 23 (Tunstall) (927)			
		vote	share
Paice A. Ms.	Con	0	0.0
Turnout		0.0	0.0
No. 24 (Orford) (826)			
		vote	share
Greenwell E.	Con	0	0.0
Turnout		0.0	0.0
No. 25 (Hollesey) (998)			
		vote	share
Shannon M.	Ind	0	0.0
Turnout		0.0	0.0
No. 34 (Bealings) (1175)			
		vote	share
Macray W.	Con	0	0.0
Turnout		0.0	0.0
No. 35 (Grundisburgh) (1544)			
		vote	share
Fabb J.	Con	0	0.0
Turnout		0.0	0.0
No. 37 (Ufford) (937)			
		vote	share
Shipman R.	Con	367	66.0
Gordon V.	Lib	189	34.0
Turnout		59.3	32.0
No. 4 (Felixstowe: South) (2818) ²			
		vote	share
Palmer R.	Con	0	-
Sanders R.	Con	0	0.0
Turnout		0.0	0.0
No. 5 (Felixstowe: South East) (2130) ²			
		vote	share
Rowland W.	Con	0	0.0
Mumford N.	Con	0	-
Turnout		0.0	0.0
No. 6 (Felixstowe: West) (2744) ²			
		vote	share
Gibson B. Ms.	Con	541	41.7
Castle R.	Lab	459	35.4
Ribbans G. Ms.	Con	403	-
Whitfield C. Ms.	Lab	400	-
Stansfield B.	Ind Lab	298	23.0
Turnout		47.3	6.3
No. 9 (Woodbridge) (5485) ⁵			
		vote	share
Briscoe A.	Con	1,326	41.3
Scarborough L.	Con	1,142	-
Dawnay P.	Ind	1,102	34.3
Rowland M.	Con	1,046	-
Dunnett D.	Con	1,003	-
Rosher B.	Con	984	-
Hill E.	Lab	784	24.4
Frost E.	Ind	418	-
Davis D. Ms.	Lab	365	-
Turnout		58.6	7.0
Rushmere St. Andrew (2389) ²			
		vote	share
Barnard G.	Ind	0	-
Forton S.	Ind	0	0.0
Turnout		0.0	0.0
Saxmundham (1257)			
		vote	share
Fisher B.	Ind	0	0.0
Turnout		0.0	0.0

Trimleys (2166)²			
Punchard R.	Con	vote	share
Carrick-Spreat B. Ms.	Con	678	62.5
Corkhill M.	Lab	586	-
Stansfield W. Ms.	Lab	407	37.5
		393	-
	Turnout	50.1	25.0

Walberswick (1412)			
De A. Segundo	Con	vote	share
Roberts J.	Ind	315	41.5
Mack M. Ms.	Lib	204	26.9
Bloomfield D.	Ind	171	22.5
		69	9.1
	Turnout	53.8	14.6

Westleton (1123)			
Caines B. Ms.	Ind	vote	share
Perry A.	Lib	455	77.2
		134	22.8
	Turnout	52.4	54.5

Wickham Market (1267)			
Mason P.	Ind	vote	share
Taylor V.	Ind	283	48.5
Rule D.	Ind	185	31.7
		115	19.7
	Turnout	46.0	16.8

Yoxford (1005)			
Paice J.	Con	vote	share
Young K.	Lib	266	48.5
Holmes F. Ms.	Lab	169	30.8
		113	20.6
	Turnout	54.5	17.7

Suffolk Coastal - 1979

Aldeburgh (2589)²			
Agate G. Ms.	Con	vote	share
Whately-Smith P.	Con	0	-
		0	0.0
	Turnout	0.0	0.0

Alderton & Sutton (896)			
Franks B.	Con	vote	share
		0	0.0
	Turnout	0.0	0.0

Buxlow (1458)			
Wright R.	Con	vote	share
Coates J.	Lab	591	52.5
Burnett M.	Ind Con	289	25.7
		246	21.8
	Turnout	78.7	26.8

Dennington (1210)			
Paice J.	Con	vote	share
Carter A.	Ind	496	53.0
		439	47.0
	Turnout	77.4	6.1

Felixstowe North (3811)³			
Grayston C.	Con	vote	share
Webb C.	Con	1,616	56.8
Palmer R.	Con	1,526	-
Smith D.	Lab	1,375	-
White T.	Lab	1,227	43.2
Strong L.	Lab	1,048	-
		964	-
	Turnout	76.8	13.7

Framlingham (1603)			
Irving H.	Ind	vote	share
		0	0.0
	Turnout	0.0	0.0

Hasketon (910)			
Hyde K. Ms.	Ind	vote	share
		0	0.0
	Turnout	0.0	0.0

Kelsale (1084)			
Keeble A.	Con	vote	share
		0	0.0
	Turnout	0.0	0.0

Kesgrave (3422)³			
Casey T.	Con	vote	share
Cooper P.	Con	0	-
Elmer M.	Con	0	-
		0	0.0
	Turnout	0.0	0.0

Kirton (1461)			
Metcalfe J. Ms.	Ind	vote	share
		0	0.0
	Turnout	0.0	0.0

Leiston (3822)³			
Geater J.	Con	vote	share
Telford A.	Lab	1,364	36.6
Farrow L.	Con	1,312	35.2
Hawkins T.	Con	1,171	-
Poulter J.	Lab	1,097	-
Hodgson T.	Lab	1,056	-
Huxley F.	Lib	1,028	-
Wilson A. Ms.	Lib	739	19.8
Howard W.	Comm	475	-
		309	8.3
	Turnout	79.0	1.4

Martlesham (1657)			
Woods C.	Ind	vote	share
		0	0.0
	Turnout	0.0	0.0

Melton (1645)			
Hutchison P.	Ind	vote	share
Davis F.	Ind	860	71.4
		344	28.6
	Turnout	74.4	42.9

Nacton (1607)			
Chapman C. Ms.	Con	vote	share
Cook J.	Lab	847	70.5
		355	29.5
	Turnout	76.0	40.9

No. 15 (Bramfield) (1346)			
Scoppie D.	Con	vote	share
Collins C.	Lib	575	53.4
		501	46.6
	Turnout	80.9	6.9

No. 18 (Earl Soham) (1137)			
Woodcock N.	Ind	vote	share
Brown A. Ms.	Con	535	57.3
		398	42.7
	Turnout	82.5	14.7

No. 19 (Hacheston) (873)			
Cranbrook G.	Con	vote	share
		0	0.0
	Turnout	0.0	0.0

No. 2 (Felixstowe: East) (3812)³			
Grindrod F.	Con	vote	share
Clark F.	Con	0	-
Ryley A.	Con	0	-
		0	0.0
	Turnout	0.0	0.0

No. 20 (Snape) (989)			
Lapsley J.	Con	vote	share
		0	0.0
	Turnout	0.0	0.0

No. 21 (Otley) (1241)			
Kitson R.	Con	vote	share
		0	0.0
	Turnout	0.0	0.0

No. 23 (Tunstall) (921)			
Paice A. Ms.	Con	vote	share
		0	0.0
	Turnout	0.0	0.0

No. 24 (Orford) (826)			
Greenwell E.	Con	vote	share
		0	0.0
	Turnout	0.0	0.0

No. 25 (Hollesey) (999)			
Shannon M.	Con	vote	share
		0	0.0
	Turnout	0.0	0.0

No. 34 (Bealings) (1204)			
Macray W.	Con	vote	share
		0	0.0
	Turnout	0.0	0.0

No. 35 (Grundisburgh) (1621)			
Fabb J.	Con	vote	share
		0	0.0
	Turnout	0.0	0.0

No. 37 (Ufford) (1185)			
Nicholls R.	Con	vote	share
Gordon V.	Ind	457	51.1
		438	48.9
	Turnout	76.3	2.1

No. 4 (Felixstowe: South) (2684)²			
Loveday A.	ICAC	vote	share
Savage T.	Con	979	52.3
Ferguson F.	ICAC	894	47.7
Sanders R.	Con	873	-
		843	-
	Turnout	71.6	4.5

No. 5 (Felixstowe: South East) (2166)²			
Mumford N.	Con	vote	share
Chatfield G.	Con	1,242	79.6
Chandler J.	Lab	1,168	-
Turnbull P.	Lab	319	20.4
		299	-
	Turnout	75.5	59.1

No. 6 (Felixstowe: West) (2830)²			
Castle R.	Lab	vote	share
Loveday B.	Lab	1,057	52.3
Bojdys R.	Con	1,045	-
Tozer R.	Con	965	47.7
		937	-
	Turnout	77.1	4.5

No. 9 (Woodbridge) (5464)⁵			
Dawnay P.	Ind	vote	share
Rowland M.	Con	2,615	38.9
Dunnett D.	Con	2,277	33.9
Hill E.	Lab	2,253	-
Hewitt S.	Lab	1,829	27.2
Thornhill G.	Con	1,735	-
Davis D. Ms.	Con	1,589	-
	Lab	1,099	-
	Turnout	54.8	5.0

Rushmere St. Andrew (2585) ²			
		vote	share
Forton S.	Ind	0	0.0
Barnard G.	Ind	0	-
Turnout		0.0	0.0
Saxmundham (1286)			
		vote	share
Fisher B.	Ind	0	0.0
Turnout		0.0	0.0
Trimleys (2341) ²			
		vote	share
Punchard R.	Con	0	0.0
Carrick-Spreat B. Ms.	Con	0	-
Turnout		0.0	0.0
Walberswick (1453)			
		vote	share
De Segundo A. Ms.	Con	0	0.0
Turnout		0.0	0.0
Westleton (1144)			
		vote	share
Caines B. Ms.	Ind	0	0.0
Turnout		0.0	0.0
Wickham Market (1503)			
		vote	share
Mason P.	Ind	0	0.0
Turnout		0.0	0.0
Yoxford (1034)			
		vote	share
Hazelwood A.	Con	454	56.7
Deif T.	VR	347	43.3
Turnout		78.7	13.4

Suffolk Coastal - 1983

Aldeburgh (2503) ²			
		vote	share
Agate G. Ms.	Con	783	66.0
Cooney H.	Con	717	-
Scott I.	Lib/SDP	403	34.0
Turnout		42.5	32.0
Alderton & Sutton (915)			
		vote	share
Peacock R. Ms.	Con	0	0.0
Turnout		0.0	0.0
Bealings (1216)			
		vote	share
Sledmore W.	Con	0	0.0
Turnout		0.0	0.0
Bramfield & Cratfield (1492)			
		vote	share
Burroughes S.	Con	0	0.0
Turnout		0.0	0.0
Buxlow (1507)			
		vote	share
Wright M. Ms.	Ind	0	0.0
Turnout		0.0	0.0
Dennington (1210)			
		vote	share
Paice J.	Con	0	0.0
Turnout		0.0	0.0

Earl Soham (1220)			
		vote	share
Woodcock N.	Ind	0	0.0
Turnout		0.0	0.0
Felixstowe Central (2573) ²			
		vote	share
Savage T.	Con	851	75.5
Webb C.	Con	848	-
Sweetman H. Ms.	Lab	276	24.5
Else B.	Lab	250	-
Turnout		46.0	51.0
Felixstowe East (2886) ²			
		vote	share
Bojdys R.	Con	0	-
Clarke B.	Con	0	0.0
Turnout		0.0	0.0
Felixstowe North (2907) ²			
		vote	share
Grayston C.	Con	749	52.8
Deacon M.	Lab	670	47.2
Palmer R.	Con	667	-
Dyer M. Ms.	Lab	595	-
Turnout		51.0	5.6
Felixstowe South (2533) ²			
		vote	share
Sutton V.	Con	503	50.0
Loveday A.	Ind	502	50.0
George A.	Con	381	-
Ryles J.	Ind	366	-
Paddick D.	Ind	292	-
Turnout		46.8	0.1
Felixstowe South East (2818) ²			
		vote	share
Mumford N.	Con	0	-
Tozer R.	Con	0	0.0
Turnout		0.0	0.0
Felixstowe West (2592) ²			
		vote	share
Careless L.	Con	507	38.6
Stokell M.	Con	483	-
Gibson B. Ms.	Ind	410	31.2
Sharman M.	Lab	398	30.3
Ballentyne D.	Lab	389	-
Turnout		46.4	7.4
Framlingham (1762)			
		vote	share
Coe T.	Con	489	54.2
Campbell J.	Lab	311	34.4
Rooke K.	Lib/SDP	103	11.4
Turnout		51.4	19.7
Glemham (891)			
		vote	share
Brookes H. Ms.	Con	0	0.0
Turnout		0.0	0.0
Grundisburgh & Winesham (1627)			
		vote	share
Fabb J.	Con	0	0.0
Turnout		0.0	0.0
Hasketon (904)			
		vote	share
Preese P. Ms.	Con	0	0.0
Turnout		0.0	0.0
Hollesey (1005)			
		vote	share
Shannon M.	Con	0	0.0
Turnout		0.0	0.0

Kelsale (1096)			
		vote	share
Keeble J.	Con	0	0.0
Turnout		0.0	0.0
Kesgrave (3687) ³			
		vote	share
Elmer M.	Con	914	71.9
Cooper P.	Con	878	-
Casey T.	Con	825	-
Robinson S.	Lab	357	28.1
Margerum B. Ms.	Lab	347	-
Turnout		36.6	43.8
Kirton (1458)			
		vote	share
Metcalfe J. Ms.	Ind	649	88.2
Voelcker S. Ms.	Lab	87	11.8
Turnout		50.9	76.4
Leiston (3853) ³			
		vote	share
Geater J.	Con	1,128	32.8
Hodgson T.	Lab	939	27.3
Hawkins T.	Con	902	-
Huxley F.	Lib/SDP	844	24.5
Hill G.	Con	627	-
Howard W.	Comm	531	15.4
Stanley D.	Lib/SDP	298	-
Turnout		56.2	5.5
Martlesham (2240)			
		vote	share
Woods C.	Con	0	0.0
Turnout		0.0	0.0
Melton (1921)			
		vote	share
Hutchison M. Ms.	Ind	545	73.7
Fitch D.	Lib/SDP	194	26.3
Turnout		37.7	47.5
Nacton (1640)			
		vote	share
Law J. Ms.	Con	0	0.0
Turnout		0.0	0.0
Orford (842)			
		vote	share
Greenwell E.	Con	0	0.0
Turnout		0.0	0.0
Otley (979)			
		vote	share
Kitson R.	Con	302	65.2
Yule D.	Ind	161	34.8
Turnout		47.6	30.5
Rushmere St. Andrew (2826) ²			
		vote	share
Gooch D.	Con	0	-
Laing G.	Con	0	0.0
Turnout		0.0	0.0
Saxmundham (1320)			
		vote	share
Fisher B.	Ind	0	0.0
Turnout		0.0	0.0
Snape (1044)			
		vote	share
Lapsley J.	Con	0	0.0
Turnout		0.0	0.0

Trimleys (3405) ²			
		vote	share
Carrick-Spreat B. Ms.	Con	771	46.7
Donnelly D.	Con	707	-
Howlett R.	Lab	530	32.1
Dixon M. Ms.	Lab	388	-
Squirrell D.	Lib/SDP	351	21.2
England P.	Lib/SDP	307	-
Turnout		49.8	14.6
Tunstall (939)			
		vote	share
Paice A. Ms.	Con	265	60.4
Stanley M. Ms.	Lib/SDP	174	39.6
Turnout		47.6	20.7
Ufford (1198)			
		vote	share
Fooks H.	Con	0	0.0
Turnout		0.0	0.0
Walberswick (1345)			
		vote	share
James G.	Con	0	0.0
Turnout		0.0	0.0
Westleton (1142)			
		vote	share
Caines B. Ms.	Ind	0	0.0
Turnout		0.0	0.0
Wickham Market (1480)			
		vote	share
Mason P.	Ind	354	66.3
Rooke C. Ms.	Lib/SDP	104	19.5
Thurlow P.	Lab	76	14.2
Turnout		36.5	46.8
Woodbridge Central (1285)			
		vote	share
Thornhill G.	Con	288	51.6
Dawnay P.	Ind	215	38.5
Wilkinson D.	Lab	55	9.9
Turnout		44.0	13.1
Woodbridge Farlingaye (1192)			
		vote	share
Hewitt S.	Con	245	60.0
Horton T.	Lib/SDP	163	40.0
Turnout		34.3	20.1
Woodbridge Kyson (908)			
		vote	share
Dunnett D.	Ind	159	42.1
Redmond K. Ms.	Lab	134	35.4
Aldam J.	Lib/SDP	85	22.5
Turnout		42.7	6.6
Woodbridge Riverside (1068)			
		vote	share
Rowland M.	Con	0	0.0
Turnout		0.0	0.0
Woodbridge Seckford (3141)			
		vote	share
Geen R.	Con	0	0.0
Turnout		0.0	0.0
Yoxford (1037)			
		vote	share
Hazelwood A.	Con	386	65.1
Poppleton J.	Lab	207	34.9
Turnout		57.3	30.2

Suffolk Coastal - 1987

Aldeburgh (2522) ²			
		vote	share
Codney H.	Con	752	57.4
Wood C.	Con	680	-
Cooke-Yarborough E.	Lib/SDP	559	42.6
Jacob J.	Lib/SDP	525	-
Turnout		54.3	14.7
Alderton & Sutton (940)			
		vote	share
Peacock R. Ms.	Con	273	59.0
Monk P.	Lib/SDP	158	34.1
Brown F.	Ind	32	6.9
Turnout		49.4	24.8
Bealings (1480)			
		vote	share
Sledmere F.	Con	0	0.0
Turnout		0.0	0.0
Bramfield & Cratfield (1511)			
		vote	share
Burroughes S.	Con	475	69.0
Poppleton J.	Lab	213	31.0
Turnout		46.1	38.1
Buxlow (1684)			
		vote	share
Wright M. Ms.	Ind	0	0.0
Turnout		0.0	0.0
Dennington (1259)			
		vote	share
Wardley R.	Ind	421	53.0
Tedder R. Ms.	Con	181	22.8
Green C.	Ind	157	19.8
Croft N.	Lab	35	4.4
Turnout		63.1	30.2
Earl Soham (1219)			
		vote	share
Woodcock N.	Ind	0	0.0
Turnout		0.0	0.0
Felixstowe Central (2511) ²			
		vote	share
Holland R.	Con	661	47.6
Webb C.	Con	656	-
Durrant M. Ms.	Lib/SDP	515	37.1
Morgan C.	Lib/SDP	498	-
Colebourn P.	Lab	213	15.3
Eyton M. Ms.	Lab	176	-
Turnout		58.0	10.5
Felixstowe East (2936) ²			
		vote	share
Clarke B.	Con	965	48.7
Race E.	Con	854	-
Warren P.	Lib/SDP	717	36.2
Sheppard M.	Lib/SDP	657	-
Lancaster S. Ms.	Ind	298	15.1
Turnout		63.5	12.5
Felixstowe North (2912) ²			
		vote	share
Grayston C.	Con	660	41.0
Stokell M.	Con	638	-
Deacon M.	Lab	602	37.4
Warner D.	Lab	409	-
Cousins A. Ms.	Lib/SDP	348	21.6
Bowles L. Ms.	Lib/SDP	300	-
Turnout		56.4	3.6

Felixstowe South (2712) ²			
		vote	share
Savage D. Ms.	Con	612	38.7
Loveday A.	Ind	611	38.6
Swift E.	Con	433	-
Ward G.	Lib/SDP	360	22.7
Turnout		43.5	0.1
Felixstowe South East (2840) ²			
		vote	share
Mumford N.	Con	1,030	60.9
Tozer R.	Con	983	-
Stones D. Ms.	Lib/SDP	509	30.1
Garwell J.	Lib/SDP	476	-
Carpenter D.	Lab	152	9.0
Manley S. Ms.	Lab	138	-
Turnout		60.2	30.8
Felixstowe West (3008) ²			
		vote	share
Paddick D. Ms.	Lib/SDP	715	49.0
Page S.	Lib/SDP	586	-
Savage T.	Con	521	35.7
Benns P.	Con	466	-
Evans S.	Lab	222	15.2
Fallows D.	Lab	200	-
Turnout		48.2	13.3
Framlingham (1897)			
		vote	share
Thirkell J.	Con	482	45.8
Campbell J.	Lab	362	34.4
Booth P. Ms.	Lib/SDP	134	12.7
Gibbons R.	Green	74	7.0
Turnout		55.9	11.4
Glemham (859)			
		vote	share
Brookes H. Ms.	Con	266	57.6
Rooke C. Ms.	Lib/SDP	196	42.4
Turnout		54.1	15.2
Grundisburgh & Winesham (1698)			
		vote	share
Morton M.	Con	473	62.3
Barker M. Ms.	Lib/SDP	286	37.7
Turnout		44.9	24.6
Hasketon (1284)			
		vote	share
Ilett J.	Con	376	59.2
Ball D. Ms.	Lib/SDP	259	40.8
Turnout		50.1	18.4
Holesley (1063)			
		vote	share
Shannon M.	Con	0	0.0
Turnout		0.0	0.0
Kelsale (1065)			
		vote	share
Ratcliff N.	Lib/SDP	276	47.7
Keeble J.	Con	236	40.8
Todd D.	Lab	67	11.6
Turnout		57.3	6.9
Kesgrave (2777) ³			
		vote	share
Dowsing C.	Con	757	44.6
Bull A.	Con	734	-
Cooper P.	Con	710	-
Guest R.	Lib/SDP	570	33.6
Northover C.	Lab	369	21.8
Turnout		53.8	11.0
Kirton (1571)			
		vote	share
Metcalfe J. Ms.	Ind	0	0.0
Turnout		0.0	0.0

Leiston (3782) ³			
		vote	share
Geater J.	Con	1,091	32.2
Hawkins T.	Con	928	-
Hodgson T.	Lab	852	25.2
Shreeve J.	Con	790	-
Howard W.	Comm	622	18.4
Burnside M.	Green	489	14.5
Stanley D.	Ind	329	9.7
Turnout		54.5	7.1

Martlesham (3004)			
		vote	share
Kelso J.	Lib/SDP	715	56.2
Bryant R.	Ind	557	43.8
Turnout		42.9	12.4

Melton (2047)			
		vote	share
Hutchison M. Ms.	Ind	651	77.7
Buck P.	Lab	187	22.3
Turnout		41.2	55.4

Nacton (1498)			
		vote	share
Law J. Ms.	Con	493	63.9
Krailling D. Ms.	Lib/SDP	279	36.1
Turnout		51.7	27.7

Orford (929)			
		vote	share
Fairweather M.	Lib/SDP	311	52.7
Greenwell E.	Con	255	43.2
Beardall C.	Green	24	4.1
Turnout		63.6	9.5

Otley (977)			
		vote	share
Sutton V.	Con	281	56.1
Yule D.	Ind	151	30.1
Stott E. Ms.	Lab	69	13.8
Turnout		51.6	25.9

Rushmere St. Andrew (2975) ²			
		vote	share
Gooch D.	Con	922	77.4
Laing G.	Con	867	-
Mamujee A.	Lab	269	22.6
Turnout		57.3	54.8

Saxmundham (1397)			
		vote	share
Fisher B.	Ind	371	58.6
Welton K.	Lab	262	41.4
Turnout		45.4	17.2

Snape (1166)			
		vote	share
Burnett K.	Con	364	60.3
Moss W. Ms.	Lib/SDP	186	30.8
Shiells W.	CAS	54	8.9
Turnout		52.3	29.5

Trimleys (4211) ²			
		vote	share
Carrick-Spreat B. Ms.	Con	908	44.2
Donnelly D.	Con	848	-
Marfleet A.	Lib/SDP	663	32.3
Cawthorn N.	Lib/SDP	562	-
Dixon M. Ms.	Lab	481	23.4
Turnout		47.2	11.9

Tunstall (923)			
		vote	share
Herring R.	Con	0	0.0
Turnout		0.0	0.0

Ufford (1222)			
		vote	share
Fooks H.	Con	0	0.0
Turnout		0.0	0.0

Walberswick (1390)			
		vote	share
James G.	Con	0	0.0
Turnout		0.0	0.0

Westleton (1119)			
		vote	share
Caines B. Ms.	Ind	491	72.1
Paige A.	Green	190	27.9
Turnout		61.1	44.2

Wickham Market (1572)			
		vote	share
Mason P.	Ind	420	70.5
Aldam J.	Lib/SDP	89	14.9
Pizzey V. Ms.	Lab	87	14.6
Turnout		38.0	55.5

Woodbridge Central (1280)			
		vote	share
Thornhill G.	Con	405	63.9
Cavalier-Smith G. Ms.	Lib/SDP	164	25.9
Hall L. Ms.	Lab	65	10.3
Turnout		50.2	38.0

Woodbridge Farlingaye (1543)			
		vote	share
Hewitt S.	Con	293	50.3
Hazell P. Ms.	Lib/SDP	201	34.5
Staines B.	Lab	88	15.1
Turnout		38.2	15.8

Woodbridge Kyson (886)			
		vote	share
Twigge N.	Lib/SDP	174	39.6
Spencer L.	Ind	173	39.4
Redmond K. Ms.	Lab	92	21.0
Turnout		49.8	0.2

Woodbridge Riverside (1104)			
		vote	share
Rowland M.	Con	408	64.7
Thompson E. Ms.	Lib/SDP	197	31.2
Budd C.	Lab	26	4.1
Turnout		55.9	33.4

Woodbridge Seckford (1161)			
		vote	share
Geen R.	Con	327	56.3
Healey A. Ms.	Lib/SDP	208	35.8
Buck H. Ms.	Lab	46	7.9
Turnout		50.5	20.5

Yoxford (1075)			
		vote	share
Hazelwood A.	Con	411	69.5
Merriott P. Ms.	Lab	180	30.5
Turnout		55.3	39.1

Suffolk Coastal - 1991

Aldeburgh (2445) ²			
		vote	share
Richardson J.	Con	507	28.8
Wood C.*	Con	494	-
Herbert-Jones H.	Ind	451	25.7
Cowan C.	LD	409	23.3
Hawes S.	Ind	249	-
Duffell T.	Lab	206	11.7
Robinson C.	Green	185	10.5
Turnout		56.6	3.2

Alderton & Sutton (929)			
		vote	share
Peacock R. Ms.*	Con	227	44.4
Monk P.	LD	204	39.9
Hemming C.	Lab	80	15.7
Turnout		55.0	4.5

Bealings (1418)			
		vote	share
Jowers I.*	Con	556	74.3
Driver G.	Lab	192	25.7
Turnout		52.8	48.7

Bramfield & Cratfield (1429)			
		vote	share
Church R.	Con	397	59.6
Troughton J.	Lab	269	40.4
Turnout		46.6	19.2

Buxlow (1771)			
		vote	share
Moss W. Ms.	LD	508	70.5
Monk S. Ms.	Lab	213	29.5
Turnout		40.7	40.9

Dennington (1265)			
		vote	share
Wardley R.*	Ind	0	0.0
Turnout		0.0	0.0

Earl Soham (1191)			
		vote	share
Woodcock N.*	Ind	493	75.3
Booth P. Ms.	LD	162	24.7
Turnout		55.0	50.5

Felixstowe Central (2064) ²			
		vote	share
Holland R.*	Con	751	63.1
Webb C.*	Con	749	-
Bignell C. Ms.	Lab	439	36.9
Steward D.	Lab	402	-
Turnout		56.7	26.2

Felixstowe East (2995) ²			
		vote	share
Clarke B.*	Con	869	55.0
Race E.*	Con	761	-
Houseley A.	LD	516	32.7
Warren P.	LD	483	-
Sweetman H. Ms.	Lab	194	12.3
McGrath R. Ms.	Lab	188	-
Turnout		52.3	22.4

Felixstowe North (2905) ²			
		vote	share
Deacon M.*	Lab	775	47.8
Stoddart R.	Lab	619	-
Norman R.	Con	471	29.0
Stokell M.	Con	439	-
Cousins A. Ms.	LD	376	23.2
Ninnmey M.	LD	273	-
Turnout		55.8	18.7

Felixstowe South (2630) ²			
		vote	share
Savage D. Ms.*	Con	671	47.4
Fountain J.	Con	523	-
Macgregor C. Ms.	LD	360	25.4
Eyton M.	Ind	193	13.6
Walker M.	Lab	191	13.5
Turnout		42.9	22.0

Felixstowe South East (2935) ²			
		vote	share
Slemmings C. Ms.	Con	987	69.5
Smith A.	Con	986	-
Carpenter D.	Lab	434	30.5
Wyatt M.	Lab	415	-
Turnout		48.1	38.9

Felixstowe West (3750)²			
		vote	share
Dangerfield H.	LD	530	37.0
Erlam S. Ms.	Lab	501	35.0
Golightly D.	LD	493	-
Whitworth R.	Lab	459	-
Dyer J.	Con	400	28.0
Maister A.	Con	381	-
Turnout		39.4	2.0
Framlingham (2097)			
		vote	share
Campbell J.	Lab	499	46.4
Bowers J.	Con	460	42.8
Holloway J.	Green	117	10.9
Turnout		51.3	3.6
Glemham (895)			
		vote	share
Brookes H. Ms.*	Con	341	73.0
Chamberlain L.	Lab	126	27.0
Turnout		52.2	46.0
Grundisburgh & Wimesham (1804)			
		vote	share
Morton M.*	Con	0	0.0
Turnout		0.0	0.0
Hasketon (1290)			
		vote	share
Preese P. Ms.	Con	310	50.0
Ball D. Ms.	LD	244	39.4
Troughton S.	Lab	66	10.6
Turnout		48.1	10.6
Holesley (1109)			
		vote	share
Shannon M.*	Con	435	65.6
Hemming A.	Lab	134	20.2
Mason V. Ms.	Green	94	14.2
Turnout		59.8	45.4
Kelsale (1043)			
		vote	share
Ratcliff N.*	Ind	264	48.3
Berendt R.	Con	188	34.4
Poppleton J.	Lab	95	17.4
Turnout		52.4	13.9
Kesgrave (3910)³			
		vote	share
Ferguson H.	Con	845	61.4
Dowsing C.*	Con	829	-
Cooper P.*	Con	778	-
Kelly A.	Lab	531	38.6
Irwin M.	Lab	452	-
Turnout		38.2	22.8
Kirton (1631)			
		vote	share
Metcalfe J. Ms.*	Ind	594	70.4
Corker S. Ms.	Con	187	22.2
Campbell M.	Lab	63	7.5
Turnout		51.7	48.2
Leiston (3926)³			
		vote	share
Hodgson T.*	Lab	990	34.3
Girling J. Ms.	Lab	921	-
Geater J.*	Con	767	26.6
Hawkins T.*	Con	698	-
Howard W.	COMM	634	22.0
Burnside M.	Green	495	17.2
Hurn J.	Con	436	-
Turnout		50.5	7.7

Martlesham (3619)			
		vote	share
Hollingsworth B.	Con	866	45.9
Kelso J.*	LD	826	43.8
Pitcher A.	Lab	193	10.2
Turnout		52.1	2.1
Melton (2317)			
		vote	share
Hutchinson M.	Ind	0	0.0
Turnout		0.0	0.0
Nacton (1767)			
		vote	share
Law J. Ms.*	Con	576	73.1
Goddard D.	Lab	212	26.9
Turnout		44.6	46.2
Orford (936)			
		vote	share
Fairweather M.*	Ind	412	69.8
Vanneck P.	Con	178	30.2
Turnout		63.0	39.7
Otley (1010)			
		vote	share
Sutton V.*	Con	248	46.6
Yule D.	LD	223	41.9
Taylor G.	Lab	61	11.5
Turnout		52.7	4.7
Rushmere St. Andrew (3170)²			
		vote	share
Gooch D.*	Con	802	54.6
Laing G.*	Con	755	-
Copper D.	LD	666	45.4
Turnout		45.6	9.3
Saxmundham (1538)			
		vote	share
Warren R.	Con	303	39.0
Welton K.	Lab	285	36.7
Barnes J.	LD	189	24.3
Turnout		50.5	2.3
Snape (1132)			
		vote	share
Burnett K.*	Con	347	63.9
Blackshaw H. Ms.	Lab	196	36.1
Turnout		48.0	27.8
Trimleys (4306)²			
		vote	share
Carrick-Spreat B. Ms.*	Con	740	38.0
Donnelly D.*	Con	723	-
Dixon M. Ms.	Lab	701	36.0
Marfleet A.	LD	507	26.0
Thompson C.	Lab	484	-
Turnout		42.5	2.0
Tunstall (994)			
		vote	share
Herring R.*	Con	343	57.8
Monk J. Ms.	SLD	250	42.2
Turnout		59.7	15.7
Ufford (1237)			
		vote	share
Fooks H.*	Con	332	57.0
Hazell P. Ms.	SLD	250	43.0
Turnout		47.0	14.1
Walberswick (1410)			
		vote	share
Leighton R.	Con	383	46.1
Block A.	LD	350	42.2
Buck H. Ms.	Lab	97	11.7
Turnout		58.9	4.0

Westleton (1129)			
		vote	share
Caines B. Ms.*	Ind	378	64.0
Barnett J.	Green	213	36.0
Turnout		52.3	27.9
Wickham Market (1658)			
		vote	share
Mason P.*	Ind	418	63.5
Doran K.	Lab	144	21.9
Cousens M.	Green	96	14.6
Turnout		39.7	41.6
Woodbridge Central (1445)			
		vote	share
Thornhill G.*	Con	459	69.2
Murray A.	Lab	204	30.8
Turnout		45.9	38.5
Woodbridge Farlingaye (1477)			
		vote	share
Healey A. Ms.	LD	323	49.7
Perry R.	Con	203	31.2
Buck P.	Lab	124	19.1
Turnout		44.0	18.5
Woodbridge Kyson (840)			
		vote	share
Burgon R.	Lab	201	45.1
Spencer L.	Ind	149	33.4
Green N.	LD	96	21.5
Turnout		53.1	11.7
Woodbridge Riverside (1123)			
		vote	share
Rowland M.*	Con	440	75.1
Arundel M. Ms.	Lab	146	24.9
Turnout		52.2	50.2
Woodbridge Seckford (1115)			
		vote	share
Geen R.*	Con	279	46.0
Eveleigh M.	SLD	259	42.7
Horabin R. Ms.	Lab	68	11.2
Turnout		54.3	3.3
Yoxford (1163)			
		vote	share
Gray D.	Con	368	66.4
Croft N.	Lab	186	33.6
Turnout		47.6	32.9
Suffolk Coastal - 1995			
Aldeburgh (2422)²			
		vote	share
Richardson J.*	Con	550	44.7
Steen M. Ms.	Con	538	-
Matthews S.	LD	494	40.1
Little P. Ms.	LD	485	-
Doran K.	Lab	187	15.2
Finlayson N.	Lab	157	-
Turnout		53.6	4.5
Alderton & Sutton (1123)			
		vote	share
Block C. Ms.	LD	273	50.6
Peacock R. Ms.*	Con	162	30.1
Buck P.	Lab	104	19.3
Turnout		48.0	20.6
Bealings (1471)			
		vote	share
Jowers I.*	Con	376	52.6
Rufford G.	Ind	339	47.4
Turnout		48.9	5.2

Bramfield & Cratfield (1465)

		vote	share
Mair G.	Lab	364	50.8
Church R.*	Con	297	41.5
Thomas R.	Ind	55	7.7
Turnout		49.0	9.4

Buxlow (1721)

		vote	share
Moss W. Ms.*	LD	304	37.9
Truman P.	Con	275	34.3
Troughton J.	Lab	223	27.8
Turnout		46.7	3.6

Dennington (1374)

		vote	share
Moore-Moffatt A. Ms.	LD	330	52.3
Rous R.*	Ind	301	47.7
Turnout		46.1	4.6

Earl Soham (1238)

		vote	share
Kerr B.	Con	298	50.8
Stocker S. Ms.	LD	289	49.2
Turnout		47.7	1.5

Felixstowe Central (2677)²

		vote	share
Bignell C. Ms.	Lab	533	39.1
Rowe D.	Lab	516	-
Holland R.*	Con	480	35.2
Webb C.*	Con	470	-
Dangerfield P. Ms.	LD	350	25.7
Moody G. Ms.	LD	284	-
Turnout		52.0	3.9

Felixstowe East (3054)²

		vote	share
Clarke B.*	Con	679	47.3
Slemmings C.	Con	607	-
Sweetman S.	Lab	398	27.7
McDonald S. Ms.	Lab	381	-
Sheppard M.	LD	358	24.9
Warren P.	LD	352	-
Turnout		47.4	19.6

Felixstowe North (2909)²

		vote	share
Deacon M.*	Lab	922	66.6
Carpenter D.	Lab	775	-
Malster A.	Con	266	19.2
Stops R.	Con	225	-
Cousins A. Ms.	LD	197	14.2
Knights R.	LD	134	-
Turnout		48.4	47.4

Felixstowe South (2610)²

		vote	share
Savage D. Ms.*	Con	486	42.3
Bailey J.	Con	393	-
Macgregor C. Ms.	LD	370	32.2
Rayner D. Ms.	LD	351	-
Gibson D. Ms.	Lab	294	25.6
Sanderson M.	Lab	285	-
Turnout		43.9	10.1

Felixstowe South East (2916)²

		vote	share
Minns M.	Con	704	46.8
Smith A.*	Con	699	-
Campbell R. Ms.	Lab	489	32.5
Pettit R.	Lab	435	-
Moffat V. Ms.	LD	311	20.7
Yates A.	LD	221	-
Turnout		51.6	14.3

Felixstowe West (4184)²

		vote	share
Dangerfield H.*	LD	684	43.2
Mullen J.	Lab	637	40.3
Pettit M. Ms.	Lab	628	-
Reeves L.	LD	526	-
Bishop E.	Con	261	16.5
Turnout		37.7	3.0

Framlingham (2163)

		vote	share
Campbell J.*	Lab	620	66.7
Kirby A.	Con	309	33.3
Turnout		43.2	33.5

Glemham (963)

		vote	share
Howard P.	LD	242	58.2
Brookes H. Ms.*	Con	174	41.8
Turnout		43.4	16.3

Grundisburgh & Wivensham (1886)

		vote	share
Bull G.	LD	381	50.9
Morton M.*	Con	367	49.1
Turnout		39.6	1.9

Hasketon (1271)

		vote	share
Else R.	LD	338	52.6
Preese P. Ms.*	Con	305	47.4
Turnout		51.1	5.1

Hollesley (1186)

		vote	share
Mason V. Ms.	LD	197	37.5
Dawson R.	Con	172	32.7
Hemming C.	Lab	157	29.8
Turnout		44.5	4.8

Kelsale (1083)

		vote	share
Hetherington N. Ms.	Lab	251	60.3
Volstaker B.	Con	165	39.7
Turnout		39.1	20.7

Kesgrave (5778)³

		vote	share
Proctor G.	Lab	868	42.4
Pitcher A.	Lab	781	-
Ferguson H.*	Con	767	37.5
Fox N.	Lab	742	-
Dowsing C.*	Con	668	-
Cooper P.*	Con	634	-
Young R.	LD	412	20.1
Devlin L. Ms.	LD	330	-
Breeze M.	LD	254	-
Turnout		34.3	4.9

Kirton (1660)

		vote	share
Metcalfe J. Ms.	Ind	0	0.0
Turnout		0.0	0.0

Leiston (4011)³

		vote	share
Girling J. Ms.*	Lab	1,199	62.0
Hodgson T.*	Lab	1,134	-
Taylor M.	Lab	1,040	-
Geater J.*	Con	734	38.0
Hawkins T.	Con	676	-
Spink C. Ms.	Con	466	-
Turnout		49.3	24.1

Martlesham (3769)

		vote	share
Kelso J.	LD	797	46.1
Embery D.	Con	499	28.9
Irwin M.	Lab	360	20.8
Forbes J.	Green	73	4.2
Turnout		46.5	17.2

Melton (2546)

		vote	share
Hutchison M. Ms.*	Ind	533	53.4
Place C.	Lab	465	46.6
Turnout		39.5	6.8

Nacton (2442)

		vote	share
Cawthorn N. Ms.	LD	482	54.3
Law J. Ms.*	Con	405	45.7
Turnout		36.7	8.7

Orford (1035)

		vote	share
Archbold T.*	LD	254	45.8
Bacon S.	Con	201	36.3
Evans S.	Lab	99	17.9
Turnout		53.6	9.6

Otley (1081)

		vote	share
Barrett A.*	LD	294	73.7
Dockerill T.	Lab	105	26.3
Turnout		37.5	47.4

Rushmere St. Andrew (3374)²

		vote	share
Laing G.*	Con	558	39.9
Cooper D.	LD	553	39.6
Gooch D.*	Con	548	-
Elliott G.	LD	447	-
Hyde M.	Lab	286	20.5
Atkinson-Padmire V. Ms.	Lab	280	-
Turnout		42.1	0.4

Saxmundham (1884)

		vote	share
Welton K.	Lab	477	52.6
Warren R.*	Con	208	22.9
Bush P.	Ind	153	16.9
Fisher J.	Ind	69	7.6
Turnout		48.3	29.7

Snape (1207)

		vote	share
Burnett K.*	Con	258	46.5
Hetherington P.	Lab	180	32.4
Fry C.	LD	117	21.1
Turnout		46.0	14.1

Trimleys (4377)²

		vote	share
Dixon M. Ms.	Lab	908	54.2
Blackshaw H. Ms.	Lab	865	-
Donnelly D.*	Con	500	29.9
Carrick-Spreat B. Ms.*	Con	492	-
Thomson S. Ms.	LD	267	15.9
Gilbert T.	LD	192	-
Turnout		40.9	24.4

Tunstall (1626)

		vote	share
Herring R.*	Con	383	50.9
Wolfers P.	Lab	217	28.8
Llewellyn A. Ms.	LD	121	16.1
Martin P.	Green	32	4.2
Turnout		46.6	22.0

Ufford (1291)			
		vote	share
Cavendish E.	Con	305	47.4
Monk J. Ms.	LD	177	27.5
Osborne H.	Lab	161	25.0
Turnout		49.9	19.9

Walberswick (1315)			
		vote	share
Leighton R.*	Con	389	53.7
Winyard R.	Lab	336	46.3
Turnout		56.6	7.3

Westleton (1136)			
		vote	share
Caines B. Ms.*	Ind	325	55.9
Stringer E. Ms.	Lab	159	27.4
Barnett C.	Ind GRN	97	16.7
Turnout		51.5	28.6

Wickham Market (1805)			
		vote	share
Mason P.*	Ind	346	49.9
Dockerill B. Ms.	Lab	190	27.4
Hall B.	LD	158	22.8
Turnout		39.1	22.5

Woodbridge Central (1394)			
		vote	share
Wenyon M.	LD	300	43.2
Hinton A.	Con	236	34.0
Caddick M.	Lab	159	22.9
Turnout		50.8	9.2

Woodbridge Farlingaye (1490)			
		vote	share
Healey A. Ms.*	LD	307	50.6
Murray A.	Lab	207	34.1
Bidwell J.	Con	93	15.3
Turnout		41.2	16.5

Woodbridge Kyson (939)			
		vote	share
Burgon R.*	Lab	306	77.3
Norris J.	Con	90	22.7
Turnout		42.4	54.5

Woodbridge Riverside (1170)			
		vote	share
Hewitt S.	Con	363	63.1
Arundel M. Ms.	Lab	212	36.9
Turnout		49.7	26.3

Woodbridge Seckford (1165)			
		vote	share
Geen R.*	Con	236	39.8
Ball D. Ms.	LD	226	38.1
Davis R.	Lab	131	22.1
Turnout		51.1	1.7

Yoxford (1159)			
		vote	share
Gray D.*	Ind	249	43.6
Stringer J.	Lab	172	30.1
Crosby P.	LD	150	26.3
Turnout		49.3	13.5

Suffolk Coastal - 1999

Aldeburgh (2551) ²			
		vote	share
Steen M. Ms.*	Con	748	55.7
Richardson J.	Con	599	-
Hinves D. Ms.	LD	596	44.3
Pask P. Ms.	LD	591	-
Turnout		55.5	11.3

Alderton & Sutton (1335)			
		vote	share
Block C. Ms.*	LD	253	51.4
Fraser W.	Con	170	34.6
Dore R. Ms.	Lab	69	14.0
Turnout		36.9	16.9

Bealings (1503)			
		vote	share
Jowers I.*	Con	0.0	-
Turnout		0.0	0.0

Bramfield & Cratfield (1502)			
		vote	share
Church R.*	Con	449	66.9
Cutler S. Ms.	Lab	222	33.1
Turnout		44.7	33.8

Buxlow (1725)			
		vote	share
Dickerson K.	LD	399	52.6
Hawkins T.	Con	359	47.4
Turnout		43.9	5.3

Dennington (1506)			
		vote	share
Rose W.	Con	297	51.2
Houseley A.	LD	283	48.8
Turnout		38.5	2.4

Earl Soham (1359)			
		vote	share
Kerr B.*	Con	351	60.5
Eddy J.	LD	229	39.5
Turnout		42.7	21.0

Felixstowe Central (2803) ²			
		vote	share
Smith D.	Con	618	53.6
Stokell M.	Con	588	-
Bignell C. Ms.*	Lab	535	46.4
Rowe D.*	Lab	534	-
Turnout		42.7	7.2

Felixstowe East (3130) ²			
		vote	share
Slemmings C.*	Con	668	54.2
Bentley C.	Con	659	-
Price B.	LD	300	24.3
Mullen H. Ms.	Lab	265	21.5
Sherratt R.	LD	247	-
Pettit R.	Lab	238	-
Turnout		39.2	29.8

Felixstowe North (2900) ²			
		vote	share
Deacon M.*	Lab	720	68.4
Carpenter D.*	Lab	569	-
Rawnsley M.	Con	333	31.6
Turnout		35.6	36.8

Felixstowe South (2844) ²			
		vote	share
Savage D. Ms.*	Con	459	44.4
Craner J.	Con	393	-
Dangerfield S. Ms.	LD	335	32.4
Ninnmey M.	LD	247	-
Dangerfield S.	Lab	239	32.4
Lockwood T.	Lab	224	-
Turnout		35.5	12.0

Felixstowe South East (2937) ²			
		vote	share
Minns M.*	Con	801	62.3
Smith A.*	Con	782	-
Campbell R. Ms.	Lab	485	37.7
Morris M. Ms.	Lab	445	-
Turnout		45.7	24.6

Felixstowe West (4259) ²			
		vote	share
Dangerfield H.*	LD	546	43.5
Paddick D. Ms.	LD	463	-
Mullen J.*	Lab	460	36.7
Pettit M. Ms.	Lab	424	-
Bishop E.	Con	248	19.8
Turnout		28.2	6.9

Framlingham (2237)			
		vote	share
Campbell J.*	Lab	507	53.3
Gorst Ellis R. Ms.	Con	445	46.7
Turnout		42.6	6.5

Glemham (1006)			
		vote	share
Howard P.*	LD	209	51.2
Taverner P.	Con	199	48.8
Turnout		40.6	2.5

Grundisburgh & Wivesham (1896)			
		vote	share
Legett J.	Con	348	47.2
Bull G.*	LD	261	35.4
Neesam S. Ms.	Lab	128	17.4
Turnout		37.1	11.8

Hasketon (1284)			
		vote	share
Else R.*	LD	318	53.6
D'Arcy R.	Con	275	46.4
Turnout		46.2	7.3

Holesley (1262)			
		vote	share
Sturrock R.	Con	269	44.7
Mason V. Ms.*	LD	241	40.0
Murray A.	Lab	92	15.3
Turnout		47.7	4.7

Kelsale (1094)			
		vote	share
Bridson J. Ms.*	LD	166	37.6
Evans S.	Lab	143	32.4
Herring A. Ms.	Con	133	30.1
Turnout		40.4	5.2

Kesgrave (6658) ³			
		vote	share
Hammond J.	Con	780	35.1
Cooper P.	Con	766	-
Read V. Ms.	Ind	724	32.5
Compton L. Ms.	Lab	721	32.4
Whitby P.	Lab	578	-
Widdowson P.	Lab	464	-
Grimwood R.	Ind	371	-
Turnout		26.3	2.5

Kirtton (1679)			
		vote	share
O'Brien P. Ms.	Con	333	51.4
Condict N.	LD	315	48.6
Turnout		38.6	2.8

Leiston (4073) ³			
		vote	share
Geater J.	Con	692	53.1
Harris G.	Con	660	-
Taylor M.*	Lab	611	46.9
Girling J. Ms.*	Lab	593	-
Hawkins G. Ms.	Con	556	-
Hodgson T.*	Lab	500	-
Turnout		35.7	6.2

Martlesham (4074)			
		vote	share
Kelso J.*	LD	787	52.6
Webber J.	Con	536	35.8
Huntington S. Ms.	Lab	173	11.6
Turnout		36.7	16.8
Melton (2743)			
Warbrugh P. Ms.	Con	573	59.3
Place C.	Lab	394	40.7
Turnout		35.3	18.5
Nacton (2635)			
Snow C. Ms.	Con	498	50.7
Voelcker T.	Ind	484	49.3
Turnout		37.3	1.4
Orford (1046)			
Skepper J. Ms.	Con	214	40.9
Perren P.	LD	176	33.7
Worne D.	Ind	133	25.4
Turnout		50.0	7.3
Otley (1127)			
Bellfield P.	Con	272	54.0
Barrett A.*	LD	166	32.9
Middleton E.	Lab	66	13.1
Turnout		44.7	21.0
Rushmere St. Andrew (4463)²			
Laing G.*	Con	847	56.8
Whiting R.	Con	791	-
Cooper D.*	LD	643	43.2
Kelso C. Ms.	LD	500	-
Turnout		32.4	13.7
Saxmundham (1999)			
Welton K.*	Lab	317	39.8
Andrews M. Ms.	LD	250	31.4
Warren R.	Con	230	28.9
Turnout		39.9	8.4
Snape (1314)			
Fidler C.	Con	310	56.0
Cable G.	Lab	244	44.0
Turnout		42.2	11.9
Trimleys (4367)²			
Dixon M. Ms.*	Lab	742	56.9
Blackshaw H. Ms.*	Lab	641	-
Stennet F. Ms.	Con	561	43.1
Barker J.	Con	546	-
Turnout		31.2	13.9
Tunstall (1948)			
Herring R.*	Con	508	70.8
Johnston K. Ms.	LD	210	29.2
Turnout		36.9	41.5
Ufford (1300)			
Franks D.*	Con	466	78.1
Bright F.	Lab	131	21.9
Turnout		45.9	56.1
Walberswick (1322)			
Leighton R.*	Con	0.0	-
Turnout		0.0	0.0

Westleton (1177)			
		vote	share
McCulloch H.	Con	0.0	-
Turnout		0.0	0.0
Wickham Market (1804)			
Hall B.	LD	227	39.5
Pizzey V. Ms.	Lab	106	18.5
Caulfield S.	Con	104	18.1
East D. Ms.	Ind	79	13.8
Manning M.	Ind	58	10.1
Turnout		31.8	21.1
Woodbridge Central (1419)			
Barratt N.	Con	309	44.2
Montgomery R.	LD	232	33.2
Caddick M.	Lab	158	22.6
Turnout		49.3	11.0
Woodbridge Farlingaye (1489)			
Healey A. Ms.*	LD	216	45.9
Nunn C.	Con	148	31.4
Bryant K. Ms.	Lab	107	22.7
Turnout		31.6	14.4
Woodbridge Kyson (953)			
Burgon R.*	Lab	218	61.1
Binns E.	Con	139	38.9
Turnout		37.5	22.1
Woodbridge Riverside (1151)			
Hewitt S.*	Con	288	50.8
Bull S. Ms.	LD	213	37.6
Arundel M. Ms.	Lab	66	11.6
Turnout		49.3	13.2
Woodbridge Seckford (1143)			
Geen R.*	Con	253	50.7
Ball D. Ms.	LD	178	35.7
Davis R.	Lab	68	13.6
Turnout		43.7	15.0
Yoxford (1177)			
Wragg P.	Con	275	54.6
Stringer J.	Lab	229	45.4
Turnout		42.8	9.1
Suffolk Coastal - 2003			
Aldeburgh (3328)²			
Warren A.	Con	826	52.7
Wilson M. Ms.*	Con	818	-
Hoad L. Ms.	LD	609	38.9
Dickerson K.*	LD	557	-
Berry W.	Green	131	8.4
Turnout		46.8	13.9
Earl Soham (1696)			
Jackson N.	Con	442	54.8
Else R.*	LD	289	35.9
Thompson E.	Green	75	9.3
Turnout		47.6	19.0
Farlingaye (1586)			
Healey A. Ms.*	LD	289	49.5
Redsell B.	Con	193	33.0
Guest T.	Lab	102	17.5
Turnout		37.1	16.4

Felixstowe East (3442)²			
		vote	share
Savage D. Ms.*	Con	936	60.3
Slemmings C.*	Con	852	-
Houseley D.	LD	395	25.4
Sheppard M.	LD	317	-
Bennett H. Ms.	Lab	222	14.3
Mullen J.	Lab	201	-
Turnout		44.0	34.8
Felixstowe North (3355)²			
Rodwell A. Ms.	Con	464	38.3
Deacon M.*	Lab	459	37.9
Coleman P.	Con	403	-
Carpenter D.*	Lab	380	-
Brinkley S.	Ind	156	12.9
Woolstenholmes P.	Ind	151	-
Price B.	LD	132	10.9
Sherratt R.	LD	116	-
Turnout		35.6	0.4
Felixstowe South (3538)²			
Smith D.*	Con	535	44.4
Bentinck D.*	Con	529	-
Rayner D. Ms.	LD	483	40.1
Macgregor C. Ms.	LD	473	-
Campbell M.	Lab	187	15.5
Tuthill S.	Lab	159	-
Turnout		34.9	4.3
Felixstowe South East (3776)²			
Minns M.*	Con	878	58.8
Smith A.*	Con	840	-
Campbell R. Ms.	Lab	325	21.8
Reeves L.	LD	289	-
Yates A.	LD	289	19.4
Knight M.	Lab	284	-
Turnout		39.7	37.1
Felixstowe West (5137)³			
Dangerfield H.*	LD	709	49.4
Paddick D. Ms.*	LD	685	-
Ninnmey M.	LD	594	-
Pettit M. Ms.	Lab	395	27.5
Morris M. Ms.	Lab	382	-
Waller P.	Lab	356	-
Newman G.	Con	332	23.1
Bishop E.	Con	314	-
Sennington J. Ms.	Con	301	-
Turnout		28.1	21.9
Framlingham (3444)²			
Musgrave K.	Con	710	55.2
Rose W.*	Con	678	-
Griffiths D.	LD	459	35.7
Baker M.	LD	383	-
Gaze M. Ms.	Green	118	9.2
Turnout		36.2	19.5
Grundisburgh (1842)			
Jowers I.*	Con	430	68.7
Joiner E. Ms.	Green	196	31.3
Turnout		34.0	37.4
Hacheston (1699)			
Hart C.	Con	525	73.0
Fulcher R. Ms.	Green	194	27.0
Turnout		42.8	46.0
Hollesley With Eyke (1699)			
Sturrock R. Ms.*	Con	402	57.3
Mason V. Ms.	LD	300	42.7
Turnout		42.1	14.5

Kesgrave East (4624) ³			
		vote	share
Klaschka J.	Con	0	0.0
Hammond J.*	Con	0	-
Bugg N.*	Con	0	-
Turnout		0.0	0.0

Kesgrave West (3002) ²			
		vote	share
Read V. Ms.*	LD	418	50.7
Grimwood R.	Con	406	49.3
Zoller J. Ms.	Con	397	-
Briggs J.	LD	365	-
Turnout		28.1	1.5

Kyson (1619)			
		vote	share
Binns E.	Con	243	42.9
Burgon R.*	Lab	141	24.9
Craig-Bennett A.	LD	105	18.5
Brownsord J.	UK Ind	78	13.8
Turnout		35.2	18.0

Leiston (4885) ³			
		vote	share
Geater J.*	Con	758	38.2
Hawkins T.	Con	683	-
Nunn A.	Con	593	-
Morrissey J. Ms.	LD	532	26.8
Hodgson T.	Lab	486	24.5
Troughton J.	Lab	417	-
Stroud R.	Ind	207	10.4
Turnout		30.0	11.4

Martlesham (3929) ²			
		vote	share
Kelso J.*	LD	868	50.3
Foster R. Ms.	LD	674	-
Blundell C.	Con	571	33.1
Ramsey A.	Con	491	-
Forbes J.	Green	287	16.6
Turnout		39.6	17.2

Melton & Ufford (3823) ²			
		vote	share
Perry J.	Con	748	58.2
Callaghan P.	Con	663	-
Butterwick G.	LD	537	41.8
Coates C.	LD	533	-
Turnout		34.7	16.4

Nacton (3446) ²			
		vote	share
O'Brien P. Ms.*	Con	0	0.0
Falconer V. Ms.	Con	0	-
Turnout		0.0	0.0

Orford & Tunstall (1648)			
		vote	share
Herring R.*	Con	514	69.4
Perren P.	LD	227	30.6
Turnout		45.3	38.7

Otley (1790)			
		vote	share
Bellfield P.*	Con	500	69.6
Else S. Ms.	LD	218	30.4
Turnout		40.2	39.3

Peasenhall (1697)			
		vote	share
Burroughes S.*	Con	373	51.4
Andrews R.	LD	197	27.2
Berry J. Ms.	Green	155	21.4
Turnout		44.3	24.3

Rendlesham (1533)			
		vote	share
Dunnett P.	Con	246	61.5
Wroe K. Ms.	LD	154	38.5
Turnout		26.1	23.0

Riverside (1648)			
		vote	share
Cocker C.	Con	393	54.1
Bull S. Ms.	LD	247	34.0
Smith-Lyte R. Ms.	Green	87	12.0
Turnout		45.9	20.1

Rushmere St. Andrew (4803) ³			
		vote	share
Whiting R.	Con	0	-
Gooch D.	Con	0	0.0
Laing G.	Con	0	-
Turnout		0.0	0.0

Saxmundham (3442) ²			
		vote	share
Batho P.	Con	568	44.5
Andrews M. Ms.	LD	457	35.8
Wild W.	Con	435	-
Tricker D.	LD	347	-
Welton K.*	Lab	252	19.7
Salmon E. Ms.	Lab	172	-
Turnout		34.6	8.7

Seckford (1533)			
		vote	share
Barratt N.*	Con	370	54.0
Montgomery R.	LD	315	46.0
Turnout		44.7	8.0

Snape (1642)			
		vote	share
Fidler C.*	Con	393	64.2
Moss W. Ms.	LD	219	35.8
Turnout		37.9	28.4

Sutton (1329)			
		vote	share
Block C. Ms.*	LD	306	52.5
Deas D.	Con	277	47.5
Turnout		43.8	5.0

Trimleys With Kirton (5526) ³			
		vote	share
Green S. Ms.	Con	742	39.1
Dixon M. Ms.*	Lab	735	38.7
Bidwell J.	Con	688	-
Eastman T.	Con	648	-
Pulford M.	Lab	550	-
Knight C. Ms.	Lab	458	-
Paddock G.	LD	420	22.1
Dangerfield I. Ms.	LD	413	-
Turnout		32.0	0.4

Walberswick & Wenham (1721)			
		vote	share
Leighton R.*	Con	463	62.6
Block A.	LD	277	37.4
Turnout		43.2	25.1

Wickham Market (1741)			
		vote	share
Hall B.*	LD	343	61.1
East D. Ms.	Con	166	29.6
Pizzey V. Ms.	Lab	52	9.3
Turnout		32.6	31.6

Witnesham (1606)			
		vote	share
Leggett J.*	Con	0	0.0
Turnout		0.0	0.0

Yoxford (1728)			
		vote	share
Wragg P.*	Con	412	61.5
Barrett J.	Green	258	38.5
Turnout		38.9	23.0

Suffolk Coastal - 2007

Aldeburgh (2853) ²			
		vote	share
Fellowes M. Ms.	Con	960	65.2
Warren R.*	Con	783	-
Hubbard J. Ms.	LD	513	34.8
Pilkington N. Ms.	LD	402	-
Turnout		52.4	30.3

Earl Soham (1661)			
		vote	share
Snell B.	Con	499	62.1
Else R.	LD	305	37.9
Turnout		49.4	24.1

Faringaye (1532)			
		vote	share
Ball D. Ms.*	LD	331	53.5
Callaghan P.*	Con	234	37.8
White J.	Lab	54	8.7
Turnout		40.7	15.7

Felixstowe East (3325) ²			
		vote	share
Savage D. Ms.*	Con	1,170	66.9
Slemmings C.*	Con	1,107	-
Price B.	LD	323	18.5
Bennett H. Ms.	Lab	255	14.6
Ridout M. Ms.	Lab	183	-
Turnout		49.2	48.5

Felixstowe North (3200) ²			
		vote	share
Deacon M.*	Lab	596	42.9
Goodwin A. Ms.	Con	591	42.5
Garfield J. Ms.	Con	558	-
Rowe D.	Lab	467	-
Mulberg J.	Green	202	14.5
Turnout		41.6	0.4

Felixstowe South (3200) ²			
		vote	share
Sennington J. Ms.*	Con	654	49.5
Coleman P.	Con	628	-
Dangerfield P. Ms.	LD	544	41.1
Miller D.	LD	497	-
Bignell J. Ms.	Lab	124	9.4
Dunn A.	Lab	115	-
Turnout		41.5	8.3

Felixstowe South East (3567) ²			
		vote	share
Smith A.*	Con	971	59.9
Gorski H.	Con	959	-
Yates A.	LD	355	21.9
Mullen H. Ms.	Lab	296	18.2
Mullen J.	Lab	271	-
Turnout		43.7	38.0

Felixstowe West (4824) ³			
		vote	share
Dangerfield H.*	LD	783	51.0
Bryant S. Ms.	LD	761	-
Ninnmeyer M.*	LD	737	-
Bird S.	Con	406	26.4
Bentinck D.*	Con	386	-
Wedge V. Ms.	Con	363	-
Knight C. Ms.	Lab	346	22.5
Carpenter D.	Lab	333	-
Lambe B.	Lab	322	-
Turnout		32.5	24.6

Framlingham (3486) ²			
		vote	share
Rose W.*	Con	891	56.4
Walker C.	Con	741	-
Thompson E.	Green	395	25.0
Clough J.	Lab	295	18.7
Salmon E. Ms.	Lab	162	-
Turnout		39.9	31.4

Grundisburgh (1839)			
		vote	share
Jowers I.*	Con	518	64.6
Hughes G.	LD	204	25.4
Stone P.	Lab	80	10.0
Turnout		43.8	39.2

Hacheston (1636)			
		vote	share
Hart C.*	Con	472	55.4
Housley A.	LD	266	31.2
Fulcher R. Ms.	Green	114	13.4
Turnout		52.7	24.2

Hollesey With Eyke (1626)			
		vote	share
Sturrock R. Ms.*	Con	443	69.1
Wooderson T.	Ind	198	30.9
Turnout		40.6	38.2

Kesgrave East (6314) ³			
		vote	share
Klaschka J.*	Con	995	44.0
Ogden S. Ms.	Con	738	-
Neale M. Ms.	Con	629	-
Briggs J.	LD	461	20.4
Goodchild N. Ms.	Lab	432	19.1
Payne L.	Ind	374	16.5
Connelly S.	Lab	294	-
Robinson S.	Lab	201	-
Turnout		29.3	23.6

Kesgrave West (3001) ²			
		vote	share
McCallum D. Ms.	Con	626	59.7
Grimwood M.*	Con	567	-
Read V. Ms.*	LD	423	40.3
Smith E. Ms.	LD	313	-
Turnout		34.8	19.4

Kyson (1580)			
		vote	share
Binns E.*	Con	0	0.0
Turnout		0.0	0.0

Leiston (4707) ³			
		vote	share
Geater J.*	Con	768	28.3
Hawkins T.*	Con	676	-
Nunn A.*	Con	657	-
Cooper T.	Ind	581	21.4
Morrissey J. Ms.	LD	520	19.2
Hodgson T.	Lab	512	18.9
Andrews R.	LD	409	-
Riebold D.	Green	331	12.2
Turnout		37.7	6.9

Martlesham (3870) ²			
		vote	share
Kelso J.*	LD	867	44.0
Blundell C.	Con	828	42.1
Dooley J. Ms.	LD	579	-
Eastman T.	Con	558	-
Forbes J.	Green	274	13.9
Keeble D.	Green	224	-
Turnout		46.3	2.0

Melton & Ufford (3763) ²			
		vote	share
Bond M.	Con	990	58.0
Bidwell J.*	Con	985	-
Dann D. Ms.	LD	486	28.5
Harrup V.	LD	317	-
Burgon R.	Lab	231	13.5
Turnout		42.3	29.5

Nacton (3666) ²			
		vote	share
Falconer V. Ms.*	Con	1,001	70.3
O'Brien P. Ms.*	Con	966	-
Ball J.	LD	422	29.7
Turnout		39.8	40.7

Orford & Tunstall (1453)			
		vote	share
Herring R.*	Con	484	59.8
Roberts R.	Green	182	22.5
Pilkington H.	LD	143	17.7
Turnout		56.0	37.3

Otley (1768)			
		vote	share
Bellfield P.*	Con	561	68.0
Ward P.	Green	138	16.7
Booth M.	LD	126	15.3
Turnout		46.9	51.3

Peasenhall (1693)			
		vote	share
Burroughes S.*	Con	509	61.9
Gaze M. Ms.	Green	313	38.1
Turnout		48.9	23.8

Rendlesham (1952)			
		vote	share
Dunnett P.*	Con	437	65.5
Halliday B.	LD	230	34.5
Turnout		34.4	31.0

Riverside (1569)			
		vote	share
Redsell B.	Con	467	54.5
Craig-Bennett A.	LD	208	24.3
Taylor A.	Green	102	11.9
Needham H.	Lab	80	9.3
Turnout		55.0	30.2

Rushmere St. Andrew (4762) ³			
		vote	share
Gooch D.*	Con	1,264	61.4
Laing G.*	Con	1,237	-
Whiting R.*	Con	1,217	-
Archer P.	LD	533	25.9
Jolly T.	LD	483	-
Houseley D.	LD	292	-
Towndrow C.	Lab	260	12.6
Turnout		40.4	35.5

Saxmundham (3704) ²			
		vote	share
Batho P.*	Con	805	53.8
Andrews M. Ms.*	LD	692	46.2
Smith R.	Con	590	-
Dickerson K.	LD	523	-
Turnout		39.1	7.5

Seckford (1437)			
		vote	share
Cocker C.*	Con	405	54.7
Whitaker M.	LD	336	45.3
Turnout		52.0	9.3

Snape (1575)			
		vote	share
Fidler C.*	Con	415	60.0
Moss W. Ms.	LD	277	40.0
Turnout		44.4	19.9

Sutton (1616)			
		vote	share
Block C. Ms.*	LD	484	61.9
Pratt J.	Con	298	38.1
Turnout		48.5	23.8

Trimleys With Kirton (5389) ³			
		vote	share
Kerry R.	Con	1,116	56.8
Harding G.	Con	1,108	-
Green S. Ms.*	Con	1,082	-
Rayner D. Ms.	LD	454	23.1
Macy T.	LD	408	-
Mayes N.	Lab	395	20.1
Waller P.	Lab	372	-
Morris M. Ms.	Lab	328	-
Turnout		37.3	33.7

Walberswick & Wenhaston (1573)			
		vote	share
Keable K.	Con	574	72.1
Tytler D.	Lab	222	27.9
Turnout		51.7	44.2

Wickham Market (1683)			
		vote	share
Hall B.*	LD	411	60.2
Smith D. Ms.	Con	150	22.0
West J.	UKIP	70	10.2
Pizzey V. Ms.	Lab	52	7.6
Turnout		40.8	38.2

Witnesham (1620)			
		vote	share
Waddell K. Ms.	Con	562	82.5
Scott A.	Lab	119	17.5
Turnout		42.5	65.1

Yoxford (1624)			
		vote	share
Slater B.*	LD	551	58.9
Leighton R. Ms.*	Con	329	35.2
Goodchild P.	BNP	55	5.9
Turnout		57.8	23.7

Suffolk Coastal - 2011

Aldeburgh (2692) ²			
		vote	share
Fellowes M. Ms.*	Con	833	44.7
Haworth T-J. Ms.	Con	766	-
Duerr S. Ms.	Ind	575	30.9
Day S.	LD	455	24.4
Turnout		58.3	13.8

Earl Soham (1661)			
		vote	share
Snell B.*	Con	738	75.2
Dockerill T.	Lab	243	24.8
Turnout		60.6	50.5

Farlingaye (1561)			
		vote	share
Ball D. Ms.*	LD	316	40.9
Mulcahy P. Ms.	Con	254	32.9
White W.	Lab	202	26.2
Turnout		49.5	8.0

Felixstowe East (3319) ²			
		vote	share
Savage D. Ms.*	Con	1,151	47.9
Slemmings C.*	Con	1,013	-
Mason G. Ms.	Ind	570	23.7
Bennett H. Ms.	Lab	373	15.5
Price B.	LD	310	12.9
Mullen H. Ms.	Lab	260	-
Turnout		60.3	24.2

Felixstowe North (3249) ²			
		vote	share
Deacon M.*	Lab	887	60.8
Williams K. Ms.	Lab	687	-
Dye W.	Con	572	39.2
Titchener M.	Con	563	-
Turnout		45.8	21.6

Felixstowe South (3370) ²			
		vote	share
Coleman P.*	Con	694	50.1
Sennington J. Ms.*	Con	693	-
Reaville R.	Lab	375	27.1
Tink A.	Lab	352	-
Hughes G.	LD	316	22.8
Miller D.	LD	301	-
Turnout		43.1	23.0

Felixstowe South East (3552) ²			
		vote	share
Garfield J. Ms.*	Con	892	46.8
Smith A.*	Con	849	-
Bennett J.	LD	639	33.5
Macgregor C. Ms.	LD	513	-
McGrath R. Ms.	Lab	377	19.8
Haymes P.	Lab	343	-
Turnout		54.9	13.3

Felixstowe West (4840) ³			
		vote	share
Bird S.	Con	590	34.2
Sharman M.	Lab	590	34.2
Morris M. Ms.	Lab	574	-
Dangerfield H.*	LD	547	31.7
Beedle S.	Con	546	-
Mullen J.	Lab	535	-
Moore J.	Con	503	-
Ninmney M.*	LD	479	-
Woods P.	LD	454	-
Turnout		37.3	0.0

Framlingham (3538) ²			
		vote	share
Hudson C.	Con	1,040	54.1
Walker C.*	Con	900	-
Clough J.	Lab	447	23.2
Thompson E.	Green	436	22.7
Salmon E. Ms.	Lab	355	-
Turnout		51.8	30.8

Grundisburgh (1817)			
		vote	share
Fryatt A.	Con	665	69.7
Middleton E.	Lab	289	30.3
Turnout		53.3	39.4

Hacheston (1590)			
		vote	share
Peck G.	Con	483	50.5
Bensley L. Ms.	Lab	191	20.0
Houseley A.	LD	166	17.3
Fulcher R. Ms.	Green	117	12.2
Turnout		60.8	30.5

Holesley With Eyke (1664)			
		vote	share
Marson J. Ms.	Con	579	64.5
Snell J. Ms.	Lab	318	35.5
Turnout		55.0	29.1

Kesgrave East (7345) ³			
		vote	share
Ogden S. Ms.*	Con	1,405	43.7
Neale M. Ms.*	Con	1,390	-
Klaschka J.*	Con	1,343	-
Isaacs D.	Lab	704	21.9
Dockerill B. Ms.	Lab	606	-
Fairbrother D.	LD	561	17.5
Howard J.	Green	542	16.9
Azmoodeh M.	LD	443	-
Turnout		36.9	21.8

Kesgrave West (3063) ²			
		vote	share
McCallum D. Ms.*	Con	877	67.3
Grimwood M.*	Con	692	-
Hubert-Chibnall A. Ms.	Lab	427	32.7
Turnout		45.4	34.5

Kyson (1588)			
		vote	share
Binns E.*	Con	317	41.8
Gregory V. Ms.	LD	274	36.1
Burgon R.	Lab	168	22.1
Turnout		48.2	5.7

Leiston (4741) ³			
		vote	share
Cooper A.	Ind	841	28.8
Nunn A.*	Con	805	27.5
Hawkins T.*	Con	745	-
Hodgson T.	Lab	641	21.9
Parker N.	Con	581	-
Cox B.	Lab	529	-
Smedley S.	Lab	422	-
Clark A. Ms.	Green	351	12.0
Morrissey J. Ms.	LD	287	9.8
Turnout		42.8	1.2

Martlesham (4008) ²			
		vote	share
Kelso J.*	LD	1,110	38.7
Blundell C.*	Con	960	33.5
Callaghan P.	Con	484	-
Brome L.	Ind	340	11.9
Leeder A.	Lab	264	9.2
Needham H.	Lab	225	-
Keeble D.	Green	193	6.7
Forbes J.	Green	181	-
Turnout		54.1	5.2

Melton & Ufford (3886) ²			
		vote	share
Bond M.*	Con	1,110	55.9
Bidwell J.*	Con	1,101	-
Bale J.	Lab	470	23.7
Shepherd C. Ms.	Lab	452	-
Ball J.	LD	405	20.4
Turnout		52.2	32.2

Nacton (3666) ²			
		vote	share
Falconer V. Ms.*	Con	1,113	60.3
O'Brien P. Ms.*	Con	1,102	-
Leeder A.	Lab	377	20.4
Reid B. Ms.	Green	357	19.3
Waller P.	Lab	322	-
Turnout		51.4	39.8

Orford & Tunstall (1437)			
		vote	share
Herring R.*	Con	0	0.0
Turnout		0.0	0.0

Otley (1773)			
		vote	share
Bellfield P.*	Con	777	76.3
Stone P.	Lab	241	23.7
Turnout		58.7	52.7

Peasenhall (1704)			
		vote	share
Burroughes S.*	Con	604	64.6
Benstead R.	Lab	331	35.4
Turnout		56.0	29.2

Rendlesham (2391)			
		vote	share
Eastman T.	Con	659	67.2
Martineau	Lab	321	32.8
Turnout		41.7	34.5

Riverside (1643)			
		vote	share
Holdcroft G.*	Con	538	54.0
Yule K. Ms.	LD	306	30.7
Corston A.	Lab	152	15.3
Turnout		61.0	23.3

Rushmere St. Andrew (4929) ³			
		vote	share
Whiting R.*	Con	1,422	66.1
Withey J.	Con	1,405	-
Newton M.	Con	1,393	-
Robinson S.	Lab	728	33.9
Turnout		45.3	32.3

Saxmundham (3813) ²			
		vote	share
Batho P.*	Con	843	38.1
Andrews M. Ms.*	LD	596	27.0
Smith R.	Con	505	-
Tricker D.	Ind	425	19.2
Cassels J.	Green	347	15.7
Dickerson K.	LD	335	-
Turnout		45.8	11.2

Seckford (1567)			
		vote	share
Sayles J.	Con	477	50.9
Harrup V.	LD	298	31.8
Bale S. Ms.	Lab	162	17.3
Turnout		60.4	19.1

Snape (1530)			
		vote	share
Dunnett P.*	Con	0	0.0
Turnout		0.0	0.0

Sutton (1861)			
		vote	share
Block C. Ms.*	LD	502	53.1
Adeane J.	Con	319	33.7
Bolger T.	Lab	125	13.2
Turnout		51.1	19.3

Trimleys With Kirton (5432) ³			
		vote	share
Harvey S. Ms.	Con	1,053	37.3
Harding G.*	Con	981	-
Kerry R.*	Con	948	-
Green S. Ms.*	Ind	762	27.0
Brinkley S.	Lab	631	22.3
Good J. Ms.	Lab	568	-
Mayes N.	Lab	560	-
Marfleet A.	LD	379	13.4
Burnett I.	LD	308	-
Turnout		46.0	10.3

Walberswick & Wenhaston (1538)			
		vote	share
Gower M.	Con	595	65.1
Thomas A. Ms.	Lab	319	34.9
Turnout		60.3	30.2

Wickham Market (1685)			
		vote	share
Hall B.*	LD	486	60.5
Smith D. Ms.	Con	191	23.8
Pizzey V. Ms.	Lab	126	15.7
Turnout		48.0	36.7

Witnesham (1602)			
		vote	share
Hudson S.	Con	659	76.1
Scott A.	Lab	207	23.9
Turnout		54.4	52.2

Yoxford (1597)			
		vote	share
Slater B.*	Ind	594	60.6
Williams H. Ms.	Con	386	39.4
Turnout		61.9	21.2

