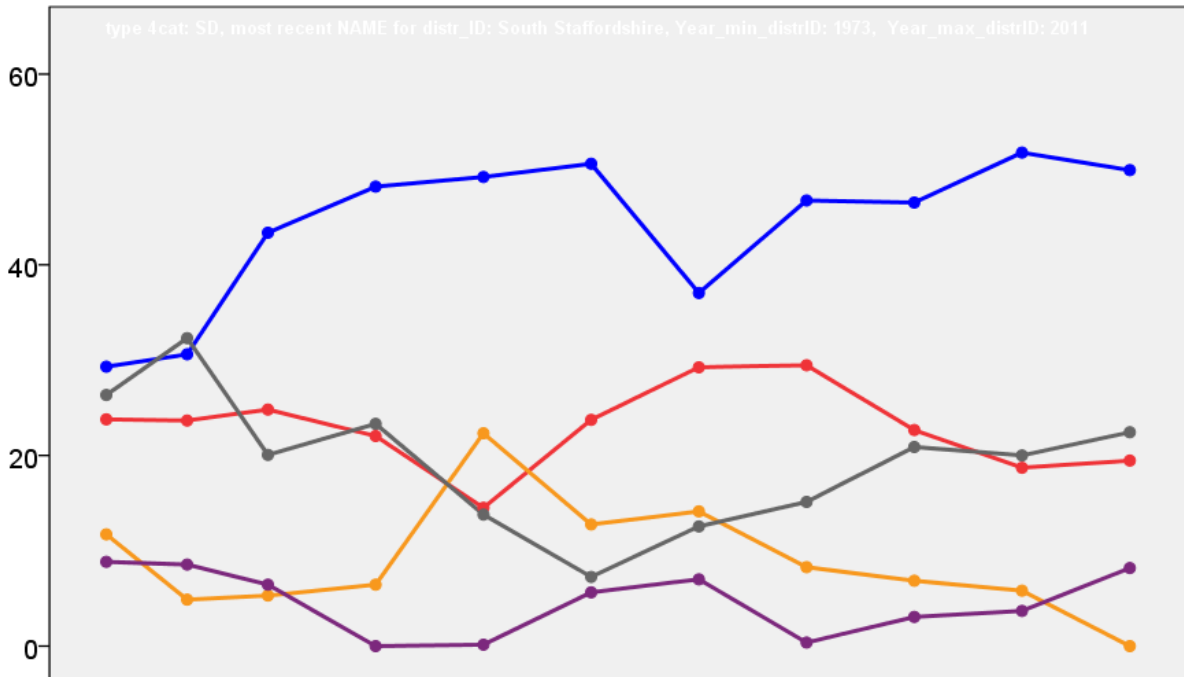


South Staffordshire Council Election Results 1973-2011



Colin Rallings and Michael Thrasher
The Elections Centre
Plymouth University

The information contained in this report has been obtained from a number of sources. Election results from the immediate post-reorganisation period were painstakingly collected by Alan Willis largely, although not exclusively, from local newspaper reports. From the mid-1980s onwards the results have been obtained from each local authority by the Elections Centre. The data are stored in a database designed by Lawrence Ware and maintained by Brian Cheal and others at Plymouth University. Despite our best efforts some information remains elusive whilst we accept that some errors are likely to remain. Notice of any mistakes should be sent to elections@plymouth.ac.uk. The results sequence can be kept up to date by purchasing copies of the annual Local Elections Handbook, details of which can be obtained by contacting the email address above.

Front cover: the graph shows the distribution of percentage vote shares over the period covered by the results. The lines reflect the colours traditionally used by the three main parties. The grey line is the share obtained by Independent candidates while the purple line groups together the vote shares for all other parties.

Rear cover: the top graph shows the percentage share of council seats for the main parties as well as those won by Independents and other parties. The lines take account of any by-election changes (but not those resulting from elected councillors switching party allegiance) as well as the transfers of seats during the main round of local election.

The lower graph shows for each main round of local elections the overall percentage turnout (solid line), the percentage of women candidates standing at (dotted line) and the percentage of women among those elected (hashed line).

South Staffordshire - 1973

Acton Trussell (891)

		vote	share
Beaumont F.	Con	0	0.0
		Turnout	0.0 0.0

Bishopswood (1007)

		vote	share
Roberts G.	Con	0	0.0
		Turnout	0.0 0.0

Brewood (2461)²

		vote	share
Corbett D. Ms.	Con	618	65.1
Dearden F.	Con	533	-
Hopper T.	Lab	332	34.9
Phillips M.	Lab	234	-
		Turnout	38.6 30.1

Cheslyn Hay (2503)²

		vote	share
Stanton D.	Ind	551	50.8
Craddock W.	Lab	534	49.2
Mason D.	Lab	456	-
		Turnout	43.3 1.6

Coven (2436)²

		vote	share
Jones D.	Ind	533	62.0
Clay I.	Ind	482	-
Till J.	Con	186	21.6
Gregory G.	Lab	141	16.4
Burns D.	Lab	79	-
		Turnout	35.3 40.3

Essington (2822)²

		vote	share
Roberts R.	Ind	964	63.3
Wilson A.	Ind	854	-
Mountfield H.	Lab	558	36.7
Massey I.	Lab	454	-
		Turnout	53.9 26.7

Featherstone (1919)²

		vote	share
Greenaway J.	Lab	0	-
Lunt R.	Lab	0	0.0
		Turnout	0.0 0.0

Great Wyrley Landywood (3397)³

		vote	share
Turner P.	Lab	523	53.1
Cliff J.	Lab	475	-
Jones G.	Ind	462	46.9
Foster R.	Ind	437	-
Newell W.	Lab	304	-
		Turnout	29.0 6.2

Great Wyrley West (1073)

		vote	share
Collins B.	Ind	302	66.2
Price J.	Ind Lab	78	17.1
Harvey H.	Lab	76	16.7
		Turnout	42.5 49.1

Himley & Swindon (1105)

		vote	share
Brownhill W.	Con	215	60.1
Gladstone T.	Lib	143	39.9
		Turnout	32.4 20.1

Huntington (1554)

		vote	share
Hames V. Ms.	Lab	236	45.6
Guest A.	Local	179	34.6
Drury I. Ms.	Ind	103	19.9
		Turnout	33.3 11.0

Lapley (1448)

		vote	share
Swift T.	Ind	324	47.9
Hitchen W.	Ind	235	34.7
Monckton A.	Con	118	17.4
		Turnout	46.8 13.1

Lower Penn (1234)

		vote	share
Trudgill J.	Lib	269	38.5
McTaggart H.	Con	260	37.2
Brown W.	ACM	169	24.2
		Turnout	56.6 1.3

No. 14 (Great Wyrley: Town) (4896)³

		vote	share
Homesshaw M.	Lab	709	60.4
Lawson E.	Lab	481	-
Lees P.	Ind	465	39.6
Patrick A.	Lab	394	-
Wilkes W.	Ind	332	-
		Turnout	24.0 20.8

No. 17 (Bobbington & Enville) (754)

		vote	share
Holland M.	Con	0	0.0
		Turnout	0.0 0.0

No. 18 (Codsall) (6428)⁵

		vote	share
Jones M.	Con	1,216	46.5
Housden D.	Con	1,214	-
Bramall D.	Con	1,185	-
Yates P. Ms.	Con	1,185	-
Inch J.	Con	1,155	-
Beddow R.	Lib	898	34.3
Lawrence R. Ms.	Lab	503	19.2
Nicholson R. Ms.	Lab	495	-
Lewis F.	Lab	475	-
Pearce M. Ms.	Lab	470	-
Pickin R.	Lab	466	-
		Turnout	40.7 12.2

No. 20 (Kinver) (5011)⁴

		vote	share
Harris S.	CA	1,129	40.5
Austin J.	CA	915	-
Wrigley W. Ms.	Con	895	32.1
Wrigley F. Ms.	Con	851	-
Gosling J.	Lib	766	27.5
Harris G.	Con	703	-
Torkington R.	CA	702	-
Simpkiss S.	CA	686	-
Williams R.	Con	636	-
		Turnout	55.7 8.4

No. 23 (Trysull & Seisdon) (718)

		vote	share
Bolland C.	Ind	204	58.0
Salmon J.	Con	148	42.0
		Turnout	49.0 15.9

No. 24 (Wombourne: East) (4795)⁴

		vote	share
Gould C. Ms.	Con	940	53.7
Robson M.	Con	928	-
Lawson B.	Con	917	-
Wakeford L.	Con	848	-
Wakelam K.	Ind	432	24.7
Greenwood F.	Lab	379	21.6
Wymer I.	Lab	344	-
Maynard M. Ms.	Lab	332	-
Reeves P.	Lab	301	-
Pritchard P.	Ind	154	-
		Turnout	36.5 29.0

No. 25 (Wombourne: West) (3828)³

		vote	share
Griffiths J.	Con	514	48.1
Kelly I.	Con	465	-
Waterfield E.	Con	430	-
Forder R.	Lib	307	28.7
Piper J. Ms.	Lab	247	23.1
Duffy J.	Lib	228	-
Parker N.	Lab	204	-
Scriven H.	Lib	203	-
Lamb G. Ms.	Lab	201	-
		Turnout	27.9 19.4

No. 26 (Wrottesley) (3035)²

		vote	share
Walley G.	Con	407	54.5
Bott K.	Con	387	-
Spencer J.	Lab	340	45.5
Dupont D.	Lab	320	-
		Turnout	24.6 9.0

Pattingham & Patshull (1613)

		vote	share
Squire A.	Ind	431	77.8
Pateman P.	Lib	123	22.2
		Turnout	34.3 55.6

Penkridge North East (1564)

		vote	share
Lees K.	Ind	338	57.2
Gold W.	Lab	253	42.8
		Turnout	37.8 14.4

Penkridge South East (1565)

		vote	share
Williams S.	Con	373	71.5
Southall A.	Lab	149	28.5
		Turnout	33.4 42.9

Penkridge West (1175)

		vote	share
Stanford J.	Con	269	58.1
Narraway G.	Lab	106	22.9
Whitehouse C.	Ind	88	19.0
		Turnout	39.4 35.2

Shareshill (1173)

		vote	share
Rowe J.	Ind Con	279	43.3
Cowin D.	Ind	201	31.2
Longlow A.	Con	108	16.8
Holdcroft C.	Ind Lab	56	8.7
		Turnout	54.9 12.1

South Staffordshire - 1976

Acton Trussell (1060)

		vote	share
Beaumont F.	Con	0	0.0
		Turnout	0.0 0.0

Bishopswood (1003)

		vote	share
Roberts G.	Con	0	0.0
		Turnout	0.0 0.0

Brewood (2377)²

		vote	share
Corbett D. Ms.	Con	881	63.4
Sheldon G.	Con	512	-
Evans J.	Ind	381	27.4
Dearden F.	Ind	266	-
Lewis F.	Ind	174	-
Hopper T.	Lab	128	9.2
Kearney M.	Ind	111	-
Burns D.	Lab	57	-
		Turnout	58.5 36.0

Cheslyn Hay (2499)²			
		vote	share
Craddock W.	Lab	600	43.6
Stanton D.	Ind	552	40.1
Phillips K. Ms.	Lab	405	-
Plant V. Ms.	Ind	387	-
Watford J.	Lib	223	16.2
Turnout		55.0	3.5

Coven (2431)²			
		vote	share
Clay L.	Ind	552	73.0
Jones D.	Ind	503	-
Till F.	Ind	258	-
Jones L. Ms.	Lab	204	27.0
Leader C.	Lab	129	-
Turnout		31.1	46.0

Essington (2833)²			
		vote	share
Roberts R.	Ind	899	61.0
Wilson A.	Ind	757	-
Whitehouse B.	Lab	574	39.0
Mountford H.	Lab	567	-
Turnout		52.0	22.1

Featherstone (1907)²			
		vote	share
Greenaway J.	Lab	591	64.7
Lunt R.	Lab	453	-
Kennard A.	Con	323	35.3
Turnout		47.9	29.3

Great Wyrley Landywood (3393)³			
		vote	share
Jones G.	Ind	870	66.9
Bladen B.	Ind	758	-
Mellor H.	Ind	735	-
Cliff J.	Lab	430	33.1
Turner P.	Lab	371	-
Morson J.	Lab	255	-
Turnout		38.3	33.8

Great Wyrley West (1099)			
		vote	share
Watson D.	Ind	343	74.9
Fawdrey M.	Lab	115	25.1
Turnout		41.7	49.8

Himley & Swindon (1127)			
		vote	share
Brownhill W.	Con	0	0.0
Turnout		0.0	0.0

Huntington (1761)			
		vote	share
Cole G.	Lab	286	40.1
Hames V. Ms.	Ind Lab	233	32.6
Drury I. Ms.	Ind	195	27.3
Turnout		40.5	7.4

Lapley (1445)			
		vote	share
Hitchen W.	Con	0	0.0
Turnout		0.0	0.0

Lower Penn (1225)			
		vote	share
Winsper W.	Con	365	53.8
Brown W.	Ind	314	46.2
Turnout		55.4	7.5

No. 14 (Great Wyrley: Town) (5095)³			
		vote	share
Collins B.	Ind	1,430	59.6
Harding H.	Ind	1,315	-
Cooper K.	Ind	1,005	-
Benton R.	Lab	546	22.7
Bates A.	Lib	425	17.7
Jones C.	Lab	388	-
Crowley R.	Lab	386	-
Turnout		47.1	36.8

No. 17 (Bobbington & Enville) (728)			
		vote	share
Holland N.	Con	0	0.0
Turnout		0.0	0.0

No. 18 (Codsall) (6835)⁵			
		vote	share
Yates P. Ms.	Con	1,776	46.2
Housden D.	Con	1,673	-
Bramall D.	Con	1,632	-
Inch J.	Con	1,624	-
Jones M.	Con	1,497	-
Beddow R.	Ind	1,237	32.2
Jones J. Ms.	Lab	833	21.7
Bellingham E. Ms.	Lab	480	-
Bins A. Ms.	Lab	472	-
Lawrence R. Ms.	Lab	448	-
Strickland C.	Lab	445	-
Turnout		56.3	14.0

No. 20 (Kinver) (5052)⁴			
		vote	share
Harris S.	CA	1,558	57.8
Austin J.	CA	1,288	-
Wrigley W. Ms.	Con	1,136	42.2
Wrigley F. Ms.	Con	1,102	-
Simkiss F.	CA	1,054	-
Temple M.	CA	925	-
Evers C.	Con	912	-
Hadfield R.	Con	852	-
Turnout		53.3	15.7

No. 23 (Trysull & Seisdon) (746)			
		vote	share
Bolland C.	Con	0	0.0
Turnout		0.0	0.0

No. 24 (Wombourne: East) (4968)⁴			
		vote	share
Gould C. Ms.	Con	1,371	63.2
Heath A.	Con	1,287	-
Robson M.	Con	1,253	-
Suckling A.	Con	1,212	-
Greenwood F.	Lab	422	19.4
Maynard P. Ms.	Lab	391	-
Hardwick C.	Lib	378	17.4
Wymer C. Ms.	Lab	367	-
Fox R.	Lib	363	-
Westwood J. Ms.	Lib	360	-
Rees B.	Lab	287	-
Turnout		43.7	43.7

No. 25 (Wombourne: West) (4016)³			
		vote	share
Griffiths J.*	Con	886	47.8
Waterfield E.*	Con	737	-
Kelly I.*	Con	700	-
Wakeford L.	Ind Con	480	25.9
Forder R.	Lib	267	14.4
Kessler E.	Lab	221	11.9
Grabham D.	Lab	209	-
Maddox R.	Lab	207	-
Duffy J.	Lib	168	-
Waddicor K.	Lib	142	-
Turnout		46.2	21.9

No. 26 (Wrottesley) (3094)²			
		vote	share
Bott K.	Con	613	64.5
Wailey G.	Con	602	-
Dupont D.	Lab	337	35.5
Lawrence R.	Lab	319	-
Turnout		30.7	29.1

Pattingham & Patshull (1687)			
		vote	share
Squire A.	Ind	0	0.0
Turnout		0.0	0.0

Penkridge North East (1561)			
		vote	share
Lees K.	Ind	481	63.4
Gold W.	Lab	278	36.6
Turnout		48.6	26.7

Penkridge South East (2443)			
		vote	share
Williams S.	Ind	596	58.4
Hannaby K.	Lab	425	41.6
Turnout		41.8	16.7

Penkridge West (1143)			
		vote	share
Stafford J.	Con	388	67.8
Whitehouse C.	Lab	184	32.2
Turnout		50.0	35.7

Shareshill (1256)			
		vote	share
Hood A.	Con	384	49.1
Rowe J.	Ind	292	37.3
Burns S. Ms.	Lab	106	13.6
Turnout		62.3	11.8

South Staffordshire - 1979

Acton Trussell (1145)			
		vote	share
Buxton E.	Ind Con	361	38.0
Graham E.	Ind	314	33.0
Douglas R.	Con	276	29.0
Turnout		83.1	4.9

Bilbrook (2964)²			
		vote	share
Crompton R.	Con	1,207	57.8
Walley G.	Con	1,105	-
Price W.	Lab	881	42.2
Bellingham E. Ms.	Lab	789	-
Turnout		70.4	15.6

Bishopswood (1018)			
		vote	share
Roberts G.	Con	0	0.0
Turnout		0.0	0.0

Brewood (2370)²			
		vote	share
Corbett D. Ms.	Con	0	-
Sheldon G.	Con	0	0.0
Turnout		0.0	0.0

Cheslyn Hay (2552)²			
		vote	share
Craddock W.	Lab	1,009	37.4
Stanton D.	Ind	850	31.5
Perks D.	Con	839	31.1
Bird G.	Lab	713	-
Turnout		105.7	5.9

Codsall North (3217)²			
		vote	share
Bramall D.	Con	1,641	71.8
Yates P. Ms.	Con	1,579	-
Williams T.	Lab	643	28.2
Brook J.	Lab	627	-
Turnout		71.0	43.7

Codsall South (3882)³			
		vote	share
Housden D.	Con	2,137	73.8
Inch J.	Con	2,048	-
Jones M.	Con	1,897	-
Jones J. Ms.	Lab	758	26.2
Lawrence R. Ms.	Lab	709	-
Brook V. Ms.	Lab	654	-
Turnout		74.6	47.6

Coven (2345)²			
		vote	share
Jones D.	Ind	894	41.7
Groves T.	Con	786	36.6
McCarthy G.	Ind	583	-
Jones L. Ms.	Lab	466	21.7
Hopper T.	Lab	250	-
Turnout		91.5	5.0

Essington (2919)²			
		vote	share
Roberts R.	Con	1,310	40.4
Wilson J.	Ind	1,039	32.0
Mountfield H.	Lab	896	27.6
Baldwin D.	Lab	796	-
Turnout		111.2	8.4

Featherstone (1935)			
		vote	share
Greenaway J.	Lab	753	54.8
Hough J.	Ind	620	45.2
Turnout		71.0	9.7

Great Wyrley Landywood (3932)³			
		vote	share
Jones G.	Ind	1,645	44.4
Bladen D.	Ind	1,538	-
Mellor H.	Ind	1,514	-
Allen D.	Lab	1,128	30.4
Lawson E.	Lab	959	-
Newell W.	Lib	934	25.2
Turnout		94.3	13.9

Great Wyrley North (1111)			
		vote	share
Harding M.	Con	473	53.3
Randle D.	Lab	218	24.5
Middlebrook S. Ms.	Ind	197	22.2
Turnout		79.9	28.7

Great Wyrley Town (4024)³			
		vote	share
Harding V. Ms.	Con	1,380	42.9
Bullock G.	Lab	1,234	38.3
Smith P.	Lab	1,176	-
Turner P.	Lab	1,138	-
Vaughan K.	Con	1,012	-
Shaw C.	Con	991	-
Cooper K.	Ind	605	18.8
Wilkes W.	Ind	537	-
Dams M.	Ind	389	-
Turnout		80.0	4.5

Great Wyrley West (1188)			
		vote	share
Watson D.	Ind	621	64.2
Wood B.	Lab	346	35.8
Turnout		81.4	28.4

Himley & Swindon (1260)			
		vote	share
Brownhill W.	Con	0	0.0
Turnout		0.0	0.0

Huntington (1839)			
		vote	share
Cole G.	Lab	0	0.0
Turnout		0.0	0.0

Kinver (3785)³			
		vote	share
Harris S.	CA	2,203	67.1
Jeffries K.	CA	1,728	-
Simkiss F.	CA	1,582	-
Wrigley W.	Con	1,080	32.9
Wrigley F. Ms.	Con	989	-
Hadfield R.	Con	778	-
Turnout		86.7	34.2

Lapley (1633)			
		vote	share
Chadwin L. Ms.	Con	0	0.0
Turnout		0.0	0.0

Lower Penn (1261)			
		vote	share
Winsper W.	Con	655	62.9
Brown W.	Ind	386	37.1
Turnout		82.6	25.8

Pattingham & Patshull (1780)			
		vote	share
Burton J. Ms.	Con	0	0.0
Turnout		0.0	0.0

Penkridge North East (1647)			
		vote	share
Chambers J.	Lib	993	72.1
Lees K.	Con	385	27.9
Turnout		83.7	44.1

Penkridge South East (2708)²			
		vote	share
Hodson E.	Con	1,360	43.8
Williams S.	Ind	1,170	37.7
Lunt R.	Lab	573	18.5
Nicholson R. Ms.	Lab	504	-
Turnout		114.6	6.1

Penkridge West (1163)			
		vote	share
Stanford J.	Con	0	0.0
Turnout		0.0	0.0

Perton (3645)			
		vote	share
Yardley C.	Con	1,600	79.2
Lawrence R.	Lab	421	20.8
Turnout		55.4	58.3

Shareshill (1265)			
		vote	share
Hood A.	Con	0	0.0
Turnout		0.0	0.0

Stourton (1607)			
		vote	share
Tweedie D.	Con	707	62.5
Wedgebury J.	CA	425	37.5
Turnout		70.4	24.9

Trysull & Seisdon (1471)			
		vote	share
Bolland C.	Con	0	0.0
Turnout		0.0	0.0

Wombourne North (3788)³			
		vote	share
Jones E.	Con	1,745	65.7
Suckling A.	Con	1,659	-
Williams B. Ms.	Con	1,585	-
Fox R.	Lab	910	34.3
Maynard M. Ms.	Lab	875	-
Turnout		70.1	31.5

Wombourne South East (2522)²			
		vote	share
McTaggart H.	Ind	956	36.1
Smith J.	Con	794	30.0
Wakeford H.	Con	590	-
Forder R.	Lib	531	20.0
Duffy D.	Lab	370	14.0
Kessler E.	Lab	327	-
Stevenson P.	Lib	323	-
Turnout		105.1	6.1

Wombourne South West (3882)³			
		vote	share
Griffiths J.	Con	1,724	65.8
Kelly I.	Con	1,557	-
Waterfield E.	Con	1,428	-
Wymer C. Ms.	Lab	895	34.2
Lewis J.	Lab	880	-
Turnout		67.5	31.7

South Staffordshire - 1983

Acton Trussell (1255)			
		vote	share
Buxton N.	Ind	0	0.0
Turnout		0.0	0.0

Bilbrook (3018)²			
		vote	share
Crompton R.	Con	655	61.2
Walley G.	Con	603	-
Price W.	Lab	416	38.8
Williams T.	Lab	348	-
Turnout		35.5	22.3

Bishopswood (997)			
		vote	share
Roberts G.	Con	0	0.0
Turnout		0.0	0.0

Brewood (2456)²			
		vote	share
Sheldon G.	Con	0	0.0
Corbett D. Ms.	Con	0	-
Turnout		0.0	0.0

Cheslyn Hay (2555)²			
		vote	share
Stanton D.	Ind	610	51.4
Craddock W.	Lab	577	48.6
Bird G.	Lab	440	-
Turnout		46.5	2.8

Codsall North (3280)²			
		vote	share
Bramall D.	Con	896	77.0
Yates P. Ms.	Con	840	-
Dupont D.	Lab	267	23.0
Lawrence R. Ms.	Lab	259	-
Turnout		35.5	54.1

Codsall South (4012) ³			
		vote	share
Bousden D.	Con	1,261	78.5
Inch J.	Con	1,248	-
Jones M.	Con	1,166	-
Bellingham E. Ms.	Lab	345	21.5
Gorman M.	Lab	343	-
Keay W.	Lab	316	-
Turnout		40.0	57.0

Coven (2355) ²			
		vote	share
Jones D.	Ind	673	42.6
McCarthy G.	Con	580	36.7
Jones L. Ms.	Lab	328	20.7
Turnout		67.1	5.9

Essington (2942) ²			
		vote	share
Roberts R.	Con	958	55.2
Wakeman C.	Con	826	-
Mountfield H.	Lab	470	27.1
Wood B.	Lab	310	-
Wilson A.	Ind	306	17.6
Commins L.	Ind	305	-
Turnout		58.9	28.1

Featherstone (1742)			
		vote	share
Greenaway J.	Lab	0	0.0
Turnout		0.0	0.0

Great Wyrley Landywood (4267) ³			
		vote	share
Mellor H.	Ind	1,055	68.7
Bryn Jones G.	Ind	1,035	-
Bladen B.	Ind	999	-
Denson R.	Lab	481	31.3
Lawson A.	Lab	475	-
Lawson E.	Lab	436	-
Turnout		36.0	37.4

Great Wyrley North (1135)			
		vote	share
Harding H. Ms.	Con	399	74.0
Lowe T.	Lab	140	26.0
Turnout		48.2	48.1

Great Wyrley Town (4145) ³			
		vote	share
Cooper K.	Ind	914	41.4
Turner P.	Lab	653	29.6
Smallwood L.	Con	640	29.0
Kiddlebrook S. Ms.	Ind	625	-
Shubinsky K. Ms.	Lab	565	-
Coldrick A.	Ind	469	-
Lidster P.	Lab	446	-
Turnout		53.2	11.8

Great Wyrley West (1320)			
		vote	share
Watson D.	Ind	413	75.4
Pugh A.	Lab	135	24.6
Turnout		42.1	50.7

Himley & Swindon (1430)			
		vote	share
Brownhill W.	Con	0	0.0
Turnout		0.0	0.0

Huntington (2034)			
		vote	share
Hewston C.	Ind	398	55.7
Main R.	Lab	317	44.3
Turnout		35.7	11.3

Kinver (3974) ³			
		vote	share
Harris S.	Ind	1,259	52.1
Fletcher B. Ms.	Con	892	36.9
Jeffries K.	Con	878	-
Baxter J. Ms.	Ind	843	-
Smith L.	Ind	572	-
Hadfield R.	Con	561	-
Boning T.	Lab	265	11.0
Turnout		60.8	15.2

Lapley (1859)			
		vote	share
Chadwin-Winsper L. Ms.	Con	352	36.7
Weate R.	Ind	323	33.7
Thompson D.	Ind	192	20.0
Punter B.	Lab	92	9.6
Turnout		52.6	3.0

Lower Penn (1273)			
		vote	share
Winsper W.	Con	468	68.5
Brown W.	Ind	145	21.2
Nicholson R.	Lab	70	10.2
Turnout		54.4	47.3

Pattingham & Patshull (1832)			
		vote	share
Burton J. Ms.	Con	798	84.4
Cartwright M.	Lab	147	15.6
Turnout		52.2	68.9

Penkridge North East (1670)			
		vote	share
Chambers R.	Lib/SDP	627	71.4
Benning R.	Con	251	28.6
Turnout		52.6	42.8

Penkridge South East (2919) ²			
		vote	share
Bugler J.	Lib/SDP	733	40.3
Needham M.	Lib/SDP	697	-
Lewis F.	Con	414	22.7
Williams S.	Ind	391	21.5
Murphy D.	Lab	282	15.5
Pritchard J.	Lab	246	-
Turnout		62.4	17.5

Penkridge West (1238)			
		vote	share
Cartwright D.	Con	384	55.3
Quinton K.	Lib/SDP	311	44.7
Turnout		57.2	10.5

Perton (5310)			
		vote	share
Yardley C.	Con	1,408	73.0
Hester R.	Lab	521	27.0
Turnout		37.2	46.0

Shareshill (1279)			
		vote	share
Hood A.	Con	721	87.3
Lunt R.	Lab	105	12.7
Turnout		64.6	74.6

Stourton (1672)			
		vote	share
Edwards B.	Con	473	62.9
McCall D.	Ind	279	37.1
Turnout		45.9	25.8

Trysull & Seisdon (1513)			
		vote	share
Bolland C.	Con	503	61.9
Clarkson R.	Ind	309	38.1
Turnout		54.1	23.9

Wombourne North (3873) ³			
		vote	share
McTaggart H.	Con	1,100	69.4
Williams J. Ms.	Con	979	-
Suckling A.	Con	979	-
Wymer C. Ms.	Lab	486	30.6
Turnout		41.0	38.7

Wombourne South East (2690) ²			
		vote	share
Waterfield E.	Con	914	72.3
Eyett B.	Con	863	-
Rees B.	Lab	351	27.7
Turnout		47.0	44.5

Wombourne South West (4160) ³			
		vote	share
Griffiths J.	Con	957	55.7
Kelly I.	Con	953	-
Jones E.	Con	855	-
Hayward C.	Lab	422	24.6
Wainwright S.	Lib/SDP	339	19.7
Duffy J.	Lib/SDP	332	-
Sadler I.	Lib/SDP	293	-
Turnout		41.3	31.1

South Staffordshire - 1987

Acton Trussell (1295)			
		vote	share
Buxton N.	Con	0	0.0
Turnout		0.0	0.0

Bilbrook (4083) ²			
		vote	share
Crompton R.	Con	812	45.6
Beattie M. Ms.	Lib/SDP	729	41.0
Walley G.	Con	706	-
Tomlinson	Lib/SDP	629	-
Inns A.	Lab	238	13.4
Gilbert	Lab	211	-
Turnout		43.6	4.7

Bishopwood (1053)			
		vote	share
Cox B.	Con	393	67.0
Walker P.	Lib/SDP	194	33.0
Turnout		56.1	33.9

Brewood (2497) ²			
		vote	share
Corbett D. Ms.	Con	887	53.9
Goatman F.	Con	706	-
Lomax V.	Lib/SDP	657	39.9
Haynes C.	Lib/SDP	442	-
Glenshore J.	Lab	102	6.2
Turnout		65.9	14.0

Cheslyn Hay North (2499) ²			
		vote	share
Stanton D.	Ind	445	37.7
Craddock W.	Lab	372	31.5
Butler S.	Lib/SDP	363	30.8
Wood B.	Lab	322	-
Coldrick A.	Ind	184	-
Turnout		47.2	6.2

Cheslyn Hay South (2642) ²			
		vote	share
Watson D.	Con	535	43.7
Bladen B.	Con	460	-
Jones V.	Lib/SDP	386	31.5
Williams K.	Lib/SDP	360	-
Knight R.	Lab	304	24.8
Bird G.	Lab	278	-
Turnout		46.4	12.2

Codsall North (3527)²			
		vote	share
Evans J.	Con	1,057	55.1
Bramall D.	Con	1,027	-
Wilcox E.	Lib/SDP	584	30.4
Davies J.	Lib/SDP	371	-
Gorman M.	Lab	277	14.4
Williams T.	Lab	173	-
Turnout		54.4	24.7
Codsall South (2811)³			
		vote	share
Holmes G. Ms.	Con	1,138	64.1
Inch J.	Con	1,117	-
Taylor J.	Con	1,102	-
Lynch M.	Lib/SDP	487	27.5
Tomlinson M.	Lib/SDP	403	-
Dann N.	Lib/SDP	335	-
Bellingham E. Ms.	Lab	149	8.4
Keay W.	Lab	119	-
Cross L.	Lab	114	-
Turnout		63.1	36.7
Coven (2591)²			
		vote	share
Jones D.	Con	833	66.6
McCarthy G.	Con	756	-
Jones L. Ms.	Lab	293	23.4
Legge D.	Lib/SDP	125	10.0
Hewitt S.	Lib/SDP	118	-
Turnout		48.3	43.2
Essington (3469)²			
		vote	share
Wakeman C.	Con	1,037	60.0
Kitson F.	Ind	692	40.0
Williams P.	Con	653	-
Whitehouse B.	Ind	589	-
Commins L.	Ind	414	-
Turnout		49.8	20.0
Featherstone (2636)			
		vote	share
Greenaway J.	Lab	720	59.0
Darley D.	Con	500	41.0
Turnout		46.6	18.0
Great Wyrley Landywood (3488)²			
		vote	share
Jones G.	Con	745	38.0
Mellor H.	Ind	742	37.8
Moran A.	Lab	475	24.2
Lawson E.	Lab	472	-
Turnout		56.3	0.2
Great Wyrley North (978)			
		vote	share
Harding H. Ms.	Con	335	76.3
Lowe T.	Lab	104	23.7
Turnout		45.2	52.6
Great Wyrley Town (4215)³			
		vote	share
Smallwood L.	Con	1,054	43.8
Johnson J.	Con	899	-
Bullock G.	Lab	727	30.2
Middlebrook S.	Ind	623	25.9
Turner P.	Lab	595	-
Cartwright M.	Lab	491	-
Turnout		57.0	13.6
Himley & Swindon (1862)			
		vote	share
Brownhill W.	Con	552	68.6
Turner A.	Lib/SDP	253	31.4
Turnout		43.3	37.1

Huntington (2057)			
		vote	share
Hewston C.	Lab	371	60.1
Hames V. Ms.	Ind	246	39.9
Turnout		30.3	20.3
Kinver (4164)³			
		vote	share
Fletcher B. Ms.	Con	1,031	36.1
Baxter J. Ms.	Ind	993	34.8
Baxter J.	Ind	822	34.8
Jeffries K.	Con	715	-
Gosling J.	Lib/SDP	666	23.3
Hollinshead I.	Ind	596	-
Hadfield R.	Con	562	-
Pettit M.	Lab	166	5.8
Pettit R.	Lab	152	-
Winters M.	Lab	131	-
Turnout		68.6	1.3
Lapley (2012)			
		vote	share
Wright R.	Con	641	60.4
Thompson D.	Lib/SDP	326	30.7
Punter R.	Lab	94	8.9
Turnout		52.6	29.7
Lower Penn (1348)			
		vote	share
Wisper W.	Con	401	56.0
Brown W.	Ind	315	44.0
Turnout		54.0	12.0
Pattingham & Patshull (1872)			
		vote	share
Burton J. Ms.	Con	815	75.9
Trubshaw A.	Lib/SDP	168	15.6
Cartwright J.	Lab	91	8.5
Turnout		54.9	60.2
Penkridge North East (1694)			
		vote	share
Oliver J.	Lib/SDP	441	47.2
Simmonite J.	Con	403	43.1
Willets E.	Lab	90	9.6
Turnout		55.1	4.1
Penkridge South East (3113)²			
		vote	share
Lloyd R.	Con	701	44.5
Benning R.	Con	619	-
Palmer K.	Lib/SDP	455	28.9
Oades P.	Lib/SDP	427	-
Murphy D.	Lab	420	26.6
Pritchard J.	Lab	328	-
Turnout		50.6	15.6
Penkridge West (1281)			
		vote	share
Cartwright D.	Con	386	56.1
Bean M.	Lib/SDP	240	34.9
Tyler A.	Ind Lab	62	9.0
Turnout		53.7	21.2
Perton (7434)			
		vote	share
Yardley C.	Con	1,433	55.4
Firmstone W.	Lib/SDP	754	29.2
Allen P.	Ind	398	15.4
Turnout		35.0	26.3
Shareshill (1631)			
		vote	share
Hood A.	Con	851	85.8
Cleeton D.	Lab	141	14.2
Turnout		61.1	71.6

Stourton (1393)			
		vote	share
Edwards B.	Con	505	71.0
Cartwright M.	Ind	206	29.0
Turnout		53.0	42.1
Trysull & Seisdon (1615)			
		vote	share
Bolland C.	Con	0	0.0
Turnout		0.0	0.0
Wombourne North (3846)³			
		vote	share
Williams J. Ms.	Con	1,024	41.9
Suckling A.	Con	1,017	-
Arliss E.	Con	998	-
Reynolds J.	Lib/SDP	686	28.1
Hewitt E. Ms.	Lib/SDP	655	-
Warne A.	Lib/SDP	576	-
McTaggart H.	Ind	388	15.9
Kelly M. Ms.	Lab	347	14.2
Turnout		63.6	13.8
Wombourne South East (2852)²			
		vote	share
Battison D.	Con	901	51.0
Hyett B.	Con	839	-
Hodgkiss I.	Lib/SDP	554	31.4
Hardwick E.	Lib/SDP	482	-
Wymer P.	Lab	164	9.3
McTaggart J.	Ind	147	8.3
Turnout		61.9	19.6
Wombourne South West (4369)³			
		vote	share
Kelly I.	Con	1,030	45.0
Wainwright S.	Lib/SDP	1,007	44.0
Griffiths J.	Con	1,007	-
Jones E.	Con	925	-
Sadler I.	Lib/SDP	794	-
Daly D.	Lib/SDP	785	-
Beaumont D.	Lab	251	11.0
Nicholson R. Ms.	Lab	216	-
Turnout		52.4	1.0
South Staffordshire - 1991			
Acton Trussell (1349)			
		vote	share
Buxton N.*	Con	0	0.0
Turnout		0.0	0.0
Bilbrook (3926)²			
		vote	share
Crompton R.*	Con	755	49.0
Mackie K.	Con	653	-
Beattie M. Ms.*	LD	419	27.2
Gorman M.	Lab	367	23.8
Lynch M.	LD	348	-
Williams T.	Lab	329	-
Turnout		36.6	21.8
Brewood & Coven (5249)³			
		vote	share
Clay I.	Con	1,390	61.1
Corbett D. Ms.*	Con	1,357	-
Jones D.*	Con	1,334	-
Jones L. Ms.	Lab	884	38.9
Turnout		43.3	22.3

Cheslyn Hay (5234) ³			
		vote	share
Paradine D.	Ind	955	38.9
Stanton D.*	Ind	896	-
Craddock W.*	Lab	756	30.8
Warson D.	Con	747	30.4
Bird G.	Lab	740	-
Bladen B.	Con	710	-
Woolley B.	Con	594	-
Pugh A. Ms.	Lab	560	-
Turnout		61.5	8.1

Codsall North (3520) ²			
		vote	share
Bramall D.*	Con	1,044	76.3
Evans J.*	Con	1,019	-
Williams J. Ms.	Lab	325	23.7
Hargreaves T.	Lab	290	-
Turnout		38.1	52.5

Codsall South (2937) ²			
		vote	share
Holmes G. Ms.*	Con	1,064	65.0
Inch J.*	Con	1,010	-
Birch V. Ms.	LD	358	21.9
Bellingham E. Ms.	Lab	215	13.1
Banbury W. Ms.	Lab	168	-
Turnout		55.7	43.1

Essington (3679) ²			
		vote	share
Wakeman C.*	Con	1,006	41.9
Kitson F.*	Res	849	35.4
Sadler S.	Ind	544	22.7
Scott J. Ms.	Con	401	-
Turnout		57.0	6.5

Featherstone (3021) ²			
		vote	share
Greenaway J.*	Lab	749	54.0
Burns S. Ms.	Lab	748	-
Grant I.	Con	639	46.0
Povey C.	Con	635	-
Turnout		45.9	7.9

Great Wyrley Landywood (3623) ²			
		vote	share
Moran A.	Lab	686	37.6
Wood B.	Lab	586	-
Jones G.*	Con	578	31.7
Mellor H.*	Ind	562	30.8
Turnout		50.4	5.9

Great Wyrley Town (5094) ³			
		vote	share
Harding H. Ms.*	Con	1,075	37.3
Johnson J. Ms.*	Con	965	-
Smallwood L.*	Con	946	-
Bullock G.	Lab	918	31.9
Imamoglu N.	Res	886	30.8
Lockley W.	Lab	768	-
Lowe T.	Lab	653	-
Turnout		52.2	5.5

Himley & Swindon (1958)			
		vote	share
Brownhill W.*	Con	0	0.0
Turnout		0.0	0.0

Huntington (2130) ²			
		vote	share
Ashley L.	Lab	0	-
Cavanagh P.	Lab	0	0.0
Turnout		0.0	0.0

Kinver (5600) ³			
		vote	share
Fletcher B. Ms.*	Con	1,689	45.6
Gosling J.	LD	1,476	39.8
Edwards B.	Con	1,406	-
Beswick L.	Con	1,040	-
Winters M. Ms.	Lab	543	14.6
Turnout		66.2	5.7

Lower Penn (1338)			
		vote	share
Winsper W.*	Con	0	0.0
Turnout		0.0	0.0

Patttingham & Patshull (1810)			
		vote	share
Burton J. Ms.*	Con	725	82.0
Cartwright M.	Lab	159	18.0
Turnout		48.8	64.0

Penkridge North East (1724)			
		vote	share
Wilkinson D.	Ind	0	0.0
Turnout		0.0	0.0

Penkridge South East (3483) ²			
		vote	share
Benning R.*	Con	832	58.1
Higgs R.	Con	768	-
Murphy D.	Lab	601	41.9
Turnout		41.1	16.1

Penkridge West (1315)			
		vote	share
Cartwright D.*	Con	0	0.0
Turnout		0.0	0.0

Perton Central (4201) ³			
		vote	share
Bromley P. Ms.	Con	755	43.5
Morris S.	Con	720	-
Young C. Ms.	Con	652	-
Allen P. Ms.	Ind	430	24.8
Firmstone W.	LD	332	19.1
Taylor D. Ms.	Ind	253	-
Hill L. Ms.	Ind	238	-
Evans G.	Lab	217	12.5
Draper L.	Lab	203	-
Turnout		53.0	18.7

Perton Dippons (4151) ²			
		vote	share
Yardley C.*	Con	889	71.0
James A.	Con	828	-
Evans A. Ms.	Lab	363	29.0
Ratcliffe K.	Lab	314	-
Turnout		28.9	42.0

Shareshill (1622)			
		vote	share
Hood A.*	Con	704	78.1
Williams P. Ms.	Ind Con	197	21.9
Turnout		55.5	56.3

Trysull & Seisdon (1657)			
		vote	share
Bolland C.*	Con	0	0.0
Turnout		0.0	0.0

Wheaton Aston Bishopswood & Lapley (3213) ²			
		vote	share
Wright R.	Con	1,053	71.8
Cox B.*	Con	1,037	-
Punter B.	Lab	413	28.2
Turnout		45.6	43.7

Wombourne North (3889) ²			
		vote	share
Williams J. Ms.*	Con	911	50.0
Rowley G.	Con	807	-
Hewitt E. Ms.	LD	514	28.2
Russell G.	LD	513	-
Kelly M. Ms.	Lab	398	21.8
Turnout		46.9	21.8

Wombourne South East (2737) ²			
		vote	share
Powell E. Ms.	Con	707	50.1
Morris W.	Con	658	-
Godwin D.	LD	455	32.2
Daly D.	LD	350	-
Beaumont D.	Lab	250	17.7
Turnout		51.6	17.8

Wombourne South West (4398) ³			
		vote	share
Wainwright S.*	LD	821	43.2
Sadler I.	LD	819	-
Kelly I.*	Con	785	41.3
Heath B. Ms.	Con	775	-
Hipkiss L.	Con	716	-
Smith A.	LD	582	-
Nicholson R. Ms.	Lab	296	15.6
Turnout		43.2	1.9

South Staffordshire - 1995

Acton Trussell (1347)			
		vote	share
Buxton N.*	Ind	328	50.6
Wood C.	Ind	320	49.4
Turnout		48.2	1.2

Bilbrook (3646) ²			
		vote	share
Crompton R.*	Con	576	44.7
Mackie K.*	Con	483	-
Gorman M.	Lab	436	33.8
Williams T.	Lab	414	-
Beattie M. Ms.	LD	278	21.6
Turnout		31.7	10.9

Brewood & Coven (5262) ³			
		vote	share
Clay I.*	Con	1,037	53.1
Corbett D. Ms.*	Con	1,018	-
Jones L. Ms.	Lab	915	46.9
Holmes K. Ms.	Lab	885	-
Jones D.*	Con	879	-
Taylor W.	Lab	838	-
Turnout		41.8	6.3

Cheslyn Hay (5662) ³			
		vote	share
Stanton D.*	Ind	880	41.2
Craddock W.*	Lab	859	40.2
Pugh A. Ms.	Lab	786	-
Boyle T.	Lab	768	-
Woolley B.	Ind	620	-
Harris M.	Ind	531	-
Gibson P.	Con	397	18.6
Turnout		34.2	1.0

Codsall North (3432) ²			
		vote	share
Bramall D.*	Con	583	41.1
Evans J.*	Con	560	-
Binns A. Ms.	Lab	323	22.7
Winkle L. Ms.	Ind	293	20.6
Williams J. Ms.	Lab	292	-
Jones J. Ms.	LD	221	15.6
Turnout		34.9	18.3

Codsall South (2938) ²			
		vote	share
Holmes M. Ms.*	Con	635	55.6
Inch J.*	Con	630	-
Birch N.	LD	286	25.0
Birch V. Ms.	LD	249	-
Reynolds M.	Lab	221	19.4
Tomlinson J.	Lab	202	-
Turnout		36.8	30.6

Essington (3648) ²			
		vote	share
Kitson F.*	Ind	853	64.0
Whitehouse B.	Ind	710	-
Smallman J. Ms.	Ind	638	-
Commings L.	Con	479	36.0
Turnout		42.5	28.1

Featherstone (3194) ²			
		vote	share
Burns S. Ms.*	Lab	770	67.8
Light P.	Lab	659	-
Williams B.	Con	273	24.1
Faultless L. Ms.	Con	264	-
Darby S.	Ind	92	8.1
Turnout		36.2	43.8

Great Wyrley Landywood (3618) ²			
		vote	share
Moran A.*	Lab	630	55.0
Wood B.*	Lab	607	-
Douglass R.	Res	515	45.0
Smith F.	Res	446	-
Turnout		32.2	10.0

Great Wyrley Town (5019) ³			
		vote	share
Imamoglu N.	Res	1,170	46.3
Perry K. Ms.	Res	833	-
Bullock G.	Lab	767	30.3
Green G. Ms.	Res	695	-
Harding H. Ms.*	Con	591	23.4
Lockley W.	Lab	562	-
Lawson E.	Lab	474	-
Smallwood L.*	Con	459	-
Johnson J. Ms.*	Con	434	-
Turnout		42.6	15.9

Himley & Swindon (1723)			
		vote	share
Brownhill W.*	Con	0	0.0
Turnout		0.0	0.0

Huntington (2591) ²			
		vote	share
Ashley L.*	Lab	683	79.4
Wallace A.	Lab	448	-
Lycett R.	Ind	177	20.6
Turnout		50.5	58.8

Kinver (5645) ³			
		vote	share
Fletcher B. Ms.*	Con	1,301	41.2
Edwards B.*	Con	1,211	-
Gosling J.*	LD	1,125	35.7
Ridgeway C. Ms.	Lab	728	23.1
Turnout		37.5	5.6

Lower Penn (822)			
		vote	share
Baker L. Ms.	Ind	260	69.1
Winsper W.*	Con	116	30.9
Turnout		46.0	38.3

Patttingham & Patshull (1875)			
		vote	share
Burton J. Ms.*	Con	534	75.0
Cartwright M.	Lab	178	25.0
Turnout		37.1	50.0

Penkridge North East (1714)			
		vote	share
Wilkinson D.*	Con	0	0.0
Turnout		0.0	0.0

Penkridge South East (3624) ²			
		vote	share
Kemp M.	Lab	790	59.8
Murphy D.	Lab	754	-
Benning R.*	Con	532	40.2
Higgs R.*	Con	517	-
Turnout		38.5	19.5

Penkridge West (1418)			
		vote	share
Cartwright D.*	Con	0	0.0
Turnout		0.0	0.0

Perton Central (4285) ³			
		vote	share
Young C. Ms.*	Con	484	40.6
Brown-Bullivant J. Ms.	Con	397	-
Hargreaves T.	Lab	394	33.1
Harris J. Ms.	Con	391	-
Perkins M.	Lab	374	-
Bromley P. Ms.*	Ind Con	314	26.3
Bromley C.*	Ind Con	313	-
Turnout		25.4	7.6

Perton Dippons (4104) ²			
		vote	share
Marshall R.*	Con	531	38.6
James A.*	Con	467	-
Thacker I. Ms.	Lab	444	32.2
Firmstone W.	LD	402	29.2
Turnout		28.1	6.3

Shareshill (1632)			
		vote	share
Hood A.*	Con	512	59.5
Fletcher N.	Lab	204	23.7
Williams P. Ms.	Ind Con	145	16.8
Turnout		52.6	35.8

Trysull & Seisdon (1668)			
		vote	share
Newsham M. Ms.	Con	0	0.0
Turnout		0.0	0.0

Wheaton Aston Bishopswood & Lapley (3350) ²			
		vote	share
Cox B.*	Con	805	57.1
Wright R.*	Con	792	-
Punter B.	Lab	604	42.9
Turnout		44.2	14.3

Wombourne North (3982) ²			
		vote	share
Reynolds J.	LD	741	51.5
Williams J. Ms.*	Con	699	48.5
Russell G.	LD	696	-
Gough B. Ms.	Con	669	-
Turnout		36.1	2.9

Wombourne South East (2728) ²			
		vote	share
Shale F.	Con	588	54.6
Williams R.	Con	579	-
Davies M.	LD	489	45.4
Hewitt S.	LD	480	-
Turnout		41.2	9.2

Wombourne South West (4332) ³			
		vote	share
Wainwright S.*	LD	780	54.3
Sadler I.*	LD	771	-
Kelly I.*	Con	656	45.7
Smith A.	LD	621	-
Hipkiss L.	Con	549	-
Hartley I. Ms.	Con	490	-
Turnout		32.2	8.6

South Staffordshire - 1999

Acton Trussell (1355)			
		vote	share
Spandler G.	Con	330	52.5
Bates L.	Ind	235	37.4
Smith A.	Lab	63	10.0
Turnout		46.5	15.1

Bilbrook (3516) ²			
		vote	share
Mackie K.*	Con	533	61.8
Mackie D. Ms.*	Con	533	-
Williams T.	Lab	330	38.2
Aspey M.	Lab	326	-
Turnout		25.0	23.5

Brewood & Coven (5248) ³			
		vote	share
Clay I.*	Con	1,106	55.7
Holmes D. Ms.	Con	1,006	-
Hampson M.	Con	957	-
Jones L. Ms.*	Lab	880	44.3
Wynne-Jones A.	Lab	599	-
Watton D.	Lab	562	-
Turnout		37.3	11.4

Cheslyn Hay (5764) ³			
		vote	share
Stanton D.*	Ind	658	52.6
Craddock W.*	Ind	652	-
Harris M.	Lab	592	47.4
Stokes M.	Ind	584	-
Pugh A. Ms.*	Lab	557	-
Lacey L. Ms.	Lab	522	-
Turnout		23.9	5.3

Codsall North (3385) ²			
		vote	share
Evans J.*	Con	676	71.6
Michell J.	Con	640	-
Allan A. Ms.	Lab	268	28.4
Williams J. Ms.	Lab	266	-
Turnout		28.0	43.2

Codsall South (2913) ²			
		vote	share
Holmes G. Ms.*	Con	679	63.2
Inch J.*	Con	639	-
Birch V. Ms.	LD	236	22.0
Gorman M.	Lab	159	14.8
Turnout		32.0	41.2

Essington (3762) ²			
		vote	share
Crudington D.	Ind	757	39.9
Griffin P. Ms.	Con	610	32.1
Kitson F.*	Lab	532	28.0
Whitehouse B.*	Lab	459	-
Turnout		37.2	7.7

Featherstone (2980) ²			
		vote	share
Brindle J.	Lab	478	58.9
Light P.*	Lab	444	-
Williams P. Ms.	Con	333	41.1
Turnout		27.7	17.9

Great Wyrley Landywood (3786) ²			
		vote	share
Moran A.*	Lab	408	59.6
Wood B.*	Lab	403	-
Douglass R.	Ind	277	40.4
Turnout		17.9	19.1

Great Wyrley Town (4946) ³			
		vote	share
Bullock G.*	Lab	650	39.5
Perry K. Ms.*	Con	591	35.9
Harding H. Ms.	Con	580	-
Lockley W.	Lab	511	-
Lawson E.	Lab	476	-
Imamoglu N.*	Ind	405	24.6
Jones J.	Ind	319	-
Turnout		26.6	3.6

Himley & Swindon (1716)			
		vote	share
Brownhill W.*	Con	0	0.0
Turnout		0.0	0.0

Huntington (2701) ²			
		vote	share
Ashley L.*	Lab	495	82.4
Wallace A.*	Lab	441	-
Buxton N.*	Con	106	17.6
Ford I. Ms.	Con	93	-
Turnout		23.4	64.7

Kinver (5687) ³			
		vote	share
Fletcher B. Ms.*	Con	1,096	37.6
Edwards B.*	Con	1,010	-
Gosling J.*	LD	992	34.0
Ray E. Ms.	Ind	830	28.4
Harrison J. Ms.	LD	631	-
Wiseman D.	Con	580	-
Turnout		35.3	3.6

Lower Penn (829)			
		vote	share
Reade R.	Con	260	55.3
Everett D.	Ind	210	44.7
Turnout		57.0	10.6

Pattingham & Patshull (1860)			
		vote	share
Burton J. Ms.*	Con	525	83.2
Cartwright M.*	Lab	106	16.8
Turnout		34.0	66.4

Penkridge North East (1671)			
		vote	share
Wilkinson D.*	Con	280	51.3
Hodgkiss R.	Lab	266	48.7
Turnout		33.5	2.6

Penkridge South East (3635) ²			
		vote	share
Kemp M.*	Lab	652	56.4
Murphy D.*	Lab	514	-
Hoare K. Ms.	Con	504	43.6
Williams K.	Con	474	-
Turnout		31.1	12.8

Penkridge West (1418)			
		vote	share
Cartwright D.*	Con	290	64.4
McPheat J.	Lab	160	35.6
Turnout		31.8	28.9

Perton Central (4299) ³			
		vote	share
Bromley C.	Con	533	45.2
Bromley P. Ms.	Con	529	-
Young C. Ms.*	Con	521	-
Edwards R.	Lab	377	31.9
Hargreaves T.*	Lab	317	-
Harris J. Ms.	Ind	270	22.9
Turnout		23.0	13.2

Perton Dippons (4119) ²			
		vote	share
Marshall R.*	Con	653	54.5
James A.*	Con	539	-
Carr L. Ms.	Ind	292	24.4
Webster G.	Lab	253	21.1
Caine N.	Ind	156	-
Turnout		25.0	30.1

Shareshill (1655)			
		vote	share
Hood A.*	Con	520	66.8
Bird G.	Lab	158	20.3
Williams B.	Ind Con	101	13.0
Turnout		47.1	46.5

Trysull & Seisdon (1704)			
		vote	share
Newsham M. Ms.*	Con	507	85.9
Winters A.	Lab	83	14.1
Turnout		34.6	71.9

Wheaton Aston Bishopswood & Lapley (3399) ²			
		vote	share
Cox B.*	Con	735	61.7
Wright R.*	Con	695	-
Punter B.	Lab	457	38.3
Turnout		36.6	23.3

Wombourne North (4159) ²			
		vote	share
Williams J. Ms.*	Con	613	42.5
Turton A. Ms.	Con	583	-
Darby K.	LD	390	27.1
Wymmer C. Ms.	Lab	252	17.5
Baker L. Ms.*	Ind	186	12.9
Turnout		28.9	15.5

Wombourne South East (2684) ²			
		vote	share
Timms P.	Con	568	52.4
Williams R.*	Con	555	-
Davies V. Ms.	LD	298	27.5
Ferrier T.	Lab	219	20.2
Turnout		34.2	24.9

Wombourne South West (4296) ³			
		vote	share
Kelly I.*	Con	684	56.6
Hipkiss L.	Con	612	-
Davies M.	Con	566	-
Sadler I.*	LD	339	28.0
Wainwright S.*	LD	316	-
Smith A.	LD	211	-
Godfrey M.	Lab	186	15.4
Parsons A. Ms.	Lab	182	-
Turnout		26.3	28.5

South Staffordshire - 2003

Bilbrook (3437) ²			
		vote	share
Mackie K.*	Con	398	61.3
Mackie D. Ms.*	Con	395	-
Tomlinson J.	Lab	251	38.7
Williams T.	Lab	238	-
Turnout		22.8	22.7

Brewood & Coven (5323) ³			
		vote	share
Holmes D. Ms.*	Con	1,054	58.0
Hampson M.*	Con	1,034	-
Clay I.*	Con	960	-
Jones L. Ms.	Lab	762	42.0
Wynne-Jones A.	Lab	619	-
Light P.*	Lab	385	-
Turnout		34.4	16.1

Cheslyn Hay North & Saredon (3024) ²			
		vote	share
Boyle T.	Lab	461	57.9
Harris M.*	Lab	423	-
Williams B.	Con	335	42.1
Turnout		26.7	15.8

Cheslyn Hay South (3403) ²			
		vote	share
Craddock W.*	Ind	343	37.4
Bird G.	Lab	304	33.2
Pugh A. Ms.	Lab	297	-
Taylor D.	Con	270	29.4
Turnout		21.0	4.3

Codsall North (3413) ²			
		vote	share
Evans J.*	Con	0	0.0
Campbell P. Ms.	Con	0	-
Turnout		0.0	0.0

Codsall South (3269) ²			
		vote	share
Marshall R.*	Con	0	-
Michell J.*	Con	0	0.0
Turnout		0.0	0.0

Essington (3816) ²			
		vote	share
Cliff D.	Ind	769	53.1
Griffin P. Ms.*	Con	500	34.5
Clarke H. Ms.	Con	371	-
Crudgington D.	Ind	348	-
Lawson E.	Lab	179	12.4
Turnout		34.4	18.6

Featherstone & Shareshill (3665) ²			
		vote	share
Brindle J.*	Lab	429	35.5
Cope R.	Ind	412	34.1
Hood H. Ms.	Con	368	30.4
Gambone G.	Lab	332	-
Lawrence M.	Con	277	-
Michael S.	Ind	170	-
Turnout		30.2	1.4

Great Wyrley Landywood (3743) ²			
		vote	share
Wood B.*	Lab	365	55.1
Moran A.*	Lab	349	-
Sharma B.	Con	298	44.9
Turnout		17.9	10.1

Great Wyrley Town (5019) ³			
		vote	share
Perry K. Ms.*	Con	778	60.7
Johnson J. Ms.	Con	739	-
Mason L. Ms.	Con	679	-
Bullock G.*	Lab	503	39.3
Jones J.	Lab	443	-
Turner P.	Lab	409	-
Turnout		25.1	21.5

Himley & Swindon (1736)			
		vote	share
Brownhill W.*	Con	442	73.9
Edwards R.	Lab	156	26.1
Turnout		34.6	47.8

Huntington & Hatherton (3324)²			
		vote	share
Ashley L.*	Lab	359	57.0
Wilson F.	Lab	301	-
Williams P. Ms.	Con	271	43.0
Turnout		18.8	14.0
Kinver (5719)³			
		vote	share
Edwards B.*	Con	972	34.0
Ray E. Ms.	Ind	947	33.1
Gobling J.	LD	941	32.9
Davies M.*	Con	765	-
Harrison J. Ms.	LD	743	-
Hadlington D.	Con	600	-
Turnout		33.5	0.9
Pattingham & Patshull (1821)			
		vote	share
Burton J. Ms.*	Con	0	0.0
Turnout		0.0	0.0
Penkridge North East & Acton Trussell (2973)²			
		vote	share
Ford I. Ms.	Con	0	-
Spandler G.*	Con	0	0.0
Turnout		0.0	0.0
Penkridge South East (3633)²			
		vote	share
Raven C. Ms.	Con	580	64.2
Holt R.	Con	555	-
Hodgkiss R.	Lab	323	35.8
Murphy D.*	Lab	302	-
Turnout		26.2	28.5
Penkridge West (1696)			
		vote	share
Cartwright D.*	Con	326	68.8
McPheat J.	Lab	148	31.2
Turnout		26.0	37.6
Perton Dippons (1594)			
		vote	share
James K.*	Con	270	66.2
Checketts R.	Lab	138	33.8
Turnout		25.9	32.4
Perton East (1721)			
		vote	share
Billson D.	Con	260	52.3
Carr L. Ms.	Ind	237	47.7
Turnout		28.9	4.6
Perton Lakeside (5128)³			
		vote	share
Bromley C.*	Con	604	40.6
Bromley P. Ms.*	Con	602	-
Caine N.	Con	576	-
Young C. Ms.	Ind	518	34.8
Randle S. Ms.	Lab	366	24.6
Turnout		23.7	5.8
Trysull & Seisdon (1696)			
		vote	share
McCardle R.	Con	0	0.0
Turnout		0.0	0.0
Wheaton Aston Bishopswood & Lapley (3273)²			
		vote	share
Cox B.*	Con	0	-
Wright R.*	Con	0	0.0
Turnout		0.0	0.0

Wombourne North & Lower Penn (5033)³			
		vote	share
Hinton A.	Con	976	58.7
Williams J. Ms.*	Con	971	-
Reade R.*	Con	965	-
Baker L. Ms.	Ind	688	41.3
Turnout		30.8	17.3
Wombourne South East (3230)²			
		vote	share
Timms P.*	Con	556	36.9
Williams R.*	Con	545	-
Sadler I.	LD	494	32.8
Hipkiss L.	Ind	458	30.4
Turnout		35.6	4.1
Wombourne South West (3600)²			
		vote	share
Edwards S. Ms.	FP	641	57.0
Kelly I.*	Con	483	43.0
Davies M.*	Con	457	-
Turnout		30.0	14.1
South Staffordshire - 2007			
Bilbrook (3272)²			
		vote	share
Oatley S. Ms.	Con	703	63.7
Mackie K.*	Con	698	-
Gregory J.	Lab	400	36.3
Tomlinson J.	Lab	339	-
Turnout		34.0	27.5
Brewod & Coven (5375)³			
		vote	share
Ball A.	Ind	1,128	42.4
Hampson M.*	Con	1,018	38.3
Clay I.*	Con	992	-
Holmes A. Ms.*	Con	989	-
Holmes L. Ms.	Lab	514	19.3
Turnout		38.0	4.1
Cheslyn Hay North & Saredon (2800)²			
		vote	share
Caine A. Ms.	Con	405	50.8
Caine N.	Con	400	-
Boyle M.*	Lab	393	49.2
Harris M.*	Lab	371	-
Turnout		30.0	1.5
Cheslyn Hay South (3618)²			
		vote	share
Williams B.	Con	609	42.1
Heseltine D.	Con	495	-
Craddock B.*	Ind	469	32.4
Davison J.	Lab	369	25.5
Turnout		31.0	9.7
Codsall North (3353)²			
		vote	share
Campbell P. Ms.*	Con	979	80.0
Evans J.*	Con	943	-
Williams D.	Lab	245	20.0
Williams T.	Lab	217	-
Turnout		38.0	60.0
Codsall South (3285)²			
		vote	share
Michell J.*	Con	862	64.1
Marshall R.*	Con	856	-
Lynch M.	UKIP	286	21.3
Williams J. Ms.	Lab	197	14.6
Turnout		38.0	42.8

Essington (3840)²			
		vote	share
Cliff D.*	Ind	0	0.0
Griffin P. Ms.*	Con	0	0.0
Turnout		0.0	0.0
Featherstone & Shareshill (3343)²			
		vote	share
Cope B.*	Ind	557	45.5
Beardsmore F.	Ind	383	-
Lawrence M.	Con	310	25.3
Brindle J.*	Lab	242	19.8
Tate J. Ms.	Con	211	-
Brindle A. Ms.	Lab	168	-
Hollis S.	UKIP	115	9.4
Turnout		27.8	20.2
Great Wyrley Landywood (3743)²			
		vote	share
Williams K. Ms.	Con	640	62.8
Perry R.	Con	614	-
Wood B.*	Lab	379	37.2
Jones J.	Lab	373	-
Turnout		28.0	25.6
Great Wyrley Town (4848)³			
		vote	share
Perry K. Ms.*	Con	1,117	73.4
Johnson J. Ms.*	Con	1,052	-
Bates B.*	Con	1,016	-
Lowe J. Ms.	Lab	405	26.6
Lowe T.	Lab	387	-
Turnout		32.0	46.8
Himley & Swindon (1711)			
		vote	share
Lees R.	Con	0	0.0
Turnout		0.0	0.0
Huntington & Hatherton (3332)²			
		vote	share
Williams P. Ms.	Con	435	54.5
Ashley J.*	Lab	363	45.5
Wilson F.*	Lab	359	-
Jones L.	Con	326	-
Turnout		24.0	9.0
Kinver (5845)³			
		vote	share
Edwards B.*	Con	1,305	38.3
Ray E. Ms.*	Ind	1,096	32.2
Gosling J.*	LD	1,002	29.4
Davies M.	Con	977	-
Hall J.	Con	976	-
Turnout		38.0	6.1
Pattingham & Patshull (1853)			
		vote	share
Burton J. Ms.*	Con	0	0.0
Turnout		0.0	0.0
Penkridge North East & Acton Trussell (3002)²			
		vote	share
Spandler G.*	Con	0	0.0
Ford I. Ms.*	Con	0	-
Turnout		0.0	0.0
Penkridge South East (3573)²			
		vote	share
Raven C. Ms.*	Con	906	71.1
Holt R.*	Con	811	-
McGuinness T.	Lab	369	28.9
Turnout		35.0	42.1
Penkridge West (1705)			
		vote	share
Cartwright D.*	Con	0	0.0
Turnout		0.0	0.0

Perton Dippons (1573)			
		vote	share
James K.*	Con	0	0.0
Turnout		0.0	0.0

Perton East (1786)			
		vote	share
Billson D.*	Con	367	53.0
Allen P. Ms.	Ind	293	42.3
Smith A.	LD	33	4.8
Turnout		39.0	10.7

Perton Lakeside (5053) ³			
		vote	share
Heseltine R. Ms.	Con	590	45.7
Fereday D.	Con	579	-
Moreton R.	Con	556	-
Bourke A.	Ind	537	41.6
James A. Ms.	Ind	506	-
Pitt M.	Ind	467	-
Black A.	Ind	426	-
McElduff K.	Lab	165	12.8
Bromley P. Ms.*	Ind	163	-
Bromley C.*	Ind	146	-
Turnout		30.0	4.1

Trysull & Seisdon (1690)			
		vote	share
McCardle R.*	Con	0	0.0
Turnout		0.0	0.0

Wheaton Aston Bishopswood & Lapley (3282) ²			
		vote	share
Cox B.*	Con	0	-
Wright R.*	Con	0	0.0
Turnout		0.0	0.0

Wombourne North & Lower Penn (5145) ³			
		vote	share
Hinton A.*	Con	0	-
Williams J. Ms.*	Con	0	0.0
Reade R.*	Con	0	-
Turnout		0.0	0.0

Wombourne South East (3195) ²			
		vote	share
Timms C. Ms.	Con	784	64.5
Williams R.*	Con	636	-
Fanthom G.	UKIP	432	35.5
Turnout		38.0	28.9

Wombourne South West (3548) ²			
		vote	share
Bond M. Ms.	Con	633	58.5
Heath B. Ms.	Con	604	-
Sadler I.	LD	274	25.3
Jones S. Ms.	Lab	175	16.2
Turnout		27.0	33.2

South Staffordshire - 2011

Bilbrook (3329) ²			
		vote	share
Chapman V. Ms.	Con	848	64.0
Oatley S. Ms.*	Con	823	-
Wynne-Jones A.	Lab	478	36.0
McElduff K.	Lab	409	-
Turnout		42.6	27.9

Brewood & Coven (5479) ³			
		vote	share
Clay I.*	Con	1,369	44.5
Holmes A. Ms.	Con	1,221	-
Hampson M.*	Con	1,193	-
Ball A.*	Ind	941	30.6
Jones L. Ms.	Lab	765	24.9
Holmes L. Ms.	Lab	661	-
Turnout		44.0	13.9

Cheslyn Hay North & Saredon (3383) ²			
		vote	share
Boyle M.	Ind	431	29.3
Harris M.	Lab	410	27.9
Caine A. Ms.*	Con	388	26.4
Caine N.*	Con	384	-
Brindle A.	Lab	325	-
Gould K.	UKIP	242	16.5
Turnout		37.0	1.4

Cheslyn Hay South (3018) ²			
		vote	share
Heseltine D.*	Con	443	31.7
Williams B.*	Con	412	-
Davidson J.	Lab	396	28.4
Pugh A. Ms.	Ind	312	22.3
Hollis S.	UKIP	245	17.6
Turnout		37.0	3.4

Codsall North (3330) ²			
		vote	share
Campbell P. Ms.*	Con	861	57.2
Ewart M.	Con	797	-
Evans J.*	Ind	337	22.4
Williams J. Ms.	Lab	308	20.5
Williams T.	Lab	259	-
Turnout		42.0	34.8

Codsall South (3357) ²			
		vote	share
Marshall R.*	Con	1,019	61.8
Michell J.*	Con	909	-
Lynch M.	UKIP	377	22.8
Smith G. Ms.	Lab	254	15.4
Wall P. Ms.	Lab	204	-
Turnout		46.0	38.9

Essington (3959) ²			
		vote	share
Cliff D.*	Ind	1,135	61.4
Whitehouse W.	Ind	483	-
Young C. Ms.	Con	408	22.1
Bond B.	Con	383	-
Hale C. Ms.	Lab	307	16.6
Turnout		41.0	39.3

Featherstone & Sharesill (3757) ²			
		vote	share
Cope B.*	Ind	639	40.0
Beardsmore F.*	Ind	536	-
Brindle J.	Lab	482	30.2
Lawrence M.	Con	475	29.8
Light P.	Lab	231	-
Turnout		39.0	9.8

Great Wyrley Landywood (3835) ²			
		vote	share
Williams K. Ms.*	Con	646	50.5
Perry R.*	Con	611	-
Bullock K.	Lab	453	35.4
Jones J.	Lab	423	-
Keatley G.	UKIP	179	14.0
Turnout		33.0	15.1

Great Wyrley Town (4961) ³			
		vote	share
Perry K. Ms.*	Con	1,182	56.8
Johnson J. Ms.*	Con	1,101	-
Bates B.*	Con	1,048	-
Lowe T.	Lab	537	25.8
McKenzie M.	UKIP	361	17.4
Turnout		36.0	31.0

Himley & Swindon (1726)			
		vote	share
Lees R.*	Con	417	50.2
Fanthom G.	UKIP	261	31.4
Pincher K.	Ind	152	18.3
Turnout		48.3	18.8

Huntington & Hatherton (3796) ²			
		vote	share
Williams P.*	Con	569	51.4
Ashley J.*	Lab	537	48.6
Kenyon R.	Lab	496	-
Turnout		30.0	2.9

Kinver (6016) ³			
		vote	share
Edwards B.*	Con	1,659	49.2
Hingley L. Ms.	Con	1,655	-
Wooddisse P.	Con	1,122	-
Ray E. Ms.*	Ind	1,071	31.7
Ridgeway C. Ms.	Lab	644	19.1
Turnout		45.0	17.4

Pattingham & Patshull (1820)			
		vote	share
Burton J. Ms.*	Con	789	86.8
Brindle S. Ms.	Ind	120	13.2
Turnout		50.0	73.6

Penkridge North East & Acton Trussell (3090) ²			
		vote	share
Ford I. Ms.*	Con	835	51.6
Bates L.	Con	811	-
Craddock B.	Ind	416	25.7
Morris S. Ms.	Lab	367	22.7
Turnout		48.4	25.9

Penkridge South East (3531) ²			
		vote	share
Raven C. Ms.*	Con	798	45.1
Raven J.	Con	638	-
Oldfield D.	Ind	499	28.2
Brennan V.	Lab	474	26.8
Turnout		42.0	16.9

Penkridge West (1681)			
		vote	share
Cartwright D.*	Con	370	53.9
Stonehouse C.	Ind	181	26.4
Murphy S.	Ind	135	19.7
Turnout		41.5	27.6

Perton Dippons (1590)			
		vote	share
James K.*	Con	382	60.6
Duffell C. Ms.	Ind	248	39.4
Turnout		40.5	21.3

Perton East (1789)			
		vote	share
Billson D.*	Con	432	51.8
Bourke A.	Ind	402	48.2
Turnout		47.2	3.6

Perton Lakeside (5054) ³			
		vote	share
Fereday D.*	Con	886	46.7
Heseltine R. Ms.*	Con	850	-
Moreton R.*	Con	800	-
James A. Ms.	Ind	592	31.2
Black A.	Ind	513	-
Pitt P. Ms.	Ind	453	-
Fenby J.	Lab	418	22.0
Turnout		35.8	15.5

Trysull & Seisdon (1784)			
		vote	share
McCardle R.*	Con	532	66.9
Compson N.	Ind	263	33.1
Turnout		45.1	33.8

Wheaton Aston Bishopswood & Lapley (3329) ²			
		vote	share
Wright R.*	Con	0	0.0
Cox B.*	Con	0	-
Turnout		0.0	0.0

Wombourne North & Lower Penn (5291)³			
		vote	share
Hinton A.*	Con	1,345	65.5
Reade R.*	Con	1,267	-
Williams J. Ms.*	Con	1,236	-
Jones L.	UKIP	707	34.5
<hr/>			
	Turnout	41.4	31.1

Wombourne South East (3192)²			
		vote	share
Williams R.*	Con	873	63.5
Granger J. Ms.	Con	860	-
Pace S.	UKIP	501	36.5
<hr/>			
	Turnout	45.2	27.1

Wombourne South West (3542)²			
		vote	share
Davies M.	Con	0	0.0
Bond M. Ms.*	Con	0	-
<hr/>			
	Turnout	0.0	0.0

