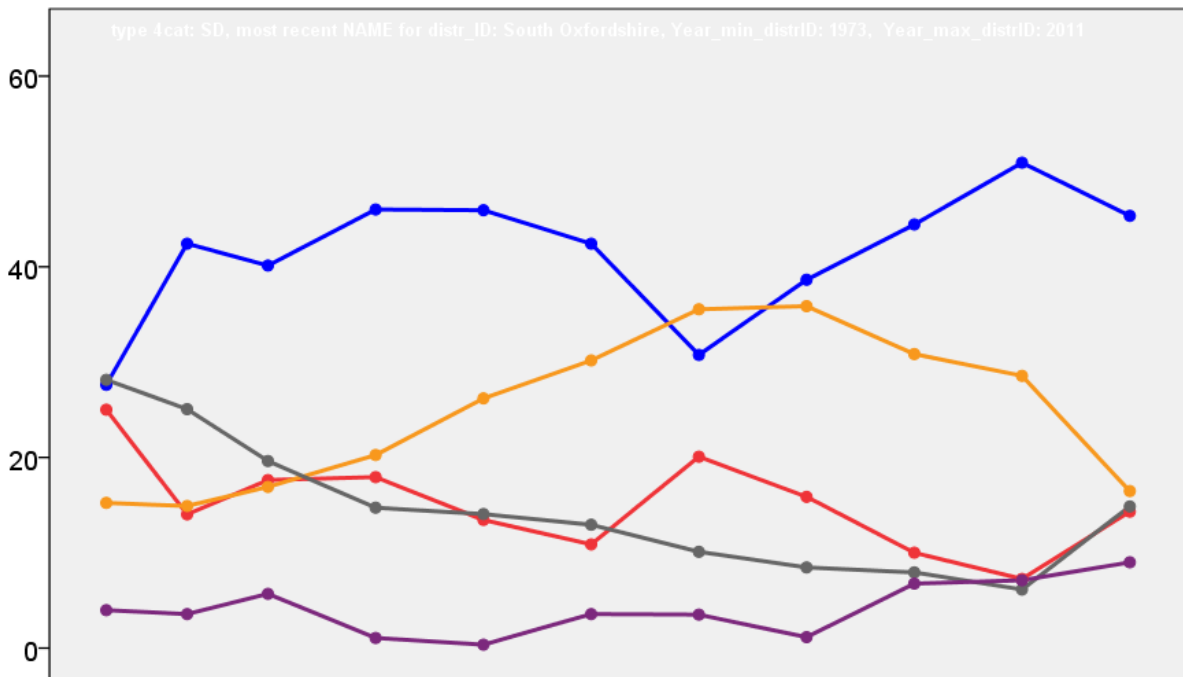


# South Oxfordshire District Council Election Results 1973-2011



Colin Rallings and Michael Thrasher  
The Elections Centre  
Plymouth University

The information contained in this report has been obtained from a number of sources. Election results from the immediate post-reorganisation period were painstakingly collected by Alan Willis largely, although not exclusively, from local newspaper reports. From the mid-1980s onwards the results have been obtained from each local authority by the Elections Centre. The data are stored in a database designed by Lawrence Ware and maintained by Brian Cheal and others at Plymouth University. Despite our best efforts some information remains elusive whilst we accept that some errors are likely to remain. Notice of any mistakes should be sent to [elections@plymouth.ac.uk](mailto:elections@plymouth.ac.uk). The results sequence can be kept up to date by purchasing copies of the annual Local Elections Handbook, details of which can be obtained by contacting the email address above.

Front cover: the graph shows the distribution of percentage vote shares over the period covered by the results. The lines reflect the colours traditionally used by the three main parties. The grey line is the share obtained by Independent candidates while the purple line groups together the vote shares for all other parties.

Rear cover: the top graph shows the percentage share of council seats for the main parties as well as those won by Independents and other parties. The lines take account of any by-election changes (but not those resulting from elected councillors switching party allegiance) as well as the transfers of seats during the main round of local election.

The lower graph shows for each main round of local elections the overall percentage turnout (solid line), the percentage of women candidates standing at (dotted line) and the percentage of women among those elected (hashed line).

## South Oxfordshire - 1973

Aston Rowant (1643)			
		vote	share
Nixey F.	Ind	445	62.9
Cray P. Ms.	Con	206	29.1
Naish M. Ms.	Ind	57	8.1
Turnout		40.7	33.8

Benson (2927) <sup>2</sup>			
		vote	share
Brighting R.	Ind	0	0.0
Winfield R.	Con	0	0.0
Turnout		0.0	0.0

Berinsfield (1782)			
		vote	share
Hall K.	Lab	330	68.2
Mitchell H.	Ind	154	31.8
Turnout		28.0	36.4

Chinnor (2929) <sup>2</sup>			
		vote	share
Tucker D. Ms.	Lab	619	52.0
Knight K. Ms.	Con	572	48.0
Shearing T.	Lab	494	-
Mitchell D.	Con	470	-
Turnout		38.0	3.9

Cholsey (2934) <sup>2</sup>			
		vote	share
Payne A.	Ind	731	65.2
Clarke E. Ms.	Ind	631	-
Roberts P. Ms.	Lab	390	34.8
Membury J.	Lab	292	-
Turnout		40.0	30.4

Clifton Hampden (1890)			
		vote	share
Davies T.	Con	221	39.6
Varney E.	Lab	146	26.2
Dewhurst K.	Ind Con	140	25.1
Buckingham C.	Ind	51	9.1
Turnout		28.0	13.4

Dorchester (1666)			
		vote	share
Hughes-Jones M. Ms.	Lib	397	52.4
Belcher R.	Ind	360	47.6
Turnout		45.0	4.9

Forest Hill (1412)			
		vote	share
Busfield J.	Ind	364	56.5
Washington A.	Con	280	43.5
Turnout		40.0	13.0

Goring (2874) <sup>2</sup>			
		vote	share
Hewitt F.	Ind	0	0.0
Thompson E.	Con	0	0.0
Turnout		0.0	0.0

Great Milton (1682)			
		vote	share
Pickett G.	Con	390	55.5
Howe G.	Ind	185	26.3
Allison P.	Lab	128	18.2
Turnout		41.8	29.2

Littlemore (5800) <sup>3</sup>			
		vote	share
Buckingham W.	Lab	858	74.6
Brocklesby G. Ms.	Lab	796	-
Blewitt J.	Lab	758	-
Johnson P.	Lib	292	25.4
Turnout		20.0	49.2

Marston (2581) <sup>2</sup>			
		vote	share
Tasker G.	Ind	413	50.6
Hawgood C.	Ind	406	-
Sutton D.	Lab	403	49.4
Undy R.	Lab	315	-
Turnout		33.0	1.2

No. 11 (Stadhampton) (1122)			
		vote	share
Peers C.	Ind	201	51.8
Shave K.	Con	187	48.2
Turnout		34.5	3.6

No. 14 (Chalgrove) (1500)			
		vote	share
Burton M. Ms.	Lib	231	43.8
Fitzgerald F.	Ind	210	39.8
Scott C.	Ind	86	16.3
Turnout		35.0	4.0

No. 18 (Henley: North) (4383) <sup>3</sup>			
		vote	share
Sadler R.	Prog Ind	843	30.8
Fazey V. Ms.	Con	518	19.0
Corrall A.	Ind	513	18.8
Boulton B.	Lab	484	17.7
Crossman S.	Ind	482	-
Rayner N.	Con	461	-
Myer B.	Lab	424	-
Venn E.	Lab	416	-
Charrington E. Ms.	Lib	375	13.7
Mates A.	Lib	361	-
Brandwood H.	Ind	243	-
Turnout		42.1	11.9

No. 19 (Henley: South) (4193) <sup>3</sup>			
		vote	share
Day J. Ms.	Ind	998	31.3
Carden R.	Lib	934	29.3
Carson-Bury J.	Con	813	25.5
Weston L.	Con	691	-
Carey P.	Con	572	-
Diamond G.	Lib	567	-
Green S. Ms.	Lab	445	13.9
Mulelly L.	Lib	404	-
Turnout		49.7	2.0

No. 21 (Woodcote) (2108)			
		vote	share
Livesley D.	Lib	368	40.7
Lidiard A. Ms.	Ind	280	31.0
Goldsmid J.	Ind	256	28.3
Turnout		43.0	9.7

No. 22 (Kidmore End) (1587)			
		vote	share
Griffiths J. Ms.	Con	0	0.0
Turnout		0.0	0.0

No. 23 (Mapledurham) (2379) <sup>2</sup>			
		vote	share
Noble R.	Ind	0	0.0
Eyston J.	Ind	0	-
Turnout		0.0	0.0

No. 24 (Rutherford Peppard) (1522)			
		vote	share
Wood S.	Con	0	0.0
Turnout		0.0	0.0

No. 27 (Caversham Park) (2471)			
		vote	share
Benton C.	Con	326	41.4
Cockman P.	Lib	306	38.8
Carr C. Ms.	Lab	156	19.8
Turnout		31.9	2.5

No. 28 (Micklands & Chilern) (1426)			
		vote	share
Houdret M.	Con	226	54.7
Monk S. Ms.	Lib	187	45.3
Turnout		29.0	9.4

No. 29 (Nettlebed) (1395)			
		vote	share
Duke F.	Con	240	57.8
Stacpoole R.	Ind	175	42.2
Turnout		29.7	15.7

No. 3 (Risinghurst & Sandhills) (2449) <sup>2</sup>			
		vote	share
Graham C.	Lab	0	0.0
Knight F.	Ind	0	0.0
Turnout		0.0	0.0

No. 30 (Bix) (1083)			
		vote	share
Smith I.	Lib	0	0.0
Turnout		0.0	0.0

No. 31 (Crowmarsh) (1772)			
		vote	share
Dawes A.	Ind	386	52.3
Strange D.	Ind	352	47.7
Turnout		42.0	4.6

No. 32 (Thame) (4671) <sup>3</sup>			
		vote	share
Dodds D.	Con	787	39.7
Barclay T.	Con	740	-
Hastings M.	Lib	691	34.9
Barrington D.	Con	535	-
Webb L.	Ind	502	25.4
Hurrell D.	Ind	488	-
Turnout		32.7	4.8

No. 34 (The Hagbournes) (1420)			
		vote	share
Field L.	Con	0	0.0
Turnout		0.0	0.0

No. 35 (Brightwell-Cum-Sotwell) (2146) <sup>2</sup>			
		vote	share
Wigley T.	Ind	656	68.6
Howard E.	Ind	643	-
Masefield S. Ms.	Con	300	31.4
Turnout		50.0	37.2

No. 37 (Didcot: All Saints-Georgetown-Park) (5516) <sup>4</sup>			
		vote	share
Clewes A.	Con	1,132	48.2
Lane E.	Con	1,107	-
Cubitt J.	Con	1,098	-
Butcher D.	Con	1,092	-
Cullen P.	Lab	956	40.7
Eaton L. Ms.	Lab	952	-
Jones G.	Lab	903	-
Vaughan E. Ms.	Lab	884	-
Davidson R.	Comm	259	11.0
Turnout		41.0	7.5

**No. 38 (Didcot: Greenmere & Northbourne)**  
(2908)<sup>2</sup>

		vote	share
Brown I.	Lab	970	68.3
Cole A.	Lab	888	-
Daukes O. Ms.	Con	451	31.7
Ottaway D.	Con	405	-
<b>Turnout</b>		27.0	36.5

**No. 6 (Garsington) (1275)**

		vote	share
Townsend B.	Ind	226	47.3
Burton A.	Lab	106	22.2
Smith W.	Ind	94	19.7
Blake P.	Ind	52	10.9
<b>Turnout</b>		37.0	25.1

**No. 7 (Horspath) (1506)**

		vote	share
Bowley N.	Ind	427	61.5
Crane R. Ms.	Lab	267	38.5
<b>Turnout</b>		46.0	23.1

**Shiplake (1881)**

		vote	share
Southern A.	Con	0	0.0
<b>Turnout</b>		0.0	0.0

**Sonning Common (2733)<sup>2</sup>**

		vote	share
Bush W.	Con	0	-
Fulford E.	Con	0	0.0
<b>Turnout</b>		0.0	0.0

**Wallingford (4308)<sup>3</sup>**

		vote	share
Goode J.	Lib	967	34.9
Brown A.	Lab	934	33.7
Myatt B.	Con	870	31.4
Hartwell P.	Con	851	-
Brooke I. Ms.	Lab	745	-
Hastings P.	Lab	625	-
<b>Turnout</b>		44.0	1.2

**Watlington (1869)**

		vote	share
Horwood M.	Con	447	67.1
Dole P. Ms.	Lab	219	32.9
<b>Turnout</b>		35.6	34.2

**Wheatley (2780)<sup>2</sup>**

		vote	share
Paterson P.	Con	640	39.5
Windows F.	Ind	597	36.9
Morris S. Ms.	Lab	382	23.6
Freeborn P.	Lab	320	-
<b>Turnout</b>		40.0	2.7

**South Oxfordshire - 1976**

**Aston Rowant (1712)**

		vote	share
Nixey J.	Ind	0	0.0
<b>Turnout</b>		0.0	0.0

**Benson (3321)<sup>2</sup>**

		vote	share
Belcher D.	Con	829	60.6
Edwards W.	Con	725	-
Harcourt G.	Lib	539	39.4
<b>Turnout</b>		36.8	21.2

**Berinsfield (1814)**

		vote	share
Hall K.	Lab	287	36.2
Hiles J. Ms.	Ind	280	35.4
Parsons R.	Lib	150	18.9
Humphrey D.	Con	75	9.5
<b>Turnout</b>		44.0	0.9

**Chinnor (3647)<sup>2</sup>**

		vote	share
Knight M. Ms.	Con	986	53.8
Clarke P.	Con	842	-
Tucker D. Ms.	Lab	480	26.2
Jackson B.	Lib	367	20.0
Harmsworth E.	Lib	354	-
Wilson G.	Lab	339	-
<b>Turnout</b>		50.4	27.6

**Cholsey (2895)<sup>2</sup>**

		vote	share
Clarke P. Ms.	Con	908	43.6
Clarke E. Ms.	Ind	793	38.1
Spriggs D. Ms.	Lab	380	18.3
<b>Turnout</b>		71.9	5.5

**Clifton Hampden (1984)**

		vote	share
Davies T.	Con	0	0.0
<b>Turnout</b>		0.0	0.0

**Dorchester (1807)**

		vote	share
Hughes-Jones M. Ms.	Lib	649	59.8
Yarwood C.	Con	436	40.2
<b>Turnout</b>		60.9	19.6

**Forest Hill (1429)**

		vote	share
Busfield T.	Ind	0	0.0
<b>Turnout</b>		0.0	0.0

**Goring (2947)<sup>2</sup>**

		vote	share
Stovold T.	Con	931	66.2
Renel E.	Con	842	-
Hewitt F.	Ind	476	33.8
Morgan R.	Ind	410	-
<b>Turnout</b>		50.6	32.3

**Great Milton (1684)**

		vote	share
Pickett G.	Con	504	63.6
Hamilton R.	Lab	120	15.2
Berwick I. Ms.	Lib	86	10.9
Howe G.	Ind	82	10.4
<b>Turnout</b>		47.2	48.5

**Littlemore (5602)<sup>3</sup>**

		vote	share
Buckingham W.	Lab	856	62.3
Blewitt J.	Lab	702	-
Brocklesby E.	Lab	686	-
Cole B.	Lib	518	37.7
Hodgkinson R.	Lib	389	-
<b>Turnout</b>		24.5	24.6

**Marston (2633)<sup>2</sup>**

		vote	share
Hawgood C.	Lab	634	52.8
Jones N.	Ind	566	47.2
Rowland K.	Ind	533	-
Langridge J.	Lab	515	-
<b>Turnout</b>		45.6	5.7

**No. 11 (Stadhampton) (1132)**

		vote	share
Franklin N.	Con	343	54.2
Peers C.	Ind	290	45.8
<b>Turnout</b>		56.0	8.4

**No. 14 (Chalgrove) (1539)**

		vote	share
Graham-Troll D.	Con	409	51.3
Burton M. Ms.	Lib	389	48.7
<b>Turnout</b>		52.0	2.5

**No. 18 (Henley: North) (4548)<sup>3</sup>**

		vote	share
Fazey V. Ms.	Con	928	29.8
Johnston D.	Con	865	-
Clarke T.	Con	837	-
Sadler R.	Prog Ind	830	26.6
Corrall A.	Ind	633	20.3
Hall M. Ms.	Lib	390	12.5
Venn E.	Lab	335	10.8
<b>Turnout</b>		41.4	3.1

**No. 19 (Henley: South) (4253)<sup>3</sup>**

		vote	share
Day M. Ms.	Ind	1,323	41.4
Lane A. Ms.	Con	1,286	40.2
Carson-Bury J.	Con	1,210	-
Chacksfield D.	Con	599	-
Heap M.	Lib	588	18.4
<b>Turnout</b>		48.6	1.2

**No. 21 (Woodcote) (2443)**

		vote	share
Chandler D. Ms.	Con	700	60.8
Millin G. Ms.	Ind	452	39.2
<b>Turnout</b>		48.1	21.5

**No. 22 (Kidmore End) (1626)**

		vote	share
Griffiths J. Ms.	Con	0	0.0
<b>Turnout</b>		0.0	0.0

**No. 23 (Mapledurham) (2462)<sup>2</sup>**

		vote	share
Eyston J.	Con	805	49.8
Noble R.	Ind	580	35.9
White D.	Lib	231	14.3
<b>Turnout</b>		41.7	13.9

**No. 24 (Rutherford Peppard) (1532)**

		vote	share
Monbiot R. Ms.	Con	486	76.5
Lea R.	Ind	149	23.5
<b>Turnout</b>		41.6	53.1

**No. 27 (Caversham Park) (2875)**

		vote	share
Stoddart H.	Lib	0	0.0
<b>Turnout</b>		0.0	0.0

**No. 28 (Micklands & Chiltern) (1520)**

		vote	share
Lowe G.	Lib	309	55.5
Houdret M.	Con	248	44.5
<b>Turnout</b>		36.6	11.0

**No. 29 (Nettlebed) (1310)**

		vote	share
Duke F.	Con	0	0.0
<b>Turnout</b>		0.0	0.0

**No. 3 (Risinghurst & Sandhills) (2373)<sup>2</sup>**

		vote	share
Keegan B.	Con	543	36.0
Knight F.	Ind	502	33.3
Graham G.	Lab	464	30.7
<b>Turnout</b>		63.6	2.7

<b>No. 30 (Bix) (1032)</b>			
<b>Whittington C. Ms.</b>	Ind	vote 0	share 0.0
<hr/>			
	<b>Turnout</b>	0.0	0.0

<b>No. 31 (Crowmarsh) (1794)</b>			
<b>Dawes A.</b>	Ind	vote 671	share 68.6
<b>Wright D.</b>	Con	307	31.4
<hr/>			
	<b>Turnout</b>	55.2	37.2

<b>No. 32 (Thame) (5265)<sup>3</sup></b>			
<b>Dodds D.</b>	Con	vote 1,209	share 34.1
<b>Webb L.</b>	Ind	937	26.5
<b>Hurrell D.</b>	Res	715	20.2
<b>Simpson C.</b>	Con	710	-
<b>Brook I.</b>	Lib	680	19.2
<b>Elson G.</b>	Lib	522	-
<hr/>			
	<b>Turnout</b>	38.0	7.7

<b>No. 34 (The Hagbournes) (1459)</b>			
<b>Field J.</b>	Con	vote 0	share 0.0
<hr/>			
	<b>Turnout</b>	0.0	0.0

<b>No. 35 (Brightwell-Cum-Sotwell) (2321)<sup>2</sup></b>			
<b>Howard E.</b>	Ind	vote 749	share 61.8
<b>Wigley T.</b>	Ind	747	-
<b>Randolph M. Ms.</b>	Con	463	38.2
<b>Whitwell S.</b>	Con	383	-
<hr/>			
	<b>Turnout</b>	54.3	23.6

<b>No. 37 (Didcot: All Saints-Georgetown-Park) (5816)<sup>4</sup></b>			
<b>Pryor B.</b>	Con	vote 1,574	share 60.3
<b>Clewes A.</b>	Con	1,496	-
<b>Butcher D.</b>	Con	1,427	-
<b>Lane E.</b>	Con	1,374	-
<b>Hitchcock L.</b>	Lab	1,037	39.7
<b>Crouch E.</b>	Lab	849	-
<b>Crouch R. Ms.</b>	Lab	831	-
<b>Shurrock S.</b>	Lab	726	-
<hr/>			
	<b>Turnout</b>	44.9	20.6

<b>No. 38 (Didcot: Greenmere &amp; Northbourne) (4031)<sup>2</sup></b>			
<b>Brown T.</b>	Lab	vote 979	share 58.0
<b>Cole A.</b>	Lab	859	-
<b>Brian P.</b>	Con	710	42.0
<b>Longshaw L.</b>	Con	617	-
<hr/>			
	<b>Turnout</b>	42.1	15.9

<b>No. 6 (Garsington) (1294)</b>			
<b>Townsend B.</b>	Ind	vote 479	share 74.8
<b>Moulton R.</b>	Con	161	25.2
<hr/>			
	<b>Turnout</b>	49.5	49.7

<b>No. 7 (Horspath) (1520)</b>			
<b>Bowley N.</b>	Ind	vote 0	share 0.0
<hr/>			
	<b>Turnout</b>	0.0	0.0

<b>Shiplake (1866)</b>			
<b>Southern A.</b>	Con	vote 0	share 0.0
<hr/>			
	<b>Turnout</b>	0.0	0.0

<b>Sonning Common (2859)<sup>2</sup></b>			
<b>Bush W.</b>	Con	vote 880	share 61.3
<b>Bush W.</b>	Con	860	61.3
<b>Gudgeon S.</b>	Ind	555	38.7
<b>Compton A.</b>	Ind	532	-
<hr/>			
	<b>Turnout</b>	53.7	0.0

<b>Wallingford (4602)<sup>3</sup></b>			
<b>Lester C.</b>	Con	vote 1,227	share 43.2
<b>Hedley P.</b>	Con	1,158	-
<b>Goode A.</b>	Lib	997	35.1
<b>Davies P. Ms.</b>	Ind	613	21.6
<hr/>			
	<b>Turnout</b>	43.5	8.1

<b>Watlington (1960)</b>			
<b>Bullock J. Ms.</b>	Con	vote 514	share 58.1
<b>Moseley B.</b>	Lab	237	26.8
<b>Brett F. Ms.</b>	Lib	133	15.0
<hr/>			
	<b>Turnout</b>	45.2	31.3

<b>Wheatley (2837)<sup>2</sup></b>			
<b>Paterson P.</b>	Con	vote 883	share 39.0
<b>Windows F.</b>	Ind	706	31.2
<b>Minett M.</b>	Lib	418	18.5
<b>Dalton C.</b>	Lib	341	-
<b>Anderson J.</b>	Lab	255	11.3
<hr/>			
	<b>Turnout</b>	79.7	7.8

## South Oxfordshire - 1979

<b>Aston Rowant (1771)</b>			
<b>Nixey F.</b>	Con	vote 949	share 67.3
<b>Vessey A. Ms.</b>	Lib	462	32.7
<hr/>			
	<b>Turnout</b>	79.7	34.5

<b>Benson (2867)<sup>2</sup></b>			
<b>Belcher D.</b>	Con	vote 1,323	share 63.6
<b>Edwards W.</b>	Con	1,179	-
<b>Owen M.</b>	Lib	757	36.4
<hr/>			
	<b>Turnout</b>	72.5	27.2

<b>Berinsfield (1823)</b>			
<b>Hall K.</b>	Lab	vote 632	share 50.3
<b>Hiles J. Ms.</b>	Ind	625	49.7
<hr/>			
	<b>Turnout</b>	69.0	0.6

<b>Chinnor (4097)<sup>2</sup></b>			
<b>Hood A. Ms.</b>	Con	vote 1,504	share 38.0
<b>Knight M. Ms.*</b>	Con	1,435	-
<b>Harmsworth E.</b>	Lib	833	21.1
<b>Wilson G.</b>	Lab	645	16.3
<b>Coulson A.</b>	Ind Con	504	12.7
<b>Jackson B.</b>	Ind	470	11.9
<b>Hawkins W. Ms.</b>	Lib	468	-
<hr/>			
	<b>Turnout</b>	96.6	17.0

<b>Cholsey (3075)<sup>2</sup></b>			
<b>O'Kill R.</b>	Con	vote 0	share 0.0
<b>Clarke P. Ms.</b>	Con	0	-
<hr/>			
	<b>Turnout</b>	0.0	0.0

<b>Clifton Hampden (1866)</b>			
<b>Davies T.</b>	Con	vote 855	share 63.6
<b>White H. Ms.</b>	Lab	490	36.4
<hr/>			
	<b>Turnout</b>	72.1	27.1

<b>Dorchester (1811)</b>			
<b>Hugh-Jones M.</b>	Ind	vote 840	share 61.1
<b>Yarwood C.</b>	Con	535	38.9
<hr/>			
	<b>Turnout</b>	75.9	22.2

<b>Forest Hill (1453)</b>			
<b>Busfield J.</b>	Con	vote 792	share 75.1
<b>Britton R.</b>	Lab	263	24.9
<hr/>			
	<b>Turnout</b>	72.6	50.1

<b>Goring (3076)<sup>2</sup></b>			
<b>Stovold T.</b>	Con	vote 1,472	share 54.0
<b>Morgan R.</b>	Ind	1,252	46.0
<b>Renel E.</b>	Con	1,190	-
<hr/>			
	<b>Turnout</b>	88.6	8.1

<b>Great Milton (1722)</b>			
<b>Picket G.</b>	Con	vote 0	share 0.0
<hr/>			
	<b>Turnout</b>	0.0	0.0

<b>Littlemore (5828)<sup>3</sup></b>			
<b>Buckingham W.</b>	Lab	vote 2,358	share 51.0
<b>Blewitt J.</b>	Lab	2,104	-
<b>Norman C. Ms.</b>	Lab	1,718	-
<b>Tovey R.</b>	Lib	1,186	25.7
<b>Johnson P.</b>	Ind Lib	1,078	23.3
<hr/>			
	<b>Turnout</b>	79.3	25.4

<b>Marston (2704)<sup>2</sup></b>			
<b>Jones N.</b>	Ind	vote 1,251	share 59.7
<b>Rowland K.</b>	Ind	1,037	-
<b>Sutton D.</b>	Lab	843	40.3
<b>Tiwari K.</b>	Lab	515	-
<hr/>			
	<b>Turnout</b>	77.4	19.5

<b>No. 11 (Stadhampton) (1144)</b>			
<b>Haycraft R.</b>	Con	vote 0	share 0.0
<hr/>			
	<b>Turnout</b>	0.0	0.0

<b>No. 14 (Chalgrove) (1609)</b>			
<b>Conlan C. Ms.</b>	Con	vote 777	share 62.7
<b>St. George M. Ms.</b>	Lib	463	37.3
<hr/>			
	<b>Turnout</b>	77.1	25.3

<b>No. 18 (Henley: North) (4538)<sup>3</sup></b>			
<b>Fazey V. Ms.</b>	Con	vote 1,632	share 46.9
<b>Johnston D.</b>	Con	1,480	-
<b>Howard J.</b>	Con	1,477	-
<b>Cherrington P.</b>	E	1,204	34.6
<b>Hutton J.</b>	Lib	964	-
<b>Ogden I.</b>	Lib	796	-
<b>Murton R.</b>	Lab	641	18.4
<hr/>			
	<b>Turnout</b>	76.6	12.3

<b>No. 19 (Henley: South) (4179)<sup>3</sup></b>			
<b>Lane A. Ms.</b>	Con	vote 1,914	share 40.4
<b>Day J. Ms.</b>	Ind	1,663	35.1
<b>Carson-Bury J.</b>	Con	1,465	-
<b>Wendon M. Ms.</b>	Con	730	-
<b>Owen J. Ms.</b>	Lib	712	15.0
<b>St. George C.</b>	Lib	556	-
<b>Mulelly D. Ms.</b>	Lib	551	-
<b>Adamson A. Ms.</b>	Lab	450	9.5
<hr/>			
	<b>Turnout</b>	113.4	5.3

<b>No. 21 (Woodcote) (2554)</b>			
<b>Sparks P. Ms.</b>	Con	vote 1,024	share 51.7
<b>Millin G. Ms.</b>	Ind	955	48.3
<hr/>			
	<b>Turnout</b>	77.5	3.5

<b>No. 22 (Kidmore End) (1493)</b>			
<b>Griffiths J. Ms.</b>	Con	vote 0	share 0.0
<hr/>			
	<b>Turnout</b>	0.0	0.0

No. 23 (Mapledurham) (1939)			
		vote	share
<b>Eyston J.</b>	Con	0	0.0
<b>Turnout</b>		0.0	0.0

No. 24 (Rutherford Peppard) (1515)			
		vote	share
<b>Monbiot R. Ms.</b>	Con	0	0.0
<b>Turnout</b>		0.0	0.0

No. 29 (Nettlebed) (1369)			
		vote	share
<b>Pim A.</b>	Ind	618	61.6
<b>Duke F.</b>	Con	386	38.4
<b>Turnout</b>		73.3	23.1

No. 3 (Risinghurst & Sandhills) (2453) <sup>2</sup>			
		vote	share
<b>Payne J.</b>	Con	1,040	44.4
<b>Bell J.</b>	Lab	691	29.5
Carter K.	Lab	679	-
Spencer W.	Ind	611	26.1
Hornby P.	Ind	366	-
<b>Turnout</b>		95.5	14.9

No. 30 (Bix) (1052)			
		vote	share
<b>Whittington C. Ms.</b>	Ind	0	0.0
<b>Turnout</b>		0.0	0.0

No. 31 (Crowmarsh) (1785)			
		vote	share
<b>Dawes A.</b>	Ind	729	54.8
<b>Blount C.</b>	Lib	470	35.3
<b>McDade J.</b>	Ind	132	9.9
<b>Turnout</b>		74.6	19.5

No. 32 (Thame) (6172) <sup>3</sup>			
		vote	share
<b>Brook I.</b>	Ind Lib	2,316	29.0
<b>Webb L.</b>	Ind	2,303	28.9
<b>Blackmore N. Ms.</b>	Con	1,711	21.5
Elson G.	Lib	1,646	20.6
Kingham P.	Lib	1,450	-
Massey J.	Lib	1,312	-
<b>Turnout</b>		129.2	0.2

No. 34 (The Hagbournes) (1520)			
		vote	share
<b>Field L.</b>	Con	0	0.0
<b>Turnout</b>		0.0	0.0

No. 35 (Brightwell-Cum-Sotwell) (2315) <sup>2</sup>			
		vote	share
<b>Wigley T.</b>	Ind	1,253	61.1
<b>Howard E.</b>	Ind	1,134	-
<b>Randolph M. Ms.</b>	Con	799	38.9
<b>Turnout</b>		88.6	22.1

No. 37 (Didcot: All Saints-Georgetown-Park) (5707) <sup>4</sup>			
		vote	share
<b>Butcher D.</b>	Con	2,317	58.8
<b>Clewes A.</b>	Con	2,205	-
<b>Daukes O. Ms.</b>	Con	2,101	-
<b>Crawley C. Ms.</b>	Lab	1,622	41.2
Williams R.	Lab	1,591	-
Jones G.	Lab	1,479	-
Lane E.	Con	1,467	-
Gill I.	Lab	1,452	-
<b>Turnout</b>		69.0	17.6

No. 38 (Didcot: Greenmere & Northbourne) (4179) <sup>2</sup>			
		vote	share
<b>Hitchcock L.</b>	Lab	1,718	54.4
<b>Crabtree R.</b>	Lab	1,492	-
Pryor B.	Con	1,441	45.6
Standen D.	Con	1,241	-
<b>Turnout</b>		75.6	8.8

No. 6 (Garsington) (1300)			
		vote	share
<b>Townsend B.</b>	Ind	0	0.0
<b>Turnout</b>		0.0	0.0

No. 7 (Horspath) (1607)			
		vote	share
<b>Bowley N.</b>	Ind	509	41.6
<b>Fitchett F. Ms.</b>	Con	458	37.4
<b>Sparrowhawk T.</b>	Lib	257	21.0
<b>Turnout</b>		76.2	4.2

Shiplake (2077)			
		vote	share
<b>Scarr J.</b>	Con	1,057	66.2
<b>Edwards S. Ms.</b>	Lab	329	20.6
<b>Hose P.</b>	Ind	210	13.2
<b>Turnout</b>		76.8	45.6

Sonning Common (2821) <sup>2</sup>			
		vote	share
<b>Bush W.</b>	Con	1,284	57.7
<b>Fulford E.</b>	Con	1,228	-
<b>Compton A.</b>	Lib	942	42.3
<b>Lea R.</b>	Lib	795	-
<b>Turnout</b>		78.9	15.4

Wallingford (4630) <sup>3</sup>			
		vote	share
<b>Ashton P. Ms.</b>	Con	1,963	46.4
<b>Lester T.</b>	Con	1,829	-
<b>Payne R.</b>	Con	1,448	-
<b>Southern D.</b>	Lib	1,173	27.7
<b>Evans R.</b>	Lab	1,099	26.0
<b>Turnout</b>		91.5	18.7

Watlington (1914)			
		vote	share
<b>Bullock J. Ms.</b>	Con	844	59.8
<b>Hawkins R.</b>	Lib	288	20.4
<b>Elbourne R.</b>	Lab	279	19.8
<b>Turnout</b>		73.7	39.4

Wheatley (3079) <sup>2</sup>			
		vote	share
<b>Paterson P.</b>	Con	1,372	53.8
<b>Wilkinson J.</b>	Lib	1,178	46.2
<b>Mieczkowski F.</b>	Con	1,143	-
<b>Turnout</b>		82.8	7.6

## South Oxfordshire - 1983

Aston Rowant (1916)			
		vote	share
<b>Nixey J.</b>	Con	575	57.4
<b>Bindoff G. Ms.</b>	Ind	215	21.5
<b>Porter D.</b>	Lib/SDP	212	21.2
<b>Turnout</b>		52.3	35.9

Benson (3171) <sup>2</sup>			
		vote	share
<b>Belcher D.</b>	Con	723	44.2
<b>Edwards W.</b>	Ind Con	527	32.2
Percival P.	Con	305	-
Hesketh R.	Lab	205	12.5
Richardson G.	Lib/SDP	181	11.1
Welch R.	Lib/SDP	148	-
<b>Dole P. Ms.</b>	Lab	113	-
<b>Turnout</b>		51.6	12.0

Berinsfield (1934)			
		vote	share
<b>Hall K.</b>	Lab	453	75.0
<b>Drinkwater R.</b>	Lib/SDP	151	25.0
<b>Turnout</b>		31.2	50.0

Brightwell (1862)			
		vote	share
<b>Laurie N. Ms.</b>	Lib/SDP	504	50.7
<b>Reed R.</b>	Con	491	49.3
<b>Turnout</b>		53.4	1.3

Chalgrove (3079) <sup>2</sup>			
		vote	share
<b>Haycraft R.</b>	Con	680	33.8
<b>Slater B.</b>	Con	679	-
<b>Fitzgerald F.</b>	Ind	650	32.3
<b>Turner D.</b>	Lib/SDP	487	24.2
<b>Maunder C. Ms.</b>	Lab	197	9.8
<b>Turnout</b>		65.4	1.5

Chinnor (4229) <sup>2</sup>			
		vote	share
<b>Knight M. Ms.*</b>	Con	1,213	58.8
<b>Markham F.</b>	Con	1,024	-
<b>Stewart-Smith M. Ms.</b>	Lab	455	22.1
<b>Partridge J.</b>	Lib/SDP	394	19.1
<b>Hilton R.</b>	Lib/SDP	339	-
<b>Yeo J. Ms.</b>	Lab	306	-
<b>Turnout</b>		48.8	36.8

Cholsey (3114) <sup>2</sup>			
		vote	share
<b>Clarke P. Ms.</b>	Con	778	47.8
<b>Richardson A.</b>	Con	591	-
<b>Haworth J.</b>	Lab	473	29.1
<b>Haworth D. Ms.</b>	Lab	380	-
<b>Morgan B.</b>	Ind	376	23.1
<b>Turnout</b>		52.2	18.7

Clifton Hampden (1804)			
		vote	share
<b>King N. Ms.</b>	Con	624	73.6
<b>Beech J.</b>	Lib/SDP	224	26.4
<b>Turnout</b>		47.0	47.2

Crowmarsh (2289)			
		vote	share
<b>Strange D.</b>	Con	726	65.1
<b>Winters M. Ms.</b>	Lab	390	34.9
<b>Turnout</b>		48.8	30.1

Didcot North (3368) <sup>2</sup>			
		vote	share
<b>Flood J.</b>	Con	883	47.4
<b>Clewes A.</b>	Con	820	-
<b>Griffiths S.</b>	Lab	561	30.1
<b>McNulty M.</b>	Lab	546	-
<b>Jones A.</b>	Lib/SDP	417	22.4
<b>Turnout</b>		55.3	17.3

Didcot Northbourne (2136)			
		vote	share
<b>Crabtree R.</b>	Lab	448	47.5
<b>Daukes O. Ms.</b>	Con	345	36.6
<b>Collins K.</b>	Lib/SDP	150	15.9
<b>Turnout</b>		44.1	10.9

Didcot South (4916) <sup>3</sup>			
		vote	share
<b>Hitchcock L.</b>	Lab	1,096	51.6
<b>Duggan B.</b>	Lab	1,083	-
<b>Brown P.</b>	Con	1,027	48.4
<b>Butcher D.</b>	Con	1,008	-
<b>Harding A. Ms.</b>	Con	990	-
<b>Gill R.</b>	Lab	953	-
<b>Turnout</b>		43.2	3.3

Dorchester (1843)			
		vote	share
<b>Murphy C. Ms.</b>	Con	624	61.3
<b>Sadler E. Ms.</b>	Ind	394	38.7
<b>Turnout</b>		55.2	22.6

Forest Hill (1467)			
		vote	share
<b>Busfield T.</b>	Con	438	62.6
Brown J.	Lib/SDP	133	19.0
Sirett W.	Lab	129	18.4
		<b>Turnout</b>	47.7 43.6
Garsington (1747)			
<b>Townsend B.</b>	Ind	610	80.3
Warren E.	Lib/SDP	150	19.7
		<b>Turnout</b>	43.5 60.5
Goring (3101) <sup>2</sup>			
<b>Ducker E. Ms.</b>	Con	1,106	55.7
<b>Stovold T.</b>	Con	1,032	-
Coombs T.	Lib/SDP	556	28.0
Charters C.	Lab	325	16.4
		<b>Turnout</b>	64.1 27.7
Goring Heath (1901)			
<b>Eyston J.</b>	Con	600	66.0
Morfev G.	Lib/SDP	217	23.9
Randall I. Ms.	Lab	92	10.1
		<b>Turnout</b>	47.8 42.1
Great Milton (1841)			
<b>Pickett G.</b>	Con	670	70.7
Harriott S. Ms.	Lib/SDP	278	29.3
		<b>Turnout</b>	51.5 41.4
Hagbourne (2078)			
<b>Wigley T.</b>	Ind	722	64.7
Bradshaw W.	Lib/SDP	394	35.3
		<b>Turnout</b>	53.7 29.4
Henley (8756) <sup>5</sup>			
<b>Lane A.</b>	Con	2,124	41.7
<b>Fazey V. Ms.</b>	Con	1,697	-
<b>Day J. Ms.</b>	Ind	1,653	32.4
<b>Wynn-Roberts W. Ms.</b>	Con	1,616	-
<b>Howard J.</b>	Con	1,470	-
Jones E.	Con	1,360	-
Carson-Bury J.	Ind	1,095	-
Owen M.	Lib/SDP	891	17.5
Evans P. Ms.	Lib/SDP	712	-
Fortune J. Ms.	Lib/SDP	680	-
Bailson H. Ms.	Lib/SDP	550	-
Cooper J.	Lib/SDP	543	-
Green S. Ms.	Lab	428	8.4
Turner S. Ms.	Lab	386	-
Merton R.	Lab	363	-
Undy R.	Lab	253	-
Christoforou G.	Lab	250	-
		<b>Turnout</b>	58.2 9.2
Kidmore End (1536)			
<b>Winterbottom S. Ms.</b>	Con	530	81.5
Sugarman B. Ms.	Lab	120	18.5
		<b>Turnout</b>	42.3 63.1
Littlemore (5779) <sup>3</sup>			
<b>Buckingham B.</b>	Lab	1,348	64.2
<b>Ledger B. Ms.</b>	Lab	1,230	-
<b>Blewitt J.</b>	Lab	1,169	-
Arnatt R.	Con	753	35.8
Weston G.	Con	673	-
Mankelov J.	Con	644	-
		<b>Turnout</b>	36.4 28.3

Marston (2701) <sup>2</sup>			
		vote	share
<b>Jones N.</b>	Ind	657	60.3
<b>Rowland K.</b>	Ind	520	-
Bartlett N.	Lab	433	39.7
Tiwari K.	Lab	396	-
		<b>Turnout</b>	40.4 20.6
Nettlebed (1817)			
<b>Cook D. Ms.</b>	Con	639	68.8
Sawbridge M. Ms.	Lib/SDP	238	25.6
Maunders B.	Lab	52	5.6
		<b>Turnout</b>	51.1 43.2
Risinghurst (3696) <sup>2</sup>			
<b>Taylor P.</b>	Con	707	30.7
<b>Bowley N.</b>	Ind	663	28.8
Bell J.	Lab	553	24.0
Stanton-lfe D.	Lib/SDP	377	16.4
Leeding M.	Ind	248	-
Beaumont B.	Ind	151	-
		<b>Turnout</b>	62.2 1.9
Rotherfield Peppard (1707)			
<b>Monbiot R. Ms.</b>	Con	712	91.0
Kealy A. Ms.	Lib/SDP	70	9.0
		<b>Turnout</b>	45.8 82.1
Shiplake (2076)			
<b>Doble B.</b>	Con	676	73.6
Gillett E. Ms.	Lib/SDP	243	26.4
		<b>Turnout</b>	44.3 47.1
Sonning Common (2846) <sup>2</sup>			
<b>Badcock A.</b>	Con	899	46.2
<b>Bush B.</b>	Con	810	-
Holcombe R.	Lib/SDP	607	31.2
Wright K.	Lab	438	22.5
		<b>Turnout</b>	68.3 15.0
Thame North (3286) <sup>2</sup>			
<b>Smith D. Ms.</b>	Con	784	50.3
<b>Brook I.</b>	Lib/SDP	774	49.7
Elson G.	Lib/SDP	604	-
		<b>Turnout</b>	47.4 0.6
Thame South (3793) <sup>2</sup>			
<b>Webb L.</b>	Ind	828	38.5
<b>Blackmore N. Ms.</b>	Con	796	37.0
Day J. Ms.	Lib/SDP	529	24.6
Baker M. Ms.	Lib/SDP	493	-
		<b>Turnout</b>	56.8 1.5
Wallingford (4761) <sup>3</sup>			
<b>Ashton P. Ms.</b>	Con	1,083	53.7
<b>Lester T.</b>	Con	1,012	-
<b>Payne R.</b>	Con	969	-
Southern D.	Lib/SDP	521	25.8
Curry D.	Lib/SDP	440	-
Wilkins M.	Lab	412	20.4
Dodd B. Ms.	Lab	303	-
Elburne D. Ms.	Lab	275	-
		<b>Turnout</b>	42.3 27.9
Watlington (1956)			
<b>Pate S. Ms.</b>	Lib/SDP	582	52.1
Bullock J. Ms.	Con	425	38.0
Elburne R.	Lab	110	9.8
		<b>Turnout</b>	57.1 14.1

Wheatley (3182) <sup>2</sup>			
		vote	share
<b>Blake M. Ms.</b>	Con	767	45.6
<b>Wilkinson J.</b>	Lib/SDP	752	44.7
Minty D. Ms.	Con	726	-
Broad G.	Lib/SDP	545	-
Lomas M.	Lab	164	9.7
Fray J.	Lab	159	-
		<b>Turnout</b>	52.9 0.9
Woodcote (1758)			
<b>Farmery J. Ms.</b>	Con	390	51.0
Millin G. Ms.	Ind	374	49.0
		<b>Turnout</b>	43.5 2.1
South Oxfordshire - 1987			
Aston Rowant (2012)			
<b>Nixey J.</b>	Con	640	61.4
Bindoff G. Ms.	Ind	403	38.6
		<b>Turnout</b>	51.8 22.7
Benson (3282) <sup>2</sup>			
<b>Belcher D.</b>	Con	793	50.6
<b>Edwards W.</b>	Con	673	-
Taylor J.	Ind	521	33.2
Law A. Ms.	All	254	16.2
Beech J.	All	238	-
		<b>Turnout</b>	47.8 17.3
Berinsfield (2156)			
<b>Hall K.</b>	Lab	508	55.6
Chrip K.	Con	406	44.4
		<b>Turnout</b>	42.4 11.2
Brightwell (1951)			
<b>Gration B. Ms.</b>	Con	589	52.4
Stimson J.	All	535	47.6
		<b>Turnout</b>	57.6 4.8
Chalgrove (3214) <sup>2</sup>			
<b>Haycraft R.</b>	Con	835	51.5
<b>Nixey A.</b>	Con	832	-
Turner D.	All	601	37.1
Hilton R.	All	420	-
Slater B.	Ind Con	184	11.4
		<b>Turnout</b>	50.4 14.4
Chinnor (4421) <sup>2</sup>			
<b>Hawkins C.</b>	Lib/SDP	978	34.1
<b>Barlow C. Ms.</b>	Con	955	33.3
Line H.	All	938	32.7
Shadbolt R.	Con	876	-
		<b>Turnout</b>	64.9 0.8
Cholsey (3062) <sup>2</sup>			
<b>Clarke P. Ms.</b>	Con	828	52.5
<b>Morgan J. Ms.</b>	All	750	47.5
Richardson A.	Con	704	-
Whiting J.	All	646	-
		<b>Turnout</b>	51.5 4.9
Clifton Hampden (1888)			
<b>King N. Ms.</b>	Con	0	0.0
		<b>Turnout</b>	0.0 0.0

Crowmarsh (2303)			
		vote	share
<b>Strange D.</b>	Con	820	71.7
Crawford J.	All	324	28.3
<b>Turnout</b>		49.7	43.4
Didcot North (3845) <sup>2</sup>			
		vote	share
<b>Horn B. Ms.</b>	Con	861	35.3
<b>Flood J.</b>	Con	858	-
Belcher C.	Lib/SDP	547	22.5
Jones A.	All	546	22.4
Paterson A.	Lab	482	19.8
Jessemy A.	Lab	468	-
<b>Turnout</b>		63.4	12.9
Didcot Northbourne (2448)			
		vote	share
<b>McNulty M.</b>	Lab	414	38.9
Horn P.	Con	406	38.2
Gilks R.	All	244	22.9
<b>Turnout</b>		43.5	0.8
Didcot South (4900) <sup>3</sup>			
		vote	share
<b>Duggan B.</b>	Lab	1,124	38.9
<b>Hitchcock L.</b>	Lab	1,019	-
<b>Gill R.</b>	Lab	991	-
Harding A. Ms.	Con	983	34.0
Baker F.	Con	929	-
Swanborough H.	Con	757	-
Rickard M.	All	475	16.5
Talbot D.	Ind	305	10.6
<b>Turnout</b>		58.9	4.9
Dorchester (1897)			
		vote	share
<b>Robinson J.</b>	Con	735	63.3
Sadler E. Ms.	Ind	255	22.0
Field G.	Lab	171	14.7
<b>Turnout</b>		61.2	41.3
Forest Hill (1455)			
		vote	share
<b>Minty D. Ms.</b>	Con	430	57.4
Merritt B.	Lab	174	23.2
Dalton M. Ms.	All	145	19.4
<b>Turnout</b>		51.5	34.2
Garsington (1855)			
		vote	share
<b>Townsend B.</b>	Ind	521	62.8
Belcher M.	Ind	308	37.2
<b>Turnout</b>		44.7	25.7
Goring (3114) <sup>2</sup>			
		vote	share
<b>Ducker E. Ms.</b>	Con	1,036	63.8
<b>Edmonds L.</b>	Con	942	-
Mark C.	All	587	36.2
Harper-Holdcroft W.	All	500	-
<b>Turnout</b>		52.1	27.7
Goring Heath (1924)			
		vote	share
<b>Eyston J.</b>	Con	567	55.0
Minton C. Ms.	All	464	45.0
<b>Turnout</b>		53.6	10.0
Great Milton (1820)			
		vote	share
<b>Pickett G.</b>	Con	0	0.0
<b>Turnout</b>		0.0	0.0
Hagbourne (2274)			
		vote	share
????????????	Ind	0	0.0
<b>Turnout</b>		0.0	0.0

Henley (9079) <sup>5</sup>			
		vote	share
<b>Lane T.</b>	Con	2,228	39.3
<b>Day M. Ms.</b>	Ind	1,830	32.3
<b>Howard J.</b>	Con	1,785	-
<b>Nimmo-Smith D.</b>	Con	1,775	-
<b>Jones E.</b>	Con	1,714	-
Turner J.	Con	1,678	-
Owen M.	All	1,206	21.3
Evans P. Ms.	All	1,178	-
Luff P.	All	1,086	-
Smewing J. Ms.	All	993	-
Bruce C.	All	974	-
Russell-Swinnerton I.	Lab	407	7.2
<b>Turnout</b>		62.5	7.0
Kidmore End (1543)			
		vote	share
<b>Jarrett P.</b>	Con	499	68.3
Storch J. Ms.	All	175	23.9
Wright K.	Lab	57	7.8
<b>Turnout</b>		47.4	44.3
Littlemore (5703) <sup>3</sup>			
		vote	share
<b>Buckingham B.</b>	Lab	1,186	54.9
<b>Blewitt J.</b>	Lab	1,104	-
<b>Ledger B. Ms.</b>	Lab	1,066	-
Mankelov J.	Con	543	25.1
Hussain F.	Con	473	-
Bewick J.	All	433	20.0
Jenkins P.	All	307	-
Fisher A.	All	298	-
<b>Turnout</b>		37.9	29.7
Marston (2828) <sup>2</sup>			
		vote	share
<b>Gibbs I.</b>	Con	603	33.0
<b>Jones N.</b>	Ind	469	25.7
Drinkwater R.	Lab	466	25.5
Tiwari K.	Lab	435	-
Maclarnon K. Ms.	All	288	15.8
Lawrence-Wilson R.	All	272	-
<b>Turnout</b>		64.6	7.3
Nettlebed (1861)			
		vote	share
<b>Cook D. Ms.</b>	Con	628	68.3
Pim B. Ms.	All	291	31.7
<b>Turnout</b>		49.4	36.7
Risinghurst (3732) <sup>2</sup>			
		vote	share
<b>Mathews S.</b>	Con	794	34.7
<b>Bowley N.</b>	Ind	760	33.2
Khan K.	All	368	16.1
Addison D.	Lab	367	16.0
Leeding M.	Ind	315	-
Medlicott A.	Lab	295	-
<b>Turnout</b>		61.3	1.5
Rotherfield Peppard (1729)			
		vote	share
<b>Monbiot R. Ms.</b>	Con	638	75.2
Leslie G.	All	131	15.4
Haris J.	Lab	79	9.3
<b>Turnout</b>		49.0	59.8
Shiplake (2051)			
		vote	share
<b>Holmes G.</b>	Con	622	64.7
Law B.	All	273	28.4
Hill I.	Lab	67	7.0
<b>Turnout</b>		46.9	36.3

Sonning Common (2035) <sup>2</sup>			
		vote	share
<b>Badcock A.</b>	Con	1,037	63.2
<b>Laird C. Ms.</b>	Con	896	-
Magahy J. Ms.	All	417	25.4
Pilcher J.	All	401	-
Gerrard P.	Lab	186	11.3
Jones R.	Lab	180	-
<b>Turnout</b>		80.6	37.8
Thame North (3913) <sup>2</sup>			
		vote	share
<b>Smith D. Ms.</b>	Con	950	47.3
<b>Brook I.</b>	All	849	42.2
Spencer K. Ms.	All	547	-
Crouch R. Ms.	Lab	211	10.5
<b>Turnout</b>		51.4	5.0
Thame South (4090) <sup>2</sup>			
		vote	share
<b>Blackmore N. Ms.</b>	Con	864	37.4
<b>Webb L.</b>	Ind	769	33.3
Baker M. Ms.	All	435	18.8
Day J. Ms.	All	401	-
Howgate M. Ms.	Lab	241	10.4
<b>Turnout</b>		56.5	4.1
Wallingford (5220) <sup>3</sup>			
		vote	share
<b>Ashton P. Ms.</b>	Con	1,293	35.3
<b>Lester T.</b>	Con	1,190	-
<b>Revell B.</b>	Ind	1,079	29.5
Southern D.	Lib/SDP	907	24.8
Morley M.	Con	745	-
Holt P.	Lib/SDP	648	-
Laurie N. Ms.	Lib/SDP	560	-
Beckwith I.	Lab	380	10.4
<b>Turnout</b>		70.1	5.8
Watlington (2155)			
		vote	share
<b>Agnew J.</b>	Con	586	52.0
Duffy O. Ms.	All	416	36.9
Elbourne D. Ms.	Lab	125	11.1
<b>Turnout</b>		52.3	15.1
Wheatley (3322) <sup>2</sup>			
		vote	share
<b>Blake M. Ms.</b>	Con	985	51.5
<b>Fonge B.</b>	Con	833	-
Hutton R.	All	671	35.1
Rowell G.	All	507	-
Lomas M.	Lab	258	13.5
Fray J.	Lab	208	-
<b>Turnout</b>		57.6	16.4
Woodcote (1955)			
		vote	share
<b>Peirce R.</b>	All	684	61.1
Quinton C.	Con	435	38.9
<b>Turnout</b>		57.2	22.3

## South Oxfordshire - 1991

Aston Rowant (1860)			
		vote	share
<b>Nixey F.*</b>	Con	512	51.5
Harvey P. Ms.	LD	482	48.5
<b>Turnout</b>		53.6	3.0
Benson (3110) <sup>2</sup>			
		vote	share
<b>Edwards W.*</b>	Con	677	36.3
<b>Cooper S. Ms.</b>	LD	666	35.7
Barrington-Groves E.	Con	604	-
Crabbe A.	Ind	524	28.1
Main R.	Ind	190	-
<b>Turnout</b>		48.9	0.6



<b>Berinsfield (2122)</b>			
		vote	share
<b>Hall K.*</b>	Lab	0	0.0
<b>Turnout</b>		0.0	0.0
<b>Brightwell (1912)</b>			
		vote	share
<b>Crowe V. Ms.</b>	Con	549	50.4
Stimson J.	LD	541	49.6
<b>Turnout</b>		57.3	0.7
<b>Chalgrove (3146)<sup>2</sup></b>			
		vote	share
<b>Nixey A.*</b>	Con	869	57.4
<b>Haycraft R.*</b>	Con	751	-
Bedwell A.	LD	646	42.6
Jones I.	LD	566	-
<b>Turnout</b>		50.0	14.7
<b>Chinnor (4377)<sup>2</sup></b>			
		vote	share
<b>Whelehan P.</b>	Ind	1,442	67.9
<b>Hawkins C.*</b>	Ind	1,196	-
Wilson J.	Con	681	32.1
Stanley J. Ms.	Con	643	-
<b>Turnout</b>		48.0	35.8
<b>Cholsey (2923)<sup>2</sup></b>			
		vote	share
<b>Morgan J. Ms.*</b>	LD	887	58.8
<b>Roberts P. Ms.</b>	LD	884	-
Clarke P. Ms.*	Con	621	41.2
Dixon F.	Con	557	-
<b>Turnout</b>		60.0	17.6
<b>Clifton Hampden (2146)</b>			
		vote	share
<b>Marthews S.</b>	Con	487	52.6
Hammer H. Ms.	LD	439	47.4
<b>Turnout</b>		43.7	5.2
<b>Crowmarsh (2235)</b>			
		vote	share
<b>Lomax G.*</b>	Con	546	51.2
Griffin J.	LD	520	48.8
<b>Turnout</b>		47.9	2.4
<b>Didcot North (4295)<sup>2</sup></b>			
		vote	share
<b>Flood J.*</b>	Con	885	43.5
<b>Horn B. Ms.*</b>	Con	843	-
Evans D.	Lab	734	36.1
Wilkinson A.	Lab	678	-
Jones A.	LD	415	20.4
Hewson W.	LD	358	-
<b>Turnout</b>		48.7	7.4
<b>Didcot Northbourne (2778)</b>			
		vote	share
<b>McNulty M.*</b>	Lab	750	68.0
McDonagh L.	Con	353	32.0
<b>Turnout</b>		41.4	36.0
<b>Didcot South (4599)<sup>3</sup></b>			
		vote	share
<b>Hitchcock L.*</b>	Lab	1,127	42.3
<b>Gill R.*</b>	Lab	1,119	-
<b>Evans N.</b>	Lab	1,054	-
Excell F.	Ind	912	34.2
Harding A. Ms.	Con	624	23.4
Brown J.	Con	622	-
Horn P.	Con	615	-
<b>Turnout</b>		50.0	8.1
<b>Dorchester (1783)</b>			
		vote	share
<b>Robinson J.*</b>	Con	693	68.9
Hazell S. Ms.	LD	313	31.1
<b>Turnout</b>		56.4	37.8

<b>Forest Hill (1599)</b>			
		vote	share
<b>Minty D. Ms.*</b>	Con	336	50.2
Purse G.	LD	333	49.8
<b>Turnout</b>		41.8	0.4
<b>Garsington (1792)</b>			
		vote	share
<b>Townsend B.*</b>	Ind	584	69.0
Belcher M.	Ind	262	31.0
<b>Turnout</b>		47.2	38.1
<b>Goring (2991)<sup>2</sup></b>			
		vote	share
<b>Ducker E. Ms.*</b>	Con	916	58.0
<b>Edmonds L.*</b>	Con	795	-
Foot D.	LD	664	42.0
Bicknell T. Ms.	LD	651	-
<b>Turnout</b>		52.0	15.9
<b>Goring Heath (1764)</b>			
		vote	share
<b>Whitfeld D. Ms.</b>	Con	562	52.0
Butterworth H.	LD	519	48.0
<b>Turnout</b>		61.0	4.0
<b>Great Milton (1749)</b>			
		vote	share
<b>Neil C.</b>	LD	568	57.5
Pickett G.*	Con	419	42.5
<b>Turnout</b>		55.0	15.1
<b>Hagbourne (2439)</b>			
		vote	share
<b>Morley M.*</b>	Con	0	0.0
<b>Turnout</b>		0.0	0.0
<b>Henley (8272)<sup>5</sup></b>			
		vote	share
<b>Day J. Ms.*</b>	Con	1,724	39.6
<b>Lane A.*</b>	Con	1,630	-
<b>Arlett K.</b>	Res	1,553	35.7
<b>Zakss G. Ms.</b>	Res	1,512	-
<b>Zakss I.</b>	Res	1,393	-
Voss J. Ms.	Res	1,276	-
Howard J.*	Con	1,239	-
Gash R. Ms.	Con	1,166	-
Jones E.*	Con	1,110	-
Owen J. Ms.	LD	1,073	24.7
Owen M.	LD	873	-
Aird P. Ms.	LD	811	-
Fitchett F.	LD	733	-
Hutton J.	LD	686	-
<b>Turnout</b>		45.9	3.9
<b>Horspath (1133)</b>			
		vote	share
<b>Bowley N.</b>	Ind	388	52.4
Staples N.	Con	291	39.3
Pritchard N.	LD	62	8.4
<b>Turnout</b>		65.7	13.1
<b>Kidmore End (1391)</b>			
		vote	share
<b>Griffiths D.*</b>	Con	0	0.0
<b>Turnout</b>		0.0	0.0
<b>Nettlebed (1697)</b>			
		vote	share
<b>Cook D. Ms.*</b>	Con	483	54.1
Ellis L. Ms.	LD	255	28.6
Harris P.	Ind	155	17.4
<b>Turnout</b>		52.0	25.5
<b>Rotherfield Peppard (1565)</b>			
		vote	share
<b>Shapland R.</b>	Con	464	60.3
Davis M.	LD	305	39.7
<b>Turnout</b>		49.2	20.7

<b>Shiplake (1879)</b>			
		vote	share
<b>Hibbert E.</b>	Ind	543	56.9
Holmes G.*	Con	411	43.1
<b>Turnout</b>		50.0	13.8
<b>Sonning Common (2893)<sup>2</sup></b>			
		vote	share
<b>Badcock A.*</b>	Con	727	57.2
<b>Turner J.</b>	Con	548	-
Barnett R.	LD	545	42.8
Hynd P.	LD	526	-
<b>Turnout</b>		44.0	14.3
<b>Thame North (4361)<sup>2</sup></b>			
		vote	share
<b>Smith D. Ms.*</b>	Con	956	54.0
<b>Blanks F.</b>	Con	812	-
Howgate M. Ms.	Lab	506	28.6
Le Mesurier T.	Lab	444	-
Winward L. Ms.	LD	308	17.4
<b>Turnout</b>		40.6	25.4
<b>Thame South (4041)<sup>2</sup></b>			
		vote	share
<b>Blackmore N. Ms.*</b>	Con	657	37.4
<b>Peddell J.</b>	Con	556	-
Webb L.*	Ind	497	28.3
Crouch R. Ms.	Lab	352	20.0
McGill J.	Lab	280	-
Beech J.	LD	252	14.3
Tremaine J.	LD	132	-
<b>Turnout</b>		43.6	9.1
<b>Wallingford (5222)<sup>3</sup></b>			
		vote	share
<b>Lester T.*</b>	Con	1,265	35.8
<b>Bradburn G.</b>	LD	1,183	33.5
<b>Strange D.</b>	LD	912	-
Foster K.	Con	818	-
Beckwith I.	Lab	766	21.7
Seed D.	Lab	557	-
Garraway R.	Lab	472	-
Ely R.	Ind	315	8.9
<b>Turnout</b>		58.7	2.3
<b>Watlington (2125)</b>			
		vote	share
<b>Horton T.</b>	LD	741	65.7
Gill J.	Con	387	34.3
<b>Turnout</b>		53.1	31.4
<b>Wheatley (3462)<sup>2</sup></b>			
		vote	share
<b>Fonge B.*</b>	Con	940	45.6
<b>Trueman K.</b>	Con	861	-
Purse P. Ms.	LD	627	30.4
Audars E. Ms.	Lab	494	24.0
<b>Turnout</b>		49.2	15.2
<b>Woodcote (1878)</b>			
		vote	share
<b>Peirce R.*</b>	LD	766	65.6
Albin N. Ms.	Con	401	34.4
<b>Turnout</b>		62.0	31.3
<b>South Oxfordshire - 1995</b>			
<b>Aston Rowant (1987)</b>			
		vote	share
<b>Nixey F.*</b>	Ind	459	52.1
Harvey P. Ms.	LD	422	47.9
<b>Turnout</b>		46.0	4.2

<b>Benson (3164)<sup>2</sup></b>			
		vote	share
<b>Cooper S. Ms.*</b>	LD	734	40.6
<b>Merritt J.</b>	Lab	419	23.2
Aspeling-Jones J. Ms.	LD	398	-
Edwards W.*	Con	394	21.8
Hill C.	Con	319	-
Crabbe A.	Ind	262	14.5
Taylor J.	Ind	209	-
Passey L.	Ind	90	-
<b>Turnout</b>		49.0	17.4

<b>Berinsfield (1775)</b>			
		vote	share
<b>Hall K.*</b>	Lab	393	46.5
Riel L.	LD	385	45.6
Stevenson I.	Con	67	7.9
<b>Turnout</b>		47.8	0.9

<b>Brightwell (1931)</b>			
		vote	share
<b>Campbell J.</b>	LD	680	63.4
Randolph M. Ms.	Con	392	36.6
<b>Turnout</b>		56.3	26.9

<b>Chalgrove (3464)<sup>2</sup></b>			
		vote	share
<b>Turner D.</b>	LD	913	50.2
<b>Heath-Whyte C. Ms.</b>	LD	764	-
Nixey A.*	Con	650	35.8
Haycraft R.	Con	501	-
Merritt C. Ms.	Lab	255	14.0
<b>Turnout</b>		50.6	14.5

<b>Chinnor (4287)<sup>2</sup></b>			
		vote	share
<b>Whelehan P.*</b>	Ind	1,197	72.3
<b>Nixey D.</b>	Ind	985	-
Turney D.	Con	458	27.7
<b>Turnout</b>		36.9	44.7

<b>Cholsey (3023)<sup>2</sup></b>			
		vote	share
<b>Morgan J. Ms.*</b>	LD	736	61.0
<b>Morgan R.</b>	LD	606	-
Rothwell G.	Con	470	39.0
Lloyd R.	Con	454	-
<b>Turnout</b>		42.3	22.1

<b>Clifton Hampden (2218)</b>			
		vote	share
<b>Stimson J.</b>	LD	525	57.5
Seccombe J.	Con	388	42.5
<b>Turnout</b>		41.8	15.0

<b>Crowmarsh (2269)</b>			
		vote	share
<b>Griffin J.</b>	LD	604	49.8
Brockway R.	Con	468	38.6
Smith S.	Lab	141	11.6
<b>Turnout</b>		53.6	11.2

<b>Didcot North (5655)<sup>2</sup></b>			
		vote	share
<b>Joslin T.</b>	Lab	1,130	47.2
<b>Hards N.</b>	Lab	1,084	-
Flood J.*	Con	771	32.2
Horn P.*	Con	760	-
Jennings C.	LD	494	20.6
Worgan A.	LD	427	-
<b>Turnout</b>		44.2	15.0

<b>Didcot Northbourne (2986)</b>			
		vote	share
<b>McNulty M.*</b>	Lab	720	72.1
Lang J. Ms.	LD	152	15.2
Elias L.	Con	126	12.6
<b>Turnout</b>		33.6	56.9

<b>Didcot South (4637)<sup>3</sup></b>			
		vote	share
<b>Gill R.*</b>	Lab	1,238	45.6
<b>Hitchcock L.*</b>	Lab	1,182	-
<b>Hards E. Ms.</b>	Lab	1,004	-
Excell F.	Ind	801	29.5
Flood M. Ms.	Con	400	14.7
Nye D.	Con	329	-
Nye M. Ms.	Con	285	-
Jones A.	LD	273	10.1
Parry J. Ms.	LD	249	-
Lang V.	LD	191	-
<b>Turnout</b>		43.6	16.1

<b>Dorchester (1752)</b>			
		vote	share
<b>Hill E. Ms.</b>	Con	556	52.3
<b>Barnett I. Ms.*</b>	LD	507	47.7
<b>Turnout</b>		61.1	4.6

<b>Forest Hill (1569)</b>			
		vote	share
<b>Purse P. Ms.</b>	LD	504	69.6
Lord J.	Con	220	30.4
<b>Turnout</b>		46.9	39.2

<b>Garsington (1846)</b>			
		vote	share
<b>Townsend B.*</b>	Ind	474	59.5
Fitchett F. Ms.	Ind	322	40.5
<b>Turnout</b>		45.3	19.1

<b>Goring (3000)<sup>2</sup></b>			
		vote	share
<b>Ducker E. Ms.*</b>	Con	787	47.2
<b>Foot D.</b>	LD	662	39.7
Edmonds L.*	Con	618	-
Laugher C. Ms.	LD	579	-
Hart C.	Lab	220	13.2
Wadey C. Ms.	Lab	172	-
<b>Turnout</b>		52.9	7.5

<b>Goring Heath (1726)</b>			
		vote	share
<b>Whitfield D. Ms.*</b>	Con	493	51.1
Butterworth H.	LD	472	48.9
<b>Turnout</b>		56.1	2.2

<b>Great Milton (1798)</b>			
		vote	share
<b>Neal C.*</b>	LD	652	77.5
Nimmo-Smith D.	Con	189	22.5
<b>Turnout</b>		47.0	55.1

<b>Hagbourne (2404)</b>			
		vote	share
<b>Greene P.</b>	Con	597	44.8
Gray M.	LD	494	37.0
McCormack B.	Lab	243	18.2
<b>Turnout</b>		55.9	7.7

<b>Henley (8379)<sup>5</sup></b>			
		vote	share
<b>Voss J. Ms.</b>	Ind Res	1,579	30.4
<b>Arllett K.*</b>	Ind Res	1,543	-
<b>Day J. Ms.*</b>	Con	1,520	29.3
<b>Lane A.*</b>	Con	1,390	-
<b>Owen J. Ms.</b>	LD	1,345	25.9
Facy E.	Con	1,251	-
Aird P. Ms.	LD	1,093	-
Howard J.	Con	1,007	-
Turner J.	Con	956	-
Luff P.	LD	886	-
Aird D.	LD	836	-
Mulcahy P. Ms.	LD	771	-
Davey C. Ms.	Lab	743	14.3
Matthews S.	Lab	686	-
<b>Turnout</b>		44.6	1.1

<b>Horspath (1081)</b>			
		vote	share
<b>Bullock S. Ms.</b>	LD	506	66.0
Bowley N.*	Ind	261	34.0
<b>Turnout</b>		72.2	31.9

<b>Kidmore End (1370)</b>			
		vote	share
<b>Griffiths D.*</b>	Con	325	60.4
Clayson R.	LD	213	39.6
<b>Turnout</b>		39.7	20.8

<b>Nettlebed (1849)</b>			
		vote	share
<b>Busbcome P. Ms.</b>	Con	560	64.1
Harris P.	Ind	174	19.9
Holmes-Smith R.	LD	139	15.9
<b>Turnout</b>		47.8	44.2

<b>Rotherfield Peppard (1549)</b>			
		vote	share
<b>Thomson J.</b>	Con	430	62.0
Owen M.	LD	263	38.0
<b>Turnout</b>		45.1	24.1

<b>Shiplake (1989)</b>			
		vote	share
<b>Hibbert E.*</b>	Ind	507	61.1
Rudge E.	Con	323	38.9
<b>Turnout</b>		44.4	22.2

<b>Sonning Common (2950)<sup>2</sup></b>			
		vote	share
<b>Hargreaves S.</b>	Lab	619	35.1
<b>Hortop J.</b>	LD	602	34.1
Badcock A.*	Con	545	30.9
Viney C. Ms.	Con	499	-
<b>Turnout</b>		46.5	1.0

<b>Thame North (4279)<sup>2</sup></b>			
		vote	share
<b>Le Mesurier T.</b>	Lab	664	42.9
<b>Gleeson P.</b>	Lab	615	-
Smith D. Ms.*	Con	557	36.0
Bundock P. Ms.	Con	457	-
Winward L. Ms.	LD	325	21.0
<b>Turnout</b>		34.6	6.9

<b>Thame South (4172)<sup>2</sup></b>			
		vote	share
<b>Gunn A.</b>	Lab	824	60.4
<b>Stiles M. Ms.</b>	Lab	800	-
Dobie B. Ms.*	Con	540	39.6
Peddell J.*	Con	535	-
<b>Turnout</b>		35.5	20.8

<b>Wallingford (5093)<sup>3</sup></b>			
		vote	share
<b>Strange D.*</b>	LD	1,314	48.7
<b>Atkins E. Ms.</b>	LD	1,230	-
<b>Hayton A.</b>	LD	929	-
Beckwith I.	Lab	923	34.2
Godwin S. Ms.	Lab	544	-
Bucklow C. Ms.	Lab	523	-
Cripps D. Ms.	Con	460	17.1
O'Loughlin P.	Con	446	-
Pattison W.	Con	391	-
<b>Turnout</b>		47.5	14.5

<b>Watlington (2127)</b>			
		vote	share
<b>Horton T.*</b>	LD	687	67.4
Sloan D.	Con	332	32.6
<b>Turnout</b>		48.2	34.8

**Wheatley (3713)<sup>2</sup>**

		vote	share
Thomas L. Ms.	LD	726	41.1
Beech J.	LD	573	-
Fonge B.*	Con	537	30.4
Pigott A. Ms.	Con	512	-
Ormston M.	Lab	503	28.5
<b>Turnout</b>		43.7	10.7

**Woodcote (1868)**

		vote	share
Peirce R.*	LD	668	69.9
McAdden J.	Con	288	30.1
<b>Turnout</b>		51.2	39.7

**South Oxfordshire - 1999****Aston Rowant (2112)**

		vote	share
Mann I.	Con	460	61.3
Husband S.	LD	291	38.7
<b>Turnout</b>		35.7	22.5

**Benson (3302)<sup>2</sup>**

		vote	share
Cooper S. Ms.*	LD	824	44.6
Bloomfield F.	Con	561	30.4
Merritt J.*	Lab	462	25.0
Frost N.	Con	445	-
Curl D.	LD	402	-
<b>Turnout</b>		45.3	14.2

**Berinsfield (1886)**

		vote	share
Hiles M.	LD	438	64.2
Hall K.*	Lab	219	32.1
Quinton C.	Con	25	3.7
<b>Turnout</b>		36.2	32.1

**Brightwell (1974)**

		vote	share
Greene M. Ms.	Con	445	46.5
Kane P. Ms.	LD	427	44.6
Giaretta D.	Lab	86	9.0
<b>Turnout</b>		48.8	1.9

**Chalgrove (3490)<sup>2</sup>**

		vote	share
Turner D.*	LD	710	55.3
Heath-Whyte C. Ms.*	LD	676	-
Nixey A.	Con	450	35.0
Pritchard P. Ms.	Con	397	-
Merritt C. Ms.	Lab	125	9.7
<b>Turnout</b>		36.2	20.2

**Chinnor (4524)<sup>2</sup>**

		vote	share
Wright S.	Ind	663	42.2
Nixey D.*	Ind	631	-
Cooper S. Ms.	Con	544	34.6
Owens B.	Con	483	-
Smith S.	Lab	205	13.0
Heath-Whyte R.	LD	159	10.1
<b>Turnout</b>		31.3	7.6

**Cholsey (3009)<sup>2</sup>**

		vote	share
Morgan J. Ms.*	LD	585	54.3
Morgan R.*	LD	506	-
Hayward A.	Con	493	45.7
Bodeker P. Ms.	Con	471	-
<b>Turnout</b>		37.1	8.5

**Clifton Hampden (2294)**

		vote	share
Stimson J.*	LD	416	56.7
King N. Ms.	Con	318	43.3
<b>Turnout</b>		32.1	13.4

**Crowmarsh (2359)**

		vote	share
Griffin J.*	LD	461	47.4
Slatter P. Ms.	Con	421	43.3
Moseley B.	Lab	90	9.3
<b>Turnout</b>		41.4	4.1

**Didcot North (8423)<sup>2</sup>**

		vote	share
Hards N.*	Lab	1,024	42.3
Brown S. Ms.	Lab	1,014	-
Flood J.	Con	934	38.5
Stenton S.	Con	839	-
Jones A.	LD	465	19.2
Jennings C.	LD	456	-
<b>Turnout</b>		29.4	3.7

**Didcot Northbourne (3029)**

		vote	share
McNulty M.*	Lab	419	65.6
Elias L.	Con	136	21.3
Thacker L.	LD	84	13.1
<b>Turnout</b>		21.3	44.3

**Didcot South (4906)<sup>3</sup>**

		vote	share
Hitchcock L.*	Lab	897	50.1
Hards E. Ms.*	Lab	885	-
Swainston R.	Lab	852	-
Ritchie G. Ms.	Con	516	28.8
Dolan C.	Con	499	-
Thompson A.	Con	476	-
Parry J. Ms.	LD	226	12.6
Jennings M. Ms.	LD	199	-
Lang J. Ms.	LD	171	-
Brooks-Saxl D.	Green	150	8.4
<b>Turnout</b>		35.0	21.3

**Dorchester (1794)**

		vote	share
Cotton J.	Con	493	55.0
Robinson D.	LD	404	45.0
<b>Turnout</b>		51.0	9.9

**Forest Hill (1573)**

		vote	share
Purse P. Ms.*	LD	469	69.4
Walsh J.	Con	207	30.6
<b>Turnout</b>		43.3	38.8

**Garsington (1864)**

		vote	share
Tomline A. Ms.	LD	384	49.1
Townsend B.*	Ind	342	43.7
Goodey J.	Ind	56	7.2
<b>Turnout</b>		42.2	5.4

**Goring (3010)<sup>2</sup>**

		vote	share
Ducker E. Ms.*	Con	764	60.2
Harding K.	Con	673	-
Jackson A. Ms.	LD	505	39.8
Martyn-Johns M. Ms.	LD	497	-
<b>Turnout</b>		41.3	20.4

**Goring Heath (1792)**

		vote	share
Whitfield D. Ms.*	Con	537	64.8
Butterworth H.	LD	292	35.2
<b>Turnout</b>		46.3	29.6

**Great Milton (1881)**

		vote	share
Neal C.*	LD	369	53.2
Boyle R.	Con	242	34.9
Morris A.	Green	82	11.8
<b>Turnout</b>		36.9	18.3

**Hagbourne (2562)**

		vote	share
Greene P.*	Con	605	47.7
Worgan A.	LD	399	31.5
Atkinson W.	Lab	141	11.1
Slade J.	Ind	123	9.7
<b>Turnout</b>		49.6	16.2

**Henley (8449)<sup>5</sup>**

		vote	share
Lane A.*	Con	1,687	37.1
Spencer-Jones N.	Con	1,502	-
Stride S.	Con	1,431	-
McInnes M.	Con	1,347	-
Harrison B.	Con	1,293	-
Buckett T.	Ind	1,217	26.7
Owen J. Ms.*	LD	1,122	24.7
Mulcahy P. Ms.	LD	777	-
Brown M.	LD	725	-
Owen M.	LD	689	-
Browne D. Ms.	Ind	674	-
Follett A.	Ind	657	-
Mannings A.	LD	616	-
Russell-Swinnerton I.	Lab	525	11.5
Lock E.	Lab	463	-
<b>Turnout</b>		40.9	10.3

**Horspath (1083)**

		vote	share
Edwards S. Ms.	LD	0	0.0
<b>Turnout</b>		0.0	0.0

**Kidmore End (1474)**

		vote	share
Kemp H.	Con	380	76.6
Vincent D.	LD	116	23.4
<b>Turnout</b>		34.0	53.2

**Nettlebed (1937)**

		vote	share
Sloan D.	Con	599	70.7
Snell N.	LD	248	29.3
<b>Turnout</b>		44.0	41.4

**Rotherfield Peppard (1618)**

		vote	share
Thomson J.*	Con	405	64.4
Snell B. Ms.	LD	224	35.6
<b>Turnout</b>		39.5	28.8

**Shiplake (2182)**

		vote	share
Rudge E.	Con	393	45.0
George K.	Ind	248	28.4
Ransom E. Ms.	LD	151	17.3
Matthews J. Ms.	Lab	82	9.4
<b>Turnout</b>		40.2	16.6

**Sonning Common (2962)<sup>2</sup>**

		vote	share
Naish D.	Con	574	34.7
Davies A.	LD	540	32.6
Viney C. Ms.	Con	492	-
McArthur K. Ms.	Lab	335	20.2
Carlisle A.	Green	206	12.4
<b>Turnout</b>		41.2	2.1

**Thame North (4446)<sup>2</sup>**

		vote	share
Brown D. Ms.	Con	496	37.8
Wilkinson D. Ms.	Con	491	-
Le Mesurier T.*	Lab	446	34.0
Gleeson P.*	Lab	402	-
Laver D.	LD	370	28.2
<b>Turnout</b>		28.2	3.8

Thame South (4216) <sup>2</sup>			
		vote	share
Midwinter A. Ms.	Ind	584	32.0
Stiles M. Ms.*	Lab	476	26.1
Jokumsen S. Ms.	Con	449	24.6
Welply P.	Con	435	-
Blyth P.	Lab	361	-
Cockayne P.	LD	314	17.2
<b>Turnout</b>		33.4	5.9

Wallingford (5033) <sup>3</sup>			
		vote	share
Strange D.*	LD	1,075	54.0
Phillips A. Ms.	LD	888	-
Hayton A.*	LD	872	-
Moor N.	Con	627	31.5
Dawe P. Ms.	Con	550	-
Cripps D. Ms.	Con	481	-
Talbot J.	Lab	287	14.4
Glasscock T.	Lab	266	-
<b>Turnout</b>		35.9	22.5

Watlington (2254)			
		vote	share
Horton T.*	LD	547	62.7
Beattie R.	Con	325	37.3
<b>Turnout</b>		39.1	25.5

Wheatley (4022) <sup>2</sup>			
		vote	share
Bell R.	LD	647	47.5
Beech J.*	LD	563	-
Fonge B.	Con	474	34.8
Minty D. Ms.	Con	458	-
Newdick M.	Lab	241	17.7
<b>Turnout</b>		32.7	12.7

Woodcote (1945)			
		vote	share
Peirce R.*	LD	433	68.9
Sanderson I.	Con	195	31.1
<b>Turnout</b>		32.6	37.9

## South Oxfordshire - 2003

Aston Rowant (1896)			
		vote	share
Brown D. Ms.*	Con	530	74.5
Savory C.	LD	105	14.8
Newell T.	Lab	76	10.7
<b>Turnout</b>		38.1	59.8

Benson (4141) <sup>2</sup>			
		vote	share
Cooper S. Ms.*	LD	862	52.1
Bloomfield F.*	Con	791	47.9
Booker P.	LD	787	-
Loughran P.	Con	554	-
<b>Turnout</b>		38.4	4.3

Berinsfield (4343) <sup>2</sup>			
		vote	share
Cotton J.*	Con	825	47.6
Cross P.	Con	764	-
Hiles M.*	LD	583	33.6
Heath-Whyte C. Ms.*	LD	490	-
Hall K.	Lab	325	18.8
Hall M.	Lab	229	-
<b>Turnout</b>		39.1	14.0

Brightwell (1983)			
		vote	share
Greene M. Ms.*	Con	521	56.9
Fishwick J. Ms.	LD	395	43.1
<b>Turnout</b>		46.0	13.8

Chalgrove (2194)			
		vote	share
Turner D.*	LD	510	60.6
Pritchard A. Ms.	Con	284	33.8
Collins P.	Lab	47	5.6
<b>Turnout</b>		38.4	26.9

Chiltern Woods (1896)			
		vote	share
Thomson J.*	Con	438	67.4
Chancellor F. Ms.	LD	212	32.6
<b>Turnout</b>		34.5	34.8

Chinnor (4555) <sup>2</sup>			
		vote	share
Cameron L. Ms.	Con	688	44.6
Haywood P. Ms.	Ind	523	33.9
Heaven D.	Con	513	-
Wright M.	Ind	509	-
Stanley E.	Ind	227	-
Marfleet J. Ms.	Lab	180	11.7
Cockayne P.	LD	151	9.8
<b>Turnout</b>		32.5	10.7

Cholsey & Wallingford South (4125) <sup>2</sup>			
		vote	share
Dawe P. Ms.	Con	727	52.0
Leadsom A. Ms.	Con	682	-
Morgan J. Ms.*	LD	671	48.0
Clyde J. Ms.	LD	628	-
<b>Turnout</b>		35.2	4.0

Crowmarsh (1802)			
		vote	share
Jennings M.	Con	402	53.7
Griffin J.*	LD	346	46.3
<b>Turnout</b>		41.7	7.5

Didcot All Saints (4058) <sup>2</sup>			
		vote	share
Flood J.	Con	552	34.8
Davidson S. Ms.	Ind	438	27.6
Thompson A.	Con	419	-
Fysh M.	Lab	391	24.7
Brown S. Ms.*	Lab	381	-
Beszant E. Ms.	LD	204	12.9
<b>Turnout</b>		31.9	7.2

Didcot Ladygrove (5535) <sup>3</sup>			
		vote	share
Service W.	Con	509	35.9
Daukes C.	Con	498	-
Harris M.	Con	478	-
Parry J. Ms.	LD	473	33.4
Jones A.	LD	468	-
Hards N.*	Lab	435	30.7
Worgan A.	LD	420	-
Giaretta P. Ms.	Lab	409	-
Atkinson W.	Lab	402	-
<b>Turnout</b>		26.1	2.5

Didcot Northbourne (4040) <sup>2</sup>			
		vote	share
McNulty M.*	Lab	416	48.8
Giaretta D.	Lab	388	-
Jeffreys R.	Con	265	31.1
Hawlor R.	Con	261	-
Jennings M. Ms.	LD	172	20.2
<b>Turnout</b>		21.0	17.7

Didcot Park (4349) <sup>2</sup>			
		vote	share
Davies M. Ms.	Lab	665	44.0
Hards E. Ms.*	Lab	630	-
Flood M. Ms.	Con	480	31.8
Elais L.	Con	442	-
Thacker L.	LD	197	13.0
Brooks-Saxal D.	Green	169	11.2
<b>Turnout</b>		30.9	12.2

Forest Hill & Holton (2337)			
		vote	share
Purse P. Ms.*	LD	585	66.5
Walsh J.	Con	295	33.5
<b>Turnout</b>		37.8	33.0

Garsington (2187)			
		vote	share
Tomline A. Ms.*	LD	471	60.4
Belcher M.	Con	309	39.6
<b>Turnout</b>		35.7	20.8

Goring (4537) <sup>2</sup>			
		vote	share
Ducker E. Ms.*	Con	1,222	56.3
Slatter P. Ms.	Con	1,117	-
Harrison A. Ms.	LD	640	29.5
Wardle C. Ms.	LD	590	-
Norman J.	Green	309	14.2
<b>Turnout</b>		45.3	26.8

Great Milton (2050)			
		vote	share
Nowell-Smith J.	LD	419	46.5
Nixey F.	Con	333	36.9
Newdick M.	Lab	92	10.2
Morris A.	Green	58	6.4
<b>Turnout</b>		44.2	9.5

Hagbourne (2094)			
		vote	share
Greene P.*	Con	662	68.4
Smith J. Ms.	LD	203	21.0
Goff J.	Lab	103	10.6
<b>Turnout</b>		46.6	47.4

Henley North (4392) <sup>2</sup>			
		vote	share
Arlett K.	HenRG	779	46.3
Zakss G. Ms.	HenRG	710	-
Spencer-Jones N.*	Con	621	36.9
Harrison B.*	Con	563	-
Pinfield P.	LD	142	8.4
Carlisle A.	Green	142	8.4
<b>Turnout</b>		35.1	9.4

Henley South (4316) <sup>2</sup>			
		vote	share
Bucket T.	HenRG	895	49.2
Wood B.	HenRG	645	-
Rooke A.	Con	439	24.1
Lane A.*	Con	417	-
Snell N.	LD	339	18.6
Miles S. Ms.	Green	145	8.0
<b>Turnout</b>		35.2	25.1

Sandford (2085)			
		vote	share
Stimson J.*	LD	275	45.8
Tremain R.	Con	208	34.7
Atkinson W.	Lab	66	11.0
Scott D.	Green	51	8.5
<b>Turnout</b>		28.8	11.2

Shiplake (3841) <sup>2</sup>			
		vote	share
Rudge E.*	Con	973	74.2
Leonard M.	Con	945	-
Cooper E. Ms.	LD	339	25.8
Curl D.	LD	287	-
<b>Turnout</b>		35.6	48.3

Sonning Common (4261) <sup>2</sup>			
		vote	share
Naish D.*	Con	983	71.1
Kemp H.*	Con	908	-
Martyn-Johns M. Ms.	LD	399	28.9
Wardle P.	LD	335	-
<b>Turnout</b>		33.1	42.3

<b>Thame North (4350)<sup>2</sup></b>			
		<b>vote</b>	<b>share</b>
<b>Bretherton D.</b>	LD	526	43.2
<b>Welpy P.</b>	Con	471	38.6
Paul J. Ms.	LD	418	-
Carter N.	Con	416	-
Aitken E.	Lab	222	18.2
Chandler C.	Lab	201	-
<b>Turnout</b>		27.5	4.5
<b>Thame South (4306)<sup>2</sup></b>			
		<b>vote</b>	<b>share</b>
<b>Midwinter A. Ms.*</b>	Ind	825	40.6
<b>Dodds D.</b>	Con	642	31.6
Stiles M. Ms.*	Lab	566	27.8
Choudhury A. Ms.	Con	460	-
<b>Turnout</b>		33.7	9.0
<b>Wallingford North (4230)<sup>2</sup></b>			
		<b>vote</b>	<b>share</b>
<b>Strange D.*</b>	Ind	978	45.2
<b>Moor N.</b>	Con	607	28.0
Laurie N. Ms.	LD	581	26.8
Cohen J.	Con	363	-
<b>Turnout</b>		35.4	17.1
<b>Watlington (4162)<sup>2</sup></b>			
		<b>vote</b>	<b>share</b>
<b>Mann I.*</b>	Con	835	53.0
<b>Sloan D.*</b>	Con	803	-
Fleming J. Ms.	LD	741	47.0
Snell B. Ms.	LD	617	-
<b>Turnout</b>		40.0	6.0
<b>Wheatley (4245)<sup>2</sup></b>			
		<b>vote</b>	<b>share</b>
<b>Bell R.*</b>	LD	674	47.3
<b>Gray S. Ms.</b>	LD	638	-
Hamer J.	Con	566	39.7
Ludlow D. Ms.	Con	487	-
Andrews M.	Lab	184	12.9
Ferrett D.	Lab	155	-
<b>Turnout</b>		33.2	7.6
<b>Woodcote (1936)</b>			
		<b>vote</b>	<b>share</b>
<b>Quinton C.</b>	Con	553	58.1
Pierce R.*	LD	398	41.9
<b>Turnout</b>		49.3	16.3

## South Oxfordshire - 2007

<b>Aston Rowant (1897)</b>			
		<b>vote</b>	<b>share</b>
<b>Brown D. Ms.*</b>	Con	663	77.2
Lowry E.	LD	128	14.9
Newell T.	Lab	68	7.9
<b>Turnout</b>		45.4	62.3
<b>Benson (4158)<sup>2</sup></b>			
		<b>vote</b>	<b>share</b>
<b>Bloomfield F.*</b>	Con	920	48.3
<b>Cooper S. Ms.*</b>	LD	868	45.6
Davies S.	Con	835	-
Blenkinsop A. Ms.	LD	586	-
Wood A.	Lab	117	6.1
<b>Turnout</b>		42.3	2.7
<b>Berinsfield (4433)<sup>2</sup></b>			
		<b>vote</b>	<b>share</b>
<b>Cotton J.*</b>	Con	988	56.8
<b>Cross P.*</b>	Con	945	-
Stevenson M.	Green	318	18.3
Neail C.	LD	226	13.0
Fearneyhough B.	LD	210	-
Atkinson W.	Lab	208	12.0
<b>Turnout</b>		36.2	38.5

<b>Brightwell (1977)</b>			
		<b>vote</b>	<b>share</b>
<b>Collett C. Ms.</b>	Ind	522	54.3
Greene M. Ms.*	Con	440	45.7
<b>Turnout</b>		48.9	8.5
<b>Chalgrove (2199)</b>			
		<b>vote</b>	<b>share</b>
<b>Turner D.*</b>	LD	645	64.9
Pritchard A. Ms.	Con	317	31.9
Collins P.	Lab	32	3.2
<b>Turnout</b>		45.5	33.0
<b>Chiltern Woods (1898)</b>			
		<b>vote</b>	<b>share</b>
<b>Newland M.</b>	Con	523	70.0
Cooper A.	LD	115	15.4
Palmer-Stevens K. Ms.	Green	78	10.4
Cooper S.	Ind	31	4.1
<b>Turnout</b>		39.5	54.6
<b>Chinnor (4508)<sup>2</sup></b>			
		<b>vote</b>	<b>share</b>
<b>Hood C.</b>	Con	887	45.3
<b>Andrews G.</b>	Con	832	-
Haywood P.*	Ind	731	37.3
Wright M.	Ind	611	-
Marfleet J. Ms.	Lab	194	9.9
Paul J. Ms.	LD	147	7.5
<b>Turnout</b>		39.4	8.0
<b>Cholsey &amp; Wallingford South (4289)<sup>2</sup></b>			
		<b>vote</b>	<b>share</b>
<b>Aska F. Ms.</b>	Con	921	57.7
<b>Dawe P. Ms.*</b>	Con	900	-
Hayton A.	LD	676	42.3
Clyde J. Ms.	LD	671	-
<b>Turnout</b>		39.1	15.3
<b>Crowmarsh (1882)</b>			
		<b>vote</b>	<b>share</b>
<b>Odd N.</b>	Con	430	54.2
Griffin J.	LD	364	45.8
<b>Turnout</b>		42.2	8.3
<b>Didcot All Saints (4120)<sup>2</sup></b>			
		<b>vote</b>	<b>share</b>
<b>Flood J.*</b>	Con	809	51.8
<b>Daukes C.</b>	Con	791	-
Hards N.	Lab	434	27.8
Brown S. Ms.	Lab	391	-
Jones A.	LD	320	20.5
<b>Turnout</b>		35.5	24.0
<b>Didcot Ladygrove (5495)<sup>3</sup></b>			
		<b>vote</b>	<b>share</b>
<b>Harbour T.</b>	Con	934	51.0
<b>Service W.*</b>	Con	888	-
<b>Hawlor R.</b>	Con	857	-
Watkins D. Ms.	LD	618	33.7
Sutton A.	LD	610	-
Worgan A.	LD	546	-
Birchall A. Ms.	Lab	281	15.3
Atkins R.	Lab	259	-
<b>Turnout</b>		32.1	17.2
<b>Didcot Northbourne (3939)<sup>2</sup></b>			
		<b>vote</b>	<b>share</b>
<b>Murphy J. Ms.</b>	Con	430	36.8
<b>Elias L.</b>	Con	423	-
Giaretta D.*	Lab	408	34.9
Cooper B.	Lab	399	-
Jennings M. Ms.	LD	174	14.9
Such S. Ms.	Ind	156	13.4
Johns F.	Ind	122	-
<b>Turnout</b>		27.9	1.9

<b>Didcot Park (4347)<sup>2</sup></b>			
		<b>vote</b>	<b>share</b>
<b>Davies M. Ms.*</b>	Lab	669	41.0
<b>Turner M. Ms.</b>	Con	655	40.1
Thompson A.	Con	654	-
Hards E. Ms.*	Lab	604	-
Parry J. Ms.	LD	308	18.9
Jennings C.	LD	256	-
<b>Turnout</b>		36.9	0.9
<b>Forest Hill &amp; Holton (2168)</b>			
		<b>vote</b>	<b>share</b>
<b>Purse P. Ms.*</b>	LD	516	57.1
Walsh J.	Con	308	34.1
Mosteshar-Ghari P. Ms.	Green	80	8.8
<b>Turnout</b>		41.8	23.0
<b>Garsington (2070)</b>			
		<b>vote</b>	<b>share</b>
<b>Gillespie E. Ms.</b>	Con	486	48.9
Tomline A. Ms.*	LD	448	45.1
Curtis S.	Green	59	5.9
<b>Turnout</b>		48.3	3.8
<b>Goring (4601)<sup>2</sup></b>			
		<b>vote</b>	<b>share</b>
<b>Ducker E. Ms.*</b>	Con	1,445	54.1
<b>Slatter P. Ms.*</b>	Con	1,199	-
Wardle C. Ms.	LD	665	24.9
Norman J.	Green	559	20.9
<b>Turnout</b>		46.5	29.2
<b>Great Milton (2058)</b>			
		<b>vote</b>	<b>share</b>
<b>Nowell-Smith J.*</b>	LD	525	56.6
Fitchett G.	Con	403	43.4
<b>Turnout</b>		45.2	13.1
<b>Hagbourne (2156)</b>			
		<b>vote</b>	<b>share</b>
<b>Greene P.*</b>	Con	628	65.4
Morgan J. Ms.	LD	245	25.5
Goff J.	Lab	87	9.1
<b>Turnout</b>		44.9	39.9
<b>Henley North (4397)<sup>2</sup></b>			
		<b>vote</b>	<b>share</b>
<b>Bland J. Ms.</b>	Con	808	50.1
<b>Hillier L. Ms.</b>	Con	772	-
Zakss G. Ms.*	HenRG	582	36.1
Follett A.	HenRG	570	-
Mancey D.	LD	119	7.4
Fahey M.	Lab	103	6.4
<b>Turnout</b>		35.2	14.0
<b>Henley South (4334)<sup>2</sup></b>			
		<b>vote</b>	<b>share</b>
<b>Buckett T.*</b>	HenRG	738	34.2
<b>Myer R. Ms.</b>	Con	606	28.1
Wilson J.	Con	535	-
Wood B.*	HenRG	516	-
Arlett K.	Ind	380	17.6
Allison J.	LD	190	8.8
Findlay S. Ms.	Green	154	7.1
Hamilton R.	BNP	90	4.2
<b>Turnout</b>		38.9	6.1
<b>Sandford (2029)</b>			
		<b>vote</b>	<b>share</b>
<b>Tomlinson P. Ms.</b>	Con	373	48.6
Stimson J.*	LD	297	38.7
Scott D.	Green	98	12.8
<b>Turnout</b>		38.1	9.9
<b>Shiplake (3864)<sup>2</sup></b>			
		<b>vote</b>	<b>share</b>
<b>Leonard M.*</b>	Con	1,114	77.9
<b>Peasgood R.</b>	Con	1,054	-
Vincent D.	LD	316	22.1
<b>Turnout</b>		37.0	55.8

Sonning Common (4045) <sup>2</sup>			
		vote	share
Harrison P.	Con	1,280	73.4
Rooke A.	Con	1,053	-
Wardle P.	LD	463	26.6
<b>Turnout</b>		41.3	46.9

Thame North (4342) <sup>2</sup>			
		vote	share
Bretherton D.*	LD	700	43.8
Walker R.	Con	675	42.3
Welply P.*	Con	634	-
Matelot-Green J. Ms.	LD	633	-
Stiles M. Ms.	Lab	222	13.9
<b>Turnout</b>		45.9	1.6

Thame South (4288) <sup>2</sup>			
		vote	share
Dodds D.*	Con	868	35.5
Midwinter A. Ms.*	Ind	768	31.4
Laver D.	LD	579	23.7
Cockayne P.	LD	468	-
Aitken E.	Lab	232	9.5
<b>Turnout</b>		40.4	4.1

Wallingford North (4236) <sup>2</sup>			
		vote	share
Harris M.	Con	835	56.5
Lokhon I.	Con	822	-
Collins A.	LD	643	43.5
McDonald H. Ms.	LD	638	-
<b>Turnout</b>		37.7	13.0

Watlington (4231) <sup>2</sup>			
		vote	share
Paterson A. Ms.	Con	1,256	71.9
Mann I.*	Con	1,025	-
Jackson J. Ms.	LD	490	28.1
<b>Turnout</b>		39.4	43.9

Wheatley (4225) <sup>2</sup>			
		vote	share
Carr J. Ms.	Con	934	49.7
Hodgson A.	Con	839	-
Bell R.*	LD	710	37.8
Gray S. Ms.*	LD	659	-
Battye J.	Green	236	12.6
<b>Turnout</b>		42.6	11.9

Woodcote (1966)			
		vote	share
Peirce R.	LD	528	51.6
Quinton C.*	Con	495	48.4
<b>Turnout</b>		52.5	3.2

## South Oxfordshire - 2011

Aston Rowant (1886)			
		vote	share
Brown D. Ms.*	Con	793	78.2
Mancey D.	LD	221	21.8
<b>Turnout</b>		55.0	56.4

Benson (4306) <sup>2</sup>			
		vote	share
Bloomfield F.*	Con	1,053	44.1
Wallis R. Ms.	Con	857	-
Cooper S. Ms.*	LD	795	33.3
Levy G.	LD	336	-
Powell A. Ms.	Green	275	11.5
Wood A.	Lab	266	11.1
<b>Turnout</b>		44.8	10.8

Berinsfield (4500) <sup>2</sup>			
		vote	share
Cross P.*	Con	954	38.6
Hiles M.	Ind	790	31.9
Pullen R.	Con	786	-
Stevenson M.	Green	729	29.5
<b>Turnout</b>		45.2	6.6

Brightwell (2018)			
		vote	share
Collett C. Ms.*	Ind	681	64.1
Hanson M.	Con	300	28.2
Neighbour L. Ms.	Lab	81	7.6
<b>Turnout</b>		53.2	35.9

Chalgrove (2222)			
		vote	share
Turner D.*	LD	729	61.6
Fowler C. Ms.	Con	375	31.7
Collins P.	Lab	80	6.8
<b>Turnout</b>		53.3	29.9

Chiltern Woods (1830)			
		vote	share
Nimmo-Smith J. Ms.	Con	715	73.9
Davies A.	LD	141	14.6
Treacher V. Ms.	Lab	112	11.6
<b>Turnout</b>		53.7	59.3

Chinnor (4614) <sup>2</sup>			
		vote	share
Hood C.*	Con	1,054	49.7
Andrews G.*	Con	1,026	-
Haywood P.	Ind	740	34.9
Wright M.	Ind	737	-
Stone S.	Lab	327	15.4
<b>Turnout</b>		46.5	14.8

Cholsey & Wallingford South (4349) <sup>2</sup>			
		vote	share
Gray M.	Ind	1,229	47.8
Dawe P. Ms.*	Con	883	34.3
Aska F. Ms.*	Con	838	-
Winters M. Ms.	Lab	459	17.9
Moody J.	Lab	229	-
<b>Turnout</b>		50.6	13.5

Crowmarsh (1793)			
		vote	share
Crabbe K. Ms.	Con	501	55.4
Griffin J.	LD	403	44.6
<b>Turnout</b>		51.6	10.8

Didcot All Saints (4098) <sup>2</sup>			
		vote	share
Joslin T.	Lab	647	42.7
Turner M. Ms.*	Con	642	42.4
Murphy J. Ms.*	Con	635	-
Hands N.	Lab	597	-
Jones A.	LD	226	14.9
Loder J.	LD	185	-
<b>Turnout</b>		37.5	0.3

Didcot Ladygrove (5755) <sup>3</sup>			
		vote	share
Harbour T.*	Con	1,106	39.2
Service W.*	Con	1,060	-
Harris N.	Ind	948	33.6
Hawlor R.*	Con	903	-
Atkinson B.	Lab	529	18.7
Williams N. Ms.	Lab	506	-
Bulman R.	Lab	408	-
Williams P.	UKIP	242	8.6
<b>Turnout</b>		39.8	5.6

Didcot Northbourne (4025) <sup>2</sup>			
		vote	share
Cooper B.	Lab	504	29.0
Connel S.	Con	458	26.3
Wilgrove S.	Lab	442	-
Rouane D.	LD	429	24.7
Hayward P.	Con	428	-
Such S. Ms.	Ind	348	20.0
<b>Turnout</b>		36.6	2.6

Didcot Park (4333) <sup>2</sup>			
		vote	share
Davies M. Ms.*	Lab	769	45.5
Hards E. Ms.	Lab	730	-
Harrison C.	Con	668	39.5
Thompson A.	Con	640	-
Parry J. Ms.	LD	253	15.0
Worgan T.	LD	180	-
<b>Turnout</b>		40.2	6.0

Forest Hill & Holton (2160)			
		vote	share
Purse P. Ms.*	LD	621	61.5
Camps-Walsh G. Ms.	Con	389	38.5
<b>Turnout</b>		48.1	23.0

Garsington (2070)			
		vote	share
Gillespie E. Ms.*	Con	639	65.9
Jackson J. Ms.	LD	331	34.1
<b>Turnout</b>		48.4	31.8

Goring (4591) <sup>2</sup>			
		vote	share
Ducker E. Ms.*	Con	1,447	44.4
Slatter P. Ms.*	Con	1,199	-
Dragonetti P.	Green	866	26.6
Wardle C. Ms.	LD	552	16.9
Barefield F. Ms.	Lab	394	12.1
<b>Turnout</b>		55.9	17.8

Great Milton (2122)			
		vote	share
Harrod S.	Con	641	60.3
Court W. Ms.	LD	422	39.7
<b>Turnout</b>		51.1	20.6

Hagbourne (2177)			
		vote	share
Docherty L.	Con	831	73.7
Lane A. Ms.	Lab	296	26.3
<b>Turnout</b>		52.7	47.5

Henley North (4392) <sup>2</sup>			
		vote	share
Hodgkin E. Ms.	HenRG	923	34.5
Bland J. Ms.*	Con	801	29.9
Hillier L. Ms.*	Con	789	-
Akehurst M.	Ind	696	26.0
Allison J.	LD	139	5.2
Hendry N.	LD	123	-
Holland P.	Lab	116	4.3
<b>Turnout</b>		43.0	4.6

Henley South (4638) <sup>2</sup>			
		vote	share
Wood J. Ms.	HenRG	926	32.6
Hall W.	Con	723	25.4
Arlett K.	Ind	710	25.0
Silvester D.	Con	670	-
Dunker A.	LD	274	9.6
Wood B.	LD	253	-
Goodwin M. Ms.	Lab	208	7.3
<b>Turnout</b>		45.2	7.1

**Sandford (1919)**

		<b>vote</b>	<b>share</b>
<b>Cotton J.*</b>	Con	424	47.7
Stimson J.	Ind	248	27.9
Atkinson W.	Lab	216	24.3
<b>Turnout</b>		47.1	19.8

**Shiplake (3788)<sup>2</sup>**

		<b>vote</b>	<b>share</b>
<b>Leonard M.*</b>	Con	1,371	67.3
<b>Simister R.</b>	Con	1,176	-
Wardle P.	LD	345	16.9
Matthews J. Ms.	Lab	321	15.8
<b>Turnout</b>		49.8	50.4

**Sonning Common (4362)<sup>2</sup>**

		<b>vote</b>	<b>share</b>
<b>Harrison P.*</b>	Con	1,461	52.2
<b>Rooke A.*</b>	Con	1,259	-
Carlisle A.	Green	852	30.4
Winchester D.	Lab	486	17.4
<b>Turnout</b>		51.7	21.8

**Thame North (4429)<sup>2</sup>**

		<b>vote</b>	<b>share</b>
<b>Weply M.</b>	Con	1,075	54.5
<b>Bretherton D.*</b>	LD	898	45.5
Matelot Green J. Ms.	LD	800	-
<b>Turnout</b>		42.2	9.0

**Thame South (4546)<sup>2</sup>**

		<b>vote</b>	<b>share</b>
<b>Dodds D.*</b>	Con	1,065	32.3
<b>Midwinter A. Ms.*</b>	Ind	916	27.8
Stiles M. Ms.	Lab	892	27.1
Laver D.	LD	422	12.8
Barker P.	LD	313	-
<b>Turnout</b>		50.0	4.5

**Wallingford North (4571)<sup>2</sup>**

		<b>vote</b>	<b>share</b>
<b>Harris M.*</b>	Con	854	42.9
<b>Lokhon I.*</b>	Con	810	-
Harrison C.	Ind	643	32.3
Kneeshaw G.	Lab	493	24.8
Ruecroft G.	Lab	406	-
<b>Turnout</b>		40.6	10.6

**Watlington (4190)<sup>2</sup>**

		<b>vote</b>	<b>share</b>
<b>Fairbairn</b>			
<b>Badcock A. Ms.</b>	Con	1,351	60.0
<b>Paterson A. Ms.*</b>	Con	1,328	-
Hancock N.	LD	536	23.8
Merritt J.	Lab	366	16.2
<b>Turnout</b>		51.1	36.2

**Wheatley (4316)<sup>2</sup>**

		<b>vote</b>	<b>share</b>
<b>Carr J. Ms.*</b>	Con	976	56.0
<b>Bell R.</b>	LD	766	44.0
Walsh J.	Con	724	-
Harris H. Ms.	LD	694	-
<b>Turnout</b>		43.2	12.1

**Woodcote (1905)**

		<b>vote</b>	<b>share</b>
<b>Quinton C.</b>	Con	703	63.8
Pierce R.	LD	304	27.6
Holland A. Ms.	Lab	95	8.6
<b>Turnout</b>		58.5	36.2

