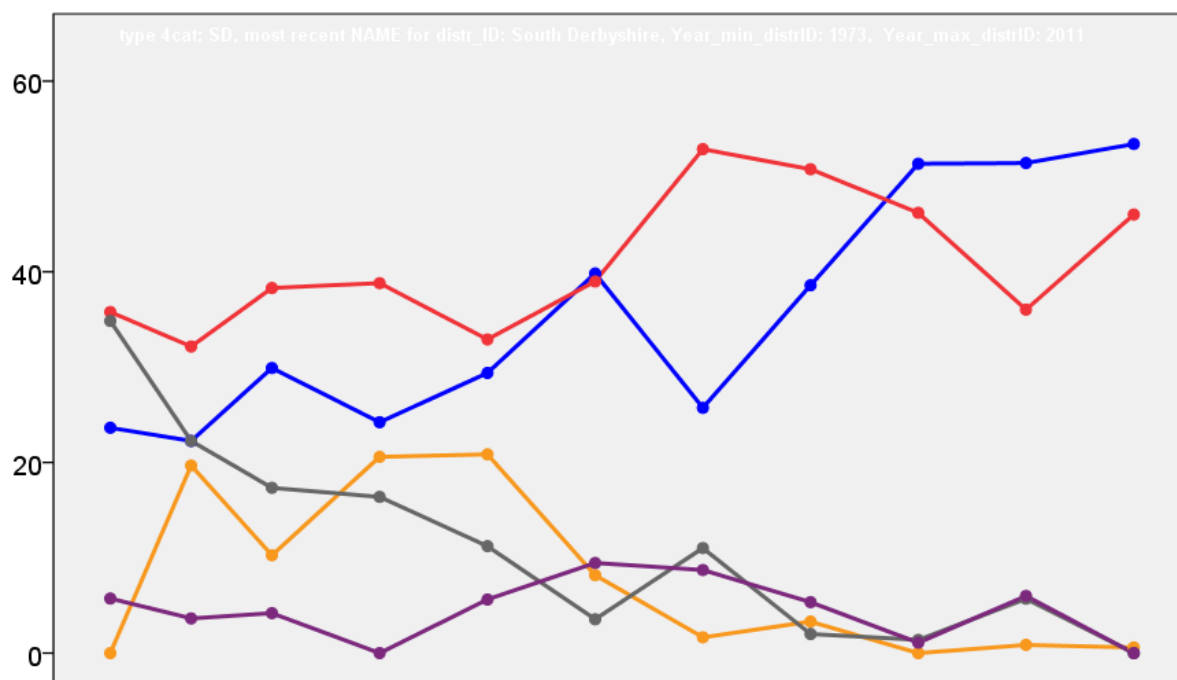


# South Derbyshire District Council Election Results 1973-2011



Colin Rallings and Michael Thrasher  
The Elections Centre  
Plymouth University

The information contained in this report has been obtained from a number of sources. Election results from the immediate post-reorganisation period were painstakingly collected by Alan Willis largely, although not exclusively, from local newspaper reports. From the mid-1980s onwards the results have been obtained from each local authority by the Elections Centre. The data are stored in a database designed by Lawrence Ware and maintained by Brian Cheal and others at Plymouth University. Despite our best efforts some information remains elusive whilst we accept that some errors are likely to remain. Notice of any mistakes should be sent to [elections@plymouth.ac.uk](mailto:elections@plymouth.ac.uk). The results sequence can be kept up to date by purchasing copies of the annual Local Elections Handbook, details of which can be obtained by contacting the email address above.

Front cover: the graph shows the distribution of percentage vote shares over the period covered by the results. The lines reflect the colours traditionally used by the three main parties. The grey line is the share obtained by Independent candidates while the purple line groups together the vote shares for all other parties.

Rear cover: the top graph shows the percentage share of council seats for the main parties as well as those won by Independents and other parties. The lines take account of any by-election changes (but not those resulting from elected councillors switching party allegiance) as well as the transfers of seats during the main round of local election.

The lower graph shows for each main round of local elections the overall percentage turnout (solid line), the percentage of women candidates standing at (dotted line) and the percentage of women among those elected (hashed line).

## South Derbyshire - 1973

### No. 1 (Swadlincote: Church Gresley) (3674)<sup>3</sup>

		vote	share
Heape W.	Lab	0	-
Roberts H.	Lab	0	-
White J.	Lab	0	0.0
<b>Turnout</b>		0.0	0.0

### No. 11 (Hatton) (1649)

		vote	share
Hanbury P.	Ind	0	0.0
<b>Turnout</b>		0.0	0.0

### No. 12 (Hilton) (1136)

		vote	share
Holland P.	Ind	0	0.0
<b>Turnout</b>		0.0	0.0

### No. 13 (Burnaston) (1176)

		vote	share
Mottershead H.	Con	404	62.7
Severn C.	Ind	240	37.3
<b>Turnout</b>		54.8	25.5

### No. 14 (Aston-On-Trent & Shardlow) (2165)<sup>2</sup>

		vote	share
Chamberlain E.	Ind	838	62.8
Robbins M. Ms.	Ind	773	-
Lythgoe J. Ms.	Lab	496	37.2
<b>Turnout</b>		61.6	25.6

### No. 15 (Melbourne) (3530)<sup>3</sup>

		vote	share
Parkinson J.	Ind	750	68.2
Bentley D. Ms.	Ind	705	-
Morgan-Owen J.	Ind	683	-
Curzon D.	Lab	349	31.8
Harrison M.	Lab	310	-
<b>Turnout</b>		31.1	36.5

### No. 2 (Swadlincote: Stanton Andnewhall) (6805)<sup>5</sup>

		vote	share
Dunn W.	Lab	0	-
Taylor J.	Lab	0	0.0
Mercer R.	Lab	0	-
Holmes G.	Lab	0	-
Hough A.	Lab	0	-
<b>Turnout</b>		0.0	0.0

### No. 3 (Swadlincote: Swadlincote) (5162)<sup>4</sup>

		vote	share
Moulson J.	Lab	1,497	73.2
Nutt R.	Lab	1,437	-
Miller J.	Lab	1,395	-
Flowers W.	Lab	1,293	-
Muskette A. Ms.	Con	548	26.8
Handley G.	Con	520	-
Handley R. Ms.	Con	489	-
<b>Turnout</b>		39.6	46.4

### No. 4 (Linton) (2958)<sup>2</sup>

		vote	share
Dennis F.	Lab	911	49.8
Valentine B.	Lab	768	-
Bates W.	Ind	488	26.7
George J.	Ind Con	430	23.5
Dolman M.	Ind Con	274	-
Chapman G.	Ind	115	-
<b>Turnout</b>		61.8	23.1

### No. 5 (Overseal) (3662)<sup>3</sup>

		vote	share
Jackson C.	Ind	1,133	53.6
Varnham J.	Ind	943	-
Richardson P.	Ind	856	-
Sutton T.	Lab	505	23.9
Thompson L.	Ind Con	477	22.6
Gough G.	Lab	440	-
Lord H.	Ind	402	-
Beecroft J.	Lab	396	-
<b>Turnout</b>		57.8	29.7

### No. 6 (Hartshorne & Woodville) (4731)<sup>4</sup>

		vote	share
Dytham R.	Lab	1,182	48.5
Canner C.	Lab	1,011	-
Oakley E. Ms.	Lab	933	-
Thompson C.	Lab	916	-
Orme J.	Con	743	30.5
Harvey A.	Con	681	-
Adam D.	Con	557	-
Waldron A. Ms.	Ind	514	21.1
<b>Turnout</b>		51.6	18.0

### No. 7 (Repton & Bretby) (3103)<sup>2</sup>

		vote	share
Bentley I. Ms.	Con	1,203	74.0
Harpur-Crewe C.	Con	1,136	-
Thomasson M. Ms.	Lab	422	26.0
Outhwaite J. Ms.	Lab	418	-
<b>Turnout</b>		52.4	48.1

### No. 8 (Findern) (940)

		vote	share
Stubbs J.	Ind	402	88.0
Mead G.	Lab	55	12.0
<b>Turnout</b>		48.6	75.9

### No. 9 (Etwell) (2214)<sup>2</sup>

		vote	share
Clarke M.	Ind	747	58.6
Pelly R.	Ind	736	-
Jonathan C. Ms.	Con	527	41.4
<b>Turnout</b>		57.5	17.3

### Willington (1565)

		vote	share
England E.	Con	315	56.1
Oakey A.	Lab	246	43.9
<b>Turnout</b>		35.8	12.3

## South Derbyshire - 1976

### No. 1 (Swadlincote: Church Gresley) (4031)<sup>3</sup>

		vote	share
Lacey M.	Lib	937	34.5
Heape W.*	Lab	799	29.4
Ratcliffe J.	Lab	579	-
Bates C.	Ind	525	19.3
White J.*	Lab	489	-
Topliss M. Ms.	Con	456	16.8
Corten F.	Ind	264	-
<b>Turnout</b>		44.2	5.1

### No. 11 (Hatton) (1615)

		vote	share
Hanbury P.*	Ind	0	0.0
<b>Turnout</b>		0.0	0.0

### No. 12 (Hilton) (1244)

		vote	share
Holland P.*	Ind	0	0.0
<b>Turnout</b>		0.0	0.0

### No. 13 (Burnaston) (1234)

		vote	share
Mottershead C.*	Con	0	0.0
<b>Turnout</b>		0.0	0.0

### No. 14 (Aston-On-Trent & Shardlow) (2339)<sup>2</sup>

		vote	share
Clifton J.	Con	913	48.4
Robbins S.*	Con	775	-
Lythgoe W.	Lab	379	20.1
Turner T.	Lib	378	20.0
Mitchell A. Ms.	Ind	217	11.5
<b>Turnout</b>		65.1	28.3

### No. 15 (Melbourne) (4144)<sup>3</sup>

		vote	share
Parkinson J.*	Ind	1,247	77.8
Knowles H.	Ind	1,184	-
Morgan-Owen J.*	Ind	1,097	-
Brookes J.	Lab	356	22.2
Martin M.	Lab	313	-
<b>Turnout</b>		41.9	55.6

### No. 2 (Swadlincote: Stanton Andnewhall) (6837)<sup>5</sup>

		vote	share
Holmes G.*	Lab	1,371	58.4
Hough A.*	Lab	1,222	-
Taylor J.	Lab	1,158	-
Dunn W.*	Lab	1,114	-
Mead G.	Lab	1,061	-
Blackman T.	Lib	978	41.6
<b>Turnout</b>		32.5	16.7

### No. 3 (Swadlincote: Swadlincote) (5311)<sup>4</sup>

		vote	share
Martin B.	Lib	1,164	53.1
Martin M. Ms.	Lib	1,057	-
Nutt R.*	Lab	1,027	46.9
Moulson J.*	Lab	1,004	-
Wilkins P.	Lab	906	-
Flowers W.*	Lab	868	-
<b>Turnout</b>		40.1	6.3

### No. 4 (Linton) (3150)<sup>2</sup>

		vote	share
Oakden J.	Ind	924	47.1
Valentine B.*	Lab	637	32.5
Jackson A.	Lab	558	-
Bates W.	Ind	525	-
Clegg V.	Con	402	20.5
<b>Turnout</b>		54.7	14.6

### No. 5 (Overseal) (3748)<sup>3</sup>

		vote	share
Varnham J.*	Ind	1,066	65.5
Jackson C.*	Ind	981	-
Richardson P.*	Ind	920	-
Verey A.	Lab	561	34.5
Dennis F.	Lab	520	-
Fox G.	Lab	482	-
<b>Turnout</b>		48.8	31.0

### No. 6 (Hartshorne & Woodville) (4650)<sup>4</sup>

		vote	share
Dytham R.*	Lab	936	34.8
Harvey A.	Ind Con	766	28.5
Canner C.*	Lab	761	-
Oakey E. Ms.*	Lab	745	-
Canner R. Ms.	Ind Con	687	-
Thompson C.*	Lab	686	-
Adams D.	Ind Con	600	-
Harper I.	Ind Lab	587	21.8
Dennis B.	Ind Con	503	-
Chaplin E.	Lib	400	14.9
<b>Turnout</b>		42.4	6.3

**No. 7 (Repton & Bretby) (3137)<sup>2</sup>**

		vote	share
<b>Bentley I. Ms.*</b>	Con	1,524	81.0
<b>Harpur-Crewe C.*</b>	Con	1,440	-
Thomasson A.	Lab	358	19.0
Auckland A. Ms.	Lab	309	-
<b>Turnout</b>		60.2	62.0

**No. 8 (Findern) (972)**

		vote	share
<b>Beard A. Ms.</b>	Con	481	81.1
Kingston H. Ms.	Lab	112	18.9
<b>Turnout</b>		61.2	62.2

**No. 9 (Etwall) (2208)<sup>2</sup>**

		vote	share
<b>Evans H.</b>	Ind	705	54.9
<b>Clark M.*</b>	Ind	650	-
Turner S.	Con	579	45.1
<b>Turnout</b>		54.5	9.8

**Willington (1522)**

		vote	share
<b>England E.*</b>	Con	328	38.9
Taylor C.	Lib	284	33.7
Pearce H.	Lab	231	27.4
<b>Turnout</b>		55.8	5.2

**South Derbyshire - 1979****Aston (2834)<sup>2</sup>**

		vote	share
<b>Clifton J.</b>	Con	1,491	39.8
<b>Robbins S.</b>	Ind Con	1,212	32.4
Lythgoe W.	Lab	526	14.0
Turner T.	Lib	515	13.8
Williamson C.	Lab	353	-
<b>Turnout</b>		132.1	7.5

**Etwall (3563)<sup>2</sup>**

		vote	share
<b>Beard A.</b>	Con	1,700	64.2
<b>Ayre C.</b>	Con	1,699	-
Smith A.	Lab	950	35.8
Pearce H.	Lab	691	-
<b>Turnout</b>		74.4	28.3

**Gresley (4249)<sup>3</sup>**

		vote	share
<b>Lacey M.</b>	Lib	1,910	45.8
<b>Heape W.</b>	Lab	1,699	40.7
<b>Martin M.</b>	Lab	1,335	-
Ratcliffe J.	Lab	1,118	-
Oxley T.	Lib	1,044	-
Tyrrell M.	Lib	815	-
Starkey J.	Con	562	13.5
Benstead E.	Con	533	-
<b>Turnout</b>		98.2	5.1

**Hartshorne (2966)<sup>2</sup>**

		vote	share
<b>Oakey E.</b>	Lab	1,329	59.0
<b>Harper I.</b>	Lab	1,293	-
Harvey A.	Con	924	41.0
Witham F.	Con	792	-
<b>Turnout</b>		76.0	18.0

**Hatton (1448)**

		vote	share
<b>Hanbury F.</b>	Ind	0	0.0
<b>Turnout</b>		0.0	0.0

**Hilton (1694)**

		vote	share
<b>Holland P.</b>	Ind	713	51.4
Clark T.	Ind	673	48.6
<b>Turnout</b>		81.8	2.9

**Linton (2729)<sup>2</sup>**

		vote	share
<b>Oakden J.</b>	Ind	1,234	54.9
<b>Jackson A.</b>	Lab	1,014	45.1
Clamp C.	Ind	836	-
Jennings J.	Lab	684	-
<b>Turnout</b>		82.4	9.8

**Melbourne (3076)<sup>2</sup>**

		vote	share
<b>Parkinson J.</b>	Ind	1,554	61.0
<b>Knowles H.</b>	Ind	1,362	-
Coates D.	Lab	992	39.0
Sturges R.	Lab	570	-
<b>Turnout</b>		82.8	22.1

**Midway (4273)<sup>3</sup>**

		vote	share
<b>Holmes G.</b>	Lab	2,123	65.1
<b>Dunn W.</b>	Lab	1,802	-
<b>Lord W.</b>	Lab	1,749	-
Adams D.	Con	1,139	34.9
Cook D.	Con	999	-
<b>Turnout</b>		76.3	30.2

**Netherseal (1323)**

		vote	share
<b>Richardson P.</b>	Ind	706	64.7
Lauro M.	Lab	385	35.3
<b>Turnout</b>		82.5	29.4

**Newhall (4487)<sup>3</sup>**

		vote	share
<b>Hough A.</b>	Lab	1,953	49.5
<b>Banfield C.</b>	Lab	1,559	-
<b>Mead G.</b>	Lab	1,536	-
Mitchell K.	Con	1,052	26.7
Chaplin E.	Lib	939	23.8
Whitebrook T.	Con	845	-
<b>Turnout</b>		87.9	22.8

**North West (1270)**

		vote	share
<b>Clark M.</b>	Ind	622	60.9
Drury A.	Con	399	39.1
<b>Turnout</b>		80.4	21.8

**Overseal (1509)**

		vote	share
<b>Jackson C.</b>	Lab	696	55.9
Varnham J.	Ind	548	44.1
<b>Turnout</b>		82.4	11.9

**Repton (2811)<sup>2</sup>**

		vote	share
<b>Bentley I. Ms.</b>	Con	1,655	74.4
<b>Meinertzhagen S.</b>	Con	1,365	-
Auckland A. Ms.	Lab	570	25.6
Braithwaite C.	Lab	529	-
<b>Turnout</b>		79.2	48.8

**Swadlincote (3758)<sup>3</sup>**

		vote	share
<b>Nott R.</b>	Lab	1,571	50.3
<b>Moulson J.</b>	Lab	1,503	-
<b>Canner C.</b>	Lab	1,360	-
Martin B.	Lib	885	28.4
Martin M.	Lib	777	-
Franklin J.	Con	665	21.3
Tomlin M.	Con	631	-
Lomas D.	Con	619	-
<b>Turnout</b>		83.0	22.0

**Ticknall (2486)<sup>2</sup>**

		vote	share
<b>Harpur Crewe C.</b>	Con	1,184	38.5
<b>Cox L.</b>	Ind	1,124	36.6
Pitter H.	Lab	766	24.9
<b>Turnout</b>		123.7	2.0

**Walton (1311)**

		vote	share
<b>Valentine B.</b>	Lab	599	55.3
Clucas R.	Con	484	44.7
<b>Turnout</b>		82.6	10.6

**Willington (1546)**

		vote	share
<b>England E.</b>	Con	763	59.4
Oakey W.	Ind Lab	521	40.6
<b>Turnout</b>		83.1	18.8

**Woodville (1476)**

		vote	share
<b>Dytham T.</b>	Lab	678	65.4
Topliss M.	Con	359	34.6
<b>Turnout</b>		70.3	30.8

**South Derbyshire - 1983****Aston (2942)<sup>2</sup>**

		vote	share
<b>Ryan J.</b>	Con	981	39.1
<b>Clifton J.*</b>	Ind	809	32.2
Slattery C.	Lib/SDP	458	18.3
Williamson C.	Lab	261	10.4
Cox B.	Lab	242	-
<b>Turnout</b>		85.3	6.9

**Etwall (3621)<sup>2</sup>**

		vote	share
<b>Ayre C.*</b>	Con	1,024	64.4
<b>Martin G.</b>	Con	1,001	-
Smith A.	Lab	566	35.6
Hutchin B.	Lab	523	-
<b>Turnout</b>		43.9	28.8

**Gresley (4580)<sup>3</sup>**

		vote	share
<b>Lacey M.*</b>	Lib/SDP	1,095	50.1
<b>Heape W.*</b>	Lab	1,092	49.9
<b>Ratcliffe J.</b>	Lab	954	-
Whatton R.	Lab	903	-
Wilkinson J.	Lib/SDP	729	-
Duval R.	Lib/SDP	653	-
<b>Turnout</b>		47.8	0.1

**Hartshorne (2978)<sup>2</sup>**

		vote	share
<b>Harper L.*</b>	Lab	839	62.0
<b>Oakey E.*</b>	Lab	781	-
Adams D.	Con	514	38.0
<b>Turnout</b>		45.4	24.0

**Hatton (1582)**

		vote	share
<b>Tullett R.</b>	Ind	0	0.0
<b>Turnout</b>		0.0	0.0

**Hilton (1742)**

		vote	share
<b>Roe M. Ms.</b>	Con	567	76.8
Buckley P.	Lab	171	23.2
<b>Turnout</b>		42.4	53.7

**Linton (2740)<sup>2</sup>**

		vote	share
<b>Jackson A.*</b>	Lab	738	61.8
<b>Aldridge F.</b>	Lab	683	-
Hill J.	Lib/SDP	457	38.2
<b>Turnout</b>		43.6	23.5

**Melbourne (3148)<sup>2</sup>**

		vote	share
<b>Parkinson J.*</b>	Ind	1,056	61.0
<b>Ingram J.</b>	Ind	775	-
Coates D.	Lab	675	39.0
Carroll J. Ms.	Lab	391	-
<b>Turnout</b>		55.0	22.0

<b>Midway (4563)<sup>3</sup></b>			
		<b>vote</b>	<b>share</b>
Dunn W.*	Lab	0	-
Holmes G.*	Lab	0	-
Lord W.*	Lab	0	0.0
<b>Turnout</b>		0.0	0.0

<b>Netherseal (1265)</b>			
		<b>vote</b>	<b>share</b>
Richardson P.*	Ind	415	66.8
Storey G.	Lab	206	33.2
<b>Turnout</b>		49.1	33.7

<b>Newhall (4772)<sup>3</sup></b>			
		<b>vote</b>	<b>share</b>
Hough A.*	Lab	976	65.7
Banfield C.*	Lab	912	-
Mead G.*	Lab	719	-
Martin V.	Lib/SDP	509	34.3
Jones T.	Lib/SDP	500	-
<b>Turnout</b>		31.1	31.4

<b>North West (1290)</b>			
		<b>vote</b>	<b>share</b>
Clarke M.*	Ind	0	0.0
<b>Turnout</b>		0.0	0.0

<b>Overseal (1492)</b>			
		<b>vote</b>	<b>share</b>
Jackson C.*	Lab	435	56.7
Varnham J.	Ind	332	43.3
<b>Turnout</b>		51.4	13.4

<b>Repton (2841)<sup>2</sup></b>			
		<b>vote</b>	<b>share</b>
Dent J.	Con	1,105	79.3
Bentley I. Ms.*	Con	1,091	-
Jones A.	Lab	288	20.7
Macdonald A.	Lab	280	-
<b>Turnout</b>		49.0	58.7

<b>Swadlincote (3626)<sup>3</sup></b>			
		<b>vote</b>	<b>share</b>
Canner C.*	Lab	810	52.9
Ford J.	Lab	804	-
Davis R.	Lab	773	-
Martin B.	Lib/SDP	722	47.1
Martin M.	Lib/SDP	650	-
Cunnington C.	Lib/SDP	502	-
<b>Turnout</b>		42.3	5.7

<b>Ticknall (2547)<sup>2</sup></b>			
		<b>vote</b>	<b>share</b>
Cox L.*	Ind	553	43.6
Turner T.	Lib/SDP	514	40.5
Parker A.	Ind	511	-
Gould J.	Lib/SDP	510	-
Harrison M.	Lab	202	15.9
Sturgess R.	Lab	158	-
<b>Turnout</b>		49.8	3.1

<b>Walton (1293)</b>			
		<b>vote</b>	<b>share</b>
Valentine B.*	Lab	0	0.0
<b>Turnout</b>		0.0	0.0

<b>Willington (1634)</b>			
		<b>vote</b>	<b>share</b>
Bordoli M.	Con	486	51.4
Auckland A.	Lab	237	25.1
Eyre R.	Lib/SDP	222	23.5
<b>Turnout</b>		57.8	26.3

<b>Woodville (1796)</b>			
		<b>vote</b>	<b>share</b>
Dytham R.*	Lab	0	0.0
<b>Turnout</b>		0.0	0.0

## South Derbyshire - 1987

<b>Aston (3251)<sup>2</sup></b>			
		<b>vote</b>	<b>share</b>
Clifton J.*	Ind Con	1,008	54.6
Ryan J.*	Ind Con	930	-
Barber A.	All	584	31.6
Bell G.	All	532	-
Brooks L.	Lab	254	13.8
Haddrell C.	Lab	246	-
<b>Turnout</b>		56.8	23.0

<b>Etwall (3858)<sup>2</sup></b>			
		<b>vote</b>	<b>share</b>
Mathews J.	Con	1,231	51.2
Lemmon J.	Con	1,179	-
Smith I.	All	820	34.1
Winter D.	All	577	-
Smith A.	Lab	353	14.7
Johnson M.	Lab	248	-
<b>Turnout</b>		62.3	17.1

<b>Gresley (5050)<sup>3</sup></b>			
		<b>vote</b>	<b>share</b>
Lacey M.*	Lib/SDP	1,135	38.6
Heape W.*	Lab	1,089	37.0
Lester J.	Lab	971	-
Martin M.	Lab	789	-
Whotton R.	Ind	720	24.5
<b>Turnout</b>		58.3	1.6

<b>Hartshorne (2998)<sup>2</sup></b>			
		<b>vote</b>	<b>share</b>
Harper I.*	Lab	884	49.7
Oakley E.*	Lab	827	-
Adams D.	Con	552	31.1
Holland J.	Con	481	-
Toon K.	Ind	341	19.2
<b>Turnout</b>		59.3	18.7

<b>Hatton (1819)</b>			
		<b>vote</b>	<b>share</b>
Shirley R.	Ind	474	54.9
Robey H.	Con	390	45.1
<b>Turnout</b>		47.5	9.7

<b>Hilton (1896)</b>			
		<b>vote</b>	<b>share</b>
Roe M. Ms.*	Con	801	80.1
Jones A.	Lab	199	19.9
<b>Turnout</b>		52.7	60.2

<b>Linton (2913)<sup>2</sup></b>			
		<b>vote</b>	<b>share</b>
Aldridge F.*	Lab	851	44.0
Buckley P.	Lab	649	-
Bodell J.	Res	394	20.4
Hill J.	All	369	19.1
Wilcock J.	Con	319	16.5
<b>Turnout</b>		66.4	23.6

<b>Melbourne (3364)<sup>2</sup></b>			
		<b>vote</b>	<b>share</b>
Coates D.	Lab	834	38.6
Parkinson J.*	Ind	701	32.5
Carroll J. Ms.	Lab	678	-
Ingram J.*	Ind	671	-
Murray-Leslie M.	All	624	28.9
Gordon J.	All	234	-
<b>Turnout</b>		64.2	6.2

<b>Midway (4704)<sup>3</sup></b>			
		<b>vote</b>	<b>share</b>
Lord W.*	Lab	1,228	61.0
Holmes G.*	Lab	1,225	-
Dunn W.*	Lab	1,185	-
Parrans J.	Con	786	39.0
Jefferies C.	Con	766	-
<b>Turnout</b>		42.8	21.9

<b>Netherseal (1282)</b>			
		<b>vote</b>	<b>share</b>
Richardson P.*	Ind	0	0.0
<b>Turnout</b>		0.0	0.0

<b>Newhall (5201)<sup>3</sup></b>			
		<b>vote</b>	<b>share</b>
Mead G.*	Lab	1,013	42.1
Coxon P.	Lab	945	-
Mead J. Ms.	Lab	897	-
Simpson P.	All	704	29.2
Rickard A.	Con	692	28.7
<b>Turnout</b>		46.3	12.8

<b>North West (1385)</b>			
		<b>vote</b>	<b>share</b>
Bale M.	Con	521	59.8
Clark M.*	Ind	350	40.2
<b>Turnout</b>		62.9	19.6

<b>Overseal (1553)</b>			
		<b>vote</b>	<b>share</b>
Knight G.	Lab	406	41.1
Jackson C.*	Ind Lab	261	26.4
Varnham J.	Ind	201	20.4
Sutton P.	Con	78	7.9
Acraman A.	Green	41	4.2
<b>Turnout</b>		63.6	14.7

<b>Repton (3009)<sup>2</sup></b>			
		<b>vote</b>	<b>share</b>
Dent J.*	Con	1,199	62.7
Bentley I. Ms.*	Con	1,016	-
Eyre R.	Lib/SDP	447	23.4
Auckland A. Ms.	Lab	267	14.0
Sample F.	Lab	222	-
<b>Turnout</b>		63.6	39.3

<b>Swadlincote (3630)<sup>3</sup></b>			
		<b>vote</b>	<b>share</b>
Canner C.*	Lab	1,141	49.0
Davis R.*	Lab	996	-
Ford J.*	Lab	958	-
Martin B.	Lib/SDP	599	25.7
Woodward D.	Con	587	25.2
<b>Turnout</b>		64.1	23.3

<b>Ticknall (2770)<sup>2</sup></b>			
		<b>vote</b>	<b>share</b>
Sanders H. Ms.	Con	661	30.1
Cox L.*	Ind	614	27.9
Turner T.*	All	506	23.0
Hollingworth A.	All	496	-
Shepherd D.	Lab	417	19.0
Williamson C.	Lab	367	-
<b>Turnout</b>		79.4	2.1

<b>Walton (1328)</b>			
		<b>vote</b>	<b>share</b>
Douglas I.	Con	355	43.0
Lauro K. Ms.	Lab	237	28.7
Blackman M.	Lib/SDP	234	28.3
<b>Turnout</b>		62.2	14.3

<b>Willington (1701)</b>			
		<b>vote</b>	<b>share</b>
Bordoli M.*	Con	732	70.8
Evens G.	Lab	302	29.2
<b>Turnout</b>		60.8	41.6

<b>Woodville (2003)</b>			
		<b>vote</b>	<b>share</b>
Dytham R.*	Lab	495	62.5
Hill D.	All	297	37.5
<b>Turnout</b>		39.5	25.0

## South Derbyshire - 1991

### Aston (3282)<sup>2</sup>

		vote	share
Clifton J.*	Ind Con	1,187	69.0
Ryan J.*	Ind Con	1,162	-
Brooks L.	Lab	534	31.0
Mayhew B.	Lab	395	-

Turnout 54.6 37.9

### Etwall (3816)<sup>2</sup>

		vote	share
Lemmon J.*	Con	1,411	72.7
Boyles R.	Con	1,307	-
Smith A.	Lab	529	27.3
McCallum J.	Lab	463	-

Turnout 48.6 45.5

### Gresley (5330)<sup>3</sup>

		vote	share
Heape W.*	Lab	1,182	37.6
Lester J.*	Lab	1,156	-
Twigger T.	Lab	1,072	-
Lacey M.*	Lib	919	29.2
Clamp P.	Con	656	20.9
Bird E.	Ind Lab	389	12.4

Turnout 44.8 8.4

### Hartshorne (2945)<sup>2</sup>

		vote	share
Harper I.*	Lab	976	58.0
Sherratt A.	Lab	879	-
Adams D.	Con	706	42.0
Mitchell F.	Con	690	-

Turnout 59.8 16.1

### Hatton (1993)

		vote	share
Smith P.	Con	540	51.9
Shirley R.*	Ind	500	48.1

Turnout 52.2 3.8

### Hilton (1884)

		vote	share
Roe M. Ms.*	Con	776	76.5
Johnson M.	Ind	238	23.5

Turnout 53.8 53.1

### Linton (3131)<sup>2</sup>

		vote	share
Aldridge F.*	Lab	916	54.6
Arnold J.	Lab	870	-
Hill J.	LD	459	27.4
Laxton B.	Ind Lab	303	18.1

Turnout 47.0 27.2

### Melbourne (3547)<sup>2</sup>

		vote	share
Hewlett K. Ms.	Con	1,366	53.3
Freeman B.*	Lab	1,196	46.7
Parkinson J.*	Con	1,055	-
Wilson C. Ms.	Lab	824	-

Turnout 62.6 6.6

### Midway (4892)<sup>3</sup>

		vote	share
Lord W.*	Lab	1,067	60.5
Dunn W.*	Lab	1,022	-
Wilkins P.*	Lab	933	-
Bates E. Ms.	LD	696	39.5

Turnout 36.0 21.0

### Netherseal (1348)

		vote	share
Richardson P.*	Lab	0	0.0

Turnout 0.0 0.0

### Newhall (5257)<sup>3</sup>

		vote	share
Lewis A.*	Lab	1,074	44.6
Mead J. Ms.*	Lab	1,071	-
Coxon P.*	Lab	985	-
Corten J.	Con	748	31.0
Porter G.	Con	677	-
Simpson P.	LD	588	24.4

Turnout 42.2 13.5

### North West (1463)

		vote	share
Bale M.*	Con	696	85.0
Clemens C.	Lab	123	15.0

Turnout 56.0 70.0

### Overseal (1571)

		vote	share
Knight G.*	Lab	0	0.0

Turnout 0.0 0.0

### Repton (2960)<sup>2</sup>

		vote	share
Bentley I. Ms.*	Con	1,016	62.4
Plant E. Ms.	Con	989	-
Outhwaite R.	LD	340	20.9
Winter D.	LD	326	-
Auckland A. Ms.	Lab	271	16.7
Wilks M.	Lab	251	-

Turnout 57.5 41.5

### Swadlincote (3638)<sup>3</sup>

		vote	share
Davis R.*	Lab	0	-
Ford J.*	Lab	0	-
Ratcliffe J.	Lab	0	0.0

Turnout 0.0 0.0

### Ticknall (3532)<sup>2</sup>

		vote	share
Sanders H. Ms.*	Con	925	54.2
Wilkinson V. Ms.	Con	888	-
Jackson B. Ms.	Lab	782	45.8
Shepherd D.	Lab	707	-

Turnout 53.9 8.4

### Walton (1294)

		vote	share
Douglas I.*	Con	435	57.1
Belfield A.	Lab	327	42.9

Turnout 58.9 14.2

### Willington (1800)

		vote	share
Betts A.	Con	543	54.7
Evens G.	Lab	450	45.3

Turnout 55.4 9.4

### Woodville (2037)

		vote	share
Hall J. Ms.	Lab	506	50.6
Malcolm I.	Con	327	32.7
Dytham R.	Ind	167	16.7

Turnout 49.3 17.9

## South Derbyshire - 1995

### Aston (3332)<sup>2</sup>

		vote	share
Brooks L.	Lab	877	56.2
Swords J. Ms.	Lab	711	-
Clifton J.*	Ind Con	684	43.8
Ryan J.*	Ind Con	637	-

Turnout 47.2 12.4

### Etwall (3814)<sup>2</sup>

		vote	share
Lemmon J.*	Con	782	51.3
Boyles R.*	Con	746	-
Johnson M.	Lab	505	33.2
McCallum J.	Lab	489	-
Robinson T.	Ind	236	15.5

Turnout 39.1 18.2

### Gresley (5855)<sup>3</sup>

		vote	share
Lester J.*	Lab	1,000	61.0
Southerd T.	Lab	960	-
Rose C.	Lab	866	-
Heape W.*	Ind Lab	639	39.0
Twigger T.*	Ind Lab	593	-
Bird E.	Ind Lab	442	-

Turnout 31.4 22.0

### Hartshorne (2818)<sup>2</sup>

		vote	share
Harper I.*	Lab	1,007	68.1
Sherratt A.*	Lab	813	-
Adams D.	Ind	472	31.9

Turnout 48.8 36.2

### Hatton (1965)

		vote	share
Smith P.*	Ind	509	57.3
Wilks M.	Ind	379	42.7

Turnout 45.2 14.6

### Hilton (1969)

		vote	share
Roe M. Ms.*	Con	499	60.5
Clemens C.	Lab	326	39.5

Turnout 42.1 21.0

### Linton (3118)<sup>2</sup>

		vote	share
Lauro M.	Lab	947	83.4
Southern R.	Lab	842	-
Turner J.	Con	189	16.6

Turnout 38.6 66.7

### Melbourne (3782)<sup>2</sup>

		vote	share
Carroll J. Ms.	Lab	1,496	61.6
Lythgoe W.	Lab	1,056	-
Hewlett K. Ms.*	Con	932	38.4
Jackson A.	Con	913	-

Turnout 62.5 23.2

### Midway (5258)<sup>3</sup>

		vote	share
Dunn W.*	Lab	0	-
Wilkins P.*	Lab	0	0.0

Turnout 0.0 0.0

### Netherseal (1368)

		vote	share
Braithwaite C. Ms.	Lab	446	52.3
Shaw C.	Con	406	47.7

Turnout 62.6 4.7

### Newhall (5216)<sup>3</sup>

		vote	share
Lewis A.*	Lab	1,059	82.1
Mead J. Ms.*	Lab	1,002	-
Coxon P.*	Lab	907	-
Walker H.	Con	231	17.9

Turnout 27.4 64.2

### North West (1487)

		vote	share
Bale M.*	Con	501	72.0
Moulson J.	Lab	195	28.0

Turnout 47.4 44.0

Overseal (1585)			
		vote	share
<b>Knight G.*</b>	Lab	0	0.0
<b>Turnout</b>		0.0	0.0

Repton (2920) <sup>2</sup>			
		vote	share
<b>Plant E. Ms.*</b>	Con	633	36.8
<b>Wheeler H. Ms.</b>	Con	501	-
Fadhley C. Ms.	Lab	400	23.2
Outhwaite R.	LD	353	20.5
Wilks F. Ms.	Ind	335	19.5
Winter D.	LD	278	-
<b>Turnout</b>		45.6	13.5

Swadlincote (3654) <sup>3</sup>			
		vote	share
<b>Ford J.*</b>	Lab	944	45.5
<b>Dixon P.</b>	Lab	642	-
<b>Hall J. Ms.*</b>	Lab	577	-
Davis R.*	Ind Lab	534	25.7
Martin B.	Ind	416	20.0
Ratcliffe J.*	Ind Lab	245	-
Moore C. Ms.	Con	181	8.7
<b>Turnout</b>		38.8	19.8

Ticknall (4165) <sup>2</sup>			
		vote	share
<b>Oakes N.</b>	Lab	1,115	67.2
<b>Shepherd D.</b>	Lab	981	-
Wilkinson V. Ms.*	Con	545	32.8
Sanders H. Ms.*	Con	492	-
<b>Turnout</b>		43.2	34.3

Walton (1357)			
		vote	share
<b>Shakeshaft P.</b>	Lab	350	58.0
Douglas I.*	Con	253	42.0
<b>Turnout</b>		44.6	16.1

Willington (1916)			
		vote	share
<b>Evens G.</b>	Lab	590	64.3
Betts A.*	Con	328	35.7
<b>Turnout</b>		48.0	28.5

Woodville (2140)			
		vote	share
<b>Taylor S.</b>	Lab	0	0.0
<b>Turnout</b>		0.0	0.0

## South Derbyshire - 1999

Aston (4232) <sup>2</sup>			
		vote	share
<b>Brooks L.*</b>	Lab	800	46.8
<b>Robbins M. Ms.</b>	Ind Con	656	38.4
Clifton J.	Ind Con	608	-
Smith D.	Lab	564	-
Clifton M.	Ind	254	14.9
<b>Turnout</b>		37.8	8.4

Etwall (3866) <sup>2</sup>			
		vote	share
<b>Lemmon J.*</b>	Con	968	69.8
<b>Hood F.</b>	Con	958	-
Mayhew B.	Lab	419	30.2
<b>Turnout</b>		37.4	39.6

Gresley (6092) <sup>3</sup>			
		vote	share
<b>Southerd T.*</b>	Lab	852	66.3
<b>Harrington K.</b>	Lab	852	-
<b>Rose C.*</b>	Lab	785	-
Lacey M.	Con	434	33.7
<b>Turnout</b>		27.6	32.5

Hartshorne (2842) <sup>2</sup>			
		vote	share
<b>Bell R.</b>	Lab	525	69.9
<b>Sherratt A.*</b>	Lab	465	-
Bladen P. Ms.	Con	226	30.1
<b>Turnout</b>		26.6	39.8

Hatton (2115)			
		vote	share
<b>Whyman B.*</b>	Lab	564	78.2
Littlejohn R.	Con	157	21.8
<b>Turnout</b>		34.1	56.4

Hilton (2962)			
		vote	share
<b>Walton R. Ms.</b>	Con	845	77.5
Jones A.	Lab	245	22.5
<b>Turnout</b>		36.9	55.0

Linton (3076) <sup>2</sup>			
		vote	share
<b>Southern R.*</b>	Lab	541	75.8
<b>Lauro M.*</b>	Lab	522	-
Walker H.	Con	173	24.2
<b>Turnout</b>		23.5	51.5

Melbourne (3878) <sup>2</sup>			
		vote	share
<b>Carroll J. Ms.*</b>	Lab	1,108	56.0
<b>Harrison J.</b>	Con	872	44.0
Lythgoe W.*	Lab	852	-
Silkstone B.	Con	813	-
<b>Turnout</b>		48.9	11.9

Midway (5466) <sup>3</sup>			
		vote	share
<b>Dunn W.*</b>	Lab	748	45.0
<b>Wilkins P.*</b>	Lab	728	-
<b>Routledge W.*</b>	Lab	667	-
Mulgrew M.	Ind Lab	320	19.3
Martin V.	LD	306	18.4
Wheeler R.	Con	287	17.3
<b>Turnout</b>		22.4	25.8

Netherseal (1425)			
		vote	share
<b>Shaw C.</b>	Con	393	51.0
Braithwaite C. Ms.*	Lab	265	34.4
Perry T.	Ind	112	14.5
<b>Turnout</b>		54.2	16.6

Newhall (5000) <sup>3</sup>			
		vote	share
<b>Mead J. Ms.*</b>	Lab	638	72.3
<b>Richards K.*</b>	Lab	577	-
<b>Coxon P.*</b>	Lab	558	-
Salt R.	Con	245	27.7
<b>Turnout</b>		19.5	44.5

North West (1549)			
		vote	share
<b>Bale M.*</b>	Con	556	81.9
Barker N.	Lab	123	18.1
<b>Turnout</b>		44.2	63.8

Overseal (1677)			
		vote	share
<b>Knight G.*</b>	lab	0	0.0
<b>Turnout</b>		0.0	0.0

Repton (3026) <sup>2</sup>			
		vote	share
<b>Bladen J.*</b>	Con	721	70.1
<b>Wheeler H. Ms.*</b>	Con	697	-
Wilks F. Ms.	Lab	308	29.9
Hall G.	Lab	274	-
<b>Turnout</b>		41.3	40.1

Swadlincote (3634) <sup>3</sup>			
		vote	share
<b>Ford J.*</b>	Lab	639	59.7
<b>Rose M. Ms.*</b>	Lab	550	-
<b>Stone R.*</b>	Lab	547	-
Martin B.	LD	298	27.9
Simpson P.	LD	185	-
Hillyar-Russ P.	Con	133	12.4
<b>Turnout</b>		26.2	31.9

Ticknall (4501) <sup>2</sup>			
		vote	share
<b>Shepherd D.*</b>	Lab	854	66.9
<b>Pabla L.</b>	Lab	772	-
Hill L. Ms.	Con	422	33.1
<b>Turnout</b>		30.2	33.9

Walton (1340)			
		vote	share
<b>Douglas I.</b>	Con	306	57.0
Lauro K. Ms.	Lab	231	43.0
<b>Turnout</b>		40.1	14.0

Willington (2067)			
		vote	share
<b>Evens G.*</b>	Lab	412	57.1
Robinson T.	Con	310	42.9
<b>Turnout</b>		35.3	14.1

Woodville (2326)			
		vote	share
<b>Taylor S.*</b>	Lab	0	0.0
<b>Turnout</b>		0.0	0.0

## South Derbyshire - 2003

Aston (5048) <sup>3</sup>			
		vote	share
<b>Atkin N.</b>	Con	1,150	53.1
<b>Naily R.</b>	Con	1,000	-
<b>Renwick B. Ms.</b>	Con	959	-
Brooks L.*	Lab	796	36.7
Lythgoe W.	Lab	613	-
Sturges R.	Lab	510	-
Crompton I.	UK Ind	220	10.2
<b>Turnout</b>		39.0	16.3

Church Gresley (3740) <sup>2</sup>			
		vote	share
<b>Southerd T.*</b>	Lab	512	63.8
<b>Harrington K.*</b>	Lab	506	-
Lacey M.	Con	290	36.2
Turner J.	Con	274	-
<b>Turnout</b>		23.5	27.7

Etwall (3708) <sup>2</sup>			
		vote	share
<b>Lemmon J.*</b>	Con	923	74.3
<b>Hood F.*</b>	Con	870	-
Barker C. Ms.	Lab	320	25.7
Richards G.	Lab	242	-
<b>Turnout</b>		34.4	48.5

Hartshorne & Ticknall (3531) <sup>2</sup>			
		vote	share
<b>Bell R.*</b>	Lab	717	55.1
<b>Jones R.</b>	Lab	612	-
Stanton M.	Con	584	44.9
Vorley M.	Con	562	-
<b>Turnout</b>		37.4	10.2

Hatton (1952)			
		vote	share
<b>Whyman B.*</b>	Lab	545	77.6
Lemmon S. Ms.	Con	157	22.4
<b>Turnout</b>		36.1	55.3

Hilton (3163) <sup>2</sup>			
		vote	share
Walton R. Ms.*	Con	770	72.8
Martin G.	Con	621	-
Adcock M.	Lab	287	27.2
Jones A.	Lab	225	-
<b>Turnout</b>		33.4	45.7

Linton (3732) <sup>2</sup>			
		vote	share
Lauro M.*	Lab	540	50.9
Southern R.*	Lab	521	-
Douglas I.*	Con	520	49.1
Goodwin K.	Con	508	-
<b>Turnout</b>		29.9	1.9

Melbourne (3663) <sup>2</sup>			
		vote	share
Carroll J. Ms.*	Lab	914	51.1
Harrison J.*	Con	873	48.9
Hewlett J.	Con	766	-
Mayhew B.	Lab	655	-
<b>Turnout</b>		42.1	2.3

Midway (5509) <sup>3</sup>			
		vote	share
Wilkins P.*	Lab	676	55.9
Dunn W.*	Lab	661	-
Mulgrew M.	Lab	620	-
Adams D.	Con	533	44.1
McEwan J.	Con	467	-
Paulson R.	Con	443	-
<b>Turnout</b>		22.5	11.8

Newhall & Stanton (5561) <sup>3</sup>			
		vote	share
Bambrick S.	Lab	667	66.8
Mead J. Ms.*	Lab	648	-
Richards K.	Lab	626	-
Sexton R.	Con	331	33.2
Salt R.	Con	314	-
Wheeler R.	Con	293	-
<b>Turnout</b>		19.2	33.7

North West (1651)			
		vote	share
Bale M.*	Con	619	82.6
Woods B.	Lab	130	17.4
<b>Turnout</b>		46.0	65.3

Repton (3410) <sup>2</sup>			
		vote	share
Bladen J.*	Con	946	76.2
Wheeler H. Ms.*	Con	889	-
Bell K. Ms.	Lab	295	23.8
Hall G.	Lab	229	-
<b>Turnout</b>		36.2	52.5

Seales (3969) <sup>2</sup>			
		vote	share
Shaw C.*	Con	895	63.1
Hall M. Ms.	Con	785	-
Knight G.*	Lab	523	36.9
Lauro K. Ms.	Lab	495	-
<b>Turnout</b>		36.8	26.2

Stenson (3331) <sup>2</sup>			
		vote	share
Pabla L.*	Lab	711	73.8
Shepherd D.*	Lab	680	-
Harrison S. Ms.	Con	253	26.2
Hawksworth M. Ms.	Con	229	-
<b>Turnout</b>		31.7	47.5

Swadlincote (5114) <sup>3</sup>			
		vote	share
Lane R.	Lab	637	50.9
Stone R.*	Lab	617	-
Murphy S.	Lab	536	-
Jacks H. Ms.	Con	335	26.8
Goodall E. Ms.	Con	328	-
Bridges M.	Con	297	-
Jones N.	Ind	280	22.4
<b>Turnout</b>		22.8	24.1

Willington & Findern (3470) <sup>2</sup>			
		vote	share
Ford M.	Con	820	62.8
Hood A. Ms.	Con	777	-
Evens G.*	Lab	485	37.2
Chopra V.	Lab	341	-
<b>Turnout</b>		37.6	25.7

Woodville (4250) <sup>2</sup>			
		vote	share
Taylor S.*	Lab	572	61.0
Isham G. Ms.	Lab	510	-
Bailey C.	Con	366	39.0
Smith S. Ms.	Con	299	-
<b>Turnout</b>		22.1	22.0

## South Derbyshire - 2007

Aston (5040) <sup>3</sup>			
		vote	share
Atkin N.*	Con	1,547	64.5
Coyle H. Ms.	Con	1,500	-
Watson S.	Con	1,428	-
Barker C. Ms.	Lab	613	25.5
Green E.	Lab	608	-
Sturges P.	Lab	506	-
Crompton I.	UKIP	240	10.0
<b>Turnout</b>		46.4	38.9

Church Gresley (4113) <sup>2</sup>			
		vote	share
Southern B.*	Lab	798	66.8
Southerd T.*	Lab	770	-
Hawksworth R.	Con	397	33.2
Lemmon S. Ms.	Con	389	-
<b>Turnout</b>		31.9	33.6

Etwell (3854) <sup>2</sup>			
		vote	share
Brown L. Ms.	Ind	1,056	46.4
Lemmon J.*	Con	980	43.0
Hood F.*	Con	814	-
Bambrick P.	Lab	242	10.6
<b>Turnout</b>		47.4	3.3

Hartshorne & Ticknall (3563) <sup>2</sup>			
		vote	share
Murray P.	Con	859	47.9
Stanton M.	Con	828	-
Bell R.*	Lab	727	40.6
Jones R.*	Lab	630	-
Sherratt A.	Ind	206	11.5
<b>Turnout</b>		48.3	7.4

Hatton (1936)			
		vote	share
Roberts A.	Con	605	56.7
Whyman B.*	Lab	462	43.3
<b>Turnout</b>		55.3	13.4

Hilton (4436) <sup>2</sup>			
		vote	share
Plenderleith A. Ms.	Con	1,094	66.0
Patten J. Ms.	Con	992	-
Walton R. Ms.*	Ind	327	19.7
Walton J.	Ind	292	-
Adcock M.	Lab	236	14.2
Laughlin P.	Lab	198	-
<b>Turnout</b>		36.8	46.3

Linton (3845) <sup>2</sup>			
		vote	share
Jones C.	Con	928	60.6
Wheeler B.	Con	841	-
Lauro K. Ms.	Lab	604	39.4
Lauro M.*	Lab	589	-
<b>Turnout</b>		40.5	21.1

Melbourne (3703) <sup>2</sup>			
		vote	share
Harrison J.*	Con	1,237	57.7
Hewlett J.	Con	1,036	-
Carroll J. Ms.*	Lab	908	42.3
Lythgoe B.	Lab	589	-
<b>Turnout</b>		53.3	15.3

Midway (5576) <sup>3</sup>			
		vote	share
Dunn W.*	Lab	822	41.9
Farrington G. Ms.	Con	812	41.4
Wilkins P.*	Lab	795	-
Mulgrew M.*	Lab	786	-
Roberts S. Ms.	Con	741	-
Pratt A. Ms.	Con	729	-
Smith R.	UKIP	328	16.7
<b>Turnout</b>		32.8	0.5

Newhall & Stanton (5730) <sup>3</sup>			
		vote	share
Bambrick S.*	Lab	918	50.9
Mead J. Ms.*	Lab	856	-
Richards K.*	Lab	791	-
Henry P. Ms.	Con	465	25.8
Salt R.	Con	459	-
Ellis S. Ms.	Con	446	-
Bailey P. Ms.	BNP	422	23.4
<b>Turnout</b>		30.4	25.1

North West (1711)			
		vote	share
Bale M.*	Con	746	86.0
Woods B.	Lab	121	14.0
<b>Turnout</b>		50.8	72.1

Repton (3505) <sup>2</sup>			
		vote	share
Bladen J.*	Con	1,177	77.7
Wheeler H. Ms.*	Con	1,135	-
Taylor J. Ms.	Lab	338	22.3
Mayhew B.	Lab	260	-
<b>Turnout</b>		43.8	55.4

Seales (4081) <sup>2</sup>			
		vote	share
Grant J.	Con	1,048	64.3
Timms H.	Con	989	-
Hall G.	Lab	582	35.7
White C.	Lab	458	-
<b>Turnout</b>		38.5	28.6

Stenson (3301) <sup>2</sup>			
		vote	share
Pabla L.*	Lab	865	73.9
Shepherd D.*	Lab	826	-
Harrison S. Ms.	Con	305	26.1
Cawdron J.	Con	260	-
<b>Turnout</b>		38.4	47.9



<b>Swadlincote (5390)<sup>3</sup></b>			
		<b>vote</b>	<b>share</b>
Lane J. Ms.*	Lab	808	42.6
Lane R.*	Lab	797	-
Tilley N.*	Lab	787	-
Fallows R.	BNP	430	22.7
Pratt C.	Con	418	22.1
Hawksworth M. Ms.	Con	387	-
Plenderleith G.	Con	366	-
Morris P.	LD	239	12.6
Benzing M.	LD	195	-
Fugiel-Morris C. Ms.	LD	194	-
<b>Turnout</b>		<b>32.8</b>	<b>19.9</b>

<b>Willington &amp; Findern (3448)<sup>2</sup></b>			
		<b>vote</b>	<b>share</b>
Ford M.*	Con	1,162	78.6
Hood A. Ms.*	Con	1,095	-
Jones A.	Lab	317	21.4
Chopra V.	Lab	249	-
<b>Turnout</b>		<b>43.5</b>	<b>57.1</b>

<b>Woodville (5174)<sup>2</sup></b>			
		<b>vote</b>	<b>share</b>
Taylor S.*	Lab	679	46.0
Gillespie C. Ms.	Lab	553	-
Bridges M.	Con	546	37.0
Henry T.	Con	509	-
McEwan J.	UKIP	252	17.1
<b>Turnout</b>		<b>27.4</b>	<b>9.0</b>

## South Derbyshire - 2011

<b>Aston (5281)<sup>3</sup></b>			
		<b>vote</b>	<b>share</b>
Atkin N.*	Con	1,571	65.1
Watson A. Ms.	Con	1,388	-
Watson S.*	Con	1,383	-
Green W.	Lab	844	34.9
Kempton A.	Lab	744	-
Bickerton P.	Lab	710	-
<b>Turnout</b>		<b>49.0</b>	<b>30.1</b>

<b>Church Gresley (5125)<sup>3</sup></b>			
		<b>vote</b>	<b>share</b>
Southerd T.*	Lab	1,064	62.6
Rhind G.	Lab	954	-
Stuart B.	Lab	904	-
Baldwin L. Ms.	Con	635	37.4
Beard D.	Con	549	-
Willoughby T.	Con	541	-
<b>Turnout</b>		<b>36.3</b>	<b>25.3</b>

<b>Elwall (4404)<sup>2</sup></b>			
		<b>vote</b>	<b>share</b>
Brown L. Ms.*	Con	1,622	77.0
Lemmon J.*	Con	1,395	-
Adcock M.	Lab	484	23.0
McCallum J.	Lab	461	-
<b>Turnout</b>		<b>51.0</b>	<b>54.0</b>

<b>Hatton (1998)</b>			
		<b>vote</b>	<b>share</b>
Roberts A.*	Con	548	58.7
Stokes G.	Lab	386	41.3
<b>Turnout</b>		<b>47.0</b>	<b>17.3</b>

<b>Hilton (6698)<sup>3</sup></b>			
		<b>vote</b>	<b>share</b>
Plenderleith A. Ms.*	Con	1,589	65.0
Bale M.*	Con	1,526	-
Patten J. Ms.*	Con	1,505	-
Cooper S.	Lab	856	35.0
England J.	Lab	659	-
Timmins M. Ms.	Lab	630	-
<b>Turnout</b>		<b>40.8</b>	<b>30.0</b>

<b>Linton (3930)<sup>2</sup></b>			
		<b>vote</b>	<b>share</b>
Jones C.*	Con	784	46.6
Wheeler R.*	Con	746	-
Lauro K. Ms.	Lab	727	43.2
Church S.	Lab	687	-
Johnson L. Ms.	LD	171	10.2
<b>Turnout</b>		<b>44.7</b>	<b>3.4</b>

<b>Melbourne (3993)<sup>2</sup></b>			
		<b>vote</b>	<b>share</b>
Harrison J.*	Con	1,346	57.0
Hewlett J.*	Con	1,208	-
Carroll J. Ms.	Lab	1,014	43.0
Sturges R.	Lab	661	-
<b>Turnout</b>		<b>57.3</b>	<b>14.1</b>

<b>Midway (6312)<sup>3</sup></b>			
		<b>vote</b>	<b>share</b>
Dunn P.*	Lab	1,330	59.1
Wilkins P.*	Lab	1,290	-
Pearson R.	Lab	1,273	-
Farrington G. Ms.*	Con	922	40.9
Pallett J. Ms.	Con	801	-
Billings A.	Con	765	-
<b>Turnout</b>		<b>39.5</b>	<b>18.1</b>

<b>Newhall &amp; Stanton (6323)<sup>3</sup></b>			
		<b>vote</b>	<b>share</b>
Bambrick S.*	Lab	1,386	65.8
Mead J. Ms.*	Lab	1,260	-
Richards K.*	Lab	1,184	-
Lacey M.	Con	720	34.2
Lacey J. Ms.	Con	674	-
Salt R.	Con	615	-
<b>Turnout</b>		<b>36.5</b>	<b>31.6</b>

<b>Repton (4095)<sup>2</sup></b>			
		<b>vote</b>	<b>share</b>
Stanton M.*	Con	1,427	69.0
Smith P.	Con	1,390	-
Cox B.	Lab	641	31.0
Wilks F. Ms.	Lab	613	-
<b>Turnout</b>		<b>53.3</b>	<b>38.0</b>

<b>Seales (4173)<sup>2</sup></b>			
		<b>vote</b>	<b>share</b>
Hall M. Ms.	Con	1,015	52.2
Frost S.	Lab	928	47.8
Timms H.*	Con	919	-
Jones A.	Lab	730	-
<b>Turnout</b>		<b>48.5</b>	<b>4.5</b>

<b>Stenson (3260)<sup>2</sup></b>			
		<b>vote</b>	<b>share</b>
Shepherd D.*	Lab	956	67.4
Chahal M.	Lab	924	-
Dyke E. Ms.	Con	462	32.6
Lemmon S. Ms.	Con	357	-
<b>Turnout</b>		<b>45.3</b>	<b>34.8</b>

<b>Swadlincote (5958)<sup>3</sup></b>			
		<b>vote</b>	<b>share</b>
Tilley N.*	Lab	1,139	57.7
Heath N. Ms.	Lab	1,108	-
Mulgrew M.	Lab	1,043	-
Bird D.	Con	835	42.3
Wheeler H. Ms.*	Con	789	-
Henry A.	Con	721	-
<b>Turnout</b>		<b>36.7</b>	<b>15.4</b>

<b>Willington &amp; Findern (3522)<sup>2</sup></b>			
		<b>vote</b>	<b>share</b>
Ford M.*	Con	1,116	68.3
Hood A. Ms.*	Con	962	-
Hall D.	Lab	518	31.7
Chopra V. Ms.	Lab	343	-
<b>Turnout</b>		<b>46.5</b>	<b>36.6</b>

<b>Woodville (6467)<sup>3</sup></b>			
		<b>vote</b>	<b>share</b>
Taylor S.*	Lab	1,145	53.8
Bell R.	Lab	1,107	-
Murray P.*	Con	982	46.2
Gillespie C. Ms.*	Lab	955	-
Pratt C.	Con	889	-
Roberts S. Ms.	Con	847	-
<b>Turnout</b>		<b>35.1</b>	<b>7.7</b>

