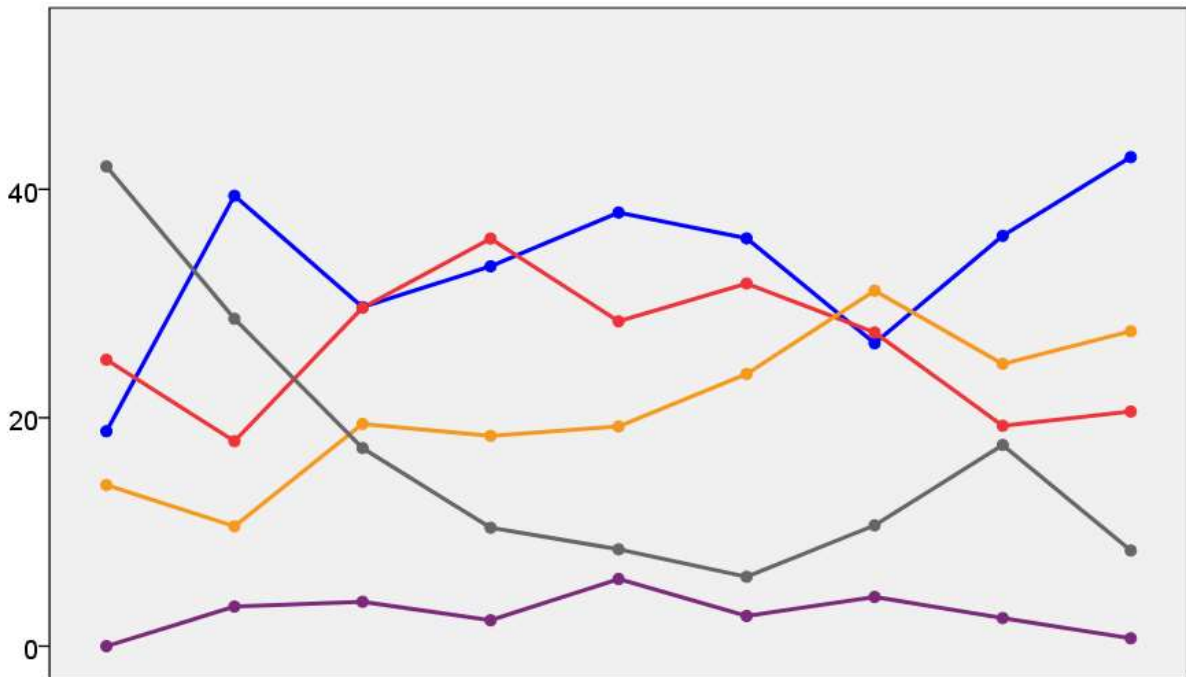


Shropshire County Council Election Results 1973-2005



Colin Rallings and Michael Thrasher
The Elections Centre
Plymouth University

The information contained in this report has been obtained from a number of sources. Election results from the immediate post-reorganisation period were painstakingly collected by Alan Willis largely, although not exclusively, from local newspaper reports. From the mid-1980s onwards the results have been obtained from each local authority by the Elections Centre. The data are stored in a database designed by Lawrence Ware and maintained by Brian Cheal and others at Plymouth University. Despite our best efforts some information remains elusive whilst we accept that some errors are likely to remain. Notice of any mistakes should be sent to elections@plymouth.ac.uk. The results sequence can be kept up to date by purchasing copies of the annual Local Elections Handbook, details of which can be obtained by contacting the email address above.

Front cover: the graph shows the distribution of percentage vote shares over the period covered by the results. The lines reflect the colours traditionally used by the three main parties. The grey line is the share obtained by Independent candidates while the purple line groups together the vote shares for all other parties.

Rear cover: the top graph shows the percentage share of council seats for the main parties as well as those won by Independents and other parties. The lines take account of any by-election changes (but not those resulting from elected councillors switching party allegiance) as well as the transfers of seats during the main round of local election.

The lower graph shows for each main round of local elections the overall percentage turnout (solid line), the percentage of women candidates standing at (dotted line) and the percentage of women among those elected (hashed line).

Shropshire 1973

Albrighton (5334)			
Whittingham E.	Ind	vote 0	share 0.0
		Turnout	0.0 0.0
Baschurch (2237)			
Hawksley P.	Con	vote 0	share 0.0
		Turnout	0.0 0.0
Bishops Castle & Chirbury (3663)			
Eyres A.	Ind	vote 922	share 65.2
Francis P.	Lib	493	34.8
		Turnout	38.6 30.3
Bridgnorth (7517)²			
Robinson E.	Lib	vote 1,980	share 51.4
Donnellan P.	Ind	1,875	48.6
Parr W.	Ind	1,433	-
Blackwell H.	Ind	967	-
		Turnout	51.3 2.7
Broseley (2830)			
Dugdale J.	Ind	vote 688	share 62.7
Kirby M. Ms.	Lib	409	37.3
		Turnout	38.8 25.4
Chelmarsh (2979)			
Hodgson N. Ms.	Ind	vote 0	share 0.0
		Turnout	0.0 0.0
Church Stretton (3924)			
Radcliffe G.	Ind	vote 0	share 0.0
		Turnout	0.0 0.0
Clee Hill & Corvedale (4033)			
More J.	Ind	vote 0	share 0.0
		Turnout	0.0 0.0
Cleobury Mortimer (2104)			
Jones R.	Ind	vote 628	share 58.5
Allen S.	Lab	446	41.5
		Turnout	51.0 16.9
Clun & Lydbury (3162)			
Brereton D. Ms.	Ind	vote 773	share 55.1
Peppé A. Ms.	Ind	465	33.1
Beardsley T.	Ind	166	11.8
		Turnout	44.4 21.9
Condover (6014)			
Lloyd R.	Ind	vote 1,430	share 52.7
Parker S.	Lib	1,286	47.3
		Turnout	45.2 5.3
Dawley Magna (4450)			
Bullock H.	Ind	vote 837	share 57.3
Prescott M.	Lab	624	42.7
		Turnout	32.8 14.6
Donnington (4997)			
Whyte G.	Lab	vote 1,658	share 77.7
Leech P.	Con	476	22.3
		Turnout	42.7 55.4

Drayton (5406)			
Gask D. Ms.	Ind	vote 1,283	share 51.3
Champ E.	Lab	1,219	48.7
		Turnout	46.3 2.6
Ellesmere (4045)			
Jebb L.	Ind	vote 0	share 0.0
		Turnout	0.0 0.0
Ford (3212)			
Gurden A.	Con	vote 0	share 0.0
		Turnout	0.0 0.0
Hadley (3634)			
Hayward J. Ms.	Lab	vote 0	share 0.0
		Turnout	0.0 0.0
High Ercall (3742)			
Holt E. Ms.	Con	vote 769	share 57.2
Archer W.	Ind	386	28.7
Jack S. Ms.	Ind	190	14.1
		Turnout	35.9 28.5
Highley (3304)			
Bowers J.	Ind	vote 0	share 0.0
		Turnout	0.0 0.0
Hinstock (3176)			
Espley G.	Con	vote 845	share 60.9
Nagington D.	Lab	543	39.1
		Turnout	43.7 21.8
Hodnet (3245)			
Corbett J.	Ind	vote 880	share 77.5
Roberts S.	Lab	256	22.5
		Turnout	35.0 54.9
Lilleshall (4376)			
Marsh B. Ms.	Con	vote 0	share 0.0
		Turnout	0.0 0.0
Ludlow (5603)			
Lloyd D.	Ind	vote 1,018	share 55.9
Bromley G.	Lab	802	44.1
		Turnout	32.5 11.9
Madeley (12006)²			
Heighway P.	Lab	vote 1,636	share 60.8
Willets J.	Lab	1,353	-
Pitman R.	Ind	1,056	39.2
		Turnout	22.4 21.5
Malinsee (3594)			
Richards H.	Lab	vote 458	share 44.1
Parkes G.	Ind	361	34.7
Carpenter E. Ms.	Ind	220	21.2
		Turnout	28.9 9.3
Montford (3517)			
Onions E.	Ind	vote 892	share 74.3
McDonald L.	Lab	308	25.7
		Turnout	34.1 48.7

Morfe (4562)			
Goulburn C.	Ind	vote 1,065	share 60.6
Wheeler C.	Lib	692	39.4
		Turnout	38.5 21.2
Much Wenlock (2309)			
Hill D.	Ind	vote 796	share 58.3
Lamputt E.	Ind	570	41.7
		Turnout	59.2 16.5
Newport (7077)²			
Morris-Eyton R.	Con	vote 1,437	share 42.3
Plowman A.	Ind	1,185	34.9
Colton G.	Con	1,003	-
Newns E.	Lab	775	22.8
		Turnout	48.0 7.4
Oswestry (Eastern) (4678)			
Symon P. Ms.	Con	vote 0	share 0.0
		Turnout	0.0 0.0
Oswestry (Western) (4395)			
Jones W.	Ind	vote 0	share 0.0
		Turnout	0.0 0.0
Pontesbury (3288)			
Challinor W.	Ind	vote 0	share 0.0
		Turnout	0.0 0.0
Prees (3530)			
Batkin H.	Ind	vote 0	share 0.0
		Turnout	0.0 0.0
Ruyton-Xi-Towns (3711)			
Cambridge R.	Ind	vote 0	share 0.0
		Turnout	0.0 0.0
Shawbury (2881)			
Wycherley P.	Ind	vote 733	share 47.7
Lee R.	Ind	503	32.7
Roberts G.	Lab	302	19.6
		Turnout	53.4 15.0
Shifnal (4441)			
Thomas A.	Lab	vote 804	share 34.1
Turnock R.	Ind	793	33.6
McNeil T.	Con	700	29.7
Billingsley F.	Ind	62	2.6
		Turnout	53.1 0.5
Shrewsbury (Abbey) (4826)			
Carder G.	Con	vote 0	share 0.0
		Turnout	0.0 0.0
Shrewsbury (Battlefield & Harlescot) (9006)²			
Farr W.	Lab	vote 0	share -
Ryder T.	Lab	0	0.0
		Turnout	0.0 0.0
Shrewsbury (Belle Vue) (8105)²			
Marsh W.	Lib	vote 3,008	share 68.3
Brodie I.	Lib	2,655	-
Fletcher G.	Con	1,394	31.7
Shrank A.	Con	1,315	-
		Turnout	54.3 36.7

Shrewsbury (Castle) (2937)			
		vote	share
Williams A.	Con	757	54.9
Curley M.	Lab	622	45.1
Turnout		47.0	9.8
Shrewsbury (Ditherington) (3364)			
		vote	share
Woodvine D.	Lab	0	0.0
Turnout		0.0	0.0
Shrewsbury (Kingsland) (3222)			
		vote	share
Duffield F.	Con	0	0.0
Turnout		0.0	0.0
Shrewsbury (Monkmoor) (5435)			
		vote	share
Bevan H.	Lab	1,109	65.9
Griffin N.	Con	575	34.1
Turnout		31.0	31.7
Shrewsbury (Welsh) (3526)			
		vote	share
Smith B. Ms.	Con	857	65.9
Ball M.	Lab	443	34.1
Turnout		36.9	31.8
St. Oswald (2438)			
		vote	share
Sutcliffe D.	Con	0	0.0
Turnout		0.0	0.0
Teme (2442)			
		vote	share
Coles A.	Ind	668	60.1
Strong E. Ms.	Ind	444	39.9
Turnout		45.5	20.1
Wellington (Haygate) (3970)			
		vote	share
Griffiths E.	Ind	833	65.4
Stillwell J.	Con	440	34.6
Turnout		32.1	30.9
Wellington (Park) (7939)²			
		vote	share
Harrison E. Ms.	Lab	1,378	54.1
Mason B. Ms.	Lab	1,371	-
Hall R.	Con	1,167	45.9
Morris-Jones P.	Con	1,072	-
Turnout		32.1	8.3
Wem (4134)			
		vote	share
Groom T.	Ind	0	0.0
Turnout		0.0	0.0
Weston Rhyn (4000)			
		vote	share
Jones R.	Lab	0	0.0
Turnout		0.0	0.0
Whitchurch (5316)			
		vote	share
Goodwin D.	Ind	0	0.0
Turnout		0.0	0.0
Whittington (2780)			
		vote	share
Morris T.	Ind	730	58.7
Bowyer J.	Con	513	41.3
Turnout		44.7	17.5
Wombridge (7267)²			
		vote	share
Bradshaw H.	Lab	0	-
Holbrook L.	Lab	0	0.0
Turnout		0.0	0.0

Wrekin (2714)			
		vote	share
Chappell A. Ms.	Lab	599	51.8
Holt V.	Con	558	48.2
Turnout		42.6	3.5
Wrockwardine Wood (4987)			
		vote	share
Wood F.	Lab	0	0.0
Turnout		0.0	0.0
Wroxeter (E.P. 23.6.77) (3515)			
		vote	share
Shaw J.	Ind	0	0.0
Turnout		0.0	0.0

Shropshire 1977

Albrighton (5348)			
		vote	share
Whittingham E.*	Con	0	0.0
Turnout		0.0	0.0
Baschurch (2231)			
		vote	share
Hawksley P.*	Con	514	53.0
Hodnett J.	Ind	456	47.0
Turnout		43.5	6.0
Bishops Castle & Chirbury (3814)			
		vote	share
Sykes W.	Ind	1,033	66.9
Phillips P.	Lib	510	33.1
Turnout		40.5	33.9
Bridgnorth (7580)²			
		vote	share
Robinson E.*	Lib	2,224	42.3
Walker J.	Con	1,803	34.3
Mapp M.	Con	1,575	-
Donnellan P.*	Ind	1,233	23.4
Leedham F.	Ind	152	-
Turnout		69.4	8.0
Broseley (3092)			
		vote	share
Dugdale J.*	Ind	0	0.0
Turnout		0.0	0.0
Chelmarsh (3058)			
		vote	share
Hodgson N. Ms.*	Ind	690	59.1
Parr W.	Con	478	40.9
Turnout		38.2	18.2
Church Stretton (4156)			
		vote	share
Radcliffe G.*	Ind	1,025	74.3
Bunting J.	Ind	355	25.7
Turnout		33.2	48.6
Clee Hill & Corvedale (4011)			
		vote	share
More J.*	Con	0	0.0
Turnout		0.0	0.0
Clebury Mortimer (2169)			
		vote	share
Roger D.	Lib	579	52.7
Jones R.*	Ind	520	47.3
Turnout		50.7	5.4
Clun & Lydbury (3290)			
		vote	share
Brereton D. Ms.*	Ind	0	0.0
Turnout		0.0	0.0

Condover (6354)			
		vote	share
Lloyd R.*	Con	2,328	81.0
Freudmann A.	Lab	547	19.0
Turnout		45.2	61.9
Dawley Magna (8709)			
		vote	share
Stevenson J.	Con	1,030	41.6
Gittins S. Ms.	Lab	855	34.5
Bullock H.*	Ind Con	522	21.1
Bradford J.	Comm	71	2.9
Turnout		28.5	7.1
Donnington (4834)			
		vote	share
Ward P.	Con	934	57.0
Whyte G.*	Lab	706	43.0
Turnout		33.9	13.9
Drayton (6069)			
		vote	share
Nagington D.	Con	983	49.5
Gask D. Ms.*	Ind	595	30.0
Oliver P.	Lab	407	20.5
Turnout		32.7	19.5
Ellesmere (4032)			
		vote	share
Jebb L.*	Ind	794	56.7
Thompson S.	Ind	607	43.3
Turnout		34.7	13.3
Ford (3337)			
		vote	share
Owen J.	Ind	816	59.3
Gurden A.*	Con	561	40.7
Turnout		41.3	18.5
Hadley (3392)			
		vote	share
Hayward J. Ms.*	Lab	867	64.6
Stillwell J.	Con	475	35.4
Turnout		39.6	29.2
High Ercall (3462)			
		vote	share
Holt E. Ms.*	Con	1,063	83.7
Jack S. Ms.	Ind	207	16.3
Turnout		36.7	67.4
Highley (3483)			
		vote	share
Bowers J.*	Ind	795	53.6
Lloyd E.	Lab	519	35.0
Merricks A.	Lib	168	11.3
Turnout		42.5	18.6
Hinstock (2936)			
		vote	share
Hancock W.	Ind	879	90.2
Sheet A.	Lab	95	9.8
Turnout		33.2	80.5
Hodnet (3382)			
		vote	share
Corbett J.*	Ind	592	48.8
Dodd E.	Ind	531	43.8
Whitcombe K.	Lab	89	7.3
Turnout		35.8	5.0
Lilleshall (4420)			
		vote	share
Marsh B. Ms.*	Con	0	0.0
Turnout		0.0	0.0

Ludlow (5792)			
		vote	share
Went J.	Ind	957	44.3
Gill R.	Lab	464	21.5
Amos L.	Ind Con	370	17.1
Clare R. Ms.	Lib	369	17.1
Turnout		37.3	22.8
Madeley (12606)²			
		vote	share
Dickins V. Ms.	Con	1,921	49.2
Chillcott J.	Con	1,600	-
Hooks A.	Lab	1,518	38.9
England A.	Lab	1,364	-
Akister R.	Lib	338	8.7
Jones A.	Comm	129	3.3
Gilman R.	Comm	120	-
Turnout		31.0	10.3
Malinsee (4544)			
		vote	share
Barber J.	Con	746	55.1
Harrison P.	Lab	608	44.9
Turnout		29.8	10.2
Montford (3430)			
		vote	share
Conrad E. Ms.	Con	0	0.0
Turnout		0.0	0.0
Morfe (4612)			
		vote	share
Kenyon-Slaney W.	Con	0	0.0
Turnout		0.0	0.0
Much Wenlock (2366)			
		vote	share
Hill D.*	Ind	844	66.2
Gripton P.	Ind Con	430	33.8
Turnout		53.8	32.5
Newport (7527)²			
		vote	share
Morris-Eyton R.*	Con	2,025	62.1
Cooper K.	Con	1,305	-
Evans W.	Lib	765	23.5
Bailey D.	Ind	470	14.4
Turnout		43.3	38.7
Oswestry (Eastern) (4920)			
		vote	share
Symon P. Ms.*	Con	842	47.0
Collins J.	Ind	419	23.4
Allchurch M. Ms.	Lib	279	15.6
Smith K.	Lab	252	14.1
Turnout		36.4	23.6
Oswestry (Western) (4584)			
		vote	share
Gill I. Ms.	Con	1,017	58.8
Hartshorn H.	Ind Con	388	22.4
Nixon H.	Lab	325	18.8
Turnout		37.7	36.4
Pontesbury (3357)			
		vote	share
Challinor W.*	Ind	885	53.7
Pritchard J.	Ind	763	46.3
Turnout		49.1	7.4
Prees (3687)			
		vote	share
Collins P. Ms.*	Ind	0	0.0
Turnout		0.0	0.0
Ruyton-Xi-Towns (3824)			
		vote	share
Kenyon J.	Ind	962	67.9
Parry I.	Ind	455	32.1
Turnout		37.1	35.8

Shawbury (3119)			
		vote	share
Wycherley F.*	Ind	1,061	80.1
Roberts G.	Lab	264	19.9
Turnout		42.5	60.2
Shifnal (4892)			
		vote	share
Turnock W.	Ind	1,038	54.1
Jeffrey F.	Con	879	45.9
Turnout		39.2	8.3
Shrewsbury (Abbey) (5354)			
		vote	share
Carder G.*	Con	1,610	77.3
Medley P.	Lab	474	22.7
Turnout		38.9	54.5
Shrewsbury (Battlefield & Harlescot (9477)²			
		vote	share
Edington J.	Con	1,399	50.8
Ryder T.*	Lab	1,356	49.2
McDonald L.	Lab	1,066	-
Turnout		29.1	1.6
Shrewsbury (Belle Vue) (8598)²			
		vote	share
Marsh W.	Lib	1,872	51.0
Marsh J. Ms.*	Lib	1,801	-
Hughes P. Ms.	Con	1,795	49.0
Wright M.	Con	1,693	-
Turnout		42.6	2.1
Shrewsbury (Castle) (2829)			
		vote	share
Webber E.	Con	0	0.0
Turnout		0.0	0.0
Shrewsbury (Ditherington) (3730)			
		vote	share
Woodvine D.*	Lab	773	47.7
Good F.	Con	723	44.6
Joyner J. Ms.	Lib	126	7.8
Turnout		43.5	3.1
Shrewsbury (Kingsland) (3238)			
		vote	share
Williams A.	Con	0	0.0
Turnout		0.0	0.0
Shrewsbury (Monkmoor) (5562)			
		vote	share
Woodhouse H.	Con	745	37.5
Bevan H.*	Ind Lab	711	35.8
Dyas E. Ms.	Lab	370	18.6
Griffin N.	Ind	159	8.0
Turnout		35.7	1.7
Shrewsbury (Welsh) (3721)			
		vote	share
Balkwill N.	Con	1,219	77.3
Ellard A.	Lab	358	22.7
Turnout		42.4	54.6
St. Oswald (2263)			
		vote	share
Sutcliffe D.*	Con	0	0.0
Turnout		0.0	0.0
Teme (2543)			
		vote	share
Coles A.*	Ind	0	0.0
Turnout		0.0	0.0
Wellington (Haygate) (3828)			
		vote	share
Griffiths E.*	Ind	0	0.0
Turnout		0.0	0.0

Wellington (Park) (7726)²			
		vote	share
Cotterill J.	Con	1,800	56.5
Potts M. Ms.	Con	1,712	-
Harrison E. Ms.*	Lab	1,007	31.6
Mason B. Ms.*	Lab	944	-
Pearce K.	Lib	379	11.9
Turnout		41.2	24.9
Wem (4406)			
		vote	share
Groom T.*	Ind	0	0.0
Turnout		0.0	0.0
Weston Rhyn (4250)			
		vote	share
Lloyd D.	Ind	730	69.6
Scott G. Ms.	Lib	319	30.4
Turnout		24.7	39.2
Whitchurch (5520)			
		vote	share
Goodwin D.*	Ind	992	74.6
Dovaston J.	Lab	338	25.4
Turnout		24.1	49.2
Whittington (2876)			
		vote	share
Hughes B. Ms.	Con	695	69.7
Rowlands G.	Ind	302	30.3
Turnout		34.7	39.4
Wombridge (7228)²			
		vote	share
Holbrook L.*	Lab	0	0.0
Bradshaw H.*	Lab	0	-
Turnout		0.0	0.0
Wrekin (2540)			
		vote	share
Holt V.	Con	692	62.1
Chappell M. Ms.*	Lab	423	37.9
Turnout		43.9	24.1
Wrockwardine Wood (5044)			
		vote	share
Bassnett R.	Con	716	37.4
Wood F.*	Lab	698	36.5
Baker G. Ms.	Ind	498	26.0
Turnout		37.9	0.9
Wroxeter (E.P. 23.6.77) (3538)			
		vote	share
Hartley M. Ms.	Con	813	76.6
Duckett W.	Lab	249	23.4
Turnout		30.0	53.1

Shropshire 1981

Albrighton (4724)			
Whittingham E.	Con	1,514	86.2
Baker J.	Lab	243	13.8
Turnout		37.2	72.3
Bagley (3191)			
Farr W.	Soc Dem	583	37.7
Webber E.	Con	497	32.1
Parsons A.	Lab	466	30.1
Turnout		48.4	5.6
Bayston Hill (4608)			
Wright T.	Lib	1,482	71.5
Hutton P.	Con	590	28.5
Turnout		45.0	43.1
Belle Vue (4014)			
Marsh W.	Lib	782	40.2
Edwards A.	Lab	668	34.3
Jones I. Ms.	Con	497	25.5
Turnout		48.5	5.9
Bishops Castle (3869)			
Phillips P.	Lib	962	51.6
Brook D.	Ind	770	41.3
Robbs F. Ms.	Lab	134	7.2
Turnout		48.2	10.3
Bridgnorth Rural (4461)			
Green S. Ms.	Lib	845	35.3
Gill C.	Con	799	33.4
Yeomans R. Ms.	Ind	750	31.3
Turnout		53.7	1.9
Bridgnorth Town (4808)			
Robinson E.	Lib	1,995	76.7
Cooksey M.	Con	606	23.3
Turnout		54.1	53.4
Brookside (3564)			
Hancox J. Ms.	Lab	877	73.2
Rake-Davies M. Ms.	Con	321	26.8
Turnout		33.6	46.4
Broseley (3930)			
Elcock R.	Lab	821	36.0
Cash W.	Con	683	29.9
Robinson P.	Lib	580	25.4
Parr W.	Ind	197	8.6
Turnout		58.0	6.0
Burnell (4489)			
Lloyd R.	Con	1,361	65.2
Jones J.	Lib	726	34.8
Turnout		46.5	30.4
Castlefields & Ditherington (4086)			
Woodvine D.	Lab	0	0.0
Turnout		0.0	0.0
Church Stretton (4461)			
Corbett T.	Con	0	0.0
Turnout		0.0	0.0

Clee Hill (4950)			
Coles A.	Ind	1,208	48.1
Gaukroger D.	Lib	1,146	45.6
Reiner M.	Res	157	6.3
Turnout		50.7	2.5
Clun (3350)			
Brereton D. Ms.	Ind	0	0.0
Turnout		0.0	0.0
College (3890)			
Mason B. Ms.	Lab	1,090	63.6
Rex D.	Con	625	36.4
Turnout		44.1	27.1
Copthorne (4382)			
Balkwill B.	Con	1,207	73.3
Mosley J. Ms.	Lab	440	26.7
Turnout		37.6	46.6
Corvedale (4064)			
More J.	Con	767	41.9
Clare R. Ms.	Lib	715	39.0
Cashmore R.	Ind	349	19.1
Turnout		45.1	2.8
Cuckoo Oak (3437)			
England A.	Lab	1,080	73.6
Gardner A.	Con	360	24.5
Foulkes L.	Comm	28	1.9
Turnout		42.7	49.0
Dawley Magna (4030)			
Keen M.	Lab	1,168	75.3
Bushell T.	Ind	384	24.7
Turnout		38.5	50.5
Donnington (3443)			
Leek S.	Lab	886	69.5
Bassnett K.	Con	389	30.5
Turnout		37.0	39.0
Dothill (4069)			
Fowler G.	Lab	1,201	54.4
Hosken M.	Con	1,008	45.6
Turnout		54.3	8.7
Edgmond (4622)			
Cotterill J.	Con	1,422	69.2
Trower F.	Lab	356	17.3
George D.	Lib	276	13.4
Turnout		44.4	51.9
Ellesmere (4716)			
Knight B.	Lib	1,133	45.4
Hodnett J.	Ind	808	32.4
Jebb L.	Ind	384	15.4
Thompson S.	Lab	172	6.9
Turnout		52.9	13.0
Hadley (5301)			
Hayward J. Ms.	Lab	1,516	66.2
Tully-Ellis P.	Con	438	19.1
Robbins G.	Lib	337	14.7
Turnout		43.2	47.1

Harlescott (4022)			
McDonald L.	Lab	968	74.7
Edington M. Ms.	Con	327	25.3
Turnout		32.2	49.5
Haygate (4133)			
Griffiths E.	Ind	1,214	71.5
McCormick M.	Lab	484	28.5
Turnout		41.1	43.0
Hodnet (4267)			
Dodd E.	Ind	617	34.1
Roberts M.	Con	428	23.6
Hancock W.	Ind Con	349	19.3
Badland W.	Lab	215	11.9
Munns P.	Ind	203	11.2
Turnout		42.5	10.4
Hollinswood (3779)			
Knight J.	Res	795	48.6
Perkins R.	Lab	503	30.7
Bates A.	Con	339	20.7
Turnout		43.3	17.8
Ketley (4018)			
Holbrook L.	Lab	932	59.4
Donaldson B.	Con	393	25.1
Houlston E. Ms.	Ind	243	15.5
Turnout		39.0	34.4
Lawley (4346)			
Turner J.	Lab	1,232	78.0
Perris W.	Con	348	22.0
Turnout		36.4	55.9
Lilleshall (3764)			
Ward P.	Con	853	53.6
Rollason W.	Lab	737	46.4
Turnout		42.2	7.3
Loton (3939)			
Thomas G.	Con	817	65.5
Hanmer J.	Ind	431	34.5
Turnout		31.7	30.9
Ludlow (5962)			
Went J.	Res	866	38.9
Corston P.	Lib	859	38.6
Reece-Green D.	Lab	503	22.6
Turnout		37.4	0.3
Madeley (3539)			
Davis S. Ms.	Lab	885	62.6
Wilkie P. Ms.	Con	504	35.6
Boyd E.	Comm	25	1.8
Turnout		40.0	26.9
Market Drayton (4236)			
Walker R.	Lab	975	58.0
Nagington D.	Con	706	42.0
Turnout		39.7	16.0
Meole Brace (4264)			
Marsh J. Ms.	Lib	1,496	73.9
Miles D.	Con	528	26.1
Turnout		47.5	47.8

Monkmoor (4544)			
		vote	share
Freudmann A.	Lab	736	35.3
Dearing P.	Con	718	34.4
Smith C.	Soc Dem	631	30.3
Turnout		45.9	0.9

Morfe (4723)			
		vote	share
Kenyon-Slaney W.	Con	1,151	58.3
Mace R.	Lib	824	41.7
Turnout		41.8	16.6

Much Wenlock (4054)			
		vote	share
Hill D.	Con	0	0.0
Turnout		0.0	0.0

Myddle (4656)			
		vote	share
Boughey A.	Ind	1,460	73.3
Roberts G.	Lab	532	26.7
Turnout		42.8	46.6

Newport North (4019)			
		vote	share
Evans J.	Lib	958	51.3
Whitfield E.	Con	661	35.4
Malone B.	Lab	250	13.4
Turnout		46.5	15.9

Newport South (3841)			
		vote	share
Marsh B. Ms.	Con	948	53.7
Wiggin M.	Lib	586	33.2
Homer C. Ms.	Lab	230	13.0
Turnout		45.9	20.5

Oswestry East (5164)			
		vote	share
Lambie A.	Lib	820	36.4
Smith K.	Lab	760	33.7
Symon P. Ms.	Con	672	29.8
Turnout		43.6	2.7

Oswestry West (4733)			
		vote	share
Gull I. Ms.	Con	893	53.7
Chamberlain J. Ms.	Lab	770	46.3
Turnout		35.1	7.4

Prees (4023)			
		vote	share
Collins P. Ms.	Ind	1,121	85.3
Medley P.	Lab	193	14.7
Turnout		32.7	70.6

Priorslee (3319)			
		vote	share
Dodd E.	Ind	880	59.0
Briggs C.	Lab	612	41.0
Turnout		45.0	18.0

Quarry (3835)			
		vote	share
Bowen A.	Lib	833	50.3
Williams A.	Con	824	49.7
Turnout		43.2	0.5

Rea Valley (4230)			
		vote	share
Holyoak Y. Ms.	Ind	1,107	70.1
McCall D.	Ind	472	29.9
Turnout		37.3	40.2

Ruyton-X1-Towns (3332)			
		vote	share
Kenyon J.	Ind	880	82.6
Nixon H.	Lab	186	17.4
Turnout		32.0	65.1

Shifnal (5253)			
		vote	share
Turnock W.	Ind	1,266	47.1
Hawksley P.	Con	957	35.6
Davis P.	Lab	464	17.3
Turnout		51.2	11.5

St. Oswald (3394)			
		vote	share
Sutcliffe D.	Con	685	53.2
Pinder A.	Ind	439	34.1
Leatham-Thomas B. Ms.	Lab	163	12.7
Turnout		37.9	19.1

Stirchley (4830)			
		vote	share
Turner J. Ms.	Lab	974	60.9
Evans L.	Con	351	21.9
Snell T.	Lib	275	17.2
Turnout		33.1	38.9

Stottesdon (3992)			
		vote	share
Bowers J.	Ind	0	0.0
Turnout		0.0	0.0

Sundorne (4076)			
		vote	share
Kinclia J.	Lab	0	0.0
Turnout		0.0	0.0

Sutton (4000)			
		vote	share
Frew A.	Con	944	51.0
Baldwin G.	Lib	572	30.9
Kearns G.	Lab	334	18.1
Turnout		46.3	20.1

Tern (4130)			
		vote	share
Conrad E. Ms.	Con	711	41.3
Freeman R.	Soc Dem	566	32.9
Roberts J.	Lab	443	25.8
Turnout		41.6	8.4

Underdale (3932)			
		vote	share
Owen E. Ms.	Lab	781	44.0
Parker S.	Lib	526	29.7
Hatcher M. Ms.	Con	467	26.3
Turnout		45.1	14.4

Wem (4319)			
		vote	share
Groom T.	Ind	1,094	78.9
Taylor J.	Lab	293	21.1
Turnout		32.1	57.8

Weston Rhyn (3531)			
		vote	share
Lloyd D.	Ind	633	50.6
Borrett V.	Lab	618	49.4
Turnout		35.4	1.2

Whitchurch (5711)			
		vote	share
Cambridge H.	Lib	816	48.4
Shuttleworth P. Ms.	Ind	382	22.6
Dovaston J.	Lab	327	19.4
Wright R.	Ind	162	9.6
Turnout		29.5	25.7

Whittington (3878)			
		vote	share
Hughes B. Ms.	Con	659	43.8
Graves R.	Ind	481	32.0
Brook J. Ms.	Lab	364	24.2
Turnout		38.8	11.8

Wombridge (4047)			
		vote	share
Bradshaw H.	Lab	1,247	73.3
Turner N.	Con	455	26.7
Turnout		42.1	46.5

Woodside (4057)			
		vote	share
Hooke A.	Lab	875	61.4
Frost E. Ms.	Con	299	21.0
Vaughan V.	Lib	231	16.2
Bradford J.	Comm	21	1.5
Turnout		35.1	40.4

Woore (4547)			
		vote	share
Gillow J.	Con	782	43.8
Salter M. Ms.	Ind	536	30.0
Lewis L.	Lab	467	26.2
Turnout		39.3	13.8

Wrekin Rural (3778)			
		vote	share
Holt V.	Con	845	48.5
Turner R.	Lab	441	25.3
Akister R.	Lib	342	19.6
Jack S. Ms.	Ind Rp	114	6.5
Turnout		46.1	23.2

Wrockwardine Wood (3915)			
		vote	share
Wood F.	Lab	940	51.9
Jenkins I.	Lib	607	33.5
Egginton M. Ms.	Con	264	14.6
Turnout		46.3	18.4

Shropshire 1985

Albrighton (4975)			
		vote	share
Whittingham E.*	Con	1,140	56.2
Leeson D.	Lib/SDP	889	43.8
Turnout		40.8	12.4

Bagley (3295)			
		vote	share
Farr W.*	Lib/SDP	615	35.8
Edwards B.	Lab	554	32.2
Elliott W.	Con	551	32.0
Turnout		52.2	3.5

Bayston Hill (4733)			
		vote	share
Wright T.*	Lib/SDP	1,123	57.2
Wheeler A.	Con	618	31.5
Sambrook J. Ms.	Lab	223	11.4
Turnout		41.5	25.7

Belle Vue (4121)			
		vote	share
Marmion K. Ms.	Lab	881	45.0
Jacobs I.	Lib/SDP	558	28.5
Woodbine E.	Con	517	26.4
Turnout		47.5	16.5

Bishops Castle (3950)			
		vote	share
Roberts J.	Con	738	49.9
Phillips P.*	Lib/SDP	518	35.0
Lomas C. Ms.	Lab	170	11.5
Kerswell W.	Ind	53	3.6
Turnout		37.4	14.9

Bridgnorth Rural (4695)			
		vote	share
Yeomans R. Ms.	Con	1,282	65.6
Etchells M.	Lab	673	34.4
Turnout		41.6	31.2

Bridgnorth Town (5162)			
		vote	share
Green D.	Lib/SDP	1,342	55.8
Mapp M.	Con	1,064	44.2
Turnout		46.6	11.6
Brookside (3668)			
		vote	share
Berrington C.	Lab	762	60.4
Pearce K.	Lib/SDP	282	22.4
Stewart J.	Con	217	17.2
Turnout		34.4	38.1
Broseley (3719)			
		vote	share
Elcock R.*	Ind Lab	982	41.9
Mason A.	Lab	828	35.4
Jones J. Ms.	Con	532	22.7
Turnout		63.0	6.6
Burnell (4725)			
		vote	share
Lloyd R.	Con	0	0.0
Turnout		0.0	0.0
Castlefields & Ditherington (4234)			
		vote	share
Woodvine D.*	Lab	1,092	73.0
Leonard S. Ms.	Con	403	27.0
Turnout		35.3	46.1
Church Stretton (4599)			
		vote	share
Larney P. Ms.	Con	1,038	50.1
Winterburn G.	Lib/SDP	839	40.5
Haymes M.	Lab	193	9.3
Turnout		45.0	9.6
Clee Hill (5345)			
		vote	share
Coels A.*	Res	1,326	62.7
Allen S.	Lab	525	24.8
Reiner M.	Ind	263	12.4
Turnout		39.6	37.9
Clun (3567)			
		vote	share
Brereton D. Ms.*	Ind	1,069	71.0
Roberts T.	Ind	291	19.3
Bailey R.	Lab	145	9.6
Turnout		42.2	51.7
College (3925)			
		vote	share
Mason B. Ms.*	Lab	1,048	64.1
Hall C. Ms.	Con	588	35.9
Turnout		41.7	28.1
Copthorne (5495)			
		vote	share
Richey G.	Con	1,261	65.7
Thrower P.	Lab	657	34.3
Turnout		34.9	31.5
Corvedale (4214)			
		vote	share
Marston T.	Ind	604	33.0
Mercer R.	Con	544	29.7
Clare R. Ms.	Lib/SDP	499	27.3
Nicholls P. Ms.	Lab	184	10.0
Turnout		43.5	3.3
Cuckoo Oak (3796)			
		vote	share
England A.*	Lab	948	71.0
Jones M.	Con	388	29.0
Turnout		35.2	41.9

Dawley Magna (4928)			
		vote	share
Bould G.	Lab	1,467	75.2
Swayne D.	Con	483	24.8
Turnout		39.6	50.5
Donnington (3404)			
		vote	share
Rollason W.	Lab	1,003	73.2
Handley J.	Con	368	26.8
Turnout		40.3	46.3
Dothill (4353)			
		vote	share
Edwardes D.	Lab	1,056	50.4
Hobbs M. Ms.	Con	1,039	49.6
Turnout		48.1	0.8
Edgmond (4768)			
		vote	share
Cotterill J.*	Con	1,149	63.6
White L.	Lab	405	22.4
Jack S. Ms.	Ind	252	14.0
Turnout		37.9	41.2
Ellesmere (5063)			
		vote	share
Lea R.	Lib/SDP	1,080	50.6
Hodnett J.	Ind	1,054	49.4
Turnout		42.1	1.2
Hadley (6663)			
		vote	share
Hayward J. Ms.*	Lab	1,534	62.3
Higgins C.	Con	568	23.1
Murray J.	Lib/SDP	360	14.6
Turnout		37.0	39.2
Harlescott (4086)			
		vote	share
McDonald L.*	Lab	845	54.1
Sandford E. Ms.	Con	717	45.9
Turnout		38.2	8.2
Haygate (4105)			
		vote	share
Griffiths E.*	Con	1,134	57.3
McCormick M.	Lab	844	42.7
Turnout		48.2	14.7
Hodnet (4364)			
		vote	share
Dodd E.*	Ind	0	0.0
Turnout		0.0	0.0
Hollinswood (3824)			
		vote	share
Harrison K.	Lab	753	47.0
Dixon C. Ms.	Lib/SDP	432	27.0
Evans L.	Con	417	26.0
Turnout		41.9	20.0
Ketley (3930)			
		vote	share
Holbrook L.*	Lab	931	70.9
Wearmouth S. Ms.	Con	383	29.1
Turnout		33.4	41.7
Lawley (4887)			
		vote	share
Turner J.*	Lab	1,141	74.8
Tyler R.	Con	384	25.2
Turnout		31.2	49.6
Lilleshall (3828)			
		vote	share
Cutler F.	Lab	744	50.3
Ward P.*	Con	735	49.7
Turnout		38.6	0.6

Loton (4042)			
		vote	share
Thomas G.*	Con	0	0.0
Turnout		0.0	0.0
Ludlow (6520)			
		vote	share
Corston P.	Lib/SDP	1,236	45.0
Wynne J. Ms.	Con	918	33.4
Wall R.	Ind	592	21.6
Turnout		42.1	11.6
Madeley (3821)			
		vote	share
Davis S. Ms.*	Lab	1,089	69.2
Wilkie P. Ms.	Con	484	30.8
Turnout		41.2	38.5
Market Drayton (4440)			
		vote	share
Walker R.*	Lab	969	55.7
Nagington D.	Con	772	44.3
Turnout		39.2	11.3
Meole Brace (5195)			
		vote	share
Marsh J. Ms.*	Lib/SDP	1,372	59.9
Hughes J. Ms.	Con	557	24.3
Cowlshaw F.	Lab	362	15.8
Turnout		44.1	35.6
Monkmoor (4783)			
		vote	share
Collins A. Ms.	Con	994	40.9
Turner R.	Lab	765	31.5
Smith C.	Lib/SDP	669	27.6
Turnout		50.8	9.4
Morfe (4410)			
		vote	share
Carver D. Ms.*	Con	0	0.0
Turnout		0.0	0.0
Much Wenlock (4146)			
		vote	share
Hill D.*	Con	1,117	79.1
Daly R.	Lab	295	20.9
Turnout		34.1	58.2
Myddle (4856)			
		vote	share
Roberts M.*	Con	0	0.0
Turnout		0.0	0.0
Newport North (4252)			
		vote	share
Evans J.*	Lib/SDP	1,250	57.7
Prior J. Ms.	Con	528	24.4
Williams D.	Lab	387	17.9
Turnout		50.9	33.3
Newport South (3988)			
		vote	share
Marsh B. Ms.*	Con	818	44.1
Clayton-Jones S.	Lib/SDP	752	40.6
Batkin B.	Lab	283	15.3
Turnout		46.5	3.6
Oswestry East (5643)			
		vote	share
Davies J.	Lab	1,192	59.6
Hawksley C. Ms.	Con	807	40.4
Turnout		35.4	19.3
Oswestry West (4703)			
		vote	share
Gull I. Ms.*	Con	924	53.7
Chamberlain J. Ms.	Lab	797	46.3
Turnout		36.6	7.4

Prees (4128)			
		vote	share
Collins P. Ms.*	Ind	1,103	84.9
Gunton J. Ms.	Lab	196	15.1
Turnout		31.5	69.8
Priorslee (4139)			
		vote	share
Raxster G.	Lab	865	51.8
Houlston J.	Ind	531	31.8
Shaw P.	Con	273	16.4
Turnout		40.3	20.0
Quarry (3849)			
		vote	share
Bowen A.*	Lib/SDP	962	50.2
Butcher M. Ms.	Con	797	41.6
Kinclia J.	Lab	159	8.3
Turnout		49.8	8.6
Rea Valley (4554)			
		vote	share
Holyoak Y. Ms.*	Ind	0	0.0
Turnout		0.0	0.0
Ruyton-X1-Towns (3448)			
		vote	share
Sharp D.	Ind	532	56.1
Stockbridge J.	Ind	417	43.9
Turnout		27.5	12.1
Shifnal (6279)			
		vote	share
Turnock W.*	Ind	810	30.5
Drabble P.	Con	677	25.5
Tonkinson G.	Lib/SDP	666	25.1
McClements W.	Lab	499	18.8
Turnout		42.2	5.0
St. Oswald (3143)			
		vote	share
Tomley M. Ms.	Ind	0	0.0
Turnout		0.0	0.0
Stirchley (5050)			
		vote	share
Auger D.	Lab	1,154	73.5
Evans E. Ms.	Con	416	26.5
Turnout		31.1	47.0
Stottesdon (4220)			
		vote	share
Englehart P.	Con	475	23.5
Gould A.	Ind	473	23.5
Bache C.	Ind	438	21.7
Rodenhurst J.	Ind	316	15.7
Murphy J.	Lab	315	15.6
Turnout		47.8	0.1
Sundorne (3894)			
		vote	share
Freudmann A.	Lab	924	71.8
Evans F.	Con	363	28.2
Turnout		33.1	43.6
Sutton (4041)			
		vote	share
Frew A.*	Con	854	45.5
Baldwin G.	Lib/SDP	511	27.3
Bailey C.	Lab	510	27.2
Turnout		46.4	18.3
Tern (4318)			
		vote	share
Shiels N.	Lib/SDP	848	57.5
Conrad E. Ms.*	Con	626	42.5
Turnout		34.1	15.1

Underdale (3939)			
		vote	share
Owen E. Ms.*	Lab	0	0.0
Turnout		0.0	0.0
Wem (4651)			
		vote	share
Groom T.*	Ind	1,009	80.9
Taylor J.	Lab	238	19.1
Turnout		26.8	61.8
Weston Rhyn (3748)			
		vote	share
Smith K.	Lab	836	53.2
Lloyd D.*	Ind	517	32.9
Terry G.	Ind	219	13.9
Turnout		41.9	20.3
Whitchurch (5818)			
		vote	share
Cambridge H.*	Lib/SDP	1,153	71.7
Wood M.	Lab	455	28.3
Turnout		27.6	43.4
Whittington (3954)			
		vote	share
Hughes B. Ms.*	Con	0	0.0
Turnout		0.0	0.0
Wombidge (4032)			
		vote	share
Bradshaw H.*	Lab	1,072	74.2
Garbett B.	Con	372	25.8
Turnout		35.8	48.5
Woodside (4370)			
		vote	share
Hooke A.*	Lab	1,032	71.7
Simpson B. Ms.	Con	407	28.3
Turnout		32.9	43.4
Woore (4746)			
		vote	share
Gillow J.*	Con	1,140	59.3
Gough R.	Lab	781	40.7
Turnout		40.5	18.7
Wrekin Rural (4334)			
		vote	share
Holt V.*	Con	953	51.0
Stokes S.	Lib/SDP	482	25.8
Turner R.	Lab	435	23.3
Turnout		43.1	25.2
Wrockwardine Wood (3917)			
		vote	share
Pickering N.	Lab	1,047	65.8
Breeze P.	Lib/SDP	273	17.2
Tully-Ellis P.	Con	270	17.0
Turnout		40.6	48.7

Shropshire 1989

Albrighton (4926)			
		vote	share
Pate M.	Con	1,351	55.6
Leeson D.	LD	1,077	44.4
Turnout		49.3	11.3
Bagley (3431)			
		vote	share
Stockley P.	Con	495	35.5
Farr W.*	SDP	490	35.2
Lloyd H.	Lab	408	29.3
Turnout		40.6	0.4
Bayston Hill (4368)			
		vote	share
Wright T.*	LD	1,091	60.1
Chillcott D.	Con	725	39.9
Turnout		41.6	20.2
Belle Vue (4360)			
		vote	share
Hutchison R.	LD	999	44.1
Parsons A.	Lab	845	37.3
Butcher M.	Con	420	18.6
Turnout		51.9	6.8
Bishops Castle (4135)			
		vote	share
Roberts J.*	Con	0	0.0
Turnout		0.0	0.0
Bridgnorth Rural (4803)			
		vote	share
Green S. Ms.	LD	872	50.2
Sower K.	Con	577	33.2
Jones N.	Ind Con	289	16.6
Turnout		36.2	17.0
Bridgnorth Town (5295)			
		vote	share
Onions D.	Con	1,208	55.0
Kram E. Ms.	Lab	988	45.0
Turnout		41.5	10.0
Brookside (3776)			
		vote	share
Berrington C.*	Lab	556	71.1
Plant C.	Ind	226	28.9
Turnout		20.7	42.2
Broseley (4316)			
		vote	share
Elcock R.*	Ind Lab	1,110	63.4
Cooper C. Ms.	Con	642	36.6
Turnout		40.6	26.7
Burnell (4848)			
		vote	share
Lloyd R.*	Con	1,298	67.8
Dowse C.	LD	617	32.2
Turnout		39.5	35.6
Castlefields & Ditherington (4355)			
		vote	share
Woodvine D.*	Lab	1,058	68.9
Reakes-Williams G.	Con	330	21.5
Mclvor N.	Green	147	9.6
Turnout		35.2	47.4
Church Stretton (4770)			
		vote	share
Larney P. Ms.*	Con	1,306	58.6
Johnson K.	LD	922	41.4
Turnout		46.7	17.2

Clee Hill (5651)			
		vote	share
Coles A.*	Res	1,588	70.7
Talbot C.	Ind	659	29.3
Turnout		39.8	41.3
Clun (3664)			
		vote	share
Morgan J.	Con	736	52.8
Appleton-Fox N.	Green	658	47.2
Turnout		38.0	5.6
College (3835)			
		vote	share
Mason B. Ms.*	Lab	907	59.6
Hall C. Ms.	Con	614	40.4
Turnout		39.7	19.3
Copthorne (6231)			
		vote	share
Richey G.*	Con	1,445	51.2
Rudd A.	LD	1,375	48.8
Turnout		45.3	2.5
Corvedale (4293)			
		vote	share
Kenchington C.	Con	899	53.6
Morris B. Ms.	LD	777	46.4
Turnout		39.0	7.3
Cuckoo Oak (3901)			
		vote	share
Lane M.	Lab	938	75.1
Stilwell J.	Con	311	24.9
Turnout		32.0	50.2
Dawley Magna (5371)			
		vote	share
Bould G.*	Lab	1,304	72.5
Lee A.	Con	494	27.5
Turnout		33.5	45.1
Donnington (3418)			
		vote	share
Whyte G.	Lab	951	74.0
Handley J.	Con	335	26.0
Turnout		37.6	47.9
Dothill (5223)			
		vote	share
Robinson W.	Con	1,093	44.2
Gorse J. Ms.	Lab	1,082	43.8
Scholes M.	Green	297	12.0
Turnout		47.3	0.4
Edgmond (4836)			
		vote	share
Cotterill J.*	Con	0	0.0
Turnout		0.0	0.0
Ellesmere (5200)			
		vote	share
Lea R.*	LD	1,512	64.7
McLaughlin P. Ms.	Con	824	35.3
Turnout		44.9	29.5
Hadley (6960)			
		vote	share
Hayward J. Ms.*	Lab	1,824	75.2
Eardley N.	Con	601	24.8
Turnout		34.8	50.4
Harlescott (4095)			
		vote	share
Sandford E. Ms.	Con	997	50.6
Beddow G.	Lab	857	43.5
Eddies M.	LD	118	6.0
Turnout		48.2	7.1

Haygate (4194)			
		vote	share
Holt E. Ms.	Con	1,139	61.3
Randles K.	Lab	719	38.7
Turnout		44.3	22.6
Hodnet (4940)			
		vote	share
Dodd E.*	Ind	916	68.5
Stevenson J.	Ind	421	31.5
Turnout		27.1	37.0
Hollinswood (4064)			
		vote	share
Hicks J.	Lab	844	66.8
Pritchard E. Ms.	Con	420	33.2
Turnout		31.1	33.5
Ketley (4046)			
		vote	share
Yates L.	Lab	954	64.3
Street L. Ms.	Con	529	35.7
Turnout		36.7	28.7
Lawley (5444)			
		vote	share
Turner J.*	Lab	939	73.6
Tyler R.	Con	337	26.4
Turnout		23.4	47.2
Lilleshall (4094)			
		vote	share
Cutler F.*	Lab	791	52.7
Cook G.	Con	711	47.3
Turnout		36.7	5.3
Loton (3984)			
		vote	share
Bayley L.	Con	824	52.0
Roberts K.	Ind	760	48.0
Turnout		39.8	4.0
Ludlow (6829)			
		vote	share
Lloyd D.	Ind	1,617	56.1
Corston P.*	LD	1,266	43.9
Turnout		42.2	12.2
Madeley (4239)			
		vote	share
Davis S. Ms.*	Lab	1,172	71.5
Wilkie P. Ms.	Con	467	28.5
Turnout		38.7	43.0
Market Drayton (5374)			
		vote	share
Walker R.*	Lab	978	51.0
Platt M.	Con	939	49.0
Turnout		35.7	2.0
Meole Brace (5974)			
		vote	share
Marsh J. Ms.*	LD	1,248	63.3
Boyd K.	Con	725	36.7
Turnout		33.0	26.5
Monkmoor (4997)			
		vote	share
Trotman C.	Lab	1,326	55.8
Loasby H.	Con	1,050	44.2
Turnout		47.5	11.6
Morfe (5100)			
		vote	share
Carver D. Ms.*	Con	1,179	68.4
Steel R.	LD	545	31.6
Turnout		33.8	36.8

Much Wenlock (4382)			
		vote	share
Hill D.*	Con	0	0.0
Turnout		0.0	0.0
Myddle (5693)			
		vote	share
Roberts M.*	Con	1,066	57.2
Crowther-Smith D. Ms.LD		798	42.8
Turnout		32.7	14.4
Newport North (5075)			
		vote	share
Evans J.*	LD	1,456	57.8
Adams D.	Con	750	29.8
Hawkins J. Ms.	Lab	312	12.4
Turnout		49.6	28.0
Newport South (3702)			
		vote	share
Marsh B. Ms.*	Con	1,040	51.7
West A.	LD	628	31.2
Gardner A.	Lab	344	17.1
Turnout		54.3	20.5
Oswestry East (6149)			
		vote	share
Davies J.*	Lab	0	0.0
Turnout		0.0	0.0
Oswestry West (4740)			
		vote	share
Gull I. Ms.*	Con	0	0.0
Turnout		0.0	0.0
Prees (4414)			
		vote	share
France B.	Ind	995	69.8
Beckett J. Ms.	Con	431	30.2
Turnout		32.3	39.6
Priorslee (4495)			
		vote	share
Raxster G.*	Lab	798	43.5
Houlston J.	Res	633	34.5
Fletcher I.	Con	405	22.1
Turnout		40.8	9.0
Quarry (3913)			
		vote	share
Butcher E.	Con	941	51.4
Bowem A. Ms.	LD	888	48.6
Turnout		46.7	2.9
Rea Valley (5149)			
		vote	share
Holyoak Y. Ms.*	Con	1,285	62.3
Crookes S. Ms.	Lab	420	20.4
Woolland A. Ms.	LD	356	17.3
Turnout		40.0	42.0
Ruyton-X1-Towns (3546)			
		vote	share
Stockbridge J.	Ind	709	63.4
Chamberlain J. Ms.	Ind	410	36.6
Turnout		31.6	26.7
Shifnal (5751)			
		vote	share
Turnock W.*	Ind	985	44.1
Tonkinson G.	Ind	699	31.3
Jones J.	Con	552	24.7
Turnout		38.9	12.8

St. Oswald (3468)			
		vote	share
Jones S.	Lab	598	47.4
Francis T.	Ind	262	20.8
Dennis L.	Ind Con	194	15.4
Roberts R.	Con	140	11.1
Burman R.	LD	67	5.3
Turnout		36.4	26.6
Stirchley (5276)			
		vote	share
Upton C.	Lab	972	69.8
Evans L.	Con	421	30.2
Turnout		26.4	39.6
Stottesdon (4391)			
		vote	share
Engleheart P.*	Con	1,192	60.0
Bache C.	Ind	503	25.3
Murphy J.	Lab	291	14.7
Turnout		45.2	34.7
Sundorne (3821)			
		vote	share
Freudmann A.*	Lab	920	75.8
Miller F. Ms.	Con	293	24.2
Turnout		31.7	51.7
Sutton (4187)			
		vote	share
Meeks P.	Con	944	50.9
Edbrooke M. Ms.	LD	486	26.2
Griffiths D.	Lab	423	22.8
Turnout		44.3	24.7
Tern (4445)			
		vote	share
Everall E.	Con	1,074	55.3
Preece D.	Lab	469	24.2
Dunham P.	LD	398	20.5
Turnout		43.7	31.2
Underdale (3940)			
		vote	share
Owen E. Ms.*	Lab	897	57.5
Ramwell T.	Con	452	29.0
Hardy G.	Green	106	6.8
Clarke J. Ms.	LD	105	6.7
Turnout		39.6	28.5
Wem (5040)			
		vote	share
Mellings C.	LD	1,434	63.1
Groom T.*	Ind Con	840	36.9
Turnout		45.1	26.1
Weston Rhyn (3831)			
		vote	share
Smith K.*	Lab	866	61.2
Bowyer J.	Con	549	38.8
Turnout		36.9	22.4
Whitchurch (6038)			
		vote	share
Cambridge H.*	LD	992	61.7
Chadwick J.	Con	615	38.3
Turnout		26.6	23.5
Whittington (4096)			
		vote	share
Hughes B. Ms.*	Con	684	53.1
Terry G.	LD	605	46.9
Turnout		31.5	6.1
Wombidge (4451)			
		vote	share
Bradshaw H.*	Lab	1,268	71.8
Alvey J.	Con	497	28.2
Turnout		39.7	43.7

Woodside (4517)			
		vote	share
Hooke A.*	Lab	732	73.4
Usher P. Ms.	Con	265	26.6
Turnout		22.1	46.8
Woore (4339)			
		vote	share
Gillow J.*	Con	866	58.9
Lewis L.	Lab	456	31.0
King J.	LD	148	10.1
Turnout		33.9	27.9
Wrekin Rural (4133)			
		vote	share
Holt V.*	Con	1,200	69.3
Uppal J.	Lab	532	30.7
Turnout		41.9	38.6
Wrockwardine Wood (3890)			
		vote	share
Pickering N.*	Lab	986	75.3
Fletcher V. Ms.	Con	323	24.7
Turnout		33.7	50.6
Shropshire 1993			
Albrighton (4801)			
		vote	share
Pate M.*	Con	1,016	54.0
Wylie B.	Lab	544	28.9
Parry R.	Ind	320	17.0
Turnout		39.2	25.1
Bagley (3685)			
		vote	share
Dunham P.*	LD	1,081	68.1
Entwistle N.	Lab	282	17.8
Pritchard A.	Con	224	14.1
Turnout		43.1	50.3
Bayston Hill (4201)			
		vote	share
Wright T.*	LD	930	54.0
Chillcott D.	Con	537	31.2
Parry M. Ms.	Lab	256	14.9
Turnout		41.0	22.8
Belle Vue (4175)			
		vote	share
Edbrooke M. Ms.	LD	784	43.8
Scott W.	Lab	710	39.6
Jones R.	Con	298	16.6
Turnout		42.9	4.1
Bishops Castle (4307)			
		vote	share
Phillips P.	LD	1,219	67.5
Roberts J.*	Con	587	32.5
Turnout		41.9	35.0
Bridgnorth Rural (5197)			
		vote	share
Green S. Ms.*	LD	993	53.7
Anslow W.	Con	857	46.3
Turnout		35.6	7.4
Bridgnorth Town (5372)			
		vote	share
Green A.	Lab	898	39.3
Onions D.*	Con	791	34.6
Jephcott B.	Ind	595	26.1
Turnout		42.5	4.7

Brookside (4233)			
		vote	share
Berrington C.*	Lab	586	77.9
Tully-Ellis P.	Con	166	22.1
Turnout		17.8	55.9
Broseley (4279)			
		vote	share
Elcock R.*	Ind Lab	755	44.4
McClelland J. Ms.	Lab	636	37.4
Wilson S.	Con	311	18.3
Turnout		39.8	7.0
Burnell (4769)			
		vote	share
Lloyd R.*	Con	1,271	71.8
Crookes A.	Lab	499	28.2
Turnout		37.1	43.6
Castlefields & Ditherington (4286)			
		vote	share
Woodvine D.*	Lab	919	62.0
Toms C.	LD	563	38.0
Turnout		34.6	24.0
Church Stretton (4993)			
		vote	share
Larney P. Ms.*	Con	1,139	52.1
Kronbergs Z.	LD	785	35.9
Nisbet D.	Lab	264	12.1
Turnout		43.8	16.2
Clee Hill (6081)			
		vote	share
Coles A.*	Ind	0	0.0
Turnout		0.0	0.0
Clun (3741)			
		vote	share
Morgan J.	Con	660	43.5
Hartin N.	LD	438	28.9
Appleton-Fox N.	Green	419	27.6
Turnout		40.6	14.6
College (3927)			
		vote	share
Mason B. Ms.*	Lab	591	70.3
Hobbs M. Ms.	Con	250	29.7
Turnout		21.4	40.5
Copthorne (6391)			
		vote	share
Richey G.*	Con	1,037	47.6
Lawrence M. Ms.	LD	753	34.6
Allcroft A.	Lab	389	17.9
Turnout		34.1	13.0
Corvedale (4588)			
		vote	share
Wheeler J.	Con	1,014	54.9
Smith J.	Ind	704	38.1
Oliver M.	Ind	130	7.0
Turnout		40.3	16.8
Cuckoo Oak (4163)			
		vote	share
Lane M.*	Lab	710	72.9
Wilkie P. Ms.	Con	264	27.1
Turnout		23.4	45.8
Dawley Magna (5952)			
		vote	share
Bould G.*	Lab	1,196	72.6
Forgham P.	Con	451	27.4
Turnout		27.7	45.2

Donnington (3487)			
		vote	share
Whyte G.*	Lab	717	75.3
Wainwright M.	Con	235	24.7
Turnout		27.3	50.6
Dothill (5829)			
		vote	share
Robinson W.*	Con	1,136	51.8
Bolt D.	Lab	1,058	48.2
Turnout		37.6	3.6
Edgmond (4902)			
		vote	share
Baker-Oliver L. Ms.	Con	934	61.2
Jack S. Ms.	Ind	592	38.8
Turnout		31.1	22.4
Ellesmere (5523)			
		vote	share
Whyte A.	LD	1,436	65.7
McLaughlin P. Ms.	Con	749	34.3
Turnout		39.6	31.4
Hadley (7801)			
		vote	share
Austin R.	Lab	1,614	72.2
Pritchard E. Ms.	Con	621	27.8
Turnout		28.7	44.4
Harlescott (3996)			
		vote	share
Sandford E. Ms.*	Con	1,155	62.0
Allaway J. Ms.	Lab	707	38.0
Turnout		46.6	24.1
Haygate (4197)			
		vote	share
Holt E. Ms.*	Con	863	54.1
Edwards M.	Lab	733	45.9
Turnout		38.0	8.1
Hodnet (5016)			
		vote	share
Dodd E.*	Ind Con	0	0.0
Turnout		0.0	0.0
Hollinswood (4728)			
		vote	share
Holding S.	Lab	636	53.8
Tyler R.	Con	361	30.5
Church J.	Green	186	15.7
Turnout		25.0	23.2
Ketley (4382)			
		vote	share
Yates L.*	Lab	745	72.6
Eade J. Ms.	Con	281	27.4
Turnout		23.4	45.2
Lawley (6480)			
		vote	share
Turner J.*	Lab	918	68.5
Marshall M. Ms.	Con	423	31.5
Turnout		20.7	36.9
Lilleshall (4713)			
		vote	share
Handley J.	Con	726	52.8
Cutler F.*	Lab	648	47.2
Turnout		29.2	5.7
Loton (4061)			
		vote	share
Bayley L.*	Con	944	72.1
Moorcroft R.	Lab	366	27.9
Turnout		32.3	44.1

Ludlow (7081)			
		vote	share
Corston P.	LD	1,764	73.5
Caulcott T.	Con	635	26.5
Turnout		33.9	47.1
Madeley (4361)			
		vote	share
Davis S. Ms.*	Lab	745	62.3
Jones R.	Con	290	24.3
Pooley M.	Green	160	13.4
Turnout		27.4	38.1
Market Drayton (5643)			
		vote	share
Walker R.*	Lab	959	55.5
Little B.	Con	768	44.5
Turnout		30.6	11.1
Meole Brace (5808)			
		vote	share
Marsh J. Ms.*	LD	1,212	57.4
Boyd K.	Con	545	25.8
Marshall J. Ms.	Lab	355	16.8
Turnout		36.4	31.6
Monkmoor (4895)			
		vote	share
Trotman C.*	Lab	1,162	56.7
Rowland Jones S.	Con	561	27.4
Clarke J. Ms.	LD	328	16.0
Turnout		41.9	29.3
Morfe (5360)			
		vote	share
Wood M.	Con	931	63.9
Steel R.	LD	365	25.1
Zissler K.	Lab	161	11.1
Turnout		27.2	38.8
Much Wenlock (4588)			
		vote	share
Hill D.*	Con	876	52.7
Platt D.	Lab	307	18.5
Taylor A.	LD	252	15.2
Preece D.	Ind	228	13.7
Turnout		36.3	34.2
Myddle (5321)			
		vote	share
Maybury D.	LD	1,100	54.9
Roberts M.*	Con	904	45.1
Turnout		37.7	9.8
Newport North (5392)			
		vote	share
Evans J.*	LD	1,184	53.6
Allen D.	Con	643	29.1
Allan D.	Lab	383	17.3
Turnout		41.0	24.5
Newport South (3757)			
		vote	share
Marsh B. Ms.*	Con	878	51.0
West A.	LD	843	49.0
Turnout		45.8	2.0
Oswestry East (6628)			
		vote	share
Perks M.	Lab	884	44.3
Stevens S. Ms.	LD	644	32.3
Bickerton A.	Ind	467	23.4
Turnout		30.1	12.0
Oswestry West (4947)			
		vote	share
Foster T.	Lab	770	37.3
Jones W.	LD	690	33.4
Gull I. Ms.*	Con	606	29.3
Turnout		41.8	3.9

Prees (4601)			
		vote	share
Barker M.*	Ind	0	0.0
Turnout		0.0	0.0
Priorslee (5407)			
		vote	share
Raxster G.*	Lab	848	43.1
Houlston J.	RES	636	32.3
Fletcher I.	Con	484	24.6
Turnout		36.4	10.8
Quarry (3626)			
		vote	share
Beardwell M.	LD	974	53.1
Butcher E.*	Con	733	40.0
Rose J.	Lab	127	6.9
Turnout		50.6	13.1
Rea Valley (5144)			
		vote	share
Holyoak Y. Ms.*	Con	1,113	45.8
Balmond M. Ms.	LD	1,038	42.7
Crookes S. Ms.	Lab	281	11.6
Turnout		47.3	3.1
Ruyton-X1-Towns (3685)			
		vote	share
Stockbridge J.*	Con	651	66.3
Leatham-Thomas B. Ms.	Lab	33.7	33.1
Turnout		26.7	32.6
Shifnal (5865)			
		vote	share
Turnock W.*	Ind	667	28.6
Tonkinson G.	Ind	613	26.3
Turley K.	Lab	542	23.2
Arnold C.	Ind	513	22.0
Turnout		39.8	2.3
St. Oswald (3430)			
		vote	share
Biffen S. Ms.	Con	0	0.0
Turnout		0.0	0.0
Stirchley (5528)			
		vote	share
Roberts A. Ms.	Lab	841	60.8
Free P. Ms.	LIB	283	20.4
Tyler I. Ms.	Con	260	18.8
Turnout		25.0	40.3
Stottesdon (4512)			
		vote	share
Engleheart P.*	Con	1,056	58.7
Murphy J.	Lab	743	41.3
Turnout		39.9	17.4
Sundorne (3877)			
		vote	share
Farr W.	Lab	756	60.0
Preece D.	Ind	336	26.6
Repath R.	Con	169	13.4
Turnout		32.5	33.3
Sutton (3962)			
		vote	share
Littlejohns B.	Con	832	52.7
Roberts E.	Lab	388	24.6
White N.	LD	358	22.7
Turnout		39.8	28.1
Tern (4458)			
		vote	share
Everall E.*	Con	0	0.0
Turnout		0.0	0.0

Underdale (4182)			
		vote	share
Storey R.	Lab	770	42.9
Kenny J.	LD	643	35.9
Morris K.	Con	380	21.2
Turnout		42.9	7.1
Wem (5530)			
Mellings C.*	LD	1,809	80.9
Jeffery L. Ms.	Con	427	19.1
Turnout		40.4	61.8
Weston Rhyn (4205)			
Stevens H.	LD	799	56.8
Smith K.*	Lab	607	43.2
Turnout		33.4	13.7
Whitchurch (6630)			
Bates J.	Ind	1,014	47.9
Young R.	LD	636	30.1
Chadwick J.	Con	466	22.0
Turnout		31.9	17.9
Whittington (4356)			
Hughes B. Ms.*	Con	548	43.3
Terry G.	LD	419	33.1
Smith J. Ms.	Lab	298	23.6
Turnout		29.0	10.2
Wombridge (4461)			
Deakin A. Ms.	Lab	970	75.5
Williams M. Ms.	Con	314	24.5
Turnout		28.8	51.1
Woodside (4781)			
Taylor D.	Lab	615	75.5
Usher P. Ms.	Con	200	24.5
Turnout		17.1	50.9
Woore (4440)			
Gillow J.*	Con	775	61.8
Smith J. Ms.	Lab	480	38.2
Turnout		28.3	23.5
Wrekin Rural (4471)			
Holt V.*	Con	758	43.5
Gibb B. Ms.	Lab	526	30.2
Saunders R.	Green	250	14.3
Tomlinson W.	LD	210	12.0
Turnout		39.0	13.3
Wrockwardine Wood (3879)			
Coulbeck J.	Lab	834	78.5
Fletcher V. Ms.	Con	228	21.5
Turnout		27.4	57.1

Shropshire 1997

Albrighton (4837)			
		vote	share
Pate M.*	Con	1,823	52.7
Elliott C.	Lab	891	25.8
Murray D.	LD	744	21.5
Turnout		71.0	27.0
Bagley (4448)			
Dunham P.*	LD	1,597	50.1
Mason G. Ms.*	Lab	962	30.2
Adams P.	Con	631	19.8
Turnout		71.0	19.9
Bayston Hill (4348)			
Wright T.*	LD	2,033	62.9
Williams E.	Lab	1,201	37.1
Turnout		74.0	25.7
Belle Vue (4548)			
Myers P.	Lab	1,530	46.3
Edbrooke M. Ms.*	LD	1,161	35.2
Askwith J.	Con	611	18.5
Turnout		73.0	11.2
Bishops Castle (5310)			
Phillips P.*	LD	2,109	65.5
Williams M.	Ind Con	1,109	34.5
Turnout		61.0	31.1
Bridgnorth Rural (5287)			
Lee G.	Con	1,695	42.0
Taylor F.	LD	1,232	30.5
Dartnall H.	Lab	1,112	27.5
Turnout		77.0	11.5
Bridgnorth Town (5574)			
Lea J. Ms.	Ind Con	1,686	40.4
Green A.*	Lab	1,438	34.4
Jephcott B.	LD	1,051	25.2
Turnout		75.0	5.9
Broseley (4289)			
Lane R.*	Ind Lab	2,143	71.0
McClland I.	Lab	875	29.0
Turnout		70.0	42.0
Burnell (5126)			
Lloyd R.*	Con	2,026	53.8
Ryder D.	LD	964	25.6
Etchells M.	Lab	775	20.6
Turnout		73.0	28.2
Castlefields & Ditherington (4401)			
Woodvine D.*	Ind	1,750	61.9
Day K. Ms.	LD	1,076	38.1
Turnout		64.0	23.8
Church Stretton (5055)			
Larney P. Ms.*	Con	1,888	49.2
Knobbergs Z.	LD	1,529	39.8
Lane M.	Lab	420	10.9
Turnout		76.0	9.4

Clee Hill (6371)			
		vote	share
Coles A.*	Ind	2,361	51.0
Nix J. Ms.	LD	1,140	24.6
Grosvenor J.	Lab	1,130	24.4
Turnout		73.0	26.4
Clun (3848)			
Hartin N.	LD	1,146	39.3
Morgan J.*	Con	1,100	37.7
Barnett K.	Ind	668	22.9
Turnout		76.0	1.6
Cophthorne (6813)			
Chambers C.	LD	1,913	39.4
Richey G.*	Con	1,863	38.3
Blakeman A.	Lab	1,082	22.3
Turnout		71.0	1.0
Corvedale (4809)			
Bodenham C.	Ind	1,223	34.6
Motley C. Ms.	Con	828	23.5
Phillips R.	LD	534	15.1
Day R. Ms.	Lab	476	13.5
Summerfield T.	Ind	469	13.3
Turnout		73.0	11.2
Ellesmere (5708)			
Whyte A.*	LD	1,697	41.6
McLaughlin P. Ms.	Ind	1,437	35.2
Ballamy E. Ms.	Lab	944	23.1
Turnout		71.0	6.4
Harlescote (4066)			
Sandford E. Ms.*	Con	1,408	51.0
Allaway J. Ms.	Lab	1,123	40.7
Clarke J. Ms.	LD	231	8.4
Turnout		68.0	10.3
Hodnet (5172)			
Dodd E.*	Con	2,366	67.9
Brookes B.	Lab	1,120	32.1
Turnout		67.0	35.7
Loton (4563)			
Roberts J.	Con	1,770	53.0
Shepherd J.	LD	792	23.7
Walters R.	Lab	779	23.3
Turnout		73.0	29.3
Ludlow (7333)			
Corston P.*	LD	2,762	53.5
Williams. G. Ms.	Lab	1,480	28.6
Coldwell J.	Con	924	17.9
Turnout		70.0	24.8
Market Drayton (5741)			
Walker R.*	Lab	2,193	56.8
Beckett J.	Con	1,669	43.2
Turnout		67.0	13.6
Meole Brace (6014)			
Marsh J. Ms.*	LD	1,718	38.4
McKenzie G.	Lab	1,625	36.4
Palliser A.	Con	1,127	25.2
Turnout		74.0	2.1

Monkmoor (4958)			
		vote	share
Trotman C.*	Lab	1,807	50.1
Felton S.	Con	1,067	29.6
Toms C.	LD	730	20.3
Turnout		73.0	20.5

Morfe (5459)			
		vote	share
Winckler M. Ms.	Con	2,163	53.7
Taylor C.	LD	1,275	31.7
Jennings G.	Lab	589	14.6
Turnout		74.0	22.1

Much Wenlock (4586)			
		vote	share
Hill D.*	Con	1,459	41.5
Whiteman P.	Ind	864	24.6
Preece D.	Ind	564	16.0
McClland J. Ms.	Lab	546	15.5
Moor J.	Ind	85	2.4
Turnout		77.0	16.9

Myddle (5533)			
		vote	share
Jones S.	Ind	1,516	39.2
Thurston J.	LD	1,329	34.4
Lowdon W. Ms.	Lab	1,022	26.4
Turnout		70.0	4.8

Oswestry East (7053)			
		vote	share
Perks M.*	Lab	2,287	46.3
Hawksley C. Ms.	Con	1,376	27.8
Stevens S. Ms.	LD	1,281	25.9
Turnout		70.0	18.4

Oswestry West (4889)			
		vote	share
Sayles P.	Lab	1,319	38.8
Gull I. Ms.	Con	1,190	35.0
Sanders D.	LD	891	26.2
Turnout		70.0	3.8

Prees (4530)			
		vote	share
Barker M.*	LD	1,869	58.3
Dakin G.	Con	1,338	41.7
Turnout		71.0	16.6

Quarry (4192)			
		vote	share
Beardwell M.*	LD	1,633	57.5
Hodges J. Ms.	Con	807	28.4
Tandy J.	Lab	399	14.1
Turnout		68.0	29.1

Rea Valley (5600)			
		vote	share
Evans R.	LD	2,202	51.4
Rowland Jones S.	Con	1,418	33.1
Peake I.	Lab	661	15.4
Turnout		76.0	18.3

Ruyton-X1-Towns (3930)			
		vote	share
Stockbridge J.*	Ind Con	1,768	63.6
Simblet L. Ms.	Lab	1,010	36.4
Turnout		71.0	27.3

Shifnal (6049)			
		vote	share
Tonkinson G.	Ind	1,926	43.1
Turley K.*	Lab	1,542	34.5
Yarnell R.	LD	996	22.3
Turnout		74.0	8.6

St. Oswald (3508)			
		vote	share
Biffen S. Ms.*	Con	1,153	45.0
Davies G. Ms.	Lab	853	33.3
Burman R.	LD	559	21.8
Turnout		73.0	11.7

Stottesdon (4566)			
		vote	share
Engleheart P.*	Ind	1,748	53.7
Bache C.	Ind	831	25.5
Poulton G. Ms.	Lab	568	17.4
Denham J. Ms.	Green	110	3.4
Turnout		72.0	28.2

Sundorne (3966)			
		vote	share
Farr W.*	Lab	1,625	63.4
Chapman A. Ms.	LD	940	36.6
Turnout		65.0	26.7

Sutton (4129)			
		vote	share
Littlejohns B.*	Con	1,318	40.0
Griffiths C. Ms.	Lab	1,230	37.3
Edwards R.	LD	746	22.6
Turnout		80.0	2.7

Tern (4646)			
		vote	share
Everall E.*	Con	1,632	47.6
Woodman H. Ms.	LD	917	26.7
Entwistle R.	Lab	880	25.7
Turnout		74.0	20.9

Underdale (4527)			
		vote	share
Kenny J.	LD	1,512	49.2
Lehane M. Ms.	Lab	1,065	34.7
Morgan D.	Con	494	16.1
Turnout		68.0	14.6

Wem (5560)			
		vote	share
Mellings C.*	LD	3,318	88.5
Groves G.	Lab	432	11.5
Turnout		68.0	77.0

Weston Rhyn (4275)			
		vote	share
Smith K.	Lab	1,303	41.6
Stevens H.*	LD	1,169	37.3
Powell W.	Con	661	21.1
Turnout		73.0	4.3

Whitchurch (6839)			
		vote	share
Biggins T.	Con	1,795	38.3
Bates J.*	LD	1,694	36.2
Watson G.	Lab	1,193	25.5
Turnout		68.0	2.2

Whittington (4529)			
		vote	share
Lloyd D.	Ind	1,289	41.0
Chalmers R.	Lab	1,089	34.7
Sheldon M.	Con	764	24.3
Turnout		69.0	6.4

Woore (4434)			
		vote	share
Gillow J.*	Con	1,568	50.0
Hopkins J.	Lab	845	27.0
Wallace P.	LD	722	23.0
Turnout		71.0	23.1

Shropshire 2001

Albrighton (4885)			
		vote	share
Pate M.*	Con	1,746	56.2
Wylie B.	Lab	805	25.9
Murray D.	LD	558	17.9
Turnout		64.6	30.3

Bagley (4335)			
		vote	share
Holmwood J.	Lab	1,097	41.1
Thurston J.	LD	889	33.3
Membury E. Ms.	Con	683	25.6
Turnout		62.1	7.8

Bayston Hill (4319)			
		vote	share
Clarke J.	Lab	1,594	51.7
Fox A.*	Con	992	32.2
Edwards R.	LD	497	16.1
Turnout		74.4	19.5

Belle Vue (4363)			
		vote	share
Tandy J.	Lab	1,735	61.2
Browner S. Ms.	Con	718	25.3
Bullard E. Ms.	Green	381	13.4
Turnout		66.0	35.9

Bishops Castle (4441)			
		vote	share
Phillips P.*	LD	1,840	60.1
Williams M.	Con	978	32.0
Gaffney J.	Green	243	7.9
Turnout		69.1	28.2

Bridgnorth Rural (5325)			
		vote	share
Walker D.	LD	1,267	36.6
Lee G.*	Con	1,239	35.8
Lane M.	Lab	502	14.5
Taylor F.	Green	450	13.0
Turnout		65.9	0.8

Bridgnorth Town (5736)			
		vote	share
Hurst-Knight J.	Con	1,519	39.6
Jephcott B.	LD	1,368	35.6
Green T.	Lab	952	24.8
Turnout		68.9	3.9

Broseley (4380)			
		vote	share
Jones J. Ms.	Lab	1,184	41.0
Robinson P.	LD	1,054	36.5
Lally P.	Con	647	22.4
Turnout		66.7	4.5

Burnell (5137)			
		vote	share
Nutting P.	Con	2,041	55.5
Moore S. Ms.	Lab	859	23.4
Repath R.	Ind	777	21.1
Turnout		73.1	32.1

Castlefields & Ditherington (4240)			
		vote	share
Woodvine D.*	Lab	1,477	61.6
Bridgeman C.	Con	402	16.8
Chapman A. Ms.	LD	346	14.4
Fletcher S.	green	173	7.2
Turnout		57.7	44.8

Church Stretton (5049)			
		vote	share
Gibson J.	Con	1,690	45.2
Knobbergs Z.	LD	1,631	43.6
Downey L. Ms.	Green	418	11.2
Turnout		74.4	1.6

Clee Hill (6703)			
		vote	share
Coles A.*	Ind	2,276	50.4
Cramp M.	Ind	1,629	36.1
Auger W.	Green	613	13.6
Turnout		69.1	14.3
Clun (3866)			
		vote	share
Hartin N.*	LD	1,186	41.7
Pendry C.	Ind	766	26.9
Evans A.	Ind	714	25.1
Humphreys R.	Green	181	6.4
Turnout		74.1	14.8
Copthorne (7414)			
		vote	share
Richey G.	Con	1,917	39.7
Chambers C.*	LD	1,704	35.3
Griffiths M.	Lab	1,205	25.0
Turnout		66.4	4.4
Corvedale (4983)			
		vote	share
Bodenham C.*	Ind	1,974	59.0
Hoskins J. Ms.	Ind	748	22.3
Dyer A. Ms.	Green	626	18.7
Turnout		68.5	36.6
Ellesmere (5763)			
		vote	share
Hartley E. Ms.	Con	2,063	53.3
Whyte A.*	LD	1,804	46.7
Turnout		68.8	6.7
Harlescott (3874)			
		vote	share
Jones I.	LD	1,163	51.3
Sandford E. Ms.*	Con	1,105	48.7
Turnout		59.4	2.6
Hodnet (5276)			
		vote	share
Dodd E.*	Con	2,211	69.9
Barclay D. Ms.	Lab	951	30.1
Turnout		61.7	39.8
Loton (4593)			
		vote	share
Roberts J.*	Con	2,044	68.1
Calver T.	Lab	957	31.9
Turnout		61.7	36.2
Ludlow (7527)			
		vote	share
Corston P.*	LD	2,447	50.6
Merrick M.	Con	1,362	28.2
Williams G.	Lab	755	15.6
Bruley C.	Green	273	5.6
Turnout		64.5	22.4
Market Drayton (6093)			
		vote	share
Walker R.*	Lab	1,902	55.9
Minnery D.	Con	1,502	44.1
Turnout		57.4	11.8
Meole Brace (5910)			
		vote	share
Morris W.	Lab	2,160	55.9
Owen M.*	Con	1,702	44.1
Turnout		68.2	11.9
Monkmoor (4786)			
		vote	share
Sambrook S. Ms.	Lab	1,726	56.3
Jones J. Ms.	Con	862	28.1
Morgan J.	LD	475	15.5
Turnout		65.4	28.2

Morfe (5512)			
		vote	share
Winckler M. Ms.*	Con	1,981	54.2
Taylor C.	LD	1,676	45.8
Turnout		67.7	8.3
Much Wenlock (4951)			
		vote	share
Hill D.*	Con	1,617	47.6
Grafton G. Ms.	LD	1,294	38.1
Preece D.	Ind	485	14.3
Turnout		68.6	9.5
Myddle (5799)			
		vote	share
Clarke J.	LD	1,813	50.2
Jones S.*	Con	1,800	49.8
Turnout		65.5	0.4
Oswestry East (7174)			
		vote	share
Box P.	Lab	1,826	44.1
Bennett M.	Ind	1,175	28.4
Benyon W.	Con	1,143	27.6
Turnout		58.6	15.7
Oswestry West (4699)			
		vote	share
Barrow K.	Con	1,183	41.5
Channon E. Ms.	LD	1,099	38.5
Sayles P.*	Ind	569	20.0
Turnout		63.8	2.9
Prees (4537)			
		vote	share
Dakin G.	Con	1,565	54.7
Barker M.*	Ind	1,297	45.3
Turnout		66.4	9.4
Quarry (4118)			
		vote	share
Beardwell M.*	LD	1,484	55.0
Lloyd G.	Con	804	29.8
Vesey H. Ms.	Lab	411	15.2
Turnout		67.9	25.2
Rea Valley (5547)			
		vote	share
Holyoak Y. Ms.	Ind	1,334	33.7
Perrin S. Ms.	Con	1,178	29.8
Evans R.*	LD	977	24.7
Allum R.	Lab	467	11.8
Turnout		72.2	3.9
Ruyton-X1-Towns (4213)			
		vote	share
Gaskill D. Ms.	Ind	1,378	50.4
Stockbridge J.*	Con	1,354	49.6
Turnout		66.1	0.9
Shifnal (6064)			
		vote	share
Tonkinson G.*	Ind	1,362	35.9
Jones L.	Ind	1,260	33.2
Jowett R.	Ind	1,169	30.8
Turnout		67.3	2.7
St. Oswald (3669)			
		vote	share
Drummond J. Ms.	Con	897	38.3
Walpole A.	Ind	797	34.0
Burman R.	LD	648	27.7
Turnout		65.3	4.3
Stottesdon (4682)			
		vote	share
Engleheart P.*	Ind	2,191	77.0
Matthews S.	Con	655	23.0
Turnout		63.4	54.0

Sundorne (3856)			
		vote	share
Allaway J. Ms.	Lab	1,440	65.1
Fox A.	Con	471	21.3
White N.	LD	223	10.1
Taylor J Ms.	Green	77	3.5
Turnout		57.3	43.8
Sutton (4041)			
		vote	share
Littlejohns B.	Con	1,302	44.7
Loasby H.	Lab	1,110	38.1
Toms C.	LD	504	17.3
Turnout		72.2	6.6
Tern (4821)			
		vote	share
Everall E.*	Con	1,618	49.4
Peake I.	Lab	860	26.2
Woodman H. Ms.	LD	800	24.4
Turnout		68.0	23.1
Underdale (4635)			
		vote	share
Kenny J.*	LD	1,484	53.7
Roberts E.	Lab	806	29.1
Adams P.	Con	373	13.5
Harris A. Ms.	Green	103	3.7
Turnout		59.7	24.5
Wem (5650)			
		vote	share
Mellings C.*	LD	2,481	67.9
Murray J.	Con	1,175	32.1
Turnout		64.7	35.7
Weston Rhyn (4319)			
		vote	share
Stevens H.	LD	911	33.9
Graham N.	Ind	589	21.9
Jones R.	Ind	589	21.9
Follett S.	Con	514	19.1
Smith K.*	Ind	86	3.2
Turnout		62.3	12.0
Whitchurch (6930)			
		vote	share
Biggins T.*	Con	2,167	53.1
Bates J.	LD	1,916	46.9
Turnout		58.9	6.1
Whittington (4854)			
		vote	share
Lloyd D.*	Ind	2,164	77.1
Platt M.	Con	641	22.9
Turnout		57.8	54.3
Woore (4575)			
		vote	share
Gillow J.*	Con	1,807	65.2
Hopkins J.	Lab	965	34.8
Turnout		60.6	30.4

Shropshire 2005

Albrighton (4930)

		vote	share
Pate M.*	Con	1,872	55.7
Lusk J.	Lab	832	24.8
Murray D.	LD	655	19.5
Turnout		68.1	31.0

Bagley (3676)

		vote	share
Evans R.	LD	962	40.8
Williams S.	Con	737	31.3
Felton S.	Lab	656	27.9
Turnout		64.1	9.6

Baschurch (3596)

		vote	share
Craig B. Ms.	Con	0	0.0
Turnout		0.0	0.0

Bayston Hill (4172)

		vote	share
Ted J.*	Lab	1,899	62.5
Jetson J.	Con	759	25.0
Hamer M. Ms.	LD	378	12.5
Turnout		72.8	37.5

Belle-Vue (4501)

		vote	share
Tandy J.*	Lab	1,596	50.4
Morgan D.	Con	728	23.0
King S. Ms.	LD	533	16.8
Green T.	Green	312	9.8
Turnout		70.4	27.4

Bishops Castle (4450)

		vote	share
Phillips P.*	LD	1,866	57.4
Priest R.	Con	1,384	42.6
Turnout		73.0	14.8

Bridgnorth East (4892)

		vote	share
Lea C.	Con	1,354	42.1
Walker D.*	LD	1,336	41.6
Lane M.	Lab	524	16.3
Turnout		65.7	0.6

Bridgnorth Rural (3742)

		vote	share
Lee G.	Con	1,193	44.2
Taylor C.	LD	1,093	40.5
Voysey F.	Ind	208	7.7
Madden P.	Lab	207	7.7
Turnout		72.2	3.7

Bridgnorth West (4886)

		vote	share
Hurst-Knight J.*	Con	1,521	44.0
Stilwell R.	LD	1,434	41.5
Caldecott G. Ms.	Lab	501	14.5
Turnout		70.7	2.5

Broseley (4420)

		vote	share
Jones J. Ms.*	Lab	1,355	44.6
Robinson P.	LD	911	30.0
Jenrick R.	Con	771	25.4
Turnout		68.7	14.6

Burnell (4723)

		vote	share
Nutting P.*	Con	2,191	59.2
Cook G. Ms.	LD	735	19.9
Mackenzie J. Ms.	Lab	564	15.2
Peach H.	Green	209	5.7
Turnout		78.3	39.4

Castlefields & Ditherington (4267)

		vote	share
Mosley A.	Lab	1,282	49.2
Wagner A.	Con	602	23.1
Keating S. Ms.	LD	568	21.8
Lovell C. Ms.	Green	155	5.9
Turnout		61.1	26.1

Church Stretton (5122)

		vote	share
Gibson J.*	Con	2,062	52.8
Hill R.	LD	1,840	47.2
Turnout		76.2	5.7

Clee (5631)

		vote	share
Coles A.*	LD	1,944	50.5
Holmes N.	Con	1,907	49.5
Turnout		68.4	1.0

Clun (4182)

		vote	share
Hartin N.*	LD	1,727	53.8
Barnett K.	Con	1,483	46.2
Turnout		76.8	7.6

Copthorne (4622)

		vote	share
Richey G.*	Con	1,358	42.0
Lucas A. Ms.	LD	1,009	31.2
Curzon R.	Lab	869	26.9
Turnout		70.0	10.8

Corvedale (5023)

		vote	share
Evans D.	Con	1,804	51.6
Bodenham C.*	Ind	1,694	48.4
Turnout		69.6	3.1

Ellesmere (3971)

		vote	share
Hartley E. Ms.*	Con	1,628	67.0
Whyte A.	LD	802	33.0
Turnout		61.2	34.0

Harlescott (4106)

		vote	share
Sandford E. Ms.	Con	1,273	47.3
Jones I.*	Lab	1,114	41.4
Eddies M.	LD	303	11.3
Turnout		65.5	5.9

Loton (4372)

		vote	share
Roberts J.*	Con	1,801	57.4
Smith F.	LD	761	24.3
Griffiths C. Ms.	Lab	576	18.4
Turnout		71.8	33.1

Ludlow (3822)

		vote	share
Corston P.*	LD	1,547	60.2
Perks G.	Con	1,024	39.8
Turnout		67.3	20.3

Ludlow Rural (5464)

		vote	share
Parry E. Ms.	LD	2,207	59.9
Barclay N.	Con	1,479	40.1
Turnout		67.5	19.8

Market Drayton (8314)²

		vote	share
Minnery D.	Con	2,156	52.5
Davies R.	Con	2,098	-
Walker R.*	Lab	1,948	47.5
O'Brien R.	Lab	1,676	-
Turnout		56.4	5.1

Market Drayton Rural (5917)

		vote	share
Gillow J.*	Con	2,735	72.8
Hopkins J.	Lab	1,022	27.2
Turnout		63.5	45.6

Meole-Brace (4946)

		vote	share
Owen M.	Con	1,603	44.9
Morris W.*	Lab	1,293	36.2
Crake S.	LD	677	18.9
Turnout		72.2	8.7

Monkmoor (4786)

		vote	share
Sambrook S. Ms.*	Lab	1,549	48.6
Felton P.	Con	911	28.6
Durnell J.	LD	729	22.9
Turnout		66.6	20.0

Morfe (3737)

		vote	share
Winckler M. Ms.*	Con	1,778	64.6
Seivewright I.	LD	635	23.1
Nolan J.	Lab	341	12.4
Turnout		73.7	41.5

Much Wenlock (4888)

		vote	share
Gibbon D.	LD	1,922	54.5
Parr W.	Con	1,602	45.5
Turnout		72.1	9.1

Oswestry (9458)²

		vote	share
Box P.*	Lab	2,210	38.3
Benyon W.	Con	1,810	31.4
Channon E. Ms.	LD	1,744	30.3
Durston J.	LD	1,603	-
Cherrington P.	Con	1,438	-
Turnout		59.0	6.9

Porthill (4975)

		vote	share
Chebsey A. Ms.	LD	1,688	46.1
Richey M. Ms.	Con	1,230	33.6
Vaughan-Evans A.	Lab	564	15.4
O'Neill K.	Green	179	4.9
Turnout		73.6	12.5

Prees (5657)

		vote	share
Dakin G.*	Con	1,822	53.5
Barker M.	Ind	1,215	35.7
Barnett A.	Ind	368	10.8
Turnout		60.2	17.8

Rea Valley (4413)

		vote	share
Holyoak Y. Ms.*	Ind	2,037	66.2
Balmord M. Ms.	LD	561	18.2
Peake I.	Lab	322	10.5
Brown J.	Green	155	5.0
Turnout		69.7	48.0

Ruyton-Xi-Towns (4878)

		vote	share
Gaskill D. Ms.*	Ind	1,582	53.4
Barrow K.*	Con	1,378	46.6
Turnout		60.7	6.9

Shawbury (4230)

		vote	share
Calder K. Ms.	Con	1,569	56.4
Jones S.	Ind	1,213	43.6
Turnout		65.8	12.8

Shifnal (5734)			
West S.	Con	2,149	56.5
Turley K.	Lab	1,657	43.5
Turnout		66.4	12.9
St. Oswald (5200)			
Drummond J. Ms.*	Con	1,345	38.3
Humphries J.	LD	795	22.6
Hughes D.	Lab	721	20.5
Sayles P.	Ind	654	18.6
Turnout		67.6	15.6
Stottesdon (4535)			
Martin P.	LD	1,717	59.1
Thornton T.	Con	1,188	40.9
Turnout		64.1	18.2
Sundorne (5476)			
Allaway J. Ms.*	Lab	1,742	55.6
Rees B.	Con	792	25.3
Day K. Ms.	LD	601	19.2
Turnout		57.2	30.3
Sutton & Reabrook (4360)			
Parsons E. Ms.	Lab	1,371	42.4
Littlejohns B.*	Con	1,319	40.8
Roberts E.	LD	543	16.8
Turnout		74.2	1.6
Tern (5098)			
Everall E.*	Con	2,044	55.0
Woolland A. Ms.	LD	899	24.2
Canning D.	Lab	776	20.9
Turnout		73.0	30.8
Underdale (4349)			
Kenny J.*	LD	1,807	64.1
Allum R.	Lab	641	22.7
Hughes J.	Con	371	13.2
Turnout		64.8	41.4
Wem (4154)			
Mellings C.*	LD	1,780	69.4
Walmsley J.	Con	784	30.6
Turnout		61.7	38.8
Wem Rural (4359)			
Williams B.	Con	1,540	50.7
Skinner M.	LD	808	26.6
Dee P. Ms.	Ind	687	22.6
Turnout		69.6	24.1
Weston Rhyn (4052)			
Jenkins W.	Lab	839	33.1
Taylor R.	Con	656	25.8
Stevens H.*	LD	644	25.4
Graham N.	Ind	399	15.7
Turnout		62.6	7.2
Whitchurch (4736)			
Biggins T.*	Con	1,872	66.2
Shore J.	Lab	954	33.8
Turnout		59.7	32.5
Whittington (4986)			
Lloyd D.*	Ind	2,148	73.1
Mansfield P.	Con	789	26.9
Turnout		58.9	46.3

