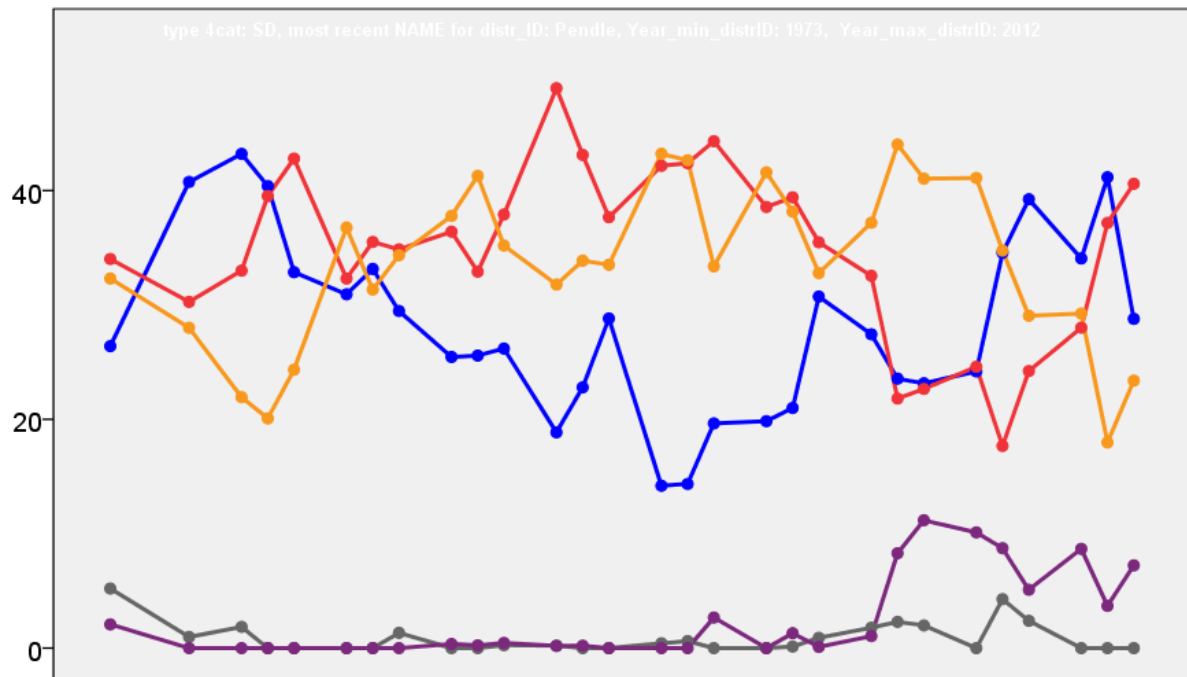


Pendle Borough Council Election Results 1973-2012



Colin Rallings and Michael Thrasher
The Elections Centre
Plymouth University

The information contained in this report has been obtained from a number of sources. Election results from the immediate post-reorganisation period were painstakingly collected by Alan Willis largely, although not exclusively, from local newspaper reports. From the mid-1980s onwards the results have been obtained from each local authority by the Elections Centre. The data are stored in a database designed by Lawrence Ware and maintained by Brian Cheal and others at Plymouth University. Despite our best efforts some information remains elusive whilst we accept that some errors are likely to remain. Notice of any mistakes should be sent to elections@plymouth.ac.uk. The results sequence can be kept up to date by purchasing copies of the annual Local Elections Handbook, details of which can be obtained by contacting the email address above.

Front cover: the graph shows the distribution of percentage vote shares over the period covered by the results. The lines reflect the colours traditionally used by the three main parties. The grey line is the share obtained by Independent candidates while the purple line groups together the vote shares for all other parties.

Rear cover: the top graph shows the percentage share of council seats for the main parties as well as those won by Independents and other parties. The lines take account of any by-election changes (but not those resulting from elected councillors switching party allegiance) as well as the transfers of seats during the main round of local election.

The lower graph shows for each main round of local elections the overall percentage turnout (solid line), the percentage of women candidates standing at (dotted line) and the percentage of women among those elected (hashed line).

Pendle - 1973

No. 1 (Colne: Primet Bridge) (1820)

		vote	share
Widdup J.	Lib	378	39.0
Wharton L.	Lab	305	31.5
Seed A.	Con	152	15.7
Shore K. Ms.	Ind Lab	133	13.7

Turnout 53.2 7.5

No. 10 (Nelson: Marsden) (3145)³

		vote	share
Evans A.	Lab	810	47.3
Taylor N.	Lab	804	-
Wells W.	Lab	757	-
Farnhill J.	Lib	513	29.9
Riley N.	Con	391	22.8
Hargreaves B.	Con	323	-

Turnout 54.5 17.3

No. 11 (Nelson: Clover Hill) (3239)³

		vote	share
Smith J. Ms.	Lab	723	40.9
Spence K.	Lab	650	-
Walton K.	Lab	578	-
Sutcliff M.	Lib	547	30.9
Maple G.	Lib	542	-
Sutcliffe E.	Lib	523	-
Caygill G.	Con	499	28.2

Turnout 54.6 9.9

No. 12 (Nelson: Walverden) (3820)³

		vote	share
Spencer J.	Lab	957	52.5
Hardacre H.	Lab	940	-
Rothwell B.	Con	865	47.5
Rigby D.	Con	819	-
McClave K.	Lab	792	-
Blackburn H.	Con	786	-

Turnout 47.7 5.0

No. 13 (Barnoldswick: Central) (911)

		vote	share
Bebbington J. Ms.	Lib	328	55.5
Horton G.	Lab	263	44.5

Turnout 64.9 11.0

No. 14 (Barnoldswick: Coates) (2177)²

		vote	share
Smith R.	Con	544	28.8
Bennett D. Ms.	Ind	518	27.4
Christofides G.	Lab	507	26.8
Bebbington R.	Lib	321	17.0
Moss T.	Con	255	-

Turnout 86.8 1.4

No. 15 (Barnoldswick: East) (1547)

		vote	share
Prenton K.	Lib	556	60.3
Logan L.	Lab	250	27.1
Wilson H.	Con	116	12.6

Turnout 59.6 33.2

No. 16 (Barnoldswick: North) (1795)

		vote	share
Pickard J.	Lib	374	37.2
Redfean B.	Lab	263	26.2
Smith T.	Ind	237	23.6
Worthy C.	Con	131	13.0

Turnout 56.0 11.0

No. 17 (Barnoldswick: West) (1273)

		vote	share
Macsween R.	Lab	376	55.7
Prenton P. Ms.	Lib	179	26.5
McDermott J.	Ind	120	17.8

Turnout 53.0 29.2

No. 18 (Barrowford: Newbridge) (1872)

		vote	share
Dixon A.	Lib	454	38.6
Ames P.	Con	416	35.3
Ellison T.	Lab	307	26.1

Turnout 62.9 3.2

No. 19 (Barrowford: Central) (970)

		vote	share
Rawlinson R.	Lab	348	60.0
Milburn K.	Con	137	23.6
Highton K.	Lib	95	16.4

Turnout 59.8 36.4

No. 2 (Colne: Vivary Bridge) (4216)⁴

		vote	share
Greaves H. Ms.	Lib	962	47.3
Walker N.	Lib	929	-
Targett B. Ms.	Lib	895	-
Duerden T.	Lib	885	-
Denton C.	Lab	745	36.6
Davidson B.	Lab	732	-
Payne M. Ms.	Lab	638	-
Hughes C.	Lab	621	-
Benson S.	Con	326	16.0
Ilott J.	Con	321	-
Pickup T.	Con	282	-
Parkinson V.	Con	267	-

Turnout 48.2 10.7

No. 20 (Barrowford: Higherford) (1207)

		vote	share
Pilling B.	Lib	353	46.7
Dawes G.	Con	316	41.8
Holt F.	Lab	87	11.5

Turnout 62.6 4.9

No. 21 (Brierfield: North) (600)

		vote	share
Woodhead J. Ms.	Lab	129	44.3
Brown D.	Lib	102	35.1
Birtwistle B.	Con	60	20.6

Turnout 48.5 9.3

No. 22 (Brierfield: South) (2162)

		vote	share
Sutcliffe P.	Con	532	52.1
Tallett E.	Lab	334	32.7
Oxborough M. Ms.	Lib	156	15.3

Turnout 47.3 19.4

No. 23 (Brierfield: East) (2239)

		vote	share
Arnold M. Ms.	Con	603	65.0
Firmin K.	Lab	325	35.0

Turnout 42.9 30.0

No. 24 (Brierfield: West) (885)

		vote	share
Gregory S.	Con	212	46.6
Hodge A. Ms.	Lab	173	38.0
Waterworth W.	Lib	70	15.4

Turnout 51.4 8.6

No. 25 (Earby: East) (1448)

		vote	share
Riley R.	Lab	462	55.3
Preston G.	Con	373	44.7

Turnout 57.7 10.7

No. 26 (Earby: West) (1574)

		vote	share
Riley A.	Lab	404	44.3
Beveridge C.	Con	278	30.5
Macdonald A.	Lib	230	25.2

Turnout 57.9 13.8

No. 27 (Earby: Kelbrook) (710)

		vote	share
Berry G.	Con	292	73.0
Whitehead K.	Lab	108	27.0

Turnout 56.3 46.0

No. 28 (Trawden) (1440)

		vote	share
Macdonald E. Ms.	Lib	363	45.0
Harrup A.	Lab	299	37.1
Kay W.	Con	145	18.0

Turnout 56.0 7.9

No. 29 (Old Laund Booth) (1469)

		vote	share
Smith T.	Ind	341	39.1
Walton J.	Con	323	37.0
Hobson V.	Lib	208	23.9

Turnout 59.4 2.1

No. 3 (Colne: Central) (1410)

		vote	share
Greaves A.	Lib	436	74.1
Mason T.	Lab	123	20.9
Buck G.	Con	29	4.9

Turnout 41.7 53.2

No. 30 (Foulridge) (1442)

		vote	share
Taylor J.	Lib	426	55.5
Tinniswood W.	Ind	178	23.2
Richardson J. Ms.	Con	163	21.3

Turnout 53.2 32.3

No. 31 (Reedly Hallows) (1311)

		vote	share
Fletcher J.	Con	257	62.1
Hargreaves J.	Lib	157	37.9

Turnout 31.6 24.2

No. 32 (Salterforth) (506)

		vote	share
Kerridge G.	Con	0	0.0

Turnout 0.0 0.0

No. 4 (Colne: Horsfield) (4236)⁴

		vote	share
Melling F.	Lib	931	46.0
Melling K. Ms.	Lib	877	-
Coulton G.	Lib	827	-
Dawson W.	Lib	800	-
Somers P.	Con	557	27.5
Mazey C.	Lab	535	26.4
Whalley J.	Lab	533	-
Wilson P.	Con	493	-
Barnes T.	Lab	492	-
Walsh A.	Lab	482	-
Parker M. Ms.	Con	467	-
Ray A.	Con	451	-

Turnout 47.8 18.5

No. 5 (Colne: Carry Bridge) (1288)

		vote	share
Sargeant W.	Lib	236	38.8
Evans J.	Con	193	31.7
Wright H.	Lab	180	29.6

Turnout 47.3 7.1

No. 6 (Colne: Laneshaw Bridge) (1238)

		vote	share
Smithson J.	Lib	449	56.1
Crabtree D.	Con	260	32.5
Lindsay A.	Ind Con	69	8.6
Clamp J.	Lab	23	2.9

Turnout 64.7 23.6

No. 7 (Nelson: Bradley) (3758) ³			
		vote	share
Punt A. Ms.	Lab	928	47.3
Standage R.	Lab	884	-
Helmn J.	Lab	847	-
Clifford F.	Ind	420	21.4
Gittins V.	Lib	363	18.5
Mason E. Ms.	Lib	349	-
Maycock G.	Con	253	12.9
Turnout		52.3	25.9

No. 8 (Nelson: Central & Whitefield) (4227) ³			
		vote	share
Sagar P.	Lib	997	37.6
Roberts C.	Lib	797	-
Holiday J.	Lib	774	-
Cook E. Ms.	Lab	727	27.4
Dole B. Ms.	Lab	673	-
Sutcliffe K.	Lab	555	-
Greenwood J.	Ind Lab	520	19.6
Warwick P.	Con	409	15.4
Turnout		62.8	10.2

No. 9 (Nelson: Netherfield & Southfield) (5166) ³			
		vote	share
Hartley F.	Lab	1,164	44.6
Bell D.	Lib	1,076	41.2
Myers E.	Lab	1,009	-
Murray K.	Lab	1,002	-
Sparks W.	Lib	904	-
White J. Ms.	Lib	839	-
Kemp C.	Con	369	14.1
Turnout		50.5	3.4

Pendle - 1976

Barrowford (4068) ³			
		vote	share
Cunningham R.	Con	1,077	38.0
Douglas J.	Con	941	-
Coughlan K.	Con	939	-
Rawlinson R.	Lab	907	32.0
Dixon A.	Lib	849	30.0
Roberts C.	Lib	827	-
Nutter B.	Lib	647	-
Greenwood J.	Lab	583	-
Greenwood H. Ms.	Lab	542	-
Turnout		63.5	6.0

Boulsworth (3679) ³			
		vote	share
Evans J.	Con	1,325	62.5
Benson S.	Con	1,237	-
O'Connell A. Ms.	Con	1,075	-
Smithson J.	Lib	796	37.5
Davies C. Ms.	Lib	709	-
Gaught P.	Lib	654	-
Turnout		56.8	24.9

Bradley (4165) ³			
		vote	share
Punt A. Ms.	Lab	982	46.8
Helmn J.	Lab	885	-
McClaue K.	Lab	821	-
Holt T.	Lib	590	28.1
Hodgson K. Ms.	Con	525	25.0
Howcroft D.	Lib	472	-
Riley J. Ms.	Con	448	-
Barraclough M. Ms.	Lib	427	-
Sutcliffe B. Ms.	Con	378	-
Turnout		50.8	18.7

Brierfield (3593) ³			
		vote	share
Gregory S.	Con	907	48.8
Askew G.	Con	858	-
Cuttell P.	Con	784	-
Clamp J.	Lab	547	29.5
Firmin K.	Lab	489	-
Tallett E.	Lab	475	-
Buck A.	Lib	403	21.7
Buck V. Ms.	Lib	397	-
White D.	Lib	309	-
Turnout		51.8	19.4

Clover Hill (3299) ³			
		vote	share
Spence K.	Lab	742	42.2
Sutcliff M.	Con	741	42.1
Smith J. Ms.	Lab	725	-
Hargreaves B.	Con	686	-
Caygill G.	Con	679	-
Walton K.	Lab	612	-
Kendall N. Ms.	Lib	276	15.7
Vernon E. Ms.	Lib	225	-
Maple G.	Lib	222	-
Turnout		52.7	0.1

Coates (3843) ³			
		vote	share
Smith R.	Lab	862	39.9
Horton G.	Lab	760	-
Amos J.	Con	722	33.4
Targett K.	Lab	707	-
Ryder A.	Con	682	-
Davis E. Ms.	Lib	578	26.7
Carbutt J.	Lib	567	-
Johnson A.	Lib	547	-
Turnout		52.9	6.5

Craven (3943) ³			
		vote	share
Christofides G.	Lab	1,234	42.8
Macswain R.	Lab	849	-
Moss T. Ms.	Con	842	29.2
Bebbington J. Ms.	Lib	808	28.0
Ellison A. Ms.	Con	795	-
Tetlow A.	Lib	751	-
Riding D. Ms.	Lib	656	-
Lawrenson K.	Lab	616	-
Turnout		63.1	13.6

Earby (4071) ³			
		vote	share
Preston G.	Con	1,371	48.4
Berry G.	Con	1,216	-
Kerridge G.	Con	1,139	-
Pickles C.	Lab	785	27.7
Riley R.	Lab	738	-
Riley A.	Lab	725	-
Clarke E.	Lib	676	23.9
Winder S. Ms.	Lib	604	-
Glasgow R.	Lib	464	-
Turnout		65.2	20.7

Fence (1527)			
		vote	share
Fletcher J.	Con	513	71.7
Aspden J. Ms.	Lib	202	28.3
Turnout		47.2	43.5

Foulridge (1051)			
		vote	share
Tomlinson P.	Con	551	73.7
Thomas H.	Lib	197	26.3
Turnout		71.4	47.3

Horsfield (3847) ³			
		vote	share
Duerden N.	Con	1,049	48.7
Bennett M.	Con	910	-
Heap C. Ms.	Con	901	-
Melling F.	Lib	553	25.7
Pickles T.	Lab	552	25.6
Parry T.	Lab	513	-
Coxon D.	Lab	494	-
Coulton G.	Lib	439	-
Dawson W.	Lib	412	-
Turnout		52.9	23.0

Marsden (3687) ³			
		vote	share
Beckett A.	Con	861	43.8
Evans A.	Lab	803	40.8
Marshall R.	Con	766	-
Howarth D.	Con	751	-
Taylor N.	Lab	746	-
Waddington J.	Lab	743	-
Puckering R.	Lib	304	15.4
Lloyd M. Ms.	Lib	267	-
Di L. Cioccio	Lib	228	-
Turnout		52.5	2.9

Pendleside (979)			
		vote	share
Smith T.	Ind	356	53.9
Ridehalgh H.	Con	305	46.1
Turnout		67.6	7.7

Reedley (3101) ³			
		vote	share
Sutcliffe P.	Con	1,062	80.8
Crossley W. Ms.	Con	1,017	-
Clarkson R.	Con	996	-
Barnes A. Ms.	Lib	252	19.2
Oxborough M. Ms.	Lib	243	-
Lightfoot A. Ms.	Lib	232	-
Turnout		46.0	61.6

Southfield (3901) ³			
		vote	share
Hartley F.	Lab	958	42.2
Myers E.	Lab	823	-
Jefferys A.	Lab	815	-
Bell D.	Lib	793	35.0
Bell J. Ms.	Lib	650	-
Riley B.	Lib	586	-
Crawford M. Ms.	Con	517	22.8
Fletcher S.	Con	491	-
Rothwell D.	Con	471	-
Turnout		56.4	7.3

Vivary Bridge (4327) ³			
		vote	share
Greaves H. Ms.	Lib	970	43.3
Duerden M.	Lib	843	-
Aspden J.	Lib	803	-
Garnett A.	Con	722	32.2
Maycock G.	Con	682	-
Rogerson N.	Con	613	-
Payne M.	Lab	547	24.4
McGrath A.	Lab	511	-
Ferguson M.	Lab	465	-
Turnout		51.0	11.1

Walverden (3764) ³			
		vote	share
Hardacre H.	Lab	830	36.5
Rothwell B.	Con	825	36.3
Rigby D.	Con	797	-
Smith B. Ms.	Con	782	-
Proudfoot H.	Lab	707	-
Gormley J.	Lab	680	-
Berry P.	Lib	618	27.2
Lee G.	Lib	546	-
Carrins P.	Lib	491	-
Turnout		59.0	0.2

Waterside (3627)³			
		vote	share
Greaves A.	Lib	744	41.9
Duerden C. Ms.	Lib	647	-
Sargeant W.	Lib	608	-
Clifford F.	Lab	554	31.2
Chesworth V.	Lab	543	-
Marcon R. Ms.	Lab	531	-
Fawcett C.	Con	479	27.0
Kemp C.	Con	436	-
Overson M.	Con	432	-
Turnout		47.6	10.7

Whitefield (3844)³			
		vote	share
Higson F.	Lab	747	40.6
Singleton J.	Lab	717	-
Appleby V. Ms.	Lab	711	-
Sagar P.	Lib	614	33.3
Warwick P.	Con	481	26.1
Cox V. Ms.	Lib	479	-
Roberts W.	Con	474	-
Mills B.	Con	467	-
Nelson R.	Lib	439	-
Turnout		48.2	7.2

Pendle - 1978

Barrowford (4173)			
		vote	share
Coughlan K.	Con	1,174	50.6
Dixon A.	Lib	613	26.4
Butterfield F.	Lab	534	23.0
Turnout		56.7	24.2

Boulsworth (3734)			
		vote	share
O'Connell A. Ms.	Con	885	54.5
Johnson D.	Lib	738	45.5
Turnout		44.0	9.1

Bradley (4174)			
		vote	share
McClave K.	Lab	1,005	62.8
Riley J. Ms.	Con	460	28.8
Howcroft D.	Lib	135	8.4
Turnout		39.1	34.1

Brierfield (3589)			
		vote	share
Barrett R.	Con	668	35.6
Walton K.	Lab	639	34.1
Haworth J.	Ind	567	30.3
Turnout		53.0	1.5

Clover Hill (3409)			
		vote	share
Hodgson K.	Con	867	48.8
Smith J. Ms.	Lab	766	43.2
Thomas M.	Lib	142	8.0
Turnout		52.8	5.7

Coates (3886)			
		vote	share
Hill R.	Lab	728	37.1
Amos J.	Con	727	37.0
Carbutt J.	Lib	509	25.9
Turnout		51.2	0.1

Craven (3944)			
		vote	share
Moss T. Ms.	Con	929	46.1
Targett K.	Lab	566	28.1
Davis E.	Lib	521	25.8
Turnout		51.7	18.0

Earby (4120)			
		vote	share
Kerridge G.	Con	1,290	60.2
Pickles C.	Lab	853	39.8
Turnout		52.7	20.4

Fence (1613)			
		vote	share
Fletcher J.	Con	537	65.2
Nutter B.	Lib	286	34.8
Turnout		52.2	30.5

Horsfield (3830)			
		vote	share
Melling F.	Lib	838	46.1
Heap C. Ms.	Con	579	31.8
Pickup A.	Lab	402	22.1
Turnout		48.0	14.2

Marsden (3886)			
		vote	share
Marshall R.	Con	936	52.3
Taylor N.	Lab	853	47.7
Turnout		46.6	4.6

Reedley (3268)			
		vote	share
Clarkson R.	Con	1,034	75.0
Buck V.	Lib	345	25.0
Turnout		43.0	50.0

Southfield (3826)			
		vote	share
Jefferys A.	Lab	925	52.3
Good B.	Con	663	37.5
Thomas H.	Lib	182	10.3
Turnout		46.9	14.8

Vivary Bridge (4424)			
		vote	share
Aspden J.	Lib	948	42.9
Lane G.	Con	669	30.3
Walsh A.	Lab	592	26.8
Turnout		50.7	12.6

Walverden (3801)			
		vote	share
Rigby D.	Con	809	37.9
Livesey J.	Lab	790	37.0
Berry P.	Lib	535	25.1
Turnout		56.9	0.9

Waterside (3499)			
		vote	share
Sargeant W.	Lib	805	51.5
Pickles T.	Lab	407	26.0
Stansfield C.	Con	352	22.5
Turnout		45.4	25.4

Whitefield (3828)			
		vote	share
Lawrenson K.	Lab	1,031	58.2
Puckering R.	Con	632	35.6
Holt T.	Lib	110	6.2
Turnout		47.0	22.5

Pendle - 1979

Barrowford (4115)			
		vote	share
Graham R.	Con	2,145	62.0
Butterfield F.	Lab	1,313	38.0
Turnout		85.5	24.1

Boulsworth (3688)			
		vote	share
Benson S.	Con	1,503	50.2
Wood C.	Lib	1,144	38.2
Higson K.	Lab	349	11.6
Turnout		82.3	12.0

Bradley (4129)			
		vote	share
Helmn J.	Lab	2,058	65.1
Riley J. Ms.	Con	1,102	34.9
Turnout		78.2	30.3

Brierfield (3521)			
		vote	share
Askew G.	Con	1,585	54.8
Duerden R.	Lab	1,309	45.2
Turnout		83.7	9.5

Clover Hill (3436)			
		vote	share
Sutcliffe M.	Con	1,597	55.3
Walton K.	Lab	1,290	44.7
Turnout		84.9	10.6

Coates (3846)			
		vote	share
Bebbington J.	Lib	1,473	46.9
Macswen R.	Lab	870	27.7
Wilkinson D.	Con	796	25.4
Turnout		83.2	19.2

Craven (3969)			
		vote	share
Heaton M.	Lab	1,198	36.6
Clayhills V.	Con	1,115	34.1
Bebbington R.	Lib	958	29.3
Turnout		84.3	2.5

Earby (4126)			
		vote	share
Berry G.	Con	1,862	53.7
Byrne J.	Lab	1,604	46.3
Turnout		85.2	7.4

Foulridge (1079)			
		vote	share
Tomlinson P.	Con	0	0.0
Turnout		0.0	0.0

Horsfield (3731)			
		vote	share
Melling K.	Lib	1,787	59.3
Lane G.	Con	642	21.3
Whalley A.	Lab	586	19.4
Turnout		82.0	38.0

Marsden (3846)			
		vote	share
Evans A.	Lab	1,744	55.7
Puckering R.	Con	1,389	44.3
Turnout		82.2	11.3

Reedley (3294)			
		vote	share
Crossley W. Ms.	Con	1,846	66.9
Duerden M.	Lab	914	33.1
Turnout		84.9	33.8

Southfield (3806)			
		vote	share
Smith J.	Lab	1,880	61.5
Good B.	Con	1,176	38.5
Turnout		81.5	23.0

Vivary Bridge (4383)²

		vote	share
Clamp D.	Lib	1,502	46.6
Walker N.	Lib	1,491	-
Walker J.	Lab	885	27.4
Walsh A.	Lab	848	-
Heap C.	Con	839	26.0
Atkinson D.	Con	819	-
Turnout		80.1	19.1

Walverden (3703)

		vote	share
Livesey J.	Lab	1,391	45.5
Rothwell B.	Con	1,230	40.2
Berry P.	Lib	435	14.2
Turnout		83.7	5.3

Waterside (3425)

		vote	share
Thomas H.	Lib	1,411	54.1
Pickles T.	Lab	736	28.2
Wilson M.	Con	462	17.7
Turnout		77.5	25.9

Whitefield (3729)

		vote	share
Singleton J.	Lab	1,227	43.2
Nutter B.	Lib	1,123	39.6
Strang P.	Con	488	17.2
Turnout		78.0	3.7

Pendle - 1980**Barrowford (4170)**

		vote	share
Fraser A.	Con	1,029	43.5
Hewitt D.	Lib	779	33.0
Costello P.	Lab	555	23.5
Turnout		57.6	10.6

Boulsworth (3747)

		vote	share
Evans J.	Con	1,103	57.2
Berry N.	Lib	652	33.8
Lawrenson E.	Lab	173	9.0
Turnout		52.2	23.4

Bradley (4077)

		vote	share
Punt A. Ms.	Lab	1,445	80.9
Landriau M.	Con	341	19.1
Turnout		44.6	61.8

Brierfield (3571)

		vote	share
Walton K.	Lab	852	50.6
Gregory S.	Con	674	40.0
Buck A.	Lib	158	9.4
Turnout		47.9	10.6

Clover Hill (3459)

		vote	share
Spence K.	Lab	1,092	58.9
Good B.	Con	762	41.1
Turnout		54.4	17.8

Coates (3911)

		vote	share
Smith R.	Lab	638	38.4
Carbutt J.	Lib	548	33.0
Turner C.	Con	474	28.6
Turnout		43.1	5.4

Craven (4064)

		vote	share
Whipp D.	Lib	891	41.5
Christofides G.	Lab	820	38.2
Amos J.	Con	437	20.3
Turnout		53.7	3.3

Earby (4193)

		vote	share
Dickson J.	Con	1,169	54.8
Riley A.	Lab	965	45.2
Turnout		51.7	9.6

Horsfield (3743)

		vote	share
Davies C.	Lib	814	50.0
Whalley A.	Lab	455	27.9
Aston M.	Con	359	22.1
Turnout		44.0	22.1

Marsden (3936)

		vote	share
Thompson J.	Lab	829	36.9
Beckett A.	Con	732	32.6
White J.	Lib	684	30.5
Turnout		57.9	4.3

Pendleside (1085)

		vote	share
Smith T.	Ind	0	0.0
Turnout		0.0	0.0

Reedley (3302)

		vote	share
Sutcliffe P.	Con	981	70.8
Duerden R.	Lab	404	29.2
Turnout		42.7	41.7

Southfield (3826)

		vote	share
Hartley F.	Lab	1,371	75.1
Strang P.	Con	454	24.9
Turnout		48.5	50.2

Vivary Bridge (4401)

		vote	share
Greaves H. Ms.	Lib	1,054	53.6
Walsh A.	Lab	576	29.3
Lane G.	Con	335	17.0
Turnout		45.4	24.3

Walverden (3726)

		vote	share
Hardacre H.	Lab	1,176	63.5
Haworth J.	Con	677	36.5
Turnout		50.4	26.9

Waterside (3501)

		vote	share
Greaves A.	Lib	895	55.7
Pickles T.	Lab	526	32.7
Blackham L.	Con	187	11.6
Turnout		46.8	22.9

Whitefield (3733)

		vote	share
Higson F.	Lab	1,028	49.2
Nutter B.	Lib	864	41.4
Hewitt B.	Con	196	9.4
Turnout		56.5	7.9

Pendle - 1982**Barrowford (4156)**

		vote	share
Nutter B.	Lib/SDP	1,102	45.2
Coughlan K.	Con	962	39.5
Toothill R.	Lab	372	15.3
Turnout		60.0	5.7

Boulsworth (3788)

		vote	share
Davies A.	Lib/SDP	837	46.3
Lane G.	Con	769	42.5
Durkin K.	Lab	202	11.2
Turnout		49.0	3.8

Bradley (4085)

		vote	share
McClave K.	Lab	1,042	60.5
Brindle M.	Lib/SDP	430	25.0
Blackham L.	Con	251	14.6
Turnout		43.0	35.5

Brierfield (3522)

		vote	share
Haworth J.	Con	815	43.1
Shore K.	Lab	741	39.2
Farrar A.	Lib/SDP	333	17.6
Turnout		55.0	3.9

Clover Hill (3523)

		vote	share
Landriau M.	Con	695	40.5
McMillan R.	Lab	653	38.1
Blackburn A.	Lib/SDP	367	21.4
Turnout		50.0	2.4

Coates (3889)²

		vote	share
Whipp C. Ms.	Lib/SDP	891	46.6
Riding D. Ms.	Lib/SDP	875	-
Kaczmarek J.	Lab	511	26.7
Smith J.	Con	511	26.7
Dunn J.	Lab	507	-
Turnout		50.0	19.9

Craven (4110)

		vote	share
Warner M.	Lib/SDP	1,147	55.2
Ford D.	Con	482	23.2
Clegg C.	Lab	448	21.6
Turnout		52.0	32.0

Earby (4249)

		vote	share
Knight R.	Con	1,030	43.5
Turner J.	Lib/SDP	729	30.8
Higgins D.	Lab	609	25.7
Turnout		57.0	12.7

Fence (1760)

		vote	share
Fletcher J.	Con	508	65.9
Dixon A.	Lib/SDP	163	21.1
Ecclestone M.	Lab	100	13.0
Turnout		45.0	44.7

Horsfield (3799)

		vote	share
Melling F.	Lib/SDP	1,149	67.6
Dobney R.	Lab	291	17.1
Herbert A. Ms.	Con	260	15.3
Turnout		46.0	50.5

Marsden (4052)			
		vote	share
Gillett M.	Lab	928	45.4
Husband A.	Lib/SDP	663	32.5
Marshall R.	Con	452	22.1
		Turnout	52.0 13.0

Reedley (3343)			
		vote	share
Clarkson R.	Con	905	55.2
Bullock M.	Lib/SDP	385	23.5
Simpkin D.	Lab	349	21.3
		Turnout	50.0 31.7

Southfield (3877)			
		vote	share
Jefferys A.	Lab	963	49.0
Allen J.	Lib/SDP	657	33.4
Good B.	Con	347	17.6
		Turnout	52.0 15.6

Vivary Bridge (4498)			
		vote	share
Walker N.	Lib/SDP	875	48.8
Johnson C.	Lab	519	29.0
Andrews J.	Con	398	22.2
		Turnout	41.0 19.9

Walverden (3513)			
		vote	share
Anderton D.	Lab	816	42.6
Rigby D.	Con	736	38.4
Brown I.	Lib/SDP	364	19.0
		Turnout	56.0 4.2

Waterside (3539)			
		vote	share
Pickles T.	Lab	731	44.1
Sargeant W.	Lib/SDP	707	42.7
Blackham W.	Con	219	13.2
		Turnout	48.0 1.4

Whitefield (3672)			
		vote	share
Butterfield F.	Lab	836	44.4
Higson B.	Lib/SDP	706	37.5
Derbyshire P.	Con	340	18.1
		Turnout	53.0 6.9

Pendle - 1983

Barrowford (4233)			
		vote	share
Carrins P.	Lib/SDP	1,070	42.2
Coughlan K.	Con	1,063	41.9
Sullivan R. Ms.	Lab	403	15.9
		Turnout	61.0 0.3

Boulsworth (3823)			
		vote	share
Benson S.	Con	876	46.1
Weinberg M.	Lib/SDP	778	40.9
Chesworth M.	Lab	248	13.0
		Turnout	51.0 5.2

Bradley (3986)			
		vote	share
Punt D.	Lab	1,054	57.7
Miller P.	Con	490	26.8
Brindle M.	Lib/SDP	283	15.5
		Turnout	47.0 30.9

Brierfield (3533)			
		vote	share
Simpkin D.	Lab	973	50.3
Tattersall J.	Con	778	40.2
McGhie W.	Lib/SDP	183	9.5
		Turnout	56.0 10.1

Clover Hill (3462)			
		vote	share
Rigby D.	Con	745	37.9
Butterfield M.	Lab	727	36.9
Ormerod G.	Lib/SDP	496	25.2
		Turnout	58.0 0.9

Coates (3880)			
		vote	share
Bebbington J.	Lib/SDP	888	42.0
Dunn J.	Lab	650	30.7
Slinger M.	Con	576	27.2
		Turnout	56.0 11.3

Craven (4113)			
		vote	share
Heaton M.	Lab	960	41.2
Radford D.	Con	717	30.8
Pacey M.	Lib/SDP	654	28.1
		Turnout	58.0 10.4

Earby (4237)			
		vote	share
Berry G.	Con	1,125	45.0
Allen D. Ms.	Lib/SDP	865	34.6
Hill F.	Lab	508	20.3
		Turnout	60.0 10.4

Foulridge (1106)			
		vote	share
Bennett M.	Con	419	62.2
Dwyer J.	Lab	145	21.5
Sargeant W.	Lib/SDP	110	16.3
		Turnout	63.0 40.7

Horsfield (3822)			
		vote	share
Melling K.	Lib/SDP	920	51.3
Belbin P.	Lab	466	26.0
Wilkinson A.	Con	408	22.7
		Turnout	48.0 25.3

Marsden (3970)			
		vote	share
Evans A.	Lab	1,105	53.4
Baltrop M.	Con	701	33.9
Aspden J.	Lib/SDP	262	12.7
		Turnout	53.0 19.5

Reedley (3377)			
		vote	share
Crossley W. Ms.	Con	1,111	66.8
Singleton F. Ms.	Lib/SDP	321	19.3
Ramzan M.	Lab	230	13.8
		Turnout	50.0 47.5

Southfield (3870)			
		vote	share
Smith J.	Lab	1,025	46.6
Allen J.	Lib/SDP	769	35.0
Blackham J.	Con	404	18.4
		Turnout	58.0 11.6

Vivary Bridge (4431)			
		vote	share
Clamp D.	Lib/SDP	1,031	46.9
Toothill R.	Lab	678	30.8
Duerden M.	Con	490	22.3
		Turnout	51.0 16.1

Walverden (3410)			
		vote	share
Livesey J.	Lab	1,083	53.1
Rycroft C.	Con	707	34.7
Goulding W.	Lib/SDP	249	12.2
		Turnout	61.0 18.4

Waterside (3495)			
		vote	share
Thomas H.	Lib/SDP	844	46.4
Hunting P.	Lab	742	40.8
Blackham W.	Con	233	12.8
		Turnout	53.0 5.6

Whitefield (3646)			
		vote	share
Lockwood I.	Lab	982	45.3
Singleton J.	Lib/SDP	849	39.1
Chadwick F.	Con	339	15.6
		Turnout	61.0 6.1

Pendle - 1984

Barrowford (4270)			
		vote	share
Fraser A.	Con	1,118	47.6
Weinberg M.	Lib/SDP	802	34.1
Sullivan R. Ms.	Lab	429	18.3
		Turnout	56.0 13.5

Boulsworth (3851)			
		vote	share
Evans J.	Con	957	52.4
Whitehead D. Ms.	Lib/SDP	618	33.8
Swann S.	Lab	251	13.7
		Turnout	49.0 18.6

Bradley (3951)			
		vote	share
Nyke S. Ms.	Lab	974	53.7
Astin I. Ms.	Lib/SDP	623	34.3
Ahmed N.	Con	218	12.0
		Turnout	47.0 19.3

Brierfield (3521)			
		vote	share
Walton K.	Lab	885	48.9
Tattersall J.	Con	778	43.0
Taylor S. Ms.	Lib/SDP	146	8.1
		Turnout	53.0 5.9

Clover Hill (3460)			
		vote	share
Spence K.	Lab	864	47.0
Keates N.	Con	555	30.2
Ormerod G.	Lib/SDP	419	22.8
		Turnout	54.0 16.8

Coates (3859)			
		vote	share
Riding D. Ms.	Lib/SDP	1,151	52.9
Macswen N.	Lab	617	28.3
Brown D. Ms.	Con	409	18.8
		Turnout	58.0 24.5

Craven (4079)			
		vote	share
Whipp D.	Lib/SDP	1,298	57.5
Bowes N.	Lab	534	23.6
Moss T. Ms.	Con	426	18.9
		Turnout	57.0 33.8

Earby (4249)			
		vote	share
Dickson J.	Con	1,087	46.1
Allen D. Ms.	Lib/SDP	794	33.7
Hill F.	Lab	476	20.2
		Turnout	57.0 12.4

Horsfield (3781)			
		vote	share
Allen J.	Lib/SDP	1,037	52.1
Belbin P.	Lab	582	29.2
Wilkinson A.	Con	373	18.7
Turnout		54.0	22.8

Marsden (3978)			
		vote	share
Hawtrey D.	Lab	1,038	58.0
Doney B.	Con	563	31.5
Brindle M.	Lib/SDP	189	10.6
Turnout		46.0	26.5

Pendleside (1063)			
		vote	share
Smith T.	Ind	425	56.4
Beckett T.	Con	288	38.2
Woodyer S.	Lab	40	5.3
Turnout		72.0	18.2

Reedley (3415)			
		vote	share
Miller P.	Con	970	64.4
Singleton F. Ms.	Lib/SDP	311	20.6
Ramzan M.	Lab	226	15.0
Turnout		45.0	43.7

Southfield (3869)			
		vote	share
Hartley F.	Lab	1,153	58.6
Green J. Ms.	Lib/SDP	603	30.7
Malik H.	Con	211	10.7
Turnout		52.0	28.0

Vivary Bridge (4419)			
		vote	share
Greaves H. Ms.	Lib/SDP	894	45.7
Magnall D.	Lab	715	36.6
Blackham W.	Con	347	17.7
Turnout		45.0	9.2

Walverden (3331)			
		vote	share
Hardacre H.	Lab	969	58.1
Williamson K.	Con	520	31.2
Goulding W.	Lib/SDP	179	10.7
Turnout		52.0	26.9

Waterside (3444)			
		vote	share
Greaves T.	Lib/SDP	807	48.3
Hunting P.	Lab	672	40.2
Welsh D.	Con	191	11.4
Turnout		50.0	8.1

Whitefield (3585)			
		vote	share
Singleton J.	Lib/SDP	1,075	50.2
Iqbal A.	Lab	684	32.0
Ashraf M.	Con	381	17.8
Turnout		61.0	18.3

Pendle - 1986

Barrowford (4413)			
		vote	share
Nutter B.	Lib/SDP	1,119	47.2
Bracewell K.	Con	788	33.3
Brown R.	Lab	462	19.5
Turnout		54.5	14.0

Boulsworth (3967)			
		vote	share
Davies A.	Lib/SDP	873	49.1
Wilkinson A.	Con	679	38.2
Thomson A.	Lab	227	12.8
Turnout		44.8	10.9

Bradley (3846)			
		vote	share
McClave K.	Lab	914	54.5
Lord P.	Lib/SDP	589	35.1
Hodgson K. Ms.	Con	174	10.4
Turnout		44.2	19.4

Brierfield (3528)			
		vote	share
Clifford F.	Lab	796	44.1
Haworth J.	Con	669	37.1
Sutton A. Ms.	Lib/SDP	267	14.8
Baldwin B. Ms.	Green	72	4.0
Turnout		52.1	7.0

Clover Hill (3479)			
		vote	share
Shore K. Ms.	Lab	842	50.3
Landriau M.	Con	570	34.1
Palmer P. Ms.	Lib/SDP	262	15.7
Turnout		48.1	16.2

Coates (3877)			
		vote	share
Whipp V. Ms.	Lib/SDP	1,147	55.2
Smith B.	Lab	692	33.3
Abbot E. Ms.	Con	240	11.5
Turnout		54.5	21.9

Craven (4083)			
		vote	share
Warner M.	Lib/SDP	1,176	55.0
Preston G.	Con	520	24.3
Duxbury J. Ms.	Lab	444	20.7
Turnout		53.1	30.7

Earby (4208)			
		vote	share
Allen D. Ms.	Lib/SDP	982	41.0
Knight R.	Con	895	37.4
Riley T.	Lab	516	21.6
Turnout		57.7	3.6

Fence (1790)			
		vote	share
David J.	Lib/SDP	583	61.7
Fletcher J.	Con	362	38.3
Turnout		53.9	23.4

Horsfield (3715)			
		vote	share
Weinberg M.	Lib/SDP	839	52.0
Berry J. Ms.	Lab	531	32.9
Welsh D.	Con	245	15.2
Turnout		43.9	19.1

Marsden (3893)			
		vote	share
Gillett S. Ms.	Lab	1,076	61.5
Marshall R.	Con	408	23.3
Farrar A.	Lib/SDP	267	15.2
Turnout		45.5	38.1

Reedley (3457)			
		vote	share
Clarkson R.	Con	703	41.1
Buck A.	Lib/SDP	589	34.5
Higgins M.	Lab	376	22.0
Baldwin N.	Green	41	2.4
Turnout		50.2	6.7

Southfield (3785)			
		vote	share
Jefferys A.	Lab	1,099	59.6
Smith S.	Con	396	21.5
Thornton K.	Lib/SDP	350	19.0
Turnout		49.4	38.1

Vivary Bridge (4358)			
		vote	share
Walker N.	Lib/SDP	969	56.1
Strachan K. Ms.	Lab	532	30.8
Welsh L. Ms.	Con	225	13.0
Turnout		40.2	25.3

Walverden (3100)			
		vote	share
Anderton D.	Lab	870	50.9
Hargreaves A.	Con	628	36.7
Goulding W.	Lib/SDP	211	12.3
Turnout		55.8	14.2

Waterside (3370)			
		vote	share
Sargeant E. Ms.	Lib/SDP	796	46.2
Evans J.	Lab	791	45.9
Sumner V.	Con	135	7.8
Turnout		51.9	0.3

Whitefield (3459)			
		vote	share
Butterfield F.	Lab	1,023	56.6
Singleton F. Ms.	Lib/SDP	598	33.1
Barton T. Ms.	Con	188	10.4
Turnout		53.0	23.5

Pendle - 1987

Barrowford (4412)			
		vote	share
Carrins P.	Lib/SDP	1,028	40.2
Bracewell C.	Con	1,005	39.3
Kelly M.	Lab	527	20.6
Turnout		59.1	0.9

Boulsworth (3992)			
		vote	share
Robertson D.	Lib/SDP	1,164	57.4
Benson S.	Con	659	32.5
McDonnell M.	Lab	205	10.1
Turnout		51.3	24.9

Bradley (3833)			
		vote	share
Buckley G.	Lib/SDP	970	47.6
Punt D.	Lab	898	44.1
Stott D.	Con	169	8.3
Turnout		53.8	3.5

Brierfield (3513)			
		vote	share
Wells W.	Lab	685	39.5
Sutcliffe P.	Con	542	31.3
Conroy C.	All	431	24.9
Baldwin N.	Green	75	4.3
Turnout		50.2	8.3

Clover Hill (3462)			
		vote	share
French J.	Lab	831	47.6
Hamilton R.	Con	594	34.0
Weaver J.	Lib/SDP	320	18.3
Turnout		51.0	13.6

Coates (3859)			
		vote	share
Carthy D.	Lib/SDP	1,002	51.5
Kelly J.	Lab	560	28.8
Noon C. Ms.	Con	385	19.8
Turnout		51.4	22.7

Craven (4032)			
		vote	share
Sharples M. Ms.	Lib/SDP	1,339	63.6
Atkins W.	Lab	394	18.7
Abbott D.	Con	374	17.8
Turnout		53.5	44.9

Earby (4191)			
		vote	share
Haigh T.	Lib/SDP	1,127	43.8
Berry G.	Con	960	37.3
Hayton R.	Lab	484	18.8
Turnout		62.2	6.5

Foulridge (1180)			
		vote	share
Clegg P.	Con	348	45.9
Dwyer Y.	Lab	224	29.6
Halstead E.	Lib/SDP	186	24.5
Turnout		65.0	16.4

Horsfield (3700)			
		vote	share
Richardson J.	Lib/SDP	973	53.2
Brown R.	Lab	533	29.2
Welsh D.	Con	322	17.6
Turnout		50.0	24.1

Marsden (3922) ²			
		vote	share
Evans A.	Lab	987	52.9
Atkinson L.	Lab	977	-
Clancy A. Ms.	Con	542	29.1
Rosen M.	Con	407	-
Farrar A.	Lib/SDP	336	18.0
Sutton A.	Lib/SDP	315	-
Turnout		49.8	23.9

Reedley (3460)			
		vote	share
Buck A.	Lib/SDP	911	46.6
Landriau M.	Con	758	38.8
Higgins M.	Lab	285	14.6
Turnout		57.3	7.8

Southfield (3805)			
		vote	share
Thompson S.	Lab	982	54.8
Morley J.	Lib/SDP	443	24.7
Welsh L. Ms.	Con	367	20.5
Turnout		47.5	30.1

Vivary Bridge (4288)			
		vote	share
Clamp D.	Lib/SDP	1,081	59.4
Colton R.	Lab	488	26.8
Derbyshire P.	Con	251	13.8
Turnout		43.0	32.6

Walverden (3007)			
		vote	share
Butterfield M.	Lab	706	42.8
Hargreaves A.	Con	475	28.8
Thornton K.	Lib/SDP	468	28.4
Turnout		55.6	14.0

Waterside (3266)			
		vote	share
Thomas H.	Lib/SDP	954	50.8
Evans J.	Lab	796	42.4
Keates N.	Con	127	6.8
Turnout		58.2	8.4

Whitefield (3423)			
		vote	share
Lockwood I.	Lab	889	56.9
Singleton F. Ms.	Lib/SDP	410	26.2
Barton T. Ms.	Con	264	16.9
Turnout		46.5	30.6

Pendle - 1988

Barrowford (4459)			
		vote	share
Kemp C.	Con	1,040	45.7
Riley B.	SLD	697	30.7
Kelly M.	Lab	537	23.6
Turnout		51.0	15.1

Boulsworth (3936)			
		vote	share
Sutton-Day T.	SLD	809	46.7
Brown M. Ms.	Con	692	40.0
Swann J. Ms.	Lab	231	13.3
Turnout		44.0	6.8

Bradley (3790)			
		vote	share
Nike S. Ms.*	Lab	1,133	61.0
Lloyd A.	SLD	578	31.1
Nasim J.	Con	146	7.9
Turnout		49.0	29.9

Brierfield (3498)			
		vote	share
Westwell J.	Lab	817	45.8
Hunt S.	SLD	574	32.2
Tattersall J.	Con	330	18.5
Baldwin N.	Green	63	3.5
Turnout		51.0	13.6

Clover Hill (3471)			
		vote	share
Spence K.*	Lab	936	56.2
Welsh D.	Con	405	24.3
Lyle S.	SLD	325	19.5
Turnout		48.0	31.9

Coates (3849)			
		vote	share
Riding D. Ms.*	SLD	931	53.8
Lambert S. Ms.	Lab	492	28.4
Noon C. Ms.	Con	309	17.8
Turnout		45.0	25.3

Craven (4020)			
		vote	share
Whipp D.*	SLD	898	48.6
Macsween L. Ms.	Lab	491	26.6
Tyrer R.	Con	460	24.9
Turnout		46.0	22.0

Earby (4156)			
		vote	share
Myers E.	Con	926	42.9
Daggett B.	SLD	686	31.7
Hill F.	Lab	549	25.4
Turnout		52.0	11.1

Horsfield (3586)			
		vote	share
Allen J.*	SLD	662	42.9
Brown R.	Lab	631	40.9
Herbert A. Ms.	Con	249	16.1
Turnout		43.0	2.0

Marsden (3814)			
		vote	share
Hawtreay D.*	Lab	1,055	62.9
Clancy A. Ms.	Con	471	28.1
Clamp P. Ms.	SLD	152	9.1
Turnout		44.0	34.8

Pendleside (1128)			
		vote	share
Wren F.	Con	496	68.7
Lyons A. Ms.	SLD	226	31.3
Turnout		64.0	37.4

Reedley (3506)			
		vote	share
Ralph I.	SLD	761	44.3
Jackson P.	Con	691	40.2
Walton K.	Lab	266	15.5
Turnout		49.0	4.1

Southfield (3690)			
		vote	share
Hartley F.*	Lab	1,003	56.6
Morley J.	SLD	542	30.6
Welsh L. Ms.	Con	226	12.8
Turnout		48.0	26.0

Vivary Bridge (4164)			
		vote	share
Greaves H. Ms.*	SLD	852	46.5
Collier K. Ms.	Lab	678	37.0
Duerden T.	Con	234	12.8
Foat D.	Green	68	3.7
Turnout		44.0	9.5

Walverden (2957)			
		vote	share
Dodd J.	Lab	720	47.7
Thornton K.	SLD	446	29.6
Greenhow L.	Con	342	22.7
Turnout		51.0	18.2

Waterside (3159)			
		vote	share
Greaves A.*	SLD	829	53.6
Hirst T. Ms.	Lab	621	40.1
Hodgson J.	Con	98	6.3
Turnout		49.0	13.4

Whitefield (3252)			
		vote	share
Dole L.	Lab	908	49.9
Jehangir I. Ms.	Con	530	29.1
David H.	SLD	307	16.9
Ahmed S.	Ind	76	4.2
Turnout		56.0	20.8

Pendle - 1990

Barrowford (4611)			
		vote	share
Nutter B.*	SLD	1,077	39.1
Crossley L. Ms.	Con	856	31.1
Kelly M.	Lab	818	29.7
Turnout		59.7	8.0

Boulsworth (4176)			
		vote	share
Davies A.*	SLD	1,270	61.8
Bowden R.	Con	400	19.5
Bateman M.	Lab	385	18.7
Turnout		49.2	42.3

Bradley (3720)			
		vote	share
Lees H.	Lab	1,401	66.3
Winch N.	SLD	599	28.3
Smith B. Ms.	Con	114	5.4
Turnout		56.8	37.9

Brierfield (3516)			
		vote	share
Clifford F.*	Lab	1,393	67.5
Tattersall A. Ms.	Con	360	17.4
McCausland F. Ms.	SLD	311	15.1
Turnout		58.7	50.0

Clover Hill (3532)			
		vote	share
Shore K. Ms.*	Lab	1,359	70.0
Welsh D.	Con	375	19.3
Hewitt D.	SLD	208	10.7
Turnout		55.0	50.7

Coates (3893)			
		vote	share
Lambert S. Ms.	Lab	1,101	48.0
Whipp C. Ms.*	SLD	891	38.8
Noon C. Ms.	Con	302	13.2
Turnout		58.9	9.2

Craven (4056)			
		vote	share
Macswen L. Ms.	Lab	1,036	47.3
Warner M.*	SLD	852	38.9
Hoyle W. Ms.	Con	300	13.7
Turnout		53.9	8.4

Earby (4264)			
		vote	share
Allen D. Ms.*	SLD	892	36.9
Riley T.	Lab	813	33.7
Myers J. Ms.	Con	710	29.4
Turnout		56.6	3.3

Fence (1944)			
		vote	share
David J.*	SLD	874	62.9
Wolfenden P.	Con	437	31.5
Jones G.	Lab	78	5.6
Turnout		71.5	31.5

Horsfield (3647)			
		vote	share
Brown R.	Lab	1,008	46.6
Williamson C. Ms.	SLD	942	43.6
Halstead S.	Con	212	9.8
Turnout		59.3	3.1

Marsden (3819)			
		vote	share
Atkinson L.	Lab	1,671	79.5
Landriau M.	Con	363	17.3
Ahmed S.	SLD	69	3.3
Turnout		55.1	62.2

Reedley (3566)			
		vote	share
Clarkson R.*	Con	822	40.0
Jackson R.	SLD	690	33.6
Gregson K.	Lab	541	26.4
Turnout		57.6	6.4

Southfield (3659)			
		vote	share
Hopkins C. Ms.	Lab	1,638	77.9
Morley J.	SLD	242	11.5
Barton T. Ms.	Con	223	10.6
Turnout		57.5	66.4

Vivary Bridge (4188)			
		vote	share
Gwynne D. Ms.	SLD	901	44.5
Brown A. Ms.	Lab	846	41.8
Riley J. Ms.	Con	209	10.3
Foat D.	Green	70	3.5
Turnout		48.4	2.7

Walverden (3044)			
		vote	share
Proud D.	Lab	1,220	68.7
Howarth P.	Con	353	19.9
Thornton K.	SLD	202	11.4
Turnout		58.3	48.8

Waterside (3165)			
		vote	share
Pickles T.	Lab	968	53.2
Sargeant E. Ms.*	SLD	674	37.1
Hodgson J.	Con	103	5.7
Richens T.	Ind	74	4.1
Turnout		57.5	16.2

Whitefield (2941)			
		vote	share
Miller B.	Lab	945	48.9
Jehangir I. Ms.	Con	497	25.7
Lyle S.	SLD	489	25.3
Turnout		65.7	23.2

Pendle - 1991

Barrowford (4606)			
		vote	share
Jackson B.	Con	909	35.2
Carrins P.*	LD	903	34.9
Kelly M.	Lab	772	29.9
Turnout		56.1	0.2

Boulsworth (4146)			
		vote	share
Robertson D.*	LD	1,025	52.4
Hodgson J.	Con	514	26.3
Bateman M.	Lab	418	21.4
Turnout		47.2	26.1

Bradley (3551)			
		vote	share
Dennison T.	Lab	1,040	69.2
Winch N.	LD	266	17.7
Landriau M.	Con	196	13.0
Turnout		42.3	51.5

Brierfield (3503)			
		vote	share
Clements N.	Lab	982	53.2
Hunt S.	LD	528	28.6
Tattersall A. Ms.	Con	336	18.2
Turnout		52.7	24.6

Clover Hill (3511)			
		vote	share
Waite C.	Lab	1,054	61.9
Clegg R. Ms.	Con	423	24.8
Berry P.	LD	226	13.3
Turnout		48.5	37.1

Coates (3873)			
		vote	share
Bell M. Ms.	LD	963	48.8
Howarth G.	Lab	726	36.8
Noon C. Ms.	Con	286	14.5
Turnout		51.0	12.0

Craven (4057)			
		vote	share
Sharples M. Ms.*	LD	1,199	58.0
Simpson D.	Lab	639	30.9
Hoyle W. Ms.	Con	231	11.2
Turnout		51.0	27.1

Earby (4347) ²			
		vote	share
Haigh T.*	LD	997	43.6
Pinks A.	LD	818	-
Carroll R. Ms.	Con	752	32.9
Myers J. Ms.	Con	746	-
McGrath A.	Lab	539	23.6
Carlisle K.	Lab	526	-
Turnout		53.7	10.7

Foulridge (1103)			
		vote	share
Clegg P.*	Con	361	52.9
Johns D.	Lab	322	47.1
Turnout		61.9	5.7

Horsfield (3663)			
		vote	share
Davies M. Ms.	LD	1,022	50.0
Brown A. Ms.	Lab	797	39.0
Bowden R.	Con	225	11.0
Turnout		55.8	11.0

Marsden (3782)			
		vote	share
Hawtrey P. Ms.	Lab	1,180	65.3
Howarth P.	Con	628	34.7
Turnout		47.8	30.5

Reedley (3555)			
		vote	share
Buck A.*	LD	1,123	53.0
Jackson P.	Con	700	33.0
Gregson K.	Lab	296	14.0
Turnout		59.6	20.0

Southfield (3665)			
		vote	share
Leo A.	Lab	1,227	70.2
Barton T. Ms.	Con	276	15.8
Morley J.	LD	245	14.0
Turnout		47.7	54.4

Vivary Bridge (4190)			
		vote	share
Gwynne D. Ms.	LD	940	44.8
Dennison E.	Lab	866	41.3
Riley J. Ms.	Con	227	10.8
Foat D.	Green	66	3.1
Turnout		50.1	3.5

Walverden (2686)			
		vote	share
Hughes C.	Lab	938	60.3
Hodgson K. Ms.	Con	424	27.2
Thornton K.	LD	194	12.5
Turnout		58.0	33.0

Waterside (3176)			
		vote	share
Robinson N.	Lab	833	50.2
Sargeant E. Ms.	LD	711	42.9
McCormick P. Ms.	Con	114	6.9
Turnout		52.2	7.4

Whitefield (2998) ²			
		vote	share
Ali A.	Lab	919	51.6
French J.	Lab	742	-
Khan R.	Con	562	31.5
Hewitt D.	LD	301	16.9
Howarth A. Ms.	LD	265	-
Turnout		55.6	20.0

Pendle - 1992

Barrowford (4629)			
		vote	share
Kemp C.*	Con	970	42.8
Vickerman A.	LD	894	39.4
Kelly M.	Lab	403	17.8
Turnout		49.0	3.4

Boulsworth (4149)			
		vote	share
Belbin J. Ms.*	LD	852	52.3
Hodgson J.	Con	535	32.8
McAnulty A.	Lab	242	14.9
Turnout		39.3	19.5

Bradley (3720)			
		vote	share
Nike S. Ms.*	Lab	771	73.5
Noden-Thompson K.	LD	278	26.5
Turnout		28.2	47.0
Brierfield (3546)			
Thompson S.	Lab	733	43.4
Jackson P.	Con	525	31.1
Hunt S.	LD	431	25.5
Turnout		47.6	12.3
Clover Hill (3498)			
Spence K.*	Lab	803	61.1
Clegg R. Ms.	Con	382	29.0
Berry P.	LD	130	9.9
Turnout		37.6	32.0
Coates (3898)			
Whipp C. Ms.	LD	752	41.5
Simpson D.	Lab	599	33.1
Crabtree J.	Con	461	25.4
Turnout		46.5	8.4
Craven (4149)			
Whipp D.*	LD	870	52.2
Macsween N.	Lab	473	28.4
Langtree V. Ms.	Con	325	19.5
Turnout		40.2	23.8
Earby (4266)			
Carroll R. Ms.	Con	840	42.3
Burke T.	LD	612	30.8
Todd C.	Lab	533	26.9
Turnout		46.5	11.5
Horsfield (3659)			
Moulton A. Ms.	LD	592	41.7
Brown A. Ms.	Lab	517	36.4
Bryan R.	Con	310	21.8
Turnout		38.8	5.3
Marsden (3675)			
Hawtreay D.*	Lab	691	58.2
Howarth P.	Con	406	34.2
Mortimer N.	LD	91	7.7
Turnout		32.3	24.0
Pendleside (1135)			
Wren F.*	Con	554	78.1
Tallett E.	LD	105	14.8
Atkinson C.	Lab	50	7.1
Turnout		62.5	63.3
Reedley (3577)			
McCormick P. Ms.	Con	860	49.9
Ralph I.*	LD	587	34.0
McBride A.	Lab	277	16.1
Turnout		48.2	15.8
Southfield (3660)			
Hartley F.*	Lab	930	71.5
Barton T. Ms.	Con	255	19.6
Morley J.	LD	115	8.8
Turnout		35.5	51.9

Vivary Bridge (4254)			
		vote	share
Greaves H. Ms.*	LD	857	50.3
Pickles I.	Lab	623	36.6
Riley J. Ms.	Con	224	13.1
Turnout		40.1	13.7
Walverden (3061)			
Dodd J.	Lab	628	51.2
Hodgson K. Ms.	Con	405	33.0
Thornton K.	LD	193	15.7
Turnout		40.1	18.2
Waterside (3187)			
Ormrod L.	Lab	747	47.0
Greaves A.*	LD	719	45.3
Tennant N.	Con	122	7.7
Turnout		49.8	1.8
Whitefield (3035)			
French J.*	Lab	562	48.2
Charlton-Foley S.	LD	447	38.4
Welsh D.	Con	156	13.4
Turnout		38.4	9.9

Pendle - 1994

Barrowford (4587)			
		vote	share
Vickerman A.	LD	1,250	58.6
Crossley L. Ms.	Con	516	24.2
Hargreaves A.	Lab	366	17.2
Turnout		46.5	34.4
Boulsworth (4177)			
Davies A.*	LD	1,029	59.1
Hartley F.	Lab	370	21.3
Hodgeson J.	Con	342	19.6
Turnout		41.7	37.9
Bradley (3782)			
Lees H.*	Lab	977	64.0
Bokhari S.	LD	409	26.8
Smith B. Ms.	Con	140	9.2
Turnout		40.5	37.2
Brierfield (3537)			
Clifford F.*	Lab	871	56.8
David H.	LD	334	21.8
Jackson P.	Con	329	21.4
Turnout		43.5	35.0
Clover Hill (3443)			
Shore K. Ms.*	Lab	938	67.7
Bowden R.	Con	268	19.4
Hewitt D.	LD	179	12.9
Turnout		40.3	48.4
Coates (3903)			
Hartley M.	LD	1,432	65.1
Lambert S. Ms.*	Lab	651	29.6
Shawcroft M. Ms.	Con	118	5.4
Turnout		56.5	35.5

Craven (4155)			
		vote	share
Scott P.	LD	1,179	58.9
Macsween L. Ms.*	Lab	659	32.9
Langtree V. Ms.	Con	165	8.2
Turnout		48.4	26.0
Earby (4295)			
Allen D. Ms.*	LD	1,082	48.3
Todd C.	Lab	623	27.8
Wadsworth M.	Con	535	23.9
Turnout		52.2	20.5
Fence (1889)			
David J.*	LD	914	91.9
Jones G.	Lab	81	8.1
Turnout		52.9	83.7
Horsfield (3653)			
Gilhespy G. Ms.	LD	856	50.8
Johns D.	Lab	683	40.6
Medley A.	Con	145	8.6
Turnout		46.2	10.3
Marsden (3668)			
Atkinson L.*	Lab	1,094	78.5
Howarth P.	Con	240	17.2
Ashraf M.	LD	60	4.3
Turnout		38.1	61.3
Reedley (3603)			
Clarkson R.*	Con	789	45.7
Hunt S.	LD	544	31.5
McBride A.	Lab	392	22.7
Turnout		47.8	14.2
Southfield (3484)			
Hopkins C. Ms.*	Lab	1,026	76.3
Berry P.	LD	319	23.7
Turnout		38.7	52.6
Vivary Bridge (4138)			
Clegg D.	LD	1,007	51.0
Crambie G.	Lab	872	44.1
Riley J. Ms.	Con	97	4.9
Turnout		47.9	6.8
Walverden (3000)			
Proud D.*	Lab	907	69.3
Noon C. Ms.	Con	226	17.3
Thornton K.	LD	175	13.4
Turnout		43.7	52.1
Waterside (3185)			
Greaves A.	LD	825	48.2
Pickles T.*	Lab	767	44.8
Hindle H.	Ind	121	7.1
Turnout		53.9	3.4
Whitefield (3018)			
Iqbal M.	Lab	780	46.1
Rasool G.	LD	762	45.0
Barton T. Ms.	Con	150	8.9
Turnout		56.6	1.1

Pendle - 1995

Barrowford (4623)

		vote	share
Carrins P.	LD	882	48.5
Hargreaves A.	Lab	530	29.1
Barton T. Ms.	Con	407	22.4
	Turnout	39.5	19.4

Boulsworth (4171)

		vote	share
Robertson D.*	LD	849	57.8
Johnson S.	Lab	389	26.5
Hodgson J.	Con	231	15.7
	Turnout	35.3	31.3

Bradley (3733)

		vote	share
Hartley F.	Lab	792	47.2
Hussain R.	LD	688	41.0
Geddes D.	Ind	156	9.3
Nasim J.	Con	41	2.4
	Turnout	45.2	6.2

Brierfield (3558)

		vote	share
Karim S.	LD	672	38.9
Ramzan M.	Lab	607	35.2
Jackson P.	Con	447	25.9
	Turnout	49.0	3.8

Clover Hill (3461)

		vote	share
Waite C.*	Lab	906	72.1
Beckett M. Ms.	Con	190	15.1
Stanworth D. Ms.	LD	160	12.7
	Turnout	36.5	57.0

Coates (3829)

		vote	share
Bell M. Ms.*	LD	986	57.4
Crowther S.	Lab	571	33.2
Tennant J.	Con	162	9.4
	Turnout	45.2	24.1

Craven (4113)

		vote	share
Dinsdale A. Ms.	LD	813	53.2
Skinner W.	Lab	525	34.4
Noon C. Ms.	Con	190	12.4
	Turnout	37.5	18.8

Earby (4261)

		vote	share
Haigh T.*	LD	715	38.7
Todd C.	Lab	680	36.8
Wadsworth M.	Con	452	24.5
	Turnout	43.7	1.9

Foulridge (1139)

		vote	share
Moss P.	LD	306	49.0
Johns D.	Lab	172	27.5
Howarth P.	Con	147	23.5
	Turnout	55.1	21.4

Horsfield (3594)

		vote	share
Gilhespy I.*	LD	709	51.1
Selsby M.	Lab	564	40.7
Riley J. Ms.	Con	114	8.2
	Turnout	38.9	10.5

Marsden (3588)

		vote	share
Ali A.	Lab	555	45.0
White S.	LD	359	29.1
McCormick G.	Con	319	25.9
	Turnout	34.5	15.9

Reedley (3617)

		vote	share
Buck A.*	LD	744	44.4
Chadwick F.	Con	478	28.6
McBride A.	Lab	452	27.0
	Turnout	46.4	15.9

Southfield (3465)

		vote	share
Leo A.*	Lab	1,012	77.0
Wildman P.	Con	161	12.3
Berry P.	LD	141	10.7
	Turnout	38.4	64.8

Vivary Bridge (4112)

		vote	share
Gwynne D. Ms.*	LD	879	52.1
Till A.	Lab	706	41.8
Leith J.	Con	103	6.1
	Turnout	41.2	10.2

Walverden (2962)

		vote	share
Hughes C.*	Lab	851	71.8
Tattersall A. Ms.	Con	169	14.3
Thornton K.	LD	165	13.9
	Turnout	40.2	57.6

Waterside (3154)

		vote	share
Sargeant E. Ms.	LD	713	50.1
Pickles T.	Lab	667	46.9
Thompson A. Ms.	Con	42	3.0
	Turnout	45.2	3.2

Whitefield (3115)

		vote	share
Rasool G.	LD	1,073	57.0
Ali A.*	Lab	811	43.0
	Turnout	61.4	13.9

Pendle - 1996

Barrowford (4647)

		vote	share
Nelson R.	LD	629	34.4
Hargreaves A.	Lab	607	33.2
Crossley L. Ms.	Con	592	32.4
	Turnout	39.4	1.2

Boulsworth (4151)

		vote	share
Belbin J. Ms.*	LD	874	58.9
Johnson S.	Lab	396	26.7
Wood R.	Con	213	14.4
	Turnout	35.8	32.2

Bradley (3734)

		vote	share
Leather A.	Lab	887	54.4
Khan R.	LD	653	40.0
Riley J. Ms.	Con	92	5.6
	Turnout	43.9	14.3

Brierfield (3483)

		vote	share
Akrigg B.	Lab	926	52.3
Ahmed E.	LD	512	28.9
Jackson P.	Con	332	18.8
	Turnout	50.9	23.4

Clover Hill (3427)

		vote	share
Akrigg N.	Lab	809	67.1
Chadwick F.	Con	258	21.4
Standworth P.	LD	139	11.5
	Turnout	35.3	45.7

Coates (3864)

		vote	share
Garnett S. Ms.	LD	854	49.7
Skinner W.	Lab	604	35.2
Owens A.	Con	260	15.1
	Turnout	44.5	14.6

Craven (4081)

		vote	share
Whipp D.*	LD	774	54.1
Lewis A.	Lab	447	31.2
Hargreaves B. Ms.	Con	211	14.7
	Turnout	35.1	22.8

Earby (4321)

		vote	share
Brewer A. Ms.	LIB	677	35.4
Todd C.	Lab	663	34.7
Carroll R. Ms.*	Con	571	29.9
	Turnout	44.3	0.7

Horsfield (3562)

		vote	share
Hill S. Ms.	Lab	778	54.8
Nightingale C.	LD	529	37.3
Myers D.	Con	113	8.0
	Turnout	39.8	17.5

Marsden (3500)

		vote	share
Short M.	Lab	699	68.1
McCormick G.	Con	191	18.6
White S.	LD	137	13.3
	Turnout	29.4	49.5

Pendleside (1166)

		vote	share
Derwent S. Ms.*	Con	510	79.6
Atkinson C.	Lab	85	13.3
Tallett E.	LD	46	7.2
	Turnout	55.0	66.3

Reedley (3627)

		vote	share
McCormick P. Ms.*	Con	757	46.0
Hunt S.	LD	551	33.5
Strachan K. Ms.	Lab	336	20.4
	Turnout	45.5	12.5

Southfield (3395)

		vote	share
Hartley F.*	Lab	927	77.1
Wildman P.	Con	193	16.1
Berry P.	LD	82	6.8
	Turnout	35.5	61.1

Vivary Bridge (4088)

		vote	share
Lord D. Ms.	LD	678	46.3
Ormrod D. Ms.	Lab	662	45.2
Leith J.	Con	124	8.5
	Turnout	35.9	1.1

Walverden (2955)²

		vote	share
Abbyss R.	Lab	615	43.2
Raja R.	Lab	604	-
French D.	LD	563	39.6
Hussain S.	LD	459	-
Bowman A. Ms.	Con	245	17.2
Tattersall A. Ms.	Con	233	-
	Turnout	48.4	3.7

Waterside (3210)

		vote	share
Ormrod L.*	Lab	920	66.8
Howarth S. Ms.	LD	285	20.7
Mitchell A.	Con	172	12.5
	Turnout	42.9	46.1

Whitefield (3167)			
		vote	share
Azam M.	LD	1,142	53.4
Ali A.	Lab	858	40.1
Barton T. Ms.	Con	139	6.5
Turnout		68.0	13.3

Pendle - 1998

Barrowford (4743)			
		vote	share
Vickerman A.*	LD	717	45.2
Crossley L. Ms.	Con	460	29.0
Hargreaves A.	Lab	408	25.7
Turnout		33.5	16.2

Boulsworth (4211)			
		vote	share
Davies A.*	LD	702	60.2
Wilson M.	Lab	267	22.9
Ilott J.	Con	198	17.0
Turnout		27.7	37.3

Bradley (3694)			
		vote	share
Iqbal M.	Lab	750	49.4
Munir M.	LD	600	39.5
Riley J. Ms.	Con	169	11.1
Turnout		41.3	9.9

Brierfield (3295)			
		vote	share
Clifford F.*	Lab	631	54.7
Lord Z. Ms.	Con	404	35.0
Stanworth D. Ms.	LD	118	10.2
Turnout		35.1	19.7

Clover Hill (3447)			
		vote	share
Shore K. Ms.*	Lab	601	58.1
French D.	LD	239	23.1
Chadwick F.	Con	194	18.8
Turnout		30.1	35.0

Coates (3858)			
		vote	share
Adams M. Ms.	LD	691	57.2
Skinner W.	Lab	350	28.9
Toon C.	Con	168	13.9
Turnout		31.3	28.2

Craven (4037)			
		vote	share
Norcross M. Ms.	LD	631	54.6
Edwards J.	Lab	333	28.8
Langtree M.	Con	191	16.5
Turnout		28.7	25.8

Earby (4321)			
		vote	share
Allen D. Ms.*	LD	709	43.7
Carroll R. Ms.	Con	641	39.5
Strachan K. Ms.	Lab	273	16.8
Turnout		37.8	4.2

Fence (1881)			
		vote	share
David J.*	LD	731	84.4
Mitchell A.	Con	89	10.3
Lockwood I.	Lab	46	5.3
Turnout		46.0	74.1

Horsfield (3431)			
		vote	share
Gilhespy G. Ms.*	LD	601	53.3
Nightingale C.	Lab	527	46.7
Turnout		33.0	6.6

Marsden (3593)			
		vote	share
Rowland G.*	Lab	552	72.0
Barton T. Ms.	Con	215	28.0
Turnout		21.4	43.9

Reedley (3696)			
		vote	share
Clarkson R.*	Con	711	57.1
Martin A.	Lab	290	23.3
Hunt S.	LD	244	19.6
Turnout		33.7	33.8

Southfield (3267)			
		vote	share
Allen P. Ms.	Lab	690	74.4
Wildman P.	Con	237	25.6
Turnout		28.5	48.9

Vivary Bridge (4129)			
		vote	share
Clegg D.*	LD	576	47.3
Barnett P. Ms.	Lab	548	45.0
Riley G.	Con	93	7.6
Turnout		29.5	2.3

Walverden (2928)			
		vote	share
Hussain S.	LD	680	52.1
Raja R.*	Lab	432	33.1
Landriau M.	Con	194	14.9
Turnout		44.8	19.0

Waterside (3164)			
		vote	share
Doult A. Ms.	Lab	547	49.4
Beck J.	LD	483	43.6
Hodgson K. Ms.	Con	78	7.0
Turnout		35.2	5.8

Whitefield (3048)			
		vote	share
Ahmed S.	LD	940	51.7
Ansar M.	Lab	788	43.3
McKenna P.	Con	90	5.0
Turnout		60.0	8.4

Pendle - 1999

Barrowford (4750)			
		vote	share
Crossley L. Ms.	Con	595	38.6
Carrins P.*	LD	509	33.1
Hargreaves A.	Lab	436	28.3
Turnout		32.4	5.6

Boulsworth (4233)			
		vote	share
Robertson D.*	LD	649	54.6
Wood R.	Con	286	24.1
Foat D.	Lab	254	21.4
Turnout		28.1	30.5

Bradley (3616)			
		vote	share
Hartley F.*	Lab	940	51.1
Munir M.	LD	815	44.3
Riley J. Ms.	Con	85	4.6
Turnout		51.1	6.8

Brierfield (3250)			
		vote	share
Karim S.*	LD	578	38.2
Martin A.	Lab	562	37.1
Lord Z. Ms.	Con	373	24.7
Turnout		46.8	1.1

Clover Hill (3454)			
		vote	share
Waite C.*	Lab	681	69.0
Chadwick F.	Con	223	22.6
French D.	LD	83	8.4
Turnout		28.6	46.4

Coates (3858)			
		vote	share
Bell M. Ms.*	LD	647	52.8
Edwards J.	Lab	434	35.4
Horsfield M.	Con	144	11.8
Turnout		32.5	17.4

Craven (4017)			
		vote	share
Neal F.	Lab	549	45.8
Whipp A. Ms.	LD	469	39.1
Langtree M.	Con	180	15.0
Turnout		29.9	6.7

Earby (4301)			
		vote	share
Carroll R. Ms.	Con	778	42.7
Haigh T.*	LD	756	41.5
Skinner J. Ms.	Lib	289	15.9
Turnout		42.5	1.2

Foulridge (1139)			
		vote	share
Belshaw C. Ms.	Con	247	51.8
Moss P.*	LD	166	34.8
Wilson M.	Lab	64	13.4
Turnout		42.1	17.0

Horsfield (3397)			
		vote	share
Gilhespy I.*	LD	449	43.0
Johns D.	Lab	448	42.9
Benson S.	Con	147	14.1
Turnout		30.9	0.1

Marsden (3579)			
		vote	share
Ali A.*	Lab	614	61.9
Landriau M.	Con	279	28.1
Masih W.	LD	99	10.0
Turnout		27.8	33.8

Reedley (3631)			
		vote	share
Barton T. Ms.	Con	655	50.5
Buck A.*	LD	459	35.4
Razaq M.	Lab	183	14.1
Turnout		35.8	15.1

Southfield (3237)			
		vote	share
Dunn S. Ms.	Lab	587	56.4
Le-Page M.	LD	236	22.7
Wildman P.	Con	218	20.9
Turnout		32.2	33.7

Vivary Bridge (4195)			
		vote	share
Hunting J. Ms.	Lab	721	50.1
Beck J.	LD	555	38.6
Riley G.	Con	133	9.2
Hartley P.	Ind	29	2.0
Turnout		34.3	11.5

Walverden (2961)			
		vote	share
Robinson J. Ms.	Lab	707	51.3
Collett L.	LD	534	38.7
Tattersall A. Ms.	Con	138	10.0
Turnout		46.7	12.5

Waterside (3216)			
		vote	share
Sargeant E. Ms.*	LD	579	47.0
Tweedie I.	Lab	570	46.3
Mitchell A.	Con	82	6.7
Turnout		38.4	0.7

Whitefield (3107)			
		vote	share
Ansar M.	Lab	1,021	50.0
Rasool G.*	LD	910	44.6
Hook F.	Con	109	5.3
Turnout		66.0	5.4

Pendle - 2000

Barrowford (4767)			
		vote	share
Beckett A.	Con	813	45.4
Simpson M.	LD	691	38.6
Oliver R.	Lab	286	16.0
Turnout		37.6	6.8

Boulsworth (4230)			
		vote	share
Belbin J. Ms.*	LD	757	56.2
Ryder H.	Con	304	22.6
Parsons R.	Lab	287	21.3
Turnout		31.9	33.6

Bradley (3496)			
		vote	share
Stables C. Ms.	Lab	770	47.0
Munir M.	LD	749	45.7
Landriau M.	Con	120	7.3
Turnout		47.2	1.3

Brierfield (3183)			
		vote	share
Akrigg B.*	Lab	525	50.4
Chadwick F.	Con	429	41.2
Stanworth D. Ms.	LD	88	8.4
Turnout		33.0	9.2

Clover Hill (3430)			
		vote	share
Akrigg N.*	Lab	519	58.4
Jackson A. Ms.	Con	285	32.1
French D.	LD	85	9.6
Turnout		26.0	26.3

Coates (3883)			
		vote	share
Taylforth J. Ms.	LD	932	65.4
Edwards J.	Lab	316	22.2
Horsfield M.	Con	176	12.4
Turnout		36.7	43.3

Craven (4007)			
		vote	share
Whipp D.*	LD	935	64.0
Purcell J. Ms.	Lab	349	23.9
Myers E.	Con	177	12.1
Turnout		36.7	40.1

Earby (4354)			
		vote	share
Tennant C.	Con	930	46.9
Haigh T.	LD	884	44.5
Foat D.	Lab	171	8.6
Turnout		45.8	2.3

Horsfield (3428)			
		vote	share
Nightingale C.	Lab	484	49.1
Wensley I.	LD	284	28.8
Riley G.	Con	218	22.1
Turnout		28.8	20.3

Marsden (3545)			
		vote	share
Ormrod D. Ms.*	Lab	620	63.7
Eyre J.	Con	354	36.3
Turnout		27.6	27.3

Pendleside (1217)			
		vote	share
Derwent S. Ms.*	Con	541	88.4
Martin A.	Lab	71	11.6
Turnout		50.5	76.8

Reedley (3695)			
		vote	share
McCormick P. Ms.*	Con	1,336	79.3
Tariq M.	Lab	348	20.7
Turnout		46.1	58.7

Southfield (3233)			
		vote	share
Latif M.	Lab	524	54.8
Wildman P.	Con	433	45.2
Turnout		29.7	9.5

Vivary Bridge (4203)			
		vote	share
Whalley D.	Lab	591	43.4
Lord D. Ms.*	LD	362	26.6
Nowland P.	Ind	203	14.9
Ilott J.	Con	183	13.4
Hartley P.	Ind GRN	24	1.8
Turnout		32.4	16.8

Walverden (2966)			
		vote	share
Adam G.	Lab	572	40.2
Ditta A.	LD	505	35.5
Abbiss R.*	Con	347	24.4
Turnout		48.1	4.7

Waterside (3240) ²			
		vote	share
Ormrod L.*	Lab	596	61.6
Tweedie I.	Lab	517	-
Whittle L. Ms.	LD	225	23.3
Beck J.	LD	217	-
Mitchell A.	Con	146	15.1
Thompson A. Ms.	Con	143	-
Turnout		31.2	38.4

Whitefield (3136)			
		vote	share
Qadri R.	Lab	944	48.8
Ali L.	LD	873	45.1
Holden R.	Con	117	6.0
Turnout		62.1	3.7

Pendle - 2002

Barrowford (3917) ³			
		vote	share
Vickerman A.*	LD	840	42.9
Beckett A.*	Con	761	38.8
Crossley L. Ms.*	Con	742	-
Simpson M.	LD	667	-
Coates K. Ms.	LD	658	-
Eyre J.	Con	615	-
Nike S. Ms.	Lab	359	18.3
Hargreaves A.	Lab	275	-
Oliver R.	Lab	262	-
Turnout		47.7	4.0

Blacko & Higherford (1340)			
		vote	share
Derwent S. Ms.*	Con	569	81.8
Ingham H. Ms.	Lab	67	9.6
Abbiss C. Ms.	LD	60	8.6
Turnout		52.0	72.1

Boulsworth (3706) ³			
		vote	share
Belbin J. Ms.*	LD	901	58.7
Davies A.*	LD	831	-
Robertson D.*	LD	828	-
Calvert M.	Con	392	25.6
Farnell J.	Con	305	-
Ryder H.	Con	299	-
Gray D. Ms.	Lab	241	15.7
Parsons R.	Lab	241	-
Wilson M.	Lab	205	-
Turnout		41.2	33.2

Bradley (4269) ³			
		vote	share
Iqbal M.*	Lab	1,052	50.3
Hartley F.*	Lab	1,047	-
Nasim M.	Lab	995	-
Munir M.	LD	885	42.3
Robinson S. Ms.	LD	861	-
Stopforth D.	LD	800	-
King E.	Con	155	7.4
Chadwick F.	Con	153	-
Myers E.	Con	132	-
Turnout		52.1	8.0

Brierfield (3546) ³			
		vote	share
Clifford F.*	Lab	845	44.7
Allen P. Ms.*	Lab	840	-
Jabbar A.	Lab	838	-
Jackson P.	Con	818	43.3
Ashraf H.	Con	804	-
Wren F.	Con	796	-
Lawrence W.	LD	227	12.0
Mehmood K.	LD	147	-
Carlos I.	LD	145	-
Turnout		56.2	1.4

Clover Hill (3686) ³			
		vote	share
Waite C.*	Lab	675	42.2
Akrigg N.*	Lab	640	-
Shore K. Ms.*	LD	596	37.2
Ansar M.*	Lab	577	-
Foster D.	LD	545	-
Malik N.	LD	444	-
Emmott A. Ms.	Con	330	20.6
Taylor M. Ms.	Con	300	-
Jackson A. Ms.	Con	286	-
Turnout		43.4	4.9

Coates (3971) ³			
		vote	share
Bell M. Ms.*	LD	1,082	65.6
Adams M. Ms.*	LD	1,020	-
Buck A.	LD	989	-
Hanson P.	Lab	383	23.2
Poole D.	Con	185	11.2
Myers J. Ms.	Con	179	-
Turnout		39.8	42.4

Craven (4033) ³			
		vote	share
Whipp D.*	LD	1,056	54.7
Norcross M. Ms.*	LD	973	-
Hill-Crane M. Ms.	LD	879	-
Neal F.*	Lab	622	32.2
Harrison K.	Con	254	13.1
Davison B. Ms.	Con	239	-
Harrison B. Ms.	Con	235	-
Turnout		43.2	22.5

Earby (4355) ³			
		vote	share
Tennant C.*	Con	939	46.7
Carroll R. Ms.*	Con	925	-
Horsfield M.	Con	861	-
Haigh D. Ms.*	LD	795	39.5
Haigh T.	LD	748	-
Day C. Ms.	LD	689	-
Skinner W.	Lab	278	13.8
Wilkinson R. Ms.	Lab	236	-
Turnout		45.5	7.2

Foulridge (1357)			
		vote	share
Belshaw C. Ms.*	Con	352	54.7
Smith J. Ms.	Lab	188	29.2
Birtwell M. Ms.	LD	104	16.1
	Turnout	47.5	25.5
Higham & Pendleside (1388)			
		vote	share
Nutter J.	Con	567	76.7
Wicks S. Ms.	Lab	172	23.3
	Turnout	53.7	53.5
Horsfield (3829)³			
		vote	share
Davies S. Ms.	LD	618	39.9
Lord D. Ms.*	LD	593	-
Kerrigan A. Ms.	LD	566	-
Broughton P.	Lab	423	27.3
Johns D.	Lab	406	-
Hutson K.	Lab	356	-
Nowland P.	Ind	301	19.4
Riley J. Ms.	Con	207	13.4
Thompson A. Ms.	Con	192	-
Myers D.	Con	162	-
	Turnout	36.3	12.6
Marsden (2508)²			
		vote	share
Ormrod D. Ms.*	Lab	473	45.5
Rowland G.*	Lab	455	-
Atkinson L.	Ind	235	22.6
Landriau M.	Con	232	22.3
Landriau V. Ms.	Con	201	-
French D.	LD	100	9.6
Stanworth D. Ms.	LD	80	-
	Turnout	38.2	22.9
Old Laund Booth (1217)			
		vote	share
David J.*	LD	639	84.6
Bevan C.	Con	116	15.4
	Turnout	62.7	69.3
Reedley (3953)³			
		vote	share
McCormick P. Ms.*	Con	1,255	57.2
Clegg W.	Con	1,155	-
Barton T. Ms.*	Con	1,071	-
Allen R.	Lab	681	31.0
Hanif M.	Lab	599	-
Greaves V. Ms.	LD	258	11.8
Myers F. Ms.	LD	215	-
Whipp A. Ms.	LD	198	-
	Turnout	56.2	26.2
Southfield (3640)³			
		vote	share
Dunn S. Ms.*	Lab	787	54.4
Latif M.*	Lab	681	-
Ali A.*	Lab	673	-
Wildman P.	Con	350	24.2
Marshall J.	Con	344	-
Thornton M.	LD	310	21.4
Ahmed R.	LD	193	-
Ashraf M.	LD	159	-
Nasim J.	Con	158	-
	Turnout	37.5	30.2
Vivary Bridge (3969)³			
		vote	share
Clegg D.*	LD	617	37.1
Whalley D.*	Lab	608	36.5
Allanson F.	Lab	510	-
Foat D.	Lab	502	-
Jackson R.	LD	479	-
Benson S.	Con	290	17.4
Porter I.	Con	281	-
Riley G.	Con	249	-
Bean K.	SA	149	9.0
	Turnout	35.6	0.5

Walverden (3543)²			
		vote	share
Adam G.*	Lab	566	43.7
Robinson J. Ms.*	Lab	546	-
Ahmed Q.	LD	544	42.0
Greaves A.	LD	478	-
King B. Ms.	Con	186	14.4
Tattersall A. Ms.	Con	165	-
	Turnout	52.0	1.7
Waterside (3612)³			
		vote	share
Sargeant E. Ms.*	LD	626	42.9
Doult A. Ms.*	Lab	499	34.2
Robinson I.	LD	492	-
Tweedie I.*	Lab	442	-
Statham A.	LD	437	-
Moulton A. Ms.	Lab	431	-
Jackson E.	Con	168	11.5
Macsween R.	SA	167	11.4
Wood R.	Con	165	-
Mitchell A.	Con	151	-
	Turnout	36.7	8.7
Whitefield (2501)²			
		vote	share
Ahmed M.	LD	900	48.6
Mahmood A.	Lab	846	45.7
Malik A.	LD	795	-
Arshad M.	Lab	680	-
Ainsworth M. Ms.	Con	105	5.7
Ahmed I.	Con	79	-
	Turnout	70.1	2.9
Pendle - 2003			
Barrowford (3924)			
		vote	share
Crossley L. Ms.*	Con	565	31.0
Simpson M.	LD	535	29.4
Brennan M.	BNP	482	26.5
Hargreaves A.	Lab	240	13.2
	Turnout	46.5	1.6
Blacko & Higherford (1344)			
		vote	share
Derwent S. Ms.*	Con	552	84.4
Ingham H. Ms.	Lab	62	9.5
Stanworth C. Ms.	LD	40	6.1
	Turnout	49.1	74.9
Boulsworth (3810)²			
		vote	share
Robertson D.*	LD	784	53.5
Turner L.	LD	625	-
Calvert M.	Con	493	33.7
Riley G.	Con	370	-
Dawson C. Ms.	Lab	188	12.8
Foat K.	Lab	160	-
	Turnout	36.6	19.9
Bradley (4201)			
		vote	share
Munir J.	LD	1,208	62.4
Sakib M.	Lab	727	37.6
	Turnout	46.9	24.9
Brierfield (3647)			
		vote	share
Ahmed N.	LD	819	50.8
Hutson K.	Lab	409	25.4
Jackson P.	Con	330	20.5
Daniel S. Ms.	Soc All	54	3.3
	Turnout	44.9	25.4

Clover Hill (3686)			
		vote	share
Shore K. Ms.*	LD	768	43.8
Dawson T.	BNP	452	25.8
Ansar M.	Lab	445	25.4
Landriau M.	Con	87	5.0
	Turnout	47.7	18.0
Coates (4009)			
		vote	share
Buck A.*	LD	989	55.4
Whitehead G.	BNP	394	22.1
Skinner W.	Lab	176	9.9
Purcell J. Ms.	Ind	114	6.4
Langtree N. Ms.	Con	112	6.3
	Turnout	44.8	33.3
Craven (4081)			
		vote	share
Hill-Crane M. Ms.*	LD	880	53.7
Neal F.	Lab	548	33.4
Watson-Davison B. Ms.	Con	212	12.9
	Turnout	40.8	20.2
Earby (4373)			
		vote	share
Horsfield M.*	Con	822	49.0
Haigh T.	LD	659	39.2
Wilkinson R. Ms.	Lab	198	11.8
	Turnout	38.6	9.7
Foulridge (1347)			
		vote	share
Belshaw C. Ms.*	Con	294	62.0
Smith J. Ms.	Lab	114	24.1
Stopforth D.	LD	66	13.9
	Turnout	35.6	38.0
Higham & Pendleside (1403)			
		vote	share
Nutter J.*	Con	366	51.5
Skinner V. Ms.	LD	279	39.2
Wicks S. Ms.	Lab	66	9.3
	Turnout	50.9	12.2
Horsfield (3843)			
		vote	share
Kerrigan A. Ms.*	LD	490	41.8
Nowland P.	Ind	297	25.4
Broughton P.	Lab	213	18.2
Thompson A. Ms.	Con	135	11.5
Bean K.	Soc	36	3.1
	Turnout	30.7	16.5
Old Laund Booth (1233)			
		vote	share
David J.*	LD	555	80.1
Bevan C.	Con	138	19.9
	Turnout	56.5	60.2
Reedley (4009)			
		vote	share
Barton T. Ms.*	Con	913	53.5
Allen B.	Lab	544	31.9
Mirza S.	LD	251	14.7
	Turnout	44.2	21.6
Southfield (3715)			
		vote	share
Robinson S. Ms.	LD	833	56.8
Ali A.*	Lab	377	25.7
Wildman P.	Con	138	9.4
Geddes D.	Ind	96	6.5
Ali A.	Ind	23	25.7
	Turnout	39.8	31.1

Vivary Bridge (3974)			
		vote	share
Robinson S. Ms.	LD	502	34.2
Parker B.	BNP	441	30.1
Allanson F.*	Lab	375	25.6
Farnell J.	Con	148	10.1
Turnout		37.0	4.2

Waterside (3597)			
		vote	share
Robinson I.*	LD	515	48.1
Tweedie I.	Lab	360	33.6
Regan M. Ms.	Con	137	12.8
Macswen R.	Soc All	58	5.4
Turnout		30.1	14.5

Pendle - 2004

Barrowford (3962)			
		vote	share
Beckett A.*	Con	873	41.9
Simpson M.	LD	649	31.2
Dawson T.	BNP	385	18.5
Smith J. Ms.	Lab	176	8.4
Turnout		52.9	10.8

Boulsworth (3919)			
		vote	share
Davies A.*	LD	747	35.9
Calvert M.	Con	739	35.6
Boocock T.	BNP	413	19.9
Johns D.	Lab	179	8.6
Turnout		53.6	0.4

Bradley (4255)			
		vote	share
Caley D. Ms.	LD	1,239	52.0
Sakib M.	Lab	971	40.8
Landriau V. Ms.	Con	171	7.2
Turnout		56.7	11.3

Brierfield (3691)			
		vote	share
Wren F.	LD	1,024	49.9
Tattersall A. Ms.	Con	547	26.6
Allen P. Ms.*	Lab	483	23.5
Turnout		56.4	23.2

Clover Hill (3746)			
		vote	share
Foster D.	LD	1,109	57.7
Brennan M.	BNP	342	17.8
Akrigg N.*	Lab	325	16.9
Landriau M.	Con	147	7.6
Turnout		51.7	39.9

Coates (4025)			
		vote	share
Adams M. Ms.*	LD	1,057	54.1
Stonnell J.	BNP	434	22.2
Davison B. Ms.	Con	250	12.8
Skinner W.	Lab	211	10.8
Turnout		48.9	31.9

Craven (4105)			
		vote	share
Norcross M. Ms.*	LD	899	44.1
Whitehead G.	BNP	447	21.9
Langtree V. Ms.	Con	290	14.2
Ingham H. Ms.	Lab	232	11.4
Baxter D. Ms.	UKIP	170	8.3
Turnout		49.9	22.2

Earby (4382)			
		vote	share
Carroll R. Ms.*	Con	998	44.1
Haigh T.	LD	549	24.3
Parker B.	BNP	432	19.1
Foat D.	Lab	284	12.5
Turnout		52.0	19.8

Horsfield (3895)			
		vote	share
Lord D. Ms.*	LD	659	35.3
Locke A.	BNP	364	19.5
Nowland P.	Ind	356	19.1
McCabe G.	Lab	302	16.2
Riley J. Ms.	Con	186	10.0
Turnout		48.2	15.8

Marsden (2537)			
		vote	share
Rowland G.*	Lab	512	44.8
Gascoigne B.	Con	384	33.6
Hartley F.	Ind	247	21.6
Turnout		45.5	11.2

Reedley (4062)			
		vote	share
Clegg W.*	Con	1,201	54.8
Allen R.	Lab	547	25.0
Abdullah S.	LD	442	20.2
Turnout		54.8	29.9

Southfield (3746)			
		vote	share
Robinson J. Ms.	LD	905	53.8
Wicks S. Ms.	Lab	506	30.1
Wildman P.	Con	270	16.1
Turnout		45.5	23.7

Vivary Bridge (4048)			
		vote	share
Whalley D.*	Lab	582	33.5
Robinson D.	LD	488	28.1
Cottage R.	BNP	402	23.2
Ryder H.	Con	263	15.2
Turnout		43.2	5.4

Walverden (2604)			
		vote	share
Zaman M.	LD	800	51.3
Allanson F.*	Lab	425	27.2
Jackson A. Ms.	Con	335	21.5
Turnout		60.5	24.0

Waterside (3677)			
		vote	share
Greaves A.	LD	816	55.6
Tweedie I.	Lab	395	26.9
Regan M. Ms.	Con	257	17.5
Turnout		40.5	28.7

Whitefield (2470)			
		vote	share
Ahmed N.	LD	1,063	55.5
Mahmood A.*	Lab	741	38.7
Ainsworth M. Ms.	Con	110	5.7
Turnout		78.2	16.8

Pendle - 2006

Barrowford (3966)			
		vote	share
Eyre J.	Con	740	45.2
Vickerman A.*	LD	712	43.5
Stables C. Ms.	Lab	185	11.3
Turnout		41.7	1.7

Boulsworth (3976)			
		vote	share
Hurst A.	LD	681	37.0
Vaughan V. Ms.	Con	572	31.1
Boocock T.	BNP	463	25.2
Allanson J. Ms.	Lab	123	6.7
Turnout		46.4	5.9

Bradley (4367)			
		vote	share
Iqbal M.*	Lab	951	46.0
Iftikhar S. Ms.	LD	879	42.5
Landriau V. Ms.	Con	239	11.6
Turnout		48.0	3.5

Brierfield (3719)			
		vote	share
Shabnam N.*	LD	623	40.1
Allen R.	Lab	467	30.1
Jackson P.	Con	464	29.9
Turnout		42.3	10.0

Clover Hill (3806)			
		vote	share
Edwards R.	LD	726	44.2
Mulligan H. Ms.	BNP	405	24.6
Waite C.*	Lab	358	21.8
Landriau M.	Con	155	9.4
Turnout		43.3	19.5

Coates (4024)			
		vote	share
Bell M. Ms.*	LD	1,002	64.6
Sargeant S. Ms.	Con	336	21.7
Randhawa L.	Lab	213	13.7
Turnout		39.1	42.9

Craven (4176)			
		vote	share
Whipp D.*	LD	923	50.3
Stonnell J.	BNP	459	25.0
Langtree V. Ms.	Con	301	16.4
Wicks S. Ms.	Lab	151	8.2
Turnout		44.1	25.3

Earby (4445)			
		vote	share
Tennant C.*	Con	1,100	59.2
Haigh D. Ms.	LD	487	26.2
Wilkinson P.	Lab	271	14.6
Turnout		42.2	33.0

Horsfield (3971)			
		vote	share
Davies S. Ms.*	LD	681	43.2
Whitehead G.	BNP	454	28.8
Allanson F.	Lab	251	15.9
Riley G.	Con	191	12.1
Turnout		39.9	14.4

Marsden (2549)			
		vote	share
Parker B.	BNP	417	38.3
Ormrod D. Ms.*	Lab	337	31.0
Eyre T.	Con	176	16.2
Dean D.	LD	158	14.5
Turnout		42.7	7.4

Reedley (4076)²			
		vote	share
McCormick P. Ms.*	Con	1,120	56.1
Clegg J. Ms.	Con	1,027	-
Westwell A. Ms.	LD	554	27.8
Naeem S. Ms.	LD	375	-
Martin A.	Lab	322	16.1
Turnout		46.1	28.4

Southfield (3911)			
		vote	share
Dunn S. Ms.*	Lab	527	42.9
Weinberg M.	LD	491	40.0
Myers J. Ms.	Con	210	17.1
Turnout		32.0	2.9

Vivary Bridge (4055) ²			
		vote	share
Clegg D.*	LD	690	44.6
Thomas H.	LD	599	-
Cottage R.	BNP	403	26.1
Dawson T.	BNP	352	-
Foat D.	Lab	248	16.0
Tweedie D. Ms.	Lab	230	-
Benson S.	Con	206	13.3
Ryder H.	Con	157	-
Turnout		38.3	18.6

Walverden (2629)			
		vote	share
Adam G.*	Lab	673	50.9
Malik A.	LD	492	37.2
Jackson A. Ms.	Con	156	11.8
Turnout		50.7	13.7

Waterside (3705)			
		vote	share
Boyle P.	LD	677	58.5
Tweedie I.	Lab	306	26.4
Regan M. Ms.	Con	174	15.0
Turnout		31.7	32.1

Whitefield (2561)			
		vote	share
Mahmood A.*	Lab	943	51.7
Ahmed M.	LD	797	43.7
Ainsworth M. Ms.	Con	83	4.6
Turnout		71.7	8.0

Pendle - 2007

Barrowford (3940)			
		vote	share
Crossley L. Ms.*	Con	1,087	66.9
Nike S. Ms.	Lab	411	25.3
Mann D.	LD	126	7.8
Turnout		41.5	41.6

Blacko & Higherford (1433)			
		vote	share
Derwent S. Ms.*	Con	566	79.8
Pope J.	Lab	80	11.3
Reynolds D.	LD	63	8.9
Turnout		49.6	68.5

Boulsworth (4043)			
		vote	share
Vaughan V. Ms.	Con	647	36.9
Robertson D.*	LD	640	36.5
Mulligan J. Ms.	BNP	271	15.5
Allanson J. Ms.	Lab	121	6.9
Jamieson L. Ms.	Green	74	4.2
Turnout		43.4	0.4

Bradley (4580)			
		vote	share
Younis N.	Lab	1,026	44.0
Munir M.*	LD	800	34.3
Landriau V. Ms.	Con	344	14.7
Stables C. Ms.	Green	164	7.0
Turnout		51.1	9.7

Brierfield (3790)			
		vote	share
Ahmed N.*	LD	943	49.7
Jackson A. Ms.	Con	537	28.3
Allen R.	Lab	416	21.9
Turnout		50.6	21.4

Clover Hill (3818)			
		vote	share
Bird G.	LD	570	32.8
Ansar E. Ms.	Lab	415	23.9
Dawson T.	BNP	336	19.3
Eyre T.	Con	208	12.0
Shore K. Ms.*	Ind	163	9.4
Banks J.	UKIP	45	2.6
Turnout		45.5	8.9

Coates (4036)			
		vote	share
Buck A.*	LD	745	49.7
Purcell J. Ms.	Ind	410	27.4
Harrison B. Ms.	Con	205	13.7
Tweedie I.	Lab	139	9.3
Turnout		37.5	22.3

Craven (4184)			
		vote	share
Bell M.	LD	736	46.9
Hill-Crane M. Ms.*	Ind	428	27.3
Sargeant S. Ms.	Con	405	25.8
Turnout		38.0	19.6

Earby (4495)			
		vote	share
Horsfield M.*	Con	1,264	69.1
Taylforth J. Ms.	LD	324	17.7
Metcalfe J.	Lab	240	13.1
Turnout		40.9	51.4

Foulridge (1372)			
		vote	share
Belshaw C. Ms.*	Con	342	56.1
Cole G.	LD	132	21.6
Cannon G.	UKIP	88	14.4
Allanson F.	Lab	48	7.9
Turnout		44.7	34.4

Higham & Pendleside (1368)			
		vote	share
Starkie K.	Con	520	62.4
Boylan W.	LD	264	31.7
Oliver R.	Lab	49	5.9
Turnout		60.9	30.7

Horsfield (3980)			
		vote	share
Kerrigan A. Ms.*	LD	651	43.7
Smith B.	Con	314	21.1
Whitehead G.	BNP	295	19.8
Foat D.	Lab	231	15.5
Turnout		37.6	22.6

Old Laund Booth (1207)			
		vote	share
David J.*	LD	462	66.0
Belshaw A.	Con	212	30.3
Hargreaves A.	Lab	26	3.7
Turnout		58.1	35.7

Reedley (4122)			
		vote	share
Barton T. Ms.*	Con	1,222	63.6
Khaliq S.	Lab	380	19.8
Malik A.	LD	320	16.6
Turnout		47.1	43.8

Southfield (4032)			
		vote	share
Robinson S. Ms.*	LD	634	40.6
Wicks S. Ms.	Lab	364	23.3
McKenna P.	Con	282	18.1
Preston J. Ms.	BNP	280	17.9
Turnout		38.7	17.3

Vivary Bridge (4031)			
		vote	share
Thomas H.*	LD	641	45.9
Riley G.	Con	274	19.6
Cullen V. Ms.	BNP	272	19.5
Martin T.	Lab	211	15.1
Turnout		34.8	26.3

Waterside (3728)			
		vote	share
Roach G.	LD	599	42.1
Grant A.	BNP	283	19.9
McCabe G.	Lab	242	17.0
Hill P.	Con	171	12.0
Hartley-Fish A. Ms.	Green	65	4.6
Robinson I.*	Ind	64	4.5
Turnout		38.2	22.2

Pendle - 2008

Barrowford (3993)			
		vote	share
Beckett A.*	Con	1,136	67.3
Nike S. Ms.	Lab	411	24.4
Bradshaw T.	LD	140	8.3
Turnout		42.4	43.0

Boulsworth (4091) ²			
		vote	share
Calvert M.	Con	1,189	59.9
Askew G.	Con	1,006	-
Davies A.*	LD	663	33.4
Robertson D.	LD	618	-
McCabe G.	Lab	133	6.7
Pope J.	Lab	69	-
Turnout		48.3	26.5

Bradley (4558)			
		vote	share
Sakib M.	Lab	946	54.1
Mohammed J.	LD	474	27.1
Chaudry Z.	Con	329	18.8
Turnout		39.3	27.0

Brierfield (3691)			
		vote	share
Ashraf N.	Lab	863	47.2
Jackson A. Ms.	Con	632	34.6
Wren F.*	LD	332	18.2
Turnout		49.7	12.6

Clover Hill (3864)			
		vote	share
Ansar E. Ms.	Lab	624	37.7
Foster D.*	LD	533	32.2
Eyre T.	Con	496	30.0
Turnout		43.3	5.5

Coates (4115)			
		vote	share
Adams M. Ms.*	LD	665	45.5
Bailey K.	Con	637	43.6
Skinner J.	Lab	158	10.8
Turnout		35.7	1.9

Craven (4186)			
		vote	share
Whittaker G.	Ind	559	32.6
Franklin S. Ms.*	LD	437	25.5
Bunn S. Ms.	Con	427	24.9
Whitehead G.	BNP	235	13.7
Oliver R.	Lab	56	3.3
Turnout		41.0	7.1

Earby (4635)			
		vote	share
Langtree V. Ms.	Con	1,248	69.5
Tayforth J. Ms.	LD	325	18.1
Foat D.	Lab	223	12.4
Turnout		39.0	51.4

Horsfield (3998)			
		vote	share
Benson S.	Con	670	49.2
Lord D. Ms.*	LD	507	37.2
Hargreaves A.	Lab	185	13.6
Turnout		34.3	12.0

Marsden (2575)			
		vote	share
Grant A.	BNP	412	39.1
Rowland G.*	Con	339	32.2
Ormrod D. Ms.	Lab	221	21.0
Upward M.	LD	82	7.8
Turnout		41.0	6.9

Reedley (4146)			
		vote	share
Blomeley M.	Con	1,250	71.1
Allen R.	Lab	285	16.2
Ali M.	LD	224	12.7
Turnout		42.8	54.9

Southfield (4101)			
		vote	share
Wicks S. Ms.	Lab	547	36.6
McKenna P.	Con	487	32.6
Robinson J. Ms.*	LD	462	30.9
Turnout		37.1	4.0

Vivary Bridge (4094)			
		vote	share
Clegg G. Ms.	LD	490	35.6
Riley G.	Con	393	28.5
Cullen V. Ms.	BNP	305	22.1
Tweedie I.	Lab	189	13.7
Turnout		33.8	7.0

Walverden (2702)			
		vote	share
Khalid M.	Lab	610	44.0
Ali A.	LD	400	28.9
King B. Ms.	Con	376	27.1
Turnout		51.5	15.2

Waterside (3744)			
		vote	share
Greaves A.*	LD	492	39.9
Mulligan H. Ms.	BNP	337	27.3
Ilott J.	Con	211	17.1
Martin A.	Lab	151	12.2
Robinson I.	Ind	43	3.5
Turnout		33.1	12.6

Whitefield (2666)			
		vote	share
Ahmed N.*	LD	1,110	65.0
Tariq M.	Lab	512	30.0
Landriau V. Ms.	Con	85	5.0
Turnout		64.9	35.0

Pendle - 2010

Barrowford (4066)			
		vote	share
Eyre J.*	Con	1,563	55.0
Nike S. Ms.	Lab	906	31.9
Caley D. Ms.	LD	372	13.1
Turnout		70.3	23.1

Boulsworth (4198)			
		vote	share
Askew G.	Con	1,487	48.0
James T.	LD	665	21.5
McCabe G.	Lab	647	20.9
Mulligan J. Ms.	BNP	300	9.7
Turnout		74.2	26.5

Bradley (4641)			
		vote	share
Iqbal M.*	Lab	1,386	48.4
Ahmed T.	LD	816	28.5
Eyre T.	Con	381	13.3
Geddes D.	EFP	279	9.7
Turnout		62.1	19.9

Brierfield (3736)			
		vote	share
Arshad M.	Lab	1,152	42.8
Hussain A.	Con	759	28.2
Afzal P.	LD	403	15.0
Karmer L.	BNP	379	14.1
Turnout		73.4	14.6

Clover Hill (3786)			
		vote	share
Shore K. Ms.	Lab	777	32.3
Wood J.	LD	720	29.9
Taylor J. Ms.	Con	588	24.4
Rowe J.	BNP	323	13.4
Turnout		63.9	2.4

Coates (4157)			
		vote	share
Gaskell L. Ms.	LD	1,280	45.4
Bailey K.	Con	915	32.5
Smith R.	Lab	337	12.0
Foster M.	BNP	286	10.1
Turnout		68.1	13.0

Craven (4286)			
		vote	share
Whipp D.*	LD	1,372	47.6
Purcell J. Ms.	Con	1,175	40.7
Pope J.	Lab	337	11.7
Turnout		68.2	6.8

Earby (4808)			
		vote	share
Tennant C.*	Con	1,684	50.9
Tayforth J. Ms.	LD	687	20.8
Oliver R.	Lab	488	14.7
Jackman J.	BNP	450	13.6
Turnout		69.2	30.1

Horsfield (4007)			
		vote	share
Butterworth N.	Con	828	34.6
Davies S. Ms.*	LD	814	34.0
Johns D.	Lab	435	18.2
Fairless J. Ms.	BNP	314	13.1
Turnout		60.1	0.6

Marsden (2641)			
		vote	share
Parker B.*	BNP	502	30.5
Foat D.	Lab	474	28.8
Gregory J.	Con	448	27.3
Whitehall-Pain A.	LD	220	13.4
Turnout		62.4	1.7

Reedley (4192)			
		vote	share
McCormick P. Ms.*	Con	1,492	49.2
Allen R.	Lab	839	27.7
Massey K.	LD	699	23.1
Turnout		72.7	21.6

Southfield (4043)			
		vote	share
Dunn S. Ms.*	Lab	908	38.1
Robinson J. Ms.	LD	754	31.6
McKenna P.	Con	724	30.3
Turnout		59.8	6.5

Vivary Bridge (4095)			
		vote	share
Clegg D.*	LD	832	34.2
Cooney J.	Con	711	29.2
Hargreaves A.	Lab	514	21.1
Cullen V. Ms.	BNP	376	15.5
Turnout		59.6	5.0

Walverden (2699)			
		vote	share
Henderson J. Ms.	Lab	697	38.3
Ali A.	LD	632	34.8
King B. Ms.	Con	489	26.9
Turnout		68.0	3.6

Waterside (3863)			
		vote	share
Lord D. Ms.	LD	984	44.1
Hall J.	Con	487	21.8
Martin A.	Lab	430	19.3
Robinson I.	BNP	328	14.7
Turnout		58.1	22.3

Whitefield (2645)			
		vote	share
Mahmood A.*	Lab	1,088	57.0
Qadri R.	LD	672	35.2
Beckett M. Ms.	Con	150	7.9
Turnout		73.2	21.8

Pendle - 2011

Barrowford (4070)			
		vote	share
Crossley L. Ms.*	Con	1,045	57.8
Nike S. Ms.	Lab	763	42.2
Turnout		45.0	15.6

Blacko & Higherford (1480)			
		vote	share
Derwent S. Ms.*	Con	583	79.8
Pope J.	Lab	148	20.2
Turnout		49.7	59.5

Boulsworth (4217)			
		vote	share
White P.	Con	1,000	53.6
Jordan J.	Lab	512	27.4
Kerrigan J.	LD	355	19.0
Turnout		44.7	26.1

Bradley (4581)			
		vote	share
Younis N.*	Lab	1,339	70.5
Eyre T.	Con	218	11.5
Geddes D.	EFP	172	9.1
Massey K.	LD	171	9.0
Turnout		41.7	59.0

Brierfield (3752)			
		vote	share
Ahmed N.*	Lab	1,161	64.1
Gregory J.	Con	650	35.9
Turnout		49.0	28.2

Clover Hill (3782)			
		vote	share
Smith R.	Lab	775	51.4
Taylor J. Ms.	Con	358	23.8
Wood J.	LD	213	14.1
Fairless J. Ms.	BNP	161	10.7
Turnout		40.3	27.7

Coates (4166)			
		vote	share
Throupe J. Ms.	LD	775	45.5
Clarke S. Ms.	Con	593	34.8
Tweedie I.	Lab	336	19.7
	Turnout	41.7	10.7

Craven (4305)			
		vote	share
Purcell J. Ms.	Con	768	42.5
Stead D.	LD	719	39.8
Roberts B.	Lab	321	17.8
	Turnout	42.7	2.7

Earby (4816)			
		vote	share
Horsfield M.*	Con	1,145	53.7
Rycroft H. Ms.	Lab	513	24.1
Jackman J.	Edem	263	12.3
Taylforth J. Ms.	LD	210	9.9
	Turnout	44.6	29.7

Foulridge (1367)			
		vote	share
Waugh G.	Con	551	78.7
Metcalfe D.	Lab	149	21.3
	Turnout	51.6	57.4

Higham & Pendleside (1402)			
		vote	share
Starkie J.*	Con	625	80.4
Oliver R.	Lab	152	19.6
	Turnout	56.1	60.9

Horsfield (3997)			
		vote	share
Kerrigan A. Ms.*	LD	555	37.9
Pearson R. Ms.	Con	490	33.4
Foat D.	Lab	421	28.7
	Turnout	37.2	4.4

Old Laund Booth (1235)			
		vote	share
David J.*	LD	367	48.5
Hartley J. Ms.	Con	357	47.2
Maltby P.	Lab	32	4.2
	Turnout	61.3	1.3

Reedley (4214)			
		vote	share
Allen R.	Lab	1,218	53.4
Barton T. Ms.*	Con	1,062	46.6
	Turnout	54.8	6.8

Southfield (4040)			
		vote	share
Whalley D.	Lab	866	53.9
McKenna P.	Con	363	22.6
Robinson J. Ms.	LD	204	12.7
Karmer L.	BNP	112	7.0
Banks J.	UKIP	62	3.9
	Turnout	40.2	31.3

Vivary Bridge (4118)			
		vote	share
Cooney J.	Con	555	37.9
Hargreaves A.	Lab	464	31.7
Thomas H.*	LD	444	30.3
	Turnout	35.9	6.2

Waterside (3865)			
		vote	share
Roach G.*	LD	605	43.9
Johns D.	Lab	381	27.6
Regan M. Ms.	Con	214	15.5
Rowe J.	BNP	179	13.0
	Turnout	36.2	16.2

Pendle - 2012

Barrowford (4058)			
		vote	share
Beckett A.*	Con	918	60.1
Nike S. Ms.	Lab	609	39.9
	Turnout	38.0	20.2

Boulsworth (4223)²			
		vote	share
Foxley M. Ms.	Con	639	42.0
McBeth J.	Con	562	-
Jordan J.	Lab	349	22.9
Foat D.	Lab	308	-
Greaves H. Ms.	LD	211	13.9
Rowe J.	BNP	181	11.9
Thomas M. Ms.	LD	155	-
Hartley-Fish R. Ms.	Green	141	9.3
	Turnout	32.6	19.1

Bradley (4696)			
		vote	share
Sakib M.*	Lab	1,178	55.0
Ahmed S.	LD	700	32.7
Eyre T.	Con	147	6.9
Oxbrow S.	Green	118	5.5
	Turnout	45.9	22.3

Brierfield (3690)			
		vote	share
Ashraf N.*	Lab	1,102	67.9
Gregory J.	Con	520	32.1
	Turnout	44.3	35.9

Clover Hill (3827)			
		vote	share
Ansar E. Ms.*	Lab	848	61.2
Taylor J. Ms.	Con	281	20.3
Cullen V. Ms.	BNP	149	10.8
Berry P.	LD	108	7.8
	Turnout	36.5	40.9

Coates (4194)			
		vote	share
Adams M. Ms.*	LD	726	55.2
Bailey K.	Con	372	28.3
McKimm C.	Lab	218	16.6
	Turnout	31.7	26.9

Craven (4334)			
		vote	share
Hartley K.	LD	615	43.8
Langtree S. Ms.	Con	376	26.8
Johns D.	Lab	220	15.7
Baxter D. Ms.	UKIP	193	13.7
	Turnout	32.5	17.0

Earby (4865)			
		vote	share
Carroll R. Ms.	Con	712	41.3
Oliver R.	Lab	356	20.7
Haigh D. Ms.	LD	343	19.9
Jackman J.	Edem	311	18.1
	Turnout	35.5	20.7

Horsfield (3937)			
		vote	share
Benson A.*	Con	515	40.4
Kerrigan J.	LD	386	30.3
Hargreaves T.	Lab	375	29.4
	Turnout	32.9	10.1

Marsden (2618)			
		vote	share
Cooney T.	Con	391	37.7
Grant A.*	BNP	354	34.2
Ali A.	Lab	291	28.1
	Turnout	39.8	3.6

Reedley (4284)			
		vote	share
Hanif M.	Lab	1,034	48.5
Barton T. Ms.	Con	917	43.0
Wood J.	LD	181	8.5
	Turnout	50.1	5.5

Southfield (4144)			
		vote	share
Wicks S. Ms.*	Lab	847	68.7
Anwar A.	LD	196	15.9
Pratt P.	Con	190	15.4
	Turnout	30.1	52.8

Vivary Bridge (4215)			
		vote	share
Tweedie I.	Lab	389	32.0
Wilkinson K.	Con	369	30.3
Clegg G. Ms.*	LD	367	30.2
Jamieson L. Ms.	Green	91	7.5
	Turnout	28.9	1.6

Walverden (2689)			
		vote	share
Aziz A.	Lab	783	74.7
McGowan N.	Con	265	25.3
	Turnout	39.5	49.4

Waterside (3875)			
		vote	share
Greaves A.	LD	564	47.6
Graham I.	Lab	343	29.0
Riley G.	Con	110	9.3
Topping G.	Dnat	92	7.8
Penney D.	Green	75	6.3
	Turnout	30.7	18.7

Whitefield (2749)			
		vote	share
Ahmed N.*	LD	1,113	62.0
Ali S.	Lab	623	34.7
Beckett M. Ms.	Con	60	3.3
	Turnout	66.0	27.3

