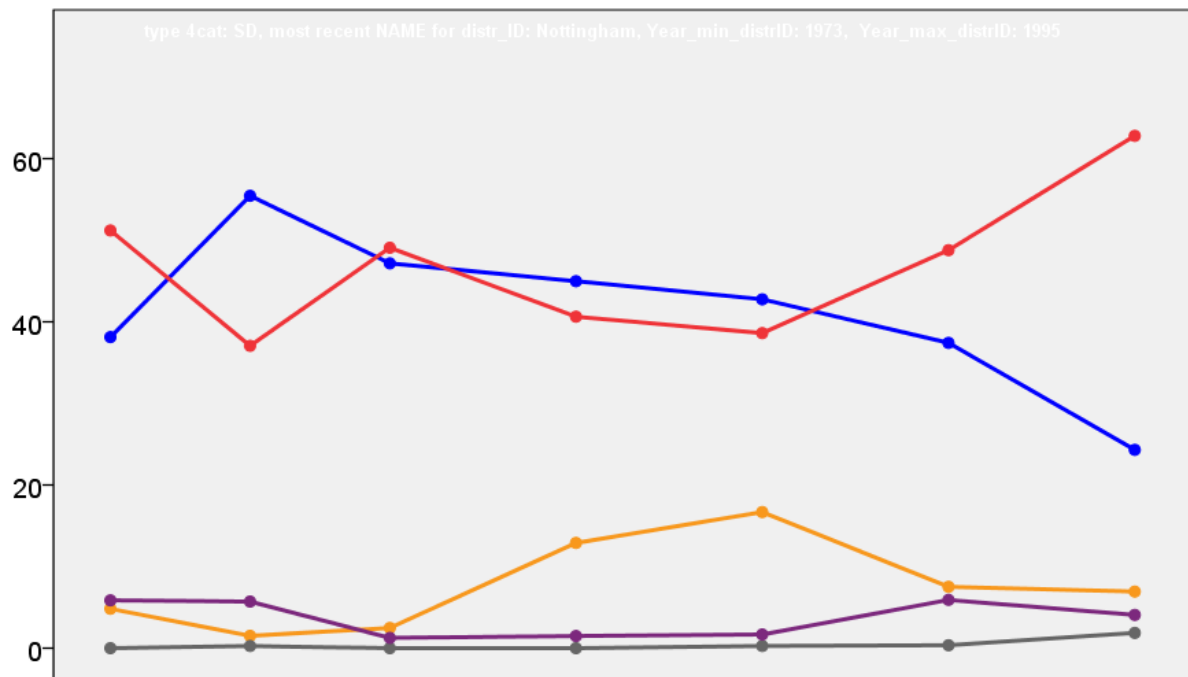


Nottingham City Council Election Results 1973-1995



Colin Rallings and Michael Thrasher
The Elections Centre
Plymouth University

The information contained in this report has been obtained from a number of sources. Election results from the immediate post-reorganisation period were painstakingly collected by Alan Willis largely, although not exclusively, from local newspaper reports. From the mid-1980s onwards the results have been obtained from each local authority by the Elections Centre. The data are stored in a database designed by Lawrence Ware and maintained by Brian Cheal and others at Plymouth University. Despite our best efforts some information remains elusive whilst we accept that some errors are likely to remain. Notice of any mistakes should be sent to elections@plymouth.ac.uk. The results sequence can be kept up to date by purchasing copies of the annual Local Elections Handbook, details of which can be obtained by contacting the email address above.

Front cover: the graph shows the distribution of percentage vote shares over the period covered by the results. The lines reflect the colours traditionally used by the three main parties. The grey line is the share obtained by Independent candidates while the purple line groups together the vote shares for all other parties.

Rear cover: the top graph shows the percentage share of council seats for the main parties as well as those won by Independents and other parties. The lines take account of any by-election changes (but not those resulting from elected councillors switching party allegiance) as well as the transfers of seats during the main round of local election.

The lower graph shows for each main round of local elections the overall percentage turnout (solid line), the percentage of women candidates standing at (dotted line) and the percentage of women among those elected (hashed line).

Nottingham 1973

Abbey (12589) ³			
		vote	share
Bateman G.	Con	2,765	58.4
Adams W.	Con	2,762	-
Hamilton A.	Con	2,655	-
Browne P.	Lib	1,211	25.6
Howarth E.	Lib	1,190	-
Ward R.	Lib	1,085	-
Clough E. Ms.	Lab	756	16.0
Harris A.	Lab	741	-
Harby T.	Lab	698	-
		Turnout	37.2 32.8

Bridge (11066) ³			
		vote	share
Worthington C.	Lab	1,440	67.0
Chambers G.	Lab	1,380	-
Crew T.	Lab	1,333	-
Johnson F.	Con	710	33.0
Pike I. Ms.	Con	663	-
Adshead D. Ms.	Con	611	-
		Turnout	19.9 34.0

Broxtowe (11778) ³			
		vote	share
Squires L.	Lab	2,580	58.3
Birkinshaw D.	Lab	2,101	-
Wilkins T.	Lab	1,717	-
Walker E.E.	Ind Lab	1,302	29.4
Walker M.M. Ms.	Ind Lab	901	-
Macpherson A.	Con	540	12.2
		Turnout	29.2 28.9

Byron (14251) ³			
		vote	share
Pate E.	Lab	1,788	70.3
Roberts M. Ms.	Lab	1,774	-
Birch D.	Lab	1,746	-
Dumbill P. Ms.	Con	757	29.7
Smith W. Ms.	Con	736	-
Tozer B. Ms.	Con	701	-
		Turnout	18.8 40.5

Clifton (13783) ³			
		vote	share
Holland P.	Lab	1,789	83.7
Brailsford D.	Lab	1,662	-
Shelton A.	Lab	1,646	-
Webster D.	Con	348	16.3
		Turnout	15.3 67.4

Forest (9966) ³			
		vote	share
Watkinson O.	Con	1,380	48.8
Dyer W.	Con	1,372	-
Woodward F.	Con	1,357	-
Sansom N. Ms.	Lab	809	28.6
Harris F.	Lab	774	-
Bannard J.	Lab	717	-
Sales D.	Lib	638	22.6
Rowan E.E.	Lib	617	-
Rowan W.W.	Lib	594	-
		Turnout	28.7 20.2

Lenton (13614) ³			
		vote	share
Yuill M. Ms.	Lab	2,183	52.4
Price P.	Lab	2,173	-
Iles J. Ms.	Lab	2,137	-
Godwin-Austen J. Ms.	Con	1,986	47.6
Fox G.	Con	1,973	-
Evans J.	Con	1,904	-
		Turnout	32.0 4.7

Manvers (6029) ³			
		vote	share
Carroll	Lab	1,053	65.2
Edwards	Lab	1,032	-
Brady K.	Lab	993	-
Pearson A. Ms.	Con	561	34.8
Pearson D.	Con	532	-
Pearson J.	Con	526	-
		Turnout	27.2 30.5

Mapperley (15060) ³			
		vote	share
Green J.	Con	2,199	55.6
Bradbury C.	Con	2,187	-
Elliott W.	Con	2,101	-
Whittaker M. Ms.	Lib	929	23.5
Toseland H.	Lib	837	-
Pennington J.	Lab	827	20.9
Murdy G.	Lib	817	-
Ward S.	Lab	786	-
Perkins B.	Lab	773	-
		Turnout	26.7 32.1

Market (6966) ³			
		vote	share
Evans S.	Lab	739	57.2
Butler C.	Lab	716	-
Roe H.	Lab	631	-
Galvin R.	Con	554	42.8
McKeon M. Ms.	Con	547	-
Robinson M.	Con	524	-
		Turnout	21.3 14.3

Portland (12827) ³			
		vote	share
Bignall D.	Lab	1,834	46.4
Baker S.	Lab	1,692	-
Iles R.	Lab	1,678	-
Ricks B. Ms.	Con	1,572	39.8
Ricks F.	Con	1,566	-
Ricks V. Ms.	Con	1,491	-
Caine D.	NF	548	13.9
		Turnout	28.9 6.6

Radford (10456) ³			
		vote	share
Maynard L.	Lab	1,731	67.6
Higgott B.	Lab	1,703	-
Brady T.	Lab	1,670	-
Orr W.	Con	828	32.4
Poole D.	Con	824	-
Woodroffe D.	Con	815	-
		Turnout	25.3 35.3

Robin Hood (11862) ³			
		vote	share
Pidgeon J.	Lab	1,919	64.0
Vipond S.	Lab	1,891	-
Pinfold W. Ms.	Lab	1,869	-
Marshall B.	Con	1,078	36.0
Freeland S.	Con	1,048	-
Edgson C. Ms.	Con	999	-
		Turnout	25.7 28.1

St. Albans (12989) ³			
		vote	share
Matthews I. Ms.	Lab	2,574	53.0
Wright A.	Lab	2,169	-
Arnold T.	Lab	1,865	-
Peck J.	Comm	1,526	31.4
Naylor C.	Con	755	15.6
Atherton P.	Con	712	-
Beales K.	Con	680	-
		Turnout	30.3 21.6

St. Anns (5619) ³			
		vote	share
Carroll J.	Lab	1,108	56.0
Higgins B. Ms.	Lab	1,090	-
Burgess C.	Lab	1,017	-
Rolling R.	Con	872	44.0
Rushton S.	Con	866	-
Pink A. Ms.	Con	863	-
		Turnout	35.9 11.9

Trent (13406) ³			
		vote	share
Roberts G. Ms.	Con	1,939	51.9
Edwards W.	Lab	1,800	48.1
Dinwoodie P. Ms.	Lab	1,789	-
Higgins F.	Lab	1,788	-
Smith J.	Con	1,783	-
Clarke C.	Con	1,772	-
		Turnout	28.6 3.7

University (12812) ³			
		vote	share
Dennett F. Ms.	Lab	2,049	55.6
Dennett F.	Lab	2,016	55.6
Churchill W.	Lab	1,966	-
Cumberland F.	Con	1,635	44.4
Lofthouse A. Ms.	Con	1,538	-
Tresidder R.	Con	1,476	-
		Turnout	29.0 0.0

Wollaton (15444) ³			
		vote	share
Littlewood B.	Lab	2,505	62.9
Bush D.	Lab	2,251	-
Birch R.	Lab	2,219	-
Wilson H.	Con	1,475	37.1
Lymbury J.	Con	1,417	-
Horne M. Ms.	Con	1,369	-
		Turnout	25.8 25.9

Nottingham 1976

Abbey (8129) ²			
		vote	share
Bateman E.	Con	3,089	77.7
Suthers M.	Con	3,024	-
Sanders B.	Lab	885	22.3
Coward R.	Lab	827	-
		Turnout	50.9 55.5

Aspley (8413) ²			
		vote	share
Harby T.	Lab	1,498	50.0
Kelly G.	Con	1,496	50.0
Kirk J.	Con	1,464	-
Wilkins T.	Lab	1,260	-
		Turnout	38.0 0.1

Basford (8248) ²			
		vote	share
Howe G.	Con	2,177	64.1
Swift C.	Con	2,057	-
Haymes G. Ms.	Lab	1,138	33.5
Sansom A. Ms.	Lab	1,094	-
Pashley J.	Comm	80	2.4
		Turnout	42.8 30.6

Beechdale (8053) ²			
		vote	share
Crowe M. Ms.	Con	2,350	63.0
Hickey C.	Con	2,339	-
Bush D.	Lab	1,380	37.0
Churchill R.	Lab	1,260	-
		Turnout	48.7 26.0

Bestwood Park (6964) ²			
		vote	share
Raynor A.	Con	1,176	50.3
Pennington J.	Lab	1,164	49.7
Meads J.	Lab	1,150	-
Traynor M.	Con	1,048	-
		Turnout	35.8 0.5

Billborough (7150) ²			
		vote	share
Muskett K.	Con	1,297	44.4
Littlewood B.	Lab	1,251	42.9
Berkeley-White A.	Con	1,035	-
Birch R.	Lab	983	-
James A.	TA	370	12.7
		Turnout	39.5 1.6

Bridge (5318) ²			
		vote	share
Johnson F.	Con	807	53.9
Adshead D. Ms.	Con	790	-
Chambers G.	Lab	691	46.1
Roe H.	Lab	655	-
Turnout		35.5	7.7

Bulwell East (7697) ²			
		vote	share
Matthews I. Ms.	Lab	1,623	39.2
Keeling A.	Con	1,345	32.5
Caulton A. Ms.	Con	1,262	-
Arnold T.	Lab	1,183	-
Peck J.	Comm	1,171	28.3
Turnout		49.7	6.7

Bulwell West (6923) ²			
		vote	share
Howe D.	Res	1,038	51.0
Wright A.	Lab	998	49.0
Lyon D.	Res	991	-
Croome F.	Lab	981	-
Turnout		32.2	2.0

Byron (8855) ³			
		vote	share
Small G.	Con	1,388	39.4
Owen P.	Con	1,350	-
Timson E. Ms.	Con	1,346	-
Ducker J. Ms.	Lab	1,077	30.6
Brady T.	Lab	1,076	-
Rees D.	Res	1,060	30.1
Witham J.	Res	1,039	-
Birch D.	Lab	1,027	-
Clay P.	Res	1,011	-
Turnout		42.6	8.8

Clifton East (7486) ²			
		vote	share
Holland P.	Lab	1,205	52.7
Clarke M. Ms.	Con	1,080	47.3
Shelton A.	Lab	898	-
Turnout		30.4	5.5

Clifton West (6539) ²			
		vote	share
Mills C.	Con	1,068	53.6
Flowerday D.	Con	964	-
Woolley J.	Lab	924	46.4
Riley J.	Lab	896	-
Turnout		32.6	7.2

Forest (7889) ²			
		vote	share
Watkinson O.	Con	1,685	59.1
Rolling R.	Con	1,652	-
Price P.	Lab	848	29.7
Bamfield J.	Lab	683	-
Bunting S.	Lib	319	11.2
Sales D.	Lib	279	-
Turnout		37.2	29.3

Greenwood (6524) ²			
		vote	share
Roberts G. Ms.	Con	2,282	74.1
Clarke C.	Con	2,166	-
Roberts M. Ms.	Lab	799	25.9
Butler C.	Lab	788	-
Turnout		48.4	48.1

Lenton (9647) ²			
		vote	share
Carroll J.	Lab	1,409	42.9
Smith E.	Con	1,328	40.5
Aslam M.	Lab	995	-
Kandola H.	Con	932	-
Hussain A.	Ind Lab	237	7.2
Kebbie S.	Ind	214	6.5
Bains G.	COCTOC	95	2.9
Turnout		31.0	2.5

Manvers (7556) ²			
		vote	share
Tongue D.	Lab	1,111	50.8
Williamson J.	Lab	1,093	-
Vinerd B.	Con	1,075	49.2
Thompson K.	Con	994	-
Turnout		30.5	1.6

Mapperley (7836) ²			
		vote	share
Bradbury W.	Con	2,278	70.5
Green J.	Con	2,142	-
Best R.	Lab	678	21.0
Bell V. Ms.	Lab	652	-
Murdy G.	Lib	273	8.5
Stewart R.	Lib	248	-
Turnout		42.1	49.6

Park (7431) ²			
		vote	share
Borrett C.	Con	1,947	67.3
Pink A. Ms.	Con	1,801	-
Gibson C.	Lab	947	32.7
Lynch C.	Lab	936	-
Turnout		41.2	34.6

Portland (7862) ²			
		vote	share
Holey D.	Con	1,591	52.4
Ricks B. Ms.	Con	1,471	-
Bignall D.	Lab	1,252	41.3
Iles R.	Lab	1,085	-
Barker A.	Lib	191	6.3
McCluskey G.	Lib	164	-
Turnout		39.3	11.2

Radford (8457) ²			
		vote	share
Maynard L.	Lab	1,475	52.0
Allsop R.	Lab	1,364	-
Elliott G.	Con	1,361	48.0
Woodward F.	Con	1,334	-
Turnout		35.7	4.0

Robin Hood (8888) ²			
		vote	share
Marshall B.	Con	2,371	62.8
Stone A.	Con	2,351	-
Vipond W.	Lab	1,407	37.2
Pinfold S. Ms.	Lab	1,381	-
Turnout		45.5	25.5

Sherwood (8244) ²			
		vote	share
Broughton J.	Con	2,573	70.2
Poole D.	Con	2,563	-
Iles J. Ms.	Lab	651	17.8
Bannard J.	Lab	642	-
Whittaker M. Ms.	Lib	440	12.0
Toseland H.	Lib	406	-
Turnout		46.4	52.5

St. Anns (6449) ²			
		vote	share
Rushton S.	Con	1,073	50.6
Burgess P.	Lab	1,046	49.4
Higgins B. Ms.	Lab	1,018	-
Stevens K.	Con	996	-
Turnout		34.3	1.3

Strelley (6950) ²			
		vote	share
Squires L.	Lab	1,199	48.2
Birkinshaw D.	Lab	1,037	-
Walker E.	Ind Lab	665	26.7
Tomlinson J.	Con	624	25.1
Baumfield R.	Con	594	-
Turnout		34.4	21.5

Trent (7641) ²			
		vote	share
Griffiths R.	Con	1,350	57.1
Lowery P.	Con	1,250	-
Edwards G.	Lab	1,014	42.9
Dinwoodie P. Ms.	Lab	988	-
Turnout		32.5	14.2

Wilford (8024) ²			
		vote	share
Thompson S.	Con	2,258	65.0
Lofthouse A. Ms.	Con	2,242	-
Dennett F.	Lab	1,217	35.0
Dennett F. Ms.	Lab	1,135	35.0
Turnout		45.9	30.0

Wollaton (8836) ²			
		vote	share
Adams W.	Con	3,770	77.8
Hamilton A.	Con	3,629	-
Clough E. Ms.	Lab	1,078	22.2
Harris A.	Lab	1,049	-
Turnout		56.8	55.5

Nottingham 1979

Abbey (8052) ²			
		vote	share
Bateman E.	Con	4,028	70.1
Suthers M.	Con	3,846	-
Evans B.	Lab	1,720	29.9
Daley G.	Lab	1,710	-
Turnout		74.9	40.2

Aspley (8177) ²			
		vote	share
Harby T.	Lab	3,523	63.6
Wilkins T.	Lab	3,223	-
Flowerday D.	Con	2,018	36.4
Smith M. Ms.	Con	1,978	-
Turnout		69.4	27.2

Basford (7940) ²			
		vote	share
Swift C.	Con	2,811	52.9
Howe G.	Con	2,785	-
Sankey C.	Lab	2,502	47.1
Farrands C.	Lab	2,387	-
Turnout		70.9	5.8

Beechdale (7882) ²			
		vote	share
Crowe M. Ms.	Con	3,025	53.1
Hickey C.	Con	3,001	-
Churchill W.	Lab	2,668	46.9
Parker B.	Lab	2,435	-
Turnout		75.2	6.3

Bestwood Park (7420) ²			
		vote	share
Phillips L.	Lab	2,881	63.6
Hartshorne J.	Lab	2,857	-
Raynor A.	Con	1,648	36.4
Treasure R.	Con	1,639	-
Turnout		66.8	27.2

Bilborough (6841) ²			
		vote	share
Wood M.	Lab	2,538	51.0
Gibson C.	Lab	2,410	-
Savage J.	Con	1,654	33.3
Bowler T.	Con	1,599	-
Prew R.	Lib	780	15.7
Turnout		72.1	17.8

Bridge (5124)²			
		vote	share
Chambers G.	Lab	2,045	63.1
Pennington J.	Lab	1,975	-
Adshead D. Ms.	Con	1,198	36.9
Johnson F.	Con	1,173	-
Turnout		67.7	26.1

Bulwell East (7454)²			
		vote	share
Matthews I. Ms.	Lab	2,598	43.5
Arnold J.	Lab	1,937	-
Coyne T.	Con	1,792	30.0
Keeling A.	Con	1,724	-
Peck J.	Comm	1,587	26.6
Lambert G.	Comm	415	-
Turnout		73.4	13.5

Bulwell West (7947)²			
		vote	share
Wright A.	Lab	2,833	60.4
Pavier K.	Lab	2,772	-
Howe D.	Con	1,859	39.6
Straghan R.	Con	1,767	-
Turnout		66.9	20.8

Byron (10519)³			
		vote	share
Ducker J. Ms.	Lab	3,472	51.9
Arthur D.	Lab	3,352	-
Brotherton C.	Lab	3,313	-
Small G.	Con	3,215	48.1
Owen P.	Con	3,105	-
Timson E. Ms.	Con	2,968	-
Turnout		69.6	3.8

Clifton East (7215)²			
		vote	share
Dennett F. Ms.	Lab	3,019	61.8
Dennett F.	Lab	2,884	61.8
Clarke M. Ms.	Con	1,870	38.2
Kelly G.	Con	1,514	-
Turnout		70.8	0.0

Clifton West (7914)²			
		vote	share
Riley J.	Lab	2,910	53.1
Price P.	Lab	2,891	-
Mills C.	Con	1,995	36.4
Wainwright H.	Con	1,872	-
Burton R.	Lib	572	10.4
Turnout		70.1	16.7

Forest (7819)²			
		vote	share
Quigley P.	Con	2,406	54.0
Rolling R.	Con	2,367	-
Daley P.	Lab	2,047	46.0
Tipping S.	Lab	1,987	-
Turnout		59.7	8.1

Greenwood (7557)²			
		vote	share
Roberts G. Ms.	Con	3,046	59.3
Clarke C.	Con	3,025	-
Dudley K.	Lab	2,087	40.7
Lakey H. Ms.	Lab	1,867	-
Turnout		71.6	18.7

Lenton (7256)²			
		vote	share
Carroll J.	Lab	1,930	59.3
Brady T.	Lab	1,925	-
Berrington B. Ms.	Con	1,326	40.7
Smith E.	Con	1,218	-
Turnout		55.7	18.6

Manvers (8191)²			
		vote	share
Higgins B. Ms.	Lab	2,844	60.5
Tongue D.	Lab	2,775	-
Ashby K.	Con	1,730	36.8
Fines D. Ms.	Con	1,656	-
Vant R. Ms.	NF	123	2.6
Turnout		60.7	23.7

Mapperley (7788)²			
		vote	share
Bradbury W.	Con	3,467	68.2
Green J.	Con	3,259	-
Best R.	Lab	1,616	31.8
Clark C. Ms.	Lab	1,605	-
Turnout		68.4	36.4

Park (6907)²			
		vote	share
Borrett C.	Con	2,308	48.5
Pink A. Ms.	Con	2,186	-
Lynch C.	Lab	1,792	37.7
Yuill M. Ms.	Lab	1,508	-
Allsopp T.	Lib	655	13.8
Turnout		67.0	10.9

Portland (7839)²			
		vote	share
Carey A.	Lab	2,657	52.1
Ricks B. Ms.*	Con	2,439	47.9
Coward R.	Lab	2,323	-
Simpson W.	Con	2,321	-
Turnout		66.8	4.3

Radford (7207)²			
		vote	share
Maynard L.	Lab	2,351	61.4
Allsop R.	Lab	2,293	-
Elliott G.	Con	1,480	38.6
Watson A.	Con	1,411	-
Turnout		57.0	22.7

Robin Hood (8084)²			
		vote	share
Marshall B.	Con	2,841	49.8
Stone A.	Con	2,795	-
Wain M.	Lab	2,321	40.7
Edwards G.	Lab	2,055	-
Dalling R.	Lib	540	9.5
Turnout		71.3	9.1

Sherwood (7978)²			
		vote	share
Poole D.	Con	3,187	56.8
Young R.	Con	3,003	-
Haymes G. Ms.	Lab	1,626	29.0
Heslop J. Ms.	Lab	1,529	-
Whittaker M. Ms.	Lib	801	14.3
Wrench M.	Lib	629	-
Turnout		71.7	27.8

St. Anns (6534)²			
		vote	share
Burgess P.	Lab	2,481	61.9
Higgins F.	Lab	2,071	-
Rushton S.	Con	1,524	38.1
Vinerd B.	Con	1,295	-
Turnout		59.7	23.9

Strelley (6819)²			
		vote	share
Squires L.	Lab	2,975	73.9
Birkinshaw D.	Lab	2,945	-
Berkeley A.	Con	1,050	26.1
Brown J. Ms.	Con	1,002	-
Turnout		64.7	47.8

Trent (6711)²			
		vote	share
Dinwoodie W.	Lab	2,120	52.0
Carter J.	Con	1,954	48.0
Griffiths R.	Con	1,901	-
Riasat M.	Lab	1,553	-
Turnout		64.5	4.1

Wilford (8109)²			
		vote	share
Thompson S.	Con	3,212	55.7
Lofthouse A. Ms.	Con	3,177	-
Gilbert T.	Lab	2,556	44.3
Wingfield F.	Lab	2,451	-
Turnout		76.1	11.4

Wollaton (9068)²			
		vote	share
Brandon-Bravo M.	Con	4,672	67.7
Hamilton A.	Con	4,628	-
Bellamy R.	Lab	2,228	32.3
Orton R.	Lab	2,103	-
Turnout		79.8	35.4

Nottingham 1983

Abbey (7904)²			
		vote	share
Bateman E.	Con	2,450	63.2
Suthers M.	Con	2,411	-
Booth D.	Lab	817	21.1
Evans B.	Lab	782	-
Dale C.	Lib/SDP	609	15.7
Turnout		44.7	42.1

Aspley (8465)²			
		vote	share
Harby T.	Lab	1,717	47.7
Gibson C.	Lab	1,595	-
Cutts P.	Con	1,511	42.0
Caulton A.	Con	1,305	-
Walker M.	Lib/SDP	370	10.3
England F.	Lib/SDP	348	-
Turnout		40.4	5.7

Basford (8057)²			
		vote	share
Howe G.	Con	1,965	48.7
Swift C.	Con	1,836	-
Daley P.	Lab	1,537	38.1
Reed A.	Lab	1,452	-
Stevenson J.	Lib/SDP	537	13.3
Turnout		45.5	10.6

Beechdale (7803)²			
		vote	share
Crowe M. Ms.	Con	2,097	53.0
Hickey C.	Con	2,066	-
Churchill W.	Lab	1,477	37.3
Gordon C.	Lab	1,286	-
Welch J.	Lib/SDP	383	9.7
Whelan K.	Lib/SDP	366	-
Turnout		49.2	15.7

Bestwood Park (7802)²			
		vote	share
Hartshorne J.	Lab	1,499	53.9
Phillips L.	Lab	1,417	-
Broughton K.	Con	1,004	36.1
Flint J.	Con	977	-
Williams J.	Lib/SDP	277	10.0
Atkinson H.	Lib/SDP	265	-
Turnout		34.9	17.8

Bilborough (6542)²			
		vote	share
Wood M.	Lab	1,189	43.2
Armstrong K.	Con	1,167	42.4
Doak M.	Con	1,121	-
Arnold J.	Lab	1,034	-
Matthews M. Ms.	Lib/SDP	399	14.5
Rudge C.	Lib/SDP	287	-
Turnout		40.4	0.8

Bridge (6810)²			
		vote	share
MacIennan I.	Lab	1,590	56.8
Stout M.	Lab	1,515	-
Johnson F.	Con	819	29.3
Collin E.	Con	790	-
Horan F.	Lib/SDP	388	13.9
Turnout		37.5	27.6

Bulwell East (7924)²			
		vote	share
Matthews I. Ms.	Lab	1,503	34.0
Timson B.	Con	1,299	29.4
Peck J.	Comm	1,286	29.1
Timson E.	Con	1,161	-
Allsop R.	Lab	1,088	-
Chainey M.	Lib/SDP	336	7.6
Jones A.	Lib/SDP	322	-
Turnout		44.1	4.6

Bulwell West (9093)²			
		vote	share
Pavier K.	Lab	1,829	52.8
Wright A.	Lab	1,588	-
Cipko E.	Con	1,179	34.0
Broughton J.	Con	1,177	-
Prewett P.	Lib/SDP	459	13.2
Turnout		34.3	18.7

Byron (10807)³			
		vote	share
Kilbourne G.	Con	1,923	42.3
Flowerday D.	Con	1,890	-
Ducker J. Ms.	Lab	1,841	40.5
Lowery P.	Con	1,816	-
Brotherton C.	Lab	1,656	-
Arthur D.	Lab	1,601	-
Williams L.	Lib/SDP	785	17.3
Warrington P.	Lib/SDP	775	-
Seal W.	Lib/SDP	763	-
Turnout		40.3	1.8

Clifton East (7292)²			
		vote	share
Dennett F. Ms.	Lab	1,448	60.9
Dennett F.	Lab	1,402	60.9
Chawner A.	Con	931	39.1
Atkins G.	Con	906	-
Turnout		32.1	0.0

Clifton West (8139)²			
		vote	share
Charlesworth B.	Lab	1,666	45.1
Riley J.	Lab	1,652	-
Hayes J.	Con	1,458	39.4
Armstrong-Holmes J.	Con	1,437	-
Butcher H.	Lib/SDP	573	15.5
Grocock V.	Lib/SDP	423	-
Turnout		44.3	5.6

Forest (7550)²			
		vote	share
Taylor S.	Lab	1,554	47.7
McCance R.	Lab	1,552	-
Rolling R.	Con	1,082	33.2
Quigley P.	Con	1,082	-
Gregson-Murray S.	Lib/SDP	622	19.1
Turnout		39.0	14.5

Greenwood (8283)²			
		vote	share
Rushton S.	Con	2,131	54.4
Clarke C.	Con	2,117	-
Johnston R.	Lab	1,318	33.6
Radcliff P.	Lab	1,207	-
Berkeley A.	Lib/SDP	468	11.9
Turnout		43.7	20.8

Lenton (6203)²			
		vote	share
Haymes G.	Lab	1,407	57.9
Morris A.	Lab	1,381	-
Free E.	Con	632	26.0
Bilan L.	Con	550	-
Green H.	Lib/SDP	293	12.1
Shirley P.	Lib/SDP	223	-
Platt D.	Comm	96	4.0
Turnout		36.9	31.9

Manvers (8555)²			
		vote	share
Higgins B. Ms.	Lab	2,019	66.6
Tongue D.	Lab	1,872	-
Griffiths R.	Con	1,013	33.4
Smith M.	Con	981	-
Turnout		34.4	33.2

Mapperley (8225)²			
		vote	share
Bradbury W.	Con	2,138	62.3
Ross F.	Con	2,068	-
Clark C. Ms.	Lab	815	23.7
Rotheram H.	Lab	791	-
Murdy G.	Lib/SDP	480	14.0
Ryder R.	Lib/SDP	421	-
Turnout		40.8	38.5

Park (7302)²			
		vote	share
Borrett C.	Con	1,519	48.2
Pink A. Ms.	Con	1,472	-
Glass R.	Lab	1,082	34.3
McGuiggan J.	Lab	1,014	-
Corbett J.	Lib/SDP	549	17.4
Long G.	Lib/SDP	449	-
Turnout		39.2	13.9

Portland (7590)²			
		vote	share
Ricks B. Ms.	Con	1,604	47.1
Bowler T.	Con	1,587	-
Jones D.	Lab	1,440	42.3
McGlade M.	Lab	1,353	-
Calver R.	Lib/SDP	362	10.6
Turnout		41.8	4.8

Radford (6998)²			
		vote	share
Harrison L.	Lab	1,269	52.9
Lee N.	Lab	1,246	-
Elliott G.	Con	860	35.8
Allwood J.	Con	790	-
Kennedy R.	Lib/SDP	272	11.3
Jackson M.	Lib/SDP	258	-
Turnout		33.5	17.0

Robin Hood (8554)²			
		vote	share
Marshall B.	Con	2,235	53.2
Stone A.	Con	2,081	-
Clark A.	Lab	1,349	32.1
Leivers G.	Lab	1,294	-
Foster G.	Lib/SDP	619	14.7
Coleman C.	Lib/SDP	573	-
Turnout		47.6	21.1

Sherwood (8103)²			
		vote	share
Poole D.	Con	2,190	56.7
Young R.	Con	1,982	-
Williams W.	Lab	1,024	26.5
Belbin D.	Lab	951	-
Whittaker M. Ms.	Lib/SDP	646	16.7
Hodgson J.	Lib/SDP	558	-
Turnout		45.4	30.2

St. Anns (6614)²			
		vote	share
Burgess P.	Lab	1,432	54.3
Higgins F.	Lab	1,232	-
Stevens C.	Con	821	31.1
Stirzaker S.	Con	739	-
Bird M.	Lib/SDP	385	14.6
Turnout		34.9	23.2

Strelley (6761)²			
		vote	share
Birkinshaw D.	Lab	1,328	55.3
Parker B.	Lab	1,150	-
Armstrong D.	Con	696	29.0
Adams W.	Con	679	-
Walker E.	Lib/SDP	378	15.7
Barker M.	Lib/SDP	376	-
Turnout		34.1	26.3

Trent (7002)²			
		vote	share
Carter J.	Con	1,458	43.8
Dinwoodie W.	Lab	1,364	41.0
Smith B.	Con	1,340	-
Maynard L.	Lab	1,264	-
Idris S.	SDP	258	7.7
Hiley J.	Lib	250	7.5
Roylance C.	Lib	174	-
Turnout		43.6	2.8

Wilford (8305)²			
		vote	share
Thompson S.	Con	2,184	55.4
Lofthouse A. Ms.	Con	2,165	-
Daley G.	Lab	1,155	29.3
Collington A.	Lab	1,094	-
Dale G.	Lib/SDP	604	15.3
Puri N.	Lib/SDP	308	-
Turnout		45.2	26.1

Wollaton (9351)²			
		vote	share
Hamilton A.	Con	3,279	64.1
Brandon-Bravo M.	Con	3,194	-
Fildes C.	Lab	950	18.6
Eyres C.	Lab	938	-
Corbett B.	Lib/SDP	890	17.4
Turnout		49.5	45.5

Nottingham 1987

Abbey (10007)²

		vote	share
Bateman E.	Con	2,692	56.0
Suthers M.	Con	2,609	-
Whitworth D. Ms.	Lab	1,141	23.7
Mir Z.	Lab	1,018	-
Allsopp T.	Lib/SDP	976	20.3
Coldrick D.	Lib/SDP	882	-
	Turnout	48.5	32.3

Aspley (8304)²

		vote	share
Harby T.	Lab	1,781	48.9
Worthington C.	Lab	1,464	-
Johnson R.	Con	1,421	39.0
Sharma B.	Con	1,183	-
Keith A.	Lib/SDP	439	12.1
Smith S.	Lib/SDP	394	-
	Turnout	42.7	9.9

Basford (8008)²

		vote	share
Howe G.	Con	1,992	46.3
Rolling R.	Con	1,837	-
Heppell E. Ms.	Lab	1,758	40.9
Lambert R.	Lab	1,487	-
Ball T.	Lib/SDP	553	12.9
Sutton J.	Lib/SDP	518	-
	Turnout	54.7	5.4

Beechdale (7646)²

		vote	share
Crowe M. Ms.	Con	2,193	49.8
Hickey C.	Con	2,147	-
Peck J.	Lab	1,626	36.9
Burgess P.	Lab	1,598	-
Welch J.	Lib/SDP	587	13.3
Grocock V.	Lib/SDP	550	-
	Turnout	59.1	12.9

Bestwood Park (7481)²

		vote	share
Hartshorne J.	Lab	1,427	44.3
Robinson A.	Lab	1,371	-
Russell S.	Con	1,330	41.3
Smedley P.	Con	1,210	-
Johnson M.	Lib/SDP	462	14.4
Peacock J.	Lib/SDP	452	-
	Turnout	44.9	3.0

Bilborough (5714)²

		vote	share
Wood M.	Lab	1,354	43.0
Shore J. Ms.	Con	1,284	40.7
Scott D.	Lab	1,269	-
Stannard F.	Con	1,259	-
Matthews M. Ms.	Lib/SDP	513	16.3
Calvert J.	Lib/SDP	511	-
	Turnout	57.0	2.2

Bridge (7043)²

		vote	share
Clausen D. Ms.	Lab	1,716	56.4
Maclennan I.	Lab	1,603	-
Azad R.	Con	955	31.4
Cross G.	Con	935	-
Horan F.	Lib/SDP	370	12.2
Williams J. Ms.	Lib/SDP	308	-
	Turnout	45.0	25.0

Bulwell East (8003)²

		vote	share
Matthews I. Ms.	Lab	1,619	32.3
Peck J.	Comm	1,417	28.2
Timson B.	Con	1,369	27.3
Parkinson G.	Con	1,342	-
Baker N. Ms.	Lab	1,270	-
Warwick A.	Lib/SDP	615	12.3
Wood D.	Lib/SDP	361	-
	Turnout	55.3	4.0

Bulwell West (9494)²

		vote	share
Jones D.	Lab	1,791	48.3
Gapper V.	Lab	1,670	-
Elliott G.	Con	1,377	37.1
Campione A. Ms.	Con	1,335	-
Boyle P.	Lib/SDP	540	14.6
Dennis N.	Lib/SDP	538	-
	Turnout	40.6	11.2

Byron (10548)³

		vote	share
Duncan M. Ms.	Con	2,466	50.6
Flowerday D.	Con	2,234	-
Kilbourne G.	Con	2,218	-
Ducker J. Ms.	Lab	1,757	36.0
Dinwoodie W.	Lab	1,643	-
O'Connor G.	Lab	1,579	-
Godsmark D.	Lib/SDP	652	13.4
Walsh P.	Lib/SDP	581	-
	Turnout	45.1	14.5

Clifton East (6858)²

		vote	share
White A.	Lab	1,440	48.5
Gibson C.	Lab	1,355	-
Carter R.	Con	1,027	34.6
Lowery P.	Con	1,009	-
Candlish G.	Lib/SDP	502	16.9
Wheatley H. Ms.	Lib/SDP	488	-
	Turnout	45.1	13.9

Clifton West (7983)²

		vote	share
Charlesworth B.	Lab	1,807	46.1
Riley J.	Lab	1,749	-
Culley G. Ms.	Con	1,568	40.0
Hermann P.	Con	1,524	-
Lucas H.	Lib/SDP	542	13.8
Oubridge G.	Lib/SDP	438	-
	Turnout	50.3	6.1

Forest (7684)²

		vote	share
Taylor S.	Lab	1,874	52.5
Ibrahim M.	Lab	1,835	-
Taylor K. Ms.	Con	1,219	34.2
Quigley P.	Con	1,182	-
Peach B. Ms.	Lib/SDP	476	13.3
Mohammed Y.	Lib/SDP	445	-
	Turnout	48.3	18.4

Greenwood (8351)²

		vote	share
Clarke C.	Con	2,250	53.6
Rushton S.	Con	2,138	-
Kirkwood W.	Lab	1,410	33.6
Maxfield G. Ms.	Lab	1,357	-
Allanach R.	Lib/SDP	537	12.8
Roylance C.	Lib/SDP	536	-
	Turnout	51.7	20.0

Lenton (6730)²

		vote	share
Morris A.	Lab	1,631	56.4
Khan S.	Lab	1,515	-
Hayes S.	Con	696	24.1
Free E.	Con	627	-
Brown S.	Lib/SDP	437	15.1
Platt D.	Comm	127	4.4
	Turnout	40.0	32.3

Manvers (8220)²

		vote	share
Higgins B. Ms.	Lab	1,713	54.2
Pearch W.	Lab	1,566	-
Pearson L. Ms.	Con	942	29.8
Singh R.	Con	767	-
Hopewell V.	All	507	16.0
Hay A. Ms.	All	492	-
	Turnout	39.3	24.4

Mapperley (7892)²

		vote	share
Bradbury W.	Con	2,082	57.0
Ross F.	Con	1,978	-
Gaughan A.	Lab	841	23.0
Totterdill P.	Lab	763	-
Ashton G.	All	728	19.9
Staniforth A.	All	718	-
	Turnout	46.9	34.0

Park (7230)²

		vote	share
Borrett C.	Con	1,470	43.9
Pink A. Ms.	Con	1,427	-
Argyle S.	Lab	1,424	42.5
Clarke T.	Lab	1,409	-
Green A. Ms.	Lib/SDP	455	13.6
Long G.	Lib/SDP	431	-
	Turnout	51.2	1.4

Portland (6953)²

		vote	share
Bowler T.	Con	1,637	49.2
Ricks B. Ms.	Con	1,619	-
Cooper A.	Lab	1,173	35.2
Cooke N.	Lab	1,130	-
Belshaw J. Ms.	Lib/SDP	518	15.6
Lee G.	Lib/SDP	441	-
	Turnout	48.7	13.9

Radford (6611)²

		vote	share
Munn M. Ms.	Lab	1,453	54.9
Ghazni I.	Lab	1,344	-
Maqsood M.	Con	826	31.2
Willis M.	Con	819	-
Williams A.	Lib/SDP	367	13.9
Burr J.	Lib/SDP	347	-
	Turnout	41.7	23.7

Robin Hood (8934)²

		vote	share
Marshall B.	Con	2,086	42.0
Stone A.	Con	1,957	-
Beesley P.	Lib/SDP	1,574	31.7
Forskiitt M.	Lib/SDP	1,521	-
Clark A.	Lab	1,302	26.2
Daley P.	Lab	1,201	-
	Turnout	56.1	10.3

Sherwood (8224)²

		vote	share
Poole D.	Con	2,043	45.2
Young R.	Con	1,924	-
Whittaker M. Ms.	Lib/SDP	1,281	28.3
Nolan E.	Lab	1,198	26.5
Jones C. Ms.	Lib/SDP	1,177	-
Powe O.	Lab	1,141	-
	Turnout	55.0	16.9

St. Anns (6832)²

		vote	share
Collins J.	Lab	1,535	54.3
Ahmed H.	Lab	1,472	-
Levick B.	Con	985	34.8
Grimshaw R. Ms.	Con	966	-
Logan R.	All	307	10.9
Staniforth M. Ms.	All	264	-
	Turnout	43.3	19.5

Strelley (6337)²

		vote	share
Parker B.	Lab	1,734	60.4
Chapman G.	Lab	1,704	-
Parr T.	Con	680	23.7
Cipko E. Ms.	Con	610	-
Birkinshaw D.	Ind	280	9.7
Wyatt A.	Lib/SDP	178	6.2
Laundy A.	Ind	146	-
Shah P.	Lib/SDP	120	-
	Turnout	45.4	36.7

Trent (7079) ²			
		vote	share
Carter J.	Con	1,582	45.9
Satti A.	Con	1,402	-
Khan L.	Lab	1,084	31.5
Muter A.	Lab	1,018	-
Hiley J.	Lib/SDP	594	17.2
Oliver G. Ms.	Lib/SDP	573	-
Walsh E.	Mod Lab	184	5.3
Turnout		47.4	14.5

Wilford (8103) ²			
		vote	share
Mills C.	Con	2,359	48.6
Thompson S.	Con	2,358	-
Kay T.	Lib/SDP	1,301	26.8
Harper R.	Lab	1,197	24.6
Stevenson A. Ms.	Lab	1,074	-
Williams L.	Lib/SDP	1,018	-
Turnout		59.7	21.8

Wollaton (10584) ²			
		vote	share
Hamilton A.	Con	3,640	61.1
Kingdon O.	Con	3,385	-
Fletcher L. Ms.	Lib/SDP	1,220	20.5
Hain R. Ms.	Lib/SDP	1,215	-
Casson J. Ms.	Lab	1,098	18.4
Millard E. Ms.	Lab	1,017	-
Turnout		56.7	40.6

Nottingham 1991

Abbey (9928) ²			
		vote	share
Ryley J.	Con	2,475	50.4
Suthers M.*	Con	2,371	-
Harriss S.	Lab	1,579	32.2
Batra I.	Lab	1,411	-
Allsop T.	LD	854	17.4
Turnout		49.4	18.3

Aspley (7933) ²			
		vote	share
Scott D.*	Lab	2,277	66.2
James H.	Lab	2,155	-
McGuire T.	Con	804	23.4
Thurnell J. Ms.	Con	773	-
Hornett D.	LD	361	10.5
Turnout		43.4	42.8

Basford (7738) ²			
		vote	share
Morris H.	Lab	2,125	55.6
Wakefield T. Ms.	Lab	1,990	-
Rolling R.*	Con	1,698	44.4
Burrows R.	Con	1,678	-
Turnout		48.4	11.2

Beechdale (7508) ²			
		vote	share
Crowe M. Ms.*	Con	1,862	47.1
Hickey C.*	Con	1,861	-
Toye P.	Lab	1,677	42.4
Ducker C.	Lab	1,599	-
Campbell A.	LD	362	9.2
Ward P.	LD	345	-
Waddingham G.	Ind	51	1.3
Turnout		52.0	4.7

Bestwood Park (7139) ²			
		vote	share
Robinson A.*	Lab	2,065	67.3
Hartshorne J.*	Lab	1,923	-
Howarth M.	Con	1,002	32.7
Price A.	Con	898	-
Turnout		41.2	34.7

Bilborough (5998) ²			
		vote	share
Wood M.*	Lab	1,680	51.9
Scott S. Ms.	Lab	1,668	-
Asher R. Ms.	Con	1,057	32.7
Shore J. Ms.	Con	1,043	-
Welch J.	LIB	282	8.7
Grocock V.	LIB	230	-
Calvert J.	LD	215	6.6
Turnout		53.9	19.3

Bridge (7121) ²			
		vote	share
MacIennan I.*	Lab	1,815	60.8
Mir Z.	Lab	1,538	-
Spencer T.	Con	666	22.3
Hird J.	Con	658	-
Marshall A.	LD	256	8.6
Banwell N.	Green	246	8.2
Watts P.	LD	191	-
Turnout		39.4	38.5

Bulwell East (7879) ²			
		vote	share
Peck J.*	Green	1,835	39.5
Baker N. Ms.	Lab	1,800	38.8
Whyman C.	Lab	1,734	-
Gregory T. Ms.	Green	1,162	-
Miles P.	Con	1,008	21.7
Romanczyk A.	Con	964	-
Turnout		54.0	0.8

Bulwell West (9012) ²			
		vote	share
Jones D.*	Lab	2,225	55.4
Gapper V.*	Lab	2,039	-
Bradburn P.	Con	1,331	33.1
Williams K.	Con	1,092	-
Corlett E.	LD	463	11.5
Turnout		44.6	22.2

Byron (10532) ³			
		vote	share
Clark A.*	Lab	2,503	49.0
Jones C. Ms.	Lab	2,248	-
Duncan M. Ms.*	Con	2,130	41.7
Sohoye G. Ms.	Lab	2,097	-
Paterson J. Ms.	Con	2,048	-
Harris T.	Con	1,926	-
Boyle P.	LD	477	9.3
Hale I.	LD	394	-
Turnout		46.5	7.3

Clifton East (6449) ²			
		vote	share
White A.*	Lab	2,004	69.9
Gibson C.*	Lab	1,886	-
Torz C. Ms.	Con	865	30.1
Marzano G.	Con	858	-
Turnout		43.5	39.7

Clifton West (7902) ²			
		vote	share
Charlesworth B.*	Lab	2,129	59.0
Riley J.*	Lab	2,111	-
Osborne S. Ms.	Con	1,482	41.0
Harris N.	Con	1,452	-
Turnout		45.4	17.9

Forest (8152) ²			
		vote	share
Taylor J.*	Lab	1,646	54.5
Ibrahim M.*	Lab	1,552	-
Downes J.	Con	931	30.8
Maqsood M.	Con	832	-
Pallis M. Ms.	Green	444	14.7
Jezewski J.	Green	404	-
Turnout		35.6	23.7

Greenwood (8198) ²			
		vote	share
Clarke C.*	Con	2,060	55.0
Curtis M.	Con	1,870	-
Spencer P.	Lab	1,436	38.4
Thomas A.	Lab	1,257	-
Jackson P.	Anti PT	248	6.6
Turnout		43.4	16.7

Lenton (6235) ²			
		vote	share
Clark M. Ms.	Lab	1,504	61.0
Parsons S. Ms.	Lab	1,073	-
Manning P.	Con	396	16.1
Ball M.	Con	379	-
Ayling K. Ms.	Green	312	12.7
Browne J.	LD	254	10.3
O'Regan M.	LD	185	-
Turnout		35.4	44.9

Manvers (8118) ²			
		vote	share
Higgins B. Ms.*	Lab	1,899	64.5
Liversidge D.	Lab	1,617	-
Holey D.	Con	653	22.2
Holey D. Ms.	Con	599	22.2
Stockell J.	Green	209	7.1
McCloskey F.	Anti PT	183	6.2
Walton P.	Anti PT	52	-
Turnout		33.4	42.3

Mapperley (7990) ²			
		vote	share
Bradbury W.*	Con	1,944	53.5
Ross F.*	Con	1,805	-
Edwards M.	Lab	1,687	46.5
Trimble D.	Lab	1,568	-
Turnout		43.8	7.1

Park (7332) ²			
		vote	share
Argyle S.	Lab	1,682	46.0
Khan S.*	Lab	1,545	-
Standland K. Ms.	Con	1,329	36.4
Teece J.	Con	1,214	-
Coope J.	Green	322	8.8
Hale J. Ms.	LD	320	8.8
Browne H.	LD	297	-
Turnout		48.0	9.7

Portland (7670) ²			
		vote	share
Bloomfield M. Ms.*	Lab	1,722	51.6
Jackson B.	Lab	1,648	-
Bowler T.	Con	1,615	48.4
Ricks B. Ms.*	Con	1,557	-
Turnout		42.6	3.2

Radford (6550) ²			
		vote	share
McIntosh R.	Lab	1,343	59.3
Choudhry A.	Lab	1,330	-
Hayes S.	Con	495	21.9
Kirk D.	Con	467	-
Jones G.	Green	426	18.8
Turnout		34.3	37.5

Robin Hood (9216) ²			
		vote	share
Marshall B.*	Con	1,881	36.0
Humphreys S.	Con	1,780	-
Long G.	LD	1,455	27.9
Padley T. Ms.	Lab	1,449	27.8
Lail P.	Lab	1,380	-
George D.	LD	1,362	-
Williams J.	Green	193	3.7
Beeby M. Ms.	LIB	165	3.2
Shaw T.	Anti PT	76	1.5
Turnout		55.2	8.2

Sherwood (8213) ²			
		vote	share
Poole D.*	Con	1,792	38.2
Bowler I.	Con	1,777	-
Ducker J. Ms.	Lab	1,742	37.2
Parbutt B.	Lab	1,578	-
Ball T.	LD	721	15.4
Strauss P.	Green	431	9.2
Turnout		57.1	1.1

St. Anns (6572) ²			
		vote	share
Collins J.*	Lab	1,766	64.0
Wilson D.	Lab	1,427	-
Clarke R. Ms.	Con	670	24.3
Tuck B. Ms.	Con	559	-
Crossland D.	Green	208	7.5
Longhurst R.	Anti PT	116	4.2
McCloskey K.	Anti PT	62	-
Turnout		38.2	39.7

Strelley (6531) ²			
		vote	share
Chapman G.*	Lab	1,763	71.3
Parker B.*	Lab	1,634	-
Bullock J.	Con	496	20.1
Potter M.	Con	429	-
Brill P.	LD	213	8.6
Turnout		37.9	51.3

Trent (6934) ²			
		vote	share
Maqsood M.	Lab	1,295	46.3
Hussain T.	Lab	1,216	-
Carter J.*	Con	1,206	43.1
Doherty I. Ms.	Con	1,140	-
Stewart B. Ms.	Ind	297	10.6
Turnout		39.3	3.2

Wilford (7674) ²			
		vote	share
Mills C.*	Con	1,939	49.4
Thompson S.*	Con	1,924	-
Kay T.	Lab	1,565	39.9
Robson L.	Lab	1,539	-
Horan F.	LD	419	10.7
Ellwood A.	LD	389	-
Turnout		50.7	9.5

Wollaton (10580) ²			
		vote	share
Culley G. Ms.	Con	2,973	51.9
Kingdon O.*	Con	2,861	-
Crabtree A.	Lab	1,545	27.0
Foster C.	Lab	1,345	-
Howells A.	LD	1,023	17.9
Sutton T.	LD	903	-
Merrick D.	Ind Con	190	3.3
Turnout		52.1	24.9

Nottingham 1995

Abbey (10196) ²			
		vote	share
Crowley R. Ms.	Lab	1,775	47.2
Taylor I.	Lab	1,661	-
Ryley J.*	Con	1,556	41.4
Folman J.	Con	1,446	-
Corlett E.	LD	426	11.3
Goforth N.	LD	369	-
Turnout		36.9	5.8

Aspley (7492) ²			
		vote	share
Scott D.*	Lab	1,659	82.7
James H.*	Lab	1,538	-
Chawner D.	Con	346	17.3
Thurnell B.	Con	278	-
Turnout		28.8	65.5

Basford (7306) ²			
		vote	share
Morris H.*	Lab	998	60.0
Wakefield A. Ms.*	Lab	893	-
Higginson J. Ms.	Con	665	40.0
Qureshi H.	Con	539	-
Turnout		33.3	20.0

Beechdale (7304) ²			
		vote	share
Bell T.	Lab	2,063	66.1
Whittall M.	Lab	1,842	-
Hickey C.	Con	1,060	33.9
Pinnick J.	Con	953	-
Turnout		43.3	32.1

Bestwood Park (6782) ²			
		vote	share
Robinson A.*	Lab	1,756	84.7
Hartshorne J.*	Lab	1,644	-
Cooper M. Ms.	Con	317	15.3
Hunt M.	Con	279	-
Turnout		33.7	69.4

Bilborough (5588) ²			
		vote	share
Wood M.*	Lab	1,336	63.0
Scott S. Ms.*	Lab	1,306	-
Richards J. Ms.	Con	312	14.7
Shore J. Ms.	Con	294	-
Lacey P.	Ind	271	12.8
Calvert J.	LD	203	9.6
Turnout		37.8	48.3

Bridge (6855) ²			
		vote	share
Maclennan I.*	Lab	1,576	76.7
Mir Z.*	Lab	1,191	-
Marshall A.	LD	243	11.8
Blunt L. Ms.	Con	236	11.5
Cross V. Ms.	Con	228	-
Turnout		29.7	64.9

Bulwell East (7664) ²			
		vote	share
Baker N. Ms.*	Lab	1,657	47.7
Peck J.*	Green	1,520	43.8
Grocock B.	Lab	1,365	-
Jones A.	Green	822	-
Phillips P.	Con	295	8.5
Eaton S. Ms.	Con	282	-
Turnout		40.2	3.9

Bulwell West (8865) ²			
		vote	share
Jones D.*	Lab	1,847	64.6
Heppell E. Ms.	Lab	1,563	-
Freeman G.	MILT Lab	653	22.9
Bowler B. Ms.	Con	357	12.5
Thurnell J. Ms.	Con	314	-
Turnout		31.3	41.8

Byron (10330) ³			
		vote	share
Clark A.*	Lab	2,220	78.3
Jones C. Ms.*	Lab	2,063	-
Munir M.	Lab	1,766	-
Maltby D.	Con	615	21.7
Smedley P.	Con	610	-
Chandra T.	Con	593	-
Turnout		28.4	56.6

Clifton East (6055) ²			
		vote	share
Greensmith R.*	Lab	1,991	83.6
Gibson C.*	Lab	1,725	-
Jackson P.	Con	391	16.4
Hayes S.	Con	313	-
Turnout		40.0	67.2

Clifton West (7934) ²			
		vote	share
Riley J.*	Lab	2,254	81.7
Charlesworth B.*	Lab	2,206	-
Spencer T.	Con	505	18.3
Culley I.	Con	504	-
Turnout		37.4	63.4

Forest (7836) ²			
		vote	share
Taylor J.*	Lab	1,566	65.8
Afsar J.	Lab	1,339	-
Baxter A.	Green	397	16.7
Taylor K. Ms.	Con	349	14.7
Charma J.	Con	261	-
Spicer P.	Ind	69	2.9
Turnout		27.9	49.1

Greenwood (7988) ²			
		vote	share
Williams K.	Lab	1,543	54.0
Mellen D.	Lab	1,542	-
Clarke C.*	Con	1,121	39.3
Curtis M.*	Con	1,007	-
Wheatcroft M.	Green	191	6.7
Turnout		37.1	14.8

Lenton (6098) ²			
		vote	share
Parsons S. Ms.*	Lab	1,258	84.9
Khan R.	Lab	1,242	-
Bennett D.	Con	224	15.1
Levick B.	Con	183	-
Turnout		27.6	69.8

Manvers (7388) ²			
		vote	share
Higgins B. Ms.*	Lab	1,598	83.4
Liversidge D.*	Lab	1,579	-
Smith D.	Con	318	16.6
Tolan J.	Con	245	-
Turnout		27.9	66.8

Mapperley (7750) ²			
		vote	share
Dewinton E. Ms.	Lab	1,506	47.6
Akhtar S.	Lab	1,393	-
Bradbury W.*	Con	1,274	40.2
Rolling R.	Con	1,122	-
Raymond M.	LD	387	12.2
Campione A. Ms.	LD	374	-
Turnout		40.8	7.3

Park (7529) ²			
		vote	share
Argyle S.*	Lab	1,570	67.0
Trimble D.*	Lab	1,524	-
Allan R.	Con	535	22.8
Nudd A.	Con	435	-
Hale J. Ms.	LD	237	10.1
Hale I.	LD	219	-
Turnout		31.3	44.2

Portland (7339) ²			
		vote	share
Briggs S. Ms.*	Lab	1,496	61.7
Jackson B.*	Lab	1,396	-
Gay J.	Con	625	25.8
Prentice M.	Con	618	-
Falconbridge K.	LD	303	12.5
Turnout		32.9	35.9

Radford (6643) ²			
		vote	share
Donn J.	Lab	1,133	77.2
Rothwell I.	Lab	983	-
Gibson D.	Con	208	14.2
Poyser I. Ms.	Con	172	-
Ord N.	Green	126	8.6
Turnout		21.9	63.1

Robin Hood (9122)²

		vote	share
George D.	LD	1,778	44.8
Markin B.	LD	1,725	-
Briggs W.	Lab	1,561	39.3
Woodward D.	Lab	1,485	-
Bennett D.	Con	633	15.9
Would C.	Con	547	-
Turnout		44.4	5.5

Sherwood (7781)²

		vote	share
Parbutt B.	Lab	1,946	57.0
Davidson J. Ms.	Lab	1,939	-
Hyndman G.	Con	1,159	34.0
Poole D.*	Con	1,115	-
Ball T.	LD	307	9.0
Turnout		44.4	23.1

St. Anns (6230)²

		vote	share
Collins J.*	Lab	1,496	83.0
Wilson D.*	Lab	1,368	-
Ross F.	Con	307	17.0
Kilbourne G.	Con	305	-
Turnout		30.7	65.9

Strelley (6198)²

		vote	share
Chapman G.*	Lab	1,452	72.2
Parker B.*	Lab	1,258	-
Hayes P. Ms.	Ind	399	19.9
Crofts J.	Con	159	7.9
Southall J.	Con	121	-
Turnout		30.3	52.4

Trent (6383)²

		vote	share
East L. Ms.	Lab	1,412	55.8
Asghar A.	Lab	1,406	-
Satti A.	Ind	587	23.2
Beecroft S. Ms.	Con	355	14.0
Price A.	Con	314	-
Mulloy K.	LD	176	7.0
Turnout		37.0	32.6

Wilford (7401)²

		vote	share
Malcolm I.	Lab	1,718	54.1
Aslam M.	Lab	1,615	-
Thompson S.*	Con	1,174	37.0
Bowler T.	Con	1,091	-
Boyle P.	LD	285	9.0
Ellwood A.	LD	244	-
Turnout		45.2	17.1

Wollaton (10356)²

		vote	share
Culley G. Ms.*	Con	2,126	44.4
Casson J. Ms.	Lab	2,089	43.6
Hayes J.	Con	2,078	-
Gapper V.	Lab	1,969	-
Sutton T.	LD	571	11.9
Turnout		44.9	0.8

