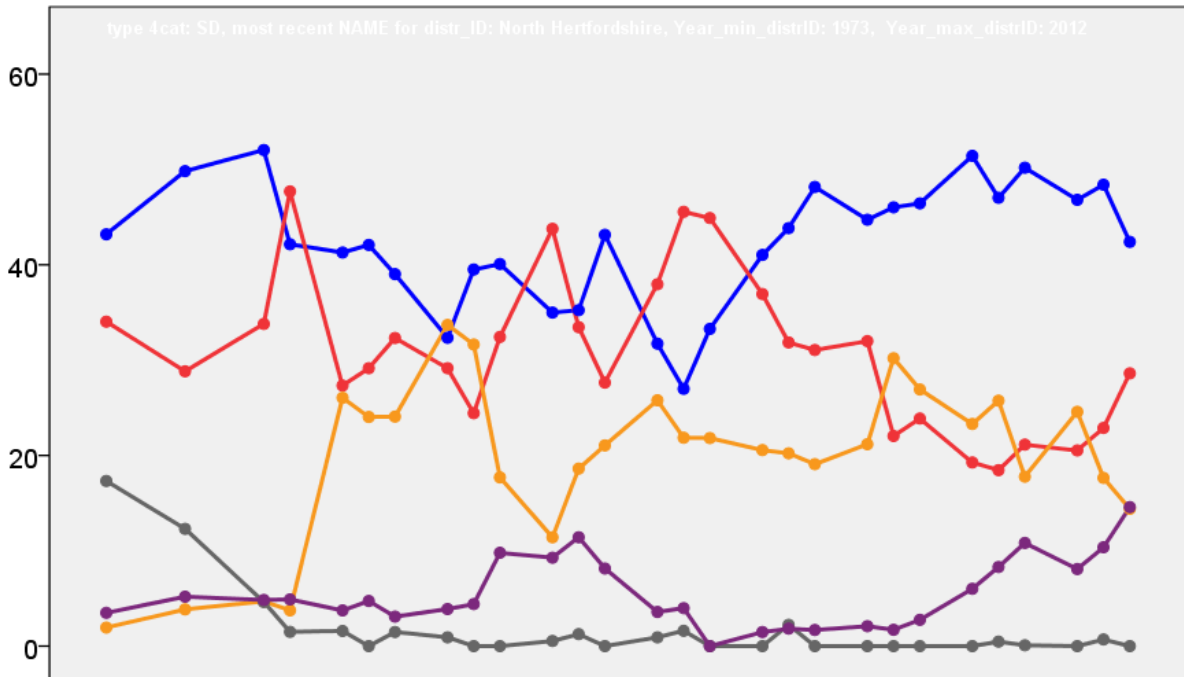


# North Hertfordshire District Council Election Results 1973-2012



Colin Rallings and Michael Thrasher  
The Elections Centre  
Plymouth University

The information contained in this report has been obtained from a number of sources. Election results from the immediate post-reorganisation period were painstakingly collected by Alan Willis largely, although not exclusively, from local newspaper reports. From the mid-1980s onwards the results have been obtained from each local authority by the Elections Centre. The data are stored in a database designed by Lawrence Ware and maintained by Brian Cheal and others at Plymouth University. Despite our best efforts some information remains elusive whilst we accept that some errors are likely to remain. Notice of any mistakes should be sent to [elections@plymouth.ac.uk](mailto:elections@plymouth.ac.uk). The results sequence can be kept up to date by purchasing copies of the annual Local Elections Handbook, details of which can be obtained by contacting the email address above.

Front cover: the graph shows the distribution of percentage vote shares over the period covered by the results. The lines reflect the colours traditionally used by the three main parties. The grey line is the share obtained by Independent candidates while the purple line groups together the vote shares for all other parties.

Rear cover: the top graph shows the percentage share of council seats for the main parties as well as those won by Independents and other parties. The lines take account of any by-election changes (but not those resulting from elected councillors switching party allegiance) as well as the transfers of seats during the main round of local election.

The lower graph shows for each main round of local elections the overall percentage turnout (solid line), the percentage of women candidates standing at (dotted line) and the percentage of women among those elected (hashed line).

## North Hertfordshire - 1973

### Baldock (4785)<sup>3</sup>

		vote	share
Burgess N. Ms.	Ind	1,212	40.4
York G.	Lab	813	27.1
Barton J.	Con	769	25.6
Watson S.	Lab	687	-
McFall R.	Lab	639	-
Harrison R.	Con	605	-
Whelan J.	Lib	207	6.9
Turnout		62.7	13.3

### Codicote (1986)

		vote	share
Winch D.	Con	614	71.8
Gentle A.	Lab	241	28.2
Turnout		43.2	43.6

### Knebworth (2675)<sup>2</sup>

		vote	share
Dumelow G.	Con	659	40.1
Grosse A.	Con	555	-
Lisles M.	Lab	355	21.6
Bois D.	Res	330	20.1
Grosse E.	Ind	298	18.1
Turnout		46.5	18.5

### No. 10 (Letchworth: Westbury) (2519)<sup>2</sup>

		vote	share
Marshall C.	Con	832	54.5
McKenna J.	Con	782	-
Kitchiner D.	Lab	696	45.5
Watson-Blake E.	Lab	679	-
Turnout		62.2	8.9

### No. 11 (Letchworth: Central Andwilliam) (3574)<sup>2</sup>

		vote	share
Saunders R.	Con	962	59.9
Jones M. Ms.	Con	941	-
Squirrell D.	Ind	417	26.0
Wiggs F. Ms.	Lab	226	14.1
Pulham L.	Lab	165	-
Turnout		40.7	34.0

### No. 12 (Royston) (6279)<sup>4</sup>

		vote	share
????	Ind	0	0.0
????	Ind	0	0.0
??? Ms.	Ind	0	-
???? Ms.	Ind	0	0.0
Turnout		0.0	0.0

### No. 13 (Arbury) (2800)<sup>2</sup>

		vote	share
Gurney E.	Ind	971	51.5
Evans P.	Con	649	34.4
Thompson N. Ms.	Con	642	-
Watson W.	Lab	266	14.1
Page W.	Lab	243	-
Turnout		67.4	17.1

### No. 14 (Sandon & Newsells) (2304)<sup>2</sup>

		vote	share
Brookes E. Ms.	Con	710	55.5
Rose I.	Con	558	-
Crumpholt J.	Ind	414	32.4
Toochen P. Ms.	Lab	155	12.1
Miller B.	Lab	118	-
Turnout		55.5	23.1

### No. 15 (Ashbrook Hitchwood & Kimpton) (4547)<sup>3</sup>

		vote	share
Wren I.	Con	1,457	77.5
McMurtrie J. Ms.	Con	1,383	-
Raffell J.	Con	1,312	-
Kendall D.	Lab	422	22.5
Evans C. Ms.	Lab	405	-
Dicks P.	Lab	348	-
Turnout		42.6	55.1

### No. 18 (Cadwell Hoo & Offa) (4736)<sup>3</sup>

		vote	share
Lodge R.	Ind	971	37.6
Kendall G.	Lab	904	35.0
Stedman D.	Ind	894	-
Holden J.	Ind	847	-
Hawkes R.	Lab	770	-
Cousins R.	Lab	742	-
Swann H.	Con	708	27.4
Baines A.	Con	679	-
Little I.	Con	638	-
Turnout		52.7	2.6

### No. 2 (Hitchin: Oughton) (4094)<sup>3</sup>

		vote	share
Carss A. Ms.	Lab	683	52.8
Reilly J.	Lab	666	-
Rowe C.	Lab	624	-
Parfitt J.	Con	338	26.1
Elliott T.	Ind	272	21.0
Turnout		27.1	26.7

### No. 3 (Hitchin: Bearton) (3682)<sup>2</sup>

		vote	share
Ballantyne J.	Con	949	57.0
Jenkinson D. Ms.	Con	917	-
McQuillan A.	Lab	716	43.0
Seabrook J.	Lab	705	-
Turnout		46.2	14.0

### No. 4 (Hitchin: Priory) (4469)<sup>3</sup>

		vote	share
Flatman B.	Con	1,013	59.6
Crook K.	Con	989	-
Doel D.	Con	960	-
Williams B.	Lib	409	24.0
Massey D.	Lab	279	16.4
Gentle J. Ms.	Lab	267	-
Herbert A.	Lab	253	-
Turnout		33.7	35.5

### No. 6 (Hitchin: Highbury) (4211)<sup>3</sup>

		vote	share
Wearmouth B. Ms.	Con	1,153	53.3
Ford L.	Con	988	-
Hillman M.	Con	891	-
Bache D.	Ind	748	34.6
Hartless R.	Ind	447	-
Jackson G.	Ind	387	-
Guymer W.	Lab	261	12.1
Wilson D.	Lab	230	-
Reilly D. Ms.	Lab	223	-
Hull P.	Ind	159	-
Turnout		45.7	18.7

### No. 7 (Letchworth: Norton) (6285)<sup>4</sup>

		vote	share
Miller W.	Lab	1,513	62.9
Stockwell C.	Lab	1,396	-
Devlin G.	Lab	1,384	-
Badstevener E. Ms.	Lab	1,309	-
McGinlay J.	Con	894	37.1
Down B.	Con	866	-
Turnout		37.0	25.7

### No. 8 (Letchworth: Pixmore) (5057)<sup>3</sup>

		vote	share
Griffiths D.	Lab	1,178	75.3
Hall R.	Lab	1,163	-
Brown E.	Lab	1,149	-
Bifield W.	Con	387	24.7
Turnout		32.9	50.5

### Walsworth (4023)<sup>3</sup>

		vote	share
Goldsmith J.	Lab	880	36.7
Clarke P.	Lab	833	-
Logan K.	Res	769	32.1
Ingram D.	Con	750	31.3
Morton T.	Res	720	-
Toleman C. Ms.	Lab	708	-
Turnout		46.3	4.6

### Wilbury (4243)<sup>3</sup>

		vote	share
Gallard D.	Lab	1,144	59.5
Briercliffe M. Ms.	Lab	1,107	-
Mantle I.	Lab	1,102	-
Cole J.	Con	779	40.5
Jackson B.	Con	755	-
Turnout		47.0	19.0

## North Hertfordshire - 1976

### Baldock (6631)<sup>3</sup>

		vote	share
Burgess N. Ms.	Ind	1,240	40.3
Gazely R.	Con	873	28.4
Barton J.	Con	839	-
York G.	Lab	716	23.3
Watson S.	Lab	628	-
McFall R.	Lab	607	-
Bickell A.	Con	511	-
Littleford R.	Lib	248	8.1
Turnout		46.4	11.9

### Codicote (2052)

		vote	share
Winch D.	Con	0	0.0
Turnout		0.0	0.0

### Knebworth (2828)<sup>2</sup>

		vote	share
Dumelow G.	Con	727	48.0
Grosse A.	Con	555	-
Tomlinson A.	Res	527	34.8
Gilbert R.	Res	309	-
Lisles M.	Lab	262	17.3
Turnout		53.6	13.2

### No. 10 (Letchworth: Westbury) (2311)<sup>2</sup>

		vote	share
Marshall C.	Con	1,011	65.5
Woods P.	Con	921	-
Parkins H.	Lab	533	34.5
Simpson O.	Lab	517	-
Turnout		66.8	31.0

### No. 11 (Letchworth: Central Andwilliam) (3906)<sup>2</sup>

		vote	share
Burrows A.	Con	1,786	83.0
Saunders R.	Con	1,742	-
Fulley H.	Lab	366	17.0
Turnout		55.1	66.0

### No. 12 (Royston) (9661)<sup>4</sup>

		vote	share
Smith F.	Con	1,998	39.2
Stevens G.	Ind	1,673	32.8
Rule P. Ms.	Ind	1,672	-
Gray L.	Ind	1,350	-
Botfield T.	Con	1,258	-
McMichael C.	Con	1,124	-
Marshall H.	Con	1,095	-
Beckwith R.	Lab	815	16.0
Evans A.	Lab	767	-
Ball P.	Lab	675	-
Lord H. Ms.	Lib	615	12.1
Kernaghan M.	Lab	603	-
Perkins A.	Lib	406	-
Turnout		52.8	6.4

### No. 13 (Arbury) (2575)<sup>2</sup>

		vote	share
Evans R.	Con	950	69.3
Stapleton J.	Con	926	-
Schofield J.	Lab	420	30.7
Summers J.	Lab	307	-
Turnout		53.2	38.7



Letchworth South-West (4059) <sup>3</sup>			
		vote	share
Saunders R.	Con	2,148	66.5
Burrows A.	Con	2,122	-
Woods G.	Con	1,970	-
Spencer S.	Lab	1,080	33.5
Gallard D.	Lab	958	-
Percival N.	Lab	891	-
Turnout		79.5	33.1
Newsells (1164)			
Wilkerson R.	Con	736	79.6
Pettit A.	Lab	189	20.4
Turnout		79.5	59.1
Offa (1473)			
Fitzgerald R. Ms.	Con	541	45.0
Kendall D.	Lab	358	29.8
Jamieson D.	Lib	304	25.3
Turnout		81.7	15.2
Oughton (4385) <sup>3</sup>			
Carss A. Ms.	Lab	1,750	52.9
Reilly J.	Lab	1,677	-
Stears M.	Lab	1,594	-
Ashley D.	Con	1,275	38.5
Leeson V. Ms.	Con	1,214	-
Smith A.	Con	1,141	-
Logan V.	Ind	283	8.6
Turnout		75.4	14.4
Priory (2768) <sup>2</sup>			
Flatman B.	Con	1,731	79.1
Hillman M.	Con	1,606	-
Mason R.	Lab	457	20.9
Bains H.	Lab	341	-
Turnout		79.0	58.2
Royston East (3701) <sup>2</sup>			
Rule P. Ms.	Con	1,843	58.2
Smith F.	Con	1,822	-
McLennan S.	Lib	672	21.2
Pratt R.	Lab	650	20.5
Walker J.	Lab	577	-
Turnout		85.5	37.0
Royston West (4188) <sup>3</sup>			
Ferguson D.	Con	1,807	51.9
Greenfield H.	Con	1,590	-
Emms A.	Con	1,379	-
Evans A.	Lab	883	25.3
Lord H. Ms.	Lib	795	22.8
Etheridge J.	Lab	739	-
Kernaghan M.	Lab	684	-
Turnout		83.2	26.5
Sandon (1105)			
Brookes E. Ms.	Con	734	82.6
Weetch J. Ms.	Lab	155	17.4
Turnout		80.5	65.1
Walsworth (5019) <sup>3</sup>			
Logan K.	Res	2,313	41.5
Worbey B.	Res	2,119	-
Peacock F.	Lab	1,703	30.6
Maccormack P.	Con	1,551	27.9
Anderson M. Ms.	Lab	1,144	-
Harmer B.	Lab	1,105	-
Turnout		110.9	11.0
Weston (1128)			
Evans R.	Con	653	69.8
Donaghue M.	Lab	282	30.2
Turnout		82.9	39.7

Wilbury (4062) <sup>3</sup>			
		vote	share
Bloxham R.	Con	1,509	43.7
Emsall K.	Con	1,394	-
Mantle I.	Lab	1,357	39.3
Smith J.	Con	1,298	-
Evans D.	Lab	1,290	-
Briercliffe M. Ms.	Lab	1,270	-
McGinley I.	Lib	587	17.0
Turnout		85.0	4.4

## North Hertfordshire - 1980

Ashbrook (2068)			
		vote	share
Tatham M.	Con	684	62.2
Brydon K.	Lab	416	37.8
Turnout		53.2	24.4
Baldock (5039)			
Page W.	Lab	1,305	56.5
Vaughan C.	Con	798	34.6
Toogood	Ecol	205	8.9
Turnout		45.8	22.0
Bearton (4352)			
Smith Ms.	Lab	1,013	52.9
Keaveney	Con	902	47.1
Turnout		44.0	5.8
Cadwell (1745)			
Lodge R.	Ind	438	59.3
Ashley	Con	163	22.1
Kirby	Lab	137	18.6
Turnout		42.3	37.3
Grange (4904)			
Kearns D.	Lab	1,348	64.4
Barclay	Con	746	35.6
Turnout		42.7	28.7
Highbury (4966)			
Maccormack P.	Con	1,361	66.7
Ruff K.	Lab	480	23.5
Goodale	Ecol	200	9.8
Turnout		41.1	43.2
Knebworth (3060)			
Grosse	Con	888	58.5
Herrmann	Lab	630	41.5
Turnout		49.6	17.0
Letchworth East (4084)			
McWalter T.	Lab	1,238	61.9
Brett A.	Con	763	38.1
Turnout		49.0	23.7
Letchworth South-East (4174)			
Playford	Lab	1,432	70.9
Ritchie J. Ms.	Con	475	23.5
Rolls	Ecol	113	5.6
Turnout		48.4	47.4
Letchworth South-West (4074)			
Woods G.	Con	1,329	57.1
Spencer S.	Lab	997	42.9
Turnout		57.1	14.3

Oughton (4445)			
		vote	share
Stears M.	Lab	1,291	69.5
Ashley D.	Con	508	27.3
Logan V.	NF	59	3.2
Turnout		41.8	42.1
Priory (2815)			
Howett F.	Con	965	83.6
Prescott	Lab	189	16.4
Turnout		41.0	67.2
Royston East (3772)			
Smith F.	Con	863	61.3
Etheridge J. Ms.	Lab	301	21.4
McLennan S.	Lib	243	17.3
Turnout		37.3	39.9
Royston West (4383)			
Botfield T.	Con	698	42.7
Kernaghan M.	Lab	533	32.6
Lord H. Ms.	Lib	404	24.7
Turnout		37.3	10.1
Walsworth (5245)			
Peacock F.	Lab	1,202	52.1
Emery	Res	777	33.7
Lord	Lib	252	10.9
Hutchins	Ecol	77	3.3
Turnout		44.0	18.4
Weston (1109)			
Evans R.	Con	354	64.5
Schofield	Lab	195	35.5
Turnout		49.5	29.0
Wilbury (3896)			
Mantle I.	Lab	1,216	54.8
Smith J.	Con	808	36.4
McGinlay	Lib	197	8.9
Turnout		57.0	18.4
North Hertfordshire - 1982			
Baldock (5203)			
Clarke P.	Con	986	40.5
McFall R.	Lab	766	31.5
Pritchett M.	All	625	25.7
Toogood	Ecol	58	2.4
Turnout		46.8	9.0
Bearton (4421)			
Frost N.	Con	877	39.9
Smith Ms.	Lab	796	36.2
Shipleigh H.	All	524	23.9
Turnout		49.7	3.7
Codicote (2267)			
Winch D.	Con	744	76.2
Wright	Lab	233	23.8
Turnout		43.1	52.3
Grange (5179)			
Kitchiner D.	Lab	912	38.4
Bray	All	822	34.7
Sherwood	Con	638	26.9
Turnout		45.8	3.8

Highbury (5066)			
		vote	share
Kingston-Splatt B.	Con	1,298	54.9
Abrahams	All	785	33.2
Ruff K.	Lab	283	12.0
Turnout		46.7	21.7

Kimpton (1655)			
		vote	share
Thompson F.	Ind	518	81.3
Swain	Lab	119	18.7
Turnout		38.5	62.6

Knebworth (3158)			
		vote	share
Dumelow G.	Con	927	58.0
Scott	All	324	20.3
Kelly B.	Lab	318	19.9
Bols	Res	29	1.8
Turnout		50.6	37.7

Letchworth East (4162)			
		vote	share
Wilmer S.	Lab	901	40.4
Armitage	All	713	32.0
Langridge D.	Con	617	27.7
Turnout		53.6	8.4

Letchworth South-East (5949)			
		vote	share
Prior N.	Con	1,121	35.9
Quinn	All	1,028	32.9
Kirby J. Ms.	Lab	974	31.2
Turnout		52.5	3.0

Letchworth South-West (4321)			
		vote	share
Burrows A.	Con	1,566	63.6
Short	All	581	23.6
Khawaja	Lab	316	12.8
Turnout		57.0	40.0

Oughton (4537)			
		vote	share
Reilly J.	Lab	919	48.1
Ashley D.	Con	595	31.2
Hall	All	396	20.7
Turnout		42.1	17.0

Priory (2802)			
		vote	share
Flatman	Con	936	65.0
Aspinall	All	406	28.2
Billing	Lab	98	6.8
Turnout		51.4	36.8

Royston East (3822)			
		vote	share
Rule	Con	1,027	55.1
???	All	634	34.0
???	Lab	204	34.0
Turnout		48.8	21.1

Royston West (4755)			
		vote	share
Greenfield H.	Con	1,157	55.2
Greenfield H.	All	548	55.2
Greenfield H.	Lab	392	55.2
Turnout		44.1	0.0

Walsworth (5729)			
		vote	share
Worbey B.	Res	1,130	44.9
Sharp V. Ms.	Lab	756	30.1
Lord	All	629	25.0
Turnout		43.9	14.9

Wilbury (4031)			
		vote	share
Emsall K.	Con	947	40.9
Murray S.	Lab	905	39.1
Gore	All	462	20.0
Turnout		57.4	1.8

## North Hertfordshire - 1983

Arbury (1811)			
		vote	share
Sheldrick J.	Con	582	48.3
Travis G. Ms.	All	531	44.1
Percival N.	Lab	91	7.6
Turnout		66.5	4.2

Baldock (5196)			
		vote	share
Evans A.	Con	1,238	47.3
McFall R.	Lab	933	35.6
Pritchett M.	All	448	17.1
Turnout		50.4	11.6

Bearton (4347)			
		vote	share
Roberts D.	Con	981	41.6
Smith H.	Lab	882	37.4
Shipley H.	All	396	16.8
Emery B.	Res	97	4.1
Turnout		54.2	4.2

Grange (5084)			
		vote	share
Leonard L.	Lab	1,017	37.2
Nicholson B.	All	954	34.9
McKenna J.	Con	764	27.9
Turnout		53.8	2.3

Highbury (5047)			
		vote	share
Wearmouth B. Ms.	Con	1,626	65.6
Burton M. Ms.	All	502	20.3
Trangmar T. Ms.	Lab	350	14.1
Turnout		49.1	45.4

Hitchwood (1349)			
		vote	share
Raffell J.	Con	463	62.1
Wilson E.	All	209	28.0
Marr J. Ms.	Lab	74	9.9
Turnout		55.3	34.0

Hoo (1554)			
		vote	share
Jackson J.	Con	430	49.9
Kendall D.	Lab	274	31.8
Lord C. Ms.	All	157	18.2
Turnout		55.4	18.1

Letchworth East (4168) <sup>2</sup>			
		vote	share
Bifield C.	Lab	956	40.1
Parkins H.	Lab	910	-
Fisher M.	All	768	32.2
Mulder H.	All	717	-
King N.	Con	660	27.7
Langridge D.	Con	655	-
Turnout		62.3	7.9

Letchworth South-East (5887)			
		vote	share
Quinn T.	All	1,355	37.6
Whalley G.	Con	1,308	36.3
Kirby J. Ms.	Lab	940	26.1
Turnout		61.2	1.3

Letchworth South-West (4332)			
		vote	share
Talbot J.	Con	1,400	55.0
Spencer S.	Lab	617	24.2
Ryden R. Ms.	All	530	20.8
Turnout		58.8	30.7

Newsells (1276)			
		vote	share
Wilkerson R.	Con	507	79.7
Kernaghan M.	Lab	129	20.3
Turnout		49.8	59.4

Offa (1488)			
		vote	share
Jackson L. Ms.	Con	426	47.9
Hofton A.	All	236	26.5
Mayo J.	Lab	228	25.6
Turnout		59.8	21.3

Oughton (4437)			
		vote	share
Carss A. Ms.	Lab	1,070	54.3
Ashley D.	Con	641	32.5
Boardman L. Ms.	All	259	13.1
Turnout		44.4	21.8

Royston West (5045)			
		vote	share
Doyle L.	Con	1,115	43.6
Lord H. Ms.	All	1,107	43.3
Etheridge J.	Lab	335	13.1
Turnout		50.7	0.3

Sandon (1085)			
		vote	share
Toulson P. Ms.	Con	507	78.1
Short P.	All	78	12.0
Davies P.	Lab	64	9.9
Turnout		59.8	66.1

Walsworth (5817)			
		vote	share
Logan K.	Res	1,517	46.4
Ruff K.	Lab	811	24.8
Crow J.	Con	612	18.7
Kelliher H.	All	329	10.1
Turnout		56.2	21.6

Wilbury (4003)			
		vote	share
Murray S.	Lab	1,162	45.1
Bloxham R.	Con	1,080	42.0
Marsh M. Ms.	All	332	12.9
Turnout		64.3	3.2

## North Hertfordshire - 1984

Ashbrook (2057)			
		vote	share
Tatham M.	Con	633	55.4
Brydon K.	Lab	311	27.2
Seabrook J.	All	199	17.4
Turnout		55.6	28.2

Baldock (5839)			
		vote	share
Moir A.	Lab	1,163	40.8
Ford A.	Con	1,050	36.9
Gore B.	All	636	22.3
Turnout		48.8	4.0

Bearton (4450)			
		vote	share
Billingham J. Ms.	Lab	1,056	47.0
Saunders J. Ms.	Con	893	39.7
Shipley H.	All	299	13.3
Turnout		50.5	7.3

Cadwell (1773)			
		vote	share
Lodge R.	Ind	525	61.0
Baker M.	Lab	205	23.8
Milner A. Ms.	All	130	15.1
		Turnout	48.5 37.2

Grange (5179)			
		vote	share
Kearns D.	Lab	1,122	41.1
Nicholson B.	All	934	34.2
Sturman R.	Con	673	24.7
		Turnout	52.7 6.9

Highbury (5105)			
		vote	share
Maccormack P.	Con	1,247	51.9
Burton M. Ms.	All	772	32.1
Trangmar T. Ms.	Lab	386	16.0
		Turnout	47.1 19.8

Knebworth (3188)			
		vote	share
Hilton M. Ms.	Con	797	52.1
Hudson A.	All	445	29.1
Kelly B.	Lab	288	18.8
		Turnout	48.0 23.0

Letchworth East (5841)			
		vote	share
Parkins H.	Lab	1,073	43.3
Fisher M.	All	871	35.1
King N.	Con	536	21.6
		Turnout	42.5 8.1

Letchworth South-East (5954)			
		vote	share
Whalley G.	Con	1,173	34.2
Attwood D.	All	1,150	33.5
Evans D.	Lab	1,107	32.3
		Turnout	57.6 0.7

Letchworth South-West (4491)			
		vote	share
Woods G.	Con	1,294	54.3
Preston J.	Lab	596	25.0
Ryden R. Ms.	All	494	20.7
		Turnout	53.1 29.3

Oughton (4377)			
		vote	share
Stears M.	Lab	1,096	60.4
Ashley D.	Con	459	25.3
Maclean L. Ms.	All	260	14.3
		Turnout	41.5 35.1

Priory (2769)			
		vote	share
Howett F.	Con	858	67.7
Burford-Mason A.	All	275	21.7
Agar N.	Lab	135	10.6
		Turnout	45.8 46.0

Royston East (3996)			
		vote	share
Smith F.	Con	1,133	72.4
Webb	Lab	432	27.6
		Turnout	39.2 44.8

Royston West (5319)			
		vote	share
Margolis	Lib/SDP	1,157	46.3
Botfield T.	Con	943	37.8
King Ms.	Lab	397	15.9
		Turnout	46.9 8.6

Walsworth (5941)			
		vote	share
Parker C.	Res	1,094	36.2
Sharp V. Ms.	Lab	938	31.0
Jones J.	Con	595	19.7
Sefton J. Ms.	All	397	13.1
		Turnout	50.9 5.2

Weston (1396)			
		vote	share
Evans R.	Con	459	60.9
Barker G.	All	173	22.9
McFall R.	Lab	122	16.2
		Turnout	54.0 37.9

Wilbury (4016)			
		vote	share
Bloxham R.	Con	1,062	44.4
Mantle I.	Lab	1,007	42.1
Mulder H.	All	325	13.6
		Turnout	59.6 2.3

## North Hertfordshire - 1986

Baldock (5839)			
		vote	share
Clarke P.	Con	1,146	36.5
McFall R.	Lab	1,069	34.0
Young R.	All	929	29.5
		Turnout	53.8 2.4

Bearton (4450)			
		vote	share
Marr J. Ms.	Lab	1,132	50.6
Frost N.	Con	720	32.2
Cunningham P. Ms.	All	385	17.2
		Turnout	50.3 18.4

Codicote (2324)			
		vote	share
Winch D.	Con	563	43.5
Stevenson C. Ms.	All	418	32.3
Omer K. Ms.	Lab	313	24.2
		Turnout	55.7 11.2

Grange (5179)			
		vote	share
Kitchener D.	Lab	1,233	42.2
Welch P.	All	1,107	37.9
Hannah J.	Con	519	17.7
Barrett I.	Green	65	2.2
		Turnout	56.5 4.3

Highbury (5105)			
		vote	share
Burton M. Ms.	All	1,204	46.2
Kingston-Splatt B.	Con	1,025	39.4
Tizzard D.	Lab	375	14.4
		Turnout	51.0 6.9

Kimpton (1645)			
		vote	share
Wilkins A.	All	363	41.8
Wright D.	Ind	339	39.0
Macdonald S.	Lab	167	19.2
		Turnout	52.8 2.8

Knebworth (3302)			
		vote	share
Dumelow G.	Con	940	57.6
Stiff M.	All	422	25.9
Carter C. Ms.	Lab	270	16.5
		Turnout	49.4 31.7

Letchworth East (5841)			
		vote	share
Summan R.	Lab	916	39.5
Elliott T.	All	894	38.5
Bush J.	Con	511	22.0
		Turnout	39.7 0.9

Letchworth South-East (5954)			
		vote	share
Williams G.	All	1,754	49.8
Prior N.	Con	931	26.4
Agar N.	Lab	840	23.8
		Turnout	59.2 23.3

Letchworth South-West (4491)			
		vote	share
Burrows A.	Con	1,402	49.7
Fisher M.	All	1,152	40.9
Jovic M.	Lab	265	9.4
		Turnout	62.8 8.9

Oughton (4377)			
		vote	share
Smith H.	Lab	1,020	52.7
Sefton J. Ms.	All	578	29.9
Leeson V. Ms.	Con	336	17.4
		Turnout	44.2 22.9

Priory (2769)			
		vote	share
Flatman B.	Con	718	57.1
Seabrook J.	All	349	27.7
Newbury J. Ms.	Lab	191	15.2
		Turnout	45.4 29.3

Royston East (3996)			
		vote	share
Rule P. Ms.	Con	1,114	52.2
McCann J. Ms.	All	733	34.3
Gill J.	Lab	288	13.5
		Turnout	53.4 17.8

Royston West (5319)			
		vote	share
Bate F. Ms.	All	1,094	40.2
Botfield T.	Con	1,085	39.8
King E. Ms.	Lab	545	20.0
		Turnout	51.2 0.3

Walsworth (5941)			
		vote	share
Swain J.	Res	1,273	45.5
Sharp V. Ms.	Lab	1,008	36.0
Kelt A. Ms.	All	429	15.3
Roberts A. Ms.	Green	87	3.1
		Turnout	47.1 9.5

Wilbury (4016)			
		vote	share
Mantle I.	Lab	1,048	43.3
Emsall K.	Con	842	34.8
Edwards H. Ms.	All	532	22.0
		Turnout	60.3 8.5

## North Hertfordshire - 1987

Arbury (1810)			
		vote	share
Marlow S.	Lib/SDP	574	46.1
Sheldrick J.	Con	551	44.3
Leete M. Ms.	Lab	120	9.6
		Turnout	69.0 1.8

<b>Baldock (6483)</b>			
		<b>vote</b>	<b>share</b>
<b>Evens A.</b>	Con	1,669	46.8
Donoghue M.	Lab	968	27.1
Young R.	Lib/SDP	931	26.1
<b>Turnout</b>		55.0	19.6

<b>Bearton (4554)</b>			
		<b>vote</b>	<b>share</b>
<b>Trangmar T. Ms.</b>	Lab	959	39.9
Frost N.	Con	893	37.2
Cunningham P. Ms.	Lib/SDP	550	22.9
<b>Turnout</b>		53.0	2.7

<b>Grange (5275)</b>			
		<b>vote</b>	<b>share</b>
<b>Thomson B. Ms.</b>	Lib/SDP	1,114	36.4
Mardell P.	Lab	1,040	34.0
Hannah J.	Con	827	27.0
Barratt I.	Green	78	2.5
<b>Turnout</b>		58.0	2.4

<b>Highbury (5163)</b>			
		<b>vote</b>	<b>share</b>
<b>Wearmouth B. Ms.</b>	Con	1,446	49.2
Burford-Mason A. Ms.	Lib/SDP	1,208	41.1
Tizzard D.	Lab	284	9.7
<b>Turnout</b>		57.0	8.1

<b>Hitchwood (1381)</b>			
		<b>vote</b>	<b>share</b>
<b>Raffell J.</b>	Con	565	67.8
Canning R.	Lib/SDP	134	16.1
McWalter T.	Lab	134	16.1
<b>Turnout</b>		60.0	51.7

<b>Hoo (1523)</b>			
		<b>vote</b>	<b>share</b>
<b>Jackson J.</b>	Con	439	48.9
Macdonald S.	Lab	242	27.0
Hampson W.	Lib/SDP	216	24.1
<b>Turnout</b>		59.0	22.0

<b>Letchworth East (4192)</b>			
		<b>vote</b>	<b>share</b>
<b>Bifield W.</b>	Lab	1,043	41.6
Marr K.	Lib/SDP	816	32.5
Bush J.	Con	651	25.9
<b>Turnout</b>		60.0	9.0

<b>Letchworth South-East (6021)</b>			
		<b>vote</b>	<b>share</b>
<b>Quinn A.</b>	Lib/SDP	1,743	47.6
Muir M.	Con	1,217	33.2
Kereher L. Ms.	Lab	702	19.2
<b>Turnout</b>		61.0	14.4

<b>Letchworth South-West (4651)</b>			
		<b>vote</b>	<b>share</b>
<b>Jones D.</b>	Con	1,556	51.9
Simpson I.	Lib/SDP	1,139	38.0
Newbury J. Ms.	Lab	301	10.0
<b>Turnout</b>		65.0	13.9

<b>Newsells (1329)</b>			
		<b>vote</b>	<b>share</b>
<b>Wilkerson R.</b>	Con	532	62.1
Gardiner R. Ms.	Lib/SDP	279	32.6
Hills C.	Lab	45	5.3
<b>Turnout</b>		64.0	29.6

<b>Offa (1522)</b>			
		<b>vote</b>	<b>share</b>
<b>Faulkner L. Ms.</b>	Con	451	43.2
Jackson M.	Lib/SDP	443	42.4
Saunders J.	Lab	150	14.4
<b>Turnout</b>		69.0	0.8

<b>Oughton (4318)</b>			
		<b>vote</b>	<b>share</b>
<b>Carss A. Ms.</b>	Lab	1,530	51.1
Jack R.	Con	508	25.2
Sefton J. Ms.	Lib/SDP	479	23.7
<b>Turnout</b>		47.0	25.9

<b>Royston West (5593)</b>			
		<b>vote</b>	<b>share</b>
<b>Doyle L.</b>	Con	1,490	48.5
Hardwicke G. Ms.	Lib/SDP	1,079	35.1
Bowles D.	Lab	501	16.3
<b>Turnout</b>		55.0	13.4

<b>Sandon (1144)</b>			
		<b>vote</b>	<b>share</b>
<b>Greenfield H.</b>	Con	451	58.9
Stainthorpe S. Ms.	Lib/SDP	273	35.6
Adams W.	Lab	42	5.5
<b>Turnout</b>		67.0	23.2

<b>Walsworth (6065)</b>			
		<b>vote</b>	<b>share</b>
<b>Logan K.</b>	Res	1,523	48.2
Sharp V. Ms.	Lab	662	20.9
West B.	Con	504	15.9
Kelly H. Ms.	Lib/SDP	422	13.3
Roberts E. Ms.	Green	52	1.6
<b>Turnout</b>		52.0	27.2

<b>Wilbury (4030)</b>			
		<b>vote</b>	<b>share</b>
<b>Emsall K.</b>	Con	1,072	43.1
Evans D.	Lab	944	37.9
Hunter D.	Lib/SDP	472	19.0
<b>Turnout</b>		62.0	5.1

## North Hertfordshire - 1988

<b>Ashbrook (2046)</b>			
		<b>vote</b>	<b>share</b>
<b>Tatham M.*</b>	Con	667	64.6
Brydon K.	Lab	253	24.5
Heath J.	SLD	113	10.9
<b>Turnout</b>		50.0	40.1

<b>Baldock (6703)</b>			
		<b>vote</b>	<b>share</b>
<b>Crow B.</b>	Con	1,595	50.7
Moir A.*	Lab	1,327	42.2
Tustin S. Ms.	SLD	221	7.0
<b>Turnout</b>		47.0	8.5

<b>Bearton (4500)</b>			
		<b>vote</b>	<b>share</b>
<b>Billing J. Ms.*</b>	Lab	1,174	54.1
Frost N.	Con	624	28.7
Cunningham P. Ms.	SLD	171	7.9
Edwards J.	Rate	135	6.2
Studman C.	Green	68	3.1
<b>Turnout</b>		48.0	25.3

<b>Cadwell (1801)</b>			
		<b>vote</b>	<b>share</b>
<b>Lee R.</b>	Con	538	55.1
Macnally C.	Lab	327	33.5
Canning R.	SLD	88	9.0
Hatch B. Ms.	SDP	24	2.5
<b>Turnout</b>		54.0	21.6

<b>Grange (5215)</b>			
		<b>vote</b>	<b>share</b>
<b>Kearns D.*</b>	Lab	1,302	42.6
Muir M.	Con	861	28.2
Kingman A. Ms.	SLD	729	23.9
Sinclair S. Ms.	SDP	164	5.4
<b>Turnout</b>		58.0	14.4

<b>Highbury (5154)</b>			
		<b>vote</b>	<b>share</b>
<b>Maccormack P.*</b>	Con	1,092	46.2
Read R. Ms.	SLD	471	19.9
Tizzard D.	Lab	359	15.2
Randall C. Ms.	SDP	294	12.4
Tait J. Ms.	Rate	150	6.3
<b>Turnout</b>		46.0	26.2

<b>Knebworth (3416)</b>			
		<b>vote</b>	<b>share</b>
<b>Hilton M. Ms.*</b>	Con	917	62.4
Stiff M.	SLD	286	19.5
Nelson J.	Lab	266	18.1
<b>Turnout</b>		43.0	43.0

<b>Letchworth East (4199)</b>			
		<b>vote</b>	<b>share</b>
<b>Kercher L. Ms.</b>	Lab	1,077	53.2
Langbridge D.	Con	607	30.0
Marr K.	SLD	340	16.8
<b>Turnout</b>		48.0	23.2

<b>Letchworth South-East (6004)</b>			
		<b>vote</b>	<b>share</b>
<b>Wood P. Ms.</b>	Con	1,158	39.1
Evans D.	Lab	812	27.4
Bray J.	SDP	707	23.9
Shipley H.	SLD	287	9.7
<b>Turnout</b>		49.0	11.7

<b>Letchworth South-West (4642)</b>			
		<b>vote</b>	<b>share</b>
<b>Woods G.*</b>	Con	1,203	48.3
Simpson I.	SLD	697	28.0
McWalter T.	Lab	418	16.8
Ashton R.	SDP	174	7.0
<b>Turnout</b>		54.0	20.3

<b>Oughton (4225)</b>			
		<b>vote</b>	<b>share</b>
<b>Kirby J. Ms.</b>	Lab	1,022	70.5
Edwards M.	SLD	427	29.5
<b>Turnout</b>		35.0	41.1

<b>Priory (2737)</b>			
		<b>vote</b>	<b>share</b>
<b>Howett F.*</b>	Con	832	65.8
Sefton J. Ms.	SLD	265	21.0
Wood R.	Lab	167	13.2
<b>Turnout</b>		46.0	44.9

<b>Royston East (4170)</b>			
		<b>vote</b>	<b>share</b>
<b>Smith F.*</b>	Con	1,146	58.3
Comley J. Ms.	SLD	493	25.1
Hills C.	Lab	328	16.7
<b>Turnout</b>		47.0	33.2

<b>Royston West (5652)</b>			
		<b>vote</b>	<b>share</b>
<b>Hughes M.</b>	Con	1,216	46.8
Hardwicke G. Ms.	SLD	855	32.9
King R.	Lab	525	20.2
<b>Turnout</b>		46.0	13.9

<b>Walsworth (6096)</b>			
		<b>vote</b>	<b>share</b>
<b>Parker C.*</b>	Rate	1,584	62.0
Newby R.	Lab	688	26.9
Clark P.	SLD	213	8.3
Roberts E. Ms.	Green	70	2.7
<b>Turnout</b>		42.0	35.1

<b>Weston (1248)</b>			
		<b>vote</b>	<b>share</b>
<b>Evans R.*</b>	Con	403	56.6
Jarvis S.	SLD	196	27.5
Leete R.	Lab	113	15.9
<b>Turnout</b>		57.0	29.1



Wilbury (4036)			
		vote	share
Mardell P.	Lab	1,010	46.1
Bloxham R.*	Con	941	42.9
Hunter D.	SLD	242	11.0
Turnout		54.0	3.1

## North Hertfordshire - 1990

Baldock (6953)			
		vote	share
Parlour M.	Lab	1,713	52.2
Hill M.	Con	1,569	47.8
Turnout		47.2	4.4

Bearton (4475)			
		vote	share
Marr J. Ms.*	Lab	1,375	63.8
Porter N.	Con	545	25.3
Canning R.	SLD	235	10.9
Turnout		48.2	38.5

Codicote (2381)			
		vote	share
Smith E.	Con	763	57.3
Read P.	Lab	569	42.7
Turnout		56.0	14.6

Grange (5083)			
		vote	share
Kitchiner D.*	Lab	1,826	65.2
Muir M.	Con	604	21.6
Streeter R.	SLD	245	8.7
Barrett I.	Green	126	4.5
Turnout		55.1	43.6

Highbury (5086)			
		vote	share
Boddey S.	Con	964	37.3
Burton E. Ms.*	SDP	747	28.9
Tizzard D.	Lab	670	25.9
Hyde N.	Ind	204	7.9
Turnout		50.8	8.4

Kimpton (1636)			
		vote	share
Martin A. Ms.	Con	509	59.8
Saunders J.	Lab	342	40.2
Turnout		52.0	19.6

Knebworth (3419)			
		vote	share
Dumelow G.*	Con	1,013	56.3
Doyle C. Ms.	Lab	415	23.1
Stiff M.	SLD	202	11.2
Madgin S.	Green	170	9.4
Turnout		52.6	33.2

Letchworth East (4600)			
		vote	share
Jarman A.	Lab	1,435	57.7
Storer G. Ms.	Con	595	23.9
Gammell M.	SLD	247	9.9
Blakeley E.	Green	209	8.4
Turnout		54.0	33.8

Letchworth South-East (6091)			
		vote	share
Wilkinson J.	Lab	1,591	47.8
Whalley G.	Con	1,097	33.0
Wellfare G.	SDP	347	10.4
Stevens S. Ms.	Green	294	8.8
Turnout		54.7	14.8

Letchworth South-West (4592)			
		vote	share
Needham L. Ms.	Con	1,341	48.3
Simpson I.	SLD	800	28.8
Agar N.	Lab	637	22.9
Turnout		60.5	19.5

Oughton (4175)			
		vote	share
Smith H.*	Lab	1,368	68.4
Lambourne P. Ms.	Con	367	18.3
Clark P.	SLD	266	13.3
Turnout		47.9	50.0

Priory (2741)			
		vote	share
Flatman R.*	Con	822	53.9
Harbron S.	SLD	455	29.8
Gosling J. Ms.	Lab	249	16.3
Turnout		55.7	24.0

Royston East (4170)			
		vote	share
Drake D.	Con	1,087	48.2
Etheridge J. Ms.	Lab	686	30.4
Waterhouse G. Ms.	SLD	296	13.1
Harrison M.	SDP	184	8.2
Turnout		54.0	17.8

Royston West (6125)			
		vote	share
Doyle T.	Con	1,261	37.7
Cook S.	SLD	1,043	31.2
Baker L. Ms.	Lab	1,037	31.0
Turnout		54.6	6.5

Walsworth (6004)			
		vote	share
Swain J.*	Rate	1,423	47.5
Stears M.	Lab	1,289	43.0
Sefton J. Ms.	SLD	284	9.5
Turnout		49.9	4.5

Wilbury (3996)			
		vote	share
Mantle I.*	Lab	1,320	59.4
Wilkins H. Ms.	Con	668	30.1
Tustin S. Ms.	SLD	233	10.5
Turnout		55.6	29.4

## North Hertfordshire - 1991

Arbury (1779)			
		vote	share
Young A.	Con	566	50.9
Waide M. Ms.	LD	416	37.4
Strickland-Clark A. Ms.	Lab	130	11.7
Turnout		62.7	13.5

Baldock (7093)			
		vote	share
Muir M.	Con	1,509	46.7
Leete R.	Lab	1,124	34.8
Jarvis S. Ms.	LD	597	18.5
Turnout		45.5	11.9

Bearton (4506)			
		vote	share
Whitlock D.	Lab	1,064	51.3
Archer S.	Con	691	33.3
Harbron L. Ms.	LD	321	15.5
Turnout		46.2	18.0

Grange (5190)			
		vote	share
Reade T.	Lab	1,404	54.3
McNeilly C. Ms.	Con	730	28.2
Worcester C. Ms.	LD	451	17.4
Turnout		49.9	26.1

Highbury (5061)			
		vote	share
Dartington R.	Con	977	39.8
Burton E. Ms.	Rate	693	28.2
Tizzard D.	Lab	466	19.0
Clark P.	LD	318	13.0
Turnout		48.5	11.6

Hitchwood (1357)			
		vote	share
Bird R.	Con	433	62.7
Cunningham P. Ms.	LD	135	19.5
Southward C.	Lab	123	17.8
Turnout		51.1	43.1

Hoo (1468)			
		vote	share
Barnard D.	Con	410	49.0
Wood R.	Lab	313	37.4
Llewelyn D.	LD	113	13.5
Turnout		56.9	11.6

Letchworth East (4855)			
		vote	share
Bifield W.*	Lab	1,108	50.1
Storer G. Ms.	Con	638	28.8
Gammell M.	LD	360	16.3
Blakeley E.	Green	106	4.8
Turnout		45.7	21.2

Letchworth South-East (6066)			
		vote	share
Agar N.	Lab	1,136	37.4
Shakespeare-Smith R.	Con	1,123	37.0
Kingman A. Ms.	LD	672	22.1
Fraser-Andrews S. Ms.	Green	105	3.5
Turnout		50.1	0.4

Letchworth South-West (4521)			
		vote	share
Simpson I.	Lib	1,257	46.6
Jones D.*	Con	1,061	39.4
Grimes L. Ms.	Lab	377	14.0
Turnout		59.7	7.3

Newsells (1231)			
		vote	share
Wilkerson R.*	Con	448	62.3
Martin R.	LD	147	20.4
Hurst C. Ms.	Lab	124	17.2
Turnout		58.5	41.9

Offa (1567)			
		vote	share
Faulkner L. Ms.*	Con	474	47.7
Harbron S.	LD	404	40.7
Saunders J.	Lab	115	11.6
Turnout		63.4	7.0

Oughton (4017)			
		vote	share
Carss A. Ms.*	Lab	1,122	65.7
Lambourne P. Ms.	Con	370	21.7
Walker V. Ms.	LD	215	12.6
Turnout		42.5	44.1

Royston West (6167)			
		vote	share
Cook S.	LD	1,366	42.5
Perry J.	Con	1,199	37.3
Baker L. Ms.	Lab	648	20.2
Turnout		52.3	5.2

<b>Sandon (1115)</b>			
		<b>vote</b>	<b>share</b>
<b>Faure Walker E.</b>	Ind	416	60.5
<b>Greenfield H.*</b>	Con	216	31.4
<b>Martin J. Ms.</b>	LD	32	4.7
<b>Doyle C. Ms.</b>	Lab	24	3.5
		<b>Turnout</b>	61.2 29.1

<b>Walsworth (6022)</b>			
		<b>vote</b>	<b>share</b>
<b>Logan K.*</b>	Rate	1,627	57.4
<b>Billing D.</b>	Lab	914	32.2
<b>Newby R.</b>	LD	294	10.4
		<b>Turnout</b>	47.2 25.1

<b>Wilbury (3911)</b>			
		<b>vote</b>	<b>share</b>
<b>Evans D.</b>	Lab	908	43.5
<b>Emsall K.*</b>	Con	847	40.6
<b>Tustin S. Ms.</b>	LD	333	15.9
		<b>Turnout</b>	53.5 2.9

## North Hertfordshire - 1992

<b>Ashbrook (2136)</b>			
		<b>vote</b>	<b>share</b>
<b>Tatham M.*</b>	Con	789	70.4
<b>Saunder J.</b>	Lab	215	19.2
<b>Upchurch E. Ms.</b>	LD	116	10.4
		<b>Turnout</b>	54.0 51.3

<b>Baldock (7133)</b>			
		<b>vote</b>	<b>share</b>
<b>Crow B.*</b>	Con	1,536	51.0
<b>Penfold H.</b>	LD	846	28.1
<b>Leete R.</b>	Lab	629	20.9
		<b>Turnout</b>	42.4 22.9

<b>Bearton (4520)</b>			
		<b>vote</b>	<b>share</b>
<b>Billing J. Ms.*</b>	Lab	845	42.0
<b>East M.</b>	Con	704	35.0
<b>Parker C.</b>	Rate	315	15.7
<b>Canning R.</b>	LD	148	7.4
		<b>Turnout</b>	44.6 7.0

<b>Cadwell (1832)</b>			
		<b>vote</b>	<b>share</b>
<b>Lee R.*</b>	Con	620	67.8
<b>Lawson D.</b>	Lab	294	32.2
		<b>Turnout</b>	50.3 35.7

<b>Grange (5169)</b>			
		<b>vote</b>	<b>share</b>
<b>Kearns D.*</b>	Lab	1,078	52.3
<b>McNelliey C. Ms.</b>	Con	613	29.8
<b>Worcester C. Ms.</b>	LD	369	17.9
		<b>Turnout</b>	40.0 22.6

<b>Highbury (5073)</b>			
		<b>vote</b>	<b>share</b>
<b>Dee P.</b>	Con	1,067	46.1
<b>Burton E. Ms.</b>	Rate	657	28.4
<b>Clark P.</b>	LD	304	13.1
<b>Gater P.</b>	Lab	288	12.4
		<b>Turnout</b>	45.7 17.7

<b>Knebworth (3402)</b>			
		<b>vote</b>	<b>share</b>
<b>Hilton M. Ms.*</b>	Con	861	62.6
<b>Stiff M.</b>	LD	335	24.3
<b>Ashwell J.</b>	Lab	180	13.1
		<b>Turnout</b>	40.7 38.2

<b>Letchworth East (4926)</b>			
		<b>vote</b>	<b>share</b>
<b>Kercher L. Ms.*</b>	Lab	878	45.0
<b>Athwal R.</b>	Con	603	30.9
<b>Gammell M.</b>	LD	405	20.8
<b>Blakeley E.</b>	Green	65	3.3
		<b>Turnout</b>	39.8 14.1

<b>Letchworth South-East (6097)</b>			
		<b>vote</b>	<b>share</b>
<b>Wood P. Ms.</b>	Con	1,261	44.6
<b>Trangmar T. Ms.</b>	Lab	969	34.3
<b>Poole P. Ms.</b>	LD	596	21.1
		<b>Turnout</b>	46.4 10.3

<b>Letchworth South-West (4551)</b>			
		<b>vote</b>	<b>share</b>
<b>Woods G.*</b>	Con	1,206	48.3
<b>Kingman A. Ms.</b>	LD	1,030	41.2
<b>Grimes L. Ms.</b>	Lab	263	10.5
		<b>Turnout</b>	55.0 7.0

<b>Oughton (3972)</b>			
		<b>vote</b>	<b>share</b>
<b>Kirby J. Ms.*</b>	Lab	796	58.4
<b>McLean J. Ms.</b>	Con	431	31.6
<b>Palmer G.</b>	LD	135	9.9
		<b>Turnout</b>	34.6 26.8

<b>Priory (2802)</b>			
		<b>vote</b>	<b>share</b>
<b>Thake R.*</b>	Con	822	63.4
<b>Seabrook E. Ms.</b>	LD	321	24.8
<b>Tizzard D.</b>	Lab	153	11.8
		<b>Turnout</b>	46.3 38.7

<b>Royston East (4254)</b>			
		<b>vote</b>	<b>share</b>
<b>Smith F.*</b>	Con	1,131	61.1
<b>Pitts M. Ms.</b>	LD	386	20.8
<b>Etheridge J. Ms.</b>	Lab	335	18.1
		<b>Turnout</b>	43.5 40.2

<b>Royston West (6189)</b>			
		<b>vote</b>	<b>share</b>
<b>Hughes M.*</b>	Con	1,288	48.1
<b>Kennington P. Ms.</b>	LD	833	31.1
<b>Baker L. Ms.</b>	Lab	559	20.9
		<b>Turnout</b>	43.5 17.0

<b>Walsworth (6091)</b>			
		<b>vote</b>	<b>share</b>
<b>Ward D.</b>	Rate	1,613	60.8
<b>Kirk P.</b>	Lab	821	30.9
<b>Cunningham P. Ms.</b>	LD	220	8.3
		<b>Turnout</b>	43.5 29.8

<b>Weston (1259)</b>			
		<b>vote</b>	<b>share</b>
<b>Jarvis S.</b>	LD	383	51.7
<b>Evans R.*</b>	Con	328	44.3
<b>Trangmar T. Ms.</b>	Lab	30	4.0
		<b>Turnout</b>	58.8 7.4

<b>Wilbury (3920)</b>			
		<b>vote</b>	<b>share</b>
<b>Shakespeare-Smith R.</b>	Con	773	41.7
<b>Mardell P.*</b>	Lab	660	35.6
<b>Booton P.</b>	LD	422	22.7
		<b>Turnout</b>	47.4 6.1

## North Hertfordshire - 1994

<b>Baldock (7112)</b>			
		<b>vote</b>	<b>share</b>
<b>Bagnelle V.</b>	Con	1,310	41.7
<b>Hartley A.</b>	Lab	1,098	34.9
<b>Jarvis S. Ms.</b>	LD	735	23.4
		<b>Turnout</b>	44.3 6.7

<b>Bearton (4504)</b>			
		<b>vote</b>	<b>share</b>
<b>Marr J. Ms.*</b>	Lab	1,233	62.0
<b>East M.</b>	Con	374	18.8
<b>Martin R.</b>	LD	177	8.9
<b>Parker C.</b>	Rate	108	5.4
<b>Howitt N.</b>	Green	96	4.8
		<b>Turnout</b>	44.1 43.2

<b>Codicote (2499)</b>			
		<b>vote</b>	<b>share</b>
<b>Smith E.*</b>	Con	612	45.7
<b>McWalter T.</b>	Lab	483	36.1
<b>Stanley R.</b>	LD	186	13.9
<b>Nelson M.</b>	Ind Lab	58	4.3
		<b>Turnout</b>	53.8 9.6

<b>Grange (5173)</b>			
		<b>vote</b>	<b>share</b>
<b>Mardell P.</b>	Lab	1,482	59.0
<b>Mitchell E. Ms.</b>	Con	519	20.7
<b>Hall R.</b>	LD	509	20.3
		<b>Turnout</b>	48.5 38.4

<b>Highbury (5099)</b>			
		<b>vote</b>	<b>share</b>
<b>Chapman T.</b>	Con	1,016	41.0
<b>Clark P.</b>	LD	973	39.2
<b>Tizzard D.</b>	Lab	491	19.8
		<b>Turnout</b>	48.7 1.7

<b>Kimpton (1663)</b>			
		<b>vote</b>	<b>share</b>
<b>Burn R.</b>	Con	382	48.2
<b>Palmer G.</b>	LD	290	36.6
<b>Wood R.</b>	Lab	120	15.2
		<b>Turnout</b>	48.0 11.6

<b>Knebworth (3371)</b>			
		<b>vote</b>	<b>share</b>
<b>Dumelow G.*</b>	Con	793	51.5
<b>Stiff M.</b>	LD	341	22.1
<b>Levett G.</b>	Lab	328	21.3
<b>Madgin S.</b>	Green	79	5.1
		<b>Turnout</b>	45.9 29.3

<b>Letchworth East (4929)</b>			
		<b>vote</b>	<b>share</b>
<b>Jarman A.*</b>	Lab	1,121	53.5
<b>Harris A.</b>	Con	527	25.2
<b>Gammell M.</b>	LD	381	18.2
<b>Blakley E.</b>	Green	66	3.2
		<b>Turnout</b>	42.6 28.4

<b>Letchworth South-East (5937)</b>			
		<b>vote</b>	<b>share</b>
<b>Wilkinson J.*</b>	Lab	1,305	40.9
<b>Ellis D.</b>	LD	1,096	34.3
<b>McNelliey C. Ms.</b>	Con	790	24.8
		<b>Turnout</b>	53.8 6.5

<b>Letchworth South-West (4507)</b>			
		<b>vote</b>	<b>share</b>
<b>Kingham A. Ms.</b>	LD	1,166	44.0
<b>Needham L. Ms.*</b>	Con	1,051	39.7
<b>Watson-Blake E. Ms.</b>	Lab	431	16.3
		<b>Turnout</b>	58.8 4.3

<b>Oughton (4038)</b>			
		<b>vote</b>	<b>share</b>
<b>Harbourne D.</b>	Lab	980	64.9
Walker V. Ms.	LD	277	18.3
Brook N.	Con	254	16.8
	<b>Turnout</b>	37.4	46.5

<b>Priory (2888)</b>			
		<b>vote</b>	<b>share</b>
<b>Ashley D.</b>	Con	566	41.0
Chamberlain D.	Ind	315	22.8
Canning R.	LD	277	20.1
Stears M.	Lab	221	16.0
	<b>Turnout</b>	47.9	18.2

<b>Royston East (4315)</b>			
		<b>vote</b>	<b>share</b>
<b>Drake D.*</b>	Con	900	43.6
Pitts M. Ms.	LD	655	31.7
King R.	Lab	508	24.6
	<b>Turnout</b>	47.8	11.9

<b>Royston West (6184)</b>			
		<b>vote</b>	<b>share</b>
<b>Kennington P. Ms.</b>	LD	1,078	37.7
Dwerryhouse- Spears J. Ms.	Con	983	34.4
Baker L. Ms.	Lab	799	27.9
	<b>Turnout</b>	46.2	3.3

<b>Walsworth (6050)</b>			
		<b>vote</b>	<b>share</b>
<b>Kirk P.</b>	Lab	1,360	50.6
Burton E. Ms.	Rate	816	30.3
Lovewell B.	Con	277	10.3
Heath J.	LD	237	8.8
	<b>Turnout</b>	44.5	20.2

<b>Wilbury (4160)</b>			
		<b>vote</b>	<b>share</b>
<b>Mantle I.*</b>	Lab	990	52.7
Bloxham S.	Con	471	25.1
Booton P.	LD	419	22.3
	<b>Turnout</b>	45.2	27.6

## North Hertfordshire - 1995

<b>Arbury (1887)</b>			
		<b>vote</b>	<b>share</b>
<b>Young A.*</b>	Con	671	57.3
Pritchard R.	LD	323	27.6
McFall R.	Lab	177	15.1
	<b>Turnout</b>	62.1	29.7

<b>Baldock (7132)</b>			
		<b>vote</b>	<b>share</b>
<b>Derbyshire B.</b>	Lab	1,535	53.2
Muir M.*	Con	919	31.8
Gaskell V.	LD	433	15.0
	<b>Turnout</b>	40.5	21.3

<b>Bearton (4566)</b>			
		<b>vote</b>	<b>share</b>
<b>Hitchcock D.</b>	Lab	1,181	71.8
East M.	Con	271	16.5
Newham J.	LD	192	11.7
	<b>Turnout</b>	36.1	55.4

<b>Grange (5122)</b>			
		<b>vote</b>	<b>share</b>
<b>Morris D.</b>	Lab	1,668	71.7
Mitchell E. Ms.	Con	390	16.8
Hall R.	LD	269	11.6
	<b>Turnout</b>	45.5	54.9

<b>Highbury (5066)</b>			
		<b>vote</b>	<b>share</b>
<b>Clark P.</b>	LD	1,041	44.2
Dartington R.*	Con	744	31.6
Shelbourn A. Ms.	Lab	570	24.2
	<b>Turnout</b>	46.6	12.6

<b>Hitchwood (1398)</b>			
		<b>vote</b>	<b>share</b>
<b>Bird R.*</b>	Con	318	55.4
Southward C.	Lab	175	30.5
Upchurch E. Ms.	LD	81	14.1
	<b>Turnout</b>	41.2	24.9

<b>Hoo (1464)</b>			
		<b>vote</b>	<b>share</b>
<b>Wood R.</b>	Lab	403	46.4
Barnard D.*	Con	400	46.0
Martin R.	LD	66	7.6
	<b>Turnout</b>	59.5	0.3

<b>Letchworth East (4896)</b>			
		<b>vote</b>	<b>share</b>
<b>Hartley A.</b>	Lab	1,343	65.5
Bloxham S.	Con	378	18.4
Ellis D.	LD	296	14.4
Blakeley E.	Green	34	1.7
	<b>Turnout</b>	41.9	47.1

<b>Letchworth South-East (6149)</b>			
		<b>vote</b>	<b>share</b>
<b>Agar N.*</b>	Lab	1,439	51.0
Gammell M.	LD	738	26.2
McNelliey C. Ms.	Con	642	22.8
	<b>Turnout</b>	46.0	24.9

<b>Letchworth South-West (4579)</b>			
		<b>vote</b>	<b>share</b>
<b>Simpson I.*</b>	LD	1,141	44.6
Needham L. Ms.	Con	1,007	39.3
Watson-Blake E. Ms.	Lab	413	16.1
	<b>Turnout</b>	56.0	5.2

<b>Newsells (1290)</b>			
		<b>vote</b>	<b>share</b>
<b>Wilkerson R.*</b>	Con	419	54.6
East F.	LD	187	24.4
Peacock F.	Lab	161	21.0
	<b>Turnout</b>	59.9	30.2

<b>Offa (1542)</b>			
		<b>vote</b>	<b>share</b>
<b>Strong C. Ms.</b>	Con	310	37.7
Jarvis S. Ms.	LD	275	33.5
Wood J. Ms.	Lab	237	28.8
	<b>Turnout</b>	53.4	4.3

<b>Oughton (4038)</b>			
		<b>vote</b>	<b>share</b>
<b>Carss A. Ms.*</b>	Lab	1,157	76.5
Brook N.	Con	184	12.2
Walker V. Ms.	LD	171	11.3
	<b>Turnout</b>	37.5	64.4

<b>Royston West (6275)</b>			
		<b>vote</b>	<b>share</b>
<b>Cook S.*</b>	LD	870	34.7
Garland K.	Lab	844	33.7
Lill P.	Con	791	31.6
	<b>Turnout</b>	40.0	1.0

<b>Sandon (1151)</b>			
		<b>vote</b>	<b>share</b>
<b>Walker E.*</b>	Ind	482	84.7
Haslam N.	Lab	87	15.3
	<b>Turnout</b>	49.7	69.4

<b>Walsworth (6018)</b>			
		<b>vote</b>	<b>share</b>
<b>Terry P.</b>	Lab	1,275	45.9
Logan K.*	Rate	1,160	41.8
Lovewell B.	Con	212	7.6
Cunningham P. Ms.	LD	128	4.6
	<b>Turnout</b>	46.2	4.1

<b>Wilbury (4275)</b>			
		<b>vote</b>	<b>share</b>
<b>Evans D.*</b>	Lab	975	56.3
Thomson J. Ms.	Con	424	24.5
Booton P.	LD	333	19.2
	<b>Turnout</b>	40.6	31.8

## North Hertfordshire - 1996

<b>Ashbrook (2431)</b>			
		<b>vote</b>	<b>share</b>
<b>Barnard D.</b>	Con	646	57.1
Wallace E.	Lab	307	27.1
Upchurch E. Ms.	LD	178	15.7
	<b>Turnout</b>	46.9	30.0

<b>Baldock (7342)</b>			
		<b>vote</b>	<b>share</b>
<b>McFall R.</b>	Lab	1,085	43.5
Crow B.*	Con	832	33.3
Tapp G.	LD	578	23.2
	<b>Turnout</b>	34.1	10.1

<b>Bearton (4623)</b>			
		<b>vote</b>	<b>share</b>
<b>Billing J. Ms.*</b>	Lab	1,078	69.8
West B.	Con	286	18.5
Newham J.	LD	180	11.7
	<b>Turnout</b>	33.5	51.3

<b>Cadwell (1807)</b>			
		<b>vote</b>	<b>share</b>
<b>Sobek A. Ms.</b>	Lab	466	53.6
Hughes R.	Con	403	46.4
	<b>Turnout</b>	48.5	7.2

<b>Grange (5085)</b>			
		<b>vote</b>	<b>share</b>
<b>Kearns D.*</b>	Lab	1,371	67.2
Shaddick S.	Con	415	20.3
Hall R.	LD	255	12.5
	<b>Turnout</b>	40.1	46.8

<b>Highbury (5074)</b>			
		<b>vote</b>	<b>share</b>
<b>Canning R.</b>	LD	910	41.3
Chapman S. Ms.	Con	853	38.7
Hankin L. Ms.	Lab	440	20.0
	<b>Turnout</b>	43.5	2.6

<b>Knebworth (3410)</b>			
		<b>vote</b>	<b>share</b>
<b>Hilton M. Ms.*</b>	Con	756	50.1
Liddy T.	Lab	754	49.9
	<b>Turnout</b>	44.4	0.1

<b>Letchworth East (4891)</b>			
		<b>vote</b>	<b>share</b>
<b>Kercher L. Ms.*</b>	Lab	1,181	64.0
Stockford P.	Con	378	20.5
Gammell M.	LD	285	15.5
	<b>Turnout</b>	37.7	43.5

<b>Letchworth South-East (6220)</b>			
		<b>vote</b>	<b>share</b>
<b>Andrews J. Ms.</b>	Lab	1,193	46.3
Wood P. Ms.*	Con	789	30.6
Leonard J. Ms.	LD	597	23.1
	<b>Turnout</b>	41.6	15.7

Letchworth South-West (4565)			
		vote	share
<b>Needham L. Ms.</b>	Con	1,021	42.5
Jarvis S. Ms.	LD	1,018	42.4
Watson-Blake M. Ms.	Lab	362	15.1
Turnout		52.6	0.1

Oughton (4068) <sup>2</sup>			
		vote	share
<b>Kirby J. Ms.*</b>	Lab	984	67.5
<b>Stears M.</b>	Lab	893	-
Warwick V. Ms.	LD	251	17.2
Brook N.	Con	222	15.2
Turnout		33.3	50.3

Priory (2869)			
		vote	share
<b>Thake R.*</b>	Con	620	55.2
Palmer G.	LD	274	24.4
White C.	Lab	230	20.5
Turnout		39.3	30.8

Royston East (4347)			
		vote	share
<b>Smith F.*</b>	Con	854	48.1
Prince K.	Lab	586	33.0
Coates C. Ms.	LD	334	18.8
Turnout		40.8	15.1

Royston West (6392)			
		vote	share
<b>Baker L. Ms.</b>	Lab	992	39.6
Dwerryhouse-Spears J. Ms.	Con	860	34.4
East F.	LD	651	26.0
Turnout		39.3	5.3

Walsworth (6020)			
		vote	share
<b>Banks J.</b>	Lab	1,480	67.6
Lovewell B.	Con	447	20.4
Heath J.	LD	261	11.9
Turnout		36.4	47.2

Weston (1241)			
		vote	share
<b>Jarvis S.*</b>	LD	553	69.5
Thomson J. Ms.	Con	192	24.1
Mann J.	Lab	51	6.4
Turnout		64.4	45.4

Wilbury (4305)			
		vote	share
<b>Grindal G.</b>	Lab	928	58.7
Shakespeare-Smith R.*	Con	421	26.6
Booton P.	LD	231	14.6
Turnout		36.7	32.1

## North Hertfordshire - 1998

Baldock (7440)			
		vote	share
<b>Crow B.</b>	Con	947	48.6
Haslam N.	Lab	763	39.1
White J.	LD	240	12.3
Turnout		26.3	9.4

Bearton (4619)			
		vote	share
<b>Marr J. Ms.*</b>	Lab	709	57.6
Cherry P. Ms.	Con	356	28.9
Llewelyn D. Ms.	LD	145	11.8
Woodhouse G.	NLP	20	1.6
Turnout		26.7	28.7

Codicote (2541)			
		vote	share
<b>La Plain L.</b>	Con	641	62.0
Hillyer D. Ms.	Lab	312	30.2
Stanley R.	LD	81	7.8
Turnout		40.8	31.8

Grange (5057)			
		vote	share
<b>Mardell P.*</b>	Lab	996	64.9
Paul S.	Con	304	19.8
Hall R.	LD	235	15.3
Turnout		30.4	45.1

Highbury (5054)			
		vote	share
<b>Damiani A.</b>	Con	1,012	48.5
Lord R.	LD	726	34.8
Newham J.	Lab	343	16.4
Bell G.	NLP	7	0.3
Turnout		41.4	13.7

Kimpton (1738)			
		vote	share
<b>Horrell D.</b>	Con	422	66.4
Seddon C.	Lab	143	22.5
Jarvis S. Ms.	LD	66	10.4
Hawkins D. Ms.	NLP	5	0.8
Turnout		36.5	43.9

Knebworth (3459) <sup>2</sup>			
		vote	share
<b>Gray J. Ms.</b>	Con	720	56.3
<b>Wordsworth F.</b>	Con	715	-
Liddy T.	Lab	361	28.2
Tasker C.	Lab	335	-
Stiff M.	LD	128	10.0
Madgin S.	Green	71	5.5
Winder J.	LD	47	-
Turnout		35.6	28.0

Letchworth East (4903)			
		vote	share
<b>Jarman A.*</b>	Lab	750	54.5
Wilson A.	Con	370	26.9
Gammell M.	LD	257	18.7
Turnout		28.2	27.6

Letchworth South-East (6236)			
		vote	share
<b>Wilkinson J.*</b>	Lab	993	43.3
McNelliey C. Ms.	Con	771	33.7
Turner M.	LD	527	23.0
Turnout		36.8	9.7

Letchworth South-West (4629)			
		vote	share
<b>Kingman A. Ms.*</b>	LD	1,097	48.0
Shakespeare-Smith R.	Con	936	40.9
Watson-Blake M. Ms.	Lab	254	11.1
Turnout		49.5	7.0

Oughton (4159)			
		vote	share
<b>Stears M.*</b>	Lab	684	66.2
Brook N.	Con	228	22.1
Warwick V. Ms.	LD	110	10.6
Bell Y. Ms.	NLP	11	1.1
Turnout		24.9	44.1

Priory (2926)			
		vote	share
<b>Ashley D.*</b>	Con	645	65.0
Sheard D.	Lab	214	21.6
Winder J.	LD	128	12.9
Burcombe A. Ms.	NLP	6	0.6
Turnout		34.0	43.4

Royston East (4386)			
		vote	share
<b>Burt P.</b>	Con	822	56.8
King R.	Lab	399	27.6
Ledden J.	LD	227	15.7
Turnout		33.2	29.2

Royston West (6513)			
		vote	share
<b>Lombardi J.</b>	Con	1,004	48.6
Baxter P. Ms.*	LD	594	28.8
West V.	Lab	467	22.6
Turnout		32.1	19.9

Walsworth (6321) <sup>2</sup>			
		vote	share
<b>Kirk P.*</b>	Lab	1,112	49.7
<b>Lunn S. Ms.</b>	Lab	1,020	-
Lovewell B.	Con	524	23.4
Shirley D.	LD	357	16.0
Howe G.	Green	202	9.0
Howard R.	NLP	42	1.9
Rolph L. Ms.	NLP	18	-
Turnout		29.7	26.3

Wilbury (4563)			
		vote	share
<b>Mantle I.*</b>	Lab	641	50.8
Redfern N.	Con	452	35.8
Booton P.	LD	170	13.5
Turnout		27.7	15.0

## North Hertfordshire - 1999

Arbury (1981)			
		vote	share
<b>Young A.*</b>	Con	703	65.5
Pritchard R.	LD	241	22.5
White J. Ms.	Lab	129	12.0
Turnout		54.4	43.1

Baldock East (1767)			
		vote	share
<b>Weeks M.</b>	Con	256	56.4
Merson J.	Lab	101	22.2
Kirkland M. Ms.	LD	97	21.4
Turnout		25.7	34.1

Baldock Town (5702) <sup>3</sup>			
		vote	share
<b>Crow B.*</b>	Con	1,025	43.7
<b>Muir M.</b>	Con	859	-
<b>Knighon I.</b>	Con	842	-
Derbyshire B.*	Lab	787	33.5
McFall R.*	Lab	706	-
Milne A.*	Lab	577	-
Deacon P.	Ind	317	13.5
White J. Ms.	LD	217	9.2
Turner S. Ms.	LD	177	-
Turnout		35.6	10.1

Cadwell (1832)			
		vote	share
<b>Gibbs P. Ms.</b>	Con	450	51.1
Sobek A. Ms.*	Lab	318	36.1
Derwent A.	LD	113	12.8
Turnout		48.1	15.0

Chesfield (1289)			
		vote	share
<b>Jarvis S. Ms.</b>	LD	379	60.5
Peers C. Ms.	Con	192	30.7
Whatson R.	Lab	55	8.8
Turnout		48.8	29.9



Hitchin Walsworth (5509) <sup>2</sup>			
		vote	share
Kirk P.	Lab	930	44.8
Lovewell B.*	Con	844	40.7
Watson R.	Lab	832	-
Shakespeare-Smith R.	Con	782	-
Shirley D.	LD	160	7.7
Howe G.	Green	110	5.3
Howard R.	NLP	31	1.5
Turnout		35.1	4.1

Hitchwood (1988)			
		vote	share
Calder A.*	Con	659	77.2
Wood J. Ms.	Lab	142	16.6
Winder J.	LD	53	6.2
Turnout		43.2	60.5

Knebworth (4025)			
		vote	share
Wordsworth F.*	Con	861	72.2
Stiff M.	LD	154	12.9
Hatherington N. Ms.	Lab	135	11.3
Madgin S.	Green	43	3.6
Turnout		29.7	59.3

Letchworth East (5307)			
		vote	share
Kercher L. Ms.*	Lab	747	49.4
Allen E. Ms.	Con	540	35.7
Gammell M.	LD	225	14.9
Turnout		28.6	13.7

Letchworth Grange (5154)			
		vote	share
Morris D.*	Lab	728	50.6
Reith G.	Con	538	37.4
Minards-Gammell M. Ms.	LD	172	12.0
Turnout		28.0	13.2

Letchworth South East (5191)			
		vote	share
McNellie C. Ms.*	Con	744	45.5
Andrews J. Ms.	Lab	596	36.5
Turner M.	LD	295	18.0
Turnout		31.6	9.1

Letchworth South West (5624)			
		vote	share
Hone T.	Con	1,269	47.3
Ircha A.	LD	1,222	45.5
Hartley J. Ms.	Lab	193	7.2
Turnout		47.8	1.8

Letchworth Wilbury (4016)			
		vote	share
Grindal G.*	Lab	517	55.9
Thomson J. Ms.	Con	296	32.0
Booton P.	LD	112	12.1
Turnout		23.1	23.9

Royston Heath (3898)			
		vote	share
Kennedy R.*	Con	641	52.7
King R.	Lab	304	25.0
Ledden J.	LD	271	22.3
Turnout		31.4	27.7

Royston Meridian (3338)			
		vote	share
Smith F.*	Con	587	54.1
Fryer D. Ms.	Lab	284	26.2
Baxter P. Ms.	LD	215	19.8
Turnout		32.6	27.9

Royston Palace (3813)			
		vote	share
Beaver M.*	Con	486	48.0
Herbert J. Ms.	Lab	308	30.4
Coates C. Ms.	LD	219	21.6
Turnout		26.7	17.6

## North Hertfordshire - 2002

Baldock Town (5640)			
		vote	share
Muir M.*	Con	1,357	65.4
Leete R.	Lab	487	23.5
Hollands G.	LD	230	11.1
Turnout		36.8	41.9

Codicote (2027)			
		vote	share
Omer K. Ms.*	Lab	600	55.7
Bardett A.	Con	478	44.3
Turnout		53.3	11.3

Hitchin Bearton (5326)			
		vote	share
Terry P.	Lab	849	50.4
Cherry P. Ms.	Con	507	30.1
Catchpole K.	LD	187	11.1
Tierney-Howitt N.	Green	142	8.4
Turnout		31.8	20.3

Hitchin Highbury (5466)			
		vote	share
Clark P.*	LD	1,405	63.4
Shakespeare-Smith R.	Con	713	32.2
Howe G.	Green	98	4.4
Turnout		40.8	31.2

Hitchin Oughton (3750)			
		vote	share
Billing D.	Lab	656	58.6
Strong T.	Con	308	27.5
Sutcliffe I. Ms.	LD	156	13.9
Turnout		29.9	31.1

Hitchin Priory (3962)			
		vote	share
Ashley A. Ms.	Con	991	64.4
Macmillan H. Ms.	LD	314	20.4
Rehal T.	Lab	234	15.2
Turnout		38.9	44.0

Hitchin Walsworth (5423)			
		vote	share
Lunn S. Ms.*	Lab	1,000	46.8
Miller D.	Con	847	39.6
Shirley D.	LD	198	9.3
Howe E. Ms.	Green	92	4.3
Turnout		39.5	7.2

Kimpton (1710)			
		vote	share
Horrell D.*	Con	551	72.9
Wood J. Ms.	Lab	100	13.2
Ircha A.	LD	67	8.9
Ashton D.	Green	38	5.0
Turnout		44.5	59.7

Knebworth (3955)			
		vote	share
Gray J. Ms.*	Con	826	61.9
Stears D.	Lab	266	19.9
Wilkins P.	LD	183	13.7
Madgin S.	Green	60	4.5
Turnout		33.8	41.9

Letchworth East (5292)			
		vote	share
Hartley T.*	Lab	650	42.0
Allen E. Ms.	Con	536	34.6
Gammell M.	LD	241	15.6
Blakeley E.	Green	120	7.8
Turnout		29.3	7.4

Letchworth Grange (5171)			
		vote	share
Mardell P.*	Lab	920	59.2
Gower J. Ms.	Con	439	28.2
Minards-Gammell M. Ms.	LD	195	12.5
Turnout		30.1	31.0

Letchworth South East (5117)			
		vote	share
Barry J.	Con	811	44.5
Agar N.*	Lab	656	36.0
Winder J.	LD	355	19.5
Turnout		35.7	8.5

Letchworth South West (5653)			
		vote	share
Kingman A. Ms.*	LD	1,369	47.9
Redfern N.*	Con	1,244	43.5
Hartley J. Ms.	Lab	247	8.6
Turnout		50.7	4.4

Letchworth Wilbury (4023)			
		vote	share
Mantle I.*	Lab	578	54.1
Cook J. Ms.	Con	333	31.2
Butcher N.	LD	157	14.7
Turnout		26.7	22.9

Royston Heath (3897) <sup>2</sup>			
		vote	share
Greenwood F. Ms.	Con	671	51.5
Burt P.*	Con	651	-
King R.	Lab	350	26.8
Garland K.	Lab	322	-
Ledden J.	LD	283	21.7
Turnout		31.6	24.6

Royston Meridian (3704)			
		vote	share
Hunter T.*	Con	611	53.0
Fryer D. Ms.	Lab	309	26.8
Baxter P. Ms.	LD	232	20.1
Turnout		31.2	26.2

Royston Palace (3805)			
		vote	share
Davidson W.	Con	543	51.5
Baker L.*	Lab	512	48.5
Turnout		28.1	2.9

## North Hertfordshire - 2003

Arbury (2030)			
		vote	share
Young A.*	Con	744	61.5
Marshall A.	LD	466	38.5
Turnout		59.8	23.0

Baldock East (1775)			
		vote	share
Hollands G.	LD	363	53.0
Wilsher L.	Con	322	47.0
Turnout		38.8	6.0

Baldock Town (5728)			
		vote	share
Weeks M.*	Con	982	57.5
Burgin P.	Lab	465	27.2
White J.	LD	260	15.2
Turnout		29.9	30.3

<b>Cadwell (1799)</b>			
		<b>vote</b>	<b>share</b>
<b>Gibbs P. Ms.*</b>	Con	383	57.1
Canning R.	LD	142	21.2
Rehal T. Ms.	Lab	117	17.4
Howe G.	Green	29	4.3
<b>Turnout</b>		37.4	35.9
<b>Chesfield (2930)</b>			
		<b>vote</b>	<b>share</b>
<b>Jarvis S. Ms.*</b>	LD	595	68.2
Dear J. Ms.	Con	224	25.7
Vale P.	Lab	54	6.2
<b>Turnout</b>		29.9	42.5
<b>Ermine (1972)</b>			
		<b>vote</b>	<b>share</b>
<b>Marshall H.*</b>	Con	675	65.5
Simpson I.	LD	319	30.9
Garland K.	Lab	37	3.6
<b>Turnout</b>		52.4	34.5
<b>Hitchin Bearton (5366)</b>			
		<b>vote</b>	<b>share</b>
<b>Billing J. Ms.*</b>	Lab	782	50.1
Banks K.	Con	421	27.0
Sutcliffe I. Ms.	LD	232	14.9
Madgin S.	Green	127	8.1
<b>Turnout</b>		29.4	23.1
<b>Hitchin Highbury (5443)</b>			
		<b>vote</b>	<b>share</b>
<b>Oliver L.</b>	LD	1,123	52.1
Miller D.	Con	892	41.4
Sahasi K. Ms.	Lab	141	6.5
<b>Turnout</b>		39.7	10.7
<b>Hitchin Walsworth (5435)</b>			
		<b>vote</b>	<b>share</b>
<b>Sheard D.</b>	Lab	679	42.5
Shakespeare-Smith R.	Con	583	36.5
Shirley D.	LD	214	13.4
Howe E. Ms.	Green	123	7.7
<b>Turnout</b>		29.5	6.0
<b>Hoo (1807)</b>			
		<b>vote</b>	<b>share</b>
<b>Barnard D.*</b>	Con	587	68.7
Wood R.	Lab	208	24.3
Ircha A.	LD	60	7.0
<b>Turnout</b>		47.5	44.3
<b>Letchworth East (5299)</b>			
		<b>vote</b>	<b>share</b>
<b>Paterson M.</b>	Con	566	39.3
Jarman A.*	Lab	519	36.0
Gammell M.	LD	272	18.9
Blakeley E.	Green	84	5.8
<b>Turnout</b>		27.2	3.3
<b>Letchworth Grange (5111)</b>			
		<b>vote</b>	<b>share</b>
<b>Kearns D.*</b>	Lab	683	43.6
Bloxham S.	Con	626	39.9
Butcher N.	LD	259	16.5
<b>Turnout</b>		30.8	3.6
<b>Letchworth South East (5162)</b>			
		<b>vote</b>	<b>share</b>
<b>Cunningham J.</b>	Con	826	46.6
Davies J.	Lab	652	36.8
Winder J.	LD	295	16.6
<b>Turnout</b>		34.4	9.8
<b>Letchworth South West (5666)</b>			
		<b>vote</b>	<b>share</b>
<b>Needham L. Ms.</b>	Con	1,246	49.4
Winder J.	LD	1,063	42.2
Ross P.	Lab	211	8.4
<b>Turnout</b>		44.7	7.3

<b>Offa (1629)</b>			
		<b>vote</b>	<b>share</b>
<b>Strong C. Ms.*</b>	Con	438	63.5
Johnson P.	LD	160	23.2
Watson R.	Lab	92	13.3
<b>Turnout</b>		42.4	40.3
<b>Weston &amp; Sandon (1553)</b>			
		<b>vote</b>	<b>share</b>
<b>Jarvis S.*</b>	LD	566	69.8
Darby M. Ms.	Con	222	27.4
Stears D.	Lab	23	2.8
<b>Turnout</b>		52.3	42.4
<b>North Hertfordshire - 2004</b>			
<b>Baldock Town (5838)</b>			
		<b>vote</b>	<b>share</b>
<b>Knighthon I.*</b>	Con	1,375	61.8
Burgin P.	Lab	459	20.6
Kirkland M. Ms.	LD	391	17.6
<b>Turnout</b>		38.5	41.2
<b>Hitchin Bearton (5434)</b>			
		<b>vote</b>	<b>share</b>
<b>Stears M.*</b>	Lab	816	38.3
Hyde A.	Con	626	29.4
Clark R.	LD	378	17.8
Howe G.	Green	309	14.5
<b>Turnout</b>		39.5	8.9
<b>Hitchin Highbury (5543)</b>			
		<b>vote</b>	<b>share</b>
<b>Wren S. Ms.</b>	Con	1,265	45.8
Shirley D.	LD	1,205	43.6
Sahasi K.	Lab	177	6.4
Ware A.	Green	114	4.1
<b>Turnout</b>		50.0	2.2
<b>Hitchin Oughton (3719)</b>			
		<b>vote</b>	<b>share</b>
<b>Kirby J. Ms.*</b>	Lab	581	48.1
Brook N.	Con	377	31.2
Canning R.	LD	251	20.8
<b>Turnout</b>		32.7	16.9
<b>Hitchin Priory (4016)</b>			
		<b>vote</b>	<b>share</b>
<b>Thake R.*</b>	Con	1,106	60.1
Ircha A.	LD	473	25.7
McCall D.	Lab	261	14.2
<b>Turnout</b>		46.2	34.4
<b>Hitchin Walsworth (5460)</b>			
		<b>vote</b>	<b>share</b>
<b>Shakespeare-Smith R.</b>	Con	926	41.1
Kirk P.*	Lab	797	35.4
Sutcliffe I. Ms.	LD	324	14.4
Howe E. Ms.	Green	204	9.1
<b>Turnout</b>		41.4	5.7
<b>Hitchwood (2045)</b>			
		<b>vote</b>	<b>share</b>
<b>Miller D.</b>	Con	582	67.8
Lott M.	LD	183	21.3
Watson R.	Lab	94	10.9
<b>Turnout</b>		42.3	46.4
<b>Knebworth (3992)<sup>2</sup></b>			
		<b>vote</b>	<b>share</b>
<b>Wordsworth R.*</b>	Con	924	51.8
<b>Bardett A.</b>	Con	889	-
Wilkins D. Ms.	LD	470	26.3
Winder U. Ms.	LD	219	-
Eden A.	Lab	198	11.1
Madgin S.	Green	192	10.8
<b>Turnout</b>		39.6	25.4

<b>Letchworth East (5256)</b>			
		<b>vote</b>	<b>share</b>
<b>Kercher L. Ms.*</b>	Lab	752	38.9
Mitchell E. Ms.	Con	714	37.0
Gammell M.	LD	466	24.1
<b>Turnout</b>		37.0	2.0
<b>Letchworth Grange (5069)</b>			
		<b>vote</b>	<b>share</b>
<b>Bloxham S.</b>	Con	727	39.7
Jarman A.	Lab	696	38.0
Turner S. Ms.	LD	410	22.4
<b>Turnout</b>		36.4	1.7
<b>Letchworth South East (5234)</b>			
		<b>vote</b>	<b>share</b>
<b>McNamara L.</b>	Con	979	46.0
Melton M. Ms.	Lab	665	31.3
Winder J.	LD	484	22.7
<b>Turnout</b>		40.9	14.8
<b>Letchworth South West (5710)</b>			
		<b>vote</b>	<b>share</b>
<b>Hone T.*</b>	Con	1,454	49.4
Winder J.	LD	1,218	41.4
Hartley J. Ms.	Lab	269	9.1
<b>Turnout</b>		51.8	8.0
<b>Letchworth Wilbury (4105)</b>			
		<b>vote</b>	<b>share</b>
<b>Grindal G.*</b>	Lab	548	42.3
Cook J. Ms.	Con	471	36.3
Minards-Gammell M. Ms.	LD	278	21.4
<b>Turnout</b>		31.9	5.9
<b>Royston Heath (4031)</b>			
		<b>vote</b>	<b>share</b>
<b>Burt P.*</b>	Con	882	55.2
Hill R.	LD	434	27.2
Garland K.	Lab	282	17.6
<b>Turnout</b>		40.0	28.0
<b>Royston Meridian (4000)</b>			
		<b>vote</b>	<b>share</b>
<b>Smith F.*</b>	Con	867	56.6
Ledden J.	LD	419	27.3
West V.	Lab	247	16.1
<b>Turnout</b>		38.6	29.2
<b>Royston Palace (3855)</b>			
		<b>vote</b>	<b>share</b>
<b>Inwood R.</b>	LD	614	44.5
Palmer G.	Con	518	37.5
Baker L.	Lab	248	18.0
<b>Turnout</b>		36.1	7.0
<b>North Hertfordshire - 2006</b>			
<b>Baldock Town (5913)</b>			
		<b>vote</b>	<b>share</b>
<b>Muir M.*</b>	Con	1,370	65.0
Burgin P.	Lab	331	15.7
White J.	LD	257	12.2
Howe G.	Green	149	7.1
<b>Turnout</b>		35.8	49.3
<b>Codicote (2096)</b>			
		<b>vote</b>	<b>share</b>
<b>Brindley T.</b>	Con	744	75.5
Wood R.	Lab	122	12.4
Winder J.	LD	119	12.1
<b>Turnout</b>		47.3	63.1





<b>Hitchwood Offa &amp; Hoo (5569)<sup>3</sup></b>			
		<b>vote</b>	<b>share</b>
<b>Barnard D.*</b>	Con	1,603	53.7
<b>Miller D.*</b>	Con	1,516	-
<b>Strong C. Ms.*</b>	Con	1,512	-
Johnson P.	LD	503	16.9
Ashton D.	Green	486	16.3
Billing C. Ms.	Lab	391	13.1
<b>Turnout</b>		43.4	36.9
<b>Kimpton (1771)</b>			
		<b>vote</b>	<b>share</b>
<b>Bishop J.*</b>	Con	512	72.9
Jarvis O.	LD	125	17.8
Wood J. Ms.	Lab	65	9.3
<b>Turnout</b>		39.8	55.1
<b>Knebworth (4025)<sup>2</sup></b>			
		<b>vote</b>	<b>share</b>
<b>Gray J. Ms.*</b>	Con	987	58.1
<b>Bardett A.*</b>	Con	943	-
Wilkins D. Ms.	LD	296	17.4
Burnell J.	Lab	232	13.7
Painter H.	Lab	213	-
Berrington W.	Green	183	10.8
<b>Turnout</b>		37.1	40.7
<b>Letchworth East (3877)<sup>2</sup></b>			
		<b>vote</b>	<b>share</b>
<b>Kercher L. Ms.*</b>	Lab	549	45.5
<b>Jarman A.</b>	Lab	503	-
Paterson M.*	Con	456	37.8
Proudlove D. Ms.*	Con	440	-
Winder R. Ms.	LD	202	16.7
Fisher M.	LD	187	-
<b>Turnout</b>		32.2	7.7
<b>Letchworth Grange (5805)<sup>3</sup></b>			
		<b>vote</b>	<b>share</b>
<b>Kearns D.*</b>	Lab	912	42.4
<b>Bloxham S.*</b>	Con	906	42.1
<b>Dear A. Ms.</b>	Con	869	-
Bloxham M. Ms.*	Con	852	-
Andrews J. Ms.	Lab	843	-
Eden T.	Lab	840	-
Inwood J. Ms.	LD	335	15.6
<b>Turnout</b>		36.1	0.3
<b>Letchworth South East (5788)<sup>3</sup></b>			
		<b>vote</b>	<b>share</b>
<b>Cunningham J.*</b>	Con	928	43.0
<b>Booth J.</b>	Con	861	-
<b>Levett D.*</b>	Con	841	-
Kissen N.	Lab	451	20.9
Lake K.	Lab	433	-
Kingman A. Ms.	LD	430	19.9
Winter J. Ms.	LD	422	-
Winder J.	LD	374	-
Barry J.	UKIP	350	16.2
<b>Turnout</b>		34.3	22.1
<b>Letchworth South West (5990)<sup>3</sup></b>			
		<b>vote</b>	<b>share</b>
<b>Needham L. Ms.*</b>	Con	1,532	57.4
<b>Davey M. Ms.*</b>	Con	1,426	-
<b>Hone T.</b>	Con	1,407	-
Winder J.	LD	593	22.2
Harcourt C.	LD	541	-
Penny M.	LD	536	-
Parkins H.	Lab	279	10.5
Hart J.	Green	263	9.9
Blakeley E.	Green	252	-
Mollart-Griffin H. Ms.	Green	183	-
<b>Turnout</b>		42.1	35.2
<b>Letchworth Wilbury (4035)<sup>2</sup></b>			
		<b>vote</b>	<b>share</b>
<b>Grindal G.*</b>	Lab	595	41.1
<b>Mantle I.</b>	Lab	592	-
Needham E.*	Con	546	37.7
Sharma P.	Con	431	-
Winder U. Ms.	LD	307	21.2
<b>Turnout</b>		32.2	3.4

<b>Royston Heath (4137)<sup>2</sup></b>			
		<b>vote</b>	<b>share</b>
<b>Burt P.*</b>	Con	780	51.7
<b>Hill F. Ms.*</b>	Con	778	-
Coates C. Ms.	LD	536	35.5
Lilley N. Ms.	LD	445	-
King R.	Lab	194	12.8
<b>Turnout</b>		36.2	16.2
<b>Royston Meridian (4084)<sup>2</sup></b>			
		<b>vote</b>	<b>share</b>
<b>Hunter T.*</b>	Con	842	51.8
<b>Smith F.*</b>	Con	785	-
Ledden J.	LD	333	20.5
May D.	LD	312	-
Harmel K. Ms.	Green	266	16.4
West V.	Lab	183	11.3
<b>Turnout</b>		35.6	31.3
<b>Royston Palace (4127)<sup>2</sup></b>			
		<b>vote</b>	<b>share</b>
<b>Beardwell L. Ms.*</b>	LD	753	48.6
<b>Inwood R.*</b>	LD	710	-
Davidson B.	Con	648	41.8
Palmer G.	Con	607	-
Garland K.	Lab	149	9.6
<b>Turnout</b>		36.7	6.8
<b>Weston &amp; Sandon (1604)</b>			
		<b>vote</b>	<b>share</b>
<b>Jarvis S.*</b>	LD	604	73.4
Rowell C. Ms.	Con	219	26.6
<b>Turnout</b>		51.6	46.8
<b>North Hertfordshire - 2008</b>			
<b>Baldock East (2191)</b>			
		<b>vote</b>	<b>share</b>
<b>Kirkland M. Ms.*</b>	LD	535	51.9
Smith J. Ms.	Con	459	44.5
Harmel K. Ms.	Green	37	3.6
<b>Turnout</b>		47.1	7.4
<b>Baldock Town (5467)</b>			
		<b>vote</b>	<b>share</b>
<b>Weeks M.*</b>	Con	1,148	61.6
Young R.	LD	317	17.0
Hicks D. Ms.	Lab	302	16.2
Pond S. Ms.	Green	96	5.2
<b>Turnout</b>		34.2	44.6
<b>Hitchin Bearton (5993)</b>			
		<b>vote</b>	<b>share</b>
<b>Sangha D.*</b>	Lab	748	36.8
Bunker C.	Con	700	34.4
Maynard L. Ms.	LD	302	14.8
Walker M.	Green	284	14.0
<b>Turnout</b>		34.2	2.4
<b>Hitchin Highbury (5788)</b>			
		<b>vote</b>	<b>share</b>
<b>Body C. Ms.*</b>	LD	1,186	47.4
Hanson M.	Con	1,056	42.2
Crawley M.	Lab	141	5.6
Mardon R.	Green	118	4.7
<b>Turnout</b>		43.3	5.2
<b>Hitchin Oughton (3750)</b>			
		<b>vote</b>	<b>share</b>
<b>Kirby J. Ms.*</b>	Lab	640	50.9
Parker S.	Con	410	32.6
Clark R.	LD	108	8.6
Howe G.	Green	99	7.9
<b>Turnout</b>		33.6	18.3

<b>Hitchin Priory (3529)</b>			
		<b>vote</b>	<b>share</b>
<b>Thake R.*</b>	Con	954	63.5
Courts L. Ms.	LD	262	17.4
Honey C.	Green	148	9.9
Birdsey A. Ms.	Lab	138	9.2
<b>Turnout</b>		42.6	46.1
<b>Hitchin Walsworth (5961)</b>			
		<b>vote</b>	<b>share</b>
<b>Shakespeare-Smith R.*</b>	Con	995	42.9
Johnson R.	Lab	660	28.4
Woodruff G.	Green	418	18.0
Darley A.	LD	249	10.7
<b>Turnout</b>		39.0	14.4
<b>Hitchwood Offa &amp; Hoo (5588)</b>			
		<b>vote</b>	<b>share</b>
<b>Strong C. Ms.*</b>	Con	1,705	73.1
Johnson P.	LD	243	10.4
Billing C. Ms.	Lab	226	9.7
Bland H.	Green	160	6.9
<b>Turnout</b>		41.9	62.6
<b>Knebworth (4033)</b>			
		<b>vote</b>	<b>share</b>
<b>Bardett A.*</b>	Con	1,071	70.5
Burnell J.	Lab	241	15.9
Winder J.	LD	113	7.4
Berrington W.	Green	94	6.2
<b>Turnout</b>		37.9	54.6
<b>Letchworth East (3876)</b>			
		<b>vote</b>	<b>share</b>
<b>Paterson M.</b>	Con	519	37.6
Jarman A.*	Lab	508	36.8
Greener R. Ms.	LD	129	9.3
Blakeley E.	Green	92	6.7
Godfrey T.	BNP	89	6.4
Savage J. Ms.	UKIP	44	3.2
<b>Turnout</b>		35.9	0.8
<b>Letchworth Grange (5713)</b>			
		<b>vote</b>	<b>share</b>
<b>Marmont P.</b>	Con	808	37.0
Andrews J. Ms.	Lab	727	33.3
Penny M.	LD	237	10.8
Gillespie B.	BNP	184	8.4
Keeler S. Ms.	UKIP	135	6.2
Gouldstone L.	Green	95	4.3
<b>Turnout</b>		38.4	3.7
<b>Letchworth South East (5709)</b>			
		<b>vote</b>	<b>share</b>
<b>Levett D.*</b>	Con	1,084	53.9
Kissen N.	Lab	376	18.7
Winter J. Ms.	LD	295	14.7
Barry J.	UKIP	172	8.6
Mollart-Griffin H. Ms.	Green	83	4.1
<b>Turnout</b>		35.4	35.2
<b>Letchworth South West (5914)</b>			
		<b>vote</b>	<b>share</b>
<b>Hone T.*</b>	Con	1,465	61.5
Winder J.	LD	464	19.5
Parkins H.	Lab	240	10.1
Hart J.	Green	215	9.0
<b>Turnout</b>		40.5	42.0
<b>Letchworth Wilbury (4022)</b>			
		<b>vote</b>	<b>share</b>
<b>Needham E.*</b>	Con	502	37.7
Mantle I.*	Lab	475	35.6
Norgan R.	BNP	135	10.1
White J.	LD	122	9.2
Dye S. Ms.	Green	78	5.9
Bardwaj J.	Ind	21	1.6
<b>Turnout</b>		33.2	2.0



<b>Letchworth Grange (5747)</b>			
		<b>vote</b>	<b>share</b>
<b>Kearns D.*</b>	Lab	1,083	42.1
Stephenson B.	Con	924	35.9
Penny M.	LD	185	7.2
Rodgers M.	UKIP	165	6.4
Bland R. Ms.	Green	145	5.6
Vickers C.	Edem	73	2.8
<b>Turnout</b>		45.2	6.2

<b>Letchworth South East (5676)</b>			
		<b>vote</b>	<b>share</b>
<b>Harman R.</b>	Con	1,149	48.4
Summan R.	Lab	633	26.7
Stevens P.	UKIP	213	9.0
May D.	LD	207	8.7
Drew J.	Green	171	7.2
<b>Turnout</b>		42.3	21.7

<b>Letchworth South West (5977)</b>			
		<b>vote</b>	<b>share</b>
<b>Needham L. Ms.*</b>	Con	1,682	56.3
Mardell P.	Lab	481	16.1
Winder J.	LD	433	14.5
May M.	Green	390	13.1
<b>Turnout</b>		50.3	40.2

<b>Royston Heath (4091)</b>			
		<b>vote</b>	<b>share</b>
<b>Burt P.*</b>	Con	996	54.3
Garland K.	Lab	354	19.3
Jeray P.	LD	264	14.4
Oddy P.	Green	219	11.9
<b>Turnout</b>		45.4	35.0

<b>Royston Meridian (4124)</b>			
		<b>vote</b>	<b>share</b>
<b>Hunter T.*</b>	Con	1,058	59.0
West V.	Lab	333	18.6
Davies K. Ms.	LD	261	14.6
Harmel K. Ms.	Green	141	7.9
<b>Turnout</b>		44.0	40.4

<b>Royston Palace (4011)</b>			
		<b>vote</b>	<b>share</b>
<b>Green J. Ms.</b>	Con	667	42.8
Baker L.	Lab	402	25.8
Greatrex T.	LD	364	23.3
Groves P.	Green	126	8.1
<b>Turnout</b>		39.5	17.0

<b>Weston &amp; Sandon (1643)</b>			
		<b>vote</b>	<b>share</b>
<b>Jarvis S.*</b>	LD	564	58.6
Schwick C.	Con	322	33.5
Riley A.	Lab	42	4.4
De Bock A. Ms.	Green	34	3.5
<b>Turnout</b>		58.7	25.2

## North Hertfordshire - 2012

<b>Baldock East (2244)</b>			
		<b>vote</b>	<b>share</b>
<b>Harris J.</b>	Con	475	47.2
Kirkland M. Ms.*	LD	392	38.9
West V.	Lab	86	8.5
Hutchinson S. Ms.	Green	54	5.4
<b>Turnout</b>		45.2	8.2

<b>Baldock Town (5796)</b>			
		<b>vote</b>	<b>share</b>
<b>Weeks M.*</b>	Con	828	55.1
Garland K.	Lab	308	20.5
Tapping A. Ms.	Green	221	14.7
Winter R.	LD	147	9.8
<b>Turnout</b>		26.1	34.6

<b>Chesfield (5225)</b>			
		<b>vote</b>	<b>share</b>
<b>Jarvis S. Ms.</b>	LD	685	44.0
Henry J.	Con	534	34.3
Joshi B.	Lab	280	18.0
Power F. Ms.	Green	59	3.8
<b>Turnout</b>		29.9	9.7

<b>Hitchin Bearton (6226)</b>			
		<b>vote</b>	<b>share</b>
<b>Segalini D. Ms.</b>	Lab	1,041	52.9
Stoner A.	Con	536	27.2
Nicholson G.	Green	216	11.0
Lott M.	LD	175	8.9
<b>Turnout</b>		31.7	25.7

<b>Hitchin Highbury (6029)</b>			
		<b>vote</b>	<b>share</b>
<b>Leal-Bennett D.</b>	Con	906	39.9
Body C. Ms.*	LD	877	38.6
Mardell P.	Lab	301	13.3
Greatorex J. Ms.	Green	187	8.2
<b>Turnout</b>		37.9	1.3

<b>Hitchin Oughton (3599)</b>			
		<b>vote</b>	<b>share</b>
<b>Kirby J. Ms.</b>	Lab	638	60.8
Barnard F. Ms.	Con	258	24.6
Brookman A.	Green	103	9.8
Lambie R.	LD	50	4.8
<b>Turnout</b>		29.3	36.2

<b>Hitchin Priory (3579)</b>			
		<b>vote</b>	<b>share</b>
<b>Thake R.*</b>	Con	696	49.2
Sayany N. Ms.	Lab	228	16.1
Smyth A. Ms.	UKIP	228	16.1
Willoughby L. Ms.	LD	146	10.3
De Bock A. Ms.	Green	117	8.3
<b>Turnout</b>		39.7	33.1

<b>Hitchin Walsworth (6084)</b>			
		<b>vote</b>	<b>share</b>
<b>Shakespeare-Smith R.*</b>	Con	759	39.1
Sheard D.	Lab	756	38.9
May M.	Green	299	15.4
Ircha A.	LD	127	6.5
<b>Turnout</b>		32.1	0.2

<b>Hitchwood Offa &amp; Hoo (5583)</b>			
		<b>vote</b>	<b>share</b>
<b>Strong C. Ms.*</b>	Con	1,230	64.2
Chinnery L. Ms.	Lab	325	17.0
Howe G.	Green	213	11.1
Johnson P.	LD	147	7.7
<b>Turnout</b>		34.6	47.3

<b>Knebworth (4130)</b>			
		<b>vote</b>	<b>share</b>
<b>Bardett A.*</b>	Con	741	57.8
Holman J.	Lab	251	19.6
Scuoler A.	UKIP	147	11.5
Bland H.	Green	142	11.1
<b>Turnout</b>		31.3	38.3

<b>Letchworth East (4257)</b>			
		<b>vote</b>	<b>share</b>
<b>Mantle I.</b>	Lab	472	40.4
Paterson M.*	Con	383	32.8
Barry J.	UKIP	108	9.2
Blakeley E.	Green	97	8.3
Fisher M.	LD	73	6.2
Vickers T.	Edem	36	3.1
<b>Turnout</b>		27.6	7.6

<b>Letchworth Grange (5756)</b>			
		<b>vote</b>	<b>share</b>
<b>Billing C. Ms.</b>	Lab	721	43.3
Marmont P.*	Con	487	29.3
Vickers C.	Edem	202	12.1
Bland R. Ms.	Green	131	7.9
Penny M.	LD	123	7.4
<b>Turnout</b>		29.1	14.1

<b>Letchworth South East (5653)</b>			
		<b>vote</b>	<b>share</b>
<b>Levett D.*</b>	Con	627	39.1
Kissen N.	Lab	487	30.3
Stevens P.	UKIP	235	14.6
Winder J.	LD	132	8.2
Drew J.	Green	124	7.7
<b>Turnout</b>		28.6	8.7

<b>Letchworth South West (5990)</b>			
		<b>vote</b>	<b>share</b>
<b>Hone T.*</b>	Con	1,097	54.0
Andrews J. Ms.	Lab	403	19.8
Winder J.	LD	274	13.5
Leek R. Ms.	Green	257	12.7
<b>Turnout</b>		34.0	34.2

<b>Letchworth Wilbury (4128)</b>			
		<b>vote</b>	<b>share</b>
<b>Sangha D.*</b>	Lab	432	38.0
Frankland A.	Con	415	36.5
Rodgers M.	UKIP	132	11.6
Hart J.	Green	121	10.6
White J.	LD	38	3.3
<b>Turnout</b>		27.8	1.5

