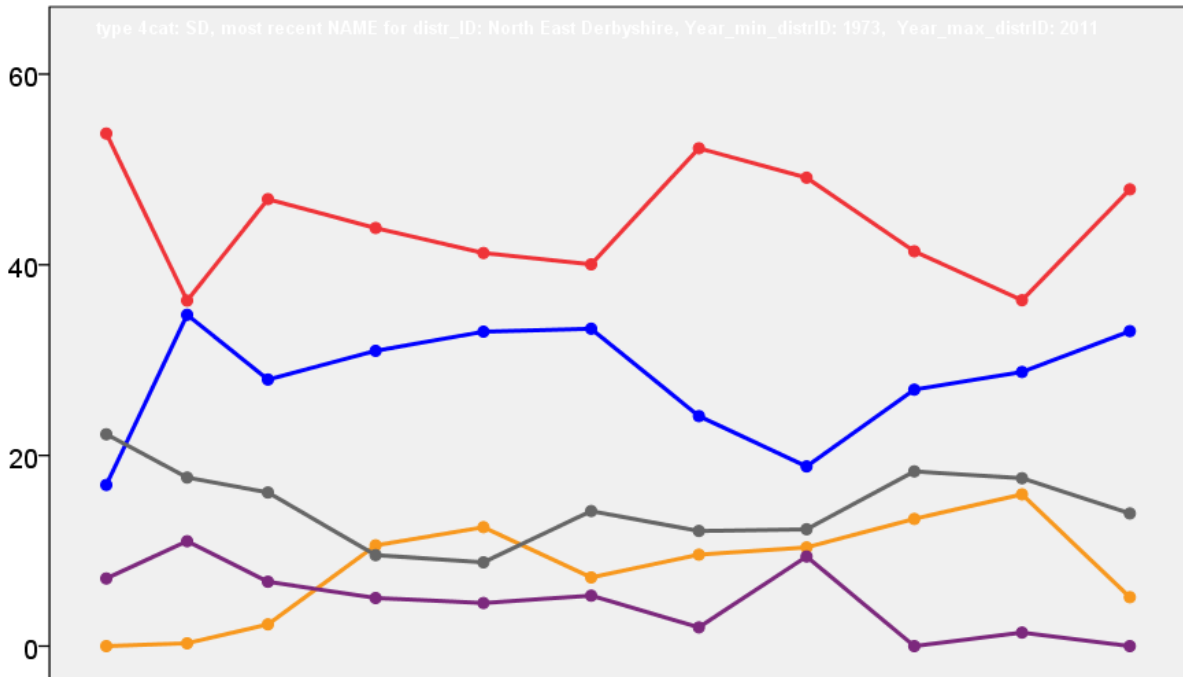


North East Derbyshire District Council Election Results 1973-2011



Colin Rallings and Michael Thrasher
The Elections Centre
Plymouth University

The information contained in this report has been obtained from a number of sources. Election results from the immediate post-reorganisation period were painstakingly collected by Alan Willis largely, although not exclusively, from local newspaper reports. From the mid-1980s onwards the results have been obtained from each local authority by the Elections Centre. The data are stored in a database designed by Lawrence Ware and maintained by Brian Cheal and others at Plymouth University. Despite our best efforts some information remains elusive whilst we accept that some errors are likely to remain. Notice of any mistakes should be sent to elections@plymouth.ac.uk. The results sequence can be kept up to date by purchasing copies of the annual Local Elections Handbook, details of which can be obtained by contacting the email address above.

Front cover: the graph shows the distribution of percentage vote shares over the period covered by the results. The lines reflect the colours traditionally used by the three main parties. The grey line is the share obtained by Independent candidates while the purple line groups together the vote shares for all other parties.

Rear cover: the top graph shows the percentage share of council seats for the main parties as well as those won by Independents and other parties. The lines take account of any by-election changes (but not those resulting from elected councillors switching party allegiance) as well as the transfers of seats during the main round of local election.

The lower graph shows for each main round of local elections the overall percentage turnout (solid line), the percentage of women candidates standing at (dotted line) and the percentage of women among those elected (hashed line).

North East Derbyshire - 1973

Barlow & Holmesfield (1494)

		vote	share
Needham J.	Ind	594	75.4
Cockbaine E.	Lab	194	24.6
Turnout		52.7	50.8

Brampton & Walton (2385)²

		vote	share
Hill E.	Ind	777	72.0
Bird G.	Ind	747	-
Tebbs R.	Lab	302	28.0
Turnout		45.2	44.0

Coal Aston (2573)²

		vote	share
Lees P.	Con	747	68.1
Foster R.	Con	740	-
Nixon A.	Lab	350	31.9
Steele D.	Lab	336	-
Turnout		42.6	36.2

Grassmoor (2929)²

		vote	share
Lide T. Ms.	Lab	692	69.3
Brunt F.	Lab	579	-
Wright S.	Con	306	30.7
Turnout		27.6	38.7

No. 1 (Clay Cross) (7238)⁶

		vote	share
Nuttall D.	Lab	2,268	67.5
Wellon A.	Lab	2,220	-
Bunting C.	Lab	2,171	-
Skinner D.	Lab	2,144	-
Skinner G.	Lab	2,103	-
Smith G.	Lab	2,081	-
Blowen W.	Res	1,090	32.5
Holmes J.	Res	1,069	-
Brookes M.	Res	1,039	-
Wild A.	Res	955	-
Fitzpatrick B.	Res	948	-
Fitzpatrick V.	Res	901	-
Turnout		46.4	35.1

No. 10 (Ashover) (2290)²

		vote	share
Bond U.	Ind	796	62.2
Rotter G.	Ind	594	-
Chappell J. Ms.	Lab	483	37.8
Buxton S.	Ind	280	-
Turnout		55.9	24.5

No. 11 (Eckington) (4288)³

		vote	share
Cryer D.	Lab	1,139	64.7
Clegg E. Ms.	Lab	1,123	-
Dargue J.	Lab	671	-
Gosling D.	Ind	622	35.3
Barker E.	Ind	375	-
Smith D.	Ind	259	-
Turnout		41.1	29.4

No. 14 (Killamarsh) (4037)³

		vote	share
Warnes K.	Lab	1,086	81.0
Grant A.	Lab	1,072	-
Cochrane R.	Lab	1,023	-
Wright H.	Ind	254	19.0
Turnout		33.2	62.1

No. 16 (Calow) (2114)²

		vote	share
Higgins W.	Lab	282	40.2
Booth G.	Ind	269	38.3
Thornycroft G.	Con	151	21.5
Babbs T.	Lab	147	-
Jones K.	Ind	69	-
Turnout		33.2	1.9

No. 17 (Heath) (1291)

		vote	share
Smith B.	Lab	355	72.7
Robson G.	Ind	133	27.3
Turnout		37.8	45.5

No. 2 (Dronfield: Central) (2065)²

		vote	share
Wood M.	Con	659	54.4
Watt A.	Con	647	-
Ford C.	Lab	553	45.6
Nicholls D.	Lab	545	-
Turnout		58.7	8.7

No. 20 (North Wingfield) (5390)⁴

		vote	share
Ralley L.	Lab	1,132	47.9
Barrs R.	Lab	1,064	-
Rhodes O.	Lab	1,046	-
Wakelam D.	Lab	1,017	-
Searston K.	Ind Lab	762	32.3
Gent W.	Ind	467	19.8
Turnout		43.8	15.7

No. 22 (Shirland & Higham) (4484)³

		vote	share
Fellows W.	Lab	1,049	72.6
Haslam G.	Lab	1,013	-
Beaumont W.	Lab	958	-
Chambers A.	Ind	396	27.4
Turnout		32.2	45.2

No. 23 (Sutton-Cum-Duckmanton) (1006)

		vote	share
Roach A.	Ind	0	0.0
Turnout		0.0	0.0

No. 4 (Dronfield: Dronfield) (3601)³

		vote	share
Batty C. Ms.	Con	970	63.4
Slinn F.	Con	946	-
Batty F.	Con	938	-
Barnes H.	Lab	559	36.6
Lynch G.	Lab	534	-
Oldman K.	Lab	510	-
Turnout		42.5	26.9

No. 5 (Dronfield: North) (2346)²

		vote	share
Johnson G.	Lab	725	57.7
Seddons H.	Lab	723	-
Smalley P.	Con	532	42.3
Tasker P.	Con	520	-
Turnout		53.6	15.4

No. 6 (Dronfield: South) (3343)²

		vote	share
Stinson P.	Con	922	57.3
Smith T.	Con	903	-
Abrahams R.	Lab	686	42.7
Hefferdwick K.	Lab	625	-
Turnout		48.1	14.7

Pilsley (1977)²

		vote	share
Bestwick F. Ms.	Ind	0	0.0
Feather L.	Lab	0	0.0
Turnout		0.0	0.0

Renishaw (1518)

		vote	share
Rice W.	Lab	415	76.9
Crayson P.	Con	125	23.1
Turnout		35.6	53.7

Ridgeway & Marsh Lane (1401)

		vote	share
Beattie N.	Lab	0	0.0
Turnout		0.0	0.0

Tupton (2372)²

		vote	share
Mellor E.	Lab	778	68.2
Marshall G.	Lab	752	-
Priestnall E.	Ind	363	31.8
Wares E.	Ind	347	-
Turnout		48.1	36.4

Unstone (1585)

		vote	share
Dawson F.	Lab	407	72.4
Dann J. Ms.	Ind	155	27.6
Turnout		35.5	44.8

Wingerworth (4287)³

		vote	share
Middleton E. Ms.	Ind	695	54.5
White H.	Ind	626	-
Binns B.	Lab	581	45.5
Reid R.	Lab	529	-
Whitmore G.	Lab	413	-
Turnout		29.8	8.9

North East Derbyshire - 1976

Barlow & Holmesfield (1483)

		vote	share
Needham J.*	Ind	695	80.9
Ledger S.	Lab	164	19.1
Turnout		57.9	61.8

Brampton & Walton (2462)²

		vote	share
Hill E.*	Ind	0	-
Bird G.*	Ind	0	0.0
Turnout		0.0	0.0

Coal Aston (2585)²

		vote	share
Lees B. Ms.*	Con	1,028	76.0
Rudd J.	Con	1,020	-
Sharpe E.	Lab	325	24.0
Steele D.	Lab	321	-
Turnout		52.3	52.0

Grassmoor (3027)²

		vote	share
Bennett A.	Ind Lab	824	40.8
Lide T. Ms.*	Lab	611	30.3
Dymond D.	Lab	583	-
Wright S.	Con	583	28.9
Turnout		66.7	10.6

No. 1 (Clay Cross) (7142)⁶

		vote	share
Davis S.	Res	1,948	56.5
Fuller D.	Res	1,931	-
Jeffrey A.	Res	1,904	-
Bescoby-Chambers J.	Res	1,896	-
Loughead J.	Res	1,870	-
Monk N.	Res	1,816	-
Harris G.	Lab	1,497	43.5
Fox C.	Lab	1,484	-
Cooper D. Ms.	Lab	1,479	-
King A. Ms.	Lab	1,444	-
Northedge H.	Lab	1,441	-
Smith M. Ms.	Lab	1,393	-
Turnout		48.2	13.1

No. 10 (Ashover) (2351)²

		vote	share
Bond U.*	Ind	890	65.5
Rotter G.*	Ind	729	-
Chappell J. Ms.	Lab	469	34.5
Turnout		57.8	31.0

No. 11 (Eckington) (4251) ³			
		vote	share
Cryer D.*	Lab	957	60.3
Clegg E. Ms.*	Lab	954	-
Barker A.	Lab	748	-
Goulder E.	Con	630	39.7
Turnout		37.3	20.6

No. 14 (Killamarsh) (4697) ³			
		vote	share
Cochrane R.*	Lab	1,063	55.2
Warnes K.*	Lab	1,052	-
Redfern R.	Lab	1,002	-
Whitfield P.	Con	864	44.8
Green M. Ms.	Con	831	-
Havenhand R.	Con	735	-
Turnout		41.0	10.3

No. 16 (Calow) (2078) ²			
		vote	share
Booth G.*	Ind	338	52.9
Higgins W.*	Lab	301	47.1
Babbs T.	Lab	93	-
Turnout		30.8	5.8

No. 17 (Heath) (1134)			
		vote	share
Smith B.*	Lab	244	45.9
Garlick J.	Ind	169	31.8
Robson G.	Ind	81	15.2
Binsley A. Ms.	Ind Lab	38	7.1
Turnout		46.9	14.1

No. 2 (Dronfield: Central) (2054) ²			
		vote	share
Norbron R.	Con	863	68.1
Tasker P. Ms.	Con	847	-
Ford C.	Lab	405	31.9
Barnes H.	Lab	385	-
Turnout		61.7	36.1

No. 20 (North Wingfield) (5473) ⁴			
		vote	share
Grainger C.	Ind	1,308	42.7
Barrs R.*	Lab	971	31.7
Brunt R.	Lab	963	-
Wakelam D.*	Lab	912	-
Ralley L.*	Lab	890	-
Gent W.	Con	785	25.6
Turnout		56.0	11.0

No. 22 (Shirland & Higham) (4603) ³			
		vote	share
Beaumont W.*	Lab	0	0.0
Haslam G.*	Lab	0	-
Fellows W.*	Lab	0	-
Turnout		0.0	0.0

No. 23 (Sutton-Cum-Duckmanton) (983)			
		vote	share
Roach A.*	Ind	0	0.0
Turnout		0.0	0.0

No. 4 (Dronfield: Dronfield) (4925) ³			
		vote	share
Batty C. Ms.*	Con	1,769	74.3
Batty E.*	Con	1,719	-
Giles H.	Con	1,699	-
Fearn E.	Lab	611	25.7
Lynch G.	Lab	568	-
Kanwar B.	Lab	542	-
Turnout		48.3	48.7

No. 5 (Dronfield: North) (2361) ²			
		vote	share
Smalley P.	Con	597	53.6
Smith C. Ms.	Con	583	-
Seddons H.*	Lab	517	46.4
Johnson G.*	Lab	515	-
Turnout		47.2	7.2

No. 6 (Dronfield: South) (3505) ²			
		vote	share
Stinson P.*	Con	1,177	71.3
Smith T.*	Con	1,166	-
Smith C. Ms.	Lab	474	28.7
Oldman K.	Lab	463	-
Turnout		47.1	42.6

Pilsley (1997) ²			
		vote	share
Stoddart W.	Ind	417	52.3
Ward D. Ms.	Lab	381	47.7
Bone J.	Lab	331	-
Turnout		40.0	4.5

Renishaw (1491)			
		vote	share
Rice W.*	Ind Lab	340	42.1
Swain J.	Lab	272	33.7
Hunt I.	Con	110	13.6
Sims B.	Lib	85	10.5
Turnout		54.1	8.4

Ridgeway & Marsh Lane (1408)			
		vote	share
Hardy W.	Con	457	55.9
Beattie N.*	Lab	361	44.1
Turnout		58.1	11.7

Tupton (2488) ²			
		vote	share
Mellor R.*	Lab	0	0.0
Marshall G.*	Lab	0	-
Turnout		0.0	0.0

Unstone (1558)			
		vote	share
Dawson F.*	Lab	310	55.5
Cooper H.	Con	249	44.5
Turnout		35.9	10.9

Wingerworth (4404) ³			
		vote	share
Rice B.	Ind	1,163	47.8
Middleton E. Ms.*	Ind	891	-
Cafeara G.	Con	832	34.2
White W.*	Ind	674	-
Binns B.*	Lab	437	18.0
Whitmore G.	Lab	345	-
Hawkins P.	Lab	304	-
Turnout		55.2	13.6

North East Derbyshire - 1979

Ashover (1449)			
		vote	share
Bond E.	Ind	716	63.4
Chappell J. Ms.	Ind	286	25.3
Lowe H.	Lab	128	11.3
Turnout		78.0	38.1

Barlow & Holmesfield (1503)			
		vote	share
Needham J.	Con	787	67.2
Boyes R.	Ind	233	19.9
Meakin D.	Lab	151	12.9
Turnout		77.9	47.3

Brampton & Walton (2652) ³			
		vote	share
Lowe J. Ms.	Con	0	0.0
Mott A. Ms.	Ind	0	0.0
Hill E.	Con	0	-
Turnout		0.0	0.0

Clay Cross North (4418) ³			
		vote	share
Fox T.	Lab	1,848	53.5
Griffiths G.	Lab	1,794	-
Mosley J.	Lab	1,669	-
Jeffrey A.	Res	1,604	46.5
Davis S.	Res	1,555	-
Bescoby-Chambers J.	Res	1,554	-
Turnout		78.1	7.1

Clay Cross South (2531) ²			
		vote	share
Fox C.	Lab	1,495	74.3
McGrogan K.	Lab	1,402	-
Hunt G.	Res	517	25.7
Drake R.	Res	505	-
Turnout		79.5	48.6

Coal Aston (2676) ²			
		vote	share
Lees B. Ms.	Con	1,479	68.9
Rudd J.	Con	1,421	-
Steele D.	Lab	669	31.1
Steele K. Ms.	Lab	591	-
Turnout		80.3	37.7

Dronfield North (3777) ³			
		vote	share
Browes H.	Lab	1,505	51.5
Griffith D.	Con	1,420	48.5
Smalley P.	Con	1,416	-
Ford C.	Lab	1,402	-
Seddons H.	Lab	1,352	-
Croarke F.	Con	1,352	-
Turnout		77.4	2.9

Dronfield South (4727) ³			
		vote	share
Tasker P. Ms.	Con	2,261	58.5
Smith T.	Con	2,125	-
Stinson P.	Con	2,105	-
Baxter G.	Lab	1,027	26.6
Corcoran R.	Lab	933	-
Cresswell F.	Lab	914	-
Park C.	Lib	574	14.9
Burgess M. Ms.	Lib	562	-
Rothwell C. Ms.	Lib	523	-
Turnout		81.7	32.0

Dronfield Woodhouse (1622)			
		vote	share
Norbron R.	Con	880	64.6
Sharpe A.	Lab	482	35.4
Turnout		84.0	29.2

Eckington North (2036) ²			
		vote	share
Clegg B.	Lab	801	41.4
Harrington P.	Lab	677	-
Barker E.	Ind	568	29.3
Howells G.	Con	568	29.3
Turnout		95.1	12.0

Eckington South (2577) ²			
		vote	share
Barker A.	Lab	1,430	71.2
Greer J.	Lab	1,127	-
Wright H.	Con	578	28.8
Turnout		77.9	42.4

Gosforth Valley (4098) ³			
		vote	share
Batty C.	Con	2,064	60.3
Batty E. Ms.	Con	2,001	-
Giles H.	Con	1,968	-
Burgess E.	Lib	683	20.0
Cooper M.	Lab	675	19.7
Scott I. Ms.	Lib	663	-
Kay R. Ms.	Lib	655	-
Hammersley R.	Lab	646	-
Oldham K.	Lab	632	-
Turnout		83.5	40.4

Grassmoor (3389)²			
		vote	share
Lide T. Ms.	Lab	1,715	69.9
Newell M.	Lab	1,601	-
Wright S.	Con	738	30.1
Wright P.	Con	720	-
Turnout		72.4	39.8
Holmewood & Heath (2737)²			
		vote	share
Smith B.	Lab	1,219	54.2
Brunt R.	Lab	1,213	-
Price T.	Ind	1,031	45.8
Turnout		82.2	8.4
Killamarsh East (1657)			
		vote	share
Woolley A.	Lab	860	65.1
Everard G.	Con	462	34.9
Turnout		79.8	30.1
Killamarsh West (3738)³			
		vote	share
Cochrane R.	Lab	1,801	67.0
Redfern R.	Lab	1,736	-
Robinson C.	Lab	1,626	-
Whitfield D. Ms.	Con	889	33.0
Whitfield P.	Con	885	-
Berresford R.	Con	863	-
Turnout		72.0	33.9
Morton (1506)			
		vote	share
Rotter G.	Ind	599	52.1
Shaw G.	Lab	551	47.9
Turnout		76.4	4.2
North Wingfield Central (3413)³			
		vote	share
Wynn J.	Lab	1,624	67.4
Ralley L.	Lab	1,578	-
Ward D. Ms.	Lab	1,512	-
Gent W.	Con	785	32.6
Wilkes F.	Con	654	-
Robson G.	Con	592	-
Turnout		70.6	34.8
Pilsley (2395)²			
		vote	share
Moon T.	Ind	1,270	59.4
Dickins G.	Lab	869	40.6
Kirkwood T.	Lab	709	-
Turnout		89.3	18.7
Renishaw (1463)			
		vote	share
Howarth E.	Lab	688	62.4
Hart T.	Ind Lab	415	37.6
Turnout		75.4	24.8
Ridgeway & Marsh Lane (1357)			
		vote	share
Hardy W.	Con	596	58.2
Hudson F.	Lab	428	41.8
Turnout		75.5	16.4
Shirland (4075)³			
		vote	share
Towndrow W.	Lab	1,771	59.9
Beaumont W.	Lab	1,726	-
Haslam G.	Lab	1,718	-
Williams L.	Ind Lab	1,188	40.1
Turnout		72.6	19.7
Sutton (3154)²			
		vote	share
Roach A.	Ind	1,303	55.3
Booth G.	Ind	1,172	-
Jones C.	Lab	1,052	44.7
Dunn J.	Lab	837	-
Turnout		74.7	10.7

Tupton (2459)²			
		vote	share
Hawkins P.	Lab	1,273	59.9
Whitmore G.	Lab	1,015	-
Carrington W.	Ind	853	40.1
Turnout		86.5	19.8
Unstone (1601)			
		vote	share
Wall F. Ms.	Lab	786	61.7
Wright G.	Con	487	38.3
Turnout		79.5	23.5
Wingerworth (4580)³			
		vote	share
Rice B.	Ind	2,028	45.5
Ounsley K.	Con	1,423	31.9
Cafearo G.	Con	1,385	-
Turner C.	Ind	1,350	-
Reid R.	Lab	1,005	22.6
Maskell R.	Lab	784	-
Binns B.	Lab	615	-
Turnout		97.3	13.6
North East Derbyshire - 1983			
Ashover (1493)			
		vote	share
Bond U.*	Ind	0	0.0
Turnout		0.0	0.0
Barlow & Holmesfield (1559)			
		vote	share
Needham J.*	Con	0	0.0
Turnout		0.0	0.0
Brampton & Walton (2822)³			
		vote	share
Lowe J. Ms.*	Con	1,007	80.7
Hill E.*	Con	945	-
Smith N.	Con	860	-
Wheatcroft H.	Lab	241	19.3
Turnout		44.2	61.4
Clay Cross North (4409)³			
		vote	share
Fox C.*	Lab	0	-
Dunn J.	Lab	0	-
Martin B.	Lab	0	0.0
Turnout		0.0	0.0
Clay Cross South (2691)²			
		vote	share
Fox T.*	Lab	0	0.0
Dunn R.	Lab	0	-
Turnout		0.0	0.0
Coal Aston (2829)²			
		vote	share
Lees B. Ms.*	Con	811	55.9
Rudd J.*	Con	758	-
Steele D.	Lab	393	27.1
Smith C. Ms.	Lab	384	-
Thelwell G.	All	246	17.0
Wood M.	All	244	-
Turnout		51.3	28.8
Dronfield North (3780)³			
		vote	share
Seddons H.	Lab	1,046	46.4
Ford C.	Lab	1,029	-
Baxter G.	Lab	952	-
Griffith D.*	Con	785	34.8
Gill C. Ms.	Con	779	-
Hutchinson O. Ms.	Con	718	-
Hey D.	All	425	18.8
Deighton F. Ms.	All	387	-
Turnout		59.7	11.6

Dronfield South (4926)³			
		vote	share
Tasker P. Ms.*	Con	1,529	54.9
Smith T.*	Con	1,476	-
Stinson P.*	Con	1,455	-
Goodhand J.	Lab	746	26.8
Foster N.	Lab	727	-
Merrison L. Ms.	Lab	708	-
Kay P.	Lib/SDP	509	-
Pryce W.	Lib/SDP	509	18.3
Turnout		56.5	28.1
Dronfield Woodhouse (1671)			
		vote	share
Batty C.	Con	563	55.6
Barnes H.	Lab	292	28.9
Birch M.	All	157	15.5
Turnout		60.6	26.8
Eckington North (2723)²			
		vote	share
Turner P.	Lab	571	46.0
Heath R.	Lab	477	-
Clegg P. Ms.*	Ind Lab	371	29.9
Howells G.	Con	298	24.0
Turnout		45.5	16.1
Eckington South (2603)²			
		vote	share
Barker A.*	Lab	778	61.1
Greer J.*	Lab	675	-
Clegg B.	Ind Lab	292	22.9
Wright H.	Con	204	16.0
Turnout		48.9	38.1
Gosforth Valley (4281)³			
		vote	share
Batty E. Ms.*	Con	1,459	59.1
Giles H.*	Con	1,347	-
Groarke M. Ms.	Con	1,278	-
Duncan S.	Lib/SDP	612	24.8
Gregory N.	Lib/SDP	599	-
Garrett A.	Lab	396	16.1
Farms J.	Lab	362	-
Hammersley R.	Lab	340	-
Turnout		57.6	34.3
Grassmoor (3341)²			
		vote	share
Newell M.	Lab	0	0.0
Lide T. Ms.*	Lab	0	-
Turnout		0.0	0.0
Holmewood & Heath (2847)²			
		vote	share
Brunt R.*	Lab	865	68.8
Smith B.*	Lab	833	-
Wright S.	Con	393	31.2
Robson G.	Con	278	-
Turnout		44.2	37.5
Killamarsh East (1669)			
		vote	share
Machin M.	Lab	350	60.4
Woolley A.	Ind	229	39.6
Turnout		34.7	20.9
Killamarsh West (4148)³			
		vote	share
Redfern R.*	Lab	881	65.7
Robinson C.*	Lab	871	-
Turner A.	Lab	856	-
Crowder D.	Lib/SDP	460	34.3
Lake D.	Lib/SDP	432	-
Turnout		32.3	31.4
Morton (1550)			
		vote	share
Beaver R.	Lab	383	55.7
Jones E.	Lib/SDP	304	44.3
Turnout		44.3	11.5

North Wingfield Central (3568) ³			
		vote	share
Ralley L.*	Lab	997	72.9
Wynn J.*	Lab	983	-
Ward D. Ms.*	Lab	948	-
Gent W.	Con	370	27.1
Turnout		38.3	45.9

Pilsley (2565) ²			
		vote	share
Moon T.*	Ind	714	40.7
Brailsford M.	Lab	703	40.0
Duffield C. Ms.	Ind	613	-
Hurt P.	Lab	524	-
Forrest R.	Lib/SDP	224	12.8
Radford R.	Con	115	6.5
Turnout		68.5	0.6

Renishaw (1412)			
		vote	share
Howarth E.*	Lab	532	72.7
Hart T.	Lib/SDP	200	27.3
Turnout		51.8	45.4

Ridgeway & Marsh Lane (1356)			
		vote	share
Spooner B.	Con	359	50.6
Woodruff J.	Lab	350	49.4
Turnout		52.3	1.3

Shirland (4150) ³			
		vote	share
Towndrow W.*	Lab	953	53.3
Williams L.	Ind Lab	835	46.7
Shaw G.	Lab	793	-
Howard H.	Lab	751	-
Turnout		43.1	6.6

Sutton (3086) ²			
		vote	share
Roach A.*	Ind	679	54.8
Booth G.*	Ind	649	-
Booker P.	Lab	560	45.2
Fearn E.	Lab	438	-
Turnout		40.1	9.6

Tupton (2635) ²			
		vote	share
Marshall G.	Lab	898	68.6
Whitmore G.*	Lab	746	-
Lowe D.	Ind	411	31.4
Turnout		49.7	37.2

Unstone (1604)			
		vote	share
Wall M. Ms.*	Lab	479	59.1
Emmens M.	Con	331	40.9
Turnout		50.5	18.3

Wingerworth (4742) ³			
		vote	share
Cornford H.	Con	972	40.8
Ounsley K.*	Con	922	-
Thompson B.	Con	879	-
Rice B.*	Ind	802	33.7
Grant R.	Lab	606	25.5
Turner C.	Ind	557	-
Arrowsmith B.	Lab	544	-
Moss T.	Lab	538	-
Turnout		50.2	7.1

North East Derbyshire - 1987

Ashover (1533)			
		vote	share
Parr B.	Ind	465	61.3
Ramshaw G.	Con	237	31.2
Rutherford R.	Lab	57	7.5
Turnout		49.5	30.0

Barlow & Holmesfield (1605)			
		vote	share
Boyes R.	Ind	422	48.8
Knight A.	Con	321	37.2
Foster M. Ms.	Lab	121	14.0
Turnout		53.8	11.7

Brampton & Walton (3078) ³			
		vote	share
Needham P.	Con	0	-
Lowe J. Ms.*	Con	0	-
Thompson H.	Con	0	0.0
Turnout		0.0	0.0

Clay Cross North (4369) ³			
		vote	share
Nuttall J.	Lab	1,164	49.8
Dunn J.*	Lab	1,079	-
Skinner G.	Lab	1,041	-
Fox C.*	Mod Lab	671	28.7
Drake R.	Con	504	21.5
Turnout		34.0	21.1

Clay Cross South (2600) ²			
		vote	share
Booker P. Ms.	Lab	0	-
Nuttall D.	Lab	0	0.0
Turnout		0.0	0.0

Coal Aston (2864) ²			
		vote	share
Hinchliffe C.	Con	793	52.5
Gill C.	Con	775	-
Birch M.	Lib/SDP	391	25.9
Wing M.	Lib/SDP	381	-
Steele D.	Lab	326	21.6
Steele K. Ms.	Lab	301	-
Turnout		52.7	26.6

Dronfield North (3789) ³			
		vote	share
Baxter G.*	Lab	947	41.7
Foster N.	Lab	946	-
Smith C. Ms.	Lab	927	-
Gill C. Ms.	Con	733	32.2
Hinchliffe L. Ms.	Con	724	-
Kay R. Ms.	Lib/SDP	593	26.1
Turnout		60.0	9.4

Dronfield South (5152) ³			
		vote	share
Tasker P. Ms.*	Con	1,322	50.7
Stinson P.*	Con	1,286	-
Smith T.*	Con	1,278	-
Goodhand J.	Lab	648	24.9
Hammersley R.	Lab	644	-
England P. Ms.	Lib/SDP	636	24.4
Moor B.	Lab	635	-
Kay P.	Lib/SDP	600	-
Whyman P.	Lib/SDP	588	-
Turnout		50.6	25.9

Dronfield Woodhouse (1695)			
		vote	share
Batty C.*	Con	520	53.0
Gillott K.	Lab	286	29.1
Temple S.	Lib/SDP	176	17.9
Turnout		57.9	23.8

Eckington North (3036) ²			
		vote	share
Turner P.*	Lab	0	0.0
Brown P.	Lab	0	-
Turnout		0.0	0.0

Eckington South (2535) ²			
		vote	share
Barker A.*	Lab	0	-
Cussons P.	Lab	0	0.0
Turnout		0.0	0.0

Gosforth Valley (4422) ³			
		vote	share
Smillie D. Ms.	Lib/SDP	1,034	43.0
Batty E. Ms.*	Con	1,031	42.9
Bennett D.	Con	1,000	-
Gregory N.	Lib/SDP	985	-
Pryce W.	Lib/SDP	962	-
Giles H.*	Con	951	-
Barrett C.	Lab	338	14.1
Clark S.	Lab	326	-
Dunn A.	Lab	320	-
Turnout		54.3	0.1

Grassmoor (3498) ²			
		vote	share
Lide T. Ms.*	Lab	1,294	70.8
Newell M.*	Lab	1,043	-
Wright S.	Con	534	29.2
Turnout		52.3	41.6

Holmewood & Heath (2351) ²			
		vote	share
Brunt R.*	Lab	789	71.8
Glasby G.	Lab	651	-
Thomson D.	Con	310	28.2
Turnout		46.7	43.6

Killamarsh East (1749)			
		vote	share
Laycock L.	Lab	0	0.0
Turnout		0.0	0.0

Killamarsh West (4356) ³			
		vote	share
Warnes K.	Lab	1,180	65.7
Robinson C.*	Lab	1,161	-
Reed J.	Lab	1,125	-
Leigh A.	Lib/SDP	616	34.3
Turnout		41.2	31.4

Morton (1597)			
		vote	share
Beaver R.*	Lab	0	0.0
Turnout		0.0	0.0

North Wingfield Central (4574) ³			
		vote	share
Wynn J.*	Lab	1,377	67.6
Barker N.	Lab	1,330	-
Bradley J.	Lab	1,288	-
Gent W.	Con	661	32.4
Turnout		44.6	35.1

Pilsley (2513) ²			
		vote	share
Moon T.*	Ind	920	45.1
Brailsford M.*	Mod Lab	577	28.3
Holmes P. Ms.	Lab	544	26.7
Bailey M.	Lab	367	-
Turnout		81.2	16.8

Renishaw (1461)			
		vote	share
Howarth E.*	Lab	0	0.0
Turnout		0.0	0.0

Ridgeway & Marsh Lane (1404)			
		vote	share
Spooner B.*	Con	389	51.3
Pickering S.	Lab	369	48.7
Turnout		54.0	2.6

Shirland (4190) ³			
		vote	share
Howard H.	Lab	0	-
Shaw G.*	Lab	0	0.0
Hancock M.	Lab	0	-
Turnout		0.0	0.0

Sutton (3131) ²			
		vote	share
Beresford I.	Lab	690	52.6
Booth G.*	Ind	622	47.4
Kitchener M.	Lab	544	-
Turnout		41.9	5.2

Tupton (2317) ²			
		vote	share
Whitmore G.*	Lab	0	0.0
Marshall G.*	Lab	0	-
Turnout		0.0	0.0

Unstone (1597)			
		vote	share
Hopkinson F.	Lab	474	62.5
Emmens M.	Con	285	37.5
Turnout		47.5	24.9

Wingerworth (5271) ³			
		vote	share
Wade G.	Con	1,473	65.1
Hopkinson J.	Con	1,462	-
Jacobson-Kemp G. Ms.	Con	1,406	-
Higginbottom J.	Lab	791	34.9
Moss T.	Lab	776	-
Bower T.	Lab	720	-
Turnout		43.0	30.1

North East Derbyshire - 1991

Ashover (1475)			
		vote	share
Parr B.*	Ind	625	83.8
Mason P.	Lab	121	16.2
Turnout		50.6	67.6

Barlow & Holmesfield (1618)			
		vote	share
Grice J.	Con	500	54.5
Carter I. Ms.	Lab	253	27.6
Boyes R.*	Ind	165	18.0
Turnout		56.7	26.9

Brampton & Walton (2402) ³			
		vote	share
Thompson H.*	Con	889	49.0
Needham P.*	Con	858	-
Hutchinson J.	Ind	619	34.1
Hague J.	Lab	305	16.8
Long N. Ms.	Lab	237	-
Turnout		40.4	14.9

Clay Cross North (4211) ³			
		vote	share
Nuttall J.*	Lab	1,208	66.3
Simpson M. Ms.	Lab	1,148	-
Fisher S.	Lab	1,091	-
Drake R.	Con	614	33.7
Turnout		32.1	32.6

Clay Cross South (2596) ²			
		vote	share
Nuttall D.*	Lab	0	0.0
Booker P. Ms.	Lab	0	-
Turnout		0.0	0.0

Coal Aston (2795) ²			
		vote	share
Clark T.	Con	567	40.4
Gill C.*	Con	559	-
Emmens M.	Ind Con	446	31.8
Steele D.	Lab	389	27.7
Machin M.	Lab	364	-
Turnout		41.6	8.6

Dronfield North (3798) ³			
		vote	share
Smith C. Ms.	Lab	929	58.3
Baxter G.*	Lab	926	-
Cooper M.	Lab	916	-
Davies S.	Con	664	41.7
Moorcroft A. Ms.	Con	662	-
Owen G.	Con	641	-
Turnout		41.6	16.6

Dronfield South (5307) ³			
		vote	share
Lindley R.	Ind Con	893	30.6
Marr K. Ms.	Con	888	30.4
Thorpe J.	Ind Con	774	-
Carnell R.	Con	685	-
Foster N.	Lab	635	21.8
Foster M. Ms.	Lab	633	-
Holden J. Ms.	Lab	625	-
Pryce C. Ms.	LD	501	17.2
Kay R. Ms.	LD	458	-
Temple W. Ms.	LD	438	-
Turnout		41.0	0.2

Dronfield Woodhouse (1659)			
		vote	share
Batty C.*	Con	437	51.2
Rutherford R.	Lab	240	28.1
Temple S.	LD	176	20.6
Turnout		51.4	23.1

Eckington North (3061) ²			
		vote	share
Dargue J.	Lab	668	48.2
Brown P.*	Lab	664	-
Feasey W.	Con	387	27.9
Robinson P.	Ind	330	23.8
Turnout		33.5	20.3

Eckington South (2610) ²			
		vote	share
Capps R.	Lab	0	-
Pickering S.	Lab	0	0.0
Turnout		0.0	0.0

Gosforth Valley (4673) ³			
		vote	share
Smillie D. Ms.*	LD	1,145	47.5
Duncan D. Ms.	LD	975	-
Knowles M. Ms.	LD	957	-
Batty E. Ms.*	Con	918	38.0
Bennett D.*	Con	865	-
Cartwright R.	Con	837	-
Moor B.	Lab	350	14.5
Moor B. Ms.	Lab	342	14.5
Steele K. Ms.	Lab	296	-
Turnout		47.7	9.4

Grassmoor (3050) ²			
		vote	share
Lide T. Ms.*	Lab	0	-
Woolven A.*	Lab	0	0.0
Turnout		0.0	0.0

Holmewood & Heath (2375) ²			
		vote	share
Brunt R.*	Lab	0	-
Glasby J.*	Lab	0	0.0
Turnout		0.0	0.0

Killamarsh East (1825)			
		vote	share
Laycock L.*	Lab	0	0.0
Turnout		0.0	0.0

Killamarsh West (4621) ³			
		vote	share
Warns K.*	Lab	0	0.0
Robinson C.*	Lab	0	-
Laws H.	Lab	0	-
Turnout		0.0	0.0

Morton (1603)			
		vote	share
Treeweek M. Ms.	Lab	0	0.0
Turnout		0.0	0.0

North Wingfield Central (4772) ³			
		vote	share
Butler G.*	Lab	1,136	71.1
Bradley J.*	Lab	1,130	-
Ward D. Ms.	Lab	1,083	-
Gent W.	Con	461	28.9
Renshaw J.	Con	397	-
Turnout		29.4	42.3

Pilsley (2590) ²			
		vote	share
Moon T.*	Ind	751	54.2
Holmes P. Ms.	Lab	635	45.8
Bailey M.	Lab	430	-
Turnout		35.1	8.4

Renishaw (1495)			
		vote	share
Cousins P.*	Lab	0	0.0
Turnout		0.0	0.0

Ridgeway & Marsh Lane (1452)			
		vote	share
Greer J.	Lab	369	52.3
Spooner B.*	Con	336	47.7
Turnout		48.6	4.7

Shirland (4182) ³			
		vote	share
Wareing S. Ms.	Lab	0	0.0
Cotterell D.	Lab	0	-
Howard H.*	Lab	0	-
Turnout		0.0	0.0

Sutton (3175) ²			
		vote	share
Beresford I.*	Lab	784	57.7
Kerry P.	Lab	706	-
Booth G.*	Ind	575	42.3
Turnout		32.5	15.4

Tupton (2316) ²			
		vote	share
Marshall G.*	Lab	835	61.8
Broadhead P.	Lab	550	-
Whitmore G.*	Ind	516	38.2
Turnout		41.0	23.6

Unstone (1548)			
		vote	share
Hopkinson F.*	Lab	409	58.3
Emmens S.	Con	293	41.7
Turnout		45.9	16.5

Wingerworth (5510) ³			
		vote	share
Wade G.*	Con	1,462	63.0
Holmes M.*	Con	1,456	-
Pickford W.	Con	1,451	-
Moss T.	Lab	858	37.0
Caines S.	Lab	848	-
Kitchener M.	Lab	770	-
Turnout		41.4	26.0

North East Derbyshire - 1995

Ashover (1494)			
		vote	share
Parr B.*	Ind	573	78.0
Mason P.	Lab	162	22.0
Turnout		49.2	55.9

Barlow & Holmesfield (1594)			
		vote	share
Grice J.*	Con	369	44.9
Liles M.	Lab	264	32.1
Huckerby C. Ms.	Ind	189	23.0
Turnout		51.6	12.8
Brampton & Walton (2604) ³			
		vote	share
Thompson H.*	Con	647	56.5
Needham P.*	Con	630	-
Hutchinson J.*	Con	560	-
David C.	Lab	498	43.5
Turnout		44.0	13.0
Clay Cross North (4309) ³			
		vote	share
Simpson M. Ms.	Lab	0	0.0
Savidge K.	Lab	0	-
Morley G.	Lab	0	-
Turnout		0.0	0.0
Clay Cross South (2757) ²			
		vote	share
Booker P. Ms.*	Lab	0	-
Nuttall D.*	Lab	0	0.0
Turnout		0.0	0.0
Coal Aston (2715) ²			
		vote	share
Slater R.	Lab	624	51.1
Steele D.	Lab	600	-
Gill C.	Ind	352	28.9
Kershaw A. Ms.	Ind	257	-
Clark T.	Con	244	20.0
Norbron R.	Con	168	-
Turnout		44.9	22.3
Dronfield North (3746) ³			
		vote	share
Baxter G.*	Lab	969	74.6
Smith C. Ms.*	Lab	947	-
Cooper M.*	Lab	932	-
Newton N. Ms.	Con	330	25.4
Skelton B. Ms.	Con	291	-
Turnout		34.7	49.2
Dronfield South (5316) ³			
		vote	share
Foster M. Ms.	Lab	875	47.8
Goodhand J.	Lab	874	-
Foster N.	Lab	855	-
Marr K. Ms.*	Con	570	31.1
Emmens M.	Con	555	-
Newton R.	Con	444	-
Pryce C. Ms.	LD	387	21.1
Kay P.	LD	363	-
Kay R. Ms.	LD	324	-
Turnout		34.5	16.6
Dronfield Woodhouse (1661)			
		vote	share
Cheetham D.	Lab	329	48.2
Batty C.*	Con	189	27.7
Temple S.	LD	165	24.2
Turnout		41.1	20.5
Eckington North (3130) ²			
		vote	share
Marsh J. Ms.	Lab	741	83.3
Dargue J.*	Lab	724	-
Robinson P.	Con	149	16.7
Feasey W.	Con	132	-
Turnout		28.4	66.5
Eckington South (2621) ²			
		vote	share
Brown P.	Lab	643	60.0
Capps R.*	Lab	609	-
Walpole D.	Ind Lab	338	31.6
Pickering S.*	Ind Lab	277	-
Wright H.	Ind	90	8.4
Turnout		40.9	28.5

Gosforth Valley (4772) ³			
		vote	share
Smillie D. Ms.*	LD	1,094	56.1
Mortimer D.	LD	985	-
Knowles M. Ms.*	LD	980	-
Vernon T.	Lab	506	25.9
Coulgate E.	Lab	487	-
Steele K. Ms.	Lab	479	-
Emmens J. Ms.	Con	350	17.9
Turnout		40.9	30.2
Grassmoor (3115) ²			
		vote	share
Lide T. Ms.*	Lab	0	0.0
Hill E. Ms.	Lab	0	-
Turnout		0.0	0.0
Holmewood & Heath (2326) ²			
		vote	share
Brunt R.*	Lab	0	0.0
Glasby G.*	Ind	0	0.0
Turnout		0.0	0.0
Killamarsh East (1815)			
		vote	share
Laycock L.*	Lab	0	0.0
Turnout		0.0	0.0
Killamarsh West (4985) ³			
		vote	share
Robinson C.*	Lab	0	-
Windle J.*	Lab	0	0.0
Laws H.*	Lab	0	-
Turnout		0.0	0.0
Morton (1587)			
		vote	share
Treweek M. Ms.	Lab	0	0.0
Turnout		0.0	0.0
North Wingfield Central (4886) ³			
		vote	share
Butler G.*	Lab	0	-
Ward D. Ms.*	Lab	0	0.0
Bradley F.*	Lab	0	-
Turnout		0.0	0.0
Pilsley (2539) ²			
		vote	share
Holmes P. Ms.*	Lab	661	54.6
Antcliff G.	Lab	648	-
Moon T.*	Ind	549	45.4
Turnout		47.7	9.3
Renishaw (1463)			
		vote	share
Parsons C.*	Lab	0	0.0
Turnout		0.0	0.0
Ridgeway & Marsh Lane (1443)			
		vote	share
Featherstone D.	Lab	307	57.5
Harris G. Ms.	Con	227	42.5
Turnout		37.0	15.0
Shirland (4140) ³			
		vote	share
Cotterill D.*	Lab	1,151	67.9
Shaw G.	Lab	878	-
Smith V. Ms.	Lab	853	-
Bush K.	Ind	319	18.8
Kemp G. Ms.	Con	224	13.2
Turnout		40.9	49.1
Sutton (3133) ²			
		vote	share
Kerry P.*	Lab	0	-
Rockett S. Ms.	Lab	0	0.0
Turnout		0.0	0.0

Tupton (2411) ²			
		vote	share
Marshall G.*	Lab	0	0.0
Broadhead P.*	Lab	0	-
Turnout		0.0	0.0
Unstone (1558)			
		vote	share
Hopkinson F.*	Lab	0	0.0
Turnout		0.0	0.0
Wingerworth (5655) ³			
		vote	share
Moss T.	Lab	1,230	59.4
Fox B.	Lab	1,222	-
Mercer A.	Lab	1,194	-
Holmes M.*	Con	841	40.6
Wade G.*	Con	821	-
Pickford W.*	Con	813	-
Turnout		36.6	18.8
North East Derbyshire - 1999			
Ashover (1525)			
		vote	share
Parr B.*	Ind	498	79.9
Mason P.	Lab	125	20.1
Turnout		40.9	59.9
Barlow & Holmesfield (1607)			
		vote	share
Huckerby C. Ms.*	Con	406	68.9
Carter I. Ms.	Lab	183	31.1
Turnout		36.7	37.9
Brampton & Walton (2808) ³			
		vote	share
Needham P.*	Con	596	49.0
Thompson H.*	Con	595	-
Hutchinson J.*	Con	535	-
Marriot J. Ms.	Lab	387	31.8
Ross D.	Ind	234	19.2
Turnout		27.9	17.2
Clay Cross North (4286) ³			
		vote	share
Savidge K.*	Lab	947	67.5
Booker P. Ms.*	Lab	941	-
Morley G.*	Lab	915	-
Mansell P.	Ind	456	32.5
Hawkins S. Ms.	Ind	455	-
Woods D.	Ind	408	-
Turnout		32.2	35.0
Clay Cross South (2694) ²			
		vote	share
Nuttall D.*	Lab	871	77.7
Riggott P.	Lab	870	-
Hopkinson J. Ms.	Ind	250	22.3
Simpson M. Ms.	Ind	217	-
Turnout		32.1	55.4
Coal Aston (2576) ²			
		vote	share
Furniss T.	Lab	366	36.7
Emmens M.	Con	359	36.0
Steele D.*	Lab	351	-
Gill C.	Ind	273	27.4
Leake K.	Con	263	-
Turnout		31.3	0.7

Dronfield North (3700) ³			
		vote	share
Baxter G.*	Lab	633	56.0
Goodhand J.*	Lab	632	-
Smith C. Ms.	Lab	622	-
Reedman S. Ms.	Con	271	24.0
Skelton B. Ms.	Con	252	-
Kay R. Ms.	LD	226	20.0
Pryce C. Ms.	LD	214	-
Temple S.	LD	180	-
Turnout		27.3	32.0

Dronfield South (5274) ³			
		vote	share
England P. Ms.	LD	782	37.6
Marr K. Ms.	Con	669	32.1
Foster N.*	Lab	631	30.3
Gilbert J.	Lab	615	-
Clarke T.	Con	611	-
Hill D.	Lab	578	-
Turnout		24.6	5.4

Dronfield Woodhouse (1693)			
		vote	share
Cheetham D.*	Lab	0	0.0
Turnout		0.0	0.0

Eckington North (3152) ²			
		vote	share
Marsh J. Ms.*	Lab	491	71.7
Dargue J.*	Lab	425	-
Wright H. Ms.	Ind	194	28.3
Turnout		17.6	43.4

Eckington South (2723) ²			
		vote	share
Capps R.*	Lab	0	0.0
Brown P.*	Lab	0	-
Turnout		0.0	0.0

Gosforth Valley (4786) ³			
		vote	share
Mortimer D.*	LD	979	67.9
Higgins F.	LD	941	-
Williams J.	Lab	463	32.1
Steele K. Ms.*	Lab	372	-
Lilleyman M.	Lab	349	-
Turnout		21.6	35.8

Grassmoor (3040) ²			
		vote	share
Marriott R.	Lab	0	0.0
Hill E. Ms.*	Lab	0	-
Turnout		0.0	0.0

Holmewood & Heath (2155) ²			
		vote	share
Williams P. Ms.	Lab	0	0.0
Brunt R.*	Lab	0	-
Turnout		0.0	0.0

Killamarsh East (1792)			
		vote	share
Windle J.*	Lab	402	55.9
Sampson K.	Res	317	44.1
Turnout		40.1	11.8

Killamarsh West (5306) ³			
		vote	share
Holden J. Ms.	Lab	987	59.5
Laws H.*	Lab	955	-
Robinson C.*	Lab	942	-
Dye C. Ms.	Res	673	40.5
Turner T.	Res	659	-
Legge I.*	Res	651	-
Turnout		30.6	18.9

Morton (1604)			
		vote	share
Treweek M. Ms.*	Lab	0	0.0
Turnout		0.0	0.0

North Wingfield Central (5003) ³			
		vote	share
Bradley F.*	Lab	0	-
Butler G.*	Lab	0	-
Ward D. Ms.*	Lab	0	0.0
Turnout		0.0	0.0

Pilsley (2530) ²			
		vote	share
Antcliff G.*	Lab	565	55.9
Holmes P. Ms.*	Lab	457	-
Moon T.	Ind	445	44.1
Turnout		29.0	11.9

Renishaw (1485)			
		vote	share
Ridgeway B.	Lab	0	0.0
Turnout		0.0	0.0

Ridgeway & Marsh Lane (1423)			
		vote	share
Walpole D.	Lab	244	55.8
Holmes M.	Con	193	44.2
Turnout		30.7	11.7

Shirland (4224) ³			
		vote	share
Taylor F.*	Lab	0	0.0
Smith V. Ms.*	Lab	0	-
Cotterill D.*	Lab	0	-
Turnout		0.0	0.0

Sutton (3186) ²			
		vote	share
Kerry P.*	Lab	584	51.7
Beresford I.	Ind Lab	545	48.3
Chapman D.	Lab	482	-
Turnout		25.3	3.5

Tupton (2444) ²			
		vote	share
Pass G.	Lab	555	67.5
Broadhead P.*	Lab	486	-
Woods D. Ms.	Ind Res	267	32.5
Turnout		26.8	35.0

Unstone (1491)			
		vote	share
Hopkinson F.*	Con	271	60.0
Hill J. Ms.	Lab	181	40.0
Turnout		30.3	19.9

Wingerworth (5645) ³			
		vote	share
Pickford W.	Con	850	51.3
O'Neil P.	Con	841	-
Wade G.*	Con	831	-
Fisher T.	Lab	807	48.7
White B. Ms.	Lab	772	-
Fox B.*	Lab	744	-
Turnout		28.6	2.6

North East Derbyshire - 2003

Ashover (1519)			
		vote	share
Ramshaw G.	Ind	0	0.0
Turnout		0.0	0.0

Barlow & Holmesfield (1520)			
		vote	share
Huckerby C. Ms.*	Con	398	76.0
Stone L.	Lab	126	24.0
Turnout		35.0	51.9

Brampton & Walton (2954) ²			
		vote	share
Thompson H.*	Con	629	65.7
Needham P.*	Con	619	-
Marriott S.	Lab	329	34.3
Turnout		33.0	31.3

Clay Cross North (4256) ³			
		vote	share
Morley G.*	Lab	0	-
Holmes J.	Lab	0	-
Savidge K.*	Lab	0	0.0
Turnout		0.0	0.0

Clay Cross South (2746) ²			
		vote	share
Riggott P.*	Lab	0	0.0
Nuttall D.*	Lab	0	-
Turnout		0.0	0.0

Coal Aston (2834) ²			
		vote	share
Emmens M.*	Con	484	52.4
Furniss T.*	Lab	439	47.6
Williams J.*	Lab	418	-
Turnout		32.3	4.9

Dronfield North (3017) ²			
		vote	share
Baxter G.*	Lab	443	50.3
Smith C. Ms.*	Lab	440	-
Emmens M. Ms.*	Con	224	25.4
Pryce C. Ms.	LD	214	24.3
Turnout		26.1	24.9

Dronfield South (4196) ³			
		vote	share
Marr K. Ms.*	Con	631	38.1
Cheetham D.*	Lab	539	32.5
Foster N.*	Lab	514	-
Gill C.	Ind	488	29.4
Hill D.	Lab	485	-
Kershaw A. Ms.	Ind	445	-
Turnout		29.5	5.5

Dronfield Woodhouse (2929) ²			
		vote	share
Temple S.	LD	456	45.5
Hodd E.	LD	409	-
Brunt S.	Lab	277	27.6
Skelton B. Ms.	Con	269	26.8
Quick R.	Lab	255	-
Turnout		31.0	17.9

Eckington North (2840) ²			
		vote	share
Marsh J. Ms.*	Lab	348	50.3
Dargue J.*	Lab	301	-
Speed D.	Ind	231	33.4
Robinson C.	Ind	205	-
Robinson P.	Con	113	16.3
Turnout		23.4	16.9

Eckington South (2817) ²			
		vote	share
Yates L.	Lab	350	51.5
Brown P.*	Ind	330	48.5
Capps R.*	Ind	324	-
Turnout		22.9	2.9

Gosforth Valley (4071) ³			
		vote	share
Pryce W.	LD	832	70.9
Mortimer D.*	LD	799	-
Higgins F.*	LD	795	-
Foster K.	Lab	342	29.1
Clark S.	Lab	332	-
Steele K. Ms.	Lab	318	-
Turnout		29.8	41.7

Grassmoor (2897) ²			
		vote	share
Hill E. Ms.*	Lab	0	-
Marriott R.*	Lab	0	0.0
Turnout		0.0	0.0

Holmewood & Heath (2726) ²			
		vote	share
Williams P. Ms.*	Lab	0	0.0
Fisher T.	Lab	0	-
Turnout		0.0	0.0

Killamarsh East (2823) ²			
		vote	share
Holden J. Ms.*	Lab	0	-
Laughton G.	Lab	0	0.0
Turnout		0.0	0.0

Killamarsh West (4245) ³			
		vote	share
Robinson C.*	Lab	476	58.6
Laws H.*	Lab	475	-
Windle J.*	Lab	416	-
Potts M. Ms.	Ind	336	41.4
Turnout		18.2	17.2

North Wingfield Central (4083) ³			
		vote	share
Barker N.	Lab	597	64.2
Ward D. Ms.*	Lab	538	-
Butler G.*	Lab	533	-
Gent W.	Con	333	35.8
Turnout		23.0	28.4

Pilsley & Morton (3859) ³			
		vote	share
Moon T.	Ind	634	53.1
Antcliff G.*	Lab	561	46.9
Holmes P. Ms.*	Lab	538	-
Wilson M.	Lab	443	-
Turnout		28.6	6.1

Renishaw (1457)			
		vote	share
Ridgway B.*	Lab	0	0.0
Turnout		0.0	0.0

Ridgeway & Marsh Lane (1368)			
		vote	share
Walpole D.*	Lab	0	0.0
Turnout		0.0	0.0

Shirland (4282) ³			
		vote	share
Taylor S. Ms.	Lab	0	0.0
Cotterill D.*	Lab	0	-
Taylor F.*	Lab	0	-
Turnout		0.0	0.0

Sutton (3172) ²			
		vote	share
Kerry P.*	Lab	517	71.0
Dolby N. Ms.	Lab	502	-
Evans I. Ms.	Con	211	29.0
Turnout		24.0	42.0

Tupton (2864) ²			
		vote	share
Pass G.*	Lab	0	0.0
Broadhead P.*	Lab	0	-
Turnout		0.0	0.0

Unstone (1418)			
		vote	share
Hopkinson F.*	Ind	230	51.9
Hill J. Ms.	Lab	213	48.1
Turnout		31.6	3.8

Wingerworth (4650) ³			
		vote	share
Pickford W.*	Con	621	32.0
Ellis S.	Con	565	-
O'Neill P.*	Con	540	-
Walker K.	Lab	465	24.0
Robinson J. Ms.	LD	439	22.6
Moore K.	LD	437	-
Scothern R.	Ind	416	21.4
Snowdon T.	LD	387	-
Gordon M.	Lab	371	-
Turnout		33.7	8.0

North East Derbyshire - 2007

Ashover (1565)			
		vote	share
Ramshaw P.*	Con	0	0.0
Turnout		0.0	0.0

Barlow & Holmesfield (1505)			
		vote	share
Huckerby C. Ms.*	Con	524	80.0
Mannion-Brunt J. Ms.	Lab	131	20.0
Turnout		44.1	60.0

Brampton & Walton (2961) ²			
		vote	share
Thacker M.	Con	876	59.5
Elliott P.	Con	861	-
Moore K.*	LD	364	24.7
Marriott S.	Lab	232	15.8
Swallow J.	Lab	168	-
Turnout		46.6	34.8

Clay Cross North (4497) ³			
		vote	share
Holmes J.*	Lab	0	-
Savidge K.*	Lab	0	0.0
Morley G.*	Lab	0	-
Turnout		0.0	0.0

Clay Cross South (2808) ²			
		vote	share
Riggott P.*	Lab	589	70.1
Wright B.*	Lab	507	-
Snowdon R.	LD	251	29.9
Turnout		28.0	40.2

Coal Aston (2786) ²			
		vote	share
Emmens M.*	Con	569	48.7
Blackburn P.	Con	514	-
Furniss T.*	Lab	378	32.4
Clark S.	Lab	341	-
Wing M.	LD	221	18.9
Stocks J.	LD	220	-
Turnout		42.0	16.4

Dronfield North (3057) ²			
		vote	share
Smith C. Ms.*	Lab	432	44.9
Baxter G.*	Lab	429	-
Allsop S. Ms.	Con	371	38.5
Skelton B. Ms.	Con	337	-
Pryce C. Ms.	LD	160	16.6
Turnout		31.1	6.3

Dronfield South (4192) ³			
		vote	share
Marr K. Ms.*	Con	583	32.4
Bull R.	LD	545	30.3
Oxspring D.	LD	536	-
Gage D.	Con	500	-
McElligott T.	LD	466	-
Abbott C. Ms.	Con	422	-
Foster N.*	Lab	365	20.3
Hill D.	Lab	328	-
Gachagan R.	Lab	324	-
Gill C.	Ind	304	16.9
Gill A. Ms.	Ind	237	-
Turnout		39.1	2.1

Dronfield Woodhouse (2879) ²			
		vote	share
Sorrill G.	LD	538	46.9
Temple S.*	LD	535	-
Jackson J.	Con	402	35.0
Powell R.	Con	367	-
Brunt S.	Lab	208	18.1
Quick R.	Lab	186	-
Turnout		40.2	11.8

Eckington North (2813) ²			
		vote	share
Booth J. Ms.	Ind	378	46.1
Dargue J.*	Lab	287	35.0
Marsh J. Ms.*	Lab	261	-
Deakin R.	Ind	206	-
Robinson P.	Con	155	18.9
Turnout		26.0	11.1

Eckington South (2802) ²			
		vote	share
Brown P.*	Ind	343	51.0
Hunt C.	Lab	330	49.0
Speed D.	Ind	320	-
Walpole D.	Lab	306	-
Turnout		25.3	1.9

Gosforth Valley (4107) ³			
		vote	share
Pryce W.*	LD	937	52.5
Mortimer D.*	LD	829	-
Higgins F.*	LD	807	-
Hearn J. Ms.	Con	520	29.1
Rhodes J. Ms.	Con	481	-
Shearon J.	Lab	327	18.3
Smith C. Ms.	Lab	320	-
Steele K. Ms.	Lab	297	-
Turnout		40.0	23.4

Grassmoor (3041) ²			
		vote	share
Hill E. Ms.*	Lab	760	77.7
Hemsley P. Ms.	Lab	677	-
Willmot D.	Con	218	22.3
Turnout		33.5	55.4

Holmewood & Heath (2795) ²			
		vote	share
Fisher T.*	Lab	0	-
Williams P. Ms.*	Lab	0	0.0
Turnout		0.0	0.0

Killamarsh East (2861) ²			
		vote	share
Robinson L. Ms.*	Lab	0	-
Windle J.*	Lab	0	0.0
Turnout		0.0	0.0

Killamarsh West (4340) ³			
		vote	share
Robinson C.*	Lab	0	0.0
Laws H.*	Lab	0	-
Garrett A.	Lab	0	-
Turnout		0.0	0.0

North Wingfield Central (4259)³

		vote	share
Barker N.*	Lab	783	58.1
Butler G.*	Lab	676	-
Ward D. Ms.*	Lab	632	-
Booker H.	Ind	564	41.9

Turnout 28.7 16.3

Pilsley & Morton (4046)³

		vote	share
Cooper A.	Ind	887	64.0
Moon T.*	Ind	857	-
Holmes P. Ms.*	Lab	499	36.0
Ullathorne G.	Lab	351	-
Tuckley C.	Lab	323	-

Turnout 31.9 28.0

Renishaw (1869)

		vote	share
Ridgway B.*	Lab	336	56.2
Robinson C.	Ind	148	24.7
Harris G. Ms.	Con	114	19.1

Turnout 32.0 31.4

Ridgeway & Marsh Lane (1361)

		vote	share
Gordon M.	Lab	191	34.5
Dye A.	Ind	190	34.3
Basford S.	Con	173	31.2

Turnout 40.9 0.2

Shirland (4381)³

		vote	share
Cotterill D.*	Lab	825	60.9
Taylor F.*	Lab	689	-
Taylor S. Ms.*	Lab	620	-
Sterland N.	Con	530	39.1

Turnout 30.5 21.8

Sutton (3148)²

		vote	share
Dolby N. Ms.*	Lab	554	50.0
Kerry P.*	Lab	549	-
Hough N.	Ind	305	27.5
Evans I. Ms.	Con	250	22.5
Edmonds K.	Con	237	-

Turnout 34.0 22.5

Tupton (2983)²

		vote	share
Watters G. Ms.	Ind	600	47.5
Broadhead P.*	Ind	587	-
Goodyer C. Ms.	Lab	448	35.5
Skinner D.	Lab	438	-
Holmes M.	Con	215	17.0
Wells-Lomas T. Ms.	Con	193	-

Turnout 43.6 12.0

Unstone (1412)

		vote	share
Hopkinson F.*	Ind	270	60.0
Hill J. Ms.	Lab	180	40.0

Turnout 32.1 20.0

Wingerworth (4576)³

		vote	share
Pickford W.*	Con	1,011	44.3
Ellis S.*	Con	915	-
O'Neill P.*	Con	870	-
Snowdon T.	LD	589	25.8
Robinson J. Ms.	LD	575	-
Karim K.	LD	457	-
Prout M.	Lab	362	15.9
Gordon M. Ms.	Lab	321	-
Gower J.	Green	321	14.1

Turnout 42.5 18.5

North East Derbyshire - 2011**Ashover (1598)**

		vote	share
Ramshaw G.	Con	649	81.4
Flude B.	Lab	148	18.6

Turnout 50.3 62.9

Barlow & Holmesfield (1552)

		vote	share
Huckerby C. Ms.*	Con	553	72.7
Carter I. Ms.	Lab	208	27.3

Turnout 49.5 45.3

Brampton & Walton (2993)²

		vote	share
Elliott P.*	Con	1,062	72.6
Thacker M.*	Con	1,054	-
Grayling M.	Lab	401	27.4

Turnout 52.2 45.2

Clay Cross North (4536)³

		vote	share
Reader T. Ms.	Lab	1,068	64.0
Savidge K.*	Lab	1,065	-
Morley G.*	Lab	1,064	-
Jerman E.	Con	602	36.0
Olddale J. Ms.	Con	499	-

Turnout 40.0 27.9

Clay Cross South (2901)²

		vote	share
Riggott P.*	Lab	814	76.9
Wright B.*	Lab	751	-
Burrow K. Ms.	Con	244	23.1

Turnout 37.5 53.9

Coal Aston (2783)²

		vote	share
Emmens M.*	Con	730	49.5
Blackburn P.*	Con	680	-
O'Donnell K. Ms.	Lab	546	37.0
Smith V. Ms.	Lab	543	-
Memmott R. Ms.	LD	198	13.4

Turnout 53.0 12.5

Dronfield North (3244)²

		vote	share
Baxter G.*	Lab	676	52.5
Smith C. Ms.*	Lab	639	-
Blackburn D. Ms.	Con	449	34.9
Foster M.	Con	409	-
Memmott B.	LD	163	12.7

Turnout 40.0 17.6

Dronfield South (4238)³

		vote	share
Foster-Guembourg A. Ms.	Con	854	42.5
Oxspring D.*	Con	719	-
Foster N.	Lab	699	34.8
Talford A. Ms.	Con	681	-
Cheetham D.	Lab	676	-
Smith C. Ms.	Lab	670	-
Bull R.*	LD	457	22.7
Memmott A.	LD	334	-

Turnout 46.1 7.7

Dronfield Woodhouse (2801)²

		vote	share
Hall R.	Con	613	45.5
Widdowson P.	Con	544	-
Clark S.	Lab	402	29.8
Steele K. Ms.	Lab	365	-
Temple S.*	LD	333	24.7
Sorrill G.*	LD	306	-

Turnout 49.0 15.7

Eckington North (2904)²

		vote	share
Austen J. Ms.	Lab	473	49.2
Dargue J.*	Lab	431	-
Booth J. Ms.*	Ind	340	35.4
Jesson J.	Ind	206	-
Robinson C.	Ind	197	-
Abbott C. Ms.	Con	148	15.4
Donnelly J.	Con	136	-

Turnout 37.0 13.8

Eckington South (2965)²

		vote	share
Hunt C.*	Lab	604	60.5
Ridgway J. Ms.	Lab	462	-
Brown P.*	Ind	260	26.1
Speed D.	Ind	166	-
McDonnell A.	Con	134	13.4
Taylor R.	Con	115	-

Turnout 33.3 34.5

Gosforth Valley (4173)³

		vote	share
Emmens M. Ms.	Con	818	40.6
McGroarty J.	Con	798	-
Blackburn A. Ms.	Con	773	-
Gachagan R.	Lab	619	30.7
Hill D.	Lab	606	-
Quick R.	Lab	590	-
Temple W. Ms.	LD	579	28.7
Winfrow A.	LD	436	-
Botham L.	LD	415	-

Turnout 48.3 9.9

Grassmoor (2989)²

		vote	share
Hill E. Ms.*	Lab	928	80.1
Hemsley P. Ms.*	Lab	891	-
Blackburn A.	Con	230	19.9
Blackburn M. Ms.	Con	212	-

Turnout 42.0 60.3

Holmewood & Heath (2729)²

		vote	share
Stone L.	Lab	607	71.0
Williams P. Ms.*	Lab	582	-
Jason D.	Con	248	29.0

Turnout 34.7 42.0

Killamarsh East (2912)²

		vote	share
Laws H.*	Lab	743	72.5
Windle J.*	Lab	652	-
Mason G.	Con	282	27.5
Abbott C.	Con	206	-

Turnout 37.5 45.0

Killamarsh West (4346)³

		vote	share
Robinson L. Ms.*	Lab	955	59.2
Garrett A.*	Lab	929	-
Rice W.	Lab	918	-
Potts M. Ms.	Ind	398	24.7
Hadfield S. Ms.	Con	259	16.1
Renwick R. Ms.	Con	213	-
Smith R.	Con	198	-

Turnout 36.6 34.6

North Wingfield Central (4526)³

		vote	share
Barker N.*	Lab	1,284	67.3
Gillott K.	Lab	1,153	-
Butler G.*	Lab	1,108	-
Booker H.	Ind	354	18.6
Cupit C. Ms.	Con	270	14.2
Moss C.	Con	238	-
Willmot D.	Con	222	-

Turnout 39.0 48.7

Pilsley & Morton (4057)³

		vote	share
Moon T.*	Ind	833	42.6
Holmes P. Ms.*	Lab	763	39.0
Cooper A.*	Ind	754	-
Ward D. Ms.*	Lab	471	-
Boyle J.	Lab	431	-
Todd J.	Con	359	18.4
Berta S.	Con	313	-
Turnout		40.9	3.6

Renishaw (2032)

		vote	share
Ridgway B.*	Lab	480	68.1
Harris G. Ms.	Con	225	31.9
Turnout		35.3	36.2

Ridgeway & Marsh Lane (1377)

		vote	share
Gordon M.*	Lab	410	57.3
Abbot C. Ms.	Con	306	42.7
Turnout		51.9	14.5

Shirland (4391)³

		vote	share
Skinner D.	Lab	964	44.9
Barnes B.	Lab	929	-
Lewis B.	Con	670	31.2
Ullathorne G.	Lab	610	-
Liggett G.	Con	587	-
Liggett H. Ms.	Con	562	-
Cotterill D.*	Ind	512	23.9
Turnout		44.0	13.7

Sutton (3201)²

		vote	share
Dolby N. Ms.*	Lab	791	59.3
Kerry P.*	Lab	789	-
Evans I.	Con	308	23.1
Edmonds K.	Con	305	-
Hough N.	Ind	236	17.7
Turnout		42.0	36.2

Tupton (3041)²

		vote	share
Lilleyman W.	Lab	754	72.5
Peters S.	Lab	699	-
Lacey P.	Ind	286	27.5
Greaves F.	Ind	281	-
Wakefield B.	Ind	236	-
Greaves S. Ms.	Ind	234	-
Wakefield M. Ms.	Ind	206	-
Turnout		48.0	45.0

Unstone (1452)

		vote	share
Hill J. Ms.	Lab	0	0.0
Turnout		0.0	0.0

Wingerworth (4551)³

		vote	share
Antcliff P. Ms.	Con	1,129	40.5
Ellis S.*	Con	1,113	-
Ellis C. Ms.	Con	1,014	-
O'Neill P.*	Ind	838	30.1
Snape J. Ms.	Lab	821	29.4
Gordon M. Ms.	Lab	730	-
Turnout		48.2	10.4

