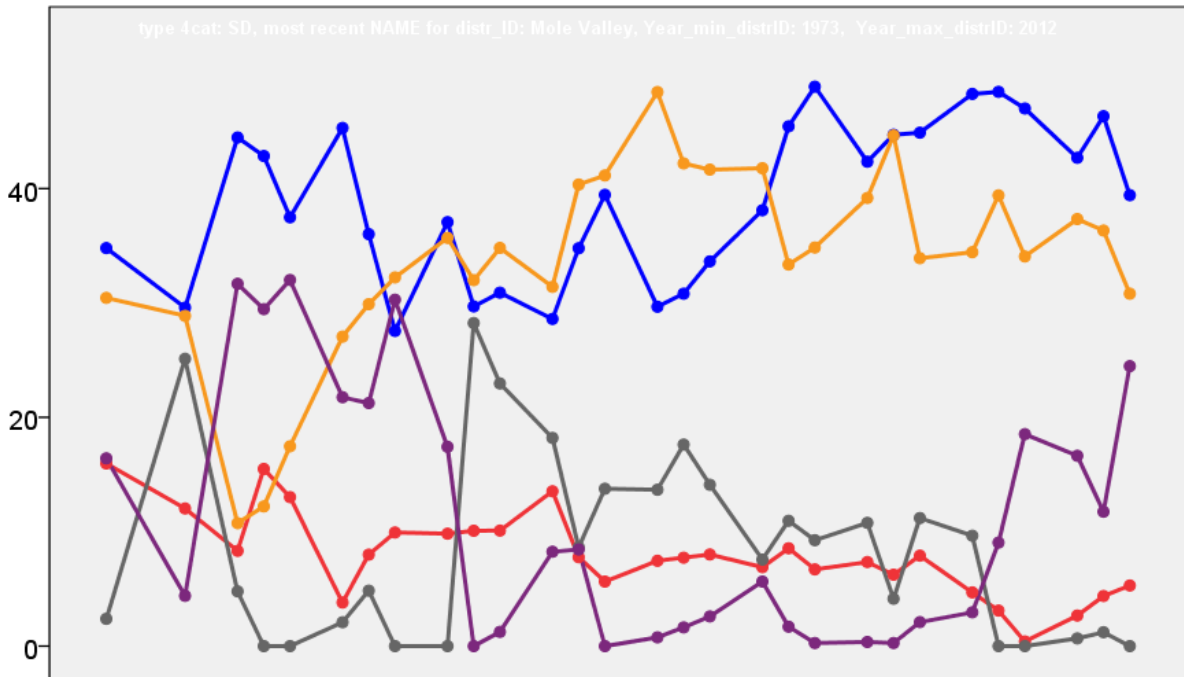


# Mole Valley District Council Election Results 1973-2012



Colin Rallings and Michael Thrasher  
The Elections Centre  
Plymouth University

The information contained in this report has been obtained from a number of sources. Election results from the immediate post-reorganisation period were painstakingly collected by Alan Willis largely, although not exclusively, from local newspaper reports. From the mid-1980s onwards the results have been obtained from each local authority by the Elections Centre. The data are stored in a database designed by Lawrence Ware and maintained by Brian Cheal and others at Plymouth University. Despite our best efforts some information remains elusive whilst we accept that some errors are likely to remain. Notice of any mistakes should be sent to [elections@plymouth.ac.uk](mailto:elections@plymouth.ac.uk). The results sequence can be kept up to date by purchasing copies of the annual Local Elections Handbook, details of which can be obtained by contacting the email address above.

Front cover: the graph shows the distribution of percentage vote shares over the period covered by the results. The lines reflect the colours traditionally used by the three main parties. The grey line is the share obtained by Independent candidates while the purple line groups together the vote shares for all other parties.

Rear cover: the top graph shows the percentage share of council seats for the main parties as well as those won by Independents and other parties. The lines take account of any by-election changes (but not those resulting from elected councillors switching party allegiance) as well as the transfers of seats during the main round of local election.

The lower graph shows for each main round of local elections the overall percentage turnout (solid line), the percentage of women candidates standing at (dotted line) and the percentage of women among those elected (hashed line).

## Mole Valley - 1973

Brockham (1675)			
		vote	share
Shaw A.	Lib	491	64.4
Grindall J.	Res	272	35.6
<b>Turnout</b>		45.6	28.7

Charlwood (2389) <sup>2</sup>			
		vote	share
Whiting R.	Lib	616	53.0
Tyler R.	Con	546	47.0
Fryer H. Ms.	Con	460	-
<b>Turnout</b>		48.6	6.0

Dorking North-West (1755)			
		vote	share
Carpenter S. Ms.	Lib	569	74.3
Bruce-Radcliffe G.	Con	197	25.7
<b>Turnout</b>		43.6	48.6

Dorking South-East (2682) <sup>2</sup>			
		vote	share
Keys D.	Con	535	39.1
Martin T. Ms.	Con	477	-
Kenward F.	Res	476	34.8
Blackman M.	Lab	358	26.2
Holder M.	Lab	277	-
<b>Turnout</b>		51.0	4.3

Dorking South-West (2079) <sup>2</sup>			
		vote	share
Laytob H.	Con	516	77.6
Nicholson-Florence O.	Con	495	-
Davis K.	Lab	149	22.4
White P.	Lab	120	-
<b>Turnout</b>		32.0	55.2

Holmwood & Beare Green (1930)			
		vote	share
Symons C.	Con	343	56.7
North B. Ms.	Ind Con	262	43.3
<b>Turnout</b>		31.3	13.4

Leith Hill (1287)			
		vote	share
Evelyn J.	Ind	0	0.0
<b>Turnout</b>		0.0	0.0

No. 10 (Leatherhead: Bookham) (7582) <sup>5</sup>			
		vote	share
Kille T.	Res	0	-
Matts K.	Res	0	-
Pedrick W.	Res	0	-
Sansom A. Ms.	Res	0	-
Taylor S.	Res	0	0.0
<b>Turnout</b>		0.0	0.0

No. 11 (Leatherhead: Fetcham) (5633) <sup>4</sup>			
		vote	share
Atkins M.	Ind	0	-
Morris H.	Ind	0	-
Stevens S.	Ind	0	-
Vickers B.	Ind	0	0.0
<b>Turnout</b>		0.0	0.0

No. 12 (Leatherhead: Leatherhead) (7171) <sup>5</sup>			
		vote	share
Tortise R. Ms.	Con	1,224	44.3
Thorn R.	Con	1,176	-
Holmes A.	Con	1,175	-
Coldicott B.	Con	1,163	-
Hill M. Ms.	Con	1,141	-
Anderson M.	Lib	866	31.3
Potts J.	Lib	857	-
Rayner H.	Lib	856	-
Slaughter T.	Lib	787	-
Warner G.	Lib	773	-
Hopper E.	Lab	675	24.4
Porter P. Ms.	Lab	666	-
Green F.	Lab	647	-
Livesey S. Ms.	Lab	634	-
Finch F.	Lab	554	-
<b>Turnout</b>		38.6	12.9

No. 17 (Betchworth & Leigh) (2704) <sup>2</sup>			
		vote	share
Goulburn E.	Con	580	40.2
Sanders A.	Con	559	-
Tiphani P.	Lib	477	33.0
Coles D.	Ind	387	26.8
<b>Turnout</b>		53.4	7.1

No. 2 (Dorking: Mickleham) (2017) <sup>2</sup>			
		vote	share
Malins H.	Con	0	-
Tatham P.	Con	0	0.0
<b>Turnout</b>		0.0	0.0

No. 3 (Dorking: North East) (1812)			
		vote	share
Harber J. Ms.	Lib	511	58.2
Martin R.	Con	367	41.8
<b>Turnout</b>		48.5	16.4

No. 9 (Leatherhead: Ashtead) (10181) <sup>7</sup>			
		vote	share
Gollin E. Ms.	Res	1,653	80.0
Durham A.	Res	1,623	-
Jones D.	Res	1,618	-
Griffin E.	Res	1,617	-
Davey P. Ms.	Res	1,611	-
Nevington J.	Res	1,608	-
Lidgey H.	Res	1,607	-
Hopper W. Ms.	Lab	414	20.0
Bradford M. Ms.	Lab	389	-
McDevitt D.	Lab	377	-
McCoid J.	Lab	354	-
Stander H. Ms.	Lab	330	-
Middleton G.	Lab	328	-
Stander M.	Lab	295	-
<b>Turnout</b>		20.3	59.9

North Holmwood (3276) <sup>2</sup>			
		vote	share
Goodall D.	Lab	874	44.0
Manners G.	Lab	762	-
Butler W.	Lib	628	31.6
Rush C.	Con	483	24.3
Russell G.	Con	433	-
<b>Turnout</b>		60.6	12.4

Okewood (1357)			
		vote	share
Strudwick E.	Ind	0	0.0
<b>Turnout</b>		0.0	0.0

Rural South (1993)			
		vote	share
Constable N.	Lib	481	52.3
Posnor A.	Con	438	47.7
<b>Turnout</b>		46.1	4.7

Westcott (1659)			
		vote	share
Mills P.	Con	415	49.8
Llewellyn-Williams V.	Lib	299	35.9
Davidson A.	Lab	120	14.4
<b>Turnout</b>		50.3	13.9

## Mole Valley - 1976

Ashtead Common (3050) <sup>2</sup>			
		vote	share
Hurley I.	Res	0	-
Jones D.	Res	0	0.0
<b>Turnout</b>		0.0	0.0

Ashtead Park (2851) <sup>2</sup>			
		vote	share
Lewis I.	Res	0	-
Lidgey H.	Res	0	0.0
<b>Turnout</b>		0.0	0.0

Ashtead Village (4160) <sup>3</sup>			
		vote	share
Bevington J.	Res	0	-
Davey P. Ms.	Res	0	-
Gollin E. Ms.	Res	0	0.0
<b>Turnout</b>		0.0	0.0

Bookham North (3576) <sup>2</sup>			
		vote	share
Pedrick W.	Ind	860	61.6
Matts K.	Ind	850	-
Storey P. Ms.	Lib	536	38.4
Turner A.	Lib	476	-
<b>Turnout</b>		41.1	23.2

Bookham South (4068) <sup>3</sup>			
		vote	share
Sansom A. Ms.	Ind	1,056	100.0
Taylor S.	Ind	1,036	-
Vickers B.	Ind	952	-
Brackenbury A.	Ind	834	-
<b>Turnout</b>		39.0	49.2

Box Hill (2473) <sup>2</sup>			
		vote	share
Tatham P.	Con	0	0.0
Malins H.	Con	0	-
<b>Turnout</b>		0.0	0.0

Brockham (1614)			
		vote	share
Kenward F.	Res	481	46.5
Shaw A.	Lib	423	40.9
Pullen N.	Lab	130	12.6
<b>Turnout</b>		64.2	5.6

Charlwood (1555)			
		vote	share
Epson E.	Ind	0	0.0
<b>Turnout</b>		0.0	0.0

Dorking North East (1779)			
		vote	share
Musgrove R.	Con	539	53.3
Harber J. Ms.	Lib	472	46.7
<b>Turnout</b>		56.9	6.6

Dorking North-West (1669)			
		vote	share
Carpenter S. Ms.	Lib	430	57.1
Whittington P.	Con	323	42.9
<b>Turnout</b>		45.2	14.2

Dorking South-East (2701) <sup>2</sup>			
		vote	share
Keys D.	Con	0	-
Martin T. Ms.	Con	0	0.0
Turnout		0.0	0.0

Dorking South-West (2005) <sup>2</sup>			
		vote	share
Housden E.	Lib	602	58.1
Layton H.	Con	434	41.9
Nicholson-Florence O.	Con	396	-
Turnout		49.7	16.2

Fetcham East (2844) <sup>2</sup>			
		vote	share
Morris H.	Ind	0	-
Stevenson J.	Ind	0	0.0
Turnout		0.0	0.0

Fetcham West (2847) <sup>2</sup>			
		vote	share
Atkins M.	Ind	0	-
Gillespie J.	Ind	0	0.0
Turnout		0.0	0.0

Holmwood & Beare Green (1871) <sup>2</sup>			
		vote	share
Symons C.	Con	0	-
Turner G.	Con	0	0.0
Turnout		0.0	0.0

Leatherhead North (3983) <sup>3</sup>			
		vote	share
Finch F.	Lab	585	38.8
Coldicott B.	Con	582	38.6
Holmes A.	Con	564	-
Loxton D.	Lab	530	-
Mackenzie B. Ms.	Con	506	-
McDevitt D.	Lab	494	-
Stone A.	Lib	341	22.6
Agerholm M. Ms.	Lib	328	-
Hope R. Ms.	Lib	310	-
Turnout		38.5	0.2

Leatherhead South (3201) <sup>2</sup>			
		vote	share
Thorn R.	Con	0	0.0
Tortise R. Ms.	Con	0	-
Turnout		0.0	0.0

Leith Hill (1296)			
		vote	share
Evelyn J.	Ind	0	0.0
Turnout		0.0	0.0

North Holmwood (3357) <sup>2</sup>			
		vote	share
Rush C.	Con	705	53.9
Eason G.	Con	662	-
Wendon S. Ms.	Lab	602	46.1
McCoid J.	Lab	592	-
Turnout		44.2	7.9

Okewood (1349)			
		vote	share
Strudwick E.	Ind	0	0.0
Turnout		0.0	0.0

Rural East (1141) <sup>2</sup>			
		vote	share
Sanders A.	Con	0	0.0
Goulburn E.	Con	0	-
Turnout		0.0	0.0

Rural South (1983)			
		vote	share
Wheeler W.	Con	657	64.7
Eves-Thorpe T.	Lib	358	35.3
Turnout		53.5	29.5

Westcott (1678)			
		vote	share
Mills P.	Con	0	0.0
Turnout		0.0	0.0

## Mole Valley - 1978

Ashtead Park (2754)			
		vote	share
Lewis I.	Res	875	62.9
Pollock H. Ms.	Con	516	37.1
Turnout		50.5	25.8

Ashtead Village (4106)			
		vote	share
Coley J.	Res	1,042	56.3
Lester H.	Con	810	43.7
Turnout		45.1	12.5

Bookham North (3671)			
		vote	share
Matts K.	Con	812	59.6
Berry N.	Ind	550	40.4
Turnout		37.1	19.2

Bookham South (4201)			
		vote	share
Vickers B.	Con	0	0.0
Turnout		0.0	0.0

Brockham (1620)			
		vote	share
Kenward F.	Res	592	55.4
Shaw P.	Lib	477	44.6
Turnout		66.0	10.8

Dorking North East (1738)			
		vote	share
Musgrove R.	Con	552	53.3
Russ O.	Res	237	22.9
Homewood M.	Lib	157	15.2
Goodall D.	Lab	90	8.7
Turnout		59.6	30.4

Dorking South-East (2593)			
		vote	share
Martin T. Ms.	Con	623	50.2
Galbraith W.	Res	276	22.2
Wendon S. Ms.	Lab	221	17.8
Skilton C.	Lib	122	9.8
Turnout		47.9	27.9

Dorking South-West (2078)			
		vote	share
Layton H.	Con	563	54.0
Lancaster W.	Lib	480	46.0
Turnout		50.2	8.0

Fetcham East (2853)			
		vote	share
Stevenson J.	Res	0	0.0
Turnout		0.0	0.0

Leatherhead North (4204)			
		vote	share
Holmes A.	Con	736	53.2
McCoid J.	Lab	647	46.8
Turnout		32.9	6.4

Leatherhead South (3150)			
		vote	share
Tortise R. Ms.	Con	0	0.0
Turnout		0.0	0.0

Rural East (2282)			
		vote	share
Copley L.	Res	619	55.4
Kenney A.	Con	499	44.6
Turnout		49.0	10.7

Westcott (1687)			
		vote	share
????? Ms.	Ind	0	0.0
Turnout		0.0	0.0

## Mole Valley - 1979

Ashtead Common (3078)			
		vote	share
Douglass B. Ms.	Res	948	38.8
Wignall G.	Lib	637	26.1
Frost E.	Con	630	25.8
Gathercole P.	Lab	226	9.3
Turnout		79.3	12.7

Ashtead Village (4140)			
		vote	share
West-Watson E.	Res	1,778	54.2
Lester H.	Con	1,053	32.1
Newman W.	Lab	451	13.7
Turnout		79.3	22.1

Bookham South (4216)			
		vote	share
McNay W. Ms.	Res	1,716	51.6
Findlay J.	Con	1,608	48.4
Turnout		78.9	3.2

Box Hill (2328)			
		vote	share
Tatham P.	Con	1,109	64.1
Hope C.	Lib	621	35.9
Turnout		74.3	28.2

Charlwood (1607)			
		vote	share
Sewill H. Ms.	Ind	0	0.0
Turnout		0.0	0.0

Fetcham West (2937)			
		vote	share
Atkins M.	Res	1,526	64.1
Johnson S. Ms.	Con	854	35.9
Turnout		81.0	28.2

Holmwood & Beare Green (1811)			
		vote	share
Symons C.	Con	777	57.0
Lancaster W.	Lib	586	43.0
Turnout		75.3	14.0

Leatherhead North (4282)			
		vote	share
Coldicott B.	Con	1,612	52.8
McDevitt D.	Lab	1,440	47.2
Turnout		71.3	5.6

Leatherhead South (3159)			
		vote	share
Thorn R.	Con	0	0.0
Turnout		0.0	0.0

Leith Hill (1308)			
		vote	share
Evelyn J.	Ind	0	0.0
Turnout		0.0	0.0

North Holmwood (3345)			
		vote	share
Eason G.	Con	1,038	38.6
Wendon S. Ms.	Lab	1,020	37.9
Skilton C.	Lib	630	23.4
Turnout		80.4	0.7

Okewood (1383)			
		vote	share
Strudwick E.	Ind	0	0.0
Turnout		0.0	0.0

Rural East (2296)			
		vote	share
Goulburn E.	Con	0	0.0
Turnout		0.0	0.0

Rural South (2091)			
		vote	share
Wheeler W.	Con	0	0.0
Turnout		0.0	0.0

## Mole Valley - 1980

Ashtead Common (3108)			
		vote	share
Syms J.	Res	0	0.0
Turnout		0.0	0.0

Ashtead Park (2921)			
		vote	share
Durham A.	Res	768	53.7
Sharland D.	Con	661	46.3
Turnout		48.9	7.5

Ashtead Village (4232)			
		vote	share
Marsh J. Ms.	Res	932	46.3
Ashby J. Ms.	Con	794	39.5
Bush T.	Lab	285	14.2
Turnout		47.5	6.9

Bookham North (3740)			
		vote	share
Pedrick W.	Res	816	67.9
Hughes F. Ms.	Lib	385	32.1
Turnout		32.1	35.9

Bookham South (4256)			
		vote	share
Sansom A. Ms.	Res	1,027	55.5
Meehan M.	Con	822	44.5
Turnout		43.4	11.1

Box Hill (2420)			
		vote	share
Malins H.	Con	779	69.9
Shaw A.	Lib	336	30.1
Turnout		46.1	39.7

Dorking North-West (1617)			
		vote	share
Carpenter S. Ms.	Res	348	59.4
Trim H.	Con	238	40.6
Turnout		36.2	18.8

Dorking South-East (2711)			
		vote	share
Keys D.	Con	700	58.3
Groat M.	Lib	500	41.7
Turnout		44.3	16.7

Dorking South-West (2167)			
		vote	share
Housden E.	Lib	578	55.7
Bruinvelds P.	Con	460	44.3
Turnout		47.9	11.4

Fetcham East (2916)			
		vote	share
Morris M.	Res	0	0.0
Turnout		0.0	0.0

Fetcham West (2949)			
		vote	share
Gillespie J.	Res	0	0.0
Turnout		0.0	0.0

Holmwood & Beare Green (1800)			
		vote	share
Lancaster W.	Lib	419	51.5
Turner T.	Con	395	48.5
Turnout		45.2	2.9

Leatherhead North (4553)			
		vote	share
Finch F.	Lab	960	60.0
Gowan T. Ms.	Con	639	40.0
Turnout		35.1	20.1

North Holmwood (3459)			
		vote	share
Rush C.	Res	795	44.2
Wendon S. Ms.	Lab	662	36.8
Skilton C.	Lib	340	18.9
Turnout		52.0	7.4

## Mole Valley - 1982

Ashtead Park (2885)			
		vote	share
Sharland D.	Con	751	50.1
Lewis I.	Res	749	49.9
Turnout		52.0	0.1

Ashtead Village (4174)			
		vote	share
Hopper J.	Res	911	46.8
Ashby J. Ms.	Con	687	35.3
Barlow N.	All	347	17.8
Turnout		46.6	11.5

Bookham North (3710)			
		vote	share
Matts K.	Con	1,061	60.6
Hughes F. Ms.	All	690	39.4
Turnout		47.2	21.2

Bookham South (4313)			
		vote	share
Findlay J.	Con	979	48.7
Berry N.	Res	645	32.1
O'Shea N.	Lib/SDP	386	19.2
Turnout		46.6	16.6

Brockham (2014)			
		vote	share
Kenward F.	Res	622	54.0
Shaw A.	Lib/SDP	530	46.0
Turnout		57.2	8.0

Dorking North East (1872)			
		vote	share
Musgrove R.	Con	596	60.9
Moxon J.	Lib/SDP	383	39.1
Turnout		52.3	21.8

Dorking South-East (2821)			
		vote	share
Martin T. Ms.	Con	701	57.1
Martin P.	Lib/SDP	354	28.9
Wendon S. Ms.	Lab	172	14.0
Turnout		43.5	28.3

Dorking South-West (2161)			
		vote	share
Adams P.	All	508	45.6
Westbrook N.	Con	507	45.6
Padgham R.	Lab	98	8.8
Turnout		51.5	0.1

Fetcham East (2904)			
		vote	share
Tring R.	Res	807	68.1
Tait D.	Lib/SDP	378	31.9
Turnout		40.8	36.2

Leatherhead North (4515)			
		vote	share
Hope C.	All	564	29.7
Walker J.	Con	532	28.0
Tidy J.	Lab	425	22.4
Holmes A.	Ind	380	20.0
Turnout		42.1	1.7

Leatherhead South (3127)			
		vote	share
Tortise R. Ms.	Con	1,079	68.5
Doran P.	Lib/SDP	497	31.5
Turnout		50.4	36.9

Rural East (1827)			
		vote	share
Keen M.	Con	730	70.7
Blakemore A. Ms.	Lib/SDP	302	29.3
Turnout		56.5	41.5

Westcott (1703)			
		vote	share
Mills P.	Con	645	73.1
Thompson G. Ms.	Res	237	26.9
Turnout		51.8	46.3

## Mole Valley - 1983

Ashtead Common (3137)			
		vote	share
Douglass B. Ms.	Res	1,097	79.5
Shimmin P. Ms.	Lib/SDP	283	20.5
Turnout		44.9	59.0

Ashtead Village (4286)			
		vote	share
Cunliffe S. Ms.	Res	0	0.0
Turnout		0.0	0.0

Bookham South (4449)			
		vote	share
Findlay J.	Con	0	0.0
Turnout		0.0	0.0

Box Hill (2457)			
		vote	share
Tatham B.	Con	758	61.8
Draper D.	Lib/SDP	468	38.2
Turnout		48.9	23.7

Charlwood (1604)			
		vote	share
Sewill H. Ms.	Res	544	85.0
Kanabus P.	Lib/SDP	96	15.0
Turnout		40.8	70.0

Fetcham West (3045)			
		vote	share
Vanneck-Murray T. Ms.	Res	695	52.7
Morris J.	Lib/SDP	625	47.3
Turnout		44.4	5.3

Holmwood & Beare Green (2031)			
		vote	share
Young G. Ms.	Lib/SDP	553	50.5
Symons C.	Con	541	49.5
<b>Turnout</b>		54.3	1.1

Leatherhead North (4553)			
		vote	share
Coldicott B.	Con	618	36.6
Ward H. Ms.	Lab	562	33.3
Doran P.	Lib/SDP	509	30.1
<b>Turnout</b>		37.5	3.3

Leatherhead South (3284)			
		vote	share
Thorn R.	Con	934	64.5
Thompson P.	Lib/SDP	514	35.5
<b>Turnout</b>		44.8	29.0

Leith Hill (1334)			
		vote	share
Evelyn P.	Ind Con	400	61.8
O'Shea N.	Lib/SDP	247	38.2
<b>Turnout</b>		50.0	23.6

North Holmwood (3459)			
		vote	share
Eason G.	Con	677	38.3
Wendon S. Ms.	Lab	550	31.1
Coton J. Ms.	Lib/SDP	542	30.6
<b>Turnout</b>		52.0	7.2

Okewood (1422)			
		vote	share
Lee-Steere G.	Con	288	44.2
Strudwick F.	Res	217	33.3
Lazenby K.	Ind	146	22.4
<b>Turnout</b>		46.7	10.9

Rural East (1952)			
		vote	share
Ashall R.	Ind	528	50.7
Schooling V. Ms.	Con	513	49.3
<b>Turnout</b>		54.5	1.4

Rural South (2158)			
		vote	share
Wheeler W.	Con	677	68.0
Tait D.	Lib/SDP	319	32.0
<b>Turnout</b>		47.7	35.9

## Mole Valley - 1984

Ashted Common (3117)			
		vote	share
Syms H.	Res	816	53.1
Keitley N.	Con	492	32.0
Shimmin P. Ms.	Lib/SDP	229	14.9
<b>Turnout</b>		49.3	21.1

Ashted Park (2888)			
		vote	share
Lewis I.	Res	988	66.5
Coles C.	Con	498	33.5
<b>Turnout</b>		51.5	33.0

Ashted Village (4302)			
		vote	share
Marsh J. Ms.	Res	1,400	83.5
Holtler D.	Lab	276	16.5
<b>Turnout</b>		39.0	67.1

Bookham North (3830)			
		vote	share
Pedrick G.	Res	0	0.0
<b>Turnout</b>		0.0	0.0

Bookham South (3998)			
		vote	share
Sansom A. Ms.	Res	0	0.0
<b>Turnout</b>		0.0	0.0

Box Hill (2509)			
		vote	share
Musgrave G.	Con	689	57.0
Draper D.	Lib/SDP	519	43.0
<b>Turnout</b>		48.1	14.1

Dorking North-West (1684)			
		vote	share
Edge D.	Con	356	50.0
Carpenter S. Ms.	Res	272	38.2
Jeffreys G.	Lab	84	11.8
<b>Turnout</b>		42.3	11.8

Dorking South-East (2788)			
		vote	share
Trim H.	Con	644	50.5
O'Shea N.	Lib/SDP	506	39.7
Holder M.	Lab	126	9.9
<b>Turnout</b>		45.8	10.8

Dorking South-West (2156)			
		vote	share
Wright D.	Lib/SDP	555	49.3
King-Smith P. Ms.	Con	493	43.8
Pedgham R.	Lab	77	6.8
<b>Turnout</b>		52.2	5.5

Fetcham East (3061)			
		vote	share
Morris H.	Res	704	68.2
Allsop A.	Lib/SDP	328	31.8
<b>Turnout</b>		33.7	36.4

Fetcham West (3157)			
		vote	share
Morris J.	Lib/SDP	715	51.4
Gillespie J.	Res	675	48.6
<b>Turnout</b>		44.0	2.9

Holmwood & Beare Green (2140)			
		vote	share
Lancaster W.	Lib/SDP	754	68.0
Griffith P.	Con	355	32.0
<b>Turnout</b>		51.8	36.0

Leatherhead North (4546)			
		vote	share
Ward H. Ms.	Lab	628	37.2
Thompson P.	Lib/SDP	569	33.7
Jackson K.	Con	489	29.0
<b>Turnout</b>		37.1	3.5

North Holmwood (3767)			
		vote	share
Ward M.	Lib/SDP	991	55.3
Wendon S. Ms.	Lab	402	22.4
Foulston M.	Con	400	22.3
<b>Turnout</b>		47.6	32.8

## Mole Valley - 1986

Ashted Park (2891)			
		vote	share
Mager A. Ms.	Res	766	49.9
Sharland D.	Con	635	41.4
Crighton I.	Green	134	8.7
<b>Turnout</b>		53.1	8.5

Ashted Village (4319)			
		vote	share
Hopper J.	Res	780	36.9
Williamson W.	Con	671	31.8
Woods A.	Lib/SDP	446	21.1
Lyon M.	Lab	215	10.2
<b>Turnout</b>		48.9	5.2

Bookham North (3830)			
		vote	share
Matts K.	Con	0	0.0
<b>Turnout</b>		0.0	0.0

Bookham South (3548)			
		vote	share
Findlay J.	Con	986	46.5
Berry N.	Lib/SDP	947	44.6
Fryett J.	Lab	189	8.9
<b>Turnout</b>		59.8	1.8

Brockham (2023)			
		vote	share
Kenwood F.	Res	582	50.0
Homewood M.	Lib/SDP	467	40.2
White P.	Lab	114	9.8
<b>Turnout</b>		57.5	9.9

Dorking North East (1908)			
		vote	share
Burt D.	Lib/SDP	554	49.6
Musgrove R.	Con	479	42.9
Turner A. Ms.	Lab	83	7.4
<b>Turnout</b>		58.5	6.7

Dorking South-East (2756)			
		vote	share
Smith G.	Con	633	44.9
O'Shea H.	Lib/SDP	605	42.9
Belowicz G.	Lab	173	12.3
<b>Turnout</b>		51.2	2.0

Dorking South-West (2152)			
		vote	share
Butcher J.	Lib/SDP	701	54.9
Cole M. Ms.	Con	455	35.7
Trier N.	Lab	120	9.4
<b>Turnout</b>		59.3	19.3

Fetcham East (3218)			
		vote	share
Tring R.	Res	740	56.2
Grigson K. Ms.	Lib/SDP	576	43.8
<b>Turnout</b>		40.9	12.5

Leatherhead North (4540)			
		vote	share
Hope C.	Lib/SDP	801	43.1
Hales S. Ms.	Lab	595	32.0
Richards G.	Con	461	24.8
<b>Turnout</b>		40.9	11.1

Leatherhead South (3185)			
		vote	share
Tortise R. Ms.	Con	842	62.0
Whittingham S.	Lib/SDP	515	38.0
<b>Turnout</b>		42.6	24.1

Rural East (1916)			
		vote	share
Keen M.	Con	636	66.3
Woodward A. Ms.	Lib/SDP	324	33.8
<b>Turnout</b>		50.1	32.5

Westcott (1778)			
		vote	share
Mills P.	Con	590	58.5
Rowe D. Ms.	Lib/SDP	214	21.2
Smith D.	Lab	204	20.2
<b>Turnout</b>		56.7	37.3

## Mole Valley - 1987

Ashtead Common (3117)			
		vote	share
Douglas B. Ms.	Ind	1,108	86.0
Green C.	Lab	181	14.0
<b>Turnout</b>		41.4	71.9

Ashtead Village (4388)			
		vote	share
Cunliffe S. Ms.	Ind	1,419	70.8
Woods T.	All	434	21.7
Newman W.	Lab	151	7.5
<b>Turnout</b>		45.7	49.2

Bookham South (4037)			
		vote	share
Huggins M. Ms.	Ind	1,069	50.4
Berry N.	All	1,050	49.6
<b>Turnout</b>		52.5	0.9

Box Hill (2509)			
		vote	share
Tatham P.	Con	818	66.3
Draper D.	All	335	27.2
Tate J.	Lab	80	6.5
<b>Turnout</b>		49.1	39.2

Charlwood (1591)			
		vote	share
Sewill H. Ms.	Ind	596	85.3
Corey G.	Lab	103	14.7
<b>Turnout</b>		43.9	70.5

Fetcham West (3157)			
		vote	share
Vanneck-Murray T. Ms.	Ind	848	55.9
Widger B.	All	670	44.1
<b>Turnout</b>		48.1	11.7

Holmwood & Beare Green (2140)			
		vote	share
Allsop A. Ms.	All	595	48.7
Bowden R.	Con	547	44.8
Smith D.	Lab	79	6.5
<b>Turnout</b>		57.1	3.9

Leatherhead North (4575)			
		vote	share
Whittingham S.	All	808	41.2
Richards G.	Con	642	32.7
Hales S. Ms.	Lab	513	26.1
<b>Turnout</b>		42.9	8.5

Leatherhead South (3219)			
		vote	share
Thorn R.	Con	935	61.6
Baker J. Ms.	All	582	38.4
<b>Turnout</b>		47.1	23.3

Leith Hill (1316)			
		vote	share
Cross J.	Con	485	71.2
Rowe D. Ms.	All	157	23.1
Turner F.	Lab	39	5.7
<b>Turnout</b>		51.7	48.2

North Holmwood (3767)			
		vote	share
Haslam E. Ms.	All	1,078	48.2
Eason G.	Con	774	34.6
Helowicz G.	Lab	383	17.1
<b>Turnout</b>		59.3	13.6

Okewood (1319)			
		vote	share
Lee-Steere G.	Con	400	81.3
Trier N.	Lab	92	18.7
<b>Turnout</b>		37.3	62.6

Rural East (1933)			
		vote	share
Schooling V. Ms.	Con	0	0.0
<b>Turnout</b>		0.0	0.0

Rural South (2221)			
		vote	share
Wheeler W.	Con	698	79.6
Padgham R.	Lab	179	20.4
<b>Turnout</b>		39.5	59.2

## Mole Valley - 1988

Ashtead Common (3098)			
		vote	share
Coldicott B.	Ind	485	37.5
Sparham J. Ms.	Con	409	31.6
Bracher J.	SLD	275	21.2
Stevens E. Ms.	Lab	126	9.7
<b>Turnout</b>		41.8	5.9

Ashtead Park (2962)			
		vote	share
Lewis I.*	Ind	991	80.2
Crichton L. Ms.	Green	244	19.8
<b>Turnout</b>		41.7	60.5

Ashtead Village (4457)			
		vote	share
Marsh J. Ms.*	Ind	1,307	82.1
Holder D.	Lab	284	17.9
<b>Turnout</b>		35.7	64.3

Bookham North (3950)			
		vote	share
Mackinnon I. Ms.	Con	947	60.4
Harmer-Jones L. Ms.	SLD	621	39.6
<b>Turnout</b>		39.7	20.8

Bookham South (4526)			
		vote	share
Oliver T.	Ind	1,042	54.8
Berry N.	SLD	859	45.2
<b>Turnout</b>		42.0	9.6

Box Hill (2562)			
		vote	share
Musgrave G.*	Con	743	73.1
Beard P.	SLD	196	19.3
Tate J.	Lab	78	7.7
<b>Turnout</b>		39.7	53.8

Dorking North-West (1751)			
		vote	share
Edge D.*	Con	459	63.5
Browning S. Ms.	SLD	159	22.0
Turner F.	Lab	105	14.5
<b>Turnout</b>		41.3	41.5

Dorking South-East (2723)			
		vote	share
Keys D.	Con	617	45.8
Draper D.	SLD	616	45.7
Herman P.	Lab	115	8.5
<b>Turnout</b>		49.5	0.1

Dorking South-West (2131)			
		vote	share
Wright D.*	SLD	567	48.3
Maltby N.	Con	486	41.4
Trier N.	Lab	121	10.3
<b>Turnout</b>		55.1	6.9

Fetcham East (3277)			
		vote	share
Page V. Ms.	Ind	627	55.3
Grigson K. Ms.	SLD	507	44.7
<b>Turnout</b>		34.6	10.6

Fetcham West (3269)			
		vote	share
Hall T.	Con	892	55.2
Morris J.*	SLD	723	44.8
<b>Turnout</b>		49.4	10.5

Holmwood & Beare Green (2249)			
		vote	share
Lancaster W.*	SLD	626	56.0
Gray M. Ms.	Con	426	38.1
Smith D.	Lab	66	5.9
<b>Turnout</b>		49.7	17.9

Leatherhead North (4611)			
		vote	share
Ward H. Ms.*	Lab	822	44.1
Walker J.	Con	519	27.9
Woods A.	SLD	472	25.3
Cude P.	Ind	50	2.7
<b>Turnout</b>		40.4	16.3

North Holmwood (4076)			
		vote	share
Ward M.*	SLD	1,204	59.4
Coombs P.	Con	560	27.6
Wolf F. Ms.	Lab	262	12.9
<b>Turnout</b>		49.7	31.8

## Mole Valley - 1990

Ashtead Park (2926)			
		vote	share
Mager A. Ms.*	Ind	1,034	80.5
Cooper A.	Green	250	19.5
<b>Turnout</b>		43.9	61.1

Ashtead Village (4459)			
		vote	share
Hiscock J.	Ind	1,374	67.4
Scott C.	Lab	387	19.0
Woods A.	SLD	279	13.7
<b>Turnout</b>		45.8	48.4

Bookham North (3910)			
		vote	share
Matts K.*	Con	955	46.3
Harmer-Jones L. Ms.	SLD	675	32.8
Piper J.	Ind	431	20.9
<b>Turnout</b>		52.7	13.6

Bookham South (4485)			
		vote	share
Berry N.	SLD	1,171	48.6
Findlay J.*	Con	1,007	41.8
Whelan S. Ms.	Green	230	9.6
<b>Turnout</b>		53.7	6.8

Brockham (2090)			
		vote	share
Homewood M.	SLD	690	56.0
Kenward F.*	Ind	543	44.0
<b>Turnout</b>		59.0	11.9

Dorking North East (1855)			
		vote	share
<b>Burt D.*</b>	SLD	713	62.2
Pulling-Smith P.	Con	355	31.0
Arbury W.	Lab	79	6.9
<b>Turnout</b>		61.8	31.2

Dorking South-East (2755)			
		vote	share
<b>Draper D.</b>	SLD	871	53.3
Cole M. Ms.	Con	538	32.9
Jeffreys J. Ms.	Lab	147	9.0
Whittaker S.	Green	79	4.8
<b>Turnout</b>		59.3	20.4

Dorking South-West (2166)			
		vote	share
<b>Butcher J.*</b>	SLD	639	53.0
Maltby N.	Con	387	32.1
Trier N.	Lab	180	14.9
<b>Turnout</b>		55.7	20.9

Fetcham East (3228)			
		vote	share
<b>Tring R.*</b>	Ind	0	0.0
<b>Turnout</b>		0.0	0.0

Leatherhead North (4605)			
		vote	share
<b>Hope C.*</b>	Green	973	53.0
Marsden G.	Lab	864	47.0
<b>Turnout</b>		39.9	5.9

Leatherhead South (3253)			
		vote	share
<b>Lashmar N.</b>	Con	1,001	64.5
Ward M.	Lab	552	35.5
<b>Turnout</b>		47.7	28.9

Rural East (1950)			
		vote	share
<b>Keen M.*</b>	Con	587	58.1
Nicholls A.	SLD	235	23.2
Corey G.	Lab	189	18.7
<b>Turnout</b>		51.8	34.8

Westcott (1739)			
		vote	share
<b>Cheesman N.</b>	SLD	562	48.3
Kingsley-Jones J. Ms.	Con	483	41.5
Smith D.	Lab	118	10.1
<b>Turnout</b>		66.9	6.8

## Mole Valley - 1991

Ashted Common (3126)			
		vote	share
<b>Douglass B. Ms.*</b>	Res	648	46.7
Bracher J.	LD	506	36.5
Keohane J.	Con	234	16.9
<b>Turnout</b>		44.4	10.2

Ashted Park (3003)			
		vote	share
<b>Cunliffe S. Ms.*</b>	Ind	972	45.6
Wiltshire P. Ms.	Con	663	31.1
Scott C.	Lab	213	10.0
Welling M.	LD	203	9.5
Cooper A.	Green	81	3.8
<b>Turnout</b>		48.2	14.5

Bookham South (4448)			
		vote	share
<b>Anderson M.</b>	LD	1,163	48.0
Glenister M.	Con	665	27.4
Huggins M. Ms.*	Res	596	24.6
<b>Turnout</b>		54.5	20.5

Box Hill (2530)			
		vote	share
<b>Tatham P.*</b>	Con	668	48.1
Rowe D. Ms.	LD	633	45.6
Watts E.	Lab	88	6.3
<b>Turnout</b>		54.9	2.5

Charlwood (1579)			
		vote	share
<b>Sewill H. Ms.*</b>	Ind	463	75.2
Welling V. Ms.	LD	92	14.9
Corey G.	Lab	61	9.9
<b>Turnout</b>		39.0	60.2

Fetcham West (3220)			
		vote	share
<b>Oliver W. Ms.</b>	Con	834	44.9
Grigson K. Ms.	LD	567	30.5
Vanneck-			
Murray T. Ms.*	Res	407	21.9
Marsden G. Ms.	Lab	50	2.7
<b>Turnout</b>		57.7	14.4

Holmwood & Beare Green (2196)			
		vote	share
<b>Allsop A. Ms.*</b>	LD	718	55.7
Gray M. Ms.	Con	517	40.1
Wendon S. Ms.	Lab	54	4.2
<b>Turnout</b>		58.7	15.6

Leatherhead North (4614) <sup>2</sup>			
		vote	share
<b>Baker J. Ms.</b>	LD	944	45.6
<b>Woods A.</b>	LD	708	-
Ward M.	Lab	612	29.6
Wood D.	Con	514	24.8
Loxton D.	Lab	489	-
Hinkley S. Ms.	Con	455	-
<b>Turnout</b>		43.6	16.0

Leatherhead South (3194)			
		vote	share
<b>Chamarette H.</b>	Con	878	58.6
Greed E.	LD	443	29.6
Macfarlane D.	Lab	177	11.8
<b>Turnout</b>		46.9	29.0

Leith Hill (1298)			
		vote	share
<b>Maltby N.</b>	Con	430	62.0
Macrae M. Ms.	LD	263	38.0
<b>Turnout</b>		53.4	24.1

North Holmwood (4219)			
		vote	share
<b>Watson M.</b>	LD	1,473	66.0
Pulling-Smith P. Ms.	Con	502	22.5
Wolf F. Ms.	Lab	257	11.5
<b>Turnout</b>		52.9	43.5

Okewood (1217)			
		vote	share
<b>Wilkie T.</b>	Ind	336	45.8
Lee-Steere G.*	Con	228	31.1
Wallace K.	LD	145	19.8
Trier N.	Lab	25	3.4
<b>Turnout</b>		60.3	14.7

Rural East (1917)			
		vote	share
<b>Revis P.</b>	Con	467	54.7
Nicholls A.	LD	386	45.3
<b>Turnout</b>		44.5	9.5

Rural South (2285)			
		vote	share
<b>O'Shea N.</b>	LD	735	55.6
Wheeler W.*	Con	529	40.0
Jeffreys J. Ms.	Lab	57	4.3
<b>Turnout</b>		57.8	15.6

## Mole Valley - 1992

Ashted Common (3170)			
		vote	share
<b>Bracher J.</b>	LD	815	55.3
Barclay J.	Ind	658	44.7
<b>Turnout</b>		47.2	10.7

Ashted Park (3003)			
		vote	share
<b>Townsend C.</b>	Ind	728	56.3
Wiltshire P. Ms.	Con	486	37.6
Barker W. Ms.	LD	79	6.1
<b>Turnout</b>		43.8	18.7

Ashted Village (4515)			
		vote	share
<b>Marsh J. Ms.*</b>	Ind	966	56.9
Pelliccia-Enoizi J.	Con	458	27.0
Shimmin P. Ms.	LD	275	16.2
<b>Turnout</b>		37.6	29.9

Bookham North (3837)			
		vote	share
<b>Mackinnon I. Ms.*</b>	Con	1,213	73.3
Harmer-Jones L. Ms.	LD	441	26.7
<b>Turnout</b>		43.7	46.7

Bookham South (4485)			
		vote	share
<b>Oliver T.*</b>	LD	1,351	60.5
Glenister M.	Con	883	39.5
<b>Turnout</b>		50.4	20.9

Box Hill (2530)			
		vote	share
<b>Riley M. Ms.</b>	Con	632	51.4
Rowe D. Ms.	LD	554	45.1
Watts E.	Lab	43	3.5
<b>Turnout</b>		48.8	6.3

Dorking North-West (1876)			
		vote	share
<b>Edge D.*</b>	Con	518	56.4
Cooksey M. Ms.	LD	356	38.7
Phillips B. Ms.	Lab	45	4.9
<b>Turnout</b>		47.5	17.6

Dorking South-East (2783)			
		vote	share
<b>Cooksey S.</b>	LD	783	53.6
Hinkley S. Ms.	Con	609	41.7
Jeffreys J. Ms.	Lab	70	4.8
<b>Turnout</b>		53.3	11.9

Dorking South-West (2179)			
		vote	share
<b>Wright D.*</b>	LD	596	50.1
Morshead T. Ms.	Con	509	42.8
Trier N.	Lab	85	7.1
<b>Turnout</b>		55.3	7.3

Fetcham East (3357)			
		vote	share
<b>Wood D.</b>	Con	672	41.3
Page V. Ms.*	Ind	550	33.8
Birchall L. Ms.	LD	405	24.9
<b>Turnout</b>		49.3	7.5

Fetcham West (3282)			
		vote	share
<b>Hall T.*</b>	Con	1,062	70.7
Thomson J.	LD	441	29.3
<b>Turnout</b>		46.5	41.3



Holmwood & Beare Green (2220)			
		vote	share
Lancaster W.*	LD	723	64.2
Eason G.	Con	354	31.4
Roger N.	Lab	49	4.4
Turnout		51.2	32.8

Leatherhead North (4580)			
		vote	share
Ward H. Ms.*	Lab	763	45.8
Carr J.	LD	544	32.7
Ingleby S.	Con	359	21.5
Turnout		36.7	13.1

North Holmwood (4314)			
		vote	share
Ward M.*	LD	1,312	65.3
Pulling-Smith P. Ms.	Con	563	28.0
Wolf F. Ms.	Lab	134	6.7
Turnout		47.0	37.3

## Mole Valley - 1994

Ashtead Park (2992)			
		vote	share
Wadsworth A.	Ind	975	64.5
Gammon A.	Con	342	22.6
Walker G.	LD	125	8.3
Cooper A.	Green	70	4.6
Turnout		50.3	41.9

Ashtead Village (4484)			
		vote	share
Hiscock J.*	Ind	1,140	49.8
Webster E. Ms.	LD	623	27.2
Aird A.	Con	331	14.5
Newman W.	Lab	193	8.4
Turnout		51.8	22.6

Bookham North (3838)			
		vote	share
Wright T.	LD	1,062	52.7
Matts K.*	Con	952	47.3
Turnout		53.4	5.5

Bookham South (4428)			
		vote	share
Berry N.*	LD	1,549	67.5
Cumming H. Ms.	Con	747	32.5
Turnout		52.5	34.9

Brockham (2202)			
		vote	share
Homewood M.*	LD	833	66.7
Mardell H. Ms.	Con	346	27.7
Roger N.	Lab	69	5.5
Turnout		57.3	39.0

Dorking North East (1798)			
		vote	share
Burt D.*	LD	753	71.9
Foulston M.	Con	241	23.0
Watts E.	Lab	53	5.1
Turnout		58.8	48.9

Dorking South-East (2672)			
		vote	share
Draper D.*	LD	835	60.4
Baker J. Ms.	Con	416	30.1
Jeffreys J. Ms.	Lab	131	9.5
Turnout		52.3	30.3

Dorking South-West (2193)			
		vote	share
Butcher J.*	LD	677	57.0
Heath M.	Con	254	21.4
Steele J.	Ind	141	11.9
Smith S. Ms.	Lab	116	9.8
Turnout		54.7	35.6

Fetcham East (3360)			
		vote	share
Seabrook P.	Con	959	59.5
Shimmin P. Ms.	LD	654	40.5
Turnout		48.9	18.9

Leatherhead North (4536)			
		vote	share
Lewis B. Ms.	LD	889	45.6
Ward M.	Lab	601	30.8
Dickson R. Ms.	Con	375	19.2
Smith D.	Green	86	4.4
Turnout		43.4	14.8

Leatherhead South (3166)			
		vote	share
Eckersley R.	LD	821	49.0
Lashmar N.*	Con	653	39.0
Ward M.	Lab	201	12.0
Turnout		53.4	10.0

Rural East (1877)			
		vote	share
Wade H. Ms.	LD	523	48.1
Keen M.*	Ind	522	48.0
Corey G.	Lab	42	3.9
Turnout		58.5	0.1

Westcott (1729)			
		vote	share
Cooksey M. Ms.	LD	499	48.8
Pulling-Smith P. Ms.	Con	414	40.5
Smith D.	Lab	110	10.8
Turnout		59.7	8.3

## Mole Valley - 1995

Ashtead Common (3091)			
		vote	share
Douglass B. Ms.*	Ind	769	57.0
Webster E. Ms.	LD	581	43.0
Turnout		43.8	13.9

Ashtead Village (4440)			
		vote	share
Cunliffe S. Ms.*	Ind	1,228	74.9
Shimmin P. Ms.	LD	273	16.7
Huggett J. Ms.	Green	138	8.4
Turnout		37.1	58.3

Bookham South (4380)			
		vote	share
Anderson M.*	LD	1,464	69.2
Glenister M.	Con	652	30.8
Turnout		48.4	38.4

Box Hill (2481)			
		vote	share
Tatham P.*	Con	645	52.2
Lawrie G.	LD	485	39.2
Jeffreys J. Ms.	Lab	106	8.6
Turnout		49.9	12.9

Charlwood (1561)			
		vote	share
Sewill H. Ms.*	Ind	470	63.2
Vallance P.	Ind Con	106	14.2
Nicholls A.	LD	102	13.7
Corey G.	Lab	66	8.9
Turnout		47.7	48.9

Fetcham West (3270)			
		vote	share
Oliver W. Ms.*	Con	1,016	58.9
Prentice K.	LD	710	41.1
Turnout		53.0	17.7

Holmwood & Beare Green (2151)			
		vote	share
Allsop A. Ms.*	LD	545	56.0
Pulling-Smith P. Ms.	Con	287	29.5
Burnage A. Ms.	Lab	142	14.6
Turnout		45.4	26.5

Leatherhead North (4544)			
		vote	share
Ward M.	Lab	689	37.3
Baker J. Ms.	LD	621	33.6
Salsbury C. Ms.	Con	476	25.8
Smith D.	Green	61	3.3
Turnout		40.7	3.7

Leatherhead South (3095)			
		vote	share
Dickson R. Ms.	Con	900	57.7
Spoons T.	LD	661	42.3
Turnout		50.6	15.3

Leith Hill (1325)			
		vote	share
Maltby N.*	Con	467	62.3
Hall P.	LD	189	25.2
Steele J.	Ind	94	12.5
Turnout		56.7	37.1

North Holmwood (4131)			
		vote	share
Watson M.*	LD	1,097	63.4
Eason G.	Con	333	19.2
Wolf F. Ms.	Lab	301	17.4
Turnout		41.9	44.1

Okewood (1386)			
		vote	share
Wilkie T.*	Ind	370	51.2
Barber J.	Con	272	37.7
Marshall N. Ms.	LD	80	11.1
Turnout		52.3	13.6

Rural East (1880)			
		vote	share
Pharo-Tomlin J.*	Con	704	61.2
Hawkins G.	LD	386	33.6
Peck E.	Lab	60	5.2
Turnout		61.2	27.7

Rural South (2325)			
		vote	share
O'Shea N.*	LD	683	60.9
Mackinnon B. Ms.	Ind	359	32.0
Roger N.	Lab	80	7.1
Turnout		48.4	28.9

## Mole Valley - 1996

Ashtead Common (3108)			
		vote	share
Parker H.	Ind	772	64.4
Shimmin P. Ms.	LD	427	35.6
Turnout		39.4	28.8

Ashtead Park (3041)			
		vote	share
Townsend C.*	Ind	977	88.6
Hawkins G.	LD	126	11.4
Turnout		37.3	77.2

Ashtead Village (4481)			
		vote	share
Marsh J. Ms.*	Ind	1,042	70.7
Mayes R.	LD	432	29.3
Turnout		33.7	41.4

<b>Bookham North (3927)</b>			
		vote	share
<b>Mackinnon I. Ms.*</b>	Con	1,173	69.5
Harvey R.	LD	514	30.5
<b>Turnout</b>		43.9	39.1
<b>Bookham South (4435)</b>			
		vote	share
<b>Oliver T.*</b>	LD	1,174	61.7
Glenister M.	Con	728	38.3
<b>Turnout</b>		43.5	23.4
<b>Box Hill (2492)</b>			
		vote	share
<b>Huggins M. Ms.</b>	Con	645	48.1
Vaks A.	LD	615	45.9
Barker I. Ms.	Lab	80	6.0
<b>Turnout</b>		54.9	2.2
<b>Dorking North-West (1878)</b>			
		vote	share
<b>Edge D.*</b>	Con	554	55.5
Gould R.	LD	356	35.6
Peck E.	Lab	89	8.9
<b>Turnout</b>		54.2	19.8
<b>Dorking South-East (2639)</b>			
		vote	share
<b>Cooksey S.*</b>	LD	644	51.2
Parker P. Ms.	Ind Con	462	36.7
Jeffreys J. Ms.	Lab	153	12.2
<b>Turnout</b>		48.5	14.5
<b>Dorking South-West (2223)</b>			
		vote	share
<b>Flowitt W.</b>	LD	557	50.1
Dykes C. Ms.	Con	421	37.9
Trier N.	Lab	133	12.0
<b>Turnout</b>		50.6	12.2
<b>Fetcham East (3356)</b>			
		vote	share
<b>Wood D.*</b>	Con	981	58.4
Prentice K.	LD	700	41.6
<b>Turnout</b>		50.9	16.7
<b>Fetcham West (3230)</b>			
		vote	share
<b>Hall T.*</b>	Con	931	61.7
Hill S. Ms.	LD	579	38.3
<b>Turnout</b>		47.5	23.3
<b>Holmwood &amp; Beare Green (2187)<sup>2</sup></b>			
		vote	share
<b>Slater J.</b>	LD	562	51.4
<b>Oliver J. Ms.</b>	LD	545	-
Barber J.	Con	421	38.5
Pulling-Smith P. Ms.	Con	411	-
Roger N.	Lab	110	10.1
Corey G.	Lab	94	-
<b>Turnout</b>		51.9	12.9
<b>Leatherhead North (4530)</b>			
		vote	share
<b>Ward H. Ms.*</b>	Lab	761	47.2
Moody K.	Con	441	27.4
Cullum M. Ms.	LD	359	22.3
Smith D.	Green	51	3.2
<b>Turnout</b>		36.1	19.9
<b>North Holmwood (4147)</b>			
		vote	share
<b>Ward M.*</b>	LD	1,194	66.0
Janes C. Ms.	Con	358	19.8
Wolf F. Ms.	Lab	258	14.3
<b>Turnout</b>		44.3	46.2

## Mole Valley - 1998

<b>Ashtead Park (3039)</b>			
		vote	share
<b>Wadsworth A.*</b>	Ind Res	863	85.9
Hodge C.	Lab	142	14.1
<b>Turnout</b>		33.1	71.7
<b>Ashtead Village (4458)</b>			
		vote	share
<b>Hiscock J.*</b>	Ind	1,157	84.0
Scott C.	Lab	221	16.0
<b>Turnout</b>		31.0	67.9
<b>Bookham North (3812)</b>			
		vote	share
<b>Moore W.</b>	Con	1,003	66.9
Harvey R.	LD	497	33.1
<b>Turnout</b>		39.5	33.7
<b>Bookham South (4290)<sup>2</sup></b>			
		vote	share
<b>Berry N.*</b>	LD	1,100	59.6
<b>Turner A.</b>	LD	1,056	-
Glenister C. Ms.	Con	746	40.4
Glenister M.	Con	719	-
<b>Turnout</b>		44.6	19.2
<b>Brockham (2171)</b>			
		vote	share
<b>Homewood M.*</b>	LD	682	74.9
Slater R.	Con	170	18.7
James I.	Lab	58	6.4
<b>Turnout</b>		41.9	56.3
<b>Dorking North East (1806)</b>			
		vote	share
<b>Burt D.*</b>	LD	581	65.3
Curran P.	Con	255	28.7
Watts E.	Lab	54	6.1
<b>Turnout</b>		49.3	36.6
<b>Dorking South-East (2635)</b>			
		vote	share
<b>Timms L. Ms.</b>	LD	540	48.1
Whiston D.	Con	478	42.6
Corey G.	Lab	104	9.3
<b>Turnout</b>		42.6	5.5
<b>Dorking South-West (2160)</b>			
		vote	share
<b>Butcher J.*</b>	LD	512	58.4
Jessup A.	Con	258	29.5
Trier N.	Lab	106	12.1
<b>Turnout</b>		40.6	29.0
<b>Fetcham East (3338)</b>			
		vote	share
<b>Seabrook P.*</b>	Con	992	77.0
Griffin M. Ms.	LD	296	23.0
<b>Turnout</b>		38.7	54.0
<b>Leatherhead North (4483)</b>			
		vote	share
<b>Lewis B. Ms.*</b>	LD	870	57.1
Christison D.	Lab	369	24.2
Harber J.	Con	284	18.6
<b>Turnout</b>		34.0	32.9
<b>Leatherhead South (3128)</b>			
		vote	share
<b>Sharland D.</b>	Con	680	55.0
Carr J.	LD	557	45.0
<b>Turnout</b>		39.6	9.9

<b>Rural East (1887)</b>			
		vote	share
<b>Vinter G.</b>	Con	521	62.9
Wade H. Ms.*	LD	307	37.1
<b>Turnout</b>		44.6	25.8
<b>Westcott (1685)</b>			
		vote	share
<b>Cooksey M. Ms.*</b>	LD	443	50.3
Musgrave B. Ms.	Con	437	49.7
<b>Turnout</b>		52.3	0.7
<b>Mole Valley - 1999</b>			
<b>Ashtead Common (3038)</b>			
		vote	share
<b>Douglass B. Ms.*</b>	Ind	567	49.6
Harber J.	Con	407	35.6
Shimmin P. Ms.	LD	170	14.9
<b>Turnout</b>		37.8	14.0
<b>Ashtead Village (4405)</b>			
		vote	share
<b>Williams M.</b>	Ind	1,001	66.6
Everest C.	Con	373	24.8
Huggett J. Ms.	Green	129	8.6
<b>Turnout</b>		34.2	41.8
<b>Bookham South (4280)</b>			
		vote	share
<b>Anderson M.*</b>	LD	1,131	52.2
Dawson M.	Con	867	40.0
Neish S. Ms.	Lab	169	7.8
<b>Turnout</b>		50.7	12.2
<b>Box Hill (2458)</b>			
		vote	share
<b>Tatham P.*</b>	Con	616	48.4
Ford B.	LD	611	48.0
Watts E.	Lab	46	3.6
<b>Turnout</b>		51.9	0.4
<b>Charlwood (1558)</b>			
		vote	share
<b>Webb D.</b>	Con	347	63.4
Watson J.	LD	110	20.1
James I.	Lab	90	16.5
<b>Turnout</b>		35.6	43.3
<b>Fetcham West (3161)</b>			
		vote	share
<b>Oliver W. Ms.*</b>	Con	926	75.5
Morton T.	LD	300	24.5
<b>Turnout</b>		38.8	51.1
<b>Holmwood &amp; Beare Green (2174)</b>			
		vote	share
<b>Oliver J. Ms.*</b>	LD	573	55.3
Spicer M.	Con	404	39.0
Roger N.	Lab	60	5.8
<b>Turnout</b>		47.8	16.3
<b>Leatherhead North (4427)</b>			
		vote	share
<b>Carr J.</b>	LD	541	40.2
Ward M.*	Lab	450	33.4
Salsbury C. Ms.	Con	320	23.8
Cooper A.	Green	35	2.6
<b>Turnout</b>		30.5	6.8
<b>Leatherhead South (3048)</b>			
		vote	share
<b>Dickson R. Ms.*</b>	Con	726	63.2
Lloyd C.	LD	319	27.8
Hume J. Ms.	Green	103	9.0
<b>Turnout</b>		37.7	35.5

Leith Hill (1322)			
		vote	share
<b>Maltby N.*</b>	Con	465	76.5
Watson C.	LD	91	15.0
May P.	Lab	52	8.6
<b>Turnout</b>		46.1	61.5

North Holmwood (4085)			
		vote	share
<b>Watson M.*</b>	LD	766	56.2
Foulston M.	Con	328	24.0
Christison D.	Lab	270	19.8
<b>Turnout</b>		33.5	32.1

Okewood (1418)			
		vote	share
<b>Barber J.</b>	Con	415	74.4
Nurse B.	LD	74	13.3
Trier N.	Lab	69	12.4
<b>Turnout</b>		39.4	61.1

Rural East (1872)			
		vote	share
<b>Shersby J.</b>	Con	521	65.8
Washtell J.	LD	198	25.0
Helowicz A. Ms.	Lab	73	9.2
<b>Turnout</b>		42.5	40.8

Rural South (2394)			
		vote	share
<b>Pearson J. Ms.</b>	Con	421	42.4
Longhurst C. Ms.	LD	355	35.8
Collison B. Ms.	Ind	153	15.4
Corey G.	Lab	64	6.4
<b>Turnout</b>		41.6	6.6

## Mole Valley - 2000

Ashtead Common (3033) <sup>2</sup>			
		vote	share
<b>Douglass B. Ms.*</b>	Ind	726	49.3
<b>Northcott W.</b>	Ind	658	-
Newton G.	Con	424	28.8
Sharland S. Ms.	Con	393	-
Harwood D.	LD	208	14.1
Shimmin P. Ms.	LD	205	-
Gough J.	Lab	116	7.9
<b>Turnout</b>		47.8	20.5

Ashtead Park (3047) <sup>2</sup>			
		vote	share
<b>Townsend C.*</b>	Ind	765	58.4
<b>Wadsworth A.*</b>	Ind	734	-
Everest C.	Con	474	36.2
Wylde S.	Con	426	-
Cooper A.	Green	72	5.5
<b>Turnout</b>		42.9	22.2

Ashtead Village (4376) <sup>3</sup>			
		vote	share
<b>Marsh J. Ms.*</b>	Ind	997	64.6
<b>Hiscock J.*</b>	Ind	966	-
<b>Williams M.*</b>	Ind	960	-
Brosnan D. Ms.	Con	377	24.4
Wood P.	Con	368	-
Thompson D.	Con	361	-
Scott C.	Lab	169	11.0
<b>Turnout</b>		35.5	40.2

Beare Green (1510)			
		vote	share
<b>Homewood V. Ms.*</b>	LD	384	60.6
Spicer M.	Con	223	35.2
Roger N.	Lab	27	4.3
<b>Turnout</b>		42.0	25.4

Bookham North (4463) <sup>3</sup>			
		vote	share
<b>Curran C. Ms.</b>	Con	1,277	65.5
<b>Mackinnon I. Ms.*</b>	Con	1,265	-
<b>Moore W.*</b>	Con	1,257	-
Hunt A. Ms.	LD	673	34.5
Frost P.	LD	647	-
Laxton J.	LD	640	-
<b>Turnout</b>		44.1	31.0

Bookham South (4292) <sup>3</sup>			
		vote	share
<b>Anderson M.*</b>	LD	1,314	60.2
<b>Berry N.*</b>	LD	1,149	-
<b>Turner T.*</b>	LD	1,119	-
Allen A. Ms.	Con	869	39.8
Walker D.	Con	835	-
Wemms J. Ms.	Con	786	-
<b>Turnout</b>		50.4	20.4

Box Hill & Headley (1625)			
		vote	share
<b>Ladell D. Ms.</b>	Con	409	51.4
Ford B.	LD	366	46.0
Watts E.	Lab	21	2.6
<b>Turnout</b>		49.2	5.4

Brockham Betchworth & Buckland (3424) <sup>2</sup>			
		vote	share
<b>Homewood M.*</b>	LD	853	49.6
<b>Kenney A.</b>	Con	740	43.0
Vinter G.*	Con	676	-
Washtell J.	LD	647	-
Helowicz A. Ms.	Lab	127	7.4
<b>Turnout</b>		46.7	6.6

Capel Leigh & Newdigate (3064) <sup>2</sup>			
		vote	share
<b>Pearson J. Ms.*</b>	Con	848	71.6
<b>Shersby J.*</b>	Con	761	-
Gordon J.	LD	242	20.4
Watson J.	LD	230	-
Corey G.	Lab	94	7.9
<b>Turnout</b>		38.3	51.2

Charlwood (1560)			
		vote	share
<b>Webb D.*</b>	Con	310	61.6
Longhurst C. Ms.	LD	145	28.8
James I.	Lab	48	9.5
<b>Turnout</b>		32.2	32.8

Dorking North (3011) <sup>2</sup>			
		vote	share
<b>Edge D.*</b>	Con	809	51.1
<b>Burt D.*</b>	LD	629	39.8
Huggins M. Ms.*	Con	567	-
Hunter A. Ms.	LD	475	-
Hepburn S-J. Ms.	Lab	144	9.1
<b>Turnout</b>		47.2	11.4

Dorking South (4904) <sup>3</sup>			
		vote	share
<b>Butcher J.*</b>	LD	1,070	48.5
<b>Cooksey S.*</b>	LD	1,006	-
<b>Timms L. Ms.*</b>	LD	975	-
Broom H.	Con	955	43.3
Campbell A.	Con	934	-
Whiston D.	Con	829	-
Helowicz G.	Lab	182	8.2
May P.	Lab	169	-
Trier N.	Lab	156	-
<b>Turnout</b>		44.5	5.2

Fetcham East (2895) <sup>2</sup>			
		vote	share
<b>Seabrook P.*</b>	Con	844	65.2
<b>Wood D.*</b>	Con	737	-
Cummins M. Ms.	LD	451	34.8
Freeman A.	LD	388	-
<b>Turnout</b>		44.7	30.3

Fetcham West (3057) <sup>2</sup>			
		vote	share
<b>Oliver W. Ms.*</b>	Con	886	69.4
<b>Hall T.*</b>	Con	773	-
Bowen H.	LD	391	30.6
Morton T.	LD	350	-
<b>Turnout</b>		41.7	38.8

Holmwoods (4540) <sup>3</sup>			
		vote	share
<b>Watson M.*</b>	LD	805	52.7
<b>Longhurst M.</b>	LD	717	-
<b>Ellis T.</b>	LD	699	-
Greenough A. Ms.	Con	526	34.4
Foulston M.	Con	510	-
Mir I. Ms.	Con	477	-
Davis K.	Lab	196	12.8
Christison D.	Lab	183	-
Swan P.	Lab	150	-
<b>Turnout</b>		33.9	18.3

Leatherhead North (4358) <sup>3</sup>			
		vote	share
<b>Ward H. Ms.*</b>	Lab	571	37.2
<b>Lewis B. Ms.*</b>	LD	498	32.5
<b>Carr J.*</b>	LD	469	-
Salsbury C. Ms.	Con	465	30.3
Thomas A.	Con	450	-
Dawson M.	Con	447	-
Wigley R.	Lab	434	-
Ward M.	Lab	426	-
Ball M. Ms.	LD	397	-
<b>Turnout</b>		33.7	4.8

Leatherhead South (3011) <sup>2</sup>			
		vote	share
<b>Dickson R. Ms.*</b>	Con	807	67.3
<b>Sharland D.*</b>	Con	722	-
Lewis J.	LD	392	32.7
Lloyd C.	LD	371	-
<b>Turnout</b>		40.1	34.6

Leith Hill (1304)			
		vote	share
<b>Maltby N.*</b>	Con	447	77.7
Watson C.	LD	128	22.3
<b>Turnout</b>		44.2	55.5

Mickleham Westhumble & Pixham (1491)			
		vote	share
<b>Tatham P.*</b>	Con	516	59.4
Wright A.	LD	301	34.6
Wendon D.	Lab	52	6.0
<b>Turnout</b>		58.4	24.7

Okewood (1440)			
		vote	share
<b>Barber J.*</b>	Con	402	78.2
Round S.	LD	112	21.8
<b>Turnout</b>		35.7	56.4

Westcott (1635)			
		vote	share
<b>Matthews L.</b>	Con	536	53.8
Cooksey M. Ms.*	LD	403	40.5
Ward M.	Lab	57	5.7
<b>Turnout</b>		60.9	13.4

## Mole Valley - 2002

Ashtead Common (3111)			
		vote	share
<b>Northcott W.*</b>	Ind	756	51.4
Sharland S. Ms.	Con	603	41.0
Gough J.	Lab	112	7.6
<b>Turnout</b>		46.2	10.4

Asstead Park (3100)			
		vote	share
Smith P.	Ind	740	57.1
Reynolds C.	Con	464	35.8
Gilchrist S. Ms.	Lab	58	4.5
Cooper A.	Green	34	2.6
<b>Turnout</b>		41.9	21.3

Asstead Village (4367)			
		vote	share
Williams M.*	Ind	810	47.8
Hunt C.	Con	575	34.0
Jones J. Ms.	LD	177	10.5
Scott C.	Lab	88	5.2
Huggett J. Ms.	Green	43	2.5
<b>Turnout</b>		38.8	13.9

Bookham North (4414)			
		vote	share
Moore W.*	Con	1,111	52.4
Howarth E. Ms.	LD	939	44.3
Helowicz G.	Lab	70	3.3
<b>Turnout</b>		48.2	8.1

Bookham South (4297)			
		vote	share
Turner T.*	LD	1,149	59.0
Palmer E.	Con	710	36.5
James I.	Lab	88	4.5
<b>Turnout</b>		44.9	22.5

Brockham Betchworth & Buckland (3411)			
		vote	share
Washtell J.	LD	876	55.8
Kennedy A.*	Con	623	39.7
Helowicz A. Ms.	Lab	71	4.5
<b>Turnout</b>		46.1	16.1

Capel Leigh & Newdigate (3035)			
		vote	share
Shersby J.*	Con	755	67.7
Watson J.	LD	360	32.3
<b>Turnout</b>		36.9	35.4

Dorking North (3004)			
		vote	share
Burt D.*	LD	751	54.5
Upton-Taylor B. Ms.	Con	516	37.4
Christison D.	Lab	111	8.1
<b>Turnout</b>		46.3	17.1

Dorking South (4891)			
		vote	share
Cooksey M. Ms.*	LD	1,197	53.6
Michael V. Ms.	Con	863	38.6
May P.	Lab	174	7.8
<b>Turnout</b>		45.7	15.0

Fetcham East (2812)			
		vote	share
Paterson-Borland G.	Con	810	67.9
Freeman A.	LD	383	32.1
<b>Turnout</b>		42.8	35.8

Fetcham West (3058)			
		vote	share
Hall T.*	Con	618	57.1
Bowen H.	LD	394	36.4
Corey G.	Lab	70	6.5
<b>Turnout</b>		35.5	20.7

Holmwoods (4481)			
		vote	share
Salmon C. Ms.	LD	965	60.2
Foulston M.	Con	430	26.8
Davis K.	Lab	207	12.9
<b>Turnout</b>		35.8	33.4

Leatherhead North (4398)			
		vote	share
Carr J.*	LD	721	48.8
Trier N.	Lab	438	29.7
Keys C. Ms.	Con	317	21.5
<b>Turnout</b>		33.7	19.2

Leatherhead South (3041)			
		vote	share
Sharland D.*	Con	665	54.5
Lloyd C.	LD	470	38.5
Watts E.	Lab	85	7.0
<b>Turnout</b>		40.2	16.0

## Mole Valley - 2003

Asstead Village (4439)			
		vote	share
Hunt C.	Con	739	42.7
Hiscock J.*	Ind	689	39.8
Jones J. Ms.	LD	160	9.2
Scott C.	Lab	97	5.6
Huggett J. Ms.	Green	45	2.6
<b>Turnout</b>		39.0	2.9

Beare Green (1489)			
		vote	share
Homewood V. Ms.*	LD	409	71.3
Johnson V. Ms.	Con	165	28.7
<b>Turnout</b>		38.9	42.5

Bookham North (4440)			
		vote	share
Walker D.	Con	1,198	53.3
Howarth E. Ms.	LD	1,048	46.7
<b>Turnout</b>		50.8	6.7

Bookham South (4332)			
		vote	share
Freeman A.	LD	1,150	60.7
Wemms J. Ms.	Con	656	34.6
Diffley-Pierce D. Ms.	Lab	88	4.6
<b>Turnout</b>		43.9	26.1

Box Hill & Headley (1718)			
		vote	share
Ladell D. Ms.*	Con	584	65.0
Gavey J. Ms.	LD	315	35.0
<b>Turnout</b>		52.6	29.9

Brockham Betchworth & Buckland (3432)			
		vote	share
Homewood M.*	LD	806	61.7
O'Neill P.	Con	430	32.9
Helowicz A. Ms.	Lab	70	5.4
<b>Turnout</b>		38.2	28.8

Capel Leigh & Newdigate (3112)			
		vote	share
Pearson J. Ms.*	Con	734	66.5
Watson J.	LD	269	24.4
Helowicz G.	Lab	100	9.1
<b>Turnout</b>		35.6	42.2

Charlwood (1567)			
		vote	share
Webb D.*	Con	287	61.6
Longhurst C. Ms.	LD	179	38.4
<b>Turnout</b>		29.8	23.2

Dorking South (4928)			
		vote	share
Cooksey S.*	LD	1,104	57.5
Mason P. Ms.	Con	681	35.5
Watts E.	Lab	134	7.0
<b>Turnout</b>		39.1	22.0

Holmwoods (4519)			
		vote	share
Longhurst M.*	LD	848	59.6
Foulston M.	Con	441	31.0
Ward M.	Lab	135	9.5
<b>Turnout</b>		31.8	28.6

Leatherhead North (4320)			
		vote	share
Lewis B. Ms.*	LD	517	42.2
Mountford D.	Con	364	29.7
Ward M.	Lab	343	28.0
<b>Turnout</b>		28.6	12.5

Leith Hill (1272)			
		vote	share
Maltby N.*	Con	386	64.1
Round S.	LD	176	29.2
Macdonagh M.	Lab	40	6.6
<b>Turnout</b>		47.6	34.9

Mickleham Westhumble & Pixham (1453)			
		vote	share
Tatham P.*	Con	470	56.6
Phillips C. Ms.	LD	328	39.5
Davis K.	Lab	33	4.0
<b>Turnout</b>		57.2	17.1

Okewood (1420)			
		vote	share
Michael V. Ms.	Con	316	70.5
Gordon J.	LD	132	29.5
<b>Turnout</b>		31.6	41.1

## Mole Valley - 2004

Asstead Common (3118)			
		vote	share
Howell D.	Ind	818	49.7
Sharland S. Ms.	Con	590	35.8
Gough J.	Lab	120	7.3
Cane R.	UKIP	119	7.2
<b>Turnout</b>		53.0	13.8

Asstead Park (3157)			
		vote	share
Townsend C.*	Ind	847	51.4
Ashton T.	Con	592	35.9
Curley B. Ms.	UKIP	89	5.4
Gilchrist S. Ms.	Lab	65	3.9
Cooper A.	Green	56	3.4
<b>Turnout</b>		52.4	15.5

Asstead Village (4467)			
		vote	share
Reynolds C.	Con	951	41.7
Whybrow J.	Ind	923	40.5
Howell H. Ms.	UKIP	220	9.7
Scott C.	Lab	185	8.1
<b>Turnout</b>		51.1	1.2

Bookham North (4443)			
		vote	share
Curran C. Ms.*	Con	1,492	56.7
Hulford L. Ms.	LD	1,068	40.6
Trier N.	Lab	73	2.8
<b>Turnout</b>		59.5	16.1

Bookham South (4300)			
		vote	share
Howarth E. Ms.	LD	1,198	52.8
Dalley J.	Con	988	43.6
James I.	Lab	82	3.6
<b>Turnout</b>		53.2	9.3

Dorking North (3028)			
		vote	share
Masters N. Ms.	LD	754	51.8
Upton-Taylor B. Ms.	Con	609	41.8
Helowicz G.	Lab	94	6.5
Turnout		48.5	10.0

Dorking South (4863)			
		vote	share
Phillips C. Ms.	LD	1,257	53.7
Philpot T.	Con	915	39.1
Watts E.	Lab	168	7.2
Turnout		48.6	14.6

Fetcham East (2822)			
		vote	share
Corden C. Ms.	Con	934	65.1
Goodman S. Ms.	LD	418	29.1
Forehead J.	Lab	83	5.8
Turnout		51.2	36.0

Fetcham West (3038)			
		vote	share
Aboud E.	Con	808	53.1
Laxton J.	LD	628	41.3
Roger N.	Lab	86	5.7
Turnout		50.5	11.8

Holmwoods (4449)			
		vote	share
Howard M.	LD	996	55.2
Mir D.	Con	649	36.0
Davis K.	Lab	160	8.9
Turnout		40.9	19.2

Leatherhead North (4295)			
		vote	share
Mountford D.	Con	511	34.2
Webb H. Ms.	LD	492	33.0
Ward H. Ms.*	Lab	489	32.8
Turnout		35.1	1.3

Leatherhead South (3075)			
		vote	share
Dickson R. Ms.*	Con	845	53.8
Slater M.	LD	530	33.7
Ward M.	Lab	196	12.5
Turnout		51.5	20.1

Westcott (1658)			
		vote	share
Ellis T.*	LD	498	48.9
Brooks M. Ms.	Con	492	48.3
Helowicz A. Ms.	Lab	28	2.8
Turnout		63.0	0.6

## Mole Valley - 2006

Ashtead Common (3141)			
		vote	share
Northcott W.*	Ind	860	51.6
Robertson T.	Con	718	43.0
Gough J.	Lab	90	5.4
Turnout		53.2	8.5

Ashtead Park (3183)			
		vote	share
Davis W.	Con	732	45.5
Smith P.*	Ind	709	44.1
Gilchrist S. Ms.	Lab	66	4.1
Cane R.	UKIP	59	3.7
Cooper A.	Green	42	2.6
Turnout		50.5	1.4

Ashtead Village (4473)			
		vote	share
Sharland S. Ms.	Con	1,002	45.4
Kerton C. Ms.	Ind	895	40.5
Scott C.	Lab	120	5.4
Huggett J. Ms.	Green	97	4.4
Howell H. Ms.	UKIP	94	4.3
Turnout		49.4	4.8

Bookham North (4435)			
		vote	share
Purkiss J. Ms.	Con	1,431	61.2
Tillott P.	LD	906	38.8
Turnout		52.9	22.5

Bookham South (4317)			
		vote	share
Chandler J.	Con	1,441	57.0
Haque J.	LD	991	39.2
Bottomley S.	Lab	97	3.8
Turnout		58.8	17.8

Brockham Betchworth & Buckland (3496)			
		vote	share
Horden K. Ms.	Con	924	49.8
Potter V. Ms.	LD	869	46.8
James I.	Lab	64	3.4
Turnout		53.3	3.0

Capel Leigh & Newdigate (3219)			
		vote	share
Murdoch I.	LD	882	51.1
Shersby J.*	Con	782	45.3
Millard C. Ms.	Lab	62	3.6
Turnout		53.8	5.8

Dorking North (3038)			
		vote	share
Burt D.*	LD	785	53.2
Aspinall M.	Con	420	28.5
Sedgwick R.	Green	213	14.4
Wilson J.	Lab	58	3.9
Turnout		48.8	24.7

Dorking South (4989)			
		vote	share
Cooksey M. Ms.*	LD	1,102	47.1
House C.	Con	869	37.1
Barnett A. Ms.	Green	248	10.6
Trier N.	Lab	122	5.2
Turnout		47.0	10.0

Fetcham East (2868)			
		vote	share
Westwood K. Ms.	Con	957	69.1
Grigson K. Ms.	LD	363	26.2
Forehead J.	Lab	64	4.6
Turnout		48.4	42.9

Fetcham West (3058)			
		vote	share
Hall T.*	Con	928	64.1
Humphreys A. Ms.	LD	519	35.9
Turnout		47.5	28.3

Holmwoods (4582)			
		vote	share
Salmon C. Ms.	LD	1,062	61.6
Mir D.	Con	532	30.9
Davis K.	Lab	130	7.5
Turnout		37.9	30.7

Leatherhead North (4454)			
		vote	share
Hedgeland P. Ms.	Con	757	43.7
Carr H.	LD	754	43.5
Lawrence D.	Lab	221	12.8
Turnout		39.3	0.2

Leatherhead South (3106)			
		vote	share
Sharland D.*	Con	825	55.6
Smith D.	LD	555	37.4
Ward M.	Lab	103	6.9
Turnout		48.2	18.2

## Mole Valley - 2007

Ashtead Village (4472)			
		vote	share
Hunt C.*	Con	1,261	55.0
Kerton C. Ms.	Asht Ind	841	36.7
Scott C.	Lab	66	2.9
Hedgeland B.	LD	63	2.7
Warren M.	UKIP	62	2.7
Turnout		51.3	18.3

Beare Green (1498)			
		vote	share
Homewood V. Ms.*	LD	425	56.4
Mir D.	Con	328	43.6
Turnout		50.5	12.9

Bookham North (4463)			
		vote	share
Walker D.*	Con	1,438	64.4
Tillott P.	LD	592	26.5
Lambert R.	Green	204	9.1
Turnout		50.1	37.9

Bookham South (4365)			
		vote	share
Freeman A.*	LD	1,328	55.6
Aspinall M.	Con	1,061	44.4
Turnout		54.8	11.2

Box Hill & Headley (1743)			
		vote	share
Ladell D. Ms.*	Con	553	55.8
Preedy D.	LD	438	44.2
Turnout		56.9	11.6

Brockham Betchworth & Buckland (3557)			
		vote	share
Homewood M.*	LD	937	50.7
Quinlan C.	Con	865	46.8
Nasskau L.	Lab	45	2.4
Turnout		52.0	3.9

Capel Leigh & Newdigate (3214)			
		vote	share
Pearson J. Ms.*	Con	769	60.0
Brown P. Ms.	LD	430	33.6
James I.	Lab	82	6.4
Turnout		40.1	26.5

Charlwood (1688)			
		vote	share
Webb D.*	Con	367	66.7
Daniels D.	LD	183	33.3
Turnout		33.0	33.5

Dorking South (5032)			
		vote	share
Cooksey S.*	LD	1,275	55.2
House C.	Con	685	29.7
Barnett M. Ms.	Green	139	6.0
Peters K. Ms.	UKIP	121	5.2
Trier N.	Lab	90	3.9
Turnout		45.9	25.5

Holmwoods (4643)			
		vote	share
<b>Longhurst M.*</b>	LD	894	51.3
Shersby J.	Con	556	31.9
Curran M. Ms.	UKIP	107	6.1
Davis K.	Lab	100	5.7
Fewster J. Ms.	Green	85	4.9
<b>Turnout</b>		37.6	19.4

Leatherhead North (4588)			
		vote	share
<b>Lewis-Carr B. Ms.*</b>	LD	829	47.5
Rabbetts M.	Con	577	33.1
Ward M.	Lab	190	10.9
Cane B.	UKIP	105	6.0
Sedgwick R.	Green	43	2.5
<b>Turnout</b>		38.1	14.4

Leith Hill (1252)			
		vote	share
<b>Johnson M.</b>	Con	426	68.9
Round S.	LD	171	27.7
Macdonagh M.	Lab	21	3.4
<b>Turnout</b>		49.7	41.3

Mickleham Westhumble & Pixham (1469)			
		vote	share
<b>Tatham B.*</b>	Con	493	59.3
Elderton E.	LD	261	31.4
Suggett E.	Green	46	5.5
Pleece P.	Lab	31	3.7
<b>Turnout</b>		56.8	27.9

Okewood (1418)			
		vote	share
<b>Michael V. Ms.*</b>	Con	381	67.8
Figg S.	LD	111	19.8
Jones L.	UKIP	70	12.5
<b>Turnout</b>		39.7	48.0

## Mole Valley - 2008

Ashted Common (3148)			
		vote	share
<b>Howell D.*</b>	Asht Ind	893	58.1
Wood L.	Con	643	41.9
<b>Turnout</b>		49.0	16.3

Ashted Park (3179)			
		vote	share
<b>Townsend C.*</b>	Asht Ind	906	57.5
Burrows A.	Con	592	37.6
Cane B.	UKIP	78	4.9
<b>Turnout</b>		49.7	19.9

Ashted Village (4512)			
		vote	share
<b>Reynolds C.*</b>	Con	1,168	53.8
Ling S.	Asht Ind	883	40.6
Howell F. Ms.	UKIP	122	5.6
<b>Turnout</b>		48.2	13.1

Bookham North (4482)			
		vote	share
<b>Curran C. Ms.*</b>	Con	1,466	66.7
Joseph M.	LD	731	33.3
<b>Turnout</b>		49.2	33.5

Bookham South (4431)			
		vote	share
<b>Howarth E. Ms.*</b>	LD	1,200	52.2
Hems G.	Con	899	39.1
Langton-Smith J. Ms.	UKIP	110	4.8
Bottomley S.	Lab	91	4.0
<b>Turnout</b>		52.0	13.1

Dorking North (3149)			
		vote	share
<b>Elderton P.</b>	LD	753	51.4
Billard R.	Con	514	35.1
Sedgwick R.	Green	130	8.9
Foulston M.	UKIP	67	4.6
<b>Turnout</b>		46.7	16.3

Dorking South (5233)			
		vote	share
<b>Loretto T.</b>	LD	1,181	52.4
Mosobbir M.	Con	734	32.6
Peters K. Ms.	UKIP	169	7.5
Barnett M. Ms.	Green	168	7.5
<b>Turnout</b>		43.1	19.8

Fetcham East (2968)			
		vote	share
<b>Corden C. Ms.*</b>	Con	1,036	76.2
Grigson K. Ms.	LD	324	23.8
<b>Turnout</b>		46.1	52.4

Fetcham West (3052)			
		vote	share
<b>About E.*</b>	Con	840	50.2
Haque R.	LD	834	49.8
<b>Turnout</b>		55.1	0.4

Holmwoods (4759)			
		vote	share
<b>Howard M.*</b>	LD	870	51.1
Quinlan C.	Con	563	33.1
Curran M. Ms.	UKIP	269	15.8
<b>Turnout</b>		36.0	18.0

Leatherhead North (4919)			
		vote	share
<b>Hedgeland B.</b>	LD	866	52.3
Green K.	Con	621	37.5
Masters S.	UKIP	170	10.3
<b>Turnout</b>		33.9	14.8

Leatherhead South (3273)			
		vote	share
<b>Dickson R. Ms.*</b>	Con	889	61.4
Howarth D.	LD	454	31.3
Jones L.	UKIP	106	7.3
<b>Turnout</b>		44.3	30.0

Westcott (1716)			
		vote	share
<b>Friend J.</b>	Con	555	53.2
Fraser Ker I.	LD	413	39.6
Afonso A.	UKIP	76	7.3
<b>Turnout</b>		61.0	13.6

## Mole Valley - 2010

Ashted Common (3240)			
		vote	share
<b>Northcott J.*</b>	Asht Ind	1,448	58.7
Wood L.	Con	881	35.7
Sieman R.	UKIP	138	5.6
<b>Turnout</b>		76.8	23.0

Ashted Park (3209)			
		vote	share
<b>Brooke R.</b>	Asht Ind	1,171	48.3
Jones H.	Con	1,038	42.8
Gilchrist S. Ms.	Lab	120	4.9
Cane B.	UKIP	96	4.0
<b>Turnout</b>		75.7	5.5

Ashted Village (4580)			
		vote	share
<b>Ling S.</b>	Asht Ind	1,770	50.2
Sharland S. Ms.*	Con	1,521	43.1
Scott C.	Lab	238	6.7
<b>Turnout</b>		77.4	7.1

Bookham North (4621)			
		vote	share
<b>Hurworth T. Ms.</b>	Con	2,025	57.1
Tillott P.	LD	1,519	42.9
<b>Turnout</b>		77.1	14.3

Bookham South (4472)			
		vote	share
<b>Harris P.</b>	LD	1,751	49.7
Chandler J.*	Con	1,599	45.4
Langton-Smith J. Ms.	UKIP	174	4.9
<b>Turnout</b>		79.0	4.3

Brockham Betchworth & Buckland (3551)			
		vote	share
<b>Potter P.</b>	LD	1,430	51.8
Yarwood C.	Con	1,155	41.8
Goacher R.	UKIP	177	6.4
<b>Turnout</b>		78.3	10.0

Capel Leigh & Newdigate (3338)			
		vote	share
<b>Warren P.</b>	Con	1,193	47.6
Murdoch I.*	LD	1,034	41.2
Peters K.	UKIP	169	6.7
Green D.	Green	112	4.5
<b>Turnout</b>		75.5	6.3

Dorking North (3193)			
		vote	share
<b>Burt D.*</b>	LD	1,443	60.0
Double M.	Con	643	26.7
Sedgwick R.	Green	126	5.2
Afonso A.	UKIP	116	4.8
Nasskau L.	Lab	79	3.3
<b>Turnout</b>		75.6	33.2

Dorking South (5449)			
		vote	share
<b>Cooksey M. Ms.*</b>	LD	2,316	59.1
Cox P.	Con	1,182	30.1
Fewster J. Ms.	Green	219	5.6
Foulston M.	UKIP	204	5.2
<b>Turnout</b>		72.5	28.9

Fetcham East (3085)			
		vote	share
<b>Westwood K. Ms.*</b>	Con	1,440	61.4
Regan M.	LD	726	30.9
Masters S.	UKIP	181	7.7
<b>Turnout</b>		76.5	30.4

Fetcham West (3116)			
		vote	share
<b>Haque R.</b>	LD	1,417	55.9
Hall T.*	Con	1,116	44.1
<b>Turnout</b>		81.7	11.9

Holmwoods (4920)			
		vote	share
<b>Salmon C. Ms.*</b>	LD	1,507	45.2
Light N.	Con	1,208	36.3
Curran M. Ms.	UKIP	319	9.6
Pemberton F.	Lab	297	8.9
<b>Turnout</b>		68.1	9.0

Leatherhead North (5074)			
		vote	share
<b>Howarth D.</b>	LD	1,125	36.8
Ashton T.	Con	1,113	36.5
Horitz P.	Lab	353	11.6
Hedgeland P. Ms.*	Ind	275	9.0
Voss S. Ms.	UKIP	187	6.1
<b>Turnout</b>		60.4	0.4

Leatherhead South (3388)			
		vote	share
<b>Sharland D.*</b>	Con	1,256	53.6
Lloyd C.	LD	923	39.4
Payne D.	UKIP	163	7.0
<b>Turnout</b>		72.7	14.2

## Mole Valley - 2011

Ashted Village (4585)			
		vote	share
Hunt C.*	Con	1,335	51.1
Busby J.	Asht Ind	1,040	39.8
Scott C.	Lab	161	6.2
Cane B.	Ind	74	2.8
<b>Turnout</b>		57.2	11.3

Beare Green (1525)			
		vote	share
Homewood V. Ms.*	LD	401	49.1
Clack H. Ms.	Con	281	34.4
Bone G.	UKIP	76	9.3
Orde J.	Lab	58	7.1
<b>Turnout</b>		53.8	14.7

Bookham North (4601)			
		vote	share
Newman P.	Con	1,610	61.6
Hartwellgareth G.	LD	1,005	38.4
<b>Turnout</b>		57.8	23.1

Bookham South (4438)			
		vote	share
Chandler J.	Con	1,228	46.9
Freeman A.*	LD	1,168	44.6
Mulvenna-Pegrum D. Ms.	UKIP	222	8.5
<b>Turnout</b>		59.5	2.3

Box Hill & Headley (1748)			
		vote	share
Preedy D.	LD	452	46.3
Ashton T.	Con	435	44.5
Afonso A.	UKIP	90	9.2
<b>Turnout</b>		56.2	1.7

Brockham Betchworth & Buckland (3555)			
		vote	share
Muggeridge J.	Con	1,042	52.2
O'Shea N.	LD	803	40.3
Payne D.	UKIP	150	7.5
<b>Turnout</b>		56.8	12.0

Capel Leigh & Newdigate (3375)			
		vote	share
Osborne-Patterson C. Ms.	Con	978	56.6
Sykes J. Ms.	LD	423	24.5
Bowling T.	UKIP	187	10.8
Bakunowicz J. Ms.	Green	140	8.1
<b>Turnout</b>		51.3	32.1

Charlwood (1807)			
		vote	share
Yarwood C.	Con	510	68.6
Daniels D.	LD	140	18.8
Haynes T.	UKIP	93	12.5
<b>Turnout</b>		41.9	49.8

Dorking South (5376)			
		vote	share
Cooksey S.*	LD	1,494	54.0
Cox P.	Con	827	29.9
Pemberton F.	Lab	303	11.0
Foulston M.	UKIP	141	5.1
<b>Turnout</b>		51.8	24.1

Holmwoods (4871)			
		vote	share
Longhurst M.*	LD	863	41.7
Light N.	Con	743	35.9
Seale B. Ms.	UKIP	238	11.5
Nasskau L.	Lab	226	10.9
<b>Turnout</b>		42.9	5.8

Leatherhead North (5098)			
		vote	share
Lewis-Carr B. Ms.*	LD	820	41.5
Prescot C.	Con	669	33.9
Loxton D.	Lab	278	14.1
Masters S.	UKIP	209	10.6
<b>Turnout</b>		39.1	7.6

Leith Hill (1292)			
		vote	share
Mir D.	Con	430	52.8
Watson H. Ms.	LD	384	47.2
<b>Turnout</b>		63.9	5.7

Mickleham Westhumble & Pixham (1545)			
		vote	share
McCheyne R. Ms.	LD	483	51.4
Double M.	Con	391	41.6
Peters K. Ms.	UKIP	65	6.9
<b>Turnout</b>		61.7	9.8

Okewood (1425)			
		vote	share
Michael V. Ms.*	Con	382	49.1
Goodman A.	Ind	210	27.0
Jones L.	UKIP	104	13.4
Round S.	LD	82	10.5
<b>Turnout</b>		55.1	22.1

## Mole Valley - 2012

Ashted Common (3217)			
		vote	share
Hancock P. Ms.	Asht Ind	920	66.6
Jones H.	Con	395	28.6
Tombs A.	LD	67	4.8
<b>Turnout</b>		43.3	38.0

Ashted Park (3336)			
		vote	share
Townsend C.*	Asht Ind	972	71.4
Reynolds F. Ms.	Con	339	24.9
Gilchrist S. Ms.	Lab	51	3.7
<b>Turnout</b>		41.0	46.5

Ashted Village (4649)			
		vote	share
Cooper M. Ms.	Asht Ind	1,012	54.7
Reynolds C.*	Con	713	38.6
Scott C.	Lab	124	6.7
<b>Turnout</b>		40.0	16.2

Bookham North (4623)			
		vote	share
Curran C. Ms.*	Con	1,152	59.0
Freeman A.	LD	545	27.9
Peters K. Ms.	UKIP	254	13.0
<b>Turnout</b>		42.5	31.1

Bookham South (4485)			
		vote	share
Brooks S. Ms.	LD	1,013	46.5
Kelley B.	Con	882	40.5
Cane B.	UKIP	284	13.0
<b>Turnout</b>		48.9	6.0

Dorking North (3202)			
		vote	share
Elderton E.*	LD	682	54.0
Billard R.	Con	277	21.9
Robertson-Bonds T.	Lab	171	13.5
Payne D.	UKIP	134	10.6
<b>Turnout</b>		39.8	32.0

Dorking South (5538)			
		vote	share
Loretto T.*	LD	1,038	50.7
Dykes C. Ms.	Con	571	27.9
Pemberton F.	Lab	254	12.4
Goacher R.	UKIP	185	9.0
<b>Turnout</b>		37.4	22.8

Fetcham East (3107)			
		vote	share
Brooks L. Ms.	Con	692	59.6
Smith A.	LD	253	21.8
Hill M.	UKIP	216	18.6
<b>Turnout</b>		37.7	37.8

Fetcham West (3150)			
		vote	share
Aboud E.*	Con	792	51.7
Regan M.	LD	739	48.3
<b>Turnout</b>		49.2	3.5

Holmwoods (4888)			
		vote	share
Monkman W.	LD	727	45.0
Spicer M.	Con	447	27.7
Foulston M.	UKIP	287	17.8
Nasskau L.	Lab	154	9.5
<b>Turnout</b>		33.2	17.3

Leatherhead North (5164)			
		vote	share
Shimmin P. Ms.	LD	535	35.4
Prescot C.	Con	495	32.7
Dorrell G.	Lab	270	17.8
Haynes T.	UKIP	213	14.1
<b>Turnout</b>		29.5	2.6

Leatherhead South (3397)			
		vote	share
Dickson R. Ms.*	Con	683	56.2
Lloyd C.	LD	294	24.2
Jones L.	UKIP	238	19.6
<b>Turnout</b>		36.1	32.0

Westcott (1746)			
		vote	share
Friend J.*	Con	468	47.4
Granger M.	LD	285	28.9
Afonso A.	UKIP	195	19.8
Davis K.	Lab	39	4.0
<b>Turnout</b>		56.7	18.5

