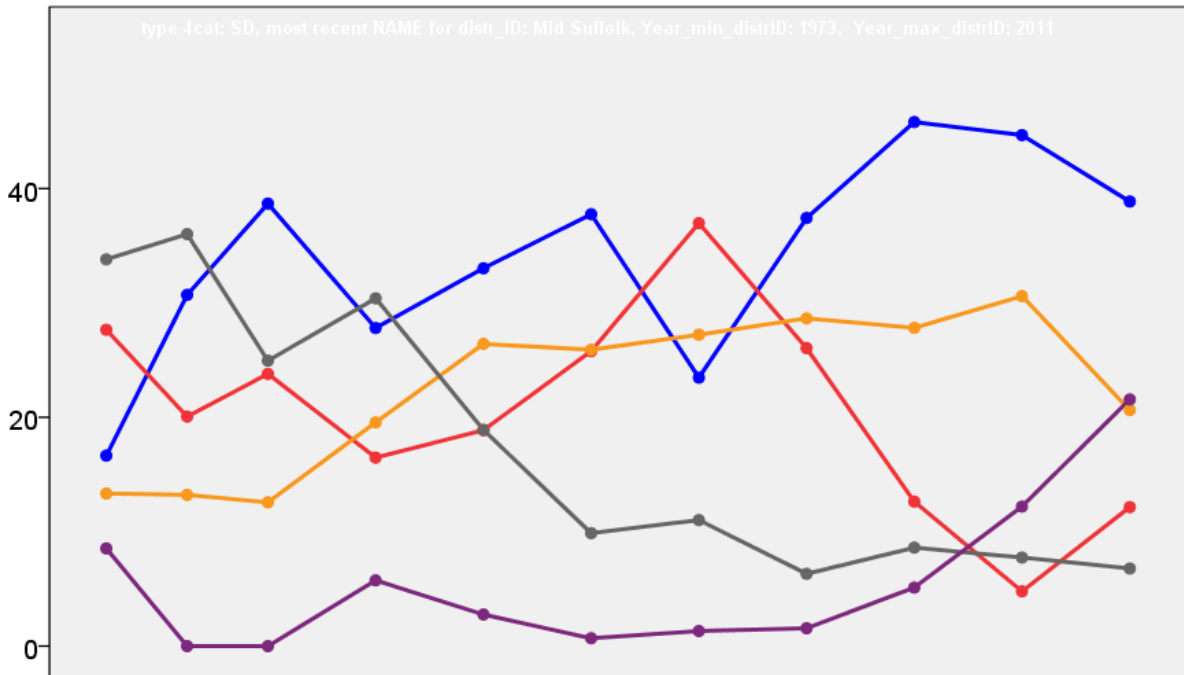


Mid Suffolk District Council Election Results 1973-2011



Colin Rallings and Michael Thrasher
The Elections Centre
Plymouth University

The information contained in this report has been obtained from a number of sources. Election results from the immediate post-reorganisation period were painstakingly collected by Alan Willis largely, although not exclusively, from local newspaper reports. From the mid-1980s onwards the results have been obtained from each local authority by the Elections Centre. The data are stored in a database designed by Lawrence Ware and maintained by Brian Cheal and others at Plymouth University. Despite our best efforts some information remains elusive whilst we accept that some errors are likely to remain. Notice of any mistakes should be sent to elections@plymouth.ac.uk. The results sequence can be kept up to date by purchasing copies of the annual Local Elections Handbook, details of which can be obtained by contacting the email address above.

Front cover: the graph shows the distribution of percentage vote shares over the period covered by the results. The lines reflect the colours traditionally used by the three main parties. The grey line is the share obtained by Independent candidates while the purple line groups together the vote shares for all other parties.

Rear cover: the top graph shows the percentage share of council seats for the main parties as well as those won by Independents and other parties. The lines take account of any by-election changes (but not those resulting from elected councillors switching party allegiance) as well as the transfers of seats during the main round of local election.

The lower graph shows for each main round of local elections the overall percentage turnout (solid line), the percentage of women candidates standing at (dotted line) and the percentage of women among those elected (hashed line).

Mid Suffolk - 1973

Barham (1238)			
Macrow J. Ms.	Ind	vote 0	share 0.0
		Turnout	0.0 0.0
Claydon (1084)			
Williams J.	Ind	vote 0	share 0.0
		Turnout	0.0 0.0
Creeting (1045)			
Ward J. Ms.	Ind	vote 0	share 0.0
		Turnout	0.0 0.0
Debenham (1086)			
Glass R.	Con	vote 294	share 65.5
Erbe P.	Lab	155	34.5
		Turnout	41.3 31.0
Elmswell (1093)			
Dyball D.	Ind	vote 0	share 0.0
		Turnout	0.0 0.0
Eye (1376)			
Flatman C.	Lab	vote 413	share 51.6
Havers H.	Ind	388	48.4
		Turnout	58.2 3.1
Fressingfield (1030)			
Thurston B. Ms.	Ind	vote 0	share 0.0
		Turnout	0.0 0.0
Gislingham (1239)			
Watson P.	Ind	vote 333	share 64.3
Chitty R.	Con	185	35.7
		Turnout	41.8 28.6
Haughley & Wetherden (1132)			
Crascall E.	Lab	vote 0	share 0.0
		Turnout	0.0 0.0
Helmingham (1066)			
Willsher R.	Ind	vote 0	share 0.0
		Turnout	0.0 0.0
Hoxne (1164)			
McNamara W.	Con	vote 273	share 63.3
Gooderham R.	Lab	158	36.7
		Turnout	37.0 26.7
Mendlesham (1236)			
Braybrooke A.	Ind	vote 0	share 0.0
		Turnout	0.0 0.0
Needham Market (1510)			
Swain J.	Con	vote 428	share 47.1
Bugg S.	Ind	299	32.9
Phillips H.	Lab	181	19.9
		Turnout	60.1 14.2

No. 16 (Stowupland) (1932)²

Addison A.	Lab	vote 595	share 40.6
Shave M.	Lab	458	-
Carter J.	Con	393	26.8
Wilson S.	Lib	252	17.2
Leeks G.	Ind	226	15.4
Groom R.	Con	176	-
		Turnout	75.9 13.8

No. 2 (Stowmarket) (6722)⁶

Brooke F.	Lib	vote 1,247	share 27.0
Jones R. Ms.	Lab	1,195	25.9
Pattle R.	Ind	1,110	24.1
Soames C.	Lab	1,093	-
Hiron R.	Lab	1,082	-
Jones E.	Lab	1,068	-
Howard P.	Ind Lab	1,063	23.0
Clarke A.	Lab	917	-
Nunn E.	Lab	817	-
		Turnout	68.7 1.1

No. 26 (Bacton) (1079)

Beake V. Ms.	Ind	vote 0	share 0.0
		Turnout	0.0 0.0

No. 28 (Walsham-Le-Willows) (924)

Edwards S.	Con	vote 0	share 0.0
		Turnout	0.0 0.0

No. 29 (Badwell Ash) (991)

Linn H.	Ind	vote 0	share 0.0
		Turnout	0.0 0.0

No. 33 (Woolpit) (1251)

Bland R.	Ind	vote 0	share 0.0
		Turnout	0.0 0.0

No. 34 (Rattlesden) (936)

Muir L.	Con	vote 0	share 0.0
		Turnout	0.0 0.0

No. 5 (Ringshall) (1021)

Crooks H.	Ind	vote 219	share 63.3
Cartwright H.	Ind	78	22.5
Winchester A.	Ind	49	14.2
		Turnout	33.9 40.8

No. 7 (Barking) (1112)

Wilton E.	Ind	vote 0	share 0.0
		Turnout	0.0 0.0

No. 8 (Somersham) (1249)

Keyte S.	Ind	vote 225	share 53.3
Bird C.	Ind	197	46.7
		Turnout	33.8 6.6

No. 9 (Bramford) (1600)

Cunningham G.	Lab	vote 244	share 62.7
Fisk E.	Ind	145	37.3
		Turnout	24.3 25.4

Norton (1425)

Armstrong F.	Ind	vote 0	share 0.0
		Turnout	0.0 0.0

Onehouse (1267)

Mitson H.	Ind	vote 0	share 0.0
		Turnout	0.0 0.0

Palgrave (1179)

Wickett W.	Ind	vote 362	share 67.0
West O.	Con	178	33.0
		Turnout	45.8 34.1

Rickingham (1353)

Gowen M. Ms.	Ind	vote 0	share 0.0
		Turnout	0.0 0.0

Stonham (1034)

Penistan R.	Ind	vote 0	share 0.0
		Turnout	0.0 0.0

Stradbroke (1019)

Hawes S.	Ind	vote 0	share 0.0
		Turnout	0.0 0.0

Thurston (1066)

Howes P.	Ind	vote 251	share 60.8
Moreland J. Ms.	Lib	162	39.2
		Turnout	38.7 21.5

Wetheringsett (1182)

Sleigh P.	Ind	vote 328	share 53.0
Mills R.	Lab	291	47.0
		Turnout	52.4 6.0

Weybread (1156)

Hadingham F.	Ind	vote 0	share 0.0
		Turnout	0.0 0.0

Worlingworth (1148)

Harvey R.	Con	vote 322	share 60.4
Bushby R.	Lab	211	39.6
		Turnout	46.4 20.8

Mid Suffolk - 1976

Barham (1265)

Macrow J. Ms.	Con	vote 490	share 86.7
Koppel P. Ms.	Lab	75	13.3
		Turnout	44.7 73.5

Claydon (1082)

Griffiths H.	Ind	vote 0	share 0.0
		Turnout	0.0 0.0

Creeting (1049)

Ward J. Ms.	Ind	vote 0	share 0.0
		Turnout	0.0 0.0

Debenham (1264)

Glass R.	Con	vote 449	share 74.2
Higgins A. Ms.	Lab	156	25.8
		Turnout	47.9 48.4

Elmswell (1396)			
		vote	share
Dyball D.	Ind	464	86.2
Britton B.	Lab	74	13.8
Turnout		38.5	72.5
Eye (1367)			
		vote	share
Flatman C.	Ind	514	75.9
Butterworth M.	Ind	163	24.1
Turnout		49.5	51.8
Fressingfield (1148)			
		vote	share
Rice E. Ms.	Con	0	0.0
Turnout		0.0	0.0
Gislingham (1301)			
		vote	share
Watson P.	Ind	0	0.0
Turnout		0.0	0.0
Haughley & Wetherden (1235)			
		vote	share
Crascall E.	Lab	0	0.0
Turnout		0.0	0.0
Helmingham (1071)			
		vote	share
Willsher R.	Ind	372	83.4
Finch J.	Ind	74	16.6
Turnout		41.6	66.8
Hoxne (1181)			
		vote	share
McGregor G.	Con	0	0.0
Turnout		0.0	0.0
Mendlesham (1285)			
		vote	share
Braybrooke A.	Ind	0	0.0
Turnout		0.0	0.0
Needham Market (1903)			
		vote	share
Swain J.	Con	633	64.3
Carter P. Ms.	Lab	351	35.7
Turnout		51.7	28.7
No. 16 (Stowupland) (2004) ²			
		vote	share
Wilson S.	Lib	642	50.1
Addison A.	Lab	639	49.9
Shave M.	Lab	600	-
Turnout		63.9	0.2
No. 2 (Stowmarket) (7093) ⁶			
		vote	share
Brewster G.	Ind	1,286	30.5
Pattle R.	Ind	1,129	-
Brooke F.	Lib	1,104	26.2
Jones R. Ms.	Lab	1,034	24.5
Jones E.	Lab	945	-
Oldfield P.	Lab	930	-
Packer G.	Con	797	18.9
Ashton A.	Lib	783	-
Soames C.	Lab	779	-
Hiron R.	Lab	775	-
Nunn E.	Lab	714	-
Hewitt B.	Lib	628	-
Turnout		59.5	4.3
No. 26 (Bacton) (1207)			
		vote	share
Beak B. Ms.	Con	0	0.0
Turnout		0.0	0.0

No. 28 (Walsham-Le-Willows) (916)			
		vote	share
Edwards S.	Con	406	85.7
Pearce D.	Lab	68	14.3
Turnout		51.7	71.3
No. 29 (Badwell Ash) (965)			
		vote	share
Linn H.	Ind	0	0.0
Turnout		0.0	0.0
No. 33 (Woolpit) (1328)			
		vote	share
Maitland P.	Con	438	55.7
Wood M. Ms.	Ind	246	31.3
Humphrey R.	Lab	103	13.1
Turnout		59.3	24.4
No. 34 (Rattlesden) (957)			
		vote	share
Muir L.	Con	209	53.2
Cole D.	Ind	184	46.8
Turnout		41.1	6.4
No. 5 (Ringshall) (1120)			
		vote	share
Crooks H.	Ind	427	84.6
Winchester A.	Lab	78	15.4
Turnout		45.1	69.1
No. 7 (Barking) (1173)			
		vote	share
Chapman P.	Ind	0	0.0
Turnout		0.0	0.0
No. 8 (Somersham) (1259)			
		vote	share
Keyte S.	Ind	0	0.0
Turnout		0.0	0.0
No. 9 (Bramford) (1733)			
		vote	share
Cunningham G.	Lab	0	0.0
Turnout		0.0	0.0
Norton (1469)			
		vote	share
Siffleete B.	Con	322	53.6
Henderson A.	Ind	279	46.4
Turnout		40.9	7.2
Onehouse (1299)			
		vote	share
Mitson H.	Ind	523	66.7
Brent Roach F.	Lib	261	33.3
Turnout		60.4	33.4
Palgrave (1227)			
		vote	share
Wickett W.	Ind	0	0.0
Turnout		0.0	0.0
Rickinghall (1449)			
		vote	share
Moss R.	Ind	278	48.1
Robertson A.	Ind	188	32.5
Spiller S. Ms.	Lab	112	19.4
Turnout		39.9	15.6
Stonham (1052)			
		vote	share
D'Arcy H.	Con	432	74.2
Douglas M.	Lab	150	25.8
Turnout		55.3	48.5

Stradbroke (1085)			
		vote	share
Hawes S.	Ind	0	0.0
Turnout		0.0	0.0
Thurston (1236)			
		vote	share
Kilner R.	Con	484	87.2
Wallington R.	Lab	71	12.8
Turnout		44.9	74.4
Wetheringsett (1190)			
		vote	share
Taylor G.	Ind	0	0.0
Turnout		0.0	0.0
Weybread (1151)			
		vote	share
Thompson G.	Con	0	0.0
Turnout		0.0	0.0
Worlingworth (783)			
		vote	share
Horvath M.	Ind	470	77.8
Bushby R.	Lab	134	22.2
Turnout		77.1	55.6
Mid Suffolk - 1979			
Badwell Ash (1115)			
		vote	share
Linn H.	Ind	0	0.0
Turnout		0.0	0.0
Barham (1297)			
		vote	share
Macrow J. Ms.	Ind	0	0.0
Turnout		0.0	0.0
Barking (1413)			
		vote	share
Chapman P.	Ind	0	0.0
Turnout		0.0	0.0
Bramford (2941) ²			
		vote	share
Cunningham G.	Ind	1,207	52.3
Bird C.	Con	1,099	47.7
Dickson S. Ms.	Con	941	-
Turnout		78.4	4.7
Claydon (1109)			
		vote	share
Griffiths H.	Con	0	0.0
Turnout		0.0	0.0
Creeting (1058)			
		vote	share
Ward J. Ms.	Ind	693	84.3
Winchester A.	Lab	129	15.7
Turnout		77.7	68.6
Debenham (1345)			
		vote	share
Glass R.	Con	0	0.0
Turnout		0.0	0.0
Elmswell (1435)			
		vote	share
Dyball D.	Ind	0	0.0
Turnout		0.0	0.0

Eye (1399)			
		vote	share
Flatman C.	Ind	0	0.0
	Turnout	0.0	0.0
Fressingfield (1174)			
		vote	share
Rice E. Ms.	Con	582	62.0
White R.	Lib	357	38.0
	Turnout	80.0	24.0
Gislingham (1281)			
		vote	share
Stevens W.	Ind	634	66.2
Beak V.	Con	323	33.8
	Turnout	74.7	32.5
Haughley & Wetherden (1344)			
		vote	share
Crascall E.	Lab	0	0.0
	Turnout	0.0	0.0
Helmington (1063)			
		vote	share
Willsher R.	Ind	0	0.0
	Turnout	0.0	0.0
Hoxne (1231)			
		vote	share
McGregor G.	Con	0	0.0
	Turnout	0.0	0.0
Mendlesham (1360)			
		vote	share
Braybrooke A.	Ind	0	0.0
	Turnout	0.0	0.0
Needham Market (2055) ²			
		vote	share
Swain J.	Con	1,028	61.6
Lacey E.	Con	917	-
Koppel P. Ms.	Lab	641	38.4
Carter P. Ms.	Lab	559	-
	Turnout	81.2	23.2
Norton (1471)			
		vote	share
Siffleet B.	Con	601	53.6
Armstrong F.	Ind	520	46.4
	Turnout	76.2	7.2
Onehouse (1371)			
		vote	share
Mitson H.	Ind	0	0.0
	Turnout	0.0	0.0
Palgrave (1256)			
		vote	share
Wickett W.	Ind	477	50.7
Goodin N.	Con	464	49.3
	Turnout	74.9	1.4
Rattlesden (1296)			
		vote	share
Muir L.	Con	0	0.0
	Turnout	0.0	0.0
Rickingham (1446)			
		vote	share
Moss R.	Ind	0	0.0
	Turnout	0.0	0.0
Ringshall (1209)			
		vote	share
Crooks H.	Ind	729	79.4
Boyle V. Ms.	Lab	189	20.6
	Turnout	75.9	58.8

Stonham (1103)			
		vote	share
D'Arcy H.	Con	0	0.0
	Turnout	0.0	0.0
Stowmarket Central (3936) ²			
		vote	share
Brooke F.	Lib	1,164	37.0
Cade J. Ms.	Con	1,046	33.3
Perry D.	Con	982	-
Oldfield P.	Lab	935	29.7
Jones E.	Lab	861	-
	Turnout	79.9	3.8
Stowmarket North (2968) ²			
		vote	share
Jones R. Ms.	Lab	939	42.4
Pattle R.	Ind	764	34.5
Franklin H.	Lab	554	-
Burch J.	Con	511	23.1
	Turnout	74.6	7.9
Stowmarket South (2058) ²			
		vote	share
Nunn E.	Lab	909	54.5
Soames C.	Lab	861	-
Fox P.	Con	758	45.5
	Turnout	81.0	9.1
Stowupland (3720) ²			
		vote	share
Wilson S.	Lib	1,316	42.0
Addison A.	Lab	1,075	34.3
Shave M.	Lab	904	-
Knight D.	Con	741	23.7
	Turnout	84.2	7.7
Stradbroke (1152)			
		vote	share
Hawes S.	Ind	0	0.0
	Turnout	0.0	0.0
Thurston (1366)			
		vote	share
Davies S.	Con	0	0.0
	Turnout	0.0	0.0
Walsham Le Willows (1341)			
		vote	share
Edwards S.	Con	0	0.0
	Turnout	0.0	0.0
Wetheringsett (1191)			
		vote	share
Taylor G.	Ind	0	0.0
	Turnout	0.0	0.0
Weybread (1147)			
		vote	share
Thompson G.	Con	663	69.3
Peck S. Ms.	Lab	294	30.7
	Turnout	83.4	38.6
Woolpit (1021)			
		vote	share
Baker R.	Ind	608	69.7
Maitland P.	Con	264	30.3
	Turnout	85.4	39.4
Worlingworth (1148)			
		vote	share
Thurman K. Ms.	Con	652	71.3
Bushby R.	Lab	262	28.7
	Turnout	79.6	42.7

Mid Suffolk - 1983

Badwell Ash (1234)			
		vote	share
Linn M. Ms.	Ind	0	0.0
	Turnout	0.0	0.0
Barham (1381)			
		vote	share
Shipp B. Ms.	Con	453	66.4
Ward B.	Lib/SDP	229	33.6
	Turnout	49.4	32.8
Barking (1391)			
		vote	share
Chapman P.	Ind	526	84.0
Cornish F.	Ind	100	16.0
	Turnout	45.0	68.1
Bramford (2684) ²			
		vote	share
Bird C.	Con	612	56.8
Cunningham G.	Ind	465	43.2
Banfield J. Ms.	Con	391	-
	Turnout	54.7	13.6
Claydon (1235)			
		vote	share
Griffiths H.	Con	0	0.0
	Turnout	0.0	0.0
Creeting (1045)			
		vote	share
Ward J. Ms.	Ind	304	62.0
Lilley A. Ms.	Lib/SDP	186	38.0
	Turnout	46.9	24.1
Debenham (1361)			
		vote	share
Alcock E.	Con	0	0.0
	Turnout	0.0	0.0
Elmswell (1585)			
		vote	share
Dyball D.	Ind	408	61.4
Coleman G.	Lib/SDP	205	30.9
Green M.	Ecol	51	7.7
	Turnout	41.9	30.6
Eye (1393)			
		vote	share
Flatman C.	Ind	0	0.0
	Turnout	0.0	0.0
Fressingfield (1261)			
		vote	share
Marchant R.	Ind	290	56.1
White R.	Lib/SDP	227	43.9
	Turnout	41.0	12.2
Gislingham (1366)			
		vote	share
Stevens W.	Ind	0	0.0
	Turnout	0.0	0.0
Haughley & Wetherden (1391)			
		vote	share
Crascall E.	Lab	0	0.0
	Turnout	0.0	0.0
Helmington (1071)			
		vote	share
Denyer M.	Con	325	71.7
Crosby C. Ms.	Ind	128	28.3
	Turnout	42.3	43.5

Hoxne (1285)			
		vote	share
Herbert Y. Ms.	Con	0	0.0
Turnout		0.0	0.0

Mendlesham (1329)			
		vote	share
Braybrooke A.	Ind	465	81.6
Luis F. Ms.	Ecol	105	18.4
Turnout		42.9	63.2

Needham Market (2902) ²			
		vote	share
Mason I.	Con	0	-
Swain J.	Con	0	0.0
Turnout		0.0	0.0

Norton (1537)			
		vote	share
Siffleet B.	Con	408	63.1
Matthissen J.	Ecol	239	36.9
Turnout		42.1	26.1

Onehouse (1425)			
		vote	share
Mitson H.	Ind	565	85.5
Chapman C. Ms.	Ecol	96	14.5
Turnout		46.4	71.0

Palgrave (1314)			
		vote	share
Goodin N.	Ind Con	0	0.0
Turnout		0.0	0.0

Rattlesden (1389)			
		vote	share
Vansittart R.	Con	356	52.5
Cole D.	Lib/SDP	215	31.7
Dawson J.	Lab	107	15.8
Turnout		48.8	20.8

Rickingham (1477)			
		vote	share
Moss R.	Ind	417	63.2
Jackson J. Ms.	Ind	243	36.8
Turnout		44.7	26.4

Ringshall (1351)			
		vote	share
Martindale W.	Con	263	50.2
Manton L. Ms.	Ind	261	49.8
Turnout		38.8	0.4

Stonham (1113)			
		vote	share
D'Arcy H.	Con	0	0.0
Turnout		0.0	0.0

Stowmarket Central (3256) ²			
		vote	share
Cade J. Ms.	Con	591	44.0
Perry D.	Con	572	-
Livett M. Ms.	Lib/SDP	417	31.1
Reed F.	Lab	334	24.9
Weatherell M.	Lab	186	-
Turnout		64.5	13.0

Stowmarket North (2623) ²			
		vote	share
Jones R. Ms.	Lab	483	36.7
Jones E.	Lab	381	-
Pattle R.	Ind	326	24.8
Crane W.	Con	321	24.4
Wilson M. Ms.	Lib/SDP	186	14.1
Turnout		64.7	11.9

Stowmarket South (2475) ²			
		vote	share
Nunn E.	Lab	661	47.3
Soames C.	Lab	531	-
Burch D.	Con	394	28.2
Finch J.	Lib/SDP	342	24.5
Turnout		56.4	19.1

Stowupland (2951) ²			
		vote	share
Wilson S.	Lib/SDP	1,139	47.6
Shave M.	Lab	923	38.6
Stearn R.	Ecol	331	13.8
Turnout		81.1	9.0

Stradbroke (1162)			
		vote	share
Hawes S.	Ind	0	0.0
Turnout		0.0	0.0

Thurston (1575)			
		vote	share
Marston F.	Con	471	70.5
Walters J.	Lab	197	29.5
Turnout		42.4	41.0

Walsham Le Willows (1483)			
		vote	share
Edwards S.	Con	467	53.4
Beak V. Ms.	Ind	243	27.8
Barber R.	Lib/SDP	132	15.1
Austin R.	Ecol	33	3.8
Turnout		59.0	25.6

Wetheringsett (1215)			
		vote	share
Taylor G.	Con	0	0.0
Turnout		0.0	0.0

Weybread (1192)			
		vote	share
Wellingham J.	Con	0	0.0
Turnout		0.0	0.0

Woolpit (1065)			
		vote	share
Baker R.	Ind	355	68.1
Rutter N.	Ecol	109	20.9
Morris R.	Lab	57	10.9
Turnout		48.9	47.2

Worlingworth (1251)			
		vote	share
Thurman K. Ms.	Con	0	0.0
Turnout		0.0	0.0

Mid Suffolk - 1987

Badwell Ash (1240)			
		vote	share
Austin P.	Ind	334	56.1
Montgomery R.	Lib/SDP	216	36.3
O'Keefe T.	Lab	45	7.6
Turnout		48.0	19.8

Barham (1431)			
		vote	share
Shipp B. Ms.	Con	427	60.9
Ward B.	Lib/SDP	165	23.5
Wilson T.	Lab	109	15.5
Turnout		49.0	37.4

Barking (1440)			
		vote	share
Chapman P.	Ind	498	76.9
Cope P.	Lib/SDP	94	14.5
Carter P. Ms.	Lab	56	8.6
Turnout		45.0	62.3

Bramford (2782) ²			
		vote	share
Bird C.	Con	695	55.5
Plummer B.	Con	640	-
Barker E.	Lab	299	23.9
Barker L. Ms.	Lab	289	-
Thomas P.	Lib/SDP	258	20.6
Turnout		45.0	31.6

Claydon (1341)			
		vote	share
Griffiths H.	Con	352	59.7
Wilson J. Ms.	Lab	121	20.5
Dedman J.	Lib/SDP	117	19.8
Turnout		44.0	39.2

Creeting (1084)			
		vote	share
Coton H.	Con	348	55.3
Lilley A. Ms.	Lib/SDP	237	37.7
Howell C. Ms.	Lab	44	7.0
Turnout		58.0	17.6

Debenham (1512)			
		vote	share
Alcock E.	Con	488	65.9
Nettleton D.	Lib/SDP	177	23.9
Macpherson D.	Lab	76	10.3
Turnout		49.0	42.0

Elmswell (1842)			
		vote	share
Dyball D.	Ind	465	70.1
Stanners P.	Lab	198	29.9
Turnout		36.0	40.3

Eye (1461)			
		vote	share
Flatman C.	Ind	564	87.7
McGeever D. Ms.	Lab	79	12.3
Turnout		44.0	75.4

Fressingfield (1261)			
		vote	share
Marchant R.	Ind	322	50.1
White R.	Lib/SDP	181	28.1
Kerr A. Ms.	Lab	73	11.4
Holloway J.	Green	67	10.4
Turnout		51.0	21.9

Gislingham (1468)			
		vote	share
Henniker-Major L. Ms.	Lib/SDP	492	58.8
Vaudrey C.	Con	345	41.2
Turnout		57.0	17.6

Haughley & Wetherden (1431)			
		vote	share
Crascall E.	Lab	496	55.9
Spencer H.	Con	241	27.2
Thomson P. Ms.	Lib/SDP	150	16.9
Turnout		62.0	28.7

Helmingham (1080)			
		vote	share
Denyer M.	Ind	317	65.2
Cleverly C.	Lib/SDP	115	23.7
Wheeler P.	Lab	54	11.1
Turnout		45.0	41.6

Hoxne (1402)			
		vote	share
Harding D.	Con	361	47.7
Breeze M.	Lib/SDP	322	42.5
Millwood R.	Lab	74	9.8
Turnout		54.0	5.2

Mendlesham (1435)			
		vote	share
Braybrooke A.	Ind	376	54.6
Blake R.	Lib/SDP	170	24.7
Langston J.	Lab	100	14.5
Luis F. Ms.	Green	43	6.2
Turnout		48.0	29.9
Needham Market (3206)²			
		vote	share
Swain J.	Con	680	45.1
Mason I.	Con	629	-
Miller G.	Lib/SDP	498	33.0
Finch J. Ms.	Lib/SDP	418	-
Ceasar S. Ms.	Lab	213	14.1
Ceasar D.	Lab	211	-
Dixon W.	Ind Con	116	7.7
Turnout		47.0	12.1
Norton (1524)			
		vote	share
Siffleet B.	Con	397	53.1
Wyart R.	Lib/SDP	154	20.6
Armstrong F.	Ind	122	16.3
Matthissen J.	Green	44	5.9
Payne T.	Lab	30	4.0
Turnout		49.0	32.5
Onehouse (1498)			
		vote	share
Townsley R.	Lib/SDP	550	85.4
Howell C. Ms.	Lab	94	14.6
Turnout		43.0	70.8
Palgrave (1359)			
		vote	share
West G.	Con	334	42.4
Goodin N.	Ind	236	29.9
Fawcett J.	Lib/SDP	150	19.0
Hepburn H. Ms.	Lab	68	8.6
Turnout		58.0	12.4
Rattlesden (1404)			
		vote	share
Vansittart R.	Con	312	42.7
Otton P. Ms.	Lib/SDP	301	41.2
Woodham J. Ms.	Lab	73	10.0
Bornett C.	Green	44	6.0
Turnout		52.0	1.5
Rickingham (1583)			
		vote	share
Pask B. Ms.	Con	348	46.8
Foster J.	Ind	242	32.5
Lockwood G. Ms.	Lib/SDP	85	11.4
Hicks J. Ms.	Lab	69	9.3
Turnout		47.0	14.2
Ringshall (1461)			
		vote	share
Wallace R.	Con	434	67.5
Marchant A.	Lib/SDP	120	18.7
Salmon B.	Lab	89	13.8
Turnout		44.0	48.8
Stonham (1124)			
		vote	share
Allen V. Ms.	Lib/SDP	363	51.3
Morley F.	Ind	321	45.3
Lewis A.	Lab	24	3.4
Turnout		63.0	5.9
Stowmarket Central (4496)²			
		vote	share
Cade J. Ms.	Con	727	33.0
Perry D.	Ind	585	26.6
Hewitt B.	Lib/SDP	466	21.2
Winchester A.	Lab	425	19.3
Snell R.	Lab	389	-
Turnout		49.0	6.4

Stowmarket North (3618)²			
		vote	share
Jones B. Ms.	Lab	638	44.1
Jones E.	Lab	553	-
Crane W.	Con	439	30.3
Tungate A.	Lib/SDP	256	17.7
Clarkson J. Ms.	Green	114	7.9
Turnout		40.0	13.8
Stowmarket South (3211)²			
		vote	share
Nunn E.	Lab	675	45.7
Soames C.	Lab	536	-
Mayes B.	Con	420	28.4
Shaw E. Ms.	Lib/SDP	382	25.9
Shaw J.	Lib/SDP	353	-
Turnout		46.0	17.3
Stowupland (4689)²			
		vote	share
Shave M.	Lab	856	32.6
Jay J. Ms.	Lib/SDP	768	29.2
Finn J.	Con	610	23.2
Douglas M.	Lab	405	-
Stearn R.	Green	392	14.9
Turnout		56.0	3.4
Stradbroke (1164)			
		vote	share
Hawes S.	Ind	474	90.5
Davis P.	Lab	50	9.5
Turnout		45.0	80.9
Thurston (1698)			
		vote	share
Marston F.	Con	426	54.5
Morland J. Ms.	Lib/SDP	260	33.3
Keeble J.	Lab	95	12.2
Turnout		46.0	21.3
Walsham Le Willows (1217)			
		vote	share
Edwards S.	Con	511	70.0
Barber R.	Lib/SDP	148	20.3
Dougall J.	Lab	71	9.7
Turnout		60.0	49.7
Wetheringsett (1237)			
		vote	share
Taylor G.	Ind	390	64.4
Morris S. Ms.	Lib/SDP	116	19.1
Fearnhead D.	Lab	100	16.5
Turnout		49.0	45.2
Weybread (1244)			
		vote	share
Wellingham J.	Con	470	61.0
Pietrzak A.	Lib/SDP	190	24.6
Williams P.	Lab	111	14.4
Turnout		62.0	36.3
Woolpit (1217)			
		vote	share
Melvin R.	Ind	371	56.5
Coleman G.	Lib/SDP	235	35.8
Morris R.	Lab	51	7.8
Turnout		54.0	20.7
Worlingworth (1243)			
		vote	share
Thurman K. Ms.	Con	447	73.4
Wilson D.	Lib/SDP	111	18.2
Cholmondeley A. Ms.	Lab	51	8.4
Turnout		49.0	55.2

Mid Suffolk - 1991			
Badwell Ash (1214)			
		vote	share
Austin P.*	Ind	0	0.0
Turnout		0.0	0.0
Barham (1525)			
		vote	share
Shipp B. Ms.*	Con	291	43.0
Ramsden N.	LD	222	32.8
Williams P.	Lab	163	24.1
Turnout		45.0	10.2
Barking (1465)			
		vote	share
Chapman P.*	Ind	410	64.3
Fisher J.	LD	122	19.1
Carter P. Ms.	Lab	106	16.6
Turnout		44.0	45.1
Bramford (2947)²			
		vote	share
Plummer B.*	Con	0	0.0
Bird C.*	Con	0	-
Turnout		0.0	0.0
Claydon (1475)			
		vote	share
Griffiths H.*	Con	307	54.3
Wilson T.	Lab	167	29.6
Redbond M.	LD	91	16.1
Turnout		38.0	24.8
Creeting (1151)			
		vote	share
Lilley A. Ms.	LD	399	61.0
Bennett G.	Con	255	39.0
Turnout		57.0	22.0
Debenham (1641)			
		vote	share
Alcock E.*	Con	474	61.2
Comer S. Ms.	LD	300	38.8
Turnout		48.0	22.5
Elmswell (2090)			
		vote	share
Cook R.	Con	406	47.8
Robinson S.	Lab	277	32.6
Serjeant G.	LD	166	19.6
Turnout		41.0	15.2
Eye (1484)			
		vote	share
Flatman C.*	Ind	267	37.7
Morris S. Ms.	LD	200	28.2
Whant M. Ms.	Con	135	19.0
Reeves S. Ms.	Lab	107	15.1
Turnout		49.0	9.4
Fressingfield (1363)			
		vote	share
Frost G.	Ind	472	74.3
Millwood E. Ms.	Lab	163	25.7
Turnout		47.0	48.7
Gislingham (1638)			
		vote	share
Henniker-Major L. Ms.*	LD	386	43.6
Farmer P.	Con	296	33.4
O'Keefe T.	Lab	204	23.0
Turnout		54.0	10.2

Haughley & Wetherden (1503)			
		vote	share
Crascall E.*	Lab	577	73.8
Bowden R.	Con	205	26.2
Turnout		52.0	47.6
Helmingham (1157)			
Raine M. Ms.	Con	0	0.0
Turnout		0.0	0.0
Hoxne (1401)			
Craven J. Ms.	LD	452	56.3
Harding D.	Con	351	43.7
Turnout		57.0	12.6
Mendlesham (1514)			
Baully E.	Con	519	61.9
Barker J. Ms.	Lab	320	38.1
Turnout		56.0	23.7
Needham Market (3407) ²			
Marchant W. Ms.*	LD	968	50.1
Scott R. Ms.*	LD	679	-
Watts T.	Con	461	23.8
Redman P.	Con	419	-
Caesar S. Ms.	Lab	295	15.3
Mason I.	Ind	210	10.9
Turnout		50.0	26.2
Norton (1645)			
Siffleet B.*	Con	490	60.9
Palmer S.	Lab	315	39.1
Turnout		50.0	21.7
Onehouse (1577)			
How J. Ms.*	LD	604	75.4
Waspe V. Ms.	Con	197	24.6
Turnout		50.8	50.8
Palgrave (1424)			
Wells D.	LD	323	42.3
Webbe M. Ms.	Con	313	41.0
McGeever D. Ms.	Lab	127	16.6
Turnout		54.0	1.3
Rattlesden (1462)			
Otton P. Ms.	LD	479	59.7
Vansittart R.	Con	240	29.9
Woodham J. Ms.	Lab	83	10.3
Turnout		55.0	29.8
Rickingham (1785)			
Pask B. Ms.*	Con	561	63.2
Stratford J.	Lab	327	36.8
Turnout		50.0	26.4
Ringshall (1466)			
Turner M.	LD	351	46.6
Wallace R.	Con	337	44.7
Salmon B.	Lab	66	8.8
Turnout		52.0	1.9
Stonham (1220)			
Ward B.	LD	356	57.6
Burch D.	Con	262	42.4
Turnout		51.0	15.2

Stowmarket Central (3570) ²			
		vote	share
Olney A.	Lab	638	36.3
Snell R.	Lab	633	-
Cade J. Ms.	Con	591	33.6
Perry D.	Con	501	-
Cray R.	LD	338	19.2
Buckfield D.	Green	192	10.9
Turnout		44.0	2.7
Stowmarket North (3402) ²			
Jones R. Ms.*	Lab	742	56.1
Jones E.*	Lab	712	-
Crane W.	Con	366	27.7
Godfree R.	Con	352	-
Cray G. Ms.	LD	215	16.3
Wilson M. Ms.	LD	189	-
Turnout		40.0	28.4
Stowmarket South (3390) ²			
Nunn E.*	Lab	795	49.4
Wicker S. Ms.*	Lab	649	-
Shaw J.	LD	411	25.5
Mayer B.	Con	404	25.1
Mayer L. Ms.	Con	397	-
Turnout		42.0	23.9
Stowupland (3331) ²			
Shave M.*	Lab	1,006	39.0
Hendry I.	Con	548	21.2
Jay J. Ms.	LD	546	21.2
Descombes C. Ms.	Lab	536	-
Stearn R.	Ind	480	18.6
Turnout		54.0	17.8
Stradbroke (1194)			
Gemmill S.	Con	409	63.8
Whitworth H. Ms.	LD	232	36.2
Turnout		45.0	27.6
Thurston (1982)			
Marston F.*	Con	519	65.6
Carlisle P. Ms.	Ind	272	34.4
Turnout		40.0	31.2
Walsham Le Willows (1565)			
Edwards S.*	Con	444	58.7
Montgomery R.	Ind	195	25.8
Dougall J.	Lab	118	15.6
Turnout		48.0	32.9
Wetheringsett (1267)			
Passmore R.	Con	328	57.3
Carr M.	Lab	244	42.7
Turnout		45.0	14.7
Weybread (1273)			
Wellingham J.*	Con	427	65.3
Deeks G.	Lab	227	34.7
Turnout		52.0	30.6
Woolpit (1304)			
Melvin R.*	Ind	462	81.9
Wilkes B. Ms.	LD	102	18.1
Turnout		43.0	63.8
Worlingworth (1239)			
Thurman K. Ms.*	Con	446	73.7
Wakeman D.	Lab	159	26.3
Turnout		51.0	47.4

Mid Suffolk - 1995

Badwell Ash (1269)			
		vote	share
Austin P.*	Ind	346	62.3
Descombes C. Ms.	Lab	209	37.7
Turnout		44.0	24.7
Barham (1711)			
Ramsden N.	LD	285	36.2
Shipp B. Ms.*	Con	261	33.2
Cooper P.	Lab	241	30.6
Turnout		46.0	3.0
Barking (1530)			
Hoy V. Ms.	LD	305	43.8
Pratt A. Ms.	Con	227	32.6
Lee D.	Lab	164	23.6
Turnout		46.0	11.2
Bramford (2908) ²			
Green T.	Lab	436	41.9
Curl C. Ms.	Lab	426	-
Bird C.*	Con	337	32.4
Plummer B.*	Con	306	-
Sands P.	LD	267	25.7
Wishart J.	LD	261	-
Turnout		38.0	9.5
Claydon (1509)			
Wilson T.	Lab	343	54.9
Williams J.	Con	282	45.1
Turnout		42.0	9.8
Creeting (1175)			
Lilley A. Ms.*	LD	338	55.1
Vickery R.	Con	183	29.9
Lewis A.	Lab	92	15.0
Turnout		53.0	25.3
Debenham (1746)			
Clevery C.*	LD	360	58.8
Cooksley C.	Ind	141	23.0
Robinson J. Ms.	Lab	111	18.1
Turnout		36.0	35.8
Elmswell (2366)			
Durrant R.	Lab	350	34.4
Dow P.	Ind	316	31.0
Ward C.	LD	184	18.1
Cook R.*	Con	168	16.5
Turnout		43.0	3.3
Eye (1521)			
Flatman C.*	Ind	344	51.3
Carr M.	Lab	326	48.7
Turnout		44.0	2.7
Fressingfield (1480)			
Frost G.*	Ind	419	55.9
Stewart H.	LD	216	28.8
Herod K.	Lab	114	15.2
Turnout		51.0	27.1
Gislingham (1742)			
O'Keefe T.	Lab	343	45.9
Netscher B.	LD	246	32.9
Ayres H. Ms.	Con	159	21.3
Turnout		43.0	13.0

Haughley & Wetherden (1564)			
		vote	share
Crascall E.*	Lab	0	0.0
Turnout		0.0	0.0
Helmingham (1158)			
		vote	share
Raine M. Ms.*	Con	215	44.7
Jones L.	LD	180	37.4
Hammond C.	Lab	86	17.9
Turnout		42.0	7.3
Hoxne (1471)			
		vote	share
Craven J. Ms.*	LD	457	71.5
Campbell-Preston M. Ms.	Con	182	28.5
Turnout		44.0	43.0
Mendlesham (1586)			
		vote	share
Barker J. Ms.	Lab	389	54.0
Ribbons M.	Ind	332	46.0
Turnout		46.0	7.9
Needham Market (3560) ²			
		vote	share
Marchant W. Ms.*	LD	939	60.8
Stannard D. Ms.	LD	750	-
Hill D.	Lab	373	24.1
Fisk G.	Lab	283	-
Burch D.	Con	233	15.1
Turnout		43.0	36.6
Norton (1684)			
		vote	share
Siffleet B.*	Con	415	49.1
Dykes E. Ms.	Lab	294	34.8
Carlisle P. Ms.	LD	137	16.2
Turnout		51.0	14.3
Onehouse (1665)			
		vote	share
Cray R.	LD	288	39.3
Sinclair J.	Con	232	31.7
Rogers J. Ms.	Lab	213	29.1
Turnout		44.0	7.6
Palgrave (1484)			
		vote	share
Michell C.	Con	238	37.3
Roche J. Ms.	LD	232	36.4
Wright C.	Lab	168	26.3
Turnout		43.0	0.9
Rattlesden (1470)			
		vote	share
Otton P. Ms.*	LD	459	57.8
Drinkwater J.	Con	192	24.2
Briggs G.	Lab	143	18.0
Turnout		54.0	33.6
Rickingham (1986)			
		vote	share
Pask B. Ms.*	Con	406	50.5
Hill R.	Lab	398	49.5
Turnout		41.0	1.0
Ringshall (1728)			
		vote	share
Turner M.	LD	500	70.3
Joslin P.	Con	133	18.7
Carter P. Ms.	Lab	78	11.0
Turnout		41.0	51.6
Stonham (1303)			
		vote	share
Fowler A.	LD	379	70.3
Passmore T.	Con	160	29.7
Turnout		42.0	40.6

Stowmarket Central (3673) ²			
		vote	share
Olney A.*	Lab	626	40.5
Snell R.*	Lab	624	-
Scarff K.	LD	463	30.0
Boatfield G.	Con	455	29.5
Turnout		36.0	10.6
Stowmarket North (3633) ²			
		vote	share
Jones R. Ms.*	Lab	842	71.8
Jones E.*	Lab	824	-
Cray G. Ms.	LD	330	28.2
Turnout		32.0	43.7
Stowmarket South (3421) ²			
		vote	share
Nunn E.*	Lab	756	59.8
Britton S. Ms.*	Lab	600	-
McKinlay B. Ms.	LD	509	40.2
Turnout		35.0	19.5
Stowupland (3362) ²			
		vote	share
Shave M.*	Lab	1,081	60.2
Jones C. Ms.*	Lab	874	-
Major N.	Con	358	19.9
Stearn R.	Green	356	19.8
Turnout		46.0	40.3
Stradbroke (1236)			
		vote	share
Gemmill S.*	Con	406	62.5
Thornber C. Ms.	Lab	244	37.5
Turnout		54.0	24.9
Thurston (2210)			
		vote	share
Stevenson D.	Lab	492	55.8
Bowden R.	Con	390	44.2
Turnout		40.0	11.6
Walsham Le Willows (1649)			
		vote	share
Russell A.*	Con	465	55.4
Dougall J.	Lab	374	44.6
Turnout		52.0	10.8
Wetheringsett (1324)			
		vote	share
Ravenhill M. Ms.	Lab	254	50.3
Passmore R.*	Con	251	49.7
Turnout		38.0	0.6
Weybread (1304)			
		vote	share
Kent S. Ms.	Ind	391	60.2
Deeks G.	Lab	258	39.8
Turnout		51.0	20.5
Woolpit (1497)			
		vote	share
Melvin R.*	Ind	433	68.2
Robinson S.	Lab	202	31.8
Turnout		43.0	36.4
Worlingworth (1253)			
		vote	share
Whitworth H. Ms.	LD	288	52.7
Debenham P.*	Ind	258	47.3
Turnout		44.0	5.5

Mid Suffolk - 1999

Badwell Ash (1331)			
		vote	share
Saunders M.	LD	300	50.3
Storey J. Ms.*	Con	296	49.7
Turnout		45.0	0.7
Barham (1706)			
		vote	share
Crane C.	LD	310	46.1
Ferris P.	Con	235	34.9
Elliot A.	Lab	128	19.0
Turnout		39.0	11.1
Barking (1552)			
		vote	share
Hoy V. Ms.*	LD	0	0.0
Turnout		0.0	0.0
Bramford (3247) ²			
		vote	share
Saunders R.	Con	384	40.7
Green T.*	Lab	381	40.4
Curl C. Ms.*	Lab	351	-
Sands P.	LD	179	19.0
Truelove J. Ms.	LD	145	-
Turnout		26.0	0.3
Claydon (1548)			
		vote	share
Miller M.	Con	302	56.7
Swale D.	Lab	186	34.9
Flury A.	LD	45	8.4
Turnout		34.0	21.8
Creething (1180)			
		vote	share
Lilley A. Ms.*	LD	311	62.1
Broatfield G.	Con	190	37.9
Turnout		42.0	24.2
Debenham (1800)			
		vote	share
Sadler-Bridge D.	LD	317	40.9
Passmore T.	Con	304	39.2
Chittenden S. Ms.	Lab	154	19.9
Turnout		43.0	1.7
Elmswell (2522)			
		vote	share
Talbot M.	Con	326	38.7
Durrant R.*	Lab	230	27.3
Dow P.	Ind	206	24.5
Serjeant G.	LD	80	9.5
Turnout		34.0	11.4
Eye (1540)			
		vote	share
Flatman C.*	Ind	333	54.6
Carr M.	Lab	202	33.1
Faulkener J.	LD	75	12.3
Turnout		40.0	21.5
Fressingfield (1511)			
		vote	share
Frost G.*	Ind	443	71.3
Stewart H.	LD	178	28.7
Turnout		41.0	42.7
Gislingham (1830)			
		vote	share
O'Keefe T.*	Lab	327	45.9
Kearsley D. Ms.	Con	302	42.4
Clarke G.	LD	83	11.7
Turnout		39.0	3.5

Haughley & Wetherden (1671)

		vote	share
Evans D.*	Lab	322	51.3
Lockett I.	Con	247	39.3
Grimbly J.	LD	59	9.4
Turnout		38.0	11.9

Helmingham (1189)

		vote	share
Raine M. Ms.*	Con	304	66.1
Tanner G.	Lab	86	18.7
Selwyn-Smith M. Ms.	LD	70	15.2
Turnout		39.0	47.4

Hoxne (1544)

		vote	share
Craven J. Ms.*	LD	356	53.8
Geddes S. Ms.	Con	241	36.4
Halton E. Ms.	Lab	65	9.8
Turnout		43.0	17.4

Mendlesham (1690)

		vote	share
Storey C.	Con	363	50.5
Barker J. Ms.*	Lab	356	49.5
Turnout		43.0	1.0

Needham Market (3558)²

		vote	share
Marchant W. Ms.*	LD	881	59.4
Norris M.	LD	535	-
Mason I.	Con	377	25.4
Smith K.	Lab	224	15.1
Turnout		35.0	34.0

Norton (1807)

		vote	share
Siffleet B.*	Con	432	53.3
Ottley J.	LD	378	46.7
Turnout		46.0	6.7

Onehouse (1732)

		vote	share
Cray R.*	LD	406	65.2
Willison-Gray R.	Con	217	34.8
Turnout		36.0	30.3

Palgrave (1566)

		vote	share
Michell C.*	Con	342	56.9
Goater M.	LD	149	24.8
Wright C.	Lab	110	18.3
Turnout		38.0	32.1

Rattlesden (1538)

		vote	share
Otton P. Ms.*	LD	0	0.0
Turnout		0.0	0.0

Rickinghall (2080)

		vote	share
Michell S. Ms.	Con	378	45.2
Lodge T.	Lab	355	42.5
Lavin C.	LD	103	12.3
Turnout		40.0	2.8

Ringshall (2021)

		vote	share
Turner M.*	LD	0	0.0
Turnout		0.0	0.0

Stonham (1340)

		vote	share
Fowler A.*	LD	306	61.3
Grimsey R.	Con	193	38.7
Turnout		37.0	22.6

Stowmarket Central (3722)²

		vote	share
Finbow M. Ms.	Lab	503	44.4
Paton G.	Con	450	39.7
Snell R.*	Lab	425	-
Burch D.	Con	400	-
Fearnley B.	LD	180	15.9
Townsley R.	LD	155	-
Turnout		30.0	4.7

Stowmarket North (3463)²

		vote	share
Jones R. Ms.*	Ind Lab	351	43.0
Jones E.*	Ind lab	347	-
Macpherson D.	Lab	235	28.8
Cray G. Ms.	LD	231	28.3
Britton S. Ms.	Lab	220	-
Cooke A. Ms.	LD	179	-
Turnout		22.0	14.2

Stowmarket South (3463)²

		vote	share
McKinley B. Ms.	LD	501	58.9
Scarff K.	LD	418	-
Nunn E.*	Lab	349	41.1
Drake J.	Lab	263	-
Turnout		24.0	17.9

Stowupland (3329)²

		vote	share
Shave M.*	Lab	663	54.1
Jones C. Ms.*	Lab	569	-
Clover J.	Con	407	33.2
Dyble P.	Con	199	-
Rapsey F.	LD	155	12.7
Turnout		35.0	20.9

Stradbroke (1215)

		vote	share
Gemmill S.*	Con	380	73.6
Whymark D. Ms.	LD	136	26.4
Turnout		43.0	47.3

Thurston (2495)

		vote	share
Cook R.	Con	444	51.9
Stevenson D.*	Lab	332	38.8
Wilkes B. Ms.	LD	80	9.3
Turnout		33.0	13.1

Walsham Le Willows (1699)

		vote	share
Russell A.*	Con	375	51.0
Dougall J.	Lab	287	39.0
Adamson G. Ms.	LD	73	9.9
Turnout		43.0	12.0

Wetheringsett (1359)

		vote	share
Passmore R.	Con	309	56.1
Ravenhill M. Ms.*	Lab	242	43.9
Turnout		41.0	12.2

Weybread (1349)

		vote	share
Mathias G.	Con	335	54.1
Pye D.	LD	159	25.7
Deeks G.	Lab	125	20.2
Turnout		46.0	28.4

Woolpit (1535)

		vote	share
Melvin R.*	Ind	440	80.1
Flower R.	LD	109	19.9
Turnout		36.0	60.3

Worlingworth (1326)

		vote	share
Thurman J.	Con	288	54.8
Van Slooten R.	LD	238	45.2
Turnout		40.0	9.5

Mid Suffolk - 2003**Bacton & Old Newton (1802)**

		vote	share
Shave M.*	Ind	420	48.4
Hodges D.	Con	270	31.1
Stearn R.	Green	178	20.5
Turnout		48.4	17.3

Badwell Ash (1938)

		vote	share
Barker R.	Con	668	64.2
Saunders M.*	LD	373	35.8
Turnout		54.1	28.3

Barking & Somersham (1723)

		vote	share
Hoy V. Ms.*	LD	0	0.0
Turnout		0.0	0.0

Bramford & Blakenham (3162)²

		vote	share
Install G.	Lab	0	0.0
Saunders R.*	Con	0	0.0
Turnout		0.0	0.0

Claydon & Barham (3405)²

		vote	share
Crane C.*	LD	756	58.4
Eastall S.	LD	712	-
Williams J.	Con	538	41.6
Cooper N.	Con	485	-
Turnout		38.1	16.8

Debenham (1680)

		vote	share
Alcock E.	Con	386	52.7
Lorenzo M.	LD	221	30.2
Carr M.	Green	125	17.1
Turnout		43.6	22.5

Elmswell & Norton (3526)²

		vote	share
Milward C. Ms.*	LD	873	65.8
Reed D.	LD	850	-
Etchells-Butler D.	Con	453	34.2
Turnout		37.9	31.7

Eye (1591)

		vote	share
Flatman C.*	Ind	0	0.0
Turnout		0.0	0.0

Fressingfield (1776)

		vote	share
Frost G.*	Ind	454	61.5
Deeks G.	Ind	117	15.9
Goode M. Ms.	LD	88	11.9
Beanland E. Ms.	Green	79	10.7
Turnout		42.0	45.7

Gislingham (1862)

		vote	share
Kearsley D. Ms.	Con	572	66.1
O'Keefe T.*	Lab	294	33.9
Turnout		47.0	32.1

Haughley & Wetherden (1660)

		vote	share
Davie-Thornhill J.	Con	335	52.2
Evans D.*	Lab	307	47.8
Turnout		38.9	4.4

Helmingham & Coddham (1651)

		vote	share
Passmore T.	Con	415	62.2
West S.	LD	252	37.8
Turnout		40.5	24.4

Hoxne (1597)			
		vote	share
Lawrence C.	Con	463	62.7
Van Slooten R.	LD	275	37.3
Turnout		46.4	25.5
Mendlesham (1755)			
		vote	share
Stringer A.	Green	472	53.4
Gilmour J.*	Con	412	46.6
Turnout		50.9	6.8
Needham Market (3662)²			
		vote	share
Marchant W. Ms.*	LD	740	53.6
Norris M.*	LD	517	-
Mason I.	Con	468	33.9
Darnell R.	Con	465	-
Hill D.	Lab	173	12.5
Turnout		38.6	19.7
Onehouse (1667)			
		vote	share
Cameron-Laker B.	Con	297	42.6
Cray R.*	LD	293	42.0
Matthissen J.	Green	108	15.5
Turnout		42.0	0.6
Palgrave (1614)			
		vote	share
Michell C.*	Con	418	71.8
Halton E. Ms.	Lab	164	28.2
Turnout		36.5	43.6
Rattlesden (1510)			
		vote	share
Otton P. Ms.*	LD	488	73.4
Morris M.	Ind	177	26.6
Turnout		44.3	46.8
Rickinghall & Walsham (3376)²			
		vote	share
Russell A.*	Con	812	66.5
Michell S. Ms.*	Con	797	-
Dougall J.	Lab	409	33.5
Turnout		37.0	33.0
Ringshall (1928)			
		vote	share
Godden P. Ms.	LD	340	54.3
Rauh E. Ms.	Con	286	45.7
Turnout		32.6	8.6
Stowmarket Central (3676)²			
		vote	share
Paton G.*	Con	621	54.5
Robinson P. Ms.	Con	558	-
Finbow M. Ms.*	Lab	518	45.5
Snell R.	Lab	428	-
Turnout		32.4	9.0
Stowmarket North (4594)³			
		vote	share
Shephard F.	Con	621	57.7
Whittle F.	Con	571	-
Macpherson D.	Lab	455	42.3
Drake J.	Lab	448	-
Britton S. Ms.	Lab	446	-
Turnout		24.7	15.4
Stowmarket South (3724)²			
		vote	share
McKinley B. Ms.*	LD	533	50.8
Wasp V. Ms.	Con	517	49.2
Scarff K.*	LD	504	-
Myers-Hewitt K.	Con	479	-
Turnout		28.7	1.5

Stowupland (1755)			
		vote	share
Lockett I.	Con	384	66.0
Lodge T.	Lab	198	34.0
Turnout		33.6	32.0
Stradbroke & Laxfield (1917)			
		vote	share
Gemmill S.*	Ind	438	66.7
Coulter S. Ms.	LD	115	17.5
Green A.	Green	104	15.8
Turnout		34.3	49.2
The Stonhams (1755)			
		vote	share
Fowler A.*	LD	333	45.2
Passmore R.*	Con	300	40.7
Hardingham N.	Green	104	14.1
Turnout		42.0	4.5
Thurston & Hesselst (3317)²			
		vote	share
Haley D.	Con	687	47.7
Stiff A.	Con	639	-
Kemplay D.	LD	384	26.7
Stevenson D.	Lab	369	25.6
Turnout		36.5	21.0
Wetheringsett (1818)			
		vote	share
Tilbury C.	Con	0	0.0
Turnout		0.0	0.0
Woolpit (1545)			
		vote	share
Melvin R.*	Ind	361	73.1
Cooke A.	LD	133	26.9
Turnout		32.0	46.2
Worlingworth (1739)			
		vote	share
Debenham P.*	Con	547	77.4
Foster D. Ms.	LD	160	22.6
Turnout		40.8	54.7
Mid Suffolk - 2007			
Bacton & Old Newton (1902)			
		vote	share
Stringer S. Ms.	Ind	473	54.7
Curran T.	Con	392	45.3
Turnout		45.9	9.4
Badwell Ash (1992)			
		vote	share
Barker R.*	Con	782	75.3
Gath A. Ms.	LD	152	14.6
Jones J.	BNP	105	10.1
Turnout		52.2	60.6
Barking & Somersham (1752)			
		vote	share
Wright S.	Suff	362	39.6
Smith J.	Con	286	31.3
Richardson R.*	LD	266	29.1
Turnout		52.2	8.3
Bramford & Blakenham (3153)²			
		vote	share
Blakenham M.	Suff	706	41.2
Field J.*	LD	689	40.2
Fowler N. Ms.	LD	459	-
Britt L. Ms.	Con	318	18.6
Turnout		43.9	1.0

Claydon & Barham (3618)²			
		vote	share
Redbond M.*	LD	933	52.5
Touman M.	LD	527	-
Welham P.	Suff	465	26.2
Ferris P.	Con	378	21.3
Turnout		39.7	26.4
Debenham (1838)			
		vote	share
Guthrie D. Ms.	Con	486	67.7
Truelove J. Ms.	LD	232	32.3
Turnout		39.5	35.4
Elmswell & Norton (3881)²			
		vote	share
Milward C. Ms.*	LD	674	34.7
Carlton-Walker S.	Con	600	30.9
Reed D.*	LD	573	-
Mansel S. Ms.	Ind	503	25.9
Cawthorne N. Ms.	UKIP	167	8.6
Turnout		38.6	3.8
Eye (1646)			
		vote	share
Flatman C.*	Ind	0	0.0
Turnout		0.0	0.0
Fressingfield (1820)			
		vote	share
Curran M. Ms.	Con	576	66.7
Deeks G.	Ind	287	33.3
Turnout		48.2	33.5
Gislingham (1999)			
		vote	share
Kearsley D. Ms.*	Con	690	78.6
O'Keefe T.	Lab	188	21.4
Turnout		44.9	57.2
Haughley & Wetherden (1722)			
		vote	share
Laker B.	Con	354	45.1
Clarke G.	LD	309	39.4
Overett J. Ms.	Green	122	15.5
Turnout		46.9	5.7
Helmingham & Coddensham (1733)			
		vote	share
Passmore T.*	Con	571	72.9
Chapman I.	LD	212	27.1
Turnout		45.5	45.8
Hoxne (1686)			
		vote	share
Gibson-Harries E. Ms.	Con	489	57.1
Adey E. Ms.*	LD	368	42.9
Turnout		49.8	14.1
Mendlesham (1811)			
		vote	share
Stringer A.*	Green	838	77.5
Fleming J. Ms.	Con	225	20.8
Reed L. Ms.	LD	18	1.7
Turnout		59.8	56.7
Needham Market (3623)²			
		vote	share
Marchant W. Ms.*	LD	955	58.8
Norris M.*	LD	771	-
Liddell A.	Con	445	27.4
Craggs V. Ms.	Con	324	-
Mason I.	UKIP	223	13.7
Turnout		40.7	31.4

Onehouse (1769)			
		vote	share
Matthissen J.	Green	368	40.2
Lloyd M.	Con	352	38.5
Turner N. Ms.	LD	195	21.3
Turnout		51.9	1.7

Palgrave (1774)			
		vote	share
Laurie D.	Con	0	0.0
Turnout		0.0	0.0

Rattlesden (1635)			
		vote	share
Otton P. Ms.*	LD	473	54.9
Nodding R.	Con	389	45.1
Turnout		52.8	9.7

Rickinghall & Walsham (3441) ²			
		vote	share
Michell S. Ms.*	Con	918	73.6
Osborne D.	Con	878	-
Dougall J.	Lab	329	26.4
Stebbing J.	Lab	309	-
Turnout		38.8	47.2

Ringshall (2095)			
		vote	share
Godden P. Ms.*	LD	426	51.1
Langford K. Ms.	Con	408	48.9
Turnout		40.0	2.2

Stowmarket Central (3643) ²			
		vote	share
Robinson P. Ms.*	Con	719	57.2
Mayes L. Ms.	Con	696	-
Finbow A. Ms.	LD	539	42.8
Groundsell C.	LD	501	-
Turnout		36.1	14.3

Stowmarket North (5847) ³			
		vote	share
Green G.	Con	1,011	45.8
Whittle F.*	Con	984	-
Woodley P.	Con	804	-
Macpherson D.*	Lab	609	27.6
Curle J.	LD	589	26.7
Turnout		30.3	18.2

Stowmarket South (3691) ²			
		vote	share
Scarff K.	LD	531	38.5
Waspe V. Ms.*	Con	525	38.0
Whybrow D.	Con	414	-
Vecchi C.	LD	333	-
Snell G.	Lab	191	13.8
Streatfield C.	UKIP	133	9.6
Turnout		32.2	0.4

Stowupland (1797)			
		vote	share
Byles C. Ms.	Con	434	58.3
Sands P.	LD	168	22.6
Snell R.	Lab	143	19.2
Turnout		42.0	35.7

Stradbroke & Laxfield (2045)			
		vote	share
Gemmill S.*	Ind	651	80.6
Aalders-Dunthorne A.	LD	157	19.4
Turnout		39.8	61.1

The Stonhams (1843)			
		vote	share
Fowler A.*	LD	470	55.6
Betts J. Ms.	Con	375	44.4
Turnout		46.0	11.2

Thurston & Hessest (3445) ²			
		vote	share
Haley D.*	Con	752	57.8
Scott R.	Con	666	-
Flower R.	LD	549	42.2
Kemplay D.	LD	478	-
Turnout		39.2	15.6

Wetheringsett (1948)			
		vote	share
Tilbury C.*	Con	516	62.0
Fearnley B.	Green	234	28.1
Grimbley J.	LD	82	9.9
Turnout		43.1	33.9

Woolpit (1621)			
		vote	share
Melvin R.*	Ind	449	75.1
Cooke A. Ms.	LD	149	24.9
Turnout		36.9	50.2

Worlingworth (1871)			
		vote	share
Debenham P.*	Con	636	76.3
Field K. Ms.	LD	198	23.7
Turnout		44.8	52.5

Mid Suffolk - 2011

Bacton & Old Newton (1956)			
		vote	share
Stringer S. Ms.*	Ind	476	48.9
Bennett S.	Con	412	42.3
Hawkins I.	UKIP	85	8.7
Turnout		50.1	6.6

Badwell Ash (2141)			
		vote	share
Barker R.*	Con	779	70.0
Mellen A.	Green	183	16.4
Gath A. Ms.	LD	89	8.0
Fairweather T.	UKIP	62	5.6
Turnout		52.3	53.5

Barking & Somersham (1794)			
		vote	share
Wright S.*	Suff	493	53.4
Smith J.	Con	310	33.5
Payne D.	LD	121	13.1
Turnout		52.0	19.8

Bramford & Blakenham (3241) ²			
		vote	share
Blakenham M.*	Suff	731	36.7
Field J.*	LD	584	29.3
Welsby K.	Con	453	22.8
Smith B.	LD	226	-
Elliott T.	Lab	222	11.2
Meudec S. Ms.	Lab	200	-
Turnout		47.8	7.4

Claydon & Barham (3640) ²			
		vote	share
Whitehead J.	Con	573	33.4
Redbond M.*	LD	502	29.3
Britt L. Ms.	Con	469	-
Touman M.*	LD	296	-
Wilson J. Ms.	Lab	251	14.6
Fairburn S. Ms.	Suff	250	14.6
Wilson T.	Lab	233	-
Penny D.	Green	139	8.1
Turnout		43.8	4.1

Debenham (1863)			
		vote	share
Guthrie K. Ms.	Con	509	53.3
Fearnley B.	Green	178	18.6
Chattington J. Ms.	Lab	176	18.4
Stansfield D.	LD	92	9.6
Turnout		51.6	34.7

Elmswell & Norton (4169) ²			
		vote	share
Storey J. Ms.	Con	991	38.8
Mansel S. Ms.	Green	657	25.7
Milward C. Ms.*	LD	615	24.1
Cunningham J.	LD	492	-
Salmon H. Ms.	Lab	291	11.4
Turnout		48.3	13.1

Eye (1652)			
		vote	share
Flatman C.*	Ind	426	49.4
Carr M.	Green	334	38.7
Ede P.	Lab	102	11.8
Turnout		52.9	10.7

Fressingfield (1892)			
		vote	share
Curran M. Ms.*	Con	575	58.6
Aalders-Dunthorne A.	LD	230	23.4
Deeks G.	Lab	177	18.0
Turnout		52.3	35.1

Gislingham (2127)			
		vote	share
Kearsley D. Ms.*	Con	696	61.9
Paterson G.	Green	184	16.4
O'Keefe K.	Lab	152	13.5
Smith L. Ms.	LD	93	8.3
Turnout		53.4	45.5

Haughley & Wetherden (1768)			
		vote	share
Eburne R. Ms.	Green	0	0.0
Turnout		0.0	0.0

Helmingham & Coddenham (1814)			
		vote	share
Passmore T.*	Con	719	71.8
Spurling M.	LD	283	28.2
Turnout		56.3	43.5

Hoxne (1705)			
		vote	share
Gibson-Harries E. Ms.*	Con	594	64.0
Edwards L. Ms.	LD	175	18.9
Hinchliffe G.	Lab	159	17.1
Turnout		54.7	45.2

Mendlesham (1817)			
		vote	share
Stringer A.*	Green	764	74.0
Fleming J. Ms.	Con	223	21.6
Martin R. Ms.	Lab	46	4.5
Turnout		57.2	52.4

Needham Market (3622) ²			
		vote	share
Marchant W. Ms.*	LD	1,045	64.5
Norris M.*	LD	850	-
Streatfield S. Ms.	UKIP	299	18.4
Hill D.	Lab	277	17.1
Turnout		42.1	46.0

Onehouse (1768)			
		vote	share
Matthissen J.*	Green	539	56.3
Carlton-Walker S.*	Con	312	32.6
Turner N. Ms.	LD	106	11.1
Turnout		54.8	23.7

Palgrave (1859)			
		vote	share
Burn D.	Con	534	58.7
Guthrie B.	Green	209	23.0
Halton E. Ms.	Lab	167	18.4
Turnout		49.5	35.7

Rattlesden (1638)			
		vote	share
Otton P.*	LD	604	64.3
Clayden A.	Con	335	35.7
Turnout		58.2	28.6
Rickinghall & Walsham (3703)²			
		vote	share
Michell S. Ms.*	Con	1,006	58.5
Osborne D.*	Con	971	-
Dougall E.	Lab	497	28.9
Stebbing J.	Lab	426	-
Truelove J. Ms.	LD	218	12.7
Turnout		47.9	29.6
Ringshall (2166)			
		vote	share
Godden P. Ms.*	LD	528	51.0
Whybrow D.	Con	508	49.0
Turnout		49.1	1.9
Stowmarket Central (3681)²			
		vote	share
Robinson P. Ms.*	Con	744	38.5
Mayes L. Ms.*	Con	636	-
Britton S. Ms.	Lab	398	20.6
Betts-Davies G.	Green	363	18.8
Griffith D.	UKIP	252	13.0
Curle J.	LD	176	9.1
Groundsell C.	LD	164	-
Turnout		44.1	17.9
Stowmarket North (7024)³			
		vote	share
Green G.*	Con	1,202	33.6
Whittle F.*	Con	1,033	-
Macpherson D.	Lab	855	23.9
Woodley P.*	Con	813	-
Rozier N.	Green	737	20.6
Sharma B.	LD	432	12.1
Lay C.	UKIP	348	9.7
Turnout		34.6	9.7
Stowmarket South (3735)²			
		vote	share
Brewster G.	Ind	480	23.1
Wasp V. Ms.*	Con	468	22.5
Scarff K.*	LD	403	19.4
Davis T. Ms.	Green	366	17.6
Whybrow A. Ms.	Con	345	-
Izod J.	Lab	254	12.2
Vecchi C.	LD	150	-
Streatfield C.	UKIP	108	5.2
Turnout		40.2	0.6
Stowupland (1822)			
		vote	share
Byles C. Ms.*	Con	356	40.6
Valladares M.	LD	265	30.3
Snell R.	Lab	128	14.6
Theobald C.	Green	127	14.5
Turnout		48.4	10.4
Stradbroke & Laxfield (2089)			
		vote	share
Gemmill S.*	Ind	752	72.2
Hargrave J.	LD	289	27.8
Turnout		50.8	44.5
The Stonhams (1845)			
		vote	share
Curran T.	Con	462	46.2
Fowler A.*	LD	295	29.5
Hardingham N.	Green	152	15.2
Hicks J.	Lab	91	9.1
Turnout		54.6	16.7

Thurston & Hessett (3513)²			
		vote	share
Haley D.*	Con	999	57.9
Powell S.	Con	724	-
Kemplay D.	LD	499	28.9
Bush G. Ms.	UKIP	226	13.1
Palmer G.	UKIP	169	-
Turnout		46.7	29.0
Wetheringsett (1981)			
		vote	share
Tilbury C.*	Con	533	53.6
Turner R. Ms.	Green	281	28.2
Ravenhill M. Ms.	Lab	128	12.9
Field K. Ms.	LD	53	5.3
Turnout		50.5	25.3
Woolpit (1632)			
		vote	share
Melvin R.*	Ind	468	57.1
Scotford D.	Green	204	24.9
Broadway J. Ms.	LD	79	9.6
Salmon B.	Lab	69	8.4
Turnout		51.4	32.2
Worlingworth (1891)			
		vote	share
Hicks M.	Con	613	63.1
Burrows P.	Lab	221	22.7
Aalders-Dunthorne K.	LD	138	14.2
Turnout		52.1	40.3

