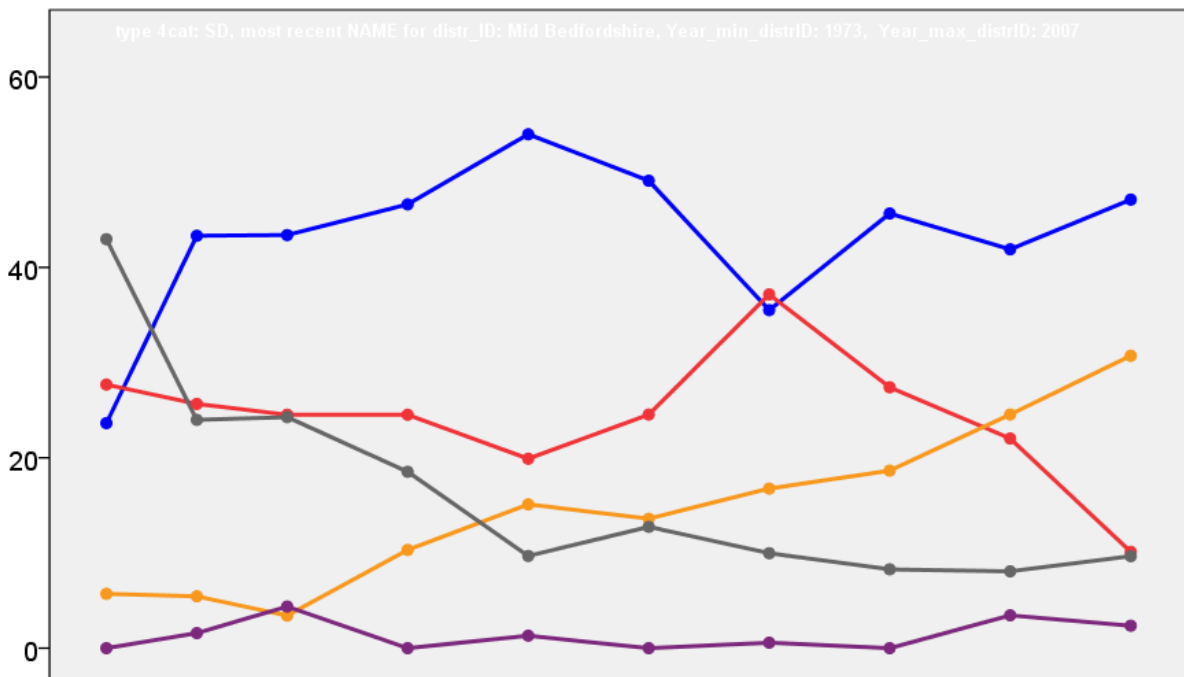


# Mid Bedfordshire District Council Election Results 1973-2007



Colin Rallings and Michael Thrasher  
The Elections Centre  
Plymouth University

The information contained in this report has been obtained from a number of sources. Election results from the immediate post-reorganisation period were painstakingly collected by Alan Willis largely, although not exclusively, from local newspaper reports. From the mid-1980s onwards the results have been obtained from each local authority by the Elections Centre. The data are stored in a database designed by Lawrence Ware and maintained by Brian Cheal and others at Plymouth University. Despite our best efforts some information remains elusive whilst we accept that some errors are likely to remain. Notice of any mistakes should be sent to [elections@plymouth.ac.uk](mailto:elections@plymouth.ac.uk). The results sequence can be kept up to date by purchasing copies of the annual Local Elections Handbook, details of which can be obtained by contacting the email address above.

Front cover: the graph shows the distribution of percentage vote shares over the period covered by the results. The lines reflect the colours traditionally used by the three main parties. The grey line is the share obtained by Independent candidates while the purple line groups together the vote shares for all other parties.

Rear cover: the top graph shows the percentage share of council seats for the main parties as well as those won by Independents and other parties. The lines take account of any by-election changes (but not those resulting from elected councillors switching party allegiance) as well as the transfers of seats during the main round of local election.

The lower graph shows for each main round of local elections the overall percentage turnout (solid line), the percentage of women candidates standing at (dotted line) and the percentage of women among those elected (hashed line).



Harlington (1413)			
		vote	share
Giles A.*	Con	0	0.0
Turnout		0.0	0.0
Haynes & Houghton Conquest (1597)			
		vote	share
Craddock H.	Ind	507	82.7
Sparshott R.	Lab	106	17.3
Turnout		38.4	65.4
Maulden (1592)			
		vote	share
Robinson I. Ms.*	Ind	644	87.1
Brown J.	Lab	95	12.9
Turnout		46.4	74.3
No. 10 (Flitton & Pulloxhill & Westoning) (2209) <sup>2</sup>			
		vote	share
Eells J. Ms.*	Con	0	-
Kent J. Ms.*	Con	0	0.0
Turnout		0.0	0.0
No. 11 (Flitwick & Steppingley) (4260) <sup>3</sup>			
		vote	share
Randall M.*	Con	1,152	65.3
Humphrey M.	Con	1,142	-
Gale D.	Con	1,119	-
Rolls F. Ms.*	Lab	613	34.7
Gammons G.	Lab	532	-
Lescott R.	Lab	422	-
Turnout		41.4	30.5
No. 13 (Aspley) (2144) <sup>2</sup>			
		vote	share
Klinner W.*	Ind	0	0.0
Campbell W. Ms.	Ind	0	-
Turnout		0.0	0.0
No. 14 (Marston) (1150)			
		vote	share
Barnes C. Ms.	Con	525	61.8
Deacy M.	Lab	324	38.2
Turnout		73.8	23.7
No. 15 (Lidlington) (1477)			
		vote	share
Chapman C. Ms.	Con	384	57.1
Donnelly A.*	Lab	289	42.9
Turnout		45.6	14.1
No. 17 (Blunham) (1289)			
		vote	share
Woods E. Ms.*	Con	531	84.4
Chapman I. Ms.	Lab	98	15.6
Turnout		48.8	68.8
No. 18 (Northill) (1908)			
		vote	share
Turner P. Ms.	Con	872	84.2
Berry M. Ms.	Lab	164	15.8
Turnout		54.3	68.3
No. 2 (Biggleswade) (7379) @ 6			
		vote	share
Cook C. Ms.*	Ind	2,164	36.0
Killeen F. Ms.	Con	1,963	32.7
Chambers L.*	Lab	1,884	31.3
Rouse P. Ms.*	Con	1,789	-
Bennett R.	Con	1,630	-
Brunt V.*	Lab	1,588	-
Armstrong M. Ms.*	Ind	1,484	-
Pepper R.*	Lab	1,198	-
Costly A.	Lab	1,030	-
Wheeler A. Ms.	Lab	954	-
James C.	Lab	761	-
Turnout		81.5	3.3

No. 20 (Campton & Meppershalland Shefford) (5105) @ 4			
		vote	share
Burrows F.*	Con	1,540	42.0
Cadman D.	Con	1,346	-
Rogers G.*	Con	1,316	-
Buxton J.	Con	950	-
Smythe A.*	Lab	771	21.0
Pettifar F.	Ind	692	18.9
Bowry P. Ms.	Lib	668	18.2
Faircloth M. Ms.	Ind	479	-
Evans R.	Lab	458	-
Emmerson G. Ms.	Lab	363	-
Turnout		71.9	20.9
No. 21 (Henlow & Langford) (3630) <sup>3</sup>			
		vote	share
Gates G.*	Con	915	38.7
Cook P. Ms.	Con	837	-
Cliff W.	Ind Con	509	21.5
Loney A.	Lab	501	21.2
Charles G.*	Ind	438	18.5
Turnout		65.1	17.2
No. 24 (Potton) (2693) <sup>2</sup>			
		vote	share
Jakes F.*	Ind	746	42.7
Ream J.*	Con	698	40.0
Forbes D.	Lab	302	17.3
Berry J.	Lab	293	-
Turnout		64.8	2.7
No. 25 (Wensley) (915)			
		vote	share
Goodyer W.*	Con	308	56.5
Walker D.	Lib	164	30.1
Monahan J. Ms.	Lab	73	13.4
Turnout		59.6	26.4
No. 3 (Sandy) (4784) <sup>3</sup>			
		vote	share
Sherwood-King A.*	Con	1,356	41.9
Quince K.*	Ind	1,323	40.9
Gammell A.	Con	1,215	-
Monahan P.	Lab	555	17.2
Buckle J.	Lab	493	-
Hibbert W.	Lab	399	-
Turnout		67.6	1.0
Old Warden & Southill (1173)			
		vote	share
Saunderson J.*	Con	375	64.0
Hamer-Harries M. Ms.	Lab	211	36.0
Turnout		50.0	28.0
Shillington & Stondon (2529) <sup>2</sup>			
		vote	share
Roe R.*	Ind	0	0.0
Cooper G.*	Ind	0	-
Turnout		0.0	0.0
Stotfold (4105) <sup>3</sup>			
		vote	share
Hyde F.*	Ind	763	34.8
Long J.	Con	748	34.1
Clark B.*	Ind	717	-
Wood H.*	Lab	682	31.1
Watkins R.	Ind	663	-
McColl W.	Lab	435	-
Tookey S. Ms.	Lab	384	-
Turnout		53.4	0.7
Woburn (1236)			
		vote	share
Woodward D.	Con	308	40.3
Glasse M. Ms.*	Ind	241	31.5
Ellis J.	Ind	215	28.1
Turnout		61.8	8.8
Wrest (1416)			
		vote	share
Wood G.*	Ind	0	0.0
Turnout		0.0	0.0

## Mid Bedfordshire 1979

Amphill (4224) <sup>3</sup>			
		vote	share
Cowell A. Ms.	Con	1,728	39.7
Palmer A. Ms.	Con	1,566	-
Wagstaff G. Ms.	Lab	1,480	34.0
Soaper B.	Con	1,399	-
Laycock M. Ms.	Lib	1,141	26.2
Low J.	Lib	895	-
Turnout		79.0	5.7
Arlesey (2762) <sup>2</sup>			
		vote	share
Albon A. Ms.	Con	1,227	55.2
Turner R.	Con	1,028	-
Harrowell D.	Lab	995	44.8
Tizard J.	Lab	678	-
Turnout		80.6	10.4
Aspley (2376) <sup>2</sup>			
		vote	share
Melina A. Ms.	Ind	0	0.0
Jaye W.	Ind	0	-
Turnout		0.0	0.0
Biggleswade Ivel (3931) <sup>3</sup>			
		vote	share
Killeen F. Ms.	Con	1,623	34.2
Chambers L.	Lab	1,580	33.3
Rouse P. Ms.	Ind Con	1,548	32.6
Armstrong M. Ms.	Ind Con	1,331	-
Costley A.	Lab	1,077	-
McIlroy R.	Lab	857	-
Turnout		80.3	0.9
Biggleswade Stratton (4038) <sup>3</sup>			
		vote	share
Cook C.	Ind	1,951	37.9
Bennett R.	Con	1,743	33.9
Brunt V.	Lab	1,448	28.2
Dominey J.	Con	1,090	-
Bornett T.	Lab	992	-
Milton P.	Lab	979	-
Turnout		82.3	4.0
Blunham (1531)			
		vote	share
Woods E. Ms.	Con	0	0.0
Turnout		0.0	0.0
Campton & Meppershall (1309)			
		vote	share
Buxton J.	Con	0	0.0
Turnout		0.0	0.0
Clifton & Henlow (3599) <sup>3</sup>			
		vote	share
Rogers G.	Con	1,556	51.5
Burrows F.	Con	1,495	-
Cliff W.	Ind	1,464	48.5
Cook P. Ms.	Con	1,314	-
Turnout		75.4	3.0
Clophill (1207)			
		vote	share
Russell W.	Con	0	0.0
Turnout		0.0	0.0
Cranfield (3100) <sup>3</sup>			
		vote	share
Hawksby J.	Con	1,321	50.2
Salisbury J.	Ind	1,312	49.8
Palmer R.	Con	1,167	-
Sullivan J.	Con	726	-
Turnout		77.0	0.3

<b>Flitton Greenfield &amp; Pulloxhill (1297)</b>			
		vote	share
<b>Eells J. Ms.</b>	Con	0	0.0
	<b>Turnout</b>	0.0	0.0
<b>Flitwick East (3169)<sup>2</sup></b>			
		vote	share
<b>Randall M.</b>	Con	1,488	61.5
<b>Cowell J.</b>	Con	1,345	-
<b>Rolls F. Ms.</b>	Lab	933	38.5
	<b>Turnout</b>	79.6	22.9
<b>Flitwick West (1989)<sup>2</sup></b>			
		vote	share
<b>Saxby A.</b>	Con	0	0.0
<b>Gale D.</b>	Con	0	-
	<b>Turnout</b>	0.0	0.0
<b>Harlington (1770)</b>			
		vote	share
<b>Giles A.</b>	Con	775	53.7
<b>Preston E.</b>	Ind	344	23.8
<b>McFadden J.</b>	Ind	198	13.7
<b>Ragless J.</b>	Lab	127	8.8
	<b>Turnout</b>	83.7	29.8
<b>Haynes &amp; Houghton Conquest (1665)</b>			
		vote	share
<b>Craddock H.</b>	Ind	0	0.0
	<b>Turnout</b>	0.0	0.0
<b>Langford (1912)</b>			
		vote	share
<b>Gates G.</b>	Con	915	57.5
<b>Loney A.</b>	Lab	677	42.5
	<b>Turnout</b>	84.4	14.9
<b>Marston (3149)<sup>2</sup></b>			
		vote	share
<b>Barnes C. Ms.</b>	Con	1,188	50.3
<b>Towell D.</b>	Lab	1,176	49.7
<b>Chapman F.</b>	Con	927	-
<b>Martin R. Ms.</b>	Lab	757	-
	<b>Turnout</b>	78.4	0.5
<b>Maulden (1875)</b>			
		vote	share
<b>Robinson I. Ms.</b>	Ind	914	62.9
<b>Lockey H.</b>	Ind Con	538	37.1
	<b>Turnout</b>	80.9	25.9
<b>Northill (1521)</b>			
		vote	share
<b>Turner P. Ms.</b>	Con	0	0.0
	<b>Turnout</b>	0.0	0.0
<b>Old Warden &amp; Southill (1168)</b>			
		vote	share
<b>Hamer-Harries M. Ms.</b>	Ind	439	52.3
<b>Pool S. Ms.</b>	Con	400	47.7
	<b>Turnout</b>	72.6	4.6
<b>Potton (2901)<sup>2</sup></b>			
		vote	share
<b>Ream J.</b>	Con	0	0.0
<b>Jakes F.</b>	Ind	0	0.0
	<b>Turnout</b>	0.0	0.0
<b>Sandy All Saints (2527)<sup>2</sup></b>			
		vote	share
<b>Gammell A.</b>	Con	1,262	69.2
<b>Sherwood-King A.</b>	Con	1,203	-
<b>Kirkwood I.</b>	Lab	562	30.8
<b>Monahan J. Ms.</b>	Lab	521	-
	<b>Turnout</b>	78.8	38.4

<b>Sandy St. Swithuns (2828)<sup>3</sup></b>			
		vote	share
<b>Quince K.</b>	Ind	1,115	39.0
<b>Davidson N.</b>	Con	928	32.5
<b>Smith E.</b>	Ind	864	-
<b>Cameron L.</b>	Lab	813	28.5
<b>Monahan P.</b>	Lab	710	-
<b>Hibbert W.</b>	Lab	591	-
	<b>Turnout</b>	77.4	6.5
<b>Shefford (2108)<sup>2</sup></b>			
		vote	share
<b>Gouldsbrough A. Ms.</b>	Con	770	45.2
<b>Smyth A.</b>	Ind	723	42.4
<b>Cadman D.</b>	Con	677	-
<b>Faircloth M. Ms.</b>	Ind	497	-
<b>Emmerson G. Ms.</b>	Lab	212	12.4
<b>McIlroy R. Ms.</b>	Lab	196	-
	<b>Turnout</b>	80.6	2.8
<b>Shillington &amp; Stondon (2588)<sup>2</sup></b>			
		vote	share
<b>Roe R.</b>	Ind	1,120	61.1
<b>Burr S.</b>	Ind	820	-
<b>Simkins D.</b>	Con	714	38.9
<b>Parrish P.</b>	Con	691	-
	<b>Turnout</b>	79.7	22.1
<b>Stotfold (4467)<sup>3</sup></b>			
		vote	share
<b>Long J.</b>	Con	1,958	37.4
<b>Wood H.</b>	Lab	1,683	32.1
<b>Hyde F.</b>	Ind	1,600	30.5
<b>Watkins R.</b>	Ind	1,493	-
	<b>Turnout</b>	72.5	5.2
<b>Wensley (1217)</b>			
		vote	share
<b>Goodyer W.</b>	Con	519	51.4
<b>Riches C.</b>	Lib	490	48.6
	<b>Turnout</b>	83.5	2.9
<b>Westoning (1188)</b>			
		vote	share
<b>Kent J. Ms.</b>	Con	0	0.0
	<b>Turnout</b>	0.0	0.0
<b>Woburn (1180)</b>			
		vote	share
<b>Woodward D.</b>	Con	562	59.5
<b>Ellis J.</b>	Ind	383	40.5
	<b>Turnout</b>	81.4	18.9
<b>Wrest (1418)</b>			
		vote	share
<b>Wood G.</b>	Ind	0	0.0
	<b>Turnout</b>	0.0	0.0

## Mid Bedfordshire 1983

<b>Amphill (4368)<sup>3</sup></b>			
		vote	share
<b>Cowell A. Ms.*</b>	Con	1,145	36.2
<b>Wagstaff G. Ms.*</b>	Lab	1,073	33.9
<b>Palmer M. Ms.*</b>	Con	1,030	-
<b>Cruse P.</b>	Lib/SDP	949	30.0
<b>Letch J.</b>	Lib/SDP	643	-
	<b>Turnout</b>	72.5	2.3
<b>Arlesey (3003)<sup>2</sup></b>			
		vote	share
<b>Harrowell D.</b>	Lab	801	52.8
<b>Turner R.*</b>	Con	715	47.2
<b>Albon A. Ms.*</b>	Con	636	-
<b>Walker G. Ms.</b>	Lab	469	-
	<b>Turnout</b>	50.5	5.7

<b>Aspley (2468)<sup>2</sup></b>			
		vote	share
<b>Chapman F. Ms.</b>	Con	746	44.9
<b>Crampin A. Ms.</b>	Lib/SDP	475	28.6
<b>Jaye H.*</b>	Ind	442	26.6
	<b>Turnout</b>	67.4	16.3
<b>Biggleswade Ivel (4477)<sup>3</sup></b>			
		vote	share
<b>Vickers P.</b>	Con	1,237	43.7
<b>Chambers L.*</b>	Lab	1,000	35.3
<b>Strachan D.</b>	Con	867	-
<b>Rouse P. Ms.*</b>	Con	859	-
<b>Smeeton H.</b>	Lab	756	-
<b>Mason C.</b>	Lab	712	-
<b>Cook P.</b>	Ind	593	21.0
	<b>Turnout</b>	63.2	8.4
<b>Biggleswade Stratton (4276)<sup>3</sup></b>			
		vote	share
<b>Cook C.*</b>	Ind	1,182	35.0
<b>Bennett R.*</b>	Con	1,112	32.9
<b>Brunt V.*</b>	Lab	1,083	32.1
<b>Smith D.</b>	Con	996	-
<b>Costley A.</b>	Lab	780	-
<b>Bornett T.</b>	Lab	759	-
	<b>Turnout</b>	79.0	2.1
<b>Blunham (1575)</b>			
		vote	share
<b>Davidson N.</b>	Con	556	63.3
<b>Lawford S.</b>	Lib/SDP	191	21.7
<b>Lamburn S. Ms.</b>	Lab	132	15.0
	<b>Turnout</b>	55.8	41.5
<b>Campton &amp; Meppershall (1351)</b>			
		vote	share
<b>Buxton J.*</b>	Con	0	0.0
	<b>Turnout</b>	0.0	0.0
<b>Clifton &amp; Henlow (3702)<sup>3</sup></b>			
		vote	share
<b>Rogers G.*</b>	Con	1,028	68.4
<b>Cook P. Ms.</b>	Con	928	-
<b>Burn G. Ms.</b>	Con	831	-
<b>Mayes J.</b>	Lab	475	31.6
	<b>Turnout</b>	40.6	36.8
<b>Clophill (1220)</b>			
		vote	share
<b>Russell W.*</b>	Con	342	67.9
<b>Cue P. Ms.</b>	Lab	162	32.1
	<b>Turnout</b>	41.3	35.7
<b>Cranfield (3205)<sup>3</sup></b>			
		vote	share
<b>Grimes T.</b>	Con	875	45.6
<b>Hawksby J.*</b>	Con	770	-
<b>Palmer R.*</b>	Con	651	-
<b>Gurney F.</b>	Lib/SDP	511	26.7
<b>Ambridge R.</b>	Ind	270	14.1
<b>Morris A.</b>	Lab	261	13.6
<b>Cummins L. Ms.</b>	Lab	257	-
<b>Perry F. Ms.</b>	Lab	221	-
	<b>Turnout</b>	59.8	19.0
<b>Flitton Greenfield &amp; Pulloxhill (1593)</b>			
		vote	share
<b>Eells J. Ms.*</b>	Con	530	81.8
<b>Renwick G.</b>	Lab	118	18.2
	<b>Turnout</b>	40.7	63.6
<b>Flitwick East (2647)<sup>2</sup></b>			
		vote	share
<b>Cowell J.*</b>	Con	0	-
<b>Randall M.*</b>	Con	0	0.0
	<b>Turnout</b>	0.0	0.0

Flitwick West (3431) <sup>2</sup>			
		vote	share
Gale D.*	Con	935	57.8
Baker C. Ms.	Con	793	-
Clayton R.	Lib/SDP	458	28.3
Austin I. Ms.	Lab	224	13.9
Churchill P.	Lab	189	-
<b>Turnout</b>		47.1	29.5

Harlington (1807)			
		vote	share
Giles J.*	Con	674	71.1
Walsh T.	Lab	274	28.9
<b>Turnout</b>		52.5	42.2

Haynes & Houghton Conquest (1771)			
		vote	share
Craddock H.*	Ind	519	60.2
Oertel B.	Lab	343	39.8
<b>Turnout</b>		48.7	20.4

Langford (1989)			
		vote	share
Loney A.	Lab	0	0.0
<b>Turnout</b>		0.0	0.0

Marston (3296) <sup>2</sup>			
		vote	share
Barnes C. Ms.*	Con	885	63.9
Meddings B.	Con	714	-
Thatcher J.	Lab	501	36.1
<b>Turnout</b>		42.1	27.7

Maulden (1920)			
		vote	share
Robinson I. Ms.*	Ind	478	53.6
Frizzells R. Ms.	Con	414	46.4
<b>Turnout</b>		46.5	7.2

Northhill (1605)			
		vote	share
Turner P. Ms.*	Con	0	0.0
<b>Turnout</b>		0.0	0.0

Old Warden & Southill (1149)			
		vote	share
Hamer-Harries M. Ms.*	Ind	0	0
<b>Turnout</b>		0.0	0.0

Potton (4191) <sup>2</sup>			
		vote	share
Jakes F.*	Ind	835	43.5
Ream J.*	Con	690	36.0
Morgan J.	Lab	394	20.5
<b>Turnout</b>		45.8	7.6

Sandy All Saints (2665) <sup>2</sup>			
		vote	share
Gammell A.*	Con	783	66.0
Sherwood-King A.*	Con	692	-
Blain T.	Lab	403	34.0
<b>Turnout</b>		44.5	32.0

Sandy St. Swithuns (3213) <sup>3</sup>			
		vote	share
Osborne C.	Ind	658	42.9
Sherwood-King T.	Con	544	35.4
Holloway C. Ms.	Lab	333	21.7
Price B.	Lab	321	-
Wilks P.	Lab	299	-
<b>Turnout</b>		47.8	7.4

Shefford (2514) <sup>2</sup>			
		vote	share
Burson E. Ms.	Con	702	34.4
Faircloth M. Ms.	Ind	487	23.9
Smyth A.*	Lib/SDP	454	22.3
King A.	Lab	396	19.4
Molan G.	Lab	173	-
<b>Turnout</b>		81.1	10.5

Shillington & Stondon (2633) <sup>2</sup>			
		vote	share
Roe R.*	Ind	624	42.2
Simkins R. Ms.	Con	615	41.6
Burr S.*	Ind	554	-
Tenwick M.	Lab	240	16.2
Woolhead B.	Lab	151	-
<b>Turnout</b>		56.2	0.6

Stotfold (4603) <sup>3</sup>			
		vote	share
Hyde F.*	Ind	0	0.0
Wood H.*	Lab	0	0.0
Long J.*	Con	0	0.0
<b>Turnout</b>		0.0	0.0

Wensley (1301)			
		vote	share
Goodyer G.*	Con	0	0.0
<b>Turnout</b>		0.0	0.0

Westoning (1287)			
		vote	share
Kent J. Ms.*	Con	0	0.0
<b>Turnout</b>		0.0	0.0

Woburn (1290)			
		vote	share
Woodward D.*	Con	810	78.6
Ellis J.	Lib/SDP	220	21.4
<b>Turnout</b>		79.8	57.3

Wrest (1512)			
		vote	share
Thurman R.	Con	371	46.8
Storey E. Ms.	Lib/SDP	220	27.7
Wood G.*	Ind	155	19.5
Martin R.	Lab	47	5.9
<b>Turnout</b>		52.4	19.0

## Mid Bedfordshire 1987

Amphill (4596) <sup>3</sup>			
		vote	share
Holden R.	Con	1,302	39.2
Palmer A. Ms.*	Con	1,260	-
Young S. Ms.	All	1,103	33.2
Wagstaff G. Ms.*	Lab	916	27.6
Duffin C. Ms.	Lab	521	-
Williams R.	Lab	340	-
<b>Turnout</b>		72.3	6.0

Arlesey (3255) <sup>2</sup>			
		vote	share
Harrowell D.*	Lab	833	50.8
Turner R.*	Con	808	49.2
Williams V.	Lab	618	-
<b>Turnout</b>		50.4	1.5

Aspley (2532) <sup>2</sup>			
		vote	share
Chapman C. Ms.*	Con	841	52.7
Brown R.	Con	756	-
Crampin A. Ms.*	All	599	37.5
McDowell L. Ms.	Lab	156	9.8
Walmsley J. Ms.	Lab	143	-
<b>Turnout</b>		63.0	15.2

Biggleswade Ivel (4891) <sup>3</sup>			
		vote	share
Rouse P. Ms.	Con	1,515	59.7
Vickers P.*	Con	1,432	-
Strachan D.*	Con	1,080	-
Chambers L.*	Lab	1,021	40.3
Malyon P.	Lab	656	-
Costley A.	Lab	265	-
<b>Turnout</b>		51.9	19.5

Biggleswade Stratton (4469) <sup>3</sup>			
		vote	share
Bennett R.*	Con	1,376	40.8
Smith D.	Con	1,255	-
Cook C.*	Ind	1,013	30.1
Brunt V.*	Lab	981	29.1
Briars B.	Lab	745	-
Forbes A. Ms.	Lab	606	-
<b>Turnout</b>		75.4	10.8

Blunham (1581)			
		vote	share
Davidson N.*	Con	598	81.4
Lawrence J. Ms.	Green	137	18.6
<b>Turnout</b>		46.5	62.7

Campton & Meppershall (1403)			
		vote	share
Price D.	Con	574	77.9
Kimber J. Ms.	Lab	163	22.1
<b>Turnout</b>		52.5	55.8

Clifton & Henlow (4049) <sup>3</sup>			
		vote	share
Rogers G.*	Con	1,196	60.8
Cook P. Ms.*	Con	1,148	-
Burn G. Ms.*	Con	1,093	-
Simpson L.	Ind	418	21.3
Bird J. Ms.	Lab	352	17.9
Tenwick M.	Lab	319	-
<b>Turnout</b>		48.6	39.6

Clophill (1245)			
		vote	share
Russell W.*	Con	423	74.7
Phillips K.	Lab	143	25.3
<b>Turnout</b>		45.5	49.5

Cranfield (3167) <sup>3</sup>			
		vote	share
Palmer R.*	Con	991	64.6
Grimes T.*	Con	949	-
Harris A. Ms.	Con	893	-
Hamilton J.	All	292	19.0
Wood S.	All	279	-
Heley J.	All	250	-
Morris A.	Lab	250	16.3
Harris R.	Lab	228	-
Martin R.	Lab	204	-
<b>Turnout</b>		48.4	45.6

Flitton Greenfield & Pulloxhill (1374)			
		vote	share
Eells J. Ms.*	Con	569	82.9
Churchill P.	Lab	117	17.1
<b>Turnout</b>		49.9	65.9

Flitwick East (3775) <sup>2</sup>			
		vote	share
Cowell J.*	Con	993	70.6
Randall M.*	Con	959	-
Bannister J.	Lab	413	29.4
Davis D.	Lab	308	-
<b>Turnout</b>		37.2	41.3

Flitwick West (4289) <sup>2</sup>			
		vote	share
Gale D.*	Con	1,146	58.3
Baker C. Ms.*	Con	1,143	-
Watton C. Ms.	All	616	31.3
Watton J.	All	571	-
Churchill D.	Lab	205	10.4
Watson A.	Lab	201	-
<b>Turnout</b>		45.9	26.9

Harlington (1913)			
		vote	share
Golby B.	All	568	50.7
Cousins H.	Con	411	36.7
Conibeer J.	Lab	142	12.7
<b>Turnout</b>		58.6	14.0

<b>Haynes &amp; Houghton Conquest (1948)</b>			
		vote	share
<b>Dorman E. Ms.</b>	Con	616	60.7
Oertel B.	Lab	226	22.3
Limond M. Ms.	All	173	17.0
<b>Turnout</b>		52.1	38.4
<b>Langford (2161)</b>			
		vote	share
<b>Trussell P. Ms.</b>	Con	606	53.7
Handsombe D.	All	288	25.5
Loney A.*	Lab	234	20.7
<b>Turnout</b>		52.2	28.2
<b>Marston (3299)<sup>2</sup></b>			
		vote	share
<b>Barnes C. Ms.*</b>	Con	886	48.1
<b>Howe G.</b>	Con	715	-
Meddings B.*	Ind Con	365	19.8
Rooney E. Ms.	Lab	310	16.8
Sunman P.	All	280	15.2
Walmsley H.	Lab	264	-
<b>Turnout</b>		55.8	28.3
<b>Maulden (2008)</b>			
		vote	share
<b>New B. Ms.</b>	Con	555	55.4
Brown E. Ms.	Ind	284	28.4
Nicklin J. Ms.	Lab	86	8.6
Richards R.	All	76	7.6
<b>Turnout</b>		49.9	27.1
<b>Northill (1674)</b>			
		vote	share
<b>Turner P. Ms.*</b>	Con	0	0.0
<b>Turnout</b>		0.0	0.0
<b>Old Warden &amp; Southill (1275)</b>			
		vote	share
<b>Hamer-Harries M. Ms.*</b>	All	0	0.0
<b>Turnout</b>		0.0	0.0
<b>Potton (3419)<sup>2</sup></b>			
		vote	share
<b>Jakes F.*</b>	Ind	813	43.6
<b>Ream J.*</b>	Con	719	38.5
Forbes I.	Lab	334	17.9
Morgan J.	Lab	248	-
<b>Turnout</b>		54.6	5.0
<b>Sandy All Saints (2874)<sup>2</sup></b>			
		vote	share
<b>Gammell A.*</b>	Con	0	-
<b>Sherwood-King A.*</b>	Con	0	0.0
<b>Turnout</b>		0.0	0.0
<b>Sandy St. Swithuns (3632)<sup>3</sup></b>			
		vote	share
<b>Lack P. Ms.</b>	Con	835	56.7
Sherwood-King P. Ms.*	Con	748	-
<b>Rice T.</b>	Con	748	-
Goodwin G.	All	637	43.3
Tomlin P.	All	618	-
Lister N.	All	594	-
<b>Turnout</b>		40.5	13.5
<b>Shefford (2595)<sup>2</sup></b>			
		vote	share
<b>Burson E. Ms.*</b>	Con	711	37.0
<b>Faircloth M. Ms.*</b>	Ind	515	26.8
Smyth A.	All	512	26.6
Brooks D.	Lab	186	9.7
Bornett T.	Lab	150	-
<b>Turnout</b>		74.1	10.2

<b>Shillington &amp; Stondon (2658)<sup>2</sup></b>			
		vote	share
<b>Simkins R. Ms.*</b>	Con	847	42.0
<b>Roe R.*</b>	Ind	680	33.7
Barker W. Ms.	All	348	17.3
Woodbine M.	Lab	141	7.0
Houliston E. Ms.	Lab	105	-
<b>Turnout</b>		75.8	8.3
<b>Stotfold (4803)<sup>3</sup></b>			
		vote	share
<b>Long J.*</b>	Con	0	0.0
<b>Hyde F.*</b>	Ind	0	0.0
<b>Wood H.*</b>	Lab	0	0.0
<b>Turnout</b>		0.0	0.0
<b>Wensley (1305)</b>			
		vote	share
<b>Collier B.</b>	Con	507	62.1
Walker D.	All	181	22.2
Pates J. Ms.	Lab	129	15.8
<b>Turnout</b>		62.6	39.9
<b>Westoning (1335)</b>			
		vote	share
<b>Kent J. Ms.*</b>	Con	531	83.0
Gregory J.	Lab	109	17.0
<b>Turnout</b>		47.9	65.9
<b>Woburn (1249)</b>			
		vote	share
<b>Woodward D.*</b>	Con	529	74.0
Ellis J.	All	129	18.0
Loney M.	Lab	57	8.0
<b>Turnout</b>		57.2	55.9
<b>Wrest (1610)</b>			
		vote	share
<b>Thurman R.*</b>	Con	655	82.2
Cue P. Ms.	Lab	142	17.8
<b>Turnout</b>		49.5	64.4

## Mid Bedfordshire 1991

<b>Amphill (4870)<sup>3</sup></b>			
		vote	share
<b>Holden R.*</b>	Con	1,110	47.1
<b>Palmer A. Ms.*</b>	Con	1,000	-
<b>Mayhead P. Ms.*</b>	Con	881	-
Young S. Ms.	LD	817	34.7
Sunman A.	LD	599	-
Bradbury N. Ms.	Lab	428	18.2
Nicklin J. Ms.	Lab	350	-
Urquhart C. Ms.	Lab	348	-
<b>Turnout</b>		43.0	12.4
<b>Arlesey (3334)<sup>2</sup></b>			
		vote	share
<b>Harrowell D.*</b>	Lab	865	58.5
<b>Landman D.</b>	Lab	616	-
Turner R.*	Con	613	41.5
Covington M.	Con	538	-
<b>Turnout</b>		44.0	17.1
<b>Aspley (2693)<sup>2</sup></b>			
		vote	share
<b>Chapman C. Ms.*</b>	Con	749	52.1
<b>Brown R.*</b>	Con	696	-
Dickins M.	LD	366	25.5
Bassindale A.	Lab	323	22.5
<b>Turnout</b>		48.0	26.6

<b>Biggleswade Ivel (4934)<sup>3</sup></b>			
		vote	share
<b>Rouse P. Ms.*</b>	Con	1,379	61.1
<b>Vickers P.*</b>	Con	1,264	-
<b>Strachan D.*</b>	Con	1,061	-
Peirce M.	Lab	877	38.9
Bowpitt C. Ms.	Lab	823	-
Malyon P.	Lab	755	-
<b>Turnout</b>		47.0	22.3
<b>Biggleswade Stratton (4948)<sup>3</sup></b>			
		vote	share
<b>Bennett R.*</b>	Con	1,208	37.8
<b>Smith D.*</b>	Con	1,143	-
<b>Brunt D. Ms.</b>	Lab	1,071	33.5
Cook C.*	Ind	921	28.8
Briars A. Ms.	Lab	886	-
Forbes A. Ms.	Lab	731	-
<b>Turnout</b>		48.0	4.3
<b>Blunham (1589)</b>			
		vote	share
<b>Davidson N.*</b>	Ind	0	0.0
<b>Turnout</b>		0.0	0.0
<b>Campton &amp; Meppershall (1436)</b>			
		vote	share
<b>Price D.*</b>	Con	0	0.0
<b>Turnout</b>		0.0	0.0
<b>Clifton &amp; Henlow (4118)<sup>3</sup></b>			
		vote	share
<b>Rogers G.*</b>	Con	1,027	52.2
<b>Cliff W.</b>	Ind	940	47.8
<b>Cook P. Ms.*</b>	Con	889	-
Burn G. Ms.*	Con	733	-
<b>Turnout</b>		40.0	4.4
<b>Clophill (1243)</b>			
		vote	share
<b>Dunn R.</b>	Ind	374	74.4
Mason D.	Lab	129	25.6
<b>Turnout</b>		41.0	48.7
<b>Cranfield (3102)<sup>3</sup></b>			
		vote	share
<b>Dosser S. Ms.</b>	Con	658	43.4
<b>Clarke M.*</b>	Con	656	-
<b>Baker R.</b>	Con	636	-
Morris A.	Lab	340	22.4
Rooney E. Ms.	Lab	309	-
Hamilton J.	LD	306	20.2
Harris R.	Lab	250	-
Ambridge R.	Ind	211	13.9
<b>Turnout</b>		43.0	21.0
<b>Flitton Greenfield &amp; Pulloxhill (1410)</b>			
		vote	share
<b>Eells J. Ms.*</b>	Con	484	69.8
McDonald S. Ms.	Lab	209	30.2
<b>Turnout</b>		49.0	39.7
<b>Flitwick East (3934)<sup>2</sup></b>			
		vote	share
<b>Baker C. Ms.*</b>	Con	786	59.7
<b>Randall M.*</b>	Con	615	-
Bray P.	Lab	530	40.3
<b>Turnout</b>		35.0	19.5
<b>Flitwick West (4292)<sup>2</sup></b>			
		vote	share
<b>Forster J.</b>	Con	1,042	67.7
<b>Gale D.*</b>	Con	1,026	-
Newman J. Ms.	Lab	497	32.3
Watson A.	Lab	467	-
<b>Turnout</b>		40.0	35.4

Harlington (1813)			
		vote	share
Golby B.*	LD	574	50.3
Younger R.	Con	385	33.7
Howson M.	Lab	182	16.0
Turnout		63.0	16.6

Haynes & Houghton Conquest (1938)			
		vote	share
Dorman E. Ms.*	Con	0	0.0
Turnout		0.0	0.0

Langford (2157)			
		vote	share
Trussell P. Ms.*	Con	492	47.7
Handscombe D.	LD	308	29.8
Scholes J. Ms.	Lab	232	22.5
Turnout		48.0	17.8

Marston (3176) <sup>2</sup>			
		vote	share
Barnes C. Ms.*	Con	876	59.9
Lake I. Ms.*	Con	789	-
Pollock L.	Lab	302	20.7
Riches G.	LD	284	19.4
Crick M. Ms.	Lab	278	-
Turnout		45.0	39.3

Maulden (2048)			
		vote	share
New B. Ms.*	Con	658	67.3
Sunman S.	LD	161	16.5
Mason M. Ms.	Lab	159	16.3
Turnout		48.0	50.8

Northill (1639)			
		vote	share
Turner P. Ms.*	Con	0	0.0
Turnout		0.0	0.0

Old Warden & Southill (1147)			
		vote	share
Ballard K.	Con	0	0.0
Turnout		0.0	0.0

Potton (3542) <sup>2</sup>			
		vote	share
Jakes F.*	Ind	0	-
Ream J.*	Ind	0	0.0
Turnout		0.0	0.0

Sandy All Saints (2900) <sup>2</sup>			
		vote	share
Gammell A.*	Con	572	51.4
Goss A.	Ind	541	48.6
Sherwood-King A.*	Con	484	-
Turnout		36.5	2.8

Sandy St. Swithuns (3766) <sup>3</sup>			
		vote	share
Sherwood-King P. Ms.*	Con	621	37.5
Goodwin G.	LD	565	34.1
Rice T.	Con	563	-
Darlow D. Ms.	Con	502	-
Ball J.	Lab	470	28.4
Rescorla D. Ms.*	Lab	440	-
Turnout		36.0	3.4

Shefford (2554) <sup>2</sup>			
		vote	share
Burson E. Ms.*	Con	781	45.5
Faircloth M. Ms.*	Ind	590	34.4
Argent F. Ms.	Lab	346	20.2
Gardiner M. Ms.	Lab	258	-
Turnout		49.0	11.1

Shillington & Stondon (2681) <sup>2</sup>			
		vote	share
Simkins R. Ms.*	Con	662	62.3
Bell W.*	Con	636	-
Woodbine M.	Lab	401	37.7
Turnout		43.0	24.6

Stotfold (4775) <sup>3</sup>			
		vote	share
Saunders J.	Con	1,287	36.4
Street J.	Con	1,283	-
Collier C.	LD	776	22.0
Wood H.*	Lab	766	21.7
Hyde F.*	Ind	703	19.9
Keenan J.	Ind	218	-
Turnout		50.0	14.5

Wensley (1310)			
		vote	share
Collier B.*	Con	377	56.9
Walker D.	LD	286	43.1
Turnout		51.0	13.7

Westoning (1307)			
		vote	share
Goldsmith J.	Con	0	0.0
Turnout		0.0	0.0

Woburn (1264)			
		vote	share
Duggan A.	Con	423	59.7
Ellis J.	LD	208	29.3
Wells A.	Ind	78	11.0
Turnout		56.5	30.3

Wrest (1689)			
		vote	share
Taylor M. Ms.	Con	601	69.6
Thompson A. Ms.	Lab	262	30.4
Turnout		51.0	39.3

## Mid Bedfordshire 1995

Amphill (4947) <sup>3</sup>			
		vote	share
Holden R.*	Con	914	34.8
Young S. Ms.	LD	896	34.1
Morris J.	Lab	820	31.2
Mayhead P. Ms.*	Con	736	-
Soaper F.	Con	702	-
Gardner S. Ms.	Lab	696	-
Nicklin J. Ms.	Lab	659	-
Turnout		44.6	0.7

Arlesey (3397) <sup>2</sup>			
		vote	share
Harrowell D.*	Lab	1,033	77.4
Brown D. Ms.*	Lab	954	-
Whitney-Long L. Ms.	Con	301	22.6
Turnout		40.8	54.9

Aspley (2612) <sup>2</sup>			
		vote	share
Chapman C. Ms.*	Con	545	43.6
Brown R.*	Con	516	-
Martin R.	LD	357	28.5
Walmsley J. Ms.	Lab	349	27.9
Newbould D.	Lab	326	-
Turnout		46.0	15.0

Biggleswade Ivel (5001) <sup>3</sup>			
		vote	share
Costley A.	Lab	992	41.2
Malyon P.	Lab	963	-
Merrett K.	Lab	928	-
Rook P.	Ind	710	29.5
Rouse P. Ms.*	Con	707	29.3
Strachan D.*	Con	594	-
Weedon R.	Con	503	-
Turnout		41.4	11.7

Biggleswade Stratton (5300) <sup>3</sup>			
		vote	share
Albone D.	Lab	1,130	47.8
Owen C.	Lab	1,055	-
Baguley I.	Lab	1,049	-
Vickers P.*	Con	736	31.1
Bennet P.	Con	597	-
Bracey M. Ms.	LD	498	21.1
Turnout		39.4	16.7

Blunham (1601)			
		vote	share
Davidson N.*	Con	375	52.4
Loney A.	Lab	172	24.0
Sharrock J.	LD	169	23.6
Turnout		44.8	28.4

Campton & Meppershall (1442)			
		vote	share
Biggins C.	Con	376	52.6
Kimber J. Ms.	Lab	339	47.4
Turnout		49.9	5.2

Clifton & Henlow (4063) <sup>3</sup>			
		vote	share
Cliff W.*	LD	729	41.3
Rogers G.*	Con	656	37.2
Cook P. Ms.*	Con	645	-
Livesey P. Ms.	LD	635	-
Swain C. Ms.	LD	573	-
Devereux C. Ms.	Lab	378	21.4
Devereux D.	Lab	339	-
Morgan-Gray K. Ms.	Lab	331	-
Turnout		41.8	4.1

Clophill (1274)			
		vote	share
Dunn R.*	Con	255	54.5
Farr J.	Lab	213	45.5
Turnout		36.9	9.0

Cranfield (3441) <sup>3</sup>			
		vote	share
Butler N.	Ind	572	37.3
Doyle J.	Ind	549	-
Dosser S. Ms.*	Con	464	30.3
Baker R.*	Ind	395	-
Rooney E. Ms.	Lab	372	24.3
Fitzgerald-Finch Y. Ms.	Con	333	-
Pollock L.	Lab	316	-
Harris R.	Lab	267	-
Gardiner D. Ms.	LD	125	8.2
Heley J.	LD	118	-
Riches G.	LD	90	-
Turnout		41.1	7.0

Flitton Greenfield & Pulloxhill (1493)			
		vote	share
Austin V.	Ind	281	41.0
Eells J. Ms.*	Con	268	39.1
Uney C.	Lab	136	19.9
Turnout		45.9	1.9

Flitwick East (4062) <sup>2</sup>			
		vote	share
Griffiths P.	Lab	736	51.5
Layton M.	Lab	719	-
Baker C. Ms.*	Con	476	33.3
Forster S. Ms.	Con	412	-
Prior M.	LD	217	15.2
Sunman S.	LD	154	-
Turnout		35.9	18.2

Flitwick West (4767) <sup>2</sup>			
		vote	share
Pullen G.	Lab	899	45.6
Sutton J.	Lab	652	-
Gale D.*	Con	589	29.9
Forster J.*	Con	554	-
Mason G.	LD	265	13.4
Jones R.	Green	220	11.2
Turnout		36.3	15.7



Harlington (1777)			
		vote	share
<b>Golby B.*</b>	LD	633	63.7
Uney M. Ms.	Lab	232	23.4
Goldsmith J.	Con	128	12.9
<b>Turnout</b>		56.1	40.4

Haynes & Houghton Conquest (1901)			
		vote	share
<b>Dorman E. Ms.*</b>	Con	461	54.6
Bouch P.	Lab	384	45.4
<b>Turnout</b>		45.1	9.1

Langford (2175)			
		vote	share
<b>Mayes J.</b>	Lab	546	62.8
Trussell P. Ms.	Con	324	37.2
<b>Turnout</b>		40.2	25.5

Marston (3383) <sup>2</sup>			
		vote	share
<b>Lake I. Ms.*</b>	Ind	479	31.8
<b>Morris A.</b>	Lab	433	28.8
Teasdale D.	Lab	409	-
Tysoe D.	Con	399	26.5
Caborn C.	LD	193	12.8
Peachey-May C. Ms.	LD	175	-
<b>Turnout</b>		37.8	3.1

Maulden (2074)			
		vote	share
<b>Clark D.</b>	Lab	484	50.4
Tucker J. Ms.	Con	477	49.6
<b>Turnout</b>		47.4	0.7

Northill (1663)			
		vote	share
<b>Turner P. Ms.*</b>	Con	405	62.1
Thomas R. Ms.	Lab	247	37.9
<b>Turnout</b>		40.9	24.2

Old Warden & Southill (1163)			
		vote	share
<b>Ballard K.*</b>	Con	261	51.5
Christie A.	Lab	246	48.5
<b>Turnout</b>		43.8	3.0

Potton (3597) <sup>2</sup>			
		vote	share
<b>Gurney D. Ms.</b>	Con	539	37.6
<b>Lewis A. Ms.</b>	Con	536	-
Butlin N.	Lab	508	35.5
Brittain D.	Lab	431	-
Langridge P.	LD	385	26.9
<b>Turnout</b>		38.3	2.2

Sandy All Saints (2853) <sup>2</sup>			
		vote	share
<b>Goss A.*</b>	Ind	664	45.2
<b>Gammell A.*</b>	Con	553	37.6
Morris L.	Lab	253	17.2
Lefford A.	Lab	243	-
<b>Turnout</b>		36.1	7.6

Sandy St. Swithuns (3729) <sup>3</sup>			
		vote	share
<b>Gurney J.</b>	Ind	774	34.4
<b>Blaine P.</b>	LD	570	25.3
<b>Butler J.</b>	Lab	492	21.9
James J. Ms.	Lab	482	-
Goodwin G.*	LD	474	-
Rice T.*	Con	415	18.4
Thompson A. Ms.	Lab	413	-
<b>Turnout</b>		39.1	9.1

Shefford (2986) <sup>2</sup>			
		vote	share
<b>McGregor L. Ms.</b>	LD	608	37.3
<b>Walker G. Ms.</b>	Lab	537	33.0
Potter G.	Con	484	29.7
Houliston E. Ms.	Lab	456	-
Brown A.	Con	402	-
<b>Turnout</b>		48.1	4.4

Shillington & Stondon (2733) <sup>2</sup>			
		vote	share
<b>Pickering J.</b>	Lab	591	52.3
<b>Woodbine M.</b>	Lab	542	-
Marshall D.	Con	540	47.7
<b>Turnout</b>		43.8	4.5

Stotfold (4731) <sup>3</sup>			
		vote	share
<b>Street J.*</b>	Con	956	40.8
<b>Saunders J.*</b>	Con	927	-
<b>Smith M.</b>	Con	827	-
Arden C.	Lab	772	33.0
Harrold R.	Lab	752	-
Reeves M.	Lab	694	-
Collier B.*	LD	613	26.2
Mutton K.	LD	440	-
<b>Turnout</b>		51.2	7.9

Wensley (1363)			
		vote	share
<b>Collier B.*</b>	Con	333	51.7
Pates J. Ms.	Lab	311	48.3
<b>Turnout</b>		47.5	3.4

Westoning (1429)			
		vote	share
<b>Rayment A.</b>	Con	319	54.3
Abbott D.	Lab	269	45.7
<b>Turnout</b>		41.1	8.5

Woburn (1341)			
		vote	share
<b>Duggan A.*</b>	Con	432	60.6
Ellis J.	Lab	211	29.6
Caborn A. Ms.	LD	70	9.8
<b>Turnout</b>		54.1	31.0

Wrest (1823)			
		vote	share
<b>Taylor M. Ms.*</b>	Ind	365	49.5
Herod M. Ms.	Lab	237	32.2
Dickins M.	LD	135	18.3
<b>Turnout</b>		40.8	17.4

## Mid Bedfordshire 1999

Ampthill (5323) <sup>3</sup>			
		vote	share
<b>Young S. Ms.*</b>	LD	1,266	49.0
<b>Dover C. Ms.</b>	LD	906	-
<b>Holden R.*</b>	Con	824	31.9
Mayhead P. Ms.	Con	773	-
Wiley G.	LD	692	-
Morris J.*	Lab	495	19.1
Gardner S. Ms.	Lab	358	-
<b>Turnout</b>		37.5	17.1

Arlesey (3550) <sup>2</sup>			
		vote	share
<b>Harrowell J. Ms.</b>	Ind	543	58.4
<b>Williams V.</b>	Ind	521	-
Harris P. Ms.	Lab	386	41.6
Ross P.	Lab	320	-
<b>Turnout</b>		27.5	16.9

Aspley (2711) <sup>2</sup>			
		vote	share
<b>Chapman C. Ms.*</b>	Con	592	44.4
<b>Brown R.*</b>	Con	576	-
Martin R.	LD	387	29.0
Davis N.	Lab	355	26.6
<b>Turnout</b>		40.2	15.4

Biggleswade Ivel (5337) <sup>3</sup>			
		vote	share
<b>Costley A.*</b>	Lab	847	55.4
<b>Skinner R.</b>	Lab	827	-
<b>Malyon P.*</b>	Lab	779	-
Rouse P. Ms.	Con	683	44.6
Mayhew P.	Con	671	-
Lawrence D.	Con	653	-
<b>Turnout</b>		31.9	10.7

Biggleswade Stratton (5677) <sup>3</sup>			
		vote	share
<b>Albone D.*</b>	Lab	767	40.7
<b>Vickers P.</b>	Con	736	39.1
<b>Broderick H. Ms.</b>	Lab	679	-
Mayhew P.	Con	677	-
Merrett K.*	Lab	668	-
Cazaly M.	Con	640	-
Bracey M. Ms.	LD	381	20.2
<b>Turnout</b>		30.1	1.6

Blunham (1683)			
		vote	share
<b>Fountain L. Ms.</b>	Con	514	71.9
Shilladay P.	Lab	201	28.1
<b>Turnout</b>		43.2	43.8

Campton & Meppershall (1770)			
		vote	share
<b>Keen F.</b>	Con	396	55.4
Stone A.	LD	218	30.5
Howe R.	Lab	101	14.1
<b>Turnout</b>		40.4	24.9

Clifton & Henlow (4298) <sup>3</sup>			
		vote	share
<b>Rogers G.*</b>	Con	795	41.8
<b>Cook P. Ms.*</b>	Con	750	-
<b>Cliff W.*</b>	LD	731	38.5
Livesey P. Ms.	LD	646	-
Swain C. Ms.	LD	573	-
Devereux D.	Lab	374	19.7
<b>Turnout</b>		37.0	3.4

Clophill (1292)			
		vote	share
<b>Hawkins M.</b>	Con	373	74.7
Tizard G. Ms.*	Lab	126	25.3
<b>Turnout</b>		38.9	49.5

Cranfield (3800) <sup>3</sup>			
		vote	share
<b>Dosser S. Ms.*</b>	Con	521	44.8
<b>Mathews K.</b>	Con	450	-
<b>Fitzgerald-Finch Y. Ms.*</b>	Con	449	-
Bastable A.	Ind	337	29.0
Pollock L.	Lab	304	26.2
Baker R.	Ind	295	-
Bower F. Ms.	Lab	273	-
Aucott J. Ms.	Lab	257	-
Henson P.	Ind	246	-
<b>Turnout</b>		29.9	15.8

Flitton Greenfield & Pulloxhill (1631)			
		vote	share
<b>Thompson D.</b>	Con	0.0	-
<b>Turnout</b>		0.0	0.0

Flitwick East (4147) <sup>2</sup>			
		vote	share
<b>Goodman R.</b>	Con	597	51.9
<b>Griffiths P.*</b>	Lab	553	48.1
Layton M.*	Lab	531	-
Lee V.	Con	517	-
<b>Turnout</b>		27.7	3.8

Flitwick West (5024) <sup>2</sup>			
		vote	share
<b>Gale D.</b>	Con	620	42.8
<b>Gardner J.</b>	Con	599	-
Pullen G.*	Lab	452	31.2
Marsh S.	Lab	433	-
Watton J.	LD	378	26.1
Mason S. Ms.	LD	340	-
<b>Turnout</b>		29.3	11.6

Harlington (1790)			
		vote	share
<b>Golby B.*</b>	LD	756	86.2
Barnes R.	Con	121	13.8
<b>Turnout</b>		49.4	72.4

Haynes & Houghton Conquest (2005)			
		vote	share
<b>Bowdidge R.</b>	Con	591	71.3
Bouch P.	Lab	238	28.7
<b>Turnout</b>		41.5	42.6

Langford (2255)			
		vote	share
<b>Mayer J.*</b>	Lab	482	57.9
Evans P.	Con	350	42.1
<b>Turnout</b>		37.0	15.9

Marston (4115) <sup>2</sup>			
		vote	share
<b>Lake I. Ms.*</b>	Ind	690	39.0
<b>Tysoe D.</b>	Con	665	37.5
Morris A.*	Lab	416	23.5
Rooney E. Ms.	Lab	346	-
<b>Turnout</b>		31.1	1.4

Maulden (2208)			
		vote	share
<b>Lockey H.</b>	Con	616	58.8
Phillip S.	Lab	432	41.2
<b>Turnout</b>		47.9	17.6

Northhill (1760)			
		vote	share
<b>Turner P. Ms.*</b>	Con	0.0	0.0
<b>Turnout</b>		0.0	0.0

Old Warden & Southill (1073)			
		vote	share
<b>Capon N.</b>	Con	255	54.6
Baines A.	LD	212	45.4
<b>Turnout</b>		43.6	9.2

Potton (3684) <sup>2</sup>			
		vote	share
<b>Lewis A. Ms.*</b>	Con	759	62.9
<b>Gurney D. Ms.*</b>	Con	733	-
Butlin N.	Lab	447	37.1
Brittain D.	Lab	399	-
<b>Turnout</b>		33.9	25.9

Sandy All Saints (2965) <sup>2</sup>			
		vote	share
<b>Gammell A.*</b>	Con	531	43.5
<b>Goss A.*</b>	Ind	458	37.5
Ogonah A. Ms.	Lab	231	18.9
Royle T.	Lab	207	-
<b>Turnout</b>		30.1	6.0

Sandy St. Swithuns (5023) <sup>3</sup>			
		vote	share
<b>Gurney J.*</b>	Ind	719	35.5
<b>McMurdo M.</b>	Ind	584	-
<b>Blaine P.*</b>	LD	539	26.6
Browne G. Ms.	Con	428	21.1
Leverkus C. Ms.	Con	413	-
Butler J.*	Lab	339	16.7
Joyce E.	Lab	249	-
Mitchell L.	Lab	230	-
Hollands G.	LD	185	-
<b>Turnout</b>		28.0	8.9

Shefford (3638) <sup>2</sup>			
		vote	share
<b>Birt L.</b>	Con	584	44.9
<b>Brown A.</b>	Con	536	-
Devereux C. Ms.	Lab	433	33.3
Wilkinson C.	Lab	348	-
Hall S. Ms.	LD	284	21.8
<b>Turnout</b>		32.9	11.6

Shillington & Stondon (2903) <sup>2</sup>			
		vote	share
<b>Drinkwater R. Ms.</b>	Con	700	57.9
<b>Whiteman A.</b>	Con	606	-
Bornett T.	Lab	509	42.1
Oertel B.	Lab	366	-
<b>Turnout</b>		41.3	15.8

Stotfold (4894) <sup>3</sup>			
		vote	share
<b>Street J.*</b>	Con	1,068	50.7
<b>Collier B.</b>	LD	1,038	49.3
<b>Smith M.*</b>	Con	1,024	-
Saunders J.*	Con	969	-
<b>Turnout</b>		38.0	1.4

Wensley (1435)			
		vote	share
<b>Collier B.*</b>	Con	465	76.7
Ball S.	Lab	141	23.3
<b>Turnout</b>		42.8	53.5

Westoning (1456)			
		vote	share
<b>Rayment A.*</b>	Con	464	76.2
Faughnan A.	Lab	145	23.8
<b>Turnout</b>		41.8	52.4

Woburn (1378)			
		vote	share
<b>Duggan A.*</b>	Con	455	81.0
Gilmour P. Ms.	Lab	107	19.0
<b>Turnout</b>		40.8	61.9

Wrest (1888)			
		vote	share
<b>Keen K. Ms.</b>	Con	452	67.7
Houliston E. Ms.	Lab	216	32.3
<b>Turnout</b>		35.8	35.3

## Mid Bedfordshire 2003

Amphill (5335) <sup>3</sup>			
		vote	share
<b>Summerfield G.*</b>	LD	1,179	38.3
<b>Cathrall M.</b>	LD	949	-
<b>Holden R.*</b>	Con	823	26.8
Smith M.	Lab	704	22.9
Jones J.	Con	580	-
Stratton J.	Con	489	-
Harrison G.	Green	370	12.0
<b>Turnout</b>		37.3	11.6

Arlesey (3832) <sup>2</sup>			
		vote	share
<b>Williams V.*</b>	Ind	607	42.1
<b>Brown D. Ms.</b>	Lab	492	34.1
Woodward P.	Con	344	23.8
West D.	Ind	127	-
<b>Turnout</b>		25.4	8.0

Aspley Guise (1946)			
		vote	share
<b>Chapman C. Ms.*</b>	Con	0	0.0
<b>Turnout</b>		0.0	0.0

Biggleswade Holme (3617) <sup>2</sup>			
		vote	share
<b>Smith D.*</b>	Con	549	42.5
<b>Vickers P.*</b>	Con	525	-
Bracey M. Ms.	LD	399	30.9
Forbes A. Ms.	Lab	345	26.7
Baines A.	LD	309	-
Costley A.*	Lab	305	-
<b>Turnout</b>		35.5	11.6

Biggleswade Ivel (5494) <sup>3</sup>			
		vote	share
<b>Jones M.</b>	Con	645	42.8
<b>Rouse P. Ms.</b>	Con	634	-
<b>Lawrence J. Ms.</b>	Con	614	-
Briars B.	Lab	594	39.4
Skinner R.*	Lab	535	-
Broderick H. Ms.*	Lab	527	-
Laver G.	LD	268	17.8
Leach G. Ms.	LD	238	-
<b>Turnout</b>		27.4	3.4

Biggleswade Stratton (2723) <sup>2</sup>			
		vote	share
<b>Lawrence D.</b>	Con	335	44.9
<b>Cazaly M.</b>	Con	331	-
Kerfoot R. Ms.	Lab	266	35.7
Merrett K.	Lab	240	-
Hartwell S.	LD	145	19.4
<b>Turnout</b>		26.3	9.2

Clifton & Meppershall (3388) <sup>2</sup>			
		vote	share
<b>Rogers A.*</b>	Con	758	48.0
<b>Carne P.</b>	Con	709	-
Livesey P. Ms.	LD	537	34.0
Devereux D.	Lab	283	17.9
<b>Turnout</b>		39.7	14.0

Cranfield (4084) <sup>2</sup>			
		vote	share
<b>Matthews K.*</b>	Con	737	66.7
<b>Bastable A.</b>	Con	705	-
Morris A.	Lab	368	33.3
Pollock L.	Lab	342	-
<b>Turnout</b>		28.7	33.4

Flitton Greenfield & Pulloxhill (1668)			
		vote	share
<b>Thompson D.*</b>	Con	335	54.5
Ellis R.	Green	280	45.5
<b>Turnout</b>		36.9	8.9

<b>Flitwick East (4131)<sup>2</sup></b>			
		<b>vote</b>	<b>share</b>
<b>Lee A.</b>	LD	496	35.9
<b>Watton J.</b>	LD	440	-
Goodman R.*	Con	376	27.2
North J.	Con	330	-
Griffiths P.*	Lab	294	21.3
Torselli M. Ms.	Green	216	15.6
<b>Turnout</b>		<b>28.6</b>	<b>8.7</b>
<b>Flitwick West (5803)<sup>3</sup></b>			
		<b>vote</b>	<b>share</b>
<b>Gale D.*</b>	Con	1,012	63.8
<b>Gardner J.*</b>	Con	974	-
<b>Male S.</b>	Con	927	-
Mallett H. Ms.	Lab	574	36.2
Layton M.	Lab	538	-
Pullen G.	Lab	534	-
<b>Turnout</b>		<b>28.6</b>	<b>27.6</b>
<b>Harlington (1790)</b>			
		<b>vote</b>	<b>share</b>
<b>Golby B.*</b>	LD	747	87.4
Langham A.	Con	108	12.6
<b>Turnout</b>		<b>48.2</b>	<b>74.7</b>
<b>Houghton Haynes Southill &amp; Old Warden (3164)<sup>2</sup></b>			
		<b>vote</b>	<b>share</b>
<b>Capon N.*</b>	Con	0	0.0
<b>Bowdidge R.*</b>	Con	0	-
<b>Turnout</b>		<b>0.0</b>	<b>0.0</b>
<b>Langford &amp; Henlow Village (3754)<sup>2</sup></b>			
		<b>vote</b>	<b>share</b>
<b>Cliff W.*</b>	LD	738	44.8
<b>Sewell S. Ms.</b>	LD	588	-
Dixon S.	Con	581	35.3
Wright P.	Con	576	-
Handsombe D.	Lab	328	19.9
<b>Turnout</b>		<b>42.5</b>	<b>9.5</b>
<b>Marston (3860)<sup>2</sup></b>			
		<b>vote</b>	<b>share</b>
<b>Tysoe D.*</b>	Con	651	69.1
<b>Prince S.</b>	Con	626	-
Rooney E. Ms.	Lab	291	30.9
Greenough R.	Lab	286	-
<b>Turnout</b>		<b>26.4</b>	<b>38.2</b>
<b>Maulden &amp; Clophill (3543)<sup>2</sup></b>			
		<b>vote</b>	<b>share</b>
<b>Lockey H.*</b>	Con	852	53.5
<b>Hawkins M.*</b>	Con	791	-
Fitt B. Ms.	LD	469	29.4
Thorp G.	Lab	272	17.1
Shanahan T.	Lab	267	-
<b>Turnout</b>		<b>43.0</b>	<b>24.0</b>
<b>Northill &amp; Blunham (3483)<sup>2</sup></b>			
		<b>vote</b>	<b>share</b>
<b>Turner P. Ms.*</b>	Con	0	0.0
<b>Davison J. Ms.*</b>	Con	0	-
<b>Turnout</b>		<b>0.0</b>	<b>0.0</b>
<b>Potton &amp; Wensley (5527)<sup>3</sup></b>			
		<b>vote</b>	<b>share</b>
<b>Gurney D. Ms.*</b>	Con	1,118	60.1
<b>Lewis A. Ms.*</b>	Con	1,096	-
<b>Lewis J.</b>	Con	986	-
Heskins P.	Lab	743	39.9
<b>Turnout</b>		<b>33.8</b>	<b>20.2</b>
<b>Sandy Ivel (3486)<sup>2</sup></b>			
		<b>vote</b>	<b>share</b>
<b>Gurney J.*</b>	Ind	691	48.3
<b>Gammell A.*</b>	Con	553	38.6
Goss A.*	Ind	396	-
Wheatley P.	Green	187	13.1
<b>Turnout</b>		<b>30.6</b>	<b>9.6</b>

<b>Sandy Pinnacle (4904)<sup>3</sup></b>			
		<b>vote</b>	<b>share</b>
<b>Blaine P.*</b>	LD	871	39.5
<b>McMurdo M.*</b>	Ind	722	32.8
<b>Aldis P.</b>	LD	637	-
Scott M.	Con	370	16.8
Smith R.	Con	325	-
Hetherington N. Ms.	Lab	240	10.9
<b>Turnout</b>		<b>29.0</b>	<b>6.8</b>
<b>Shefford Campton &amp; Gravenhurst (5151)<sup>3</sup></b>			
		<b>vote</b>	<b>share</b>
<b>Birt L.*</b>	Con	802	40.6
<b>Brown A.*</b>	Con	769	-
<b>Chapman M.</b>	LD	670	33.9
Green A.	Con	639	-
Devereux C. Ms.	Lab	505	25.5
<b>Turnout</b>		<b>31.3</b>	<b>6.7</b>
<b>Shillington Stondon &amp; Henlow Camp (3774)<sup>2</sup></b>			
		<b>vote</b>	<b>share</b>
<b>Drinkwater R. Ms.*</b>	Con	864	71.5
<b>Whiteman A.*</b>	Con	710	-
Wilson A. Ms.	Lab	344	28.5
Mallett J. Ms.	Lab	306	-
<b>Turnout</b>		<b>32.5</b>	<b>43.0</b>
<b>Silsoe (1391)</b>			
		<b>vote</b>	<b>share</b>
<b>Keen K. Ms.*</b>	Con	0	0.0
<b>Turnout</b>		<b>0.0</b>	<b>0.0</b>
<b>Stotfold (4998)<sup>3</sup></b>			
		<b>vote</b>	<b>share</b>
<b>Street J.*</b>	Con	981	50.1
<b>Collier B.*</b>	LD	978	49.9
<b>Saunders J.</b>	Con	821	-
Evans P.	Con	815	-
<b>Turnout</b>		<b>33.7</b>	<b>0.2</b>
<b>Westoning &amp; Tingrith (1656)</b>			
		<b>vote</b>	<b>share</b>
<b>Rayment A.*</b>	Ind	446	84.3
Pullen J. Ms.	Lab	83	15.7
<b>Turnout</b>		<b>32.3</b>	<b>68.6</b>
<b>Woburn (2067)</b>			
		<b>vote</b>	<b>share</b>
<b>Duggan A.*</b>	Con	0	0.0
<b>Turnout</b>		<b>0.0</b>	<b>0.0</b>
<b>Mid Bedfordshire 2007</b>			
<b>Amphill (5390)<sup>3</sup></b>			
		<b>vote</b>	<b>share</b>
<b>Summerfield G.*</b>	LD	1,381	39.7
<b>Pearce M.</b>	LD	1,077	-
<b>Smith M.</b>	Ind	1,060	30.5
Duckett P.	Con	1,035	29.8
Holden R.*	Con	974	-
Gibson C. Ms.	Con	939	-
<b>Turnout</b>		<b>46.4</b>	<b>9.2</b>
<b>Arlesey (4107)<sup>2</sup></b>			
		<b>vote</b>	<b>share</b>
<b>Harper H.</b>	Con	562	39.3
<b>Dalgarno I.</b>	Con	491	-
Brown D. Ms.*	Lab	442	30.9
Williams V.*	Ind	427	29.8
Warwick L. Ms.	Lab	275	-
West D.	Ind	202	-
<b>Turnout</b>		<b>31.1</b>	<b>8.4</b>
<b>Aspley Guise (1913)</b>			
		<b>vote</b>	<b>share</b>
<b>Chapman C. Ms.*</b>	Con	0	0.0
<b>Turnout</b>		<b>0.0</b>	<b>0.0</b>

<b>Biggleswade Holme (3666)<sup>2</sup></b>			
		<b>vote</b>	<b>share</b>
<b>Vickers P.*</b>	Con	806	63.1
<b>Smith D.*</b>	Con	795	-
Grayston S. Ms.	Lab	471	36.9
James D.	Lab	395	-
<b>Turnout</b>		<b>36.3</b>	<b>26.2</b>
<b>Biggleswade Ivel (5716)<sup>3</sup></b>			
		<b>vote</b>	<b>share</b>
<b>Smith W. Ms.</b>	Con	1,015	59.3
<b>Lawrence J. Ms.*</b>	Con	980	-
<b>Jones M.*</b>	Con	914	-
Skinner R.	Lab	697	40.7
Briars B.	Lab	680	-
Albone D.	Lab	678	-
<b>Turnout</b>		<b>32.9</b>	<b>18.6</b>
<b>Biggleswade Stratton (2741)<sup>2</sup></b>			
		<b>vote</b>	<b>share</b>
<b>Lawrence D.*</b>	Con	509	48.2
<b>Cazaly M.*</b>	Con	497	-
Forbes A. Ms.	Lab	322	30.5
Kerfoot R. Ms.	Lab	292	-
Carter P. Ms.	BNP	224	21.2
<b>Turnout</b>		<b>38.1</b>	<b>17.7</b>
<b>Clifton &amp; Meppershall (3605)<sup>2</sup></b>			
		<b>vote</b>	<b>share</b>
<b>Rogers A.*</b>	Con	1,143	76.2
<b>Carne P.*</b>	Con	1,112	-
Devereux D.	Lab	357	23.8
<b>Turnout</b>		<b>44.6</b>	<b>52.4</b>
<b>Cranfield (4241)<sup>2</sup></b>			
		<b>vote</b>	<b>share</b>
<b>Bastable A.*</b>	Con	873	67.1
<b>Matthews K.*</b>	Con	867	-
Morris A.	Lab	429	32.9
Pollock L.	Lab	411	-
<b>Turnout</b>		<b>32.7</b>	<b>34.1</b>
<b>Flitton Greenfield &amp; Pulloxhill (1762)</b>			
		<b>vote</b>	<b>share</b>
<b>Ellis R.</b>	Green	612	64.7
Thompson D.*	Con	334	35.3
<b>Turnout</b>		<b>54.0</b>	<b>29.4</b>
<b>Flitwick East (4225)<sup>2</sup></b>			
		<b>vote</b>	<b>share</b>
<b>Mitchell S.</b>	LD	883	58.2
<b>Watton J.*</b>	LD	766	-
Lee V.	Con	633	41.8
Aslam S.	Con	478	-
<b>Turnout</b>		<b>35.6</b>	<b>16.5</b>
<b>Flitwick West (5795)<sup>3</sup></b>			
		<b>vote</b>	<b>share</b>
<b>Male S.*</b>	Con	1,283	64.2
<b>Gale D.*</b>	Con	1,191	-
<b>Bayntun D.</b>	Con	1,067	-
Mason I. Ms.	LD	715	35.8
<b>Turnout</b>		<b>33.6</b>	<b>28.4</b>
<b>Harlington (1796)</b>			
		<b>vote</b>	<b>share</b>
<b>Golby B.*</b>	LD	739	72.4
Moriondo M. Ms.	Con	216	21.2
Brown M. Ms.	Lab	66	6.5
<b>Turnout</b>		<b>57.0</b>	<b>51.2</b>
<b>Houghton Haynes Southill &amp; Old Warden (3191)<sup>2</sup></b>			
		<b>vote</b>	<b>share</b>
<b>Baines A.</b>	LD	777	53.7
<b>Barker A. Ms.</b>	Con	670	46.3
Goode J.	LD	613	-
Carter A.	Con	569	-
<b>Turnout</b>		<b>45.8</b>	<b>7.4</b>

<b>Langford &amp; Henlow Village (3985)<sup>2</sup></b>			
		<b>vote</b>	<b>share</b>
<b>Clarke J.</b>	Con	966	54.0
<b>Haider Z.</b>	Con	862	-
Cliff W.*	LD	822	46.0
Hendrix F.	LD	744	-
<b>Turnout</b>		45.5	8.1

<b>Marston (4259)<sup>2</sup></b>			
		<b>vote</b>	<b>share</b>
<b>Tysoe D.*</b>	Con	846	48.0
<b>Gibson M.</b>	Con	598	-
Booth I.	LD	462	26.2
Clapham I.	Ind	454	25.8
<b>Turnout</b>		33.4	21.8

<b>Maulden &amp; Clophill (3694)<sup>2</sup></b>			
		<b>vote</b>	<b>share</b>
<b>Lockey H.*</b>	Con	0	0.0
<b>Hawkins M.*</b>	Con	0	-
<b>Turnout</b>		0.0	0.0

<b>Northhill &amp; Blunham (3525)<sup>2</sup></b>			
		<b>vote</b>	<b>share</b>
<b>Davison J. Ms.*</b>	Con	1,102	71.5
<b>Turner P. Ms.*</b>	Con	1,034	-
Davis G. Ms.	LD	440	28.5
<b>Turnout</b>		44.4	42.9

<b>Potton &amp; Wensley (5698)<sup>3</sup></b>			
		<b>vote</b>	<b>share</b>
<b>Lewis J.*</b>	Con	0	0.0
<b>Gurney D. Ms.*</b>	Con	0	-
<b>Lewis A. Ms.*</b>	Con	0	-
<b>Turnout</b>		0.0	0.0

<b>Sandy Ivel (3425)<sup>2</sup></b>			
		<b>vote</b>	<b>share</b>
<b>Blaine P.</b>	LD	773	37.9
<b>Gurney J.*</b>	Ind	727	35.7
Smith R.	Con	537	26.4
McIlwain D.	Con	484	-
<b>Turnout</b>		40.9	2.3

<b>Sandy Pinnacle (5182)<sup>3</sup></b>			
		<b>vote</b>	<b>share</b>
<b>Aldis P.*</b>	LD	1,016	41.7
<b>Butler M.</b>	LD	900	-
<b>Lynch K.</b>	Ind	761	31.3
White G.	LD	737	-
Smith R. Ms.	Con	658	27.0
<b>Turnout</b>		36.2	10.5

<b>Shefford Campton &amp; Gravenhurst (5546)<sup>3</sup></b>			
		<b>vote</b>	<b>share</b>
<b>Birt L.*</b>	Con	1,237	46.2
<b>Brown A.*</b>	Con	1,117	-
<b>Chapman M.*</b>	LD	1,016	38.0
Stidolph R.	Con	939	-
Devereux C. Ms.	Lab	424	15.8
<b>Turnout</b>		38.6	8.3

<b>Shillington Stondon &amp; Henlow Camp (4391)<sup>2</sup></b>			
		<b>vote</b>	<b>share</b>
<b>Drinkwater R. Ms.*</b>	Con	1,018	53.5
<b>Graham A. Ms.</b>	LD	886	46.5
Whiteman A.*	Con	649	-
<b>Turnout</b>		38.3	6.9

<b>Silsoe (1379)</b>			
		<b>vote</b>	<b>share</b>
<b>Keen K. Ms.*</b>	Con	0	0.0
<b>Turnout</b>		0.0	0.0

<b>Stotfold (5730)<sup>3</sup></b>			
		<b>vote</b>	<b>share</b>
<b>Street J.*</b>	Con	1,268	48.1
<b>Turner C. Ms.</b>	Con	1,158	-
<b>Saunders J.*</b>	Con	1,012	-
Collier B.*	LD	983	37.3
Dennis A.	Lab	383	14.5
<b>Turnout</b>		36.2	10.8

<b>Westoning &amp; Tingrith (1720)</b>			
		<b>vote</b>	<b>share</b>
<b>Rayment A.*</b>	Con	0	0.0
<b>Turnout</b>		0.0	0.0

<b>Woburn (2035)</b>			
		<b>vote</b>	<b>share</b>
<b>Wells C.</b>	Con	0	0.0
<b>Turnout</b>		0.0	0.0



