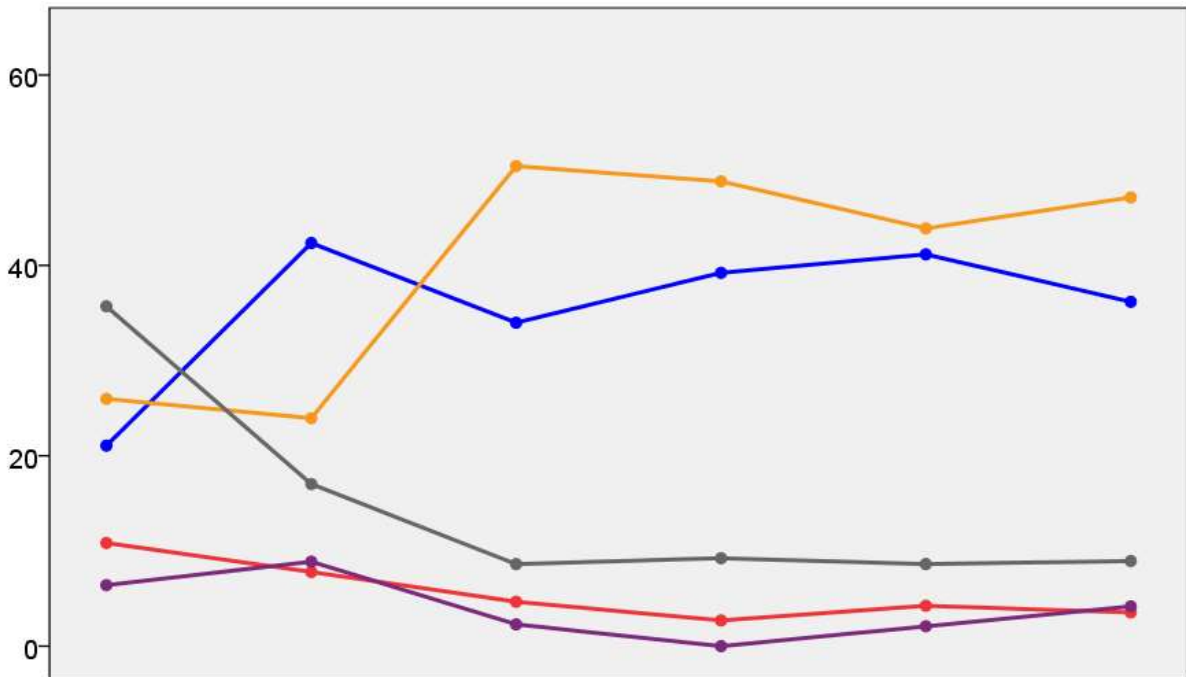


Isle of Wight County Council Election Results 1973-1993



Colin Rallings and Michael Thrasher
The Elections Centre
Plymouth University

The information contained in this report has been obtained from a number of sources. Election results from the immediate post-reorganisation period were painstakingly collected by Alan Willis largely, although not exclusively, from local newspaper reports. From the mid-1980s onwards the results have been obtained from each local authority by the Elections Centre. The data are stored in a database designed by Lawrence Ware and maintained by Brian Cheal and others at Plymouth University. Despite our best efforts some information remains elusive whilst we accept that some errors are likely to remain. Notice of any mistakes should be sent to elections@plymouth.ac.uk. The results sequence can be kept up to date by purchasing copies of the annual Local Elections Handbook, details of which can be obtained by contacting the email address above.

Front cover: the graph shows the distribution of percentage vote shares over the period covered by the results. The lines reflect the colours traditionally used by the three main parties. The grey line is the share obtained by Independent candidates while the purple line groups together the vote shares for all other parties.

Rear cover: the top graph shows the percentage share of council seats for the main parties as well as those won by Independents and other parties. The lines take account of any by-election changes (but not those resulting from elected councillors switching party allegiance) as well as the transfers of seats during the main round of local election.

The lower graph shows for each main round of local elections the overall percentage turnout (solid line), the percentage of women candidates standing at (dotted line) and the percentage of women among those elected (hashed line).

Isle Of Wight 1973

Cowes Castle (2935)

		vote	share
Daish L.	Con	0	0.0
Turnout		0.0	0.0

Cowes Central (1890)

		vote	share
Butchers N.	Ind	0	0.0
Turnout		0.0	0.0

Cowes Medina (2201)

		vote	share
King G.	Lab	0	0.0
Turnout		0.0	0.0

Cowes Northwood (3394)²

		vote	share
Jacobsen H.	Con	832	41.5
Halpin M. Ms.	Con	818	-
Thomas J. Ms.	Lib	747	37.3
Godfrey T.	Lab	424	21.2
Turnout		41.5	4.2

East Cowes (2038)

		vote	share
Moon H.	Ind	517	60.5
Chessell H.	Lib	338	39.5
Turnout		41.9	20.9

Isle Of Wight Rural No. 1 (Bembridg) (2636)

		vote	share
Gulston D.	Ind	603	57.9
Naylor D.	Ind	439	42.1
Turnout		39.5	15.7

Isle Of Wight Rural No. 2 (Brading) (1572)

		vote	share
Blackham J.	Ind	0	0.0
Turnout		0.0	0.0

Isle Of Wight Rural No. 3 (Newchurc) (1735)

		vote	share
Henshaw M. Ms.	Lib	354	50.1
Richards R.	Ind	353	49.9
Turnout		40.7	0.1

Isle Of Wight Rural No. 4 (Niton) (2044)

		vote	share
Sice V. Ms.	Ind	470	52.7
Mew B.	Lab	232	26.0
Lawes W.	Ind	189	21.2
Turnout		43.5	26.7

Isle Of Wight Rural No. 5 (1787)

		vote	share
Westmore R.	Ind	635	71.0
Campbell C. Ms.	Lib	259	29.0
Turnout		50.0	42.1

Isle Of Wight Rural No. 6 (2733)

		vote	share
Ross S.	Lib	1,080	71.7
Turner W.	Con	426	28.3
Turnout		55.1	43.4

Isle Of Wight Rural No. 7 (Totland) (1586)

		vote	share
Toogood E.	Ind	721	81.8
Quick W.	Con	160	18.2
Turnout		55.5	63.7

Isle Of Wight Rural No. 8 (Freshwat) (4251)²

		vote	share
Cooper J. Ms.	Lib	1,272	54.5
Evans H.	Ind	1,063	45.5
Osman G.	Ind	1,050	-
Smith R.	Lib	732	-
Osborne R.	Ind	463	-
Turnout		53.8	9.0

Newport Carisbrooke (2617)

		vote	share
Moody A.	Ind	0	0.0
Turnout		0.0	0.0

Newport Central (1617)

		vote	share
Kitchington J.	Lab	366	45.7
Biggs A.	Con	247	30.8
Simms D.	Lib	188	23.5
Turnout		49.5	14.9

Newport Fairlee (3928)²

		vote	share
Drudge A.	Res	1,008	47.3
Minns F.	Res	981	-
Bull P.	Lib	599	28.1
Jones F.	Con	526	24.7
Turnout		39.6	19.2

Newport Mount Joy (2500)

		vote	share
Barton M.	Lab	497	52.4
Harvey H.	Con	451	47.6
Turnout		37.9	4.9

Newport Pan (2952)²

		vote	share
Russell L.	Lab	618	41.1
Chalmers A.	Lab	614	-
Cunningham T.	Con	473	31.4
Chilverton S. Ms.	Lib	414	27.5
Turnout		35.8	9.6

Newport Parkhurst (2580)

		vote	share
Pratt B.	Lib	410	45.7
Hodges M.	Lab	257	28.6
Drayton R.	Con	231	25.7
Turnout		34.8	17.0

Osborne (2482)

		vote	share
Glossop S.	Lab	738	71.7
Tutton R.	Con	291	28.3
Turnout		41.4	43.4

Ryde Binstead (2863)

		vote	share
Stay A.	Ind	704	62.0
Cleaver E.	Con	431	38.0
Turnout		39.6	24.1

Ryde North East (2231)

		vote	share
Langdon J.	Ind	454	51.6
Burton R.	Con	426	48.4
Turnout		39.4	3.2

Ryde North West (1845)

		vote	share
Minghella E.	Ind	454	58.2
Rees Millington W.	Ind	326	41.8
Turnout		42.2	16.4

Ryde South East (1700)

		vote	share
Brazier J.	Res	402	64.0
Dower N.	Con	226	36.0
Turnout		36.9	28.0

Ryde South West (3164)²

		vote	share
White A.	Ind	675	44.7
Christy M. Ms.	Ind	634	-
Holland A.	Con	441	29.2
Drake G. Ms.	Lab	393	26.0
Cooper O. Ms.	Con	334	-
Turnout		39.1	15.5

Ryde St. Helens (2696)

		vote	share
Donald B.	Ind	1,026	70.7
Woolley M. Ms.	Lib	426	29.3
Turnout		53.8	41.3

Ryde St. Johns (3733)²

		vote	share
Darken R.	Con	700	59.4
Price R.	Con	698	-
Wratten B.	Ind	479	40.6
Turnout		25.1	18.7

Sandown North (2737)

		vote	share
Gray W.	Ind	0	0.0
Turnout		0.0	0.0

Sandown South (3653)²

		vote	share
Harris P.	Lib	868	45.3
Buttle G.	Res	675	35.2
Moore W.	Res	597	-
Bunce H.	Con	374	19.5
Kingham A.	Con	372	-
Turnout		39.5	10.1

Shanklin North (3540)²

		vote	share
Rogers E. Ms.	Ind	723	56.4
Tiedman J.	Ind	629	-
Orchard H. Ms.	Lib	558	43.6
Turnout		26.9	12.9

Shanklin South (1939)

		vote	share
Rogers W.	Ind	289	51.4
Orchard G.	Ind	273	48.6
Turnout		28.9	2.8

Ventnor Bonchurch & Wroxhall (1968)

		vote	share
Wadsworth A.	Ind	389	51.7
Green S.	Ind	364	48.3
Turnout		38.2	3.3

Ventnor Central (1288)

		vote	share
Graham-Stewart P. Ms.	Lib	440	76.8
Jeffery I.	Con	133	23.2
Turnout		44.4	53.6

Ventnor St. Lawrence (2382)

		vote	share
Van Thal A.	Lib	495	50.6
Stotesbury D.	Con	483	49.4
Turnout		41.4	1.2

Isle Of Wight 1977

Cowes Castle (2970)			
		vote	share
Daish L.*	Con	0	0.0
Turnout		0.0	0.0

Cowes Central (1796)			
		vote	share
Butchers N.*	Ind	0	0.0
Turnout		0.0	0.0

Cowes Medina (2135)			
		vote	share
Gorlick C.	Con	482	51.3
Maxted E.	Lab	457	48.7
Turnout		43.9	2.7

Cowes Northwood (3616) ²			
		vote	share
Jacobsen H.*	Con	1,136	45.2
Drake B.	Lib	1,054	42.0
Halpin M. Ms.*	Con	1,005	-
Wilkie W.	Lab	322	12.8
Turnout		69.5	3.3

East Cowes (2052)			
		vote	share
Moon H.*	Ind	526	52.7
Hooper R.	Lib	472	47.3
Turnout		48.6	5.4

Isle Of Wight Rural No. 1 (Bembridg) (2978)			
		vote	share
Rowell R.	Con	1,201	71.4
Naylor D.	Ind	481	28.6
Turnout		56.5	42.8

Isle Of Wight Rural No. 2 (Brading) (1624)			
		vote	share
Trzebski J.	Con	606	72.1
Wilkinson R. Ms.	Lib	234	27.9
Turnout		51.7	44.3

Isle Of Wight Rural No. 3 (Newchurc) (1905)			
		vote	share
Jarrett P.	Con	560	51.6
Lanfear M. Ms.*	Lib	526	48.4
Turnout		57.0	3.1

Isle Of Wight Rural No. 4 (Niton) (2161)			
		vote	share
Fradgley P.	Con	848	62.3
Sice V. Ms.*	Ind	514	37.7
Turnout		63.0	24.5

Isle Of Wight Rural No. 5 (2009)			
		vote	share
Westmore R.*	Con	0	0.0
Turnout		0.0	0.0

Isle Of Wight Rural No. 6 (2934)			
		vote	share
Lucas C.	Con	0	0.0
Turnout		0.0	0.0

Isle Of Wight Rural No. 7 (Totland) (1740)			
		vote	share
Finch B. Ms.	Res	635	62.9
Smith R.	Lib	374	37.1
Turnout		57.9	25.9

Isle Of Wight Rural No. 8 (Freshwat) (4744) ²			
		vote	share
Oddy A.	Con	1,308	31.3
Thomas C.	Res	1,291	30.9
Cooper J. Ms.*	Lib	1,108	26.5
Jones R.	Lab	283	6.8
Levrier S.	Ind	188	4.5
Turnout		88.1	0.4

Newport Carisbrooke (4979)			
		vote	share
Moody A.*	Ind	811	60.5
Cunningham T.	Con	530	39.5
Turnout		26.9	21.0

Newport Central (1467)			
		vote	share
Lacey K.	Lib	415	55.5
Simms R.	Con	333	44.5
Turnout		50.9	11.0

Newport Fairlee (4362) ²			
		vote	share
Dixon R.	Con	969	51.1
Garbett R.	Con	961	-
Pollard A.	Res	928	48.9
Whitaker J.	Res	912	-
Turnout		43.5	2.2

Newport Mount Joy (2348)			
		vote	share
Marshall J.	Con	531	52.9
Rudge R.	Lib	473	47.1
Turnout		42.7	5.8

Newport Pan (3296) ²			
		vote	share
Barton M.	Lib	882	48.5
Drayton R.	Con	501	27.5
Jenner A. Ms.	Con	489	-
Chalmers A.*	Lab	437	24.0
Russell L.*	Lab	399	-
Turnout		55.2	20.9

Newport Parkhurst (2424)			
		vote	share
Pratt B.*	Lib	524	53.1
Court J.	Con	462	46.9
Turnout		40.6	6.3

Osborne (2728)			
		vote	share
Glossop S.*	Lab	695	51.6
Crews K.	Con	651	48.4
Turnout		49.3	3.3

Ryde Binstead (3279)			
		vote	share
Jewitt R.	Con	0	0.0
Turnout		0.0	0.0

Ryde North East (2202)			
		vote	share
Langdon J.*	Ind	0	0.0
Turnout		0.0	0.0

Ryde North West (2014)			
		vote	share
Fisher W.	Con	532	52.9
Minghella E.*	Ind	474	47.1
Turnout		49.9	5.8

Ryde South East (1670)			
		vote	share
Smith M. Ms.	Lib	462	53.9
Morley N.	Con	318	37.1
Woracker D.	Lab	77	9.0
Turnout		51.3	16.8

Ryde South West (3182) ²			
		vote	share
Sharp L.	Con	673	47.0
Bayley M. Ms.	Con	639	-
Caple W.	Ind	524	36.6
Wilson C. Ms.	Lab	235	16.4
Wilson K.	Lab	229	-
Turnout		45.0	10.4

Ryde St. Helens (2976)			
		vote	share
Donald B.*	Ind	0	0.0
Turnout		0.0	0.0

Ryde St. Johns (3837) ²			
		vote	share
Darken R.*	Con	0	-
Heath B. Ms.	Con	0	0.0
Turnout		0.0	0.0

Sandown North (2882)			
		vote	share
Gray W.*	Ind	0	0.0
Turnout		0.0	0.0

Sandown South (3627) ²			
		vote	share
Buttle G.*	Res	0	0.0
Harris P.*	Lib	0	0.0
Turnout		0.0	0.0

Shanklin North (3809) ²			
		vote	share
Orchard G.	Ind	863	39.1
Rogers E. Ms.*	Con	857	38.8
Holmes J.	Con	682	-
Gardner J.	Lib	486	22.0
Turnout		57.9	0.3

Shanklin South (2030)			
		vote	share
Davies I.	Con	0	0.0
Turnout		0.0	0.0

Ventnor Bonchurch & Wroxhall (2063)			
		vote	share
Wadsworth A.*	Ind	651	63.0
Coffey L.	Lib	382	37.0
Turnout		50.1	26.0

Ventnor Central (1257)			
		vote	share
Graham-Stewart P. Ms.*	Lib	307	48.5
Philpott A.	Con	268	42.3
Morris R.	Ind	58	9.2
Turnout		50.4	6.2

Ventnor St. Lawrence (2533)			
		vote	share
Ross D. Ms.	Con	849	68.7
Edwards E. Ms.	Ind	386	31.3
Turnout		48.8	37.5

Isle Of Wight 1981

Arreton & Newchurch (2179)			
		vote	share
Lanfear M. Ms.	Lib	672	59.4
Jarrett P.	Con	459	40.6
		Turnout	51.9 18.8
Ashey (1992)			
		vote	share
Wilson G.	Lib	613	57.5
Winter F.	Con	374	35.1
Cuthbert L. Ms.	Lab	80	7.5
		Turnout	53.6 22.4
Bembridge (3070)			
		vote	share
Rowell R.	Con	1,064	63.3
Naylor A.	Lib	562	33.4
Sutters S.	Lab	56	3.3
		Turnout	54.8 29.8
Binstead (2047)			
		vote	share
Jewitt R.	Con	519	52.6
Perfitt M. Ms.	Lib	468	47.4
		Turnout	48.2 5.2
Brading (1675)			
		vote	share
Trzebski J.	Con	0	0.0
		Turnout	0.0 0.0
Brightstone & Shorewell (1744)			
		vote	share
Leyton P.	Lib	561	50.4
Currie A.	Con	504	45.3
White D.	Lab	48	4.3
		Turnout	63.8 5.1
Calbourne Shalfleet & Yarmouth (2714)			
		vote	share
Laird S. Ms.	Con	746	51.0
Hancock J.	Lib	717	49.0
		Turnout	53.9 2.0
Carisbrooke East (807)			
		vote	share
Ross S.	Lib	404	71.6
Dobson P. Ms.	Con	148	26.2
Jones R.	Lab	12	2.1
		Turnout	69.9 45.4
Carisbrooke West (2034)			
		vote	share
Kitchington J.	Ind	902	93.9
Stringer R.	Lab	59	6.1
		Turnout	47.2 87.7
Chale & Niton (2222)			
		vote	share
Fradgley P.	Con	682	52.6
Waddleton D.	Lib	575	44.4
Sullivan C.	Lab	39	3.0
		Turnout	58.3 8.3
Cowes Castle (2912)			
		vote	share
Carter C.	Lib	904	58.7
Flynn S.	Con	635	41.3
		Turnout	52.9 17.5
Cowes Central (1894)			
		vote	share
Lennox D.	Lib	586	52.2
Butchers N.	Ind	481	42.8
Ray P.	Lab	56	5.0
		Turnout	59.3 9.3

Cowes Medina (1979)			
		vote	share
Bird E.	Lib	815	72.3
Smith S.	Lab	170	15.1
Billington M. Ms.	Con	142	12.6
		Turnout	56.9 57.2
East Cowes (2706)			
		vote	share
Moon H.	Ind	713	61.0
Guy A.	Ind Li	456	39.0
		Turnout	43.2 22.0
Fairlee (1982)			
		vote	share
Breach P.	Lib	698	65.4
Dixon R.	Con	332	31.1
Wood D.	Lab	38	3.6
		Turnout	53.9 34.3
Freshwater Afton (2072)			
		vote	share
Le Brecht E. Ms.	Con	652	51.3
Cooper J. Ms.	Lib	619	48.7
		Turnout	61.3 2.6
Freshwater Norton (2130)			
		vote	share
Parker A.	Con	484	42.4
Smith A. Ms.	Lib	465	40.8
Fitzsimmons B.	Lab	192	16.8
		Turnout	53.6 1.7
Gatcombe & Godshill (1844)			
		vote	share
Westmore R.	Con	574	54.3
Cardew A. Ms.	Lib	484	45.7
		Turnout	57.4 8.5
Gurnard (1722)			
		vote	share
Sutherland S. Ms.	Lib	525	53.0
Halpin M. Ms.	Con	466	47.0
		Turnout	57.5 6.0
Mount Joy (2649)			
		vote	share
Smith R.	Lib	747	55.8
Giles E.	Con	506	37.8
Wilson C. Ms.	Lab	85	6.4
		Turnout	50.5 18.0
Nettlestone & St.Helens (2331)			
		vote	share
Rains S.	Lib	796	51.3
Hollis L.	Con	707	45.6
Kitchen E. Ms.	Lab	48	3.1
		Turnout	66.5 5.7
Newport Central (2443)			
		vote	share
Lacey K.	Lib	791	63.5
Tungate J. Ms.	Con	401	32.2
O'Flaherty L.	Lab	54	4.3
		Turnout	51.0 31.3
Northwood (1663)			
		vote	share
Drake B.	Lib	894	74.1
Powe J.	Con	259	21.5
Millar P.	Lab	53	4.4
		Turnout	72.5 52.7
Osborne (2520)			
		vote	share
Augustus J. Ms.	Lib	869	69.7
Glossop S.	Lab	377	30.3
		Turnout	49.4 39.5

Pan (2381)			
		vote	share
Barton M.	Lib	897	67.3
Beere A.	Lab	261	19.6
Jenner A. Ms.	Con	175	13.1
		Turnout	56.0 47.7
Parkhurst (2487)			
		vote	share
Pratt B.	Lib	679	66.8
Eden D.	Con	280	27.5
Kedwards R. Ms.	Lab	58	5.7
		Turnout	40.9 39.2
Ryde North East (2493)			
		vote	share
White P.	Lib	664	58.2
Bartholomew N.	Con	412	36.1
Westmore P.	Lab	64	5.6
		Turnout	45.7 22.1
Ryde North West (2278)			
		vote	share
Minghella E.	Ind	471	51.8
Sharp L.	Con	438	48.2
		Turnout	39.9 3.6
Ryde South East (1904)			
		vote	share
Williams J.	Lib	0	0.0
		Turnout	0.0 0.0
Ryde South West (2354)			
		vote	share
Robinson M.	Lib	682	61.5
Harley D.	Con	321	28.9
Scholes R.	Lab	106	9.6
		Turnout	47.1 32.6
Sandown Lake (3266)			
		vote	share
Harris P.	Lib	775	53.4
Buttle G.	Rpa	565	38.9
Williams I.	Lab	111	7.6
		Turnout	44.4 14.5
Sandown North (2130)			
		vote	share
Gray W.	Ind	0	0.0
		Turnout	0.0 0.0
Sandown South (1416)			
		vote	share
Davis P.	Lib	366	52.9
Findon E.	Con	326	47.1
		Turnout	48.9 5.8
Seaview & Appley (2393)			
		vote	share
Hersey A.	Con	805	62.8
Hayes R.	Lib	476	37.2
		Turnout	53.5 25.7
Shanklin Central (2249)			
		vote	share
Cassidy G.	Lib	480	50.9
Holmes J.	Con	463	49.1
		Turnout	41.9 1.8
Shanklin North (1737)			
		vote	share
Howe H.	Lib	427	60.6
Orchard G.	Ind	245	34.8
Cotton C.	Lab	33	4.7
		Turnout	40.6 25.8
Shanklin South (2196)			
		vote	share
Fry F.	Con	0	0.0
		Turnout	0.0 0.0

St. Lawrence & Lowther (1546)			
		vote	share
Ross D. Ms.	Con	365	37.2
Orchard D.	Lib	349	35.5
Norton T.	Ind	268	27.3
Turnout		63.5	1.6

St.Johns (2532)			
		vote	share
Jarman E.	Lib	533	54.0
Heath B. Ms.	Ind	311	31.5
Waters B.	Lab	81	8.2
Allen R.	Ind	62	6.3
Turnout		39.0	22.5

Totland (1836)			
		vote	share
Cokes T.	Con	868	78.8
Brewer A.	Lib	233	21.2
Turnout		60.0	57.7

Ventnor Central (2948)			
		vote	share
Graham-Stewart P. Ms.	Lib	878	60.3
Farthing R.	Con	578	39.7
Turnout		49.4	20.6

Wootton (2352)			
		vote	share
Stolworthy M. Ms.	Lib	841	64.4
Garbett R.	Con	465	35.6
Turnout		55.5	28.8

Wroxall & Bonchurch (1553)			
		vote	share
Crossley E. Ms.	Lib	437	52.8
Wadsworth A.	Ind	390	47.2
Turnout		53.3	5.7

Isle Of Wight 1985

Arreton & Newchurch (2344)			
		vote	share
O'Rourke P.	Con	582	50.7
Lanfear M. Ms.	Lib/SDP	567	49.3
Turnout		49.0	1.3

Ashey (2045)			
		vote	share
Wilson G.*	Lib/SDP	598	61.8
Winter F.	Con	369	38.2
Turnout		47.3	23.7

Bembridge (3183)			
		vote	share
Rowsell R.*	Con	922	57.1
Griffin J.	Lib/SDP	394	24.4
Harbour O. Ms.	Ind	298	18.5
Turnout		50.7	32.7

Binstead (2279)			
		vote	share
Wakeley A.	Lib/SDP	728	51.9
Clarke M.	Con	676	48.1
Turnout		61.6	3.7

Brading (1644)			
		vote	share
Brand P.	Ind	365	37.9
Hunter J.	Ind	349	36.2
Good R.	Lib/SDP	249	25.9
Turnout		58.6	1.7

Brightstone & Shorewell (1867)			
		vote	share
Leyton P.*	Lib/SDP	699	61.0
Wheeler R.	Con	446	39.0
Turnout		61.3	22.1

Calbourne Shalfleet & Yarmouth (2761)			
		vote	share
Laird S. Ms.*	Con	762	54.9
McAllister A.	Lib/SDP	626	45.1
Turnout		51.1	9.8

Carisbrooke East (1086)			
		vote	share
Rains S.	Lib/SDP	488	70.3
Vos M.	Con	206	29.7
Turnout		63.9	40.6

Carisbrooke West (2334)			
		vote	share
Jacobs P.	Lib/SDP	817	66.9
Wadham P. Ms.	Con	405	33.1
Turnout		52.4	33.7

Chale & Niton (2351)			
		vote	share
Fradgley P.*	Con	743	60.8
Peppitt T.	Lib/SDP	479	39.2
Turnout		52.0	21.6

Cowes Castle (3093)			
		vote	share
Leigh A. Ms.	Con	880	55.8
Hinds M. Ms.	Lib/SDP	696	44.2
Turnout		51.0	11.7

Cowes Central (1908)			
		vote	share
Lennox D.*	Lib/SDP	556	65.4
Badger J.	Con	188	22.1
Reynolds I.	Lab	59	6.9
Hartopp W.	Ind	47	5.5
Turnout		44.5	43.3

Cowes Medina (2064)			
		vote	share
Le Breton W.	Lib/SDP	478	74.2
Turner P.	Lab	166	25.8
Turnout		31.2	48.4

East Cowes (2870)			
		vote	share
Anderson V. Ms.	Lib/SDP	550	40.4
Moon H.*	Ind	457	33.6
Scott H.	Con	245	18.0
Sullivan C.	Lab	110	8.1
Turnout		47.5	6.8

Fairlee (2034)			
		vote	share
Breach P.*	Lib/SDP	707	69.7
Oulton R.	Con	308	30.3
Turnout		49.9	39.3

Freshwater Afton (2032)			
		vote	share
Le Brecht E. Ms.*	Con	663	58.6
Heijbroek M.	Lib/SDP	468	41.4
Turnout		55.7	17.2

Freshwater Norton (2165)			
		vote	share
Clarke A. Ms.	Con	548	49.3
Smith A. Ms.	Lib/SDP	540	48.6
Bishop P.	Ind	24	2.2
Turnout		51.4	0.7

Gatcombe & Godshill (2076)			
		vote	share
Westmore R.*	Con	601	53.0
Cardew A. Ms.	Lib/SDP	532	47.0
Turnout		54.6	6.1

Gurnard (1582)			
		vote	share
Pickford E.	Lib/SDP	485	56.9
Annett A.	Con	368	43.1
Turnout		53.9	13.7

Mount Joy (2554)			
		vote	share
Smith R.*	Lib/SDP	795	61.7
Wadham A.	Con	493	38.3
Turnout		50.4	23.4

Nettlestone & St.Helens (2444)			
		vote	share
Taylor P.	Lib/SDP	813	54.1
Bartholomew M. Ms.	Con	689	45.9
Turnout		61.5	8.3

Newport Central (2523)			
		vote	share
Lacey K.*	Lib/SDP	718	62.6
Smith B.	Con	429	37.4
Turnout		45.5	25.2

Northwood (2141)			
		vote	share
Drake B.*	Lib/SDP	761	67.0
Hobart K. Ms.	Con	375	33.0
Turnout		53.1	34.0

Osborne (2457)			
		vote	share
Augustus J. Ms.	Lib/SDP	692	57.7
Cook J.	Con	332	27.7
Jones R.	Lab	176	14.7
Turnout		48.8	30.0

Pan (2350)			
		vote	share
Barton M.*	Lib/SDP	669	65.5
Rawson J. Ms.	Con	181	17.7
Heath M.	Lab	172	16.8
Turnout		43.5	47.7

Parkhurst (2506)			
		vote	share
Pratt B.*	Lib/SDP	662	85.4
Townsend P.	Ind	113	14.6
Turnout		30.9	70.8

Ryde North East (2542)			
		vote	share
Ritchie J.	Con	650	57.7
Norwood P.	Lib/SDP	476	42.3
Turnout		44.3	15.5

Ryde North West (2213)			
		vote	share
Axford A. Ms.	Con	595	52.2
Minghella E.*	Ind	545	47.8
Turnout		51.5	4.4

Ryde South East (2191)			
		vote	share
Pooley M. Ms.	Lib/SDP	520	63.5
Barton M. Ms.	Con	217	26.5
Savill K.	Lab	82	10.0
Turnout		37.4	37.0

Ryde South West (2394)			
		vote	share
Robinson M.*	Lib/SDP	740	66.5
Barton C.	Con	287	25.8
Westmore P.	Lab	86	7.7
Turnout		46.5	40.7
Sandown Lake (3718)			
		vote	share
Harris P.*	Lib/SDP	868	59.5
Reichmann V. Ms.	Con	455	31.2
Dale V.	Lab	136	9.3
Turnout		39.2	28.3
Sandown North (2132)			
		vote	share
Osborn A. Ms.	Lib/SDP	486	47.8
Dyer J.	Con	402	39.5
Gray W.*	Ind	129	12.7
Turnout		47.7	8.3
Sandown South (1562)			
		vote	share
Buttle G.	Ind	267	50.9
Davis P.*	Lib/SDP	258	49.1
Turnout		33.6	1.7
Seaview & Appley (2491)			
		vote	share
Hersey A.*	Ind	688	56.3
Bartholomew N.	Con	534	43.7
Turnout		49.1	12.6
Shanklin Central (2428)			
		vote	share
Cassidy G.*	Ind	528	54.5
Couchman P.	Con	356	36.8
Cair M.	Lab	84	8.7
Turnout		39.9	17.8
Shanklin North (1753)			
		vote	share
Howe H.*	Lib/SDP	526	71.3
Morris W.	Con	212	28.7
Turnout		42.1	42.5
Shanklin South (2276)			
		vote	share
Raynor V. Ms.	Lib/SDP	406	42.2
Joyner T.	Con	344	35.8
Rees H.	Ind	212	22.0
Turnout		42.3	6.4
St. Lawrence & Lowther (1554)			
		vote	share
Orchard D.	Lib/SDP	292	34.9
Bartlett A.	Ind	281	33.6
Ross D. Ms.*	Con	264	31.5
Turnout		53.9	1.3
St. Johns (2524)			
		vote	share
Jarman E.*	Lib/SDP	398	45.0
Heath B. Ms.	Con	283	32.0
Dominey G.	Lab	203	23.0
Turnout		35.0	13.0
Totland (2083)			
		vote	share
Cokes T.*	Con	721	69.2
Cooper J. Ms.	Lib/SDP	265	25.4
Kershaw R.	Ind	56	5.4
Turnout		50.0	43.8
Ventnor Central (3147)			
		vote	share
Waring G.	Lib/SDP	759	54.4
Philpott J. Ms.	Con	635	45.6
Turnout		44.3	8.9

Wootton (2490)			
		vote	share
Stolworthy M. Ms.	Lib/SDP	694	52.5
Crowley-Smith G.	Con	627	47.5
Turnout		53.1	5.1
Wroxall & Bonchurch (1703)			
		vote	share
Pyne M. Ms.	Lib/SDP	570	53.1
Sprackling B.	Con	504	46.9
Turnout		63.1	6.1
Isle Of Wight 1989			
Arreton & Newchurch (2795)			
		vote	share
Fulwood A.	Con	629	53.8
Lanfear M. Ms.	Ind	541	46.2
Turnout		41.9	7.5
Ashey (2080)			
		vote	share
Wilson G.*	LD	674	62.2
Altman A.	Con	409	37.8
Turnout		52.1	24.5
Bembridge (3219)			
		vote	share
Rowell R.*	Con	0	0.0
Turnout		0.0	0.0
Binstead (2439)			
		vote	share
Wakeley A.*	LD	698	55.1
Bartholomew N.	Con	569	44.9
Turnout		51.9	10.2
Brading (1666)			
		vote	share
Brand P.*	LD	644	70.7
Oulton R.	Con	267	29.3
Turnout		54.7	41.4
Brightstone & Shorewell (2080)			
		vote	share
Smart S. Ms.	LD	750	61.6
Pollock A.	Con	467	38.4
Turnout		58.5	23.3
Calbourne Shalfleet & Yarmouth (2868)			
		vote	share
Cowley R.	LD	886	55.8
Clarke A. Ms.	Con	701	44.2
Turnout		55.3	11.7
Carisbrooke East (1517)			
		vote	share
Morey V.	LD	474	69.0
Bambeck S. Ms.	Con	213	31.0
Turnout		45.3	38.0
Carisbrooke West (2407)			
		vote	share
Foster B. Ms.	Con	649	56.4
Price R.	LD	501	43.6
Turnout		47.8	12.9
Chale & Niton (2387)			
		vote	share
Fradgley P.*	Con	655	50.3
Patterson J. Ms.	LD	646	49.7
Turnout		54.5	0.7

Cowes Castle (3099)			
		vote	share
Leigh A. Ms.*	Con	826	52.0
Denham J.	LD	665	41.9
Young I.	Lab	96	6.0
Turnout		51.2	10.1
Cowes Central (1953)			
		vote	share
Whaley C.	LD	448	50.7
Jackson G.	Con	329	37.2
Broad A. Ms.	Lab	107	12.1
Turnout		45.3	13.5
Cowes Medina (2104)			
		vote	share
Barton M.	LD	375	37.7
Orr G.	Lab	308	31.0
Forrest R.	Con	211	21.2
Hilton F.	Ind	100	10.1
Turnout		47.2	6.7
East Cowes (3066)			
		vote	share
Anderson V. Ms.*	LD	771	53.5
Walker S.	Con	429	29.8
Downer R.	Lab	242	16.8
Turnout		47.0	23.7
Fairlee (2192)			
		vote	share
Breach P.*	LD	709	73.4
Whitby-Smith J.	Con	257	26.6
Turnout		44.1	46.8
Freshwater Afton (2274)			
		vote	share
Le Brecht E. Ms.*	Con	595	54.4
Bellamy S.	LD	499	45.6
Turnout		48.1	8.8
Freshwater Norton (2161)			
		vote	share
Smith A. Ms.	Ind	543	48.9
Renwick J.	Con	540	48.6
Bishop P.	Ind	28	2.5
Turnout		51.4	0.3
Gatcombe & Godshill (2074)			
		vote	share
Westmore R.	Con	572	52.4
Cardew A. Ms.	LD	520	47.6
Turnout		52.7	4.8
Gurnard (1537)			
		vote	share
Pickford E.*	LD	513	58.8
Kemball R.	Con	359	41.2
Turnout		56.7	17.7
Mount Joy (2606)			
		vote	share
Smith R.*	LD	688	67.3
Pinhorn M.	Con	334	32.7
Turnout		39.2	34.6
Nettlestone & St. Helens (2690)			
		vote	share
Taylor P.*	Green	669	42.7
Lees S.	Con	668	42.6
Griffin J.	LD	156	9.9
Hersey R.	Ind	75	4.8
Turnout		58.3	0.1
Newport Central (2583)			
		vote	share
Lacey K.*	LD	723	63.4
Mapp E.	Con	418	36.6
Turnout		44.2	26.7

Northwood (2134)			
		vote	share
Drake B.*	LD	672	61.0
Annett A.	Con	336	30.5
Sim A.	Lab	94	8.5
Turnout		51.6	30.5
Osborne (2409)			
		vote	share
Augustus J. Ms.*	LD	578	46.3
Downer A.	Lab	348	27.9
Mundell L. Ms.	Con	323	25.9
Turnout		51.8	18.4
Pan (2339)			
		vote	share
Overton A.	LD	368	36.4
Coburn A.	Lab	240	23.7
Gwilliam D.	Con	215	21.3
Deacon V.	Ind	188	18.6
Turnout		43.2	12.7
Parkhurst (2651)			
		vote	share
Pratt B.*	LD	635	65.5
Mazillius R.	Con	334	34.5
Turnout		36.6	31.1
Ryde North East (2604)			
		vote	share
Ritchie J.*	Con	414	35.9
Adams V. Ms.	Green	316	27.4
Norwood P.	LD	257	22.3
Langdon J.	Ind	104	9.0
Derham H.	Lab	62	5.4
Turnout		44.3	8.5
Ryde North West (2215)			
		vote	share
Axford A. Ms.*	Con	596	56.7
Vrba H. Ms.	LD	455	43.3
Turnout		47.4	13.4
Ryde South East (1992)			
		vote	share
Chapman B.	LD	534	45.9
Boynton H.	Con	452	38.9
Adams J.	Ind	177	15.2
Turnout		58.4	7.1
Ryde South West (2410)			
		vote	share
Arnold N.	LD	573	46.0
Axford A. Ms.	Con	470	37.7
Pearson K.	Lab	203	16.3
Turnout		51.7	8.3
Sandown Lake (4029)			
		vote	share
Harris P.*	LD	1,067	65.3
Lutley P. Ms.	Con	567	34.7
Turnout		40.6	30.6
Sandown North (2303)			
		vote	share
Buttle G.	Con	555	54.5
Jarman E.	LD	463	45.5
Turnout		44.2	9.0
Sandown South (1593)			
		vote	share
Guy K.	Con	353	50.8
Taylor V. Ms.	LD	342	49.2
Turnout		43.6	1.6
Seaview & Appley (2580)			
		vote	share
Atkinson B. Ms.	Con	720	57.3
Hersey A.*	Ind	537	42.7
Turnout		48.7	14.6

Shanklin Central (2535)			
		vote	share
Cassidy G.*	Ind	552	47.3
Mundy A.	Con	351	30.1
Williams J.	LD	265	22.7
Turnout		46.1	17.2
Shanklin North (1831)			
		vote	share
Osborn A. Ms.	LD	561	69.9
Beach J.	Con	242	30.1
Turnout		43.9	39.7
Shanklin South (2458)			
		vote	share
Harrison M. Ms.	Con	505	45.5
Rees H.	Ind	356	32.1
Williams A. Ms.	LD	249	22.4
Turnout		45.2	13.4
St. Lawrence & Lowther (1505)			
		vote	share
Bartlett A.	Ind	461	52.6
Allsop D. Ms.	LD	215	24.5
Bates H.	Con	201	22.9
Turnout		58.3	28.1
St. Johns (2585)			
		vote	share
Bowker J.	LD	483	44.1
Wade B.	Con	306	27.9
Jones R.	Lab	306	27.9
Turnout		42.4	16.2
Totland (2214)			
		vote	share
Cokes T.*	Con	734	67.2
Moth W. Ms.	LD	359	32.8
Turnout		49.4	34.3
Ventnor Central (3176)			
		vote	share
Ross D. Ms.	Con	650	53.1
Waring G.*	LD	573	46.9
Turnout		38.5	6.3
Wootton (2719)			
		vote	share
Stolworthy M. Ms.*	LD	766	52.1
Abraham B.	Con	704	47.9
Turnout		54.1	4.2
Wroxall & Bonchurch (1786)			
		vote	share
Pyne M. Ms.*	Ind	418	55.0
Pyne G.	Con	342	45.0
Turnout		42.6	10.0
Isle Of Wight 1993			
Arreton & Newchurch (2772)			
		vote	share
Lanfeer M. Ms.	Ind	564	51.6
Fulwood A.*	Con	529	48.4
Turnout		39.4	3.2
Ashey (2204)			
		vote	share
Wilson G.*	LD	604	59.6
Jones A.	Con	409	40.4
Turnout		46.0	19.2
Bembridge (3241)			
		vote	share
Rowell R.*	Con	960	55.3
Bailey G.	LD	777	44.7
Turnout		53.6	10.5

Binstead (2437)			
		vote	share
Wakeley A.*	LD	732	58.7
Bartholomew N.	Con	515	41.3
Turnout		51.2	17.4
Brading (1645)			
		vote	share
Brand P.*	LD	692	70.4
Allegri B.	Con	291	29.6
Turnout		59.8	40.8
Brightstone & Shorewell (2008)			
		vote	share
Wareham J. Ms.	LD	643	53.7
Stark M. Ms.	Con	385	32.2
House S. Ms.	Ind	110	9.2
Mathews J. Ms.	Lab	59	4.9
Turnout		59.6	21.6
Calbourne Shalfleet & Yarmouth (2679)			
		vote	share
Cowley R.*	LD	789	51.9
Butchers T. Ms.	Con	731	48.1
Turnout		56.7	3.8
Carisbrooke East (1673)			
		vote	share
Morey V.*	LD	558	72.8
Foster P.	Con	209	27.2
Turnout		45.9	45.5
Carisbrooke West (2455)			
		vote	share
Dixey R.	LD	635	56.0
Foster B. Ms.*	Con	498	44.0
Turnout		46.2	12.1
Chale & Niton (2329)			
		vote	share
White J. Ms.	LD	581	46.4
Heron D.	Con	396	31.7
Starke M.	Ind	274	21.9
Turnout		53.7	14.8
Cowes Castle (3211)			
		vote	share
Leigh A. Ms.*	Con	804	63.5
Wells T.	LD	463	36.5
Turnout		39.5	26.9
Cowes Central (1928)			
		vote	share
Butchers N.	Ind	339	52.7
Whaley C.*	LD	230	35.8
Broad A. Ms.	Lab	74	11.5
Turnout		33.4	17.0
Cowes Medina (2091)			
		vote	share
Siegal Z.	LD	309	42.9
Young I.	Lab	256	35.6
Cave L. Ms.	Con	155	21.5
Turnout		34.4	7.4
East Cowes (3045)			
		vote	share
Anderson V. Ms.*	LD	927	71.1
Lale S. Ms.	Con	376	28.9
Turnout		42.8	42.3
Fairlee (2149)			
		vote	share
Breach P.*	LD	589	64.9
Harrison M. Ms.	Con	318	35.1
Turnout		42.2	29.9

Freshwater Afton (2248)			
		vote	share
Rogerson L. Ms.	LD	577	51.4
Le Brecht E. Ms.*	Con	545	48.6
Turnout		49.9	2.9
Freshwater Norton (2289)			
		vote	share
Osman L.	Con	492	52.4
Smith A. Ms.*	Ind	447	47.6
Turnout		41.0	4.8
Gatcombe & Godshill (2050)			
		vote	share
Westmore R.*	Con	458	44.3
Bailey V. Ms.	LD	399	38.6
Cardew A. Ms.	Ind	177	17.1
Turnout		50.4	5.7
Gurnard (1525)			
		vote	share
Pickford E.*	LD	481	57.5
Annett A.	Con	276	33.0
Morris R.	Lab	80	9.6
Turnout		54.9	24.5
Mount Joy (2482)			
		vote	share
Smart S. Ms.	LIB	545	46.4
Masters L. Ms.	Con	321	27.3
Smith R.*	LD	309	26.3
Turnout		47.3	19.1
Nettlestone & St.Helens (2617)			
		vote	share
Fletcher M.	Con	684	51.2
Bowker A. Ms.	LD	652	48.8
Turnout		51.1	2.4
Newport Central (2654)			
		vote	share
Lacey K.*	LD	627	60.9
Dimmock L.	Con	312	30.3
Sterio N.	Lab	90	8.7
Turnout		38.8	30.6
Northwood (2080)			
		vote	share
Drake B.*	LD	691	67.0
Cooke A.	Con	272	26.4
Lilsdorter J. Ms.	Lab	69	6.7
Turnout		49.6	40.6
Osborne (2384)			
		vote	share
Barton M.	LD	669	58.4
Racey J. Ms.	Ind	477	41.6
Turnout		48.1	16.8
Pan (2282)			
		vote	share
Overton A.*	Ind	319	35.3
Coburn A.	Lab	304	33.6
Hersey A.	LD	281	31.1
Turnout		39.6	1.7
Parkhurst (2593)			
		vote	share
Pratt B.*	LD	599	74.4
Brittan D.	Con	206	25.6
Turnout		31.1	48.8
Ryde North East (2719)			
		vote	share
Ross M.	LD	351	37.6
Ritchie J.*	Con	318	34.1
Fuller P.	Green	166	17.8
Norwood P.	Ind LI	98	10.5
Turnout		34.3	3.5

Ryde North West (2242)			
		vote	share
Axford A. Ms.*	Con	580	58.8
Lennox S. Ms.	LD	406	41.2
Turnout		44.0	17.6
Ryde South East (1952)			
		vote	share
Chapman B.*	LD	630	65.9
Bailey F.	Con	265	27.7
Farmery C.	Lab	61	6.4
Turnout		49.0	38.2
Ryde South West (2369)			
		vote	share
Moore R.	LD	633	61.8
Taylor A.	Con	331	32.3
Rickard A.	Lab	60	5.9
Turnout		43.2	29.5
Sandown Lake (4033)			
		vote	share
Harris P.*	LIB	842	56.8
Easlea L.	Con	397	26.8
Leppard S.	Lab	243	16.4
Turnout		36.8	30.0
Sandown North (2329)			
		vote	share
Buttle G.*	Con	411	44.4
Fletcher W. Ms.	LD	410	44.3
Wyndham-Jones M.	Ind	104	11.2
Turnout		39.7	0.1
Sandown South (1724)			
		vote	share
Jarman M. Ms.	LD	311	52.1
Guy K.*	Con	286	47.9
Turnout		34.6	4.2
Seaview & Appley (2470)			
		vote	share
Barry R.	LD	634	51.2
Atkinson B. Ms.*	Con	605	48.8
Turnout		50.2	2.3
Shanklin Central (2554)			
		vote	share
Cassidy G.*	Ind	537	60.3
Keenor J. Ms.	LD	353	39.7
Turnout		34.9	20.7
Shanklin North (1796)			
		vote	share
Keenor E.	LD	317	40.7
Connors H. Ms.	Con	283	36.4
Hollands A.	Lab	178	22.9
Turnout		43.3	4.4
Shanklin South (2281)			
		vote	share
Rees H.	LD	531	57.7
Paul G.	Con	389	42.3
Turnout		40.3	15.4
St. Lawrence & Lowther (1435)			
		vote	share
Bartlett A.*	Ind	591	83.0
Farrant E.	Con	121	17.0
Turnout		49.6	66.0
St.Johns (2800)			
		vote	share
Bowker J.*	LD	721	66.0
Wade B.	Con	242	22.2
Pearson K.	Lab	129	11.8
Turnout		39.0	43.9

Totland (2173)			
		vote	share
Parslow C.	Con	509	56.8
Rook G. Ms.	LD	387	43.2
Turnout		41.2	13.6
Ventnor Central (3042)			
		vote	share
Taylor V. Ms.*	LD	681	49.7
Reed D.	Con	445	32.5
Burrows M.	Green	243	17.8
Turnout		45.0	17.2
Wootton (2878)			
		vote	share
Stolworthy M. Ms.*	LD	748	52.0
Abraham B.	Con	585	40.7
Goodway R.	Ind	106	7.4
Turnout		50.0	11.3
Wroxall & Bonchurch (1790)			
		vote	share
Hipkiss R.*	Con	460	53.2
Evans D.	LD	404	46.8
Turnout		48.3	6.5

