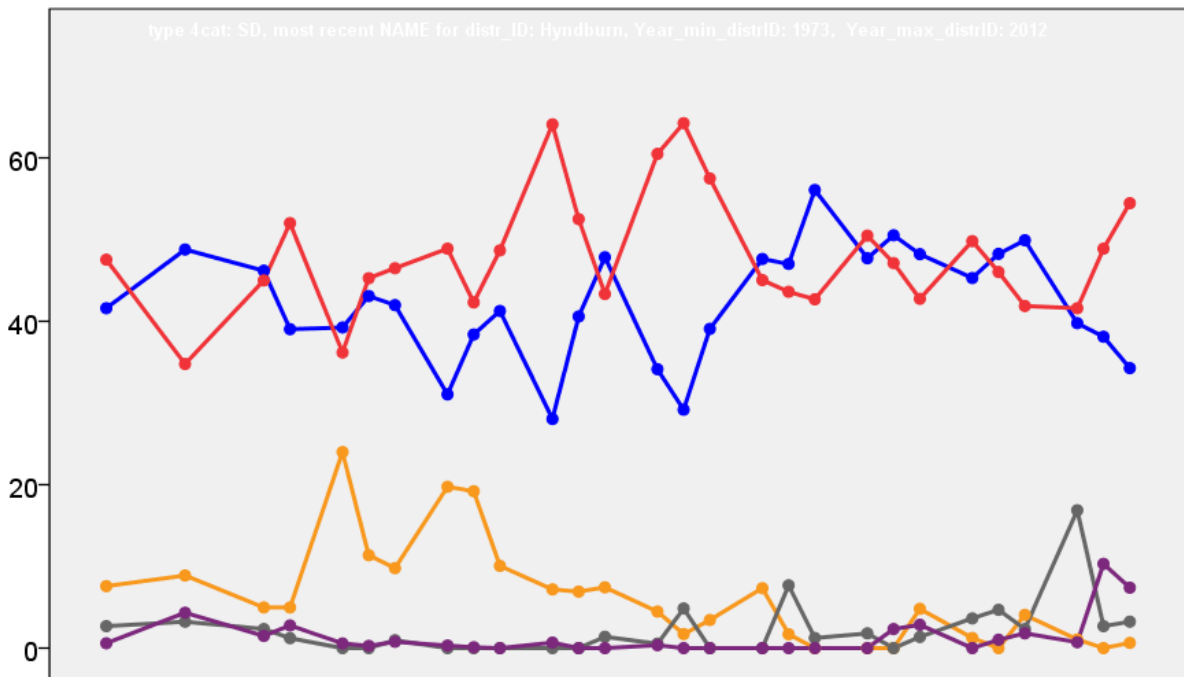


Hyndburn Borough Council Election Results 1973-2012



Colin Rallings and Michael Thrasher
The Elections Centre
Plymouth University

The information contained in this report has been obtained from a number of sources. Election results from the immediate post-reorganisation period were painstakingly collected by Alan Willis largely, although not exclusively, from local newspaper reports. From the mid-1980s onwards the results have been obtained from each local authority by the Elections Centre. The data are stored in a database designed by Lawrence Ware and maintained by Brian Cheal and others at Plymouth University. Despite our best efforts some information remains elusive whilst we accept that some errors are likely to remain. Notice of any mistakes should be sent to elections@plymouth.ac.uk. The results sequence can be kept up to date by purchasing copies of the annual Local Elections Handbook, details of which can be obtained by contacting the email address above.

Front cover: the graph shows the distribution of percentage vote shares over the period covered by the results. The lines reflect the colours traditionally used by the three main parties. The grey line is the share obtained by Independent candidates while the purple line groups together the vote shares for all other parties.

Rear cover: the top graph shows the percentage share of council seats for the main parties as well as those won by Independents and other parties. The lines take account of any by-election changes (but not those resulting from elected councillors switching party allegiance) as well as the transfers of seats during the main round of local election.

The lower graph shows for each main round of local elections the overall percentage turnout (solid line), the percentage of women candidates standing at (dotted line) and the percentage of women among those elected (hashed line).

Hyndburn - 1973

Netherton (3981)³

		vote	share
Slynn G.	Lab	1,074	42.2
Hayhurst J.	Lab	1,065	-
Tattersall T.	Lab	970	-
Wells W.	Ind	824	32.4
Mercer D.	Con	645	25.4
Ashcroft K.	Con	583	-
Abbott S.	Con	560	-
Turnout		50.5	9.8

No. 1 (Accrington: West) (2562)²

		vote	share
Hargreaves P. Ms.	Lab	816	64.6
Smith G.	Lab	733	-
Whewell G.	Con	448	35.4
Threlfall T.	Con	341	-
Turnout		47.7	29.1

No. 10 (Church: St. James) (1069)

		vote	share
Salt H.	Lab	471	84.4
Prestage R.	Con	87	15.6
Turnout		52.5	68.8

No. 11 (Church: Chapel & Elmfield) (1344)

		vote	share
Grime J.	Lab	406	65.5
Briggs B.	Con	214	34.5
Turnout		46.6	31.0

No. 12 (Church: Dill Hall) (1261)

		vote	share
Walsh P.	Lib	377	53.5
Wild J.	Con	328	46.5
Turnout		52.0	7.0

No. 13 (Clayton-Le-Moors) (5384)⁴

		vote	share
Hoyle E. Ms.	Con	1,576	51.8
Jackson J. Ms.	Con	1,533	-
Galbraith P.	Con	1,497	-
Kilby R.	Con	1,486	-
Hill W.	Lab	1,469	48.2
Slinger H.	Lab	1,252	-
Mercer S.	Lab	1,244	-
Simms W.	Lab	1,154	-
Turnout		56.2	3.5

No. 14 (Great Harwood: North West) (4251)⁴

		vote	share
Hall J. Ms.	Con	1,218	51.1
Dunne J.	Lab	1,164	48.9
Coe F. Ms.	Con	1,095	-
Frankland W. Ms.	Con	1,049	-
Mayor T.	Lab	1,009	-
Ford J.	Lab	952	-
Singleton A.	Con	890	-
Birtwistle G.	Lab	890	-
Turnout		51.2	2.3

No. 16 (Oswaldtwistle: St. Pauls-Immanuel-St. Mic) (5126)⁴

		vote	share
Hargreaves K.	Con	1,440	56.4
Finch W.	Con	1,330	-
Clegg D. Ms.	Con	1,263	-
Newsham A.	Lab	1,115	43.6
Kyffin F.	Con	1,097	-
Hogan J.	Lab	1,032	-
Sanderson D.	Lab	902	-
Bramley T.	Lab	856	-
Turnout		46.2	12.7

No. 17 (Oswaldtwistle: Foxhill Bank & St. Oswalds) (5536)⁴

		vote	share
Sandiford B. Ms.	Con	979	47.8
Hill E.	Con	942	-
Renshaw T.	Con	927	-
Haworth H.	Lab	886	43.3
Bolton K.	Con	877	-
Waddington G. Ms.	Lab	822	-
McDonald G. Ms.	Lab	818	-
Almond W.	Lab	811	-
Marshall T.	Comm	183	8.9
Turnout		28.6	4.5

No. 18 (Rishton) (4506)⁴

		vote	share
Critchlow A.	Lab	1,488	54.5
McNeil D.	Con	1,243	45.5
Aspden J.	Con	1,237	-
Parkinson F.	Lab	1,117	-
Rushton P.	Con	1,080	-
Edmondson F.	Con	1,057	-
Jackson M. Ms.	Lab	984	-
Peel R.	Lab	932	-
Turnout		57.0	9.0

No. 2 (Accrington: Central) (1574)

		vote	share
Haines W.	Lab	374	63.3
Everitt E.	Con	217	36.7
Turnout		37.7	26.6

No. 3 (Accrington: North) (5381)⁴

		vote	share
Pratt S. Ms.	Con	1,324	36.8
Donohue J.	Lab	1,301	36.1
Taylor B.	Con	1,225	-
Hughes J. Ms.	Con	1,173	-
Walker B.	Lab	1,143	-
Benson A.	Con	1,128	-
Meaney T.	Lab	1,127	-
Wheeler R.	Lab	1,110	-
Matthews W.	Lib	974	27.1
Turnout		53.3	0.6

No. 4 (Accrington: Peel Park) (2966)²

		vote	share
Owens A. Ms.	Con	747	50.2
Madden J.	Lab	740	49.8
Wallwork W.	Lab	730	-
Duckworth R.	Con	683	-
Turnout		50.6	0.5

No. 5 (Accrington: East) (1958)²

		vote	share
Sudders A. Ms.	Lab	471	50.3
Parkinson W.	Con	466	49.7
Walsh M.	Lab	445	-
Fedoriw M. Ms.	Con	388	-
Turnout		48.6	0.5

No. 6 (Accrington: South) (4176)³

		vote	share
Marsden K.	Lib	981	45.4
Lund A.	Lib	708	-
Rennison V. Ms.	Con	638	29.6
Duckworth R.	Con	635	-
Whelan B. Ms.	Con	610	-
Fowler D.	Lib	606	-
Rigg R.	Lab	540	25.0
Whittaker G.	Lab	442	-
Whitam B.	Lab	440	-
Turnout		47.0	15.9

No. 7 (Accrington: Higher Antley) (2201)²

		vote	share
Curtis K.	Lab	534	59.4
Haines A. Ms.	Lab	496	-
Stanton W.	Con	365	40.6
Kessler M.	Con	284	-
Turnout		40.8	18.8

No. 8 (Accrington: Spring Hill) (4541)⁴

		vote	share
Dillon C.	Lab	1,091	70.0
Hargreaves P.	Lab	1,030	-
Growden J.	Lab	1,002	-
Westwell C.	Lab	960	-
Broadhurst G.	Con	467	30.0
Davies A.	Con	449	-
Turnout		36.0	40.1

No. 9 (Accrington: Huncoat) (1975)²

		vote	share
Grant D. Ms.	Lab	668	63.6
Farrimond W.	Lab	596	-
Holden F.	Con	383	36.4
Martin M. Ms.	Con	339	-
Turnout		52.9	27.1

Hyndburn - 1976

Netherton (3892)³

		vote	share
Frankland W. Ms.	Con	915	51.0
Hanson A. Ms.	Con	912	-
Slynn G.	Lab	879	49.0
Keszler M.	Con	872	-
Hayhurst J.	Lab	840	-
Tattersall A.	Lab	779	-
Turnout		49.6	2.0

No. 1 (Accrington: West) (2518)²

		vote	share
Hargreaves P. Ms.	Lab	687	62.8
Whitham B.	Lab	519	-
Broadhurst G.	Con	407	37.2
Harwood R.	Con	379	-
Turnout		42.0	25.6

No. 10 (Church: St. James) (1039)

		vote	share
Dickinson L.	Lab	270	64.9
Prestage R.	Con	146	35.1
Turnout		40.3	29.8

No. 11 (Church: Chapel & Elmfield) (1343)

		vote	share
Grime J.	Lab	0	0.0
Turnout		0.0	0.0

No. 12 (Church: Dill Hall) (1235)

		vote	share
Riley J.	Con	423	60.4
Rogan C. Ms.	Lab	213	30.4
Stuttard H.	Lib	64	9.1
Turnout		56.8	30.0

No. 13 (Clayton-Le-Moors) (5506)⁴

		vote	share
Hoyle E. Ms.	Con	1,789	66.7
Gilbraith P.	Con	1,737	-
Jackson J. Ms.	Con	1,606	-
Downing J.	Con	1,583	-
Lewis A.	Lab	894	33.3
Sims M. Ms.	Lab	851	-
Turnout		46.9	33.4

No. 14 (Great Harwood: North West) (4418)⁴

		vote	share
Hall J. Ms.	Con	1,406	62.9
Sunner W.	Con	1,338	-
Owen K.	Con	1,284	-
Owen T.	Con	1,220	-
Lambert T.	Lab	829	37.1
Hocking J.	Lab	793	-
Livesey F.	Lab	750	-
Sunner J. Ms.	Lab	682	-
Turnout		49.6	25.8

No. 16 (Oswaldtwistle: St. Pauls-Immanuel-St. Mic (5304)⁴

		vote	share
Finch W.	Con	1,228	35.7
Downing M. Ms.	Con	1,206	-
Clegg D. Ms.	Con	1,173	-
Rushton L.	Con	1,134	-
Newsham A.	Lab	958	27.9
Walsh C.	Ind	745	21.7
Thorpe I.	Lib	504	14.7
Turnout		43.8	7.9

No. 17 (Oswaldtwistle: Foxhill Bank & St. Oswalds (5634)⁴

		vote	share
Hargreaves J.	Con	1,330	56.8
Sandiford B. Ms.	Con	1,263	-
Hill E.	Con	1,234	-
Renshaw T.	Con	1,187	-
Farmer J.	Lab	808	34.5
Marshall T.	Comm	205	8.7
Turnout		37.8	22.3

No. 18 (Rishton) (4597)⁴

		vote	share
McNeil D.	Con	1,362	50.7
Critchlow A.	Lab	1,322	49.3
Rushton P.	Con	1,171	-
Edmondson F.	Con	1,146	-
Davies A.	Con	1,056	-
Parkinson F.	Lab	855	-
Peel R.	Lab	748	-
Palmer J.	Lab	632	-
Turnout		51.4	1.5

No. 2 (Accrington: Central) (1454)

		vote	share
Haines W.	Lab	367	58.3
Mortimer M. Ms.	Con	263	41.7
Turnout		43.0	16.5

No. 3 (Accrington: North) (5426)⁴

		vote	share
Pratt S. Ms.	Con	1,290	55.6
Hughes J. Ms.	Con	1,196	-
Duckworth R.	Con	1,103	-
Taylor H.	Con	1,093	-
Ellison F.	Lib	596	25.7
Unwin A.	Lib	555	-
Dobson K.	NF	436	18.8
Turnout		36.1	29.9

No. 4 (Accrington: Peel Park) (2907)²

		vote	share
Owens A. Ms.	Con	595	39.1
Smith G.	Lab	489	32.1
Favell P.	Con	478	-
Eddleston R.	Lab	422	-
Riley D.	NF	245	16.1
Rigg R.	Ind	192	12.6
Turnout		44.8	7.0

No. 5 (Accrington: East) (2068)²

		vote	share
Parkinson W.	Con	485	52.5
Benson A.	Con	473	-
Sudders A. Ms.	Lab	438	47.5
Turnout		41.7	5.1

No. 6 (Accrington: South) (4532)³

		vote	share
Marsden K.	Lib	861	42.5
Rennison V. Ms.	Con	791	39.1
Fairley B.	Con	785	-
Martin M. Ms.	Con	772	-
Lund A.	Lib	678	-
Leeming A.	Lib	594	-
Cronshaw D.	NF	373	18.4
Turnout		40.5	3.5

No. 7 (Accrington: Higher Antley) (2200)²

		vote	share
Cleak M. Ms.	Con	509	50.8
Curtis K.	Lab	492	49.2
Harwood P. Ms.	Con	464	-
Keeley D.	Lab	427	-
Turnout		45.2	1.7

No. 8 (Accrington: Spring Hill) (4464)⁴

		vote	share
Dillon C.	Lab	923	41.0
Pickup J.	Lab	918	-
Bramley T.	Lab	777	-
Court E. Ms.	Con	774	34.4
Westell C.	Lab	763	-
Jameson A.	Con	683	-
Batty H.	Lib	556	24.7
O'Hanlon D.	Lib	549	-
Turnout		43.3	6.6

No. 9 (Accrington: Huncoat) (1965)²

		vote	share
Grant D. Ms.	Lab	525	53.9
Farrimond W.	Lab	475	-
Deakin D.	Con	449	46.1
Hindley J.	Con	448	-
Turnout		51.1	7.8

Hyndburn - 1979

Altham (1077)

		vote	share
Lowe F. Ms.	Con	0	0.0
Turnout		0.0	0.0

Barnfield (3042)³

		vote	share
Sudders A. Ms.	Lab	1,143	52.8
Keeley D.	Lab	955	-
Parkinson W.	Con	865	40.0
Jones L.	Lab	837	-
Benson A.	Con	822	-
Bramley-Haworth S. Ms.	Con	730	-
Dobson K.	NF	156	7.2
Turnout		61.1	12.8

Baxenden (3499)³

		vote	share
Maudsley B. Ms.	Con	1,401	40.7
Creig E.	Con	1,342	-
Hindley J.	Con	1,316	-
Marsden K.	Lib	1,257	36.5
Eddleston R.	Lab	786	22.8
Saville E.	Lab	642	-
Downey B.	Lab	561	-
Turnout		70.5	4.2

Central (4175)³

		vote	share
Haines W.	Lab	1,736	58.8
Curtis K.	Lab	1,659	-
Whitham B.	Lab	1,438	-
Taylor S.	Con	958	32.5
Harwood P. Ms.	Con	858	-
Hamer J.	NF	256	8.7
Turnout		55.8	26.4

Church (4915)³

		vote	share
Grime J.	Lab	2,174	61.3
Dickinson L.	Lab	1,922	-
Hargreaves P. Ms.	Lab	1,866	-
Riley J.	Con	1,194	33.6
Holding G.	Con	1,112	-
Kemp R.	Con	996	-
McCormack J.	NF	181	5.1
Turnout		64.9	27.6

Clayton-Le-Moors (4190)³

		vote	share
Arkwright J.	Con	1,782	57.7
Jackson J. Ms.	Con	1,621	-
Downing J.	Con	1,528	-
Mercer S.	Lab	1,307	42.3
Whittam P.	Lab	1,181	-
Rogan C. Ms.	Lab	1,077	-
Turnout		68.6	15.4

Eachill (2114)²

		vote	share
McNeil D.	Con	858	48.6
Henry G.	Con	851	-
Moore F.	Lab	530	30.0
Scott I.	Lab	490	-
Kitchin I.	Lib	377	21.4
Turnout		49.7	18.6

Huncoat (2802)³

		vote	share
Bramley-Haworth N.	Con	1,050	50.7
Grant D. Ms.	Lab	1,022	49.3
Deakin D.	Con	990	-
Howard G.	Con	974	-
Farrimond W.	Lab	924	-
Turnout		59.8	1.4

Immanuel (3559)³

		vote	share
Barrett M. Ms.	Con	1,317	52.0
Browning M. Ms.	Con	1,303	-
Lee J.	Lab	1,217	48.0
McKie A.	Con	1,209	-
Nuttall B.	Lab	1,027	-
O'Rourke F.	Lab	880	-
Turnout		66.0	3.9

Milnshaw (4181)³

		vote	share
Pratt S. Ms.	Con	1,716	54.1
Taylor H.	Con	1,623	-
Duckworth R.	Con	1,490	-
Ashworth G.	Lab	1,454	45.9
Barrett J.	Lab	1,359	-
Turnout		61.6	8.3

Netherton (3745)³

		vote	share
Slynn G.	Lab	1,735	57.3
Hindley M.	Lab	1,319	-
Gregory F.	Lab	1,299	-
Frankland W. Ms.	Con	1,294	42.7
Harrison A.	Con	1,258	-
McAloon T.	Con	1,145	-
Turnout		72.5	14.6

Norden (2603)²

		vote	share
Critchlow A.	Lab	1,131	54.0
Sharples F.	Con	965	46.0
Davies G.	Con	944	-
Peel H.	Lab	786	-
Turnout		49.7	7.9

Overton (4558)³

		vote	share
Hall J. Ms.	Con	2,171	63.1
Sumner W.	Con	1,958	-
Allardice E.	Con	1,770	-
Foks R.	Lab	1,268	36.9
O'Kane R. Ms.	Lab	1,217	-
Stirling E. Ms.	Lab	1,095	-
Turnout		70.1	26.3

Peel (4033)³

		vote	share
Dawson B.	Lab	1,470	53.6
Culshaw J.	Lab	1,436	-
Owens A. Ms.	Con	1,273	46.4
Holmes W.	Lab	1,226	-
Vaughan J.	Con	1,006	-
Sutcliffe I. Ms.	Con	1,005	-
Turnout		62.2	7.2

Spring Hill (4189)³

		vote	share
Dillon C.	Lab	1,446	34.1
McGrath D. Ms.	Lab	1,186	-
Westell C.	Lab	1,151	-
Pickup J.	Ind	1,067	25.2
Court E. Ms.	Con	999	23.6
Batty H.	Lib	640	15.1
O'Hanlon D.	Lib	450	-
Dearden M.	Comm	87	2.1
Turnout		56.8	8.9

St. Andrews (3279)³

		vote	share
Hargreaves J.	Con	1,435	61.2
Walsh C.	Con	1,133	-
Clegg D. Ms.	Con	1,111	-
Owen H.	Lab	910	38.8
Newsham A.	Lab	895	-
Bennett G.	Lab	868	-
Turnout		65.4	22.4

St. Oswalds (4136)³

		vote	share
Hill E.	Con	1,794	59.9
Renshaw T.	Con	1,715	-
Sandiford B. Ms.	Con	1,696	-
Howorth H.	Lab	1,201	40.1
Owen D.	Lab	1,060	-
Johnstone B.	Lab	937	-
Turnout		68.6	19.8

Hyndburn - 1980**Barnfield (3017)**

		vote	share
Jones L.	Lab	783	62.8
Parkinson W.	Con	464	37.2
Turnout		41.4	25.6

Baxenden (3539)

		vote	share
Eddleston R.	Lab	596	34.8
Marsden K.	Lib	576	33.6
Hindley A.	Con	543	31.7
Turnout		48.5	1.2

Central (3950)

		vote	share
Whitham B.	Lab	1,119	72.9
Vaughan J.	Con	417	27.1
Turnout		39.1	45.7

Church (4843)

		vote	share
Hargreaves P. Ms.	Lab	1,429	68.5
Holden G.	Con	658	31.5
Turnout		43.2	36.9

Clayton-Le-Moors (4180)

		vote	share
Whittam P.	Lab	838	42.0
Downing J.	Con	828	41.5
Bramhill S.	Lib	331	16.6
Turnout		48.0	0.5

Eachill (2102)

		vote	share
Henry G.	Con	482	46.8
Hillman T.	Lab	350	34.0
Kitchin I.	Lib	197	19.1
Turnout		49.0	12.8

Huncoat (2764)

		vote	share
Saville E.	Lab	696	50.1
Deakin D.	Con	694	49.9
Turnout		50.3	0.1

Immanuel (3569)

		vote	share
Nuttall B.	Lab	704	51.7
Court E. Ms.	Con	658	48.3
Turnout		38.2	3.4

Milnshaw (4188)

		vote	share
Ashworth G.	Lab	1,044	56.2
Duckworth R.	Con	813	43.8
Turnout		44.4	12.4

Netherton (3714)

		vote	share
Gregory F.	Lab	1,058	59.4
Bramley-Haworth S.	Con	722	40.6
Turnout		48.1	18.9

Norden (2538)

		vote	share
Sharples R.	Con	652	55.9
Parkinson F.	Lab	379	32.5
Holden R.	Lib	135	11.6
Turnout		46.0	23.4

Overton (4518)

		vote	share
Marsh D.	Lab	910	50.4
Allardice E.	Con	897	49.6
Turnout		40.0	0.7

Peel (3861)

		vote	share
Wallwork W.	Lab	1,111	64.8
Owens A. Ms.	Con	603	35.2
Turnout		44.5	29.6

Spring Hill (4120)

		vote	share
Westell C.	Lab	776	52.9
Pickup J.	Ind Lab	690	47.1
Turnout		36.6	5.9

St. Andrews (3238)

		vote	share
Newsham A.	Lab	642	50.6
Clegg D. Ms.	Con	626	49.4
Turnout		39.3	1.3

St. Oswalds (4079)

		vote	share
Sandford B. Ms.	Con	656	44.7
Howorth H.	Lab	509	34.7
Marsden D.	Ind	302	20.6
Turnout		36.0	10.0

Hyndburn - 1982**Barnfield (2998)**

		vote	share
Keeley D.	Lab	532	41.3
Strak J.	Lib/SDP	441	34.3
Vaughan J.	Con	314	24.4
Turnout		43.7	7.1

Baxenden (3523)

		vote	share
Lund A.	Lib/SDP	773	49.1
Creig E.	Con	667	42.4
Nuttall L.	Ind Lab	134	8.5
Turnout		44.8	6.7

Central (3993)

		vote	share
Curtis K.	Lab	733	51.4
Tattersall D.	Lib/SDP	398	27.9
Bhatti M.	Con	295	20.7
Turnout		35.8	23.5

Church (4828)

		vote	share
Dickinson L.	Lab	956	49.2
Riley J.	Con	549	28.3
Wells A.	Lib/SDP	438	22.5
Turnout		40.4	20.9

Clayton-Le-Moors (4172)

		vote	share
Thom M. Ms.	Lab	961	44.1
Haworth B.	Con	823	37.8
Bramhill S.	Lib/SDP	396	18.2
Turnout		52.3	6.3

Huncoat (2723)

		vote	share
Deakin D.	Con	660	50.5
Wilkinson J. Ms.	Lab	490	37.5
Thorpe I.	Lib/SDP	157	12.0
Turnout		48.1	13.0

Immanuel (3589)

		vote	share
Browning M. Ms.	Con	757	53.6
Nuttall J.	Lab	456	32.3
Wilkinson A.	Lib/SDP	199	14.1
Turnout		39.3	21.3

Milnshaw (4145)

		vote	share
Taylor H.	Con	716	44.0
Hillman E.	Lab	535	32.9
Holden R.	Lib/SDP	377	23.2
Turnout		39.3	11.1

Netherton (3692)

		vote	share
Hindley M.	Lab	749	44.3
Bullock E.	Con	679	40.2
Kitchin I.	Lib/SDP	262	15.5
Turnout		45.8	4.1

Norden (2564)

		vote	share
Partington A.	Con	519	42.8
Critchlow A.	Lab	439	36.2
Baxendale A.	Lib/SDP	256	21.1
Turnout		47.5	6.6

Overton (4541)

		vote	share
Sumner W.	Con	950	50.0
Gregory B. Ms.	Lab	579	30.5
Baxendale J. Ms.	Lib/SDP	371	19.5
Turnout		42.0	19.5

Peel (3904)

		vote	share
Culshaw J.	Lab	688	45.2
Parkinson W.	Con	495	32.5
Beck D.	Lib/SDP	340	22.3
Turnout		39.2	12.7

Spring Hill (4126)

		vote	share
McGrath D. Ms.	Lab	613	43.7
Pickup J.	Lib/SDP	497	35.4
Hindley J.	Con	292	20.8
Turnout		34.0	8.3

St. Andrews (3195)

		vote	share
Court E. Ms.	Con	718	53.6
Fielding M.	Lab	385	28.7
Tattersall K. Ms.	Lib/SDP	237	17.7
Turnout		42.2	24.9

St. Oswalds (4179)			
		vote	share
Renshaw T.	Con	740	47.7
Marsden I.	Lib/SDP	467	30.1
Allonby R.	Lab	343	22.1
Turnout		37.1	17.6

Hyndburn - 1983

Altham (1073)			
		vote	share
Pilling J.	Con	280	45.8
Hillman E.	Lab	217	35.5
Bramhill S.	Lib/SDP	115	18.8
Turnout		57.1	10.3

Barnfield (2915)			
		vote	share
Strak J.	Lib/SDP	660	45.8
Beswick J.	Lab	481	33.4
Whitehead D.	Con	299	20.8
Turnout		49.4	12.4

Baxenden (3591)			
		vote	share
Creig E.	Con	739	45.0
Matthews W.	Lib/SDP	668	40.6
Jones M.	Lab	237	14.4
Turnout		45.9	4.3

Central (3923)			
		vote	share
Wilkinson J.	Lab	946	55.9
Tattersall K.	Lib/SDP	440	26.0
Bhatti M.	Con	306	18.1
Turnout		43.4	29.9

Church (4816)			
		vote	share
Grime J.	Lab	1,357	64.5
Broadhurst G.	Con	532	25.3
Wilson R.	Lib/SDP	214	10.2
Turnout		43.0	39.2

Clayton-Le-Moors (4237)			
		vote	share
Arkwright J.	Con	1,285	51.6
Thom A.	Lab	1,205	48.4
Turnout		58.5	3.2

Eachill (2239)			
		vote	share
McNeil D.	Con	740	61.9
Peel H.	Lab	383	32.1
Smith F.	Ecol	72	6.0
Turnout		53.7	29.9

Huncoat (2751)			
		vote	share
Bramley-Haworth N.	Con	738	48.5
Boyle W.	Lab	604	39.7
Tattersall D.	Lib/SDP	181	11.9
Turnout		55.5	8.8

Immanuel (3678)			
		vote	share
Barett M.	Con	850	51.4
Allonby R.	Lab	804	48.6
Turnout		45.0	2.8

Milnshaw (4105)			
		vote	share
Parkinson W.	Con	1,022	51.9
Billington P.	Lab	946	48.1
Turnout		48.0	3.9

Netherton (3655)			
		vote	share
Slynn G.	Lab	1,213	57.7
Bullock E.	Con	831	39.5
Younis M.	Lib/SDP	58	2.8
Turnout		57.6	18.2

Overton (4515)			
		vote	share
Hall J. Ms.	Con	1,451	60.5
Pope G.	Lab	948	39.5
Turnout		53.3	21.0

Peel (3831)			
		vote	share
Dawson B.	Lab	835	51.2
Travis P.	Con	480	29.4
Beck D.	Lib/SDP	316	19.4
Turnout		42.6	21.8

Spring Hill (4084)			
		vote	share
Dillon C.	Lab	884	59.5
Pickup J.	Lib/SDP	398	26.8
Hindley J.	Con	204	13.7
Turnout		38.5	32.7

St. Andrews (3124)			
		vote	share
Hargreaves J.	Con	936	62.9
Hodgkinson J. Ms.	Lab	553	37.1
Turnout		47.0	25.7

St. Oswalds (4243)			
		vote	share
Hill E.	Con	871	61.7
McCormack J.	Lab	540	38.3
Turnout		33.0	23.5

Hyndburn - 1984

Barnfield (2984)			
		vote	share
Stars Y. Ms.	Lib/SDP	696	46.2
Jones L.	Lab	562	37.3
Scholes J. Ms.	Con	249	16.5
Turnout		50.5	8.9

Baxenden (3657)			
		vote	share
Dickinson J.	Con	847	49.6
Newsham A.	Lib/SDP	556	32.5
Carter T.	Lab	306	17.9
Turnout		46.7	17.0

Central (3790)			
		vote	share
Whitham B.	Lab	916	68.8
Hindley J.	Con	415	31.2
Turnout		36.7	37.6

Church (4888)			
		vote	share
Hargreaves P. Ms.	Lab	1,204	53.5
Caton L.	Lib/SDP	587	26.1
Churm P.	Con	459	20.4
Turnout		46.1	27.4

Clayton-Le-Moors (4280)			
		vote	share
Whittam S.	Lab	1,196	52.9
Haworth B.	Con	1,067	47.1
Turnout		53.0	5.7

Eachill (2289)			
		vote	share
Henry G.	Con	678	61.1
Hillman T.	Lab	355	32.0
Smith F.	Ecol	77	6.9
Turnout		48.6	29.1

Huncoat (2796)			
		vote	share
Feeley C.	Lab	825	54.6
Bowling A.	Con	687	45.4
Turnout		54.3	9.1

Immanuel (3739)			
		vote	share
Holden M.	Con	802	44.6
Allonby R.	Lab	735	40.9
Nuttall B.	Ind	262	14.6
Turnout		48.2	3.7

Milnshaw (4197)			
		vote	share
Ashworth G.	Lab	1,081	50.5
Tyldesley B.	Con	1,060	49.5
Turnout		51.2	1.0

Netherton (3672)			
		vote	share
Pope G.	Lab	878	47.7
Bullock E.	Con	686	37.3
Griffiths G.	Lib/SDP	238	12.9
Taylor J.	Ecol	38	2.1
Turnout		50.5	10.4

Norden (2543)			
		vote	share
Sharples R.	Con	737	61.4
Billington P.	Lab	421	35.1
Moss S. Ms.	Ecol	43	3.6
Turnout		47.4	26.3

Overton (4588)			
		vote	share
Bramley-Haworth S. Ms.	Con	1,131	50.8
Marsh D.	Lab	1,096	49.2
Turnout		48.8	1.6

Peel (3879)			
		vote	share
Saville E.	Lab	749	41.7
Tattersall K. Ms.	Lib/SDP	594	33.1
Travis P.	Con	398	22.2
Harrison G.	Ecol	55	3.1
Turnout		46.4	8.6

Spring Hill (4120)			
		vote	share
Westell C.	Lab	960	69.3
Duckworth R.	Con	425	30.7
Turnout		33.8	38.6

St. Andrews (3135) ²			
		vote	share
Britcliffe P.	Con	922	56.2
Stell E. Ms.	Con	851	-
Hodgkinson J. Ms.	Lab	718	43.8
Baron S.	Lab	700	-
Turnout		54.5	12.4

St. Oswalds (4268)			
		vote	share
Sandiford B. Ms.	Con	889	56.5
McCormack J.	Lab	685	43.5
Turnout		36.9	13.0

Hyndburn - 1986

Barnfield (3078)

		vote	share
Millett E. Ms.	Lib/SDP	721	50.0
Mellors M.	Lab	522	36.2
Rushton E. Ms.	Con	198	13.7
	Turnout	46.9	13.8

Baxenden (3716)

		vote	share
Lund A.	Lib/SDP	751	46.0
Scholes J. Ms.	Con	544	33.3
Pinder W.	Lab	339	20.7
	Turnout	44.0	12.7

Central (3539)

		vote	share
Curtis K.	Lab	767	49.4
Siddiqi T.	Con	506	32.6
Smith M. Ms.	Lib/SDP	281	18.1
	Turnout	44.1	16.8

Church (4760)

		vote	share
Dickinson L.	Lab	1,282	70.9
Caton L.	Lib/SDP	527	29.1
	Turnout	38.0	41.7

Clayton-Le-Moors (4243)

		vote	share
Thom C. Ms.	Lab	1,392	59.8
Lord D.	Con	656	28.2
Bramhill J. Ms.	Lib/SDP	279	12.0
	Turnout	54.9	31.6

Huncoat (2942)

		vote	share
Walker E.	Lab	836	53.9
Deakin D.	Con	715	46.1
	Turnout	52.8	7.8

Immanuel (3773)

		vote	share
McCormack J.	Lab	892	51.4
Browning M. Ms.	Con	843	48.6
	Turnout	46.1	2.8

Milnshaw (4203)

		vote	share
English P.	Lab	1,121	58.4
Sutcliffe A.	Con	800	41.6
	Turnout	45.9	16.7

Netherton (3665)

		vote	share
Marsh D.	Lab	874	46.5
Hanson G.	Con	618	32.9
Griffiths G.	Lib/SDP	386	20.6
	Turnout	51.4	13.6

Norden (2548)

		vote	share
Ainsworth A.	Lib/SDP	480	36.6
Sharples J. Ms.	Con	424	32.3
Mundy A.	Lab	409	31.2
	Turnout	51.6	4.3

Overton (4622)

		vote	share
Nightingale C.	Lab	956	42.0
Sumner W.	Con	861	37.8
Holden R.	Lib/SDP	458	20.1
	Turnout	49.3	4.2

Peel (3838)

		vote	share
Culshaw J.	Lab	770	44.6
Tattersall K. Ms.	Lib/SDP	707	40.9
Whitehead D.	Con	250	14.5
	Turnout	45.1	3.6

Spring Hill (4048)

		vote	share
Hillman E.	Lab	1,014	55.8
Nuttall B.	Lib/SDP	598	32.9
Purcell J. Ms.	Con	204	11.2
	Turnout	44.9	22.9

St. Andrews (3177)

		vote	share
Hodgkinson J. Ms.	Lab	767	47.8
Court E. Ms.	Con	753	46.9
Callaghan P.	Green	84	5.2
	Turnout	50.5	0.9

St. Oswalds (4337)

		vote	share
Goldsmith W.	Lab	905	53.5
Renshaw T.	Con	786	46.5
	Turnout	39.1	7.0

Hyndburn - 1987

Altham (1118)

		vote	share
Horkin K.	Con	253	40.1
Tattersall N.	Lab	222	35.2
Bramhill S.	Lib/SDP	156	24.7
	Turnout	56.4	4.9

Barnfield (3104)

		vote	share
Strak J.	Lib/SDP	778	50.5
Beech S.	Lab	471	30.6
Rushton E. Ms.	Con	292	18.9
	Turnout	49.4	19.9

Baxenden (3752)

		vote	share
Snape G.	Lib/SDP	841	51.5
Creig E.	Con	793	48.5
	Turnout	43.9	2.9

Central (3492)

		vote	share
Wilkinson J.	Lab	733	43.4
Siddiqui T.	Con	603	35.7
Smith M. Ms.	Lib/SDP	352	20.9
	Turnout	48.5	7.7

Church (4807)

		vote	share
Grime J.	Lab	1,572	64.5
Hogan P.	Con	866	35.5
	Turnout	50.8	29.0

Clayton-Le-Moors (4439)

		vote	share
Stone C.	Lab	1,189	50.8
Arkwright S.	Con	1,150	49.2
	Turnout	52.8	1.7

Eachill (2526)

		vote	share
Critchlow A.	Lab	594	41.3
Bibby P.	Con	471	32.7
Block M.	Lib/SDP	342	23.8
Smith F.	Green	33	2.3
	Turnout	57.0	8.5

Huncoat (2982)

		vote	share
Bramley-Haworth N.	Con	887	51.9
Parkins M. Ms.	Lab	823	48.1
	Turnout	57.6	3.7

Immanuel (3803)

		vote	share
Barrett M. Ms.	Con	916	45.2
Allonby R.	Lab	850	42.0
Smith M.	Lib/SDP	259	12.8
	Turnout	53.3	3.3

Milnshaw (4201)

		vote	share
Parkinson W.	Con	967	41.8
Ainsworth J.	Lab	865	37.4
Rigg R.	Lib/SDP	479	20.7
	Turnout	55.0	4.4

Netherton (3705)

		vote	share
Slynn G.	Lab	1,041	49.2
Hunt S.	Con	685	32.4
Griffiths G.	Lib/SDP	391	18.5
	Turnout	57.2	16.8

Overton (4688)

		vote	share
Sumner W.	Con	992	39.1
Law-Riding M.	Lab	831	32.7
Gradwell M.	Lib/SDP	717	28.2
	Turnout	54.3	6.3

Peel (3692)

		vote	share
Tattersall K. Ms.	Lib/SDP	995	52.5
Dawson B.	Lab	672	35.4
Rushton J.	Con	229	12.1
	Turnout	52.7	17.0

Spring Hill (4028)

		vote	share
McCormack R.	Lab	1,104	58.1
Tregartha G.	Lib/SDP	454	23.9
Holdich B.	Con	343	18.0
	Turnout	47.1	34.2

St. Andrews (3160)

		vote	share
Court E. Ms.	Con	1,001	55.0
Brame L.	Lab	818	45.0
	Turnout	57.8	10.1

St. Oswalds (4385)

		vote	share
Hill E.	Con	1,076	53.9
Delaney S. Ms.	Lab	920	46.1
	Turnout	45.7	7.8

Hyndburn - 1988

Barnfield (3011)

		vote	share
Stars Y. Ms.*	SLD	595	42.2
Beech S.	Lab	548	38.9
Parkinson F.	Con	266	18.9
	Turnout	46.8	3.3

Baxenden (3770)

		vote	share
Dickinson J.*	Con	947	56.0
Tregartha G. Ms.	SLD	419	24.8
Fawcett A.	Lab	325	19.2
	Turnout	44.9	31.2

Central (3414)			
		vote	share
Heap R.	Lab	926	60.6
Siddiqui T.	Con	602	39.4
Turnout		44.8	21.2
Church (4731)			
		vote	share
Massey R.	Lab	1,412	62.7
Hogan P.	Con	839	37.3
Turnout		47.6	25.5
Clayton-Le-Moors (4493)			
		vote	share
Smith A.	Lab	1,100	48.7
Grime J. Ms.	Con	827	36.6
Lightfoot L.	SLD	331	14.7
Turnout		50.3	12.1
Eachill (2567)			
		vote	share
Bibby P.	Con	671	53.2
Molloy F. Ms.	Lab	591	46.8
Turnout		49.2	6.3
Huncoat (2942)			
		vote	share
Feeley C.*	Lab	862	54.5
Wallis R.	Con	721	45.5
Turnout		53.8	8.9
Immanuel (3818)			
		vote	share
Farrer S. Ms.	Con	959	51.6
Goggin R.	Lab	900	48.4
Turnout		48.7	3.2
Milnshaw (4157)			
		vote	share
Eddleston R.	Lab	1,082	53.7
Barrett D.	Con	934	46.3
Turnout		48.5	7.3
Netherton (3665)			
		vote	share
Baron D.	Lab	903	45.4
Hunt D.	Con	738	37.1
Patten S.	SLD	346	17.4
Turnout		54.2	8.3
Norden (2572)			
		vote	share
Sharples F.*	Con	621	52.3
McCormack H. Ms.	Lab	567	47.7
Turnout		46.2	4.5
Overton (4643)			
		vote	share
Bramley-Haworth S. Ms.*	Con	907	37.2
Stacey T.	Lab	886	36.4
Gradwell M.	SLD	643	26.4
Turnout		52.5	0.9
Peel (3678)			
		vote	share
Dawson B.	Lab	799	48.1
Jones J.	SLD	502	30.2
Parkinson K. Ms.	Con	360	21.7
Turnout		45.2	17.9
Spring Hill (3981)			
		vote	share
Westell C.*	Lab	1,283	97.0
Nolan M. Ms.	Con	39	3.0
Turnout		33.2	94.1

St. Andrews (3176)			
		vote	share
Britcliffe P.*	Con	1,128	61.6
Crook P.	Lab	703	38.4
Turnout		57.7	23.2
St. Oswalds (4401)			
		vote	share
Hayes D.	Con	1,069	56.3
Delaney S. Ms.	Lab	830	43.7
Turnout		43.1	12.6
Hyndburn - 1990			
Barnfield (3074)			
		vote	share
Millett E. Ms.*	SLD	720	50.9
Walker E.	Lab	695	49.1
Turnout		46.0	1.8
Baxenden (3917)			
		vote	share
Lund A.*	SLD	679	34.6
Scholes J. Ms.	Con	667	33.9
Cowell M.	Lab	619	31.5
Turnout		50.2	0.6
Central (3203)			
		vote	share
Curtis K.*	Lab	0	0.0
Turnout		0.0	0.0
Church (4717)			
		vote	share
Dickinson L.*	Lab	1,794	78.6
Holden J.	Con	488	21.4
Turnout		48.4	57.2
Clayton-Le-Moors (4751)			
		vote	share
Thom M. Ms.*	Lab	1,779	72.4
Turner A. Ms.	Con	677	27.6
Turnout		51.7	44.9
Huncoat (3047)			
		vote	share
Pepper J.	Lab	1,036	62.1
Wallis R.	Con	379	22.7
Brunt A.	Green	178	10.7
Tregartha F.	SLD	75	4.5
Turnout		54.7	39.4
Immanuel (3931)			
		vote	share
Delaney S. Ms.	Lab	1,444	66.5
Riley A.	Con	726	33.5
Turnout		55.2	33.1
Milnshaw (4211)			
		vote	share
Battle J. Ms.	Lab	1,553	66.2
Foster S. Ms.	Con	793	33.8
Turnout		55.7	32.4
Netherton (3756)			
		vote	share
Reid C.	Lab	1,452	71.1
Hunt D.	Con	590	28.9
Turnout		54.4	42.2
Norden (2567)			
		vote	share
Molloy F. Ms.	Lab	881	65.4
Sharples J. Ms.	Con	467	34.6
Turnout		52.5	30.7

Overton (4658)			
		vote	share
Nightingale C.*	Lab	1,604	63.4
Hunt S. Ms.	Con	924	36.6
Turnout		54.3	26.9
Peel (3641) ²			
		vote	share
Culshaw J.*	Lab	1,333	67.5
Mirza M.	Lab	802	-
Greenfield D.	SLD	425	21.5
Aldren H. Ms.	SLD	370	-
Turner S.	Con	218	11.0
Turnout		57.1	46.0
Spring Hill (3993)			
		vote	share
Hillman E.	Lab	0	0.0
Turnout		0.0	0.0
St. Andrews (3237)			
		vote	share
Pinder W.	Lab	1,250	66.6
Farrer J.	Con	626	33.4
Turnout		58.0	33.3
St. Oswalds (4479)			
		vote	share
Goldsmith W.*	Lab	1,505	63.7
Griffiths G.	Con	857	36.3
Turnout		52.7	27.4
Hyndburn - 1991			
Altham (1071)			
		vote	share
Stone C.	Lab	251	43.6
Foster J.	Con	173	30.0
Bramhill S.	LD	152	26.4
Turnout		53.8	13.5
Barnfield (3035)			
		vote	share
Mellors M.	Lab	589	44.1
Mills G.	LD	493	36.9
Griffiths G.	Con	255	19.1
Turnout		44.1	7.2
Baxenden (3882)			
		vote	share
Scholes J. Ms.	Con	884	49.8
Snape G.*	LD	490	27.6
Seager J. Ms.	Lab	402	22.6
Turnout		45.7	22.2
Central (2873)			
		vote	share
Hussain A.	Lab	703	69.7
Amin M.	Con	306	30.3
Turnout		35.1	39.3
Church (4488)			
		vote	share
Grime J.*	Lab	1,310	66.8
Holden J.	Con	652	33.2
Turnout		43.7	33.5
Clayton-Le-Moors (4698)			
		vote	share
Cooper J.	Lab	1,254	52.4
Haworth S. Ms.	Con	1,141	47.6
Turnout		51.0	4.7
Eachill (2614)			
		vote	share
Critchlow A.*	Lab	769	60.7
Sharples J. Ms.	Con	497	39.3
Turnout		48.4	21.5

Huncoat (2969)			
		vote	share
Parkins M. Ms.	Lab	934	62.3
Holding S. Ms.	Con	565	37.7
Turnout		50.5	24.6

Immanuel (3821)			
		vote	share
Warden C. Ms.	Lab	1,111	56.7
Riley A.	Con	848	43.3
Turnout		51.3	13.4

Milnshaw (4145)			
		vote	share
Ormerod I.	Lab	1,056	47.5
Foster S. Ms.	Con	899	40.4
Aldren H. Ms.	LD	268	12.1
Turnout		53.6	7.1

Netherton (3613)			
		vote	share
Slynn G.*	Lab	1,020	52.9
Hunt D.	Con	907	47.1
Turnout		53.3	5.9

Overton (4586)			
		vote	share
Sumner W.*	Con	1,159	52.2
Whittaker W.	Lab	1,063	47.8
Turnout		48.5	4.3

Peel (3492)			
		vote	share
Yousaf M.	Lab	690	44.1
Mills A. Ms.	LD	478	30.6
Travis P.	Con	395	25.3
Turnout		44.8	13.6

Spring Hill (3808)			
		vote	share
Goggin R.	Lab	1,203	74.4
Farrer J.	Con	415	25.6
Turnout		42.5	48.7

St. Andrews (3211)			
		vote	share
Cowell M.	Lab	912	51.4
Court E. Ms.*	Con	864	48.6
Turnout		55.3	2.7

St. Oswalds (4413)			
		vote	share
Hill E.*	Con	1,077	51.7
Dunston E. Ms.	Lab	1,008	48.3
Turnout		47.2	3.3

Hyndburn - 1992

Barnfield (3003)			
		vote	share
Stars Y. Ms.*	LD	468	35.8
Seager J. Ms.	Lab	461	35.2
Scholes D.	Con	380	29.0
Turnout		43.6	0.5

Baxenden (3831)			
		vote	share
Heys M.	Con	1,228	73.8
Hillman B. Ms.	Lab	255	15.3
Whitchelo T.	LD	182	10.9
Turnout		43.5	58.4

Central (2792)			
		vote	share
Heap R.*	Lab	493	47.2
Siddiqui T.	Con	416	39.8
Tregartha F.	LD	135	12.9
Turnout		37.4	7.4

Church (4384)			
		vote	share
Massey R.*	Lab	803	49.3
Holden J.	Con	659	40.5
Tregartha G. Ms.	LD	167	10.3
Turnout		37.2	8.8

Clayton-Le-Moors (4641)			
		vote	share
Haworth S. Ms.	Con	1,143	52.1
Smith A.*	Lab	1,051	47.9
Turnout		47.3	4.2

Eachill (2575)			
		vote	share
Henry G.	Con	455	42.3
Bibby P.*	Ind	335	31.1
Vear P.	Lab	286	26.6
Turnout		41.8	11.2

Huncoat (2958)			
		vote	share
Walker A. Ms.	Lab	623	52.2
Holding S. Ms.	Con	461	38.6
Whitchelo P. Ms.	LD	110	9.2
Turnout		40.4	13.6

Immanuel (3795)			
		vote	share
Farrer S. Ms.*	Con	901	52.3
Beswick J. Ms.	Lab	823	47.7
Turnout		45.4	4.5

Milnshaw (4103)			
		vote	share
Foster J.	Con	943	49.3
Eddleston R.*	Lab	835	43.6
Mills G.	LD	135	7.1
Turnout		46.6	5.6

Netherton (3564)			
		vote	share
Goodwin L.	Lab	813	49.4
Hunt D.	Con	728	44.2
Snape G.	LD	105	6.4
Turnout		46.2	5.2

Norden (2544)			
		vote	share
Sharples F.*	Con	623	61.2
Ibrahim H. Ms.	Lab	395	38.8
Turnout		40.0	22.4

Overton (4481)			
		vote	share
Bramley-Haworth S. Ms.*	Con	1,047	52.9
Whittaker W.	Lab	774	39.1
Hilton P.	LD	159	8.0
Turnout		44.2	13.8

Peel (3502)			
		vote	share
Dawson B.*	Lab	668	54.4
Holdich B.	Con	323	26.3
Mills E. Ms.	LD	236	19.2
Turnout		35.0	28.1

Spring Hill (3797)			
		vote	share
Westell C.*	Lab	750	63.0
Farrer J.	Con	339	28.5
Robinson M.	LD	102	8.6
Turnout		31.4	34.5

St. Andrews (3183)			
		vote	share
Britcliffe P.*	Con	1,003	58.6
Westell D. Ms.	Lab	710	41.4
Turnout		53.8	17.1

St. Oswalds (4390)			
		vote	share
Hayes D.*	Con	927	55.4
Dunston E. Ms.	Lab	746	44.6
Turnout		38.1	10.8

Hyndburn - 1994

Barnfield (2950)			
		vote	share
Dwyer W. Ms.	Lab	582	44.2
Jones J. Ms.	LD	492	37.4
Crooks S.	Con	160	12.1
Peake R.	BISTRO	83	6.3
Turnout		45.0	6.8

Baxenden (3922)			
		vote	share
Scholes D.	Con	685	39.8
Jones L.	LD	527	30.6
Bushell A.	Lab	510	29.6
Turnout		44.3	9.2

Central (2764)			
		vote	share
Curtis K.*	Lab	730	67.8
Haworth D.	Con	347	32.2
Turnout		39.8	35.6

Church (4272)			
		vote	share
Dickinson L.*	Lab	1,156	69.6
Holden J.	Con	504	30.4
Turnout		39.1	39.3

Clayton-Le-Moors (4719)			
		vote	share
Thom M. Ms.*	Lab	1,406	68.6
Harrison W.	Con	645	31.4
Turnout		44.0	37.1

Huncoat (3025)			
		vote	share
Parkins D.	Lab	935	68.4
Raynor M. Ms.	Con	431	31.6
Turnout		45.6	36.9

Immanuel (3786) ²			
		vote	share
Delaney S. Ms.*	Lab	998	61.0
Roncoli T. Ms.	Lab	895	-
Hindle S. Ms.	Con	638	39.0
Tomlinson B.	Con	624	-
Turnout		45.4	22.0

Milnshaw (4135)			
		vote	share
Battle J. Ms.*	Lab	1,081	56.7
Horne S.	Con	827	43.3
Turnout		46.5	13.3

Netherton (3616)			
		vote	share
Reid C.*	Lab	966	65.5
Scaife A. Ms.	Con	509	34.5
Turnout		41.3	31.0

Norden (2649)			
		vote	share
Molley F. Ms.*	Lab	573	59.4
Hindle C. Ms.	Con	391	40.6
Turnout		36.8	18.9

Overton (4417)			
		vote	share
Baron D.	Lab	1,052	61.2
Ford F.	Con	666	38.8
Turnout		39.5	22.5

Peel (3475)			
		vote	share
Mason I.	Lab	868	71.8
Wolstenholme D.	Con	341	28.2
Turnout		35.3	43.6

Spring Hill (3689)			
		vote	share
Hillman E.*	Lab	921	73.0
Holdich B.	Con	218	17.3
Street A.	Ind	123	9.7
Turnout		34.5	55.7

St. Andrews (3226)			
		vote	share
Pinder W.*	Lab	853	54.9
Court E. Ms.	Con	701	45.1
Turnout		48.9	9.8

St. Oswalds (4530)			
		vote	share
Goldsmith W.*	Lab	1,126	61.6
Fisher A. Ms.	Con	701	38.4
Turnout		40.8	23.3

Hyndburn - 1995

Altham (1047)			
		vote	share
Parkinson M.	Lab	283	51.1
Pinder R.	Con	143	25.8
Stone C.*	Ind	81	14.6
Bramhill S.	LD	47	8.5
Turnout		53.1	25.3

Barnfield (2920)			
		vote	share
Eddleston R.	Lab	737	63.9
Alvey W.	Ind	251	21.8
Barnes R.	Con	166	14.4
Turnout		39.6	42.1

Baxenden (3891)			
		vote	share
Bushell A.	Lab	644	40.9
Scholes J. Ms.*	Con	603	38.3
Jones L.	LD	329	20.9
Turnout		40.6	2.6

Central (2967)			
		vote	share
Hussain A.*	Lab	567	55.1
Crooks S.	Con	462	44.9
Turnout		35.0	10.2

Church (4331)			
		vote	share
Grime J.*	Lab	1,139	70.0
Raynor M. Ms.	Con	489	30.0
Turnout		37.8	39.9

Clayton-Le-Moors (4788)			
		vote	share
Brindle M. Ms.	Lab	1,292	68.1
Harrison W.	Con	606	31.9
Turnout		39.9	36.1

Eachill (2614)			
		vote	share
Tootle H.*	Lab	566	60.9
Hindle C. Ms.	Con	363	39.1
Turnout		35.6	21.9

Huncoat (3115)			
		vote	share
Parkins M. Ms.*	Lab	729	55.4
Addison J.	Ind	438	33.3
Haworth D.	Con	148	11.3
Turnout		42.3	22.1

Immanuel (3776)			
		vote	share
Roncoli T. Ms.*	Lab	964	67.0
Barrett M. Ms.	Con	475	33.0
Turnout		38.2	34.0

Milnshaw (4142)			
		vote	share
Ormerod I.*	Lab	1,235	64.0
Horne S.	Con	694	36.0
Turnout		46.7	28.0

Netherton (3696)			
		vote	share
Slynn G.*	Lab	1,036	65.7
Mason D.	Ind	292	18.5
Spencer N.	Con	250	15.8
Turnout		42.8	47.1

Overton (4415)			
		vote	share
Forshaw D.	Lab	1,085	65.6
Ford F.	Con	570	34.4
Turnout		37.8	31.1

Peel (3493)			
		vote	share
Yousaf M.*	Lab	747	67.9
Wolstenholme D.	Con	353	32.1
Turnout		31.8	35.8

Spring Hill (3755)			
		vote	share
Goggin R.*	Lab	901	83.7
Travis P.	Con	175	16.3
Turnout		28.8	67.5

St. Andrews (3262)			
		vote	share
Cowell M.*	Lab	967	70.2
Tomlinson B.	Con	411	29.8
Turnout		42.4	40.3

St. Oswalds (4582)			
		vote	share
Peplow M.	Lab	1,183	70.9
Hill E.*	Con	485	29.1
Turnout		36.5	41.8

Hyndburn - 1996

Barnfield (2916)			
		vote	share
Haworth B. Ms.	Lab	572	55.8
McGilveray M. Ms.	Con	274	26.7
Whitchelo T.	LD	179	17.5
Turnout		35.1	29.1

Baxenden (3910)			
		vote	share
Dickinson J.	Con	792	45.5
Sargison J. Ms.	Lab	660	37.9
Jones L.	LD	289	16.6
Turnout		44.5	7.6

Central (3043)			
		vote	share
Heap R.*	Lab	741	67.3
Crooks S.	Con	360	32.7
Turnout		36.4	34.6

Church (4362)			
		vote	share
Massey R.*	Lab	894	63.6
Raynor M. Ms.	Con	511	36.4
Turnout		32.4	27.3

Clayton-Le-Moors (4782)			
		vote	share
O'Kane T.	Lab	1,112	60.2
Haworth S. Ms.*	Con	736	39.8
Turnout		38.8	20.3

Eachill (2565)			
		vote	share
Jackson W. Ms.	Lab	515	59.1
Parkinson F.	Con	357	40.9
Turnout		34.0	18.1

Huncoat (3218)			
		vote	share
Ranger M.	Lab	745	58.6
Pinder R.	Con	526	41.4
Turnout		39.5	17.2

Immanuel (3815)			
		vote	share
Beswick J. Ms.	Lab	892	54.7
Haynes S. Ms.	Con	739	45.3
Turnout		42.8	9.4

Milnshaw (4078)			
		vote	share
Wells J.	Lab	862	48.2
Horne S.	Con	630	35.2
Pritchard M.	LD	298	16.6
Turnout		43.9	13.0

Netherton (3653)			
		vote	share
Goodwin L.*	Lab	806	66.2
Oakley R.	Con	411	33.8
Turnout		33.4	32.5

Norden (2632)			
		vote	share
Hillman B. Ms.	Lab	537	60.2
Scaife A. Ms.	Con	355	39.8
Turnout		34.2	20.4

Overton (4564)			
		vote	share
Rahman M.	Lab	1,097	60.8
Clarke P.	Con	706	39.2
Turnout		39.7	21.7

Peel (3520)			
		vote	share
Dawson B.*	Lab	765	70.6
Wolstenholme D.	Con	318	29.4
Turnout		30.9	41.3

Spring Hill (3742)			
		vote	share
Westell C.*	Lab	774	72.7
Tomlinson B.	Con	291	27.3
Turnout		28.6	45.4

St. Andrews (3263)			
		vote	share
Britcliffe P.*	Con	931	54.1
Tunstall J.	Lab	789	45.9
Turnout		52.8	8.3

St. Oswalds (4609)			
		vote	share
Westell D. Ms.	Lab	1,041	57.6
Haynes D.*	Con	766	42.4
Turnout		39.3	15.2

Hyndburn - 1998

Barnfield (2863)

		vote	share
Dwyer W. Ms.*	Lab	365	45.4
Scholes J. Ms.	Con	274	34.1
Whitchelo T.	LD	165	20.5
	Turnout	28.2	11.3

Baxenden (3950)

		vote	share
Scholes D.*	Con	728	55.5
Sargison J. Ms.	Lab	341	26.0
Jones L.	LD	242	18.5
	Turnout	33.3	29.5

Central (3154)

		vote	share
Curtis K.*	Lab	455	48.3
Crooks S.	Con	369	39.2
Moss R.	LD	118	12.5
	Turnout	30.1	9.1

Church (4196)

		vote	share
Dickinson L.*	Lab	596	51.6
Raynor M. Ms.	Con	559	48.4
	Turnout	27.7	3.2

Clayton-Le-Moors (4761)

		vote	share
Storey J. Ms.	Con	693	52.0
Cowell M. Ms.	Lab	640	48.0
	Turnout	28.0	4.0

Huncoat (3252)

		vote	share
Parkins D.*	Lab	650	61.2
Deakin D.	Con	412	38.8
	Turnout	32.7	22.4

Immanuel (3786)

		vote	share
Hayes S. Ms.	Con	727	58.5
Delaney S. Ms.*	Lab	515	41.5
	Turnout	32.9	17.1

Milnshaw (4033)

		vote	share
Travis P.	Con	560	40.5
Battle J. Ms.*	Lab	524	37.9
Pritchard M.	LD	300	21.7
	Turnout	34.4	2.6

Netherton (3605)

		vote	share
Frankland W. Ms.	Con	580	54.0
Russell E.	Lab	494	46.0
	Turnout	29.9	8.0

Norden (2579)²

		vote	share
Davies R.	Con	338	51.4
Horne S.	Con	328	-
Molloy F. Ms.*	Lab	320	48.6
Walsh S.	Lab	262	-
	Turnout	26.4	2.7

Overton (4592)

		vote	share
Clarke P.	Con	604	47.3
Williams A.	Lab	509	39.8
Gradwell M.	LD	165	12.9
	Turnout	27.9	7.4

Peel (3435)

		vote	share
Mason I.*	Lab	443	57.3
Wolstenholme D.	Con	330	42.7
	Turnout	22.7	14.6

Spring Hill (3662)²

		vote	share
Barton P. Ms.	Lab	502	50.9
Dunstan E. Ms.	Lab	435	-
Boota K.	Con	261	26.5
Whitchelo P. Ms.	LD	223	22.6
	Turnout	23.8	24.4

St. Andrews (3287)

		vote	share
Walmsley B.	Con	748	61.6
Rapson P.	Lab	466	38.4
	Turnout	37.0	23.2

St. Oswalds (4698)

		vote	share
Hayes D.	Con	688	52.5
Goldsmith W.*	Lab	622	47.5
	Turnout	27.9	5.0

Hyndburn - 1999

Altham (1120)

		vote	share
Parkinson M.*	Lab	200	47.7
Cottam P.	Con	114	27.2
Pinder R.	Ind	91	21.7
Stone C.	Ind	14	3.3
	Turnout	37.9	20.5

Barnfield (2878)

		vote	share
Battle J. Ms.	Lab	412	46.7
Crooks S.	Con	308	34.9
Moss R.	LD	163	18.5
	Turnout	30.9	11.8

Baxenden (3976)

		vote	share
Griffiths J.	Con	912	65.9
Bushell A.*	Lab	298	21.5
Jones L.	LD	174	12.6
	Turnout	34.9	44.4

Central (3201)

		vote	share
Mohammed A.	Con	847	67.7
Hussain A.*	Lab	404	32.3
	Turnout	39.6	35.4

Church (4152)

		vote	share
Raynor M. Ms.	Con	829	56.2
Grime J.*	Lab	645	43.8
	Turnout	35.8	12.5

Clayton-Le-Moors (4882)

		vote	share
Haworth S. Ms.	Con	945	56.8
Smith A.	Lab	720	43.2
	Turnout	34.3	13.5

Eachill (2540)

		vote	share
Butler J. Ms.	Con	447	56.8
Tootle H.*	Lab	340	43.2
	Turnout	31.3	13.6

Huncoat (3276)

		vote	share
Deakin D.	Con	571	51.4
Walsh S.	Lab	539	48.6
	Turnout	34.1	2.9

Immanuel (3764)

		vote	share
Armstrong D. Ms.	Con	669	52.1
Delaney S. Ms.	Lab	614	47.9
	Turnout	34.2	4.3

Milnshaw (3986)

		vote	share
Taylor P.	Con	668	43.2
Ormerod I.*	Lab	660	42.7
Pritchard M.	Ind	217	14.0
	Turnout	38.9	0.5

Netherton (3630)

		vote	share
Shurmer A.	Ind	1,048	66.1
Slynn G.*	Lab	537	33.9
	Turnout	43.9	32.2

Overton (4608)

		vote	share
Wilson L. Ms.	Con	836	53.6
Forshaw D.*	Lab	725	46.4
	Turnout	34.1	7.1

Peel (3365)

		vote	share
Keegan M. Ms.	Lab	566	62.3
Wolstenholme D.	Con	343	37.7
	Turnout	27.2	24.5

Spring Hill (3670)

		vote	share
Dunston E. Ms.*	Lab	682	54.3
Akram M.	Con	424	33.8
Hillman E.	Ind	149	11.9
	Turnout	34.6	20.6

St. Andrews (3242)

		vote	share
Hindle S. Ms.	Con	616	52.2
Cowell M.*	Lab	565	47.8
	Turnout	36.6	4.3

St. Oswalds (4754)

		vote	share
Griffiths G.	Con	770	51.7
Goldsmith W.	Lab	720	48.3
	Turnout	31.5	3.4

Hyndburn - 2000

Barnfield (2816)

		vote	share
Dobson A.	Con	394	52.7
Haworth B. Ms.*	Lab	354	47.3
	Turnout	26.6	5.3

Baxenden (3990)

		vote	share
Dickinson J.*	Con	1,008	78.5
Baron D.	Lab	276	21.5
	Turnout	32.5	57.0

Central (3221)

		vote	share
Kazi S.	Con	890	69.0
Heap R.*	Lab	400	31.0
	Turnout	40.4	38.0

Church (4119)			
		vote	share
Hogan E.	Con	721	54.2
Grime J.	Lab	610	45.8
Turnout		32.5	8.3

Clayton-Le-Moors (4937)			
		vote	share
O'Kane T.*	Lab	758	50.1
Davies S. Ms.	Con	756	49.9
Turnout		30.8	0.1

Eachill (2526)			
		vote	share
Scaife A. Ms.	Con	416	55.8
Jackson W. Ms.*	Lab	329	44.2
Turnout		29.6	11.7

Huncoat (3293)			
		vote	share
Walsh S.	Lab	528	51.2
Cottam P.	Con	504	48.8
Turnout		31.4	2.3

Immanuel (3745) ²			
		vote	share
Duffy M. Ms.	Con	697	57.4
Lockwood J. Ms.	Con	668	-
Neil L.	Lab	518	42.6
Tootie H.	Lab	494	-
Turnout		34.1	14.7

Milnshaw (3962) ²			
		vote	share
Ormerod I.	Lab	732	44.3
Mills G.	Con	685	41.5
Pilkington A. Ms.	Con	664	-
Sargison G.	Lab	638	-
Pritchard M.	Ind	234	14.2
Turnout		41.0	2.8

Netherton (3570)			
		vote	share
Atkinson R.	Con	571	53.1
Forshaw D.	Lab	505	46.9
Turnout		30.5	6.1

Norden (2545)			
		vote	share
Horne S.*	Con	505	65.9
Molloy F. Ms.	Lab	261	34.1
Turnout		30.3	31.9

Overton (4590)			
		vote	share
Mason D.	Con	790	51.5
Rahman M.*	Lab	745	48.5
Turnout		33.6	2.9

Peel (3318)			
		vote	share
Dawson B.*	Lab	477	61.7
Wolstenholme D.	Con	296	38.3
Turnout		23.7	23.4

Spring Hill (3577)			
		vote	share
Westell C.*	Lab	613	55.5
Dad A.	Con	491	44.5
Turnout		31.2	11.1

St. Andrews (3286)			
		vote	share
Britcliffe P.*	Con	943	67.6
Cowell M.	Lab	451	32.4
Turnout		42.6	35.3

St. Oswalds (4740)			
		vote	share
Roberts B.	Con	854	65.3
Cowell M. Ms.	Lab	454	34.7
Turnout		27.7	30.6

Hyndburn - 2002

Altham (3321) ²			
		vote	share
Myles D.	Lab	583	56.5
Parkinson M.*	Lab	577	-
Storey J. Ms.*	Con	449	43.5
Gabryszak A. Ms.	Con	447	-
Turnout		32.2	13.0

Barnfield (3364) ²			
		vote	share
Dobson A.*	Con	625	50.4
Dwyer W. Ms.*	Lab	614	49.6
Scholes D.*	Con	582	-
Walsh S.*	Lab	534	-
Turnout		36.5	0.9

Baxenden (3426) ²			
		vote	share
Griffiths J.*	Con	808	66.2
Dickinson J.*	Con	807	-
Mason I.*	Lab	412	33.8
Ormerod A. Ms.	Lab	367	-
Turnout		36.4	32.5

Central (3419) ²			
		vote	share
Ali S.	Lab	720	51.2
Kazi S.*	Con	686	48.8
Khan A.	Lab	657	-
Pilkington A. Ms.	Con	542	-
Turnout		43.6	2.4

Church (3499) ²			
		vote	share
Battle J. Ms.*	Lab	788	63.7
Broadley J.	Lab	771	-
Hogan E.*	Con	450	36.3
Raynor M. Ms.*	Con	434	-
Turnout		37.0	27.3

Clayton-Le-Moors (3521) ²			
		vote	share
O'Kane T.*	Lab	569	40.0
Burke J.	Lab	510	-
Taylor A. Ms.	Con	478	33.6
Taylor M.	Con	476	-
Cooper J.	Ind	377	26.5
Turnout		37.6	6.4

Huncoat (3241) ²			
		vote	share
Parkins D.*	Lab	859	72.5
Shiel B.*	Lab	678	-
Mills E. Ms.	Con	326	27.5
Scholes P. Ms.	Con	326	-
Turnout		36.3	45.0

Immanuel (3443) ²			
		vote	share
Hayes S. Ms.*	Con	644	52.8
Lockwood J. Ms.*	Con	597	-
McCormack E. Ms.	Lab	575	47.2
Baron D.*	Lab	541	-
Turnout		35.6	5.7

Milnshaw (3556) ²			
		vote	share
Ormerod I.*	Lab	805	55.8
Pritchard M.	Lab	726	-
Mills G.*	Con	637	44.2
Travis P.*	Con	612	-
Turnout		41.4	11.7

Netherton (3345) ²			
		vote	share
Rahman M.*	Lab	684	55.4
Shorrocks S. Ms.	Lab	601	-
Hargreaves K.	Con	551	44.6
Atkinson A. Ms.	Con	539	-
Turnout		39.0	10.8

Overton (4867) ³			
		vote	share
Frankland W. Ms.*	Con	963	58.0
Clarke P.*	Con	936	-
Mason D.*	Con	880	-
Slynn G.	Lab	698	42.0
Whitaker W.	Lab	684	-
Haworth B. Ms.	Lab	638	-
Turnout		34.6	16.0

Peel (3263) ²			
		vote	share
Dawson B.*	Lab	601	67.1
Jones G.	Lab	569	-
Cunliffe J.	Con	295	32.9
Barden D.	Con	272	-
Turnout		28.0	34.2

Rishton (5115) ³			
		vote	share
Butler J. Ms.*	Con	1,026	58.3
Scaife A. Ms.*	Con	881	-
Horne S.*	Con	813	-
Jackson W. Ms.	Lab	734	41.7
Newton G.	Lab	693	-
Molloy F. Ms.	Lab	663	-
Turnout		33.8	16.6

Spring Hill (3415) ²			
		vote	share
Barton P. Ms.*	Lab	696	63.4
Dunston E. Ms.*	Lab	649	-
Barton P.*	Con	401	63.4
Qayyum A.	Con	398	-
Turnout		33.2	0.0

St. Andrews (3299) ²			
		vote	share
Britcliffe P.*	Con	729	55.1
Walmsley B.*	Con	705	-
Westell D. Ms.	Lab	594	44.9
Cowell M.	Lab	545	-
Turnout		40.0	10.2

St. Oswalds (5112) ³			
		vote	share
Hayes D.*	Con	924	59.1
Griffiths G.*	Con	858	-
Roberts B.*	Con	850	-
McCormack J.	Lab	639	40.9
Neil L.	Lab	559	-
Jones G.	Lab	550	-
Turnout		31.9	18.2

Hyndburn - 2003

Altham (3559)			
		vote	share
Parkinson M.*	Lab	948	56.1
Taylor M.	Con	743	43.9
Turnout		47.9	12.1

Barnfield (3380)			
		vote	share
Barton P.	Con	623	35.2
Dwyer W. Ms.*	Lab	601	34.0
Dixon I.	Green	545	30.8
Turnout		52.6	1.2

Baxenden (3267)			
		vote	share
Dickinson J.*	Con	1,235	70.2
Whittaker W.	Lab	524	29.8
Turnout		54.2	40.4

Central (3306)			
		vote	share
Kazi S.*	Con	1,137	62.0
Heap R.	Lab	697	38.0
Turnout		55.9	24.0

Church (3446)			
		vote	share
Broadley J.*	Lab	973	58.0
Hogan E.	Con	706	42.0
Turnout		49.2	15.9

Clayton-Le-Moors (3524)			
		vote	share
Storey J. Ms.	Con	953	53.6
Burke J.*	Lab	824	46.4
Turnout		51.0	7.3

Huncoat (3207)			
		vote	share
Shiel B.*	Lab	905	57.6
Day P. Ms.	Con	666	42.4
Turnout		50.0	15.2

Immanuel (3408)			
		vote	share
Lockwood J. Ms.*	Con	908	52.5
McCormack E. Ms.	Lab	822	47.5
Turnout		51.2	5.0

Milnshaw (3526)			
		vote	share
Pritchard M.*	Lab	1,061	53.7
Scholes D.	Con	914	46.3
Turnout		56.8	7.4

Overton (4970)			
		vote	share
Mason D.*	Con	1,344	51.9
Baron D.	Lab	1,246	48.1
Turnout		52.8	3.8

Rishton (5068)			
		vote	share
Jackson W. Ms.	Lab	1,311	52.2
Horne S.*	Con	1,202	47.8
Turnout		50.2	4.3

St. Oswalds (5110)			
		vote	share
Roberts B.*	Con	1,343	55.7
McCormack J.	Lab	1,069	44.3
Turnout		47.9	11.4

Hyndburn - 2004

Altham (3755)			
		vote	share
Myles D.*	Lab	767	52.4
Liddle J. Ms.	Con	696	47.6
Turnout		40.2	4.9

Barnfield (3290)			
		vote	share
Dobson A.*	Con	638	39.9
Dixon L.	Green	552	34.6
Newton G.	Lab	407	25.5
Turnout		49.1	5.4

Baxenden (3246)			
		vote	share
Griffiths J.*	Con	816	53.0
Jones L.	LD	362	23.5
Mason L.	Lab	362	23.5
Turnout		48.2	29.5

Central (3329)			
		vote	share
Dad A.	Con	968	53.8
Ali S.*	Lab	831	46.2
Turnout		56.1	7.6

Church (3437)			
		vote	share
Battle J. Ms.*	Lab	662	48.0
Home S.	Con	451	32.7
Hartley M.	Ind	265	19.2
Turnout		40.7	15.3

Netherton (3287)			
		vote	share
Wilson L. Ms.	Con	742	52.4
Shorrock S. Ms.*	Lab	673	47.6
Turnout		44.0	4.9

Overton (4981)			
		vote	share
Clarke P.*	Con	1,189	55.1
Baron D.	Lab	969	44.9
Turnout		44.7	10.2

Peel (3238)			
		vote	share
Jones G.*	Lab	710	67.8
Scholes D.	Con	337	32.2
Turnout		33.7	35.6

Rishton (5108)			
		vote	share
Scaife A. Ms.*	Con	1,229	59.5
Forshaw D.	Lab	837	40.5
Turnout		41.5	19.0

Spring Hill (3385)			
		vote	share
Dunston E. Ms.*	Lab	714	50.2
Qayyum A.	Con	460	32.3
Iqbal J.	LD	248	17.4
Turnout		43.0	17.9

St. Andrews (3223)			
		vote	share
Walmsley B.*	Con	589	43.3
McCormack E. Ms.	Lab	451	33.2
Greene W.	LD	319	23.5
Turnout		43.5	10.2

St. Oswalds (5092)			
		vote	share
Haworth M. Ms.	Con	1,195	57.8
McCormack J.	Lab	873	42.2
Turnout		41.5	15.6

Hyndburn - 2006

Clayton-Le-Moors (3527)			
		vote	share
Collingridge N.	Ind	553	40.0
O'Kane T.*	Lab	459	33.2
Storey P.	Con	369	26.7
Turnout		39.5	6.8

Huncoat (3345)			
		vote	share
Gott P.	Lab	593	54.1
Pratt K. Ms.	Con	503	45.9
Turnout		33.3	8.2

Immanuel (3423)			
		vote	share
McCormack E. Ms.	Lab	640	51.2
Hayes S. Ms.*	Con	611	48.8
Turnout		37.0	2.3

Milnshaw (3462)			
		vote	share
Pritchard C. Ms.	Lab	719	56.8
Horne S.	Con	546	43.2
Turnout		37.2	13.7

Netherton (3326)			
		vote	share
Rahman M.*	Lab	780	57.1
Barton D.	Con	585	42.9
Turnout		41.5	14.3

Overton (5011)			
		vote	share
Atkinson R.	Con	956	53.8
Kearney R.	Lab	822	46.2
Turnout		36.0	7.5

Peel (3166)			
		vote	share
Dawson B.*	Lab	514	67.4
Wolstenholme D.	Con	249	32.6
Turnout		24.5	34.7

Rishton (5063)			
		vote	share
Liddle J. Ms.	Con	1,022	51.2
Hamilton C. Ms.*	Lab	975	48.8
Turnout		39.7	2.4

Spring Hill (3538)			
		vote	share
Barton P. Ms.*	Lab	838	71.3
Arif I.	Con	338	28.7
Turnout		33.9	42.5

St. Andrews (3297)			
		vote	share
Britcliffe P.*	Con	704	49.1
Knight G. Ms.	Lab	542	37.8
Greene W.	LD	188	13.1
Turnout		43.7	11.3

St. Oswalds (5118)			
		vote	share
Hayes D.*	Con	997	59.3
Pinder W.	Lab	684	40.7
Turnout		33.3	18.6

Hyndburn - 2007

Altham (3982)			
		vote	share
Parkinson M.*	Lab	837	62.0
Taylor S.	Con	514	38.0
Turnout		34.2	23.9

Barnfield (3371)			
		vote	share
Barton P.*	Con	768	55.9
Hyland R.	Lab	422	30.7
Gormley K. Ms.	Green	183	13.3
Turnout		40.8	25.2

Baxenden (3261)			
		vote	share
Pratt K. Ms.	Con	891	72.6
Preston V. Ms.	Lab	336	27.4
Turnout		38.0	45.2

Central (3438)			
		vote	share
Ayub M.	Lab	945	57.4
Siddique M.*	Con	700	42.6
Turnout		48.5	14.9

Church (3303)			
		vote	share
Broadley J.*	Lab	740	61.9
Safdar M.	Con	456	38.1
Turnout		36.4	23.7

Clayton-Le-Moors (3550)			
		vote	share
Storey J. Ms.*	Con	666	53.3
Landers P. Ms.	Lab	583	46.7
Turnout		35.6	6.6

Huncoat (3456)			
		vote	share
Parkins D.	Ind	838	53.8
Shiel B.*	Lab	444	28.5
Wells A. Ms.	Con	276	17.7
Turnout		45.1	25.3

Immanuel (3528)			
		vote	share
Lockwood J. Ms.*	Con	724	52.2
McCormack J.	Lab	662	47.8
Turnout		39.5	4.5

Milnshaw (3555)			
		vote	share
Pritchard M.*	Lab	900	65.2
Baron D.	Con	480	34.8
Turnout		39.2	30.4

Overton (4973)			
		vote	share
Mason D.*	Con	978	57.6
Kearney R.	Lab	719	42.4
Turnout		34.5	15.3

Rishton (5011)			
		vote	share
Home S.	Con	1,078	52.1
Jackson W. Ms.*	Lab	990	47.9
Turnout		41.5	4.3

St. Oswalds (5131)			
		vote	share
Roberts B.*	Con	1,081	62.8
Pinder B.	Lab	639	37.2
Turnout		33.8	25.7

Hyndburn - 2008

Altham (3938)			
		vote	share
Haworth S. Ms.	Con	653	52.4
Landers P. Ms.	Lab	594	47.6
Turnout		32.1	4.7

Barnfield (3159)			
		vote	share
Dobson T.*	Con	819	64.9
McCormack C.	Lab	261	20.7
Gormley K. Ms.	Green	181	14.4
Turnout		40.0	44.3

Baxenden (3251)			
		vote	share
Griffiths J.*	Con	866	71.0
Preston V. Ms.	Lab	227	18.6
Daly D.	Green	126	10.3
Turnout		37.6	52.4

Central (3623)			
		vote	share
Dad A.*	Con	857	41.9
Ali T.	Lab	637	31.2
Khan I.	LD	550	26.9
Turnout		56.7	10.8

Church (3180)			
		vote	share
Smith J. Ms.	Lab	592	57.3
Taylor S.	Con	442	42.7
Turnout		32.6	14.5

Netherton (3258)			
		vote	share
Wilson L. Ms.*	Con	486	37.0
Kearney R.	Lab	429	32.7
Robinson I.	Ind	397	30.3
Turnout		40.5	4.3

Overton (4931)			
		vote	share
Clarke P.*	Con	1,022	55.5
Wells C.	Lab	821	44.5
Turnout		37.7	10.9

Peel (3106)			
		vote	share
Jones G.*	Lab	584	71.7
Fisher C.	Con	230	28.3
Turnout		26.4	43.5

Rishton (4846)			
		vote	share
Grayson H.*	Lab	1,403	62.8
Baron D.	Con	831	37.2
Turnout		46.2	25.6

Spring Hill (3510)			
		vote	share
Dad M.*	Lab	689	57.9
Safdar M.	Con	502	42.1
Turnout		34.4	15.7

St. Andrews (3213)			
		vote	share
Walmsley B.*	Con	636	59.4
McCormack J.	Lab	294	27.5
Greene B.	LD	141	13.2
Turnout		33.4	31.9

St. Oswalds (5125)			
		vote	share
Haworth M. Ms.*	Con	1,134	66.2
Pinder B.	Lab	580	33.8
Turnout		33.7	32.3

Hyndburn - 2010

Clayton-Le-Moors (3546)			
		vote	share
O'Kane T.	Lab	800	33.8
Anderson J. Ms.	Con	722	30.5
Collingridge N.*	Ind	655	27.6
Eccles A.	BNP	192	8.1
Turnout		67.2	3.3

Huncoat (3448)			
		vote	share
Whittaker N.	Con	797	35.5
Isherwood M.	Lab	779	34.7
Gott P.	Ind	669	29.8
Turnout		65.5	0.8

Immanuel (3472)			
		vote	share
McCormack C. Ms.*	Lab	1,163	50.5
Taylor S.	Con	1,142	49.5
Turnout		67.5	0.9

Milnshaw (3391)			
		vote	share
Pritchard C. Ms.*	Lab	1,230	57.4
Jepson R.	Con	913	42.6
Turnout		64.8	14.8

Netherton (3096)			
		vote	share
Wells C.	Lab	1,137	56.2
Baron D.	Con	540	26.7
Aspin S.	Ind	347	17.1
Turnout		65.9	29.5

Overton (4887)			
		vote	share
Robinson I.	Ind	1,614	51.8
Atkinson R.*	Con	1,503	48.2
Turnout		67.0	3.6

Peel (2984)			
		vote	share
Dawson B.*	Lab	1,168	71.3
Cassidy D.	Con	470	28.7
Turnout		56.0	42.6

Rishton (4863)			
		vote	share
Moss K.	Lab	1,535	46.5
Sourbutts R.	Con	1,384	42.0
Fisher C.	Ind	380	11.5
Turnout		68.3	4.6

Spring Hill (3478)			
		vote	share
Barton P. Ms.*	Lab	1,291	63.9
Safdar M.	Con	447	22.1
Hussain A.	LD	281	13.9
Turnout		59.1	41.8

St. Andrews (3272)			
		vote	share
Britcliffe P.*	Con	1,060	51.8
McCormack J.	Lab	744	36.3
Hindley T.	Ind	243	11.9
Turnout		63.4	15.4

St. Oswalds (5078)			
		vote	share
Hayes D.*	Con	1,584	47.2
Eaves S.	Lab	1,200	35.8
Smith B.	Ind	572	17.0
Turnout		66.6	11.4

Hyndburn - 2011

Altham (4047)			
		vote	share
Parkinson M.*	Lab	999	65.8
Todd P.	Con	520	34.2
Turnout		37.8	31.5

Barnfield (3376)			
		vote	share
Harrison J. Ms.	Lab	756	51.0
Barton P.*	Con	650	43.8
Hindley J.	Ind	77	5.2
Turnout		44.5	7.1

Baxenden (3277)			
		vote	share
Pratt K. Ms.*	Con	845	57.4
Hartley D.	Lab	626	42.6
Turnout		45.4	14.9
Central (3755)			
		vote	share
Ayub M.*	Lab	1,602	71.7
Hussain R.	Con	544	24.4
Anwar M.	UKIP	88	3.9
Turnout		59.9	47.4
Church (3258)			
		vote	share
Broadley J.*	Lab	845	66.1
Hussain M.	Con	433	33.9
Turnout		39.7	32.2
Clayton-Le-Moors (3696)			
		vote	share
Collingridge N.	Ind Hynd	579	36.3
Fisher C.	Lab	575	36.0
Storey J. Ms.*	Con	442	27.7
Turnout		43.6	0.3
Huncoat (3491)			
		vote	share
Parkins D.*	Ind Hynd	980	63.6
Hurn J. Ms.	Con	345	22.4
Cudworth S.	Lab	215	14.0
Turnout		44.4	41.2
Immanuel (3553)			
		vote	share
Addison J. Ms.	Con	878	54.6
McCormack J.	Lab	731	45.4
Turnout		45.8	9.1
Milnshaw (3517)			
		vote	share
Cox P.	Lab	710	45.4
Pritchard M.*	Ind	460	29.4
Jepson R.	Con	372	23.8
Rayner C.	Ind	23	1.5
Turnout		44.5	16.0
Overton (5012)			
		vote	share
Molineux G.	Lab	988	44.3
Atkinson R.	Con	740	33.2
Mason D.*	Ind Hynd	500	22.4
Turnout		44.7	11.1
Rishton (5147)			
		vote	share
Cleary C. Ms.	Lab	1,180	52.3
Horne S.	Con	1,077	47.7
Turnout		44.2	4.6
St. Oswalds (5143)			
		vote	share
Roberts B.*	Con	1,086	53.4
Eaves S.	Lab	946	46.6
Turnout		40.1	6.9
Hyndburn - 2012			
Altham (4065)			
		vote	share
Fisher C.	Lab	733	62.1
Raynor M. Ms.	Con	251	21.3
Hodgkiss J.	Ind Hynd	196	16.6
Turnout		29.2	40.8

Barnfield (3404)			
		vote	share
Dobson T.*	Con	770	54.9
Plummer J. Ms.	Lab	609	43.4
Kelly R.	LD	24	1.7
Turnout		41.5	11.5
Baxenden (3229)			
		vote	share
Hurn T.	Con	726	64.4
Hartley D.	Lab	401	35.6
Turnout		35.3	28.8
Central (3803)			
		vote	share
Khan A.	Lab	1,163	57.8
Dad A.*	Con	848	42.2
Turnout		53.4	15.7
Church (3401)			
		vote	share
Smith J. Ms.*	Lab	710	58.6
Khan B.	Con	325	26.8
Pritchard M.	Ind	141	11.6
Talbot S.	LD	36	3.0
Turnout		35.7	31.8
Netherton (3333)			
		vote	share
Aziz N.	Lab	834	65.3
Wilson L. Ms.*	Con	444	34.7
Turnout		39.0	30.5
Overton (5005)			
		vote	share
Molineux K. Ms.	Lab	868	45.8
Clarke P.*	Con	387	20.4
Duckworth J.	Ind	317	16.7
Davidson G.	UKIP	224	11.8
Govier J.	Ind	99	5.2
Turnout		37.9	25.4
Peel (3264)			
		vote	share
Dwyer W. Ms.	Lab	570	67.7
Brown P.	Ind Hynd	272	32.3
Turnout		25.9	35.4
Rishton (5142)			
		vote	share
Grayson H.*	Lab	1,374	71.3
Melia W.	Con	553	28.7
Turnout		37.8	42.6
Spring Hill (3580)			
		vote	share
Dad M.*	Lab	940	60.2
Younis M.	Con	400	25.6
Smith K.	Ind Hynd	171	11.0
Furness K. Ms.	LD	50	3.2
Turnout		43.8	34.6
St. Andrews (3434)			
		vote	share
Pinder B.	Lab	543	52.6
Walmsley B.*	Con	489	47.4
Turnout		30.3	5.2
St. Oswalds (5102)			
		vote	share
Haworth M. Ms.*	Con	692	40.6
Eaves S.	Lab	606	35.6
Thompson P.	UKIP	406	23.8
Turnout		33.4	5.0

