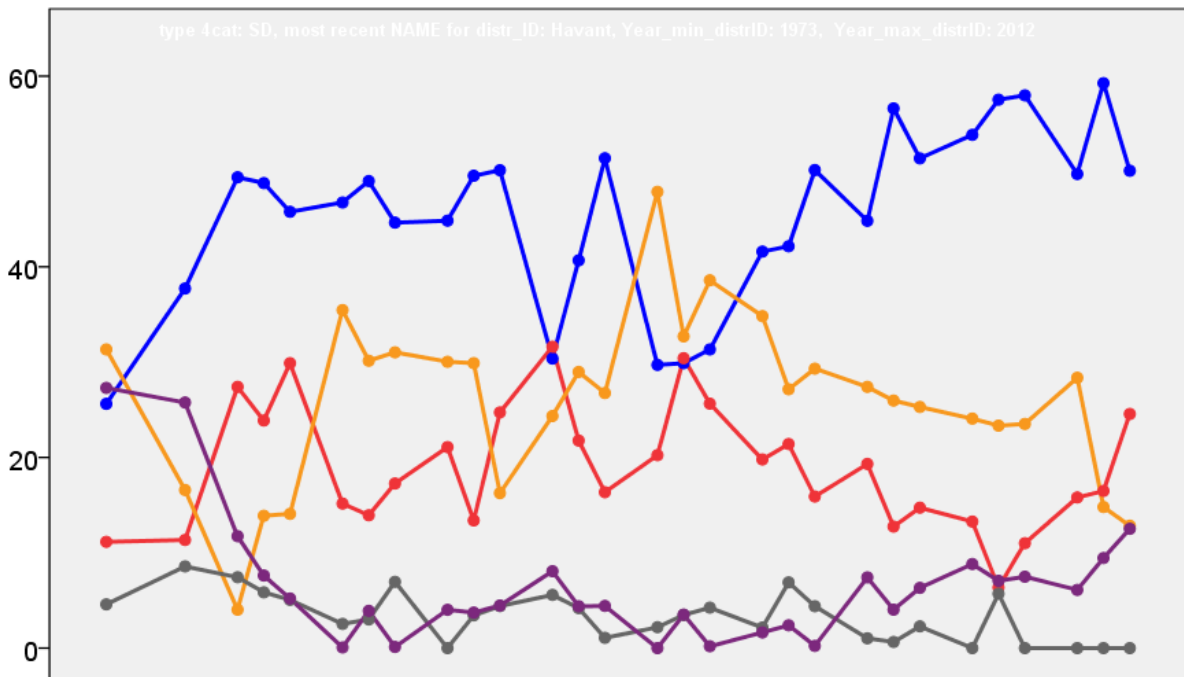


# Havant Borough Council Election Results 1973-2012



Colin Rallings and Michael Thrasher  
The Elections Centre  
Plymouth University

The information contained in this report has been obtained from a number of sources. Election results from the immediate post-reorganisation period were painstakingly collected by Alan Willis largely, although not exclusively, from local newspaper reports. From the mid-1980s onwards the results have been obtained from each local authority by the Elections Centre. The data are stored in a database designed by Lawrence Ware and maintained by Brian Cheal and others at Plymouth University. Despite our best efforts some information remains elusive whilst we accept that some errors are likely to remain. Notice of any mistakes should be sent to [elections@plymouth.ac.uk](mailto:elections@plymouth.ac.uk). The results sequence can be kept up to date by purchasing copies of the annual Local Elections Handbook, details of which can be obtained by contacting the email address above.

Front cover: the graph shows the distribution of percentage vote shares over the period covered by the results. The lines reflect the colours traditionally used by the three main parties. The grey line is the share obtained by Independent candidates while the purple line groups together the vote shares for all other parties.

Rear cover: the top graph shows the percentage share of council seats for the main parties as well as those won by Independents and other parties. The lines take account of any by-election changes (but not those resulting from elected councillors switching party allegiance) as well as the transfers of seats during the main round of local election.

The lower graph shows for each main round of local elections the overall percentage turnout (solid line), the percentage of women candidates standing at (dotted line) and the percentage of women among those elected (hashed line).

## Havant - 1973

### Barncroft (5940)<sup>3</sup>

		vote	share
Hughes D. Ms.	Lib	589	56.6
Childs P. Ms.	Lib	571	-
Cooper H.	Lib	571	-
Taylor W.	Lab	452	43.4
Pope W.	Lab	440	-
Handscomb C.	Lab	418	-
<b>Turnout</b>		17.5	13.2

### Battins (5131)<sup>3</sup>

		vote	share
Bell B. Ms.	Lab	968	70.1
Berry K.	Lab	827	-
Robinson E. Ms.	Lab	815	-
Hutchings L.	Lib	413	29.9
Hider D.	Lib	392	-
<b>Turnout</b>		26.9	40.2

### Bedhampton (4740)<sup>3</sup>

		vote	share
Fairhead R.	Lib	959	40.5
Fyfe F.	Lib	771	-
Gregory H.	Con	748	31.6
Sleigh M. Ms.	Lib	720	-
Todd M.	Con	665	-
Yeoman W.	Res	662	27.9
Worton N.	Con	573	-
<b>Turnout</b>		50.0	8.9

### Bondfields (3340)<sup>3</sup>

		vote	share
Hyson R. Ms.	Lib	397	54.1
Theobald E.	Lib	390	-
Russell R.	Lib	378	-
Parker J.	Lab	337	45.9
Smith B.	Lab	314	-
Gleadall A.	Lab	302	-
<b>Turnout</b>		22.0	8.2

### Cowplain (6535)<sup>3</sup>

		vote	share
Hungate I. Ms.	Ind Res	960	33.8
Bailey J.	Res	811	28.5
Dunne J.	Res	803	-
Chapple-Hyam N.	Res	743	-
Carpenter M.	Con	635	22.3
Crichton D.	Lib	437	15.4
Cook S.	Lib	330	-
<b>Turnout</b>		43.5	5.2

### Hart Plain (5168)<sup>3</sup>

		vote	share
Lee C.	Res	888	65.9
Frankel J.	Res	853	-
Carruthers J.	Res	812	-
Jackson A.	Lib	460	34.1
Day E. Ms.	Lib	412	-
Day R.	Lib	412	-
<b>Turnout</b>		26.1	31.8

### Havant (5642)<sup>3</sup>

		vote	share
Vine F.	Con	1,320	48.5
Spero M.	Con	1,118	-
Wingate W.	Lib	1,105	40.6
Concannon G. Ms.	Con	1,079	-
Hutchinson D.	Lib	946	-
Harvey N. Ms.	Lib	880	-
Leask D.	Res	296	10.9
<b>Turnout</b>		48.2	7.9

### Hayling (9470)<sup>6</sup>

		vote	share
Derben J.	Res	1,982	44.9
Whistler A.	Res	1,903	-
Morriss A.	Res	1,749	-
Garside A. Ms.	Res	1,545	-
Pook K. Ms.	Con	1,422	32.2
Quinton B.	Res	1,412	-
Game C.	Res	1,411	-
Jacobs P.	Con	1,304	-
Dossetter E.	Con	1,251	-
Leigh E.	Con	1,054	-
Marshall C.	Lib	1,006	22.8
Toole M.	Lib	910	-
<b>Turnout</b>		46.6	12.7

### Leigh Park (3197)<sup>3</sup>

		vote	share
Powell L.	Lab	425	65.3
Jones E.	Lab	416	-
Park R.	Lab	411	-
Matthews R.	Lib	226	34.7
Jannaway J.	Lib	201	-
Boyles P.	Lib	189	-
<b>Turnout</b>		20.4	30.6

### Purbrook (6082)<sup>3</sup>

		vote	share
Williams P.	Res	1,277	38.8
Williams T.	Con	1,053	32.0
Blackett G. Ms.	Con	1,050	-
Todd D. Ms.	Lib	962	29.2
<b>Turnout</b>		54.1	6.8

### Stockheath (5918)<sup>3</sup>

		vote	share
Hughes C.	Lib	487	41.1
Western P.	Lab	452	38.1
Proctor G.	Lab	444	-
Fieldsend M. Ms.	Lib	433	-
Cutting J.	Lib	412	-
Handscomb I. Ms.	Lab	408	-
Leaning R.	Con	194	16.4
Muchan B. Ms.	Comm	52	4.4
<b>Turnout</b>		20.0	3.0

### Warblington (6569)<sup>3</sup>

		vote	share
Keen A. Ms.	Res	1,345	34.2
Weekes M. Ms.	Con	1,225	31.1
Chadwick E.	Con	1,083	-
Meade E.	Con	1,010	-
Williams P.	Lib	950	24.1
Collins P.	Lib	940	-
Hewish R.	Lib	769	-
Cooper A.	Lab	415	10.5
<b>Turnout</b>		59.9	3.0

### Waterloo (6732)<sup>3</sup>

		vote	share
Wakeford R.	Ind	1,254	56.1
Saunders F.	Ind	991	-
Cooper T.	Lib	575	25.7
Powell J.	Con	408	18.2
<b>Turnout</b>		33.2	30.4

## Havant - 1976

### Barncroft (4430)<sup>3</sup>

		vote	share
Kelly J.	Lab	522	52.4
Smith B.	Lab	490	-
Hyson L.	Lib	474	47.6
Handscomb I. Ms.	Lab	458	-
Turner E.	Lib	433	-
Collins P.	Lib	425	-
<b>Turnout</b>		21.1	4.8

### Battins (6098)<sup>3</sup>

		vote	share
Bell B. Ms.	Lab	1,325	54.3
Robinson E. Ms.	Lab	852	-
Gleadall A.	Lab	824	-
Butler K.	Con	723	29.6
Croucher C.	Lib	393	16.1
Russell R.	Lib	347	-
Hamer H. Ms.	Lib	320	-
<b>Turnout</b>		26.2	24.7

### Bedhampton (6350)<sup>3</sup>

		vote	share
Gregory H.	Con	1,751	60.6
Todd M.	Con	1,515	-
Yeoman W.	Con	1,445	-
Sleigh M. Ms.	Lib	628	21.7
Fyfe F.	Lib	601	-
Heath G.	Lab	511	17.7
Innes D.	Lib	489	-
<b>Turnout</b>		36.4	38.9

### Bondfields (5460)<sup>3</sup>

		vote	share
Berry K.	Lab	1,092	55.6
Powell L.	Lab	906	-
Hyson R.	Lib	872	44.4
Taylor W.	Lab	866	-
Hardcastle M.	Lib	840	-
Theobald E.	Lib	817	-
<b>Turnout</b>		32.9	11.2

### Cowplain (5954)<sup>3</sup>

		vote	share
Bailey J.	Res	1,373	33.6
Hulme J.	Con	1,295	31.7
Hill V.	Res	1,265	-
Hungate I. Ms.	Ind	1,028	25.1
Miron R. Ms.	Lib	395	9.7
<b>Turnout</b>		30.0	1.9

### Emsworth (6384)<sup>3</sup>

		vote	share
Keen A.	Res	1,883	40.3
Chadwick E.	Con	1,747	37.4
Thomas B.	Res	1,316	-
Lewis C.	Con	1,168	-
Morgan W.	Ind	1,042	22.3
<b>Turnout</b>		37.4	2.9

### Hart Plain (5918)<sup>3</sup>

		vote	share
Carruthers J.	Res	1,250	53.9
Frankel J.	Res	1,030	-
Sellar J.	Res	963	-
Dryer L.	Con	763	32.9
Cowper D.	Con	716	-
Porch D.	Lib	305	13.2
<b>Turnout</b>		28.3	21.0

### Hayling East (4968)<sup>3</sup>

		vote	share
Pook K. Ms.	Con	1,039	53.3
Selby R.	Con	1,012	-
Tickner P.	Con	965	-
Morriss A.	Res	911	46.7
Quinton B.	Res	842	-
Clifford S.	Res	720	-
<b>Turnout</b>		36.8	6.6

### Hayling West (5035)<sup>3</sup>

		vote	share
Broughton J. Ms.	Res	1,315	55.3
Whistler A.	Res	1,127	-
Edwards A. Ms.	Con	1,062	44.7
Garside A. Ms.	Res	1,046	-
Harcourt B.	Con	943	-
Hewitt S.	Con	853	-
<b>Turnout</b>		42.0	10.6

<b>Purbrook (5481)<sup>3</sup></b>			
<b>Blackett G. Ms.</b>	Con	1,659	72.0
<b>Williams T.</b>	Con	1,655	-
<b>Hall S.</b>	Con	1,529	-
Coulson A. Ms.	Lib	646	28.0
Ramsay A.	Lib	595	-
<b>Turnout</b>		37.0	43.9

<b>St. Faiths (6357)<sup>3</sup></b>			
<b>Vine F.</b>	Con	1,773	57.5
<b>Spero M.</b>	Con	1,628	-
<b>Massey S.</b>	Con	1,577	-
Hickson K.	Lib	1,312	42.5
Wingate W.	Lib	1,273	-
Morphet P. Ms.	Lib	998	-
<b>Turnout</b>		44.9	14.9

<b>Stakes (5261)<sup>3</sup></b>			
<b>Ludbrook C.</b>	Con	989	34.6
<b>Rose H.</b>	Con	855	-
<b>Orrick C.</b>	Con	782	-
Miller D.	Res	776	27.1
O'Brien M. Ms.	Ind	754	26.3
Lille F.	Lib	343	12.0
Hutchings L.	Lib	337	-
<b>Turnout</b>		30.6	7.4

<b>Warren Park (5262)<sup>3</sup></b>			
<b>Pope W.</b>	Lab	643	46.5
<b>Hughes C.</b>	Lib	616	44.5
<b>Slight A.</b>	Lab	616	-
Western P.	Lab	583	-
Hayter D.	Lib	558	-
Williams G.	Lib	496	-
Hodgkins J.	Comm	125	9.0
<b>Turnout</b>		23.0	2.0

<b>Waterloo (5173)<sup>3</sup></b>			
<b>Butler M. Ms.</b>	Res	1,658	60.7
<b>Wilkins D.</b>	Res	1,517	-
<b>Gordon-Rae N.</b>	Res	1,290	-
Brown H.	Con	807	29.5
Varty L.	Ind	267	9.8
<b>Turnout</b>		35.7	31.1

## Havant - 1978

<b>Barncroft (4471)</b>			
<b>Western P.</b>	Lab	565	68.3
Fyfe F.	Lib	262	31.7
<b>Turnout</b>		18.5	36.6

<b>Battins (6035)<sup>2</sup></b>			
<b>Albin P. Ms.</b>	Lab	901	61.0
<b>Gleadall A.</b>	Lab	832	-
Cole D.	Con	577	39.0
<b>Turnout</b>		24.5	21.9

<b>Bedhampton (6353)<sup>2</sup></b>			
<b>McCarthy M.</b>	Con	1,649	75.2
<b>Yeoman W.</b>	Con	1,591	-
Heath G.	Lab	545	24.8
<b>Turnout</b>		34.5	50.3

<b>Bondfields (5494)</b>			
<b>Wheeler W.</b>	Lab	1,215	56.5
Kerry P.	Con	648	30.2
Theobald E.	Lib	286	13.3
<b>Turnout</b>		39.1	26.4

<b>Cowplain (6115)</b>			
<b>Wigham J.</b>	Con	1,473	55.3
Carruthers J. Ms.	Res	1,190	44.7
<b>Turnout</b>		43.5	10.6

<b>Emsworth (6565)</b>			
<b>Daines T. Ms.</b>	Con	1,457	48.6
Thomas B.	Res	1,019	34.0
White H.	Lab	524	17.5
<b>Turnout</b>		45.7	14.6

<b>Hart Plain (6367)</b>			
<b>Dryer L.</b>	Con	1,504	77.6
Cotter F.	Lab	434	22.4
<b>Turnout</b>		30.4	55.2

<b>Hayling East (5327)</b>			
<b>Harcourt B.</b>	Con	1,145	58.3
Svensson E.	Ind	820	41.7
<b>Turnout</b>		36.9	16.5

<b>Hayling West (5259)</b>			
<b>Edwards A. Ms.</b>	Con	0	0.0
<b>Turnout</b>		0.0	0.0

<b>Purbrook (5912)</b>			
<b>Hall S.</b>	Con	0	0.0
<b>Turnout</b>		0.0	0.0

<b>St. Faiths (6796)</b>			
<b>Massey S.</b>	Con	0	0.0
<b>Turnout</b>		0.0	0.0

<b>Stakes (5492)</b>			
<b>Orrick C.</b>	Con	842	46.4
O'Brien M. Ms.	Ind	579	31.9
Beauvoisin M. Ms.	Lab	393	21.7
<b>Turnout</b>		33.0	14.5

<b>Warren Park (5256)</b>			
<b>Slight A.</b>	Lab	581	73.5
Hutchings L.	Lib	210	26.5
<b>Turnout</b>		15.0	46.9

<b>Waterloo (5376)</b>			
<b>Boggis B.</b>	Con	0	0.0
<b>Turnout</b>		0.0	0.0

## Havant - 1979

<b>Barncroft (4492)</b>			
<b>Smith B.</b>	Lab	1,629	54.2
Hutchings L.	Lib	1,234	41.1
Hodgkins J.	Comm	141	4.7
<b>Turnout</b>		66.9	13.1

<b>Battins (6022)</b>			
<b>Robinson E. Ms.</b>	Lab	2,268	58.2
Cole D.	Con	1,632	41.8
<b>Turnout</b>		64.8	16.3

<b>Bedhampton (6375)</b>			
<b>Todd M.</b>	Con	0	0.0
<b>Turnout</b>		0.0	0.0

<b>Bondfields (5544)</b>			
<b>Powell L.</b>	Lab	2,319	59.6
Croucher C. Ms.	Lib	1,572	40.4
<b>Turnout</b>		70.2	19.2

<b>Cowplain (6225)</b>			
<b>Carruthers J. Ms.</b>	Res	2,781	56.8
Hulme J.	Con	2,117	43.2
<b>Turnout</b>		78.7	13.6

<b>Emsworth (6749)<sup>2</sup></b>			
<b>Chadwick E.</b>	Con	3,476	64.1
<b>Barker S.</b>	Con	3,188	-
Fairhead R.	Lib	1,949	35.9
<b>Turnout</b>		80.4	28.1

<b>Hart Plain (6747)</b>			
<b>Beresford R.</b>	Con	3,365	68.2
Cotter F.	Lab	1,572	31.8
<b>Turnout</b>		73.2	36.3

<b>Hayling East (5436)</b>			
<b>Osborne P.</b>	Con	2,565	66.5
Fyfe F.	Lib	1,294	33.5
<b>Turnout</b>		71.0	32.9

<b>Hayling West (5380)</b>			
<b>Atterbury D.</b>	Con	2,690	66.9
Wareham F.	Ind Con	1,333	33.1
<b>Turnout</b>		74.8	33.7

<b>Purbrook (6125)</b>			
<b>Williams T.</b>	Con	3,530	73.0
Palmer K.	Lab	1,306	27.0
<b>Turnout</b>		79.0	46.0

<b>St. Faiths (6816)</b>			
<b>Spero M.</b>	Con	3,907	73.1
Phillips J.	Lab	1,438	26.9
<b>Turnout</b>		78.4	46.2

<b>Stakes (5594)</b>			
<b>Rose H.</b>	Con	1,679	41.2
O'Brien M. Ms.	Ind	1,271	31.2
Beauvoisin M. Ms.	Lab	712	17.5
Porch D.	Lib	409	10.0
<b>Turnout</b>		72.8	10.0

<b>Warren Park (5302)</b>			
<b>Heath G.</b>	Lab	1,471	42.6
Hayter D.	Lib	1,299	37.6
Du-Cro B.	Ind	682	19.8
<b>Turnout</b>		65.1	5.0

<b>Waterloo (5485)</b>			
<b>Moss B. Ms.</b>	Con	2,301	54.2
Willis D.	Ind	1,319	31.1
Matthews I. Ms.	Lab	626	14.7
<b>Turnout</b>		77.4	23.1

## Havant - 1980

### Barncroft (4621)

		vote	share
Hyson L.	Lab	832	66.9
Grant G. Ms.	Lib	371	29.8
Hodgkins J.	Comm	40	3.2

Turnout 26.9 37.1

### Battins (6135)

		vote	share
Gleadall A.	Lab	872	71.5
Hutchings L.	Lib	348	28.5

Turnout 19.9 43.0

### Bedhampton (6397)

		vote	share
Yeoman W.	Con	1,379	70.0
Hyson R. Ms.	Lab	591	30.0

Turnout 30.8 40.0

### Bondfields (5711)

		vote	share
Berry K.	Lab	1,224	64.6
Robins P.	Lib	671	35.4

Turnout 33.2 29.2

### Cowplain (6419)

		vote	share
Carruthers J. Ms.	Res	1,114	53.8
Bailey J.	Con	804	38.8
Gordon J. Ms.	Lab	152	7.3

Turnout 32.2 15.0

### Emsworth (7127)

		vote	share
Maycock S.	Con	1,683	78.7
Poole R.	Lab	456	21.3

Turnout 30.0 57.4

### Hart Plain (6778)

		vote	share
Laws D.	Con	1,012	66.9
Pratt P.	Lab	501	33.1

Turnout 22.3 33.8

### Hayling East (5497)

		vote	share
Pook K. Ms.	Con	1,049	59.1
Lark B.	Lib	726	40.9

Turnout 32.3 18.2

### Hayling West (5627)

		vote	share
Broughton J. Ms.	Ind	1,236	60.6
Kerry P.	Con	804	39.4

Turnout 36.3 21.2

### Purbrook (6471)

		vote	share
Blackett G. Ms.	Con	1,261	72.1
Palmer K.	Lab	487	27.9

Turnout 27.0 44.3

### St. Faiths (6907)

		vote	share
Vine F.	Con	1,441	49.3
Corbett R.	Lib	1,042	35.6
West D.	Lab	440	15.1

Turnout 42.3 13.7

### Stakes (5719)<sup>2</sup>

		vote	share
Farmer W.	Con	701	61.0
Ludbrook C.	Con	697	-
Cotter F.	Lab	449	39.0
Beauvoisin M. Ms.	Lab	445	-

Turnout 20.1 21.9

### Warren Park (5453)

		vote	share
Phillips J.	Lab	998	71.3
Hayter D.	Lib	285	20.4
Du-Cro B.	Ind Lab	117	8.4

Turnout 25.7 50.9

### Waterloo (5627)

		vote	share
Moss K.	Con	1,051	77.7
Matthews I. Ms.	Lab	302	22.3

Turnout 24.0 55.4

## Havant - 1982

### Barncroft (4729)

		vote	share
Crellin P. Ms.	Lib/SDP	622	57.5
Stevenson D. Ms.	Lab	459	42.5

Turnout 23.4 15.1

### Battins (6163)

		vote	share
Taylor W.	Lab	573	50.0
Western P.	Lib/SDP	572	50.0

Turnout 18.8 0.1

### Bedhampton (6356)

		vote	share
Titchener A.	Con	1,231	51.5
Cobbett R.	Lib/SDP	930	38.9
Bargent J.	Lab	227	9.5

Turnout 38.1 12.6

### Bondfields (5875)

		vote	share
Wheeler W.	Lab	996	52.1
Hawkins D.	Lib/SDP	568	29.7
Coldbreath C.	Con	348	18.2

Turnout 33.3 22.4

### Cowplain (6480)

		vote	share
Beer W.	Con	1,310	59.7
Johnson P.	Lib/SDP	688	31.3
Sheppard C. Ms.	Lab	197	9.0

Turnout 34.3 28.3

### Emsworth (7377)

		vote	share
Daines T. Ms.	Con	1,824	64.6
Rankin E.	Lib/SDP	767	27.2
Kewell K.	Lab	234	8.3

Turnout 38.9 37.4

### Hart Plain (6921)

		vote	share
Dryer L.	Con	1,297	57.6
Bellinger R.	Lib/SDP	728	32.3
Eaves M.	Lab	227	10.1

Turnout 33.2 25.3

### Hayling East (5518)

		vote	share
Harcourt B.	Con	1,228	61.5
Venables J. Ms.	Lib/SDP	611	30.6
Bodian D.	Lab	157	7.9

Turnout 36.0 30.9

### Hayling West (5581)

		vote	share
Edwards A. Ms.	Con	1,341	58.1
Van Hagen S.	Lib/SDP	898	38.9
Pyke D. Ms.	Ind	68	2.9

Turnout 42.2 19.2

### Purbrook (6648)

		vote	share
Ellis E. Ms.	Con	1,293	58.2
Lowe J.	Lib/SDP	646	29.1
Beauvoisin M.	Lab	283	12.7

Turnout 32.1 29.1

### St. Faiths (7050)

		vote	share
Massey S.	Con	1,657	52.8
Carter R.	Lib/SDP	1,459	46.5
Stephen J.	NF	22	0.7

Turnout 45.3 6.3

### Stakes (6235)

		vote	share
Ludbrook C.	Con	758	34.8
O'Brien M. Ms.	Ind	665	30.5
Hogan S.	Lib/SDP	404	18.5
Allenby A.	Lab	354	16.2

Turnout 35.6 4.3

### Warren Park (5536)

		vote	share
Hyson R.	Lab	535	50.0
Cosslett J.	Lib/SDP	534	50.0

Turnout 19.7 0.1

### Waterloo (5980)

		vote	share
Green D.	Con	1,198	56.2
Bigden R.	Lib/SDP	802	37.6
Beckham D.	Lab	132	6.2

Turnout 36.3 18.6

## Havant - 1983

### Barncroft (4739)

		vote	share
Brewin S.	Lib/SDP	629	42.3
Boyles P.	Lab	534	35.9
Laws L. Ms.	Con	325	21.8

Turnout 31.4 6.4

### Battins (6042)

		vote	share
Powell L.	Lab	1,031	64.6
Haytor D.	Lib/SDP	564	35.4

Turnout 26.4 29.3

### Bedhampton (6188)

		vote	share
Coldbreath C.	Con	1,546	57.8
Lowe J.	Lib/SDP	837	31.3
Bargent J.	Lab	290	10.8

Turnout 43.2 26.5

### Bondfields (6060)

		vote	share
Wyatt A.	Lab	1,244	50.9
Marchant J.	Con	634	26.0
Bellinger R.	Lib/SDP	564	23.1

Turnout 40.3 25.0

### Cowplain (6437)

		vote	share
Carruthers J. Ms.	Res	1,339	51.1
Wilsher D.	Con	1,281	48.9

Turnout 40.7 2.2

### Emsworth (7493)

		vote	share
Chadwick E.	Con	2,199	69.5
Clouting J.	Lib/SDP	963	30.5

Turnout 42.2 39.1

<b>Hart Plain (6847)</b>			
		vote	share
<b>Beresford R.</b>	Con	1,535	66.1
Mills I.	Lib/SDP	786	33.9
<b>Turnout</b>		33.9	32.3
<b>Hayling East (5570)</b>			
		vote	share
<b>Osborne P.</b>	Con	1,527	67.0
Tallack M.	Lib/SDP	751	33.0
<b>Turnout</b>		40.9	34.1
<b>Hayling West (5557)</b>			
		vote	share
<b>Whebbby P.</b>	Con	1,539	64.6
Van Hegan S.	Lib/SDP	845	35.4
<b>Turnout</b>		42.9	29.1
<b>Purbrook (6953)</b>			
		vote	share
<b>Williams T.</b>	Con	1,918	64.9
Compton E.	Lab	524	17.7
Bell G.	Lib/SDP	513	17.4
<b>Turnout</b>		42.5	47.2
<b>St. Faiths (6998)</b>			
		vote	share
<b>Carter R.</b>	Lib/SDP	2,029	53.8
Hellier W.	Con	1,743	46.2
<b>Turnout</b>		53.9	7.6
<b>Stakes (6417)</b>			
		vote	share
<b>O'Brien M. Ms.</b>	Ind	1,031	39.4
Rose H.	Con	957	36.6
Allenby A.	Lab	365	13.9
Barwood B.	Lib/SDP	265	10.1
<b>Turnout</b>		40.8	2.8
<b>Warren Park (5365)</b>			
		vote	share
<b>Peaston A.</b>	Lib/SDP	834	51.6
Heath G.	Lab	781	48.4
<b>Turnout</b>		30.1	3.3
<b>Waterloo (6225)</b>			
		vote	share
<b>Moss B. Ms.</b>	Con	1,560	67.9
Bigden R.	Lib/SDP	737	32.1
<b>Turnout</b>		36.9	35.8

## Havant - 1984

<b>Barncroft (4753)</b>			
		vote	share
<b>Hyson L.</b>	Lab	710	50.0
Collins P.	Lib/SDP	507	35.7
Hunt R.	Con	204	14.4
<b>Turnout</b>		30.7	14.3
<b>Battins (6111)</b>			
		vote	share
<b>Cousins R.</b>	Lab	657	58.2
Hutchings L.	Lib/SDP	472	41.8
<b>Turnout</b>		18.9	16.4
<b>Bedhampton (6257)</b>			
		vote	share
<b>Yeoman B.</b>	Con	1,048	46.0
Bellinger R.	Lib/SDP	940	41.2
Smith B.	Lab	256	11.2
Brightwell P.	Ind Dirty Blue	35	1.5
<b>Turnout</b>		36.5	4.7

<b>Bondfields (5836)</b>			
		vote	share
<b>Hart T.</b>	Lab	1,316	72.3
Clouting J.	Lib/SDP	505	27.7
<b>Turnout</b>		32.0	44.5
<b>Cowplain (6623)</b>			
		vote	share
<b>Hewitt S.</b>	Con	1,181	60.2
Mills I.	Lib/SDP	781	39.8
<b>Turnout</b>		30.1	20.4
<b>Emsworth (7757)</b>			
		vote	share
<b>Maycock D.</b>	Con	1,838	68.9
Crellin D.	Lib/SDP	550	20.6
Stevenson D.	Lab	279	10.5
<b>Turnout</b>		34.8	48.3
<b>Hart Plain (7044)</b>			
		vote	share
<b>Cook J.</b>	Con	1,240	61.9
Frost N.	Lib/SDP	490	24.5
Rowe S.	Lab	272	13.6
<b>Turnout</b>		30.1	37.5
<b>Hayling East (5971)</b>			
		vote	share
<b>Teal K.</b>	Con	1,235	60.7
Van Hagen S.	Lib/SDP	798	39.3
<b>Turnout</b>		34.7	21.5
<b>Hayling West (5872)<sup>2</sup></b>			
		vote	share
<b>Broughton J. Ms.</b>	Ind	1,375	43.7
<b>Garside A. Ms.</b>	Con	1,134	36.1
Pook K. Ms.	Con	917	-
Bousfield T.	Lib/SDP	636	20.2
<b>Turnout</b>		41.0	7.7
<b>Purbrook (7120)</b>			
		vote	share
<b>Blackett G. Ms.</b>	Con	1,627	69.5
Gardner B.	Lab	363	15.5
Marsh C. Ms.	Lib/SDP	350	15.0
<b>Turnout</b>		33.5	54.0
<b>St. Faiths (7178)</b>			
		vote	share
<b>Cosslett K.</b>	Lib/SDP	1,812	50.6
Vine F.	Con	1,549	43.3
Cutler R.	Lab	218	6.1
<b>Turnout</b>		50.6	7.3
<b>Stakes (6998)</b>			
		vote	share
<b>Farmer W.</b>	Con	824	40.9
Cunningham P.	Ind	696	34.5
Beauvoisin M. Ms.	Lab	310	15.4
Martin C.	Lib/SDP	185	9.2
<b>Turnout</b>		29.3	6.4
<b>Warren Park (5576)</b>			
		vote	share
<b>Phillips J.</b>	Lab	763	55.7
Hughes C.	Lib/SDP	608	44.3
<b>Turnout</b>		24.9	11.3
<b>Waterloo (6445)</b>			
		vote	share
<b>Moss K.</b>	Con	1,414	69.9
Brown H.	Lib/SDP	608	30.1
<b>Turnout</b>		31.9	39.9

## Havant - 1986

<b>Barncroft (4740)</b>			
		vote	share
<b>Morgan G.</b>	Lab	865	49.2
Crellin P. Ms.	Lib/SDP	628	35.7
Booth G.	Con	266	15.1
<b>Turnout</b>		37.9	13.5
<b>Battins (6048)</b>			
		vote	share
<b>Taylor W.</b>	Lab	844	52.3
Mincham C.	Con	369	22.8
Hayter D.	Lib/SDP	351	21.7
Courtney T.	Ind Rate	51	3.2
<b>Turnout</b>		27.2	29.4
<b>Bedhampton (6248)</b>			
		vote	share
<b>Bellinger R.</b>	Lib/SDP	1,281	44.7
Titchener A.	Con	1,233	43.1
Rowe S.	Lab	350	12.2
<b>Turnout</b>		46.5	1.7
<b>Bondfields (5774)</b>			
		vote	share
<b>Gardner B.</b>	Lab	1,252	59.5
McCormick P.	Con	436	20.7
Brown D.	Lib/SDP	416	19.8
<b>Turnout</b>		37.2	38.8
<b>Cowplain (6909)</b>			
		vote	share
<b>Ford M.</b>	Res	1,291	52.0
Beer P.	Con	1,003	40.4
Morris C.	Lab	188	7.6
<b>Turnout</b>		36.5	11.6
<b>Emsworth (7939)</b>			
		vote	share
<b>Daines T. Ms.</b>	Con	2,084	59.1
Benzie H.	Lib/SDP	1,170	33.2
Perry R.	Lab	275	7.8
<b>Turnout</b>		44.8	25.9
<b>Hart Plain (7114)</b>			
		vote	share
<b>Dryer T.</b>	Con	1,265	54.7
Budd D. Ms.	Lib/SDP	708	30.6
Dixon B.	Lab	340	14.7
<b>Turnout</b>		33.6	24.1
<b>Hayling East (6283)</b>			
		vote	share
<b>Harcourt B.</b>	Con	1,260	50.6
Van Hagen S.	Lib/SDP	1,029	41.4
Stevenson D. Ms.	Lab	199	8.0
<b>Turnout</b>		40.1	9.3
<b>Hayling West (6081)<sup>2</sup></b>			
		vote	share
<b>Mincham F. Ms.</b>	Con	1,282	56.8
<b>Whitehead J.</b>	Con	1,255	-
McQuade P.	Lib/SDP	800	35.4
Hutchings L.	Lib/SDP	649	-
Stevenson D.	Lab	177	7.8
<b>Turnout</b>		41.0	21.3
<b>Purbrook (7237)</b>			
		vote	share
<b>Blackett W.</b>	Con	1,630	68.1
Compton E.	Lab	764	31.9
<b>Turnout</b>		33.9	36.2
<b>St. Faiths (7129)</b>			
		vote	share
<b>Graney J. Ms.</b>	Lib/SDP	1,907	52.6
Vine F.	Con	1,493	41.2
Cutler R.	Lab	225	6.2
<b>Turnout</b>		51.6	11.4

**Stakes (7759)**

		vote	share
<b>Ludbrook C.</b>	Con	1,113	53.7
Marsh K. Ms.	Lib/SDP	582	28.1
Beauvoisin M. Ms.	Lab	378	18.2
	<b>Turnout</b>	27.2	25.6

**Warren Park (5354)**

		vote	share
<b>Wheeler B.</b>	Lab	918	63.2
Timmins B.	Lib/SDP	317	21.8
Pine R.	Con	217	14.9
	<b>Turnout</b>	27.7	41.4

**Waterloo (7122)**

		vote	share
<b>Tart G.</b>	Con	1,308	54.5
Bigden R.	Lib/SDP	833	34.7
Bridges B.	Lab	261	10.9
	<b>Turnout</b>	34.4	19.8

**Havant - 1987****Barncroft (4679)**

		vote	share
<b>Crellin P. Ms.</b>	All	692	40.2
Steel V. Ms.	Lab	633	36.8
Harris G.	Con	397	23.1
	<b>Turnout</b>	36.4	3.4

**Battins (6051)**

		vote	share
<b>Powell L.</b>	Lab	771	37.9
McCormick P.	Con	752	36.9
Budd F.	All	513	25.2
	<b>Turnout</b>	32.9	0.9

**Bedhampton (6287)**

		vote	share
<b>Titchener A.</b>	Con	1,628	50.1
Lowe J.	All	1,624	49.9
	<b>Turnout</b>	51.5	0.1

**Bondfields (5688)**

		vote	share
<b>Burgess M.</b>	Lab	1,043	48.3
Coleborn N.	Con	600	27.8
Baker J.	All	515	23.9
	<b>Turnout</b>	38.5	20.5

**Cowplain (7057)**

		vote	share
<b>Carruthers J. Ms.</b>	Res	1,397	49.2
Cross M. Ms.	Con	1,271	44.7
Morris C.	Lab	173	6.1
	<b>Turnout</b>	40.9	4.4

**Emsworth (7967)**

		vote	share
<b>Chadwick E.</b>	Con	2,268	58.5
Benzie H.	All	1,331	34.3
Perry R.	Lab	281	7.2
	<b>Turnout</b>	49.4	24.1

**Hart Plain (7168)**

		vote	share
<b>Beresford R.</b>	Con	1,548	56.4
Budd D. Ms.	All	871	31.8
Dixon R.	Lab	324	11.8
	<b>Turnout</b>	39.0	24.7

**Hayling East (6182)**

		vote	share
<b>Osborne P.</b>	Con	1,662	61.6
McQuade P.	All	856	31.7
Stevenson D. Ms.	Lab	179	6.6
	<b>Turnout</b>	44.5	29.9

**Hayling West (6299)**

		vote	share
<b>Whitehead J.</b>	Con	1,810	57.1
Van Hagen S.	All	1,242	39.2
Morgan M.	Lab	118	3.7
	<b>Turnout</b>	51.3	17.9

**Purbrook (7249)**

		vote	share
<b>Pottle P.</b>	Con	1,867	61.1
Brown H.	All	841	27.5
Hooke J.	Lab	347	11.4
	<b>Turnout</b>	42.7	33.6

**St. Faiths (7206)**

		vote	share
<b>Fulcher J. Ms.</b>	Con	2,077	53.9
Richardson M.	All	1,487	38.6
Cutler R.	Lab	290	7.5
	<b>Turnout</b>	54.3	15.3

**Stakes (8223)**

		vote	share
<b>O'Brien M. Ms.</b>	Ind	1,316	45.1
Branson J.	Con	1,300	44.6
Stewart L.	Lab	301	10.3
	<b>Turnout</b>	36.1	0.5

**Warren Park (5243)**

		vote	share
<b>Compton E.</b>	Lab	612	35.9
Hughes E.	All	594	34.8
Wyatt T.	Con	500	29.3
	<b>Turnout</b>	33.2	1.1

**Waterloo (7585)**

		vote	share
<b>Moss P.</b>	Con	1,873	54.6
Whitehead M.	All	1,232	35.9
Towers J.	Lab	213	6.2
Gregory P.	Ind Con	76	2.2
Harris D.	Ind	38	1.1
	<b>Turnout</b>	46.0	18.7

**Havant - 1988****Barncroft (4596)**

		vote	share
<b>Hyson L.*</b>	Lab	730	50.9
Van Hagen S.	SLD	405	28.2
Shepherd D.	Con	299	20.9
	<b>Turnout</b>	31.2	22.7

**Battins (6054)**

		vote	share
<b>Cousins R.*</b>	Lab	960	53.2
Vine F.	Con	664	36.8
Barwood B.	SLD	180	10.0
	<b>Turnout</b>	29.8	16.4

**Bedhampton (6223)**

		vote	share
<b>Hughes E.</b>	SLD	1,306	45.5
Wyatt A.	Con	1,266	44.1
Steel V. Ms.	Lab	297	10.4
	<b>Turnout</b>	46.1	1.4

**Bondfields (5621)**

		vote	share
<b>Hart T.*</b>	Lab	1,324	69.7
Smith D.	Con	372	19.6
Hutchings L.	SLD	204	10.7
	<b>Turnout</b>	33.8	50.1

**Cowplain (7084)**

		vote	share
<b>Rea J. Ms.</b>	Rate	1,406	59.4
Cross M. Ms.	Con	809	34.2
Morris C.	Lab	151	6.4
	<b>Turnout</b>	33.4	25.2

**Emsworth (7861)**

		vote	share
<b>Parker A.</b>	Con	1,990	64.1
Timmins B.	SLD	625	20.1
Goddard A.	Lab	490	15.8
	<b>Turnout</b>	39.5	44.0

**Hart Plain (7208)**

		vote	share
<b>Cook J.*</b>	Con	1,209	64.5
Hawkins P. Ms.	Lab	665	35.5
	<b>Turnout</b>	26.0	29.0

**Hayling East (6227)**

		vote	share
<b>Mincham C.</b>	Con	1,264	63.2
Fuller G.	Ind	369	18.5
Stevenson D. Ms.	Lab	366	18.3
	<b>Turnout</b>	32.1	44.8

**Hayling West (6446)**

		vote	share
<b>Atterbury A. Ms.</b>	Con	1,526	70.9
Swain J.	SLD	436	20.3
Stevenson D.	Lab	191	8.9
	<b>Turnout</b>	33.4	50.6

**Purbrook (7252)**

		vote	share
<b>Blackett G. Ms.*</b>	Con	1,673	70.8
Funnell R.	Lab	691	29.2
	<b>Turnout</b>	32.6	41.5

**St. Faiths (7148)**

		vote	share
<b>McCormick P.</b>	Con	1,778	52.6
Cosslett J.*	SLD	1,314	38.9
Cutler R.	Lab	289	8.5
	<b>Turnout</b>	47.3	13.7

**Stakes (8248)**

		vote	share
<b>Laws D.</b>	Ind	1,017	41.9
Farmer W.*	Con	1,014	41.8
Beauvoisin M. Ms.	Lab	394	16.2
	<b>Turnout</b>	29.4	0.1

**Warren Park (5192)**

		vote	share
<b>Phillips J.*</b>	Lab	913	69.0
Pitcher A.	Con	268	20.2
Budd F.	SLD	143	10.8
	<b>Turnout</b>	25.5	48.7

**Waterloo (7894)**

		vote	share
<b>Moss K.*</b>	Con	1,632	66.7
Butt D.	SLD	499	20.4
Dixon R.	Lab	316	12.9
	<b>Turnout</b>	31.0	46.3

**Havant - 1990****Barncroft (4401)**

		vote	share
<b>Steel V. Ms.</b>	Lab	1,262	67.6
Shepherd S.	SLD	604	32.4
	<b>Turnout</b>	42.4	35.3

<b>Battins (5926)</b>			
		vote	share
Taylor W.*	Lab	1,719	69.1
Sleigh A.	SLD	395	15.9
Louth J. Ms.	Con	375	15.1
<b>Turnout</b>		42.0	53.2

<b>Bedhampton (6154)</b>			
		vote	share
Bellinger R.*	SLD	1,786	49.2
Carpenter T. Ms.	Con	1,120	30.8
Cox D.	Lab	725	20.0
<b>Turnout</b>		59.0	18.3

<b>Bondfields (5317)</b>			
		vote	share
Gardner B.*	Lab	1,893	74.2
Burns A. Ms.	SLD	332	13.0
Harris G.	Con	327	12.8
<b>Turnout</b>		48.0	61.2

<b>Cowplain (7000)</b>			
		vote	share
Carruthers J. Ms.	Res	1,640	49.6
Adams D.	Con	1,012	30.6
Morgan G.	Lab	652	19.7
<b>Turnout</b>		47.2	19.0

<b>Emsworth (7683)</b>			
		vote	share
Daines T. Ms.*	Con	2,108	49.7
Cosslett J. Ms.	SLD	953	22.5
Adams A.	Lab	941	22.2
Brown J. Ms.	Green	239	5.6
<b>Turnout</b>		55.2	27.2

<b>Hart Plain (6979)</b>			
		vote	share
Farmer W.	Con	1,150	38.9
Hawkins P. Ms.	Lab	1,105	37.3
Budd F.	SLD	704	23.8
<b>Turnout</b>		42.4	1.5

<b>Hayling East (6142)</b>			
		vote	share
Van Hagan S.	SLD	1,381	44.4
Hedley P.	Ind	1,058	34.0
Stevenson D. Ms.	Lab	486	15.6
Fuller G.	Ind	183	5.9
<b>Turnout</b>		50.6	10.4

<b>Hayling West (6295)</b>			
		vote	share
Gale E.	Con	1,714	53.9
Swain J.	SLD	613	19.3
Stevenson D.	Lab	462	14.5
Mincham F. Ms.*	Ind Con	390	12.3
<b>Turnout</b>		50.5	34.6

<b>Purbrook (7047)</b>			
		vote	share
Blackett W.*	Con	1,600	42.8
Wheeler W.	Lab	1,042	27.9
Mauger J.	SLD	884	23.7
Mitchell T.	Green	209	5.6
<b>Turnout</b>		53.0	14.9

<b>St. Faiths (7009)</b>			
		vote	share
Benzie H.	SLD	1,779	43.4
Vine F.	Con	1,703	41.5
Cutler R.	Lab	618	15.1
<b>Turnout</b>		58.5	1.9

<b>Stakes (7796)</b>			
		vote	share
O'Brian D.	Ind	1,111	31.2
Beauvoisin M. Ms.	Lab	1,000	28.1
Ludbrook C.*	Con	891	25.0
Bazley C.	SLD	561	15.7
<b>Turnout</b>		45.7	3.1

<b>Warren Park (4937)</b>			
		vote	share
Race R.	Lab	1,522	74.6
Bond J.	SLD	340	16.7
Tomlinson C.	Green	177	8.7
<b>Turnout</b>		41.3	58.0

<b>Waterloo (8008)</b>			
		vote	share
Tart G.*	Con	1,596	39.9
Crosby C.	Res	955	23.9
Funnell R.	Lab	731	18.3
Butt D.	SLD	569	14.2
Boilcombe P.	Ind	145	3.6
<b>Turnout</b>		49.9	16.0

## Havant - 1991

<b>Barncroft (4312)</b>			
		vote	share
Hyson R. Ms.	Lab	1,005	70.5
Carpenter T. Ms.	Con	421	29.5
<b>Turnout</b>		33.1	41.0

<b>Battins (5561)</b>			
		vote	share
Funnell R.	Lab	963	52.0
Blunt J.	LD	532	28.7
Louth J. Ms.	Con	356	19.2
<b>Turnout</b>		33.3	23.3

<b>Bedhampton (6041)</b>			
		vote	share
Mullin J.	LD	1,500	46.0
Titchener A.*	Con	1,277	39.1
Cox D.	Lab	428	13.1
Mitchell T.	Green	59	1.8
<b>Turnout</b>		54.0	6.8

<b>Bondfields (5268)</b>			
		vote	share
Powell L.	Lab	1,364	65.6
Leib K.	Con	384	18.5
Bond J.	LD	330	15.9
<b>Turnout</b>		39.4	47.2

<b>Cowplain (6843)</b>			
		vote	share
Carruthers J. Ms.*	Res	1,506	51.9
Adams D.	Con	897	30.9
Bigden R.	LD	281	9.7
Sherlock F.	Lab	215	7.4
<b>Turnout</b>		42.4	21.0

<b>Emsworth (7576)</b>			
		vote	share
Berridge H.	Con	2,093	54.8
Cosslett J. Ms.	LD	1,266	33.1
Goddard A.	Lab	340	8.9
Brown J. Ms.	Green	122	3.2
<b>Turnout</b>		50.4	21.6

<b>Hart Plain (6848)</b>			
		vote	share
Vine F.	Con	1,161	41.4
Butt D.	LD	1,023	36.5
Morris C. Ms.	Lab	617	22.0
<b>Turnout</b>		40.9	4.9

<b>Hayling East (5974)</b>			
		vote	share
Osborne P.*	Con	1,263	48.7
Van Hagen M. Ms.	LD	1,033	39.8
Miller N.	Lab	298	11.5
<b>Turnout</b>		43.4	8.9

<b>Hayling West (6068)</b>			
		vote	share
Pearce F.	Con	1,605	60.1
Swain J.	LD	779	29.2
Kilpatrick S. Ms.	Lab	286	10.7
<b>Turnout</b>		44.0	30.9

<b>Purbrook (6949)</b>			
		vote	share
Maddowell R.	Con	1,538	49.1
Mauger J.	LD	1,032	32.9
Perry R.	Lab	565	18.0
<b>Turnout</b>		45.1	16.1

<b>St. Faiths (6880)</b>			
		vote	share
Fulcher J. Ms.*	Con	1,742	46.7
Emerson A.	LD	1,593	42.7
Cutler R.	Lab	398	10.7
<b>Turnout</b>		54.2	4.0

<b>Stakes (8105)</b>			
		vote	share
O'Brien M. Ms.*	Ind	1,614	49.2
Warwick W.	Con	824	25.1
Harris C.	Lab	555	16.9
Bazley C.	LD	285	8.7
<b>Turnout</b>		40.4	24.1

<b>Warren Park (4828)</b>			
		vote	share
Wheeler W.	Lab	838	49.1
Terry J. Ms.	LD	656	38.5
Pepper R. Ms.	Con	212	12.4
<b>Turnout</b>		35.3	10.7

<b>Waterloo (8008)</b>			
		vote	share
Moss B. Ms.*	Con	1,871	58.5
Brown H.	LD	828	25.9
Smith D.	Lab	498	15.6
<b>Turnout</b>		39.9	32.6

## Havant - 1992

<b>Barncroft (4322)</b>			
		vote	share
Hyson L.*	Lab	476	47.6
Titchener A.	Con	289	28.9
Hutchings L.	LD	235	23.5
<b>Turnout</b>		23.1	18.7

<b>Battins (5681)</b>			
		vote	share
Cousins R.*	Lab	594	47.6
Parker A.	Con	400	32.1
Blunt J.	LD	253	20.3
<b>Turnout</b>		22.0	15.6

<b>Bedhampton (6016)</b>			
		vote	share
Hughes E.*	LD	1,307	45.6
Williams R.	Con	1,247	43.5
Harris G.	Lab	251	8.8
Mitchell T.	Green	59	2.1
<b>Turnout</b>		47.6	2.1

<b>Bondfields (5132)</b>			
		vote	share
Hart T.*	Lab	952	60.3
Carpenter T. Ms.	Con	364	23.0
Betteridge A.	LD	264	16.7
<b>Turnout</b>		30.8	37.2



<b>Cowplain (7050)</b>			
		vote	share
Rea J. Ms.*	Res	1,216	51.8
Pepper R. Ms.	Con	935	39.8
Sherlock H.	Lab	197	8.4
<b>Turnout</b>		33.3	12.0
<b>Emsworth (7584)</b>			
		vote	share
Parker A.*	Con	1,963	59.8
Cosslett J. Ms.	LD	979	29.8
Goddard A.	Lab	247	7.5
Brown J. Ms.	Green	94	2.9
<b>Turnout</b>		43.3	30.0
<b>Hart Plain (6707)</b>			
		vote	share
Cook J.*	Con	1,151	50.1
Butt D.	LD	848	36.9
Hanan J. Ms.	Lab	297	12.9
<b>Turnout</b>		34.2	13.2
<b>Hayling East (5979)</b>			
		vote	share
Hedley P.	Con	1,292	58.2
Venables J. Ms.	LD	775	34.9
Kellaway T.	Lab	154	6.9
<b>Turnout</b>		37.1	23.3
<b>Hayling West (6170)</b>			
		vote	share
Atterbury A. Ms.*	Con	1,621	70.5
Buxton L. Ms.	LD	500	21.8
Kilpatrick S. Ms.	Lab	177	7.7
<b>Turnout</b>		37.2	48.8
<b>Purbrook (6946)</b>			
		vote	share
Blackett G. Ms.*	Con	1,582	60.8
Mauger J.	LD	735	28.2
Harris C.	Lab	286	11.0
<b>Turnout</b>		37.5	32.5
<b>St. Faiths (6878)</b>			
		vote	share
McCormick P.*	Con	1,883	55.1
Emerson A.	LD	1,341	39.2
Cutler R.	Lab	194	5.7
<b>Turnout</b>		50.6	15.9
<b>Stakes (8047)</b>			
		vote	share
Tomlinson A.	Con	1,250	55.9
Bazley C.	LD	548	24.5
Beauvoisin M. Ms.	Lab	438	19.6
<b>Turnout</b>		27.8	31.4
<b>Warren Park (4725)</b>			
		vote	share
Phillips J.*	Lab	602	49.1
Race R.	Ind	339	27.7
Pine R.	Con	171	14.0
Hasker S.	LD	92	7.5
Tomlinson C.	Green	21	1.7
<b>Turnout</b>		25.9	21.5
<b>Waterloo (8035)</b>			
		vote	share
Moss K.*	Con	2,007	71.1
Brown H.	LD	536	19.0
Smith D.	Lab	278	9.9
<b>Turnout</b>		35.1	52.1

## Havant - 1994

<b>Barncroft (4167)</b>			
		vote	share
Steel V. Ms.*	Lab	618	51.5
Sargent C.	LD	456	38.0
Coldbreath C.	Con	127	10.6
<b>Turnout</b>		28.8	13.5
<b>Battins (5455)</b>			
		vote	share
Taylor W.*	Lab	848	52.8
Sansom C.	LD	542	33.7
Plater D.	Con	217	13.5
<b>Turnout</b>		29.5	19.0
<b>Bedhampton (5950)</b>			
		vote	share
Bellinger R.*	LD	1,804	63.9
Parker A.	Con	684	24.2
Harris T.	Lab	333	11.8
<b>Turnout</b>		47.4	39.7
<b>Bondfields (4992)</b>			
		vote	share
Gardner B.*	Lab	1,161	66.2
Betteridge A.	LD	354	20.2
Leib K.	Con	176	10.0
Pritchard R.	Ind	64	3.6
<b>Turnout</b>		35.2	46.0
<b>Cowplain (7015)</b>			
		vote	share
Wilcox M. Ms.	LD	1,607	59.5
Young D. Ms.	Con	823	30.4
Lewis S.	Lab	273	10.1
<b>Turnout</b>		38.5	29.0
<b>Emsworth (7575)</b>			
		vote	share
Emerson A.	LD	1,784	49.0
Daines T. Ms.	Con	1,505	41.4
Goddard A.	Lab	350	9.6
<b>Turnout</b>		48.0	7.7
<b>Hart Plain (6613)</b>			
		vote	share
Butt D.	LD	1,613	67.7
Wilson K.	Con	496	20.8
Graham J.	Lab	274	11.5
<b>Turnout</b>		36.0	46.9
<b>Hayling East (6032)</b>			
		vote	share
Venables J. Ms.	LD	1,174	46.2
Bond C.	Con	1,088	42.8
Rees P.	Lab	279	11.0
<b>Turnout</b>		42.2	3.4
<b>Hayling West (6362)</b>			
		vote	share
Van Hagen S.	LD	1,471	49.7
Gale E.*	Con	1,240	41.9
Phillips S.	Lab	251	8.5
<b>Turnout</b>		46.6	7.8
<b>Purbrook (6967)</b>			
		vote	share
Mauger B. Ms.	LD	1,334	47.4
Farrow D.	Con	1,019	36.2
Harris C.	Lab	459	16.3
<b>Turnout</b>		40.4	11.2
<b>St. Faiths (6998)</b>			
		vote	share
Benzie H.*	LD	1,890	55.5
Legg F.	Con	1,058	31.1
Francis B. Ms.	Lab	459	13.5
<b>Turnout</b>		48.7	24.4

<b>Stakes (7946)</b>			
		vote	share
Reaves D. Ms.	LD	1,021	38.2
Ambrose P. Ms.	Ind	698	26.1
Harris G.	Lab	535	20.0
Warwick W.	Con	421	15.7
<b>Turnout</b>		33.7	12.1
<b>Warren Park (4499)</b>			
		vote	share
Croft M.	Lab	733	54.7
Hutchings L.	LD	486	36.2
Wilson M.	Con	122	9.1
<b>Turnout</b>		29.8	18.4
<b>Waterloo (8060)</b>			
		vote	share
Tart G.*	Con	1,362	46.1
Scammell E. Ms.	LD	1,124	38.0
Smith D.	Lab	469	15.9
<b>Turnout</b>		36.7	8.1
<b>Havant - 1995</b>			
<b>Barncroft (4146)</b>			
		vote	share
Hyson R. Ms.*	Lab	813	63.4
Sargent C.	LD	354	27.6
Coldbreath C.	Con	116	9.0
<b>Turnout</b>		30.9	35.8
<b>Battins (5519)</b>			
		vote	share
Hanan J. Ms.	Lab	1,078	70.4
Blanch M.	LD	251	16.4
Parker A.	Con	202	13.2
<b>Turnout</b>		27.7	54.0
<b>Bedhampton (5996)</b>			
		vote	share
Boxall L.	LD	1,317	54.2
Wilson K.	Con	640	26.3
Heath G.	Lab	475	19.5
<b>Turnout</b>		40.6	27.8
<b>Bondfields (5003)</b>			
		vote	share
Powell L.*	Lab	1,263	74.3
Greenhill R.	Con	226	13.3
Sansom C.	LD	212	12.5
<b>Turnout</b>		34.0	61.0
<b>Cowplain (7135)</b>			
		vote	share
Carruthers J. Ms.*	Res	1,131	46.4
Lockwood P.	LD	486	19.9
Francis E.	Lab	420	17.2
Young D. Ms.	Con	403	16.5
<b>Turnout</b>		34.2	26.4
<b>Emsworth (7720)</b>			
		vote	share
Bolt H. Ms.	LD	1,460	41.8
Williams M. Ms.	Con	1,296	37.1
Harris G.	Lab	740	21.2
<b>Turnout</b>		45.3	4.7
<b>Hart Plain (6730)</b>			
		vote	share
Troke S. Ms.	LD	1,004	47.0
Vine F.*	Con	573	26.9
Wheeler W.	Lab	557	26.1
<b>Turnout</b>		31.7	20.2

Hayling East (6431)			
		vote	share
<b>King S.</b>	LD	934	42.1
Good Z. Ms.	Con	798	36.0
Kingaby N. Ms.	Lab	485	21.9
<b>Turnout</b>		34.5	6.1

Hayling West (6426)			
		vote	share
<b>Pearce F.*</b>	Con	1,086	45.5
Mitchell S. Ms.	LD	927	38.8
Blunden C.	Lab	374	15.7
<b>Turnout</b>		37.1	6.7

Purbrook (6938)			
		vote	share
<b>Farrow D.</b>	Con	1,197	44.4
Harding J. Ms.	LD	755	28.0
Jackson J.	Lab	742	27.5
<b>Turnout</b>		38.8	16.4

St. Faiths (7069)			
		vote	share
<b>Hutchings L.</b>	LD	1,287	41.2
Fulcher J. Ms.*	Con	1,221	39.1
Morris C. Ms.	Lab	617	19.7
<b>Turnout</b>		44.2	2.1

Stakes (8046)			
		vote	share
<b>O'Brien M. Ms.*</b>	Ind	1,050	42.1
Beauvoisin M. Ms.	Lab	751	30.1
Legg V. Ms.	LD	361	14.5
Warwick W.	Con	330	13.2
<b>Turnout</b>		31.0	12.0

Warren Park (4540)			
		vote	share
<b>Francis B. Ms.</b>	Lab	788	54.8
Race R.	LD	556	38.7
Wilson M.	Con	93	6.5
<b>Turnout</b>		31.7	16.1

Waterloo (8096)			
		vote	share
<b>Moss B. Ms.*</b>	Con	1,450	50.9
Smith D.	Lab	695	24.4
Bazley C.	LD	633	22.2
Hill V.	Ind	72	2.5
<b>Turnout</b>		35.2	26.5

## Havant - 1996

Barncroft (4095)			
		vote	share
<b>Hyson L.*</b>	Lab	647	53.2
Haywood M.	LD	483	39.7
Coldbreath C.	Con	86	7.1
<b>Turnout</b>		29.7	13.5

Battins (5530)			
		vote	share
<b>Cotgrave I.</b>	Lab	778	61.0
Blanch M.	LD	285	22.4
Crocker D.	Con	212	16.6
<b>Turnout</b>		23.1	38.7

Bedhampton (6072)			
		vote	share
<b>Worley J.*</b>	LD	1,607	83.3
Ali R.	Lab	323	16.7
<b>Turnout</b>		31.8	66.5

Bondfields (5030)			
		vote	share
<b>Hart T.*</b>	Lab	1,096	74.4
Bond J.	LD	378	25.6
<b>Turnout</b>		29.3	48.7

Cowplain (7114)			
		vote	share
<b>Rea J. Ms.*</b>	Ind	871	36.6
Hinchcliffe D.	LD	636	26.7
Young D. Ms.	Con	551	23.2
King F.	Lab	321	13.5
<b>Turnout</b>		33.4	9.9

Emsworth (7706)			
		vote	share
<b>Bolt M.</b>	LD	1,349	41.6
Williams M. Ms.	Con	1,327	40.9
Harris G.	Lab	569	17.5
<b>Turnout</b>		42.1	0.7

Hart Plain (6676)			
		vote	share
<b>Holliday F.</b>	LD	931	49.5
Ashman G.	Con	530	28.2
Wheeler W.	Lab	418	22.2
<b>Turnout</b>		28.2	21.3

Hayling East (6524)			
		vote	share
<b>Quick P.</b>	Con	929	42.6
Ringwood M.	LD	885	40.6
Blunden C.	Lab	365	16.8
<b>Turnout</b>		33.4	2.0

Hayling West (6483)			
		vote	share
<b>Atterbury A. Ms.*</b>	Con	1,105	46.3
Fisher P.	LD	1,027	43.0
Funnell R.	Lab	255	10.7
<b>Turnout</b>		36.8	3.3

Purbrook (7021)			
		vote	share
<b>Blackett G. Ms.*</b>	Con	1,214	47.0
Harper T. Ms.	LD	770	29.8
Barney A.	Lab	597	23.1
<b>Turnout</b>		36.8	17.2

St. Faiths (7145)			
		vote	share
<b>West D.</b>	LD	1,495	46.4
McCormick P.*	Con	1,281	39.7
Morris C. Ms.	Lab	448	13.9
<b>Turnout</b>		45.1	6.6

Stakes (8012)			
		vote	share
<b>Beauvoisin M. Ms.</b>	Lab	760	34.5
Still P.	LD	549	24.9
Russell A.	Con	487	22.1
Tomlinson A.*	Ind	405	18.4
<b>Turnout</b>		27.5	9.6

Warren Park (4505)			
		vote	share
<b>Creese J. Ms.</b>	LD	621	53.7
Jackson J.	Lab	536	46.3
<b>Turnout</b>		25.7	7.3

Waterloo (8070)			
		vote	share
<b>Moss K.*</b>	Con	1,698	57.9
Hill D.	Lab	597	20.3
Bazley C.	LD	582	19.8
Hill V.	UK Ind	57	1.9
<b>Turnout</b>		36.4	37.5

## Havant - 1998

Barncroft (3988)			
		vote	share
<b>Fox T.</b>	LD	321	38.4
Steel V. Ms.*	Lab	255	30.5
Hyson L.	Ind Lab	199	23.8
Coldbreath C.	Con	61	7.3
<b>Turnout</b>		21.0	7.9

Battins (5489)			
		vote	share
<b>Hansford P.</b>	Lab	364	39.3
White G.	LD	214	23.1
Cotgrave M. Ms.	Ind Lab	211	22.8
Wilson T.	Con	138	14.9
<b>Turnout</b>		16.9	16.2

Bedhampton (6072)			
		vote	share
<b>Bellinger R.*</b>	LD	1,367	64.2
Hedley P.	Con	555	26.1
Brown R.	Lab	208	9.8
<b>Turnout</b>		35.1	38.1

Bondfields (5121)			
		vote	share
<b>Gardner B.*</b>	Lab	787	71.2
Cutts P. Ms.	LD	165	14.9
Brown M. Ms.	Con	153	13.8
<b>Turnout</b>		21.6	56.3

Cowplain (7069)			
		vote	share
<b>Hartridge V. Ms.</b>	LD	855	49.0
Russell A.	Con	655	37.5
Edwards P. Ms.	Lab	235	13.5
<b>Turnout</b>		24.7	11.5

Emsworth (7753)			
		vote	share
<b>Gillett D.</b>	Con	1,509	51.9
Emerson A.*	LD	1,083	37.3
Harris G.	Lab	313	10.8
<b>Turnout</b>		37.5	14.7

Hart Plain (6622) <sup>2</sup>			
		vote	share
<b>Butt D.*</b>	LD	982	65.4
<b>Wilcox M. Ms.*</b>	LD	928	-
Cook J.	Con	318	21.2
Wearn R.	Con	277	-
Miller E.	Lab	201	13.4
<b>Turnout</b>		40.9	44.2

Hayling East (6932)			
		vote	share
<b>Erlebach G.</b>	Con	1,270	69.1
Landser A. Ms.	LD	347	18.9
Smith D.	Lab	221	12.0
<b>Turnout</b>		26.5	50.2

Hayling West (6715)			
		vote	share
<b>Quick S. Ms.*</b>	Con	1,187	60.3
Fisher P.	LD	560	28.4
Russell R.	Lab	223	11.3
<b>Turnout</b>		29.3	31.8

Purbrook (7192)			
		vote	share
<b>Farrow H. Ms.</b>	Con	1,123	53.1
Potts N. Ms.	Lab	523	24.7
Mauger B. Ms.*	LD	468	22.1
<b>Turnout</b>		29.4	28.4

**St. Faiths (7278)**

		vote	share
Shorten M.	Con	1,466	52.9
Benzie H.*	LD	1,004	36.3
Heath G.	Lab	299	10.8
<b>Turnout</b>		38.1	16.7

**Stakes (8085)**

		vote	share
Fish W.	Lab	573	32.6
Williams D.	Ind	537	30.6
Patterson M. Ms.*	Con	514	29.3
Landsner R.	LD	131	7.5
<b>Turnout</b>		21.7	2.1

**Warren Park (4495)**

		vote	share
Race R.*	LD	696	59.7
Hoyle R.	Lab	470	40.3
<b>Turnout</b>		25.9	19.4

**Waterloo (8068)**

		vote	share
Tart G.*	Con	1,425	65.3
Crawford R.	LD	495	22.7
Funnell R.	Lab	262	12.0
<b>Turnout</b>		27.1	42.6

**Havant - 1999****Barncroft (3996)**

		vote	share
Hoyle R.	Lab	395	45.5
Bowen J.	LD	374	43.0
Hedley E. Ms.	Con	82	9.4
Rees P.	Lib	18	2.1
<b>Turnout</b>		21.8	2.4

**Battins (5526)**

		vote	share
Hanan J. Ms.*	Lab	486	51.1
Saunders L. Ms.	LD	269	28.3
Wilson T.	Con	139	14.6
Landsner R.	Lib	58	6.1
<b>Turnout</b>		17.2	22.8

**Bedhampton (6110)**

		vote	share
Briggs J. Ms.	LD	1,060	50.2
Bee P.	Con	799	37.8
Brown R.	Lab	209	9.9
Landsner A. Ms.	lib	45	2.1
<b>Turnout</b>		34.6	12.4

**Bondfields (5177)**

		vote	share
Powell L.*	Lab	676	71.9
Coslett J.	LD	133	14.1
Brown M. Ms.	Con	131	13.9
<b>Turnout</b>		18.2	57.8

**Cowplain (7077)**

		vote	share
Carruthers J. Ms.*	Ind	1,049	56.8
Crawford R.	LD	395	21.4
Adams D.	Con	221	12.0
Johnston E. Ms.	Lab	183	9.9
<b>Turnout</b>		26.1	35.4

**Emsworth (7930)**

		vote	share
Wilson-Smith V. Ms.	Con	1,560	49.6
Benzie H.	LD	1,225	39.0
Harris G.	Lab	358	11.4
<b>Turnout</b>		39.7	10.7

**Hart Plain (6714)**

		vote	share
Troke S. Ms.*	LD	775	56.5
Ashman G.	Con	357	26.0
Dixon R.	Lab	239	17.4
<b>Turnout</b>		20.4	30.5

**Hayling East (7132)**

		vote	share
Collins D.	Con	1,203	63.6
Thompson G.	Lab	403	21.3
Cutts P. Ms.	LD	200	10.6
Gibson F.	Green	85	4.5
<b>Turnout</b>		26.5	42.3

**Hayling West (6926)**

		vote	share
Pearce F.*	Con	1,383	73.2
Conder R. Ms.	Lab	306	16.2
Austen D.	LD	200	10.6
<b>Turnout</b>		27.3	57.0

**Purbrook (7259)**

		vote	share
Farrow D.*	Con	1,214	60.4
Potts N. Ms.	Lab	495	24.6
Mauger B. Ms.	LD	300	14.9
<b>Turnout</b>		27.7	35.8

**St. Faiths (7685)**

		vote	share
Fulcher G.	Con	1,452	51.5
Hutchings L.*	LD	1,064	37.8
Smith D.	Lab	302	10.7
<b>Turnout</b>		36.7	13.8

**Stakes (8204)**

		vote	share
O' Brien M. Ms.*	Ind	664	38.5
Patterson M. Ms.	Con	441	25.6
Steel V. Ms.	Lab	386	22.4
Pylee C. Ms.	LD	155	9.0
Atwell M.	Ind Lab	80	4.6
<b>Turnout</b>		21.0	12.9

**Warren Park (4636)**

		vote	share
Francis B. Ms.*	Lab	464	45.9
Race C. Ms.	Lib	273	27.0
White G.	LD	238	23.6
Bartlett S. Ms.	Ind Lab	35	3.5
<b>Turnout</b>		21.8	18.9

**Waterloo (8083)**

		vote	share
Foster D.	Con	1,498	65.7
Jones-Parry I.	Lab	419	18.4
Bazely A. Ms.	LD	362	15.9
<b>Turnout</b>		28.2	47.3

**Havant - 2000****Barncroft (3960)**

		vote	share
Hayward M.	LD	348	48.0
Rogers M.	Lab	247	34.1
Shepherd L. Ms.	Con	112	15.4
Hoar P. Ms.	Ind Lab	18	2.5
<b>Turnout</b>		18.3	13.9

**Battins (5441)**

		vote	share
Cousins R.	Lab	338	39.1
Martin A.	LD	279	32.3
Carpenter T. Ms.	Con	218	25.2
Barney E.	Ind Lab	30	3.5
<b>Turnout</b>		15.9	6.8

**Bedhampton (6085)**

		vote	share
Worley J.*	LD	1,053	48.0
Bee P.	Con	975	44.4
Brown R.	Lab	167	7.6
<b>Turnout</b>		36.1	3.6

**Bondfields (5092)**

		vote	share
Hart T.*	Lab	626	62.8
Brown M. Ms.	Con	222	22.3
Coslett J.	LD	149	14.9
<b>Turnout</b>		19.6	40.5

**Cowplain (7025)**

		vote	share
Rea J. Ms.*	Ind	1,068	69.3
Crawford R.	LD	313	20.3
Johnston E. Ms.	Lab	160	10.4
<b>Turnout</b>		21.9	49.0

**Emsworth (7859)**

		vote	share
Colson D.	Con	1,814	59.2
Bolt M.*	LD	1,041	34.0
Rees P.	Lab	209	6.8
<b>Turnout</b>		39.0	25.2

**Hart Plain (6584)**

		vote	share
Shaw L.	Con	639	46.7
Purkis R.	LD	586	42.8
Wheeler B.	Lab	143	10.5
<b>Turnout</b>		20.8	3.9

**Hayling East (7156)**

		vote	share
Quick P.*	Con	1,262	67.2
Causer M.	LD	400	21.3
Russell R.	Lab	215	11.5
<b>Turnout</b>		26.2	45.9

**Hayling West (6942)**

		vote	share
Bond C.	Con	1,676	77.7
Temple D. Ms.	LD	284	13.2
Conder R. Ms.	Lab	196	9.1
<b>Turnout</b>		31.1	64.6

**Purbrook (7188)**

		vote	share
Blackett G. Ms.*	Con	1,293	69.8
Bazley C.	LD	287	15.5
Harris G.	Lab	273	14.7
<b>Turnout</b>		25.8	54.3

**St. Faiths (7768)**

		vote	share
Fulcher J. Ms.	Con	1,494	47.8
West D.*	LD	1,436	45.9
Smith D.	Lab	196	6.3
<b>Turnout</b>		40.2	1.9

**Stakes (8032)**

		vote	share
Blackett B.	Con	722	45.8
Beauvoisin M. Ms.*	Lab	528	33.5
Pylee C. Ms.	LD	325	20.6
<b>Turnout</b>		19.6	12.3

**Warren Park (4515)**

		vote	share
Petty C. Ms.	Lab	295	41.3
Ennis B.	LD	272	38.1
Guest A. Ms.	Con	138	19.3
Hoar G.	Ind Lab	9	1.3
<b>Turnout</b>		15.8	3.2

Waterloo (7960)			
		vote	share
<b>Moss K.*</b>	Con	1,629	72.1
Bazley A. Ms.	LD	357	15.8
Perry R.	Lab	273	12.1
<b>Turnout</b>		28.4	56.3

## Havant - 2002

Barncroft (4480) <sup>2</sup>			
		vote	share
<b>Cousins R.*</b>	Lab	416	49.2
<b>Hoyle R.*</b>	Lab	406	-
Lake P.	LD	235	27.8
Culley S. Ms.	Con	195	23.0
Wynne C. Ms.	Con	164	-
<b>Turnout</b>		18.9	21.4

Battins (4883) <sup>2</sup>			
		vote	share
<b>Hanan J. Ms.*</b>	Lab	529	52.5
<b>Hansford P.*</b>	Lab	476	-
Rayner J. Ms.	Con	267	26.5
Beagley I.	Con	238	-
Sargent C.	LD	212	21.0
<b>Turnout</b>		20.3	26.0

Bedhampton (6947) <sup>3</sup>			
		vote	share
<b>Bellinger R.*</b>	LD	1,408	47.6
<b>Marshall S.</b>	LD	1,224	-
<b>Welch A.</b>	LD	1,134	-
Harris K.	Con	1,127	38.1
Guest A. Ms.	Con	1,111	-
Ward M.	Con	1,066	-
Fish W.*	Lab	285	9.6
Roberts C.	Lab	258	-
Jackson J.	Lab	254	-
Mitchell T.	Green	140	4.7
<b>Turnout</b>		40.9	9.5

Bondfields (5114) <sup>2</sup>			
		vote	share
<b>Gardner B.*</b>	Lab	803	66.0
<b>Hart T.*</b>	Lab	741	-
Brown M. Ms.	Con	226	18.6
Wride J. Ms.	Con	209	-
Gatenby V. Ms.	LD	187	15.4
<b>Turnout</b>		23.6	47.5

Cowplain (7383) <sup>3</sup>			
		vote	share
<b>Briggs A.</b>	Con	1,170	54.9
<b>Keast D.</b>	Con	1,056	-
<b>Smallcorn M. Ms.</b>	Con	999	-
Hartridge V. Ms.*	LD	961	45.1
Ponsonby F. Ms.	LD	766	-
<b>Turnout</b>		27.9	9.8

Emsworth (7801) <sup>3</sup>			
		vote	share
<b>Gillett D.*</b>	Con	1,842	51.6
<b>Colson D.*</b>	Con	1,788	-
<b>Wilson-Smith V. Ms.*</b>	Con	1,727	-
Benzie H.	LD	1,056	29.6
Cosslett G.	LD	849	-
Cosslett J. Ms.	LD	803	-
Fitter A. Ms.	Lab	429	12.0
Gilchrist W.	Lab	412	-
Rees P.	Lab	308	-
Wood M.	Green	243	6.8
<b>Turnout</b>		42.8	22.0

Hart Plain (7356) <sup>3</sup>			
		vote	share
<b>Purkis R.*</b>	LD	896	45.1
<b>Troke S. Ms.*</b>	LD	875	-
<b>Shaw L.*</b>	Con	800	40.3
Branson J. Ms.	Con	758	-
Pylee C. Ms.	LD	750	-
Chakrabarti G.	Con	673	-
Ratcliffe K.	Ind	289	14.6
<b>Turnout</b>		25.0	4.8

Hayling East (7287) <sup>3</sup>			
		vote	share
<b>Erlbach G.*</b>	Con	1,381	53.4
<b>Collins D.*</b>	Con	1,311	-
<b>Pearce S. Ms.</b>	Con	1,311	-
Clarke M.	Lab	561	21.7
Marsden L. Ms.	Lab	519	-
Mealy S. Ms.	Lab	500	-
Clouting J.	LD	355	13.7
Gibson F.	Green	289	11.2
<b>Turnout</b>		32.8	31.7

Hayling West (7006) <sup>3</sup>			
		vote	share
<b>Pearce F.*</b>	Con	1,590	58.9
<b>Pierce-Jones V.</b>	Con	1,565	-
<b>Weymouth D.</b>	Con	1,426	-
Underwood S. Ms.	Lab	433	16.0
Manning G.	Lab	425	-
Stacey A.	Lab	409	-
Allum J. Ms.	LD	390	14.4
Leek G. Ms.	Green	286	10.6
<b>Turnout</b>		34.6	42.9

Purbrook (7340) <sup>3</sup>			
		vote	share
<b>Blackett G. Ms.*</b>	Con	1,500	61.2
<b>Farrow D.*</b>	Con	1,413	-
<b>Farrow H. Ms.*</b>	Con	1,312	-
Wheeler W.	Lab	485	19.8
Sherlock H.	Lab	478	-
Crawford R.	LD	467	19.0
Sherlock N. Ms.	Lab	458	-
<b>Turnout</b>		30.8	41.4

St. Faiths (6844) <sup>3</sup>			
		vote	share
<b>Fulcher J. Ms.*</b>	Con	1,531	42.1
<b>Guest D.*</b>	Con	1,393	-
<b>Bolton R.</b>	Con	1,389	-
West D.	LD	949	26.1
Hutchings L.	LD	926	-
Dawes T.	Green	726	20.0
Middleton R.	LD	692	-
Francis B. Ms.*	Lab	430	11.8
Price A.	Lab	341	-
Smith D.	Lab	279	-
<b>Turnout</b>		45.4	16.0

Stakes (7566) <sup>3</sup>			
		vote	share
<b>Kennedy O. Ms.</b>	Con	747	33.9
<b>Tarrant N.</b>	Con	688	-
<b>Beauvoisin M. Ms.</b>	Lab	634	28.8
Voice L. Ms.	LD	428	19.4
Jacks K.	Green	393	17.8
Vassallo K. Ms.	Lab	385	-
Russell R.	Lab	379	-
<b>Turnout</b>		21.4	5.1

Warren Park (4762) <sup>2</sup>			
		vote	share
<b>Brown R.</b>	Lab	407	56.9
<b>Steel V. Ms.</b>	Lab	382	-
Carpenter T. Ms.	Con	178	24.9
Colson O. Ms.	Con	164	-
Ponsonby M.	LD	130	18.2
<b>Turnout</b>		14.6	32.0

Waterloo (7529) <sup>3</sup>			
		vote	share
<b>Cole C. Ms.</b>	LD	0	0.0
<b>Moss K.*</b>	Con	0	-
<b>Tart G.*</b>	Con	0	0.0
<b>Turnout</b>		0.0	0.0

## Havant - 2003

Bedhampton (6888)			
		vote	share
<b>Welch A.*</b>	LD	1,008	42.7
Smith K.	Con	957	40.5
Roberts C.	Lab	205	8.7
Mitchell T.	Green	193	8.2
<b>Turnout</b>		34.3	2.2

Cowplain (7256)			
		vote	share
<b>Smallcorn M. Ms.*</b>	Con	1,117	58.7
Hartridge V. Ms.	LD	589	31.0
Monks K.	Lab	196	10.3
<b>Turnout</b>		26.4	27.8

Emsworth (7732)			
		vote	share
<b>Wilson-Smith V. Ms.*</b>	Con	1,779	59.3
Cosslett J.	LD	876	29.2
Gilchrist W.	Lab	345	11.5
<b>Turnout</b>		39.0	30.1

Hart Plain (7293)			
		vote	share
<b>West D.</b>	LD	701	40.8
Shaw L.*	Con	685	39.8
Sherlock H.	Lab	197	11.5
Ratcliffe K.	Ind	136	7.9
<b>Turnout</b>		23.6	0.9

Hayling East (7151)			
		vote	share
<b>Collins D.*</b>	Con	1,192	59.5
Mealy S. Ms.	Lab	461	23.0
Clouting J.	LD	225	11.2
Gibson F.	Green	127	6.3
<b>Turnout</b>		28.1	36.5

Hayling West (6909)			
		vote	share
<b>Lenaghan A.</b>	Con	1,655	71.7
Steentoft M. Ms.	LD	358	15.5
Clarke M.	Lab	296	12.8
<b>Turnout</b>		33.6	56.2

Purbrook (7229)			
		vote	share
<b>Farrow H. Ms.*</b>	Con	1,180	63.9
Potts N. Ms.	Lab	365	19.8
Voice L.	LD	303	16.4
<b>Turnout</b>		25.6	44.1

St. Faiths (6904)			
		vote	share
<b>Bolton R.*</b>	Con	1,387	51.6
Benzie H.	LD	583	21.7
Dawes T.	Green	536	20.0
Smith D.	Lab	180	6.7
<b>Turnout</b>		39.0	29.9

Stakes (7466)			
		vote	share
<b>Hilton C.</b>	Con	650	48.1
Beauvoisin M. Ms.*	Lab	459	33.9
Sargent B.	LD	243	18.0
<b>Turnout</b>		18.2	14.1

Waterloo (7477)			
		vote	share
Moss K.*	Con	1,411	69.4
Ponsonby F. Ms.	LD	623	30.6
<b>Turnout</b>		27.4	38.7

## Havant - 2004

Barncroft (4438)			
		vote	share
Weeks Y. Ms.	Con	472	48.1
Roberts C.	Lab	282	28.7
Ponsonby F. Ms.	LD	228	23.2
<b>Turnout</b>		22.4	19.3

Battins (4851)			
		vote	share
Rayner J. Ms.	Con	386	36.6
Hansford P.*	Lab	361	34.2
Stocker S. Ms.	LD	188	17.8
Lumb L. Ms.	Green	120	11.4
<b>Turnout</b>		21.9	2.4

Bedhampton (6990)			
		vote	share
Smith K.	Con	1,254	42.9
Marshall S.*	LD	1,211	41.5
Edwards A. Ms.	Lab	276	9.5
Mitchell T.	Green	179	6.1
<b>Turnout</b>		42.0	1.5

Bondfields (5067)			
		vote	share
Hart T.*	Lab	555	49.0
Brown M. Ms.	Con	293	25.9
Sargent C.	LD	285	25.2
<b>Turnout</b>		22.6	23.1

Cowplain (7286)			
		vote	share
Keast D.*	Con	1,598	62.3
Jacobs J.	LD	662	25.8
Monks K.	Lab	307	12.0
<b>Turnout</b>		35.6	36.5

Emsworth (7752)			
		vote	share
Gibb-Gray B.	Con	2,207	60.3
Cosslett J.	LD	879	24.0
Gilchrist W.	Lab	362	9.9
Dawes S. Ms.	Green	214	5.8
<b>Turnout</b>		47.6	36.3

Hart Plain (7348) <sup>2</sup>			
		vote	share
Pearce P. Ms.	LD	1,171	46.2
Troke S. Ms.*	LD	1,165	-
Shaw L.*	Con	977	38.5
Masterton M.	Con	945	-
Hoyle R.*	Lab	203	8.0
Wheeler W.	Lab	190	-
Gleed B.	Green	184	7.3
<b>Turnout</b>		33.0	7.7

Hayling East (7192) <sup>2</sup>			
		vote	share
Pearce S. Ms.*	Con	1,331	53.0
Goulding C.	Con	1,316	-
Causer M. Ms.	LD	497	19.8
Mealy J.	Lab	396	15.8
Mealy S. Ms.	Lab	363	-
Shawashi J. Ms.	LD	344	-
Ansari A. Ms.	Green	289	11.5
<b>Turnout</b>		34.5	33.2

Hayling West (6915)			
		vote	share
Pierce-Jones V.*	Con	1,737	64.0
Steenoft M. Ms.	LD	446	16.4
Manning G.	Lab	311	11.5
Leek G. Ms.	Green	222	8.2
<b>Turnout</b>		39.6	47.5

Purbrook (7291)			
		vote	share
Farrow D.*	Con	1,255	49.0
Cooper P. Ms.	Ind	711	27.8
Potts N. Ms.	Lab	317	12.4
Welch P. Ms.	LD	276	10.8
<b>Turnout</b>		35.3	21.3

St. Faiths (6905)			
		vote	share
Guest D.*	Con	1,659	54.2
Benzie H.	LD	808	26.4
Dawes T.	Green	329	10.7
Osborne R. Ms.	Lab	266	8.7
<b>Turnout</b>		44.5	27.8

Stakes (7502)			
		vote	share
Tarrant N.*	Con	929	49.9
Pylee C. Ms.	LD	409	22.0
Smith D.	Lab	335	18.0
Carver S.	Green	189	10.2
<b>Turnout</b>		25.0	27.9

Warren Park (4680)			
		vote	share
Steel V. Ms.*	Lab	319	40.1
Branson J. Ms.	Con	270	34.0
Moore-Blunt J. Ms.	LD	206	25.9
<b>Turnout</b>		17.3	6.2

Waterloo (7530)			
		vote	share
Hunt J.	Con	1,661	58.5
Hartridge V. Ms.	LD	626	22.1
Benjamin P.	Lab	306	10.8
Turner J. Ms.	Green	244	8.6
<b>Turnout</b>		37.9	36.5

## Havant - 2006

Barncroft (4254)			
		vote	share
Fairhurst G.	Con	465	44.0
Cousins R.*	Lab	284	26.9
Harris S.	UKIP	164	15.5
Ponsonby M.	LD	143	13.5
<b>Turnout</b>		24.8	17.1

Battins (4691)			
		vote	share
Hanan J. Ms.*	Lab	346	31.9
Cobbett R.	LD	328	30.2
Purkis R.	Con	275	25.3
Palmer L. Ms.	Green	136	12.5
<b>Turnout</b>		23.1	1.7

Bedhampton (6896)			
		vote	share
Wride J. Ms.	Con	1,321	46.1
Ponsonby F. Ms.	LD	1,081	37.7
Herbert G.	Edem	190	6.6
Edwards A. Ms.	Lab	178	6.2
Mitchell T.	Green	96	3.3
<b>Turnout</b>		41.6	8.4

Bondfields (4833)			
		vote	share
Stocker S. Ms.	LD	608	46.2
Gardner B.*	Lab	479	36.4
Carpenter T. Ms.	Con	228	17.3
<b>Turnout</b>		27.2	9.8

Cowplain (7210)			
		vote	share
Briggs A.*	Con	1,359	60.5
Jacobs J.	LD	458	20.4
Gleed A. Ms.	Green	259	11.5
Monks K.	Lab	170	7.6
<b>Turnout</b>		31.2	40.1

Emsworth (7650)			
		vote	share
Gillett D.*	Con	2,071	59.2
Benzie H.	LD	949	27.1
Youle M. Ms.	Green	262	7.5
Smith D.	Lab	218	6.2
<b>Turnout</b>		45.8	32.1

Hart Plain (7244)			
		vote	share
Cheshire M.	Con	1,089	48.2
Bazley A. Ms.	LD	880	39.0
Vassallo K. Ms.	Lab	170	7.5
Gleed B.	Green	119	5.3
<b>Turnout</b>		31.2	9.3

Hayling East (7105)			
		vote	share
Smith J.	Con	1,567	63.1
Mealy S. Ms.	Lab	344	13.8
Causer M. Ms.	LD	337	13.6
Leek G. Ms.	Green	236	9.5
<b>Turnout</b>		35.0	49.2

Hayling West (6818)			
		vote	share
Pearce F.*	Con	1,848	68.1
Shawashi J. Ms.	LD	364	13.4
Blunden C.	Lab	260	9.6
Dawes S. Ms.	Green	243	9.0
<b>Turnout</b>		39.8	54.7

Purbrook (7163)			
		vote	share
Blackett G. Ms.*	Con	1,507	63.5
Marshall S.	LD	332	14.0
Potts N. Ms.	Lab	283	11.9
Blenkharn J. Ms.	Green	250	10.5
<b>Turnout</b>		33.1	49.5

St. Faiths (6861)			
		vote	share
Branson J. Ms.	Con	1,574	52.5
Briggs J. Ms.	LD	789	26.3
Dawes T.	Green	391	13.0
Barnes F.	Lab	245	8.2
<b>Turnout</b>		43.7	26.2

Stakes (7202)			
		vote	share
Kennedy O. Ms.*	Con	955	54.0
Steel B.	Lab	335	19.0
Pook S. Ms.	LD	282	16.0
Smith W. Ms.	Green	195	11.0
<b>Turnout</b>		24.5	35.1

Warren Park (4449)			
		vote	share
Brown R.*	Lab	369	42.4
Galloway R.	Con	236	27.1
Moore-Blunt J. Ms.	LD	158	18.1
Hines B.	UKIP	108	12.4
<b>Turnout</b>		19.6	15.3

Waterloo (7418)			
		vote	share
Brown W. Ms.	Con	1,683	66.9
Bolt M.	LD	525	20.9
Beauvoison M. Ms.	Lab	308	12.2
<b>Turnout</b>		33.9	46.0

## Havant - 2007

### Bedhampton (6935)

		vote	share
<b>Buckley A. Ms.</b>	LD	1,351	48.3
Galloway R.	Con	1,032	36.9
Edwards A. Ms.	Lab	145	5.2
Herbert G.	Edem	120	4.3
Finch R.	UKIP	90	3.2
Griffiths K. Ms.	Green	60	2.1

Turnout 40.4 11.4

### Cowplain (7312)

		vote	share
<b>Smallcorn M. Ms.*</b>	Con	1,708	74.5
Bolt M.	LD	401	17.5
Vassallo K. Ms.	Lab	184	8.0

Turnout 31.0 57.0

### Emsworth (7716)

		vote	share
<b>Wilson-Smith V. Ms.*</b>	Con	1,999	57.4
Benzie H.	LD	834	24.0
Gardner B.	Lab	238	6.8
Dawes E. Ms.	Green	218	6.3
Harris S.	UKIP	193	5.5

Turnout 45.1 33.5

### Hart Plain (7376)

		vote	share
<b>Shimbart G.</b>	Con	1,216	58.5
Jacobs J.	LD	861	41.5

Turnout 28.2 17.1

### Hayling East (7195)

		vote	share
<b>Collins D.*</b>	Con	1,468	60.7
Brown N.	Ind	491	20.3
Shawashi J. Ms.	LD	319	13.2
Gleed A. Ms.	Green	139	5.8

Turnout 33.6 40.4

### Hayling West (6867)

		vote	share
<b>Lenaghan A.*</b>	Con	1,818	63.3
Phillips J.	Ind	550	19.2
Causar M. Ms.	LD	254	8.8
Thomas R.	UKIP	127	4.4
Leek G. Ms.	Green	122	4.2

Turnout 41.8 44.2

### Purbrook (7182)

		vote	share
<b>Farrow H. Ms.*</b>	Con	1,216	54.3
Long S.	Ind	413	18.4
Potts N. Ms.	Lab	252	11.2
Moore-Blunt J. Ms.	LD	219	9.8
Blenkharn J. Ms.	Green	141	6.3

Turnout 31.2 35.8

### St. Faiths (6914)

		vote	share
<b>Bolton R.*</b>	Con	1,425	48.3
Cobbett R.	LD	900	30.5
Cousins R.	Lab	229	7.8
Dawes T.	Green	207	7.0
Little A.	UKIP	113	3.8
Greenham G.	Edem	77	2.6

Turnout 42.7 17.8

### Stakes (7409)

		vote	share
<b>Hilton C.*</b>	Con	922	51.6
Bazley A. Ms.	LD	339	19.0
Steel B.	Lab	335	18.7
Smith W. Ms.	Green	192	10.7

Turnout 24.1 32.6

### Waterloo (7557)

		vote	share
<b>Buckley P.</b>	Con	1,861	72.4
Briggs J. Ms.	LD	471	18.3
Gilchrist W.	Lab	238	9.3

Turnout 34.0 54.1

## Havant - 2008

### Barncroft (4350)

		vote	share
<b>Weeks Y. Ms.*</b>	Con	575	54.7
Fish W.	Lab	187	17.8
Finch R.	UKIP	146	13.9
Hutchings L.	LD	143	13.6

Turnout 24.3 36.9

### Battins (4835)

		vote	share
<b>Ponsonby F. Ms.*</b>	LD	559	46.4
Shaw L.	Con	292	24.3
Hansford P.	Lab	199	16.5
Legge P.	UKIP	154	12.8

Turnout 24.9 22.2

### Bedhampton (7014)

		vote	share
<b>Smith K.*</b>	Con	1,216	47.1
Sawtell J.	LD	903	35.0
Herbert G.	Edem	182	7.1
Edwards A. Ms.	Lab	170	6.6
Little S.	UKIP	110	4.3

Turnout 37.0 12.1

### Bondfields (4972)

		vote	share
<b>Hart T.*</b>	Lab	385	33.4
Fairhurst A. Ms.	Con	318	27.6
Briggs J. Ms.	LD	257	22.3
Lester H.	UKIP	121	10.5
Greenham G.	Edem	71	6.2

Turnout 23.3 5.8

### Cowplain (7303)

		vote	share
<b>Keast D.*</b>	Con	1,645	71.7
Jacobs J.	LD	495	21.6
Monks K.	Lab	155	6.8

Turnout 31.5 50.1

### Emsworth (7866)

		vote	share
<b>Gibb-Gray B.*</b>	Con	2,287	66.1
Maple C.	LD	699	20.2
Gilchrist W.	Lab	263	7.6
Spurge A.	UKIP	209	6.0

Turnout 44.0 45.9

### Hart Plain (7455)

		vote	share
<b>Shimbart E. Ms.</b>	Con	1,421	61.6
Crawford R.	LD	681	29.5
Sherlock H.	Lab	204	8.8

Turnout 31.1 32.1

### Hayling East (7273)

		vote	share
<b>Pearce S. Ms.*</b>	Con	1,494	63.0
Shawashi J. Ms.	LD	351	14.8
Kerrin G.	UKIP	306	12.9
Blunden C.	Lab	221	9.3

Turnout 32.6 48.2

### Hayling West (6905)

		vote	share
<b>Pierce-Jones V.*</b>	Con	1,842	68.6
Pascall T.	LD	449	16.7
Thomas R.	UKIP	212	7.9
Smith D.	Lab	181	6.7

Turnout 39.1 51.9

### Purbrook (7177)

		vote	share
<b>Farrow D.*</b>	Con	1,471	66.2
Potts D.	Lab	280	12.6
Moore-Blunt J. Ms.	LD	280	12.6
Blenkharn J. Ms.	Green	190	8.6

Turnout 31.0 53.6

### St. Faiths (7076)

		vote	share
<b>Guest D.*</b>	Con	1,318	45.9
Cobbett R.	LD	915	31.9
Snow E. Ms.	UKIP	223	7.8
Cousins R.	Lab	218	7.6
Dawes T.	Green	195	6.8

Turnout 40.6 14.0

### Stakes (7447)

		vote	share
<b>Tarrant C. Ms.</b>	Con	1,108	62.7
Bazley A. Ms.	LD	365	20.6
Steel B.	Lab	295	16.7

Turnout 23.9 42.0

### Warren Park (4801)

		vote	share
<b>Sceal M.</b>	Con	407	36.1
Brown A. Ms.	LD	383	34.0
Steel V. Ms.*	Lab	234	20.7
Harris S.	UKIP	104	9.2

Turnout 23.5 2.1

### Waterloo (7554)

		vote	share
<b>Hunt J.*</b>	Con	1,808	70.2
Dunford F.	LD	497	19.3
Beauvoisin M. Ms.	Lab	271	10.5

Turnout 34.2 50.9

## Havant - 2010

### Barncroft (4400)

		vote	share
<b>Fairhurst M.*</b>	Con	945	42.5
Edwards A. Ms.	Lab	592	26.6
Ponsonby M.	LD	478	21.5
Finch R.	UKIP	211	9.5

Turnout 50.6 15.9

### Battins (4825)

		vote	share
<b>Ray K. Ms.</b>	LD	912	38.3
Fairhurst L. Ms.	Con	816	34.3
Phillips L. Ms.	Lab	651	27.4

Turnout 49.3 4.0

### Bedhampton (7085)

		vote	share
<b>Wride J. Ms.*</b>	Con	2,166	46.0
Briggs J. Ms.	LD	1,460	31.0
Edwards O.	Lab	589	12.5
Harris S.	UKIP	271	5.8
Mitchell T.	Green	121	2.6
Herbert G.	Edem	100	2.1

Turnout 66.4 15.0

### Bondfields (4955)

		vote	share
<b>Edwards F. Ms.</b>	Con	882	34.1
Marshall S.	LD	845	32.7
Cousins R.	Lab	669	25.9
Greenham G.	Edem	190	7.3

Turnout 52.2 1.4

### Cowplain (7638)

		vote	share
<b>Briggs T.*</b>	Con	2,993	58.8
Crabb T. Ms.	LD	1,483	29.1
Monks K.	Lab	616	12.1

Turnout 69.4 29.7

Emsworth (7810)			
		vote	share
Gillett D.*	Con	3,124	53.7
Miller R. Ms.	LD	1,470	25.3
Gilchrist K.	Lab	669	11.5
Reddoch I.	UKIP	315	5.4
Smith W. Ms.	Green	235	4.0
<b>Turnout</b>		74.4	28.5

Hart Plain (7457)			
		vote	share
Cheshire M.*	Con	2,424	51.0
Crawford R.	LD	1,671	35.2
Sherlock H.	Lab	657	13.8
<b>Turnout</b>		64.5	15.8

Hayling East (7325) <sup>2</sup>			
		vote	share
Smith J.*	Con	2,272	44.5
Turner L. Ms.	Con	2,027	-
Pritchard P.	LD	1,116	21.9
Armstrong A. Ms.	LD	929	-
Mealy S. Ms.	Lab	715	14.0
Laxton J.	Lab	695	-
Kerrin G.	UKIP	689	13.5
Youle H. Ms.	Green	313	6.1
<b>Turnout</b>		66.1	22.6

Hayling West (6902)			
		vote	share
Wilson M.	Con	2,913	59.8
Brown A. Ms.	LD	898	18.4
Underwood S. Ms.	Lab	636	13.1
Kerrin B. Ms.	UKIP	424	8.7
<b>Turnout</b>		70.6	41.4

Purbrook (7233)			
		vote	share
Blackett G. Ms.*	Con	2,596	53.7
Pook S. Ms.	LD	1,335	27.6
Wheeler L. Ms.	Lab	907	18.7
<b>Turnout</b>		66.9	26.1

St. Faiths (7138)			
		vote	share
Branson J. Ms.*	Con	2,530	49.5
Corrigan P.	LD	1,593	31.2
Smith J.	Lab	591	11.6
Dawes T.	Green	394	7.7
<b>Turnout</b>		71.6	18.3

Stakes (7421)			
		vote	share
Kennedy O. Ms.*	Con	2,150	49.1
Bazley A. Ms.	LD	1,289	29.4
Matthews R.	Lab	938	21.4
<b>Turnout</b>		59.0	19.7

Warren Park (4967)			
		vote	share
Johnson M.	Con	752	34.2
Brown R.*	Lab	673	30.6
Maple C.	LD	620	28.2
Little S.	UKIP	154	7.0
<b>Turnout</b>		44.3	3.6

Waterloo (7669)			
		vote	share
Bastin R.	Con	2,922	55.8
Dunford F.	LD	1,646	31.4
Miller E.	Lab	466	8.9
Jannaway R.	Green	205	3.9
<b>Turnout</b>		69.1	24.4

## Havant - 2011

Bedhampton (7118)			
		vote	share
Smith G.	Con	1,390	45.4
Welch C.	LD	847	27.7
Cousins R.	Lab	442	14.4
Harris S.	UKIP	212	6.9
Mitchell T.	Green	168	5.5
<b>Turnout</b>		43.0	17.8

Cowplain (7375)			
		vote	share
Smallcorn M. Ms.*	Con	1,928	65.4
Monks K.	Lab	449	15.2
Jacobs J.	LD	346	11.7
Ludlam D.	Green	226	7.7
<b>Turnout</b>		40.0	50.2

Emsworth (7819)			
		vote	share
Galloway R.	Con	2,418	58.7
Marshall S.	LD	558	13.5
Smith J.	Lab	531	12.9
Kelly S. Ms.	Green	363	8.8
Spurge A.	UKIP	252	6.1
<b>Turnout</b>		53.2	45.1

Hart Plain (7478)			
		vote	share
Shimbart G.*	Con	1,694	58.9
Trowse F. Ms.	Lab	597	20.7
Crabb T. Ms.	LD	587	20.4
<b>Turnout</b>		39.0	38.1

Hayling East (7313)			
		vote	share
Collins D.*	Con	1,757	59.7
Mealy S. Ms.	Lab	427	14.5
Kerrin G.	UKIP	329	11.2
Pritchard P.	LD	265	9.0
Youle M. Ms.	Green	164	5.6
<b>Turnout</b>		40.8	45.2

Hayling West (6901)			
		vote	share
Lenaghan A.*	Con	2,213	67.6
Mealy J.	Lab	390	11.9
Holt S. Ms.	Green	237	7.2
Kerrin B. Ms.	UKIP	223	6.8
Brown M. Ms.	LD	210	6.4
<b>Turnout</b>		47.7	55.7

Purbrook (7254)			
		vote	share
Farrow H. Ms.*	Con	1,731	61.8
Wheeler L. Ms.	Lab	677	24.2
Harper T. Ms.	LD	395	14.1
<b>Turnout</b>		39.2	37.6

St. Faiths (7096)			
		vote	share
Bolton R.*	Con	1,819	53.6
Edwards O.	Lab	560	16.5
Briggs J. Ms.	LD	513	15.1
Dawes T.	Green	293	8.6
Finch R.	UKIP	211	6.2
<b>Turnout</b>		48.1	37.1

Stakes (7395)			
		vote	share
Hilton C.*	Con	1,264	53.6
Potts D.	Lab	653	27.7
Bazley A. Ms.	LD	441	18.7
<b>Turnout</b>		32.2	25.9

Waterloo (7719)			
		vote	share
Buckley P.*	Con	2,216	66.8
Dunford F.	LD	440	13.3
Nottingham D. Ms.	Lab	401	12.1
Jannaway R.	Green	259	7.8
<b>Turnout</b>		43.3	53.6

## Havant - 2012

Barncroft (4588)			
		vote	share
Weeks Y. Ms.*	Con	443	46.9
Smith G.	Lab	274	29.0
Finch R.	UKIP	164	17.4
Bolt H. Ms.	LD	63	6.7
<b>Turnout</b>		20.7	17.9

Battins (4910)			
		vote	share
Cousins R.	Lab	431	40.7
Ponsonby F. Ms.*	LD	371	35.1
Sapcote K.	Con	256	24.2
<b>Turnout</b>		21.0	5.7

Bedhampton (7118)			
		vote	share
Smith K.*	Con	927	42.9
Maple C.	LD	434	20.1
Smith D.	Lab	346	16.0
Harris S.	UKIP	299	13.8
Mitchell T.	Green	155	7.2
<b>Turnout</b>		30.4	22.8

Bondfields (4981)			
		vote	share
Hart T.*	Lab	503	51.7
Patrick D. Ms.	Con	335	34.5
Marshall S.	LD	134	13.8
<b>Turnout</b>		19.0	17.3

Cowplain (7426)			
		vote	share
Keast D.*	Con	1,168	58.0
Monks K.	Lab	381	18.9
Holman B.	Green	293	14.5
Jacobs J.	LD	172	8.5
<b>Turnout</b>		27.2	39.1

Emsworth (7803)			
		vote	share
Gibb-Gray B.*	Con	1,698	57.8
Cobbett S. Ms.	Green	583	19.8
Blunden C.	Lab	370	12.6
Miller R. Ms.	LD	288	9.8
<b>Turnout</b>		37.6	37.9

Hart Plain (7480)			
		vote	share
Shimbart E. Ms.*	Con	1,333	61.5
Sherlock H.	Lab	538	24.8
Woodard E. Ms.	LD	297	13.7
<b>Turnout</b>		26.7	36.7

Hayling East (7338)			
		vote	share
Turner L. Ms.	Con	939	43.9
Underwood S. Ms.	Lab	467	21.8
Kerrin G.	UKIP	454	21.2
Valentine P.	Green	167	7.8
Pritchard P.	LD	114	5.3
<b>Turnout</b>		29.2	22.0

**Hayling West (6909)**

		<b>vote</b>	<b>share</b>
<b>Jones V.</b>	Con	1,110	46.7
Perry J.	UKIP	573	24.1
Clarke M.	Lab	422	17.7
Holt S. Ms.	Green	169	7.1
Marshall B.	LD	104	4.4
<b>Turnout</b>		34.5	22.6

**Purbrook (7309)**

		<b>vote</b>	<b>share</b>
<b>Tarrant C. Ms.</b>	Con	1,081	57.4
Wheeler L. Ms.	Lab	587	31.2
Bolt M.	LD	214	11.4
<b>Turnout</b>		26.0	26.2

**St. Faiths (7143)**

		<b>vote</b>	<b>share</b>
<b>Guest D.*</b>	Con	1,221	51.0
Francis B. Ms.	Lab	540	22.5
Dawes T.	Green	352	14.7
Briggs J. Ms.	LD	283	11.8
<b>Turnout</b>		34.4	28.4

**Stakes (7430)**

		<b>vote</b>	<b>share</b>
<b>Heard R.</b>	Con	774	50.0
Beauvoisin M. Ms.	Lab	552	35.7
Bazley A. Ms.	LD	222	14.3
<b>Turnout</b>		21.2	14.3

**Warren Park (5026)**

		<b>vote</b>	<b>share</b>
<b>Brown R.</b>	Lab	361	44.3
Brown A. Ms.	LD	237	29.1
Sceal M.*	Con	216	26.5
<b>Turnout</b>		16.3	15.2

**Waterloo (7707)**

		<b>vote</b>	<b>share</b>
<b>Hunt J.*</b>	Con	1,334	60.3
Robinson F. Ms.	Lab	524	23.7
Dunford F.	LD	356	16.1
<b>Turnout</b>		28.9	36.6





