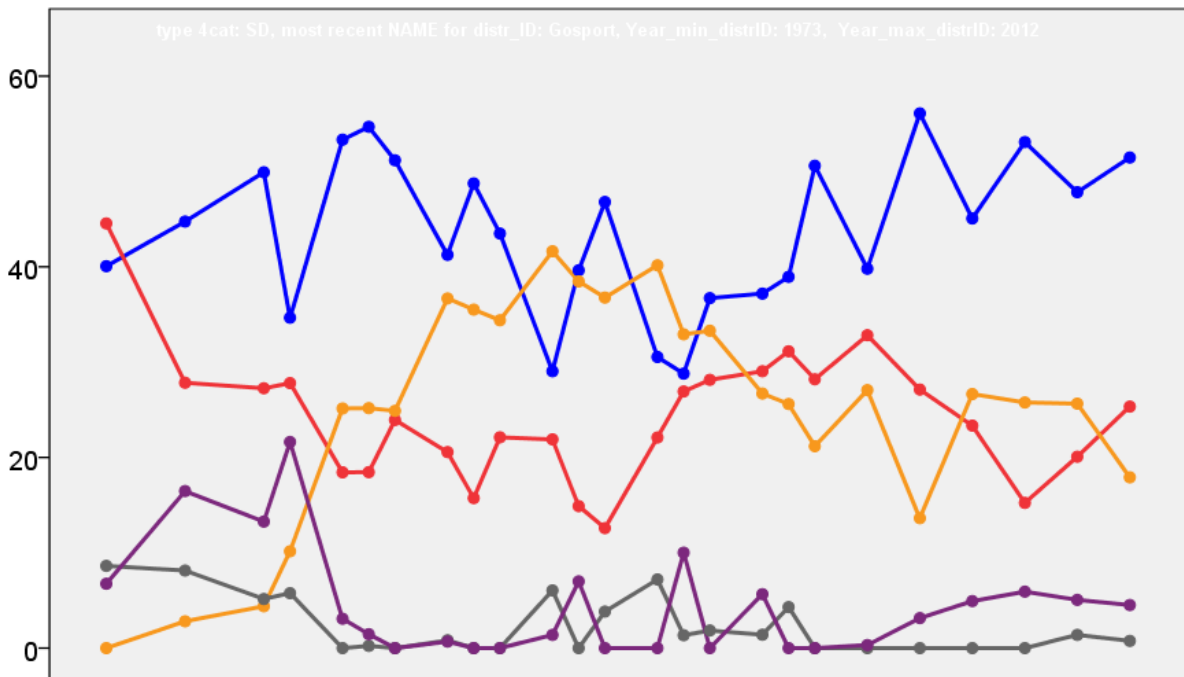


# Gosport Borough Council Election Results 1973-2012



Colin Rallings and Michael Thrasher  
The Elections Centre  
Plymouth University

The information contained in this report has been obtained from a number of sources. Election results from the immediate post-reorganisation period were painstakingly collected by Alan Willis largely, although not exclusively, from local newspaper reports. From the mid-1980s onwards the results have been obtained from each local authority by the Elections Centre. The data are stored in a database designed by Lawrence Ware and maintained by Brian Cheal and others at Plymouth University. Despite our best efforts some information remains elusive whilst we accept that some errors are likely to remain. Notice of any mistakes should be sent to [elections@plymouth.ac.uk](mailto:elections@plymouth.ac.uk). The results sequence can be kept up to date by purchasing copies of the annual Local Elections Handbook, details of which can be obtained by contacting the email address above.

Front cover: the graph shows the distribution of percentage vote shares over the period covered by the results. The lines reflect the colours traditionally used by the three main parties. The grey line is the share obtained by Independent candidates while the purple line groups together the vote shares for all other parties.

Rear cover: the top graph shows the percentage share of council seats for the main parties as well as those won by Independents and other parties. The lines take account of any by-election changes (but not those resulting from elected councillors switching party allegiance) as well as the transfers of seats during the main round of local election.

The lower graph shows for each main round of local elections the overall percentage turnout (solid line), the percentage of women candidates standing at (dotted line) and the percentage of women among those elected (hashed line).

## Gosport - 1973

### Alverstoke (6369)<sup>3</sup>

		vote	share
<b>Taylor H.</b>	Con	1,670	76.3
<b>Maynard G.</b>	Con	1,655	-
<b>Greene P.</b>	Con	1,552	-
Wright J. Ms.	Lab	520	23.7
Hawkins M. Ms.	Lab	516	-
Hewitt J. Ms.	Lab	497	-
<b>Turnout</b>		35.6	52.5

### Bridgemary (6018)<sup>3</sup>

		vote	share
<b>Borras R.</b>	Lab	1,279	69.4
<b>Winter J. Ms.</b>	Lab	1,203	-
<b>Humphries L.</b>	Lab	1,200	-
Choppen R.	Con	564	30.6
Brewster D. Ms.	Con	563	-
Day D.	Con	527	-
<b>Turnout</b>		31.9	38.8

### Brockhurst (4086)<sup>3</sup>

		vote	share
<b>Wright D.</b>	Lab	1,119	71.4
<b>Sears E.</b>	Lab	1,047	-
<b>Winter K. Ms.</b>	Lab	944	-
Ray C. Ms.	Con	448	28.6
<b>Turnout</b>		37.2	42.8

### Elson (3589)<sup>3</sup>

		vote	share
<b>Irwin R.</b>	Res	989	60.0
<b>Partington A.</b>	Res	908	-
<b>Rushforth L.</b>	Res	858	-
Carter B. Ms.	Con	360	21.8
Livesey J.	Lab	300	18.2
Dwyer F.	Lab	221	-
Baker A. Ms.	Lab	219	-
<b>Turnout</b>		44.3	38.1

### Forton (3289)<sup>3</sup>

		vote	share
<b>Hewitt G.</b>	Lab	737	72.0
<b>Leyland S.</b>	Lab	645	-
<b>Milton D.</b>	Lab	645	-
Bryant J.	Con	286	28.0
Hoyland A.	Con	251	-
Hoyland M. Ms.	Con	233	-
<b>Turnout</b>		31.1	44.1

### Hardway (3366)<sup>3</sup>

		vote	share
<b>Vincent R.</b>	Con	870	59.8
<b>Keith T.</b>	Con	822	-
<b>Davies H.</b>	Con	781	-
Pawling N. Ms.	Lab	585	40.2
Radford P.	Lab	578	-
Cooley P. Ms.	Lab	539	-
<b>Turnout</b>		44.0	19.6

### Lee (3976)<sup>3</sup>

		vote	share
<b>Dimmer R.</b>	Ind	1,108	45.4
<b>Kirkin R.</b>	Con	958	39.3
<b>Wroughton J.</b>	Con	786	-
Skipper G. Ms.	Con	696	-
Winter E. Ms.	Lab	374	15.3
Hanbridge L.	Lab	293	-
Hill M.	Lab	278	-
<b>Turnout</b>		42.9	6.1

### Leesland (3529)<sup>3</sup>

		vote	share
<b>Burton J.</b>	Lab	986	52.0
<b>Behrendt F. Ms.</b>	Con	909	48.0
<b>Pittard B. Ms.</b>	Lab	827	-
Cooley H.	Lab	814	-
Tribble C.	Con	780	-
Hern J.	Con	772	-
<b>Turnout</b>		51.1	4.1

### Newtown (2755)<sup>3</sup>

		vote	share
<b>Mabey S.</b>	Lab	735	34.1
<b>Chidlow W.</b>	Ind	639	29.7
<b>Leyland C. Ms.</b>	Lab	565	-
Gilchrist A.	Lab	480	-
Richards R.	Con	403	18.7
Hare L.	Res	377	17.5
Hulme A.	Res	366	-
Seymour J.	Con	354	-
<b>Turnout</b>		52.6	4.5

### Rowner (8715)<sup>3</sup>

		vote	share
<b>Hardman E. Ms.</b>	Lab	1,352	58.0
<b>Wallace L. Ms.</b>	Lab	1,151	-
<b>Bond B.</b>	Lab	1,114	-
Candy H.	Con	981	42.0
Ellis A. Ms.	Con	943	-
Briggs A.	Con	936	-
<b>Turnout</b>		27.3	15.9

### Town (3280)<sup>3</sup>

		vote	share
<b>Hales J.</b>	Lab	1,031	61.0
<b>Rees G.</b>	Lab	800	-
<b>Burton L. Ms.</b>	Lab	760	-
Davis A.	Con	660	39.0
Russell O. Ms.	Con	646	-
Cooper R.	Con	571	-
<b>Turnout</b>		50.8	21.9

## Gosport - 1976

### Alverstoke (6684)<sup>3</sup>

		vote	share
<b>Taylor H.</b>	Con	2,584	63.9
<b>Maynard T.</b>	Con	2,573	-
<b>Greene P.</b>	Con	2,374	-
Hug L. Ms.	Res	1,019	25.2
Tyrrell J.	Lab	443	10.9
Bell J. Ms.	Lab	441	-
Woods H.	Lab	413	-
<b>Turnout</b>		60.5	38.7

### Bridgemary (6268)<sup>3</sup>

		vote	share
<b>Borras R.</b>	Lab	1,235	48.3
<b>Winter J. Ms.</b>	Lab	1,230	-
<b>Humphries L.</b>	Lab	1,206	-
Carter B.	Con	963	37.6
Seymour J.	Con	931	-
Ellis A. Ms.	Con	822	-
Topple P. Ms.	Lib	361	14.1
<b>Turnout</b>		40.8	10.6

### Brockhurst (3906)<sup>3</sup>

		vote	share
<b>Wright D.</b>	Lab	964	52.5
<b>Sears E.</b>	Lab	933	-
<b>Pearce A. Ms.</b>	Con	872	47.5
Winter K. Ms.	Lab	861	-
Bayford B.	Con	830	-
Richards R.	Con	781	-
<b>Turnout</b>		47.0	5.0

### Elson (3582)<sup>3</sup>

		vote	share
<b>Irwin R.</b>	Res	1,085	50.0
<b>Partington A.</b>	Res	970	-
<b>Rushforth L.</b>	Res	753	-
Neal V.	Con	662	30.5
Laws H. Ms.	Con	563	-
Chamberlain D.	Con	447	-
Hewitt J. Ms.	Lab	422	19.5
Dyer N.	Lab	418	-
Welch A.	Lab	329	-
<b>Turnout</b>		60.6	19.5

### Forton (3476)<sup>3</sup>

		vote	share
<b>Hewitt G.</b>	Lab	740	51.7
<b>Leyland S.</b>	Lab	660	-
<b>Leyland C. Ms.</b>	Lab	638	-
Cox S. Ms.	Con	529	37.0
Bryant J.	Con	493	-
O'Dell W.	Con	446	-
De La Mare D.	Lib	162	11.3
Old A.	Lib	128	-
<b>Turnout</b>		41.2	14.7

### Hardway (3341)<sup>3</sup>

		vote	share
<b>Keith T.</b>	Con	978	42.4
<b>Duncan-Brown S.</b>	Con	949	-
<b>McBryde I. Ms.</b>	Con	925	-
Pearce C.	Res	587	25.5
Hawkins D.	Lab	454	19.7
Wallace J. Ms.	Lab	443	-
Cully S.	Lab	351	-
Herridge A.	Lib	286	12.4
<b>Turnout</b>		69.0	17.0

### Lee (3985)<sup>3</sup>

		vote	share
<b>Garforth A.</b>	Con	1,688	47.9
<b>Flory G.</b>	Con	1,684	-
<b>Dimmer R.</b>	Ind	1,540	43.7
Dyer A. Ms.	Lab	295	8.4
Mason A.	Lab	247	-
Redrup J.	Lab	222	-
<b>Turnout</b>		88.4	4.2

### Leesland (3497)<sup>3</sup>

		vote	share
<b>Behrendt F. Ms.</b>	Con	990	39.3
<b>O'Neill G.</b>	Res	876	34.8
<b>Lucas D.</b>	Con	727	-
Parsons C.	Con	693	-
Pittard B. Ms.	Lab	654	26.0
Hill M.	Lab	563	-
Winter E. Ms.	Lab	537	-
<b>Turnout</b>		72.1	4.5

### Newtown (3086)<sup>3</sup>

		vote	share
<b>Chidlow W.</b>	Ind	798	27.2
<b>Pearce R.</b>	Con	795	27.1
<b>Hare L.</b>	Res	679	23.2
Mabey S.	Lab	660	22.5
Rasmussen J.	Con	659	-
Goode P.	Lab	470	-
Winter E. Ms.	Lab	381	-
<b>Turnout</b>		95.0	0.1

### Rowner (8856)<sup>3</sup>

		vote	share
<b>Williams A.</b>	Con	1,726	53.3
<b>Withers D.</b>	Con	1,672	-
<b>Egglestone A.</b>	Con	1,652	-
Hardman E. Ms.	Lab	1,515	46.7
Wallace L. Ms.	Lab	1,303	-
Bond B.	Lab	1,233	-
<b>Turnout</b>		36.6	6.5

### Town (3207)<sup>3</sup>

		vote	share
<b>Davis A.</b>	Con	1,080	49.3
<b>Keith K. Ms.</b>	Con	1,037	-
<b>Hope D.</b>	Con	771	-
Burton L. Ms.	Lab	622	28.4
Bell P.	Lab	580	-
Rees G.	Lab	529	-
Hulme A.	Res	490	22.4
<b>Turnout</b>		68.4	20.9

## Gosport - 1979

### Alverstoke (4816)<sup>3</sup>

		vote	share
Greene P.	Con	1,990	47.0
Baker E. Ms.	Con	1,984	-
Wall P.	Con	1,804	-
Pugh G.	Res	837	19.7
Herridge A.	Lib	833	19.7
Goode P.	Lab	578	13.6
<b>Turnout</b>		55.3	27.2

### Anglesey (5157)<sup>3</sup>

		vote	share
Maynard G.	Con	3,129	78.9
Pearce A. Ms.	Con	2,940	-
Pearce R.	Con	2,906	-
Roberts R. Ms.	Lab	837	21.1
<b>Turnout</b>		77.6	57.8

### Bridgemy (5184)<sup>3</sup>

		vote	share
Carter B.	Con	1,923	53.9
Stagg D.	Con	1,813	-
Edgar P.	Con	1,781	-
Leyland S.	Lab	1,642	46.1
Leyland C. Ms.	Lab	1,508	-
Skelly A.	Lab	1,454	-
<b>Turnout</b>		79.7	7.9

### Brockhurst (5099)<sup>3</sup>

		vote	share
Wright D.	Lab	1,710	42.6
Sears E.	Lab	1,695	-
Bayford B.	Con	1,536	38.3
Stone G.	Con	1,481	-
Lockhart J. Ms.	Con	1,469	-
Bond B.	Lab	1,441	-
Bennett P.	Res	769	19.2
<b>Turnout</b>		74.6	4.3

### Elson (5151)<sup>3</sup>

		vote	share
Irwin R.	Res	1,691	42.3
White R.	Con	1,578	39.4
Ellis A. Ms.	Con	1,512	-
Seymour D.	Con	1,504	-
Johnson M. Ms.	Res	1,487	-
Rushforth L.	Res	1,452	-
Wright J. Ms.	Lab	733	18.3
Bell J. Ms.	Lab	709	-
Hawkins M. Ms.	Lab	692	-
<b>Turnout</b>		79.2	2.8

### Hardway & Forton (5569)<sup>3</sup>

		vote	share
Keith T.	Con	2,092	46.0
McBryde I. Ms.	Con	2,041	-
Duncan-Brown S.	Con	1,988	-
Searle K.	Lab	1,934	42.5
Hewitt G.	Lab	1,601	-
Hill A. Ms.	Lab	1,259	-
De La Mare D.	Res	523	11.5
<b>Turnout</b>		73.9	3.5

### Lee (4929)<sup>3</sup>

		vote	share
Garforth A.	Con	2,600	40.1
Flory G.	Con	2,577	-
Dimmer R.	Ind	2,226	34.3
Philp G.	Lib	1,064	16.4
Gray S. Ms.	Lab	599	9.2
<b>Turnout</b>		80.5	5.8

### Leesland (5093)<sup>3</sup>

		vote	share
Behrendt F. Ms.	Con	2,182	44.5
Lucas D.	Con	1,975	-
O'Neill G.	Res	1,908	38.9
Parsons C.	Con	1,720	-
Hill M.	Lab	810	16.5
Pittard B. Ms.	Lab	800	-
<b>Turnout</b>		77.8	5.6

### Rowner (5797)<sup>3</sup>

		vote	share
Williams A.	Con	2,454	57.0
Hayward A.	Con	2,407	-
Marks A.	Con	2,299	-
Hardman E. Ms.	Lab	1,848	43.0
Dyer N.	Lab	1,526	-
Holloway J.	Lab	1,484	-
<b>Turnout</b>		76.8	14.1

### Town (5262)<sup>3</sup>

		vote	share
Davis A. Ms.	Con	2,066	65.8
Keith K. Ms.	Con	2,024	-
Hope D.	Con	1,868	-
Jordan S. Ms.	Lab	1,074	34.2
Bell P.	Lab	1,056	-
Welch A.	Lab	798	-
<b>Turnout</b>		77.4	31.6

## Gosport - 1980

### Alverstoke (4855)

		vote	share
Herridge A.	Lib	792	48.3
Yeomans D.	Con	541	33.0
Bidewell V. Ms.	Res	207	12.6
Goode P.	Lab	101	6.2
<b>Turnout</b>		33.8	15.3

### Anglesey (5172)

		vote	share
Pearce R.	Con	1,507	67.0
De La Mare Y. Ms.	Res	371	16.5
Walls A.	Lib	211	9.4
Mason A.	Lab	161	7.2
<b>Turnout</b>		43.5	50.5

### Bridgemy (3786)

		vote	share
Leyland S.	Lab	1,115	69.3
Martin J.	Res	338	21.0
Edgar P.	Con	156	9.7
<b>Turnout</b>		42.5	48.3

### Brockhurst (5527)

		vote	share
Searle K.	Lab	1,294	55.9
Bayford B.	Con	859	37.1
Edwards M.	Res	163	7.0
<b>Turnout</b>		41.9	18.8

### Elson (5322)

		vote	share
Johnson M. Ms.	Res	839	37.1
Ellis A. Ms.	Con	714	31.6
Dyer N.	Lab	470	20.8
Irving B.	Lib	239	10.6
<b>Turnout</b>		42.5	5.5

### Hardway & Forton (5650)

		vote	share
Close R.	Con	932	43.8
Hewitt G.	Lab	899	42.2
Styler D.	Res	158	7.4
Simpson D. Ms.	Lib	141	6.6
<b>Turnout</b>		37.7	1.5

### Lee (5719)

		vote	share
Dimmer R.	Ind	1,259	51.2
Irving E.	Res	760	30.9
Tomlinson J.	Lab	228	9.3
Jennings M.	Lib	212	8.6
<b>Turnout</b>		43.0	20.3

### Leesland (5175)

		vote	share
O'Neill G.	Res	1,075	44.9
Parsons C.	Con	838	35.0
Christian A.	Lab	332	13.9
Chuter R.	Lib	151	6.3
<b>Turnout</b>		46.3	9.9

### Rowner (5890)

		vote	share
Marks A.	Con	1,107	52.9
Burnham A.	Lab	984	47.1
<b>Turnout</b>		35.5	5.9

### Town (5345)

		vote	share
Hope D.	Con	912	34.1
Pritchard H.	Res	767	28.6
Jordan S. Ms.	Lab	485	18.1
Herridge S. Ms.	Lib	472	17.6
Harris C.	Ecol	42	1.6
<b>Turnout</b>		50.1	5.4

## Gosport - 1982

### Alverstoke (5554)

		vote	share
King D.	Con	977	63.3
Cresswell B.	All	502	32.5
Hawkins D.	Lab	65	4.2
<b>Turnout</b>		27.8	30.8

### Anglesey (5192)

		vote	share
Pearce A. Ms.	Con	1,402	69.1
Shankland J. Ms.	All	534	26.3
Hawkins L. Ms.	Lab	94	4.6
<b>Turnout</b>		39.1	42.8

### Bridgemy (5316)

		vote	share
Stagg D.	Con	860	42.6
Cully S.	Lab	716	35.4
Patter E. Ms.	All	444	22.0
<b>Turnout</b>		38.0	7.1

### Brockhurst (5889)

		vote	share
Sears E.	Lab	934	46.2
Coleborn R.	Con	700	34.7
Miles D.	All	386	19.1
<b>Turnout</b>		34.3	11.6

### Elson (5411)

		vote	share
White R.	Con	861	37.4
Bennett P.	Res	641	27.8
Whitbread A. Ms.	All	477	20.7
Nicholls G.	Lab	326	14.1
<b>Turnout</b>		42.6	9.5

### Hardway & Forton (5710)

		vote	share
McBryde I. Ms.	Con	1,219	61.3
Billows G.	All	397	20.0
Bell P.	Lab	371	18.7
<b>Turnout</b>		34.8	41.4

### Lee (5218)

		vote	share
Flory G.	Con	1,489	66.8
Tomlinson J.	All	615	27.6
Nicholls L. Ms.	Lab	124	5.6
<b>Turnout</b>		42.7	39.2

Leesland (5246)			
		vote	share
Lucas D.	Con	1,272	61.4
Marchant P.	All	505	24.4
Christian A.	Lab	295	14.2
<b>Turnout</b>		39.5	37.0

Rowner (6059)			
		vote	share
Hayward A.	Con	1,176	54.7
Clark D.	Lab	630	29.3
Chuter R.	All	345	16.0
<b>Turnout</b>		35.5	25.4

Town (5362)			
		vote	share
Keith K. Ms.	Con	1,115	46.4
Chegwyn P.	All	1,014	42.2
Fleet T.	Lab	273	11.4
<b>Turnout</b>		44.8	4.2

## Gosport - 1983

Alverstoke (4242)			
		vote	share
Edgar P.	Con	1,276	61.6
Jordan S. Ms.	Lib/SDP	688	33.2
Rowe K.	Lab	106	5.1
<b>Turnout</b>		48.8	28.4

Anglesey (5203)			
		vote	share
Briggs A.	Con	1,759	72.4
Robinson-Grindey S.	Lib/SDP	433	17.8
Hawkins L. Ms.	Lab	181	7.4
Hearn P.	Ind	57	2.3
<b>Turnout</b>		46.7	54.6

Bridgemary (5269)			
		vote	share
Parker C.	Con	1,117	47.5
Cully S.	Lab	978	41.6
Topple S. Ms.	Lib/SDP	255	10.9
<b>Turnout</b>		44.6	5.9

Brockhurst (5929)			
		vote	share
Nicholls H.	Con	1,288	49.6
Christian A.	Lab	967	37.2
Miles D.	Lib/SDP	342	13.2
<b>Turnout</b>		43.8	12.4

Elsion (5448)			
		vote	share
Ellis A. Ms.	Con	1,075	44.4
Whitbread A. Ms.	Lib/SDP	1,057	43.7
Nicholls G.	Lab	287	11.9
<b>Turnout</b>		44.4	0.7

Hardway & Forton (5767)			
		vote	share
Furlong D. Ms.	Con	1,103	47.3
Chuter R.	Lib/SDP	745	32.0
Haines M.	Lab	482	20.7
<b>Turnout</b>		40.4	15.4

Lee (5384)			
		vote	share
Garforth A.	Con	1,880	71.7
Tomlinson J.	Lib/SDP	526	20.1
Nicholls L. Ms.	Lab	216	8.2
<b>Turnout</b>		48.7	51.6

Leesland (5363)			
		vote	share
Hook M.	Con	1,387	55.9
Marchant P.	Lib/SDP	405	16.3
Gardner D.	Res	364	14.7
Binfield L.	Lab	327	13.2
<b>Turnout</b>		46.3	39.5

Rowner (6147)			
		vote	share
Williams R.	Con	1,642	59.4
Clark D.	Lab	835	30.2
Billows G.	Lib/SDP	289	10.4
<b>Turnout</b>		45.0	29.2

Town (5400)			
		vote	share
Chegwyn P.	Lib/SDP	1,528	53.9
Davis A. Ms.	Con	1,090	38.4
Taylor R.	Lab	217	7.7
<b>Turnout</b>		52.5	15.4

## Gosport - 1984

Alverstoke (5544)			
		vote	share
Herridge A.	Lib/SDP	894	49.0
Goss J.	Con	828	45.4
Bond N.	Lab	101	5.5
<b>Turnout</b>		32.9	3.6

Anglesey (5277)			
		vote	share
Geall R.	Con	1,388	64.3
Hart B.	Lib/SDP	637	29.5
Nicholls G.	Lab	135	6.3
<b>Turnout</b>		40.9	34.8

Bridgemary (5301)			
		vote	share
Leyland S.	Lab	1,189	57.9
Philpott S.	Con	863	42.1
<b>Turnout</b>		38.7	15.9

Brockhurst (6037)			
		vote	share
Webster G.	Con	862	35.7
Russell M.	Lib/SDP	835	34.6
Christian A.	Lab	716	29.7
<b>Turnout</b>		40.0	1.1

Elsion (5490)			
		vote	share
Johnson M. Ms.	Con	1,028	45.1
Boden D.	Lib/SDP	873	38.3
Hawkins L. Ms.	Lab	376	16.5
<b>Turnout</b>		41.5	6.8

Hardway & Forton (5707)			
		vote	share
Hayling J.	Con	898	43.7
Gardner D.	Lib/SDP	812	39.5
Haines M.	Lab	346	16.8
<b>Turnout</b>		36.0	4.2

Lee (5498)			
		vote	share
Snaith M. Ms.	Con	1,711	83.7
Nicholls L. Ms.	Lab	334	16.3
<b>Turnout</b>		37.2	67.3

Leesland (5518)			
		vote	share
O'Neill G.	Con	1,533	75.4
Binfield L.	Lab	500	24.6
<b>Turnout</b>		36.8	50.8

Rowner (6138)			
		vote	share
Clark D.	Lab	1,342	55.9
Stanley M.	Con	1,058	44.1
<b>Turnout</b>		39.1	11.8

Town (5444)			
		vote	share
Buggy C.	Lib/SDP	1,362	54.8
Davis A. Ms.	Con	957	38.5
Benfield M.	Lab	166	6.7
<b>Turnout</b>		45.6	16.3

## Gosport - 1986

Alverstoke (6847)			
		vote	share
Philpott S.	Con	868	46.3
Marshfield W.	Lib/SDP	794	42.3
Puddicombe B.	Lab	214	11.4
<b>Turnout</b>		27.4	3.9

Anglesey (5352)			
		vote	share
Rushton G.	Con	1,359	48.4
Aston J. Ms.	Lib/SDP	1,323	47.1
Russell G.	Lab	128	4.6
<b>Turnout</b>		52.5	1.3

Bridgemary (5333)			
		vote	share
Leyland C. Ms.	Lab	1,267	52.4
Stagg D.	Con	633	26.2
Hart B.	Lib/SDP	516	21.4
<b>Turnout</b>		45.3	26.2

Brockhurst (6145)			
		vote	share
Russell M.	Lib/SDP	1,004	38.2
Bell D.	Con	816	31.0
Benfield M.	Lab	648	24.6
Searle K.	Ind Lab	162	6.2
<b>Turnout</b>		42.8	7.1

Elsion (5532)			
		vote	share
Whitbread A. Ms.	Lib/SDP	1,181	54.6
Oliver A.	Con	772	35.7
Nicholls G.	Lab	210	9.7
<b>Turnout</b>		39.1	18.9

Hardway & Forton (5648)			
		vote	share
McBryde I. Ms.	Con	844	42.8
Harns C.	Lib/SDP	599	30.4
Cummings D.	Lab	333	16.9
Gardner D.	Ind	195	9.9
<b>Turnout</b>		34.9	12.4

Lee (5612)			
		vote	share
Benner R.	Con	1,476	58.7
Gill C.	Lib/SDP	841	33.5
Groom G.	Lab	197	7.8
<b>Turnout</b>		44.8	25.3

Leesland (5674)			
		vote	share
Lucas D.	Con	1,230	50.1
Harris J.	Lib/SDP	922	37.5
Mason J.	Lab	305	12.4
<b>Turnout</b>		43.3	12.5

Rowner (6129)			
		vote	share
Alder S.	Lab	1,376	50.9
Hayward A.	Con	982	36.3
Jenking-Rees D.	Lib/SDP	345	12.8
<b>Turnout</b>		44.1	14.6

Town (5488)			
		vote	share
Miles D.	Lib/SDP	1,203	53.5
Spiers V.	Con	834	37.1
Nicholls L. Ms.	Lab	213	9.5
<b>Turnout</b>		41.0	16.4

## Gosport - 1987

Alverstoke (6803)			
		vote	share
Edgar P.	Con	1,493	65.5
Mansfield W.	Lib/SDP	631	27.7
Puiddicombe B.	Lab	155	6.8
<b>Turnout</b>		33.5	37.8

Anglesey (5319)			
		vote	share
Briggs T.	Con	1,710	50.2
Aston J. Ms.	Lib/SDP	1,623	47.7
Angus M.	Lab	71	2.1
<b>Turnout</b>		64.0	2.6

Bridgemary (5278)			
		vote	share
Cully S.	Lab	1,353	52.3
Aledslake A.	Con	972	37.6
Chater R.	Lib/SDP	261	10.1
<b>Turnout</b>		49.0	14.7

Brockhurst (6128)			
		vote	share
Nicholls H.	Con	1,246	44.0
Carr E.	Lib/SDP	1,161	41.0
Benfield M.	Lab	424	15.0
<b>Turnout</b>		46.2	3.0

Elson (5564)			
		vote	share
Ellis A. Ms.	Con	1,173	46.8
Manton N.	Lib/SDP	1,127	45.0
Skelly A.	Lab	204	8.1
<b>Turnout</b>		45.0	1.8

Hardway & Forton (5737)			
		vote	share
Parker M.	Con	1,182	48.4
Denn E. Ms.	Lib/SDP	1,026	42.0
Summersgill P.	Lab	236	9.7
<b>Turnout</b>		42.6	6.4

Lee (5760)			
		vote	share
Reynolds J.	Con	1,879	62.1
Gill C.	Lib/SDP	983	32.5
Pollard T.	Lab	162	5.4
<b>Turnout</b>		52.5	29.6

Leesland (5567)			
		vote	share
Hook M.	Con	1,421	51.4
Ufferton J.	Lib/SDP	1,118	40.4
Smith D.	Lab	228	8.2
<b>Turnout</b>		49.7	11.0

Rowner (6126)			
		vote	share
Hayward A.	Con	1,349	45.4
Nicholls G.	Lab	1,280	43.1
Heridge S.	Lib/SDP	342	11.5
<b>Turnout</b>		48.5	2.3

Town (5669)			
		vote	share
Chegwyn P.	Lib/SDP	1,520	55.1
Stagg D.	Con	1,017	36.8
Nicholls L. Ms.	Lab	224	8.1
<b>Turnout</b>		48.7	18.2

## Gosport - 1988

Alverstoke (6923)			
		vote	share
Yeomans D.	Con	1,055	64.7
Marshfield W.	SLD	401	24.6
Bond N.	Lab	175	10.7
<b>Turnout</b>		23.6	40.1

Anglesey (5462)			
		vote	share
Geall R.*	Con	1,599	61.7
Aston J. Ms.	SLD	848	32.7
Green D. Ms.	Lab	145	5.6
<b>Turnout</b>		47.5	29.0

Bridgemary (5316)			
		vote	share
Leyland S.*	Lab	1,563	67.6
Alderslade L. Ms.	Con	748	32.4
<b>Turnout</b>		43.5	35.3

Brockhurst (6115)			
		vote	share
Bailey M. Ms.	SLD	957	37.7
Webster G.*	Con	931	36.7
Puiddicombe B.	Lab	648	25.6
<b>Turnout</b>		41.5	1.0

Elson (5528)			
		vote	share
Whitbread R.	SLD	1,245	55.7
Oliver M.	Con	816	36.5
Lowman T.	Lab	176	7.9
<b>Turnout</b>		40.5	19.2

Hardway & Forton (5860)			
		vote	share
Hayling J.*	Con	909	46.1
Denn E. Ms.	SLD	701	35.6
Nicholls G.	Lab	361	18.3
<b>Turnout</b>		33.6	10.6

Lee (5956)			
		vote	share
Snaith M. Ms.*	Con	1,376	52.5
Cresswell B.	SLD	1,065	40.6
Pollard T.	Lab	179	6.8
<b>Turnout</b>		44.0	11.9

Leesland (5714)			
		vote	share
Chegwyn P.	SLD	1,767	63.5
O'Neill G.*	Con	892	32.0
Grimes P.	Lab	125	4.5
<b>Turnout</b>		48.7	31.4

Rowner (6244)			
		vote	share
Clark D.*	Lab	1,703	57.5
Alderslade A.	Con	1,106	37.4
Gully T.	SLD	152	5.1
<b>Turnout</b>		47.4	20.2

Town (5739) <sup>2</sup>			
		vote	share
Herridge A.	SLD	1,114	47.5
Upperton J. Ms.	SLD	1,089	-
Davies A.	Con	1,002	42.7
Stagg D.	Con	896	-
Alder P.	Lab	230	9.8
Nicholls L. Ms.	Lab	215	-
<b>Turnout</b>		39.6	4.8

## Gosport - 1990

Alverstoke (7689)			
		vote	share
Underwood J.	SLD	1,569	58.5
Philpott S.*	Con	764	28.5
Bate S.	Lab	254	9.5
Patchett M. Ms.	Green	95	3.5
<b>Turnout</b>		34.9	30.0

Anglesey (5365)			
		vote	share
Howell S.	Con	1,437	46.3
Aston J. Ms.	SLD	1,387	44.7
Bond N.	Lab	199	6.4
O'Sullivan J. Ms.	Green	81	2.6
<b>Turnout</b>		57.9	1.6

Bridgemary (5299)			
		vote	share
Leyland C. Ms.*	Lab	1,899	73.7
Penketh R.	Con	676	26.3
<b>Turnout</b>		48.8	47.5

Brockhurst (5968)			
		vote	share
Russell M.*	SLD	1,596	51.1
Puiddicombe B.	Lab	793	25.4
Alderslade A.	Con	632	20.2
Harrington F.	Green	102	3.3
<b>Turnout</b>		52.4	25.7

Elson (5515)			
		vote	share
Whitbread A. Ms.*	SLD	1,948	69.2
Jenking-Rees D. Ms.	Con	539	19.1
Pugh A.	Lab	328	11.7
<b>Turnout</b>		51.1	50.1

Hardway & Forton (5917)			
		vote	share
Seal A. Ms.	SLD	1,757	63.8
McBryde I. Ms.*	Con	630	22.9
Grimes P.	Lab	369	13.4
<b>Turnout</b>		46.6	40.9

Lee (5975)			
		vote	share
Alcock D.	Ind	1,758	52.6
Pierce D.	Con	1,196	35.8
Miller C.	Lab	390	11.7
<b>Turnout</b>		56.1	16.8

Leesland (5701)			
		vote	share
Brown K.	SLD	1,510	55.2
Brady M. Ms.	Con	768	28.1
Mew K.	Lab	335	12.2
Staffieri J. Ms.	Green	124	4.5
<b>Turnout</b>		48.1	27.1

Rowner (6355)			
		vote	share
Alder S.*	Lab	1,423	48.8
Alderslade L. Ms.	Con	1,046	35.9
Marshfield W.	SLD	448	15.4
<b>Turnout</b>		45.9	12.9

Town (5856)			
		vote	share
Miles D.*	SLD	1,880	62.6
Stewart K. Ms.	Con	751	25.0
Downey E. Ms.	Lab	372	12.4
<b>Turnout</b>		51.4	37.6

## Gosport - 1991

### Alverstoke (7441)

		vote	share
<b>Edgar P.*</b>	Con	1,321	50.3
Leader L.	LD	1,138	43.4
Bond N.	Lab	165	6.3
	<b>Turnout</b>	35.3	7.0

### Anglesey (5178)

		vote	share
<b>Briggs A.*</b>	Con	1,581	53.7
Palmer R.	LD	1,365	46.3
	<b>Turnout</b>	57.1	7.3

### Bridgemary (5147)

		vote	share
<b>Cully S.*</b>	Lab	1,689	71.0
Doyle R.	Con	689	29.0
	<b>Turnout</b>	46.3	42.1

### Brockhurst (5723)

		vote	share
<b>Barker L. Ms.</b>	LD	1,113	43.8
Alderslade A.	Con	879	34.6
James C.	Lab	547	21.5
	<b>Turnout</b>	44.5	9.2

### Elson (5368)

		vote	share
<b>Early E.</b>	LD	1,438	56.0
Maguire P.	Con	928	36.2
Pugh A.	Lab	201	7.8
	<b>Turnout</b>	47.9	19.9

### Hardway & Forton (5723)

		vote	share
<b>Adams T.</b>	LD	1,390	59.5
Randall A.	Con	739	31.6
Tufnail S.	Lab	208	8.9
	<b>Turnout</b>	40.9	27.9

### Lee (5764)

		vote	share
<b>Cottle E.</b>	Res	1,851	59.2
Philpott S.	Con	1,278	40.8
	<b>Turnout</b>	54.5	18.3

### Leesland (5672)

		vote	share
<b>Heaps F. Ms.</b>	LD	1,289	50.1
Dunton P.	Con	1,073	41.7
Miller C.	Lab	212	8.2
	<b>Turnout</b>	45.4	8.4

### Rowner (6186)

		vote	share
<b>Hayward A.*</b>	Con	1,106	39.9
Gully T.	LD	1,004	36.2
Byrnes T.	Lab	661	23.9
	<b>Turnout</b>	44.8	3.7

### Town (5674)

		vote	share
<b>Upperton J. Ms.*</b>	LD	1,438	55.7
Stewart K. Ms.	Con	887	34.3
Downey E. Ms.	Lab	258	10.0
	<b>Turnout</b>	45.6	21.3

## Gosport - 1992

### Alverstoke (7921)

		vote	share
<b>Yeomans D.*</b>	Con	1,293	61.3
Leader L.	LD	711	33.7
Skelly A.	Lab	107	5.1
	<b>Turnout</b>	26.7	27.6

### Anglesey (5219)

		vote	share
<b>Snaith M. Ms.</b>	Con	1,811	67.3
Palmer R.	LD	880	32.7
	<b>Turnout</b>	51.6	34.6

### Bridgemary (5105)

		vote	share
<b>Leyland S.*</b>	Lab	1,332	62.4
Shepherd R.	Con	643	30.1
Ward K.	LD	161	7.5
	<b>Turnout</b>	41.9	32.3

### Brockhurst (5814)

		vote	share
<b>Bailey M. Ms.*</b>	LD	1,002	43.3
Alderslade A.	Con	800	34.6
Wright D.	Lab	511	22.1
	<b>Turnout</b>	39.9	8.7

### Elson (5456)

		vote	share
<b>Whitbread R.*</b>	LD	1,192	51.2
Martin S.	Con	1,000	43.0
Searle K.	Lab	134	5.8
	<b>Turnout</b>	42.6	8.3

### Hardway & Forton (5741)

		vote	share
<b>Davison P. Ms.</b>	LD	1,110	56.3
Furlong R.	Con	755	38.3
Bundy J.	Lab	108	5.5
	<b>Turnout</b>	34.4	18.0

### Lee (5741)

		vote	share
<b>Foster G.</b>	Con	1,719	62.2
Cresswell B.	Ind	920	33.3
Wright J. Ms.	Lab	124	4.5
	<b>Turnout</b>	48.2	28.9

### Leesland (5549)

		vote	share
<b>Cheggyn P.*</b>	LD	1,325	54.3
O'Neill R.	Con	1,016	41.6
Cosgrove T.	Lab	101	4.1
	<b>Turnout</b>	44.0	12.7

### Rowner (6139)

		vote	share
<b>Philpott S.</b>	Con	1,208	43.3
Gully T.	LD	1,129	40.5
Binfield L.	Lab	451	16.2
	<b>Turnout</b>	45.6	2.8

### Town (5853)

		vote	share
<b>Herridge A.*</b>	LD	1,306	53.7
Stagg D.	Con	976	40.1
Whitcher J. Ms.	Lab	151	6.2
	<b>Turnout</b>	41.6	13.6

## Gosport - 1994

### Alverstoke (7888)

		vote	share
<b>Charman R.</b>	LD	1,033	50.0
Martin S.	Con	772	37.4
Darrington S.	Lab	260	12.6
	<b>Turnout</b>	26.2	12.6

### Anglesey (5196)

		vote	share
<b>Brooks S. Ms.</b>	LD	1,145	41.7
Bayford B.	Con	1,143	41.6
Lucas D.	Ind	323	11.8
Harding A.	Lab	134	4.9
	<b>Turnout</b>	52.9	0.1

### Bridgemary (5046)

		vote	share
<b>Leyland C. Ms.*</b>	Lab	1,699	76.5
Quelsh M. Ms.	Con	334	15.0
Palmer J. Ms.	LD	189	8.5
	<b>Turnout</b>	44.1	61.4

### Brockhurst (5735)

		vote	share
<b>Bailey J.</b>	LD	1,165	56.7
Angus M. Ms.	Lab	506	24.6
Pyke S. Ms.	Con	383	18.6
	<b>Turnout</b>	35.9	32.1

### Elson (5323)

		vote	share
<b>Whitbread A. Ms.*</b>	LD	1,393	67.0
Gibaud R. Ms.	Con	417	20.1
Cosgrove T.	Lab	269	12.9
	<b>Turnout</b>	39.1	46.9

### Hardway & Forton (5639)

		vote	share
<b>Seal A. Ms.*</b>	LD	982	53.7
Ward S.	Con	553	30.3
Bundy J.	Lab	292	16.0
	<b>Turnout</b>	32.5	23.5

### Lee (5739)

		vote	share
<b>Alcock D.*</b>	Ind	1,322	47.6
Burgess H.	Con	1,215	43.7
Channing K. Ms.	Lab	241	8.7
	<b>Turnout</b>	48.4	3.9

### Leesland (5614)

		vote	share
<b>Brown K.*</b>	LD	1,350	60.0
Ellis A. Ms.	Con	661	29.4
Mitchell E. Ms.	Lab	240	10.7
	<b>Turnout</b>	40.2	30.6

### Rowner (6105)

		vote	share
<b>Binfield L.</b>	Lab	1,092	42.6
Geddes M.	Con	820	32.0
Morley C.	LD	652	25.4
	<b>Turnout</b>	42.0	10.6

### Town (5738)

		vote	share
<b>Miles D.*</b>	LD	1,259	56.2
Pyke K.	Con	673	30.0
Whitcher J. Ms.	Lab	309	13.8
	<b>Turnout</b>	39.2	26.1

## Gosport - 1995

### Alverstoke (7352)

		vote	share
<b>Payne D.</b>	LD	719	41.9
Dunkley M. Ms.	Con	686	39.9
Cheetham T.	Lab	313	18.2
	<b>Turnout</b>	23.4	1.9

### Anglesey (5203)

		vote	share
<b>Edgar P.*</b>	Con	1,457	54.5
Robbins J. Ms.	LD	839	31.4
Cully J. Ms.	Lab	222	8.3
Lewis T.	Ind	156	5.8
	<b>Turnout</b>	51.5	23.1

### Bridgemary (5016)

		vote	share
<b>Cully S.*</b>	Lab	1,621	81.7
Quelch M. Ms.	Con	259	13.0
Simpson D. Ms.	LD	105	5.3
	<b>Turnout</b>	39.7	68.6

Brockhurst (5986)			
		vote	share
Barker L. Ms.	LD	863	47.0
Angus M. Ms.	Lab	526	28.6
Neal K. Ms.	Con	447	24.3
Turnout		30.7	18.4

Elson (5314)			
		vote	share
Early E.*	LD	925	50.0
Hook M.	Con	573	31.0
Cosgrove T.	Lab	353	19.1
Turnout		34.9	19.0

Hardway & Forton (5620)			
		vote	share
Budden C.	LD	806	47.5
Ward S.	Con	450	26.5
Bundy J.	Lab	442	26.0
Turnout		30.2	21.0

Lee (5778)			
		vote	share
Cottle E.*	Res	1,347	61.5
Robson D.	LD	546	24.9
Hadenham M.	Lab	298	13.6
Turnout		38.1	36.6

Leesland (5564)			
		vote	share
Taylor M.	LD	929	47.0
Ellis A. Ms.	Con	647	32.7
Wright J. Ms.	Lab	400	20.2
Turnout		35.6	14.3

Rowner (6069)			
		vote	share
Harding A.	Lab	1,036	45.4
Hayward A.*	Con	845	37.0
Simpson D. Ms.	LD	281	12.3
Binfield I. Ms.	Ind	122	5.3
Turnout		37.6	8.4

Town (5745)			
		vote	share
Yeates M.	LD	774	32.2
Upperton J. Ms.*	Ind LIB	718	29.9
Geddes M.	Con	572	23.8
Whitcher J. Ms.	Lab	340	14.1
Turnout		41.9	2.3

## Gosport - 1996

Alverstoke (7434)			
		vote	share
Charman J. Ms.	LD	660	42.0
Dunkley M. Ms.	Con	651	41.5
Cheetham T.	Lab	259	16.5
Turnout		21.1	0.6

Anglesey (5242)			
		vote	share
Hayward A.	Con	1,312	62.0
Palmer J. Ms.	LD	594	28.1
Whitcher J. Ms.	Lab	209	9.9
Turnout		40.4	33.9

Bridgemary (5001)			
		vote	share
Leyland S.*	Lab	1,394	80.5
Quelch M. Ms.	Con	231	13.3
Simpson D. Ms.	LD	107	6.2
Turnout		34.6	67.1

Brockhurst (6188)			
		vote	share
Bailey M. Ms.*	LD	743	50.4
Hadenham M.	Lab	417	28.3
Vibert H.	Con	313	21.2
Turnout		23.8	22.1

Elson (5344)			
		vote	share
Ward K.	LD	743	49.8
Neal K. Ms.	Con	512	34.3
Bundy J.	Lab	236	15.8
Turnout		27.9	15.5

Hardway & Forton (5681)			
		vote	share
Searle K.	Lab	630	35.5
Langdon P.	Con	587	33.0
Davidson P. Ms.*	LD	560	31.5
Turnout		31.2	2.4

Lee (5828)			
		vote	share
Foster G.*	Con	1,197	52.4
Whitbread R.	LD	806	35.3
Bell P.	Lab	281	12.3
Turnout		39.2	17.1

Leesland (5577)			
		vote	share
Chegwyn P.*	LD	1,115	57.1
Hook M.	Con	678	34.7
Angus M. Ms.	Lab	160	8.2
Turnout		35.1	22.4

Rowner (6091)			
		vote	share
Philpott S.*	Con	908	44.4
Hobbs M. Ms.	Lab	799	39.1
Gully P. Ms.	LD	337	16.5
Turnout		33.5	5.3

Town (5745)			
		vote	share
Cully J. Ms.	Lab	879	38.8
Gully T.*	LD	563	24.8
Geddes M.	Con	478	21.1
Upperton J. Ms.	Ind	346	15.3
Turnout		39.4	13.9

## Gosport - 1998

Alverstoke (7509)			
		vote	share
King D.	Con	583	46.5
Pearce C.	LD	234	18.6
Daniels V. Ms.	Lab	224	17.8
Charman R.*	Ind LD	214	17.1
Turnout		16.2	27.8

Anglesey (4933)			
		vote	share
Hook M.	Con	1,099	58.3
Bloodworth T. Ms.	LD	599	31.8
Whitcher J. Ms.	Lab	187	9.9
Turnout		36.2	26.5

Bridgemary (5005) <sup>2</sup>			
		vote	share
Angus L. Ms.	Lab	0	0.0
Wright D.	Lab	0	-
Turnout		0.0	0.0

Brockhurst (5964)			
		vote	share
Train J.*	Lab	592	46.3
Carter-Harrington F.	LD	330	25.8
Rigg B.	Con	288	22.5
Barnsley C.	Ind LD	68	5.3
Turnout		20.9	20.5

Elson (5258)			
		vote	share
Edwards K.	LD	672	46.4
Furlong D. Ms.	Con	379	26.2
Whitbread R.	Ind LD	199	13.7
Bell P.	Lab	199	13.7
Turnout		26.9	20.2

Hardway & Forton (5540)			
		vote	share
Searle D. Ms.	Lab	660	46.0
Langdon P.	Con	460	32.1
Kelly D. Ms.	LD	203	14.2
Markham A. Ms.	Ind LD	111	7.7
Turnout		25.3	13.9

Lee (5800)			
		vote	share
Burgess H.	Con	971	46.4
Alcock D.*	LD	789	37.7
Cheetham T.	Lab	178	8.5
Whitbread A. Ms.	Ind LD	153	7.3
Turnout		35.0	8.7

Leesland (5489)			
		vote	share
Bartlett G.	Con	533	35.3
Taylor G.	LD	529	35.0
Batterbury J. Ms.	Lab	247	16.4
Lucas D.	Ind	201	13.3
Turnout		26.7	0.3

Rowner (5816)			
		vote	share
Binfield I. Ms.*	Lab	1,047	70.8
Clarke A.	Con	431	29.2
Turnout		24.1	41.7

Town (5552)			
		vote	share
Redrup N.	Lab	830	42.4
Geddes M.	Con	588	30.0
Jones S.	LD	474	24.2
Ashcroft R.	Ind LD	67	3.4
Turnout		34.5	12.4

## Gosport - 1999

Alverstoke (7983) <sup>2</sup>			
		vote	share
Gill K.	LD	675	43.4
Carter-Harrington F.	LD	668	-
Gibson P.	Con	592	38.0
Dickson R.	Con	551	-
Keeley P.	Lab	169	10.9
Methuen W.	Lab	131	-
Payne D.*	Ind	121	7.8
Turnout		36.4	5.3

Anglesey (5215)			
		vote	share
Edgar P.*	Con	1,524	75.0
Seal A. Ms.	LD	308	15.2
Cheetham T.	Lab	201	9.9
Turnout		38.9	59.8

Bridgemary (4949)			
		vote	share
Cully S.*	Lab	1,177	82.8
Ward S.	Con	245	17.2
Turnout		28.8	65.5



<b>Brockhurst (6104)</b>			
		<b>vote</b>	<b>share</b>
<b>Russell M.</b>	LD	556	36.9
Batterbury J. Ms.	Lab	516	34.2
Barker L. Ms.*	Ind	436	28.9
	<b>Turnout</b>	24.8	2.7

<b>Elson (5401)</b>			
		<b>vote</b>	<b>share</b>
<b>Farr K.</b>	LD	848	55.3
Rigg B.	Con	422	27.5
Jeffrey C. Ms.	Lab	186	12.1
Whitbread R.	Ind	78	5.1
	<b>Turnout</b>	28.4	27.8

<b>Hardway &amp; Forton (5385)</b>			
		<b>vote</b>	<b>share</b>
<b>Langdon P.</b>	Con	579	44.2
Durrant A.	Lab	556	42.4
Manton N. Ms.	LD	176	13.4
	<b>Turnout</b>	24.4	1.8

<b>Lee (5983)</b>			
		<b>vote</b>	<b>share</b>
<b>Taylor B.</b>	Con	1,395	72.8
Fisher D.	LD	295	15.4
Bell P.	Lab	225	11.7
	<b>Turnout</b>	32.0	57.4

<b>Leesland (5626)</b>			
		<b>vote</b>	<b>share</b>
<b>Bloodworth T. Ms.*</b>	LD	1,031	65.4
Lucas D.	Con	401	25.4
Waite D.	Lab	144	9.1
	<b>Turnout</b>	28.1	40.0

<b>Rowner (5926)</b>			
		<b>vote</b>	<b>share</b>
<b>Wright J. Ms.*</b>	Lab	961	57.3
Burrows J.	Con	716	42.7
	<b>Turnout</b>	28.3	14.6

<b>Town (5653)</b>			
		<b>vote</b>	<b>share</b>
<b>Smith P.</b>	Lab	1,006	50.9
Geddes M.	Con	556	28.2
Pearce C.	LD	337	17.1
Simpson D. Ms.	Ind	76	3.8
	<b>Turnout</b>	34.8	22.8

## Gosport - 2000

<b>Alverstoke (7686)</b>			
		<b>vote</b>	<b>share</b>
<b>Gibson P.</b>	Con	786	52.9
Bone A.	LD	568	38.2
Forhead B.	Lab	131	8.8
	<b>Turnout</b>	19.3	14.7

<b>Anglesey (5038)</b>			
		<b>vote</b>	<b>share</b>
<b>Hayward A.*</b>	Con	1,315	68.3
Pearce C.	LD	476	24.7
Jeffrey C. Ms.	Lab	135	7.0
	<b>Turnout</b>	38.3	43.6

<b>Bridgemary (4868)</b>			
		<b>vote</b>	<b>share</b>
<b>Angus M. Ms.*</b>	Lab	854	69.3
Watts J. Ms.	Con	379	30.7
	<b>Turnout</b>	25.3	38.5

<b>Brockhurst (5984)</b>			
		<b>vote</b>	<b>share</b>
<b>Batterbury J. Ms.</b>	Lab	648	44.1
Chegwyn P.*	LD	491	33.4
Burrows J.	Con	331	22.5
	<b>Turnout</b>	24.6	10.7

<b>Elson (5269)</b>			
		<b>vote</b>	<b>share</b>
<b>Rigg B.</b>	Con	711	48.1
Smith D.	LD	545	36.8
Leishman B.*	Lab	223	15.1
	<b>Turnout</b>	28.1	11.2

<b>Hardway &amp; Forton (5528)</b>			
		<b>vote</b>	<b>share</b>
<b>Allen R.</b>	Con	634	42.8
Searle K.*	Lab	601	40.5
Low D.	LD	248	16.7
	<b>Turnout</b>	26.9	2.2

<b>Lee (5889)</b>			
		<b>vote</b>	<b>share</b>
<b>Kimber D.</b>	Con	1,721	77.5
Fisher D.	LD	292	13.2
Wilson-Suffield P.	Lab	207	9.3
	<b>Turnout</b>	37.8	64.4

<b>Leesland (5483)</b>			
		<b>vote</b>	<b>share</b>
<b>Salter J. Ms.</b>	LD	756	50.1
Ward S.	Con	622	41.2
Waite D.	Lab	132	8.7
	<b>Turnout</b>	27.6	8.9

<b>Rowner (5827)</b>			
		<b>vote</b>	<b>share</b>
<b>Philpott S.*</b>	Con	1,018	57.3
Durrant A.	Lab	760	42.7
	<b>Turnout</b>	30.6	14.5

<b>Town (5476)</b>			
		<b>vote</b>	<b>share</b>
<b>Cully J. Ms.*</b>	Lab	973	49.9
Dickson R.	Con	851	43.6
Seal A. Ms.	LD	127	6.5
	<b>Turnout</b>	35.6	6.3

## Gosport - 2002

<b>Alverstoke (3597)<sup>2</sup></b>			
		<b>vote</b>	<b>share</b>
<b>Edgar P.*</b>	Con	1,010	67.4
<b>Bartlett G.*</b>	Con	982	-
Jackson J. Ms.	LD	350	23.4
Payne G.	LD	311	-
Searle C. Ms.	Lab	138	9.2
Whitcher J. Ms.	Lab	114	-
	<b>Turnout</b>	41.9	44.1

<b>Anglesey (3096)<sup>2</sup></b>			
		<b>vote</b>	<b>share</b>
<b>Hayward A.*</b>	Con	692	48.7
<b>Hook M.*</b>	Con	626	-
Bloodworth T. Ms.*	LD	620	43.7
Hicks A.	LD	562	-
Hall J. Ms.	Lab	108	7.6
Madgwick J.	Lab	85	-
	<b>Turnout</b>	45.5	5.1

<b>Bridgemary North (3649)<sup>2</sup></b>			
		<b>vote</b>	<b>share</b>
<b>Cully S.*</b>	Lab	814	76.3
<b>Angus M. Ms.*</b>	Lab	795	-
Watts J. Ms.	Con	253	23.7
Landels H.	Con	235	-
	<b>Turnout</b>	29.5	52.6

<b>Bridgemary South (3713)<sup>2</sup></b>			
		<b>vote</b>	<b>share</b>
<b>Wright D.*</b>	Lab	767	71.2
<b>Wright J. Ms.*</b>	Lab	754	-
Butchart H.	Con	310	28.8
Millinder K. Ms.	Con	298	-
	<b>Turnout</b>	29.5	42.4

<b>Brockhurst (3961)<sup>2</sup></b>			
		<b>vote</b>	<b>share</b>
<b>Salter J. Ms.*</b>	LD	490	43.8
<b>Russell M.*</b>	LD	473	-
King J. Ms.	Con	323	28.9
Foster I.	Con	314	-
Batterbury G.	Lab	306	27.3
Salter R.	Lab	291	-
	<b>Turnout</b>	28.0	14.9

<b>Christchurch (3079)<sup>2</sup></b>			
		<b>vote</b>	<b>share</b>
<b>Carr M.*</b>	LD	499	40.2
<b>Francis D.*</b>	LD	476	-
Smith P.*	Lab	411	33.1
Durrant A.	Lab	365	-
Dickson R.	Con	332	26.7
Clinton P.	Con	314	-
	<b>Turnout</b>	40.8	7.1

<b>Elson (3661)<sup>2</sup></b>			
		<b>vote</b>	<b>share</b>
<b>Edwards K. Ms.*</b>	LD	616	54.4
<b>Elshaw L. Ms.*</b>	LD	594	-
Rigg B.*	Con	385	34.0
Philpott K. Ms.	Con	354	-
Bull E. Ms.	Lab	131	11.6
Bull S.	Lab	127	-
	<b>Turnout</b>	30.8	20.4

<b>Forton (3370)<sup>2</sup></b>			
		<b>vote</b>	<b>share</b>
<b>Searle K.</b>	Lab	488	46.5
<b>Farr K.*</b>	Lab	480	-
Seal A. Ms.*	LD	384	36.6
Low D.	LD	316	-
Holmes G. Ms.	Con	178	17.0
Craker D.	Con	173	-
	<b>Turnout</b>	31.0	9.9

<b>Grange (3858)<sup>2</sup></b>			
		<b>vote</b>	<b>share</b>
<b>Bone A.*</b>	LD	373	55.3
<b>Gravell M. Ms.*</b>	LD	344	-
Gould N.	Lab	209	31.0
Davis M.	Lab	201	-
Downing C.	Con	92	13.6
Ward S.	Con	87	-
	<b>Turnout</b>	17.3	24.3

<b>Hardway (3511)<sup>2</sup></b>			
		<b>vote</b>	<b>share</b>
<b>Allen R.*</b>	Con	529	51.1
<b>Langdon P.*</b>	Con	500	-
Leishman B.	Lab	295	28.5
Searle D. Ms.*	Lab	294	-
Anderson P. Ms.	LD	148	14.3
Salter M.	LD	123	-
Bowles J.	UK Ind	63	6.1
	<b>Turnout</b>	29.3	22.6

<b>Lee East (2513)<sup>2</sup></b>			
		<b>vote</b>	<b>share</b>
<b>Kimber D.*</b>	Con	602	70.0
<b>Burgess H.*</b>	Con	584	-
Fisher D.	LD	155	18.0
Robson D.	LD	145	-
Boyd S. Ms.	Lab	103	12.0
Bell P.	Lab	101	-
	<b>Turnout</b>	35.0	52.0

<b>Lee West (3518)<sup>2</sup></b>			
		<b>vote</b>	<b>share</b>
<b>Carter C.*</b>	Con	1,233	77.7
<b>Taylor B.*</b>	Con	1,062	-
Methven W.	Lab	354	22.3
Madgwick M.	Lab	272	-
	<b>Turnout</b>	44.7	55.4

Leesland (3505) <sup>2</sup>			
		vote	share
<b>Chegwyn P.*</b>	LD	548	51.3
<b>Smith D.*</b>	LD	507	-
Clarke M. Ms.	Con	264	24.7
Cheetham T.	Lab	256	24.0
Perris R.	Con	247	-
Wilson-Suffield P.	Lab	211	-
<b>Turnout</b>		30.0	26.6

Peel Common (3540) <sup>2</sup>			
		vote	share
<b>Binfield I. Ms.*</b>	Lab	738	57.8
<b>Russell P.*</b>	Lab	665	-
Philpott S.*	Con	539	42.2
Geddes M.	Con	506	-
<b>Turnout</b>		35.4	15.6

Privett (3357) <sup>2</sup>			
		vote	share
<b>Gill K.*</b>	LD	627	46.7
<b>Friend M.*</b>	LD	603	-
Gibson P.*	Con	546	40.7
King D.*	Con	524	-
Fox J.	Lab	170	12.7
Gough D.	Lab	169	-
<b>Turnout</b>		40.5	6.0

Rowner & Holbrook (3723) <sup>2</sup>			
		vote	share
<b>Batterbury J. Ms.*</b>	Lab	401	42.0
<b>Train J.*</b>	Lab	387	-
Fletcher M.	LD	372	39.0
Cooke S.	LD	344	-
Gravells N.	Con	181	19.0
Jacobs C.	Con	163	-
<b>Turnout</b>		26.0	3.0

Town (3415) <sup>2</sup>			
		vote	share
<b>Cully J. Ms.*</b>	Lab	767	60.4
<b>Redrup N.*</b>	Lab	687	-
Didymus J.	Con	361	28.4
Philpott M.	Con	346	-
Allaway C. Ms.	LD	141	11.1
Seal S.	LD	114	-
<b>Turnout</b>		36.7	32.0

## Gosport - 2004

Alverstoke (3531)			
		vote	share
<b>Clinton P.*</b>	Con	1,323	81.3
Salter R.	Lab	304	18.7
<b>Turnout</b>		46.8	62.6

Anglesey (3047)			
		vote	share
<b>Hook M.*</b>	Con	1,034	75.9
Hall J. Ms.	Lab	328	24.1
<b>Turnout</b>		45.6	51.8

Bridgemary North (3606)			
		vote	share
<b>Davis M.</b>	Lab	643	57.6
Watts J. Ms.	Con	473	42.4
<b>Turnout</b>		31.4	15.2

Bridgemary South (3683)			
		vote	share
<b>Wright J. Ms.*</b>	Lab	727	61.4
Perris R.	Con	457	38.6
<b>Turnout</b>		32.5	22.8

Brockhurst (3823)			
		vote	share
<b>Foster I.</b>	Con	681	53.5
Russell M.*	LD	385	30.3
Fox J.	Lab	206	16.2
<b>Turnout</b>		33.6	23.3

Christchurch (3106)			
		vote	share
<b>Dickson R.</b>	Con	564	44.3
Hicks A.	LD	362	28.4
Searle D. Ms.	Lab	348	27.3
<b>Turnout</b>		41.6	15.9

Elson (3596)			
		vote	share
<b>Rigg B.*</b>	Con	624	47.0
Elshaw L. Ms.*	LD	415	31.3
Bridgewater F.	UKIP	187	14.1
Whitcher J. Ms.	Lab	101	7.6
<b>Turnout</b>		36.9	15.7

Forton (3339)			
		vote	share
<b>Farr K.*</b>	Lab	410	40.5
Elshaw G.	LD	303	29.9
Oliver A. Ms.	Con	300	29.6
<b>Turnout</b>		30.5	10.6

Grange (3524)			
		vote	share
<b>Champion N. Ms.</b>	LD	239	36.8
Burt V.	Lab	222	34.2
Landels H.	Con	188	29.0
<b>Turnout</b>		18.5	2.6

Hardway (3938)			
		vote	share
<b>Langdon P.*</b>	Con	822	66.1
Smith A. Ms.	Green	213	17.1
Bell P.	Lab	209	16.8
<b>Turnout</b>		31.7	49.0

Lee East (3136)			
		vote	share
<b>Burgess H.*</b>	Con	966	83.0
Madgwick J.	Lab	198	17.0
<b>Turnout</b>		37.7	66.0

Lee West (3466)			
		vote	share
<b>Taylor B.*</b>	Con	1,326	81.9
Madgwick M.	Lab	294	18.1
<b>Turnout</b>		47.7	63.7

Leesland (3560)			
		vote	share
<b>Smith D.*</b>	LD	529	48.9
Bailey M. Ms.	Con	380	35.1
Durrant A.	Lab	173	16.0
<b>Turnout</b>		30.6	13.8

Peel Common (3456)			
		vote	share
<b>Philpott S.</b>	Con	896	57.6
Russell P.*	Lab	401	25.8
Bowles J.	UKIP	259	16.6
<b>Turnout</b>		45.2	31.8

Privett (3269)			
		vote	share
<b>Jacobs C.*</b>	Con	865	63.0
Jackson J. Ms.	LD	348	25.3
Gough D.	Lab	161	11.7
<b>Turnout</b>		42.3	37.6

Rowner & Holbrook (3436)			
		vote	share
<b>Train J.*</b>	Lab	326	35.6
Morrison T. Ms.	Con	317	34.6
Richards W.	LD	273	29.8
<b>Turnout</b>		26.9	1.0

Town (3451)			
		vote	share
<b>Redrup N.*</b>	Lab	630	54.2
Geddes M.	Con	532	45.8
<b>Turnout</b>		34.7	8.4

## Gosport - 2006

Alverstoke (3461)			
		vote	share
<b>Edgar P.*</b>	Con	1,193	76.2
Elsom F. Ms.	LD	242	15.5
Dewar S. Ms.	Lab	131	8.4
<b>Turnout</b>		45.8	60.7

Anglesey (2999)			
		vote	share
<b>Hicks A.</b>	LD	810	54.0
Hayward A.*	Con	622	41.4
Noakes P.	Lab	69	4.6
<b>Turnout</b>		51.5	12.5

Bridgemary North (3435)			
		vote	share
<b>Cully S.*</b>	Lab	809	67.8
Ward M. Ms.	Con	384	32.2
<b>Turnout</b>		35.6	35.6

Bridgemary South (3492)			
		vote	share
<b>Wright D.*</b>	Lab	703	61.9
Taylor P. Ms.	Con	433	38.1
<b>Turnout</b>		33.0	23.8

Brockhurst (3638)			
		vote	share
<b>Salter J. Ms.*</b>	LD	677	55.0
Elshaw L. Ms.	Con	341	27.7
O'Gorman J.	Lab	156	12.7
Staffieri J. Ms.	Green	58	4.7
<b>Turnout</b>		34.8	27.3

Christchurch (3194)			
		vote	share
<b>Carr M.*</b>	LD	585	49.0
Geddes M.	Con	346	29.0
Durrant A.	Lab	154	12.9
Forster V. Ms.	Green	108	9.1
<b>Turnout</b>		38.1	20.0

Elson (3519)			
		vote	share
<b>Ballard S. Ms.</b>	LD	648	48.6
Edwards K.*	Con	517	38.8
Bradshaw N. Ms.	Green	88	6.6
Sykes L. Ms.	Lab	81	6.1
<b>Turnout</b>		38.4	9.8

Forton (3209)			
		vote	share
<b>Foster-Reed C.</b>	LD	556	48.4
Searle K.*	Lab	356	31.0
Elshaw G.	Con	158	13.8
Vernon M.	Green	78	6.8
<b>Turnout</b>		36.1	17.4

Grange (3430)			
		vote	share
<b>Champion P.</b>	Con	310	46.4
Burt V.	Lab	152	22.8
Mudie M.	LD	142	21.3
Maclennan I.	Green	64	9.6
<b>Turnout</b>		19.7	23.7

Hardway (3811)			
		vote	share
<b>Allen R.*</b>	Con	621	45.7
Smith A. Ms.	Green	610	44.9
Wilson M.	Lab	129	9.5
<b>Turnout</b>		36.2	0.8

Lee East (3697)			
		vote	share
<b>Kimber D.*</b>	Con	1,106	84.4
Cully J.	Lab	205	15.6
<b>Turnout</b>		36.4	68.7

Lee West (3551)			
		vote	share
<b>Carter C.*</b>	Con	1,410	85.9
Bell P.	Lab	231	14.1
<b>Turnout</b>		47.9	71.8

Leesland (3369)			
		vote	share
<b>Chegwyn P.*</b>	LD	752	67.0
Burns A.	Con	270	24.1
O'Gorman M.	Lab	100	8.9
<b>Turnout</b>		33.7	43.0

Peel Common (3343)			
		vote	share
<b>Ward S.</b>	Con	806	57.4
Binfield I. Ms.*	Lab	597	42.6
<b>Turnout</b>		42.6	14.9

Privett (3220)			
		vote	share
<b>Gill K.*</b>	LD	743	54.1
Hook L. Ms.	Con	516	37.6
Hall J. Ms.	Lab	115	8.4
<b>Turnout</b>		42.2	16.5

Rowner & Holbrook (3142)			
		vote	share
<b>Mudie S. Ms.</b>	LD	403	41.3
Watts J. Ms.	Con	276	28.3
Russell P.*	Lab	248	25.4
Thomas R. Ms.	Green	48	4.9
<b>Turnout</b>		31.3	13.0

Town (3358)			
		vote	share
<b>Cully J. Ms.*</b>	Lab	757	61.5
Stewart K. Ms.	Con	331	26.9
Kelly D. Ms.	LD	143	11.6
<b>Turnout</b>		37.4	34.6

## Gosport - 2008

Alverstoke (3455)			
		vote	share
<b>Hook M.*</b>	Con	1,175	70.5
Payne G.	LD	200	12.0
Smith J. Ms.	UKIP	165	9.9
Hall J. Ms.	Lab	127	7.6
<b>Turnout</b>		47.9	58.5

Anglesey (2999)			
		vote	share
<b>Forder R.</b>	LD	711	49.1
Taylor B.*	Con	664	45.9
Hewitt G.	Lab	72	5.0
<b>Turnout</b>		48.3	3.2

Bridgemary North (3532)			
		vote	share
<b>Edwards K.</b>	Con	594	52.2
Searle K.	Lab	544	47.8
<b>Turnout</b>		32.5	4.4

Bridgemary South (3568)			
		vote	share
<b>Geddes M.</b>	Con	625	54.2
Wright J. Ms.*	Lab	529	45.8
<b>Turnout</b>		32.0	8.3

Brockhurst (3759)			
		vote	share
<b>Salter M.</b>	LD	571	47.5
Foster I.*	Con	476	39.6
O'Gorman M.	Lab	81	6.7
Staffieri J. Ms.	Green	74	6.2
<b>Turnout</b>		32.1	7.9

Christchurch (3376)			
		vote	share
<b>Dickson R.*</b>	Con	501	42.7
Carr H. Ms.	LD	487	41.6
Andrews C. Ms.	UKIP	68	5.8
Noakes P.	Lab	61	5.2
Forster V. Ms.	Green	55	4.7
<b>Turnout</b>		34.7	1.2

Elson (3528)			
		vote	share
<b>Bailey A. Ms.</b>	LD	582	46.3
Hook L. Ms.	Con	510	40.6
Bridgewater F.	UKIP	103	8.2
Madgwick M.	Lab	61	4.9
<b>Turnout</b>		35.8	5.7

Forton (3379)			
		vote	share
<b>Bradley M.</b>	LD	448	41.0
Farr K.*	Lab	396	36.2
Greenwood P.	Con	250	22.9
<b>Turnout</b>		32.6	4.8

Grange (3746)			
		vote	share
<b>West K. Ms.</b>	Con	359	54.5
Morby G.	LD	216	32.8
Durrant A.	Lab	59	9.0
Maclennan I.	Green	25	3.8
<b>Turnout</b>		17.7	21.7

Hardway (4203)			
		vote	share
<b>Langdon P.*</b>	Con	792	52.1
Smith A. Ms.	Green	472	31.1
Cully J.	Lab	182	12.0
Fells D.	UKIP	73	4.8
<b>Turnout</b>		36.2	21.1

Lee East (4279)			
		vote	share
<b>Burgess H.*</b>	Con	1,132	71.7
Keeley P.	LD	373	23.6
Bell P.	Lab	74	4.7
<b>Turnout</b>		38.2	48.1

Lee West (3720)			
		vote	share
<b>Beavis J.</b>	Con	1,691	89.7
Whitcher J. Ms.	Lab	194	10.3
<b>Turnout</b>		50.0	79.4

Leesland (3503)			
		vote	share
<b>Smith D.*</b>	LD	604	48.2
McAleese G.	Con	555	44.3
O'Gorman V. Ms.	Lab	94	7.5
<b>Turnout</b>		35.9	3.9

Peel Common (3325)			
		vote	share
<b>Philpott S.*</b>	Con	913	68.1
Bowles J.	LD	291	21.7
O'Gorman J.	Lab	136	10.1
<b>Turnout</b>		40.4	46.4

Privett (3322)			
		vote	share
<b>Forder I. Ms.</b>	LD	734	49.6
Jacobs C.*	Con	677	45.8
Madgwick J.	Lab	68	4.6
<b>Turnout</b>		44.7	3.9

Rowner & Holbrook (3251)			
		vote	share
<b>Murphy M.</b>	Con	345	39.5
Edwards M.	LD	215	24.6
Train J.*	Lab	183	20.9
Shaw R.	Edem	131	15.0
<b>Turnout</b>		26.9	14.9

Town (3747)			
		vote	share
<b>Searle D. Ms.*</b>	Lab	492	38.0
Burns A.	Con	427	32.9
Simpson C.	LD	240	18.5
Harris C. Ms.	UKIP	94	7.3
Haines H.	Green	43	3.3
<b>Turnout</b>		34.9	5.0

## Gosport - 2010

Alverstoke (3434)			
		vote	share
<b>Edgar P.*</b>	Con	1,576	63.5
Kelly D. Ms.	LD	370	14.9
Hewitt G.	Lab	339	13.7
Smith J. Ms.	UKIP	136	5.5
Maclennan L. Ms.	Green	60	2.4
<b>Turnout</b>		72.4	48.6

Anglesey (3031)			
		vote	share
<b>Scard A.</b>	Con	1,254	56.8
Hicks A.*	LD	764	34.6
Madgwick M.	Lab	189	8.6
<b>Turnout</b>		73.2	22.2

Bridgemary North (3521)			
		vote	share
<b>Wright D.</b>	Lab	1,002	47.4
Whyte J.	Con	733	34.6
Rowan T.	Edem	381	18.0
<b>Turnout</b>		60.4	12.7

Bridgemary South (3609)			
		vote	share
<b>Carter C.</b>	Con	1,154	57.6
Durrant A.	Lab	848	42.4
<b>Turnout</b>		56.4	15.3

Brockhurst (3782)			
		vote	share
<b>Henshaw J.</b>	Con	918	41.9
Mudie S. Ms.	LD	850	38.8
O'Gorman M.	Lab	331	15.1
Staffieri J. Ms.	Green	92	4.2
<b>Turnout</b>		58.5	3.1

Christchurch (3603)			
		vote	share
<b>Ronayne W.</b>	Con	862	40.2
Morby G.	LD	777	36.3
Hustler J.	Lab	312	14.6
Andrews C. Ms.	UKIP	191	8.9
<b>Turnout</b>		60.0	4.0

Elson (3509)			
		vote	share
<b>Ballard S. Ms.*</b>	LD	1,049	45.5
Green S.	Con	906	39.3
Noakes P.	Lab	205	8.9
Bridgewater J.	UKIP	143	6.2
<b>Turnout</b>		65.8	6.2

Forton (3427)			
		vote	share
<b>Foster-Reed C.*</b>	LD	789	39.9
Greenwood P.	Con	610	30.8
Farr K.	Lab	580	29.3
<b>Turnout</b>		58.0	9.0

Grange (3454)			
		vote	share
<b>Jessop T.</b>	Con	641	42.8
Woods J. Ms.	LD	594	39.6
Fox J.	Lab	204	13.6
Maclennan F. Ms.	Green	60	4.0
<b>Turnout</b>		43.6	3.1

**Hardway (4239)**

		vote	share
Allen R.*	Con	1,184	44.7
Simpson C.	LD	799	30.2
Williams S.	Lab	278	10.5
Smith C. Ms.	Green	240	9.1
Fells D.	UKIP	145	5.5
<b>Turnout</b>		62.7	14.6

**Lee East (4443)**

		vote	share
Kimber D.*	Con	1,853	61.1
Keeley P.	LD	766	25.3
Bell P.	Lab	412	13.6
<b>Turnout</b>		68.5	35.9

**Lee West (3962)**

		vote	share
Carter C.*	Con	1,849	64.9
Bailey J.	LD	698	24.5
Whitcher J. Ms.	Lab	302	10.6
<b>Turnout</b>		71.9	40.4

**Leesland (3578)**

		vote	share
Chegwyn P.*	LD	1,016	47.9
McAleese G.	Con	872	41.1
Noakes C. Ms.	Lab	233	11.0
<b>Turnout</b>		59.5	6.8

**Peel Common (3370)**

		vote	share
Hook L. Ms.	Con	1,304	58.7
Ripley P.	Lab	483	21.7
Bowles J.	Ind	435	19.6
<b>Turnout</b>		66.4	36.9

**Privett (3367)**

		vote	share
Jacobs C.	Con	1,062	45.6
Gill K.*	LD	971	41.7
Bateman J. Ms.	Lab	297	12.7
<b>Turnout</b>		69.0	3.9

**Rowner & Holbrook (3357)**

		vote	share
Lane M.	Con	753	44.1
Train J.	Lab	543	31.8
Shaw B.	Edem	174	10.2
Campbell J.	UKIP	144	8.4
McGookin J.	Ind	93	5.4
<b>Turnout</b>		51.0	12.3

**Town (3881)**

		vote	share
Cully J. Ms.*	Lab	1,090	48.3
Taylor B.	Con	682	30.2
Simpson J.	LD	325	14.4
Harris C.	UKIP	95	4.2
Adams F.	Edem	64	2.8
<b>Turnout</b>		58.4	18.1

**Gosport - 2012****Alverstoke (3431)**

		vote	share
Hook M.*	Con	791	60.7
Fox J.	Lab	220	16.9
Smith J. Ms.	UKIP	194	14.9
Ballard K. Ms.	LD	99	7.6
<b>Turnout</b>		38.2	43.8

**Anglesey (3017)**

		vote	share
Forder R.*	Con	854	68.4
Hicks A.	LD	254	20.3
Baker B. Ms.	Lab	141	11.3
<b>Turnout</b>		41.5	48.0

**Bridgemary North (3505)**

		vote	share
Wright J. Ms.	Lab	708	62.9
Bateman R.	Con	418	37.1
<b>Turnout</b>		32.4	25.8

**Bridgemary South (3637)**

		vote	share
Geddes M.*	Con	450	51.8
Durrant A.	Lab	418	48.2
<b>Turnout</b>		24.2	3.7

**Brockhurst (3873)**

		vote	share
Hylands R.*	LD	554	55.9
Elshaw L. Ms.	Con	277	28.0
Reynolds H.	Lab	160	16.1
<b>Turnout</b>		25.8	28.0

**Christchurch (3731)**

		vote	share
Dickson R.*	Con	406	38.8
Kelly D. Ms.	LD	351	33.5
Noakes C. Ms.	Lab	165	15.8
Andrews C. Ms.	UKIP	125	11.9
<b>Turnout</b>		28.2	5.3

**Elson (3576)**

		vote	share
Hazel C.	Con	463	43.9
Heaver G.	LD	435	41.2
Cully J.	Lab	157	14.9
<b>Turnout</b>		29.7	2.7

**Forton (3394)**

		vote	share
Farr K.	Lab	309	34.6
Pinder S.	LD	287	32.2
Fletcher D.	Con	188	21.1
Rice A.	UKIP	108	12.1
<b>Turnout</b>		26.5	2.5

**Grange (3403)**

		vote	share
Morgan M. Ms.	Con	222	49.7
Bateman J. Ms.	Lab	131	29.3
Keeley P.	LD	94	21.0
<b>Turnout</b>		13.2	20.4

**Hardway (4350)**

		vote	share
Langdon P.*	Con	596	56.2
Smith A. Ms.	Green	185	17.4
Ripley P. Ms.	Lab	154	14.5
Simpson C.	LD	126	11.9
<b>Turnout</b>		24.4	38.7

**Lee East (4459)**

		vote	share
Burgess H.*	Con	866	66.7
Giles G.	Lab	325	25.0
Bailey J.	LD	107	8.2
<b>Turnout</b>		29.3	41.7

**Lee West (3942)**

		vote	share
Beavis J.*	Con	1,340	82.4
Whitcher J. Ms.	Lab	286	17.6
<b>Turnout</b>		41.8	64.8

**Leesland (3651)**

		vote	share
Diffey M. Ms.	LD	507	49.9
McAleese G.	Con	293	28.8
Freestone M.	Lab	121	11.9
Smith D.*	Ind	96	9.4
<b>Turnout</b>		28.1	21.0

**Peel Common (3423)**

		vote	share
Philpott S.*	Con	689	63.7
Davis M.	Lab	236	21.8
Sinclair C.	UKIP	157	14.5
<b>Turnout</b>		31.8	41.9

**Privett (3383)**

		vote	share
Gill K.	Con	685	63.4
Bailey A. Ms.	LD	203	18.8
Robbins T.	Lab	193	17.9
<b>Turnout</b>		32.5	44.6

**Rowner & Holbrook (3308)**

		vote	share
Murphy M.*	Con	310	42.1
Train J.	Lab	219	29.7
Carter S. Ms.	LD	167	22.7
McGookin J.	Ind	41	5.6
<b>Turnout</b>		23.8	12.3

**Town (3826)**

		vote	share
Searle D. Ms.*	Lab	642	53.0
Thompson A. Ms.	Con	464	38.3
Carr H. Ms.	LD	58	4.8
Martin S.	BNP	48	4.0
<b>Turnout</b>		31.6	14.7



