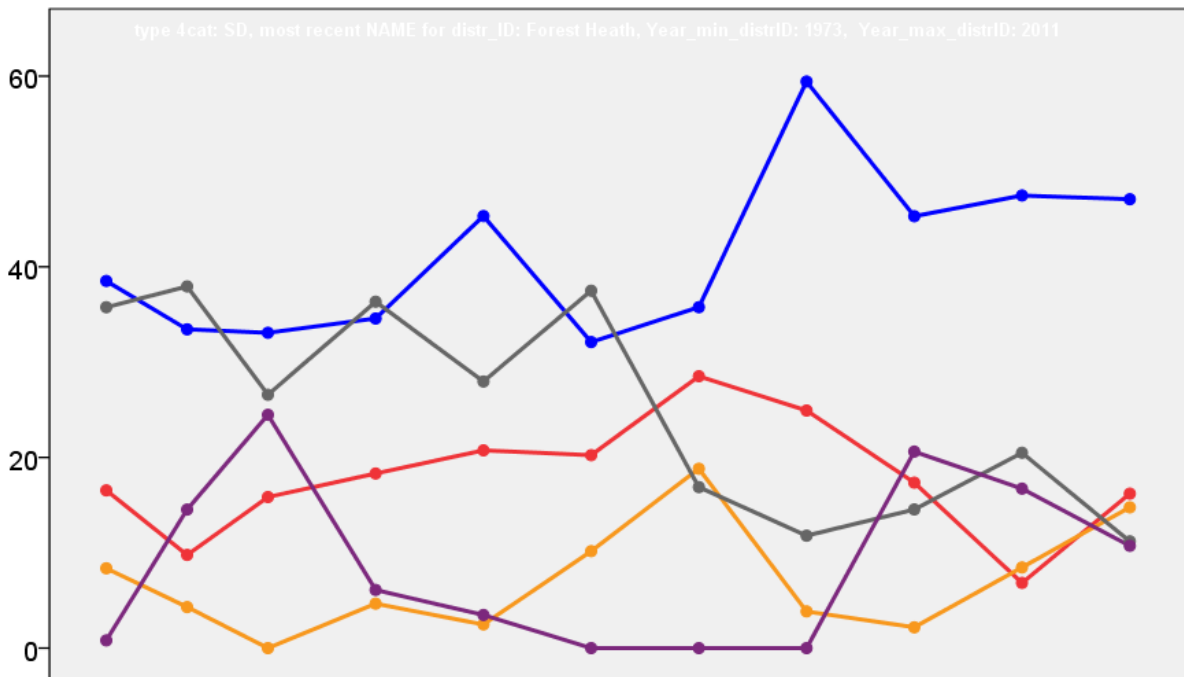


Forest Heath District Council Election Results 1973-2011



Colin Rallings and Michael Thrasher
The Elections Centre
Plymouth University

The information contained in this report has been obtained from a number of sources. Election results from the immediate post-reorganisation period were painstakingly collected by Alan Willis largely, although not exclusively, from local newspaper reports. From the mid-1980s onwards the results have been obtained from each local authority by the Elections Centre. The data are stored in a database designed by Lawrence Ware and maintained by Brian Cheal and others at Plymouth University. Despite our best efforts some information remains elusive whilst we accept that some errors are likely to remain. Notice of any mistakes should be sent to elections@plymouth.ac.uk. The results sequence can be kept up to date by purchasing copies of the annual Local Elections Handbook, details of which can be obtained by contacting the email address above.

Front cover: the graph shows the distribution of percentage vote shares over the period covered by the results. The lines reflect the colours traditionally used by the three main parties. The grey line is the share obtained by Independent candidates while the purple line groups together the vote shares for all other parties.

Rear cover: the top graph shows the percentage share of council seats for the main parties as well as those won by Independents and other parties. The lines take account of any by-election changes (but not those resulting from elected councillors switching party allegiance) as well as the transfers of seats during the main round of local election.

The lower graph shows for each main round of local elections the overall percentage turnout (solid line), the percentage of women candidates standing at (dotted line) and the percentage of women among those elected (hashed line).

Forest Heath - 1973

Iceni (1077)

		vote	share
Ford L.	Ind	283	42.6
King O.	Ind	256	38.5
Bingham A.	Ind	53	8.0
Smith F.	Lab	43	6.5
Carter E. Ms.	Ind	30	4.5
Turnout		61.7	4.1

Lakenheath (2139)²

		vote	share
Coleman F.	Ind	408	100.0
Pooley R.	Ind	381	-
Morley R.	Ind	296	-
Turnout		19.1	37.3

Manor (1030)

		vote	share
Wiggin J.	Ind	264	68.0
Adrian M.	Lib	124	32.0
Turnout		37.7	36.1

Mill (969)

		vote	share
Taylor T.	Con	0	0.0
Turnout		0.0	0.0

No. 1 (Newmarket: Severals) (2975)³

		vote	share
Petre M. Ms.	Con	631	42.5
Shaw D.	Con	576	-
Parfitt J.	Ind	565	38.0
Lambton E.	Con	520	-
Jordon H.	Lab	290	19.5
Turnout		49.9	4.4

No. 10 (Mildenhall) (4841)⁵

		vote	share
Hagger D. Ms.	Con	1,270	44.3
Coe A.	Con	930	-
Madeley J.	Con	849	-
Barker J.	Con	835	-
Plumpton E.	Con	673	-
Tweedie J.	Lab	612	21.3
Wells E.	Lib	603	21.0
Newsom M.	Lab	550	-
Barrington K.	Lab	539	-
Mears M.	Ind	385	13.4
Nelson T.	Ind	264	-
Turnout		59.3	22.9

No. 2 (Newmarket: St. Marys) (2643)³

		vote	share
Hopkinson C.	Con	615	46.3
Chapman A.	Con	577	-
Jones N.	Con	527	-
Lomas R. Ms.	Lab	379	28.6
Donovan A.	Lab	364	-
Donovan C. Ms.	Lab	338	-
Sadler W.	Ind	333	25.1
Turnout		50.2	17.8

No. 3 (Newmarket: Exning) (1795)²

		vote	share
Edmundson E.	Ind	0	-
Welford J.	Ind	0	0.0
Turnout		0.0	0.0

No. 4 (Newmarket: Woodditton) (1066)

		vote	share
Osborn P.	Con	301	72.5
Bursford A.	Lab	114	27.5
Turnout		38.9	45.1

No. 5 (Newmarket: All Saints) (1167)

		vote	share
Button J.	Con	370	83.9
Kidd T.	Soc	71	16.1
Turnout		37.8	67.8

No. 6 (Brandon) (3373)⁴

		vote	share
Fuller B.	Ind	0	0.0
Baldwin T.	Ind	0	-
Jacob E. Ms.	Ind	0	-
Lingwood R.	Ind	0	-
Turnout		0.0	0.0

South (1101)

		vote	share
Thompson J.	Ind	234	59.5
Most W.	Con	159	40.5
Turnout		35.7	19.1

Forest Heath - 1976

Iceni (1060)

		vote	share
Ford L.	Ind	0	0.0
Turnout		0.0	0.0

Lakenheath (2281)²

		vote	share
Coleman F.	Ind	651	83.9
Barratt S.	Ind	648	-
Morley R.	Ind	252	-
Harland J.	Res	125	16.1
Turnout		43.6	67.8

Manor (1095)

		vote	share
Wiggin J.	Ind	0	0.0
Turnout		0.0	0.0

Mill (1071)

		vote	share
Taylor T.	Ind	296	69.3
Bashford M. Ms.	Ind	131	30.7
Turnout		40.2	38.6

No. 1 (Newmarket: Severals) (3075)³

		vote	share
Petre M. Ms.	Con	797	48.7
Shaw^ D.	Con	712	-
Sadler W.	Con	683	-
Parfitt J.	Ind	540	33.0
Penman R.	Lab	300	18.3
Turnout		42.6	15.7

No. 10 (Mildenhall) (5797)⁵

		vote	share
Hagger D. Ms.	Con	1,317	35.9
Haylock J.	Ind	1,286	35.0
Pendleton P.	Res	1,068	29.1
Cocksedge R.	Con	1,023	-
Wallis R.	Con	1,017	-
Taylor-Balls F.	Con	917	-
Madeley J.	Con	819	-
Browne R.	Res	760	-
Turnout		42.5	0.8

No. 2 (Newmarket: St. Marys) (2607)³

		vote	share
Hopkinson C.	Con	538	67.8
Chapman A.	Con	514	-
Jones N.	Con	430	-
Mail G.	Lab	256	32.2
Turnout		34.2	35.5

No. 3 (Newmarket: Exning) (2213)²

		vote	share
Welford J.	Ind	655	48.7
Barrett B.	Lib	392	29.1
Dwane D.	Lab	299	22.2
Turnout		47.2	19.5

No. 4 (Newmarket: Woodditton) (1043)

		vote	share
Osborn P.	Con	0	0.0
Turnout		0.0	0.0

No. 5 (Newmarket: All Saints) (1144)

		vote	share
Venning G.	Con	412	77.6
Eccleston P. Ms.	Lib	119	22.4
Turnout		47.1	55.2

No. 6 (Brandon) (3862)⁴

		vote	share
Adam H.	Con	901	37.2
Lingwood B.	Ind	688	28.4
Jacob E. Ms.	Ind	666	-
Webb W.	Res	531	21.9
Rubens B. Ms.	Lab	304	12.5
Turnout		36.8	8.8

South (1080)

		vote	share
Thompson J.	Ind	0	0.0
Turnout		0.0	0.0

Forest Heath - 1979

All Saints (2084)²

		vote	share
Osborn P.	Con	0	0.0
Linney D. Ms.	Con	0	-
Turnout		0.0	0.0

Brandon East (2107)²

		vote	share
Jacob E. Ms.	Ind	720	30.0
Robinson O. Ms.	Con	714	29.8
Brentnall W.	Res	642	26.8
Rubens B. Ms.	Lab	321	13.4
Turnout		72.1	0.3

Brandon West (2329)²

		vote	share
Adam H.	Con	973	38.7
Williams C.	Ind	815	32.4
Webb W.	Res	374	14.9
Kirk J.	Lab	355	14.1
Copsey C.	Lab	332	-
Turnout		73.8	6.3

Exning (1400)

		vote	share
Welford J.	Ind	0	0.0
Turnout		0.0	0.0

Great Heath (1791)

		vote	share
Roman N.	Con	327	26.7
Tuck J.	Res	293	23.9
Herzberg P. Ms.	Lab	288	23.5
Munro E.	Ind	234	19.1
Harrison S.	Ind	85	6.9
Turnout		70.5	2.8

Iceni (1017)

		vote	share
Ford L.	Ind	0	0.0
Turnout		0.0	0.0

Lakenheath (2539)²

		vote	share
Coleman F.	Ind	1,438	100.0
Barratt S.	Ind	1,196	-
Gurney M.	Ind	587	-
Turnout		74.8	79.6

Manor (1180)			
		vote	share
Chester S. Ms.	Rate	479	50.4
Wiggin J.	Con	471	49.6
Turnout		79.9	0.8

Market (2360) ²			
		vote	share
Hagger D. Ms.	Con	914	45.4
Wallis R.	Con	674	-
Nelson T.	Rate	620	30.8
Tweedie J. Ms.	Lab	480	23.8
Vallack B.	Lab	358	-
Turnout		70.1	14.6

Mill (1370)			
		vote	share
Taylor T.	Ind	0	0.0
Turnout		0.0	0.0

Severals (3190) ³			
		vote	share
Sadler W.	Con	0	-
Petre M. Ms.	Con	0	-
Shaw D.	Con	0	0.0
Turnout		0.0	0.0

South (1132)			
		vote	share
Thompson J.	Con	0	0.0
Turnout		0.0	0.0

St. Marys (3003) ³			
		vote	share
Chapman A.	Con	1,097	55.8
Hopkinson C.	Con	1,038	-
Jones N.	Con	928	-
Connor D. Ms.	Lab	869	44.2
Dwane P.	Lab	803	-
Devoy A.	Lab	733	-
Turnout		74.4	11.6

Studlands Park (875)			
		vote	share
Barrett B.	Con	0	0.0
Turnout		0.0	0.0

The Rows (2008) ²			
		vote	share
Haylock J.	Res	1,164	77.8
Pendleton P.	Res	914	-
Manchee D. Ms.	Con	332	22.2
Turnout		74.1	55.6

Forest Heath - 1983

All Saints (2271) ²			
		vote	share
Linney D. Ms.	Con	644	78.7
Jaggard G.	Con	627	-
Muge C.	Lab	174	21.3
West K.	Lab	160	-
Turnout		36.0	57.5

Brandon East (2700) ²			
		vote	share
Brentnall W.	Con	562	43.1
Marshall K.	Ind	453	34.8
Jacob E. Ms.	Ind	414	-
Copsey C.	Lab	288	22.1
Riding J.	Lab	229	-
Turnout		48.3	8.4

Brandon West (2452) ²			
		vote	share
Adam H.	Con	406	41.2
Bishop W.	Ind	384	38.9
Williams C.	Ind	334	-
Vincent A.	Ind	297	-
Starnes D.	Lab	196	19.9
Turnout		40.2	2.2

Exning (1472)			
		vote	share
Welford J.	Ind	509	74.0
O'Hara D. Ms.	Lib/SDP	179	26.0
Turnout		46.7	48.0

Great Heath (2038)			
		vote	share
Roman N.	Con	411	44.3
Vallack B.	Lab	238	25.7
Heath H.	Lib/SDP	178	19.2
Barker J.	Ind	100	10.8
Turnout		45.5	18.7

Iceni (989)			
		vote	share
Ford L.	Ind	422	75.0
Marston N.	Ind	141	25.0
Turnout		56.9	49.9

Lakenheath (2706) ²			
		vote	share
Coleman F.	Ind	1,008	83.7
Barratt S.	Ind	894	-
Brown C.	Lab	197	16.3
Turnout		44.5	67.3

Manor (1242)			
		vote	share
Wiggin J.	Ind	487	58.0
Chester S. Ms.	Con	352	42.0
Turnout		67.6	16.1

Market (2477) ²			
		vote	share
Hagger D. Ms.	Con	630	70.9
Wallis R.	Con	611	-
Franks M. Ms.	Lab	258	29.1
Turnout		35.8	41.9

Mill (1839)			
		vote	share
Munro E. Ms.	Ind	268	35.5
Martin B.	Ind	224	29.7
Lester M.	Ind	195	25.9
Newman R.	Ind	67	8.9
Turnout		41.0	5.8

Severals (3551) ³			
		vote	share
Petre M. Ms.	Con	692	46.0
Jackson H.	Con	619	-
Shaw D.	Con	530	-
Sadler W.	Ind Con	427	28.4
Wusteman M. Ms.	Lab	385	25.6
Turnout		42.4	17.6

South (1185)			
		vote	share
Gray E. Ms.	Ind	430	59.6
Thompson J.	Con	291	40.4
Turnout		60.8	19.3

St. Marys (3183) ³			
		vote	share
Dwane P.	Lab	537	30.9
Chapman A.	Con	509	29.3
Jefferys M.	Lab	506	-
Abercrombie J.	Lab	506	-
Hopkinson C.	Con	424	-
Sadler E. Ms.	Ind Con	410	23.6
Bentley G.	Con	406	-
Griffith D.	Lib/SDP	283	16.3
Turnout		54.6	1.6

Studlands Park (1080)			
		vote	share
Jones N.	Con	247	50.7
Devoy A.	Lab	240	49.3
Turnout		47.8	1.4

The Rows (2082) ²			
		vote	share
Pendleton P.	Ind	0	0.0
Haylock J.	Ind	0	-
Turnout		0.0	0.0

Forest Heath - 1987

All Saints (2387) ²			
		vote	share
Jaggard G.	Con	618	76.9
Linney D. Ms.	Con	542	-
Muge R. Ms.	Lab	186	23.1
Turnout		33.7	53.7

Brandon East (2926) ²			
		vote	share
Marshall K.	Ind	535	45.5
Brentnall W.	Con	488	41.5
Jacob E. Ms.	Ind	470	-
Pocock D.	Ind	258	-
Potter K.	Lab	152	12.9
Brown C.	Lab	138	-
Turnout		40.2	4.0

Brandon West (2502) ²			
		vote	share
Bishop W.	Ind	675	46.3
Adam H.	Con	572	39.2
Bourton H.	Lab	212	14.5
Turnout		58.3	7.1

Exning (1504)			
		vote	share
Welford J.	Ind	487	67.1
Wild J.	Con	239	32.9
Turnout		48.3	34.2

Great Heath (2160)			
		vote	share
Roman N.	Con	664	66.1
Vallack B.	Lab	340	33.9
Turnout		46.5	32.3

Iceni (1045)			
		vote	share
Ford L.	Ind	0	0.0
Turnout		0.0	0.0

Lakenheath (2795) ²			
		vote	share
Crane R.	Ind	775	62.8
Barratt S.	Ind	654	-
Elworthy J.	All	311	25.2
Brown P. Ms.	Lab	149	12.1
Turnout		44.2	37.6

Manor (1215)			
		vote	share
Wiggin J.	Ind	455	59.2
Chester S. Ms.	Con	267	34.8
Neville J.	Lab	46	6.0
Turnout		63.2	24.5

Market (2715) ²			
		vote	share
Madeley D. Ms.	Con	731	71.7
Wallis R.	Con	691	-
Lloyd V. Ms.	Lab	288	28.3
Dawson P.	Lab	285	-
Turnout		37.5	43.5

Mill (1766)			
		vote	share
Hale S.	Ind	328	62.4
Burnett B. Ms.	Lab	198	37.6
Turnout		29.8	24.7

Severals (3836) ³			
		vote	share
Hopkinson C.	Con	761	70.0
Shaw D.	Con	722	-
Jackson H.	Con	714	-
Hanlon J.	Lab	326	30.0
Turnout		28.3	40.0

South (1212)			
		vote	share
Gray B.	Ind All	437	59.2
Thomason F.	Con	301	40.8
Turnout		60.9	18.4

St. Marys (3122) ³			
		vote	share
Chapman A.	Con	795	57.2
Crickmere S. Ms.	Con	766	-
Lynch C. Ms.	Con	746	-
Dwane P.	Lab	596	42.8
Jefferys M.	Lab	568	-
Muge C.	Lab	546	-
Turnout		44.6	14.3

Studlands Park (1059)			
		vote	share
Jones N.	Con	257	69.5
Drury J. Ms.	Lab	113	30.5
Turnout		34.9	38.9

The Rows (2255) ²			
		vote	share
Pendleton R.	Ind	0	0.0
Haylock J.	Ind SDP	0	0.0
Turnout		0.0	0.0

Forest Heath - 1991

All Saints (2504) ²			
		vote	share
Jaggard G.*	Con	463	62.7
Linney D. Ms.*	Con	419	-
Muge R. Ms.	Lab	155	21.0
Hough K. Ms.	Lab	147	-
Baldwin G.	LD	120	16.3
Prater D.	LD	81	-
Turnout		31.0	41.7

Brandon East (3153) ²			
		vote	share
Jacob E. Ms.	Ind	619	100.0
Marshall K.*	Ind	589	-
Pocock D.	Ind	339	-
Guthrie N.	Ind	303	-
Ashley E.	Ind	149	-
Turnout		41.0	75.0

Brandon West (2552) ²			
		vote	share
Bishop W.*	Ind	598	46.6
Adams H.*	Con	458	35.7
Bourton J. Ms.	Lab	228	17.8
Rubens B. Ms.	Lab	162	-
Turnout		37.0	10.9

Exning (1536)			
		vote	share
Rogers A.	LD	346	54.7
Welford J.*	Ind	286	45.3
Turnout		41.0	9.5

Great Heath (2283)			
		vote	share
Roman N.*	Con	590	61.5
Vallack G. Ms.	Lab	369	38.5
Turnout		42.0	23.0

Iceni (1101)			
		vote	share
Ford L.*	Ind	0	0.0
Turnout		0.0	0.0

Lakenheath (2885) ²			
		vote	share
Crane R.*	Ind	786	49.0
Peachey A.	Con	541	33.7
George A.	Lab	276	17.2
Turnout		38.0	15.3

Manor (1188)			
		vote	share
Wiggin J.*	Ind	418	67.6
Chester S. Ms.	Ind	200	32.4
Turnout		52.0	35.3

Market (2953) ²			
		vote	share
Madeley D. Ms.*	Con	582	45.2
Wallis R.*	Con	468	-
Dawson P.	Lab	405	31.4
Allerton J.	Lab	356	-
Barker J.	Ind	301	23.4
Turnout		38.0	13.7

Mill (1694)			
		vote	share
Lester J.	Con	278	51.3
Jesson E.	Ind	169	31.2
Hale S.*	Ind	95	17.5
Turnout		32.0	20.1

Severals (4122) ³			
		vote	share
Griffith D.	LD	584	33.4
Jackson H.*	Con	549	31.4
Huggan T.	LD	539	-
Whiterod G.	LD	515	-
Shaw D.*	Con	487	-
Hopkinson C.*	Ind	318	18.2
Jefferys M.	Lab	295	16.9
Allum V. Ms.	Lab	280	-
Turnout		35.0	2.0

South (1239)			
		vote	share
Gray B.*	Ind	0	0.0
Turnout		0.0	0.0

St. Marys (3062) ³			
		vote	share
Crickmere S. Ms.*	Con	594	43.2
Muge C.	Lab	565	41.1
Lynch C. Ms.*	Con	553	-
Goulden G. Ms.	Con	510	-
Holland K.	Lab	494	-
Cornell R.	LD	217	15.8
Pilborough C. Ms.	LD	185	-
Turnout		42.0	2.1

Studlands Park (1038)			
		vote	share
Jones N.*	Con	161	48.5
Donnison G.	Lab	103	31.0
George W.	LD	68	20.5
Turnout		32.0	17.5

The Rows (2428) ²			
		vote	share
Haylock J.*	Ind	646	71.1
Pendleton P.*	Ind	545	-
Bowers P.	Lab	262	28.9
Turnout		40.0	42.3

Forest Heath - 1995

All Saints (2482) ²			
		vote	share
Jaggard G.*	Con	383	49.9
Johns K.*	Con	322	-
Allum V. Ms.	Lab	245	31.9
Baldwin G.	LD	140	18.2
Ridout G.	LD	91	-
Turnout		29.3	18.0

Brandon East (3427) ²			
		vote	share
Marshall K.*	Ind	548	37.5
Silver N.	Lab	468	32.1
Jacob E. Ms.*	Con	444	30.4
Weeks J.	Con	245	-
Banks R.	Ind	218	-
Turnout		36.7	5.5

Brandon West (2693) ²			
		vote	share
Bishop W.*	Con	474	46.8
Brown C.	Lab	313	30.9
Carter M.	Ind	225	22.2
Pocock D.	Ind	209	-
Goode J.	Con	187	-
Bourton J. Ms.	Ind	124	-
Turnout		34.6	15.9

Exning (1502)			
		vote	share
Rogers A.*	LD	418	64.9
Thomason F.	Con	135	21.0
Donnison G.	Lab	91	14.1
Turnout		43.0	43.9

Great Heath (2572)			
		vote	share
Roman N.*	Con	499	52.4
Vallack G. Ms.	Lab	385	40.4
McConnell K. Ms.	LD	69	7.2
Turnout		37.4	12.0

Iceni (1121)			
		vote	share
Richards S.	Con	198	39.7
Taylor J.	Lab	164	32.9
Brame M. Ms.	LD	137	27.5
Turnout		44.8	6.8

Lakenheath (2818) ²			
		vote	share
Rutterford B.	Con	613	53.5
Crane R.*	Con	611	-
Brown P. Ms.	Lab	305	26.6
Willingham D. Ms.	LD	227	19.8
Turnout		34.7	26.9

Manor (1214)			
		vote	share
Wiggin J.*	Ind	283	47.1
Prater D.	LD	205	34.1
Watts R.	Lab	113	18.8
Turnout		49.6	13.0

Market (2910) ²			
		vote	share
Dawson P.	Lab	452	37.2
Madeley D. Ms.*	Con	429	35.3
Stephenson M.	Lab	356	-
Madeley J.	Con	341	-
Barker J.	Ind	224	18.4
Brame M.	LD	111	9.1
Turnout		36.4	1.9

Mill (1761)			
		vote	share
Duncan C.	LD	209	35.2
Lester J.*	Con	203	34.2
Hale S.	Lab	182	30.6
Turnout		33.8	1.0

Severals (4154) ³			
		vote	share
Griffith D.*	LD	672	46.9
Hancock M.	LD	634	-
Rogers J. Ms.	LD	622	-
Jackson H.*	Con	415	29.0
Echols J. Ms.	Lab	345	24.1
Shakespeare S.	Con	342	-
McDonald J.	Con	335	-
Turnout		31.7	17.9

South (1221)			
		vote	share
Gray B.*	Ind	362	52.9
Andrews-Smith E. Ms.	Con	322	47.1
Turnout		56.3	5.8

St. Marys (3058) ³			
		vote	share
Crickmere S. Ms.*	Con	492	45.0
Lynch C. Ms.*	Con	457	-
Dwane P.	Lab	431	39.4
Jefferys M.	Lab	425	-
Levick D.	Con	422	-
Alloway A. Ms.	Lab	386	-
Bolton M. Ms.	LD	171	15.6
Mitchell D.	LD	140	-
Turnout		36.9	5.6

Studlands Park (893)			
		vote	share
George W.	LD	210	56.8
McKeown R.	Lab	84	22.7
Wright D.	Con	76	20.5
Turnout		41.4	34.1

The Rows (2541) ²			
		vote	share
Haylock J.*	Ind	539	51.3
Barker P. Ms.	Ind	349	-
Kemp P.	Lab	314	29.9
Morton D.	Con	198	18.8
Turnout		37.0	21.4

Forest Heath - 1999

All Saints (2553) ²			
		vote	share
Jaggard G.*	Con	392	64.9
Jackson H.*	Con	344	-
Halliwell H. Ms.	Lab	212	35.1
Uney V. Ms.	Lab	173	-
Turnout		24.3	29.8

Brandon East (3351) ²			
		vote	share
Edwards S.	Con	596	53.8
Silverter R.	Con	400	-
Silver N.*	Lab	288	26.0
Vincent S. Ms.	Ind	223	20.1
Bourton J. Ms.	Lab	220	-
Ahern J. Ms.	Ind	211	-
Turnout		31.6	27.8

Brandon West (2659) ²			
		vote	share
Bishop W.*	Con	491	68.1
Wackett P.	Con	304	-
Silver T.	Lab	230	31.9
Brown C.*	Lab	215	-
Turnout		27.1	36.2

Exning (1503)			
		vote	share
Levick D.	Con	290	51.8
Wright B.	Ind	270	48.2
Turnout		38.8	3.6

Great Heath (2445)			
		vote	share
Roman N.*	Con	508	66.1
Taylor J.	Lab	261	33.9
Turnout		31.8	32.1

Iceni (1122)			
		vote	share
Richards S.	Con	311	63.6
Barker J.*	Ind	178	36.4
Turnout		44.1	27.2

Lakenheath (2805) ²			
		vote	share
Crane R.*	Con	635	77.0
Rutterford B.*	Con	634	-
Brown P. Ms.	Lab	190	23.0
Turnout		29.1	53.9

Manor (1224)			
		vote	share
Wiggin J.*	Con	302	63.4
Pigerham E.	Ind	174	36.6
Turnout		39.0	26.9

Market (2961) ²			
		vote	share
McGhee J.	Con	628	60.4
Smith M.	Con	502	-
Home C.	Lab	411	39.6
Dawson P.*	Lab	375	-
Turnout		33.8	20.9

Mill (1883)			
		vote	share
Duncan C.*	LD	0	0.0
Turnout		0.0	0.0

Severals (4189) ³			
		vote	share
Mills T.	Con	573	51.8
Barker C.	Con	570	-
Akins M. Ms.	Con	540	-
Castellina M. Ms.	LD	269	24.3
Cornelissen P.	Lab	265	23.9
Pilborough C. Ms.	LD	233	-
Turnout		23.5	27.5

South (1257)			
		vote	share
Gray B.*	Ind	370	65.7
Andrews-Smith J. Ms.	Con	193	34.3
Turnout		44.7	31.4

St. Marys (3010) ³			
		vote	share
Lynch C. Ms.*	Con	475	52.0
Sadler W.*	Con	447	-
Jefferys M.	Lab	439	48.0
Dwane P.*	Lab	411	-
Halliwell P.	Lab	406	-
Gouldon G. Ms.	Con	385	-
Turnout		31.9	3.9

Studlands Park (930)			
		vote	share
George W.*	LD	127	51.8
White W.	con	118	48.2
Turnout		26.4	3.7

The Rows (2594) ²			
		vote	share
Waters T.	Con	609	69.2
Newman R.	Con	499	-
Kemp P.	Lab	271	30.8
Turnout		35.3	38.4

Forest Heath - 2003

All Saints (2626) ²			
		vote	share
Jaggard G.	Con	445	68.9
Millar R.	Con	367	-
Malham S. Ms.	Lab	201	31.1
Yarrow K.	Lab	170	-
Turnout		24.9	37.8

Brandon East (3882) ³			
		vote	share
Edwards S.*	Con	567	43.4
Vincent S. Ms.	Con	464	-
Stewart E.	Ind	451	34.5
Silvester R.*	Con	387	-
Dean S.	Lab	288	22.1
Silver N.	Ind	284	-
Turnout		27.8	8.9

Brandon West (2572) ²			
		vote	share
Bishop W.*	Con	397	55.1
Turner D.	Con	233	-
Bourton J. Ms.	WSIA	123	17.1
Silver T.	Lab	109	15.1
Brown P. Ms.	Lab	105	-
Saxby A.	Ind	91	12.6
Turnout		24.2	38.1

Eriswell & The Rows (2968) ²			
		vote	share
Waters T.*	Con	584	45.7
Newman R.*	WSIA	460	36.0
Newton D.	Con	298	-
Bowman D.	Lab	234	18.3
Turnout		33.9	9.7

Exning (1516)			
		vote	share
Levick D.*	Con	254	63.3
Patmore J.	Lab	147	36.7
Turnout		26.7	26.7

Great Heath (2748) ²			
		vote	share
Roman N.*	Con	395	43.3
Wheble A.	Con	274	-
Taylor J.	Lab	220	24.1
Barker J.	Ind	219	24.0
Whitear D.	UK Ind	79	8.7
Turnout		25.1	19.2

Iceni (1365)			
		vote	share
Burt R. Ms.	WSIA	297	55.5
Syvret S. Ms.	Con	238	44.5
Turnout		39.5	11.0

Lakenheath (2861) ²			
		vote	share
Rutterford B.*	Con	506	46.7
Crane R.*	Con	473	-
Smith I.	UK Ind	357	32.9
Whitpen T.	WSIA	221	20.4
Turnout		30.1	13.7

Manor (1243)			
		vote	share
Richards S.*	Ind	240	43.2
Cox D.	WSIA	172	30.9
Pigerham E.	Con	144	25.9
Turnout		45.2	12.2

Market (2557) ²			
		vote	share
McGhee J.*	Con	339	35.6
Smith M.*	Con	251	-
Horne C.	Lab	250	26.3
Nunn L. Ms.	WSIA	149	15.7
Dale G.	Ind	108	11.3
Hayes G.	UK Ind	106	11.1
Hitt H.	UK Ind	86	-
Turnout		29.3	9.3

Red Lodge (1225) ²			
		vote	share
Chambers L. Ms.	Con	193	55.8
Duncan C.*	Ind	153	44.2
Merrick P.	Con	113	-
Middleton J. Ms.	Ind	110	-
Woodcock B.	Ind	107	-
Turnout		33.4	11.6

Severals (4012) ³			
		vote	share
Lambton G.	Con	369	33.1
Hills M. Ms.	Con	322	-
Barker C.*	Con	309	-
Littlewood J.	WSIA	285	25.6
Hirst J.	WSIA	262	-
George W.*	LD	251	22.5
Burnett J.	Lab	210	18.8
Uney V. Ms.	Lab	196	-
Turnout		23.5	7.5

South (1245)			
		vote	share
Goff R.	Con	329	52.2
Gray B.*	Ind	301	47.8
Turnout		50.8	4.4

St. Marys (4358) ³			
		vote	share
Mills T.*	WSIA	445	32.1
Sadler W.*	Con	443	31.9
Lynch C. Ms.*	Con	429	-
Drummond A.	WSIA	394	-
Weaver E. Ms.	Con	340	-
Jeffreys M.*	Lab	334	24.1
Dwane P.	Lab	250	-
Ahsan R.	Lab	212	-
Hudson D.	UK Ind	166	12.0
Turnout		26.9	0.1

Forest Heath - 2007

All Saints (2599) ²			
		vote	share
Millar R.*	Con	355	48.3
Jaggard G.*	Con	351	-
Pilborough C. Ms.	LD	195	26.5
Turner C.	Lab	185	25.2
Turnout		25.2	21.8

Brandon East (4024) ³			
		vote	share
Stewart E.*	Con	698	48.2
Edwards S.*	Con	653	-
Vincent S. Ms.*	Con	590	-
Silvester R.	UKIP	415	28.7
Brown C.	Ind	335	23.1
Turnout		30.2	19.5

Brandon West (2655) ²			
		vote	share
Bishop W.*	Con	604	72.2
Simmons A.	Con	351	-
Wojtasz A.	Ind	233	27.8
Turnout		29.7	44.3

Eriswell & The Rows (2943) ²			
		vote	share
Waters T.*	Con	716	70.2
Keane B.	Con	562	-
Chandler D.	UKIP	304	29.8
Turnout		33.9	40.4

Exning (1509)			
		vote	share
Fairman-Smith M. Ms.	Con	253	51.1
Williams N.	LD	242	48.9
Turnout		33.1	2.2

Great Heath (2760) ²			
		vote	share
Roman N.*	Con	475	55.8
Wheble A.*	Con	359	-
Barker J.	Ind	248	29.1
Hitchman D.	Ind	168	-
Whitear D.	UKIP	128	15.0
Turnout		28.4	26.7

Iceni (1379)			
		vote	share
Burt R. Ms.*	Con	0	0.0
Turnout		0.0	0.0

Lakenheath (3066) ²			
		vote	share
Gathercole D.	Con	650	47.1
Flack S.	Con	560	-
Lucas D.	Ind	426	30.9
Smith I.	UKIP	303	22.0
Smith R.	UKIP	188	-
Turnout		41.0	16.2

Manor (1251)			
		vote	share
Syvret S. Ms.	Con	0	0.0
Turnout		0.0	0.0

Market (2563) ²			
		vote	share
McGhee J.*	Con	494	66.0
Smith M.*	Con	436	-
Hayes G.	UKIP	254	34.0
Hitt H.	UKIP	214	-
Turnout		30.0	32.1

Red Lodge (1308) ²			
		vote	share
James S.	Con	0	0.0
Chambers L. Ms.*	Con	0	-
Turnout		0.0	0.0

Severals (3908) ³			
		vote	share
Appleby A.	LD	461	33.7
Radford I.	LD	435	-
Hirst J.	Ind	360	26.3
Hills M. Ms.*	Con	356	26.0
Huggan T.	LD	349	-
Barker C.*	Con	343	-
Jackson H.	Con	314	-
Uney V. Ms.	Lab	190	13.9
Turnout		27.5	7.4

South (1277)			
		vote	share
Dicker R.	Con	0	0.0
Turnout		0.0	0.0

St. Marys (4179) ³			
		vote	share
Drummond A.	Ind	570	33.1
Honeyford S. Ms.	Con	433	25.1
Allen R. Ms.	Ind	420	-
Lynch C. Ms.*	Con	374	-
Hudson D.	UKIP	369	21.4
Sadler W.*	Con	367	-
Drakeley C.	Ind	351	-
Jefferys M.	Lab	350	20.3
Turnout		30.4	8.0

Forest Heath - 2011

All Saints (2737) ²			
		vote	share
Jaggard G.*	Con	461	43.9
Millar R.*	Con	366	-
Turner C.	Lab	313	29.8
Radford H. Ms.	LD	277	26.4
Turnout		34.2	14.1

Brandon East (4232) ³			
		vote	share
Bishop W.*	Con	788	60.6
Edwards S.*	Con	677	-
Stewart E.*	Con	585	-
Ridgwell P.	UKIP	512	39.4
Silvester R.	UKIP	460	-
Meadows A. Ms.	UKIP	415	-
Turnout		35.7	21.2

Brandon West (2727) ²			
		vote	share
Bimson D.	Con	416	38.8
Simmons A.*	Con	296	-
Allen M.	Lab	263	24.6
Kostecki H.	UKIP	199	18.6
Jones-Weetman A. Ms.	Ind	193	18.0
Jacobs L.	Ind	185	-
Turnout		36.1	14.3

Eriswell & The Rows (3096) ²			
		vote	share
Waters T.*	Con	667	50.0
Bowman D.	Con	582	-
Smith J.	LD	358	26.9
Chandler D.	Ind	308	23.1
Turnout		41.4	23.2

Exning (1577)			
		vote	share
Williams N.	LD	372	56.1
Anderson J. Ms.	Con	291	43.9
Turnout		42.7	12.2

Great Heath (2839) ²			
		vote	share
Roman N.*	Con	435	41.3
Wheble A.*	Con	322	-
Alecock J.	LD	254	24.1
Caple T.	Lab	233	22.1
Lawrence A.	UKIP	132	12.5
Whitear D.	UKIP	101	-
Turnout		33.4	17.2

Iceni (1405)			
		vote	share
Burt R. Ms.*	Con	485	69.1
Appleton H. Ms.	Lab	217	30.9
Turnout		50.3	38.2

Lakenheath (3109)²

		vote	share
Noble C.	Con	656	45.7
Gathercole D.*	Ind	553	38.5
Frost I.	Con	416	-
Lucas C. Ms.	Ind	326	-
Smith I.	UKIP	227	15.8
Smith R.	UKIP	116	-
Turnout		41.9	7.2

Manor (1301)

		vote	share
Huggan T.	LD	366	54.3
Frost S.	Con	308	45.7
Turnout		52.3	8.6

Market (2793)²

		vote	share
McGhee J.*	Con	615	70.2
Smith M.*	Con	570	-
Caple G. Ms.	Lab	261	29.8
Finn P.	Lab	237	-
Turnout		34.9	40.4

Red Lodge (2230)²

		vote	share
Dicker R.*	Con	0	-
Drummond A.*	Con	0	0.0
Turnout		0.0	0.0

Severals (4967)³

		vote	share
Anderson M.	Con	663	46.2
Hood R. Ms.	Con	655	-
Hirst J.*	Con	637	-
Uney V. Ms.	Lab	416	29.0
Radford I.*	LD	357	24.9
Horner I.	LD	237	-
Turnout		28.2	17.2

South (1321)

		vote	share
Lynch C. Ms.	Con	0	0.0
Turnout		0.0	0.0

St. Marys (4324)³

		vote	share
Barker C.	Con	540	29.4
Sadler W.	Con	505	-
Jefferys M.	Lab	473	25.8
Allen R. Ms.*	Ind	451	24.6
Hudson D.	UKIP	372	20.3
Syvret S. Ms.*	Con	355	-
Clifton P.	Lab	329	-
Turnout		33.2	3.6

