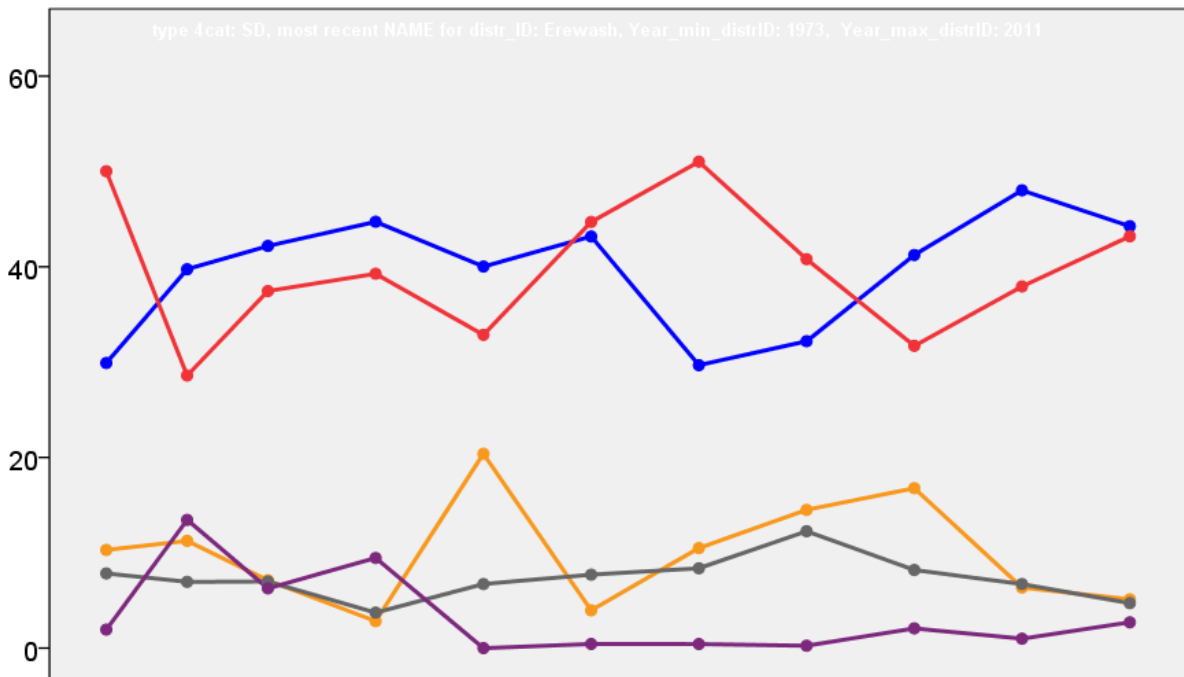


Erewash Borough Council Election Results 1973-2011



Colin Rallings and Michael Thrasher
The Elections Centre
Plymouth University

The information contained in this report has been obtained from a number of sources. Election results from the immediate post-reorganisation period were painstakingly collected by Alan Willis largely, although not exclusively, from local newspaper reports. From the mid-1980s onwards the results have been obtained from each local authority by the Elections Centre. The data are stored in a database designed by Lawrence Ware and maintained by Brian Cheal and others at Plymouth University. Despite our best efforts some information remains elusive whilst we accept that some errors are likely to remain. Notice of any mistakes should be sent to elections@plymouth.ac.uk. The results sequence can be kept up to date by purchasing copies of the annual Local Elections Handbook, details of which can be obtained by contacting the email address above.

Front cover: the graph shows the distribution of percentage vote shares over the period covered by the results. The lines reflect the colours traditionally used by the three main parties. The grey line is the share obtained by Independent candidates while the purple line groups together the vote shares for all other parties.

Rear cover: the top graph shows the percentage share of council seats for the main parties as well as those won by Independents and other parties. The lines take account of any by-election changes (but not those resulting from elected councillors switching party allegiance) as well as the transfers of seats during the main round of local election.

The lower graph shows for each main round of local elections the overall percentage turnout (solid line), the percentage of women candidates standing at (dotted line) and the percentage of women among those elected (hashed line).

Erewash - 1973

Breadsall & Morley (1067)

		vote	share
Crowther B.	Con	276	41.2
Render J.	Lab	210	31.3
Marshall S.	Ind	184	27.5
Turnout		62.8	9.9

Breaston (3298)³

		vote	share
Parkinson R.	Con	798	60.0
Gill H.	Con	779	-
Pemberton H.	Con	749	-
Fox M.	Lab	533	40.0
Roberts H.	Lab	501	-
Torr A. Ms.	Lab	471	-
Turnout		40.4	19.9

Draycott (1691)

		vote	share
Boyland R.	Lab	526	62.3
Rayner K.	Con	318	37.7
Turnout		49.9	24.6

Little Eaton (1410)

		vote	share
Currey J.	Ind	485	82.6
Stokes M.	Lab	102	17.4
Turnout		41.6	65.2

No. 1 (Ilkeston: Granby) (2154)²

		vote	share
Turner A.	Lab	592	70.7
Winter G. Ms.	Lab	434	-
Goulton D.	Con	245	29.3
Turnout		38.9	41.5

No. 12 (Dale Abbey) (1997)²

		vote	share
Cresswell P.	Ind	521	44.7
Johnstone R.	Con	438	37.6
Cope B.	Lab	207	17.8
Read I. Ms.	Lab	183	-
Turnout		58.4	7.1

No. 16 (Sandiacre) (5707)⁴

		vote	share
Hart W.	Lab	1,485	50.1
Jowett J. Ms.	Lab	1,183	-
Arbon C.	Lab	920	-
Kirkland J. Ms.	Lab	910	-
Clements J.	Con	859	29.0
Uren D.	Con	838	-
Lungley H.	CA	619	20.9
Ross-Clyne R.	Con	584	-
Jones P.	Con	575	-
Goode F.	CA	381	-
Harding S.	CA	220	-
Judson C.	CA	201	-
Turnout		51.9	21.1

No. 2 (Ilkeston: Market) (3478)²

		vote	share
Cook R.	Lib	740	51.1
Barnes J.	Lab	707	48.9
Campion M.	Lab	671	-
Turnout		41.6	2.3

No. 3 (Ilkeston: North) (5613)⁴

		vote	share
Hawkins I.	Ind	1,311	50.3
Fletcher R. Ms.	Lab	1,293	49.7
Gunn J. Ms.	Ind	1,163	-
Beecham J.	Lab	1,122	-
Smith K.	Lab	1,120	-
Cooke A.	Ind	1,116	-
Cooper G.	Ind	1,115	-
Crompton J.	Lab	924	-
Turnout		46.4	0.7

No. 5 (Ilkeston: South) (7746)⁶

		vote	share
Taylor T.	Lib	1,808	54.5
Littleproud K.	Lab	1,510	45.5
Spencer E.	Lib	1,486	-
Butcher D.	Lib	1,474	-
Bassett P.	Lab	1,460	-
Goacher L.	Lib	1,406	-
Clarke M. Ms.	Lib	1,403	-
Bradley G. Ms.	Lib	1,345	-
Woodward H.	Lab	1,196	-
Badder M.	Lab	1,155	-
Hatton S.	Lab	1,112	-
Jones L.	Lab	1,056	-
Turnout		42.8	9.0

No. 6 (Ilkeston: Victoria) (3340)²

		vote	share
Meacham F.	Con	823	57.2
Evans W.	Con	765	-
Nash A.	Lab	615	42.8
Moon E.	Lab	571	-
Turnout		43.1	14.5

No. 7 (Long Eaton: Derby Road) (8120)⁶

		vote	share
Bramley J.	Lab	2,005	62.1
Marshall J. Ms.	Lab	1,889	-
Taylor T.	Lab	1,816	-
Willey D.	Lab	1,740	-
Pratt L.	Lab	1,736	-
Decker R.	Lab	1,734	-
Broadbelt C.	Con	1,224	37.9
Maltby J.	Con	1,187	-
Stevenson A.	Con	1,173	-
Wilkinson A.	Con	1,169	-
Crawford-Grundy F.	Con	1,158	-
Robinson D.	Con	1,112	-
Turnout		39.8	24.2

No. 8 (Long Eaton: New Sawley) (8190)⁶

		vote	share
Camm W.	Lab	1,959	65.1
Walsh P.	Lab	1,534	-
Woolley J.	Lab	1,519	-
Wells T. Ms.	Lab	1,515	-
Riley A.	Lab	1,488	-
Welford T.	Lab	1,393	-
Chalk V.	Con	1,052	34.9
Craggs M.	Con	1,015	-
Woodward B.	Con	1,002	-
Webb R.	Con	968	-
Holmes W.	Con	966	-
Carswill D.	Con	947	-
Turnout		36.8	30.1

No. 9 (Long Eaton: Nottinghamroad & Sawley Road) (7825)⁶

		vote	share
White B. Ms.	Lab	1,317	41.4
Allsop C.	Lab	1,258	-
Brown D.	Lab	1,258	-
Buckley G.	Lab	1,227	-
Wright C.	Lab	1,154	-
Byrne D.	Con	1,125	35.3
Murphy E.	Lab	1,116	-
Gough R.	Con	1,106	-
Graham R.	Con	1,055	-
Guest A.	Con	1,006	-
Hickton F. Ms.	Con	976	-
McCaig D.	Con	970	-
Barnes W.	Lib	741	23.3
Matusewicz V. Ms.	Lib	609	-
Turnout		40.7	6.0

Ockbrook & Borrowwash (5134)⁴

		vote	share
West A.	Lab	1,480	57.1
Kennedy A.	Lab	1,344	-
Highton E.	Lab	1,199	-
Ball P.	Lab	1,158	-
Archer J.	Con	1,113	42.9
Seeley R.	Con	1,017	-
Coates R.	Con	997	-
Thompson D.	Con	977	-
Turnout		50.5	14.2

Old Park (2925)²

		vote	share
Poole J.	Lab	669	71.6
Pestell L. Ms.	Lab	613	-
Gough G.	Con	265	28.4
Turnout		31.9	43.3

Stanley (1591)

		vote	share
Hurst D.	Lab	486	58.2
Smith J.	Con	349	41.8
Turnout		52.5	16.4

West Hallam (1763)

		vote	share
Heathcote L.	Con	668	70.4
Morley B.	Lab	281	29.6
Turnout		53.8	40.8

Erewash - 1976

Breadsall & Morley (1034)

		vote	share
Crowther D.*	Con	510	74.7
Jones R.	Lab	173	25.3
Turnout		66.7	49.3

Breaston (3307)³

		vote	share
Parkinson R.*	Con	1,248	74.4
Pemberton H.*	Con	1,218	-
Gill H.*	Con	1,189	-
Torr A. Ms.	Lab	429	25.6
Webb D.	Lab	416	-
Adams L.	Lab	387	-
Turnout		52.0	48.8

Draycott (1732)

		vote	share
Wilson A.	Con	582	55.5
Boyland R.*	Lab	467	44.5
Turnout		62.2	11.0

Little Eaton (1452)

		vote	share
Currey J.*	Ind	464	67.1
Foxcroft J.	Lab	227	32.9
Turnout		48.6	34.3

No. 1 (Ilkeston: Granby) (2030)²

		vote	share
Smith K.	Ind Lab	414	49.7
Turner A.*	Ind Lab	388	-
Smith S. Ms.	Lab	210	25.2
Tyler F.	Lib	209	25.1
Orrell J.	Lib	186	-
Ryder S.	Lab	157	-
Turnout		43.1	24.5

No. 12 (Dale Abbey) (2026)²

		vote	share
Johnstone A. Ms.*	Con	604	45.2
Cresswell P.*	Ind	520	39.0
Ball D.	Lab	211	15.8
Read I. Ms.	Lab	152	-
Turnout		44.7	6.3

No. 16 (Sandiacre) (5730)⁴

		vote	share
Uren D.	Con	1,497	44.1
Hart W.*	Lab	1,438	42.4
Ross-Clyne G.	Con	1,342	-
Jones F.	Con	1,217	-
Jowett M. Ms.*	Lab	1,197	-
Hooley S. Ms.	Con	1,170	-
Hampson J.	Lab	985	-
Arbon C.*	Lab	967	-
Overton K.	Lib	456	13.4
Turnout		49.8	1.7

No. 2 (Ilkeston: Market) (3297)²

		vote	share
Cook R.*	Lib	832	37.5
Ball M.	Con	751	33.8
Barnes J.*	Lab	470	21.2
Campion M.	Lab	338	-
Beardsley L.	Ind	168	7.6
Turnout		47.2	3.6

No. 3 (Ilkeston: North) (6586)⁴

		vote	share
Hawkins T.*	Ind	1,294	33.8
Cooper G.	Ind	961	-
Gunn J. Ms.*	Ind	957	-
Fletcher F. Ms.*	Lab	897	23.5
Reeve P.	Lib	843	22.0
Beecham J.*	FPS	790	20.7
Poole E. Ms.	FPS	566	-
Keany T.	FPS	527	-
Barnes S. Ms.	Lab	458	-
Watson M.	Lab	434	-
Turnout		36.6	10.4

No. 5 (Ilkeston: South) (7577)⁶

		vote	share
Taylor E.*	Lib	1,301	40.3
Spencer E.*	Lib	1,143	-
Butcher D.*	Lib	1,100	-
Wheeler V. Ms.	Lib	1,096	-
Abbott B.	Con	965	29.9
Littleproud K.*	Lab	961	29.8
Smith J.	Con	947	-
Fildes J.	Con	927	-
Goacher J.*	Lib	918	-
Sampson C.	Lib	818	-
Evans J.	Lab	722	-
Woodward H.	Lab	707	-
Walton R.	Lab	691	-
Bassett P.	Lab	683	-
Harris L.	Lab	581	-
Turnout		38.7	10.4

No. 6 (Ilkeston: Victoria) (3201)²

		vote	share
Meachem F.*	Con	894	75.4
Evans W.*	Con	821	-
Nash A.	Lab	291	24.6
Turnout		41.9	50.9

No. 7 (Long Eaton: Derby Road) (8039)⁶

		vote	share
Chell L.	Con	1,980	56.9
Inshaw C.	Con	1,946	-
Marriott G.	Con	1,945	-
Wilkinson A.	Con	1,938	-
Paton R.	Con	1,923	-
Ward F.	Con	1,887	-
Marshall J. Ms.*	Lab	1,499	43.1
Decker R.*	Lab	1,445	-
Heath J.	Lab	1,437	-
Willey D.*	Lab	1,387	-
Negus G.	Lab	1,356	-
Spencer R.	Lab	1,355	-
Turnout		45.4	13.8

No. 8 (Long Eaton: New Sawley) (8515)⁶

		vote	share
Camm W.*	Ind Lab	3,868	56.1
Cameron G.	Con	1,894	27.5
Chalk V.	Con	1,880	-
Richards S.	Con	1,872	-
Webb R.	Con	1,774	-
Purves H. Ms.	Con	1,598	-
Webb R.	Con	1,584	-
Hind D.	Lab	1,133	16.4
Walsh T.*	Lab	1,122	-
Woolley J.*	Lab	1,117	-
Wells J. Ms.*	Lab	1,029	-
Bentley T.	Lab	993	-
Wells T. Ms.	Lab	911	-
Turnout		58.3	28.6

No. 9 (Long Eaton: Nottingham Road & Sawley Road) (7621)⁶

		vote	share
Byrne D.*	Con	1,577	45.1
Gough R.	Con	1,520	-
Allen J.	Con	1,474	-
Wells C.	Con	1,410	-
Hickton F. Ms.	Con	1,404	-
Allen J. Ms.	Con	1,372	-
White B. Ms.*	Lab	1,055	30.2
Buckley G.*	Lab	1,053	-
Buckley J. Ms.	Lab	956	-
Sutton W.	Lab	921	-
Wright C.*	Lab	917	-
Wilford T.	Lab	890	-
Rudin J.	Lib	867	24.8
Barnes J.	Lib	605	-
Bowen G.	Lib	500	-
Cobb J.	Lib	477	-
Matuszewicz V. Ms.	Lib	452	-
Elkins P. Ms.	Lib	417	-
Turnout		43.0	14.9

Ockbrook & Borrowash (5334)⁴

		vote	share
Archer J.	Con	2,007	61.7
Seeley R.	Con	1,797	-
Coates R.	Con	1,771	-
Colclough A.	Con	1,704	-
West A.*	Lab	1,244	38.3
Kennedy A.*	Lab	1,178	-
Highton E.*	Lab	1,101	-
Scarborough F.	Lab	865	-
Turnout		68.8	23.5

Old Park (2736)²

		vote	share
Morton J.	Con	375	43.6
Oldham D.	Con	346	-
Poole J.*	Ind Lab	320	37.2
Pestell L. Ms.*	Ind Lab	300	-
Richards C.	Lab	165	19.2
McMahon H.	Lab	150	-
Turnout		39.1	6.4

Stanley (1620)

		vote	share
Hurst D.*	Lab	481	55.7
Smith A.	Con	382	44.3
Turnout		54.4	11.5

West Hallam (1912)

		vote	share
Shaw H.	Con	658	59.6
Steiner P.	Ind	339	30.7
White A.	Lab	107	9.7
Turnout		60.3	28.9

Erewash - 1979**Breadsall & Morley (1060)**

		vote	share
Bayliss W.	Con	597	68.5
Marshall S.	Ind	144	16.5
Orrell J.	Lab	130	14.9
Turnout		82.2	52.0

Breaston (4113)³

		vote	share
Parkinson R.	Con	2,093	64.9
Gill R.	Con	2,053	-
Pemberton H.	Con	2,017	-
Torr A. Ms.	Lab	1,130	35.1
Turnout		78.4	29.9

Cotmanhay (4974)³

		vote	share
Fletcher F. Ms.	Lab	1,764	37.4
Cooper G.	Ind	1,483	31.5
Morton J.	Con	1,465	31.1
Walters R.	Con	1,462	-
Campion M.	Lab	1,371	-
Smith S. Ms.	Lab	1,201	-
Turnout		94.7	6.0

Dale Abbey (1110)

		vote	share
Cresswell P.	Ind	716	81.2
Ball D. Ms.	Lab	166	18.8
Turnout		79.5	62.4

Derby Rd East (4280)³

		vote	share
Marshall J. Ms.	Lab	1,513	53.4
Negus A.	Lab	1,403	-
Griffiths H.	Lab	1,360	-
Ward J.	Con	1,320	46.6
Craggs D.	Con	1,292	-
Marriott G.	Con	1,237	-
Turnout		66.2	6.8

Derby Rd West (4087)³

		vote	share
Wilkinson A.	Con	1,757	57.6
Paton R.	Con	1,713	-
Wilkinson M. Ms.	Con	1,710	-
Decker R.	Lab	1,291	42.4
Jones R.	Lab	1,124	-
Scott A.	Lab	1,051	-
Turnout		74.6	15.3

Draycott (2091)

		vote	share
Wilson A.	Con	1,052	66.4
Winfield C.	Lab	533	33.6
Turnout		75.8	32.7

Ilkeston Central (4391)³

		vote	share
Gilbert P.	Lab	1,211	34.9
Geeham J.	Lab	1,141	-
Gilbert T.	Lab	1,128	-
Ball M.	Con	906	26.1
Butcher D.	Lib	889	25.6
Atkinson J. Ms.	Con	867	-
Collins D.	Con	775	-
Edwards C. Ms.	Lib	640	-
Tyler F.	Lib	628	-
Turner A.	Ind Lab	466	13.4
Turnout		79.1	8.8

Ilkeston North (2796)²

		vote	share
Gunn J.	Ind	1,179	56.6
Millard J.	Lab	904	43.4
Poole J.	Ind	761	-
Turnout		74.5	13.2

Ilkeston South (2955)²

		vote	share
McCluskey J. Ms.	Con	1,010	41.3
Oldham D.	Con	897	-
Severn E.	Lab	800	32.7
Cullen C.	Lab	694	-
Spencer E.	Lib	633	25.9
Turnout		82.7	8.6

Kirk Hallam North (2771)²

		vote	share
Shelley B.	Lab	953	47.0
Walton R.	Lab	897	-
Eaton D.	Lib	608	30.0
Brown J.	Lib	503	-
Fildes J.	Con	466	23.0
Hallam L.	Con	462	-
Turnout		73.2	17.0

Kirk Hallam South (2728) ²			
		vote	share
Maloney P.	Lab	991	50.6
Taylor E.	Lib	967	49.4
Barclay A.	Lab	884	-
Ross J.	Lib	794	-
Turnout		71.8	1.2
Little Eaton (1723)			
		vote	share
Walls Hargreaves P.	Con	929	66.1
Foxcroft J.	Lab	477	33.9
Turnout		81.6	32.1
Long Eaton Central (2816) ²			
		vote	share
Hickton F. Ms.	Con	1,047	51.1
Stevenson D.	Con	1,031	-
White B. Ms.	Lab	1,003	48.9
Buckley J. Ms.	Lab	996	-
Turnout		72.8	2.1
Nottingham Road (4392) ³			
		vote	share
Allen J.	Con	1,658	53.4
Burn D.	Con	1,594	-
Gough R.	Con	1,515	-
Calladine M. Ms.	Lab	1,445	46.6
Sutton W.	Lab	1,209	-
Wright C.	Lab	1,204	-
Turnout		70.7	6.9
Ockbrook & Borrowash (5625) ³			
		vote	share
Archer J.	Con	2,706	55.2
Seeley R.	Con	2,619	-
Colclough A.	Con	2,539	-
Highton E.	Lab	1,603	32.7
Ball P.	Lab	1,472	-
Whitt P.	Lab	1,348	-
Birch W.	Lib	596	12.2
Turnout		87.2	22.5
Old Park (2659) ²			
		vote	share
Guy T.	Lab	1,042	60.6
Woodhouse R.	Lab	958	-
Sherwood M.	Con	678	39.4
Spittal B. Ms.	Con	653	-
Turnout		64.7	21.2
Sandiacre North (3357) ²			
		vote	share
Hart W.	Lab	1,454	51.7
Jowett M. Ms.	Lab	1,231	-
Rawicz M. Ms.	Con	1,031	36.6
Ainslow M.	Con	800	-
Overton K.	Ind	329	11.7
Turnout		83.8	15.0
Sandiacre South (2592) ²			
		vote	share
Uren D.	Con	1,180	59.3
Jones F.	Con	1,134	-
Hempson J.	Lab	810	40.7
Arbon C.	Lab	808	-
Turnout		76.8	18.6
Sawley (5359) ³			
		vote	share
Camm W.	Ind Lab	3,388	52.4
Marshall C.	Con	1,346	20.8
Chalk V.	Con	1,120	-
Buckley G.	Lab	1,044	16.2
Green F.	Lab	1,036	-
Pulfer C.	Con	912	-
Needham J.	Lib	682	10.6
Turnout		120.5	31.6

Stanley (1561)			
		vote	share
Hurst D.	Lab	751	59.1
Hart J.	Con	519	40.9
Turnout		81.4	18.3
Victoria (2822) ²			
		vote	share
Evans W.	Con	1,296	56.9
Johnstone A. Ms.	Con	1,097	-
Shelley J.	Lab	535	23.5
Watson M.	Lab	508	-
Argent I.	Ind	445	19.6
Turnout		80.7	33.4
West Hallam (2594) ²			
		vote	share
Shaw H.	Con	1,412	72.9
Heathcote L.	Con	1,393	-
Reeve N.	Lab	526	27.1
Jameson S.	Lab	477	-
Turnout		74.7	45.7
Wilsthorpe (3333) ²			
		vote	share
Richards S.	Con	1,491	60.4
Webb R.	Con	1,427	-
Wells T.	Lab	977	39.6
Spencer B.	Lab	917	-
Turnout		74.0	20.8
Erewash - 1983			
Breadsall & Morley (1007)			
		vote	share
Queenborough J.	Con	498	80.1
Elwell J. Ms.	Lab	124	19.9
Turnout		63.4	60.1
Breaston (3514) ³			
		vote	share
Orchard M. Ms.	Con	1,352	73.6
Parkinson R.*	Con	1,239	-
Pemberton H.*	Con	1,229	-
Torr A. Ms.	Lab	486	26.4
Pinfield D.	Lab	447	-
Collyer E.	Lab	400	-
Turnout		48.9	47.1
Cotmanhay (5187) ³			
		vote	share
Jeffrey P.	Lab	928	40.4
Fletcher F. Ms.*	Lab	913	-
Campion M.	Lab	865	-
Cartmell A.	Con	759	33.1
Waters M.	Lib/SDP	608	26.5
Clarke M.	Lib/SDP	578	-
Pestell L.	Lib/SDP	466	-
Turnout		32.9	7.4
Dale Abbey (1118)			
		vote	share
Cresswell P.*	Ind	459	80.5
Harlow A.	Lab	111	19.5
Turnout		51.0	61.1
Derby Rd East (4262) ³			
		vote	share
Marshall J. Ms.*	Lab	980	56.6
Griffiths H.*	Lab	895	-
Negus G.*	Lab	885	-
Marriott G.	Con	750	43.4
Ward C.	Con	690	-
Turnout		32.8	13.3

Derby Rd West (4732) ³			
		vote	share
Wilkinson A.*	Con	1,279	49.8
Wilkinson M. Ms.*	Con	1,241	-
Stevens S.	Con	1,222	-
Willey D.	Lab	785	30.6
Turner P.	Lab	746	-
Molson I.	Lab	731	-
Neill I.	Lib/SDP	504	19.6
Turnout		46.1	19.2
Draycott (2057)			
		vote	share
Boyland R.	Ind Lab	671	55.9
Crowther D.	Con	529	44.1
Turnout		58.3	11.8
Ilkeston Central (4147) ³			
		vote	share
Geehan J.*	Lab	870	58.7
Bevan E.	Lab	863	-
Gilbert T.*	Lab	860	-
Atkinson J. Ms.	Con	611	41.3
Collins D.	Con	593	-
Hill N. Ms.	Con	552	-
Turnout		35.0	17.5
Ilkeston North (2744) ²			
		vote	share
Jeffries E.	Lab	631	51.0
Gunn J.*	Ind	606	49.0
Carrington J.	Lab	551	-
Edwards J.	Ind	378	-
Turnout		39.7	2.0
Ilkeston South (3018) ²			
		vote	share
McCluskey J. Ms.*	Con	685	53.1
Oldham D.*	Con	627	-
Halford B.	Lab	605	46.9
Cullen C.	Lab	577	-
Turnout		41.3	6.2
Kirk Hallam North (2887) ²			
		vote	share
Walton R.*	Lab	738	65.5
Shelley B.*	Lab	730	-
Wallbank E.	Con	388	34.5
Roberts C.	Con	344	-
Turnout		42.3	31.1
Kirk Hallam South (2659) ²			
		vote	share
Killeavy B.	Lab	827	78.2
Moloney P.*	Lab	825	-
Jones C.	Con	231	21.8
Simmons D.	Con	221	-
Turnout		39.6	56.3
Little Eaton (1821)			
		vote	share
Hargreaves P.*	Con	630	74.5
Fearn M.	Lab	216	25.5
Turnout		46.5	48.9
Long Eaton Central (3232) ²			
		vote	share
Hickton F. Ms.*	Con	643	38.9
Wood J.	Con	616	-
Buckley J. Ms.	Lab	533	32.3
Biddulph V.	Ind Lab	475	28.8
Scott A.	Lab	379	-
Turnout		40.9	6.7
Nottingham Road (4428) ³			
		vote	share
Allen J.*	Con	1,048	57.1
Byrne D.*	Con	1,034	-
Gough R.*	Con	1,026	-
White B. Ms.	Lab	786	42.9
Wright C.	Lab	718	-
Sutton W.	Lab	694	-
Turnout		39.9	14.3

Ockbrook & Borrowash (5678)³			
		vote	share
Seeley R.*	Con	1,924	57.2
Colclough A.*	Con	1,841	-
Tumanow M. Ms.	Con	1,790	-
Highton E.	Lab	1,437	42.8
Bell D.	Lab	1,187	-
Somerset Sullivan J.	Lab	1,082	-
Turnout		54.1	14.5
Old Park (2869)²			
		vote	share
Guy T.*	Lab	713	66.9
Needham M.	Lab	665	-
Sherwood M.	Con	353	33.1
Spittal B. Ms.	Con	343	-
Turnout		36.2	33.8
Sandiacre North (3275)²			
		vote	share
Jowett M. Ms.*	Lab	1,043	59.5
Barker D.	Lab	943	-
Aindow M.	Con	710	40.5
Tapping K.	Con	685	-
Turnout		51.6	19.0
Sandiacre South (2960)²			
		vote	share
Uren D.*	Con	949	64.7
Ross-Clyne G.	Con	933	-
Dickman F.	Lab	518	35.3
Williams I.	Lab	515	-
Turnout		49.2	29.4
Sawley (5661)³			
		vote	share
Camm W.*	Ind Lab	2,574	57.5
Chalk V.*	Con	1,039	23.2
Munro L.	Con	989	-
Robinson R.	Lab	864	19.3
Thompson G.	Lab	664	-
Wells T.	Lab	660	-
Turnout		40.0	34.3
Stanley (1569)			
		vote	share
Ball P.	Lab	548	60.2
Fildes J.	Con	363	39.8
Turnout		58.1	20.3
Victoria (2775)²			
		vote	share
Evans W.*	Con	905	58.4
Johnstone A. Ms.*	Con	754	-
Trueman K.	Lab	644	41.6
Gough P.	Lab	602	-
Turnout		52.3	16.8
West Hallam (2954)²			
		vote	share
Heathcote L.*	Con	896	-
Shaw H.*	Con	896	58.3
Steiner P.	Ind	398	25.9
Blockley C.	Ind	349	-
Birch M.	Lab	242	15.8
Clapham A.	Lab	212	-
Turnout		50.5	32.4
Wilsthorpe (4113)²			
		vote	share
Webb R.*	Con	1,042	56.2
Morton S.	Con	957	-
Chadbourne S.	Lab	811	43.8
Winfield C.	Lab	743	-
Turnout		43.2	12.5

Erewash - 1987

Abbotsford (1565)			
		vote	share
Trueman K. Ms.	Lab	373	41.1
Sweetland R.	Con	284	31.3
Allen J.	Lib/SDP	251	27.6
Turnout		58.0	9.8
Breadsall & Morley (994)			
		vote	share
Smith J.	Con	540	73.3
O'Dowd D.	Lib/SDP	117	15.9
Elwell J. Ms.	Lab	80	10.9
Turnout		74.1	57.4
Breaston (3612)³			
		vote	share
Orchard M. Ms.*	Con	1,418	61.7
Parkinson R.*	Con	1,315	-
Pemberton H.*	Con	1,273	-
Fox M.	Lab	491	21.4
Torr A. Ms.	Lab	477	-
Smedley R.	Lab	434	-
Northover P.	Lib/SDP	389	16.9
Northover L.	Lib/SDP	325	-
Turnout		59.3	40.3
Cotmanhay (4176)³			
		vote	share
Jeffery P.*	Lab	1,007	52.7
Campion M.*	Lab	943	-
Lucas B.	Lab	919	-
Bramley T.	Con	611	32.0
Snell P.	Con	599	-
Jones C.	Con	548	-
Parker D.	Lib/SDP	293	15.3
Turnout		43.7	20.7
Dale Abbey (1086)			
		vote	share
Cresswell P.*	Ind	462	77.3
Davies E.	Lib/SDP	70	11.7
Newton R.	Lab	66	11.0
Turnout		55.1	65.6
Derby Rd East (4213)³			
		vote	share
Griffiths H.*	Lab	860	41.2
Brown E.	Lab	833	-
Gilbert A.	Lab	779	-
Evans M.	Con	683	32.8
Morton A.	Con	632	-
Brookes M.	Lib/SDP	542	26.0
Smith A.	Lib/SDP	475	-
Turnout		46.1	8.5
Derby Rd West (4902)³			
		vote	share
Wilkinson A.*	Con	1,259	49.3
Wilkinson M. Ms.*	Con	1,226	-
Stevens S.*	Con	1,199	-
Platts G.	Lab	654	25.6
Neill I.	Lib/SDP	639	25.0
Andrews M.	Lab	620	-
Willcox T.	Lib/SDP	609	-
Redgraves B.	Lib/SDP	605	-
Somerset Sullivan J.	Lab	554	-
Turnout		51.8	23.7
Draycott (2198)			
		vote	share
Harrison J.	Con	629	47.3
Boylard R.*	Lab	602	45.3
Wing J.	Lib/SDP	99	7.4
Turnout		61.1	2.0

Ilkeston Central (4227)³			
		vote	share
Geehan J.*	Lab	786	45.1
Lynch P.	Lab	775	-
Bevan E.*	Lab	731	-
Atkinson J. Ms.	Con	669	38.4
Ball M.	Con	666	-
Brown J.	Con	614	-
Young D.	Lib/SDP	289	16.6
Hunt M.	Lib/SDP	280	-
McGinnis G.	Lib/SDP	257	-
Turnout		44.0	6.7
Ilkeston North (2642)²			
		vote	share
Henshaw M.	Lab	676	63.1
Carrington K. Ms.	Lab	625	-
Birkbeck D.	Lib/SDP	395	36.9
Turnout		40.1	26.2
Ilkeston South (2965)²			
		vote	share
Bishop E.	Lab	628	37.6
Harrison B. Ms.	Con	595	35.6
Reed P.	Con	578	-
Vause P.	Lab	512	-
Johnston T.	Lib/SDP	448	26.8
Turnout		52.5	2.0
Kirk Hallam North (2922)²			
		vote	share
Stevens C.	Lab	837	54.9
Walton R.*	Lab	788	-
Wallbank E.	Con	405	26.6
Lawrence E.	Con	375	-
Smith S.	Lib/SDP	282	18.5
Turnout		51.5	28.3
Kirk Hallam South (2574)²			
		vote	share
Killeavy B.*	Lab	902	66.0
Moloney P.*	Lab	862	-
Allen J. Ms.	Con	274	20.0
Chambers M.	Con	244	-
Walters M.	Lib/SDP	191	14.0
Turnout		51.7	45.9
Little Eaton (1865)			
		vote	share
Downing S.	Con	617	52.5
Easter J.	Lib/SDP	439	37.3
Bedford R. Ms.	Lab	120	10.2
Turnout		63.1	15.1
Long Eaton Central (3456)²			
		vote	share
Brown J.	Con	704	43.5
Hickton F. Ms.*	Con	682	-
Hosker R.	Lab	640	39.6
Marshall J.	Lab	588	-
Davis F.	Lib/SDP	274	16.9
Turnout		45.1	4.0
Nottingham Road (4766)³			
		vote	share
Allen J.*	Con	1,204	47.7
Byrne D.*	Con	1,166	-
Gough R.*	Con	1,088	-
White B. Ms.	Lab	782	31.0
Buckley J.	Lab	753	-
Stevenson G.	Lab	729	-
Fountain M.	Lib/SDP	536	21.3
Turnout		48.0	16.7

Ockbrook & Borrowwash (5590)³

		vote	share
Tumanow M. Ms.*	Con	1,861	50.1
Collyer F.	Con	1,857	-
Harling D. Ms.	Con	1,733	-
Highton E.	Lab	1,323	35.6
Whitt P.	Lab	1,059	-
Martin J.	Lab	959	-
Davies W.	Lib/SDP	530	14.3
Griffiths M.	Lib/SDP	450	-

Turnout 60.0 14.5

Old Park (2960)²

		vote	share
Guy T.*	Lab	606	45.0
Goacher E.	Lab	572	-
Pestell L. Ms.	Lib/SDP	384	28.5
Sherwood D.	Con	356	26.4
Hunt J.	Lib/SDP	347	-
Sherwood M.	Con	343	-

Turnout 46.4 16.5

Sandiacre North (3358)²

		vote	share
Barker D.*	Lab	815	41.9
Judson I.	Con	805	41.4
Aindow M.	Con	754	-
Dickman F.	Lab	723	-
Cross N.	Lib/SDP	323	16.6

Turnout 54.5 0.5

Sandiacre South (3275)²

		vote	share
Uren D.*	Con	1,079	57.5
Jones F.	Con	985	-
Williams I.	Lab	407	21.7
Tilford H. Ms.	Lib/SDP	389	20.7
Pratley D.	Lab	375	-

Turnout 53.3 35.8

Sawley (5686)³

		vote	share
Camm W.*	Ind	2,613	51.6
Chalk V.*	Con	979	19.3
Miller K.	Con	960	-
Campbell J.	Lib/SDP	858	16.9
Gay E.	Lib/SDP	727	-
Hall J.	Lab	617	12.2
Mills P.	Lab	594	-

Turnout 58.0 32.2

Stanley (1666)

		vote	share
Ball P.*	Lab	496	52.1
Shaw H.	Con	456	47.9

Turnout 57.3 4.2

Victoria (2803)²

		vote	share
Evans W.*	Con	732	49.6
Johnstone A. Ms.*	Con	726	-
Charlesworth B.	Lab	385	26.1
Woodhouse R.	Lab	364	-
Bosman A.	Lib/SDP	360	24.4
Butelli B.	Lib/SDP	345	-

Turnout 51.3 23.5

West Hallam (3353)²

		vote	share
Fildes J.	Con	1,100	55.1
Shaw H.*	Con	1,009	-
Pitchford M.	Lib/SDP	538	26.9
Carrier J.	Lab	360	18.0
Harrison J. Ms.	Lab	299	-

Turnout 53.7 28.1

Wilsthorpe (4344)²

		vote	share
Holdsworth D.	Con	1,051	46.5
Cormack J. Ms.	Con	1,042	-
Moss C.	Lib/SDP	690	30.5
Scott A.	Lab	521	23.0
Cheetham N.	Lab	499	-

Turnout 48.6 16.0

Erewash - 1991**Abbotsford (1720)**

		vote	share
Trueman K. Ms.*	Lab	525	51.5
Matsell B.	Con	494	48.5

Turnout 59.4 3.0

Breadsall & Morley (964)

		vote	share
Smith J.*	Con	464	74.7
Elwell J. Ms.	Lab	157	25.3

Turnout 65.0 49.4

Breaston (3674)³

		vote	share
Orchard M. Ms.*	Con	1,411	68.6
Pemberton H.*	Con	1,267	-
Parkinson R.*	Con	1,260	-
Torr A. Ms.	Lab	645	31.4
Bradley S. Ms.	Lab	616	-
Simpson G. Ms.	Lab	572	-

Turnout 55.0 37.3

Cotmanhay (4282)³

		vote	share
Jeffrey P.*	Lab	1,172	69.2
Henshaw M. Ms.	Lab	1,151	-
Barber D.	Lab	1,087	-
Roberts G.	Con	521	30.8
Walker T.	Con	496	-
Warsop J. Ms.	Con	485	-

Turnout 41.7 38.5

Dale Abbey (1162)

		vote	share
Cresswell P.*	Ind	531	81.8
Wright C.	Lab	118	18.2

Turnout 57.0 63.6

Derby Rd East (4115)³

		vote	share
Griffiths H.*	Lab	1,359	68.0
Kirby J.	Lab	1,248	-
Montgomery R.	Lab	1,227	-
Finch R.	Con	639	32.0
Lawrence B. Ms.	Con	633	-
Lawrence E.	Con	612	-

Turnout 48.1 36.0

Derby Rd West (4819)³

		vote	share
Stevens S.*	Con	1,281	46.0
Hartopp G.	Con	1,186	-
Wilkinson A.*	Con	1,172	-
Cartwright J.	Lab	1,108	39.8
Gilbert B. Ms.	Lab	1,064	-
Carson N.	Lab	1,050	-
Neill I.	LD	397	14.2

Turnout 54.7 6.2

Draycott (2080)

		vote	share
Orchard D.	Con	742	58.9
Cheetham C. Ms.	Lab	518	41.1

Turnout 61.0 17.8

Ilkeston Central (4099)³

		vote	share
Geehan J.*	Lab	1,062	59.8
Lynch P.*	Lab	1,032	-
Phillips F.	Lab	982	-
Atkinson J. Ms.	Con	714	40.2
Hill N. Ms.	Con	638	-
Heron S.	Con	619	-

Turnout 46.5 19.6

Ilkeston North (2485)²

		vote	share
Carrington K. Ms.*	Lab	653	74.5
Bevan E.*	Lab	606	-
Wallbank E.	Con	223	25.5

Turnout 38.1 49.1

Ilkeston South (2855)²

		vote	share
Bishop E.*	Lab	859	55.1
Frudd J.	Lab	794	-
Harrison B. Ms.*	Con	700	44.9
Blount A.	Con	656	-

Turnout 55.4 10.2

Kirk Hallam North (2840)²

		vote	share
Cullen C.	Lab	876	65.7
Stevens C.*	Lab	856	-
Reed P.	Con	457	34.3

Turnout 48.0 31.4

Kirk Hallam South (2461)²

		vote	share
Killeavy B.*	Lab	906	78.1
Moloney P.*	Lab	815	-
Johnson W.	Con	254	21.9
Allen J. Ms.	Con	221	-

Turnout 49.2 56.2

Little Eaton (1915)

		vote	share
Downing S.*	Con	682	73.9
Bedford R. Ms.	Lab	241	26.1

Turnout 49.0 47.8

Long Eaton Central (4003)²

		vote	share
Grant M.	Lab	1,003	52.9
Stevenson G. Ms.	Lab	987	-
Hickton F. Ms.*	Con	892	47.1
Gough R.	Con	884	-

Turnout 50.3 5.9

Nottingham Road (4671)³

		vote	share
Hosker R.	Lab	1,209	53.9
White B. Ms.	Lab	1,187	-
Dyer J. Ms.	Lab	1,133	-
Allen J.*	Con	1,032	46.1
Brown J.	Con	1,010	-
Byrne D.*	Con	989	-

Turnout 50.9 7.9

Ockbrook & Borrowwash (5559)³

		vote	share
Tumanow M. Ms.*	Con	1,745	50.8
Collyer F.*	Con	1,651	-
Harling D. Ms.*	Con	1,581	-
Highton E.	Lab	1,287	37.4
Whitt P.	Lab	1,212	-
Martin J.	Lab	980	-
Cockayne E.	LD	405	11.8
Blackwell P.	LD	398	-

Turnout 58.5 13.3

Old Park (2825)²

		vote	share
Bell K.	Lab	868	70.9
Goacher E.*	Lab	836	-
Harrison D.	Con	357	29.1
Skelton R.	Con	318	-

Turnout 45.0 41.7

Sandiacre North (3322)²

		vote	share
Barker D.*	Lab	981	56.9
Dickman F.	Lab	902	-
Hardy A.	Con	743	43.1
Tapping K.	Con	730	-

Turnout 53.0 13.8

Sandiacre South (3321) ²			
		vote	share
Simmons D.	Con	963	58.1
Jones F.*	Con	914	-
Hampson J.	Lab	620	37.4
Liddle J.	Lab	569	-
Whirledge P.	Ind	74	4.5
Turnout		50.0	20.7

Sawley (5611) ³			
		vote	share
Cam W.*	Ind	2,737	52.2
Thomas A.	LD	917	17.5
Hay-Heddle J.	Con	833	15.9
Allen R.	LD	791	-
Miller K.*	Con	781	-
Buckley J. Ms.	Lab	760	14.5
Fountain M.	Lab	686	-
Turnout		58.4	34.7

Stanley (1758)			
		vote	share
Smales-Cresswell H.	Con	543	50.6
Cheetham N.	Lab	530	49.4
Turnout		61.0	1.2

Victoria (2878) ²			
		vote	share
Evans W.*	Con	710	49.9
Johnstone A. Ms.*	Con	693	-
Harries L. Ms.	Lab	522	36.7
Kendrick D.	Lab	501	-
Atterbury L.	Green	191	13.4
Hunter I.	Green	51	-
Turnout		51.0	13.2

West Hallam (3779) ²			
		vote	share
Fildes J.*	Con	1,195	67.9
Shaw H.*	Con	1,005	-
Harrison J. Ms.	Lab	565	32.1
Turnout		45.0	35.8

Wilthorpe (4262) ²			
		vote	share
Holdsworth D.*	Con	1,136	57.3
Cormack J. Ms.*	Con	1,120	-
Stevenson C.	Lab	845	42.7
Woollford R.	Lab	727	-
Turnout		48.7	14.7

Erewash - 1995

Abbotsford (2344)			
		vote	share
Trueman P.	Lab	540	59.1
Harrison D.	Con	373	40.9
Turnout		39.1	18.3

Breadsall & Morley (950)			
		vote	share
Smith J.*	Con	261	58.0
Elwell J. Ms.	Lab	189	42.0
Turnout		48.0	16.0

Breaston (3648) ³			
		vote	share
Orchard M. Ms.*	Con	947	56.9
Pemberton H.*	Con	858	-
Parkinson R.*	Con	795	-
Bradley S. Ms.	Lab	717	43.1
Simpson G. Ms.	Lab	703	-
Edwards J. Ms.	Lab	671	-
Turnout		45.7	13.8

Cotmanhay (4141) ³			
		vote	share
Henshaw M. Ms.*	Lab	926	66.3
Jeffery P.*	Lab	861	-
Barber D.*	Lab	859	-
Sleight F.	Ind	236	16.9
Fildes F. Ms.	Con	235	16.8
Barr I.	Con	206	-
Burke P.	Con	197	-
Turnout		33.5	49.4

Dale Abbey (1145)			
		vote	share
Cresswell P.*	Ind	375	66.6
Cartwright J.	Lab	188	33.4
Turnout		49.3	33.2

Derby Rd East (3926) ³			
		vote	share
Griffiths H.*	Lab	534	63.6
Kirby J.*	Lab	494	-
Montgomery R.*	Lab	475	-
Marshall J. Ms.	Con	195	23.2
Lawrence B. Ms.	Con	179	-
Lawrence E.	Con	172	-
Davis F.	LD	110	13.1
Read A.	LD	76	-
Hodgins J.	LD	74	-
Turnout		39.2	40.4

Derby Rd West (4655) ³			
		vote	share
Dunmore-Revill C. Ms.	Lab	1,054	49.9
Duncan R.	Lab	1,025	-
Montgomery H. Ms.	Lab	988	-
Stevens S.*	Con	819	38.7
Hartopp G.*	Con	792	-
Webster J. Ms.	Con	777	-
Redgraves B.	LD	241	11.4
Prior M.	LD	240	-
Neill I.	LD	233	-
Turnout		46.4	11.1

Draycott (2005)			
		vote	share
Orchard D.*	Con	514	49.1
Cheetham C. Ms.	Lab	442	42.2
Garnett M.	LD	91	8.7
Turnout		53.0	6.9

Ilkeston Central (4125) ³			
		vote	share
Lynch P.*	Lab	961	66.3
Geehan J.*	Lab	960	-
Phillips F.*	Lab	913	-
Atkinson J. Ms.	Con	342	23.6
Chapman H. Ms.	Con	285	-
Nalty R.	Con	221	-
Atterbury L.	Green	147	10.1
Turnout		35.5	42.7

Ilkeston North (2352) ²			
		vote	share
Bevan E.*	Lab	499	82.8
Kendrick D.	Lab	481	-
Clare J.	Con	104	17.2
Clare V. Ms.	Con	88	-
Turnout		29.1	65.5

Ilkeston South (2708) ²			
		vote	share
Bishop E.*	Lab	867	76.5
Frudd J.*	Lab	790	-
Johnson W.	Con	266	23.5
Fall P. Ms.	Con	244	-
Turnout		42.2	53.0

Kirk Hallam North (2687) ²			
		vote	share
Stevens C.*	Lab	899	84.7
Richmond B. Ms.	Lab	867	-
Reed P.	Con	162	15.3
Roberts G.	Con	128	-
Turnout		41.5	69.5

Kirk Hallam South (2142) ²			
		vote	share
Killeavy B.*	Lab	728	88.7
Moloney P.*	Lab	633	-
Aindow M.	Con	93	11.3
Turnout		39.9	77.3

Little Eaton (1919)			
		vote	share
Downing S.*	Con	363	52.2
Williams S.	Lab	333	47.8
Turnout		36.3	4.3

Long Eaton Central (3989) ²			
		vote	share
Stevenson G. Ms.*	Lab	986	59.4
Grant M.*	Lab	964	-
Hickton F. Ms.	Con	426	25.7
Dalligan S.	Con	398	-
Allen R. Ms.	LD	247	14.9
Allen R.	LD	215	14.9
Turnout		42.7	33.8

Nottingham Road (4713) ³			
		vote	share
Hosker R.*	Lab	1,134	55.7
Holmes C. Ms.	Lab	1,095	-
White B. Ms.*	Lab	1,067	-
Allen J.	Con	615	30.2
Hickton G.	Con	574	-
Miller K.	Con	526	-
Fletcher L.	LD	287	14.1
King S. Ms.	LD	186	-
Rabjohns M.	LD	150	-
Turnout		42.7	25.5

Ockbrook & Borrowash (5376) ³			
		vote	share
Ball D. Ms.	Lab	1,175	44.7
Tumanow M. Ms.*	Con	1,075	40.9
Briggs M.	Lab	1,046	-
Molson I.	Lab	1,038	-
Harling D. Ms.*	Con	956	-
Stokes B.	Con	886	-
Meese B.	LD	378	14.4
Stone D.	LD	359	-
Turnout		44.4	3.8

Old Park (2658) ²			
		vote	share
Bell K.*	Lab	732	81.4
Goacher E.*	Lab	690	-
Palmer F. Ms.	Con	167	18.6
Aindow M. Ms.	Con	166	-
Turnout		35.1	62.8

Sandiacre North (3149) ²			
		vote	share
Barker D.*	Lab	874	64.7
Corner G. Ms.	Lab	816	-
Hardy A.	Con	314	23.2
Blount A.	Con	297	-
Tuck J. Ms.	LD	163	12.1
Tragatsch P.	LD	122	-
Turnout		43.2	41.5

Sandiacre South (3280) ²			
		vote	share
Tuck P.*	LD	558	37.2
Dickman S. Ms.	Lab	510	34.0
Tilford H. Ms.	LD	453	-
Waring M.	Lab	450	-
Jones F.*	Con	433	28.8
Jones S. Ms.	Con	380	-
Turnout		43.9	3.2

Sawley (5333)³			
		vote	share
Camm W.*	Ind	2,299	50.0
Pilgrim R.*	LD	889	19.3
Wilford L. Ms.	Lab	852	18.5
Williams M.	Lab	847	-
Oliver M.	LD	692	-
Byrne D.	Con	558	12.1
Hay-Heddle J.*	Con	501	-
Turnout		52.9	30.7

Stanley (1693)			
		vote	share
Highton E.	Lab	417	52.7
Russell M. Ms.	Con	259	32.7
Hartley D.	LD	116	14.6
Turnout		46.8	19.9

Victoria (2792)²			
		vote	share
Goacher M. Ms.	Lab	677	55.7
Phillips P. Ms.	Lab	610	-
Harrison B. Ms.	Con	539	44.3
Matsell B.	Con	538	-
Turnout		45.1	11.3

West Hallam (3732)²			
		vote	share
Fildes J.*	Con	667	50.3
Harries P.	Lab	658	49.7
Griffiths A. Ms.	Lab	643	-
Shaw H.*	Con	629	-
Turnout		37.3	0.7

Wilsthorpe (4625)²			
		vote	share
Thompson G.	Lab	832	42.0
Dunmore-Revill F.	Lab	820	-
Brown J.	Con	584	29.5
Smith D.	Con	570	-
Cormack J. Ms.*	LD	564	28.5
Rabjohns J. Ms.	LD	505	-
Turnout		42.1	12.5

Erewash - 1999

Abbotsford (3529)			
		vote	share
Trueman P.*	Lab	555	62.7
Wade P.	Con	330	37.3
Turnout		25.3	25.4

Breadsall & Morley (958)			
		vote	share
Smith J.*	Con	199	54.5
Elwell J. Ms.	Lab	114	31.2
Beardmore J.	LD	52	14.2
Turnout		38.1	23.3

Breaston (3702)³			
		vote	share
Orchard M. Ms.*	Con	1,019	51.8
Parkinson R.*	Con	895	-
Pemberton H.*	Con	888	-
Bradley S. Ms.	Lab	638	32.4
Colegate M. Ms.	LD	310	15.8
Turnout		42.1	19.4

Cotmanhay (4188)³			
		vote	share
Henshaw M. Ms.*	Lab	638	66.4
Birch M. Ms.	Lab	584	-
Harries P.*	Lab	558	-
Abbiss L.	Con	207	21.5
Richards E. Ms.	Con	177	-
Tapping K.	Con	168	-
Parkinson J.	LD	116	12.1
Turnout		21.6	44.8

Dale Abbey (1171)			
		vote	share
Cresswell P.*	Ind	343	78.7
Clements T. Ms.	Lab	93	21.3
Turnout		38.0	57.3

Derby Rd East (3854)³			
		vote	share
Griffiths H.*	Lab	623	61.9
Wright M. Ms.	Lab	621	-
Buckley G.	Lab	608	-
Corbett L. Ms.	Con	235	23.3
Carpenter P.	Con	235	-
Chadbourne R.	Con	234	-
Davis F.	LD	149	14.8
Turnout		26.1	38.5

Derby Rd West (4895)³			
		vote	share
Andrews D.	Lab	691	47.5
Coates M. Ms.	Lab	655	-
Duncan R.*	Lab	635	-
Marshall J.	Con	563	38.7
Miller K.	Con	558	-
Perry W. Ms.	Con	547	-
Read A.	LD	201	13.8
Prior M.	LD	184	-
Neill I.	LD	181	-
Turnout		30.2	8.8

Draycott (2115)			
		vote	share
Orchard D.*	Con	545	63.6
Platts G. Ms.	Lab	215	25.1
Garnett M.	LD	97	11.3
Turnout		41.0	38.5

Ilkeston Central (4184)³			
		vote	share
Birkin G. Ms.	Lab	625	55.3
Phillips F.*	Lab	601	-
Farnsworth W.	Lab	586	-
Geehan J.*	Ind	258	22.8
Chapman H. Ms.	Con	247	21.9
Bartlett J. Ms.	Con	224	-
Judson I.	Con	210	-
Turnout		24.4	32.5

Ilkeston North (2413)²			
		vote	share
Lucas B.*	Lab	400	81.6
Beardsley C.	Lab	383	-
Bilbie S.	Con	90	18.4
Guest E. Ms.	Con	86	-
Turnout		21.0	63.3

Ilkeston South (2771)²			
		vote	share
Bishop E.*	Lab	582	77.8
Frudd J.*	Lab	537	-
Aindow M. Ms.	Con	166	22.2
Holbrook T.	Con	159	-
Turnout		27.9	55.6

Kirk Hallam North (2683)²			
		vote	share
Stevens C.*	Lab	503	59.8
Stevens R.	Lab	448	-
Baker-Johnson H.	LD	175	20.8
Stevenson N. Ms.	Con	163	19.4
Keenan T.	Con	131	-
Turnout		29.2	39.0

Kirk Hallam South (2175)²			
		vote	share
Killeavy B.*	Ind	307	42.6
Green S.	Lab	305	42.4
Stevens S. Ms.	Lab	278	-
Russell R. Ms.	Ind	223	-
Blount A.	Con	57	7.9
Coombes L.	LD	51	7.1
Aindow M.	Con	48	-
Turnout		31.8	0.3

Little Eaton (2005)			
		vote	share
Summerfield A.	Con	270	45.5
Williams S.	Lab	162	27.3
Salmon R.	LD	161	27.2
Turnout		30.0	18.2

Long Eaton Central (4177)²			
		vote	share
Hosker P. Ms.	Lab	657	54.9
Stevenson G. Ms.*	Lab	635	-
Hickton F. Ms.	Con	376	31.4
Jones S. Ms.	Con	360	-
Allen R. Ms.	LD	163	13.6
Turnout		27.9	23.5

Nottingham Road (4791)³			
		vote	share
White B. Ms.*	Lab	832	53.2
Hosker R.*	Lab	822	-
Grant M.*	Lab	784	-
Gough N. Ms.	Con	524	33.5
Clulow M.	Con	458	-
Hopcroft A. Ms.	Con	442	-
Hayes C.	LD	208	13.3
Turnout		30.9	19.7

Ockbrook & Borrowash (5769)³			
		vote	share
Hodges D.	Con	1,058	48.6
Tumanow M. Ms.*	Con	1,055	-
Harling D. Ms.	Con	956	-
Briggs M.*	Lab	876	40.2
Bates K.	Lab	867	-
Martin J.	Lab	852	-
Messe B.	LD	243	11.2
Robbins A. Ms.	LD	190	-
Turnout		37.0	8.4

Old Park (2763)²			
		vote	share
Phillips P. Ms.*	Lab	203	42.4
Moloney P.*	Lab	192	-
Miller B.	Con	138	28.8
Clarke V. Ms.	Con	131	-
Bell K.*	Ind	100	20.9
Goacher E.*	Ind	76	-
France Z. Ms.	LD	38	7.9
Turnout		24.9	13.6

Sandiacre North (3323)²			
		vote	share
Corner G. Ms.*	Lab	510	47.8
Waring M.	Lab	436	-
Hardy A.	Con	405	38.0
Wallis M.	Con	400	-
Gay E.	LD	80	7.5
Simmons M.	SLP	71	6.7
Harrison W.	SLP	64	-
Turnout		31.0	9.8

Sandiacre South (3389)²			
		vote	share
Content S. Ms.*	LD	562	45.2
Tilford H. Ms.	LD	497	-
Uren B. Ms.	Con	427	34.4
Jones F.	Con	372	-
Dickman S. Ms.*	Lab	253	20.4
Owen W.	Lab	215	-
Turnout		35.0	10.9

Sawley (5275)³			
		vote	share
Camm W.*	Ind	2,060	49.2
France C.*	LD	1,054	25.2
Allen R.	LD	829	-
Llewellyn O.	Lab	599	14.3
Hay-Heddle J.*	Con	474	11.3
Chappell K.	Con	404	-
Turnout		45.2	24.0

Stanley (1708)			
		vote	share
Newman G. Ms.	Ind	229	40.5
Highton E.*	Lab	158	28.0
Shaw H.	Ind	127	22.5
Hartley D.	LD	51	9.0
Turnout		34.0	12.6

Victoria (2930) ²			
		vote	share
Hickton G.	Con	396	42.0
Stephenson E.	Con	386	-
Haydon S.	Lab	380	40.3
Morgan D.	Lab	355	-
Parker D.	LD	91	9.7
Bell A. Ms.	Ind	75	8.0
Goacher M. Ms.*	Ind	74	-
Turnout		31.9	1.7

West Hallam (3858) ²			
		vote	share
Fildes J.*	Con	683	52.6
Harrison D.	Con	622	-
Barber D.*	Lab	449	34.6
Barker D.*	Lab	375	-
Dale K. Ms.	LD	167	12.9
Turnout		32.0	18.0

Wilthorpe (5029) ²			
		vote	share
Corbett C.	Con	615	45.0
Brown J.	Con	587	-
Thompson G.*	Lab	582	42.6
Durov V. Ms.	Lab	506	-
Wathen S. Ms.	LD	170	12.4
Daxer G.	LD	162	-
Turnout		28.0	2.4

Erewash - 2003

Abbotsford (3841) ²			
		vote	share
Booth M. Ms.*	Lab	457	53.0
Lucas B.*	Lab	451	-
Holbrook T.	Con	405	47.0
Stokes J. Ms.	Con	347	-
Turnout		23.6	6.0

Breaston (3585) ²			
		vote	share
Orchard M. Ms.*	Con	1,032	71.1
Parkinson R.*	Con	973	-
Bradley S. Ms.	Lab	419	28.9
Simpson G.	Lab	362	-
Turnout		40.8	42.2

Cotmanhay (3317) ²			
		vote	share
Birch M. Ms.*	Lab	352	57.1
Morgan D.	Lab	326	-
Richards E. Ms.	Con	264	42.9
Tapping K.	Con	221	-
Turnout		19.6	14.3

Derby Road East (3512) ²			
		vote	share
Griffiths H.*	Lab	413	48.5
Wright M. Ms.*	Lab	377	-
Corbett L. Ms.	Con	229	26.9
Clare J.	Con	216	-
Davis F.	LD	209	24.6
Read A.	LD	199	-
Turnout		25.0	21.6

Derby Road West (4712) ³			
		vote	share
Marshall J.	Con	625	43.0
Chadbourne R.	Con	582	-
Miller K.	Con	565	-
Andrews D.*	Lab	433	29.8
Cartwright A. Ms.	Lab	422	-
Avill-Coates M. Ms.	Lab	404	-
Neill I.	LD	396	27.2
Stevenson K.	LD	352	-
Oldham A.	LD	347	-
Turnout		31.2	13.2

Draycott (3015) ²			
		vote	share
Orchard D.*	Con	744	65.6
Aindow M.	Con	567	-
Cresswell P.*	Ind	391	34.4
O'Neill M.	Ind	304	-
Turnout		37.4	31.1

Hallam Fields (3592) ²			
		vote	share
Bishop E.*	Lab	521	63.2
Dunkley J.	Lab	460	-
Aindow M. Ms.	Con	304	36.8
Williams R.	Con	285	-
Turnout		24.3	26.3

Ilkeston Central (3450) ²			
		vote	share
Birkin G. Ms.*	Lab	406	54.1
Phillips F.*	Lab	384	-
Bartlett J. Ms.	Con	345	45.9
Gilligan V.	Con	314	-
Turnout		23.5	8.1

Ilkeston North (2803) ²			
		vote	share
Beardsley C.*	Lab	339	64.9
Bevan E.	Lab	335	-
Lomas M. Ms.	Con	183	35.1
Smith M. Ms.	Con	162	-
Turnout		19.8	29.9

Kirk Hallam (4739) ³			
		vote	share
Killeavy B.*	Ind	568	33.3
Green S.*	Lab	491	28.7
Spencer E.	LD	421	24.6
Booth L.	Lab	415	-
Stevens R.*	Lab	361	-
Prior M.	LD	288	-
Blount A.	Con	228	13.3
Stephenson N. Ms.	Con	210	-
Hay-Hedde J.	Con	144	-
Turnout		26.8	4.5

Little Eaton & Breadsall (2923) ²			
		vote	share
Smith J.*	Con	519	45.9
Summerfield A.*	Con	483	-
Salmon R.	LD	408	36.1
Beardmore J.	LD	307	-
Newman W.	Lab	204	18.0
Turnout		38.5	9.8

Little Hallam (3049) ²			
		vote	share
Harrison B. Ms.	Con	602	65.9
Stephenson E.*	Con	591	-
Haydon S.	Lab	312	34.1
Shooter J. Ms.	Lab	298	-
Turnout		33.0	31.7

Long Eaton Central (4521) ³			
		vote	share
Dockerill R.	Con	560	38.6
Hickton G.*	Con	534	-
Hartopp G.	Con	531	-
Hosker P. Ms.*	Lab	514	35.5
Stevenson C.	Lab	461	-
Stevenson G. Ms.*	Lab	433	-
Allen R. Ms.	LD	252	17.4
Grant R.	LD	202	-
Daxer G.	LD	202	-
Bartrop D.	UK Ind	123	8.5
Turnout		30.5	3.2

Nottingham Road (4778) ³			
		vote	share
Hosker R.*	Lab	629	42.8
White B. Ms.*	Lab	609	-
Grant M.*	Lab	576	-
Gough N. Ms.	Con	560	38.1
Watson D	Con	474	-
Jones F.	Con	451	-
Pennington J.	BNP	282	19.2
Turnout		29.4	4.7

Ockbrook & Borrowash (5664) ³			
		vote	share
Hodges D.	Con	1,177	52.9
Tumanow M. Ms.	Con	1,149	-
Smith P.	Con	1,055	-
Bates K.	Lab	830	37.3
Highton E.	Lab	810	-
Martin J.	Lab	794	-
France Z. Ms.	LD	220	9.9
Long M. Ms.	LD	214	-
Turnout		38.4	15.6

Old Park (3023) ²			
		vote	share
Phillips P. Ms.*	Lab	369	58.2
Maloney P.*	Lab	347	-
Miller B.	Con	265	41.8
Clare V. Ms.	Con	229	-
Turnout		22.2	16.4

Sandiacre North (3329) ²			
		vote	share
Wallis M.	Con	453	42.1
Hardy A.	Con	451	-
Blacker M. Ms.	Lab	431	40.1
Waring M.*	Lab	374	-
Hallam P. Ms.	LD	192	17.8
Turnout		30.0	2.0

Sandiacre South (3383) ²			
		vote	share
Bilbie S.	Con	572	43.5
Uren B. Ms.*	Con	551	-
Tilford H. Ms.*	LD	508	38.6
Garnett M.	LD	430	-
Barker D.	Lab	236	17.9
Turnout		36.7	4.9

Sawley (5194) ³			
		vote	share
Camm W.*	Ind	1,252	48.7
France C.*	LD	685	26.6
Allen R.*	LD	494	-
Hemsley J.	Lab	258	10.0
Gilligan B. Ms.	Con	224	8.7
Clare H. Ms.	Con	221	-
Stokes B.	Con	162	-
R U Seerius	MRLP	154	6.0
Turnout		37.7	22.0

Stanley (1712)			
		vote	share
Newman G. Ms.*	Lab	381	64.7
Harling D. Ms.*	Con	208	35.3
Turnout		34.5	29.4

West Hallam & Dale Abbey (4079)³			
		vote	share
Hart C. Ms.	Con	851	51.5
Hamson G.	LD	802	48.5
Fildes J.*	Con	753	-
Sherwood M.	Con	720	-
Mallett J. Ms.	LD	702	-
Turnout		36.2	3.0

Wilsthorpe (5156)³			
		vote	share
Corbett C.*	Con	774	43.9
Brown J.*	Con	709	-
Briggs D. Ms.	Con	709	-
Llewellyn O.	Lab	557	31.6
Wathen S.	LD	432	24.5
Barnes M.	LD	423	-
Turnout		28.8	12.3

Erewash - 2007

Abbotsford (3881)²			
		vote	share
Adams-Shaw D.	Con	633	51.3
Sherwood M.	Con	621	-
Booth M. Ms.*	Lab	601	48.7
Farnsworth W.	Lab	481	-
Turnout		33.5	2.6

Breaston (3544)²			
		vote	share
Orchard M. Ms.*	Con	1,183	72.8
Parkinson R.*	Con	1,075	-
Sarell C.	Lab	443	27.2
Turnout		45.1	45.5

Cotmanhay (3374)²			
		vote	share
Morgan D.*	Lab	554	61.5
Booth J.	Lab	513	-
Cox R.	Con	347	38.5
Gilligan V.	Con	295	-
Turnout		29.0	23.0

Derby Road East (3546)²			
		vote	share
Griffiths H.*	Lab	569	52.4
Wright M. Ms.*	Lab	540	-
Marshall J.	Con	516	47.6
Flowers J.	Con	506	-
Turnout		33.1	4.9

Derby Road West (4600)³			
		vote	share
Rose P.	Con	846	45.4
Miller K.*	Con	808	-
Hickton G.	Con	797	-
Andrews K. Ms.	Lab	602	32.3
Hemsley J.	Lab	566	-
Martin J.	Lab	510	-
Prior M.	LD	415	22.3
Neill I.	LD	398	-
Robbins A. Ms.	LD	328	-
Turnout		40.0	13.1

Draycott (2975)²			
		vote	share
Orchard D.*	Con	855	64.8
Clare V. Ms.	Con	761	-
Garnett M.	LD	248	18.8
Scott D.	Lab	217	16.4
Payne T.	LD	205	-
Turnout		42.6	46.0

Hallam Fields (3709)²			
		vote	share
Bishop E.*	Lab	715	60.3
Phillips A.	Lab	681	-
Ratcliffe S.	Con	470	39.7
Williams R.	Con	441	-
Turnout		33.6	20.7

Ilkeston Central (3325)²			
		vote	share
Birkin G. Ms.*	Lab	588	55.5
Phillips F.*	Lab	550	-
Cox D. Ms.	Con	472	44.5
Major W.	Con	467	-
Turnout		33.4	10.9

Ilkeston North (2784)²			
		vote	share
Wilson J. Ms.	Lab	400	60.6
Bevan E.*	Lab	391	-
Bartlett J. Ms.	Con	260	39.4
Stokes B.	Con	239	-
Turnout		28.8	21.2

Kirk Hallam (4691)³			
		vote	share
Frudd J.	Lab	950	70.1
Booth L.	Lab	893	-
Green S.*	Lab	871	-
Stanley V. Ms.	Con	406	29.9
Alexander M.	Con	372	-
Stokes J. Ms.	Con	360	-
Turnout		30.9	40.1

Little Eaton & Breadsall (2806)²			
		vote	share
Summerfield A.*	Con	724	48.0
Knight E. Ms.	Con	576	-
Downing S.	Ind	563	37.3
Farnsworth M. Ms.	Lab	222	14.7
Turnout		44.8	10.7

Little Hallam (3189)²			
		vote	share
Harrison B. Ms.*	Con	712	58.5
Stephenson D.	Con	701	-
Penny L. Ms.	Lab	505	41.5
Haydon S.	Lab	489	-
Turnout		40.1	17.0

Long Eaton Central (4432)³			
		vote	share
Briggs D. Ms.	Con	643	41.6
Corbett L. Ms.	Con	640	-
Maguire A. Ms.	Con	640	-
Mellors D. Ms.	Lab	584	37.8
Grant M.	Lab	583	-
Neill C. Ms.	Lab	581	-
Ward J. Ms.	LD	319	20.6
Allen R. Ms.	LD	317	-
Allen S. Ms.	LD	301	-
Turnout		37.1	3.8

Nottingham Road (4597)³			
		vote	share
Hosker R.*	Lab	729	42.9
White B. Ms.*	Lab	686	-
Gough M. Ms.	Con	658	38.7
Stevenson A. Ms.	Lab	651	-
Popp P. Ms.	Con	600	-
Wright E. Ms.	Con	548	-
Hollas I.	Green	314	18.5
Turnout		34.8	4.2

Ockbrook & Borrowash (5613)³			
		vote	share
Tumanow V. Ms.*	Con	1,523	62.9
Holbrook T.	Con	1,444	-
Wallis M.	Con	1,413	-
Bates K.	Lab	900	37.1
Whitt P.	Lab	894	-
Highton E.	Lab	862	-
Turnout		44.0	25.7

Old Park (3012)²			
		vote	share
Phillips P. Ms.*	Lab	542	60.8
Moloney P.*	Lab	510	-
Blount A.	Con	350	39.2
Clare J.	Con	288	-
Turnout		31.2	21.5

Sandiacre North (3415)²			
		vote	share
Hardy A.*	Con	654	53.5
Nisbet A. Ms.	Con	644	-
Waring M.	Lab	568	46.5
Farnsworth B.	Lab	537	-
Turnout		36.3	7.0

Sandiacre South (3285)²			
		vote	share
Dinsdale G.	Con	898	66.5
Hulls J. Ms.	Con	806	-
White L.	Lab	452	33.5
Thorne P.	Lab	385	-
Turnout		41.6	33.0

Sawley (5092)³			
		vote	share
Camm W.*	Ind	1,580	48.8
Allen R.*	LD	651	20.1
Daxer G.	LD	628	-
Hay-Heddle J.	Con	594	18.4
Chappell K.	Con	593	-
Scott H. Ms.	Lab	411	12.7
Stevenson B.	Lab	372	-
Turnout		39.8	28.7

Stanley (1673)			
		vote	share
Newman G. Ms.*	Lab	490	56.6
Willitts P.	Con	376	43.4
Turnout		52.3	13.2

West Hallam & Dale Abbey (4004)³			
		vote	share
Hart C. Ms.*	Con	1,157	74.0
Harrison B. Ms.	Con	1,021	-
Fildes J.*	Con	957	-
Frudd L. Ms.	Lab	407	26.0
Turnout		40.4	48.0

Wilsthorpe (5213)³			
		vote	share
Corbett C.*	Con	1,058	50.0
Smith G.	Con	946	-
Athwal K.	Con	889	-
Llewellyn O.	Lab	665	31.4
Woollford R.	Lab	602	-
Aanonson F. Ms.	LD	394	18.6
Aanonson P.	LD	367	-
Turnout		37.1	18.6

Erewash - 2011

Abbotsford (3891)²			
		vote	share
Custance V. Ms.	Con	710	46.5
Dawson J.	Lab	654	42.8
Seeds A.	Lab	597	-
Major K. Ms.*	Con	583	-
Togni A. Ms.	LD	164	10.7
Turnout		39.5	3.7

Breaston (3654)²			
		vote	share
Orchard M. Ms.*	Con	1,277	66.9
Parkinson R.*	Con	1,207	-
Sarell C.	Lab	633	33.1
Neill P. Ms.	Lab	570	-
Turnout		54.0	33.7

Cotmanhay (3335)²			
		vote	share
Booth J.*	Lab	662	58.8
Morgan D.*	Lab	605	-
Hay-Heddle J.	Con	278	24.7
Ratcliffe S.	Con	267	-
Bailey M.	BNP	185	16.4
Turnout		34.8	34.1

Derby Road East (3563) ²			
		vote	share
Griffiths H.*	Lab	786	58.6
Griffiths M. Ms.*	Lab	781	-
Harris R.	Con	556	41.4
Solloway A. Ms.	Con	518	-
Turnout		40.2	17.1

Derby Road West (4676) ³			
		vote	share
Andrews K. Ms.*	Lab	902	40.1
Hickton G.*	Con	886	39.4
Miller K.*	Con	876	-
Southern N. Ms.	Con	854	-
Scott H. Ms.	Lab	826	-
Alamu D.	Lab	822	-
Neill I.	LD	275	12.2
Oseman J. Ms.	LD	272	-
Smedley C.	BNP	188	8.4
Turnout		47.8	0.7

Draycott (3253) ²			
		vote	share
Clare V. Ms.*	Con	863	58.4
Orchard D.*	Con	852	-
Russell K. Ms.	Lab	391	26.5
Waring M.	Lab	375	-
Garnett M.	LD	223	15.1
Madin M.	LD	155	-
Turnout		47.1	32.0

Hallam Fields (3815) ²			
		vote	share
Bishop E.*	Lab	773	50.4
Phillips A.*	Lab	677	-
Adams-Shaw B. Ms.	Con	470	30.6
Adams-Shaw D.*	Con	418	-
Farrand G.	Edem	292	19.0
Turnout		40.6	19.7

Ilkeston Central (3405) ²			
		vote	share
Birkin G. Ms.*	Lab	901	79.2
Phillips F.*	Lab	838	-
Rose R.	Con	236	20.8
Williams R.	Con	173	-
Turnout		37.2	58.5

Ilkeston North (2980) ²			
		vote	share
Bevan E.*	Lab	609	58.7
Wilson J. Ms.*	Lab	533	-
Bartlett J. Ms.	Con	293	28.3
Hickton G. Ms.	Con	250	-
Adcock C.	BNP	135	13.0
Turnout		34.8	30.5

Kirk Hallam (4687) ³			
		vote	share
Frudd J.*	Lab	1,111	73.9
Booth L.*	Lab	1,101	-
Green S.*	Lab	1,056	-
Beadling A.	Con	392	26.1
McCaig M. Ms.	Con	365	-
Tudbury M.	Con	340	-
Turnout		36.7	47.8

Little Eaton & Breadsall (2872) ²			
		vote	share
Summerfield A.*	Con	728	44.1
Stevenson A. Ms.	Con	661	-
Downing S.	Ind	584	35.4
Elwell J. Ms.	Lab	340	20.6
Carr-Williamson G.	Lab	209	-
Turnout		50.9	8.7

Little Hallam (3222) ²			
		vote	share
Hopkinson M. Ms.	Con	745	49.4
Stephenson D.*	Con	647	-
Haydon S.	Lab	588	39.0
Tatham P. Ms.	Lab	536	-
Hood P.	Green	174	11.5
Turnout		45.9	10.4

Long Eaton Central (4538) ³			
		vote	share
Stevenson A. Ms.	Lab	825	45.1
Neill C. Ms.	Lab	817	-
Briggs D. Ms.*	Con	802	43.8
Ball P.	Lab	790	-
Griffiths A.	Con	756	-
Powell M.	Con	729	-
Allen L. Ms.	LD	204	11.1
Ward J. Ms.	LD	191	-
Watts K.	LD	153	-
Turnout		42.0	1.3

Nottingham Road (4663) ³			
		vote	share
Hosker R.*	Lab	1,037	58.4
Mellors D. Ms.	Lab	936	-
Pidgeon C. Ms.	Lab	907	-
Gough M. Ms.*	Con	738	41.6
Maguire A. Ms.*	Con	674	-
Popp P. Ms.	Con	664	-
Turnout		40.4	16.8

Ockbrook & Borrowash (5639) ³			
		vote	share
Holbrook T.*	Con	1,707	62.3
Tumanow V. Ms.*	Con	1,700	-
Wallis M.*	Con	1,675	-
Martin J.	Lab	1,033	37.7
Harrison D.	Lab	1,006	-
Whitt P.	Lab	988	-
Turnout		51.3	24.6

Old Park (2945) ²			
		vote	share
Phillips P. Ms.*	Lab	705	70.1
Moloney P.*	Lab	680	-
Blackburn L. Ms.	Con	301	29.9
Gilligan V.	Con	271	-
Turnout		36.5	40.2

Sandiacre North (3646) ²			
		vote	share
Booth M. Ms.	Lab	627	41.3
Bilbie S.	Con	605	39.9
Frudd L. Ms.	Lab	579	-
Hardy A.*	Con	574	-
Nisbet A. Ms.*	Ind	285	18.8
Turnout		40.5	1.5

Sandiacre South (3241) ²			
		vote	share
Dinsdale G.*	Con	770	48.2
Hulls J. Ms.*	Con	702	-
White L.	Lab	461	28.9
Thorne P.	Lab	400	-
Heydon R. Ms.	Ind	225	14.1
Lowe M.	LD	141	8.8
Bamford C. Ms.	LD	116	-
Turnout		46.0	19.3

Sawley (5139) ³			
		vote	share
Walton D.	Con	857	41.2
Bonam J. Ms.	Con	816	-
Woolford R.	Lab	789	37.9
Hosker A.	Lab	780	-
Smith M. Ms.	Con	756	-
Llewellyn O.	Lab	710	-
Daxer G.*	LD	434	20.9
Allen R.*	LD	423	-
Allen R. Ms.	LD	408	-
Turnout		43.5	3.3

Stanley (1717)			
		vote	share
McGraw L. Ms.	Lab	426	53.6
Stevenson A. Ms.	Con	369	46.4
Turnout		46.9	7.2

West Hallam & Dale Abbey (4048) ³			
		vote	share
Hart C. Ms.*	Con	1,164	54.1
Broughton B.	Con	969	-
Harrison B. Ms.*	Con	881	-
Hamson G.	Ind	602	28.0
Steiner P.	Ind	449	-
Haydon S. Ms.	Lab	386	17.9
Langham S. Ms.	Lab	341	-
Pounder J.	Lab	330	-
Turnout		49.0	26.1

Wilsthorpe (5464) ³			
		vote	share
Corbett C.*	Con	1,159	47.4
Smith G.*	Con	981	-
Athwal K.*	Con	899	-
Scott D.	Lab	886	36.3
Pidgeon P.	Lab	873	-
Stevenson B.	Lab	836	-
Aanonson F. Ms.	LD	399	16.3
Turnout		43.0	11.2

