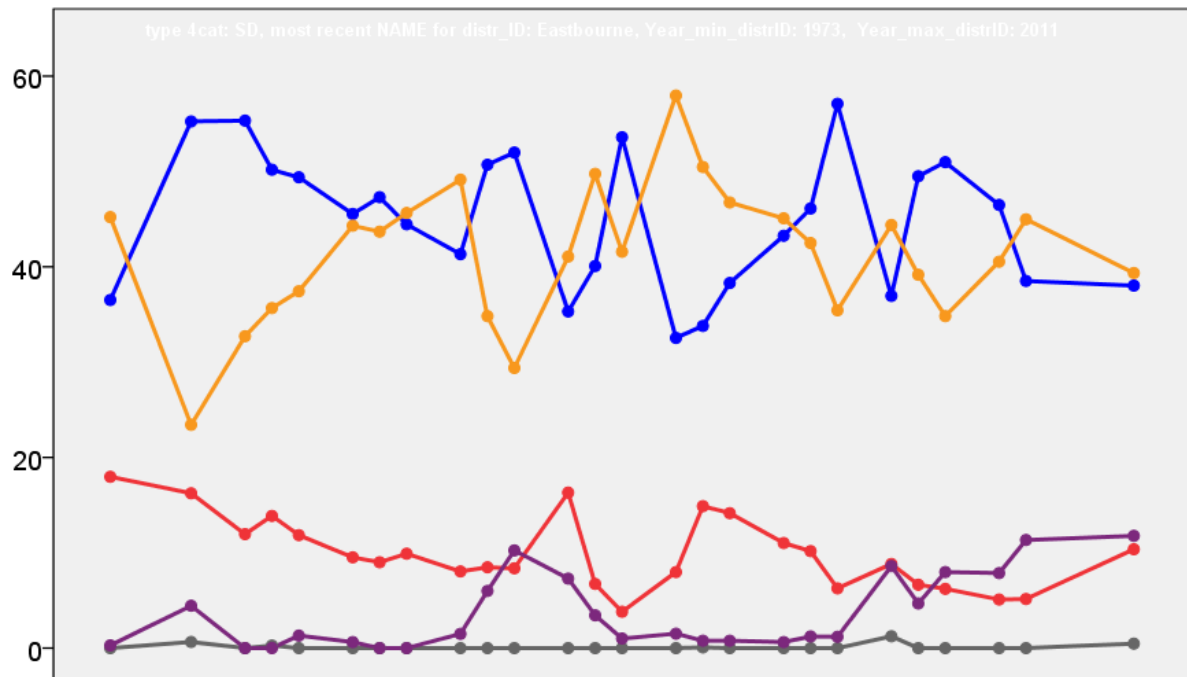


# Eastbourne Borough Council Election Results 1973-2011



Colin Rallings and Michael Thrasher  
The Elections Centre  
Plymouth University

The information contained in this report has been obtained from a number of sources. Election results from the immediate post-reorganisation period were painstakingly collected by Alan Willis largely, although not exclusively, from local newspaper reports. From the mid-1980s onwards the results have been obtained from each local authority by the Elections Centre. The data are stored in a database designed by Lawrence Ware and maintained by Brian Cheal and others at Plymouth University. Despite our best efforts some information remains elusive whilst we accept that some errors are likely to remain. Notice of any mistakes should be sent to [elections@plymouth.ac.uk](mailto:elections@plymouth.ac.uk). The results sequence can be kept up to date by purchasing copies of the annual Local Elections Handbook, details of which can be obtained by contacting the email address above.

Front cover: the graph shows the distribution of percentage vote shares over the period covered by the results. The lines reflect the colours traditionally used by the three main parties. The grey line is the share obtained by Independent candidates while the purple line groups together the vote shares for all other parties.

Rear cover: the top graph shows the percentage share of council seats for the main parties as well as those won by Independents and other parties. The lines take account of any by-election changes (but not those resulting from elected councillors switching party allegiance) as well as the transfers of seats during the main round of local election.

The lower graph shows for each main round of local elections the overall percentage turnout (solid line), the percentage of women candidates standing at (dotted line) and the percentage of women among those elected (hashed line).

## Eastbourne - 1973

### Cavendish (4074)<sup>3</sup>

		vote	share
Ward T.	Lib	1,290	54.2
Ward E. Ms.	Lib	1,165	-
Leach L.	Lib	1,108	-
Wood P.	Lab	522	21.9
Macdonald J.	Con	487	20.5
Cross J.	Lab	482	-
Staples L. Ms.	Con	431	-
Lowton M.	Con	425	-
Watson G. Ms.	Lab	415	-
Armstrong R.	Conserv	81	3.4
<b>Turnout</b>		55.4	32.3

### Central (4100)<sup>3</sup>

		vote	share
Maryan A.	Lib	1,047	56.5
Piper C.	Lib	986	-
Ward S. Ms.	Lib	973	-
Tunwell M.	Con	806	43.5
Poynter R.	Con	800	-
Nicholson N.	Con	800	-
<b>Turnout</b>		45.9	13.0

### Devonshire (4414)<sup>3</sup>

		vote	share
Healey J.	Lib	969	46.8
Dobell E.	Con	949	45.8
Boswall A.	Lib	936	-
Creffield W.	Lib	920	-
Bowdler E.	Con	905	-
Charlton D. Ms.	Con	883	-
Howse J. Ms.	Lab	152	7.3
<b>Turnout</b>		46.0	1.0

### Downside (4251)<sup>3</sup>

		vote	share
Skilton M.	Lib	1,547	59.2
Edwards E. Ms.	Lib	1,410	-
Goodchild H.	Lib	1,374	-
Angelman J.	Con	1,068	40.8
Charlton M.	Con	897	-
Belsey C.	Con	888	-
<b>Turnout</b>		59.0	18.3

### Hampden Park (8109)<sup>4</sup>

		vote	share
Jackson P.	Lib	1,903	48.9
Lacey C.	Lib	1,768	-
Mason L.	Lib	1,694	-
Carr D.	Lib	1,650	-
Hutchinson R.	Lab	1,548	39.8
Bosley G.	Lab	1,492	-
Chantler P.	Lab	1,309	-
Elphick L. Ms.	Lab	1,291	-
Young C. Ms.	Con	440	11.3
Tunwell J. Ms.	Con	436	-
Cumming A. Ms.	Con	435	-
Anscombe C. Ms.	Con	407	-
<b>Turnout</b>		46.5	9.1

### Langney (8708)<sup>4</sup>

		vote	share
Caine L.	Lab	1,745	46.6
Solly F.	Lab	1,580	-
Baker R.	Lab	1,538	-
Salmon D.	Lab	1,514	-
Anscombe J.	Con	1,154	30.8
Bare M. Ms.	Con	1,109	-
Greenfield I.	Con	1,088	-
Porter C.	Con	1,079	-
Thomas J.	Lib	842	22.5
<b>Turnout</b>		38.6	15.8

### Meads (5068)<sup>3</sup>

		vote	share
Vickers L.	Con	1,345	-
Raven K. Ms.	Con	1,345	56.5
Brockwell P.	Con	1,297	-
Pettigrew E. Ms.	Lib	919	38.6
Hanlon M.	Lib	880	-
Rees R.	Lib	878	-
Harris I. Ms.	Lab	118	5.0
<b>Turnout</b>		46.4	17.9

### Ratton (8067)<sup>4</sup>

		vote	share
Dingwall R.	Lib	1,802	44.4
Ouzman W. Ms.	Con	1,746	43.0
Phipp M.	Con	1,698	-
Cullen D.	Con	1,698	-
Frere L.	Lib	1,650	-
Charlton W.	Lib	1,636	-
Toop J.	Con	1,597	-
French E. Ms.	Lib	1,575	-
Ticehurst A.	Lab	510	12.6
Booth K. Ms.	Lab	474	-
Evans D.	Lab	467	-
Sorrell P. Ms.	Lab	455	-
<b>Turnout</b>		49.1	1.4

### Roselands (4490)<sup>3</sup>

		vote	share
Horridge C.	Lib	1,319	55.7
Evenden W.	Lib	1,244	-
Scott C.	Lib	1,228	-
Riley J.	Con	680	28.7
Wakeford J.	Con	607	-
White M.	Con	589	-
Richardson P.	Lab	370	15.6
<b>Turnout</b>		49.6	27.0

### Upperton (5013)<sup>3</sup>

		vote	share
Gardner U. Ms.	Con	1,414	62.4
Aukett T.	Con	1,359	-
Aldous C.	Con	1,285	-
Perrin M. Ms.	Lib	851	37.6
Parsons D.	Lib	828	-
Frere N. Ms.	Lib	740	-
<b>Turnout</b>		45.1	24.9

## Eastbourne - 1976

### Devonshire (6248)<sup>3</sup>

		vote	share
Dobell C.	Con	1,638	54.1
Charlton D. Ms.	Con	1,563	-
Tunwell M.	Con	1,473	-
Healy J.	Lib	810	26.8
Boswall A.	Lib	802	-
Shuttleworth A.	Lib	707	-
Richardson L.	Lab	383	12.7
Evans D.	Lab	352	-
Watson A.	Lab	326	-
Ward S. Ms.	Ind	194	6.4
<b>Turnout</b>		49.4	27.4

### Downside (6296)<sup>3</sup>

		vote	share
Angelman J.	Con	1,849	53.6
Bowdler E.	Con	1,589	-
Staples L. Ms.	Con	1,456	-
Skilton M.	Lib	1,139	33.0
Edwards E. Ms.	Lib	987	-
Piper C.	Lib	948	-
Blowes P.	Lab	464	13.4
Manktelow J.	Lab	446	-
Manktelow J. Ms.	Lab	405	-
<b>Turnout</b>		54.7	20.6

### Hampden Park (6471)<sup>3</sup>

		vote	share
Hutchinson R.	Lab	1,707	41.0
Smedley C.	Lab	1,237	-
Turner H.	Lab	1,209	-
Grainger E. Ms.	Con	907	21.8
Jackson P.	Ind Lib	899	21.6
Belsey C.	Con	896	-
Archer J. Ms.	Con	859	-
Mason L.	Lib	650	15.6
Jackson I. Ms.	Lib	625	-
Field T.	Lib	616	-
<b>Turnout</b>		55.0	19.2

### Langney (5120)<sup>3</sup>

		vote	share
Caine L.	Lab	882	35.7
Anscombe J.	Con	844	34.2
Maryan A.	Lib	745	30.1
Salmon D.	Lab	680	-
Maryan R.	Lib	653	-
Cross N. Ms.	Lab	651	-
Page J.	Lib	601	-
<b>Turnout</b>		45.3	1.5

### Meads (6228)<sup>3</sup>

		vote	share
Raven K. Ms.	Con	2,507	86.3
Gripton A.	Con	2,482	-
Vickers L.	Con	2,456	-
Pettigrew J. Ms.	Lib	397	13.7
Bray B.	Lib	316	-
<b>Turnout</b>		48.6	72.7

### Ocklynge (5393)<sup>3</sup>

		vote	share
Cullen D.	Con	2,074	72.8
Ouzman W. Ms.	Con	2,048	-
Enser A.	Con	1,972	-
Parsons D.	Lib	776	27.2
Rodohan P.	Lib	649	-
<b>Turnout</b>		54.7	45.5

### Ratton (3773)<sup>3</sup>

		vote	share
Aitchison D.	Con	1,519	68.4
Phipp M.	Con	1,497	-
Bruce-Kerr A.	Con	1,451	-
Williamson A. Ms.	Lib	533	24.0
Thompson M.	Lib	512	-
Milton R.	Ind Lib	169	7.6
<b>Turnout</b>		56.9	44.4

### Roselands (6328)<sup>3</sup>

		vote	share
Riley J.	Con	1,783	51.3
Riley J. Ms.	Con	1,694	51.3
Wakeford J.	Con	1,603	-
Scott C.	Lib	798	23.0
Cross J.	Lab	620	17.8
Jones M. Ms.	Lab	592	-
Scott D. Ms.	Lib	568	-
Watson G. Ms.	Lab	564	-
Bray S. Ms.	Lib	520	-
Ward T.	Ind Lib	276	7.9
Ward E. Ms.	Ind Lib	256	-
<b>Turnout</b>		52.8	0.0

### St. Anthony's (5484)<sup>3</sup>

		vote	share
Houstoun-Boswall M. Ms.	Con	1,265	46.0
Bintliff L.	Con	1,229	-
Hanlon M.	Con	1,218	-
Solly F.	Lab	862	31.3
Baker R.	Lab	813	-
Beere A.	Lab	709	-
Attack S.	Lib	623	22.7
Killick C. Ms.	Lib	606	-
Brady J.	Lib	534	-
<b>Turnout</b>		53.9	14.7

**Upperton (5967)<sup>3</sup>**

		vote	share
<b>Aldous C.</b>	Con	2,343	79.1
<b>Aukett T.</b>	Con	2,188	-
<b>Gardner U. Ms.</b>	Con	2,184	-
Perrin M. Ms.	Lib	620	20.9
<b>Turnout</b>		49.9	58.2

**Eastbourne - 1978****Devonshire (5837)**

		vote	share
<b>Tunwell M.*</b>	Con	1,579	68.8
Ward E. Ms.	Lib	383	16.7
Beere A.	Lab	332	14.5
<b>Turnout</b>		39.4	52.1

**Downside (6201)**

		vote	share
<b>Atack S.</b>	Lib	1,879	51.6
Wakefield F.	Con	1,582	43.4
Beeney J. Ms.	Lab	183	5.0
<b>Turnout</b>		58.9	8.2

**Hampden Park (6358)**

		vote	share
<b>Coward M.</b>	Con	1,300	44.1
Turner H.*	Lab	1,086	36.9
Field T.	Lib	559	19.0
<b>Turnout</b>		46.4	7.3

**Langney (5973)**

		vote	share
<b>Shuttleworth A.</b>	Lib	1,902	57.9
Watson D.	Con	1,004	30.6
Salmon D.	Lab	378	11.5
<b>Turnout</b>		55.1	27.3

**Meads (6176)**

		vote	share
<b>Vickers L.*</b>	Con	2,196	86.6
Rist K.	Lib	339	13.4
<b>Turnout</b>		41.2	73.3

**Ocklynge (5466)**

		vote	share
<b>Enser A.*</b>	Con	1,732	75.6
Rodohan P.	Lib	560	24.4
<b>Turnout</b>		42.1	51.1

**Ratton (4316)**

		vote	share
<b>Bruce-Kerr A.*</b>	Con	1,351	65.0
Mason L.	Lib	726	35.0
<b>Turnout</b>		48.2	30.1

**Roselands (6359)**

		vote	share
<b>Healy J.</b>	Lib	2,101	59.2
Wakeford J.*	Con	1,124	31.7
Jones M. Ms.	Lab	326	9.2
<b>Turnout</b>		56.0	27.5

**St. Anthonys (5482)**

		vote	share
<b>Powell F.</b>	Con	1,349	58.5
Riddington A.	Lab	958	41.5
<b>Turnout</b>		42.3	16.9

**Upperton (5987)**

		vote	share
<b>Gardner U. Ms.*</b>	Con	1,887	79.7
Piper C.	Lib	481	20.3
<b>Turnout</b>		39.7	59.4

**Eastbourne - 1979****Devonshire (5542)**

		vote	share
<b>Ellis D.</b>	Con	2,188	55.5
Spence A.	Lib	1,029	26.1
Gay D.	Lab	727	18.4
<b>Turnout</b>		72.1	29.4

**Downside (6263)**

		vote	share
<b>Skilton M.</b>	Lib	2,420	49.9
Harffey P.	Con	2,100	43.3
Campbell V. Ms.	Lab	330	6.8
<b>Turnout</b>		77.9	6.6

**Hampden Park (6435)**

		vote	share
<b>Belsay C.</b>	Con	1,939	39.4
Cross J.	Lab	1,582	32.1
Pooley J.	Lib	1,400	28.4
<b>Turnout</b>		77.2	7.3

**Langney (6109)**

		vote	share
<b>Hall R.</b>	Lib	2,478	53.8
Anscombe J.*	Con	1,563	33.9
Cross N. Ms.	Lab	569	12.3
<b>Turnout</b>		76.3	19.8

**Meads (6009)**

		vote	share
<b>Gripton A.*</b>	Con	3,341	77.7
Rist K.	Lib	716	16.6
Beere A.	Lab	244	5.7
<b>Turnout</b>		72.5	61.0

**Ocklynge (5519)**

		vote	share
<b>Jeffries D.</b>	Con	2,893	67.8
Westbey S.	Lib	892	20.9
Beeney J. Ms.	Lab	484	11.3
<b>Turnout</b>		77.9	46.9

**Ratton (4822)**

		vote	share
<b>Williamson M. Ms.</b>	Lib	1,769	46.2
Woods J. Ms.	Con	1,680	43.9
Turner G.	Lab	259	6.8
Phipp M.*	Ind	118	3.1
<b>Turnout</b>		80.4	2.3

**Roselands (6540)**

		vote	share
<b>Swansborough C.</b>	Lib	2,415	47.3
Riley J. Ms.*	Con	2,039	39.9
Knibbs B. Ms.	Lab	655	12.8
<b>Turnout</b>		78.6	7.4

**St. Anthonys (5603)**

		vote	share
<b>Bintliff L.*</b>	Con	1,642	38.5
Heasman P.	Lib	1,632	38.3
Riddington T.	Lab	989	23.2
<b>Turnout</b>		77.0	0.2

**Upperton (6070)**

		vote	share
<b>Ford T.</b>	Con	2,922	67.1
Pocock D.	Lib	1,107	25.4
Salmon D.	Lab	328	7.5
<b>Turnout</b>		73.0	41.7

**Eastbourne - 1980****Devonshire (5391)**

		vote	share
<b>Dobell T.*</b>	Con	1,226	47.3
Kenward M.	Lib	1,059	40.9
Gay D.	Lab	307	11.8
<b>Turnout</b>		48.1	6.4

**Downside (6126)**

		vote	share
<b>Heasman P.</b>	Lib	1,721	48.2
Angelman J.*	Con	1,500	42.0
Anderson K.	Ecol	207	5.8
Salmon D.	Lab	140	3.9
<b>Turnout</b>		58.3	6.2

**Hampden Park (6467)**

		vote	share
<b>Pooley J.</b>	Lib	1,181	38.2
Harffey P.	Con	1,105	35.7
Turner J. Ms.	Lab	808	26.1
<b>Turnout</b>		47.9	2.5

**Langney (6317)**

		vote	share
<b>Tutt D.</b>	Lib	1,802	60.1
Taylor M.	Con	677	22.6
Caine L.*	Lab	520	17.3
<b>Turnout</b>		47.5	37.5

**Meads (6100)**

		vote	share
<b>Raven K. Ms.*</b>	Con	2,048	84.9
Rist K.	Lib	262	10.9
Thomas C. Ms.	Lab	103	4.3
<b>Turnout</b>		39.6	74.0

**Ocklynge (5570)**

		vote	share
<b>Cullen D.*</b>	Con	1,690	65.3
Westbey S.	Lib	560	21.6
Cross N. Ms.	Lab	169	6.5
Sanders G.	Ecol	169	6.5
<b>Turnout</b>		46.5	43.7

**Ratton (5135)**

		vote	share
<b>Stevenson A. Ms.</b>	Con	1,321	53.1
Hearn P.	Lib	1,021	41.1
Turner G.	Lab	145	5.8
<b>Turnout</b>		48.4	12.1

**Roselands (6785)**

		vote	share
<b>Mason L.</b>	Lib	1,750	49.4
Field T.	Con	1,296	36.6
Day P.	Lab	497	14.0
<b>Turnout</b>		52.3	12.8

**St. Anthonys (5775)**

		vote	share
<b>Houston-Boswall M. Ms.*</b>	Con	1,257	44.0
Martin J.	Lib	1,023	35.8
Burt M.	Lab	576	20.2
<b>Turnout</b>		49.5	8.2

**Upperton (6224)**

		vote	share
<b>Aldous C.*</b>	Con	2,056	80.3
Heffernan K. Ms.	Lib	367	14.3
Hobden D.	Lab	138	5.4
<b>Turnout</b>		41.2	66.0

## Eastbourne - 1982

### Devonshire (5438)

		vote	share
Tunwell M.*	Con	1,239	48.7
Guess M.	Lib/SDP	1,139	44.8
Cross J.	Lab	165	6.5

Turnout 46.9 3.9

### Downside (6207)

		vote	share
Atack S.*	Lib/SDP	2,034	58.8
Staples L. Ms.	Con	1,154	33.3
Anderson K.	Ecol	177	5.1
Turner G.	Lab	97	2.8

Turnout 55.9 25.4

### Hampden Park (6461)

		vote	share
Hutchinson R.	Lab	1,354	41.8
Osborn M.	Lib/SDP	942	29.1
Sayer K.	Con	942	29.1

Turnout 50.3 12.7

### Langney (6344)

		vote	share
Shuttleworth A.*	Lib/SDP	2,045	72.8
Rich J.	Con	582	20.7
Burt M.	Lab	183	6.5

Turnout 44.4 52.1

### Meads (6063)

		vote	share
Vickers A.*	Con	2,105	82.6
Smith L.	Lib/SDP	444	17.4

Turnout 42.3 65.2

### Ocklynge (5607)

		vote	share
Enser P. Ms.*	Con	1,623	62.9
Wood N.	Lib/SDP	958	37.1

Turnout 46.2 25.8

### Ratton (5993)

		vote	share
Bruce-Kerr A.*	Con	1,279	46.8
Hearn P.	Lib/SDP	1,180	43.2
Day P.	Lab	273	10.0

Turnout 45.7 3.6

### Roselands (6765)

		vote	share
Healy J.*	Lib/SDP	1,886	58.8
Field T.	Con	1,103	34.4
Blackburn J. Ms.	Lab	217	6.8

Turnout 47.4 24.4

### St. Anthony's (6084)

		vote	share
Martin J.	Lib/SDP	1,213	44.5
Powell G.*	Con	1,120	41.1
Riddington T.	Lab	392	14.4

Turnout 44.8 3.4

### Upperton (6323)

		vote	share
Gardner U. Ms.*	Con	1,681	72.5
Penfold J.	Lib/SDP	638	27.5

Turnout 36.8 45.0

## Eastbourne - 1983

### Devonshire (5395)

		vote	share
Ellis D.*	Con	1,490	49.1
Dixon K.	Lib/SDP	1,329	43.8
Gay D.	Lab	217	7.1

Turnout 56.4 5.3

### Downside (6155)

		vote	share
Skilton M.*	Lib/SDP	2,018	57.8
Smith W.	Con	1,214	34.8
O'Brien J.	Lab	261	7.5

Turnout 56.8 23.0

### Hampden Park (6447)

		vote	share
Hearn P. Ms.	Lib/SDP	1,340	38.6
Murray A. Ms.	Con	1,112	32.0
Caine L.	Lab	1,023	29.4

Turnout 53.9 6.6

### Langney (6483)

		vote	share
Mepham A	Lib/SDP	2,187	67.4
Williams G.	Con	837	25.8
Pettigrew J.	Lab	219	6.8

Turnout 50.1 41.6

### Meads (6125)

		vote	share
Stevens D.	Con	2,407	84.6
Smith K.	Lib/SDP	439	15.4

Turnout 46.7 69.1

### Ocklynge (5607)

		vote	share
Jeffries D.*	Con	1,755	58.0
Grist J. Ms.	Lib/SDP	1,077	35.6
Holt C. Ms.	Lab	196	6.5

Turnout 54.1 22.4

### Ratton (5921)

		vote	share
Humphries N.	Con	1,510	48.6
Williamson T. Ms.*	Lib/SDP	1,334	42.9
Blackburn J. Ms.	Lab	262	8.4

Turnout 52.6 5.7

### Roselands (6805)

		vote	share
Guess M.	Lib/SDP	2,104	58.6
Perrin S.	Con	1,202	33.5
Turner G.	Lab	286	8.0

Turnout 52.8 25.1

### St. Anthony's (6168)

		vote	share
Curtis B.	Con	1,685	48.0
Smith L.	Lib/SDP	1,395	39.7
Day P.	Lab	430	12.3

Turnout 56.9 8.3

### Upperton (6384)

		vote	share
Harfrey P.	Con	1,980	71.0
Maryan T.	Lib/SDP	810	29.0

Turnout 45.4 41.9

## Eastbourne - 1984

### Devonshire (5358)

		vote	share
Rodohan P.	Lib/SDP	1,343	50.1
Gibson E.	Con	1,147	42.8
Turner G.	Lab	192	7.2

Turnout 50.2 7.3

### Downside (6158)

		vote	share
Swansborough C.	Lib/SDP	1,502	50.3
Brewer C.	Con	1,147	38.4
Clack A.	Lab	340	11.4

Turnout 48.6 11.9

### Hampden Park (6459)

		vote	share
McMahon R.	Lib/SDP	1,354	40.4
Day P.	Lab	1,069	31.9
Murray A. Ms.	Con	930	27.7

Turnout 52.0 8.5

### Langney (6625)

		vote	share
Tutt D.*	Lib/SDP	2,053	73.3
West D.	Con	586	20.9
Pettigrew J.	Lab	160	5.7

Turnout 42.3 52.4

### Meads (6240)

		vote	share
Raven K. Ms.*	Con	2,071	85.1
Smith K.	Lib/SDP	265	10.9
Pritchard B. Ms.	Lab	99	4.1

Turnout 39.1 74.2

### Ocklynge (5572)

		vote	share
Cullen D.*	Con	1,438	55.6
Grist J. Ms.	Lib/SDP	1,026	39.7
Wyllie R.	Lab	122	4.7

Turnout 46.5 15.9

### Ratton (5869)

		vote	share
Williamson T. Ms.*	Lib/SDP	1,362	45.8
Stevens A. Ms.	Con	1,352	45.5
Mason I.	Lab	259	8.7

Turnout 50.7 0.3

### Roselands (6760)

		vote	share
Mason L.*	Lib/SDP	2,134	65.1
Moger J.	Con	898	27.4
Cross N. Ms.	Lab	247	7.5

Turnout 48.6 37.7

### St. Anthony's (6122)

		vote	share
Smith L.	Lib/SDP	1,443	45.6
Watson D.	Con	1,372	43.4
Walsh K.	Lab	348	11.0

Turnout 51.7 2.2

### Upperton (6361)

		vote	share
Aldous C.*	Con	1,788	75.3
Brazier S.	Lib/SDP	586	24.7

Turnout 37.4 50.6

## Eastbourne - 1986

### Devonshire (5279)

		vote	share
Rose A.	Lib/SDP	1,142	46.6
Tunwell M.*	Con	1,132	46.2
Usmani K.	Lab	177	7.2

Turnout 46.5 0.4

### Downside (6217)

		vote	share
Leggett B.	Lib/SDP	1,696	62.6
Townsend D.	Con	822	30.3
O'Shea B.	Green	192	7.1

Turnout 43.6 32.3

### Hampden Park (6431)

		vote	share
Hearn P. Ms.	Lib/SDP	1,201	40.5
Day P.	Lab	1,116	37.7
Lutterer P.	Con	645	21.8

Turnout 46.1 2.9

<b>Langney (7273)</b>			
		<b>vote</b>	<b>share</b>
<b>Shuttleworth A.*</b>	Lib/SDP	2,295	75.7
Waghorne J. Ms.	Con	526	17.3
Stanley E. Ms.	Lab	212	7.0
<b>Turnout</b>		41.7	58.3

<b>Meads (6328)</b>			
		<b>vote</b>	<b>share</b>
<b>Vickers A.*</b>	Con	1,991	77.2
Nicholls P. Ms.	Lib/SDP	589	22.8
<b>Turnout</b>		41.0	54.3

<b>Ocklynge (5492)</b>			
		<b>vote</b>	<b>share</b>
<b>Enser P. Ms.*</b>	Con	1,312	53.0
Kirtley R.	Lib/SDP	1,022	41.3
Macdonald J. Ms.	Lab	140	5.7
<b>Turnout</b>		45.2	11.7

<b>Ratton (6070)</b>			
		<b>vote</b>	<b>share</b>
<b>Higgins F.</b>	Con	1,450	49.7
Broome C.	Lib/SDP	1,120	38.4
Turner G.	Lab	345	11.8
<b>Turnout</b>		48.1	11.3

<b>Roselands (6652)</b>			
		<b>vote</b>	<b>share</b>
<b>Healy J.*</b>	Lib/SDP	1,817	60.8
Lowe J.	Con	728	24.4
Earley B.	Lab	225	7.5
Heath J.	Green	219	7.3
<b>Turnout</b>		45.0	36.4

<b>St. Anthonyms (6125)</b>			
		<b>vote</b>	<b>share</b>
<b>Grist J. Ms.</b>	Lib/SDP	1,701	60.1
Leigh B. Ms.	Con	1,128	39.9
<b>Turnout</b>		46.5	20.3

<b>Upperton (6732)</b>			
		<b>vote</b>	<b>share</b>
<b>Fletcher G. Ms.</b>	Con	1,649	63.4
Durrant P.	Lib/SDP	951	36.6
<b>Turnout</b>		38.7	26.8

## **Eastbourne - 1987**

<b>Devonshire (5192)</b>			
		<b>vote</b>	<b>share</b>
<b>Aldridge A.</b>	Con	1,378	52.7
Sandell A.	Lib/SDP	976	37.3
Wells J.	Green	135	5.2
Usmani K.	Lab	128	4.9
<b>Turnout</b>		50.4	15.4

<b>Downside (6115)</b>			
		<b>vote</b>	<b>share</b>
<b>Skilton M.*</b>	Lib/SDP	1,476	47.0
Townsend D.	Con	1,306	41.6
O'Shea B.	Green	187	5.9
Pratt M.	Lab	174	5.5
<b>Turnout</b>		51.4	5.4

<b>Hampden Park (6299)</b>			
		<b>vote</b>	<b>share</b>
<b>Hearn P. Ms.*</b>	Lib/SDP	1,243	38.2
Day P.	Lab	1,031	31.7
Mills G.	Con	983	30.2
<b>Turnout</b>		51.7	6.5

<b>Langney (7425)</b>			
		<b>vote</b>	<b>share</b>
<b>Mepham A.*</b>	Lib/SDP	1,824	54.5
Johnston K.	Con	1,004	30.0
Webb C.	Green	337	10.1
Poole D.	Lab	184	5.5
<b>Turnout</b>		45.1	24.5

<b>Meads (6380)</b>			
		<b>vote</b>	<b>share</b>
<b>Stevens D.*</b>	Con	2,698	82.9
Bannister M.	Lib/SDP	416	12.8
Pritchard B. Ms.	Lab	140	4.3
<b>Turnout</b>		51.0	70.1

<b>Ocklynge (5468)</b>			
		<b>vote</b>	<b>share</b>
<b>Morrow M.</b>	Con	1,855	65.1
Broome C.	Lib/SDP	876	30.7
Benefield E.	Lab	120	4.2
<b>Turnout</b>		52.5	34.3

<b>Ratton (6126)</b>			
		<b>vote</b>	<b>share</b>
<b>Humphries N.*</b>	Con	1,897	54.3
Heasman P.	Lib/SDP	1,287	36.9
Masson I.	Lab	308	8.8
<b>Turnout</b>		57.0	17.5

<b>Roselands (6591)</b>			
		<b>vote</b>	<b>share</b>
<b>Guess M.*</b>	Lib/SDP	1,296	37.9
Thomas V.	Con	1,220	35.7
Heath J.	Green	707	20.7
Watkins M.	Lab	198	5.8
<b>Turnout</b>		51.9	2.2

<b>St. Anthonyms (6150)</b>			
		<b>vote</b>	<b>share</b>
<b>Smith M. Ms.</b>	Con	1,707	47.4
Hughes R.	Lib/SDP	1,226	34.0
Armstrong R.	Green	351	9.7
Hicks B.	Lab	320	8.9
<b>Turnout</b>		58.6	13.3

<b>Upperton (6870)</b>			
		<b>vote</b>	<b>share</b>
<b>Harffey P.*</b>	Con	2,262	71.1
Durrant P.	Lib/SDP	583	18.3
Evans D.	Green	210	6.6
Fisher C.	Lab	126	4.0
<b>Turnout</b>		46.3	52.8

## **Eastbourne - 1988**

<b>Devonshire (5037)</b>			
		<b>vote</b>	<b>share</b>
<b>Gillett G.</b>	Con	1,186	48.1
Rodohan P.*	SLD	1,144	46.4
Usmani K.	Lab	138	5.6
<b>Turnout</b>		49.0	1.7

<b>Downside (5933)</b>			
		<b>vote</b>	<b>share</b>
<b>Kirtley R.</b>	SLD	1,347	45.9
Townsend D.	Con	1,226	41.7
Frost A.	Lab	199	6.8
Moore J. Ms.	Green	165	5.6
<b>Turnout</b>		49.5	4.1

<b>Hampden Park (6306)</b>			
		<b>vote</b>	<b>share</b>
<b>Day P.</b>	Lab	1,037	34.3
Parker H.	SLD	941	31.1
Mills G.	Con	916	30.3
Wells Ms D.	Green	133	4.4
<b>Turnout</b>		48.0	3.2

<b>Langney (7767)</b>			
		<b>vote</b>	<b>share</b>
<b>Tutt D.*</b>	SLD	2,204	67.4
Russell D. Ms.	Con	804	24.6
Wells J.	Green	262	8.0
<b>Turnout</b>		42.1	42.8

<b>Meads (6402)</b>			
		<b>vote</b>	<b>share</b>
<b>Deschamps M.</b>	Con	2,593	83.2
Bannister M.	SLD	340	10.9
Pritchard B. Ms.	Lab	185	5.9
<b>Turnout</b>		48.7	72.3

<b>Ocklynge (5374)</b>			
		<b>vote</b>	<b>share</b>
<b>Cullen D.*</b>	Con	1,704	72.2
Broome C.	SDP	655	27.8
<b>Turnout</b>		43.9	44.5

<b>Ratton (5994)</b>			
		<b>vote</b>	<b>share</b>
<b>Tunwell M.</b>	Con	1,885	61.3
Williamson M. Ms.*	SLD	832	27.1
Poole D.	Lab	358	11.6
<b>Turnout</b>		51.3	34.2

<b>Roselands (6424)</b>			
		<b>vote</b>	<b>share</b>
<b>Mason L.*</b>	SLD	1,466	45.6
Caroe L. Ms.	Con	1,290	40.2
Cole C. Ms.	Lab	232	7.2
Quarrington C. Ms.	Green	224	7.0
<b>Turnout</b>		50.0	5.5

<b>St. Anthonyms (6276)</b>			
		<b>vote</b>	<b>share</b>
<b>Amess C.</b>	Con	1,561	48.0
Smith L.*	SDP	1,363	41.9
Beck A.	Lab	327	10.1
<b>Turnout</b>		51.8	6.1

<b>Upperton (6721)</b>			
		<b>vote</b>	<b>share</b>
<b>Murray A. Ms.</b>	Con	2,204	77.5
Durrant P.	SLD	411	14.5
Evans D.	Green	228	8.0
<b>Turnout</b>		42.3	63.1

## **Eastbourne - 1990**

<b>Devonshire (5232)</b>			
		<b>vote</b>	<b>share</b>
<b>O'Neill D. Ms.</b>	SLD	1,148	43.7
Pentecost M.	Con	870	33.1
Gould A. Ms.	Lab	445	16.9
Geals R. Ms.	Green	166	6.3
<b>Turnout</b>		50.4	10.6

<b>Downside (5926)</b>			
		<b>vote</b>	<b>share</b>
<b>Leggett A.*</b>	SLD	1,713	51.7
Leigh B. Ms.	Con	853	25.7
Osborn M.	Lab	507	15.3
Oliphant A. Ms.	Green	240	7.2
<b>Turnout</b>		55.9	26.0

<b>Hampden Park (6244)</b>			
		<b>vote</b>	<b>share</b>
<b>Pooley M. Ms.</b>	SLD	1,501	43.2
Wyllie R.	Lab	1,259	36.3
Mills G.	Con	566	16.3
O'Shea B.	Green	145	4.2
<b>Turnout</b>		55.5	7.0

<b>Langney (8796)</b>			
		<b>vote</b>	<b>share</b>
<b>Shuttleworth A.*</b>	SLD	3,132	72.8
Wood J.	Con	611	14.2
Beck A.	Lab	557	13.0
<b>Turnout</b>		48.9	58.6

Meads (6320)			
		vote	share
Vickers L.*	Con	2,399	74.2
Britcher J. Ms.	SLD	508	15.7
Hall P.	Lab	326	10.1
Turnout		51.2	58.5

Ocklynge (5453)			
		vote	share
Townsend D.	Con	1,269	45.2
Parsons R.	SLD	1,056	37.6
Oliphant J.	Green	253	9.0
Turner H.	Lab	228	8.1
Turnout		51.7	7.6

Ratton (6303)			
		vote	share
Higgins F.*	Con	1,516	45.1
Williamson M. Ms.	Lib	1,156	34.4
Blackburn J. Ms.	Lab	688	20.5
Turnout		53.4	10.7

Roselands (6624)			
		vote	share
Healy J.*	SLD	1,891	54.9
Stuart A.	Con	812	23.6
Thompson E. Ms.	Lab	506	14.7
Somerville C. Ms.	Green	238	6.9
Turnout		52.0	31.3

St. Anthony's (6414)			
		vote	share
Grist J. Ms.*	SLD	1,886	52.8
Johnston K.	Con	1,084	30.3
Riddington A.	Lab	605	16.9
Turnout		55.7	22.4

Upperton (6482)			
		vote	share
Priest C. Ms.	Con	1,732	57.2
Ellis R.	SLD	784	25.9
Poole D.	Lab	290	9.6
Evans D.	Green	221	7.3
Turnout		46.6	31.3

## Eastbourne - 1991

Devonshire (5069)			
		vote	share
Jones B.	LD	1,384	58.1
O'Shea J.	Con	881	37.0
Geals J. Ms.	Green	118	5.0
Turnout		47.2	21.1

Downside (5888)			
		vote	share
Skilton M.*	LD	2,061	62.8
Foster M.	Con	1,046	31.9
Turner H.	Lab	175	5.3
Turnout		55.9	30.9

Hampden Park (6138)			
		vote	share
Woodall O. Ms.	LD	1,499	45.8
Wyllie R.	Lab	1,009	30.8
Mills G.	Con	768	23.4
Turnout		53.4	15.0

Langney (9230)			
		vote	share
Heasman P.	LD	2,936	70.6
Hayes M.	Con	991	23.8
Fletcher C.	Lab	229	5.5
Turnout		45.0	46.8

Meads (6218)			
		vote	share
Stevens D.*	Con	2,319	72.1
Durrant P.	LD	786	24.4
Dowds P.	Green	110	3.4
Turnout		51.8	47.7

Ocklynge (5354)			
		vote	share
Parsons R.*	LD	1,747	57.7
Penhaligon A.	Con	1,282	42.3
Turnout		56.7	15.4

Ratton (6220)			
		vote	share
Goodall B. Ms.	Con	1,430	44.3
Williamson M-T. Ms.	Lib	797	24.7
Lloyd B.	LD	739	22.9
Blackburn J. Ms.	Lab	263	8.1
Turnout		52.0	19.6

Roselands (6469)			
		vote	share
Ungar J.	LD	2,056	60.9
Metcalfe P.	Con	997	29.5
Thomson E. Ms.	Lab	227	6.7
Griffin A.	Green	96	2.8
Turnout		52.2	31.4

St. Anthony's (6421)			
		vote	share
Ellis R.	LD	1,841	50.6
Ashby J.	Con	1,513	41.6
Gooch M. Ms.	Lab	286	7.9
Turnout		56.8	9.0

Upperton (6512)			
		vote	share
Marsden G.	Con	1,816	61.4
Whitby B.	LD	1,141	38.6
Turnout		45.6	22.8

## Eastbourne - 1992

Devonshire (5440)			
		vote	share
Gillett G.*	Con	1,236	55.1
Scott D.	LD	1,007	44.9
Turnout		41.4	10.2

Downside (5946)			
		vote	share
Kirtley R.*	LD	1,484	52.6
Foster M.	Con	1,234	43.7
Coles N. Ms.	Lab	104	3.7
Turnout		47.5	8.9

Hampden Park (6176)			
		vote	share
Wright N.	LD	1,304	50.4
Mills G.	Con	883	34.1
Dalton L.	Lab	402	15.5
Turnout		41.9	16.3

Langney (9436)			
		vote	share
Tutt D.*	LD	2,392	65.0
Hayes M.	Con	1,176	31.9
Beck A.	Lab	113	3.1
Turnout		39.0	33.0

Meads (6459)			
		vote	share
Deschamps M*	Con	2,618	84.2
Kendrick I. Ms.	LD	490	15.8
Turnout		48.2	68.5

Ocklynge (5309)			
		vote	share
Cullen D.*	Con	1,544	58.8
Green S. Ms.	LD	1,084	41.2
Turnout		49.6	17.5

Ratton (6192)			
		vote	share
Tunwell M.*	Con	1,784	62.2
Kendrick P.	LD	630	22.0
Williamson M. Ms.	Lib	292	10.2
Turner H.	Lab	164	5.7
Turnout		46.4	40.2

Roselands (6487)			
		vote	share
Mason L.*	LD	1,653	53.8
Metcalfe P.	Con	1,278	41.6
Thomson E. Ms.	Lab	142	4.6
Turnout		47.4	12.2

St. Anthony's (6650)			
		vote	share
Smith M. Ms.	Con	1,758	53.6
Brooks D.	LD	1,337	40.8
Riddington A.	Lab	184	5.6
Turnout		49.4	12.8

Upperton (6749)			
		vote	share
Murray A. Ms.*	Con	2,081	74.4
Whitby B.	LD	717	25.6
Turnout		41.5	48.7

## Eastbourne - 1994

Devonshire (5453)			
		vote	share
Scott D.	LD	1,295	64.7
Charlton M.	Con	708	35.3
Turnout		36.8	29.3

Downside (5838)			
		vote	share
Leggett A.*	LD	1,921	73.2
Phillips M.	Con	549	20.9
Turner H.	Lab	154	5.9
Turnout		44.9	52.3

Hampden Park (6154)			
		vote	share
Pooley M. Ms.*	LD	1,426	52.3
Buckle W.	Lab	784	28.7
Russell H.	Con	441	16.2
Poole D.	DKDC	78	2.9
Turnout		44.4	23.5

Langney (9717)			
		vote	share
Shuttleworth A.*	LD	2,985	79.7
Bicknell L. Ms.	Con	501	13.4
Hall P.	Lab	261	7.0
Turnout		38.6	66.3

Meads (6501)			
		vote	share
Taylor B.*	Con	1,883	68.2
Forrester-Brown W.	LD	880	31.8
Turnout		42.6	36.3

Ocklynge (5402)			
		vote	share
James W.	LD	1,460	58.8
Townsend D.*	Con	1,025	41.2
Turnout		46.2	17.5

Ratton (6148)			
		vote	share
Higgins F.*	Con	1,203	40.5
Stevens S.	LD	1,071	36.0
Fletcher C.	Lab	352	11.8
Williamson M. Ms.	Lib	306	10.3
Tomsett N.	DKDC	39	1.3
<b>Turnout</b>		48.4	4.4

Roselands (6614)			
		vote	share
Healy B. Ms.*	LD	2,007	74.6
O'Shea J.	Con	462	17.2
Cole J.	Lab	221	8.2
<b>Turnout</b>		40.7	57.4

St. Antonys (7036)			
		vote	share
Grist J. Ms.*	LD	1,771	57.6
Wesson R.	Con	1,044	34.0
Beck A.	Lab	258	8.4
<b>Turnout</b>		43.8	23.7

Upperton (7113)			
		vote	share
Whitby B.	LD	1,299	47.8
Mills G.	Con	1,230	45.3
Wyllie B.	Lab	187	6.9
<b>Turnout</b>		38.3	2.5

## Eastbourne - 1995

Devonshire (5386)			
		vote	share
Jones B.*	LD	866	45.5
Charlton M.	Con	692	36.3
Hall P.	Lab	325	17.1
Poole D.	Ind	21	1.1
<b>Turnout</b>		35.4	9.1

Downside (5862)			
		vote	share
Skilton M.*	LD	1,609	65.4
Herbert S.	Con	523	21.3
Cole N. Ms.	Lab	329	13.4
<b>Turnout</b>		42.1	44.1

Hampden Park (6217)			
		vote	share
Woodall O. Ms.*	LD	1,298	52.6
Johnson N.	Lab	824	33.4
Mills K. Ms.	Con	345	14.0
<b>Turnout</b>		39.7	19.2

Langney (9726)			
		vote	share
Heasman P.*	LD	2,317	73.4
Bicknell L. Ms.	Con	446	14.1
Marks K. Ms.	Lab	392	12.4
<b>Turnout</b>		32.5	59.3

Meads (6572)			
		vote	share
Stevens D.*	Con	1,830	65.9
Forrester-Brown W.	LD	649	23.4
Openshaw L. Ms.	Lab	299	10.8
<b>Turnout</b>		42.3	42.5

Ocklynge (5415) <sup>2</sup>			
		vote	share
Parsons R.*	LD	1,277	49.9
Sutton-Smith R.	LD	1,090	-
Townsend D.	Con	971	37.9
Charlton S. Ms.	Con	818	-
Morrison J.	Lab	313	12.2
Wentworth S. Ms.	Lab	299	-
<b>Turnout</b>		46.0	11.9

Ratton (6227)			
		vote	share
Stevens S.	LD	1,312	44.6
Goodall B. Ms.*	Con	1,098	37.3
Brede J.	Lab	328	11.1
Williamson M. Ms.	Lib	204	6.9
<b>Turnout</b>		47.3	7.3

Roselands (6666)			
		vote	share
Ungar J.*	LD	1,761	69.8
Anson P.	Con	427	16.9
Cole J.	Lab	335	13.3
<b>Turnout</b>		37.9	52.9

St. Antonys (7062)			
		vote	share
Ellis R.*	LD	1,405	45.9
Backhouse R.	Con	1,206	39.4
Mathias S.	Lab	447	14.6
<b>Turnout</b>		43.3	6.5

Upperton (7046)			
		vote	share
Marsden G.*	Con	1,425	53.3
Daish J. Ms.	LD	893	33.4
Dalton L.	Lab	357	13.3
<b>Turnout</b>		38.1	19.9

## Eastbourne - 1996

Devonshire (5434)			
		vote	share
Teso J. Ms.	LD	795	42.2
Charlton S. Ms.	Con	700	37.2
Frisby J. Ms.	Lab	388	20.6
<b>Turnout</b>		34.3	5.0

Downside (5878)			
		vote	share
Kirtley R.*	LD	1,474	65.2
Herbert S.	Con	525	23.2
Coe G.	Lab	263	11.6
<b>Turnout</b>		38.6	42.0

Hampden Park (6243)			
		vote	share
Thompson M.	LD	1,213	56.2
Wentworth S. Ms.	Lab	575	26.6
Mills G.	Con	370	17.1
<b>Turnout</b>		34.6	29.6

Langney (9730)			
		vote	share
Morris L. Ms.	LD	1,699	64.7
Bicknell L. Ms.	Con	503	19.2
Fisher E.	Lab	422	16.1
<b>Turnout</b>		27.0	45.6

Meads (6438)			
		vote	share
Deschamps M.*	Con	1,753	68.6
Bloom S. Ms.	LD	584	22.9
Openshaw R.	Lab	217	8.5
<b>Turnout</b>		39.7	45.8

Ocklynge (5464)			
		vote	share
Strivens J.	LD	999	45.2
Townsend D.	Con	920	41.6
Parton E.	Lab	292	13.2
<b>Turnout</b>		40.6	3.6

Ratton (6208)			
		vote	share
Tunwell M.*	Con	1,308	47.5
Potter G.	LD	1,001	36.4
Breed J.	Lab	256	9.3
Williamson M. Ms.	Lib	187	6.8
<b>Turnout</b>		45.7	11.2

Roselands (6496)			
		vote	share
Mason L.*	LD	1,430	67.8
Jay A.	Con	391	18.5
Cole J.	Lab	289	13.7
<b>Turnout</b>		32.5	49.2

St. Antonys (7163)			
		vote	share
Smith M. Ms.*	Con	1,344	49.2
Marshall H.	LD	1,004	36.7
Rossetter R.	Lab	386	14.1
<b>Turnout</b>		38.2	12.4

Upperton (6984)			
		vote	share
Murray A. Ms.*	Con	1,346	51.3
Greenaway M. Ms.	LD	982	37.4
Wallis S.	Lab	298	11.3
<b>Turnout</b>		37.6	13.9

## Eastbourne - 1998

Devonshire (5546)			
		vote	share
Charlton S. Ms.*	Con	737	42.8
Berry B. Ms.	LD	735	42.7
Frisby J. Ms.	Lab	249	14.5
<b>Turnout</b>		31.1	0.1

Downside (5892)			
		vote	share
Leggett A.*	LD	1,337	69.5
Usher C.	Con	399	20.7
Rossetter R.	Lab	188	9.8
<b>Turnout</b>		32.7	48.8

Hampden Park (6085)			
		vote	share
Pooley M. Ms.*	LD	1,039	59.6
French A.	Lab	453	26.0
Sowerby J. Ms.	Con	251	14.4
<b>Turnout</b>		28.7	33.6

Langney (9809) <sup>2</sup>			
		vote	share
Potter G.*	LD	1,413	64.3
Kerr R.	LD	1,383	-
Hedger R.	Con	478	21.7
Meladio L.	Con	421	-
Reid A. Ms.	Lab	307	14.0
Wallis S.	Lab	250	-
<b>Turnout</b>		23.1	42.5

Meads (6610)			
		vote	share
Taylor B.*	Con	1,875	74.0
Bloom S. Ms.	LD	658	26.0
<b>Turnout</b>		38.4	48.0

Ocklynge (5544)			
		vote	share
Neeham M.	Con	995	48.6
James W.*	LD	900	43.9
Morrison J.	Lab	154	7.5
<b>Turnout</b>		37.1	4.6



Ratton (6252)			
		vote	share
Higgins F.*	Con	1,384	62.4
Harris J.	LD	444	20.0
Pettigrew J.	Lab	256	11.5
Williamson M-T. Ms.	Lib	133	6.0
<b>Turnout</b>		35.5	42.4

Roselands (6683) <sup>2</sup>			
		vote	share
Healy B. Ms.*	LD	1,269	65.9
Stanley N.	LD	1,070	-
Gristwood R.	Con	434	22.5
Wesson R.	Con	383	-
Habets E.	Lab	222	11.5
Pettigrew J.	Lab	216	-
<b>Turnout</b>		28.9	43.4

St. Anthonys (7770)			
		vote	share
Backhouse R.	Con	1,419	54.1
Gleeson J.	LD	907	34.6
Carmody J.	Lab	295	11.3
<b>Turnout</b>		33.8	19.5

Upperton (6711)			
		vote	share
Lacey R.	Con	1,182	53.0
Whitby B.*	LD	838	37.6
Cronin E. Ms.	Lab	209	9.4
<b>Turnout</b>		33.2	15.4

## Eastbourne - 1999

Devonshire (5512)			
		vote	share
Roberts M.	Con	839	45.0
Jones B.*	LD	812	43.6
Smith B.	Lab	213	11.4
<b>Turnout</b>		33.9	1.4

Downside (5835)			
		vote	share
Skilton M.*	LD	1,219	61.5
Stanbury J.	Con	615	31.0
Wallis S.	Lab	148	7.5
<b>Turnout</b>		34.1	30.5

Hampden Park (6075)			
		vote	share
Woodall O. Ms.*	LD	1,035	58.4
French A.	Lab	407	23.0
Soweby J. Ms.	Con	329	18.6
<b>Turnout</b>		29.2	35.5

Langney (9916)			
		vote	share
Berry B. Ms.	LD	1,464	62.8
Meladia L.	Con	567	24.3
Reid A. Ms.	Lab	299	12.8
<b>Turnout</b>		23.5	38.5

Meads (6675)			
		vote	share
Stevens D.*	Con	1,841	73.8
Ticehurst M. Ms.	LD	358	14.4
Worster P.	Lab	179	7.2
Boys S. Ms.	Green	116	4.7
<b>Turnout</b>		37.4	59.5

Ocklynge (5541)			
		vote	share
Parsons R.*	LD	1,121	47.6
Howlett S. Ms.	Con	1,108	47.1
Brook J.	Lab	125	5.3
<b>Turnout</b>		42.6	0.6

Ratton (6218)			
		vote	share
Goodall B. Ms.*	Con	1,376	63.9
Harris J.	LD	425	19.7
Habets E.	Lab	204	9.5
Williamson M. Ms.	Lib	149	6.9
<b>Turnout</b>		34.7	44.2

Roselands (6686)			
		vote	share
Stanley N.*	LD	1,293	66.5
Gristwood R.	Con	444	22.9
Pettigrew J.	Lab	206	10.6
<b>Turnout</b>		29.1	43.7

St. Anthonys (8060)			
		vote	share
Bowker P.	Con	1,499	55.4
Ellis R.*	LD	999	36.9
Rossetter R.	Lab	206	7.6
<b>Turnout</b>		34.4	18.5

Upperton (6757)			
		vote	share
Marsden G.*	Con	1,374	66.3
Beckman L. Ms.	LD	480	23.2
Cronin E. Ms.	Lab	217	10.5
<b>Turnout</b>		30.7	43.2

## Eastbourne - 2000

Devonshire (5408)			
		vote	share
Elkin D.	Con	886	47.3
Teso B. Ms.*	LD	767	41.0
Wentworth S. Ms.	Lab	142	7.6
Sier R.	Green	78	4.2
<b>Turnout</b>		34.7	6.4

Downside (5875)			
		vote	share
Stanbury J.	Con	961	49.8
Sparks R.	LD	833	43.2
Habets E.	Lab	134	7.0
<b>Turnout</b>		32.9	6.6

Hampden Park (6090)			
		vote	share
Thompson M.*	LD	736	49.7
Riseley R.	Con	457	30.8
Pettigrew J.	Lab	289	19.5
<b>Turnout</b>		24.4	18.8

Langney (10063)			
		vote	share
Marsh N.	LD	1,304	61.7
Meladio L.	Con	809	38.3
<b>Turnout</b>		21.1	23.4

Meads (6490)			
		vote	share
Deschamps M.*	Con	2,056	79.6
King W. Ms.	LD	337	13.0
Pettigrew J. Ms.	Lab	190	7.4
<b>Turnout</b>		39.9	66.6

Ocklynge (5572)			
		vote	share
Belsey C.	Con	1,310	59.0
Creaven J.	LD	911	41.0
<b>Turnout</b>		40.1	18.0

Ratton (6228)			
		vote	share
Tunwell M.*	Con	1,391	72.2
Gleeson J.	LD	205	10.6
Williamson M. Ms.	Lib	169	8.8
Brinson D.	Lab	161	8.4
<b>Turnout</b>		31.0	61.6

Roselands (6683)			
		vote	share
Harris J.	LD	895	48.1
Williams C.	Con	782	42.0
Morrison J.	Lab	185	9.9
<b>Turnout</b>		27.9	6.1

St. Anthonys (8187)			
		vote	share
Smith M. Ms.*	Con	1,744	62.0
Carpenter C. Ms.	LD	867	30.8
Phillips J.	Lab	203	7.2
<b>Turnout</b>		34.5	31.2

Upperton (6861)			
		vote	share
Murray A. Ms.*	Con	1,479	74.2
Durrant P.	LD	515	25.8
<b>Turnout</b>		29.2	48.3

## Eastbourne - 2002

Devonshire (8496) <sup>3</sup>			
		vote	share
Healy B. Ms.*	LD	1,600	61.4
Teso B. Ms.	LD	1,480	-
Stanley N.*	LD	1,462	-
Charlton M.	Con	515	19.8
Elkin S. Ms.	Con	500	-
Leagas D. Ms.	Con	453	-
Richardson D.	Green	269	10.3
Tucker P.	Lab	223	8.6
<b>Turnout</b>		27.9	41.6

Hampden Park (7645) <sup>3</sup>			
		vote	share
Pooley M. Ms.*	LD	1,278	57.0
Thompson M.*	LD	1,149	-
Woodall O. Ms.*	LD	1,145	-
Ring N. Ms.	Lab	523	23.3
Brinson D.	Lab	514	-
Falkner M.	Lab	451	-
Sowerby J. Ms.	Con	328	14.6
Cook P. Ms.	Con	321	-
Riseley R.	Con	312	-
Dalton L. Ms.	Green	114	5.1
O'Shea F.	Green	112	-
Luxford R.	Green	79	-
<b>Turnout</b>		29.2	33.7

Langney (7752) <sup>3</sup>			
		vote	share
Berry C.	LD	1,255	60.5
Sims I. Ms.	LD	1,178	-
Slater R.	LD	1,118	-
Richards A.	Con	596	28.7
Andrews I.	Con	574	-
Walters T.	Con	554	-
Morrison J.	Lab	139	6.7
Pettigrew J.	Lab	109	-
Quarrington C. Ms.	Green	86	4.1
<b>Turnout</b>		25.8	31.7

Meads (8216) <sup>3</sup>			
		vote	share
Stevens D.*	Con	2,001	56.6
Taylor B.*	Con	1,967	-
Elkin D.*	Con	1,949	-
Berry B. Ms.*	LD	731	20.7
Ticehurst M. Ms.	LD	686	-
Aylott K.	LD	662	-
Gross C.	Green	351	9.9
Pettigrew J.	Lab	280	7.9
Alderton K.	UK Ind	174	4.9
Maryan R.	UK Ind	129	-
<b>Turnout</b>		38.9	35.9

**Old Town (8244)<sup>3</sup>**

		vote	share
<b>Leggett A.*</b>	LD	2,161	51.7
<b>Skilton M. Ms.*</b>	LD	2,153	-
<b>Creaven J.</b>	LD	1,942	-
Lucas I.	Con	1,252	29.9
Herbert S.	Con	1,166	-
Stanbury J.*	Con	1,156	-
Stevens L.	Green	408	9.8
Rosseter R.	Lab	216	5.2
Phipp M.	Ind	146	3.5
<b>Turnout</b>		45.0	21.7

**Ratton (7944)<sup>3</sup>**

		vote	share
<b>Belsey C.*</b>	Con	1,641	55.0
<b>Goodall B. Ms.*</b>	Con	1,628	-
<b>Howlett S. Ms.</b>	Con	1,564	-
Harris J. Ms.*	LD	806	27.0
Cunliffe-Lister P. Ms.	LD	793	-
Schmoller M. Ms.	LD	661	-
Buck D.	Lab	295	9.9
Dalton N. Ms.	Green	242	8.1
<b>Turnout</b>		35.4	28.0

**Sovereign (5949)<sup>3</sup>**

		vote	share
<b>Bowker P.*</b>	Con	1,001	47.2
<b>Williams C.*</b>	Con	970	-
<b>Warner P.</b>	Con	925	-
Carroll A.	LD	648	30.6
Bloom M.	LD	638	-
Ellis R.	LD	632	-
Gunning L.	Ind	175	8.3
Pilkington J. Ms.	Lab	172	8.1
McCarthy J. Ms.	Green	124	5.8
<b>Turnout</b>		31.8	16.7

**St. Anthonys (8488)<sup>3</sup>**

		vote	share
<b>Tutt D.</b>	LD	2,005	62.3
<b>Harris J.*</b>	LD	1,987	-
<b>Marsh N.*</b>	LD	1,907	-
Charlton S. Ms.*	Con	827	25.7
Davidson J.	Con	762	-
Wilton J.	Con	705	-
Sedgewick H. Ms.	Lab	221	6.9
Sier R.	Green	164	5.1
<b>Turnout</b>		35.8	36.6

**Upperton (7862)<sup>3</sup>**

		vote	share
<b>Marsden G.*</b>	Con	1,390	48.2
<b>Lacey R.*</b>	Con	1,332	-
<b>Murray A. Ms.*</b>	Con	1,311	-
Tester T.	LD	989	34.3
Whitby B.	LD	966	-
Pritcher S.	LD	964	-
Montague S. Ms.	Green	292	10.1
Tucker M.	Lab	213	7.4
<b>Turnout</b>		34.0	13.9

**Eastbourne - 2003****Devonshire (7790)**

		vote	share
<b>Stanley N.*</b>	LD	1,222	58.1
Graham K.	Con	723	34.3
Dalton N. Ms.	Green	160	7.6
<b>Turnout</b>		27.1	23.7

**Hampden Park (7369)**

		vote	share
<b>Woodall O. Ms.*</b>	LD	955	49.9
Brinson D.	Lab	439	22.9
Abella E.	Con	414	21.6
Dalton L.	Green	107	5.6
<b>Turnout</b>		26.1	26.9

**Langney (7422)**

		vote	share
<b>Slater R.*</b>	LD	828	46.9
Walters T.	Con	722	40.9
Pettigrew J.	Lab	153	8.7
Quarrington C. Ms.	Green	62	3.5
<b>Turnout</b>		23.9	6.0

**Meads (7853)**

		vote	share
<b>Elkin D.*</b>	Con	2,202	71.3
Wallis S.	LD	518	16.8
Buck D.	Lab	216	7.0
Gross C.	Green	154	5.0
<b>Turnout</b>		39.4	54.5

**Old Town (7719)**

		vote	share
<b>Lucas I.</b>	Con	1,813	50.2
Creaven J.*	LD	1,471	40.8
Stephens L.	Green	173	4.8
Rosseter R.	Lab	152	4.2
<b>Turnout</b>		46.9	9.5

**Ratton (7728)**

		vote	share
<b>Howlett S. Ms.*</b>	Con	1,803	64.8
Durrant P.	LD	652	23.4
Falkner M.	Lab	205	7.4
Moore K.	Green	123	4.4
<b>Turnout</b>		36.1	41.4

**Sovereign (6096)**

		vote	share
<b>Warner P.*</b>	Con	1,255	54.7
Carroll A.	LD	1,040	45.3
<b>Turnout</b>		37.8	9.4

**St. Anthonys (8146)**

		vote	share
<b>Marsh N.*</b>	LD	1,349	54.2
Charlton S. Ms.	Con	810	32.6
Ring N. Ms.	Lab	190	7.6
Alderton K.	UK Ind	138	5.5
<b>Turnout</b>		30.6	21.7

**Upperton (7509)**

		vote	share
<b>Murray A. Ms.*</b>	Con	1,480	56.4
Gowland S.	LD	845	32.2
Tucker P.	Lab	153	5.8
Morrison J.	Green	144	5.5
<b>Turnout</b>		35.0	24.2

**Eastbourne - 2004****Devonshire (7516)**

		vote	share
<b>Bannister M. Ms.</b>	LD	1,177	44.7
Graham K.	Con	1,040	39.5
Gross C.	Green	239	9.1
Goude R.	Lab	178	6.8
<b>Turnout</b>		35.3	5.2

**Hampden Park (6987)**

		vote	share
<b>Thompson M.*</b>	LD	988	44.9
Abella E.	Con	636	28.9
Brinson D.	Lab	356	16.2
Dalton L.	Green	222	10.1
<b>Turnout</b>		31.6	16.0

**Langney (7141)**

		vote	share
<b>Sims I. Ms.*</b>	LD	1,210	49.8
Walters T.	Con	921	37.9
Scott S.	Lab	164	6.7
Quarrington C. Ms.	Green	137	5.6
<b>Turnout</b>		34.1	11.9

**Meads (7600)**

		vote	share
<b>Taylor B.*</b>	Con	2,672	71.2
Wallis S.	LD	589	15.7
Arnold K. Ms.	Green	271	7.2
Scard D.	Lab	221	5.9
<b>Turnout</b>		49.6	55.5

**Old Town (7862)<sup>2</sup>**

		vote	share
<b>Herbert S.</b>	Con	1,926	44.9
<b>Skilton M.*</b>	LD	1,854	43.2
Stanbury J.	Con	1,816	-
Habets P. Ms.	LD	1,739	-
Birchwood C. Ms.	Green	355	8.3
McCarthy J. Ms.	Green	289	-
Pettigrew J.	Lab	155	3.6
Rosseter R.	Lab	132	-
<b>Turnout</b>		54.9	1.7

**Ratton (7588)**

		vote	share
<b>Goodall B. Ms.*</b>	Con	2,227	65.8
Durrant P.	LD	702	20.7
Falkner M.	Lab	233	6.9
Moore K.	Green	225	6.6
<b>Turnout</b>		44.7	45.0

**Sovereign (6757)**

		vote	share
<b>Williams C.*</b>	Con	1,517	59.4
Salsbury M. Ms.	LD	806	31.6
Dalton N. Ms.	Green	229	9.0
<b>Turnout</b>		38.1	27.9

**St. Anthonys (7985)**

		vote	share
<b>Harris J.*</b>	LD	1,441	47.1
Kim-Symes J. Ms.	Con	1,200	39.2
Norris H.	Green	242	7.9
Ring N. Ms.	Lab	176	5.8
<b>Turnout</b>		38.4	7.9

**Upperton (7385)**

		vote	share
<b>Lacey R.*</b>	Con	1,754	59.6
Rodohan P.	LD	724	24.6
O'Shea F.	Green	255	8.7
Pettigrew M. Ms.	Lab	212	7.2
<b>Turnout</b>		40.1	35.0

**Eastbourne - 2006****Devonshire (7464)**

		vote	share
<b>Wallis S.</b>	LD	1,491	56.8
Jones B.	Con	749	28.5
Vonderdell Z. Ms.	Green	201	7.7
Goude R.	Lab	184	7.0
<b>Turnout</b>		35.4	28.3

**Hampden Park (6963)**

		vote	share
<b>Pooley M. Ms.*</b>	LD	1,230	53.0
Abella E.	Con	632	27.2
Brinson D.	Lab	251	10.8
Dalton L.	Green	209	9.0
<b>Turnout</b>		33.5	25.8

**Langney (7239)**

		vote	share
<b>Tester T.</b>	LD	1,209	52.0
Walters S. Ms.	Con	809	34.8
Quarrington C. Ms.	Green	161	6.9
Akers C.	Lab	147	6.3
<b>Turnout</b>		32.3	17.2

Meads (7431)			
		vote	share
<b>Stevens D.*</b>	Con	2,440	66.4
Creaven J.	LD	756	20.6
Arnold K. Ms.	Green	306	8.3
Scard D.	Lab	173	4.7
<b>Turnout</b>		49.7	45.8

Old Town (7880)			
		vote	share
<b>Angel A. Ms.</b>	Con	1,843	46.6
Skilton M.*	LD	1,590	40.2
Gross C.	Green	416	10.5
Sedgewick H. Ms.	Lab	109	2.8
<b>Turnout</b>		50.5	6.4

Ratton (7567)			
		vote	share
<b>Belsey C.*</b>	Con	2,091	59.6
Staker B.	LD	1,035	29.5
Moore K.	Green	225	6.4
Ring N. Ms.	Lab	160	4.6
<b>Turnout</b>		46.6	30.1

Sovereign (7804)			
		vote	share
<b>Bowker P.*</b>	Con	1,597	56.7
Salsbury M. Ms.	LD	914	32.4
McCarthy J. Ms.	Green	181	6.4
Mieres D.	Lab	125	4.4
<b>Turnout</b>		36.2	24.2

St. Antonys (8055)			
		vote	share
<b>Tutt D.*</b>	LD	1,913	59.9
Moles T. Ms.	Con	962	30.1
Norris H.	Green	204	6.4
Wentworth S. Ms.	Lab	116	3.6
<b>Turnout</b>		39.8	29.8

Upperton (7451)			
		vote	share
<b>Marsden G.*</b>	Con	1,661	54.1
Rodohan P.	LD	1,011	32.9
Birchwood C. Ms.	Green	261	8.5
Goude E. Ms.	Lab	138	4.5
<b>Turnout</b>		41.3	21.2

## Eastbourne - 2007

Devonshire (7664) <sup>3</sup>			
		vote	share
<b>Bannister M. Ms.*</b>	LD	1,598	57.6
<b>Stanley N.*</b>	LD	1,442	-
<b>Wallis S.*</b>	LD	1,395	-
Lau C. Ms.	Con	632	22.8
Elkin S. Ms.	Con	619	-
Giorgi M.	Con	569	-
Payne S.	Green	229	8.2
Vonderdell Z. Ms.	Green	224	-
Gell K.	Lab	160	5.8
Richardson L.	UKIP	157	5.7
Goude R.	Lab	155	-
<b>Turnout</b>		34.5	34.8

Hampden Park (7243) <sup>3</sup>			
		vote	share
<b>Pooley M. Ms.*</b>	LD	1,338	56.3
<b>Woodall O. Ms.*</b>	LD	1,277	-
<b>Thompson M.*</b>	LD	1,138	-
Brenchley C.	Con	555	23.4
Bailey B.	Con	499	-
Skriczka M. Ms.	Con	417	-
Ring A. Ms.	Lab	274	11.5
Brinson D.	Lab	230	-
Dalton L.	Green	208	8.8
Salmon D.	Lab	197	-
O'Shea F.	Green	181	-
Huetting I.	Green	164	-
<b>Turnout</b>		32.0	33.0

Langney (7551) <sup>3</sup>			
		vote	share
<b>Miah H.</b>	LD	1,453	53.2
<b>Tester T.*</b>	LD	1,333	-
<b>Purchase D.</b>	LD	1,310	-
Freebody T.	Con	912	33.4
Maddison-White M.	Con	826	-
Stanbury J.	Con	806	-
Quarrington C.	Green	192	7.0
Akers C.	Lab	174	6.4
Erridge A. Ms.	Green	163	-
<b>Turnout</b>		34.0	19.8

Meads (7841) <sup>3</sup>			
		vote	share
<b>Taylor B.*</b>	Con	2,407	63.1
<b>Elkin D.*</b>	Con	2,387	-
<b>Goodyear N.</b>	Con	2,329	-
Ticehurst M. Ms.	LD	729	19.1
Fisher J. Ms.	LD	692	-
Creaven B.	LD	681	-
Arnold K. Ms.	Green	457	12.0
Boys H.	Green	375	-
Forsyth D. Ms.	Green	299	-
Scard D.	Lab	220	5.8
<b>Turnout</b>		47.9	44.0

Old Town (8127) <sup>3</sup>			
		vote	share
<b>Heaps C. Ms.</b>	LD	2,202	42.7
<b>Goodwin A.</b>	LD	2,007	-
<b>Szanto G.</b>	LD	1,939	-
Angel A. Ms.	Con	1,890	36.7
Lucas I.*	Con	1,772	-
Herbert S.*	Con	1,667	-
Gross C.	Green	681	13.2
Chambers A. Ms.	UKIP	191	3.7
Cottrell A. Ms.	Lab	190	3.7
<b>Turnout</b>		54.8	6.1

Ratton (7707) <sup>3</sup>			
		vote	share
<b>Belsey C.*</b>	Con	2,076	51.5
<b>Goodall B. Ms.*</b>	Con	1,970	-
<b>Howlett S. Ms.*</b>	Con	1,920	-
Hearn P. Ms.	LD	1,184	29.4
Moore J.	LD	1,128	-
Staker B.	LD	1,023	-
Dalton N. Ms.	Green	332	8.2
Alderton K.	UKIP	270	6.7
Moore K.	Green	240	-
Nolan J.	Lab	172	4.3
<b>Turnout</b>		48.3	22.1

Sovereign (8469) <sup>3</sup>			
		vote	share
<b>Morris S. Ms.</b>	LD	1,762	49.9
<b>Bloom M.</b>	LD	1,756	-
<b>Salsbury M. Ms.</b>	LD	1,692	-
Warner P.*	Con	1,379	39.1
Moles T. Ms.	Con	1,298	-
Williams C.*	Con	1,294	-
McCarthy J. Ms.	Green	269	7.6
Mieres D.	Lab	121	3.4
<b>Turnout</b>		39.0	10.8

St. Antonys (8285) <sup>3</sup>			
		vote	share
<b>Tutt D.*</b>	LD	2,344	67.4
<b>Harris J.*</b>	LD	2,242	-
<b>Mattock G. Ms.</b>	LD	2,193	-
Challen J. Ms.	Con	766	22.0
Stoddart T.	Con	735	-
Steinberg S. Ms.	Con	710	-
Norris H.	Green	199	5.7
Culshaw I.	Lab	170	4.9
Sier R.	Green	156	-
<b>Turnout</b>		41.3	45.4

Upperton (7679) <sup>3</sup>			
		vote	share
<b>Hough A. Ms.</b>	LD	1,610	43.3
<b>Madell R. Ms.</b>	LD	1,573	-
<b>Marsden G.*</b>	Con	1,557	41.9
Lacey R.*	Con	1,534	-
Rodohan P.	LD	1,530	-
Murray A. Ms.*	Con	1,449	-
Lewis S. Ms.	Green	253	6.8
Stephens L.	Green	224	-
Goude E. Ms.	Lab	149	4.0
Mackillop G. Ms.	UKIP	146	3.9
Murden P.	UKIP	145	-
<b>Turnout</b>		46.3	1.4

## Eastbourne - 2011

Devonshire (8473) <sup>3</sup>			
		vote	share
<b>Bannister M. Ms.*</b>	LD	1,529	49.8
<b>Stanley N.*</b>	LD	1,304	-
<b>Wallis S.*</b>	LD	1,273	-
Parker M. Ms.	Con	672	21.9
Elkin S. Ms.	Con	666	-
Sanders G.	Con	580	-
Clark S.	Lab	412	13.4
Goude R.	Lab	345	-
Winstone J. Ms.	Lab	337	-
Wintle L. Ms.	Green	295	9.6
Paethorpe B.	Green	256	-
Gell K.	Ind	160	5.2
<b>Turnout</b>		34.5	27.9

Hampden Park (7181) <sup>3</sup>			
		vote	share
<b>Hearn P. Ms.</b>	LD	1,394	49.6
<b>Murray J.</b>	LD	1,266	-
<b>Thompson M.*</b>	LD	1,225	-
Ansell C. Ms.	Con	692	24.6
Glover K. Ms.	Con	672	-
Chapman S. Ms.	Con	643	-
Brinson D.	Lab	470	16.7
Lambert J.	Lab	418	-
Stonestreet G.	Lab	344	-
Dalton L.	Green	255	9.1
Huetting I.	Green	220	-
Sier R.	Green	166	-
<b>Turnout</b>		40.1	25.0

Langney (7900) <sup>3</sup>			
		vote	share
<b>Shuttleworth A.</b>	LD	1,434	53.0
<b>Miah H.*</b>	LD	1,328	-
<b>Tester T.*</b>	LD	1,282	-
Freebody T.	Con	726	26.8
Glover J.	Con	720	-
Jenkins J. Ms.	Con	705	-
Comfort L.	Lab	278	10.3
Quarrington C. Ms.	Green	270	10.0
Meekings S.	Lab	258	-
Noble R.	Lab	218	-
<b>Turnout</b>		34.4	26.1

Meads (7977) <sup>3</sup>			
		vote	share
<b>Taylor B.*</b>	Con	2,239	52.5
<b>Elkin D.*</b>	Con	2,232	-
<b>Goodyear N.*</b>	Con	2,126	-
Banner T.	LD	797	18.7
Fisher J. Ms.	LD	766	-
Ticehurst M. Ms.	LD	734	-
Boys H.	Green	414	9.7
Couture J. Ms.	Lab	411	9.6
Cameron I.	UKIP	404	9.5
Scard D.	Lab	373	-
Forsyth D. Ms.	Green	361	-
Jaffer M.	Lab	349	-
<b>Turnout</b>		51.4	33.8

**Old Town (8355)<sup>3</sup>**

		<b>vote</b>	<b>share</b>
<b>Heaps C. Ms.*</b>	LD	2,432	46.7
<b>Coles J. Ms.</b>	LD	1,934	-
<b>Ungar J.</b>	LD	1,738	-
Angel A. Ms.	Con	1,726	33.1
De Havilland-Geraghty V.	Con	1,350	-
Perry D. Ms.	Con	1,193	-
Oliphant P. Ms.	Green	631	12.1
Key H. Ms.	Lab	418	8.0
Richards P.	Lab	374	-
Richards S. Ms.	Lab	340	-
<b>Turnout</b>		53.4	13.6

**Ratton (7789)<sup>3</sup>**

		<b>vote</b>	<b>share</b>
<b>Belsey C.*</b>	Con	2,357	54.2
<b>Howlett S. Ms.*</b>	Con	2,076	-
<b>Murdoch C.</b>	Con	1,991	-
Beckmann L. Ms.	LD	999	23.0
Howarth R.	LD	984	-
Rodohan B. Ms.	LD	908	-
Dalton N. Ms.	Green	523	12.0
Hall C.	Lab	471	10.8
Nolan J.	Lab	394	-
Sedgwick H. Ms.	Lab	360	-
<b>Turnout</b>		53.1	31.2

**Sovereign (8985)<sup>3</sup>**

		<b>vote</b>	<b>share</b>
<b>Ede P.</b>	Con	1,904	48.3
<b>Warner P.</b>	Con	1,767	-
<b>Jenkins G.</b>	Con	1,745	-
Salsbury M. Ms.*	LD	1,193	30.2
Holt S.	LD	1,169	-
Loseby G. Ms.	LD	1,106	-
McCarthy J. Ms.	Green	488	12.4
Wentworth S. Ms.	Lab	359	9.1
<b>Turnout</b>		40.6	18.0

**St. Anthonys (8315)<sup>3</sup>**

		<b>vote</b>	<b>share</b>
<b>Tutt D.*</b>	LD	2,169	58.9
<b>Harris J.*</b>	LD	1,929	-
<b>Mattock G. Ms.*</b>	LD	1,913	-
Ansell N.	Con	846	23.0
Herbert S.	Con	759	-
Borland R.	Con	752	-
Ferguson J. Ms.	Lab	383	10.4
Salmon D.	Lab	348	-
Culshaw I.	Lab	332	-
Norris H.	Green	287	7.8
<b>Turnout</b>		43.8	35.9

**Upperton (8119)<sup>3</sup>**

		<b>vote</b>	<b>share</b>
<b>Liddiard T.</b>	Con	1,731	44.8
<b>West A. Ms.</b>	Con	1,707	-
<b>Cooke A.</b>	Con	1,694	-
Hough A. Ms.*	LD	1,394	36.1
Rodohan P.	LD	1,378	-
Lewis H. Ms.	LD	1,324	-
Webb K.	Green	427	11.0
Barr M. Ms.	Lab	313	8.1
Davies L. Ms.	Lab	305	-
Goude E. Ms.	Lab	304	-
<b>Turnout</b>		46.4	8.7



