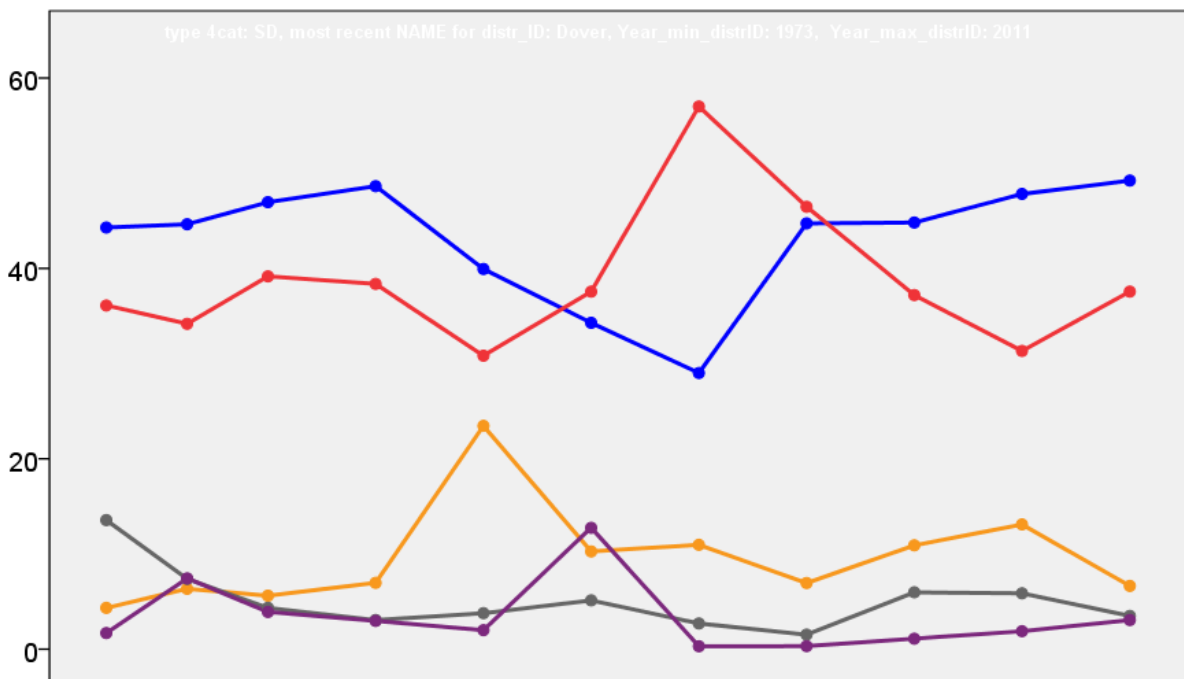


# Dover District Council Election Results 1973-2011



Colin Rallings and Michael Thrasher  
The Elections Centre  
Plymouth University

The information contained in this report has been obtained from a number of sources. Election results from the immediate post-reorganisation period were painstakingly collected by Alan Willis largely, although not exclusively, from local newspaper reports. From the mid-1980s onwards the results have been obtained from each local authority by the Elections Centre. The data are stored in a database designed by Lawrence Ware and maintained by Brian Cheal and others at Plymouth University. Despite our best efforts some information remains elusive whilst we accept that some errors are likely to remain. Notice of any mistakes should be sent to [elections@plymouth.ac.uk](mailto:elections@plymouth.ac.uk). The results sequence can be kept up to date by purchasing copies of the annual Local Elections Handbook, details of which can be obtained by contacting the email address above.

Front cover: the graph shows the distribution of percentage vote shares over the period covered by the results. The lines reflect the colours traditionally used by the three main parties. The grey line is the share obtained by Independent candidates while the purple line groups together the vote shares for all other parties.

Rear cover: the top graph shows the percentage share of council seats for the main parties as well as those won by Independents and other parties. The lines take account of any by-election changes (but not those resulting from elected councillors switching party allegiance) as well as the transfers of seats during the main round of local election.

The lower graph shows for each main round of local elections the overall percentage turnout (solid line), the percentage of women candidates standing at (dotted line) and the percentage of women among those elected (hashed line).

## Dover - 1973

### Ash (2015)<sup>2</sup>

		vote	share
Laslett R.	Con	0	0.0
Chandler R.	Ind	0	0.0
Turnout		0.0	0.0

### Aylesham (2754)<sup>2</sup>

		vote	share
Moffat J.	Lab	852	69.8
Hill E.	Lab	843	-
Jack D.	Ind	246	20.1
Carline D.	Con	123	10.1
Payne J.	Con	52	-
Turnout		44.3	49.6

### Barton (3322)<sup>2</sup>

		vote	share
Bean P.	Con	952	60.6
Kemp B.	Con	861	-
Sansum D.	Lab	619	39.4
Thornton H.	Lab	558	-
Turnout		47.3	21.2

### Capel-Le-Ferne (2050)<sup>2</sup>

		vote	share
Ricketts H.	Con	564	62.9
Eley E.	Con	488	-
Souton C.	Ind	333	37.1
Turnout		43.8	25.8

### Cornilo (1434)

		vote	share
Williams J.	Con	594	71.2
Brailsford C. Ms.	Lab	240	28.8
Turnout		58.2	42.4

### Eastry (1628)

		vote	share
Miller D. Ms.	Con	377	56.2
Mollart L. Ms.	Ind	294	43.8
Turnout		41.2	12.4

### Eythorne (1021)

		vote	share
Speed B.	Lab	554	67.2
Jones D.	Con	271	32.8
Turnout		80.8	34.3

### Little Stour (1841)

		vote	share
Cave H.	Con	602	85.1
Pettman G.	Comm	105	14.9
Turnout		38.4	70.3

### Lydden & Temple Ewell (1722)

		vote	share
Sinnatt J.	Con	502	62.4
Burkimsher J. Ms.	Ind	303	37.6
Turnout		46.7	24.7

### Middle Deal (4781)<sup>3</sup>

		vote	share
Spears S.	Lab	1,243	54.2
Kilbery I.	Lab	1,185	-
Anderson D.	Lab	1,159	-
Ferris E.	Con	1,050	45.8
Yates-Mercer D.	Con	997	-
Vidler J. Ms.	Con	997	-
Turnout		48.0	8.4

### No. 10 (Dover: Town & Pier) (2738)<sup>2</sup>

		vote	share
Watson J.	Lab	542	46.5
Thompson J.	Lab	541	-
Frayne R.	Con	374	32.1
Banger C. Ms.	Con	361	-
Stone W.	Ind	249	21.4
Ullmann J.	Ind	92	-
Turnout		42.5	14.4

### No. 3 (Deal: South) (5343)<sup>4</sup>

		vote	share
Wilson-Haffendon S.	Con	0	0.0
Elliott B.	Con	0	-
Cavell A.	Con	0	-
Greenway A.	Con	0	-
Turnout		0.0	0.0

### No. 4 (Deal: West) (5119)<sup>4</sup>

		vote	share
Bell J.	Lab	1,599	77.2
Harrison T.	Lab	1,536	-
Leach J.	Lab	1,489	-
Southey R.	Lab	1,484	-
Bain D.	Con	471	-
Brown G.	Con	471	22.8
Kennedy M.	Con	440	-
Kiggin S. Ms.	Con	438	-
Turnout		40.4	54.5

### No. 5 (Dover: River) (8183)<sup>6</sup>

		vote	share
Ruck G.	Lab	1,750	39.6
Mee P.	Lab	1,726	-
Sims C.	Lab	1,718	-
Bushell J.	Lab	1,654	-
Ridgway B.	Lab	1,577	-
Tant B.	Lab	1,488	-
Parkinson B.	Lib	1,380	31.3
Buss P.	Con	1,285	29.1
McCracken R.	Con	1,190	-
Terry C. Ms.	Con	1,111	-
Spear C. Ms.	Con	1,088	-
Westmorland L.	Con	1,004	-
Davies I. Ms.	Con	927	-
Turnout		54.0	8.4

### No. 6 (Dover: Hougham) (5454)<sup>4</sup>

		vote	share
Dennard J.	Con	1,395	51.9
Newman R.	Lab	1,291	48.1
Farrell M.	Con	1,270	-
Smith S.	Con	1,254	-
Norley R.	Con	1,241	-
Shirley A.	Lab	1,137	-
Beal C.	Lab	1,107	-
Gardner R.	Lab	1,089	-
Turnout		49.2	3.9

### No. 7 (Dover: St. Barts) (2942)<sup>2</sup>

		vote	share
Goodfellow K. Ms.	Lab	704	65.1
Hart M. Ms.	Lab	693	-
McCracken A.	Con	377	34.9
Wakefield R.	Con	324	-
Turnout		36.7	30.2

### No. 8 (Dover: Castle) (2586)<sup>2</sup>

		vote	share
Morison H.	Con	707	67.8
Aslett G.	Con	683	-
Overton D.	Ind Con	336	32.2
Turnout		40.3	35.6

### Noninstone (1021)

		vote	share
Styles B.	Ind	316	71.3
Slingsby N.	Lab	127	28.7
Turnout		43.4	42.7

### North Deal (4475)<sup>3</sup>

		vote	share
Eckersley F.	Con	890	53.7
Whiteside R.	Con	857	-
Matveieff M. Ms.	Con	855	-
Young R.	Lab	768	46.3
Hood J.	Lab	752	-
Clarke E. Ms.	Lab	720	-
Turnout		37.1	7.4

### Pineham (2794)<sup>2</sup>

		vote	share
Thomas K.	Ind	580	57.2
Spencer B. Ms.	Con	434	42.8
Cooper M.	Ind	361	-
Hackford G.	Con	271	-
Sears K. Ms.	Ind	128	-
Turnout		36.3	14.4

### Ringwould (1359)

		vote	share
Payne G. Ms.	Con	433	69.6
Gildert F.	Ind Lab	98	15.8
Morris D.	Ind	91	14.6
Turnout		45.8	53.9

### Sandwich (3483)<sup>3</sup>

		vote	share
Chesterfield R.	Con	1,041	40.9
Simmonds E.	Con	852	-
Du Boulay J. Ms.	Ind	764	30.0
Leith P. Ms.	Lab	740	29.1
Castle B.	Con	718	-
Leith F.	Lab	609	-
Skeer J.	Lab	430	-
Turnout		73.1	10.9

### Shepherdswell With Coldred (1501)

		vote	share
Williamson A. Ms.	Con	517	63.8
Richards E.	Lab	180	22.2
Wood H.	Ind	113	14.0
Turnout		54.0	41.6

### St. Margarets- At-Cliffe (2264)<sup>2</sup>

		vote	share
Melhuish R.	Con	786	61.9
Chapman A.	Con	655	-
Scott W.	Ind	256	20.2
Beynon H. Ms.	Lab	228	18.0
Letts R.	Lab	194	-
Turnout		56.1	41.7

### Woodnesborough With Staple (1080)

		vote	share
Maggs R.	Ind	361	86.4
Blackman W.	Lab	57	13.6
Turnout		38.7	72.7

### Worth (1145)

		vote	share
Davis D.	Con	355	55.8
Fever H.	Ind	281	44.2
Turnout		55.5	11.6

## Dover - 1976

### Ash (2067)<sup>2</sup>

		vote	share
Fox A. Ms.	Con	0	0.0
Henderson C.	Ind Con	0	0.0
Turnout		0.0	0.0

### Aylesham (2815)<sup>2</sup>

		vote	share
Morgan W.	Lab	840	62.2
Moffat J.	Lab	693	-
Hill E.	Ind	511	37.8
Turnout		42.6	24.4

Barton (3236) <sup>2</sup>			
		vote	share
Bean P.	Con	913	48.7
Kemp H.	Con	689	-
Sansum D.	Lab	483	25.8
Thornton H.	Lab	404	-
Overton F.	Rate	344	18.4
Saxby J.	Ind Rate	133	7.1
Saxby J.	Ind Rate	121	7.1
Turnout		50.9	23.0

Capel-Le-Ferne (2127) <sup>2</sup>			
		vote	share
Ricketts H.	Con	859	79.0
Eley E.	Con	745	-
Abbott C.	Lab	228	21.0
Turnout		50.2	58.0

Cornilo (1426)			
		vote	share
Williams J.	Con	0	0.0
Turnout		0.0	0.0

Eastry (1607)			
		vote	share
Miller A. Ms.	Con	0	0.0
Turnout		0.0	0.0

Eythorne (1628)			
		vote	share
Speed B.	Lab	472	53.7
Wood H.	Ind	213	24.2
Symons B. Ms.	Con	194	22.1
Turnout		54.0	29.5

Little Stour (1806)			
		vote	share
Cave H.	Con	582	62.6
Larkins H.	Ind	209	22.5
Slingsby N.	Lab	88	9.5
Pettman G.	Comm	51	5.5
Turnout		54.3	40.1

Lydden & Temple Ewell (1683)			
		vote	share
Sinnatt J.	Con	613	67.7
Monk J. Ms.	Lab	292	32.3
Turnout		53.5	35.5

Middle Deal (4740) <sup>3</sup>			
		vote	share
Spears S.	Lab	1,178	37.6
Reid D.	Con	1,059	33.8
Killbery I.	Lab	1,019	-
Hare B.	Con	1,014	-
Young R.	Lab	997	-
Sayer D.	Con	968	-
Whiting K.	Res	482	15.4
Ratcliffe G.	Lib	410	13.1
Brown G.	Lib	293	-
Ambler M.	Lib	267	-
Turnout		57.6	3.8

No. 10 (Dover: Town & Pier) (2549) <sup>2</sup>			
		vote	share
Watson J.	Lab	642	57.1
Hood G.	Lab	617	-
Williams B.	Con	483	42.9
Roberts I.	Con	478	-
Turnout		47.5	14.1

No. 3 (Deal: South) (5393) <sup>4</sup>			
		vote	share
Wilson-Haffenden P.	Con	1,622	60.8
Purnell A. Ms.	Con	1,587	-
Cavell A.	Con	1,550	-
Thomas A. Ms.	Lab	587	22.0
Thomas P.	Lab	557	-
Thomas L.	Lib	460	17.2
Pugh D.	Lib	455	-
Sargent N.	Lib	382	-
Turnout		47.5	38.8

No. 4 (Deal: West) (5353) <sup>4</sup>			
		vote	share
Leach J.	Lab	1,603	72.0
Lennon J.	Lab	1,570	-
Towe R.	Lab	1,542	-
Runcie J.	Lab	1,521	-
Chidgey A. Ms.	Con	624	28.0
Chadwick E.	Con	599	-
Sharpe D. Ms.	Con	595	-
Hallett H.	Con	563	-
Turnout		44.6	44.0

No. 5 (Dover: River) (8766) <sup>6</sup>			
		vote	share
Ruck G.	Lab	1,730	39.5
Mee P.	Lab	1,632	-
Hadden E. Ms.	Lab	1,597	-
Buss P.	Con	1,594	36.4
Evans R.	Con	1,551	-
Clayton D.	Con	1,544	-
Bushell J.	Lab	1,491	-
Kennedy M.	Con	1,461	-
Tant R.	Lab	1,431	-
Sheldrake A. Ms.	Lab	1,431	-
Spear C. Ms.	Con	1,356	-
Westmoreland L.	Con	1,228	-
Parkinson J.	Lib	1,060	24.2
King P.	Lib	718	-
Turnout		43.1	3.1

No. 6 (Dover: Hougham) (5313) <sup>4</sup>			
		vote	share
Dennard H.	Con	1,493	57.7
Aslett G.	Con	1,360	-
Farrell M.	Con	1,319	-
Norley R.	Con	1,222	-
Newman R.	Lab	1,094	42.3
Beal C.	Lab	1,010	-
Gardner N. Ms.	Lab	978	-
Runcie A.	Lab	874	-
Turnout		50.0	15.4

No. 7 (Dover: St. Barts) (2883) <sup>2</sup>			
		vote	share
Hart M. Ms.	Lab	636	62.4
Goodfellow K. Ms.	Lab	636	-
Davies G.	Con	384	37.6
Lawrence J.	Con	339	-
Turnout		41.6	24.7

No. 8 (Dover: Castle) (2565) <sup>2</sup>			
		vote	share
Morison H.	Con	747	59.6
Coombe N.	Con	644	-
Overton D.	Res	507	40.4
Turnout		44.6	19.1

Noninstone (1022)			
		vote	share
Styles B.	Con	434	71.1
Richardson R.	Lab	176	28.9
Turnout		59.7	42.3

North Deal (4341) <sup>3</sup>			
		vote	share
Ferris E.	Con	1,270	51.4
Matvieff M. Ms.	Con	1,011	-
Whiteside R.	Con	979	-
Michael S.	Lab	690	27.9
Porter B.	Lab	627	-
Bradford D.	Lab	616	-
Osborn I.	Res	509	20.6
Turnout		47.4	23.5

Pineham (3100) <sup>2</sup>			
		vote	share
Spencer B. Ms.	Con	724	38.0
Thomas A.	Ind	562	29.5
Fido C. Ms.	Lab	345	18.1
Bishop G.	Lab	306	-
Lilley W.	Ind Rate	272	14.3
Cooper M.	Ind	203	-
Turnout		44.8	8.5

Ringwould (1451)			
		vote	share
Payne G. Ms.	Con	479	50.8
Calder M. Ms.	Ind Con	464	49.2
Turnout		65.1	1.6

Sandwich (3504) <sup>3</sup>			
		vote	share
Du Boulay J. Ms.	Ind	1,116	41.4
Chesterfield R.	Con	855	31.7
Simmonds E.	Con	737	-
Leith P. Ms.	Lab	727	26.9
Clark R.	Con	401	-
Gibson E. Ms.	Ind	370	-
Shanks D.	Ind	306	-
Turnout		53.0	9.7

Shepherdswell With Coldred (1571)			
		vote	share
Williamson A. Ms.	Con	0	0.0
Turnout		0.0	0.0

St. Margarets- At-Cliffe (2327) <sup>2</sup>			
		vote	share
Robertson W.	Con	847	59.3
Chapman A.	Con	800	-
Purchase G.	Lib	313	21.9
Hay W.	Lab	268	18.8
Hulks C.	Lab	261	-
Meredith D.	Lib	161	-
Turnout		59.8	37.4

Woodnesborough With Staple (1073)			
		vote	share
Cave M.	Con	0	0.0
Turnout		0.0	0.0

Worth (1304)			
		vote	share
Davis D.	Con	0	0.0
Turnout		0.0	0.0

## Dover - 1979

Ash (2085) <sup>2</sup>			
		vote	share
Henderson B.	Con	1,082	73.2
Fox A. Ms.	Con	982	-
Boreham C. Ms.	Lab	397	26.8
Boreham C.	Lab	378	26.8
Turnout		70.9	46.3

Aylesham (2819) <sup>2</sup>			
		vote	share
Garrity D.	Lab	1,965	85.0
Morgan W.	Lab	1,626	-
Jones A.	Con	346	15.0
Turnout		82.0	70.1

Barton (3355) <sup>2</sup>			
		vote	share
Bean P.	Con	1,474	57.8
Kemp B.	Con	1,289	-
Sansum T.	Lab	1,075	42.2
Whatton P.	Lab	992	-
Turnout		76.0	15.7

Buckland (3452) <sup>2</sup>			
		vote	share
Hadden E. Ms.	Lab	1,887	78.0
Mee P.	Lab	1,526	-
Meadows A. Ms.	Con	531	-
Moon J.	Con	531	22.0
Turnout		70.0	56.1

Capel-Le-Ferne (2192) <sup>2</sup>			
		vote	share
Ricketts H.	Con	1,144	74.8
Eley E.	Con	1,060	-
Allen J.	Lab	386	25.2
Ellison M.	Lab	385	-
Turnout		69.8	49.5

Castle (2533) <sup>2</sup>			
		vote	share
Coombe N.	Con	952	46.1
Meek R.	Con	896	-
Overton D.	Ind Con	636	30.8
Howard W.	Lab	478	23.1
Spratling G. Ms.	Lab	382	-
Turnout		81.6	15.3

Cornilo (1427)			
		vote	share
Williams J.	Con	664	59.0
Hill D.	Lab	251	22.3
Harrop D. Ms.	Lib	211	18.7
Turnout		78.9	36.7

Eastry (1736)			
		vote	share
Miller D. Ms.	Con	883	64.0
Richardson D.	Lab	497	36.0
Turnout		79.5	28.0

Eythorne (1688)			
		vote	share
Bishop G.	Lab	889	66.5
Wood H.	Con	447	33.5
Turnout		79.1	33.1

Little Stour (1811)			
		vote	share
Butler R.	Con	564	40.8
Larkins H.	Ind	348	25.2
Kimbell B. Ms.	Ind	260	18.8
Jones K.	Lab	113	8.2
Pettman G.	Comm	97	7.0
Turnout		76.3	15.6

Lower Walmer (3806) <sup>3</sup>			
		vote	share
Wilson-Haffenden P.	Con	1,905	69.8
Cavell A.	Con	1,798	-
Purnell R. Ms.	Con	1,774	-
Cox G.	Lab	824	30.2
Harrison T.	Lab	809	-
Runcie A.	Lab	749	-
Turnout		71.7	39.6

Lydden & Temple Ewell (1704)			
		vote	share
Hubbard D.	Con	941	67.0
Styles R.	Lab	463	33.0
Turnout		82.4	34.0

Maxton & Elms Vale (2873) <sup>2</sup>			
		vote	share
Aslett G.	Con	1,188	48.8
Farrell M.	Con	1,000	-
Lambert R.	Lab	702	28.8
Dye N. Ms.	Lab	627	-
King P.	Lib	544	22.4
Turnout		84.7	20.0

Middle Deal (4792) <sup>3</sup>			
		vote	share
Reid D.	Con	1,881	50.9
Spears S.	Lab	1,811	49.1
Stock B.	Con	1,722	-
Stodart D.	Con	1,664	-
Killbery L.	Lab	1,630	-
Young R.	Lab	1,593	-
Turnout		77.0	1.9

Mill Hill (2727) <sup>2</sup>			
		vote	share
Towe R.	Lab	1,507	69.4
Brailsford C. Ms.	Lab	1,506	-
Cheap D.	Con	663	30.6
Holloboon J.	Con	599	-
Turnout		79.6	38.9

Mongeham (2960) <sup>2</sup>			
		vote	share
Birkett T.	Lab	1,581	67.7
Leach J.	Lab	1,515	-
Sharpe D.	Con	754	32.3
Eyden C.	Con	728	-
Turnout		78.9	35.4

Noninstone (1087)			
		vote	share
Cohen J. Ms.	Lib	409	46.9
Cooper D.	Con	349	40.0
Carr P.	Lab	114	13.1
Turnout		80.2	6.9

North Deal (4249) <sup>3</sup>			
		vote	share
Ferris E.	Con	1,765	48.5
Elliott W.	Con	1,451	-
Whiteside R.	Con	1,321	-
Elliott A. Ms.	Lab	995	27.3
Holmes M.	Lab	989	-
Pinkney D.	Lab	844	-
Greenway-Stanley A.	Ind Con	588	16.2
Spinner J.	Ind	291	8.0
Turnout		85.6	21.2

Pineham (3421) <sup>3</sup>			
		vote	share
Saunders G.	Con	1,605	56.0
Spencer B. Ms.	Con	1,478	-
Monk G.	Con	1,424	-
Neate M. Ms.	Lab	666	23.3
Newman J.	Lab	602	-
Linton B.	Lib	593	20.7
Richards E.	Lab	499	-
Turnout		83.7	32.8

Priory (2793) <sup>2</sup>			
		vote	share
Abbott C.	Lab	894	41.2
Allt G.	Lab	847	-
Mitchell T.	Con	783	36.1
Lawrence J.	Con	738	-
Overton F.	Ind	494	22.8
Turnout		77.7	5.1

Ringwold (1530)			
		vote	share
Joy D.	Con	1,024	84.5
Jones M.	Lab	188	15.5
Turnout		79.2	69.0

River (2912) <sup>2</sup>			
		vote	share
Clayton D.	Con	1,224	47.9
Buss P.	Con	1,094	-
Parkinson B.	Lib	945	37.0
Nicholas S. Ms.	Lib	704	-
Bushall J.	Lab	386	15.1
Butler G.	Lab	267	-
Turnout		87.7	10.9

Sandwich (3481) <sup>3</sup>			
		vote	share
Chesterfield R.	Con	1,312	30.6
Du Boulay J. Ms.	Ind	1,241	29.0
Leith P. Ms.	Lab	1,067	24.9
Sneller H.	Con	1,057	-
Simmonds E.	Con	909	-
Jones G.	Ind Con	662	15.5
Goodwin J.	Lab	575	-
Gregory J.	Lab	503	-
Wilson P.	Ind Con	163	-
Turnout		123.0	1.7

Shepherdswell With Coldred (1579)			
		vote	share
Williamson A. Ms.	Con	780	61.9
Thatcher S. Ms.	Lab	286	22.7
Potter M.	Lib	195	15.5
Turnout		79.9	39.2

St. Margarets- At-Cliffe (2301) <sup>2</sup>			
		vote	share
Robertson W.	Con	1,169	54.7
Walker C. Ms.	Con	1,055	-
King G.	Lib	517	24.2
Hay W.	Lab	453	21.2
Thornton H.	Lab	275	-
Turnout		93.0	30.5

St. Radigunds (2403) <sup>2</sup>			
		vote	share
Ruck G.	Lab	1,105	63.1
Tant B.	Lab	986	-
Evans B.	Con	647	36.9
Terry C. Ms.	Con	589	-
Turnout		72.9	26.1

Tower Hamlets (2966) <sup>2</sup>			
		vote	share
Goodfellow K.	Lab	1,255	64.9
Hart M. Ms.	Lab	1,187	-
Gledhill D.	Con	680	35.1
Mills T.	Con	672	-
Turnout		65.2	29.7

Town & Pier (2004) <sup>2</sup>			
		vote	share
Hood J. Ms.	Lab	896	61.2
Watson J.	Lab	863	-
Hanson D. Ms.	Con	569	38.8
Williams B.	Con	558	-
Turnout		73.1	22.3

Upper Walmer (1721)			
		vote	share
Payne G. Ms.	Con	484	39.4
Meadows R.	Ind Con	393	32.0
Gore D.	Lab	351	28.6
Turnout		71.4	7.4

Woodnesborough With Staple (1089)			
		vote	share
Cave M.	Con	0	0.0
Turnout		0.0	0.0

Worth (1302)			
		vote	share
Davis D.	Con	708	69.9
Garside J.	Lab	305	30.1
Turnout		77.8	39.8

## Dover - 1983

Ash (2161) <sup>2</sup>			
		vote	share
Henderson B.	Con	515	50.1
Fox A. Ms.	Con	461	-
Foat G.	Lib/SDP	364	35.4
Holmes J.	Lab	103	10.0
Samson R.	Lab	82	-
Arnall V.	Ecol	46	4.5
Turnout		47.6	14.7

Aylesham (2841) <sup>2</sup>			
		vote	share
Garrity D.	Lab	1,208	88.4
Wilson P.	Lab	1,098	-
Bew J.	Con	158	11.6
Turnout		48.1	76.9

<b>Barton (3332)<sup>2</sup></b>			
		<b>vote</b>	<b>share</b>
<b>Gledhill D.</b>	Con	923	59.0
<b>Williams B.</b>	Con	910	-
Bean G.	Lab	641	41.0
Dolbear H.	Lab	592	-
<b>Turnout</b>		<b>46.9</b>	<b>18.0</b>
<b>Buckland (3582)<sup>2</sup></b>			
		<b>vote</b>	<b>share</b>
<b>Hadden E. Ms.</b>	Lab	1,039	76.5
<b>Beeby W.</b>	Lab	980	-
Gledhill S. Ms.	Con	320	23.5
<b>Turnout</b>		<b>37.9</b>	<b>52.9</b>
<b>Capel-Le-Ferne (2222)<sup>2</sup></b>			
		<b>vote</b>	<b>share</b>
<b>Tyler G.</b>	Con	681	77.6
<b>Eley E.</b>	Con	665	-
Johnson R.	Lab	197	22.4
Baldwin J.	Lab	184	-
<b>Turnout</b>		<b>39.5</b>	<b>55.1</b>
<b>Castle (2513)<sup>2</sup></b>			
		<b>vote</b>	<b>share</b>
<b>Miller R.</b>	Con	673	49.7
<b>Davis D.</b>	Con	498	-
Overton D.	Ind Con	442	32.6
Beeby S. Ms.	Lab	239	17.7
Shillito M. Ms.	Lab	237	-
<b>Turnout</b>		<b>53.9</b>	<b>17.1</b>
<b>Cornilo (1428)</b>			
		<b>vote</b>	<b>share</b>
<b>Johnstone A.</b>	Con	444	59.3
Howard W.	Lab	305	40.7
<b>Turnout</b>		<b>52.5</b>	<b>18.6</b>
<b>Eastry (1842)</b>			
		<b>vote</b>	<b>share</b>
<b>Thompson F.</b>	Con	490	64.7
Richardson D.	Lab	267	35.3
<b>Turnout</b>		<b>41.1</b>	<b>29.5</b>
<b>Eythorne (1788)</b>			
		<b>vote</b>	<b>share</b>
<b>Sansum T.</b>	Lab	603	64.1
Wood H.	Con	337	35.9
<b>Turnout</b>		<b>52.6</b>	<b>28.3</b>
<b>Little Stour (1838)</b>			
		<b>vote</b>	<b>share</b>
<b>Sumner J.</b>	Con	581	64.0
Pettman G.	Comm	140	15.4
Carr P.	Lab	119	13.1
Arnall W. Ms.	Ecol	68	7.5
<b>Turnout</b>		<b>49.4</b>	<b>48.6</b>
<b>Lower Walmer (4016)<sup>3</sup></b>			
		<b>vote</b>	<b>share</b>
<b>Purnell R. Ms.</b>	Con	1,205	57.5
<b>Watkins P.</b>	Con	1,172	-
<b>Isaacson J.</b>	Con	1,123	-
Cox G.	Lab	449	21.4
Brace D. Ms.	Lab	445	-
Somerville J.	Lab	421	-
Bennett J. Ms.	Lib/SDP	357	17.0
Bolger M. Ms.	Ecol	83	4.0
<b>Turnout</b>		<b>52.1</b>	<b>36.1</b>
<b>Lydden &amp; Temple Ewell (1710)</b>			
		<b>vote</b>	<b>share</b>
<b>Hubbard H.</b>	Con	680	77.9
Brivo D.	Lab	193	22.1
<b>Turnout</b>		<b>51.1</b>	<b>55.8</b>

<b>Maxton &amp; Elms Vale (2850)<sup>2</sup></b>			
		<b>vote</b>	<b>share</b>
<b>Farrell M.</b>	Con	807	46.1
<b>Norley R.</b>	Con	674	-
King P.	Lib/SDP	540	30.8
McGregor M. Ms.	Lab	404	23.1
Caldwell A. Ms.	Lab	378	-
<b>Turnout</b>		<b>61.4</b>	<b>15.2</b>
<b>Middle Deal (4858)<sup>3</sup></b>			
		<b>vote</b>	<b>share</b>
<b>Reid D.</b>	Con	1,187	44.3
<b>Killbery I.</b>	Lab	1,116	41.7
<b>Sargent N.</b>	Con	1,102	-
James P.	Con	1,093	-
Borham C.	Lab	1,070	-
Gore D.	Lab	1,016	-
Stilwell L.	Lib/SDP	374	14.0
<b>Turnout</b>		<b>55.1</b>	<b>2.7</b>
<b>Mill Hill (2808)<sup>2</sup></b>			
		<b>vote</b>	<b>share</b>
<b>Towe R.</b>	Lab	1,103	74.5
<b>Brailsford C. Ms.</b>	Lab	1,065	-
Holloboon J.	Con	288	19.4
Tyler C. Ms.	Ecol	90	6.1
<b>Turnout</b>		<b>52.7</b>	<b>55.0</b>
<b>Mongeham (3048)<sup>2</sup></b>			
		<b>vote</b>	<b>share</b>
<b>Birkett T.</b>	Lab	1,092	68.2
<b>Moyle J.</b>	Lab	1,026	-
Cheap D.	Con	509	31.8
De Bourbel E. Ms.	Con	442	-
<b>Turnout</b>		<b>52.5</b>	<b>36.4</b>
<b>Noninstone (1066)</b>			
		<b>vote</b>	<b>share</b>
<b>Wiskar J. Ms.</b>	Con	391	63.9
Groues J.	Lab	145	23.7
Potter M.	Ecol	76	12.4
<b>Turnout</b>		<b>57.4</b>	<b>40.2</b>
<b>North Deal (4338)<sup>3</sup></b>			
		<b>vote</b>	<b>share</b>
<b>Ferris E.</b>	Con	1,114	54.6
<b>Elliott W.</b>	Con	1,103	-
<b>Whiteside R.</b>	Con	1,000	-
Elliott A. Ms.	Lab	753	36.9
Goodwin L.	Lab	645	-
Checksfield S. Ms.	Lab	609	-
Tyler J.	Ecol	110	5.4
Frost R.	Anti B Spt &	63	3.1
<b>Turnout</b>		<b>47.0</b>	<b>17.7</b>
<b>Pineham (3922)<sup>3</sup></b>			
		<b>vote</b>	<b>share</b>
<b>Monk G.</b>	Con	869	70.4
<b>Saunders G.</b>	Con	858	-
<b>Spencer B. Ms.</b>	Con	850	-
Akers R.	Lab	365	29.6
Watts P. Ms.	Lab	324	-
Winwright I. Ms.	Lab	292	-
<b>Turnout</b>		<b>31.5</b>	<b>40.8</b>
<b>Priory (2771)<sup>2</sup></b>			
		<b>vote</b>	<b>share</b>
<b>Truelove J.</b>	Con	582	42.5
<b>Abbott C.</b>	Lab	579	42.3
Whitfield E. Ms.	Lab	566	-
Evans B.	Con	558	-
Sugden A.	Lib/SDP	207	15.1
<b>Turnout</b>		<b>49.4</b>	<b>0.2</b>
<b>Ringwold (1563)</b>			
		<b>vote</b>	<b>share</b>
<b>Joy D.</b>	Con	648	76.9
Vaughan R.	Lab	98	11.6
Summercorn S. Ms.	Ind	61	7.2
Tuckett M. Ms.	Ecol	36	4.3
<b>Turnout</b>		<b>53.9</b>	<b>65.2</b>

<b>River (3022)<sup>2</sup></b>			
		<b>vote</b>	<b>share</b>
<b>Buss P.</b>	Con	873	42.4
<b>Kennedy S.</b>	Con	869	-
Dale G.	Lib/SDP	476	23.1
Mee P.	Ind	461	22.4
Ruck G.	Lab	251	12.2
Styles R.	Lab	175	-
<b>Turnout</b>		<b>68.2</b>	<b>19.3</b>
<b>Sandwich (3489)<sup>3</sup></b>			
		<b>vote</b>	<b>share</b>
<b>Chesterfield R.</b>	Con	963	37.7
<b>Sneller H.</b>	Con	877	-
<b>Simmonds E.</b>	Con	703	-
Du Boulay J. Ms.	Ind	679	26.6
Leith P. Ms.	Lab	642	25.1
Clark R.	Lib/SDP	271	10.6
Sparnon T.	Lab	268	-
Birkett J. Ms.	Lab	240	-
<b>Turnout</b>		<b>73.2</b>	<b>11.1</b>
<b>Shepherdswell With Coldred (1628)</b>			
		<b>vote</b>	<b>share</b>
<b>Williamson A. Ms.</b>	Con	560	64.9
Watts B.	Lab	146	16.9
Johnson M.	Lib/SDP	146	16.9
Callaghan J. Ms.	Ecol	11	1.3
<b>Turnout</b>		<b>53.0</b>	<b>48.0</b>
<b>St. Margarets- At-Cliffe (2405)<sup>2</sup></b>			
		<b>vote</b>	<b>share</b>
<b>Robertson W.</b>	Con	989	81.7
<b>Walker C. Ms.</b>	Con	949	-
Bird J.	Lab	222	18.3
Button D. Ms.	Lab	201	-
<b>Turnout</b>		<b>50.4</b>	<b>63.3</b>
<b>St. Radigunds (2493)<sup>2</sup></b>			
		<b>vote</b>	<b>share</b>
<b>Tant R.</b>	Lab	616	72.1
<b>Fillies A.</b>	Lab	546	-
Zandee P. Ms.	Con	238	27.9
<b>Turnout</b>		<b>34.3</b>	<b>44.3</b>
<b>Tower Hamlets (2492)<sup>2</sup></b>			
		<b>vote</b>	<b>share</b>
<b>Hart M. Ms.*</b>	Lab	880	71.3
<b>Young B.</b>	Lab	766	-
Jones A.	Con	355	28.7
Mills E.	Con	313	-
<b>Turnout</b>		<b>49.6</b>	<b>42.5</b>
<b>Town &amp; Pier (1988)<sup>2</sup></b>			
		<b>vote</b>	<b>share</b>
<b>Hood J.</b>	Lab	686	66.8
<b>Hood J. Ms.</b>	Lab	586	66.8
Hine W.	Con	341	33.2
<b>Turnout</b>		<b>51.7</b>	<b>0.0</b>
<b>Upper Walmer (1816)</b>			
		<b>vote</b>	<b>share</b>
<b>Payne G. Ms.</b>	Con	544	57.9
Spears O.	Lab	395	42.1
<b>Turnout</b>		<b>51.7</b>	<b>15.9</b>
<b>Woodnesborough With Staple (1083)</b>			
		<b>vote</b>	<b>share</b>
<b>Maxwell S. Ms.</b>	Con	318	80.1
Farbrace A. Ms.	Lab	79	19.9
<b>Turnout</b>		<b>36.7</b>	<b>60.2</b>
<b>Worth (1283)</b>			
		<b>vote</b>	<b>share</b>
<b>Forster G.</b>	Con	520	79.8
Carr C.	Lab	132	20.2
<b>Turnout</b>		<b>50.8</b>	<b>59.5</b>

## Dover - 1987

<b>Ash (2168)<sup>2</sup></b>			
		<b>vote</b>	<b>share</b>
<b>Henderson B.</b>	Con	501	52.0
<b>Smith M. Ms.</b>	Con	426	-
Foot G.	All	391	40.6
Blake N.	All	269	-
Bartolo T.	Lab	72	7.5
Sutcliffe P.	Lab	62	-
	<b>Turnout</b>	44.5	11.4

<b>Aylesham (2955)<sup>2</sup></b>			
		<b>vote</b>	<b>share</b>
<b>Garrity D.</b>	Lab	1,381	82.8
<b>Wilson P.</b>	Lab	1,359	-
Holt T. Ms.	All	184	11.0
Hoskins J. Ms.	All	132	-
Smith S.	Con	103	6.2
	<b>Turnout</b>	59.4	71.8

<b>Barton (3248)<sup>2</sup></b>			
		<b>vote</b>	<b>share</b>
<b>Williams B.</b>	Con	800	43.8
<b>Tatam T.</b>	Con	769	-
Sencicle L. Ms.	All	510	27.9
Taylor D.	All	499	-
Pearson M. Ms.	Lab	447	24.5
Slingsby G.	Lab	429	-
Saker S.	Law & Order	70	3.8
	<b>Turnout</b>	56.8	15.9

<b>Buckland (3454)<sup>2</sup></b>			
		<b>vote</b>	<b>share</b>
<b>Newman B.</b>	Lab	784	57.1
<b>Siewwright R.</b>	Lab	759	-
Mears L. Ms.	All	314	22.9
Knott D.	All	282	-
Cawsey A.	Con	276	20.1
	<b>Turnout</b>	40.1	34.2

<b>Capel-Le-Ferne (2253)<sup>2</sup></b>			
		<b>vote</b>	<b>share</b>
<b>Tyler G.</b>	Con	653	59.7
<b>Davis D.</b>	Con	616	-
Barker P.	All	313	28.6
Neville E.	All	291	-
Roberts J. Ms.	Lab	127	11.6
Baldwin J.	Lab	122	-
	<b>Turnout</b>	51.0	31.1

<b>Castle (2412)<sup>2</sup></b>			
		<b>vote</b>	<b>share</b>
<b>Cope B.</b>	Con	574	52.5
<b>Overton D.</b>	Con	566	-
Standing S. Ms.	All	321	29.3
Swan R.	All	264	-
Beeby S. Ms.	Lab	199	18.2
Shillito M. Ms.	Lab	195	-
	<b>Turnout</b>	46.8	23.1

<b>Cornilo (1546)</b>			
		<b>vote</b>	<b>share</b>
<b>Farrer R. Ms.</b>	Con	479	51.7
Howard W.	Lab	309	33.3
Rudd M. Ms.	All	139	15.0
	<b>Turnout</b>	60.2	18.3

<b>Eastry (1784)</b>			
		<b>vote</b>	<b>share</b>
<b>Whisker S. Ms.</b>	Con	403	43.4
Harrowell S.	Lab	154	16.6
Smith S. Ms.	All	145	15.6
Thompson F.	Ind	121	13.0
Mollart I. Ms.	Ind	106	11.4
	<b>Turnout</b>	52.2	26.8

## Eythorne (1801)

<b>Sansum T.</b>			
		<b>vote</b>	<b>share</b>
Cave A.	Lab	553	60.2
Champion P.	Con	208	22.6
	All	158	17.2
	<b>Turnout</b>	51.1	37.5

<b>Little Stour (1842)</b>			
		<b>vote</b>	<b>share</b>
<b>Sumner J.</b>	Con	469	46.7
Thomas J.	All	345	34.4
Pettman J.	Comm	118	11.8
Loomer H.	Lab	72	7.2
	<b>Turnout</b>	55.1	12.4

<b>Lower Walmer (4053)<sup>3</sup></b>			
		<b>vote</b>	<b>share</b>
<b>Purnell R. Ms.</b>	Con	1,076	53.4
<b>Watkins P.</b>	Con	1,068	-
<b>Isaacson J.</b>	Con	1,068	-
Bennett J. Ms.	All	507	25.1
Brown H. Ms.	All	490	-
Stevens J.	All	452	-
Cox R.	Lab	433	21.5
Rowbotham E. Ms.	Lab	433	-
Danican A.	Lab	427	-
	<b>Turnout</b>	51.3	28.2

<b>Lydden &amp; Temple Ewell (1894)</b>			
		<b>vote</b>	<b>share</b>
<b>Hubbard D.</b>	Con	510	51.8
Jardine J.	All	316	32.1
Brooks J.	Lab	158	16.1
	<b>Turnout</b>	52.1	19.7

<b>Maxton &amp; Elms Vale (2799)<sup>2</sup></b>			
		<b>vote</b>	<b>share</b>
<b>King P.</b>	All	754	46.3
<b>King M. Ms.</b>	All	735	-
Hunnissett J.	Con	564	34.7
Hyde C.	Con	527	-
Bird E. Ms.	Lab	309	19.0
Gaines K.	Lab	300	-
	<b>Turnout</b>	60.6	11.7

<b>Middle Deal (4946)<sup>3</sup></b>			
		<b>vote</b>	<b>share</b>
<b>Reid D.</b>	Con	1,072	37.3
<b>Kilberry I.</b>	Lab	1,033	35.9
<b>Birkett J. Ms.</b>	Lab	1,032	-
Boreham C.	Lab	1,006	-
Sargent N.	Con	997	-
Hobbs R.	Con	906	-
Bennett W.	All	495	17.2
Barnbrook P. Ms.	All	479	-
Halshall W.	All	435	-
Bloy D.	Ind Con	274	9.5
Blown R.	Ind Con	225	-
	<b>Turnout</b>	56.1	1.4

<b>Mill Hill (2794)<sup>2</sup></b>			
		<b>vote</b>	<b>share</b>
<b>Towe R.</b>	Lab	954	68.6
<b>Maxted S.</b>	Lab	925	-
Merry J. Ms.	Con	250	18.0
Hayes C. Ms.	Con	245	-
Higgs M.	All	187	13.4
Hadley J.	All	184	-
	<b>Turnout</b>	51.5	50.6

<b>Mongeham (3135)<sup>2</sup></b>			
		<b>vote</b>	<b>share</b>
<b>Birkett T.</b>	Lab	997	61.3
<b>Clay A.</b>	Lab	925	-
Beach D. Ms.	Con	383	23.5
Philpott J.	Con	378	-
Haysman A.	All	247	15.2
Reynolds A. Ms.	All	233	-
	<b>Turnout</b>	53.0	37.7

## Noninstone (1083)

<b>Smith C.</b>			
		<b>vote</b>	<b>share</b>
Hoda B. Ms.	Con	380	57.4
Morgan B.	All	199	30.1
	Lab	83	12.5
	<b>Turnout</b>	61.1	27.3

<b>North Deal (4271)<sup>3</sup></b>			
		<b>vote</b>	<b>share</b>
<b>Ferris E.</b>	Con	944	35.9
<b>Whiteside D.</b>	Con	772	-
<b>McNicholas M. Ms.</b>	Con	759	-
Elliott A. Ms.	Lab	684	26.0
Denyer M.	Lab	659	-
Brace D. Ms.	Lab	620	-
Vicedomini B. Ms.	All	413	15.7
Piper J. Ms.	All	405	-
Turner W.	All	405	-
Elliott W.	Ind Con	374	14.2
Friend A.	Ind Con	240	-
Frost R.	Anti Dog	213	8.1
Purr P.	Ind Con	152	-
	<b>Turnout</b>	54.3	9.9

<b>Pineham (4027)<sup>3</sup></b>			
		<b>vote</b>	<b>share</b>
<b>Khan T.</b>	Con	959	41.6
<b>Morgan G. Ms.</b>	Con	816	-
<b>Monk G.</b>	Con	781	-
Neumann T.	All	616	26.7
Funnell J.	All	601	-
Wouldham E.	Ind	516	22.4
Johnson J. Ms.	All	477	-
Akers R.	Lab	212	9.2
Akers P. Ms.	Lab	210	-
Watson D.	Lab	193	-
	<b>Turnout</b>	49.0	14.9

<b>Priory (2777)<sup>2</sup></b>			
		<b>vote</b>	<b>share</b>
<b>Sansum K.</b>	Lab	573	45.3
<b>Prosser G.</b>	Lab	540	-
Truelove J.	Con	424	33.5
Sparks G.	Con	370	-
Sugden A.	All	268	21.2
Wright R.	All	243	-
	<b>Turnout</b>	46.0	11.8

<b>Ringwold (1577)</b>			
		<b>vote</b>	<b>share</b>
<b>Philpott M. Ms.</b>	Con	531	61.7
Maynard D.	All	242	28.1
Bean S.	Lab	88	10.2
	<b>Turnout</b>	54.8	33.6

<b>River (2985)<sup>2</sup></b>			
		<b>vote</b>	<b>share</b>
<b>Dale A.</b>	All	865	47.9
<b>Nicholas S. Ms.</b>	All	695	-
Taylor P.	Con	684	37.9
Buss P.	Con	622	-
Newman J. Ms.	Lab	257	14.2
Verrill S. Ms.	Lab	206	-
	<b>Turnout</b>	58.4	10.0

<b>Sandwich (3672)<sup>3</sup></b>			
		<b>vote</b>	<b>share</b>
<b>Chesterfield R.</b>	Con	1,146	49.1
<b>Sneller H.</b>	Con	997	-
<b>Simmonds E.</b>	Con	888	-
Du Boulay J. Ms.	Ind	841	36.0
Spence A. Ms.	Lab	349	14.9
Smith G.	Lab	331	-
Cohen D.	Lab	298	-
	<b>Turnout</b>	49.2	13.1

<b>Shepherdswell With Coldred (1749)</b>			
		<b>vote</b>	<b>share</b>
<b>Williamson A. Ms.</b>	Con	649	56.4
Johnson M.	All	321	27.9
Booton L.	Lab	181	15.7
	<b>Turnout</b>	66.1	28.5

St. Margarets- At-Cliffe (2400)<sup>2</sup>

		vote	share
<b>Robinson W.</b>	Con	843	63.0
<b>Walker C. Ms.</b>	Con	777	-
Thomson S. Ms.	All	354	26.4
Rudd A.	All	314	-
Bird J.	Lab	142	10.6
Button D. Ms.	Lab	135	-

Turnout 56.4 36.5

St. Radigunds (2408)<sup>2</sup>

		vote	share
<b>Tant B.</b>	Lab	603	60.0
<b>Haworth G.</b>	Lab	570	-
Zandee P. Ms.	Con	201	20.0
Davies J.	All	201	20.0
King W.	All	177	-

Turnout 41.9 40.0

Tower Hamlets (2917)<sup>2</sup>

		vote	share
<b>Young B.*</b>	Lab	720	52.8
<b>Young L. Ms.</b>	Lab	650	-
White A. Ms.	Con	333	24.4
Murphy J. Ms.	All	311	22.8
Brown J. Ms.	All	293	-

Turnout 47.2 28.4

Town & Pier (1828)<sup>2</sup>

		vote	share
<b>Hood J.</b>	Lab	719	68.3
<b>Hood J. Ms.</b>	Lab	677	68.3
White J.	Con	209	19.8
Reid H.	All	125	11.9
Woolford J.	All	87	-

Turnout 57.0 0.0

## Upper Walmer (1820)

		vote	share
<b>Payne G. Ms.</b>	Con	437	42.2
Hares D.	All	419	40.5
Mills K.	Lab	179	17.3

Turnout 56.9 1.7

## Woodnesborough With Staple (1145)

		vote	share
<b>Maxwell S. Ms.</b>	Con	348	81.3
Garrity T.	Lab	80	18.7

Turnout 37.7 62.6

## Worth (1300)

		vote	share
<b>Forster G.</b>	Con	345	57.0
Dicks C.	All	179	29.6
Holyer L.	Lab	81	13.4

Turnout 46.5 27.4

## Dover - 1991

Ash (2196)<sup>2</sup>

		vote	share
<b>Smith M. Ms.*</b>	Con	471	43.3
<b>Henderson C.*</b>	Con	462	-
Blake N.	LD	276	25.4
Whitburn N.	LD	218	-
Matthews N.	Green	183	16.8
Sutcliffe P.	Lab	157	14.4
Booton L.	Lab	145	-

Turnout 47.0 17.9

Aylesham (2986)<sup>2</sup>

		vote	share
<b>Bartolo H. Ms.</b>	Lab	1,356	83.7
<b>Wilson P.*</b>	Lab	1,339	-
Kelly J. Ms.	Green	164	10.1
Claiden J. Ms.	Con	100	6.2
Le-Faye K. Ms.	Con	91	-

Turnout 56.0 73.6

Barton (3159)<sup>2</sup>

		vote	share
<b>Williams B.*</b>	Con	694	38.6
<b>Hyde C.*</b>	Con	694	-
Sansum M. Ms.	Lab	670	37.3
Sievewright A. Ms.	Lab	615	-
Philp B.	Ind Con	286	15.9
Davies J. Ms.	Green	148	8.2

Turnout 52.8 1.3

Buckland (3477)<sup>2</sup>

		vote	share
<b>Newman W.*</b>	Lab	993	76.0
<b>Sievewright R.*</b>	Lab	961	-
Watson D.	Con	220	16.8
Watts R. Ms.	Con	190	-
Mack B. Ms.	Green	94	7.2

Turnout 39.5 59.1

Capel-Le-Ferne (2257)<sup>2</sup>

		vote	share
<b>Tyler G.*</b>	Con	785	64.3
<b>Bamfield T.</b>	Con	765	-
Baldwin J.	Lab	276	22.6
Washford R.	Lab	217	-
Hollett J. Ms.	Green	160	13.1

Turnout 54.9 41.7

Castle (2360)<sup>2</sup>

		vote	share
<b>Overton D.*</b>	Con	536	53.5
<b>Cope B.*</b>	Con	520	-
Beeby S. Ms.	Lab	323	32.3
Shillito M. Ms.	Lab	277	-
Davies S.	Green	142	14.2

Turnout 43.5 21.3

## Cornilo (1513)

		vote	share
<b>Farrer R. Ms.*</b>	Con	403	45.1
Upton J.	Lab	394	44.1
Lundy-Overton A. Ms.	Green	96	10.8

Turnout 59.1 1.0

## Eastry (1750)

		vote	share
<b>Whisker S. Ms.*</b>	Con	521	56.1
Messiter J.	Lab	245	26.4
Marsh N.	Ind	117	12.6
Turner E. Ms.	Green	46	5.0

Turnout 53.1 29.7

## Eythorne (1794)

		vote	share
<b>Sansum A.*</b>	Lab	605	68.1
Shearer R.	Con	209	23.5
Sewell A.	Green	74	8.3

Turnout 49.7 44.6

## Little Stour (1928)

		vote	share
<b>Willshaw A. Ms.</b>	LD	574	51.8
Sumner J.*	Con	367	33.1
Loomer H.	Lab	93	8.4
Shaw P.	Green	47	4.2
Pettman G.	COM	28	2.5

Turnout 57.8 18.7

Lower Walmer (4023)<sup>3</sup>

		vote	share
<b>Purnell A. Ms.*</b>	Con	1,008	39.5
<b>Watkins P.*</b>	Con	967	-
<b>Isaacson J.*</b>	Con	928	-
Bradford B. Ms.	Lab	682	26.7
Pollitt S. Ms.	Lab	627	-
Danican A.	Lab	625	-
Taylor R.	LD	435	17.0
Findley P.	Green	428	16.8

Turnout 52.5 12.8

## Lydden &amp; Temple Ewell (1920)

		vote	share
<b>Hubbard H.*</b>	Con	549	53.8
Murton D.	Lab	331	32.5
Matthews P. Ms.	Green	140	13.7

Turnout 53.2 21.4

Maxton & Elms Vale (2792)<sup>2</sup>

		vote	share
<b>King M. Ms.*</b>	LD	527	30.0
<b>King P.*</b>	LD	506	-
Martin P.	Lab	487	27.7
Bird J.	Lab	475	-
King N.	Con	406	23.1
McNeir R.	Con	358	-
Evans D.	Ind	278	15.8
Audsley J.	Green	59	3.4

Turnout 58.3 2.3

Middle Deal (4971)<sup>3</sup>

		vote	share
<b>McManus J.</b>	Lab	1,346	42.2
<b>Pollitt A.</b>	Lab	1,264	-
<b>Rowbotham E. Ms.</b>	Lab	1,241	-
Sullivan A.	Green	765	24.0
Cartwright M.	Con	733	23.0
Evans R.	Con	704	-
Nicolson B.	Con	657	-
Friend A.	Ind Con	343	10.8
Bloy D.	Ind Con	338	-
Maidment B.	Ind Con	252	-

Turnout 55.4 18.2

Mill Hill (2846)<sup>2</sup>

		vote	share
<b>Towe R.*</b>	Lab	1,077	70.7
<b>Gore D.*</b>	Lab	1,060	-
Hinton-Jones B.	Con	293	19.2
Martin P. Ms.	Con	258	-
Cranwell V. Ms.	Green	153	10.0

Turnout 52.6 51.5

Mongeham (3114)<sup>2</sup>

		vote	share
<b>Birkett J. Ms.</b>	Lab	1,185	70.8
<b>Bradford A.</b>	Lab	1,047	-
Henson G.	Con	303	18.1
Johnston R.	Con	267	-
Barnard J.	Green	186	11.1

Turnout 52.1 52.7

## Noninstone (1112)

		vote	share
<b>Smith C.*</b>	Con	390	63.4
Morgan W.	Lab	155	25.2
Craig A.	Green	70	11.4

Turnout 55.3 38.2

North Deal (4764)<sup>3</sup>

		vote	share
<b>Walker B.</b>	Ind	890	26.4
<b>Elliott A. Ms.</b>	Lab	853	25.3
<b>Ferris E.*</b>	Con	845	25.1
Bradford G. Ms.	Lab	808	-
Boreham C.	Lab	805	-
Watts D.	Con	653	-
Whiteside R.*	Con	611	-
Frost R.	LD	455	13.5
Elliott W.	LD	428	-
McCabe M.	LD	383	-
Wilkinson A. Ms.	Green	329	9.8
Meyer D.	Ind	292	-

Turnout 54.5 1.1

Pineham (4099)<sup>3</sup>

		vote	share
<b>Martin B.*</b>	Con	868	48.0
<b>Khan T.*</b>	Con	858	-
<b>Jepson T.</b>	Con	843	-
Verrill P.	Lab	548	30.3
Kember J. Ms.	Lab	529	-
Whitfield E. Ms.	Lab	494	-
Stucken A.	Green	392	21.7

Turnout 42.3 17.7



Priory (2595) <sup>2</sup>			
		vote	share
Sansum K.*	Lab	769	66.9
Prosser G.*	Lab	725	-
Bradley-Jamieson R. Ms.	Con	260	22.6
Frayne R.	Con	236	-
Taylor P. Ms.	Green	121	10.5
Turnout		44.9	44.3
Ringwold (1574)			
		vote	share
Philpott M. Ms.*	Con	495	59.4
Gaines K.	Lab	183	21.9
Tuckett M. Ms.	Green	156	18.7
Turnout		53.0	37.4
River (2921) <sup>2</sup>			
		vote	share
Nicholas S. Ms.*	LD	996	52.8
Terry C. Ms.*	LD	918	-
Soppitt D.	Con	547	29.0
Jaenicke D.	Con	484	-
Newman J. Ms.	Lab	279	14.8
Sheldrake W.	Lab	190	-
Bond N.	Green	66	3.5
Turnout		67.1	23.8
Sandwich (3789) <sup>3</sup>			
		vote	share
Chesterfield R.*	Con	946	34.1
Bragg H.*	Con	887	-
Laslett W. Ms.	LD	773	27.8
Simmonds E.*	Con	648	-
Franklin J.	LD	461	-
Cummings M.	Ind	452	16.3
Perry R.	LD	406	-
Davis M. Ms.	Lab	306	11.0
Peckham S. Ms.	Green	301	10.8
Davis R.	Lab	289	-
Petrie A. Ms.	Lab	256	-
Turnout		54.8	6.2
Shepherdswell With Coldred (1720)			
		vote	share
Williamson A. Ms.*	Con	415	41.3
Mummery P.	Ind	302	30.1
Hoskins J. Ms.	Lab	246	24.5
Sewell R.	Green	41	4.1
Turnout		58.5	11.3
St. Margarets- At-Cliffe (2406) <sup>2</sup>			
		vote	share
Robertson W.*	Con	918	55.7
Lauder S.	Con	767	-
Bird E. Ms.	Lab	327	19.8
Button D. Ms.	Lab	264	-
Lee-Delisle E.	Ind	222	13.5
Santer A. Ms.	Green	182	11.0
Turnout		59.7	35.8
St. Radigunds (2316) <sup>2</sup>			
		vote	share
Mills K.	Lab	658	72.5
Tant R.*	Lab	640	-
Francis J.	Con	182	20.0
Whistler C.	Con	146	-
Santer G.	Green	68	7.5
Turnout		41.7	52.4
Tower Hamlets (2802) <sup>2</sup>			
		vote	share
Young L. Ms.*	Lab	939	69.7
Sheldrake P.	Lab	868	-
Ashbee J.	Con	286	21.2
Cope E. Ms.	Con	257	-
Freezer A.	Green	122	9.1
Turnout		49.1	48.5

Town & Pier (1737) <sup>2</sup>			
		vote	share
Hood G.*	Lab	688	70.9
Hood J. Ms.*	Lab	644	-
Smith S. Ms.	Con	201	20.7
Smith S.	Con	157	20.7
Carroll M.	Green	81	8.4
Turnout		54.1	50.2
Upper Walmer (1886)			
		vote	share
Heath P.	Con	547	50.5
Bennett J. Ms.	LD	260	24.0
Birkett T.	Lab	231	21.3
Booth B.	Green	46	4.2
Turnout		57.5	26.5
Woodnesborough With Staple (1164)			
		vote	share
Maxwell S. Ms.*	Con	302	63.7
Wright F.	Lab	90	19.0
Audsley D. Ms.	Green	82	17.3
Turnout		41.2	44.7
Worth (1396)			
		vote	share
Bull M. Ms.*	Con	324	49.0
Sole M.	LD	234	35.4
Brooks J.	Lab	75	11.3
Birchall E.	Green	28	4.2
Turnout		47.9	13.6
Dover - 1995			
Ash (2219) <sup>2</sup>			
		vote	share
Smith M. Ms.*	Con	466	46.9
Hersey B.*	Con	365	-
Blake N.	LD	309	31.1
Whitburn N.	LD	289	-
Rowbotham D.	Lab	218	22.0
Bano M. Ms.	Lab	213	-
Turnout		45.3	15.8
Aylesham (2890) <sup>2</sup>			
		vote	share
Bartolo H. Ms.*	Lab	1,438	94.0
Wilson P.*	Lab	1,372	-
Nelson J.	Con	91	6.0
Turnout		54.6	88.1
Barton (3197) <sup>2</sup>			
		vote	share
Man-Cheung D.	Lab	920	69.6
Osmond C.	Lab	913	-
Francis J.	Con	286	21.7
Miller R.	Con	277	-
Philp B.	Ind Con	115	8.7
Turnout		42.9	48.0
Buckland (3267) <sup>2</sup>			
		vote	share
Newman W.*	Lab	949	90.8
Bannister S.*	Lab	829	-
Hutton S. Ms.	Con	96	9.2
Turnout		34.2	81.6
Capel-Le-Ferne (2287) <sup>2</sup>			
		vote	share
Bamfield T.*	Con	534	57.7
Scales F.	Con	468	-
Baldwin J.	Lab	392	42.3
Washford R.	Lab	369	-
Turnout		48.2	15.3

Castle (2418) <sup>2</sup>			
		vote	share
Beeby S. Ms.	Lab	452	52.6
Sansum M. Ms.	Lab	432	-
Cope B.*	Con	408	47.4
Frayne R.	Con	337	-
Turnout		38.1	5.1
Cornilo (1493)			
		vote	share
Rowbotham E. Ms.	Lab	572	68.2
North P.	Con	267	31.8
Turnout		56.6	36.4
Eastry (1676)			
		vote	share
Marsh N.	Lab	520	62.6
Anthony C.	Con	311	37.4
Turnout		50.2	25.2
Eythorne (1862)			
		vote	share
Sansum A.*	Lab	713	84.9
Mathison G.	Con	127	15.1
Turnout		45.1	69.8
Little Stour (2002)			
		vote	share
Willshaw A. Ms.*	LD	528	55.6
Wilkinson J.	Con	241	25.4
Dunning M.	Lab	181	19.1
Turnout		47.8	30.2
Lower Walmer (4017) <sup>3</sup>			
		vote	share
Burnham M. Ms.	Lab	1,015	44.6
Cox S.	Lab	993	-
Towe R.	Lab	984	-
Beach D. Ms.	Con	896	39.4
Henson G.	Con	785	-
Webb A.	Con	753	-
Bennett J. Ms.	LD	364	16.0
Turnout		53.6	5.2
Lydden & Temple Ewell (1931)			
		vote	share
Murton D.	Lab	515	56.3
Hubbard H.*	Con	400	43.7
Turnout		47.9	12.6
Maxton & Elms Vale (2755) <sup>2</sup>			
		vote	share
Bird E. Ms.	Lab	921	63.2
Woodbridge F.	Lab	863	-
Gavin M.	LD	338	23.2
Green M. Ms.	LD	314	-
Stevens D. Ms.	Con	199	13.6
Turnout		50.6	40.0
Middle Deal (4968) <sup>3</sup>			
		vote	share
Birkett T.	Lab	1,662	76.1
Boreham C.*	Lab	1,626	-
Pollitt A.*	Lab	1,490	-
Watts D.	Con	522	23.9
Turnout		46.5	52.2
Mill Hill (2850) <sup>2</sup>			
		vote	share
Bradford G. Ms.	Lab	1,161	88.0
Rees J.	Lab	1,120	-
Tebbutt J. Ms.	Con	159	12.0
Turnout		49.3	75.9
Mongeham (3004) <sup>2</sup>			
		vote	share
Bradford A.*	Lab	1,275	86.0
Birkett J. Ms.*	Lab	1,162	-
Le-Faye K. Ms.	Con	207	14.0
Turnout		51.5	72.1

Noninstone (1125)			
		vote	share
Smith C.*	Con	317	55.9
Davis R.	Lab	250	44.1
<b>Turnout</b>		50.4	11.8
North Deal (4937) <sup>3</sup>			
		vote	share
Elliott A. Ms.*	Lab	1,554	49.8
Leach J.	Lab	1,407	-
Furnival M.	Lab	1,326	-
Walker B.*	Ind	678	21.7
Bowles J.	Con	594	19.0
Evans R.	Con	558	-
Hamilton R.	Con	550	-
Turner W.	LD	295	9.5
Brett D.	Ind	123	-
<b>Turnout</b>		52.4	28.1
Pineham (4091) <sup>3</sup>			
		vote	share
Cowan G.*	Lab	1,001	51.1
Clements D.	Lab	973	-
Piper M.	Lab	798	-
Khan T.*	Con	676	34.5
Keyser M. Ms.	Con	587	-
Lauder Y. Ms.	Con	508	-
Frost R.	LD	283	14.4
<b>Turnout</b>		45.7	16.6
Priory (2575) <sup>2</sup>			
		vote	share
Prosser G.*	Lab	747	84.2
Sansum K.*	Lab	713	-
Ashbee M. Ms.	Con	140	15.8
Sparks G.	Con	127	-
<b>Turnout</b>		37.0	68.4
Ringwould (1574)			
		vote	share
Edwards C. Ms.	Con	408	51.7
Hay T.	Lab	381	48.3
<b>Turnout</b>		50.3	3.4
River (2958) <sup>2</sup>			
		vote	share
Nicholas S. Ms.*	LD	845	53.0
Terry C. Ms.*	LD	735	-
Dunford A.	Con	402	25.2
Allt G.	Lab	348	21.8
Sheldrake C.	Lab	338	-
Soppitt D.	Con	330	-
<b>Turnout</b>		53.8	27.8
Sandwich (3753) <sup>3</sup>			
		vote	share
Laslett W. Ms.*	LD	703	32.1
Bragg H.*	Con	676	30.9
Butcher B.	Con	567	-
Sneller J.	Con	557	-
Yule A.	Lab	486	22.2
Franklin J.	LD	455	-
Wood M. Ms.	Lab	430	-
Perry R.	LD	404	-
Watts J.	Ind	324	14.8
Brooks J.	Lab	264	-
<b>Turnout</b>		49.0	1.2
Shepherdswell With Coldred (1681)			
		vote	share
Hansell R.	Lab	574	66.4
Record J. Ms.	Con	291	33.6
<b>Turnout</b>		51.8	32.7
St. Margarets- At-Cliffe (2449) <sup>2</sup>			
		vote	share
Robertson W.*	Con	759	58.5
Lauder S.*	Con	698	-
Bird J.	Lab	539	41.5
Kember J. Ms.	Lab	501	-
<b>Turnout</b>		54.6	16.9

St. Radigunds (2483) <sup>2</sup>			
		vote	share
Tant R.*	Lab	0	0.0
Mills K.*	Lab	0	-
<b>Turnout</b>		0.0	0.0
Tower Hamlets (2855) <sup>2</sup>			
		vote	share
Sheldrake P.*	Lab	965	85.1
Young L. Ms.*	Lab	941	-
Morgan J.	Con	169	14.9
<b>Turnout</b>		45.1	70.2
Town & Pier (1593) <sup>2</sup>			
		vote	share
Hood G.*	Lab	617	80.9
Hood J. Ms.*	Lab	583	-
Hutton J. Ms.	Con	146	19.1
<b>Turnout</b>		50.7	61.7
Upper Walmer (1983)			
		vote	share
Heath P.*	Con	435	43.0
Pollitt S. Ms.	Lab	399	39.5
Bennett W.	LD	177	17.5
<b>Turnout</b>		51.0	3.6
Woodnesborough With Staple (1173)			
		vote	share
Bartlett T.	Con	249	49.5
Cronk J.	Lab	143	28.4
Willshaw N.	LD	111	22.1
<b>Turnout</b>		43.0	21.1
Worth (1494)			
		vote	share
Bull M. Ms.*	Con	288	45.6
Haste J.	Lab	233	36.9
Hewett-Silk D.	LD	111	17.6
<b>Turnout</b>		42.4	8.7
Dover - 1999			
Ash (2195) <sup>2</sup>			
		vote	share
Smith M. Ms.*	Ind	433	36.9
Hersey B.*	Con	350	29.9
Elliott I. Ms.	Con	306	-
Whitburn N.	LD	225	19.2
Garlick. N.	Lab	164	14.0
Lucas J.	Lab	100	-
<b>Turnout</b>		40.9	7.1
Aylesham (2723) <sup>2</sup>			
		vote	share
Knight L.	Lab	833	92.9
Bartolo H. Ms.*	Lab	821	-
Nelson J.	Con	64	7.1
Carter J. Ms.	Con	56	-
<b>Turnout</b>		35.5	85.7
Barton (3265) <sup>2</sup>			
		vote	share
Allt G.*	Lab	521	52.6
Tranter K.	Lab	497	-
Newsam R.	Con	470	47.4
James G. Ms.	Con	451	-
<b>Turnout</b>		32.0	5.1
Buckland (3164) <sup>2</sup>			
		vote	share
Clements D.*	Lab	519	82.1
Bannister S.*	Lab	513	-
Cope B.	Con	113	17.9
Farrant L.	Con	106	-
<b>Turnout</b>		21.8	64.2

Capel-Le-Ferne (2367) <sup>2</sup>			
		vote	share
Bamfield T.*	Con	641	72.6
Scales F.*	Con	586	-
Baldwin J.	Lab	242	27.4
Washford R.	Lab	228	-
<b>Turnout</b>		37.6	45.2
Castle (2344) <sup>2</sup>			
		vote	share
Watson D.	Con	546	61.8
Watson T.	Con	522	-
Rigden C. Ms.	Lab	337	38.2
Wilford J. Ms.	Lab	306	-
<b>Turnout</b>		38.6	23.7
Cornilo (1431)			
		vote	share
Rowbotham E. Ms.*	Lab	351	50.1
Thistle N.	Con	349	49.9
<b>Turnout</b>		49.4	0.3
Eastry (1734)			
		vote	share
Whisker S. Ms.*	Con	521	72.3
Birnberg T.	Lab	200	27.7
<b>Turnout</b>		41.9	44.5
Eythorne (1837)			
		vote	share
Hansell W. Ms.	Lab	384	73.6
Lauder Y. Ms.	Con	138	26.4
<b>Turnout</b>		28.5	47.1
Little Stour (2081)			
		vote	share
Curtis B.	LD	408	46.7
Craik A. Ms.	Con	364	41.7
Brown G.	Lab	101	11.6
<b>Turnout</b>		41.9	5.0
Lower Walmer (4057) <sup>3</sup>			
		vote	share
Rook R.	Con	897	53.6
Henson G.	Con	887	-
Watts D.	Con	859	-
Pearce L. Ms.	Lab	775	46.4
Eddy M.*	Lab	763	-
Wells P.	Lab	757	-
<b>Turnout</b>		42.9	7.3
Lydden & Temple Ewell (1888)			
		vote	share
Record J. Ms.	Con	399	55.4
Harvey A. Ms.*	Lab	321	44.6
<b>Turnout</b>		38.2	10.8
Maxton & Elms Vale (2774) <sup>2</sup>			
		vote	share
Bird E. Ms.*	Lab	627	71.7
Woodbridge F.*	Lab	569	-
Hughes J. Ms.	Con	247	28.3
Hutton S. Ms.	Con	215	-
<b>Turnout</b>		31.0	43.5
Middle Deal (4937) <sup>3</sup>			
		vote	share
Birkett T.*	Lab	962	66.3
Burnham M. Ms.*	Lab	935	-
Rowe M.	Lab	876	-
Godsell K.	Con	489	33.7
Collins D. Ms.	Con	483	-
Larsen H. Ms.	Con	425	-
<b>Turnout</b>		30.7	32.6



<b>North Deal (5546)<sup>3</sup></b>			
		<b>vote</b>	<b>share</b>
<b>Rook J. Ms.</b>	Con	994	52.3
<b>Le Chevalier P.</b>	Con	935	-
<b>Elliott W.</b>	Con	915	-
Bano B.*	Lab	907	47.7
Wilmington R.*	Lab	896	-
Walters B. Ms.*	Lab	877	-
<b>Turnout</b>		35.9	4.6

<b>Ringwold (1639)</b>			
		<b>vote</b>	<b>share</b>
<b>Edwards C. Ms.*</b>	Con	414	67.6
Hay T.	Lab	198	32.4
<b>Turnout</b>		38.0	35.3

<b>River (3630)<sup>2</sup></b>			
		<b>vote</b>	<b>share</b>
<b>Nicholas S. Ms.*</b>	Con	892	63.4
<b>Richardson A.*</b>	Con	760	-
Newman J. Ms.	Lab	330	23.5
Bird E. Ms.*	Lab	230	-
Osborne D.	LD	185	13.1
Frampton S. Ms.	LD	166	-
<b>Turnout</b>		37.4	39.9

<b>Sandwich (5299)<sup>3</sup></b>			
		<b>vote</b>	<b>share</b>
<b>Leith S.*</b>	Con	1,007	52.3
<b>Butcher B.*</b>	Con	984	-
<b>Lloyd-Jones D.</b>	Con	806	-
Hart M.	LD	394	20.5
Henson R. Ms.	Lab	281	14.6
Willshaw N.	LD	276	-
Rigden C. Ms.	Lab	254	-
Taylorson B. Ms.	Lab	251	-
Easton D.	Ind	242	12.6
<b>Turnout</b>		31.0	31.9

<b>St. Margarets-At-Cliffe (3535)<sup>2</sup></b>			
		<b>vote</b>	<b>share</b>
<b>Little R.</b>	Con	836	60.8
<b>Watkins P.*</b>	Con	756	-
Bird J.	Lab	304	22.1
Baldwin J.	Lab	274	-
Lee-Delisle E.	Ind	235	17.1
<b>Turnout</b>		37.0	38.7

<b>St. Radigunds (3466)<sup>2</sup></b>			
		<b>vote</b>	<b>share</b>
<b>Mills K.*</b>	Lab	562	66.7
<b>Tranter K.*</b>	Lab	557	-
Morgan J.	Con	281	33.3
Rowland B.	Con	239	-
<b>Turnout</b>		26.8	33.3

<b>Tower Hamlets (3460)<sup>2</sup></b>			
		<b>vote</b>	<b>share</b>
<b>Sansum M. Ms.</b>	Lab	546	52.8
<b>Smallwood D. Ms.*</b>	Lab	516	-
Farrell S. Ms.	Con	329	31.8
Lammas A.	BNP	160	15.5
<b>Turnout</b>		27.3	21.0

<b>Town &amp; Pier (1462)</b>			
		<b>vote</b>	<b>share</b>
<b>Hood G.*</b>	Lab	310	60.1
Cope B.	Con	206	39.9
<b>Turnout</b>		36.4	20.2

<b>Walmer (5593)<sup>3</sup></b>			
		<b>vote</b>	<b>share</b>
<b>Dawkins P.</b>	Con	774	60.8
<b>Heath P.*</b>	Con	770	-
<b>Henson G.*</b>	Con	754	-
Eddy M.	Lab	500	39.2
Birkett T.*	Lab	487	-
Feeney J.	Lab	467	-
<b>Turnout</b>		34.3	21.5

<b>Whitfield (3499)<sup>2</sup></b>			
		<b>vote</b>	<b>share</b>
<b>Lodge P.</b>	LD	593	44.5
<b>Meredith C.</b>	LD	558	-
Martin B.*	Con	529	39.7
McKeague D.	Con	500	-
Murray D.	Lab	210	-
Rees A. Ms.	Lab	210	15.8
<b>Turnout</b>		39.0	4.8

## **Dover - 2007**

<b>Aylesham (3504)<sup>2</sup></b>			
		<b>vote</b>	<b>share</b>
<b>Bartolo H. Ms.*</b>	Lab	831	68.3
<b>Keen L. Ms.</b>	Lab	808	-
Conolly L. Ms.	Con	311	25.6
Carr D.	Con	287	-
Lee-Delisle E.	Ind	75	6.2
<b>Turnout</b>		34.6	42.7

<b>Buckland (5358)<sup>3</sup></b>			
		<b>vote</b>	<b>share</b>
<b>Tranter J. Ms.*</b>	Lab	734	49.5
<b>Smith J.</b>	Lab	665	-
<b>Smith A. Ms.</b>	Lab	663	-
Cope S. Ms.	Con	463	31.2
Jenner A. Ms.	Con	431	-
Carter J. Ms.	Con	419	-
Campbell-Marshall P.	UKIP	285	19.2
<b>Turnout</b>		27.7	18.3

<b>Capel-Le-Ferne (1878)</b>			
		<b>vote</b>	<b>share</b>
<b>Scales F.*</b>	Con	477	68.7
Brooks J.	Lab	112	16.1
Norton C. Ms.	UKIP	105	15.1
<b>Turnout</b>		37.1	52.6

<b>Castle (1776)</b>			
		<b>vote</b>	<b>share</b>
<b>Collor N.*</b>	Con	476	67.1
Brivio P. Ms.	Lab	233	32.9
<b>Turnout</b>		40.3	34.3

<b>Eastry (3897)<sup>2</sup></b>			
		<b>vote</b>	<b>share</b>
<b>Kenton N.*</b>	Con	810	52.3
<b>Manion S.*</b>	Con	764	-
Rowbotham E. Ms.	Lab	403	26.0
Battles J.	Lab	348	-
Smith S. Ms.	LD	335	21.6
Hook L. Ms.	LD	225	-
<b>Turnout</b>		39.1	26.3

<b>Eythorne &amp; Shepherdswell (3687)<sup>2</sup></b>			
		<b>vote</b>	<b>share</b>
<b>Lloyd-Jones D.*</b>	Con	703	39.5
<b>Record J. Ms.</b>	Con	577	-
Errington C. Ms.	Lab	561	31.5
Hansell R.*	Ind	517	29.0
Cadogan P. Ms.	Lab	497	-
<b>Turnout</b>		42.8	8.0

<b>Little Stour &amp; Ashstone (5345)<sup>3</sup></b>			
		<b>vote</b>	<b>share</b>
<b>Bartlett T.*</b>	Con	1,424	67.9
<b>Chandler S. Ms.*</b>	Con	1,422	-
<b>Smees S.</b>	Con	1,169	-
Curtis B.	LD	460	21.9
Whitburn N.	LD	409	-
Hardee F.	LD	303	-
Birkett T.	Lab	213	10.2
Wilton T. Ms.	Lab	205	-
Hawkins B.	Lab	197	-
<b>Turnout</b>		38.6	46.0

<b>Lydden &amp; Temple Ewell (1913)</b>			
		<b>vote</b>	<b>share</b>
<b>Frayne R.*</b>	Con	552	67.6
Bird J.	Lab	186	22.8
Norton A.	UKIP	79	9.7
<b>Turnout</b>		43.1	44.8

<b>Maxton Elms Vale &amp; Priory (5323)<sup>3</sup></b>			
		<b>vote</b>	<b>share</b>
<b>Sansum K.*</b>	Lab	733	37.0
<b>Munt J. Ms.*</b>	Lab	647	-
<b>Walkden R.*</b>	Con	624	31.5
Bannister S.*	Lab	602	-
Frayne A. Ms.	Con	566	-
Jenner A.	Con	545	-
Mackie J.	LD	381	19.2
Dawkins P.*	LD	296	-
Stiles D.	LD	291	-
Matcham V.	Ind	243	12.3
<b>Turnout</b>		34.0	5.5

<b>Middle Deal &amp; Sholden (5823)<sup>3</sup></b>			
		<b>vote</b>	<b>share</b>
<b>Friend A.</b>	Con	1,002	43.6
<b>Bond T.</b>	Con	997	-
<b>Le Chevalier S. Ms.</b>	Con	954	-
Burnham M. Ms.*	Lab	943	41.0
Cronk J.*	Lab	897	-
Wells P.*	Lab	854	-
Hook A.	LD	353	15.4
Benfield J. Ms.	LD	332	-
Hilton J.	LD	269	-
<b>Turnout</b>		39.7	2.6

<b>Mill Hill (5822)<sup>3</sup></b>			
		<b>vote</b>	<b>share</b>
<b>Eddy M.</b>	Lab	983	52.2
<b>Bano B.</b>	Lab	919	-
<b>Furnival M.*</b>	Lab	900	-
Jull P.	Con	503	26.7
Elliott W.*	Con	496	-
Rook R.	Con	493	-
Young L. Ms.	LD	397	21.1
Sewell M. Ms.	LD	289	-
Sewell S. Ms.	LD	255	-
<b>Turnout</b>		32.7	25.5

<b>North Deal (5648)<sup>3</sup></b>			
		<b>vote</b>	<b>share</b>
<b>Rook J. Ms.*</b>	Con	1,118	45.7
<b>Rook C.</b>	Con	1,058	-
<b>Kirby C.</b>	Con	1,046	-
Delling S. Ms.*	Lab	862	35.2
Gardner W.	Lab	829	-
Henderson B.	Lab	776	-
Sewell N.	LD	467	19.1
Turner W.	LD	456	-
Acamley P.	LD	437	-
<b>Turnout</b>		43.5	10.5

<b>Ringwold (1694)</b>			
		<b>vote</b>	<b>share</b>
<b>Edwards C. Ms.*</b>	Con	513	65.0
Garside M.	Lab	148	18.8
Mantel D.	LD	128	16.2
<b>Turnout</b>		46.9	46.3

<b>River (3719)<sup>2</sup></b>			
		<b>vote</b>	<b>share</b>
<b>Nicholas S. Ms.*</b>	Con	1,201	63.7
<b>Richardson A.*</b>	Con	1,010	-
Killip J.	Ind	381	20.2
Newman W.	Lab	302	16.0
Newman J. Ms.	Lab	282	-
<b>Turnout</b>		46.0	43.5

Sandwich (5516) <sup>3</sup>			
		vote	share
Leith S.*	Con	1,326	50.0
Butcher B.*	Con	1,253	-
Mayes D.	Con	1,001	-
Hart M.	LD	662	25.0
Perry R.	LD	602	-
Easton D.	Ind	385	14.5
Brimmell J. Ms.	Lab	278	10.5
Hawkins P. Ms.	Lab	262	-
Kember J. Ms.	Lab	243	-
Turnout		40.5	25.0

St. Margarets-At-Cliffe (3502) <sup>2</sup>			
		vote	share
Ward I.	Con	1,058	63.1
Watkins P.*	Con	969	-
Law A. Ms.	LD	343	20.5
Bird E. Ms.	Lab	276	16.5
Bird T.	Lab	248	-
Turnout		44.9	42.6

St. Radigunds (3580) <sup>2</sup>			
		vote	share
Mills K.*	Lab	456	42.4
Cowan G.	Lab	348	-
Tranter K.*	Ind	313	29.1
Morgan J.	Con	306	28.5
Rowland B.	Con	246	-
Turnout		26.0	13.3

Tower Hamlets (3857) <sup>2</sup>			
		vote	share
Goodwin J.	Lab	663	61.1
Smallwood D. Ms.*	Lab	641	-
Miller H. Ms.	Con	422	38.9
McKeague D.	Con	388	-
Turnout		29.1	22.2

Town & Pier (1477)			
		vote	share
Hood G.*	Lab	286	52.1
Cope B.	Con	118	21.5
Precious C.	Dov All	90	16.4
Dimmock S.	New P	55	10.0
Turnout		38.0	30.6

Walmer (6018) <sup>3</sup>			
		vote	share
Heath P.*	Con	1,520	66.2
Smith C.*	Con	1,486	-
Le Chevalier P.*	Con	1,427	-
Murray D.	Lab	775	33.8
Brimmell E.	Lab	768	-
Fillingham D.	Lab	762	-
Turnout		40.1	32.5

Whitfield (3661) <sup>2</sup>			
		vote	share
Meredith C.*	LD	748	44.9
Lodge P.*	LD	705	-
Back J.	Con	674	40.5
Hersey B.	Con	570	-
Feeney J.	Lab	243	14.6
Taylorson A.	Lab	220	-
Turnout		44.9	4.4

## Dover - 2011

Aylesham (3530) <sup>2</sup>			
		vote	share
Thompson R.	Lab	1,077	76.0
Keen L. Ms.*	Lab	975	-
Lloyd-Jones D.*	Con	341	24.0
Rook C.*	Con	303	-
Turnout		41.1	51.9

Buckland (5388) <sup>3</sup>			
		vote	share
Tranter J. Ms.*	Lab	781	42.0
Smith A. Ms.*	Lab	746	-
Smith J.*	Lab	746	-
Morgan J.	Con	490	26.4
Jenner A. Ms.	Con	475	-
Rowland B.	Con	452	-
Rix N.	Dov All	391	21.0
McHugh P.	TUSC	197	10.6
Turnout		30.9	15.7

Capel-Le-Ferne (1927)			
		vote	share
Scales F.*	Con	656	71.4
Brooks J.	Lab	263	28.6
Turnout		48.5	42.8

Castle (1802)			
		vote	share
Collor N.*	Con	440	54.8
Wanstall G.	Ind	186	23.2
Bird E. Ms.	Lab	177	22.0
Turnout		45.1	31.6

Eastry (3986) <sup>2</sup>			
		vote	share
Kenton N.*	Con	1,184	64.8
Manion S.*	Con	1,062	-
Rowbotham E. Ms.	Lab	643	35.2
Rees J.	Lab	628	-
Turnout		49.2	29.6

Eythorne & Shepherdswell (3693) <sup>2</sup>			
		vote	share
Ovenden M. Ms.	Con	992	43.6
Walker P.	Lab	781	34.3
Record J. Ms.*	Con	699	-
Tough C.	Lab	573	-
Hansell R.	Ind Pty Dov	503	22.1
Turnout		53.7	9.3

Little Stour & Ashstone (5437) <sup>3</sup>			
		vote	share
Chandler S. Ms.*	Con	1,680	64.5
Bartlett T.*	Con	1,665	-
Conolly M.	Con	1,490	-
Timpson R.	LD	504	19.4
Birkett J. Ms.	Lab	420	16.1
Blackburn K. Ms.	Lab	409	-
Hawkins B.	Lab	372	-
Hilton J. Ms.	LD	269	-
Turnout		48.3	45.2

Lydden & Temple Ewell (1909)			
		vote	share
Lymmer G.	Con	451	49.1
Haste J.	Lab	237	25.8
Elks K.	Ind	230	25.1
Turnout		48.5	23.3

Maxton Elms Vale & Priory (5449) <sup>3</sup>			
		vote	share
Jones S. Ms.	Lab	988	50.2
Walkden R.*	Con	980	49.8
Smallwood D. Ms.*	Lab	979	-
Revell V. Ms.	Lab	945	-
Hemingway M.	Con	944	-
Sherratt P.	Con	900	-
Turnout		38.4	0.4

Middle Deal & Sholden (5856) <sup>3</sup>			
		vote	share
Hawkins P. Ms.	Lab	1,330	43.7
Cronk J.	Lab	1,222	-
Bond T.*	Con	1,197	39.3
Friend A.*	Con	1,189	-
Garside M.	Lab	1,151	-
Jennings R.	Con	1,138	-
Robbins P.	Ind	519	17.0
Turnout		48.7	4.4

Mill Hill (5875) <sup>3</sup>			
		vote	share
Bano B.*	Lab	1,318	52.3
Eddy M.*	Lab	1,315	-
Pollitt A.	Lab	1,251	-
Battles J.	Con	737	29.3
Elliott W.	Con	695	-
Trickey J.	LD	463	18.4
Bennett J. Ms.	LD	385	-
Turnout		41.9	23.1

North Deal (5595) <sup>3</sup>			
		vote	share
Rook J. Ms.*	Con	1,239	47.0
Frost R.	Con	1,163	-
Gardner W.	Lab	1,124	42.6
Henderson B.	Lab	1,097	-
Jull P.	Con	1,085	-
Taylorson A.	Lab	1,025	-
Hook A.	LD	273	-
Hook L. Ms.	LD	273	10.4
Turnout		47.3	4.4

Ringwold (1689)			
		vote	share
Le Chevalier S. Ms.*	Con	625	65.9
Robertson D.	Lab	324	34.1
Turnout		56.8	31.7

River (3714) <sup>2</sup>			
		vote	share
Nicholas S. Ms.*	Con	1,175	59.0
Beresford P. Ms.	Con	1,108	-
Newman J. Ms.	Lab	517	25.9
Newman W.	Lab	453	-
Killip J.	Ind	301	15.1
Turnout		52.5	33.0

Sandwich (5600) <sup>3</sup>			
		vote	share
Butcher B.*	Con	1,591	56.2
Carter P.	Con	1,505	-
Russell M. Ms.	Con	1,217	-
Birkett T.	Lab	634	22.4
Sealy E. Ms.	Lab	612	-
Hart M.	LD	604	21.4
Errington C. Ms.	Lab	573	-
Smith S. Ms.	LD	326	-
Turnout		47.2	33.8

St. Margarets-At-Cliffe (3479) <sup>2</sup>			
		vote	share
Morris K.	Con	1,257	71.5
Watkins P.*	Con	1,185	-
Bird J.	Lab	500	28.5
Bird T.	Lab	467	-
Turnout		53.2	43.1

St. Radigunds (3624) <sup>2</sup>			
		vote	share
Mills K.*	Lab	545	53.4
Cowan G.*	Lab	525	-
Boulares D. Ms.	Con	475	46.6
Dimmock S.	Con	474	-
Turnout		30.6	6.9

Tower Hamlets (3908) <sup>2</sup>			
		vote	share
Goodwin J.*	Lab	760	66.8
Brivio P. Ms.	Lab	750	-
Cope B.	Con	377	33.2
Le-Faye K. Ms.	Con	299	-
Turnout		31.4	33.7

Town & Pier (1479)			
		vote	share
Hood G.*	Lab	324	56.1
Precious C.	Dov All	254	43.9
Turnout		40.0	12.1

**Walmer (6105)<sup>3</sup>**

		<b>vote</b>	<b>share</b>
<b>Heath P.*</b>	Con	1,764	62.6
<b>Smith C.*</b>	Con	1,690	-
<b>Le Chevalier P.*</b>	Con	1,624	-
Brown G.	Lab	1,056	37.4
Brimmell E.	Lab	1,014	-
Cosin B.	Lab	978	-
<hr/>			
	<b>Turnout</b>	48.9	25.1

**Whitfield (3926)<sup>2</sup>**

		<b>vote</b>	<b>share</b>
<b>Hannent D.</b>	Con	847	44.6
<b>Back J.</b>	Con	831	-
Meredith C.*	LD	654	34.4
Curtis B.	LD	520	-
Cosin M. Ms.	Lab	319	16.8
Rees A. Ms.	Lab	287	-
Matcham V.	Ind	80	4.2
<hr/>			
	<b>Turnout</b>	49.0	10.2



