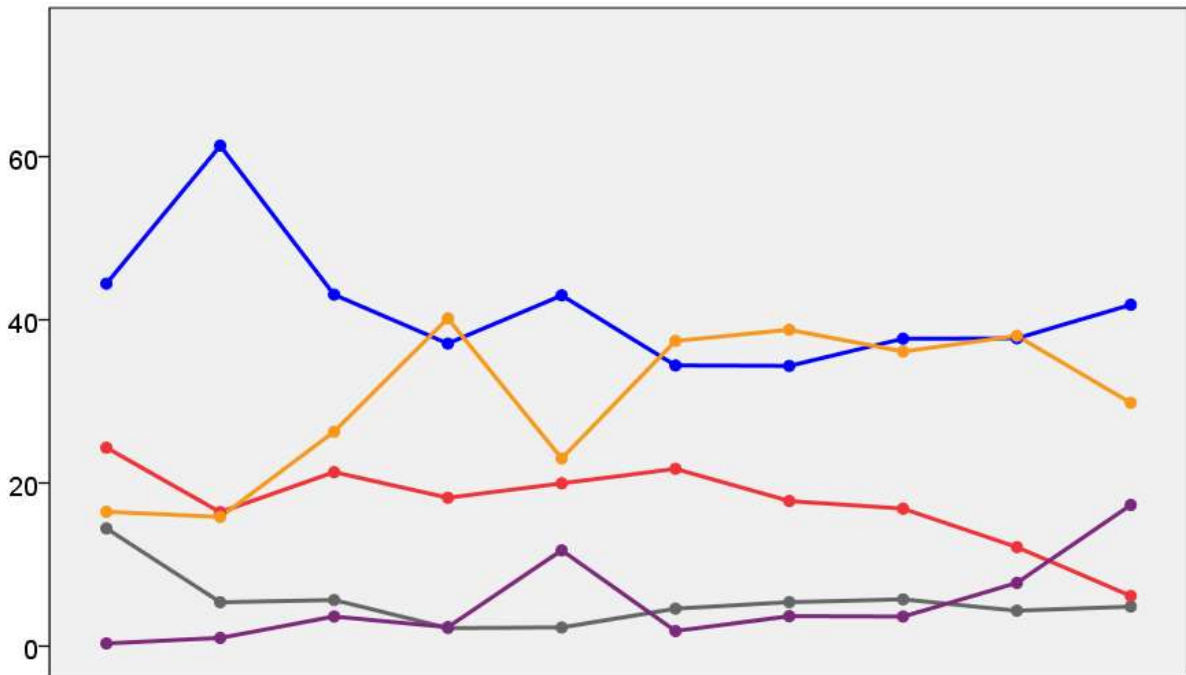


# Devon County Council Election Results 1973-2009



Colin Rallings and Michael Thrasher  
The Elections Centre  
Plymouth University

The information contained in this report has been obtained from a number of sources. Election results from the immediate post-reorganisation period were painstakingly collected by Alan Willis largely, although not exclusively, from local newspaper reports. From the mid-1980s onwards the results have been obtained from each local authority by the Elections Centre. The data are stored in a database designed by Lawrence Ware and maintained by Brian Cheal and others at Plymouth University. Despite our best efforts some information remains elusive whilst we accept that some errors are likely to remain. Notice of any mistakes should be sent to [elections@plymouth.ac.uk](mailto:elections@plymouth.ac.uk). The results sequence can be kept up to date by purchasing copies of the annual Local Elections Handbook, details of which can be obtained by contacting the email address above.

Front cover: the graph shows the distribution of percentage vote shares over the period covered by the results. The lines reflect the colours traditionally used by the three main parties. The grey line is the share obtained by Independent candidates while the purple line groups together the vote shares for all other parties.

Rear cover: the top graph shows the percentage share of council seats for the main parties as well as those won by Independents and other parties. The lines take account of any by-election changes (but not those resulting from elected councillors switching party allegiance) as well as the transfers of seats during the main round of local election.

The lower graph shows for each main round of local elections the overall percentage turnout (solid line), the percentage of women candidates standing at (dotted line) and the percentage of women among those elected (hashed line).

## Devon 1973

### Axminster Rural No. 1 (6822)

		vote	share
May M.	Ind	1,884	50.4
Apthorp E.	Con	1,328	35.5
Good D.	Ind	339	9.1
Kirk W.	Lab	187	5.0
<b>Turnout</b>		54.8	14.9

### Axminster Rural No. 2 (8851)

		vote	share
Hull D.	Lib	1,741	41.6
Moulding C.	Con	1,707	40.8
Hicks R.	Ind	476	11.4
Milton K.	Lab	261	6.2
<b>Turnout</b>		47.3	0.8

### Barnstaple No. 1 (6319)

		vote	share
Taylor W.	NDM	979	33.7
Thomas B.	Ind	866	29.8
Dibble A.	Lib	809	27.8
Thomas R.	Lab	255	8.8
<b>Turnout</b>		46.0	3.9

### Barnstaple No. 2 (6508)

		vote	share
Potter D.	Lib	1,755	54.5
Wright E.	Con	913	28.3
Capel C.	Lab	555	17.2
<b>Turnout</b>		49.5	26.1

### Barnstaple Rural No. 1 (8689)

		vote	share
Inclledon R.	Lib	2,441	54.8
Moon A.	Con	1,741	39.1
Williams P. Ms.	Lab	272	6.1
<b>Turnout</b>		51.3	15.7

### Barnstaple Rural No. 2 (4123)

		vote	share
Isaacs J.	Lib	1,383	50.4
Shaplund W.	Con	1,246	45.4
Johns I. Ms.	Lab	116	4.2
<b>Turnout</b>		66.6	5.0

### Barnstaple Rural No. 3 (7038)

		vote	share
Brannam J.	Con	1,388	42.6
Andrew J.	Ind	1,376	42.3
Thomas H. Ms.	Lab	492	15.1
<b>Turnout</b>		46.3	0.4

### Barnstaple Rural No. 4 (Lynton) (4478)

		vote	share
Richards F.	Ind	1,276	52.2
Andrews G.	Con	1,057	43.2
Lopez A.	Lab	113	4.6
<b>Turnout</b>		54.6	9.0

### Bideford (8698)

		vote	share
Needs J.	Lib	1,774	46.9
Fulford H.	Con	800	21.1
Hughes A.	Ind	626	16.5
Bailey F.	Lab	512	13.5
Sherborne T.	Ind	72	1.9
<b>Turnout</b>		43.5	25.7

### Bideford Rural (6181)

		vote	share
Brimacombe S.	Con	1,775	48.5
Lott N. Ms.	Lib	1,727	47.1
Gonley J.	Lab	161	4.4
<b>Turnout</b>		59.3	1.3

### Budleigh Salterton (7072)

		vote	share
Brockman R.	Con	2,372	63.7
Pyne G.	Lib	1,144	30.7
O'Callaghan M.	Lab	209	5.6
<b>Turnout</b>		52.7	33.0

### Crediton (5448)

		vote	share
Blamey M. Ms.	Lib	1,237	50.0
Stoneman K.	Con	998	40.3
Wardle A.	Lab	240	9.7
<b>Turnout</b>		45.4	9.7

### Crediton Rural (6540)

		vote	share
Warren C.	Ind	1,785	53.0
Pennington E.	Con	1,253	37.2
Davey D.	Lab	328	9.7
<b>Turnout</b>		51.5	15.8

### Dartmouth (6632)

		vote	share
Watts D.	Con	1,167	43.2
Gilbert M.	Lab	537	19.9
Fitch-Northen C.	Ind	529	19.6
Hopker D.	Ind	466	17.3
<b>Turnout</b>		40.7	23.3

### Dawlish (7310)

		vote	share
Langley C. Ms.	Ind	2,021	69.1
Williams G.	Lib	752	25.7
Berry D.	Lab	151	5.2
<b>Turnout</b>		40.0	43.4

### Exeter No. 1 (8417)

		vote	share
Saw C. Ms.	Lab	1,758	38.8
Hilton P.	Lib	1,715	37.8
Levers J.	Con	1,062	23.4
<b>Turnout</b>		53.9	0.9

### Exeter No. 2 (7677)

		vote	share
Browning M.	Lib	1,933	42.6
Chesney M. Ms.	Lab	1,464	32.2
Spencer P. Ms.	Con	1,143	25.2
<b>Turnout</b>		59.1	10.3

### Exeter No. 3 (7450)

		vote	share
Martin J.	Con	1,935	47.4
Tremlett R.	Lab	1,099	26.9
Behenna M. Ms.	Lib	1,049	25.7
<b>Turnout</b>		54.8	20.5

### Exeter No. 4 (7967)

		vote	share
Morrish D.	Lib	2,269	49.4
Long V.	Lab	1,759	38.3
Greenslade G.	Con	561	12.2
<b>Turnout</b>		57.6	11.1

### Exeter No. 5 (11370)<sup>2</sup>

		vote	share
Sargent H.	Con	2,401	44.9
Oliver F.	Lab	2,312	43.3
Speller A.	Con	2,305	-
Golant A. Ms.	Lab	2,150	-
Ewens A.	Lib	632	11.8
Vokes S. Ms.	Lib	607	-
<b>Turnout</b>		47.0	1.7

### Exeter No. 6 (12216)<sup>2</sup>

		vote	share
Hutchings W.	Lab	2,683	45.9
Spence S. Ms.	Lab	2,352	-
Landers J.	Con	2,240	38.3
Holladay H.	Con	2,164	-
Morris L.	Lib	924	15.8
Fuller J.	Lib	889	-
<b>Turnout</b>		47.9	7.6

### Exeter No. 7 (12230)<sup>2</sup>

		vote	share
McGahey E.	Con	2,511	46.3
Sim R.	Con	2,457	-
Foot A.	Lib	1,574	29.0
Foot J. Ms.	Lib	1,522	-
Long N.	Lab	1,337	24.7
Reidy J.	Lab	1,291	-
<b>Turnout</b>		44.3	17.3

### Exmouth No. 1 (6743)

		vote	share
Pye V.	Con	1,736	56.5
Thomas N.	Lib	962	31.3
Barracough J. Ms.	Lab	372	12.1
<b>Turnout</b>		45.5	25.2

### Exmouth No. 2 (Withycombe Raleigh) (6223)

		vote	share
Dray D.	Con	1,310	47.8
Coles R.	Lib	776	28.3
Palmer M. Ms.	Lab	657	24.0
<b>Turnout</b>		44.1	19.5

### Exmouth No. 3 (7197)

		vote	share
Herbert E. Ms.	Con	1,585	47.7
Morgan F. Ms.	Lib	1,028	31.0
Ratcliffe A. Ms.	Lab	707	21.3
<b>Turnout</b>		46.1	16.8

### Holsworthy (6554)

		vote	share
Broad H. Ms.	Con	1,286	38.2
Cann W.	Ind	849	25.2
Moon A.	Ind	611	18.2
Sillifant T.	Lib	546	16.2
Kennard G.	Lab	73	2.2
<b>Turnout</b>		51.3	13.0

### Honiton (7751)

		vote	share
Lawrence E.	Con	1,638	46.8
Halse J.	Ind	1,366	39.1
Newitt M.	Lab	446	12.8
Hulf A.	Ind	48	1.4
<b>Turnout</b>		45.1	7.8

### Ilfracombe (7223)

		vote	share
Hancock D.	Ind	2,182	50.5
Disney C.	Con	1,032	23.9
Kingston E.	Lib	892	20.6
Parkhouse G.	Lab	218	5.0
<b>Turnout</b>		59.9	26.6

### Kingsbridge Rural No. 1 (7790)

		vote	share
Day S.	Con	2,069	56.0
Yabsley C.	Ind	1,218	33.0
Brimblecombe G.	Lab	406	11.0
<b>Turnout</b>		47.4	23.0

### Kingsbridge Rural No. 2 (7490)

		vote	share
Ansell C.	Con	2,012	55.8
Kemp G.	Ind	1,097	30.4
Gilbert J. Ms.	Lab	494	13.7
<b>Turnout</b>		48.1	25.4

<b>Newton Abbot No. 1 (7271)</b>			
		vote	share
Nicholls E. Ms.	Lab	1,399	50.5
Gibbon H.	Con	1,369	49.5
<b>Turnout</b>		38.1	1.1
<b>Newton Abbot No. 2 (7334)</b>			
		vote	share
Lamb L.	Lab	1,576	46.0
Jenner J. Ms.	Con	1,236	36.1
Taylor J.	Lib	614	17.9
<b>Turnout</b>		46.7	9.9
<b>Newton Abbot Rural No. 1 (7688)</b>			
		vote	share
Phillpotts A.	Con	1,336	40.5
Timms J.	Ind	783	23.7
West J.	Lib	627	19.0
Walke W.	Ind	321	9.7
Guscott F.	Lab	234	7.1
<b>Turnout</b>		42.9	16.8
<b>Newton Abbot Rural No. 2 (7544)</b>			
		vote	share
Beer M. Ms.	Con	1,728	60.5
Coulter A.	Ind	690	24.1
Fairbairn T.	Lib	440	15.4
<b>Turnout</b>		37.9	36.3
<b>Newton Abbot Rural No. 3 (7740)</b>			
		vote	share
Everett A. Ms.	Con	1,831	64.8
Cruickshank W. Ms.	Lib	655	23.2
Beresford F.	Lab	341	12.1
<b>Turnout</b>		36.5	41.6
<b>Newton Abbot Rural No. 4 (6702)</b>			
		vote	share
Day E.	Con	1,640	76.5
Boyce R.	Lab	504	23.5
<b>Turnout</b>		32.0	53.0
<b>Northam (6658)</b>			
		vote	share
Armstrong G.	Lib	1,294	38.3
Patt E. Ms.	Con	1,052	31.1
Congdon C. Ms.	Ind	622	18.4
Milbride R.	Lab	351	10.4
Ford A.	Ind	60	1.8
<b>Turnout</b>		50.8	7.2
<b>Okehampton (5317)</b>			
		vote	share
Passmore W.	Ind	1,468	54.6
Lethbridge L.	Con	1,029	38.3
Kennard K.	Lab	192	7.1
<b>Turnout</b>		50.6	16.3
<b>Okehampton Rural (6637)</b>			
		vote	share
Hampson M. Ms.	Con	1,630	65.9
Jones D.	Ind	614	24.8
Mardon W.	Lab	230	9.3
<b>Turnout</b>		37.3	41.1
<b>Ottery St. Mary (6952)</b>			
		vote	share
Thorne W.	Con	1,610	52.9
Roberts A.	Ind	1,083	35.6
Mason L.	Lab	351	11.5
<b>Turnout</b>		43.8	17.3
<b>Plymouth No. 1 (15523)<sup>3</sup></b>			
		vote	share
Innes D. Ms.	Con	4,820	73.4
Creber G.	Con	4,514	-
Thompson W.	Con	4,245	-
Dent F.	Lab	1,746	26.6
Saunders T.	Lab	1,456	-
Williams H.	Lab	1,443	-
<b>Turnout</b>		42.3	46.8

<b>Plymouth No. 10 (Plympton St. Mary) (7021)</b>			
		vote	share
Speare L.	Con	1,654	67.8
Browning M. Ms.	Lab	784	32.2
<b>Turnout</b>		34.7	35.7
<b>Plymouth No. 11 (Plymstock Dunstone) (7792)</b>			
		vote	share
Butland G.	Con	1,788	58.3
Snell R.	Lib	883	28.8
De Launey S.	Lab	396	12.9
<b>Turnout</b>		39.4	29.5
<b>Plymouth No. 12 (Plymstock Radford) (7158)</b>			
		vote	share
Wigmore J.	Con	1,683	65.2
Hill E.	Lab	898	34.8
<b>Turnout</b>		36.1	30.4
<b>Plymouth No. 13 (St. Andrew) (7339)</b>			
		vote	share
Glinn A.	Con	1,612	55.0
Stott F.	Lab	1,318	45.0
<b>Turnout</b>		39.9	10.0
<b>Plymouth No. 14 (St. Aubyn) (7516)</b>			
		vote	share
Long A.	Lab	1,536	64.9
Wilbraham S.	Con	832	35.1
<b>Turnout</b>		31.5	29.7
<b>Plymouth No. 15 (St. Budeaux) (7778)</b>			
		vote	share
Hockey R.	Lab	1,945	58.6
Baker E. Ms.	Con	1,376	41.4
<b>Turnout</b>		42.7	17.1
<b>Plymouth No. 16 (St. Peter) (6868)</b>			
		vote	share
Curry R.	Lab	1,710	71.4
Mitchell D.	Con	686	28.6
<b>Turnout</b>		34.9	42.7
<b>Plymouth No. 17 (Stoke) (7192)</b>			
		vote	share
Stark D.	Con	1,671	60.5
Cock J.	Lab	1,093	39.5
<b>Turnout</b>		38.4	20.9
<b>Plymouth No. 18 (Sutton) (7542)</b>			
		vote	share
Kelland F.	Lab	1,725	57.5
Hawk R. Ms.	Lib	684	22.8
Ryall C.	Con	593	19.8
<b>Turnout</b>		39.8	34.7
<b>Plymouth No. 19 (Trelawny) (7819)</b>			
		vote	share
Jinks G.	Con	2,205	68.9
Glanville K.	Lab	996	31.1
<b>Turnout</b>		40.9	37.8
<b>Plymouth No. 2 (16930)<sup>3</sup></b>			
		vote	share
Evans W.	Lab	3,017	57.1
Scott R.	Lab	2,787	-
Welch H.	Lab	2,659	-
Childs D. Ms.	Con	2,265	42.9
Chapman D.	Con	2,198	-
Jones T.	Con	2,158	-
<b>Turnout</b>		31.2	14.2
<b>Plymouth No. 20 (Mount Gould) (7897)</b>			
		vote	share
Thornton T.	Con	1,469	44.5
Butland R.	Lab	1,232	37.3
Gladwell G.	Lib	600	18.2
<b>Turnout</b>		41.8	7.2

<b>Plymouth No. 3 (Crownhill) (9718)<sup>2</sup></b>			
		vote	share
Allen E.	Con	1,959	61.4
Browne R.	Con	1,939	-
Gould F. Ms.	Lab	1,230	38.6
Trevarn H.	Lab	1,167	-
<b>Turnout</b>		32.8	22.9
<b>Plymouth No. 4 (Efford) (7325)</b>			
		vote	share
Hill L.	Lab	1,673	54.5
Macmillan A. Ms.	Con	829	27.0
Snell J. Ms.	Lib	566	18.4
<b>Turnout</b>		41.9	27.5
<b>Plymouth No. 5 (Ernesettle) (7323)</b>			
		vote	share
Roberts J.	Lab	1,506	57.1
Dicker D.	Con	1,133	42.9
<b>Turnout</b>		36.0	14.1
<b>Plymouth No. 6 (Ford) (7363)</b>			
		vote	share
Batchelor B. Ms.	Lab	1,591	54.2
Fox H. Ms.	Con	1,346	45.8
<b>Turnout</b>		39.9	8.3
<b>Plymouth No. 7 (Honicknowle) (7982)</b>			
		vote	share
Whitfield P.	Lab	2,446	73.1
Radmore P. Ms.	Con	899	26.9
<b>Turnout</b>		41.9	46.2
<b>Plymouth No. 8 (Pennycross) (7801)</b>			
		vote	share
Drake G.	Lab	2,050	65.1
Gardiner K.	Con	1,100	34.9
<b>Turnout</b>		40.4	30.2
<b>Plymouth No. 9 (Plympton Erle) (6063)</b>			
		vote	share
Hannam E.	Con	1,185	63.8
Fildew J.	Lab	672	36.2
<b>Turnout</b>		30.6	27.6
<b>Plympton St. Mary No. 1 (5255)</b>			
		vote	share
Stacey E. Ms.	Lib	967	44.9
Young M.	Con	583	27.1
Congdon J.	Ind	329	15.3
Tuck S. Ms.	Lab	274	12.7
<b>Turnout</b>		41.0	17.8
<b>Plympton St. Mary No. 2 (6443)</b>			
		vote	share
Sayers A.	Con	1,541	60.0
Woodcock J. Ms.	Ind	846	32.9
Tate E. Ms.	Lab	181	7.0
<b>Turnout</b>		39.9	27.1
<b>Sidmouth No. 1 (6139)</b>			
		vote	share
Skinner A.	Con	2,586	81.5
Murch R. Ms.	Lib	587	18.5
<b>Turnout</b>		51.7	63.0
<b>Sidmouth No. 2 (5238)</b>			
		vote	share
Pinney F.	Con	2,007	76.7
Franklin A.	Lib	445	17.0
Hill R.	Lab	166	6.3
<b>Turnout</b>		50.0	59.7
<b>South Molton (8781)</b>			
		vote	share
Verney D.	Ind	2,592	46.6
Cook A.	Ind	1,792	32.2
Pierce H.	Con	982	17.6
Rowley J.	Lab	199	3.6
<b>Turnout</b>		63.4	14.4

<b>St. Thomas No. 1 (8206)</b>			
		<b>vote</b>	<b>share</b>
<b>Taylor R.</b>	Con	1,609	49.0
Hallett W.	Ind	969	29.5
Brock P.	Ind	372	11.3
Chesney C.	Ind	332	10.1
<b>Turnout</b>		40.0	19.5
<b>St. Thomas No. 2 (8042)</b>			
		<b>vote</b>	<b>share</b>
<b>Preston F.</b>	Con	1,807	53.9
Sargent J. Ms.	Lib	1,030	30.7
Long R.	Lab	517	15.4
<b>Turnout</b>		41.7	23.2
<b>Tavistock No. 1 (Tavistock) (6576)</b>			
		<b>vote</b>	<b>share</b>
<b>Gallup L. Ms.</b>	Con	841	26.6
Cresswell C.	Lib	767	24.3
Pridham L.	Ind	572	18.1
Moore H.	Ind	495	15.7
Reynolds R.	Lab	486	15.4
<b>Turnout</b>		48.1	2.3
<b>Tavistock No. 2 (4787)</b>			
		<b>vote</b>	<b>share</b>
<b>Mounce V.</b>	Ind	1,195	57.1
Drake H. Ms.	Con	729	34.8
Bazley G.	Lab	168	8.0
<b>Turnout</b>		43.7	22.3
<b>Tavistock No. 3 (6849)</b>			
		<b>vote</b>	<b>share</b>
<b>Whitmarsh G.</b>	Ind	1,352	48.2
Crane M. Ms.	Con	892	31.8
Lewis J. Ms.	Ind	383	13.7
Scott M. Ms.	Lab	178	6.3
<b>Turnout</b>		41.0	16.4
<b>Teignmouth (10337)</b>			
		<b>vote</b>	<b>share</b>
<b>Proctor C.</b>	Ind	2,042	41.2
Bladon A.	Con	1,542	31.1
Pope R.	Lib	978	19.7
Maydon K. Ms.	Lab	264	5.3
Cole W.	Ind	132	2.7
<b>Turnout</b>		48.0	10.1
<b>Tiverton (East) (6916)</b>			
		<b>vote</b>	<b>share</b>
<b>Amory I.</b>	Con	1,302	43.5
Allen M. Ms.	Lib	849	28.4
Penney K.	Lab	843	28.2
<b>Turnout</b>		43.3	15.1
<b>Tiverton (West) (4367)</b>			
		<b>vote</b>	<b>share</b>
<b>Shapland F.</b>	Ind	1,197	51.6
Jones W.	Lib	690	29.7
Turner M. Ms.	Ind	434	18.7
<b>Turnout</b>		53.1	21.8
<b>Tiverton Rural No. 1 (9617)</b>			
		<b>vote</b>	<b>share</b>
<b>Elmes P. Ms.</b>	Con	1,805	45.8
Rowe L.	Lib	1,132	28.7
Denner W.	Ind	640	16.3
Peel D. Ms.	Lab	361	9.2
<b>Turnout</b>		40.9	17.1
<b>Tiverton Rural No. 2 (6262)</b>			
		<b>vote</b>	<b>share</b>
<b>Heggadon W.</b>	Con	1,573	52.1
Noon T.	Lib	907	30.1
Traill W.	Ind	321	10.6
Penney C. Ms.	Lab	216	7.2
<b>Turnout</b>		48.2	22.1

<b>Torbay Blatchcombe (7106)</b>			
		<b>vote</b>	<b>share</b>
<b>Clark G.</b>	Lab	1,912	51.9
Walke K.	Con	1,774	48.1
<b>Turnout</b>		51.9	3.7
<b>Torbay Cockington With Chelston (7896)</b>			
		<b>vote</b>	<b>share</b>
<b>Wilkinson-Cox P. Ms.</b>	Con	2,231	60.1
Humphrey C.	Lab	1,482	39.9
<b>Turnout</b>		47.0	20.2
<b>Torbay Coverdale (6452)</b>			
		<b>vote</b>	<b>share</b>
<b>Snell R.</b>	Con	1,552	57.4
Harris E.	Lab	1,152	42.6
<b>Turnout</b>		41.9	14.8
<b>Torbay Ellacombe (6560)</b>			
		<b>vote</b>	<b>share</b>
<b>Champ S.</b>	Lab	1,066	37.7
Handford I.	Lib	938	33.2
Hands G.	Con	821	29.1
<b>Turnout</b>		43.1	4.5
<b>Torbay Furzeham With Churston (7047)</b>			
		<b>vote</b>	<b>share</b>
<b>Langton G.</b>	Con	2,211	81.3
Anspach K.	Lab	508	18.7
<b>Turnout</b>		38.6	62.6
<b>Torbay Hollicombe (6931)</b>			
		<b>vote</b>	<b>share</b>
<b>Fraser-James V. Ms.</b>	Con	2,093	74.4
Hodge P.	Lab	721	25.6
<b>Turnout</b>		40.6	48.8
<b>Torbay Shiphay (6673)</b>			
		<b>vote</b>	<b>share</b>
<b>Clotworthy W.</b>	Lib	1,143	38.3
Williams A. Ms.	Con	1,039	34.8
Turner R.	Lab	802	26.9
<b>Turnout</b>		44.7	3.5
<b>Torbay St. Marychurch (7943)</b>			
		<b>vote</b>	<b>share</b>
<b>Greenslade A.</b>	Con	1,535	49.9
Pentney J.	Lib	1,126	36.6
Roy C.	Lab	418	13.6
<b>Turnout</b>		38.8	13.3
<b>Torbay St. Michaels With Goodringt (8395)</b>			
		<b>vote</b>	<b>share</b>
<b>Foster G.</b>	Con	1,888	58.5
Clarke I.	Lab	1,339	41.5
<b>Turnout</b>		38.4	17.0
<b>Torbay St. Peters With St. Marys (6629)</b>			
		<b>vote</b>	<b>share</b>
<b>Gabbey M. Ms.</b>	Con	1,608	51.9
Thomas L.	Lab	1,492	48.1
<b>Turnout</b>		46.8	3.7
<b>Torbay Tormohun (6984)</b>			
		<b>vote</b>	<b>share</b>
<b>Oliver G.</b>	Con	1,424	58.7
Stone J.	Lab	1,001	41.3
<b>Turnout</b>		34.7	17.4
<b>Torbay Torwood (6837)</b>			
		<b>vote</b>	<b>share</b>
<b>Goodrich A.</b>	Con	1,818	68.1
Jenkins E. Ms.	Ind	850	31.9
<b>Turnout</b>		39.0	36.3

<b>Torrington (5903)</b>			
		<b>vote</b>	<b>share</b>
<b>Mortimer E.</b>	Ind	1,053	48.5
Hodgson D.	Con	886	40.8
Dicker D.	Lab	232	10.7
<b>Turnout</b>		36.8	7.7
<b>Totnes (6869)</b>			
		<b>vote</b>	<b>share</b>
<b>Williams S.</b>	Con	1,217	48.5
Mineard D.	Lib	686	27.4
Shail H.	Lab	605	24.1
<b>Turnout</b>		36.5	21.2
<b>Totnes Rural (6895)</b>			
		<b>vote</b>	<b>share</b>
<b>Rickard G.</b>	Con	1,561	53.0
Griffiths M.	Lib	994	33.8
Pope V. Ms.	Lab	390	13.2
<b>Turnout</b>		42.7	19.3
<b>Devon 1977</b>			
<b>Axminster Rural No. 1 (7123)</b>			
		<b>vote</b>	<b>share</b>
<b>Chapple R.</b>	Con	2,277	80.8
Ruffle R.	Lib	542	19.2
<b>Turnout</b>		39.7	61.5
<b>Axminster Rural No. 2 (9212)</b>			
		<b>vote</b>	<b>share</b>
<b>Gardner F.</b>	Con	2,696	55.8
Hull D.*	Lib	2,134	44.2
<b>Turnout</b>		52.5	11.6
<b>Barnstaple No. 1 (6776)</b>			
		<b>vote</b>	<b>share</b>
<b>Taylor W.*</b>	NDM	1,885	77.3
Dibble A.	Lib	552	22.7
<b>Turnout</b>		36.1	54.7
<b>Barnstaple No. 2 (6483)</b>			
		<b>vote</b>	<b>share</b>
<b>Potter D.*</b>	Lib	1,504	51.1
Wright E.	Con	1,257	42.7
Jones J.	Lab	184	6.2
<b>Turnout</b>		45.6	8.4
<b>Barnstaple Rural No. 1 (9110)</b>			
		<b>vote</b>	<b>share</b>
<b>Bamford J.</b>	Con	2,339	53.6
Inclledon R.*	Lib	1,516	34.7
Roach J.	Ind	509	11.7
<b>Turnout</b>		48.0	18.9
<b>Barnstaple Rural No. 2 (4395)</b>			
		<b>vote</b>	<b>share</b>
<b>Ackland A.</b>	Con	1,457	53.5
Isaac J.*	Lib	1,267	46.5
<b>Turnout</b>		62.0	7.0
<b>Barnstaple Rural No. 3 (7385)</b>			
		<b>vote</b>	<b>share</b>
<b>Stanbury R.</b>	Con	2,380	64.7
Jordan K.	Lib	1,296	35.3
<b>Turnout</b>		50.0	29.5
<b>Barnstaple Rural No. 4 (Lynton) (4502)</b>			
		<b>vote</b>	<b>share</b>
<b>Richards F.*</b>	Ind	1,241	52.9
Watts D.	Con	1,106	47.1
<b>Turnout</b>		52.4	5.8

<b>Bideford (9112)</b>			
		<b>vote</b>	<b>share</b>
<b>Dunn L.</b>	Con	1,687	50.1
<b>Needs J.*</b>	Lib	1,222	36.3
<b>Bailey F.</b>	Lab	391	11.6
<b>Sherborne T.</b>	Ind	65	1.9
	<b>Turnout</b>	37.2	13.8

<b>Bideford Rural (6580)</b>			
		<b>vote</b>	<b>share</b>
<b>Brimacombe S.*</b>	Con	2,364	72.7
<b>Marsden G.</b>	Lib	888	27.3
	<b>Turnout</b>	49.5	45.4

<b>Budleigh Salterton (7196)</b>			
		<b>vote</b>	<b>share</b>
<b>Brockman R.*</b>	Con	2,485	76.5
<b>Hoare G.</b>	Lib	764	23.5
	<b>Turnout</b>	45.2	53.0

<b>Crediton (5950)</b>			
		<b>vote</b>	<b>share</b>
<b>Way G.</b>	Con	1,301	60.2
<b>Blamey M. Ms.*</b>	Lib	860	39.8
	<b>Turnout</b>	36.4	20.4

<b>Crediton Rural (6673)</b>			
		<b>vote</b>	<b>share</b>
<b>Warren C.*</b>	Ind	2,044	80.9
<b>Stimson A.</b>	Ind	482	19.1
	<b>Turnout</b>	38.0	61.8

<b>Dartmouth (6685)</b>			
		<b>vote</b>	<b>share</b>
<b>Watts D.*</b>	Con	1,864	75.6
<b>Vincent G. Ms.</b>	Lib	603	24.4
	<b>Turnout</b>	37.0	51.1

<b>Dawlish (7873)</b>			
		<b>vote</b>	<b>share</b>
<b>Bealey M. Ms.</b>	Con	2,433	69.9
<b>Williams G.</b>	Lib	1,050	30.1
	<b>Turnout</b>	44.4	39.7

<b>Exeter No. 1 (8984)</b>			
		<b>vote</b>	<b>share</b>
<b>Chambers E. Ms.</b>	Con	1,988	48.9
<b>Vincent J.</b>	Lab	1,346	33.1
<b>Lawson S.</b>	Lib	730	18.0
	<b>Turnout</b>	45.2	15.8

<b>Exeter No. 2 (7785)</b>			
		<b>vote</b>	<b>share</b>
<b>Rogers D.</b>	Con	1,817	43.0
<b>Howell V.</b>	Lib	1,614	38.2
<b>Long N.</b>	Lab	792	18.8
	<b>Turnout</b>	54.3	4.8

<b>Exeter No. 3 (7292)</b>			
		<b>vote</b>	<b>share</b>
<b>Martin J.*</b>	Con	2,613	69.7
<b>Boyce R.</b>	Lab	803	21.4
<b>Smith S. Ms.</b>	Lib	335	8.9
	<b>Turnout</b>	51.6	48.3

<b>Exeter No. 4 (8324)</b>			
		<b>vote</b>	<b>share</b>
<b>Morrish D.*</b>	Lib	2,066	45.8
<b>Venner M.</b>	Con	1,362	30.2
<b>Tremlett R.</b>	Lab	1,085	24.0
	<b>Turnout</b>	54.3	15.6

<b>Exeter No. 5 (11032)<sup>2</sup></b>			
		<b>vote</b>	<b>share</b>
<b>Sargent H.*</b>	Con	2,923	57.6
<b>Foster D.</b>	Con	2,903	-
<b>Oliver F.*</b>	Lab	1,670	32.9
<b>Petrie A.</b>	Lab	1,506	-
<b>Nuttall R.</b>	Lib	485	9.6
<b>Thorne P.</b>	Lib	477	-
	<b>Turnout</b>	46.0	24.7

<b>Exeter No. 6 (13052)<sup>2</sup></b>			
		<b>vote</b>	<b>share</b>
<b>Panter W.</b>	Con	3,247	53.9
<b>Taylor B. Ms.</b>	Con	3,145	-
<b>Hutchings W.*</b>	Lab	2,323	38.6
<b>Spence S. Ms.*</b>	Lab	2,162	-
<b>Kellway B. Ms.</b>	Lib	455	7.6
<b>Brock P.</b>	Lib	381	-
	<b>Turnout</b>	46.2	15.3

<b>Exeter No. 7 (11877)<sup>2</sup></b>			
		<b>vote</b>	<b>share</b>
<b>McGahey E.*</b>	Con	3,100	62.2
<b>Sim R.*</b>	Con	3,037	-
<b>Nation D.</b>	Lib	855	17.2
<b>Hamilton N.</b>	Lib	817	-
<b>Worthington C. Ms.</b>	Lab	691	13.9
<b>Cadwallader A. Ms.</b>	Lab	628	-
<b>Forrest H.</b>	Ind	337	6.8
	<b>Turnout</b>	42.0	45.1

<b>Exmouth No. 1 (6841)</b>			
		<b>vote</b>	<b>share</b>
<b>Thorpe P.</b>	Con	2,571	75.5
<b>Thomas N.</b>	Lib	834	24.5
	<b>Turnout</b>	49.9	51.0

<b>Exmouth No. 2 (Withycombe Raleigh) (6976)</b>			
		<b>vote</b>	<b>share</b>
<b>Dray D.*</b>	Con	2,048	63.7
<b>Chamberlain G.</b>	Lib	709	22.1
<b>Bradford M. Ms.</b>	Lab	456	14.2
	<b>Turnout</b>	46.1	41.7

<b>Exmouth No. 3 (7164)</b>			
		<b>vote</b>	<b>share</b>
<b>Herbert E. Ms.*</b>	Con	2,457	70.0
<b>Powley J.</b>	Lib	570	16.2
<b>Martin W. Ms.</b>	Lab	482	13.7
	<b>Turnout</b>	49.1	53.8

<b>Holsworthy (6810)</b>			
		<b>vote</b>	<b>share</b>
<b>Broad H. Ms.*</b>	Con	2,197	66.2
<b>Trace W.</b>	Ind	1,124	33.8
	<b>Turnout</b>	48.8	32.3

<b>Honiton (7994)</b>			
		<b>vote</b>	<b>share</b>
<b>Lawrence E.*</b>	Con	2,383	71.6
<b>Collins R.</b>	Lib	743	22.3
<b>Newitt M.</b>	Lab	202	6.1
	<b>Turnout</b>	41.8	49.3

<b>Ilfracombe (7403)</b>			
		<b>vote</b>	<b>share</b>
<b>Hancock D.*</b>	Ind	1,913	59.5
<b>Ferris W.</b>	Con	1,303	40.5
	<b>Turnout</b>	43.7	19.0

<b>Kingsbridge Rural No. 1 (8162)</b>			
		<b>vote</b>	<b>share</b>
<b>Day S.*</b>	Con	0	0.0
	<b>Turnout</b>	0.0	0.0

<b>Kingsbridge Rural No. 2 (7912)</b>			
		<b>vote</b>	<b>share</b>
<b>Ansell C.*</b>	Con	0	0.0
	<b>Turnout</b>	0.0	0.0

<b>Newton Abbot No. 1 (7512)</b>			
		<b>vote</b>	<b>share</b>
<b>England H.</b>	Con	1,711	55.8
<b>Nicholls E. Ms.*</b>	Lab	863	28.1
<b>Findlay D.</b>	Lib	493	16.1
	<b>Turnout</b>	41.0	27.6

<b>Newton Abbot No. 2 (7736)</b>			
		<b>vote</b>	<b>share</b>
<b>Birkett F.</b>	Con	1,592	48.7
<b>Lamb L.*</b>	Ind Lab	871	26.6
<b>Davey J. Ms.</b>	Lab	507	15.5
<b>Wills R.</b>	Lib	299	9.1
	<b>Turnout</b>	42.7	22.1

<b>Newton Abbot Rural No. 1 (7933)</b>			
		<b>vote</b>	<b>share</b>
<b>Phillipotts A.*</b>	Con	2,129	67.0
<b>West J.</b>	Lib	1,048	33.0
	<b>Turnout</b>	40.1	34.0

<b>Newton Abbot Rural No. 2 (7707)</b>			
		<b>vote</b>	<b>share</b>
<b>Coulter A.</b>	Ind	1,471	47.1
<b>Palmer P. Ms.</b>	Con	1,150	36.9
<b>Norrish S.</b>	Lib	499	16.0
	<b>Turnout</b>	40.7	10.3

<b>Newton Abbot Rural No. 3 (7806)</b>			
		<b>vote</b>	<b>share</b>
<b>Gilbert F.</b>	Con	2,415	75.1
<b>Letten D.</b>	Lib	800	24.9
	<b>Turnout</b>	41.4	50.2

<b>Newton Abbot Rural No. 4 (6772)</b>			
		<b>vote</b>	<b>share</b>
<b>Day E.*</b>	Con	0	0.0
	<b>Turnout</b>	0.0	0.0

<b>Northam (7103)</b>			
		<b>vote</b>	<b>share</b>
<b>Sumner M.</b>	Con	2,094	59.2
<b>Armstrong G.*</b>	Lib	706	20.0
<b>Morrish J.</b>	Ind	456	12.9
<b>Coles M.</b>	Lab	177	5.0
<b>Smith W.</b>	Ind	105	3.0
	<b>Turnout</b>	50.1	39.2

<b>Okehampton (5156)</b>			
		<b>vote</b>	<b>share</b>
<b>Williams S.</b>	Ind	1,383	56.3
<b>Passmore W.*</b>	Con	1,075	43.7
	<b>Turnout</b>	47.8	12.5

<b>Okehampton Rural (6674)</b>			
		<b>vote</b>	<b>share</b>
<b>Hampson M. Ms.*</b>	Con	0	0.0
	<b>Turnout</b>	0.0	0.0

<b>Ottery St. Mary (7703)</b>			
		<b>vote</b>	<b>share</b>
<b>Thorne W.*</b>	Con	2,581	76.8
<b>Roberts A.</b>	Lib	489	14.6
<b>Chesney M. Ms.</b>	Lab	289	8.6
	<b>Turnout</b>	43.8	62.3

<b>Plymouth No. 1 (15116)<sup>3</sup></b>			
		<b>vote</b>	<b>share</b>
<b>Creber G.*</b>	Con	5,004	77.4
<b>Thompson W.*</b>	Con	4,813	-
<b>Milligan F.</b>	Con	4,801	-
<b>Huckett L.</b>	Lab	982	15.2
<b>Lemin R.</b>	Lab	953	-
<b>Butland R.</b>	Lab	894	-
<b>Sowden J.</b>	Lib	479	7.4
<b>Simonds P.</b>	Lib	423	-
<b>Gladwell G.</b>	Lib	409	-
	<b>Turnout</b>	42.8	62.2

<b>Plymouth No. 10 (Plympton St. Mary) (7189)</b>			
		<b>vote</b>	<b>share</b>
<b>Speare L.*</b>	Con	2,325	74.7
<b>Fraser R.</b>	Lab	540	17.4
<b>Byatt J.</b>	Lib	246	7.9
	<b>Turnout</b>	43.4	57.4

Plymouth No. 11 (Plymstock Dunstone) (8698)			
		vote	share
Dicker D.	Con	3,231	79.6
Hill E.	Lab	511	12.6
Tice C. Ms.	Lib	315	7.8
Turnout		46.7	67.0

Plymouth No. 12 (Plymstock Radford) (7316)			
		vote	share
Wigmore J.*	Con	2,314	74.8
Marks C. Ms.	Lab	432	14.0
Tice D.	Lib	346	11.2
Turnout		42.4	60.9

Plymouth No. 13 (St. Andrew) (6749)			
		vote	share
Glinn A.*	Con	1,495	58.2
Clinick E. Ms.	Lab	667	26.0
Grant J. Ms.	Ind	406	15.8
Turnout		38.2	32.2

Plymouth No. 14 (St. Aubyn) (7600)			
		vote	share
Gregory M.	Con	1,423	53.1
Saunders T.	Lab	1,258	46.9
Turnout		35.4	6.2

Plymouth No. 15 (St. Budeaux) (7859)			
		vote	share
Glazsher L. Ms.	Con	1,998	54.2
Hockey R.*	Lab	1,690	45.8
Turnout		47.2	8.4

Plymouth No. 16 (St. Peter) (6389)			
		vote	share
Curry R.*	Lab	1,244	56.4
Moiser C.	Con	960	43.6
Turnout		34.7	12.9

Plymouth No. 17 (Stoke) (7005)			
		vote	share
Stark D.*	Con	1,900	65.7
Barron L.	Lab	991	34.3
Turnout		41.4	31.4

Plymouth No. 18 (Sutton) (7111)			
		vote	share
Luke S. Ms.	Con	1,128	42.6
Rugg F.	Lab	1,043	39.4
York P.	Lib	477	18.0
Turnout		37.4	3.2

Plymouth No. 19 (Trelawny) (7525)			
		vote	share
Holman C.	Con	2,869	77.5
Clift E.	Lab	832	22.5
Turnout		49.3	55.0

Plymouth No. 2 (17809) <sup>3</sup>			
		vote	share
Lippell M. Ms.	Con	4,053	57.8
Wheeler R.	Con	3,979	-
Douglas-Green J. Ms.	Con	3,609	-
Evans W.*	Lab	2,961	42.2
Luscombe H.	Lab	2,838	-
Scott R.*	Lab	2,741	-
Turnout		39.4	15.6

Plymouth No. 20 (Mount Gould) (7753)			
		vote	share
Thornton R.*	Con	1,913	57.2
Leppard J.	Lab	961	28.7
Farrage J. Ms.	Ind	469	14.0
Turnout		43.3	28.5

Plymouth No. 3 (Crownhill) (12201) <sup>2</sup>			
		vote	share
Allen E.*	Con	3,382	64.7
Ponsonby M. Ms.	Con	3,235	-
Hughes M.	Lab	1,164	22.3
Caylor T.	Lab	1,094	-
Coe D. Ms.	Lib	681	13.0
Turnout		42.8	42.4

Plymouth No. 4 (Efford) (7407)			
		vote	share
Smith E. Ms.	Con	1,849	54.9
Hill R.*	Lab	1,519	45.1
Turnout		45.7	9.8

Plymouth No. 5 (Ernesettle) (7470)			
		vote	share
Pascoe C. Ms.	Con	1,782	51.3
Roberts J.*	Lab	1,695	48.7
Turnout		46.6	2.5

Plymouth No. 6 (Ford) (7152)			
		vote	share
Fox H. Ms.	Con	1,824	53.6
Batchelor B. Ms.*	Lab	1,287	37.9
Rawlings K. Ms.	Lib	256	7.5
Rendle P.	Comm	33	1.0
Turnout		47.9	15.8

Plymouth No. 7 (Honicknowle) (7784)			
		vote	share
Whitfield P.*	Lab	1,977	55.3
Brown M. Ms.	Con	1,596	44.7
Turnout		46.1	10.7

Plymouth No. 8 (Pennycross) (7961)			
		vote	share
Drake G.*	Lab	1,688	51.5
Hooper A.	Con	1,588	48.5
Turnout		41.2	3.1

Plymouth No. 9 (Plympton Erle) (8496)			
		vote	share
Hannam E.*	Con	2,326	71.7
Jarvis J.	Lab	648	20.0
Pedrick G.	Lib	271	8.4
Turnout		38.2	51.7

Plympton St. Mary No. 1 (5740)			
		vote	share
Trahair J. Ms.	Con	1,644	52.1
Stacey E. Ms.*	Lib	1,513	47.9
Turnout		55.1	4.1

Plympton St. Mary No. 2 (7113)			
		vote	share
Sayers A.*	Con	2,627	74.5
Biggs N.	Lib	901	25.5
Turnout		49.7	48.9

Sidmouth No. 1 (6028)			
		vote	share
Fryer C.	Con	2,216	69.9
Baker S.	Lab	953	30.1
Turnout		52.7	39.9

Sidmouth No. 2 (6873)			
		vote	share
Pinney F.*	Con	2,108	78.2
Glaister P.	Lib	589	21.8
Turnout		39.3	56.3

South Molton (9303)			
		vote	share
Verney D.*	Ind	0	0.0
Turnout		0.0	0.0

St. Thomas No. 1 (8618)			
		vote	share
Taylor R.*	Con	2,513	76.1
Yendell F.	Lib	791	23.9
Turnout		38.4	52.1

St. Thomas No. 2 (8427)			
		vote	share
Pike L.	Con	2,625	75.6
Partridge D.	Lib	847	24.4
Turnout		41.3	51.2

Tavistock No. 1 (Tavistock) (7236)			
		vote	share
Gallup L. Ms.*	Con	1,950	70.2
Reynolds R.	Lab	828	29.8
Turnout		38.5	40.4

Tavistock No. 2 (4887)			
		vote	share
Mounce V.*	Con	1,252	56.7
Lancaster H.	Ind	957	43.3
Turnout		45.3	13.4

Tavistock No. 3 (7084)			
		vote	share
Crane M. Ms.	Con	2,068	67.7
Cutts P.	Lib	987	32.3
Turnout		43.2	35.4

Teignmouth (10758)			
		vote	share
Sawyer A.	Con	2,761	58.9
Shaw D. Ms.	Lib	700	14.9
Gribble C. Ms.	Ind	591	12.6
Marshall S.	Ind	349	7.4
Woods K.	Lab	218	4.6
Cole W.	Ind	71	1.5
Turnout		43.8	43.9

Tiverton (East) (7464)			
		vote	share
Amory I.*	Con	1,661	65.2
Noon M. Ms.	Lib	885	34.8
Turnout		34.2	30.5

Tiverton (West) (4746)			
		vote	share
Shapland F.*	Ind	0	0.0
Turnout		0.0	0.0

Tiverton Rural No. 1 (10440)			
		vote	share
Elmes P. Ms.*	Con	2,609	78.1
Moore B.	Ind	732	21.9
Turnout		32.1	56.2

Tiverton Rural No. 2 (6722)			
		vote	share
Heggadon W.*	Con	1,919	77.5
Cooper A.	Lib	557	22.5
Turnout		37.0	55.0

Torbay Blatchcombe (7355)			
		vote	share
Oxley B. Ms.	Con	1,911	62.9
Clarke I.*	Lab	1,129	37.1
Turnout		41.4	25.7

Torbay Cockington With Chelston (8059)			
		vote	share
Wilkinson-Cox P. Ms.*	Con	2,591	76.7
Critchlow J.	Lab	788	23.3
Turnout		42.2	53.4

Torbay Coverdale (6701)			
		vote	share
<b>Snell R.*</b>	Con	1,687	71.0
Stapleton A.	Lab	689	29.0
<b>Turnout</b>		35.6	42.0

Torbay Ellacombe (6469)			
		vote	share
<b>Holdup M.</b>	Con	1,422	57.4
Champ S.*	Lab	595	24.0
Sykes S.	Lib	460	18.6
<b>Turnout</b>		38.4	33.4

Torbay Furzeham With Churston (6990)			
		vote	share
<b>Robertson D.</b>	Con	0	0.0
<b>Turnout</b>		0.0	0.0

Torbay Hollicombe (6872)			
		vote	share
<b>Fraser-James V. Ms.*</b>	Con	2,189	81.7
Rice J.	Lab	490	18.3
<b>Turnout</b>		39.0	63.4

Torbay Shiphay (7062)			
		vote	share
<b>Waddling A.</b>	Con	1,316	51.2
Couzens P.	Lab	711	27.6
Clotworthy W.*	Lib	545	21.2
<b>Turnout</b>		36.5	23.5

Torbay St. Marychurch (8250)			
		vote	share
<b>Batham N.</b>	Con	2,155	71.1
Myers S.	Lib	877	28.9
<b>Turnout</b>		36.8	42.2

Torbay St. Michaels With Goodringt (8969)			
		vote	share
<b>Law A.</b>	Con	2,077	69.1
Law J.	Lib	497	16.5
Rice S. Ms.	Lab	432	14.4
<b>Turnout</b>		33.6	52.6

Torbay St. Peters With St. Marys (6961)			
		vote	share
<b>Edwards C.</b>	Con	1,783	73.2
Shaw B. Ms.	Lab	653	26.8
<b>Turnout</b>		35.1	46.4

Torbay Tormohun (6779)			
		vote	share
<b>Oliver G.*</b>	Con	1,465	76.9
Stone J.	Lab	440	23.1
<b>Turnout</b>		28.1	53.8

Torbay Torwood (6784)			
		vote	share
<b>Goodrich A.*</b>	Con	2,158	85.5
Clark A.	Lab	365	14.5
<b>Turnout</b>		37.4	71.1

Torrington (6248)			
		vote	share
<b>Mortimer E.*</b>	Con	1,500	67.8
Wedgwood J.	Lib	714	32.2
<b>Turnout</b>		35.5	35.5

Totnes (7094)			
		vote	share
<b>Williams S.*</b>	Con	1,813	57.8
Harvey V. Ms.	Lab	604	19.2
Greig S. Ms.	Lib	580	18.5
Hilditch D.	Ind	142	4.5
<b>Turnout</b>		44.5	38.5

Totnes Rural (7360)			
		vote	share
<b>Rickard G.*</b>	Con	1,631	57.7
Morel A.	Lib	1,195	42.3
<b>Turnout</b>		38.5	15.4

## Devon 1981

Axminster Rural No. 1 (7473)			
		vote	share
<b>Chapple R.*</b>	Con	1,803	50.9
Rogers M. Ms.	Lib	1,537	43.4
Armes A.	Lab	200	5.6
<b>Turnout</b>		47.5	7.5

Axminster Rural No. 2 (9602)			
		vote	share
<b>Gardner F.*</b>	Con	2,423	48.9
Hull D.	Lib	2,238	45.2
Putt C. Ms.	Lab	295	6.0
<b>Turnout</b>		51.7	3.7

Barnstaple No. 1 (7329)			
		vote	share
<b>Taylor W.*</b>	NDM	1,254	38.7
Greenslade B.	Lib	1,011	31.2
Yeo S. Ms.	Con	549	16.9
Rees B.	Lab	429	13.2
<b>Turnout</b>		44.7	7.5

Barnstaple No. 2 (6706)			
		vote	share
<b>Potter D.*</b>	Lib	1,506	50.0
Trethewey G.	Con	837	27.8
James P.	Lab	479	15.9
Bainbridge A. Ms.	Ecol	164	5.5
Sables G.	Comm	23	0.8
<b>Turnout</b>		45.0	22.2

Barnstaple Rural No. 1 (9786)			
		vote	share
<b>Inclledon R.</b>	Lib	2,313	51.3
Bamford J.*	Con	2,200	48.7
<b>Turnout</b>		46.3	2.5

Barnstaple Rural No. 2 (5002)			
		vote	share
<b>Prowse M.</b>	Lib	1,325	45.1
Ackland A.*	Con	1,225	41.7
Joy R.	Lab	388	13.2
<b>Turnout</b>		58.7	3.4

Barnstaple Rural No. 3 (8189)			
		vote	share
<b>Stanbury R.*</b>	Con	2,017	49.0
Gregory J.	Lib	1,649	40.1
Webb V.	Lab	451	11.0
<b>Turnout</b>		50.4	8.9

Barnstaple Rural No. 4 (Lynton) (4569)			
		vote	share
<b>Nightingale E.</b>	Ind	991	52.4
Green D.	Con	899	47.6
<b>Turnout</b>		41.5	4.9

Bideford (9340)			
		vote	share
<b>Armstrong G.</b>	Lib	1,458	38.9
Dunn L.*	Con	907	24.2
Needs J.	Ind	698	18.6
Bailey F.	Lab	688	18.3
<b>Turnout</b>		40.3	14.7

Bideford Rural (6661)			
		vote	share
<b>Brimacombe S.*</b>	Con	1,729	59.2
Sillifant T.	Lib	1,190	40.8
<b>Turnout</b>		44.0	18.5

Budleigh Salterton (7391)			
		vote	share
<b>Brockman R.*</b>	Con	2,052	55.9
Pyne G.	Lib	1,424	38.8
Goddard A.	Lab	194	5.3
<b>Turnout</b>		49.8	17.1

Crediton (6140)			
		vote	share
<b>Steer N.</b>	Con	1,332	52.4
Ballard R.	Lib	862	33.9
Tupman W.	Lab	349	13.7
<b>Turnout</b>		41.4	18.5

Crediton Rural (6978)			
		vote	share
<b>Pennington E.</b>	Con	1,337	38.8
Warren B.*	Ind	1,248	36.2
Heighington G.	Lib	579	16.8
Davey D.	Lab	284	8.2
<b>Turnout</b>		49.6	2.6

Dartmouth (6621)			
		vote	share
<b>Savage L.</b>	Con	1,371	50.6
Laver Vincent G. Ms.	Lib	1,339	49.4
<b>Turnout</b>		41.1	1.2

Dawlish (8112)			
		vote	share
<b>Bealey M. Ms.*</b>	Con	2,118	54.3
Gilbert W.	Lib	1,360	34.9
Dollins S.	Lab	423	10.8
<b>Turnout</b>		48.2	19.4

Exeter No. 1 (9395)			
		vote	share
<b>Vincent J.</b>	Lab	1,988	45.2
Chambers E. Ms.*	Con	1,447	32.9
Palmer R.	Lib	883	20.1
Tansley P.	Ecol	82	1.9
<b>Turnout</b>		47.0	12.3

Exeter No. 2 (7828)			
		vote	share
<b>Rogers D.*</b>	Con	1,519	36.5
Ruffle R.	Lib	1,517	36.4
Rich M.	Lab	1,066	25.6
Humphreys L. Ms.	Ecol	61	1.5
<b>Turnout</b>		53.3	0.0

Exeter No. 3 (7666)			
		vote	share
<b>Slocombe H.</b>	Con	1,805	39.8
Parsons L.	Ind	1,753	38.6
Tremlett R.	Lab	824	18.2
Stoolman M.	Ecol	157	3.5
<b>Turnout</b>		59.6	1.1

Exeter No. 4 (8261)			
		vote	share
<b>Morrish D.*</b>	Lib	2,194	45.6
Hesford M.	Lab	1,598	33.2
Rogers A.	Con	1,017	21.1
<b>Turnout</b>		58.3	12.4

Exeter No. 5 (12202) <sup>2</sup>			
		vote	share
<b>Richardson J. Ms.</b>	Con	2,480	43.0
<b>Cooke M.</b>	Con	2,374	-
Golant A. Ms.	Lab	2,215	38.4
Wills N. Ms.	Lab	1,936	-
Vokes S. Ms.	Lib	732	12.7
Bromley I.	Lib	531	-
Frings P.	Ecol	337	5.8
Green C.	Ecol	321	-
<b>Turnout</b>		44.8	4.6



<b>Exeter No. 6 (13141)<sup>2</sup></b>			
		<b>vote</b>	<b>share</b>
<b>Spence S. Ms.</b>	Lab	2,847	45.0
<b>Lloyd J.</b>	Lab	2,816	-
<b>Panter W.*</b>	Con	2,410	38.1
<b>Taylor B. Ms.*</b>	Con	2,334	-
<b>Pearson J.</b>	Lib	939	14.8
<b>Burden M.</b>	Lib	835	-
<b>Bond G.</b>	Ecol	133	2.1
<b>Tansley G. Ms.</b>	Ecol	112	-
<b>Turnout</b>		47.3	6.9

<b>Exeter No. 7 (11715)<sup>2</sup></b>			
		<b>vote</b>	<b>share</b>
<b>Sim R.*</b>	Con	2,541	45.3
<b>McGahey E.*</b>	Con	2,500	-
<b>Greenhough R.</b>	Lab	1,638	29.2
<b>Lopez B. Ms.</b>	Lab	1,552	-
<b>Challans R.</b>	Lib	1,433	25.5
<b>Revesz T.</b>	Lib	1,417	-
<b>Turnout</b>		47.3	16.1

<b>Exmouth No. 1 (7118)</b>			
		<b>vote</b>	<b>share</b>
<b>Thorpe P.*</b>	Con	1,956	62.9
<b>Mitchell M.</b>	Lib	705	22.7
<b>Salter J.</b>	Lab	450	14.5
<b>Turnout</b>		43.8	40.2

<b>Exmouth No. 2 (Withycombe Raleigh) (8644)</b>			
		<b>vote</b>	<b>share</b>
<b>Shenton D. Ms.</b>	Con	1,448	42.5
<b>Hopkins C. Ms.</b>	Lib	1,145	33.6
<b>Mills J. Ms.</b>	Lab	503	14.8
<b>Beresford J.</b>	Ind	310	9.1
<b>Turnout</b>		39.5	8.9

<b>Exmouth No. 3 (7076)</b>			
		<b>vote</b>	<b>share</b>
<b>Handford A.</b>	Con	1,687	48.9
<b>Travers P. Ms.</b>	Lib	1,037	30.1
<b>Davison R.</b>	Lab	726	21.0
<b>Turnout</b>		49.4	18.8

<b>Holsworthy (7153)</b>			
		<b>vote</b>	<b>share</b>
<b>Yeo J.</b>	Ind	1,587	46.8
<b>Broad H. Ms.*</b>	Con	1,421	41.9
<b>Vanstone W.</b>	Lab	384	11.3
<b>Turnout</b>		47.7	4.9

<b>Honiton (8733)</b>			
		<b>vote</b>	<b>share</b>
<b>James C.</b>	Con	1,688	44.1
<b>Summers A.</b>	Ind	1,064	27.8
<b>Andrew F.</b>	Lib	593	15.5
<b>Newitt M.</b>	Lab	273	7.1
<b>Cresswell J. Ms.</b>	Ecol	214	5.6
<b>Turnout</b>		44.1	16.3

<b>Ilfracombe (7819)</b>			
		<b>vote</b>	<b>share</b>
<b>Blackmore M.</b>	Lib	2,264	65.3
<b>Disney C.</b>	Con	1,205	34.7
<b>Turnout</b>		44.4	30.5

<b>Kingsbridge Rural No. 1 (8269)</b>			
		<b>vote</b>	<b>share</b>
<b>Day S.*</b>	Con	2,468	59.6
<b>Rothwell G.</b>	Lib	1,230	29.7
<b>Vere M.</b>	Lab	253	6.1
<b>Lyle A.</b>	Ecol	191	4.6
<b>Turnout</b>		50.3	29.9

<b>Kingsbridge Rural No. 2 (8434)</b>			
		<b>vote</b>	<b>share</b>
<b>Saqui D.</b>	Con	2,041	55.1
<b>Sheard R. Ms.</b>	Lib	1,300	35.1
<b>Boys P.</b>	Lab	366	9.9
<b>Turnout</b>		44.1	20.0

<b>Newton Abbot No. 1 (7571)</b>			
		<b>vote</b>	<b>share</b>
<b>Groom D.</b>	Con	1,314	41.8
<b>Millinchip L. Ms.</b>	Lab	1,044	33.2
<b>Lord A.</b>	Lib	783	24.9
<b>Turnout</b>		41.5	8.6

<b>Newton Abbot No. 2 (8491)</b>			
		<b>vote</b>	<b>share</b>
<b>Wills-Pope B.</b>	Con	1,533	41.2
<b>Nicholls E. Ms.</b>	Lab	1,193	32.1
<b>Wills R.</b>	Lib	995	26.7
<b>Turnout</b>		43.9	9.1

<b>Newton Abbot Rural No. 1 (8137)</b>			
		<b>vote</b>	<b>share</b>
<b>Phillpotts A.*</b>	Con	1,945	52.5
<b>Brill M. Ms.</b>	Lib	1,758	47.5
<b>Turnout</b>		45.7	5.0

<b>Newton Abbot Rural No. 2 (7905)</b>			
		<b>vote</b>	<b>share</b>
<b>Coulter A.*</b>	Ind	1,859	61.6
<b>Hewitt-Wing E. Ms.</b>	Lib	1,159	38.4
<b>Turnout</b>		38.4	23.2

<b>Newton Abbot Rural No. 3 (8017)</b>			
		<b>vote</b>	<b>share</b>
<b>Gilbert F.*</b>	Con	2,029	57.8
<b>Cose J.</b>	Lib	1,480	42.2
<b>Turnout</b>		43.9	15.6

<b>Newton Abbot Rural No. 4 (7185)</b>			
		<b>vote</b>	<b>share</b>
<b>Rooke J. Ms.</b>	Con	1,329	47.6
<b>Back D.</b>	Ind	624	22.4
<b>Waye D. Ms.</b>	Lib	516	18.5
<b>Gallagher B.</b>	Lab	321	11.5
<b>Turnout</b>		38.9	25.3

<b>Northam (7153)</b>			
		<b>vote</b>	<b>share</b>
<b>Sumner M.*</b>	Con	1,505	46.8
<b>Ford P.</b>	Ind	1,280	39.8
<b>Dark G.</b>	Lab	430	13.4
<b>Turnout</b>		45.0	7.0

<b>Okehampton (5405)</b>			
		<b>vote</b>	<b>share</b>
<b>Vick M. Ms.</b>	Con	999	39.7
<b>Passmore W.</b>	Ind	819	32.5
<b>Williams S.*</b>	Ind	699	27.8
<b>Turnout</b>		47.1	7.2

<b>Okehampton Rural (6903)</b>			
		<b>vote</b>	<b>share</b>
<b>Cann W.</b>	Ind	1,721	53.4
<b>Hampson M. Ms.*</b>	Con	1,499	46.6
<b>Turnout</b>		46.9	6.9

<b>Ottery St. Mary (8126)</b>			
		<b>vote</b>	<b>share</b>
<b>Thorne W.*</b>	Con	1,962	56.3
<b>Conway M. Ms.</b>	Lib	1,085	31.1
<b>Crawley J.</b>	Lab	437	12.5
<b>Turnout</b>		42.9	25.2

<b>Plymouth No. 1 (13918)<sup>3</sup></b>			
		<b>vote</b>	<b>share</b>
<b>Creber G.*</b>	Con	3,940	59.8
<b>Milligan F.*</b>	Con	3,754	-
<b>Pengelly E.</b>	Con	3,612	-
<b>Cresswell S. Ms.</b>	Lab	1,821	27.6
<b>Dufton P. Ms.</b>	Lab	1,702	-
<b>Woodley P.</b>	Lab	1,569	-
<b>Storey J.</b>	Ecol	829	12.6
<b>Turnout</b>		41.3	32.2

<b>Plymouth No. 10 (Plympton St. Mary) (7164)</b>			
		<b>vote</b>	<b>share</b>
<b>Stopperton J. Ms.</b>	Ind Con	1,908	52.8
<b>Finn L.</b>	Lib	704	19.5
<b>Bunkin E.</b>	Lab	535	14.8
<b>Melvin K.</b>	Con	467	12.9
<b>Turnout</b>		50.8	33.3

<b>Plymouth No. 11 (Plymstock Dunstone) (8696)</b>			
		<b>vote</b>	<b>share</b>
<b>Dicker D.*</b>	Con	2,395	59.8
<b>Turner P.</b>	Lib	904	22.6
<b>Edmonds G.</b>	Lab	704	17.6
<b>Turnout</b>		46.1	37.2

<b>Plymouth No. 12 (Plymstock Radford) (6844)</b>			
		<b>vote</b>	<b>share</b>
<b>Wigmore J.*</b>	Con	1,747	54.1
<b>Haines L.</b>	Lab	867	26.9
<b>Byatt J.</b>	Lib	615	19.0
<b>Turnout</b>		47.3	27.3

<b>Plymouth No. 13 (St. Andrew) (5647)</b>			
		<b>vote</b>	<b>share</b>
<b>Hole S.</b>	Con	1,083	52.2
<b>Huckett L.</b>	Lab	992	47.8
<b>Turnout</b>		37.2	4.4

<b>Plymouth No. 14 (St. Aubyn) (6826)</b>			
		<b>vote</b>	<b>share</b>
<b>Merry M.</b>	Lab	1,614	63.4
<b>Walley R.</b>	Con	599	23.5
<b>Oxford M.</b>	Lib	331	13.0
<b>Turnout</b>		37.4	39.9

<b>Plymouth No. 15 (St. Budeaux) (6963)</b>			
		<b>vote</b>	<b>share</b>
<b>Rushby A.</b>	Lab	1,876	63.3
<b>Glazsher L. Ms.*</b>	Con	1,089	36.7
<b>Turnout</b>		42.9	26.5

<b>Plymouth No. 16 (St. Peter) (5211)</b>			
		<b>vote</b>	<b>share</b>
<b>Curry R.*</b>	Lab	1,533	77.8
<b>Baker G.</b>	Con	438	22.2
<b>Turnout</b>		38.0	55.6

<b>Plymouth No. 17 (Stoke) (6213)</b>			
		<b>vote</b>	<b>share</b>
<b>Stark D.*</b>	Con	1,217	44.4
<b>Reeve F. Ms.</b>	Lab	888	32.4
<b>Hunter K.</b>	Lib	531	19.4
<b>Perry C. Ms.</b>	Ecol	108	3.9
<b>Turnout</b>		44.4	12.0

<b>Plymouth No. 18 (Sutton) (5956)</b>			
		<b>vote</b>	<b>share</b>
<b>Caylor T.</b>	Lab	1,379	49.0
<b>York P.</b>	Lib	833	29.6
<b>Brimacombe F.</b>	Con	601	21.4
<b>Turnout</b>		47.3	19.4

<b>Plymouth No. 19 (Trelawny) (6768)</b>			
		<b>vote</b>	<b>share</b>
<b>Holman C.*</b>	Con	1,923	53.7
<b>Sewell J.</b>	Lab	1,063	29.7
<b>Pawley R.</b>	Lib	596	16.6
<b>Turnout</b>		53.1	24.0

<b>Plymouth No. 2 (16810)<sup>3</sup></b>			
		<b>vote</b>	<b>share</b>
<b>Evans W.</b>	Lab	4,000	55.4
<b>Pedley J.</b>	Lab	3,793	-
<b>Scott R.</b>	Lab	3,720	-
<b>Douglas-Green J. Ms.*</b>	Con	2,238	31.0
<b>Jarvis A.</b>	Con	2,102	-
<b>Sullivan F. Ms.</b>	Con	2,003	-
<b>Swann P.</b>	Lib	983	13.6
<b>Chapman J.</b>	Lib	961	-
<b>Turnout</b>		39.4	24.4

Plymouth No. 20 (Mount Gould) (6516)			
		vote	share
Thornton R.*	Con	1,266	43.7
De Launey A.	Lab	1,257	43.4
Zessimides G. Ms.	Lib	375	12.9
Turnout		44.6	0.3

Plymouth No. 3 (Crownhill) (15505) <sup>2</sup>			
		vote	share
Hughes M.	Lab	2,833	38.8
Williams V.	Con	2,706	37.1
Tebby R.	Con	2,705	-
Palmer T.	Lab	2,587	-
Coe B. Ms.	Lib	1,547	21.2
Kent R.	Lib	1,253	-
Long F. Ms.	Ecol	214	2.9
Turnout		44.7	1.7

Plymouth No. 4 (Efford) (7406)			
		vote	share
Miller B.	Lab	2,158	59.0
Stanbury C.	Con	1,096	29.9
Pedrick G.	Lib	406	11.1
Turnout		49.6	29.0

Plymouth No. 5 (Ernesettle) (6799)			
		vote	share
Tranter D.	Lab	2,078	66.0
Pascoe C. Ms.*	Con	1,069	34.0
Turnout		46.5	32.1

Plymouth No. 6 (Ford) (6503)			
		vote	share
Hill E.	Lab	1,342	46.7
Fox H. Ms.*	Con	1,040	36.2
Rawlings K. Ms.	Lib	492	17.1
Turnout		44.3	10.5

Plymouth No. 7 (Honicknowle) (6789)			
		vote	share
Rowley E. Ms.	Lab	2,367	70.7
Brown M. Ms.	Con	981	29.3
Turnout		49.5	41.4

Plymouth No. 8 (Pennycross) (7099)			
		vote	share
Knott D.	Lab	2,225	65.0
Switzer G.	Con	696	20.3
Simonds P.	Lib	373	10.9
Gardiner K.	Ind	131	3.8
Turnout		48.5	44.6

Plymouth No. 9 (Plympton Erle) (9222)			
		vote	share
Arnaud J. Ms.	Con	1,065	31.2
Collings S.	Ind Con	881	25.8
Fildew J.	Lab	848	24.8
Demellweek R.	Lib	622	18.2
Turnout		37.3	5.4

Plympton St. Mary No. 1 (6610)			
		vote	share
Stacey E. Ms.	Lib	1,823	58.5
Trahair J. Ms.*	Con	1,293	41.5
Turnout		47.4	17.0

Plympton St. Mary No. 2 (7512)			
		vote	share
Sayers A.*	Con	2,124	60.9
Hammonds J. Ms.	Lib	1,364	39.1
Turnout		46.5	21.8

Sidmouth No. 1 (6112)			
		vote	share
Fryer S.*	Con	1,953	65.0
Hogg K.	Lib	565	18.8
Gregory L.	Lab	487	16.2
Turnout		49.4	46.2

Sidmouth No. 2 (5838)			
		vote	share
Pinney F.*	Con	1,725	65.2
Hurd P.	Lib	709	26.8
Sharpe R.	Lab	212	8.0
Turnout		45.4	38.4

South Molton (9952)			
		vote	share
Isaac J.	Lib	2,370	46.2
Short G.	Con	2,259	44.0
Joanes R.	Ecol	501	9.8
Turnout		51.7	2.2

St. Thomas No. 1 (8664)			
		vote	share
Taylor R.*	Con	2,019	57.2
Yendell F.	Lib	978	27.7
Holland M.	Lab	532	15.1
Turnout		40.8	29.5

St. Thomas No. 2 (8391)			
		vote	share
Pike L.*	Con	2,227	54.7
Pay P. Ms.	Lib	1,289	31.7
Slack R.	Lab	429	10.5
Voysey F.	Ind	123	3.0
Turnout		48.6	23.1

Tavistock No. 1 (Tavistock) (8091)			
		vote	share
Gallup L. Ms.*	Con	1,559	48.8
Reynolds R.	Lab	839	26.3
Heath G.	Lib	794	24.9
Turnout		39.9	22.6

Tavistock No. 2 (4919)			
		vote	share
Morshead E.	Con	1,172	57.0
Lancaster H.	Ind	884	43.0
Turnout		42.0	14.0

Tavistock No. 3 (7555)			
		vote	share
Crane M. Ms.*	Con	1,697	54.1
Cutts P.	Lib	1,045	33.3
Batchelor B. Ms.	Lab	395	12.6
Turnout		41.7	20.8

Teignmouth (10706)			
		vote	share
Sawyer A.*	Con	2,229	53.3
Phillips R.	Lib	1,471	35.2
Geisler D.	Lab	481	11.5
Turnout		39.1	18.1

Tiverton (East) (7509)			
		vote	share
Amory I.*	Con	1,284	44.8
Cruwys L.	Lib	1,055	36.8
Reeves R.	Lab	526	18.4
Turnout		38.3	8.0

Tiverton (West) (4940)			
		vote	share
Turner M. Ms.	Ind	1,411	72.0
Heighington M. Ms.	Lib	289	14.7
Le Noury S. Ms.	Lab	261	13.3
Turnout		39.9	57.2

Tiverton Rural No. 1 (11247)			
		vote	share
Elmes P. Ms.*	Con	2,030	41.4
Truelove L.	Lib	1,521	31.0
Pugsley D.	Ind	713	14.5
Reeves S. Ms.	Lab	639	13.0
Turnout		43.8	10.4

Tiverton Rural No. 2 (6846)			
		vote	share
Heggadon W.*	Con	1,651	51.8
Collins P.	Lib	1,208	37.9
Di Paolo C.	Lab	328	10.3
Turnout		46.7	13.9

Torbay Blatchcombe (7441)			
		vote	share
Oxley B. Ms.*	Con	1,079	34.3
Harris E.	Lab	809	25.7
Law J.	Lib	652	20.7
Bowditch L.	Res	497	15.8
Holden D.	Ecol	106	3.4
Turnout		42.8	8.6

Torbay Cockington With Chelston (8000)			
		vote	share
Wilkinson-Cox P. Ms.*	Con	1,825	
		51.0	
Salt P.	Lib	1,120	31.3
Daniel L.	Lab	630	17.6
Turnout		44.8	19.7

Torbay Coverdale (6837)			
		vote	share
Snell R.*	Con	966	37.0
McCaig R.	Lab	623	23.9
Brown R.	Lib	504	19.3
Wheeler A.	Res	447	17.1
Phelps L. Ms.	Ecol	71	2.7
Turnout		39.2	13.1

Torbay Ellacombe (6267)			
		vote	share
Holdup M.*	Con	920	36.2
Horne D.	Lab	799	31.4
Anderson D.	Lib	666	26.2
Bradbury D.	Ecol	156	6.1
Turnout		40.7	4.8

Torbay Furzeham With Churston (6938)			
		vote	share
Robertson D.*	Con	1,697	53.2
Brown P.	Lib	1,118	35.1
Harman T.	Lab	372	11.7
Turnout		46.0	18.2

Torbay Hollicombe (6670)			
		vote	share
Fraser-James V. Ms.*	Con	1,385	46.6
Leaney F.	Res	772	26.0
Linnitt K.	Lib	471	15.8
Clark G.	Lab	346	11.6
Turnout		45.8	20.6

Torbay Shiphay (7292)			
		vote	share
Waddling A.*	Con	980	34.8
Couzens P.	Lab	925	32.8
Effer P.	Lib	911	32.4
Turnout		38.7	2.0

Torbay St. Marychurch (8265)			
		vote	share
Bevan S. Ms.	Con	1,597	42.5
Ball A. Ms.	Lib	1,289	34.3
Doyle T.	Res	409	10.9
Roy F.	Lab	371	9.9
Bradbury E. Ms.	Ecol	91	2.4
Turnout		45.5	8.2

Torbay St. Michaels With Goodringt (9429)			
		vote	share
Moore J. Ms.	Con	1,258	31.4
Murray D.	Res	1,157	28.8
Sanders A.	Lib	1,142	28.5
Holland U. Ms.	Lab	321	8.0
Abrahams D.	Ecol	133	3.3
Turnout		42.8	2.5

Torbay St. Peters With St. Marys (7083)			
		vote	share
Good A.	Con	1,391	50.4
Salter W. Ms.	Lib	805	29.2
Howes H.	Lab	563	20.4
Turnout		39.1	21.2

Torbay Tormohun (6702)			
		vote	share
Oliver G.*	Con	956	41.8
Stone F.	Lib	758	33.2
Stone J.	Lab	465	20.3
Bradbury P.	Ecol	107	4.7
Turnout		34.3	8.7

Torbay Torwood (6774)			
		vote	share
Goodrich A.*	Con	1,720	68.9
Spencer J.	Lib	417	16.7
Clark A.	Lab	255	10.2
Mactaggart I.	Ecol	105	4.2
Turnout		37.0	52.2

Torrington (6523)			
		vote	share
Isaac P.	Lib	1,525	63.6
Owens J.	Con	872	36.4
Turnout		36.8	27.2

Totnes (7312)			
		vote	share
Williams S.*	Con	1,349	42.5
Thomas B.	Lib	1,047	33.0
Harvey V. Ms.	Lab	781	24.6
Turnout		43.6	9.5

Totnes Rural (7761)			
		vote	share
Walker J.	Lib	1,415	43.7
Rickard G.*	Con	1,402	43.3
Jones M.	Ecol	422	13.0
Turnout		41.8	0.4

## Devon 1985

Alphington & St. Thomas (9248)			
		vote	share
Ruffle R.*	Lib/SDP	2,174	46.1
Spencer P. Ms.	Con	1,528	32.4
Rich M.	Lab	1,009	21.4
Turnout		50.9	13.7

Ashburton & Buckfastleigh (7764)			
		vote	share
Watson K.	Con	1,719	47.5
Brill M. Ms.	Lib/SDP	1,542	42.6
Jarrett D. Ms.	Lab	359	9.9
Turnout		46.6	4.9

Axminster Rural (10416)			
		vote	share
Hull D.	Lib/SDP	2,729	49.7
Gardner F.*	Con	2,550	46.4
Price R.	Lab	216	3.9
Turnout		52.8	3.3

Babbacombe (8438)			
		vote	share
Drew P. Ms.	Lib/SDP	1,440	43.3
Bevan S. Ms.*	Con	1,382	41.6
Stone J.	Lab	504	15.2
Turnout		39.4	1.7

Barnstaple North (9215)			
		vote	share
Greenslade B.	Lib/SDP	1,659	40.6
Taylor W.*	NDM	1,101	27.0
Rook S.	Con	943	23.1
Bradley J.	Lab	382	9.4
Turnout		44.3	13.7

Barnstaple South (8437)			
		vote	share
Potter D.*	Lib/SDP	1,878	56.8
Hill R.	Con	952	28.8
Pearce N.	Lab	476	14.4
Turnout		39.2	28.0

Barton (8262)			
		vote	share
Brown M.	Lib/SDP	1,727	55.9
Nichols D.	Con	869	28.2
McAuley B.	Lab	491	15.9
Turnout		37.4	27.8

Barton & St. Loyes (7460)			
		vote	share
Callis K.	Con	1,413	41.5
Gale C.	Lab	1,160	34.1
Bailey A.	Lib/SDP	829	24.4
Turnout		45.6	7.4

Belvedere (8874)			
		vote	share
Pike L.*	Con	2,103	50.9
Pay P. Ms.	Lib/SDP	2,028	49.1
Turnout		46.6	1.8

Berry Head (8327)			
		vote	share
Davis S.*	Con	1,348	47.2
Paddon B. Ms.	Lib/SDP	965	33.8
Morey M.	Lab	543	19.0
Turnout		34.3	13.4

Bideford (9844)			
		vote	share
Lane M.*	Lib/SDP	2,129	60.2
Brenton D.	Lab	707	20.0
Foster V. Ms.	Ind	673	19.0
Beale M.	Ind	27	0.8
Turnout		35.9	40.2

Bovey (8326)			
		vote	share
Coulter A.	Con	1,803	46.0
Cox J.	Lib/SDP	1,552	39.6
Coward D.	Lab	561	14.3
Turnout		47.0	6.4

Bradninch & Creedy (8321)			
		vote	share
Crang A.	Con	1,698	44.9
Heighington G.	Lib/SDP	1,528	40.4
Tupman A. Ms.	Lab	309	8.2
Fausset R.	Ind	244	6.5
Turnout		45.4	4.5

Braunton Rural (8924)			
		vote	share
Inclledon R.*	Lib/SDP	1,973	47.4
Woodward G.	Con	1,836	44.1
Hames P.	Ecol	350	8.4
Turnout		46.6	3.3

Budleigh & Sidmouth (9900)			
		vote	share
Hornby I. Ms.*	Con	2,959	60.1
Dingwall R.	Lib/SDP	1,730	35.2
Mills S. Ms.	Lab	232	4.7
Turnout		49.7	25.0

Budshead (8526)			
		vote	share
Scott R.*	Lab	1,934	47.4
Goodwins D. Ms.	Lib/SDP	1,744	42.7
Shield M. Ms.	Con	402	9.9
Turnout		47.9	4.7

Clennon (8183)			
		vote	share
Postle B.	Lib/SDP	1,770	51.2
Moore J. Ms.*	Con	1,118	32.4
Harris E.	Lab	567	16.4
Turnout		42.2	18.9

Clyst Vale (8746)			
		vote	share
Taylor R.*	Con	1,755	49.2
Squires M.	Lib/SDP	1,432	40.2
Chesney M. Ms.	Lab	377	10.6
Turnout		40.8	9.1

Combe Martin Rural (9240)			
		vote	share
Andrews G.	Con	1,741	39.4
Prowse M.*	Lib/SDP	1,562	35.4
Nightingale E.*	Ind	701	15.9
James E. Ms.	Lab	253	5.7
Jones C.	Ecol	160	3.6
Turnout		47.8	4.1

Compton (8282)			
		vote	share
Clarke B. Ms.	Lib/SDP	1,839	47.2
Thorogood R.	Con	1,788	45.9
Johnson D. Ms.	Ecol	268	6.9
Turnout		47.0	1.3

Countess Wear & Topsham (7575)			
		vote	share
Slocombe H.*	Con	2,075	59.2
Sutton J.	Lab	996	28.4
Smith J. Ms.	Ecol	435	12.4
Turnout		46.3	30.8

Crediton Rural (9637)			
		vote	share
Pennington E.*	Con	1,749	48.9
Collins D. Ms.	Lib/SDP	1,446	40.4
Tupman W.	Lab	384	10.7
Turnout		37.1	8.5

Cullompton Rural (9683)			
		vote	share
Allen D.	Lib/SDP	1,479	42.7
Harris E.	Con	1,165	33.7
Vicary J.	Ind	428	12.4
Timbrell M.	Lab	389	11.2
Turnout		35.7	9.1

Dartmouth Rural (8056)			
		vote	share
Tomlinson M. Ms.	Con	1,769	50.4
Henshall J. Ms.	Lib/SDP	1,425	40.6
Jolliffe G. Ms.	Lab	316	9.0
Turnout		43.6	9.8

Dawlish (8720)			
		vote	share
Healey M. Ms.*	Con	2,018	53.0
Harding J.	Lib/SDP	1,340	35.2
Clarke P.	Lab	446	11.7
Turnout		43.6	17.8

Drake (9154)			
		vote	share
Curry C.	Lib/SDP	1,637	38.2
Hole S.*	Con	1,383	32.3
Kelly P.	Lab	1,154	27.0
Wheeler T. Ms.	Ecol	106	2.5
Turnout		46.8	5.9

<b>Efford (8339)</b>			
		<b>vote</b>	<b>share</b>
<b>Miller B.*</b>	Lab	2,160	50.3
Byatt J.	Lib/SDP	1,212	28.2
Toms M. Ms.	Con	919	21.4
<b>Turnout</b>		51.5	22.1
<b>Eggbuckland (9491)</b>			
		<b>vote</b>	<b>share</b>
<b>Nelmes A.</b>	Lib/SDP	2,427	45.7
Hughes M.*	Lab	1,674	31.5
Malsom L.	Con	1,206	22.7
<b>Turnout</b>		55.9	14.2
<b>Elberry (8479)</b>			
		<b>vote</b>	<b>share</b>
<b>Robertson D.*</b>	Con	1,619	44.7
Luscombe T.	Lib/SDP	1,113	30.7
Walker D.	Res	625	17.2
Loader J. Ms.	Lab	268	7.4
<b>Turnout</b>		42.8	14.0
<b>Ellacombe &amp; Upton (8610)</b>			
		<b>vote</b>	<b>share</b>
<b>Elliott W.</b>	Con	1,098	33.1
Easey W.	Lib/SDP	1,030	31.0
Salloway E. Ms.	Res	807	24.3
Hele T.	Lab	384	11.6
<b>Turnout</b>		38.5	2.0
<b>Estover (10299)</b>			
		<b>vote</b>	<b>share</b>
<b>Stanbury D.</b>	Lib/SDP	2,108	44.7
Williams V.*	Con	1,538	32.6
Payne G.	Lab	1,065	22.6
<b>Turnout</b>		45.7	12.1
<b>Exmouth Littleham (7278)</b>			
		<b>vote</b>	<b>share</b>
<b>Willoughby B.</b>	Con	1,589	48.6
Toye B.	Lib/SDP	1,400	42.8
Ferguson M.	Lab	283	8.6
<b>Turnout</b>		45.0	5.8
<b>Exmouth Lymptstone (8632)</b>			
		<b>vote</b>	<b>share</b>
<b>Strudwick J.</b>	Lib/SDP	1,929	46.1
Handford A.*	Con	1,812	43.3
Davison R.	Lab	445	10.6
<b>Turnout</b>		48.5	2.8
<b>Exmouth Withycombe (9758)</b>			
		<b>vote</b>	<b>share</b>
<b>Bucklar H. Ms.</b>	Lib/SDP	2,005	52.7
Shenton D. Ms.*	Con	1,417	37.2
Salter J.	Lab	384	10.1
<b>Turnout</b>		39.0	15.4
<b>Exwick &amp; Cowick (8919)</b>			
		<b>vote</b>	<b>share</b>
<b>Vincent J.*</b>	Lab	1,596	38.9
Roberts P. Ms.	Con	1,200	29.3
Thompson P.	Lib/SDP	1,177	28.7
Vail R.	Ecol	127	3.1
<b>Turnout</b>		46.0	9.7
<b>Fremington Rural (8473)</b>			
		<b>vote</b>	<b>share</b>
<b>Gregory J.</b>	Lib/SDP	1,942	48.1
Stanbury R.*	Con	1,810	44.8
Webb V.	Lab	287	7.1
<b>Turnout</b>		47.7	3.3
<b>Ham (7733)</b>			
		<b>vote</b>	<b>share</b>
<b>Knott D.*</b>	Lab	1,881	49.5
Luscombe J. Ms.	Lib/SDP	1,438	37.8
Sullivan F. Ms.	Con	484	12.7
<b>Turnout</b>		49.2	11.6

<b>Hatherleigh &amp; Chagford (8168)</b>			
		<b>vote</b>	<b>share</b>
<b>Cann W.*</b>	Ind	2,324	65.7
Harper A.	Con	1,212	34.3
<b>Turnout</b>		43.3	31.4
<b>Heavitree &amp; Wonford (7907)</b>			
		<b>vote</b>	<b>share</b>
<b>Morrish D.*</b>	Lib/SDP	2,081	52.5
Skinner J.	Lab	1,156	29.2
Lowry M. Ms.	Con	725	18.3
<b>Turnout</b>		50.1	23.3
<b>Holsworthy Rural (9258)</b>			
		<b>vote</b>	<b>share</b>
<b>Broad H. Ms.</b>	Con	1,927	50.3
Sillifant T.	Lib/SDP	1,628	42.5
Vanstone W.	Ind	273	7.1
<b>Turnout</b>		41.3	7.8
<b>Honicknowle (9395)</b>			
		<b>vote</b>	<b>share</b>
<b>Roberts J.*</b>	Lab	2,590	55.0
Murrish O.	Lib/SDP	1,416	30.1
Bentley P.	Con	706	15.0
<b>Turnout</b>		50.2	24.9
<b>Honiton Rural (8916)</b>			
		<b>vote</b>	<b>share</b>
<b>Halse J.</b>	Lib/SDP	2,298	57.5
James C.*	Con	1,457	36.5
Sharpe R.	Lab	239	6.0
<b>Turnout</b>		44.8	21.1
<b>Ilfracombe (8158)</b>			
		<b>vote</b>	<b>share</b>
<b>Blackmore M.*</b>	Lib/SDP	2,035	60.7
Gross G. Ms.	Con	1,040	31.0
James P.	Lab	276	8.2
<b>Turnout</b>		41.1	29.7
<b>Ivybridge (10040)</b>			
		<b>vote</b>	<b>share</b>
<b>Stacey E. Ms.*</b>	Lib/SDP	2,666	59.2
Woollacombe J.	Con	1,838	40.8
<b>Turnout</b>		44.9	18.4
<b>Keyham (8591)</b>			
		<b>vote</b>	<b>share</b>
<b>Martin T.</b>	Lib/SDP	1,735	43.7
Hill E.*	Lab	1,597	40.2
Atkey C.	Con	637	16.0
<b>Turnout</b>		46.2	3.5
<b>Kings Ash (9213)</b>			
		<b>vote</b>	<b>share</b>
<b>Lentell D.</b>	Lib/SDP	1,729	52.8
Salvidge A.	Con	918	28.0
Harrison A.	Lab	627	19.2
<b>Turnout</b>		35.5	24.8
<b>Kingsbridge Rural (9986)</b>			
		<b>vote</b>	<b>share</b>
<b>Saqui D.*</b>	Con	2,114	52.9
Jarrett N.	Lib/SDP	1,411	35.3
Boys P.	Lab	237	5.9
Noakes E. Ms.	Ecol	231	5.8
<b>Turnout</b>		40.0	17.6
<b>Kingsteignton (7729)</b>			
		<b>vote</b>	<b>share</b>
<b>Rooke J. Ms.*</b>	Con	1,514	44.8
Hutchinson F.	Lib/SDP	1,132	33.5
Jarrett A.	Lab	732	21.7
<b>Turnout</b>		43.7	11.3

<b>Livermead (8202)</b>			
		<b>vote</b>	<b>share</b>
<b>Fraser-James V. Ms.*</b>	Con	1,554	47.9
Cherry A.	Lib/SDP	1,389	42.8
Ecclesfield H. Ms.	Lab	303	9.3
<b>Turnout</b>		39.6	5.1
<b>Manor (8312)</b>			
		<b>vote</b>	<b>share</b>
<b>Gillin J.</b>	Lib/SDP	2,287	60.2
Waddling A.*	Con	924	24.3
Daniel M.	Lab	591	15.5
<b>Turnout</b>		45.7	35.8
<b>Modbury &amp; Salcombe (8509)</b>			
		<b>vote</b>	<b>share</b>
<b>Day S.*</b>	Con	2,306	64.1
Gilbert J. Ms.	Lib/SDP	1,033	28.7
Ross F.	Lab	256	7.1
<b>Turnout</b>		42.2	35.4
<b>Mount Gould (7710)</b>			
		<b>vote</b>	<b>share</b>
<b>Hoy P.</b>	Lib/SDP	1,730	45.8
Brown T.	Lab	1,044	27.6
Barnes G.	Con	949	25.1
Hancocks M.	Ecol	55	1.5
<b>Turnout</b>		49.0	18.2
<b>Newton Abbot East (8113)</b>			
		<b>vote</b>	<b>share</b>
<b>Groom D.*</b>	Con	1,366	40.5
Pyle E.	Lib/SDP	1,027	30.4
Gallagher B.	Lab	982	29.1
<b>Turnout</b>		41.6	10.0
<b>Newton Abbot West (8459)</b>			
		<b>vote</b>	<b>share</b>
<b>Symons F.</b>	Lib/SDP	1,536	41.9
Wills-Pope B.*	Con	1,328	36.2
Warrilow S. Ms.	Lab	806	22.0
<b>Turnout</b>		43.4	5.7
<b>Northam Rural (9755)</b>			
		<b>vote</b>	<b>share</b>
<b>Sumner M.*</b>	Con	1,732	44.0
Ford P.	Lib/SDP	1,699	43.2
Rice P.	Lab	503	12.8
<b>Turnout</b>		40.3	0.8
<b>Okehampton Rural (8307)</b>			
		<b>vote</b>	<b>share</b>
<b>Vick M. Ms.*</b>	Con	1,961	55.5
Tatton-Brown G.	Lib/SDP	1,112	31.5
Garbutt D.	Lab	460	13.0
<b>Turnout</b>		42.5	24.0
<b>Oldway (8613)</b>			
		<b>vote</b>	<b>share</b>
<b>Oxley B. Ms.*</b>	Con	1,485	47.2
Davis J.	Lib/SDP	1,323	42.1
McCracken A.	Lab	338	10.7
<b>Turnout</b>		36.5	5.1
<b>Ottery St. Mary Rural (8172)</b>			
		<b>vote</b>	<b>share</b>
<b>Thorne W.*</b>	Con	1,998	49.3
Hadley C.	Lib/SDP	1,814	44.7
Newitt M.	Lab	244	6.0
<b>Turnout</b>		49.6	4.5
<b>Pinhoe &amp; Whipton (7524)</b>			
		<b>vote</b>	<b>share</b>
<b>Spence S. Ms.*</b>	Lab	1,767	52.2
Knox T.	Con	1,079	31.9
Pearson J.	Lib/SDP	536	15.8
<b>Turnout</b>		44.9	20.3

Plympton Erle (9887)			
		vote	share
Williams M.	Lib/SDP	1,967	44.1
Phillipotts M. Ms.	Ind Con	1,133	25.4
Fildew J.	Lab	684	15.3
Arnaud J.*	Con	674	15.1
Turnout		45.1	18.7

Plympton St. Mary (8800)			
		vote	share
Hendley M.	Lib/SDP	2,048	45.9
Stopperton J. Ms.*	Ind Con	1,368	30.7
Bunkin E.	Lab	573	12.9
Parkinson M.	Con	470	10.5
Turnout		50.7	15.3

Plymstock Dunstone (9171)			
		vote	share
Willcock E.	Lib/SDP	1,804	42.0
Dicker D.*	Con	1,767	41.2
Gachagan R.	Lab	723	16.8
Turnout		46.8	0.9

Plymstock Radford (8380)			
		vote	share
Wigmore J.*	Con	1,773	45.6
Unwin G.	Lib/SDP	1,366	35.2
Westlake A.	Lab	697	17.9
Collins N.	Ind	50	1.3
Turnout		46.4	10.5

Rougemont & St. Leonards (8405)			
		vote	share
McGahey E.*	Con	1,542	39.2
Ballard R.	Lib/SDP	1,304	33.1
Odoni J. Ms.	Lab	950	24.1
Brenan T.	Ecol	142	3.6
Turnout		46.9	6.0

Seaton Rural (9578)			
		vote	share
Rogers M. Ms.	Lib/SDP	2,364	47.0
Chapple R.*	Con	2,321	46.2
Hawkins D.	Lab	341	6.8
Turnout		52.5	0.9

Sidmouth Rural (8323)			
		vote	share
Pinney F.*	Con	2,295	60.0
Bond M. Ms.	Lib/SDP	1,096	28.7
Pollentine S.	Lab	433	11.3
Turnout		45.9	31.4

South Molton Rural (10071)			
		vote	share
Isaac J.*	Lib/SDP	2,645	53.9
Burton E. Ms.	Con	1,997	40.7
Joanes R.	Ecol	267	5.4
Turnout		48.7	13.2

Southway (9827)			
		vote	share
Evans W.*	Lab	2,097	46.9
Goodwins C.	Lib/SDP	1,526	34.1
Horswell J.	Con	848	19.0
Turnout		45.5	12.8

St. Budeaux (8601)			
		vote	share
Luscombe H.	Lib/SDP	1,868	46.1
Lemin R.	Lab	1,495	36.9
Waterman M. Ms.	Con	689	17.0
Turnout		47.1	9.2

St. Davids & Pennsylvania (10437)			
		vote	share
Cooke M.*	Con	1,837	39.7
Fisher H.	Lib/SDP	1,713	37.0
Wallace K. Ms.	Lab	765	16.5
Frings P.	Ecol	311	6.7
Turnout		44.3	2.7

St. Peter (8047)			
		vote	share
Merry M.*	Lab	1,712	54.5
Pedrick G.	Lib/SDP	838	26.7
Eyre R.	Con	519	16.5
Barber J.	Ecol	75	2.4
Turnout		39.1	27.8

Stoke (9102)			
		vote	share
Robins A. Ms.	Lib/SDP	1,642	33.8
Stark D.*	Con	1,629	33.5
Wright M.	Lab	1,585	32.6
Turnout		53.4	0.3

Stoke Hill & Polsloe (7958)			
		vote	share
Westlake R.	Lab	1,775	48.5
Henson Y. Ms.	Con	1,110	30.4
Murray T.	Lib/SDP	680	18.6
Bainborough A.	Ecol	92	2.5
Turnout		46.0	18.2

Sutton (8070)			
		vote	share
Caylor T.*	Lab	1,842	46.8
York P.	Lib/SDP	1,034	26.3
Brimacombe F.*	Con	998	25.4
Ashley C. Ms.	Ecol	62	1.6
Turnout		48.8	20.5

Tavistock (9053)			
		vote	share
Morshead E.*	Con	1,775	45.7
Gillett C. Ms.	Lib/SDP	1,542	39.7
Batchelor B. Ms.	Lab	569	14.6
Turnout		42.9	6.0

Teignbridge South (10307)			
		vote	share
Perkin J.	Con	2,310	52.1
Parsons P. Ms.	Lib/SDP	1,703	38.4
Ramage E. Ms.	Lab	417	9.4
Turnout		43.0	13.7

Teignmouth (9593)			
		vote	share
Sawyer A.*	Con	1,835	45.2
Cox D.	Lib/SDP	1,682	41.5
Kennedy M. Ms.	Lab	539	13.3
Turnout		42.3	3.8

Tiverton East (9031)			
		vote	share
Hobson R. Ms.	Lib/SDP	1,153	36.1
Houlson A.	Con	895	28.0
Spencer P.	Ind	787	24.6
Dobbin D. Ms.	Lab	358	11.2
Turnout		35.4	8.1

Tiverton West (9567)			
		vote	share
Turner M. Ms.*	Ind	1,770	49.5
Tilley S. Ms.	Lib/SDP	1,409	39.4
Wateridge C. Ms.	Lab	291	8.1
Clegg P.	Ind	108	3.0
Turnout		37.4	10.1

Torrington Rural (9736)			
		vote	share
Soby P. Ms.	Con	1,541	43.6
Wedgwood J.	Lib/SDP	1,467	41.5
Johnston S.	Lab	529	15.0
Turnout		36.3	2.1

Totnes Rural (10186)			
		vote	share
Walker J.*	Lib/SDP	1,982	46.7
Williams S.*	Con	1,603	37.8
Jones B. Ms.	Lab	658	15.5
Turnout		41.7	8.9

Trelawney (7618)			
		vote	share
Paterson P.	Lib/SDP	1,778	38.8
Brown R.*	Con	1,485	32.4
Brimblecombe N. Ms.	Lab	1,325	28.9
Turnout		60.2	6.4

Wellswood (7700)			
		vote	share
Oliver G.*	Con	1,685	64.9
Heselton J. Ms.	Lib/SDP	699	26.9
Mellor J.	Lab	211	8.1
Turnout		33.7	38.0

Wembury & Erme (8340)			
		vote	share
Sayers A.*	Con	2,328	52.0
Carruthers-Watt N.	Lib/SDP	1,803	40.3
Campbell A.	Lab	345	7.7
Turnout		53.7	11.7

Yelverton Rural (9183)			
		vote	share
Crane M. Ms.*	Con	1,718	47.2
Cutts P.	Lib/SDP	1,358	37.3
Greaves N.	Lab	564	15.5
Turnout		39.6	9.9

## Devon 1989

Alphington & St. Thomas (9384)			
		vote	share
Ruffle R.*	LD	1,737	41.6
Hart E. Ms.	Con	1,229	29.4
Taylor L.	Lab	868	20.8
Blackmore D.	Green	345	8.3
Turnout		44.5	12.2

Ashburton & Buckfastleigh (7948)			
		vote	share
Watson K.*	Con	1,503	44.1
Ward W.	LD	1,221	35.8
Whitley W.	Ind	525	15.4
Hope A.	MRL	163	4.8
Turnout		42.9	8.3

Axminster Rural (10809)			
		vote	share
Drake A.	Con	3,167	56.7
Porch L.	LD	1,408	25.2
Toothill A.	Green	518	9.3
Self H.	Lab	495	8.9
Turnout		51.7	31.5

Babbacombe (8608)			
		vote	share
Ogden D.	Con	1,405	46.2
Drew P. Ms.*	LD	1,130	37.2
Mellor J.	Lab	506	16.6
Turnout		35.3	9.0

Barnstaple North (9934)			
		vote	share
Greenslade B.*	LD	2,335	60.2
Rook S.	Con	1,107	28.5
Miller P.	Lab	437	11.3
Turnout		39.0	31.7

Barnstaple South (8827)			
		vote	share
Seddon R.	LD	1,697	49.1
Gunn L.	Con	1,062	30.7
Basil N.	Lab	695	20.1
Turnout		39.1	18.4

Barton (8209)			
		vote	share
Stone F.*	LD	1,561	50.0
McPhail B. Ms.	Con	918	29.4
Cowling B.	SDP	358	11.5
Middleditch R.	Lab	287	9.2
<b>Turnout</b>		38.1	20.6

Barton & St. Loyes (7705)			
		vote	share
Callis K.*	Con	1,524	42.7
Barnett E. Ms.	Lab	1,326	37.2
Logan A.	LD	508	14.2
Leigh-Dugmore A.	Green	211	5.9
<b>Turnout</b>		46.3	5.5

Belvedere (9403)			
		vote	share
Pike L.*	Ind Con	2,202	51.7
Berman B.	LD	2,056	48.3
<b>Turnout</b>		45.3	3.4

Berry Head (8781)			
		vote	share
Love S.*	Con	1,576	52.2
Morey M.	Lab	903	29.9
Symons F. Ms.	LD	541	17.9
<b>Turnout</b>		34.4	22.3

Bideford (10303)			
		vote	share
Lane M.*	LD	2,030	70.2
Parry S.	Lab	860	29.8
<b>Turnout</b>		28.1	40.5

Bovey (8837)			
		vote	share
Coulter A.*	Con	1,811	60.1
Jackson A.	Green	1,200	39.9
<b>Turnout</b>		34.1	20.3

Bradninch & Creedy (8636)			
		vote	share
Crang A.*	Con	1,994	54.8
Cornish G.	LD	1,208	33.2
Richer R.	Lab	436	12.0
<b>Turnout</b>		42.1	21.6

Braunton Rural (9469)			
		vote	share
Woodward G.	Con	2,359	53.0
Inclendon R.*	LD	2,089	47.0
<b>Turnout</b>		47.0	6.1

Budleigh & Sidmouth (10518)			
		vote	share
Sutherland-Earl J. Ms.	Con	61.0	3,081
Toye B.	LD	910	18.0
Michel P. Ms.	Green	624	12.3
Price R.	Lab	293	5.8
Sutch D.	MRL	145	2.9
<b>Turnout</b>		48.0	43.0

Budshead (9260)			
		vote	share
Scott R.	Lab	2,216	55.7
Rowe P.	SDP	1,210	30.4
Skyrme D. Ms.	Con	551	13.9
<b>Turnout</b>		42.9	25.3

Clennon (8587)			
		vote	share
Fenton I.	LD	1,467	44.4
Jones G.	Con	1,394	42.2
McCracken A.	Lab	445	13.5
<b>Turnout</b>		38.5	2.2

Clyst Vale (9109)			
		vote	share
Taylor R.*	Con	1,920	49.1
Austin P. Ms.	LD	1,519	38.8
Stoolman M.	Green	473	12.1
<b>Turnout</b>		42.9	10.3

Combe Martin Rural (10279)			
		vote	share
Knight M.	LD	2,843	56.1
Andrews G.*	Con	2,052	40.5
Mack L.	Lab	175	3.5
<b>Turnout</b>		49.3	15.6

Compton (8321)			
		vote	share
Stark D.	Con	2,125	56.1
Hosgood H.	SDP	635	16.8
Burton R.	Lab	602	15.9
Boon P.	Green	424	11.2
<b>Turnout</b>		45.5	39.4

Countess Wear & Topsham (7213)			
		vote	share
Slocombe H.*	Con	2,090	56.9
Duddington L. Ms.	Lab	879	23.9
Thain M. Ms.	SDP	395	10.8
Culpeper M. Ms.	Green	308	8.4
<b>Turnout</b>		50.9	33.0

Crediton Rural (10543)			
		vote	share
Lee M.	Con	1,965	53.1
Edwards R.	SDP	1,146	31.0
Richer F.	Lab	591	16.0
<b>Turnout</b>		35.1	22.1

Cullompton Rural (11124)			
		vote	share
Vicary J.	Con	1,744	48.6
Allen D.*	LD	1,454	40.5
Penney K.	Lab	391	10.9
<b>Turnout</b>		32.3	8.1

Dartmouth Rural (8087)			
		vote	share
Tomlinson M. Ms.*	Con	2,064	64.6
Manley L.	Ind	457	14.3
Laver-Vincent G. Ms.	Ind	374	11.7
Costelloe M.	Lab	299	9.4
<b>Turnout</b>		39.5	50.3

Dawlish (9706)			
		vote	share
Bealey M. Ms.*	Con	2,279	59.5
Osborne E.	LD	947	24.7
Woods K.	Lab	604	15.8
<b>Turnout</b>		39.5	34.8

Drake (9017)			
		vote	share
Hole S.	Con	1,571	39.2
Coyle J.	Lab	1,246	31.1
Clarke B. Ms.	SDP	808	20.2
Grinrod G.	Green	380	9.5
<b>Turnout</b>		44.4	8.1

Efford (9018)			
		vote	share
Miller B.*	Lab	2,318	54.6
Banks K.	Con	1,332	31.4
Toms C.	LD	598	14.1
<b>Turnout</b>		47.1	23.2

Egguckland (9988)			
		vote	share
Wright M.	Lab	1,697	37.4
Bouskill R.	Con	1,476	32.5
Nelmes A.*	LD	774	17.0
Williams S. Ms.	SDP	593	13.1
<b>Turnout</b>		45.5	4.9

Elberry (9028)			
		vote	share
Cooke M.	Con	2,261	64.8
Browne M. Ms.	LD	703	20.1
Loader W.	Lab	525	15.0
<b>Turnout</b>		38.6	44.7

Ellacombe & Upton (8792)			
		vote	share
Elliott W.*	Con	1,195	48.1
Failey-Smith P.	Lab	649	26.1
Pentney R. Ms.	LD	360	14.5
Mallinder J.	SDP	278	11.2
<b>Turnout</b>		28.2	22.0

Estover (10917)			
		vote	share
Sloggett A. Ms.	Con	1,826	41.0
Stanbury D.*	SDP	1,332	29.9
Fletcher M.	Lab	1,045	23.4
Watson A.	Green	256	5.7
<b>Turnout</b>		40.8	11.1

Exmouth Littleham (7453)			
		vote	share
Willoughby B.*	Con	1,656	54.1
Payne R.	LD	580	19.0
Eastwood K.	Lab	395	12.9
Hulin D.	Green	301	9.8
Redgwell A. Ms.	SDP	127	4.2
<b>Turnout</b>		41.0	35.2

Exmouth Lymptone (8703)			
		vote	share
Hughes B.	Con	1,848	43.4
Chamberlain G.	LD	1,175	27.6
Davison R.	Lab	495	11.6
Mascall T.	Ind	419	9.8
Hill D.	Green	325	7.6
<b>Turnout</b>		49.0	15.8

Exmouth Withycombe (10545)			
		vote	share
Costello B.	Con	1,793	43.2
Bucklar H. Ms.	LD	1,733	41.8
Page T.	Lab	403	9.7
Rosser J. Ms.	Green	217	5.2
<b>Turnout</b>		39.3	1.4

Exwick & Cowick (9617)			
		vote	share
Butler P.	Lab	1,881	42.4
Rogers D.	Con	1,348	30.4
Palmer P. Ms.	SDP	911	20.5
Vail K. Ms.	Green	294	6.6
<b>Turnout</b>		46.1	12.0

Fremington Rural (8804)			
		vote	share
Stanbury R.	Con	1,949	47.6
Cane R.	LD	1,850	45.2
Crawford I.	Lab	294	7.2
<b>Turnout</b>		46.5	2.4

Ham (8396)			
		vote	share
Knott D.	Lab	2,038	60.7
Yardley M. Ms.	SDP	655	19.5
Waterman K.	Con	484	14.4
Burdess A.	LD	180	5.4
<b>Turnout</b>		40.0	41.2

Hatherleigh & Chagford (8512)			
		vote	share
Cann W.*	Ind	2,257	53.1
Cleverdon G.	Con	1,992	46.9
<b>Turnout</b>		49.9	6.2

<b>Heavitree &amp; Wonford (7446)</b>			
		<b>vote</b>	<b>share</b>
<b>Morrish D.*</b>	LD	1,537	42.6
Midgeley M. Ms.	Lab	1,000	27.7
Shiel N.	Con	682	18.9
Morris K.	Green	391	10.8
	<b>Turnout</b>	48.5	14.9
<b>Holsworthy Rural (10077)</b>			
		<b>vote</b>	<b>share</b>
<b>Broad H. Ms.*</b>	Con	2,187	56.5
Bristow R.	LD	1,331	34.4
Landells M. Ms.	Lab	352	9.1
	<b>Turnout</b>	38.4	22.1
<b>Honicknowle (9514)</b>			
		<b>vote</b>	<b>share</b>
<b>Roberts J.*</b>	Lab	2,591	61.1
Lucas I.	SDP	884	20.8
Wallace J. Ms.	Con	768	18.1
	<b>Turnout</b>	44.6	40.2
<b>Honiton Rural (11143)</b>			
		<b>vote</b>	<b>share</b>
<b>Halse J.</b>	Con	2,400	52.3
Rotherham D. Ms.	LD	703	15.3
Sharpe R.	Lab	504	11.0
Coombs R.	SDP	409	8.9
Tanner J.	Green	332	7.2
Bell R.	Ind	240	5.2
	<b>Turnout</b>	41.2	37.0
<b>Ilfracombe (8466)</b>			
		<b>vote</b>	<b>share</b>
<b>Kingston E.*</b>	LD	1,731	61.4
Dixon W.	Con	1,087	38.6
	<b>Turnout</b>	33.3	22.9
<b>Ivybridge (12674)</b>			
		<b>vote</b>	<b>share</b>
<b>Woollcombe J.</b>	Con	2,616	55.3
Pannell C. Ms.	LD	2,113	44.7
	<b>Turnout</b>	37.3	10.6
<b>Keyham (8425)</b>			
		<b>vote</b>	<b>share</b>
<b>Woodcock J.</b>	SDP	1,638	44.8
Bennett A.	Lab	1,359	37.1
Waterman M. Ms.	Con	532	14.5
Robins J.	LD	131	3.6
	<b>Turnout</b>	43.4	7.6
<b>Kings Ash (9307)</b>			
		<b>vote</b>	<b>share</b>
<b>Lentell D.*</b>	LD	1,378	40.3
Friend D.	Lab	1,049	30.6
Miller R.	Con	996	29.1
	<b>Turnout</b>	36.8	9.6
<b>Kingsbridge Rural (11095)</b>			
		<b>vote</b>	<b>share</b>
<b>Verniquet M. Ms.</b>	Con	2,676	65.0
Thorning D.	LD	1,098	26.7
Kenyon D.	Lab	343	8.3
	<b>Turnout</b>	37.1	38.3
<b>Kingsteignton (8728)</b>			
		<b>vote</b>	<b>share</b>
<b>Rooke J. Ms.*</b>	Con	1,616	52.9
Hay T.	LD	935	30.6
Brogan S.	Lab	501	16.4
	<b>Turnout</b>	35.0	22.3
<b>Livermead (8306)</b>			
		<b>vote</b>	<b>share</b>
<b>Fraser-James V. Ms.*</b>	Con	1,732	60.7
Davis F.	LD	763	26.7
Dent M.	Lab	358	12.5
	<b>Turnout</b>	34.3	34.0

<b>Manor (8411)</b>			
		<b>vote</b>	<b>share</b>
<b>Sawyer A.</b>	Con	1,095	36.7
Fisher G.	SDP	835	28.0
Haines J.	Lab	546	18.3
Ayres R.	LD	508	17.0
	<b>Turnout</b>	35.5	8.7
<b>Modbury &amp; Salcombe (8837)</b>			
		<b>vote</b>	<b>share</b>
<b>Day S.*</b>	Con	2,536	66.4
Collinson D.	LD	960	25.1
McGinn S. Ms.	Lab	322	8.4
	<b>Turnout</b>	43.2	41.3
<b>Mount Gould (7547)</b>			
		<b>vote</b>	<b>share</b>
<b>Vosper K.</b>	Lab	1,359	39.8
Brimacombe F.	Con	1,198	35.1
Hoy P.*	SDP	856	25.1
	<b>Turnout</b>	45.2	4.7
<b>Newton Abbot East (8049)</b>			
		<b>vote</b>	<b>share</b>
<b>Wills-Pope B.</b>	Con	1,408	43.1
Sutcliffe S.	Lab	1,157	35.4
Cook S. Ms.	LD	705	21.6
	<b>Turnout</b>	40.6	7.7
<b>Newton Abbot West (8691)</b>			
		<b>vote</b>	<b>share</b>
<b>Stovin D. Ms.</b>	Con	1,432	45.9
Kennedy R.	Lab	604	19.3
Symons F.*	SDP	599	19.2
Jarrett D. Ms.	Green	260	8.3
Cox D.	LD	228	7.3
	<b>Turnout</b>	35.9	26.5
<b>Northam Rural (10351)</b>			
		<b>vote</b>	<b>share</b>
<b>Waters P.</b>	Con	1,792	43.5
Henson H.	LD	814	19.8
Marsh S. Ms.	Green	773	18.8
Rowe D.	Lab	736	17.9
	<b>Turnout</b>	39.8	23.8
<b>Okehampton Rural (8576)</b>			
		<b>vote</b>	<b>share</b>
<b>Vicks M.*</b>	Con	2,023	52.9
Herriman C. Ms.	LD	1,802	47.1
	<b>Turnout</b>	44.6	5.8
<b>Oldway (8923)</b>			
		<b>vote</b>	<b>share</b>
<b>Oxley B. Ms.*</b>	Con	1,737	55.6
Livingston R.	Lab	530	17.0
James R.	LD	491	15.7
Worth C.	SDP	364	11.7
	<b>Turnout</b>	35.0	38.7
<b>Ottery St. Mary Rural (8424)</b>			
		<b>vote</b>	<b>share</b>
<b>Thorne W.*</b>	Con	2,203	55.0
Foggitt P.	Green	880	22.0
Hadley E. Ms.	SDP	546	13.6
Gregory J. Ms.	Lab	373	9.3
	<b>Turnout</b>	47.5	33.1
<b>Pinhoe &amp; Whipton (7416)</b>			
		<b>vote</b>	<b>share</b>
<b>Spence S. Ms.*</b>	Lab	1,896	54.8
Harwood B.	Con	1,175	33.9
Kazim T. Ms.	SDP	217	6.3
Dunstan S. Ms.	Green	174	5.0
	<b>Turnout</b>	46.7	20.8

<b>Plympton Erle (11417)</b>			
		<b>vote</b>	<b>share</b>
<b>Mills J.</b>	Con	1,667	39.6
Radmore P. Ms.	SDP	1,292	30.7
Williams M.*	LD	645	15.3
Collings A.	Lab	607	14.4
	<b>Turnout</b>	36.9	8.9
<b>Plympton St. Mary (9514)</b>			
		<b>vote</b>	<b>share</b>
<b>Pearson M.</b>	Con	2,102	49.0
Hendley M.*	LD	1,001	23.3
Williams S. Ms.	SDP	606	14.1
Payne J.	Lab	582	13.6
	<b>Turnout</b>	45.1	25.7
<b>Plymstock Dunstone (10347)</b>			
		<b>vote</b>	<b>share</b>
<b>Dicker D.</b>	Con	2,854	62.2
Willcock E.*	SDP	1,009	22.0
Gachagan R.	Lab	728	15.9
	<b>Turnout</b>	44.4	40.2
<b>Plymstock Radford (8600)</b>			
		<b>vote</b>	<b>share</b>
<b>Wigmore J.*</b>	Con	2,142	54.0
Unwin G.	LD	763	19.3
Allan P.	Lab	699	17.6
Stagg H. Ms.	SDP	359	9.1
	<b>Turnout</b>	46.1	34.8
<b>Rougemont &amp; St. Leonards (8075)</b>			
		<b>vote</b>	<b>share</b>
<b>McGahey E.*</b>	Con	1,329	33.5
Parker D. Ms.	Lab	1,226	30.9
Howell V.	LD	995	25.1
Vail R.	Green	420	10.6
	<b>Turnout</b>	49.2	2.6
<b>Seaton Rural (10411)</b>			
		<b>vote</b>	<b>share</b>
<b>Ffoulkes A.</b>	Con	3,137	56.2
Rogers M. Ms.	LD	1,813	32.5
Damon R.	Green	384	6.9
Clive-Francis P.	Lab	252	4.5
	<b>Turnout</b>	53.7	23.7
<b>Sidmouth Rural (8703)</b>			
		<b>vote</b>	<b>share</b>
<b>Pinney F.*</b>	Con	2,232	54.2
Bryden N.	LD	645	15.7
Keen S. Ms.	Green	573	13.9
Hughes S.	MRL	352	8.5
Pollentine S.	Lab	318	7.7
	<b>Turnout</b>	47.3	38.5
<b>South Molton Rural (10502)</b>			
		<b>vote</b>	<b>share</b>
<b>Bell J.</b>	LD	2,087	42.5
Burton E. Ms.	Con	2,084	42.4
Ingram P. Ms.	Green	375	7.6
Donner P.	Lab	367	7.5
	<b>Turnout</b>	46.8	0.1
<b>Southway (10375)</b>			
		<b>vote</b>	<b>share</b>
<b>Evans W.*</b>	Lab	2,247	57.9
Hellier M.	Con	878	22.6
Goodson R.	SDP	758	19.5
	<b>Turnout</b>	37.4	35.3
<b>St. Budeaux (8507)</b>			
		<b>vote</b>	<b>share</b>
<b>Luscombe H.*</b>	SDP	1,473	42.7
Hall A.	Lab	1,268	36.7
Maddock M. Ms.	Con	712	20.6
	<b>Turnout</b>	40.6	5.9

St. Davids & Pennsylvania (10320)			
		vote	share
Cooke M.*	Con	1,895	39.0
Rossall M. Ms.	LD	1,609	33.1
Potter S.	Green	728	15.0
Berg N.	Lab	624	12.9
<b>Turnout</b>		47.1	5.9

St. Peter (7976)			
		vote	share
Cohen E. Ms.	Lab	2,051	67.4
Wood G.	Con	582	19.1
Goodinson R.	LD	412	13.5
<b>Turnout</b>		38.2	48.2

Stoke (9181)			
		vote	share
Pascoe C. Ms.	Con	1,492	34.2
Nicholson P.	SDP	1,412	32.4
Miller D.	Lab	1,199	27.5
Shaw S.	Green	255	5.9
<b>Turnout</b>		47.5	1.8

Stoke Hill & Polsloe (7709)			
		vote	share
Westlake R.*	Lab	1,756	54.6
Henson D.	Con	889	27.6
Bainborough A.	Green	305	9.5
Carpenter P.	SDP	269	8.4
<b>Turnout</b>		41.8	26.9

Sutton (7680)			
		vote	share
Wheeler G.	Lab	1,962	57.3
Fowler J. Ms.	Con	881	25.7
York P.	LD	584	17.0
<b>Turnout</b>		44.6	31.5

Tavistock (9592)			
		vote	share
Cook R.	Con	2,508	55.8
Gorbett G. Ms.	Lab	931	20.7
Thompson N.	LD	925	20.6
Hope A.	MRL	128	2.8
<b>Turnout</b>		46.8	35.1

Teignbridge South (11427)			
		vote	share
Perkin J.*	Con	2,297	52.5
Cook P.	LD	1,638	37.4
Moore M.	Ind Con	444	10.1
<b>Turnout</b>		38.3	15.0

Teignmouth (10274)			
		vote	share
Russell E. Ms.*	Con	1,958	49.2
Phillips R.	LD	1,200	30.2
Kennedy M. Ms.	Lab	822	20.7
<b>Turnout</b>		38.7	19.0

Tiverton East (9376)			
		vote	share
Hobson R. Ms.*	LD	1,056	35.7
Williams R.	Con	953	32.2
Spencer P.	Ind	634	21.4
Mills V. Ms.	Lab	318	10.7
<b>Turnout</b>		31.6	3.5

Tiverton West (9857)			
		vote	share
Turner M. Ms.*	Ind	2,574	83.5
Wateridge C. Ms.	Lab	508	16.5
<b>Turnout</b>		31.3	67.0

Torrington Rural (10299)			
		vote	share
Soby P. Ms.*	Con	1,925	51.4
Simmons C. Ms.	Green	1,132	30.2
Burton W. Ms.	Lab	689	18.4
<b>Turnout</b>		36.4	21.2

Totnes Rural (10685)			
		vote	share
Pennington J.	Con	2,340	46.7
Walker J.*	LD	1,861	37.2
Tall M.	Lab	808	16.1
<b>Turnout</b>		46.9	9.6

Trelawney (7750)			
		vote	share
Davey H.	Lab	1,751	39.3
Williams V.	Con	1,627	36.6
Dean J.	LD	1,073	24.1
<b>Turnout</b>		57.4	2.8

Wellswood (8283)			
		vote	share
Oliver G.*	Con	1,904	75.8
Fawkes F. Ms.	LD	331	13.2
Millman T.	Lab	215	8.6
Rowe J.	MRL	61	2.4
<b>Turnout</b>		30.3	62.6

Wembury & Erme (8632)			
		vote	share
Hart T.	Con	2,453	57.3
Flood D. Ms.	LD	1,440	33.6
Jones B. Ms.	Lab	389	9.1
<b>Turnout</b>		49.6	23.7

Yelverton Rural (9383)			
		vote	share
Crane M. Ms.*	Con	1,860	47.8
Curry C.*	LD	1,129	29.0
Bentley R.	Lab	901	23.2
<b>Turnout</b>		41.5	18.8

## Devon 1993

Alphington & St. Thomas (10145)			
		vote	share
Ruffle R.*	LD	2,181	53.1
Rogers D.	Con	961	23.4
Warwick S.	Lab	836	20.3
Gittins R.	Green	132	3.2
<b>Turnout</b>		40.5	29.7

Ashburton & Buckfastleigh (8387)			
		vote	share
Watson K.*	Con	1,281	38.4
Whittaker A. Ms.	LD	1,061	31.8
Brill M. Ms.	LIB	540	16.2
Kennedy R.	Lab	451	13.5
<b>Turnout</b>		39.7	6.6

Axminster Rural (10775)			
		vote	share
Drake A.*	Con	2,133	42.5
Paley M.	LD	2,083	41.5
Draper B.	Ind	471	9.4
Schwalm A. Ms.	Lab	337	6.7
<b>Turnout</b>		46.6	1.0

Babbacombe (8425)			
		vote	share
Hawkins K. Ms.	LD	1,828	55.5
Ogden D.*	Con	1,103	33.5
Middleditch R.	Lab	360	10.9
<b>Turnout</b>		39.1	22.0

Barnstaple North (9739)			
		vote	share
Greenslade B.*	LD	2,320	71.9
Slocombe K.	Con	642	19.9
Chapman A. Ms.	Lab	263	8.2
<b>Turnout</b>		33.1	52.0

Barnstaple South (9021)			
		vote	share
Seddon R.*	LD	2,098	61.2
Parkhouse M.	Con	1,008	29.4
Watson R.	Lab	320	9.3
<b>Turnout</b>		38.0	31.8

Barton (7904)			
		vote	share
Ayres R.	LD	1,783	65.0
Goulden P.	Con	581	21.2
Lack R.	Lab	240	8.8
Carlick A.	SDP	138	5.0
<b>Turnout</b>		34.7	43.8

Barton & St. Loyes (7800)			
		vote	share
Badcock A.	Lab	1,470	37.7
Morrish J. Ms.	LIB	1,178	30.2
Callis K.*	Con	947	24.3
Baxter E. Ms.	LD	248	6.4
Dorman M. Ms.	Green	57	1.5
<b>Turnout</b>		50.0	7.5

Belvedere (9902)			
		vote	share
Berman B.	LD	2,132	49.3
Pike L.*	Ind	1,772	41.0
Woods P. Ms.	Lab	422	9.8
<b>Turnout</b>		43.7	8.3

Berry Head (8515)			
		vote	share
Ellery V.	Lab	1,464	43.2
Love S.*	Con	1,221	36.0
Morris D.	LD	705	20.8
<b>Turnout</b>		39.8	7.2

Bideford (14582)			
		vote	share
Lane M.*	LD	2,128	62.1
Brenton E. Ms.	Lab	781	22.8
Collins A.	Con	518	15.1
<b>Turnout</b>		23.5	39.3

Bovey (9364)			
		vote	share
Coulter A.*	Con	1,358	37.9
Douglas-Dunbar A.	LD	1,217	34.0
Drake S. Ms.	Lab	644	18.0
Hatley J. Ms.	Ind	361	10.1
<b>Turnout</b>		38.2	3.9

Bradninch & Creedy (8566)			
		vote	share
Barham P. Ms.	LD	1,781	46.9
Crang A.*	Con	1,677	44.1
Siantonas A.	Lab	341	9.0
<b>Turnout</b>		44.4	2.7

Braunton Rural (9168)			
		vote	share
Spear D.	LD	2,740	62.3
Cumberledge M.	Con	1,458	33.2
Fry P.	Lab	199	4.5
<b>Turnout</b>		48.0	29.2

Budleigh & Sidmouth (10234)			
		vote	share
Channon C. Ms.	Con	2,463	55.4
Lee E.	LD	1,438	32.4
Greenwood S.	Ind	227	5.1
Dorey D.	Lab	215	4.8
Whitfield J.	Ind Con	102	2.3
<b>Turnout</b>		43.4	23.1

Budshead (9173)			
		vote	share
Scott R.	Lab	2,075	70.4
Bull C. Ms.	LD	527	17.9
Horler G.	Con	347	11.8
<b>Turnout</b>		32.2	52.5



<b>Clennon (8516)</b>			
		<b>vote</b>	<b>share</b>
<b>Fenton I.*</b>	LD	2,109	59.6
Hawkins M.	Con	1,036	29.3
Farmer G.	Lab	396	11.2
<b>Turnout</b>		41.6	30.3
<b>Clyst Vale (9117)</b>			
		<b>vote</b>	<b>share</b>
<b>Glanvill J.</b>	LD	2,293	55.4
Taylor R.*	Con	1,315	31.8
Keane M. Ms.	Lab	284	6.9
Burns G. Ms.	LIB	244	5.9
<b>Turnout</b>		45.4	23.6
<b>Combe Martin Rural (10262)</b>			
		<b>vote</b>	<b>share</b>
<b>Knight M.*</b>	LD	2,884	60.7
Andrews G.	Con	1,629	34.3
Harriott M.	Lab	236	5.0
<b>Turnout</b>		46.3	26.4
<b>Compton (8482)</b>			
		<b>vote</b>	<b>share</b>
<b>Stark D.*</b>	Con	1,707	54.0
Rushton J. Ms.	LD	787	24.9
Woodman T.	Lab	665	21.1
<b>Turnout</b>		37.2	29.1
<b>Countess Wear &amp; Topsham (7139)</b>			
		<b>vote</b>	<b>share</b>
<b>Slocombe H.*</b>	Con	1,647	49.0
Baldwin D. Ms.	Lab	842	25.1
Freeman J.	LD	655	19.5
Pentecost B. Ms.	LIB	214	6.4
<b>Turnout</b>		47.0	24.0
<b>Crediton Rural (10746)</b>			
		<b>vote</b>	<b>share</b>
<b>Palk J. Ms.</b>	LD	2,245	54.8
Lee M.*	Con	1,539	37.6
Stubbings D.	Lab	314	7.7
<b>Turnout</b>		38.1	17.2
<b>Cullompton Rural (10996)</b>			
		<b>vote</b>	<b>share</b>
<b>Bulley C. Ms.</b>	LD	2,023	53.5
Vicary J.*	Con	1,358	35.9
Kilshaw F.	Lab	402	10.6
<b>Turnout</b>		34.4	17.6
<b>Dartmouth Rural (8016)</b>			
		<b>vote</b>	<b>share</b>
<b>Tomlinson M. Ms.*</b>	Con	1,664	51.6
Tytherleigh J.	LD	1,562	48.4
<b>Turnout</b>		40.2	3.2
<b>Dawlish (9634)</b>			
		<b>vote</b>	<b>share</b>
<b>Bealey M. Ms.*</b>	Con	1,522	41.7
Johns L.	LD	1,495	40.9
Hesse G.	Lab	634	17.4
<b>Turnout</b>		37.9	0.7
<b>Drake (9947)</b>			
		<b>vote</b>	<b>share</b>
<b>Wilton J.</b>	Lab	1,477	42.4
Hole S.*	Con	1,211	34.7
Bray R.	LD	660	18.9
Billings R.	Ind	139	4.0
<b>Turnout</b>		35.1	7.6
<b>Efford (9230)</b>			
		<b>vote</b>	<b>share</b>
<b>Miller B.*</b>	Lab	2,068	60.0
Pollin J.	Con	888	25.8
Howard P. Ms.	LD	492	14.3
<b>Turnout</b>		37.4	34.2

<b>Egguckland (10087)</b>			
		<b>vote</b>	<b>share</b>
<b>Wright M.*</b>	Lab	2,196	50.5
Banks K.	Con	1,285	29.6
Nelmes A.	LD	864	19.9
<b>Turnout</b>		43.1	21.0
<b>Elberry (8703)</b>			
		<b>vote</b>	<b>share</b>
<b>Cooke M.*</b>	Con	1,698	48.3
John S.	LD	1,161	33.0
Robinson J.	Lab	658	18.7
<b>Turnout</b>		40.4	15.3
<b>Ellacombe &amp; Upton (8709)</b>			
		<b>vote</b>	<b>share</b>
<b>Davis J.</b>	LD	1,620	55.0
Benney M.	Con	906	30.8
Vinson N.	Lab	352	12.0
Mallinder J.	SDP	66	2.2
<b>Turnout</b>		33.8	24.3
<b>Estover (11724)</b>			
		<b>vote</b>	<b>share</b>
<b>Sloggett A. Ms.*</b>	Con	1,883	43.4
Lemin A.	Lab	1,674	38.6
Robinson P. Ms.	LD	784	18.1
<b>Turnout</b>		37.0	4.8
<b>Exmouth Littleham (7317)</b>			
		<b>vote</b>	<b>share</b>
<b>Willoughby B.*</b>	Con	1,297	45.7
Bevan E.	LD	1,195	42.1
Eastwood K.	Lab	344	12.1
<b>Turnout</b>		38.8	3.6
<b>Exmouth Lymstone (8650)</b>			
		<b>vote</b>	<b>share</b>
<b>Folland G.</b>	LD	1,835	47.1
Hughes B.*	Con	1,208	31.0
Davison R.	Lab	852	21.9
<b>Turnout</b>		45.0	16.1
<b>Exmouth Withycombe (10325)</b>			
		<b>vote</b>	<b>share</b>
<b>Turner K.</b>	LD	1,802	46.0
Costello B.*	Con	1,622	41.4
Tant N.	Lab	495	12.6
<b>Turnout</b>		38.0	4.6
<b>Exwick &amp; Cowick (9959)</b>			
		<b>vote</b>	<b>share</b>
<b>Butler P.*</b>	Lab	2,260	56.4
Williams G.	Con	1,008	25.2
Gilbert K. Ms.	LD	736	18.4
<b>Turnout</b>		40.2	31.3
<b>Fremington Rural (9372)</b>			
		<b>vote</b>	<b>share</b>
<b>Cane R.</b>	LD	2,411	55.3
Stanbury R.*	Con	1,619	37.1
Watson M.	Lab	330	7.6
<b>Turnout</b>		46.5	18.2
<b>Ham (8242)</b>			
		<b>vote</b>	<b>share</b>
<b>Ball F.</b>	Lab	1,903	71.4
Patton J.	Con	405	15.2
Wallace C. Ms.	LD	356	13.4
<b>Turnout</b>		32.3	56.2
<b>Hatherleigh &amp; Chagford (8138)</b>			
		<b>vote</b>	<b>share</b>
<b>Cann W.*</b>	Ind	0	0.0
<b>Turnout</b>		0.0	0.0

<b>Heavitree &amp; Wonford (7671)</b>			
		<b>vote</b>	<b>share</b>
<b>Morrish D.*</b>	LIB	1,589	49.2
Taylor L.	Lab	809	25.1
Arnold R.	Con	397	12.3
Jeffery M.	LD	347	10.8
Brenan T.	Green	85	2.6
<b>Turnout</b>		42.1	24.2
<b>Holsworthy Rural (10336)</b>			
		<b>vote</b>	<b>share</b>
<b>Griffiths F.</b>	LD	1,856	50.5
Broad H. Ms.*	Con	1,591	43.3
Landells P.	Lab	227	6.2
<b>Turnout</b>		35.6	7.2
<b>Honicknowle (9729)</b>			
		<b>vote</b>	<b>share</b>
<b>Bennett A.</b>	Lab	2,640	78.2
Wallace J. Ms.	Con	738	21.8
<b>Turnout</b>		34.7	56.3
<b>Honiton Rural (11921)</b>			
		<b>vote</b>	<b>share</b>
<b>Halse J.*</b>	Con	2,035	43.0
Hills K.	LD	1,373	29.0
Sharpe R.	Lab	756	16.0
Tootill A.	Ind	568	12.0
<b>Turnout</b>		39.7	14.0
<b>Ilfracombe (8320)</b>			
		<b>vote</b>	<b>share</b>
<b>Kingston E.*</b>	LD	1,548	45.4
Gear L. Ms.	Con	1,544	45.3
James P.	Lab	320	9.4
<b>Turnout</b>		41.0	0.1
<b>Ivybridge (14849)</b>			
		<b>vote</b>	<b>share</b>
<b>Pannell C. Ms.</b>	LD	2,278	43.1
Woolcombe J.*	Con	2,191	41.4
Wilson J.	Lab	821	15.5
<b>Turnout</b>		35.6	1.6
<b>Keyham (8522)</b>			
		<b>vote</b>	<b>share</b>
<b>Connelly D.</b>	Lab	2,157	74.5
Glanville M.	Con	737	25.5
<b>Turnout</b>		34.0	49.1
<b>Kings Ash (8839)</b>			
		<b>vote</b>	<b>share</b>
<b>Lentell D.*</b>	LD	1,848	56.7
Harris E.	Lab	773	23.7
Drew P. Ms.	Con	641	19.7
<b>Turnout</b>		36.9	33.0
<b>Kingsbridge Rural (11009)</b>			
		<b>vote</b>	<b>share</b>
<b>Thorning D.</b>	LD	1,820	47.6
Balkwill J.	Con	1,715	44.8
Jeffreys K.	Lab	289	7.6
<b>Turnout</b>		34.7	2.7
<b>Kingsteignton (9388)</b>			
		<b>vote</b>	<b>share</b>
<b>Smith P. Ms.</b>	Ind	1,436	44.0
Rooke J. Ms.*	Con	1,170	35.9
Stride R.	Lab	654	20.1
<b>Turnout</b>		34.7	8.2
<b>Livermead (8120)</b>			
		<b>vote</b>	<b>share</b>
<b>Salloway E. Ms.</b>	Con	1,856	48.6
Trethewey B. Ms.	LD	1,680	44.0
Holland U. Ms.	Lab	232	6.1
Ryman M.	SDP	48	1.3
<b>Turnout</b>		47.0	4.6

<b>Manor (7877)</b>			
		<b>vote</b>	<b>share</b>
<b>Monaghan M.</b>	LD	1,504	46.4
McPhail B. Ms.	Con	842	26.0
Stewart M. Ms.	Lab	760	23.4
Worth C.	SDP	135	4.2
<b>Turnout</b>		41.2	20.4

<b>Modbury &amp; Salcombe (8619)</b>			
		<b>vote</b>	<b>share</b>
<b>Day S.*</b>	Con	1,965	52.8
Flood D. Ms.	LD	1,552	41.7
Dudley J.	Lab	207	5.6
<b>Turnout</b>		43.2	11.1

<b>Mount Gould (8228)</b>			
		<b>vote</b>	<b>share</b>
<b>Demuth C.</b>	Lab	1,158	44.0
Wright L. Ms.	Con	940	35.8
Howard R.	LD	531	20.2
<b>Turnout</b>		32.0	8.3

<b>Newton Abbot East (8216)</b>			
		<b>vote</b>	<b>share</b>
<b>Mills B.</b>	Lab	1,188	35.0
Clarke M. Ms.	LD	1,073	31.6
Wills-Pope B.*	Con	966	28.5
Parry L.	Ind	166	4.9
<b>Turnout</b>		41.3	3.4

<b>Newton Abbot West (8813)</b>			
		<b>vote</b>	<b>share</b>
<b>Symons F.</b>	LD	2,004	57.4
Stovin D. Ms.*	Con	1,061	30.4
Brogan S.	Lab	425	12.2
<b>Turnout</b>		39.6	27.0

<b>Northam Rural (11642)</b>			
		<b>vote</b>	<b>share</b>
<b>Elliott F.</b>	LD	1,999	46.3
Waters P.*	Con	1,660	38.5
Bloomfield S. Ms.	Lab	655	15.2
<b>Turnout</b>		37.1	7.9

<b>Okehampton Rural (9182)</b>			
		<b>vote</b>	<b>share</b>
<b>Herriman C. Ms.</b>	LD	2,631	66.9
Cowan A.	Con	1,092	27.8
Stormont S.	Lab	207	5.3
<b>Turnout</b>		42.8	39.2

<b>Oldway (8833)</b>			
		<b>vote</b>	<b>share</b>
<b>Ferret-Green A. Ms.</b>	LD	1,760	50.6
Oxley B. Ms.*	Con	1,409	40.5
Livingston R.	Lab	309	8.9
<b>Turnout</b>		39.4	10.1

<b>Ottery St. Mary Rural (8569)</b>			
		<b>vote</b>	<b>share</b>
<b>Giles A.</b>	Ind	2,613	63.2
Brown G.	Con	1,524	36.8
<b>Turnout</b>		48.3	26.3

<b>Pinhoe &amp; Whipton (7638)</b>			
		<b>vote</b>	<b>share</b>
<b>Spence S. Ms.*</b>	Lab	1,985	58.4
Forrow N.	Con	869	25.6
Taylor A.	LD	462	13.6
Dunstan S. Ms.	Green	81	2.4
<b>Turnout</b>		44.5	32.9

<b>Plympton Erle (12493)</b>			
		<b>vote</b>	<b>share</b>
<b>Hill K. Ms.</b>	LD	1,859	44.9
Fox J.	Con	1,529	37.0
Burns R.	Lab	749	18.1
<b>Turnout</b>		33.1	8.0

<b>Plympton St. Mary (9496)</b>			
		<b>vote</b>	<b>share</b>
<b>Lawley M. Ms.</b>	Con	1,622	48.7
Baharie V.	LD	865	26.0
Nally T. Ms.	Lab	843	25.3
<b>Turnout</b>		35.1	22.7

<b>Plymstock Dunstone (10554)</b>			
		<b>vote</b>	<b>share</b>
<b>Dicker D.*</b>	Con	2,359	57.1
Tunbridge I.	LD	972	23.5
Ingham P. Ms.	Lab	800	19.4
<b>Turnout</b>		39.1	33.6

<b>Plymstock Radford (8430)</b>			
		<b>vote</b>	<b>share</b>
<b>Wigmore J.*</b>	Con	1,737	53.2
Allan P.	Lab	823	25.2
Byatt J.	LD	706	21.6
<b>Turnout</b>		38.7	28.0

<b>Rougemont &amp; St. Leonards (8814)</b>			
		<b>vote</b>	<b>share</b>
<b>Owen G. Ms.</b>	Lab	1,630	38.0
Howell V.	LD	1,526	35.5
McGahey E.*	Con	942	21.9
Edwards P.	Green	195	4.5
<b>Turnout</b>		48.7	2.4

<b>Seaton Rural (10711)</b>			
		<b>vote</b>	<b>share</b>
<b>Rogers M. Ms.</b>	LD	2,544	50.3
Ffoulkes A.*	Con	2,216	43.8
Goodland R.	Lab	295	5.8
<b>Turnout</b>		47.2	6.5

<b>Sidmouth Rural (8471)</b>			
		<b>vote</b>	<b>share</b>
<b>Hughes S.</b>	Ind	2,656	58.6
Sutherland-Earl J. Ms.	Con	1,468	32.4
Bailey A.	LD	309	6.8
Mills S. Ms.	Lab	97	2.1
<b>Turnout</b>		53.5	26.2

<b>South Molton Rural (10466)</b>			
		<b>vote</b>	<b>share</b>
<b>Venner F.</b>	LD	2,749	58.6
Mercer S.	Con	1,702	36.3
Mestel B.	Lab	237	5.1
<b>Turnout</b>		44.8	22.3

<b>Southway (10367)</b>			
		<b>vote</b>	<b>share</b>
<b>Evans E. Ms.*</b>	Lab	2,167	65.6
Bowyer L. Ms.	Con	649	19.6
Hipkiss S. Ms.	LD	489	14.8
<b>Turnout</b>		31.9	45.9

<b>St. Budeaux (8931)</b>			
		<b>vote</b>	<b>share</b>
<b>Mallett N.</b>	Lab	1,783	58.0
Plymsol J. Ms.	Con	726	23.6
Bull M.	LD	451	14.7
Stanner P.	SDP	116	3.8
<b>Turnout</b>		34.4	34.4

<b>St. Davids &amp; Pennsylvania (11066)</b>			
		<b>vote</b>	<b>share</b>
<b>Oakes G.</b>	LD	2,195	46.7
Gooding G.	Con	1,392	29.6
Duff C. Ms.	Lab	872	18.5
Potter S.	Green	246	5.2
<b>Turnout</b>		42.5	17.1

<b>St. Peter (8354)</b>			
		<b>vote</b>	<b>share</b>
<b>Cohen E. Ms.*</b>	Lab	1,475	62.2
Gamble D.	Con	489	20.6
York P.	LD	409	17.2
<b>Turnout</b>		28.4	41.6

<b>Stoke (9575)</b>			
		<b>vote</b>	<b>share</b>
<b>Hirmeris V. Ms.</b>	Lab	1,604	40.5
Pascoe C. Ms.*	Con	1,363	34.4
Evans J.	LD	990	25.0
<b>Turnout</b>		41.3	6.1

<b>Stoke Hill &amp; Polsloe (8108)</b>			
		<b>vote</b>	<b>share</b>
<b>Westlake R.*</b>	Lab	1,713	56.5
Thomas S.	Con	573	18.9
Rijke N.	LD	534	17.6
Totterdell Ms.	Green	153	5.0
Needs G.	NF	60	2.0
<b>Turnout</b>		37.4	37.6

<b>Sutton (8444)</b>			
		<b>vote</b>	<b>share</b>
<b>Wheeler G.*</b>	Lab	1,676	56.1
Brimacombe F.	Con	896	30.0
Roake T.	LD	317	10.6
Parker L. Ms.	Green	99	3.3
<b>Turnout</b>		35.4	26.1

<b>Tavistock (9841)</b>			
		<b>vote</b>	<b>share</b>
<b>Cook R.*</b>	LD	2,167	55.4
Mathew R.	Con	1,175	30.0
Stuart S. S.	Lab	572	14.6
<b>Turnout</b>		39.8	25.3

<b>Teignbridge South (11825)</b>			
		<b>vote</b>	<b>share</b>
<b>Cook P.</b>	LD	2,176	48.7
Perkin J.*	Con	1,798	40.3
Hughes R.	Lab	490	11.0
<b>Turnout</b>		37.8	8.5

<b>Teignmouth (10573)</b>			
		<b>vote</b>	<b>share</b>
<b>Strudwick D.</b>	LD	2,619	54.7
Russell E. Ms.*	Con	1,500	31.4
Kennedy M. Ms.	Lab	665	13.9
<b>Turnout</b>		45.3	23.4

<b>Tiverton East (9828)</b>			
		<b>vote</b>	<b>share</b>
<b>Hobson R. Ms.*</b>	LD	1,593	51.7
Boyes O. Ms.	Con	1,042	33.8
Kilshaw A. Ms.	Lab	446	14.5
<b>Turnout</b>		31.4	17.9

<b>Tiverton West (9863)</b>			
		<b>vote</b>	<b>share</b>
<b>Turner M. Ms.*</b>	Ind	2,383	71.2
Way N.	LD	602	18.0
Gibb S. Ms.	Lab	363	10.8
<b>Turnout</b>		34.0	53.2

<b>Torrington Rural (10430)</b>			
		<b>vote</b>	<b>share</b>
<b>Brook W.</b>	LD	2,791	67.2
Soby P. Ms.*	Con	1,364	32.8
<b>Turnout</b>		39.8	34.3

<b>Totnes Rural (10825)</b>			
		<b>vote</b>	<b>share</b>
<b>Walker J.</b>	LD	1,989	41.8
Pennington J.*	Con	1,954	41.0
Heape C.	Lab	820	17.2
<b>Turnout</b>		44.0	0.7

<b>Trelawney (7661)</b>			
		<b>vote</b>	<b>share</b>
<b>Burns V. Ms.</b>	Lab	1,611	42.5
Nicholson P. Ms.	Con	1,552	40.9
Hazell M.	LD	458	12.1
Hannaford R.	Ind	172	4.5
<b>Turnout</b>		49.5	1.6

<b>Wellswood (8018)</b>			
		<b>vote</b>	<b>share</b>
<b>Oliver G.*</b>	Con	1,450	59.0
Chambers P.	LD	797	32.4
Millman T.	Lab	211	8.6
<b>Turnout</b>		30.7	26.6

<b>Wembury &amp; Erme (8522)</b>			
		<b>vote</b>	<b>share</b>
<b>Hart T.*</b>	Con	1,965	52.1
Brooks P.	Ind	1,409	37.4
Cue P.	Lab	395	10.5
<b>Turnout</b>		44.2	14.8

<b>Yelverton Rural (9351)</b>			
		<b>vote</b>	<b>share</b>
<b>Lee R.</b>	LD	2,508	57.6
Tait R.	Con	1,160	26.6
Anstess R.	Lab	348	8.0
Chaliss S. Ms.	Green	266	6.1
Mathis C.	Ind Con	75	1.7
<b>Turnout</b>		46.6	30.9

## Devon 1997

<b>Alphington &amp; St. Thomas (10366)</b>			
		<b>vote</b>	<b>share</b>
<b>Ruffle R.*</b>	LD	3,226	40.9
Duncan A.	Lab	2,723	34.5
Edwardson R.	Con	1,753	22.2
Iles S. Ms.	Green	182	2.3
<b>Turnout</b>		76.4	6.4

<b>Ashburton &amp; Buckfastleigh (8783)</b>			
		<b>vote</b>	<b>share</b>
<b>Whittaker L. Ms.</b>	LD	2,695	40.5
Maughan T.	Con	2,634	39.6
Kennedy R.	Lab	1,008	15.1
May S. Ms.	Lib	319	4.8
<b>Turnout</b>		76.7	0.9

<b>Axminster Rural (11135)</b>			
		<b>vote</b>	<b>share</b>
<b>Drake A.*</b>	Con	3,681	42.5
Hull D.	LD	3,604	41.6
Walden J.	Lab	852	9.8
Draper B.	Ind	531	6.1
<b>Turnout</b>		78.6	0.9

<b>Barnstaple North (9543)</b>			
		<b>vote</b>	<b>share</b>
<b>Greenslade B.*</b>	LD	4,273	63.1
McCrum S. Ms.	Con	1,508	22.3
Chapman A. Ms.	Lab	995	14.7
<b>Turnout</b>		72.4	40.8

<b>Barnstaple South (8983)</b>			
		<b>vote</b>	<b>share</b>
<b>Pollard I.</b>	LD	3,616	57.0
Parkhouse M.	Con	1,780	28.1
Watson R.	Lab	944	14.9
<b>Turnout</b>		72.3	29.0

<b>Barton &amp; St. Loyes (8061)</b>			
		<b>vote</b>	<b>share</b>
<b>Morrish J. Ms.*</b>	Lib	2,867	44.9
Palmer R.	Lab	1,819	28.5
Parr A.	Con	1,083	17.0
Langston P. Ms.	LD	472	7.4
Dunstan S. Ms.	Green	146	2.3
<b>Turnout</b>		79.7	16.4

<b>Belvedere (10559)</b>			
		<b>vote</b>	<b>share</b>
<b>Berman B.*</b>	LD	3,759	45.3
Williams G.	Con	3,011	36.3
Clayson M.	Lab	1,161	14.0
Pfeiffer S.	Green	369	4.4
<b>Turnout</b>		79.4	9.0

<b>Bideford (10283)</b>			
		<b>vote</b>	<b>share</b>
<b>Lane M.*</b>	LD	4,239	58.9
Brenton A. Ms.	Lab	1,741	24.2
Bayles G.	Con	1,214	16.9
<b>Turnout</b>		71.4	34.7

<b>Bovey (10188)</b>			
		<b>vote</b>	<b>share</b>
<b>Clarke N.</b>	LD	3,579	45.9
Portus J.	Con	2,846	36.5
Miller N.	Lab	1,368	17.6
<b>Turnout</b>		77.4	9.4

<b>Bradninch &amp; Creedy (8770)</b>			
		<b>vote</b>	<b>share</b>
<b>Crang A.</b>	Con	3,008	43.3
Barham P. Ms.*	LD	2,625	37.8
Herries C. Ms.	Lab	668	9.6
Roach J. Ms.	Lib	638	9.2
<b>Turnout</b>		79.9	5.5

<b>Braunton Rural (9185)</b>			
		<b>vote</b>	<b>share</b>
<b>Spear D.*</b>	LD	3,977	55.3
Cumberlege M.	Con	2,517	35.0
Hannant H. Ms.	Lab	696	9.7
<b>Turnout</b>		79.5	20.3

<b>Budleigh &amp; Sidmouth (10486)</b>			
		<b>vote</b>	<b>share</b>
<b>Channon C. Ms.*</b>	Con	4,643	58.5
Jenkinson D.	LD	2,393	30.1
Batty N.	Lab	902	11.4
<b>Turnout</b>		76.8	28.3

<b>Clyst Vale (9566)</b>			
		<b>vote</b>	<b>share</b>
<b>Glanvill J.*</b>	LD	3,801	50.3
Speller A.	Con	2,540	33.6
Hart C. Ms.	Lab	889	11.8
Burns G. Ms.	Lib	332	4.4
<b>Turnout</b>		79.7	16.7

<b>Combe Martin Rural (10368)</b>			
		<b>vote</b>	<b>share</b>
<b>Knight M.*</b>	LD	4,116	49.7
Loving M. Ms.	Con	3,351	40.5
Hoyles H. Ms.	Lab	812	9.8
<b>Turnout</b>		81.2	9.2

<b>Countess Wear &amp; Topsham (7218)</b>			
		<b>vote</b>	<b>share</b>
<b>Leadbetter A.</b>	Con	2,118	36.2
Ballantyne M. Ms.	LD	1,872	32.0
Baldwin D. Ms.	Lab	1,737	29.7
Berry M. Ms.	Lib	128	2.2
<b>Turnout</b>		81.3	4.2

<b>Crediton Rural (11069)</b>			
		<b>vote</b>	<b>share</b>
<b>Palk J. Ms.*</b>	LD	3,612	42.7
Lee M.	Con	3,475	41.1
Licence C.	Lab	971	11.5
Lever L. Ms.	Green	400	4.7
<b>Turnout</b>		77.2	1.6

<b>Cullompton Rural (11734)</b>			
		<b>vote</b>	<b>share</b>
<b>Bulley C. Ms.*</b>	LD	3,276	37.1
Harvey P. Ms.	Con	2,423	27.5
Campbell J. Ms.	Ind	1,770	20.1
Thomas I.	Lab	971	11.0
Burgess M.	Green	381	4.3
<b>Turnout</b>		76.0	9.7

<b>Dartmouth Rural (8132)</b>			
		<b>vote</b>	<b>share</b>
<b>Mills J.</b>	Con	2,535	42.6
Henshall J. Ms.	LD	1,905	32.0
Hannafor R.	Lab	1,509	25.4
<b>Turnout</b>		74.1	10.6

<b>Dawlish (10015)</b>			
		<b>vote</b>	<b>share</b>
<b>Buckle W.</b>	LD	3,172	42.9
Bealey M. Ms.*	Con	2,832	38.3
Hesse G.	Lab	1,386	18.8
<b>Turnout</b>		74.5	4.6

<b>Exmouth Littleham (7198)</b>			
		<b>vote</b>	<b>share</b>
<b>Willoughby B.*</b>	Con	1,984	40.3
Mudge R.	LD	1,957	39.8
Mendham S. Ms.	Lab	849	17.3
Beresford S.	Ind	131	2.7
<b>Turnout</b>		69.2	0.5

<b>Exmouth Lymstone (8712)</b>			
		<b>vote</b>	<b>share</b>
<b>Hughes B.</b>	Con	2,355	36.2
Wragg E. Ms.	LD	2,328	35.8
Davison R.	Lab	965	14.8
Helliker R.	Ind	655	10.1
Bucklar B.	Ind LD	199	3.1
<b>Turnout</b>		75.4	0.4

<b>Exmouth Withycombe (10713)</b>			
		<b>vote</b>	<b>share</b>
<b>Turner K.*</b>	LD	3,225	42.2
Costello B.	Con	2,682	35.1
Ross J. Ms.	Lab	1,498	19.6
Eastley R.	Ind	234	3.1
<b>Turnout</b>		72.1	7.1

<b>Exwick &amp; Cowick (10292)</b>			
		<b>vote</b>	<b>share</b>
<b>Butler P.*</b>	Lab	3,786	49.1
Knapp E.	Con	2,028	26.3
Wilcox S. Ms.	LD	1,459	18.9
Smith P.	Lib	439	5.7
<b>Turnout</b>		75.2	22.8

<b>Fremington Rural (10020)</b>			
		<b>vote</b>	<b>share</b>
<b>Cane R.*</b>	LD	3,499	43.9
Cann R.	Con	3,022	37.9
Watson M.	Lab	978	12.3
Watts D.	Ind	478	6.0
<b>Turnout</b>		80.9	6.0

<b>Hatherleigh &amp; Chagford (8673)</b>			
		<b>vote</b>	<b>share</b>
<b>Cann W.*</b>	Ind	3,840	56.9
Trimming J.	Con	2,044	30.3
Blizzard J.	Lab	864	12.8
<b>Turnout</b>		80.6	26.6

<b>Heavitree &amp; Wonford (7693)</b>			
		<b>vote</b>	<b>share</b>
<b>Morrish D.*</b>	Lib	2,355	41.5
Stevens R.	Lab	1,912	33.7
Williams G.	Con	661	11.7
Hobden S. Ms.	LD	593	10.5
Brenan T.	Green	150	2.6
<b>Turnout</b>		73.9	7.8

<b>Holsworthy Rural (10826)</b>			
		<b>vote</b>	<b>share</b>
<b>Shadrick D.</b>	LD	4,069	49.0
Broad H. Ms.	Con	3,505	42.2
Landrells P.	Lab	727	8.8
<b>Turnout</b>		77.7	6.8

<b>Honiton Rural (12558)</b>			
		<b>vote</b>	<b>share</b>
<b>Blackman A.</b>	Con	3,779	40.5
Coombs R.	LD	2,659	28.5
Collins R.	Lib	1,242	13.3
Sharpe R.	Lab	1,240	13.3
Mclvor E. Ms.	Green	405	4.3
<b>Turnout</b>		75.0	12.0

Ilfracombe (8221)			
		vote	share
<b>Withers A.</b>	Ind	2,332	39.2
Edmunds M.	LD	1,862	31.3
Andrews G.	Con	1,073	18.0
Mugford M.	Lab	681	11.4
<b>Turnout</b>		73.2	7.9

Ivybridge (16170)			
		vote	share
<b>Mitchell E.</b>	Con	4,832	40.6
Pannell C. Ms.*	LD	4,597	38.6
Trigger D.	Lab	2,483	20.8
<b>Turnout</b>		74.4	2.0

Kingsbridge Rural (11608)			
		vote	share
<b>Masters O.</b>	Con	3,944	45.3
Thorning D.*	LD	3,332	38.2
McGinn S. Ms.	Lab	1,436	16.5
<b>Turnout</b>		76.3	7.0

Kingsteignton (10361)			
		vote	share
<b>Smith J.</b>	LD	2,703	34.8
Jenkins D.	Con	2,567	33.0
Errington B. Ms.	Lab	1,311	16.9
Stride R.	Ind	1,195	15.4
<b>Turnout</b>		75.9	1.7

Modbury & Salcombe (8916)			
		vote	share
<b>Day S.*</b>	Con	3,573	53.0
Flood D. Ms.	LD	3,165	47.0
<b>Turnout</b>		76.5	6.1

Newton Abbot East (8404)			
		vote	share
<b>Wickham G.</b>	LD	2,429	38.1
Lewis K.	Con	1,983	31.1
Mills B.*	Lab	1,965	30.8
<b>Turnout</b>		76.6	7.0

Newton Abbot West (9327)			
		vote	share
<b>Symons F.*</b>	LD	2,909	44.3
Morris J.	Con	1,867	28.4
Andrews J. Ms.	Lab	1,439	21.9
Lindsey C. Ms.	Green	355	5.4
<b>Turnout</b>		71.4	15.9

Northam Rural (11067)			
		vote	share
<b>Elliott F.*</b>	LD	3,912	46.2
Soby P. Ms.	Con	2,733	32.2
Bloomfield S. Ms.	Lab	1,449	17.1
Simmons C. Ms.	Green	382	4.5
<b>Turnout</b>		78.1	13.9

Okehampton Rural (9156)			
		vote	share
<b>Herriman C. Ms.*</b>	LD	3,453	50.2
Davies P.	Con	2,383	34.7
Tucker M. Ms.	Lab	630	9.2
Pithouse M.	Lib	407	5.9
<b>Turnout</b>		76.1	15.6

Ottery St. Mary Rural (8949)			
		vote	share
<b>Giles A.*</b>	Ind	3,994	56.7
Smith T. Ms.	Con	1,644	23.4
Olive M. Ms.	LD	787	11.2
Black L.	Lab	615	8.7
<b>Turnout</b>		79.1	33.4

Pinhoe & Whipton (7863)			
		vote	share
<b>Spence S. Ms.*</b>	Lab	3,250	53.4
Kirk C.	Con	1,633	26.8
Thompson T.	LD	887	14.6
Danks M. Ms.	Lib	315	5.2
<b>Turnout</b>		77.8	26.6

Rougemont & St. Leonards (9415)			
		vote	share
<b>Owen J. Ms.*</b>	Lab	2,585	38.4
Brock P.	LD	2,105	31.3
Williams J.	Con	1,593	23.7
King S. Ms.	Green	276	4.1
Holt V. Ms.	Lib	176	2.6
<b>Turnout</b>		71.9	7.1

Seaton Rural (10757)			
		vote	share
<b>Rogers M. Ms.*</b>	LD	4,230	52.5
Burton P.	Con	3,005	37.3
Redgrave S. Ms.	Lab	825	10.2
<b>Turnout</b>		75.8	15.2

Sidmouth Rural (8516)			
		vote	share
<b>Hughes S.*</b>	Con	4,121	63.1
Swallow B.	LD	1,660	25.4
Goodland R.	Lab	748	11.5
<b>Turnout</b>		77.6	37.7

South Molton Rural (10497)			
		vote	share
<b>Venner F.*</b>	LD	3,375	41.8
Wedlake R.	Con	2,701	33.5
Mercer S.	Ind	1,412	17.5
Kendrew P. Ms.	Lab	583	7.2
<b>Turnout</b>		79.1	8.4

St. Davids & Pennsylvania (11669)			
		vote	share
<b>Oakes G.*</b>	LD	3,234	39.7
Coates J.	Con	2,377	29.2
Barker S. Ms.	Lab	2,179	26.8
Edwards P.	Green	349	4.3
<b>Turnout</b>		70.0	10.5

Stoke Hill & Polsloe (8160)			
		vote	share
<b>Westlake R.*</b>	Lab	2,955	48.4
Henson Y. Ms.	Con	1,688	27.6
Russell D.	LD	1,028	16.8
Canning T. Ms.	green	293	4.8
Potter F.	lib	143	2.3
<b>Turnout</b>		75.2	20.7

Tavistock (9495)			
		vote	share
<b>Cook R.*</b>	LD	3,694	50.1
Corner D. Ms.	Con	2,365	32.1
Batchelor B. Ms.	Lab	1,316	17.8
<b>Turnout</b>		79.0	18.0

Teignbridge South (12414)			
		vote	share
<b>Cook P.*</b>	LD	4,228	44.4
Oliver G.	Con	3,870	40.6
Sutcliffe S.	Lab	1,424	15.0
<b>Turnout</b>		77.5	3.8

Teignmouth (11142)			
		vote	share
<b>Strudwick M. Ms.*</b>	LD	3,027	37.1
Russell E. Ms.	Con	2,513	30.8
Phillips R.	Ind	1,315	16.1
Reiner S. Ms.	Lab	1,298	15.9
<b>Turnout</b>		73.8	6.3

Tiverton East (10131)			
		vote	share
<b>Hobson R. Ms.*</b>	LD	3,138	41.8
Radford R.	Con	2,746	36.6
Kilshaw A. Ms.	Lab	1,168	15.6
Proud S. Ms.	Green	456	6.1
<b>Turnout</b>		74.8	5.2

Tiverton West (9990)			
		vote	share
<b>Turner M. Ms.*</b>	Ind	3,350	44.8
Cruwys L.	LD	2,959	39.6
Griffiths A.	Lab	1,023	13.7
Stoner F.	Ind	145	1.9
<b>Turnout</b>		76.1	5.2

Torrington Rural (10469)			
		vote	share
<b>Brook W.*</b>	LD	3,551	44.3
Cowle J.	Con	2,982	37.2
Wittram B.	Lab	1,167	14.6
Rose J.	Ind	308	3.8
<b>Turnout</b>		77.5	7.1

Totnes Rural (11531)			
		vote	share
<b>Pennington J.</b>	Con	3,074	34.8
Walker J.*	LD	2,934	33.2
Evans B.	Lab	2,178	24.7
Pratt A.	Green	647	7.3
<b>Turnout</b>		77.5	1.6

Wembury & Erme (8941)			
		vote	share
<b>Baldry K.</b>	LD	3,523	51.8
Hart T.*	Con	3,273	48.2
<b>Turnout</b>		76.9	3.7

Yelverton Rural (9744)			
		vote	share
<b>Madigan G. Ms.</b>	LD	3,201	45.6
Tait R.	Con	2,546	36.2
Webb C. Ms.	Lab	856	12.2
Warth C. Ms.	Green	423	6.0
<b>Turnout</b>		73.0	9.3

## Devon 2001

Alphington & St. Thomas (10823)			
		vote	share
<b>Gale C.</b>	Lab	2,639	37.3
Ruffie R.*	LD	2,586	36.5
Edwardson R.	Con	1,499	21.2
Dorman M. Ms.	Green	353	5.0
<b>Turnout</b>		65.4	0.7

Ashburton & Buckfastleigh (8926)			
		vote	share
<b>Barker S.</b>	Con	2,889	46.0
Bonney M.	LD	2,378	37.9
Harriott M.	Lab	1,010	16.1
<b>Turnout</b>		71.5	8.1

Axminster Rural (11317)			
		vote	share
<b>Drake A.*</b>	Ind	4,076	52.0
George K.	LD	2,791	35.6
Walden J.	Lab	974	12.4
<b>Turnout</b>		69.9	16.4

Barnstaple North (9384)			
		vote	share
<b>Greenslade B.*</b>	LD	3,415	59.8
Knill J.	Con	1,482	25.9
Robathan M.	Lab	818	14.3
<b>Turnout</b>		61.7	33.8

Barnstaple South (8720)			
		vote	share
<b>Hawes R.</b>	LD	2,766	52.1
Harrison H.	Con	1,663	31.3
Cash S.	Lab	877	16.5
<b>Turnout</b>		62.0	20.8

**Barton & St. Loyes (7964)**

		vote	share
<b>Morrish J. Ms.*</b>	LIB	2,589	48.5
Sheldon G.	Lab	1,602	30.0
Johnson P.	Con	858	16.1
Palmer A. Ms.	LD	292	5.5
	<b>Turnout</b>	67.1	18.5

**Belvedere (11098)**

		vote	share
<b>Berman B.*</b>	LD	4,535	57.2
Evans S.	Con	3,400	42.8
	<b>Turnout</b>	72.8	14.3

**Bideford (10345)**

		vote	share
<b>Barton H.</b>	LD	2,333	38.1
Brenton A. Ms.	Lab	1,527	24.9
Isaac W.	Ind	1,255	20.5
Chapman S. Ms.	Con	1,008	16.5
	<b>Turnout</b>	59.9	13.2

**Bovey (11277)**

		vote	share
<b>Clarke N.*</b>	LD	3,689	45.2
Klinkenberg A. Ms.	Con	3,372	41.3
Lamont J. Ms.	Lab	1,097	13.4
	<b>Turnout</b>	73.2	3.9

**Bradninch & Creedy (8887)**

		vote	share
<b>Lee M.*</b>	Con	3,191	47.0
Way N.	LD	2,433	35.8
Beament J.	Lab	537	7.9
Lever L. Ms.	Green	444	6.5
Collins L. Ms.	LIB	183	2.7
	<b>Turnout</b>	76.7	11.2

**Braunton Rural (9263)**

		vote	share
<b>Spear D.*</b>	LD	2,351	36.5
Chester J. Ms.	Con	2,023	31.4
Piper C.	Ind	1,473	22.9
Durham P.	Lab	593	9.2
	<b>Turnout</b>	70.3	5.1

**Budleigh & Sidmouth (10329)**

		vote	share
<b>Channon C. Ms.*</b>	Con	4,530	61.3
Sutton S. Ms.	LD	1,931	26.1
Mills D.	Lab	934	12.6
	<b>Turnout</b>	72.2	35.1

**Clyst Vale (9735)**

		vote	share
<b>Glanvill J.*</b>	LD	3,201	45.4
Howe M.	Con	2,780	39.4
Stevenson I.	Lab	822	11.7
Burns G. Ms.	LIB	249	3.5
	<b>Turnout</b>	72.9	6.0

**Combe Martin Rural (11184)**

		vote	share
<b>Knight M.*</b>	LD	3,947	50.6
Singh J.	Con	3,030	38.9
Cotton B.	Lab	818	10.5
	<b>Turnout</b>	71.3	11.8

**Countess Wear & Topsham (7631)**

		vote	share
<b>Leadbetter A.*</b>	Con	2,264	42.2
Hemming C.	Lab	1,713	31.9
Copus R.	LD	880	16.4
Edwards P.	Green	284	5.3
Danks M. Ms.	LIB	230	4.3
	<b>Turnout</b>	70.4	10.3

**Crediton Rural (11106)**

		vote	share
<b>Squires M. Ms.</b>	Con	3,410	44.3
Palk J. Ms.*	LD	3,262	42.3
Blizzard J.	Lab	835	10.8
Shearer S. Ms.	LIB	197	2.6
	<b>Turnout</b>	69.9	1.9

**Cullompton Rural (12698)**

		vote	share
<b>Berry E.</b>	Con	4,050	47.1
Palmer C. Ms.*	LD	2,765	32.2
Herries C. Ms.	Lab	1,173	13.6
Burgess M.	Green	606	7.1
	<b>Turnout</b>	68.5	15.0

**Dartmouth Rural (8153)**

		vote	share
<b>Hawkins J.</b>	Con	2,965	54.7
Fletcher M. Ms.	LD	1,858	34.3
McKay J.	Lab	593	10.9
	<b>Turnout</b>	67.3	20.4

**Dawlish (10507)**

		vote	share
<b>Clatworth J.*</b>	Con	3,031	42.8
Protheroe W.	LD	3,014	42.5
Hesse G.	Lab	1,040	14.7
	<b>Turnout</b>	68.1	0.2

**Exmouth Littleham (7069)**

		vote	share
<b>Bamsey K. Ms.</b>	Con	1,937	43.8
Mudge R.	LD	1,737	39.2
Canavan P.	Lab	752	17.0
	<b>Turnout</b>	63.2	4.5

**Exmouth Lympstone (8748)**

		vote	share
<b>Hughes B.*</b>	Con	2,360	41.6
Mitchell J. Ms.	LD	1,824	32.2
Cumming E. Ms.	Lab	1,000	17.6
Forshaw C.	UK Ind	279	4.9
Widdowson R.	Ind	209	3.7
	<b>Turnout</b>	65.1	9.4

**Exmouth Withycombe (10976)**

		vote	share
<b>Taylor B. Ms.</b>	LD	2,520	37.2
Elson J. Ms.	Con	2,217	32.7
Armstrong M. Ms.	Lab	1,623	24.0
Wilson L. Ms.	UK Ind	414	6.1
	<b>Turnout</b>	62.1	4.5

**Exwick & Cowick (10425)**

		vote	share
<b>Siantonas A.*</b>	Lab	3,163	49.3
Sclater G.	Con	1,686	26.3
Wilcox S. Ms.	LD	915	14.3
Smith P.	LIB	347	5.4
Hawkes M.	Green	310	4.8
	<b>Turnout</b>	61.6	23.0

**Fremington Rural (10846)**

		vote	share
<b>Cann R.</b>	Con	2,924	38.6
Cane R.*	LD	2,340	30.9
Holland P. Ms.	Ind	1,424	18.8
Watson R.	Lab	892	11.8
	<b>Turnout</b>	70.6	7.7

**Hatherleigh & Chagford (8775)**

		vote	share
<b>Cann W.*</b>	Ind	2,388	36.7
Robertson A.	Con	2,066	31.7
Cartwright N.	LD	1,672	25.7
Cash M. Ms.	Lab	388	6.0
	<b>Turnout</b>	74.8	4.9

**Heavitree & Wonford (7473)**

		vote	share
<b>Morrish D.*</b>	LIB	2,040	42.6
Martin I.	Lab	1,634	34.1
Williams G.	Con	563	11.8
Thickett P. Ms.	LD	350	7.3
Froom S.	Green	199	4.2
	<b>Turnout</b>	64.0	8.5

**Holsworthy Rural (10976)**

		vote	share
<b>Shadrick D.*</b>	LD	4,314	55.9
Broyd G.	Con	2,776	36.0
Knight I.	Lab	628	8.1
	<b>Turnout</b>	71.1	19.9

**Honiton Rural (13417)**

		vote	share
<b>Nicholson B.</b>	Con	4,081	46.3
Olive M. Ms.	LD	2,741	31.1
Teare M.	Lab	1,214	13.8
Collins R.	LIB	684	7.8
Price-Alexander M.	Pro life	96	1.1
	<b>Turnout</b>	66.1	15.2

**Ilfracombe (8247)**

		vote	share
<b>Gear L. Ms.*</b>	Con	1,878	38.0
Edmunds M.	LD	1,538	31.1
Cooper T.	Lab	907	18.3
Pearson F.	Ind	372	7.5
Thompson K.	Ind	249	5.0
	<b>Turnout</b>	61.1	6.9

**Ivybridge (16683)**

		vote	share
<b>Mitchell E.*</b>	Con	5,228	47.8
Trigger D.	Lab	2,947	26.9
Browning M.	LD	2,761	25.2
	<b>Turnout</b>	66.1	20.9

**Kingsbridge Rural (11743)**

		vote	share
<b>Master O.*</b>	Con	4,429	53.7
Peers A. Ms.	LD	2,969	36.0
Parkes J.	UK Ind	851	10.3
	<b>Turnout</b>	70.2	17.7

**Kingsteignton (10646)**

		vote	share
<b>Smith J.*</b>	LD	2,757	38.7
Lambert J. Ms.	Con	2,484	34.9
Errington B. Ms.	Lab	1,146	16.1
Stride R.	Ind	733	10.3
	<b>Turnout</b>	67.6	3.8

**Modbury & Salcombe (8715)**

		vote	share
<b>Day S.*</b>	Con	3,595	57.6
Harvey R.	LD	1,948	31.2
Beeson E. Ms.	Lab	700	11.2
	<b>Turnout</b>	71.6	26.4

**Newton Abbot East (8682)**

		vote	share
<b>Wickham G.*</b>	LD	2,388	41.3
Walters M.	Con	1,863	32.2
Mills B.	Lab	1,530	26.5
	<b>Turnout</b>	67.0	9.1

**Newton Abbot West (9006)**

		vote	share
<b>Symons F.*</b>	LD	2,943	50.6
Mewis R.	Con	1,752	30.1
Lewis L. Ms.	Lab	1,121	19.3
	<b>Turnout</b>	65.1	20.5

Northam Rural (11814)			
		vote	share
Collins A.	Con	3,363	42.1
Bewes A.	LD	3,265	40.8
Lovera S. Ms.	Lab	1,369	17.1
Turnout		68.9	1.2
Okehampton Rural (9540)			
		vote	share
Marsh C. Ms.	Con	3,340	50.0
Williams K.	LD	2,650	39.7
Richards-Mole R. Ms.	Lab	690	10.3
Turnout		70.8	10.3
Ottery St. Mary Rural (9207)			
		vote	share
Giles A.*	Ind	4,122	60.8
Fraser T.	Con	1,804	26.6
Rotherham S.	LD	859	12.7
Turnout		74.2	34.2
Pinhoe & Whipton (7899)			
		vote	share
Spence S. Ms.*	Lab	2,763	52.1
Macdonald J.	Con	1,568	29.6
Dalby A.	LD	740	14.0
Danks K.	LIB	232	4.4
Turnout		67.1	22.5
Rougemont & St. Leonards (9874)			
		vote	share
Owen J. Ms.*	Lab	2,213	37.3
Brock P.	LD	1,957	33.0
White J.	Con	1,208	20.4
Brenan T.	Green	453	7.6
Bahrij J.	LIB	97	1.6
Turnout		60.0	4.3
Seaton Rural (10865)			
		vote	share
Rogers M. Ms.*	LD	3,646	48.0
Meakin J.	Con	3,168	41.7
Blackwell J. Ms.	Lab	788	10.4
Turnout		70.8	6.3
Sidmouth Rural (8415)			
		vote	share
Hughes S.*	Con	4,375	69.0
Foster W.	LD	1,186	18.7
Davison R.	Lab	780	12.3
Turnout		75.9	50.3
South Molton Rural (10720)			
		vote	share
Yabsley J.	Con	3,685	47.6
Sewell S. Ms.	LD	3,499	45.2
Dunwoody D.	Lab	558	7.2
Turnout		73.2	2.4
St. Davids & Pennsylvania (12151)			
		vote	share
Luxton C. Ms.	LD	2,376	34.0
Coates J.	Con	2,155	30.8
Jarvis E. Ms.	Lab	1,891	27.0
Bruins A.	Green	574	8.2
Turnout		57.6	3.2
Stoke Hill & Polsloe (8399)			
		vote	share
Westlake R.*	Lab	2,656	53.2
Griffin T.	Con	1,087	21.8
Hobden S. Ms.	LD	877	17.6
Hayward J.	Green	376	7.5
Turnout		59.5	31.4
Tavistock (10138)			
		vote	share
Connelly R.	LD	3,024	42.0
Taylor J.	Con	2,973	41.3
Keen P.	Lab	841	11.7
Pithouse M.	LIB	358	5.0
Turnout		71.7	0.7

Teignbridge South (12793)			
		vote	share
Cook P.*	LD	4,078	44.7
Oliver G.	Con	3,934	43.1
Radford J.	Lab	1,112	12.2
Turnout		72.0	1.6
Teignmouth (11278)			
		vote	share
Strudwick M. Ms.*	LD	3,148	42.2
Russell S. Ms.	Con	2,824	37.9
Kennedy R.	Lab	1,484	19.9
Turnout		66.8	4.3
Tiverton East (10521)			
		vote	share
Radford R.	Con	2,906	41.7
Beard B.	LD	2,208	31.7
Kilshaw A. Ms.	Lab	1,204	17.3
Hughes-Jones M.	Green	509	7.3
Janes E.	LIB	136	2.0
Turnout		66.2	10.0
Tiverton West (9690)			
		vote	share
Turner M. Ms.*	Ind	3,260	48.7
Thom N.	LD	2,380	35.6
Graham P.	Lab	729	10.9
Pratt A.	Green	323	4.8
Stoner F.	Ind	0	0.0
Turnout		69.1	13.2
Torrington Rural (11064)			
		vote	share
Rawlinson J.	LD	3,181	40.3
Wedlake R.	Con	2,939	37.3
Johnston S.	Lab	861	10.9
Ferguson P. Ms.	Ind	458	5.8
Rose J.	Ind	229	2.9
Camilleri P.	Ind	216	2.7
Turnout		72.5	3.1
Totnes Rural (11703)			
		vote	share
Date G.	LD	3,234	40.6
Pennington J.*	Con	3,211	40.3
Sutcliffe S.	Lab	1,522	19.1
Turnout		68.9	0.3
Wembury & Erme (8818)			
		vote	share
Hart T.	Con	3,078	50.0
Baldry K.*	LD	2,259	36.7
Owen D.	Lab	816	13.3
Turnout		70.3	13.3
Yelverton Rural (9412)			
		vote	share
Madigan G. Ms.*	LD	2,813	41.4
Tait R.	Con	2,463	36.2
Woodham L.	Lab	791	11.6
Davies P.	Ind	735	10.8
Turnout		72.9	5.1

## Devon 2005

Alphington & Cowick (10829)			
		vote	share
Browning M.	LD	3,188	43.8
Harris R.	Lab	1,919	26.4
Baldwin M. Ms.	Con	1,443	19.8
Bell A.	Green	331	4.6
Challice D.	UKIP	282	3.9
Smith P.	Lib	109	1.5
Turnout		67.2	17.5

Ashburton & Buckfastleigh (10030)			
		vote	share
Barker S.*	Con	2,793	39.4
Wickham G.*	LD	2,663	37.6
Harriott M.	Lab	999	14.1
Van Der Kiste K. Ms.	UKIP	636	9.0
Turnout		70.7	1.8
Axminster (8874)			
		vote	share
Hull D.	LD	2,912	45.5
Chubb I.	Con	2,908	45.4
Walden J.	Lab	581	9.1
Turnout		72.1	0.1
Barnstaple North (10055)			
		vote	share
Greenslade B.*	LD	3,411	56.8
Gill J.	Con	1,305	21.7
Brenton A. Ms.	Lab	720	12.0
Bramley-Howard E.	Green	572	9.5
Turnout		59.8	35.1
Barnstaple South (9726)			
		vote	share
Haywood C.	LD	3,116	50.4
Brailey D.	Con	1,999	32.3
Cornish R.	Green	596	9.6
Bawden B.	Ind	474	7.7
Turnout		63.6	18.1
Bickleigh & Wembury (8937)			
		vote	share
Hart T.*	Con	3,073	50.8
Tarsky C.	LD	2,219	36.6
McOustra J.	UKIP	763	12.6
Turnout		67.8	14.1
Bideford East (8919)			
		vote	share
Barton H.*	LD	2,613	47.5
Leather C.	Con	1,891	34.4
Brenton D.	Lab	1,001	18.2
Turnout		61.7	13.1
Bideford South & Hartland (9032)			
		vote	share
Temperley H.	LD	2,825	47.4
Williamson R.	Con	2,162	36.2
Gale V.	Lab	978	16.4
Turnout		66.0	11.1
Bovey Tracey Rural (8468)			
		vote	share
Morgan S. Ms.	LD	3,041	48.6
Warren A. Ms.	Con	2,627	42.0
Lamont J. Ms.	Lab	587	9.4
Turnout		73.9	6.6
Braunton Rural (9327)			
		vote	share
Jenkins J. Ms.	LD	2,325	36.6
Chesters J. Ms.	Con	2,250	35.4
Piper C.	Ind	610	9.6
Harrison M.	Green	607	9.5
Nearby D.	Lab	566	8.9
Turnout		68.2	1.2
Broadclyst & Whimple (8922)			
		vote	share
Button D.	LD	3,039	48.1
Bowden P.	Con	2,863	45.4
Burns G. Ms.	Lib	411	6.5
Turnout		70.8	2.8
Budleigh (8579)			
		vote	share
Channon C. Ms.*	Con	3,454	55.9
Frewin-Smith P.	LD	1,862	30.1
Fegan S.	Lab	865	14.0
Turnout		72.0	25.8

Chudleigh Rural (9040)			
		vote	share
Brook F.	Con	2,330	35.4
Smith K.	LD	2,052	31.2
Frost R.	Ind	1,451	22.0
Errington B. Ms.	Lab	754	11.4
Turnout		72.9	4.2

Chulmleigh & Swimbridge (9529)			
		vote	share
Tucker F.	LD	3,209	46.0
Edgell R.	Con	2,848	40.8
Godfrey I.	Green	915	13.1
Turnout		73.2	5.2

Combe Martin Rural (8126)			
		vote	share
Davis A. Ms.	Con	2,522	44.7
Spear D.*	LD	2,414	42.8
Hooper J.	Green	706	12.5
Turnout		69.4	1.9

Crediton Rural (8977)			
		vote	share
Way N.	LD	3,105	50.6
Squires M. Ms.*	Con	2,183	35.6
Green A.	UKIP	472	7.7
Culpeper E. Ms.	Green	380	6.2
Turnout		68.4	15.0

Cullompton Rural (9741)			
		vote	share
Berry E.*	Con	3,072	48.0
Keylock R. Ms.	LD	2,266	35.4
Matthews C.	Green	416	6.5
Dezart G.	UKIP	407	6.4
Rice J. Ms.	Lib	233	3.6
Turnout		65.6	12.6

Dartmouth & Kingswear (7031)			
		vote	share
Hawkins J.*	Con	2,435	50.4
Phillips A.	LD	1,280	26.5
Boughton B.	Lab	649	13.4
Kempton R.	UKIP	471	9.7
Turnout		68.8	23.9

Dawlish (10535)			
		vote	share
Clatworthy J.	Con	3,246	45.5
Connett A.	LD	2,843	39.8
Court J.	Lab	1,051	14.7
Turnout		67.8	5.6

Duryard & Pennsylvania (8565)			
		vote	share
Hobden S. Ms.	LD	2,486	46.1
Thomas D.	Con	1,690	31.4
Parker D. Ms.	Lab	981	18.2
Stone G.	UKIP	166	3.1
Clissold T.	Soc Alt	65	1.2
Turnout		62.9	14.8

Exminster & Kenton (7153)			
		vote	share
Berman B.*	LD	2,582	50.4
Webber S.	Con	1,901	37.1
Hesse G.	Lab	641	12.5
Turnout		71.6	13.3

Exmouth Brixington & Withycombe (10259)			
		vote	share
Taylor B. Ms.*	LD	3,458	53.4
Elson J. Ms.	Con	2,097	32.4
Wilson D.	UKIP	685	10.6
Widdowson R.	Ind	239	3.7
Turnout		63.2	21.0

Exmouth Halsdon & Woodbury (8467)			
		vote	share
Hughes B.*	Con	2,405	40.4
Graham P. Ms.	LD	2,351	39.5
Newton C. Ms.	Lab	779	13.1
Kelly J.	UKIP	422	7.1
Turnout		70.4	0.9

Exmouth Littleham & Town (9985)			
		vote	share
Wragg E. Ms.	LD	2,690	42.6
Bamsey K. Ms.*	Con	2,166	34.3
Canavan P.	Lab	1,017	16.1
Evans C.	UKIP	438	6.9
Turnout		63.2	8.3

Exwick & St. Thomas (11253)			
		vote	share
Hannaford R.	LD	3,141	43.5
Robson L. Ms.	Lab	2,626	36.3
Henson D.	Con	1,080	14.9
Harper L.	UKIP	378	5.2
Turnout		64.2	7.1

Fremington Rural (8058)			
		vote	share
Cann R.*	Con	2,758	50.0
Jury D.	Ind	1,765	32.0
Mack L. Ms.	Green	997	18.1
Turnout		68.5	18.0

Hatherleigh & Chagford (9178)			
		vote	share
McInnes J.	Con	3,358	48.0
Carter A. Ms.	LD	2,609	37.3
Bamford S. Ms.	UKIP	529	7.6
Lopez B. Ms.	Lab	493	7.1
Turnout		76.1	10.7

Heavitree & Whipton & Barton (10174)			
		vote	share
Foggin O. Ms.	Lab	2,419	35.9
Gale C.*	Lib	1,454	21.6
Barrett T. Ms.	LD	1,379	20.5
Nelson-Tomsen K.	Con	1,201	17.8
Myrone R. Ms.	UKIP	285	4.2
Turnout		66.2	14.3

Holsworthy Rural (9720)			
		vote	share
Shadrack D.*	LD	3,864	55.2
Tabor G. Ms.	Con	2,617	37.4
Vanstone W.	Lab	517	7.4
Turnout		72.0	17.8

Honiton St. Michaels (8741)			
		vote	share
Nicholson B.*	Con	2,889	48.5
Pettet A. Ms.	LD	1,751	29.4
Price R.	Lab	831	14.0
Collins L. Ms.	Lib	481	8.1
Turnout		68.1	19.1

Honiton St. Pauls (8980)			
		vote	share
Boote R.	Con	3,145	49.4
Coombs R.	LD	1,736	27.3
Boom S. Ms.	Lab	972	15.3
Collins R.	Lib	510	8.0
Turnout		70.9	22.1

Ilfracombe (8778)			
		vote	share
Fowler G.	LD	2,132	42.0
Crabb P.	Con	1,783	35.1
Frances I.	Ind	716	14.1
Pearson F.	Green	443	8.7
Turnout		57.8	6.9

Ivybridge (8894)			
		vote	share
Croad R.	Con	2,115	36.3
Beeson E. Ms.	Lab	1,592	27.3
Corney D.	LD	1,586	27.2
Gerrish B.	UKIP	541	9.3
Turnout		65.6	9.0

Kingsbridge & Stokenham (8012)			
		vote	share
Brazil J.	LD	2,806	49.3
Masters O.*	Con	2,266	39.8
Dooley S.	UKIP	625	11.0
Turnout		71.1	9.5

Kingsteignton (8712)			
		vote	share
Smith J.*	LD	2,450	43.5
Walters M.	Con	1,978	35.1
White J.	Lab	1,200	21.3
Turnout		64.6	8.4

Newton Abbot North (8710)			
		vote	share
Fry A. Ms.	LD	2,829	52.7
Johnson M.	Con	1,641	30.5
Kaye B.	Lab	903	16.8
Turnout		61.7	22.1

Newton Abbot South (9565)			
		vote	share
Hook G.	LD	3,275	53.3
Vizor A.	Con	1,819	29.6
Lewis L. Ms.	Lab	1,048	17.1
Turnout		64.2	23.7

Newton St. Cyres & Sandford (8795)			
		vote	share
Lee M.*	Con	3,425	50.9
Elston G. Ms.	LD	2,114	31.4
Lever L. Ms.	Green	736	10.9
Edwards R.	UKIP	449	6.7
Turnout		76.5	19.5

Newtown & Polsloe (8390)			
		vote	share
Westlake R.*	Lab	1,779	33.3
Henson Y. Ms.	Con	1,387	26.0
Thickett P. Ms.	LD	1,380	25.8
Discombe N.	Green	695	13.0
Woolner D.	Ind	100	1.9
Turnout		63.7	7.3

Northam (9693)			
		vote	share
Ford L.	LD	2,459	37.3
Collins A.*	Con	2,151	32.6
Eastman A.	UKIP	1,190	18.0
Prokowski S. Ms.	Lab	799	12.1
Turnout		68.1	4.7

Okehampton Rural (10283)			
		vote	share
Marsh C. Ms.*	Con	3,216	43.8
Williams K.	LD	2,747	37.5
Young A. Ms.	Lab	740	10.1
Kelly W.	UKIP	632	8.6
Turnout		71.3	6.4

Ottery St. Mary Rural (9022)			
		vote	share
Giles A.*	Ind	3,718	55.6
Fraser T.	Con	1,815	27.2
Olive M. Ms.	LD	733	11.0
Boom A.	Lab	416	6.2
Turnout		74.1	28.5

Pinhoe & Mincinglake (8713)			
		vote	share
<b>Spence S. Ms.*</b>	Lab	2,480	43.3
Smith R. Ms.	Con	1,805	31.5
Gooding N.	LD	1,442	25.2
<b>Turnout</b>		65.7	11.8

Priory & St. Leonards (10395)			
		vote	share
<b>Owen J. Ms.*</b>	Lab	2,773	41.5
Shiel N.	Con	1,908	28.6
Ruffle R.	LD	1,367	20.5
Courtney L.	UKIP	331	5.0
Danks K.	Lib	297	4.4
<b>Turnout</b>		64.2	13.0

Seaton Coastal (9327)			
		vote	share
<b>Rogers M. Ms.*</b>	LD	3,538	54.8
Knight J.	Con	2,624	40.6
Partridge-Hogbin B.	UKIP	299	4.6
<b>Turnout</b>		69.3	14.1

Sidmouth Sidford (10472)			
		vote	share
<b>Hughes S.*</b>	Con	4,736	63.6
Toye B.	LD	1,733	23.3
Davison R.	Lab	973	13.1
<b>Turnout</b>		71.1	40.4

South Brent & Dartington (8689)			
		vote	share
<b>Pennington J.</b>	Con	2,903	46.3
Pannell C. Ms.	LD	2,749	43.9
Reeves B.	Lab	614	9.8
<b>Turnout</b>		72.1	2.5

South Molton Rural (8753)			
		vote	share
<b>Yabsley J.*</b>	Con	3,042	49.2
Sewell S. Ms.	LD	2,472	40.0
Morningmist J. Ms.	Green	664	10.7
<b>Turnout</b>		70.6	9.2

St. Davids & St. James (8597)			
		vote	share
<b>Brock P.</b>	LD	2,194	43.5
Poat J.	Lab	1,176	23.3
Smith S.	Con	952	18.9
Price-Sosner I.	Green	586	11.6
Fitzgeorge-Parker M.	UKIP	140	2.8
<b>Turnout</b>		58.7	20.2

St. Loyaes & Topsham (7776)			
		vote	share
<b>Leadbetter A.*</b>	Con	2,081	36.3
Lyons R. Ms.	Lab	1,261	22.0
Noble B.	LD	954	16.6
Danks M. Ms.	Lib	914	15.9
Brandsen E.	UKIP	265	4.6
Edwards P.	Green	259	4.5
<b>Turnout</b>		73.7	14.3

Tavistock (9698)			
		vote	share
<b>Connelly R.*</b>	LD	2,109	31.0
Sanders P.	Con	1,898	27.9
Sherrell E.	Ind	1,769	26.0
Hardy D. Ms.	Lab	565	8.3
Mudge D. Ms.	UKIP	464	6.8
<b>Turnout</b>		70.2	3.1

Teign Estuary (8433)			
		vote	share
<b>Cox D.</b>	LD	1,837	32.3
Brown C. Ms.	Con	1,491	26.2
Clarence C.	Ind	957	16.8
Kennedy M. Ms.	Lab	802	14.1
Whitlock C.	UKIP	594	10.5
<b>Turnout</b>		67.4	6.1

Teignbridge South (8756)			
		vote	share
<b>Cook P.*</b>	LD	2,406	37.9
Long W.	Con	2,088	32.9
Colclough M. Ms.	Ind	1,192	18.8
Verbrugge E. Ms.	Lab	660	10.4
<b>Turnout</b>		72.5	5.0

Teignmouth (7593)			
		vote	share
<b>Bray C.</b>	LD	1,883	35.6
Bladon G.	Con	1,465	27.7
Russell S. Ms.	Ind	784	14.8
Phillips R.	Ind	590	11.2
Tucker M. Ms.	Lab	564	10.7
<b>Turnout</b>		69.6	7.9

Thurlestone Salcombe & Allington (7732)			
		vote	share
<b>Day S.*</b>	Con	2,820	52.7
Spears R. Ms.	LD	2,006	37.5
Trigger D.	Lab	530	9.9
<b>Turnout</b>		69.3	15.2

Tiverton East (9146)			
		vote	share
<b>Hannon D.</b>	LD	2,485	45.3
Knowles D.	Con	2,269	41.3
Caffin C.	UKIP	735	13.4
<b>Turnout</b>		60.0	3.9

Tiverton West (9503)			
		vote	share
<b>Turner M. Ms.*</b>	Ind	2,327	36.2
Griffiths A.	Con	1,693	26.4
Williams P.	LD	1,199	18.7
Siantonas A.*	Lab	594	9.2
Gildershorp K.	UKIP	343	5.3
Cottam D.	Green	269	4.2
<b>Turnout</b>		67.6	9.9

Torrington Rural (9943)			
		vote	share
<b>Rawlinson J.*</b>	LD	2,849	41.0
Morrish W.	Con	2,788	40.1
Pettifer H.	Lab	714	10.3
Merchant P.	UKIP	596	8.6
<b>Turnout</b>		69.9	0.9

Totnes Rural (8076)			
		vote	share
<b>Date G.*</b>	LD	2,811	49.9
Hawkins I.	Con	1,398	24.8
Hughes L. Ms.	Lab	892	15.8
Wyatt P.	UKIP	531	9.4
<b>Turnout</b>		69.7	25.1

Willand & Uffculme (9501)			
		vote	share
<b>Radford R.*</b>	Con	3,115	46.6
Wilson K.	LD	1,744	26.1
Bentley R.	Lab	835	12.5
Cheesbrough W.	Green	524	7.8
Haines M.	UKIP	473	7.1
<b>Turnout</b>		70.4	20.5

Yealampton (8756)			
		vote	share
<b>Mitchell E.*</b>	Con	2,873	45.7
Baldry K.	LD	2,700	42.9
Williamson J. Ms.	UKIP	714	11.4
<b>Turnout</b>		71.8	2.8

Yelverton Rural (9770)			
		vote	share
<b>Hosking A.</b>	LD	2,810	39.2
Hitchins P.	Con	2,770	38.6
Lopez E.	Lab	809	11.3
Mudge A.	UKIP	783	10.9
<b>Turnout</b>		73.4	0.6

## Devon 2009

Alphington & Cowick (10754)			
		vote	share
<b>Newcombe V. Ms.</b>	LD	1,701	38.7
Baldwin M. Ms.*	Con	1,560	35.5
Crane B.	Lab	602	13.7
Bell A.	Green	530	12.1
<b>Turnout</b>		41.6	3.2

Ashburton & Buckfastleigh (10528)			
		vote	share
<b>Barker S.*</b>	Con	2,333	48.5
Nutley J.	LD	1,359	28.3
Somerville R.	Green	910	18.9
Branston R.	Lab	205	4.3
<b>Turnout</b>		46.1	20.3

Axminster (9190)			
		vote	share
<b>Moulding A.</b>	Con	2,110	45.6
Hull D.*	LD	1,760	38.1
Draper B.	UKIP	625	13.5
Walden J.	Lab	130	2.8
<b>Turnout</b>		50.6	7.6

Barnstaple North (10531)			
		vote	share
<b>Greenslade B.*</b>	LD	1,558	42.9
Harvey S.	Con	1,215	33.4
Bramley H.	Green	586	16.1
Cann M.	Lab	202	5.6
Dyer P.	Comm	74	2.0
<b>Turnout</b>		34.8	9.4

Barnstaple South (10271)			
		vote	share
<b>Haywood C.*</b>	LD	1,375	36.5
Luggar D.	Con	1,099	29.2
Pagram M.	UKIP	836	22.2
Watkin M. Ms.	Green	343	9.1
Neary D.	Lab	111	2.9
<b>Turnout</b>		36.8	7.3

Bickleigh & Wembury (9206)			
		vote	share
<b>Hart J.*</b>	Con	2,154	56.6
Williams H.	UKIP	777	20.4
Ramsay C. Ms.	LD	483	12.7
Casemore S.	Green	286	7.5
Taplin D.	Lab	107	2.8
<b>Turnout</b>		41.6	36.2

Bideford East (9854)			
		vote	share
<b>Robinson S.</b>	Con	1,081	29.9
Barton H.*	LD	893	24.7
Dezart G.	UKIP	750	20.7
Church C. Ms.	Lib	648	17.9
Brenton A. Ms.	Lab	245	6.8
<b>Turnout</b>		36.9	5.2

Bideford South & Hartland (9648)			
		vote	share
<b>Boyle A. Ms.</b>	Con	1,272	34.3
Julian R.	UKIP	981	26.4
Temperley H.*	LD	881	23.7
Inch T.	Lib	356	9.6
Brenton D.	Lab	220	5.9
<b>Turnout</b>		38.7	7.8

Bovey Tracey Rural (8913)			
		vote	share
<b>Gribble G.</b>	Con	2,213	46.7
Morgan S. Ms.*	LD	1,568	33.1
Watkins B.	UKIP	526	11.1
Hutton F.	Green	321	6.8
Taylor M. Ms.	Lab	114	2.4
<b>Turnout</b>		53.4	13.6



<b>Braunton Rural (9269)</b>			
		<b>vote</b>	<b>share</b>
<b>Chugg C. Ms.</b>	Con	1,587	39.2
Alexander M.	LD	1,193	29.5
Crowther S.	UKIP	715	17.7
Knight M.	Green	263	6.5
Cann V. Ms.	Lab	200	4.9
Marshall G.	BNP	91	2.2
<b>Turnout</b>		43.9	9.7
<b>Broadclyst &amp; Whimble (8978)</b>			
		<b>vote</b>	<b>share</b>
<b>Bowden P.</b>	Con	2,055	46.7
Button D.*	LD	1,889	42.9
Macdonald M. Ms.	Lab	230	5.2
Fribbens C.	BNP	228	5.2
<b>Turnout</b>		49.0	3.8
<b>Budleigh (8639)</b>			
		<b>vote</b>	<b>share</b>
<b>Channon C. Ms.*</b>	Con	2,556	59.2
Whitworth H. Ms.	LD	948	22.0
Hooker G.	Ind	625	14.5
Scurfield A. Ms.	Lab	188	4.4
<b>Turnout</b>		50.4	37.2
<b>Chudleigh Rural (9555)</b>			
		<b>vote</b>	<b>share</b>
<b>Brook J.</b>	Con	2,174	47.0
Smith K.	LD	1,015	21.9
Curran R.	UKIP	833	18.0
Hill-Clements K.	Green	389	8.4
French P.	Lab	215	4.6
<b>Turnout</b>		48.5	25.1
<b>Chulmleigh &amp; Swimbridge (9381)</b>			
		<b>vote</b>	<b>share</b>
<b>Edgell R.</b>	Con	1,860	39.2
Tucker J.*	LD	1,819	38.3
Bell C.	Ind	557	11.7
Knight L. Ms.	Green	426	9.0
Lopez E.	Lab	82	1.7
<b>Turnout</b>		50.8	0.9
<b>Combe Martin Rural (8231)</b>			
		<b>vote</b>	<b>share</b>
<b>Davis A. Ms.*</b>	Con	1,972	53.1
Gubb Y. Ms.	LD	1,305	35.1
Harrison M.	Green	365	9.8
Duley E.	Lab	75	2.0
<b>Turnout</b>		45.5	17.9
<b>Crediton Rural (9798)</b>			
		<b>vote</b>	<b>share</b>
<b>Way N.*</b>	LD	2,148	47.9
Hare-Scott P.	Con	1,632	36.4
Rickey R.	Green	323	7.2
Davies F.	BNP	240	5.4
Beament J.	Lab	142	3.2
<b>Turnout</b>		45.9	11.5
<b>Cullompton Rural (10423)</b>			
		<b>vote</b>	<b>share</b>
<b>Berry J.*</b>	Con	2,437	58.1
Taylor L.	LD	1,130	26.9
Matthews C.	Green	418	10.0
Boom S. Ms.	Lab	209	5.0
<b>Turnout</b>		40.0	31.2
<b>Dartmouth &amp; Kingswear (7287)</b>			
		<b>vote</b>	<b>share</b>
<b>Hawkins J.*</b>	Con	1,740	58.9
Tagg D.	LD	673	22.8
Haward S. Ms.	Green	542	18.3
<b>Turnout</b>		41.0	36.1

<b>Dawlish (10937)</b>			
		<b>vote</b>	<b>share</b>
<b>Clatworthy J.*</b>	Con	2,236	48.5
Collins D.	LD	969	21.0
Fountain M. Ms.	UKIP	901	19.5
Fairfax R.	Green	273	5.9
Hesse G.	Lab	236	5.1
<b>Turnout</b>		42.4	27.5
<b>Duryard &amp; Pennsylvania (8083)</b>			
		<b>vote</b>	<b>share</b>
<b>Prowse G.</b>	Con	1,544	41.5
Hobden S. Ms.*	LD	1,446	38.8
Dean A.	Lab	286	7.7
Milburn T.	Green	231	6.2
Gove P.	UKIP	216	5.8
<b>Turnout</b>		46.7	2.6
<b>Exminster &amp; Kenton (7322)</b>			
		<b>vote</b>	<b>share</b>
<b>Connett A.</b>	LD	1,663	44.7
Lake K.	Con	1,630	43.8
Bragg A.	Green	345	9.3
Sutton R. Ms.	Lab	86	2.3
<b>Turnout</b>		51.1	0.9
<b>Exmouth Brixington &amp; Withycombe (10209)</b>			
		<b>vote</b>	<b>share</b>
<b>Taylor B. Ms.*</b>	LD	1,980	50.8
Chapman D.	Con	1,625	41.7
Fegan S.	Lab	290	7.4
<b>Turnout</b>		38.9	9.1
<b>Exmouth Halsdon &amp; Woodbury (8613)</b>			
		<b>vote</b>	<b>share</b>
<b>Hughes B.*</b>	Con	2,092	53.4
Dumper T.	LD	1,610	41.1
Newton C. Ms.	Lab	217	5.5
<b>Turnout</b>		46.5	12.3
<b>Exmouth Littleham &amp; Town (10340)</b>			
		<b>vote</b>	<b>share</b>
<b>Wragg E. Ms.*</b>	LD	2,003	47.4
Humphreys J.	Con	1,993	47.1
Venton K.	Lab	232	5.5
<b>Turnout</b>		41.4	0.2
<b>Exwick &amp; St. Thomas (11052)</b>			
		<b>vote</b>	<b>share</b>
<b>Hannaford R.*</b>	LD	1,659	39.8
Moore K.	Lab	718	17.2
Glover A.	Con	622	14.9
Harper L.	UKIP	596	14.3
Elesedy A.	Green	324	7.8
West L.	BNP	155	3.7
Gale N. Ms.	Lib	91	2.2
<b>Turnout</b>		37.9	22.6
<b>Fremington Rural (8316)</b>			
		<b>vote</b>	<b>share</b>
<b>Cann R.*</b>	Ind	1,559	41.4
Gill J.	Con	810	21.5
Millgate A.	UKIP	625	16.6
Piper C.	LD	442	11.7
Cornish R.	Green	217	5.8
Smalley J. Ms.	Lab	115	3.1
<b>Turnout</b>		45.6	19.9
<b>Hatherleigh &amp; Chagford (10012)</b>			
		<b>vote</b>	<b>share</b>
<b>McInnes J.*</b>	Con	2,822	55.9
Elston G. Ms.	LD	1,270	25.1
Phelps D. Ms.	UKIP	958	19.0
<b>Turnout</b>		50.7	30.7

<b>Heavitree &amp; Whipton &amp; Barton (9986)</b>			
		<b>vote</b>	<b>share</b>
<b>Foggin O. Ms.*</b>	Lab	1,214	29.2
Crow T. Ms.	Con	1,059	25.5
Gale C.	Lib	601	14.5
Timmis R.	UKIP	464	11.2
Greenall S. Ms.	Green	348	8.4
Thickett P. Ms.	LD	324	7.8
Hudson V. Ms.	BNP	146	3.5
<b>Turnout</b>		42.2	3.7
<b>Holsworthy Rural (10320)</b>			
		<b>vote</b>	<b>share</b>
<b>Parsons B.</b>	Con	2,624	54.4
James K.	LD	1,580	32.8
Funnell K.	Green	490	10.2
Bray G.	Lab	127	2.6
<b>Turnout</b>		47.2	21.7
<b>Honiton St. Michaels (8997)</b>			
		<b>vote</b>	<b>share</b>
<b>Randall Johnson S. Ms.</b>	Con	1,495	39.6
Olive M. Ms.	LD	1,260	33.4
Nicholson B.*	Ind	869	23.0
Boom A.	Lab	151	4.0
<b>Turnout</b>		42.3	6.2
<b>Honiton St. Pauls (9098)</b>			
		<b>vote</b>	<b>share</b>
<b>Diviani P.</b>	Con	1,740	43.1
Coombs R.	LD	853	21.1
Denton L. Ms.	UKIP	691	17.1
Boote R.*	Ind	568	14.1
Teare M.	Lab	189	4.7
<b>Turnout</b>		44.7	22.0
<b>Ilfracombe (9128)</b>			
		<b>vote</b>	<b>share</b>
<b>Fowler G.*</b>	LD	1,195	39.2
Yabsley P.	Con	819	26.9
Beagley D.	UKIP	667	21.9
Hextall J.	Green	189	6.2
Moore D.	BNP	110	3.6
Tonkin D. Ms.	Lab	67	2.2
<b>Turnout</b>		34.0	12.3
<b>Ivybridge (9309)</b>			
		<b>vote</b>	<b>share</b>
<b>Croad R.*</b>	Con	1,772	51.5
Baldry K.	LD	831	24.1
Green A. Ms.	Green	430	12.5
Trigger D.	Lab	408	11.9
<b>Turnout</b>		37.2	27.3
<b>Kingsbridge &amp; Stokenham (8230)</b>			
		<b>vote</b>	<b>share</b>
<b>Brazil J.*</b>	LD	2,063	46.1
Gilbert R.	Con	1,951	43.6
Coombes B. Ms.	Green	336	7.5
Whitby J.	Lab	123	2.7
<b>Turnout</b>		54.8	2.5
<b>Kingsteignton (8997)</b>			
		<b>vote</b>	<b>share</b>
<b>Walters M.</b>	Con	1,269	38.4
Fear A.	UKIP	886	26.8
Smith J.*	LD	655	19.8
Baker J. Ms.	Green	267	8.1
Errington B. Ms.	Lab	229	6.9
<b>Turnout</b>		36.9	11.6
<b>Newton Abbot North (9254)</b>			
		<b>vote</b>	<b>share</b>
<b>Fry A. Ms.*</b>	LD	1,323	43.1
Lowes L. Ms.	Con	1,132	36.9
Capaldi L. Ms.	Green	408	13.3
Kennedy R.	Lab	208	6.8
<b>Turnout</b>		33.5	6.2

**Newton Abbot South (9963)**

		vote	share
Hook G.*	LD	1,940	51.7
Ballinger A.	Con	1,169	31.2
Lindsey C. Ms.	Green	441	11.8
Kaye B.	Lab	201	5.4
<b>Turnout</b>		38.0	20.6

**Newton St. Cyres & Sandford (9155)**

		vote	share
Lee M.*	Con	2,761	58.3
Bourne P.	LD	1,159	24.5
Schofield J. Ms.	Green	676	14.3
Galloway P. Ms.	Lab	136	2.9
<b>Turnout</b>		52.0	33.9

**Newtown & Polsloe (8085)**

		vote	share
Westlake R.*	Lab	1,026	32.5
Henson D.	Con	844	26.7
Thomas A.	Green	487	15.4
Hannaford A.	LD	487	15.4
Stone G.	UKIP	248	7.9
Bridge-Taylor R.	BNP	66	2.1
<b>Turnout</b>		39.4	5.8

**Northam (10147)**

		vote	share
Eastman A.	Con	1,980	45.8
Johnson D.	UKIP	1,084	25.1
Renton K. Ms.	LD	1,058	24.5
Owen K.	Lab	204	4.7
<b>Turnout</b>		43.1	20.7

**Okehampton Rural (10782)**

		vote	share
Marsh C. Ms.*	Con	2,473	50.2
Young J.	LD	1,426	29.0
Welsh R.	UKIP	857	17.4
Lyons R. Ms.	Lab	168	3.4
<b>Turnout</b>		45.8	21.3

**Ottery St. Mary Rural (9094)**

		vote	share
Giles R.*	Ind	2,863	61.0
Cox D.	Con	1,062	22.6
Laitinen W.	LD	522	11.1
O'Hara S.	BNP	181	3.9
Parker D. Ms.	Lab	69	1.5
<b>Turnout</b>		51.9	38.3

**Pinhoe & Mincinglake (8733)**

		vote	share
Spence S. Ms.*	Lab	1,250	34.3
Thompson D.	Con	1,221	33.5
Down G.	UKIP	571	15.7
Chun K.	LD	432	11.9
Conway A. Ms.	BNP	168	4.6
<b>Turnout</b>		42.3	0.8

**Priory & St. Leonards (10545)**

		vote	share
Owen J. Ms.*	Lab	1,415	32.6
Luke L. Ms.	Con	1,403	32.3
Gay R.	UKIP	532	12.3
Ruffle R.	LD	477	11.0
Worthley A.	Green	413	9.5
Danks K.	Lib	101	2.3
<b>Turnout</b>		41.6	0.3

**Seaton Coastal (9688)**

		vote	share
Knight J.	Con	1,757	39.6
Rogers M. Ms.*	LD	1,622	36.6
Allison J.	UKIP	879	19.8
Blackwell J. Ms.	Lab	177	4.0
<b>Turnout</b>		46.0	3.0

**Sidmouth Sidford (10599)**

		vote	share
Hughes S.*	Con	3,553	71.7
Gammell M.	LD	1,125	22.7
Robson L. Ms.	Lab	274	5.5
<b>Turnout</b>		47.4	49.0

**South Brent & Dartington (8949)**

		vote	share
Pennington T.*	Con	2,015	45.6
Pannell C. Ms.	LD	1,229	27.8
Greenham T.	Green	876	19.8
Harrington R.	Ind	296	6.7
<b>Turnout</b>		49.7	17.8

**South Molton Rural (9055)**

		vote	share
Yabsley J.*	Con	1,689	40.4
Worden D.	LD	1,462	34.9
Burton E. Ms.	UKIP	714	17.1
Morningmist J. Ms.	Green	235	5.6
Fox J. Ms.	Lab	85	2.0
<b>Turnout</b>		46.4	5.4

**St. Davids & St. James (8690)**

		vote	share
Brock P.*	LD	1,112	38.5
Corbridge B.	Con	545	18.9
Price-Sosner I.	Green	486	16.8
Bull P.	Lab	475	16.4
Crawford K.	UKIP	271	9.4
<b>Turnout</b>		33.6	19.6

**St. Loyes & Topsham (8869)**

		vote	share
Leadbetter A.*	Con	1,829	49.3
Barrett S. Ms.	LD	743	20.0
Danks M. Ms.	Lib	643	17.3
Wright E.	Lab	497	13.4
<b>Turnout</b>		42.8	29.3

**Tavistock (11730)**

		vote	share
Sellis D. Ms.	Con	1,348	27.6
Sherrell T.	Ind	1,307	26.7
Clish-Green A. Ms.	LD	1,077	22.0
Mudge G.	UKIP	600	12.3
Connolly R.*	Ind	416	8.5
Sparling M.	Lab	142	2.9
<b>Turnout</b>		41.9	0.8

**Teign Estuary (8759)**

		vote	share
Clarance C.	Con	1,618	41.4
Cox D.*	LD	1,306	33.5
Stanton R.	UKIP	642	16.4
Porter A.	Green	211	5.4
Lumb A.	Lab	127	3.3
<b>Turnout</b>		44.7	8.0

**Teignbridge South (8932)**

		vote	share
Smith D.	Con	1,849	44.5
Dewhurst A.	LD	1,590	38.3
Eberhardt-Shelton K. Ms.	Green	561	13.5
Kennedy M. Ms.	Lab	152	3.7
<b>Turnout</b>		46.8	6.2

**Teignmouth (8087)**

		vote	share
McMurray J.	Con	1,209	33.4
Bray C.*	LD	1,120	30.9
Whitlock C.	UKIP	631	17.4
Phillips R.	Ind	228	6.3
Langdon R. Ms.	Green	177	4.9
Authers C.	Ind	129	3.6
Duffy N.	Lab	129	3.6
<b>Turnout</b>		44.8	2.5

**Thurlestone Salcombe & Allington (7981)**

		vote	share
Day S.*	Con	1,870	51.1
O'Callaghan D. Ms.	LD	807	22.1
Wright S.	Ind	595	16.3
Fisher S. Ms.	Green	384	10.5
<b>Turnout</b>		46.1	29.1

**Tiverton East (10203)**

		vote	share
Hannon D.*	LD	1,435	37.9
Chesterton R.	Con	1,123	29.7
Gildenthorp K.	UKIP	505	13.3
Crocker L.	Ind	451	11.9
Povey K.	Green	150	4.0
Stevenson I.	Lab	121	3.2
<b>Turnout</b>		37.2	8.2

**Tiverton West (10088)**

		vote	share
Colthorpe P. Ms.	Con	1,334	34.2
Turner M. Ms.*	Ind	1,220	31.2
Williams P.	LD	666	17.1
McIntyre T.	UKIP	338	8.7
Povey K. Ms.	Green	218	5.6
Groves S. Ms.	Lab	129	3.3
<b>Turnout</b>		38.9	2.9

**Torrington Rural (10572)**

		vote	share
Boyd A.	Con	2,027	42.3
Lee G.	LD	1,317	27.5
Hummerstone G.	UKIP	1,088	22.7
Simmons C. Ms.	Green	359	7.5
<b>Turnout</b>		45.6	14.8

**Totnes Rural (8449)**

		vote	share
Black P. Ms.	Green	1,224	32.5
Date G.*	LD	1,207	32.0
Hicks M.	Con	1,025	27.2
Robillard C.	Lab	314	8.3
<b>Turnout</b>		45.0	0.5

**Willand & Uffculme (10201)**

		vote	share
Radford R.*	Con	2,256	53.4
Norman B.	LD	756	17.9
Pugsley D.	Ind	665	15.7
Lever C.	Green	390	9.2
Whitlock S. Ms.	Lab	158	3.7
<b>Turnout</b>		41.5	35.5

**Yealmpton (9007)**

		vote	share
Mumford W.	Con	2,184	47.7
Vidal-Hall A.	LD	1,196	26.1
Germain E. Ms.	UKIP	761	16.6
Weaver G. Ms.	Green	442	9.6
<b>Turnout</b>		51.1	21.6

**Yelverton Rural (11328)**

		vote	share
Sanders P.	Con	1,954	39.4
Kennedy G.	LD	1,720	34.7
Mudge A.	UKIP	1,041	21.0
Young A. Ms.	Lab	247	5.0
<b>Turnout</b>		44.0	4.7



