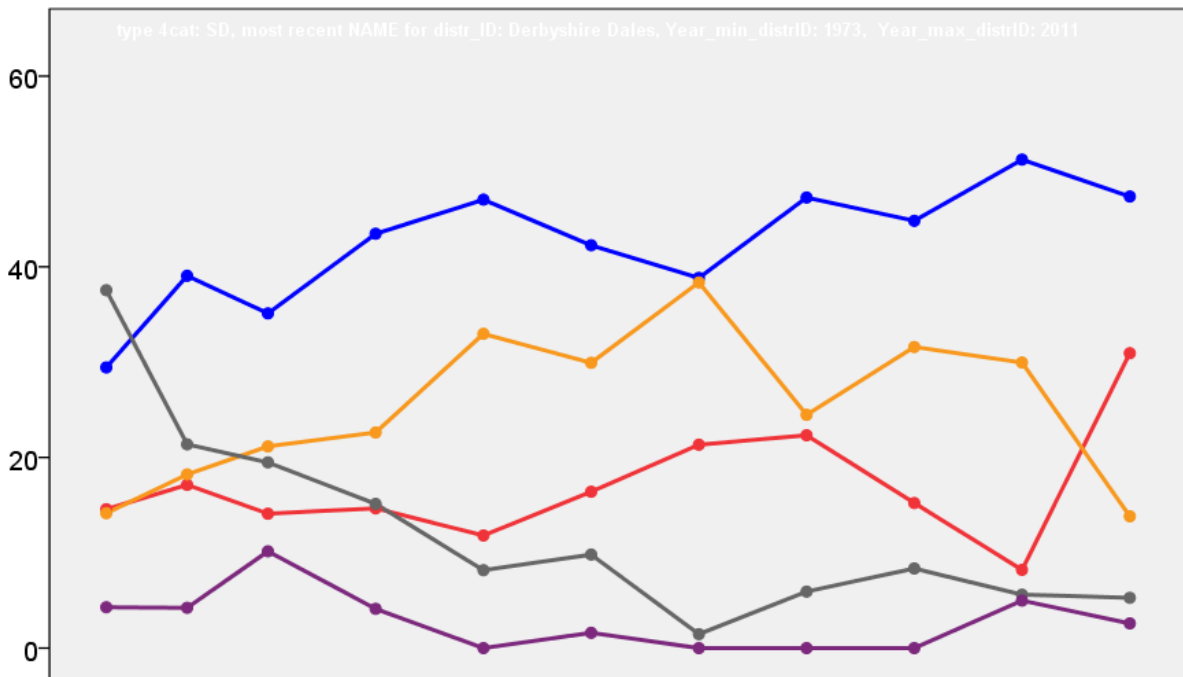


# Derbyshire Dales District Council Election Results 1973-2011



Colin Rallings and Michael Thrasher  
The Elections Centre  
Plymouth University

The information contained in this report has been obtained from a number of sources. Election results from the immediate post-reorganisation period were painstakingly collected by Alan Willis largely, although not exclusively, from local newspaper reports. From the mid-1980s onwards the results have been obtained from each local authority by the Elections Centre. The data are stored in a database designed by Lawrence Ware and maintained by Brian Cheal and others at Plymouth University. Despite our best efforts some information remains elusive whilst we accept that some errors are likely to remain. Notice of any mistakes should be sent to [elections@plymouth.ac.uk](mailto:elections@plymouth.ac.uk). The results sequence can be kept up to date by purchasing copies of the annual Local Elections Handbook, details of which can be obtained by contacting the email address above.

Front cover: the graph shows the distribution of percentage vote shares over the period covered by the results. The lines reflect the colours traditionally used by the three main parties. The grey line is the share obtained by Independent candidates while the purple line groups together the vote shares for all other parties.

Rear cover: the top graph shows the percentage share of council seats for the main parties as well as those won by Independents and other parties. The lines take account of any by-election changes (but not those resulting from elected councillors switching party allegiance) as well as the transfers of seats during the main round of local election.

The lower graph shows for each main round of local elections the overall percentage turnout (solid line), the percentage of women candidates standing at (dotted line) and the percentage of women among those elected (hashed line).

## Derbyshire Dales - 1973

### Ashbourne (4202)<sup>3</sup>

		vote	share
Ward J.	Con	735	36.5
Plumley E. Ms.	Con	538	-
Smith R.	Con	492	-
Birch C.	Ind	445	22.1
Seddon N.	Lib	438	21.7
Cooper E.	Lab	398	19.7
Lehuede R.	Lab	346	-
Turnout		48.0	14.4

### Bakewell (3171)<sup>3</sup>

		vote	share
Welch T.	Ind	914	54.3
Wright I.	Ind	776	-
Evans R.	Con	770	45.7
Levick S.	Con	641	-
Riley J.	Ind	567	-
Brooke-Taylor A. Ms.	Con	545	-
Turnout		53.1	8.6

### Brailsford (1139)

		vote	share
Archer R.	Ind	0	0.0
Turnout		0.0	0.0

### Doveridge (1376)

		vote	share
Stevenson J.	Con	0	0.0
Turnout		0.0	0.0

### Eyam & Stoney Middleton (1215)

		vote	share
Hall F.	Ind	372	56.5
Dyson T.	Ind	286	43.5
Turnout		54.2	13.1

### Hulland (1382)

		vote	share
Sevier N.	Con	505	53.1
Short M. Ms.	Ind	257	27.0
Bull W.	Ind	189	19.9
Turnout		68.8	26.1

### Masson (2576)<sup>2</sup>

		vote	share
Savidge D.	Lib	641	39.0
Draper G.	Lab	359	21.8
Elliott S.	Ind	340	20.7
Beresford A.	Con	305	18.5
Tarlton J.	Con	201	-
Turnout		63.9	17.1

### No. 1 (Hartington) (1079)

		vote	share
Glossop W.	Ind	335	55.5
Rowley J. Ms.	Con	269	44.5
Turnout		56.0	10.9

### No. 10 (Bradwell) (1454)

		vote	share
Southwell D.	Con	490	64.8
Wilson B.	Ind	266	35.2
Turnout		52.0	29.6

### No. 13 (Hathersage) (1532)

		vote	share
Smith E.	Con	543	68.8
White J. Ms.	Ind	246	31.2
Turnout		51.5	37.6

### No. 14 (The Longstones) (1230)

		vote	share
Duncan C. Ms.	Con	374	55.2
Unsworth C.	Ind	304	44.8
Turnout		55.1	10.3

### No. 15 (Calver) (1597)

		vote	share
White J.	Con	512	54.4
Adlington K.	Ind	380	40.3
Rowland C.	Ind	50	5.3
Turnout		59.0	14.0

### No. 16 (Winster) (1724)<sup>2</sup>

		vote	share
Elliott P.	Ind	731	71.6
Clemson A.	Con	290	28.4
Turner A.	Con	246	-
Turnout		59.2	43.2

### No. 18 (Baslow & Bubnell) (1283)

		vote	share
Fisher D.	Ind	450	51.8
Turner A.	Con	418	48.2
Turnout		67.7	3.7

### No. 2 (Brassington) (1248)

		vote	share
Rose L.	Con	386	55.3
Oldfield A.	Ind	219	31.4
Goodall R.	ERPASR	93	13.3
Turnout		55.9	23.9

### No. 21 (Matlock) (7643)<sup>6</sup>

		vote	share
Wray T.	Ind	1,745	28.2
Yates J.	Con	1,549	25.1
Slater J.	Con	1,494	-
Statham G.	Con	1,484	-
Nightingale G.	Con	1,406	-
Edwards P. Ms.	Lib	1,313	21.2
Spark R.	Con	1,159	-
Shaw A.	Con	944	-
Moore H.	Lab	892	14.4
Minney R.	Lab	807	-
Ferguson W.	Lab	734	-
Hammers R.	Lab	688	-
Bennett A.	BHF	682	11.0
Priestnall K.	Lab	601	-
Turnout		80.9	3.2

### No. 22 (North & South Darley) (4622)<sup>4</sup>

		vote	share
Fearn J.	Lib	1,456	33.1
Fearn R.	Lib	1,171	-
Wall J.	Ind	1,157	26.3
Turner J.	Lab	954	21.7
Briddon H.	Con	833	18.9
Mills H.	Con	754	-
Jackson L.	Ind	681	-
Ince R.	Con	610	-
Draper L. Ms.	Lab	604	-
Corbett W.	Lab	395	-
Linley C.	Lab	358	-
Turnout		95.2	6.8

### No. 4 (Clifton) (1287)

		vote	share
Peach G.	Ind	563	69.2
Rose L.	Con	250	30.8
Turnout		63.2	38.5

### No. 9 (Tideswell) (1846)<sup>2</sup>

		vote	share
Swindell W.	Ind	601	39.1
Mottershaw I.	Ind Lib	585	38.1
Bandey E. Ms.	Lab	351	22.8
Maurer P.	Lab	303	-
Turnout		83.3	1.0

### Norbury (1145)

		vote	share
Stanton J.	Con	340	53.6
Prince T.	Ind	294	46.4
Turnout		55.4	7.3

### Taddington (1209)

		vote	share
Holland F.	Con	381	57.4
Gould M. Ms.	Ind	168	25.3
Jones C.	Ind	115	17.3
Turnout		54.9	32.1

### Wirksworth (3793)<sup>3</sup>

		vote	share
Doxley W.	Lab	1,297	39.7
Cresswell J.	Lab	1,167	-
Spencer F.	Ind	968	29.6
Barnes R.	Lab	670	-
Flint S.	Lib	633	19.4
Spriggs J. Ms.	Ind	573	-
Neville R.	Con	373	11.4
Turnout		86.2	10.1

### Youlgreave (1326)

		vote	share
Oldfield B.	Lab	364	42.4
Birds S.	Ind	353	41.1
Treece M. Ms.	Ind	141	16.4
Turnout		64.7	1.3

## Derbyshire Dales - 1976

### Ashbourne (4178)<sup>3</sup>

		vote	share
Ward G.*	Con	824	36.4
Plumbly E. Ms.*	Con	764	-
Smith R.*	Con	703	-
Moore D.	Ind	637	28.1
Lehuede R.	Lab	467	20.6
Seddon N.	Lib	337	14.9
Turnout		39.0	8.3

### Bakewell (3228)<sup>3</sup>

		vote	share
Welch T.*	Ind	878	32.6
Wright L.*	Con	851	31.6
Evans R.*	Con	834	-
Pidcock J.	Con	816	-
Haythornthwaite D. Ms.	Lib	754	28.0
Twigg J. Ms.	Ind	580	-
Price B.	Lib	387	-
Hoar A.	Lab	214	7.9
Turnout		63.4	1.0

### Brailsford (1157)

		vote	share
Grix S.	Con	0	0.0
Turnout		0.0	0.0

### Doveridge (1344)

		vote	share
Stevenson J.*	Con	459	64.9
Ashton P. Ms.	Lib	248	35.1
Turnout		53.3	29.8

### Eyam & Stoney Middleton (1213)

		vote	share
Hall F.*	Ind	552	69.2
Hubbard W.	Ind	246	30.8
Turnout		66.4	38.3

### Hulland (1424)

		vote	share
Sevier R.*	Con	0	0.0
Turnout		0.0	0.0

### Masson (2539)<sup>2</sup>

		vote	share
Savidge D.*	Ind	815	44.4
White D.	Con	577	31.5
Wilson M. Ms.	Lib	268	14.6
Bartholomew E. Ms.	Lab	174	9.5
Ottewell J.	Lab	145	-
Turnout		48.0	13.0

No. 1 (Hartington) (1133)			
		vote	share
Glossop F.*	Ind Con	401	52.3
Rowley J. Ms.	Ind Con	251	32.8
Page E.	Lab	114	14.9
<b>Turnout</b>		68.0	19.6

No. 10 (Bradwell) (1424)			
		vote	share
Bradwell C.	Ind	512	55.5
Southwell J.*	Con	410	44.5
<b>Turnout</b>		64.9	11.1

No. 13 (Hathersage) (1517)			
		vote	share
Smith E.*	Con	743	68.7
Boyce J. Ms.	Lab	228	21.1
Nolan A. Ms.	Lib	110	10.2
<b>Turnout</b>		71.4	47.6

No. 14 (The Longstones) (1233)			
		vote	share
Crowther C. Ms.	Con	605	82.3
Windle D.	Ind	130	17.7
<b>Turnout</b>		60.1	64.6

No. 15 (Calver) (1632)			
		vote	share
Gillian M. Ms.	Con	540	51.2
Adlington K.	Ind	514	48.8
<b>Turnout</b>		65.0	2.5

No. 16 (Winsters) (1766) <sup>2</sup>			
		vote	share
Elliott P.*	Ind	558	40.7
Clemson A.	Con	458	33.4
Riley N.	Lab	355	25.9
<b>Turnout</b>		56.4	7.3

No. 18 (Baslow & Bubnell) (1307)			
		vote	share
Hoole C.	Con	0	0.0
<b>Turnout</b>		0.0	0.0

No. 2 (Brassington) (1229)			
		vote	share
Rose L.*	Con	0	0.0
<b>Turnout</b>		0.0	0.0

No. 21 (Matlock) (7962) <sup>6</sup>			
		vote	share
Stevens G.	Con	2,132	46.8
Slater J.*	Con	1,957	-
Statham G.*	Con	1,954	-
Nightingale G.*	Con	1,824	-
Edwards P. Ms.*	Lib	1,744	38.3
Henshall D.	Con	1,424	-
Shaw A.	Con	1,401	-
Crapper B.	Lib	1,287	-
Boam T.	Lib	1,265	-
Walker J. Ms.	Lib	1,090	-
Moore W.	Lab	675	14.8
Measham D.	Lab	647	-
Priestnall K.	Lab	583	-
March J.	Lab	578	-
<b>Turnout</b>		49.3	8.5

No. 22 (North & South Darley) (4601) <sup>4</sup>			
		vote	share
Fearn J.*	Lib	1,013	27.9
Fearn R.*	Lib	906	-
Colhoun J.	Con	902	24.8
Jackson L.	Ind	886	24.4
Turner J.*	Lab	834	22.9
Wall J.*	Ind	797	-
Sharpe D. Ms.	Con	702	-
Wild A.	Con	611	-
Wild P.	Con	585	-
Boyack J.	Lab	499	-
Draper G.	Ind	489	-
Langley R. Ms.	Lib	389	-
Corbett W.	Lab	360	-
Berry W.	Lib	308	-
<b>Turnout</b>		57.5	3.1

No. 4 (Clifton) (1295)			
		vote	share
Peach G.*	Con	0	0.0
<b>Turnout</b>		0.0	0.0

No. 9 (Tideswell) (1806) <sup>2</sup>			
		vote	share
Naylor J. Ms.	Con	673	54.9
Redshaw D. Ms.	Con	573	-
Ayres M. Ms.	Lab	552	45.1
<b>Turnout</b>		63.2	9.9

Norbury (1159)			
		vote	share
Clowes T.	Con	0	0.0
<b>Turnout</b>		0.0	0.0

Taddington (1177)			
		vote	share
Holland F.*	Con	493	69.0
Gould M. Ms.	Ind	221	31.0
<b>Turnout</b>		61.3	38.1

Wirksworth (3977) <sup>3</sup>			
		vote	share
Doxey W.*	Lab	1,002	41.4
Cresswell J.*	Lab	925	-
Burton T.	Con	823	34.0
Waterhouse M. Ms.	Lab	703	-
Simpson R.	Lib	596	24.6
Ayres R.	Lib	516	-
<b>Turnout</b>		48.5	7.4

Youlgreave (1324)			
		vote	share
Oldfield B.*	Ind Lab	524	49.7
Dale E.	Con	379	35.9
Read J. Ms.	Lab	152	14.4
<b>Turnout</b>		80.7	13.7

## Derbyshire Dales - 1979

Ashbourne (4382) <sup>3</sup>			
		vote	share
Ward G.	Ind Con	1,809	34.9
Moore D.	Con	1,208	23.3
Birch C.	Res	1,119	21.6
Plumbly E. Ms.	Con	942	-
Smith R.	Con	926	-
Goldstraw E. Ms.	Lib	807	15.5
Seddon N.	Lib	315	-
Hale H.	Ind	247	4.8
<b>Turnout</b>		76.3	11.6

Ashford & Longstone (1337)			
		vote	share
Crowther C. Ms.	Con	0	0.0
<b>Turnout</b>		0.0	0.0

Bakewell (3218) <sup>3</sup>			
		vote	share
Welch T.	Ind	1,344	40.4
Wright L.	Con	1,023	30.7
Haythornthwaite D. Ms.	Lib	962	28.9
Twigg J. Ms.	Con	938	-
Clemson A.	Con	707	-
Cheshire R.	Lib	681	-
Green I.	Lib	573	-
<b>Turnout</b>		80.3	9.6

Bradwell (1394)			
		vote	share
Bradwell C.	Ind	670	58.4
Southwell D.	Con	477	41.6
<b>Turnout</b>		83.5	16.8

Brailsford (1192)			
		vote	share
Grix S.	Con	0	0.0
<b>Turnout</b>		0.0	0.0

Brassington & Parwich (1290)			
		vote	share
Rose L.	Con	0	0.0
<b>Turnout</b>		0.0	0.0

Calver (1068)			
		vote	share
Gillan M. Ms.	Con	456	51.1
Adlington K.	Ind Con	436	48.9
<b>Turnout</b>		84.4	2.2

Chatsworth (1473)			
		vote	share
Hoole C.	Con	0	0.0
<b>Turnout</b>		0.0	0.0

Clifton & Bradley (1187)			
		vote	share
Peach G.	Con	0	0.0
<b>Turnout</b>		0.0	0.0

Darley Dale (3959) <sup>3</sup>			
		vote	share
Fearn D.	Lib	1,576	36.6
Fearn J.	Lib	1,494	-
Jackson L.	Ind	1,192	27.7
Boyack J.	Lab	819	19.0
Crowther G.	Lib	792	-
Knifton J. Ms.	Con	722	16.8
Austin K.	Con	578	-
Payne M.	Con	555	-
Draper G.	Ind	460	-
<b>Turnout</b>		80.4	8.9

Doveridge (1370)			
		vote	share
Stevenson J.	Con	665	61.4
Brindley C.	Ind	418	38.6
<b>Turnout</b>		79.2	22.8

Eyam & Stoney Middleton (1278)			
		vote	share
Hall F.	Con	692	67.8
Hubbard W.	Ind	262	25.7
Plant C.	Lab	66	6.5
<b>Turnout</b>		79.8	42.2

Hartington & Doverdale (1290)			
		vote	share
Glossop F.	Con	867	86.7
Page E.	Lab	133	13.3
<b>Turnout</b>		78.5	73.4

<b>Hathersage (2310)<sup>2</sup></b>			
		<b>vote</b>	<b>share</b>
<b>Smith E.</b>	Con	1,042	38.8
<b>Bowie D.</b>	Lib	699	26.0
Duffield P.	Ind Con	650	24.2
Jackson R.	Lib	548	-
Boyce J. Ms.	Lab	294	10.9
Dobbins B. Ms.	Lab	175	-
<b>Turnout</b>		82.1	12.8
<b>Hulland (1509)</b>			
		<b>vote</b>	<b>share</b>
<b>Sevier R.</b>	Con	0	0.0
<b>Turnout</b>		0.0	0.0
<b>Masson (2638)<sup>2</sup></b>			
		<b>vote</b>	<b>share</b>
<b>Morris R.</b>	Con	802	37.2
<b>White D.</b>	Con	790	-
Greaves B. Ms.	Lib	685	31.8
Cantrill K.	Lab	669	31.0
March J.	Lab	643	-
<b>Turnout</b>		77.1	5.4
<b>Matlock All Saints (4062)<sup>3</sup></b>			
		<b>vote</b>	<b>share</b>
<b>Stevens G.</b>	Con	1,467	39.6
<b>Boam T.</b>	Lib	1,236	33.4
<b>Crapper B.</b>	Lib	1,097	-
Turner B.	Con	985	-
Webb B. Ms.	Con	905	-
Elsworth M. Ms.	Lib	840	-
Johnson T.	Ind Con	565	15.3
McLardy A.	Lab	432	11.7
March J. Ms.	Lab	412	-
Wilson V. Ms.	Lab	404	-
<b>Turnout</b>		77.2	6.2
<b>Matlock St. Giles (4176)<sup>3</sup></b>			
		<b>vote</b>	<b>share</b>
<b>Edwards P. Ms.</b>	Lib	1,655	43.4
<b>Gill P.</b>	Con	1,083	28.4
<b>Crapper M.</b>	Lib	1,070	-
Lowy D. Ms.	Lib	915	-
Slater J.	Con	846	-
Henshall M. Ms.	Con	745	-
Moore W.	Lab	617	16.2
Allwood P.	Lab	615	-
Morgan E. Ms.	Lab	461	-
Shaw A.	Ind Con	456	12.0
<b>Turnout</b>		77.4	15.0
<b>Norbury (1194)</b>			
		<b>vote</b>	<b>share</b>
<b>Clowes T.</b>	Ind Con	0	0.0
<b>Turnout</b>		0.0	0.0
<b>Stanton (1256)</b>			
		<b>vote</b>	<b>share</b>
<b>Elliott P.</b>	Ind	814	81.2
Corbett W.	Lab	189	18.8
<b>Turnout</b>		81.4	62.3
<b>Taddington (1206)</b>			
		<b>vote</b>	<b>share</b>
<b>Holland F.</b>	Con	0	0.0
<b>Turnout</b>		0.0	0.0
<b>Tideswell (1839)</b>			
		<b>vote</b>	<b>share</b>
<b>Naylor J. Ms.</b>	Con	1,030	69.6
Bandey A.	Lab	450	30.4
<b>Turnout</b>		81.0	39.2
<b>Winster &amp; South Darley (1135)</b>			
		<b>vote</b>	<b>share</b>
<b>Burton D.</b>	Lib	544	60.3
Tomlinson C.	Con	358	39.7
<b>Turnout</b>		80.8	20.6

<b>Wirksworth (4155)<sup>3</sup></b>			
		<b>vote</b>	<b>share</b>
<b>Handley M.</b>	Ind	1,894	38.7
<b>Doxey H.</b>	Lab	1,771	36.2
<b>Brown C.</b>	Con	1,234	25.2
Waterhouse M. Ms.	Lab	1,197	-
Burton T.	Con	876	-
Richards C.	Lab	740	-
<b>Turnout</b>		76.8	2.5
<b>Youlgreave (1293)</b>			
		<b>vote</b>	<b>share</b>
<b>Oldfield B.</b>	Ind	673	61.6
Evans R.	Con	419	38.4
<b>Turnout</b>		85.5	23.3

## Derbyshire Dales - 1983

<b>Ashbourne (4730)<sup>3</sup></b>			
		<b>vote</b>	<b>share</b>
<b>Ward G.*</b>	Ind Con	1,200	44.5
<b>Birch C.*</b>	Con	1,042	38.6
<b>Plumbly E. Ms.</b>	Con	898	-
Smith V. Ms.	Lab	457	16.9
Barnes C. Ms.	Lab	305	-
Fargeant A.	Lab	298	-
<b>Turnout</b>		57.1	5.9
<b>Ashford &amp; Longstone (1391)</b>			
		<b>vote</b>	<b>share</b>
<b>Crowther C. Ms.*</b>	Con	674	85.0
Windle D.	Ind	119	15.0
<b>Turnout</b>		57.0	70.0
<b>Bakewell (3209)<sup>3</sup></b>			
		<b>vote</b>	<b>share</b>
<b>Welch T.*</b>	Ind	907	36.7
<b>Twigg J. Ms.</b>	Con	832	33.7
<b>Haythornthwaite D. Ms.*</b>	Lib/SDP	730	29.6
Wright L.*	Con	672	-
Knighton M. Ms.	Con	609	-
Dudley A. Ms.	Lib/SDP	520	-
Crump P. Ms.	Lib/SDP	274	-
<b>Turnout</b>		76.9	3.0
<b>Bradwell (1399)</b>			
		<b>vote</b>	<b>share</b>
<b>Bradwell C.*</b>	Ind	595	83.0
Lindley J. Ms.	Lab	122	17.0
<b>Turnout</b>		51.3	66.0
<b>Brailsford (1272)</b>			
		<b>vote</b>	<b>share</b>
<b>Foster J.</b>	Con	372	59.9
Spendlove A.	Lib/SDP	249	40.1
<b>Turnout</b>		48.8	19.8
<b>Brassington &amp; Parwich (1366)</b>			
		<b>vote</b>	<b>share</b>
<b>Rose L.*</b>	Con	0	0.0
<b>Turnout</b>		0.0	0.0
<b>Calver (1073)</b>			
		<b>vote</b>	<b>share</b>
<b>Gillan M. Ms.*</b>	Con	456	62.6
Palmer T.	Lib/SDP	272	37.4
<b>Turnout</b>		67.8	25.3
<b>Chatsworth (1495)</b>			
		<b>vote</b>	<b>share</b>
<b>Hoole C.*</b>	Con	620	63.5
Coggins R.	Lib/SDP	357	36.5
<b>Turnout</b>		65.4	26.9

<b>Clifton &amp; Bradley (1165)</b>			
		<b>vote</b>	<b>share</b>
<b>Peach J.*</b>	Con	431	63.5
Sayer K.	Ind	248	36.5
<b>Turnout</b>		58.3	27.0
<b>Darley Dale (4242)<sup>3</sup></b>			
		<b>vote</b>	<b>share</b>
<b>Fearn D.*</b>	Lib/SDP	885	31.7
<b>Fearn B.*</b>	Con	841	30.1
<b>Rayner H.</b>	Con	738	-
Coverdale W.	Con	682	-
Jackson L.*	Ind	664	23.8
Crowter G.	Lib/SDP	643	-
Crowder M.	Lib/SDP	526	-
Boyack J.	Lab	400	14.3
Davison S. Ms.	Lab	307	-
Draper G.	Ind	274	-
Quick A. Ms.	Lab	255	-
<b>Turnout</b>		65.8	1.6
<b>Doveridge (1323)</b>			
		<b>vote</b>	<b>share</b>
<b>Spencer E. Ms.</b>	Con	407	50.8
Stevenson J.*	Ind	201	25.1
Barry B.	Lib/SDP	193	24.1
<b>Turnout</b>		60.5	25.7
<b>Eyam &amp; Stoney Middleton (1278)</b>			
		<b>vote</b>	<b>share</b>
<b>Hall F.*</b>	Con	594	73.8
Hubbard W.	Ind	116	14.4
Slater R.	Lab	95	11.8
<b>Turnout</b>		63.0	59.4
<b>Hartington &amp; Doverdale (1250)</b>			
		<b>vote</b>	<b>share</b>
<b>Glossop F.*</b>	Ind	598	83.8
Page E.	Lab	116	16.2
<b>Turnout</b>		57.1	67.5
<b>Hathersage (2318)<sup>2</sup></b>			
		<b>vote</b>	<b>share</b>
<b>Massey W.</b>	Con	817	55.1
<b>Fearne M. Ms.</b>	Con	779	-
Jackson R.	Lib/SDP	498	33.6
Elliott J. Ms.	Lib/SDP	282	-
Boyce J. Ms.	Lab	167	11.3
Dobbins B. Ms.	Lab	142	-
<b>Turnout</b>		63.9	21.5
<b>Hulland (1584)</b>			
		<b>vote</b>	<b>share</b>
<b>Sevier R.*</b>	Con	570	73.5
Seed M. Ms.	Lib/SDP	205	26.5
<b>Turnout</b>		48.9	47.1
<b>Masson (2754)<sup>2</sup></b>			
		<b>vote</b>	<b>share</b>
<b>White D.*</b>	Con	590	43.1
<b>Allen P. Ms.</b>	Con	522	-
Young E. Ms.	Lib/SDP	397	29.0
March J.	Lab	383	28.0
Cantrill K.	Lab	380	-
Greaves B. Ms.	Lib/SDP	367	-
<b>Turnout</b>		49.7	14.1
<b>Matlock All Saints (4124)<sup>3</sup></b>			
		<b>vote</b>	<b>share</b>
<b>Stevens G.*</b>	Con	1,211	52.4
<b>Storey B.</b>	Con	952	-
<b>Birch K.</b>	Con	882	-
Boam T.*	Lib/SDP	746	32.3
Crapper B.*	Lib/SDP	730	-
Elsworth M. Ms.	Lib/SDP	617	-
Corcoran A.	Lab	353	15.3
Hall A.	Lab	285	-
McLardy P. Ms.	Lab	267	-
<b>Turnout</b>		56.0	20.1

<b>Matlock St. Giles (4270)<sup>3</sup></b>			
		vote	share
<b>Edwards P. Ms.*</b>	Lib/SDP	1,169	47.2
<b>Clay W.</b>	Con	895	36.1
<b>Crapper M.*</b>	Lib/SDP	841	-
Leighton P.	Con	830	-
Nightingale G.	Con	781	-
Eatherden J.	Lib/SDP	615	-
Beaumont M.	Lab	413	16.7
Morgan E. Ms.	Lab	364	-
Bird J.	Lab	357	-
	<b>Turnout</b>	58.0	11.1
<b>Norbury (1222)</b>			
		vote	share
<b>Bull K.</b>	Con	0	0.0
	<b>Turnout</b>	0.0	0.0
<b>Stanton (1292)</b>			
		vote	share
<b>Elliott P.*</b>	Ind	378	49.3
Musgrave M.	Con	298	38.9
Coatesworth D. Ms.	Lab	90	11.7
	<b>Turnout</b>	59.3	10.4
<b>Taddington (1262)</b>			
		vote	share
<b>Holland F.*</b>	Con	0	0.0
	<b>Turnout</b>	0.0	0.0
<b>Tideswell (1911)</b>			
		vote	share
<b>Naylor J. Ms.*</b>	Con	675	73.4
Maurer P.	Lab	245	26.6
	<b>Turnout</b>	48.1	46.7
<b>Winster &amp; South Darley (1172)</b>			
		vote	share
<b>Burton D.*</b>	Lib/SDP	383	54.4
Clifford J.	Con	209	29.7
Owen I.	Lab	112	15.9
	<b>Turnout</b>	60.1	24.7
<b>Wirksworth (4319)<sup>3</sup></b>			
		vote	share
<b>Doxey W.*</b>	Lab	1,321	49.4
<b>Waterhouse M. Ms.</b>	Lab	991	-
<b>Morley C.</b>	Con	843	31.5
Clamp S.	Lab	791	-
Fowke E.	Con	638	-
Walsh R.	Con	527	-
Kindleysides E. Ms.	Lib/SDP	508	19.0
Coles J.	Lib/SDP	432	-
Ashurst B.	Lib/SDP	396	-
	<b>Turnout</b>	61.9	17.9
<b>Youlgreave (1315)</b>			
		vote	share
<b>Oldfield B.*</b>	Ind	584	66.9
Carrington P.	Con	289	33.1
	<b>Turnout</b>	66.4	33.8
<b>Derbyshire Dales - 1987</b>			
<b>Ashbourne (4927)<sup>3</sup></b>			
		vote	share
<b>Ward G.*</b>	Con	1,306	52.1
<b>Birch C.*</b>	Con	1,279	-
<b>Plumbly E. Ms.*</b>	Con	1,132	-
Taylor E.	Lib/SDP	819	32.6
Alton J.	Lib/SDP	606	-
Robins N.	Lib/SDP	514	-
Smith V. Ms.	Lab	384	15.3
Barnes C. Ms.	Lab	314	-
Hadfield D.	Lab	263	-
	<b>Turnout</b>	50.9	19.4

<b>Ashford &amp; Longstone (1331)</b>			
		vote	share
<b>Crowther C. Ms.*</b>	Con	625	71.4
Cieslakowska A. Ms.	Lib/SDP	195	22.3
McPhie G. Ms.	Lab	55	6.3
	<b>Turnout</b>	65.7	49.1
<b>Bakewell (3282)<sup>3</sup></b>			
		vote	share
<b>Crapper M.</b>	Lib/SDP	959	38.7
<b>Haythornthwaite D. Ms.*</b>	Lib/SDP	940	-
<b>Twigg J. Ms.*</b>	Con	824	33.2
Luckraft A.	Con	638	-
Knighthon M. Ms.	Con	616	-
Blakeway J.	Ind	598	24.1
Crump P. Ms.	Lib/SDP	559	-
Welch T.*	Ind	539	-
Wright L.	Ind	213	-
McPhie D.	Lab	99	4.0
Taggart J. Ms.	Lab	70	-
Brough T. Ms.	Lab	63	-
	<b>Turnout</b>	75.6	5.4
<b>Bradwell (1419)</b>			
		vote	share
<b>Bradwell C.*</b>	Ind	500	63.5
Shaw D.	Ind	288	36.5
	<b>Turnout</b>	55.5	26.9
<b>Brailsford (1292)</b>			
		vote	share
<b>Foster J.*</b>	Con	570	65.1
Spendlove A.	Lib/SDP	306	34.9
	<b>Turnout</b>	67.8	30.1
<b>Brassington &amp; Parwich (1416)</b>			
		vote	share
<b>Rose L.*</b>	Con	666	66.9
Fearn J.	Lib/SDP	249	25.0
Udall L.	Lab	80	8.0
	<b>Turnout</b>	70.3	41.9
<b>Calver (1127)</b>			
		vote	share
<b>Gillan M. Ms.*</b>	Con	538	69.8
Mumford R.	Lib/SDP	196	25.4
Thorpe D.	Lab	37	4.8
	<b>Turnout</b>	68.4	44.4
<b>Chatsworth (1565)</b>			
		vote	share
<b>Hoole C.*</b>	Con	648	62.9
Grindrod J. Ms.	Lib/SDP	382	37.1
	<b>Turnout</b>	65.8	25.8
<b>Clifton &amp; Bradley (1183)</b>			
		vote	share
<b>Peach G.*</b>	Con	517	65.5
Hunt A.	Lib/SDP	272	34.5
	<b>Turnout</b>	66.7	31.1
<b>Darley Dale (4453)<sup>3</sup></b>			
		vote	share
<b>Fearn D.*</b>	Lib/SDP	1,229	47.1
<b>Fearn B.*</b>	Con	1,047	40.1
<b>Fearn S. Ms.</b>	Lib/SDP	1,038	-
Richardson P.	Con	1,015	-
Jones P.	Lib/SDP	944	-
Hill A.	Con	852	-
Davison S. Ms.	Lab	336	12.9
Ratcliffe I. Ms.	Lab	257	-
Maloney L. Ms.	Lab	250	-
	<b>Turnout</b>	58.7	7.0
<b>Doveridge (1373)</b>			
		vote	share
<b>Brindley C.</b>	Con	618	70.0
Barry S.	Lib/SDP	265	30.0
	<b>Turnout</b>	64.3	40.0

<b>Eyam &amp; Stoney Middleton (1366)</b>			
		vote	share
<b>Longden S. Ms.</b>	Con	481	59.8
Hubbard W.	Ind	131	16.3
Slater R.	Lab	99	12.3
Hodges R.	Lib/SDP	94	11.7
	<b>Turnout</b>	58.9	43.5
<b>Hartington &amp; Doverdale (1289)</b>			
		vote	share
<b>Glossop F.*</b>	Ind	625	81.0
Nunnington T.	Lib/SDP	147	19.0
	<b>Turnout</b>	59.9	61.9
<b>Hathersage (2394)<sup>2</sup></b>			
		vote	share
<b>Massey W.*</b>	Con	828	48.1
<b>Bevan J. Ms.</b>	Con	768	-
Mander D.	Lib/SDP	720	41.8
Dobbins B. Ms.	Lab	174	10.1
Jackson P.	Lab	149	-
	<b>Turnout</b>	71.9	6.3
<b>Hulland (1664)</b>			
		vote	share
<b>Sevier R.*</b>	Con	613	66.1
Walters J.	Lib/SDP	315	33.9
	<b>Turnout</b>	55.8	32.1
<b>Masson (2846)<sup>2</sup></b>			
		vote	share
<b>Allen O. Ms.*</b>	Con	758	47.4
<b>White D.</b>	Con	752	-
Bowman B. Ms.	Lib/SDP	456	28.5
Greaves B. Ms.	Lib/SDP	455	-
March J.	Lab	384	24.0
Windsor R.	Lab	369	-
	<b>Turnout</b>	56.1	18.9
<b>Matlock All Saints (4269)<sup>3</sup></b>			
		vote	share
<b>Stevens G.*</b>	Con	1,307	47.0
<b>Barker D.</b>	Lib/SDP	1,194	42.9
<b>Birch K.*</b>	Con	1,083	-
Elsworth M. Ms.	Lib/SDP	1,048	-
Storey B.*	Con	1,037	-
Clarke W. Ms.	Lib/SDP	968	-
Varney J.	Lab	282	10.1
Hall A.	Lab	275	-
White C.	Lab	269	-
	<b>Turnout</b>	65.2	4.1
<b>Matlock St. Giles (4394)<sup>3</sup></b>			
		vote	share
<b>Edwards P. Ms.*</b>	Lib/SDP	1,545	51.4
<b>Flitter S.</b>	Lib/SDP	1,236	-
<b>Brewster D.</b>	Lib/SDP	1,091	-
Leighton P.	Con	1,064	35.4
Henshaw M. Ms.	Con	1,013	-
Wall J.	Con	838	-
Morgan E. Ms.	Lab	394	13.1
Grayling M.	Lab	337	-
Wheeldon J.	Lab	302	-
	<b>Turnout</b>	68.3	16.0
<b>Norbury (1256)</b>			
		vote	share
<b>Bull K.*</b>	Con	676	83.9
Fereday E.	Lib/SDP	130	16.1
	<b>Turnout</b>	64.2	67.7
<b>Stanton (1341)</b>			
		vote	share
<b>Barnes J.</b>	Con	446	57.0
Thomas A.	Lib/SDP	337	43.0
	<b>Turnout</b>	58.4	13.9
<b>Taddington (1279)</b>			
		vote	share
<b>Holland F.*</b>	Con	527	65.7
Newton C.	Lib/SDP	275	34.3
	<b>Turnout</b>	62.7	31.4

Tideswell (1999)			
		vote	share
<b>Naylor J. Ms.*</b>	Con	702	65.4
Knott J.	Lab	371	34.6
<b>Turnout</b>		53.7	30.8

Winster & South Darley (1168)			
		vote	share
<b>Burton D.*</b>	Lib/SDP	457	56.5
Thornton J. Ms.	Con	261	32.3
Goalen P.	Lab	91	11.2
<b>Turnout</b>		69.3	24.2

Wirksworth (4388) <sup>3</sup>			
		vote	share
<b>Doxey W.*</b>	Lab	1,253	44.7
<b>Waterhouse M. Ms.*</b>	Lab	1,014	-
<b>Clamp S.</b>	Lab	989	-
Mountney N.	Con	818	29.2
Waterhouse R.	Con	774	-
Johnson P. Ms.	Lib/SDP	731	26.1
Walsh R.	Con	629	-
Saunders D.	Lib/SDP	564	-
Read F. Ms.	Lib/SDP	499	-
<b>Turnout</b>		63.9	15.5

Youlgreave (1309)			
		vote	share
<b>Oldfield B.*</b>	Ind	653	72.6
Statham D.	Con	246	27.4
<b>Turnout</b>		68.7	45.3

## Derbyshire Dales - 1991

Ashbourne (5090) <sup>3</sup>			
		vote	share
<b>Birch C.*</b>	Con	1,039	29.9
<b>Ward G.*</b>	Ind	1,028	29.6
<b>Plumbly E. Ms.*</b>	Con	1,016	-
Taylor E.	LD	641	18.4
Maddock H.	LD	455	-
Loveday G. Ms.	Lab	395	11.4
Sellers H. Ms.	LD	374	-
Smail E. Ms.	Green	372	10.7
Smith V. Ms.	Lab	345	-
Hodkinson A.	Lab	222	-
<b>Turnout</b>		49.0	0.3

Ashford & Longstone (1394)			
		vote	share
<b>Crowther C. Ms.*</b>	Con	684	75.2
Hunter J. Ms.	LD	225	24.8
<b>Turnout</b>		66.1	50.5

Bakewell (3151) <sup>3</sup>			
		vote	share
<b>Dudley A. Ms.</b>	LD	1,137	50.8
<b>Twigg J. Ms.*</b>	Con	1,099	49.2
<b>Twigg L.</b>	Con	839	-
Waddington C. Ms.	LD	770	-
Thomson D.	Con	737	-
Burrows J. Ms.	LD	683	-
<b>Turnout</b>		61.7	1.7

Bradwell (1417)			
		vote	share
<b>Goodison J. Ms.</b>	Con	451	55.7
Kenworthy A. Ms.	Lab	359	44.3
<b>Turnout</b>		58.5	11.4

Brailsford (1294)			
		vote	share
<b>Foster J.*</b>	Con	0	0.0
<b>Turnout</b>		0.0	0.0

Brassington & Parwich (1475)			
		vote	share
<b>Rose L.*</b>	Con	0	0.0
<b>Turnout</b>		0.0	0.0

Calver (1148)			
		vote	share
<b>Gillan M. Ms.*</b>	Con	496	68.9
Mumford M. Ms.	LD	224	31.1
<b>Turnout</b>		64.2	37.8

Chatsworth (1502)			
		vote	share
<b>Trickett J. Ms.</b>	Con	687	75.7
Kettell N.	LD	221	24.3
<b>Turnout</b>		61.2	51.3

Clifton & Bradley (1341)			
		vote	share
<b>Trafford C.</b>	Con	0	0.0
<b>Turnout</b>		0.0	0.0

Darley Dale (4424) <sup>3</sup>			
		vote	share
<b>Fearn D.*</b>	LD	1,488	54.1
<b>Fearn S. Ms.*</b>	LD	1,387	-
<b>Burton D.</b>	LD	1,368	-
Fearn B.*	Con	901	32.7
Lescure K.	Con	843	-
Cochrane A.	Con	811	-
Beresford K.	Lab	364	13.2
Davison S. Ms.	Lab	360	-
<b>Turnout</b>		61.4	21.3

Doveridge (1399)			
		vote	share
<b>Brindley C.*</b>	Con	0	0.0
<b>Turnout</b>		0.0	0.0

Eyam & Stoney Middleton (1335)			
		vote	share
<b>Longden S. Ms.*</b>	Con	476	63.0
Thorpe D.	Lab	174	23.0
Stork S. Ms.	LD	105	13.9
<b>Turnout</b>		57.4	40.0

Hartington & Doverdale (1281)			
		vote	share
<b>Glossop F.*</b>	Ind	603	83.6
Page E.	Lab	118	16.4
<b>Turnout</b>		57.0	67.3

Hathersage (2252) <sup>2</sup>			
		vote	share
<b>Bevan J. Ms.*</b>	Con	871	63.7
<b>Massey W.*</b>	Con	854	-
Whitney P. Ms.	LD	262	19.2
Dobbins B. Ms.	Lab	235	17.2
Crane D.	Lab	224	-
<b>Turnout</b>		57.4	44.5

Hulland (1627)			
		vote	share
<b>McBride G.</b>	Con	0	0.0
<b>Turnout</b>		0.0	0.0

Masson (2770) <sup>2</sup>			
		vote	share
<b>Allen O. Ms.*</b>	Con	546	36.4
<b>Webster J.</b>	Con	534	-
Bowman B. Ms.	LD	503	33.5
Beckett J.	LD	480	-
Whittaker D.	Lab	451	30.1
March J.	Lab	434	-
<b>Turnout</b>		34.7	2.9

Matlock All Saints (4048) <sup>3</sup>			
		vote	share
<b>Barker D.*</b>	LD	1,260	45.1
<b>Stevens G.*</b>	Con	1,162	41.6
<b>Henshaw M. Ms.</b>	Con	1,008	-
Elsworth M. Ms.	LD	984	-
Brown K.	LD	898	-
Storey B.	Con	847	-
Baldy M. Ms.	Lab	345	12.3
Wilson V. Ms.	Lab	335	-
Stacey V. Ms.	Lab	318	-
French M.	Ind	27	1.0
<b>Turnout</b>		63.5	3.5

Matlock St. Giles (4424) <sup>3</sup>			
		vote	share
<b>Edwards P. Ms.*</b>	LD	1,416	54.8
<b>Flitter S.*</b>	LD	1,130	-
<b>Brewster D.*</b>	LD	1,065	-
Clegg J.	Con	716	27.7
Meredith J.	Con	687	-
Oakley T.	Con	672	-
Beaumont M.	Lab	453	17.5
Bird J.	Lab	364	-
Hathaway C. Ms.	Lab	360	-
<b>Turnout</b>		56.7	27.1

Norbury (1257)			
		vote	share
<b>Bull K.*</b>	Con	0	0.0
<b>Turnout</b>		0.0	0.0

Stanton (1311)			
		vote	share
<b>Barnes J.*</b>	Con	385	56.1
Powell J.	Lab	162	23.6
Stones S. Ms.	LD	139	20.3
<b>Turnout</b>		52.8	32.5

Taddington (1221)			
		vote	share
<b>Holland F.*</b>	Con	0	0.0
<b>Turnout</b>		0.0	0.0

Tideswell (1910)			
		vote	share
<b>Simpson E.</b>	Con	501	41.6
Hodgson G.*	Ind	421	35.0
Barber S. Ms.	LD	247	20.5
Smith K.	Green	34	2.8
<b>Turnout</b>		64.0	6.7

Winster & South Darley (1145)			
		vote	share
<b>Thomas A.</b>	LD	354	43.8
Dakin P. Ms.	Con	340	42.1
Rowan H.	Ind	76	9.4
Shields M. Ms.	Green	38	4.7
<b>Turnout</b>		71.5	1.7

Wirksworth (4597) <sup>3</sup>			
		vote	share
<b>Doxey W.*</b>	Lab	1,478	61.2
<b>Clamp S.*</b>	Lab	1,425	-
<b>Waterhouse M. Ms.*</b>	Lab	1,304	-
Waterhouse R.	Con	937	38.8
Bowmer S.	Con	871	-
Walsh R.	Con	728	-
<b>Turnout</b>		54.8	22.4

Youlgreave (1356)			
		vote	share
<b>Oldfield B.*</b>	Ind	555	56.1
Warren J.	Con	386	39.0
Eaton J.	LD	48	4.9
<b>Turnout</b>		74.0	17.1

## Derbyshire Dales - 1995

<b>Ashbourne (5144)<sup>3</sup></b>			
		<b>vote</b>	<b>share</b>
Ferry V.	LD	977	38.4
Elliott F.	Con	795	31.3
Hodkinson A.	Lab	772	30.3
Ward G.*	Con	687	-
White A.	Lab	657	-
Hurfurt W.	LD	563	-
Loveday G. Ms.	Lab	488	-
Dunn B. Ms.	LD	388	-
Roberts J. Ms.	Con	355	-
	<b>Turnout</b>	43.0	7.2
<b>Ashford &amp; Longstone (1404)</b>			
		<b>vote</b>	<b>share</b>
Crowthor C. Ms.*	Con	506	58.9
Askew P.	LD	353	41.1
	<b>Turnout</b>	61.0	17.8
<b>Bakewell (3250)<sup>3</sup></b>			
		<b>vote</b>	<b>share</b>
Dudley A. Ms.*	LD	1,064	54.1
Twigg J. Ms.*	Con	903	45.9
Crump P. Ms.	LD	844	-
Twigg L.*	Con	722	-
Andrew R.	LD	692	-
Surplice D.	Con	599	-
	<b>Turnout</b>	53.0	8.2
<b>Bradwell (1440)</b>			
		<b>vote</b>	<b>share</b>
Kenworthy A. Ms.	Lab	433	58.9
Goodison J. Ms.*	Con	302	41.1
	<b>Turnout</b>	51.0	17.8
<b>Brailsford (1376)</b>			
		<b>vote</b>	<b>share</b>
Wheatcroft G.	LD	390	53.8
Foster J.*	Con	335	46.2
	<b>Turnout</b>	53.0	7.6
<b>Brassington &amp; Parwich (1518)</b>			
		<b>vote</b>	<b>share</b>
Rose L.*	Con	535	67.7
Fargent A.	Lab	188	23.8
Bell J.	LD	67	8.5
	<b>Turnout</b>	52.0	43.9
<b>Calver (1131)</b>			
		<b>vote</b>	<b>share</b>
Gillan M. Ms.*	Con	394	58.4
Mumford M. Ms.	LD	281	41.6
	<b>Turnout</b>	60.0	16.7
<b>Chatsworth (1502)</b>			
		<b>vote</b>	<b>share</b>
Trickett J. Ms.*	Con	436	51.4
Robinson C. Ms.	LD	412	48.6
	<b>Turnout</b>	57.0	2.8
<b>Clifton &amp; Bradley (1442)</b>			
		<b>vote</b>	<b>share</b>
Bates I.	Con	410	62.3
Page R.	Lab	145	22.0
Madin M. Ms.	LD	103	15.7
	<b>Turnout</b>	46.0	40.3
<b>Darley Dale (4663)<sup>3</sup></b>			
		<b>vote</b>	<b>share</b>
Fearn D.	LD	1,303	56.3
Fearn S. Ms.	LD	1,245	-
Burton D.*	LD	1,231	-
Davison S. Ms.	Lab	522	22.6
Hobbs K.	Con	489	21.1
Lescure K.	Con	480	-
Cochrane A.	Con	432	-
Dennis H. Ms.	Lab	409	-
Dennis A.	Lab	407	-
	<b>Turnout</b>	49.0	33.8

## Doveridge (1452)

		<b>vote</b>	<b>share</b>
Brindley C.*	Con	0	0.0
	<b>Turnout</b>	0.0	0.0
<b>Eyam &amp; Stoney Middleton (1335)</b>			
		<b>vote</b>	<b>share</b>
Longden S. Ms.*	Con	280	56.2
Stork S. Ms.	LD	218	43.8
	<b>Turnout</b>	38.0	12.4
<b>Hartington &amp; Doverdale (1305)</b>			
		<b>vote</b>	<b>share</b>
Glossop M. Ms.*	Con	375	63.5
Page E.	Lab	216	36.5
	<b>Turnout</b>	45.0	26.9
<b>Hathersage (2283)<sup>2</sup></b>			
		<b>vote</b>	<b>share</b>
Bevan J. Ms.*	Con	575	55.0
Massey W.*	Con	543	-
Gait R. Ms.	Lab	470	45.0
Hayes J.	Lab	416	-
	<b>Turnout</b>	52.0	10.0
<b>Hulland (1681)</b>			
		<b>vote</b>	<b>share</b>
Radford J. Ms.	Con	420	57.6
Mayes N.	Lab	309	42.4
	<b>Turnout</b>	43.0	15.2
<b>Masson (2688)<sup>2</sup></b>			
		<b>vote</b>	<b>share</b>
March J.	Lab	521	40.9
Whittaker D.	Lab	502	-
Bowman B. Ms.	LD	484	38.0
Beckett J.	LD	464	-
Webster J.*	Con	268	21.1
Allen O. Ms.*	Con	257	-
	<b>Turnout</b>	49.0	2.9
<b>Matlock All Saints (4168)<sup>3</sup></b>			
		<b>vote</b>	<b>share</b>
Barker D.*	LD	1,165	50.0
Boam T.	LD	1,012	-
Elsworth M. Ms.	LD	932	-
Stevens G.*	Con	747	32.1
Henshaw M. Ms.*	Con	604	-
Higham J.	Con	478	-
Hathaway C. Ms.	Lab	416	17.9
Wibberley M. Ms.	Lab	404	-
McLardy A.	Lab	386	-
	<b>Turnout</b>	52.0	18.0
<b>Matlock St. Giles (4378)<sup>3</sup></b>			
		<b>vote</b>	<b>share</b>
Edwards P. Ms.*	LD	1,197	49.1
Flitter S.*	LD	907	-
Brown K.*	LD	777	-
White P. Ms.	Lab	443	18.2
Bird J.	Lab	442	-
Clegg J.	Con	434	17.8
Barker W.	Con	414	-
Greenwood D.	Lab	375	-
Bond A.	Ind	363	14.9
	<b>Turnout</b>	46.0	30.9
<b>Norbury (1367)</b>			
		<b>vote</b>	<b>share</b>
Bull K.	Con	0	0.0
	<b>Turnout</b>	0.0	0.0
<b>Stanton (1299)</b>			
		<b>vote</b>	<b>share</b>
Simpson K. Ms.	LD	309	49.7
Barnes J.*	Con	213	34.2
Powell J.	Lab	100	16.1
	<b>Turnout</b>	50.0	15.4

## Taddington (1257)

		<b>vote</b>	<b>share</b>
Chapman J.	Con	432	60.8
Brindle W. Ms.	Lab	164	23.1
Sharples B.	LD	114	16.1
	<b>Turnout</b>	57.0	37.7
<b>Tideswell (1888)</b>			
		<b>vote</b>	<b>share</b>
Barber S. Ms.	LD	543	56.9
Simpson E.*	Con	411	43.1
	<b>Turnout</b>	51.0	13.8
<b>Winster &amp; South Darley (1172)</b>			
		<b>vote</b>	<b>share</b>
Thomas A.*	LD	406	60.3
Rowan H.	Lab	139	20.7
Roberts G.	Con	128	19.0
	<b>Turnout</b>	58.0	39.7
<b>Wirksworth (4475)<sup>3</sup></b>			
		<b>vote</b>	<b>share</b>
Ratcliffe I. M Ms.	Lab	0	-
Ward A.	Lab	0	0.0
Clamp S.*	Lab	0	-
	<b>Turnout</b>	0.0	0.0
<b>Youlgreave (1375)</b>			
		<b>vote</b>	<b>share</b>
Oldfield B.*	Lab	441	57.2
Warren J.	Con	223	28.9
Brister S.	LD	107	13.9
	<b>Turnout</b>	56.0	28.3
<b>Derbyshire Dales - 1999</b>			
<b>Ashbourne (5498)<sup>3</sup></b>			
		<b>vote</b>	<b>share</b>
Spencer S.	Con	941	43.9
Elliott F.*	Con	928	-
Hodkinson A.*	Con	775	-
Ferry V.*	LD	626	29.2
Millward A.	Lab	575	26.8
Ferry J. Ms.	LD	517	-
Lee A.	LD	450	-
	<b>Turnout</b>	34.2	14.7
<b>Ashford &amp; Longstone (1392)</b>			
		<b>vote</b>	<b>share</b>
Crowthor C. Ms.*	Con	602	77.8
Perry J. Ms.	Lab	172	22.2
	<b>Turnout</b>	56.3	55.6
<b>Bakewell (3260)<sup>3</sup></b>			
		<b>vote</b>	<b>share</b>
Brighton J.	Ind	764	35.4
Young H.	Ind	605	-
Smith T.	Ind	572	-
Twigg J. Ms.*	Con	568	26.3
Dudley A. Ms.*	LD	545	25.2
Walker C. Ms.	Con	475	-
Trickett J. Ms.*	Con	400	-
Russell P. Ms.	Lab	284	13.1
Steele J. Ms.	LD	254	-
Garratt E. Ms.	LD	253	-
	<b>Turnout</b>	51.4	9.1
<b>Bradwell (1457)</b>			
		<b>vote</b>	<b>share</b>
Goodison J. Ms.	Con	422	61.4
Nunn J.	Lab	265	38.6
	<b>Turnout</b>	47.0	22.9
<b>Brailsford (1460)</b>			
		<b>vote</b>	<b>share</b>
Valentine C. Ms.	Con	471	67.7
Wheatcroft C.*	LD	225	32.3
	<b>Turnout</b>	47.8	35.3



Brassington & Parwich (1587)			
		vote	share
Rose L.*	Con	583	71.9
Page C.	Lab	121	14.9
Jackson D.	LD	107	13.2
		<b>Turnout</b>	51.0 57.0
Calver (1142)			
		vote	share
Gillan M. Ms.*	Con	357	53.9
Thompson P.	LD	233	35.2
Hall D. Ms.	Lab	72	10.9
		<b>Turnout</b>	58.0 18.7
Chatsworth (1476)			
		vote	share
Walker J. Ms.	Con	436	52.8
Birchley P. Ms.	LD	330	40.0
Perry J.	Lab	60	7.3
		<b>Turnout</b>	56.0 12.8
Clifton & Bradley (1511)			
		vote	share
Bates I.*	Con	585	81.9
Page R.	Lab	129	18.1
		<b>Turnout</b>	47.6 63.9
Darley Dale (4715) <sup>3</sup>			
		vote	share
Burton D.*	LD	965	45.6
Fearn D.*	LD	927	-
Fearn S. Ms.*	LD	894	-
Lescure K.	Con	562	26.6
Simpson-Birks B. Ms.	Con	443	-
Simpson-Birks H.	Con	398	-
Davison S. Ms.	Lab	366	17.3
Cottrell S.	Lab	311	-
Kilburn T.	Ind	223	10.5
		<b>Turnout</b>	36.7 19.0
Doveridge (1565)			
		vote	share
Brindley C.*	Con	488	74.6
Chidlow K.	LD	101	15.4
Ratcliffe J.	Lab	65	9.9
		<b>Turnout</b>	41.8 59.2
Eyam & Stoney Middleton (1334)			
		vote	share
Oddy J.	Con	397	60.9
Holt S. Ms.	LD	140	21.5
Jeffrey D. Ms.	Lab	115	17.6
		<b>Turnout</b>	50.0 39.4
Hartington & Doverdale (1288)			
		vote	share
Hollingsworth J.	Con	404	73.3
Page E.	Lab	147	26.7
		<b>Turnout</b>	43.0 46.6
Hathersage (2364) <sup>2</sup>			
		vote	share
Bevan J. Ms.*	Con	733	67.1
Hoskin D.	Con	684	-
Gait R. Ms.	Lab	360	32.9
Poulson C. Ms.	Lab	347	-
		<b>Turnout</b>	48.0 34.1
Hulland (1786)			
		vote	share
Radford J. Ms.*	Con	475	65.0
Pulham J. Ms.	LD	129	17.6
Bark F.	Lab	127	17.4
		<b>Turnout</b>	41.0 47.3

Masson (2704) <sup>2</sup>			
		vote	share
March J.*	Lab	520	52.4
Elliott N.	Lab	435	-
Beckett J.	LD	241	24.3
Garrad D.	Con	232	23.4
Bowman B. Ms.	LD	228	-
Shopland B.	Con	194	-
		<b>Turnout</b>	36.4 28.1
Matlock All Saints (4302) <sup>3</sup>			
		vote	share
Stevens G.	Con	832	43.4
Barker D.*	LD	764	39.9
Boam T.*	LD	693	-
Henshaw M. Ms.	Con	680	-
Moss M.	LD	648	-
Ward N.	Con	607	-
Baldy P.	Lab	319	16.7
Ellis H.	Lab	259	-
Hathaway E.	Lab	238	-
		<b>Turnout</b>	41.8 3.6
Matlock St. Giles (4482) <sup>3</sup>			
		vote	share
Flitter S.*	LD	903	39.4
Wildgoose P. Ms.*	LD	754	-
Allwood N.	LD	726	-
Dakin D. Ms.	Con	710	31.0
Wall J.	Con	581	-
Wilson D.	Con	544	-
Bird J.	Lab	348	15.2
Parkinson K.	Lab	339	-
Bond A.	Ind	332	14.5
Rutter M.	Lab	299	-
		<b>Turnout</b>	44.4 8.4
Norbury (1461)			
		vote	share
Bull K.*	Con	632	87.3
Rosindell B. Ms.	Lab	92	12.7
		<b>Turnout</b>	49.7 74.6
Stanton (1371)			
		vote	share
Read D. Ms.	Con	285	50.2
Simpson K. Ms.*	LD	183	32.2
Powell J.	Lab	100	17.6
		<b>Turnout</b>	44.4 18.0
Taddington (1269)			
		vote	share
Chapman J.*	Con	466	68.4
Worth T. Ms.	Lab	143	21.0
Geraghty M. Ms.	LD	72	10.6
		<b>Turnout</b>	54.0 47.4
Tideswell (1953)			
		vote	share
Critchlow T. Ms.	Con	317	36.3
Barber S. Ms.*	LD	295	33.8
Ayers M. Ms.	Lab	261	29.9
		<b>Turnout</b>	45.0 2.5
Winster & South Darley (1218)			
		vote	share
Dring R.	LD	310	48.4
Biggin A.	Con	218	34.0
Morris C.	Lab	113	17.6
		<b>Turnout</b>	52.9 14.4
Wirksworth (4545) <sup>3</sup>			
		vote	share
Clamp S.*	Lab	1,111	64.6
Ratcliffe I. Ms.	Lab	1,029	-
Duffield P. Ms.*	Lab	959	-
Hall K.	Con	488	28.4
Gratton G.	Con	473	-
Bradley A.	Con	429	-
Brown K.*	LD	120	7.0
Burfoot M.	LD	108	-
Elsowth D.	LD	103	-
		<b>Turnout</b>	37.0 36.2

Youlgreave (1367)			
		vote	share
Youatt J.	Ind	239	40.7
Soper R.	Con	209	35.6
Smith M. Ms.	LD	139	23.7
		<b>Turnout</b>	43.0 5.1
Derbyshire Dales - 2003			
Ashbourne North (2921) <sup>2</sup>			
		vote	share
Elliott F.*	Con	0	-
Millward A.	Con	0	0.0
		<b>Turnout</b>	0.0 0.0
Ashbourne South (3068) <sup>2</sup>			
		vote	share
Lewer A.	Con	517	71.1
Hodkinson A.*	Con	487	-
Page C.	Lab	210	28.9
Page L.	Lab	165	-
		<b>Turnout</b>	24.3 42.2
Bakewell (3950) <sup>3</sup>			
		vote	share
Twigg J. Ms.	Con	1,042	49.4
Walker C. Ms.	Con	810	-
Pearce J.	Con	786	-
Brighton J.*	Ind	531	25.2
Young H. Ms.*	Ind	452	-
Smith M. Ms.	LD	376	17.8
Pocock H. Ms.	LD	351	-
Smith T.*	Ind	332	-
Steele J. Ms.	LD	298	-
Pope S.	Lab	162	7.7
		<b>Turnout</b>	46.6 24.2
Bradwell (1543)			
		vote	share
Goodison J. Ms.*	Con	0	0.0
		<b>Turnout</b>	0.0 0.0
Brailsford (1325)			
		vote	share
Valentine C. Ms.*	Con	0	0.0
		<b>Turnout</b>	0.0 0.0
Calver (1614)			
		vote	share
Hunt C. Ms.*	Con	575	72.2
Holt S. Ms.	LD	221	27.8
		<b>Turnout</b>	49.4 44.5
Carsington Water (1523)			
		vote	share
Rose L.*	Con	468	77.7
Pulman J. Ms.	LD	134	22.3
		<b>Turnout</b>	40.2 55.5
Chatsworth (1471)			
		vote	share
Longden M.	Con	0	0.0
		<b>Turnout</b>	0.0 0.0
Clifton & Bradley (1488)			
		vote	share
Bates I.*	Con	0	0.0
		<b>Turnout</b>	0.0 0.0
Darley Dale (4180) <sup>3</sup>			
		vote	share
Burton D.*	LD	1,051	64.4
Fearn D.*	LD	1,014	-
Fearn S. Ms.*	LD	989	-
Wall J.	Con	396	24.3
Simpson-Birks H.	Con	395	-
Kilburn T.	Con	344	-
Page F. Ms.	Lab	184	11.3
		<b>Turnout</b>	37.8 40.2

Dovedale & Parwich (1371)			
		vote	share
<b>Spencer S.*</b>	Con	441	77.1
Page E.	Lab	131	22.9
<b>Turnout</b>		42.5	54.2
Doveridge & Sudbury (1544)			
		vote	share
<b>Brindley C.*</b>	Con	0	0.0
<b>Turnout</b>		0.0	0.0
Hartington & Taddington (1340)			
		vote	share
<b>Chapman D.*</b>	Con	364	74.0
Nancolas E. Ms.	LD	128	26.0
<b>Turnout</b>		37.1	48.0
Hathersage & Eyam (3088) <sup>2</sup>			
		vote	share
<b>Bevan J. Ms.*</b>	Con	0	-
<b>Hoskin D.*</b>	Con	0	0.0
<b>Turnout</b>		0.0	0.0
Hulland (1493)			
		vote	share
<b>Radford J. Ms.*</b>	Con	0	0.0
<b>Turnout</b>		0.0	0.0
Lathkill & Bradford (1396)			
		vote	share
<b>Moore W.</b>	Ind	320	52.2
Howard A.	Con	293	47.8
<b>Turnout</b>		44.0	4.4
Litton & Longstone (1386)			
		vote	share
<b>Otter R.</b>	Con	0	0.0
<b>Turnout</b>		0.0	0.0
Masson (2596) <sup>2</sup>			
		vote	share
<b>March J.*</b>	Lab	395	44.9
<b>Elliott N.*</b>	Lab	328	-
Bowman B. Ms.	LD	248	28.2
Cochrane J. Ms.	Con	237	26.9
Beckett J. Ms.	LD	236	-
Smith V. Ms.	Con	230	-
<b>Turnout</b>		33.2	16.7
Matlock All Saints (4308) <sup>3</sup>			
		vote	share
<b>Barker D.*</b>	LD	914	41.7
<b>Burfoot M.</b>	LD	897	-
<b>Stevens G.*</b>	Con	867	39.5
Moss M.	LD	766	-
Askew M.	Con	566	-
Smith J.	Con	541	-
Elliott A. Ms.	Ind	413	18.8
Power J. Ms.	Ind	262	-
<b>Turnout</b>		43.3	2.1
Matlock St. Giles (4368) <sup>3</sup>			
		vote	share
<b>Flitter S.*</b>	LD	1,035	52.6
<b>Allwood A.*</b>	LD	913	-
<b>Lunn U. Ms.</b>	LD	815	-
Dakin D. Ms.	Con	703	35.7
Stevens J. Ms.	Con	692	-
Tipping B.	Con	665	-
Page T.	Lab	229	11.6
<b>Turnout</b>		41.8	16.9
Norbury (1343)			
		vote	share
<b>Bull K.*</b>	Con	0	0.0
<b>Turnout</b>		0.0	0.0
Stanton (1477)			
		vote	share
<b>Read D. Ms.*</b>	Con	0	0.0
<b>Turnout</b>		0.0	0.0

Tideswell (1513)			
		vote	share
<b>Critchlow T. Ms.*</b>	Con	282	50.9
Barber S. Ms.	LD	272	49.1
<b>Turnout</b>		37.0	1.8
Winster & South Darley (1470)			
		vote	share
<b>Dring R.*</b>	LD	400	64.6
Wall J. Ms.	Con	128	20.7
Tozer P.	Lab	91	14.7
<b>Turnout</b>		42.2	43.9
Wirksworth (4601) <sup>3</sup>			
		vote	share
<b>Ratcliffe I. Ms.*</b>	Lab	901	65.8
<b>Ratcliffe J.*</b>	Lab	822	-
<b>Slack P.</b>	Lab	820	-
Hall K.	Con	468	34.2
Gratton G.	Con	452	-
Hall L. Ms.	Con	405	-
<b>Turnout</b>		31.3	31.6
Derbyshire Dales - 2007			
Ashbourne North (2891) <sup>2</sup>			
		vote	share
<b>Millward T.*</b>	Con	0	0.0
<b>Bull S.</b>	Con	0	-
<b>Turnout</b>		0.0	0.0
Ashbourne South (3270) <sup>2</sup>			
		vote	share
<b>Hodkinson A.*</b>	Con	0	-
<b>Lewer A.*</b>	Con	0	0.0
<b>Turnout</b>		0.0	0.0
Bakewell (3881) <sup>3</sup>			
		vote	share
<b>Twig J. Ms.*</b>	Con	1,200	71.5
<b>Walker C. Ms.*</b>	Con	1,057	-
<b>Duncan P.</b>	Con	1,041	-
Birchley P. Ms.	LD	479	28.5
Molyneux P. Ms.	LD	448	-
Nancolas E. Ms.	LD	386	-
<b>Turnout</b>		44.8	42.9
Bradwell (1570)			
		vote	share
<b>Goodison J. Ms.*</b>	Con	0	0.0
<b>Turnout</b>		0.0	0.0
Brailsford (1310)			
		vote	share
<b>Valentine C. Ms.*</b>	Con	0	0.0
<b>Turnout</b>		0.0	0.0
Calver (1561)			
		vote	share
<b>Hunt C. Ms.*</b>	Con	632	77.4
Nicholson M. Ms.	LD	185	22.6
<b>Turnout</b>		53.0	54.7
Carsington Water (1518)			
		vote	share
<b>Rose L.*</b>	Con	553	76.2
Smail M. Ms.	Green	93	12.8
Wheatcroft G.	LD	80	11.0
<b>Turnout</b>		47.9	63.4
Chatsworth (1433)			
		vote	share
<b>Longden M.*</b>	Con	648	75.5
Wareham Z. Ms.	LD	210	24.5
<b>Turnout</b>		60.3	51.0

Clifton & Bradley (1439)			
		vote	share
<b>Bates I.*</b>	Con	0	0.0
<b>Turnout</b>		0.0	0.0
Darley Dale (4264) <sup>3</sup>			
		vote	share
<b>Burton D.*</b>	LD	1,016	50.1
<b>Fearn D.*</b>	LD	978	-
<b>Allwood N.*</b>	LD	934	-
Fearn B.	Con	541	26.7
Evans J.	Ind	471	23.2
Kay S. Ms.	Ind	456	-
<b>Turnout</b>		41.3	23.4
Dovedale & Parwich (1376)			
		vote	share
<b>Spencer S.*</b>	Con	0	0.0
<b>Turnout</b>		0.0	0.0
Doveridge & Sudbury (1534)			
		vote	share
<b>Catt A.</b>	Con	496	68.8
Jarville N. Ms.	Ind	225	31.2
<b>Turnout</b>		47.6	37.6
Hartington & Taddington (1355)			
		vote	share
<b>Chapman D.*</b>	Con	417	74.9
Bardsley R.	LD	140	25.1
<b>Turnout</b>		41.9	49.7
Hathersage & Eyam (3168) <sup>2</sup>			
		vote	share
<b>Bevan J. Ms.*</b>	Con	1,039	69.5
<b>Hoskin D.*</b>	Con	1,008	-
Bowman B. Ms.	LD	455	30.5
<b>Turnout</b>		46.6	39.1
Hulland (1503)			
		vote	share
<b>Radford J. Ms.*</b>	Con	0	0.0
<b>Turnout</b>		0.0	0.0
Lathkill & Bradford (1356)			
		vote	share
<b>McCloy A.*</b>	Ind	406	66.2
Howard A.	Con	207	33.8
<b>Turnout</b>		45.3	32.5
Litton & Longstone (1395)			
		vote	share
<b>Bentley J.*</b>	Con	491	71.3
Rainsford V. Ms.	LD	198	28.7
<b>Turnout</b>		49.7	42.5
Masson (2483) <sup>2</sup>			
		vote	share
<b>March J.*</b>	Lab	427	43.5
<b>Hume P.</b>	Con	403	41.0
Davis T.	Con	380	-
Elliott N.*	Lab	366	-
Wildgoose D.	LD	152	15.5
Steadman T. Ms.	LD	149	-
<b>Turnout</b>		39.5	2.4
Matlock All Saints (4237) <sup>3</sup>			
		vote	share
<b>Burfoot S. Ms.*</b>	LD	997	44.3
<b>Stevens G.*</b>	Con	964	42.8
<b>Barker D.*</b>	LD	911	-
Elliott A. Ms.	Con	833	-
Gregory S.	Con	773	-
Moss M.	LD	715	-
Douglas E.	Green	289	12.8
<b>Turnout</b>		46.5	1.5

Matlock St. Giles (4318) <sup>3</sup>			
		vote	share
Flitter S.*	LD	1,042	57.0
Hopkinson B.	LD	865	-
Rosser T.	LD	865	-
Tipping B.	Con	787	43.0
Stevens J. Ms.	Con	761	-
Lunn U. Ms.*	Con	661	-
Turnout		42.7	13.9
Norbury (1368)			
Bull K.*	Con	0	0.0
Turnout		0.0	0.0
Stanton (1514)			
Buckingham S. Ms.	Con	346	59.6
Wildgoose P. Ms.	LD	235	40.4
Turnout		38.6	19.1
Tideswell (1501)			
Critchlow T. Ms.*	Con	344	64.5
George T.	Green	95	17.8
Holt S. Ms.	LD	94	17.6
Turnout		35.7	46.7
Winster & South Darley (1406)			
Moseley J.*	Con	371	44.2
Swindell C.	Lab	249	29.6
Wright M.	LD	220	26.2
Turnout		59.9	14.5
Wirksworth (4569) <sup>3</sup>			
Ratcliffe I. Ms.*	Lab	937	38.0
Ratcliffe M.*	Lab	789	-
Slack P.*	Lab	780	-
Gratton G.	Con	637	25.8
Walker H. Ms.	Con	508	-
Stockell J.	Green	504	20.4
Williamson G.	Con	433	-
Green R.	LD	387	15.7
Turnout		40.6	12.2

## Derbyshire Dales - 2011

Ashbourne North (3019) <sup>2</sup>			
		vote	share
Bull S.*	Con	785	65.9
Millward T.*	Con	673	-
Whyman R.	Lab	407	34.1
Turnout		41.3	31.7
Ashbourne South (3627) <sup>2</sup>			
Lewer A.*	Con	883	65.6
Donnelly T.	Con	583	-
Page C.	Lab	464	34.4
Turnout		40.9	31.1
Bakewell (3993) <sup>3</sup>			
Twigg J. Ms.*	Con	1,378	64.1
Walker C. Ms.*	Con	1,245	-
Tilbrook P. Ms.	Con	1,121	-
Russell P. Ms.	Lab	773	35.9
Turnout		52.1	28.1
Bradwell (1561)			
Goodison J. Ms.*	Con	430	54.2
Furness C.	Ind	364	45.8
Turnout		52.5	8.3

Brailsford (1348)			
		vote	share
Jenkins A.	Con	517	74.1
Hodkinson A.*	Ind	181	25.9
Turnout		51.9	48.1
Calver (1580)			
Hunt C. Ms.*	Con	0	0.0
Turnout		0.0	0.0
Carsington Water (1546)			
Rose L.*	Con	0	0.0
Turnout		0.0	0.0
Chatsworth (1458)			
Longden M.*	Con	0	0.0
Turnout		0.0	0.0
Clifton & Bradley (1522)			
Shirley A.	Con	512	55.4
Bates I.*	Ind	326	35.3
Swabey J.	UKIP	86	9.3
Turnout		61.8	20.1
Darley Dale (4419) <sup>3</sup>			
Fearn D.*	LD	731	36.0
Burton D.*	LD	729	-
Statham A.	Con	720	35.5
Allwood N.*	LD	694	-
Staves K. Ms.	Con	688	-
Macpherson N.	Con	610	-
Morrison J. Ms.	Lab	578	28.5
Page F. Ms.	Lab	554	-
Rogers P.	Lab	512	-
Turnout		48.6	0.5
Dovedale & Parwich (1417)			
Fitzherbert R.	Con	594	76.6
Page E.	Lab	181	23.4
Turnout		55.3	53.3
Doveridge & Sudbury (1540)			
Catt A.*	Con	660	81.7
Brown K. Ms.	Lab	148	18.3
Turnout		53.4	63.4
Hartington & Taddington (1366)			
Chapman D.*	Con	0	0.0
Turnout		0.0	0.0
Hathersage & Eyam (3201) <sup>2</sup>			
Bevan J.*	Con	962	49.9
Monks J. Ms.	Con	728	-
Robinson B. Ms.	Lab	605	31.4
Robinson V. Ms.	Lab	562	-
Hoskin D.*	LD	359	18.6
Tweeddale J.	LD	352	-
Turnout		59.7	18.5
Hulland (1502)			
Bright R.	Con	0	0.0
Turnout		0.0	0.0
Lathkill & Bradford (1331)			
Frederickson D.	Ind	390	52.8
Blythe M.	Con	349	47.2
Turnout		57.4	5.5

Litton & Longstone (1422)			
		vote	share
Horton N.	Con	0	0.0
Turnout		0.0	0.0
Masson (2500) <sup>2</sup>			
Purdy G.	Con	593	50.9
Cartwright R.	Lab	571	49.1
Hume P.*	Con	566	-
Whitehead N.	Lab	534	-
Turnout		50.3	1.9
Matlock All Saints (4330) <sup>3</sup>			
Burfoot S. Ms.*	LD	931	38.0
Stevens G.*	Con	808	33.0
Elliott A. Ms.	Con	796	-
Barker D.*	LD	789	-
Gregory S.	Con	730	-
Jones D.	LD	715	-
Botham A.	Lab	709	29.0
Turnout		50.6	5.0
Matlock St. Giles (4357) <sup>3</sup>			
Flitter S.*	LD	950	41.3
Tipping B.	Con	716	31.2
Stevens J. Ms.	Con	691	-
Hopkinson B.*	LD	670	-
Hopkinson C. Ms.	LD	655	-
Davies S. Ms.	Lab	632	27.5
Walsh R.	Con	604	-
Peters S.	Lab	562	-
Turnout		48.6	10.2
Norbury (1369)			
Bull K.*	Con	0	0.0
Turnout		0.0	0.0
Stanton (1494)			
Wild J. Ms.	Con	246	48.9
Morrison J. Ms.	Lab	173	34.4
Allwood A.	LD	84	16.7
Turnout		34.1	14.5
Tideswell (1504)			
Bower J. Ms.	Con	338	45.7
Barber S. Ms.	LD	244	33.0
Page L.	Lab	157	21.2
Turnout		49.8	12.7
Winster & South Darley (1411)			
Swindell C.	Lab	690	78.7
Swindell R. Ms.	Con	187	21.3
Turnout		62.6	57.4
Wirksworth (4672) <sup>3</sup>			
Ratcliffe I. Ms.*	Lab	1,293	52.8
Slack P.*	Lab	1,048	-
Ratcliffe M.*	Lab	1,023	-
Cope P.	Con	626	25.5
Spencer C.	Green	532	21.7
Bull S. Ms.	Con	517	-
Stockell J.	Green	484	-
Smith J.	Con	474	-
Turnout		49.8	27.2

