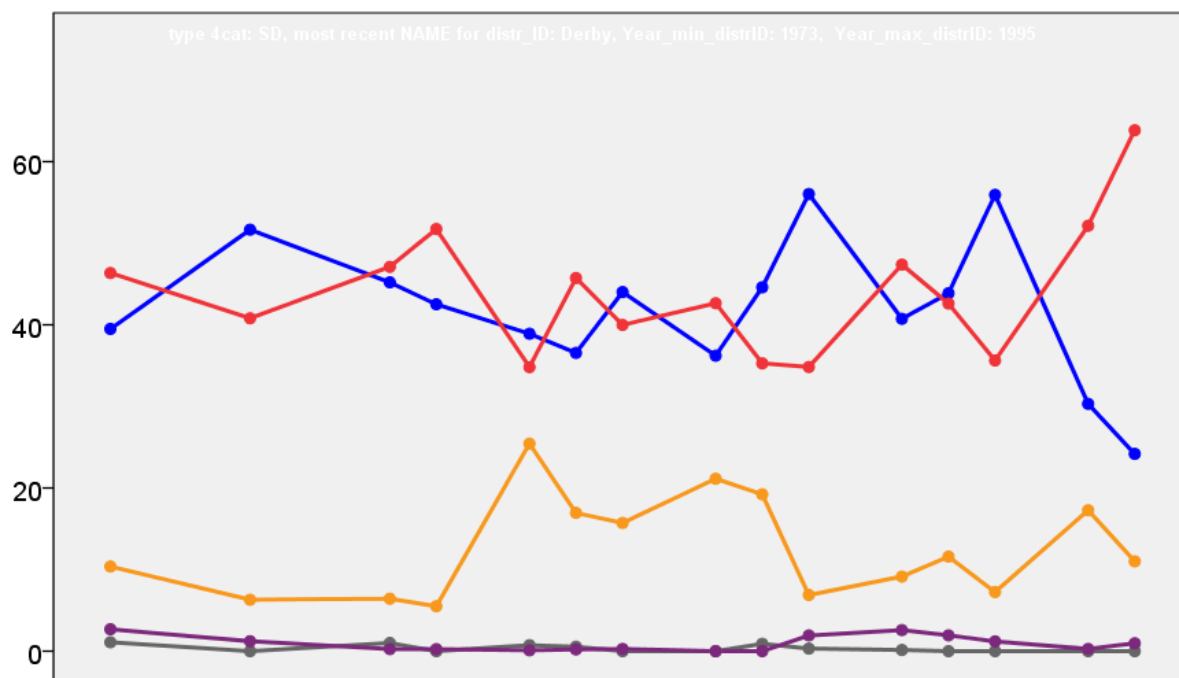


Derby City Council Election Results 1973-1995



Colin Rallings and Michael Thrasher
The Elections Centre
Plymouth University

The information contained in this report has been obtained from a number of sources. Election results from the immediate post-reorganisation period were painstakingly collected by Alan Willis largely, although not exclusively, from local newspaper reports. From the mid-1980s onwards the results have been obtained from each local authority by the Elections Centre. The data are stored in a database designed by Lawrence Ware and maintained by Brian Cheal and others at Plymouth University. Despite our best efforts some information remains elusive whilst we accept that some errors are likely to remain. Notice of any mistakes should be sent to elections@plymouth.ac.uk. The results sequence can be kept up to date by purchasing copies of the annual Local Elections Handbook, details of which can be obtained by contacting the email address above.

Front cover: the graph shows the distribution of percentage vote shares over the period covered by the results. The lines reflect the colours traditionally used by the three main parties. The grey line is the share obtained by Independent candidates while the purple line groups together the vote shares for all other parties.

Rear cover: the top graph shows the percentage share of council seats for the main parties as well as those won by Independents and other parties. The lines take account of any by-election changes (but not those resulting from elected councillors switching party allegiance) as well as the transfers of seats during the main round of local election.

The lower graph shows for each main round of local elections the overall percentage turnout (solid line), the percentage of women candidates standing at (dotted line) and the percentage of women among those elected (hashed line).

Derby 1973

Abbey (10842)³

		vote	share
Tunnicliffe F. Ms.	Lab	1,131	40.5
Walker M.	Lab	1,058	-
Dearie A.	Lab	1,017	-
Johnson H.	Con	873	31.3
Ford L.	Con	863	-
Bunting R.	Con	803	-
Burgess M.	Lib	786	28.2
Gregory I. Ms.	Lib	712	-
Hund M.	Lib	686	-
Turnout		25.8	9.2

Allestree (10137)³

		vote	share
Keene R.	Con	2,790	76.8
Chadwick B.	Con	2,711	-
Thorpe J.	Con	2,710	-
Cooper R.	Lab	843	23.2
Pritchard N. Ms.	Lab	797	-
Pepper L.	Lab	732	-
Turnout		36.2	53.6

Alvaston (7811)³

		vote	share
Baker W.	Lab	1,190	64.8
Hanks P.	Lab	1,120	-
Potts T.	Lab	1,075	-
Jackson L.	Con	646	35.2
McKeenan M.	Con	623	-
Turnout		24.8	29.6

Arboretum (6314)³

		vote	share
Harlow G. Ms.	Lab	959	50.6
Maltby J.	Lab	879	-
Charles B.	Lab	848	-
Mackenzie D. Ms.	Lib	569	30.0
Marchant T.	Lib	494	-
White D.	Lib	476	-
Marshall G.	Con	270	14.3
Marson W.	UP	96	5.1
Turnout		28.7	20.6

Babington (9618)³

		vote	share
Bussell A.	Con	1,214	52.6
Gadsby C.	Con	1,181	-
Wood E. Ms.	Con	1,148	-
Fox F.	Lab	879	38.1
Christophers U. Ms.	Lab	852	-
Moseley J. Ms.	Lab	838	-
Booth D.	UP	215	9.3
Ashby A.	UP	193	-
Gibson S.	UP	187	-
Turnout		24.7	14.5

Breadsall (8874)³

		vote	share
Eden O. Ms.	Lab	1,231	63.1
McCall J.	Lab	1,160	-
Wawman A. Ms.	Lab	1,101	-
Gadsby B.	Con	500	25.6
Leatherbarrow J.	Con	464	-
Smith A.	UP	219	11.2
Turnout		20.4	37.5

Chaddesden (8574)³

		vote	share
Lloyd H.	Lab	1,158	61.1
Winfield D.	Lab	1,095	-
Salt G.	Lab	1,086	-
Black G.	Con	736	38.9
Styles S.	Con	735	-
Woods E.	Con	733	-
Turnout		22.4	22.3

Chellaston (13236)³

		vote	share
Mathews W.	Lab	1,891	56.3
Styles G.	Lab	1,859	-
Swindells M.	Lab	1,764	-
Tivey O.	Con	1,465	43.7
Morley C.	Con	1,429	-
Doncher P.	Con	1,340	-
Turnout		25.5	12.7

Darley (8356)³

		vote	share
Longdon R.	Con	1,384	70.0
Reid E.	Con	1,295	-
Tillett J.	Con	1,256	-
Jepson V.	Lab	593	30.0
Pountain W.	Lab	573	-
Fox G.	Lab	572	-
Turnout		24.5	40.0

Derwent (7989)³

		vote	share
Harlow A.	Lab	1,052	70.9
Watson W.	Lab	1,042	-
Orgill J.	Lab	1,016	-
Daniels B.	Con	432	29.1
Turnout		18.1	41.8

Friar Gate (10010)³

		vote	share
Ekiert D. Ms.	Lib	1,384	50.7
Swain C.	Lib	1,380	-
Peel M.	Lib	1,349	-
Baxter R.	Lab	1,347	49.3
Rebecek M. Ms.	Lab	1,329	-
Summers G.	Lab	1,298	-
Turnout		27.7	1.4

Litchurch (5421)³

		vote	share
Bookbinder D.	Lab	727	75.1
Newton R.	Lab	697	-
Wood M. Ms.	Lab	676	-
Gray L.	Con	241	24.9
Turnout		20.2	50.2

Littleover (8877)³

		vote	share
Grimwood-Taylor M. Ms.	Con	1,522	59.7
Glenn N.	Con	1,415	-
Shepley L. Ms.	Con	1,378	-
Torney B. Ms.	Lab	564	22.1
Walker M. Ms.	Lab	531	-
Tomblin L.	Lab	501	-
Campion A.	Ind	465	18.2
Turnout		26.0	37.6

Mickleover (9420)³

		vote	share
Larder G.	Lib	1,664	49.7
Astle W.	Lib	1,658	-
Stokes B. Ms.	Lib	1,575	-
Hobson J.	Con	1,230	36.7
Greene R.	Con	1,197	-
O'Brien S. Ms.	Con	1,176	-
Cox J. Ms.	Lab	456	13.6
Low C.	Lab	447	-
Pearce H.	Lab	400	-
Turnout		35.7	13.0

Normanton (8455)³

		vote	share
White H. Ms.	Lab	1,361	53.4
Ireland J.	Lab	1,352	-
Christophers J.	Lab	1,263	-
Prime T.	Con	1,189	46.6
Penn D. Ms.	Con	1,168	-
Lemmings S.	Con	1,153	-
Turnout		31.3	6.7

Osmaston (8367)³

		vote	share
Carty J.	Lab	1,424	73.3
Bull E.	Lab	1,295	-
Spacey R. Ms.	Lab	1,252	-
Baines E.	UP	268	13.8
Parsons H. Ms.	Con	251	12.9
Marshall D.	Con	243	-
Turnout		21.4	59.5

Pear Tree (7095)³

		vote	share
Webster H.	Lab	1,501	62.1
Ault I. Ms.	Lab	1,401	-
Singh N.	Lab	1,328	-
McIntyre D.	Con	576	23.8
Sims P.	UP	342	14.1
Turnout		31.2	38.2

Spondon (9076)³

		vote	share
Owen J.	Con	1,442	51.4
Swainson G. Ms.	Con	1,408	-
Ufton C.	Lab	1,365	48.6
Baxendale-Baines G.	Con	1,340	-
Bradbury L.	Lab	1,306	-
Wilkinson W.	Lab	1,199	-
Turnout		31.9	2.7

Derby 1976

Abbey (9984)³

		vote	share
Tunnicliffe F. Ms.*	Lab	1,756	55.8
Walker M.*	Lab	1,595	-
Weightman P.	Lab	1,547	-
Pickering D.	Con	1,392	44.2
White R. Ms.	Con	1,366	-
Flint V. Ms.	Con	1,350	-
Turnout		32.7	11.6

Allestree (9976)³

		vote	share
Thorpe J.*	Con	3,673	70.0
Keene R.*	Con	3,658	-
Chadwick B.*	Con	3,531	-
Cooper R.	Lab	790	15.1
Nuttall W.	Lib	782	14.9
Taylor M.	Lib	738	-
Dolan J.	Lab	727	-
Pepper J. Ms.	Lab	712	-
Turnout		51.9	55.0

Alvaston (7622)³

		vote	share
Baker W.*	Lab	1,381	52.3
Hanks P.*	Lab	1,280	-
Owens J.	Con	1,260	47.7
Potts T.*	Lab	1,245	-
Blount J.	Con	1,137	-
Wood B. Ms.	Con	1,118	-
Turnout		35.9	4.6

Arboretum (6021)³

		vote	share
Charles B.*	Lab	1,076	60.8
Maltby J.*	Lab	1,058	-
Unwin S.	Lab	1,012	-
Hencliffe C.	Con	695	39.2
Barham P.	Con	672	-
Williams D.	Con	654	-
Turnout		32.9	21.5

Babington (8867) ³			
		vote	share
Bussell A.*	Con	1,671	63.1
Wood E. Ms.*	Con	1,542	-
Gadsby C.*	Con	1,524	-
Fox F.	Lab	817	30.8
Fox G. Ms.	Lab	812	-
Watkins W. Ms.	Lab	738	-
Gibson S.	UENP	162	-
Hitchcock G.	UENP	162	6.1
Ashby A.	UENP	142	-
Turnout		31.3	32.2

Breadsall (8933) ³			
		vote	share
Eden O. Ms.*	Lab	1,331	51.2
Summers G.	Lab	1,232	-
Wawman A. Ms.*	Lab	1,211	-
Leatherbarrow J.	Con	1,099	42.3
Wooley G.	Con	1,093	-
Leatherbarrow C. Ms.	Con	1,075	-
Gibson B. Ms.	UENP	171	6.6
Smith A.	UENP	153	-
Gallear L.	UENP	148	-
Turnout		31.0	8.9

Chaddesden (8577) ³			
		vote	share
Andrews G.	Con	1,682	53.5
Oldershaw R.	Con	1,663	-
Sephton H.	Con	1,536	-
Lloyd H.*	Lab	1,464	46.5
Neale R.	Lab	1,311	-
Harlow A.	Lab	1,261	-
Turnout		38.5	6.9

Chellaston (14053) ³			
		vote	share
Morley C.	Con	2,696	54.9
Keys K. Ms.	Con	2,673	-
Walker R.	Con	2,657	-
Matthews W.*	Lab	2,211	45.1
Styles G.*	Lab	2,171	-
Taylor J.	Lab	2,090	-
Turnout		36.9	9.9

Darley (8012) ³			
		vote	share
Longdon R.*	Con	1,993	69.3
Reid E.*	Con	1,941	-
Tillett J.*	Con	1,887	-
Mansfield M.	Lab	881	30.7
Bolton G. Ms.	Lab	872	-
Osborn J.	Lab	792	-
Turnout		38.8	38.7

Derwent (7809) ³			
		vote	share
Topham G.	Lab	1,289	60.9
Topham L. Ms.	Lab	1,244	-
Ward E.	Lab	1,236	-
Daniels B.	Con	827	39.1
Marples K. Ms.	Con	784	-
Du Sautoy G.	Con	763	-
Turnout		29.2	21.8

Friar Gate (9766) ³			
		vote	share
Robinson D.	Lab	1,593	46.9
Christophers J.	Lab	1,515	-
Baxter R.	Lab	1,512	-
Bunting R.	Con	1,174	34.5
Bunting A. Ms.	Con	1,141	-
Thomas G.	Con	1,043	-
Peel M.*	Lib	632	18.6
Swain C.*	Lib	592	-
Spencer F.	Lib	587	-
Turnout		36.6	12.3

Litchurch (3797) ³			
		vote	share
Newton R.*	Lab	699	66.4
Unwin K. Ms.	Lab	657	-
Wood M. Ms.*	Lab	655	-
Northover A.	Con	354	33.6
Northover J.	Con	333	-
Curzon D.	Con	324	-
Turnout		29.4	32.8

Littleover (8979) ³			
		vote	share
Grimwood-Taylor M. Ms.*	Con	2,751	78.7
Glenn N.*	Con	2,628	-
Shepley L. Ms.*	Con	2,600	-
Kimpton M. Ms.	Lab	744	21.3
Torney B. Ms.	Lab	725	-
Brocklehurst F.	Lab	717	-
Turnout		40.1	57.4

Mickleover (10080) ³			
		vote	share
Johnson H.	Con	2,289	51.4
Hulls C.	Con	2,204	-
Reynolds P.	Con	2,131	-
Brown M.	Lib	1,292	29.0
Burgess M.	Lib	1,210	-
Lawn G.	Lib	1,115	-
Johnson P.	Lab	873	19.6
Jones E.	Lab	737	-
Slater I.	Lab	611	-
Turnout		43.3	22.4

Normanton (8805) ³			
		vote	share
Keith J.	Con	1,786	51.8
Murphy F.	Con	1,752	-
Gray L.	Con	1,732	-
Bull D.	Lab	1,663	48.2
King R.	Lab	1,644	-
White H. Ms.	Lab	1,597	-
Turnout		41.8	3.6

Osmaston (8238) ³			
		vote	share
Carty B. Ms.*	Lab	1,305	65.8
Bull E.*	Lab	1,283	-
Spacey R. Ms.*	Lab	1,267	-
Black D.	Con	499	25.2
Allen A.	Con	456	-
Lemmings S.	Con	441	-
Baines E.	UENP	178	9.0
Sims M.	UENP	138	-
Verity L.	UENP	136	-
Turnout		25.7	40.7

Pear Tree (7413) ³			
		vote	share
Pountain W.	Lab	1,365	61.5
Singh N.*	Lab	1,327	-
Ault I. Ms.*	Lab	1,246	-
Garland Y. Ms.	Con	688	31.0
Swindall M. Ms.	Con	659	-
Webley K.	Con	635	-
Sims J. Ms.	UENP	166	7.5
Sims O. Ms.	UENP	137	-
Sims P.	UENP	121	-
Turnout		33.2	30.5

Spondon (9188) ³			
		vote	share
Leatherbarrow W.	Con	2,117	49.3
Swainson G. Ms.*	Con	2,076	-
Dickinson D.	Con	1,950	-
Whitt P.	Lab	1,388	32.3
Wright E. Ms.	Lab	1,292	-
Irwin S. Ms.	Lab	1,205	-
Wheway A.	Lib	793	18.5
Saxton P.	Lib	642	-
Haysum S.	Lib	576	-
Turnout		44.2	17.0

Derby 1979

Abbey (9410) ³			
		vote	share
Tunncliffe F. Ms.	Lab	3,101	51.2
Walker M.	Lab	2,735	-
McNab D.	Lab	2,714	-
Marples K. Ms.	Con	2,061	34.1
Hutchinson K. Ms.	Con	2,030	-
Williams D.	Con	1,937	-
Parker T.	Ind	508	8.4
Richards E.	Lib	382	6.3
Titterton J.	Lib	362	-
Wilson L.	Lib	331	-
Turnout		64.3	17.2

Allestree (7986) ²			
		vote	share
Thorpe J.	Con	4,302	64.1
Chadwick B.	Con	4,273	-
Davies S.	Lab	1,419	21.2
Bloor K.	Lab	1,384	-
Nuttall W.	Lib	987	14.7
Turnout		84.0	43.0

Alvaston (6082) ²			
		vote	share
Baker W.	Lab	2,293	53.8
Sweeting G.	Lab	2,061	-
Stafford B.	Con	1,971	46.2
McNair J.	Con	1,771	-
Turnout		70.1	7.6

Babington (9601) ³			
		vote	share
Maltby J.	Lab	3,332	54.7
Matthews W.	Lab	3,268	-
Unwin S.	Lab	2,805	-
Flint V. Ms.	Con	1,895	31.1
Garland M. Ms.	Con	1,836	-
Hoogerwerf T.	Con	1,731	-
Jahal K.	Ind	624	10.2
Gibson S.	ENP	244	4.0
Turnout		63.5	23.6

Blagreaves (7871) ²			
		vote	share
Grimwood-Taylor M. Ms.	Con	58.7	3,430
Murphy F.	Con	3,276	-
Slater I.	Lab	2,410	41.3
McLaverly P.	Lab	2,397	-
Turnout		74.2	17.5

Boulton (7957) ²			
		vote	share
Kennedy A.	Lab	3,321	55.9
Perkins C.	Lab	3,267	-
Hughes W.	Con	2,615	44.1
Mrozek H.	Con	2,424	-
Turnout		74.6	11.9

Breadsall (9236) ²			
		vote	share
Ward E.	Lab	3,980	61.6
Wawman M. Ms.	Lab	3,790	-
Nicols S.	Con	2,478	38.4
Wood E.	Con	2,354	-
Turnout		69.9	23.3

Chaddesden (8818) ²			
		vote	share
Brocklehurst F.	Lab	3,285	51.7
Summers G.	Lab	3,245	-
Andrews G.	Con	3,075	48.3
Sephton H.	Con	2,775	-
Turnout		72.1	3.3

Chellaston (6947)²			
		vote	share
Bussell A.	Con	2,786	52.0
Blount J.	Con	2,646	-
Fuller M.	Lab	2,569	48.0
Moseley J. Ms.	Lab	2,369	-
Turnout		77.1	4.1

Darley (9429)³			
		vote	share
Reid E.	Con	4,376	67.0
Tillett J.	Con	4,322	-
Longdon R.	Con	4,162	-
Wilson T.	Lab	2,155	33.0
Dolan J.	Lab	2,152	-
Bolton G.	Lab	2,099	-
Turnout		69.3	34.0

Derwent (8029)²			
		vote	share
Topham G.	Lab	2,975	56.5
Topham L. Ms.	Lab	2,693	-
Daniels B.	Con	1,510	28.7
Kitchen E. Ms.	Con	1,436	-
Connolly S.	Lib	735	13.9
Cudworth S. Ms.	Lib	593	-
Birks B.	Comm	49	0.9
Turnout		65.6	27.8

Kingsway (8000)²			
		vote	share
Johnson H.	Con	2,820	49.7
Bates J.	Con	2,712	-
Jones E.	Lab	1,495	26.4
Anderson J.	Lab	1,391	-
Benson B. Ms.	Lib	1,355	23.9
Spendlove A.	Lib	1,306	-
Turnout		70.9	23.4

Litchurch (9525)²			
		vote	share
Newton R.	Lab	3,611	72.4
Wood M. Ms.	Lab	3,333	-
Northover A.	Con	1,377	27.6
Hyde R.	Con	1,363	-
Turnout		52.4	44.8

Littleover (6667)²			
		vote	share
Wood R.	Con	3,453	70.9
Shepley L.	Con	3,431	-
Woodhead P.	Lab	1,420	29.1
Umney R.	Lab	1,392	-
Turnout		73.1	41.7

Mackworth (7797)²			
		vote	share
Robinson D.	Lab	3,221	55.9
Baxter R.	Lab	3,182	-
Doubleday R.	Con	1,805	31.3
Broxholme B.	Con	1,651	-
Taylor L. Ms.	Lib	733	12.7
Toombs K.	Lib	725	-
Turnout		73.9	24.6

Mickleover (6422)²			
		vote	share
Glen N.	Con	2,062	40.9
Keene N. Ms.	Con	2,060	-
Smith A.	Lib	1,839	36.5
Sharp E.	Lib	1,762	-
Ward J. Ms.	Lab	1,140	22.6
Gorham H.	Lab	1,013	-
Turnout		78.5	4.4

Normanton (7662)²			
		vote	share
Godfrey J.	Lab	3,148	59.7
Laxton R.	Lab	2,978	-
Andjelic R.	Con	2,124	40.3
Oldershaw R.	Con	2,048	-
Turnout		68.8	19.4

Osmaston (7129)²			
		vote	share
Carty B. Ms.	Lab	3,085	69.8
Spacey R. Ms.	Lab	2,789	-
Allen A.	Con	1,336	30.2
Parsons H. Ms.	Con	1,261	-
Turnout		62.0	39.6

Sinfin (6898)²			
		vote	share
Bull E.	Lab	2,554	55.8
Dhindsa N.	Lab	2,150	-
Keith J.	Con	2,024	44.2
Swinburn W. Ms.	Con	1,902	-
Turnout		66.4	11.6

Spondon (9551)³			
		vote	share
Scholes J.	Con	3,664	47.5
Kellogg D.	Con	3,550	-
Edgar D.	Con	3,498	-
Collar R.	Lab	2,811	36.4
Cullerton T.	Lab	2,739	-
Pountain W.	Lab	2,370	-
Dickenson T.	Lib	1,245	16.1
Somerset-Sullivan J.	Lib	735	-
Turnout		80.8	11.0

Derby 1980

Abbey (9682)			
		vote	share
McNab D.*	Lab	1,574	64.9
Hutchinson K. Ms.	Con	852	35.1
Turnout		25.1	29.8

Allestree (8128)			
		vote	share
Chadwick B.*	Con	2,134	66.8
Davies S.	Lab	575	18.0
Webley W.	Lib	484	15.2
Turnout		39.3	48.8

Alvaston (6665)			
		vote	share
Sweeting G.*	Lab	1,312	64.0
Lissett J. Ms.	Con	739	36.0
Turnout		30.8	27.9

Babington (9435)			
		vote	share
Unwin S.*	Lab	1,856	71.9
Keith J.	Con	725	28.1
Turnout		27.4	43.8

Blagreaves (7921)			
		vote	share
Murphy F.*	Con	1,481	50.2
McLavery P.	Lab	1,470	49.8
Turnout		37.3	0.4

Boulton (8083)			
		vote	share
Slater I.	Lab	2,029	63.7
Hazelwood D.	Con	1,157	36.3
Turnout		39.4	27.4

Breadsall (9514)			
		vote	share
Wawman N. Ms.*	Lab	1,865	69.5
Hoogerwerf T.	Con	777	29.0
Gibson S.	ENP	40	1.5
Turnout		28.2	40.6

Chaddesden (8848)			
		vote	share
Summers G.*	Lab	1,826	57.9
Andrews G.	Con	1,329	42.1
Turnout		35.7	15.8

Chellaston (7304)			
		vote	share
Blount J.*	Con	1,513	51.3
Fuller M.	Lab	1,437	48.7
Turnout		40.4	2.6

Darley (9525)			
		vote	share
Longdon R.*	Con	2,072	57.7
Parnham D.	Lab	1,168	32.5
Kennelly M.	Lib	353	9.8
Turnout		37.7	25.2

Derwent (7948)			
		vote	share
Topham L. Ms.	Lab	1,495	61.3
Daniels B.*	Con	482	19.8
Connolly S.	Lib	463	19.0
Turnout		30.7	41.5

Kingsway (7882)			
		vote	share
Bates J.*	Con	1,523	52.1
Jones E.	Lab	811	27.8
Smith A.	Lib	588	20.1
Turnout		37.1	24.4

Litchurch (8794)			
		vote	share
Wood M. Ms.*	Lab	1,557	81.2
Northover A.	Con	361	18.8
Turnout		21.8	62.4

Spondon (9665)			
		vote	share
Edgar D.*	Con	1,790	47.2
Osborn J.	Lab	1,636	43.2
Dickinson T.	Lib	306	8.1
Sabine B. Ms.	Ecol	57	1.5
Turnout		39.2	4.1

Derby 1982

Abbey (9341)			
		vote	share
Walker M.*	Lab	1,461	47.0
Rowley M.	Con	921	29.6
Cocker D.	Lib/SDP	726	23.4
Turnout		33.3	17.4

Allestree (8201)			
		vote	share
Thorpe J.*	Con	2,687	63.4
Webley W.	Lib/SDP	1,177	27.8
Clarke K.	Lab	374	8.8
Turnout		51.7	35.6

Alvaston (7069)			
		vote	share
Osborn J.	Lab	933	37.5
Lissett J. Ms.	Con	784	31.5
Graham I.	Lib/SDP	771	31.0
Turnout		35.2	6.0

Babington (9240)			
		vote	share
Matthews W.*	Lab	1,710	56.4
Brown R.	Con	516	17.0
Cliff R.	Lib/SDP	436	14.4
Ahluwalia P.	Ind	368	12.1
Turnout		32.8	39.4

Blagreaves (8038)			
		vote	share
Keith J.	Con	1,756	44.1
Turner R.	Lab	1,172	29.5
George D.	Lib/SDP	1,051	26.4
Turnout		49.5	14.7

Boulton (9034)			
		vote	share
Kennedy A.*	Lab	1,413	39.0
Sephton H.	Con	1,141	31.5
Moore C.	Lib/SDP	1,073	29.6
Turnout		40.1	7.5

Breadsall (9969)			
		vote	share
Ward E.*	Lab	1,526	41.4
Bell F.	Lib/SDP	1,062	28.8
Oxley B.	Con	1,051	28.5
Gibson S.	ENP	50	1.4
Turnout		37.0	12.6

Darley (9498)			
		vote	share
Tillett J.*	Con	2,366	58.5
Woods E.	Lib/SDP	994	24.6
Eddy R.	Lab	687	17.0
Turnout		42.6	33.9

Littlelover (6932)			
		vote	share
Shepley L.*	Con	1,756	56.5
Taylor G.	Lib/SDP	787	25.3
Taylor M.	Lab	564	18.2
Turnout		44.8	31.2

Mackworth (7659)			
		vote	share
Baxter R.*	Lab	1,465	51.3
Gabrielczyk J.	Con	698	24.4
King P.	Lib/SDP	695	24.3
Turnout		37.3	26.8

Mickleover (7880)			
		vote	share
Keene R.*	Con	1,901	52.0
Stokes B. Ms.	Lib/SDP	1,211	33.1
Dorrell D. Ms.	Lab	543	14.9
Turnout		46.4	18.9

Normanton (7917)			
		vote	share
Shillingford L.	Lab	1,475	51.2
Matthews J. Ms.	Con	870	30.2
Bottomley J.	Lib/SDP	536	18.6
Turnout		36.4	21.0

Osmaston (7084)			
		vote	share
Laxton R.	Lab	1,096	61.9
Debrick R.	Con	357	20.1
Taylor E.	Lib/SDP	319	18.0
Turnout		25.0	41.7

Sinfin (7508)			
		vote	share
Dhindsa N.*	Lab	1,438	51.6
Andrews G.	Con	676	24.2
Glazebrook J.	Lib/SDP	674	24.2
Turnout		37.1	27.3

Spondon (10014)			
		vote	share
Du Sautoy G.	Con	1,774	42.0
Thrower R. Ms.	Lab	1,372	32.5
Tivey K.	Lib/SDP	1,073	25.4
Turnout		42.1	9.5

Derby 1983

Abbey (9439)			
		vote	share
Tunncliffe F. Ms.*	Lab	1,803	59.9
Tomlinson M. Ms.	Con	910	30.2
Wilson L.	All	298	9.9
Turnout		31.9	29.7

Babington (8607)			
		vote	share
Maltby J.*	Lab	2,424	72.8
Hackney J. Ms.	Con	657	19.7
Cutler J. Ms.	Lib/SDP	250	7.5
Turnout		38.7	53.0

Chaddesden (8952)			
		vote	share
Streets M. Ms.	Lab	1,615	39.3
Andrews G.	Con	1,441	35.1
Dibdon K.	Lib/SDP	1,053	25.6
Turnout		45.9	4.2

Chellaston (7891)			
		vote	share
Lissett J. Ms.	Con	1,903	52.7
Fuller M.	Lab	1,711	47.3
Turnout		45.8	5.3

Darley (9430)			
		vote	share
Wright A.	Con	2,560	59.5
Denman W. Ms.	Lab	810	18.8
Simpson P.	Lib/SDP	677	15.7
Morledge R.	Ind	253	5.9
Turnout		45.6	40.7

Derwent (7861)			
		vote	share
Kennedy G.	Lib/SDP	1,763	51.9
Topham G.*	Lab	1,195	35.2
Hadfield C. Ms.	Con	425	12.5
Gibson S.	CCU	13	0.4
Turnout		43.2	16.7

Kingsway (8074)			
		vote	share
Johnson H.*	Con	1,752	53.4
Seward S. Ms.	Lib/SDP	800	24.4
Dorrell D. Ms.	Lab	726	22.1
Turnout		40.6	29.0

Litchurch (7966)			
		vote	share
McGIVEN J.	Lab	2,041	73.2
Phillips A.	Con	486	17.4
Mooney W.	Lib/SDP	261	9.4
Turnout		35.0	55.8

Littlelover (6967)			
		vote	share
Wood R.*	Con	1,913	56.8
Bolton S. Ms.	Lab	878	26.1
Taylor G.	Lib/SDP	486	14.4
Sabine B. Ms.	Ecol	88	2.6
Turnout		48.3	30.8

Mackworth (7600)			
		vote	share
Anderson J.	Lab	1,817	58.3
Haller B.	Con	916	29.4
King P.	Lib/SDP	383	12.3
Turnout		41.0	28.9

Mickleover (8187)			
		vote	share
Glen N.*	Con	0	0.0
Turnout		0.0	0.0

Normanton (7928)			
		vote	share
Brocklehurst F.	Lab	2,012	61.0
Dickenson K.	Con	1,003	30.4
Boateng P.	Lib/SDP	283	8.6
Turnout		41.6	30.6

Osmaston (7078)			
		vote	share
Bull K.	Lab	1,461	72.9
Lester K.	Con	360	18.0
Colman G.	Lib/SDP	182	9.1
Turnout		28.3	55.0

Sinfin (7580)			
		vote	share
Mullarkey A.	Lab	1,828	58.5
Foy P.	Con	648	20.7
Moore C.	Lib/SDP	647	20.7
Turnout		41.2	37.8

Spondon (10096)			
		vote	share
Rowley M.	Con	2,185	52.0
Tanvir M.	Lab	1,146	27.3
Barnett J. Ms.	Lib/SDP	869	20.7
Turnout		41.6	24.7

Derby 1984

Abbey (9572)			
		vote	share
Fuller M.	Lab	1,508	58.5
Tomlinson M. Ms.	Con	822	31.9
James P.	Lib/SDP	174	6.7
Wall E.	Ecol	74	2.9
Turnout		26.9	26.6

Allestree (8208)			
		vote	share
Chadwick B.*	Con	2,601	70.0
Jones H.	Lib/SDP	574	15.5
Turner R.	Lab	539	14.5
Turnout		45.2	54.6

Alvaston (7684)			
		vote	share
Sweeting G.*	Lab	1,479	51.5
Baldwin R.	Con	1,137	39.6
Brocklehurst C.	Lib/SDP	255	8.9
Turnout		37.4	11.9

Babington (8625)			
		vote	share
Unwin S.*	Lab	1,732	63.7
Thompson B.	Con	670	24.7
Burgess M.	Lib/SDP	315	11.6
Turnout		31.5	39.1

Blagreaves (8019)			
		vote	share
Murphy F.*	Con	1,408	40.9
Royle M. Ms.	Lab	1,282	37.2
George D.	Lib/SDP	710	20.6
Sabine B. Ms.	Ecol	45	1.3
Turnout		43.0	3.7

Boulton (9362)			
		vote	share
Thrower C.	Lab	1,712	47.6
Webley K.	Con	1,393	38.8
Boateng P.	Lib/SDP	488	13.6
Turnout		38.4	8.9

Breadsall (10048)			
		vote	share
Wawman N. Ms.*	Lab	1,870	50.8
Ormond R.	Con	1,167	31.7
Beasley P.	Lib/SDP	646	17.5
Turnout		36.7	19.1

Chaddesden (8790)			
		vote	share
Bolton S. Ms.	Lab	1,643	46.0
Andrews G.	Con	1,483	41.5
Connolly S. Ms.	Lib/SDP	446	12.5
Turnout		40.6	4.5

Chellaston (8207)			
		vote	share
Brown K.	Con	1,977	54.8
Summers G.	Lab	1,268	35.2
Coleman G.	Lib/SDP	362	10.0
Turnout		44.0	19.7

Darley (9363)			
		vote	share
Longdon R.*	Con	2,273	62.7
Hanman W. Ms.	Lab	901	24.8
Hancock J.	Lib/SDP	453	12.5
Turnout		38.7	37.8

Derwent (7571)			
		vote	share
Geraghty P. Ms.	Lib/SDP	1,401	46.1
Wingfield J.	Lab	1,245	41.0
Bunting R.	Con	391	12.9
Turnout		40.1	5.1

Kingsway (7990)			
		vote	share
Brown N.	Con	1,586	55.2
Dorrell D. Ms.	Lab	747	26.0
Simpson P.	Lib/SDP	542	18.9
Turnout		36.0	29.2

Litchurch (7870)			
		vote	share
Wood M. Ms.*	Lab	0	0.0
Turnout		0.0	0.0

Spondon (10099)			
		vote	share
Leatherbarrow J.	Con	2,170	54.0
Hayes D.	Lab	1,404	34.9
Guilford R.	Lib/SDP	444	11.1
Turnout		39.8	19.1

Derby 1986

Abbey (9887)			
		vote	share
Walker M.*	Lab	1,842	60.9
Base C.	Con	746	24.7
Wilson L.	Lib/SDP	436	14.4
Turnout		30.6	36.2

Allestree (8256)			
		vote	share
Thorpe J.*	Con	2,563	62.3
Jones H.	Lib/SDP	957	23.3
Turner R.	Lab	596	14.5
Turnout		49.9	39.0

Alvaston (8021)			
		vote	share
Matthews W.	Lab	1,284	42.7
Adams D.	Lib/SDP	943	31.4
Bertalan M.	Con	780	25.9
Turnout		37.5	11.3

Babington (8277)			
		vote	share
Schofield B.	Lab	1,663	57.0
Burgess M.	Lib/SDP	763	26.2
Fullarton P.	Con	489	16.8
Turnout		35.2	30.9

Blagreaves (8048)			
		vote	share
Keith J.*	Con	1,599	42.0
Ainsley M.	Lab	1,518	39.9
George D.	Lib/SDP	692	18.2
Turnout		47.3	2.1

Boulton (9544)			
		vote	share
Kennedy A.*	Lab	1,680	43.3
Thompson B.	Con	1,140	29.4
Harlow P.	Lib/SDP	1,056	27.2
Turnout		40.6	13.9

Breadsall (10835)			
		vote	share
Ward E.*	Lab	1,988	54.8
Andrews G.	Con	1,051	28.9
Holbrook H.	Lib/SDP	592	16.3
Turnout		33.5	25.8

Darley (9438)			
		vote	share
Tillet J.*	Con	2,142	46.9
Repton M.	Lab	1,487	32.6
King S.	Lib/SDP	935	20.5
Turnout		48.4	14.4

Littleover (7158)			
		vote	share
Shepley L.*	Con	1,498	45.6
Cooper A.	Lib/SDP	903	27.5
Broughton J.	Lab	887	27.0
Turnout		45.9	18.1

Mackworth (7334)			
		vote	share
Baxter R.*	Lab	1,675	60.0
Mayell A.	Con	743	26.6
Jackson R.	Lib/SDP	374	13.4
Turnout		38.1	33.4

Mickleover (8393)			
		vote	share
Keene R.*	Con	1,783	49.1
Wilbraham A.	Lib/SDP	999	27.5
McReynolds M.	Lab	849	23.4
Turnout		43.3	21.6

Normanton (7694)			
		vote	share
Shillingford L.*	Lab	1,584	58.6
Lester K.	Con	743	27.5
Drew W.	Lib/SDP	375	13.9
Turnout		35.1	31.1

Osmaston (7580)			
		vote	share
Laxton R.*	Lab	1,226	71.2
Brown D. Ms.	Con	289	16.8
Elsbury P.	Lib/SDP	208	12.1
Turnout		22.7	54.4

Sinfin (7499)			
		vote	share
Dhindsa N.*	Lab	1,517	60.4
Larimore B.	Con	595	23.7
James P.	Lib/SDP	401	16.0
Turnout		33.5	36.7

Spondon (10201)			
		vote	share
Du Sautoy G.*	Con	1,851	44.6
Tanvir M.	Lab	1,419	34.2
Guilford R.	Lib/SDP	880	21.2
Turnout		40.7	10.4

Derby 1987

Abbey (9743)			
		vote	share
Ainsley M.	Lab	1,669	45.4
Larimore B.	Con	1,432	38.9
Wilson L.	All	579	15.7
Turnout		37.8	6.4

Babington (8280)			
		vote	share
Maltby J.*	Lab	1,593	52.7
Burgess M.	All	815	27.0
Fogg T.	Con	613	20.3
Turnout		36.5	25.8

Chaddesden (8784)			
		vote	share
Johnson H.	Con	1,923	46.2
Streets M.*	Lab	1,502	36.1
Holbrook H.	All	733	17.6
Turnout		47.3	10.1

Chellaston (9345)			
		vote	share
Jennings J.	Con	2,611	51.7
Lythgoe W.	Lab	1,457	28.8
Essex M.	All	615	12.2
Lissett J.*	Ind	369	7.3
Turnout		54.1	22.8

Darley (9427)			
		vote	share
Hickson P.	Con	2,797	55.7
Repton M.	Lab	1,377	27.4
Pratt L.	All	849	16.9
Turnout		53.3	28.3

Derwent (7489)			
		vote	share
Tunnicliffe F.	Lab	1,348	42.4
King S.	All	1,221	38.4
Heath D.	Con	611	19.2
Turnout		42.5	4.0

Kingsway (7903)			
		vote	share
Bertalan M.	Con	2,191	58.6
Barker L.	All	860	23.0
Evans J. Ms.	Lab	662	17.7
Gibson S.	Ind	26	0.7
Turnout		47.3	35.6

Litchurch (7970)			
		vote	share
McGiven J.*	Lab	1,585	57.1
Wayne B.	Con	688	24.8
Khan R.	All	504	18.1
Turnout		34.8	32.3

Littleover (7280)			
		vote	share
Wood R.*	Con	1,976	51.1
Cooper A.	All	938	24.3
Turner R.	Lab	847	21.9
Dickenson K.	Ind	106	2.7
Turnout		53.1	26.8

Mackworth (7289)			
		vote	share
Clemson A.	Con	1,378	42.4
Tanvir M.	Lab	1,251	38.5
Jackson R.	All	619	19.1
	Turnout	44.6	3.9

Mickleover (8510)			
		vote	share
Glen N.*	Con	2,842	65.2
Wilbraham A.	All	899	20.6
Taylor P.	Lab	617	14.2
	Turnout	51.2	44.6

Normanton (7819)			
		vote	share
Brocklehurst F.*	Lab	1,473	47.6
Hogg D.	Con	1,137	36.7
Drew W.	All	486	15.7
	Turnout	39.6	10.9

Osmaston (6525)			
		vote	share
Woolley J.	Lab	1,119	57.0
Brown D. Ms.	Con	511	26.0
Elsbury P.	All	334	17.0
	Turnout	30.1	31.0

Sinfen (7529)			
		vote	share
Mullarkey A.*	Lab	1,500	52.0
Lester K.	Con	869	30.1
James P.	All	514	17.8
	Turnout	38.3	21.9

Spondon (10320)			
		vote	share
Brown C.	Con	3,218	57.9
Hayes D.	Lab	1,617	29.1
Guilford R.	All	721	13.0
	Turnout	53.8	28.8

Derby 1988

Abbey (9434)			
		vote	share
Fuller M.*	Lab	1,945	50.8
Hart S.	Con	1,647	43.0
Kaye J.	LD	139	3.6
Brock P.	Green	101	2.6
	Turnout	40.6	7.8

Allestree (8184)			
		vote	share
Chadwick B.*	Con	3,491	79.7
Cox B.	Lab	488	11.1
Jones H.	LD	403	9.2
	Turnout	53.5	68.5

Alvaston (8127)			
		vote	share
Fullarton P.	Con	1,887	52.4
Sweeting G.*	Lab	1,518	42.1
Holbrook H. Ms.	LD	198	5.5
	Turnout	44.3	10.2

Babington (7849)			
		vote	share
Kalia A.	Lab	1,500	49.0
Mohammad A.	Con	866	28.3
Burgess M.	LD	531	17.4
Dickenson K.	SDP	106	3.5
Wall E.	Green	56	1.8
	Turnout	39.0	20.7

Blagreaves (7984)			
		vote	share
Hogg D.	Con	2,543	60.4
Jordan C. Ms.	Lab	1,244	29.5
Blane E.	LD	176	4.2
Barker L.	SDP	165	3.9
Billington J.	Green	83	2.0
	Turnout	52.7	30.8

Boulton (9400)			
		vote	share
Thompson K.	Con	2,433	51.9
Thrower C.*	Lab	1,659	35.4
Harlow P.	LD	380	8.1
Carrington D.	SDP	216	4.6
	Turnout	49.9	16.5

Breadsall (11690)			
		vote	share
Orton G.	Con	2,788	54.4
Wawman N. Ms.*	Lab	2,042	39.9
Hartropp S. Ms.	LD	294	5.7
	Turnout	43.8	14.6

Chaddesden (8763)			
		vote	share
Else G.	Con	2,113	49.3
Bolton S. Ms.*	Lab	1,936	45.2
Byrne L.	LD	236	5.5
	Turnout	48.9	4.1

Chellaston (9472)			
		vote	share
Brown K.*	Con	3,664	73.9
Marshall J.	Lab	1,072	21.6
Essex M.	LD	220	4.4
	Turnout	52.3	52.3

Darley (9424)			
		vote	share
Hulls C.	Con	3,032	65.6
Dickens J.	Lab	1,114	24.1
Webley W.	LD	313	6.8
Seward P.	SDP	161	3.5
	Turnout	49.0	41.5

Derwent (7293) ²			
		vote	share
Repton M.	Lab	1,522	54.3
Hayes D.	Lab	1,475	-
Daniels C.	Con	926	33.0
James C.	Con	883	-
Benson B. Ms.	LD	270	9.6
King S.	LD	268	-
Smith S.	Ind	85	3.0
	Turnout	37.2	21.3

Kingsway (7845)			
		vote	share
Brown N.*	Con	2,442	69.0
Evans J. Ms.	Lab	764	21.6
Turner P. Ms.	LD	333	9.4
	Turnout	45.1	47.4

Litchurch (7750)			
		vote	share
Wood M. Ms.*	Lab	1,545	59.8
Wayne B.	Con	670	25.9
Kahn R.	LD	272	10.5
Brown L.	Ind	98	3.8
	Turnout	33.4	33.8

Spondon (10355)			
		vote	share
Leatherbarrow J.*	Con	3,360	65.0
Taylor P.	Lab	1,457	28.2
Holbrook D.	LD	147	2.8
Peat P.	SDP	135	2.6
Ludkiewicz L. Ms.	Green	70	1.4
	Turnout	49.9	36.8

Derby 1990

Abbey (9065)			
		vote	share
Walker M.*	Lab	2,596	62.1
Shaw G. Ms.	Con	1,125	26.9
Harris C.	LD	236	5.6
Brock P.	Green	226	5.4
	Turnout	46.1	35.2

Allestree (8085)			
		vote	share
Du Sautoy G.	Con	3,177	67.7
Gowing W.	Lab	1,017	21.7
Jones H.	LD	498	10.6
	Turnout	58.0	46.0

Alvaston (8226)			
		vote	share
Thrower C.	Lab	1,962	47.7
Webley K.	Con	1,492	36.3
Western J.	LD	657	16.0
	Turnout	50.0	11.4

Babington (7533)			
		vote	share
Wilsoncroft V. Ms.	Lab	2,152	62.8
Ali M.	Con	532	15.5
Khan G.	ISLAM	316	9.2
Hartropp S.	LD	273	8.0
Emmans B. Ms.	Green	152	4.4
	Turnout	45.5	47.3

Blagreaves (8081)			
		vote	share
Keith J.*	Con	2,391	49.3
Groves J. Ms.	Lab	1,946	40.2
Turner P. Ms.	LD	509	10.5
	Turnout	60.0	9.2

Boulton (9368)			
		vote	share
Kennedy A.*	Lab	2,367	47.7
Gadsby C.	Con	1,787	36.0
Harlow P.	LD	626	12.6
Cooper C.	Green	181	3.6
	Turnout	53.0	11.7

Breadsall (13193)			
		vote	share
Ward E.*	Lab	3,491	50.1
Bishop M.	Con	2,932	42.1
McCann M.	LD	549	7.9
	Turnout	52.8	8.0

Darley (9428)			
		vote	share
Hart S.	Con	2,873	56.1
Wynn C.	Lab	1,676	32.7
Webley W.	LD	375	7.3
Ludkiewicz L. Ms.	Green	199	3.9
	Turnout	54.3	23.4

Litchurch (7523)			
		vote	share
Rehman A.	Lab	1,943	65.7
Najeeb M.	Con	622	21.0
Jackson R.	LD	291	9.8
Brown L.	Ind	103	3.5
	Turnout	39.3	44.6

Littleover (7219)			
		vote	share
Wayne B.	Con	2,186	52.5
Till J. Ms.	Lab	1,525	36.6
Burgess M.	LD	451	10.8
	Turnout	57.7	15.9

Mackworth (7027)			
		vote	share
Baxter R.*	Lab	2,326	63.4
Tatlow G. Ms.	Con	1,105	30.1
Holbrook H. Ms.	LD	239	6.5
Turnout		52.2	33.3

Mickleover (8557)			
		vote	share
Keene R.*	Con	2,609	57.5
McReynolds M.	Lab	1,333	29.4
Evans R.	LD	383	8.4
Jones C. Ms.	Green	209	4.6
Turnout		53.0	28.1

Normanton (7614)			
		vote	share
Bolton S. Ms.	Lab	2,052	55.3
Gray I.	Con	1,039	28.0
Blane E.	LD	299	8.1
Shillingford L.*	Ind Lab	205	5.5
Wall E.	Green	118	3.2
Turnout		48.8	27.3

Osmaston (6242)			
		vote	share
Laxton R.*	Lab	1,684	73.5
Broadfield R.	Con	430	18.8
King S.	LD	176	7.7
Turnout		36.7	54.8

Sinfin (7453)			
		vote	share
Dhindsa N.*	Lab	2,097	61.3
Brindley S.	Con	916	26.8
Pulham G.	LD	408	11.9
Turnout		45.9	34.5

Spondon (10299)			
		vote	share
Dickinson D.	Con	2,939	48.7
Williamson C.	Lab	2,575	42.6
Holbrook D.	LD	351	5.8
Chapman P.	Green	176	2.9
Turnout		58.7	6.0

Derby 1991

Abbey (9134)			
		vote	share
Ainsley M.*	Lab	2,054	55.0
Shaw G. Ms.	Con	1,267	33.9
Wood G.	LD	279	7.5
Brock P.	Green	136	3.6
Turnout		40.9	21.1

Babington (7471)			
		vote	share
Hussain F.	Lab	1,596	58.8
Burgess M.	LD	505	18.6
Ali M.	Con	489	18.0
Emmans B. Ms.	Green	122	4.5
Turnout		36.3	40.2

Chaddesden (8566)			
		vote	share
Till J. Ms.	Lab	2,209	48.7
Johnson H.*	Con	1,857	40.9
Smith D. Ms.	LD	474	10.4
Turnout		53.0	7.8

Chellaston (9697)			
		vote	share
Jennings J.*	Con	2,893	60.6
Gorham H. Ms.	Lab	1,321	27.7
Hartropp A.	LD	417	8.7
Cooper C.	Green	140	2.9
Turnout		49.2	32.9

Darley (9323)			
		vote	share
Hickson P.*	Con	2,826	57.6
Gilmore J. Ms.	Lab	1,298	26.5
Webley W.	LD	692	14.1
Ludkiewicz L. Ms.	Green	88	1.8
Turnout		52.6	31.2

Derwent (7529)			
		vote	share
Hayes D.	Lab	1,784	59.1
Ormond J. Ms.	Con	863	28.6
McCann M. Ms.	LD	308	10.2
Sandars I.	Green	64	2.1
Turnout		40.1	30.5

Kingsway (7638)			
		vote	share
Bertalan M.*	Con	2,171	59.1
Hepworth K.	Lab	1,017	27.7
Spendlove A.	LD	486	13.2
Turnout		48.1	31.4

Litchurch (7338)			
		vote	share
McGiven J.*	Lab	1,744	64.8
Najeeb M.	Con	614	22.8
Harris C.	LD	196	7.3
Davies L. Ms.	Green	139	5.2
Turnout		36.7	42.0

Littleover (7183)			
		vote	share
Wood R.	Con	1,918	47.3
Care L. Ms.	LD	1,060	26.2
Green J.	Lab	1,006	24.8
Attenborrow M. Ms.	Green	67	1.7
Turnout		56.4	21.2

Mackworth (6848)			
		vote	share
Summers G.	Lab	1,929	55.7
Clemson A.*	Con	1,242	35.8
Hartropp S.	LD	294	8.5
Turnout		50.6	19.8

Mickleover (8414)			
		vote	share
Broadfield R.	Con	2,710	62.5
Macdonald A. Ms.	Lab	922	21.3
Turner D.	LD	573	13.2
Jones C. Ms.	Green	128	3.0
Turnout		51.5	41.3

Normanton (7438)			
		vote	share
Williamson C.	Lab	1,810	55.1
Webley K.	Con	1,104	33.6
Jones L. Ms.	LD	285	8.7
Wall E.	Green	83	2.5
Turnout		44.0	21.5

Osmaston (6082)			
		vote	share
Streets M. Ms.	Lab	1,254	64.8
Brown D. Ms.	Con	479	24.8
Todd A. Ms.	LD	201	10.4
Turnout		31.8	40.1

Sinfin (7523)			
		vote	share
Mullarkey A.*	Lab	1,960	63.7
Hateley C.	Con	822	26.7
Blane E.	LD	295	9.6
Turnout		40.9	37.0

Spondon (10244)			
		vote	share
Brown C.*	Con	3,268	57.2
Merry K. Ms.	Lab	1,916	33.5
Holebrook D.	LD	413	7.2
Chapman P.	Green	119	2.1
Turnout		46.3	42.1

Turnout 55.8 23.7

Derby 1992

Abbey (9274)			
		vote	share
Fuller M.*	Lab	1,502	50.3
Shaw-Clarke G. Ms.	Con	1,231	41.2
Turner D.	LD	132	4.4
Brock P.	Green	67	2.2
Milner D.	SD	53	1.8
Turnout		32.2	9.1

Allestree (7900)			
		vote	share
Chadwick B.*	Con	3,087	78.0
Cotton A.	Lab	603	15.2
Jones H.	LD	270	6.8
Turnout		50.1	62.7

Alvaston (8138)			
		vote	share
Fullarton P.*	Con	1,755	52.5
Fuller G. Ms.	Lab	1,395	41.7
Todd A. Ms.	LD	196	5.9
Turnout		41.2	10.8

Babington (7370)			
		vote	share
Kalia A.*	Lab	1,326	53.1
Javed A.	Con	691	27.7
Burgess M.	LD	379	15.2
Davies M. Ms.	Green	103	4.1
Turnout		34.1	25.4

Blagreaves (8096)			
		vote	share
Lester K.	Con	1,997	55.5
Wilkinson N.	Lab	1,087	30.2
Spendlove A.	LD	515	14.3
Turnout		44.6	25.3

Boulton (9036)			
		vote	share
Thompson K.*	Con	2,141	51.7
Merry K. Ms.	Lab	1,683	40.6
Harlow P.	LD	319	7.7
Turnout		45.9	11.1

Breadsall (14379)			
		vote	share
Latham P. Ms.	Con	3,255	57.3
Woolley E. Ms.	Lab	2,126	37.4
McCann M.	LD	296	5.2
Turnout		39.5	19.9

Chaddesden (8534)			
		vote	share
Johnson H.	Con	1,775	48.2
Macdonald A. Ms.	Lab	1,678	45.5
Holyoake T.	LD	232	6.3
Turnout		43.3	2.6

Chellaston (9586)			
		vote	share
Brown K.*	Con	3,093	70.3
Jackson B. Ms.	Lab	1,090	24.8
Winson A.	LD	157	3.6
Cooper C.	Green	57	1.3
Turnout		45.9	45.6

Darley (9436)			
		vote	share
Hulls C.*	Con	2,875	66.0
Wright W.	Lab	1,041	23.9
Webley W.	LD	375	8.6
Ludkiewicz L. Ms.	Green	68	1.6
Turnout		46.3	42.1

Derwent (7589)			
		vote	share
Repton M.*	Lab	1,285	54.3
Ormond J. Ms.	Con	906	38.3
King S.	LD	142	6.0
Wall E.	Green	32	1.4
Turnout		31.2	16.0

Kingsway (7666)			
		vote	share
Brown N.*	Con	2,102	65.3
Hepworth K.	Lab	747	23.2
Care I.	LD	304	9.4
Jones C. Ms.	Green	65	2.0
Turnout		42.1	42.1

Litchurch (7457)			
		vote	share
Rehman A.	Lab	1,219	56.3
Yaqub M.	Con	654	30.2
Harris C.	LD	175	8.1
Macdonald J. Ms.	Green	118	5.4
Turnout		29.2	26.1

Spondon (10116)			
		vote	share
Leatherbarrow J.*	Con	2,828	64.9
Byrne M.	Lab	1,301	29.8
Holbrook D.	LD	187	4.3
Chapman P.	Green	43	1.0
Turnout		43.2	35.0

Derby 1994

Abbey (9514)			
		vote	share
Walker M.*	Lab	2,186	69.1
Sice D.	Con	627	19.8
Lilley D. Ms.	LD	350	11.1
Turnout		33.7	49.3

Allestree (8077)			
		vote	share
Du Sautoy G.*	Con	1,963	52.6
Merry K. Ms.	Lab	998	26.7
King S.	LD	772	20.7
Turnout		47.2	25.9

Alvaston (8098)			
		vote	share
Wynn C.	Lab	1,830	60.2
Matsell B.	Con	804	26.5
Phelan B.	LD	404	13.3
Turnout		38.3	33.8

Babington (7455)			
		vote	share
Wilsoncroft V. Ms.*	Lab	1,684	67.7
Yaqub M.	Con	546	21.9
Sherazi M.	LD	259	10.4
Turnout		34.1	45.7

Blagreaves (8167)			
		vote	share
Redfern M. Ms.	Lab	2,253	47.3
Spendlove A.	LD	1,262	26.5
Keith J.*	Con	1,247	26.2
Turnout		59.2	20.8

Boulton (8869)			
		vote	share
Kennedy A.*	Lab	2,286	59.2
Axelrod M. Ms.	Con	1,017	26.3
Harlow P.	LD	560	14.5
Turnout		44.4	32.9

Breadsall (15307)			
		vote	share
Whitby J.	Lab	3,619	54.6
Pallett C.	Con	2,164	32.6
Harris M.	LD	850	12.8
Turnout		43.8	21.9

Darley (9494)			
		vote	share
Hart S.*	Con	1,943	45.1
Wooley E. Ms.	Lab	1,453	33.7
Pratt R.	LD	916	21.2
Turnout		46.5	11.4

Littleover (7254)			
		vote	share
Burgess M.	LD	1,823	46.7
Shaw G. Ms.	Con	1,094	28.0
Cotton A.	Lab	933	23.9
Dickenson K.	SDP	57	1.5
Turnout		55.1	18.7

Mackworth (6621)			
		vote	share
Baxter R.*	Lab	1,953	69.5
Clemson A.	Con	543	19.3
Alcock L. Ms.	LD	218	7.8
Hardy G.	NF	95	3.4
Turnout		43.1	50.2

Mickleover (8458)			
		vote	share
Keene R.*	Con	1,542	41.4
Taylor P.	Lab	1,468	39.5
Wilbraham A.	LD	711	19.1
Turnout		44.7	2.0

Normanton (7527)			
		vote	share
Bolton S. Ms.*	Lab	1,928	70.7
Javed A.	Con	458	16.8
Cooper A.	LD	342	12.5
Turnout		37.0	53.9

Osmaston (6065)			
		vote	share
Laxton R.*	Lab	1,374	77.6
Wakefield H.	Con	227	12.8
Ashburner E.	LD	169	9.5
Turnout		28.7	64.8

Sinfin (7712)			
		vote	share
Dhindsa N.*	Lab	1,919	69.7
Pegg A.	Con	494	17.9
Troup R.	LD	340	12.4
Turnout		36.5	51.8

Spondon (10049)			
		vote	share
Byrne M.	Lab	2,539	52.6
Dickinson D.*	Con	1,852	38.4
Hill P.	LD	438	9.1
Turnout		49.0	14.2

Derby 1995

Abbey (9816)			
		vote	share
Ainsley M*	Lab	2,186	77.1
Sice D.	Con	398	14.0
Lilley D. Ms.	LD	252	8.9
Turnout		29.0	63.0

Babington (7402)			
		vote	share
Hussain F.*	Lab	1,681	74.9
Magee J. Ms.	Con	236	10.5
Sherazi M.	LD	173	7.7
Davies L. Ms.	Green	154	6.9
Turnout		30.6	64.4

Chaddesden (8354)			
		vote	share
Merry K. Ms.	Lab	2,347	70.0
Kilminster M.	Con	726	21.6
Alcock L.	LD	221	6.6
Chapman P.	Green	61	1.8
Turnout		40.2	48.3

Chellaston (9418)			
		vote	share
Jackson B. Ms.	Lab	2,197	56.7
Jennings J.*	Con	1,678	43.3
Turnout		41.2	13.4

Darley (9446)			
		vote	share
Woolley E. Ms.	Lab	2,017	49.5
Hickson P.*	Con	1,555	38.2
King S.	LD	502	12.3
Turnout		43.2	11.3

Derwent (7490)			
		vote	share
Hayes D.*	Lab	2,028	84.5
Pegg A.	Con	372	15.5
Turnout		32.1	69.0

Kingsway (7467)			
		vote	share
Graves A.	Lab	1,628	49.2
Maw B.	Con	883	26.7
Crosby A. Ms.	LD	799	24.1
Turnout		44.4	22.5

Litchurch (7359)			
		vote	share
McGiven J.*	Lab	1,699	78.2
Samra B.	Con	255	11.7
Macdonald J. Ms.	Green	112	5.2
Sherazi B.	LD	107	4.9
Turnout		29.8	66.5

Littleover (7201)			
		vote	share
Ashburner E.	LD	1,581	45.5
Bhalla S.	Lab	1,113	32.0
Shaw G. Ms.	Con	737	21.2
Dickenson K.	SDP	44	1.3
Turnout		48.3	13.5

Mackworth (6500)			
		vote	share
Gerrard R.	Lab	2,121	81.3
Veitch J.	Con	374	14.3
Savage W.	LD	115	4.4
Turnout		40.2	66.9

Mickleover (8785)			
		vote	share
Taylor P.	Lab	2,027	54.9
Broadfield R.*	Con	1,206	32.7
Care I.	LD	456	12.4
Turnout		42.1	22.3

Normanton (7231)

		vote	share
Williamson C.*	Lab	1,774	75.6
McCandless P.	Con	349	14.9
Cooper A.	LD	164	7.0
Wall E.	Green	60	2.6
<hr/>			
	Turnout	32.6	60.7

Osmaston (5897)

		vote	share
Streets M. Ms.*	Lab	1,217	82.6
Carran G.	Con	159	10.8
Troup R.	LD	97	6.6
<hr/>			
	Turnout	25.1	71.8

Sinfin (7655)

		vote	share
Mullarkey A.*	Lab	1,934	81.6
Lee J. Ms.	Con	234	9.9
Gale P.	LD	202	8.5
<hr/>			
	Turnout	31.0	71.7

Spondon (9865)

		vote	share
Wilson C.	Lab	2,522	57.4
Brown C.*	Con	1,626	37.0
Harris C.	LD	242	5.5
<hr/>			
	Turnout	44.6	20.4

