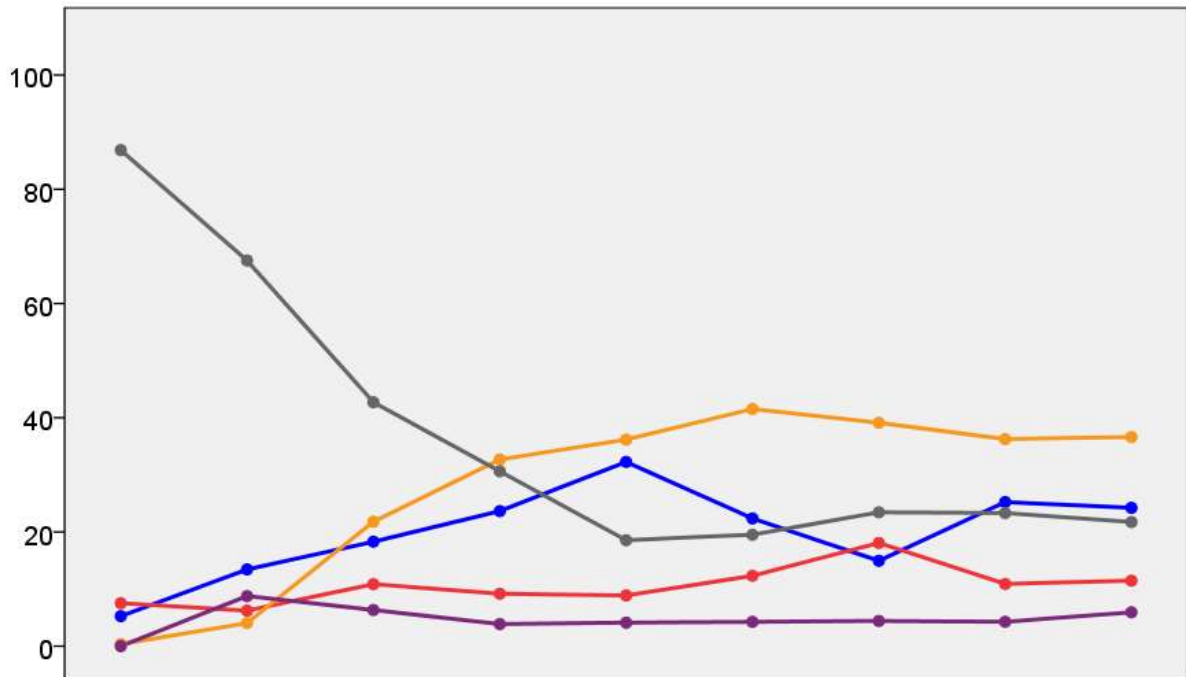


Cornwall County Council Election Results 1973-2005



Colin Rallings and Michael Thrasher
The Elections Centre
Plymouth University

The information contained in this report has been obtained from a number of sources. Election results from the immediate post-reorganisation period were painstakingly collected by Alan Willis largely, although not exclusively, from local newspaper reports. From the mid-1980s onwards the results have been obtained from each local authority by the Elections Centre. The data are stored in a database designed by Lawrence Ware and maintained by Brian Cheal and others at Plymouth University. Despite our best efforts some information remains elusive whilst we accept that some errors are likely to remain. Notice of any mistakes should be sent to elections@plymouth.ac.uk. The results sequence can be kept up to date by purchasing copies of the annual Local Elections Handbook, details of which can be obtained by contacting the email address above.

Front cover: the graph shows the distribution of percentage vote shares over the period covered by the results. The lines reflect the colours traditionally used by the three main parties. The grey line is the share obtained by Independent candidates while the purple line groups together the vote shares for all other parties.

Rear cover: the top graph shows the percentage share of council seats for the main parties as well as those won by Independents and other parties. The lines take account of any by-election changes (but not those resulting from elected councillors switching party allegiance) as well as the transfers of seats during the main round of local election.

The lower graph shows for each main round of local elections the overall percentage turnout (solid line), the percentage of women candidates standing at (dotted line) and the percentage of women among those elected (hashed line).

Cornwall 1973

Altarnun (2220)			
		vote	share
Hooper L.	Ind	0	0.0
Turnout		0.0	0.0
Bodmin (6513) ²			
		vote	share
Macwatt I.	Ind	1,384	100.0
Kinsman H.	Ind	1,013	-
Hill L.	Ind	818	-
Hedger R.	Ind	619	-
Turnout		37.0	47.2
Breage (4119)			
		vote	share
Roberts D.	Ind	0	0.0
Turnout		0.0	0.0
Bude (4580)			
		vote	share
Ball J.	Ind	978	51.4
Willoughby R.	Ind	925	48.6
Turnout		41.7	2.8
Budock (4819)			
		vote	share
Thomas C. Ms.	Ind	1,004	43.1
Blasbery H.	Con	731	31.4
Rickard W.	Ind	596	25.6
Turnout		48.4	11.7
Callington (3341)			
		vote	share
Tamblyn J.	Ind	1,163	67.2
Pengelly C.	Ind	568	32.8
Turnout		52.1	34.4
Calstock (3367)			
		vote	share
Rodda L.	Ind	713	53.3
Martin J.	Ind	625	46.7
Turnout		39.8	6.6
Camborne (North) (3800)			
		vote	share
Weeks A. Ms.	Lab	828	65.3
Richards C.	Con	440	34.7
Turnout		33.6	30.6
Camborne (South) (4732)			
		vote	share
Bath R.	Con	0	0.0
Turnout		0.0	0.0
Camborne (West) (4404)			
		vote	share
Bowden K.	Con	545	54.0
Norman E. Ms.	Ind	464	46.0
Turnout		23.6	8.0
Camelford (2678)			
		vote	share
Wakeham T.	Ind	873	52.3
St. Aubyn-Molesworth J.	Ind	797	47.7
Turnout		62.6	4.6
Falmouth (Arwenack) (2591)			
		vote	share
Lobb F.	Con	0	0.0
Turnout		0.0	0.0

Falmouth (Penwerris) (4557)			
		vote	share
Davey G.	Lab	0	0.0
Turnout		0.0	0.0
Falmouth (Smithick) (2564)			
		vote	share
Symonds G.	Lab	765	54.6
Parry L.	Con	636	45.4
Turnout		54.7	9.2
Falmouth (Trevethan) (3695)			
		vote	share
Wood F. Ms.	Ind	0	0.0
Turnout		0.0	0.0
Fowey & Lostwithiel (3760)			
		vote	share
Ough P.	Ind	856	54.6
Spreadbury I.	Ind	713	45.4
Turnout		41.8	9.1
Grampound (3716)			
		vote	share
Williams F.	Ind	0	0.0
Turnout		0.0	0.0
Hayle (5504)			
		vote	share
Cock W.	Ind	737	31.6
Harwood F.	Ind	434	18.6
Sleeman J.	Ind	423	18.2
Bibby W.	Con	357	15.3
Johns H.	Ind	260	11.2
Capper L.	Ind	119	5.1
Turnout		42.6	13.0
Helland (2649)			
		vote	share
Brewer F.	Ind	0	0.0
Turnout		0.0	0.0
Helston (Helston) (4538)			
		vote	share
Moyle F.	Ind	967	66.2
Thomas F.	Lab	494	33.8
Turnout		32.3	32.4
Helston (Porthleven & Sithney) (2359)			
		vote	share
Andrews G.	Ind	437	50.1
Gale M.	Ind	436	49.9
Turnout		37.2	0.1
Illogan North (4914)			
		vote	share
Bawden F.	Con	591	36.7
Rule S.	Lab	477	29.6
Bailey J.	Ind	325	20.2
Powell M. Ms.	Ind	218	13.5
Turnout		33.0	7.1
Illogan South (2758)			
		vote	share
Penna W.	Ind	395	55.4
Elford D.	Lab	318	44.6
Turnout		25.9	10.8
Kea & Kenwyn (6319)			
		vote	share
Hooker J.	Ind	0	0.0
Turnout		0.0	0.0
Lanreath (3622)			
		vote	share
Philp J.	Ind	0	0.0
Turnout		0.0	0.0

Launceston (4055)			
		vote	share
Hart J. Ms.	Ind	1,026	54.7
Thomas G.	Ind	436	23.3
Parsons C.	Ind	413	22.0
Turnout		47.1	31.5
Linkinhorne (2454)			
		vote	share
Trewin K.	Ind	584	71.6
Trevallion R.	Lib	232	28.4
Turnout		33.3	43.1
Liskeard (4101)			
		vote	share
Andrew A.	Ind	1,487	76.5
Holmes R.	Ind	456	23.5
Turnout		47.5	53.1
Looe (3272)			
		vote	share
Couch M. Ms.	Ind	0	0.0
Turnout		0.0	0.0
Ludgvan (3257)			
		vote	share
Green F.	Ind	0	0.0
Turnout		0.0	0.0
Maker (2511)			
		vote	share
Carew Pole J.	Ind	1,046	60.9
Miller F.	Ind	352	20.5
Regan T.	Lab	320	18.6
Turnout		68.4	40.4
Marazion (3399)			
		vote	share
Hosking F.	Ind	0	0.0
Turnout		0.0	0.0
Menheniot (3619)			
		vote	share
Maddever J.	Ind	941	70.6
Mollard T.	Ind	392	29.4
Turnout		36.9	41.2
Mylor (3941)			
		vote	share
Dale K. Ms.	Ind	0	0.0
Turnout		0.0	0.0
Newquay No. 1 (North) (3145)			
		vote	share
Widdon E.	Ind	620	47.8
Brown H.	Ind	499	38.5
Brind H.	Lab	178	13.7
Turnout		41.5	9.3
Newquay No. 2 (4734)			
		vote	share
Cocks P.	Ind	0	0.0
Turnout		0.0	0.0
Newquay No. 3 (2381)			
		vote	share
Mountford L.	Ind	0	0.0
Turnout		0.0	0.0
Padstow (4065)			
		vote	share
Kestell W.	Ind	951	61.9
Bennett F. Ms.	Ind	585	38.1
Turnout		37.8	23.8

Penryn (3925)			
		vote	share
Tallack F.	Ind	1,059	62.2
Gwyther E.	Lab	428	25.1
Grevatte-Ball E. Ms.	Ind	216	12.7
Turnout		43.8	37.1

Penzance (Central) (5043)			
		vote	share
Rowe M.	Ind	0	0.0
Turnout		0.0	0.0

Penzance (East) (4165)			
		vote	share
Batten J.	Ind	1,061	56.7
Nicholas J.	Ind	811	43.3
Turnout		45.0	13.4

Penzance (North) (2334)			
		vote	share
Lutey H.	Ind	505	52.7
Burstow R.	Ind	454	47.3
Turnout		41.2	5.3

Penzance (South) (3354)			
		vote	share
Cocks G.	Ind	0	0.0
Turnout		0.0	0.0

Perranporth (4770)			
		vote	share
Rowse W.	Ind	933	43.0
Tredinnick J.	Ind	708	32.6
Williams J.	Ind	295	13.6
Bebbington E.	Ind	236	10.9
Turnout		45.8	10.4

Probus (2916)			
		vote	share
Hicks H.	Ind	1,278	87.2
Davies C.	Ind	187	12.8
Turnout		50.3	74.5

Redruth (North) (4312)			
		vote	share
Williams G.	Ind	658	70.6
Hocking E.	Ind	274	29.4
Turnout		21.8	41.2

Redruth (South) (3750)			
		vote	share
Jeffery S.	Ind	0	0.0
Turnout		0.0	0.0

Roche (3715)			
		vote	share
Pollard W.	Ind	0	0.0
Turnout		0.0	0.0

Roseland (3347)			
		vote	share
Julyan R.	Ind	0	0.0
Turnout		0.0	0.0

Saltash (7738)²			
		vote	share
Foster J.	Ind	1,684	100.0
Hodge K.	Ind	1,587	-
Coleman A.	Ind	1,105	-
Turnout		35.9	83.7

St. Agnes (4041)			
		vote	share
Simmons H.	Ind	0	0.0
Turnout		0.0	0.0

St. Austell (East Central) (5323)			
		vote	share
Wakeford J.	Ind	1,308	73.8
Sanderson H.	Lab	465	26.2
Turnout		33.4	47.5

St. Austell (East) (5416)²			
		vote	share
Goddard J.	Ind	1,164	100.0
Williams H.	Ind	1,116	-
Trevanion D.	Ind	574	-
Turnout		37.5	60.1

St. Austell (North) (2748)			
		vote	share
Clyne D.	Ind	0	0.0
Turnout		0.0	0.0

St. Austell (South) (4946)			
		vote	share
Dorman E.	Ind	929	58.4
Whetter J.	Ind	663	41.6
Turnout		32.2	16.7

St. Austell (West Central) (4711)			
		vote	share
Gallagher J.	Ind	1,187	72.3
McAllister T.	Lab	454	27.7
Turnout		34.9	44.7

St. Buryan (2216)			
		vote	share
Daniel J.	Ind	796	54.5
Hicks T.	Ind	665	45.5
Turnout		66.0	9.0

St. Cleer (2202)			
		vote	share
Olliver J.	Ind	0	0.0
Turnout		0.0	0.0

St. Columb (4325)			
		vote	share
Hoskin E.	Ind	0	0.0
Turnout		0.0	0.0

St. Day & Lanner (3591)			
		vote	share
Pullen W.	Con	0	0.0
Turnout		0.0	0.0

St. Germans (3037)			
		vote	share
Tamblyn W.	Ind	0	0.0
Turnout		0.0	0.0

St. Ives (North) (3713)			
		vote	share
Daniel J.	Ind	903	75.4
Slocombe T.	Ind	294	24.6
Turnout		32.4	50.9

St. Ives (South) (3979)			
		vote	share
Knight A.	Ind	708	57.1
Franklin H.	Ind	275	22.2
Laity D.	Ind	257	20.7
Turnout		31.4	34.9

St. Just (2757)			
		vote	share
Derrington M. Ms.	Ind	0	0.0
Turnout		0.0	0.0

St. Keverne (4653)			
		vote	share
Hendy A.	Ind	2,047	63.3
Trewin J.	Ind	1,186	36.7
Turnout		69.6	26.6

St. Kew (2989)			
		vote	share
Hobbs R.	Ind	610	36.6
Lander H.	Ind	603	36.2
Dawe W.	Ind	453	27.2
Turnout		56.0	0.4

St. Stephen (4841)			
		vote	share
Clyma S.	Ind	0	0.0
Turnout		0.0	0.0

Stokeclimsland (3348)			
		vote	share
Phillips D.	Ind	0	0.0
Turnout		0.0	0.0

Stratton (3731)			
		vote	share
Gubbin S.	Ind	0	0.0
Turnout		0.0	0.0

Tintagel (3059)			
		vote	share
Bray H.	Ind	0	0.0
Turnout		0.0	0.0

Torpoint (3472)			
		vote	share
Woolvett H.	Ind	0	0.0
Turnout		0.0	0.0

Truro (East) (4512)			
		vote	share
Carlyon A. Ms.	Ind	732	48.5
Scott M.	Ind	497	32.9
Beeching J.	Ind	280	18.6
Turnout		33.6	15.6

Truro (West) (6999)²			
		vote	share
Smith K.	Ind	0	0.0
Hodge J.	Ind	0	-
Turnout		0.0	0.0

Wadebridge (3584)			
		vote	share
Lang D.	Ind	0	0.0
Turnout		0.0	0.0

Wendron (3965)			
		vote	share
Gluyas W.	Ind	0	0.0
Turnout		0.0	0.0

Cornwall 1977

Altarnun (2503)

		vote	share
Hooper L.*	Ind	852	63.3
Brown A.	Ind	495	36.7
Turnout		54.1	26.5

Bodmin (7514)²

		vote	share
Kinsman H.*	Ind	911	33.7
Pooley A.	Lab	578	21.4
Quinnell A.	Lib	465	17.2
Lyne W.	Ind	424	-
Bamford J.	Ecol	420	15.5
Hedger R.	Ind	390	-
Harding C.	Lab	381	-
Lees-Barton R.	Ind	346	-
Phillips D.	Ind	300	-
Townsend B.	Res	223	8.2
Melbourne B. Ms.	Ind	153	-
Williams O. Ms.	NF	109	4.0
Turnout		35.7	12.3

Breage (4406)

		vote	share
Roberts D.*	Ind	0	0.0
Turnout		0.0	0.0

Bude (5041)

		vote	share
Ball J.*	Ind	0	0.0
Turnout		0.0	0.0

Budock (5082)

		vote	share
Eccleshall D.	Con	1,063	47.1
Rickard S. Ms.	Ind	607	26.9
Spargo E.	Ind	589	26.1
Turnout		44.6	20.2

Callington (3543)

		vote	share
Tamblyn J.*	Ind	0	0.0
Turnout		0.0	0.0

Calstock (3610)

		vote	share
Rodda L.*	Ind	561	37.7
Uren C.	Ind	419	28.1
Harley S.	Ind	263	17.7
Smale T.	Lab	247	16.6
Turnout		41.4	9.5

Camborne (North) (4469)

		vote	share
Waters B. Ms.	Con	812	52.0
Weeks A. Ms.*	Lab	749	48.0
Turnout		35.0	4.0

Camborne (South) (4394)

		vote	share
Scantlebury J.	Ind	574	35.8
Bunt A.	Ind Lab	569	35.5
Bath R.*	Con	462	28.8
Turnout		37.1	0.3

Camborne (West) (4335)

		vote	share
Bowden K.*	Con	755	66.5
Haydney D.	Ind	246	21.7
Norman E. Ms.	Ind	134	11.8
Turnout		26.7	44.8

Camelford (2817)

		vote	share
Sprayson K.	Ind	0	0.0
Turnout		0.0	0.0

Falmouth (Arwenack) (2563)

		vote	share
Lobb F.*	Con	0	0.0
Turnout		0.0	0.0

Falmouth (Penwerris) (4594)

		vote	share
Pearce J.	Ind	909	58.3
Davey G.*	Lab	651	41.7
Turnout		34.0	16.5

Falmouth (Smithick) (2965)

		vote	share
Harding T.	Con	0	0.0
Turnout		0.0	0.0

Falmouth (Trevethan) (3842)

		vote	share
Evans G.	Con	0	0.0
Turnout		0.0	0.0

Fowey & Lostwithiel (3871)

		vote	share
Kerr H.	Ind	814	48.5
Spreadbury I.	Ind	743	44.2
Sandercock G.	MK	123	7.3
Turnout		43.6	4.2

Grampound (3934)

		vote	share
Williams F.*	Ind	0	0.0
Turnout		0.0	0.0

Hayle (5985)

		vote	share
Cock W.*	Ind	988	55.9
Sleeman J.	Ind	416	23.5
Ansell G.	MK	216	12.2
Bailey M. Ms.	Lab	149	8.4
Turnout		30.1	32.3

Helland (2850)

		vote	share
Faull J.	Ecol	0	0.0
Turnout		0.0	0.0

Helston (Helston) (5075)

		vote	share
Climo C.	Ind	0	0.0
Turnout		0.0	0.0

Helston (Porthleven & Sithney) (2478)

		vote	share
Andrews G.*	Ind	630	73.9
Prior P.	MK	222	26.1
Turnout		34.4	47.9

Illogan North (5214)

		vote	share
Thomas B.	Con	720	48.4
Nicholls F.	Ind Con	296	19.9
Williams J. Ms.	MK	273	18.3
Bawden F.*	Ind Con	200	13.4
Turnout		28.8	28.5

Illogan South (3188)

		vote	share
Dudeny P.	Con	381	55.3
Sara E.	Ind	308	44.7
Turnout		21.7	10.6

Kea & Kenwyn (7226)

		vote	share
Hooker J.*	Con	1,837	60.7
Cox S. Ms.	Ind	955	31.5
Smith B.	Ind	235	7.8
Turnout		42.5	29.1

Lanreath (3904)

		vote	share
Philp J.*	Ind	0	0.0
Turnout		0.0	0.0

Launceston (4180)

		vote	share
Hart J. Ms.*	Ind	0	0.0
Turnout		0.0	0.0

Linkinhorne (2761)

		vote	share
Trewin K.*	Ind	0	0.0
Turnout		0.0	0.0

Liskeard (4508)

		vote	share
Eliot M.	Ind	1,069	49.8
Holmes R.	MK	521	24.3
Gallagher W.	CARE	281	13.1
Lyon T.	Ind	277	12.9
Turnout		48.7	25.5

Looe (3398)

		vote	share
Couch M. Ms.*	Ind	772	61.3
Penrose P.	Ind	487	38.7
Turnout		37.3	22.6

Ludgvan (3372)

		vote	share
Green F.*	Ind	0	0.0
Turnout		0.0	0.0

Maker (2741)

		vote	share
Carew Pole J.*	Ind	0	0.0
Turnout		0.0	0.0

Marazion (3456)

		vote	share
Hosking F.*	Ind	0	0.0
Turnout		0.0	0.0

Menheniot (3932)

		vote	share
Kitson J.	Ind	932	49.4
Maddever J.*	Ind	632	33.5
Irving J.	Ind	173	9.2
Willington S. Ms.	Ecol	149	7.9
Turnout		48.2	15.9

Mylor (4022)

		vote	share
Dale K. Ms.*	Ind	0	0.0
Turnout		0.0	0.0

Newquay No. 1 (North) (3270)

		vote	share
Widdon E.*	Ind	0	0.0
Turnout		0.0	0.0

Newquay No. 2 (5139)

		vote	share
Cocks P.*	Ind	0	0.0
Turnout		0.0	0.0

Newquay No. 3 (2412)

		vote	share
Mountford L.*	Ind	0	0.0
Turnout		0.0	0.0

Padstow (4285)

		vote	share
Kestell W.*	Ind	0	0.0
Turnout		0.0	0.0

Penryn (3931)			
		vote	share
Ashwin J.	Con	0	0.0
Turnout		0.0	0.0
Penzance (Central) (4862)			
		vote	share
Rowe M.*	Ind	0	0.0
Turnout		0.0	0.0
Penzance (East) (4191)			
		vote	share
Nicholas J.	Ind	0	0.0
Turnout		0.0	0.0
Penzance (North) (3462)			
		vote	share
Lutey H.*	Ind	0	0.0
Turnout		0.0	0.0
Penzance (South) (2610)			
		vote	share
Cocks G.*	Ind	0	0.0
Turnout		0.0	0.0
Perranporth (4949)			
		vote	share
Rowe W.*	Ind	0	0.0
Turnout		0.0	0.0
Probus (3048)			
		vote	share
Hicks H.*	Con	0	0.0
Turnout		0.0	0.0
Redruth (North) (4193)			
		vote	share
Ham J.	Ind	416	50.6
Verge J.	Con	406	49.4
Turnout		19.8	1.2
Redruth (South) (3920)			
		vote	share
Davey A.	Ind	542	38.4
Jeffery S.*	Ind	445	31.5
Barron P. Ms.	Con	255	18.1
Soloman J.	MK	169	12.0
Turnout		36.6	6.9
Roche (3860)			
		vote	share
Burnett P.	Ind	1,133	63.1
Tidy B.	Ind	663	36.9
Turnout		46.8	26.2
Roseland (3532)			
		vote	share
Julyan R.*	Ind	0	0.0
Turnout		0.0	0.0
Saltash (8572) ²			
		vote	share
Foster J.*	Ind	2,118	55.6
Hodge K.*	Ind	1,934	-
Scannell J.	Lib	1,336	35.1
Cummins G.	NF	356	9.3
Turnout		41.8	20.5
St. Agnes (4156)			
		vote	share
Simmons H.*	Ind	0	0.0
Turnout		0.0	0.0
St. Austell (East Central) (6222)			
		vote	share
Wakeford J.*	Ind	1,518	81.6
Curtis M.	Lab	343	18.4
Turnout		30.0	63.1

St. Austell (East) (5687) ²			
		vote	share
Goddard J.*	Ind	1,314	72.4
Williams H.*	Ind	794	-
Bayliss W.	Lab	500	27.6
Turnout		33.8	44.9
St. Austell (North) (2662)			
		vote	share
Clyne D.*	Ind	606	70.4
Budge L.	Lab	255	29.6
Turnout		32.4	40.8
St. Austell (South) (5144)			
		vote	share
Dorman E.*	Ind	1,012	62.7
Dunn G.	Ind	276	17.1
Whetter J.	Ind	177	11.0
Gummo S.	Lab	148	9.2
Turnout		31.4	45.6
St. Austell (West Central) (4704)			
		vote	share
Gallagher J.*	Ind	1,146	75.6
McCallum H.	Lab	369	24.4
Turnout		32.2	51.3
St. Buryan (2382)			
		vote	share
Daniel J.*	Ind	0	0.0
Turnout		0.0	0.0
St. Cleer (2521)			
		vote	share
Olliver J.*	Ind	0	0.0
Turnout		0.0	0.0
St. Columb (4692)			
		vote	share
Hoskin E.*	Ind	0	0.0
Turnout		0.0	0.0
St. Day & Lanner (3798)			
		vote	share
Pullen W.*	Con	501	37.3
Smitheram F.	Ind	349	26.0
Nurhonen D.	Ind	296	22.1
Spargo E.	Ind	196	14.6
Turnout		35.5	11.3
St. Germans (3468)			
		vote	share
Harding W.	Ind	924	50.7
Tamblyn W.*	Ind	898	49.3
Turnout		52.7	1.4
St. Ives (North) (3762)			
		vote	share
Daniel J.*	Ind	891	80.8
Williams I.	MK	212	19.2
Turnout		29.5	61.6
St. Ives (South) (4199)			
		vote	share
Eddy O.	Ind	903	53.2
Clarke J. Ms.	Ind	422	24.9
Elsden R. Ms.	Ind	213	12.6
Knight A.*	Ind	158	9.3
Turnout		40.6	28.4
St. Just (2867)			
		vote	share
Derrington M. Ms.*	Ind	0	0.0
Turnout		0.0	0.0
St. Keverne (5152)			
		vote	share
Hendy A.*	Ind	0	0.0
Turnout		0.0	0.0

St. Kew (3297)			
		vote	share
Lander H.	Ind	0	0.0
Turnout		0.0	0.0
St. Stephen (4675)			
		vote	share
Clyma S.*	Ind	769	56.0
Smyth W.	Ind	605	44.0
Turnout		29.5	11.9
Stokeclimland (3685)			
		vote	share
Davis P.	Ind	617	39.2
Burden N.	Ind	507	32.2
Penney M.	Ind	451	28.6
Turnout		42.8	7.0
Stratton (3918)			
		vote	share
Sutton A.	Ind	0	0.0
Turnout		0.0	0.0
Tintagel (3228)			
		vote	share
Whiting F.	Ind	1,081	60.3
Flower R.	Ind	712	39.7
Turnout		56.1	20.6
Torpoint (3776)			
		vote	share
Tregedeon F.	Ind	889	62.9
Callender C.	CARE	525	37.1
Turnout		37.6	25.7
Truro (East) (4726)			
		vote	share
Carlyon A. Ms.*	Ind	1,015	52.8
Hurst J.	Lib	835	43.5
Anchors P.	Lab	71	3.7
Turnout		41.0	9.4
Truro (West) (7119) ²			
		vote	share
Hodge J.*	Ind	1,771	52.9
Banfield R.	Con	1,574	47.1
Evans R. Ms.	Ind	690	-
Turnout		40.4	5.9
Wadebridge (3668)			
		vote	share
Palmer E. Ms.	Ind	708	40.9
Lang D.*	Ind	624	36.1
Goldsmith E.	Ecol	398	23.0
Turnout		47.7	4.9
Wendron (3929)			
		vote	share
Gluyas W.*	Ind	1,004	68.5
Micklethwait G.	Ind Con	462	31.5
Turnout		37.4	37.0

Cornwall 1981

Altarnun (2593)			
		vote	share
Hooper L.*	Ind	676	50.8
Brown A.	Ind	654	49.2
	Turnout	51.6	1.7
Bodmin (8207)²			
		vote	share
Quinnell A.	Lib	1,430	45.6
Kinsman H.*	Ind	942	30.1
Lyne W.	Ind	920	-
Fenton J.	Lab	761	24.3
Loftus G.	Lab	639	-
	Turnout	34.8	15.6
Breage (4427)			
		vote	share
Roberts D.*	Ind	0	0.0
	Turnout	0.0	0.0
Bude (5483)			
		vote	share
Spiers J.	Ind	1,052	41.2
Ball J.*	Con	898	35.1
Terry A. Ms.	Lab	605	23.7
	Turnout	46.9	6.0
Budock (5139)			
		vote	share
Eccleshall D.*	Con	1,116	54.7
Rickard W.	Ind	926	45.3
	Turnout	39.9	9.3
Callington (3682)			
		vote	share
Tamblyn J.*	Ind	1,359	80.7
Burley E.	Ind	324	19.3
	Turnout	45.9	61.5
Calstock (3943)			
		vote	share
Smale T.	Lab	630	36.6
Martin J.	Con	584	34.0
Uren C.	Ind	341	19.8
Venning S.	Ind	164	9.5
	Turnout	43.7	2.7
Camborne (North) (4838)			
		vote	share
Waters B. Ms.*	Con	725	40.2
Warren D.	Lab	573	31.8
Ford G.	Lib	390	21.6
Skewes C.	MK	116	6.4
	Turnout	37.8	8.4
Camborne (South) (4638)			
		vote	share
Bunt A.	Lab	1,040	50.8
Scantlebury J.*	Ind	758	37.0
Close B. Ms.	Con	250	12.2
	Turnout	44.9	13.8
Camborne (West) (4537)			
		vote	share
Bowden K.*	Con	748	45.9
Haynes-Curtis C. Ms.	Lab	686	42.1
Mitchell K. Ms.	MK	197	12.1
	Turnout	36.1	3.8
Camelford (2836)			
		vote	share
Northcott H.	Ind	0	0.0
	Turnout	0.0	0.0

Falmouth (Arwenack) (2495)			
		vote	share
Lobb P.*	Con	0	0.0
	Turnout	0.0	0.0
Falmouth (Penwerris) (4461)			
		vote	share
Timmins D.	Lab	866	55.7
Pearce J.*	Ind	689	44.3
	Turnout	35.1	11.4
Falmouth (Smithick) (3144)			
		vote	share
O'Brien D.	Con	561	51.4
O'Neill R.	Ind	530	48.6
	Turnout	35.5	2.8
Falmouth (Trevethan) (4295)			
		vote	share
Evans G.*	Con	935	57.1
Pellow D.	Ind	703	42.9
	Turnout	38.9	14.2
Fowey & Lostwithiel (3918)			
		vote	share
Court H. Ms.	Ind	1,002	54.7
Meyer T.	Lib	661	36.1
Saundry J.	MK	169	9.2
	Turnout	46.8	18.6
Grampound (4102)			
		vote	share
Williams F.*	Ind	0	0.0
	Turnout	0.0	0.0
Hayle (6291)			
		vote	share
Cock W.*	Ind	975	48.6
Ring J.	Lab	575	28.7
Sleeman J.	Ind	455	22.7
	Turnout	32.1	20.0
Helland (2995)			
		vote	share
Faull J.*	Ecol	791	50.0
Tyler P.	Lib	790	50.0
	Turnout	52.9	0.1
Helston (Helston) (5084)			
		vote	share
Climo C.*	Ind	577	42.1
Grayson D.	Lib	564	41.2
Gerrard G.	MK	228	16.7
	Turnout	27.1	0.9
Helston (Porthleven & Sithney) (2525)			
		vote	share
Bond R.	Ind	563	45.7
Andrews G.*	Ind	543	44.1
Prior P.	MK	125	10.2
	Turnout	49.2	1.6
Illogan North (5492)			
		vote	share
Stone R.	Con	1,061	60.1
Roberts K.	Lab	705	39.9
	Turnout	32.5	20.2
Illogan South (3378)			
		vote	share
Godolphin R.	Lab	522	50.4
Dudenev P.*	Con	360	34.8
Forster A.	MK	153	14.8
	Turnout	30.7	15.7
Kea & Kenwyn (7682)			
		vote	share
Hooker J.*	Con	0	0.0
	Turnout	0.0	0.0

Lanreath (4075)			
		vote	share
Philp J.*	Ind	0	0.0
	Turnout	0.0	0.0
Launceston (4588)			
		vote	share
Baker L.	Lib	1,542	53.3
Buckingham A.	Ind	1,162	40.2
Partridge G. Ms.	Lab	189	6.5
	Turnout	63.3	13.1
Linkinhorne (2905)			
		vote	share
Simmons A.	Lib	784	56.6
Trewin K.*	Ind	601	43.4
	Turnout	47.7	13.2
Liskeard (4756)			
		vote	share
Eliot R.*	Con	1,122	48.6
Pascoe J. Ms.	Lib	871	37.7
Holmes R.	MK	316	13.7
	Turnout	48.8	10.9
Looe (3770)			
		vote	share
Bonson H.	Ind	982	60.9
Warrington J.	Con	631	39.1
	Turnout	43.0	21.8
Ludgvan (3488)			
		vote	share
Green F.*	Ind	0	0.0
	Turnout	0.0	0.0
Maker (2815)			
		vote	share
Carew Pole J.*	Ind	0	0.0
	Turnout	0.0	0.0
Marazion (3607)			
		vote	share
Hosking F.*	Ind	0	0.0
	Turnout	0.0	0.0
Menheniot (4140)			
		vote	share
Kitson J.*	Ind	1,334	70.2
Jones D.	Lib	566	29.8
	Turnout	46.0	40.4
Mylor (4159)			
		vote	share
Dale K. Ms.*	Con	0	0.0
	Turnout	0.0	0.0
Newquay No. 1 (North) (3238)			
		vote	share
Widdon E.*	Ind	742	66.7
Nelson A.	Lab	371	33.3
	Turnout	34.5	33.3
Newquay No. 2 (5634)			
		vote	share
Cocks P.*	Lib	1,633	66.1
Smith C.	Con	596	24.1
Jose K.	Lab	240	9.7
	Turnout	43.9	42.0
Newquay No. 3 (2468)			
		vote	share
Mountford L.*	Ind	1,053	80.0
Boyle D.	Lab	264	20.0
	Turnout	53.5	59.9

Padstow (4199)			
		vote	share
Kestell W.*	Ind	1,364	78.3
Boyle D.	Lab	379	21.7
Turnout		41.7	56.5
Penryn (3835)			
		vote	share
Smuda L. Ms.	Ind	654	50.1
Mann E. Ms.	Lib	652	49.9
Turnout		34.2	0.2
Penzance (Central) (4747)			
		vote	share
Batten J.	Ind	643	38.3
Lawry C.	MK	562	33.4
Rowe M.*	Con	476	28.3
Turnout		35.6	4.8
Penzance (East) (4156)			
		vote	share
Nicholas J.*	Ind	759	42.4
Rogers W.	Con	596	33.3
Murley C.	MK	433	24.2
Turnout		43.1	9.1
Penzance (North) (2619)			
		vote	share
Lutey H.*	Ind	0	0.0
Turnout		0.0	0.0
Penzance (South) (3383)			
		vote	share
Cocks G.*	Ind	797	66.1
Ruhrmund J.	Ind	409	33.9
Turnout		35.8	32.2
Perranporth (5125)			
		vote	share
Rowse W.*	Ind	0	0.0
Turnout		0.0	0.0
Probus (3283)			
		vote	share
Grose T.	Con	0	0.0
Turnout		0.0	0.0
Redruth (North) (4386)			
		vote	share
White D.	Lab	365	29.4
Barron P. Ms.	Con	338	27.2
Ham J.*	Ind	314	25.3
Barnes R.	MK	226	18.2
Turnout		29.0	2.2
Redruth (South) (4001)			
		vote	share
Davey A.*	Ind	0	0.0
Turnout		0.0	0.0
Roche (3829)			
		vote	share
Burnett P.*	Ind	1,008	52.0
Hughes I. Ms.	Lib	931	48.0
Turnout		50.7	4.0
Roseland (3453)			
		vote	share
Julyan R.*	Ind	915	40.1
Mennear D.	Lib	885	38.7
Potts L.	Con	484	21.2
Turnout		66.4	1.3

Saltash (9330) ²			
		vote	share
Hodge K.*	Ind	1,733	50.3
Scannell J.	Lib	1,353	39.3
Foster J.*	Ind	1,317	-
Harding V.	Ind	1,289	-
Spring B. Ms.	Lib	831	-
Webb K.	Lab	357	10.4
Colton D.	Lab	342	-
Turnout		43.0	11.0
St. Agnes (4293)			
		vote	share
Thewlis T.	Ind	796	39.9
Sawle J.	Con	795	39.8
Richards O. Ms.	Ind	405	20.3
Turnout		46.9	0.1
St. Austell (East Central) (6900)			
		vote	share
Wakeford J.*	Ind	0	0.0
Turnout		0.0	0.0
St. Austell (East) (6192) ²			
		vote	share
Goddard J.*	Ind	1,510	88.3
Williams H.*	Ind	899	-
Pennington J.	Ind	812	-
Collins D.	MK	201	11.7
Turnout		35.8	76.5
St. Austell (North) (2567)			
		vote	share
Vincent E. Ms.	Lib	651	43.3
Budge L.	Lab	545	36.3
Scott T.	Ind	289	19.2
Lobb N.	MK	17	1.1
Turnout		58.6	7.1
St. Austell (South) (5316)			
		vote	share
Parsons D.	Con	944	63.1
Whetter J.	MK	553	36.9
Turnout		28.6	26.1
St. Austell (West Central) (5048)			
		vote	share
Curtice M. Ms.	Lib	1,280	62.5
Gallagher J.*	Ind	768	37.5
Turnout		40.7	25.0
St. Buryan (2332)			
		vote	share
Daniel J.*	Ind	0	0.0
Turnout		0.0	0.0
St. Cleer (2682)			
		vote	share
Olliver J.*	Ind	0	0.0
Turnout		0.0	0.0
St. Columb (4896)			
		vote	share
Parkyn A.	VOP	1,498	56.5
Harvey P. Ms.	Con	563	21.2
Hoskin E.*	Lib	556	21.0
Hitchens R.	MK	35	1.3
Turnout		54.4	35.3
St. Day & Lanner (3941)			
		vote	share
Wayne K. Ms.	Lab	509	36.8
Smitheram F.	Ind	445	32.2
Pullen W.*	Con	428	31.0
Turnout		35.2	4.6

St. Germans (3713)			
		vote	share
Harding W.*	Con	1,138	61.5
Spring G.	Lib	458	24.8
Bebb A.	Lab	254	13.7
Turnout		50.0	36.8
St. Ives (North) (3662)			
		vote	share
Storer H.	Con	751	54.1
Daniel J.*	Ind	637	45.9
Turnout		38.3	8.2
St. Ives (South) (4440)			
		vote	share
Eddy O.*	Con	749	52.5
Laity N.	Ind	678	47.5
Turnout		32.4	5.0
St. Just (3051)			
		vote	share
Derrington M. Ms.*	Ind	0	0.0
Turnout		0.0	0.0
St. Keverne (5299)			
		vote	share
Hendy A.*	Ind	0	0.0
Turnout		0.0	0.0
St. Kew (3479)			
		vote	share
Lander H.*	Ind	1,186	62.3
Scawin A.	Con	718	37.7
Turnout		54.7	24.6
St. Stephen (4768)			
		vote	share
Hughes K.	Lib	1,072	51.9
Harris D.	Ind	992	48.1
Turnout		43.4	3.9
Stokeclimland (3865)			
		vote	share
Davey S.	Lib	1,172	53.6
Davis P.*	Ind	912	41.7
Leather D.	Lab	101	4.6
Turnout		56.7	11.9
Stratton (4111)			
		vote	share
Sutton A.*	Ind	1,062	53.9
Vogel P.	Lib	805	40.9
Watkinson L.	Lab	102	5.2
Turnout		48.0	13.1
Tintagel (3257)			
		vote	share
Whiting F.*	Ind	1,113	70.9
Flower R.	Ind	407	25.9
Pickering R.	Ind	49	3.1
Turnout		48.4	45.0
Torpoint (4668)			
		vote	share
Cross R.	Lib	917	49.1
Callender C.	Res	592	31.7
Andrews E.	Con	357	19.1
Turnout		40.2	17.4
Truro (East) (4831)			
		vote	share
Hurst J.	Lib	1,400	63.8
Carlyon A. Ms.*	Ind	794	36.2
Turnout		45.6	27.6
Truro (West) (7416) ²			
		vote	share
Banfield R.*	Con	0	0.0
Pryor M.	Lib	0	0.0
Turnout		0.0	0.0

Wadebridge (3845)			
		vote	share
Palmer E. Ms.*	Ind	0	0.0
Turnout		0.0	0.0

Wendron (4258)			
		vote	share
Gluyas W.*	Ind	0	0.0
Turnout		0.0	0.0

Cornwall 1985

Altarnun (3623)			
		vote	share
Hooper L.	Ind	686	36.2
Budge R.	Con	591	31.2
Brown A.*	Ind	459	24.2
Clark E. Ms.	Lab	161	8.5
Turnout		52.4	5.0

Biscoverey (4836)			
		vote	share
Wells S.	Lib/SDP	698	40.7
Wakeford J.	Ind	655	38.2
Woodroffe J. Ms.	Con	363	21.2
Turnout		35.5	2.5

Bodmin St. Marys (4550)			
		vote	share
Quinnell A.*	Lib/SDP	669	53.9
Jordan F.	Lab	306	24.6
Wallace F.	Ind	267	21.5
Turnout		27.3	29.2

Bodmin St. Petroc (4112)			
		vote	share
Taylor W.	Lib/SDP	752	70.3
Roberts J.	Lab	225	21.0
Trevallion R.	Ind Li	93	8.7
Turnout		26.0	49.3

Breage (4068)			
		vote	share
Roberts D.	Ind	1,498	83.1
Shaw G.	Con	305	16.9
Turnout		44.3	66.2

Bude (4723)			
		vote	share
Spiers J.*	Ind	1,318	81.8
Terry A. Ms.	Lab	294	18.2
Turnout		34.1	63.5

Callington (4317)			
		vote	share
Tamblyn J.*	Ind	0	0.0
Turnout		0.0	0.0

Calstock (4266)			
		vote	share
Smale T.*	Lab	1,114	50.6
Boundy C.	Con	745	33.8
Hilborne A.	Ind Con	183	8.3
Miles N.	Ecol	161	7.3
Turnout		51.6	16.7

Camborne North (4881)			
		vote	share
Waters B. Ms.	Con	640	42.7
Cosgrove M.	Lab	540	36.0
Robinson P.	Lib/SDP	318	21.2
Turnout		30.7	6.7

Camborne South (4819)			
		vote	share
Geach J.	Lab	934	49.5
Ford G.	Lib/SDP	564	29.9
Pascoe M.	Con	389	20.6
Turnout		39.2	19.6

Camborne West (4703)			
		vote	share
Heffer A.	Lib/SDP	906	56.7
Bowden K.*	Con	691	43.3
Turnout		34.0	13.5

Camelford (3559)			
		vote	share
Northcott H.	Ind	1,030	56.1
Ellison R.	Ind	602	32.8
Huntley H.	Lab	205	11.2
Turnout		51.6	23.3

Constantine (3969)			
		vote	share
Eccleshall D.	Con	742	44.1
Came O.	Ind	503	29.9
Rickard W.	Ind	437	26.0
Turnout		42.4	14.2

Dobwalls (3361)			
		vote	share
Matthews G.	Con	613	52.9
Edwards R.	Ind	546	47.1
Turnout		34.5	5.8

Falmouth Arwenack (5265)			
		vote	share
Evans G.*	Con	1,132	53.1
Hollebon M.	Lib/SDP	1,001	46.9
Turnout		40.5	6.1

Falmouth Penwerris (4382)			
		vote	share
Nelson A.	Lab	878	57.1
Davis P.	Ind	365	23.7
Jones E.	Lib/SDP	294	19.1
Turnout		35.1	33.4

Falmouth Smithick (5241)			
		vote	share
Harrison G.	Con	831	42.2
Greene G.	Lab	602	30.5
Alexander C.	Lib/SDP	538	27.3
Turnout		37.6	11.6

Feock & Kea (3951)			
		vote	share
Child M. Ms.	Lib/SDP	1,194	54.3
Lobb P.	Con	1,004	45.7
Turnout		55.6	8.6

Fowey & Lostwithiel (3983)			
		vote	share
Kerr H.	Con	608	31.3
Thomas R.	Lib/SDP	586	30.2
Kneebone S.	Ind	526	27.1
Saundry J.	CNP	223	11.5
Turnout		48.8	1.1

Grampound (4170)			
		vote	share
Williams F.	Ind	0	0.0
Turnout		0.0	0.0

Hayle North (4375)			
		vote	share
Johns H.	Ind	733	55.6
Reynolds M.	Con	585	44.4
Turnout		30.1	11.2

Hayle South (3691)			
		vote	share
Laity T.	Ind	585	56.6
Cock W.*	Ind	449	43.4
Turnout		28.0	13.2

Helland (3169)			
		vote	share
Thomson J. Ms.	Lib/SDP	0	0.0
Turnout		0.0	0.0

Helston North (4870)			
		vote	share
Curnow R.	Ind	447	37.3
Climo C.*	Ind	430	35.8
Grayson D.	Ind	262	21.8
Olliff R.	Ind	61	5.1
Turnout		24.6	1.4

Illogan & Portreath (4772)			
		vote	share
Holmes P.	Lib/SDP	777	55.7
Stone R.*	Con	617	44.3
Turnout		29.2	11.5

Illogan South (4783)			
		vote	share
Godolphin R.*	Lib/SDP	866	63.5
Bennie K.	Con	497	36.5
Turnout		28.5	27.1

Kenwyn (4295)			
		vote	share
Gosnay G. Ms.	Lib/SDP	1,076	66.6
Howes J.	Ind	540	33.4
Turnout		37.6	33.2

Lanreath (4145)			
		vote	share
Philp J.	Ind	1,355	75.4
Gilroy D.	Con	441	24.6
Turnout		43.3	50.9

Launceston (4847)			
		vote	share
Baker L.*	Lib/SDP	1,787	88.0
Clark L.	Lab	244	12.0
Turnout		41.9	76.0

Liskeard (4997)			
		vote	share
Eliot M.*	Con	1,127	51.8
Moss E.	Ind	758	34.9
Minns J.	Lab	266	12.2
Cullingford D.	BNP	24	1.1
Turnout		43.5	17.0

Looe (3985)			
		vote	share
Bonson H.*	Ind	1,101	64.9
Langmaid P.	Con	595	35.1
Turnout		42.6	29.8

Ludgvan (4746)			
		vote	share
Lutley H.*	Con	0	0.0
Turnout		0.0	0.0

Marazion (3658)			
		vote	share
Barnard E. Ms.	Con	551	37.5
Thomas T.	Ind	464	31.6
Brooke J.	Ind	455	31.0
Turnout		40.2	5.9

Meneage & South Helston (3980)			
		vote	share
Lyne P. Ms.	Ind	1,081	76.8
Bryant R.	Con	327	23.2
Turnout		35.4	53.6

Menheniot (3151)			
		vote	share
Simmons A.	Lib/SDP	1,144	75.5
Higgins M.	Con	348	23.0
Trehane R.	BNP	24	1.6
Turnout		48.1	52.5
Mylor (4380)			
		vote	share
Dale K. Ms.	Con	1,185	64.9
Webb A.	Lib/SDP	642	35.1
Turnout		41.7	29.7
Newquay Central (4720)			
		vote	share
Cocks P.*	Lib/SDP	1,132	75.6
Trevena A.	Ind	366	24.4
Turnout		31.7	51.1
Newquay North (4201)			
		vote	share
Hosking W.	Lib/SDP	1,476	77.8
Bedford J.	Con	421	22.2
Turnout		45.2	55.6
Newquay West (3946)			
		vote	share
Mitchell A.	Lib/SDP	975	56.8
Mountford L.*	Ind	742	43.2
Turnout		43.5	13.6
Padstow (4526)			
		vote	share
Hirst A.	Ind	0	0.0
Turnout		0.0	0.0
Penryn (3958)			
		vote	share
Mann M. Ms.*	Lib/SDP	1,086	79.0
Smith H.	Con	289	21.0
Turnout		34.7	58.0
Penzance East (5033)			
		vote	share
Large S.	Lab	1,247	53.5
Nicholas J.*	Con	1,082	46.5
Turnout		46.3	7.1
Penzance South (4880)			
		vote	share
Lawry C.	MK	1,037	51.7
Marsh D.	Con	970	48.3
Turnout		41.1	3.3
Penzance West (4582)			
		vote	share
Furse K.	Con	0	0.0
Turnout		0.0	0.0
Perranporth (5570)			
		vote	share
Rowse W.*	Ind	0	0.0
Turnout		0.0	0.0
Poltair (4802)			
		vote	share
Curtice M. Ms.*	Lib/SDP	0	0.0
Turnout		0.0	0.0
Porthleven (3645)			
		vote	share
Richards D.	Ind	694	44.0
Andrews G.	Ind	637	40.4
Prior P.	MK	246	15.6
Turnout		43.3	3.6

Probus (3973)			
		vote	share
Mannell G.	Lib/SDP	1,112	100.0
Grose T.*	Con	0	0.0
Turnout		27.9	100.0
Rame (3548)			
		vote	share
Carew Pole L.*	Ind	1,790	87.0
Crowley M. Ms.	Lab	267	13.0
Turnout		58.0	74.0
Redruth North (4559)			
		vote	share
Neville P.	Lab	0	0.0
Turnout		0.0	0.0
Redruth South (4329)			
		vote	share
Davey A.	Ind	0	0.0
Turnout		0.0	0.0
Roche (3913)			
		vote	share
Burnett P.*	Ind	942	56.4
Gregor S.	Lib/SDP	728	43.6
Turnout		42.7	12.8
Roseland (3534)			
		vote	share
Julyan R.*	Ind	1,234	61.3
Ewans E.	Lib/SDP	780	38.7
Turnout		57.0	22.5
Saltash East (5478)			
		vote	share
Spring B. Ms.	Lib/SDP	785	33.7
Hodge K.*	Ind	707	30.4
Smith B.	Ind	487	20.9
Eggs D.	Lab	327	14.0
Cummins G.	BNP	22	0.9
Turnout		42.5	3.4
Saltash West (4774)			
		vote	share
Scannell J.*	Lib/SDP	1,102	52.2
Avery K.	Res	673	31.9
Griffiths J.	Lab	336	15.9
Turnout		44.2	20.3
St. Agnes (4666)			
		vote	share
Cheshire F.	Lib/SDP	1,169	57.7
Thewlis T.*	Ind	858	42.3
Turnout		43.4	15.3
St. Austell West (4562)			
		vote	share
Smith A.	Lib/SDP	1,099	63.1
Down G.	Con	643	36.9
Turnout		38.2	26.2
St. Blaise (5033)			
		vote	share
Alexander T.	Ind	1,066	51.1
Ford T.	Lib/SDP	703	33.7
Atherton W.	Lab	317	15.2
Turnout		41.4	17.4
St. Cleer (4035)			
		vote	share
England O. Ms.	Lib/SDP	815	53.8
Olliver J.	Ind	699	46.2
Turnout		37.5	7.7
St. Columb (3214)			
		vote	share
Parkyn A.*	Ind	0	0.0
Turnout		0.0	0.0

St. Day Lanner & Carharrack (3961)			
		vote	share
Spargo E.	Con	483	33.3
McGough A.	Lib/SDP	447	30.8
Wayne T.*	Lab	330	22.8
James D.	Ind	190	13.1
Turnout		36.6	2.5
St. Germans (3279)			
		vote	share
Harding W.*	Con	861	50.8
Millard M.	Lib/SDP	833	49.2
Turnout		51.7	1.7
St. Ives North (3226)			
		vote	share
Storer H.*	Con	845	61.6
Parker S.	Lab	526	38.4
Turnout		42.5	23.3
St. Ives South (3704)			
		vote	share
Eddy O.	Ind	693	50.1
Milton D.	Con	689	49.9
Turnout		37.3	0.3
St. Just (4839)			
		vote	share
Daniel J.	Con	1,259	59.7
Murley C.	MK	851	40.3
Turnout		43.6	19.3
St. Keverne (4375)			
		vote	share
Hendy A.*	Con	1,356	64.6
Wilkes L.	Ind	744	35.4
Turnout		48.0	29.1
St. Kew (3563)			
		vote	share
Lander S.*	Ind	0	0.0
Turnout		0.0	0.0
St. Stephen (5973)			
		vote	share
Harris D.	Ind	1,258	60.9
Hughes K.*	Lib/SDP	806	39.1
Turnout		34.6	21.9
Stithians (3261)			
		vote	share
Plummer J.	Ind	0	0.0
Turnout		0.0	0.0
Stokeclimland (4301)			
		vote	share
Davey S.*	Lib/SDP	0	0.0
Turnout		0.0	0.0
Stratton (3916)			
		vote	share
Heard E. Ms.	Lib/SDP	810	51.7
Sutton A.*	Ind	758	48.3
Turnout		40.0	3.3
Tintagel (3521)			
		vote	share
Whiting F.*	Ind	1,372	85.2
Herries C.	Lab	239	14.8
Turnout		45.8	70.3
Torpoint (5547)			
		vote	share
Cross R.*	Lib/SDP	1,738	67.2
Callender C.	Res	523	20.2
Vernon T.	Lab	327	12.6
Turnout		46.7	46.9

Trevarna (4407)			
		vote	share
Horn A.	Lib/SDP	1,021	61.0
Gallagher J.	Con	652	39.0
	Turnout	38.0	22.1
Treverbyn (3734)			
		vote	share
Vincent E. Ms.	Lib/SDP	0	0.0
	Turnout	0.0	0.0
Truro East (4809)			
		vote	share
Hurst J.*	Lib/SDP	0	0.0
	Turnout	0.0	0.0
Truro South (4019)			
		vote	share
Ansari D. Ms.	Lib/SDP	1,434	75.0
James N.	Con	478	25.0
	Turnout	47.6	50.0
Truro West (3856)			
		vote	share
Pryor M. Ms.*	Lib/SDP	1,201	64.3
Flooks W.	Con	427	22.9
Jenner M.	Lab	157	8.4
Whetter J.	CNP	82	4.4
	Turnout	48.4	41.5
Wadebridge (4171)			
		vote	share
Fisher I.	Ind	0	0.0
	Turnout	0.0	0.0
Cornwall 1989			
Altarnun (3952)			
		vote	share
Hooper L.*	Ind	1,013	50.4
Gribble P. Ms.	Con	675	33.6
Harris B. Ms.	LD	321	16.0
	Turnout	50.8	16.8
Biscovey (5057)			
		vote	share
Yelland L. Ms.*	LD	1,284	61.7
Rosevear H.	Con	798	38.3
	Turnout	41.2	23.3
Bodmin St. Marys (4714)			
		vote	share
Quinnell A.*	LD	739	47.0
Jordan F.	Lab	632	40.2
Wallace F.	Ind	203	12.9
	Turnout	33.4	6.8
Bodmin St. Petroc (4481)			
		vote	share
Cox V. Ms.*	LD	971	55.2
Denholm E.	Con	517	29.4
Spears L. Ms.	Lab	272	15.5
	Turnout	39.3	25.8
Breage (4330)			
		vote	share
Roberts D.*	Ind	1,369	76.6
Walker J. Ms.	Con	418	23.4
	Turnout	41.3	53.2
Bude (5279)			
		vote	share
May O.*	LD	1,604	86.7
Terry J.	Lab	245	13.3
	Turnout	35.0	73.5

Callington (4923)			
		vote	share
Screech R.	Con	1,102	53.7
Potter M. Ms.	LD	950	46.3
	Turnout	41.7	7.4
Calstock (4708)			
		vote	share
Smale T.*	Lab	0	0.0
	Turnout	0.0	0.0
Camborne North (5110)			
		vote	share
Godolphin R.	Lab	670	41.2
Godolphin R.	LD	545	41.2
Pascoe M.	Con	411	25.3
	Turnout	31.8	0.0
Camborne South (5018)			
		vote	share
Geach J.	Lab	1,207	62.1
Williams S.	Con	470	24.2
Davies R.	LD	267	13.7
	Turnout	38.7	37.9
Camborne West (4930)			
		vote	share
Jeffery M.	Lab	805	35.4
Bowden K.	Con	770	33.8
Heffer A.	LD	702	30.8
	Turnout	46.2	1.5
Camelford (3874)			
		vote	share
Northcott H.*	Ind	1,411	83.0
Herries C. Ms.	Lab	288	17.0
	Turnout	43.9	66.1
Constantine (4108)			
		vote	share
Muirhead J.*	Con	1,422	69.4
Rickard W.	Ind	627	30.6
	Turnout	49.9	38.8
Dobwalls (3753)			
		vote	share
Mellor J.	LD	1,018	60.5
Thompson B.	Con	664	39.5
	Turnout	44.8	21.0
Falmouth Arwenack (5748)			
		vote	share
Evans G.*	Con	1,412	64.9
Greene G.	Lab	765	35.1
	Turnout	37.9	29.7
Falmouth Penwerris (4492)			
		vote	share
Nelson A.*	Lab	1,113	59.2
Roper A. Ms.	Con	516	27.4
O'Neill R.	Ind	251	13.4
	Turnout	41.9	31.8
Falmouth Smithick (5271)			
		vote	share
Harrison G.	Con	908	40.1
Lingham R.	LD	753	33.3
White J. Ms.	Lab	602	26.6
	Turnout	42.9	6.8
Feock & Kea (4137)			
		vote	share
Lobb P.	Con	1,145	52.5
Burton C.	LD	1,037	47.5
	Turnout	52.7	4.9

Fowey & Lostwithiel (4358)			
		vote	share
Tidy B.	LD	1,110	58.1
Band G.	Con	801	41.9
	Turnout	43.9	16.2
Grampound (4408)			
		vote	share
Parnall J.	LD	1,385	59.4
Williams J.*	Con	945	40.6
	Turnout	52.9	18.9
Hayle North (4832)			
		vote	share
Johns H.*	Ind	700	46.6
Jones D.	Con	461	30.7
McGuire M.	SDP	341	22.7
	Turnout	31.1	15.9
Hayle South (4423)			
		vote	share
Laity T.*	Ind	0	0.0
	Turnout	0.0	0.0
Helland (3447)			
		vote	share
Thomson J. Ms.*	LD	928	63.7
Bell R.	Con	528	36.3
	Turnout	42.2	27.5
Helston North (5269)			
		vote	share
Curnow R.*	Ind	686	47.1
Kibblewhite A.	Con	568	39.0
Pritchard G.	LD	201	13.8
	Turnout	27.6	8.1
Illogan & Portreath (5100)			
		vote	share
Holmes P.*	LD	1,272	66.5
Jopling N.	Con	641	33.5
	Turnout	37.5	33.0
Illogan South (5089)			
		vote	share
Moyle M.	LD	1,023	67.6
Stone R.	Con	491	32.4
	Turnout	29.8	35.1
Kenwyn (4671)			
		vote	share
Rowe P. Ms.	Ind	683	37.9
Nute C.*	LD	585	32.5
Smith D.	Con	366	20.3
Goldsworthy E. Ms.	Lab	167	9.3
	Turnout	38.6	5.4
Lanreath (4363)			
		vote	share
Philp J.*	Ind	0	0.0
	Turnout	0.0	0.0
Launceston (5027)			
		vote	share
Nicholls G.	LD	1,262	81.2
Hudson F.	Lab	292	18.8
	Turnout	30.9	62.4
Liskeard (5765)			
		vote	share
Eliot R.*	Con	1,093	48.6
England D. Ms.	LD	863	38.4
Holmes J.	MK	291	13.0
	Turnout	39.0	10.2
Looe (4374)			
		vote	share
Bonson H.*	Ind	0	0.0
	Turnout	0.0	0.0

Ludgvan (5301)			
		vote	share
Knowles R.*	Con	1,191	52.8
Simmons S.	LD	1,065	47.2
Turnout		42.6	5.6
Marazion (4114)			
		vote	share
Barnard E. Ms.*	Con	1,025	62.5
Stoneham P.	LD	614	37.5
Turnout		39.8	25.1
Meneage & South Helston (3917)			
		vote	share
Lyne P. Ms.*	Ind	1,063	77.6
Thompson G.	Con	307	22.4
Turnout		35.0	55.2
Menheniot (3375)			
		vote	share
Simmons A.*	LD	1,066	68.6
White S. Ms.	Con	488	31.4
Turnout		46.0	37.2
Mylor (4612)			
		vote	share
Dale K. Ms.*	Con	929	43.6
Davis P.	Ind	734	34.4
Jackson C.	LD	469	22.0
Turnout		46.2	9.1
Newquay Central (5485)			
		vote	share
Cocks P.*	LD	1,244	64.4
Hamand L.	Con	687	35.6
Turnout		35.2	28.8
Newquay North (4677)			
		vote	share
Hosking W.*	LD	1,608	74.7
Irons O. Ms.	Con	545	25.3
Turnout		46.0	49.4
Newquay West (4384)			
		vote	share
Morris D.	Con	1,064	54.5
Merrell G. Ms.	LD	450	23.1
Coad R.	Ind	437	22.4
Turnout		44.5	31.5
Padstow (4736)			
		vote	share
Hirst A.*	Ind	1,368	68.4
Shaplund J. Ms.	Con	633	31.6
Turnout		42.3	36.7
Penryn (4540)			
		vote	share
Hocking D.*	LD	1,133	66.5
Carden A.	Con	571	33.5
Turnout		37.5	33.0
Penzance East (5230)			
		vote	share
Matthews J.	Lab	1,254	47.3
Schofield P. Ms.	Con	1,023	38.6
Davidson J. Ms.	SDP	374	14.1
Turnout		50.7	8.7
Penzance South (5075)			
		vote	share
Lawry C.*	MK	1,342	55.2
Nicholas I.	Con	1,088	44.8
Turnout		47.9	10.5
Penzance West (4606)			
		vote	share
Richards S.	LD	1,273	59.0
Lacey I.	Con	885	41.0
Turnout		46.9	18.0

Perranporth (6195)			
		vote	share
Tonkin A.*	Ind	1,393	51.9
Sweet J.	Con	1,289	48.1
Turnout		43.3	3.9
Poltair (5070)			
		vote	share
Curtice M. Ms.*	LD	1,275	79.2
Smith M. Ms.	Con	334	20.8
Turnout		31.7	58.5
Porthleven (3912)			
		vote	share
Richards D.*	Ind	953	67.1
Baines M. Ms.	Con	292	20.5
Prior P.	MK	176	12.4
Turnout		36.3	46.5
Probus (4605)			
		vote	share
Mannell G.*	LD	1,410	64.5
Bowden B.	Con	776	35.5
Turnout		47.5	29.0
Rame (3674)			
		vote	share
Carew Pole J*	Ind	0	0.0
Turnout		0.0	0.0
Redruth North (5033)			
		vote	share
Neville P.*	Lab	739	46.4
Garwood H. Ms.	Con	343	21.6
Aston P. Ms.	LD	306	19.2
Stribley F.	MRL	203	12.8
Turnout		31.6	24.9
Redruth South (4504)			
		vote	share
Hailey C.	Lab	905	52.1
Phillips M.	Con	625	36.0
McCough A.	LD	208	12.0
Turnout		38.6	16.1
Roche (4416)			
		vote	share
Inch L. Ms.	LD	1,174	50.7
Burnett P.*	Ind	1,142	49.3
Turnout		52.4	1.4
Roseland (3693)			
		vote	share
Tregunna P.	Con	1,511	64.2
Jackson G.	LD	843	35.8
Turnout		63.7	28.4
Saltash East (4281)			
		vote	share
Spring B. Ms.*	LD	903	44.8
Hooper S. Ms.	RES	786	39.0
Colton D.	Lab	325	16.1
Turnout		47.0	5.8
Saltash West (3604)			
		vote	share
Hodge K.	Ind	792	38.4
Brooking A.	LD	662	32.1
Richards J.	Con	407	19.7
Webb J. Ms.	Lab	202	9.8
Turnout		57.2	6.3
St. Agnes (5276)			
		vote	share
Cheshire F.*	LD	1,464	65.2
Cockerham B.	Con	783	34.8
Turnout		42.6	30.3

St. Austell West (4971)			
		vote	share
Mills W.	LD	1,159	61.7
Down G.	Con	719	38.3
Turnout		37.8	23.4
St. Blaise (5366)			
		vote	share
Alexander T.*	Ind	0	0.0
Turnout		0.0	0.0
St. Cleer (5647)			
		vote	share
Horrell M. Ms.	LD	882	50.7
Wilton G. Ms.	Con	859	49.3
Turnout		30.8	1.3
St. Columb (3388)			
		vote	share
Parkyn A.*	VOP	1,356	78.3
Blacklock D.	SDP	195	11.3
Hill H.	Con	180	10.4
Turnout		51.1	67.1
St. Day Lanner & Carharrack (4239)			
		vote	share
Mason G.	LD	1,035	63.0
Spargo E.*	Ind	372	22.6
Wannell M.	Con	237	14.4
Turnout		38.8	40.3
St. Germans (4954)			
		vote	share
Harding B.	Con	930	52.4
Pearce A. Ms.	LD	606	34.2
Smith B.	Ind	238	13.4
Turnout		35.8	18.3
St. Ives North (3377)			
		vote	share
Storer H.*	Con	597	51.9
Shelton L. Ms.	LD	553	48.1
Turnout		34.1	3.8
St. Ives South (4036)			
		vote	share
Eddy O.*	Ind	652	54.8
Milton D.	Con	537	45.2
Turnout		29.5	9.7
St. Just (5361)			
		vote	share
Daniel J.*	Con	1,492	55.0
Roddan R.	Lab	1,221	45.0
Turnout		50.6	10.0
St. Keverne (4621)			
		vote	share
Englefield P. Ms.	Ind	1,524	72.1
Lyle R.	Con	590	27.9
Turnout		45.7	44.2
St. Kew (3789)			
		vote	share
Lander S.*	Ind	762	38.6
Symons J.	Ind	569	28.9
Hocking F.	Con	490	24.8
Green J. Ms.	Lab	151	7.7
Turnout		52.0	9.8
St. Stephen (6497)			
		vote	share
Harris D.	Ind	1,278	69.2
Waite E. Ms.	LD	568	30.8
Turnout		28.4	38.5

Stithians (3424)			
		vote	share
Plummer J.*	Ind	988	59.2
Trewhella R.	Con	681	40.8
Turnout		48.7	18.4
Stokeclimland (4594)			
		vote	share
Davey S.*	LD	1,562	69.0
Stanbury M.	Con	703	31.0
Turnout		49.3	37.9
Stratton (4358)			
		vote	share
Heard E. Ms.	LD	0	0.0
Turnout		0.0	0.0
Tintagel (4030)			
		vote	share
Whiting F.*	Ind	0	0.0
Turnout		0.0	0.0
Torpoint (6274)			
		vote	share
Cross R.*	LD	1,463	63.2
Callender C.	Res	556	24.0
Heather P. Ms.	Con	295	12.7
Turnout		36.9	39.2
Trevarna (4557)			
		vote	share
Horn A.*	LD	953	52.9
Menear T.	Ind	434	24.1
Tregunna B.	Con	415	23.0
Turnout		39.5	28.8
Treverbyn (3854)			
		vote	share
Vincent E. Ms.	LD	1,552	86.0
Golding P.	Con	253	14.0
Turnout		46.8	72.0
Truro East (5119)			
		vote	share
Hurst J.*	LD	1,133	51.8
Biscoe M.	Ind	536	24.5
Wright J.	Con	366	16.7
Street S. Ms.	Lab	151	6.9
Turnout		42.7	27.3
Truro South (4098)			
		vote	share
Ansari D. Ms.*	LD	1,096	63.3
Flooks W.	Con	347	20.0
Stevenson J. Ms.	Ind	227	13.1
Riley K.	Ind	62	3.6
Turnout		42.3	43.2
Truro West (4006)			
		vote	share
Pryor M. Ms.*	LD	798	39.8
Carlyon A. Ms.	Ind	698	34.8
Eathorne L. Ms.	Con	403	20.1
Cunningham R.	Lab	106	5.3
Turnout		50.0	5.0
Wadebridge (4865)			
		vote	share
Palmer E. Ms.	Ind	1,311	60.9
Fisher I.*	Ind	842	39.1
Turnout		44.3	21.8

Cornwall 1993

Altarnun (4089)			
		vote	share
Hillman G.	LD	919	46.3
Budge R.	Ind	509	25.7
Brown A.	Ind	266	13.4
Woods J.	Ind	196	9.9
Withers M. Ms.	Green	94	4.7
Turnout		48.5	20.7
Biscovey (5033)			
		vote	share
Burley M.	LD	923	52.2
Vercoe R.	Ind	492	27.8
Hugh L.	Con	354	20.0
Turnout		35.2	24.4
Bodmin St. Marys (4714)			
		vote	share
Quinnell A.*	LD	961	76.7
Williams M.	Lab	292	23.3
Turnout		26.6	53.4
Bodmin St. Petroc (4481)			
		vote	share
Cox V. Ms.*	LD	0	0.0
Turnout		0.0	0.0
Breage (4335)			
		vote	share
Roberts D.*	Ind	1,408	79.6
Ashall J.	Con	361	20.4
Turnout		40.8	59.2
Bude (5362)			
		vote	share
May O.*	LD	1,534	60.0
Wonnacott P.	Con	773	30.3
Hunt F. Ms.	Lab	165	6.5
Tindall S.	Green	83	3.2
Turnout		47.7	29.8
Callington (5111)			
		vote	share
Williams K. Ms.	LD	1,323	84.8
Miller M.	MK	238	15.2
Turnout		30.5	69.5
Calstock (4677)			
		vote	share
Smale T.*	Lab	0	0.0
Turnout		0.0	0.0
Camborne North (5098)			
		vote	share
Godolphin R.*	Lab	711	44.3
Venning T. Ms.	LD	408	25.4
Warrener L. Ms.	LIB	283	17.6
Baker A.	Con	202	12.6
Turnout		31.5	18.9
Camborne South (5185)			
		vote	share
Geach J.*	Lab	1,087	52.6
Young H.	LD	628	30.4
Mitchell R.	Con	256	12.4
Stephens F.	LIB	95	4.6
Turnout		39.9	22.2
Camborne West (4951)			
		vote	share
Jeffery M.*	Lab	941	40.3
Heywood L.	Con	671	28.7
Trengove C. Ms.	LD	648	27.7
Trevenen-Jenkin C.	MK	76	3.3
Turnout		47.2	11.6

Camelford (3919)			
		vote	share
Northcott H.*	Ind	0	0.0
Turnout		0.0	0.0
Constantine (4086)			
		vote	share
Muirhead J.*	Con	1,222	62.6
Kent J.	LD	509	26.1
Cottington D.	Lab	222	11.4
Turnout		47.8	36.5
Dobwalls (3703)			
		vote	share
Mellor J.*	LD	1,117	74.5
Stephens P.	Con	382	25.5
Turnout		40.5	49.0
Falmouth Arwenack (5627)			
		vote	share
Evans G.*	Con	915	40.3
Davies B.	LD	891	39.3
Clarke J. Ms.	Lab	463	20.4
Turnout		40.3	1.1
Falmouth Penwerris (4297)			
		vote	share
Plinston M.	Lab	1,076	67.2
Acton-Page A.	Con	283	17.7
Peppin K.	LD	242	15.1
Turnout		37.3	49.5
Falmouth Smithick (5179)			
		vote	share
Morris B.	LD	1,042	42.6
Neild J. Ms.	Lab	798	32.6
Carden A.	Con	606	24.8
Turnout		47.2	10.0
Feock & Kea (4085)			
		vote	share
Breckon M. Ms.*	Ind	0	0.0
Turnout		0.0	0.0
Fowey & Lostwithiel (4268)			
		vote	share
Breckon M. Ms.*	Ind	0	0.0
Turnout		0.0	0.0
Grampound (4342)			
		vote	share
Parnall J.*	LD	1,127	60.9
Williams J.	Con	723	39.1
Turnout		42.6	21.8
Hayle North (5209)			
		vote	share
Johns H.*	Ind	1,165	67.8
Simmons J.	Con	553	32.2
Turnout		33.0	35.6
Hayle South (4875)			
		vote	share
Laity T.*	Ind	1,143	74.7
Prior L.	Con	387	25.3
Turnout		31.4	49.4
Helland (3597)			
		vote	share
Cox P.	LD	941	52.0
Coad D.	Ind	689	38.0
Amor Y. Ms.	Con	181	10.0
Turnout		50.4	13.9
Helston North (5562)			
		vote	share
Kilty J.	LD	901	46.7
Pascoe R.	Ind	616	31.9
Thompson G.	Con	412	21.4
Turnout		34.7	14.8

Illogan & Portreath (5250)				
		vote	share	
Holmes P.*	LIB	746	38.6	
Rowe T.	LD	587	30.4	
Bowden K.	Con	330	17.1	
Knight D.	Lab	268	13.9	
	Turnout	36.8	8.2	
Illogan South (5206)				
		vote	share	
Moyle M.*	LD	747	47.0	
Lydiard C.	Lab	395	24.9	
Weeks T.	Con	257	16.2	
Rolling T. Ms.	LIB	190	12.0	
	Turnout	30.5	22.2	
Kenwyn (4640)				
		vote	share	
Rowe P. Ms.*	Ind	1,188	65.7	
Nute C.	LD	621	34.3	
	Turnout	39.0	31.3	
Lanreath (4206)				
		vote	share	
Philp J.*	Ind	706	41.4	
Robertson D.	Con	439	25.7	
Males R.	Ind	238	14.0	
Yaxley J.	Ind	181	10.6	
Lemon D. Ms.	Lab	141	8.3	
	Turnout	40.5	15.7	
Launceston (5157)				
		vote	share	
Nicholls G.*	LD	0	0.0	
	Turnout	0.0	0.0	
Liskeard (5157)				
		vote	share	
Gillbard M.	LD	925	41.2	
Eliot R.*	Con	790	35.2	
Lloyd S.	Lab	234	10.4	
Gillard T.	Ind	171	7.6	
Dunbar P.	MK	123	5.5	
	Turnout	43.5	6.0	
Looe (4367)				
		vote	share	
Bonson H.*	Ind	1,011	78.7	
Caston J.	Lab	273	21.3	
	Turnout	29.4	57.5	
Ludgvan (5658)				
		vote	share	
Luscombe S. Ms.	LD	1,665	68.9	
Crellin T.	Con	751	31.1	
	Turnout	42.7	37.8	
Marazion (4332)				
		vote	share	
Price T.	LD	1,290	59.7	
Barnard E. Ms.*	Con	658	30.5	
Kennard C.	Lab	212	9.8	
	Turnout	49.9	29.3	
Meneage & South Helston (4030)				
		vote	share	
Lyne P. Ms.*	Ind	777	47.0	
Keay J.	LD	746	45.2	
Kibblewhite A.	Con	129	7.8	
	Turnout	41.0	1.9	
Menheniot (3420)				
		vote	share	
Simmons A.*	LD	1,071	72.7	
Flooks W.	Con	317	21.5	
Landrigan J. Ms.	Lab	85	5.8	
	Turnout	43.1	51.2	

Mylor (4431)				
		vote	share	
Hichens R.*	Con	927	42.1	
Eastburn D.	LD	859	39.0	
Jenkin L. Ms.	MK	271	12.3	
Evans D. Ms.	Lab	144	6.5	
	Turnout	49.7	3.1	
Newquay Central (5516)				
		vote	share	
Cocks P.*	LD	1,418	58.1	
Weller J.	Con	1,021	41.9	
	Turnout	44.2	16.3	
Newquay North (4634)				
		vote	share	
Hosking W.*	LD	1,703	82.4	
McLaren M.	Con	364	17.6	
	Turnout	44.6	64.8	
Newquay West (4499)				
		vote	share	
Morris D.*	Con	1,080	54.7	
Irons O. Ms.	LD	895	45.3	
	Turnout	43.9	9.4	
Padstow (4910)				
		vote	share	
Hirst A.*	Ind	0	0.0	
	Turnout	0.0	0.0	
Penryn (4515)				
		vote	share	
Curless A.*	LD	840	53.0	
Brokenshire L.	Ind	478	30.1	
Clarke D.	Lab	268	16.9	
	Turnout	35.1	22.8	
Penzance East (5356)				
		vote	share	
Fegan C.	Lab	1,178	42.7	
Pilcher M.	Con	1,041	37.8	
Howes G. Ms.	LD	537	19.5	
	Turnout	51.5	5.0	
Penzance South (5138)				
		vote	share	
Lawry C.*	MK	1,548	60.0	
Bick S. Ms.	Con	1,034	40.0	
	Turnout	50.3	19.9	
Penzance West (4397)				
		vote	share	
Richards S.*	LD	846	39.5	
Lewarne R. Ms.	Lab	683	31.9	
Julian F.	Con	612	28.6	
	Turnout	48.7	7.6	
Perranporth (6015)				
		vote	share	
Yeo K.	LD	1,444	61.9	
Money S.	Con	889	38.1	
	Turnout	38.8	23.8	
Poltair (5046)				
		vote	share	
Hughes K.	LD	865	44.6	
Menear T.	Ind	585	30.2	
Doyle D.	Lab	297	15.3	
Rouse M.	Con	193	9.9	
	Turnout	38.5	14.4	
Porthleven (3966)				
		vote	share	
Richards D.*	Ind	1,115	65.2	
Stevens J.	Lab	346	20.2	
Edwards L.	Con	249	14.6	
	Turnout	43.1	45.0	

Probus (4684)				
		vote	share	
Mannell G.*	LD	1,640	80.3	
Woolven A.	Con	402	19.7	
	Turnout	43.6	60.6	
Rame (3582)				
		vote	share	
Richards D.	Ind	595	35.5	
Elworthy J. Ms.	Ind	510	30.5	
Pyle-Howard B. Ms.	Con	321	19.2	
Brown M.	Lab	248	14.8	
	Turnout	46.7	5.1	
Redruth North (5135)				
		vote	share	
Neville P.*	Lab	707	52.0	
Bonner V. Ms.	LD	425	31.3	
Herd J.	Con	228	16.8	
	Turnout	26.5	20.7	
Redruth South (4440)				
		vote	share	
Hailey C.*	Lab	903	56.5	
Serpell N.	Con	272	17.0	
Bray T.	LIB	248	15.5	
Hendry R.	LD	174	10.9	
	Turnout	36.0	39.5	
Roche (4416)				
		vote	share	
Burdon C.	LD	1,069	74.2	
Phillips A. Ms.	Lab	371	25.8	
	Turnout	32.6	48.5	
Roseland (3596)				
		vote	share	
Tregunna P.*	Con	1,031	51.0	
Moyle A. Ms.	LD	991	49.0	
	Turnout	56.2	2.0	
Saltash East (5598)				
		vote	share	
Spring B. Ms.*	LD	935	50.5	
Domaille E.	RES	564	30.5	
Gilroy B.	Lab	351	19.0	
	Turnout	33.1	20.1	
Saltash West (5454)				
		vote	share	
Hodge K.*	Ind	841	42.3	
Preston C. Ms.	LD	635	31.9	
Rosekilly B. Ms.	Con	311	15.6	
Greagh-Osborne R.	Lab	202	10.2	
	Turnout	36.5	10.4	
St. Agnes (5307)				
		vote	share	
Kent N.	LD	1,230	54.5	
Richards O. Ms.	Ind	613	27.1	
Neep R.	Con	415	18.4	
	Turnout	42.6	27.3	
St. Austell West (4962)				
		vote	share	
Lobb W.	LD	1,029	65.7	
Horton I.	Con	398	25.4	
Beardsmore M. Ms.	Lab	140	8.9	
	Turnout	31.6	40.3	
St. Blaise (5322)				
		vote	share	
Alexander T.*	Ind	976	44.3	
Reski M. Ms.	LD	890	40.4	
Wilkie J.	Lab	230	10.4	
Westbrook K. Ms.	Green	106	4.8	
	Turnout	41.4	3.9	

St. Cleer (4277)			
		vote	share
Horrell M. Ms.*	LD	997	57.9
Wilton G. Ms.	Con	586	34.0
Colton D.	Lab	140	8.1
	Turnout	40.3	23.9
St. Columb (3528)			
		vote	share
Parkyn A.*	VOP	0	0.0
	Turnout	0.0	0.0
St. Day Lanner & Carharrack (4181)			
		vote	share
Mason G.*	LD	1,020	68.4
James D.	Ind	216	14.5
Prisk C. Ms.	Con	201	13.5
Sowden P. Ms.	LIB	55	3.7
	Turnout	35.7	53.9
St. Germans (3538)			
		vote	share
Lister B.	Ind	792	49.3
Harding W.*	Con	566	35.2
Barlow I.	Green	142	8.8
Thompson H.	Lab	108	6.7
	Turnout	45.5	14.1
St. Ives North (3309)			
		vote	share
Mitchell A.	LD	920	56.1
Isaacs L. Ms.	Lab	490	29.9
Griffin J. Ms.	Con	231	14.1
	Turnout	49.6	26.2
St. Ives South (4373)			
		vote	share
Royle J.	LD	1,008	62.8
Eddy O.*	Con	597	37.2
	Turnout	36.7	25.6
St. Just (5481)			
		vote	share
Daniel J.*	Con	1,369	57.0
Roddan R.	Lab	1,033	43.0
	Turnout	43.8	14.0
St. Keverne (4715)			
		vote	share
Engelfield P. Ms.*	Ind	1,461	69.3
Thomas A.	Con	647	30.7
	Turnout	44.7	38.6
St. Kew (3766)			
		vote	share
Lander S.*	Ind	902	49.1
Fenner D.	Con	602	32.8
Watson R.	Ind	333	18.1
	Turnout	48.8	16.3
St. Stephen (6796)			
		vote	share
Harris D.*	LD	1,379	65.9
Davis M.	Ind	440	21.0
Cole R.	MK	272	13.0
	Turnout	30.8	44.9
Stithians (3620)			
		vote	share
Plummer J.*	Ind	1,030	69.8
Burden M.	Con	445	30.2
	Turnout	40.8	39.7
Stokeclimsland (4596)			
		vote	share
Davey S.*	LD	1,773	80.4
Mumford R.	Con	431	19.6
	Turnout	48.0	60.9

Stratton (4523)			
		vote	share
Heard E. Ms.*	LD	1,175	76.2
Bolitho J.	Ind	368	23.8
	Turnout	34.1	52.3
Tintagel (3825)			
		vote	share
Whiting F.*	Ind	1,053	60.2
Flower R.	Ind	696	39.8
	Turnout	45.7	20.4
Torpoint (6176)			
		vote	share
Cross R.*	LD	1,425	61.7
Litchfield A.	Ind	464	20.1
Callender H.	RATE	420	18.2
	Turnout	37.4	41.6
Trevarna (4603)			
		vote	share
Horn A.*	LD	904	59.4
Tregunna B.	Con	360	23.7
Derry P.	Lab	257	16.9
	Turnout	33.0	35.8
Treverbryn (4034)			
		vote	share
Vincent E. Ms.*	LD	1,462	84.0
Budge L.	Lab	278	16.0
	Turnout	43.1	68.0
Truro East (5192)			
		vote	share
Hampton A.	LD	1,186	54.5
Biscoe M.	Ind	855	39.3
Turner W.	Lab	137	6.3
	Turnout	42.0	15.2
Truro South (4022)			
		vote	share
Ansari D. Ms.*	LD	0	0.0
	Turnout	0.0	0.0
Truro West (3921)			
		vote	share
Longhurst J.	LD	649	42.2
Treseder C.	Con	365	23.7
Pryor M. Ms.*	Ind	237	15.4
Davies M.	Lab	175	11.4
Roberts C.	Ind	111	7.2
	Turnout	39.2	18.5
Wadebridge (5198)			
		vote	share
Palmer E. Ms.*	Ind	0	0.0
	Turnout	0.0	0.0

Cornwall 1997

Altarnun (4367)			
		vote	share
Scoble K.	LD	2,467	85.0
Leather A. Ms.	Lab	436	15.0
	Turnout	66.5	70.0
Biscovey (5217)			
		vote	share
Burley M.*	LD	1,818	50.0
Merrick R.	Con	1,090	30.0
Love M.	Lab	729	20.0
	Turnout	69.7	20.0
Bodmin St. Marys (4622)			
		vote	share
Quinnell A.*	LD	2,278	77.5
Davis S. Ms.	Lab	661	22.5
	Turnout	63.6	55.0

Bodmin St. Petroc (4852)			
		vote	share
Cox V. Ms.	LD	1,422	44.2
Hocking T.	Ind	987	30.7
Amor Y. Ms.	Con	431	13.4
Johnson R.	Lab	379	11.8
	Turnout	66.3	13.5
Breage (4507)			
		vote	share
Roberts D.*	Ind	2,529	76.7
Wood J.	Lab	768	23.3
	Turnout	73.2	53.4
Bude (5607)			
		vote	share
May O.*	LD	1,749	43.8
Parsons B. Ms.	Ind	1,310	32.8
Bolitho J.	MK	634	15.9
Hunt F. Ms.	Lab	176	4.4
Tindall S.	Green	128	3.2
	Turnout	71.3	11.0
Callington (5364)			
		vote	share
Williams K. Ms.*	LD	2,566	70.4
King P.	Lab	558	15.3
Miller M.	MK	522	14.3
	Turnout	68.0	55.1
Calstock (4703)			
		vote	share
Smale T.*	Lab	1,859	53.6
Ault J.	LD	1,608	46.4
	Turnout	73.7	7.2
Camborne North (5081)			
		vote	share
Godolphin C.*	Lab	1,777	53.8
Dennis V.	LD	728	22.0
Kitto S.	Con	505	15.3
Warrener L. Ms.	Lib	295	8.9
	Turnout	65.1	31.7
Camborne South (5503)			
		vote	share
Godolphin J.	Lab	1,194	29.5
Geach J.*	Ind Lab	1,176	29.0
Bunce A.	LD	777	19.2
Herd J.	Con	590	14.6
Sanders A.	MK	207	5.1
Rule K.	Lib	110	2.7
	Turnout	73.7	0.4
Camborne West (4892)			
		vote	share
Jeffery M.*	Lab	1,590	44.2
Godolphin S.	LD	996	27.7
Jenkin F.	Con	762	21.2
Trevenen Jenkin C.	MK	136	3.8
Skinner C.	Lib	114	3.2
	Turnout	73.6	16.5
Camelford (4320)			
		vote	share
Goodenough K.	Ind	1,519	49.2
Ward J.	LD	1,248	40.4
Wood H. Ms.	Lab	319	10.3
	Turnout	71.4	8.8
Constantine (4152)			
		vote	share
Muirhead J.	Con	1,912	58.3
Hodges J. Ms.	LD	876	26.7
Allen J. Ms.	Lab	492	15.0
	Turnout	79.0	31.6

Dobwalls (3871)			
		vote	share
Hocking G.	LD	1,525	52.9
Stephens P.	Con	873	30.3
Landrigan J. Ms.	Lab	251	8.7
George K.	MK	234	8.1
Turnout		74.5	22.6

Falmouth Arwenack (5831)			
		vote	share
Gray R.	Con	1,354	31.1
Breacker D.	Lab	1,188	27.3
Lang J.	LD	1,075	24.7
Bottomley J.	Ind	737	16.9
Turnout		74.7	3.8

Falmouth Penwerris (4320)			
		vote	share
Ferrett J. Ms.	Lab	1,515	49.4
Cartwright A.	LD	952	31.1
Carden A.	Con	598	19.5
Turnout		71.0	18.4

Falmouth Smithick (5389)			
		vote	share
Morris B.*	LD	2,031	49.1
Bowers B. Ms.	Lab	1,135	27.5
Bonney R.	Con	968	23.4
Turnout		76.7	21.7

Feock & Kea (4222)			
		vote	share
Currie J.	Con	1,314	39.0
Oxford P.	LD	1,182	35.1
Burn J.	Ind	871	25.9
Turnout		79.8	3.9

Fowey & Lostwithiel (4431)			
		vote	share
Breckon M. Ms.*	Ind	2,290	73.0
Hartley W.	Lab	436	13.9
Trudgian S.	MK	409	13.0
Turnout		70.8	59.1

Grampound (4421)			
		vote	share
Lobb W.	LD	1,576	48.9
Mason J. Ms.	Con	886	27.5
Bunney S. Ms.	Lab	590	18.3
Westbrook K. Ms.	Green	173	5.4
Turnout		73.0	21.4

Hayle North (5130)			
		vote	share
Batty P. Ms.	LD	1,136	31.0
Penhaligon E. Ms.	Ind	1,003	27.3
Allen C.	Ind	716	19.5
Murray T.	Lab	641	17.5
Farley J. Ms.	Lib	172	4.7
Turnout		71.5	3.6

Hayle South (5100)			
		vote	share
Lello R.	LD	1,653	45.4
Menadue S. Ms.	Ind	1,059	29.1
Gregory R.	Lab	660	18.1
Lewarne R. Ms.	MK	269	7.4
Turnout		71.4	16.3

Helland (3806)			
		vote	share
Cox P.*	LD	1,819	64.6
Coppin P.	Ind	736	26.1
Mold G. Ms.	Lab	262	9.3
Turnout		74.0	38.4

Helston North (5702)			
		vote	share
Swift S. Ms.	LD	1,693	45.8
Stevens J.	Ind	1,128	30.5
Bailey S.	Lab	484	13.1
Thompson G.	Ind	388	10.5
Turnout		64.8	15.3

Illogan & Portreath (5259)			
		vote	share
Holmes P.*	Lib	1,516	40.0
Rowe T.	LD	1,053	27.8
Hendra L. Ms.	Lab	947	25.0
Youlton V.	Ind	271	7.2
Turnout		72.0	12.2

Illogan South (5334)			
		vote	share
Waterhouse C.	Lab	1,347	39.7
Beckerleg C.	LD	971	28.6
Osborne S.	UK Ind	419	12.4
Wills R.	MK	354	10.4
Crossman C. Ms.	Lib	300	8.8
Turnout		63.6	11.1

Kenwyn (4716)			
		vote	share
Rowe P. Ms.*	Ind	2,026	57.5
Taylor J.	LD	1,190	33.8
Roach N.	Lab	305	8.7
Turnout		74.7	23.7

Lanreath (4309)			
		vote	share
Philp J.*	Ind	1,730	56.0
Channings T.	LD	1,032	33.4
Knight M. Ms.	Lab	326	10.6
Turnout		71.7	22.6

Launceston (5260)			
		vote	share
Nicholls G.	LD	2,891	81.7
Leather D.	Lab	646	18.3
Turnout		67.2	63.5

Liskeard (6426)			
		vote	share
Gillbard M.*	LD	2,112	45.6
Andrew M.	Con	1,573	34.0
Crocker J.	Lab	669	14.4
Sandercock G.	MK	277	6.0
Turnout		72.1	11.6

Looe (4330)			
		vote	share
Gardner S.	Ind	2,155	71.5
Brooks D. Ms.	Lab	495	16.4
Dunbar P.	MK	363	12.0
Turnout		69.6	55.1

Ludgvan (5752)			
		vote	share
Freeman S.	LD	1,584	36.3
Mann R.	Ind	1,308	30.0
Fleming H.	Con	751	17.2
Ewer J.	Lab	716	16.4
Turnout		75.8	6.3

Marazion (4458)			
		vote	share
Crellin A.	Con	1,316	40.4
Maple C.	LD	1,258	38.6
Kennard C.	Lab	687	21.1
Turnout		73.2	1.8

Meneage & South Helston (3892)			
		vote	share
Lyne P. Ms.*	Ind	1,265	47.9
Keay J.	LD	1,091	41.3
Clarke D.	Lab	284	10.8
Turnout		67.8	6.6

Menheniot (3599)			
		vote	share
Flocks W.	Ind	1,250	50.0
McTaggart B. Ms.	LD	1,248	50.0
Turnout		69.4	0.1

Mylor (4526)			
		vote	share
Hichens R.*	Con	1,964	54.9
Brain M.	LD	1,131	31.6
Robinson J. Ms.	Lab	480	13.4
Turnout		79.0	23.3

Newquay Central (5921)			
		vote	share
Merrell G. Ms.	LD	1,504	37.3
Weller J.	Con	1,445	35.8
Young S.	Ind	569	14.1
Barley G.	Lab	517	12.8
Turnout		68.2	1.5

Newquay North (4858)			
		vote	share
Hosking W.*	LD	2,022	59.5
Hamand L.	Con	751	22.1
Kaspar E. Ms.	Lab	409	12.0
McLaren M.	Ind	215	6.3
Turnout		69.9	37.4

Newquay West (4779)			
		vote	share
Morris D.*	Con	1,083	34.7
Irons O. Ms.	LD	836	26.8
James D.	Ind	729	23.4
Manley G.	Lab	472	15.1
Turnout		65.3	7.9

Padstow (5157)			
		vote	share
Hirst A.*	Ind	2,770	83.4
Eastman W.	Lab	551	16.6
Turnout		64.4	66.8

Penryn (4635)			
		vote	share
Brokenshire L.	Ind	1,070	30.8
Gore S.	Lab	995	28.7
Curless A.*	LD	833	24.0
Banks L.	Con	571	16.5
Turnout		74.8	2.2

Penzance East (5204)			
		vote	share
Drew J.	LD	1,530	41.1
Fegan C.	Lab	1,390	37.3
Wood R.	Con	805	21.6
Turnout		71.6	3.8

Penzance South (5029)			
		vote	share
Lawry C.*	MK	2,606	70.5
Pilcher E. Ms.	Con	1,088	29.5
Turnout		73.5	41.1

Penzance West (4283)			
		vote	share
Richards S.*	LD	1,386	42.6
Furneaux M.	Con	1,034	31.8
Richings A.	Lab	834	25.6
Turnout		76.0	10.8

Perranporth (6209)			
		vote	share
Yeo K.*	LD	1,849	42.1
Hancock D.	Ind	1,313	29.9
Herd A.	Con	1,228	28.0
Turnout		70.7	12.2

Poltair (5281)			
		vote	share
Hughes K.*	LD	1,465	42.3
Menear T.	Ind	940	27.1
Doyle D.	Lab	781	22.6
Rouse M.	Ind	277	8.0
Turnout		65.6	15.2
Porthleven (3900)			
		vote	share
Richards D.*	Ind	1,484	55.0
Stephens G.	LD	876	32.5
Abraham S.	Lab	336	12.5
Turnout		69.1	22.6
Probus (4810)			
		vote	share
Menear D.	LD	1,912	55.5
Rogers V.	Con	1,161	33.7
Hodge P.	MK	369	10.7
Turnout		71.6	21.8
Rame (3722)			
		vote	share
Richards D.*	Ind	1,000	36.1
Elworthy J. Ms.	Ind	939	33.9
McTaggart M.	LD	657	23.7
Holden S.	Ind	171	6.2
Turnout		74.3	2.2
Redruth North (5044)			
		vote	share
Knight D.	Lab	1,606	48.2
Kitto C. Ms.	Con	1,064	31.9
Dinham K.	LD	417	12.5
Browne O. Ms.	Lib	247	7.4
Turnout		66.1	16.3
Redruth South (4390)			
		vote	share
Bray T.	Ind	933	30.7
Aston P. Ms.	LD	776	25.6
Lidyard C.	Lab	770	25.4
Bowden K.	Con	483	15.9
Matthews R.	Lib	75	2.5
Turnout		69.2	5.2
Roche (4798)			
		vote	share
Burdon C.*	LD	1,491	57.7
Budge L.	Lab	719	27.8
Ferris C.	Con	372	14.4
Turnout		53.8	29.9
Roseland (3626)			
		vote	share
Tregunna P.*	Con	1,514	54.6
Moyle A. Ms.	LD	1,259	45.4
Turnout		76.5	9.2
Saltash East (5791)			
		vote	share
Spring B. Ms.*	LD	2,429	59.1
Colton D.	Lab	859	20.9
Willis R.	Ind	820	20.0
Turnout		70.9	38.2
Saltash West (5943)			
		vote	share
Preston C. Ms.	LD	3,098	74.9
Miller P. Ms.	Lab	1,037	25.1
Turnout		69.6	49.8
St. Agnes (5610)			
		vote	share
Kent N.*	LD	2,075	52.0
Bray D.	Con	1,022	25.6
George K.	Ind	466	11.7
Palmer C.	Ind	430	10.8
Turnout		71.2	26.4

St. Austell West (5194)			
		vote	share
Down G.	LD	1,724	49.6
Horton I.	Con	1,085	31.2
Wetzel D.	Lab	668	19.2
Turnout		66.9	18.4
St. Blaise (5292)			
		vote	share
Roberts W.	Ind	1,631	45.5
Beck S.	LD	1,249	34.8
Bancroft A.	Lab	705	19.7
Turnout		67.7	10.7
St. Cleer (4456)			
		vote	share
Powell A.	LD	1,818	57.3
Watson D. Ms.	Ind	957	30.2
Lemon D. Ms.	Lab	397	12.5
Turnout		71.2	27.1
St. Columb (3891)			
		vote	share
Parkyn A.*	Ind	1,469	52.6
Weller R. Ms.	Con	609	21.8
Pearce M.	LD	433	15.5
Barley J. Ms.	Lab	281	10.1
Turnout		71.8	30.8
St. Day Lanner & Carharrack (4185)			
		vote	share
Mason G.*	LD	1,491	49.9
McGough A.	Lab	827	27.7
Anson M. Ms.	Con	568	19.0
Paterson J. Ms.	Lib	103	3.4
Turnout		71.4	22.2
St. Germans (3675)			
		vote	share
Lister T.*	Ind	1,756	61.7
Harding W.	Con	826	29.0
Lendon K.	Ind	265	9.3
Turnout		77.5	32.7
St. Ives North (3338)			
		vote	share
Mitchell A.*	LD	1,489	61.8
Eddy O.	Ind	922	38.2
Turnout		72.2	23.5
St. Ives South (4295)			
		vote	share
Storer H.	Ind	1,502	51.3
Gillett I.	LD	790	27.0
Milton D.	Con	636	21.7
Turnout		68.2	24.3
St. Just (5647)			
		vote	share
Ewer R. Ms.	Lab	2,206	52.2
Daniel J.*	Con	2,021	47.8
Turnout		74.9	4.4
St. Keverne (4733)			
		vote	share
Englefield P. Ms.*	Ind	2,584	74.7
Edwards L.	LD	874	25.3
Turnout		73.1	49.5
St. Kew (3865)			
		vote	share
Richards H. Ms.	Ind	1,352	49.3
Lander S.*	Ind	1,140	41.6
Norris W.	Lab	248	9.1
Turnout		70.9	7.7

St. Stephen (7193)			
		vote	share
Harris D.*	LD	2,265	48.4
Rowe J. Ms.	Ind	1,006	21.5
Batchelor E.	Con	571	12.2
Cole R.	MK	510	10.9
Davis M.	Ind	326	7.0
Turnout		65.0	26.9
Stithians (3674)			
		vote	share
Plummer J.*	Ind	1,070	39.0
Burden M.	Con	615	22.4
Beer S.	Lab	525	19.1
Venning J.	LD	432	15.7
Ekins B.	Lib	104	3.8
Turnout		74.7	16.6
Stokeclimland (4942)			
		vote	share
Davey S.*	LD	3,121	88.7
Price K.	Lab	397	11.3
Turnout		71.2	77.4
Stratton (4734)			
		vote	share
Heard E. Ms.*	LD	2,910	87.0
Bennett A.	Lab	434	13.0
Turnout		70.6	74.0
Tintagel (3949)			
		vote	share
Whiting F.*	Ind	2,283	82.3
Wood H.	Lab	492	17.7
Turnout		70.3	64.5
Torpoint (6386)			
		vote	share
Chadwick J.	LD	3,151	76.9
Mandeville A. Ms.	Lab	945	23.1
Turnout		64.1	53.9
Trevarna (4619)			
		vote	share
Horn A.*	LD	1,503	48.9
Philips A. Ms.	Lab	887	28.8
Vercoe R.	Con	685	22.3
Turnout		66.6	20.0
Treverbyn (4093)			
		vote	share
Vincent E. Ms.*	LD	1,733	62.2
Buckley J. Ms.	Lab	688	24.7
Bass B.	Con	363	13.0
Turnout		68.0	37.5
Truro East (5190)			
		vote	share
Biscoe B.	Ind	1,914	52.2
Hampton A.*	LD	1,242	33.9
Davies L. Ms.	Lab	510	13.9
Turnout		70.6	18.3
Truro South (4058)			
		vote	share
Ansari D. Ms.*	LD	1,848	62.9
Hosken J. Ms.	Con	680	23.1
Holmes A. Ms.	Lab	412	14.0
Turnout		72.5	39.7
Truro West (3931)			
		vote	share
Longhurst J.*	LD	1,326	47.3
Wells C.	Con	807	28.8
Davies M.	Lab	673	24.0
Turnout		71.4	18.5

Wadebridge (5411)			
		vote	share
Palmer E. Ms.*	Ind	3,066	80.3
Rowe J.	Lab	751	19.7
Turnout		70.5	60.6

Cornwall 2001

Altarnun (4621)			
		vote	share
Scoble K.*	LD	0	0.0
Turnout		0.0	0.0

Biscovey (5383)			
		vote	share
Stewart R.	Con	1,419	43.0
Burley M.*	LD	1,318	39.9
Riddle T.	Lab	563	17.1
Turnout		62.0	3.1

Bodmin St. Marys (4754)			
		vote	share
Quinnell A.*	Ind	1,843	79.1
Shelley M.	Con	487	20.9
Turnout		52.4	58.2

Bodmin St. Petroc (4941)			
		vote	share
Cox V. Ms.*	LD	1,184	44.3
Davies P.	Ind	1,005	37.6
Castle M. Ms.	Con	485	18.1
Turnout		54.8	6.7

Breage (4758)			
		vote	share
Roberts D.*	Ind	2,378	78.5
Atherton P. Ms.	Lab	652	21.5
Turnout		66.2	57.0

Bude (6005)			
		vote	share
Whalley D.	LD	1,840	46.3
Bolitho J.	MK	1,149	28.9
Pillman R.	Con	986	24.8
Turnout		66.7	17.4

Callington (5470)			
		vote	share
Nettle T.	Ind	2,562	73.6
Fletcher F.	Con	919	26.4
Turnout		66.6	47.2

Calstock (4919)			
		vote	share
Smale T.*	Lab	1,378	41.5
Bartlett R.	LD	1,103	33.2
Fletcher V. Ms.	Con	838	25.2
Turnout		68.5	8.3

Camborne North (4988)			
		vote	share
Godolphin C.*	Lab	1,082	38.6
Pope E.	LD	999	35.6
Kitto S.	Con	387	13.8
Cullimore S.	MK	232	8.3
Simmons M. Ms.	LIB	105	3.7
Turnout		57.0	3.0

Camborne South (5519)			
		vote	share
Godolphin J.*	Lab	1,219	36.0
Bunce A.	LD	977	28.8
Herd J.	Con	599	17.7
Sanders A.	MK	455	13.4
Bailey S.	LIB	140	4.1
Turnout		62.2	7.1

Camborne West (4906)			
		vote	share
Jeffery M.*	Lab	1,115	35.4
Beare R.	LD	1,002	31.8
Woodward J.	Con	756	24.0
Ranson H. Ms.	MK	174	5.5
Trevaskis W.	Ind	72	2.3
Skinner C.	LIB	35	1.1
Turnout		65.0	3.6

Camelford (4589)			
		vote	share
Ellison R.	Con	1,277	39.0
Comber B. Ms.	LD	1,098	33.5
Goodenough K.*	Ind	899	27.5
Turnout		72.0	5.5

Constantine (4301)			
		vote	share
Hatton N.	Con	1,817	59.0
Davies M. Ms.	LD	703	22.8
Clarke D.	Lab	562	18.2
Turnout		72.4	36.1

Dobwalls (3974)			
		vote	share
Hocking G.*	LD	1,518	57.8
Cooke G.	Con	791	30.1
Dunbar P.	MK	319	12.1
Turnout		67.1	27.7

Falmouth Arwenack (5906)			
		vote	share
Bonney R.	LD	1,427	36.0
Gray R.*	Con	1,397	35.3
Breacker D.	Lab	1,136	28.7
Turnout		67.9	0.8

Falmouth Penwerris (4100)			
		vote	share
Ferrett J. Ms.*	Lab	1,204	47.5
Sterratt D.	LD	668	26.4
Rimmer N.	Con	466	18.4
Stephens C.	MK	126	5.0
Renowden E. Ms.	LIB	69	2.7
Turnout		62.3	21.2

Falmouth Smithick (5309)			
		vote	share
Morris B.*	LD	1,821	52.5
Ball M.	Lab	823	23.7
Thompson G.	Con	667	19.2
Bowers B. Ms.	Ind	155	4.5
Turnout		66.0	28.8

Feock & Kea (4167)			
		vote	share
Currie J.*	Con	1,673	54.4
May M.	LD	1,175	38.2
Haworth J. Ms.	Lab	225	7.3
Turnout		74.3	16.2

Fowey & Lostwithiel (4494)			
		vote	share
Bain S. Ms.	Con	1,121	36.9
Pegg J.	Ind	990	32.6
Picton D.	LD	923	30.4
Turnout		69.2	4.3

Grampound (4464)			
		vote	share
Lobb W.*	LD	1,746	58.8
Mason J. Ms.	Con	1,225	41.2
Turnout		68.0	17.5

Hayle North (5396)			
		vote	share
Lello T.	LD	1,885	54.8
Penhaligon E. Ms.	Con	1,557	45.2
Turnout		66.1	9.5

Hayle South (5198)			
		vote	share
Oliver S. Ms.	Ind	1,537	45.9
Lello R.*	LD	1,257	37.5
Smith M.	Lab	557	16.6
Turnout		65.2	8.4

Helland (4032)			
		vote	share
Miller D.	Con	1,389	50.4
Catlin K.	LD	1,365	49.6
Turnout		69.4	0.9

Helston North (6061)			
		vote	share
Martin P.	Ind	1,891	52.9
Swift S. Ms.*	LD	1,686	47.1
Turnout		60.8	5.7

Illogan & Portreath (5560)			
		vote	share
Holmes P.*	LIB	964	27.6
Rowe T.	LD	963	27.6
Hutchinson N.	Lab	792	22.7
Beer A.	Con	772	22.1
Turnout		63.4	0.0

Illogan South (5522)			
		vote	share
Moyle M.	Lab	1,395	45.1
Dennis W. Ms.	LD	818	26.5
Metcalfe A. Ms.	MK	635	20.5
Tonkins G.	LIB	243	7.9
Turnout		58.0	18.7

Kenwyn (4859)			
		vote	share
Rowe P. Ms.*	Ind	1,968	63.3
Young P. Ms.	LD	666	21.4
Denton K.	MK	242	7.8
Tozer E. Ms.	Lab	233	7.5
Turnout		64.7	41.9

Lanreath (4389)			
		vote	share
Philp J.*	Ind	1,607	54.1
Yaxley J.	Con	890	30.0
Keen R.	MK	472	15.9
Turnout		69.2	24.1

Launceston (5376)			
		vote	share
Nicholls G.*	LD	2,526	78.3
Boyle R.	Con	698	21.7
Turnout		61.0	56.7

Liskeard (6646)			
		vote	share
Gillbard M.*	LD	2,289	57.2
Cooke S. Ms.	Con	1,183	29.6
Sandercock G.	MK	530	13.2
Turnout		62.3	27.6

Looe (4344)			
		vote	share
Overd R.	Ind	1,096	40.3
Ellis C.	Con	839	30.8
Francis A.	LD	786	28.9
Turnout		64.5	9.4

Ludgvan (5890)			
		vote	share
Mann R.	Ind	1,771	45.3
Fonk M.	LD	1,504	38.5
Orban A. Ms.	Con	636	16.3
Turnout		68.0	6.8

Marazion (4567)			
		vote	share
Walker N.	LD	1,996	64.5
Weller P.	Con	1,097	35.5
Turnout		69.8	29.1
Meneage & South Helston (4083)			
		vote	share
Lyne P. Ms.*	Ind	1,408	59.3
Palmer V. Ms.	LD	966	40.7
Turnout		59.8	18.6
Menheniot (3672)			
		vote	share
Flooks W.*	Ind	1,497	62.8
McTaggart B. Ms.	LD	887	37.2
Turnout		67.7	25.6
Mylor (4472)			
		vote	share
Hichens R.*	Con	1,635	49.8
Banks C.	LD	1,138	34.7
Wildy J.	Lab	379	11.5
Johns N. Ms.	LIB	130	4.0
Turnout		74.3	15.1
Newquay Central (6292)			
		vote	share
Edwards R.	LD	2,207	62.9
Bryant C.	Con	1,299	37.1
Turnout		58.1	25.9
Newquay North (5003)			
		vote	share
Heywood H.	Ind	1,435	48.6
Rainbow J.	LD	826	28.0
Moore J.	Con	692	23.4
Turnout		60.1	20.6
Newquay West (5172)			
		vote	share
Irons O. Ms.	LD	1,488	52.3
Morris D.*	Con	1,358	47.7
Turnout		56.6	4.6
Padstow (5141)			
		vote	share
Townrow S. Ms.	LD	1,532	46.6
Kemp E.	Ind	1,024	31.2
Castle J.	Con	730	22.2
Turnout		64.7	15.5
Penryn (4626)			
		vote	share
Brokenshire L.*	Ind	658	22.5
May M. Ms.	Ind	629	21.5
Bennett A.	Lab	587	20.1
Warner C.	LD	418	14.3
Eathome-Gibbons L. Ms.	Con	335	11.5
Jago C.	Ind	292	10.0
Turnout		63.9	1.0
Penzance East (5386)			
		vote	share
Williams T. Ms.	LD	1,034	31.6
Gregory R.	Lab	1,008	30.9
Trevena K. Ms.	Con	724	22.2
Rendle P.	MK	388	11.9
Jackson J.	Ind	113	3.5
Turnout		62.1	0.8
Penzance South (4998)			
		vote	share
Payne M.	Lab	1,667	46.6
Lawry C.*	MK	1,009	28.2
Scott E.	Con	698	19.5
Hosking S.	Ind	201	5.6
Turnout		72.6	18.4

Penzance West (4275)			
		vote	share
Richards S.*	LD	1,516	54.4
Furneaux M.	Con	844	30.3
Lawrence M.	Ind	425	15.3
Turnout		67.3	24.1
Perranporth (6348)			
		vote	share
Yeo K.*	LD	1,566	40.2
Herd A.	Con	1,282	32.9
Carter E. Ms.	MK	594	15.2
Hughes D.	Lab	455	11.7
Turnout		62.2	7.3
Poltair (5270)			
		vote	share
Hume J. Ms.	LD	1,160	37.5
Menear T.	Ind	998	32.3
Doyle D.	Lab	510	16.5
Pritchard J. Ms.	Con	422	13.7
Turnout		60.0	5.2
Porthleven (4106)			
		vote	share
Richards D.*	Ind	1,521	62.5
Gunter R. Ms.	LD	636	26.2
Clarke J. Ms.	Lab	275	11.3
Turnout		60.3	36.4
Probus (5027)			
		vote	share
Mennear S.*	LD	1,873	56.9
German J.	Con	1,055	32.1
Phillips R. Ms.	Lab	363	11.0
Turnout		66.5	24.9
Rame (3803)			
		vote	share
Murray S. Ms.	Con	1,345	52.6
Adams P.	LD	1,211	47.4
Turnout		68.6	5.2
Redruth North (4980)			
		vote	share
Waterhouse C.	Lab	1,180	41.7
Mason C.	Con	607	21.4
Turner W.	LD	522	18.4
Knight D.*	Ind	329	11.6
Poole W. Ms.	LIB	195	6.9
Turnout		57.7	20.2
Redruth South (4428)			
		vote	share
Hicks G.	Ind	1,026	36.2
Bray T.*	Ind	537	18.9
Chin-Quee G.	Lab	445	15.7
Aston P. Ms.	LD	410	14.5
Carroll J.	Con	366	12.9
Crossman C. Ms.	LIB	51	1.8
Turnout		64.7	17.2
Roche (4951)			
		vote	share
Higman B.	LD	1,492	52.0
Wood J.	Ind	1,377	48.0
Turnout		60.0	4.0
Roseland (3605)			
		vote	share
Tregunna P.*	Con	1,413	55.4
Brown C.	LD	893	35.0
Pykett A.	Lab	123	4.8
Andrew B.	MK	122	4.8
Turnout		71.1	20.4
Saltash East (5796)			
		vote	share
Preston B.	LD	2,073	59.0
Yates D.	Con	883	25.1
Morrish J. Ms.	Ind	556	15.8
Turnout		61.4	33.9

Saltash West (6230)			
		vote	share
Mepsted J. Ms.	LD	2,186	56.4
Maunder D.	Con	1,261	32.5
Morrish C.	Ind	428	11.0
Turnout		63.5	23.9
St. Agnes (5701)			
		vote	share
Cooper R.	LD	1,532	41.4
Mitchell W.	Con	1,129	30.5
Hope E.	Ind	466	12.6
Johns S. Ms.	Lab	416	11.2
Rich-Degeneve S. Ms.	MK	161	4.3
Turnout		65.5	10.9
St. Austell West (5110)			
		vote	share
Hunkin B.	LD	1,146	35.9
Mutton D. Ms.	Con	922	28.9
Budge L.	Lab	502	15.7
Olford J.	Ind	369	11.6
Tyrell T.	MK	249	7.8
Turnout		63.0	7.0
St. Blaise (5320)			
		vote	share
Roberts W.*	Ind	1,339	42.1
Chapman M.	LD	1,095	34.4
Seel A.	Lab	375	11.8
Collins M.	Con	370	11.6
Turnout		60.3	7.7
St. Cleer (4784)			
		vote	share
England O. Ms.	LD	989	31.2
Stephens P.	Con	744	23.5
Bunt C.	Ind	726	22.9
Emuss M. Ms.	Ind	709	22.4
Turnout		67.7	7.7
St. Columb (4140)			
		vote	share
Glanville P.	Ind	1,597	60.8
Ellery Y. Ms.	Con	643	24.5
Banks M.	LD	386	14.7
Turnout		64.0	36.3
St. Day Lanner & Carharrack (4398)			
		vote	share
Kaczmarek M.	Ind	1,044	38.2
Thomas J.	LD	826	30.2
Allen E. Ms.	Lab	500	18.3
Anson M. Ms.	Con	366	13.4
Turnout		62.8	8.0
St. Germans (3781)			
		vote	share
McTaggart M.	LD	1,217	46.6
Harding W.	Con	1,068	40.9
Hazel C.	Ind	325	12.5
Turnout		70.1	5.7
St. Ives North (3302)			
		vote	share
Mitchell A.*	LD	1,460	68.2
Richards N.	Ind	356	16.6
Power J.	Con	326	15.2
Turnout		64.9	51.5
St. Ives South (4095)			
		vote	share
Tonkin G.	LD	1,066	40.7
Milton D.	Con	973	37.2
Murray T.	Lab	577	22.1
Turnout		64.8	3.6

St. Just (5588)			
		vote	share
Ewer R. Ms.*	Lab	1,769	46.0
Daniel J.	Con	1,547	40.3
Moyle A.	MK	527	13.7
Turnout		70.2	5.8

St. Keverne (4885)			
		vote	share
Englefield P. Ms.*	Ind	2,512	78.2
Mesropians A.	Con	702	21.8
Turnout		67.1	56.3

St. Kew (3738)			
		vote	share
Richards H. Ms.*	Ind	1,022	39.6
Lander S.	Ind	574	22.2
Evans N.	LD	525	20.3
Cooke A.	Con	463	17.9
Turnout		70.0	17.3

St. Stephen (7558)			
		vote	share
Thomas K. Ms.	LD	1,204	29.2
Curnow D.	Ind	972	23.6
Bennett C.	Con	767	18.6
Hawken E. Ms.	Ind	608	14.7
Watling P. Ms.	Lab	573	13.9
Turnout		55.0	5.6

Stithians (3715)			
		vote	share
Plummer J.*	Ind	1,155	45.8
Martin T.	Con	637	25.3
Zied A.	LD	399	15.8
Wilson J.	Lab	331	13.1
Turnout		68.4	20.5

Stokeclimland (5077)			
		vote	share
Paynter A.	LD	2,230	62.7
Milne Home J.	Con	1,326	37.3
Turnout		71.0	25.4

Stratton (5043)			
		vote	share
Heard E. Ms.*	LD	2,275	65.8
Purser R.	Con	1,181	34.2
Turnout		69.7	31.7

Tintagel (4084)			
		vote	share
Brown G.	LD	1,472	53.7
Flower R.	Ind	660	24.1
Reeves R.	Con	610	22.2
Turnout		68.0	29.6

Torpoint (6421)			
		vote	share
Crago M.	Ind	1,940	53.1
Brimacombe A.	Con	859	23.5
Parkin E.	LD	857	23.4
Turnout		59.3	29.6

Trevarna (4496)			
		vote	share
Rawlins B.	LD	974	39.5
Polmouther E. Ms.	Con	782	31.7
Derry P.	Lab	520	21.1
Marshall C.	MK	191	7.7
Turnout		55.0	7.8

Trevorbyn (4509)			
		vote	share
Vincent E. Ms.*	LD	1,703	66.2
Luke M.	MK	477	18.5
Horton I.	Con	392	15.2
Turnout		57.6	47.7

Truro East (5466)			
		vote	share
Biscoe B.*	Ind	1,769	53.4
Cox R. Ms.	LD	1,221	36.9
Kelly V. Ms.	Lab	322	9.7
Turnout		61.4	16.5

Truro South (3916)			
		vote	share
Ansari D. Ms.*	LD	1,204	47.4
Hoskin J. Ms.	Con	782	30.8
Leamon P. Ms.	Lab	283	11.1
Jenkin C.	MK	271	10.7
Turnout		65.6	16.6

Truro West (3978)			
		vote	share
Carlyon A. Ms.	Ind	931	38.1
Fozzard C. Ms.	LD	642	26.3
Wells C.	Con	490	20.1
Tozer E.	Lab	272	11.1
Tal-E-Bot R.	MK	82	3.4
Payne M.	Ind	25	1.0
Turnout		61.9	11.8

Wadebridge (5801)			
		vote	share
Brewer C.	Ind	1,227	33.1
Brenton K.	Ind	752	20.3
Hornbrook D.	Ind	675	18.2
Henshaw D. Ms.	Con	627	16.9
Rowe J.	Ind	429	11.6
Turnout		65.5	12.8

Cornwall 2005

Bodmin St. Marys (5163)			
		vote	share
Kerridge A. Ms.	LD	1,477	54.2
Quinnell A.*	Ind	465	17.1
Battersby J.	Con	419	15.4
Acton D.	Lab	364	13.4
Turnout		52.8	37.1

Bodmin St. Petroc (4994)			
		vote	share
Rogerson S.	LD	1,953	71.7
Parkyn K. Ms.	Con	771	28.3
Turnout		54.5	43.4

Breage & Crowan (4654)			
		vote	share
Robertson A.	Con	1,233	38.0
Martin J.	LD	924	28.5
Keeling J.	Ind	725	22.3
Olivier S. Ms.	Lab	364	11.2
Turnout		69.7	9.5

Bude-Stratton (9159) ²			
		vote	share
Whalley D.*	LD	3,059	43.1
Heard E. Ms.*	LD	2,773	-
Bolitho J.	MK	2,329	32.8
Heenan J. Ms.	Con	1,715	24.1
Turnout		66.7	10.3

Burraton & Landulph (5319)			
		vote	share
McTaggart B. Ms.	LD	2,058	59.4
Eggleston O. Ms.	Con	1,407	40.6
Turnout		65.1	18.8

Callington (5104)			
		vote	share
Nettle T.*	Ind	1,988	60.1
Price D.	LD	700	21.2
Adcock R.	Con	618	18.7
Turnout		64.8	39.0

Calstock (5013)			
		vote	share
Smale T.*	Lab	1,287	37.4
Flashman J.	Con	1,247	36.3
Hutty P.	LD	906	26.3
Turnout		68.6	1.2

Camborne North (4863)			
		vote	share
Pope E.	LD	1,186	41.2
Godolphin R.*	Lab	997	34.6
Prisk T.	Con	412	14.3
Hills P.	MK	185	6.4
Tonkins G.	Lib	98	3.4
Turnout		59.2	6.6

Camborne South (5034)			
		vote	share
Bunce A.	LD	1,382	43.8
Bunt A.	Lab	1,065	33.8
Sanders A.	MK	493	15.6
Trengove R. Ms.	Lib	213	6.8
Turnout		62.6	10.1

Camborne West (5169)			
		vote	share
Woodward J.	Con	884	25.5
Bickford C.	Lab	868	25.0
Wilson J.	LD	813	23.4
Cullimore S.	MK	780	22.5
Hart R. Ms.	Lib	127	3.7
Turnout		67.2	0.5

Camelford & Altarnun (4821)			
		vote	share
Comber B. Ms.	LD	1,357	41.3
Goodenough K.	Ind	1,152	35.1
Hall C. Ms.	Con	774	23.6
Turnout		68.1	6.2

Carn Brea (5309)			
		vote	share
Moyle M.*	Lab	1,416	44.1
Wright J. Ms.	LD	898	28.0
Fleming P.	Con	556	17.3
Duncan W.	UKIP	340	10.6
Turnout		60.5	16.1

Chacewater Shortlanesend & Threemilestone (4281)			
		vote	share
Dyer F.	Con	985	33.5
Jones T. Ms.	LD	799	27.2
Rowe P. Ms.*	Ind	770	26.2
Allen M.	Lab	261	8.9
Denton K.	MK	123	4.2
Turnout		68.6	6.3

Constantine (5307)			
		vote	share
Hatton N.*	Con	1,933	48.4
Hewett-Silk D.	LD	956	23.9
Lambert M. Ms.	Lab	564	14.1
Fryer G. Ms.	Ind	539	13.5
Turnout		75.2	24.5

Falmouth North (10654) ²			
		vote	share
Bonney R.*	LD	2,428	34.8
Chin-Quee G.	Lab	2,150	30.8
Sterratt D.	LD	1,991	-
Ferrett J. Ms.*	Lab	1,694	-
Eva S.	Ind	1,249	17.9
Varney M.	Ind	1,154	-
Rimmer N.	Con	1,146	16.4
Kuruber J.	Con	931	-
Turnout		66.9	4.0

Falmouth South (4592)			
		vote	share
Cramp O.	LD	1,113	37.0
Brown G. Ms.	Con	910	30.2
Breacker D.	Lab	600	19.9
Staeton W.	Ind	387	12.9
Turnout		65.5	6.7
Feock & Kea (4248)			
		vote	share
Currie J.*	Con	1,222	38.0
Edmond R.	Ind	927	28.9
Warner C.	LD	773	24.1
Bailey M. Ms.	Lab	211	6.6
Trebell M.	MK	80	2.5
Turnout		75.6	9.2
Fowey & Lostwithiel (4265)			
		vote	share
Bain S. Ms.*	Con	1,257	43.8
Gillett I.	LD	943	32.9
Boosey E. Ms.	Ind	670	23.3
Turnout		67.3	10.9
Grampond & Mevagissey (4558)			
		vote	share
Hunkin B.*	LD	1,387	46.6
Mason J. Ms.	Con	1,254	42.1
Baker J. Ms.	Lab	336	11.3
Turnout		65.3	4.5
Hayle-Gwinear-Gwithian (8942)²			
		vote	share
Lello T.*	LD	2,250	31.8
Oliver S. Ms.*	Ind	1,949	27.5
Cook D.	LD	1,600	-
Penhaligon G.	Con	1,284	18.1
Gregory R.	Lab	990	14.0
Watson Y. Ms.	Con	834	-
Mager J.	UKIP	602	8.5
Turnout		63.0	4.3
Helland (3520)			
		vote	share
Bryant D.	LD	0	0.0
Turnout		0.0	0.0
Helston North (4563)			
		vote	share
Phillips P.	LD	1,351	46.3
Martin P.*	Ind	1,053	36.1
Powell P.	Con	512	17.6
Turnout		63.9	10.2
Illogan & Portreath (5329)			
		vote	share
Rowe T.	Ind	813	23.0
Ekinsmyth D.	LD	684	19.4
Holmes P.*	Lib	673	19.1
Thomas U. Ms.	Con	636	18.0
Phillips R. Ms.	Lab	576	16.3
Cann G.	Ind	148	4.2
Turnout		66.2	3.7
Lanreath (5002)			
		vote	share
Adams P.	LD	971	29.4
Hayward H.	Con	955	28.9
Tubb P.	Ind	849	25.7
Yaxley J.	Ind	529	16.0
Turnout		66.1	0.5
Launceston (7562)²			
		vote	share
Paynter A.*	LD	2,208	42.4
Nicholls G.*	LD	2,182	-
Chapman E.	Ind	1,835	35.3
Reeve A.	Con	1,162	22.3
Jordan G.	Ind	716	-
Turnout		63.2	7.2

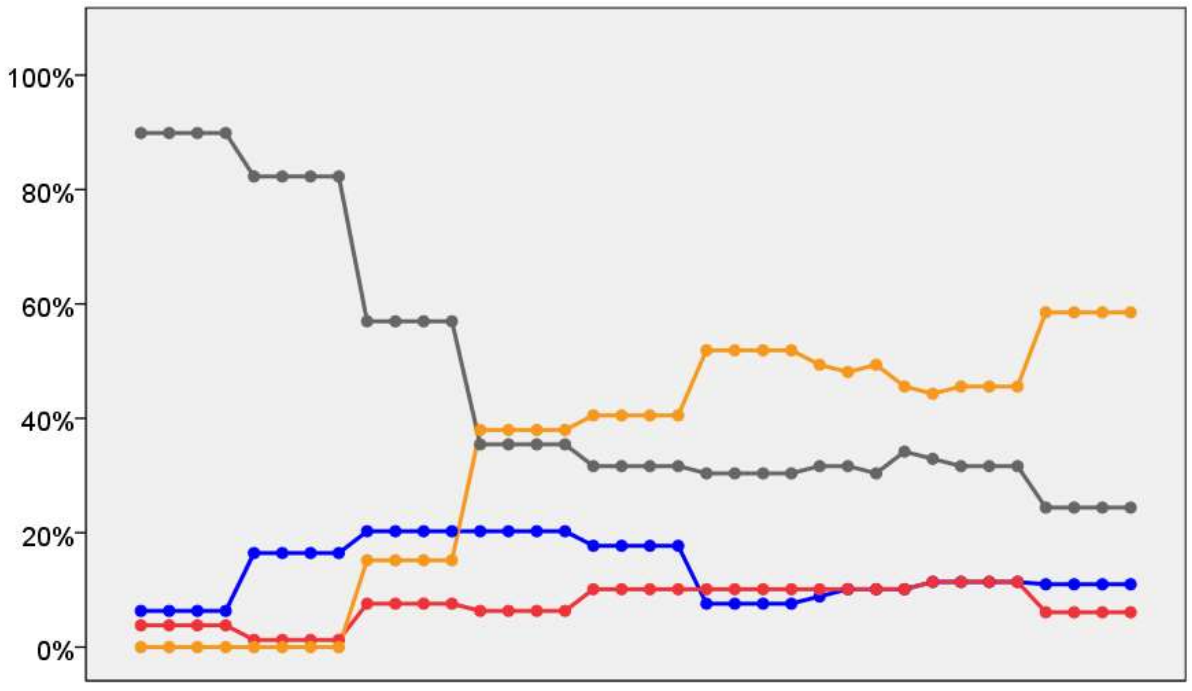
Liskeard (9802)²			
		vote	share
Hocking G.*	LD	2,805	55.5
Jones R.	LD	2,570	-
Wilton G. Ms.	Con	1,583	31.3
Cooke S. Ms.	Con	1,536	-
Miller M.	MK	667	13.2
Turnout		61.5	24.2
Looe (4582)			
		vote	share
Toms A.	Con	1,858	63.8
Joy M.	LD	1,052	36.2
Turnout		63.5	27.7
Ludgvan (5002)			
		vote	share
Mann R.*	Ind	1,705	49.0
Squire M.	LD	1,379	39.6
Marsham A.	Lab	395	11.4
Turnout		69.6	9.4
Luxulyan Valley (3641)			
		vote	share
Roberts W.*	Ind	0	0.0
Turnout		0.0	0.0
Marazion (4596)			
		vote	share
Walker N.*	LD	1,535	47.1
Roskilly S. Ms.	Con	1,319	40.5
Murray T.	Lab	404	12.4
Turnout		70.9	6.6
Marhamchurch & Week St. Mary (4664)			
		vote	share
Booker R.	LD	1,796	53.8
Tucker P.	Con	1,543	46.2
Turnout		71.6	7.6
Meneage & South Helston (3709)			
		vote	share
Lyne P. Ms.*	Ind	1,267	54.8
Evershed A.	LD	773	33.4
Pullen T.	Lab	271	11.7
Turnout		62.3	21.4
Menheniot & St. Germans (4621)			
		vote	share
McTaggart M.*	LD	1,673	53.2
Ellis C.	Con	1,471	46.8
Turnout		68.0	6.4
Mount Charles (4598)			
		vote	share
Rawlins B.*	LD	1,106	45.3
Polmouther E. Ms.	Ind	838	34.3
Derry P.	Lab	497	20.4
Turnout		53.1	11.0
Mylor (4521)			
		vote	share
Hichens R.*	Con	1,517	44.1
Banks C.	LD	1,336	38.9
Trenchard L. Ms.	Lab	344	10.0
Dunstan W.	MK	140	4.1
Johns N. Ms.	Lib	100	2.9
Turnout		76.0	5.3
Newquay Central (4813)			
		vote	share
Edwards R.*	LD	1,107	43.2
Freeman D. Ms.	Con	1,022	39.9
Varga J.	Ind	434	16.9
Turnout		53.3	3.3

Newquay North (5619)			
		vote	share
Brooke E.	LD	1,279	37.6
Lambhead P.	Con	1,231	36.2
Heywood H.*	Ind	889	26.2
Turnout		60.5	1.4
Newquay West (4834)			
		vote	share
Dent D.	Ind	976	36.5
Clarke L. Ms.	Con	902	33.7
Irons O. Ms.*	LD	799	29.8
Turnout		55.4	2.8
Padstow (5121)			
		vote	share
Townrow S. Ms.*	LD	1,665	52.1
Brewer P.	Con	1,532	47.9
Turnout		62.4	4.2
Penryn (4596)			
		vote	share
Hutchings S.	LD	1,012	34.3
May M. Ms.	Ind	645	21.9
Scott E.	Lab	610	20.7
Wilkes E.	Ind	342	11.6
Vyvan A.	Con	340	11.5
Turnout		64.2	12.4
Penzance (16551)³			
		vote	share
Payne M.*	Lab	3,999	27.1
Mates P.	LD	3,195	21.7
Williams T. Ms.*	LD	3,188	-
Pilcher M.	Con	2,912	19.8
Sanderson P. Ms.	LD	2,730	-
Schofield P. Ms.	Con	2,057	-
Champion J.	Con	1,947	-
Power J. Ms.	Green	1,534	10.4
Russell M.	Green	1,303	-
Faulkner M.	UKIP	1,290	8.8
Rendle P.	MK	1,277	8.7
Barnes R.	UKIP	1,021	-
Dennis C. Ms.	Ind	523	3.6
Turnout		65.4	5.5
Perranporth (5238)			
		vote	share
Yeo K.*	LD	1,631	50.3
Grant J.	Ind	792	24.4
Basnett A.	Lab	430	13.3
Mann C. Ms.	MK	388	12.0
Turnout		61.9	25.9
Porthleven (4017)			
		vote	share
Curnow W.	Ind	1,356	55.2
Lewarne R. Ms.	LD	810	33.0
Webster G.	Lab	289	11.8
Turnout		61.1	22.2
Probus & Carland (5180)			
		vote	share
Mennear S.*	LD	1,432	43.3
Rogers V.	Con	1,116	33.7
Mewton P.	Lab	419	12.7
Hodge P.	MK	343	10.4
Turnout		63.9	9.5
Rame (4966)			
		vote	share
Ault J.	LD	2,005	58.0
Murray S.	Con	1,449	42.0
Turnout		69.6	16.1

Redruth North (4754)			
		vote	share
Barnes R.	Lab	1,152	41.3
Cannicott D.	LD	616	22.1
Bennett M.	Con	392	14.0
Dolley A. Ms.	Ind	316	11.3
Eddowes M.	Ind	217	7.8
Uren C. Ms.	Lib	98	3.5
Turnout		58.7	19.2
Redruth South (4736)			
		vote	share
Hicks G.*	Ind	1,636	51.6
Aston P. Ms.	LD	637	20.1
Fry R.	Lab	535	16.9
Bosworth I.	Con	283	8.9
Skinner C.	Lib	79	2.5
Turnout		66.9	31.5
Roche (4433)			
		vote	share
Higman B.*	LD	1,145	46.2
Wood J.	Ind	995	40.2
Crampton M.	Lab	337	13.6
Turnout		55.9	6.1
Roseland (4683)			
		vote	share
German J.	Ind	1,266	38.7
Bishop R.	Con	1,038	31.7
Greenslade F.	LD	757	23.1
Hitchings R.	MK	214	6.5
Turnout		69.9	7.0
Saltash (9481) ²			
		vote	share
Mepsted J. Ms.*	LD	3,114	45.1
Preston B.*	LD	2,914	-
Carter D.	Con	1,603	23.2
Gregory B.	Ind	1,534	22.2
Jones L.	Con	1,151	-
Sandercock G.	MK	657	9.5
Turnout		61.7	21.9
St. Agnes (5655)			
		vote	share
Cooper R.*	LD	1,994	53.4
Hope E.	Con	1,031	27.6
Wiggins M. Ms.	Lab	402	10.8
Stodder C.	Ind	205	5.5
Tal-E-Bot R.	MK	101	2.7
Turnout		66.0	25.8
St. Austell Bay (5164)			
		vote	share
Bull J. Ms.	LD	1,343	42.1
Stewart R.*	Con	1,336	41.9
Richardson M. Ms.	Lab	510	16.0
Turnout		61.8	0.2
St. Austell North (4623)			
		vote	share
Stocker J.	LD	1,051	43.2
Heyward S. Ms.	Ind	670	27.5
Parkinson R.	Lab	453	18.6
Morton-Nance P.	MK	261	10.7
Turnout		52.7	15.6
St. Blaise (4922)			
		vote	share
Burley M.	LD	1,355	51.7
Riddle T.	Lab	659	25.2
Christie R.	Ind	606	23.1
Turnout		53.2	26.6
St. Cleer (5194)			
		vote	share
Emuss R.	LD	1,372	39.1
Harris C.	Con	1,139	32.4
Martin B. Ms.	Ind	1,002	28.5
Turnout		67.6	6.6

St. Columb (4252)			
		vote	share
Glanville P.*	Ind	1,963	76.1
Ellery Y. Ms.	Con	616	23.9
Turnout		60.7	52.2
St. Day Lanner & Carharrack (4311)			
		vote	share
Kaczmarek M.*	Ind	1,535	52.7
Thomas J.	LD	721	24.8
Fry V. Ms.	Lab	357	12.3
Anson M. Ms.	Con	300	10.3
Turnout		67.6	27.9
St. Enoder & Colan (4226)			
		vote	share
Waters A.	Ind	964	39.0
Rainbow J.	LD	571	23.1
Clarke K.	Con	560	22.6
Hawken E. Ms.	Ind	378	15.3
Turnout		58.5	15.9
St. Ives (9055) ²			
		vote	share
Mitchell A.*	LD	2,272	31.0
Symons J. Ms.	Con	1,580	21.6
Penhaligon E. Ms.	Con	1,463	-
Tonkin G.*	LD	1,426	-
Tanner J. Ms.	Ind	1,416	19.3
Isaacs H.	Lab	1,337	18.2
Slack K. Ms.	Green	723	9.9
Richards P. Ms.	Green	418	-
Turnout		65.8	9.4
St. Just (5831)			
		vote	share
Angove P. Ms.	LD	1,253	31.5
Goninan C.	Ind	1,173	29.5
Maddern W.	Con	945	23.8
Olivier C.	Lab	601	15.1
Turnout		68.1	2.0
St. Keverne (4718)			
		vote	share
Rule C. Ms.	Ind	2,450	75.3
Southwood P.	Con	803	24.7
Turnout		68.9	50.6
St. Mewan (4133)			
		vote	share
Egerton A. Ms.	LD	1,450	53.1
Bennett C.	Con	938	34.4
Doyle D.	Lab	341	12.5
Turnout		66.0	18.8
St. Stephen (4696)			
		vote	share
Curnow D.	Ind	1,258	49.4
Thomas K. Ms.*	LD	907	35.6
Watling P. Ms.	Lab	384	15.1
Turnout		54.3	13.8
Stithians (4262)			
		vote	share
Plummer J.*	Ind	1,265	41.8
Ryall C. Ms.	LD	785	26.0
Whyte Trudgeon H. Ms.	Con	611	20.2
Clarke D.	Lab	362	12.0
Turnout		70.9	15.9
Stokeclimland (4549)			
		vote	share
Burden N.	Ind	1,591	48.3
Scoble K.*	LD	1,103	33.5
Ayres J.	Con	603	18.3
Turnout		72.5	14.8

Tintagel (4441)			
		vote	share
Brown G.*	LD	2,122	71.4
Walker D.	Con	851	28.6
Turnout		66.9	42.8
Torpoint (6134)			
		vote	share
Parkin E.	LD	1,211	33.1
Briggs M.	Con	1,154	31.5
Crago M.*	Ind	881	24.1
Chadwick J.	Ind	413	11.3
Turnout		59.7	1.6
Trevorbyn (4806)			
		vote	share
Vincent E. Ms.*	LD	1,590	57.8
Luke M.	MK	654	23.8
Lucas D. Ms.	Lab	509	18.5
Turnout		57.3	34.0
Truro East (9499) ²			
		vote	share
Ansari D. Ms.*	LD	2,416	30.7
Biscoe B.*	Ind	2,206	28.0
Cox R. Ms.	LD	1,956	-
Hill T.	Con	1,888	24.0
Mackenzie C. Ms.	Lab	793	10.1
Richardson M.	Lab	567	-
Gondal V. Ms.	MK	566	7.2
Turnout		64.0	2.7
Truro West (4562)			
		vote	share
Carlyon A. Ms.*	Ind	1,347	48.8
Neale M. Ms.	LD	844	30.5
Davies J.	Lab	409	14.8
Stephens C.	MK	163	5.9
Turnout		60.6	18.2
Wadebridge & St. Minver (10635) ²			
		vote	share
Brewer C.*	Ind	3,000	35.6
Rowe J.	LD	2,904	34.5
Richards H. Ms.*	Ind	2,435	-
Cooke A.	Con	1,751	20.8
Battle P.	Lab	763	9.1
Turnout		67.2	1.1



...

