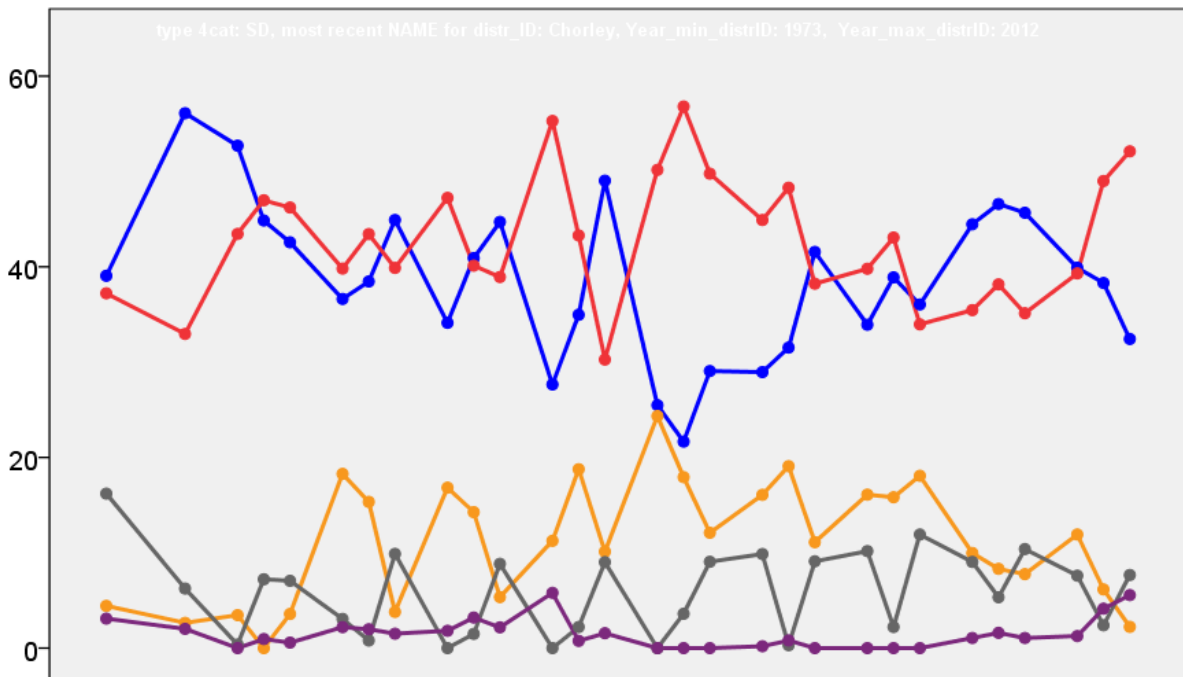


# Chorley Borough Council Election Results 1973-2012



Colin Rallings and Michael Thrasher  
The Elections Centre  
Plymouth University

The information contained in this report has been obtained from a number of sources. Election results from the immediate post-reorganisation period were painstakingly collected by Alan Willis largely, although not exclusively, from local newspaper reports. From the mid-1980s onwards the results have been obtained from each local authority by the Elections Centre. The data are stored in a database designed by Lawrence Ware and maintained by Brian Cheal and others at Plymouth University. Despite our best efforts some information remains elusive whilst we accept that some errors are likely to remain. Notice of any mistakes should be sent to [elections@plymouth.ac.uk](mailto:elections@plymouth.ac.uk). The results sequence can be kept up to date by purchasing copies of the annual Local Elections Handbook, details of which can be obtained by contacting the email address above.

Front cover: the graph shows the distribution of percentage vote shares over the period covered by the results. The lines reflect the colours traditionally used by the three main parties. The grey line is the share obtained by Independent candidates while the purple line groups together the vote shares for all other parties.

Rear cover: the top graph shows the percentage share of council seats for the main parties as well as those won by Independents and other parties. The lines take account of any by-election changes (but not those resulting from elected councillors switching party allegiance) as well as the transfers of seats during the main round of local election.

The lower graph shows for each main round of local elections the overall percentage turnout (solid line), the percentage of women candidates standing at (dotted line) and the percentage of women among those elected (hashed line).

## Chorley - 1973

### Adlington (3861)<sup>3</sup>

		vote	share
<b>Shone E. Ms.</b>	Lab	1,029	53.7
<b>Taylor J.</b>	Lab	1,015	-
<b>Hoyle P. Ms.</b>	Lab	962	-
Turner J.	Con	887	46.3
Stead J.	Con	846	-
Hunt H.	Con	834	-
<b>Turnout</b>		49.6	7.4

### Anderton Heath Charnock & Rivington (2316)<sup>2</sup>

		vote	share
<b>Morris R.</b>	Con	649	57.9
<b>Raby E. Ms.</b>	Con	621	-
Hallatt A.	Lab	267	23.8
Bolton C.	Ind	205	18.3
Berry R.	Ind	178	-
<b>Turnout</b>		48.4	34.1

### Anglezarke Heapey & Wheelton (994)

		vote	share
<b>Hodkinson E.</b>	Con	361	69.7
Newbury M. Ms.	Lab	157	30.3
<b>Turnout</b>		52.1	39.4

### Brindle & Hoghton (1333)

		vote	share
<b>Crook A.</b>	Ind	441	64.4
Gernon G.	Con	150	21.9
Gardiner H. Ms.	Lib	94	13.7
<b>Turnout</b>		51.4	42.5

### Charnock Richard (1196)

		vote	share
<b>Webb J. Ms.</b>	Ind	267	40.0
Williams E.	Ind	234	35.1
Witts M. Ms.	Con	100	15.0
Westby T.	Ind	66	9.9
<b>Turnout</b>		55.8	4.9

### Eccleston & Heskin (3695)<sup>3</sup>

		vote	share
<b>Horsfield C.</b>	Ind	890	46.2
<b>Lucas J. Ms.</b>	Con	732	38.0
<b>Marden A.</b>	Con	707	-
Twist B.	Con	543	-
Ellison J.	Lab	304	15.8
Taylor H.	Lab	284	-
Titherington T.	Lab	271	-
<b>Turnout</b>		52.1	8.2

### Lostock (2466)<sup>2</sup>

		vote	share
<b>Shuttleworth R.</b>	Ind	405	38.8
<b>Jump J.</b>	Ind	403	-
Lambert D.	Con	388	37.1
Norcross W.	Con	334	-
Thorp V. Ms.	Lab	252	24.1
Wrennall R.	Ind	214	-
Darlington L.	Lab	178	-
<b>Turnout</b>		42.4	1.6

### Mawdesley (1198)

		vote	share
<b>Culshaw F.</b>	Con	302	54.5
Yates D.	Ind	224	40.4
Ashcroft G.	Lab	28	5.1
<b>Turnout</b>		46.2	14.1

### No. 10 (Clayton-Le-Woods & Cuerden) (4018)<sup>3</sup>

		vote	share
<b>Barton E.</b>	Con	752	73.7
<b>Livesey J.</b>	Con	727	-
<b>Vickery A.</b>	Con	629	-
Haggarty J.	Lab	269	26.3
Torkington K.	Lab	246	-
Edwards F.	Lab	238	-
<b>Turnout</b>		25.4	47.3

### No. 11 (Euxton) (4310)<sup>3</sup>

		vote	share
<b>Heaton E.</b>	Ind	890	30.8
<b>Moorcroft J.</b>	Con	844	29.2
<b>Simons G.</b>	Con	770	-
Sheppard C. Ms.	Lab	693	23.9
Sheppard C.	Lab	658	23.9
Fowler J.	Lab	612	-
Felton C.	Lib	467	16.1
Phillips W.	Lib	213	-
Webster T.	Lib	199	-
<b>Turnout</b>		67.1	1.6

### No. 16 (Coppull: North) (1680)

		vote	share
<b>Holding J.</b>	Ind Lab	417	52.7
Meadows J.	Lab	374	47.3
<b>Turnout</b>		47.1	5.4

### No. 17 (Coppull: East) (2153)<sup>2</sup>

		vote	share
<b>Lowe A.</b>	Lab	580	60.6
<b>Critchley A.</b>	Lab	549	-
Helme A.	Con	377	39.4
<b>Turnout</b>		44.4	21.2

### No. 18 (Coppull: West) (1153)

		vote	share
<b>Gore E.</b>	Lab	342	65.8
Penketh A.	Ind	94	18.1
Hart R.	Con	84	16.2
<b>Turnout</b>		45.1	47.7

### No. 2 (Chorley: North) (4641)<sup>4</sup>

		vote	share
<b>Sellers I.</b>	Con	1,069	49.5
<b>Beechey M. Ms.</b>	Con	1,049	-
<b>Seabrook D.</b>	Con	1,021	-
<b>Glynn J.</b>	Con	1,015	-
Crook T.	Lab	752	34.8
Prebble M. Ms.	Lab	696	-
Bevan A. Ms.	Lab	660	-
Atherton P.	Lab	649	-
Wilson F.	Lib	338	15.7
Walker S.	Lib	332	-
Harkness I.	Lib	319	-
Griffiths A.	Lib	319	-
<b>Turnout</b>		46.5	14.7

### No. 3 (Chorley: South) (5674)<sup>5</sup>

		vote	share
<b>Keane P. Ms.</b>	Lab	1,406	57.3
<b>Holme J.</b>	Lab	1,343	-
<b>Clarke H.</b>	Lab	1,325	-
<b>Ashton S.</b>	Lab	1,303	-
<b>Coombes M.</b>	Lab	1,296	-
Blackburn M. Ms.	Con	1,046	42.7
Bibby H.	Con	1,004	-
Marsden J.	Con	1,001	-
Farnworth A.	Con	966	-
Pass L.	Con	933	-
<b>Turnout</b>		43.2	14.7

### No. 4 (Chorley: East) (6665)<sup>5</sup>

		vote	share
<b>Sandham K.</b>	Lab	1,478	67.5
<b>Corcoran W.</b>	Lab	1,476	-
<b>Crook J.</b>	Lab	1,447	-
<b>McKenna C.</b>	Lab	1,429	-
<b>Yates D.</b>	Lab	1,395	-
Charnley B.	Con	713	32.5
Rigby A.	Con	712	-
Burgess G.	Con	701	-
Hoban G. Ms.	Con	699	-
Goodier W.	Con	684	-
<b>Turnout</b>		32.9	34.9

### No. 5 (Chorley: West) (6636)<sup>5</sup>

		vote	share
<b>Edgerley D.</b>	Lab	1,754	57.6
<b>Haddon F.</b>	Lab	1,720	-
<b>Gee T.</b>	Lab	1,707	-
<b>Pearson M.</b>	Lab	1,698	-
<b>Wilson J.</b>	Lab	1,661	-
Rigby R.	Con	1,290	42.4
Ainsworth P. Ms.	Con	1,243	-
Bleasdale M. Ms.	Con	1,222	-
Heald A.	Con	1,212	-
Thompson M.	Con	1,210	-
<b>Turnout</b>		45.9	15.2

### Whittle Le Woods (2567)<sup>2</sup>

		vote	share
<b>Bowling T.</b>	Con	513	53.0
<b>Ashton J.</b>	Con	492	-
McEvoy D.	Lab	455	47.0
Cookson T.	Lab	452	-
<b>Turnout</b>		37.7	6.0

### Withnell (2366)<sup>2</sup>

		vote	share
<b>Harwood T.</b>	Ind Lab	425	29.3
<b>Forsyth I. Ms.</b>	Con	384	26.4
Crowther M. Ms.	Ind	335	23.1
Clare K.	Lib	308	21.2
Whalley R.	Ind	284	-
Marginson J.	Con	280	-
Thompson R.	Ind	151	-
<b>Turnout</b>		61.4	2.8

## Chorley - 1976

### Adlington (3981)<sup>3</sup>

		vote	share
<b>Moss A.</b>	Con	965	55.4
<b>Cunliffe D.</b>	Con	949	-
<b>Case P. Ms.</b>	Con	926	-
Shone E. Ms.*	Lab	778	44.6
Fraser T.	Lab	724	-
Molyneux F.	Lab	713	-
<b>Turnout</b>		46.6	10.7

### Anderton Heath Charnock & Rivington (2282)<sup>2</sup>

		vote	share
<b>Morris R.*</b>	Con	774	80.9
<b>Raby M. Ms.*</b>	Con	710	-
Wilson P. Ms.	Lab	183	19.1
<b>Turnout</b>		41.8	61.8

### Anglezarke Heapey & Wheelton (989)

		vote	share
<b>Turner J. Ms.</b>	Con	477	79.5
Talbot M.	Lab	123	20.5
<b>Turnout</b>		60.2	59.0

### Brindle & Hoghton (1432)

		vote	share
<b>Crook A.</b>	Con	671	93.2
Thomas H.	Lab	49	6.8
<b>Turnout</b>		50.0	86.4

### Charnock Richard (1273)

		vote	share
<b>Smethurst D. Ms.</b>	Con	405	51.5
Webb J. Ms.	Ind	283	36.0
Ashcroft G.	Lab	98	12.5
<b>Turnout</b>		60.9	15.5

### Chorley East (4365)<sup>3</sup>

		vote	share
<b>Corcoran B.</b>	Lab	887	56.3
<b>Hodson B.</b>	Lab	873	-
<b>Sandham K.</b>	Lab	870	-
Charnley R.	Con	688	43.7
Jolly R.	Con	682	-
Jones M. Ms.	Con	636	-
<b>Turnout</b>		37.6	12.6

Chorley North East (4011) <sup>3</sup>			
		vote	share
<b>Charnley B. Ms.</b>	Con	827	50.8
<b>Pilkington B.</b>	Con	816	-
<b>Field V. Ms.</b>	Lab	802	49.2
Jamieson S.	Con	773	-
Ashton S.	Lab	733	-
Yates D.	Lab	710	-
<b>Turnout</b>		40.2	1.5

Chorley North West (2489) <sup>2</sup>			
		vote	share
<b>Sellers I.</b>	Con	1,157	71.9
<b>Glynn J.</b>	Con	1,078	-
Crook T.	Lab	248	15.4
Baynham F.	Lab	233	-
Wilson F.	Lib	204	12.7
<b>Turnout</b>		60.2	56.5

Chorley South East (4138) <sup>3</sup>			
		vote	share
<b>Keane P.</b>	Lab	971	46.9
<b>Marsden J.</b>	Con	935	45.1
<b>Moss E. Ms.</b>	Con	885	-
Riding J. Ms.	Con	846	-
Crook J.	Lab	808	-
Slater M.	Lab	793	-
Taylor A. Ms.	Lib	165	8.0
Smith C.	Lib	149	-
<b>Turnout</b>		47.1	1.7

Chorley South West (4186) <sup>3</sup>			
		vote	share
<b>Holme J.</b>	Lab	1,291	63.7
<b>Clarke H.</b>	Lab	1,250	-
<b>Wilson J.</b>	Lab	1,220	-
Blackburn M. Ms.	Con	735	36.3
Malpas P.	Con	710	-
Hudson W.	Con	681	-
<b>Turnout</b>		48.9	27.4

Chorley West (4369) <sup>3</sup>			
		vote	share
<b>Snape R.</b>	Con	1,362	59.3
<b>Rigby R.</b>	Con	1,316	-
<b>Whittington D.</b>	Con	1,245	-
Pearson M.	Lab	933	40.7
Gee T.	Lab	927	-
Edgerley D.	Lab	908	-
<b>Turnout</b>		53.0	18.7

Clayton-Le-Woods East (1431) <sup>2</sup>			
		vote	share
<b>Monks F.</b>	Con	571	83.5
<b>Livesey J.</b>	Con	533	-
McEvoy D.	Lab	113	16.5
Ford M. Ms.	Lab	113	-
<b>Turnout</b>		49.5	67.0

Clayton-Le-Woods West & Cuerden (3006) <sup>2</sup>			
		vote	share
<b>Crabtree E. Ms.</b>	Con	951	75.9
<b>Wharton R.</b>	Con	896	-
Ford G.	Lab	302	24.1
Hardman D.	Lab	259	-
<b>Turnout</b>		42.2	51.8

Coppull North (2481) <sup>2</sup>			
		vote	share
<b>Holding J.</b>	Ind Lab	590	37.2
<b>Meadows J.</b>	Lab	503	31.7
Wilkinson J.	Con	494	31.1
Gore E.	Lab	476	-
<b>Turnout</b>		54.6	5.5

Coppull South (2687) <sup>2</sup>			
		vote	share
<b>Lowe A.</b>	Lab	849	62.9
<b>Critchley A.</b>	Lab	654	-
Helme A.	Con	501	37.1
Chadwick C.	Con	455	-
<b>Turnout</b>		50.2	25.8

Eccleston & Heskin (3659) <sup>3</sup>			
		vote	share
<b>Horsfield C.</b>	Ind	1,043	50.9
<b>Lucas J. Ms.</b>	Con	1,007	49.1
<b>Marsden E.</b>	Con	978	-
Twist B.	Con	706	-
Hailwood F.	Ind	462	-
<b>Turnout</b>		46.5	1.8

Euxton North (2386) <sup>2</sup>			
		vote	share
<b>Branston L. Ms.</b>	Con	739	64.9
<b>Rigby J. Ms.</b>	Con	721	-
Barker J. Ms.	Lab	400	35.1
Higson F.	Lab	379	-
<b>Turnout</b>		50.0	29.8

Euxton South (2864) <sup>2</sup>			
		vote	share
<b>Moorcroft J.</b>	Con	964	73.3
<b>Simons G.</b>	Con	891	-
Taylor F.	Lab	351	26.7
Newbury M. Ms.	Lab	340	-
<b>Turnout</b>		47.5	46.6

Lostock (2420) <sup>2</sup>			
		vote	share
<b>Lambert D.</b>	Con	620	55.5
<b>Gardner R.</b>	Ind	497	44.5
Whalley G.	Con	471	-
Shuttleworth R.	Ind	396	-
<b>Turnout</b>		45.9	11.0

Mawdesley (1193)			
		vote	share
<b>Culshaw F.</b>	Con	0	0.0
<b>Turnout</b>		0.0	0.0

Whittle Le Woods (2559) <sup>2</sup>			
		vote	share
<b>Simkin D.</b>	Con	739	61.6
<b>Burchell D.</b>	Con	708	-
Cookson A.	Lab	297	24.8
Waring F.	Lab	276	-
Farnworth V.	Lib	164	13.7
Moss D. Ms.	Lib	148	-
<b>Turnout</b>		47.1	36.8

Withnell (2358) <sup>2</sup>			
		vote	share
<b>Forsyth I. Ms.</b>	Con	794	53.8
<b>Crowther M. Ms.</b>	Con	712	-
Harwood R.	Lab	441	29.9
Lavelle G.	Lab	341	-
O'Loughlin T.	Lib	241	16.3
Gardner K.	Lib	163	-
<b>Turnout</b>		60.7	23.9

## Chorley - 1978

Adlington (4102)			
		vote	share
<b>Shone E. Ms.</b>	Lab	1,057	52.6
Case P. Ms.*	Con	953	47.4
<b>Turnout</b>		49.0	5.2

Anderton Heath Charnock & Rivington (2280)			
		vote	share
<b>Raby M. Ms.*</b>	Con	638	79.9
Farnworth M. Ms.	Lib	160	20.1
<b>Turnout</b>		35.0	59.9

Anglezarke Heapey & Wheelton (1013)			
		vote	share
<b>Turner J. Ms.</b>	Con	415	77.3
Talbot M.	Lab	122	22.7
<b>Turnout</b>		53.0	54.6

Chorley East (4325)			
		vote	share
<b>Sandham K.</b>	Lab	1,038	66.7
Charnley R.	Con	519	33.3
<b>Turnout</b>		36.0	33.3

Chorley North East (4103)			
		vote	share
<b>Edgerley D.</b>	Lab	848	55.9
Jamieson S.	Con	606	39.9
Isaac E.	Lib	64	4.2
<b>Turnout</b>		37.0	15.9

Chorley North West (3154)			
		vote	share
<b>Glynn J.</b>	Con	1,133	69.1
Broadhead G.	Lib	254	15.5
Baynham F.	Lab	253	15.4
<b>Turnout</b>		52.0	53.6

Chorley South East (4218)			
		vote	share
<b>Moss E. Ms.</b>	Con	875	53.2
Crook J.	Lab	770	46.8
<b>Turnout</b>		39.0	6.4

Chorley South West (4143)			
		vote	share
<b>Wilson J.</b>	Lab	1,378	70.8
Malpas P.	Con	569	29.2
<b>Turnout</b>		47.0	41.6

Chorley West (4406)			
		vote	share
<b>Whittington D.</b>	Con	1,204	55.8
Gee T.	Lab	837	38.8
Wilson F.	Lib	118	5.5
<b>Turnout</b>		49.0	17.0

Clayton-Le-Woods West & Cuerden (3052)			
		vote	share
<b>Wharton R.</b>	Con	703	74.3
Hardman D.	Lab	243	25.7
<b>Turnout</b>		31.0	48.6

Coppull North (2547)			
		vote	share
<b>Meadows J.</b>	Lab	817	65.5
Hudson W.	Con	431	34.5
<b>Turnout</b>		49.0	30.9

Coppull South (2700)			
		vote	share
<b>Gladwinfield D.</b>	Lab	648	57.1
Lewis J.	Con	486	42.9
<b>Turnout</b>		42.0	14.3

Eccleston & Heskin (3770)			
		vote	share
<b>Marsden A.</b>	Con	956	76.8
Titherington T.	Lab	288	23.2
<b>Turnout</b>		33.0	53.7

Euxton North (2416)			
		vote	share
<b>Rigby J. Ms.</b>	Con	677	56.0
Higson F.	Lab	531	44.0
<b>Turnout</b>		50.0	12.1

Mawdesley (1216)			
		vote	share
<b>Culshaw F.</b>	Con	384	85.3
Warwick E. Ms.	Lab	66	14.7
<b>Turnout</b>		37.0	70.7

<b>Whittle Le Woods (2583)</b>			
		<b>vote</b>	<b>share</b>
<b>Burchell D.</b>	Con	490	54.2
Waring J.	Lab	206	22.8
Farnworth V.	Lib	130	14.4
Bailey W.	Ind	41	4.5
Butler G.	Ind	37	4.1
<b>Turnout</b>		35.0	31.4

## Chorley - 1979

<b>Adlington (4127)</b>			
		<b>vote</b>	<b>share</b>
<b>Lawson W.</b>	Con	1,687	50.0
Fraser T.	Lab	1,686	50.0
<b>Turnout</b>		81.7	0.0

<b>Chorley East (4227)</b>			
		<b>vote</b>	<b>share</b>
<b>Hodson B.</b>	Lab	2,028	65.9
Jolly R.	Con	1,048	34.1
<b>Turnout</b>		72.8	31.9

<b>Chorley North East (4167)<sup>2</sup></b>			
		<b>vote</b>	<b>share</b>
<b>Baynham F.</b>	Lab	1,697	54.8
<b>Watmough A.</b>	Lab	1,663	-
Pilkington B.	Con	1,402	45.2
Cunliffe D.	Con	1,389	-
<b>Turnout</b>		74.4	9.5

<b>Chorley South East (4198)</b>			
		<b>vote</b>	<b>share</b>
<b>Astley H.</b>	Lab	1,793	53.9
Marsden J.	Con	1,531	46.1
<b>Turnout</b>		79.2	7.9

<b>Chorley South West (4111)</b>			
		<b>vote</b>	<b>share</b>
<b>Haddon F.</b>	Lab	2,109	65.7
Malpas P.	Con	1,103	34.3
<b>Turnout</b>		78.1	31.3

<b>Chorley West (4292)</b>			
		<b>vote</b>	<b>share</b>
<b>Gee A.</b>	Lab	1,408	39.2
Knowles P.	Con	1,399	39.0
Smeeton J. Ms.	Ind	782	21.8
<b>Turnout</b>		83.6	0.3

<b>Clayton-Le-Woods East (1692)</b>			
		<b>vote</b>	<b>share</b>
<b>Livesey J.</b>	Con	669	50.1
Butler G.	Ind	405	30.3
Hagarty J.	Lab	261	19.6
<b>Turnout</b>		78.9	19.8

<b>Clayton-Le-Woods West &amp; Cuerden (3131)</b>			
		<b>vote</b>	<b>share</b>
<b>Crabtree E. Ms.</b>	Con	1,563	63.0
Wilson P. Ms.	Lab	918	37.0
<b>Turnout</b>		79.2	26.0

<b>Coppull North (2745)</b>			
		<b>vote</b>	<b>share</b>
<b>Clark M.</b>	Lab	1,266	56.8
Helme A.	Con	733	32.9
Greeney T.	Ind	229	10.3
<b>Turnout</b>		81.2	23.9

<b>Coppull South (2679)</b>			
		<b>vote</b>	<b>share</b>
<b>Lowe A.</b>	Lab	1,212	55.6
Lewis J.	Con	571	26.2
Walsh H.	Save the Y	397	18.2
<b>Turnout</b>		81.4	29.4

<b>Eccleston &amp; Heskin (3823)</b>			
		<b>vote</b>	<b>share</b>
<b>Lucas J. Ms.</b>	Con	1,851	58.7
Whittaker A.	Lab	1,300	41.3
<b>Turnout</b>		82.4	17.5

<b>Euxton North (2506)</b>			
		<b>vote</b>	<b>share</b>
<b>Branston L. Ms.</b>	Con	1,175	56.4
Higson F.	Lab	910	43.6
<b>Turnout</b>		83.2	12.7

<b>Euxton South (3110)</b>			
		<b>vote</b>	<b>share</b>
<b>Simons G.</b>	Con	1,648	65.8
Newbury M. Ms.	Lab	857	34.2
<b>Turnout</b>		80.5	31.6

<b>Lostock (2656)</b>			
		<b>vote</b>	<b>share</b>
<b>Gardner R.</b>	Ind	1,606	77.0
Darlington L.	Lab	481	23.0
<b>Turnout</b>		78.6	53.9

<b>Whittle Le Woods (2537)</b>			
		<b>vote</b>	<b>share</b>
<b>Simkin D.</b>	Con	1,217	58.5
Crook R.	Lab	865	41.5
<b>Turnout</b>		82.1	16.9

<b>Withnell (2446)</b>			
		<b>vote</b>	<b>share</b>
<b>Crowther M. Ms.</b>	Con	1,167	57.5
Talbot M.	Lab	863	42.5
<b>Turnout</b>		83.0	15.0

## Chorley - 1980

<b>Adlington (4235)</b>			
		<b>vote</b>	<b>share</b>
<b>Moyle L.</b>	Lab	1,096	49.8
Moos A.	Con	844	38.3
Yates R.	Lib	262	11.9
<b>Turnout</b>		52.0	11.4

<b>Anderton Heath Charnock &amp; Rivington (2391)</b>			
		<b>vote</b>	<b>share</b>
<b>Morris R.*</b>	Con	614	57.1
Nuttall J.	Lab	262	24.3
Isaac E.	Lib	69	6.4
Baldwin W. Ms.	Ind	68	6.3
Thompson A.	Ecol	63	5.9
<b>Turnout</b>		45.0	32.7

<b>Brindle &amp; Hoghton (1440)</b>			
		<b>vote</b>	<b>share</b>
<b>Crook A.</b>	Con	599	86.7
Wilson P. Ms.	Lab	92	13.3
<b>Turnout</b>		48.0	73.4

<b>Charnock Richard (1442)</b>			
		<b>vote</b>	<b>share</b>
<b>Holt J.</b>	Con	579	60.8
Hilton N.	Lab	373	39.2
<b>Turnout</b>		66.0	21.6

<b>Chorley East (4145)</b>			
		<b>vote</b>	<b>share</b>
<b>Corcoran W.</b>	Lab	1,271	76.7
Malpas P.	Con	387	23.3
<b>Turnout</b>		40.0	53.3

<b>Chorley North East (4130)</b>			
		<b>vote</b>	<b>share</b>
<b>Watmough A.</b>	Lab	1,053	55.4
Crompton A.	Con	691	36.4
Fainworth V.	Lib	156	8.2
<b>Turnout</b>		46.0	19.1

<b>Chorley North West (4335)</b>			
		<b>vote</b>	<b>share</b>
<b>Birtill G.</b>	Con	1,389	62.8
Da Costa M.	Lab	611	27.6
Wilson F.	Lib	211	9.5
<b>Turnout</b>		51.0	35.2

<b>Chorley South East (4274)</b>			
		<b>vote</b>	<b>share</b>
<b>Keane P.</b>	Lab	1,284	65.3
Marsden J.	Con	682	34.7
<b>Turnout</b>		46.0	30.6

<b>Chorley South West (4096)</b>			
		<b>vote</b>	<b>share</b>
<b>Holme J.</b>	Lab	1,485	78.8
Blackburn M. Ms.	Con	399	21.2
<b>Turnout</b>		46.0	57.6

<b>Chorley West (4367)</b>			
		<b>vote</b>	<b>share</b>
<b>Snape R.</b>	Ind	1,566	66.4
Brown M. Ms.	Lab	792	33.6
<b>Turnout</b>		54.0	32.8

<b>Clayton-Le-Woods East (1865)</b>			
		<b>vote</b>	<b>share</b>
<b>Robinson B.</b>	Con	463	67.1
Hubbold R.	Lab	227	32.9
<b>Turnout</b>		37.0	34.2

<b>Eccleston &amp; Heskin (3846)</b>			
		<b>vote</b>	<b>share</b>
<b>Horsfield C.</b>	Con	946	49.2
Whittaker A.	Lab	907	47.2
Wareing J.	Ecol	70	3.6
<b>Turnout</b>		50.0	2.0

<b>Euxton South (3154)</b>			
		<b>vote</b>	<b>share</b>
<b>Moorcroft J.</b>	Con	816	63.1
Newbury M. Ms.	Lab	347	26.8
Prescott R.	Lib	130	10.1
<b>Turnout</b>		41.0	36.3

<b>Lostock (2997)</b>			
		<b>vote</b>	<b>share</b>
<b>Lambert D.</b>	Con	665	71.6
Darlington L.	Lab	264	28.4
<b>Turnout</b>		31.0	43.2

<b>Withnell (2493)</b>			
		<b>vote</b>	<b>share</b>
<b>Forsyth I. Ms.</b>	Con	770	55.2
Talbot M.	Lab	626	44.8
<b>Turnout</b>		56.0	10.3

## Chorley - 1982

<b>Adlington (4351)</b>			
		<b>vote</b>	<b>share</b>
<b>Shone E. Ms.</b>	Lab	998	48.0
Smith G.	Con	728	35.0
Yates R.	Lib/SDP	317	15.2
Coulston E.	Ecol	37	1.8
<b>Turnout</b>		47.8	13.0

<b>Anderton Heath Charnock &amp; Rivington (2425)</b>			
		<b>vote</b>	<b>share</b>
<b>Raby E. Ms.</b>	Con	592	57.3
Challis P.	Lab	239	23.1
Moorhouse M.	Lib/SDP	202	19.6
<b>Turnout</b>		42.6	34.2

Anglezarke Heapey & Wheelton (1132)				
		vote	share	
Case M. Ms.	Con	280	51.9	
McCormick H. Ms.	Ind	133	24.6	
Waring R.	Lab	83	15.4	
Isaac E.	Lib/SDP	44	8.1	
<b>Turnout</b>		47.7	27.2	

Chorley East (4249)				
		vote	share	
Sandham K.	Lab	947	63.7	
Paterson S.	Con	314	21.1	
Whitivam A.	Lib/SDP	226	15.2	
<b>Turnout</b>		35.0	42.6	

Chorley North East (4143)				
		vote	share	
Edgerley D.	Lab	824	50.7	
Crompton A.	Con	493	30.4	
Ross J. Ms.	Lib/SDP	307	18.9	
<b>Turnout</b>		39.2	20.4	

Chorley North West (5042)				
		vote	share	
Matthews P.	Con	1,266	55.9	
Hagarty J.	Lib/SDP	503	22.2	
Jones J. Ms.	Lab	495	21.9	
<b>Turnout</b>		44.9	33.7	

Chorley South East (4323)				
		vote	share	
Coombes M.	Lab	804	45.9	
Almond M.	Con	562	32.1	
Jones C.	Lib/SDP	337	19.2	
Holgate A.	Ecol	48	2.7	
<b>Turnout</b>		40.5	13.8	

Chorley South West (4056)				
		vote	share	
Wilson J.	Lab	1,230	70.9	
Blackburn M. Ms.	Con	330	19.0	
Wiltshire M. Ms.	Lib/SDP	176	10.1	
<b>Turnout</b>		42.8	51.8	

Chorley West (4418)				
		vote	share	
Hibbold R.	Lab	592	32.4	
Schofield E.	Con	581	31.8	
Wilson F.	Lib/SDP	426	23.3	
Smeeton J. Ms.	Ind	230	12.6	
<b>Turnout</b>		41.4	0.6	

Clayton-Le-Woods West & Cuerden (3827)				
		vote	share	
Wharton R.	Con	808	50.2	
Walters M.	Lib/SDP	526	32.7	
Morrison J.	Lab	277	17.2	
<b>Turnout</b>		42.1	17.5	

Coppull North (2772)				
		vote	share	
Meadows J.	Lab	900	66.1	
Freeland S.	Con	241	17.7	
Riley S.	Lib/SDP	220	16.2	
<b>Turnout</b>		49.1	48.4	

Coppull South (2723)				
		vote	share	
Berry T.	Lab	602	45.7	
Taylor A.	Lib/SDP	379	28.8	
McNamara A. Ms.	Con	337	25.6	
<b>Turnout</b>		48.4	16.9	

Eccleston & Heskin (3858)				
		vote	share	
Whittaker A.	Lab	700	34.8	
Wallwork P.	Con	683	34.0	
Hailwood F.	Ind	264	13.1	
Swarbrick P. Ms.	Lib/SDP	208	10.3	
Marsden N.	Ind Con	155	7.7	
<b>Turnout</b>		52.1	0.8	

Euxton North (2504)				
		vote	share	
Rigby J. Ms.	Con	613	49.2	
Higson F.	Lab	393	31.5	
Gregson J.	Lib/SDP	241	19.3	
<b>Turnout</b>		49.8	17.6	

Mawdesley (1262)				
		vote	share	
Culshaw F.	Con	409	49.1	
Mawdesley J.	Ind Con	282	33.9	
Miles G. Ms.	Lab	89	10.7	
Pilling P.	Lib/SDP	53	6.4	
<b>Turnout</b>		66.0	15.2	

Whittle Le Woods (2548)				
		vote	share	
Burchall D.	Con	449	45.5	
Crook R.	Lab	267	27.1	
Gale R. Ms.	Lib/SDP	170	17.2	
Farnworth V.	Ind	100	10.1	
<b>Turnout</b>		38.7	18.5	

## Chorley - 1983

Adlington (4411)				
		vote	share	
Molyneux F. Ms.	Lab	926	42.5	
Smith G.	Con	910	41.8	
Yates R.	Lib/SDP	290	13.3	
Coulston E.	Ecol	53	2.4	
<b>Turnout</b>		49.4	0.7	

Chorley East (4051)				
		vote	share	
Hodson B.	Lab	1,067	79.6	
Kitcher J.	Lib/SDP	274	20.4	
<b>Turnout</b>		33.1	59.1	

Chorley North East (4163)				
		vote	share	
Baynham F.	Lab	959	55.9	
Ambrose A.	Con	526	30.7	
Ross J. Ms.	Lib/SDP	230	13.4	
<b>Turnout</b>		41.2	25.2	

Chorley South East (4356)				
		vote	share	
Muir J.	Lab	981	47.2	
Marsden A.	Con	700	33.7	
Metcalfe D.	Lib/SDP	362	17.4	
Holgate M. Ms.	Ecol	35	1.7	
<b>Turnout</b>		47.7	13.5	

Chorley South West (4087)				
		vote	share	
Haddon F.	Lab	1,250	72.1	
Blackburn M. Ms.	Con	483	27.9	
<b>Turnout</b>		42.4	44.3	

Chorley West (4404)				
		vote	share	
Gee A.	Lab	962	43.3	
Crompton A.	Con	799	35.9	
Wilson F.	Lib/SDP	463	20.8	
<b>Turnout</b>		50.5	7.3	

Clayton-Le-Woods East (2405)				
		vote	share	
Livesey J.	Con	623	53.8	
Butler G.	Ind Rate	206	17.8	
Jones S.	Lib/SDP	177	15.3	
Gilbert A.	Lab	151	13.1	
<b>Turnout</b>		48.1	36.0	

Clayton-Le-Woods West & Cuerden (3941)				
		vote	share	
White D.	Con	839	50.5	
Morrison J.	Lab	455	27.4	
Budd C.	Lib/SDP	369	22.2	
<b>Turnout</b>		42.2	23.1	

Coppull North (2792)				
		vote	share	
Clark M.	Lab	798	62.7	
Heyes F.	Lib/SDP	475	37.3	
<b>Turnout</b>		45.6	25.4	

Coppull South (2719)				
		vote	share	
Taylor A.	Lib/SDP	871	61.7	
Muir S.	Lab	540	38.3	
<b>Turnout</b>		51.9	23.5	

Eccleston & Heskin (3897)				
		vote	share	
Lucas J. Ms.	Con	1,169	58.4	
Titherington T.	Lab	834	41.6	
<b>Turnout</b>		51.4	16.7	

Euxton North (2453)				
		vote	share	
McNamara A. Ms.	Con	728	50.2	
Higson F.	Lab	392	27.0	
Branston L. Ms.	Ind Con	207	14.3	
Gregson J.	Lib/SDP	123	8.5	
<b>Turnout</b>		59.1	23.2	

Euxton South (3108)				
		vote	share	
Simons G.	Con	863	60.1	
Bamford K.	Lab	370	25.8	
Branston R.	Ind	203	14.1	
<b>Turnout</b>		46.2	34.3	

Lostock (3304)				
		vote	share	
Mee A. Ms.	Con	814	66.8	
Clarke G.	Lab	405	33.2	
<b>Turnout</b>		36.9	33.6	

Whittle Le Woods (2553)				
		vote	share	
Bowling T.	Con	639	55.1	
Dimeck G.	Lab	263	22.7	
Heaton L. Ms.	Lib/SDP	257	22.2	
<b>Turnout</b>		45.4	32.4	

Withnell (2474)				
		vote	share	
Talbot M.	Lab	661	50.0	
Crowther M. Ms.	Con	660	50.0	
<b>Turnout</b>		53.4	0.1	

## Chorley - 1984

Adlington (4406)				
		vote	share	
Hoyle L. Ms.	Lab	998	44.7	
Smith R.	Con	902	40.4	
Yates R.	Lib/SDP	267	12.0	
Coulston E.	Ecol	67	3.0	
<b>Turnout</b>		50.7	4.3	

Anderton Heath Charnock & Rivington (2000)				
		vote	share	
Morris R.*	Con	645	64.5	
Tunnha N.	Lab	193	19.3	
Pilling P.	Lib/SDP	127	12.7	
Holgate S.	Ecol	35	3.5	
<b>Turnout</b>		50.0	45.2	

Brindle & Hoghton (1683)			
		vote	share
<b>Crook A.</b>	Con	0	0.0
<b>Turnout</b>		0.0	0.0
Charnock Richard (1482)			
		vote	share
<b>Holt J.</b>	Con	575	63.4
Hilton N.	Lab	259	28.6
Holland E.	Lib/SDP	73	8.0
<b>Turnout</b>		61.2	34.8
Chorley East (4152)			
		vote	share
<b>Corcoran W.</b>	Lab	989	72.4
Ambrose A.	Con	377	27.6
<b>Turnout</b>		32.9	44.8
Chorley North East (4184) <sup>2</sup>			
		vote	share
<b>Watmough A.</b>	Lab	975	53.6
<b>Lowe K.</b>	Lab	938	-
Bell E.	Con	735	40.4
Middleton R.	Con	699	-
Ashton A.	Ecol	110	6.0
<b>Turnout</b>		43.5	13.2
Chorley North West (5082)			
		vote	share
<b>Birtill G.</b>	Con	1,711	72.6
Hubbold C. Ms.	Lab	647	27.4
<b>Turnout</b>		46.4	45.1
Chorley South East (4344)			
		vote	share
<b>Bailey K.</b>	Lab	1,103	59.9
Marsden A.	Con	655	35.6
Holgate M. Ms.	Ecol	84	4.6
<b>Turnout</b>		42.4	24.3
Chorley South West (4160)			
		vote	share
<b>Holme J.</b>	Lab	1,387	79.4
Blackburn M. Ms.	Con	360	20.6
<b>Turnout</b>		42.0	58.8
Chorley West (4375)			
		vote	share
<b>Snape R.</b>	Ind	1,594	61.3
Parr R.	Lab	529	20.4
Armstrong R.	Con	476	18.3
<b>Turnout</b>		59.4	41.0
Clayton-Le-Woods East (2729)			
		vote	share
<b>Simkin D.</b>	Con	403	34.0
Jones S.	Lib/SDP	394	33.2
Butler G.	Ind	257	21.7
Bailey W.	Lab	133	11.2
<b>Turnout</b>		43.5	0.8
Eccleston & Heskin (3914)			
		vote	share
<b>Smith A.</b>	Con	1,152	57.6
Titherington T.	Lab	848	42.4
<b>Turnout</b>		51.1	15.2
Euxton South (3152)			
		vote	share
<b>Moorcroft J.</b>	Con	776	65.7
Simpson S. Ms.	Lab	406	34.3
<b>Turnout</b>		37.5	31.3
Lostock (3287)			
		vote	share
<b>Lambert D.</b>	Con	642	62.2
Carr W.	Ind	390	37.8
<b>Turnout</b>		31.4	24.4

Withnell (2511)			
		vote	share
<b>Campbell M. Ms.</b>	Con	774	55.4
Bingley M. Ms.	Lab	574	41.1
Cocker S.	Ecol	48	3.4
<b>Turnout</b>		55.6	14.3
Chorley - 1986			
Adlington (4402)			
		vote	share
<b>Shone E. Ms.</b>	Lab	1,098	50.7
Dobbie N.	Lib/SDP	540	24.9
Marsden A.	Con	495	22.9
Cubbin A.	Green	33	1.5
<b>Turnout</b>		49.2	25.8
Anderton Heath Charnock & Rivington (2445)			
		vote	share
<b>Raby M. Ms.*</b>	Con	478	51.5
McGowan T.	Lab	297	32.0
Pilling P.	Lib/SDP	154	16.6
<b>Turnout</b>		38.0	19.5
Anglezarke Heapey & Wheelton (1220)			
		vote	share
<b>Lewis B.</b>	Con	452	66.2
Jaynes C.	Lab	163	23.9
Dobbie J. Ms.	Lib/SDP	68	10.0
<b>Turnout</b>		56.0	42.3
Chorley East (4025)			
		vote	share
<b>Sandham K.</b>	Lab	1,002	78.0
Ambrose A.	Con	282	22.0
<b>Turnout</b>		31.9	56.1
Chorley North East (3993)			
		vote	share
<b>Edgerley D.</b>	Lab	984	60.3
Montgomery E. Ms.	Con	468	28.7
Bonney G.	Lib/SDP	125	7.7
Holgate S.	Green	56	3.4
<b>Turnout</b>		40.9	31.6
Chorley North West (5100)			
		vote	share
<b>Paterson M.</b>	Con	1,278	51.2
Hubbold C. Ms.	Lab	739	29.6
Ross-Mills J. Ms.	Lib/SDP	477	19.1
<b>Turnout</b>		48.9	21.6
Chorley South East (4228)			
		vote	share
<b>Coombes M.</b>	Lab	1,029	53.8
Gray M. Ms.	Con	623	32.6
Wilson F.	Lib/SDP	195	10.2
Holgate M. Ms.	Green	64	3.3
<b>Turnout</b>		45.2	21.2
Chorley South West (4256)			
		vote	share
<b>Wilson J.</b>	Lab	1,176	74.5
Gray D.	Con	293	18.6
Logie R.	Green	110	7.0
<b>Turnout</b>		37.1	55.9
Chorley West (4333)			
		vote	share
<b>Brown T.</b>	Lab	982	49.7
Armstrong B.	Con	653	33.0
Charleston K.	Lib/SDP	341	17.3
<b>Turnout</b>		45.6	16.6

Clayton-Le-Woods West & Cuerden (4235)			
		vote	share
<b>Welch S. Ms.</b>	Con	730	43.6
Riley R.	Lab	601	35.9
Crolla M.	Lib/SDP	342	20.4
<b>Turnout</b>		39.5	7.7
Coppull North (2823)			
		vote	share
<b>Meadows J.</b>	Lab	880	59.5
Holland D.	Lib/SDP	455	30.8
Middleton R.	Con	144	9.7
<b>Turnout</b>		52.4	28.7
Coppull South (2811)			
		vote	share
<b>Norris S.</b>	Lib/SDP	705	46.9
Toon R.	Lab	654	43.5
Knowles P.	Con	145	9.6
<b>Turnout</b>		53.5	3.4
Eccleston & Heskin (3906)			
		vote	share
<b>Whittaker A.</b>	Lab	1,150	56.2
Tasker T.	Con	802	39.2
Manwaring J. Ms.	Green	95	4.6
<b>Turnout</b>		52.4	17.0
Euxton North (2680) <sup>2</sup>			
		vote	share
<b>Rigby J. Ms.</b>	Con	612	47.2
<b>Crompton A.</b>	Con	525	-
Gray T.	Lab	449	34.6
Simpson S. Ms.	Lab	360	-
Lavender M. Ms.	Lib/SDP	148	11.4
Logie J. Ms.	Green	88	6.8
<b>Turnout</b>		48.4	12.6
Mawdesley (1327)			
		vote	share
<b>Culshaw F.</b>	Con	395	77.9
Fishman S. Ms.	Lab	112	22.1
<b>Turnout</b>		38.2	55.8
Whittle Le Woods (2660)			
		vote	share
<b>Kelly B.</b>	Lib/SDP	581	41.9
Burchell D.	Con	527	38.0
Partington R.	Lab	278	20.1
<b>Turnout</b>		52.1	3.9
Chorley - 1987			
Adlington (4536)			
		vote	share
<b>Molyneux F. Ms.</b>	Lab	1,016	44.6
Moss A.	Con	890	39.1
Pilling P.	Lib/SDP	371	16.3
<b>Turnout</b>		50.2	5.5
Chorley East (4003)			
		vote	share
<b>Hodson B.</b>	Lab	949	67.4
Smith I. Ms.	Con	398	28.2
Bolton-King P.	Green	62	4.4
<b>Turnout</b>		35.2	39.1
Chorley North East (4073)			
		vote	share
<b>Lowe K.</b>	Lab	952	56.7
Montgomery E. Ms.	Con	627	37.4
Holgate A.	Green	99	5.9
<b>Turnout</b>		41.2	19.4

**Chorley South East (4294)**

		vote	share
<b>Hardy B. Ms.</b>	Lab	937	45.8
Gray M. Ms.	Con	765	37.4
Pilling D.	Lib/SDP	289	14.1
Holgate M. Ms.	Green	53	2.6
<b>Turnout</b>		47.6	8.4

**Chorley South West (4285)**

		vote	share
<b>McGowan T.</b>	Lab	1,110	60.0
Birnie T.	Con	383	20.7
Haddon F.	Ind	278	15.0
Logie R.	Green	80	4.3
<b>Turnout</b>		43.2	39.3

**Chorley West (4412)**

		vote	share
<b>Gee A.</b>	Lab	962	42.6
Armstrong R.	Con	834	36.9
Wilson F.	Lib/SDP	463	20.5
<b>Turnout</b>		51.2	5.7

**Clayton-Le-Woods East (6088)<sup>2</sup>**

		vote	share
<b>Livesey J.</b>	Con	1,281	45.2
<b>Villers D. Ms.</b>	Con	1,202	-
Jones S.	Lib/SDP	908	32.0
Bradshaw R.	Lib/SDP	794	-
Murphy E.	Lab	648	22.8
Wilton P. Ms.	Lab	621	-
<b>Turnout</b>		46.6	13.1

**Clayton-Le-Woods West & Cuerden (2973)**

		vote	share
<b>Briggs H.</b>	Con	728	60.2
Nugent P.	Lab	258	21.3
Catt H. Ms.	Lib/SDP	224	18.5
<b>Turnout</b>		40.7	38.8

**Coppull North (2900)**

		vote	share
<b>Clark M.</b>	Lab	894	58.1
Greeney T.	Lib/SDP	475	30.8
Bell J.	Con	171	11.1
<b>Turnout</b>		53.1	27.2

**Coppull South (3197)**

		vote	share
<b>Holland E.</b>	Lib/SDP	749	46.6
Riley R.	Lab	671	41.7
Knowles P.	Con	188	11.7
<b>Turnout</b>		50.3	4.9

**Eccleston & Heskin (3914)**

		vote	share
<b>Lucas J. Ms.</b>	Con	1,154	54.2
Titherington T.	Lab	843	39.6
Manwaring J. Ms.	Green	132	6.2
<b>Turnout</b>		54.4	14.6

**Euxton North (2576)**

		vote	share
<b>Crompton A.</b>	Con	690	53.8
Gray T.	Lab	593	46.2
<b>Turnout</b>		49.8	7.6

**Euxton South (3187)**

		vote	share
<b>Simons G.</b>	Con	881	67.9
Simpson S. Ms.	Lab	416	32.1
<b>Turnout</b>		40.7	35.9

**Lostock (2830)**

		vote	share
<b>Mee A. Ms.</b>	Con	775	63.0
McDonald I.	Keep Crost	456	37.0
<b>Turnout</b>		43.5	25.9

**Whittle Le Woods (2691)**

		vote	share
<b>Bowling T.</b>	Con	727	51.5
Lavender M. Ms.	All	448	31.7
Malaney R.	Lab	238	16.8
<b>Turnout</b>		52.5	19.7

**Withnell (2715)**

		vote	share
<b>Moss P. Ms.</b>	Con	769	52.7
Talbot M.	Lab	558	38.3
Crowther M. Ms.	Ind	131	9.0
<b>Turnout</b>		53.7	14.5

**Chorley - 1988****Adlington (4443)**

		vote	share
<b>Hoyle L. Ms.*</b>	Lab	1,027	48.1
Moss A.	Con	883	41.3
Pilling P.	SLD	227	10.6
<b>Turnout</b>		48.1	6.7

**Anderton Heath Charnock & Rivington (2483)**

		vote	share
<b>Morris R.*</b>	Con	622	69.2
Talbot M.	Lab	277	30.8
<b>Turnout</b>		36.2	38.4

**Brindle & Hoghton (1927)**

		vote	share
<b>Cook A.*</b>	Con	753	83.7
Nugent P.	Lab	147	16.3
<b>Turnout</b>		46.7	67.3

**Charnock Richard (1456)**

		vote	share
<b>Armstrong R.</b>	Con	480	57.8
Hilton P. Ms.	Lab	350	42.2
<b>Turnout</b>		57.0	15.7

**Chorley East (3891)**

		vote	share
<b>Corcoran W.*</b>	Lab	826	69.8
Haughton P.	Con	357	30.2
<b>Turnout</b>		30.4	39.6

**Chorley North East (4023)**

		vote	share
<b>Watmough A.*</b>	Lab	1,030	65.0
Montgomery E. Ms.	Con	555	35.0
<b>Turnout</b>		39.4	30.0

**Chorley North West (5116)**

		vote	share
<b>Bithill G.*</b>	Con	1,424	60.0
Lowe P.	Lab	616	25.9
Bradshaw R.	SLD	334	14.1
<b>Turnout</b>		46.4	34.0

**Chorley South East (4180)**

		vote	share
<b>Bailey K.*</b>	Lab	893	49.2
Gray M. Ms.	Con	782	43.1
Pilling D.	SLD	94	5.2
Holgate M. Ms.	Green	45	2.5
<b>Turnout</b>		43.4	6.1

**Chorley South West (4288)**

		vote	share
<b>Parr R.</b>	Lab	1,223	80.6
Logie R.	Green	295	19.4
<b>Turnout</b>		35.4	61.1

**Chorley West (4334)**

		vote	share
<b>Snape R.*</b>	Ind	1,783	74.3
Lowe A.	Lab	339	14.1
McCarthy P.	Con	279	11.6
<b>Turnout</b>		55.4	60.1

**Clayton-Le-Woods East (5961)**

		vote	share
<b>Simkin D. Ms.*</b>	Con	1,097	51.1
Jones S.	SLD	592	27.6
Murphy E.	Lab	413	19.2
Manwaring J. Ms.	Green	44	2.1
<b>Turnout</b>		36.0	23.5

**Eccleston & Heskin (3976)**

		vote	share
<b>Smith A.*</b>	Con	1,052	58.0
Marsden A.	Lab	666	36.7
Manwaring C.	Green	95	5.2
<b>Turnout</b>		45.6	21.3

**Euxton South (3106)**

		vote	share
<b>Moorcroft J.*</b>	Con	722	68.4
Dawson N.	Lab	334	31.6
<b>Turnout</b>		34.0	36.7

**Lostock (2880)**

		vote	share
<b>Lambert D.*</b>	Con	679	63.0
Kellett J.	Lab	398	37.0
<b>Turnout</b>		37.4	26.1

**Withnell (2664)**

		vote	share
<b>Smith I. Ms.</b>	Con	722	46.7
England T.	Lab	522	33.8
Campbell M. Ms.*	Ind	274	17.7
Crowther M. Ms.	Ind Con	27	1.7
<b>Turnout</b>		58.0	12.9

**Chorley - 1990****Adlington (4514)**

		vote	share
<b>Shone E. Ms.*</b>	Lab	1,620	67.0
Keenan J.	Con	566	23.4
Pilling P.	SLD	233	9.6
<b>Turnout</b>		53.6	43.6

**Anderton Heath Charnock & Rivington (2465)**

		vote	share
<b>Raby E. Ms.*</b>	Con	580	44.9
Rees I.	Lab	577	44.7
Isaac E.	SLD	134	10.4
<b>Turnout</b>		52.4	0.2

**Anglezarke Heapey & Wheelton (1241)**

		vote	share
<b>Gray M. Ms.</b>	Con	369	51.8
Turner S.	Lab	267	37.5
Ross-Mills J. Ms.	SLD	76	10.7
<b>Turnout</b>		57.4	14.3

**Chorley East (3924)**

		vote	share
<b>Lowe P.</b>	Lab	1,363	75.5
Bentley N.	Con	279	15.5
Jones R.	Green	163	9.0
<b>Turnout</b>		46.0	60.1

**Chorley North East (4094)**

		vote	share
<b>Edgerley D.*</b>	Lab	1,433	70.0
Glynn I. Ms.	Con	401	19.6
Taylor A. Ms.	SLD	119	5.8
Manwaring J. Ms.	Green	94	4.6
<b>Turnout</b>		50.0	50.4



Chorley North West (5229)			
		vote	share
McGrath M. Ms.	Lab	1,222	42.3
Smith G.	Con	1,149	39.8
Bradshaw R.	SLD	289	10.0
Russell D.	Green	226	7.8
Turnout		55.2	2.5

Chorley South East (4204)			
		vote	share
Coombes M.*	Lab	1,514	64.9
Haughton P. Ms.	Con	580	24.9
Pilling D.	SLD	137	5.9
Holgate M. Ms.	Green	102	4.4
Turnout		55.5	40.0

Chorley South West (4560)			
		vote	share
Wilson J.*	Lab	1,789	74.5
Malpas P.	Con	361	15.0
Tate P.	APT	131	5.5
Logie R.	Green	121	5.0
Turnout		52.7	59.5

Chorley West (4342)			
		vote	share
Brown T.*	Lab	1,475	60.3
Knowles P.	Con	555	22.7
Wilson F.	SLD	301	12.3
Logie J. Ms.	Green	116	4.7
Turnout		56.4	37.6

Clayton-Le-Woods East (6484)			
		vote	share
Jones S.	SLD	1,018	37.2
Simkin D. Ms.	Con	843	30.8
Murphy E.	Lab	767	28.0
Lewin S. Ms.	Green	108	3.9
Turnout		42.2	6.4

Clayton-Le-Woods West & Cuerden (3029)			
		vote	share
Corcoran C. Ms.	Lab	711	46.0
Muncaster M.	Con	655	42.4
D'Eye M.	SLD	180	11.6
Turnout		51.0	3.6

Coppull North (2895)			
		vote	share
Meadows J.*	Lab	995	60.2
Mayock B. Ms.	Ind Dem	658	39.8
Turnout		57.1	20.4

Coppull South (3069)			
		vote	share
Lowe A.	Lab	850	50.3
Akroyd L. Ms.	SLD	839	49.7
Turnout		55.0	0.7

Eccleston & Heskin (4068)			
		vote	share
Whittaker A.*	Lab	1,445	66.0
Burke J. Ms.	Con	608	27.7
Manwaring C.	Green	138	6.3
Turnout		53.9	38.2

Euxton North (2715)			
		vote	share
Gee D.	Lab	820	50.0
Rigby J. Ms.*	Con	708	43.2
Dutton L. Ms.	SLD	112	6.8
Turnout		60.4	6.8

Mawdesley (1382)			
		vote	share
Culshaw F.*	Con	506	62.6
Forshaw E.	Lab	302	37.4
Turnout		58.5	25.2

Whittle Le Woods (2818)			
		vote	share
Bell J.	Con	708	48.4
Crook R.	Lab	583	39.8
Pearson D.	SLD	173	11.8
Turnout		52.0	8.5

## Chorley - 1991

Adlington (4455)			
		vote	share
Molyneaux F. Ms.*	Lab	1,095	47.8
Watts D.	Con	758	33.1
Pilling P.	LD	437	19.1
Turnout		52.2	14.7

Chorley East (3894)			
		vote	share
Hodson B.*	Lab	1,003	73.0
Charnley R.	Con	371	27.0
Turnout		35.8	46.0

Chorley North East (4089)			
		vote	share
Lowe K.*	Lab	1,067	66.6
Shaw A.	Con	535	33.4
Turnout		39.7	33.2

Chorley South East (4177)			
		vote	share
Hardy B. Ms.*	Lab	1,074	53.1
Haughton P. Ms.	Con	671	33.2
Porter D.	LD	277	13.7
Turnout		49.1	19.9

Chorley South West (4726)			
		vote	share
McGowan T.*	Lab	1,236	63.5
Malpas P.	Con	397	20.4
Kendall G.	LD	255	13.1
Logie R.	Green	57	2.9
Turnout		41.6	43.1

Chorley West (4188)			
		vote	share
Gee A.*	Lab	1,104	51.5
Rowarth F.	Con	716	33.4
Wilson F.	LD	324	15.1
Turnout		51.2	18.1

Clayton-Le-Woods East (7204)			
		vote	share
Charlesworth S.	LD	1,536	47.8
Owler A.	Con	1,067	33.2
Nugent P.	Lab	497	15.5
Butler G.	Ind	113	3.5
Turnout		44.6	14.6

Clayton-Le-Woods West & Cuerden (2905)			
		vote	share
Simkin D. Ms.	Con	816	52.2
Murphy E.	Lab	472	30.2
D'Eye M.	LD	275	17.6
Turnout		53.8	22.0

Coppull North (2894)			
		vote	share
Hilton N.	Lab	796	51.9
Akroyd F.	LD	738	48.1
Turnout		54.3	3.8

Coppull South (3034)			
		vote	share
Holland E.	LD	981	58.5
Toon J. Ms.	Lab	697	41.5
Turnout		55.3	16.9

Eccleston & Heskin (3996)			
		vote	share
Lucas J. Ms.*	Con	935	47.4
Titherington T.	Lab	877	44.4
Manwaring C.	Green	162	8.2
Turnout		49.4	2.9

Euxton North (2638)			
		vote	share
Rigby J. Ms.	Con	837	52.9
Gray T.	Lab	746	47.1
Turnout		60.0	5.7

Euxton South (3242)			
		vote	share
Simons G.*	Con	663	42.7
Yarrow J. Ms.	Ind	455	29.3
Dawson N.	Lab	435	28.0
Turnout		47.9	13.4

Lostock (2912)			
		vote	share
Mee A. Ms.*	Con	916	65.9
Mallatratt J.	Lab	473	34.1
Turnout		47.7	31.9

Whittle Le Woods (2749)			
		vote	share
Walker J.	Con	637	49.2
Pearson D.	LD	339	26.2
Pascoe C.	Lab	319	24.6
Turnout		47.1	23.0

Withnell (2644)			
		vote	share
Moss P. Ms.*	Con	727	46.2
England T.	Lab	548	34.8
Charlesworth G. Ms.	LD	230	14.6
Crowther M. Ms.	Ind	68	4.3
Turnout		59.5	11.4

## Chorley - 1992

Adlington (4477)			
		vote	share
Hoyle L. Ms.*	Lab	923	46.7
Watts J.	Con	826	41.8
Pilling P.	LD	227	11.5
Turnout		44.1	4.9

Anderton Heath Charnock & Rivington (2476)			
		vote	share
Morris R.*	Con	631	64.4
Molyneaux J. Ms.	Lab	274	28.0
Johnston L. Ms.	LD	75	7.7
Turnout		39.8	36.4

Brindle & Hoghton (1481)			
		vote	share
Charnley J.*	Con	468	58.3
Ross-Mills J. Ms.	LD	293	36.5
Nugent P.	Lab	42	5.2
Turnout		54.4	21.8

Charnock Richard (1474)			
		vote	share
Armstrong R.*	Con	541	73.7
Lees M. Ms.	Lab	159	21.7
Akroyd F.	LD	34	4.6
Turnout		49.7	52.0

Chorley East (3905)			
		vote	share
Wilson P. Ms.*	Lab	621	61.3
Charnley R.	Con	392	38.7
Turnout		26.0	22.6

Chorley North East (4106)			
		vote	share
<b>Watmough A.*</b>	Lab	609	48.3
Morris G.	Con	557	44.2
Wilson F.	LD	94	7.5
<b>Turnout</b>		30.7	4.1

Chorley North West (5214)			
		vote	share
<b>Birtill G.*</b>	Con	1,422	64.9
Crabtree R.	Lab	580	26.5
Bradshaw R.	LD	190	8.7
<b>Turnout</b>		42.1	38.4

Chorley South East (4158) <sup>2</sup>			
		vote	share
<b>Haughton P. Ms.</b>	Con	791	49.8
<b>Baxendale E.</b>	Con	781	-
Bailey K.*	Lab	661	41.6
Snow C.	Lab	595	-
Porter D.	LD	137	8.6
Porter M. Ms.	LD	126	-
<b>Turnout</b>		39.5	8.2

Chorley South West (4911)			
		vote	share
<b>Parr R.*</b>	Lab	875	60.6
Malpas P.	Con	569	39.4
<b>Turnout</b>		29.5	21.2

Chorley West (4287)			
		vote	share
<b>Snap R.*</b>	Ind	1,921	84.1
Snow J. Ms.	Lab	202	8.8
Roworth F.	Con	160	7.0
<b>Turnout</b>		53.3	75.3

Clayton-Le-Woods East (7325)			
		vote	share
<b>Simkin D. Ms.*</b>	Con	1,406	50.3
Charlesworth G. Ms.	LD	1,085	38.8
Murphy E.	Lab	305	10.9
<b>Turnout</b>		38.0	11.5

Eccleston & Heskin (3974)			
		vote	share
<b>Twist B.</b>	Con	983	60.6
Titherington T.	Lab	541	33.4
Eadon J.	LD	97	6.0
<b>Turnout</b>		40.7	27.3

Euxton South (3258)			
		vote	share
<b>Russell G.</b>	Con	633	43.9
Gray T.	Lab	458	31.8
Moorcroft J.*	Ind Con	351	24.3
<b>Turnout</b>		44.3	12.1

Lostock (3098)			
		vote	share
<b>Lambert D.*</b>	Con	805	70.2
Davenport P.	Lab	341	29.8
<b>Turnout</b>		37.0	40.5

Withnell (2757)			
		vote	share
<b>Smith I. Ms.*</b>	Con	831	70.1
Yates D.	Lab	209	17.6
Crowther M. Ms.	Ind	104	8.8
Jones V. Ms.	LD	42	3.5
<b>Turnout</b>		43.1	52.4

## Chorley - 1994

Adlington (4450)			
		vote	share
<b>Shone E. Ms.*</b>	Lab	1,150	64.4
Marsden A.	Con	325	18.2
Pilling P.	LD	311	17.4
<b>Turnout</b>		40.1	46.2

Anderton Heath Charnock & Rivington (2557)			
		vote	share
<b>Molyneux J. Ms.</b>	Lab	534	45.6
Tonge P.	Con	505	43.1
Bleasdale J.	LD	133	11.3
<b>Turnout</b>		45.9	2.5

Anglezarke Heapey & Wheelton (1187)			
		vote	share
<b>Gray M. Ms.*</b>	Con	259	42.9
Ross-Mills J. Ms.	LD	212	35.1
Gray M. Ms.	Lab	133	42.9
<b>Turnout</b>		51.3	7.8

Chorley East (3918)			
		vote	share
<b>Lowe P.*</b>	Lab	844	74.6
Charnley R.	Con	159	14.0
Trebilcock J.	LD	129	11.4
<b>Turnout</b>		28.9	60.5

Chorley North East (4085)			
		vote	share
<b>Edgerley D.*</b>	Lab	955	70.3
Godfrey C.	Con	238	17.5
Fenn S.	LD	165	12.2
<b>Turnout</b>		33.2	52.8

Chorley North West (5218)			
		vote	share
<b>McGrath M. Ms.*</b>	Lab	1,168	47.2
Bentley R.	Con	962	38.9
Norman L. Ms.	LD	345	13.9
<b>Turnout</b>		47.8	8.3

Chorley South East (4035)			
		vote	share
<b>Coombes M.*</b>	Lab	986	58.3
Crook M.	Con	473	28.0
Porter D.	LD	231	13.7
<b>Turnout</b>		38.9	30.4

Chorley South West (5082)			
		vote	share
<b>Wilson J.*</b>	Lab	1,341	82.0
Malpas P.	Con	295	18.0
<b>Turnout</b>		32.4	63.9

Chorley West (4264)			
		vote	share
<b>Brown T.*</b>	Lab	1,102	64.2
Richens J. Ms.	Con	361	21.0
Charlesworth G. Ms.	LD	253	14.7
<b>Turnout</b>		40.3	43.2

Clayton-Le-Woods East (7549)			
		vote	share
<b>Jones S.*</b>	LD	2,092	74.6
Cole H.	Con	714	25.4
<b>Turnout</b>		37.1	49.1

Clayton-Le-Woods West & Cuerden (3186)			
		vote	share
<b>Ormston G. Ms.</b>	LD	538	37.7
Cronshaw J. Ms.	Lab	473	33.1
Muncaster M.	Con	417	29.2
<b>Turnout</b>		44.8	4.6

Coppull North (2819)			
		vote	share
<b>Lees M. Ms.*</b>	Lab	820	57.2
Walsh S. Ms.	LD	538	37.5
Stewart M. Ms.	Con	75	5.2
<b>Turnout</b>		50.9	19.7

Coppull South (3025)			
		vote	share
<b>Ball K.</b>	LD	821	52.8
Lowe A.*	Lab	637	40.9
Stewart M.	Con	98	6.3
<b>Turnout</b>		51.6	11.8

Eccleston & Heskin (4003)			
		vote	share
<b>Whittaker A.*</b>	Lab	1,544	72.4
Fiddler M. Ms.	Con	464	21.7
Sharp P. Ms.	LD	126	5.9
<b>Turnout</b>		53.4	50.6

Euxton North (2695)			
		vote	share
<b>Gee D.*</b>	Lab	785	59.4
Montgomery E. Ms.	Con	425	32.1
Jones V. Ms.	LD	112	8.5
<b>Turnout</b>		49.0	27.2

Mawdesley (1361)			
		vote	share
<b>Culshaw F.*</b>	Con	398	55.1
Holgate A.	Lab	324	44.9
<b>Turnout</b>		54.2	10.2

Whittle Le Woods (2724)			
		vote	share
<b>Bell J.*</b>	Con	485	42.8
Lavender M. Ms.	LD	350	30.9
Yates D.	Lab	298	26.3
<b>Turnout</b>		41.7	11.9

## Chorley - 1995

Adlington (4387)			
		vote	share
<b>Molyneux F. Ms.*</b>	Lab	1,133	78.6
Bleasdale J.	LD	308	21.4
<b>Turnout</b>		32.9	57.3

Chorley East (4056)			
		vote	share
<b>Hodson B.*</b>	Lab	954	88.1
Charnley R.	Con	129	11.9
<b>Turnout</b>		26.7	76.2

Chorley North East (4063) <sup>2</sup>			
		vote	share
<b>Lowe A.</b>	Lab	988	73.8
<b>Lowe K.*</b>	Lab	959	-
Goldsby R. Ms.	Con	209	15.6
Goldsby C.	Con	201	-
Jones V. Ms.	LD	142	10.6
<b>Turnout</b>		31.2	58.2

Chorley South East (4007)			
		vote	share
<b>Holgate A.</b>	Lab	1,101	68.2
Baxendale E.*	Con	385	23.8
Porter D.	LD	129	8.0
<b>Turnout</b>		40.3	44.3

Chorley South West (5001)			
		vote	share
<b>McGowan T.*</b>	Lab	1,317	85.1
Malpas P.	Con	231	14.9
<b>Turnout</b>		30.4	70.2

Chorley West (4228)			
		vote	share
Gee A.*	Lab	1,193	78.2
Montgomery E. Ms.	Con	333	21.8
<b>Turnout</b>		36.1	56.4
Clayton-Le-Woods East (7475)			
		vote	share
Charlesworth S.*	LD	1,110	48.6
Murphy E.	Lab	608	26.6
Cullens A.	Con	564	24.7
<b>Turnout</b>		30.5	22.0
Clayton-Le-Woods West & Cuerden (3101)			
		vote	share
Cronshaw J. Ms.	Lab	484	40.0
Freeman J.	LD	452	37.3
Muncaster M.	Con	275	22.7
<b>Turnout</b>		39.1	2.6
Coppull North (2831)			
		vote	share
Hilton N.*	Lab	784	59.3
Eastham P.	LD	442	33.4
Stewart M. Ms.	Con	97	7.3
<b>Turnout</b>		46.7	25.9
Coppull South (2967)			
		vote	share
Holland E.*	LD	722	51.1
Lees R.	Lab	605	42.8
Stewart M.	Con	86	6.1
<b>Turnout</b>		47.6	8.3
Eccleston & Heskin (4026)			
		vote	share
Titherington T.	Lab	1,013	62.7
Lucas J. Ms.*	Con	509	31.5
Staig D.	Ind	93	5.8
<b>Turnout</b>		40.1	31.2
Euxton North (2704)			
		vote	share
Berry J. Ms.	Lab	765	59.1
Jolly G. Ms.	Con	399	30.8
Bland D.	LD	130	10.0
<b>Turnout</b>		47.9	28.3
Euxton South (3368)			
		vote	share
Cocking J.	Lab	720	58.0
Simons G.*	Con	403	32.4
Sharp P. Ms.	LD	119	9.6
<b>Turnout</b>		36.9	25.5
Lostock (3185)			
		vote	share
Heyes D.	Lab	512	37.6
Rigby J. Ms.	Con	430	31.6
Iddon M. Ms.	Ind	420	30.8
<b>Turnout</b>		42.8	6.0
Whittle Le Woods (2680)			
		vote	share
Lavender M. Ms.	LD	395	38.1
Walker J.*	Con	389	37.5
Yates D.	Ind	252	24.3
<b>Turnout</b>		38.7	0.6
Withnell (2767)			
		vote	share
Jones K. Ms.	Lab	663	52.1
Crook M.	Con	457	35.9
Charlesworth G. Ms.	LD	103	8.1
Crowther M. Ms.	Ind	50	3.9
<b>Turnout</b>		46.0	16.2

## Chorley - 1996

Adlington (4428)			
		vote	share
Hoyle L. Ms.*	Lab	1,179	69.4
Taylor J.	Con	391	23.0
Bland A. Ms.	LD	129	7.6
<b>Turnout</b>		37.6	46.4
Anderton Heath Charnock & Rivington (2548)			
		vote	share
Lees R.	Lab	612	57.5
Morris R.*	Con	452	42.5
<b>Turnout</b>		41.6	15.0
Brindle & Hoghton (1506)			
		vote	share
Charnley J.*	Con	343	45.3
Ross-Mills J. Ms.	LD	334	44.1
Lowe J.	Lab	80	10.6
<b>Turnout</b>		50.5	1.2
Charnock Richard (1513)			
		vote	share
Armstrong R.*	Con	353	50.6
Lancaster J.	Lab	227	32.5
Walsh S. Ms.	LD	118	16.9
<b>Turnout</b>		46.2	18.1
Chorley East (3907)			
		vote	share
Wilson P. Ms.*	Lab	915	85.4
Charnley R.	Con	156	14.6
<b>Turnout</b>		27.5	70.9
Chorley North East (4118)			
		vote	share
Lowe K.	Lab	980	81.8
Goldsby C.	Con	218	18.2
<b>Turnout</b>		27.6	63.6
Chorley North West (5116)			
		vote	share
Crabtree R.	Lab	1,004	45.9
Collinson R.	Con	880	40.3
Norman L. Ms.	LD	302	13.8
<b>Turnout</b>		42.6	5.7
Chorley South East (3975)			
		vote	share
Snow C.	Lab	951	60.0
Haughton P. Ms.	Con	521	32.9
Porter D.	LD	113	7.1
<b>Turnout</b>		40.0	27.1
Chorley South West (5188)			
		vote	share
Parr R.*	Lab	1,169	71.3
Crook M.	Con	347	21.2
Eubank L. Ms.	LD	123	7.5
<b>Turnout</b>		31.2	50.2
Chorley West (4181)			
		vote	share
Snape R.*	Ind	1,581	80.7
Prior G.	Lab	291	14.9
Malpas P.	Con	86	4.4
<b>Turnout</b>		47.0	65.9
Clayton-Le-Woods East (7429)			
		vote	share
Bland D.	LD	1,115	46.2
Murphy E.	Lab	693	28.7
Cullens A.	Con	603	25.0
<b>Turnout</b>		32.6	17.5

Eccleston & Heskin (4111)			
		vote	share
Forshaw E.	Lab	913	56.2
Twist B.*	Con	625	38.5
Eadon J.	LD	86	5.3
<b>Turnout</b>		39.6	17.7
Euxton South (3347)			
		vote	share
Davies M. Ms.	Lab	739	52.5
Russell G.*	Con	452	32.1
Morris G.	LD	217	15.4
<b>Turnout</b>		42.1	20.4
Lostock (3263)			
		vote	share
Lloyd D.	Lab	487	40.4
Iddon M. Ms.	Ind	390	32.4
Lambert D.*	Con	327	27.2
<b>Turnout</b>		36.9	8.1
Withnell (2817)			
		vote	share
Howard C.	Lab	584	46.8
Smith I. Ms.*	Con	569	45.6
Jones V. Ms.	LD	94	7.5
<b>Turnout</b>		44.3	1.2
Chorley - 1998			
Adlington (4377) <sup>2</sup>			
		vote	share
Hoyle C. Ms.*	Lab	828	61.6
Molyneux J. Ms.*	Lab	778	-
Christopher S. Ms.	Con	331	24.6
Tyler R.	Con	225	-
Pilling P.	LD	186	13.8
<b>Turnout</b>		29.0	37.0
Anderton Heath Charnock & Rivington (2656)			
		vote	share
Case M. Ms.	Con	452	46.5
Davies M.	Lab	432	44.5
Porter D.	LD	49	5.0
Sims M.	Green	38	3.9
<b>Turnout</b>		36.7	2.1
Anglezarke Heapey & Wheelton (1363)			
		vote	share
Gray M. Ms.*	Con	267	45.4
Ross-Mills J. Ms.	LD	216	36.7
Downes M.	Lab	105	17.9
<b>Turnout</b>		43.2	8.7
Chorley East (4091)			
		vote	share
Coombes M.*	Lab	548	76.2
Baxendale E.	Con	171	23.8
<b>Turnout</b>		17.7	52.4
Chorley North East (4212)			
		vote	share
Edgerley D.*	Lab	611	68.9
Goldsby C.	Con	276	31.1
<b>Turnout</b>		21.2	37.8
Chorley North West (5204)			
		vote	share
Collinson R.	Con	927	49.7
Lennox L. Ms.	Lab	710	38.0
Norman L. Ms.	LD	229	12.3
<b>Turnout</b>		36.0	11.6
Chorley South East (4031)			
		vote	share
Lees M. Ms.*	Lab	757	56.3
Haughton P. Ms.	Con	587	43.7
<b>Turnout</b>		33.4	12.6

Chorley South West (5244)			
		vote	share
Wilson J.*	Lab	738	66.0
Malpas P.	Con	292	26.1
Porter M. Ms.	LD	88	7.9
<b>Turnout</b>		21.4	39.9

Chorley West (4216)			
		vote	share
Snapé J. Ms.	Ind	1,407	73.1
Brown T.*	Lab	430	22.3
Goldsby R. Ms.	Con	88	4.6
<b>Turnout</b>		45.7	50.8

Clayton-Le-Woods East (7511)			
		vote	share
Jones S.*	LD	638	40.2
Cullens A.	Ind	558	35.2
Murphy E.	Lab	391	24.6
<b>Turnout</b>		21.3	5.0

Clayton-Le-Woods West & Cuerden (3138)			
		vote	share
Bland A. Ms.	Lab	527	40.3
Walker J.	Con	419	32.1
Ormston G. Ms.*	LD	361	27.6
<b>Turnout</b>		41.7	8.3

Coppull North (2863)			
		vote	share
Walsh S. Ms.	LD	583	58.2
Murphy J.	Lab	379	37.9
Perry C.	Con	39	3.9
<b>Turnout</b>		35.0	20.4

Coppull South (3034)			
		vote	share
Ball K.*	LD	716	66.1
Vaughan C.	Lab	299	27.6
Macdonald A.	Con	69	6.4
<b>Turnout</b>		36.1	38.5

Eccleston & Heskin (4257)			
		vote	share
Whittaker A.*	Lab	1,255	74.3
Lucas J. Ms.	Con	434	25.7
<b>Turnout</b>		39.7	48.6

Euxton North (2810)			
		vote	share
Gee D.*	Lab	618	62.7
Goldsworthy P.	Con	310	31.5
Sharp P. Ms.	LD	57	5.8
<b>Turnout</b>		35.1	31.3

Mawdesley (1485)			
		vote	share
Culshaw F.*	Con	368	72.0
Woodroffe M. Ms.	Lab	143	28.0
<b>Turnout</b>		34.5	44.0

Whittle Le Woods (3127)			
		vote	share
Bell J.*	Con	735	74.7
Bailey W.	Lab	171	17.4
Fenn S.	LD	78	7.9
<b>Turnout</b>		31.4	57.3

## Chorley - 1999

Adlington (4374)			
		vote	share
Molyneaux F. Ms.*	Lab	698	71.9
Ormston R.	LD	273	28.1
<b>Turnout</b>		22.5	43.8

Chorley East (4124)			
		vote	share
Hodson B.*	Lab	627	75.5
Baxendale E.	Con	204	24.5
<b>Turnout</b>		20.3	50.9

Chorley North East (4180)			
		vote	share
Lowe A.*	Lab	610	66.7
Goldsby C.	Con	224	24.5
Charlesworth G. Ms.	LD	81	8.9
<b>Turnout</b>		21.9	42.2

Chorley South East (4012)			
		vote	share
Holgate A.*	Lab	646	59.8
Tyler R.	Con	355	32.9
Porter D.	LD	79	7.3
<b>Turnout</b>		26.9	26.9

Chorley South West (5240)			
		vote	share
McGowan T.*	Lab	776	74.3
Malpas P.	Con	268	25.7
<b>Turnout</b>		19.9	48.7

Chorley West (4187)			
		vote	share
Gee A.*	Lab	720	62.6
Goldsby R. Ms.	Con	257	22.3
Porter M. Ms.	LD	173	15.0
<b>Turnout</b>		27.7	40.3

Clayton-Le-Woods East (7640)			
		vote	share
Fenn S.	LD	1,010	47.9
Livesey R.	Con	696	33.0
Cronshaw J. Ms.	Lab	402	19.1
<b>Turnout</b>		27.7	14.9

Clayton-Le-Woods West & Cuerden (3175)			
		vote	share
Brownlee L. Ms.	Lab	528	46.3
Walker J.	Con	419	36.8
Ormston G. Ms.	LD	193	16.9
<b>Turnout</b>		36.0	9.6

Coppull North (2853)			
		vote	share
Cuerden P. Ms.	LD	533	60.7
Murphy J.	Lab	345	39.3
<b>Turnout</b>		31.0	21.4

Coppull South (3015)			
		vote	share
Holland E.*	LD	764	70.7
Thompson H. Ms.	Lab	262	24.3
McMullan C.	Ind	54	5.0
<b>Turnout</b>		36.0	46.5

Eccleston & Heskin (4229)			
		vote	share
Titherington T.*	Lab	946	59.8
Twist B.	Con	636	40.2
<b>Turnout</b>		37.0	19.6

Euxton North (2955)			
		vote	share
Gray T.	Lab	503	55.4
GoLDsworthy P.	Con	359	39.5
Sharp P. Ms.	LD	46	5.1
<b>Turnout</b>		30.8	15.9

Euxton South (3333)			
		vote	share
Russell G.	Con	508	45.9
Cocking J.*	Lab	497	44.9
Norman L. Ms.	LD	101	9.1
<b>Turnout</b>		33.2	1.0

Lostock (3276)			
		vote	share
Sutton H. Ms.	Con	590	54.0
Freeman J.	Lab	304	27.8
Heyes D.*	Ind Lab	145	13.3
Mellor W.	LD	53	4.9
<b>Turnout</b>		33.5	26.2

Whittle Le Woods (3257)			
		vote	share
Ward M. Ms.	Con	622	60.7
Turner S.	Lab	263	25.7
Harding S.	LD	140	13.7
<b>Turnout</b>		31.6	35.0

Withnell (2879)			
		vote	share
Jones K. Ms.*	Lab	595	51.7
Smith I. Ms.	Con	555	48.3
<b>Turnout</b>		40.3	3.5

## Chorley - 2000

Adlington (4370)			
		vote	share
Molyneaux J. Ms.*	Lab	568	53.5
Morris M.	Con	361	34.0
Donohue S. Ms.	LD	132	12.4
<b>Turnout</b>		24.3	19.5

Anderton Heath Charnock & Rivington (2739)			
		vote	share
Haughton P. Ms.	Con	495	47.6
Davies M.	Lab	398	38.3
Foster W. Ms.	LD	146	14.1
<b>Turnout</b>		37.9	9.3

Brindle & Hoghton (1506)			
		vote	share
Dickinson D.	Con	410	76.2
Charlesworth G. Ms.	LD	66	12.3
Turner S.	Lab	62	11.5
<b>Turnout</b>		35.8	63.9

Charnock Richard (1531)			
		vote	share
Heaton H.*	Con	444	73.9
Lowe P.	Lab	108	18.0
Parkinson M. Ms.	LD	49	8.2
<b>Turnout</b>		39.5	55.9

Chorley East (4226)			
		vote	share
Wilson P. Ms.*	Lab	502	60.0
Bora S. Ms.	Con	266	31.8
Holland S. Ms.	LD	68	8.1
<b>Turnout</b>		19.8	28.2

Chorley North East (4193)			
		vote	share
Lowe K.*	Lab	440	53.1
Goldsby C.	Con	304	36.7
Porter M. Ms.	LD	84	10.1
<b>Turnout</b>		19.8	16.4

Chorley North West (5147)			
		vote	share
Malpas P.	Con	964	52.4
Crabtree R.*	Lab	662	36.0
Norman L. Ms.	LD	214	11.6
<b>Turnout</b>		35.9	16.4

Chorley South East (3991)			
		vote	share
Snow C.*	Lab	595	54.6
Baxendale E.	Con	386	35.4
Porter D.	LD	108	9.9
<b>Turnout</b>		27.3	19.2

Chorley South West (5227)			
		vote	share
Parr R.*	Lab	513	57.2
Longton L.	Con	264	29.4
Eubank L. Ms.	LD	120	13.4
Turnout		17.2	27.8

Chorley West (4174)			
		vote	share
Snape R.*	Ind	1,561	87.5
Cocking J.	Lab	145	8.1
Parkinson S.	Con	77	4.3
Turnout		42.9	79.4

Clayton-Le-Woods East (7742) <sup>2</sup>			
		vote	share
Buckley P.	LD	792	39.3
Mellor W.	LD	781	-
Livesey R.	Con	733	36.3
Meredith J.	Con	718	-
Bland D.*	Lab	492	24.4
Murphy E.	Lab	461	-
Turnout		25.7	2.9

Eccleston & Heskin (4229)			
		vote	share
Forshaw E.*	Lab	726	52.1
Twist B.	Con	668	47.9
Turnout		33.1	4.2

Euxton South (3378)			
		vote	share
Goldworthy P.	Con	585	48.3
Davies M. Ms.*	Lab	559	46.2
Rackham R.	LD	66	5.5
Turnout		35.9	2.1

Lostock (3322)			
		vote	share
Dickinson D. Ms.	Con	627	64.4
Lloyd D.*	Lab	347	35.6
Turnout		29.6	28.7

Withnell (2873)			
		vote	share
Smith I. Ms.	Con	542	52.2
Howard C.*	Lab	437	42.1
Norris M.	LD	59	5.7
Turnout		36.1	10.1

## Chorley - 2002

Adlington & Anderton (5383) <sup>3</sup>			
		vote	share
Hoyle C. Ms.*	Lab	1,887	50.9
Davies M.	Lab	1,580	-
Molyneux F. Ms.*	Lab	1,413	-
Leigh I. Ms.	Con	1,027	27.7
Lawson B. Ms.	Con	1,020	-
Lawson W.	Con	1,014	-
Pilling P.	LD	795	21.4
Turnout		61.7	23.2

Astley & Buckshaw (2793) <sup>2</sup>			
		vote	share
Lennox L. Ms.	Lab	875	50.7
Perks M.	Con	851	49.3
Houghton P. Ms.*	Con	834	-
Fielden M. Ms.	Lab	656	-
Turnout		61.3	1.4

Brindle & Houghton (1796)			
		vote	share
Dickinson D.*	Con	823	69.5
Charlesworth S.	LD	182	15.4
Gore B. Ms.	Lab	179	15.1
Turnout		64.9	54.1

Chisnall (3179) <sup>2</sup>			
		vote	share
Heaton H.*	Con	1,028	42.6
Smith E.	Con	699	-
Davies J.	Lab	594	24.6
Lees M. Ms.*	Lab	516	-
Cornwell A.	Ind	410	17.0
Jones G. Ms.	LD	379	15.7
Eubank L. Ms.	LD	246	-
Turnout		67.1	18.0

Chorley East (4840) <sup>3</sup>			
		vote	share
Parr R.*	Lab	1,658	47.6
Wilson P. Ms.*	Lab	1,651	-
Brown T.	Lab	1,536	-
Coombes M.*	Ind	711	20.4
Betney J. Ms.	Con	596	17.1
Mellor J. Ms.	LD	521	14.9
Turnout		56.5	27.2

Chorley North East (5097) <sup>3</sup>			
		vote	share
Edgerley D.*	Lab	1,624	47.3
Lowe A.*	Lab	1,505	-
Lowe K.*	Lab	1,419	-
Flemming J.	Con	795	23.2
Livesey E.	Con	683	-
Smith E. Ms.	LD	614	17.9
Frost G.	Ind	401	11.7
Turnout		56.9	24.1

Chorley North West (5095) <sup>3</sup>			
		vote	share
Snape R.*	Ind	2,973	50.4
Snape J. Ms.*	Ind	2,612	-
Crabtree R.	Lab	1,161	19.7
Malpas P.*	Con	1,101	18.6
Norman L. Ms.	LD	669	11.3
Higham P.	Con	491	-
Perks E. Ms.	Con	447	-
Turnout		74.3	30.7

Chorley South East (4804) <sup>3</sup>			
		vote	share
McGowan T.*	Lab	1,508	50.7
Holgate A.*	Lab	1,377	-
Snow C.*	Lab	1,282	-
Goodspeed G.	Con	959	32.2
Marsden S. Ms.	Con	931	-
Higham B. Ms.	Con	788	-
Porter D.	LD	510	17.1
Turnout		59.3	18.4

Chorley South West (4651) <sup>3</sup>			
		vote	share
Lees R.	Lab	1,522	69.8
Gee A.*	Lab	1,489	-
Wilson J.*	Lab	1,457	-
Livesey D. Ms.	Con	657	30.2
Houghton K.	Con	632	-
Turnout		50.8	39.7

Clayton-Le-Woods & Whittle-Le-Woods (5373) <sup>3</sup>			
		vote	share
Bell J.*	Con	1,816	50.6
Walker J.	Con	1,466	-
Baxter N.	Con	1,418	-
Gray S. Ms.	Lab	905	25.2
Charlesworth G. Ms.	LD	869	24.2
Harding S.	LD	861	-
Woodruff D.	Lab	772	-
Harvey G.	Lab	673	-
Turnout		62.1	25.4

Clayton-Le-Woods North (5090) <sup>3</sup>			
		vote	share
Buckley P.*	LD	909	34.4
Fenn S.*	LD	890	-
Mellor W.*	LD	875	-
Livesey R.	Con	871	33.0
Cullens A.	Con	869	-
Cronshaw J. Ms.	Lab	861	32.6
Cullens M. Ms.	Con	853	-
Feeman J.	Lab	795	-
Holden A.	Lab	700	-
Turnout		53.1	1.4

Clayton-Le-Woods West & Cuerden (3420) <sup>2</sup>			
		vote	share
Brownlee L. Ms.*	Lab	916	41.6
Bedford T.	Con	827	37.6
Chapman S.	Con	790	-
Murphy E.	Lab	749	-
Ormston G. Ms.	LD	457	20.8
Turnout		60.3	4.0

Coppull (4952) <sup>3</sup>			
		vote	share
Ball K.*	LD	1,570	54.5
Walsh S. Ms.*	LD	1,503	-
Cuerden P. Ms.*	LD	1,373	-
Birchall A.	Lab	1,313	45.5
Murphy J.	Lab	1,294	-
Maddock P.	Lab	1,290	-
Turnout		60.3	8.9

Eccleston & Mawdesley (4952) <sup>3</sup>			
		vote	share
Whittaker A.*	Lab	1,798	55.3
Iddon M.	Con	1,455	44.7
Culshaw F.*	Con	1,429	-
Titherington T.*	Lab	1,400	-
Twist B.	Con	1,325	-
Forshaw E.*	Lab	1,150	-
Turnout		64.3	10.5

Euxton North (3234) <sup>2</sup>			
		vote	share
Gray T.*	Lab	1,086	51.9
Gee D.*	Lab	989	-
Russel R. Ms.	Con	773	36.9
Mitchell G.	Con	769	-
Buckley M. Ms.	LD	234	11.2
Turnout		64.8	15.0

Euxton South (3299) <sup>2</sup>			
		vote	share
Russell G.*	Con	1,053	52.2
Goldworthy P.*	Con	1,036	-
Gray M. Ms.*	Lab	965	47.8
Lowe M. Ms.	Lab	855	-
Turnout		63.9	4.4

Heath Charnock & Rivington (1794)			
		vote	share
Case M. Ms.*	Con	732	64.3
Molyneux J. Ms.*	Lab	407	35.7
Turnout		63.2	28.5

Lostock (3260) <sup>2</sup>			
		vote	share
Iddon M. Ms.	Ind	913	34.5
Dickinson D. Ms.*	Con	894	33.8
Massam D.	Lab	836	31.6
Rigby G.	Con	691	-
Lloyd D.	Lab	409	-
Turnout		65.5	0.7

Pennine (1703)			
		vote	share
Gray M. Ms.*	Con	645	55.0
Ross-Mills J. Ms.	LD	350	29.8
Wilson P.*	Lab	178	15.2
Turnout		68.6	25.1

Wheulton & Withnell (3359) <sup>2</sup>			
		vote	share
Smith I. Ms.*	Con	1,137	45.1
Howard C.	Lab	884	35.0
Parkinson S.	Con	746	-
Lowe P.	Lab	514	-
Graham S. Ms.	LD	502	19.9
<b>Turnout</b>		64.0	10.0

## Chorley - 2003

Adlington & Anderton (5304)			
		vote	share
Molyneux J. Ms.	Lab	1,281	44.0
Birtwistle L. Ms.	Con	1,104	37.9
Pilling P.	LD	528	18.1
<b>Turnout</b>		53.0	6.1

Astley & Buckshaw (2773)			
		vote	share
Perks M.*	Con	887	58.2
Lloyd D.	Lab	488	32.0
Ormston R.	LD	149	9.8
<b>Turnout</b>		55.0	26.2

Chisnall (3209)			
		vote	share
Smith E.*	Con	620	35.8
Forshaw E.	Lab	529	30.6
Cornwell A.	Ind	299	17.3
Jones G.	LD	283	16.3
<b>Turnout</b>		54.0	5.3

Chorley East (4881)			
		vote	share
Brown T.*	Lab	1,282	59.8
Perks E. Ms.	Con	440	20.5
Coombes M.	Ind	422	19.7
<b>Turnout</b>		44.0	39.3

Chorley North East (5072)			
		vote	share
Lowe M. Ms.	Lab	1,264	53.2
Smith S.	Con	785	33.0
Smith E. Ms.	LD	327	13.8
<b>Turnout</b>		46.0	20.2

Chorley North West (4991)			
		vote	share
Malpas P.	Con	1,254	42.0
Crabtree R.*	Lab	1,126	37.7
Norman L. Ms.	LD	605	20.3
<b>Turnout</b>		59.0	4.3

Chorley South East (4751)			
		vote	share
Snow C.*	Lab	1,281	51.3
Marsden S. Ms.	Con	863	34.6
Porter D.	LD	352	14.1
<b>Turnout</b>		50.0	16.7

Chorley South West (4704)			
		vote	share
Wilson J.*	Lab	1,150	58.2
Carter L.	Con	487	24.6
Mellor J. Ms.	LD	340	17.2
<b>Turnout</b>		42.0	33.5

Clayton-Le-Woods & Whittle-Le-Woods (5341)			
		vote	share
Baxter N.*	Con	1,170	47.9
Gray S. Ms.	Lab	640	26.2
Charlesworth G. Ms.	LD	634	25.9
<b>Turnout</b>		49.0	21.7

Clayton-Le-Woods North (5127)			
		vote	share
Livesey R.	Con	715	36.8
Mellor W.*	LD	699	36.0
Woodruff D.	Lab	529	27.2
<b>Turnout</b>		38.0	0.8

Clayton-Le-Woods West & Cuerden (3475)			
		vote	share
Bedford T.*	Con	731	42.0
Murphy T.	Lab	656	37.7
Ormston G. Ms.	LD	353	20.3
<b>Turnout</b>		51.0	4.3

Coppull (4938)			
		vote	share
Birchall A.	Lab	939	45.6
Cuerden P. Ms.*	LD	873	42.4
Livesey D. Ms.	Con	246	12.0
<b>Turnout</b>		44.0	3.2

Eccleston & Mawdesley (4872)			
		vote	share
Culshaw F.*	Con	1,399	51.5
Titherington T.	Lab	1,320	48.5
<b>Turnout</b>		55.0	2.9

Euxton South (3303)			
		vote	share
Goldsworthy P.*	Con	1,039	57.2
Gray M. Ms.	Lab	778	42.8
<b>Turnout</b>		55.0	14.4

Lostock (3332)			
		vote	share
Dickinson D. Ms.*	Con	899	55.1
Massam D.	Lab	734	44.9
<b>Turnout</b>		54.0	10.1

## Chorley - 2004

Adlington & Anderton (5425)			
		vote	share
Davies M.*	Lab	1,226	43.8
Barron P.	Con	1,105	39.5
Pilling P.	LD	469	16.8
<b>Turnout</b>		52.6	4.3

Brindle & Houghton (1774)			
		vote	share
Dickinson D.*	Con	521	52.3
Williams S.	Ind	193	19.4
Graham M.	Lab	122	12.2
Dixon G.	Ind	91	9.1
Mellor W.*	LD	69	6.9
<b>Turnout</b>		56.9	32.9

Chorley East (4979)			
		vote	share
Wilson M. Ms.	Lab	1,038	51.9
Livesey E. Ms.	Con	443	22.2
Mellor J. Ms.	LD	309	15.5
Fawcett T.	Ind	209	10.5
<b>Turnout</b>		40.6	29.8

Chorley North East (5084)			
		vote	share
Lowe A.*	Lab	913	41.3
Blackburn C.	LD	679	30.7
Parkinson S.	Con	618	28.0
<b>Turnout</b>		45.0	10.6

Chorley North West (5001)			
		vote	share
Snappe J. Ms.*	Ind	2,290	77.0
Cullens M. Ms.	Con	375	12.6
Norman L. Ms.	LD	220	7.4
Baker P.	Ind	88	3.0
<b>Turnout</b>		60.1	64.4

Chorley South East (4810)			
		vote	share
Lees M. Ms.	Lab	999	45.1
Livesey D. Ms.	Con	768	34.7
Porter D.	LD	446	20.2
<b>Turnout</b>		46.9	10.4

Chorley South West (4789)			
		vote	share
Gee A.*	Lab	841	47.4
Perks E. Ms.	Con	482	27.1
Eubank L. Ms.	LD	453	25.5
<b>Turnout</b>		38.4	20.2

Clayton-Le-Woods & Whittle-Le-Woods (5377)			
		vote	share
Walker J.*	Con	1,361	51.4
Charlesworth G. Ms.	LD	679	25.6
Gray S. Ms.	Lab	608	23.0
<b>Turnout</b>		50.5	25.8

Clayton-Le-Woods North (5147)			
		vote	share
Cullens A.	Con	813	39.6
Fenn S.*	LD	736	35.9
Unsworth D.	Lab	502	24.5
<b>Turnout</b>		41.4	3.8

Coppull (5013)			
		vote	share
Walsh S. Ms.*	LD	1,187	48.4
Gore B.	Lab	966	39.4
Royce S.	Con	299	12.2
<b>Turnout</b>		50.4	9.0

Eccleston & Mawdesley (4818)			
		vote	share
Counce H.	Con	1,358	53.8
Bradley H. Ms.	Lab	1,168	46.2
<b>Turnout</b>		54.8	7.5

Euxton North (3566)			
		vote	share
Gee D.*	Lab	1,016	53.3
Russell R. Ms.	Con	890	46.7
<b>Turnout</b>		55.1	6.6

Heath Charnock & Rivington (1802)			
		vote	share
Case M. Ms.*	Con	661	69.8
Molyneux F. Ms.*	Lab	286	30.2
<b>Turnout</b>		54.8	39.6

Lostock (3356)			
		vote	share
Iddon M. Ms.*	Ind	821	46.2
Moulton S.	Con	667	37.6
Tack P. Ms.	Lab	288	16.2
<b>Turnout</b>		54.2	8.7

Wheulton & Withnell (3297)			
		vote	share
Smith S.	Con	808	47.1
Howard C.*	Lab	552	32.2
Graham S. Ms.	LD	355	20.7
<b>Turnout</b>		53.4	14.9

## Chorley - 2006

Adlington & Anderton (5640)			
		vote	share
Hoyle C. Ms.*	Lab	1,264	57.1
Barron P.	Con	700	31.6
Pilling P.	LD	249	11.3
<b>Turnout</b>		39.5	25.5

<b>Astley &amp; Buckshaw (2780)</b>			
		vote	share
<b>Cain A.</b>	Con	832	66.4
Lennox L. Ms.*	Lab	421	33.6
<b>Turnout</b>		45.6	32.8
<b>Chisnall (3318)</b>			
		vote	share
<b>Heaton H.*</b>	Con	701	55.7
Ball N. Ms.	LD	319	25.4
Lloyd D.	Lab	238	18.9
<b>Turnout</b>		39.0	30.4
<b>Chorley East (4959)</b>			
		vote	share
<b>Khan H. Ms.</b>	Lab	798	56.9
Parkinson S.	Con	605	43.1
<b>Turnout</b>		29.2	13.8
<b>Chorley North East (5033)</b>			
		vote	share
<b>Edgerley D.*</b>	Lab	816	51.8
Bedford M. Ms.	Con	486	30.9
Denby C.	New P	272	17.3
<b>Turnout</b>		31.5	21.0
<b>Chorley North West (4996)</b>			
		vote	share
<b>Snape R.*</b>	Ind	2,312	85.3
Bradley A.	Lab	203	7.5
Houghton K.	Con	197	7.3
<b>Turnout</b>		54.5	77.8
<b>Chorley South East (4887)</b>			
		vote	share
<b>McGowan T.*</b>	Lab	625	42.9
Higham B. Ms.	Con	612	42.0
Porter D.	LD	219	15.0
<b>Turnout</b>		31.4	0.9
<b>Chorley South West (5470)</b>			
		vote	share
<b>Lees R.*</b>	Lab	0	0.0
<b>Turnout</b>		0.0	0.0
<b>Clayton-Le-Woods &amp; Whittle-Le-Woods (5383)</b>			
		vote	share
<b>Bell J.*</b>	Con	1,268	64.8
Rogerson D.	Lab	362	18.5
Charlesworth G. Ms.	LD	327	16.7
<b>Turnout</b>		36.4	46.3
<b>Clayton-Le-Woods North (5234)<sup>2</sup></b>			
		vote	share
<b>Cullens M. Ms.</b>	Con	713	42.1
<b>Baker P.</b>	Con	661	-
Martyniuk K. Ms.	Lab	561	33.1
Murphy E.	Lab	484	-
Buckley A.	LD	420	24.8
<b>Turnout</b>		30.0	9.0
<b>Clayton-Le-Woods West &amp; Cuerden (3511)</b>			
		vote	share
<b>Muncaster M.</b>	Con	793	60.1
Freeman J.	Lab	526	39.9
<b>Turnout</b>		38.0	20.2
<b>Coppull (5002)</b>			
		vote	share
<b>Ball K.*</b>	LD	907	54.4
Millar S. Ms.	Lab	521	31.2
Royce S.	Con	240	14.4
<b>Turnout</b>		33.4	23.1
<b>Eccleston &amp; Mawdesley (4795)</b>			
		vote	share
<b>Iddon K.</b>	Con	1,176	54.1
Whittaker A.*	Lab	998	45.9
<b>Turnout</b>		45.6	8.2

<b>Euxton North (3592)</b>			
		vote	share
<b>Russell R. Ms.</b>	Con	833	53.7
Gray T.*	Lab	718	46.3
<b>Turnout</b>		43.4	7.4
<b>Euxton South (3268)</b>			
		vote	share
<b>Russell G.*</b>	Con	836	67.6
Bradley H. Ms.	Lab	401	32.4
<b>Turnout</b>		38.2	35.2
<b>Pennine (1749)</b>			
		vote	share
<b>Gray M. Ms.*</b>	Con	498	65.2
Berry H. Ms.	Lab	155	20.3
Ross-Mills J. Ms.	LD	111	14.5
<b>Turnout</b>		43.5	44.9
<b>Wheelton &amp; Withnell (3290)</b>			
		vote	share
<b>Smith I. Ms.*</b>	Con	886	65.6
Howard C.	Lab	464	34.4
<b>Turnout</b>		41.6	31.3

## Chorley - 2007

<b>Adlington &amp; Anderton (5637)</b>			
		vote	share
<b>Molyneux J. Ms.*</b>	Lab	1,078	45.7
Unsworth A.	Con	863	36.6
Pilling P.	LD	254	10.8
Greenhalgh D.	UKIP	163	6.9
<b>Turnout</b>		42.0	9.1
<b>Astley &amp; Buckshaw (2874)</b>			
		vote	share
<b>Perks M.*</b>	Con	975	76.5
Lloyd D.	Lab	299	23.5
<b>Turnout</b>		44.7	53.1
<b>Chisnall (3332)</b>			
		vote	share
<b>Smith E.*</b>	Con	755	57.8
Forshaw E.	Lab	551	42.2
<b>Turnout</b>		39.4	15.6
<b>Chorley East (4976)</b>			
		vote	share
<b>Brown T.*</b>	Lab	963	60.5
Parkinson S.	Con	388	24.4
Coombes M.	Ind	242	15.2
<b>Turnout</b>		32.1	36.1
<b>Chorley North East (5037)</b>			
		vote	share
<b>Low M. Ms.*</b>	Lab	858	50.3
Acton T.	Con	597	35.0
Denby C.	New P	251	14.7
<b>Turnout</b>		34.0	15.3
<b>Chorley North West (4966)</b>			
		vote	share
<b>Malpas P.*</b>	Con	1,349	56.1
Bradley A.	Lab	1,056	43.9
<b>Turnout</b>		48.7	12.2
<b>Chorley South East (4935)</b>			
		vote	share
<b>Houghton P. Ms.</b>	Con	855	44.5
Snow C.*	Lab	834	43.4
Porter D.	LD	231	12.0
<b>Turnout</b>		39.2	1.1

<b>Chorley South West (5666)</b>			
		vote	share
<b>Lennox L. Ms.</b>	Lab	718	42.1
Smith E. Ms.	Con	548	32.1
Lucas D.	Ind	441	25.8
<b>Turnout</b>		30.2	10.0
<b>Clayton-Le-Woods &amp; Whittle-Le-Woods (5468)</b>			
		vote	share
<b>Morgan G.*</b>	Con	1,162	57.1
Charlesworth G. Ms.	LD	447	22.0
Cronshaw J. Ms.	Lab	426	20.9
<b>Turnout</b>		37.3	35.1
<b>Clayton-Le-Woods North (5273)</b>			
		vote	share
<b>Devaney M.</b>	Con	727	41.4
Martyniuk K. Ms.	Lab	634	36.1
Fenn S.	LD	396	22.5
<b>Turnout</b>		33.4	5.3
<b>Clayton-Le-Woods West &amp; Cuerden (3450)</b>			
		vote	share
<b>Boothman J. Ms.</b>	Con	773	56.5
Rogerson D.	Lab	595	43.5
<b>Turnout</b>		40.0	13.0
<b>Coppull (4998)</b>			
		vote	share
<b>Ball N. Ms.</b>	LD	826	51.3
Millar S. Ms.	Lab	524	32.6
Bedford M. Ms.	Con	259	16.1
<b>Turnout</b>		32.5	18.8
<b>Eccleston &amp; Mawdesley (4803)</b>			
		vote	share
<b>Joyce K.</b>	Con	1,245	60.2
Bradley H. Ms.	Lab	824	39.8
<b>Turnout</b>		43.3	20.3
<b>Euxton South (3250)</b>			
		vote	share
<b>Goldworthy P.*</b>	Con	832	61.1
Gray T.	Lab	529	38.9
<b>Turnout</b>		42.2	22.3
<b>Lostock (3470)</b>			
		vote	share
<b>Dickinson D. Ms.*</b>	Con	745	51.6
Wilson T.	Ind	700	48.4
<b>Turnout</b>		42.1	3.1

## Chorley - 2008

<b>Adlington &amp; Anderton (5593)</b>			
		vote	share
<b>Wilson P.</b>	Lab	1,103	44.5
Catterall L.	Con	1,079	43.6
Pilling P.	LD	294	11.9
<b>Turnout</b>		44.4	1.0
<b>Brindle &amp; Houghton (1737)</b>			
		vote	share
<b>Dickinson D.*</b>	Con	648	81.6
Caton N.	Lab	146	18.4
<b>Turnout</b>		46.0	63.2
<b>Chorley East (4871)</b>			
		vote	share
<b>Berry J. Ms.</b>	Lab	974	62.4
Gregory N. Ms.	Con	587	37.6
<b>Turnout</b>		33.3	24.8

**Chorley North East (4885)**

		vote	share
Lowe A.*	Lab	764	45.2
Parkinson S.	Con	650	38.5
Denby C.	New P	276	16.3
<b>Turnout</b>		34.7	6.7

**Chorley North West (4816)**

		vote	share
Snape J. Ms.*	Ind	2,055	76.3
Pryor J.	Lab	337	12.5
Higham B. Ms.	Con	302	11.2
<b>Turnout</b>		53.3	63.8

**Chorley South East (4847)**

		vote	share
Bradley A.	Lab	890	46.2
Smith E. Ms.	Con	834	43.3
Porter D.	LD	204	10.6
<b>Turnout</b>		39.9	2.9

**Chorley South West (5653)**

		vote	share
Gee A.*	Lab	831	51.8
Livesey D. Ms.	Con	772	48.2
<b>Turnout</b>		28.5	3.7

**Clayton-Le-Woods & Whittle-Le-Woods (5583)**

		vote	share
Walker J.*	Con	1,353	65.5
Maguire C. Ms.	Lab	387	18.7
Charlesworth G. Ms.	LD	326	15.8
<b>Turnout</b>		37.1	46.8

**Clayton-Le-Woods North (5051)**

		vote	share
Cullens A.*	Con	897	53.1
Murfit S.	Lab	499	29.5
Fenn S.	LD	294	17.4
<b>Turnout</b>		33.6	23.6

**Coppull (4820)**

		vote	share
Walsh S. Ms.*	LD	898	51.2
Gore P.	Lab	588	33.5
Royce S.	Con	269	15.3
<b>Turnout</b>		36.6	17.7

**Eccleston & Mawdesley (4736)**

		vote	share
Caunce H.*	Con	1,306	57.7
Whittaker A.	Lab	956	42.3
<b>Turnout</b>		48.2	15.5

**Euxton North (3547)**

		vote	share
Platt D. Ms.	Con	908	54.9
Gee D.*	Lab	745	45.1
<b>Turnout</b>		46.8	9.9

**Heath Charnock & Rivington (1749)**

		vote	share
Case M. Ms.*	Con	573	72.3
Walmsley P.	Lab	220	27.7
<b>Turnout</b>		45.6	44.5

**Lostock (3398)**

		vote	share
Moulton S.	Con	846	56.8
Iddon M. Ms.*	Ind	644	43.2
<b>Turnout</b>		44.1	13.6

**Wheulton & Withnell (3210)**

		vote	share
Smith S.*	Con	848	55.1
France C.	Lab	690	44.9
<b>Turnout</b>		48.2	10.3

**Chorley - 2010****Adlington & Anderton (5609)**

		vote	share
Hoyle C. Ms.*	Lab	2,231	55.6
Higham B. Ms.	Con	1,186	29.6
Pilling P.	LD	593	14.8
<b>Turnout</b>		73.0	26.1

**Astley & Buckshaw (3064)**

		vote	share
Platt A.	Con	1,170	53.9
Handley I.	Lab	1,002	46.1
<b>Turnout</b>		71.9	7.7

**Chisnall (3245)**

		vote	share
Heaton H.*	Con	1,190	51.0
Forshaw E.	Lab	620	26.6
Hoyland D.	LD	349	15.0
Cornwell A.	Ind	174	7.5
<b>Turnout</b>		72.1	24.4

**Chorley East (4789)**

		vote	share
Khan H. Ms.*	Lab	1,743	58.0
Sohail K.	Con	657	21.8
Coombes M.	Ind	607	20.2
<b>Turnout</b>		63.0	36.1

**Chorley North East (4822)**

		vote	share
Edgerley D.*	Lab	1,523	47.7
Michael B.	Con	894	28.0
Eubank L. Ms.	LD	456	14.3
Hogan N.	UKIP	234	7.3
Bridge I.	Green	84	2.6
<b>Turnout</b>		66.6	19.7

**Chorley North West (4786)**

		vote	share
Snape R.*	Ind	3,020	83.0
Trevalyan B.	Con	441	12.1
Denby C.	UKIP	178	4.9
<b>Turnout</b>		76.9	70.9

**Chorley South East (4841)**

		vote	share
Murray B.	Lab	1,441	45.4
Matthews E.	Con	1,097	34.6
Porter D.	LD	497	15.7
Ffelan C.	Green	138	4.3
<b>Turnout</b>		66.2	10.8

**Chorley South West (5791)**

		vote	share
Lees R.*	Lab	1,616	46.8
Chapman S.	Con	1,124	32.6
Grunstein C.	LD	711	20.6
<b>Turnout</b>		59.8	14.3

**Clayton-Le-Woods & Whittle-Le-Woods (5809)**

		vote	share
Bell J.*	Con	2,300	54.7
Maguire F. Ms.	Lab	1,024	24.3
Charlesworth G. Ms.	LD	882	21.0
<b>Turnout</b>		72.8	30.3

**Clayton-Le-Woods North (5316)**

		vote	share
Cullens M. Ms.*	Con	1,178	38.4
Murfit S.	Lab	1,037	33.8
Fenn S.	LD	853	27.8
<b>Turnout</b>		60.1	4.6

**Clayton-Le-Woods West & Cuerden (3351)**

		vote	share
Muncaster M.*	Con	1,274	54.6
Rogerson D.	Lab	1,060	45.4
<b>Turnout</b>		70.0	9.2

**Coppull (4863)**

		vote	share
Ball K.*	LD	1,613	49.7
Toon R.	Lab	1,087	33.5
Royce S.	Con	546	16.8
<b>Turnout</b>		67.2	16.2

**Eccleston & Mawdesley (4849)**

		vote	share
Iddon K.*	Con	2,015	57.6
Bradley H. Ms.	Lab	1,484	42.4
<b>Turnout</b>		73.0	15.2

**Euxton North (3557)**

		vote	share
Russell R. Ms.*	Con	1,388	53.3
Jarnell M.	Lab	1,215	46.7
<b>Turnout</b>		74.1	6.6

**Euxton South (3239)**

		vote	share
Russell G.*	Con	1,379	60.1
Holgate S.	Lab	915	39.9
<b>Turnout</b>		71.4	20.2

**Pennine (1712)**

		vote	share
Gray M. Ms.*	Con	820	62.3
Berry H. Ms.	Lab	496	37.7
<b>Turnout</b>		77.8	24.6

**Wheulton & Withnell (3243)**

		vote	share
Hansford A. Ms.	Con	1,282	52.8
Caton N.	Lab	1,148	47.2
<b>Turnout</b>		75.8	5.5

**Chorley - 2011****Adlington & Anderton (5564)**

		vote	share
Molyneux J. Ms.*	Lab	1,418	55.0
Catterall L.	Con	898	34.8
Hughes T.	LD	264	10.2
<b>Turnout</b>		46.9	20.2

**Astley & Buckshaw (3314)**

		vote	share
Perks M.*	Con	872	54.3
Handley I.	Lab	599	37.3
Mallinson J.	UKIP	134	8.3
<b>Turnout</b>		49.0	17.0

**Chisnall (3271)**

		vote	share
Leadbetter P.	Con	739	49.5
Gee D.	Lab	607	40.7
Cuerden P. Ms.	LD	146	9.8
<b>Turnout</b>		45.9	8.8

**Chorley East (4820)**

		vote	share
Brown T.*	Lab	1,381	75.8
Parkinson S.	Con	276	15.2
Shorrock T.	UKIP	164	9.0
<b>Turnout</b>		37.9	60.7

**Chorley North East (4859)**

		vote	share
Lowe M. Ms.*	Lab	1,280	66.2
Matthews E.	Con	653	33.8
<b>Turnout</b>		40.2	32.4

**Chorley North West (4796)**

		vote	share
Phipps P. Ms.	Lab	1,535	56.0
Malpas P.*	Con	1,207	44.0
<b>Turnout</b>		57.7	12.0



<b>Chorley South East (4858)</b>			
		<b>vote</b>	<b>share</b>
<b>Walmsley P.</b>	Lab	1,056	50.7
Chapman S.	Con	701	33.7
Cecil N.	UKIP	137	6.6
Curtis C.	Ind	103	4.9
Porter D.	LD	86	4.1
<b>Turnout</b>		43.1	17.0

<b>Chorley South West (5843)</b>			
		<b>vote</b>	<b>share</b>
<b>Holgate A.</b>	Lab	1,115	57.1
Michael B.	Con	487	24.9
Grunstein C.	LD	193	9.9
Wallbank A.	UKIP	157	8.0
<b>Turnout</b>		33.6	32.2

<b>Clayton-Le-Woods &amp; Whittle-Le-Woods (5911)</b>			
		<b>vote</b>	<b>share</b>
<b>Morgan G.*</b>	Con	1,162	48.6
Maguire C. Ms.	Lab	793	33.2
Charlesworth G. Ms.	LD	286	12.0
Freeman H. Ms.	UKIP	148	6.2
<b>Turnout</b>		40.7	15.4

<b>Clayton-Le-Woods North (5076)</b>			
		<b>vote</b>	<b>share</b>
<b>Murfitt S.</b>	Lab	891	45.0
Devaney M.*	Con	716	36.1
Rhodes M.	UKIP	213	10.8
Fenn S.	LD	161	8.1
<b>Turnout</b>		39.2	8.8

<b>Clayton-Le-Woods West &amp; Cuerden (3362)</b>			
		<b>vote</b>	<b>share</b>
<b>Rogerson D.</b>	Lab	801	50.3
Boothman J. Ms.*	Con	655	41.1
Freeman P.	UKIP	137	8.6
<b>Turnout</b>		47.7	9.2

<b>Coppull (4799)</b>			
		<b>vote</b>	<b>share</b>
<b>Crow M.</b>	Lab	1,141	54.7
Ball N. Ms.*	LD	682	32.7
Mercer S. Ms.	Con	262	12.6
<b>Turnout</b>		43.6	22.0

<b>Eccleston &amp; Mawdesley (4837)</b>			
		<b>vote</b>	<b>share</b>
<b>Joyce K.*</b>	Con	1,247	56.9
Ely S.	Lab	945	43.1
<b>Turnout</b>		46.6	13.8

<b>Euxton South (3210)</b>			
		<b>vote</b>	<b>share</b>
<b>Goldsworthy P.*</b>	Con	734	50.4
Jarnell M.	Lab	593	40.7
Hogan D. Ms.	UKIP	130	8.9
<b>Turnout</b>		45.8	9.7

<b>Lostock (3426)</b>			
		<b>vote</b>	<b>share</b>
<b>Dickinson D. Ms.*</b>	Con	699	43.4
Forrest J.	Ind	604	37.5
Gaskill M.	Lab	309	19.2
<b>Turnout</b>		47.3	5.9

## Chorley - 2012

<b>Adlington &amp; Anderton (5605)<sup>2</sup></b>			
		<b>vote</b>	<b>share</b>
<b>Wilson P.*</b>	Lab	1,290	58.4
<b>Dunn G.</b>	Lab	1,241	-
Devaney M.	Con	580	26.2
Matthews E.	Con	473	-
Clewlow H.	UKIP	340	15.4
<b>Turnout</b>		37.7	32.1

<b>Brindle &amp; Houghton (1730)</b>			
		<b>vote</b>	<b>share</b>
<b>Dickinson D.*</b>	Con	430	63.8
Caton C.	Lab	244	36.2
<b>Turnout</b>		39.2	27.6

<b>Chorley East (4877)</b>			
		<b>vote</b>	<b>share</b>
<b>Berry J. Ms.*</b>	Lab	1,151	74.4
Parkinson S.	Con	253	16.3
Leach A.	Green	144	9.3
<b>Turnout</b>		31.9	58.0

<b>Chorley North East (4989)</b>			
		<b>vote</b>	<b>share</b>
<b>Lowe A.*</b>	Lab	1,068	63.9
Mercer S. Ms.	Con	311	18.6
Shorrock T.	UKIP	223	13.3
Cross S.	Green	69	4.1
<b>Turnout</b>		33.4	45.3

<b>Chorley North West (4739)</b>			
		<b>vote</b>	<b>share</b>
<b>Snape J. Ms.*</b>	Ind	1,755	71.7
O'Donoghue G.	Lab	476	19.4
Metcalfe D.	Con	218	8.9
<b>Turnout</b>		51.9	52.2

<b>Chorley South East (5028)</b>			
		<b>vote</b>	<b>share</b>
<b>Bradley A.*</b>	Lab	1,079	59.4
Chapman S.	Con	505	27.8
Hughes G.	Ind	151	8.3
Straw A.	Green	80	4.4
<b>Turnout</b>		36.2	31.6

<b>Chorley South West (5848)</b>			
		<b>vote</b>	<b>share</b>
<b>Gee A.*</b>	Lab	1,087	70.2
Cook T.	Con	462	29.8
<b>Turnout</b>		26.7	40.3

<b>Clayton-Le-Woods &amp; Whittle-Le-Woods (6087)</b>			
		<b>vote</b>	<b>share</b>
<b>Walker J.*</b>	Con	1,220	58.6
Maguire F. Ms.	Lab	861	41.4
<b>Turnout</b>		34.5	17.3

<b>Clayton-Le-Woods North (5216)</b>			
		<b>vote</b>	<b>share</b>
<b>Cronshaw J. Ms.</b>	Lab	1,000	58.4
Cullens A.*	Con	711	41.6
<b>Turnout</b>		33.2	16.9

<b>Coppull (4845)</b>			
		<b>vote</b>	<b>share</b>
<b>Finnamore R.</b>	Lab	1,017	57.4
Walsh S. Ms.*	LD	555	31.3
Malpas P.	Con	201	11.3
<b>Turnout</b>		36.9	26.1

<b>Eccleston &amp; Mawdesley (4831)</b>			
		<b>vote</b>	<b>share</b>
<b>Caunce H.*</b>	Con	1,009	46.6
Ely S.	Lab	914	42.2
Keane R.	UKIP	241	11.1
<b>Turnout</b>		45.0	4.4

<b>Euxton North (3517)</b>			
		<b>vote</b>	<b>share</b>
<b>Gee D.</b>	Lab	847	53.8
Platt D. Ms.*	Con	549	34.9
Mallinson J.	UKIP	179	11.4
<b>Turnout</b>		45.1	18.9

<b>Heath Charnock &amp; Rivington (1769)</b>			
		<b>vote</b>	<b>share</b>
<b>Snape K. Ms.</b>	Lab	475	55.4
Catterall B. Ms.	Con	278	32.4
Cecil N.	UKIP	105	12.2
<b>Turnout</b>		48.8	23.0

<b>Lostock (3412)</b>			
		<b>vote</b>	<b>share</b>
<b>Dalton J.</b>	Con	708	56.0
Whittaker A.	Lab	556	44.0
<b>Turnout</b>		37.4	12.0

<b>Wheelton &amp; Withnell (3216)</b>			
		<b>vote</b>	<b>share</b>
<b>France C.</b>	Lab	888	58.8
Moran D.	Con	623	41.2
<b>Turnout</b>		47.2	17.5

