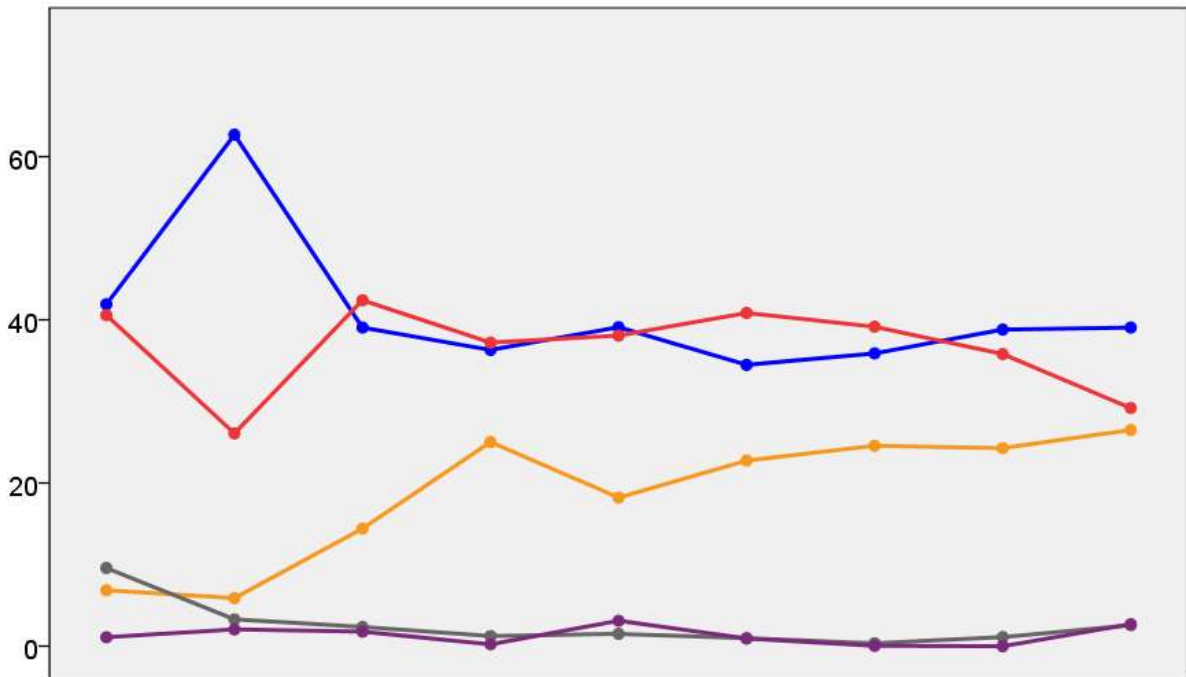


Cheshire County Council Election Results 1973-2005



Colin Rallings and Michael Thrasher
The Elections Centre
Plymouth University

The information contained in this report has been obtained from a number of sources. Election results from the immediate post-reorganisation period were painstakingly collected by Alan Willis largely, although not exclusively, from local newspaper reports. From the mid-1980s onwards the results have been obtained from each local authority by the Elections Centre. The data are stored in a database designed by Lawrence Ware and maintained by Brian Cheal and others at Plymouth University. Despite our best efforts some information remains elusive whilst we accept that some errors are likely to remain. Notice of any mistakes should be sent to elections@plymouth.ac.uk. The results sequence can be kept up to date by purchasing copies of the annual Local Elections Handbook, details of which can be obtained by contacting the email address above.

Front cover: the graph shows the distribution of percentage vote shares over the period covered by the results. The lines reflect the colours traditionally used by the three main parties. The grey line is the share obtained by Independent candidates while the purple line groups together the vote shares for all other parties.

Rear cover: the top graph shows the percentage share of council seats for the main parties as well as those won by Independents and other parties. The lines take account of any by-election changes (but not those resulting from elected councillors switching party allegiance) as well as the transfers of seats during the main round of local election.

The lower graph shows for each main round of local elections the overall percentage turnout (solid line), the percentage of women candidates standing at (dotted line) and the percentage of women among those elected (hashed line).

Cheshire 1973

Alsager Odd Rode (12544)

		vote	share
Hollinshead J.	Ind	2,757	54.2
Smith S.	Con	2,330	45.8
Turnout		40.6	8.4

Bollington (10111)

		vote	share
Mosley E. Ms.	Con	2,130	38.2
Washington J.	Lab	1,756	31.5
Berry A.	Lib	1,693	30.3
Turnout		55.2	6.7

Bucklow Rural (6980)

		vote	share
Cornwall-Legh C.	Con	2,494	80.5
Caswell P.	Lab	605	19.5
Turnout		44.4	61.0

Chester No. 1 (17158)²

		vote	share
Tomlins T.	Lab	3,802	64.0
Price J.	Lab	3,790	-
James A.	Con	2,138	36.0
Turnout		34.6	28.0

Chester No. 2 (8003)

		vote	share
Fazey T.	Lab	1,986	54.5
Jones J.	Con	1,655	45.5
Turnout		45.5	9.1

Chester No. 3 (11083)

		vote	share
Ribbeck C.	Con	2,975	59.8
Hill S.	Lab	2,003	40.2
Turnout		44.9	19.5

Chester No. 4 (8480)

		vote	share
Cotterell J.	Con	2,064	52.8
Arrowsmith J.	Lab	1,848	47.2
Turnout		46.1	5.5

Chester Rural No. 1 (13203)

		vote	share
Wade W.	Con	3,474	45.5
Hooper D.	Lib	2,095	27.4
Barker F.	Lab	2,072	27.1
Turnout		57.9	18.0

Chester Rural No. 2 (11276)

		vote	share
Davies-Colley J.	Con	3,584	63.0
Crawford J.	Lab	2,108	37.0
Turnout		50.5	25.9

Congleton No. 1 (6320)

		vote	share
Bowers F.	Lab	1,431	58.8
Harrison C.	Con	1,001	41.2
Turnout		38.5	17.7

Congleton No. 2 (8944)

		vote	share
Worthington R.	Con	2,210	58.1
Gill E.	Lab	1,597	41.9
Turnout		42.6	16.1

Congleton Rural (8783)

		vote	share
Withers D.	Con	0	0.0
Turnout		0.0	0.0

Crewe No. 1 (6690)

		vote	share
Booth J.	Lab	1,191	65.3
Beckett M.	Con	633	34.7
Turnout		27.3	30.6

Crewe No. 2 (10987)

		vote	share
Vernon H.	Lab	2,562	68.2
Hollins A.	Con	1,193	31.8
Turnout		34.2	36.5

Crewe No. 3 (10557)

		vote	share
Hinks R.	Lab	0	0.0
Turnout		0.0	0.0

Crewe No. 4 (8381)

		vote	share
Orwell S.	Lab	1,417	58.6
Copeland R.	Con	534	22.1
Beckett A.	Ind	469	19.4
Turnout		28.9	36.5

Ellesmere Port No. 1 (10877)

		vote	share
Isted G.	Lab	2,122	52.2
Brown N.	Con	1,942	47.8
Turnout		37.4	4.4

Ellesmere Port No. 2 (10782)

		vote	share
Richards P. Ms.	Con	2,094	55.1
Lloyd L.	Lab	1,707	44.9
Turnout		35.3	10.2

Ellesmere Port No. 3 (10040)

		vote	share
Broadhouse J.	Lab	2,386	71.9
Evans H.	Con	931	28.1
Turnout		33.0	43.9

Ellesmere Port No. 4 (8819)

		vote	share
Hayward C.	Lab	1,893	77.9
Gorman T.	Con	437	18.0
Finch S.	Dem	99	4.1
Turnout		27.5	59.9

Golborne (5905)

		vote	share
Edwards W.	Con	2,017	56.6
Daintith L.	Lab	1,545	43.4
Turnout		60.3	13.3

Knutsford (9929)

		vote	share
Walley J.	Ind	2,787	62.1
Facer R.	Lab	1,698	37.9
Turnout		45.2	24.3

Lymm (7582)

		vote	share
Impe D.	Lib	2,379	55.9
Thomason J.	Con	1,880	44.1
Turnout		56.2	11.7

Macclesfield No. 1 (10001)

		vote	share
Godwin J.	Con	1,516	38.5
Lingard A.	Lib	1,310	33.2
Johnson A.	Lab	1,115	28.3
Turnout		39.4	5.2

Macclesfield No. 2 (10833)

		vote	share
Harris B.	Con	1,604	36.8
Tatton A.	Lab	1,521	34.9
Hobson M.	Lib	1,230	28.2
Turnout		40.2	1.9

Macclesfield No. 3 (10213)

		vote	share
Dobson D.	Lab	2,025	59.6
Brown W.	Con	1,372	40.4
Turnout		33.3	19.2

Macclesfield Rural No. 1 (8709)

		vote	share
Smith S.	Con	3,136	65.9
Rutherford D.	Lab	1,626	34.1
Turnout		54.7	31.7

Macclesfield Rural No. 2 (6186)

		vote	share
Bayley E.	Con	2,729	78.8
Jeuda B.	Lab	734	21.2
Turnout		56.0	57.6

Macclesfield Rural No. 3 (7613)

		vote	share
Melrose M. Ms.	Con	2,480	56.0
Davies A.	Lib	1,559	35.2
Jeuda D.	Lab	393	8.9
Turnout		58.2	20.8

Middlewich (5583)

		vote	share
Millington D.	Lab	1,904	63.5
Faulkner W.	Ind	1,094	36.5
Turnout		53.7	27.0

Nantwich (8692)

		vote	share
Holman T.	Con	0	0.0
Turnout		0.0	0.0

Nantwich Rural No. 1 (6902)

		vote	share
Mulliner B.	Con	0	0.0
Turnout		0.0	0.0

Nantwich Rural No. 2 (10239)

		vote	share
Driver J.	Ind	2,731	48.9
Roberts A.	Con	1,468	26.3
Haines K.	Lab	1,384	24.8
Turnout		54.5	22.6

Nantwich Rural No. 3 (9216)

		vote	share
Hill J. Ms.	Con	1,840	50.7
Furber F.	Ind	1,786	49.3
Turnout		39.3	1.5

Neston (12782)

		vote	share
Herbert J.	Con	0	0.0
Turnout		0.0	0.0

Northwich No. 1 (5211)

		vote	share
Jones J.	Lab	1,127	46.1
Teece T.	Con	865	35.4
Wood A.	Lib	454	18.6
Turnout		46.9	10.7

Northwich No. 2 (7920)

		vote	share
Carey R.	Lab	2,471	79.6
Adams P.	Ind	634	20.4
Turnout		39.2	59.2

Northwich Rural No. 1 (13932)

		vote	share
Couper G.	Con	2,410	36.2
Pollard J.	Ind	2,355	35.4
Oliveira J.	Lab	1,895	28.5
Turnout		47.8	0.8

Northwich Rural No. 2 (11027)			
		vote	share
Hayes J.	Con	3,527	70.2
Waddington A.	Lab	1,494	29.8

Turnout 45.5 40.5

Northwich Rural No. 3 (9323)			
		vote	share
Johnson J.	Con	2,616	64.3
Bostock R.	Lab	1,452	35.7

Turnout 43.6 28.6

Runcorn No. 1 (10157)			
		vote	share
Clare T.	Lab	2,700	71.7
Povey I.	Con	1,067	28.3

Turnout 37.1 43.4

Runcorn No. 2 (8479)			
		vote	share
Eastup R.	Lab	2,129	52.3
Wood A.	Con	1,939	47.7

Turnout 48.0 4.7

Runcorn No. 3 (9721)			
		vote	share
Tyrrell P.	Lab	2,334	66.6
Tinne M.	Con	1,173	33.4

Turnout 36.1 33.1

Runcorn Rural No. 1 (6666)			
		vote	share
Rylands G.	Con	2,123	58.0
Dawson J.	Lib	1,119	30.5
Bentley J.	Lab	421	11.5

Turnout 55.0 27.4

Runcorn Rural No. 2 (12006)			
		vote	share
Ford G.	Con	2,396	44.7
Lloyd-Jones P.	Lab	1,783	33.2
Rushton G.	Ind	1,187	22.1

Turnout 44.7 11.4

Runcorn Rural No. 3 (11033)			
		vote	share
Bartholomew A.	Con	2,957	51.5
Deakin F.	Lib	1,982	34.5
Fagan J.	Lab	799	13.9

Turnout 52.0 17.0

Sandbach (10278)			
		vote	share
Lea I. Ms.	Ind	2,925	61.4
Swain D.	Lab	1,836	38.6

Turnout 46.3 22.9

Tarvin Rural No. 1 (8335)			
		vote	share
Carr F.	Con	2,644	76.7
Woods A.	Lab	804	23.3

Turnout 41.4 53.4

Tarvin Rural No. 2 (5379)			
		vote	share
Appleby T.	Con	0	0.0

Turnout 0.0 0.0

Warrington No. 1 (17040)²			
		vote	share
Whitehead H.	Lab	4,199	79.4
Mapp D.	Lab	4,039	-
Shakeshaft B.	Con	1,090	20.6
Borsa B.	Con	995	-

Turnout 31.0 58.8

Warrington No. 2 (9040)			
		vote	share
Avery W.	Lab	2,251	78.4
Rigby R.	Con	621	21.6

Turnout 31.8 56.8

Warrington No. 3 (8889)			
		vote	share
Phoenix J.	Lab	2,038	55.9
Crocker R.	Con	1,611	44.1

Turnout 41.1 11.7

Warrington No. 4 (11578)			
		vote	share
Cooper G.	Lab	2,649	62.1
Burt G.	Con	1,620	37.9

Turnout 36.9 24.1

Warrington Rural No. 1 (8370)			
		vote	share
Appleton H.	Lab	1,861	51.2
Fairclough H.	Con	1,773	48.8

Turnout 43.4 2.4

Warrington Rural No. 2 (6671)			
		vote	share
Humphreys R.	Con	1,613	54.0
Urey F.	Lab	1,372	46.0

Turnout 44.7 8.1

Warrington Rural No. 3 (11199)			
		vote	share
Farrington W.	Con	1,755	35.2
Edwards H.	Lab	1,683	33.7
Chynoweth C.	Lib	1,055	21.1
Crundall M.	Ind	497	10.0

Turnout 44.6 1.4

Warrington Rural No. 4 (7033)			
		vote	share
Tanner R.	Con	1,527	54.6
Bottomley J.	Lab	1,272	45.4

Turnout 39.8 9.1

Widnes No. 1 (12050)			
		vote	share
Oakes E. Ms.	Lab	2,708	69.4
Bowditch C.	Con	1,196	30.6

Turnout 32.4 38.7

Widnes No. 2 (9846)			
		vote	share
Maynard A.	Con	1,983	60.2
Steele R.	Lab	1,313	39.8

Turnout 33.5 20.3

Widnes No. 3 (8709)			
		vote	share
Nyland F.	Lab	1,661	65.2
Winstanley W.	Con	886	34.8

Turnout 29.2 30.4

Widnes No. 4 (10130)			
		vote	share
Owen S.	Lab	1,948	67.0
Tuson R.	Con	958	33.0

Turnout 28.7 34.1

Wilmslow No. 1 (11976)			
		vote	share
Sampey G.	Res	2,509	40.5
Kerr D.	Con	1,433	23.1
Wolfe J.	Lib	1,426	23.0
Shaw D.	Lab	833	13.4

Turnout 51.8 17.4

Wilmslow No. 2 (10209)			
		vote	share
Millett J.	Con	2,936	59.6
Butcher B.	Ind	1,994	40.4

Turnout 48.3 19.1

Winsford No. 1 (9013)			
		vote	share
Knight L.	Lab	1,804	53.3
Wilson J.	Ind	1,578	46.7

Turnout 37.5 6.7

Winsford No. 2 (7371)			
		vote	share
McGee E.	Lab	1,291	53.1
Roberts A.	Con	1,142	46.9

Turnout 33.0 6.1

Cheshire 1977

Alsager Odd Rode (13576)			
		vote	share
Hollinshead J.*	Con	3,228	60.9
Swain P.	Lib	976	18.4
Shemlit D.	Ind	801	15.1
Haydock W.	Ind	292	5.5

Turnout 39.0 42.5

Bollington (10843)			
		vote	share
Mosley E. Ms.*	Con	3,471	63.1
Jeuda B.	Lab	1,055	19.2
Berry A.	Lib	979	17.8

Turnout 50.8 43.9

Bucklow Rural (7425)			
		vote	share
Beckett J.	Con	2,540	71.1
Stubbs C.	Lib	815	22.8
Caswell P.	Lab	217	6.1

Turnout 48.1 48.3

Chester No. 1 (17127)²			
		vote	share
Barton J.	Con	2,358	40.0
Horswill C.	Con	2,321	-
Tomlins T.*	Lab	2,230	37.8
Price J.*	Lab	2,206	-
Pankhurst L.	Res	885	15.0
Winslade E.	Lib	419	7.1
Stunnell R.	Lib	419	-

Turnout 34.4 2.2

Chester No. 2 (7674)			
		vote	share
Llewellyn-Jones M. Ms.	Con	42.9	1,570
Fazey T.*	Lab	1,031	28.2
Rowlands L.	Res	579	15.8
Smith J.	Lib	478	13.1

Turnout 47.7 14.7

Chester No. 3 (11032)			
		vote	share
Ribbeck C.*	Con	3,066	62.2
Hill S.	Lab	1,354	27.4
Simpson D.	Lib	513	10.4

Turnout 44.7 34.7

Chester No. 4 (8559)			
		vote	share
Cotterell J.*	Con	1,826	43.3
Arrowsmith J.	Lab	1,065	25.2
Westbrook D.	Res	1,052	24.9
Guy L. Ms.	Lib	277	6.6

Turnout 49.3 18.0

Chester Rural No. 1 (14918)			
		vote	share
McConnell D. Ms.	Con	4,718	70.7
Cottier D.	Lib	981	14.7
Smith R.	Lab	977	14.6
Turnout		44.8	56.0

Chester Rural No. 2 (11896)			
		vote	share
Davies-Colley J.*	Con	3,786	72.4
Woods A.	Lab	736	14.1
Skerrett N.	Lib	705	13.5
Turnout		43.9	58.4

Congleton No. 1 (6551)			
		vote	share
Harrison C.	Con	1,404	59.5
Bowers F.*	Lab	955	40.5
Turnout		36.0	19.0

Congleton No. 2 (10227)			
		vote	share
Worthington R.*	Con	2,825	75.9
Gill E.	Lab	895	24.1
Turnout		36.4	51.9

Congleton Rural (9456)			
		vote	share
Withers D.*	Con	3,021	89.3
Pollard S.	Lab	363	10.7
Turnout		35.8	78.5

Crewe No. 1 (5909)			
		vote	share
Hassall G.	Con	858	50.3
Booth A.*	Lab	847	49.7
Turnout		28.9	0.6

Crewe No. 2 (10877)			
		vote	share
Neild J.	Con	2,161	52.2
Vernon H.*	Lab	1,975	47.8
Turnout		38.0	4.5

Crewe No. 3 (11579)			
		vote	share
Woolrich B.	Con	2,174	53.0
Hinks R.*	Lab	1,700	41.4
O'Brien M.	Lib	230	5.6
Turnout		35.4	11.5

Crewe No. 4 (8175)			
		vote	share
Orwell S.*	Lab	1,413	48.8
Copeland R.	Con	1,358	46.9
Round D.	Lib	122	4.2
Turnout		35.4	1.9

Ellesmere Port No. 1 (11426)			
		vote	share
Reeves I. Ms.	Con	2,809	62.5
Isted G.*	Lab	1,683	37.5
Turnout		39.3	25.1

Ellesmere Port No. 2 (13347)			
		vote	share
Richards P. Ms.*	Con	3,739	67.6
Hayward P. Ms.	Lab	1,790	32.4
Turnout		41.4	35.3

Ellesmere Port No. 3 (10049)			
		vote	share
Bateman D.	Lab	1,673	51.5
Evans H.	Con	1,573	48.5
Turnout		32.3	3.1

Ellesmere Port No. 4 (8584)			
		vote	share
Hayward C.*	Lab	1,435	58.7
Wilson P. Ms.	Con	1,010	41.3
Turnout		28.5	17.4

Golborne (6000)			
		vote	share
Edwards W.*	Con	2,276	74.3
Aldridge K.	Lab	786	25.7
Turnout		51.0	48.7

Knutsford (10338)			
		vote	share
Walley J.*	Ind	2,345	45.1
Page M. Ms.	Con	1,937	37.2
Facer R.	Lab	922	17.7
Turnout		50.3	7.8

Lymm (7567)			
		vote	share
Jenkins J.	Con	2,400	56.2
Impe D.*	Lib	1,225	28.7
Brookes C.	Lab	646	15.1
Turnout		56.4	27.5

Macclesfield No. 1 (11737)			
		vote	share
Godwin J.*	Con	2,663	66.2
Bailey D.	Lab	719	17.9
Davies E. Ms.	Lib	639	15.9
Turnout		34.3	48.3

Macclesfield No. 2 (11357)			
		vote	share
Harris B.*	Con	2,551	72.4
Hartley W.	Lab	971	27.6
Turnout		31.0	44.9

Macclesfield No. 3 (10612)			
		vote	share
Barker D. Ms.	Con	1,580	44.1
Robinson R.	Lib	1,082	30.2
Bullen J.	Lab	918	25.6
Turnout		33.7	13.9

Macclesfield Rural No. 1 (10258)			
		vote	share
Cronan P.	Con	3,714	82.6
Robertson C.	Lab	780	17.4
Turnout		43.8	65.3

Macclesfield Rural No. 2 (6467)			
		vote	share
Bayley E.*	Con	2,746	90.2
Jeuda D. Ms.	Lab	300	9.8
Turnout		47.1	80.3

Macclesfield Rural No. 3 (8029)			
		vote	share
Melrose M. Ms.*	Con	2,914	64.0
Martin J.	Res	1,381	30.3
Craig J.	Lab	260	5.7
Turnout		56.7	33.7

Middlewich (5556)			
		vote	share
Booth A. Ms.	Con	1,247	51.5
Millington D.*	Lab	1,173	48.5
Turnout		43.6	3.1

Nantwich (8954)			
		vote	share
Holman T.*	Con	3,031	74.7
Nurse P.	Lab	740	18.2
Cannon D.	Lib	284	7.0
Turnout		45.3	56.5

Nantwich Rural No. 1 (7302)			
		vote	share
Young W.	Con	2,619	88.5
Broomhall T.	Lib	340	11.5
Turnout		40.5	77.0

Nantwich Rural No. 2 (10564)			
		vote	share
Richardson A.	Con	3,671	81.0
Fovargue G.	Lab	861	19.0
Turnout		42.9	62.0

Nantwich Rural No. 3 (9409)			
		vote	share
Hill J. Ms.*	Con	3,191	77.8
Heath W.	Lab	910	22.2
Turnout		43.6	55.6

Neston (14049)			
		vote	share
Herbert J.*	Con	4,199	68.5
Smith M.	Lib	1,545	25.2
Calland M. Ms.	BM	390	6.4
Turnout		43.7	43.3

Northwich No. 1 (5038)			
		vote	share
Jones J.*	Lab	0	0.0
Turnout		0.0	0.0

Northwich No. 2 (7848)			
		vote	share
Carey R.*	Lab	0	0.0
Turnout		0.0	0.0

Northwich Rural No. 1 (14623)			
		vote	share
Couper G.*	Con	4,368	82.0
Blach D.	Lab	959	18.0
Turnout		36.4	64.0

Northwich Rural No. 2 (11546)			
		vote	share
Lowe A.	Con	3,473	64.7
Fogg D.	Lab	1,895	35.3
Turnout		46.5	29.4

Northwich Rural No. 3 (9638)			
		vote	share
Phillips C.	Con	2,515	78.1
Woodier R.	Lab	705	21.9
Turnout		33.4	56.2

Runcorn No. 1 (10311)			
		vote	share
Clare T.*	Lab	1,605	50.9
Parkinson M. Ms.	Con	1,549	49.1
Turnout		30.6	1.8

Runcorn No. 2 (9194)			
		vote	share
Dale S. Ms.	Con	2,626	58.9
Eastup R.*	Lab	1,831	41.1
Turnout		48.5	17.8

Runcorn No. 3 (17560)			
		vote	share
Perry D.	Con	2,574	51.9
Lloyd-Jones P.	Lab	2,382	48.1
Turnout		28.2	3.9

Runcorn Rural No. 1 (6815)			
		vote	share
Rylands G.*	Con	2,504	82.7
Kennedy E.	Lib	524	17.3
Turnout		44.4	65.4

Runcorn Rural No. 2 (12473)			
		vote	share
Ford G.*	Con	3,899	77.3
Clark M.	Lab	1,148	22.7
Turnout		40.5	54.5

Runcorn Rural No. 3 (11060)			
		vote	share
Bartholomew A.*	Con	3,651	80.8
Pierce B.	Lib	870	19.2
Turnout		40.9	61.5

Sandbach (10913)			
		vote	share
Lea I. Ms.*	Con	2,777	65.5
Riley S.	Lib	621	14.7
Watson L.	Lab	561	13.2
Willett J.	Ind	279	6.6
Turnout		38.8	50.9

Tarvin Rural No. 1 (8645)			
		vote	share
Carr F.*	Con	2,750	84.3
Rees C.	Lab	511	15.7
Turnout		37.7	68.7

Tarvin Rural No. 2 (5418)			
		vote	share
Humphreys J.	Con	1,939	89.0
Indermaur J.	Lib	239	11.0
Turnout		40.2	78.1

Warrington No. 1 (16597) ²			
		vote	share
Whitehead H.*	Lab	2,549	57.5
Ratcliffe G.	Lab	2,299	-
Phizackalea A.	Con	1,883	42.5
Pears R.	Con	1,850	-
Turnout		26.7	15.0

Warrington No. 2 (8482)			
		vote	share
Avery W.	Lab	1,794	64.9
Robinson K.	Con	969	35.1
Turnout		32.6	29.9

Warrington No. 3 (7726)			
		vote	share
Stirrup A.	Con	1,458	53.2
Edwards H.	Lab	1,285	46.8
Turnout		35.5	6.3

Warrington No. 4 (11407)			
		vote	share
Bettley D. Ms.	Con	2,263	55.4
Cooper G.*	Lab	1,821	44.6
Turnout		35.8	10.8

Warrington Rural No. 1 (8678)			
		vote	share
Smith D.	Con	1,866	51.2
Appleton H.*	Lab	995	27.3
Brookfield D.	Res	785	21.5
Turnout		42.0	23.9

Warrington Rural No. 2 (6851)			
		vote	share
Bird R.	Con	1,911	68.2
Pennington J.	Lab	890	31.8
Turnout		40.9	36.5

Warrington Rural No. 3 (9200)			
		vote	share
Farrington W.*	Con	3,174	65.7
Wheelan T.	Lab	1,656	34.3
Turnout		52.5	31.4

Warrington Rural No. 4 (13704)			
		vote	share
Tanner R.*	Con	2,399	71.5
Harpin A.	Lab	955	28.5
Turnout		24.5	43.1

Widnes No. 1 (12016)			
		vote	share
Hayes J.	Con	1,848	54.3
Oakes E. Ms.*	Lab	1,555	45.7
Turnout		28.3	8.6

Widnes No. 2 (9943)			
		vote	share
Maynard K.*	Con	2,556	76.2
Smith O. Ms.	Lab	800	23.8
Turnout		33.8	52.3

Widnes No. 3 (7790)			
		vote	share
Wilson G.	Con	1,135	54.9
Steele R.	Lab	861	41.6
Lowey W.	Ind	73	3.5
Turnout		26.6	13.2

Widnes No. 4 (11180)			
		vote	share
Lyons C. Ms.	Con	1,549	51.7
Owen S.*	Lab	1,446	48.3
Turnout		26.8	3.4

Wilmslow No. 1 (12325)			
		vote	share
Sampey G.*	Ind	2,644	41.6
Costello B. Ms.	Con	2,615	41.2
Howell V. Ms.	Lab	649	10.2
Town H.	Lib	351	5.5
Wainwright W.	Comm	91	1.4
Turnout		51.5	0.5

Wilmslow No. 2 (10255)			
		vote	share
Millet J.*	Con	3,302	55.8
Morris J.	Ind	1,127	19.0
Butcher B.	Ind	669	11.3
Lynn P.	Lib	529	8.9
Ryder S. Ms.	Lab	294	5.0
Turnout		57.7	36.7

Winsford No. 1 (9369)			
		vote	share
Nield L.	Con	1,699	50.2
Knight L.*	Lab	1,688	49.8
Turnout		36.2	0.3

Winsford No. 2 (7982)			
		vote	share
Ward M. Ms.	Con	1,565	58.2
McGee E.*	Lab	1,125	41.8
Turnout		33.7	16.4

Cheshire 1981

Alderley (8076)			
		vote	share
Melrose M. Ms.	Con	2,657	72.6
Robb A.	Lib	707	19.3
Robins W.	Lab	295	8.1
Turnout		45.3	53.3

Alsager & Lawton (10979)			
		vote	share
Bould D.	Lib	2,400	43.6
Broomfield W.	Con	1,869	33.9
Taylor F. Ms.	Lab	1,240	22.5
Turnout		50.2	9.6

Birchfield (10144)			
		vote	share
Maynard K.	Con	2,353	59.1
Gerrard C. Ms.	Lab	1,627	40.9
Turnout		39.2	18.2

Birchwood (3091)			
		vote	share
Earlam M. Ms.	Lab	725	55.4
Hoyle T.	Con	584	44.6
Turnout		42.3	10.8

Blacon (9038)			
		vote	share
Tomlins T.	Lab	2,622	75.3
Barton J.	Con	486	13.9
Pye I.	Lib	340	9.8
Kaye D.	Comm	36	1.0
Turnout		38.5	61.3

Bollington & Disley (11243)			
		vote	share
Corcoran-Hinchcliffe K.	Con	2,816	48.2
Washington J.	Lab	1,960	33.5
Berry A.	Lib	1,068	18.3
Turnout		52.0	14.6

Boughton & Vicars Cross (11164)			
		vote	share
Platt-Jones S. Ms.	Con	2,302	43.4
Proctor S. Ms.	Lib	1,589	30.0
Crawford J.	Lab	1,408	26.6
Turnout		47.5	13.5

Bridgewater (11539)			
		vote	share
Mulholland S.	Lib	2,580	46.5
Bartholomew A.	Con	2,215	39.9
Stanger E. Ms.	Lab	756	13.6
Turnout		48.1	6.6

Brookmere (9474)			
		vote	share
Fogg D.	Lab	2,350	57.2
Woodhouse R.	Con	1,756	42.8
Turnout		43.3	14.5

Broxton (8056)			
		vote	share
Humphreys J.	Con	0	0.0
Turnout		0.0	0.0

Bucklow (7542)			
		vote	share
Brentnall J.	Con	1,708	49.6
Taylor C.	Ind	1,405	40.8
Mather C.	Lab	332	9.6
Turnout		45.7	8.8

Burtonwood (3315)			
		vote	share
Williams H.	Lab	1,171	75.2
Bellis W.	Con	247	15.9
Appleton H.	Soc Dem	139	8.9
Turnout		47.0	59.3

Central & Westminster (11778)			
		vote	share
Hayward C.	Lab	2,990	75.8
Anderson C. Ms.	Con	804	20.4
Robinson D.	WRP	153	3.9
Turnout		33.5	55.4

Cholmondeley (8028)			
		vote	share
Young W.	Con	2,227	71.0
Marshall C.	Lab	473	15.1
Bostock J.	Lib	437	13.9
Turnout		39.1	55.9

Congleton & Buglawton (9325)

		vote	share
Gill E.	Lab	1,823	43.5
Hemsley K.	Lib	1,572	37.5
Yarwood L.	Con	800	19.1
Turnout		45.0	6.0

Crewe Central (10568)

		vote	share
Barr R.	Lab	2,130	60.2
Nield J.	Con	935	26.4
Beaumont R. Ms.	Lib	475	13.4
Turnout		33.5	33.8

Crewe North (8958)

		vote	share
Nurse P.	Lab	2,161	68.3
Woolrich B.	Con	720	22.8
Bedson A.	Lib	282	8.9
Turnout		35.3	45.6

Crewe South (8216)

		vote	share
Hinks R.	Lab	1,781	48.7
Scholes M.	Res	1,639	44.8
Phillips R.	Lib	239	6.5
Turnout		44.5	3.9

Crewe West (11758)

		vote	share
Cook G.	Lab	2,916	69.1
Silvester B.	Con	853	20.2
Griffiths G. Ms.	Lib	449	10.6
Turnout		35.9	48.9

Culcheth & Southworth (9323)

		vote	share
Edwards W.	Con	2,288	52.1
Aldridge K.	Lab	1,142	26.0
Burt M.	Lib	961	21.9
Turnout		47.1	26.1

Doddington (8964)

		vote	share
Hill J. Ms.	Con	2,609	69.4
Hilton H.	Lab	1,152	30.6
Turnout		42.0	38.7

Eddisbury (10748)

		vote	share
Dolphin F.	Con	2,824	62.1
Webster A. Ms.	Lib	1,103	24.3
Coane P.	Lab	621	13.7
Turnout		42.3	37.8

Fairfield & Howley (9700)

		vote	share
Wilson S.	Lab	2,703	69.5
Stirrup A.	Con	1,185	30.5
Turnout		40.1	39.0

Frodsham & Helsby (11069)

		vote	share
Ford G.	Con	2,352	47.5
Woodhead A.	Lab	998	20.2
Pennington F.	Ind	931	18.8
Robotham G.	Lib	667	13.5
Turnout		44.7	27.4

Gowy (11309)

		vote	share
Perry D.	Con	2,804	57.6
Morgan R.	Lib	1,209	24.9
Blair R.	Lab	852	17.5
Turnout		43.0	32.8

Grange & Rossmore (8951)

		vote	share
Isted G.	Lab	2,474	72.8
Byron H.	Con	924	27.2
Turnout		38.0	45.6

Great Sankey (10923)

		vote	share
Harpin A.	Lab	2,568	63.7
Kilduff J.	Con	1,466	36.3
Turnout		36.9	27.3

Groves & Whitby (7957)

		vote	share
Hayward P. Ms.	Lab	1,920	55.8
Harper M. Ms.	Con	1,522	44.2
Turnout		43.3	11.6

Hallwood (7856)

		vote	share
Keane H. Ms.	Lab	2,059	82.2
Bell A.	Con	446	17.8
Turnout		31.9	64.4

Halton Castle (11203)

		vote	share
Tyrrell P.	Lab	2,565	57.5
Grimes G.	Ind Lab	1,144	25.6
Holland F. Ms.	Con	668	15.0
Booth A.	WRP	85	1.9
Turnout		39.8	31.8

High Warren (7199)

		vote	share
Rylands G.	Con	1,976	61.7
Holder M. Ms.	Lab	641	20.0
Archbold M.	Lib	585	18.3
Turnout		44.5	41.7

Highfield (10110)

		vote	share
Twigg J.	Lab	2,710	76.5
Lyons C. Ms.	Con	832	23.5
Turnout		35.0	53.0

Hoole & Plas Newton (8790)

		vote	share
Stunell R.	Lib	1,803	39.0
Arrowsmith J.	Lab	1,637	35.4
Llewellyn-Jones G. Ms.	Con	1,188	25.7
Turnout		52.7	3.6

Hulme (11623)

		vote	share
Walton F.	Con	2,512	53.2
Lloyd-Griffiths D.	Lib	1,511	32.0
Ranger S.	Lab	695	14.7
Turnout		40.6	21.2

Knutsford (10662)

		vote	share
Walley J.	Ind	2,073	42.9
Stubbs C.	Con	1,599	33.1
Mather J. Ms.	Lab	1,159	24.0
Turnout		45.3	9.8

Latchford & Westy (12054)

		vote	share
Arnold B.	Lab	2,913	64.8
Bettley D. Ms.	Con	1,044	23.2
Renshaw J.	Lib	540	12.0
Turnout		37.3	41.6

Longford & Hulme (9986)

		vote	share
Whitehead H.	Lab	3,352	90.5
Brown H.	Con	351	9.5
Turnout		37.1	81.0

Lymm (7938)

		vote	share
Hall W.	Con	1,940	43.5
Stevenson R.	Lib	1,726	38.7
Caswell P.	Lab	795	17.8
Turnout		56.2	4.8

Macclesfield Forest (9504)

		vote	share
Edwardes D.	Con	1,747	43.4
Dobson D.	Ind	1,237	30.7
Bullen J.	Lab	868	21.6
Barratt N.	Ind	174	4.3
Turnout		42.4	12.7

Macclesfield Ivy (12727)

		vote	share
Jeuda B.	Lab	2,590	53.0
Harris B.	Con	2,300	47.0
Turnout		38.4	5.9

Macclesfield Victoria (11108)

		vote	share
Kingston D.	Lib	2,208	41.3
Burch J.	Lab	1,979	37.0
Jolley B.	Con	1,155	21.6
Turnout		48.1	4.3

Mersey Grange (9815)

		vote	share
Clare T.	Lab	2,698	75.1
McEvoy J.	Con	895	24.9
Turnout		36.6	50.2

Mickle Trafford (8538)

		vote	share
McConnell D. Ms.	Con	1,943	52.5
Baddock D.	Lib	1,065	28.8
Price J.	Lab	690	18.7
Turnout		43.3	23.7

Middlewich & Brereton (7335)

		vote	share
Booth A. Ms.	Lib	1,429	37.6
Millington D.	Lab	1,334	35.1
Lawrence R.	Con	1,035	27.3
Turnout		51.8	2.5

Moreton (8625)

		vote	share
McDonald P.	Lib	1,610	43.2
Worthington R.	Con	1,354	36.3
Pollard S.	Lab	764	20.5
Turnout		43.2	6.9

Nantwich (9253)

		vote	share
Holman T.	Con	2,430	55.3
Fyffe J.	Lab	1,376	31.3
George E.	Lib	585	13.3
Turnout		47.5	24.0

Neston & Parkgate (10452)

		vote	share
Herbert J.	Con	2,393	44.7
Barker F.	Lab	2,061	38.5
Phelan B.	Lib	898	16.8
Turnout		51.2	6.2

North Vale (9945)

		vote	share
Cussons S.	Con	1,870	37.2
Kendrick O.	Lab	1,645	32.7
Lowe A.	Ind	796	15.8
Bailey A.	Lib	715	14.2
Turnout		50.5	4.5

Northwich East (10773)

		vote	share
Carey R.	Lab	3,330	78.7
Hayes G.	Con	900	21.3
Turnout		39.3	57.4

Northwich West (10293)			
		vote	share
Cross M. Ms.	Lab	2,183	45.0
Phillips C.	Con	1,933	39.9
Alley J.	Soc Dem	732	15.1
Turnout		47.1	5.2

Oakfield (12137)			
		vote	share
Owen S.	Lab	2,871	67.2
Dean P.	Con	856	20.0
Jones D.	Soc Dem	543	12.7
Turnout		35.2	47.2

Orford & Bewsey (10044)			
		vote	share
Avery W.	Lab	3,172	88.0
Robinson K.	Con	432	12.0
Turnout		35.9	76.0

Overleigh (11748)			
		vote	share
Davis A.	Con	2,645	46.7
Hughes N.	Lab	1,995	35.2
Fraser S.	Lib	1,029	18.2
Turnout		48.3	11.5

Penketh & Whitecross (10800)			
		vote	share
Bennett H.	Lab	2,553	63.5
Higham A.	Con	1,467	36.5
Turnout		37.2	27.0

Poulton North (6664)			
		vote	share
Ratcliffe G.	Lab	1,562	60.6
Smith D.	Con	823	31.9
Sharpe J. Ms.	Lib	191	7.4
Turnout		38.7	28.7

Poulton South & Woolston (11106)			
		vote	share
Froggatt C.	Lab	2,133	44.8
Farington W.	Con	2,053	43.1
Schofield M.	Lib	576	12.1
Turnout		42.9	1.7

Poynton (11934)			
		vote	share
Hopkins A.	Con	3,579	72.2
Nolan M. Ms.	Lab	1,379	27.8
Turnout		41.5	44.4

Priory Cross (6939)			
		vote	share
Price S.	Lab	1,573	55.6
Thornton J.	Con	680	24.0
Baker S.	Lib	578	20.4
Turnout		40.8	31.5

Rope (9643)			
		vote	share
Richardson A.	Con	2,490	50.2
Mifflin B.	Lab	1,900	38.3
Phillips J.	Lib	571	11.5
Turnout		51.4	11.9

Sandbach (11264)			
		vote	share
Smedley C.	Lib	2,397	46.8
Lea I. Ms.	Con	1,684	32.8
Godfrey R.	Lab	1,046	20.4
Turnout		45.5	13.9

Sealand & College (8105)			
		vote	share
Harrison L.	Lab	1,848	55.3
Horswill C.	Con	1,111	33.2
Indermaur J.	Lib	384	11.5
Turnout		41.2	22.0

South Wirral (9856)			
		vote	share
Reeves I. Ms.	Con	2,529	56.8
Hayward R.	Lab	983	22.1
Corcoran M. Ms.	Lib	940	21.1
Turnout		45.2	34.7

Sutton & Rivacre (12017)			
		vote	share
Bateman D.	Lab	3,265	73.1
Wilson P. Ms.	Con	1,204	26.9
Turnout		37.2	46.1

Upton (12084)			
		vote	share
Jones J.	Con	2,645	49.9
Smith R.	Lab	1,591	30.0
Lowry P.	Lib	1,062	20.0
Turnout		43.8	19.9

Upton & Prestbury (9202)			
		vote	share
Findlow J.	Con	1,986	53.0
Mitchell C.	Lab	1,046	27.9
Lightning G.	Res	717	19.1
Turnout		40.7	25.1

Weston Heath (9749)			
		vote	share
Eastup R.	Lab	2,148	51.7
Dale S. Ms.	Con	2,009	48.3
Turnout		42.6	3.3

Wilmslow Bollin (10960)			
		vote	share
Millett J.	Con	3,400	70.2
Black E.	Lib	782	16.1
Shaw D.	Lab	383	7.9
Butcher B.	Ind	280	5.8
Turnout		44.2	54.0

Wilmslow Dean (12486)			
		vote	share
Sampey G.	Con	3,067	51.4
Fearnley P. Ms.	Lib	1,979	33.2
Hamilton I.	Lab	922	15.4
Turnout		47.8	18.2

Winsford North (11511)			
		vote	share
White B.	Lab	3,417	69.0
Fuller S. Ms.	Con	1,538	31.0
Turnout		43.0	37.9

Winsford South (9778)			
		vote	share
Lloyd-Jones P.	Lab	2,147	50.8
Winward G.	Con	1,256	29.7
Walker M.	Lib	821	19.4
Turnout		43.2	21.1

Woodend (9719)			
		vote	share
Collins J.	Lab	2,591	79.0
Crewe W.	Con	689	21.0
Turnout		33.7	58.0

Cheshire 1985

Alderley (8533)			
		vote	share
Melrose M. Ms.*	Con	2,796	70.3
Daniel A.	Lib/SDP	913	22.9
Clarke M. Ms.	Lab	270	6.8
Turnout		46.6	47.3

Alsager & Lawton (11459)			
		vote	share
Bould D.*	Lib/SDP	2,849	53.6
Vace A.	Con	1,637	30.8
Hassall P. Ms.	Lab	826	15.5
Turnout		46.4	22.8

Birchfield (10176)			
		vote	share
Maynard K.*	Con	1,689	46.6
Joinson P.	Lab	1,442	39.8
Hale R.	Lib/SDP	495	13.7
Turnout		35.6	6.8

Birchwood (6986)			
		vote	share
Fry T.*	Lab	1,376	51.2
Edwards E. Ms.	Lib/SDP	662	24.6
Hinsley D.	Con	648	24.1
Turnout		38.4	26.6

Blacon (9288)			
		vote	share
Tomlins H.*	Lab	2,336	77.5
Astill E.	Con	409	13.6
Reade J. Ms.	Lib/SDP	270	9.0
Turnout		32.5	63.9

Bollington & Disley (11445)			
		vote	share
Hinchcliffe K.*	Con	2,445	54.2
Rowbotham J.	Lab	1,123	24.9
Berry T.	Lib/SDP	939	20.8
Turnout		39.4	29.3

Boughton & Vicars Cross (12324)			
		vote	share
Jones S. Ms.*	Con	2,362	37.6
Proctor S. Ms.	Lib/SDP	2,326	37.0
Stephenson K. Ms.	Lab	1,593	25.4
Turnout		51.0	0.6

Bridgewater (11901)			
		vote	share
Mulholland S.*	Lib/SDP	3,509	57.8
Bartholomew A.	Con	1,964	32.4
Humphreys R.	Lab	597	9.8
Turnout		51.0	25.5

Brookmere (9731)			
		vote	share
Fogg D.*	Lab	1,775	43.5
Smith B. Ms.	Con	1,625	39.8
Edwards J.	Lib/SDP	683	16.7
Turnout		42.0	3.7

Broxton (8323)			
		vote	share
Humphreys J.*	Con	1,883	57.8
Higgie C.	Lib/SDP	860	26.4
Brailsford J.	Lab	516	15.8
Turnout		39.2	31.4

Bucklow (7617)			
		vote	share
Brentnall J.*	Con	2,346	81.1
Taylor N.	Lab	548	18.9
Turnout		38.0	62.1

Burtonwood (4501)			
		vote	share
Williams H.*	Lab	1,015	59.2
Bellis W.	Con	273	15.9
Hodson D.	Ind Lab	265	15.5
Ogilivvy D.	Lib/SDP	162	9.4
Turnout		38.1	43.3

Central & Westminster (11427)

		vote	share
Derrigan R.*	Lab	2,403	69.3
Hall D.	Con	657	19.0
Mahoney F.	Lib/SDP	406	11.7
Turnout		30.3	50.4

Cholmondeley (8286)

		vote	share
Young J.*	Con	1,893	73.6
Nightingale P. Ms.	Lab	678	26.4
Turnout		31.0	47.3

Congleton & Buglawton (9516)

		vote	share
Watson L.	Lab	1,890	49.0
Hemsley K.	Lib/SDP	1,125	29.2
Barnett D. Ms.	Con	840	21.8
Turnout		40.5	19.8

Crewe Central (10083)

		vote	share
Mifflin B.	Lab	2,066	55.5
Harding W.	Con	933	25.0
Dutton R.	Lib/SDP	726	19.5
Turnout		36.9	30.4

Crewe North (9321)

		vote	share
Nurse P.*	Lab	2,133	73.5
Ankers T.	Con	465	16.0
Roberts K.	Lib/SDP	304	10.5
Turnout		31.1	57.5

Crewe South (8226)

		vote	share
Hood D. Ms.	Lab	1,824	48.5
Scholes M.	Lib/SDP	1,426	37.9
Bradshaw E.	Con	432	11.5
Heath N.	Ecol	78	2.1
Turnout		45.7	10.6

Crewe West (11377)

		vote	share
Newton D.*	Lab	2,844	82.2
Handforth D. Ms.	Con	617	17.8
Turnout		30.4	64.3

Culcheth & Southworth (9282)

		vote	share
Bland K.	Con	1,697	44.7
Brewin L.	Lab	1,120	29.5
Clothier S. Ms.	Lib/SDP	976	25.7
Turnout		40.9	15.2

Doddington (9221)

		vote	share
Hill J. Ms.*	Con	2,367	68.5
Brady S.	Lab	1,088	31.5
Turnout		37.5	37.0

Eddisbury (11308)

		vote	share
Dolphin F.*	Con	2,849	54.7
Godfrey V. Ms.	Lib/SDP	1,746	33.5
Coone P.	Lab	612	11.8
Turnout		46.0	21.2

Fairfield & Howley (9746)

		vote	share
White B.*	Lab	2,547	74.2
Shakeshaft B. Ms.	Con	887	25.8
Turnout		35.2	48.3

Frodsham & Helsby (11645)

		vote	share
Ford G.*	Con	2,055	44.7
Pennington F.	Lib/SDP	1,355	29.5
Ashcroft B.	Lab	1,007	21.9
Basden A.	Ecol	179	3.9
Turnout		39.5	15.2

Gowy (11596)

		vote	share
Perry D.*	Con	2,614	53.5
Hesketh R.	Lib/SDP	1,404	28.8
Murphy T.	Lab	864	17.7
Turnout		42.1	24.8

Grange & Rossmore (8885)

		vote	share
Edwards G.	Lab	2,260	69.2
Cartledge T.	Con	632	19.3
Martin M.	Lib/SDP	375	11.5
Turnout		36.8	49.8

Great Sankey (12797)

		vote	share
Harpin A.*	Lab	2,165	47.8
Fludder S.	Con	1,250	27.6
Reynolds W.	Lib/SDP	1,117	24.6
Turnout		35.4	20.2

Groves & Whitby (8565)

		vote	share
Hayward P. Ms.*	Lab	1,752	46.7
Evans H.	Con	1,394	37.2
Clarke R.	Lib/SDP	602	16.1
Turnout		43.8	9.6

Hallwood (8103)

		vote	share
Keane H. Ms.*	Lab	1,662	75.8
Leigh P.	Con	290	13.2
Tomlinson S. Ms.	Lib/SDP	242	11.0
Turnout		27.1	62.5

Halton Castle (10808)

		vote	share
Tyrrell P.*	Lab	2,741	74.1
Allen D.	Lib/SDP	484	13.1
Davies B.	Con	473	12.8
Turnout		34.2	61.0

High Warren (7272)

		vote	share
Tilling R.	Lib/SDP	1,844	46.2
Benn K. Ms.	Con	1,660	41.6
Johnson R.	Lab	488	12.2
Turnout		54.9	4.6

Highfield (10229)

		vote	share
Gerrard C. Ms.	Lab	2,198	72.5
Jones E.	Lib/SDP	432	14.3
Tuson I.	Con	401	13.2
Turnout		29.6	58.3

Hoole & Plas Newton (8587)

		vote	share
Stunell A.*	Lib/SDP	2,264	46.5
Crampton B.	Lab	1,818	37.3
Shanklin J.	Con	787	16.2
Turnout		56.7	9.2

Hulme (12437)

		vote	share
Walton F.*	Con	2,825	60.5
Griffin G.	Lib/SDP	1,072	23.0
Gill E.*	Lab	769	16.5
Turnout		37.5	37.6

Knutsford (10796)

		vote	share
Armstrong R.	Con	2,326	43.4
Finer A. Ms.	Lib/SDP	1,274	23.8
Walley K.*	Ind	1,040	19.4
Facer I.	Lab	722	13.5
Turnout		49.7	19.6

Latchford & Westy (11918)

		vote	share
Noon B.	Lab	2,618	56.9
Stacey M.	Con	1,031	22.4
Prosser F.	Lib/SDP	952	20.7
Turnout		38.6	34.5

Longford & Hulme (9826)

		vote	share
Towers F.	Lab	2,823	76.5
Cummerson C. Ms.	Lib/SDP	469	12.7
Stirrup B.	Con	399	10.8
Turnout		37.6	63.8

Lymm (8095)

		vote	share
Nicklin W.	Lib/SDP	2,158	48.3
Hall B.*	Con	1,910	42.7
Stanger E. Ms.	Lab	402	9.0
Turnout		55.2	5.5

Macclesfield Forest (9668)

		vote	share
Palmer D.	Con	1,615	49.6
Sefton C. Ms.	Lib/SDP	860	26.4
Mellor T.	Lab	779	23.9
Turnout		33.7	23.2

Macclesfield Ivy (12960)

		vote	share
Plymen J. Ms.	Lab	1,905	39.9
Kettle H.	Con	1,632	34.1
Snape A.	Lib/SDP	1,243	26.0
Turnout		36.9	5.7

Macclesfield Victoria (11161)

		vote	share
Kingston D.*	Lib/SDP	2,944	54.7
Vigon F.	Lab	1,627	30.2
Graves A.	Con	811	15.1
Turnout		48.2	24.5

Mersey Grange (9682)

		vote	share
Clare T.*	Ind	1,785	44.5
Hill S.	Lab	1,697	42.3
McEvoy J.	Con	527	13.1
Turnout		41.4	2.2

Mickle Trafford (9261)

		vote	share
McConnell D. Ms.*	Con	1,950	54.6
Ward T.	Lib/SDP	985	27.6
Price J.	Lab	635	17.8
Turnout		38.5	27.0

Middlewich & Brereton (8485)

		vote	share
Devaney S.	Lib/SDP	1,725	41.7
Hughes E.	Con	1,033	25.0
Booth A. Ms.*	Ind	786	19.0
Copestick P.	Lab	595	14.4
Turnout		48.8	16.7

Moreton (9279)

		vote	share
McDonald P.*	Lib/SDP	1,707	44.4
Challinor W.	Con	1,433	37.2
Pollard S.	Lab	708	18.4
Turnout		41.5	7.1

Nantwich (9308)

		vote	share
Holman T.*	Con	2,554	62.3
Hope S.	Lab	1,545	37.7
Turnout		44.0	24.6

Neston & Parkgate (10500)			
		vote	share
Herbert J.*	Con	2,500	43.2
Gruffydd J.	Lab	2,238	38.7
Gaskill J.	Lib/SDP	1,043	18.0
Turnout		55.1	4.5

North Vale (10093)			
		vote	share
Cussons S.*	Con	2,303	47.7
Kendrick O.	Lab	1,613	33.4
Millington G. Ms.	Lib/SDP	916	19.0
Turnout		47.9	14.3

Northwich East (10776)			
		vote	share
Carey R.*	Lab	2,650	66.2
Stocks M.	Con	868	21.7
De Launey S.	Lib/SDP	483	12.1
Turnout		37.1	44.5

Northwich West (10750)			
		vote	share
Woodhouse B.*	Con	2,379	46.5
Curbishley J.	Lab	1,763	34.5
Wedlock D.	Lib/SDP	969	19.0
Turnout		47.5	12.1

Oakfield (12179)			
		vote	share
Owen S.*	Lab	2,644	67.9
Prescott H.	Con	716	18.4
Aldcroft A.	Lib/SDP	534	13.7
Turnout		32.0	49.5

Orford & Bewsey (10132)			
		vote	share
McGee E.*	Lab	2,623	77.4
Harrison H. Ms.	Lib/SDP	423	12.5
Stellatos K. Ms.	Con	343	10.1
Turnout		33.4	64.9

Overleigh (12361)			
		vote	share
Davis A.*	Con	2,534	47.2
Warwood C.	Lab	1,715	31.9
Playford R.	Lib/SDP	1,123	20.9
Turnout		43.5	15.2

Penketh & Whitecross (10974)			
		vote	share
Bennett H.*	Lab	1,957	47.1
Traynor J.	Lib/SDP	1,102	26.5
Walsh J.	Con	1,092	26.3
Turnout		37.8	20.6

Poulton North (7825)			
		vote	share
Froggatt C.*	Lab	1,459	56.4
Kindon D.	Con	592	22.9
Harrison J. Ms.	Lib/SDP	535	20.7
Turnout		33.0	33.5

Poulton South & Woolston (11760)			
		vote	share
Clarke J.	Lab	2,324	47.8
Smith D.	Con	1,609	33.1
Johnston A.	Lib/SDP	933	19.2
Turnout		41.4	14.7

Poynton (12405)			
		vote	share
Evans T.*	Con	2,393	45.5
Thomas L.	Lib/SDP	2,105	40.0
Booth M. Ms.	Lab	759	14.4
Turnout		42.4	5.5

Priory Cross (7729)			
		vote	share
Cargill E. Ms.	Lab	1,200	54.8
Bomba H.	Con	548	25.0
Phipps T.	Lib/SDP	440	20.1
Turnout		28.3	29.8

Rope (9951)			
		vote	share
Richardson A.*	Con	2,442	60.4
Penrice J.	Lab	1,602	39.6
Turnout		40.6	20.8

Sandbach (11727)			
		vote	share
Smedley C.*	Lib/SDP	1,998	42.8
Alcock J.	Con	1,785	38.2
Marshall C.	Lab	885	19.0
Turnout		39.8	4.6

Sealand & College (8441)			
		vote	share
Harrison L.*	Lab	2,153	59.8
Harris P.	Con	816	22.6
Howells S. Ms.	Lib/SDP	508	14.1
Taylor D. Ms.	Res	126	3.5
Turnout		42.7	37.1

South Wirral (10105)			
		vote	share
Reeves I. Ms.	Con	2,334	49.8
Corcoran M. Ms.	Lib/SDP	1,435	30.6
Hayward S.	Lab	920	19.6
Turnout		46.4	19.2

Sutton & Rivacre (11729)			
		vote	share
Bateman D.*	Lab	2,799	65.7
Wilson P. Ms.	Con	850	20.0
Bowen P.	Lib/SDP	611	14.3
Turnout		36.3	45.8

Upton (11479)			
		vote	share
Llewellyn-Jones T.*	Con	2,365	41.4
Evans D.	Lib/SDP	2,175	38.1
Simpson S.	Lab	1,176	20.6
Turnout		49.8	3.3

Upton & Prestbury (9639)			
		vote	share
Findlow P.*	Con	1,951	50.6
Haldane A.	Lib/SDP	1,302	33.7
Dobbie M.	Lab	605	15.7
Turnout		40.0	16.8

Weston Heath (10009)			
		vote	share
Leathwood W.	Lib/SDP	1,914	38.6
Eastup R.*	Lab	1,557	31.4
Hughes H.	Con	1,482	29.9
Turnout		49.5	7.2

Wilmslow Bollin (11314)			
		vote	share
Barnes A.	Con	3,212	63.3
Smith F.	Lib/SDP	1,550	30.6
Mather J. Ms.	Lab	309	6.1
Turnout		44.8	32.8

Wilmslow Dean (13284)			
		vote	share
Talbot J.	Lib/SDP	2,900	43.7
Sampey G.*	Con	2,888	43.5
Kelly J.	Lab	851	12.8
Turnout		50.0	0.2

Winsford North (11839)			
		vote	share
Neil J. Ms.	Lab	2,542	59.8
Hayes G.	Con	1,033	24.3
Coombes P. Ms.	Lib/SDP	676	15.9
Turnout		35.9	35.5

Winsford South (10204)			
		vote	share
Lloyd-Jones P.*	Lab	1,526	41.7
Blakeley E. Ms.	Con	1,085	29.7
Gaskill M.	Lib/SDP	1,048	28.6
Turnout		35.9	12.1

Woodend (10347)			
		vote	share
Collins J.*	Lab	2,328	70.4
Martindale S.	Con	553	16.7
Parker S.	Lib/SDP	427	12.9
Turnout		32.0	53.7

Cheshire 1989

Alderley (8598)			
		vote	share
Melrose M. Ms.*	Con	2,701	73.7
Clayton J. Ms.	LD	399	10.9
Greenwood J.	Lab	358	9.8
Brett B. Ms.	Green	206	5.6
Turnout		42.6	62.8

Alsager & Lawton (12068)			
		vote	share
Jones T. Ms.	LD	2,624	52.0
Redhead R.	Con	1,674	33.2
Beavan P. Ms.	Lab	747	14.8
Turnout		41.8	18.8

Birchfield (10308)			
		vote	share
Maynard K.*	Con	1,769	48.7
Jones P.*	Lab	1,760	48.5
Herley S.	MRL	101	2.8
Turnout		35.2	0.2

Birchwood (9381)			
		vote	share
Clarke L. Ms.	Lab	1,497	46.6
Hayward P.	Con	1,301	40.5
Edwards E. Ms.	LD	296	9.2
McDermott P.	SDP	118	3.7
Turnout		34.2	6.1

Blacon (8863)			
		vote	share
Tomlins T.*	Lab	2,691	83.9
Peacock J. Ms.	Con	516	16.1
Turnout		36.2	67.8

Bollington & Disley (11604)			
		vote	share
Maxwell J.	Con	2,174	50.6
Flynn F.	LD	1,523	35.5
Wardell S. Ms.	Green	596	13.9
Turnout		37.0	15.2

Boughton & Vicars Cross (13045)			
		vote	share
Jones S. Ms.*	Con	2,651	37.1
Proctor S. Ms.	LD	2,619	36.6
Halley D. Ms.	Lab	1,608	22.5
Barker M.	Green	273	3.8
Turnout		54.8	0.4

Bridgewater (12172)			
		vote	share
Walker P.	LD	2,962	51.0
Williams B.	Con	2,270	39.1
Simpson B.	Lab	580	10.0
		Turnout	47.7 11.9

Brookmere (10280)			
		vote	share
Bolton W. Ms.	Con	2,190	51.2
Curbishley J.	Lab	2,088	48.8
		Turnout	41.6 2.4

Broxton (8595)			
		vote	share
Humphreys J.*	Con	2,230	71.5
Glendon E.	Lab	887	28.5
		Turnout	36.3 43.1

Bucklow (7710)			
		vote	share
Brentnall J.*	Con	1,869	73.2
Ford A.	Lab	355	13.9
Gray M.	Green	331	13.0
		Turnout	33.1 59.3

Burtonwood (6703)			
		vote	share
McKinley A.	Lab	1,526	69.6
Hart H.	Con	396	18.1
Ashley R.	Ind	158	7.2
Worthington E.	LD	111	5.1
		Turnout	32.7 51.6

Central & Westminster (10935)			
		vote	share
Bateman D.	Lab	3,320	82.3
Sliwka M.	Con	713	17.7
		Turnout	36.9 64.6

Cholmondeley (8260)			
		vote	share
Hedley M.	Con	2,043	68.4
Nightingale P. Ms.	Lab	612	20.5
Roberts K.	LD	334	11.2
		Turnout	36.2 47.9

Congleton & Buglawton (9667)			
		vote	share
Watson L.*	Lab	1,984	64.5
Cheetham L.	Con	818	26.6
Barnett P.	LD	274	8.9
		Turnout	31.8 37.9

Crewe Central (9351)			
		vote	share
Nelson M.*	Lab	2,008	47.4
Silvester B.	Con	1,601	37.8
Cannon D.	LD	630	14.9
		Turnout	45.3 9.6

Crewe North (9914)			
		vote	share
Nurse P.*	Lab	2,134	75.6
Birchall R.	Con	497	17.6
Hawkesford R.	LD	192	6.8
		Turnout	28.5 58.0

Crewe South (8040)			
		vote	share
Hope S.	Lab	1,843	63.4
Bannister B. Ms.	Con	567	19.5
Hynes S.	LD	337	11.6
White C.	Green	161	5.5
		Turnout	36.2 43.9

Crewe West (10808)			
		vote	share
Newton D.*	Lab	2,715	79.5
Owen P.	Con	525	15.4
Phillips J.	LD	175	5.1
		Turnout	31.6 64.1

Culcheth & Southworth (9882)			
		vote	share
Bland K.*	Con	1,783	52.1
Brewin I. Ms.	Lab	1,021	29.9
Clothier S. Ms.	SDP	411	12.0
Dean-Young C.	LD	205	6.0
		Turnout	34.6 22.3

Doddington (10028)			
		vote	share
Weaver N. Ms.	Con	2,303	63.0
Hilton H.	Lab	937	25.6
Hollinshead M.	LD	417	11.4
		Turnout	36.5 37.4

Eddisbury (11490)			
		vote	share
Dolphin F.*	Con	3,514	72.2
Naylor T.	LD	680	14.0
Jamieson B.	Lab	672	13.8
		Turnout	42.3 58.2

Fairfield & Howley (9739)			
		vote	share
Clarke J.	Lab	2,199	73.6
Cooper C.	Con	591	19.8
Thornton J.	LD	196	6.6
		Turnout	30.7 53.9

Frodsham & Helsby (9582)			
		vote	share
Cousins G. Ms.	Con	1,829	38.0
Basden A.	Green	1,072	22.3
Defty J.	Lab	952	19.8
Turner M. Ms.	Ind	757	15.7
Brocklehurst D. Ms.	LD	201	4.2
		Turnout	50.2 15.7

Gowy (12232)			
		vote	share
Perry D.*	Con	2,998	59.9
Baker F.	Lab	1,092	21.8
Walley C.	LD	919	18.3
		Turnout	40.9 38.1

Grange & Rossmore (8834)			
		vote	share
Edwards G.*	Lab	2,682	79.0
White A.	Con	711	21.0
		Turnout	38.4 58.1

Great Sankey (13693)			
		vote	share
Warburton E.	Lab	2,668	65.0
Morris C. Ms.	Con	1,437	35.0
		Turnout	30.0 30.0

Groves & Whitby (9852)			
		vote	share
Hayward P. Ms.*	Lab	2,522	54.9
Henning C.	Con	1,821	39.7
Gaskell J.	LD	248	5.4
		Turnout	46.6 15.3

Hallwood (8614)			
		vote	share
Loftus C.	Lab	1,682	82.5
Bomba H.	Con	222	10.9
Threlfall P.	LD	136	6.7
		Turnout	23.7 71.6

Halton Castle (10960)			
		vote	share
Tyrell P.*	Lab	2,711	83.8
Watts J. Ms.	Con	338	10.4
Abram S.	LD	188	5.8
		Turnout	29.5 73.3

High Warren (8073)			
		vote	share
Tilling T.*	LD	2,507	54.5
Stansfield P.	Con	1,845	40.1
Park J.	Lab	246	5.4
		Turnout	57.0 14.4

Highfield (9894)			
		vote	share
Gerrard C. Ms.*	Lab	2,109	78.2
Draper S. Ms.	Con	512	19.0
Lightfoot K.	MRL	75	2.8
		Turnout	27.2 59.2

Hoole & Plas Newton (8107)			
		vote	share
Stunell R.*	LD	1,951	47.7
Starkey J.	Lab	1,275	31.2
Clarke S.	Con	705	17.2
Girvan C. Ms.	Green	159	3.9
		Turnout	50.5 16.5

Hulme (13195)			
		vote	share
Baxter J.	Con	2,406	53.3
Howkins T.	LD	1,753	38.8
Maguire D.	Lab	355	7.9
		Turnout	34.2 14.5

Knutsford (10948)			
		vote	share
Armstrong R.*	Con	2,572	54.7
Copple M.	Lab	1,616	34.3
Palmer A. Ms.	Green	517	11.0
		Turnout	43.0 20.3

Latchford & Westy (11745)			
		vote	share
Harpin A.*	Lab	2,834	69.1
Lavell C.	Con	884	21.5
Jordan A.	LD	385	9.4
		Turnout	34.9 47.5

Longford & Hulme (9273)			
		vote	share
Towers F.*	Lab	2,389	77.8
Verdon J.	Ind Lab	390	12.7
Mallett R.	Con	292	9.5
		Turnout	33.1 65.1

Lymm (8183)			
		vote	share
Woodyatt S. Ms.	Con	2,465	56.2
Nicklin A.*	LD	1,413	32.2
James A.	Lab	506	11.5
		Turnout	53.6 24.0

Macclesfield Forest (9926)			
		vote	share
Palmer D.*	Con	1,435	43.6
Machin D.	Lab	689	20.9
Stanhope E.	Ind	608	18.5
Hughes M.	Green	290	8.8
Webster A.	SDP	270	8.2
		Turnout	33.2 22.7

Macclesfield Ivy (12582)			
		vote	share
Plymen J. Ms.*	Lab	2,469	49.6
Davies W.	Con	2,123	42.7
Dilworth A. Ms.	LD	385	7.7
		Turnout	39.6 7.0

Macclesfield Victoria (11935)			
		vote	share
Kingston D.*	LD	2,705	60.5
Barber J.	Con	1,217	27.2
Boston J. Ms.	Green	546	12.2
Turnout		37.4	33.3

Mersey Grange (9595)			
		vote	share
Shaw L.	Lab	1,589	50.7
Clare T.*	Ind	1,182	37.7
Newall R.	Con	364	11.6
Turnout		32.7	13.0

Mickle Trafford (9322)			
		vote	share
McConnell D. Ms.*	Con	2,221	58.2
Whitton D. Ms.	LD	902	23.7
Begley T. Ms.	Lab	690	18.1
Turnout		40.9	34.6

Middlewich & Brereton (8809)			
		vote	share
Brodie-Browne I.	LD	1,806	48.3
Smith B. Ms.	Con	1,276	34.1
Snape W. Ms.	Lab	656	17.5
Turnout		42.4	14.2

Moreton (9848)			
		vote	share
Hemsley K.*	Lib/SDP	2,097	46.7
Challinor W.	Con	1,854	41.3
Gabbitas D.	Lab	538	12.0
Turnout		45.6	5.4

Nantwich (9470)			
		vote	share
Holman T.*	Con	2,635	61.5
George E.	Lab	1,374	32.1
Garner W. Ms.	LD	275	6.4
Turnout		45.2	29.4

Neston & Parkgate (10757)			
		vote	share
Herbert J.*	Con	2,455	45.6
Wilson J. Ms.	Lab	2,060	38.2
Nicholls G.	Green	679	12.6
Kaufmann C. Ms.	LD	195	3.6
Turnout		50.1	7.3

North Vale (9592)			
		vote	share
Cussons S.*	Con	2,186	51.0
Kendrick O.	Ind	1,609	37.6
Lyon D.	LD	489	11.4
Turnout		44.7	13.5

Northwich East (10679)			
		vote	share
Carey R.*	Lab	2,917	79.4
Whitehead R.	Con	758	20.6
Turnout		34.4	58.7

Northwich West (11705)			
		vote	share
Woodhouse R.	Con	2,325	47.2
Neil A.	Lab	1,871	38.0
Fellows M.	LD	727	14.8
Turnout		42.1	9.2

Oakfield (12405)			
		vote	share
Woolfall W.	Lab	2,776	75.8
Mitchell A. Ms.	Con	885	24.2
Turnout		29.5	51.7

Orford & Bewsey (9547)			
		vote	share
Johnson R.*	Lab	2,310	74.6
Stirrup A.	Con	628	20.3
Cummerson C. Ms.	LD	157	5.1
Turnout		32.4	54.3

Overleigh (12274)			
		vote	share
Chanklin J.	Con	2,904	44.0
Byrne P.	Lab	2,890	43.8
Stobie A.	LD	439	6.7
Burnett B.	Green	366	5.5
Turnout		53.8	0.2

Penketh & Whitecross (11006)			
		vote	share
Bennett J.*	Lab	2,187	63.6
Base C.	Con	914	26.6
Traynor J.	LD	340	9.9
Turnout		31.3	37.0

Poulton North (8740)			
		vote	share
Froggatt C.*	Lab	1,458	64.6
Bissell S.	Con	538	23.8
Sharpe J. Ms.	LD	148	6.6
Lintzel J. Ms.	SDP	112	5.0
Turnout		25.8	40.8

Poulton South & Woolston (11768)			
		vote	share
Ainger P.	Lab	2,261	45.7
Smith D.	Con	2,259	45.7
Johnston A.	LD	427	8.6
Turnout		42.0	0.0

Poynton (12602)			
		vote	share
Beasley D.	Con	2,465	48.0
Burridge L.	LD	2,101	40.9
Booth M. Ms.	Lab	567	11.0
Turnout		40.7	7.1

Priory Cross (8749)			
		vote	share
Cargill E. Ms.*	Lab	1,456	66.6
Leigh P.	Con	480	22.0
Burton P.	LD	249	11.4
Turnout		25.0	44.7

Rope (10291)			
		vote	share
Richardson A.*	Con	2,442	59.7
Elkins R.	Lab	1,169	28.6
Allison H.	LD	482	11.8
Turnout		39.8	31.1

Sandbach (12497)			
		vote	share
Lloyd-Griffiths D.	LD	2,097	43.4
Alcock J.	Con	1,693	35.0
Howarth P.	Lab	1,045	21.6
Turnout		38.7	8.4

Sealand & College (8137)			
		vote	share
Harrison L.*	Lab	2,297	63.3
Sadler R.	Con	976	26.9
Indemaur J.	LD	207	5.7
Taylor D. Ms.	Res	149	4.1
Turnout		44.6	36.4

South Wirral (10478)			
		vote	share
Reeves I. Ms.*	Con	2,424	59.7
Hughes W.	Lab	1,072	26.4
Handley G.	LD	566	13.9
Turnout		38.8	33.3

Sutton & Rivacre (11390)			
		vote	share
Toale L.	Lab	2,973	77.9
Harris M.	Con	845	22.1
Turnout		33.5	55.7

Upton (11353)			
		vote	share
Llewellyn-Jones D.*	Con	2,314	38.8
Garrod M.	LD	2,002	33.6
Devine P.	Lab	1,386	23.2
Reid P.	Green	263	4.4
Turnout		52.5	5.2

Upton & Prestbury (10345)			
		vote	share
Findlow J.*	Con	1,830	46.1
Barker J.	LD	1,826	46.0
Wardell D.	Green	316	8.0
Turnout		38.4	0.1

Weston Heath (10296)			
		vote	share
Leathwood W.*	LD	2,120	50.5
Keane H.*	Lab	1,254	29.9
Smith A.	Con	826	19.7
Turnout		40.8	20.6

Wilmslow Bollin (10993)			
		vote	share
Barnes A.*	Con	3,283	64.9
Rosen J. Ms.	SDP	1,420	28.1
Pickford R.	Lab	353	7.0
Turnout		46.0	36.8

Wilmslow Dean (13089)			
		vote	share
Tolbot W.*	LD	3,979	56.5
Whiteley P.	Con	2,447	34.7
Brook G.	Lab	620	8.8
Turnout		53.8	21.7

Winsford North (11983)			
		vote	share
Edwards N. Ms.*	Lab	2,640	67.1
Blakeley C.	Con	1,005	25.5
Rawlinson G.	LD	290	7.4
Turnout		32.8	41.6

Winsford South (10458)			
		vote	share
Chapman M. Ms.	Lab	1,853	40.6
Wilson N.	Con	1,579	34.6
Gaskill M.	LD	1,136	24.9
Turnout		43.7	6.0

Woodend (10516)			
		vote	share
Collins J.	Lab	2,098	78.2
McDonald J.	Con	323	12.0
Parker S.	LD	180	6.7
Owens A.	MRL	82	3.1
Turnout		25.5	66.2

Cheshire 1993

Alderley (8598)

		vote	share
Melrose M. Ms.*	Con	2,143	66.2
Hinchcliffe K.	Ind	566	17.5
Kerrigan N.	Lab	325	10.0
Clayton J. Ms.	Ind	205	6.3
	Turnout	37.7	48.7

Alsager & Lawton (12407)

		vote	share
Jones T. Ms.*	LD	2,842	59.1
Edmunds I.	Con	1,252	26.0
Henry A.	Lab	715	14.9
	Turnout	38.8	33.1

Birchfield (10689)

		vote	share
Lloyd Jones P.	Lab	1,936	55.2
Tuson R.	Con	1,087	31.0
Ormroyde L.	LD	486	13.9
	Turnout	32.8	24.2

Birchwood (9186)

		vote	share
Clarke L. Ms.*	Lab	1,849	61.0
Leslie J.	Con	1,183	39.0
	Turnout	33.0	22.0

Blacon (8717)

		vote	share
Tomlins T.*	Lab	1,762	81.2
Jawworzin J.	Con	293	13.5
Indermaur J.	LD	116	5.3
	Turnout	24.9	67.7

Bollington & Disley (11604)

		vote	share
Murphy B.	Con	1,972	37.8
Flyne M.	LD	1,869	35.8
Robotham P.	Lab	729	14.0
Maxwell J.*	Ind	650	12.5
	Turnout	45.0	2.0

Boughton & Vicars Cross (13424)

		vote	share
Proctor S. Ms.	LD	2,794	43.3
Walker M. Ms.	Con	2,370	36.7
Halley D. Ms.	Lab	1,290	20.0
	Turnout	48.1	6.6

Bridgewater (11916)

		vote	share
Walker P.*	LD	2,695	51.4
Williams B.	Con	1,792	34.2
Fletcher R.	Lab	752	14.4
	Turnout	44.0	17.2

Brookmere (9986)

		vote	share
Chesworth J.	Lab	1,821	47.3
Whitehead R.	Con	1,565	40.7
Price D. Ms.	LD	460	12.0
	Turnout	38.5	6.7

Broxton (8595)

		vote	share
Humphreys J.*	Con	1,567	52.7
Higgie C.	Ind	1,021	34.4
Redford E.	Lab	383	12.9
	Turnout	34.6	18.4

Bucklow (7710)

		vote	share
Turnock A.	Con	1,755	63.0
Ingham R.	LD	732	26.3
Smith M.	Lab	300	10.8
	Turnout	36.2	36.7

Burtonwood (7688)

		vote	share
McKinlay A.*	Lab	1,771	62.5
Chamberlain J.	Con	829	29.3
Earl D.	LD	232	8.2
	Turnout	36.8	33.3

Central & Westminster (11142)

		vote	share
Bateman D.*	Lab	2,658	78.8
Peach S.	Con	413	12.3
Jewkes K.	LD	300	8.9
	Turnout	30.3	66.6

Cholmondeley (9876)

		vote	share
Hedley M.*	Con	2,048	62.5
Duffus S.	Lab	687	21.0
Roberts K.	LD	542	16.5
	Turnout	33.2	41.5

Congleton & Buglawton (9580)

		vote	share
Millington B.	Lab	1,317	50.2
Heron K.	LD	725	27.7
Gosling R.	Con	579	22.1
	Turnout	27.4	22.6

Crewe Central (9332)

		vote	share
Minshall J.	Lab	2,016	56.2
Fox I. Ms.	Con	858	23.9
Cannon D.	LD	715	19.9
	Turnout	38.5	32.3

Crewe North (8304)

		vote	share
Nurse P.*	Lab	1,701	74.9
Wilkinson G.	Con	308	13.6
Hankesford R.	LD	261	11.5
	Turnout	27.3	61.4

Crewe South (8180)

		vote	share
Hood D. Ms.	Lab	1,789	66.4
Hilson J. Ms.	Con	491	18.2
Brown C.	LD	416	15.4
	Turnout	33.0	48.1

Crewe West (10945)

		vote	share
Newton D.*	Lab	2,401	82.4
Gittins A.	Con	514	17.6
	Turnout	26.6	64.7

Culcheth & Southworth (9655)

		vote	share
Bland K.*	Con	1,508	48.3
Hope B.	Lab	1,213	38.8
Cummerson C. Ms.	LD	404	12.9
	Turnout	32.4	9.4

Doddington (10623)

		vote	share
Weaver N. Ms.*	Con	1,976	55.2
Cooper J.	Lab	962	26.9
Allison H.	LD	642	17.9
	Turnout	33.7	28.3

Eddisbury (11648)

		vote	share
Dolphin F.*	Con	2,252	51.4
Godfrey V. Ms.	LD	1,461	33.3
Marsh S.	Lab	672	15.3
	Turnout	37.7	18.0

Fairfield & Howley (8739)

		vote	share
Coop E.	Lab	2,111	80.4
Hayward P.	Con	516	19.6
	Turnout	30.1	60.7

Frodsham & Helsby (11564)

		vote	share
Cousins G. Ms.*	Con	1,771	36.9
Pennington F.	Lab	1,573	32.8
Griffiths T.	LD	1,456	30.3
	Turnout	41.5	4.1

Goway (12412)

		vote	share
Pickering D.	Con	2,461	56.0
Baker F.	Lab	1,083	24.6
Naylor T.	LD	854	19.4
	Turnout	35.4	31.3

Grange & Rossmore (8723)

		vote	share
Edwards G.*	Lab	2,227	72.0
Howell G.	Con	627	20.3
Martinson P.	LD	239	7.7
	Turnout	35.5	51.7

Great Sankey (15202)

		vote	share
Williams A.	Lab	2,787	62.2
Marsh L.	Con	1,227	27.4
Tucker V. Ms.	LD	470	10.5
	Turnout	29.5	34.8

Groves & Whitby (10291)

		vote	share
Hayward P. Ms.*	Lab	2,463	56.9
Storrar R.	Con	1,439	33.2
Jewkes E. Ms.	LD	428	9.9
	Turnout	42.1	23.6

Hallwood (7792)

		vote	share
Warburton J.	Lab	1,356	71.6
Woods M.	LIB	372	19.6
Collins J.	LD	166	8.8
	Turnout	24.3	52.0

Halton Castle (11093)

		vote	share
Tyrrell P.*	Lab	2,539	85.9
Deakin G.	LD	416	14.1
	Turnout	26.6	71.8

High Warren (9914)

		vote	share
Tilling T.*	LD	2,315	56.0
Boggan S. Ms.	Con	1,452	35.1
Stockton J.	Lab	369	8.9
	Turnout	41.7	20.9

Highfield (8480)

		vote	share
Gerrard C. Ms.*	Lab	1,798	84.5
Kelly P.	Con	329	15.5
	Turnout	25.1	69.1

Hoole & Plas Newton (8164)

		vote	share
Hale M. Ms.	LD	2,090	51.3
Johnston B.	Lab	1,162	28.5
Smith A.	Con	823	20.2
	Turnout	49.9	22.8

Hulme (12948)

		vote	share
Parry R.	LD	2,448	50.5
Baxter J.*	Con	1,858	38.3
Ross D.	Lab	543	11.2
	Turnout	37.5	12.2

Knutsford (10763)			
		vote	share
Grange H.	Con	2,253	47.5
Davies D.	Lab	1,461	30.8
Austin B. Ms.	LD	1,033	21.8
Turnout		44.1	16.7
Latchford & Westy (11512)			
		vote	share
Clarke J.*	Lab	2,286	61.8
Jordan C. Ms.	LD	1,000	27.0
Dunn J.	Con	411	11.1
Turnout		32.1	34.8
Longford & Hulme (9021)			
		vote	share
Towers F.*	Lab	1,958	87.5
Dodd N.	Con	280	12.5
Turnout		24.8	75.0
Lymm (8109)			
		vote	share
Woodyatt S. Ms.*	Con	2,226	57.6
Norden G.	LD	1,220	31.6
James A.	Lab	417	10.8
Turnout		47.6	26.0
Macclesfield Forest (9926)			
		vote	share
Palmer D.*	Con	1,531	48.1
Haworth L.	Lab	1,213	38.1
Furfie S.	LD	439	13.8
Turnout		32.1	10.0
Macclesfield Ivy (12582)			
		vote	share
Copple M.	Lab	2,087	59.2
Lightning R. Ms.	Con	1,440	40.8
Turnout		28.0	18.3
Macclesfield Victoria (11935)			
		vote	share
Kingston D.*	LD	2,341	59.0
Nicholls A. Ms.	Con	989	24.9
Harewood A. Ms.	Lab	636	16.0
Turnout		33.2	34.1
Mersey Grange (9633)			
		vote	share
Shaw L.*	Lab	1,755	73.4
Sly T.	LD	347	14.5
Whittle J.	Con	290	12.1
Turnout		24.8	58.9
Mickle Trafford (9487)			
		vote	share
McConnell D. Ms.*	Con	1,849	55.2
Rudd R.	Lab	886	26.4
Pemberton J. Ms.	LD	616	18.4
Turnout		35.3	28.7
Middlewich & Brereton (9474)			
		vote	share
Roberts D. Ms.	LD	1,361	37.1
Watkinson R.	Lab	1,233	33.6
Taylor G.	Con	1,071	29.2
Turnout		38.7	3.5
Moreton (9839)			
		vote	share
Hemsley K.*	LD	1,968	46.4
Mason P.	Con	1,719	40.5
McCarthy C.	Lab	553	13.0
Turnout		43.1	5.9
Nantwich (9414)			
		vote	share
Holman T.*	Con	2,478	63.9
George E.	Lab	1,402	36.1
Turnout		41.2	27.7

Neston & Parkgate (10714)			
		vote	share
Rudd D.	Lab	2,317	47.9
Herbert J.*	Con	2,011	41.6
Oswald D. Ms.	LD	294	6.1
Nicholls G.	Green	217	4.5
Turnout		45.2	6.3
North Vale (9411)			
		vote	share
Cussons S.*	Con	1,980	45.0
Jamieson B.	Lab	1,973	44.8
Gouveia Da-Silva P.	LD	450	10.2
Turnout		46.8	0.2
Northwich East (11164)			
		vote	share
Carey R.*	Lab	2,262	72.0
Matheson A.	Con	518	16.5
Davies M. Ms.	LD	362	11.5
Turnout		28.1	55.5
Northwich West (12139)			
		vote	share
Woodhouse R.*	Con	2,148	44.1
Neil A.	Lab	1,965	40.3
Macnae M. Ms.	LD	761	15.6
Turnout		40.2	3.8
Oakfield (12792)			
		vote	share
Woolfall W.*	Lab	2,352	81.3
Calvert I.	Con	541	18.7
Turnout		22.6	62.6
Orford & Bewsey (9270)			
		vote	share
Johnson R.*	Lab	1,822	82.7
Williams D.	Con	381	17.3
Turnout		23.8	65.4
Overleigh (12046)			
		vote	share
Murphy A.	Lab	3,092	48.2
Shanklin J.*	Con	2,651	41.4
Ford M. Ms.	LD	502	7.8
Barker M.	Green	164	2.6
Turnout		53.2	6.9
Penketh & Whitecross (10810)			
		vote	share
Bennett H.*	Lab	2,178	70.9
Boardman S.	Con	892	29.1
Turnout		28.4	41.9
Poulton North (7003)			
		vote	share
Froggatt C.*	Lab	1,374	64.3
Johnson P.	Con	434	20.3
Dean-Young C.	LD	328	15.4
Turnout		30.5	44.0
Poulton South & Woolston (13907)			
		vote	share
Park J.	Lab	2,402	60.1
Smith D.	Ind Con	1,236	30.9
Culpan R.	LD	361	9.0
Turnout		28.8	29.2
Poynton (12602)			
		vote	share
Beasley D.*	Con	2,329	60.3
Ball F. Ms.	LD	896	23.2
Brewer M.	Lab	637	16.5
Turnout		30.7	37.1

Priory Cross (9363)			
		vote	share
Foster W.	LD	1,442	46.3
Cargill E. Ms.*	Lab	1,374	44.1
Pearce G.	Con	297	9.5
Turnout		33.3	2.2
Rope (10977)			
		vote	share
Richardson A.*	Con	2,042	49.5
Wright J. Ms.	Lab	1,331	32.2
Patrick D.	LD	755	18.3
Turnout		37.6	17.2
Sandbach (12587)			
		vote	share
Lloyd-Griffiths D.*	LD	1,974	48.3
Rickard J.	Con	1,315	32.2
Alban H.	Lab	800	19.6
Turnout		32.5	16.1
Sealand & College (8984)			
		vote	share
Byrne P.	Lab	1,809	63.3
Abrams R.	Con	547	19.1
Bowman E.	LD	307	10.7
Taylor D. Ms.	Ind	104	3.6
De Lemos H. Ms.	Green	90	3.2
Turnout		31.8	44.2
South Wirral (10653)			
		vote	share
Reeves I. Ms.*	Con	1,775	48.5
O'Rourke J.	Lab	1,035	28.3
Handley G.	LD	465	12.7
Money M.	Green	387	10.6
Turnout		34.4	20.2
Sutton & Rivacre (11540)			
		vote	share
Toale L.*	Lab	2,553	69.7
Merrill A.	Con	729	19.9
Gaskell J.	LD	381	10.4
Turnout		31.7	49.8
Upton (11129)			
		vote	share
Bain C.	LD	2,167	39.1
Llewellyn-Jones D.*	Con	1,909	34.4
Hughes D.	Lab	1,472	26.5
Turnout		49.9	4.7
Upton & Prestbury (10345)			
		vote	share
Findlow J.*	Con	1,875	47.1
Haldane M. Ms.	LD	1,782	44.8
Quinn B. Ms.	Lab	325	8.2
Turnout		38.5	2.3
Weston Heath (10363)			
		vote	share
Leathwood W.*	LD	2,422	62.8
Davies J.	Lab	935	24.2
Manning K.	Con	499	12.9
Turnout		37.2	38.6
Wilmslow Bollin (10993)			
		vote	share
Barnes A.*	Con	2,687	70.2
Cutler A.	LD	835	21.8
Hamnett W. Ms.	Lab	308	8.0
Turnout		34.8	48.4
Wilmslow Dean (13089)			
		vote	share
Talbot W.*	LD	3,135	55.0
Thomson V.	Con	2,135	37.4
Hamnett G. Ms.	Lab	431	7.6
Turnout		43.6	17.5

Winsford North (12586)			
		vote	share
Hooton A.	Lab	2,665	69.0
Dean R.	Con	821	21.2
Naylor K. Ms.	LD	379	9.8
Turnout		30.7	47.7

Winsford South (10459)			
		vote	share
Chapman M. Ms.*	Lab	1,869	52.7
Hall W.	Con	1,241	35.0
Lyon D.	LD	434	12.2
Turnout		33.9	17.7

Woodend (10830)			
		vote	share
Collins J.*	Lab	2,295	86.1
Calvert J. Ms.	Con	371	13.9
Turnout		24.6	72.2

Cheshire 1997

Alderley (8758)			
		vote	share
Melrose M. Ms.*	Con	4,535	68.5
Smith F.	LD	1,238	18.7
Carp G.	Lab	846	12.8
Turnout		75.6	49.8

Alsager & Lawton (12513)			
		vote	share
Bould D.	LD	4,944	51.9
Till W.	Con	2,426	25.5
O'Kane E.	Lab	2,154	22.6
Turnout		76.1	26.4

Blacon (8413)			
		vote	share
Doyle B.	Lab	4,836	77.6
Isaac C.	Con	962	15.4
Chruscizl H. Ms.	LD	436	7.0
Turnout		74.1	62.1

Bollington & Disley (11763)			
		vote	share
Wallace E. Ms.	Con	4,025	44.4
Farrand J.	LD	2,870	31.7
Brook G.	Lab	2,168	23.9
Turnout		77.0	12.7

Boughton & Vicars Cross (13296)			
		vote	share
Proctor S. Ms.*	LD	4,051	38.5
Harrison R.	Lab	3,315	31.5
Randle R. Ms.	Con	3,150	30.0
Turnout		79.1	7.0

Brookmere (10172)			
		vote	share
Marsh S.	Lab	3,053	40.1
Richardson A.	Con	2,951	38.7
Garton C.	LD	1,618	21.2
Turnout		74.9	1.3

Broxton (9031)			
		vote	share
Humphreys J.	Con	3,163	47.3
Higgie C.	LD	2,141	32.0
Brailsford J.	Lab	1,382	20.7
Turnout		74.0	15.3

Bucklow (7920)			
		vote	share
Turnock A.*	Con	3,582	61.8
Ingham R.	LD	1,272	21.9
Daulby B.	Lab	946	16.3
Turnout		73.2	39.8

Central & Westminster (10597)			
		vote	share
Bateman D.*	Lab	5,901	79.2
Bell H.	Con	931	12.5
Forster C. Ms.	LD	620	8.3
Turnout		70.3	66.7

Cholmondeley (10819)			
		vote	share
Hedley M.*	Con	4,138	50.6
Black I. Ms.	Lab	2,535	31.0
Roberts K.	LD	1,501	18.4
Turnout		75.6	19.6

Congleton & Buglawton (9771)			
		vote	share
Millington B.*	Lab	2,633	37.1
Hinckley C.	LD	1,728	24.4
Pollard J.	Con	1,594	22.5
Thwaite J.	Ind	1,137	16.0
Turnout		72.6	12.8

Crewe Central (9854)			
		vote	share
Minshall J.*	Lab	3,944	59.5
Cannon D.	LD	1,707	25.7
Fox I. Ms.	Con	981	14.8
Turnout		67.3	33.7

Crewe North (8739)			
		vote	share
Nurse P.*	Lab	4,096	70.8
Palin G.	Con	949	16.4
Patrick D.	LD	744	12.9
Turnout		66.2	54.4

Crewe South (8086)			
		vote	share
Fyffe J.	Lab	3,434	59.4
Stafford B.	LD	1,276	22.1
Fox F.	Con	1,072	18.5
Turnout		71.5	37.3

Crewe West (11951)			
		vote	share
Newton D.*	Lab	5,531	70.3
Weatherill M. Ms.	Con	1,316	16.7
Philips J.	LD	1,025	13.0
Turnout		65.9	53.5

Doddington (11452)			
		vote	share
Weaver N. Ms.*	Con	4,194	48.3
Lord D.	Lab	2,899	33.4
Naylor T.	LD	1,432	16.5
Allott S.	UK Ind	162	1.9
Turnout		75.9	14.9

Eddisbury (12056)			
		vote	share
Needham R.	Con	4,339	46.7
Godfrey V. Ms.	LD	3,182	34.2
Cernik R.	Lab	1,777	19.1
Turnout		77.1	12.4

Frodsham & Helsby (11668)			
		vote	share
Cousins G. Ms.*	Con	3,582	40.3
Fletcher J. Ms.	Lab	3,157	35.5
Griffiths T.	LD	2,159	24.3
Turnout		76.3	4.8

Gowy (12685)			
		vote	share
Fitton N.	Con	5,076	51.6
Wardman S. Ms.	Lab	2,671	27.2
Mottershaw I.	LD	2,089	21.2
Turnout		77.5	24.5

Grange & Rossmore (8410)			
		vote	share
Edwards G.*	Lab	4,626	73.3
Howell J. Ms.	Con	1,136	18.0
Martinson P.	LD	551	8.7
Turnout		75.1	55.3

Groves & Whitby (10849)			
		vote	share
Hayward P. Ms.*	Lab	4,795	55.6
Howell G.	Con	2,732	31.7
Davies D.	LD	1,104	12.8
Turnout		79.6	23.9

Hoole & Plas Newton (8527)			
		vote	share
Hale M. Ms.*	LD	2,930	44.0
Kelly D.	Lab	2,690	40.4
Owen B.	Con	1,032	15.5
Turnout		78.0	3.6

Hulme (13324)			
		vote	share
Parry R.*	LD	4,405	42.1
Riddell B.	Con	4,267	40.8
Barry P.	Lab	1,791	17.1
Turnout		78.5	1.3

Knutsford (10760)			
		vote	share
Grange H.*	Con	4,149	49.2
Austin B. Ms.	LD	2,170	25.7
Mawby J. Ms.	Lab	2,112	25.1
Turnout		78.4	23.5

Macclesfield Forest (10149)			
		vote	share
Palmer D.*	Con	3,179	44.2
Lee J. Ms.	Lab	2,643	36.8
Greenwood S. Ms.	LD	1,366	19.0
Turnout		70.8	7.5

Macclesfield Ivy (12440)			
		vote	share
Claro A.	Lab	4,076	47.0
Davenport H.	Con	2,909	33.5
Talbot C.	LD	1,689	19.5
Turnout		69.7	13.5

Macclesfield Victoria (12720)			
		vote	share
Cookson L. Ms.	LD	3,752	40.8
Thurman A.	Lab	2,747	29.9
Saunders A.	Con	2,687	29.3
Turnout		72.2	10.9

Mickle Trafford (10009)			
		vote	share
Rowlands D.	Con	3,168	42.6
Rudd R.	Lab	2,705	36.4
Pemberton J. Ms.	LD	1,556	20.9
Turnout		74.2	6.2

Middlewich & Breerton (10329)			
		vote	share
Watkinson R.	Lab	2,956	38.1
Hirst P.	LD	2,434	31.4
Challinor W.	Con	2,371	30.6
Turnout		75.1	6.7

Moreton (10535)			
		vote	share
Mason P.	Con	3,211	40.0
Hemsley K.*	LD	3,162	39.4
McCarthy C.	Lab	1,662	20.7
Turnout		76.3	0.6

Nantwich (9708)			
		vote	share
Moran A.	Lab	3,370	46.0
Greatorex D.	Con	3,053	41.7
Brown C. Ms.	LD	896	12.2
Turnout		75.4	4.3

Neston & Parkgate (10725)			
		vote	share
Rudd D.*	Lab	3,776	45.2
Andrews R.	Con	3,497	41.9
Gaskell J.	LD	1,078	12.9
Turnout		77.9	3.3

North Vale (9447)			
		vote	share
Stopford N. Ms.	Con	3,170	43.3
Jamieson B.	Lab	3,024	41.3
Morgan A.	LD	1,124	15.4
Turnout		77.5	2.0

Northwich East (11143)			
		vote	share
Carey R.*	Lab	5,597	72.8
Price D.	LD	2,089	27.2
Turnout		69.0	45.6

Northwich West (12915)			
		vote	share
Woodhouse R.*	Con	4,221	43.4
Mainwaring G.	Lab	3,610	37.1
Walker P. Ms.	LD	1,898	19.5
Turnout		75.3	6.3

Overleigh (12714)			
		vote	share
Robinson D.	Lab	4,540	45.6
Short R.	Con	4,036	40.5
Prydderch H. Ms.	LD	1,388	13.9
Turnout		78.4	5.1

Poynton (12834)			
		vote	share
Reeve B.	Con	5,279	54.3
Hall G.	LD	2,633	27.1
Maguire D.	Lab	1,814	18.7
Turnout		75.8	27.2

Rope (11575)			
		vote	share
Westwood R.	Con	3,999	43.6
Jones M.	Lab	3,518	38.4
Brown A.	LD	1,647	18.0
Turnout		79.2	5.2

Sandbach (13412)			
		vote	share
Lloyd-Griffiths D.*	LD	4,025	39.2
Price N.	Con	3,180	31.0
Parkes D.	Lab	3,062	29.8
Turnout		76.6	8.2

Sealand & College (9435)			
		vote	share
Byrne P.*	Lab	3,732	57.5
Winsor S.	Con	1,527	23.5
Indermaur J.	LD	995	15.3
Taylor D. Ms.	Ind	242	3.7
Turnout		68.9	33.9

South Wirral (11722)			
		vote	share
Hardwick G. Ms.	Con	4,245	45.7
Hayward R.	Lab	3,695	39.8
Handley G.	LD	1,344	14.5
Turnout		79.2	5.9

Sutton & Rivacre (11223)			
		vote	share
Toale L.*	Lab	5,486	66.0
Merrill A.	Con	1,658	20.0
Handley M. Ms.	LD	1,162	14.0
Turnout		74.0	46.1

Upton (11478)			
		vote	share
Bain C.*	LD	4,089	46.0
Wilson J. Ms.	Lab	2,541	28.6
Cliffe J.	Con	2,254	25.4
Turnout		77.4	17.4

Upton & Prestbury (10909)			
		vote	share
Findlow J.*	Con	3,951	49.7
Janaway M. Ms.	LD	2,251	28.3
Webb K.	Lab	1,752	22.0
Turnout		72.9	21.4

Wilmslow Bollin (10957)			
		vote	share
Barnes A.	Con	4,816	57.8
Cutler A.	LD	2,401	28.8
Parkford R.	Lab	1,120	13.4
Turnout		76.1	29.0

Wilmslow Dean (12855)			
		vote	share
Talbot W.*	LD	4,665	50.1
Breland P. Ms.	Con	2,892	31.1
O'Connor C.	Lab	1,751	18.8
Turnout		72.4	19.0

Winsford North (12963)			
		vote	share
Hooton A.*	Lab	5,833	63.2
Hollinshead E.	Con	2,205	23.9
Rutter J.	LD	1,198	13.0
Turnout		71.2	39.3

Winsford South (10419)			
		vote	share
Chapman M. Ms.*	Lab	4,725	65.5
Whittaker T.	Con	2,488	34.5
Turnout		69.2	31.0

Cheshire 2001

Abbey (9781)			
		vote	share
Harris S. Ms.	Con	3,509	52.5
Harris N.	Lab	1,907	28.5
Walker C.	LD	1,269	19.0
Turnout		69.0	24.0

Alderley (10417)			
		vote	share
Asquith M.	Con	4,285	60.5
Shepherd C.	LD	1,550	21.9
Sumner V.	Lab	1,251	17.7
Turnout		68.6	38.6

Alsager (9670)			
		vote	share
Bould D.*	LD	2,581	43.4
Till W.	Con	1,827	30.7
Hunter M.	Lab	1,345	22.6
Lloyd J.	Ind	198	3.3
Turnout		61.9	12.7

Blacon (9641)			
		vote	share
Doyle B.*	Lab	3,850	71.7
Isaac C.	Con	989	18.4
Ralph G. Ms.	LD	531	9.9
Turnout		56.3	53.3

Bollington & Disley (11771)			
		vote	share
Wallace E. Ms.*	Con	3,095	40.1
Flynn F.	LD	2,796	36.3
Birchall C. Ms.	Lab	1,821	23.6
Turnout		65.5	3.9

Boughton Heath & Vicars Cross (10819)			
		vote	share
Proctor S. Ms.*	LD	3,556	47.3
Van Der Zwan A. Ms.	Con	2,199	29.2
Hughes D.	Lab	1,766	23.5
Turnout		69.9	18.0

Broken Cross (8600)			
		vote	share
Frear D.	Con	1,909	37.3
Arnold W.	LD	1,746	34.1
Machin D.	Lab	1,459	28.5
Turnout		60.0	3.2

Broxton (9423)			
		vote	share
Dutton E. Ms.	Con	3,537	55.9
Roberts P.	LD	2,790	44.1
Turnout		68.0	11.8

Bucklow (9540)			
		vote	share
Wilkinson S.*	Con	3,992	64.8
Ingham R.	LD	1,119	18.2
Daulby B.	Lab	1,045	17.0
Turnout		65.2	46.7

Central & Westminster (10494)			
		vote	share
Bateman D.*	Lab	4,000	72.7
Brown J. Ms.	LD	799	14.5
Eardley S.	Con	705	12.8
Turnout		52.8	58.2

Cholmondeley (10609)			
		vote	share
Richardson A.	Con	4,505	63.2
Coomer A. Ms.	Lab	1,501	21.1
Nall D. Ms.	LD	1,118	15.7
Turnout		67.9	42.2

City (9913)			
		vote	share
Byrne P.*	Lab	2,798	51.6
Morris P.	Con	1,340	24.7
Mead D.	LD	1,147	21.2
Taylor D. Ms.	Ind	135	2.5
Turnout		55.5	26.9

Congleton Rural (10098)			
		vote	share
Oliver K.	Con	3,695	53.0
Parry R.*	LD	2,547	36.6
Lewis W. Ms.	Lab	724	10.4
Turnout		69.3	16.5

Congleton Town East (10632)			
		vote	share
Mason P.*	Con	3,100	47.4
Atkin D.	Lab	2,205	33.7
Thwaite J. Ms.	LD	1,239	18.9
Turnout		61.9	13.7

Congleton Town West (10670)			
		vote	share
Wolstencroft W.	Con	2,899	44.2
Wood S.	Lab	2,296	35.0
Hinckley C. Ms.*	LD	1,367	20.8
Turnout		61.9	9.2

Crewe East (11569)				Knutsford (10558)				Northwich West (11065)								
		vote	share			vote	share			vote	share					
Fyffe J.*	Lab	3,780	61.3	Grange H.*	Con	3,335	48.3	Maguire D.	Lab	2,889	46.6					
Howell E. Ms.	LD	1,257	20.4	Austin B. Ms.	LD	1,919	27.8	Charlton W.	Con	2,201	35.5					
Forrest D.	Con	1,133	18.4	Burton L.	Lab	1,649	23.9	Hughes E. Ms.	LD	1,110	17.9					
		Turnout	54.1	40.9			Turnout	65.8	20.5			Turnout	56.5	11.1		
Crewe North (9797)				Ledsham & Willaston (9083)				Overleigh (11395)								
		vote	share			vote	share			vote	share					
Nurse P.*	Lab	3,075	59.5	Hardwick G. Ms.*	Con	2,934	47.6	Robinson D.*	Lab	3,447	44.8					
Evans B.	Ind	1,184	22.9	Lloyd E.	Lab	2,149	34.9	Short R.	Con	3,047	39.6					
Morrey P.	Con	907	17.6	Handley G.	LD	1,082	17.6	Prydderch H. Ms.	LD	1,197	15.6					
		Turnout	54.5	36.6			Turnout	68.2	12.7			Turnout	68.0	5.2		
Crewe South (10659)				Macclesfield Forest (10176)				Poynton (12032)								
		vote	share			vote	share			vote	share					
Minshall J.*	Lab	3,213	55.8	Hardern B.	Con	2,553	42.1	Claxton C.	Con	4,000	53.3					
Cannon D.	LD	1,627	28.2	Jeuda B.	Lab	2,421	39.9	Robinson C.	LD	2,244	29.9					
Neild J.	Con	923	16.0	Johnson H.	LD	1,097	18.1	Jamieson F.	Lab	1,256	16.7					
		Turnout	54.3	27.5			Turnout	60.6	2.2			Turnout	63.1	23.4		
Crewe West (8945)				Macclesfield Town (10153)				Prestbury & Tytherington (8784)								
		vote	share			vote	share			vote	share					
Newton D.*	Lab	2,983	61.5	Whittle K. Ms.	Lab	2,322	40.3	Findlow J.*	Con	3,752	64.0					
Heywood M.	Con	1,274	26.3	Cookson L. Ms.*	LD	2,129	37.0	Cannell D.	LD	1,171	20.0					
Phillips J.	LD	595	12.3	Livesley W.	Con	1,310	22.7	Dale S. Ms.	Lab	940	16.0					
		Turnout	54.9	35.2			Turnout	56.7	3.4			Turnout	66.7	44.0		
Doddington (9703)				Macclesfield West (9904)				Rope (11407)								
		vote	share			vote	share			vote	share					
Weaver N. Ms.*	Con	3,219	49.5	Claro A.*	Lab	2,902	49.2	Parker R.	Con	3,246	42.6					
Stockton J. Ms.	Lab	2,078	32.0	Knowles A.	Con	1,969	33.4	Minshall P. Ms.	Lab	2,889	38.0					
Rubidge E. Ms.	LD	1,203	18.5	Farrand J.	LD	1,033	17.5	Brown A.	LD	1,476	19.4					
		Turnout	67.6	17.6			Turnout	60.2	15.8			Turnout	67.2	4.7		
Eddisbury (9467)				Marbury (11153)				Sandbach (9449)								
		vote	share			vote	share			vote	share					
Needham A.*	Con	3,588	55.1	Grange M.	Con	2,438	35.4	Price N.	Con	2,556	42.2					
Naylor T.	LD	1,475	22.7	Garton C.	LD	2,228	32.4	Lloyd-Griffiths D.*	LD	1,783	29.5					
Rees B.	Lab	1,448	22.2	Marsh S.*	Lab	2,213	32.2	Parkes D.	Lab	1,715	28.3					
		Turnout	69.1	32.5			Turnout	62.0	3.1			Turnout	64.4	12.8		
Frodsham & Helsby (11228)				Mickle Trafford (11084)				Sandbach East & Rode (11519)								
		vote	share			vote	share			vote	share					
Cousins G. Ms.*	Con	2,814	39.1	Rowlands D.*	Con	3,401	49.2	Hemsley K.	LD	2,530	35.8					
Davidson B.	Lab	2,628	36.5	Bennett D.	Lab	2,491	36.1	Evans G.	Con	2,495	35.3					
Griffiths T.	LD	1,759	24.4	Cheetham P.	LD	1,016	14.7	Gregory I.	Lab	2,037	28.8					
		Turnout	64.6	2.6			Turnout	62.7	13.2			Turnout	61.7	0.5		
Gowy (11501)				Middlewich (10082)				Sutton & Manor (10458)								
		vote	share			vote	share			vote	share					
Burke J.	Con	3,958	50.0	Sutton D.	Con	2,474	42.8	Merrick P. Ms.	Lab	3,783	60.3					
Castle A.	LD	2,072	26.2	Watkinson R.*	Lab	2,080	36.0	Anderson G.	Con	1,678	26.7					
Dixon N.	Lab	1,888	23.8	Parsons M.	LD	1,220	21.1	Pemberton J. Ms.	LD	814	13.0					
		Turnout	69.3	23.8			Turnout	57.6	6.8			Turnout	60.4	33.5		
Grange & Rossmore (10936)				Nantwich (10074)				Upton (10140)								
		vote	share			vote	share			vote	share					
Toale L.*	Lab	4,060	66.6	Moran A.*	Ind	1,989	30.8	Bain C.*	LD	2,821	42.3					
Starkey J.	Con	1,188	19.5	Sylvester B.	Con	1,970	30.5	Devine P.	Lab	2,038	30.6					
English M.	LD	846	13.9	Garner W. Ms.	Lab	1,820	28.2	Pool M.	Con	1,803	27.1					
		Turnout	56.1	47.1	Needham D.	LD	677	10.5					Turnout	66.0	11.8	
Groves & Whitby (10442)				Neston & Parkgate (11480)				Weaver (10308)								
		vote	share			vote	share			vote	share					
Jones B.	Lab	3,738	55.4	Andrews R.	Con	3,193	42.9	Stopford N. Ms.*	Con	2,848	42.4					
Kevan C.	Con	2,085	30.9	Butcher K.	Lab	3,000	40.3	Jamieson B.	Lab	2,472	36.8					
Marlow T.	LD	924	13.7	Chruscielz H. Ms.	LD	1,255	16.9	Reaper D.	LD	1,398	20.8					
		Turnout	64.9	24.5			Turnout	65.3	2.6			Turnout	65.7	5.6		
Hoole & Newton (9591)				Northwich East & Shakerley (10273)				Wilmslow North (10243)								
		vote	share			vote	share			vote	share					
Hale M. Ms.*	LD	2,580	41.0	Mainwaring G.	Lab	2,896	51.7	Tyrrell A. Ms.	Con	2,436	39.6					
Rudd R.*	Lab	2,261	35.9	Ikin D.	Con	1,838	32.8	Bradley A.	LD	2,422	39.4					
Ebo J.	Con	1,325	21.0	Hughes N. Ms.	LD	867	15.5	Hamnett W. Ms.	Lab	1,286	20.9					
Farrell D.	Ind	132	2.1											Turnout	60.4	0.2
		Turnout	66.2	5.1			Turnout	54.9	18.9							

Wilmslow South (9981)			
		vote	share
Fraser J.	Con	2,857	44.5
Graf F. Ms.	LD	2,787	43.4
Gorman M.	Lab	780	12.1
Turnout		64.7	1.1

Winsford North & East (10935)			
		vote	share
Hooton A.*	Lab	3,898	63.7
Whittaker T.	Con	1,350	22.1
Mooney H.	LD	873	14.3
Turnout		56.4	41.6

Winsford South & West (10262)			
		vote	share
Booher P. Ms.	Lab	2,665	46.6
Gaskill M.	LD	1,774	31.0
Hall W.	Con	1,285	22.4
Turnout		56.0	15.6

Cheshire 2005

Abbey (9874)			
		vote	share
Harris S. Ms.*	Con	3,171	46.6
Wood A.	LD	1,795	26.4
Wright D.	Lab	1,453	21.4
Thorp H.	Green	381	5.6
Turnout		68.9	20.2

Alderley (10235)			
		vote	share
Asquith M.*	Con	4,190	60.4
Shepherd C.	LD	1,908	27.5
Norman M.	Green	838	12.1
Turnout		67.8	32.9

Alsager (9714)			
		vote	share
Fletcher R.	LD	3,387	55.5
Till W.	Con	1,669	27.3
Gregory I.	Lab	1,050	17.2
Turnout		62.9	28.1

Blacon (9239)			
		vote	share
Doyle B.*	Lab	3,241	65.7
Poole M.	Con	951	19.3
Clyne S. Ms.	LD	743	15.1
Turnout		53.4	46.4

Bollington & Disley (11830)			
		vote	share
Roberts S. Ms.	LD	3,000	37.1
Davenport H.	Con	2,681	33.2
Birchall C. Ms.	Lab	1,357	16.8
Murphy B.	Ind	619	7.7
Doherty B.	Green	430	5.3
Turnout		68.4	3.9

Boughton Heath & Vicars Cross (10618)			
		vote	share
Proctor S. Ms.*	LD	3,262	42.4
Dutton P.	Con	2,686	34.9
Treloar A. Ms.	Lab	1,493	19.4
Weddell A.	UKIP	145	1.9
Abrams R.	Edem	101	1.3
Turnout		72.4	7.5

Broken Cross (8665)			
		vote	share
Freear D.*	Con	2,065	38.9
Arnold W.	LD	1,921	36.2
Readman M. Ms.	Lab	1,322	24.9
Turnout		61.3	2.7

Broxton (9459)			
		vote	share
Dutton E. Ms.*	Con	3,577	54.1
Roberts V. Ms.	LD	2,038	30.8
Duffus S.	Lab	997	15.1
Turnout		69.9	23.3

Bucklow (9655)			
		vote	share
Wilkinson S.*	Con	3,907	61.2
Barlow H. Ms.	LD	1,017	15.9
Daulby B.	Lab	837	13.1
Curtis T. Ms.	Green	343	5.4
Wright A.	Ind	276	4.3
Turnout		66.1	45.3

Central & Westminster (10674)			
		vote	share
Bateman D.*	Lab	3,340	63.2
Brookes M.	LD	861	16.3
Meldrum G.	Con	646	12.2
Omerod I.	Ind	252	4.8
Joines D.	BNP	183	3.5
Turnout		49.5	46.9

Cholmondeley (10734)			
		vote	share
Richardson A.*	Con	4,761	63.8
Fox R.	LD	2,699	36.2
Turnout		69.5	27.6

City (10332)			
		vote	share
Byrne P.*	Lab	2,212	39.5
Mead D.	LD	1,719	30.7
Mustill V. Ms.	Con	1,534	27.4
Croston R.	UKIP	135	2.4
Turnout		54.2	8.8

Congleton Rural (10217)			
		vote	share
Oliver K.*	Con	3,783	52.2
Lowe E.	LD	2,725	37.6
Boston R.	Lab	745	10.3
Turnout		71.0	14.6

Congleton Town East (10700)			
		vote	share
Mason P.*	Con	3,098	47.1
Smith H. Ms.	Lab	1,772	27.0
Murphy D.	LD	1,282	19.5
Kiff E. Ms.	Green	423	6.4
Turnout		61.4	20.2

Congleton Town West (10964)			
		vote	share
Wolstencroft W.*	Con	2,737	41.0
Snowdon S.	Lab	1,906	28.5
Davey S.	LD	1,530	22.9
Newbould C. Ms.	Green	510	7.6
Turnout		61.0	12.4

Crewe East (11789)			
		vote	share
Fyffe J.*	Lab	3,240	52.3
Griffiths G.	LD	1,486	24.0
Fox F.	Con	1,169	18.9
Ellis R.	BNP	299	4.8
Turnout		52.5	28.3

Crewe North (10368)			
		vote	share
Nurse P.*	Lab	2,958	54.8
Morrey P.	Con	1,139	21.1
Evans B.	Ind	927	17.2
Cornes J.	BNP	375	6.9
Turnout		52.1	33.7

Crewe South (11096)			
		vote	share
Flude D. Ms.	Lab	2,673	45.2
Cannon D.	LD	2,075	35.1
Healey K.	Con	876	14.8
Beardshaw M.	BNP	291	4.9
Turnout		53.3	10.1

Crewe West (9178)			
		vote	share
Newton D.*	Lab	2,678	53.5
Silvester B.	Con	1,479	29.6
Phillips J.	LD	846	16.9
Turnout		54.5	24.0

Doddington (11437)			
		vote	share
Brickhill D.	Con	4,259	57.4
Eatough T. Ms.	Ind	3,159	42.6
Turnout		64.9	14.8

Eddisbury (9647)			
		vote	share
Needham A.*	Con	3,324	49.4
Godfrey V. Ms.	LD	2,287	34.0
Geraerts V. Ms.	Lab	1,112	16.5
Turnout		69.7	15.4

Frodsham & Helsby (11141)			
		vote	share
Cousins G. Ms.*	Con	2,832	39.2
Beech J.	Lab	2,440	33.7
Griffiths T.	LD	1,958	27.1
Turnout		64.9	5.4

Gowy (11128)			
		vote	share
Burke J.*	Con	3,936	48.3
Garman A.	LD	2,666	32.7
Davies S.	Lab	1,555	19.1
Turnout		73.3	15.6

Grange & Rossmore (10819)			
		vote	share
Toale L.*	Lab	3,467	58.8
Hughes T.	Con	1,176	19.9
Martin S. Ms.	LD	1,056	17.9
Southgate D.	BNP	200	3.4
Turnout		54.5	38.8

Groves & Whitby (10520)			
		vote	share
Jones B.*	Lab	3,290	46.6
Starkey J.	Con	2,139	30.3
Chruscizl H. Ms.	LD	1,251	17.7
Scott G.	Ind	375	5.3
Turnout		67.1	16.3

Hoole & Newton (9449)			
		vote	share
Hale M. Ms.*	LD	2,709	43.9
Mercer E. Ms.	Lab	1,889	30.6
Ebo J.	Con	1,575	25.5
Turnout		65.3	13.3

Knutsford (10275)			
		vote	share
Grange H.*	Con	3,229	47.2
Austin B. Ms.	LD	2,127	31.1
Burton L.	Lab	1,478	21.6
Turnout		66.5	16.1

Ledsham & Willaston (9083)			
		vote	share
Hardwick G. Ms.*	Con	3,245	51.1
Hill T. Ms.	Lab	1,924	30.3
Handley G.	LD	1,179	18.6
Turnout		69.9	20.8

Macclesfield Forest (9951)			
		vote	share
Hardern B.*	Con	2,519	43.0
Boston G. Ms.	Lab	1,779	30.4
Clark A.	LD	1,162	19.8
Brett B. Ms.	Green	394	6.7
	Turnout	58.8	12.6

Macclesfield Town (10164)			
		vote	share
Carter E. Ms.	Lab	2,098	36.5
Neilson D.	LD	1,758	30.6
Davies M.	Con	1,480	25.8
Flinn S.	Green	406	7.1
	Turnout	56.5	5.9

Macclesfield West (9758)			
		vote	share
Edwards K.	Lab	2,266	39.9
Knowles A.	Con	2,008	35.3
Johnson H.	LD	1,411	24.8
	Turnout	58.3	4.5

Marbury (11319)			
		vote	share
Byram M.	Con	2,580	36.8
Garton C.	LD	2,429	34.6
Griffiths M. Ms.	Lab	2,003	28.6
	Turnout	61.9	2.2

Mickle Trafford (10982)			
		vote	share
Rowlands D.*	Con	3,427	47.9
Rudd R.	Lab	2,125	29.7
Jordan R.	LD	1,344	18.8
Pettigrew A.	UKIP	254	3.6
	Turnout	65.1	18.2

Middlewich (10294)			
		vote	share
Dickson M.	Con	1,749	29.1
Parkes C.	Lab	1,728	28.8
Parsons M.	MF	1,673	27.9
Hirst P.	LD	856	14.3
	Turnout	58.3	0.3

Nantwich (10434)			
		vote	share
Moran A.*	Ind	2,478	37.6
Woolrich B.	Con	1,735	26.3
Swann P.	Lab	1,439	21.8
Wilson P.	LD	934	14.2
	Turnout	63.1	11.3

Neston & Parkgate (10763)			
		vote	share
Andrews R.*	Con	3,123	39.7
Butcher K.	Lab	2,638	33.5
Gaskell J.	LD	1,893	24.1
Crocker H.	UKIP	216	2.7
	Turnout	73.1	6.2

Northwich East & Shakerley (10702)			
		vote	share
Mainwaring G.*	Lab	2,668	48.1
Smith B. Ms.	Con	1,765	31.8
McEllin A. Ms.	LD	1,110	20.0
	Turnout	51.8	16.3

Northwich West (12566)			
		vote	share
Maguire D.*	Lab	3,098	43.5
Charlton W.	Con	2,306	32.4
Turnbull J.	LD	1,714	24.1
	Turnout	56.6	11.1

Overleigh (11330)			
		vote	share
Mosley S.	Con	3,279	42.3
Robinson D.*	Lab	3,111	40.1
Taylor P.	LD	1,193	15.4
Scott D.	UKIP	168	2.2

	Turnout	68.4	2.2
Poynton (11944)			
		vote	share
Claxton C.*	Con	4,035	50.4
Robinson C.	LD	2,366	29.5
Middleton E. Ms.	Lab	1,611	20.1
	Turnout	67.1	20.8

Prestbury & Tytherington (8772)			
		vote	share
Findlow J.*	Con	3,707	61.8
Wellavize C.	LD	1,404	23.4
Stewart K. Ms.	Lab	887	14.8
	Turnout	68.4	38.4

Rope (11512)			
		vote	share
Simon M. Ms.	Con	3,611	45.0
Minshall P. Ms.	Lab	2,629	32.8
Brown A.	LD	1,777	22.2
	Turnout	69.6	12.2

Sandbach (9658)			
		vote	share
Price N.*	Con	2,523	41.4
Dames P.	LD	1,832	30.1
Corcoran S.	Lab	1,739	28.5
	Turnout	63.1	11.3

Sandbach East & Rode (11513)			
		vote	share
Giltrap R.	LD	2,855	39.3
Brown D.	Con	2,408	33.2
Haines K.	Lab	1,672	23.0
Jones A.	Green	326	4.5
	Turnout	63.1	6.2

Sutton & Manor (10414)			
		vote	share
Merrick P. Ms.*	Lab	3,141	50.0
Hebson N.	Con	1,674	26.6
Falconer J.	LD	934	14.9
Woodward G.	Ind	534	8.5
	Turnout	60.3	23.3

Upton (9925)			
		vote	share
Bain C.*	LD	2,707	39.8
Houlbrook J. Ms.	Con	2,211	32.5
Dixon N.	Lab	1,878	27.6
	Turnout	68.5	7.3

Weaver (10272)			
		vote	share
Dolphin N. Ms.	Con	4,039	60.4
Jamieson B.	Lab	2,652	39.6
	Turnout	65.1	20.7

Wilmslow North (10240)			
		vote	share
Bradley A.	LD	2,956	48.2
Tyrrell A. Ms.*	Con	2,732	44.5
Hare D.	Green	449	7.3
	Turnout	59.9	3.6

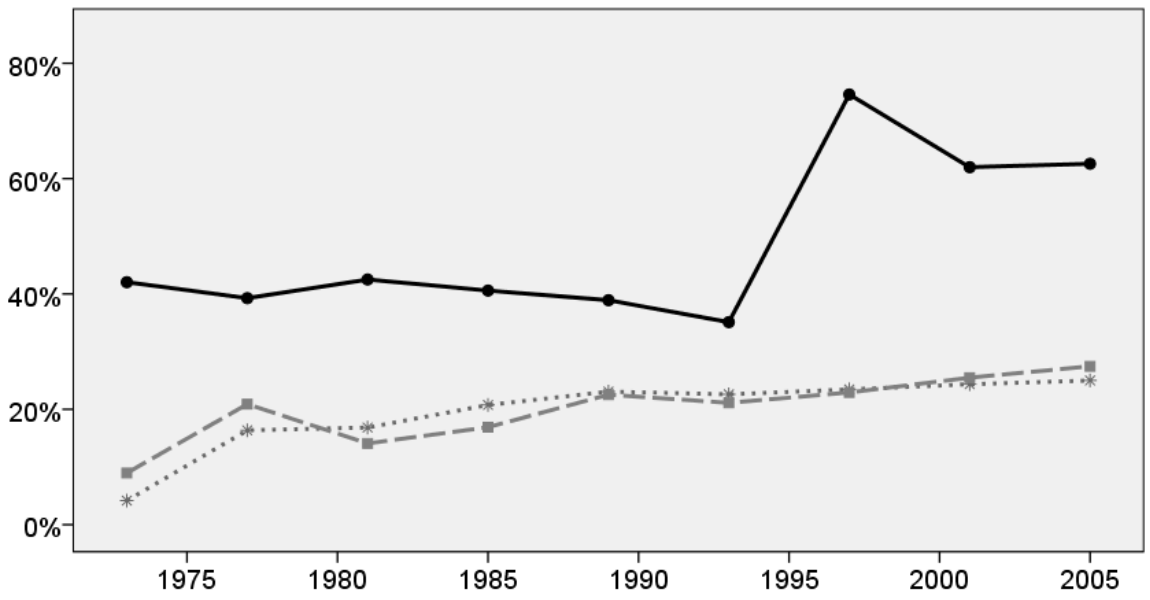
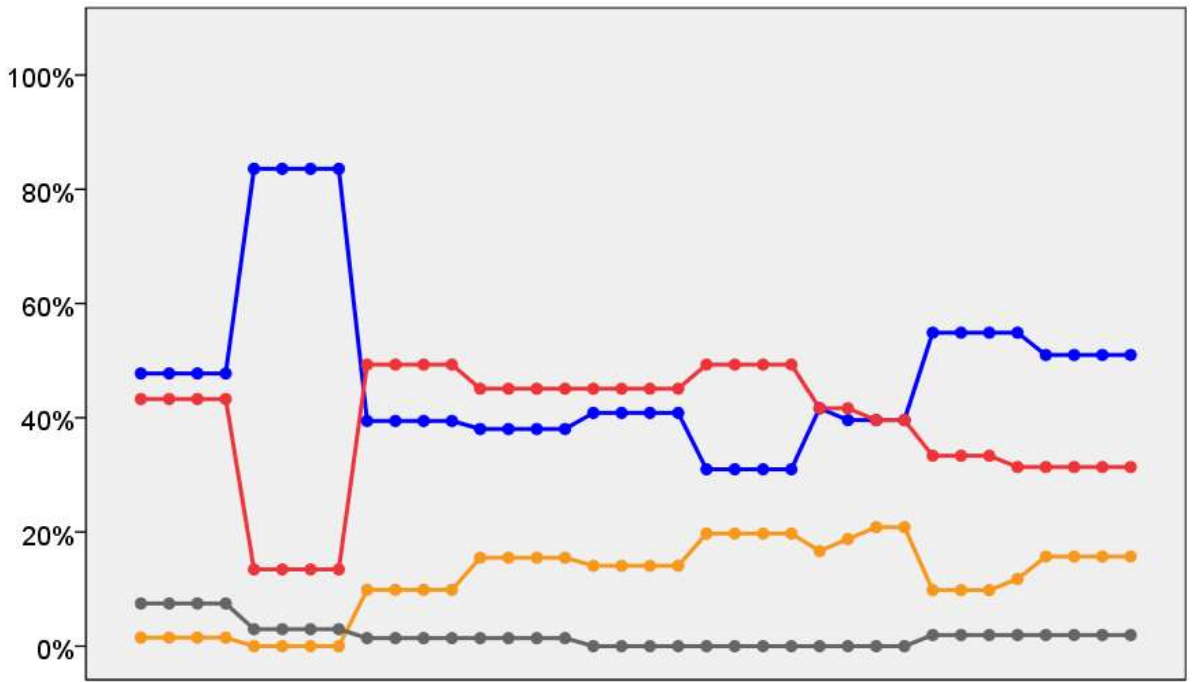
Wilmslow South (9730)			
		vote	share
Fearnley P. Ms.	LD	2,988	46.8
Fraser J.*	Con	2,974	46.6
Lewis D.	Green	421	6.6
	Turnout	65.6	0.2

Winsford North & East (11902)			
		vote	share
Hooton A.*	Lab	3,470	54.5
Worthington D.	LD	1,477	23.2
Johnson E. Ms.	Con	1,425	22.4
	Turnout	53.5	31.3

Winsford South & West (10597)			
		vote	share

Booher P. Ms.*	Lab	2,420	43.7
Gaskill M.	LD	1,867	33.7
Dahill A.	Con	1,252	22.6
	Turnout	52.3	10.0

...



...