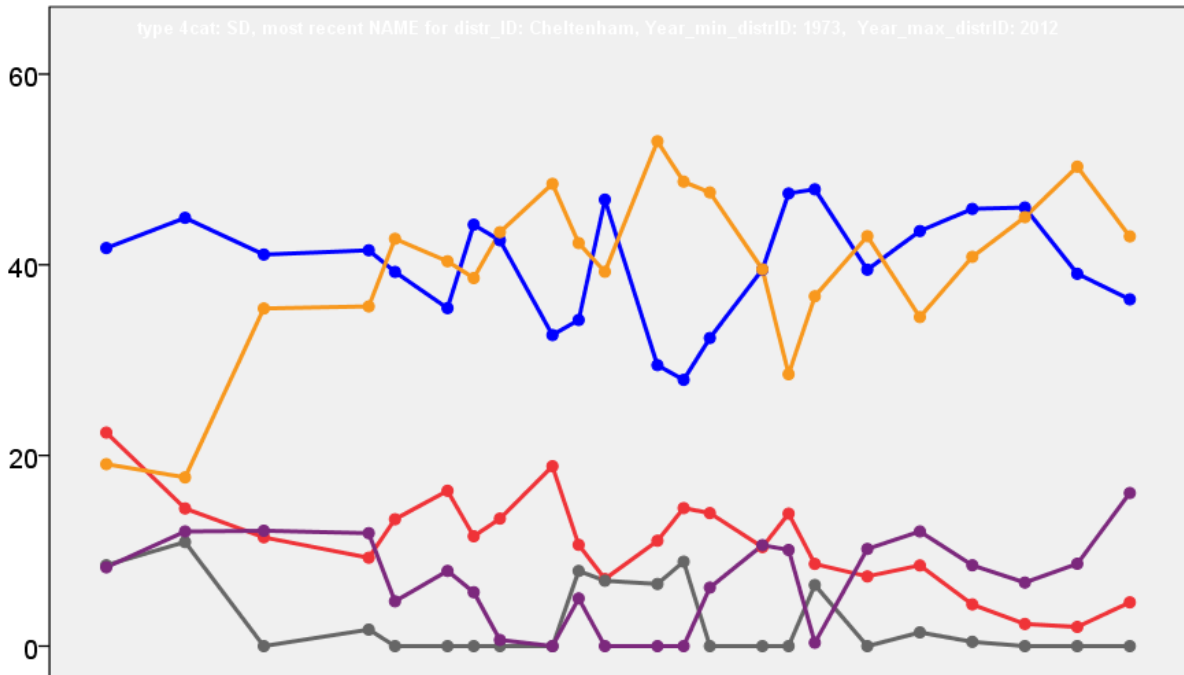


Cheltenham Borough Council Election Results 1973-2012



Colin Rallings and Michael Thrasher
The Elections Centre
Plymouth University

The information contained in this report has been obtained from a number of sources. Election results from the immediate post-reorganisation period were painstakingly collected by Alan Willis largely, although not exclusively, from local newspaper reports. From the mid-1980s onwards the results have been obtained from each local authority by the Elections Centre. The data are stored in a database designed by Lawrence Ware and maintained by Brian Cheal and others at Plymouth University. Despite our best efforts some information remains elusive whilst we accept that some errors are likely to remain. Notice of any mistakes should be sent to elections@plymouth.ac.uk. The results sequence can be kept up to date by purchasing copies of the annual Local Elections Handbook, details of which can be obtained by contacting the email address above.

Front cover: the graph shows the distribution of percentage vote shares over the period covered by the results. The lines reflect the colours traditionally used by the three main parties. The grey line is the share obtained by Independent candidates while the purple line groups together the vote shares for all other parties.

Rear cover: the top graph shows the percentage share of council seats for the main parties as well as those won by Independents and other parties. The lines take account of any by-election changes (but not those resulting from elected councillors switching party allegiance) as well as the transfers of seats during the main round of local election.

The lower graph shows for each main round of local elections the overall percentage turnout (solid line), the percentage of women candidates standing at (dotted line) and the percentage of women among those elected (hashed line).

Cheltenham - 1973

All Saints (5869)³

		vote	share
Runciman D.	Con	1,030	60.9
Vincent V.	Con	1,028	-
Ash W.	Con	1,013	-
Freeman C.	Lab	660	39.1
Martin J. Ms.	Lab	616	-
Keell-Wolft J. Ms.	Lab	584	-
Turnout		28.8	21.9

Charlton Kings (7755)⁵

		vote	share
Phillips M. Ms.	Ind	2,081	33.5
White F.	Res	1,827	29.4
Stanton V.	Con	1,819	29.3
Howgate M.	Res	1,749	-
Joyner T.	Con	1,721	-
Hudson L. Ms.	Res	1,644	-
Kenedy G. Ms.	Res	1,638	-
Bolt C.	Con	1,619	-
Roberts A. Ms.	Con	1,405	-
Rogers S.	Con	1,361	-
Bartosch W. Ms.	Lab	484	7.8
Turnout		80.1	4.1

College (5303)³

		vote	share
Hammond K.	Lib	1,645	65.4
Frewin A.	Lib	1,556	-
Harrington W.	Lib	1,358	-
Bowden F.	Con	869	34.6
Millman A.	Con	731	-
Andrews R.	Con	700	-
Turnout		47.4	30.9

Hatherley (5755)³

		vote	share
Brown B.	Con	1,086	54.7
Smith R.	Con	1,053	-
Martin-Jones D.	Con	1,031	-
Phillips E.	Lib	899	45.3
Clark B. Ms.	Lib	852	-
Bevins P.	Lib	825	-
Turnout		34.5	9.4

Hesters Way (5163)³

		vote	share
Ruck T.	Lab	957	57.5
Yates A.	Lab	917	-
Taylor H. Ms.	Lab	883	-
McLaren D. Ms.	Con	507	30.5
Cross G.	Con	332	-
Harris J.	Comm	201	12.1
Turnout		32.2	27.0

Lansdown (5281)³

		vote	share
Godwin K. Ms.	Con	0	0.0
Dent M. Ms.	Con	0	-
Dodwell A.	Con	0	-
Turnout		0.0	0.0

Park (5855)³

		vote	share
Irving C.	Con	1,664	59.3
Gaylard L.	Con	1,348	-
Bewick R.	Con	1,330	-
Davies J.	Lib	1,143	40.7
Turnout		47.9	18.6

Pittville (5652)³

		vote	share
Herbert F.	Con	1,118	64.7
Aston J.	Con	1,105	-
Hine C.	Con	1,038	-
Cusick M. Ms.	Lab	611	35.3
Hickmore A.	Lab	507	-
Neale S.	Lab	495	-
Turnout		30.6	29.3

St. Marks (6143)³

		vote	share
Watson J. Ms.	Lib	995	50.1
Nawton W.	Lab	993	49.9
Pennington J.	Lab	989	-
Hall D.	Lib	890	-
Helps K.	Lib	845	-
Gomersall C.	Lab	836	-
Turnout		32.4	0.1

St. Pauls (5086)³

		vote	share
Aldridge D.	Con	1,357	59.5
Heapey M. Ms.	Con	1,179	-
Bishop H.	Con	1,176	-
Brookes R.	Lab	922	40.5
Hall M. Ms.	Lab	746	-
Hickmore S. Ms.	Lab	733	-
Turnout		44.8	19.1

St. Peters (4768)³

		vote	share
Owen D.	Lab	867	52.2
Smith C.	Lab	835	-
Marchant R.	Con	794	47.8
McKnight W.	Lab	780	-
Turbyfield H.	Con	697	-
Le Cornu W.	Con	650	-
Turnout		34.8	4.4

Cheltenham - 1976

All Saints (5907)³

		vote	share
Bowden F.	Con	1,093	44.5
Runciman D.*	Con	1,062	-
Heapey J.	Con	1,024	-
Beagley R.	Ind	748	30.5
Silvanus-Davis D.	Ind	681	-
Hall D.	Lib	613	25.0
Mackenzie M. Ms.	Lib	592	-
Powell M.	Lib	488	-
Turnout		41.5	14.1

Charlton Kings (8185)⁵

		vote	share
White F.*	Res	2,626	31.5
Neate A.	Res	2,608	-
Stanton V.*	Con	2,545	30.5
Phillips M. Ms.*	Ind	2,485	29.8
Robinson W.	Res	2,138	-
Abbott M.	Con	2,010	-
Perry D.	Con	1,865	-
Falconer R.	Con	1,689	-
Dawson F.	Con	1,518	-
Judson T. Ms.	Lab	676	8.1
Turnout		101.8	1.0

College (5327)³

		vote	share
Hammond K.*	Lib	1,411	56.4
Frewin A.*	Lib	1,393	-
Barnett D. Ms.	Lib	1,145	-
Skinner P.	Con	1,092	43.6
Walker J.	Con	942	-
House R.	Con	912	-
Turnout		47.0	12.7

Hatherley (6047)³

		vote	share
Smith R.*	Con	1,535	59.1
Martin-Jones D.*	Con	1,519	-
Brown R.*	Con	1,519	-
Phillips E.	Lib	1,063	40.9
Bingham G.	Lib	1,004	-
Tebbutt B.	Lib	953	-
Turnout		43.0	18.2

Hesters Way (5219)³

		vote	share
Sturdy R.	Res	1,076	53.9
Jury R.	Res	1,067	-
Barnes G.	Res	1,067	-
Ruck T.*	Lab	763	38.2
Taylor H. Ms.*	Lab	705	-
Yates A.*	Lab	661	-
Harris J.	Comm	159	8.0
Turnout		38.3	15.7

Lansdown (5227)³

		vote	share
Dowdell A.*	Con	1,491	87.6
Dent M. Ms.*	Con	1,464	-
Godwin K. Ms.*	Con	1,418	-
Luker M.	Comm	212	12.4
Turnout		32.6	75.1

Park (6166)³

		vote	share
Irving C.*	Con	2,131	70.6
Gaylard L.*	Con	1,856	-
Bewick R.*	Con	1,680	-
Taylor G.	Lib	888	29.4
Clark B.	Lib	872	-
Fabian E.	Lib	826	-
Turnout		49.0	41.2

Pittville (5606)³

		vote	share
Herbert F.*	Con	1,279	61.5
Aston J.*	Con	1,266	-
Hine C.*	Con	1,259	-
Lawrie A.	Lab	801	38.5
Harris P.	Lab	782	-
James R.	Lab	768	-
Turnout		36.6	23.0

St. Marks (6187)³

		vote	share
Pennington J.*	Lab	991	35.2
Fisher W.	Con	946	33.6
Watson J. Ms.*	Lib	875	31.1
Jones N.	Lib	863	-
Freeman C.	Lab	811	-
Pounder G.	Lab	780	-
Turnout		45.5	1.6

St. Pauls (5030)³

		vote	share
Aldridge D.*	Con	1,237	59.2
Heapey M. Ms.*	Con	1,118	-
Bishop H.*	Con	1,069	-
King M. Ms.	Lab	534	25.5
Hickmore S. Ms.	Ind	320	15.3
Turnout		41.6	33.6

St. Peters (5453)³

		vote	share
Marchant R.*	Con	1,273	40.8
Pennell P.	Con	993	-
Owen D.*	Lab	935	30.0
Rawson J.	Lib	911	29.2
Smith C.*	Lab	818	-
Moore B.	Lab	727	-
Turnout		57.2	10.8

Cheltenham - 1979

All Saints (5942)³

		vote	share
Hodges V. Ms.	Lib	2,142	54.2
Jollans A.	Lib	2,096	-
Powell M.	Lib	2,089	-
Bowden F.*	Con	1,811	45.8
Heapey J.*	Con	1,757	-
Runciman D.*	Con	1,684	-
Turnout		66.5	8.4

Charlton Kings (6487)			
		vote	share
Jeans T.	Res	1,392	51.6
Heapey M. Ms.	Con	1,085	40.2
Yates H.	Lab	219	8.1
Turnout		41.6	11.4
College (6802)			
		vote	share
Gray P.	Lib/SDP	1,732	48.7
Shepherd M.*	Con	1,649	46.4
Owen D.	Lab	174	4.9
Turnout		52.3	2.3
Hatherley (6541)			
		vote	share
Whales J.*	Lib/SDP	1,805	57.8
Pennell D. Ms.	Con	1,045	33.4
Newell D.	Lab	275	8.8
Turnout		47.8	24.3
Hesters Way (6641)			
		vote	share
Turbyfield H.*	Con	923	39.6
Hale M.	Lab	774	33.2
Holder J. Ms.	Lib/SDP	635	27.2
Turnout		35.1	6.4
Lansdown (5602)			
		vote	share
Dodwell A.*	Con	1,227	57.0
Hunt R.	Lib/SDP	738	34.3
Naish J.	Lab	189	8.8
Turnout		38.5	22.7
Park (5521)			
		vote	share
Bullingham B.*	Con	1,556	54.9
Staight D. Ms.	Lib/SDP	1,277	45.1
Turnout		51.3	9.8
Pittville (6176)			
		vote	share
Pennington J.	Lab	969	36.0
Britton C.*	Con	874	32.4
Fisher B.	Lib/SDP	852	31.6
Turnout		43.6	3.5
St. Marks (5924)			
		vote	share
Cassin A. Ms.*	Lib/SDP	1,440	64.8
Fisher B.	Con	453	20.4
Evans B.	Lab	329	14.8
Turnout		37.5	44.4
St. Pauls (5680)			
		vote	share
Baker P.*	Lib/SDP	1,430	55.9
Wilton R.	Con	811	31.7
Moody B.	Lab	317	12.4
Turnout		45.0	24.2
St. Peters (5780)			
		vote	share
Wakeley G. Ms.*	Lib/SDP	1,292	54.0
Axton A.	Con	718	30.0
Chappell P.	Lab	384	16.0
Turnout		41.4	24.0

Cheltenham - 1986

All Saints (6829) ²			
		vote	share
Hodges A. Ms.*	All	1,261	45.8
Jordan S.	All	1,146	-
Pennell D. Ms.	Con	1,079	39.2
Cronk A.	Con	1,048	-
Hale D. Ms.	Lab	412	15.0
Pope R.	Lab	350	-
Turnout		40.3	6.6
Charlton Kings (6406)			
		vote	share
Perry D.*	Res	1,358	39.4
Daffurn R. Ms.	All	1,223	35.5
Norman N.	Con	864	25.1
Turnout		53.8	3.9
College (6819)			
		vote	share
Howell B.*	Con	1,782	51.0
Barnes G.	All	1,481	42.4
Luker L.	Lab	228	6.5
Turnout		51.2	8.6
Hatherley (6486) ²			
		vote	share
Phillips E.*	All	1,490	54.0
Rosser-Smith D.	All	1,339	-
Ockwell T.	Con	974	35.3
Shahlaei A.	Con	819	-
Palmer A.	Lab	294	10.7
Turnout		42.5	18.7
Hesters Way (7068)			
		vote	share
Cameron A.	All	947	36.0
Ruck T.*	Lab	870	33.1
Chaplin B.	Con	811	30.9
Turnout		37.2	2.9
Lansdown (5760)			
		vote	share
Dent M. Ms.*	Con	1,307	55.9
Lloyd C.	All	753	32.2
Stapleton L. Ms.	Lab	279	11.9
Turnout		40.6	23.7
Park (5576)			
		vote	share
Stafford M. Ms.*	Con	1,586	57.4
Norman J. Ms.	All	961	34.8
Bottomley M. Ms.	Lab	216	7.8
Turnout		49.6	22.6
Pittville (6186)			
		vote	share
Hale M.	Lab	1,070	40.9
Burke K.*	Con	883	33.8
Wadley A.	All	661	25.3
Turnout		42.3	7.2
St. Marks (5834)			
		vote	share
Watson J. Ms.*	All	1,099	53.0
Naish J.	Lab	585	28.2
Richards S.	Con	390	18.8
Turnout		35.6	24.8
St. Pauls (5584)			
		vote	share
Griggs D. Ms.	All	1,045	45.6
Aldridge D.*	Ind Rate	963	42.0
Thomas S. Ms.	Lab	285	12.4
Turnout		41.1	3.6

St. Peters (5852)			
		vote	share
Thornton P. Ms.	All	953	42.2
English A.	Con	751	33.3
Chappell P.	Lab	554	24.5
Turnout		38.6	8.9

Cheltenham - 1987

All Saints (6825)			
		vote	share
Pennell D. Ms.	Con	1,537	47.9
McKinlay A.	Lib/SDP	1,310	40.8
Hale D. Ms.	Lab	364	11.3
Turnout		47.0	7.1
Charlton Kings (6413)			
		vote	share
Moreton J. Ms.	Con	1,402	37.0
Daffurn R. Ms.	Lib/SDP	1,314	34.7
Robinson W.	Res	913	24.1
Booth P.	Lab	159	4.2
Turnout		59.1	2.3
College (7018)			
		vote	share
Chaplin B.	Con	2,341	56.0
Barnes G.	Lib/SDP	1,649	39.4
Jump P.	Lab	192	4.6
Turnout		59.6	16.5
Hatherley (6594)			
		vote	share
Thorp J. Ms.	Con	1,637	49.3
Pride R.	Lib/SDP	1,414	42.6
Palmer A.	Lab	268	8.1
Turnout		50.3	6.7
Hesters Way (7148)			
		vote	share
Banyard D.	Lib/SDP	1,389	49.2
Sturdy R.*	Res	1,000	35.4
Harriss C.	Lab	434	15.4
Turnout		39.5	13.8
Lansdown (6045)			
		vote	share
Wickham S.	Con	1,575	59.0
Jones R.	Lib/SDP	834	31.2
Stapleton L. Ms.	Lab	260	9.7
Turnout		44.2	27.8
Park (5671)			
		vote	share
Irving C.*	Con	1,972	59.7
Norman J. Ms.	Lib/SDP	1,179	35.7
Bottomley M. Ms.	Lab	150	4.5
Turnout		58.2	24.0
Pittville (6202)			
		vote	share
Raymond H.	Con	1,210	39.5
Naish J. Ms.	Lab	1,000	32.6
Wadley A.	Lib/SDP	856	27.9
Turnout		49.4	6.8
St. Marks (5781)			
		vote	share
Cassin B.*	Lib/SDP	1,270	54.8
Daniel G.	Con	682	29.4
Thomas S. Ms.	Lab	367	15.8
Turnout		40.1	25.4
St. Pauls (5749)			
		vote	share
Aldridge D.	Con	1,282	48.4
Fayter A.	Lib/SDP	1,103	41.7
Mace G.	Lab	263	9.9
Turnout		46.1	6.8

St. Peters (5861)			
		vote	share
Marchant R.*	Con	1,330	52.5
Hart P.	Lib/SDP	756	29.9
Chappell P.	Lab	446	17.6
Turnout		43.2	22.7

Cheltenham - 1988

All Saints (6759)			
		vote	share
Jordan S.	SLD	1,324	49.2
Ferriman-Lowe N.	Con	1,038	38.6
Hale D. Ms.	Lab	330	12.3
Turnout		39.8	10.6

Charlton Kings (6402)			
		vote	share
Todman W.	Con	1,733	51.3
Anderson B.	SLD	1,449	42.9
Perry M.	Lab	194	5.7
Turnout		52.7	8.4

College (7002)			
		vote	share
Freeman L.	Con	2,034	57.2
Gray P.*	SLD	1,520	42.8
Turnout		50.8	14.5

Hatherley (6671)			
		vote	share
Whales J.*	SLD	1,454	50.2
Dubow J.	Con	1,160	40.0
Palmer A.	Lab	284	9.8
Turnout		43.4	10.1

Hesters Way (7214)			
		vote	share
Brereton D.	SLD	1,251	47.5
Turbyfield H.*	Con	897	34.1
White I.	Lab	486	18.5
Turnout		36.5	13.4

Lansdown (6118)			
		vote	share
Wilson R.	Con	1,299	57.9
Clarkson M. Ms.	SLD	681	30.4
Stapleton L. Ms.	Lab	262	11.7
Turnout		36.6	27.6

Park (5700)			
		vote	share
Bullongham W.*	Con	1,589	56.8
Morris C.	SLD	1,079	38.6
Windust J.	Lab	130	4.6
Turnout		49.1	18.2

Pittville (6123)			
		vote	share
Pennington J.*	Lab	1,032	38.3
Paterson T.	Con	853	31.7
McKinlay A.	SLD	622	23.1
Wadley A.	Green	187	6.9
Turnout		44.0	6.6

St. Marks (5719)			
		vote	share
Cassin A. Ms.	SLD	1,222	61.2
Wookey R.	Con	428	21.4
Luker M.	Lab	346	17.3
Turnout		34.9	39.8

St. Pauls (5727)			
		vote	share
Baker P.*	SLD	1,267	57.9
Burke K.	Con	626	28.6
Evans W.	Lab	295	13.5
Turnout		38.2	29.3

St. Peters (5801)			
		vote	share
Wakeley G. Ms.*	SLD	797	38.0
Ball N.	Con	757	36.1
Dunkerton J.	Lab	542	25.9
Turnout		36.1	1.9

Cheltenham - 1990

All Saints (6667)			
		vote	share
Hodges A. Ms.*	SLD	1,473	50.6
Burke K.	Con	901	31.0
White I.	Lab	537	18.4
Turnout		43.7	19.6

Charlton Kings (6316)			
		vote	share
Anderson B.	SLD	1,936	53.0
Smith C.	Con	1,412	38.7
Daniel M. Ms.	Lab	305	8.3
Turnout		57.8	14.3

College (6810)			
		vote	share
Barnes G.	SLD	2,046	51.3
Howell B.*	Con	1,943	48.7
Turnout		58.6	2.6

Hatherley (6637)			
		vote	share
Phillips E.*	SLD	1,725	51.4
Nicholas A. Ms.	Con	1,162	34.6
Sewell F. Ms.	Lab	467	13.9
Turnout		50.5	16.8

Hesters Way (7301)			
		vote	share
Cameron A.*	SLD	2,061	65.6
Day S. Ms.	Lab	644	20.5
Wookey F. Ms.	Con	436	13.9
Turnout		43.0	45.1

Lansdown (5979)			
		vote	share
Dent M. Ms.*	Con	1,228	47.7
Gray M. Ms.	SLD	928	36.0
Irons R.	Lab	419	16.3
Turnout		43.1	11.7

Park (5745)			
		vote	share
Stafford M. Ms.*	Con	1,560	48.3
Compton A.	SLD	1,466	45.3
Peters M.	Lab	207	6.4
Turnout		56.3	2.9

Pittville (6050)			
		vote	share
Hale M.*	Lab	1,593	54.1
Paterson T.	Con	733	24.9
Fallon J.	SLD	619	21.0
Turnout		48.7	29.2

St. Marks (5602)			
		vote	share
Watson J. Ms.*	SLD	1,550	61.5
Curtis A.	Lab	640	25.4
Nutting M.	Con	329	13.1
Turnout		45.0	36.1

St. Pauls (5813)			
		vote	share
Griggs D. Ms.*	SLD	1,119	51.6
Gaylard B.	Con	561	25.9
North R.	Lab	489	22.5
Turnout		37.3	25.7

St. Peters (5790)			
		vote	share
Thornton P. Ms.*	SLD	1,140	43.3
Dunkerton J.	Lab	950	36.1
Ball N.	Con	544	20.7
Turnout		45.5	7.2

Cheltenham - 1991

All Saints (6589) ²			
		vote	share
Hay C.	LD	1,539	50.9
Stringer S. Ms.	LD	1,438	-
Pennell D. Ms.*	Con	1,161	38.4
Nutting M.	Con	1,032	-
Powell A.	Lab	322	10.7
Thornett-Roston M. Ms.	Lab	303	-
Turnout		44.0	12.5

Charlton Kings (6277)			
		vote	share
Goold D.	LD	1,835	50.3
Moreton J. Ms.*	Con	1,633	44.7
Daniel M. Ms.	Lab	183	5.0
Turnout		58.2	5.5

College (6806)			
		vote	share
Stone A.	LD	2,119	51.6
Chaplin B.*	Con	1,988	48.4
Turnout		60.3	3.2

Hatherley & The Reddings (7502) ⁴			
		vote	share
Fidgeon D.	LD	1,736	36.5
Townsend S. Ms.	LD	1,702	-
Lee P.	LD	1,692	-
Gray M. Ms.	LD	1,688	-
Thorp J. Ms.*	Con	1,654	34.8
Raymond C.	Con	1,480	-
Paterson T.	Con	1,365	-
Turbyfield H.	Ind	936	19.7
Hicks R.	Ind	832	-
Day S. Ms.	Lab	426	9.0
Turnout		50.4	1.7

Hesters Way (7371)			
		vote	share
Banyard D.*	LD	2,042	68.9
Wookey F. Ms.	Con	526	17.8
McClusky D.	Lab	394	13.3
Turnout		40.2	51.2

Lansdown (5819)			
		vote	share
Bramah A. Ms.	Con	1,291	55.0
Hart P.	LD	803	34.2
Irons R.	Lab	255	10.9
Turnout		40.4	20.8

Leckhampton With Up Hatherley (5481) ³			
		vote	share
Langford H. Ms.	LD	1,427	33.8
Morgan A. Ms.	LD	1,131	-
Hall D.	Ind	1,050	24.8
Buckland K.	Con	950	22.5
Witcomb M. Ms.	Con	846	-
Howell B.	Con	744	-
Welsby H.	PABAG	493	11.7
Willox I.	Ind	411	-
Courtney R.	Lab	308	7.3
Turnout		43.5	8.9

Park (5750)			
		vote	share
Irving C.*	Con	1,739	55.1
Howe J.	LD	1,273	40.3
Dunkerton J.	Lab	143	4.5
Turnout		54.9	14.8

St. Peters (6007)			
		vote	share
Thornton P. Ms.*	LD	1,162	62.4
Harriss C.	Lab	402	21.6
Warhurst E.	Con	299	16.0
Turnout		31.0	40.8

Cheltenham - 1995

All Saints (6694)			
		vote	share
Jordan S.	LD	1,287	54.0
Starling S. Ms.	Con	754	31.6
Hale D. Ms.	Lab	344	14.4
Turnout		35.8	22.3

Charlton Kings (6411)			
		vote	share
Worth J.	LD	1,339	46.3
Perry I.	Con	1,267	43.8
Moliver A.	Lab	287	9.9
Turnout		45.1	2.5

College (6777)			
		vote	share
Gray M. Ms.	LD	1,656	50.3
Watts J.	Con	1,341	40.7
Ham A.	Lab	297	9.0
Turnout		48.6	9.6

Hatherley & The Reddings (7529) ²			
		vote	share
Townsend S. Ms.*	LD	1,363	45.7
Read C.	LD	1,307	-
Payne A.	Con	739	24.8
Warhurst E.	Con	641	-
Hicks R.	Ind	446	15.0
Bailey E. Ms.	Lab	435	14.6
Burford M.	Ind	416	-
Turnout		37.7	20.9

Hesters Way (7144)			
		vote	share
Banyard D.*	LD	1,318	68.5
Curtis A.	Lab	343	17.8
Todman H. Ms.	Con	262	13.6
Turnout		27.0	50.7

Lansdown (6020)			
		vote	share
Harvey S.	LD	968	46.0
Bramah A. Ms.*	Con	873	41.5
Irons R.	Lab	265	12.6
Turnout		35.1	4.5

Leckhampton With Up Hatherley (6359)			
		vote	share
Langford H. Ms.	LD	1,177	42.5
Hall D.*	Ind	878	31.7
Trewhella J. Ms.	Con	712	25.7
Turnout		43.6	10.8

Park (5863)			
		vote	share
Jackson A.	LD	1,243	46.2
Garnham R.	Con	1,197	44.5
Morgan A. Ms.	Lab	250	9.3
Turnout		46.0	1.7

Pittville (5855)			
		vote	share
Hale M.	Lab	1,170	42.6
O'Connell C.	LD	1,097	39.9
Built-Leonard R.	Con	386	14.1
Readman G.	Ind	94	3.4
Turnout		47.1	2.7

Prestbury (5780)			
		vote	share
Cornish A.*	Ind	1,162	47.0
Jones R.	LD	736	29.7
Hopkins R.	Con	576	23.3
Turnout		42.9	17.2

St. Marks (5262)			
		vote	share
Whales J.	LD	945	65.2
Kavanagh J.	Lab	327	22.6
Melville-Smith J.	Con	177	12.2
Turnout		27.6	42.7

St. Pauls (5710)			
		vote	share
McKinlay A.*	LD	1,102	65.8
Sherbourne M.	Lab	309	18.4
Wertwyn P. Ms.	Con	264	15.8
Turnout		29.4	47.3

St. Peters (5972)			
		vote	share
Hawkins C. Ms.*	LD	958	53.3
Harriss C.	Lab	578	32.1
Cresswell I.	Con	262	14.6
Turnout		30.1	21.1

Swindon (1427)			
		vote	share
Gundy J. Ms.	LD	304	49.3
May D.	Ind	239	38.7
Garnham J. Ms.	Con	74	12.0
Turnout		43.3	10.5

Cheltenham - 1996

All Saints (6672)			
		vote	share
Franklin C. Ms.	LD	1,166	50.8
Pennell D. Ms.*	Con	823	35.9
Pearce M.	Lab	306	13.3
Turnout		35.6	14.9

Charlton Kings (6404)			
		vote	share
Todman W.*	Con	1,554	47.1
Grainger C. Ms.	LD	1,516	46.0
Moliver A.	Lab	229	6.9
Turnout		51.6	1.2

College (6720)			
		vote	share
Surgenor L.	LD	1,620	49.5
Freeman L.*	Con	1,417	43.3
Ham A.	Lab	237	7.2
Turnout		48.9	6.2

Hatherley & The Reddings (7470)			
		vote	share
McLain P.	LD	1,378	49.8
Fletcher J. Ms.*	Con	1,118	40.4
Latham M.	Lab	272	9.8
Turnout		37.2	9.4

Hesters Way (7164)			
		vote	share
Holliday S. Ms.	LD	1,226	69.3
Iddles R.	Lab	293	16.6
Warhurst E.	Con	251	14.2
Turnout		24.7	52.7

Lansdown (6002) ²			
		vote	share
Jones R.	LD	903	45.3
Whalley E. Ms.	LD	892	-
Startling S. Ms.	Con	812	40.7
Melville-Smith J.	Con	811	-
Irons R.	Lab	280	14.0
Mason-			
O'Conner K. Ms.	Lab	242	-
Turnout		34.3	4.6

Leckhampton With Up Hatherley (6659)			
		vote	share
Buckland K.*	Con	958	34.8
Pollitt G.	LD	835	30.3
Hall D.	PABAG	696	25.3
Wyborn R.	Lab	264	9.6
Turnout		41.4	4.5

Park (5841)			
		vote	share
Garnham R.	Con	1,309	49.1
Roberts D. Ms.	LD	1,182	44.3
Bhatt C.	Lab	177	6.6
Turnout		45.8	4.8

Pittville (5842)			
		vote	share
O'Connell C.	LD	1,305	47.0
Bench F.	Lab	1,052	37.9
Built-Leonard R.	Con	420	15.1
Turnout		47.7	9.1

Prestbury (5770)			
		vote	share
Newman J.*	PABAG	1,194	49.8
Walker J.	Con	548	22.9
Grimster J. Ms.	LD	453	18.9
Chapman M.	Lab	201	8.4
Turnout		41.6	27.0

St. Marks (5071)			
		vote	share
Cassin A. Ms.*	LD	969	71.5
Curtis A.	Lab	221	16.3
Pennell L. Ms.	Con	166	12.2
Turnout		26.8	55.2

St. Pauls (5671)			
		vote	share
Clarke E. Ms.*	LD	1,005	61.4
Wertwyn P. Ms.	Con	321	19.6
Robinson S.	Lab	311	19.0
Turnout		29.0	41.8

St. Peters (5993)			
		vote	share
Lawrence D.	LD	1,100	60.6
Harriss C.	Lab	456	25.1
Cresswell I.	Con	260	14.3
Turnout		30.6	35.5

Cheltenham - 1998

All Saints (6610)			
		vote	share
Pennell D. Ms.	Con	807	40.4
Henry P. Ms.	LD	619	31.0
Stringer S. Ms.*	PABAG	371	18.6
Hemmings E.	Lab	200	10.0
Turnout		30.3	9.4

Charlton Kings (6320)			
		vote	share
Moreton J. Ms.	Con	1,439	55.5
Grainger C. Ms.	LD	1,153	44.5
Turnout		41.0	11.0

College (6692)		vote	share
Freeman L.	Con	1,278	43.3
Barnes G.*	LD	1,225	41.5
Stone A.	PABAG	321	10.9
Wiffen T.	Lab	128	4.3
	Turnout	44.1	1.8

Hatherley & The Reddings (7639)		vote	share
Blackburn D. Ms.	LD	1,076	43.2
Simons P.	Con	1,036	41.6
Bailey C.	Lab	298	12.0
Foster G.	Green	82	3.3
	Turnout	32.7	1.6

Hesters Way (7108)		vote	share
Lloyd C.	LD	865	59.9
Baylis E.	Con	305	21.1
Fawcett W.	Lab	273	18.9
	Turnout	20.3	38.8

Lansdown (6120)		vote	share
Starling S. Ms.	Con	882	51.6
Whalley E. Ms.*	LD	644	37.7
Irons R.	Lab	184	10.8
	Turnout	28.0	13.9

Leckhampton With Up Hatherley (6579)		vote	share
Macdonald R.	Con	1,449	57.9
Regan A. Ms.*	LD	806	32.2
Burford M.	Lab	249	9.9
	Turnout	38.1	25.7

Park (5669)		vote	share
Smith D.	Con	1,372	62.9
Nicholls Y. Ms.	LD	810	37.1
	Turnout	38.6	25.8

Pittville (5774)		vote	share
Prince D.*	PABAG	733	33.4
Hyett R.	LD	590	26.9
Addison D.	Lab	555	25.3
Regnier N.	Con	315	14.4
	Turnout	38.1	6.5

Prestbury (6072)		vote	share
Godwin L.*	PABAG	1,153	59.9
Walker J.	Con	504	26.2
Jones J. Ms.	LD	202	10.5
Greening P.	Lab	66	3.4
	Turnout	31.8	33.7

St. Marks (4937)		vote	share
Cassin B.	LD	650	62.2
Curtis A.	Lab	205	19.6
Stevenson J.	Con	190	18.2
	Turnout	21.2	42.6

St. Pauls (6008)		vote	share
McLain H. Ms.	LD	640	73.1
Wood T.	Lab	183	20.9
Godwin S. Ms.	Con	53	6.1
	Turnout	14.6	52.2

St. Peters (6010)		vote	share
Thornton P. Ms.*	LD	655	53.6
Murray R. Ms.	Con	297	24.3
Harriss C.	Lab	270	22.1
	Turnout	20.4	29.3

Cheltenham - 1999

All Saints (6674)		vote	share
Simons P.	Con	764	37.3
Jordan S.*	LD	663	32.4
Stringer S. Ms.	PABAG	381	18.6
Bailey S. Ms.	Lab	239	11.7
	Turnout	30.7	4.9

Charlton Kings (6242)		vote	share
Curl B.	Con	1,992	66.7
Worth J.*	LD	703	23.5
Bench F.	Lab	293	9.8
	Turnout	47.9	43.1

College (6721)		vote	share
Chaplin B.	Con	1,488	49.5
Gray M. Ms.*	LD	894	29.7
Stone A.	PABAG	422	14.0
Addison M.	Lab	202	6.7
	Turnout	44.7	19.8

Hatherley & The Reddings (7673) ³		vote	share
Fletcher J. Ms.	Con	1,518	51.4
Baylis E.	Con	1,366	-
Thompson H.	Con	1,332	-
Read C.*	LD	1,072	36.3
Stuart-Smith J.	LD	927	-
Williams A.	LD	880	-
Bailey C.	Lab	361	12.2
Bailey E. Ms.	Lab	330	-
	Turnout	36.5	15.1

Hesters Way (7110)		vote	share
Banyard D.*	LD	794	52.7
Hall P. Ms.	Con	426	28.3
Harriss C.	Lab	287	19.0
	Turnout	21.2	24.4

Lansdown (5954)		vote	share
Driver B. Ms.	Con	1,123	67.0
Harvey S.*	LD	333	19.9
Baxter S.	Lab	220	13.1
	Turnout	28.0	47.1

Leckhampton With Up Hatherley (6565)		vote	share
Ryder C. Ms.	Con	1,685	62.1
Whalley E. Ms.	LD	445	16.4
Rudge S.	PABAG	302	11.1
Burford M.	Lab	283	10.4
	Turnout	41.5	45.7

Park (5615)		vote	share
Gearing G.	Con	1,327	61.2
Pictor M.	LD	615	28.3
Hale D. Ms.	Lab	228	10.5
	Turnout	38.7	32.8

Pittville (5697)		vote	share
Hale M.*	Lab	1,002	49.3
Bowden G.	Con	617	30.3
King F.	LD	415	20.4
	Turnout	35.8	18.9

Prestbury (6064)		vote	share
Silvester L. Ms.	PABAG	1,310	64.7
Walker J.	Con	545	26.9
Lawrence R.	LD	169	8.3
	Turnout	34.0	37.8

St. Marks (4954)		vote	share
Whales J.*	LD	526	48.7
Stevenson J.	Con	304	28.2
Curtis A.	Lab	249	23.1
	Turnout	22.0	20.6

St. Pauls (5975)		vote	share
McKinlay A.*	LD	651	40.9
Godwin S. Ms.	Con	641	40.3
Fawcett W.	Lab	179	11.2
Bessant K.	Green	121	7.6
	Turnout	27.0	0.6

St. Peters (5912)		vote	share
Hawkins C. Ms.*	LD	607	40.4
Marchant R.	Con	568	37.8
Irons R.	Lab	328	21.8
	Turnout	25.4	2.6

Swindon (1416)		vote	share
McVeagh J. Ms.*	PABAG	275	48.5
Snape S. Ms.	Con	233	41.1
Barnes G.	LD	59	10.4
	Turnout	40.0	7.4

Cheltenham - 2000

All Saints (6696)		vote	share
Bowden G.	Con	939	45.9
Franklin C. Ms.*	LD	909	44.4
Cope B.	Lab	198	9.7
	Turnout	30.7	1.5

Charlton Kings (6287)		vote	share
Todman W.*	Con	1,734	65.8
Harvey S.	LD	729	27.7
Chess J.	Lab	173	6.6
	Turnout	42.0	38.1

College (6704)		vote	share
Melville-Smith J.	Con	1,354	45.4
Surgenor L.*	LD	1,281	43.0
Stone A.	Ind	249	8.4
Baxter S.	Lab	98	3.3
	Turnout	44.5	2.4

Hatherley & The Reddings (7636)		vote	share
McLain P.*	Con	1,376	50.6
Rickell A.	LD	1,179	43.3
Bench B. Ms.	Lab	167	6.1
	Turnout	35.7	7.2

Hesters Way (7095)		vote	share
Holliday S. Ms.*	LD	951	62.6
Hall P. Ms.	Con	423	27.8
Moody R.	Lab	146	9.6
	Turnout	21.7	34.7

Lansdown (5801)		vote	share
Seacome D.	Con	1,009	58.1
Jones R.*	LD	596	34.3
Harriss C.	Lab	132	7.6
	Turnout	30.0	23.8

Leckhampton With Up Hatherley (6553)		vote	share
Buckland K.*	Con	1,631	72.5
Whalley E. Ms.	LD	620	27.5
	Turnout	34.5	44.9

Park (5620)			
		vote	share
Garnham R.*	Con	1,375	65.4
Bennett C. Ms.	LD	599	28.5
Bench F.	Lab	129	6.1
Turnout		37.6	36.9

Pittville (5582)			
		vote	share
Hale D. Ms.	Lab	747	42.6
Barlow C.	Con	671	38.2
King F.	LD	337	19.2
Turnout		31.5	4.3

Prestbury (6043)			
		vote	share
Stennett M.	Ind	1,388	58.7
Newman J.*	Con	791	33.4
Gray M. Ms.	LD	187	7.9
Turnout		39.2	25.2

St. Marks (5023)			
		vote	share
Cassin A. Ms.*	LD	759	68.1
Stevenson J.	Con	227	20.4
Curtis A.	Lab	128	11.5
Turnout		22.3	47.8

St. Pauls (6291)			
		vote	share
Stuart-Smith J.	LD	694	44.2
Cupper M.	Con	618	39.4
Fawcett W.	Lab	129	8.2
Bessant K.	Green	94	6.0
Holder L.	Ind	34	2.2
Turnout		25.0	4.8

St. Peters (5797)			
		vote	share
Lawrence D.*	LD	729	56.9
Blumer A.	Con	351	27.4
Irons R.	Lab	201	15.7
Turnout		22.1	29.5

Cheltenham - 2002

All Saints (4095) ²			
		vote	share
Franklin C. Ms.	LD	813	58.4
Jordan S.	LD	800	-
Newman J.	Con	463	33.3
Simons P.*	Con	456	-
Moody B. Ms.	Lab	116	8.3
Turnout		33.7	25.1

Battledown (3586) ²			
		vote	share
McLain P.*	Con	711	-
Thompson H.*	Con	711	47.1
Needs S. Ms.	LD	701	46.5
White A.	LD	699	-
Evans D.	Lab	97	6.4
Turnout		42.6	0.7

Benhall & The Reddings (4039) ²			
		vote	share
Britter N.	LD	1,082	56.4
Rickell A.	LD	948	-
Fletcher J. Ms.*	Con	836	43.6
Harman T.	Con	720	-
Turnout		45.7	12.8

Charlton Kings (4269) ²			
		vote	share
Moreton J. Ms.*	Con	981	50.3
Smith D.*	Con	903	-
Harvey S.	LD	715	36.6
Turner H. Ms.	LD	500	-
Bear C. Ms.	Green	133	6.8
Steers L. Ms.	Lab	123	6.3
Turnout		41.6	13.6

Charlton Park (3967) ²			
		vote	share
Chaplin B.	Con	1,179	64.1
Melville-Smith J.*	Con	1,109	-
Finnemore J.	LD	567	30.8
Oliver A.	LD	542	-
Addison D.	Lab	93	5.1
Turnout		46.4	33.3

College (4072) ²			
		vote	share
Barnes G.	LD	772	48.1
Surgenor L.	LD	736	-
Hall P. Ms.	Con	628	39.1
Evans R.	Con	621	-
Chatfield C.	Green	120	7.5
Howells G. Ms.	Lab	85	5.3
Turnout		37.6	9.0

Hesters Way (3957) ²			
		vote	share
Bishop L. Ms.	LD	614	66.0
Young W. Ms.	LD	584	-
Allen D. Ms.	Con	186	20.0
Silvester L. Ms.*	Con	170	-
Wells R.	Lab	131	14.1
Turnout		23.0	46.0

Lansdown (3940) ²			
		vote	share
Driver B. Ms.*	Con	746	59.1
Seacombe D.*	Con	725	-
Storm M.	LD	288	22.8
Horwood M.	LD	274	-
Bessant K.	Green	140	11.1
Vines K. Ms.	Lab	88	7.0
Turnout		30.0	36.3

Leckhampton (3991) ²			
		vote	share
Buckland K.*	Con	1,186	54.8
Mackdonald R.*	Con	1,181	-
Clarke D.	LD	977	45.2
Coleman J.	LD	949	-
Turnout		55.0	9.7

Oakley (4083) ²			
		vote	share
Hale M.*	Lab	610	58.0
Hale D. Ms.*	Lab	583	-
Anderson B.	LD	254	24.2
Wheeler S. Ms.	LD	202	-
Huckett C. Ms.	Con	187	17.8
Preston-Hall S. Ms.	Con	182	-
Turnout		26.4	33.9

Park (4425) ²			
		vote	share
Garnham R.*	Con	996	57.2
Gearing G.*	Con	951	-
Pictor M.	LD	744	42.8
Whelan W.	LD	650	-
Turnout		40.0	14.5

Pittville (4169) ²			
		vote	share
Hibbert D. Ms.	PABAG	752	43.0
Prince D.*	PABAG	723	-
Bowden G.*	Con	574	32.8
Hopwood J.	Con	502	-
Hay C.	LD	268	15.3
Clish-Green K. Ms.	LD	257	-
Hemmings E.	Lab	156	8.9
Turnout		40.5	10.2

Prestbury (4585) ²			
		vote	share
Godwin L. Ms.*	PABAG	1,187	60.3
Stennett M.*	PABAG	1,171	-
Locke M.	Con	488	24.8
Ryder P.	Con	383	-
Jones J. Ms.	LD	202	10.3
Whalley E. Ms.	LD	99	-
Griffiths C. Ms.	Green	93	4.7
Turnout		40.7	35.5

Springbank (4279) ²			
		vote	share
Morris C.	LD	603	63.5
Wheeler S.	LD	547	-
Stevenson J.	Con	196	20.6
Sygerycz A.	Con	157	-
Harriss C.	Lab	151	15.9
Turnout		21.9	42.8

St. Marks (4387) ²			
		vote	share
Holliday S. Ms.*	LD	709	60.8
Lloyd C.*	LD	698	-
Horton M.	Con	301	25.8
Wall A.	Con	274	-
Curtis A.	Lab	157	13.5
Turnout		26.0	35.0

St. Pauls (4393) ²			
		vote	share
McKinlay A.*	LD	523	66.1
Coleman C.	LD	441	-
Anstey C.	Con	104	13.1
Fawcett W.	Lab	94	11.9
Corbyn P.	Con	86	-
Stone J. Ms.	Green	70	8.8
Turnout		23.8	53.0

St. Peters (4330) ²			
		vote	share
Thornton P. Ms.*	LD	535	48.1
Stuart-Smith J.*	LD	462	-
Marchant R.	Con	426	38.3
Bird R.	Con	333	-
Irons R.	Lab	152	13.7
Turnout		23.7	9.8

Swindon Village (4441) ²			
		vote	share
Ledeux J. Ms.	LD	725	48.3
Jones R.	LD	699	-
McVeagh J. Ms.*	PABAG	598	39.8
Allen P.	PABAG	568	-
Fletcher A.	Con	178	11.9
Gould T.	Con	170	-
Turnout		33.1	8.5

Up Hatherley (4177) ²			
		vote	share
Forbes Z. Ms.	LD	1,015	58.9
Fidgeon D.	LD	1,002	-
Baylis E.*	Con	708	41.1
Nicholson A.	Con	589	-
Turnout		42.6	17.8

Warden Hill (4331) ²			
		vote	share
Hay R. Ms.	LD	945	46.7
Regan A. Ms.	Con	911	45.0
Ryder C. Ms.*	Con	878	-
Oates J.	LD	865	-
Bailey C.	Lab	168	8.3
Turnout		45.3	1.7

Cheltenham - 2004

All Saints (4178)

		vote	share
Jordan S.*	LD	636	44.3
Sygerycz A.	Con	489	34.1
Partridge R.	Green	183	12.7
Ricketts M.	Lab	128	8.9

Turnout 34.6 10.2

Battledown (3537)

		vote	share
Wall A.	Con	1,035	60.9
Coleman J.	LD	523	30.8
Mozley C. Ms.	Lab	142	8.4

Turnout 48.3 30.1

Benhall & The Reddings (4068)

		vote	share
Fletcher J. Ms.	Con	1,034	53.4
Milton R.	LD	780	40.3
Moody R.	Lab	121	6.3

Turnout 48.1 13.1

Charlton Kings (4250)

		vote	share
Smith D.*	Con	1,166	55.8
Harvey S.	LD	729	34.9
Mozeley N.	Lab	196	9.4

Turnout 49.6 20.9

Charlton Park (4019)

		vote	share
Freeman L.	Con	1,284	64.0
Woodward M. Ms.	LD	583	29.1
Addison D.	Lab	138	6.9

Turnout 49.6 35.0

College (4323)

		vote	share
Surgenor L.*	LD	841	46.7
Hall P. Ms.	Con	684	38.0
Wyndham C. Ms.	Green	177	9.8
Howells G. Ms.	Lab	100	5.5

Turnout 41.9 8.7

Hesters Way (4323)

		vote	share
Young W. Ms.*	LD	556	44.1
Banyard D.	Ind	365	28.9
Allen D. Ms.	Con	235	18.6
Moody B. Ms.	Lab	105	8.3

Turnout 29.2 15.1

Lansdown (4156)

		vote	share
Seacome D.*	Con	837	61.1
Storm M.	LD	326	23.8
Bessant K.	Green	105	7.7
Evans D.	Lab	103	7.5

Turnout 33.1 37.3

Leckhampton (4031)

		vote	share
Macdonald R.*	Con	1,466	70.3
Clarke D.	LD	500	24.0
Bench F.	Lab	118	5.7

Turnout 52.2 46.4

Oakley (4089)

		vote	share
Hale D. Ms.*	Lab	502	38.0
Wheeldon P.	LD	492	37.2
Hutton S.	Con	327	24.8

Turnout 32.5 0.8

Park (4620)

		vote	share
Gearing G.*	Con	1,199	59.1
Dobie I.	LD	660	32.5
Hughes B.	Lab	169	8.3

Turnout 44.0 26.6

Pittville (4212)

		vote	share
Prince D.*	PABAG	889	48.1
Bowden G.	Con	576	31.1
Lawrence D.	LD	268	14.5
Stone J. Ms.	Green	117	6.3

Turnout 43.9 16.9

Prestbury (4605)

		vote	share
Stennett M.*	PABAG	1,137	54.4
Newman J.	Con	593	28.4
Jones J. Ms.	LD	166	7.9
Naish J. Ms.	Lab	104	5.0
Mate J. Ms.	Green	89	4.3

Turnout 45.6 26.0

Springbank (4399)

		vote	share
Wheeler S.*	LD	566	53.6
Baylis S. Ms.	Con	360	34.1
Kelvin T.	Lab	129	12.2

Turnout 24.3 19.5

St. Marks (4460)

		vote	share
Webster J.	LD	657	46.6
Towers A.	Con	504	35.7
Harriss C.	Lab	250	17.7

Turnout 32.0 10.8

St. Pauls (4103)

		vote	share
Coleman C.*	LD	557	63.6
Godwin S. Ms.	Con	146	16.7
Griffiths C. Ms.	Green	106	12.1
McVeagh J. Ms.	PABAG	67	7.6

Turnout 21.4 46.9

St. Peters (4391)

		vote	share
Rawson J.	LD	596	44.8
Sudbury K. Ms.	Con	484	36.4
Irons R.	Lab	137	10.3
Garbutt S.	Ind	114	8.6

Turnout 30.4 8.4

Swindon Village (4461)

		vote	share
Allen P.	PABAG	672	41.5
Jones R.*	LD	613	37.9
Horton M.	Con	247	15.3
Lightfoot A. Ms.	Lab	87	5.4

Turnout 36.6 3.6

Up Hatherley (4185)

		vote	share
Nicholson A.	Con	641	35.0
Fidgeon D.*	LD	612	33.4
Burford M.	PABAG	461	25.2
Johnson B.	Lab	117	6.4

Turnout 44.1 1.6

Warden Hill (4402)

		vote	share
Regan A. Ms.*	Con	1,178	54.3
Whyborn R.	LD	820	37.8
Bailey C.	Lab	171	7.9

Turnout 50.0 16.5

Cheltenham - 2006

All Saints (4183)

		vote	share
Franklin C. Ms.*	LD	639	51.1
McArdle S. Ms.	Con	469	37.5
Easton-Lawrence S. Ms.	Lab	73	5.8
Warry T.	UKIP	70	5.6

Turnout 30.0 13.6

Battledown (3577)

		vote	share
McLain P.*	Con	1,032	68.3
Wheeldon P.	LD	387	25.6
Mozley C. Ms.	Lab	92	6.1

Turnout 42.2 42.7

Benhall & The Reddings (4042)

		vote	share
Britter N.*	LD	971	52.8
D'Ambrosio M.	Con	810	44.0
Hughes B.	Lab	58	3.2

Turnout 45.4 8.8

Charlton Kings (4231)

		vote	share
Ryder C. Ms.	Con	1,113	58.8
Harvey S.	LD	681	36.0
Mozley N.	Lab	99	5.2

Turnout 44.6 22.8

Charlton Park (4003)

		vote	share
Hall P. Ms.	Con	1,236	64.1
Dobie I.	LD	693	35.9

Turnout 48.3 28.1

College (4311)

		vote	share
Barnes G.*	LD	904	55.8
McLain H. Ms.	Con	715	44.2

Turnout 37.3 11.7

Hesters Way (4558)

		vote	share
Bishop L. Ms.*	LD	846	66.4
Woolley P.	Con	331	26.0
Boyle K.	Lab	97	7.6

Turnout 27.9 40.4

Lansdown (4351)

		vote	share
Driver B. Ms.*	Con	880	68.2
Pictor M.	LD	410	31.8

Turnout 29.5 36.4

Leckhampton (4064)

		vote	share
Buckland K.*	Con	1,258	60.5
Braunholtz C.	LD	823	39.5

Turnout 51.2 20.9

Oakley (4176)

		vote	share
Hay C.	LD	598	45.5
Hale M.*	Lab	478	36.4
McArdle L.	Con	237	18.1

Turnout 31.5 9.1

Park (4915)

		vote	share
Garnham R.*	Con	1,308	66.2
Fisher B.	LD	668	33.8

Turnout 40.3 32.4

Pittville (4240)			
		vote	share
Hibbert D. Ms.*	PABAG	750	45.8
Hay R. Ms.	LD	417	25.5
Wilkins S.	Con	409	25.0
Bench F.	Lab	62	3.8
Turnout		38.6	20.3

Prestbury (4571)			
		vote	share
Godwin L.*	PABAG	1,050	54.8
Baylis E.	Con	642	33.5
Brown P.	LD	225	11.7
Turnout		41.9	21.3

Springbank (4678)			
		vote	share
Morris C.*	LD	687	61.9
Sygyercz A.	Con	422	38.1
Turnout		23.8	23.9

St. Marks (4546)			
		vote	share
Holliday S. Ms.*	LD	681	54.2
Rogers T.	Con	447	35.6
Harriss C.	Lab	129	10.3
Turnout		27.9	18.6

St. Pauls (4271)			
		vote	share
McKinlay A.*	LD	424	51.2
Anstey C.	Con	155	18.7
Hayes D. Ms.	Ind	141	17.0
Naish J. Ms.	Lab	108	13.0
Turnout		19.4	32.5

St. Peters (4671)			
		vote	share
Thornton P. Ms.*	LD	542	46.2
Hopwood J.	Con	529	45.1
Irons R.	Lab	103	8.8
Turnout		25.2	1.1

Swindon Village (4547)			
		vote	share
Massey P.	LD	687	47.7
McVeagh J. Ms.	PABAG	506	35.1
Mekitarian L.	Con	247	17.2
Turnout		31.6	12.6

Up Hatherley (4208)			
		vote	share
Hall D.	Con	873	44.7
Whyborn R.	LD	755	38.7
Burford M.	PABAG	264	13.5
Howells G. Ms.	Lab	61	3.1
Turnout		46.2	6.0

Warden Hill (4373)			
		vote	share
Hutton S.	Con	1,168	63.3
Dunne L. Ms.	LD	676	36.7
Turnout		42.2	26.7

Cheltenham - 2008

All Saints (4304)			
		vote	share
Jordan S.*	LD	811	59.1
Christensen P.	Con	461	33.6
Becker A.	Green	61	4.4
Boyle K.	Lab	40	2.9
Turnout		32.0	25.5

Battledown (3676)			
		vote	share
Wall A.*	Con	1,013	66.7
McCloskey P.	LD	442	29.1
Mozley C. Ms.	Lab	64	4.2
Turnout		41.5	37.6

Benhall & The Reddings (4057)			
		vote	share
Fletcher J. Ms.*	Con	945	50.7
Pallet C.	LD	918	49.3
Turnout		46.1	1.4

Charlton Kings (4280)			
		vote	share
Smith D.*	Con	973	49.0
McCloskey H. Ms.	LD	940	47.4
Mozley N.	Lab	71	3.6
Turnout		46.4	1.7

Charlton Park (4044)			
		vote	share
Sudbury K. Ms.	Con	1,285	67.9
Woodward M. Ms.	LD	607	32.1
Turnout		47.0	35.8

College (4311)			
		vote	share
Surgenor L.*	LD	997	59.0
Mahon T.	Con	692	41.0
Turnout		39.5	18.1

Hesters Way (4931)			
		vote	share
Flynn W. Ms.*	LD	779	65.1
Woolley P.	Con	351	29.3
Harriss C.	Lab	67	5.6
Turnout		24.4	35.8

Lansdown (4539)			
		vote	share
Seacome D.*	Con	759	59.3
Meyer L. Ms.	LD	428	33.5
Thomas J. Ms.	Green	92	7.2
Turnout		28.2	25.9

Leckhampton (4096)			
		vote	share
Macdonald R.*	Con	1,210	56.0
Coleman C.*	LD	950	44.0
Turnout		52.9	12.0

Oakley (4287)			
		vote	share
Dunne M.	LD	661	51.3
Godwin S. Ms.	Con	403	31.3
Hughes B.	Lab	224	17.4
Turnout		30.1	20.0

Park (5135)			
		vote	share
McLain H. Ms.	Con	1,273	67.7
Stewart P.	LD	607	32.3
Turnout		36.8	35.4

Pittville (4287)			
		vote	share
Cooper T.	Con	625	38.7
Hay R. Ms.	LD	541	33.5
Nelson M. Ms.	PABAG	318	19.7
Green C. Ms.	Green	65	4.0
Easton-Lawrence S. Ms.	Lab	64	4.0
Turnout		37.7	5.2

Prestbury (4541)			
		vote	share
Stennett M.*	PABAG	1,098	58.1
Pearl H.	Con	539	28.5
Jones J. Ms.	LD	253	13.4
Turnout		41.7	29.6

Springbank (4846)			
		vote	share
Wheeler S.*	LD	752	67.3
Probert S.	Con	366	32.7
Turnout		23.1	34.5

St. Marks (4707)			
		vote	share
Webster J.*	LD	622	50.3
Shilling P. Ms.	Con	423	34.2
Gay R.	Lab	108	8.7
Heywood J.	Green	83	6.7
Turnout		26.4	16.1

St. Pauls (4760)			
		vote	share
Wheeldon P.	LD	493	65.7
Ryder P.	Con	257	34.3
Turnout		15.9	31.5

St. Peters (5052)			
		vote	share
Rawson J.*	LD	738	56.6
Hopwood J.	Con	477	36.6
Irons R.	Lab	89	6.8
Turnout		25.9	20.0

Swindon Village (4568)			
		vote	share
Fisher B.	LD	875	57.4
Allen P.*	PABAG	367	24.1
Mekitarian L.	Con	282	18.5
Turnout		33.4	33.3

Up Hatherley (4183)			
		vote	share
Whyborn R.	LD	1,115	58.4
Nicholson A.*	Con	793	41.6
Turnout		45.8	16.9

Warden Hill (4404)			
		vote	share
Regan A. Ms.*	Con	1,245	70.1
McVeigh F. Ms.	LD	530	29.9
Turnout		40.5	40.3

Cheltenham - 2010

All Saints (4278)			
		vote	share
Stewart C.	LD	1,420	52.4
Christensen P.	Con	937	34.6
Hale D. Ms.	Lab	190	7.0
Lander I.	Green	164	6.0
Turnout		63.8	17.8

Battledown (4108)			
		vote	share
McLain P.*	Con	1,563	52.1
McCloskey P.	LD	1,438	47.9
Turnout		73.6	4.2

Benhall & The Reddings (4099)			
		vote	share
Britter N.*	LD	1,701	54.9
Mason C.	Con	1,241	40.1
Whitman B. Ms.	Green	155	5.0
Turnout		75.9	14.9

Charlton Kings (4322)			
		vote	share
McCloskey H. Ms.	LD	1,611	47.8
Ryder C. Ms.*	Con	1,537	45.6
Field S. Ms.	Green	222	6.6
Turnout		78.6	2.2

Charlton Park (4072)			
		vote	share
Hall P. Ms.*	Con	1,641	52.0
Baker P.	LD	1,512	48.0
	Turnout	78.3	4.1
College (4392)			
		vote	share
Barnes G.*	LD	1,664	54.3
Perkins C.	Con	1,175	38.4
Angelo-Thomson V. Ms.	Green	223	7.3
	Turnout	70.2	16.0
Hesters Way (5057)			
		vote	share
Wheeler S.	LD	1,767	68.1
East R.	Con	829	31.9
	Turnout	51.8	36.1
Lansdown (4609)			
		vote	share
Driver B. Ms.*	Con	1,361	49.5
Meyer L. Ms.	LD	1,186	43.1
Heywood J.	Green	205	7.4
	Turnout	60.2	6.4
Leckhampton (4150)			
		vote	share
Bickerton I.	LD	1,639	48.8
Harman T.	Con	1,506	44.8
Bonsor T.	Green	216	6.4
	Turnout	81.4	4.0
Oakley (4296)²			
		vote	share
Hay C.*	LD	1,174	55.5
Hay R. Ms.	LD	1,066	-
Weller M. Ms.	Con	646	30.6
Weller N.	Con	583	-
Hughes B.	Lab	294	13.9
Harriss C.	Lab	282	-
	Turnout	53.5	25.0
Park (5257)			
		vote	share
Garnham R.*	Con	1,917	51.0
Cassin A. Ms.	LD	1,585	42.2
Stubbings J.	Green	257	6.8
	Turnout	71.9	8.8
Pittville (4318)			
		vote	share
Hibbert D. Ms.*	PABAG	971	32.9
Oates J.	LD	966	32.7
Beaty G. Ms.	Con	863	29.2
Green C. Ms.	Green	151	5.1
	Turnout	69.0	0.2
Prestbury (4644)			
		vote	share
Godwin L.*	PABAG	1,798	53.0
Derry T.	Con	842	24.8
Chan H.	LD	754	22.2
	Turnout	73.5	28.2
Springbank (4879)²			
		vote	share
Jeffries P.	LD	1,688	69.4
Morris J.	LD	1,626	-
Smith H. Ms.	Con	746	30.6
Mekitarian L.	Con	729	-
	Turnout	54.3	38.7
St. Marks (4682)			
		vote	share
Holliday S. Ms.*	LD	1,517	55.3
Bourne M.	Con	804	29.3
Gay R.	Lab	290	10.6
Williams S. Ms.	Green	131	4.8
	Turnout	58.9	26.0

St. Pauls (4780)			
		vote	share
Walklett J.	LD	1,347	64.9
Patton G.	Con	518	25.0
Becker A.	Green	210	10.1
	Turnout	44.0	40.0
St. Peters (5189)			
		vote	share
Thornton P.	LD	1,685	60.1
Logan E. Ms.	Con	847	30.2
Irons R.	Lab	271	9.7
	Turnout	54.5	29.9
Swindon Village (4552)			
		vote	share
Massey P.*	LD	1,728	65.1
Hardman J.	Con	925	34.9
	Turnout	59.0	30.3
Up Hatherley (4193)			
		vote	share
McKinlay A.	LD	1,470	46.0
Hall D.*	Con	1,469	46.0
Mozley N.	Lab	129	4.0
Hodgkinson M.	Green	125	3.9
	Turnout	76.6	0.0
Warden Hill (4439)			
		vote	share
Teakle J. Ms.	LD	1,540	47.8
Hutton S.*	Con	1,463	45.4
Van Coevorden A.	Green	219	6.8
	Turnout	73.1	2.4
Cheltenham - 2012			
All Saints (4028)			
		vote	share
Jordan S.*	LD	529	42.7
Babbage M.	Con	476	38.4
Hale D. Ms.	Lab	119	9.6
Green C. Ms.	Green	115	9.3
	Turnout	30.8	4.3
Battledown (4270)			
		vote	share
Wall A.*	Con	771	55.5
McClosky P.	LD	414	29.8
Stubbings J.	Green	204	14.7
	Turnout	32.6	25.7
Benhall & The Reddings (4105)			
		vote	share
Fletcher J. Ms.*	Con	809	46.8
Annfield M.	LD	635	36.7
Bowman P.	UKIP	284	16.4
	Turnout	42.4	10.1
Charlton Kings (4365)			
		vote	share
Reid R.	LD	854	46.4
McLain H. Ms.	Con	768	41.8
Field S. Ms.	Green	217	11.8
	Turnout	42.4	4.7
Charlton Park (4031)			
		vote	share
Smith D.*	Con	898	53.1
Baker P.	LD	794	46.9
	Turnout	42.5	6.1
College (4262)			
		vote	share
Sudbury K. Ms.	LD	864	62.0
Richardson D.	Con	529	38.0
	Turnout	33.6	24.0

Hesters Way (5052)			
		vote	share
Flynn W. Ms.*	LD	623	59.3
Woolley P.	Con	237	22.5
Hughes B.	Lab	191	18.2
	Turnout	20.9	36.7
Lansdown (4289)			
		vote	share
Seacome D.*	Con	569	52.1
Baldwin P. Ms.	LD	524	47.9
	Turnout	26.1	4.1
Leckhampton (4148)			
		vote	share
Chard A.	Con	761	43.4
Pimley E. Ms.	LD	678	38.7
Stone A.	UKIP	172	9.8
Bonsor T.	Green	141	8.0
	Turnout	42.4	4.7
Oakley (4309)			
		vote	share
Hay R. Ms.*	LD	593	54.9
Boyle K.	Lab	225	20.8
Weller M. Ms.	Con	186	17.2
Becker A.	Green	76	7.0
	Turnout	25.2	34.1
Park (5150)			
		vote	share
Harman T.	Con	972	55.8
Compton O.	LD	382	21.9
Angelo- Thomson V. Ms.	Green	230	13.2
Coleman A. Ms.	UKIP	158	9.1
	Turnout	34.0	33.9
Pittville (4168)			
		vote	share
Prince D.	PABAG	713	46.1
Feilder L.	Con	397	25.7
Ward C.	LD	280	18.1
Lander I.	Green	96	6.2
Atkinson E.	UKIP	61	3.9
	Turnout	37.2	20.4
Prestbury (4592)			
		vote	share
Stennett M.*	PABAG	1,239	72.0
Weller N.	Con	263	15.3
Mason A.	LD	218	12.7
	Turnout	37.6	56.7
Springbank (4904)			
		vote	share
Williams S. Ms.	LD	675	65.3
Harriss C.	Lab	189	18.3
Moffitt J.	Con	170	16.4
	Turnout	21.3	47.0
St. Marks (4588)			
		vote	share
Coleman C.*	LD	634	51.5
Coffey A.	Con	267	21.7
Gay R.	Lab	210	17.0
Jones D. Ms.	Green	121	9.8
	Turnout	27.0	29.8
St. Pauls (4775)			
		vote	share
Lansley A.	LD	355	51.2
Vincent P.	Lab	139	20.1
Thomas S.	Con	124	17.9
Guest J.	Green	75	10.8
	Turnout	14.6	31.2

St. Peters (5025)

		vote	share
Rawson J.*	LD	702	63.8
Strachan L. Ms.	Con	217	19.7
Irons R.	Lab	181	16.5
Turnout		22.0	44.1

Swindon Village (4501)

		vote	share
Fisher B.*	LD	835	76.1
Anderson C. Ms.	Con	262	23.9
Turnout		24.8	52.2

Up Hatherley (4162)

		vote	share
Whyborn R.*	LD	901	52.1
Askew G.	Con	552	31.9
Hack J.	UKIP	275	15.9
Turnout		41.7	20.2

Warden Hill (4439)

		vote	share
Regan A. Ms.*	Con	709	60.8
Bexfield C. Ms.	LD	249	21.4
Van Coevorden A.	Green	208	17.8
Turnout		26.3	39.5

