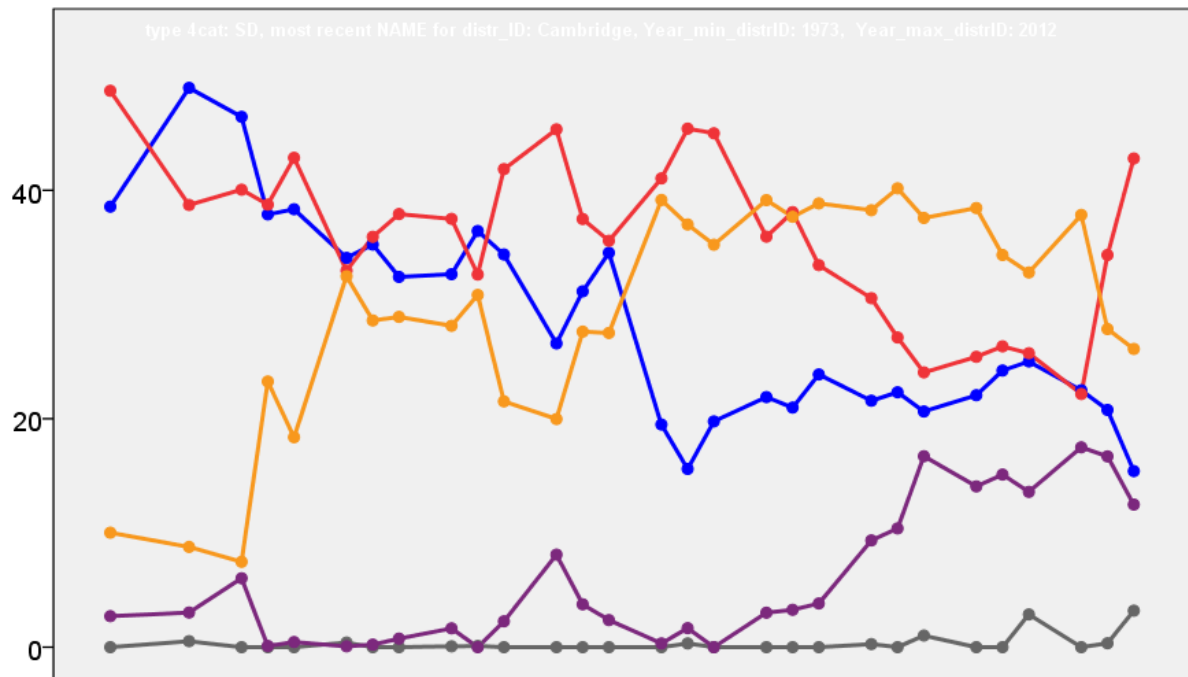


Cambridge City Council Election Results 1973-2012



Colin Rallings and Michael Thrasher
The Elections Centre
Plymouth University

The information contained in this report has been obtained from a number of sources. Election results from the immediate post-reorganisation period were painstakingly collected by Alan Willis largely, although not exclusively, from local newspaper reports. From the mid-1980s onwards the results have been obtained from each local authority by the Elections Centre. The data are stored in a database designed by Lawrence Ware and maintained by Brian Cheal and others at Plymouth University. Despite our best efforts some information remains elusive whilst we accept that some errors are likely to remain. Notice of any mistakes should be sent to elections@plymouth.ac.uk. The results sequence can be kept up to date by purchasing copies of the annual Local Elections Handbook, details of which can be obtained by contacting the email address above.

Front cover: the graph shows the distribution of percentage vote shares over the period covered by the results. The lines reflect the colours traditionally used by the three main parties. The grey line is the share obtained by Independent candidates while the purple line groups together the vote shares for all other parties.

Rear cover: the top graph shows the percentage share of council seats for the main parties as well as those won by Independents and other parties. The lines take account of any by-election changes (but not those resulting from elected councillors switching party allegiance) as well as the transfers of seats during the main round of local election.

The lower graph shows for each main round of local elections the overall percentage turnout (solid line), the percentage of women candidates standing at (dotted line) and the percentage of women among those elected (hashed line).

Cambridge - 1973

Abbey (6324)⁴

		vote	share
Molt A.	Lab	0	-
Nicol W. Ms.	Lab	0	-
Warren P.	Lab	0	0.0
Howe D. Ms.	Lab	0	-

Turnout 0.0 0.0

Arbury (7331)⁴

		vote	share
Kaldor C. Ms.	Lab	1,662	73.4
Woods R.	Lab	1,613	-
Cowell P.	Lab	1,606	-
Peel E. Ms.	Lab	1,539	-
George J. Ms.	Con	602	26.6
Miller S.	Con	540	-
Skipp T.	Con	491	-

Turnout 31.4 46.8

Castle (5153)³

		vote	share
Auker N.	Con	1,121	54.4
George B.	Con	1,063	-
Powley J.	Con	1,061	-
Prescott R.	Lab	939	45.6
Lack S.	Lab	925	-
Sargent N. Ms.	Lab	906	-

Turnout 41.0 8.8

Cherry Hinton (9983)⁵

		vote	share
Sweeney T.	Lab	1,961	45.1
Carter J. Ms.	Lab	1,935	-
Carter A.	Lab	1,894	-
Hughes J.	Lab	1,892	-
Rowling G.	Lab	1,685	-
Johnson J.	Con	1,650	38.0
Dolby S. Ms.	Con	1,648	-
Allin S.	Con	1,647	-
Neale W.	Con	1,585	-
Reilly R.	ILP	734	16.9

Turnout 38.1 7.2

Coleridge (6417)⁴

		vote	share
Fitch J. Ms.	Lib	1,207	35.8
Percival H.	Lab	1,107	32.9
Burn G. Ms.	Con	1,053	31.3
Mackay D.	Con	1,031	-
Anderson D.	Con	923	-
Parker-Rhodes D. Ms.	Lab	907	-
Hartley K. Ms.	Lab	891	-
Knowles G.	Con	863	-
Champernowne M. Ms.	Lab	843	-
Farman C. Ms.	Lib	813	-
Hands E.	Lib	796	-
Edkins K.	Lib	743	-

Turnout 45.8 3.0

East Chesterton (5362)³

		vote	share
Rooney M.	Lab	1,158	54.8
Overhill R. Ms.	Lab	1,063	-
Freeman L.	Lab	1,063	-
Foot J. Ms.	Con	956	45.2
Bosley D.	Con	923	-
Bowles S.	Con	881	-

Turnout 40.2 9.6

Market (7779)⁴

		vote	share
Kessick K. Ms.	Lib	1,070	39.2
Rosenstiel C.	Lib	1,061	-
Foot S.	Lib	1,043	-
Hawes L. Ms.	Lib	1,042	-
Lee J.	Lab	986	36.1
Findlay J. Ms.	Lab	978	-
Barnes A. Ms.	Lab	937	-
Smith M.	Lab	882	-
McCrystal J.	Con	675	24.7
Curry C.	Con	641	-
Leach M. Ms.	Con	620	-
Allcock S.	Con	609	-

Turnout 34.8 3.1

Newnham (8176)⁴

		vote	share
Lipstein G. Ms.	Lab	1,798	59.1
Cohen R. Ms.	Lab	1,726	-
Edwards R.	Lab	1,660	-
Gard E. Ms.	Lab	1,651	-
Chivers P.	Con	1,245	40.9
Masters P.	Con	1,233	-
Reid G.	Con	1,211	-
Benson I.	Con	1,145	-

Turnout 37.1 18.2

Petersfield (4319)²

		vote	share
Thornley R.	Lab	828	58.3
Beveridge R. Ms.	Lab	811	-
Foot R.	Con	592	41.7
John P.	Con	555	-

Turnout 33.8 16.6

Romsey (5709)³

		vote	share
Wright P.	Lab	1,446	73.6
May R.	Lab	1,293	-
Geoghan P.	Lab	1,273	-
Wheatley E. Ms.	Con	520	26.4
Attesley A.	Con	510	-
Chaytor V. Ms.	Con	497	-

Turnout 35.6 47.1

Trumpington (4481)³

		vote	share
Wright R.	Con	942	53.6
Rolfe G.	Con	901	-
Suckling M. Ms.	Con	858	-
Gardiner K. Ms.	Lab	814	46.4
Tucker M. Ms.	Lab	678	-
Chamberlain J.	Lab	666	-

Turnout 39.6 7.3

West Chesterton (4917)³

		vote	share
Garner M.	Con	1,093	53.8
Reed P.	Con	1,014	-
Gough-Goodman C.	Con	983	-
Nightingale H.	Lab	498	24.5
Judge K.	Lab	483	-
Silverman B.	Lab	445	-
Connolly J. Ms.	Lib	439	21.6
Braverman T.	Lib	368	-

Turnout 37.4 29.3

Cambridge - 1976

Abbey (4446)³

		vote	share
Warren P.	Lab	763	52.2
Howe D. Ms.	Lab	671	-
Molt A.	Lab	627	-
Jones E. Ms.	Con	530	36.3
Allen P. Ms.	Ind	168	11.5

Turnout 31.6 15.9

Arbury (5402)³

		vote	share
Gard E. Ms.	Lab	1,160	51.5
Rooney M.	Lab	1,127	-
Pettifor A. Ms.	Lab	1,118	-
Green O. Ms.	Con	1,093	48.5
Tyrrell S.	Con	1,089	-
Newman J.	Con	1,084	-

Turnout 45.4 3.0

Castle (5962)³

		vote	share
Auker N.	Con	1,550	60.8
Powley J.	Con	1,487	-
Reid G.	Con	1,449	-
Mackie M.	Lab	1,000	39.2
Wilson M. Ms.	Lab	987	-
Shicker J.	Lab	976	-

Turnout 44.8 21.6

Cherry Hinton (5078)³

		vote	share
Phillips J.	Con	1,192	55.3
West J.	Con	1,086	-
Coteman G.	Con	1,017	-
Holmes P.	Lab	965	44.7
Hughes J.	Lab	932	-
Dartford S.	Lab	889	-

Turnout 45.7 10.5

Coleridge (5096)³

		vote	share
Mackay D.	Con	1,067	46.4
Burling F.	Con	1,044	-
Anderson D.	Con	996	-
Percival H.	Lab	905	39.3
Curley J.	Lab	819	-
Nicol O. Ms.	Lab	808	-
Hill A.	Lib	329	14.3
Edkins L.	Lib	288	-
Townsend C.	Lib	269	-

Turnout 47.3 7.0

East Chesterton (6210)³

		vote	share
Knowles G.	Con	1,342	58.2
Reid S.	Con	1,323	-
Miller S.	Con	1,279	-
Overhill R.	Lab	964	41.8
Freeman L.	Lab	960	-
Carter A.	Lab	904	-

Turnout 39.3 16.4

Kings Hedges (3922)³

		vote	share
Cowell P.	Lab	772	57.1
Kaldor C. Ms.	Lab	688	-
Geoghan P.	Lab	627	-
Parmenter D.	Con	580	42.9

Turnout 47.4 14.2

Market (6148)³

		vote	share
Rosenstiel C.	Lib	839	26.4
Hawes L. Ms.	Lib	807	-
Edwards G.	Con	790	24.8
O'Hannan M.	Con	783	-
Price K.	Con	776	-
Greaves B.	Lib	764	-
Bleiman D.	Lab	725	22.8
Foot S. Ms.	Ind Lib	520	16.4
Berry P. Ms.	Comm	306	9.6

Turnout 38.7 1.5

Newnham (6720) ³			
		vote	share
Lipstein G. Ms.	Lab	1,306	42.5
Cohen R. Ms.	Lab	1,221	-
Edwards R.	Lab	1,218	-
Cooper B.	Con	1,172	38.1
Shaw J.	Con	1,110	-
Robinson P. Ms.	Con	1,106	-
Gore A.	Lib	598	19.4
Cummins J.	Lib	590	-
Grace D.	Lib	550	-
Turnout		44.8	4.4

Petersfield (6016) ³			
		vote	share
Sargeant E. Ms.	Con	1,018	40.9
Thornely R.	Lab	1,013	40.7
Wheatley E. Ms.	Con	966	-
Mackie D.	Lab	961	-
Wright B.	Con	948	-
Trotman S. Ms.	Lab	936	-
Beveridge R. Ms.	ILP	460	18.5
Turnout		37.9	0.2

Queen Ediths (6071) ³			
		vote	share
Hodder E. Ms.	Con	1,677	57.9
Dolby S. Ms.	Con	1,577	-
Johnson J.	Con	1,568	-
Harper P.	Lab	620	21.4
Rowling G.	Lab	619	-
Shepherd E. Ms.	Lab	615	-
Fitch J. Ms.	Lib	597	20.6
Corsellis A. Ms.	Lib	441	-
Weeds S. Ms.	Lib	380	-
Turnout		46.9	36.5

Romsey (5686) ³			
		vote	share
Wright P.	Lab	971	45.2
May R.	Lab	879	-
Sweeney T.	Lab	860	-
Barker C.	Con	707	32.9
Charlesworth A.	Lib	469	21.8
Steward J.	Lib	369	-
Minton J.	Lib	356	-
Turnout		36.2	12.3

Trumpington (5667) ³			
		vote	share
Wright R.	Con	1,511	67.2
Harrison B. Ms.	Con	1,453	-
Suckling M. Ms.	Con	1,447	-
Richer S. Ms.	Lab	737	32.8
Turnout		44.2	34.4

West Chesterton (5327) ³			
		vote	share
Garner M. Ms.	Con	1,578	72.6
Reed P.	Con	1,494	-
Gough-Goodman C.	Con	1,461	-
Hunt J.	Lab	596	27.4
Nightingale H.	Lab	562	-
Lehmann A.	Lab	519	-
Turnout		41.6	45.2

Cambridge - 1978

Abbey (4647)			
		vote	share
Molt A.*	Lab	830	67.1
Jones E. Ms.	Con	407	32.9
Turnout		26.6	34.2

Arbury (5632)			
		vote	share
May B. Ms.	Lab	1,314	53.7
Jones S. Ms.	Con	1,135	46.3
Turnout		43.5	7.3

Castle (5953)			
		vote	share
Reid G.*	Con	1,082	44.0
Kimber R.	Lab	842	34.2
Gore A.	Lib	537	21.8
Turnout		41.3	9.8

Cherry Hinton (5284)			
		vote	share
Barker C.	Con	1,321	52.0
Carter A.	Lab	1,217	48.0
Turnout		48.0	4.1

Coleridge (5168)			
		vote	share
Seagrove C.	Con	979	48.5
Curley J.	Lab	860	42.6
Mitchell P.	Lib	178	8.8
Turnout		39.0	5.9

East Chesterton (6332)			
		vote	share
Miller S.*	Con	1,277	58.3
Wall R.	Lab	912	41.7
Turnout		34.6	16.7

Kings Hedges (4083)			
		vote	share
Geoghan P.*	Lab	793	56.2
Mackenzie M.	Con	474	33.6
Badcock B.	Lib	145	10.3
Turnout		34.6	22.6

Market (6473)			
		vote	share
Reiss M. Ms.	CC	1,776	71.2
Edwards G.*	Con	718	28.8
Turnout		38.5	42.4

Newnham (6809)			
		vote	share
Nicol W. Ms.	Lab	1,501	49.1
Cragie E. Ms.	Con	987	32.3
Waite A.	Lib	567	18.6
Turnout		44.9	16.8

Petersfield (6101)			
		vote	share
Gawthrop F.	Lab	1,218	49.9
Wheatley E. Ms.*	Con	1,022	41.9
Edkins L.	Lib	201	8.2
Turnout		40.0	8.0

Queen Ediths (6114)			
		vote	share
Johnson J.*	Con	1,569	70.3
Dartford S.	Lab	663	29.7
Turnout		36.5	40.6

Romsey (5722)			
		vote	share
Sweeney T.*	Lab	989	49.4
Robinson P.	Con	601	30.0
Charlesworth A.	Lib	380	19.0
Challoner J.	Comm	31	1.5
Turnout		35.0	19.4

Trumpington (5880)			
		vote	share
Suckling B. Ms.*	Con	1,406	62.1
Watts S.	Lab	524	23.1
Green D.	Lib	287	12.7
Mowton D.	Comm	48	2.1
Turnout		38.5	38.9

West Chesterton (5318)			
		vote	share
Gough-Goodman C.*	Con	1,284	66.7
Overy R.	Lab	641	33.3
Turnout		36.2	33.4

Cambridge - 1979

Abbey (4789)			
		vote	share
Howe D. Ms.*	Lab	2,006	59.9
Jones E. Ms.	Con	945	28.2
Greaves B.	Lib	400	11.9
Turnout		70.0	31.7

Arbury (5566)			
		vote	share
Cowell E.	Lab	1,797	44.9
Harris P.	Con	1,566	39.2
Arbon R.	Lib	636	15.9
Turnout		71.8	5.8

Castle (5936)			
		vote	share
Pickles D.	Lib	2,148	49.9
Powley J.*	Con	1,153	26.8
Mortlock E.	Lab	1,003	23.3
Turnout		72.5	23.1

Cherry Hinton (5244)			
		vote	share
Howard C.	Lab	1,804	44.2
West J.*	Con	1,683	41.3
Burch C.	Lib	591	14.5
Turnout		77.8	3.0

Coleridge (5108)			
		vote	share
Burling F.*	Con	1,730	45.3
Douglas G.	Lab	1,480	38.8
Mitchell P.	Lib	606	15.9
Turnout		74.7	6.6

East Chesterton (6204)			
		vote	share
Reid S.*	Con	2,057	47.2
Wall R.	Lab	1,605	36.8
Anderson A. Ms.	Lib	699	16.0
Turnout		70.3	10.4

Kings Hedges (4184)			
		vote	share
Kaldor C. Ms.	Lab	1,544	52.3
George J. Ms.	Con	944	32.0
Badcock B.	Lib	462	15.7
Turnout		70.5	20.3

Market (6231)			
		vote	share
Hawes L. Ms.*	Lib	2,295	55.8
O'Hannan M.	Con	966	23.5
Gunn M.	Lab	853	20.7
Turnout		66.0	32.3

Newnham (6720)			
		vote	share
Cohen R. Ms.*	Lab	2,273	47.2
Osbourne P. Ms.	Con	1,276	26.5
Alford V. Ms.	Lib	1,263	26.2
Turnout		71.6	20.7

Petersfield (5967)			
		vote	share
Thornely R.*	Lab	1,899	48.9
Tasker B. Ms.	Con	1,372	35.3
Rosentiel J. Ms.	Lib	613	15.8
Turnout		65.1	13.6

Queen Ediths (5918)			
		vote	share
Dolby S. Ms.*	Con	2,317	51.4
Shepherd E. Ms.	Lab	1,199	26.6
Newman A.	Lib	990	22.0
Turnout		76.1	24.8

Romsey (5639)			
		vote	share
May R.*	Lab	1,891	49.3
Clarke S.	Con	1,193	31.1
Waite A.	Lib	748	19.5
		Turnout	68.0 18.2

Trumpington (5549)			
		vote	share
Wheatley E. Ms.	Con	2,019	51.9
Watts S.	Lab	1,067	27.4
Green D.	Lib	747	19.2
Mowton D.	Comm	59	1.5
		Turnout	70.1 24.5

West Chesterton (5294)			
		vote	share
Reed P.*	Con	1,827	49.9
Elliott J.	Lab	1,105	30.2
Gore A.	Lib	726	19.8
		Turnout	69.1 19.7

Cambridge - 1980

Abbey (4740)			
		vote	share
Smith R.	Lab	1,169	71.6
Jones E. Ms.	Con	365	22.4
Green D.	Lib	99	6.1
		Turnout	34.5 49.2

Arbury (5463)			
		vote	share
Gard E. Ms.*	Lab	1,272	52.6
Harris P.	Con	922	38.2
Burch C.	Lib	222	9.2
		Turnout	44.2 14.5

Castle (5913)			
		vote	share
Charlesworth A.	Lib	1,162	43.5
Auker N.*	Con	984	36.9
Robinson J. Ms.	Lab	524	19.6
		Turnout	45.2 6.7

Cherry Hinton (5225)			
		vote	share
Woodhouse J.	Lab	1,382	52.6
Phillips J.*	Con	1,059	40.3
Corsellis A. Ms.	Lib	187	7.1
		Turnout	50.3 12.3

Coleridge (5193)			
		vote	share
Todd M.	Lab	1,236	49.0
Mackay D.*	Con	998	39.5
Heathcock G.	Lib	291	11.5
		Turnout	48.6 9.4

East Chesterton (6088)			
		vote	share
Knowles G.*	Con	1,245	45.7
Widdows C.	Lab	1,239	45.5
Anderson A. Ms.	Lib	238	8.7
		Turnout	44.7 0.2

Kings Hedges (4398)			
		vote	share
Cowell P.*	Lab	1,134	70.6
Jenkins J. Ms.	Con	344	21.4
Badcock B.	Lib	128	8.0
		Turnout	36.5 49.2

Market (6082)			
		vote	share
Rosenstiel C.*	Lib	1,036	50.8
O'Hannan M.	Con	566	27.8
Colenso G.	Lab	436	21.4
		Turnout	33.5 23.1

Newnham (6733)			
		vote	share
Lipstein G. Ms.*	Lab	1,215	47.9
Craigie S.	Con	852	33.6
Fozzard S.	Lib	467	18.4
		Turnout	37.6 14.3

Petersfield (5836)			
		vote	share
Tufnell J. Ms.	Lab	1,434	52.9
Sergeant E. Ms.*	Con	898	33.1
Browne P.	Lib	236	8.7
Paren J.	Ecol	145	5.3
		Turnout	46.5 19.8

Queen Ediths (5902)			
		vote	share
Edwards G.	Con	1,361	46.0
Galloway B.	Lib	1,016	34.4
Shepherd E. Ms.	Lab	579	19.6
		Turnout	50.1 11.7

Romsey (5620)			
		vote	share
Wright P.*	Lab	1,214	59.3
Wright B.	Con	553	27.0
Folley R.	Lib	279	13.6
		Turnout	36.4 32.3

Trumpington (5549)			
		vote	share
Wright R.*	Con	1,226	56.5
Watts S.	Lab	598	27.6
Walker J.	Lib	345	15.9
		Turnout	39.1 29.0

West Chesterton (5249)			
		vote	share
Garner M. Ms.*	Con	1,123	57.9
Wall R.	Lab	532	27.4
Waite A.	Lib	284	14.6
		Turnout	36.9 30.5

Cambridge - 1982

Abbey (4673)			
		vote	share
Widdows C.	Lab	1,088	57.4
Mayland-Smith E. Ms.	Lib/SDP	435	23.0
Worland S. Ms.	Con	372	19.6
		Turnout	40.6 34.5

Arbury (5364)			
		vote	share
Watts S.	Lab	1,058	39.2
George S.	Con	854	31.7
Laidlaw P.	Lib/SDP	785	29.1
		Turnout	50.3 7.6

Castle (5735)			
		vote	share
Duff A.	Lib/SDP	1,300	46.3
Reid G.*	Con	1,067	38.0
Newbury R.	Lab	440	15.7
		Turnout	48.9 8.3

Cherry Hinton (5248)			
		vote	share
Herbert A.	Lab	1,123	38.9
Alderson A.	Con	952	33.0
Reiss M. Ms.	Lib/SDP	809	28.1
		Turnout	55.0 5.9

Coleridge (5337)			
		vote	share
Seagrave C.*	Con	1,127	41.3
Fairclough E. Ms.	Lab	1,003	36.8
Hunter S.	Lib/SDP	598	21.9
		Turnout	51.1 4.5

East Chesterton (6102)			
		vote	share
Miller S.*	Con	1,257	40.8
Hardy J.	Lab	952	30.9
Marshall S.	Lib/SDP	874	28.3
		Turnout	50.5 9.9

Kings Hedges (5084)			
		vote	share
Overhill R.	Lab	811	48.0
Riley-Smith T.	Lib/SDP	374	22.1
Sale W.	Con	358	21.2
Geoghan P.*	Ind	148	8.8
		Turnout	33.3 25.8

Market (5961)			
		vote	share
Rosenstiel J. Ms.	Lib/SDP	1,092	47.5
O'Hannan M.	Con	626	27.2
Carter A.	Lab	580	25.2
		Turnout	38.6 20.3

Newnham (7054)			
		vote	share
Cane V. Ms.	Lab	1,028	36.4
Bard D.	Con	937	33.2
Moore T.	Lib/SDP	857	30.4
		Turnout	40.0 3.2

Petersfield (5758)			
		vote	share
Gawthrop F.*	Lab	1,560	52.7
Pearl D.	Lib/SDP	730	24.7
Butler M.	Con	671	22.7
		Turnout	51.4 28.0

Queen Ediths (5883)			
		vote	share
Johnson J.*	Con	1,486	44.9
Bradford L. Ms.	Lib/SDP	1,317	39.8
Robertson R.	Lab	507	15.3
		Turnout	56.3 5.1

Romsey (5601)			
		vote	share
Sweeney T.*	Lab	1,189	45.8
Folley R.	Lib/SDP	1,007	38.8
Hay A.	Con	376	14.5
Hooth M.	WRP	25	1.0
		Turnout	46.4 7.0

Trumpington (5743)			
		vote	share
Suckling E. Ms.*	Con	1,409	55.6
Robinson K.	Lib/SDP	718	28.4
Pugh S.	Lab	405	16.0
		Turnout	44.1 27.3

West Chesterton (5314)			
		vote	share
Hayes M.	Lib/SDP	1,126	41.5
Gough-Goodman C.*	Con	1,125	41.5
Sinha A.	Lab	461	17.0
		Turnout	51.0 0.0

Cambridge - 1983

Abbey (4641)			
		vote	share
Fairclough E. Ms.	Lab	1,167	61.9
Worland S. Ms.	Con	488	25.9
Hales K.	Lib/SDP	230	12.2
		Turnout	40.6 36.0

Arbury (5379)			
		vote	share
Cowell E.*	Lab	1,305	47.1
George S.	Con	893	32.2
Laidlaw P.	Lib/SDP	572	20.6
Turnout		51.5	14.9

Castle (5849)			
		vote	share
Pickles D.*	Lib/SDP	1,425	45.9
Reid G.	Con	1,077	34.7
Allum V.	Lab	605	19.5
Turnout		53.1	11.2

Cherry Hinton (5291)			
		vote	share
Howard C.*	Lab	1,443	46.0
Akehurst K.	Con	989	31.5
Waller G. Ms.	Lib/SDP	703	22.4
Turnout		59.3	14.5

Coleridge (5434)			
		vote	share
Burling F.*	Con	1,334	44.2
Carter A.	Lab	1,305	43.2
Hunter S.	Lib/SDP	379	12.6
Turnout		55.5	1.0

East Chesterton (6126)			
		vote	share
Reid S.*	Con	1,320	41.0
Hall P.	Lab	1,117	34.7
Carling C. Ms.	Lib/SDP	786	24.4
Turnout		52.6	6.3

Kings Hedges (5199)			
		vote	share
Burn A.	Lab	1,117	49.5
Smee R.	Lib/SDP	618	27.4
Dean A.	Con	523	23.2
Turnout		43.4	22.1

Market (5874)			
		vote	share
Hawes L. Ms.*	Lib/SDP	1,092	42.0
Phillips J.	Con	766	29.5
Fallside M. Ms.	Lab	741	28.5
Turnout		44.2	12.5

Newnham (7200)			
		vote	share
Cohen R. Ms.*	Lab	1,308	37.9
Bard D.	Con	1,223	35.4
Reiss M. Ms.	Lib/SDP	922	26.7
Turnout		48.0	2.5

Petersfield (5796)			
		vote	share
Robertson R.	Lab	1,538	55.9
Clark G.	Con	781	28.4
Cooper T.	Lib/SDP	431	15.7
Turnout		47.4	27.5

Queen Ediths (5970)			
		vote	share
Dolby S. Ms.*	Con	1,670	48.0
Bradford L. Ms.	Lib/SDP	1,284	36.9
Winney P. Ms.	Lab	526	15.1
Turnout		58.3	11.1

Romsey (5615)			
		vote	share
Sedgwick-Jell S.	Lab	1,263	40.3
Grove C. Ms.	Lib/SDP	1,229	39.2
Clark J. Ms.	Con	552	17.6
Grumley G.	Green	90	2.9
Turnout		55.8	1.1

Trumpington (5572)			
		vote	share
Wheatley E. Ms.*	Con	1,428	58.0
Robinson K.	Lib/SDP	545	22.1
Makin A. Ms.	Lab	488	19.8
Turnout		44.2	35.9

West Chesterton (5220)			
		vote	share
Richmond H. Ms.	Lib/SDP	1,301	43.5
Reed P.*	Con	1,146	38.4
Sinha A.	Lab	541	18.1
Turnout		57.2	5.2

Cambridge - 1984

Abbey (4707)			
		vote	share
Smith R.*	Lab	1,208	62.3
Day P.	Con	550	28.4
McBey D.	Lib/SDP	182	9.4
Turnout		41.2	33.9

Arbury (5420)			
		vote	share
Gard E. Ms.*	Lab	1,093	46.8
Pilkington S. Ms.	Con	741	31.7
Warner P.	Lib/SDP	501	21.5
Turnout		43.1	15.1

Castle (5847)			
		vote	share
Charlesworth A.*	Lib/SDP	1,261	44.3
French K. Ms.	Con	948	33.3
Adams M.	Lab	637	22.4
Turnout		48.7	11.0

Cherry Hinton (5370)			
		vote	share
Woodhouse J.*	Lab	1,389	49.1
Davies R. Ms.	Con	846	29.9
Greenwell J. Ms.	Lib/SDP	592	20.9
Turnout		52.6	19.2

Coleridge (5546)			
		vote	share
Todd M.*	Lab	1,538	48.7
Cornwell I.	Con	1,255	39.7
Lavery S.	Lib/SDP	367	11.6
Turnout		57.0	9.0

East Chesterton (6214)			
		vote	share
George S.	Con	1,355	43.4
Allum V.	Lab	1,063	34.0
Simpson M. Ms.	Lib/SDP	705	22.6
Turnout		50.3	9.3

Kings Hedges (5212)			
		vote	share
Cowell P.*	Lab	1,188	55.9
Smee R.	Lib/SDP	599	28.2
Barker C. Ms.	Con	340	16.0
Turnout		40.8	27.7

Market (5885)			
		vote	share
Rosenstiel C.*	Lib/SDP	1,257	49.5
Fallside M. Ms.	Lab	695	27.4
Jones A.	Con	492	19.4
Astin T.	Ecol	93	3.7
Turnout		43.1	22.2

Newnham (7148)			
		vote	share
Lipstein G. Ms.*	Lib/SDP	1,204	37.8
Glasberg J. Ms.	Lab	1,052	33.1
Bard D.	Con	925	29.1
Turnout		44.5	4.8

Petersfield (5704)			
		vote	share
Tuffnell J. Ms.*	Lab	1,510	57.2
Gardiner S.	Con	645	24.4
Lake A.	Lib/SDP	391	14.8
Grimley G.	Ecol	96	3.6
Turnout		46.3	32.7

Queen Ediths (5981)			
		vote	share
Edwards G.*	Con	1,477	44.7
Allan H.	Lib/SDP	1,238	37.5
Burt J. Ms.	Lab	491	14.9
Garvie C. Ms.	Ecol	97	2.9
Turnout		55.2	7.2

Romsey (5613)			
		vote	share
Wright P.*	Lab	1,497	55.0
Waller G. Ms.	Lib/SDP	714	26.3
Barker C.	Con	509	18.7
Turnout		48.5	28.8

Trumpington (5701)			
		vote	share
Clark G.	Con	1,166	49.4
Kent A. Ms.	Lib/SDP	767	32.5
Makin A. Ms.	Lab	427	18.1
Turnout		41.4	16.9

West Chesterton (5289)			
		vote	share
Boyd S.	Lib/SDP	1,206	41.7
Garner M. Ms.*	Con	1,068	36.9
Overy R.	Lab	617	21.3
Turnout		54.7	4.8

Cambridge - 1986

Abbey (4852)			
		vote	share
Barnes A.	Lab	998	59.9
Hayward J. Ms.	Con	406	24.4
Whitt B.	All	263	15.8
Turnout		34.4	35.5

Arbury (5347)			
		vote	share
Thompson M. Ms.	Lab	1,041	47.3
Davenport M. Ms.	Con	672	30.5
Burgess K. Ms.	All	487	22.1
Turnout		41.1	16.8

Castle (5850)			
		vote	share
Duff A.*	All	1,221	42.0
Hoskins P.	Con	945	32.5
Megginson J.	Lab	738	25.4
Turnout		49.6	9.5

Cherry Hinton (5373)			
		vote	share
Ling T.	Lab	1,199	41.8
Bright A. Ms.	Con	936	32.6
Braddick N.	All	734	25.6
Turnout		53.4	9.2

Coleridge (5777)			
		vote	share
New A. Ms.	Lab	1,474	48.3
Beckett G.	Con	1,184	38.8
Paton A.	All	395	12.9
Turnout		52.8	9.5

East Chesterton (6347)			
		vote	share
Day P.	Con	1,429	40.8
Blake M.	Lab	1,247	35.6
Godfrey V.	All	824	23.5
Turnout		55.1	5.2

Kings Hedges (5323)			
		vote	share
Overhill R.*	Lab	881	52.2
Howart D.	All	418	24.7
Northfield S.	Con	370	21.9
Richer G.	Comm	20	1.2
Turnout		31.7	27.4

Market (5893)			
		vote	share
Rosenstiel J. Ms.*	All	1,036	42.6
Leggatt R.	Lab	765	31.5
Dodson A.	Con	439	18.1
Paren J.	Green	191	7.9
Turnout		41.3	11.1

Newnham (7125)			
		vote	share
Cane V. Ms.*	Lab	1,057	32.5
Bondi C. Ms.	All	1,053	32.3
Connolly E.	Con	878	27.0
Lloyd S.	Green	269	8.3
Turnout		45.7	0.1

Petersfield (5761)			
		vote	share
Gawthrop F.*	Lab	1,676	64.6
Walton D. Ms.	Con	563	21.7
Edkins L.	All	354	13.7
Turnout		45.0	42.9

Queen Ediths (5926)			
		vote	share
Gough-Goodman C.	Con	1,456	44.1
Bradford L. Ms.	All	1,298	39.4
Stiles J. Ms.	Lab	544	16.5
Turnout		55.7	4.8

Romsey (5560)			
		vote	share
Sweeney T.*	Lab	1,261	58.5
Barker C.	Con	521	24.2
Hurrell C. Ms.	All	373	17.3
Turnout		38.8	34.3

Trumpington (5824)			
		vote	share
Suckling E. Ms.*	Con	1,374	48.5
Slatter P. Ms.	All	994	35.1
Glegg N. Ms.	Lab	438	15.5
Wilbur L.	Ind	26	0.9
Turnout		48.6	13.4

West Chesterton (5367)			
		vote	share
Marshall S.	All	1,043	36.6
Strachan J.	Con	1,006	35.3
McHugh P.	Lab	664	23.3
Wright M. Ms.	Green	134	4.7
Turnout		53.0	1.3

Cambridge - 1987

Abbey (4826)			
		vote	share
Durrant J.	Lab	1,069	55.4
Hayward J. Ms.	Con	583	30.2
Jordan S.	All	278	14.4
Turnout		40.0	25.2

Arbury (5400)			
		vote	share
Chaplin P.	Lab	959	39.7
Davenport M. Ms.	Con	891	36.9
Pegrum A. Ms.	All	563	23.3
Turnout		44.7	2.8

Castle (6071)			
		vote	share
Howarth D.	All	1,470	43.8
Gregory R. Ms.	Con	1,153	34.4
Ball J. Ms.	Lab	733	21.8
Turnout		55.3	9.4

Cherry Hinton (5312)			
		vote	share
Wright A. Ms.	Con	1,262	37.3
Howard C.*	Lab	1,200	35.5
Basham M. Ms.	All	918	27.2
Turnout		63.6	1.8

Coleridge (5810)			
		vote	share
Burling F.*	Con	1,559	46.1
Blake M.	Lab	1,337	39.5
Paton A.	All	485	14.3
Turnout		58.2	6.6

East Chesterton (6367)			
		vote	share
Beckett G.	Con	1,628	47.5
Fairclough E. Ms.	Lab	1,013	29.6
Trowell M. Ms.	All	787	23.0
Turnout		53.8	17.9

Kings Hedges (5386) ²			
		vote	share
Hopkins S.	Lab	809	42.8
Patterson J. Ms.	Lab	756	-
Creek D.	All	575	30.4
Dodson A.	Con	507	26.8
Hoskins P.	Con	500	-
Warner P.	All	472	-
Turnout		35.1	12.4

Market (5963)			
		vote	share
Hawes L. Ms.*	All	1,202	40.7
Leggatt R.	Lab	1,026	34.8
Cathcart M.	Con	724	24.5
Turnout		49.5	6.0

Newnham (7145)			
		vote	share
Mayland-Smith E. Ms.	All	1,496	39.1
Glasberg J. Ms.	Lab	1,286	33.6
Connolly E.	Con	1,040	27.2
Turnout		53.5	5.5

Petersfield (5959)			
		vote	share
Robertson R.*	Lab	1,517	52.2
Northfield S.	Con	672	23.1
Lake A.	All	671	23.1
Gill S.	Ind	44	1.5
Turnout		48.7	29.1

Queen Ediths (5906)			
		vote	share
Reid G.	Con	1,622	46.7
Reynolds P. Ms.	All	1,395	40.2
Bedford T.	Lab	453	13.1
Turnout		58.8	6.5

Romsey (5621)			
		vote	share
Sedgwick-Jell S.*	Lab	1,304	50.5
Wheeler R. Ms.	Con	755	29.3
Anderson K. Ms.	All	522	20.2
Turnout		45.9	21.3

Trumpington (6020)			
		vote	share
Wheatley E. Ms.*	Con	1,495	52.6
Slatter P. Ms.	All	1,041	36.6
Rose M.	Lab	307	10.8
Turnout		48.6	16.0

West Chesterton (5380)			
		vote	share
Knowles E. Ms.	All	1,416	43.9
Strachan J.	Con	1,255	38.9
Antopolski V. Ms.	Lab	552	17.1
Turnout		59.9	5.0

Cambridge - 1988

Abbey (4779)			
		vote	share
Smith R.*	Lab	1,096	64.6
Wheatley T.	Con	433	25.5
Coombes B.	SLD	103	6.1
Bryan P. Ms.	Green	64	3.8
Turnout		35.5	39.1

Arbury (5241)			
		vote	share
Gard E. Ms.*	Lab	1,100	51.8
Davenport M. Ms.	Con	793	37.3
Corder E. Ms.	SLD	232	10.9
Turnout		40.5	14.4

Castle (6206)			
		vote	share
Gregory R. Ms.	Con	1,058	34.9
Bays J. Ms.	SLD	1,048	34.5
Ball J. Ms.	Lab	928	30.6
Turnout		48.9	0.3

Cherry Hinton (5334)			
		vote	share
Woodhouse J.*	Lab	1,623	51.6
Wright B.	Con	1,191	37.8
Allan M.	SLD	333	10.6
Turnout		59.0	13.7

Coleridge (5838)			
		vote	share
Todd M.*	Lab	1,807	55.3
Stokes R.	Con	1,267	38.8
Bowden C. Ms.	SLD	194	5.9
Turnout		56.0	16.5

East Chesterton (6322)			
		vote	share
George S.*	Con	1,460	48.6
Thompson M.	Lab	1,110	36.9
Znajek R.	SLD	437	14.5
Turnout		47.6	11.6

Kings Hedges (5256)			
		vote	share
Cowell P.*	Lab	1,175	65.2
Hulyer M. Ms.	Con	395	21.9
Creek D.	SLD	231	12.8
Turnout		34.3	43.3

Market (5960)			
		vote	share
Leggatt R.	Lab	1,061	38.4
Rosenstiel C.*	SLD	1,032	37.4
O'Hannan M	Con	506	18.3
Tester M.	Green	164	5.9
Turnout		46.4	1.0

Newnham (7132)

		vote	share
Fairclough E. Ms.	Lab	1,152	33.9
Lipstein G. Ms.*	SLD	1,061	31.3
Knight A. Ms.	Con	934	27.5
Wolfe C. Ms.	Green	248	7.3
Turnout		47.6	2.7

Petersfield (6016)

		vote	share
Tuffnell G. Ms.*	Lab	1,679	66.3
Butler C. Ms.	Con	529	20.9
Paton A.	SLD	188	7.4
Lenihan D.	Green	138	5.4
Turnout		42.1	45.4

Queen Ediths (5878)

		vote	share
Edwards G.*	Con	1,550	49.0
Baker A.	SLD	980	31.0
Fairclough R.	Lab	631	20.0
Turnout		53.8	18.0

Romsey (5609)

		vote	share
Wright P.*	Lab	1,295	51.1
Jones L.	SLD	633	25.0
Wheeler R. Ms.	Con	492	19.4
Fox D.	Green	114	4.5
Turnout		45.2	26.1

Trumpington (6002)

		vote	share
Froggett S. Ms.	Con	1,255	51.8
Slatter P. Ms.	SLD	747	30.8
Robson A.	Lab	420	17.3
Turnout		40.4	21.0

West Chesterton (5555)

		vote	share
Strachan J.	Con	1,074	39.1
Trowell M. Ms.	SLD	879	32.0
Mann C. Ms.	Lab	674	24.5
Wright M. Ms.	Green	123	4.5
Turnout		49.5	7.1

Cambridge - 1990

Abbey (4894)

		vote	share
Barnes A.*	Lab	1,401	67.0
Cann S. Ms.	Con	436	20.8
Emms S.	Green	140	6.7
Whitt B.	SLD	115	5.5
Turnout		42.7	46.1

Arbury (5192)

		vote	share
Thompson M. Ms.*	Lab	1,343	54.4
Clark J. Ms.	Con	687	27.8
Corder E. Ms.	SLD	294	11.9
Ounsworth S.	Green	145	5.9
Turnout		47.6	26.6

Castle (6110)

		vote	share
Charlesworth A.	SLD	1,139	33.6
Price K.	Lab	1,014	29.9
Saunders J. Ms.	Con	983	29.0
Holloway M. Ms.	Green	258	7.6
Turnout		55.5	3.7

Cherry Hinton (5402)

		vote	share
Maceachern A.	Lab	1,502	53.9
Baty R.	Con	885	31.7
Tooth P.	Green	218	7.8
Lowe K.	SLD	184	6.6
Turnout		51.6	22.1

Coleridge (5769)²

		vote	share
Ball J. Ms.	Lab	1,721	54.8
New M. Ms.*	Lab	1,491	-
Coleman J.	Con	989	31.5
Shinn J. Ms.	Con	978	-
Mackie V. Ms.	SLD	235	7.5
Robindon K. Ms.	SLD	209	-
Belza J. Ms.	Green	193	6.2
Hutton G. Ms.	Green	183	-
Turnout		52.0	23.3

East Chesterton (6359)

		vote	share
Antopolski V. Ms.	Lab	1,515	43.6
Howe G.	Con	998	28.7
Znajek R.	SLD	776	22.3
Pope P.	Green	186	5.4
Turnout		54.6	14.9

Kings Hedges (5245)

		vote	share
Patterson J. Ms.	Lab	1,307	61.5
Graham M.	Con	381	17.9
Creek D.	SLD	292	13.7
Entwistle J.	Green	144	6.8
Turnout		40.5	43.6

Market (5860)

		vote	share
Rosenstiel J. Ms.*	SLD	1,285	41.1
Southernwood K.	Lab	1,184	37.9
Waldron M.	Con	361	11.5
Droy A.	Green	297	9.5
Turnout		53.4	3.2

Newnham (7221)

		vote	share
Glasberg J. Ms.	Lab	1,676	46.5
Bishop M.	Con	881	24.4
Whyte N.	SLD	638	17.7
Smith J.	Green	409	11.3
Turnout		49.9	22.1

Petersfield (6169)

		vote	share
Stevens F. Ms.	Lab	1,751	60.9
Hull A. Ms.	Con	497	17.3
Graham R.	Green	359	12.5
Paton A.	SLD	268	9.3
Turnout		46.6	43.6

Queen Ediths (5727)

		vote	share
Gough-Goodman C.*	Con	1,319	40.0
Hibbert A.	Lab	891	27.0
Bradford L. Ms.	SLD	886	26.9
Martin P.	Green	201	6.1
Turnout		57.6	13.0

Romsey (5556)

		vote	share
Gardiner B.	Lab	1,525	60.7
Wheeler R. Ms.	Con	367	14.6
Corn J. Ms.	SLD	351	14.0
Miller I.	Green	271	10.8
Turnout		45.2	46.1

Trumpington (6114)

		vote	share
Hoskins M. Ms.	Con	1,151	40.7
Powell A.	Lab	713	25.2
Slatter P. Ms.	SLD	708	25.0
Rees D.	Green	255	9.0
Turnout		46.2	15.5

West Chesterton (5544)

		vote	share
Nimmo-Smith M.	SLD	992	31.6
Mann C. Ms.	Lab	981	31.3
Stokes R.	Con	928	29.6
Wright M. Ms.	Green	235	7.5
Turnout		56.6	0.4

Cambridge - 1991

Abbey (4705)

		vote	share
Durrant J.*	Lab	1,050	61.4
Marven R.	Con	418	24.4
Whitt B.	LD	169	9.9
Bryan P. Ms.	Green	74	4.3
Turnout		36.4	36.9

Arbury (5230)

		vote	share
Wilson S. Ms.	Lab	1,034	48.0
Ellis V. Ms.	Con	655	30.4
Corder E. Ms.	LD	466	21.6
Turnout		41.2	17.6

Castle (6111)

		vote	share
Howarth D.*	LD	1,565	50.3
Baty R.	Con	930	29.9
Price K.	Lab	616	19.8
Turnout		50.9	20.4

Cherry Hinton (5433)

		vote	share
Hillier S.	Con	1,182	44.4
Schofield A.	Lab	1,150	43.2
Wilkins K.	LD	332	12.5
Turnout		49.0	1.2

Coleridge (5729)

		vote	share
Diamond I.	Lab	1,320	48.2
Hull A. Ms.	Con	1,011	37.0
Howarth S.	LD	290	10.6
Douglas Y. Ms.	Green	115	4.2
Turnout		47.8	11.3

East Chesterton (6299)

		vote	share
Znajek R.	LD	1,083	33.7
Harding P.	Con	1,033	32.1
Milbourn A.	Lab	1,008	31.3
Pope P.	Green	94	2.9
Turnout		51.1	1.6

Kings Hedges (5073)

		vote	share
Southernwood K.	Lab	999	57.3
Howe G.	Con	465	26.7
Warde S.	LD	279	16.0
Turnout		34.4	30.6

Market (6005)

		vote	share
Lake A.	LD	1,344	49.5
Blencowe K.	Lab	821	30.3
Graham M.	Con	353	13.0
Cooper T.	Green	196	7.2
Turnout		45.2	19.3

Newnham (7306)

		vote	share
Roper D. Ms.	Lab	1,010	33.2
Wheatcroft K.	Con	896	29.5
Strachan P. Ms.	LD	857	28.2
Wright M. Ms.	Green	278	9.1
Turnout		41.6	3.7

Petersfield (6194)

		vote	share
Scott E. Ms.	Lab	1,358	56.5
Welton P.	Con	464	19.3
Paton A.	LD	344	14.3
Grimley G.	Green	236	9.8
Turnout		38.8	37.2

Queen Ediths (5683)			
		vote	share
Reid G.*	Con	1,381	46.7
Charlesworth P. Ms.	LD	867	29.3
Auton J. Ms.	Lab	711	24.0
		Turnout	52.1 17.4

Romsey (5395)			
		vote	share
Sedgwick-Jell S.*	Lab	1,111	52.5
Timmons T.	LD	413	19.5
Webb J.	Con	376	17.8
Miller I.	Green	217	10.3
		Turnout	39.2 33.0

Trumpington (6155)			
		vote	share
Coleman J.	Con	1,235	48.9
Slatter P. Ms.	LD	682	27.0
Powell A.	Lab	469	18.6
Rees D.	Green	139	5.5
		Turnout	41.0 21.9

West Chesterton (5496)			
		vote	share
Knowles E. Ms.*	LD	1,242	43.3
McHugh P.	Lab	823	28.7
Farrington M.	Con	803	28.0
		Turnout	52.2 14.6

Cambridge - 1992

Abbey (4747)			
		vote	share
Smith R.*	Lab	801	57.6
Hill-Molyneux J. Ms.	Con	482	34.7
Harden P.	LD	108	7.8
		Turnout	29.3 22.9

Arbury (5169)			
		vote	share
Ellis V. Ms.	Con	931	45.4
Gard E. Ms.*	Lab	855	41.7
Pegrum A. Ms.	LD	265	12.9
		Turnout	39.7 3.7

Castle (6190)			
		vote	share
Hipkin J.	LD	1,333	47.0
Mitton S.	Con	1,021	36.0
Gosnell S.	Lab	485	17.1
		Turnout	45.9 11.0

Cherry Hinton (5326)			
		vote	share
Seaton M.	Con	1,193	47.4
Schofield A.	Lab	973	38.7
Henney S. Ms.	LD	220	8.7
Cooper E. Ms.	Green	66	2.6
Chaplin P.	US	65	2.6
		Turnout	47.3 8.7

Coleridge (5646)			
		vote	share
Benstead J.	Lab	1,153	46.1
Jones R.	Con	1,109	44.3
Paton A.	LD	241	9.6
		Turnout	44.3 1.8

East Chesterton (6443)			
		vote	share
Nunes J.	LD	987	35.5
Carter A.	Con	945	34.0
Rooney M.	Lab	848	30.5
		Turnout	43.1 1.5

Kings Hedges (5017) ²			
		vote	share
Cowell P.*	Lab	871	58.2
Price K.	Lab	657	-
Howe G.	Con	426	28.5
Baty R.	Con	390	-
Howarth S.	LD	199	13.3
Warde S.	LD	144	-
		Turnout	26.8 29.7

Market (6073)			
		vote	share
Rosentiel C.	LD	1,313	49.2
Leggatt R.*	Lab	850	31.8
Harwood R.	Con	398	14.9
Cooper T.	Green	109	4.1
		Turnout	44.0 17.3

Newnham (7326)			
		vote	share
Baird J. Ms.	LD	1,075	35.3
Fairclough E. Ms.*	Lab	977	32.1
Wheatcroft K.	Con	760	24.9
Wright M. Ms.	Green	178	5.8
Costello N.	US	58	1.9
		Turnout	41.6 3.2

Petersfield (6112)			
		vote	share
Bradnack T.	Lab	1,220	52.5
Walton D. Ms.	Con	484	20.8
Meyland-Smith B. Ms.	LD	456	19.6
Tayar D.	Green	166	7.1
		Turnout	38.1 31.6

Queen Ediths (5704)			
		vote	share
Edwards G.*	Con	1,326	44.2
Darlington R.	LD	1,082	36.0
Henderson P. Ms.	Lab	595	19.8
		Turnout	52.6 8.1

Romsey (5381)			
		vote	share
Wright P.*	Lab	1,002	55.8
Atherton R. Ms.	Con	380	21.2
Ford R.	LD	262	14.6
Miller I.	Green	151	8.4
		Turnout	33.4 34.7

Trumpington (6058)			
		vote	share
Froggett S. Ms.*	Con	1,283	56.2
Slatter P. Ms.	LD	633	27.8
Wilson C.	Lab	365	16.0
		Turnout	37.7 28.5

West Chesterton (5405)			
		vote	share
Griffiths G. Ms.	LD	1,008	37.7
Mann C. Ms.	Lab	878	32.8
Manley S. Ms.	Con	787	29.4
		Turnout	49.5 4.9

Cambridge - 1994

Abbey (4756)			
		vote	share
Barnes A.*	Lab	965	66.2
Froggett J.	Con	253	17.4
Molyneux-Hill J. Ms.	LD	239	16.4
		Turnout	30.7 48.9

Arbury (5201)			
		vote	share
Colombo A.	Lab	1,200	53.3
McGuire T.	Con	583	25.9
Wrigley A.	LD	467	20.8
		Turnout	43.3 27.4

Castle (6382)			
		vote	share
Charlesworth A.*	LD	1,597	53.5
Smith A. Ms.	Lab	739	24.8
Mitton J. Ms.	Con	647	21.7
		Turnout	46.8 28.8

Cherry Hinton (5389)			
		vote	share
Maceachern A.*	Lab	1,391	52.5
Webb J.	Con	888	33.5
Woodford A.	LD	370	14.0
		Turnout	49.3 19.0

Coleridge (5731)			
		vote	share
Bagnall E. Ms.	Lab	1,545	61.0
George S.	Con	607	24.0
Hoddinott A.	LD	382	15.1
		Turnout	44.4 37.0

East Chesterton (6698)			
		vote	share
Stickley S. Ms.	LD	1,402	46.0
Wilson C.	Lab	1,196	39.2
Havercroft C.	Con	453	14.8
		Turnout	45.6 6.8

Kings Hedges (4922)			
		vote	share
Ratcliffe A. Ms.	Lab	1,000	64.8
Howarth E. Ms.	LD	314	20.3
Black S. Ms.	Con	229	14.8
		Turnout	31.3 44.5

Market (6107)			
		vote	share
Rosenstiel J. Ms.*	LD	1,502	61.0
Blunt D.	Lab	676	27.4
Strachan J.	Con	286	11.6
		Turnout	40.5 33.5

Newnham (7370)			
		vote	share
Lakin C.	LD	1,477	46.7
Patel A.	Lab	1,290	40.8
Stuart G.	Con	394	12.5
		Turnout	43.1 5.9

Petersfield (6326)			
		vote	share
Blencowe K.	Lab	1,387	49.6
Bowden C. Ms.	LD	1,122	40.2
Clayton V. Ms.	Con	285	10.2
		Turnout	44.4 9.5

Queen Ediths (5762)			
		vote	share
Taylor A. Ms.	LD	1,703	51.1
Gough-Goodman C.*	Con	913	27.4
Smith C. Ms.	Lab	717	21.5
		Turnout	58.0 23.7

Romsey (5700)			
		vote	share
Ratcliff J.	Lab	1,344	50.6
Smart C. Ms.	LD	1,036	39.0
Wren S.	Con	160	6.0
Miller I.	Green	118	4.4
		Turnout	46.8 11.6

Trumpington (5953)			
		vote	share
Warde S.	LD	1,201	46.2
Hoskins M. Ms.*	Con	995	38.3
Dickins C.	Lab	402	15.5
		Turnout	43.7 7.9

West Chesterton (5655)			
		vote	share
Nimmo-Smith M.*	LD	1,347	50.0
Humber P.	Lab	991	36.8
Walton D. Ms.*	Con	355	13.2
Turnout		47.8	13.2

Cambridge - 1995

Abbey (4873)			
		vote	share
Durrant J.*	Lab	988	78.4
Langton S. Ms.	LD	273	21.6
Turnout		26.4	56.7

Arbury (5160)			
		vote	share
Horne R.	Lab	1,180	61.2
George S.	Con	438	22.7
Wrigley A.	LD	310	16.1
Turnout		37.4	38.5

Castle (6657)			
		vote	share
Howarth D.	LD	1,426	54.1
Smith R.	Lab	690	26.2
Nichols A.	Con	402	15.3
Howitt L. Ms.	Green	118	4.5
Turnout		39.7	27.9

Cherry Hinton (5416)			
		vote	share
Dryden R.	Lab	1,478	63.3
Barrett-Payton E.	Con	602	25.8
Woodford A.	LD	256	11.0
Turnout		43.1	37.5

Coleridge (5849)			
		vote	share
Overhill R.	Lab	1,260	58.3
Froggett J.	Con	475	22.0
Charlesworth P. Ms.	LD	427	19.8
Turnout		37.0	36.3

East Chesterton (6873)			
		vote	share
Znajek R.*	LD	1,412	47.2
Hartley S.	Lab	1,244	41.6
Havercroft C.	Con	333	11.1
Turnout		43.5	5.6

Kings Hedges (4945)			
		vote	share
Southernwood K.*	Lab	1,100	77.2
Corder E. Ms.	LD	218	15.3
Ryder S.	Ind	107	7.5
Turnout		28.9	61.9

Market (6391)			
		vote	share
Lake A.*	LD	1,125	50.4
Atack C. Ms.	Lab	759	34.0
Strachan J.	Con	221	9.9
Hickey L. Ms.	Green	127	5.7
Turnout		35.1	16.4

Newnham (7414)			
		vote	share
Roper D. Ms.*	Lab	1,391	48.9
Schofield M.	LD	1,150	40.5
Webb J.	Con	301	10.6
Turnout		38.6	8.5

Petersfield (6686)			
		vote	share
Rogers C.	Lab	1,259	48.9
Dowden C. Ms.	LD	915	35.6
Welton P.	Con	249	9.7
Wright M. Ms.	Green	150	5.8
Turnout		38.4	13.4

Queen Ediths (5854)			
		vote	share
Mills A.	LD	1,388	47.3
Beresford J.	Lab	771	26.3
Hardie A. Ms.	Con	755	25.8
Leighton L.	NLP	18	0.6
Turnout		50.2	21.0

Romsey (5961)			
		vote	share
Baxter D.	Lab	1,238	53.2
Smart C. Ms.	LD	829	35.6
Cannon A.	Con	133	5.7
Miller I.	Green	114	4.9
Gladwin M. Ms.	NLP	15	0.6
Turnout		39.2	17.6

Trumpington (6120)			
		vote	share
Slatter P. Ms.	LD	1,056	45.2
Hoskins M. Ms.	Con	802	34.3
Hardy R.	Lab	480	20.5
Turnout		38.3	10.9

West Chesterton (5720)			
		vote	share
Knowles E. Ms.*	LD	1,224	49.5
Mann C. Ms.	Lab	895	36.2
Stuart G.	Con	355	14.3
Turnout		43.3	13.3

Cambridge - 1996

Abbey (4858)			
		vote	share
Smith R.*	Lab	882	71.5
Mitton S.	Con	200	16.2
Langton S. Ms.	LD	151	12.2
Turnout		25.4	55.3

Arbury (5250)			
		vote	share
Wright H. Ms.	Lab	1,063	54.9
Ellis V. Ms.*	Con	670	34.6
Wrigley A.	LD	205	10.6
Turnout		36.8	20.3

Castle (7013)			
		vote	share
Hipkin J.*	LD	1,421	55.8
Smith R.	Lab	684	26.9
Mitton J. Ms.	Con	441	17.3
Turnout		36.1	28.9

Cherry Hinton (5516)			
		vote	share
Howe G.	Lab	1,022	55.4
Barrett-Payton E.	Con	510	27.6
Howarth E. Ms.	LD	313	17.0
Turnout		32.9	27.8

Coleridge (5944)			
		vote	share
Benstead J.*	Lab	1,234	62.1
Axhorn P. Ms.	Con	500	25.2
Corder E.	LD	254	12.8
Turnout		33.3	36.9

East Chesterton (6906)			
		vote	share
Nunes J.*	LD	1,271	44.1
Hartley S.	Lab	1,249	43.3
Havercroft C.	Con	365	12.7
Turnout		41.5	0.8

Kings Hedges (4904)			
		vote	share
Cowell P.*	Lab	1,116	77.0
George S.	Con	197	13.6
James R.	LD	136	9.4
Turnout		29.5	63.4

Market (6579)			
		vote	share
Rosentiel C.*	LD	1,196	55.9
Flood E. Ms.	Lab	719	33.6
Hardie A. Ms.	Con	223	10.4
Turnout		32.6	22.3

Newnham (8026)			
		vote	share
Richardson G. Ms.	Lab	1,282	45.3
Baird J. Ms.*	LD	1,249	44.1
Turnball C. Ms.	Con	301	10.6
Turnout		35.3	1.2

Petersfield (6913)			
		vote	share
Bradnack T.*	Lab	1,456	62.4
Goddard S.	LD	585	25.1
Welton P.	Con	294	12.6
Turnout		33.6	37.3

Queen Ediths (5884)			
		vote	share
Edwards G.*	Con	1,138	37.7
Woodford A.	LD	1,120	37.1
Beresford J.	Lab	759	25.2
Turnout		50.6	0.6

Romsey (6000)			
		vote	share
Lucas A.	Lab	1,184	55.5
Smart C. Ms.	LD	840	39.4
Watkins A. Ms.	Con	109	5.1
Turnout		35.5	16.1

Trumpington (6092)			
		vote	share
Eagle H. Ms.	LD	886	41.2
Froggett S. Ms.*	Con	815	37.9
Davison K. Ms.	Lab	447	20.8
Turnout		34.8	3.3

West Chesterton (5883)			
		vote	share
Griffiths G. Ms.*	LD	1,221	53.1
Wardle B.	Lab	755	32.8
Stuart G.	Con	323	14.0
Turnout		38.8	20.3

Cambridge - 1998

Abbey (4688)			
		vote	share
Mbahay M.	Lab	578	65.0
Watkins A. Ms.	Con	163	18.3
Stebbings C. Ms.	LD	148	16.6
Turnout		19.0	46.7

Arbury (5057)			
		vote	share
Schofield A.*	Lab	676	53.2
Taylor M.	Con	395	31.1
James R.	LD	199	15.7
Turnout		25.2	22.1

Castle (7036)			
		vote	share
White J.	LD	1,172	60.4
Hartley S.	Lab	365	18.8
Hoile R.	Con	293	15.1
Barber M. Ms.	Green	112	5.8
Turnout		27.7	41.6

Cherry Hinton (5525)			
		vote	share
Stuart G.	Con	893	46.6
Carling R.	Lab	862	45.0
Woodford A.	LD	161	8.4
Turnout		34.7	1.6

Coleridge (5966)			
		vote	share
Bagnall E. Ms.*	Lab	873	61.7
Barrett-Payton E.	Con	363	25.6
Folley R.	LD	180	12.7
Turnout		23.8	36.0

East Chesterton (6867)			
		vote	share
Levison F. Ms.	LD	971	44.2
Charlesworth T. Ms.	Lab	903	41.1
Havercroft C.	Con	324	14.7
Turnout		32.1	3.1

Kings Hedges (4774)			
		vote	share
Talbot M.	Lab	613	65.1
Howell C.	Con	177	18.8
Wesson T.	LD	151	16.0
Turnout		19.8	46.3

Market (6595)			
		vote	share
Rosenstiel J. Ms.*	LD	837	60.5
Jones A.	Lab	288	20.8
Ing J. Ms.	Con	154	11.1
Swallow A.	Green	105	7.6
Turnout		21.1	39.7

Newnham (7929)			
		vote	share
Lakin C.*	LD	1,041	59.2
Critchlow T.	Lab	473	26.9
Strachan J.	Con	243	13.8
Turnout		22.3	32.3

Petersfield (7181)			
		vote	share
Blencowe K.*	Lab	865	55.1
Smith G.	LD	262	16.7
Mitchell S. Ms.	Green	248	15.8
Welton P.	Con	196	12.5
Turnout		21.9	38.4

Queen Ediths (6107)			
		vote	share
Taylor A. Ms.*	LD	1,394	54.8
Williams R.	Con	802	31.5
Davison K. Ms.	Lab	349	13.7
Turnout		41.7	23.3

Romsey (6227)			
		vote	share
Smart C. Ms.	LD	1,027	48.8
Gilchrist P.	Lab	887	42.1
Downer H.	Green	114	5.4
Whitehead P.	Con	77	3.7
Turnout		33.9	6.7

Trumpington (5837)			
		vote	share
Douglas D.	Con	910	45.0
Dixon M.	LD	819	40.5
Diamond P.	Lab	294	14.5
Turnout		34.7	4.5

West Chesterton (6064)			
		vote	share
Nimmo-Smith M.*	LD	973	51.4
Schicker P.	Lab	546	28.8
Ellis V.	Con	233	12.3
Wright M. Ms.	Green	142	7.5
Turnout		31.3	22.5

Cambridge - 1999

Abbey (4679)			
		vote	share
Durrant J.*	Lab	702	71.3
Mitton S.	Con	157	16.0
Smith G.	LD	76	7.7
Collins J.	Green	49	5.0
Turnout		21.1	55.4

Arbury (5118)			
		vote	share
Horne R.*	Lab	775	57.2
Taylor M.	Con	381	28.1
James J.	LD	198	14.6
Turnout		26.7	29.1

Castle (7068)			
		vote	share
Howarth D.*	LD	1,459	72.2
Hartley S.	Lab	320	15.8
Strachan J.	Con	243	12.0
Turnout		28.9	56.3

Cherry Hinton (5540)			
		vote	share
Dryden R.*	Lab	1,264	53.0
Howell C.	Con	989	41.4
Amrani F. Ms.	LD	134	5.6
Turnout		43.1	11.5

Coleridge (5896)			
		vote	share
Callaghan B.	Lab	908	60.1
McNish F. Ms.	Con	364	24.1
Folley R.	LD	239	15.8
Turnout		25.7	36.0

East Chesterton (6927)			
		vote	share
Johnston P. Ms.	Lab	1,121	44.9
Liddle J. Ms.	LD	1,049	42.0
Havercroft C.	Con	325	13.0
Turnout		36.2	2.9

Kings Hedges (4808)			
		vote	share
Overhill R.*	Lab	641	65.9
Phillips J.	Con	171	17.6
Rodgers P.	LD	161	16.5
Turnout		20.2	48.3

Market (6743)			
		vote	share
Dixon M.	LD	818	54.0
Jones A.	Lab	338	22.3
Webb J.	Con	198	13.1
Swallow A.	Green	162	10.7
Turnout		22.6	31.7

Newnham (7912)			
		vote	share
Harrison N. Ms.	LD	1,109	54.9
Addison E.	Lab	634	31.4
Watkins A. Ms.	Con	278	13.8
Turnout		25.8	23.5

Petersfield (7243)			
		vote	share
Reed H. Ms.*	Lab	988	54.4
Mitchell S. Ms.	Green	342	18.8
McCullagh J.	LD	259	14.3
Harcourt C.	Con	227	12.5
Turnout		25.1	35.6

Queen Ediths (6061)			
		vote	share
Woodford A.	LD	1,175	48.7
Williams R.	Con	742	30.7
Davison K. Ms.	Lab	371	15.4
Milsom R.	Green	126	5.2
Turnout		39.9	17.9

Romsey (6176)			
		vote	share
Gilchrist P.	Lab	1,015	50.2
Tienne J. Ms.	LD	889	43.9
Ellis V.	Con	119	5.9
Turnout		32.9	6.2

Trumpington (6010)			
		vote	share
Slatter P. Ms.*	LD	1,205	52.2
Wheatley E. Ms.	Con	937	40.6
Kemp D.	Lab	168	7.3
Turnout		38.6	11.6

West Chesterton (6023)			
		vote	share
Knowles E. Ms.*	LD	872	49.3
Schiker P.	Lab	503	28.4
Hoile R.	Con	237	13.4
Ward J. Ms.	Green	158	8.9
Turnout		29.5	20.8

Cambridge - 2000

Abbey (4764)			
		vote	share
Smith R.*	Lab	567	62.4
Mitton S.	Con	224	24.7
Huppert J.	LD	117	12.9
Turnout		19.2	37.8

Arbury (5045)			
		vote	share
Ward T.	LD	691	35.5
Wright H. Ms.*	Lab	655	33.6
Boorman R.	Con	544	27.9
Lawrence S.	Green	57	2.9
Turnout		38.7	1.8

Castle (7015)			
		vote	share
Hipkin J.*	LD	1,195	62.3
Taylor M.	Con	324	16.9
Kemp D.	Lab	261	13.6
Wright M. Ms.	Green	137	7.1
Turnout		27.4	45.4

Cherry Hinton (5465)			
		vote	share
Howell C.	Con	1,138	49.8
Rowling G.	Lab	994	43.5
Amrani F. Ms.	LD	152	6.7
Turnout		41.9	6.3

Coleridge (5939)			
		vote	share
Benstead J.*	Lab	789	52.6
Strachan J.	Con	433	28.8
Pinnington J. Ms.	LD	279	18.6
Turnout		25.3	23.7

East Chesterton (6974)			
		vote	share
Liddle J. Ms.	LD	1,104	45.9
Woodall S. Ms.	Lab	940	39.1
Havercroft C.	Con	361	15.0
	Turnout	34.6	6.8

Kings Hedges (4774)			
		vote	share
Cowell P.*	Lab	644	64.3
Webb J.	Con	204	20.4
Rodgers P.	LD	153	15.3
	Turnout	21.0	44.0

Market (6854)			
		vote	share
Rosenstiel C.*	LD	835	54.6
Jones A.	Lab	298	19.5
Phillips J.	Con	234	15.3
Swallow A.	Green	162	10.6
	Turnout	22.4	35.1

Newnham (7863)			
		vote	share
Schofield M.	LD	1,016	53.1
Richardson G. Ms.*	Lab	540	28.2
Watkins A. Ms.	Con	358	18.7
	Turnout	24.7	24.9

Petersfield (7710)			
		vote	share
Bradnack T.*	Lab	896	49.7
Mitchell S. Ms.	Green	391	21.7
Wilkins K.	LD	267	14.8
Harcourt C.	Con	249	13.8
	Turnout	23.5	28.0

Queen Ediths (6064)			
		vote	share
Stebbings R.	LD	1,282	54.9
Pennington H. Ms.	Con	711	30.5
Downham L. Ms.	Lab	341	14.6
	Turnout	38.6	24.5

Romsey (6133)			
		vote	share
Ellis-Millar S. Ms.	LD	951	45.0
Lucas A.*	Lab	900	42.6
Ellis V.	Con	134	6.3
Milsom R.	Green	126	6.0
	Turnout	34.6	2.4

Trumpington (5908)			
		vote	share
Currie J. Ms.	LD	1,096	49.0
McNish F. Ms.	Con	925	41.4
Bell M. Ms.	Lab	216	9.7
	Turnout	37.9	7.6

West Chesterton (6065)			
		vote	share
Griffiths G. Ms.*	LD	856	46.7
Gosling D.	Lab	561	30.6
Hoile R.	Con	303	16.5
Goldbeck-Wood G.	Green	112	6.1
	Turnout	30.2	16.1

Cambridge - 2002

Abbey (4739)			
		vote	share
Hart C. Ms.	Lab	571	58.6
Mitton S.	Con	180	18.5
Keating C.	LD	113	11.6
Collins J.	Green	60	6.2
Mbayah M.*	Ind	51	5.2
	Turnout	20.6	40.1

Arbury (5091)			
		vote	share
Todd-Jones M.	Lab	828	41.0
Moss-Eccardt R.	LD	579	28.7
Boorman R.	Con	513	25.4
Mitchel S. Ms.	Green	73	3.6
Minns D. Ms.	SA	27	1.3
	Turnout	39.8	12.3

Castle (7049)			
		vote	share
White J.*	LD	1,121	51.4
Boorman R. Ms.	Con	458	21.0
Richardson G. Ms.	Lab	412	18.9
Lawrence S.	Green	188	8.6
	Turnout	31.0	30.4

Cherry Hinton (5405)			
		vote	share
Stuart G.*	Con	1,174	49.3
Newbold S.	Lab	948	39.8
Amrani F. Ms.	LD	196	8.2
Tayar D.	Green	64	2.7
	Turnout	44.1	9.5

Coleridge (5862)			
		vote	share
Bagnall E. Ms.*	Lab	938	50.6
Hall M.	Con	454	24.5
Monroe J.	LD	267	14.4
Docherty D.	Green	94	5.1
Watts A.	UK Ind	53	2.9
Sedgwick-Jell S.	SA	46	2.5
	Turnout	31.7	26.1

East Chesterton (7112)			
		vote	share
Bailey J. Ms.	LD	974	40.5
Woodall S. Ms.	Lab	858	35.7
Rashid M.	Con	319	13.3
Hewett N.	Green	129	5.4
Hudson B.	UK Ind	124	5.2
	Turnout	33.9	4.8

Kings Hedges (4743)			
		vote	share
Bell M. Ms.	Lab	550	54.6
Weinman C.	Con	235	23.3
Bradford E. Ms.	LD	157	15.6
Goldbeck-Wood G.	Green	65	6.5
	Turnout	21.3	31.3

Market (6830)			
		vote	share
Rosenstiel J. Ms.*	LD	879	57.0
Chamberlain S.	Con	239	15.5
Sargeant M.	Lab	238	15.4
Lucas-Smith M.	Green	187	12.1
	Turnout	22.7	41.5

Newnham (7731)			
		vote	share
Reid S. Ms.	LD	1,134	55.5
Wright H. Ms.	Lab	372	18.2
Normington R.	Con	326	15.9
Harrison T. Ms.	Green	190	9.3
Douglas N.	Ind	23	1.1
	Turnout	26.6	37.3

Petersfield (7801)			
		vote	share
Blencowe K.*	Lab	964	40.4
Wilkins K.	LD	579	24.3
Wright M. Ms.	Green	514	21.5
Glendon L.	Con	257	10.8
Walker J.	SA	72	3.0
	Turnout	30.6	16.1

Queen Ediths (6023) ²			
		vote	share
Taylor A. Ms.*	LD	1,564	59.8
Baker A.	LD	1,424	-
Henry K.	Con	473	18.1
Ray J.	Con	409	-
Harper F. Ms.	Lab	342	13.1
Stevens J. Ms.	Lab	258	-
Milsom R.	Green	160	6.1
Davies H. Ms.	UK Ind	78	3.0
	Turnout	41.4	41.7

Romsey (6037)			
		vote	share
Smart C. Ms.*	LD	969	44.8
Sales P.	Lab	867	40.1
Russell V. Ms.	Green	194	9.0
Ellis V.	Con	131	6.1
	Turnout	35.9	4.7

Trumpington (5911)			
		vote	share
Pinnington J. Ms.	LD	1,118	47.5
Towns H. Ms.	Con	937	39.8
Turner R. Ms.	Lab	201	8.5
Westcott B.	Green	100	4.2
	Turnout	39.9	7.7

West Chesterton (6061)			
		vote	share
Nimmo-Smith M.*	LD	1,071	51.1
Schicker P.	Lab	474	22.6
Strachan J.	Con	350	16.7
Peake S.	Green	202	9.6
	Turnout	34.6	28.5

Cambridge - 2003

Abbey (4768)			
		vote	share
Durrant J*	Lab	502	55.2
Ellis V.	Con	195	21.4
Yates T.	LD	142	15.6
Collins J.	Green	71	7.8
	Turnout	19.2	33.7

Arbury (5118)			
		vote	share
James R.*	LD	739	36.4
Kidman I.	Lab	689	33.9
Boorman R.	Con	535	26.3
Pope P.	Green	70	3.4
	Turnout	39.8	2.5

Castle (6997)			
		vote	share
Howarth D.*	LD	1,226	58.0
Boorman R. Ms.	Con	455	21.5
Richardson G. Ms.	Lab	271	12.8
Lawrence S.	Green	163	7.7
	Turnout	30.1	36.5

Cherry Hinton (5415)			
		vote	share
Dryden R.*	Lab	1,072	43.3
Hinchcliffe J.	Con	1,021	41.2
Heathcock G.	LD	311	12.6
Mitchell S. Ms.	Green	73	2.9
	Turnout	45.8	2.1

Coleridge (5811)			
		vote	share
Callaghan B. Ms.*	Lab	742	60.1
Doherty L. Ms.	LD	254	20.6
Hall M.	Green	95	7.7
Sedgwick-Jell S.	Soc All	74	6.0
Watts A.	UK Ind	70	5.7
	Turnout	31.1	39.5

East Chesterton (7091)			
		vote	share
Adey D.	LD	912	40.8
Johnston P. Ms.*	Lab	756	33.8
Rashid M	Con	332	14.8
Hewitt N.	Green	157	7.0
Barr M. Ms.	UK Ind	79	3.5
	Turnout	31.6	7.0

Kings Hedges (4796) ²			
		vote	share
Hughes P. Ms.	Lab	473	46.1
Downham L. Ms.	Lab	438	-
Mennie H.	Con	214	20.9
Weinman C.	Con	202	-
Bradford E. Ms.	LD	182	17.7
Goldbeck-Wood G.	Green	157	15.3
Monroe J.	LD	129	-
	Turnout	19.7	25.2

Market (6724)			
		vote	share
Dixon M.*	LD	817	56.7
Orpin J.	Con	240	16.7
Lucas-Smith M.	Green	213	14.8
Sales P.	Lab	171	11.9
	Turnout	21.6	40.0

Newnham (7750)			
		vote	share
Smith J. Ms.	LD	987	54.3
Tailby L.	Con	334	18.4
Lynn M. Ms.	Lab	257	14.1
Gomori- Woodcock A. Ms.	Green	239	13.2
	Turnout	23.6	35.9

Petersfield (7817)			
		vote	share
Wright H. Ms.	Lab	738	35.9
Wilkins K.	LD	604	29.3
Wright M. Ms.	Green	481	23.4
Whant D.	Con	235	11.4
	Turnout	26.5	6.5

Queen Ediths (6081)			
		vote	share
Baker A.*	LD	1,497	63.8
Henry K.	Con	395	16.8
Rosser S. Ms.	Lab	242	10.3
Milsom R.	Green	119	5.1
Davies H. Ms.	UK Ind	94	4.0
	Turnout	38.7	47.0

Romsey (5997)			
		vote	share
Coleman I.	LD	892	43.8
Gilchrist P.*	Lab	789	38.8
Russell V. Ms.	Green	146	7.2
Normington R.	Con	145	7.1
Minns D. Ms.	Soc All	63	3.1
	Turnout	34.0	5.1

Trumpington (6020) ²			
		vote	share
Slatter P. Ms.*	LD	1,225	48.9
Adigun-Harris E.	LD	1,126	-
Towns H. Ms.	Con	949	37.9
George S.	Con	914	-
Ford N.	Green	181	7.2
Coulson D.	Lab	150	6.0
Goodacre J.	Lab	135	-
	Turnout	40.4	11.0

West Chesterton (6069) ²			
		vote	share
Boyce R.	LD	941	49.4
Harrison N. Ms.	LD	912	-
Brown L.	Lab	390	20.5
Sargeant M.	Lab	368	-
Strachan J.	Con	341	17.9
Palmer G.	Con	298	-
Peake S. Ms.	Green	233	12.2
Peake S.	Green	155	12.2
	Turnout	30.9	28.9

Cambridge - 2004

Abbey (6237) ³			
		vote	share
Durrant J.*	Lab	725	40.4
Hart C. Ms.*	Lab	615	-
Smith R.*	Lab	559	-
Dutton R.	Con	388	21.6
Elsom H. Ms.	LD	360	20.1
Sexton E.	LD	330	-
Mitton S.	Con	322	-
Macbeth- Hornett H. Ms.	Green	322	17.9
Gittins M.	Con	317	-
Wright M. Ms.	Green	280	-
Streets M.	LD	279	-
	Turnout	27.8	18.8

Arbury (6762) ³			
		vote	share
James R.*	LD	1,167	36.1
Hymans A.	LD	1,004	-
Ward T.*	LD	976	-
Todd-Jones M.*	Lab	908	28.1
Kidman I.	Lab	900	-
Robertson- Forrest J. Ms.	Lab	777	-
Boorman R.	Con	699	21.6
Boorman R. Ms.	Con	662	21.6
Meftah S.	Con	544	-
Wood E. Ms.	Green	459	14.2
	Turnout	43.2	8.0

Castle (6565) ³			
		vote	share
Holland M. Ms.	LD	1,130	46.0
Hipkin J.*	LD	1,112	-
Kightley S.	LD	1,011	-
Mitton J. Ms.	Con	487	19.8
Webb J. Ms.	Con	459	-
Lawrence S.	Green	436	17.8
Pilkington C.	Con	434	-
Jacks J. Ms.	Lab	403	16.4
Hemming C.	Lab	320	-
Rayner D.	Lab	272	-
	Turnout	33.1	26.2

Cherry Hinton (6266) ³			
		vote	share
Dryden R.*	Lab	1,275	41.1
McPherson R.	Lab	1,057	-
Barrett-Payton E.	Con	1,027	33.1
Howell C.*	Con	1,014	-
Palmer G.	Con	983	-
Newbold S.	Lab	938	-
Heathcock G.	LD	556	17.9
Hutchings B.	LD	400	-
Rodgers S.	LD	350	-
Ford N.	Green	242	7.8
	Turnout	46.4	8.0

Coleridge (5766) ³			
		vote	share
Callaghan B. Ms.*	Lab	782	33.8
Benstead J.*	Lab	753	-
Herbert L.	Lab	743	-
Macnaghten E.	Con	512	22.2
Mastin S.	Con	511	-
Blackhurst A.	LD	490	21.2
Folley R. Ms.	LD	477	-
Waters K. Ms.	Con	469	-
Yates T.	LD	372	-
Grinham J.	Green	340	14.7
Watts A.	UKIP	187	8.1
	Turnout	37.1	11.7

East Chesterton (5932) ³			
		vote	share
Bailey J. Ms.*	LD	913	35.8
Liddle J. Ms.*	LD	859	-
Adey D.*	LD	800	-
Johnston P. Ms.	Lab	648	25.4
Bird G. Ms.	Lab	616	-
Woodall S. Ms.	Lab	581	-
Goode M.	Con	392	15.4
Pope P.	Green	369	14.5
Cadwallader L. Ms.	Con	363	-
Goode T. Ms.	Con	334	-
Hudson B.	UKIP	229	9.0
	Turnout	37.1	10.4

Kings Hedges (6188) ³			
		vote	share
Downham L. Ms.*	Lab	558	32.3
Hughes P. Ms.*	Lab	550	-
Bell M. Ms.*	Lab	524	-
Langley P.	Con	474	27.5
Pitt M.	LD	449	26.0
Rodgers P.	LD	424	-
Upstone D.	LD	407	-
Mennie H.	Con	404	-
Weinman C.	Con	369	-
Goldbeck-Wood G.	Green	244	-
Roper G. Ms.	Green	244	14.1
	Turnout	27.6	4.9

Market (6670) ³			
		vote	share
Rosenstiel J. Ms.*	LD	824	40.9
Dixon M.*	LD	813	-
Rosenstiel C.*	LD	791	-
Haire T.	Con	367	18.2
Ionides J.	Con	357	-
Lucas-Smith M.	Green	344	17.1
Mendoza A.	Con	339	-
Scott D.	Green	325	-
Brink A.	Ind	263	13.0
Smith M.	Green	245	-
Burnett J.	Ind	232	-
Lynn-Meaden S. Ms.	Ind	225	-
Walter E. Ms.	Lab	219	10.9
Counsell D.	Lab	206	-
McCallum D.	Lab	193	-
	Turnout	29.9	22.7

Newnham (6307) ³			
		vote	share
Reid S. Ms.*	LD	1,018	47.0
Smith J. Ms.*	LD	931	-
Cantrill R.	LD	904	-
Harding-Rolls P.	Con	429	19.8
Kenney C. Ms.	Con	411	-
Gomori- Woodcock A. Ms.	Green	400	18.5
Hodge A. Ms.	Con	395	-
Gaggs R. Ms.	Lab	317	14.6
Layfield R.	Lab	288	-
Quinn W.	Green	282	-
Sternberg D.	Lab	279	-
	Turnout	31.6	27.2

Petersfield (5947) ³			
		vote	share
Bradnack T.*	Lab	797	34.7
Phillips V. Ms.	LD	787	34.3
Blencowe K.*	Lab	770	-
Mortimer T.	LD	727	-
Wright H. Ms.*	Lab	709	-
Monroe J.	LD	673	-
Collins J.	Green	349	15.2
Islam R.	Green	345	-
Mitchell S. Ms.	Green	341	-
Clarkson R. Ms.	Con	273	11.9
Douglas D.	Con	230	-
Tailby L.	Con	207	-
Walker B.	Ind	89	3.9
Turnout		37.1	0.4

Queen Ediths (6403) ³			
		vote	share
Taylor A. Ms.*	LD	1,671	53.1
Stebbing R.*	LD	1,591	-
Baker A.*	LD	1,566	-
Edwards T.	Con	653	20.8
Ray J.	Con	550	-
Hall M.	Con	531	-
Westcott B.	Green	337	10.7
Freeman L.	Lab	277	8.8
Rosser S. Ms.	Lab	256	-
Kazer J.	Lab	211	-
Davies H. Ms.	UKIP	206	6.6
Turnout		43.6	32.4

Romsey (6233) ³			
		vote	share
Smart C. Ms.*	LD	1,192	44.9
Coleman I.*	LD	1,184	-
Ellis-Miller S. Ms.*	LD	1,125	-
Goodacre J.	Lab	746	28.1
Sales P.	Lab	658	-
Stafford B.	Lab	577	-
Rippin R.	Green	394	14.8
Russell V. Ms.	Green	360	-
Ellis V.	Con	206	7.8
Reynolds M. Ms.	Con	186	-
Wheeler R. Ms.	Con	172	-
Barr M. Ms.	UKIP	119	4.5
Turnout		39.9	16.8

Trumpington (5385) ³			
		vote	share
Slatter P. Ms.*	LD	1,186	47.4
Adigun-Harris E.*	LD	1,177	-
Churchill S. Ms.	LD	1,039	-
George S.	Con	778	31.1
Beaumont A.	Con	764	-
Whant D.	Con	679	-
Galloway C. Ms.	Green	346	13.8
Allen D. Ms.	Lab	192	7.7
Tudor G.	Lab	162	-
Coulson D.	Lab	154	-
Turnout		42.4	16.3

West Chesterton (6292) ³			
		vote	share
Nimmo-Smith M.*	LD	1,302	47.1
Armstrong D. Ms.	LD	1,143	-
Boyce R.*	LD	1,086	-
McHugh P.	Lab	503	18.2
Peake S. Ms.	Green	481	17.4
Lynn M. Ms.	Lab	480	-
Lake P.	Con	478	17.3
Strachan J.	Con	463	-
Watkins S.	Lab	454	-
Watkins A. Ms.	Con	436	-
Peake S.	Green	309	17.4
Turnout		40.8	28.9

Cambridge - 2006

Abbey (6306)			
		vote	share
Lynn M. Ms.	Lab	668	37.4
Wright M. Ms.	Green	464	26.0
Milton S.	Con	362	20.3
Sexton E.	LD	292	16.3
Turnout		28.5	11.4

Arbury (6910)			
		vote	share
Ward T.*	LD	1,022	40.3
Todd-Jones M.	Lab	816	32.1
Meftah S.	Con	482	19.0
Smith M.	Green	219	8.6
Turnout		36.9	8.1

Castle (6487)			
		vote	share
Kightley S.*	LD	985	48.3
Macnaghten E.	Con	476	23.3
Lawrence S.	Green	298	14.6
Sheerman L. Ms.	Lab	282	13.8
Turnout		31.5	24.9

Cherry Hinton (6327)			
		vote	share
Newbold S.	Lab	1,071	42.9
Barrett-Payton E.*	Con	864	34.6
Mayer-Hutchings N. Ms.	LD	367	14.7
Ford N.	Green	193	7.7
Turnout		39.7	8.3

Coleridge (6004)			
		vote	share
Herbert L.*	Lab	909	41.8
Blackhurst A.	LD	477	22.0
Jones S.	Con	463	21.3
Downer H.	Green	186	8.6
Watts A.	UKIP	138	6.4
Turnout		36.3	19.9

East Chesterton (6093)			
		vote	share
Holness M. Ms.	LD	884	40.6
Layfield R.	Lab	583	26.8
Francis K.	Con	482	22.1
Pope P.	Green	228	10.5
Turnout		35.9	13.8

Kings Hedges (6107)			
		vote	share
Upstone N.	LD	718	40.0
Bird G. Ms.	Lab	533	29.7
Taylor M.	Con	350	19.5
Goldbeck-Wood G.	Green	193	10.8
Turnout		29.6	10.3

Market (6368)			
		vote	share
Rosenstiel C.*	LD	772	42.7
Haire T.	Con	392	21.7
Lucas-Smith M.	Green	359	19.9
Donnelly M. Ms.	Lab	285	15.8
Turnout		28.7	21.0

Newnham (6671)			
		vote	share
Cantrill R.*	LD	974	46.2
Strachan J.	Con	475	22.6
Powell J.	Lab	336	16.0
Gomori-Woodcock A. Ms.	Green	321	15.2
Turnout		31.7	23.7

Petersfield (6303)			
		vote	share
Blencowe K.*	Lab	879	39.0
Cooper S.	LD	848	37.7
Collins J.	Green	282	12.5
Clarkson R. Ms.	Con	243	10.8
Turnout		35.8	1.4

Queen Ediths (6435)			
		vote	share
Baker A.*	LD	1,489	56.7
Douglas D.	Con	735	28.0
Freeman L.	Lab	219	8.3
Mitchell S. Ms.	Green	181	6.9
Turnout		40.8	28.7

Romsey (6454) ²			
		vote	share
Ellis-Miller S. Ms.*	LD	1,065	41.4
Shah R.	LD	815	-
Goodacre J.	Lab	623	24.2
Sadiq T.	Lab	491	-
Griffiths J.	Green	358	13.9
Woodcock T.	Respect	294	11.4
Caldwell S.	Respect	268	-
Mennie H.	Con	235	9.1
Hewett N.	Green	216	-
Ozturk A. Ms.	Con	216	-
Turnout		37.0	17.2

Trumpington (5363)			
		vote	share
Stuart S. Ms.	LD	960	45.5
Ionides J.	Con	752	35.7
Galloway C. Ms.	Green	205	9.7
Stacey P. Ms.	Lab	191	9.1
Turnout		39.5	9.9

West Chesterton (6442)			
		vote	share
Boyce R.	LD	1,000	42.5
Mastin S.	Con	488	20.8
Watkins S.	Lab	442	18.8
Peake S. Ms.	Green	421	17.9
Turnout		36.7	21.8

Cambridge - 2007

Abbey (6436)			
		vote	share
Hart C. Ms.*	Lab	701	35.5
Wright M. Ms.	Green	593	30.0
Bower A.	Con	398	20.1
Sexton E.	LD	284	14.4
Turnout		30.8	5.5

Arbury (6669)			
		vote	share
Levy A.	LD	887	35.8
Todd-Jones M.	Lab	875	35.3
Meftah S.	Con	504	20.3
Smith M.	Green	211	8.5
Turnout		37.4	0.5

Castle (6410)			
		vote	share
Zmura T. Ms.	LD	806	42.5
Macnaghten E.	Con	490	25.8
Lawrence S.	Green	309	16.3
Abbott M. Ms.	Lab	293	15.4
Turnout		29.8	16.6

Cherry Hinton (6224)			
		vote	share
McPherson R.*	Lab	1,126	46.1
El-Neil S. Ms.	Con	806	33.0
Edkins K.	LD	257	10.5
Downer H.	Green	130	5.3
Barr M. Ms.	UKIP	121	5.0
Turnout		39.4	13.1

Coleridge (5963)²

		vote	share
Benstead J.*	Lab	861	38.0
Sadiq T.	Lab	739	-
Howell C.	Con	721	31.9
Normington R.	Con	662	-
Lindsay E. Ms.	LD	312	13.8
Hopkins V. Ms.	Green	253	11.2
Yates T.	LD	248	-
Ford N.	Green	215	-
Watts A.	UKIP	116	5.1
Turnout		36.3	6.2

East Chesterton (5842)

		vote	share
Blair C. Ms.	LD	731	34.6
Francis K.	Con	583	27.6
Haselwimmer S.	Lab	457	21.6
Pope P.	Green	225	10.7
Burkinshaw P.	UKIP	115	5.4
Turnout		36.3	7.0

Kings Hedges (5783)

		vote	share
Pitt M.	LD	679	35.9
Bird G. Ms.	Lab	661	35.0
Tempest M. Ms.	Con	368	19.5
Youd J.	Green	181	9.6
Turnout		32.8	1.0

Market (6297)

		vote	share
Dixon M.*	LD	679	42.4
Patton G.	Green	344	21.5
Haire T.	Con	341	21.3
Sheerman L. Ms.	Lab	237	14.8
Turnout		25.7	20.9

Newnham (6565)

		vote	share
Smith J. Ms.*	LD	842	44.9
Strachan J.	Con	489	26.1
Kellay A. Ms.	Green	300	16.0
Coiffait L.	Lab	246	13.1
Turnout		28.8	18.8

Petersfield (6073)

		vote	share
Walker L. Ms.	Lab	1,063	45.3
Cooper S.	LD	817	34.9
Martin J.	Con	239	10.2
Mitchell S. Ms.	Green	225	9.6
Turnout		38.7	10.5

Queen Ediths (6056)

		vote	share
Sanders V. Ms.	LD	1,364	53.4
Douglas D.	Con	760	29.7
Freeman L.	Lab	221	8.6
Lawson M.	Green	210	8.2
Turnout		42.2	23.6

Romsey (6142)

		vote	share
Shah R.*	LD	774	36.2
Goodacre J.	Lab	496	23.2
Woodcock T.	Respect	358	16.8
Griffiths J.	Green	271	12.7
Ozturk A. Ms.	Con	238	11.1
Turnout		34.9	13.0

Trumpington (5348)

		vote	share
Blackhurst A.*	LD	913	45.2
Hase P.	Con	774	38.3
Galloway C. Ms.	Green	172	8.5
Stacey P. Ms.	Lab	160	7.9
Turnout		37.9	6.9

West Chesterton (6169)

		vote	share
Armstrong D. Ms.*	LD	887	40.0
Mastin S.	Con	507	22.9
Watkins S.	Lab	451	20.4
Peake S. Ms.	Green	371	16.7
Turnout		36.0	17.1

Cambridge - 2008**Abbey (6348)**

		vote	share
Wright M. Ms.	Green	812	41.4
Durrant J.*	Lab	645	32.9
Bower A.	Con	376	19.2
Leroux C. Ms.	LD	129	6.6
Turnout		31.0	8.5

Arbury (6554)

		vote	share
Todd-Jones M.	Lab	941	35.3
James R.*	LD	908	34.1
Meftah S.	Con	468	17.6
Terry C. Ms.	Green	187	7.0
Hawke T.	Edem	161	6.0
Turnout		40.8	1.2

Castle (6471)

		vote	share
Hipkin J.*	Ind	851	39.0
Holt V. Ms.	LD	707	32.4
Macnaghten E.	Con	255	11.7
Wakeford S.	Lab	225	10.3
Lawrence S.	Green	145	6.6
Turnout		33.9	6.6

Cherry Hinton (6134)

		vote	share
Dryden R.*	Lab	1,247	52.0
El-Neil S. Ms.	Con	827	34.5
Willingham D.	LD	167	7.0
Ford N.	Green	157	6.5
Turnout		39.2	17.5

Coleridge (6050)

		vote	share
Howell C.	Con	955	40.2
Sadiq T.*	Lab	941	39.7
Desmier A.	LD	219	9.2
Hopkins V. Ms.	Green	193	8.1
Watts A.	UKIP	65	2.7
Turnout		39.4	0.6

East Chesterton (5907)

		vote	share
Liddle J. Ms.*	LD	777	38.4
Francis K.	Con	576	28.5
Haselwimmer S.	Lab	368	18.2
Pope P.	Green	203	10.0
Burkinshaw P.	UKIP	100	4.9
Turnout		34.5	9.9

Kings Hedges (5680)

		vote	share
McGovern N.	LD	760	40.6
Bird G. Ms.	Lab	562	30.1
Weinman C.	Con	419	22.4
Youd J.	Green	129	6.9
Turnout		33.1	10.6

Market (6007)

		vote	share
Bick T.	LD	645	44.1
Lawlor S. Ms.	Con	342	23.4
Dale N.	Lab	255	17.4
Mitchell S. Ms.	Green	222	15.2
Turnout		24.6	20.7

Newnham (6493)

		vote	share
Reid J. Ms.*	LD	870	50.1
Strachan J.	Con	427	24.6
Butler J. Ms.	Green	238	13.7
Redfern W.	Lab	200	11.5
Turnout		26.9	25.5

Petersfield (6186)

		vote	share
Bradnack T.*	Lab	857	44.3
Parkin E. Ms.	LD	541	28.0
Newton J.	Con	301	15.6
Sedgwick-Jell S.	Green	236	12.2
Turnout		31.4	16.3

Queen Ediths (6143)

		vote	share
Taylor A. Ms.*	LD	1,250	49.9
Douglas D.	Con	838	33.5
Goodacre J.	Lab	233	9.3
Lawson M.	Green	183	7.3
Turnout		40.9	16.5

Romsey (6405)

		vote	share
Smart C. Ms.*	LD	791	37.2
Freeman L.	Lab	535	25.1
Woodcock T.	Left	328	15.4
Barker S.	Con	285	13.4
Garrett K.	Green	189	8.9
Turnout		33.2	12.0

Trumpington (5551)

		vote	share
Al Bander S.	LD	985	45.9
Hase P.	Con	828	38.6
Galloway C. Ms.	Green	178	8.3
Stacey P. Ms.	Lab	154	7.2
Turnout		38.7	7.3

West Chesterton (6005)

		vote	share
Nimmo-Smith M.*	LD	969	43.2
Mastin S.	Con	513	22.9
Sargeant M.	Lab	461	20.5
Peake S. Ms.	Green	302	13.5
Turnout		37.5	20.3

Cambridge - 2010**Abbey (6662)**

		vote	share
Pogonowski A.	Green	1,104	29.7
Brown C.	LD	1,010	27.2
Owers G.	Lab	848	22.8
Hillman L. Ms.	Con	758	20.4
Turnout		56.3	2.5

Arbury (6714)

		vote	share
Ward T.*	LD	1,633	38.9
Kidman I.	Lab	1,133	27.0
Meftah A.	Con	812	19.3
Lawrence S.	Green	620	14.8
Turnout		63.1	11.9

Castle (6483)

		vote	share
Kightley S.*	LD	1,857	44.7
Clegg W.	Con	906	21.8
Kennedy J.	Green	749	18.0
Buckingham J.	Lab	641	15.4
Turnout		64.5	22.9

Cherry Hinton (6292)

		vote	share
Newbold S.*	Lab	1,610	38.4
Macnaghten E.	Con	1,231	29.4
Edkins K.	LD	1,023	24.4
Pooley R.	Green	328	7.8
Turnout		67.2	9.0

Coleridge (6344)

		vote	share
Herbert L.*	Lab	1,320	32.3
Bower A.	Con	1,160	28.4
Yates T.	LD	1,040	25.5
Hopkins V. Ms.	Green	446	10.9
Watts A.	UKIP	118	2.9
Turnout		64.7	3.9

East Chesterton (6384)²

		vote	share
Kerr S. Ms.	LD	1,477	36.1
Znajek R.	LD	1,305	-
Francis K.	Con	984	24.1
Bird G. Ms.	Lab	859	21.0
McCormack U. Ms.	Con	806	-
Cooper D.	Lab	776	-
Pope P.	Green	634	15.5
Ellis M.	Green	581	-
Gordon A. Ms.	Soc Alt	137	3.3
Turnout		63.7	12.1

Kings Hedges (5958)

		vote	share
Brierley S.	LD	1,236	36.3
Hughes E. Ms.	Lab	986	29.0
Adams M.	Con	813	23.9
Collis A. Ms.	Green	274	8.1
Booth M.	Soc Alt	92	2.7
Turnout		57.6	7.4

Market (6332)

		vote	share
Rosenstiel C.*	LD	1,697	43.0
Boyd J.	Con	894	22.7
Toye J.	Green	783	19.8
Stacey P. Ms.	Lab	571	14.5
Turnout		62.7	20.4

Newnham (6516)

		vote	share
Cantrill R.*	LD	1,862	44.9
Oliver S.	Con	994	24.0
Freeman L.	Lab	648	15.6
Youd J.	Green	642	15.5
Turnout		63.9	20.9

Petersfield (6215)²

		vote	share
Brown S. Ms.	LD	1,571	36.6
Marchant-Daisley G. Ms.	Lab	1,237	28.8
Reiner A. Ms.	LD	1,000	-
Mitchell S.	Green	923	21.5
Blencowe K.*	Lab	891	-
Sedgwick-Jell H.	Green	575	-
Hordern J.	Con	558	13.0
Meftah S.	Con	472	-
Turnout		62.3	7.8

Queen Ediths (6544)

		vote	share
Swanson J. Ms.	LD	2,129	49.0
Marino V.	Con	1,221	28.1
Goodacre J.	Lab	541	12.4
Westcott B.	Green	334	7.7
Jackson C. Ms.	UKIP	122	2.8
Turnout		66.7	20.9

Romsey (6560)

		vote	share
Saunders P.	LD	1,615	38.1
Carisson B.	Lab	928	21.9
Allum H. Ms.	Green	697	16.4
Slinn J. Ms.	Con	600	14.1
Woodcock T.	Soc Alt	404	9.5
Turnout		65.0	16.2

Trumpington (5787)

		vote	share
Stuart S. Ms.*	LD	1,704	43.2
Simpole-Clarke J. Ms.	Con	1,236	31.3
Latunde-Dada K.	Lab	559	14.2
Galloway C. Ms.	Green	446	11.3
Turnout		68.5	11.9

West Chesterton (6419)²

		vote	share
Boye M.*	LD	1,881	40.1
Tunnacliffe D.	LD	1,559	-
Peake S. Ms.	Green	1,201	25.6
McHugh P.	Lab	853	18.2
Sargeant M.	Lab	836	-
Karimi A. Ms.	Con	752	16.0
Peake S.	Green	674	25.6
Karimi J.	Con	652	-
Turnout		68.2	14.5

Cambridge - 2011**Abbey (6745)**

		vote	share
Hart C. Ms.*	Lab	1,057	41.8
Hughes B.	Green	796	31.5
Thomas C.	Con	414	16.4
Brown C.	LD	260	10.3
Turnout		37.8	10.3

Arbury (6793)

		vote	share
O'Reilly C. Ms.	Lab	1,310	40.5
Levy A.*	LD	1,015	31.4
Meftah A.	Con	448	13.8
Lawrence S.	Green	377	11.6
Watts A.	UKIP	87	2.7
Turnout		48.0	9.1

Castle (6585)

		vote	share
Tucker P.	LD	973	33.6
Walsh A.	Lab	728	25.2
Salway P.	Con	620	21.4
Toye J.	Green	572	19.8
Turnout		45.0	8.5

Cherry Hinton (6251)²

		vote	share
Ashton M.	Lab	1,525	51.6
McPherson R.*	Lab	1,464	-
Turnham E.	Con	880	29.8
Haire T.	Con	865	-
Esgate J. Ms.	Green	304	10.3
Ford N.	Green	267	-
Edkins K.	LD	246	8.3
Ryan J.	LD	205	-
Turnout		49.1	21.8

Coleridge (6440)

		vote	share
Benstead J.*	Lab	1,346	46.9
Bower A.	Con	869	30.3
Hopkins V. Ms.	Green	368	12.8
Yates T.	LD	285	9.9
Turnout		45.0	16.6

East Chesterton (6568)

		vote	share
Bird G. Ms.	Lab	1,133	38.4
Blair C. Ms.*	LD	912	30.9
Francis K.	Con	488	16.5
Pope P.	Green	312	10.6
Burkinshaw P.	UKIP	106	3.6
Turnout		45.4	7.5

Kings Hedges (6105)

		vote	share
Price K.	Lab	904	40.0
Pitt M.*	LD	729	32.3
Karimi A. Ms.	Con	390	17.3
Tyes I.	Ind	137	6.1
Booth M.	Camb Soc	99	4.4
Turnout		37.4	7.7

Market (6468)

		vote	share
Reiner A. Ms.	LD	754	28.0
Holbrook O.	Lab	665	24.7
Collis A. Ms.	Green	651	24.2
Waller J.	Con	620	23.0
Turnout		41.6	3.3

Newnham (6458)

		vote	share
Smith J. Ms.*	LD	990	35.2
Johnson R.	Lab	756	26.9
Anscombe-Bell J. Ms.	Con	621	22.1
Youd J.	Green	443	15.8
Turnout		44.3	8.3

Petersfield (6270)

		vote	share
Blencowe K.	Lab	1,353	48.9
O'Connell Z. Ms.	LD	594	21.5
Mitchell S.	Green	481	17.4
Meftah S.	Con	340	12.3
Turnout		44.6	27.4

Queen Ediths (6397)

		vote	share
Pippas G.	LD	1,318	41.1
Marino V.	Con	830	25.9
Birtles S. Ms.	Lab	642	20.0
Westcott B.	Green	416	13.0
Turnout		50.5	15.2

Romsey (6484)

		vote	share
Moghadas Z. Ms.	Lab	996	33.3
Shah R.*	LD	870	29.1
Gibson J.	Green	411	13.7
Barker S.	Con	360	12.0
Woodcock T.	Camb Soc	356	11.9
Turnout		46.5	4.2

Trumpington (6015)

		vote	share
Blackhurst A.*	LD	991	36.1
Ionides J.	Con	869	31.7
Latunde-Dada K.	Lab	481	17.5
Galloway C. Ms.	Green	401	14.6
Turnout		46.0	4.4

West Chesterton (6069)

		vote	share
Tunnacliffe R.	LD	1,225	38.5
Sargeant M.	Lab	866	27.2
Yeatman R.	Con	577	18.1
Lintott S.	Green	513	16.1
Turnout		53.0	11.3

Cambridge - 2012

Abbey (6684)

		vote	share
Johnson R.	Lab	963	54.4
Birkin W.	Green	423	23.9
Haire T.	Con	219	12.4
Brown C.	LD	165	9.3

Turnout 26.7 30.5

Arbury (6722)

		vote	share
Todd-Jones M.*	Lab	1,322	59.9
James R.	LD	417	18.9
Meftah A. Ms.	Con	237	10.7
Lawrence S.	Green	232	10.5

Turnout 33.1 41.0

Castle (6597)

		vote	share
Hipkin J.*	Ind	925	49.5
Walsh A.	Lab	330	17.7
Levy A.	LD	275	14.7
Pandit N.	Con	173	9.3
Toye J.	Green	164	8.8

Turnout 28.4 31.9

Cherry Hinton (6368)

		vote	share
Dryden R.*	Lab	1,556	73.2
Ozturk A. Ms.	Con	385	18.1
Edkins K.	LD	185	8.7

Turnout 33.6 55.1

Coleridge (6581)

		vote	share
Owers G.*	Lab	1,228	59.6
Barker S.	Con	422	20.5
Esgate S.	Green	228	11.1
Yates T.	LD	183	8.9

Turnout 31.5 39.1

East Chesterton (6702)

		vote	share
Abbott M. Ms.	Lab	1,012	47.4
Morris T.	LD	438	20.5
Francis K.	Con	317	14.8
Pope P.	Green	241	11.3
Burkinshaw P.	UKIP	129	6.0

Turnout 32.0 26.9

Kings Hedges (6327)

		vote	share
Gawthroppe N.	Lab	827	48.4
McGovern N.*	LD	576	33.7
Karimi A. Ms.	Con	199	11.7
Tyes I.	United PP	105	6.2

Turnout 27.2 14.7

Market (6421)

		vote	share
Bick T.*	LD	615	35.6
Kavanagh N.	Lab	505	29.3
Hughes B.	Green	349	20.2
Turnham E.	Con	257	14.9

Turnout 27.1 6.4

Newnham (6654)

		vote	share
Reid S. Ms.*	LD	917	44.5
Cain S. Ms.	Lab	641	31.1
Beaumont A.	Con	263	12.8
Aldridge B.	Green	241	11.7

Turnout 31.2 13.4

Petersfield (6180)

		vote	share
Marchant-Daisley G. Ms.*	Lab	1,036	56.6
O'Connell Z. Ms.	LD	322	17.6
Billington S. Ms.	Green	263	14.4
Patrick P.	Con	209	11.4

Turnout 29.8 39.0

Queen Ediths (6515)

		vote	share
Birtles S. Ms.	Lab	1,084	39.7
Taylor A. Ms.*	LD	963	35.2
Jefferis R.	Con	513	18.8
Lawson M.	Green	172	6.3

Turnout 42.2 4.4

Romsey (6555)

		vote	share
Smart C. Ms.*	LD	1,020	41.4
Eckersley R. Ms.	Lab	813	33.0
Woodcock T.	Camb Soc	457	18.5
Salway P.	Con	175	7.1

Turnout 37.8 8.4

Trumpington (5913)

		vote	share
Meftah S.	Con	723	36.6
Al Bander S.*	LD	644	32.6
Latunde-Dada K.	Lab	321	16.3
Galloway C. Ms.	Green	287	14.5

Turnout 33.5 4.0

West Chesterton (6139)

		vote	share
Pitt M.	LD	840	36.7
Sargeant M.	Lab	751	32.8
Strachan J.	Con	372	16.3
Perkins O.	Green	325	14.2

Turnout 37.5 3.9

