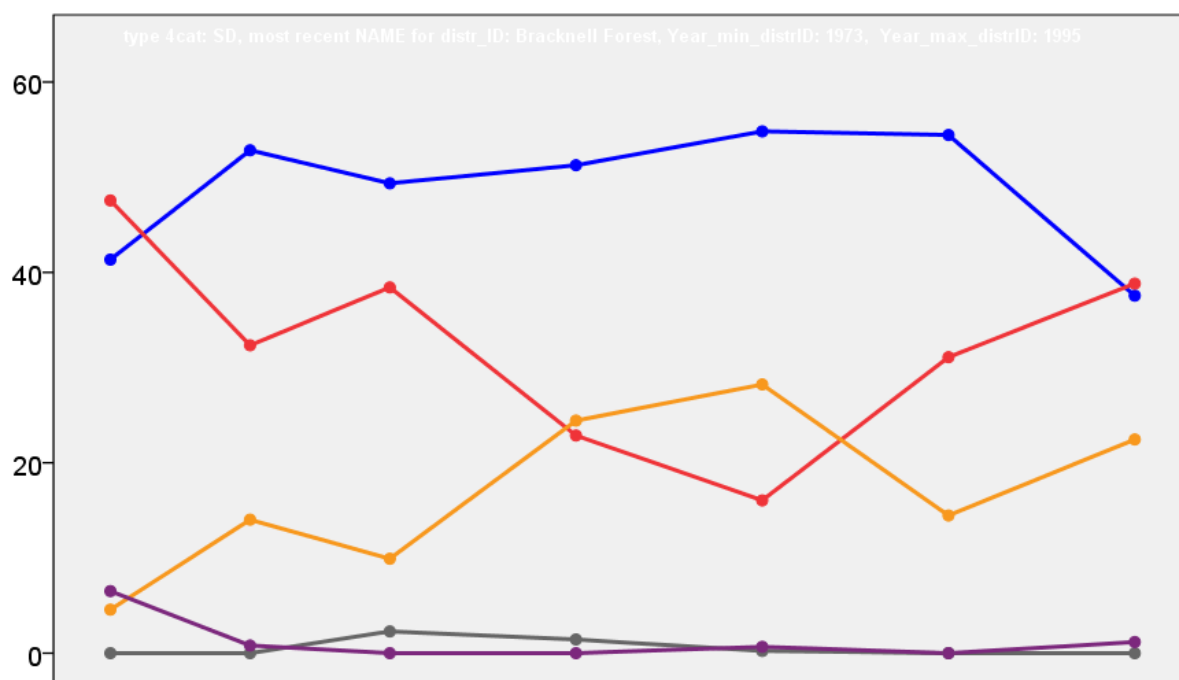


# Bracknell Forest Borough Council Election Results 1973-1995



Colin Rallings and Michael Thrasher  
The Elections Centre  
Plymouth University

The information contained in this report has been obtained from a number of sources. Election results from the immediate post-reorganisation period were painstakingly collected by Alan Willis largely, although not exclusively, from local newspaper reports. From the mid-1980s onwards the results have been obtained from each local authority by the Elections Centre. The data are stored in a database designed by Lawrence Ware and maintained by Brian Cheal and others at Plymouth University. Despite our best efforts some information remains elusive whilst we accept that some errors are likely to remain. Notice of any mistakes should be sent to [elections@plymouth.ac.uk](mailto:elections@plymouth.ac.uk). The results sequence can be kept up to date by purchasing copies of the annual Local Elections Handbook, details of which can be obtained by contacting the email address above.

Front cover: the graph shows the distribution of percentage vote shares over the period covered by the results. The lines reflect the colours traditionally used by the three main parties. The grey line is the share obtained by Independent candidates while the purple line groups together the vote shares for all other parties.

Rear cover: the top graph shows the percentage share of council seats for the main parties as well as those won by Independents and other parties. The lines take account of any by-election changes (but not those resulting from elected councillors switching party allegiance) as well as the transfers of seats during the main round of local election.

The lower graph shows for each main round of local elections the overall percentage turnout (solid line), the percentage of women candidates standing at (dotted line) and the percentage of women among those elected (hashed line).

## Bracknell Forest 1973

Ascot (3955) <sup>3</sup>			
		vote	share
Benwell M. Ms.	Con	727	64.3
Dolan J.	Con	710	-
Wright C.	Con	679	-
Day J.	Lab	403	35.7
Holloway A.	Lab	396	-
Holloway J. Ms.	Lab	389	-
Turnout		28.6	28.7

Binfield (1924)			
		vote	share
Springman A. Ms.	Con	366	73.2
Green P.	Lab	134	26.8
Turnout		26.0	46.4

Bracknell (Great Hollands) (4697) <sup>3</sup>			
		vote	share
Shillcock J. Ms.	Lab	935	61.9
Laing J. Ms.	Lab	925	-
Pettitt W.	Lab	875	-
Clarke H.	Con	402	26.6
Clarke D. Ms.	Con	392	-
Corley M.	Con	374	-
Everett A.	Ind Lab	173	11.5
Turnout		32.1	35.3

Bracknell (Old Bracknell) (3862) <sup>3</sup>			
		vote	share
Dhillon R.	Lab	788	-
McShane D.	Lab	788	46.7
Pearce T.	Lab	757	-
Kempton D. Ms.	Con	544	32.2
Hasted W.	Con	524	-
Rugman C.	Con	489	-
Hoskins K.	Lib	355	21.0
Turnout		43.7	14.5

Bullbrook (4793) <sup>3</sup>			
		vote	share
Delbridge J.	Lab	1,078	56.7
Walsh M.	Lab	1,022	-
Checkley A.	Lab	991	-
Coombs M. Ms.	Con	822	-
Strong P. Ms.	Con	822	43.3
Thompson E.	Con	782	-
Turnout		39.6	13.5

College Town (1696)			
		vote	share
Marshall J.	Ind	0	0.0
Turnout		0.0	0.0

Cranbourne (1301)			
		vote	share
Creech F.	Con	284	62.8
Turiccki M. Ms.	Lab	168	37.2
Turnout		34.7	25.7

Crowthorne & Easthampstead (4203) <sup>3</sup>			
		vote	share
Brown W.	Lib	0	0.0
Offord J.	Con	0	-
Worrall D.	Con	0	0.0
Turnout		0.0	0.0

Garth (2620) <sup>2</sup>			
		vote	share
Moylan C.	Lab	564	63.4
Pocknee J.	Lab	517	-
Harbor P. Ms.	Con	325	36.6
Turnout		33.9	26.9

Harmanswater (2896) <sup>2</sup>			
		vote	share
Pinder W.	Lab	471	42.4
Lavender G.	Lab	456	-
Underwood R.	Con	380	34.2
Wood T.	Con	367	-
Banks M. Ms.	Lib	260	23.4
White P.	Lib	249	-
Turnout		38.4	8.2

Little Sandhurst (2586) <sup>2</sup>			
		vote	share
Carruthers G.	Res	405	44.1
Yearsden J.	Res	372	-
Steele A.	Con	340	37.0
Rimes G.	Con	202	-
Crew R.	Lab	174	18.9
Kinsella J.	Lab	98	-
Turnout		35.5	7.1

Priestwood (2963) <sup>2</sup>			
		vote	share
Cain F.	Lab	564	58.4
Mountjoy T.	Lab	541	-
Clark-Lowes F.	Con	401	41.6
Mosses R.	Con	370	-
Turnout		32.6	16.9

Sandhurst (1872)			
		vote	share
Harris K.	Res	299	42.3
Dancy K. Ms.	Lab	269	38.0
Pierce J.	Con	139	19.7
Turnout		37.8	4.2

St. Marys (978)			
		vote	share
Rose P.	Con	265	60.0
Treffry R.	Lab	177	40.0
Turnout		45.2	19.9

Warfield (1277)			
		vote	share
Kay J. Ms.	Con	316	69.6
Stewart D.	Lab	138	30.4
Turnout		35.6	39.2

Wildridings (2036) <sup>2</sup>			
		vote	share
Lindop W.	Lab	532	68.1
Mihell D.	Lab	512	-
Read B.	Con	249	31.9
Toomey J.	Con	246	-
Turnout		38.4	36.2

## Bracknell Forest 1976

Ascot (3945) <sup>3</sup>			
		vote	share
Benwell M. Ms.*	Con	1,193	57.4
Jackson R.	Con	1,077	-
Evans D.	Con	935	-
Trower R.	Lib	584	28.1
Cripps G. Ms.	Lab	301	14.5
Tyler J.	Lab	291	-
Draper R.	Lab	247	-
Turnout		52.7	29.3

Binfield (1994)			
		vote	share
Lees D. Ms.	Con	801	86.1
Jones E.	Lab	129	13.9
Turnout		46.8	72.3

Bracknell (Great Hollands) (5648) <sup>3</sup>			
		vote	share
Grant J.	Con	1,186	40.4
Dale E.	Con	1,159	-
Elford D.	Con	1,123	-
Dellar A.	Lab	1,097	37.4
Kirk T. Ms.	Lab	1,090	-
Shillcock A. Ms.*	Lab	1,087	-
Malvern K.	Lib	471	16.1
Tottingham D.	Lib	451	-
Stotesbury P.	Lib	447	-
Rimple C.	Ind Lab	179	6.1
Turnout		51.9	3.0

Bracknell (Old Bracknell) (5579) <sup>3</sup>			
		vote	share
Fanthorpe T.	Con	1,148	44.4
Fleming R.	Con	1,143	-
Gennery B.	Con	1,141	-
Pearce T.*	Lab	1,045	40.4
Mason S.	Lab	1,036	-
Wheaton T.	Lab	1,002	-
Campbell R.	Lib	392	15.2
Salisbury R.	Lib	389	-
Maxwell D.	Lib	280	-
Turnout		46.3	4.0

Bullbrook (5053) <sup>3</sup>			
		vote	share
Strong P. Ms.	Con	1,264	57.0
Dowdall C.	Con	1,255	-
Padley R.	Con	1,225	-
Delbridge J.*	Lab	953	43.0
Darke P.	Lab	920	-
Checkley A.*	Lab	862	-
Turnout		43.9	14.0

College Town (1713)			
		vote	share
Marshall J.*	Con	470	69.8
Gardener A.	Lab	203	30.2
Turnout		41.8	39.7

Cranbourne (1141)			
		vote	share
Creech F.*	Con	325	70.8
Andrews T. Ms.	Lab	134	29.2
Turnout		41.2	41.6

Crowthorne & Easthampstead (4366) <sup>3</sup>			
		vote	share
Brown W.*	Lib	1,152	47.3
Cheney A.	Con	985	40.4
Finnie J.	Con	935	-
Worrall D.*	Con	810	-
Hall A.	Lab	300	12.3
Johnston S. Ms.	Lab	286	-
Turnout		55.8	6.9

Garth (2674) <sup>2</sup>			
		vote	share
Moylan C.*	Lab	659	54.1
Pocknee J.*	Lab	645	-
Brown M.	Con	558	45.9
Coombs M. Ms.	Con	555	-
Turnout		45.5	8.3

Harmanswater (2912) <sup>2</sup>			
		vote	share
Wood T.	Con	723	49.9
Brydon D.	Con	704	-
Smyth G.	Lab	518	35.8
Lavender G.*	Lab	511	-
Creat T.	Lib	207	14.3
White P.	Lib	197	-
Turnout		49.7	14.2

Little Sandhurst (2556) <sup>2</sup>			
		vote	share
Steel A.	Con	856	72.1
Burton J.	Con	773	-
Urquhart C.	Lab	332	27.9
Wood R.	Lab	283	-
Turnout		46.5	44.1

Priestwood (3016) <sup>2</sup>			
		vote	share
Cain F.*	Lab	560	50.4
Mosses R.	Con	551	49.6
Harbor P. Ms.	Con	538	-
Mountjoy T.*	Lab	534	-
Turnout		36.8	0.8

Sandhurst (1930)			
		vote	share
Rimes G.	Con	537	56.3
Dancy K. Ms.	Lab	417	43.7
Turnout		51.2	12.6

St. Marys (972)			
		vote	share
Rose P.*	Con	371	85.5
Drukker M.	Lab	63	14.5
Turnout		45.8	71.0

Warfield (1265)			
		vote	share
Kay J. Ms.*	Con	417	73.8
Stewart R.	Lab	148	26.2
Turnout		45.8	47.6

Wildridings (2123) <sup>2</sup>			
		vote	share
Mattick J.	Con	406	37.3
Wreglesworth N.	Con	368	-
Lindop W.*	Lab	358	32.9
Mullarky P.	Lib	324	29.8
Mihell D.*	Lab	320	-
Spain K.	Lib	318	-
Turnout		51.2	4.4

## Bracknell Forest 1979

Ascot (3943) <sup>3</sup>			
		vote	share
Benwell D.	Con	0	-
Jackson R.	Con	0	0.0
Stallybrass W.	Ind	0	0.0
Turnout		0.0	0.0

Binfield (2179) <sup>2</sup>			
		vote	share
Calvert J.	Con	929	51.3
Hargreaves L.	Con	838	-
Ellson P. Ms.	Lib	536	29.6
Clifford J. Ms.	Lab	347	19.2
Tarry A.	Lab	320	-
Turnout		83.2	21.7

Bullbrook (4965) <sup>3</sup>			
		vote	share
Coombs M. Ms.	Con	1,937	55.9
Dowdall C.	Con	1,874	-
Strong P. Ms.	Con	1,815	-
Darke P.	Lab	1,528	44.1
Ryan V. Ms.	Lab	1,388	-
James I.	Lab	1,380	-
Turnout		69.8	11.8

College Town (1913) <sup>2</sup>			
		vote	share
Ward A.	Con	865	41.3
Marshall J.	Ind	817	39.0
Brierly A.	Lab	412	19.7
Turnout		109.5	2.3

Cranbourne (1119)			
		vote	share
Clarke D.	Ind	0	0.0
Turnout		0.0	0.0

Crowthorne (4184) <sup>3</sup>			
		vote	share
Finnie J.	Con	1,893	68.2
Cheney A.	Con	1,866	-
Newbound B.	Con	1,598	-
Knowles J. Ms.	Lab	882	31.8
Vertigen G.	Lab	703	-
Turnout		55.3	36.4

Garth (2985) <sup>2</sup>			
		vote	share
Pocknee J.	Lab	1,209	53.9
Lindop W.	Lab	1,174	-
Powell S. Ms.	Con	1,032	46.1
Parker K.	Con	945	-
Turnout		75.1	7.9

Great Hollands North (3284) <sup>2</sup>			
		vote	share
Shillcock J. Ms.	Lab	1,170	45.1
Tunncliffe D.	Lab	1,066	-
Grant J.	Con	852	32.8
Squires J.	Con	764	-
Malvern K.	Lib	574	22.1
Simpson D.	Lib	425	-
Turnout		79.0	12.2

Great Hollands South (2730) <sup>2</sup>			
		vote	share
Dale E.	Con	1,003	48.1
Tubbs D.	Con	996	-
Dellar A.	Lab	689	33.0
Duncan J.	Lab	675	-
McMahon T.	Lib	394	18.9
Jones R.	Lib	379	-
Turnout		76.4	15.1

Hanworth (5595) <sup>3</sup>			
		vote	share
Elford D.	Con	1,842	42.4
Martin S. Ms.	Con	1,736	-
Redman G.	Con	1,716	-
Drukker M.	Lab	1,580	36.4
Wheaton T.	Lab	1,532	-
Sparrow D.	Lab	1,529	-
Balfour A.	Lib	923	21.2
Salisbury R.	Lib	856	-
Turnout		77.7	6.0

Harmanswater (3463) <sup>3</sup>			
		vote	share
Ainscough T.	Con	1,377	51.1
Brydon D.	Con	1,342	-
Wood T.	Con	1,313	-
Gardener J. Ms.	Lab	851	31.6
Mihell C.	Lab	837	-
Steinborn-Busse K.	Lab	619	-
White P.	Lib	466	17.3
Turnout		77.8	19.5

Little Sandhurst (2712) <sup>2</sup>			
		vote	share
Steel A.	Con	1,443	69.2
Cohen H.	Con	1,265	-
Goddard R.	Lab	643	30.8
Wood R.	Lab	619	-
Turnout		76.9	38.4

Old Bracknell (3821) <sup>3</sup>			
		vote	share
Mason S.	Lab	1,331	44.7
Delbridge J.	Lab	1,246	-
Pearce T.	Lab	1,240	-
Dolby D. Ms.	Con	999	33.5
Osborne-Moss D.	Con	874	-
Morris G.	Con	802	-
Maxwell D.	Lib	649	21.8
Turnout		78.0	11.1

Owlsmoor (1289)			
		vote	share
Worrall D.	Con	0	0.0
Turnout		0.0	0.0

Priestwood (2876) <sup>2</sup>			
		vote	share
Cain F.	Lab	1,304	60.4
Mountjoy T.	Lab	1,171	-
Mosses R.	Con	856	39.6
Taber G.	Con	777	-
Turnout		75.1	20.7

Sandhurst (2154) <sup>2</sup>			
		vote	share
Rimes G.	Con	1,015	60.6
Brookes C.	Con	972	-
Dancy K. Ms.	Lab	661	39.4
Lilly P.	Lab	355	-
Turnout		77.8	21.1

St. Marys (975)			
		vote	share
Warren J.	Con	0	0.0
Turnout		0.0	0.0

Warfield (1338)			
		vote	share
Kay J. Ms.	Con	685	73.1
Stewart R.	Lab	252	26.9
Turnout		70.0	46.2

Wildridings (2299) <sup>2</sup>			
		vote	share
Mattick J.	Con	894	50.9
Cole C. Ms.	Lab	862	49.1
Wreglesworth N.	Con	851	-
Warwick S. Ms.	Lab	733	-
Turnout		76.4	1.8

## Bracknell Forest 1983

Ascot (4050) <sup>3</sup>			
		vote	share
Benwell D.*	Con	1,034	59.8
Dauncey M.	Con	938	-
Jackson R.*	Con	936	-
Glynn J.	Lib/SDP	508	29.4
Harrison R.	Lib/SDP	419	-
Rennie-Fielding J. Ms.	Lib/SDP	419	-
Porter M.	Lab	188	10.9
Williams R.	Lab	184	-
Bayle M. Ms.	Lab	176	-
Turnout		42.7	30.4

Binfield (2246) <sup>2</sup>			
		vote	share
Edwards J. Ms.	Con	705	63.4
Taylor G.	Con	663	-
Biddlecombe M.	Lib/SDP	273	24.6
Sabberton R.	Lib/SDP	187	-
Harman J.	Lab	134	12.1
Glasson E.	Lab	127	-
Turnout		49.5	38.8

Bullbrook (5445) <sup>3</sup>			
		vote	share
Coombs M. Ms.*	Con	1,086	45.8
Blake L.	Con	1,051	-
Strong P. Ms.*	Con	1,037	-
Cook H.	Lab	700	29.5
Newbury J.	Lab	621	-
Hanson R.	Lib/SDP	585	24.7
Moignard M. Ms.	Lib/SDP	582	-
Wilson D.	Lab	581	-
Lees N.	Lib/SDP	550	-
Turnout		43.5	16.3

College Town (2172) <sup>2</sup>			
		vote	share
<b>Arnold A.</b>	Con	587	49.8
<b>Simonds R.</b>	Con	506	-
Routledge M.	Lib/SDP	345	29.3
Watts M.	Lib/SDP	341	-
Wood R.	Lab	247	20.9
Urquhart C.	Lab	175	-
	<b>Turnout</b>	54.3	20.5
Cranbourne (1118)			
		vote	share
<b>Ballin M. Ms.</b>	Con	334	68.2
Smart R.	Ind	112	22.9
Food M.	Lab	44	9.0
	<b>Turnout</b>	43.8	45.3
Crowthorne (3595) <sup>3</sup>			
		vote	share
<b>Finnie J.*</b>	Con	1,060	59.9
<b>Cheney A.*</b>	Con	916	-
<b>Richardson R.</b>	Con	913	-
Seaman D.	Lib/SDP	535	30.2
Lancashire A.	Lib/SDP	520	-
Murray A.	Lib/SDP	486	-
Vertigen G.	Lab	174	9.8
King S.	Lab	167	-
Wheaton T.	Lab	149	-
	<b>Turnout</b>	49.2	29.7
Garth (3052) <sup>2</sup>			
		vote	share
<b>Aspey F.</b>	Con	680	42.6
<b>Sturman C.</b>	Con	606	-
Palmer J. Ms.	Lab	512	32.1
Loneragan D.	Lab	450	-
Lindop W.	Lib/SDP	403	25.3
Pocknee J.	Lib/SDP	381	-
	<b>Turnout</b>	52.3	10.5
Great Hollands North (3346) <sup>2</sup>			
		vote	share
<b>Bouchard J. Ms.</b>	Con	635	42.5
<b>Cumming C.</b>	Con	617	-
Chapman P. Ms.	Lab	560	37.5
Lomax V. Ms.	Lab	491	-
Campbell-Grant I.	Lib/SDP	300	20.1
Jones E. Ms.	Lib/SDP	293	-
	<b>Turnout</b>	44.7	5.0
Great Hollands South (2884) <sup>2</sup>			
		vote	share
<b>McCracken I.</b>	Con	727	54.2
<b>Angell R.</b>	Con	719	-
Jamison N.	Lab	310	23.1
Biggs K. Ms.	Lib/SDP	305	22.7
Sanderson B.	Lab	303	-
Tunncliffe S. Ms.	Lib/SDP	296	-
	<b>Turnout</b>	46.5	31.1
Hanworth (6049) <sup>3</sup>			
		vote	share
<b>Elford D.*</b>	Con	1,416	48.9
<b>Percy R.</b>	Con	1,401	-
<b>Wallace M.</b>	Con	1,338	-
Grayson H.	Lab	893	30.8
Tunncliffe D.	Lab	834	-
Ozanne P.	Lab	797	-
Balfour A.	Lib/SDP	587	20.3
Gee L.	Lib/SDP	561	-
Miles M.	Lib/SDP	556	-
	<b>Turnout</b>	47.9	18.1
Harmanswater (6014) <sup>3</sup>			
		vote	share
<b>Ainscough T.*</b>	Con	1,308	49.2
<b>Mills T.</b>	Con	1,285	-
<b>Teesdale G. Ms.</b>	Con	1,257	-
Munn M. Ms.	Lab	778	29.2
Scorer A.	Lab	749	-
Williams A. Ms.	Lab	742	-
Hughes W.	Lib/SDP	575	21.6
White P.	Lib/SDP	537	-
Spencer J.	Lib/SDP	530	-
	<b>Turnout</b>	44.2	19.9

Little Sandhurst (2890) <sup>2</sup>			
		vote	share
<b>Cohen H.*</b>	Con	779	58.1
<b>Marsden J.</b>	Con	775	-
Lyne H.	Lib/SDP	368	27.4
Hewitt H.	Lib/SDP	315	-
Wood J. Ms.	Lab	194	14.5
Goddard R.	Lab	190	-
	<b>Turnout</b>	46.4	30.6
Old Bracknell (4981) <sup>3</sup>			
		vote	share
<b>Fox P.</b>	Con	842	44.5
<b>Cavill D.</b>	Con	841	-
<b>Egan J.</b>	Con	819	-
Newbury C.	Lab	613	32.4
Ryan V. Ms.	Lab	608	-
Warwick S. Ms.	Lab	586	-
Maxwell D.	Lib/SDP	439	23.2
McCartan H.	Lib/SDP	388	-
Carson C.	Lib/SDP	378	-
	<b>Turnout</b>	38.0	12.1
Owlsmoor (2246)			
		vote	share
<b>Thomas R.</b>	Con	674	51.7
Nicholson J.	Lib/SDP	527	40.4
Draper R.	Lab	103	7.9
	<b>Turnout</b>	58.1	11.3
Priestwood (3046) <sup>2</sup>			
		vote	share
<b>Furniss A.</b>	Con	483	36.2
<b>Shean J.</b>	Con	461	-
Drukker M.	Lab	457	34.3
Tarry A.	Lab	421	-
Mountjoy T.*	Lib/SDP	394	29.5
Cain F.*	Lib/SDP	376	-
	<b>Turnout</b>	43.8	1.9
Sandhurst (2567) <sup>2</sup>			
		vote	share
<b>Ward A.</b>	Con	665	48.5
<b>Brookes C.*</b>	Con	600	-
Murray L. Ms.	Lib/SDP	310	22.6
Allum G.	Ind	295	21.5
Duerden M.	Lib/SDP	258	-
Crew R.	Lab	101	7.4
Brierley A.	Lab	95	-
	<b>Turnout</b>	53.4	25.9
St. Marys (1068)			
		vote	share
<b>Warren J.*</b>	Con	426	85.9
Wheaton A. Ms.	Lab	70	14.1
	<b>Turnout</b>	46.4	71.8
Warfield (1415)			
		vote	share
<b>Kay J. Ms.*</b>	Con	455	69.3
Thompson I.	Lib/SDP	115	17.5
Murnane J.	Lab	87	13.2
	<b>Turnout</b>	46.4	51.8
Wildridings (2338) <sup>2</sup>			
		vote	share
<b>Mattick J.*</b>	Con	598	48.3
<b>Wreglesworth N.</b>	Con	548	-
Mullarky P.	Lib/SDP	340	27.4
Cole C. Ms.	Lib/SDP	328	-
Hignell W.	Lab	301	24.3
Onyewu A.	Lab	258	-
	<b>Turnout</b>	53.0	20.8

## Bracknell Forest 1987

Ascot (5755) <sup>3</sup>			
		vote	share
<b>Benwell M. Ms.*</b>	Con	1,582	57.5
<b>Boxall M.</b>	Con	1,484	-
<b>Drury D.</b>	Con	1,388	-
O'Doherty J.	All	899	32.7
Norman L. Ms.	All	858	-
Edwards J.	All	799	-
Holloway A.	Lab	271	9.8
	<b>Turnout</b>	47.8	24.8
Binfield (2578) <sup>2</sup>			
		vote	share
<b>Forrest J. Ms.</b>	Con	831	58.2
<b>Taylor G.*</b>	Con	773	-
Crawford J. Ms.	All	410	28.7
Harman J.	Lab	187	13.1
Tarry A.	Lab	148	-
	<b>Turnout</b>	55.4	29.5
Bullbrook (5707) <sup>3</sup>			
		vote	share
<b>Coombs M. Ms.*</b>	Con	1,244	52.0
<b>Albrecht R.</b>	Con	1,186	-
<b>Thompson E.</b>	Con	1,175	-
Hanson R.	All	696	29.1
Pocknee J.	All	633	-
Veakins D.	All	622	-
Ryan J. Ms.	Lab	453	18.9
Draper R.	Lab	449	-
King S.	Lab	440	-
	<b>Turnout</b>	41.9	22.9
College Town (2788) <sup>2</sup>			
		vote	share
<b>Arnold A.*</b>	Con	711	52.4
<b>Simonds R.*</b>	Con	644	-
Watts M.	All	517	38.1
Nicholson J.	All	444	-
Plested I.	Lab	130	9.6
Saunders J. Ms.	Lab	76	-
	<b>Turnout</b>	48.7	14.3
Cranbourne (1134)			
		vote	share
<b>Ballin M. Ms.*</b>	Con	349	77.0
Glynn J.	All	104	23.0
	<b>Turnout</b>	39.9	54.1
Crowthorne (3631) <sup>3</sup>			
		vote	share
<b>Finnie J.*</b>	Con	1,065	56.9
<b>Cheney A.*</b>	Con	1,006	-
<b>Jarvis J.</b>	Con	856	-
Seaman D.	All	668	35.7
Bailey R.	All	649	-
Murray A.	All	597	-
Vertigen G.	Lab	138	7.4
Waite L. Ms.	Lab	128	-
Walker D.	Lab	125	-
	<b>Turnout</b>	51.5	21.2
Garth (3166) <sup>2</sup>			
		vote	share
<b>Ryder J. Ms.</b>	Con	836	50.4
<b>O'Riordan V. Ms.</b>	Con	815	-
Wood J.	Lab	446	26.9
Good D.	Lab	444	-
Veakins Y. Ms.	All	376	22.7
Marshall M. Ms.	All	365	-
	<b>Turnout</b>	52.4	23.5
Great Hollands North (3512) <sup>2</sup>			
		vote	share
<b>Cullip C.</b>	Con	735	52.7
<b>Bouchard J. Ms.*</b>	Con	710	-
Jones F.	All	334	24.0
Davies F. Ms.	All	327	-
Scorer A.	Lab	325	23.3
Hutson M.	Lab	320	-
	<b>Turnout</b>	39.7	28.8

**Great Hollands South (3690)<sup>2</sup>**

		vote	share
Angell R.*	Con	1,016	63.0
McCracken I.*	Con	964	-
Macmahon T.	All	344	21.3
Le Patourel G.	All	338	-
Shillock J. Ms.	Lab	252	15.6
Vickers C.	Lab	243	-

Turnout 43.7 41.7

**Hanworth (6123)<sup>3</sup>**

		vote	share
Byrne P.	Con	1,465	49.7
Wallace M.*	Con	1,433	-
Ince J.	Con	1,414	-
Campbell-Grant I.	All	653	22.2
Keeley A.	All	624	-
Grayson H.	Lab	614	20.8
Wilson D.	Lab	585	-
Whitney B.	All	579	-
Toussaint-Jackson J.	Lab	515	-
Lawrence L.	Green	214	7.3

Turnout 48.1 27.6

**Harmanswater (6407)<sup>3</sup>**

		vote	share
Ainscough T.*	Con	1,584	53.0
Mills T.*	Con	1,557	-
Egan J.	Con	1,495	-
Bristow T.	All	801	26.8
Smith G.	All	796	-
Thompson M. Ms.	All	725	-
Stewart R.	Lab	602	20.2
Porter M.	Lab	548	-
Holness W.	Lab	531	-

Turnout 46.6 26.2

**Little Sandhurst (2853)<sup>2</sup>**

		vote	share
Birch D.	Con	886	54.4
Cohen H.*	Con	839	-
Washington S. Ms.	All	550	33.7
Mohammed N.	All	362	-
Urquhart C.	Lab	194	11.9
Collett J. Ms.	Lab	180	-

Turnout 57.1 20.6

**Old Bracknell (4411)<sup>3</sup>**

		vote	share
Dunn E. Ms.	Con	903	47.7
Fox T.*	Con	894	-
Mattick I. Ms.	Con	865	-
Maxwell D.	All	549	29.0
Pickersgill E.	All	532	-
Cole L.	All	521	-
Ryan T.	Lab	442	23.3
Pearce T.	Lab	437	-
Winter A.	Lab	419	-

Turnout 42.9 18.7

**Owlsmoor (3914)**

		vote	share
Thomas R.*	Con	1,051	58.7
Earwicker R.	All	658	36.8
Saunders M.	Lab	81	4.5

Turnout 45.7 22.0

**Priestwood (3147)<sup>2</sup>**

		vote	share
Blake L.	Con	706	42.7
Hall M.	Con	664	-
Clifford J. Ms.	Lab	602	36.4
Tomkins J.	Lab	507	-
Mountjoy T.	All	347	21.0
Lawlor K.	All	322	-

Turnout 52.6 6.3

**Sandhurst (3010)<sup>2</sup>**

		vote	share
Marsden J.	Con	916	63.0
Ward A.*	Con	879	-
Gabriel E.	All	329	22.6
Edwards R.	All	319	-
Goddard R.	Lab	133	9.2
Grice J. Ms.	Lab	119	-
Brookes C.	Ind	75	5.2

Turnout 48.3 40.4

**St. Marys (1146)**

		vote	share
Warren J.*	Con	521	77.3
Virgo A.	All	153	22.7

Turnout 58.8 54.6

**Warfield (1476)**

		vote	share
Kay J. Ms.*	Con	518	77.0
Lees N.	All	110	16.3
Wass S. Ms.	Lab	45	6.7

Turnout 45.6 60.6

**Wildridings (2337)<sup>2</sup>**

		vote	share
Wreglesworth N.*	Con	562	44.3
Mattick J.*	Con	559	-
Cole C. Ms.	All	504	39.7
Adams W.	All	435	-
Farley A.	Lab	204	16.1
Dossett P.	Lab	197	-

Turnout 54.3 4.6

**Bracknell Forest 1991****Ascot (7483)<sup>3</sup>**

		vote	share
Cahill S.	Con	1,547	46.7
Herlingshaw L.	Con	1,381	-
Drury D.*	Con	1,329	-
Veakins D.	LD	1,004	30.3
Miller D.	Lab	759	22.9
Draper R.	Lab	715	-

Turnout 44.2 16.4

**Binfield (3463)<sup>2</sup>**

		vote	share
Doyle H. Ms.	Con	992	69.3
Taylor G.*	Con	935	-
Williams A. Ms.	Lab	439	30.7
Harman J.	Lab	434	-

Turnout 40.5 38.6

**Bullbrook (4891)<sup>3</sup>**

		vote	share
Eason E.	Con	1,094	50.5
Thompson E.*	Con	1,071	-
Darke P.	Lab	1,071	49.5
Albrecht R.*	Con	1,059	-
Firth G.	Lab	1,032	-
Williams C.	Lab	989	-

Turnout 43.1 1.1

**College Town (3319)<sup>2</sup>**

		vote	share
Murray A.	LD	796	52.1
Edger R.	Con	733	47.9
Earwicker R.	LD	691	-
Simonds R.*	Con	673	-

Turnout 43.6 4.1

**Cranbourne (985)**

		vote	share
Ballin M. Ms.*	Con	252	68.7
Simmonds S.	Lab	115	31.3

Turnout 37.3 37.3

**Crowthorne (3716)<sup>3</sup>**

		vote	share
Finnie J.*	Con	1,153	63.6
Cheney A.*	Con	1,070	-
Thomas C. Ms.	Con	907	-
Maxwell D.	LD	661	36.4

Turnout 48.8 27.1

**Garth (2865)<sup>2</sup>**

		vote	share
Clifford J. Ms.	Lab	804	51.1
Good D.	Lab	788	-
Ryder J. Ms.*	Con	769	48.9
Wentzell P.	Con	674	-

Turnout 53.0 2.2

**Great Hollands North (3255)<sup>2</sup>**

		vote	share
Bouchard J. Ms.*	Con	786	52.6
Edmeades M. Ms.	Con	732	-
Shillcock J. Ms.	Lab	709	47.4
Adams M.	Lab	693	-

Turnout 44.9 5.2

**Great Hollands South (3346)<sup>2</sup>**

		vote	share
Angell R.*	Con	825	49.6
Price C. Ms.	Con	765	-
King S.	Lab	532	32.0
Temperton C.	Lab	506	-
Baker C.	LD	307	18.4

Turnout 49.7 17.6

**Hanworth (5666)<sup>3</sup>**

		vote	share
Wallace M.*	Con	1,381	50.8
Ince J.*	Con	1,365	-
Browne A.	Con	1,362	-
Bayle M. Ms.	Lab	1,337	49.2
Gray A.	Lab	1,257	-
Wheaton T.	Lab	1,209	-

Turnout 46.5 1.6

**Harmanswater (5895)<sup>3</sup>**

		vote	share
Mills T.*	Con	1,508	55.8
Ainscough T.*	Con	1,497	-
Pile S. Ms.	Con	1,438	-
Holness W.	Lab	1,193	44.2
Pitt K.	Lab	1,144	-
Waddington A.	Lab	1,116	-

Turnout 44.6 11.7

**Little Sandhurst (2979)<sup>2</sup>**

		vote	share
Birch D.*	Con	981	63.5
Cohen H.*	Con	870	-
Cole L.	LD	565	36.5

Turnout 51.9 26.9

**Old Bracknell (3642)<sup>3</sup>**

		vote	share
Beasley C.	Con	922	51.3
Mattick I. Ms.*	Con	908	-
Mullins A.	Con	895	-
Snelgrove A. Ms.	Lab	877	48.7
Waudby M. Ms.	Lab	861	-
Smith R.	Lab	852	-

Turnout 48.6 2.5

**Owlsmoor (3633)**

		vote	share
Thomas R.*	Con	825	61.1
Longhurst L.	LD	526	38.9

Turnout 37.2 22.1

**Priestwood (2609)<sup>2</sup>**

		vote	share
Cooper P.	Lab	778	56.4
Tompkins J.	Lab	773	-
Blake L.*	Con	602	43.6
Egan J.	Con	578	-

Turnout 52.4 12.8

<b>Sandhurst (2936)<sup>2</sup></b>			
		<b>vote</b>	<b>share</b>
<b>Marsden J.*</b>	Con	867	64.7
<b>Ward A.*</b>	Con	846	-
Nicholson D. Ms.	LD	473	35.3
Meller S.	LD	447	-
<b>Turnout</b>		44.9	29.4

<b>St. Marys (1260)</b>			
		<b>vote</b>	<b>share</b>
<b>Warren J.*</b>	Con	0	0.0
<b>Turnout</b>		0.0	0.0

<b>Warfield (1392)</b>			
		<b>vote</b>	<b>share</b>
<b>Sargeant E.</b>	Con	514	83.3
Hirst W.	Lab	103	16.7
<b>Turnout</b>		44.3	66.6

<b>Wildridings (2202)<sup>2</sup></b>			
		<b>vote</b>	<b>share</b>
<b>Dossett P.</b>	Lab	592	51.8
<b>McCormack A.</b>	Lab	563	-
Mattick J.*	Con	550	48.2
Wreglesworth N.*	Con	545	-
<b>Turnout</b>		51.1	3.7

## Bracknell Forest 1995

<b>Ascot (8123)<sup>3</sup></b>			
		<b>vote</b>	<b>share</b>
<b>Hayes D. Ms.*</b>	Con	887	33.9
<b>Miller D.</b>	Lab	865	33.1
<b>Blake J. Ms.</b>	LD	864	33.0
Herlingshaw L.*	Con	849	-
Norman L. Ms.	Lab	832	-
Thomas G.	Con	810	-
Campbell-Grant I.	LD	677	-
Harradine A.	LD	616	-
<b>Turnout</b>		31.0	0.8

<b>Binfield (4857)<sup>2</sup></b>			
		<b>vote</b>	<b>share</b>
<b>Doyle H. Ms.*</b>	Con	884	47.8
<b>Taylor G.*</b>	Con	805	-
Harman J.	Lab	597	32.3
Woodrow G. Ms.	Lab	541	-
Dickson C. Ms.	LD	369	19.9
<b>Turnout</b>		35.9	15.5

<b>Bullbrook (5134)<sup>3</sup></b>			
		<b>vote</b>	<b>share</b>
<b>Ryan P.</b>	Lab	865	44.5
<b>Draper R.</b>	Lab	798	-
<b>Egan J.</b>	Con	617	31.7
Darke P.*	Lab	589	-
Barnard G.	Con	579	-
Woodrow R.	Lab	563	-
Hanson R.	LD	462	23.8
Powell E. Ms.	LD	434	-
Hughes E. Ms.	LD	432	-
<b>Turnout</b>		41.7	12.8

<b>College Town (3970)<sup>2</sup></b>			
		<b>vote</b>	<b>share</b>
<b>Sullivan V. Ms.</b>	LD	720	52.7
<b>Neighbour D.*</b>	LD	712	-
Blatchford A.	Con	421	30.8
Simonds R.	Con	379	-
Plested I.	Lab	225	16.5
<b>Turnout</b>		33.7	21.9

<b>Cranbourne (1091)</b>			
		<b>vote</b>	<b>share</b>
<b>Ballin M. Ms.*</b>	Con	217	58.5
Friar W.	Lab	154	41.5
<b>Turnout</b>		34.7	17.0

<b>Crowthorne (4131)<sup>3</sup></b>			
		<b>vote</b>	<b>share</b>
<b>Pope S.</b>	LD	716	43.2
<b>Maxwell D.</b>	LD	642	-
<b>Finnie J.*</b>	Con	642	38.7
Scovell L.	LD	635	-
Cheney A.*	Con	611	-
Pierce-Jones M. Ms.	Con	591	-
Davies H.	Lab	301	18.1
Hammond B.	Lab	299	-
Geary E.	Lab	297	-
<b>Turnout</b>		41.6	4.5

<b>Garth (2931)<sup>2</sup></b>			
		<b>vote</b>	<b>share</b>
<b>Good D.*</b>	Lab	828	55.9
<b>Taylor S.</b>	Lab	780	-
Ryder J. Ms.	Con	506	34.2
Harrison J.	Con	440	-
Williams T.	LD	146	9.9
<b>Turnout</b>		50.7	21.8

<b>Great Hollands North (3617)<sup>2</sup></b>			
		<b>vote</b>	<b>share</b>
<b>Jones L.</b>	Lab	880	62.5
<b>Shillcock J. Ms.</b>	Lab	869	-
Drury D.	Con	529	37.5
Thomson A.	Con	520	-
<b>Turnout</b>		43.4	24.9

<b>Great Hollands South (3547)<sup>2</sup></b>			
		<b>vote</b>	<b>share</b>
<b>Adams M.</b>	Lab	686	46.4
<b>King S.</b>	Lab	667	-
Angell R.*	Con	588	39.8
Angell J. Ms.	Con	578	-
Shepherd J.	LD	204	13.8
<b>Turnout</b>		41.5	6.6

<b>Hanworth (6117)<sup>3</sup></b>			
		<b>vote</b>	<b>share</b>
<b>Keene J. Ms.</b>	Lab	1,358	51.3
<b>Wheaton T.</b>	Lab	1,297	-
<b>Vertigen G.</b>	Lab	1,196	-
Henfrey D. Ms.	Con	863	32.6
Browne A.*	Con	861	-
Wallace M.*	Con	834	-
Macmahon T.	LD	424	16.0
<b>Turnout</b>		42.0	18.7

<b>Harmanswater (6356)<sup>3</sup></b>			
		<b>vote</b>	<b>share</b>
<b>Jones S. Ms.</b>	Lab	1,342	51.3
<b>Onions W.</b>	Lab	1,309	-
<b>Simmonds S.</b>	Lab	1,226	-
McCracken I.	Con	923	35.3
Pile S. Ms.*	Con	902	-
McCracken J. Ms.	Con	870	-
Callan B.	LD	349	13.4
<b>Turnout</b>		40.3	16.0

<b>Little Sandhurst (3140)<sup>2</sup></b>			
		<b>vote</b>	<b>share</b>
<b>Bettison P.*</b>	Con	657	48.0
<b>Birch D.*</b>	Con	598	-
Bastone S. Ms.	LD	366	26.7
Urquhart C.	Lab	347	25.3
Hasemore K.	Lab	307	-
Nicholson J.	LD	266	-
<b>Turnout</b>		42.4	21.2

<b>Old Bracknell (3908)<sup>3</sup></b>			
		<b>vote</b>	<b>share</b>
<b>Bayle G.</b>	Lab	1,077	60.3
<b>Hirst B. Ms.</b>	Lab	1,048	-
<b>Veakins D.</b>	Lab	1,026	-
Ashcroft E. Ms.	Con	480	26.9
Mattick I. Ms.*	Con	478	-
Brown B. Ms.	Con	449	-
Cole L.	LD	229	12.8
Hayward J.	LD	211	-
<b>Turnout</b>		45.5	33.4

<b>Owlsmoor (4105)</b>			
		<b>vote</b>	<b>share</b>
<b>Hodge R.</b>	LD	694	46.3
Thomas R.*	Con	562	37.5
Smith R.	Lab	242	16.2
<b>Turnout</b>		37.3	8.8

<b>Priestwood (2712)<sup>2</sup></b>			
		<b>vote</b>	<b>share</b>
<b>Clifford J. Ms.</b>	Lab	567	41.4
<b>Fawcett D.</b>	Lab	387	-
Kingsbury B.	Con	354	25.9
Cooper P.*	Ind Lab	347	25.4
Zimehl J. Ms.	Con	316	-
Tompkins J.*	Ind Lab	316	-
Ford G.	LD	100	7.3
<b>Turnout</b>		48.5	15.6

<b>Sandhurst (3144)<sup>2</sup></b>			
		<b>vote</b>	<b>share</b>
<b>Ward A.*</b>	Con	661	44.1
<b>North P.</b>	Con	651	-
Score J.	LD	623	41.6
Earwicker R.	LD	550	-
Trevis S. Ms.	Lab	215	14.3
<b>Turnout</b>		46.9	2.5

<b>St. Marys (1584)</b>			
		<b>vote</b>	<b>share</b>
<b>Flood R.</b>	Con	349	67.2
Draper C. Ms.	Lab	170	32.8
<b>Turnout</b>		33.1	34.5

<b>Warfield (3841)</b>			
		<b>vote</b>	<b>share</b>
<b>Sargeant E.*</b>	Con	680	55.7
Boyd L. Ms.	LD	292	23.9
Clifton L. Ms.	Lab	248	20.3
<b>Turnout</b>		32.2	31.8

<b>Wildridings (2208)<sup>2</sup></b>			
		<b>vote</b>	<b>share</b>
<b>Grayson P.</b>	Lab	592	55.0
<b>McCormack A.*</b>	Lab	591	-
Wreglesworth M. Ms.	Con	360	33.5
Wreglesworth N.	Con	335	-
Carson C.	LD	124	11.5
Dossett P.*	Lab	100	-
<b>Turnout</b>		52.0	21.6

