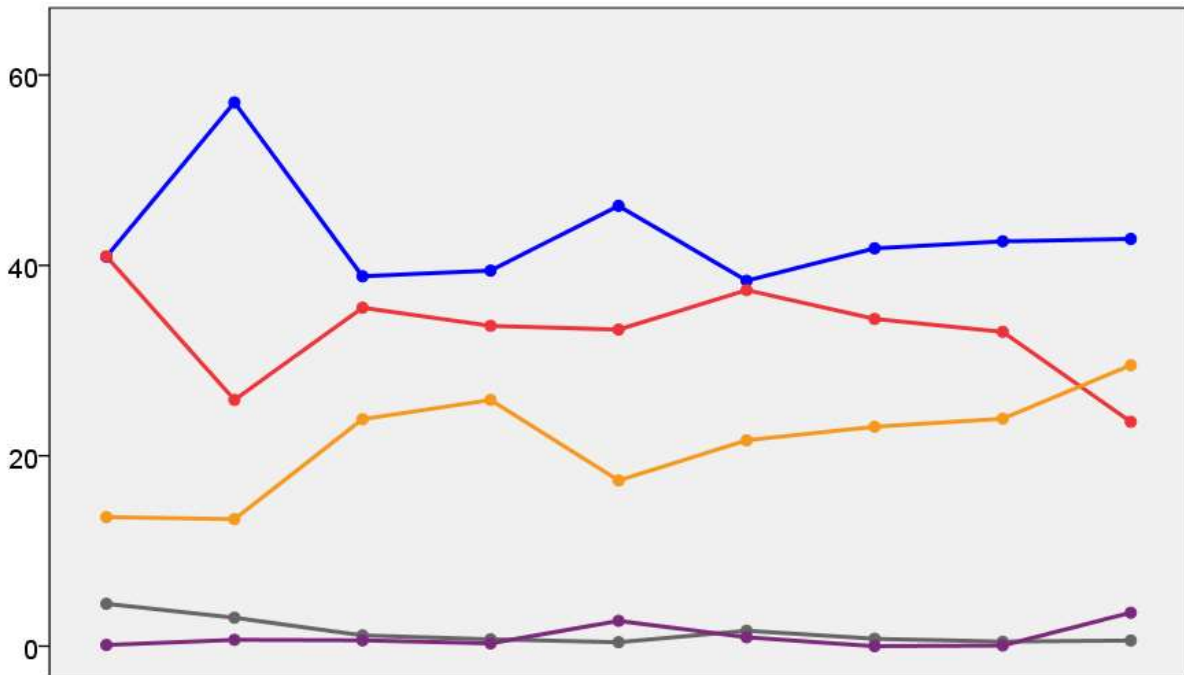


# Bedfordshire County Council Election Results 1973-2005



Colin Rallings and Michael Thrasher  
The Elections Centre  
Plymouth University

The information contained in this report has been obtained from a number of sources. Election results from the immediate post-reorganisation period were painstakingly collected by Alan Willis largely, although not exclusively, from local newspaper reports. From the mid-1980s onwards the results have been obtained from each local authority by the Elections Centre. The data are stored in a database designed by Lawrence Ware and maintained by Brian Cheal and others at Plymouth University. Despite our best efforts some information remains elusive whilst we accept that some errors are likely to remain. Notice of any mistakes should be sent to [elections@plymouth.ac.uk](mailto:elections@plymouth.ac.uk). The results sequence can be kept up to date by purchasing copies of the annual Local Elections Handbook, details of which can be obtained by contacting the email address above.

Front cover: the graph shows the distribution of percentage vote shares over the period covered by the results. The lines reflect the colours traditionally used by the three main parties. The grey line is the share obtained by Independent candidates while the purple line groups together the vote shares for all other parties.

Rear cover: the top graph shows the percentage share of council seats for the main parties as well as those won by Independents and other parties. The lines take account of any by-election changes (but not those resulting from elected councillors switching party allegiance) as well as the transfers of seats during the main round of local election.

The lower graph shows for each main round of local elections the overall percentage turnout (solid line), the percentage of women candidates standing at (dotted line) and the percentage of women among those elected (hashed line).



<b>Kempston (9292)<sup>2</sup></b>			
		vote	share
<b>Hunt S. Ms.</b>	Lab	1,888	55.8
<b>Harris R.</b>	Lab	1,771	-
Hooley P.	Con	1,493	44.2
Martin W.	Con	1,467	-
<b>Turnout</b>		36.4	11.7

<b>Leighton-Linslade No. 1 (7462)<sup>2</sup></b>			
		vote	share
<b>Randall T.</b>	Lib	1,288	37.2
<b>Mason H.</b>	Con	1,103	31.8
Pilson J.	Con	1,099	-
Burchell F.	Lab	1,074	31.0
Elliott B.	Lab	1,063	-
<b>Turnout</b>		46.4	5.3

<b>Leighton-Linslade No. 2 (7242)<sup>2</sup></b>			
		vote	share
<b>Martin E. Ms.</b>	Lib	1,212	37.1
<b>Lim K.</b>	Lab	1,056	32.3
Lane G.	Lab	1,024	-
Ort G.	Con	1,003	30.7
Kirk L.	Con	914	-
<b>Turnout</b>		45.2	4.8

<b>Luton (Central) (7791)<sup>2</sup></b>			
		vote	share
<b>Gray D.</b>	Lab	910	53.6
<b>Gilmour J.</b>	Lab	884	-
Johnston D.	Con	789	46.4
<b>Turnout</b>		21.8	7.1

<b>Luton (Crawley) (9579)<sup>3</sup></b>			
		vote	share
<b>Fox J.</b>	Lab	1,085	40.1
<b>Carleton J.</b>	Lab	962	-
<b>Dimmock E.</b>	Lab	952	-
Keens T.	Lib	902	33.3
McNally M. Ms.	Lib	742	-
Cadger P.	Lib	738	-
Woodbridge K.	Con	718	26.5
<b>Turnout</b>		28.2	6.8

<b>Luton (Dallow) (8736)<sup>2</sup></b>			
		vote	share
<b>Ager D.</b>	Lab	1,385	60.0
<b>Holes W.</b>	Lab	1,256	-
Cartwright R.	Con	925	40.0
Connolly K. Ms.	Con	814	-
<b>Turnout</b>		26.4	19.9

<b>Luton (High Town) (8350)<sup>2</sup></b>			
		vote	share
<b>Lester F.</b>	Con	1,811	64.2
<b>Dunington V. Ms.</b>	Con	1,673	-
Prosser J.	Lab	1,010	35.8
Webb R.	Lab	987	-
<b>Turnout</b>		33.8	28.4

<b>Luton (Icknield) (9176)<sup>2</sup></b>			
		vote	share
<b>White K.</b>	Con	1,857	61.5
<b>Hyett A.</b>	Con	1,849	-
Hopkins K.	Lab	1,164	38.5
Speakman A.	Lab	1,077	-
<b>Turnout</b>		32.9	22.9

<b>Luton (Leagrave) (9983)<sup>3</sup></b>			
		vote	share
<b>Patten D.</b>	Lab	1,445	41.0
<b>McCafferty J.</b>	Lab	1,332	-
<b>Urwin A. Ms.</b>	Lab	1,190	-
Curd D.	Con	1,096	31.1
Dolling M.	Lib	983	27.9
Robinson M.	Lib	734	-
<b>Turnout</b>		35.3	9.9

<b>Luton (Lewsey) (9896)<sup>3</sup></b>			
		vote	share
<b>Hamill J.</b>	Lab	1,605	58.2
<b>Harrowell D.</b>	Lab	1,463	-
<b>Glencross J.</b>	Lab	1,439	-
Samuels R.	Con	691	25.0
Larkman P. Ms.	Lib	463	16.8
<b>Turnout</b>		27.9	33.1

<b>Luton (Limbury) (9146)<sup>2</sup></b>			
		vote	share
<b>Roberts M. Ms.</b>	Lab	1,467	46.3
<b>Johnson J.</b>	Lab	1,455	-
Payne G.	Con	974	30.8
Thanki G.	Lib	726	22.9
<b>Turnout</b>		34.6	15.6

<b>Luton (South) (10190)<sup>3</sup></b>			
		vote	share
<b>Kenneally T.</b>	Lab	1,858	57.5
<b>Chambers B. Ms.</b>	Lab	1,388	-
<b>Norman K.</b>	Lab	1,358	-
O'Donnell E. Ms.	Con	1,224	37.9
Slessor G.	Comm	151	4.7
<b>Turnout</b>		31.7	19.6

<b>Luton (Stopsley) (9218)<sup>2</sup></b>			
		vote	share
<b>Fisher E.</b>	Lib	1,530	39.2
<b>Courty J.</b>	Lab	1,383	35.5
Payne M.	Lab	1,351	-
Shillingford F.	Lib	1,108	-
Lucas J.	Con	986	25.3
Macdonald J.	Con	977	-
<b>Turnout</b>		42.3	3.8

<b>Luton (Sundon Park) (10616)<sup>3</sup></b>			
		vote	share
<b>Hinkley C.</b>	Lib	2,277	46.2
<b>Hinkley D. Ms.</b>	Lib	1,877	-
<b>Larkman D.</b>	Lib	1,649	-
Haldane E.	Lab	1,611	32.7
Jones P.	Lab	1,311	-
Thakoordin J.	Lab	1,214	-
Glenister P.	Con	1,038	21.1
<b>Turnout</b>		46.4	13.5

<b>Luton (Wardown) (8491)<sup>2</sup></b>			
		vote	share
<b>Farr G.</b>	Con	1,444	62.5
<b>Hillier J.</b>	Con	1,441	-
Keary R.	Lab	867	37.5
Titchener A.	Lab	768	-
<b>Turnout</b>		27.2	25.0

<b>Luton Rural No. 1 (Barton-Le-Clay) (3438)</b>			
		vote	share
<b>Shepherd M. Ms.</b>	Con	895	69.6
Holes C. Ms.	Lab	391	30.4
<b>Turnout</b>		37.4	39.2

<b>Luton Rural No. 2 (Houghton Regis) (7513)<sup>2</sup></b>			
		vote	share
<b>Kinchella J.</b>	Lab	1,842	74.6
<b>Harwood S.</b>	Lab	1,827	-
Bryan W.	Con	626	25.4
Macey M.	Con	571	-
<b>Turnout</b>		32.8	49.3

<b>Luton Rural No. 3 (7126)<sup>2</sup></b>			
		vote	share
<b>Waller D. Ms.</b>	Con	1,212	55.2
<b>Baxter L.</b>	Con	1,150	-
Coleman R.	Lab	982	44.8
Moore P.	Lab	952	-
<b>Turnout</b>		30.8	10.5

<b>Luton Rural No. 4 (4431)</b>			
		vote	share
<b>Wainwright P.</b>	Con	1,104	70.6
Hopkins P. Ms.	Lab	460	29.4
<b>Turnout</b>		35.3	41.2

<b>Luton Rural No. 5 (3983)</b>			
		vote	share
<b>Soskin R. Ms.</b>	Lib	1,055	48.9
Merry W.	Con	658	30.5
Major E.	Lab	443	20.5
<b>Turnout</b>		54.1	18.4

<b>Sandy (4122)</b>			
		vote	share
<b>Boothby A. Ms.</b>	Ind	922	67.6
Lescott R.	Lab	442	32.4
<b>Turnout</b>		33.1	35.2

## Bedfordshire 1977

<b>Amphill (4175)</b>			
		vote	share
<b>Cowell A. Ms.*</b>	Con	1,510	81.4
Harrowell J. Ms.	Lab	346	18.6
<b>Turnout</b>		44.5	62.7

<b>Amphill Rural No. 1 (4439)</b>			
		vote	share
<b>Smith R.</b>	Con	1,530	74.7
Green D.	Lib	266	13.0
Phillips L. Ms.	Lab	251	12.3
<b>Turnout</b>		46.2	61.7

<b>Amphill Rural No. 2 (Cranfield) (5226)</b>			
		vote	share
<b>Kemp M.</b>	Con	1,398	53.2
Salisbury J.	Ind	644	24.5
Rolls F. Ms.	Lab	588	22.4
<b>Turnout</b>		50.5	28.7

<b>Amphill Rural No. 3 (3949)</b>			
		vote	share
<b>Chapman A.*</b>	Con	1,073	72.6
Kilpin S. Ms.	Lib	243	16.5
Lescott R.	Lab	161	10.9
<b>Turnout</b>		37.5	56.2

<b>Amphill Rural No. 4 (3922)</b>			
		vote	share
<b>Harris D.</b>	Con	1,185	77.3
Leete K. Ms.	Lab	347	22.7
<b>Turnout</b>		39.2	54.7

<b>Amphill Rural No. 5 (4381)</b>			
		vote	share
<b>Williams J. Ms.*</b>	Con	1,490	82.5
Martin R.	Lab	316	17.5
<b>Turnout</b>		41.3	65.0

<b>Amphill Rural No. 6 (3762)</b>			
		vote	share
<b>Bryce R.</b>	Con	1,031	50.1
Vernon T. Ms.	Lib	806	39.2
Berry D.	Lab	219	10.7
<b>Turnout</b>		54.7	10.9

<b>Bedford No. 1 (10778)<sup>3</sup></b>			
		vote	share
<b>Blowers A.*</b>	Lab	2,064	47.8
<b>Andrews T.*</b>	Lab	2,014	-
<b>Thornley M.*</b>	Lab	1,883	-
Groves S. Ms.	Con	1,406	32.5
Fulford V. Ms.	Con	1,319	-
Wray W.	Con	1,208	-
Chahal C.	Lib	852	19.7
Outen T.	Lib	820	-
Riseborough G.	Lib	813	-
	<b>Turnout</b>	40.1	15.2
<b>Bedford No. 10 (5960)</b>			
		vote	share
<b>Lennon J. Ms.</b>	Lib	1,235	40.3
Hope D.	Con	1,022	33.3
Black C.*	Lab	811	26.4
	<b>Turnout</b>	51.6	6.9
<b>Bedford No. 2 (4320)</b>			
		vote	share
<b>Edwards F.</b>	Con	1,204	49.0
Saunders C.*	Lab	1,143	46.6
Leonard R.	Lib	108	4.4
	<b>Turnout</b>	57.1	2.5
<b>Bedford No. 3 (2878)</b>			
		vote	share
<b>Dillingham B.</b>	Con	709	63.3
Pass S. Ms.	Lab	255	22.8
Thomas G.	Lib	156	13.9
	<b>Turnout</b>	39.0	40.5
<b>Bedford No. 4 (3547)</b>			
		vote	share
<b>Hammond R.</b>	Con	890	48.9
Holman P.	Lab	827	45.4
Jones J.	Lib	103	5.7
	<b>Turnout</b>	51.4	3.5
<b>Bedford No. 5 (2749)</b>			
		vote	share
<b>Wootton E.</b>	Con	655	64.3
Brophy M.	Lab	251	24.6
Nawathe M.	Lib	113	11.1
	<b>Turnout</b>	37.1	39.6
<b>Bedford No. 6 (3375)</b>			
		vote	share
<b>Fowler W. Ms.*</b>	Con	1,137	66.3
Crane R.	Lab	412	24.0
Evans M.	Lib	167	9.7
	<b>Turnout</b>	50.9	42.2
<b>Bedford No. 7 (3555)</b>			
		vote	share
<b>Griffiths J. Ms.*</b>	Con	1,143	72.3
Fennell J. Ms.	Lib	246	15.6
Abberley M. Ms.	Lab	192	12.1
	<b>Turnout</b>	44.6	56.7
<b>Bedford No. 8 (6527)</b>			
		vote	share
<b>Silkstone W.</b>	Con	1,995	61.7
Green C.	Lib	744	23.0
Jones B. Ms.	Lab	493	15.3
	<b>Turnout</b>	49.6	38.7
<b>Bedford No. 9 (4146)</b>			
		vote	share
<b>Gibbons B.</b>	Lib	1,204	47.6
Bark A.	Con	1,122	44.4
Mackechnie R.	Lab	203	8.0
	<b>Turnout</b>	61.1	3.2
<b>Bedford Rural No. 1 (Wilshamstead) (4315)</b>			
		vote	share
<b>Whitbread S.*</b>	Con	1,427	76.8
Toner M.	Lab	431	23.2
	<b>Turnout</b>	43.1	53.6

<b>Bedford Rural No. 2 (4188)</b>			
		vote	share
<b>Bowles L.*</b>	Con	1,383	68.1
Buckles K.	Lab	300	14.8
Fowler K.	Ind Con	222	10.9
Nutley B.	Lib	127	6.3
	<b>Turnout</b>	48.8	53.3
<b>Bedford Rural No. 3 (4637)</b>			
		vote	share
<b>Gordon P.</b>	Con	1,910	72.9
Wood A.	Lib	480	18.3
Luder I.	Lab	229	8.7
	<b>Turnout</b>	56.5	54.6
<b>Bedford Rural No. 4 (4332)</b>			
		vote	share
<b>Hendry P.*</b>	Con	1,476	66.2
Riley A.	Lab	426	19.1
Smith D. Ms.	Ind	328	14.7
	<b>Turnout</b>	51.5	47.1
<b>Bedford Rural No. 5 (3713)</b>			
		vote	share
<b>Brown J.*</b>	Con	1,284	84.6
Hibbert W.	Lab	234	15.4
	<b>Turnout</b>	40.9	69.2
<b>Bedford Rural No. 6 (4993)</b>			
		vote	share
<b>Garmen G. Ms.</b>	Con	1,829	69.4
Den Brinker M. Ms.	Lib	554	21.0
Burdett F. Ms.	Lab	251	9.5
	<b>Turnout</b>	52.9	48.4
<b>Bedford Rural No. 7 (3821)</b>			
		vote	share
<b>Boatman R.</b>	Con	1,028	65.3
Little D.	Lab	320	20.3
Stephenson P.	Lib	226	14.4
	<b>Turnout</b>	41.3	45.0
<b>Biggleswade (7678)<sup>2</sup></b>			
		vote	share
<b>Cook C.</b>	Ind	2,133	36.5
<b>Brunt D. Ms.*</b>	Lab	1,875	32.1
Chambers L.*	Lab	1,859	-
Bennett R.	Con	1,831	31.4
	<b>Turnout</b>	76.0	4.4
<b>Biggleswade Rural No. 1 (Arlesey) (2615)</b>			
		vote	share
<b>Dixon I.</b>	Con	908	54.8
Legate G.*	Lab	750	45.2
	<b>Turnout</b>	63.6	9.5
<b>Biggleswade Rural No. 2 (Stotfold) (4053)</b>			
		vote	share
<b>Long J.</b>	Con	1,079	50.5
Wood H.	Lab	617	28.9
Hyde L.*	Ind	439	20.6
	<b>Turnout</b>	52.9	21.6
<b>Biggleswade Rural No. 3 (5128)</b>			
		vote	share
<b>Gouldsbrough A. Ms.*</b>	Con	1,766	81.5
Walker R.	Lab	400	18.5
	<b>Turnout</b>	42.3	63.1
<b>Biggleswade Rural No. 4 (4077)</b>			
		vote	share
<b>McRae H.*</b>	Con	1,522	76.1
Costley A.	Lab	479	23.9
	<b>Turnout</b>	49.2	52.1
<b>Biggleswade Rural No. 5 (3922)</b>			
		vote	share
<b>Humphreys E.</b>	Con	1,167	57.5
Riches C.	Lib	500	24.6
Berry J.	Lab	362	17.8
	<b>Turnout</b>	51.9	32.9

<b>Biggleswade Rural No. 6 (3567)</b>			
		vote	share
<b>Burnage A.*</b>	Con	1,138	66.1
Loney A.	Lab	453	26.3
Rollings P.	Lib	130	7.6
	<b>Turnout</b>	48.5	39.8
<b>Dunstable Central (6209)<sup>2</sup></b>			
		vote	share
<b>Goodall F.</b>	Con	1,806	66.5
<b>Brett S.</b>	Con	1,626	-
Ingleton R.*	Lab	576	21.2
Pearson A.	Lab	572	-
Copper D.	Lib	334	12.3
	<b>Turnout</b>	43.7	45.3
<b>Dunstable North (6005)<sup>2</sup></b>			
		vote	share
<b>Ball K.</b>	Con	1,692	57.6
<b>Wickson D. Ms.</b>	Con	1,586	-
McAllister J.	Lab	938	31.9
Hubber D.	Lab	815	-
Lloyd G.	Lib	306	10.4
	<b>Turnout</b>	48.9	25.7
<b>Dunstable South (9482)<sup>2</sup></b>			
		vote	share
<b>Biswell K.</b>	Con	2,534	59.7
<b>Riddell R.*</b>	Con	2,486	-
Dove A.	Lab	643	15.1
Stratford J.	Lab	587	-
Roberts V. Ms.	Lib	525	12.4
Griffin C.*	Ind Con	296	7.0
Bygrove D.	Ind Lab	248	5.8
	<b>Turnout</b>	44.8	44.5
<b>Kempston (9606)<sup>2</sup></b>			
		vote	share
<b>Perkins R.</b>	Con	2,074	57.9
<b>Gershon P. Ms.</b>	Con	1,956	-
Hunt S. Ms.*	Lab	1,205	33.7
Jackson B. Ms.	Lab	1,161	-
Harding L. Ms.	Lib	301	8.4
Ellis D.	Lib	299	-
	<b>Turnout</b>	37.3	24.3
<b>Leighton-Linslade No. 1 (9474)<sup>2</sup></b>			
		vote	share
<b>Cook R.</b>	Con	2,303	52.4
<b>Mason H.*</b>	Con	2,210	-
Randall T.*	Lib	1,283	29.2
Snelling P.	Lib	1,207	-
Burchell F.	Lab	813	18.5
Moloney K.	Lab	751	-
	<b>Turnout</b>	46.4	23.2
<b>Leighton-Linslade No. 2 (7712)<sup>2</sup></b>			
		vote	share
<b>Goss T.</b>	Con	2,051	52.6
<b>Hill R. Ms.</b>	Con	1,896	-
Jones F. Ms.	Lib	1,052	27.0
Martin E. Ms.*	Lib	855	-
Elliott M. Ms.	Lab	795	20.4
Ball M.	Lab	715	-
	<b>Turnout</b>	50.5	25.6
<b>Luton (Central) (7239)<sup>2</sup></b>			
		vote	share
<b>Dunington P. Ms.</b>	Con	1,263	50.9
<b>Packe S.</b>	Con	1,198	-
Heather H.	Lab	996	40.1
Guha M.	Lab	935	-
Gresham L.	Lib	222	8.9
Rennie M.	Lib	146	-
	<b>Turnout</b>	34.3	10.8

<b>Luton (Crawley) (9262)<sup>3</sup></b>			
		vote	share
<b>Beard R.</b>	Con	2,094	55.4
<b>Carter S.</b>	Con	1,956	-
<b>Flint B.</b>	Con	1,905	-
Carleton J.*	Lab	1,335	35.3
Dimmock E.*	Lab	1,321	-
Robertson H.	Lab	1,237	-
Keens T.	Lib	354	9.4
Davies J. Ms.	Lib	312	-
Shillingford F.	Lib	268	-
<b>Turnout</b>		40.8	20.1

<b>Luton (Dallow) (8449)<sup>2</sup></b>			
		vote	share
<b>Dudley R.</b>	Con	1,493	48.6
<b>Cunningham W.</b>	Con	1,458	-
Holes W.*	Lab	1,401	45.6
Randall L.	Lab	1,386	-
Stott C. Ms.	Lib	180	5.9
Stott S.	Lib	145	-
<b>Turnout</b>		36.4	3.0

<b>Luton (High Town) (7868)<sup>2</sup></b>			
		vote	share
<b>Lester F.*</b>	Con	2,324	65.8
<b>Everard C.</b>	Con	2,259	-
Jamieson I.	Lab	792	22.4
North D.	Lab	700	-
Fensome J. Ms.	Lib	322	9.1
McNally M. Ms.	Lib	230	-
Johnson E.	Comm	92	2.6
<b>Turnout</b>		44.9	43.4

<b>Luton (Icknield) (9275)<sup>2</sup></b>			
		vote	share
<b>Longden P. Ms.</b>	Con	3,313	75.7
<b>White K.*</b>	Con	3,194	-
Cowan K. Ms.	Lab	847	19.4
Taylor M. Ms.	Lab	834	-
Robinson M.	Lib	215	4.9
Jenner E.	Lib	215	-
<b>Turnout</b>		47.2	56.4

<b>Luton (Leagrave) (9810)<sup>3</sup></b>			
		vote	share
<b>Curd D.</b>	Con	2,142	54.8
<b>Deller D.</b>	Con	2,061	-
<b>Boutwood M. Ms.</b>	Con	2,047	-
Brown H.	Lab	1,522	38.9
McCafferty J.*	Lab	1,461	-
Patten D.*	Lab	1,409	-
Mead C.	Lib	247	6.3
Larkman P. Ms.	Lib	240	-
James J.	Lib	240	-
<b>Turnout</b>		39.9	15.9

<b>Luton (Lewsey) (10161)<sup>3</sup></b>			
		vote	share
<b>De-Costa J.</b>	Con	1,788	49.5
<b>Garrett M.</b>	Con	1,728	-
<b>Priede C. Ms.</b>	Con	1,697	-
Hamill J.*	Lab	1,565	43.3
Hand M.	Lab	1,484	-
Moran E. Ms.	Lab	1,462	-
Brazier A.	Lib	261	7.2
Dolling M.	Lib	255	-
Degroot D.	Lib	252	-
<b>Turnout</b>		35.6	6.2

<b>Luton (Limbury) (8867)<sup>2</sup></b>			
		vote	share
<b>Brooks D.</b>	Con	2,043	52.3
<b>Quinn M. Ms.</b>	Con	1,975	-
Roberts M. Ms.*	Lab	1,541	39.5
Bailey J.	Lab	1,488	-
Farrow A.	Lib	322	8.2
Flynn G.	Lib	197	-
<b>Turnout</b>		44.1	12.9

<b>Luton (South) (9728)<sup>3</sup></b>			
		vote	share
<b>Flint A. Ms.</b>	Con	1,709	45.8
<b>Fox J.</b>	Lab	1,695	45.4
<b>Lambert W.</b>	Con	1,665	-
Barton M. Ms.	Con	1,664	-
Fraser M. Ms.	Lab	1,644	-
Mulligan D.	Lab	1,576	-
Johnson H.	Lib	226	6.1
Mitchell B.	Lib	224	-
Richardson G.	Lib	172	-
Mitchell T.	Comm	100	2.7
<b>Turnout</b>		38.3	0.4

<b>Luton (Stopsley) (10157)<sup>2</sup></b>			
		vote	share
<b>Borgars A.</b>	Con	2,599	49.0
<b>Bailey F.</b>	Con	2,570	-
Courty J.*	Lab	1,663	31.4
Payne M.	Lab	1,587	-
Davies R.	Lib	1,037	19.6
Roe H.	Lib	983	-
<b>Turnout</b>		52.2	17.7

<b>Luton (Sundon Park) (12370)<sup>3</sup></b>			
		vote	share
<b>Scott A.</b>	Con	2,011	35.3
<b>Johnston D.</b>	Con	1,980	-
<b>Samuels R.</b>	Con	1,909	-
Hinkley C.*	Lib	1,688	29.6
Norman K.	Lab	1,687	29.6
Hinkley D. Ms.*	Lib	1,645	-
Robertson M. Ms.	Lab	1,624	-
Thakoordin J.	Lab	1,544	-
Larkman D.*	Lib	1,525	-
How D.	NF	308	5.4
Ellames D.	NF	302	-
Williams D.	NF	284	-
<b>Turnout</b>		46.0	5.7

<b>Luton (Wardown) (8123)<sup>2</sup></b>			
		vote	share
<b>Hillier J.*</b>	Con	1,699	59.9
<b>Archer H.</b>	Con	1,692	-
Adams J. Ms.	Lab	841	-
Gilmour J.	Lab	841	29.7
Franks D.	Lib	296	10.4
Mitchell J. Ms.	Lib	205	-
<b>Turnout</b>		34.9	30.3

<b>Luton Rural No. 1 (Barton-Le-Clay) (3596)</b>			
		vote	share
<b>Shepherd M. Ms.*</b>	Con	1,210	63.3
Brown L. Ms.	Lib	516	27.0
Parrin N.	Ind	186	9.7
<b>Turnout</b>		53.3	36.3

<b>Luton Rural No. 2 (Houghton Regis) (10385)<sup>2</sup></b>			
		vote	share
<b>Bryan W.</b>	Con	1,882	48.0
<b>Shields M. Ms.</b>	Con	1,823	-
Kinchella J.*	Lab	1,616	41.2
Harwood S.*	Lab	1,601	-
Travis N.	Lib	420	10.7
<b>Turnout</b>		37.7	6.8

<b>Luton Rural No. 3 (7326)<sup>2</sup></b>			
		vote	share
<b>Brewer J. Ms.</b>	Con	2,070	63.2
<b>Gear L.</b>	Con	1,709	-
Brown C.	Ind	801	24.5
Snoxell E.	Ind	764	-
Cupper R. Ms.	Lib	405	12.4
<b>Turnout</b>		44.7	38.7

<b>Luton Rural No. 4 (4701)</b>			
		vote	share
<b>Wainwright P.*</b>	Con	1,414	60.5
Piggott B.	Lib	698	29.9
Canavan P.	Lab	224	9.6
<b>Turnout</b>		49.8	30.7

<b>Luton Rural No. 5 (4222)</b>			
		vote	share
<b>Upchurch D.</b>	Con	1,422	65.7
Ogilvie I.	Lib	742	34.3
<b>Turnout</b>		51.5	31.4

<b>Bedfordshire 1981</b>			
<b>Amphthill (4428)</b>			
<b>Sandy (4986)</b>			
<b>Sherwood-King A.</b>			
Buckle N.	Con	1,347	73.0
	Lab	498	27.0
<b>Turnout</b>		37.1	46.0

<b>Amphthill Rural No. 1 (4862)</b>			
		vote	share
<b>Cowell A. Ms.*</b>	Con	979	49.6
Cruse P.	Lib	664	33.6
Jones D.	Lab	331	16.8
<b>Turnout</b>		44.6	16.0

<b>Amphthill Rural No. 2 (Cranfield) (5654)</b>			
		vote	share
<b>Sellars A.</b>	Con	1,316	60.8
Roland E.	Lab	537	24.8
Ide C.	Lib	312	14.4
<b>Turnout</b>		44.5	36.0

<b>Amphthill Rural No. 3 (4284)</b>			
		vote	share
<b>Kemp M.*</b>	Con	993	45.5
Riley A.	Lab	652	29.9
Wood S.	Lib	538	24.6
<b>Turnout</b>		38.6	15.6

<b>Amphthill Rural No. 4 (3917)</b>			
		vote	share
<b>Chapman A.*</b>	Con	1,109	56.9
Kilpin S. Ms.	Lib	472	24.2
Loney M.	Lab	369	18.9
<b>Turnout</b>		45.5	32.7

<b>Amphthill Rural No. 5 (6150)</b>			
		vote	share
<b>Dixon I.</b>	Con	1,286	59.5
Harrowell D.	Lab	596	27.6
Jarvis S.	Lib	279	12.9
<b>Turnout</b>		55.2	31.9

<b>Amphthill Rural No. 6 (4327)</b>			
		vote	share
<b>Bryce R.*</b>	Con	1,197	53.9
Walsh T.	Lab	612	27.6
Harfield J.	Lib	411	18.5
<b>Turnout</b>		51.3	26.4

<b>Bedford No. 1 (10730)<sup>3</sup></b>			
		vote	share
<b>Blowers A.*</b>	Lab	3,333	62.9
<b>Thornley M.*</b>	Lab	3,116	-
<b>Wood A. Ms.</b>	Lab	2,921	-
Nesbitt M. Ms.	Lib	1,122	21.2
Johnson D.	Lib	880	-
Bains M.	Lib	811	-
Inskip L. Ms.	Con	742	14.0
Williams M.	Con	669	-
Waite P.	Comm	99	1.9
<b>Turnout</b>		49.4	41.7

<b>Bedford No. 10 (6529)</b>			
		vote	share
<b>Lennon J. Ms.*</b>	Lib	1,690	54.4
Loxley J.	Lab	823	26.5
Jeffrey G.	Con	595	19.1
		<b>Turnout</b>	47.6 27.9

<b>Bedford No. 2 (4291)</b>			
		vote	share
<b>Saunders C.</b>	Lab	1,307	57.2
Chamberlain S. Ms.	Con	818	35.8
Ram D.	Lib	160	7.0
		<b>Turnout</b>	53.3 21.4

<b>Bedford No. 3 (3093)</b>			
		vote	share
<b>Dillingham B.*</b>	Con	696	54.1
Anderson B.	Lab	500	38.9
Nawathe M.	Lib	91	7.1
		<b>Turnout</b>	41.6 15.2

<b>Bedford No. 4 (3488)</b>			
		vote	share
<b>Farley M.</b>	Lab	890	52.7
May F.	Con	605	35.8
Shipp G.	Lib	194	11.5
		<b>Turnout</b>	48.4 16.9

<b>Bedford No. 5 (2622)</b>			
		vote	share
<b>Wootton E.*</b>	Con	483	38.0
Grugeon D.	Lab	447	35.1
Howes E. Ms.	Lib	342	26.9
		<b>Turnout</b>	48.5 2.8

<b>Bedford No. 6 (3552)</b>			
		vote	share
<b>Barley J.</b>	Con	733	39.6
Butler J.	Lib	607	32.8
Crane R.	Lab	512	27.6
		<b>Turnout</b>	52.1 6.8

<b>Bedford No. 7 (3604)</b>			
		vote	share
<b>Sweeney W.</b>	Con	964	56.3
Fennell J. Ms.	Lib	365	21.3
Shields J. Ms.	Lab	333	19.4
Kentfield R.	Ecol	51	3.0
		<b>Turnout</b>	47.5 35.0

<b>Bedford No. 8 (8334)</b>			
		vote	share
<b>Lord M.</b>	Con	1,938	48.2
Hickman S. Ms.	Lib	1,371	34.1
Jones B. Ms.	Lab	710	17.7
		<b>Turnout</b>	48.2 14.1

<b>Bedford No. 9 (4926)</b>			
		vote	share
<b>Gibbons B.*</b>	Lib	1,431	55.8
Purbrick B. Ms.	Con	832	32.4
Sargeant M.	Lab	301	11.7
		<b>Turnout</b>	52.1 23.4

<b>Bedford Rural No. 1 (Wilshamstead) (4528)</b>			
		vote	share
<b>Collins B.</b>	Con	1,000	46.9
Chapman J.	Lib	663	31.1
Brophy M.	Lab	471	22.1
		<b>Turnout</b>	47.1 15.8

<b>Bedford Rural No. 2 (4419)</b>			
		vote	share
<b>Gershon P. Ms.</b>	Con	1,107	46.6
Woodside R.	Lib	863	36.4
Blowers G. Ms.	Lab	404	17.0
		<b>Turnout</b>	53.7 10.3

<b>Bedford Rural No. 3 (4919)</b>			
		vote	share
<b>Hendry A.</b>	Con	1,551	60.8
Mehew B.	Lib	615	24.1
Thynne J.	Lab	386	15.1
		<b>Turnout</b>	51.9 36.7

<b>Bedford Rural No. 4 (4549)</b>			
		vote	share
<b>Smith G.</b>	Con	1,184	44.9
Keens B.	Lab	1,038	39.4
Hickman N.	Lib	413	15.7
		<b>Turnout</b>	57.9 5.5

<b>Bedford Rural No. 5 (3962)</b>			
		vote	share
<b>Gibson R.</b>	Con	1,146	64.0
Newbury P.	Lib	378	21.1
Hibbert W.	Lab	268	15.0
		<b>Turnout</b>	45.2 42.9

<b>Bedford Rural No. 6 (5104)</b>			
		vote	share
<b>Rose G. Ms.</b>	Con	1,705	62.1
Swann-Price C.	Lib	722	26.3
Luder I.	Lab	319	11.6
		<b>Turnout</b>	53.8 35.8

<b>Bedford Rural No. 7 (4051)</b>			
		vote	share
<b>Haggerwood R.</b>	Lib	753	41.9
Herring S.	Con	691	38.5
Slaine A.	Lab	352	19.6
		<b>Turnout</b>	44.3 3.5

<b>Biggleswade (8188)<sup>2</sup></b>			
		vote	share
<b>Brunt D. Ms.*</b>	Lab	2,409	38.3
<b>Cook C.*</b>	Ind	1,922	30.6
Smeeton H.	Lab	1,710	-
Smith D.	Con	1,436	22.9
Sherry J.	Lib	517	8.2
Stayner R.	Lib	318	-
		<b>Turnout</b>	76.7 7.7

<b>Biggleswade Rural No. 1 (Arlesey) (2941)</b>			
		vote	share
<b>Tizard J.</b>	Lab	921	57.5
Turner R.	Con	681	42.5
		<b>Turnout</b>	54.5 15.0

<b>Biggleswade Rural No. 2 (Stotfold) (4601)</b>			
		vote	share
<b>Long J.*</b>	Con	1,176	51.3
Wood H.	Lab	926	40.4
Heley J.	Lib	190	8.3
		<b>Turnout</b>	49.8 10.9

<b>Biggleswade Rural No. 3 (5817)</b>			
		vote	share
<b>Nash P.</b>	Con	1,708	51.0
Guntert A.	Lab	963	28.8
Bowry A.	Lib	677	20.2
		<b>Turnout</b>	57.6 22.3

<b>Biggleswade Rural No. 4 (4342)</b>			
		vote	share
<b>Woods H.</b>	Con	1,240	60.1
Costley A.	Lab	495	24.0
Bird M.	Lib	327	15.9
		<b>Turnout</b>	47.5 36.1

<b>Biggleswade Rural No. 5 (4238)</b>			
		vote	share
<b>Humphreys E.*</b>	Con	987	41.3
Riches C.	Lib	965	40.4
Brunt V.	Lab	438	18.3
		<b>Turnout</b>	56.4 0.9

<b>Biggleswade Rural No. 6 (3602)</b>			
		vote	share
<b>Burnage A.*</b>	Con	719	44.3
Loney A.	Lab	598	36.8
Sewell S. Ms.	Lib	306	18.9
		<b>Turnout</b>	45.1 7.5

<b>Dunstable Central (6351)<sup>2</sup></b>			
		vote	share
<b>Goodall F.*</b>	Con	1,309	45.5
<b>Brett S.*</b>	Con	1,240	-
Ingleton R.	Lab	968	33.6
Bilgin M.	Lab	705	-
Foreman C. Ms.	Lib	600	20.9
		<b>Turnout</b>	43.6 11.9

<b>Dunstable North (5853)<sup>2</sup></b>			
		vote	share
<b>Ball F.*</b>	Con	1,300	46.6
<b>Wickson D. Ms.*</b>	Con	1,293	-
McCafferty J.	Lab	1,005	36.0
Jenkins B.	Lab	970	-
Sparling D.	Lib	485	17.4
Witherick I.	Lib	409	-
		<b>Turnout</b>	47.7 10.6

<b>Dunstable South (9364)<sup>2</sup></b>			
		vote	share
<b>Biswell K.*</b>	Con	1,883	43.9
<b>Riddell R.*</b>	Con	1,716	-
Harris R.	Lab	1,228	28.7
Pitches R.	Lib	1,175	27.4
Witherick C.	Lib	1,021	-
Nicholson M. Ms.	Lab	1,010	-
		<b>Turnout</b>	46.5 15.3

<b>Kempston (10917)<sup>2</sup></b>			
		vote	share
<b>Neff C.</b>	Lab	2,241	51.1
<b>Henderson C.</b>	Lab	2,211	-
Gilbert G.	Con	1,387	31.6
Smallridge A.	Con	1,362	-
Lincoln M.	Lib	760	17.3
Ellis D.	Lib	759	-
		<b>Turnout</b>	40.2 19.5

<b>Leighton-Linslade No. 1 (11024)<sup>2</sup></b>			
		vote	share
<b>Owen S.</b>	Lib	2,631	47.3
<b>Snelling P.</b>	Lib	2,293	-
Cook R.*	Con	1,966	35.4
Cheetham D.	Con	1,683	-
Burchell F.	Lab	961	17.3
Elliott M. Ms.	Lab	958	-
		<b>Turnout</b>	50.7 12.0

<b>Leighton-Linslade No. 2 (9646)<sup>2</sup></b>			
		vote	share
<b>Priggen P.</b>	Con	1,703	37.8
<b>Hill R. Ms.*</b>	Con	1,665	-
Freeman S. Ms.	Lib	1,657	36.8
Britsch A.	Lib	1,648	-
Moloney K.	Lab	1,147	25.4
Sturge F.	Lab	953	-
		<b>Turnout</b>	48.3 1.0

<b>Luton (Central) (7195)<sup>2</sup></b>			
		vote	share
<b>Heather H.</b>	Lab	1,550	54.3
<b>Thakoordin J.</b>	Lab	1,341	-
Bush A. Ms.	Con	701	24.5
Hills S. Ms.	Con	688	-
Roe J. Ms.	Lib	446	15.6
Hawkins J. Ms.	Lib	439	-
Byrne L.	Soc Dem	160	5.6
		<b>Turnout</b>	39.7 29.7

<b>Luton (Crawley) (9334)<sup>3</sup></b>			
		<b>vote</b>	<b>share</b>
Gillespie D.	Lab	1,651	37.4
Rose P.	Lib	1,644	37.3
Taylor M. Ms.	Lab	1,578	-
Harris R.	Lab	1,572	-
McNally M. Ms.	Lib	1,569	-
Rowan E. Ms.	Lib	1,558	-
Manley E.	Con	1,118	25.3
Flint B.*	Con	1,095	-
Thomson A.	Con	1,072	-
<b>Turnout</b>		<b>47.3</b>	<b>0.2</b>

<b>Luton (Dallow) (8340)<sup>2</sup></b>			
		<b>vote</b>	<b>share</b>
Grayson D.	Lab	2,354	61.3
Lidyard C.	Lab	2,285	-
Stephens S.	Lib	961	25.0
McColm I.	Lib	950	-
Mortain-Cogar J.	Con	527	13.7
Fazil M.	Con	505	-
<b>Turnout</b>		<b>46.1</b>	<b>36.3</b>

<b>Luton (High Town) (7956)<sup>2</sup></b>			
		<b>vote</b>	<b>share</b>
Dunington P. Ms.	Con	1,828	46.5
Lester F.*	Con	1,747	-
Fensome J. Ms.	Lab	1,225	31.1
Davis R.	Lab	1,168	-
Franks D.	Lib	882	22.4
Keens T.	Lib	797	-
<b>Turnout</b>		<b>49.5</b>	<b>15.3</b>

<b>Luton (Icknield) (10066)<sup>2</sup></b>			
		<b>vote</b>	<b>share</b>
White K.*	Con	2,845	61.0
Longden P. Ms.*	Con	2,834	-
Macey R.	Lab	1,286	27.6
Cowan K. Ms.	Lab	1,282	-
Hedges K.	Lib	536	-
Robinson M.	Lib	536	11.5
<b>Turnout</b>		<b>46.4</b>	<b>33.4</b>

<b>Luton (Leagrave) (10093)<sup>3</sup></b>			
		<b>vote</b>	<b>share</b>
Patten D.	Lab	2,039	43.4
Harvey M.	Lab	1,999	-
Wright M.	Lab	1,846	-
Deller D.*	Con	1,528	32.5
Cunningham W.	Con	1,526	-
Punter M. Ms.	Con	1,445	-
Gilmour J.	Soc Dem	580	12.3
Paul M. Ms.	Lib	554	11.8
Hayden T.	Lib	516	-
Mead C.	Lib	490	-
<b>Turnout</b>		<b>46.6</b>	<b>10.9</b>

<b>Luton (Lewsey) (11356)<sup>3</sup></b>			
		<b>vote</b>	<b>share</b>
Hand M.	Lab	2,581	60.4
Edwards R.	Lab	2,528	-
Carr G.	Lab	2,507	-
Curd D.	Con	1,115	26.1
Dudley R.	Con	1,112	-
Lankester P.	Con	1,074	-
Jenner E.	Lib	576	-
Larkman D.	Lib	576	13.5
Stott D.	Lib	528	-
<b>Turnout</b>		<b>37.6</b>	<b>34.3</b>

<b>Luton (Limbury) (9368)<sup>2</sup></b>			
		<b>vote</b>	<b>share</b>
Bailey J.	Lab	2,086	51.7
Davies B. Ms.	Lab	2,005	-
Brooks D.*	Con	1,375	34.1
Quinn M. Ms.*	Con	1,336	-
Blindell J.	Lib	577	14.3
Farrow A.	Lib	527	-
<b>Turnout</b>		<b>43.1</b>	<b>17.6</b>

<b>Luton (South) (9637)<sup>3</sup></b>			
		<b>vote</b>	<b>share</b>
Kenneally D.	Lab	2,502	60.3
Boyle J.	Lab	2,380	-
Gray D.	Lab	2,315	-
Lucas J.	Con	1,061	25.6
Portelli G.	Con	982	-
Portelli J. Ms.	Con	951	-
Felmingham J. Ms.	Lib	587	14.1
Boutwood S.	Lib	569	-
Roe H.	Lib	491	-
<b>Turnout</b>		<b>43.1</b>	<b>34.7</b>

<b>Luton (Stopsley) (10907)<sup>2</sup></b>			
		<b>vote</b>	<b>share</b>
Davies R.	Lib	2,721	44.8
Davies J. Ms.	Lib	2,669	-
Gardner J.	Lab	1,767	29.1
Bruckdorfer K.	Lab	1,706	-
Scott D.	Con	1,592	26.2
Mason H.	Con	1,494	-
<b>Turnout</b>		<b>55.7</b>	<b>15.7</b>

<b>Luton (Sundon Park) (14117)<sup>3</sup></b>			
		<b>vote</b>	<b>share</b>
Norman K.	Lab	3,347	54.2
Loader P.	Lab	3,235	-
Brown H.	Lab	3,187	-
Hinkley C.	Lib	1,431	23.2
Evans P.	Con	1,398	-
Scott A.*	Con	1,398	22.6
Samuels R.*	Con	1,380	-
Dolling M.	Lib	1,285	-
De Groot D.	Lib	1,123	-
<b>Turnout</b>		<b>43.7</b>	<b>31.0</b>

<b>Luton (Wardown) (8082)<sup>2</sup></b>			
		<b>vote</b>	<b>share</b>
Clemiston I.	Lab	2,142	57.2
White N.	Lab	1,982	-
Dodd B. Ms.	Con	1,239	33.1
Hillier J.*	Con	1,214	-
Gresham L.	Lib	362	9.7
Roe B.	Lib	306	-
<b>Turnout</b>		<b>46.3</b>	<b>24.1</b>

<b>Luton Rural No. 1 (Barton-Le-Clay) (3630)</b>			
		<b>vote</b>	<b>share</b>
Shepherd M. Ms.*	Con	861	46.7
McGuinness J.	Lib	695	37.7
Hunt E.	Lab	286	15.5
<b>Turnout</b>		<b>50.8</b>	<b>9.0</b>

<b>Luton Rural No. 2 (Houghton Regis) (11200)<sup>2</sup></b>			
		<b>vote</b>	<b>share</b>
Kinchella J.	Lab	2,453	57.2
Dawson N.	Lab	2,370	-
Druce R.	Con	1,061	24.8
Pergunas J.	Con	1,004	-
Williams C.	Lib	626	14.6
Hatswell P.	Lib	597	-
Smith L.	Brit Dem	145	3.4
Rumbold L.	Brit Dem	127	-
<b>Turnout</b>		<b>40.0</b>	<b>32.5</b>

<b>Luton Rural No. 3 (8425)<sup>2</sup></b>			
		<b>vote</b>	<b>share</b>
Brewer A.*	Con	2,102	55.8
Gear L.*	Con	1,957	-
Adams A.	Lab	978	26.0
Adams J. Ms.	Lab	947	-
Gutteridge M.	Lib	687	18.2
Walker H. Ms.	Lib	612	-
<b>Turnout</b>		<b>46.8</b>	<b>29.8</b>

<b>Luton Rural No. 4 (5478)</b>			
		<b>vote</b>	<b>share</b>
Wainwright P.*	Con	1,174	46.5
Piggott B.	Lib	954	37.8
Dawe S. Ms.	Lab	395	15.7
<b>Turnout</b>		<b>46.2</b>	<b>8.7</b>

<b>SLuton Rural No. 5 (4125)</b>			
		<b>vote</b>	<b>share</b>
Upchurch D.*	Con	1,241	56.2
Turner P.	Lab	535	24.2
Shevels D.	Lib	432	19.6
<b>Turnout</b>		<b>53.6</b>	<b>32.0</b>

<b>Sandy (5681)</b>			
		<b>vote</b>	<b>share</b>
Cameron L.	Lab	919	37.5
Sherwood-King A.*	Con	848	34.6
Lynch K.	Lib	683	27.9
<b>Turnout</b>		<b>43.1</b>	<b>2.9</b>

## Bedfordshire 1985

<b>Amphill (4716)</b>			
		<b>vote</b>	<b>share</b>
Cowell A. Ms.	Con	1,058	46.7
Richards R.	Lib/SDP	727	32.1
Duffin C. Ms.	Lab	479	21.2
<b>Turnout</b>		<b>48.0</b>	<b>14.6</b>

<b>Arlesey &amp; Langford (5305)</b>			
		<b>vote</b>	<b>share</b>
Tizard J.	Lab	1,114	43.7
Turner R.	Con	948	37.2
Smith J. Ms.	Lib/SDP	489	19.2
<b>Turnout</b>		<b>48.1</b>	<b>6.5</b>

<b>Ashcroft (5165)</b>			
		<b>vote</b>	<b>share</b>
Davies J. Ms.	Lib/SDP	1,176	47.9
Thakoordin J.*	Lab	820	33.4
Lankester T. Ms.	Con	457	18.6
<b>Turnout</b>		<b>47.5</b>	<b>14.5</b>

<b>Aspley Guise (5009)</b>			
		<b>vote</b>	<b>share</b>
Chapman A.*	Con	1,277	57.9
Freeman J.	Lib/SDP	562	25.5
Walmsley J. Ms.	Lab	365	16.6
<b>Turnout</b>		<b>44.0</b>	<b>32.4</b>

<b>Barnfield (5078)</b>			
		<b>vote</b>	<b>share</b>
Dunington P. Ms.*	Con	1,638	66.4
Large M. Ms.	Lib/SDP	463	18.8
Robertson R.	Lab	367	14.9
<b>Turnout</b>		<b>48.6</b>	<b>47.6</b>

<b>Barton-Le-Clay (4239)</b>			
		<b>vote</b>	<b>share</b>
Shepherd M. Ms.*	Con	940	45.0
Hinkley C.	Lib/SDP	808	38.7
Gregory J.	Lab	306	14.7
Cusden S. Ms.	Ecol	33	1.6
<b>Turnout</b>		<b>49.2</b>	<b>6.3</b>

<b>Beaudesert (4844)</b>			
		<b>vote</b>	<b>share</b>
Stephens E.	Con	836	39.1
Freeman S. Ms.	Lib/SDP	760	35.6
Canavan P.	Lab	505	23.6
Fortune P.	NF	36	1.7
<b>Turnout</b>		<b>44.1</b>	<b>3.6</b>

<b>Beechwood (4759)</b>			
		<b>vote</b>	<b>share</b>
Patten D.	Lab	883	45.6
Gough E.	Con	824	42.6
Singh J.	Lib/SDP	228	11.8
<b>Turnout</b>		<b>40.7</b>	<b>3.0</b>



<b>Biggleswade Ivel (4788)</b>			
		<b>vote</b>	<b>share</b>
<b>Armstrong M. Ms.</b>	Con	909	45.8
Smeeton H.	Lab	782	39.4
Lotan P.	Lib/SDP	295	14.9
<b>Turnout</b>		41.5	6.4

<b>Biggleswade Stratton (4218)</b>			
		<b>vote</b>	<b>share</b>
<b>Brunt D. Ms.</b>	Lab	1,086	50.2
Rouse P. Ms.	Con	860	39.7
Harris J.	Lib/SDP	219	10.1
<b>Turnout</b>		51.3	10.4

<b>Biscot (5027)</b>			
		<b>vote</b>	<b>share</b>
<b>White N.</b>	Lab	1,305	58.0
Rizvi S.	Con	625	27.8
Jacobi G. Ms.	Lib/SDP	319	14.2
<b>Turnout</b>		44.7	30.2

<b>Bramingham (3169)</b>			
		<b>vote</b>	<b>share</b>
<b>Lester F.*</b>	Con	674	50.0
Knight S.	Lab	383	28.4
Henderson R. Ms.	Lib/SDP	292	21.6
<b>Turnout</b>		42.6	21.6

<b>Brickhill (6062)</b>			
		<b>vote</b>	<b>share</b>
<b>Groves F.</b>	Lib/SDP	1,529	52.0
Martin S. Ms.	Con	1,035	35.2
Anderson Y. Ms.	Lab	375	12.8
<b>Turnout</b>		48.5	16.8

<b>Bromham (5514)</b>			
		<b>vote</b>	<b>share</b>
<b>Rose G. Ms.</b>	Con	1,616	54.7
Fitzpatrick M.	Lib/SDP	1,148	38.9
Bagchi A.	Lab	190	6.4
<b>Turnout</b>		53.6	15.8

<b>Brooklands (5105)</b>			
		<b>vote</b>	<b>share</b>
<b>Hewer F.</b>	Lib/SDP	954	45.0
Banwell P.	Con	734	34.6
Byrne R.	Lab	431	20.3
<b>Turnout</b>		41.5	10.4

<b>Bury Park (4848)</b>			
		<b>vote</b>	<b>share</b>
<b>Bashir M.</b>	Lab	1,286	68.2
Robinson M.	Lib/SDP	324	17.2
Fazil M.	Con	276	14.6
<b>Turnout</b>		38.9	51.0

<b>Caddington (4939)</b>			
		<b>vote</b>	<b>share</b>
<b>Brewer A.</b>	Con	1,083	49.5
Taffs A.	Lib/SDP	597	27.3
Read A. Ms.	Lab	509	23.3
<b>Turnout</b>		44.3	22.2

<b>Castle (4356)</b>			
		<b>vote</b>	<b>share</b>
<b>Lowe S.</b>	Lab	1,047	44.7
Wootton E.*	Con	908	38.8
Kirby T.	Lib/SDP	386	16.5
<b>Turnout</b>		53.7	5.9

<b>Cauldwell (5595)</b>			
		<b>vote</b>	<b>share</b>
<b>Blowers A.*</b>	Lab	1,763	75.9
Whatton R.	Con	345	14.9
Barrett-Murrer J. Ms.	Lib/SDP	214	9.2
<b>Turnout</b>		41.5	61.1

<b>Challney (4713)</b>			
		<b>vote</b>	<b>share</b>
<b>McGovern J.</b>	Lab	750	42.0
McCarroll M. Ms.	Con	690	38.6
McKenna P.	Lib/SDP	347	19.4
<b>Turnout</b>		37.9	3.4

<b>Clapham (4763)</b>			
		<b>vote</b>	<b>share</b>
<b>Haggerwood R.*</b>	Lib/SDP	1,151	52.9
Groves P.	Con	764	35.1
Johnson E.	Lab	262	12.0
<b>Turnout</b>		45.7	17.8

<b>Cranfield &amp; Marston (5146)</b>			
		<b>vote</b>	<b>share</b>
<b>Hawksby J.</b>	Con	1,109	52.1
Wilkins P. Ms.	Lib/SDP	527	24.8
Morris A.	Lab	493	23.2
<b>Turnout</b>		41.4	27.3

<b>Crawley (5595)</b>			
		<b>vote</b>	<b>share</b>
<b>Varnals J.</b>	Lib/SDP	1,161	46.5
Taylor D.	Lab	671	26.9
Robinson R.	Con	665	26.6
<b>Turnout</b>		44.6	19.6

<b>Dallow (5059)</b>			
		<b>vote</b>	<b>share</b>
<b>Lidyard C.*</b>	Lab	1,153	62.7
McColm I.	Lib/SDP	347	18.9
Rathor M.	Con	338	18.4
<b>Turnout</b>		36.3	43.9

<b>De Parys (4437)</b>			
		<b>vote</b>	<b>share</b>
<b>Sweeney W.*</b>	Con	814	46.1
Struthers J. Ms.	Lib/SDP	622	35.3
Korzeniowski J.	Lab	328	18.6
<b>Turnout</b>		39.8	10.9

<b>Dunstable Central (5723)</b>			
		<b>vote</b>	<b>share</b>
<b>Wickson D. Ms.*</b>	Con	1,466	55.5
Harris R.	Lab	668	25.3
Witherick S.	Lib/SDP	506	19.2
<b>Turnout</b>		46.1	30.2

<b>Dunstable Icknield (5322)</b>			
		<b>vote</b>	<b>share</b>
<b>Roberts A. Ms.</b>	Con	1,006	46.5
Ingleton R.	Lab	597	27.6
Gurr C.	Lib/SDP	559	25.9
<b>Turnout</b>		40.6	18.9

<b>Eaton Bray (5735)</b>			
		<b>vote</b>	<b>share</b>
<b>Gear L.*</b>	Con	1,353	59.0
Sullivan J.	Lib/SDP	438	19.1
Connell W.	Lab	290	12.6
Rollings P.	Ecol	212	9.2
<b>Turnout</b>		40.0	39.9

<b>Farley (4761)</b>			
		<b>vote</b>	<b>share</b>
<b>Boyle J.</b>	Lab	1,554	74.7
Lankester P.	Con	262	12.6
Kenneally T.	Lib/SDP	245	11.8
Green M. Ms.	Comm	20	1.0
<b>Turnout</b>		43.7	62.1

<b>Flitwick (7511)</b>			
		<b>vote</b>	<b>share</b>
<b>Randall M.*</b>	Con	1,325	49.9
Watson A.	Lab	694	26.2
Parker D.	Lib/SDP	634	23.9
<b>Turnout</b>		35.3	23.8

<b>Goldington (5575)</b>			
		<b>vote</b>	<b>share</b>
<b>Christie A.</b>	Lib/SDP	1,254	48.6
Grugeon D.	Lab	1,001	38.8
Fulford V. Ms.	Con	324	12.6
<b>Turnout</b>		46.3	9.8

<b>Great Barford &amp; Wilshamstead (6140)</b>			
		<b>vote</b>	<b>share</b>
<b>Gibson R.*</b>	Con	1,314	49.8
Hill T.	Lib/SDP	878	33.2
Currie W.	Lab	449	17.0
<b>Turnout</b>		43.0	16.5

<b>Harlington (5837)</b>			
		<b>vote</b>	<b>share</b>
<b>Barley J.</b>	Con	1,148	41.4
Larkman D.	Lib/SDP	752	27.1
Eells J. Ms.	Ind	477	17.2
Randall L.	Lab	393	14.2
<b>Turnout</b>		47.5	14.3

<b>Harpur (5093)</b>			
		<b>vote</b>	<b>share</b>
<b>Cooper C. Ms.</b>	Lab	1,094	46.3
Dillingham B.*	Con	1,042	44.1
Waters M.	Lib/SDP	228	9.6
<b>Turnout</b>		46.4	2.2

<b>Harrod (5734)</b>			
		<b>vote</b>	<b>share</b>
<b>Gershon P. Ms.*</b>	Con	1,375	54.5
Melia M.	Lib/SDP	666	26.4
Sidebottom C.	Lab	484	19.2
<b>Turnout</b>		44.0	28.1

<b>Hart Hill (4084)</b>			
		<b>vote</b>	<b>share</b>
<b>Stephens S.</b>	Lib/SDP	890	48.9
Lacey R.	Lab	640	35.1
Hoyle A.	Con	266	14.6
Mitchell T.	Comm	25	1.4
<b>Turnout</b>		44.6	13.7

<b>High Town (5521)</b>			
		<b>vote</b>	<b>share</b>
<b>Heather H.*</b>	Lab	1,167	46.9
Oakley R.	Con	740	29.7
Keens T.	Lib/SDP	581	23.4
<b>Turnout</b>		45.1	17.2

<b>Houghton Regis North West (5421)</b>			
		<b>vote</b>	<b>share</b>
<b>Kinchella J.*</b>	Lab	999	56.3
Hines R.	Lib/SDP	416	23.4
Reed M. Ms.	Con	359	20.2
<b>Turnout</b>		32.7	32.9

<b>Houghton Regis South East (5325)</b>			
		<b>vote</b>	<b>share</b>
<b>Kinchella J. Ms.</b>	Lab	779	50.1
Biswell M. Ms.	Con	378	24.3
Bird R. Ms.	Lib/SDP	337	21.7
Sturgess O. Ms.	Ecol	62	4.0
<b>Turnout</b>		29.2	25.8

<b>Kempston East (6345)</b>			
		<b>vote</b>	<b>share</b>
<b>Burley G. Ms.</b>	Lab	1,340	50.8
Eynon S.	Con	937	35.5
Culbert K.	Lib/SDP	360	13.7
<b>Turnout</b>		41.6	15.3

<b>Kempston West (5436)</b>			
		<b>vote</b>	<b>share</b>
<b>Henderson C. Ms.*</b>	Lab	970	43.1
Joy E. Ms.	Con	909	40.4
Ceirog-Jones J. Ms.	Lib/SDP	371	16.5
<b>Turnout</b>		41.4	2.7

Kingsbrook (5291)			
		vote	share
<b>Loxley J.</b>	Lab	1,227	53.3
Whiteford M. Ms.	Lib/SDP	793	34.5
Phillips P.	Con	280	12.2
<b>Turnout</b>		43.5	18.9

Leagrave (5084)			
		vote	share
<b>Wright M.*</b>	Lab	1,089	62.4
Gillespie P.	Con	426	24.4
Siederer H.	Lib/SDP	229	13.1
<b>Turnout</b>		34.3	38.0

Lewsey (6146)			
		vote	share
<b>Hand M.*</b>	Lab	1,407	72.7
Mead C.	Lib/SDP	269	13.9
Mangan D.	Con	260	13.4
<b>Turnout</b>		31.5	58.8

Limbury (5459)			
		vote	share
<b>Sawtell D.</b>	Lab	1,185	49.9
Humphreys E.	Con	897	37.8
Singh N.	Lib/SDP	293	12.3
<b>Turnout</b>		43.5	12.1

Linslade (3840)			
		vote	share
<b>Owen S.*</b>	Lib/SDP	913	45.1
Faraday M.	Con	753	37.2
Sandison G.	Lab	290	14.3
Morrissey R.	Ecol	67	3.3
<b>Turnout</b>		52.7	7.9

Luton Central (3818)			
		vote	share
<b>Bailey J.*</b>	Lab	629	44.4
Felmingham J. Ms.	Lib/SDP	561	39.6
Ranger A.	Con	228	16.1
<b>Turnout</b>		43.5	4.8

Luton Icknield (5203)			
		vote	share
<b>White K.*</b>	Con	1,109	46.3
Fox H. Ms.	Lab	838	35.0
Perry T. Ms.	Lib/SDP	447	18.7
<b>Turnout</b>		46.0	11.3

Luton South (5235)			
		vote	share
<b>Pryer C.</b>	Lab	867	43.2
Dodds G.	Con	825	41.1
Watson R.	Lib/SDP	316	15.7
<b>Turnout</b>		38.4	2.1

Marsh Farm (5213)			
		vote	share
<b>Cunliffe K.</b>	Lab	1,343	72.3
Samuels R.	Con	280	15.1
Cole W.	Lib/SDP	234	12.6
<b>Turnout</b>		35.6	57.2

Maulden (5007)			
		vote	share
<b>Sollars A.*</b>	Con	1,306	62.0
Young S. Ms.	Lib/SDP	441	20.9
Sargeant M.	Lab	360	17.1
<b>Turnout</b>		42.1	41.1

Newnham (5057)			
		vote	share
<b>Gibbons B.*</b>	Lib/SDP	1,344	48.2
Dewar M.	Con	925	33.2
Crane R.	Lab	519	18.6
<b>Turnout</b>		55.1	15.0

North East Bedfordshire (5580)			
		vote	share
<b>Hendry A.*</b>	Con	1,690	66.8
Tulk A. Ms.	Lib/SDP	474	18.7
Carroll T.	Lab	367	14.5
<b>Turnout</b>		45.4	48.0

Northfields (5469)			
		vote	share
<b>Brown H.</b>	Lab	992	43.4
Ball F.	Con	837	36.6
Witherick I.	Lib/SDP	459	20.1
<b>Turnout</b>		41.8	6.8

Northhill (4445)			
		vote	share
<b>Woods H.*</b>	Con	1,206	62.0
Costley A.	Lab	384	19.7
Sawford S.	Lib/SDP	356	18.3
<b>Turnout</b>		43.8	42.2

Plantation (4722)			
		vote	share
<b>Hill R. Ms.*</b>	Con	1,012	45.7
Banfield L.	Lib/SDP	603	27.2
Miller J.	Lab	580	26.2
Baggaley R.	NF	18	0.8
<b>Turnout</b>		46.9	18.5

Poets (5528)			
		vote	share
<b>Ellis B.</b>	Lab	923	41.9
Denny R.	Con	798	36.2
Hayden T.	Lib/SDP	484	22.0
<b>Turnout</b>		39.9	5.7

Potton (4470)			
		vote	share
<b>Baker R.</b>	Con	1,187	63.2
Sheppard J. Ms.	Lab	690	36.8
<b>Turnout</b>		42.0	26.5

Priory (4467)			
		vote	share
<b>Davies G.</b>	Lab	791	42.7
Biswell K.	Con	663	35.8
Walker R.	Lib/SDP	399	21.5
<b>Turnout</b>		41.5	6.9

Putnoe (5543)			
		vote	share
<b>Lennon J. Ms.*</b>	Lib/SDP	1,601	56.1
Wallace J.	Con	1,053	36.9
Cartlidge J. Ms.	Lab	202	7.1
<b>Turnout</b>		51.5	19.2

Queens Park (5144)			
		vote	share
<b>Saunders C.*</b>	Lab	1,347	64.1
Williams M.	Con	388	18.5
Hickman N.	Lib/SDP	210	10.0
Awon A.	Ind	155	7.4
<b>Turnout</b>		40.8	45.7

Saints (5580)			
		vote	share
<b>Heathcote F.</b>	Lab	1,241	56.7
Burrett P. Ms.	Con	639	29.2
Murray B. Ms.	Lib/SDP	310	14.2
<b>Turnout</b>		39.2	27.5

Sandy (6333)			
		vote	share
<b>Blaine P.</b>	Lib/SDP	771	31.0
Davidson N.	Con	755	30.3
Cameron L.	Ind	544	21.9
Holloway C. Ms.	Lab	419	16.8
<b>Turnout</b>		39.3	0.6

Shefford & Clifton (5043)			
		vote	share
<b>Taylor J. Ms.</b>	Con	1,198	53.5
Tenwick M.	Lab	624	27.9
Healey J.	Lib/SDP	417	18.6
<b>Turnout</b>		44.4	25.6

Shillington & Henlow (5918)			
		vote	share
<b>Burnage A.</b>	Con	1,490	70.3
Woodbine M.	Lab	630	29.7
<b>Turnout</b>		35.8	40.6

Southcott (4249)			
		vote	share
<b>Snelling P.*</b>	Lib/SDP	894	44.1
Inns S. Ms.	Con	857	42.3
Allen S.	Lab	275	13.6
<b>Turnout</b>		47.7	1.8

Stopsley (5224)			
		vote	share
<b>Johnston W.</b>	Lib/SDP	1,069	44.3
Dillingham G.	Con	906	37.5
Loader P.*	Lab	438	18.2
<b>Turnout</b>		46.2	6.8

Stotfold (4669)			
		vote	share
<b>Long J.*</b>	Con	1,265	62.4
Loney A.	Lab	763	37.6
<b>Turnout</b>		43.4	24.8

Sundon Park (5131)			
		vote	share
<b>Davies B. Ms.*</b>	Lab	896	48.3
Scott A.	Con	570	30.7
Kenneally S. Ms.	Lib/SDP	390	21.0
<b>Turnout</b>		36.2	17.6

Toddington (6035)			
		vote	share
<b>Upchurch D.*</b>	Con	1,563	56.3
Drinkwater M.	Lib/SDP	676	24.4
Turner P.	Lab	535	19.3
<b>Turnout</b>		46.0	32.0

Watling (5526)			
		vote	share
<b>Riddell R.*</b>	Con	936	46.2
Pitches R.	Lib/SDP	620	30.6
Bourne G.	Lab	470	23.2
<b>Turnout</b>		36.7	15.6

Wigmore (4814)			
		vote	share
<b>Davies R.*</b>	Lib/SDP	1,007	50.4
Bruckdorfer K.	Lab	522	26.1
Skinner C.	Con	468	23.4
<b>Turnout</b>		41.5	24.3

Wootton (5502)			
		vote	share
<b>Smith G.</b>	Con	1,429	51.9
Sell P.	Lab	822	29.8
Crook H. Ms.	Lib/SDP	504	18.3
<b>Turnout</b>		50.1	22.0

## Bedfordshire 1989

### Amphill (4992)

		vote	share
<b>Cowell A. Ms.*</b>	Con	999	55.5
Duffin C. Ms.	Lab	410	22.8
Sunman A.	LD	390	21.7
	<b>Turnout</b>	36.0	32.7

### Arlesey & Langford (5523)

		vote	share
<b>Tizard J.*</b>	Lab	1,404	57.8
Turner R.	Con	1,023	42.2
	<b>Turnout</b>	43.9	15.7

### Ashcroft (4958)

		vote	share
<b>Davies J. Ms.*</b>	LD	955	42.5
Gray B.	Lab	815	36.3
Drew K.	Con	478	21.3
	<b>Turnout</b>	45.3	6.2

### Aspley Guise (5146)

		vote	share
<b>Chapman A.*</b>	Con	1,379	72.3
Walmsley H.	Lab	528	27.7
	<b>Turnout</b>	37.1	44.6

### Barnfield (5287)

		vote	share
<b>Dunnington P. Ms.*</b>	Con	1,541	73.0
Furness R.	Lab	379	18.0
Devlin P. Ms.	LD	190	9.0
	<b>Turnout</b>	39.9	55.1

### Barton-Le-Clay (4214)

		vote	share
<b>Shepherd M. Ms.*</b>	Con	805	47.7
Lea K.	LD	694	41.2
Randall L.	Lab	187	11.1
	<b>Turnout</b>	40.0	6.6

### Beaudesert (5058)

		vote	share
<b>Stephens E.*</b>	Con	917	43.0
Date A.	Lab	624	29.2
Freeman J.	LD	594	27.8
	<b>Turnout</b>	42.2	13.7

### Beechwood (4856)

		vote	share
<b>Patten D.*</b>	Lab	764	46.0
Punter M. Ms.	Con	748	45.1
Watton C. Ms.	LD	148	8.9
	<b>Turnout</b>	34.2	1.0

### Biggleswade Ivel (5041)

		vote	share
<b>Newman B.</b>	Con	1,182	51.9
Peirce M.	Lab	1,097	48.1
	<b>Turnout</b>	45.2	3.7

### Biggleswade Stratton (4840)

		vote	share
<b>Brunt V.</b>	Lab	1,181	50.9
Armstrong M. Ms.*	Con	1,139	49.1
	<b>Turnout</b>	47.9	1.8

### Biscot (5220)

		vote	share
<b>White N.*</b>	Lab	1,172	59.0
Uddin M.	Con	596	30.0
Robinson M.	LD	158	8.0
Rizvi S.	Ind	59	3.0
	<b>Turnout</b>	38.0	29.0

### Bramingham (5630)

		vote	share
<b>Lester F.*</b>	Con	1,233	60.4
Khamis T.	Lab	412	20.2
Macmanus J.	Green	242	11.9
Devlin A.	LD	153	7.5
	<b>Turnout</b>	36.2	40.2

### Brickhill (6050)

		vote	share
<b>Hills N.*</b>	LD	1,361	47.5
Young D.	Con	1,253	43.7
Wilson G.	Lab	254	8.9
	<b>Turnout</b>	47.4	3.8

### Bromham (5505)

		vote	share
<b>Rose G. Ms.*</b>	Con	1,750	76.0
Cunningham J. Ms.	LD	553	24.0
	<b>Turnout</b>	41.8	52.0

### Brooklands (5088)

		vote	share
<b>Johnstone R.</b>	Con	793	40.6
Hewer F.*	LD	690	35.4
Stannard G. Ms.	Lab	304	15.6
Bryant G.	Green	164	8.4
	<b>Turnout</b>	38.3	5.3

### Bury Park (4775)

		vote	share
<b>Ali M.*</b>	Lab	980	61.6
Shah A.	Con	433	27.2
Dolling M.	LD	98	6.2
Parker G.	Green	79	5.0
	<b>Turnout</b>	33.3	34.4

### Caddington (5046)

		vote	share
<b>Lowden J.</b>	Con	694	38.6
Benson C. Ms.	IR	620	34.5
Widdowson J.	Green	249	13.8
Thakoordin M.	Lab	235	13.1
	<b>Turnout</b>	35.6	4.1

### Castle (4423)

		vote	share
<b>Grugeon D.</b>	Lab	1,264	60.0
Beard R.	Con	844	40.0
	<b>Turnout</b>	47.7	19.9

### Cauldwell (5643)

		vote	share
<b>Blowers A.*</b>	Lab	1,561	77.8
Barber-Lomax P.	Con	318	15.9
Gerard A. Ms.	LD	127	6.3
	<b>Turnout</b>	35.5	62.0

### Challney (4771)

		vote	share
<b>McCafferty J.</b>	Lab	744	46.9
McCarroll M. Ms.	Con	724	45.6
Young E.	LD	120	7.6
	<b>Turnout</b>	33.3	1.3

### Clapham (4640)

		vote	share
<b>Botterill J.</b>	LD	1,145	53.9
Grove H. Ms.	Con	979	46.1
	<b>Turnout</b>	45.8	7.8

### Cranfield & Marston (5074)

		vote	share
<b>Hawksby J.*</b>	Con	1,176	68.1
Morris A.	Lab	550	31.9
	<b>Turnout</b>	34.0	36.3

### Crawley (5391)

		vote	share
<b>Shaw D.</b>	LD	903	43.1
Bannan J.	Con	667	31.8
Hawkes M.	Lab	527	25.1
	<b>Turnout</b>	38.9	11.3

### Dallow (5134)

		vote	share
<b>Thakoordin J.</b>	Lab	850	55.0
Riaz M.	Con	388	25.1
Duffy P.	LD	156	10.1
McLean D.	Green	152	9.8
	<b>Turnout</b>	30.1	29.9

### De Parys (4458)

		vote	share
<b>Smithson M.</b>	LD	1,060	52.5
Groves S. Ms.	Con	795	39.4
Struthers J. Ms.	SDP	164	8.1
	<b>Turnout</b>	45.3	13.1

### Dunstable Central (5682)

		vote	share
<b>Wickson D. Ms.*</b>	Con	1,497	68.9
Shelley A. Ms.	Lab	440	20.3
Conquest D.	LD	235	10.8
	<b>Turnout</b>	38.2	48.7

### Dunstable Icknield (5165)

		vote	share
<b>Roberts A. Ms.*</b>	Con	1,215	60.2
Foley M.	Lab	396	19.6
Briggishaw M. Ms.	CATRR	239	11.8
Sygrove H. Ms.	LD	168	8.3
	<b>Turnout</b>	39.1	40.6

### Eaton Bray (5791)

		vote	share
<b>Piggott B.</b>	Con	1,218	50.7
Rollings P.	Green	916	38.2
Gregory J.	Lab	179	7.5
Watling B. Ms.	LD	88	3.7
	<b>Turnout</b>	41.5	12.6

### Farley (4628)

		vote	share
<b>Boyle J.*</b>	Lab	1,498	79.8
Elstob R.	Con	302	16.1
Taffs A.	LD	78	4.2
	<b>Turnout</b>	40.6	63.7

### Flitwick (7988)

		vote	share
<b>Harris M. Ms.</b>	Con	1,430	60.3
Watson A.	Lab	596	25.1
Mason G.	LD	347	14.6
	<b>Turnout</b>	29.7	35.1

### Goldington (5373)

		vote	share
<b>Christie A.*</b>	LD	1,119	50.0
Amery I.	Lab	718	32.1
Fulford V. Ms.	Con	402	18.0
	<b>Turnout</b>	41.7	17.9

### Great Barford & Wilshamstead (6470)

		vote	share
<b>Gibson R.*</b>	Con	1,426	60.5
Irwin N.	Lab	552	23.4
Woodcraft M.	LD	379	16.1
	<b>Turnout</b>	36.4	37.1

### Harlington (6019)

		vote	share
<b>Barley J.*</b>	Con	1,335	50.7
Stephen S. Ms.	LD	894	34.0
Bedson M.	Lab	403	15.3
	<b>Turnout</b>	43.7	16.8

<b>Harpur (5232)</b>			
		<b>vote</b>	<b>share</b>
<b>Hall P.</b>	Lab	1,329	56.9
Dillingham B.	Con	927	39.7
Sawyer D.	LD	78	3.3
	<b>Turnout</b>	44.6	17.2
<b>Harrold (5923)</b>			
		<b>vote</b>	<b>share</b>
<b>Gershon P. Ms.*</b>	Con	1,642	68.5
Thynne J.	Lab	379	15.8
Travis A. Ms.	LD	376	15.7
	<b>Turnout</b>	40.5	52.7
<b>Hart Hill (4056)</b>			
		<b>vote</b>	<b>share</b>
<b>Stephens S.*</b>	LD	731	45.8
Lacey R.	Lab	571	35.8
Everard C.	Con	294	18.4
	<b>Turnout</b>	39.3	10.0
<b>High Town (5417)</b>			
		<b>vote</b>	<b>share</b>
<b>Heather H.*</b>	Lab	1,053	50.6
Flint A.	Con	628	30.2
Chapman D.	LD	210	10.1
Bliss L. Ms.	Green	191	9.2
	<b>Turnout</b>	38.4	20.4
<b>Houghton Regis North West (5289)</b>			
		<b>vote</b>	<b>share</b>
<b>Kinchella J.*</b>	Lab	918	58.0
Barrett S. Ms.	Con	463	29.2
Hill S. Ms.	LD	203	12.8
	<b>Turnout</b>	29.9	28.7
<b>Houghton Regis South East (6320)</b>			
		<b>vote</b>	<b>share</b>
<b>Kinchella J. Ms.*</b>	Lab	803	48.5
Nye C.	Con	621	37.5
Morgan R.	LD	233	14.1
	<b>Turnout</b>	26.2	11.0
<b>Kempston East (6988)</b>			
		<b>vote</b>	<b>share</b>
<b>Burley G. Ms.*</b>	Lab	1,482	52.4
Williams M.	Con	1,348	47.6
	<b>Turnout</b>	40.5	4.7
<b>Kempston West (5876)</b>			
		<b>vote</b>	<b>share</b>
<b>Joy E. Ms.</b>	Con	1,235	54.3
Mitchell H. Ms.	Lab	1,040	45.7
	<b>Turnout</b>	38.7	8.6
<b>Kingsbrook (5395)</b>			
		<b>vote</b>	<b>share</b>
<b>Mitchell D.</b>	Lab	1,138	55.1
Outen T.	LD	586	28.4
Melville D.	Con	340	16.5
	<b>Turnout</b>	38.3	26.7
<b>Leagrave (5110)</b>			
		<b>vote</b>	<b>share</b>
<b>Ross R.</b>	Lab	1,091	59.1
Horrigan T.	Con	643	34.8
Taffs R.	LD	112	6.1
	<b>Turnout</b>	36.1	24.3
<b>Lewsey (6943)</b>			
		<b>vote</b>	<b>share</b>
<b>Hand M.*</b>	Lab	1,362	68.1
Mangan D.	Con	500	25.0
Mead C.	LD	138	6.9
	<b>Turnout</b>	28.8	43.1
<b>Limbury (5296)</b>			
		<b>vote</b>	<b>share</b>
<b>Sawtell D.*</b>	Lab	1,006	48.4
Quinn M. Ms.	Con	914	44.0
Lawes R.	LD	158	7.6
	<b>Turnout</b>	39.2	4.4
<b>Linslade (4112)</b>			
		<b>vote</b>	<b>share</b>
<b>Hopkins R.</b>	Con	728	38.9
Owen S.*	LD	707	37.8
Sandison G.	Lab	244	13.0
Morrissey R.	Green	193	10.3
	<b>Turnout</b>	45.5	1.1
<b>Luton Central (3970)</b>			
		<b>vote</b>	<b>share</b>
<b>Bailey J.*</b>	Lab	707	56.4
Brown C.	Con	400	31.9
Felmingham J. Ms.	LD	74	5.9
Markham-Dorney D.	Green	73	5.8
	<b>Turnout</b>	31.6	24.5
<b>Luton Icknield (5125)</b>			
		<b>vote</b>	<b>share</b>
<b>White K.*</b>	Con	1,113	53.9
Robson J.	Lab	765	37.1
Pringle M. Ms.	LD	186	9.0
	<b>Turnout</b>	40.3	16.9
<b>Luton South (5240)</b>			
		<b>vote</b>	<b>share</b>
<b>Pryer C.*</b>	Lab	820	43.4
Benson L.	Con	796	42.1
Hayden T.	Ind	177	9.4
Kelly P.	LD	96	5.1
	<b>Turnout</b>	36.0	1.3
<b>Marsh Farm (5484)</b>			
		<b>vote</b>	<b>share</b>
<b>Russell M.*</b>	Lab	974	69.2
Kennedy D.	Con	325	23.1
Cole W.	LD	109	7.7
	<b>Turnout</b>	25.7	46.1
<b>Maulden (5294)</b>			
		<b>vote</b>	<b>share</b>
<b>Sollars A.*</b>	Con	1,391	73.1
McKeever M.	Lab	511	26.9
	<b>Turnout</b>	35.9	46.3
<b>Newnham (4985)</b>			
		<b>vote</b>	<b>share</b>
<b>Gibbons B.*</b>	LD	938	42.5
Halse S.	Con	836	37.9
Crane R.	Lab	433	19.6
	<b>Turnout</b>	44.3	4.6
<b>North East Bedfordshire (5776)</b>			
		<b>vote</b>	<b>share</b>
<b>Hendry A.*</b>	Con	1,750	70.6
Cook P.	LD	479	19.3
Carroll T.	Lab	251	10.1
	<b>Turnout</b>	42.9	51.3
<b>Northfields (5341)</b>			
		<b>vote</b>	<b>share</b>
<b>Brown H.*</b>	Lab	950	46.5
Biswell M. Ms.	Con	884	43.3
Larkman D.	LD	208	10.2
	<b>Turnout</b>	38.2	3.2
<b>Northhill (4491)</b>			
		<b>vote</b>	<b>share</b>
<b>Reid P.</b>	Con	1,505	73.4
Malyon P.	Lab	546	26.6
	<b>Turnout</b>	45.7	46.8
<b>Plantation (4865)</b>			
		<b>vote</b>	<b>share</b>
<b>Brewer A.*</b>	Con	985	54.1
Heffernan A.	Lab	601	33.0
Parish C.	LD	235	12.9
	<b>Turnout</b>	37.4	21.1
<b>Poets (5414)</b>			
		<b>vote</b>	<b>share</b>
<b>Ellis B.*</b>	Lab	937	45.6
Denny R.	Con	931	45.3
Gaynor K. Ms.	LD	185	9.0
	<b>Turnout</b>	37.9	0.3
<b>Potton (4860)</b>			
		<b>vote</b>	<b>share</b>
<b>Baker R.*</b>	Con	1,220	70.4
Forbes A. Ms.	Lab	514	29.6
	<b>Turnout</b>	35.7	40.7
<b>Priory (4442)</b>			
		<b>vote</b>	<b>share</b>
<b>Barber R.</b>	Con	745	36.1
Davies G.*	Lab	693	33.6
Hatswell P.	CATRR	435	21.1
Walker R.	LD	190	9.2
	<b>Turnout</b>	46.4	2.5
<b>Putnoe (5629)</b>			
		<b>vote</b>	<b>share</b>
<b>Lennon J. Ms.*</b>	LD	1,571	55.6
Humphreys E.	Con	1,134	40.1
Stutz M. Ms.	Lab	123	4.3
	<b>Turnout</b>	50.2	15.5
<b>Queens Park (5144)</b>			
		<b>vote</b>	<b>share</b>
<b>Albone T.</b>	Lab	1,232	68.0
Mactoom I.	Con	427	23.6
Hawke V. Ms.	LD	152	8.4
	<b>Turnout</b>	35.2	44.5
<b>Saints (5638)</b>			
		<b>vote</b>	<b>share</b>
<b>Heathcote F.*</b>	Lab	1,288	62.0
White J. Ms.	Con	638	30.7
Murray B. Ms.	LD	152	7.3
	<b>Turnout</b>	36.9	31.3
<b>Sandy (6701)</b>			
		<b>vote</b>	<b>share</b>
<b>Blaine P.*</b>	LD	1,194	43.2
Perrin K.	Con	1,167	42.3
Hussain M.	Lab	400	14.5
	<b>Turnout</b>	41.2	1.0
<b>Shefford &amp; Clifton (5129)</b>			
		<b>vote</b>	<b>share</b>
<b>Taylor J. Ms.*</b>	Con	1,289	61.2
Urquhart C. Ms.	Lab	421	20.0
Smyth A.	Ind	395	18.8
	<b>Turnout</b>	41.0	41.2
<b>Shillington &amp; Henlow (6096)</b>			
		<b>vote</b>	<b>share</b>
<b>Burnage A.*</b>	Con	1,244	60.7
Woodbine M.	Lab	491	24.0
Barker P.	LD	313	15.3
	<b>Turnout</b>	33.6	36.8
<b>Southcott (4433)</b>			
		<b>vote</b>	<b>share</b>
<b>Inns S Ms.</b>	Con	982	48.1
Snelling P.*	LD	714	35.0
Barry K.	Green	178	8.7
McMorrow P.	Lab	168	8.2
	<b>Turnout</b>	46.1	13.1

<b>Stopsley (5403)</b>			
		<b>vote</b>	<b>share</b>
<b>Dillingham G.</b>	Con	1,003	45.5
Onslow K.	LD	757	34.3
Tester A.	Lab	445	20.2
<b>Turnout</b>		40.8	11.2

<b>Stotfold (4835)</b>			
		<b>vote</b>	<b>share</b>
<b>Saunders J.</b>	Con	1,359	56.4
Collier B.	LD	553	23.0
West C.	Lab	497	20.6
<b>Turnout</b>		49.8	33.5

<b>Sundon Park (5023)</b>			
		<b>vote</b>	<b>share</b>
<b>Cooney W.</b>	Lab	1,021	55.2
Smith M.	Con	593	32.1
Marshall P.	Green	128	6.9
Shaw D. Ms.	LD	106	5.7
<b>Turnout</b>		36.8	23.2

<b>Toddington (6051)</b>			
		<b>vote</b>	<b>share</b>
<b>Williams J.</b>	Con	1,630	65.6
Turner P.	Lab	594	23.9
Fried R.	LD	262	10.5
<b>Turnout</b>		41.1	41.7

<b>Watling (5625)</b>			
		<b>vote</b>	<b>share</b>
<b>Pergunas J.*</b>	Con	1,353	62.7
Pitches R.	LD	422	19.6
Dolan J.	Lab	382	17.7
<b>Turnout</b>		38.3	43.2

<b>Wigmore (6659)</b>			
		<b>vote</b>	<b>share</b>
<b>Davies R.*</b>	LD	1,134	44.8
Harris M.	Con	932	36.8
Stonell M.	Lab	466	18.4
<b>Turnout</b>		38.0	8.0

<b>Wootton (5558)</b>			
		<b>vote</b>	<b>share</b>
<b>Tucker D.</b>	Con	1,461	67.5
Kent E. Ms.	Lab	703	32.5
<b>Turnout</b>		38.9	35.0

## Bedfordshire 1993

<b>Amphill (5169)</b>			
		<b>vote</b>	<b>share</b>
<b>Ivey P.</b>	Con	922	48.4
Morris J.	Lab	493	25.9
Sunman A.	LD	488	25.6
<b>Turnout</b>		36.8	22.5

<b>Arlesey &amp; Langford (5574)</b>			
		<b>vote</b>	<b>share</b>
<b>Tazard J.*</b>	Lab	1,078	44.1
Beatham D.	Con	897	36.7
Handcombe D.	LD	470	19.2
<b>Turnout</b>		43.9	7.4

<b>Ashcroft (4797)</b>			
		<b>vote</b>	<b>share</b>
<b>Skepelhorn J. Ms.</b>	LD	1,058	47.2
Hoyle T.	Lab	864	38.5
Pemberton J.	Con	320	14.3
<b>Turnout</b>		46.7	8.7

<b>Aspley Guise (5022)</b>			
		<b>vote</b>	<b>share</b>
<b>Duggan A.</b>	Con	1,138	64.2
Bassindale A.	Lab	635	35.8
<b>Turnout</b>		35.3	28.4

<b>Barnfield (6014)</b>			
		<b>vote</b>	<b>share</b>
<b>Dunnington P. Ms.*</b>	Con	1,325	57.5
Davies J.	LD	475	20.6
Griffin W.	Lab	425	18.4
Northwood A.	Green	80	3.5
<b>Turnout</b>		38.3	36.9

<b>Barton-Le-Clay (4158)</b>			
		<b>vote</b>	<b>share</b>
<b>Ledster E. Ms.</b>	LD	896	55.5
Thompson P.	Con	488	30.2
Ingleton P.	Lab	231	14.3
<b>Turnout</b>		38.8	25.3

<b>Beaudesert (5267)</b>			
		<b>vote</b>	<b>share</b>
<b>Heffernan A.</b>	Lab	855	40.3
Taylor J.	Con	788	37.1
Hinchliff C.	LD	399	18.8
Wineyard V. Ms.	Green	81	3.8
<b>Turnout</b>		40.3	3.2

<b>Beechwood (4740)</b>			
		<b>vote</b>	<b>share</b>
<b>Patten D.*</b>	Lab	902	61.5
Kenneally T.	Con	379	25.8
Mead J. Ms.	LD	186	12.7
<b>Turnout</b>		31.0	35.7

<b>Biggleswade Ivel (4980)</b>			
		<b>vote</b>	<b>share</b>
<b>Newman B.*</b>	Con	1,010	53.2
Forbes A. Ms.	Lab	890	46.8
<b>Turnout</b>		38.2	6.3

<b>Biggleswade Stratton (5018)</b>			
		<b>vote</b>	<b>share</b>
<b>Brunst V.*</b>	Lab	1,106	56.7
Cazaly M.	Con	845	43.3
<b>Turnout</b>		38.9	13.4

<b>Biscot (5650)</b>			
		<b>vote</b>	<b>share</b>
<b>White N.*</b>	Lab	1,412	66.9
Lawrence L. Ms.	Con	501	23.7
Lincoln M. Ms.	LD	197	9.3
<b>Turnout</b>		37.4	43.2

<b>Bramingham (6957)</b>			
		<b>vote</b>	<b>share</b>
<b>Younger R.</b>	Con	1,219	55.6
Blackman S.	Lab	570	26.0
Varnals J.	LD	324	14.8
Blake J. Ms.	Green	80	3.6
<b>Turnout</b>		31.5	29.6

<b>Brickhill (5831)</b>			
		<b>vote</b>	<b>share</b>
<b>Hills N.*</b>	LD	1,667	59.3
Griffin L. Ms.	Con	950	33.8
Black C.	Lab	196	7.0
<b>Turnout</b>		48.2	25.5

<b>Bromham (6022)</b>			
		<b>vote</b>	<b>share</b>
<b>Jones R.</b>	Con	1,154	45.7
Kirby T.	Ind	667	26.4
McCormack C. Ms.	LD	497	19.7
Gunther R. Ms.	Lab	208	8.2
<b>Turnout</b>		42.0	19.3

<b>Brooklands (4971)</b>			
		<b>vote</b>	<b>share</b>
<b>Freeman J.</b>	LD	874	47.4
Johnstone R.*	Con	612	33.2
McMorrow P.	Lab	358	19.4
<b>Turnout</b>		37.1	14.2

<b>Bury Park (4939)</b>			
		<b>vote</b>	<b>share</b>
<b>Ali M.*</b>	Lab	1,115	62.8
Khan M.	Con	527	29.7
Rutstein S.	LD	134	7.5
<b>Turnout</b>		36.0	33.1

<b>Caddington (4819)</b>			
		<b>vote</b>	<b>share</b>
<b>Lowden J.*</b>	Con	983	57.3
Angus M.	Lab	733	42.7
<b>Turnout</b>		35.6	14.6

<b>Castle (4477)</b>			
		<b>vote</b>	<b>share</b>
<b>Dodgshon A.</b>	Lab	1,034	48.9
Simic A.	Con	649	30.7
Headley M.	LD	431	20.4
<b>Turnout</b>		47.2	18.2

<b>Cauldwell (5799)</b>			
		<b>vote</b>	<b>share</b>
<b>Blowers A.*</b>	Lab	1,400	74.9
Croxford A.	Con	308	16.5
Williams G.	LD	162	8.7
<b>Turnout</b>		32.3	58.4

<b>Challney (4634)</b>			
		<b>vote</b>	<b>share</b>
<b>McCafferty J.*</b>	Lab	1,014	59.6
Punter M. Ms.	Con	525	30.9
Duffy P.	LD	161	9.5
<b>Turnout</b>		36.7	28.8

<b>Clapham (4525)</b>			
		<b>vote</b>	<b>share</b>
<b>Devenish J.</b>	Con	840	42.6
Wickens R.	LD	748	37.9
Lumsden J. Ms.	Lab	384	19.5
<b>Turnout</b>		43.6	4.7

<b>Cranfield &amp; Marston (5390)</b>			
		<b>vote</b>	<b>share</b>
<b>Hawksby J.*</b>	Con	908	54.4
Morris A.	Lab	761	45.6
<b>Turnout</b>		31.0	8.8

<b>Crawley (5267)</b>			
		<b>vote</b>	<b>share</b>
<b>Felmingham J. Ms.</b>	LD	1,029	51.3
Sholl M.	Lab	512	25.5
Williamson E. Ms.	Con	466	23.2
<b>Turnout</b>		38.1	25.8

<b>Dallow (4818)</b>			
		<b>vote</b>	<b>share</b>
<b>Yusin M.</b>	Lab	803	54.9
Shakur A.	Con	353	24.1
Siederer H.	LD	164	11.2
West P.	Green	143	9.8
<b>Turnout</b>		30.4	30.8

<b>De Parys (5602)</b>			
		<b>vote</b>	<b>share</b>
<b>Smithson M.*</b>	LD	1,220	62.6
Buckley H. Ms.	Con	567	29.1
Otubanjo P.	Lab	162	8.3
<b>Turnout</b>		34.8	33.5

<b>Dunstable Central (5755)</b>			
		<b>vote</b>	<b>share</b>
<b>Wickson D. Ms.*</b>	Con	965	53.2
Monaghan I. Ms.	Lab	481	26.5
Denman K. Ms.	LD	367	20.2
<b>Turnout</b>		31.5	26.7

<b>Dunstable Icknield (4828)</b>			
		<b>vote</b>	<b>share</b>
<b>Roberts A. Ms.*</b>	Con	895	50.9
Rogers M.	Lab	563	32.0
Windsor T. Ms.	LD	301	17.1
<b>Turnout</b>		36.4	18.9
<b>Eaton Bray (5705)</b>			
		<b>vote</b>	<b>share</b>
<b>Piggott B.*</b>	Con	1,260	61.6
Murray J.	Lab	476	23.3
Rollings P.	Green	311	15.2
<b>Turnout</b>		35.9	38.3
<b>Farley (4365)</b>			
		<b>vote</b>	<b>share</b>
<b>Boyle J.*</b>	Lab	1,211	79.0
Drew K.	Con	227	14.8
Duffy J.	LD	94	6.1
<b>Turnout</b>		35.1	64.2
<b>Flitwick (8366)</b>			
		<b>vote</b>	<b>share</b>
<b>Mallett N.</b>	Lab	1,034	37.2
Goodman R.	Con	1,018	36.6
Mason G.	LD	404	14.5
Jones R.	Green	326	11.7
<b>Turnout</b>		33.3	0.6
<b>Goldington (5169)</b>			
		<b>vote</b>	<b>share</b>
<b>Christie A.*</b>	LD	1,342	59.6
Dawson J.	Lab	686	30.5
Bushell H.	Con	223	9.9
<b>Turnout</b>		43.6	29.1
<b>Great Barford &amp; Wilshamstead (6537)</b>			
		<b>vote</b>	<b>share</b>
<b>Payne R.</b>	Con	1,435	60.8
Tenwick M.	Lab	528	22.4
Martin A. Ms.	LD	397	16.8
<b>Turnout</b>		36.1	38.4
<b>Harlington (5943)</b>			
		<b>vote</b>	<b>share</b>
<b>Barley J.*</b>	Con	1,068	41.6
Golby B.	LD	1,044	40.7
Howson M.	Lab	455	17.7
<b>Turnout</b>		43.2	0.9
<b>Harpur (5942)</b>			
		<b>vote</b>	<b>share</b>
<b>Hall P.*</b>	Lab	1,333	61.2
Bennet P.	Con	593	27.2
Hall C.	LD	252	11.6
<b>Turnout</b>		36.7	34.0
<b>Harrold (5870)</b>			
		<b>vote</b>	<b>share</b>
<b>Gershon P. Ms.*</b>	Con	1,340	59.3
Sharpe K. Ms.	LD	575	25.5
Horne J. Ms.	Lab	343	15.2
<b>Turnout</b>		38.5	33.9
<b>Hart Hill (3953)</b>			
		<b>vote</b>	<b>share</b>
<b>Speakman A.</b>	Lab	751	46.6
Bonner J. Ms.	LD	660	41.0
Hughes I.	Con	199	12.4
<b>Turnout</b>		40.7	5.7
<b>High Town (5411)</b>			
		<b>vote</b>	<b>share</b>
<b>Landman D.</b>	Lab	986	46.8
Orr M.	Con	789	37.5
Chapman D.	LD	237	11.3
Bliss L. Ms.	Green	94	4.5
<b>Turnout</b>		38.9	9.4

<b>Houghton Regis North West (5020)</b>			
		<b>vote</b>	<b>share</b>
<b>Kinchella J.*</b>	Lab	861	57.4
Futcher D.	Con	370	24.7
Weaver T. Ms.	LD	269	17.9
<b>Turnout</b>		29.9	32.7
<b>Houghton Regis South East (6600)</b>			
		<b>vote</b>	<b>share</b>
<b>Kinchella J. Ms.*</b>	Lab	723	50.0
Wheeler W.	Con	429	29.7
Morgan R.	LD	294	20.3
<b>Turnout</b>		21.9	20.3
<b>Kempston East (7183)</b>			
		<b>vote</b>	<b>share</b>
<b>Burley G. Ms.*</b>	Lab	1,649	57.4
Reedman D.	Con	1,032	35.9
Hawke V. Ms.	LD	193	6.7
<b>Turnout</b>		40.0	21.5
<b>Kempston West (6253)</b>			
		<b>vote</b>	<b>share</b>
<b>Joy E. Ms.*</b>	Con	1,042	46.5
Denton P. Ms.	Lab	1,032	46.1
Longmore C.	LD	166	7.4
<b>Turnout</b>		35.8	0.4
<b>Kingsbrook (5137)</b>			
		<b>vote</b>	<b>share</b>
<b>Mitchell D.*</b>	Lab	1,196	68.3
Stonebridge P.	Con	354	20.2
Ames L. Ms.	LD	201	11.5
<b>Turnout</b>		34.1	48.1
<b>Leagrave (5174)</b>			
		<b>vote</b>	<b>share</b>
<b>Roden S. Ms.</b>	Lab	1,019	64.5
Titmuss J.	Con	392	24.8
McColm L. Ms.	LD	169	10.7
<b>Turnout</b>		30.5	39.7
<b>Lewsey (6853)</b>			
		<b>vote</b>	<b>share</b>
<b>Hand M.*</b>	Lab	1,230	72.7
Samuels R.	Con	272	16.1
Mead C.	LD	190	11.2
<b>Turnout</b>		24.7	56.6
<b>Limbury (5017)</b>			
		<b>vote</b>	<b>share</b>
<b>Bullock N.</b>	Lab	910	50.8
Mitchell L. Ms.	Con	691	38.6
Young E.	LD	190	10.6
<b>Turnout</b>		35.7	12.2
<b>Linslade (4066)</b>			
		<b>vote</b>	<b>share</b>
<b>Orchard H. Ms.</b>	LD	967	50.7
Rolfe G.	Con	574	30.1
Walden J.	Lab	300	15.7
Morrisey R.	Green	67	3.5
<b>Turnout</b>		46.9	20.6
<b>Luton Central (4094)</b>			
		<b>vote</b>	<b>share</b>
<b>Ellis B.*</b>	Lab	760	61.8
Keneally S. Ms.	Con	296	24.1
Howes M.	LD	125	10.2
French J.	Green	48	3.9
<b>Turnout</b>		30.0	37.8
<b>Luton Icknield (4854)</b>			
		<b>vote</b>	<b>share</b>
<b>White K.*</b>	Con	822	46.2
Furness R.	Lab	713	40.1
Keens T.	LD	244	13.7
<b>Turnout</b>		36.7	6.1

<b>Luton South (5278)</b>			
		<b>vote</b>	<b>share</b>
<b>Pryer C.*</b>	Lab	1,069	54.0
Collins D.	Con	644	32.5
Hayden T.	Ind	130	6.6
Robinson M.	LD	86	4.3
Simpkin R.	Green	52	2.6
<b>Turnout</b>		37.5	21.5
<b>Marsh Farm (5335)</b>			
		<b>vote</b>	<b>share</b>
<b>Jefferson J.</b>	Lab	1,059	79.3
Farrell G. Ms.	Con	277	20.7
<b>Turnout</b>		25.0	58.5
<b>Maulden (5217)</b>			
		<b>vote</b>	<b>share</b>
<b>Sollars A.*</b>	Con	1,303	67.4
Bouch P.	Lab	631	32.6
<b>Turnout</b>		37.1	34.7
<b>Newnham (4256)</b>			
		<b>vote</b>	<b>share</b>
<b>Gibbons B.*</b>	LD	1,100	46.7
Dickson W.	Con	768	32.6
Crane R.	Lab	486	20.6
<b>Turnout</b>		55.3	14.1
<b>North East Bedfordshire (5794)</b>			
		<b>vote</b>	<b>share</b>
<b>Hendry P.*</b>	Con	1,529	67.0
Cook P.	LD	504	22.1
Carroll T.	Lab	250	11.0
<b>Turnout</b>		39.4	44.9
<b>Northfields (5117)</b>			
		<b>vote</b>	<b>share</b>
<b>Brown H.*</b>	Lab	967	52.6
Roberts P.	Con	620	33.7
Manton M. Ms.	LD	253	13.8
<b>Turnout</b>		36.0	18.9
<b>Northhill (4439)</b>			
		<b>vote</b>	<b>share</b>
<b>Scott J.</b>	Con	974	53.1
Sharrock J.	LD	496	27.0
Thomas R. Ms.	Lab	364	19.8
<b>Turnout</b>		41.3	26.1
<b>Plantation (4767)</b>			
		<b>vote</b>	<b>share</b>
<b>Brewer A.*</b>	Con	777	48.9
Lewis M.	Lab	429	27.0
Bridgwater N.	LD	384	24.2
<b>Turnout</b>		33.4	21.9
<b>Poets (5224)</b>			
		<b>vote</b>	<b>share</b>
<b>Thakoordin J.</b>	Lab	874	45.4
Dodd B. Ms.	Con	778	40.4
McColm I.	LD	273	14.2
<b>Turnout</b>		36.9	5.0
<b>Potton (4974)</b>			
		<b>vote</b>	<b>share</b>
<b>Baker R.*</b>	Con	978	51.7
Butlin N.	Lab	497	26.3
Walker D.	LD	416	22.0
<b>Turnout</b>		38.0	25.4
<b>Priory (4217)</b>			
		<b>vote</b>	<b>share</b>
<b>Barker D.</b>	Lab	888	49.9
Biswell M. Ms.	Con	690	38.8
Larkman D.	LD	202	11.3
<b>Turnout</b>		42.2	11.1

Putnoe (5480)			
		vote	share
Hall R.	LD	1,165	52.5
Ellis C. Ms.	Con	858	38.6
Gascoyne P. Ms.	Lab	198	8.9
Turnout		40.5	13.8

Queens Park (5674)			
		vote	share
Albone T.*	Lab	1,309	70.7
Hughes R.	Con	349	18.9
Lawson P.	LD	193	10.4
Turnout		32.6	51.9

Saints (5527)			
		vote	share
Hinds S. Ms.	Lab	1,244	66.0
Kerrigan G.	Con	453	24.0
Murray B. Ms.	LD	188	10.0
Turnout		34.1	42.0

Sandy (6676)			
		vote	share
Gurney J.	Ind	1,313	56.3
Rice T.	Con	670	28.7
West C.	Lab	350	15.0
Turnout		35.0	27.6

Shefford & Clifton (5156)			
		vote	share
Taylor J. Ms.*	Con	1,062	57.8
Devereux C. Ms.	Lab	775	42.2
Turnout		35.6	15.6

Shillington & Henlow (6386)			
		vote	share
Burnage A.*	Con	980	44.5
Cliff W.	LD	793	36.0
Woodbine M.	Lab	427	19.4
Turnout		34.5	8.5

Southcott (4431)			
		vote	share
Snelling P.	LD	719	44.7
Inns S. Ms.*	Con	584	36.3
Parker F.	Lab	230	14.3
Barry K.	Green	74	4.6
Turnout		36.3	8.4

Stopsley (5391)			
		vote	share
Davies J. Ms.	LD	1,582	59.2
Dillingham G.*	Con	734	27.5
Carroll J.	Lab	355	13.3
Turnout		49.6	31.7

Stotfold (4824)			
		vote	share
Saunders J.*	Con	1,009	45.8
Harrowell D.	Lab	586	26.6
Collier B.	LD	366	16.6
Keenan J.	Ind	243	11.0
Turnout		45.7	19.2

Sundon Park (4744)			
		vote	share
Cooney W.*	Lab	1,110	65.3
Cambell G.	Con	433	25.5
Mason S. Ms.	LD	157	9.2
Turnout		35.8	39.8

Toddington (6178)			
		vote	share
Williams J.*	Con	1,241	54.6
Pullen G.	Lab	1,032	45.4
Turnout		36.8	9.2

Watling (5407)			
		vote	share
Hollick P.	Con	930	51.9
Howes C. Ms.	Lab	632	35.3
Keyes R.	LD	230	12.8
Turnout		33.1	16.6

Wigmore (7713)			
		vote	share
Greenham R.	LD	1,683	57.4
Harris M.	Con	748	25.5
Lacey R.	Lab	500	17.1
Turnout		38.0	31.9

Wootton (5785)			
		vote	share
Tucker D.*	Con	1,248	61.4
Beardmore A.	Lab	521	25.6
Meadows A.	LD	265	13.0
Turnout		35.2	35.7

## Bedfordshire 1997

Amphill (5676)			
		vote	share
Bates P.	Con	1,762	39.2
Young S. Ms.	LD	1,753	39.0
Fountain S.	Lab	982	21.8
Turnout		79.2	0.2

Arlesey & Langford (5784)			
		vote	share
Tizard J.*	Lab	2,218	52.0
Whitney-Long L. Ms.	Con	2,049	48.0
Turnout		73.8	4.0

Aspley Guise (5261)			
		vote	share
Duggan A.*	Con	2,294	55.8
Charlton G.	Lab	1,018	24.7
Hepherd R.	LD	802	19.5
Turnout		78.2	31.0

Barton-Le-Clay (5039)			
		vote	share
Ledster L. Ms.*	LD	1,610	39.9
White K.	Con	1,420	35.2
Morgan B. Ms.	Lab	1,006	24.9
Turnout		80.8	4.7

Beautesert (5295)			
		vote	share
Heffernan A.*	Lab	1,448	37.8
Cooper G.	Con	1,435	37.5
Griffin-Jorgensen H.	LD	943	24.6
Turnout		74.3	0.3

Biggleswade Ivel (5215)			
		vote	share
Newman B.*	Con	1,882	50.0
Albone D.	Lab	1,880	50.0
Turnout		72.1	0.1

Biggleswade Stratton (5478)			
		vote	share
Briars B.	Lab	2,024	51.8
Lawrence D.	Con	1,882	48.2
Turnout		71.3	3.6

Brickhill (5729)			
		vote	share
Hills N.*	LD	2,292	50.8
Benedictis D.	Con	1,407	31.2
Albone T.	Lab	813	18.0
Turnout		79.6	19.6

Bromham (6648)			
		vote	share
Jones R.*	Con	3,179	58.8
Jackson R.	Lab	1,169	21.6
Blaine P.	LD	1,058	19.6
Turnout		81.7	37.2

Brooklands (4889)			
		vote	share
Rampley M.	Lab	1,258	34.0
Rofe G.	Con	1,240	33.5
Owen S.	LD	1,198	32.4
Turnout		76.8	0.5

Caddington (4791)			
		vote	share
Stay R.	Con	2,085	58.2
Thakoordin D. Ms.	Lab	1,496	41.8
Turnout		74.7	16.4

Castle (4583)			
		vote	share
Newbigging R. Ms.	Lab	1,439	43.5
Wesley C.	Con	1,209	36.5
Lawson S.	LD	661	20.0
Turnout		73.5	7.0

Cauldwell (6187)			
		vote	share
Blowers A.*	Lab	2,570	66.4
Haro A.	Con	853	22.0
Standley P.	LD	447	11.6
Turnout		64.6	44.4

Clapham (4508)			
		vote	share
Foster A.	Con	1,642	48.4
Warren J. Ms.	Lab	1,095	32.3
Buchanan G.	LD	655	19.3
Turnout		76.5	16.1

Cranfield & Marston (6353)			
		vote	share
Hawskby J.*	Con	1,737	38.7
Pollock L.	Lab	1,324	29.5
Baker R.	Ind	805	17.9
Riches G.	LD	624	13.9
Turnout		70.7	9.2

De Parys (4498)			
		vote	share
Aylett-Green L. Ms.	LD	1,440	44.3
Williams L.	Con	1,021	31.4
Baily C.	Lab	791	24.3
Turnout		73.2	12.9

Dunstable Central (5844)			
		vote	share
Roberts P.	Con	2,310	51.9
Parker F.	Lab	1,396	31.3
Witherick I.	LD	749	16.8
Turnout		77.0	20.5

Dunstable Icknield (4682)			
		vote	share
Roberts A. Ms.*	Con	1,684	44.7
Ross D.	Lab	1,441	38.2
Windsor T. Ms.	LD	594	15.8
Gurney K.	Ind	49	1.3
Turnout		81.0	6.4

Eaton Bray (5676)			
		vote	share
Piggott B.*	Con	2,609	57.9
Blockwell C. Ms.	Lab	1,145	25.4
Martin N.	LD	755	16.7
Turnout		80.9	32.5

Flitwick (9043)			
		vote	share
Thompson D.	Con	3,007	44.1
Marsh S.	Lab	2,324	34.1
Barnard R.	LD	1,485	21.8
Turnout		75.4	10.0
Goldington (5325)			
		vote	share
Longmore C.	LD	1,727	44.9
Grugeon D.	Lab	1,411	36.7
Fulford V. Ms.	Con	707	18.4
Turnout		73.8	8.2
Great Barford & Wilshamstead (7185)			
		vote	share
Payne R.*	Con	2,689	49.6
Curl P. Ms.	Lab	1,548	28.6
Harper P.	LD	1,181	21.8
Turnout		76.3	21.1
Harlington (6455)			
		vote	share
Golby B.	LD	2,376	48.4
Langham A.	Con	2,098	42.7
Uney C.	Ind	437	8.9
Turnout		76.1	5.7
Harpur (6090)			
		vote	share
Dodgshon A.	Lab	1,983	49.0
Pilgrim J. Ms.	Con	1,285	31.8
Murphy M.	LD	776	19.2
Turnout		67.3	17.3
Harrold (5930)			
		vote	share
Gershon P. Ms.*	Con	2,520	54.8
Cooke A. Ms.	Lab	1,207	26.3
Smithson J. Ms.	LD	869	18.9
Turnout		78.3	28.6
Houghton Regis North West (4879)			
		vote	share
Kinchella J.*	Lab	1,598	44.5
Jones E. Ms.	LD	1,296	36.1
Barber V. Ms.	Con	694	19.3
Turnout		74.4	8.4
Houghton Regis South East (6595)			
		vote	share
Carey C.	LD	1,826	39.2
Kinchella J. Ms.	Lab	1,807	38.8
Barber D.	Con	1,026	22.0
Turnout		71.6	0.4
Kempston East (7303)			
		vote	share
Burley G. Ms.*	Lab	2,565	48.6
Singh J.	Con	1,501	28.5
Hall C.	LD	897	17.0
Gurr M.	Ind	311	5.9
Turnout		73.7	20.2
Kempston West (6414)			
		vote	share
Wesley O. Ms.	Lab	2,277	49.6
Devenish J.	Con	1,627	35.4
White I.	LD	690	15.0
Turnout		71.6	14.1
Kingsbrook (4946)			
		vote	share
Mitchell D.*	Lab	2,122	61.6
Rigby R.	Con	747	21.7
Dunning T.	LD	576	16.7
Turnout		69.7	39.9

Linslade (4252)			
		vote	share
Sharer K.	LD	1,257	38.4
Williams J.	Con	1,105	33.8
Rampley J. Ms.	Lab	912	27.9
Turnout		77.9	4.6
Maulden (5538)			
		vote	share
Sollars R.*	Con	2,365	54.7
Clark D.	Lab	1,204	27.8
Sharman T.	LD	755	17.5
Turnout		78.1	26.9
Newnham (6098)			
		vote	share
Muir W.	LD	1,794	38.6
Rose C.	Con	1,613	34.7
Grugeon J.	Lab	1,246	26.8
Turnout		77.2	3.9
North East Bedfordshire (5841)			
		vote	share
Hendry A.*	Con	2,923	62.8
Burrett L. Ms.	LD	886	19.0
Carroll T.	Lab	846	18.2
Turnout		80.6	43.8
Northfields (4967)			
		vote	share
Carter A.	Lab	1,841	49.8
Staples L. Ms.	Con	1,213	32.8
Thorne S. Ms.	LD	642	17.4
Turnout		76.0	17.0
Northhill (4500)			
		vote	share
Scott J.*	Con	1,832	51.8
Baines A.	LD	1,017	28.8
Devereux D.	Lab	686	19.4
Turnout		78.6	23.1
Plantation (4689)			
		vote	share
Brewer A.	Con	1,615	46.5
Macdonald P.	Lab	1,114	32.1
Turner S. Ms.	LD	743	21.4
Turnout		75.8	14.4
Potton (5121)			
		vote	share
Baker R.*	Con	2,225	59.4
Butlin N.	Lab	1,521	40.6
Turnout		73.1	18.8
Priory (4048)			
		vote	share
Barker D.*	Lab	1,341	44.7
Page R.	Con	1,155	38.5
Larkman D.	LD	503	16.8
Turnout		75.0	6.2
Putnoe (5374)			
		vote	share
Hall R.	LD	2,143	50.1
Sinclair P.	Con	1,483	34.7
Atkins R.	Lab	653	15.3
Turnout		80.2	15.4
Queens Park (6266)			
		vote	share
Colling G.	Lab	2,486	64.7
Nurse J. Ms.	Con	835	21.7
Smith P.	LD	524	13.6
Turnout		64.0	42.9

Sandy (7172)			
		vote	share
Whitmore E. Ms.	Con	2,588	50.7
Brittain D.	Lab	2,513	49.3
Turnout		71.1	1.5
Shefford & Clifton (5974)			
		vote	share
Younger R.	Con	1,965	42.8
Ross P.	Lab	1,334	29.1
Livesey P. Ms.	LD	1,289	28.1
Turnout		76.8	13.8
Shillington & Henlow (6646)			
		vote	share
Burnage A.*	Con	2,372	48.3
Swain C. Ms.	LD	1,310	26.7
Devereux C. Ms.	Lab	1,233	25.1
Turnout		74.0	21.6
Southcott (4518)			
		vote	share
Snelling P.*	LD	1,718	47.6
Orr M.	Con	1,118	30.9
Boozer A.	Lab	777	21.5
Turnout		81.3	16.6
Stotfold (4894)			
		vote	share
Saunders J.*	Con	1,688	44.5
Collier B.	LD	1,059	27.9
Harrowell D.	Lab	1,050	27.7
Turnout		77.6	16.6
Toddington (6299)			
		vote	share
Goodwin R.	Con	2,290	45.5
Hinks J. Ms.	Lab	1,885	37.4
Shingler I.	LD	859	17.1
Turnout		77.2	8.0
Watling (5413)			
		vote	share
Hollick P.*	Con	2,150	48.4
Harris R.	Lab	1,509	34.0
Keyes R.	LD	779	17.6
Turnout		83.0	14.4
Wootton (6021)			
		vote	share
Reedman D.	Con	2,154	46.1
Asquith A.	Lab	1,482	31.7
Parker M.	LD	1,035	22.2
Turnout		78.6	14.4



## Bedfordshire 2001

### Amphill (5625)

		vote	share
Gibson M.	Con	1,594	40.9
Watton J.	LD	1,368	35.1
Gardner S. Ms.	Lab	934	24.0
	Turnout	69.3	5.8

### Arlesey & Langford (5927)

		vote	share
Mayes J.	Lab	1,864	53.7
Woodward P.	Con	1,607	46.3
	Turnout	58.6	7.4

### Aspley Guise (5335)

		vote	share
Duggan A.*	Con	2,191	62.1
Davies N.	Lab	1,337	37.9
	Turnout	66.1	24.2

### Barton-Le-Clay (5837)

		vote	share
Ledster L. Ms.*	LD	1,645	41.8
Parrish P.	Con	1,415	35.9
Morgan B. Ms.	Lab	877	22.3
	Turnout	67.8	5.8

### Beaudesert (5891)

		vote	share
Heffernan A.*	Lab	1,443	41.4
Spurr B.	Con	1,363	39.1
Turner S. Ms.	LD	683	19.6
	Turnout	59.9	2.3

### Biggleswade Ivel (5439)

		vote	share
Russell M. Ms.	Con	1,346	42.7
Merrett K.	Lab	1,266	40.2
Laver G.	LD	540	17.1
	Turnout	58.0	2.5

### Biggleswade Stratton (6169)

		vote	share
Lawrence D.	Con	1,640	44.1
Briars B.*	Lab	1,523	41.0
Baines A.	LD	554	14.9
	Turnout	60.3	3.1

### Brickhill (5731)

		vote	share
Hills N.*	LD	1,609	41.6
Hand P.	Con	1,515	39.2
Anderson Y. Ms.	Lab	743	19.2
	Turnout	67.8	2.4

### Bromham (7447)

		vote	share
Jones R.*	Con	3,051	58.3
Jackson R.	Lab	1,200	22.9
Wilson S.	LD	986	18.8
	Turnout	70.8	35.3

### Brooklands (5061)

		vote	share
Goodchild R.	LD	1,141	38.4
Johnstone R.	Con	946	31.8
Rampley M.*	Lab	888	29.8
	Turnout	59.0	6.6

### Caddington (4718)

		vote	share
Stay R.*	Con	1,614	53.1
Bower F. Ms.	Lab	759	25.0
Taffs A.	LD	667	21.9
	Turnout	65.0	28.1

### Castle (4583)

		vote	share
Grugeon D.	Lab	1,316	45.6
Chiswell P.	Con	1,011	35.0
Prater T.	LD	560	19.4
	Turnout	63.8	10.6

### Cauldwell (6539)

		vote	share
Elford R.	Lab	2,264	67.7
Williams M.	Con	612	18.3
Gerard A. Ms.	LD	470	14.0
	Turnout	52.2	49.4

### Clapham (4699)

		vote	share
Foster A.*	Con	1,617	53.3
Jackson J. Ms.	Lab	991	32.6
Webster I.	LD	428	14.1
	Turnout	65.6	20.6

### Cranfield & Marston (6785)

		vote	share
Hawksby J.*	Con	1,900	48.9
Morris A.	Lab	1,238	31.9
Cunningham J. Ms.	LD	745	19.2
	Turnout	57.2	17.0

### De Parys (4618)

		vote	share
Aylett-Green L. Ms.*	LD	1,271	45.9
Rigby T.	Con	917	33.1
Crane R.	Lab	580	21.0
	Turnout	60.4	12.8

### Dunstable Central (5988)

		vote	share
Roberts P.*	Con	1,862	52.4
Rogers M.	Lab	1,217	34.3
Witherick I.	LD	472	13.3
	Turnout	59.9	18.2

### Dunstable Icknield (4813)

		vote	share
Roberts A. Ms.*	Con	1,442	45.7
Elvin A.	Lab	1,224	38.8
Hurst L. Ms.	LD	488	15.5
	Turnout	66.2	6.9

### Eaton Bray (5939)

		vote	share
Piggott B.*	Con	2,380	58.6
Tooley D.	Lab	1,053	25.9
Basham B.	LD	631	15.5
	Turnout	69.0	32.7

### Flitwick (9435)

		vote	share
Thompson D.*	Con	2,632	44.4
Pullen G.	Lab	2,159	36.4
Watton C. Ms.	LD	1,142	19.2
	Turnout	62.9	8.0

### Goldington (5217)

		vote	share
Gillard S. Ms.	LD	1,237	42.6
Caswell T.	Lab	1,127	38.8
Fulford V. Ms.	Con	540	18.6
	Turnout	55.9	3.8

### Great Barford & Wilshamstead (8190)

		vote	share
Payne R.*	Con	2,523	49.7
Devereux D.	Lab	1,425	28.0
Whiteman M.	LD	1,133	22.3
	Turnout	62.6	21.6

### Harlington (6410)

		vote	share
Lee V.	Con	1,860	41.4
Golby B.*	LD	1,849	41.1
Uney C.	Lab	785	17.5
	Turnout	70.1	0.2

### Harpur (5902)

		vote	share
Moorhouse C. Ms.	Lab	1,415	47.2
Dillingham B.	Con	1,058	35.3
Murphy M.	LD	527	17.6
	Turnout	51.5	11.9

### Harrold (5979)

		vote	share
Gershon P. Ms.*	Con	2,361	55.7
Poole S.	Lab	1,044	24.6
Standley P.	LD	836	19.7
	Turnout	71.7	31.1

### Houghton Regis North West (5217)

		vote	share
Kinchella J.*	Lab	1,242	42.1
Jones D.	LD	1,149	38.9
McCall J.	Con	559	18.9
	Turnout	57.0	3.2

### Houghton Regis South East (6776)

		vote	share
Barker D.	Lab	1,534	44.1
Carey C.*	LD	1,038	29.8
Barber D.	Con	908	26.1
	Turnout	52.0	14.3

### Kempston East (7283)

		vote	share
Burley G. Ms.*	Lab	2,282	52.2
Bishop A.	Con	1,499	34.3
Hill T.	LD	588	13.5
	Turnout	60.6	17.9

### Kempston West (6501)

		vote	share
Oliver R.	Lab	1,944	50.3
Catterill P.	Con	1,417	36.7
Lodge P. Ms.	LD	500	13.0
	Turnout	60.0	13.6

### Kingsbrook (4917)

		vote	share
Mitchell D.*	Lab	1,256	46.1
McKay S. Ms.	LD	1,023	37.6
McConnell A.	Con	444	16.3
	Turnout	56.3	8.6

### Linslade (4278)

		vote	share
Owen S.	LD	872	31.4
Hugill D. Ms.	Con	832	29.9
Reedy F.	Lab	663	23.8
Sharer K.*	Ind	414	14.9
	Turnout	66.0	1.4

### Maulden (5541)

		vote	share
North J.	Con	2,189	57.5
Thorp G.	Lab	996	26.2
Parker M.	LD	621	16.3
	Turnout	68.7	31.3

### Newnham (6228)

		vote	share
Muir W.*	LD	1,739	44.0
Bone H. Ms.	Con	1,341	33.9
Williams D.	Lab	872	22.1
	Turnout	64.0	10.1



<b>Harpur (5996)</b>			
		<b>vote</b>	<b>share</b>
<b>Atkins C. Ms.</b>	Lab	1,435	43.6
Dillingham B.	Con	947	28.8
Ryan J.	LD	530	16.1
Channon S.	BBIP	196	6.0
Foley J. Ms.	Green	183	5.6
<b>Turnout</b>		54.9	14.8

<b>Harrold (6705)</b>			
		<b>vote</b>	<b>share</b>
<b>Gershon P. Ms.*</b>	Con	2,641	53.5
Charsley N.	LD	1,367	27.7
Poole S.	Lab	931	18.8
<b>Turnout</b>		73.7	25.8

<b>Houghton Regis (12147)<sup>2</sup></b>			
		<b>vote</b>	<b>share</b>
<b>Goodchild S. Ms.</b>	LD	2,619	41.5
<b>Goodchild F.</b>	LD	2,530	-
Kinchella J.*	Lab	2,093	33.2
Barker D.*	Lab	1,930	-
Pine C.	Con	1,597	25.3
Thompson G.	Con	1,427	-
<b>Turnout</b>		54.2	8.3

<b>Icknield (4757)</b>			
		<b>vote</b>	<b>share</b>
<b>Swaisland P.</b>	Con	1,430	45.2
Pantry J. Ms.	Lab	1,145	36.2
Hatswell P.	LD	592	18.7
<b>Turnout</b>		66.6	9.0

<b>Kempston (13347)<sup>2</sup></b>			
		<b>vote</b>	<b>share</b>
<b>Burley G. Ms.*</b>	Lab	3,724	41.7
<b>Oliver R.*</b>	Lab	3,571	-
Smith M.	Con	2,479	27.7
Sikand A.	Con	1,922	-
Hill T.	LD	1,409	15.8
Slater J. Ms.	LD	1,297	-
Branston M. Ms.	BBIP	802	9.0
Davies C.	Green	524	5.9
<b>Turnout</b>		50.9	13.9

<b>Kempston Rural (3299)</b>			
		<b>vote</b>	<b>share</b>
<b>Reedman D.*</b>	Con	1,408	60.8
Gallagher D.	LD	633	27.3
Foley N.	Green	275	11.9
<b>Turnout</b>		70.2	33.5

<b>Kingsbrook (6508)</b>			
		<b>vote</b>	<b>share</b>
<b>Grugeon D.*</b>	Lab	1,460	40.8
Hodgson D.	LD	1,441	40.3
Purbrick B. Ms.	Con	676	18.9
<b>Turnout</b>		55.0	0.5

<b>Langford &amp; Henlow Village (6197)</b>			
		<b>vote</b>	<b>share</b>
<b>Rogers A.</b>	Con	1,903	43.6
Cliff W.	LD	1,613	37.0
Devereux D.	Lab	848	19.4
<b>Turnout</b>		70.4	6.6

<b>Leighton Linlade Central (10744)<sup>2</sup></b>			
		<b>vote</b>	<b>share</b>
<b>Johnstone R.</b>	Con	2,408	38.2
<b>Spurr B.</b>	Con	2,119	-
Freeman J.	LD	1,986	31.5
Heffernan A.*	Lab	1,902	30.2
Owen S.*	LD	1,865	-
Stannard M. Ms.	Lab	1,579	-
<b>Turnout</b>		60.8	6.7

<b>Marston (4117)</b>			
		<b>vote</b>	<b>share</b>
<b>King R.</b>	Con	1,278	52.5
Booth I.	LD	1,154	47.5
<b>Turnout</b>		59.1	5.1

<b>Maulden &amp; Houghton Conquest (5593)</b>			
		<b>vote</b>	<b>share</b>
<b>Carter A.</b>	Con	2,097	52.1
Cathall M.	LD	1,134	28.2
Murray J.	Lab	797	19.8
<b>Turnout</b>		72.0	23.9

<b>Newnham (6576)</b>			
		<b>vote</b>	<b>share</b>
<b>Mingay J.</b>	Con	1,241	28.9
McDonald J. Ms.	Lab	1,070	24.9
Gerard A. Ms.	LD	947	22.0
Davey E.	BBIP	825	19.2
Keyworth S.	Green	212	4.9
<b>Turnout</b>		65.3	4.0

<b>North East Bedfordshire (5870)</b>			
		<b>vote</b>	<b>share</b>
<b>Wootton T.</b>	Con	2,657	60.6
Stekelis P.	LD	788	18.0
Otubanjo P.	Lab	589	13.4
Powell M.	Green	350	8.0
<b>Turnout</b>		74.7	42.6

<b>Northfields (5137)</b>			
		<b>vote</b>	<b>share</b>
<b>Ross D.*</b>	Lab	1,444	46.9
Anklesaria S.	Con	1,021	33.2
Walmsley L. Ms.	LD	613	19.9
<b>Turnout</b>		59.9	13.7

<b>Northhill &amp; Blunham (6582)</b>			
		<b>vote</b>	<b>share</b>
<b>Scott J.*</b>	Con	2,277	50.0
Aldis P.	LD	1,489	32.7
Forbes A. Ms.	Lab	792	17.4
<b>Turnout</b>		69.2	17.3

<b>Plantation (5865)</b>			
		<b>vote</b>	<b>share</b>
<b>Walley R.</b>	Con	2,113	59.1
Griffin A.	LD	1,461	40.9
<b>Turnout</b>		60.9	18.2

<b>Potton (5539)</b>			
		<b>vote</b>	<b>share</b>
<b>Baker R.*</b>	Con	2,015	52.5
Heskins P.	Lab	930	24.2
Phillips B.	LD	896	23.3
<b>Turnout</b>		69.3	28.2

<b>Putnoe (6582)</b>			
		<b>vote</b>	<b>share</b>
<b>Bootiman R. Ms.</b>	LD	1,989	42.6
Hall R.*	Con	1,647	35.3
Yasin M.	Lab	715	15.3
Adkin M.	UKIP	315	6.8
<b>Turnout</b>		70.9	7.3

<b>Queens Park (6718)</b>			
		<b>vote</b>	<b>share</b>
<b>Colling G.*</b>	Lab	1,536	41.4
Rigby T.	Con	823	22.2
Bath N.	LD	634	17.1
Bonito M. Ms.	BBIP	585	15.8
Wheatley P.	Green	131	3.5
<b>Turnout</b>		55.2	19.2

<b>Sandy (6606)</b>			
		<b>vote</b>	<b>share</b>
<b>Blaine P.*</b>	LD	1,863	45.0
Gurney D. Ms.	Con	1,306	31.5
Dennis A.	Lab	773	18.7
Campbell O.	Green	198	4.8
<b>Turnout</b>		62.7	13.5

<b>Shefford (6350)</b>			
		<b>vote</b>	<b>share</b>
<b>Younger R.*</b>	Con	1,863	43.9
Chapman M.	LD	1,422	33.5
Devereux C. Ms.	Lab	961	22.6
<b>Turnout</b>		66.9	10.4

<b>Silsoe &amp; Shillington (6027)</b>			
		<b>vote</b>	<b>share</b>
<b>Drinkwater R. Ms.</b>	Con	2,040	52.3
Graham A. Ms.	LD	1,132	29.0
Ali T.	Lab	729	18.7
<b>Turnout</b>		64.7	23.3

<b>South East Bedfordshire (6052)</b>			
		<b>vote</b>	<b>share</b>
<b>Stay R.*</b>	Con	2,691	65.1
Akhter J.	Lab	812	19.6
Larkman P. Ms.	LD	631	15.3
<b>Turnout</b>		68.3	45.5

<b>South West Bedfordshire (5586)</b>			
		<b>vote</b>	<b>share</b>
<b>Piggott B.*</b>	Con	2,815	72.9
Harris R.	Lab	1,048	27.1
<b>Turnout</b>		69.2	45.7

<b>Southcott (5318)</b>			
		<b>vote</b>	<b>share</b>
<b>Sadler B.</b>	Con	1,563	42.7
Snelling P.*	LD	1,357	37.1
Palfrey P.	Lab	738	20.2
<b>Turnout</b>		68.8	5.6

<b>Stotfold &amp; Arlesey (9106)<sup>2</sup></b>			
		<b>vote</b>	<b>share</b>
<b>Saunders J.*</b>	Con	2,734	44.2
<b>Street J.</b>	Con	2,725	-
Collier B.	LD	1,863	30.1
Landman D.	Lab	1,584	25.6
Mayes J.*	Lab	1,343	-
Barnes T.	LD	1,137	-
<b>Turnout</b>		65.9	14.1

<b>Toddington (4980)</b>			
		<b>vote</b>	<b>share</b>
<b>Goodwin R.*</b>	Con	1,871	55.4
Keane E.	Lab	771	22.8
Gilchrist S. Ms.	LD	735	21.8
<b>Turnout</b>		67.8	32.6

<b>Watling (5160)</b>			
		<b>vote</b>	<b>share</b>
<b>Hollick P.*</b>	Con	1,818	52.6
Rogers M.	Lab	945	27.3
Keyes R.	LD	569	16.5
Campbell G. Ms.	Green	126	3.6
<b>Turnout</b>		67.0	25.2

<b>Wilshamstead (3964)</b>			
		<b>vote</b>	<b>share</b>
<b>Faulkner L. Ms.</b>	Con	976	39.5
Hare A.	Ind	751	30.4
Whiteman M.	LD	745	30.1
<b>Turnout</b>		62.4	9.1

<b>Woburn &amp; Harlington (7564)</b>			
		<b>vote</b>	<b>share</b>
<b>Duggan A.*</b>	Con	2,536	46.4
Golby B.	LD	2,137	39.1
Lewis D.	Lab	793	14.5
<b>Turnout</b>		72.3	7.3

<b>Wootton (4090)</b>			
		<b>vote</b>	<b>share</b>
<b>Willey G.</b>	LD	1,613	59.5
Tait J.	Con	1,097	40.5
<b>Turnout</b>		66.3	19.0

