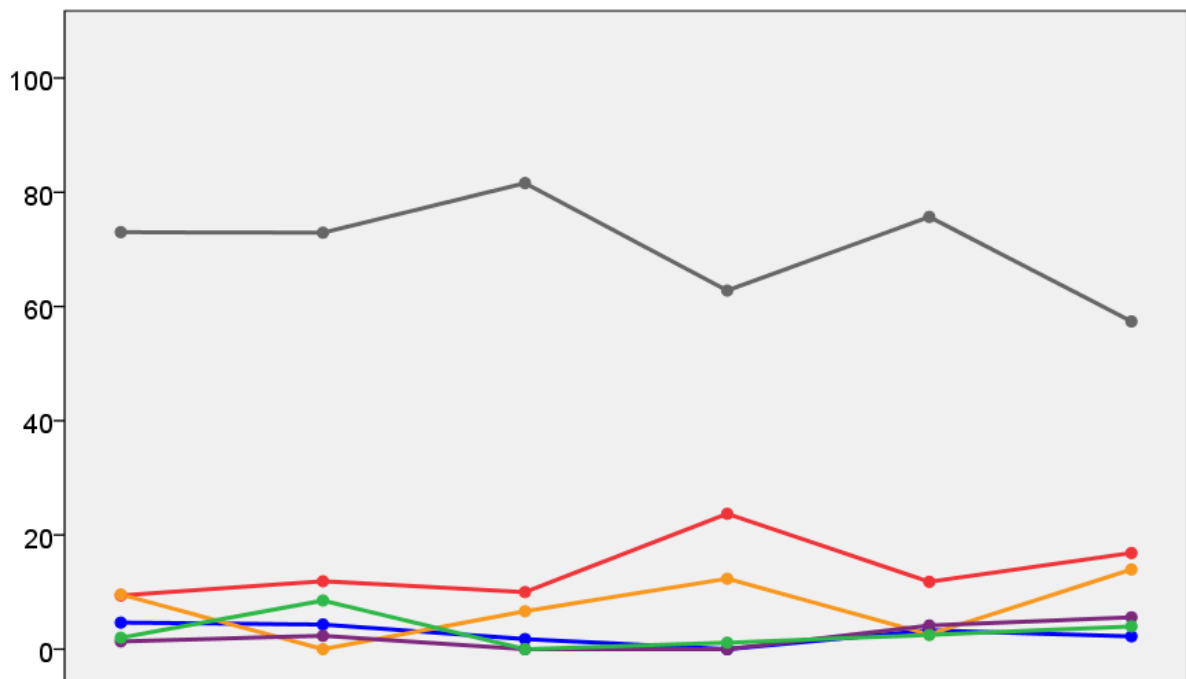


Powys County Council Election Results 1973-1993



Colin Rallings and Michael Thrasher
The Elections Centre
Plymouth University

The information contained in this report has been obtained from a number of sources. Election results from the immediate post-reorganisation period were painstakingly collected by Alan Willis largely, although not exclusively, from local newspaper reports. From the mid-1980s onwards the results have been obtained from each local authority by the Elections Centre. The data are stored in a database designed by Lawrence Ware and maintained by Brian Cheal and others at Plymouth University. Despite our best efforts some information remains elusive whilst we accept that some errors are likely to remain. Notice of any mistakes should be sent to elections@plymouth.ac.uk. The results sequence can be kept up to date by purchasing copies of the annual Local Elections Handbook, details of which can be obtained by contacting the email address above.

Front cover: the graph shows the distribution of percentage vote shares over the period covered by the results. The lines reflect the colours traditionally used by the three main parties. The grey line is the share obtained by Independent candidates while the purple line groups together the vote shares for all other parties.

Rear cover: the top graph shows the percentage share of council seats for the main parties as well as those won by Independents and other parties. The lines take account of any by-election changes (but not those resulting from elected councillors switching party allegiance) as well as the transfers of seats during the main round of local election.

The lower graph shows for each main round of local elections the overall percentage turnout (solid line), the percentage of women candidates standing at (dotted line) and the percentage of women among those elected (hashed line).

Powys 1973

Brecknock No. (1454)

		vote	share
Morris W.	Ind	404	43.3
Millichap W.	Lib	324	34.8
Miles J.	Con	204	21.9
Turnout		64.1	8.6

Brecknock No. 1 (1375)

		vote	share
Stephenson J.	Ind	591	56.6
Williams M.	Ind	453	43.4
Turnout		75.9	13.2

Brecknock No. 3 (1604)

		vote	share
James D.	Ind	555	50.6
Stephens J.	Ind	541	49.4
Turnout		68.3	1.3

Brecknock No.4 (1310)

		vote	share
Price W.	Ind	587	55.0
Thomas E.	Ind	481	45.0
Turnout		81.5	9.9

Brecon No.1 (2325)

		vote	share
Lowe W.	Con	697	58.3
Toft T.	Lab	384	32.1
Haines T.	PC	114	9.5
Turnout		51.4	26.2

Brecon No.2 (1520)

		vote	share
Cobbold E.	Ind	451	47.7
Powell E.	Lib	224	23.7
Morgan E.	Ind	155	16.4
Elliott W.	Ind	115	12.2
Turnout		62.2	24.0

Brecon No.3 (1281)

		vote	share
Watkins L.	Lab	478	55.8
Colwell J.	Ind	379	44.2
Turnout		66.9	11.6

Builth (1161)

		vote	share
Morgan J.	Lib	395	43.3
Davies R.	Ind	324	35.5
Thomas G.	Ind	104	11.4
Pugh B.	Ind	90	9.9
Turnout		78.6	7.8

Builth Rural No.1 (1297)

		vote	share
Thomas T.	Ind	0	0.0
Turnout		0.0	0.0

Builth Rural No.2 (1343)

		vote	share
Davies J.	Con	629	61.5
Davies B.	Ind	394	38.5
Turnout		76.2	23.0

Colwyn (1584)

		vote	share
Thomas R.	Ind	0	0.0
Turnout		0.0	0.0

Crickhowell No.1 (1723)

		vote	share
Greet B.	Ind	631	60.4
Llywelyn H.	Ind	414	39.6
Turnout		60.7	20.8

Crickhowell No.2 (1831)

		vote	share
Davies D.	Ind	622	72.1
Dennis G.	Ind	241	27.9
Turnout		47.1	44.1

Forden No.1 (1576)

		vote	share
Pritchard S.	Ind	0	0.0
Turnout		0.0	0.0

Forden No.2 (1367)

		vote	share
Hughes J.	Ind	425	54.0
Jones J.	Ind	362	46.0
Turnout		57.6	8.0

Hay (1010)

		vote	share
Like J.	Con	0	0.0
Turnout		0.0	0.0

Hay Rural No.2 ()

		vote	share
James O.	Ind	484	49.9
Hopkins D.	Lib	303	31.2
Clarke J.	Lab	183	18.9
Green G.	Ind	0	-
Turnout		0.0	18.7

Knighton (2093)

		vote	share
Rogers S.	Ind	529	41.6
Whiting V.	Ind	443	34.8
Evans R.	Ind	184	14.5
Mortimer W.	Ind	117	9.2
Turnout		60.8	6.8

Knighton Rural (1965)

		vote	share
Nicholls T.	Ind	0	0.0
Turnout		0.0	0.0

Llandrindod Wells No.1 (1708)

		vote	share
Edwards W.	Ind	671	78.1
Smout J.	Lab	188	21.9
Turnout		50.3	56.2

Llandrindod Wells No.2 (1621)

		vote	share
Pritchard A.	Ind	855	78.4
Murray D.	Ind	116	10.6
Scragg W.	Ind	85	7.8
Peter H.	Ind	34	3.1
Turnout		67.2	67.8

Llanfyllin (908)

		vote	share
Roberts L.	Ind	476	67.7
Watkins I.	Ind	227	32.3
Turnout		77.4	35.4

Llanfyllin Rural No.1 (1479)

		vote	share
Philips W.	Ind	0	0.0
Turnout		0.0	0.0

Llanfyllin Rural No.2 (1496)

		vote	share
Evans J.	Ind	0	0.0
Turnout		0.0	0.0

Llanfyllin Rural No.3 (1296)

		vote	share
Gittens J.	Ind	0	0.0
Turnout		0.0	0.0

Llanfyllin Rural No.4 (1028)

		vote	share
Howard E.	Ind	0	0.0
Turnout		0.0	0.0

Llanfyllin Rural No.5 (1677)

		vote	share
Jones D.	Ind	546	64.5
Wilson R.	Ind	301	35.5
Turnout		50.5	28.9

Llanidloes (2022)

		vote	share
Morgan G.	Lib	829	54.9
Watkins H.	Lab	680	45.1
Turnout		74.6	9.9

Machynlleth (1565)

		vote	share
Ward P.	Lab	622	58.0
James D.	Lib	450	42.0
Turnout		68.5	16.0

Machynlleth Rural (2058)

		vote	share
Humphreys J.	Ind	673	44.0
Thomas B.	PC	545	35.6
Beaumont J.	Ind	312	20.4
Turnout		74.3	8.4

Montgomery (1731)

		vote	share
Corfield E.	Ind	659	65.4
Rainbridge R.	Ind	349	34.6
Turnout		58.2	30.8

New Radnor (1517)

		vote	share
Lloyd V.	Ind	0	0.0
Turnout		0.0	0.0

Newtown & Llanidloes No.1 (1481)

		vote	share
Thomas T.	Ind	778	68.4
Evans W.	Ind	359	31.6
Turnout		76.8	36.9

Newtown & Llanidloes No.2 (1398)

		vote	share
Harrison T.	Ind	0	0.0
Turnout		0.0	0.0

Newtown & Llanidloes No.3 (2284)

		vote	share
Bebb J.	Ind	0	0.0
Turnout		0.0	0.0

Newtown & Llanidloes No.4 (1524)

		vote	share
Griffiths J.	Ind	0	0.0
Turnout		0.0	0.0

Newtown Central & West (1541)

		vote	share
Allford E.	Ind	413	40.2
Lewis B.	Ind	349	33.9
Hopkinson C.	Ind	245	23.8
Richards J.	Ind	21	2.0
Turnout		66.7	6.2

Newtown No. 2 (839)

		vote	share
Jones C.	Ind	0	0.0
Turnout		0.0	0.0

Newtown No. 3 (4108)			
		vote	share
Leach F.	Lib	629	46.2
Woodhouse J.	Ind	371	27.3
Richardson M.	Lab	361	26.5
Turnout		33.1	19.0
Paincastle (1200)			
		vote	share
Williams H.	Ind	526	57.7
Pritchard P.	Ind	258	28.3
Lloyd T.	Ind	127	13.9
Turnout		75.9	29.4
Presteigne (1407)			
		vote	share
Deakins J.	Ind	440	51.6
Lister L.	Ind	412	48.4
Turnout		60.6	3.3
Rhayader No.1 (1818)			
		vote	share
Lewis V.	Ind	507	39.4
Evans E.	Ind	452	35.1
Hughes R.	Ind	328	25.5
Turnout		70.8	4.3
Rhayader No.2 (1660)			
		vote	share
Knill R.	Ind	614	44.4
Thompson J.	Ind	480	34.7
Jones A.	Ind	290	21.0
Turnout		83.4	9.7
Welshpool No.1 ()			
		vote	share
Lloyd J.	Ind	0	0.0
Turnout		0.0	0.0
Welshpool No.2 ()			
		vote	share
Jones G.	Ind	524	75.9
Pritchard G.	Lab	166	24.1
Turnout		0.0	51.9
Welshpool No.3 ()			
		vote	share
Williams D.	Ind	845	65.3
Mapp.	?	449	34.7
Turnout		0.0	30.6
Welshpool No.4 ()			
		vote	share
Evans J.	Ind	187	52.7
Silver K.	Ind	133	37.5
Johnson W.	Lab	35	9.9
Turnout		0.0	15.2
Ystradgynlais No.1 (1078)			
		vote	share
Hughes J.	Lab	0	0.0
Turnout		0.0	0.0
Ystradgynlais No.2 (1669)			
		vote	share
Evans A.	Lab	0	0.0
Turnout		0.0	0.0
Ystradgynlais No.3 (2080)			
		vote	share
Williams J.	Lab	0	0.0
Turnout		0.0	0.0
Ystradgynlais No.4 (1331)			
		vote	share
Evans J.	Lab	0	0.0
Turnout		0.0	0.0

Ystradgynlais No.5 (1561)			
		vote	share
Lewis E.	Lab	0	0.0
Turnout		0.0	0.0
Powys 1977			
Brecknock No. (1457)			
		vote	share
Morris W.	Ind	0	0.0
Turnout		0.0	0.0
Brecknock No. 1 (1378)			
		vote	share
Stephenson J.	Ind	0	0.0
Turnout		0.0	0.0
Brecknock No. 3 (1607)			
		vote	share
James D.*	Ind	0	0.0
Turnout		0.0	0.0
Brecknock No.4 (1313)			
		vote	share
Jones H.	Ind	431	40.0
Smith W.	Ind	328	30.4
Patrick H.	Lab	319	29.6
Turnout		82.1	9.6
Brecon No.1 (2330)			
		vote	share
Lowe W.	Con	698	50.6
King F.	Lab	373	27.0
Head W.	PC	308	22.3
Turnout		59.2	23.6
Brecon No.2 (1523)			
		vote	share
Cobbold E.	Ind	0	0.0
Turnout		0.0	0.0
Brecon No.3 (1284)			
		vote	share
Roberts M.	Lab	0	0.0
Turnout		0.0	0.0
Builth (1164)			
		vote	share
Morgan J.	Ind	451	55.9
Davies R.	Ind	356	44.1
Turnout		69.3	11.8
Builth Rural No.1 (1300)			
		vote	share
Davies T.	Ind	0	0.0
Turnout		0.0	0.0
Builth Rural No.2 (1346)			
		vote	share
Davies J.	Ind	0	0.0
Turnout		0.0	0.0
Colwyn (1587)			
		vote	share
Thomas R.	Ind	0	0.0
Turnout		0.0	0.0
Crickhowell No.1 (1727)			
		vote	share
Jones E.	Ind	601	51.9
Greet B.	Ind	558	48.1
Turnout		67.1	3.7

Crickhowell No.2 (1835)			
		vote	share
Francis H.	Ind	463	36.6
Ald I.	Ind	413	32.6
Probert T.	Ind	200	15.8
Jeremiah D.	Lab	189	14.9
Turnout		68.9	4.0
Forden No.1 (1579)			
		vote	share
Pritchard S.	Ind	0	0.0
Turnout		0.0	0.0
Forden No.2 (1370)			
		vote	share
Hughes J.	Ind	0	0.0
Turnout		0.0	0.0
Hay (1012)			
		vote	share
Jones D.	Ind	0	0.0
Turnout		0.0	0.0
Hay Rural No.2 (1170)			
		vote	share
Green G.	Ind	321	45.6
Evans H.	Ind	256	36.4
Smith A.	Ind	127	18.0
James O.	Ind	0	-
Turnout		60.2	9.2
Knighton (2097)			
		vote	share
Rogers S.	Ind	0	0.0
Turnout		0.0	0.0
Knighton Rural (1969)			
		vote	share
Nicholls T.	Ind	0	0.0
Turnout		0.0	0.0
Llandrindod Wells No.1 (1712)			
		vote	share
Eadie F.	Ind	363	39.8
Griffiths K.	Lab	250	27.4
Daniels I.	Ind	242	26.5
Power J.	PC	57	6.3
Turnout		53.3	12.4
Llandrindod Wells No.2 (1624)			
		vote	share
Pritchard A.	Ind	0	0.0
Turnout		0.0	0.0
Llanfyllin (910)			
		vote	share
Roberts L.	Ind	0	0.0
Turnout		0.0	0.0
Llanfyllin Rural No.1 (1482)			
		vote	share
Phillips W.	Ind	0	0.0
Turnout		0.0	0.0
Llanfyllin Rural No.2 (1499)			
		vote	share
Evans J.	Ind	0	0.0
Turnout		0.0	0.0
Llanfyllin Rural No.3 (1298)			
		vote	share
Ellis D.	Ind	302	47.3
Jones D.	Ind	226	35.4
Gittins J.	Ind	111	17.4
Turnout		49.2	11.9

Llanfyllin Rural No.4 (1030)			
		vote	share
Howard E.	Ind	0	0.0
Turnout		0.0	0.0
Llanfyllin Rural No.5 (1680)			
		vote	share
Jones D.	Ind	0	0.0
Turnout		0.0	0.0
Llanidloes (2026)			
		vote	share
Morgan G.*	Lib	0	0.0
Turnout		0.0	0.0
Machynlleth (1568)			
		vote	share
Ward P.	Lab	0	0.0
Turnout		0.0	0.0
Machynlleth Rural (2063)			
		vote	share
James D.	Ind	659	43.0
Thomas B.	PC	634	41.3
Ryder R.	Ind	241	15.7
Turnout		74.4	1.6
Montgomery (1735)			
		vote	share
Corfield E.	Ind	0	0.0
Turnout		0.0	0.0
New Radnor (1520)			
		vote	share
Lloyd V.	Ind	0	0.0
Turnout		0.0	0.0
Newtown & Llanidloes No.1 (1484)			
		vote	share
Thomas T.	Ind	0	0.0
Turnout		0.0	0.0
Newtown & Llanidloes No.2 (1401)			
		vote	share
Harrison T.	Ind	0	0.0
Turnout		0.0	0.0
Newtown & Llanidloes No.3 (2288)			
		vote	share
Bebb J.	Ind	0	0.0
Turnout		0.0	0.0
Newtown & Llanidloes No.4 (1527)			
		vote	share
Griffiths J.	Ind	0	0.0
Turnout		0.0	0.0
Newtown Central & West (786)			
		vote	share
Jones C.	Ind	271	52.9
Gaskin D.	Ind	153	29.9
Lewis M.	PC	88	17.2
Turnout		65.1	23.0
Newtown East & South (3083)			
		vote	share
Leach F.	Ind	757	72.3
Bumford E.	PC	290	27.7
Turnout		34.0	44.6
Newtown North (1763)			
		vote	share
Allford M.	Ind	650	67.7
Hopkinson C.	Ind	310	32.3
Turnout		54.5	35.4

Paincastle (1203)			
		vote	share
Williams H.	Ind	581	66.6
Havard L.	Ind	292	33.4
Turnout		72.6	33.1
Presteigne (1410)			
		vote	share
Deakins J.	Ind	559	66.0
Eaborn C.	Ind	288	34.0
Turnout		60.1	32.0
Rhayader No.1 (1822)			
		vote	share
Lewis V.	Ind	0	0.0
Turnout		0.0	0.0
Rhayader No.2 (1664)			
		vote	share
Knill R.	Ind	764	59.6
Thompson J.	Ind	517	40.4
Turnout		77.0	19.3
Welshpool Buttington (991)			
		vote	share
Lloyd J.	Ind	0	0.0
Turnout		0.0	0.0
Welshpool Castle (1256)			
		vote	share
Jones G.	Ind	0	0.0
Turnout		0.0	0.0
Welshpool Guilsfield (3262)			
		vote	share
Woodcock H.	Con	0	0.0
Turnout		0.0	0.0
Welshpool Llanerchydol (494)			
		vote	share
Evans J.	Ind	0	0.0
Turnout		0.0	0.0
Ystradgynlais No.1 (1080)			
		vote	share
Williams T.	Lab	0	0.0
Turnout		0.0	0.0
Ystradgynlais No.2 (1673)			
		vote	share
Evans M.	Lab	793	67.6
Phillips D.	Ind Lab	380	32.4
Turnout		70.1	35.2
Ystradgynlais No.3 (2084)			
		vote	share
Morgan R.	Lab	0	0.0
Turnout		0.0	0.0
Ystradgynlais No.4 (1334)			
		vote	share
Evans W.	Lab	0	0.0
Turnout		0.0	0.0
Ystradgynlais No.5 (1564)			
		vote	share
Lewis H.	Ind	0	0.0
Turnout		0.0	0.0

Powys 1981

Berriew (2063)			
		vote	share
Allford E.	Ind	0	0.0
Turnout		0.0	0.0
Brecknock No. (1460)			
		vote	share
Morris W.	Lib	0	0.0
Turnout		0.0	0.0
Brecknock No. 1 (1381)			
		vote	share
Stephenson D.	Ind	520	62.3
Feiner M.	Ind	315	37.7
Turnout		60.5	24.6
Brecknock No. 3 (1610)			
		vote	share
James D.*	Ind	0	0.0
Turnout		0.0	0.0
Brecknock No.4 (1354)			
		vote	share
Jones H.	Ind	0	0.0
Turnout		0.0	0.0
Brecon No.1 (2455)			
		vote	share
Pritchard E.	Ind	492	37.2
Watkins M.	Lab	483	36.5
Lowe W.	Ind	349	26.4
Turnout		53.9	0.7
Brecon No.2 (1526)			
		vote	share
Cobbold E.	Ind	0	0.0
Turnout		0.0	0.0
Brecon No.3 (1287)			
		vote	share
Roberts M.	Lab	682	79.7
Morgan W.	Ind	174	20.3
Turnout		66.5	59.3
Builth (1223)			
		vote	share
Morgan J.	Ind	383	58.9
Davies F.	Ind	267	41.1
Turnout		53.1	17.8
Builth Rural No.1 (1303)			
		vote	share
Van Rees T.	Ind	551	58.7
Davies T.	Ind	298	31.7
John H.	Lab	90	9.6
Turnout		72.1	26.9
Builth Rural No.2 (1349)			
		vote	share
Davies J.	Ind	0	0.0
Turnout		0.0	0.0
Colwyn (1590)			
		vote	share
Thomas R.	Ind	0	0.0
Turnout		0.0	0.0
Crickhowell No.1 (1939)			
		vote	share
Jones E.	Ind	0	0.0
Turnout		0.0	0.0

Crickhowell No.2 (1970)			
		vote	share
Francis H.	Ind	652	60.0
Jeremiah D.	Lab	434	40.0
Turnout		55.1	20.1
Forden No.1 (1582)			
		vote	share
Pritchard S.	Ind	0	0.0
Turnout		0.0	0.0
Forden No.2 (1373)			
		vote	share
Hughes J.	Ind	0	0.0
Turnout		0.0	0.0
Hay (1015)			
		vote	share
Jones D.	Ind	483	63.3
Like P.	Ind	280	36.7
Turnout		75.2	26.6
Hay Rural No.2 (1313)			
		vote	share
Williams R.	SDP	412	53.4
Lewis I.	Ind	359	46.6
James O.	Ind	0	-
Turnout		58.7	6.9
Knighton (2101)			
		vote	share
Coltman-Rogers S.	Ind	0	0.0
Turnout		0.0	0.0
Knighton Rural (1973)			
		vote	share
Nicholls T.	Ind	0	0.0
Turnout		0.0	0.0
Llandrindod Wells No.1 (1715)			
		vote	share
Eadie F.	Ind	0	0.0
Turnout		0.0	0.0
Llandrindod Wells No.2 (1627)			
		vote	share
Pritchard A.	Ind	0	0.0
Turnout		0.0	0.0
Llanfyllin (912)			
		vote	share
Roberts L.	Ind	0	0.0
Turnout		0.0	0.0
Llanfyllin Rural No.1 (1485)			
		vote	share
Phillips W.	Ind	602	78.2
Robinson M.	Con	168	21.8
Turnout		51.9	56.4
Llanfyllin Rural No.2 (1502)			
		vote	share
Davis A.	Ind	0	0.0
Turnout		0.0	0.0
Llanfyllin Rural No.3 (1301)			
		vote	share
Ellis D.	Ind	0	0.0
Turnout		0.0	0.0
Llanfyllin Rural No.4 (1032)			
		vote	share
Howard E.	Ind	0	0.0
Turnout		0.0	0.0

Llanfyllin Rural No.5 (1684)			
		vote	share
Rowlands D.	Ind	701	84.3
Anison R.	Con	131	15.7
Turnout		49.4	68.5
Llanidloes (2030)			
		vote	share
Morgan G.*	Lib	0	0.0
Turnout		0.0	0.0
Machynlleth (1571)			
		vote	share
Williams J.	Ind	0	0.0
Turnout		0.0	0.0
Machynlleth Rural (2073)			
		vote	share
James D.	Ind	827	62.6
Fenwick J.	Ind	495	37.4
Turnout		63.8	25.1
Montgomery (1739)			
		vote	share
Richards B.	Ind	516	50.2
Corrfield E.	Ind	512	49.8
Turnout		59.1	0.4
New Radnor (1523)			
		vote	share
Lloyd V.	Ind	0	0.0
Turnout		0.0	0.0
Newtown & Llanidloes No.1 (1488)			
		vote	share
Thomas T.	Ind	719	59.2
Lewis R.	Ind	495	40.8
Turnout		81.6	18.5
Newtown & Llanidloes No.2 (1404)			
		vote	share
Oliver R.	Ind	470	51.8
Davies T.	Ind	437	48.2
Turnout		64.6	3.6
Newtown & Llanidloes No.3 (2293)			
		vote	share
Bebb J.	Ind	0	0.0
Turnout		0.0	0.0
Newtown & Llanidloes No.4 (1530)			
		vote	share
Griffiths J.	Ind	0	0.0
Turnout		0.0	0.0
Newtown No. 2 (843)			
		vote	share
Jones C.	Ind	0	0.0
Turnout		0.0	0.0
Newtown No. 3 (4124)			
		vote	share
Leach F.	Ind	0	0.0
Turnout		0.0	0.0
Paincastle (1336)			
		vote	share
Williams H.	Ind	511	54.8
Colin J.	SDP	260	27.9
Nicholls T.	Ind	162	17.4
Turnout		69.8	26.9
Presteigne (1530)			
		vote	share
Deakins J.	Ind	0	0.0
Turnout		0.0	0.0

Rhayader No.1 (1826)			
		vote	share
Lewis V.	Ind	751	62.5
Richards T.	Lib	451	37.5
Turnout		65.8	25.0
Rhayader No.2 (1811)			
		vote	share
Thompson J.	Ind	677	58.5
Pugh M.	Ind	480	41.5
Turnout		63.9	17.0
Welshpool Buttington (993)			
		vote	share
Lloyd J.	Ind	0	0.0
Turnout		0.0	0.0
Welshpool Castle (1259)			
		vote	share
Jones G.	Ind	0	0.0
Turnout		0.0	0.0
Welshpool Guilsfield (3269)			
		vote	share
Woodcock H.	Con	0	0.0
Turnout		0.0	0.0
Welshpool Llanerchydol (495)			
		vote	share
Evans J.	Ind	192	61.5
Marriott M.	Ind	120	38.5
Turnout		63.0	23.1
Ystradgynlais No.1 (1082)			
		vote	share
Williams T.	Lab	0	0.0
Turnout		0.0	0.0
Ystradgynlais No.2 (1623)			
		vote	share
Jones G.	Lab	0	0.0
Turnout		0.0	0.0
Ystradgynlais No.3 (2088)			
		vote	share
Jones J.	Lab	0	0.0
Turnout		0.0	0.0
Ystradgynlais No.4 (1337)			
		vote	share
Evans W.	Lab	0	0.0
Turnout		0.0	0.0
Ystradgynlais No.5 (1567)			
		vote	share
Lewis H.	Lab	0	0.0
Turnout		0.0	0.0

Powys 1985

Berriew (2068)			
		vote	share
Allford E.	Ind	0	0.0
Turnout		0.0	0.0
Brecknock No. (1463)			
		vote	share
Morriss V.	Ind	503	78.3
Penny J.	Lab	139	21.7
Turnout		43.9	56.7
Brecknock No. 1 (2766)			
		vote	share
Mann C.	Lab	0	0.0
Turnout		0.0	0.0

Brecknock No. 3 (1614)			
		vote	share
James D.*	Ind	807	81.1
Jones S.	Lab	188	18.9
Turnout		61.6	62.2
Brecknock No.4 (1395)			
		vote	share
Jones H.	Ind	0	0.0
Turnout		0.0	0.0
Brecon No.1 (1426)			
		vote	share
Stephenson J.	Ind	522	70.7
Feiner G.	Ind	216	29.3
Turnout		51.8	41.5
Brecon No.2 (1530)			
		vote	share
Williams I.	Lab	500	57.2
Leonard H.	Ind	374	42.8
Turnout		57.1	14.4
Brecon No.3 (1259)			
		vote	share
Roberts M.	Lab	0	0.0
Turnout		0.0	0.0
Builth (1322)			
		vote	share
Davies C.	Ind	0	0.0
Turnout		0.0	0.0
Builth Rural No.1 (1319)			
		vote	share
Van-Rees T.	Ind	0	0.0
Turnout		0.0	0.0
Builth Rural No.2 (1352)			
		vote	share
Davies J.	Ind	0	0.0
Turnout		0.0	0.0
Colwyn (1594)			
		vote	share
Thomas R.	Ind	0	0.0
Turnout		0.0	0.0
Crickhowell No.1 (2152)			
		vote	share
Jones E.	Ind	697	66.6
Gregory J.	Lab	350	33.4
Turnout		48.7	33.1
Crickhowell No.2 (2236)			
		vote	share
Herdman G.	Ind	643	49.8
Francis H.	Ind	341	26.4
Maddocks G.	Lab	217	16.8
Isaac D.	Ind	90	7.0
Turnout		57.7	23.4
Forden No.1 (1586)			
		vote	share
Pritchard S.	Ind	0	0.0
Turnout		0.0	0.0
Forden No.2 (1376)			
		vote	share
Owens F.	Ind	0	0.0
Turnout		0.0	0.0
Hay (1071)			
		vote	share
Jones D.	Ind	0	0.0
Turnout		0.0	0.0

Hay Rural No.2 (1567)			
		vote	share
James O.	Ind	0	0.0
Turnout		0.0	0.0
Knighton (2106)			
		vote	share
Shaw M.	Ind	482	38.9
Coltman-Rodgers S.	Ind	461	37.2
Bridge H.	Lab	295	23.8
Turnout		58.8	1.7
Knighton Rural (1977)			
		vote	share
Pugh E.	Ind	0	0.0
Turnout		0.0	0.0
Llanrindod Wells No.1 (1719)			
		vote	share
Eadie F.	Ind	435	46.8
Smith B.	Lib	268	28.8
Owens J.	Lab	227	24.4
Turnout		54.1	18.0
Llanrindod Wells No.2 (1631)			
		vote	share
Pritchard A.	Ind	0	0.0
Turnout		0.0	0.0
Llanfyllin (914)			
		vote	share
Roberts L.	Ind	0	0.0
Turnout		0.0	0.0
Llanfyllin Rural No.1 (1526)			
		vote	share
Phillips W.	Ind	0	0.0
Turnout		0.0	0.0
Llanfyllin Rural No.2 (1506)			
		vote	share
Tripp J.	Ind	0	0.0
Turnout		0.0	0.0
Llanfyllin Rural No.3 (1304)			
		vote	share
Ellis D.	Ind	0	0.0
Turnout		0.0	0.0
Llanfyllin Rural No.4 (1035)			
		vote	share
Rowlands D.	Ind	0	0.0
Turnout		0.0	0.0
Llanfyllin Rural No.5 (1733)			
		vote	share
Rowlands B.	Ind	0	0.0
Turnout		0.0	0.0
Llanidloes (2035)			
		vote	share
Morgan G.*	Lib/All	797	59.5
Jones M.	Lab	542	40.5
Turnout		65.8	19.0
Machynlleth (1575)			
		vote	share
Williams J.	Ind	0	0.0
Turnout		0.0	0.0
Machynlleth Rural (2083)			
		vote	share
James .	Ind	0	0.0
Turnout		0.0	0.0

Montgomery (1871)			
		vote	share
Corfield E.	Ind	0	0.0
Turnout		0.0	0.0
New Radnor (1527)			
		vote	share
Jones E.	Ind	537	64.0
Monkton I.	Lab	302	36.0
Turnout		54.9	28.0
Newtown & Llanidloes No.1 (1601)			
		vote	share
Thomas T.	Ind	0	0.0
Turnout		0.0	0.0
Newtown & Llanidloes No.2 (1494)			
		vote	share
Oliver R.	Ind	0	0.0
Turnout		0.0	0.0
Newtown & Llanidloes No.3 (2298)			
		vote	share
Jones G.	Ind	0	0.0
Turnout		0.0	0.0
Newtown & Llanidloes No.4 (1534)			
		vote	share
Griffiths J.	Ind	828	82.2
Jones T.	PC	179	17.8
Turnout		65.6	64.4
Newtown No. 2 (845)			
		vote	share
Jones C.	Ind	0	0.0
Turnout		0.0	0.0
Newtown No. 3 (4133)			
		vote	share
Leach F.	Ind	806	67.8
Hose A.	Lab	382	32.2
Turnout		28.7	35.7
Paincastle (1406)			
		vote	share
Williams H.	Ind	534	60.5
Nicholls T.	Ind	348	39.5
Turnout		62.7	21.1
Presteigne (1651)			
		vote	share
Deakin J.	Ind	537	52.9
Willey F.	Lab	479	47.1
Turnout		61.5	5.7
Rhayader No.1 (1898)			
		vote	share
Lewis V.	Ind	0	0.0
Turnout		0.0	0.0
Rhayader No.2 (1909)			
		vote	share
Thompson J.	Ind	0	0.0
Turnout		0.0	0.0
Talgarth (1269)			
		vote	share
Williams W.	SDP/All	0	0.0
Turnout		0.0	0.0
Welshpool Buttington (996)			
		vote	share
Lloyd J.	Ind	0	0.0
Turnout		0.0	0.0

Welshpool Castle (1262)			
		vote	share
Jones G.	Ind	0	0.0
Turnout		0.0	0.0
Welshpool Guilsfield (3276)			
		vote	share
Smith A.	Lib	872	62.4
Woodcock H.	Ind	525	37.6
Turnout		42.6	24.8
Welshpool Llanerchydol (491)			
		vote	share
Evans J.	Ind	165	62.5
Taylor G.	Lab	99	37.5
Turnout		53.8	25.0
Ystradgynlais No.1 (1085)			
		vote	share
Williams T.	Lab	0	0.0
Turnout		0.0	0.0
Ystradgynlais No.2 (1574)			
		vote	share
Edwards.	Lab	0	0.0
Turnout		0.0	0.0
Ystradgynlais No.3 (2093)			
		vote	share
James J.	Lab	0	0.0
Turnout		0.0	0.0
Ystradgynlais No.4 (1340)			
		vote	share
Gwillim C.	Lab	0	0.0
Turnout		0.0	0.0
Ystradgynlais No.5 (1571)			
		vote	share
Lewis H.	Lab	0	0.0
Turnout		0.0	0.0

Powys 1989

Beguildy (1500)			
		vote	share
Kinsey-Pugh E.*	Ind	576	62.7
Corbett W.	Ind	342	37.3
Turnout		61.2	25.5
Berriew (2051)			
		vote	share
Pritchard S.*	Ind	0	0.0
Turnout		0.0	0.0
Blaen Hafren (2217)			
		vote	share
Griffiths J.*	Ind	0	0.0
Turnout		0.0	0.0
Brecon St.John (2374)			
		vote	share
Mann C.*	Lab	0	0.0
Turnout		0.0	0.0
Brecon St.Mary (2157)			
		vote	share
Williams I.*	Lab	565	45.2
Gittins M.	SLD	380	30.4
Lambert E. Ms.	Con	305	24.4
Turnout		58.0	14.8

Breidden (1909)			
		vote	share
Lloyd J.*	Ind	0	0.0
Turnout		0.0	0.0
Builth (1592)			
		vote	share
Davies C.*	Ind	0	0.0
Turnout		0.0	0.0
Caersws (1650)			
		vote	share
Thomas T.*	Ind	0	0.0
Turnout		0.0	0.0
Castle Forden (2085)			
		vote	share
Aitchison P. Ms.	Lib	415	60.1
Senior D.	PC	275	39.9
Turnout		33.1	20.3
Colwyn (1713)			
		vote	share
Thomas R. Ms.*	Ind	0	0.0
Turnout		0.0	0.0
Crickhowell (2265)			
		vote	share
Herdman G.*	Ind	0	0.0
Turnout		0.0	0.0
Cyfeiliog (2165)			
		vote	share
James D.*	Ind	0	0.0
Turnout		0.0	0.0
Dyffryn Banw (1765)			
		vote	share
Roberts D.	Ind	464	46.1
Jones R.	Ind	441	43.8
Adams P.	Green	101	10.0
Turnout		57.0	2.3
Fforest Fawr (1347)			
		vote	share
Jones H.*	Ind	0	0.0
Turnout		0.0	0.0
Guilsfield (1538)			
		vote	share
Smith A.*	Lib	0	0.0
Turnout		0.0	0.0
Gwy Uchaf (1395)			
		vote	share
Davies J.*	Ind	0	0.0
Turnout		0.0	0.0
Hay (2156)			
		vote	share
James O.*	Ind	660	65.9
Day R.	Ind	341	34.1
Turnout		46.4	31.9
Honddu (1698)			
		vote	share
Stephens J.*	Ind	517	71.5
Wilson A.	Ind	206	28.5
Turnout		42.6	43.0
Ithon Valley (1939)			
		vote	share
Thompson J.*	Ind	0	0.0
Turnout		0.0	0.0

Kerry (1340)			
		vote	share
Brench M. Ms.	Ind	0	0.0
Turnout		0.0	0.0
Knighton (2274)			
		vote	share
Shaw W.*	Ind	617	58.6
Whiting V.	Ind	436	41.4
Turnout		46.3	17.2
Llancwm (2396)			
		vote	share
Davies W.*	Ind	818	84.3
Penny J. Ms.	Lab	152	15.7
Turnout		40.5	68.7
Llandrindod Wells North East (1905)			
		vote	share
Eadie F. Ms.*	Ind	0	0.0
Turnout		0.0	0.0
Llandrindod Wells South West (2009)			
		vote	share
Pritchard A.*	Ind	0	0.0
Turnout		0.0	0.0
Llanfyllin (2003)			
		vote	share
Rowlands D.*	Ind	0	0.0
Turnout		0.0	0.0
Llangors (1887)			
		vote	share
James D. Ms.*	Ind	688	56.5
Morris W.	Ind	530	43.5
Turnout		64.5	13.0
Llanidloes (2229)			
		vote	share
Morgan G.*	SLD	0	0.0
Turnout		0.0	0.0
Llansantffraid (2074)			
		vote	share
Roberts N. Ms.*	Ind	0	0.0
Turnout		0.0	0.0
Llanwrtyd (1305)			
		vote	share
Van Rees T.*	Ind	0	0.0
Turnout		0.0	0.0
Machynlleth (1614)			
		vote	share
Williams J.*	Ind	0	0.0
Turnout		0.0	0.0
Meifod (1592)			
		vote	share
Jones T.*	Ind	608	86.9
Evans D.	Green	92	13.1
Turnout		44.0	73.7
Montgomery (1921)			
		vote	share
Corfeild E.*	Ind	614	61.8
Richards B.	Ind	380	38.2
Turnout		51.7	23.5
Newton Central (2121)			
		vote	share
Wort J. Ms.*	Ind	0	0.0
Turnout		0.0	0.0

Newtown Llanwchaiern (2833)			
		vote	share
Jones K.*	Ind	0	0.0
Turnout		0.0	0.0
Newtown South (3078)			
		vote	share
Leach F.*	Ind	0	0.0
Turnout		0.0	0.0
Paincastle (1495)			
		vote	share
Williams H.*	Ind	0	0.0
Turnout		0.0	0.0
Presteigne (1726)			
		vote	share
Deakins J.*	Ind	468	51.8
Smith G.	Lab	435	48.2
Turnout		52.3	3.7
Radnor (1809)			
		vote	share
Jones E.*	Ind	578	60.3
Lloyd V.	Ind	380	39.7
Turnout		53.0	20.7
Rhayader (2266)			
		vote	share
Lewis V.*	Ind	0	0.0
Turnout		0.0	0.0
Talgarth (1889)			
		vote	share
Williams R.*	Soc Dem	0	0.0
Turnout		0.0	0.0
Tarell (1698)			
		vote	share
Roberts M. Ms.*	Ind	801	81.7
Vickers M.	Con	179	18.3
Turnout		57.7	63.5
Tawe Felte (2946)			
		vote	share
Gwilym C.*	Lab	0	0.0
Turnout		0.0	0.0
Tregynon (1568)			
		vote	share
Jones D.	Ind	0	0.0
Turnout		0.0	0.0
Welshpool Llanerchydol (3297)			
		vote	share
James J.	Ind	649	49.2
Taylor G.	Lab	580	44.0
Suddell O. Ms.	PC	90	6.8
Turnout		40.0	5.2
Ynysledwyn (3242)			
		vote	share
Lewis H.*	Lab	0	0.0
Turnout		0.0	0.0
Ystradgynlais (2155)			
		vote	share
Walters-Williams J.	Lab	0	0.0
Turnout		0.0	0.0

Powys 1993

Beguildy (1533)			
		vote	share
Allen A.	Ind	622	62.7
Watson W.	Ind	216	21.8
Davies J.	Ind	154	15.5
Turnout		64.7	40.9
Berriew (2156)			
		vote	share
Pritchard S.*	Ind	0	0.0
Turnout		0.0	0.0
Blaen Hafren (2280)			
		vote	share
Griffiths J.*	Ind	0	0.0
Turnout		0.0	0.0
Brecon St.John (2576)			
		vote	share
Mann C.*	Lab	805	63.2
Jones C.	Con	469	36.8
Turnout		49.5	26.4
Brecon St.Mary (2080)			
		vote	share
Williams I.*	Lab	0	0.0
Turnout		0.0	0.0
Breidden (2036)			
		vote	share
Evans J.	Ind	0	0.0
Turnout		0.0	0.0
Builth (1636)			
		vote	share
Jarman-Harris L. Ms.	Ind	498	49.7
Davies C.*	Ind	425	42.4
Bramhall R.	Green	80	8.0
Turnout		61.3	7.3
Caersws (1637)			
		vote	share
Davies E.	Ind	0	0.0
Turnout		0.0	0.0
Castle Forden (2103)			
		vote	share
Corfield J.	Ind	0	0.0
Turnout		0.0	0.0
Colwyn (1862)			
		vote	share
Thomas R. Ms.*	Ind	553	58.5
Speake P.	Ind	187	19.8
Prince R.	Green	119	12.6
Evans J.	Ind	86	9.1
Turnout		50.8	38.7
Crickhowell (2323)			
		vote	share
Herdman G.*	Ind	734	75.9
Strange G.	Lab	233	24.1
Turnout		41.6	51.8
Cyfeiliog (2161)			
		vote	share
James D.*	Ind	0	0.0
Turnout		0.0	0.0
Dyffryn Banw (1843)			
		vote	share
Jones B.	LD	652	66.2
Roberts D.*	Ind	291	29.5
Vincent-Smythe C. Ms.	Green	42	4.3
Turnout		53.5	36.6

Forest Fawr (1351)			
		vote	share
Jones H.*	Ind	0	0.0
Turnout		0.0	0.0
Guilsfield (1607)			
		vote	share
Palin F.	Ind	511	66.5
Woodcock H. Ms.	Ind	257	33.5
Turnout		47.8	33.1
Gwy Uchaf (1435)			
		vote	share
Davies J.*	Ind	0	0.0
Turnout		0.0	0.0
Hay (2258)			
		vote	share
James O.*	Ind	809	64.2
Morelli L.	Ind	452	35.8
Turnout		55.9	28.3
Honddu (1704)			
		vote	share
Thomas D. Ms.	Ind	0	0.0
Turnout		0.0	0.0
Ithon Valley (2114)			
		vote	share
Thompson J.*	Ind	0	0.0
Turnout		0.0	0.0
Kerry (1325)			
		vote	share
Brench M. Ms.*	Ind	0	0.0
Turnout		0.0	0.0
Knighton (2292)			
		vote	share
Shaw M.*	Ind	0	0.0
Turnout		0.0	0.0
Llancwm (2400)			
		vote	share
Greet B. Ms.	Ind	0	0.0
Turnout		0.0	0.0
Llandrindod Wells North East (2035)			
		vote	share
Bevan R.	Ind	526	56.0
Lennox-Smith M Ms.	Ind	228	24.3
Cadwallader R.	Ind	185	19.7
Turnout		46.1	31.7
Llandrindod Wells South West (2079)			
		vote	share
Pritchard A.*	Ind	801	87.2
Meruddud S. Ms.	PC	118	12.8
Turnout		44.2	74.3
Llanfyllin (2108)			
		vote	share
Lewis T.	Ind	0	0.0
Turnout		0.0	0.0
Llangors (1869)			
		vote	share
James D. Ms.*	Ind	0	0.0
Turnout		0.0	0.0
Llanidloes (2201)			
		vote	share
Morgan G.*	LD	983	92.2
Brand G.	Green	83	7.8
Turnout		48.4	84.4

Llansantffraid (2147)			
		vote	share
Roberts N. Ms.*	Ind	0	0.0
Turnout		0.0	0.0
Llanwrtyd (1282)			
		vote	share
Van-Rees T.*	Ind	0	0.0
Turnout		0.0	0.0
Machynlleth (1612)			
		vote	share
Williams J.*	Ind	0	0.0
Turnout		0.0	0.0
Meifod (1607)			
		vote	share
Jones T.*	Ind	539	78.0
Adams P.	Green	152	22.0
Turnout		43.0	56.0
Montgomery (2074)			
		vote	share
Hamer G.	Ind	0	0.0
Turnout		0.0	0.0
Newton Central (2256)			
		vote	share
Napier J.	LD	238	50.6
Taylor R.	PC	232	49.4
Turnout		20.8	1.3
Newtown Llanwchaiarn (2889)			
		vote	share
Jones K.	Ind	806	66.4
Wort J. Ms.*	Ind	408	33.6
Turnout		42.0	32.8
Newtown South (2989)			
		vote	share
Mackeen J.	Lab	379	46.1
Jackson N.	Ind Lab	235	28.6
Jack S. Ms.	LD	209	25.4
Turnout		27.5	17.5
Painscastle (1559)			
		vote	share
Williams H.*	Ind	0	0.0
Turnout		0.0	0.0
Presteigne (1808)			
		vote	share
Deakins J.*	Ind	481	62.9
Pitts R.	Green	284	37.1
Turnout		42.3	25.8
Radnor (1914)			
		vote	share
Jones E.*	Ind	0	0.0
Turnout		0.0	0.0
Rhayader (2349)			
		vote	share
Lewis V.*	Ind	0	0.0
Turnout		0.0	0.0
Talgarth (1935)			
		vote	share
Williams R.*	Ind	717	80.6
Bailey J.	Green	173	19.4
Turnout		46.0	61.1
Tarell (1706)			
		vote	share
Roberts M. Ms.*	Ind	0	0.0
Turnout		0.0	0.0

Tawe Felte (2945)			
		vote	share
Gwilldm G.*	Lab	0	0.0
Turnout		0.0	0.0
Tregynon (1654)			
		vote	share
Jones D.*	Ind	0	0.0
Turnout		0.0	0.0
Welshpool Llanerchydol (3452)			
		vote	share
Squibb M. Ms.	LD	842	60.8
Dart R.	Ind	349	25.2
Thompson D.	Ind	195	14.1
Turnout		40.2	35.6
Ynysledwyn (3339)			
		vote	share
Lewis H.*	Lab	1,177	54.1
Clee J.	Ind	997	45.9
Turnout		65.1	8.3
Ystradgynlais (2121)			
		vote	share
Walters-Williams J.*	Lab	936	65.8
Barrell T.	PC	487	34.2
Turnout		67.1	31.6

