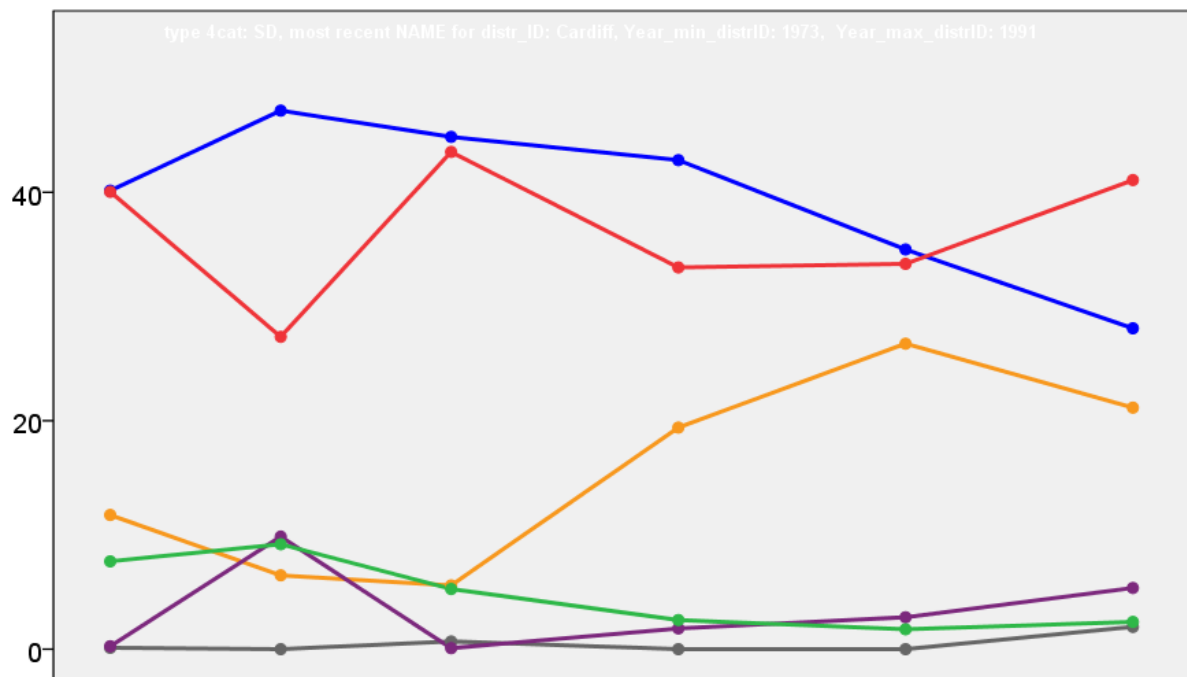


Cardiff Welsh District Council Elections Results 1973-1991



Colin Rallings and Michael Thrasher
The Elections Centre
Plymouth University

The information contained in this report has been obtained from a number of sources. Election results from the immediate post-reorganisation period were painstakingly collected by Alan Willis largely, although not exclusively, from local newspaper reports. From the mid-1980s onwards the results have been obtained from each local authority by the Elections Centre. The data are stored in a database designed by Lawrence Ware and maintained by Brian Cheal and others at Plymouth University. Despite our best efforts some information remains elusive whilst we accept that some errors are likely to remain. Notice of any mistakes should be sent to elections@plymouth.ac.uk. The results sequence can be kept up to date by purchasing copies of the annual Local Elections Handbook, details of which can be obtained by contacting the email address above.

Front cover: the graph shows the distribution of percentage vote shares over the period covered by the results. The lines reflect the colours traditionally used by the three main parties. The grey line is the share obtained by Independent candidates while the purple line groups together the vote shares for all other parties.

Rear cover: the top graph shows the percentage share of council seats for the main parties as well as those won by Independents and other parties. The lines take account of any by-election changes (but not those resulting from elected councillors switching party allegiance) as well as the transfers of seats during the main round of local election.

The lower graph shows for each main round of local elections the overall percentage turnout (solid line), the percentage of women candidates standing at (dotted line) and the percentage of women among those elected (hashed line).

Cardiff 1973

Adamsdown (6071)³

		vote	share
Evans D.	Lab	1,139	74.2
Jones J.	Lab	1,102	-
Costley R.	Lab	1,046	-
Canning E.	Con	306	19.9
Mackie T.	Ind	91	5.9
Turnout		25.3	54.2

Canton (7653)³

		vote	share
Jenkins N.	Lab	1,343	50.4
Brown B.	Con	1,323	49.6
Thomas P.	Lab	1,299	-
Kitson P.	Lab	1,283	-
Tyrell T.	Con	1,230	-
Adams W.	Con	1,171	-
Turnout		34.8	0.8

Cathays (9752)³

		vote	share
Allinston D.	Lab	1,721	44.6
Edwards J.	Lab	1,581	-
Davies W.	Lab	1,525	-
Jones I.	Con	1,049	27.2
Miles J.	Con	891	-
Rivlin M.	Con	851	-
Edwards H.	Lib	620	16.1
Sion G.	PC	466	12.1
Turnout		39.5	17.4

Central (5864)³

		vote	share
Herbert W.	Lab	1,217	62.2
Fish G.	Lab	1,209	-
Seligman D.	Lab	1,119	-
Walters L.	Con	741	37.8
Turnout		33.4	24.3

Ely (14526)⁶

		vote	share
Carling W.	Lab	2,362	67.3
Buttle A.	Lab	2,314	-
Morgan R.	Lab	2,243	-
Gale C.	Lab	2,112	-
Sloman J.	Lab	2,099	-
Lee T.	Lab	2,049	-
Clode W.	Con	791	22.5
Fitzpatrick A.	Con	751	-
Phillips J.	Con	723	-
Joshua J.	Con	714	-
Jones W.	Con	665	-
Hinder A.	Con	654	-
Dowling G.	PC	358	10.2
Lang P.	PC	325	-
McMullen P.	PC	307	-
Storm J.	PC	294	-
Maynard E.	PC	201	-
Turnout		24.2	44.7

Gabalfa (9917)³

		vote	share
Pride E.	Lab	1,647	66.2
Parry M.	Lab	1,636	-
Brown A.	Lab	1,590	-
Oldridge R.	Con	842	33.8
Turnout		25.1	32.3

Grangetown (7540)³

		vote	share
Matthewson M.	Lab	1,299	52.0
Bartlett H.	Lab	1,273	-
Owen P.	Lab	1,206	-
O'Reilly J.	Con	1,198	48.0
Judd G.	Con	1,089	-
Turnout		33.1	4.0

Lisvane Llanedynr & St. Mellons (2418)

		vote	share
Davies T.	Con	0	0.0
Turnout		0.0	0.0

Llandaff (9293)³

		vote	share
Ferguson-Jones H.	Con	1,834	59.0
Flynn K.	Con	1,759	-
Hallinan C.	Con	1,625	-
Maylin N.	Lab	650	20.9
Saunders A.	Lab	628	-
Petty A.	PC	623	20.1
Berridge J.	Lab	508	-
Turnout		33.4	38.1

Llanishen (13635)⁶

		vote	share
Pugh L.	Con	2,475	36.5
Sainsbury J.	Con	2,418	-
Watkiss R.	Con	2,396	-
Morgan N.	Con	2,360	-
O'Neil D.	Con	2,332	-
Barraby W.	Con	2,299	-
Langdon O.	Lib	1,862	27.5
Beasley M.	Lab	1,723	25.4
Goodrum E.	Lab	1,642	-
Beatson F.	Lab	1,633	-
Powell-Davies M.	Lab	1,618	-
Goodrum L.	Lab	1,605	-
Griffiths R.	PC	723	10.7
Turnout		49.7	9.0

Penylan (18983)⁶

		vote	share
Terlezki S.	Con	3,866	50.0
Turnbull G.	Con	3,628	-
Johnson L.	Con	3,601	-
Rapport C.	Con	3,540	-
Austin A.	Con	3,492	-
Thomas A.	Con	3,437	-
Davies J.	Lib	2,573	33.3
Thomas D.	Lib	2,510	-
Williams M.	Lib	2,450	-
Jones M.	Lib	2,278	-
Westerman R.	Lib	2,193	-
Miranthis A.	Lib	2,190	-
Davies M.	Lab	1,287	16.7
Jenkins G.	Lab	1,278	-
Bent R.	Lab	1,255	-
Jobbins A.	Lab	1,205	-
Jones B.	Lab	1,174	-
O'Brien K.	Lab	1,163	-
Turnout		40.7	16.7

Plasmawr (13951)⁶

		vote	share
Harding H.	Lab	1,983	57.4
Tyrell F.	Lab	1,886	-
Huish A.	Lab	1,823	-
Davies H.	Lab	1,777	-
Leondr J.	Lab	1,717	-
West E.	Lab	1,643	-
Hall W.	Con	863	25.0
Norman D.	Con	820	-
Jones J.	Con	819	-
Lloyd V.	Con	798	-
Baynham P.	Con	770	-
Quick S.	PC	608	17.6
Smith S.	PC	573	-
Rowlands R.	PC	560	-
Aaron G.	PC	526	-
Wilson W.	PC	513	-
Nicholson B.	PC	479	-
Turnout		24.8	32.4

Plasnewydd (8251)³

		vote	share
Watkin D.	Con	1,542	40.2
James S.	Con	1,325	-
Evans D.	Con	1,107	-
Troy P.	Lab	986	25.7
Mills A.	Lab	924	-
Cocks J.	Lab	879	-
Richards P.	PC	704	18.3
Nott R.	Lib	605	15.8
Thomas D.	PC	582	-
Riley P.	PC	505	-
Turnout		46.5	14.5

Radyr St. Fagans & Tongwynlais (4183)²

		vote	share
Clarke L.	Con	898	52.7
Millard G.	Con	838	-
Hughes R.	Lab	806	47.3
Bailey G.	Lab	780	-
Turnout		40.7	5.4

Rhiwbina (10378)³

		vote	share
Bain W.	Con	1,912	40.7
Davies M.	Con	1,877	-
Jones G.	Con	1,785	-
O'Brien H.	Lib	1,519	32.3
Cotsen S.	Lib	1,482	-
Davies G.	Lib	1,463	-
Davies D.	PC	692	14.7
Hughes R.	PC	652	-
Mullins M.	Lab	577	12.3
Morris B.	Lab	556	-
Morris T.	Lab	546	-
Williams R.	PC	539	-
Turnout		45.3	8.4

Riverside (7571)³

		vote	share
Davies K.	Con	1,530	47.7
Johnson A.	Con	1,323	-
Doxsey S.	Con	1,235	-
Jones V.	Lab	946	29.5
Hartnett C.	Lab	924	-
White V.	Lab	858	-
Robinson E.	Lib	394	12.3
Lee R.	PC	337	10.5
Turnout		42.4	18.2

Roath (10317)³

		vote	share
Lloyd-Edwards N.	Con	1,811	49.0
Brinks G.	Con	1,639	-
Hutchings C.	Con	1,636	-
Wood D.	Lib	929	25.2
Beauchamp J.	Lib	773	-
Davies J.	Lib	762	-
O'Callaghan T.	Lab	633	17.1
Cravos P.	PC	320	8.7
Turnout		35.8	23.9

Rumney (18837)⁶

		vote	share
Bonar Y.	Lab	2,653	52.7
Evans D.	Lab	2,626	-
Yeomans F.	Lab	2,551	-
Michael A.	Lab	2,520	-
Phillips J.	Lab	2,503	-
Reynolds J.	Lab	2,483	-
Parker S.	Con	1,643	32.7
Brown S.	Con	1,491	-
Laurie T.	Con	1,450	-
Floyd D.	Con	1,428	-
James H.	Con	1,398	-
Trevarthen S.	PC	735	14.6
Turnout		26.7	20.1

South (6788) ³			
		vote	share
Smith F.	Lab	1,540	60.8
Dunleavy P.	Lab	1,537	-
Bowen P.	Lab	1,347	-
Roche T.	Con	994	39.2
Williams E.	Con	811	-
Arnold F.	Con	800	-
Turnout		37.3	21.5

Splott (8553) ³			
		vote	share
Brooks J.	Lab	1,830	65.9
Minton V.	Lab	1,786	-
Ormonde R.	Lab	1,780	-
O'Connell D.	Con	761	27.4
Lewis K.	Con	698	-
Stark J.	Con	692	-
Jones S.	Comm	186	6.7
Turnout		32.5	38.5

Whitchurch (10543) ³			
		vote	share
Purnell D.	Con	2,672	50.3
Norton P.	Lab	2,641	49.7
Davies J.	Con	2,596	-
Riley V.	Con	2,533	-
Donne A.	Lab	2,269	-
Weeks D.	Lab	2,132	-
Turnout		50.4	0.6

Cardiff 1976

Adamsdown (5573) ³			
		vote	share
Evans D.	Lab	1,116	59.9
Costley R.	Lab	996	-
Jones I.	Lab	992	-
Jones B.	Con	747	40.1
Jones D.	Con	586	-
Turnout		33.4	19.8

Canton (7115) ³			
		vote	share
Brown B.	Con	1,901	62.4
Tyrrell T.	Con	1,628	-
Davey D.	Con	1,483	-
Jenkins N.	Lab	1,146	37.6
Thomas P.	Lab	1,126	-
Bassett R.	Lab	0	-
Lee R.	PC	0	0.0
Turnout		42.8	24.8

Cathays (9268) ³			
		vote	share
Allinson D.	Lab	1,529	30.4
Jones L.	Con	1,419	28.2
Edwards J.	Lab	1,390	-
Davies J.	Lab	1,366	-
Keigwyn M.	Con	1,329	-
Thomas D.	Con	1,248	-
Castle R.	Rate	1,046	20.8
Parsons G.	Rate	900	-
Kempton V.	Rate	834	-
German M.	Lib	593	11.8
Roberts J.	Lib	531	-
Snell G.	Lib	467	-
O'Neill T.	PC	448	8.9
Thomas D.	PC	403	-
Smith B.	PC	352	-
Turnout		54.3	2.2

Central (5620) ³			
		vote	share
Fish G.	Lab	1,010	37.5
Herbert W.	Lab	958	-
Marles D.	Con	946	35.2
Scott-Dickens G.	Con	928	-
Seligman D.	Lab	870	-
Thomas C.	Con	850	-
Guy D.	Rate	487	18.1
O'Neill D.	PC	247	9.2
Davies P.	Lib	0	0.0
Riley P.	PC	0	-
Hopkins D.	PC	0	-
Turnout		47.9	2.4

Ely (14405) ⁶			
		vote	share
Carling W.	Lab	2,510	53.0
Buttle M.	Lab	2,458	-
Morgan R.	Lab	2,402	-
Lee T.	Lab	2,258	-
Sloman J.	Lab	2,218	-
Gale C.	Lab	2,218	-
Clode W.	Con	1,745	36.9
Fitzpatrick A.	Con	1,602	-
Phillips F.	Con	1,596	-
Jones M.	Con	1,557	-
Warren M.	Con	1,545	-
Wheeler R.	Con	1,464	-
Dowling G.	PC	479	10.1
Syms J.	PC	416	-
Maynard E.	PC	346	-
Storn J.	PC	333	-
Turnout		32.9	16.2

Gabalfa (9707) ³			
		vote	share
Kingwell M.	Con	2,184	45.9
Parry M.	Lab	2,043	43.0
Merridew T.	Con	1,989	-
Pride E.	Lab	1,971	-
Tatham G.	Con	1,795	-
Brown A.	Lab	1,736	-
Doyle G.	PC	528	11.1
Schoen C.	PC	402	-
Turnout		49.0	3.0

Grangetown (7279) ³			
		vote	share
O'Reilly J.	Con	1,737	57.0
Moorcraft B.	Con	1,671	-
Judd G.	Con	1,647	-
Matthewson M.	Lab	1,309	43.0
Lydiard D.	Lab	1,280	-
Bartlett H.	Lab	1,233	-
Turnout		41.8	14.1

Lisvane Llanedynr & St. Mellons (1735)			
		vote	share
Davies T.	Con	1,127	88.7
Mitchell C.	Lib	144	11.3
Turnout		73.3	77.3

Llandaff (9099) ³			
		vote	share
Jones B.	Con	2,998	67.1
Hermer J.	Con	2,922	-
Jones H.	Con	2,838	-
Petty A.	PC	760	17.0
Saunders A.	Lab	711	15.9
Leno J.	Lab	702	-
Turnout		49.1	50.1

Llanishen (13239) ⁶			
		vote	share
Sainsbury J.	Con	3,660	35.4
Watkiss R.	Con	3,652	-
O'Neill D.	Con	3,648	-
Pugh L.	Con	3,636	-
Morgan N.	Con	3,476	-
Milsom C.	Rate	3,339	32.3
Barraby W.	Con	3,318	-
Langdon O.	Lib	1,307	12.6
Morris T.	Lab	1,173	11.3
Walker M.	Lab	1,122	-
Phillips P.	Lab	1,113	-
Edwards R.	PC	856	8.3
Doyle S.	PC	807	-
Turnout		78.1	3.1

Penylan (22826) ⁶			
		vote	share
Terlezki S.	Con	7,244	65.3
Gower L.	Con	6,974	-
Newman M.	Con	6,893	-
Austin A.	Con	6,886	-
Turnbull G.	Con	6,876	-
Thomas A.	Con	6,571	-
Thomas T.	Lib	1,570	14.1
Jones M.	Lab	1,551	14.0
Wing P.	Lab	1,541	-
O'Brien K.	Lab	1,528	-
Pound R.	Lab	1,491	-
Bayliss G.	Lab	1,477	-
Gaskell K.	Lab	1,152	-
Lindsey P.	Lib	1,129	-
Crowley R.	Lib	1,106	-
Jones B.	Lib	1,063	-
Hill D.	Lib	970	-
Ashford R.	Lib	924	-
Bush K.	PC	733	6.6
Bush E.	PC	731	-
Couch A.	PC	730	-
Phillips H.	PC	712	-
Cravos P.	PC	704	-
Price S.	PC	672	-
Turnout		48.6	51.1

Plasmawr (14094) ⁶			
		vote	share
Huish A.	Lab	2,068	39.4
Hall W.	Con	2,047	39.0
Lloyd F.	Con	2,017	-
Davvies H.	Lab	1,996	-
Pepler D.	Con	1,993	-
Phillips M.	Lab	1,976	-
Tyrrell F.	Lab	1,958	-
Skye L.	Con	1,908	-
Pearce B.	Con	1,888	-
Leonard J.	Lab	1,878	-
McIntyre D.	Con	1,870	-
Shorten B.	Lab	1,859	-
Davies D.	PC	1,131	21.6
Turnout		37.2	0.4

Plasnewydd (8275) ³			
		vote	share
Watkins D.	Con	1,901	49.7
James S.	Con	1,874	-
Evans D.	Con	1,807	-
Norton P.	Lab	897	23.5
Truran J.	Lab	857	-
Bonar J.	Lab	809	-
Thomas O.	PC	674	17.6
Coughlin M.	PC	611	-
Griffiths R.	PC	571	-
German G.	Lib	260	6.8
Jarman P.	Lib	239	-
Verma A.	Lib	188	-
Roxburgh J.	Comm	92	2.4
Turnout		46.2	26.3

Radyr St. Fagans & Tongwynlais (4590) ²			
		vote	share
Clarke L.	Con	0	0.0
Millard G.	Con	0	-
Turnout		0.0	0.0

Rhiwbina (10482) ³			
		vote	share
Bain W.	Con	3,372	58.8
Davies M.	Con	3,359	-
Jones G.	Con	3,222	-
O'Brien H.	Lib	986	17.2
Davies O.	Lib	793	-
Davies K.	PC	694	12.1
Beech C.	Lab	678	11.8
White G.	Lib	676	-
Woolfe E.	Lab	628	-
Williams B.	PC	582	-
Armstrong R.	Lab	572	-
Davies N.	PC	552	-
Turnout		54.7	41.6

Riverside (7276) ³			
		vote	share
Davies K.	Con	1,565	39.6
Mathias L.	Rate	1,254	31.7
Doxey S.	Con	1,253	-
Johnson A.	Con	1,150	-
Powell P.	Rate	941	-
Dixon A.	Lab	746	18.9
Toogood D.	Lab	588	-
Mullins K.	Lab	573	-
Petty G.	PC	392	9.9
KuczyS J.	PC	265	-
Turnout		54.4	7.9

Roath (10348) ³			
		vote	share
Lloyd-Edwards N.	Con	3,062	59.0
Brinks G.	Con	2,706	-
Richards R.	Con	2,698	-
Tucker T.	Lab	886	17.1
Bowman G.	PC	645	12.4
McWilliam J.	Lib	594	11.5
Verma P.	Lib	318	-
Turnout		50.1	42.0

Rumney (19033) ⁶			
		vote	share
Llewellyn N.	Lab	2,980	37.3
Jones V.	Lab	2,843	-
Michael A.	Lab	2,747	-
Phillips J.	Lab	2,693	-
Reynolds J.	Lab	2,685	-
Yeomans F.	Lab	2,681	-
Nicholson C.	Con	2,513	31.5
Mitchell R.	Con	2,502	-
Potter R.	Rate	2,497	31.3
Quinn L.	Con	2,409	-
Wright J.	Con	2,397	-
Hunt L.	Con	2,366	-
Turnout		42.0	5.8

South (6447) ³			
		vote	share
Smith J.	Lab	1,387	56.1
Dunleavy P.	Lab	1,363	-
Bowen P.	Lab	1,230	-
Williams E.	Con	1,084	43.9
Canning E.	Con	1,061	-
Cooper S.	Con	1,033	-
Turnout		38.3	12.3

Splott (7437) ³			
		vote	share
Ormonde R.	Lab	1,483	41.9
Williams C.	Lab	1,325	-
Bonar L.	Lab	1,136	-
Kelly T.	Con	1,015	28.7
Chichester F.	Con	968	-
Warburton R.	Rate	887	25.1
Wilcox K.	Con	876	-
Jones S.	Comm	151	4.3
Turnout		47.5	13.2

Whitchurch (10437) ³			
		vote	share
Purnell D.	Con	3,688	50.3
Riley V.	Con	3,526	-
Davies T.	Con	3,429	-
Howell G.	Lab	1,432	19.5
Bowler R.	Lab	1,388	-
Ogwen E.	PC	1,366	18.6
Owen P.	Lab	1,360	-
Davies S.	Lib	846	11.5
Sofia S.	Lib	492	-
Turnout		70.3	30.8

Cardiff 1979

Adamsdown (5429) ³			
		vote	share
Evans D.	Lab	2,440	68.4
Jones J.	Lab	2,286	-
Ford D.	Lab	2,229	-
Jones B.	Con	1,129	31.6
Quinn L.	Con	916	-
Norman D.	Con	915	-
Turnout		65.7	36.7

Canton (7046) ³			
		vote	share
Brown A.	Con	2,378	50.9
Donovan J.	Lab	2,292	49.1
Davis L.	Lab	2,007	-
Tyrrell T.	Con	1,984	-
Davey D.	Con	1,888	-
Downey T.	Lab	1,861	-
Turnout		66.3	1.8

Cathays (8917) ³			
		vote	share
Allison D.	Lab	3,185	47.0
Edwards J.	Lab	2,964	-
Drysdale J.	Lab	2,928	-
Buckley M.	Con	2,511	37.1
Moorcraft F.	Con	2,374	-
Reynolds P.	Con	2,363	-
Snell G.	Lib	711	10.5
Rees D.	Lib	653	-
Ball J.	Lib	629	-
O'Neill T.	PC	364	5.4
George B.	PC	318	-
Tilley G.	PC	308	-
Turnout		75.9	10.0

Central (5545) ³			
		vote	share
Herbert W.	Lab	1,683	48.1
Flynn M.	Lab	1,631	-
Beach C.	Lab	1,606	-
Marles D.	Con	1,231	35.2
Lowes P.	Con	1,215	-
Miles J.	Con	1,180	-
Jones S.	Lib	338	9.7
Griffiths R.	PC	247	7.1
Sagoo G.	Lib	237	-
Riley P.	PC	205	-
Hopkins D.	PC	193	-
Ball M.	Lib	37	-
Turnout		63.1	12.9

Ely (14505) ⁶			
		vote	share
Carling W.	Lab	6,230	70.1
Buttle A.	Lab	5,855	-
Selgman D.	Lab	5,664	-
Gale C.	Lab	5,356	-
Jenkins N.	Lab	5,143	-
Sloman V.	Lab	5,025	-
Benson R.	Con	2,651	29.9
Bushrod J.	Con	2,532	-
Roberts W.	Con	2,469	-
Fitzpatrick P.	Con	2,456	-
Downes S.	Con	2,424	-
Warren M.	Con	2,392	-
Turnout		61.2	40.3

Gabalfa (9911) ³			
		vote	share
Parry M.	Lab	4,157	55.1
Owen P.	Lab	3,974	-
Matthewson E.	Lab	3,597	-
Merridew T.	Con	3,000	39.8
Saunders C.	Con	2,831	-
Kempton V.	Con	2,770	-
Evans L.	PC	386	5.1
Williams B.	PC	271	-
Schoen C.	PC	213	-
Turnout		76.1	15.3

Grangetown (7183) ³			
		vote	share
O'Reilly J.	Con	2,529	50.1
Judd G.	Con	2,335	-
Moorcraft B.	Con	2,315	-
Lydiard D.	Lab	2,289	45.3
Duddridge P.	Lab	2,240	-
Mainsbridge B.	Lab	2,216	-
Hoolahan B.	PC	231	4.6
Walters I.	PC	142	-
Williams M.	PC	127	-
Turnout		70.3	4.8

Lisvane Llanedynrn & St. Mellons (3037)			
		vote	share
Davies T.	Con	0	0.0
Turnout		0.0	0.0

Llandaff (9054) ³			
		vote	share
Ferguson-James H.	Con	3,954	58.1
Jones M.	Con	3,772	-
Hermer J.	Con	3,677	-
Lewis C.	Lab	1,960	28.8
Rhoden G.	Lab	1,802	-
Bowman G.	PC	896	13.2
Turnout		75.2	29.3

Llanishen (13504) ⁶			
		vote	share
Milson C.	Con	5,952	48.7
Watkiss R.	Con	5,814	-
Smith L.	Con	5,813	-
Lewis A.	Con	5,658	-
Thomas D.	Con	5,636	-
Tatham G.	Con	5,556	-
Brown A.	Lab	3,402	27.8
Davies A.	Lab	3,373	-
Howell H.	Lab	3,301	-
Williams B.	Lab	3,284	-
Jeans S.	Lab	3,191	-
Williams E.	Lab	3,029	-
Pearcy C.	Lib	2,015	16.5
Edwards R.	PC	848	6.9
Doyle S.	PC	820	-
May J.	PC	722	-
Turnout		90.5	20.9

Penylan (25568) ⁶			
		vote	share
Austin A.	Con	10,159	51.5
Hennessy R.	Con	10,114	-
Terlezki S.	Con	10,100	-
Newman M.	Con	10,060	-
John A.	Con	10,039	-
Thomas A.	Con	9,402	-
Thomas G.	Lab	5,317	26.9
Caesar S.	Lab	4,953	-
Edwards M.	Lab	4,921	-
Williams P.	Lab	4,916	-
Green L.	Lab	4,658	-
Davies P.	Lib	3,129	15.8
Jones J.	Lib	2,990	-
Hill D.	Lib	2,961	-
Linsey P.	Lib	2,735	-
Mitchell C.	Lib	2,548	-
Reeves A.	Lib	2,386	-
Bush E.	PC	1,138	5.8
Hughes B.	PC	1,084	-
Couch A.	PC	1,077	-
Morgan A.	PC	1,060	-
Lake C.	PC	1,003	-
Howells I.	PC	970	-
Turnout		77.2	24.5

Plasmawr (14519) ⁶			
		vote	share
O'Driscoll D.	Lab	5,201	52.6
Tyrrell F.	Lab	5,152	-
Phillips M.	Lab	5,044	-
Longden M.	Lab	4,965	-
Evans D.	Lab	4,883	-
Shorten B.	Lab	4,808	-
Hall B.	Con	3,454	34.9
Davies D.	Con	3,331	12.4
Trott A.	Con	3,259	-
Jones W.	Con	3,201	-
Derrick H.	Con	3,141	-
McAuliffe E.	Con	3,139	-
Davies D.	PC	1,228	12.4
Turnout		68.1	17.7

Plasnewydd (8368) ³			
		vote	share
Watkin O.	Con	2,517	40.0
James S.	Con	2,325	-
Evans D.	Con	2,258	-
Richards C.	Lab	2,097	33.3
Robinson C.	Lab	1,848	-
Khan S.	Lab	1,621	-
German G.	Lib	1,022	16.2
Jarman P.	Lib	719	-
Thomas O.	PC	654	10.4
Brightman P.	Lib	629	-
Rees G.	PC	377	-
Bianchi D.	PC	325	-
Turnout		75.2	6.7

Radyr St. Fagans & Tongwynlais (5197) ²			
		vote	share
Clarke L.	Con	0	0.0
Millard G.	Con	0	-
Turnout		0.0	0.0

Rhiwbina (10493) ³			
		vote	share
Bain W.	Con	5,650	67.3
Jones G.	Con	5,561	-
Neale G.	Con	5,549	-
Rees D.	Lab	1,934	23.0
Morris T.	Lab	1,933	-
Woolfe R.	Lab	1,779	-
Davies D.	PC	817	9.7
Williams R.	PC	611	-
Turnout		80.1	44.2

Riverside (7476) ³			
		vote	share
Walker W.	Lab	2,231	40.9
McCarthy J.	Lab	1,983	-
Verma A.	Lab	1,830	-
Doxsey S.	Con	1,814	33.3
Souza De R.	Con	1,789	-
McAndrews F.	Con	1,534	-
Mathias D.	Ind	1,001	18.4
Arthur G.	PC	405	7.4
Turnout		72.9	7.6

Roath (10228) ³			
		vote	share
Lloyd-Edwards N.	Con	4,677	62.7
Hutchings C.	Con	4,563	-
Brinks G.	Con	4,393	-
Tucker T.	Lab	2,784	37.3
Davies N.	Lab	2,426	-
Rees R.	Lab	2,288	-
Turnout		72.9	25.4

Rumney (19012) ⁶			
		vote	share
Llewellyn M.	Lab	8,581	64.4
Drew B.	Lab	7,494	-
English D.	Lab	7,435	-
Michael A.	Lab	7,403	-
Phillips J.	Lab	7,348	-
Reynolds J.	Lab	7,281	-
Davies I.	Con	4,752	35.6
McCarthy A.	Con	4,705	-
Thomas P.	Con	4,654	-
Battista M.	Con	4,597	-
Jose T.	Con	4,532	-
Nicholson P.	Con	4,394	-
Turnout		70.1	28.7

South (6298) ³			
		vote	share
Dunleavy P.	Lab	2,616	59.7
Smith J.	Lab	2,510	-
Bowen P.	Lab	2,312	-
Williams E.	Con	1,475	33.6
Arnold F.	Con	1,378	-
Williams K.	Con	1,228	-
Roberts E.	PC	165	3.8
Harris D.	PC	149	-
Richards S.	Comm	128	2.9
Turnout		69.6	26.0

Splott (7096) ³			
		vote	share
Ormonde D.	Lab	3,393	64.5
Price E.	Lab	3,072	-
Southern J.	Lab	2,793	-
Kelly A.	Con	1,866	35.5
Chichester F.	Con	1,788	-
James R.	Con	1,682	-
Turnout		74.1	29.0

Whitchurch (10221) ³			
		vote	share
Davies T.	Con	4,413	53.8
Griffiths W.	Con	4,359	-
Riley V.	Con	4,299	-
Davies W.	Lab	2,374	28.9
Crews T.	Lab	2,266	-
James T.	Lab	2,151	-
O'Brien P.	Lib	1,021	12.4
Soffa S.	Lib	829	-
Webb C.	Lib	780	-
Pritchard-Jones H.	PC	393	4.8
Williams I.	PC	358	-
Turnout		80.2	24.9

Cardiff 1983

Adamsdown (5626) ²			
		vote	share
Phillips D.	Lab	1,063	61.8
Herbert W.	Lab	1,062	-
Lewis W.	Con	400	23.3
Kelly A.	Con	391	-
Miles A.	Lib	178	10.3
Minor H.	Lib	173	-
Edwards S.	PC	79	4.6
Arthur G.	PC	47	-
Turnout		30.6	38.5

Butetown (2427)			
		vote	share
Legall G.	Lab	870	77.6
Day L.	Con	251	22.4
Turnout		46.2	55.2

Caerau (7501) ²			
		vote	share
Carling W.	Lab	1,462	54.6
Seligman D.	Lab	1,237	-
Hinder A.	Con	658	24.6
McAndrews F.	Con	571	-
Blain J.	Lib/SDP	364	13.6
Jones G.	Green	195	7.3
Turnout		35.7	30.0

Canton (10484) ³			
		vote	share
Brown A.	Con	2,530	50.8
Davey D.	Con	2,215	-
Tyrrell T.	Con	2,170	-
Eccles C.	Lab	1,637	32.9
Drakeford M.	Lab	1,600	-
Winslade J.	Lab	1,549	-
Lawson M.	Lib/SDP	599	12.0
Shepherd G.	Lib/SDP	546	-
Smith W.	Lib/SDP	534	-
Parry K.	PC	212	4.3
Keelan P.	PC	167	-
Turnout		47.5	17.9

Cathays (10321) ³			
		vote	share
German M.	Lib	1,742	36.9
Hornblow F.	Lib	1,639	-
Allinson D.	Lab	1,531	32.4
Rees D.	Lib	1,524	-
Harris M.	Lab	1,496	-
Laing W.	Lab	1,335	-
Moorcraft F.	Con	961	20.4
Phillips S.	Con	909	-
Robinson E.	Con	861	-
Thomas O.	PC	261	5.5
Pearson K.	Green	225	4.8
Turnout		45.7	4.5

Cyncoed (8624) ³			
		vote	share
Hennessy R.	Con	2,977	62.1
John A.	Con	2,957	-
Terlezki S.	Con	2,926	-
Bryant J.	Lib/SDP	1,335	27.8
Bramall P.	Lib/SDP	1,308	-
Sagoo G.	Lib/SDP	1,156	-
Williams P.	Lab	483	10.1
Lipman A.	Lab	468	-
Parkinson M.	Lab	460	-
Turnout		55.6	34.2

Ely (10826) ³			
		vote	share
Buttle A.	Lab	2,083	66.9
Buttle M.	Lab	1,926	-
Gale C.	Lab	1,904	-
Derrick H.	Con	1,031	33.1
Sullivan B.	Con	1,007	-
Bushrod J.	Con	980	-
Turnout		28.8	33.8

Fairwater (10253) ³			
		vote	share
Ward T. Ms.	Lab	1,845	46.5
Phillips M.	Lab	1,807	-
Evans D.	Lab	1,685	-
Hall B.	Con	1,452	36.6
Hallinan M.	Con	1,324	-
Bowels F.	Con	1,317	-
Griffin D.	Lib/SDP	669	16.9
Gasson J.	Lib/SDP	500	-
Turnout		38.7	9.9

Gabalfa (4749)			
		vote	share
Hutchinson C.	Lab	929	40.0
O'Brien H.	Lib/SDP	766	32.9
Turner J.	Con	630	27.1
Turnout		49.0	7.0

Grangetown (9182)³

		vote	share
Smith J.	Lab	2,221	52.9
Bowen P.	Lab	2,074	-
Sheehan C.	Lab	2,032	-
O'Reilly P.	Con	1,978	47.1
Judd G.	Con	1,894	-
Moorcraft B.	Con	1,795	-
	Turnout	45.7	5.8

Heath (9357)³

		vote	share
Milson C.	Con	2,840	57.4
Watkiss R.	Con	2,830	-
Merridew T.	Con	2,702	-
Ebden P.	Lib/SDP	822	16.6
Williams P.	Lib/SDP	732	-
Hughes R.	Lab	702	14.2
Fitzgerald-Kuhl E.	Lib/SDP	685	-
Jones B.	Lab	650	-
Scheeres E.	Lab	629	-
Evans M.	Green	344	7.0
Jones H.	PC	241	4.9
Coyle E.	PC	185	-
	Turnout	52.9	40.8

Lisvane & St. Mellons (4752)

		vote	share
Davies T.	Con	1,152	71.5
Harrison D.	Lib/SDP	260	16.1
Picardie M.	Lab	199	12.4
	Turnout	33.9	55.4

Llandaff (6739)²

		vote	share
Jones E.	Con	1,828	57.0
Hermer J.	Con	1,807	-
Slack W.	Lib/SDP	446	13.9
Rees R.	Lab	359	11.2
Byers C.	Lab	328	-
Rendell R.	Green	299	9.3
Cadog D.	PC	275	8.6
	Turnout	47.6	43.1

Llandaff North (6091)²

		vote	share
Flynn M.	Lab	1,576	44.7
Mattewson E.	Lab	1,433	-
Sheppard M.	Lib/SDP	1,014	28.8
Jenkins T.	Lib/SDP	920	-
Porter D.	Con	866	24.6
Lindsay M.	Con	824	-
O'Neill T.	PC	67	1.9
	Turnout	57.8	16.0

Llanishen (10740)³

		vote	share
Smith L.	Con	1,999	45.3
Thomas A. Ms.	Con	1,904	-
Saunders C.	Con	1,890	-
James T.	Lab	1,578	35.7
Hobbs-Staff A.	Lab	1,550	-
Verma A.	Lab	1,506	-
Khul T.	Lib/SDP	707	16.0
Gough J.	Lib/SDP	705	-
Adalta S.	Lib/SDP	599	-
Couch A.	PC	130	2.9
Balch D.	PC	110	-
	Turnout	41.1	9.5

Llanrumney (9267)³

		vote	share
Llewellyn M.	Lab	1,901	44.8
Phillips J.	Lab	1,711	-
Reynolds J.	Lab	1,646	-
Jones V.	Lib/SDP	1,297	30.6
McCarthy E.	Con	1,041	24.6
Tobin K.	Lib/SDP	1,028	-
Woods S.	Con	1,028	-
Morgan E.	Lib/SDP	1,010	-
Brown S.	Con	987	-
	Turnout	45.7	14.2

Pentwyn (11701)³

		vote	share
Lewis R.	Con	1,763	42.1
Newman M.	Con	1,746	-
Pursew W.	Con	1,687	-
Ceasar S.	Lab	1,128	26.9
Longworth R.	Lab	1,116	-
Lewis S.	Lab	1,041	-
McMahon M.	Lib/SDP	1,030	24.6
Litchfield M.	Lib/SDP	1,024	-
Adams F.	Lib/SDP	985	-
Morgan A.	PC	271	6.5
	Turnout	35.8	15.1

Plasnewydd (12039)⁴

		vote	share
Watkin O.	Con	2,227	36.4
James S.	Con	2,052	-
Evans D.	Con	1,969	-
German G. Ms.	Lib/SDP	1,819	29.7
Oldridge R.	Con	1,743	-
Jenkins G.	Lab	1,532	25.0
Phelps M.	Lab	1,475	-
Hill D.	Lib/SDP	1,395	-
Powell A.	Lib/SDP	1,391	-
Wilkinson J. Ms.	Lab	1,368	-
Randerson J.	Lib/SDP	1,346	-
Walsh M.	Lab	1,346	-
Taylor P.	Green	282	4.6
Rees G.	PC	191	3.1
Hoyle N.	PC	170	-
Ap-Glyn N.	PC	162	-
Morgan C.	PC	155	-
Macmillan R.	Comm	74	1.2
Spencer R.	Comm	72	-
Warhurst J.	Comm	68	-
	Turnout	50.9	6.7

Radyr & St. Fagans (3869)

		vote	share
Clarke L.	Con	1,156	55.1
Drake M.	Lib/SDP	703	33.5
Drew B.	Lab	240	11.4
	Turnout	54.3	21.6

Rhiwbina (9399)³

		vote	share
Roberts E.	Con	3,200	58.2
Neale G.	Con	3,117	-
Sainsbury J.	Con	3,099	-
Crossley S.	Lib/SDP	1,303	23.7
James G.	Lib/SDP	1,037	-
O'Brien P.	Lib/SDP	1,032	-
Walters S.	Lab	783	14.2
Cocks J.	Lab	753	-
Hill R.	Lab	665	-
Evans L.	PC	211	3.8
Jones J.	PC	153	-
	Turnout	58.5	34.5

Riverside (9400)³

		vote	share
Walker W.	Lab	1,699	43.4
Southern J.	Lab	1,660	-
Essex S. Ms.	Lab	1,653	-
Johnson A.	Con	1,301	33.2
Hughes M.	Con	1,296	-
Souza De R.	Con	1,272	-
Mathias D.	Lib/SDP	601	15.3
Roberts J.	Lib/SDP	469	-
Sura G.	Lib/SDP	418	-
Lukes A.	Green	316	8.1
	Turnout	41.7	10.2

Roath (9852)³

		vote	share
Hutchings C.	Con	2,498	60.2
Edwards N.	Con	2,477	-
Brinks G.	Con	2,457	-
Kelloway L.	Lib/SDP	861	20.7
Soffa S.	Lib/SDP	823	-
Callaghan P.	Lib/SDP	818	-
Albrow I.	Lab	668	16.1
Davies N.	Lab	663	-
Screen E.	Lab	625	-
Adams G.	PC	123	3.0
Smith B.	PC	118	-
Evans S.	PC	115	-
	Turnout	42.1	39.4

Rumney (6696)²

		vote	share
Joslyn J.	Con	1,677	53.4
Quinn L.	Con	1,508	-
Owen P.	Lab	1,126	35.8
Longden M.	Lab	1,113	-
Morgan M.	Lib/SDP	340	10.8
	Turnout	46.9	17.5

Splott (7941)²

		vote	share
Ormonde D.	Lab	1,860	55.0
Price E.	Lab	1,759	-
Chichester F.	Con	820	24.2
James R.	Con	751	-
Evans P.	Lib/SDP	603	17.8
Lake S.	PC	100	3.0
	Turnout	42.6	30.7

Trowbridge (8408)²

		vote	share
English D.	Lab	1,120	76.2
Michael A.	Lab	1,103	-
McCabe A.	Con	350	23.8
	Turnout	17.5	52.4

Whitchurch & Tongwynlais (11600)⁴

		vote	share
Griffiths W.	Con	3,460	54.7
Griffiths B.	Con	3,320	-
Davies T.	Con	3,294	-
Riley V.	Con	3,221	-
Crews T.	Lab	1,445	22.8
Hutchinson D.	Lab	1,383	-
Williams J.	Lab	1,291	-
White V.	Lab	1,265	-
Hickey P.	Lib/SDP	1,141	18.0
Howell H.	Lib/SDP	999	-
Holder A.	Lib/SDP	993	-
Morton S.	Lib/SDP	933	-
Pritchard-Jones H.	PC	285	4.5
Jobbins A.	PC	209	-
	Turnout	54.6	31.8

Cardiff 1987**Adamsdown (5637)²**

		vote	share
Jones J.	Lab	1,196	57.6
Herbert W.	Lab	1,188	-
Callaghan P.	ALL	407	19.6
Munton D.	Con	372	17.9
Munton J.	Con	350	-
Borkoles J.	ALL	327	-
Edwards S.	PC	102	4.9
	Turnout	36.8	38.0

Butetown (2432)

		vote	share
Legall G.	Lab	700	66.4
Dickens W.	Con	269	25.5
Smith J.	ALL	85	8.1
	Turnout	43.3	40.9

Caerau (7516) ²			
		vote	share
Carling W.	Lab	1,633	46.9
Seligman D.	Lab	1,502	-
Gasson J. Ms.	ALL	1,136	32.6
Williams J.	ALL	980	-
Trigg C.	Con	593	17.0
Trigg R.	Con	587	-
Jones G.	Green	119	3.4
Turnout		46.3	14.3

Canton (10505) ³			
		vote	share
Davey D.	Con	2,248	39.4
Tyrrell T.	Con	2,235	-
Jones I.	Con	2,203	-
Williams G.	Lab	2,005	35.2
Southern J.	Lab	1,948	-
Hughes R.	Lab	1,885	-
Wigley A.	ALL	827	14.5
Fox V.	ALL	826	-
Denny J.	ALL	824	-
Turner V. Ms.	Green	384	6.7
Ap-Henry C.	PC	240	4.2
Turnout		54.3	4.3

Cathays (10342) ³			
		vote	share
German M.	ALL	1,992	37.6
Allinson D.	Lab	1,954	36.9
Hornblow F.	ALL	1,887	-
Baker A.	Lab	1,687	-
Sparks M.	ALL	1,684	-
Champion C.	Lab	1,683	-
Hutton N.	Con	866	16.4
Morgan E.	Con	779	-
Phillips S.	Con	749	-
Von-Rhuland C.	Green	314	5.9
Adlam R.	PC	168	3.2
Williams M. Ms.	PC	152	-
Smith B.	PC	148	-
Turnout		51.2	0.7

Cyncoed (8641) ³			
		vote	share
Randerson J. Ms.	ALL	3,055	50.7
Lewis N.	ALL	2,797	-
Pickets T. Ms.	ALL	2,708	-
Hennessy R.	Con	2,620	43.5
John A.	Con	2,518	-
Jones L.	Con	2,458	-
Jenkins G.	Lab	347	5.8
Davis L.	Lab	303	-
Ernest H.	Lab	299	-
Turnout		69.7	7.2

Ely (10848) ³			
		vote	share
Buttle A.	Lab	2,361	58.8
Buttle M.	Lab	2,316	-
Gale C.	Lab	2,207	-
Clark A.	Con	842	21.0
Courtis J.	Con	819	-
Howe C.	ALL	810	20.2
Reid N.	ALL	791	-
Mullins A.	Con	788	-
Arcos M.	ALL	762	-
Turnout		37.0	37.9

Fairwater (10274) ³			
		vote	share
Phillips M.	Lab	2,224	40.1
Ward T. Ms.	Lab	2,161	-
Evans D.	Lab	2,086	-
Davies M.	ALL	1,608	29.0
Ward C.	Con	1,522	27.4
Gillard K.	Con	1,433	-
Norman D. Ms.	Con	1,405	-
Duffield J.	ALL	866	-
Sully J.	ALL	802	-
Keelan P.	PC	199	3.6
Turnout		54.0	11.1

Gabalfa (4759)			
		vote	share
Hutchinson C.	Lab	1,296	51.7
Bevan R.	Con	574	22.9
Pearcey V.	ALL	565	22.5
Thorne N.	Green	71	2.8
Turnout		52.7	28.8

Grangetown (9201) ³			
		vote	share
Smith J.	Lab	2,213	47.4
Gallagher J. Ms.	Lab	2,144	-
Thorne L. Ms.	Lab	2,110	-
O'Reilly J.	Con	1,885	40.4
Quinn L.	Con	1,741	-
Arnold F.	Con	1,574	-
Lewis D.	ALL	568	12.2
Jones M.	ALL	541	-
Verma P.	ALL	529	-
Turnout		50.7	7.0

Heath (9376) ³			
		vote	share
Watkiss R.	Con	2,757	53.0
Milson C.	Con	2,747	-
Merridew T.	Con	2,655	-
Capron P.	ALL	1,211	23.3
Monkley W.	ALL	1,188	-
Fitzgerald-Kuhl E.	ALL	1,103	-
Hughes F.	Lab	816	15.7
Hambleton P.	Lab	806	-
Scheeres E.	Lab	751	-
Evans M.	Green	421	8.1
Turnout		55.5	29.7

Lisvane & St. Mellons (4762)			
		vote	share
Richards J.	Con	1,328	56.9
Richards E.	ALL	807	34.6
Walsh M.	Lab	197	8.4
Turnout		49.0	22.3

Llandaff (6753) ²			
		vote	share
Hermer J.	Con	1,906	50.4
Jones M. Ms.	Con	1,846	-
Marshall D.	ALL	1,108	29.3
Slack W.	ALL	1,037	-
Bettinson C.	Lab	503	13.3
Couper N.	Lab	487	-
Jones G. Ms.	PC	267	7.1
Turnout		56.0	21.1

Llandaff North (6103) ²			
		vote	share
Flynn M.	Lab	1,616	56.0
Matthewson E.	Lab	1,484	-
Marshall J.	Con	679	23.5
Gunney K.	Con	678	-
Chamberlain E.	ALL	468	16.2
Hallett G.	ALL	435	-
Rendell R.	Green	123	4.3
Turnout		47.3	32.5

Llanishen (10762) ³			
		vote	share
Tatham P. Ms.	Con	2,308	40.0
Gretton A.	Con	2,272	-
Thomas A. Ms.	Con	2,228	-
Davies C.	Lab	1,758	30.5
Matthews W.	ALL	1,706	29.6
Jones B.	Lab	1,665	-
Warlow E.	ALL	1,662	-
Laing W. Ms.	Lab	1,662	-
Capron A.	ALL	1,661	-
Turnout		53.6	9.5

Llanrumney (9286) ³			
		vote	share
Llewellyn M.	Lab	2,184	51.3
Phillips J.	Lab	2,029	-
Reynolds J.	Lab	2,001	-
Morgan E.	ALL	1,085	25.5
Coughlan H.	ALL	1,062	-
Chamberlain S.	ALL	1,046	-
Woods S.	Con	987	23.2
Glover M.	Con	977	-
McCarthy A.	Con	956	-
Turnout		45.8	25.8

Pentwyn (11725) ³			
		vote	share
Briley T.	ALL	1,755	36.8
Holman K.	ALL	1,717	-
Ribton P.	ALL	1,686	-
Newman M.	Con	1,474	30.9
Lewis R.	Con	1,469	-
Pursey W.	Con	1,416	-
Melia S.	Lab	1,310	27.5
Mawn G.	Lab	1,284	-
Peterson M.	Lab	1,266	-
Morgan A.	PC	148	3.1
Balch D.	PC	108	-
Williams R.	PC	98	-
Jones P.	Ind Soc	81	1.7
Turnout		40.7	5.9

Plasnewydd (12063) ⁴			
		vote	share
German G. Ms.	ALL	2,377	34.6
Harris G.	Con	1,904	27.7
Armitage P.	Lab	1,766	25.7
Salway F.	ALL	1,757	-
Screen E.	Lab	1,718	-
Wooley G.	ALL	1,685	-
Mitchell P.	Lab	1,631	-
Thornton D.	Lab	1,591	-
Watkin O.	Con	1,569	-
James S.	Con	1,472	-
Evans D.	Lab	1,374	-
Harris T.	Con	1,209	-
Taylor P.	Green	456	6.6
Glyn Ap N.	PC	208	3.0
Bevan D.	PC	203	-
Macmillan R.	Comm	156	2.3
Spencer R.	Comm	125	-
Turnout		56.9	6.9

Radyr & St. Fagans (3877)			
		vote	share
Clarke L.	Con	1,342	51.6
Robinson P.	ALL	956	36.8
Hughes R.	Lab	303	11.6
Turnout		67.1	14.8

Rhiwbina (9418) ³			
		vote	share
Neale G.	Con	2,955	50.6
Heselton K.	Con	2,846	-
Unwin G.	Con	2,769	-
Haines H.	ALL	1,624	27.8
Brent J. Ms.	ALL	1,623	-
Power G.	ALL	1,605	-
Williams S.	Lab	744	12.7
Bethell D.	Lab	729	-
Hill R.	Lab	688	-
Sainsbury J.	Green	522	8.9
Turnout		62.1	22.8

Riverside (9419) ³			
		vote	share
Davidson J. Ms.	Lab	2,274	47.6
Essex S. Ms.	Lab	2,144	-
Wilson J.	Lab	1,912	-
Clarke S.	Con	1,124	23.5
Griffiths R.	Con	1,119	-
Renwick A.	Con	1,093	-
Lawrie E.	ALL	579	12.1
Keward L.	ALL	562	-
Bayley J.	ALL	549	-
Scanlon S.	Green	471	9.9
Hodges N.	PC	327	6.8
Turnout		50.7	24.1

Roath (9872) ³			
		vote	share
Kelloway C. Ms.	ALL	2,229	31.2
Brinks G.	Con	2,178	30.5
Williams D.	Con	2,115	-
Hill B.	Con	2,099	-
Soffa S.	Lib	2,015	28.2
Lane V.	ALL	2,004	-
Parsons D.	Lab	728	10.2
Butler N.	Lab	714	-
Harries M.	Lab	678	-
Turnout		72.4	0.7

Rumney (6710) ²			
		vote	share
Joslyn B.	Con	1,742	47.7
Lowder G.	Con	1,621	-
Bevan D.	Lab	1,489	40.8
Payne M.	Lab	1,346	-
Walker D.	ALL	420	11.5
Al-Ubaidi C.	ALL	361	-
Turnout		54.4	6.9

Splott (7957) ²			
		vote	share
Mungham G.	Lab	2,373	62.7
Ormonde D.	Lab	2,369	-
Fox A.	Con	842	22.2
Porter G.	Con	779	-
Ahmad S.	ALL	289	7.6
Miner C.	ALL	287	-
Jones E.	PC	282	7.4
Turnout		47.6	40.4

Trowbridge (8425) ²			
		vote	share
English D.	Lab	1,628	62.7
Michael A.	Lab	1,614	-
McCarthy J.	Con	603	23.2
Sellwood W.	Con	534	-
Morgan M.	ALL	364	14.0
Cuff J.	ALL	343	-
Turnout		30.8	39.5

Whitchurch & Tongwynlais (11623) ⁴			
		vote	share
Griffiths W.	Con	3,142	44.8
Griffiths B.	Con	2,929	-
Davies T.	Con	2,911	-
Riley V.	Con	2,664	-
Hutchinson D.	Lab	2,040	29.1
James T.	Lab	2,034	-
Morrissey R.	Lab	1,866	-
Jenkins T.	ALL	1,830	26.1
Paskell A.	Lab	1,819	-
Jones M.	ALL	1,817	-
Haines R.	ALL	1,728	-
Phillips R.	ALL	1,650	-
Turnout		60.3	15.7

Cardiff 1991

Adamsdown (5649) ²			
		vote	share
Jones J.*	Lab	1,209	65.9
Herbert W.*	Lab	1,194	-
Howells N.	LD	256	14.0
Baker A.	Con	220	12.0
Stevenson S. Ms.	LD	210	-
Jeffreys B. Ms.	Con	201	-
Davies H.	PC	150	8.2
Turnout		33.0	51.9

Butetown (2437)			
		vote	share
Campbell R. Ms.	Ind	572	46.4
Foday B.	Lab	532	43.1
Summerhayes K. Ms.	Con	114	9.2
Singh B.	LD	16	1.3
Turnout		51.0	3.2

Caerau (7532) ²			
		vote	share
Gasson J. Ms.*	LD	1,914	49.9
Ernest H.	Lab	1,546	40.3
Seligman D.*	Lab	1,444	-
Burley R.	LD	1,417	-
Pithers A.	Con	258	6.7
Best R. Ms.	Green	121	3.2
Turnout		48.0	9.6

Canton (10527) ³			
		vote	share
Brennan K.	Lab	2,485	50.8
Mitchell P.	Lab	2,351	-
Thomas D.	Lab	2,153	-
Davey D.*	Con	1,473	30.1
Docking S.	Con	1,421	-
Tyrell T.*	Con	1,405	-
Crees P.	LD	513	10.5
Kettle M. Ms.	LD	464	-
Turner V. Ms.	Green	416	8.5
Morris C. Ms.	LD	386	-
Turnout		44.0	20.7

Cathays (10363) ³			
		vote	share
German M.*	LD	2,231	41.7
Hornblow F.*	LD	2,115	-
Allinson D.*	Lab	1,903	35.6
Rees D.	LD	1,742	-
Glaister L. Ms.	Lab	1,672	-
Surridge R.	Lab	1,533	-
Rees B. Ms.	Con	621	11.6
Clark N.	Green	597	11.2
Embers D.	Con	496	-
Williams M. Ms.	Con	457	-
Turnout		46.0	6.1

Cyncoed (8659) ³			
		vote	share
Randerson J. Ms.*	LD	3,134	55.1
Pickets T. Ms.*	LD	2,956	-
Lewis N.*	LD	2,846	-
Baker C.	Con	1,868	32.8
Donnelly P.	Con	1,803	-
Loader E.	Con	1,747	-
Lashford S. Ms.	Lab	396	7.0
Tugwell C.	Lab	393	-
James V. Ms.	Lab	365	-
Corker D. Ms.	Green	290	5.1
Turnout		62.0	22.3

Ely (10870) ³			
		vote	share
Morgan E. Ms.*	Lab	2,448	67.9
Davies T.	Lab	2,194	-
Gale C.*	Lab	2,144	-
Gillard K. Ms.	Con	687	19.1
Sadler I.	LD	471	13.1
Rawnsley M. Ms.	LD	428	-
Hewlett R.	LD	415	-
Turnout		34.0	48.8

Fairwater (10295) ³			
		vote	share
Phillips M.*	Lab	2,501	52.3
Ward T. Ms.*	Lab	2,497	-
Evans D.*	Lab	2,227	-
Norman D. Ms.	Con	1,046	21.9
Clarke W.	Con	1,002	-
Drake R.	SDP	717	15.0
Ceaton C. Ms.	LD	521	10.9
White S.	LD	373	-
Wigley A. Ms.	LD	329	-
Turnout		41.0	30.4

Gabalfa (4769)			
		vote	share
Hutchinson C.*	Lab	1,362	63.1
Morgan E. Ms.	Con	506	23.5
Pearcy C.	LD	289	13.4
Turnout		45.0	39.7

Grangetown (9220) ³			
		vote	share
Gallagher J. Ms.*	Lab	2,192	54.5
Smith J.*	Lab	2,129	-
Thorne L. Ms.*	Lab	2,123	-
Summerhayes J. Ms.	Con	917	22.8
Arnold F.	Con	902	-
Trask S. Ms.	Con	757	-
Fawkes P.	PC	358	8.9
Turnbull J. Ms.	LD	341	8.5
Shaw K.	Green	212	5.3
Verma M.	LD	153	-
Sayed A.	LD	152	-
Turnout		40.0	31.7

Heath (9395) ³			
		vote	share
Milsom C.*	Con	1,829	34.6
Donnelly P.	Con	1,770	-
Tatham G.*	Con	1,643	-
Rhodes N.	Ind	1,470	27.8
Monkley W.	LD	854	16.1
Hallett V. Ms.	LD	810	-
James J.	LD	805	-
Walters S.	Lab	750	14.2
Poole L.	Lab	650	-
Culat A.	Lab	600	-
Evans M.	Green	386	7.3
Turnout		42.0	6.8

Lisvane & St. Mellons (4772)			
		vote	share
Richards J.*	Con	1,217	52.0
Holland A. Ms.	LD	801	34.2
Davis L.	Lab	265	11.3
Duddy M. Ms.	Green	56	2.4
Turnout		49.0	17.8

Llandaff (6767) ²			
		vote	share
Hermer J.*	Con	1,631	46.1
Jones M. Ms.*	Con	1,605	-
Seligman V. Ms.	Lab	836	23.6
Watson R.	Lab	775	-
Slack W.	LD	501	14.2
Williams E.	LD	393	-
Jones G. Ms.	PC	328	9.3
James F.	Green	241	6.8
Turnout		49.0	22.5

Llandaff North (6116) ²			
		vote	share
Flynn M.*	Lab	1,799	66.9
Matthewson M. Ms.*	Lab	1,666	-
Morgan D.	Con	548	20.4
Marshall J.	Con	524	-
James G. Ms.	LD	343	12.8
Wright D.	LD	276	-
Turnout		46.0	46.5

Llanishen (10784) ³			
		vote	share
Tatham P. Ms.*	Con	2,382	41.9
Gretton A.*	Con	2,316	-
Hunt G.	Lab	2,308	40.6
Matthews W.	Lab	2,252	-
Laing W. Ms.	Lab	2,239	-
Thomas A. Ms.*	Con	2,158	-
Cawley M.	LD	989	17.4
Hallett V. Ms.	LD	951	-
Richards E.	LD	900	-
Turnout		54.0	1.3

Llanrumney (9305) ³			
		vote	share
Bird G. Ms.*	Lab	2,575	69.4
James B.*	Lab	2,386	-
Phillips J.*	Lab	2,159	-
McCarthy A.	Con	743	20.0
Robinson R.	Con	735	-
Hunt H. Ms.	Con	694	-
Davey L.	Green	392	10.6
Turnout		39.0	49.4

Pentwyn (11749)³			
		vote	share
Longworth R.*	Lab	1,817	43.0
Cubitt P.	Lab	1,702	-
Sullivan J.	Lab	1,641	-
Walklett J. Ms.	LD	1,292	30.6
McMahon M.	LD	1,270	-
Williams G.	LD	1,221	-
Pursey W.	Con	813	19.2
Richardson E.	Con	777	-
West V. Ms.	Con	727	-
John G. Ms.	Green	305	7.2
Turnout		35.0	12.4

Plasnewydd (12088)⁴			
		vote	share
Cox A. Ms.	Lab	2,401	37.4
Morris P.	Lab	2,203	-
Jackson F. Ms.	Lab	2,153	-
Wilkinson J. Ms.	Lab	2,083	-
German G. Ms.*	LD	1,782	27.8
Jennett S. Ms.	LD	1,459	-
Bennett J.	LD	1,379	-
Verma P.	LD	1,226	-
Cox S. Ms.	Con	1,048	16.3
Fisher K. Ms.	Con	933	-
Porter D.	Con	876	-
Williams D.	Con	809	-
Von Ruhland C.	Green	675	10.5
Edwards S. Ms.	PC	511	8.0
Turnout		43.0	9.6

Radyr & St. Fagans (3885)			
		vote	share
Davison-Sebry P.	Con	1,035	48.4
Robinson P.	Lab	600	28.1
Roberts N. Ms.	LD	502	23.5
Turnout		55.0	20.4

Rhiwbina (9437)³			
		vote	share
Neale G.*	Con	2,642	50.5
Sainsbury J.*	Con	2,605	-
Heselton K.*	Con	2,483	-
Jenkins L.	Lab	1,183	22.6
Minkes J.	Lab	1,093	-
Kempton A.	Lab	987	-
Brent J. Ms.	LD	976	18.7
Hallett G.	LD	927	-
Bowden K. Ms.	LD	832	-
Jones G.	Green	427	8.2
Turnout		52.0	27.9

Riverside (9438)³			
		vote	share
Brown R.*	Lab	2,340	54.8
Davidson J. Ms.*	Lab	2,295	-
Essex S. Ms.*	Lab	2,271	-
Rhodes N.	Con	776	18.2
Crosby G. Ms.	Con	736	-
Young P.	Con	720	-
Ward P.	Green	406	9.5
Ap-Henri C.	PC	382	8.9
Addison R.	LD	367	8.6
Burgess A. Ms.	LD	303	-
Fawcett R.	LD	247	-
Turnout		41.0	36.6

Roath (9892)³			
		vote	share
Kelloway C. Ms.*	LD	2,717	49.1
Michaelis M. Ms.	LD	2,458	-
Salway F. Ms.	LD	2,344	-
Brinks G.*	Con	1,615	29.2
Williams D.*	Con	1,415	-
Harris D.	Con	1,398	-
Rees R.	Lab	818	14.8
Groves D.	Lab	789	-
Stuart A.	Lab	629	-
Beasley D.	Green	386	7.0
Turnout		51.0	19.9

Rumney (6724)²			
		vote	share
Huish A.	Lab	1,802	59.7
Holland C. Ms.	Lab	1,649	-
Hollands A. Ms.	Con	1,216	40.3
Sharp L.	Con	1,079	-
Turnout		46.0	19.4

Splott (7974)²			
		vote	share
Mungham G.*	Lab	2,694	75.9
Ormonde D.*	Lab	2,572	-
Donaldson G. Ms.	Con	585	16.5
Ayland C. Ms.	Con	546	-
Febbo J. Ms.	LD	271	7.6
Bhagat R.	LD	193	-
Turnout		46.0	59.4

Trowbridge (8442)²			
		vote	share
English D.*	Lab	1,689	61.7
Hughes R.*	Lab	1,658	-
Cashin A.	Con	644	23.5
Thomas K.	Con	625	-
Ford W.	LD	274	10.0
Deogan H.	LD	263	-
Parry S.	PC	129	4.7
Turnout		33.0	38.2

Whitchurch & Tongwynlais (11647)⁴			
		vote	share
Griffiths W.*	Con	3,033	42.5
Davies T.*	Con	2,817	-
Griffiths B.*	Con	2,798	-
Riley V.*	Con	2,652	-
Bethell D.	Lab	2,629	36.8
Crews T.	Lab	2,561	-
Owen P.	Lab	2,376	-
Winters M.	Lab	2,176	-
Mellem G. Ms.	LD	832	11.6
Howell H.	LD	812	-
Leavers F.	LD	810	-
Williams T.	LD	658	-
Pritchard-Jones H.	PC	648	9.1
Turnout		56.0	5.7

