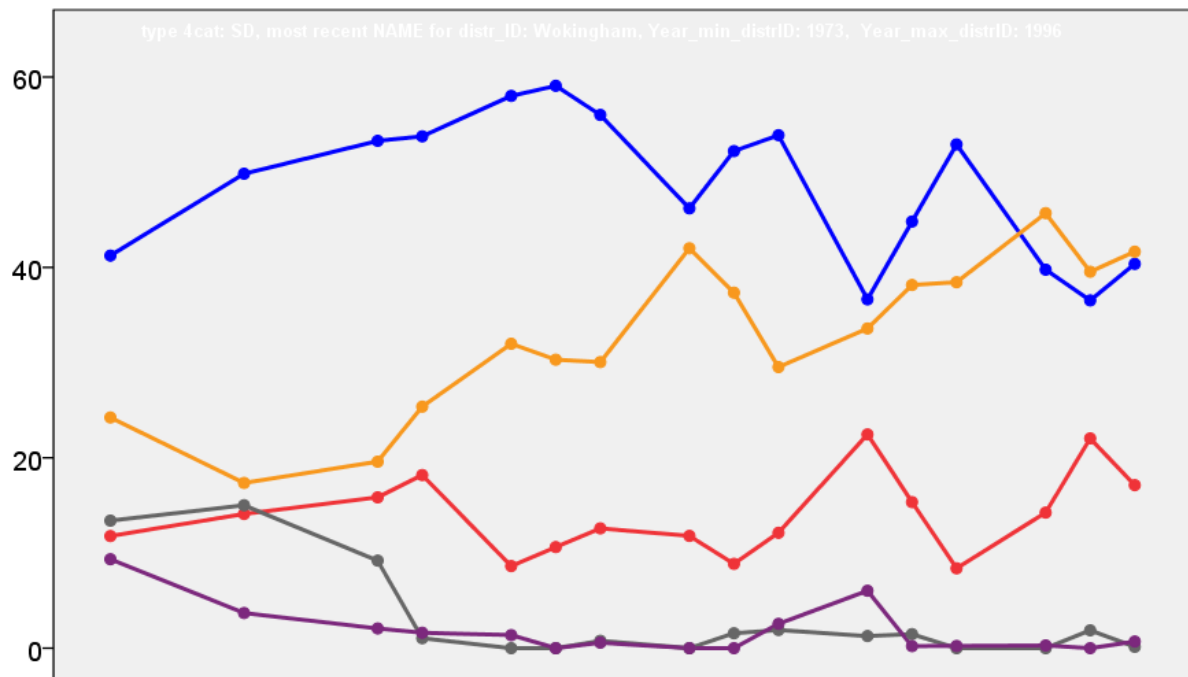


# Wokingham District Council Election Results 1973-1996



Colin Rallings and Michael Thrasher  
The Elections Centre  
Plymouth University

The information contained in this report has been obtained from a number of sources. Election results from the immediate post-reorganisation period were painstakingly collected by Alan Willis largely, although not exclusively, from local newspaper reports. From the mid-1980s onwards the results have been obtained from each local authority by the Elections Centre. The data are stored in a database designed by Lawrence Ware and maintained by Brian Cheal and others at Plymouth University. Despite our best efforts some information remains elusive whilst we accept that some errors are likely to remain. Notice of any mistakes should be sent to [elections@plymouth.ac.uk](mailto:elections@plymouth.ac.uk). The results sequence can be kept up to date by purchasing copies of the annual Local Elections Handbook, details of which can be obtained by contacting the email address above.

Front cover: the graph shows the distribution of percentage vote shares over the period covered by the results. The lines reflect the colours traditionally used by the three main parties. The grey line is the share obtained by Independent candidates while the purple line groups together the vote shares for all other parties.

Rear cover: the top graph shows the percentage share of council seats for the main parties as well as those won by Independents and other parties. The lines take account of any by-election changes (but not those resulting from elected councillors switching party allegiance) as well as the transfers of seats during the main round of local election.

The lower graph shows for each main round of local elections the overall percentage turnout (solid line), the percentage of women candidates standing at (dotted line) and the percentage of women among those elected (hashed line).

## Wokingham 1973

Arborfield (1215)			
		vote	share
Hoyle D. Ms.	Con	0	0.0
Turnout		0.0	0.0
Barkham (1058)			
		vote	share
Walker J.	Ind	0	0.0
Turnout		0.0	0.0
Bulmershe (5687) @ 4			
		vote	share
Keane J.	Lib	801	46.5
Allen M.	Lib	787	-
Wicks G.	Lib	787	-
Kirk C.	Lib	760	-
Dixon P. Ms.	Lab	569	33.0
Boyle K.	Lab	552	-
Newport R.	Lab	522	-
Delea M.	Lab	497	-
Jones S.	Con	354	20.5
Dyer D.	Con	351	-
Hamilton J.	Con	323	-
Turnout		30.3	13.5
California (1654) <sup>2</sup>			
		vote	share
Jackson S.	Con	0	-
Washington P.	Con	0	0.0
Turnout		0.0	0.0
Charvil (851)			
		vote	share
Hearn R.	Ind	0	0.0
Turnout		0.0	0.0
Coronation (4164) <sup>3</sup>			
		vote	share
Watts K.	Lib	753	52.9
Roberts M.	Lib	696	-
Pritchard I.	Lib	638	-
Petty B.	Con	559	39.3
Smith A.	Con	555	-
Young H.	Con	516	-
Boyle P.	Lab	111	7.8
Rayner B.	Lab	109	-
Pock P.	Lab	108	-
Turnout		34.2	13.6
Emmbrook (1356)			
		vote	share
Mayers J. Ms.	Con	0	0.0
Turnout		0.0	0.0
Ewendons (2355) <sup>2</sup>			
		vote	share
Watson J.	Ind	567	57.4
Sansom B.	Ind	543	-
Brunning S.	Con	421	42.6
Brunning P.	Con	378	-
Turnout		42.0	14.8
Finchampstead (2769) <sup>2</sup>			
		vote	share
Louis Sir Dickens	Con	396	71.1
Vaughan Morgan I.	Con	340	-
Matthews D.	Ind	161	28.9
Turnout		20.1	42.2
Hurst (1183)			
		vote	share
Byass D. Ms.	Con	256	56.5
Gosden A.	Ind	114	25.2
Nodrum W.	Ind Con	83	18.3
Turnout		38.3	31.3

Little Hungerford (2517) <sup>2</sup>			
		vote	share
Webbing J.	Ind	0	0.0
English E.	Ind	0	-
Turnout		0.0	0.0
Loddon (4970) @ 4			
		vote	share
Brockway R.	Lib	1,149	56.9
Wise J. Ms.	Lib	1,072	-
Fulford M.	Lib	1,057	-
Selway M.	Lib	999	-
Dawkins J.	Con	661	32.7
Dawkins A.	Con	626	-
Henderson K. Ms.	Con	591	-
Gauld J.	Con	575	-
Norris M.	Lab	209	10.4
Simpson F.	Lab	183	-
Williams J.	Lab	183	-
Warnes W.	Lab	164	-
Turnout		40.6	24.2
No. 10 (Shinfield: School) (1647)			
		vote	share
Rout C.	Ind	0	0.0
Turnout		0.0	0.0
No. 17 (South Woodley) (1795)			
		vote	share
Cole P. Ms.	Con	459	69.4
Mead R.	Lab	202	30.6
Turnout		36.8	38.9
No. 23 (Norreys) (3904) <sup>3</sup>			
		vote	share
Boyd R.	Res	854	38.6
Mossman M.	Con	777	35.1
Davis J. Ms.	Con	733	-
Watson B.	Con	646	-
Tattersall J.	Lab	583	26.3
Bellchambers A.	Lab	441	-
Clements P.	Lab	394	-
Turnout		56.7	3.5
No. 24 (Westcott) (1996)			
		vote	share
Cook G.	Res	474	52.9
Johnson P.	Con	422	47.1
Turnout		44.9	5.8
No. 4 (Earley Central) (3177) <sup>2</sup>			
		vote	share
Chamberlain P.	Con	542	47.8
Fiaherly H.	Con	533	-
Russell J.	Lib	388	34.2
Swynfield-Lain R.	Lib	377	-
Waites N.	Lab	205	18.1
Turnout		35.7	13.6
No. 5 (Earley North) (1801)			
		vote	share
Vallance N.	Res	502	61.4
Watson R.	Lib	315	38.6
Turnout		45.4	22.9
No. 6 (Earley South) (2970) <sup>2</sup>			
		vote	share
Adkins A.	Lib	455	43.5
Smalley D.	Lib	447	-
Meekings B.	Con	442	42.2
Hughes E.	Con	420	-
Silverman L.	Lab	150	14.3
Turnout		35.3	1.2
No. 8 (Shinfield: Rise & Grazeley) (1421)			
		vote	share
Stanley K.	Con	0	0.0
Turnout		0.0	0.0

No. 9 (Shinfield: Ryeish Green) (1343)			
		vote	share
Knapp T.	Con	0	0.0
Turnout		0.0	0.0
Norreys (2702) <sup>2</sup>			
		vote	share
Austin D.	Con	708	64.0
Busst M. Ms.	Con	689	-
Underdown M.	Lib	399	36.0
Williamson S.	Lib	395	-
Turnout		40.5	27.9
Remenham & Wargrave (3121) <sup>2</sup>			
		vote	share
Bramall G.	Con	605	63.2
Johnson E.	Con	401	-
Rhodes C.	Ind	352	36.8
Turnout		30.7	26.4
Sonning (1093)			
		vote	share
Scott M.	Ind	0	0.0
Turnout		0.0	0.0
St. Sebastians (3744) <sup>3</sup>			
		vote	share
Dowding D. Ms.	Con	994	42.7
Trimming J.	Con	821	-
Randall P.	Lib	700	30.1
Smith G.	Ind	633	27.2
Turnout		62.2	12.6
Swallowfield (1400)			
		vote	share
Davies E.	Ind	219	36.1
Rawlings H.	Ind	207	34.1
Sumpster M.	Con	181	29.8
Turnout		43.4	2.0
Twyford & Ruscombe (3679) <sup>3</sup>			
		vote	share
Funnel M. Ms.	Con	666	43.3
Cole J.	Con	501	-
Robinson A.	Ind	490	31.8
Finch J.	Lab	383	24.9
Thomas R.	Lab	348	-
Turnout		41.8	11.4
Winnersh (3444) <sup>3</sup>			
		vote	share
Ganden E.	Con	0	0.0
Cox W.	Con	0	-
Sparrow J.	Ind	0	0.0
Turnout		0.0	0.0

## Wokingham 1976

### Arborfield (1343)

		vote	share
Hoyle D. Ms.*	Con	382	73.2
Mills E. Ms.	Lib	78	14.9
Finlay D.	Lab	62	11.9
	<b>Turnout</b>	39.2	58.2

### Barkham (1175)

		vote	share
Chesterman M. Ms.	Con	263	48.6
Hepburn F. Ms.	Ind	249	46.0
Rayner G. Ms.	Lab	29	5.4
	<b>Turnout</b>	46.1	2.6

### Bulmershe (6036) @ 4

		vote	share
Keane J.*	Lib	972	39.2
Telfer B.	Lib	896	-
Phillips A.	Lib	893	-
Phillips M. Ms.	Lib	892	-
Jones A.	Con	883	35.6
Milner J.	Con	822	-
Petty B. Ms.	Con	820	-
Dixon P. Ms.	Lab	623	25.1
Painter R.	Lab	565	-
McLaughlin D.	Lab	540	-
Delea M.	Lab	513	-
	<b>Turnout</b>	38.8	3.6

### California (2464)<sup>2</sup>

		vote	share
Asbury R.	Con	681	60.6
Washington P.*	Con	539	-
Porter J.	Lib	352	31.3
Friend L.	Lab	91	8.1
	<b>Turnout</b>	40.0	29.3

### Charvil (992)

		vote	share
Gimblett M. Ms.	Con	568	93.1
Fedarb R.	Lab	42	6.9
	<b>Turnout</b>	61.6	86.2

### Coronation (4653)<sup>3</sup>

		vote	share
Winter A.	Con	1,039	46.1
Parkinson G.	Con	974	-
Lear E.	Con	928	-
Watts K.*	Lib	906	40.2
Daniel R.	Lib	813	-
Hamilton L.	Lib	761	-
Fairweather W.	Lab	309	13.7
Carroll J.	Lab	297	-
Heale E. Ms.	Lab	279	-
	<b>Turnout</b>	47.3	5.9

### Emmbrook (1306)

		vote	share
Mayers J. Ms.*	Con	406	60.6
Baker J.	Lab	136	20.3
House J.	Lib	128	19.1
	<b>Turnout</b>	51.6	40.3

### Evendons (2345)<sup>2</sup>

		vote	share
Charlesworth H.	Con	665	49.1
Watson J.*	Ind	524	38.7
Sansom R.*	Ind	477	-
Lynch J. Ms.	Lab	165	12.2
	<b>Turnout</b>	49.9	10.4

### Finchampstead (3113)<sup>2</sup>

		vote	share
Chase S. Ms.	Con	819	64.1
Louis Sir Dickens*	Con	779	-
Dawes A. Ms.	Lib	328	25.7
Brown C.	Lib	255	-
Lucas D.	Lab	131	10.3
	<b>Turnout</b>	39.0	38.4

### Hurst (1235)

		vote	share
Byass D. Ms.*	Con	403	88.0
Gowans S.	Lab	55	12.0
	<b>Turnout</b>	38.9	76.0

### Little Hungerford (2593)<sup>2</sup>

		vote	share
English E.*	Ind	666	45.5
Orgill M. Ms.	Con	642	43.8
Webbing F.*	Ind	567	-
Porter M.	Lab	157	10.7
	<b>Turnout</b>	48.6	1.6

### Loddon (5182) @ 4

		vote	share
Baird J. Ms.	Lib	924	46.4
Fulford M.*	Lib	920	-
Painter W.	Lib	899	-
Wise J. Ms.*	Lib	893	-
Gauld J.	Con	781	39.2
Henderson K. Ms.	Con	745	-
Lewis R.	Con	718	-
Rose V. Ms.	Con	664	-
Fell P.	Lab	286	14.4
Dixon M. Ms.	Lab	282	-
Gerken D.	Lab	257	-
Dineen F.	Lab	256	-
	<b>Turnout</b>	39.5	7.2

### No. 10 (Shinfield: School) (1586)

		vote	share
Rout C.*	Ind	361	50.6
Chapman L.	Con	290	40.7
Boyle K.	Lab	62	8.7
	<b>Turnout</b>	45.0	10.0

### No. 17 (South Woodley) (1796)

		vote	share
Cole P. Ms.*	Con	540	60.3
Moore D.	Lib	178	19.9
Pettit J.	Lab	177	19.8
	<b>Turnout</b>	50.3	40.4

### No. 23 (Norreys) (4417)<sup>3</sup>

		vote	share
Crail I.	Con	1,147	43.2
Davies Y. Ms.*	Con	1,119	-
Jessop R.	Con	1,012	-
Tattersall J.	Lab	798	30.1
Stewart W.	Ind	709	26.7
Bellchambers A.	Lab	587	-
	<b>Turnout</b>	49.0	13.1

### No. 24 (Westcott) (2102)

		vote	share
Cook G.*	Res	484	43.0
Sutcliffe N.	Con	471	41.9
Clapham T.	Lab	170	15.1
	<b>Turnout</b>	55.2	1.2

### No. 4 (Earley Central) (3288)<sup>2</sup>

		vote	share
Flaherty H.*	Con	719	43.0
Raper J.	Con	657	-
Balch J. Ms.	Ind	440	26.3
Gill M. Ms.	Lib	281	16.8
Rupert J. Ms.	Lab	231	13.8
Wilson A.	Lib	226	-
Waites N.	Lab	216	-
	<b>Turnout</b>	44.2	16.7

### No. 5 (Earley North) (1879)

		vote	share
Hughes E. Ms.	Con	354	41.3
Hellmore B.	Res	250	29.2
Irving M.	Lab	130	15.2
Storm M.	Lib	123	14.4
	<b>Turnout</b>	46.2	12.1

### No. 6 (Earley South) (3335)<sup>2</sup>

		vote	share
Cooper H.	Con	807	50.5
Rawlins R.	Con	746	-
Russell J.	Lib	594	37.2
Spratling A.	Lib	515	-
Powell D. Ms.	Lab	197	12.3
McGhee A.	Lab	181	-
	<b>Turnout</b>	47.1	13.3

### No. 8 (Shinfield: Rise & Grazeley) (1585)

		vote	share
Stanley K.*	Con	402	59.5
Battersby D. Ms.	Lib	164	24.3
Boyle P. Ms.	Lab	110	16.3
	<b>Turnout</b>	43.3	35.2

### No. 9 (Shinfield: Ryeish Green) (1350)

		vote	share
Turner R.	Con	414	56.2
Prankard M. Ms.	Lib	286	38.8
Atkins K.	Lab	37	5.0
	<b>Turnout</b>	55.5	17.4

### Norreys (2802)<sup>2</sup>

		vote	share
Busst M. Ms.*	Con	827	54.2
Austin W.*	Con	763	-
Mustarde J.	Ind	495	32.4
Wales-Smith B.	Ind	493	-
Gascoyne C.	Lab	204	13.4
	<b>Turnout</b>	52.4	21.8

### Remenham & Wargrave (3239)<sup>2</sup>

		vote	share
Frost J.	Con	755	44.1
Bramall G.*	Ind	754	44.0
North J. Ms.	Con	744	-
Stacey S.	Lab	204	11.9
	<b>Turnout</b>	44.2	0.1

### Sonning (1063)

		vote	share
Hunter G.	Con	460	88.8
Richards D.	Lab	58	11.2
	<b>Turnout</b>	48.9	77.6

### St. Sebastians (3955)<sup>3</sup>

		vote	share
Dowding D. Ms.*	Con	1,223	48.3
Trimming J.*	Con	1,036	-
Osborne T.	Con	941	-
Butcher S.	Res	660	26.0
Randall N. Ms.	Lib	473	18.7
Armitage E.	Lib	315	-
Rowe J. Ms.	Lab	178	7.0
Duffield J.	Lab	150	-
	<b>Turnout</b>	47.2	22.2

### Swallowfield (1437)

		vote	share
Davies E.*	Con	515	69.5
Doult A. Ms.	Lib	176	23.8
Atkins M. Ms.	Lab	50	6.7
	<b>Turnout</b>	52.2	45.7

### Twyford & Ruscombe (3855)<sup>3</sup>

		vote	share
Funnel M. Ms.*	Con	1,116	48.2
Cole J.*	Con	886	-
Robinson A.*	Ind	823	35.6
Fort R.	Lab	374	16.2
Howarth A.	Lab	287	-
	<b>Turnout</b>	40.1	12.7

Winnersh (3755) <sup>3</sup>			
		vote	share
Allibone R.	Con	1,229	45.4
Clark W.	Con	974	-
Sparrow J.*	Ind	641	23.7
Palmer J. Ms.	Lib	585	21.6
Hayes R.	Lab	253	9.3
Alford M. Ms.	Lab	237	-
Tees A.	Lab	188	-
Peck K.	Ind	146	-
<b>Turnout</b>		46.5	21.7

## Wokingham 1979

Arborfield (1285)			
		vote	share
Hoyle D. Ms.	Con	714	76.4
Cooke R. Ms.	Lab	220	23.6
<b>Turnout</b>		72.7	52.9

Barkham (1051)			
		vote	share
Chesterman M. Ms.	Con	582	80.7
Lawrence L.	Lab	139	19.3
<b>Turnout</b>		68.6	61.4

Bulmershe (3373) <sup>2</sup>			
		vote	share
Jones S.	Con	935	38.5
Knight A.	Con	890	-
Craigie J.	Lib	837	34.5
Apsey R.	Lib	802	-
Hadfield R.	Lab	656	27.0
Dixon P. Ms.	Lab	652	-
<b>Turnout</b>		72.0	4.0

California (2777) <sup>2</sup>			
		vote	share
Champney M.	Con	1,546	67.5
Washington P.	Con	1,394	-
Randall N. Ms.	Lib	743	32.5
<b>Turnout</b>		82.4	35.1

Charvil (1309)			
		vote	share
Gimblett M. Ms.	Con	882	85.1
Carroll J.	Lab	154	14.9
<b>Turnout</b>		79.1	70.3

Coronation (4807) <sup>3</sup>			
		vote	share
Winter A.	Con	1,765	47.2
Parkinson G.	Con	1,740	-
Lear E.	Con	1,672	-
Watson R. Ms.	Lib	1,528	40.9
Jewell C. Ms.	Lib	1,425	-
Hickson E.	Lib	1,375	-
Morris C.	Lab	445	11.9
Fairweather W.	Lab	413	-
Richards G.	Lab	380	-
<b>Turnout</b>		77.8	6.3

Emmbrook (4192) <sup>3</sup>			
		vote	share
Austin D.	Con	1,465	41.4
Busst M. Ms.	Con	1,463	-
Mayne A.	Con	1,301	-
Eamshaw J.	Ind	1,155	32.6
Webbing F.	Ind	986	-
Hayward A.	Ind	980	-
Anderson N.	Lib	918	25.9
House J.	Lib	711	-
Tonks T.	Lib	672	-
<b>Turnout</b>		84.4	8.8

Evendons (3740) <sup>3</sup>			
		vote	share
Griffith L. Ms.	Con	1,747	54.2
Charlesworth H.	Con	1,732	-
Hartley P.	Con	1,550	-
English E.	Ind	1,477	45.8
<b>Turnout</b>		86.2	8.4

Finchampstead (3439) <sup>2</sup>			
		vote	share
Chase S. Ms.	Con	1,370	47.0
Tierney R.	Con	1,207	-
Dawes A. Ms.	Lib	800	27.4
Beverstock P.	Lib	630	-
Shone A.	Ind	527	18.1
O'Brien B.	Lab	219	7.5
<b>Turnout</b>		84.8	19.5

Hurst (997)			
		vote	share
Harvey J.	Con	716	77.9
Duff M. Ms.	Lab	203	22.1
<b>Turnout</b>		92.2	55.8

Little Hungerford (3651) <sup>3</sup>			
		vote	share
Cole T. Ms.	Con	1,572	49.2
Flaherty H.	Con	1,409	-
Raper J.	Con	1,369	-
Russell J.	Lib	1,083	33.9
Pontet H. Ms.	Lib	983	-
Storm M.	Lib	972	-
Pettit J.	Lab	540	16.9
Mead R.	Lab	527	-
<b>Turnout</b>		87.5	15.3

Loddon (4285) <sup>3</sup>			
		vote	share
Baird J. Ms.	Lib	1,566	48.3
Kirk C.	Lib	1,414	-
Painter W.	Lib	1,277	-
Henderson K. Ms.	Con	1,208	37.3
Dickson W.	Con	1,161	-
Martin J.	Con	1,129	-
Painter R.	Lab	467	14.4
Harries W.	Lab	395	-
Gowans S.	Lab	384	-
<b>Turnout</b>		75.6	11.0

Norreys (4798) <sup>3</sup>			
		vote	share
Craill I.	Con	2,343	62.9
Davis Y. Ms.	Con	2,309	-
Southgate L.	Con	2,110	-
Burr C.	Lab	1,380	37.1
<b>Turnout</b>		77.6	25.9

Redhatch (3918) <sup>3</sup>			
		vote	share
Cooper H.	Con	1,626	50.4
Cross C. Ms.	Con	1,604	-
Rawlins R.	Con	1,492	-
Spratling A.	Lib	1,196	37.1
Stothart P.	Lib	1,092	-
Fry R.	Lib	1,085	-
Gurr A.	Lab	403	12.5
Sutcliffe C.	Lab	387	-
<b>Turnout</b>		82.3	13.3

Remenham & Wargrave (3348) <sup>2</sup>			
		vote	share
Frost J.	Con	1,060	80.1
Goddard D.	Con	1,007	-
Stacey S.	Lab	263	19.9
<b>Turnout</b>		39.5	60.2

Shinfield (4622) <sup>3</sup>			
		vote	share
Turner R.	Con	1,504	33.9
Gollop A. Ms.	Con	1,476	-
Ashworth G.	Con	1,462	-
Rout C.	Ind	1,303	29.4
Prankard M. Ms.	Lib	1,101	24.8
Foster W.	Lib	1,008	-
Cunnington D. Ms.	Lab	531	12.0
Garrahan J.	Lab	523	-
Miles D.	Lab	491	-
<b>Turnout</b>		96.0	4.5

Sonning (1082)			
		vote	share
Hunter G.	Con	699	82.9
Jones C.	Lab	144	17.1
<b>Turnout</b>		77.9	65.8

South Lake (4125) <sup>3</sup>			
		vote	share
Jones A.	Con	1,330	42.0
Cotterell T.	Lib	1,283	40.5
Mockler L.	Con	1,218	-
Roberts J. Ms.	Lib	1,210	-
Wilkins J. Ms.	Con	1,205	-
Daniel R.	Lib	1,201	-
Dixon M. Ms.	Lab	551	17.4
Gerken D.	Lab	495	-
McLaughlin D.	Lab	471	-
<b>Turnout</b>		76.7	1.5

St. Sebastians (4031) <sup>3</sup>			
		vote	share
Osborne T.	Con	0	-
Dowding D. Ms.	Con	0	-
Trimming J.	Con	0	0.0
<b>Turnout</b>		0.0	0.0

Swallowfield (1650)			
		vote	share
Davies E.	Con	679	54.8
Doult A. Ms.	Lib	457	36.9
Bednall R.	Lab	103	8.3
<b>Turnout</b>		75.1	17.9

Twyford & Ruscombe (4395) <sup>3</sup>			
		vote	share
Funnell M. Ms.	Con	2,447	71.7
Cole J.	Con	2,096	-
Wilkinson B. Ms.	Con	1,934	-
Howarth A.	Lab	968	28.3
Mantel R.	Lab	803	-
<b>Turnout</b>		77.7	43.3

Wescott (3657) <sup>2</sup>			
		vote	share
Mayers J. Ms.	Con	1,588	45.1
Lillycrop D.	Con	1,433	-
Stewart W.	Ind Con	1,217	34.6
Baker J.	Lab	714	20.3
<b>Turnout</b>		96.2	10.5

Whitegates (2610) <sup>2</sup>			
		vote	share
Francis M.	Con	1,271	66.8
Allen P. Ms.	Con	1,199	-
Rupert J. Ms.	Lab	631	33.2
Waites N.	Lab	600	-
<b>Turnout</b>		72.9	33.6

Winnersh (4240) <sup>3</sup>			
		vote	share
Allibone R.	Con	2,263	59.8
Clark W.	Con	1,858	-
Grobler J.	Con	1,661	-
Sparrow J.	Ind	939	24.8
Hayes R.	Lab	580	15.3
Eyre J.	Lab	559	-
Tees A.	Lab	496	-
<b>Turnout</b>		89.2	35.0

## Wokingham 1980

<b>Arborfield (1234)</b>			
		<b>vote</b>	<b>share</b>
<b>Hoyle D. Ms.*</b>	Con	314	77.1
Cunnington P.	Lab	93	22.9
	<b>Turnout</b>	33.0	54.3
<b>Bulmershe (3491)</b>			
		<b>vote</b>	<b>share</b>
<b>Dixon P. Ms.</b>	Lab	462	36.5
Knight A.*	Con	406	32.1
Craigie J.	Lib	397	31.4
	<b>Turnout</b>	36.2	4.4
<b>California (2825)</b>			
		<b>vote</b>	<b>share</b>
<b>Nolan E. Ms.</b>	Con	623	69.0
Lewis R. Ms.	Lib	204	22.6
Campbell L. Ms.	Lab	76	8.4
	<b>Turnout</b>	32.0	46.4
<b>Coronation (4892)</b>			
		<b>vote</b>	<b>share</b>
<b>Roberts J. Ms.</b>	Lib	750	44.5
Boswell D.	Con	718	42.6
Morris C.	Lab	166	9.8
Stannard J.	Ecol	52	3.1
	<b>Turnout</b>	34.5	1.9
<b>Emmbrook (4249)</b>			
		<b>vote</b>	<b>share</b>
<b>Mayne A.*</b>	Con	810	48.9
House J.	Lib	656	39.6
McLaren D.	Lab	191	11.5
	<b>Turnout</b>	39.0	9.3
<b>Evendons (3880)</b>			
		<b>vote</b>	<b>share</b>
<b>Hartley P.*</b>	Con	691	56.2
Anderson N.	Lib	400	32.5
Kennedy G.	Lab	139	11.3
	<b>Turnout</b>	31.7	23.7
<b>Finchampstead (3548)</b>			
		<b>vote</b>	<b>share</b>
<b>Long M. Ms.</b>	Con	598	53.4
Shone A.	FBPI	228	20.4
Dawes A. Ms.*	Lib	220	19.7
Hadwick D.	Lab	73	6.5
	<b>Turnout</b>	31.5	33.1
<b>Little Hungerford (3883)</b>			
		<b>vote</b>	<b>share</b>
<b>Raper J.*</b>	Con	763	56.9
Stothart P.	Lib	326	24.3
Waites N.	Lab	252	18.8
	<b>Turnout</b>	34.5	32.6
<b>Loddon (4320)</b>			
		<b>vote</b>	<b>share</b>
<b>Craigie R. Ms.</b>	Lib	512	47.0
Henderson K. Ms.	Con	430	39.4
Leblond A.	Lab	148	13.6
	<b>Turnout</b>	25.2	7.5
<b>Norreys (4837)</b>			
		<b>vote</b>	<b>share</b>
<b>Southgate L.*</b>	Con	1,291	60.2
Baker J.	Lab	853	39.8
	<b>Turnout</b>	44.3	20.4
<b>Redhatch (3905)</b>			
		<b>vote</b>	<b>share</b>
<b>Jones M. Ms.</b>	Con	673	52.7
Spratling A.	Lib	463	36.2
Sutcliffe C.	Lab	142	11.1
	<b>Turnout</b>	32.7	16.4

## Remenham & Wargrave (3352)

		<b>vote</b>	<b>share</b>
<b>Goddard D.*</b>	Con	895	88.7
Howarth A.	Lab	114	11.3
	<b>Turnout</b>	30.1	77.4
<b>Shinfield (4741)</b>			
		<b>vote</b>	<b>share</b>
<b>Rout C.</b>	Lib	719	50.6
Ashworth G.*	Con	512	36.1
Cunnington D. Ms.	Lab	148	10.4
Eggert A.	Ecol	41	2.9
	<b>Turnout</b>	30.0	14.6
<b>South Lake (4093)</b>			
		<b>vote</b>	<b>share</b>
<b>Morrow P.</b>	Lib	558	48.1
Mockler L.*	Con	345	29.7
O'Brien B.	Lab	217	18.7
Bennett R.	Ecol	41	3.5
	<b>Turnout</b>	28.4	18.3
<b>St. Sebastians (4094)</b>			
		<b>vote</b>	<b>share</b>
<b>Trimming J.*</b>	Con	740	57.1
Randall N. Ms.	Lib	253	19.5
Smith G.	Ind	234	18.0
Marshall K.	Lab	70	5.4
	<b>Turnout</b>	31.7	37.5
<b>Swallowfield (1623)</b>			
		<b>vote</b>	<b>share</b>
<b>Davies E.*</b>	Con	379	61.5
Doult A. Ms.	Lib	201	32.6
Fairweather W.	Lab	36	5.8
	<b>Turnout</b>	38.0	28.9
<b>Twyford &amp; Ruscombe (4504)</b>			
		<b>vote</b>	<b>share</b>
<b>Gray B. Ms.</b>	Con	947	60.4
Mantel R.	Lab	621	39.6
	<b>Turnout</b>	34.8	20.8
<b>Winnersh (4384)<sup>2</sup></b>			
		<b>vote</b>	<b>share</b>
<b>Teare K.</b>	Con	858	77.0
<b>Grobler J.*</b>	Con	858	-
Hayes R.	Lab	256	23.0
Eyre J.	Lab	247	-
	<b>Turnout</b>	25.4	54.0

## Wokingham 1982

<b>Barkham (1380)</b>			
		<b>vote</b>	<b>share</b>
<b>Gamlen K.</b>	Con	268	60.5
Moore S. Ms.	Lib/SDP	142	32.1
Hayes R.	Lab	33	7.4
	<b>Turnout</b>	32.1	28.4
<b>Coronation (5104)</b>			
		<b>vote</b>	<b>share</b>
<b>Parkinson G.*</b>	Con	1,066	54.6
Jewell C. Ms.	Lib/SDP	710	36.4
Morris C.	Lab	129	6.6
Stannard J.	Ecol	47	2.4
	<b>Turnout</b>	38.2	18.2
<b>Emmbrook (4348)</b>			
		<b>vote</b>	<b>share</b>
<b>Busst M. Ms.*</b>	Con	1,320	66.1
Malvern K.	Lib/SDP	536	26.9
Friend C.	Lab	140	7.0
	<b>Turnout</b>	45.9	39.3

## Evendons (4809)

		<b>vote</b>	<b>share</b>
<b>Charlesworth B.*</b>	Con	1,273	65.7
Neill J. Ms.	Lib/SDP	549	28.3
Bull J.	Lab	116	6.0
	<b>Turnout</b>	40.3	37.4
<b>Finchampstead (3664)</b>			
		<b>vote</b>	<b>share</b>
<b>Chase S. Ms.*</b>	Con	732	52.5
Levy D. Ms.	Lib/SDP	400	28.7
Shone B.	FBPRP	210	15.1
Pennell L. Ms.	Lab	52	3.7
	<b>Turnout</b>	38.0	23.8
<b>Little Hungerford (4703)</b>			
		<b>vote</b>	<b>share</b>
<b>Flaherty H.*</b>	Con	1,072	55.9
Knight F.	Lib/SDP	564	29.4
Gittings P.	Lab	196	10.2
Trayner J.	ILER	84	4.4
	<b>Turnout</b>	40.7	26.5
<b>Loddon (4525)</b>			
		<b>vote</b>	<b>share</b>
<b>Kirby D.</b>	Con	670	46.2
Craigie J.	Lib/SDP	669	46.1
O'Shea P.	Lab	111	7.7
	<b>Turnout</b>	32.0	0.1
<b>Norreys (5020)</b>			
		<b>vote</b>	<b>share</b>
<b>Brown I.</b>	Con	1,634	60.2
Fowlston B.	Lib/SDP	606	22.3
Baker J.	Lab	473	17.4
	<b>Turnout</b>	54.0	37.9
<b>Redhatch (4376)</b>			
		<b>vote</b>	<b>share</b>
<b>Cross C. Ms.*</b>	Con	1,004	53.8
Spratling A.	Lib/SDP	740	39.7
Waddington S.	Lab	121	6.5
	<b>Turnout</b>	42.6	14.2
<b>Remenham &amp; Wargrave (3411)</b>			
		<b>vote</b>	<b>share</b>
<b>Frost K.*</b>	Con	971	64.2
Mullarky P.	Lib/SDP	466	30.8
Howarth A.	Lab	75	5.0
	<b>Turnout</b>	44.3	33.4
<b>Shinfield (4798)</b>			
		<b>vote</b>	<b>share</b>
<b>Helliars-Symons P. Ms.</b>	Con	801	46.2
Walker M.	Lib/SDP	753	43.5
Cunnington D. Ms.	Lab	117	6.8
Dunn P.	Ecol	62	3.6
	<b>Turnout</b>	36.1	2.8
<b>Sonning (1206)</b>			
		<b>vote</b>	<b>share</b>
<b>Marshall P.</b>	Con	425	74.8
Graver M.	Lib/SDP	102	18.0
Fairweather W.	Lab	41	7.2
	<b>Turnout</b>	47.1	56.9
<b>South Lake (4112)<sup>2</sup></b>			
		<b>vote</b>	<b>share</b>
<b>Avery R.</b>	Lib/SDP	711	47.3
<b>Cotterell T.*</b>	Lib/SDP	698	-
Boswell D.	Con	655	43.6
Leader D. Ms.	Con	614	-
Richards G.	Lab	138	9.2
Sims O. Ms.	Lab	137	-
	<b>Turnout</b>	36.6	3.7

St. Sebastians (4154)			
		vote	share
Dowding D. Ms.*	Con	1,178	67.9
Grady J.	Lib/SDP	466	26.9
Petrides G.	Lab	90	5.2
Turnout		41.7	41.1

Twyford & Ruscombe (4537)			
		vote	share
Cole J.*	Con	1,247	61.3
Proctor B.	Lib/SDP	470	23.1
Mantel R.	Lab	316	15.5
Turnout		44.8	38.2

Wescott (3814)			
		vote	share
Lillycrop D.*	Con	1,133	62.9
Aked A.	Lib/SDP	514	28.6
Wilkinson S.	Lab	153	8.5
Turnout		47.2	34.4

Whitegates (2648)			
		vote	share
Allen P. Ms.*	Con	593	53.3
Hadfield R.	Lib/SDP	397	35.7
Butts D.	Lab	122	11.0
Turnout		42.0	17.6

Winnersh (4491)			
		vote	share
Clark W.*	Con	984	58.5
Llewellyn A. Ms.	Lib/SDP	589	35.0
Tees A.	Lab	108	6.4
Turnout		37.4	23.5

## Wokingham 1983

Bulmershe (3719)			
		vote	share
Jones S.*	Con	617	40.3
Watts K.	Lib/SDP	500	32.6
Richards G.	Lab	415	27.1
Turnout		41.2	7.6

California (2864)			
		vote	share
Champney M.*	Con	958	72.5
Cox P. Ms.	Lib/SDP	307	23.2
Gregory P.	Lab	56	4.2
Turnout		46.1	49.3

Charvil (1414)			
		vote	share
Gimblett M. Ms.*	Con	669	85.1
Pollard M.	Lib/SDP	71	9.0
Fairweather W.	Lab	46	5.9
Turnout		55.6	76.1

Coronation (5289)			
		vote	share
Winter A.*	Con	1,222	49.3
Jewell C. Ms.	Lib/SDP	1,085	43.8
Bamford S.	Lab	173	7.0
Turnout		46.9	5.5

Emmbrook (4379)			
		vote	share
Austin D.*	Con	1,348	65.4
Malvern K.	Lib/SDP	498	24.2
Petrides G.	Lab	216	10.5
Turnout		47.1	41.2

Ewendons (5450)			
		vote	share
Griffiths L.*	Con	1,591	69.2
Bass M.	Lib/SDP	527	22.9
Tebbs I.	Lab	181	7.9
Turnout		42.2	46.3

Hurst (1033)			
		vote	share
Drake A. Ms.	Con	429	84.0
Howarth A.	Lab	82	16.0
Turnout		49.5	67.9

Little Hungerford (5269)			
		vote	share
Cole P.*	Con	1,548	65.4
Knight F.	Lib/SDP	566	23.9
Gittings P.	Lab	254	10.7
Turnout		44.9	41.5

Loddon (4720)			
		vote	share
Craigie J.	Lib/SDP	1,001	50.0
Henderson K. Ms.	Con	812	40.6
Gerken D.	Lab	188	9.4
Turnout		42.4	9.4

Norreys (4991)			
		vote	share
Craill I.*	Con	1,715	66.3
Baker J.	Lab	500	19.3
Wrobel A.	Lib/SDP	372	14.4
Turnout		51.8	47.0

Redhatch (4708)			
		vote	share
Cooper H.*	Con	1,168	54.6
Spratling A.	Lib/SDP	768	35.9
Rupert J.	Lab	204	9.5
Turnout		45.5	18.7

Shinfield (4898)			
		vote	share
Cottee K.	Con	1,168	55.1
Walker M.	Lib/SDP	951	44.9
Turnout		43.3	10.2

South Lake (4164)			
		vote	share
Cotterell T.	Lib/SDP	876	51.3
Leader D. Ms.	Con	682	39.9
Morris C.	Lab	151	8.8
Turnout		41.0	11.4

St. Sebastians (4153)			
		vote	share
Unstead M.	Con	1,193	66.7
Smith G.	Lib/SDP	481	26.9
Murray-Wood U.	Lab	114	6.4
Turnout		43.1	39.8

Twyford & Ruscombe (4639)			
		vote	share
Funnell M. Ms.*	Con	1,274	64.3
Proctor B.	Lib/SDP	379	19.1
Hutton A.	Lab	328	16.6
Turnout		42.7	45.2

Wescott (3866)			
		vote	share
Mayers J. Ms.*	Con	1,235	65.1
Akad T.	Lib/SDP	460	24.3
Wilkinson S.	Lab	201	10.6
Turnout		49.0	40.9

Whitegates (2633)			
		vote	share
Ager J.	Con	578	47.1
Hadfield R.	Lib/SDP	482	39.3
Butts D.	Lab	168	13.7
Turnout		46.6	7.8

Winnersh (4589)			
		vote	share
Grobler J.	Con	1,091	58.7
Llewellyn A. Ms.	Lib/SDP	577	31.0
Schnepf P.	Lab	191	10.3
Turnout		40.5	27.6

## Wokingham 1984

Arborfield (1398)			
		vote	share
Hoyle D. Ms.*	Con	375	82.1
Scott-Bar J. Ms.	Lab	82	17.9
Turnout		32.7	64.1

Bulmershe (3726)			
		vote	share
Dixon P. Ms.*	Lab	555	44.2
Eastwood A.	Con	360	28.6
Norman L. Ms.	Lib/SDP	342	27.2
Turnout		33.7	15.5

California (2890)			
		vote	share
Nolan E. Ms.*	Con	621	69.7
Cox P. Ms.	Lib/SDP	233	26.2
Tebbs I.	Lab	37	4.2
Turnout		30.8	43.5

Coronation (5386)			
		vote	share
Whitwell J.	Con	966	47.4
Painter M.	Lib/SDP	923	45.2
Morris C.	Lab	151	7.4
Turnout		37.9	2.1

Emmbrook (4460)			
		vote	share
Mayne A.*	Con	920	52.2
Malvern K.	Lib/SDP	714	40.5
Wilkinson L. Ms.	Lab	129	7.3
Turnout		39.5	11.7

Ewendons (6198)			
		vote	share
Hartley P.*	Con	1,298	66.3
Bass M.	Lib/SDP	480	24.5
Gregory P.	Lab	181	9.2
Turnout		31.6	41.8

Finchampstead (3824)			
		vote	share
Long M. Ms.*	Con	862	78.0
Shone A.	AFCM	149	13.5
Dods I.	Lab	94	8.5
Turnout		28.9	64.5

Little Hungerford (4190)			
		vote	share
Raper J.*	Con	1,057	59.8
Fruin D.	Lib/SDP	469	26.5
Gittings P.	Lab	241	13.6
Turnout		42.2	33.3

Loddon (5065)			
		vote	share
Binding J.	Lib/SDP	837	52.0
Henderson K. Ms.	Con	617	38.3
Gerken D.	Lab	156	9.7
Turnout		31.8	13.7

Norreys (5042)			
		vote	share
Southgate L.*	Con	1,218	61.2
Baker J.	Lab	417	20.9
Donnelly J.	Lib/SDP	356	17.9
Turnout		39.5	40.2

Redhatch (6487)			
		vote	share
Devonald P.	Lib/SDP	1,037	48.3
Morgan N.	Con	914	42.6
Vincent E. Ms.	Lab	197	9.2
Turnout		33.1	5.7

Remenham & Wargrave (3490)			
		vote	share
Goddard D.*	Con	1,070	86.4
Rainsbury M. Ms.	Lib/SDP	99	8.0
Hutton A.	Lab	70	5.6
Turnout		35.5	78.4

Shinfield (5234)			
		vote	share
Cox R.	Con	837	48.4
Reynolds J. Ms.	Lib/SDP	753	43.6
Cunnington D. Ms.	Lab	139	8.0
Turnout		33.0	4.9

South Lake (4179)			
		vote	share
Collins-Tooth N.	Lib/SDP	769	57.5
Latymer G.	Con	423	31.6
Bland N.	Lab	145	10.8
Turnout		32.0	25.9

St. Sebastians (4296)			
		vote	share
Trimming J.*	Con	936	71.6
Smith G.	Lib/SDP	287	21.9
Wilkinson S.	Lab	85	6.5
Turnout		30.4	49.6

Swallowfield (1697)			
		vote	share
Vanbeek-Anthon A. Ms.	Con	431	62.9
Curwood B. Ms.	Ind	202	29.5
Cunnington P.	Lab	52	7.6
Turnout		40.4	33.4

Twyford & Ruscombe (4688)			
		vote	share
Gray B. Ms.*	Con	991	68.7
Mantel R.	Lab	451	31.3
Turnout		30.8	37.4

Winnersh (4698)			
		vote	share
Collins O. Ms.	Con	728	52.9
Llewellyn A. Ms.	Lib/SDP	546	39.7
Hayes R.	Lab	103	7.5
Turnout		29.3	13.2

## Wokingham 1986

Barkham (1069)			
		vote	share
Vos P.	Con	172	68.0
Collins D. Ms.	Lib/SDP	63	24.9
Cunnington J.	Lab	18	7.1
Turnout		23.7	43.1

Coronation (5640)			
		vote	share
Jewell C. Ms.	Lib/SDP	1,156	49.9
Parkinson G.*	Con	927	40.0
Morris C.	Lab	235	10.1
Turnout		41.1	9.9

Emmbrook (4749)			
		vote	share
Malvern K.	Lib/SDP	1,038	46.9
Eke R.	Con	967	43.7
Gascoyne C.	Lab	209	9.4
Turnout		46.6	3.2

Ewendons (7322)			
		vote	share
Charlesworth B.*	Con	1,332	57.9
Atsoparthis M.	Lib/SDP	637	27.7
Davies T.	Lab	330	14.4
Turnout		31.4	30.2

Finchampstead South (3771)			
		vote	share
Chase S. Ms.*	Con	752	65.7
Levy B.	Lib/SDP	291	25.4
O'Brien B.	Lab	101	8.8
Turnout		30.3	40.3

Little Hungerford (7565)			
		vote	share
Steel S. Ms.	Lib/SDP	1,536	55.1
Flaherty H.*	Con	998	35.8
Gittings P.	Lab	252	9.0
Turnout		36.8	19.3

Loddon (5495)			
		vote	share
Thair D.	Lib/SDP	959	53.4
Kirby D.*	Con	604	33.6
Gerken D.	Lab	233	13.0
Turnout		32.7	19.8

Norreys (5151)			
		vote	share
Brown I.*	Con	1,201	58.8
Vokes N.	Lib/SDP	476	23.3
Baker J.	Lab	364	17.8
Turnout		39.6	35.5

Redhatch (9437)			
		vote	share
Spratling A.	Lib/SDP	1,981	61.8
Seeman G.	Con	916	28.6
Sutcliffe C.	Lab	311	9.7
Turnout		34.0	33.2

Remenham & Wargrave (3562)			
		vote	share
Hudson R. Ms.	Con	1,031	73.6
Isaac K.	Lib/SDP	237	16.9
May T.	Lab	133	9.5
Turnout		39.3	56.7

Shinfield (5522)			
		vote	share
Robinson N. Ms.	Con	961	50.7
Reynolds J. Ms.	Lib/SDP	672	35.4
Rees T.	Lab	263	13.9
Turnout		34.3	15.2

Sonning (1187)			
		vote	share
Pierce C.	Con	463	82.8
Hayes R.	Lab	96	17.2
Turnout		47.1	65.7

South Lake (4531)			
		vote	share
Rigg C.	Lib/SDP	942	75.1
Bland N.	Lab	232	18.5
Winter C.	Con	81	6.5
Turnout		27.7	56.6

Twyford & Ruscombe (4727)			
		vote	share
Conway-Jones M. Ms.	Con	943	55.3
Rainsbury J. Ms.	Lib/SDP	441	25.9
Mantel R.	Lab	320	18.8
Turnout		36.0	29.5

Wescott (3860)			
		vote	share
Green J.	Con	857	53.2
Mullarky P.	Lib/SDP	567	35.2
Tebbs I.	Lab	186	11.6
Turnout		41.7	18.0

Whitegates (2847)			
		vote	share
Hadfield R.	Lib/SDP	625	46.9
Eastwood A.	Con	531	39.8
Butts D.	Lab	177	13.3
Turnout		46.8	7.1

Winnersh (4754)			
		vote	share
Llewellyn A. Ms.	Lib/SDP	994	50.1
Teare K.	Con	875	44.1
Bland P. Ms.	Lab	115	5.8
Turnout		41.7	6.0

Wokingham Without (4319)			
		vote	share
Helliar-Symons P. Ms.	Con	836	56.9
Randall N. Ms.	Lib/SDP	520	35.4
Gascoyne M. Ms.	Lab	113	7.7
Turnout		34.0	21.5

## Wokingham 1987

Bulmershe (3570)			
		vote	share
Keane J.	All	487	34.2
Bland N.	Lab	477	33.5
Henderson K.	Con	461	32.4
Turnout		39.9	0.7

Charvil (1432)			
		vote	share
Gimblett M. Ms.*	Con	577	73.8
Harris R.	All	117	15.0
Tattershall A.	Lab	88	11.3
Turnout		54.6	58.8

Coronation (5603)			
		vote	share
Winter A.*	Con	1,252	49.8
Day L.	All	1,042	41.4
Morris C.	Lab	220	8.8
Turnout		44.9	8.4

Emmbrook (4757) <sup>2</sup>			
		vote	share
Austin D.*	Con	1,454	47.3
Henesy P.	Con	1,151	-
Dalby E.	All	835	27.2
Rainsbury M.	All	689	-
Davis A. Ms.	Ind	619	20.1
Gascoyne C.	Lab	166	5.4
Gascoyne M.	Lab	157	-
Turnout		64.6	20.1

Ewendons (7725) <sup>2</sup>			
		vote	share
Griffith L. Ms.*	Con	2,089	60.9
Pennell R.	Con	1,955	-
Stagles B. Ms.	All	1,127	32.8
Williams B.	All	1,057	-
Davies T.	Lab	217	6.3
Calfe M.	Lab	190	-
Turnout		44.4	28.0

Finchampstead North (2814)			
		vote	share
Catran K.	Con	1,018	63.1
Cox E.	All	527	32.7
Spencer M.	Lab	69	4.3
Turnout		57.4	30.4

Hurst (1337)			
		vote	share
Drake A. Ms.*	Con	483	78.0
Morley N.	All	94	15.2
Riggs R.	Lab	42	6.8
Turnout		46.3	62.8



Little Hungerford (7714)			
		vote	share
<b>Swindells D.</b>	All	1,668	47.0
Williams C.	Con	1,633	46.0
Davies K.	Lab	246	6.9
<b>Turnout</b>		46.0	1.0
Loddon (5728)			
		vote	share
<b>Guy A.</b>	All	1,000	45.7
Kirby D.	Con	967	44.2
Clive R.	Lab	219	10.0
<b>Turnout</b>		38.2	1.5
Norreys (5294)			
		vote	share
<b>Craill I.*</b>	Con	1,509	60.6
Williams H.	All	644	25.9
Baker J.	Lab	337	13.5
<b>Turnout</b>		47.0	34.7
Redhatch (10731)			
		vote	share
<b>Hook J.</b>	All	2,146	48.9
Worsfold J.	Con	1,912	43.6
Sharp D.	Lab	327	7.5
<b>Turnout</b>		40.9	5.3
Shinfield (5565)			
		vote	share
<b>Hamon P.</b>	Con	1,141	54.5
Pyle M.	All	753	35.9
Tres A.	Lab	201	9.6
<b>Turnout</b>		37.6	18.5
South Lake (4575)			
		vote	share
<b>Cotterell T.*</b>	All	976	55.0
Lark J. Ms.	Con	574	32.4
Bland P. Ms.	Lab	223	12.6
<b>Turnout</b>		38.8	22.7
Twyford & Ruscombe (4766)			
		vote	share
<b>Morton R.</b>	Con	1,212	62.9
Isaac K.	All	515	26.7
Billard J.	Lab	199	10.3
<b>Turnout</b>		40.4	36.2
Wescott (3890)			
		vote	share
<b>Mayers J. Ms.*</b>	Con	1,078	58.3
Mullarky P.	All	632	34.2
Tebbs I.	Lab	139	7.5
<b>Turnout</b>		47.5	24.1
Whitegates (2871)			
		vote	share
<b>Anderson S.</b>	Con	757	55.6
Littler G.	All	474	34.8
Gittings P.	Lab	131	9.6
<b>Turnout</b>		47.4	20.8
Winnersh (4912)			
		vote	share
<b>Grobler J.*</b>	Con	1,299	52.7
Dunkley J.	All	1,049	42.6
Gambrell D.	Lab	116	4.7
<b>Turnout</b>		50.2	10.1
Wokingham Without (4505)			
		vote	share
<b>Unstead M.</b>	Con	1,169	62.2
Randall N. Ms.	All	635	33.8
Skelton B.	Lab	75	4.0
<b>Turnout</b>		41.7	28.4

## Wokingham 1988

Arborfield (1588)			
		vote	share
<b>Lynskey L. Ms.</b>	Con	334	67.1
King A.	LD	119	23.9
Kite J. Ms.	Lab	45	9.0
<b>Turnout</b>		31.4	43.2
Bulmershe (3428)			
		vote	share
<b>Bland N.</b>	Lab	547	39.1
Isaacson J.	Con	462	33.0
Samuel R.	LD	300	21.5
Bradford G.	SDP	89	6.4
<b>Turnout</b>		40.8	6.1
Coronation (5536)			
		vote	share
<b>Parkinson G.</b>	Con	985	47.2
Moore D.	LD	903	43.3
Stamp C.	Lab	197	9.4
<b>Turnout</b>		37.7	3.9
Emmbrook (4785)			
		vote	share
<b>Henesey P.</b>	Con	912	45.0
Davis A. Ms.	Ind	586	28.9
Dalby E.	LD	292	14.4
Gascoyne C.	Lab	174	8.6
Vokes N.	SDP	63	3.1
<b>Turnout</b>		42.4	16.1
Evendons (8022)			
		vote	share
<b>Pennell R.</b>	Con	1,433	63.5
Stagles B. Ms.	LD	458	20.3
Davies T.	Lab	254	11.3
Williams B.	SDP	112	5.0
<b>Turnout</b>		28.1	43.2
Finchampstead North (3889)			
		vote	share
<b>Tobin J.</b>	Con	696	61.1
Cox E.	LD	296	26.0
Davies C. Ms.	SDP	82	7.2
Sharp S.	Lab	65	5.7
<b>Turnout</b>		29.3	35.1
Finchampstead South (4441)			
		vote	share
<b>Long M. Ms.*</b>	Con	944	75.9
May C. Ms.	SDP	200	16.1
Hutton A.	Lab	100	8.0
<b>Turnout</b>		28.0	59.8
Little Hungerford (7768)			
		vote	share
<b>May P. Ms.</b>	Con	1,331	50.9
Lambert J. Ms.	LD	1,009	38.6
Davis K. Ms.	Lab	275	10.5
<b>Turnout</b>		33.7	12.3
Loddon (5843)			
		vote	share
<b>Clifford A.</b>	LD	1,024	54.0
Kirby D.	Con	670	35.3
Gerken D.	Lab	204	10.7
<b>Turnout</b>		32.5	18.7
Norreys (5399)			
		vote	share
<b>Southgate L.*</b>	Con	1,184	61.3
Williams H.	LD	382	19.8
Baker J.	Lab	367	19.0
<b>Turnout</b>		35.8	41.5

Redhatch (11287)			
		vote	share
<b>Devonald P.*</b>	LD	1,769	48.2
Worsfold J.	Con	1,600	43.6
Sharp D.	Lab	304	8.3
<b>Turnout</b>		32.5	4.6
Remenham & Wargrave (3481)			
		vote	share
<b>Goddard D.*</b>	Con	962	78.3
Isaac K.	LD	179	14.6
Tattersall A.	Lab	87	7.1
<b>Turnout</b>		35.3	63.8
Shinfield (5604)			
		vote	share
<b>Cox R.*</b>	Con	900	56.8
Hayes R.	Lab	287	18.1
Pearson M. Ms.	LD	244	15.4
Butler E. Ms.	SDP	153	9.7
<b>Turnout</b>		28.3	38.7
South Lake (4616)			
		vote	share
<b>Collins-Tooth N.*</b>	LD	1,144	56.5
Lark J. Ms.	Con	687	33.9
Bland P. Ms.	Lab	195	9.6
<b>Turnout</b>		43.9	22.6
Swallowfield (1348)			
		vote	share
<b>Beatty D. Ms.</b>	Con	457	73.6
Pearson R.	LD	105	16.9
Vincent E. Ms.	Lab	59	9.5
<b>Turnout</b>		46.1	56.7
Twyford & Ruscombe (4879)			
		vote	share
<b>Gray B. Ms.*</b>	Con	964	60.4
Bann D.	LD	317	19.9
Mantel R.	Lab	315	19.7
<b>Turnout</b>		32.7	40.5
Winnersh (4957)			
		vote	share
<b>Teare K.</b>	Con	1,070	67.0
Spratling E. Ms.	LD	295	18.5
Morris C.	Lab	143	8.9
Wiley V.	SDP	90	5.6
<b>Turnout</b>		32.2	48.5
Wokingham Without (4722)			
		vote	share
<b>Trimming J.*</b>	Con	1,012	72.8
Randall N. Ms.	LD	261	18.8
Laydon R.	Lab	118	8.5
<b>Turnout</b>		29.5	54.0

## Wokingham 1990

### Barkham (1680)

		vote	share
Vos P.*	Con	274	51.2
Williams H.	LD	155	29.0
Dowds S.	Lab	106	19.8
<b>Turnout</b>		31.9	22.2

### Coronation (5477)

		vote	share
Jewell C. Ms.*	LD	1,385	48.7
Hutchinson D. Ms.	Con	1,041	36.6
Stamp C.	Lab	418	14.7
<b>Turnout</b>		52.0	12.1

### Emmbrook (4731)

		vote	share
Malvern K.*	LD	972	39.1
Lynes J.	Con	645	26.0
Davis A. Ms.	Ind	522	21.0
Davies T.	Lab	346	13.9
<b>Turnout</b>		52.6	13.2

### Eventons (8355)

		vote	share
Szablowska W. Ms.	Con	1,381	41.6
Stagles B. Ms.	LD	1,010	30.4
Gale E. Ms.	Lab	716	21.6
Joby R.	SDP	210	6.3
<b>Turnout</b>		39.8	11.2

### Finchampstead South (4949)

		vote	share
Woolhouse J.	Con	871	43.4
May C. Ms.	SDP	734	36.5
Donelan A.	Lab	404	20.1
<b>Turnout</b>		40.7	6.8

### Little Hungerford (7836)

		vote	share
Long A.	LD	1,479	42.2
Flaherty H.	Con	1,256	35.8
Davis K. Ms.	Lab	770	22.0
<b>Turnout</b>		44.8	6.4

### Loddon (6231)

		vote	share
Thair D.*	LD	1,360	54.8
Curd A.	Con	579	23.3
Sims O. Ms.	Lab	544	21.9
<b>Turnout</b>		40.0	31.5

### Norreys (5644)

		vote	share
Brown I.*	Con	1,188	38.4
Baker J.	Lab	1,063	34.4
Lee E.	LD	671	21.7
Cottingham R. Ms.	SDP	170	5.5
<b>Turnout</b>		54.9	4.0

### Redhatch (11475)

		vote	share
Spratting A.*	LD	2,459	51.5
Jorgensen N.	Con	1,678	35.2
Royle P.	Lab	634	13.3
<b>Turnout</b>		41.7	16.4

### Remenham & Wargrave (3511)

		vote	share
Maidment C.	Con	905	60.7
Bann D.	LD	317	21.3
Jones S.	Lab	268	18.0
<b>Turnout</b>		42.6	39.5

### Shinfield (5647)

		vote	share
Taylor J. Ms.	Lab	953	35.8
Robinson N. Ms.*	Con	938	35.2
Gollop P.	LD	524	19.7
Darnton G.	Green	249	9.3
<b>Turnout</b>		47.3	0.6

### Sonning (1071)

		vote	share
Pierce C.*	Con	430	66.7
Fifield G. Ms.	LD	128	19.8
Young R.	Lab	87	13.5
<b>Turnout</b>		60.2	46.8

### South Lake (4657)

		vote	share
McCann T.	LD	1,111	54.9
Dally A. Ms.	Lab	488	24.1
Elms M.	Con	425	21.0
<b>Turnout</b>		43.5	30.8

### Twyford & Ruscombe (4925)

		vote	share
Conway-Jones M. Ms.*	Con	1,027	41.5
Tattersall A.	Lab	787	31.8
Conway S.	LD	497	20.1
Greaves T.	Green	165	6.7
<b>Turnout</b>		50.3	9.7

### Wescott (3766)

		vote	share
Vaughan D.	LD	741	56.0
Ziebland N.	Lab	370	28.0
Grady J. Ms.	SDP	212	16.0
<b>Turnout</b>		35.8	28.0

### Whitegates (2838)

		vote	share
Storm M.	LD	472	37.7
Burnett-Wilson J. Ms.	Con	431	34.4
Sharp D.	Lab	349	27.9
<b>Turnout</b>		44.2	3.3

### Winnersh (5401)

		vote	share
Worsfold J.	Con	920	42.8
Norgate C.	SDP	507	23.6
Gumbrell A.	Lab	492	22.9
Anderson K. Ms.	Green	231	10.7
<b>Turnout</b>		42.7	19.2

### Wokingham Without (5009)

		vote	share
Helliar-Symons P. Ms.*	Con	1,068	52.8
Forrest D.	LD	520	25.7
Grattidge D.	Lab	435	21.5
<b>Turnout</b>		40.5	27.1

## Wokingham 1991

### Bulmershe (3289)

		vote	share
Waters V. Ms.	LD	609	42.5
Stamp C.	Lab	567	39.6
Chapman A.	Con	257	17.9
<b>Turnout</b>		43.9	2.9

### Charvil (1602)

		vote	share
Gimblett M. Ms.*	Con	510	63.8
Alder M.	LD	215	26.9
Wickenden C.	Lab	75	9.4
<b>Turnout</b>		49.9	36.9

### Coronation (5459)

		vote	share
Day L.	LD	1,462	51.4
Hutchinson M.*	Con	1,147	40.3
Morris C.	Lab	236	8.3
<b>Turnout</b>		52.2	11.1

### Emmbrook (4657)

		vote	share
Austin D.*	Con	851	37.2
Earnshaw J.	LD	675	29.5
Albinson J.	Ind	573	25.0
Gascoyne C.	Lab	189	8.3
<b>Turnout</b>		49.5	7.7

### Eventons (8267)

		vote	share
Griffith L. Ms.*	Con	1,672	50.7
Ryan J.	LD	1,298	39.3
Davies T.	Lab	329	10.0
<b>Turnout</b>		40.0	11.3

### Finchampstead North (4065)

		vote	share
Catran K.*	Con	958	58.4
Stagles B. Ms.	LD	542	33.0
Baker J.	Lab	141	8.6
<b>Turnout</b>		40.4	25.4

### Hurst (1387)

		vote	share
Drake A. Ms.*	Con	496	78.0
Dalby J.	LD	114	17.9
McMahon C.	Lab	26	4.1
<b>Turnout</b>		46.1	60.1

### Little Hungerford (7756)

		vote	share
Luck W.	LD	1,495	45.2
Bullocke J.	Con	1,441	43.6
Davis K. Ms.	Lab	368	11.1
<b>Turnout</b>		42.8	1.6

### Loddon (6236)

		vote	share
Draper C.	LD	1,246	54.2
Flaherty H.	Con	740	32.2
Sims O. Ms.	Lab	312	13.6
<b>Turnout</b>		37.1	22.0

### Norreys (5697)

		vote	share
Crail I.*	Con	1,349	46.7
Donelan A.	Lab	894	31.0
Williams H.	LD	645	22.3
<b>Turnout</b>		51.0	15.8

### Redhatch (11434)

		vote	share
Rolls F. Ms.	LD	2,038	46.9
Cross C. Ms.	Con	1,929	44.4
Royle P.	Lab	381	8.8
<b>Turnout</b>		38.2	2.5

### Shinfield (5707)

		vote	share
Hollingshead A.	Con	1,093	43.8
Waite O.	Lab	731	29.3
Gollop P.	LD	591	23.7
Cottee K.	Ind Con	81	3.2
<b>Turnout</b>		43.8	14.5

### South Lake (4604)

		vote	share
Pratt G.	LD	908	58.5
Hutchinson D. Ms.	Con	395	25.4
Dally A. Ms.	Lab	250	16.1
<b>Turnout</b>		33.9	33.0

Twyford & Ruscombe (5137)			
		vote	share
Robinson A.*	Con	1,101	46.8
Conway S.	LD	769	32.7
Mantel R.	Lab	484	20.6
		<b>Turnout</b>	45.9 14.1

Wescott (3726)			
		vote	share
Green J.	Con	770	46.3
Dalby E.	LD	680	40.9
Grattidge D.	Lab	214	12.9
		<b>Turnout</b>	44.9 5.4

Whitegates (2786)			
		vote	share
Seeman G.*	Con	535	40.4
Andrew D.	LD	508	38.3
Vincent E. Ms.	Lab	282	21.3
		<b>Turnout</b>	47.7 2.0

Winnersh (5456)			
		vote	share
Grobler J.*	Con	1,064	56.1
Bond G.	LD	551	29.0
Gumbrell A.	Lab	283	14.9
		<b>Turnout</b>	35.1 27.0

Wokingham Without (5002)			
		vote	share
Ross A.*	Con	1,131	61.6
Williams L. Ms.	LD	497	27.1
Gascoyne M. Ms.	Lab	209	11.4
		<b>Turnout</b>	36.9 34.5

## Wokingham 1992

Arborfield (1490)			
		vote	share
Lynskey L. Ms.*	Con	402	71.8
Bacon S.	LD	128	22.9
Wismont-Lesinska G.	Lab	30	5.4
		<b>Turnout</b>	37.6 48.9

Bulmershe (3269)			
		vote	share
Hadfield R.	LD	514	39.4
Bland N.*	Lab	398	30.5
Hutchinson M.	Con	392	30.1
		<b>Turnout</b>	39.9 8.9

Coronation (5368)			
		vote	share
Parkinson G.*	Con	1,244	51.3
Moore D.	LD	1,060	43.7
Morris C.	Lab	123	5.1
		<b>Turnout</b>	45.2 7.6

Emmbrook (4671)			
		vote	share
Earnshaw J.	LD	972	48.7
Eke R.*	Con	919	46.1
Gascoyne C.	Lab	103	5.2
		<b>Turnout</b>	42.6 2.7

Ewendons (8342)			
		vote	share
Hudson C.*	Con	1,493	52.6
Angel G.	LD	1,226	43.2
Davies T.	Lab	118	4.2
		<b>Turnout</b>	34.0 9.4

Finchampstead North (4224)			
		vote	share
Trimming J. Ms.	Con	863	62.4
Drysdale P.	LD	444	32.1
Lee M.	Lab	75	5.4
		<b>Turnout</b>	32.8 30.3

Finchampstead South (4664)			
		vote	share
Long M. Ms.*	Con	927	52.9
May C. Ms.	LD	681	38.9
Shone A.	RES	81	4.6
Chizlett R.	Lab	62	3.5
		<b>Turnout</b>	37.5 14.0

Little Hungerford (7729)			
		vote	share
May P. Ms.*	Con	1,639	53.5
Hare D.	LD	1,206	39.4
Davis K. Ms.	Lab	217	7.1
		<b>Turnout</b>	39.7 14.1

Loddon (6326)			
		vote	share
Clifford A.*	LD	889	49.6
Soane W.	Con	755	42.1
Wismont-Lesinski M.	Lab	150	8.4
		<b>Turnout</b>	28.4 7.5

Norreys (5877)			
		vote	share
Southgate L.*	Con	1,246	56.7
Williams H.	LD	489	22.3
Grattidge D.	Lab	461	21.0
		<b>Turnout</b>	37.4 34.5

Redhatch (11511)			
		vote	share
Devonald P.*	LD	2,251	52.1
Jorgensen P. Ms.	Con	1,930	44.7
Royle P.	Lab	139	3.2
		<b>Turnout</b>	37.6 7.4

Remenham & Wargrave (3497)			
		vote	share
Williams N. Ms.	Con	808	77.0
Bann D.	LD	185	17.6
Leaf A.	Lab	57	5.4
		<b>Turnout</b>	30.1 59.3

Shinfield (4547)			
		vote	share
Sewell I.	Con	1,097	60.2
Pyle M.	LD	368	20.2
Waite O.	Lab	358	19.6
		<b>Turnout</b>	40.1 40.0

South Lake (4547)			
		vote	share
Clements M. Ms.	LD	677	53.9
Hutchinson D. Ms.	Con	444	35.3
Stamp C.	Lab	136	10.8
		<b>Turnout</b>	27.6 18.5

Swallowfield (1345)			
		vote	share
Beatty D. Ms.*	Con	479	78.0
Cridland I.	LD	135	22.0
		<b>Turnout</b>	46.0 56.0

Twyford & Ruscombe (5130)			
		vote	share
Breaks C. Ms.	Con	1,020	48.0
Conway S.	LD	917	43.2
Mantel R.	Lab	188	8.8
		<b>Turnout</b>	41.5 4.8

Winnersh (5617)			
		vote	share
Dovey S. Ms.	Con	1,092	71.2
Bond G.	LD	309	20.1
Gumbrell A.	Lab	133	8.7
		<b>Turnout</b>	27.3 51.0

Wokingham Without (5074)			
		vote	share
Trimming J.*	Con	1,058	65.3
Berlin P. Ms.	LD	486	30.0
Donelan A.	Lab	76	4.7
		<b>Turnout</b>	31.9 35.3

## Wokingham 1994

Barkham (1883)			
		vote	share
Ellinor B. Ms.	Con	446	63.9
Hoare H.	LD	190	27.2
Baker J.	Lab	62	8.9
		<b>Turnout</b>	37.1 36.7

Coronation (5674)			
		vote	share
Jewell C. Ms.*	LD	1,307	60.0
Hutchinson M.	Con	623	28.6
Vivian B.	Lab	250	11.5
		<b>Turnout</b>	38.4 31.4

Emmbrook (4600)			
		vote	share
Malvern K.*	LD	1,188	59.1
Eke R.	Con	627	31.2
Wood R.	Lab	195	9.7
		<b>Turnout</b>	43.7 27.9

Ewendons (8397)			
		vote	share
King C.	LD	1,771	55.4
King D. Ms.	Con	1,159	36.3
Chizlett R.	Lab	266	8.3
		<b>Turnout</b>	38.1 19.1

Finchampstead South (4641)			
		vote	share
Woolhouse J.*	Con	808	47.2
Parker J.	LD	611	35.7
Williams R.	Lab	186	10.9
Shone A.	C DEM	107	6.3
		<b>Turnout</b>	36.9 11.5

Little Hungerford (7813)			
		vote	share
Carpenter D. Ms.	LD	1,346	43.2
Lomax P.	Con	1,332	42.8
Davis K. Ms.	Lab	435	14.0
		<b>Turnout</b>	39.8 0.4

Loddon (6454)			
		vote	share
Thair D.*	LD	1,220	58.1
Wood R.	Con	499	23.8
Jones R.	Lab	380	18.1
		<b>Turnout</b>	32.5 34.3

Norreys (6062)			
		vote	share
Brown I.*	Con	1,365	47.5
Gascoyne C.	Lab	800	27.8
Dalby E.	LD	711	24.7
		<b>Turnout</b>	47.4 19.6

Redhatch (11665) <sup>2</sup>			
		vote	share
Spratling A.*	LD	2,189	55.1
Targett J. Ms.	LD	1,992	-
Hughes G.	Con	1,386	34.9
Brookes C.	Con	1,283	-
Vincent E. Ms.	Lab	401	10.1
Royle P.	Lab	360	-
		<b>Turnout</b>	32.6 20.2

**Remenham & Wargrave (3416)**

		vote	share
<b>Etheridge S.</b>	Con	794	50.0
Ferris C. Ms.	LD	688	43.3
McLoughlin W.	Lab	107	6.7
<b>Turnout</b>		46.5	6.7

**Shinfield (5713)<sup>2</sup>**

		vote	share
<b>Pollock A.</b>	Con	903	43.0
<b>Patman B.</b>	Con	864	-
Evans J. Ms.	Lab	705	33.6
Bland N.	Lab	701	-
Bond G.	LD	491	23.4
Cridland I.	LD	454	-
<b>Turnout</b>		36.1	9.4

**Sonning (1090)**

		vote	share
<b>Rose N.</b>	Con	432	64.6
Fifield G. Ms.	LD	237	35.4
<b>Turnout</b>		61.4	29.1

**South Lake (4555)<sup>2</sup>**

		vote	share
<b>McCann T.*</b>	LD	1,017	66.9
<b>Lawley C.</b>	LD	1,016	-
Petty R.	Con	265	17.4
Hutchinson D. Ms.	Con	264	-
Hayes R.	Lab	239	15.7
Goodman J.	Lab	227	-
<b>Turnout</b>		33.2	49.4

**Twyford & Ruscombe (5262)**

		vote	share
<b>Conway S.</b>	LD	1,432	56.2
Conway-Jones M. Ms.*	Con	860	33.8
Lambon B.	Lab	256	10.0
<b>Turnout</b>		48.4	22.4

**Wescott (3823)**

		vote	share
<b>Wyatt R.</b>	Con	811	48.0
Smith P.	LD	702	41.5
Gascoyne M. Ms.	Lab	178	10.5
<b>Turnout</b>		44.2	6.4

**Whitegates (2784)**

		vote	share
<b>Robson A. Ms.</b>	Con	582	46.0
Lissaman J. Ms.	LD	445	35.2
Beasley M.	Lab	238	18.8
<b>Turnout</b>		45.4	10.8

**Winnersh (5621)**

		vote	share
<b>White C. Ms.</b>	Con	934	46.5
Strickland-Clark D.	LD	874	43.5
Waite O.	Lab	199	9.9
<b>Turnout</b>		35.7	3.0

**Wokingham Without (5150)**

		vote	share
<b>Hellier-Symons P. Ms.*</b>	Con	1,006	49.1
Berkley T.	LD	624	30.5
Saunders C. Ms.	Lab	417	20.4
<b>Turnout</b>		39.8	18.7

## Wokingham 1995

**Bulmershe (3078)**

		vote	share
<b>Samuel V. Ms.</b>	LD	562	43.5
Bland N.	Lab	501	38.8
Hutchinson D. Ms.	Con	229	17.7
<b>Turnout</b>		42.0	4.7

**Charvil (1644)**

		vote	share
<b>Gimblett M. Ms.*</b>	Ind	646	71.1
Hobbs E. Ms.	Con	103	11.3
Wickenden C.	Lab	101	11.1
Trott H.	LD	59	6.5
<b>Turnout</b>		55.3	59.7

**Coronation (5711)**

		vote	share
<b>Neall R.</b>	LD	1,016	51.3
Hutchinson M.	Con	554	28.0
Boom A.	Lab	409	20.7
<b>Turnout</b>		34.7	23.3

**Emmbrook (4528)**

		vote	share
<b>Hare D.</b>	LD	764	41.4
Whyte B.	Con	758	41.1
Ferguson J.	Lab	324	17.6
<b>Turnout</b>		40.8	0.3

**Evendons (8338)**

		vote	share
<b>Albinson J.</b>	LD	1,268	44.5
King D. Ms.	Con	1,153	40.5
Gascoyne M. Ms.	Lab	428	15.0
<b>Turnout</b>		34.2	4.0

**Finchampstead North (4368)**

		vote	share
<b>Freestone A.</b>	LD	890	58.8
Cattran K.*	Con	623	41.2
<b>Turnout</b>		34.6	17.6

**Hurst (1373)**

		vote	share
<b>Drake A. Ms.*</b>	Con	383	66.4
Hull P.	LD	148	25.6
McMahon C.	Lab	46	8.0
<b>Turnout</b>		42.0	40.7

**Little Hungerford (7607)**

		vote	share
<b>Swindells D.</b>	LD	1,297	45.2
Lomax P.	Con	1,106	38.6
Davis K. Ms.	Lab	465	16.2
<b>Turnout</b>		37.7	6.7

**Loddon (6369)**

		vote	share
<b>Binding J.</b>	LD	976	52.8
Appleby R. Ms.	Lab	475	25.7
Wood R.	Con	398	21.5
<b>Turnout</b>		29.0	27.1

**Norreys (6038)**

		vote	share
<b>Crail I.*</b>	Con	1,140	43.4
Gascoyne C.	Lab	1,038	39.6
Dalby E.	LD	446	17.0
<b>Turnout</b>		43.5	3.9

**Redhatch (11537)**

		vote	share
<b>Rolls F. Ms.*</b>	LD	1,833	52.3
Hughes G.	Con	1,101	31.4
Royle P.	Lab	571	16.3
<b>Turnout</b>		30.4	20.9

**Shinfield (5536)**

		vote	share
<b>Hollingshead A.*</b>	Con	1,111	54.4
Wylie L. Ms.	Lab	933	45.6
<b>Turnout</b>		36.9	8.7

**South Lake (4497)**

		vote	share
<b>Coote L.</b>	LD	712	55.1
Goodman J.	Lab	363	28.1
Flaherty H.	Con	218	16.9
<b>Turnout</b>		28.8	27.0

**Twyford & Ruscombe (5341)**

		vote	share
<b>Ferris C. Ms.</b>	LD	1,132	47.6
Robinson A.*	Con	876	36.8
Mantel R.	Lab	370	15.6
<b>Turnout</b>		44.5	10.8

**Wescott (3899)**

		vote	share
<b>Green J.*</b>	Con	666	43.8
Smith P.	LD	600	39.5
Wood R.	Lab	253	16.7
<b>Turnout</b>		39.0	4.3

**Whitegates (2688)**

		vote	share
<b>Lissaman J. Ms.</b>	LD	468	35.2
Seeman G.*	Con	438	32.9
Jones R.	Lab	425	31.9
<b>Turnout</b>		49.5	2.3

**Winnersh (5533)**

		vote	share
<b>Kerr K.</b>	LD	943	47.4
Brookes C.	Con	771	38.8
Chizlett R.	Lab	275	13.8
<b>Turnout</b>		36.0	8.6

**Wokingham Without (5126)**

		vote	share
<b>Ross A.*</b>	Con	926	46.3
Saunders C. Ms.	Lab	596	29.8
Bristow P.	LD	478	23.9
<b>Turnout</b>		39.0	16.5

## Wokingham 1996

**Arborfield (1311)**

		vote	share
<b>Bacon S.</b>	LD	362	62.0
Scott F.	Con	222	38.0
<b>Turnout</b>		44.6	24.0

**Bulmershe (3070)**

		vote	share
<b>Hadfield R.*</b>	LD	609	45.8
Bland N.	Lab	486	36.5
Doughty S. Ms.	Con	236	17.7
<b>Turnout</b>		43.7	9.2

**Coronation (5804)**

		vote	share
<b>Dredge T.</b>	LD	1,272	55.9
Hutchinson M.	Con	755	33.2
Boom A.	Lab	247	10.9
<b>Turnout</b>		39.2	22.7

**Emmbrook (4628)**

		vote	share
<b>Whyte B.</b>	Con	1,006	47.7
Earnshaw J.*	LD	901	42.7
Grattidge D.	Lab	201	9.5
<b>Turnout</b>		45.6	5.0

**Evendons (8424)**

		vote	share
<b>Hudson C.*</b>	Con	1,224	42.4
Marinos T. Ms.	LD	1,164	40.4
Lee M.	Lab	254	8.8
Bolton J.	RES	242	8.4
<b>Turnout</b>		34.3	2.1

**Finchampstead North (4463)**

		vote	share
<b>May C. Ms.</b>	LD	887	46.4
Charlesworth T.	Con	871	45.6
Hammond B.	Lab	154	8.1
<b>Turnout</b>		43.0	0.8

**Finchampstead South (4636)**

		vote	share
<b>Long M. Ms.*</b>	Con	893	53.9
Bristow P.	LD	432	26.1
Cooper M.	Lab	281	17.0
Major Shone A.	Ind	50	3.0
<b>Turnout</b>		35.7	27.8

**Little Hungerford (7660)**

		vote	share
<b>Ladds W. Ms.</b>	LD	1,129	43.6
May P. Ms.*	Con	1,101	42.5
Rupert J. Ms.	Lab	359	13.9
<b>Turnout</b>		33.8	1.1

**Loddon (6349)**

		vote	share
<b>Clifford A.*</b>	LD	959	59.6
Henderson W.	Con	333	20.7
Appleby R. Ms.	Lab	316	19.7
<b>Turnout</b>		25.4	38.9

**Norreys (6013)**

		vote	share
<b>Southgate L.*</b>	Con	1,146	44.9
Gascoyne C.	Lab	937	36.7
King L. Ms.	LD	472	18.5
<b>Turnout</b>		42.5	8.2

**Redhatch (11834)**

		vote	share
<b>Clark P.</b>	LD	1,920	57.9
Jorgensen P. Ms.	Con	965	29.1
Cairns A.	Lab	433	13.1
<b>Turnout</b>		28.0	28.8

**Remenham & Wargrave (3498)**

		vote	share
<b>Browne F.</b>	Con	831	54.2
Hull P.	LD	532	34.7
McLoughlin W.	Lab	171	11.1
<b>Turnout</b>		43.9	19.5

**Shinfield (5599)**

		vote	share
<b>Patman B.</b>	Con	1,005	50.5
Bray P. Ms.	LD	568	28.5
Erdwin M. Ms.	Lab	419	21.0
<b>Turnout</b>		35.6	21.9

**South Lake (4485)**

		vote	share
<b>Lawley C.</b>	LD	865	67.1
Jones R.	Lab	228	17.7
Flaherty H.	Con	196	15.2
<b>Turnout</b>		28.9	49.4

**Swallowfield (1398)**

		vote	share
<b>Beatty D. Ms.*</b>	Con	426	62.4
Young R.	Lab	257	37.6
<b>Turnout</b>		49.5	24.7

**Twyford & Ruscombe (5436)**

		vote	share
<b>Ferris L.</b>	LD	1,335	55.1
Hayward C.	Con	799	33.0
Mantel R.	Lab	290	12.0
<b>Turnout</b>		44.6	22.1

**Winnersh (5516)**

		vote	share
<b>Siggery E. Ms.</b>	Con	875	49.0
Wakefield J.	LD	726	40.6
Chizlett R.	Lab	185	10.4
<b>Turnout</b>		32.8	8.3

**Wokingham Without (5185)**

		vote	share
<b>Lewis P.</b>	Con	1,100	52.0
Saunders C. Ms.	Lab	717	33.9
Berlin P. Ms.	LD	297	14.0
<b>Turnout</b>		40.8	18.1

