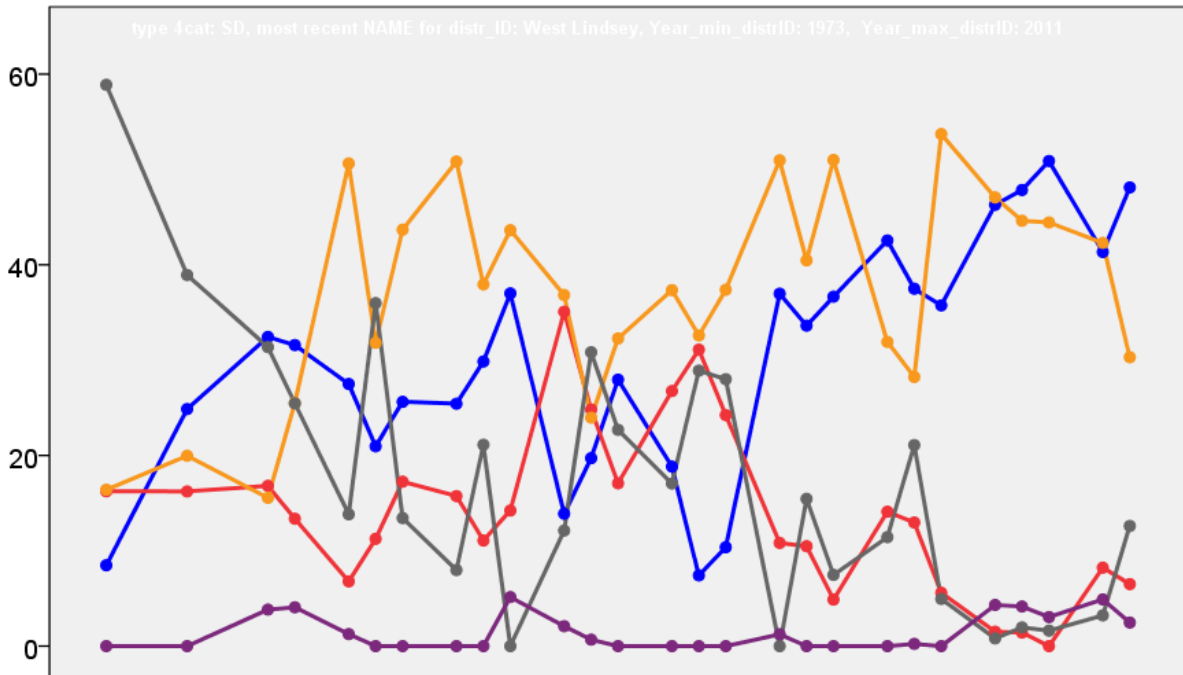


West Lindsey District Council Election Results 1973-2011



Colin Rallings and Michael Thrasher
The Elections Centre
Plymouth University

The information contained in this report has been obtained from a number of sources. Election results from the immediate post-reorganisation period were painstakingly collected by Alan Willis largely, although not exclusively, from local newspaper reports. From the mid-1980s onwards the results have been obtained from each local authority by the Elections Centre. The data are stored in a database designed by Lawrence Ware and maintained by Brian Cheal and others at Plymouth University. Despite our best efforts some information remains elusive whilst we accept that some errors are likely to remain. Notice of any mistakes should be sent to elections@plymouth.ac.uk. The results sequence can be kept up to date by purchasing copies of the annual Local Elections Handbook, details of which can be obtained by contacting the email address above.

Front cover: the graph shows the distribution of percentage vote shares over the period covered by the results. The lines reflect the colours traditionally used by the three main parties. The grey line is the share obtained by Independent candidates while the purple line groups together the vote shares for all other parties.

Rear cover: the top graph shows the percentage share of council seats for the main parties as well as those won by Independents and other parties. The lines take account of any by-election changes (but not those resulting from elected councillors switching party allegiance) as well as the transfers of seats during the main round of local election.

The lower graph shows for each main round of local elections the overall percentage turnout (solid line), the percentage of women candidates standing at (dotted line) and the percentage of women among those elected (hashed line).

West Lindsey - 1973

Ancholme Valley (1127)			
	vote	share	
Everett	Ind	0	0.0
		Turnout	0.0 0.0
Caistor (1483)			
Drakes M. Ms.	Ind	0	0.0
		Turnout	0.0 0.0
Forest (1419)			
Emerson	Ind	290	40.7
Chappell	Ind	240	33.7
Calthorp	Ind	182	25.6
		Turnout	50.0 7.0
Gainsborough North (4187) ³			
Dudley D. Ms.	Lib	1,025	42.8
Edlington A.	Lab	867	36.2
Walker M.	Lib	771	-
Green	Lib	717	-
Noble	Lab	610	-
Gerncross	Lab	527	-
Antcliff	Con	502	21.0
Wale	Con	490	-
		Turnout	48.2 6.6
Hemswell (1519)			
Tatam G.	Ind	256	48.1
Crook	Ind	154	28.9
Moore	Ind	122	22.9
		Turnout	35.0 19.2
Kelsey Wold (1430)			
Chatterton H.	Ind	0	0.0
		Turnout	0.0 0.0
Lea (1356)			
Selby	Ind	371	60.5
Harrington M. Ms.	Ind	242	39.5
		Turnout	45.0 21.0
Middle Rasen (1318)			
Hall W.	Ind	350	56.2
Whitfield	Ind	273	43.8
		Turnout	47.3 12.4
Nettleham (2666) ²			
Sellars R.	Lib	0	0.0
Herrington H.	Ind	0	0.0
		Turnout	0.0 0.0
No. 1 (Gainsborough: Central) (2629) ²			
Blackburn D.	Lab	450	45.1
Roofe C.	Lab	439	-
Brooks	Lib	285	28.6
Hewson E. Ms.	Con	262	26.3
		Turnout	35.5 16.5
No. 2 (Gainsborough: Market) (3245) ²			
Hearn F.	Lib	584	38.5
Heatlie J.	Lab	511	33.7
White	Lab	491	-
Renshaw	Con	423	27.9
		Turnout	37.6 4.8

No. 20 (Bardney) (1193)			
	Ind	vote	share
Johnson W.	Ind	0	0.0
		Turnout	0.0 0.0
No. 21 (Cherry Willingham) (1885)			
Beauman	Ind	517	66.3
Kenny	Lab	263	33.7
		Turnout	41.4 32.6
No. 22 (Reepham) (1389)			
Cooke	Ind	317	52.7
Etherington	Ind	285	47.3
		Turnout	43.3 5.3
No. 23 (Barlings) (999)			
Gaul R.	Ind	339	71.8
Holland	Ind	133	28.2
		Turnout	47.2 43.6
No. 27 (Dunholme) (1974)			
Smith	Ind	400	67.9
Baldwin	Ind	189	32.1
		Turnout	29.8 35.8
No. 4 (Gainsborough: South) (2406) ²			
Fletcher M.	Lib	449	37.9
Dordery C. Ms.	Con	389	32.9
Eccles	Lib	365	-
Salisbury	Lab	346	29.2
Mason	Lab	324	-
		Turnout	55.9 5.1
No. 5 (Market Rasen) (2266) ²			
Fletcher M.	Ind	478	77.0
Peatfield C.	Ind	397	-
Robertson	Ind	392	-
Rhodes	Ind	332	-
Rhoades	Ind	207	-
Wakefield	Lab	143	23.0
Shaw	Ind	45	-
		Turnout	27.4 53.9
Saxilby (2279) ²			
Ford G.	Ind	651	59.8
Fox	Lab	438	40.2
Eley	Ind	379	-
		Turnout	47.8 19.6
Scampton (1512)			
Richards	Ind	230	50.3
Knott	Ind	227	49.7
		Turnout	30.2 0.7
Scotter (1603)			
Cordeaux L.	Ind	260	39.4
Ledgett	Ind	205	31.1
Croft	Lib	195	29.5
		Turnout	42.0 8.3
South Cliff (1130)			
Fox G.	Ind	367	45.0
Burkett	Ind	246	30.1
Hayes	Ind	178	21.8
Coles	Ind	25	3.1
		Turnout	72.2 14.8

Stow (1213)			
	Ind	vote	share
Davey	Ind	319	58.2
Hobbs	Ind	229	41.8
		Turnout	45.0 16.4
Thonock (1373)			
Carter B.	Lib	509	67.1
Wilson	Ind	250	32.9
		Turnout	55.0 34.1
Torksey (1135)			
Westgarth J. Ms.	Ind	318	46.1
Kitchinson	Ind	222	32.2
Hill	Ind	150	21.7
		Turnout	61.0 13.9
Walshcroft (1157)			
Wilson L.	Ind	324	58.6
Key	Ind	229	41.4
		Turnout	47.8 17.2
Welton (1277)			
Capes	Ind	0	0.0
		Turnout	0.0 0.0
Wold View (1272)			
Brant C.	Ind	0	0.0
		Turnout	0.0 0.0
Yarborough (1500)			
Payne	Ind	302	39.1
Richardson	Ind	240	31.0
Vaughan	Ind	231	29.9
		Turnout	51.5 8.0

West Lindsey - 1976

Ancholme Valley (1272)			
	Ind	vote	share
Lambert L.	Ind	0	0.0
		Turnout	0.0 0.0
Caistor (1614)			
Drakes M. Ms.	Ind	842	88.4
Bradley P. Ms.	Lab	110	11.6
		Turnout	60.3 76.9
Forest (1462)			
Eminson E. Ms.	Ind	481	66.7
Skepper J.	Ind	240	33.3
		Turnout	51.2 33.4
Gainsborough North (4136) ³			
Dudley D. Ms.	Lib	622	33.9
Edlington A.	Lab	611	33.3
Burdett-			
Jones B. Ms.	Con	600	32.7
Bonnett R.	Con	575	-
Rogers D. Ms.	Con	555	-
Walker M.	Lib	520	-
Brazier W.	Lab	365	-
		Turnout	37.5 0.6

Hemswell (1217)			
		vote	share
Tatam G.	Ind	426	85.7
Rubie R.	Ind	71	14.3
Turnout		41.7	71.4
Kelsey Wold (1479)			
		vote	share
Chatterton H.	Ind	688	91.4
Bradley P.	Lab	65	8.6
Turnout		51.5	82.7
Lea (1367)			
		vote	share
Knight H.	Ind	305	48.3
Staves F. Ms.	Lib	187	29.6
Harrington M. Ms.	Ind	140	22.2
Turnout		46.4	18.7
Middle Rasen (1416)			
		vote	share
Hall W.	Ind	0	0.0
Turnout		0.0	0.0
Nettleham (2784)²			
		vote	share
Breton L.	Con	770	35.8
Sellars R.	Lib	741	34.5
Herrington H.	Ind	637	29.7
Turnout		58.4	1.4
No. 1 (Gainsborough: Central) (3171)²			
		vote	share
Blackburn D.	Lab	524	58.1
Roofe C.	Lab	511	-
Hewson E. Ms.	Con	378	41.9
Turnout		29.5	16.2
No. 2 (Gainsborough: Market) (3111)²			
		vote	share
Salisbury E.	Lab	628	51.8
Hearn F.	Lib	584	48.2
Heatlie J.	Lab	409	-
Turnout		33.5	3.6
No. 20 (Bardney) (1277)			
		vote	share
Johnson W.	Ind	0	0.0
Turnout		0.0	0.0
No. 21 (Cherry Willingham) (1884)			
		vote	share
Bowman D.	Ind	571	82.3
Meanwell C.	Lab	123	17.7
Turnout		37.6	64.6
No. 22 (Reepham) (1477)			
		vote	share
Clarke K. Ms.	Ind	0	0.0
Turnout		0.0	0.0
No. 23 (Barlings) (982)			
		vote	share
Gaul R.	Ind	0	0.0
Turnout		0.0	0.0
No. 27 (Dunholme) (2113)			
		vote	share
Emerson Smith W.	Ind	0	0.0
Turnout		0.0	0.0
No. 4 (Gainsborough: South) (2319)²			
		vote	share
Dordery C. Ms.	Con	489	45.7
Fletcher M.	Lib	350	32.7
Greenaway P. Ms.	Lib	275	-
Saville J.	Lab	231	21.6
Turnout		39.2	13.0

No. 5 (Market Rasen) (2332)²			
		vote	share
Fletcher M.	Ind	0	-
Peatfield C.	Ind	0	0.0
Turnout		0.0	0.0
Saxilby (2528)²			
		vote	share
Ford G.	Ind	723	55.4
Hughes J.	Con	583	44.6
Good M. Ms.	Ind	472	-
Turnout		48.3	10.7
Scampton (1553)			
		vote	share
Wilson P.	Ind	0	0.0
Turnout		0.0	0.0
Scotter (1684)			
		vote	share
Cordeaux L.	Ind	0	0.0
Turnout		0.0	0.0
South Cliff (1148)			
		vote	share
Fox G.	Ind	0	0.0
Turnout		0.0	0.0
Stow (1336)			
		vote	share
O'Toole K.	Ind	0	0.0
Turnout		0.0	0.0
Thonock (1349)			
		vote	share
Moulds W.	Con	398	54.1
Carter B.	Lib	337	45.9
Turnout		54.6	8.3
Torksey (1181)			
		vote	share
Westgarth J. Ms.	Ind	0	0.0
Turnout		0.0	0.0
Walshcroft (1200)			
		vote	share
Wilson L.	Ind	0	0.0
Turnout		0.0	0.0
Welton (1472)			
		vote	share
Stiles E.	Ind	374	56.0
Mant W.	Con	294	44.0
Turnout		45.4	12.0
Wold View (1287)			
		vote	share
Brant C.	Ind	0	0.0
Turnout		0.0	0.0
Yarborough (1580)			
		vote	share
Addiosn P.	Ind	0	0.0
Turnout		0.0	0.0
West Lindsey - 1979			
Ancholme Valley (1144)			
		vote	share
Milton B.	Ind	540	64.2
Carlton H.	Con	301	35.8
Turnout		73.5	28.4

Bardney (1658)			
		vote	share
Gilchrist A.	Lib	0	0.0
Turnout		0.0	0.0
Caistor (1761)			
		vote	share
Drakes M. Ms.	Ind	0	0.0
Turnout		0.0	0.0
Dunholme (1634)			
		vote	share
Smith W.	Con	0	0.0
Turnout		0.0	0.0
Forest (1560)			
		vote	share
Eminson E. Ms.	Ind	0	0.0
Turnout		0.0	0.0
Gainsborough East (4919)³			
		vote	share
Blackburn D.	Lab	1,624	34.1
Salisbury E.	Lab	1,418	-
Roofe C.	Res	1,228	25.8
Heatlie J.	Lab	1,146	-
Greenwood M.	Lib	1,125	23.6
Ross G.	Con	785	16.5
Turnout		96.8	8.3
Gainsborough North (4358)³			
		vote	share
Dudley D. Ms.	Lib	1,769	49.3
Carter B.	Lib	1,426	-
Burdett-Jones B. Ms.	Con	1,109	30.9
Pitchforth C.	Con	910	-
Barke N.	Con	870	-
Parkin D.	Lab	709	19.8
Willoughby R.	Lab	699	-
Johnson R.	Lab	685	-
Turnout		82.3	18.4
Gainsborough South West (4289)³			
		vote	share
Stallman B.	Lib	1,381	38.2
Dordery C. Ms.	Con	1,372	38.0
Murray J.	Con	1,210	-
Parkin M. Ms.	Lab	860	23.8
Willoughby E. Ms.	Lab	852	-
Hopkins T.	Lab	849	-
Turnout		84.2	0.2
Hemswell (1010)			
		vote	share
Tatam G.	Ind	0	0.0
Turnout		0.0	0.0
Kelsey Wold (1561)			
		vote	share
Chatterton H.	Ind	0	0.0
Turnout		0.0	0.0
Lea (1386)			
		vote	share
Knight H.	Con	745	66.5
Winter R. Ms.	Lab	376	33.5
Turnout		81.8	32.9
Market Rasen (2808)²			
		vote	share
Fletcher M.	Ind	1,123	53.7
Peatfield C.	Con	745	35.6
Langford S.	Ind	674	-
Rhoades A.	Ind	575	-
Shipton G.	Con	257	-
Simmonds P.	Lab	224	10.7
Taylor J. Ms.	Lab	173	-
Burkitt C.	Ind	95	-
Turnout		74.5	18.1

Middle Rasen (1546)			
		vote	share
Hall W.	Ind	607	51.8
Boase G.	Ind	564	48.2
	Turnout	75.7	3.7
Nettleham (3043) ²			
		vote	share
Breton L.	Con	1,532	43.9
Herrington H.	Ind	1,198	34.3
Kennedy M.	Lab	763	21.8
	Turnout	114.8	9.6
Saxilby (2623) ²			
		vote	share
Ford G.	Ind	1,404	48.6
Hughes J.	Con	1,002	34.7
Ballerini R.	Con	570	-
Hardy C. Ms.	Lab	483	16.7
	Turnout	110.1	13.9
Scampton (1286)			
		vote	share
Wilson P.	Con	0	0.0
	Turnout	0.0	0.0
Scotter (1759)			
		vote	share
Cordeaux L.	Con	0	0.0
	Turnout	0.0	0.0
South Cliff (1177)			
		vote	share
Fox G.	Ind	472	52.4
Carlton M. Ms.	Con	429	47.6
	Turnout	76.6	4.8
Stow (1421)			
		vote	share
Thompson C.	Con	566	51.7
Gosney G. Ms.	Ind	529	48.3
	Turnout	78.6	3.4
Thonock (1398)			
		vote	share
French M.	Lib	714	62.7
Moulds W.	Con	424	37.3
	Turnout	82.2	25.5
Torksey (1238)			
		vote	share
Westgarth J. Ms.	Ind	0	0.0
	Turnout	0.0	0.0
Walshcroft (1082)			
		vote	share
Grant C.	Ind	0	0.0
	Turnout	0.0	0.0
Welton (1641)			
		vote	share
Stiles E.	Con	0	0.0
	Turnout	0.0	0.0
Witham (4421) ³			
		vote	share
Bowman D. Ms.	Ind	1,981	58.6
Staples K. Ms.	Ind	1,929	-
Greenaway C.	Ind	1,838	-
Baldwin L.	Con	1,397	41.4
	Turnout	76.4	17.3
Wold View (1306)			
		vote	share
Brant C.	Ind	0	0.0
	Turnout	0.0	0.0

Yarborough (1794)			
		vote	share
Addison P.	Ind	781	54.8
Bunting M. Ms.	Lab	354	24.8
Wilkinson A.	Ind	290	20.4
	Turnout	79.4	30.0
West Lindsey - 1980			
Caistor (1804)			
		vote	share
Drakes M. Ms.	Ind	0	0.0
	Turnout	0.0	0.0
Dunholme (1629)			
		vote	share
Smith W.	Con	472	78.9
Hughes L.	Lab	126	21.1
	Turnout	36.8	57.9
Gainsborough East (4966)			
		vote	share
Barker R.	Lab	471	31.2
Roofe C.	Res	424	28.1
Lowe M.	Lib	359	23.8
Moulds W.	Con	257	17.0
	Turnout	31.2	3.1
Gainsborough North (4561)			
		vote	share
Burdett-Jones B. Ms.	Con	664	40.3
Parkin M. Ms.	Lab	513	31.2
Rainsforth M. Ms.	Lib	469	28.5
	Turnout	36.1	9.2
Gainsborough South West (4208)			
		vote	share
Spindley S. Ms.	Lib	850	61.8
Murray J.	Con	525	38.2
	Turnout	32.8	23.6
Market Rasen (2828)			
		vote	share
Smith D.	Lab	281	25.6
Peatfield C.	Con	279	25.5
Taylor N.	Lib	274	25.0
Langford S.	Ind	262	23.9
	Turnout	39.3	0.2
Nettleham (3112)			
		vote	share
Armitage P.	Lib	702	44.9
Cole F.	Con	642	41.1
Kennedy M.	Ind	218	14.0
	Turnout	49.6	3.8
Saxilby (2678)			
		vote	share
Hughes J.	Con	447	50.3
Ballerini R.	Ind	441	49.7
	Turnout	33.2	0.7
Scotter (1809)			
		vote	share
Cordeaux L.	Con	0	0.0
	Turnout	0.0	0.0
Stow (1434)			
		vote	share
Thompson C.	Con	0	0.0
	Turnout	0.0	0.0
Welton (1725)			
		vote	share
Stiles E.	Con	0	0.0
	Turnout	0.0	0.0

Witham (4578)			
		vote	share
Greenaway C.	Ind	937	54.2
Hussain A.	Ind	792	45.8
	Turnout	37.8	8.4
West Lindsey - 1982			
Bardney (1651)			
		vote	share
Billings R.	Lib/SDP	385	51.4
Burchnell T.	Con	364	48.6
	Turnout	45.4	2.8
Forest (1597)			
		vote	share
Eminson E. Ms.	Ind	0	0.0
	Turnout	0.0	0.0
Gainsborough East (5070)			
		vote	share
Watson T.	Lab	726	50.3
Taylor E.	Lib/SDP	582	40.3
Upton B.	Ind Lib	135	9.4
	Turnout	28.5	10.0
Gainsborough North (4624)			
		vote	share
Walker M.	Lib/SDP	861	60.0
Bassett J.	Con	573	40.0
	Turnout	31.0	20.1
Gainsborough South West (4174)			
		vote	share
Greatorex K.	Lib/SDP	870	62.1
Stephenson J.	Con	531	37.9
	Turnout	33.6	24.2
Hemswell (1058)			
		vote	share
Tatam G.	Ind	0	0.0
	Turnout	0.0	0.0
Market Rasen (2903)			
		vote	share
Taylor N.	Lib/SDP	667	51.0
Peatfield C.	Con	640	49.0
	Turnout	45.0	2.1
Nettleham (3157)			
		vote	share
Leaning M.	Lib/SDP	829	50.9
Cole F.	Con	453	27.8
Frith A.	Ind	346	21.3
	Turnout	51.6	23.1
Scampton (1355)			
		vote	share
Coe H.	Con	380	68.1
Slinger B.	Lib/SDP	178	31.9
	Turnout	41.2	36.2
South Cliff (1201)			
		vote	share
Hiscox L. Ms.	Lib/SDP	227	51.5
Fox G.	Ind	214	48.5
	Turnout	36.7	2.9
Witham (4706)			
		vote	share
Staples K. Ms.	Ind	919	52.9
Mukherjee A.	Lib/SDP	817	47.1
	Turnout	36.9	5.9

Wold View (1321)			
		vote	share
Brant C.	Ind	0	0.0
Turnout		0.0	0.0

West Lindsey - 1983

Ancholme Valley (1271)			
		vote	share
Milton B.	Con	399	64.4
Hobbin	Lib/SDP	190	30.6
Smith	Lab	31	5.0
Turnout		48.8	33.7

Gainsborough East (5077)			
		vote	share
Blackburn D.	Lab	930	60.4
Lemon	Lib/SDP	610	39.6
Turnout		30.3	20.8

Gainsborough North (4696)			
		vote	share
Mercy	Lib/SDP	894	66.6
Taylor R.	Con	449	33.4
Turnout		28.6	33.1

Gainsborough South West (4175)			
		vote	share
Stallman B.	Lib/SDP	0	0.0
Turnout		0.0	0.0

Kelsey Wold (1634)			
		vote	share
Chatterton H.	Ind	651	70.9
Wilson H.	Lab	267	29.1
Turnout		56.2	41.8

Lea (1447)			
		vote	share
Moulds W.	Con	464	63.2
Boyle	Lib/SDP	270	36.8
Turnout		50.7	26.4

Middle Rasen (1635)			
		vote	share
Wilkinson	Con	415	60.4
Thompson A.	Lib/SDP	215	31.3
Nutting	Lab	57	8.3
Turnout		42.0	29.1

Saxilby (2707)			
		vote	share
Ford G.	Ind	610	42.8
Pykett	Con	487	34.2
Ballerini R.	Ind	328	23.0
Turnout		52.6	8.6

Thonock (1491)			
		vote	share
French M.	Lib/SDP	573	65.0
Frith	Con	309	35.0
Turnout		59.2	29.9

Torksey (1283)			
		vote	share
Westgarth J. Ms.	Ind	433	58.4
Kitchinson	Ind	308	41.6
Turnout		57.8	16.9

Walshcroft (1237)			
		vote	share
Sanderson S. Ms.	Ind	275	62.4
Mercy	Lib/SDP	166	37.6
Turnout		35.7	24.7

Witham (4771)			
		vote	share
Bowman D. Ms.	Ind	915	50.1
Stonehouse	Lib/SDP	910	49.9
Turnout		38.3	0.3

Yarborough (1972)			
		vote	share
Addison P.	Ind	453	51.6
Hancock N.	Ind	356	40.5
Doyle	Lab	69	7.9
Turnout		44.5	11.0

West Lindsey - 1984

Caistor (1876)			
		vote	share
Drakes M. Ms.	Ind	0	0.0
Turnout		0.0	0.0

Dunholme (1767)			
		vote	share
Smith W.	Con	0	0.0
Turnout		0.0	0.0

Gainsborough East (5086)			
		vote	share
Laughton	All	666	50.2
Madden	Lab	661	49.8
Turnout		26.1	0.4

Gainsborough North (4686)			
		vote	share
Blake D.	All	0	0.0
Turnout		0.0	0.0

Gainsborough South West (4117)			
		vote	share
Rainsforth L.	Lab	575	36.8
Spindley S. Ms.	All	540	34.5
Parsons	Con	448	28.7
Turnout		38.0	2.2

Market Rasen (3026)			
		vote	share
Langford S.	Con	683	49.2
Chwars	All	548	39.5
Thompson	Lab	158	11.4
Turnout		45.9	9.7

Nettleham (3176)			
		vote	share
Frith A.	All	932	55.8
Wilkinson	Con	683	40.9
Pratt	Lab	56	3.4
Turnout		52.6	14.9

Saxilby (2770)²			
		vote	share
Hughes J.	Con	0	0.0
Ballerini R.	Ind	0	0.0
Turnout		0.0	0.0

Scotter (1922)			
		vote	share
Cordeaux L.	Con	0	0.0
Turnout		0.0	0.0

Stow (1497)			
		vote	share
Dunk B. Ms.	All	373	52.2
Thompson C.	Con	341	47.8
Turnout		47.7	4.5

Welton (2032)			
		vote	share
Stiles E.	Con	0	0.0
Turnout		0.0	0.0

Witham (4844)			
		vote	share
Greenaway C.	Ind	1,130	64.8
Graham	All	614	35.2
Turnout		36.0	29.6

West Lindsey - 1986

Bardney (1698)			
		vote	share
Martin A. Ms.	Lib/SDP	0	0.0
Turnout		0.0	0.0

Forest (1656)			
		vote	share
Eminson E. Ms.	Ind	0	0.0
Turnout		0.0	0.0

Gainsborough East (4910)			
		vote	share
King G.	Lib/SDP	757	55.8
Watson T.	Lab	599	44.2
Turnout		27.7	11.7

Gainsborough North (4618)			
		vote	share
Stanley J.	Lib/SDP	0	0.0
Turnout		0.0	0.0

Gainsborough South West (4153)²			
		vote	share
Greatorex K.	Lib/SDP	749	73.0
Clack D.	Lib/SDP	694	-
King W.	Con	277	27.0
Morris M. Ms.	Con	243	-
Turnout		25.2	46.0

Hemswell (1226)			
		vote	share
Newman F.	Lib/SDP	0	0.0
Turnout		0.0	0.0

Market Rasen (3089)			
		vote	share
Taylor N.	Lib/SDP	842	55.7
Holvey G.	Con	525	34.7
Thomson D.	Lab	145	9.6
Turnout		49.6	21.0

Nettleham (3145)			
		vote	share
Leaning M.	Lib/SDP	0	0.0
Turnout		0.0	0.0

Scampton (1374)			
		vote	share
Fieldshod R.	Con	0	0.0
Turnout		0.0	0.0

South Cliff (1199)			
		vote	share
Hiscox L. Ms.	Lib/SDP	0	0.0
Turnout		0.0	0.0

Witham (4876)			
		vote	share
Walton J.	Lib/SDP	984	46.8
Marks T.	Con	865	41.2
Chapman B.	Lab	252	12.0
Turnout		45.1	5.7

Wold View (1285)			
		vote	share
Brant C.	Ind	523	93.6
Baker A.	Lab	36	6.4
Turnout		43.5	87.1

West Lindsey - 1987

Ancholme Valley (1434)			
		vote	share
Bell J. Ms.	Con	486	65.8
Heathorn A.	Lib/SDP	208	28.1
Shapiro R.	Lab	45	6.1
Turnout		51.5	37.6

Gainsborough East (4926)			
		vote	share
Starkey M.	Lib/SDP	669	40.7
Blackburn D.	Lab	643	39.1
Crowl R.	Con	332	20.2
Turnout		33.4	1.6

Gainsborough North (4566)			
		vote	share
Clayton J.	Lib/SDP	896	62.9
Bassett J.	Con	528	37.1
Turnout		31.2	25.8

Gainsborough South West (4173)			
		vote	share
Clack D.	Lib/SDP	720	48.6
Morris M. Ms.	Con	431	29.1
Gillum H.	Lab	332	22.4
Turnout		35.5	19.5

Kelsey Wold (1706)			
		vote	share
Chatterton H.	Ind	550	67.3
Wilson H.	Lib/SDP	267	32.7
Turnout		47.9	34.6

Lea (1536)			
		vote	share
Moulds W.	Con	448	58.1
Bicknell H.	Lib/SDP	323	41.9
Turnout		50.2	16.2

Middle Rasen (1675)			
		vote	share
Oxley C.	Lib/SDP	425	55.1
Boyce P.	Con	346	44.9
Turnout		46.0	10.2

Saxilby (2820)			
		vote	share
Ballerini R.	Ind	1,000	78.0
Smith M.	Lab	282	22.0
Turnout		45.5	56.0

Thonock (1531)			
		vote	share
French M.	Lib/SDP	619	66.1
Parry W.	Con	318	33.9
Turnout		61.3	32.1

Torksey (1413)			
		vote	share
Westgarth J. Ms.	Ind	602	79.5
Wilson B.	Con	155	20.5
Turnout		53.6	59.0

Walshcroft (1437)			
		vote	share
Sanderson S. Ms.	Ind	0	0.0
Turnout		0.0	0.0

Witham (5000)			
		vote	share
Rhodes W.	Lib/SDP	1,095	50.7
Marks T.	Con	1,066	49.3
Turnout		43.2	1.3

Yarborough (2217)			
		vote	share
Addison P.	Ind	755	77.2
Jenkins D.	Lab	223	22.8
Turnout		44.1	54.4

West Lindsey - 1988

Caistor (1917)			
		vote	share
Drakes M. Ms.*	Ind	0	0.0
Turnout		0.0	0.0

Dunholme (1832)			
		vote	share
Smith W.*	Con	0	0.0
Turnout		0.0	0.0

Gainsborough East (4891)			
		vote	share
Rainsforth R.	SLD	0	0.0
Turnout		0.0	0.0

Gainsborough North (4539)			
		vote	share
Blake D.*	SLD	776	59.2
Parry W.	Con	534	40.8
Turnout		28.9	18.5

Gainsborough South West (4155)			
		vote	share
Rainsforth L.*	Lab	720	51.4
Bicknell H.	SLD	370	26.4
Morris M. Ms.	Con	311	22.2
Turnout		33.7	25.0

Market Rasen (3237)			
		vote	share
Langford S.*	Con	583	39.2
Holvey G.	Ind Con	343	23.0
Sharpe I.	SLD	334	22.4
Nutting A.	Lab	229	15.4
Turnout		46.2	16.1

Nettleham (3133)			
		vote	share
Frith A.*	SLD	1,003	62.3
Heneage R.	Con	606	37.7
Turnout		51.5	24.7

Saxilby (2861)			
		vote	share
Hughes J.*	Con	0	0.0
Turnout		0.0	0.0

Scotter (2045)			
		vote	share
Cadogan-Hogg G	Con	0	0.0
Turnout		0.0	0.0

Stow (1547)			
		vote	share
Murrell M.	Con	434	50.3
Dunk B. Ms.*	SLD	428	49.7
Turnout		56.0	0.7

Welton (2105)			
		vote	share
Parish M.	Con	0	0.0
Turnout		0.0	0.0

Witham (5009) ²			
		vote	share
Bonaccorsi S. Ms.	Con	0	0.0
Greenaway C.*	Ind	0	0.0
Turnout		0.0	0.0

West Lindsey - 1990

Bardney (1724)			
		vote	share
Martin A. Ms.*	SLD	551	74.4
Speck R.	Lab	190	25.6
Turnout		43.7	48.7

Forest (1755)			
		vote	share
Eminson E. Ms.*	Ind	479	53.2
Greenwood R.	SLD	233	25.9
King A. Ms.	Lab	188	20.9
Turnout		51.7	27.3

Gainsborough East (5071)			
		vote	share
Mason M.	Lab	1,103	60.9
Banyard P. Ms.	SLD	709	39.1
Turnout		35.9	21.7

Gainsborough North (4445)			
		vote	share
Ryan D.	Lab	817	40.6
Stanley J.*	SLD	669	33.2
Leader M. Ms.	Ind	527	26.2
Turnout		45.4	7.4

Gainsborough South West (4115)			
		vote	share
Jones F. Ms.	Lab	822	51.6
Greatorex K.*	SLD	771	48.4
Turnout		38.9	3.2

Hemswell (1325)			
		vote	share
Allen H. Ms.	Lab	308	50.5
Morgan W.	Con	302	49.5
Turnout		46.2	1.0

Market Rasen (3337)			
		vote	share
Taylor N.*	SLD	760	55.9
Fenn D.	Lab	303	22.3
Adamski R.	Ind	296	21.8
Turnout		41.1	33.6

Nettleham (3085)			
		vote	share
Leaning M.*	SLD	1,169	79.4
Cormack D.	Lab	303	20.6
Turnout		47.9	58.8

Scampton (1289)			
		vote	share
Dickinson M.	Con	365	68.7
Presland T.	Lab	166	31.3
Turnout		41.3	37.5

South Cliff (1221)			
		vote	share
Tilney-Bassett J. Ms.	Con	397	59.2
King J. Ms.	Lab	186	27.7
Rushby I.	Green	88	13.1
Turnout		55.0	31.4

Witham (5140)			
		vote	share
Bonaccorsi S. Ms.	Con	999	39.6
Jones I.	Lab	696	27.6
Walch M. Ms.	SLD	606	24.0
Vincent J.	SDP	222	8.8
Turnout		49.1	12.0

Wold View (1280)			
		vote	share
Brant C.*	Ind	499	79.7
Indian J.	Lab	127	20.3
Turnout		48.9	59.4

West Lindsey - 1991

Ancholme Valley (1459)			
		vote	share
Bell J. Ms.	Con	544	60.6
Heathorn A.	LD	239	26.6
Matthews J. Ms.	Lab	115	12.8
Turnout		61.9	34.0

Gainsborough East (5027)			
		vote	share
Starkey M.*	LD	869	49.1
Rayner J.	Lab	614	34.7
Morris M. Ms.	Con	288	16.3
Turnout		35.2	14.4

Gainsborough North (4482)			
		vote	share
Cormack D.	Lab	791	47.5
Greenwood R.	LD	437	26.2
Johnson G. Ms.	Con	437	26.2
Turnout		37.2	21.3

Gainsborough South West (4100)			
		vote	share
Summers J. Ms.	Con	574	35.9
Clack D.*	LD	517	32.3
Smith M.	Lab	508	31.8
Turnout		39.0	3.6

Kelsey Wold (1765)			
		vote	share
Chatterton H.*	Ind	453	52.2
Sturdy R.	LD	199	23.0
Sargeant G.	Lab	113	13.0
Littlewood W.	Green	102	11.8
Turnout		49.1	29.3

Lea (1609)			
		vote	share
Moulds W.*	Con	512	68.3
Wells G.	Lab	238	31.7
Turnout		47.4	36.5

Middle Rasen (1742)			
		vote	share
Barrass E.	Con	377	44.1
Miller K.	LD	365	42.7
Matthews D.	Lab	113	13.2
Turnout		49.5	1.4

Saxilby (2906)			
		vote	share
Ballerini R.*	Ind	805	66.3
Spurr R.	Ind	212	17.4
Grisaffi F.	Lab	198	16.3
Turnout		42.0	48.8

Thonock (1649)			
		vote	share
French M.*	LD	610	65.2
Parry W.	Con	238	25.4
Kirkby P. Ms.	Lab	88	9.4
Turnout		56.9	39.7

Torksey (1734)			
		vote	share
Westgarth J. Ms.*	Ind	687	81.2
Betts L. Ms.	Lab	159	18.8
Turnout		49.1	62.4

Walshcroft (1116)			
		vote	share
Sanderson S. Ms.	Ind	235	48.9
Jennings D.	LD	186	38.7
Speck R.	Lab	60	12.5
Turnout		43.4	10.2

Witham (5202)			
		vote	share
Staples L.	Ind	1,610	75.2
Stewart L.	Lab	530	24.8
Turnout		41.3	50.5

Yarborough (2241)			
		vote	share
Addison P.*	Ind	641	61.6
Indian J.	Lab	212	20.4
Nuttall J.	LD	188	18.1
Turnout		46.8	41.2

West Lindsey - 1992

Caistor (2030)			
		vote	share
Drakes M. Ms.*	Ind	639	79.0
Sargeant G.	Lab	170	21.0
Turnout		40.4	58.0

Dunholme (1808)			
		vote	share
Smith W.*	Con	0	0.0
Turnout		0.0	0.0

Gainsborough East (5008)			
		vote	share
Rainsforth R.*	LD	792	72.5
Hadley E. Ms.	Lab	300	27.5
Turnout		21.9	45.1

Gainsborough North (4576)			
		vote	share
Jones R.	Lab	489	37.8
Jupp S. Ms.	Con	436	33.7
Cowan D.	LD	368	28.5
Turnout		28.3	4.1

Gainsborough South West (4067)			
		vote	share
Rainsforth L.	Lab	531	42.3
Lomas D.	LD	424	33.8
Simmonds G.	Con	300	23.9
Turnout		31.0	8.5

Market Rasen (3421)			
		vote	share
Langford S.*	Con	548	42.2
Thomas P. Ms.	Ind	446	34.3
Sharpe I.	LD	305	23.5
Turnout		38.2	7.9

Nettleham (3102)			
		vote	share
Frith A.*	LD	0	0.0
Turnout		0.0	0.0

Saxilby (2938)			
		vote	share
Copeland J.	Ind	952	71.7
Hughes J.*	Con	376	28.3
Turnout		45.2	43.4

Scotter (2069)			
		vote	share
Cadogan Ogg G.	Con	0	0.0
Turnout		0.0	0.0

Stow (1543)			
		vote	share
Donaldson R.*	LD	440	57.4
Heneage R.	Con	284	37.0
Wells G.	Lab	43	5.6
Turnout		49.8	20.3

Welton (2271)			
		vote	share
Joyce R. Ms.	LD	568	50.1
Parish M.*	Con	565	49.9
Turnout		50.5	0.3

Witham (5166)			
		vote	share
Greenaway C.*	Ind	0	0.0
Turnout		0.0	0.0

West Lindsey - 1994

Bardney (1741)			
		vote	share
Turner J.	LD	0	0.0
Turnout		0.0	0.0

Forest (1847)			
		vote	share
Eminson E. Ms.*	Ind	430	55.8
Beckett J. Ms.	Lab	341	44.2
Turnout		41.9	11.5

Gainsborough East (5009)			
		vote	share
Baillie W.	Lab	914	65.8
Banyard P. Ms.	LD	476	34.2
Turnout		27.9	31.5

Gainsborough North (4650)			
		vote	share
Ryan D.*	Lab	798	49.8
Cowan A. Ms.	LD	480	29.9
Jupp S. Ms.	Con	326	20.3
Turnout		34.6	19.8

Gainsborough South West (4058)			
		vote	share
Hethershaw J. Ms.	LD	696	59.8
Mackenzie G.	Con	467	40.2
Turnout		29.0	19.7

Hemswell (1549)			
		vote	share
Dredge G.	LD	265	43.2
Miller A.	Con	215	35.0
McCullough J.	Lab	134	21.8
Turnout		39.6	8.1

Market Rasen (3464)			
		vote	share
Taylor N.*	LD	844	58.0
Thomas P. Ms.	Ind	610	42.0
Turnout		42.0	16.1

Nettleham (3189)			
		vote	share
Leaning M.*	LD	0	0.0
Turnout		0.0	0.0

Scampton (1319)			
		vote	share
Dickinson M.*	Con	0	0.0
Turnout		0.0	0.0

South Cliff (1196)			
		vote	share
Tilney-Bassett J. Ms.*	Con	385	68.6
Harris J.	Ind	176	31.4
Turnout		47.2	37.3
Witham (5287)			
Miller S.	LD	0	0.0
Turnout		0.0	0.0
Wold View (1324)			
Connolly J.	LD	291	47.4
Lawledge R.	Ind	177	28.8
Wiley R.	Con	146	23.8
Turnout		46.6	18.6

West Lindsey - 1995

Ancholme Valley (1456)			
		vote	share
Heathorn A.	LD	373	58.1
Bell J. Ms.*	Ind	269	41.9
Turnout		44.4	16.2
Gainsborough East (4887)			
Starkey M.*	LD	768	54.0
Rayner J.	Lab	653	46.0
Turnout		29.2	8.1

Gainsborough North (4684)			
		vote	share
Ryan M.	Lab	614	48.3
Cowan A. Ms.	LD	403	31.7
Otter J.	Ind	173	13.6
Taylor R.	Ind	82	6.4
Turnout		27.2	16.6

Gainsborough South West (4042)			
		vote	share
Young T.	LD	650	47.8
Wells G.	Lab	366	26.9
Tait J.	Ind	343	25.2
Turnout		33.7	20.9

Kelsey Wold (1865)			
		vote	share
Ireland C.	Con	295	40.4
Tierney J. Ms.	Lab	280	38.3
Sturdy R.	LD	156	21.3
Turnout		39.2	2.1

Lea (1752)			
		vote	share
Whaley K.	Ind	553	68.2
Summers J. Ms.*	Con	258	31.8
Turnout		46.5	36.4

Middle Rasen (1776)			
		vote	share
Rosser A.	LD	412	52.6
Bierley O.	Con	194	24.7
Thompson A.	Lab	178	22.7
Turnout		44.3	27.8

Saxilby (2958)			
		vote	share
Allen G.	Ind	541	37.4
Nelson G.	LD	469	32.5
Jones F. Ms.	Lab	435	30.1
Turnout		49.5	5.0

Thonock (1698)			
		vote	share
French M.*	LD	488	65.5
Mooney J.	Ind	257	34.5
Turnout		44.0	31.0

Torksey (1777)			
		vote	share
Westgarth J. M Ms.	Ind	0	0.0
Turnout		0.0	0.0

Walshcroft (1306)			
		vote	share
Sanderson S. Ms.*	Ind	259	44.9
Jennings D.	LD	217	37.6
Jackson C.	Lab	101	17.5
Turnout		44.5	7.3

Witham (5348)			
		vote	share
Staples L.*	Ind	1,172	57.3
Wallis J.	Lab	875	42.7
Turnout		38.5	14.5

Yarborough (2261)			
		vote	share
Fytche M.	Lab	506	48.0
Allen L.	LD	265	25.1
Turner A.	Con	209	19.8
Hancock N.	Ind	75	7.1
Turnout		46.8	22.8

West Lindsey - 1996

Caistor (2105)			
		vote	share
Caine A.*	Ind	469	67.7
Baker A.	Lab	224	32.3
Turnout		33.7	35.4

Dunholme (1879)			
		vote	share
Taylor S.	LD	449	58.6
Bell J. Ms.	Con	215	28.1
Clarke J. Ms.	Lab	102	13.3
Turnout		43.7	30.5

Gainsborough East (4753)			
		vote	share
Rainsforth R.*	LD	658	57.2
Rooney C.	Lab	383	33.3
Sparrowe P.	Con	110	9.6
Turnout		24.2	23.9

Gainsborough North (4771)			
		vote	share
Ryan P.	Lab	468	40.9
Jones R.*	LD	423	37.0
Otter J.	Con	253	22.1
Turnout		24.1	3.9

Gainsborough South West (3946)			
		vote	share
Rainsforth L.*	LD	743	57.8
Thompson A.	Lab	407	31.7
Morgan W.	Con	135	10.5
Turnout		32.6	26.1

Market Rasen (3434)			
		vote	share
Thomas P. Ms.	Ind	516	51.8
Clairmont-			
Brook J. Ms.	LD	266	26.7
Jackson C.	Lab	215	21.6
Turnout		29.1	25.1

Nettleham (3281)			
		vote	share
Frith A.*	Ind	0	0.0
Turnout		0.0	0.0

Saxilby (2969)			
		vote	share
Golding M.	LD	607	45.8
Bowden E. Ms.	Ind	589	44.5
Rooney L. Ms.	Lab	128	9.7
Turnout		44.7	1.4

Scotter (2152)			
		vote	share
Rainsforth M. Ms.	LD	413	57.4
Vickers M.	Con	307	42.6
Turnout		33.6	14.7

Stow (1613)			
		vote	share
Donaldson R.*	LD	414	58.4
Ireland J. Ms.	Con	190	26.8
Chapman B.	Lab	105	14.8
Turnout		44.1	31.6

Welton (2423)			
		vote	share
Parish M.	Ind	491	49.6
Handford A.	LD	388	39.2
Renshaw R.	Lab	110	11.1
Turnout		41.0	10.4

Witham (5365)			
		vote	share
Greenaway C.*	Ind	1,200	63.7
Jasper C.	Lab	685	36.3
Turnout		35.2	27.3

West Lindsey - 1998

Bardney (1735)			
		vote	share
Fleetwood I.	Con	381	52.1
Turner J.*	LD	350	47.9
Turnout		42.1	4.2

Forest (1819)			
		vote	share
Parry W.	Con	257	44.9
Gabbott W.	LD	207	36.1
Bullock J. Ms.	Green	109	19.0
Turnout		31.8	8.7

Gainsborough East (4418)			
		vote	share
Tinker M.	LD	543	58.4
Linda B.	Lab	283	30.5
Otter J.	Con	103	11.1
Turnout		21.1	28.0

Gainsborough North (4615)			
		vote	share
Baldwin P.	Lab	332	41.1
Webb R.	LD	287	35.5
Beverley A.	Con	189	23.4
Turnout		17.6	5.6

Gainsborough South West (3854)			
		vote	share
Mills I.	Lab	338	41.5
Hethershaw			
J-M. Ms.*	LD	320	39.3
Morgan W.	Con	157	19.3
Turnout		21.2	2.2

Hemswell (1538)			
		vote	share
Dredge G.*	LD	250	63.5
Waite J.	Con	144	36.5
Turnout		25.8	26.9
Market Rasen (3307)			
		vote	share
Taylor N.*	LD	546	71.9
Bierley O.	Con	213	28.1
Turnout		23.4	43.9
Nettleham (3384)			
		vote	share
Leaning M.*	LD	725	57.8
Davidson M. Ms.	Con	529	42.2
Turnout		37.3	15.6
Scampton (1326)			
		vote	share
Heath P.*	LD	0	0.0
Turnout		0.0	0.0
South Cliff (1221)			
		vote	share
Green E.	Con	253	58.0
Hiscox R.	LD	183	42.0
Turnout		36.0	16.1
Witham (5328)			
		vote	share
Miller S.*	LD	852	50.5
Parrott I. Ms.	Con	836	49.5
Turnout		31.9	0.9
Wold View (1302)			
		vote	share
Connolly J.*	LD	222	53.6
Mortimer D.	Con	192	46.4
Turnout		32.2	7.2
West Lindsey - 1999			
Bardney (1543)			
		vote	share
Fleetwood I.*	Con	484	59.3
Turner J.	LD	332	40.7
Turnout		53.1	18.6
Caistor (2530)²			
		vote	share
Caine A.*	Ind	0	0.0
Mortimer D.	Con	0	0.0
Turnout		0.0	0.0
Cherry Willingham (3097)²			
		vote	share
Parrott I. Ms.	Con	566	38.9
George C.*	Ind	551	37.8
Miller S.*	LD	339	23.3
Miller I. Ms.	LD	309	-
Turnout		37.7	1.0
Dunholme (1578)			
		vote	share
Taylor S.*	LD	324	51.3
Rawlins S. Ms.	Con	308	48.7
Turnout		40.1	2.5
Fiskerton (1451)			
		vote	share
Greenaway M. Ms.	Ind	269	67.9
Clairmont- Brook J. Ms.	LD	127	32.1
Turnout		27.5	35.9

Gainsborough East (4411)³			
		vote	share
Rainsforth R.*	LD	630	69.8
Starkey M.*	LD	551	-
Tinker M.*	LD	549	-
Linda B.	Lab	273	30.2
Parrott C. Ms.	Lab	263	-
Turnout		22.2	39.5
Gainsborough North (5045)³			
		vote	share
Lomas D.	LD	525	42.6
Baldwin P.*	Lab	450	36.5
Brown T.	LD	399	-
Banyard P. Ms.	LD	398	-
Ryan P.*	Lab	374	-
Mills B. Ms.	Lab	316	-
Jupp S. Ms.	Con	258	20.9
Parry J. Ms.	Con	248	-
Turnout		22.0	6.1
Gainsborough South West (3353)²			
		vote	share
Rainsforth L.*	LD	566	64.1
Young T.*	LD	529	-
Mills I.	Lab	213	24.1
Lawrence W. Ms.	Lab	167	-
Beverley A.	Con	104	11.8
Otter J.	Con	95	-
Turnout		26.8	40.0
Hemswell (1699)			
		vote	share
Gabbott W.	LD	310	52.9
Beer S.	Con	276	47.1
Turnout		34.8	5.8
Kelsey Wold (1865)			
		vote	share
Strange C.	Con	541	68.6
Watson-Smith I.	Ind	139	17.6
Tierney M.	Lab	109	13.8
Turnout		42.4	51.0
Lea (1701)			
		vote	share
Whaley K.*	Ind	0	0.0
Turnout		0.0	0.0
Market Rasen (3668)²			
		vote	share
Taylor N.*	LD	652	43.2
Fenwick G.	LD	616	-
Gibbons J.	Con	560	37.1
Bullen C. Ms.	Ind	299	19.8
Turnout		33.8	6.1
Middle Rasen (1883)			
		vote	share
Rosser A.*	LD	492	73.1
Bierley O.	Con	181	26.9
Turnout		36.1	46.2
Nettleham (3472)²			
		vote	share
Frith A.*	Ind	821	40.1
Sellars R.	LD	705	34.4
Leaning M.*	LD	632	-
Davidson M. Ms.	Con	523	25.5
Turnout		43.2	5.7
Saxilby (3019)²			
		vote	share
Dobson C. Ms.	Lab	469	36.3
Silverstone D. Ms.	Con	435	33.6
Braund D. Ms.	LD	389	30.1
Wainwright G.	Lab	389	-
Turnout		31.9	2.6

Scampton (1782)			
		vote	share
Heath P.*	LD	434	70.6
Macpherson- Lawley M.	Con	181	29.4
Turnout		34.7	41.1
Scotter (3315)²			
		vote	share
Underwood-Frost C.	Con	596	54.2
Parry W.*	Con	587	-
Rainsforth M. Ms.*	LD	504	45.8
Gabbott M. Ms.	LD	443	-
Turnout		34.3	8.4
Stow (1656)			
		vote	share
Shore R.	LD	458	64.8
Green B.	Con	249	35.2
Turnout		42.9	29.6
Sudbrooke (1843)			
		vote	share
Curtis S.	Ind	452	61.7
Rylatt C. Ms.	LD	280	38.3
Turnout		40.0	23.5
Thonock (1885)			
		vote	share
French M.*	LD	375	65.6
Morgan W.	Con	197	34.4
Turnout		30.4	31.1
Torksey (1877)			
		vote	share
Haywood S.	Ind	0	0.0
Turnout		0.0	0.0
Waddingham & Spital (1681)			
		vote	share
Green E.*	Con	409	62.2
Heathorn A.*	LD	249	37.8
Turnout		39.4	24.3
Welton (3530)²			
		vote	share
Parish M.*	Ind	715	34.7
Ireland C.*	Con	586	28.4
Hiscox R.	LD	568	27.6
Renshaw R.	Lab	191	9.3
Scott S. Ms.	Lab	150	-
Turnout		39.4	6.3
Wold View (1787)			
		vote	share
Theobald B.	Con	261	41.4
Connolly J.*	LD	248	39.3
Tolliday J.	Lab	122	19.3
Turnout		35.4	2.1
Yarborough (1969)			
		vote	share
Indian J.*	Lab	375	51.7
Burt J. Ms.	Con	350	48.3
Turnout		37.0	3.4
West Lindsey - 2000			
Caistor (2506)			
		vote	share
Schofield R.	Ind	366	47.2
Mortimer D.*	Con	305	39.3
Barr R.	Lab	82	10.6
Heathorn A.	LD	23	3.0
Turnout		31.0	7.9

Cherry Willingham (3087)			
		vote	share
Greenaway G.*	Ind	527	56.9
Miller S.	LD	400	43.1
Turnout		30.2	13.7
Dunholme (1642)			
		vote	share
Rawlins S. Ms.	Con	390	65.5
Turner P.	LD	205	34.5
Turnout		36.2	31.1
Gainsborough East (4340)			
		vote	share
Tinker M.*	LD	551	76.2
Morgan W.	Con	172	23.8
Turnout		16.8	52.4
Gainsborough North (5017)			
		vote	share
Brown T.*	LD	552	63.3
Jupp S. Ms.	Con	320	36.7
Turnout		17.5	26.6
Gainsborough South West (3335)			
		vote	share
Young T.*	LD	407	52.7
Mills B. Ms.	Lab	188	24.4
Beer S.	Con	177	22.9
Turnout		23.2	28.4
Market Rasen (3670)			
		vote	share
Fenwick G.*	LD	740	60.6
Jones A.	Con	419	34.3
Huckin P.	Lab	62	5.1
Turnout		33.4	26.3
Nettleham (3553)			
		vote	share
Sellars R.*	LD	977	64.9
Davidson M. Ms.	Con	528	35.1
Turnout		42.4	29.8
Saxilby (3146)			
		vote	share
Cotton D.	LD	667	54.3
Silverstone D. Ms.*	Con	417	33.9
Gillson H.	Lab	145	11.8
Turnout		39.1	20.3
Scotter (3355)			
		vote	share
Parry W.*	Con	742	68.6
Walker M.	LD	340	31.4
Turnout		32.3	37.2
Stow (1674)			
		vote	share
Shore R.*	LD	562	71.0
Macpherson-Lawley M.	Con	229	29.0
Turnout		47.3	42.1
Sudbrooke (1923)			
		vote	share
Curtis S.*	Ind	0	0.0
Turnout		0.0	0.0
Welton (3614)			
		vote	share
Ireland C.*	Con	686	46.7
Hiscox R.	LD	677	46.1
Scott S. Ms.	Lab	107	7.3
Turnout		40.7	0.6

West Lindsey - 2002

Bardney (1483)			
		vote	share
Fleetwood I.*	Con	501	72.4
Turner J.	LD	191	27.6
Turnout		46.8	44.8
Cherry Willingham (3165)			
		vote	share
Parrott I. Ms.*	Con	706	53.7
Heath A.	LD	436	33.2
Burghardt T-L. Ms.	Lab	173	13.2
Turnout		41.6	20.5
Fiskerton (1495)			
		vote	share
Davidson M. Ms.	Con	251	49.9
Harris R.	LD	133	26.4
Scott S. Ms.	Lab	119	23.7
Turnout		33.7	23.5
Gainsborough East (4369)			
		vote	share
Starkey M.*	LD	424	56.8
Rose D. Ms.	Lab	217	29.0
Beer S.	Con	106	14.2
Turnout		17.2	27.7
Gainsborough North (4959)			
		vote	share
Tyson I. Ms.	Lab	403	36.3
Smith K.	LD	369	33.2
Gore R.	Con	339	30.5
Turnout		22.5	3.1
Hemswell (1817)			
		vote	share
Wotherspoon C.	Con	398	61.4
Gabbott W.*	LD	250	38.6
Turnout		35.7	22.8
Market Rasen (3740)			
		vote	share
Duguid A.	Con	563	48.5
Taylor N.*	LD	484	41.7
Huckin P.	Lab	115	9.9
Turnout		31.1	6.8
Nettleham (3544)			
		vote	share
Frith A.*	Ind	944	74.8
Stainton R.	Con	318	25.2
Turnout		35.6	49.6
Scampton (1996)			
		vote	share
Heath P.*	LD	567	75.2
Randall P.	Con	187	24.8
Turnout		38.0	50.4
Thonock (1885)			
		vote	share
Henderson K. Ms.	Con	271	43.5
Chappelow P.	Lab	181	29.1
Clack D.	LD	171	27.4
Turnout		33.2	14.4
Waddingham & Spital (1718)			
		vote	share
Summers J.	Con	381	48.3
Coleman E.	Ind	210	26.6
Heathorn A.	LD	198	25.1
Turnout		46.2	21.7

Wold View (1785)			
		vote	share
Theobald B.*	Con	276	56.1
Thomas F.	Lab	216	43.9
Turnout		27.9	12.2

West Lindsey - 2003

Caistor (2553)			
		vote	share
Caine A.*	Ind	563	59.8
O'Leary P.	Con	300	31.9
Burghardt T. Ms.	Lab	78	8.3
Turnout		37.1	27.9
Gainsborough East (4426)			
		vote	share
Smith K.	LD	582	73.6
Otter J.	Con	209	26.4
Turnout		18.0	47.2
Gainsborough North (4907)			
		vote	share
Bardsley G. Ms.	Con	539	42.7
Harrison-Moore D. Ms.	LD	390	30.9
Mehrotra T.	Lab	334	26.4
Turnout		25.8	11.8
Gainsborough South West (3266)			
		vote	share
Rainsforth J. Ms.	LD	544	64.9
Howitt-Cowan P.	Ind	196	23.4
Morgan W.	Con	98	11.7
Turnout		25.7	41.5
Kelsey Wold (1927)			
		vote	share
Strange L.*	Con	0	0.0
Turnout		0.0	0.0
Lea (1733)			
		vote	share
Whaley K.*	Ind	361	47.1
Parsons I.	LD	261	34.1
Beer S.	Con	144	18.8
Turnout		44.3	13.1
Market Rasen (3801)			
		vote	share
Kitchen D.	LD	483	44.4
Norman J. Ms.	Con	347	31.9
Semple J.	Ind	258	23.7
Turnout		28.7	12.5
Middle Rasen (1861)			
		vote	share
Fenwick G.*	LD	455	54.6
Jones A.	Con	257	30.9
Vernam L. Ms.	Ind	93	11.2
Padley C.	Green	28	3.4
Turnout		44.8	23.8
Saxilby (3740)			
		vote	share
Anyan-Needham S. Ms.	Con	539	50.7
Dobson C. Ms.*	Lab	524	49.3
Turnout		28.8	1.4
Scotter (3406)			
		vote	share
Underwood-Frost C.*	Con	920	74.3
Heathorn A.	LD	319	25.7
Turnout		36.5	48.5

Torksey (2088)			
		vote	share
Kinch S.	Con	614	61.4
Bartle S. Ms.	LD	386	38.6
Turnout		48.4	22.8

Welton (4055)			
		vote	share
Parish M.*	Ind	1,083	80.0
Huckin P.	Lab	270	20.0
Turnout		33.6	60.1

Yarborough (1970)			
		vote	share
Bierley O.	Con	574	61.1
Indian J.*	Lab	365	38.9
Turnout		48.1	22.3

West Lindsey - 2004

Caistor (2585)			
		vote	share
Lawrence A. Ms.	Con	705	61.5
Hancock N.	Ind	441	38.5
Turnout		44.7	23.0

Cherry Willingham (3336)			
		vote	share
Heath A.*	LD	1,209	65.1
Deeley K.	Con	649	34.9
Turnout		56.5	30.1

Dunholme (1803)			
		vote	share
Rawlins S. Ms.*	Con	0	0.0
Turnout		0.0	0.0

Gainsborough East (4600)			
		vote	share
Tinker M.*	LD	774	48.3
Rose D. Ms.	Lab	551	34.4
Bratcher M.	Con	276	17.2
Turnout		35.3	13.9

Gainsborough North (4973)			
		vote	share
Snee J.	LD	765	37.7
Howitt-Cowan P.	Con	489	24.1
Clarke H.	Ind	417	20.6
Indian J.	Lab	356	17.6
Turnout		41.1	13.6

Gainsborough South West (3382)			
		vote	share
Young T.*	LD	690	58.0
Sweeting D.	Con	221	18.6
Dobson C. Ms.	Lab	177	14.9
Gabbott W.	Ind	101	8.5
Turnout		35.7	39.4

Market Rasen (3861)			
		vote	share
Kitchen D.*	LD	927	54.5
Skye C. Ms.	Con	774	45.5
Turnout		44.7	9.0

Nettleham (3580)			
		vote	share
Leaning M.	LD	1,278	64.7
Davidson K.	Con	696	35.3
Turnout		55.4	29.5

Saxilby (3911)			
		vote	share
Cotton D.*	LD	1,506	76.8
Morgan W.	Con	455	23.2
Turnout		50.9	53.6

Scotter (3435)			
		vote	share
Parry W.*	Con	850	54.2
Mehrotra T.	LD	719	45.8
Turnout		46.1	8.3

Stow (1845)			
		vote	share
Shore R.*	LD	810	78.2
Beer S.	Con	226	21.8
Turnout		56.5	56.4

Sudbrooke (2053)			
		vote	share
Curtis S.*	Con	656	57.5
Harris R.	LD	484	42.5
Turnout		56.0	15.1

Welton (4163)			
		vote	share
Hiscox R.	LD	1,250	57.3
Ireland C.*	Con	931	42.7
Turnout		52.9	14.6

West Lindsey - 2006

Bardney (1552)			
		vote	share
Fleetwood I.*	Con	483	67.5
Shore H. Ms.	LD	137	19.1
Pearson C. Ms.	UKIP	96	13.4
Turnout		46.5	48.3

Cherry Willingham (3503)			
		vote	share
Parrott I. Ms.*	Con	1,074	79.9
Pearson S.	UKIP	270	20.1
Turnout		39.5	59.8

Fiskerton (1685)			
		vote	share
Davidson M. Ms.*	Con	414	60.8
Smith P. Ms.	LD	202	29.7
Pearson A.	UKIP	65	9.5
Turnout		40.8	31.1

Gainsborough East (4821)			
		vote	share
Starkey M.*	LD	760	67.0
Milne J. Ms.	Con	375	33.0
Turnout		23.7	33.9

Gainsborough North (4994)			
		vote	share
Brown T.	LD	812	67.1
Foreman K. Ms.	Con	302	24.9
Simmonds G.	UKIP	97	8.0
Turnout		24.4	42.1

Hemswell (1873)			
		vote	share
Pritchard S.	LD	477	56.3
Wotherspoon C.*	Con	370	43.7
Turnout		45.3	12.6

Market Rasen (3918)			
		vote	share
Duguid A.*	Con	744	52.7
Bridger K.	LD	668	47.3
Turnout		36.2	5.4

Nettleham (3599)			
		vote	share
Frith A.*	LD	1,005	61.1
Harland S. Ms.	Con	510	31.0
Pocknee B.	Lab	130	7.9
Turnout		46.0	30.1

Scampton (2254)			
		vote	share
Heath P.*	LD	527	58.5
Howe D.	Con	374	41.5
Turnout		40.2	17.0

Thonock (2089)			
		vote	share
Rollings L. Ms.	LD	552	68.1
Sweeting D.	Con	258	31.9
Turnout		39.1	36.3

Waddingham & Spital (1890)			
		vote	share
Summers J.*	Con	421	51.2
Burton-Stepan M.	LD	302	36.7
Coleman E.	Ind	99	12.0
Turnout		43.6	14.5

Wold View (1854)			
		vote	share
Theobald B.*	Con	342	47.6
Connolly J.	LD	321	44.7
Indian J.	Lab	55	7.7
Turnout		38.9	2.9

West Lindsey - 2007

Caistor (2615)			
		vote	share
Caine A.*	Ind	0	0.0
Turnout		0.0	0.0

Gainsborough East (4923)			
		vote	share
Smith K.*	LD	716	70.3
Howitt-Cowan P.	Con	303	29.7
Turnout		21.0	40.5

Gainsborough North (4961)			
		vote	share
O'Connor P.	LD	668	46.7
Bardsley G. Ms.*	Con	499	34.9
Morley S.	Ind	202	14.1
Simmonds G.	UKIP	60	4.2
Turnout		28.9	11.8

Gainsborough South West (3633)			
		vote	share
Rainsforth J. Ms.*	LD	665	74.4
Beverley A.	Con	168	18.8
Parker M.	Ind	61	6.8
Turnout		24.6	55.6

Kelsey Wold (2052)			
		vote	share
Strange L.*	Con	808	84.3
Taylor N.	LD	110	11.5
Pearson S.	UKIP	41	4.3
Turnout		46.8	72.8

Lea (1805)			
		vote	share
Milne J. Ms.	Con	525	56.0
Parsons I.	LD	412	44.0
Turnout		52.3	12.1

Middle Rasen (2259)			
		vote	share
Fenwick G.*	LD	534	49.9
Wiseman G.	Con	425	39.7
Ranby D.	UKIP	111	10.4
Turnout		47.5	10.2

Saxilby (4129)			
		vote	share
Brockway J. Ms.	LD	934	54.0
McNeill G.	Con	709	41.0
Wells T.	UKIP	86	5.0
Turnout		42.0	13.0

Scotter (3719)			
		vote	share
Underwood-Frost C.*	Con	782	50.0
Burtenshaw J.	LD	781	50.0
Turnout		42.1	0.1

Torksey (2283)			
		vote	share
Kinch S.*	Con	594	53.6
Bartle S. Ms.	LD	289	26.1
Porter M.	BNP	225	20.3
Turnout		48.8	27.5

Welton (4348)			
		vote	share
Parish M.*	Con	995	52.8
Chapman M. Ms.	LD	888	47.2
Turnout		43.7	5.7

Yarborough (1938)			
		vote	share
Bierley O.*	Con	622	73.3
Indian J.	Lab	191	22.5
Pearson C. Ms.	UKIP	35	4.1
Turnout		44.1	50.8

West Lindsey - 2008

Caistor (2649)			
		vote	share
Lawrence A. Ms.*	Con	816	84.5
Smith R.	LD	150	15.5
Turnout		36.6	68.9

Cherry Willingham (3638)			
		vote	share
Welburn A. Ms.	Con	879	51.4
Trevor S.	LD	728	42.6
Pearson C. Ms.	UKIP	102	6.0
Turnout		47.3	8.8

Dunholme (1969)			
		vote	share
Rawlins S. Ms.*	Con	574	73.2
Wallis T.	LD	156	19.9
Allison J.	UKIP	54	6.9
Turnout		39.8	53.3

Gainsborough East (5009)			
		vote	share
Tinker M.*	LD	635	61.7
Beverley A.	Con	255	24.8
Johnson T.	UKIP	140	13.6
Turnout		20.8	36.9

Gainsborough North (5104)			
		vote	share
Bardsley G. Ms.	Con	691	52.0
Snee J.*	LD	639	48.0
Turnout		26.3	3.9

Gainsborough South West (3675)			
		vote	share
Young T.*	LD	659	75.3
Mackin D.	Con	144	16.5
Newton C.	UKIP	72	8.2
Turnout		23.9	58.9

Market Rasen (3979)			
		vote	share
Keimach B.	Con	882	57.4
Kitchen D.*	LD	543	35.4
Pearson T.	UKIP	111	7.2
Turnout		38.7	22.1

Nettleham (3705)			
		vote	share
Leaning M.*	LD	766	41.5
McNeill G.	Con	757	41.0
Kingston N.	Ind	279	15.1
Pearson S.	UKIP	46	2.5
Turnout		50.0	0.5

Saxilby (4176)			
		vote	share
Cotton D.*	LD	1,027	61.8
Pilgrim R.	Con	635	38.2
Turnout		39.9	23.6

Scotter (3823)			
		vote	share
Parry W.*	Con	945	57.3
Mehrotra T.	LD	705	42.7
Turnout		43.4	14.5

Stow (1910)			
		vote	share
Shore R.*	LD	588	60.9
Broadley S. Ms.	Con	377	39.1
Turnout		50.7	21.9

Sudbrooke (2066)			
		vote	share
Curtis S.*	Con	790	79.5
East C. Ms.	LD	204	20.5
Turnout		48.1	59.0

Welton (4382)			
		vote	share
Rodgers D. Ms.	Con	1,018	54.4
Hiscox R.*	LD	852	45.6
Turnout		42.8	8.9

West Lindsey - 2010

Bardney (1655)			
		vote	share
Fleetwood I.*	Con	604	55.2
Smith R.	LD	321	29.3
Spicer S. Ms.	UKIP	169	15.4
Turnout		66.5	25.9

Cherry Willingham (3697)			
		vote	share
Parrott I. Ms.*	Con	1,204	41.5
Stephen T.	LD	1,018	35.1
Gulliver B.	Lab	534	18.4
Pearson S.	UKIP	143	4.9
Turnout		78.4	6.4

Fiskerton (1693)			
		vote	share
Davidson M. Ms.*	Con	502	41.7
Darcel C.	Ind	240	19.9
East C. Ms.	LD	180	14.9
Tointon M. Ms.	Lab	154	12.8
Pearson C. Ms.	UKIP	129	10.7
Turnout		71.5	21.7

Gainsborough East (5007)			
		vote	share
Starkey M.*	LD	1,019	41.7
Doran R.	Lab	606	24.8
Davies T.	Con	597	24.4
Johnson T.	UKIP	224	9.2
Turnout		49.2	16.9

Gainsborough North (5287)			
		vote	share
Brown T.*	LD	1,457	49.9
Myers J.	Con	854	29.3
Bowler N.	Lab	608	20.8
Turnout		55.8	20.7

Hemswell (1926)			
		vote	share
Howitt-Cowan P.	Con	599	48.0
Pritchard S.*	LD	536	42.9
Wells A.	UKIP	113	9.1
Turnout		65.6	5.0

Market Rasen (4244)			
		vote	share
Bridger K.	LD	1,292	48.1
Duguid A.*	Con	1,120	41.7
Theobald D. Ms.	Ind	276	10.3
Turnout		64.1	6.4

Nettleham (3823)			
		vote	share
Frith A.*	LD	1,763	61.6
McNeil G.	Con	1,098	38.4
Turnout		75.8	23.2

Scampton (2305)			
		vote	share
Shore H. Ms.	LD	815	50.0
Patterson R.	Con	814	50.0
Turnout		71.6	0.1

Thonock (2221)			
		vote	share
Rollings L. Ms.*	LD	889	60.0
Henderson K. Ms.	Con	592	40.0
Turnout		67.7	20.1

Waddingham & Spital (2008)			
		vote	share
Summers J.*	Con	1,014	74.1
Beaver J.	UKIP	355	25.9
Turnout		72.6	48.1

Wold View (1954)			
		vote	share
Regis T.	Con	555	43.9
Kitchen D.	LD	480	38.0
Theobald B.*	Ind	228	18.1
Turnout		65.6	5.9

West Lindsey - 2011

Bardney (1709)			
		vote	share
Fleetwood I.*	Con	508	71.4
Spicer S. Ms.	UKIP	203	28.6
Turnout		43.8	42.9

Caistor (2693)²			
		vote	share
Caine A.*	Ind	779	45.2
Lawrence A. Ms.*	Con	665	38.6
Barker D. Ms.	Con	541	-
Turner C. Ms.	LD	278	16.1
Turnout		48.6	6.6

Cherry Willingham (3676)²			
		vote	share
Parrot I. Ms.	Con	980	56.3
Welburn A. Ms.*	Con	821	-
Trevor S.	LD	392	22.5
Beckett W. Ms.	Lab	368	21.1
Gulliver B.	Lab	349	-
Turnout		47.1	33.8

Dunholme (1946)			
		vote	share
Rawlins S. Ms.*	Con	565	68.5
Jackson M. Ms.	LD	260	31.5
Turnout		43.7	37.0
Fiskerton (1689)			
		vote	share
Darcel C.	Ind	370	45.5
Davidson M. Ms.*	Con	351	43.1
Pearson C. Ms.	UKIP	49	6.0
Nelson I.	LD	44	5.4
Turnout		48.7	2.3
Gainsborough East (5178)³			
		vote	share
Stankey M.	LD	591	44.3
Tinker M.*	LD	583	-
Doran R.	Lab	422	31.6
Smith K.*	LD	358	-
Dawson D. Ms.	Con	322	24.1
Bridgwood A.	Con	227	-
Stenson S.	Con	196	-
Turnout		24.9	12.7
Gainsborough North (5279)³			
		vote	share
Bardsley G. Ms.*	Con	675	34.1
Dobbie D.	LD	498	25.2
Bowler N.	Lab	479	24.2
Perry R.	LD	458	-
Myers J.	Con	453	-
Binns M.	LD	431	-
Webb R.	Con	390	-
Banyard P. Ms.	Ind	325	16.4
Turnout		30.7	9.0
Gainsborough South West (3730)²			
		vote	share
Rainsforth J. Ms.*	LD	698	74.7
Young T.*	LD	674	-
Beverley A.	Con	236	25.3
Beer S.	Con	202	-
Turnout		27.8	49.5
Hemswell (1984)			
		vote	share
Howitt-Cowan P.*	Con	444	52.0
Pritchard S.	LD	332	38.9
Wells A.	UKIP	78	9.1
Turnout		43.3	13.1
Kelsey Wold (2177)			
		vote	share
Strange L.*	Con	817	78.9
Heathorn R.	LD	219	21.1
Turnout		49.2	57.7
Lea (1825)			
		vote	share
Milne J. Ms.*	Con	598	65.3
Parsons I.	Ind	259	28.3
Newton C.	UKIP	59	6.4
Turnout		50.6	37.0
Market Rasen (4321)²			
		vote	share
Keimach B.*	Con	833	51.3
Bridger K.*	LD	791	48.7
Ramsey A.	Con	771	-
Richardson B.	LD	520	-
Turnout		40.6	2.6
Middle Rasen (2440)			
		vote	share
Wiseman G.*	Con	578	48.7
Grainger G.	LD	378	31.8
Ranby M.	UKIP	232	19.5
Turnout		49.7	16.8

Nettleham (3828)²			
		vote	share
Sellars R.	LD	1,238	60.6
Leaning M.*	LD	1,108	-
McNeill G.	Con	804	39.4
Ramsley E. Ms.	Con	559	-
Turnout		54.2	21.3
Saxilby (4283)²			
		vote	share
Brockway J. Ms.*	Con	1,155	39.8
Cotton D.*	LD	921	31.7
Sharples C. Ms.	Ind	827	28.5
Walker C.	LD	369	-
Turnout		47.0	8.1
Scampton (2382)			
		vote	share
Patterson R.	Con	414	37.3
Shore H. Ms.*	LD	404	36.4
Heskins R. Ms.	Lab	223	20.1
Walton D.	UKIP	70	6.3
Turnout		46.9	0.9
Scotter (3916)²			
		vote	share
Underwood-Frost C.*	Con	1,164	54.9
Parry W.*	Con	934	-
Clarke E. Ms.	Ind	623	29.4
Taylor N.	LD	332	15.7
Turnout		46.9	25.5
Stow (1901)			
		vote	share
Shore R.*	LD	650	68.5
McNeill P.	Con	299	31.5
Turnout		50.8	37.0
Sudbrooke (2146)			
		vote	share
Curtis S.*	Con	860	74.8
Tointon M. Ms.	Lab	289	25.2
Turnout		54.0	49.7
Thonock (2204)			
		vote	share
Rollings L. Ms.*	LD	523	63.5
Wotherspoon C.	Con	300	36.5
Turnout		38.9	27.1
Torksey (2378)			
		vote	share
Kinch S.*	Con	698	63.5
Ridley J.	LD	401	36.5
Turnout		47.8	27.0
Waddingham & Spital (1995)			
		vote	share
Summers J.*	Con	643	66.4
Heathorn A.	LD	199	20.6
Beaver J.	UKIP	126	13.0
Turnout		49.2	45.9
Welton (4428)²			
		vote	share
Parish M.*	Con	1,102	41.7
Rodgers D. Ms.*	Ind	997	37.7
Duguid A.	Con	691	-
Heath P.	LD	543	20.6
Turnout		48.2	4.0
Wold View (1971)			
		vote	share
Regis T.*	Con	481	62.1
Hadlow J.	LD	293	37.9
Turnout		40.4	24.3

Yarborough (1880)			
		vote	share
Bierley O.*	Con	465	51.4
Indian J.	Lab	377	41.7
Barrett P.	LD	62	6.9
Turnout		48.6	9.7

