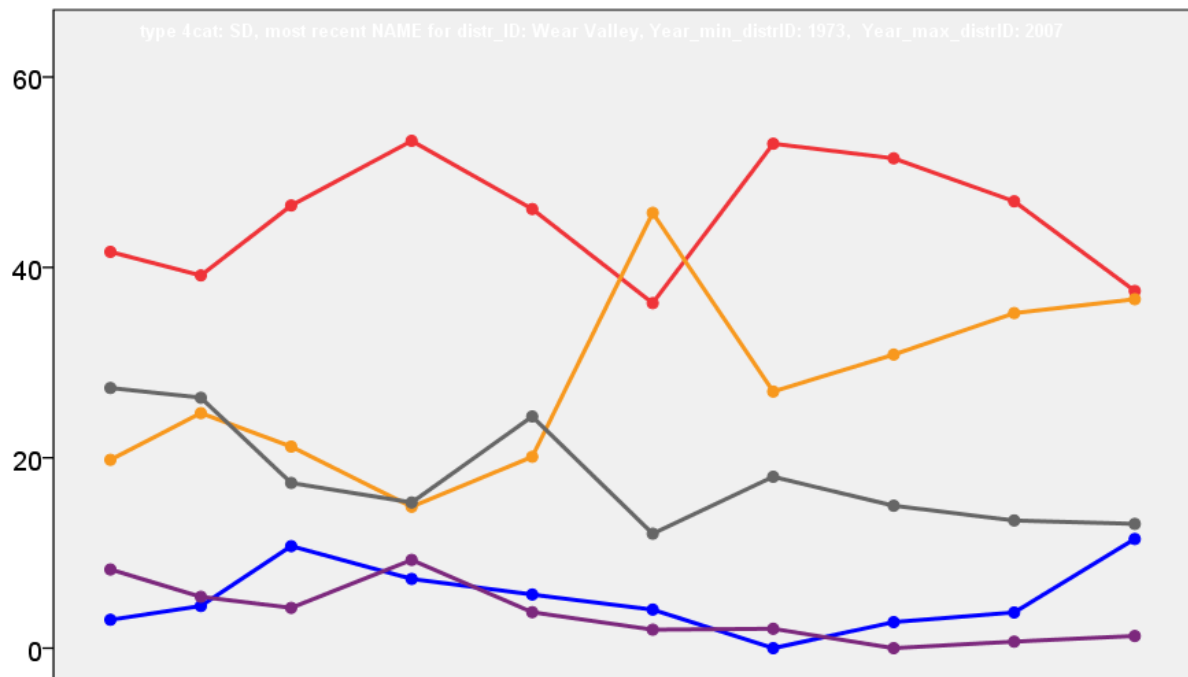


Wear Valley District Council Election Results 1973-2007



Colin Rallings and Michael Thrasher
The Elections Centre
Plymouth University

The information contained in this report has been obtained from a number of sources. Election results from the immediate post-reorganisation period were painstakingly collected by Alan Willis largely, although not exclusively, from local newspaper reports. From the mid-1980s onwards the results have been obtained from each local authority by the Elections Centre. The data are stored in a database designed by Lawrence Ware and maintained by Brian Cheal and others at Plymouth University. Despite our best efforts some information remains elusive whilst we accept that some errors are likely to remain. Notice of any mistakes should be sent to elections@plymouth.ac.uk. The results sequence can be kept up to date by purchasing copies of the annual Local Elections Handbook, details of which can be obtained by contacting the email address above.

Front cover: the graph shows the distribution of percentage vote shares over the period covered by the results. The lines reflect the colours traditionally used by the three main parties. The grey line is the share obtained by Independent candidates while the purple line groups together the vote shares for all other parties.

Rear cover: the top graph shows the percentage share of council seats for the main parties as well as those won by Independents and other parties. The lines take account of any by-election changes (but not those resulting from elected councillors switching party allegiance) as well as the transfers of seats during the main round of local election.

The lower graph shows for each main round of local elections the overall percentage turnout (solid line), the percentage of women candidates standing at (dotted line) and the percentage of women among those elected (hashed line).

Wear Valley 1973

Bishop Auckland Town (3299)³

		vote	share
Harburn D.	Lab	616	31.4
Rees D.	Lib	555	28.3
Hill G.	Ind	522	26.6
Dent S.	Lab	516	-
Harburn M. Ms.	Lab	481	-
Blackett L.	Lib	460	-
Snowball S.	Ind	453	-
Harrison H. Ms.	Ind Lab	271	13.8

Turnout 59.5 3.1

Coundon (3700)³

		vote	share
Goddard M.	Lib	760	39.7
Gordon J.	Lab	690	36.1
Archer W.	Lab	598	-
Blackett L. Ms.	Lib	592	-
Liddell G.	Lib	512	-
Conlon T.	Ind	464	24.2
Flynn J.	Lab	428	-
Dodds M.	Ind	263	-

Turnout 51.7 3.7

Escomb (970)

		vote	share
York G.	Ind	227	64.3
Bell C.	Lab	126	35.7

Turnout 36.4 28.6

Howden Le Wear (1679)

		vote	share
Tarren M. Ms.	Lib	301	38.5
Foster M.	Lab	264	33.8
Wood I.	Ind	217	27.7

Turnout 46.6 4.7

Hunwick (1305)

		vote	share
White D.	Ind Lab	491	64.9
Little M.	Lab	266	35.1

Turnout 58.0 29.7

No. 10 (Crook North) (1159)

		vote	share
Hall T.	Lab	356	52.7
Thomson J.	Ind	289	42.8
Scarlett M.	Comm	30	4.4

Turnout 58.2 9.9

No. 11 (Crook South) (2111)²

		vote	share
Brooksbank A.	Lab	669	59.7
Moralee T. Ms.	Lab	662	-
Lauder T.	Lib	452	40.3
Lauder J. Ms.	Lib	410	-

Turnout 53.1 19.4

No. 2 (Cockton Hill) (4823) @ 4

		vote	share
Fawcett H.	Lib	1,033	47.6
Preshous M. Ms.	Lib	964	-
Wood C.	Lib	952	-
Robinson E.	Lib	938	-
Hurst M. Ms.	Con	741	34.1
Guthrie H.	Lab	398	18.3
Dobson R.	Lab	311	-
Dobson E. Ms.	Lab	301	-
Dennis L.	Lab	270	-

Turnout 45.0 13.4

No. 3 (Woodhouse Close) (4101)³

		vote	share
Foster F.	Lab	795	58.2
Bryan J.	Lab	783	-
Graham A.	Lab	757	-
Marley C. Ms.	Lib	357	26.1
Haykin G.	TA	146	10.7
Rowlands E.	Comm	69	5.0
Mills A.	Comm	44	-

Turnout 33.3 32.0

No. 4 (St. Helens & West Auckland) (4281)³

		vote	share
Makinson J.	Lab	633	50.1
Nye A.	Lib	631	49.9
Steadman G.	Lab	612	-
Stobbs W.	Lab	520	-

Turnout 29.5 0.2

No. 7 (West Auckland & Coundon Grange) (2502)³

		vote	share
Callaghan J.	Ind	596	38.0
Cooper V.	Lab	531	33.8
Dixon J.	Lib	443	28.2
Hindmarch R.	Lab	415	-
Scorer T.	Ind	358	-
Johnson B.	Ind	354	-
Dawson F.	Lab	323	-
Burn D. Ms.	Lib	314	-
Tredenick B.	Lib	293	-

Turnout 62.7 4.1

No. 9 (Crook East) (1085)

		vote	share
Brown O. Ms.	People Rep	319	44.9
Crooks V. Ms.	Lab	196	27.6
Weighill I. Ms.	Lib	123	17.3
Barnett L.	Ind	72	10.1

Turnout 65.4 17.3

St. Johns Chapel (1065)

		vote	share
Pattinson K.	Ind	296	50.1
Pearl W.	Ind	295	49.9

Turnout 55.5 0.2

Stanhope (2119)²

		vote	share
Hogarth G. Ms.	Ind	953	60.7
O'Dell A.	Lab	616	39.3
Spark T.	Lab	613	-

Turnout 74.0 21.5

Stanley (1522)

		vote	share
Mason R.	Lab	474	54.8
Johnson H. Ms.	Ind	391	45.2

Turnout 56.8 9.6

Tow Law (1884)²

		vote	share
Robinson F.	Lab	532	65.5
Barrett J.	Lab	422	-
Jones J.	Ind	280	34.5

Turnout 43.1 31.0

Wheatbottom & Helmington Row (2349)²

		vote	share
Pendlebury R.	Lab	856	48.1
Wragg E. Ms.	Lab	781	-
Rhymer A.	Ind Lab	660	37.1
Elliott G.	Lib	264	14.8

Turnout 75.8 11.0

Willington East (3010)³

		vote	share
Richardson J.	Lab	1,407	59.9
Reed K.	Lab	1,194	-
Seddon A.	Lab	1,169	-
Readshaw P.	Ind	805	34.3
Campbell J.	Ind	451	-
Ursell G. Ms.	Comm	138	5.9

Turnout 78.1 25.6

Willington West (2151)²

		vote	share
Wilkinson B. Ms.	Ind	628	54.1
Smith J.	Ind	591	-
Cottle W.	Lab	532	45.9
Edwards A. Ms.	Lab	488	-

Turnout 53.9 8.3

Wolsingham (2667)²

		vote	share
Humble J.	Ind	578	59.6
Richmond J.	Ind	441	-
Proud D. Ms.	Lab	392	40.4
Gregory A.	Lab	373	-
Dowson T.	Ind	181	-

Turnout 36.4 19.2

Wear Valley 1976

Bishop Auckland Town (3062)³

		vote	share
Hill G.*	Ind	680	39.4
Rees D.*	Lib	545	31.5
Harburn D.*	Lab	503	29.1
Dent S.	Lab	457	-
Forrester F.	Lib	387	-
Harburn M. Ms.	Lab	356	-
Harrison H. Ms.	Lib	343	-

Turnout 41.9 7.8

Coundon (3697)³

		vote	share
Bulman K.	Lib	628	36.0
Archer W.*	Lab	623	35.7
Briggs T.	Lib	549	-
Brown G.	Lab	500	-
Conlon T.	Ind	493	28.3
Pelton T.	Lib	469	-
Lee J. Ms.	Lab	424	-

Turnout 38.8 0.3

Escomb (948)

		vote	share
York G.*	Ind	265	44.2
Maddison T.	Ind	230	38.4
Dixon R.	Lab	73	12.2
Gilbert H.	Lib	31	5.2

Turnout 63.3 5.8

Howden Le Wear (1686)

		vote	share
Tarren M. Ms.*	Lib	552	63.1
Davies W.	Lab	323	36.9

Turnout 52.0 26.2

Hunwick (1238)

		vote	share
White D.*	Lab	0	0.0

Turnout 0.0 0.0

No. 10 (Crook North) (1149)

		vote	share
Hall T.*	Lab	426	57.3
Johnson H. Ms.	Ind	269	36.2
Scarlett M.	Ind Soc	48	6.5

Turnout 64.9 21.1

No. 11 (Crook South) (2273) ²			
		vote	share
Brooksbank A.*	Lab	627	62.0
Moralee T. Ms.*	Lab	586	-
Clegg J. Ms.	Lib	384	38.0
Pinkney J.	Lib	366	-
Turnout		45.4	24.0

No. 2 (Cockton Hill) (4670) @ 4			
		vote	share
Hurst M. Ms.	Con	911	40.9
Fawcett H.*	Lib	882	39.6
Liddell G.	Con	808	-
Wood C.*	Lib	803	-
Ratcliffe J.	Lib	706	-
Ainscough D.	Con	705	-
Holder J.	Con	676	-
Cook E. Ms.	Lib	565	-
Jones W.	Lab	434	19.5
Harburn J. Ms.	Lab	422	-
Dawson F.	Lab	408	-
Dobson R.	Lab	367	-
Turnout		44.0	1.3

No. 3 (Woodhouse Close) (4064) ³			
		vote	share
Graham A.*	Lab	603	38.2
Foster F.*	Lab	550	-
Bryan J.*	Lab	547	-
Walker W.	Ind Lab	462	29.2
Taylor T.	Lib	328	20.8
Ruddick D.	Lib	309	-
Wright R.	Lib	241	-
Forster F.	Ind	187	11.8
Turnout		32.6	8.9

No. 4 (St. Helens & West Auckland) (4399) ³			
		vote	share
Wallis D. Ms.	Lib	874	59.9
Clayton T.	Lib	714	-
Taylor S.	Lib	590	-
Shepherd P.	Lab	584	40.1
Makinson J.*	Lab	480	-
Steadman G.*	Lab	475	-
Turnout		34.6	19.9

No. 7 (West Auckland & Coundon Grange) (2486) ³			
		vote	share
Hopper C.	Ind	793	41.0
Callaghan J.*	Ind	700	-
Dixon J.*	Lib	507	26.2
Cooper V.*	Lab	426	22.0
Clark P.	Lib	311	-
Stonehouse T.	Lab	281	-
Kirby R.	Lib	238	-
Lowe C.	Lab	216	-
Bramhald J. Ms.	Con	209	10.8
Bowen-Jones M. Ms.	Con	154	-
Turnout		57.4	14.8

No. 9 (Crook East) (961)			
		vote	share
Brown O. Ms.*	Lab	449	85.0
Pinkney A. Ms.	Lib	79	15.0
Turnout		54.9	70.1

St. Johns Chapel (1067)			
		vote	share
Pattinson K.*	Ind	399	56.9
Pearl W.	Ind	302	43.1
Turnout		65.7	13.8

Stanhope (2068) ²			
		vote	share
Spark T.	Lab	856	58.9
Hogarth G. Ms.*	Ind	597	41.1
Hobson W.	Lab	571	-
Turnout		63.1	17.8

Stanley (1375)			
		vote	share
Hall W.	Lab	457	64.3
Nicholson E. Ms.	Lib	254	35.7
Turnout		51.8	28.6

Tow Law (1826) ²			
		vote	share
Barrett J.*	Lab	398	50.8
Hannibell J. Ms.	Lib	385	49.2
Wilkinson S. Ms.	Lab	351	-
Turnout		40.6	1.7

Wheatbottom & Helmington Row (2665) ²			
		vote	share
Pendlebury R.*	Lab	873	50.6
Rhymer A.*	Ind Lab	853	49.4
Wragg E. Ms.	Lab	713	-
Turnout		56.1	1.2

Willington East (2942) ³			
		vote	share
Richardson J.*	Lab	1,434	61.8
Seddon A.*	Lab	1,259	-
Reed K.*	Lab	1,206	-
Cottle W.	Ind	580	25.0
Campbell E.	Lib	308	13.3
Mounter W.	Lib	264	-
Turnout		63.1	36.8

Willington West (2152) ²			
		vote	share
Smith J.*	Ind	755	60.3
Wilkinson B. Ms.*	Ind	638	-
Taylor G.	Lab	498	39.7
Gibson A.	Lab	453	-
Turnout		57.4	20.5

Wolsingham (2609) ²			
		vote	share
Wilson D.	Ind	710	47.6
Humble J.*	Ind	563	-
Forster J.	Lib	480	32.2
Richmond G.*	Ind	387	-
Hunt F.	Lab	303	20.3
Peveller N.	Lab	257	-
Turnout		59.8	15.4

Wear Valley 1979

Bishop Auckland Town (2869) ³			
		vote	share
Dent S.	Lab	984	34.6
Hill G.*	Ind	970	34.1
Rees D.*	Lib	889	31.3
Armstrong J.	Lab	814	-
Briggs H.	Lib	732	-
Graham A. Ms.	Lab	625	-
Turnout		99.1	0.5

Coundon (3777) ³			
		vote	share
Archer W.*	Lab	1,504	59.3
Webster F.	Lab	1,157	-
Lee J. Ms.	Lab	1,041	-
Bradley M.	Lib	1,032	40.7
Pelton A.	Lib	851	-
Hill N. Ms.	Lib	843	-
Turnout		67.1	18.6

Escomb (1097)			
		vote	share
Maddison T.	Ind	0	0.0
Turnout		0.0	0.0

Howden Le Wear (1680)			
		vote	share
Tarren M. Ms.*	People Rep	0	0.0
Turnout		0.0	0.0

Hunwick (1238)			
		vote	share
White D.*	Lab	536	60.0
Pratt R.	Ind	357	40.0
Turnout		72.1	20.0

No. 10 (Crook North) (1157)			
		vote	share
Hall T.*	Lab	0	0.0
Turnout		0.0	0.0

No. 11 (Crook South) (2397) ²			
		vote	share
Brooksbank A.*	Lab	1,105	62.7
Moralee T. Ms.*	Lab	990	-
Hogarth K.	Ind Lab	657	37.3
Turnout		73.5	25.4

No. 2 (Cockton Hill) (4776) @ 4			
		vote	share
Fawcett H.*	Lib	1,834	37.7
Hurst M. Ms.*	Con	1,782	36.6
Bramhald J. Ms.	Con	1,614	-
Foote Wood C.*	Lib	1,590	-
Neilson W.	Lab	1,252	25.7
Jones W.	Lab	1,181	-
Turnout		101.9	1.1

No. 3 (Woodhouse Close) (4071) ³			
		vote	share
Bryan J.*	Lab	1,558	56.4
Graham A.*	Lab	1,500	-
Foster F.*	Lab	1,449	-
Spark E. Ms.	Lib	659	23.9
Cook E. Ms.	Lib	636	-
Fishburn D.	Ind	544	19.7
Turnout		67.8	32.6

No. 4 (St. Helens & West Auckland) (4384) ³			
		vote	share
Wallis D. Ms.*	Lib	1,257	40.9
Wilson R.	Lab	1,175	38.3
Makinson J.	Lab	1,170	-
Stewart G.	Lab	1,165	-
Clayton E.*	Lib	910	-
Taylor S.*	Lib	706	-
Armstrong A.	Con	639	20.8
Ainscough D.	Con	615	-
Turnout		70.1	2.7

No. 7 (West Auckland & Coundon Grange) (2778) ³			
		vote	share
Hopper C.*	Ind	1,237	44.9
Callaghan J.*	Ind	1,017	-
Dixon J.*	Lib	907	32.9
Scorer T.	Ind	761	-
Langham R.	Lab	612	22.2
Turnout		99.2	12.0

No. 9 (Crook East) (1025)			
		vote	share
Brown O. Ms.*	Lab	0	0.0
Turnout		0.0	0.0

St. Johns Chapel (1091)			
		vote	share
Pattinson K.*	Ind	0	0.0
Turnout		0.0	0.0

Stanhope (2082) ²			
		vote	share
Spark T.*	Lab	1,074	58.6
McQueen W.	Ind	759	41.4
O'Dell A.	Lab	578	-
Turnout		88.0	17.2

Stanley (1376)			
		vote	share
Wilson E. Ms.	Lab	0	0.0
Turnout		0.0	0.0

Tow Law (1792)²			
		vote	share
Jones J.	Lab	1,023	66.3
Barrett J.*	Lab	721	-
Hannibell J. Ms.*	Lib	520	33.7
Turnout		86.1	32.6

Wheatbottom & Helmington Row (2625)²			
		vote	share
Pendlebury R.*	Lab	1,385	64.4
Whitton E.	Lab	1,107	-
Rhymer A.*	Ind Lab	764	35.6
Turnout		81.9	28.9

Willington East (3080)³			
		vote	share
Richardson J.*	Lab	1,897	80.8
Seddon A.*	Lab	1,752	-
Reed K.*	Lab	1,724	-
Berry R.	Con	450	19.2
Turnout		76.2	61.7

Willington West (2247)²			
		vote	share
Taylor G.	Lab	1,035	62.0
Welford M.	Lab	965	-
Smith J.*	Ind	634	38.0
Colling G.	Ind	579	-
Turnout		74.3	24.0

Wolsingham (2607)²			
		vote	share
Wilson D.*	Ind	924	44.1
Dobson H.	Con	723	34.5
Humble J.*	Ind	652	-
Proud D. Ms.	Lab	450	21.5
Balfour D. Ms.	Ind	394	-
Gowling F.	Lab	313	-
Turnout		80.4	9.6

Wear Valley 1983

Bishop Auckland Town (2963)²			
		vote	share
Dent S.	Lab	674	36.0
Hill G.	Ind	649	34.7
Rees D.	Lib/SDP	548	29.3
Batie R.	Lab	467	-
Turnout		63.1	1.3

Cockton Hill (4011)³			
		vote	share
Hurst M. Ms.	Con	1,150	69.5
Adlington M. Ms.	Con	1,057	-
Bramhald J. Ms.	Con	1,015	-
Harburn J. Ms.	Lab	504	30.5
Button J. Ms.	Lab	439	-
Turnout		41.2	39.1

Coundon (3927)³			
		vote	share
Webster F.	Lab	1,053	61.7
Lee J. Ms.	Lab	1,009	-
Archer W.	Lab	1,005	-
Bradley M.	All	655	38.3
Macdonald A.	All	541	-
Hill N. Ms.	All	527	-
Turnout		43.5	23.3

Coundon Grange (1694)²			
		vote	share
Dixon J.	All	449	47.9
Footo Wood C.	All	410	-
Thompson R.	Lab	374	39.9
Button N.	Lab	350	-
Crow C. Ms.	Ind	115	12.3
Turnout		55.4	8.0

Crook North (1313)			
		vote	share
Hall T.	Lab	480	68.0
English D.	Lib/SDP	226	32.0
Turnout		53.8	36.0

Crook South (3502)³			
		vote	share
Brown O. Ms.	Lab	1,420	68.3
Brooksbank A. Ms.	Lab	1,198	-
Moralee T. Ms.	Lab	997	-
Watts V.	All	660	31.7
Turnout		59.4	36.5

Escomb (1430)			
		vote	share
Maddison T.	Ind	424	65.8
Hodgson G.	Lab	220	34.2
Turnout		45.0	31.7

Henknowle (1797)²			
		vote	share
Neilson W.	Lab	636	68.5
Jones W.	Lab	500	-
Cooper M.	All	292	31.5
Todd F. Ms.	All	289	-
Turnout		51.6	37.1

Howden Le Wear (1671)			
		vote	share
Tarren M. Ms.	PR	337	40.7
Harding S.	Ind	279	33.7
Price D.	Lab	212	25.6
Turnout		49.6	7.0

Hunwick (1190)			
		vote	share
White D.	Lab	369	69.1
Foster G.	Ind Lab	165	30.9
Turnout		44.9	38.2

St. Helens Auckland (2192)²			
		vote	share
Judd T.	Lab	524	60.0
Thoburn J.	Lab	433	-
Clayton E.	All	349	40.0
Turnout		39.8	20.0

St. Johns Chapel (1132)			
		vote	share
Peaddon F.	Ind	481	63.5
Hayes J. Ms.	Lab	188	24.8
Wall J.	Ind	89	11.7
Turnout		67.0	38.7

Stanhope (2057)²			
		vote	share
Spark T.	Lab	696	59.1
Hunt J.	Lab	516	-
McQueen W.	All	481	40.9
Turnout		57.2	18.3

Stanley (1331)			
		vote	share
Wilson E. Ms.	Lab	353	49.2
Hall W.	Ind Lab	231	32.2
Watts M. Ms.	All	134	18.7
Turnout		53.9	17.0

Tow Law (1765)			
		vote	share
Jones J.	Lab	566	84.0
Nicholas W.	Ind	108	16.0
Turnout		38.2	68.0

West Auckland (2332)²			
		vote	share
Wilson R.	Lab	648	52.7
Wallis D. Ms.	Ind	581	47.3
Stewart G.	Lab	569	-
Turnout		77.1	5.5

Wheatbottom & Helmington Row (2596)²			
		vote	share
Pendlebury R.	Lab	1,087	71.1
Bousfield I. Ms.	Lab	848	-
Tarren A.	PR	442	28.9
Turnout		58.9	42.2

Willington East (2969)³			
		vote	share
Richardson J.	Lab	1,371	70.8
Seddon A.	Lab	1,341	-
Reed K.	Lab	1,253	-
Cottle W.	Ind Lab	566	29.2
Turnout		65.2	41.6

Willington West (2436)²			
		vote	share
Taylor G.	Lab	861	62.3
Welford M.	Lab	804	-
Smith J.	Ind	520	37.7
Turnout		56.7	24.7

Wolsingham (2619)²			
		vote	share
Wilson D.	Ind	662	31.9
Humble N. Ms.	PBP	627	30.2
Wilthew W.	Lab	399	19.2
Stephenson J. Ms.	Con	387	18.7
Allinson A.	Lab	290	-
Balfour D. Ms.	Ind	194	-
Turnout		79.2	1.7

Woodhouse Close (4260)³			
		vote	share
Foster F.	Lab	977	75.3
Bryan J.	Lab	944	-
Graham A.	Lab	914	-
Holder J.	Con	321	24.7
Turnout		30.5	50.5

Wear Valley 1987

Bishop Auckland Town (3143)²			
		vote	share
Land M. Ms.	Lib/SDP	738	37.4
Hill G.*	Ind	698	35.3
Dent S.*	Lab	539	27.3
Blanchard D.	Lab	355	-
Turnout		62.8	2.0

Cockton Hill (4213)³			
		vote	share
Hurst M. Ms.*	Con	1,070	63.8
Adlington M. Ms.*	Con	965	-
Bramhald J. Ms.*	Con	954	-
Harburn J. Ms.	Lab	608	36.2
Kellett M. Ms.	Lab	587	-
Batie R.	Lab	515	-
Turnout		39.8	27.5

Coundon (3895)³			
		vote	share
Lee J. Ms.*	Lab	834	51.8
Kay C.	Lab	827	-
Graham P.	Lab	804	-
Bradley M.	Lib/SDP	775	48.2
Jones T.	Lib/SDP	738	-
Hill N. Ms.	Lib/SDP	682	-
Turnout		41.3	3.7

Coundon Grange (1675)²			
		vote	share
Footo Wood C.*	Lib/SDP	618	70.8
Harrison G.	Lib/SDP	589	-
Thompson R.	Lab	255	29.2
Hodgson G.	Lab	226	-
Turnout		52.1	41.6

Crook North (1380)			
		vote	share
Hall T.*	Lab	451	60.0
Stewart A.	Lib/SDP	301	40.0
Turnout		54.5	19.9

Crook South (3661) ³			
		vote	share
Brown O. Ms.*	Lab	1,134	66.7
Brooksbank A. Ms.*	Lab	1,032	-
Richardson R. Ms.	Lab	940	-
Isles C. Ms.	Lib/SDP	565	33.3
Turnout		46.4	33.5

Escomb (1488)			
		vote	share
Oxbrough W.	Lab	0	0.0
Turnout		0.0	0.0

Henknowle (2129) ²			
		vote	share
Neilson W.*	Lab	670	67.1
Jones W.*	Lab	627	-
Gillett L.	Lib/SDP	329	32.9
Turnout		46.9	34.1

Howden Le Wear (1675)			
		vote	share
Johnson E.	Ind	485	59.6
Parkin T.	Lab	329	40.4
Turnout		48.6	19.2

Hunwick (1210)			
		vote	share
White D.*	Lab	0	0.0
Turnout		0.0	0.0

St. Helens Auckland (2102) ²			
		vote	share
Douthwaite H.	Lab	0	-
Judd T.*	Lab	0	0.0
Turnout		0.0	0.0

St. Johns Chapel (1163)			
		vote	share
Peadon F.*	Ind	501	70.4
Hayes J. Ms.	Lab	211	29.6
Turnout		61.2	40.7

Stanhope (2150) ²			
		vote	share
Hunt J.*	Lab	0	0.0
O'Donovan R.	Ind	0	0.0
Turnout		0.0	0.0

Stanley (1362)			
		vote	share
Wilson E. Ms.*	Lab	313	50.6
Bryan D. Ms.	Ind	306	49.4
Turnout		45.4	1.1

Tow Law (1736)			
		vote	share
Jones J.*	Lab	407	59.1
Watson C.	Ind	282	40.9
Turnout		39.7	18.1

West Auckland (2330) ²			
		vote	share
Wallis D. Ms.*	Ind	629	56.5
Wilson R.*	Lab	485	43.5
Stewart G.	Lab	453	-
Turnout		47.8	12.9

Wheatbottom & Helmington Row (2555) ²			
		vote	share
Whitton E.	Lab	734	60.0
Bousfield I. Ms.*	Lab	712	-
Halliday D.	Lib/SDP	490	40.0
Turnout		47.9	19.9

Willington East (2994) ³			
		vote	share
Reed K.*	Lab	0	-
Seddon A.*	Lab	0	0.0
Richardson J.*	Lab	0	-
Turnout		0.0	0.0

Willington West (2426) ²			
		vote	share
Taylor G.*	Lab	745	59.9
Dowson H. Ms.	Lab	696	-
Smith J.	Ind	499	40.1
Turnout		51.3	19.8

Wolsingham (2728) ²			
		vote	share
Shuttleworth V.	Ind	818	74.1
Wilson D.*	Ind	721	-
Gill G.	Ind	402	-
Irvine D.	Lab	286	25.9
Turnout		40.5	48.2

Woodhouse Close (4143) ³			
		vote	share
Foster F.*	Lab	756	51.3
Bryan J.*	Ind Lab	717	48.7
Graham A.*	Lab	624	-
Dobbin P.	Lab	451	-
Turnout		35.6	2.6

Wear Valley 1991

Bishop Auckland Town (3287) ²			
		vote	share
Land M. Ms.*	LD	860	53.2
Carr G.	LD	823	-
Dent S.	Lab	508	31.4
Jones M. Ms.	Lab	421	-
Pattinson K.	Con	250	15.5
Turnout		46.4	21.8

Cockton Hill (4124) ³			
		vote	share
Harrison J.	LD	1,050	44.8
Goldsborough J.	LD	1,032	-
Smith J.	LD	936	-
Hurst M. Ms.*	Con	690	29.4
Laurie B. Ms.	Lab	603	25.7
Bramhald J. Ms.*	Con	549	-
Adlington M. Ms.*	Con	541	-
Turnout		51.2	15.4

Coundon (3685) ³			
		vote	share
Wigley M.	LD	1,075	63.3
Russell T.	LD	1,067	-
Adams P.	LD	1,065	-
Dawson R.	Lab	622	36.7
Graham P.*	Lab	618	-
Lee J. Ms.*	Lab	593	-
Turnout		49.9	26.7

Coundon Grange (1681) ²			
		vote	share
Wood C.*	LD	588	74.0
Harrison G.*	LD	547	-
Ingledeew M. Ms.	Lab	207	26.0
Spanton P. Ms.	Lab	178	-
Turnout		45.3	47.9

Crook North (1374)			
		vote	share
Jobson J. Ms.	LD	510	62.5
Hall T.*	Lab	306	37.5
Turnout		59.3	25.0

Crook South (3727) ³			
		vote	share
Hepple C.	LD	930	52.0
Brown O. Ms.*	Lab	858	48.0
English D.	LD	842	-
Brooksbank A. Ms.*	Lab	758	-
Richardson R. Ms.*	Lab	756	-
Brown S. Ms.	LD	746	-
Turnout		48.6	4.0

Escomb (1716)			
		vote	share
Perkins W.*	LD	481	67.5
Burnip M. Ms.	Lab	232	32.5
Turnout		41.5	34.9

Henknowle (2129) ²			
		vote	share
Anderson A.	LD	568	54.1
Todd F. Ms.	LD	521	-
Jones W.*	Lab	482	45.9
Neilson B.*	Lab	426	-
Turnout		50.8	8.2

Howden Le Wear (1709)			
		vote	share
Groves R.	LD	415	48.0
Dobinson W.	Lab	274	31.7
Johnson E.*	Ind	175	20.3
Turnout		50.5	16.3

Hunwick (1213)			
		vote	share
Cunningham J.	LD	389	58.7
White D.*	Lab	274	41.3
Turnout		54.6	17.3

St. Helens Auckland (1911) ²			
		vote	share
Douthwaite H.*	Lab	463	50.8
Ferguson J.	LD	449	49.2
Judd T.*	Lab	429	-
Gilbert H.	LD	348	-
Turnout		48.8	1.5

St. Johns Chapel (1201)			
		vote	share
Almond L.	LD	324	42.9
Elliott G. Ms.	Ind	273	36.1
Hayes J. Ms.	Lab	104	13.8
Oldham G.	Green	55	7.3
Turnout		62.9	6.7

Stanhope (2058) ²			
		vote	share
Lyle J.	LD	427	50.5
Chatfield J.	LD	426	-
Bolam A. Ms.	Ind	277	32.7
O'Donovan R.*	Ind	269	-
Palliser I.	Ind	208	-
Stanton J.	Lab	142	16.8
Nicholson A.	Lab	107	-
Turnout		50.2	17.7

Stanley (1391)			
		vote	share
Patterson D. Ms.	Ind	407	55.5
Wright D.	Lab	326	44.5
Turnout		52.6	11.1

Tow Law (1688)			
		vote	share
Grogan R.	LD	345	39.2
Jones J.*	Lab	278	31.6
Spencer P.	Ind	257	29.2
Turnout		52.1	7.6

West Auckland (2230) ²			
		vote	share
Wallis D. Ms.*	Ind	631	42.8
Harker E. Ms.	Lab	438	29.7
Woods T.	Lab	412	-
Moore F.*	LD	405	27.5
Turnout		50.3	13.1

Wheatbottom & Helmington Row (2562) ²			
		vote	share
Halliday D.	LD	602	50.5
Bailey J.	LD	601	-
Bousfield I. Ms.*	Lab	591	49.5
Whitton E.*	Lab	550	-
Turnout		49.7	0.9

Willington East (3014) ³			
		vote	share
Richardson J.*	Lab	1,151	69.5
Seddon A.*	Lab	1,148	-
Reed K.*	Lab	1,136	-
Jackson C. Ms.	LD	505	30.5
Danby M. Ms.	LD	501	-
Hepple C. Ms.	LD	463	-
Turnout		57.0	39.0

Willington West (2421) ²			
		vote	share
Dowson H. Ms.*	Lab	650	52.0
Taylor G.*	Lab	635	-
Smith J.	LD	599	48.0
Allan D. Ms.	LD	531	-
Turnout		53.1	4.1

Wolsingham (2767) ²			
		vote	share
Shuttleworth V.*	Ind	840	60.0
Wilson D.*	Ind	813	-
Chatfield G.	LD	388	27.7
Hill R.	LD	306	-
Wilson E. Ms.	Lab	172	12.3
Murphy E.	Lab	144	-
Turnout		52.4	32.3

Woodhouse Close (3954) ³			
		vote	share
Wade W.*	LD	753	40.7
Sanderson C.	LD	657	-
Hutchinson A.	LD	599	-
Foster F.*	Lab	564	30.5
Bryan J.*	Ind Lab	440	23.8
Dodd T.	Lab	372	-
Button N.	Ind Lab	305	-
Wilson D.	Lab	285	-
McConkey J.	Con	93	5.0
Turnout		39.9	10.2

Wear Valley 1995

Bishop Auckland Town (3258) ²			
		vote	share
Dent S.	Lab	724	58.8
Jones M. Ms.	Lab	613	-
Carr G.*	LD	286	23.2
Fox D.	LD	231	-
Land M. Ms.*	Ind	222	18.0
Wray D.	Ind	134	-
Turnout		35.0	35.6

Cockton Hill (4032) ³			
		vote	share
Laurie B. Ms.	Lab	768	42.8
Sutton J.	Lab	686	-
Wright D.	Lab	674	-
Harrison J.*	LD	667	37.2
Smith J.*	LD	596	-
Hodgson D.	LD	589	-
Adlington M. Ms.	Ind	358	20.0
Turnout		39.0	5.6

Coundon (3521) ³			
		vote	share
Graham J. Ms.	Lab	1,009	61.6
Kay C.	Lab	1,005	-
Stonehouse N.	Lab	986	-
Bradley M.	LD	401	24.5
Turner N.	LD	298	-
Moore F.	LD	252	-
Russell T.*	Ind	227	13.9
Turnout		43.3	37.1

Coundon Grange (1628) ²			
		vote	share
Foote Wood C.*	LD	350	50.6
Ingledeu M. Ms.	Lab	342	49.4
Harrison G.*	LD	340	-
Hull J.	Lab	327	-
Turnout		41.7	1.2

Crook North (1305)			
		vote	share
Ayre C. Ms.	Lab	375	54.8
Jobson J. Ms.*	LD	309	45.2
Turnout		52.6	9.6

Crook South (3877) ³			
		vote	share
Brown O. Ms.*	Ind	1,207	52.4
Dobinson W.	Ind	1,081	-
Murphy E.	Lab	813	35.3
Hepple C.*	Lab	332	-
English D.*	LD	282	12.3
Groves A. Ms.	LD	250	-
English B. Ms.	LD	248	-
Harrison J.	Lab	227	-
Turnout		38.2	17.1

Escomb (1932)			
		vote	share
Graham K.	Lab	303	53.7
Perkins W.*	LD	261	46.3
Turnout		29.2	7.4

Henknowle (2149) ²			
		vote	share
Hewitt G.	Lab	535	60.5
Lethbridge J.	Lab	467	-
Anderson A.*	LD	349	39.5
Todd F. Ms.*	LD	344	-
Turnout		43.5	21.0

Howden Le Wear (1707)			
		vote	share
Giblin D.	Lab	341	54.0
Groves R.*	LD	290	46.0
Turnout		37.1	8.1

Hunwick (1195)			
		vote	share
Newton A. Ms.	Lab	355	68.1
Bowser K.	LD	91	17.5
Harrison B.	Ind	75	14.4
Turnout		43.6	50.7

St. Helens Auckland (1796) ²			
		vote	share
Douthwaite H.*	Lab	532	82.9
Harker P.	Lab	460	-
Kerry P.	LD	110	17.1
Staley W.	LD	25	-
Turnout		37.4	65.7

St. Johns Chapel (1187)			
		vote	share
Almond L.*	LD	391	61.9
Shuttleworth J.	Ind	99	15.7
Muncaster S. Ms.	Lab	82	13.0
Oldham G.	Ind	60	9.5
Turnout		54.0	46.2

Stanhope (2128) ²			
		vote	share
Mews T.	Ind	481	45.6
McKellar G.	Lab	413	39.2
McQueen W.	Ind	381	-
Gibson L.	Lab	370	-
Ward M.	LD	160	15.2
Wilkinson R.	LD	114	-
Turnout		49.8	6.5

Stanley (1349)			
		vote	share
Scott M.	Lab	363	65.2
Downie J.	LD	194	34.8
Turnout		41.4	30.3

Tow Law (1640)			
		vote	share
Hayton C.	Lab	319	40.1
Grogan R.*	Ind	296	37.2
Spencer P.	Ind Lab	116	14.6
Cayton A. Ms.	LD	65	8.2
Turnout		48.7	2.9

West Auckland (2186) ²			
		vote	share
Harker E. Ms.*	Lab	683	74.6
Judd T.	Lab	536	-
Ferguson J.	LD	233	25.4
Ferguson P. Ms.	LD	173	-
Turnout		41.5	49.1

Wheatbottom & Helmington Row (2482) ²			
		vote	share
Bousfield I. Ms.	Lab	723	63.3
Whitton E.	Lab	718	-
Bailey J.*	LD	419	36.7
Halliday D.*	LD	330	-
Turnout		49.4	26.6

Willington East (3083) ³			
		vote	share
Myers B.	Lab	1,274	83.8
Kingston D.	Lab	1,253	-
Townsend A.	Lab	1,237	-
English G. Ms.	LD	246	16.2
Jackson C. Ms.	LD	245	-
Walters A.	LD	235	-
Turnout		51.9	67.6

Willington West (2314) ²			
		vote	share
Elmes J.	Lab	827	74.8
Pinkney M. Ms.	Lab	821	-
Allan D. Ms.	LD	208	18.8
Walters J. Ms.	LD	173	-
Cunningham J.	Ind	71	6.4
Turnout		47.8	56.0

Wolsingham (2781) ²			
		vote	share
Shuttleworth V.*	Ind	595	52.5
Wilson D.*	Ind	507	-
Wigham D.	LD	322	28.4
Chatfield J.	LD	307	-
Townsend J. Ms.	Lab	217	19.1
Henfrey R.	Lab	189	-
Turnout		41.1	24.1

Woodhouse Close (3893) ³			
		vote	share
Langham R.	Lab	529	40.3
Lee J. Ms.	Lab	470	-
Dodd T.	Lab	468	-
Bryan J.	Ind Lab	328	25.0
Button N.	Ind Lab	268	-
Hutchinson A.*	LD	230	17.5
Sanderson C.*	LD	229	-
Wade B.*	Ind	226	17.2
Adamson B. Ms.	LD	198	-
Turnout		24.8	15.3

Wear Valley 1999

Bishop Auckland Town (3236)²

		vote	share
Gregory S.	LD	464	48.0
Dent S.*	Lab	435	45.0
Jones M. Ms.*	Lab	410	-
Marriott E. Ms.	LD	381	-
Wooley J. Ms.	Con	68	7.0

Turnout 29.3 3.0

Cockton Hill (3966)³

		vote	share
Laurie B. Ms.*	Lab	602	41.1
Harrison J.	LD	497	34.0
Stokeld K.	Lab	485	-
Anderson A.	LD	465	-
Sutton J.*	Lab	464	-
Todd F. Ms.	LD	421	-
Raine C.	Con	364	24.9

Turnout 32.5 7.2

Coundon (3406)³

		vote	share
Stonehouse N.*	Lab	779	69.4
Kay C.*	Lab	738	-
Wright D.*	Lab	648	-
Bradley M.	LD	343	30.6
Turner N.	LD	275	-

Turnout 30.5 38.9

Coundon Grange (1830)²

		vote	share
IngledeW M. Ms.*	Lab	406	53.9
Wood C.*	LD	347	46.1
Middlemas J.	Lab	329	-
Bates A. Ms.	LD	251	-

Turnout 39.1 7.8

Crook North (1269)

		vote	share
Dobinson W. Ms.*	Lab	307	68.7
Groves A. Ms.	LD	140	31.3

Turnout 35.4 37.4

Crook South (3725)³

		vote	share
Brown O. Ms.*	Lab	741	74.5
Murphy E.*	Lab	698	-
Tomlinson E.	Lab	689	-
Foster P.	LD	253	25.5
English D.	LD	213	-
English B. Ms.	LD	179	-

Turnout 32.6 49.1

Escomb (2009)

		vote	share
Jago D.	LD	199	44.5
Graham K.*	Lab	164	36.7
Bryan J.	Ind	84	18.8

Turnout 22.4 7.8

Henknowle (2146)²

		vote	share
Lothbridge J.*	Lab	383	60.0
Hewitt G.*	Lab	296	-
Pallister J. Ms.	LD	255	40.0
Todd J. Ms.	LD	253	-

Turnout 30.2 20.1

Howden Le Wear (1739)

		vote	share
Giblin D.*	Lab	315	53.9
Groves R.	LD	269	46.1

Turnout 33.7 7.9

Hunwick (1209)

		vote	share
Newton A. Ms.*	Lab	321	82.5
Woodward C.	LD	68	17.5

Turnout 32.2 65.0

St. Helens Auckland (1728)²

		vote	share
Douthwaite H.*	Lab	291	65.2
Turner A.	Lab	282	-
Morley S.	LD	155	34.8
Morley E. Ms.	LD	131	-

Turnout 28.1 30.5

St. Johns Chapel (1191)

		vote	share
Shuttleworth J.	Ind	529	73.1
Almond L.*	LD	168	23.2
Mowbray G.	Lab	27	3.7

Turnout 60.8 49.9

Stanhope (2108)²

		vote	share
Mews T.*	Ind	534	46.7
McKellar G.*	Lab	405	35.4
Foster S.	Lab	243	-
Swatten D.	LD	205	17.9

Turnout 41.1 11.3

Stanley (1295)

		vote	share
Scott M.*	Lab	248	61.7
Downie J.	LD	154	38.3

Turnout 31.0 23.4

Tow Law (1570)

		vote	share
Grogan R.	Ind	281	49.8
Hayton C.*	Lab	239	42.4
Nicholas W.	LD	44	7.8

Turnout 35.9 7.4

West Auckland (2144)²

		vote	share
Ferguson J.	LD	302	54.2
Douthwaite M. Ms.*	Lab	255	45.8
Judd T.*	Lab	200	-

Turnout 25.6 8.4

Wheatbottom & Helmington Row (2368)²

		vote	share
Bousfield I. Ms.*	Lab	561	69.8
Moody J.*	Lab	497	-
Bailey J.	LD	243	30.2
Halliday D.	LD	184	-

Turnout 36.7 39.6

Willington East (3151)³

		vote	share
Myers B.*	Lab	851	76.7
Kingston D.*	Lab	850	-
Townsend A.*	Lab	785	-
Sawkins R. Ms.	LD	259	23.3

Turnout 34.5 53.3

Willington West (2080)²

		vote	share
Pinkney M. Ms.*	Lab	513	58.1
Elmes J.*	Lab	500	-
Smith J.	Ind	275	31.1
Mounter P.	Ind	222	-
Walters J. Ms.	LD	95	10.8

Turnout 41.1 27.0

Wolsingham (2807)²

		vote	share
Shuttleworth V.*	Ind	654	49.7
Wilson D.*	Ind	495	-
Chatfield J.	LD	398	30.3
Richardson S. Ms.	Lab	263	20.0

Turnout 37.7 19.5

Woodhouse Close (3568)³

		vote	share
Clements A.	Lab	0	-
Langham R.*	Lab	0	-
Lee J. Ms.*	Lab	0	0.0

Turnout 0.0 0.0

Wear Valley 2003

Bishop Auckland Town (2227)²

		vote	share
Jones M. Ms.*	Lab	425	37.6
Gregory S.*	Ind	421	37.3
Wade W.	Lab	389	-
Marriott E. Ms.	LD	284	25.1
Hodgson K.	LD	279	-

Turnout 47.5 0.4

Cockton Hill (3823)³

		vote	share
Laurie B. Ms.*	Lab	849	37.8
Harrison N.	LD	772	34.4
Anderson A.	LD	767	-
Harrison J.*	LD	755	-
Tobin J.	Lab	719	-
Stokeld K.*	Lab	658	-
Tague J.	Con	626	27.9

Turnout 55.2 3.4

Coundon (3244)³

		vote	share
Stonehouse N.*	Lab	879	54.2
Hilditch J. Ms.	Lab	784	-
Taylor T.	LD	743	45.8
Dargue A.	LD	693	-
Russell T.	LD	670	-
Lethbridge J.	Lab	652	-

Turnout 50.7 8.4

Crook North (1307)

		vote	share
Dobinson W.*	Lab	406	57.0
Groves A. Ms.	LD	306	43.0

Turnout 54.7 14.0

Crook South (3785)³

		vote	share
Brown O. Ms.*	Lab	1,235	66.3
Mowbray G.	Lab	1,004	-
Murphy E.*	Lab	941	-
Rayner P.	LD	628	33.7
English D.	LD	547	-
English B. Ms.	LD	462	-

Turnout 50.8 32.6

Dene Valley (2141)²

		vote	share
Wood C.*	LD	653	62.1
Burn D. Ms.	LD	576	-
IngledeW M. Ms.*	Lab	399	37.9
Lethbridge S. Ms.	Lab	330	-

Turnout 50.3 24.1

Escomb (2320)²

		vote	share
Perkins W.	LD	579	57.0
Jago D.*	LD	573	-
Douthwaite H.*	Lab	436	43.0
Graham K.	Lab	373	-

Turnout 48.5 14.1

Henknowle (3001)²

		vote	share
Todd F. Ms.	LD	659	40.2
Clements A.*	Lab	658	40.1
Waldock D.	Lab	584	-
Bowser K.	LD	455	-
Hewitt G.*	Ind	256	15.6
Thornton L.	BNP	67	4.1

Turnout 50.3 0.1

Howden (1272)			
		vote	share
Quinn D.	Lab	390	55.5
Groves R.	LD	313	44.5
Turnout		55.8	11.0
Hunwick (1240)			
		vote	share
Nevins D.	Lab	324	50.8
Longhorn R.	LD	314	49.2
Turnout		51.8	1.6
St. Johns Chapel (1191)			
		vote	share
Shuttleworth J.*	Ind	0	0.0
Turnout		0.0	0.0
Stanhope (2801) ²			
		vote	share
Mews T.*	Ind	974	41.3
McKellar G.*	Lab	537	22.7
Chatfield J.	LD	530	22.4
Allan D. Ms.	LD	348	-
Letchford M.	Con	320	13.6
Turnout		61.0	18.5
Tow Law & Stanley (2909) ³			
		vote	share
Gale J.	Lab	786	42.3
Hayton C.	Lab	695	-
Grogan R.*	Ind	683	36.7
Tomlinson E.*	Lab	481	-
Bailey J.	LD	391	21.0
Hall R.	LD	329	-
Turnout		48.7	5.5
West Auckland (3523) ³			
		vote	share
Ferguson J.*	LD	910	50.5
Harker P.	Lab	893	49.5
Douthwaite M. Ms.*	Lab	882	-
Turner A.*	Lab	738	-
Turnout		51.8	0.9
Wheatbottom & Helmington Row (2235) ²			
		vote	share
Bousfield I. Ms.*	Lab	826	69.6
Moody J.*	Lab	700	-
Halliday D.	LD	360	30.4
Turnout		52.5	39.3
Willington Central (4075) ³			
		vote	share
Pinkney M. Ms.*	Lab	1,219	63.6
Sinclair A.*	Lab	1,038	-
Townsend A.*	Lab	1,026	-
Glynn A. Ms.	LD	698	36.4
Turnout		47.3	27.2
Willington West End (1056)			
		vote	share
Kingston D.*	Lab	357	61.3
Longhorn S.	LD	225	38.7
Turnout		55.5	22.7
Wolsingham & Witton-Le-Wear (2516) ²			
		vote	share
Shuttleworth V. Ms.*	Ind	1,046	75.0
Wilson D.*	Ind	872	-
Graham P.	Lab	348	25.0
Turnout		55.9	50.1
Woodhouse Close (3500) ³			
		vote	share
Langham R.*	Lab	862	58.5
Lee J. Ms.*	Lab	850	-
Wilson D.	Lab	822	-
Sanderson C.	LD	504	34.2
Thornton J.	BNP	107	7.3
Turnout		44.4	24.3

Wear Valley 2007

Bishop Auckland Town (2542) ²			
		vote	share
Zair S.	LD	374	52.2
Ord S. Ms.	LD	248	-
Wade B.	Lab	181	25.2
Anderson F.	Lab	176	-
Firby C.	Con	162	22.6
Lodge H. Ms.	Con	160	-
Turnout		29.1	26.9
Cockton Hill (3858) ³			
		vote	share
Harrison N.*	LD	600	36.7
Anderson A.*	LD	597	-
Laurie B. Ms.*	Lab	559	34.1
Raine C.	Con	478	29.2
Tague J.	Con	458	-
Snaith G.	LD	451	-
Gasston J.	Con	437	-
Stokeld K.	Lab	431	-
Turnout		39.7	2.5
Coundon (3183) ³			
		vote	share
Taylor T.*	LD	516	51.0
Hardaker D. Ms.	LD	506	-
Stonehouse N.*	Lab	495	49.0
Thompson L. Ms.	Lab	465	-
Strongman N.	Lab	370	-
Turnout		31.1	2.1
Crook North (1381)			
		vote	share
Jopling P. Ms.	LD	222	54.7
McKellar G.	Lab	184	45.3
Turnout		30.0	9.4
Crook South (4082) ³			
		vote	share
Murphy E.*	Lab	625	43.9
Mowbray G.*	Lab	622	-
Carrick A. Ms.	LD	580	40.7
Sung P.	Lab	541	-
English D.	LD	504	-
Jopling G.	LD	459	-
Muir R.	BNP	219	15.4
Turnout		33.2	3.2
Dene Valley (2203) ²			
		vote	share
Burn D. Ms.*	LD	361	59.3
Henry G.	LD	346	-
Ingledew M. Ms.	Lab	248	40.7
Lethbridge S. Ms.	Lab	222	-
Turnout		28.6	18.6
Escomb (2527) ²			
		vote	share
Yorke R.	Lab	298	35.1
Perkins W.*	LD	290	34.1
Fenwick J.	LD	280	-
Laws P.	Con	262	30.8
Gunn O. Ms.	Lab	260	-
Lynas A. Ms.	Con	250	-
Turnout		36.1	0.9
Henknowle (2851) ²			
		vote	share
Todd F. Ms.*	LD	443	53.8
Lethbridge J.	Lab	381	46.2
Huntington J.	LD	372	-
Davison R.	Lab	368	-
Turnout		29.9	7.5
Howden (1384)			
		vote	share
Bailey J.*	LD	336	74.7
Cason S.	Lab	114	25.3
Turnout		32.8	49.3

Hunwick (1492)			
		vote	share
Bowser K.	LD	270	53.9
Nevins D.*	Lab	231	46.1
Turnout		34.1	7.8
St. Johns Chapel (1219)			
		vote	share
Shuttleworth J.*	Ind	640	88.6
Houghton C.	Con	82	11.4
Turnout		59.6	77.3
Stanhope (2820) ²			
		vote	share
Mews T.*	Ind	579	36.1
Bolam A. Ms.	Ind	510	-
Hobson W.	Lab	421	26.3
Rowell C.	Con	359	22.4
Simpson A.	LD	244	15.2
Turnout		43.1	9.9
Tow Law & Stanley (3009) ³			
		vote	share
Hayton C.*	Lab	418	34.2
Gale J.*	Lab	407	-
Grogan R.*	Ind	399	32.6
Walker J.	Lab	334	-
Halliday D.	LD	246	20.1
Morgan W.	Con	161	13.2
Turnout		29.4	1.6
West Auckland (3656) ³			
		vote	share
Mairs C.	LD	556	50.2
Douthwaite M. Ms.*	Lab	552	49.8
Ferguson J.*	LD	539	-
Fenwick P. Ms.	LD	455	-
Wilson C. Ms.	Lab	432	-
Turner A.	Lab	372	-
Turnout		31.2	0.4
Wheatbottom & Helmington Row (2295) ²			
		vote	share
Ward R.	Lab	384	55.6
Seabury R. Ms.*	Lab	337	-
Gooch E. Ms.	LD	307	44.4
Gooch J.	LD	296	-
Turnout		31.2	11.1
Willington Central (4080) ³			
		vote	share
Kingston D.*	Lab	676	55.5
Sinclair A.*	Lab	663	-
Buckham J.	Lab	642	-
Horn D.	LD	543	44.5
Turnout		29.3	10.9
Willington West End (1253)			
		vote	share
Pinkney M. Ms.*	Lab	256	48.8
Brunskill B. Ms.	Con	172	32.8
Glynn A. Ms.	LD	97	18.5
Turnout		42.3	16.0
Wolsingham & Witton-Le-Wear (2493) ²			
		vote	share
Shuttleworth V. Ms.*	Ind	618	68.1
Wilson D.*	Ind	500	-
Robeson S.	Con	289	31.9
Robeson K. Ms.	Con	274	-
Turnout		36.4	36.3
Woodhouse Close (3305) ³			
		vote	share
Wilson D.*	Lab	404	58.0
Lee J. Ms.*	Lab	375	-
Kay C.*	Lab	368	-
Zair L. Ms.	LD	292	42.0
Ferguson P. Ms.	LD	278	-
Turnout		21.9	16.1

