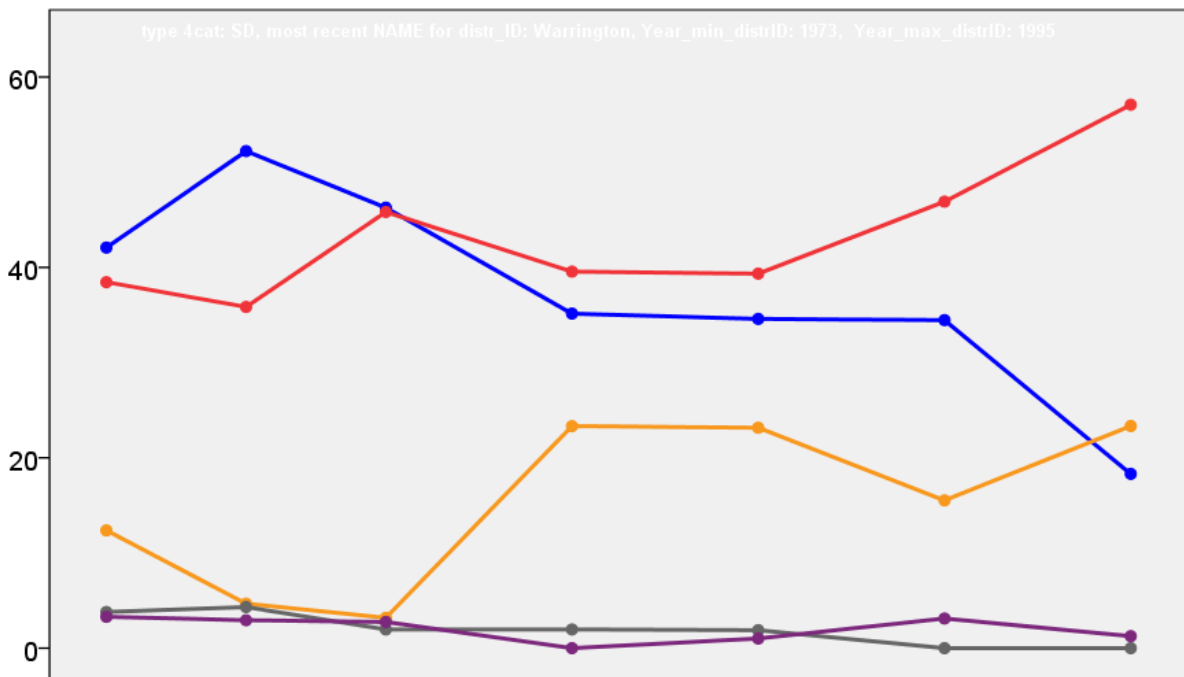


# Warrington Borough Council Election Results 1973-1995



Colin Rallings and Michael Thrasher  
The Elections Centre  
Plymouth University

The information contained in this report has been obtained from a number of sources. Election results from the immediate post-reorganisation period were painstakingly collected by Alan Willis largely, although not exclusively, from local newspaper reports. From the mid-1980s onwards the results have been obtained from each local authority by the Elections Centre. The data are stored in a database designed by Lawrence Ware and maintained by Brian Cheal and others at Plymouth University. Despite our best efforts some information remains elusive whilst we accept that some errors are likely to remain. Notice of any mistakes should be sent to [elections@plymouth.ac.uk](mailto:elections@plymouth.ac.uk). The results sequence can be kept up to date by purchasing copies of the annual Local Elections Handbook, details of which can be obtained by contacting the email address above.

Front cover: the graph shows the distribution of percentage vote shares over the period covered by the results. The lines reflect the colours traditionally used by the three main parties. The grey line is the share obtained by Independent candidates while the purple line groups together the vote shares for all other parties.

Rear cover: the top graph shows the percentage share of council seats for the main parties as well as those won by Independents and other parties. The lines take account of any by-election changes (but not those resulting from elected councillors switching party allegiance) as well as the transfers of seats during the main round of local election.

The lower graph shows for each main round of local elections the overall percentage turnout (solid line), the percentage of women candidates standing at (dotted line) and the percentage of women among those elected (hashed line).

## Warrington 1973

### Bewsey (5166)<sup>3</sup>

		vote	share
Avery W.	Lab	1,257	79.4
Pye T.	Lab	1,213	-
Hayes J.	Lab	1,198	-
Malkhandi B.	Con	326	20.6
Hanson C.	Con	291	-
Gleave J.	Con	277	-
<b>Turnout</b>		30.6	58.8

### Booths Hill (2107)

		vote	share
Rooke K. Ms.	Lib	659	74.3
Bennett B. Ms.	Lab	228	25.7
<b>Turnout</b>		42.1	48.6

### Burtonwood (3155)<sup>2</sup>

		vote	share
Phillips F.	Ind	797	52.0
Fairclough A. Ms.	Ind	593	-
Cooke R.	Lab	476	31.0
Lomas C.	Lab	342	-
Birtles J. Ms.	Con	261	17.0
<b>Turnout</b>		35.6	20.9

### Croft (1712)

		vote	share
Birchall T.	Con	579	59.5
Hampson J.	Ind Lab	266	27.3
Farrington J. Ms.	Ind	128	13.2
<b>Turnout</b>		57.0	32.2

### Culcheth & Glazebury (5927)<sup>3</sup>

		vote	share
Chapman D.	Con	1,786	56.8
Nunn D.	Con	1,669	-
Winterburn J.	Con	1,666	-
Daintith L.	Lab	1,358	43.2
Fern J.	Lab	1,262	-
Needham W. Ms.	Lab	1,210	-
<b>Turnout</b>		51.8	13.6

### Grappenhall & Thelwall (6052)<sup>3</sup>

		vote	share
Nelson S.	Lib	1,431	50.6
Brierley J.	Con	1,395	49.4
Bettley D. Ms.	Con	1,270	-
Harris G.	Lib	1,237	-
Gorton R. Ms.	Con	1,217	-
<b>Turnout</b>		41.0	1.3

### Heatley (2230)

		vote	share
Bell C.	Con	564	51.6
Riley M.	Lib	529	48.4
<b>Turnout</b>		49.1	3.2

### Howley (3533)<sup>2</sup>

		vote	share
Edwards H.	Lab	566	50.8
Edwards V. Ms.	Lab	537	-
Shaw G.	Con	297	26.6
Bohan B. Ms.	Lib	252	22.6
Shaw K. Ms.	Con	247	-
<b>Turnout</b>		31.6	24.1

### Latchford (5726)<sup>3</sup>

		vote	share
Burt G.	Con	901	52.4
Mackrell T.	Con	843	-
Miller T.	Con	830	-
Charnock F.	Lab	819	47.6
Lyne D.	Lab	806	-
Collins T.	Lab	804	-
<b>Turnout</b>		31.1	4.8

### Lymm (1754)

		vote	share
Impe D.	Lib	471	51.6
Lingard K.	Con	442	48.4
<b>Turnout</b>		52.1	3.2

### No. 1 (Longford) (6415)<sup>3</sup>

		vote	share
Whitehead H.	Lab	1,078	79.8
Arnold B.	Lab	1,022	-
Verdon J.	Lab	980	-
Potts T.	Con	273	20.2
Lea P.	Con	263	-
<b>Turnout</b>		21.1	59.6

### No. 15 (Appleton) (5226)<sup>3</sup>

		vote	share
Whittaker H.	Con	1,583	50.8
White I.	Con	1,527	-
Jenkins J.	Con	1,447	-
Mounfield P.	Ind Con	996	31.9
Billington J.	Ind Con	827	-
Bentley J.	Lab	540	17.3
Dooley G.	Lab	520	-
Fagan J.	Lab	481	-
<b>Turnout</b>		59.7	18.8

### No. 17 (Stockton Heath) (5189)<sup>3</sup>

		vote	share
Houghton F.	Con	1,336	52.3
Richardson K. Ms.	Con	1,295	-
Bate M. Ms.	Con	1,242	-
Deakin F.	Lib	841	32.9
Sanders D. Ms.	Lib	688	-
Brenton P.	Lib	629	-
Orange J.	Lab	377	14.8
Hill Willis D.	Lab	357	-
Syers G.	Lab	314	-
<b>Turnout</b>		53.0	19.4

### No. 18 (Walton) (1518)

		vote	share
Sephton J.	Con	400	61.4
Eustance J.	Ind	251	38.6
<b>Turnout</b>		43.1	22.9

### No. 2 (Hulme) (6083)<sup>3</sup>

		vote	share
Phoenix E.	Lab	1,086	85.0
Wilson S.	Lab	1,084	-
Hetherington P.	Lab	1,013	-
Woodings I.	Con	191	15.0
<b>Turnout</b>		21.5	70.1

### No. 21 (Great Sankey) (7136)<sup>3</sup>

		vote	share
Stuart R.	Con	1,029	56.5
Johnson G.	Con	1,019	-
Merrington A.	Con	938	-
Pennington J.	Lab	792	43.5
Hankey E.	Lab	700	-
Fairbrother K.	Lab	685	-
<b>Turnout</b>		32.0	13.0

### No. 23 (Poulton-With-Fearnhead) (7155)<sup>3</sup>

		vote	share
Smith D.	Con	1,120	39.6
McIntyre J.	Con	1,036	-
Ratcliffe G.	Lab	1,028	36.3
Gartside J.	Lab	987	-
Forster D.	Lab	952	-
Stirrup A.	Con	951	-
Smith L. Ms.	Lib	681	24.1
Critchley E.	Lib	660	-
Chynoweth A. Ms.	Lib	610	-
<b>Turnout</b>		45.0	3.3

### No. 24 (Winwick) (2256)<sup>2</sup>

		vote	share
Barton F.	Ind	428	32.5
Appleton H.	Lab	399	30.3
Guy H.	Con	372	28.3
Mapp D.	Lab	353	-
Wilkinson E.	Con	214	-
Chynoweth C.	Lib	116	8.8
<b>Turnout</b>		44.0	2.2

### No. 6 (Fairfield) (5469)<sup>3</sup>

		vote	share
Crocker R.	Con	1,241	53.1
Rigby R.	Con	1,125	-
Boyle A.	Con	1,115	-
Phoenix J.	Lab	1,096	46.9
Quinby D.	Lab	973	-
Wilson M. Ms.	Lab	970	-
<b>Turnout</b>		42.3	6.2

### No. 7 (Orford) (4746)<sup>3</sup>

		vote	share
Orange G.	Lab	842	57.9
Whelan T.	Lab	815	-
Pickering D.	Lab	791	-
Snelson C.	Con	481	33.1
Shakeshaft B. Ms.	Con	474	-
Borsa B. Ms.	Con	416	-
Hastings G.	Comm	131	9.0
<b>Turnout</b>		28.7	24.8

### Penketh & Cuerdley (6851)<sup>3</sup>

		vote	share
Bird R.	Con	1,163	53.0
Walsh J.	Con	1,095	-
Higham A.	Con	1,095	-
Urey F.	Lab	1,032	47.0
Faulkner H.	Lab	989	-
Barber G.	Lab	888	-
<b>Turnout</b>		38.0	6.0

### Rixton & Woolston (5521)<sup>3</sup>

		vote	share
Eaves B.	Con	1,142	56.3
Dennett E.	Con	965	-
Punshon J.	Con	956	-
Morris Clarke J.	Lab	885	43.7
Ishaque S. Ms.	Lab	832	-
Makin W.	Lab	685	-
<b>Turnout</b>		36.7	12.7

### Statham (1579)

		vote	share
Chappell J.	Lab	626	71.4
Wood R. Ms.	Lib	251	28.6
<b>Turnout</b>		55.7	42.8

### Westy (5993)<sup>3</sup>

		vote	share
Taylor R.	Lab	1,225	74.0
Myles G.	Lab	1,217	-
Cooper G.	Lab	1,184	-
Pitcher H.	Con	430	26.0
Lightfoot R.	Con	428	-
Booth M.	Con	427	-
<b>Turnout</b>		29.3	48.0

### Whitecross (3984)<sup>3</sup>

		vote	share
Bowden E.	Lab	549	53.2
Day M.	Lab	493	-
Bolton E.	Con	483	46.8
Boyle M. Ms.	Lab	483	-
Arden B.	Con	423	-
Medland B. Ms.	Con	419	-
<b>Turnout</b>		25.9	6.4

## Warrington 1976

Bewsey (4831) <sup>3</sup>			
		vote	share
Hayes J.*	Lab	1,283	82.7
Pye T.*	Lab	1,268	-
Avery W.*	Lab	1,247	-
Walsh P.	Con	268	17.3
Edwards W.	Con	261	-
Hanson C.	Con	232	-
Turnout		34.4	65.4
Booths Hill (2092)			
		vote	share
Jenkins J.	Con	754	60.2
Rooke K. Ms.*	Lib	499	39.8
Turnout		60.9	20.4
Burtonwood (3225) <sup>2</sup>			
		vote	share
Phillips F.*	Ind	932	60.7
Fairclough A. Ms.*	Ind	686	-
Allen C. Ms.	Lab	604	39.3
Turnout		47.1	21.4
Croft (1658)			
		vote	share
Birchall P.*	Con	559	57.9
Brookfield D.	Res	406	42.1
Turnout		59.2	15.9
Culcheth & Glazebury (6014) <sup>3</sup>			
		vote	share
Chapman D.*	Con	1,942	50.6
Winterburn J.*	Con	1,827	-
Nunn D.*	Con	1,819	-
Daitith L.	Lab	1,096	28.5
Fearn J.	Lab	888	-
Brewin L.	Lab	840	-
Rawes R.	Ind	803	20.9
Turnout		55.7	22.0
Grappenhall & Thelwall (6084) <sup>3</sup>			
		vote	share
Brierley J.*	Con	1,825	45.7
Ardern B.	Con	1,752	-
Connor M. Ms.	Con	1,629	-
Harrison N.	Res	831	20.8
Nelson F.*	Lib	779	19.5
Morrey P.	Lab	562	14.1
Pearson J.	Lab	419	-
Earlam M. Ms.	Lab	405	-
Turnout		50.0	24.9
Heatley (2258)			
		vote	share
Bell C.*	Con	868	66.8
Elliot G.	Lib	431	33.2
Turnout		57.7	33.6
Howley (2574) <sup>2</sup>			
		vote	share
Edwards H.*	Lab	413	61.6
Edwards V. Ms.*	Lab	392	-
Robinson K.	Con	257	38.4
Fisher M. Ms.	Con	249	-
Turnout		27.9	23.3
Latchford (5593) <sup>3</sup>			
		vote	share
Lightfoot R.	Con	1,092	55.8
Graham J.	Con	1,084	-
Shakeshaft B. Ms.	Con	1,056	-
Bennett H.	Lab	866	44.2
Hankey H.	Lab	856	-
Syers G.	Lab	818	-
Turnout		38.2	11.5

Lymm (1728)			
		vote	share
Ball A.	Con	657	63.0
Edwards R.	Lib	386	37.0
Turnout		61.1	26.0
No. 1 (Longford) (6259) <sup>3</sup>			
		vote	share
Whitehead H.*	Lab	993	70.8
Arnold B.*	Lab	907	-
Verdon J.*	Lab	854	-
Bibby J. Ms.	Con	410	29.2
Stephenson W.	Con	374	-
Hodgson W.	Con	356	-
Turnout		24.2	41.6
No. 15 (Appleton) (5259) <sup>3</sup>			
		vote	share
Mounfield P.	Con	1,762	83.2
Hewitt E.	Con	1,642	-
Whittaker H.*	Con	1,621	-
Millman C.	Lab	357	16.8
Bailey W.	Lab	325	-
Turnout		43.9	66.3
No. 17 (Stockton Heath) (4974) <sup>3</sup>			
		vote	share
Houghton F.*	Con	1,731	76.7
Richardson K. Ms.*	Con	1,679	-
Thomas J.	Con	1,630	-
Jones F. Ms.	Lab	525	23.3
Flinn C.	Lab	427	-
Turnout		45.1	53.5
No. 18 (Walton) (1472)			
		vote	share
Sephton J.*	Con	524	72.3
Eustance J.	Ind	201	27.7
Turnout		49.3	44.6
No. 2 (Hulme) (5995) <sup>3</sup>			
		vote	share
Hetherington P.*	Lab	908	74.1
Wilson M. Ms.	Lab	858	-
Wilson S.*	Lab	835	-
Hayes J.	Con	317	25.9
Walker J.	Con	290	-
Yarwood J.	Con	263	-
Turnout		21.7	48.2
No. 21 (Great Sankey) (8626) <sup>3</sup>			
		vote	share
Johnson G.*	Con	1,700	-
Merrington A.*	Con	1,700	63.2
Stuart R.*	Con	1,632	-
Pennington J.	Lab	992	36.8
Hankey E.	Lab	936	-
Fairbrother K.	Lab	880	-
Turnout		34.1	26.3
No. 23 (Poulton-With-Fearnhead) (9046) <sup>3</sup>			
		vote	share
Smith D.*	Con	1,941	60.3
McIntyre J.*	Con	1,754	-
Stirrup A.	Con	1,703	-
Ratcliffe G.*	Lab	1,280	39.7
Gartside J.	Lab	1,267	-
Collins T.	Lab	1,107	-
Turnout		37.2	20.5
No. 24 (Winwick) (2226) <sup>2</sup>			
		vote	share
Guy H.*	Con	503	56.1
Appleton H.*	Lab	393	43.9
Moore J. Ms.	Con	377	-
Beattie P.	Lab	286	-
Turnout		39.8	12.3

No. 6 (Fairfield) (5327) <sup>3</sup>			
		vote	share
Rigby R.*	Con	1,251	57.1
Crocker R.*	Con	1,228	-
Boyle A.*	Con	1,170	-
Lyne D.	Lab	939	42.9
Ryan G. Ms.	Lab	933	-
Hughes M.	Lab	933	-
Turnout		44.2	14.2
No. 7 (Orford) (4660) <sup>3</sup>			
		vote	share
Orange G.*	Lab	688	49.4
Smith J.	Con	625	44.9
Pickering D.*	Lab	615	-
Booth H.	Con	607	-
Whelan T.*	Lab	602	-
Phizacklea A.	Con	574	-
Hastings G.	Comm	79	5.7
Turnout		30.6	4.5
Penketh & Cuedley (6815) <sup>3</sup>			
		vote	share
Higham A.*	Con	1,548	64.9
Bird R.*	Con	1,535	-
Walsh J.*	Con	1,491	-
Irons M. Ms.	Lab	838	35.1
Conyngham G.	Lab	749	-
Murphy G.	Lab	702	-
Turnout		37.3	29.8
Rixton & Woolston (5774) <sup>3</sup>			
		vote	share
Punshon J.*	Con	1,420	57.5
Eaves B.*	Con	1,327	-
Jackson H.	Con	1,203	-
Clarke J.	Lab	1,048	42.5
Brewer A.	Lab	910	-
Kirkin R.	Lab	868	-
Turnout		44.9	15.1
Statham (1539)			
		vote	share
Chappell J.*	Lab	613	66.8
Hoyes D. Ms.	Con	305	33.2
Turnout		60.2	33.6
Westy (6045) <sup>3</sup>			
		vote	share
Myles G.*	Lab	1,101	66.0
Taylor R.*	Lab	1,076	-
Cooper G.*	Lab	1,031	-
Leavitt B.	Con	566	34.0
Umpleby S.	Con	561	-
Rhodes A.	Con	560	-
Turnout		32.4	32.1
Whitecross (3809) <sup>3</sup>			
		vote	share
Kilduff J.	Con	572	50.5
Jolley N.	Con	570	-
Bowden E.*	Lab	561	49.5
Royle M. Ms.	Lab	527	-
Bowden T.	Lab	525	-
Shaw G.	Con	520	-
Turnout		33.6	1.0

## Warrington 1979

Appleton Stretton & Hatton (5839) <sup>3</sup>			
		vote	share
Benn K. Ms.	Con	0	-
Mounfield P.	Con	0	-
Sephton R.	Con	0	0.0
Turnout		0.0	0.0
Bewsey (4378) <sup>3</sup>			
		vote	share
Avery W.	Lab	2,244	79.3
Pye T.	Lab	2,173	-
Hayes J.	Lab	2,136	-
Pugh G.	Con	584	20.7
Robinson K.	Con	529	-
Turnout		64.6	58.7
Booths Hill (2140)			
		vote	share
Jenkins J.	Con	890	51.7
Beardsmore D.	Lib	550	32.0
Thomas P.	Lab	281	16.3
Turnout		80.4	19.8
Burtonwood (3259) <sup>2</sup>			
		vote	share
Phillips F.	Ind	1,640	42.4
Scott A.	Lab	1,448	37.4
Ryan T.	Con	783	20.2
Turnout		118.8	5.0
Croft (2850) <sup>2</sup>			
		vote	share
Birchall T.	Con	1,545	70.0
Mellor K.	Con	1,392	-
Sanson R.	Lab	661	30.0
Saville G.	Lab	574	-
Turnout		77.4	40.1
Culcheth & Glazebury (6092) <sup>3</sup>			
		vote	share
Chapman D.	Con	2,853	64.9
Winterburn J.	Con	2,753	-
Nunn D.	Con	2,694	-
Aldridge J.	Lab	1,541	35.1
Farthing J.	Lab	1,474	-
Brewin L.	Lab	1,456	-
Turnout		72.1	29.9
Fairfield (6351) <sup>3</sup>			
		vote	share
Clayton A.	Lab	2,254	51.0
Urmston W.	Lab	2,165	-
Crocker R.	Con	2,163	49.0
Ryan G.	Lab	2,120	-
Boyle A.	Con	2,104	-
Rigby W.	Con	2,017	-
Turnout		69.5	2.1
Grappenhall & Thelwall (6302) <sup>3</sup>			
		vote	share
Brierley P.	Con	3,024	47.4
Connor M. Ms.	Con	2,863	-
Daniels C.	Con	2,250	-
Ardern B.	Ind Con	2,123	33.3
Holder D.	Lab	1,228	19.3
McAllister D.	Lab	1,082	-
Rooke A.	Lab	1,018	-
Turnout		101.2	14.1
Great Sankey North (4669) <sup>2</sup>			
		vote	share
Leatherbarrow A.	Con	2,167	60.4
Ashcroft R.	Con	1,999	-
Pennington J.	Lab	1,418	39.6
Ball B.	Lab	1,278	-
Turnout		76.8	20.9

Great Sankey South (5804) <sup>2</sup>			
		vote	share
Hall M.	Lab	2,053	52.4
McLean D.	Con	1,862	47.6
Owen J.	Lab	1,832	-
Hodgson J.	Con	1,810	-
Turnout		67.5	4.9
Heatley (2306)			
		vote	share
Bell C.	Con	1,429	78.6
Brookes C.	Lab	390	21.4
Turnout		78.9	57.1
Howley (3209) <sup>2</sup>			
		vote	share
Edwards H.	Lab	1,313	64.5
Edwards V. Ms.	Lab	1,179	-
Littlefair G.	Con	724	35.5
Fellows N.	Con	723	-
Turnout		63.5	28.9
Hulme (6233) <sup>3</sup>			
		vote	share
Hetherington P.	Lab	2,846	70.1
Wilson S.	Lab	2,766	-
Wilson N.	Lab	2,755	-
Hayes J.	Con	1,214	29.9
White G.	Con	1,146	-
Turnout		65.1	40.2
Latchford (5664) <sup>3</sup>			
		vote	share
Williams S.	Lab	2,013	51.5
Lightfoot R.	Con	1,895	48.5
Hayes J.	Con	1,839	-
Shakeshaft B. Ms.	Con	1,780	-
Beattie P.	Lab	1,658	-
Ishaque S.	Lab	1,534	-
Turnout		69.0	3.0
Longford (3830) <sup>2</sup>			
		vote	share
Verdon J.	Lab	1,871	75.7
Syers G.	Lab	1,844	-
Matthews I.	Con	602	24.3
White E.	Con	565	-
Turnout		64.6	51.3
Lymm (1813)			
		vote	share
Hall W.	Con	748	51.7
Ashley R.	Lib	469	32.4
O'Gorman F.	Lab	231	16.0
Turnout		79.9	19.3
Orford (5807) <sup>3</sup>			
		vote	share
Whitehead H.	Lab	2,509	70.1
Arnold B.	Lab	2,270	-
Orange G.	Lab	2,264	-
Bibby J.	Con	1,069	29.9
Peers R.	Con	1,055	-
Matthews H.	Con	990	-
Turnout		61.6	40.2
Penketh & Cuerdley (7102) <sup>3</sup>			
		vote	share
Bennett E.	Con	2,767	54.8
Higham A.	Con	2,674	-
Walsh J.	Con	2,331	-
Bennett H.	Lab	2,281	45.2
Irons M. Ms.	Lab	2,234	-
Towers F.	Lab	1,951	-
Turnout		71.1	9.6

Poulton With Fearnhead North (5076) <sup>3</sup>			
		vote	share
Gartside J.	Lab	1,798	53.6
Earlam M.	Lab	1,722	-
Whelan T.	Lab	1,570	-
Houghton C.	Con	1,556	46.4
Smith I.	Con	1,552	-
Smith T.	Con	1,481	-
Turnout		66.1	7.2
Poulton With Fearnhead South (4519) <sup>2</sup>			
		vote	share
Smith D.	Con	1,999	53.8
Froggatt C.	Lab	1,715	46.2
Stirrup A.	Con	1,698	-
Turnout		82.2	7.6
Rixton & Woolston (6168) <sup>3</sup>			
		vote	share
Punshon J.	Con	2,459	52.4
Eaves B.	Con	2,415	-
Clarke J.	Lab	2,238	47.6
Jackson H.	Con	2,221	-
Brewer A.	Lab	2,093	-
Kirkin R.	Lab	1,995	-
Turnout		76.2	4.7
Statham (1595)			
		vote	share
Appleyard I.	Con	478	37.0
Marks I.	Lib	420	32.5
Totton F.	Lab	394	30.5
Turnout		81.0	4.5
Stockton Heath & Walton (6368) <sup>3</sup>			
		vote	share
Richardson K.	Con	3,054	56.1
Thomas J.	Con	2,837	-
Mitchell J.	Con	2,764	-
Renshaw J.	Lib	1,228	22.5
Jones F.	Lab	1,165	21.4
Thompson J.	Lab	1,133	-
Holder M.	Lab	1,079	-
Turnout		85.5	33.5
Westy (5936) <sup>3</sup>			
		vote	share
Taylor R.	Lab	2,560	67.0
Myles G.	Lab	2,535	-
Cooper G.	Lab	2,466	-
Brown E.	Con	1,259	33.0
Brown H.	Con	1,134	-
Booth M.	Con	1,131	-
Turnout		64.3	34.1
Whitecross (3810) <sup>2</sup>			
		vote	share
Bowden E.	Lab	1,289	53.9
Hankey H.	Lab	1,286	-
Kilduff J.	Con	1,101	46.1
Marsh L.	Con	938	-
Turnout		62.7	7.9
Winwick (1754)			
		vote	share
Stokes G.	Lab	613	46.9
Hilton F.	Con	512	39.2
Appleton H.	Ind Con	181	13.9
Turnout		74.5	7.7

## Warrington 1983

### Appleton Stretton & Hatton (5774)<sup>3</sup>

		vote	share
<b>Mounfield P.*</b>	Con	1,921	62.9
<b>Sephton R.*</b>	Con	1,860	-
<b>Benn K. Ms.*</b>	Con	1,778	-
Holder M. Ms.	Lab	603	19.8
Leslie M.	Lib/SDP	529	17.3
Fagan J.	Lab	517	-
Ryan M.	Lab	512	-
	<b>Turnout</b>	52.9	43.2

### Bewsey (4283)<sup>3</sup>

		vote	share
<b>Pye T.*</b>	Lab	1,654	72.2
<b>Bowden T.</b>	Lab	1,478	-
<b>Woods L. Ms.</b>	Lab	1,399	-
McConnell J.	Lib/SDP	343	15.0
Robinson K.	Con	294	12.8
	<b>Turnout</b>	53.5	57.2

### Booths Hill (2132)

		vote	share
<b>Beardsmore D.</b>	Lib/SDP	665	48.4
Jenkins J.*	Con	563	41.0
McLean G.	Lab	146	10.6
	<b>Turnout</b>	64.4	7.4

### Burtonwood (3492)<sup>2</sup>

		vote	share
<b>Scott A.*</b>	Lab	976	42.1
<b>Bamber C.</b>	Lab	882	-
Phillips F.*	Ind	728	31.4
Ryan T.	Con	412	17.8
Shadwell R.	Lib/SDP	200	8.6
	<b>Turnout</b>	66.3	10.7

### Croft (7273)<sup>2</sup>

		vote	share
<b>Birchall T.*</b>	Con	1,476	43.4
<b>Hoyle T.</b>	Con	1,409	-
Sanson B.	Lab	1,076	31.6
Lloyd R.	Lab	1,074	-
Burt M.	Lib/SDP	851	25.0
McConnell A. Ms.	Lib/SDP	753	-
	<b>Turnout</b>	46.8	11.8

### Culcheth & Glazebury (5977)<sup>3</sup>

		vote	share
<b>Chapman D.*</b>	Con	1,524	46.8
<b>Nunn D.*</b>	Con	1,448	-
<b>Hart H.</b>	Con	1,328	-
Harrison J. Ms.	Lib/SDP	1,048	32.2
Edwards E. Ms.	Lib/SDP	880	-
Sinha V. Ms.	Lib/SDP	771	-
Brewin L.	Lab	687	21.1
Scott J. Ms.	Lab	640	-
Hudgell J. Ms.	Lab	627	-
	<b>Turnout</b>	54.5	14.6

### Fairfield (6308)<sup>3</sup>

		vote	share
<b>Hughes M.</b>	Lab	1,418	48.2
<b>Massey I.</b>	Lab	1,339	-
<b>Urmston W.*</b>	Lab	1,317	-
Rigby R.	Con	867	29.5
Booth M.	Con	804	-
Shakeshaft B. Ms.	Con	799	-
Dean A.	Lib/SDP	524	17.8
Culpan R.	Lib/SDP	492	-
Schofield M.	Lib/SDP	472	-
Cartwright B.	Ind	134	4.6
	<b>Turnout</b>	46.7	18.7

### Grappenhall & Thelwall (6617)<sup>3</sup>

		vote	share
<b>Brierley P.*</b>	Con	1,614	46.4
<b>Connor M. Ms.*</b>	Con	1,531	-
<b>Daniels C.*</b>	Con	1,439	-
Barlow R.	Lib/SDP	1,417	40.8
Archbold M.	Lib/SDP	1,364	-
Cook R. Ms.	Lib/SDP	1,218	-
Holder D.	Lab	444	12.8
Humphreys R.	Lab	377	-
Senior T.	Lab	357	-
	<b>Turnout</b>	52.5	5.7

### Great Sankey North (5019)<sup>2</sup>

		vote	share
<b>Pennington J.</b>	Lab	1,167	44.4
<b>Harpin J. Ms.</b>	Lab	1,052	-
Ashcroft R.*	Con	974	37.0
Pugh G.	Con	971	-
Chester E.	Lib/SDP	490	18.6
Jansen J.	Lib/SDP	398	-
	<b>Turnout</b>	52.4	7.3

### Great Sankey South (6169)<sup>2</sup>

		vote	share
<b>Cooper A.</b>	Lab	1,199	43.5
<b>Harris S. Ms.</b>	Lab	1,128	-
McLean D.*	Con	887	32.2
Fludder S.	Con	858	-
Whittaker A.	Lib/SDP	668	24.3
	<b>Turnout</b>	44.6	11.3

### Heatley (2343)

		vote	share
<b>Bell C.*</b>	Con	879	67.4
Ashley R.	Lib/SDP	426	32.6
	<b>Turnout</b>	55.7	34.7

### Howley (3560)<sup>2</sup>

		vote	share
<b>Edwards H.*</b>	Lab	966	57.5
<b>Edwards V. Ms.*</b>	Lab	887	-
O'Dea M. Ms.	Con	383	22.8
Birch S.	Lib/SDP	330	19.7
	<b>Turnout</b>	47.2	34.7

### Hulme (6031)<sup>3</sup>

		vote	share
<b>Whelan T.</b>	Lab	2,145	75.7
<b>Hetherington P.*</b>	Lab	2,126	-
<b>Toole J. Ms.</b>	Lab	2,076	-
Kirby G.	Lib/SDP	368	13.0
Cummerson C. Ms.	Lib/SDP	338	-
Naden H.	Con	321	11.3
Bushell G.	Con	303	-
	<b>Turnout</b>	47.0	62.7

### Latchford (5976)<sup>3</sup>

		vote	share
<b>Williams S.*</b>	Lab	1,283	45.5
<b>Taylor J.</b>	Lab	1,163	-
<b>Beattie P.</b>	Lab	1,007	-
Hayes J.*	Con	965	34.2
Stacey M.	Con	953	-
Lightfoot R.*	Con	924	-
Renshaw K.	Lib/SDP	573	20.3
	<b>Turnout</b>	47.2	11.3

### Longford (3840)<sup>2</sup>

		vote	share
<b>Syers G.*</b>	Lab	1,373	71.2
<b>Verdon E.*</b>	Lab	1,343	-
Oakley G. Ms.	Lib/SDP	317	16.4
Stevenson W.	Con	238	12.3
	<b>Turnout</b>	47.3	54.8

### Lymm (1966)

		vote	share
<b>Woodyatt S. Ms.*</b>	Con	689	56.8
Sheldon A.	Lib/SDP	340	28.1
Totton F.	Lab	183	15.1
	<b>Turnout</b>	61.6	28.8

### Orford (5949)<sup>3</sup>

		vote	share
<b>Orange G.*</b>	Lab	1,548	64.9
<b>Arnold B.*</b>	Lab	1,547	-
<b>Hannon M.</b>	Lab	1,535	-
Tout R.	Lib/SDP	433	18.1
McLean P. Ms.	Con	405	17.0
Walsh P.	Con	368	-
Wright B.	Con	366	-
	<b>Turnout</b>	40.1	46.7

### Penketh & Cuerdley (7377)<sup>3</sup>

		vote	share
<b>Bennett E.*</b>	Con	1,645	44.4
<b>Higham A.*</b>	Con	1,568	-
<b>Walsh J.*</b>	Con	1,343	-
Goodwin R.	Lab	1,242	33.5
Towers F.	Lab	1,232	-
Wall M. Ms.	Lab	1,228	-
Traynor J.	Lib/SDP	819	22.1
	<b>Turnout</b>	50.2	10.9

### Poulton With Fearnhead North (7284)<sup>3</sup>

		vote	share
<b>Gartside J.*</b>	Lab	1,535	48.5
<b>Shaw H.</b>	Lab	1,466	-
<b>Hall M.</b>	Lab	1,413	-
Houghton C.	Con	921	29.1
Tyrer E. Ms.	Con	861	-
Berry R.	Con	836	-
Sharpe J. Ms.	Lib/SDP	711	22.5
Ormston R.	Lib/SDP	617	-
Brenchley A.	Lib/SDP	566	-
	<b>Turnout</b>	43.5	19.4

### Poulton With Fearnhead South (4658)<sup>2</sup>

		vote	share
<b>Smith D.*</b>	Con	976	44.0
<b>Stirrup A.</b>	Con	928	-
Ruddle K.	Lab	718	32.4
Warburton E.	Lab	654	-
Jones L.	Lib/SDP	524	23.6
Johnston A.	Lib/SDP	481	-
	<b>Turnout</b>	47.6	11.6

### Rixton & Woolston (6781)<sup>3</sup>

		vote	share
<b>Clarke J.*</b>	Lab	1,455	39.0
<b>Eaves G. Ms.*</b>	Con	1,300	34.8
<b>Kirkin R.</b>	Lab	1,253	-
Brown H.	Con	961	-
Garner K.	Con	942	-
McGee E.	Lab	942	-
Fryer K. Ms.	Lib/SDP	582	15.6
Phillips R.	Lib/SDP	491	-
Robinson A.	Ind	396	10.6
Lintzel J. Ms.	Lib/SDP	395	-
Foster T.	Ind	206	-
	<b>Turnout</b>	55.1	4.2

### Statham (1631)

		vote	share
<b>Marks I.</b>	Lib/SDP	565	51.6
Woodyatt W.	Con	401	36.7
Doeser B.	Lab	128	11.7
	<b>Turnout</b>	67.1	15.0

### Stockton Heath & Walton (6451)<sup>3</sup>

		vote	share
<b>Langdale B. Ms.</b>	Con	1,561	46.6
<b>Simpson K.</b>	Con	1,484	-
<b>Bartholomew A.</b>	Con	1,453	-
Renshaw J.	Lib/SDP	1,386	41.3
Brown P. Ms.	Lib/SDP	1,246	-
Jordan C. Ms.	Lib/SDP	1,226	-
Graystone D.	Lab	406	12.1
Rafferty E. Ms.	Lab	401	-
Wilson S.	Lab	376	-
	<b>Turnout</b>	52.0	5.2

<b>Westy (6083)<sup>3</sup></b>			
		<b>vote</b>	<b>share</b>
<b>Myles G.*</b>	Lab	1,644	62.5
<b>Taylor R.*</b>	Lab	1,611	-
<b>Speakman B.</b>	Lab	1,404	-
Platts N.	Lib/SDP	494	18.8
Jennings A. Ms.	Con	494	18.8
<b>Turnout</b>		43.3	43.7

<b>Whitecross (3669)<sup>2</sup></b>			
		<b>vote</b>	<b>share</b>
<b>Hankey D.*</b>	Lab	817	58.1
<b>Bowden E.*</b>	Lab	748	-
Kilduff J.	Con	408	29.0
Warburton J. Ms.	Con	290	-
Whittaker B. Ms.	Lib/SDP	180	12.8
<b>Turnout</b>		38.3	29.1

<b>Winwick (1611)</b>			
		<b>vote</b>	<b>share</b>
<b>Stokes G.*</b>	Lab	440	50.5
Peake B. Ms.	Con	322	36.9
Harrison H. Ms.	Lib/SDP	110	12.6
<b>Turnout</b>		54.1	13.5

## Warrington 1987

<b>Appleton Stretton &amp; Hatton (5755)<sup>3</sup></b>			
		<b>vote</b>	<b>share</b>
<b>Septon R.*</b>	Con	1,689	48.7
<b>Marlow G.</b>	Con	1,623	-
<b>Stacey T.</b>	Con	1,526	-
Axcell B.	Lib/SDP	1,422	41.0
Daynes J. Ms.	Lib/SDP	1,331	-
Walker P.	Lib/SDP	1,277	-
Ainger P.	Lab	359	10.3
Holder M. Ms.	Lab	346	-
Williams H.	Lab	300	-
<b>Turnout</b>		57.5	7.7

<b>Bewsey (4077)<sup>3</sup></b>			
		<b>vote</b>	<b>share</b>
<b>Lawson H.</b>	Lab	1,302	84.5
<b>Williams S.</b>	Lab	1,006	-
<b>Urmston W.</b>	Lab	951	-
Groves G.	Con	239	15.5
<b>Turnout</b>		38.7	69.0

<b>Booths Hill (2110)</b>			
		<b>vote</b>	<b>share</b>
<b>Beardsmore D.*</b>	Lib/SDP	655	49.0
Woodyatt W.	Con	568	42.5
McLean G.	Lab	113	8.5
<b>Turnout</b>		65.2	6.5

<b>Burtonwood (5542)<sup>2</sup></b>			
		<b>vote</b>	<b>share</b>
<b>Bamber C.*</b>	Lab	1,349	54.4
<b>Miller A.</b>	Lab	1,286	-
Ashley R.	Ind	586	23.6
Smith M. Ms.	Con	544	21.9
<b>Turnout</b>		40.0	30.8

<b>Croft (9841)<sup>2</sup></b>			
		<b>vote</b>	<b>share</b>
<b>Hoyle L.*</b>	Con	1,912	43.0
<b>Duff A.</b>	Con	1,658	-
Mellor E.	Lab	1,481	33.3
Sugden R.	Lab	1,349	-
Burt M.	Lib/SDP	1,052	23.7
Edwards E. Ms.	Lib/SDP	962	-
<b>Turnout</b>		44.4	9.7

<b>Culcheth &amp; Glazebury (6017)<sup>3</sup></b>			
		<b>vote</b>	<b>share</b>
<b>Nunn D.*</b>	Con	1,782	53.5
<b>Hart H.*</b>	Con	1,730	-
<b>Tasker D.</b>	Con	1,652	-
Brewin L.	Lab	887	26.6
Drews P. Ms.	Lab	772	-
Naylor B.	Lab	757	-
McDermott P.	Lib/SDP	663	19.9
Schofield M.	Lib/SDP	581	-
<b>Turnout</b>		53.4	26.9

<b>Fairfield (6287)<sup>3</sup></b>			
		<b>vote</b>	<b>share</b>
<b>Hughes M.*</b>	Lab	1,494	55.2
<b>Fry J. Ms.</b>	Lab	1,478	-
<b>Harpin J. Ms.</b>	Lab	1,347	-
Carey P.	Con	817	30.2
Lightfoot R.	Con	731	-
Shakeshaft B. Ms.	Con	706	-
Ogilvy D.	Lib/SDP	396	14.6
<b>Turnout</b>		42.9	25.0

<b>Grappenhall &amp; Thelwall (6902)<sup>3</sup></b>			
		<b>vote</b>	<b>share</b>
<b>Lafferty E.</b>	Lib/SDP	1,909	51.0
<b>Mawer E. Ms.</b>	Lib/SDP	1,812	-
<b>Brown P. Ms.</b>	Lib/SDP	1,761	-
Daniels C.*	Con	1,508	40.3
Richardson E.	Con	1,418	-
Bowden R.	Con	1,401	-
Bowden T.	Lab	326	8.7
Fitzsimmons C.	Lab	261	-
Williams S.	Lab	248	-
<b>Turnout</b>		54.7	10.7

<b>Great Sankey North (6635)<sup>2</sup></b>			
		<b>vote</b>	<b>share</b>
<b>Pennington J.*</b>	Lab	1,347	48.2
<b>Carolan J.</b>	Lab	1,169	-
Pugh G.	Con	852	30.5
Fludder S.	Con	771	-
Chester E.	Lib/SDP	596	21.3
Reynolds W.	Lib/SDP	506	-
<b>Turnout</b>		42.5	17.7

<b>Great Sankey South (6485)<sup>2</sup></b>			
		<b>vote</b>	<b>share</b>
<b>Cooper A.*</b>	Lab	1,212	48.1
<b>Harris S. Ms.*</b>	Lab	1,138	-
Eckersley B.	Con	742	29.5
Naden H.	Con	686	-
Whittaker A.	Lib/SDP	565	22.4
Traynor J. Ms.	Lib/SDP	561	-
<b>Turnout</b>		49.9	18.7

<b>Heatley (2408)</b>			
		<b>vote</b>	<b>share</b>
<b>Thomason D.</b>	Con	802	58.9
Hampton N.	Lib/SDP	347	25.5
Scott D.	Lab	213	15.6
<b>Turnout</b>		58.4	33.4

<b>Howley (3500)<sup>2</sup></b>			
		<b>vote</b>	<b>share</b>
<b>Edwards V. Ms.*</b>	Lab	877	74.9
<b>Horton M.</b>	Lab	714	-
Bate W.	Con	294	25.1
<b>Turnout</b>		36.0	49.8

<b>Hulme (3848)<sup>3</sup></b>			
		<b>vote</b>	<b>share</b>
<b>Hetherington P.*</b>	Lab	1,611	71.4
<b>Buckley G.</b>	Lab	1,603	-
<b>Whelan T.*</b>	Lab	1,575	-
Hayward C. Ms.	Con	326	14.4
Cummerson C. Ms.	Lib/SDP	320	14.2
<b>Turnout</b>		39.5	56.9

<b>Latchford (5888)<sup>3</sup></b>			
		<b>vote</b>	<b>share</b>
<b>Taylor J.*</b>	Lab	1,166	42.5
<b>Humphreys R.</b>	Lab	1,153	-
<b>Rylatt D.</b>	Lab	1,106	-
Stacey M.	Con	939	34.3
Rimmer M.	Con	885	-
Hodgkinson A.	Con	864	-
Prosser F.	Lib/SDP	636	23.2
Walker J. Ms.	Lib/SDP	539	-
Cook R. Ms.	Lib/SDP	527	-
<b>Turnout</b>		48.8	8.3

<b>Longford (3758)<sup>2</sup></b>			
		<b>vote</b>	<b>share</b>
<b>Syers G.*</b>	Lab	1,109	57.0
<b>Shaw H.</b>	Lab	1,063	-
Verdon J.*	Ind	602	30.9
Groves P. Ms.	Con	235	12.1
<b>Turnout</b>		45.0	26.1

<b>Lymm (1989)</b>			
		<b>vote</b>	<b>share</b>
<b>Woodyatt S. Ms.*</b>	Con	850	68.7
Ellam B.	Lib/SDP	255	20.6
Gill J. Ms.	Lab	133	10.7
<b>Turnout</b>		63.4	48.1

<b>Orford (3804)<sup>3</sup></b>			
		<b>vote</b>	<b>share</b>
<b>Hannon M.*</b>	Lab	1,344	67.2
<b>Beattie P.</b>	Lab	1,312	-
<b>Robinson J.</b>	Lab	1,271	-
Clothier S. Ms.	Lib/SDP	341	17.1
Smith J.	Con	315	15.8
<b>Turnout</b>		33.3	50.2

<b>Penketh &amp; Cuerdley (7590)<sup>3</sup></b>			
		<b>vote</b>	<b>share</b>
<b>Simpson B.</b>	Lab	1,153	30.8
<b>Aldred T.</b>	Con	1,112	29.7
<b>Roblin M. Ms.</b>	Lab	1,084	-
Leah J. Ms.	Con	1,082	-
Carrier D.	Lab	1,072	-
Boardman M.	Con	1,011	-
Traynor J.	Lib/SDP	846	22.6
Roberts M. Ms.	Lib/SDP	835	-
Jansen J.	Lib/SDP	768	-
Walsh J.*	Ind Con	637	17.0
<b>Turnout</b>		44.9	1.1

<b>Poulton With Fearnhead North (8294)<sup>3</sup></b>			
		<b>vote</b>	<b>share</b>
<b>Hall M.*</b>	Lab	1,542	49.8
<b>Clemow A.</b>	Lab	1,534	-
<b>Gartside J.*</b>	Lab	1,419	-
Houghton C.	Con	906	29.3
Kindon R.	Con	840	-
Hayward P.	Con	820	-
Kirby G.	Lib/SDP	648	20.9
<b>Turnout</b>		37.5	20.5

<b>Poulton With Fearnhead South (4777)<sup>2</sup></b>			
		<b>vote</b>	<b>share</b>
<b>Stirrup A.*</b>	Con	929	42.4
<b>Smith D.*</b>	Con	912	-
Clemow J. Ms.	Lab	768	35.0
Edwards H.	Lab	751	-
Johnston A.	Lib/SDP	495	22.6
<b>Turnout</b>		45.9	7.3

<b>Rixton &amp; Woolston (7136)<sup>3</sup></b>			
		<b>vote</b>	<b>share</b>
<b>Eaves G. Ms.*</b>	Con	1,550	42.8
<b>Froggatt A. Ms.</b>	Lab	1,469	40.5
<b>Hazeldine W.</b>	Con	1,428	-
Mallett R.	Con	1,309	-
Greenslade J.	Lab	1,260	-
Woods L. Ms.	Lab	1,109	-
McConnell A. Ms.	Lib/SDP	606	16.7
<b>Turnout</b>		47.4	2.2

Statham (1618)			
		vote	share
Marks I.*	Lib/SDP	513	50.0
Hawley G.	Con	379	36.9
James A.	Lab	135	13.1
Turnout		64.6	13.0

Stockton Heath & Walton (6527) <sup>3</sup>			
		vote	share
Renshaw J.	Lib/SDP	1,773	50.7
Jordan C. Ms.	Lib/SDP	1,734	-
Irmgard R. Ms.	Lib/SDP	1,625	-
Langdale A. Ms.*	Con	1,395	39.9
Harrison R.	Con	1,356	-
Hayes J.	Con	1,324	-
Park J.	Lab	328	9.4
McIntyre S.	Lab	280	-
Smith P.	Lab	262	-
Turnout		55.1	10.8

Westy (5988) <sup>3</sup>			
		vote	share
Myles G.*	Lab	1,593	62.2
Taylor R.*	Lab	1,586	-
Smith D.	Lab	1,450	-
Finnegan E.	Lib/SDP	521	20.3
O'Brien P.	Lib/SDP	502	-
Platts N.	Lib/SDP	471	-
Malam G. Ms.	Con	448	17.5
Turnout		53.2	41.8

Whitecross (3582) <sup>2</sup>			
		vote	share
Bowden E.*	Lab	949	78.3
Orange G.	Lab	800	-
Cooper C.	Con	263	21.7
Turnout		35.0	56.6

Winwick (2055)			
		vote	share
Stokes G.*	Lab	471	57.8
Selway M. Ms.	Con	344	42.2
Turnout		40.2	15.6

## Warrington 1991

Appleton Stretton & Hatton (6913) <sup>3</sup>			
		vote	share
Tilling T.	LD	2,123	52.2
Axcell B.	LD	1,843	-
Walker J. Ms.	LD	1,778	-
Stansfield P.	Con	1,633	40.2
Stacey T.*	Con	1,325	-
Smith D.	Con	1,316	-
Johnson B. Ms.	Lab	308	7.6
Line F. Ms.	Lab	258	-
Malkhandi B.	Lab	232	-
Turnout		52.2	12.1

Bewsey (3891) <sup>2</sup>			
		vote	share
Lawson H.*	Lab	1,168	79.5
Roblin M. Ms.*	Lab	1,049	-
Beddard M. Ms.	Con	302	20.5
Thomson D.	Con	296	-
Turnout		40.3	58.9

Burtonwood (7427) <sup>3</sup>			
		vote	share
O'Neill T.	Lab	1,591	79.9
Joyce J.	Lab	1,583	-
Carolan J.*	Lab	1,462	-
Ashley R.	Ind Lab	400	20.1
McLean P.	Ind Lab	331	-
Turnout		25.7	59.8

Culcheth Glazebury & Croft (7405) <sup>3</sup>			
		vote	share
Hoyle T.*	Con	2,005	60.3
Bland S. Ms.	Con	1,997	-
Nunn D.*	Con	1,927	-
Brewin I. Ms.	Lab	1,322	39.7
Stokes D. Ms.	Lab	1,215	-
Urmston W.*	Lab	1,050	-
Turnout		47.3	20.5

Fairfield (5045) <sup>2</sup>			
		vote	share
Hughes M.*	Lab	1,447	76.2
Harpin J. Ms.*	Lab	1,197	-
Dolan M. Ms.	Con	453	23.8
Turnout		39.3	52.3

Grappenhall & Thelwall (6940) <sup>3</sup>			
		vote	share
Lafferty E.*	LD	1,992	52.9
Mawer E. Ms.*	LD	1,934	-
Dooley J.	LD	1,728	-
Bowden R.	Con	1,347	35.8
Newton D.	Con	1,274	-
Umpleby S.	Con	1,237	-
Park J. Ms.	Lab	424	11.3
Morey P.	Lab	410	-
Briggs K.	Lab	378	-
Turnout		51.5	17.1

Great Sankey North (7954) <sup>3</sup>			
		vote	share
Pennington J.*	Lab	1,684	55.3
Williams F. Ms.	Lab	1,657	-
Main T.	Lab	1,463	-
Johnson G.	Con	1,360	44.7
Pugh G.	Con	1,227	-
Pendlington K.	Con	1,200	-
Turnout		36.0	10.6

Great Sankey South (6682) <sup>3</sup>			
		vote	share
Cooper A.*	Lab	1,612	68.1
Williams S.*	Lab	1,457	-
Bowden E.*	Lab	1,396	-
Yarwood J.	Con	755	31.9
Nelhams S. Ms.	Con	732	-
Sharkey F.	Con	702	-
Turnout		33.2	36.2

Howley & Whitecross (7200) <sup>3</sup>			
		vote	share
Horton M.	Lab	1,640	79.2
Orange G.*	Lab	1,586	-
Wiegand A. Ms.	Lab	1,498	-
Hobson C.	Con	432	20.8
Turnout		31.9	58.3

Hulme (5060) <sup>2</sup>			
		vote	share
Williams S.*	Lab	0	-
Whelan T.*	Lab	0	0.0
Turnout		0.0	0.0

Latchford (6814) <sup>3</sup>			
		vote	share
Humphreys R.*	Lab	1,718	57.0
Taylor J.*	Lab	1,686	-
Bold R.	Lab	1,674	-
Stacey M.	Con	820	27.2
Payne B. Ms.	Con	766	-
Woolley W.	Con	735	-
Jordan A.	LD	476	15.8
Turnout		42.7	29.8

Locking Stumps Gorse Covert Andrisley (5449) <sup>2</sup>			
		vote	share
Hayward P.	Con	1,172	48.0
Rowan P.	Con	1,147	-
Mathews M.	Lab	818	33.5
Smith D.*	Lab	719	-
Edwards E. Ms.	LD	452	18.5
Turnout		42.9	14.5

Lymm (8152) <sup>3</sup>			
		vote	share
Woodyatt S. Ms.*	Con	2,621	53.3
Thomason D.*	Con	2,136	-
Thornton J.	Con	1,897	-
Marks I.	LD	1,708	34.8
Cochrane R. Ms.	LD	1,577	-
Nicklin A.	LD	1,346	-
James A.	Lab	584	11.9
Smith U. Ms.	Lab	504	-
Snee K.	Lab	495	-
Turnout		52.6	18.6

Oakwood (3909) <sup>2</sup>			
		vote	share
Nelson P. Ms.	Lab	969	68.6
Brogan J.	Lab	954	-
Leslie J.	Con	443	31.4
Steele M.	Con	430	-
Turnout		38.8	37.3

Orford (6737) <sup>3</sup>			
		vote	share
Hannon M.*	Lab	1,430	59.3
Buckley G. Ms.*	Lab	1,130	-
Robinson J.*	Ind Lab	983	40.7
Bromley E.	Lab	969	-
Beattie P.*	Ind Lab	781	-
Turnout		33.3	18.5

Penketh & Cuedley (7470) <sup>3</sup>			
		vote	share
Murray D.	Lab	1,730	55.1
Langford P.	Lab	1,718	-
Warburton G.	Lab	1,604	-
Leah J. Ms.	Con	1,408	44.9
Aldred T.*	Con	1,337	-
Convey D. Ms.	Con	1,217	-
Turnout		40.2	10.3

Poplars (4159) <sup>2</sup>			
		vote	share
Syers G.*	Lab	1,097	73.4
Shaw H.*	Lab	869	-
Vernon J.	Ind Lab	398	26.6
Turnout		33.0	46.8

Poulton North (6909) <sup>3</sup>			
		vote	share
Clemow A.*	Lab	1,467	60.6
Hall M.*	Lab	1,448	-
Gartside J.*	Lab	1,311	-
Marley J.	Con	572	23.6
Berry R.	Con	503	-
O'Dea J. Ms.	Con	462	-
Dean-Young C.	LD	382	15.8
Turnout		34.1	37.0

Poulton South (6584) <sup>3</sup>			
		vote	share
Edwards V. Ms.*	Lab	1,541	56.2
Greenslade M. Ms.	Lab	1,513	-
Haddow A. Ms.	Lab	1,478	-
Forshaw A. Ms.	Con	1,202	43.8
Mallett R.	Con	1,166	-
Roston B.	Con	1,065	-
Turnout		44.5	12.4

Rixton & Woolston (7235) <sup>3</sup>			
		vote	share
Froggatt A. Ms.*	Lab	1,837	57.4
Swift T.	Lab	1,640	-
Ainger E. Ms.	Lab	1,558	-
Turner A.	Con	1,363	42.6
Johnson P.	Con	1,324	-
Turnout		44.5	14.8



Stockton Heath & Walton (6313) <sup>3</sup>			
		vote	share
Jordan C. Ms.*	LD	1,448	46.1
Daynes J. Ms.	LD	1,377	-
Prosser F.	LD	1,286	-
Boggan S. Ms.	Con	1,200	38.2
Heyes J.	Con	1,159	-
Skelhorn A. Ms.	Con	1,117	-
Ashall P.	Lab	494	15.7
Park J.	Lab	463	-
Read S. Ms.	Lab	401	-
<b>Turnout</b>		47.2	7.9

Westy (4879) <sup>2</sup>			
		vote	share
Taylor R.*	Lab	1,440	71.0
Myles G.*	Lab	1,431	-
Finnegan E.	LD	298	14.7
Kindon R.	Con	290	14.3
<b>Turnout</b>		38.8	56.3

Winwick (2334)			
		vote	share
Stokes G.*	Lab	508	60.3
Bland K.	Con	335	39.7
<b>Turnout</b>		36.1	20.5

## Warrington 1995

Appleton Stretton & Hatton (7797) <sup>3</sup>			
		vote	share
Axcell B.*	LD	2,214	61.2
Walker J. Ms.*	LD	2,098	-
White C.	LD	1,874	-
Stansfield P.	Con	961	26.6
Caldwell J.	Con	844	-
Wood A.	Con	840	-
Johnson B. Ms.	Lab	441	12.2
Heesom E.	Lab	433	-
Whelan T.	Lab	375	-
<b>Turnout</b>		45.9	34.7

Bewsey (3779) <sup>2</sup>			
		vote	share
Lawson H.*	Lab	929	70.0
Roblin M. Ms.*	Lab	920	-
Darbyshire M.	LD	323	24.3
Norcott W.	LD	245	-
Dodd N.	Con	76	5.7
<b>Turnout</b>		37.5	45.6

Burtonwood (8144) <sup>3</sup>			
		vote	share
Joyce J.*	Lab	2,035	69.2
O'Neill T.*	Lab	2,019	-
Miller A.	Lab	1,974	-
Higgins S.	Con	469	16.0
Earl D.	LD	435	14.8
Leake S.	Con	433	-
Mart P.	Con	432	-
Philpott T.	LD	407	-
Walker P.	LD	311	-
<b>Turnout</b>		37.1	53.3

Culcheth Glazebury & Croft (8110) <sup>3</sup>			
		vote	share
Matthews M.	Lab	1,633	48.2
Haddow A. Ms.	Lab	1,527	-
Natale W. Ms.	Lab	1,455	-
Hoyle T.*	Con	1,328	39.2
Johnson P.	Con	1,103	-
Cummerson C.	LD	425	12.6
Bland S. Ms.*	Con	409	-
Coveney R.	LD	395	-
<b>Turnout</b>		38.4	9.0

Fairfield (4882) <sup>2</sup>			
		vote	share
Hughes M.*	Lab	1,400	83.4
Harpin J. Ms.*	Lab	1,195	-
Ault S.	LD	142	8.5
Doran J.	Con	137	8.2
Nelson F.	LD	112	-
<b>Turnout</b>		34.4	74.9

Grappenhall & Thelwall (7131) <sup>3</sup>			
		vote	share
Lafferty E.*	LD	1,935	57.5
Mawer E. Ms.*	LD	1,894	-
Dooley J.*	LD	1,692	-
Fletcher R.	Lab	771	22.9
Wollacott N.	Lab	748	-
Hayes J.	Lab	746	-
Boggan S. Ms.	Con	658	19.6
Bowden R.	Con	652	-
<b>Turnout</b>		47.8	34.6

Great Sankey North (3954) <sup>3</sup>			
		vote	share
Pennington J.*	Lab	1,815	65.8
Williams F. Ms.*	Lab	1,671	-
Main T.*	Lab	1,618	-
Walker D.	Con	571	20.7
Pugh G.	Con	525	-
Mutch S.	Con	476	-
Dyer H.	LD	373	13.5
Lafferty D. Ms.	LD	358	-
<b>Turnout</b>		30.0	45.1

Great Sankey South (6957) <sup>3</sup>			
		vote	share
Black P.	Lab	1,348	73.1
O'Kane E.	Lab	1,228	-
Drillsma C.	Lab	1,201	-
Sharkey F.	Con	262	14.2
Traynor J. Ms.	LD	234	12.7
Burns M.	LD	234	-
Sharkey K.	Con	227	-
Hewitt S.	LD	224	-
<b>Turnout</b>		28.3	58.9

Howley & Whitecross (7304) <sup>3</sup>			
		vote	share
Richards J.	Lab	1,502	73.0
Clarke L. Ms.	Lab	1,485	-
Harper A.	Lab	1,399	-
Beattie P.	Ind Lab	340	16.5
Timmis R.	LD	215	10.5
Prosser C. Ms.	LD	199	-
Taylor C.	LD	190	-
<b>Turnout</b>		27.7	56.5

Hulme (4873) <sup>2</sup>			
		vote	share
Kenny P.	Lab	1,507	94.1
Bromley E.	Lab	1,465	-
Bate A.	LD	94	5.9
Leslie M.	LD	80	-
<b>Turnout</b>		36.7	88.3

Latchford (6594) <sup>3</sup>			
		vote	share
Humphreys R.*	Lab	1,530	77.6
Taylor J.*	Lab	1,499	-
Smith D.	Lab	1,474	-
Jordan A.	LD	442	22.4
Sanders D.	LD	410	-
Heyes J.	LD	399	-
<b>Turnout</b>		34.1	55.2

Locking Stumps Gorse Covert Andrisley (5149) <sup>2</sup>			
		vote	share
Hamel P.	Lab	1,033	54.2
Noble D.	Lab	1,012	-
Hayward P.*	Con	649	34.0
Rowan P.*	Con	646	-
Hancock R.	LD	186	9.8
Dalling I.	NLP	39	2.0
<b>Turnout</b>		36.0	20.1

Lymm (8204) <sup>3</sup>			
		vote	share
Woodyatt S. Ms.*	Con	1,769	44.6
Cochrane R. Ms.	LD	1,505	37.9
Marks I.	LD	1,493	-
Thomason D.*	Con	1,368	-
Thornton J.*	Con	1,250	-
Fish A.	LD	1,243	-
James A.	Lab	694	17.5
Williams S.	Lab	654	-
Morey M.	Lab	567	-
<b>Turnout</b>		46.2	6.7

Oakwood (3821) <sup>2</sup>			
		vote	share
Nelson P. Ms.*	Lab	983	79.0
Fitzsimmons C.	Lab	978	-
Leslie J.	Con	147	11.8
Freeman A.	Con	135	-
Pester A.	LD	114	9.2
<b>Turnout</b>		33.0	67.2

Orford (6627) <sup>3</sup>			
		vote	share
Hannon M.*	Lab	1,487	72.6
Kenyon R.	Lab	1,346	-
Davidson J. Ms.	Lab	1,306	-
Robinson J.*	Ind Lab	270	13.2
Barnes W.	LD	172	8.4
Johnson W.	LD	148	-
Forester R.	LD	121	-
Williams D.	Con	118	5.8
<b>Turnout</b>		28.0	59.5

Penketh & Cuerdley (7292) <sup>3</sup>			
		vote	share
Deans J.	Lab	1,767	70.7
Warburton G.*	Lab	1,716	-
Langford P.*	Lab	1,694	-
Aldred T.	Con	437	17.5
Sharkey A.	Con	416	-
Yarwood J.	Con	386	-
Goulden D.	LD	295	11.8
Cox A.	LD	266	-
Parton D.	LD	221	-
<b>Turnout</b>		35.0	53.2

Poplars (4234) <sup>2</sup>			
		vote	share
Syers G.*	Lab	932	81.5
Shaw H.*	Lab	880	-
Verdon J.	Con	136	11.9
Edwards P.	LD	76	6.6
Pinder M.	Con	46	-
Wright T.	LD	45	-
<b>Turnout</b>		27.0	69.6

Poulton North (7209) <sup>3</sup>			
		vote	share
Clemow A.*	Lab	1,531	78.8
Gartside J.*	Lab	1,366	-
Kerr-Brown J.	Lab	1,331	-
Dean-Young C.	LD	412	21.2
<b>Turnout</b>		26.2	57.6

Poulton South (6468) <sup>3</sup>			
		vote	share
Greenslade M. Ms.*	Lab	1,522	73.5
Edwards V. Ms.*	Lab	1,512	-
Murray D.*	Lab	1,436	-
Lafferty P. Ms.	LD	274	13.2
Agarwal A.	Con	274	13.2
Ridley G.	LD	240	-
White C.	LD	222	-
<b>Turnout</b>		32.0	60.3

Rixton & Woolston (7575) <sup>3</sup>			
		vote	share
Swift T.*	Lab	1,970	66.2
Orange G.*	Lab	1,778	-
Bold R.*	Lab	1,748	-
Roach B.	Con	593	19.9
Turner A.	Con	498	-
Emsley W.	LD	412	13.8
<b>Turnout</b>		36.3	46.3

**Stockton Heath & Walton (6405)<sup>3</sup>**

		<b>vote</b>	<b>share</b>
<b>Jordan C. Ms.*</b>	LD	1,446	52.7
<b>Daynes J. Ms.*</b>	LD	1,409	-
<b>Prosser F.*</b>	LD	1,284	-
Park J.	Lab	687	25.0
Williams B.	Con	610	22.2
Taylor R.	Lab	591	-
Myles G.	Lab	573	-
Watson N.	Con	508	-
<b>Turnout</b>		42.1	27.7

**Westy (4703)<sup>2</sup>**

		<b>vote</b>	<b>share</b>
<b>Maier A.</b>	Lab	1,234	83.4
<b>Mundry H.</b>	Lab	1,125	-
Finnegan E.	LD	245	16.6
Johnson B.	LD	240	-
<b>Turnout</b>		31.0	66.9

**Winwick (2032)**

		<b>vote</b>	<b>share</b>
<b>Stokes G.*</b>	Lab	531	73.2
Bland K.	Con	194	26.8
<b>Turnout</b>		36.4	46.5



