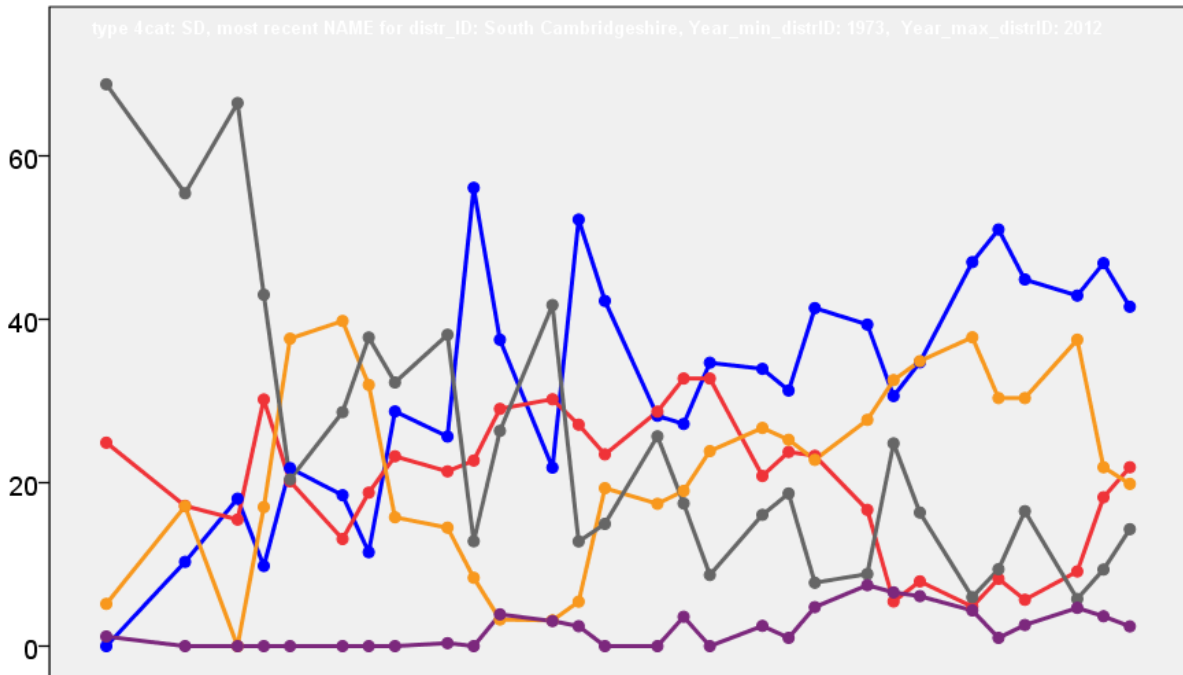


South Cambridgeshire District Council Election Results 1973-2012



Colin Rallings and Michael Thrasher
The Elections Centre
Plymouth University

The information contained in this report has been obtained from a number of sources. Election results from the immediate post-reorganisation period were painstakingly collected by Alan Willis largely, although not exclusively, from local newspaper reports. From the mid-1980s onwards the results have been obtained from each local authority by the Elections Centre. The data are stored in a database designed by Lawrence Ware and maintained by Brian Cheal and others at Plymouth University. Despite our best efforts some information remains elusive whilst we accept that some errors are likely to remain. Notice of any mistakes should be sent to elections@plymouth.ac.uk. The results sequence can be kept up to date by purchasing copies of the annual Local Elections Handbook, details of which can be obtained by contacting the email address above.

Front cover: the graph shows the distribution of percentage vote shares over the period covered by the results. The lines reflect the colours traditionally used by the three main parties. The grey line is the share obtained by Independent candidates while the purple line groups together the vote shares for all other parties.

Rear cover: the top graph shows the percentage share of council seats for the main parties as well as those won by Independents and other parties. The lines take account of any by-election changes (but not those resulting from elected councillors switching party allegiance) as well as the transfers of seats during the main round of local election.

The lower graph shows for each main round of local elections the overall percentage turnout (solid line), the percentage of women candidates standing at (dotted line) and the percentage of women among those elected (hashed line).

South Cambridgeshire - 1973

Abington (1257)

		vote	share
Dyball M. Ms.	Ind	0	0.0
	Turnout	0.0	0.0

Arrington (927)

		vote	share
Robinson D. Ms.	Ind	214	44.8
Sells B. Ms.	Ind	168	35.1
Burford G.	Ind	96	20.1
	Turnout	51.6	9.6

Balsham (1578)

		vote	share
Samworth E.	Ind	368	75.6
Kunish F.	Ind	119	24.4
	Turnout	30.7	51.1

Bar Hill (1455)

		vote	share
Lakin C.	Lib	222	56.3
Bavester C.	Ind	172	43.7
	Turnout	27.1	12.7

Barrington & Shepreth (1073)

		vote	share
Davies H.	Ind	386	63.2
Kitchener H.	Ind	225	36.8
	Turnout	56.9	26.4

Barton (1151)

		vote	share
Page R. Ms.	Ind	0	0.0
	Turnout	0.0	0.0

Bassingbourn (2053)²

		vote	share
Hutcherson S.	Lib	0	0.0
Parker M.	Ind	0	0.0
	Turnout	0.0	0.0

Bourn (1186)

		vote	share
King P.	Ind	0	0.0
	Turnout	0.0	0.0

Castle Camps (1146)

		vote	share
Cornish W.	Ind	0	0.0
	Turnout	0.0	0.0

Comberton (1280)

		vote	share
Watts W.	Ind	0	0.0
	Turnout	0.0	0.0

Coton (1034)

		vote	share
Needham R.	Lab	0	0.0
	Turnout	0.0	0.0

Cottenham (3023)²

		vote	share
Wilkin S.	Ind	483	58.1
Bartingale R.	Ind	375	-
Sanderson R.	Lab	349	41.9
	Turnout	27.5	16.1

Fowlmere & Foxton (1043)

		vote	share
Barnes S.	Lab	294	57.4
Briggs E. Ms.	Ind	218	42.6
	Turnout	49.1	14.8

Fulbourn (2644)²

		vote	share
Symonds S.	Lab	494	51.2
Hames G.	Ind	471	48.8
Kidman I.	Lab	464	-
	Turnout	36.5	2.4

Gamlingay (1804)

		vote	share
Robinson J.	Ind	0	0.0
	Turnout	0.0	0.0

Girton (2477)²

		vote	share
Pease N. Ms.	Lab	0	0.0
Allen D.	Ind	0	0.0
	Turnout	0.0	0.0

Great Shelford (2854)²

		vote	share
Cook P. Ms.	Ind	374	70.6
Lewis G.	Ind	355	-
Amos R.	Lab	156	29.4
Roberts D.	Lab	111	-
	Turnout	18.6	41.1

Hardwick (1026)

		vote	share
Turner K.	Ind	0	0.0
	Turnout	0.0	0.0

Harston (1239)

		vote	share
Hurrell M. Ms.	Ind	0	0.0
	Turnout	0.0	0.0

Haslingfield (1008)

		vote	share
Rhead F.	Ind	0	0.0
	Turnout	0.0	0.0

Histon & Impington (4120)³

		vote	share
Melvin F.	Ind	590	78.5
Mason M.	Ind	529	-
Easy E.	Ind	427	-
Gale A.	Ind	344	-
Gillson H.	Ind Lab	162	21.5
	Turnout	18.3	56.9

Linton (2128)²

		vote	share
O'Loughlin M.	Lib	490	38.3
Fairey G.	Ind	468	36.6
White E.	Lab	321	25.1
	Turnout	60.1	1.7

Little Shelford (1025)

		vote	share
Grove E. Ms.	Ind	275	74.9
Brown C.	Ind	92	25.1
	Turnout	35.8	49.9

Longstanton (993)

		vote	share
Lawfield J. Ms.	Ind	0	0.0
	Turnout	0.0	0.0

Meldreth (1236)

		vote	share
Powles P.	Ind	0	0.0
	Turnout	0.0	0.0

Milton (1236)

		vote	share
Humphries K.	Ind	0	0.0
	Turnout	0.0	0.0

No. 1 (Swavesey) (1230)

		vote	share
Spicer F.	Ind	285	63.2
Thompson S.	Ind	166	36.8
	Turnout	36.7	26.4

No. 15 (Elsworth) (815)

		vote	share
Collett K.	Ind	0	0.0
	Turnout	0.0	0.0

No. 40 (Melbourn) (2512)²

		vote	share
Lupton M. Ms.	Ind	767	68.4
Harvey S.	Ind	659	-
Impey J.	Lab	354	31.6
	Turnout	44.6	36.8

No. 41 (Duxford & Ickleton) (1729)

		vote	share
Cannon R.	Ind	0	0.0
	Turnout	0.0	0.0

Orwell (1273)

		vote	share
Brown J.	Ind	0	0.0
	Turnout	0.0	0.0

Over (1031)

		vote	share
Barker A.	Ind	0	0.0
	Turnout	0.0	0.0

Papworth (1007)

		vote	share
St. Sperling J.	Ind	0	0.0
	Turnout	0.0	0.0

Sawston (3916)³

		vote	share
Cartwright A.	Lab	587	58.6
Richer S. Ms.	Lab	453	-
Westley I.	Lab	415	-
Andrews H.	Ind	414	41.4
Nightingale A.	Ind	400	-
Swart B.	Ind	295	-
	Turnout	25.6	17.3

Stapleford (1165)

		vote	share
Holt H.	Ind	248	82.4
Latto R.	Lab	53	17.6
	Turnout	25.8	64.8

Teversham (1262)

		vote	share
Wood A. Ms.	Ind	354	78.0
Polley H.	Lab	100	22.0
	Turnout	36.0	55.9

The Mordens (1219)

		vote	share
Pepper M. Ms.	Ind	423	77.2
Murfitt F.	Ind	125	22.8
	Turnout	45.0	54.4

The Wilbrahams (919)

		vote	share
Johnson R. Ms.	Ind	0	0.0
	Turnout	0.0	0.0

Waterbeach (2375)²

		vote	share
Tweed A. Ms.	Lab	727	67.3
Hatley H. Ms.	Ind	353	32.7
Abraham J. Ms.	Ind	257	-
Tweed M.	Lab	244	-
Payton G.	Ind	98	-
	Turnout	45.5	34.6

Whittlesford (1259)			
		vote	share
Bligh D. Ms.	Ind	344	69.6
Pedley V.	Ind	150	30.4
Turnout		39.2	39.3

Willingham (1880)			
		vote	share
Rose E.	Ind	289	41.5
Robinson G.	Ind	223	32.0
Butt P.	Ind	185	26.5
Turnout		37.1	9.5

South Cambridgeshire - 1976

Abington (1218)			
		vote	share
Tulitt C.	Ind	282	56.2
Stockham T.	Ind	220	43.8
Turnout		41.3	12.4

Arrington (937)			
		vote	share
Robinson D. Ms.	Ind	301	51.8
Sell B. Ms.	Con	280	48.2
Turnout		62.0	3.6

Balsham (1601)			
		vote	share
Kunish F.	Ind	0	0.0
Turnout		0.0	0.0

Bar Hill (1933) ²			
		vote	share
Devine K.	Ind	388	57.8
Pettit M.	Ind	335	-
Choat A.	Con	283	42.2
Turnout		34.6	15.6

Barrington & Shepreth (1113)			
		vote	share
Davies H.	Ind	0	0.0
Turnout		0.0	0.0

Barton (1130)			
		vote	share
Page R. Ms.	Ind	0	0.0
Turnout		0.0	0.0

Bassingbourn (2200) ²			
		vote	share
Parker M.	Ind	0	0.0
Hutcherson S.	Lib	0	0.0
Turnout		0.0	0.0

Bourn (1165)			
		vote	share
King P.	Ind	0	0.0
Turnout		0.0	0.0

Castle Camps (1161)			
		vote	share
Cornish W.	Ind	0	0.0
Turnout		0.0	0.0

Comberton (1450)			
		vote	share
Watts W.	Ind	556	80.9
Greaves M.	Lab	131	19.1
Turnout		48.3	61.9

Coton (1120)			
		vote	share
Needham R.	Lab	0	0.0
Turnout		0.0	0.0

Cottenham (3032) ²			
		vote	share
Cossington D.	Ind	681	59.2
Bartingale R.	Ind	571	-
Sanderson R.	Lab	470	40.8
Turnout		37.5	18.3

Duxford (1176)			
		vote	share
Cannon R. Ms.	Ind	0	0.0
Turnout		0.0	0.0

Elsworth (1229)			
		vote	share
Collett K.	Ind	0	0.0
Turnout		0.0	0.0

Fowlmere & Foxton (1241)			
		vote	share
Barnes S.	Lab	0	0.0
Turnout		0.0	0.0

Fulbourn (2541) ²			
		vote	share
Symonds S.	Lab	0	0.0
Liles M.	Ind	0	0.0
Turnout		0.0	0.0

Gamlingay (1971)			
		vote	share
Robinson J.	Ind	0	0.0
Turnout		0.0	0.0

Girton (2589) ²			
		vote	share
Allen D.	Ind	0	0.0
Pease J. Ms.	Lab	0	0.0
Turnout		0.0	0.0

Great Shelford (2971) ²			
		vote	share
Cook P. Ms.	Ind	0	-
Lewis G.	Ind	0	0.0
Turnout		0.0	0.0

Hardwick (1176)			
		vote	share
Turner K.	Ind	0	0.0
Turnout		0.0	0.0

Harston (1263)			
		vote	share
Howlett M. Ms.	Con	0	0.0
Turnout		0.0	0.0

Haslingfield (1137)			
		vote	share
Rhead F.	Ind	484	73.4
Cox E. Ms.	Lab	175	26.6
Turnout		58.1	46.9

Histon & Impington (4369) ³			
		vote	share
Melvin F.	Ind	889	43.7
Berman B.	Lib	742	36.5
Easy E.	Ind	728	-
Wilkinson S.	Ind	646	-
Gillson H.	Ind	431	-
Rayment P.	Lab	404	19.9
Gluzza J.	Lab	248	-
Turnout		37.0	7.2

Ickleton (1101)			
		vote	share
Harvey S.	Ind	0	0.0
Turnout		0.0	0.0

Linton (2472) ²			
		vote	share
O'Loughlin M.	Lib	762	44.7
Kenyon P. Ms.	Ind	720	42.3
Roper D. Ms.	Lab	221	13.0
Betts R.	Lab	179	-
Turnout		40.0	2.5

Little Shelford (1152)			
		vote	share
Morris D. Ms.	Con	0	0.0
Turnout		0.0	0.0

Longstanton (941)			
		vote	share
Harradine D.	Ind	195	56.4
Lawfield J. Ms.	Ind	151	43.6
Turnout		36.8	12.7

Melbourn (2344) ²			
		vote	share
Impey J.	Lab	0	0.0
Howard M. Ms.	Con	0	0.0
Turnout		0.0	0.0

Meldreth (1279)			
		vote	share
Powles P.	Ind	0	0.0
Turnout		0.0	0.0

Milton (1238)			
		vote	share
Humphries K.	Ind	0	0.0
Turnout		0.0	0.0

Orwell (1319)			
		vote	share
Brown J.	Ind	0	0.0
Turnout		0.0	0.0

Over (1160)			
		vote	share
Barker A.	Ind	405	67.3
Bryant F.	Ind	197	32.7
Turnout		53.7	34.6

Papworth (1005)			
		vote	share
St. Sperlign J.	Ind	0	0.0
Turnout		0.0	0.0

Sawston (4174) ³			
		vote	share
Nightingale A.	Con	677	35.7
Cartwright A.	Lab	663	35.0
Anderson G. Ms.	Lab	575	-
Westley I.	Lab	561	-
Barker P.	Lib	555	29.3
Paine J. Ms.	Con	509	-
Turnout		35.0	0.7

Stapleford (1265)			
		vote	share
Holt H.	Ind	0	0.0
Turnout		0.0	0.0

Swavesey (1122)			
		vote	share
Spicer F.	Ind	0	0.0
Turnout		0.0	0.0

Teversham (1210)			
		vote	share
Francis W.	Ind	0	0.0
Turnout		0.0	0.0
The Mordens (1315)			
		vote	share
Kirby F.	Ind	0	0.0
Turnout		0.0	0.0
The Wilbrahams (998)			
		vote	share
Johnson R. Ms.	Ind	0	0.0
Turnout		0.0	0.0
Waterbeach (2524) ²			
		vote	share
Tweed A. Ms.	Lab	0	0.0
Hatley H. Ms.	Ind	0	0.0
Turnout		0.0	0.0
Whittlesford (1296)			
		vote	share
Bligh D. Ms.	Ind	0	0.0
Turnout		0.0	0.0
Willingham (1833)			
		vote	share
Rose B.	Ind	551	72.0
Robinson G.	Ind	214	28.0
Turnout		41.7	44.1

South Cambridgeshire - 1978

Abington (1293)			
		vote	share
Tulitt C.*	Ind	0	0.0
Turnout		0.0	0.0
Balsham (1654)			
		vote	share
Kunish F.*	Ind	0	0.0
Turnout		0.0	0.0
Bar Hill (2173)			
		vote	share
Flanagan T.	Ind	283	53.9
Boxall G.	Ind	242	46.1
Turnout		24.2	7.8
Barrington & Shepreth (1161)			
		vote	share
Davies H.*	Ind	0	0.0
Turnout		0.0	0.0
Barton (1147)			
		vote	share
Page R. Ms.*	Ind	525	89.6
Offord T.	Ind	61	10.4
Turnout		51.1	79.2
Bassingbourn (2529)			
		vote	share
Hutcherson S.*	Lib	0	0.0
Turnout		0.0	0.0
Bourn (1183)			
		vote	share
King P.*	Ind	0	0.0
Turnout		0.0	0.0

Cottenham (3290)			
		vote	share
Bartingale R.*	Ind	0	0.0
Turnout		0.0	0.0
Fulbourn (2730)			
		vote	share
Liles M.*	Ind	0	0.0
Turnout		0.0	0.0
Gamlingay (2087)			
		vote	share
Robinson D. Ms.*	Ind	369	50.1
Callow J.	Ind	368	49.9
Turnout		35.3	0.1
Girton (2774)			
		vote	share
Allen D.*	Ind	0	0.0
Turnout		0.0	0.0
Great Shelford (3006)			
		vote	share
Saunders S. Ms.	Con	0	0.0
Turnout		0.0	0.0
Histon & Impington (4502)			
		vote	share
Easy E.*	Ind	515	45.9
Wilkinson S.	Ind	433	38.6
Gluz J.	Lab	175	15.6
Turnout		24.9	7.3
Linton (2828)			
		vote	share
Kenyon F. Ms.*	Ind	754	77.9
Roper D. Ms.	Lab	214	22.1
Turnout		34.2	55.8
Melbourn (2491)			
		vote	share
Howard M. Ms.*	Con	0	0.0
Turnout		0.0	0.0
Sawston (4732)			
		vote	share
Evans D.	Con	905	60.7
Barwick A.	Lab	586	39.3
Turnout		31.5	21.4
Waterbeach (2337) ²			
		vote	share
Hatley H. Ms.*	Ind	633	73.3
Wyatt A.	Ind	443	-
Gaskell W.	Con	231	26.7
Turnout		28.0	46.5
Willingham (1919)			
		vote	share
Rose E.*	Ind	0	0.0
Turnout		0.0	0.0

South Cambridgeshire - 1979

Castle Camps (1255)			
		vote	share
Cornish W.*	Ind	696	72.9
Mills G.	Ind	259	27.1
Turnout		76.1	45.8
Comberton (1564)			
		vote	share
Watts W.*	Ind	0	0.0
Turnout		0.0	0.0

Coton (1133)			
		vote	share
Needham R.*	Lab	0	0.0
Turnout		0.0	0.0
Duxford (1277)			
		vote	share
Cannon R. Ms.*	Ind	0	0.0
Turnout		0.0	0.0
Elsworth (1235)			
		vote	share
Collett K.*	Ind	0	0.0
Turnout		0.0	0.0
Fowlmere & Foxton (1438)			
		vote	share
Barnes S.*	Lab	647	55.4
Puckle J.	Con	520	44.6
Turnout		81.2	10.9
Hardwick (1470)			
		vote	share
Turner K.*	Ind	0	0.0
Turnout		0.0	0.0
Harston (1453)			
		vote	share
Howlett M. Ms.*	Con	0	0.0
Turnout		0.0	0.0
Haslingfield (1240)			
		vote	share
Wilsher J. Ms.	Con	658	65.8
Cox E. Ms.	Lab	342	34.2
Turnout		80.6	31.6
Histon & Impington (4632)			
		vote	share
Berman B.*	Lib	2,045	58.7
Gillson H.	Ind	735	21.1
Gluz J.	Lab	704	20.2
Turnout		75.2	37.6
Ickleton (1148)			
		vote	share
North O.	Ind	452	52.6
Driver R. Ms.	Ind	407	47.4
Turnout		74.8	5.2
Meldreth (1369)			
		vote	share
Powles P.*	Ind	0	0.0
Turnout		0.0	0.0
Milton (1261)			
		vote	share
Humphries K.*	Ind	0	0.0
Turnout		0.0	0.0
Orwell (1394)			
		vote	share
Brown J.*	Ind	0	0.0
Turnout		0.0	0.0
Over (1322)			
		vote	share
Barker A.*	Ind	0	0.0
Turnout		0.0	0.0
Papworth (994)			
		vote	share
Turnill E.	Ind	0	0.0
Turnout		0.0	0.0

Sawston (4870)			
		vote	share
Rider H.	Ind	1,869	51.5
Dove R.	Lab	1,759	48.5
Turnout		74.5	3.0

Swavesey (1145)			
		vote	share
Shepperson J.	Ind	748	81.1
Pook J.	Lab	174	18.9
Turnout		80.5	62.3

Teversham (1274)			
		vote	share
Francis W.*	Ind	0	0.0
Turnout		0.0	0.0

South Cambridgeshire - 1980

Arrington (1018)			
		vote	share
Burford G.	Ind	0	0.0
Turnout		0.0	0.0

Bar Hill (2366)			
		vote	share
Cousin-Wood D.	Lib	0	0.0
Turnout		0.0	0.0

Bassingbourn (2687)			
		vote	share
Parker M.	Ind	506	75.0
Valbonesi P.	Lab	169	25.0
Turnout		25.1	49.9

Cottenham (3419)			
		vote	share
Stiles J.	Ind	0	0.0
Turnout		0.0	0.0

Fulbourn (2800)			
		vote	share
Symonds S.*	Lab	0	0.0
Turnout		0.0	0.0

Girton (2793)			
		vote	share
Pease N. Ms.*	Lab	0	0.0
Turnout		0.0	0.0

Great Shelford (3075)			
		vote	share
Rolph R.	Ind	0	0.0
Turnout		0.0	0.0

Histon & Impington (4782) ²			
		vote	share
Brackenbury J.	Lib	976	44.0
Muncey C.	Ind	893	40.3
Melvin F.*	Ind	601	-
Beeton M.	Lab	348	15.7
Gluz J.	Lab	301	-
Turnout		46.4	3.7

Linton (2490)			
		vote	share
O'Loughlin M.*	Lib	754	64.4
Bishop J.	Con	416	35.6
Turnout		47.0	28.9

Little Shelford (1195)			
		vote	share
Morris D. Ms.*	Con	398	55.7
Nicholls D.	Lib	317	44.3
Turnout		59.8	11.3

Longstanton (926)			
		vote	share
Lawfield J. Ms.	Ind	0	0.0
Turnout		0.0	0.0

Melbourn (2820)			
		vote	share
Impey J.*	Ind	0	0.0
Turnout		0.0	0.0

Sawston (4892)			
		vote	share
Upshaw E. Ms.	Lab	706	50.9
Mullender S.	Con	680	49.1
Turnout		28.3	1.9

Stapleford (1301)			
		vote	share
Holt H.*	Ind	0	0.0
Turnout		0.0	0.0

The Mordens (1508)			
		vote	share
Kirby F.*	Ind	0	0.0
Turnout		0.0	0.0

The Wilbrahams (1085)			
		vote	share
Johnson R. Ms.*	Ind	0	0.0
Turnout		0.0	0.0

Waterbeach (2585)			
		vote	share
Sloman W.	Ind	0	0.0
Turnout		0.0	0.0

Whittlesford (1388)			
		vote	share
Allan H.	Lib	533	76.9
Griffiths D.	Lab	160	23.1
Turnout		49.9	53.8

South Cambridgeshire - 1982

Abington (1382)			
		vote	share
Tulitt C.*	Ind	0	0.0
Turnout		0.0	0.0

Balsham (1745)			
		vote	share
Kunish F.*	Ind	0	0.0
Turnout		0.0	0.0

Bar Hill (2543)			
		vote	share
Flanagan T.*	Lib/SDP	661	61.4
Lentin A.	Con	415	38.6
Turnout		42.3	22.9

Barrington & Shepreth (1207)			
		vote	share
Davies H.*	Ind	0	0.0
Turnout		0.0	0.0

Barton (1178)			
		vote	share
Page R. Ms.*	Ind	457	77.7
Hubbard G.	Lib/SDP	131	22.3
Turnout		49.9	55.4

Bassingbourn (2819)			
		vote	share
Hutcherson S.*	Lib/SDP	0	0.0
Turnout		0.0	0.0

Bourn (1207)			
		vote	share
Spink D. Ms.	Con	361	63.8
Martlew R.	Lib/SDP	205	36.2
Turnout		46.9	27.6

Cottenham (3479)			
		vote	share
Bartingale R.*	Ind	487	32.4
Locke R.	Lib/SDP	461	30.7
Sanderson R.	Ind	410	27.3
Bridge R.	Lab	145	9.6
Turnout		43.2	1.7

Fulbourn (2939)			
		vote	share
Liles M.*	Ind	0	0.0
Turnout		0.0	0.0

Gamlingay (2295)			
		vote	share
Empson C. Ms.	Con	504	50.5
Hodgson C. Ms.	Lib/SDP	352	35.3
Tomsett C.	Ind	142	14.2
Turnout		43.5	15.2

Girton (2886)			
		vote	share
Allen D.*	Ind	644	49.8
Foot B.	Lib/SDP	525	40.6
Tweedie-Waggott A. Ms.	Lab	123	9.5
Turnout		44.8	9.2

Great Shelford (3089)			
		vote	share
Saunders S. Ms.*	Ind	702	55.6
Mortlock A.	Lib/SDP	456	36.1
Stephenson M.	Lab	104	8.2
Turnout		40.9	19.5

Histon & Impington (5121)			
		vote	share
Arthur P.	Lib/SDP	1,490	74.8
Beeton M.	Lab	502	25.2
Turnout		38.9	49.6

Linton (3051)			
		vote	share
Kenyon P. Ms.*	Ind	770	74.7
Womack P.	Lab	261	25.3
Turnout		33.8	49.4

Melbourn (2884)			
		vote	share
Mills M. Ms.	Lib/SDP	627	49.3
Spiers R.	Con	491	38.6
Parker W.	Lab	155	12.2
Turnout		44.1	10.7

Sawston (5004)			
		vote	share
Mullender S.	Con	892	40.7
Westley C.	Lib/SDP	827	37.7
Southern R.	Lab	472	21.5
Turnout		43.8	3.0

Waterbeach (2693)			
		vote	share
Hatley H. Ms.*	Ind	0	0.0
<hr/>			
	Turnout	0.0	0.0

Willingham (1925)			
		vote	share
Rose B.*	Ind	283	44.1
Raven D.	Ind	232	36.1
Dalton R.	Lab	127	19.8
<hr/>			
	Turnout	33.4	7.9

South Cambridgeshire - 1983

Castle Camps (1288)			
		vote	share
Ogilvy C. Ms.	Ind	279	65.3
Mitchell M.	Lib	148	34.7
<hr/>			
	Turnout	33.2	30.7

Comberton (1725)			
		vote	share
Watts W.*	Ind	545	54.7
Avery G.	Lib/SDP	451	45.3
<hr/>			
	Turnout	57.7	9.4

Coton (1174)			
		vote	share
Needham R.*	Lab	0	0.0
<hr/>			
	Turnout	0.0	0.0

Duxford (1301)			
		vote	share
Cannon R. Ms.*	Ind	0	0.0
<hr/>			
	Turnout	0.0	0.0

Elsworth (1292)			
		vote	share
Collett K.*	Ind	0	0.0
<hr/>			
	Turnout	0.0	0.0

Fowlmere & Foxton (1667)			
		vote	share
Barnes S.*	Lab	0	0.0
<hr/>			
	Turnout	0.0	0.0

Hardwick (2104)			
		vote	share
Plane R.	Lib/SDP	530	54.4
Turner K.*	Ind	445	45.6
<hr/>			
	Turnout	46.3	8.7

Harston (1456)			
		vote	share
Howlett M. Ms.*	Ind	0	0.0
<hr/>			
	Turnout	0.0	0.0

Haslingfield (1265)			
		vote	share
Wilsher J. Ms.*	Con	0	0.0
<hr/>			
	Turnout	0.0	0.0

Histon & Impington (5200)			
		vote	share
Muncey J. Ms.	Ind	993	42.9
Heine M. Ms.	Lib/SDP	911	39.4
Parr B. Ms.	Lab	411	17.8
<hr/>			
	Turnout	44.5	3.5

Ickleton (1218)			
		vote	share
North O.*	Ind	0	0.0
<hr/>			
	Turnout	0.0	0.0

Meldreth (1485)			
		vote	share
Course M. Ms.	Ind	0	0.0
<hr/>			
	Turnout	0.0	0.0

Milton (1312)			
		vote	share
Humphries K.*	Ind	0	0.0
<hr/>			
	Turnout	0.0	0.0

Orwell (1445)			
		vote	share
Brown J.*	Ind	0	0.0
<hr/>			
	Turnout	0.0	0.0

Over (1553)			
		vote	share
Wayman C.	Ind	0	0.0
<hr/>			
	Turnout	0.0	0.0

Papworth (999)			
		vote	share
Woodbridge M. Ms.	Lib/SDP	0	0.0
<hr/>			
	Turnout	0.0	0.0

Sawston (4986)			
		vote	share
Orgee A.	Con	951	41.4
Upshaw R.	Lab	738	32.1
Westley I.	Lib/SDP	607	26.4
<hr/>			
	Turnout	46.0	9.3

Swavesey (1159)			
		vote	share
Shepperson J.*	Ind	454	80.1
Pook J.	Lab	113	19.9
<hr/>			
	Turnout	48.9	60.1

Teversham (1492)			
		vote	share
Allen W.	Ind	411	58.4
Kelleway D.	Lab	293	41.6
<hr/>			
	Turnout	47.2	16.8

South Cambridgeshire - 1984

Arrington (1088)			
		vote	share
Burford G.*	Con	403	73.4
Green R.	Lab	146	26.6
<hr/>			
	Turnout	50.5	46.8

Bar Hill (3021)			
		vote	share
Cruse R. Ms.	Con	579	46.3
Berent A.	Lib/SDP	405	32.4
Webb S.	Lab	267	21.3
<hr/>			
	Turnout	41.4	13.9

Bassingbourn (2982)			
		vote	share
Parker M.*	Ind	0	0.0
<hr/>			
	Turnout	0.0	0.0

Cottenham (3597)			
		vote	share
Stiles J.*	Ind	679	63.2
Collinson R.	Lab	396	36.8
<hr/>			
	Turnout	29.9	26.3

Fulbourn (2777)			
		vote	share
Symonds S.*	Lab	0	0.0
<hr/>			
	Turnout	0.0	0.0

Girton (2952)			
		vote	share
Bullman E.	Con	808	71.6
Tweedie- Waggott A. Ms.	Lab	321	28.4
<hr/>			
	Turnout	38.2	43.1

Great Shelford (3188)			
		vote	share
Rolph R.*	Ind	792	77.3
Davis D.	Lab	232	22.7
<hr/>			
	Turnout	32.1	54.7

Histon & Impington (5223)			
		vote	share
Heine M. Ms.	Lib/SDP	1,005	43.8
Saunders H.	Con	915	39.9
Henderson A.	Lab	373	16.3
<hr/>			
	Turnout	43.9	3.9

Linton (3156)			
		vote	share
Attwood C.	Ind	713	74.8
Womack P.	Lab	240	25.2
<hr/>			
	Turnout	30.2	49.6

Little Shelford (1251)			
		vote	share
Bishop B. Ms.	Ind	0	0.0
<hr/>			
	Turnout	0.0	0.0

Longstanton (1290)			
		vote	share
Noble J.	Ind	230	63.4
Did-Dell P. Ms.	Ind	68	18.7
Dalton R.	Lab	65	17.9
<hr/>			
	Turnout	28.1	44.6

Melbourn (2876)			
		vote	share
Impey J.*	Ind	533	56.2
Spiers R.	Con	415	43.8
<hr/>			
	Turnout	33.0	12.4

Sawston (5096)			
		vote	share
Upshaw E. Ms.*	Lab	919	61.8
Wakefield J. Ms.	Con	569	38.2
<hr/>			
	Turnout	29.2	23.5

Stapleford (1356)			
		vote	share
Holt H.*	Ind	0	0.0
<hr/>			
	Turnout	0.0	0.0

The Mordens (1587)			
		vote	share
Kirby F.*	Ind	430	50.1
Sutton S. Ms.	Lib/SDP	428	49.9
<hr/>			
	Turnout	54.1	0.2

The Wilbrahams (1128)			
		vote	share
Johnson R. Ms.*	Ind	234	43.2
Jones A.	Lab	160	29.5
Sadler A.	Ind	148	27.3
<hr/>			
	Turnout	48.0	13.7

Waterbeach (3048)			
		vote	share
Brooks P.	Ind	582	51.5
Birch R.	Con	432	38.2
Kelleway D.	Lab	117	10.3
<hr/>			
	Turnout	37.1	13.3

Whittlesford (1510)			
		vote	share
Easthope D.	Lib/SDP	424	57.2
Broomfield S. Ms.	Ind	221	29.8
Turner G.	Lab	96	13.0
Turnout		49.1	27.4

South Cambridgeshire - 1986

Abington (1540)			
		vote	share
Tulitt C.*	Ind	0	0.0
Turnout		0.0	0.0

Balsham (1846)			
		vote	share
Kunish W.*	Ind	612	83.7
Hagger W.	Lab	119	16.3
Turnout		39.6	67.4

Bar Hill (3735)			
		vote	share
Green A.	Con	772	48.7
Flanagan T.*	Ind	585	36.9
Fuller D. Ms.	Lab	164	10.3
Hardy P.	Green	64	4.0
Turnout		42.4	11.8

Barrington & Shepreth (1269)			
		vote	share
Davies H.*	Ind	0	0.0
Turnout		0.0	0.0

Barton (1151)			
		vote	share
Page R. Ms.*	Ind	0	0.0
Turnout		0.0	0.0

Bassingbourn (2944)			
		vote	share
Townshend B.	Con	690	55.9
Poulson E. Ms.	All	544	44.1
Turnout		41.9	11.8

Bourn (1302)			
		vote	share
Spink D. Ms.*	Con	489	71.6
Colmer G. Ms.	All	194	28.4
Turnout		52.5	43.2

Cottenham (3641)			
		vote	share
Bartingale R.*	Ind	676	47.9
Bolitho V. Ms.	All	421	29.8
Collinson R.	Lab	314	22.3
Turnout		38.8	18.1

Fulbourn (2807)			
		vote	share
Liles M.*	Ind	856	63.7
Scarr N.	Lab	488	36.3
Turnout		47.9	27.4

Gamlingay (2348)			
		vote	share
Empson C. Ms.*	Con	493	65.8
McIntyre K.	Lab	256	34.2
Turnout		31.9	31.6

Girton (2930)			
		vote	share
Allen D.*	Ind	730	53.0
Burrows C.	All	469	34.0
Hiley R.	Lab	179	13.0
Turnout		47.0	18.9

Great Shelford (3256)			
		vote	share
Saunders S. Ms.*	Ind	888	74.6
Davis D.	Lab	303	25.4
Turnout		36.6	49.1

Histon & Impington (5432)			
		vote	share
Birch A.	Con	1,134	45.6
Arthur P.*	All	910	36.6
Kidman I.	Lab	444	17.8
Turnout		45.8	9.0

Linton (3220)			
		vote	share
Kenyon P. Ms.*	Ind	828	76.0
McGlue K.	Lab	261	24.0
Turnout		33.8	52.1

Melbourn (2931)			
		vote	share
Whitton-Spriggs J.	Con	0	0.0
Turnout		0.0	0.0

Sawston (5258)			
		vote	share
Mullender S.*	Con	913	53.1
Ling J.	Lab	806	46.9
Turnout		32.7	6.2

Waterbeach (3262)			
		vote	share
Hatley H. Ms.*	Ind	798	71.2
Williams B.	Lab	323	28.8
Turnout		34.4	42.4

Willingham (2296)			
		vote	share
Bradley M. Ms.	Ind	319	40.5
Manning A.	Ind	225	28.6
Raven D.	Ind	157	19.9
Dalton R.	Lab	87	11.0
Turnout		34.3	11.9

South Cambridgeshire - 1987

Castle Camps (1354)			
		vote	share
Ogilvy C. Ms.*	Ind	0	0.0
Turnout		0.0	0.0

Comberton (1764)			
		vote	share
Watts W.*	Ind	0	0.0
Turnout		0.0	0.0

Coton (1202)			
		vote	share
Petitt J.	Con	0	0.0
Turnout		0.0	0.0

Duxford (1373)			
		vote	share
Cannon R. Ms.*	Ind	0	0.0
Turnout		0.0	0.0

Elsworth (1377)			
		vote	share
Collett K.*	Ind	0	0.0
Turnout		0.0	0.0

Fowlmere & Foxton (1713)			
		vote	share
Barnes S.*	Lab	0	0.0
Turnout		0.0	0.0

Hardwick (2608)			
		vote	share
Hay M.	Con	717	53.3
Plane R.*	Lib/SDP	402	29.9
Trevor K.	Ind	226	16.8
Turnout		51.6	23.4

Harston (1561)			
		vote	share
Paget C.	Con	527	56.9
Heap M. Ms.	Ind	400	43.1
Turnout		59.4	13.7

Haslingfield (1297)			
		vote	share
Wilsher J. Ms.*	Con	0	0.0
Turnout		0.0	0.0

Histon & Impington (5452)			
		vote	share
Muncey J. Ms.*	Con	1,435	67.9
Kidman I.	Lab	514	24.3
Heinrich R.	Lib/SDP	165	7.8
Turnout		38.8	43.6

Ickleton (1282)			
		vote	share
Driver R. Ms.	Ind	0	0.0
Turnout		0.0	0.0

Meldreth (1538)			
		vote	share
Course M. Ms.*	Ind	0	0.0
Turnout		0.0	0.0

Milton (1533)			
		vote	share
Fisher J.	Ind	592	83.4
Price K.	Lab	118	16.6
Turnout		46.3	66.8

Orwell (1572)			
		vote	share
Brown J.*	Ind	0	0.0
Turnout		0.0	0.0

Over (1705)			
		vote	share
Monks E.	Con	652	82.3
Dalton R.	Lab	140	17.7
Turnout		46.5	64.6

Papworth (1069)			
		vote	share
Woodbridge M. Ms.*	Lib/SDP	279	52.4
West-Robinson R.	Con	174	32.7
Bartram R.	Ind	79	14.8
Turnout		49.8	19.7

Sawston (5303)			
		vote	share
Bard D.	Con	1,146	54.1
Upshaw J.	Lab	971	45.9
Turnout		39.9	8.3

Swavesey (1381)			
		vote	share
Shepperson J.*	Con	513	80.0
Dalton M. Ms.	Lab	128	20.0
Turnout		46.4	60.1

Teversham (1577)			
		vote	share
Wood G.	Con	505	54.3
Turner T.	Lab	425	45.7
Turnout		59.0	8.6

South Cambridgeshire - 1988

Arrington (1098)			
		vote	share
Burford G.	Con	0	0.0
	Turnout	0.0	0.0
Bar Hill (4110)			
		vote	share
Jones J. Ms.*	Con	0	0.0
	Turnout	0.0	0.0
Bassingbourn (3118)			
		vote	share
Sutherland L. Ms.	Con	507	39.9
Cathcart N.	Lab	435	34.3
Parker M.*	Ind	328	25.8
	Turnout	40.7	5.7
Cottenham (3630)			
		vote	share
Collinson R.	Lab	0	0.0
	Turnout	0.0	0.0
Fulbourn (3059)			
		vote	share
Jeans W.	Con	708	61.1
Symonds S.*	Lab	450	38.9
	Turnout	37.9	22.3
Girton (3018)			
		vote	share
Bullman E.*	Con	801	62.7
Hiley S. Ms.	Lab	476	37.3
	Turnout	42.3	25.5
Great Shelford (3210)			
		vote	share
Rolph R.*	Ind	701	66.5
Ousey M. Ms.	SLD	353	33.5
	Turnout	32.8	33.0
Histon & Impington (5431)			
		vote	share
Wynn R.	Con	976	45.4
Heine M. Ms.*	SDP	422	19.6
Mason M.	Ind	388	18.1
Kidman I.	Lab	363	16.9
	Turnout	39.6	25.8
Linton (3200)			
		vote	share
Attwood C.*	Ind	731	74.9
Hagger W.	Ind	245	25.1
	Turnout	30.5	49.8
Little Shelford (1145)			
		vote	share
Bishop V. Ms.*	Ind	0	0.0
	Turnout	0.0	0.0
Longstanton (1374)			
		vote	share
Noble J.*	Ind	315	67.3
Baigent D.	Ind	153	32.7
	Turnout	34.1	34.6
Melbourn (3011)			
		vote	share
Impey J.*	Ind	0	0.0
	Turnout	0.0	0.0

Sawston (5295)			
		vote	share
Upshaw E. Ms.*	Lab	1,188	63.2
Bissett R. Ms.	Con	691	36.8
	Turnout	35.5	26.5
Stapleford (1415)			
		vote	share
Holt H.*	Ind	0	0.0
	Turnout	0.0	0.0
The Mordens (1728)			
		vote	share
Kirby F.*	Ind	0	0.0
	Turnout	0.0	0.0
The Wilbrahams (1150)			
		vote	share
Hacke L.	Con	390	61.7
Ford J. Ms.	Lab	242	38.3
	Turnout	55.0	23.4
Waterbeach (3473)			
		vote	share
Wyatt A.	Ind	0	0.0
	Turnout	0.0	0.0
Whittlesford (1665)			
		vote	share
Easthope D.*	Ind	0	0.0
	Turnout	0.0	0.0

South Cambridgeshire - 1990

Abington (1549)			
		vote	share
Tulitt C.*	Ind	508	59.6
Kime F. Ms.	Lab	345	40.4
	Turnout	55.5	19.1
Balsham (1891)			
		vote	share
Ford E.	Con	499	54.5
Smith S. Ms.	Ind	416	45.5
	Turnout	48.9	9.1
Bar Hill (4240)			
		vote	share
Green A.*	Con	905	49.6
Flanagan T.	Ind	494	27.1
Prandy J. Ms.	Lab	426	23.3
	Turnout	43.3	22.5
Barrington & Shepreth (1285)			
		vote	share
Brashaw J.	Ind	0	0.0
	Turnout	0.0	0.0
Barton (1124)			
		vote	share
Page R. Ms.*	Ind	546	84.7
Malcolm-Brown C.	Ind	99	15.3
	Turnout	57.9	69.3
Bassingbourn (2779)			
		vote	share
Cathcart N.	Lab	599	50.8
Triggs C.	Con	580	49.2
	Turnout	42.7	1.6
Bourn (1361)			
		vote	share
Spink D. Ms.*	Con	0	0.0
	Turnout	0.0	0.0

Cottenham (3707)			
		vote	share
Bartingale R.*	Ind	945	62.3
Hiley C.	Lab	572	37.7
	Turnout	41.8	24.6
Fulbourn (3416)			
		vote	share
Liles M.*	Ind	656	42.9
Turner T.	Lab	579	37.8
Scarr N.	SLD	295	19.3
	Turnout	45.4	5.0
Gamlingay (2544)			
		vote	share
Empson C. Ms.*	Con	0	0.0
	Turnout	0.0	0.0
Girton (2963)			
		vote	share
Allen D.*	Ind	828	58.1
Bonnett K.	Lab	597	41.9
	Turnout	48.7	16.2
Great Shelford (3155)			
		vote	share
Saunders S. Ms.*	Ind	819	58.9
Hollings C.	Lab	348	25.0
Saul C. Ms.	Green	223	16.0
	Turnout	44.4	33.9
Histon & Impington (5430)			
		vote	share
Birch A.*	Con	1,242	51.4
Pease N. Ms.	Lab	1,174	48.6
	Turnout	44.7	2.8
Linton (3202)			
		vote	share
Kenyon P. Ms.*	Ind	894	71.6
Lee R.	Lab	355	28.4
	Turnout	39.1	43.2
Melbourn (3023)			
		vote	share
Roberts D. Ms.	Con	633	40.0
Trueman V. Ms.	SLD	373	23.6
Rose R.	Ind	352	22.2
Mackarsie K.	Ind	225	14.2
	Turnout	52.4	16.4
Sawston (5382)			
		vote	share
Roberts D.	Lab	1,090	47.4
Tompkins A.	Con	783	34.0
Roberts A. Ms.	Green	428	18.6
	Turnout	43.0	13.3
Waterbeach (3326)			
		vote	share
Saberton W.	Ind	731	50.8
Guy R.	Ind	524	36.4
Barlow Y. Ms.	Lab	183	12.7
	Turnout	43.5	14.4
Willingham (2456)			
		vote	share
Manning L.	Ind	422	42.8
Bradley M. Ms.	Ind	411	41.6
Burchell B.	Lab	154	15.6
	Turnout	41.3	1.1

South Cambridgeshire - 1991

Castle Camps (1332)

		vote	share
Ogilvy C. Ms.*	Ind	0	0.0
	Turnout	0.0	0.0

Comberton (1770)

		vote	share
Watts W.*	Ind	0	0.0
	Turnout	0.0	0.0

Coton (1221)

		vote	share
Tingley L. Ms.*	Con	479	70.9
Hiley C.	Lab	197	29.1
	Turnout	55.4	41.7

Duxford (1399)

		vote	share
Cannon R. Ms.*	Ind	0	0.0
	Turnout	0.0	0.0

Elsworth (1522)

		vote	share
Collett K.*	Ind	579	71.7
Johnstone S. Ms.	Con	229	28.3
	Turnout	53.1	43.3

Fowlmere & Foxton (1741)

		vote	share
Barnes S.*	Lab	0	0.0
	Turnout	0.0	0.0

Hardwick (2654)

		vote	share
Hay M.*	Con	0	0.0
	Turnout	0.0	0.0

Harston (1562)

		vote	share
Paget C.*	Con	506	57.7
Oram A.	LD	371	42.3
	Turnout	56.1	15.4

Haslingfield (1302)

		vote	share
Whitefield J.	Con	0	0.0
	Turnout	0.0	0.0

Histon & Impington (5493)

		vote	share
Muncey J. Ms.*	Con	1,397	60.5
Pease N. Ms.	Lab	913	39.5
	Turnout	42.1	21.0

Ickleton (1342)

		vote	share
Driver R. Ms.*	Ind	0	0.0
	Turnout	0.0	0.0

Meldreth (1651)

		vote	share
Course M. Ms.*	Ind	0	0.0
	Turnout	0.0	0.0

Milton (2805)

		vote	share
Fisher J.*	Ind	580	53.2
Fish P.	Con	510	46.8
	Turnout	38.9	6.4

Orwell (1613)

		vote	share
Brown J.*	Ind	0	0.0
	Turnout	0.0	0.0

Over (1816)

		vote	share
Monks E.*	Con	0	0.0
	Turnout	0.0	0.0

Papworth (1306)

		vote	share
Woodbridge M. Ms.	LD	0	0.0
	Turnout	0.0	0.0

Sawston (5388)

		vote	share
Bard D.*	Con	1,025	49.2
Barlow Y. Ms.	Lab	839	40.2
Hale H. Ms.	Green	221	10.6
	Turnout	38.7	8.9

Swavesey (1440)

		vote	share
Shepperson J.*	Con	0	0.0
	Turnout	0.0	0.0

Teversham (2574)

		vote	share
Barker C.	Con	578	48.0
Taylor V.	Lab	503	41.8
Scarr N.	LD	122	10.1
	Turnout	46.7	6.2

South Cambridgeshire - 1992

Arrington (1098)

		vote	share
Burford G.*	Con	0	0.0
	Turnout	0.0	0.0

Bar Hill (4255)

		vote	share
Jones J. Ms.*	Con	1,007	61.4
Flanagan T.	Ind	406	24.8
Brandy J. Ms.	Lab	227	13.8
	Turnout	38.5	36.6

Bassingbourn (2779)

		vote	share
Sunderland L. Ms.*	Con	602	54.4
Lord D.	LD	312	28.2
Baird P.	Lab	192	17.4
	Turnout	39.8	26.2

Cottenham (3834)

		vote	share
Collinson R.	Lab	854	54.4
Bolitho N.	Con	716	45.6
	Turnout	40.9	8.8

Fulbourn (3516)

		vote	share
Ellwood M.	Con	662	52.6
Scarr N.	LD	596	47.4
	Turnout	35.8	5.2

Girton (2893)

		vote	share
Bullman E.	Con	829	64.3
Hiley S. Ms.	Lab	460	35.7
	Turnout	44.6	28.6

Great Shelford (3155)

		vote	share
Rolph R.	Ind	830	80.2
Hollings C.	Lab	205	19.8
	Turnout	32.8	60.4

Histon & Impington (5540)

		vote	share
Taylor V. Ms.	Con	1,116	52.3
Pease N. Ms.	Lab	613	28.7
Brinton S. Ms.	LD	406	19.0
	Turnout	38.5	23.6

Linton (3226)

		vote	share
Freeman M. Ms.	LD	658	50.3
Impey E. Ms.	Con	551	42.1
Lee R.	Lab	99	7.6
	Turnout	40.5	8.2

Little Shelford (1145)

		vote	share
Bishop V. Ms.*	Ind	0	0.0
	Turnout	0.0	0.0

Longstanton (1374)

		vote	share
Stroude P.	Con	0	0.0
	Turnout	0.0	0.0

Melbourn (3093)

		vote	share
Trueman V. Ms.	LD	608	57.8
Impey J.	Ind	443	42.2
	Turnout	34.0	15.7

Sawston (5407)

		vote	share
Upshaw E. Ms.	Lab	970	56.2
Hilton H.	Con	755	43.8
	Turnout	31.9	12.5

Stapleford (1415)

		vote	share
Baynes L.	Con	0	0.0
	Turnout	0.0	0.0

The Mordens (1740)

		vote	share
Murfitt R.	Ind	683	89.2
Mackarsie K.	Lab	83	10.8
	Turnout	44.0	78.3

The Wilbrahams (1150)

		vote	share
Hacke L.*	Con	0	0.0
	Turnout	0.0	0.0

Waterbeach (3473)

		vote	share
Wyatt A.*	Ind	0	0.0
	Turnout	0.0	0.0

Whittlesford (1631)

		vote	share
Easthope D.	LD	471	52.2
Arnold M.	Con	431	47.8
	Turnout	55.3	4.4

South Cambridgeshire - 1994

Abington (1535)			
		vote	share
Tulitt C.*	Ind	0	0.0
Turnout		0.0	0.0
Balsham (1906)			
		vote	share
Ford E.*	Con	530	59.9
Mallows R.	Lab	355	40.1
Turnout		47.0	19.8
Bar Hill (4278)			
		vote	share
Flanagan T.	LD	744	42.1
Boughton-Fox M.	Con	574	32.5
Green A.*	Ind	450	25.5
Turnout		41.6	9.6
Barrington & Shepreth (1333)			
		vote	share
Brashaw J.*	Ind	0	0.0
Turnout		0.0	0.0
Barton (1125)			
		vote	share
Page R. Ms.*	Ind	553	84.9
Todd M.	Lab	98	15.1
Turnout		58.0	69.9
Bassingbourn (2781)			
		vote	share
Cathcart N.	Lab	1,007	72.7
Stowe C. Ms.	Con	379	27.3
Turnout		50.4	45.3
Bourn (1438)			
		vote	share
Spink D. Ms.*	Con	0	0.0
Turnout		0.0	0.0
Cottenham (3929)			
		vote	share
Nicholas J.	Lab	799	48.7
Bolitho N.	Con	454	27.7
Wotherspoon T.	Ind	388	23.6
Turnout		42.0	21.0
Fulbourn (3588)			
		vote	share
Fletcher R.	Ind	818	63.1
Drage M. Ms.	Con	478	36.9
Turnout		37.2	26.2
Gamlingay (2555)			
		vote	share
Hill D.	LD	711	66.5
Langlois P.	Con	358	33.5
Turnout		41.9	33.0
Girton (2898)			
		vote	share
Allen D.*	Ind	709	56.8
Hiley C.	Lab	539	43.2
Turnout		44.3	13.6
Great Shelford (3176) ²			
		vote	share
Saunders S. Ms.*	Ind	814	33.7
Sander B. Ms.	LD	808	33.4
Turner H.	Con	496	20.5
Hollings C.	Lab	298	12.3
Turnout		38.0	0.2

Histon & Impington (5564)			
		vote	share
Brown R.	Con	1,073	52.1
Swain S.	Lab	987	47.9
Turnout		37.3	4.2
Linton (3286)			
		vote	share
Kenyon P. Ms.*	Ind	912	79.4
Andrews C.	Lab	237	20.6
Turnout		35.0	58.7
Melbourn (3104)			
		vote	share
Farrell M.	LD	950	60.5
Roberts D. Ms.*	Con	619	39.5
Turnout		50.7	21.1
Sawston (5406)			
		vote	share
Roberts D.*	Lab	1,119	65.1
Smith J. Ms.	Con	601	34.9
Turnout		31.8	30.1
Waterbeach (3634)			
		vote	share
Saberton W.*	Ind	0	0.0
Turnout		0.0	0.0
Willingham (2468)			
		vote	share
Manning L.*	Ind	422	48.5
Richer D.	LD	225	25.8
Clode D.	Lab	224	25.7
Turnout		35.4	22.6

South Cambridgeshire - 1995

Castle Camps (1370)			
		vote	share
Agnew S.	LD	416	75.6
Pearse P.	Lab	134	24.4
Turnout		40.6	51.3
Comberton (1852)			
		vote	share
Grounds P. Ms.	LD	490	54.7
Watts W.*	Ind	254	28.3
Pain S.	Lab	152	17.0
Turnout		48.4	26.3
Coton (1200)			
		vote	share
Tingley L. Ms.	Con	0	0.0
Turnout		0.0	0.0
Duxford (1421)			
		vote	share
Cannon R. Ms.*	Ind	359	61.0
McDonald P.	LD	230	39.0
Turnout		41.5	21.9
Elsworth (1570)			
		vote	share
McGregor J.*	Ind	0	0.0
Turnout		0.0	0.0
Fowlmere & Foxton (1767)			
		vote	share
Roberts D. Ms.	Ind	374	35.1
Howard M.	Ind Con	372	34.9
Percy J. Ms.	Lab	319	30.0
Turnout		60.4	0.2

Hardwick (2704)			
		vote	share
Hay M.*	Ind	0	0.0
Turnout		0.0	0.0
Harston (1580)			
		vote	share
Paget C.*	Con	420	54.9
Stranks R.	LD	345	45.1
Turnout		48.5	9.8
Haslingfield (1465)			
		vote	share
Heazell E. Ms.	LD	490	69.0
Whitefield J.*	Con	220	31.0
Turnout		48.6	38.0
Histon & Impington (5589)			
		vote	share
Rayment P.	Lab	1,145	54.4
Muncey J. Ms.*	Con	958	45.6
Turnout		37.6	8.9
Ickleton (1399)			
		vote	share
Driver R. Ms.*	Ind	0	0.0
Turnout		0.0	0.0
Meldreth (1647)			
		vote	share
Course M. Ms.*	Ind	0	0.0
Turnout		0.0	0.0
Milton (3065)			
		vote	share
Summerfield R.	Ind	0	0.0
Turnout		0.0	0.0
Orwell (1730)			
		vote	share
Brown J.*	Ind	511	61.9
Gwynn D.	Ind	182	22.1
Marshall M. Ms.	Ind	132	16.0
Turnout		48.3	39.9
Over (1816)			
		vote	share
Monks E.*	Con	0	0.0
Turnout		0.0	0.0
Papworth (1326)			
		vote	share
Woodbridge M. Ms.	Ind	0	0.0
Turnout		0.0	0.0
Sawston (5404)			
		vote	share
Hollings C.	Lab	1,007	60.8
Bard D.*	Con	650	39.2
Turnout		30.7	21.5
Swavesey (1448)			
		vote	share
Shepperson J.*	Con	0	0.0
Turnout		0.0	0.0
Teversham (2692)			
		vote	share
Kime S.	Lab	641	52.8
Barker C.*	Con	573	47.2
Turnout		45.3	5.6

South Cambridgeshire - 1996

Arrington (1096)

		vote	share
Stanton O.	Con	263	46.6
Tattersall A. Ms.	LD	169	30.0
Percy J. Ms.	Lab	132	23.4
	Turnout	51.0	16.7

Bar Hill (4428)

		vote	share
Jones J. Ms.*	Con	722	42.5
Kingsbury M. Ms.	LD	582	34.3
Bicker S. Ms.	Lab	395	23.2
	Turnout	38.0	8.2

Bassingbourn (2732)

		vote	share
Speller S. Ms.	Lab	584	68.1
Harris P.	Con	273	31.9
	Turnout	31.0	36.3

Cottenham (4000)

		vote	share
Collinson F.*	Lab	1,146	75.7
Wotherspoon T.	Con	269	17.8
Edwards F.	LD	98	6.5
	Turnout	38.0	58.0

Fulbourn (3692)

		vote	share
Scarr N.	LD	655	43.1
Ellwood M.*	Con	457	30.1
McCloskey G.	Lab	408	26.8
	Turnout	41.0	13.0

Girton (2982)

		vote	share
Bullman E.*	Con	699	53.2
Hiley C.	Lab	616	46.8
	Turnout	44.0	6.3

Great Shelford (3246)

		vote	share
Vail W. Ms.	LD	558	43.1
Sutherland L. Ms.	Con	444	34.3
Gray K. Ms.	Lab	293	22.6
	Turnout	40.0	8.8

Histon & Impington (5768)

		vote	share
Gooden P.	Lab	984	45.3
Muncey J. Ms.	Con	915	42.2
Heinrich J. Ms.	LD	271	12.5
	Turnout	38.0	3.2

Linton (3295)

		vote	share
Smith G. Ms.*	LD	791	60.9
Fowler E.	Con	293	22.6
Batchelor J.	Ind	214	16.5
	Turnout	39.0	38.4

Little Shelford (1173)

		vote	share
Bishop V. Ms.*	Ind	419	73.0
Briggs A. Ms.	Lab	155	27.0
	Turnout	49.0	46.0

Longstanton (1413)

		vote	share
Stroude P.*	Con	319	72.5
Reeves M. Ms.	Ind	121	27.5
	Turnout	31.0	45.0

Melbourn (3251)²

		vote	share
Trueman V. Ms.*	LD	796	42.0
Barrett V. Ms.	Con	583	30.7
Wakerley R.	Lab	518	27.3
Morris A.	Con	338	-
	Turnout	44.0	11.2

Sawston (5399)²

		vote	share
Upshaw E. Ms.*	Lab	1,092	71.1
Ziaian S.	Lab	924	-
Smith J. Ms.	Con	443	28.9
Leigh J.	Con	362	-
	Turnout	29.0	42.3

Stapleford (1404)

		vote	share
Elsbury G.	LD	471	61.3
Bard R.	Con	297	38.7
	Turnout	55.0	22.7

The Mordens (1745)

		vote	share
Murfitt R.*	Ind	535	71.7
Thomas I.	Con	211	28.3
	Turnout	43.0	43.4

The Wilbrahams (1195)

		vote	share
Barker C.	Con	396	70.2
Wotherspoon G. Ms.	LD	168	29.8
	Turnout	47.0	40.4

Waterbeach (3819)

		vote	share
Wyatt A.*	Ind	522	45.8
Smith K.	Lab	322	28.3
Ashcroft M. Ms.	Con	295	25.9
	Turnout	30.0	17.6

Whittlesford (1773)

		vote	share
Quinlan J.	LD	406	44.8
Eccles G.	Con	334	36.8
West M.	Lab	167	18.4
	Turnout	51.0	7.9

South Cambridgeshire - 1998

Abington (1498)

		vote	share
Tulitt C.*	Ind	296	45.9
Hannan D.	Ind	203	31.5
Briggs A. Ms.	lab	91	14.1
Sadler A.	LD	55	8.5
	Turnout	43.5	14.4

Balsham (2082)

		vote	share
Barrett R.*	Con	671	84.3
Chatfield J.	LD	125	15.7
	Turnout	38.3	68.6

Bar Hill (4390)

		vote	share
Flanagan T.*	LD	755	55.7
Boughton-Fox M.	Con	601	44.3
	Turnout	31.0	11.4

Barrington & Shepreth (1391)

		vote	share
Kendrick E. Ms.	Ind	0	0.0
	Turnout	0.0	0.0

Barton (1136)

		vote	share
Page R. Ms.*	Ind	0	0.0
	Turnout	0.0	0.0

Bassingbourn (2857)

		vote	share
Cathcart N.*	lab	788	67.9
McCraith D.	Con	373	32.1
	Turnout	40.9	35.7

Bourn (1563)

		vote	share
Spink D. Ms.*	Con	0	0.0
	Turnout	0.0	0.0

Cottenham (4068)

		vote	share
Wotherspoon T.	Con	637	44.4
Nicholas J.*	lab	614	42.8
Murphy E.	LD	100	7.0
Cuthbert M.	Green	83	5.8
	Turnout	35.6	1.6

Fulbourn (3632)

		vote	share
Fletcher R.*	Ind	352	38.3
Doggett S. Ms.	Ind Lib	310	33.7
Turner R.	Con	211	22.9
Renaut R.	LD	47	5.1
	Turnout	25.5	4.6

Gamlingay (2662)

		vote	share
Edwards-Major L.*	LD	708	66.4
Keen K. Ms.	Con	358	33.6
	Turnout	40.2	32.8

Girton (2954)

		vote	share
Healey J. Ms.	Con	612	58.3
Hiley C.	lab	438	41.7
	Turnout	35.8	16.6

Great Shelford (3290)

		vote	share
Ford D.	LD	571	50.4
Saunders S. Ms.*	Ind	562	49.6
	Turnout	34.7	0.8

Histon & Impington (6163)

		vote	share
Teague J. Ms.	lab	695	39.0
Payne D.	Con	659	37.0
Thomas J.	LD	429	24.1
	Turnout	29.0	2.0

Linton (3389)

		vote	share
Batchelor J.	LD	665	68.3
Alper S.	Con	192	19.7
Staples G.	lab	117	12.0
	Turnout	28.8	48.6

Melbourn (3423)

		vote	share
Wherrell D.	LD	666	67.8
Harding P.	Con	316	32.2
	Turnout	28.8	35.6

Sawston (5605)

		vote	share
Bard D.	Con	640	52.8
Roberts D.*	lab	571	47.2
	Turnout	21.7	5.7

Waterbeach (3982)			
		vote	share
Saberton W.*	Ind	667	83.7
Ashcroft M. Ms.	Con	130	16.3
Turnout		20.3	67.4

Willingham (2505)			
		vote	share
Manning L.*	Ind	476	78.8
Edkins L.	LD	128	21.2
Turnout		24.2	57.6

South Cambridgeshire - 1999

Castle Camps (1443)			
		vote	share
Agnew S.*	LD	523	80.7
Pearse P.	Lab	125	19.3
Turnout		46.5	61.4

Comberton (1782)			
		vote	share
Harangozo S.	LD	504	66.2
Huntingfield J.	Con	257	33.8
Turnout		43.0	32.5

Coton (1206)			
		vote	share
Hughes J. Ms.*	Con	380	68.8
Lowe J.	Lab	172	31.2
Turnout		46.4	37.7

Duxford (1442)			
		vote	share
Smith R.*	Con	326	68.9
Evans P.	Lab	147	31.1
Turnout		32.8	37.8

Elsworth (1621)			
		vote	share
Ellwood M.	Con	389	56.5
McGregor J.*	Ind	299	43.5
Turnout		42.8	13.1

Fowlmere & Foxton (1792)			
		vote	share
Roberts D. Ms.*	Ind	581	72.4
Rogers C.	Lab	221	27.6
Turnout		45.3	44.9

Hardwick (2840)			
		vote	share
Stewart J.*	LD	708	81.8
Gardiner G.	Con	158	18.2
Turnout		30.6	63.5

Harston (1655)			
		vote	share
Heap J.	LD	423	61.8
Powell W.	Con	205	30.0
Hornby R.	Lab	56	8.2
Turnout		41.4	31.9

Haslingfield (1485)			
		vote	share
Heazell E. Ms.*	LD	564	78.4
Stevens J.	Con	155	21.6
Turnout		48.5	56.9

Histon & Impington (6256)			
		vote	share
Muncey J. Ms.	Con	881	46.5
Mills J.	Lab	634	33.5
Thomas J.	LD	378	20.0
Turnout		30.3	13.0

Ickleton (1428)			
		vote	share
Driver R. Ms.*	Ind	337	49.6
Brignall S. Ms.	LD	262	38.5
Wells R. Ms.	Lab	81	11.9
Turnout		47.7	11.0

Meldreth (1625)			
		vote	share
Course M. Ms.*	Ind	403	74.9
Saggers S.	Green	135	25.1
Turnout		33.5	49.8

Milton (3134)			
		vote	share
Summerfield R.*	Ind	0	0.0
Turnout		0.0	0.0

Orwell (1805)			
		vote	share
Bryant R.	Ind	532	53.1
Taylor J.	Con	360	36.0
Percy J. Ms.	Lab	109	10.9
Turnout		55.6	17.2

Over (2095)			
		vote	share
Monks E.*	Con	0	0.0
Turnout		0.0	0.0

Papworth (1523)			
		vote	share
Howell M.	Ind	334	62.5
Wilson L.	Con	200	37.5
Turnout		35.2	25.1

Sawston (5577)			
		vote	share
Ziaian-Gillan S.*	Lab	730	56.5
Smith J. Ms.	Con	561	43.5
Turnout		23.2	13.1

Swavesey (1716)			
		vote	share
Shepperson J.*	Con	0	0.0
Turnout		0.0	0.0

Teversham (2735)			
		vote	share
Kime S.*	Lab	888	75.3
Sutherland L. Ms.	Con	291	24.7
Turnout		43.3	50.6

South Cambridgeshire - 2000

Arrington (1113)			
		vote	share
Wilson L.	Con	379	54.9
Hansford J.*	LD	268	38.8
McRobie H. Ms.	Green	22	3.2
Percy J. Ms.	Lab	21	3.0
Turnout		62.0	16.1

Bar Hill (4363)			
		vote	share
Nunn P.	Con	885	58.1
Ford D.	LD	639	41.9
Turnout		35.0	16.1

Bassingbourn (3020)			
		vote	share
Gravatt C.	Con	531	47.4
Farrant R.	Lab	352	31.4
Saggers S.	Green	237	21.2
Turnout		37.0	16.0

Cottenham (4335)			
		vote	share
Collinson R.*	Lab	874	62.6
Walker P.	Con	403	28.8
Bainbridge S. Ms.	LD	87	6.2
Barber M. Ms.	Green	33	2.4
Turnout		32.0	33.7

Fulbourn (3623)			
		vote	share
Scarr N.*	UK Ind	583	53.4
Mills R.	Lab	391	35.8
Renaut C. Ms.	LD	118	10.8
Turnout		30.0	17.6

Girton (2938)			
		vote	share
Bullman E.*	Con	675	58.9
Hiley C.	Lab	471	41.1
Turnout		39.0	17.8

Great Shelford (3278)			
		vote	share
Sutherland L. Ms.	Con	694	63.1
Evans P.	Lab	406	36.9
Turnout		34.0	26.2

Histon & Impington (6358)			
		vote	share
Davies N.	Con	1,001	46.7
Gooden P.*	Lab	807	37.7
Chatfield J.	LD	334	15.6
Turnout		34.0	9.1

Linton (3525)			
		vote	share
Smith G. Ms.*	LD	746	64.6
Alper S.	Con	309	26.8
Holloway P.	Lab	99	8.6
Turnout		33.0	37.9

Little Shelford (1188)			
		vote	share
Lockwood J. Ms.	LD	319	58.0
Leigh J.	Con	187	34.0
Briggs A. Ms.	Lab	44	8.0
Turnout		46.0	24.0

Longstanton (1081)			
		vote	share
Stroude P.*	Con	182	44.5
Harradine D.	Ind	179	43.8
Durrant P.	Lab	48	11.7
Turnout		38.0	0.7

Melbourn (3473)			
		vote	share
Trueman V. Ms.*	LD	565	50.2
Bridger S. Ms.	Con	476	42.3
Smith S. Ms.	Lab	84	7.5
Turnout		32.0	7.9

Sawston (5646)			
		vote	share
Matthews R.	Con	615	51.3
Roberts D.	Lab	363	30.3
Charlesworth D.	LD	222	18.5
Turnout		21.0	21.0

Stapleford (1404)			
		vote	share
Elsbury G.*	LD	406	70.9
Gardiner G.	Con	167	29.1
Turnout		41.0	41.7

The Mordens (1804)			
		vote	share
Murfitt R.*	Ind	691	95.2
Barrett D.	Lab	35	4.8
Turnout		41.0	90.4

The Wilbrahams (1199)			
		vote	share
Barker C.*	Con	391	74.2
Regan D.	Lab	136	25.8
Turnout		44.0	48.4
Waterbeach (3941)			
		vote	share
Wyatt A.*	Ind	551	52.3
Hockney J.	Con	369	35.0
Henry S. Ms.	Lab	133	12.6
Turnout		27.0	17.3
Whittlesford (1821)			
		vote	share
Quinlan J.*	LD	470	60.3
Chapple M. Ms.	Con	310	39.7
Turnout		43.0	20.5

South Cambridgeshire - 2002

Abington (1531)			
		vote	share
Orme J.	LD	427	55.0
Todd R.	Con	298	38.4
Hadley I. Ms.	Lab	52	6.7
Turnout		51.0	16.6
Balsham (2074)			
		vote	share
Barrett R.*	Con	550	71.0
Smith M.	Green	225	29.0
Turnout		38.0	41.9
Bar Hill (4337)			
		vote	share
Flanagan T.*	LD	920	58.4
Waters B. Ms.	Con	656	41.6
Turnout		37.0	16.8
Barrington & Shepreth (1385)			
		vote	share
Porter D.	Con	334	70.3
Burlingham-Bohr A.	Green	141	29.7
Turnout		35.0	40.6
Barton (1098)			
		vote	share
Page R. Ms.*	Ind	377	61.5
Percy J. Ms.	Con	163	26.6
Connolley W.	Green	73	11.9
Turnout		56.0	34.9
Bassingbourn (3090)			
		vote	share
Cathcart N.*	Lab	680	56.8
Rowland G.	Con	351	29.3
Saggers S.	Green	166	13.9
Turnout		39.0	27.5
Bourn (2412)			
		vote	share
Spink D. Ms.*	Con	615	75.0
McRobie H. Ms.	Green	205	25.0
Turnout		34.0	50.0
Cottenham (4725)			
		vote	share
Nicholas J.	Lab	625	38.7
Wotherspoon T.*	Con	623	38.6
Doherty L. Ms.	LD	304	18.8
Orme C.	Green	64	4.0
Turnout		34.0	0.1

Fulbourn (3700)			
		vote	share
Regan D.	Lab	417	35.1
Fletcher R.*	Ind	404	34.0
Turner R.	Con	214	18.0
Campbell M.	LD	110	9.3
Lawson M.	Green	44	3.7
Turnout		32.0	1.1
Gamlingay (2733)			
		vote	share
Kindersley S.	LD	868	86.0
Stanton P. Ms.	Con	141	14.0
Turnout		37.0	72.1
Girton (2983)			
		vote	share
Healey J. Ms.*	Con	696	59.1
Wilson M.	Lab	350	29.7
Lachlan-Cope T.	Green	131	11.1
Turnout		40.0	29.4
Great Shelford (3281)			
		vote	share
Nightingale C.	Con	760	53.6
Kember H. Ms.	LD	585	41.3
Lawson M. Ms.	Green	72	5.1
Turnout		43.0	12.4
Histon & Impington (6383)			
		vote	share
Chatfield J.	LD	897	39.0
Taylor M.	Con	718	31.2
Teague J. Ms.*	Lab	612	26.6
Snaith S. Ms.	Green	73	3.2
Turnout		36.0	7.8
Linton (3537)			
		vote	share
Batchelor J.*	LD	771	64.7
Stern J. Ms.	Con	268	22.5
Holloway P.	Lab	115	9.7
Orme S. Ms.	Green	37	3.1
Turnout		34.0	42.2
Melbourn (3465)			
		vote	share
Wherrell D.*	LD	671	53.7
Pritchard R.	Con	521	41.7
Radley P. Ms.	Green	58	4.6
Turnout		36.0	12.0
Sawston (5574)			
		vote	share
Bard D.*	Con	892	59.4
Briggs A. Ms.	Lab	609	40.6
Turnout		27.0	18.9
Waterbeach (3924)			
		vote	share
Saberton W.*	Ind	667	56.1
Hockney J.	Con	367	30.9
Lachlan-Cope M. Ms.	Green	155	13.0
Turnout		30.0	25.2
Willingham (2669)			
		vote	share
Manning L.*	Ind	384	56.4
Heinrich J. Ms.	LD	193	28.3
Barber M. Ms.	Green	104	15.3
Turnout		26.0	28.0

South Cambridgeshire - 2003

Castle Camps (1505)			
		vote	share
Agnew S.*	LD	447	68.6
Brown C.	Con	205	31.4
Turnout		43.7	37.1
Comberton (1729)			
		vote	share
Harangozo S.*	LD	427	60.1
Huntingfield J.	Con	212	29.8
Orme S. Ms.	Green	72	10.1
Turnout		41.2	30.2
Coton (1247)			
		vote	share
Hughes J. Ms.*	Con	359	59.8
Mitson L. Ms.	LD	150	25.0
Connolley W.	Green	91	15.2
Turnout		48.7	34.8
Duxford (1457)			
		vote	share
Smith R. Ms.*	Con	0	0.0
Turnout		0.0	0.0
Elsworth (1642)			
		vote	share
Waters B. Ms.	Con	0	0.0
Turnout		0.0	0.0
Fowlmere & Foxton (1880)			
		vote	share
Roberts D. Ms.*	Ind	621	65.9
Stanford P.	LD	304	32.3
Orme C.	Green	17	1.8
Turnout		50.4	33.7
Hardwick (3247)			
		vote	share
Stewart J. Ms.*	LD	660	64.0
Taylor M.	Con	266	25.8
McRobie H. Ms.	Green	106	10.3
Turnout		31.8	38.2
Harston (1641)			
		vote	share
Heap J.*	LD	415	57.4
Langles A.	Con	281	38.9
Burlingham-Bohr A.	Green	27	3.7
Turnout		44.2	18.5
Haslingfield (1435)			
		vote	share
Heazell E. Ms.*	LD	470	63.9
Poulter R.	Con	230	31.3
Edmondson S.	Green	35	4.8
Turnout		51.2	32.7
Histon & Impington (6424)			
		vote	share
Muncey J. Ms.*	Con	837	40.5
Leeke L.	LD	779	37.7
Teague J. Ms.	Lab	367	17.8
Lachlan-Cope M. Ms.	Green	82	4.0
Turnout		32.2	2.8
Ickleton (1457)			
		vote	share
Driver R.*	Con	0	0.0
Turnout		0.0	0.0

Meldreth (1651)			
		vote	share
Course M. Ms.*	Ind	416	79.4
Saggers S.	Green	108	20.6
Turnout		32.2	58.8
Milton (3229)			
		vote	share
Summerfield R.*	Ind	640	84.5
Lachlan-Cope T.	Green	117	15.5
Turnout		23.7	69.1
Orwell (1828)			
		vote	share
Bryant R.*	Ind	473	66.3
Percy J. Ms.	Con	193	27.1
Nicholls S. Ms.	Green	47	6.6
Turnout		39.2	39.3
Over (2155)			
		vote	share
Monks E.*	Con	386	58.2
Abbott S. Ms.	LD	228	34.4
Barber M. Ms.	Green	49	7.4
Turnout		30.8	23.8
Papworth (1834)			
		vote	share
Howell M.*	Ind	0	0.0
Turnout		0.0	0.0
Sawston (5541)			
		vote	share
Hatton S. Ms.	Ind	482	36.0
Smith J. Ms.	Con	458	34.2
Ziaian-Gillan S.*	Ind	398	29.7
Turnout		24.6	1.8
Swavesey (1926)			
		vote	share
Shepperson J.*	Con	0	0.0
Turnout		0.0	0.0
Teversham (1956)			
		vote	share
Turner R.	Con	310	41.0
Briggs A. Ms.	Lab	299	39.6
Lynn T.	LD	95	12.6
Lawson M.	Green	52	6.9
Turnout		38.8	1.5

South Cambridgeshire - 2004

Balsham (3543)²			
		vote	share
Barrett R.*	Con	1,034	51.6
Agnew S.*	LD	971	48.4
Ford V. Ms.	Con	863	-
McCall B. Ms.	LD	847	-
Turnout		56.9	3.1
Bar Hill (3935)²			
		vote	share
Hall R.	Con	738	40.9
Waters B. Ms.*	Con	706	-
Flanagan T.*	LD	697	38.7
Pennick N.	LD	392	-
Shepherd J.	Lab	203	11.3
Margetts A.	Green	165	9.2
Turnout		42.8	2.3

Barton (1812)			
		vote	share
Page R.	Ind	482	45.8
Hughes J. Ms.*	Con	309	29.4
Mitson L. Ms.	LD	192	18.3
Connolley W.	Green	69	6.6
Turnout		57.1	16.4
Bassingbourn (3557)²			
		vote	share
Cathcart N.*	Lab	831	42.2
McCraith D.	Con	614	31.2
Rees H. Ms.	Con	575	-
Saggers S.	Green	523	26.6
Turnout		44.2	11.0
Bourn (3282)³			
		vote	share
Spink D. Ms.*	Con	872	46.4
Pateman E.	Con	710	-
Morgan D.	Con	697	-
Jocelyn M.	LD	544	29.0
McEwan-Cox D.	LD	493	-
McPhie C.	LD	391	-
Hurn M.	Lab	287	15.3
Fall H.	Ind	176	9.4
Turnout		46.2	17.5
Caldecote (1592)			
		vote	share
Martlew R.	LD	398	56.1
Baldwin D.	Con	312	43.9
Turnout		44.3	12.1
Comberton (1712)			
		vote	share
Harangozo S.*	LD	389	45.7
Huntingfield J.	Con	350	41.1
Haygarth E.	Lab	112	13.2
Turnout		49.8	4.6
Cottenham (5911)³			
		vote	share
Edwards S.	Ind	958	36.7
Wotherspoon T.	Con	932	35.7
Dixon J. Ms.	Ind	879	-
Bolitho N.	Con	843	-
Stewart M. Ms.	Ind	805	-
Bradney M.	Con	757	-
Bainbridge S. Ms.	LD	718	27.5
Harrison D.	LD	584	-
Charlesworth D.	LD	535	-
Turnout		43.0	1.0
Duxford (2010)			
		vote	share
Smith R.	Con	505	51.1
Williams J.	LD	483	48.9
Turnout		49.8	2.2
Fowlmere & Foxton (1880)			
		vote	share
Roberts D. Ms.*	Ind	0	0.0
Turnout		0.0	0.0
Fulbourn (3546)²			
		vote	share
Scarr N.*	Ind	652	40.5
Doggett S. Ms.	Ind	564	-
Williams J.	LD	453	28.2
Drage M. Ms.	Con	331	20.6
Campbell M.	LD	316	-
Taylor M.	Con	245	-
Lawson M. Ms.	Green	172	10.7
Turnout		40.7	12.4

Gamlingay (3773)²			
		vote	share
Kindersley S.*	LD	1,152	70.0
Elsby A. Ms.*	LD	940	-
Wilson L.*	Con	494	30.0
Reynolds J.	Con	430	-
Turnout		44.7	40.0
Girton (2996)²			
		vote	share
Bullman E.*	Con	683	38.7
Healey J. Ms.*	Con	674	-
Wheelwright A.	LD	592	33.5
Riley T.	Green	491	27.8
Turnout		46.5	5.2
Hardwick (1884)			
		vote	share
Stewart J.	LD	439	57.3
Mantle P.	Con	280	36.6
Burlingham-Bohr A.	Green	47	6.1
Turnout		40.3	20.8
Harston & Hauxton (1856)			
		vote	share
Heap J.*	LD	420	45.9
Langley A.	Con	343	37.4
Garfit J. Ms.	Green	102	11.1
Ruffles T.	Lab	51	5.6
Turnout		49.2	8.4
Haslingfield & The Eversdens (2033)			
		vote	share
Heazell E. Ms.*	LD	657	57.3
Poulter R.	Con	357	31.1
Edmonson S.	Green	133	11.6
Turnout		56.1	26.2
Histon & Impington (6375)³			
		vote	share
Mason M.	Ind	1,213	29.2
Chatfield J.*	LD	1,155	27.8
Muncey J. Ms.*	Con	861	20.7
Davies N.*	Con	824	-
Jones G. Ms.	LD	772	-
Hoppett J.	Con	650	-
Thomas J.	LD	627	-
Gooden P.	Lab	603	14.5
Teague J. Ms.	Ind	354	-
Claessen M.	Green	329	7.9
Turnout		45.1	1.4
Linton (3599)²			
		vote	share
Batchelor J.*	LD	839	57.7
Smith G. Ms.*	LD	794	-
Hase P.	Con	441	30.3
Brown C.	Con	441	-
Gale M.	Lab	175	12.0
Turnout		41.6	27.4
Longstanton (1495)			
		vote	share
Riley A.	Ind	471	67.3
Hudson P.	Con	146	20.9
Abbott S. Ms.	LD	83	11.9
Turnout		46.0	46.4
Melbourn (4176)²			
		vote	share
Trueman V. Ms.*	LD	875	45.5
Wherrell D.*	LD	872	-
Davey R.	Con	778	40.5
Platts A.	Con	615	-
Nichols S. Ms.	Green	268	14.0
Turnout		42.8	5.0

Meldreth (1847)			
		vote	share
De Ven S. Ms.	LD	505	53.0
Porter D.*	Con	386	40.5
Radley P. Ms.	Green	61	6.4
Turnout		51.8	12.5

Milton (3143)²			
		vote	share
Smith H. Ms.	LD	684	36.9
Summerfield R.*	Ind	678	36.5
Covell G. Ms.	Con	318	17.1
Smith C. Ms.	Con	246	-
Haylock A.	Lab	176	9.5
Turnout		38.6	0.3

Orwell & Barrington (1792)			
		vote	share
Bryant R.*	Ind	606	67.6
Percy J. Ms.	Con	290	32.4
Turnout		50.6	35.3

Papworth & Elsworth (3245)²			
		vote	share
Howell M.*	Ind	827	46.6
Wright N.	Con	531	29.9
Smith M. Ms.	Con	513	-
Hansford J.	LD	417	23.5
Turnout		45.1	16.7

Sawston (5529)³			
		vote	share
Hatton S. Ms.*	Ind	913	30.9
Bard D.*	Con	900	30.4
Zaian-Gillan S.	Lab	613	20.7
Matthews R.*	Con	588	-
Smith J. Ms.	Con	530	-
Ridgway J.	LD	530	17.9
Turnout		34.0	0.4

Swavesey (1915)			
		vote	share
Shepperson J.*	Con	444	56.4
Falla J.	LD	343	43.6
Turnout		41.4	12.8

Teversham (1957)			
		vote	share
Hunt C. Ms.	Con	251	35.5
Regan D.*	Lab	224	31.7
Amrani F. Ms.	LD	180	25.5
Lawson M.	Green	52	7.4
Turnout		35.5	3.8

The Abingtons (1741)			
		vote	share
Orme J.*	LD	605	63.6
Driver R.*	Con	216	22.7
Gutteridge M.	Ind	131	13.8
Turnout		54.4	40.9

The Mordens (1804)			
		vote	share
Murfit C. Ms.	Ind	785	78.0
Morris S.	Green	221	22.0
Turnout		55.8	56.1

The Shelfords & Stapleford (5528)³			
		vote	share
Nightingale C.*	Con	1,495	41.5
Kember H. Ms.	LD	1,334	37.0
Hurrell H.	Con	1,261	-
Lamble J.	Con	1,150	-
Moy A. Ms.	Lab	774	21.5
Turnout		49.2	4.5

The Wilbrahams (1650)			
		vote	share
Turner R.*	Con	558	61.0
Lynn T.	LD	357	39.0
Turnout		46.0	22.0

Waterbeach (3889)²			
		vote	share
Hockney J.	Con	712	40.3
Williamson J. Ms.	LD	597	33.8
Johnson P.	Con	559	-
Leeke L. Ms.	LD	480	-
Grant C. Ms.	Ind	459	26.0
Gambell R.	Ind	392	-
Turnout		44.0	6.5

Whittlesford (1934)			
		vote	share
Quinlan J.*	LD	592	64.0
Williams A.	Con	333	36.0
Turnout		48.7	28.0

Willingham & Over (4875)³			
		vote	share
Manning R.	Con	929	45.7
Burling B.	Con	841	-
Corney P. Ms.	Con	804	-
Mead R. Ms.	LD	613	30.2
Thomas C.	LD	591	-
Gelling L.	LD	500	-
Barber M. Ms.	Green	489	24.1
Turnout		38.7	15.6

South Cambridgeshire - 2006

Balsham (3530)			
		vote	share
Ford V. Ms.	Con	1,060	51.2
Agnew S.*	LD	1,011	48.8
Turnout		58.8	2.4

Bar Hill (3818)			
		vote	share
Waters B. Ms.*	Con	932	56.5
Flanagan T.	LD	537	32.6
Shepherd J.	Lab	94	5.7
Sweeney S.	Respect	86	5.2
Turnout		43.3	24.0

Bassingbourn (3427)			
		vote	share
McCraith D.*	Con	751	56.0
Saggers S.	Green	319	23.8
Milton A.	LD	272	20.3
Turnout		39.2	32.2

Bourn (4381)			
		vote	share
Morgan D.*	Con	737	46.1
Hansford J.	LD	417	26.1
Hudson C.	Ind	300	18.8
Hurn M.	Lab	145	9.1
Turnout		36.7	20.0

Caldecote (1745)			
		vote	share
Martlew R.*	LD	423	52.7
Peck A.	Con	347	43.2
Haugh H. Ms.	Lab	33	4.1
Turnout		46.1	9.5

Cottenham (5923)			
		vote	share
Bolitho N.	Con	1,207	59.8
Leeke L. Ms.	LD	811	40.2
Turnout		34.4	19.6

Fulbourn (3416)			
		vote	share
Doggett S. Ms.*	Ind	599	44.7
Williams J.	LD	423	31.5
Farmer A. Ms.	Con	319	23.8
Turnout		39.7	13.1

Gamlingay (3779)			
		vote	share
Elsby A. Ms.*	LD	787	54.9
Taylor M.	Con	529	36.9
Everson G. Ms.	Lab	117	8.2
Turnout		38.1	18.0

Girton (3135)			
		vote	share
Bygott T.	Con	685	48.1
Fane P.	LD	439	30.9
Riley T.	Green	178	12.5
Idowu M.	Lab	121	8.5
Turnout		45.4	17.3

Histon & Impington (6208)			
		vote	share
Davies N.	Ind	861	34.7
Muncey M. Ms.*	Con	816	32.9
Lynn T.	LD	614	24.7
Claessen M.	Green	191	7.7
Turnout		40.1	1.8

Linton (3560)			
		vote	share
Bear P. Ms.	LD	947	65.5
Altham R.	Con	499	34.5
Turnout		41.0	31.0

Melbourn (4092)			
		vote	share
Guest J. Ms.	Con	1,077	56.7
Wherrell D.*	LD	574	30.2
Nichols S. Ms.	Green	126	6.6
Kernaghan M.	Lab	122	6.4
Turnout		46.6	26.5

Meldreth (1794)			
		vote	share
Van De Ven S. Ms.*	LD	546	63.9
Wilson L.	Con	261	30.5
Radley P. Ms.	Green	48	5.6
Turnout		48.0	33.3

Milton (3006)			
		vote	share
Summerfield R.*	LD	686	52.1
Covell G. Ms.	Con	575	43.7
Franklin T.	MRLP	56	4.3
Turnout		44.2	8.4

Sawston (5350)			
		vote	share
Matthews R.	Con	862	49.8
Carder N.	Lab	590	34.1
Garfit J. Ms.	Green	278	16.1
Turnout		32.6	15.7

Swavesey (1957)			
		vote	share
Ellington S. Ms.	Con	0	0.0
Turnout		0.0	0.0

The Shelfords & Stapleford (5497)			
		vote	share
Berent A.	LD	1,248	46.4
King S.	Con	1,244	46.2
Nettleton M.	Lab	198	7.4
Turnout		49.1	0.1

Waterbeach (3919)			
		vote	share
Johnson P.	Con	943	56.2
Williamson J. Ms.*	LD	735	43.8
Turnout		43.2	12.4

Willingham & Over (4949)			
		vote	share
Corney P. Ms.*	Con	959	60.3
Gelling L.	LD	631	39.7
Turnout		32.4	20.6

South Cambridgeshire - 2007

Balsham (3563)

		vote	share
Barrett R.*	Con	1,142	59.9
Jarvis P. Ms.	LD	692	36.3
Amos R.	Lab	72	3.8
	Turnout	54.1	23.6

Bar Hill (3864)

		vote	share
Hall R.*	Con	871	60.3
Abbott S. Ms.	LD	220	15.2
Davies H. Ms.	UKIP	184	12.7
Shepherd J.	Lab	169	11.7
	Turnout	37.5	45.1

Barton (1842)

		vote	share
Burkitt F.	Con	446	50.4
Scott K.	Ind	309	34.9
Gomori- Woodcock A. Ms.	Green	76	8.6
Barrett A. Ms.	Lab	54	6.1
	Turnout	48.2	15.5

Bourn (4883)

		vote	share
Morgan L. Ms.	Con	676	44.1
Hume R.	Ind	642	41.9
Hurn M.	Lab	215	14.0
	Turnout	31.6	2.2

Comberton (1753)

		vote	share
Harangozo S.*	LD	438	48.2
Griffiths H.	Con	401	44.2
Durrant P.	Lab	69	7.6
	Turnout	52.0	4.1

Cottenham (6027)

		vote	share
Wotherspoon T.*	Con	1,163	56.9
Bainbridge S. Ms.	LD	678	33.2
Wilson M.	Lab	202	9.9
	Turnout	34.0	23.7

Duxford (2031)

		vote	share
Williams J.*	LD	525	54.9
Driver R.	Con	391	40.9
Nobis Y. Ms.	Lab	40	4.2
	Turnout	47.2	14.0

Fowlmere & Foxton (1888)

		vote	share
Roberts D. Ms.*	Ind	489	45.2
Cartwright C. Ms.	LD	338	31.2
Poulter R.	Con	230	21.2
Everson G. Ms.	Lab	26	2.4
	Turnout	57.5	13.9

Fulbourn (3411)

		vote	share
Scarr N.*	Ind	528	39.6
Williams J.	LD	391	29.4
Farmer A. Ms.	Con	350	26.3
Leonard O.	Lab	63	4.7
	Turnout	39.4	10.3

Hardwick (1935)

		vote	share
Stewart J.*	LD	504	73.7
Smith M. Ms.	Con	151	22.1
Haugh H. Ms.	Lab	29	4.2
	Turnout	35.5	51.6

Histon & Impington (6192)

		vote	share
Chatfield J.*	LD	1,309	52.2
Scott P.	Con	1,008	40.2
Stern R.	Lab	191	7.6
	Turnout	40.7	12.0

Milton (3033)

		vote	share
Smith H. Ms.*	LD	714	51.4
Covell G. Ms.	Con	584	42.0
Ross V. Ms.	Lab	91	6.6
	Turnout	45.8	9.4

Orwell & Barrington (1815)

		vote	share
Bird D.	Con	532	83.3
Ball S. Ms.	Lab	107	16.7
	Turnout	35.8	66.5

Papworth & Elsworth (3289)

		vote	share
Wright N.*	Con	885	74.2
Patrick A. Ms.	Lab	308	25.8
	Turnout	36.6	48.4

Sawston (5329)

		vote	share
Bard D.*	Con	995	67.5
Wallace I.	LD	256	17.4
Idowu M.	Lab	224	15.2
	Turnout	27.9	50.1

Teversham (1858)

		vote	share
Hunt C. Ms.*	Con	436	64.3
Amrani F. Ms.	LD	242	35.7
	Turnout	36.8	28.6

The Abingtons (1748)

		vote	share
Orgee A.*	Con	680	81.1
Willingham D.	LD	158	18.9
	Turnout	48.5	62.3

The Shelfords & Stapleford (5492)

		vote	share
Dipple J. Ms.	Con	1,457	54.2
Kember H. Ms.*	LD	1,040	38.7
Nettleton M.	Lab	189	7.0
	Turnout	49.1	15.5

Willingham & Over (4969)

		vote	share
Burling B.*	Con	817	47.1
Daniels P.	Ind	471	27.1
Gelling L.	LD	365	21.0
Andrews N. Ms.	Lab	83	4.8
	Turnout	35.1	19.9

South Cambridgeshire - 2008

Bassingbourn (3521)

		vote	share
Cathcart N.*	Lab	576	39.5
Dent A.	Con	447	30.7
Robinson P.	Ind	247	16.9
Saggers S.	Green	188	12.9
	Turnout	41.6	8.8

Bourn (5415)

		vote	share
Loynes M.	Con	922	49.4
Hume R.	LD	778	41.6
Hurn M.	Lab	168	9.0
	Turnout	34.6	7.7

Cottenham (6032)

		vote	share
Edwards S.*	Con	1,256	57.6
Barnett M.	LD	583	26.8
Macbeth- Hornett H. Ms.	Green	173	7.9
Shepherd J.	Lab	167	7.7
	Turnout	36.2	30.9

Gamlingay (3873)²

		vote	share
Kindersley S.*	LD	1,030	64.9
Smith B. Ms.	LD	897	-
Waldron C. Ms.	Con	558	35.1
Wilson L.	Con	507	-
	Turnout	41.0	29.7

Girton (3237)

		vote	share
De Lacey D.	Ind	715	47.3
Taylor M.	Con	564	37.3
Jones C.	Lab	104	6.9
Riley T.	Green	99	6.6
Davies H. Ms.	UKIP	29	1.9
	Turnout	46.7	10.0

Harston & Hauxton (1826)

		vote	share
Lockwood J. Ms.	LD	501	59.5
Turner R.*	Con	282	33.5
Garfit J. Ms.	Green	59	7.0
	Turnout	46.2	26.0

Haslingfield & The Eversdens (2067)

		vote	share
Heazell L. Ms.*	LD	602	48.6
Page R.*	Ind	471	38.0
Smith M. Ms.	Con	165	13.3
	Turnout	60.0	10.6

Histon & Impington (6379)

		vote	share
Mason M.*	Ind	957	35.6
Kelly V. Ms.	LD	900	33.4
Scott P.	Con	632	23.5
Wilson C.	Lab	129	4.8
Quinn W.	Green	73	2.7
	Turnout	42.3	2.1

Linton (3578)

		vote	share
Batchelor J.*	LD	939	58.3
Hickford R.	Con	672	41.7
	Turnout	45.3	16.6

Longstanton (1841)

		vote	share
Riley A.*	Ind	435	55.0
Valentine R.	Con	356	45.0
	Turnout	43.2	10.0

Melbourn (4161)

		vote	share
Barrett V. Ms.	Con	1,053	55.5
Cartwright C. Ms.	LD	534	28.1
Trueman V. Ms.*	Ind	203	10.7
Jackson H.	Lab	107	5.6
	Turnout	45.7	27.4

Papworth & Elsworth (3332)

		vote	share
Howell M.*	Con	0	0.0
	Turnout	0.0	0.0

Sawston (5394)

		vote	share
Hatton S. Ms.*	Ind	747	51.3
Denham R.	Con	709	48.7
	Turnout	27.2	2.6

The Mordens (1834)				
		vote	share	
Murfitt C. Ms.*	Ind	547	63.1	
Poulter R.	Con	219	25.3	
Morris S.	Green	101	11.6	
Turnout		47.3	37.8	

The Shelfords & Stapleford (5489)				
		vote	share	
Nightingale C.*	Con	1,379	57.4	
Whitebread S. Ms.	LD	857	35.6	
Nettleton M.	Lab	168	7.0	
Turnout		44.0	21.7	

The Wilbrahams (2022)				
		vote	share	
Turner R.*	Con	639	70.9	
Amrani F. Ms.	LD	262	29.1	
Turnout		44.7	41.8	

Waterbeach (3923)				
		vote	share	
Hockney J.*	Con	1,148	60.3	
Wright A.	LD	700	36.7	
Blair J. Ms.	Lab	57	3.0	
Turnout		48.7	23.5	

Whittlesford (1992)				
		vote	share	
Topping P.	Con	403	39.5	
Kilpatrick M.	LD	334	32.8	
Quinlan J.*	Ind	282	27.7	
Turnout		51.3	6.8	

Willingham & Over (5049)				
		vote	share	
Manning R.*	Con	1,109	66.8	
Gelling L.	LD	445	26.8	
Crowther N.	Lab	107	6.4	
Turnout		33.0	40.0	

South Cambridgeshire - 2010

Balsham (3631)				
		vote	share	
Jarvis P. Ms.	LD	1,400	50.2	
Blant A.	Con	1,391	49.8	
Turnout		77.8	0.3	

Bar Hill (3934)				
		vote	share	
Waters B. Ms.*	Con	1,453	52.0	
Gymer S. Ms.	LD	628	22.5	
Shepherd J.	Lab	337	12.1	
Doland J.	Ind	164	5.9	
Lawrence G.	UKIP	137	4.9	
McBride D.	Green	77	2.8	
Turnout		71.1	29.5	

Bassingbourn (3499)				
		vote	share	
McCraith D.*	Con	1,012	40.2	
Robinson P.	Ind	609	24.2	
Fane P.	LD	339	13.5	
Saggers S.	Green	326	12.9	
Falcini G. Ms.	Lab	232	9.2	
Turnout		72.3	16.0	

Bourn (6004)				
		vote	share	
Morgan D.*	Con	1,935	45.3	
Hansford J.	LD	1,670	39.1	
Khan M.	Lab	489	11.4	
Verrechia P.	UKIP	180	4.2	
Turnout		71.3	6.2	

Caldecote (1884)				
		vote	share	
Hawkins O.	LD	663	45.6	
Taylor M.	Con	611	42.0	
Preece J.	Green	94	6.5	
Crowther N.	Lab	87	6.0	
Turnout		77.6	3.6	

Cottenham (6029)				
		vote	share	
Harford L. Ms.	LD	1,915	43.5	
Bolitho N.*	Con	1,877	42.6	
Heaver E.	UKIP	308	7.0	
Macbeth-Hornett H. Ms.	Green	305	6.9	
Turnout		73.4	0.9	

Fulbourn (3416)				
		vote	share	
Williams J.	LD	800	33.6	
Doggett S. Ms.*	Ind	724	30.4	
Turner R.	Con	614	25.8	
Lawal G.	Lab	240	10.1	
Turnout		70.1	3.2	

Gamlingay (3865)				
		vote	share	
Smith B. Ms.	LD	1,241	43.9	
Dent A.	Con	1,130	40.0	
Zutphen C. Ms.	Ind	299	10.6	
Everson G. Ms.	Lab	158	5.6	
Turnout		73.6	3.9	

Girton (3388)				
		vote	share	
Bygott T.*	Con	1,067	41.4	
Bromwich B.	LD	994	38.6	
Jones C.	Lab	258	10.0	
Riley T.	Green	186	7.2	
Chapman A.	UKIP	73	2.8	
Turnout		76.4	2.8	

Histon & Impington (7093)				
		vote	share	
Stonham E.	LD	1,775	34.4	
Davies N.*	Ind	1,462	28.3	
Scott P.	Con	1,189	23.0	
Sweeney N. Ms.	Lab	561	10.9	
Fryer V. Ms.	UKIP	176	3.4	
Turnout		71.6	6.1	

Linton (3607)				
		vote	share	
Bear P. Ms.*	LD	1,353	50.0	
Hickford R.	Con	1,098	40.6	
Colley S.	Lab	173	6.4	
Skottowe T.	UKIP	82	3.0	
Turnout		75.2	9.4	

Melbourn (4291)				
		vote	share	
Hales G.	LD	1,476	45.1	
Jaffray C.	Con	1,343	41.0	
Patrick A. Ms.	Lab	231	7.1	
Wilkinson G.	UKIP	158	4.8	
Morris S.	Green	66	2.0	
Turnout		76.5	4.1	

Meldreth (1897)				
		vote	share	
Soond S.	LD	717	50.0	
Bullivant D.	Con	474	33.1	
Jackson H.	Lab	102	7.1	
Kendrick D.	UKIP	101	7.0	
Reynolds C.	Green	39	2.7	
Turnout		75.8	17.0	

Milton (3074)				
		vote	share	
Hersom M.	LD	1,274	58.4	
Covell G. Ms.	Con	908	41.6	
Turnout		72.3	16.8	

Sawston (5460)				
		vote	share	
Matthews R.*	Con	2,167	62.4	
Evans L.	Lab	1,304	37.6	
Turnout		65.8	24.9	

Swavesey (1909)				
		vote	share	
Ellington S. Ms.*	Con	784	56.2	
Biggs V. Ms.	LD	480	34.4	
Wilson M.	Lab	132	9.5	
Turnout		73.4	21.8	

The Shelfords & Stapleford (5573)				
		vote	share	
Shelton B.	Con	1,942	45.9	
Kilpatrick M.	LD	1,517	35.8	
Nettleton M.	Lab	444	10.5	
Whitebread L. Ms.	Green	329	7.8	
Turnout		76.2	10.0	

Waterbeach (3974)				
		vote	share	
Johnson P.*	Con	1,416	50.7	
Wright A.	LD	1,379	49.3	
Turnout		71.3	1.3	

Willingham & Over (5221)				
		vote	share	
Corney P. Ms.*	Con	1,778	48.0	
Twiss G.	LD	1,521	41.0	
Murray J. Ms.	Lab	407	11.0	
Turnout		71.7	6.9	

South Cambridgeshire - 2011

Balsham (3657)				
		vote	share	
Barrett R.*	Con	1,136	54.3	
Cook K. Ms.	LD	590	28.2	
Jacob A.	Lab	277	13.2	
Skottowe T.	UKIP	88	4.2	
Turnout		57.5	26.1	

Bar Hill (3910)				
		vote	share	
Hall R.*	Con	971	51.8	
Shepherd J.	Lab	372	19.8	
Fane P.	LD	289	15.4	
Davies-Green H. Ms.	UKIP	244	13.0	
Turnout		48.1	31.9	

Barton (1932)				
		vote	share	
Burkitt F.*	Con	774	73.5	
Tomlinson R.	Lab	279	26.5	
Turnout		55.2	47.0	

Bourn (6393)				
		vote	share	
Elcox A. Ms.	Con	1,106	42.1	
Hume R.	Ind	582	22.2	
Clayton G.	Lab	503	19.2	
Hansford J.	LD	433	16.5	
Turnout		41.3	20.0	

Comberton (1784)			
		vote	share
Harangozo S.*	LD	558	52.7
Neville T. Ms.	Con	397	37.5
Haugh H. Ms.	Lab	104	9.8
	Turnout	59.6	15.2
Cottenham (6064)			
		vote	share
Wotherspoon T.*	Con	1,453	48.1
Papworth A.	Lab	723	23.9
Leeks A.	LD	523	17.3
McBride D.	Green	185	6.1
Heaver M.	UKIP	139	4.6
	Turnout	49.1	24.1
Duxford (2111)			
		vote	share
Martin M.	Con	574	47.6
Delderfield C. Ms.	LD	522	43.3
Pounds D. Ms.	Lab	110	9.1
	Turnout	57.7	4.3
Fowlmere & Foxton (1907)			
		vote	share
Roberts D. Ms.*	Ind	714	60.8
Howard M.	Con	320	27.2
Reynolds C.	Green	86	7.3
Patrick A. Ms.	Lab	55	4.7
	Turnout	62.1	33.5
Fulbourn (3485)			
		vote	share
Scarr N.*	Ind	682	43.2
Turner R.	Con	445	28.2
Ruffles T.	Lab	291	18.4
Wallace I.	LD	161	10.2
	Turnout	45.8	15.0
Hardwick (2027)			
		vote	share
Stewart J.*	LD	583	56.4
Reynolds J.	Con	322	31.2
Crowther N.	Lab	128	12.4
	Turnout	51.4	25.3
Histon & Impington (7271)			
		vote	share
Chatfield J.*	LD	1,293	36.0
Davies N.	Ind	1,184	33.0
Mastin S.	Con	635	17.7
Lawal G.	Lab	378	10.5
Webster J.	UKIP	98	2.7
	Turnout	49.7	3.0
Milton (3127)			
		vote	share
Smith H. Ms.*	LD	807	54.3
Covell G. Ms.	Con	471	31.7
Mayer A. Ms.	Lab	209	14.1
	Turnout	48.2	22.6
Orwell & Barrington (1846)			
		vote	share
Ridgway Watt T.*	Con	534	56.9
Pinto A. Ms.	LD	303	32.3
Hailes S. Ms.	Lab	101	10.8
	Turnout	51.3	24.6
Papworth & Elsworth (3615)			
		vote	share
Wright N.*	Con	1,235	74.2
Sarris P.	Lab	429	25.8
	Turnout	46.9	48.4
Sawston (5451)			
		vote	share
Bard D.*	Con	1,397	64.6
Higgins M.	Lab	767	35.4
	Turnout	40.3	29.1

Teversham (1895)			
		vote	share
Hunt C. Ms.*	Con	446	53.8
Amrani F. Ms.	LD	207	25.0
Cornell D.	Lab	176	21.2
	Turnout	43.7	28.8
The Abingtons (1761)			
		vote	share
Orgee T.*	Con	782	82.0
Taylor G. Ms.	Lab	172	18.0
	Turnout	54.7	63.9
The Shelfords & Stapleford (5660)			
		vote	share
Whiteman-Downes D.	Con	1,503	49.1
Kilpatrick M.	LD	621	20.3
Nettleton M.	Lab	545	17.8
Whitebread L. Ms.	Green	390	12.7
	Turnout	54.5	28.8
Willingham & Over (5264)			
		vote	share
Burling B.*	Con	1,306	56.3
Monks B.	Lab	521	22.4
Twiss G.	LD	494	21.3
	Turnout	44.5	33.8
South Cambridgeshire - 2012			
Bassingbourn (3620)			
		vote	share
Cathcart N.*	Lab	743	58.0
Robinson P.	Con	371	29.0
Saggers S.	Green	132	10.3
Holmes M.	LD	34	2.7
	Turnout	35.4	29.1
Bourn (6768)			
		vote	share
Loynes M.*	Con	779	46.5
Clayton G.	Lab	666	39.7
Fane P.	LD	232	13.8
	Turnout	25.1	6.7
Cottenham (6129)			
		vote	share
Edwards S.*	Con	1,089	45.9
Papworth A.	Lab	891	37.6
Gymer R.	LD	239	10.1
Heaver M.	UKIP	151	6.4
	Turnout	38.9	8.4
Gamlingay (3831)			
		vote	share
Kindersley S.*	LD	667	58.5
Brewer H. Ms.	Con	346	30.3
Crowther N.	Lab	128	11.2
	Turnout	30.0	28.1
Girton (3416)			
		vote	share
De Lacey D.*	Ind	718	52.8
Simpson A.	Con	428	31.4
Moule T.	Lab	160	11.8
Pellew P. Ms.	LD	55	4.0
	Turnout	40.1	21.3
Harston & Hauxton (1898)			
		vote	share
Lockwood J. Ms.*	LD	415	53.1
Youens G. Ms.	Con	283	36.2
Taylor D.	Lab	83	10.6
	Turnout	41.3	16.9

Haslingfield & The Eversdens (2097)			
		vote	share
Page R.	Ind	516	43.8
Ridley R. Ms.	LD	514	43.7
Frearson T.	Con	95	8.1
Haugh H. Ms.	Lab	52	4.4
	Turnout	56.2	0.2
Histon & Impington (7483)			
		vote	share
Davies N.	Ind	1,287	46.5
Macaulay Y.	LD	568	20.5
Jones H.	Lab	473	17.1
Mastin S.	Con	438	15.8
	Turnout	37.2	26.0
Linton (3666)			
		vote	share
Hickford R.	Con	640	41.5
Batchelor J.*	LD	639	41.4
Purser T.	Lab	264	17.1
	Turnout	42.2	0.1
Longstanton (2021)			
		vote	share
Riley A.*	Con	484	62.8
Yarrow M.	Ind	190	24.6
Shepherd J. Ms.	Lab	62	8.0
Taylor J.	LD	35	4.5
	Turnout	38.6	38.1
Melbourn (4356)			
		vote	share
Barrett V. Ms.*	Con	786	55.6
Hunter M. Ms.	LD	320	22.6
Sarris P.	Lab	307	21.7
	Turnout	32.7	33.0
Papworth & Elsworth (3694)			
		vote	share
Howell M.*	Con	840	68.6
Shepherd J.	Lab	244	19.9
Baird J. Ms.	LD	140	11.4
	Turnout	33.4	48.7
Sawston (5531)			
		vote	share
Hatton S. Ms.*	Ind	535	37.1
Sales L. Ms.	Con	505	35.0
Higgins M.	Lab	335	23.2
Akinwale C. Ms.	LD	66	4.6
	Turnout	26.2	2.1
The Mordens (1913)			
		vote	share
Murfitt C. Ms.*	Ind	549	70.8
Bullivant D.	Con	142	18.3
Patrick A. Ms.	Lab	60	7.7
Thurston D.	LD	24	3.1
	Turnout	40.7	52.5
The Shelfords & Stapleford (5707)			
		vote	share
Nightingale C.*	Con	960	46.2
Nettleton M.	Lab	400	19.2
Powell B.	LD	363	17.5
Whitebread L. Ms.	Green	355	17.1
	Turnout	36.6	26.9
The Wilbrahams (2174)			
		vote	share
Turner R.*	Con	443	61.6
Ford J. Ms.	Lab	188	26.1
Wallace I.	LD	88	12.2
	Turnout	33.4	35.5
Waterbeach (4107)			
		vote	share
Hockney J.*	Con	919	56.7
Leeke M.	LD	512	31.6
Finley P.	Lab	191	11.8
	Turnout	39.4	25.1

Whittlesford (2094)

		vote	share
Topping P.*	Con	540	65.8
Delderfield C. Ms.	LD	162	19.7
Pounds D. Ms.	Lab	119	14.5
Turnout		39.4	46.0

Willingham & Over (5366)

		vote	share
Manning R.*	Con	921	59.5
Monks B.	Lab	438	28.3
Platt B.	LD	189	12.2
Turnout		29.1	31.2

