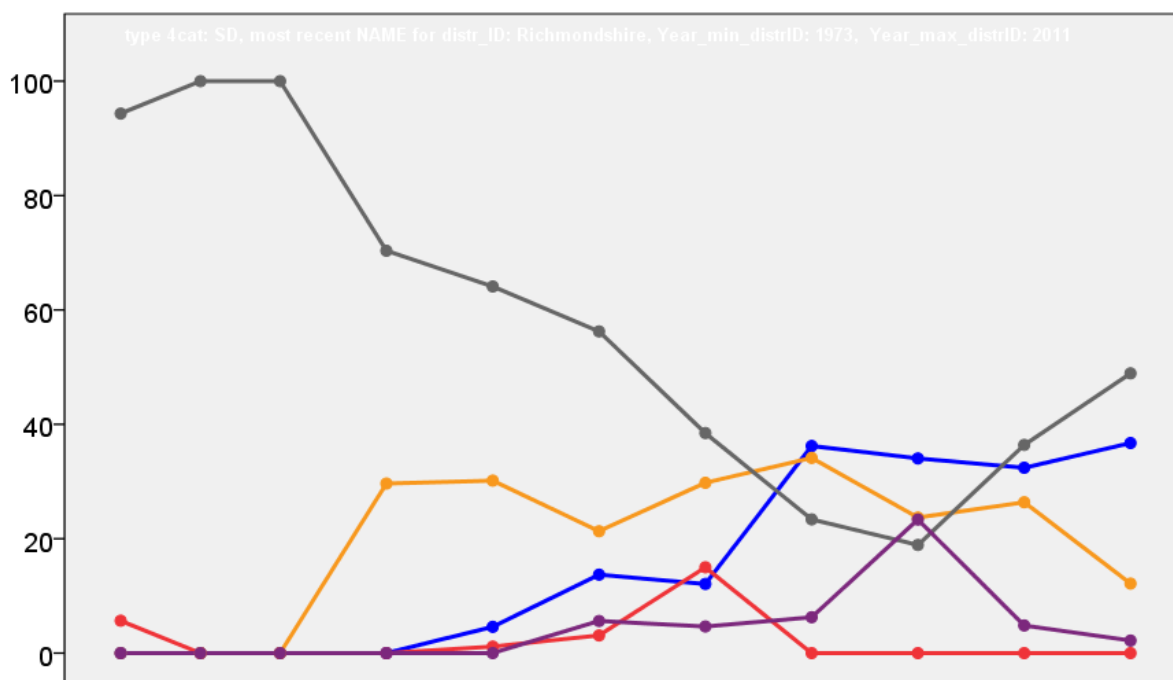


Richmondshire District Council Election Results 1973-2011



Colin Rallings and Michael Thrasher
The Elections Centre
Plymouth University

The information contained in this report has been obtained from a number of sources. Election results from the immediate post-reorganisation period were painstakingly collected by Alan Willis largely, although not exclusively, from local newspaper reports. From the mid-1980s onwards the results have been obtained from each local authority by the Elections Centre. The data are stored in a database designed by Lawrence Ware and maintained by Brian Cheal and others at Plymouth University. Despite our best efforts some information remains elusive whilst we accept that some errors are likely to remain. Notice of any mistakes should be sent to elections@plymouth.ac.uk. The results sequence can be kept up to date by purchasing copies of the annual Local Elections Handbook, details of which can be obtained by contacting the email address above.

Front cover: the graph shows the distribution of percentage vote shares over the period covered by the results. The lines reflect the colours traditionally used by the three main parties. The grey line is the share obtained by Independent candidates while the purple line groups together the vote shares for all other parties.

Rear cover: the top graph shows the percentage share of council seats for the main parties as well as those won by Independents and other parties. The lines take account of any by-election changes (but not those resulting from elected councillors switching party allegiance) as well as the transfers of seats during the main round of local election.

The lower graph shows for each main round of local elections the overall percentage turnout (solid line), the percentage of women candidates standing at (dotted line) and the percentage of women among those elected (hashed line).

Richmondshire - 1973

Askrigg (744)

		vote	share
Abraham J.	Ind	219	53.2
Hodgson C.	Ind	193	46.8
Turnout		55.4	6.3

Aysgarth (712)

		vote	share
Abraham A.	Ind	311	57.9
Drake E.	Ind	226	42.1
Turnout		75.4	15.8

Barton (1045)

		vote	share
Tarn H.	Ind	314	54.2
Flowers A.	Ind	265	45.8
Turnout		55.4	8.5

Bolton Manor (697)

		vote	share
Waite T.	Ind	0	0.0
Turnout		0.0	0.0

Catterick & Tunstall (1567)²

		vote	share
Pullen G.	Ind	308	100.0
Proom S. Ms.	Ind	300	-
Gudgin J.	Ind	243	-
Turnout		19.7	14.0

Colburn (2285)³

		vote	share
Nickling G.	Ind	457	70.3
Jeff L.	Ind	259	-
Mudd H.	Ind	207	-
Church J.	Lab	193	29.7
Turnout		28.4	40.6

Croft-On-Tees (525)

		vote	share
Leggett G.	Ind	224	74.4
Baker M.	Ind	77	25.6
Turnout		57.3	48.8

Grinton & Upper Swaledale (699)

		vote	share
Grinton J.	Ind	0	0.0
Turnout		0.0	0.0

Hawes & High Abbotside (986)

		vote	share
Metcalfe W.	Ind	242	54.9
Mason A. Ms.	Ind	199	45.1
Turnout		44.7	9.8

Hipswell (1581)²

		vote	share
Slack J. Ms.	Ind	0	0.0
Cherry B. Ms.	Ind	0	-
Turnout		0.0	0.0

Kirby Hill (799)

		vote	share
Watson C.	Ind	190	51.5
Ritzema K.	Ind	179	48.5
Turnout		46.2	3.0

Lower Dale (720)

		vote	share
Potts J.	Ind	0	0.0
Turnout		0.0	0.0

Lower Swaledale (400)

		vote	share
Jackson H.	Ind	121	52.8
Leech P.	Ind	108	47.2
Turnout		57.3	5.7

No. 1 (Richmond) (5477)⁷

		vote	share
Carr K. Ms.	Ind	1,517	80.3
May R.	Ind	1,401	-
Woodall F.	Ind	1,303	-
Eaton R.	Ind	1,132	-
Atkinson R.	Ind	1,102	-
Carr A. Ms.	Ind	887	-
Jamson F.	Ind	831	-
Todd J.	Ind	768	-
Faulkner F.	Ind	723	-
Batson P.	Ind	688	-
Bagley J.	Ind	597	-
Hendren J.	Ind	579	-
Wheatley T.	Ind	428	-
Bennett M.	Lab	373	19.7
Hall J.	Lab	318	-
Williams K.	Lab	262	-
Dalton M. Ms.	Lab	251	-
Turnout		34.5	60.5

No. 10 (Leyburn) (2016)²

		vote	share
Jones K.	Ind	497	100.0
Laughlin F.	Ind	453	-
Anderson-Webster V.	Ind	410	-
Hutchinson T.	Ind	282	-
Turnout		24.7	24.9

No. 16 (Scotton) (902)

		vote	share
Rothwell M. Ms.	Ind	0	0.0
Turnout		0.0	0.0

No. 7 (East Witton) (537)

		vote	share
Collins E.	Ind	0	0.0
Turnout		0.0	0.0

Reeth (901)

		vote	share
Weighill R.	Ind	294	56.4
Brown F.	Ind	227	43.6
Turnout		57.8	12.9

Scorton (641)

		vote	share
Sansom C.	Ind	179	45.5
Gibson J.	Ind	156	39.7
Tucker D.	Ind	58	14.8
Turnout		61.3	5.9

St. Agathas (909)

		vote	share
Forster N.	Ind	327	56.7
Nelson A. Ms.	Ind	177	30.7
York F.	Ind	73	12.7
Turnout		63.5	26.0

St. Michaels & St. Lukes (874)

		vote	share
Corps W.	Ind	0	0.0
Turnout		0.0	0.0

Stanwick (911)

		vote	share
Gill R.	Ind	273	55.7
Reynolds T.	Ind	217	44.3
Turnout		53.8	11.4

Swaleside (751)

		vote	share
Leggett R.	Ind	0	0.0
Turnout		0.0	0.0

Urevale (755)

		vote	share
Smith D.	Ind	130	33.5
Hughes R.	Ind	121	31.2
Scott-Priestley G.	Ind	93	24.0
Allinson F.	Ind	44	11.3
Turnout		51.4	2.3

Richmondshire - 1976

Askrigg (739)

		vote	share
Abraham J.	Ind	0	0.0
Turnout		0.0	0.0

Aysgarth (769)

		vote	share
Abraham A.	Ind	0	0.0
Turnout		0.0	0.0

Barton (1071)

		vote	share
Brown J.	Ind	0	0.0
Turnout		0.0	0.0

Bolton Manor (723)

		vote	share
Waite T.	Ind	0	0.0
Turnout		0.0	0.0

Catterick & Tunstall (1814)²

		vote	share
Pullan G.	Ind	281	100.0
Proom S. Ms.	Ind	252	-
Gudgin J.	Ind	228	-
Turnout		15.5	56.9

Colburn (2220)³

		vote	share
Nickling G.	Ind	0	-
Jeff L.	Ind	0	-
Mudd H.	Ind	0	0.0
Turnout		0.0	0.0

Croft-On-Tees (509)

		vote	share
Pease R. Ms.	Ind	233	64.2
Cameron E.	Ind	130	35.8
Turnout		71.3	28.4

Grinton & Upper Swaledale (711)

		vote	share
Alderson W.	Ind	0	0.0
Turnout		0.0	0.0

Hawes & High Abbotside (965)

		vote	share
Metcalfe W.	Ind	0	0.0
Turnout		0.0	0.0

Hipswell (1628)²

		vote	share
Slack J. Ms.	Ind	0	0.0
Cherry B. Ms.	Ind	0	-
Turnout		0.0	0.0

Kirby Hill (825)

		vote	share
Watson C.	Ind	231	68.8
Martel C.	Ind	105	31.3
Turnout		40.7	37.5

Lower Dale (710)

		vote	share
Potts J.	Ind	0	0.0
Turnout		0.0	0.0

Lower Swaledale (415)			
		vote	share
Jackson H.	Ind	0	0.0
Turnout		0.0	0.0
No. 1 (Richmond) (5497) ⁷			
		vote	share
May R.	Ind	1,765	100.0
Cross R.	Ind	1,756	-
Thompson B.	Ind	1,523	-
Woodall F.	Ind	1,518	-
Jameson F.	Ind	1,183	-
Carr K. Ms.	Ind	1,009	-
Faulkner F.	Ind	928	-
Hendren J.	Ind	910	-
Atkinson R.	Ind	678	-
Turnout		32.1	94.1
No. 10 (Leyburn) (2073) ²			
		vote	share
Jones K.	Ind	732	100.0
Laughlin F.	Ind	641	-
Amers F.	Ind	189	-
Turnout		35.3	85.7
No. 16 (Scotton) (943)			
		vote	share
Rothwell M. Ms.	Ind	0	0.0
Turnout		0.0	0.0
No. 7 (East Witton) (547)			
		vote	share
Collins E.	Ind	0	0.0
Turnout		0.0	0.0
Reeth (853)			
		vote	share
Weighill R.	Ind	326	69.8
Porter-Merry C.	Ind	141	30.2
Turnout		54.7	39.6
Scorton (599)			
		vote	share
Hughes T.	Ind	279	72.7
Sansom C.	Ind	105	27.3
Turnout		64.1	45.3
St. Agathas (875)			
		vote	share
Forster N.	Ind	0	0.0
Turnout		0.0	0.0
St. Michaels & St. Lukes (875)			
		vote	share
Corps W.	Ind	0	0.0
Turnout		0.0	0.0
Stanwick (882)			
		vote	share
Reeks F.	Ind	0	0.0
Turnout		0.0	0.0
Swaleside (842)			
		vote	share
Leggett R.	Ind	0	0.0
Turnout		0.0	0.0
Urevale (755)			
		vote	share
Woodrow J.	Ind	0	0.0
Turnout		0.0	0.0

Richmondshire - 1979

Askrigg (738)			
		vote	share
Abraham J.	Ind	306	55.2
Metcalfe S.	Ind	248	44.8
Turnout		75.1	10.5
Aysgarth (801)			
		vote	share
Abraham A.	Ind	0	0.0
Turnout		0.0	0.0
Barton (1074)			
		vote	share
Brown J.	Ind	0	0.0
Turnout		0.0	0.0
Bolton Manor (705)			
		vote	share
Waite C.	Ind	0	0.0
Turnout		0.0	0.0
Catterick & Tunstall (1767) ²			
		vote	share
Proom H.	Ind	751	100.0
Proom S. Ms.	Ind	588	-
Pullan G.	Ind	455	-
Gudgin J.	Ind	371	-
Turnout		70.2	67.0
Colburn (2207) ³			
		vote	share
Nickling G.	Ind	921	100.0
Mudd H.	Ind	539	-
Jeff L.	Ind	529	-
Stock P.	Ind	507	-
Church J.	Ind	340	-
Turnout		62.8	73.1
Croft-On-Tees (540)			
		vote	share
Pease R. Ms.	Ind	0	0.0
Turnout		0.0	0.0
Grinton & Upper Swaledale (710)			
		vote	share
Alderson W.	Ind	0	0.0
Turnout		0.0	0.0
Hawes & High Abbotside (993)			
		vote	share
Metcalfe W.	Ind	0	0.0
Turnout		0.0	0.0
Hipswell (779) ²			
		vote	share
Cherry B. Ms.	Ind	0	-
Slack J. Ms.	Ind	0	0.0
Turnout		0.0	0.0
Kirby Hill (914)			
		vote	share
Watson C.	Ind	0	0.0
Turnout		0.0	0.0
Leyburn (1601) ²			
		vote	share
Jones K.	Ind	0	-
Cowell B.	Ind	0	0.0
Turnout		0.0	0.0
Lower Dale (706)			
		vote	share
Potts J.	Ind	0	0.0
Turnout		0.0	0.0

Lower Swaledale (423)			
		vote	share
Bayley K.	Ind	128	49.8
Smalley M.	Ind	65	25.3
Williams E. Ms.	Ind	64	24.9
Turnout		60.8	24.5
Middleham & Coverdale (1089)			
		vote	share
Collins E.	Ind	0	0.0
Turnout		0.0	0.0
Reeth (871)			
		vote	share
Law D.	Ind	0	0.0
Turnout		0.0	0.0
Richmond Central (1451)			
		vote	share
Cross R.	Ind	0	0.0
Turnout		0.0	0.0
Richmond East (2594) ³			
		vote	share
Waldie D.	Ind	1,083	100.0
Carr K. Ms.	Ind	1,030	-
Harris A. Ms.	Ind	987	-
Oliver S.	Ind	729	-
Turnout		70.4	94.0
Richmond West (1876) ²			
		vote	share
Thompson B.	Ind	0	-
May R.	Ind	0	0.0
Turnout		0.0	0.0
Scorton (583)			
		vote	share
Bell J.	Ind	0	0.0
Turnout		0.0	0.0
Scotton (624)			
		vote	share
Rothwell M. Ms.	Ind	0	0.0
Turnout		0.0	0.0
St. Agathas (839)			
		vote	share
Spurgeon K.	Ind	0	0.0
Turnout		0.0	0.0
St. Michaels & St. Lukes (957)			
		vote	share
Corps W.	Ind	0	0.0
Turnout		0.0	0.0
Stanwick (923)			
		vote	share
Reeks F.	Ind	0	0.0
Turnout		0.0	0.0
Swaleside (823)			
		vote	share
Leggett R.	Ind	312	49.2
McGill M.	Ind	189	29.8
Hendren J.	Ind	133	21.0
Turnout		77.6	19.4
Urevale (766)			
		vote	share
Woodrow J.	Ind	317	57.6
Hodgson G.	Ind	233	42.4
Turnout		71.8	15.3

Richmondshire - 1983			
Askrigg (788)			
Abraham J.	Ind	vote 0	share 0.0
Turnout 0.0 0.0			
Aysgarth (823)			
Abraham A.	Ind	vote 0	share 0.0
Turnout 0.0 0.0			
Barton (1042)			
Brown J.	Ind	vote 0	share 0.0
Turnout 0.0 0.0			
Bolton Manor (725)			
Waite C.	Ind	vote 0	share 0.0
Turnout 0.0 0.0			
Catterick & Tunstall (1964)²			
Doughty B.	Ind	vote 600	share 100.0
Proom H.	Ind	vote 298	share -
Proom S. Ms.	Ind	vote 178	share -
Turnout 38.2 61.2			
Colburn (2446)³			
Golding	Ind	vote 0	share -
Jeff L.	Ind	vote 0	share -
Mudd H.	Ind	vote 0	share 0.0
Turnout 0.0 0.0			
Croft-On-Tees (541)			
Larcombe E.	Ind	vote 0	share 0.0
Turnout 0.0 0.0			
Grinton & Upper Swaledale (696)			
Alderson W.	Ind	vote 0	share 0.0
Turnout 0.0 0.0			
Hawes & High Abbotside (1040)			
Stott R.	Ind	vote 0	share 0.0
Turnout 0.0 0.0			
Hipswell (1062)²			
Cherry B. Ms.	Ind	vote 0	share -
Clarke C.	Ind	vote 0	share 0.0
Turnout 0.0 0.0			
Kirby Hill (693)			
Watson C.	Ind	vote 0	share 0.0
Turnout 0.0 0.0			
Leyburn (1678)²			
Jones K.	Ind	vote 0	share -
Potts J.	Ind	vote 0	share 0.0
Turnout 0.0 0.0			
Lower Dale (721)			
Cullen P.	Ind	vote 149	share 100.0
Turnout 20.7 -56.4			

Lower Swaledale (420)			
Collins E.	Ind	vote 149	share 79.7
Appleby B.	All	vote 38	share 20.3
Turnout 44.5 59.4			
Middleham & Coverdale (1172)			
Law D.	Ind	vote 0	share 0.0
Turnout 0.0 0.0			
Reeth (876)			
Law D.*	Ind	vote 0	share 0.0
Turnout 0.0 0.0			
Richmond Central (1542)			
Cross R.	Ind	vote 283	share 42.4
Clarke S. Ms.	All	vote 254	share 38.1
Hendren J.	Ind	vote 130	share 19.5
Turnout 43.3 4.3			
Richmond East (2656)³			
Buckle G. Ms.	All	vote 645	share 50.2
Carr K. Ms.	Ind	vote 640	share 49.8
May R.	Ind	vote 638	share -
Carter V.	All	vote 400	share -
Turnout 43.8 0.4			
Richmond West (1812)²			
Cross T. Ms.	Ind	vote 367	share 53.4
Lewis C. Ms.	All	vote 320	share 46.6
Golding S. Ms.	Ind	vote 177	share -
Hodge B.	Ind	vote 167	share -
Turnout 47.4 6.8			
Scorton (585)			
Bell J.	Ind	vote 0	share 0.0
Turnout 0.0 0.0			
Scotton (720)			
Rothwell M. Ms.	Ind	vote 161	share 60.3
D'Arcy J. Ms.	Lib/SDP	vote 106	share 39.7
Turnout 37.1 20.6			
St. Agathas (865)			
Forde A.	All	vote 75	share 93.8
Spurgeon K.	Ind	vote 5	share 6.3
Corps J.	Ind	vote 0	share 0.0
Turnout 9.2 87.5			
St. Michaels & St. Lukes (946)			
Bell J.	Ind	vote 0	share 0.0
Turnout 0.0 0.0			
Stanwick (949)			
Leggett R.	Ind	vote 288	share 52.9
Pelton A.	Ind	vote 110	share 20.2
Reeks F.	Ind	vote 86	share 15.8
Wood D.	Ind	vote 60	share 11.0
Turnout 54.6 32.7			
Swaleside (1050)			
Leggett R.	Ind	vote 288	share 53.7
McGill M.	Ind	vote 145	share 27.1
Grant C.	Lib/SDP	vote 103	share 19.2
Turnout 51.0 26.7			

Richmondshire - 1987			
Askrigg (808)			
Abraham J.	Ind	vote 0	share 0.0
Turnout 0.0 0.0			
Aysgarth (862)			
Abraham A.	Ind	vote 0	share 0.0
Turnout 0.0 0.0			
Barton (1104)			
Brown J.	Ind	vote 0	share 0.0
Turnout 0.0 0.0			
Bolton Manor (788)			
Watson N.	Lib/SDP	vote 238	share 53.5
Waite C.	Ind	vote 207	share 46.5
Turnout 56.5 7.0			
Catterick & Tunstall (2058)²			
Doughty B.	Ind	vote 661	share 61.0
Proom H.	Ind	vote 459	share -
Gray G.	Con	vote 422	share 39.0
Turnout 44.5 22.1			
Colburn (2612)³			
Church J.	Lib/SDP	vote 821	share 70.4
Miller L. Ms.	Lib/SDP	vote 581	share -
Copstake N.	Lib/SDP	vote 434	share -
Jeff L.	Ind	vote 345	share 29.6
Mudd H.	Ind	vote 272	share -
Turnout 37.2 40.8			
Croft-On-Tees (585)			
Larcombe E.	Ind	vote 0	share 0.0
Turnout 0.0 0.0			
Grinton & Upper Swaledale (715)			
Alderson W.	Ind	vote 0	share 0.0
Turnout 0.0 0.0			
Hawes & High Abbotside (1074)			
Stott R.	Ind	vote 0	share 0.0
Turnout 0.0 0.0			
Hipswell (1398)²			
Irwin G.	Lib/SDP	vote 0	share 0.0
Cherry B. Ms.	Ind	vote 0	share 0.0
Turnout 0.0 0.0			
Kirby Hill (974)			
Watson C.	Ind	vote 0	share 0.0
Turnout 0.0 0.0			
Leyburn (1728)²			
Jones K.	Ind	vote 611	share 100.0
Turner O. Ms.	Ind	vote 400	share -
Scott J. Ms.	Ind	vote 342	share -
Turnout 45.3 100.0			
Lower Dale (851)			
Potts J.	Ind	vote 0	share 0.0
Turnout 0.0 0.0			

Lower Swaledale (410)			
		vote	share
Cullen P.	Ind	0	0.0
Turnout		0.0	0.0
Middleham & Coverdale (1232)			
Collins E.	Ind	0	0.0
Turnout		0.0	0.0
Reeth (944)			
Law D.*	Ind	0	0.0
Turnout		0.0	0.0
Richmond Central (1592)			
Cross R.	Ind	474	65.7
Harris J.	Lib/SDP	247	34.3
Turnout		45.3	31.5
Richmond East (2862) ³			
Harris A. Ms.	Lib/SDP	997	58.2
Buckle E. Ms.	Lib/SDP	809	-
Carr K. Ms.	Ind	717	41.8
Orchard G.	Ind	692	-
Waldie D.	Ind	574	-
Carter V.	Ind	146	-
Turnout		53.2	16.3
Richmond West (1804) ²			
May R.	Ind	566	70.2
Cross P. Ms.	Ind	515	-
Metcalfe J. Ms.	Ind	308	-
World C.	Lib/SDP	135	16.7
Norton J. Ms.	Lib/SDP	135	-
Griffiths D.	Lab	105	13.0
Turnout		52.7	53.5
Scorton (606)			
Bell J.	Ind	269	74.3
McLennan G.	Lib/SDP	93	25.7
Turnout		59.7	48.6
Scotton (1038)			
Rothwell M. Ms.	Ind	0	0.0
Turnout		0.0	0.0
St. Agathas (903)			
Golding S. Ms.	Ind	442	85.2
Spurgeon K.	Ind	77	14.8
Turnout		57.5	70.3
St. Michaels & St. Lukes (975)			
Corps W.	Ind	0	0.0
Turnout		0.0	0.0
Stanwick (1010)			
Gill J.	Ind	0	0.0
Turnout		0.0	0.0
Swaleside (1246)			
McGill M.	Ind	263	57.3
Adamson P.	Ind	196	42.7
Turnout		36.8	14.6
Urevale (892)			
Woodrow J.	Ind	264	52.4
Bolam D.	Lib/SDP	240	47.6
Turnout		56.5	4.8

Richmondshire - 1991

Askrigg (828)			
		vote	share
Abraham J.*	Ind	0	0.0
Turnout		0.0	0.0
Aysgarth (945)			
Abraham A.*	Ind	0	0.0
Turnout		0.0	0.0
Barton (1142)			
Dawson C.	Ind	326	57.5
Simpson E.	Ind	241	42.5
Turnout		49.6	15.0
Bolton Manor (792)			
Watson N.*	Ind LD	0	0.0
Turnout		0.0	0.0
Catterick & Tunstall (2080)			
Allen M.	Con	260	47.4
Heaton R. Ms.	Ind	244	44.4
Griffiths D.	Lab	45	8.2
Turnout		26.4	2.9
Colburn (2730) ³			
Miller L. Ms.*	Ind	583	31.3
Church R.	LD	583	31.3
Grant H. Ms.*	SDP	479	25.7
Griffiths D.	Lab	219	11.7
Turnout		68.3	0.0
Croft-On-Tees (559)			
Larcombe E.	Ind	0	0.0
Turnout		0.0	0.0
Grinton & Upper Swaledale (729)			
Alderson R.	Ind	0	0.0
Turnout		0.0	0.0
Hawes & High Abbotside (1101)			
Stott R.*	Ind	0	0.0
Turnout		0.0	0.0
Hipswell (1473)			
Shaw S. Ms.	Ind	94	65.3
Class P.	Con	50	34.7
Turnout		9.8	30.6
Kirby Hill (876)			
Graham M.	Ind	340	67.2
Watson C.	Ind	166	32.8
Turnout		57.8	34.4
Leyburn (1788) ²			
Scott C.	Ind	0	0.0
Jones K.*	Ind	0	-
Turnout		0.0	0.0
Lower Dale (891)			
Potts J.*	Ind	0	0.0
Turnout		0.0	0.0

Lower Swaledale (435)			
		vote	share
Cullen P.*	Ind	0	0.0
Turnout		0.0	0.0
Middleham & Coverdale (1169)			
Hibbard P.	Ind	0	0.0
Turnout		0.0	0.0
Reeth (875)			
		vote	share
Kendall O.	Ind	281	55.5
Hodgson R.	Ind	149	29.4
Hughes R.	Ind	46	9.1
Ross J. Ms.	Con	30	5.9
Turnout		57.8	26.1
Richmond Central (1683)			
Cross R.*	Ind	471	61.2
World C.	LD	299	38.8
Turnout		45.8	22.3
Richmond East (2938) ³			
Buckle G. Ms.*	LD	934	36.3
Blease O.	Con	828	32.2
Carr K. Ms.*	Ind	812	31.5
Harris J.	LD	715	-
Turnout		60.0	4.1
Richmond West (1830) ²			
Cross P. Ms.	Ind	0	-
Metcalfe J. Ms.	Ind	0	0.0
Turnout		0.0	0.0
Scorton (602)			
Heseltine M.	Ind Con	0	0.0
Turnout		0.0	0.0
Scotton (1297)			
Rothwell M. Ms.	Ind	0	0.0
Turnout		0.0	0.0
St. Agathas (876)			
		vote	share
Golding S. Ms.*	Ind	366	81.3
Spurgeon K.	Ind	84	18.7
Turnout		51.4	62.7
St. Michaels & St. Lukes (1027)			
Corps W.	Ind	0	0.0
Turnout		0.0	0.0
Stanwick (1037)			
Gill J.	Ind	0	0.0
Turnout		0.0	0.0
Swaleside (1333)			
		vote	share
Fryer J.	Ind	365	62.0
McGill M.	Ind	224	38.0
Turnout		44.2	23.9
Urevale (935)			
Hardcastle S.	Con	0	0.0
Turnout		0.0	0.0

Richmondshire - 1995

Askrigg (806)			
Abraham J.*	Ind	vote 0	share 0.0
		Turnout	0.0 0.0
Aysgarth (880)			
Miller J.	Ind	vote 0	share 0.0
		Turnout	0.0 0.0
Barton (1216)			
Dawson C.*	Ind	vote 0	share 0.0
		Turnout	0.0 0.0
Bolton Manor (806)			
Watson N.*	LD	vote 0	share 0.0
		Turnout	0.0 0.0
Catterick & Tunstall (2037)²			
Green S.*	LD	vote 501	share 38.0
Pelton A.	SDP	443	33.6
Allen M.*	Con	373	28.3
		Turnout	41.6 4.4
Colburn (2611)³			
Church J.*	LD	vote 536	share 44.7
Miller L. Ms.*	Ind	468	39.0
Grant H. Ms.*	Ind	438	-
Austen M.	Lab	196	16.3
		Turnout	28.5 5.7
Croft-On-Tees (552)			
Parlour J. Ms.	LD	vote 216	share 70.6
Larcombe E.*	Ind	90	29.4
		Turnout	56.3 41.2
Grinton & Upper Swaledale (665)			
Alderson R.*	Ind	vote 0	share 0.0
		Turnout	0.0 0.0
Hawes & High Abbotside (1074)			
Blackie J.	Ind	vote 383	share 52.0
Stott R.*	Ind	354	48.0
		Turnout	69.1 3.9
Hipswell (1133)²			
Shaw S. Ms.*	Ind	vote 0	share 0.0
Irwin G.*	Ind LD	0	0.0
		Turnout	0.0 0.0
Kirby Hill (1031)			
Graham M.*	Ind	vote 0	share 0.0
		Turnout	0.0 0.0
Leyburn (1790)²			
Jones K.*	Ind	vote 579	share 61.9
Scott C.*	Ind	391	-
Butterworth A. Ms.	Lab	356	38.1
		Turnout	48.0 23.9
Lower Dale (1033)			
Potts J.*	Ind	vote 0	share 0.0
		Turnout	0.0 0.0

Lower Swaledale (419)			
Cullen P.*	Ind	vote 0	share 0.0
		Turnout	0.0 0.0
Middleham & Coverdale (1202)			
Ramsbottom F. Ms.	LD	vote 0	share 0.0
		Turnout	0.0 0.0
Reeth (903)			
Kendall O.*	Ind	vote 341	share 67.4
Davies G.	Lab	165	32.6
		Turnout	56.0 34.8
Richmond Central (1635)			
World C.	LD	vote 262	share 37.6
Griffiths S. Ms.	Lab	172	24.7
Johnson D.	Con	168	24.1
Robinson P.	Ind	94	13.5
		Turnout	43.2 12.9
Richmond East (3194)³			
Buckle G. Ms.*	LD	vote 832	share 33.6
Carr K. Ms.*	Ind	753	30.4
Blease O.*	Con	608	24.5
Frizell C. Ms.	LD	476	-
Creek K.	Con	370	-
Holliday T. Ms.	Lab	286	11.5
		Turnout	43.4 3.2
Richmond West (1738)²			
Metcalfe J. Ms.*	Ind	vote 415	share 45.8
Cross P. Ms.*	Ind	402	-
Griffiths D.	Lab	250	27.6
Appleton A. Ms.	LD	242	26.7
Simpson A. Ms.	LD	171	-
		Turnout	47.4 18.2
Scorton (630)			
Heseltine M.*	Ind Con	vote 0	share 0.0
		Turnout	0.0 0.0
Scotton (1282)			
Middlemiss P. Ms.	Ind	vote 0	share 0.0
		Turnout	0.0 0.0
St. Agathas (879)			
Golding S. Ms.	Ind	vote 0	share 0.0
		Turnout	0.0 0.0
St. Michaels & St. Lukes (1070)			
Corps W.*	Ind	vote 0	share 0.0
		Turnout	0.0 0.0
Stanwick (1018)			
Gill J.*	Ind	vote 0	share 0.0
		Turnout	0.0 0.0
Swaleside (1337)			
Fryer J.*	Ind	vote 0	share 0.0
		Turnout	0.0 0.0
Urevale (937)			
Hodgson G.	LD	vote 241	share 57.5
Hardcastle B.*	Ind	178	42.5
		Turnout	44.6 15.0

Richmondshire - 1999

Askrigg (793)			
Peacock Y. Ms.	Con	vote 318	share 66.3
Abraham J.*	Ind	162	33.8
		Turnout	60.9 32.5
Aysgarth (887)			
Bailey C.*	Ind	vote 376	share 84.7
Mason J.	LD	68	15.3
		Turnout	50.1 69.4
Barton (1288)			
Dawson C.*	Ind	vote 0	share 0.0
		Turnout	0.0 0.0
Bolton Manor (840)			
Watson N.*	LD	vote 297	share 68.6
Childs M.	Con	136	31.4
		Turnout	52.9 37.2
Catterick & Tunstall (2109)²			
Pelton T.*	Doc Dem	vote 452	share 42.0
Smith B.	Doc Dem	332	-
Priestley P. Ms.	Con	282	26.2
Heaton R. Ms.	Ind	259	24.1
Simpson A. Ms.	LD	82	-
Harrison S. Ms.	LD	82	7.6
		Turnout	37.7 15.8
Colburn (2547)³			
Miller L. Ms.*	Ind	vote 0	share 0.0
Lacey J.	Ind	0	-
Grant H. Ms.*	Ind	0	-
		Turnout	0.0 0.0
Croft-On-Tees (572)			
Parlour J. Ms.*	LD	vote 200	share 67.3
Mason. J.	Con	97	32.7
		Turnout	51.9 34.7
Grinton & Upper Swaledale (663)			
Alderson R.*	Con	vote 0	share 0.0
		Turnout	0.0 0.0
Hawes & High Abbotside (1072)			
Blackie J.*	Ind	vote 0	share 0.0
		Turnout	0.0 0.0
Hipswell (1509)²			
Bagely A. Ms.*	LD	vote 140	share 64.2
Good R.*	LD	103	-
Robertson B. Ms.	SDP	78	35.8
		Turnout	13.2 28.4
Kirby Hill (1038)			
Graham M.*	Ind	vote 0	share 0.0
		Turnout	0.0 0.0
Leyburn (1779)²			
Forth T.	LD	vote 488	share 57.8
Jones T.	LD	442	-
Pringle V. Ms.	Con	357	42.2
		Turnout	42.8 15.5

Lower Dale (996)			
		vote	share
Dunn R.	Ind	218	57.2
Blythman M. Ms.	Con	163	42.8
Turnout		38.4	14.4
Lower Swaledale (389)			
Cullen P.*	Ind	0	0.0
Turnout		0.0	0.0
Middleham & Coverdale (1247)			
Robson A. Ms.	Con	371	66.5
Ramsbottom F. Ms.*	LD	187	33.5
Turnout		44.9	33.0
Reeth (957)			
Kendall O.*	Ind	0	0.0
Turnout		0.0	0.0
Richmond Central (1585)			
World C.*	LD	354	55.6
Johnson D.	Con	283	44.4
Turnout		40.6	11.1
Richmond East (3048) ³			
Buckle G. Ms.*	LD	713	38.1
Carr K. Ms.*	Ind	596	31.8
Harris R.	LD	584	-
Blease O.*	Con	563	30.1
Frizell C. Ms.	LD	451	-
Turnout		38.4	6.3
Richmond West (1655) ²			
Metcalfe J. Ms.*	Ind	366	49.0
Appleton A. Ms.	Con	239	32.0
Golding G.	Ind	160	-
Bell S. Ms.	LD	142	19.0
Parsons S.	LD	140	-
Turnout		35.4	17.0
Scorton (694)			
Hestletine M.*	Con	0	0.0
Turnout		0.0	0.0
Scotton (1515)			
Middlemiss P. Ms.*	Ind	0	0.0
Turnout		0.0	0.0
St. Agathas (888)			
Golding S. Ms.*	Ind	0.0	0.0
Turnout		0.0	0.0
St. Michaels & St. Lukes (1030)			
Corps W.*	Ind	0	0.0
Turnout		0.0	0.0
Stanwick (1100)			
Gill J.*	Ind	0	0.0
Turnout		0.0	0.0
Swaleside (1351)			
Fryer J.*	Ind	0	0.0
Turnout		0.0	0.0

Urevale (955)			
		vote	share
Loadman K.	Con	252	54.1
Hodgson G.*	LD	214	45.9
Turnout		48.9	8.2
Richmondshire - 2003			
Addleborough (1085)			
Peacock Y. Ms.*	Con	0	0.0
Turnout		0.0	0.0
Barton (1029)			
Dawson C.*	Ind	285	57.5
Adams A. Ms.	LD	211	42.5
Turnout		48.8	14.9
Bolton Castle (1029)			
Morton W. Ms.*	Con	384	72.7
Weedon J.	LD	144	27.3
Turnout		51.7	45.5
Brompton-On-Swale & Scorton (2239) ²			
Heseltine M.*	Con	559	43.9
Fryer J.*	Ind	417	32.7
Rowe L.	LD	298	23.4
Turnout		37.7	11.1
Catterick (1848) ²			
Pelton A.*	SOC DEM	492	43.6
Johnson R.	Con	326	28.9
Brennan P.*	LD	310	27.5
Turnout		37.0	14.7
Colburn (2310) ³			
Wood P.*	Ind	384	54.3
Glover W.	Ind	375	-
Miller L. Ms.*	Rich Ind Grp	323	45.7
Grant H. Ms.*	Rich Ind Grp	311	-
Kirk J. Ms.	Ind	187	-
Turnout		30.5	8.6
Croft (1015)			
Parlour J. Ms.*	LD	280	51.4
Smith K.*	Ind	265	48.6
Turnout		53.7	2.8
Gilling West (966)			
Cronin J.	Rich Ind Grp	268	67.0
Hartley J.	Con	132	33.0
Turnout		41.9	34.0
Hawes & High Abbotside (1069)			
Blackie J.*	Con	487	87.7
Rudd C.	Rich Ind Grp	68	12.3
Turnout		53.0	75.5
Hipswell (1903) ²			
Cullen P.*	Rich Ind Grp	149	32.6
Bagley A. Ms.*	LD	130	28.4
Steckles M. Ms.	Con	108	23.6
Robertson B. Ms.	Ind	70	15.3
Turnout		16.7	4.2

Hornby Castle (955)			
		vote	share
Dunn R.*	Ind	290	87.3
Munro A.	Rich Ind Grp	42	12.7
Turnout		35.3	74.7
Leyburn (1956) ²			
Morton D.	Con	423	64.0
Ramsbottom F. Ms.	LD	238	36.0
Weedon K. Ms.	LD	193	-
Turnout		31.3	28.0
Lower Wensleydale (1023)			
Loadman K.*	Con	0	0.0
Turnout		0.0	0.0
Melsonby (1069)			
Gill J.*	Ind	226	56.5
Place T.	Rich Ind Grp	174	43.5
Turnout		37.4	13.0
Middleham (1044)			
Thomas H.	Con	0	0.0
Turnout		0.0	0.0
Middleton Tyas (1023)			
McMullon J. Ms.	Con	380	75.1
Joicey H.	Rich Ind Grp	126	24.9
Turnout		49.6	50.2
Newsham With Eppleby (985)			
Maude D.	Rich Ind Grp	0	0.0
Turnout		0.0	0.0
Penhill (990)			
Dent G.	Con	0	0.0
Turnout		0.0	0.0
Reeth & Arkengarthdale (1034)			
Kendall O.*	Ind	0	0.0
Turnout		0.0	0.0
Richmond Central (2215) ²			
World C.*	LD	480	41.0
Clarke S. Ms.	LD	381	-
Carr K. Ms.*	Rich Ind Grp	368	31.4
Johnson D.	Con	323	27.6
Turnout		40.1	9.6
Richmond East (2099) ²			
Harris J.*	LD	486	37.3
Burrows T.	Rich Ind Grp	409	31.4
McDougall I.	Con	408	31.3
Robinson J.	LD	342	-
Turnout		45.6	5.9
Richmond West (2132) ²			
Parsons S.	LD	0	0.0
Curran L. Ms.	LD	0	-
Turnout		0.0	0.0

Scotton (1618) ²			
		vote	share
Middlemiss P. Ms.*	Ind	204	48.8
Leadbeater D.	Ind	150	-
Ecker K.	LD	109	26.1
Kerr M.	Rich Ind Grp	105	25.1
Turnout		17.8	22.7

Swaledale (966)			
		vote	share
Alderson R.*	Con	327	73.0
Smethurst S.	Rich Ind Grp	121	27.0
Turnout		46.6	46.0

Richmondshire - 2007

Addleborough (1117)			
		vote	share
Peacock Y. Ms.*	Ind	539	88.5
Weedon J.	LD	70	11.5
Turnout		54.8	77.0

Barton (1014)			
		vote	share
Dawson C.*	Con	345	66.2
Adams A. Ms.	LD	176	33.8
Turnout		51.4	32.4

Bolton Castle (1081)			
		vote	share
Fairhurst S. Ms.	Con	0	0.0
Turnout		0.0	0.0

Brompton-On-Swale & Scorton (2395) ²			
		vote	share
Heseltine M.*	Con	643	41.8
Fryer J.*	Ind	475	30.9
Rowe L.	Green	421	27.4
Turnout		41.0	10.9

Catterick (1873) ²			
		vote	share
Branch J. Ms.	Con	403	36.9
Johnson R.*	Ind	318	29.1
Brennan P.	LD	247	22.6
Goodwin C. Ms.	BNP	123	11.3
Goodwin J.	BNP	98	-
Turnout		42.4	7.8

Colburn (3008) ³			
		vote	share
Grant H. Ms.	Ind	0	-
Glover B.	Ind	0	-
Wood P.*	Ind	0	0.0
Turnout		0.0	0.0

Croft (1034)			
		vote	share
Parlour J. Ms.*	LD	0	0.0
Turnout		0.0	0.0

Gilling West (990)			
		vote	share
Heslop W.	Ind	0	0.0
Turnout		0.0	0.0

Hawes & High Abbotside (1091)			
		vote	share
Blackie J.*	Ind	0	0.0
Turnout		0.0	0.0

Hipswell (2245) ²			
		vote	share
Tye A. Ms.	Con	246	37.8
Cullen P.*	Ind	240	36.9
Quirie P. Ms.	LD	164	25.2
Goff M.	LD	141	-
Turnout		23.0	0.9

Hornby Castle (1087)			
		vote	share
Steckles M. Ms.	Con	294	65.0
Pelton A.	Ind	158	35.0
Turnout		41.7	30.1

Leyburn (2149) ²			
		vote	share
Duff C.	Con	516	51.9
Butler F. Ms.	Con	478	-
Weedon K. Ms.	LD	286	28.8
Wallace D.	Ind	192	19.3
Turnout		40.0	23.1

Lower Wensleydale (1111)			
		vote	share
Loadman K.*	Ind	462	86.2
Borman B.	Ind	74	13.8
Turnout		48.4	72.4

Melsonby (1117)			
		vote	share
Wilson-Petch J.	Con	171	34.9
Catesby C. Ms.	LD	165	33.7
Place T.	Ind	154	31.4
Turnout		43.9	1.2

Middleham (1045)			
		vote	share
Harrison-Topham T.	Con	330	75.5
Wilson G. Ms.	LD	107	24.5
Turnout		41.8	51.0

Middleton Tyas (987)			
		vote	share
McMullon J. Ms.*	Con	0	0.0
Turnout		0.0	0.0

Newsham With Eppleby (1048)			
		vote	share
Newhouse H.	Con	0	0.0
Turnout		0.0	0.0

Penhill (1043)			
		vote	share
Thomas H.	Con	0	0.0
Turnout		0.0	0.0

Reeth & Arkengarthdale (1062)			
		vote	share
Bearpark M.	Ind	0	0.0
Turnout		0.0	0.0

Richmond Central (2274) ²			
		vote	share
Robinson J.	LD	493	51.5
World C.*	LD	480	-
Johnson D.	Con	465	48.5
Turnout		41.0	2.9

Richmond East (2172) ²			
		vote	share
Lord R.	Ind	649	53.7
Harris J.*	LD	560	46.3
Burrows T.*	Ind	487	-
Turnout		49.4	7.4

Richmond West (2308) ²			
		vote	share
Parsons S.*	LD	707	74.5
Curran L. Ms.*	LD	671	-
Grainger C. Ms.	Con	242	25.5
Turnout		41.8	49.0

Scotton (1867) ²			
		vote	share
Bradbury M.	Ind	245	100.0
Lambert K.	Ind	189	-
Spark M.	Ind	161	-
Turnout		20.4	1.2

Swaledale (961)			
		vote	share
Alderson R.*	Ind	342	78.1
Whelan P. Ms.	Ind	96	21.9
Turnout		46.1	56.2

Richmondshire - 2011

Addleborough (1093)			
		vote	share
Peacock Y. Ms.*	Con	0	0.0
Turnout		0.0	0.0

Barton (966)			
		vote	share
Dawson C.*	Con	345	63.9
Cook L. Ms.	Ind	195	36.1
Turnout		55.9	27.8

Bolton Castle (1050)			
		vote	share
Amsden J.	Ind	334	52.6
Ashforth D.	Con	301	47.4
Turnout		61.4	5.2

Brompton-On-Swale & Scorton (2342) ²			
		vote	share
Gill D.	Con	502	43.5
Threlfall I.	Con	491	-
Fryer J.*	Ind	408	35.3
Rowe L.	Green	245	21.2
Turnout		43.6	8.1

Catterick (1893) ²			
		vote	share
Pelton T.	Ind	512	60.2
Johnson R.*	Con	338	39.8
Branch J. Ms.*	Con	263	-
Turnout		41.6	20.5

Colburn (2679) ³			
		vote	share
Glover B.*	Con	426	52.5
Dale A. Ms.	Ind	386	47.5
Wood P.*	Ind	383	-
Grant H. Ms.*	Ind	348	-
Partridge B. Ms.	Con	342	-
Burke M. Ms.	Ind	157	-
Turnout		35.8	4.9

Croft (989)			
		vote	share
Parlour J. Ms.*	LD	323	57.9
Sayer W.	Con	235	42.1
Turnout		57.3	15.8

Gilling West (945)			
		vote	share
Heslop W.*	Ind	280	57.7
Todd P.	Con	205	42.3
Turnout		51.3	15.5

Hawes & High Abbotside (1067)			
		vote	share
Blackie J.*	Ind	615	94.8
Whinray I.	Con	34	5.2
Turnout		61.2	89.5
Hipswell (2022)²			
		vote	share
Todd S. Ms.	Con	226	34.0
Cullen P.*	Ind	218	32.8
Bagley A. Ms.	LD	140	21.1
Wallach C. Ms.	Con	96	-
Dalton D.	Green	80	12.0
Turnout		25.3	1.2
Hornby Castle (1276)			
		vote	share
Steckles M. Ms.*	Con	0	0.0
Turnout		0.0	0.0
Leyburn (2068)²			
		vote	share
Duff C.*	Con	458	51.9
Butler F. Ms.*	Con	452	-
Brook A.	Ind	425	48.1
Wallace D.	Ind	284	-
Turnout		46.0	3.7
Lower Wensleydale (1085)			
		vote	share
Loadman K.*	Con	0	0.0
Turnout		0.0	0.0
Melsonby (1095)			
		vote	share
Wilson-Petch J.*	Con	300	52.6
Stansfield J. Ms.	Ind	270	47.4
Turnout		52.2	5.3
Middleham (1024)			
		vote	share
Allen R. Ms.	Con	0	0.0
Turnout		0.0	0.0
Middleton Tyas (921)			
		vote	share
McMullon J. Ms.*	Ind	311	62.1
Staincliffe P.	Con	190	37.9
Turnout		54.6	24.2
Newsham With Eppleby (1021)			
		vote	share
Griffiths M.	Ind	320	55.8
Lilley J. Ms.	Con	253	44.2
Turnout		56.6	11.7
Penhill (982)			
		vote	share
Wilkes M.	Ind	294	55.4
Thomas H.*	Con	237	44.6
Turnout		55.5	10.7
Reeth & Arkengarthdale (1028)			
		vote	share
Gale B.	Ind	514	88.0
Alderson S. Ms.	Con	70	12.0
Turnout		57.0	76.0
Richmond Central (2186)²			
		vote	share
World C.*	LD	428	41.1
Robinson J.*	LD	421	-
Fry J.	Con	399	38.3
Simpson J.	Con	269	-
Adams A. Ms.	Ind	215	20.6
Turnout		44.5	2.8

Richmond East (2113)²			
		vote	share
Lord R.*	Ind	531	47.7
Blythman M. Ms.	Con	315	28.3
Morton D.	Con	312	-
Miller G. Ms.	Ind	295	-
Hedges S.	LD	268	24.1
Irwin M.	LD	245	-
Turnout		53.5	19.4
Richmond West (2087)²			
		vote	share
Curran L. Ms.*	Ind	698	46.3
Parsons S.*	LD	644	42.7
Wyrill J. Ms.	Con	166	11.0
Morton W. Ms.	Con	156	-
Turnout		48.9	3.6
Scotton (1820)²			
		vote	share
Bradbury M.*	Ind	287	57.7
Lambert K.*	Ind	233	-
Middlemiss P.	Con	210	42.3
Clarkson L. Ms.	Con	198	-
Turnout		29.1	15.5
Swaledale (901)			
		vote	share
Gardner M.	Ind	277	54.5
Alderson R.*	Con	231	45.5
Turnout		57.6	9.1

